

NCGS LOG

November 2024
Volume 65 No. 5

HAPPY
THANKS
GIVING



IN THIS ISSUE

On the Cover

The Portico on Plymouth Bay and Plymouth Rock



The Portico on Plymouth Bay which houses Plymouth Rock; a granite slab traditionally thought to be where the Pilgrims first stepped into the "New World" when disembarking the Mayflower on December 26, 1620. The ten-ton slab of 600-million-year-old (Neoproterozoic) Dedham Granite is a 20,000-year-old glacial deposit on the modern-day shoreline of Plymouth Bay, Massachusetts

Resources: SeePlymouth.com; Britannica.com

IN THIS ISSUE

From the Editor...

Hello again and Happy Thanksgiving! In this issue of the NOGS Log:

In the article entitled “NOGS goes Big with Girl Scouts” Tom Bergeon describes this years “Believe in Girls” event. This is an annual NOGS outreach event and volunteer opportunity for NOGS members. Checkout this fun and worthwhile event, and get involved!

The New Orleans Geological Society will host a Holiday Kick-off Party for members, family, and friends on November 2nd at Rock-N-Bowl in Mid-City, New Orleans. Proceeds from this new, and hopefully, annual event will benefit the NOGS Memorial Foundation.

The monthly luncheon and technical presentation will be held on Wednesday, November 6th at Zea's Northshore location. This month Paul Lawless will present “Upper Cretaceous Erosional Features in the Subsurface of Louisiana and Mississippi”. Come join us for a delicious lunch and engaging conversation or join us virtually! Pictures from Bob Meltz's October presentation “The Wilcox in the Northern Deepwater Gulf of Mexico - Past, Present and Future” are included so you can see what you missed!

A look back with pictures from the North-shore and South-shore kickoff parties and membership drives are included in this issue. Both events were fun and well attended. As a result NOGS welcomes fourteen new member to it ranks.

SPE Delta Section November Meeting will be on Tuesday, November 12, 2024, 11am at the Viking office, 400 Magazine, Suite 400, New Orleans, LA 70130. SPE Distinguished Lecturer Dwayne Purvis will speak on “Economic Surprises of Late-Life Production” (decommissioning and end-of-field life economics). A light lunch will be provided. It is free.

Abstract submission for Geogulf 2025 is now open! Nacogdoches, TX will host the formerly GCAGS Annual Conference April 6th through the 8th, 2025. It's not too early to make plans to attend.

I encourage professionals, academics, and graduate students to grow your network and share your research. Become an active NOGS Member, consider writing a short article in the NOGS Log or, better yet, provide a short lunchtime presentation at a monthly meeting. Volunteer to work NOGS events or offer your services as a Board Member.

Until December....

Brian Bothner



Brian Bothner
2024/2025 NOGS Log Editor



JARED BULLOCK

A MESSAGE FROM THE 2024/2025 NOGS PRESIDENT

Greetings to the NOGS LOG audience,

Have you logged in to your NOGS account on the website recently? Personally, the only time I've logged in to my account before was to register for events using my pre-filled information. It was brought to my attention that there is a tab on the website called "Members" that only appears if you're logged in. Under the tab is a digital list of all active NOGS members with contact information. Check it out sometime, and please make sure your contact info is up to date!

NOGS held its October luncheon meeting at Drago's Metairie where Bob Meltz gave an interesting talk on the Wilcox in the Northern GOM. The luncheon was very well attended with over 55 people registered for the meeting. I joked with Bob that NOGS hasn't hit that number of attendees for a luncheon in quite some time, and that it was still unclear if it was his talk or the oysters bringing people in! Jokes aside, the talk was very good, and it was well received by everyone I talked to afterwards.

Our Southshore fall social event was postponed to October 3rd at Wrong Iron in Mid City. The event attracted over 25 people including new and old faces alike. Between the two fall social kickoff events there were nearly 50 attendees and NOGS gained 14 new members. If any of our new members are reading - welcome to NOGS! Thank you again to our social event sponsors - Leaaf Environmental and Stratigraph.

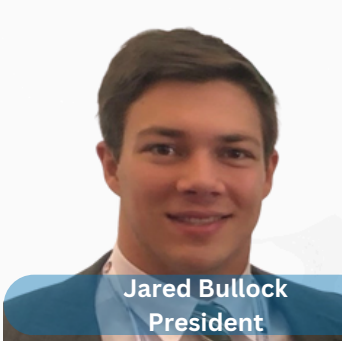
The next event on our calendar is the 2024 NOGS Holiday Party at Rock-n-Bowl on Saturday, November 2nd from 1:30-4pm. Registration is \$35 and includes bowling, food, and open bar. All kids 18 and under can attend for free. This party is a family-friendly event that is open to all. Please bring your family, friends, and prospective members!

Our next luncheon is scheduled for Wednesday, November 6th at Zea's in Covington. The speaker will be Paul Lawless presenting on "Upper Cretaceous Erosional Features in the Subsurface of Louisiana and Mississippi". As with all our luncheons, there will be time for networking at 11:30am and the meeting officially starts at 12pm with announcements followed by a presentation.

Jared Bullock
NOGS 2024-2025 President



2024/2025 NOGS BOARD OF DIRECTORS



Jared Bullock
President



Brian David
President Elect



**VOLUNTEER
NEEDED**

Editor Elect



Emmitt Lockard
Director A



Lee Hyson
Vice President



Charles Miller
Treasurer



Carol Avery
Director B



Chase Cromwell
Director C



Brittany George
Secretary



Brian Bothner
Editor

BELIEVE IN GIRLS EVENT

NOGS goes Big with Girl Scouts B.I.G. Believe In Girls - October 12th

This year's event was Girl Scouts first at Nichols State University in Thibodaux. The event is run by Kevin Shipp who brings together 30+ major STEM organizations from SE Louisiana. The highlight of our drive down was the local farmers along the bayou in full sugar cane harvest mode.

We had a great group of volunteers this year - LSU students Smruti Sardar, Sarah Bancroft and Daniel Owodunni. We were joined by Clare Falcon the State Geologist of Louisiana. NOGS members were our ever-dedicated outreach regulars Lisa Kennedy, Anna Strimas, Lily Strimas, Doug Bradford, Bernie Regel and Tom Bergeon.



About 400 girls attended the event and those who stopped at the NOGS area were treated to a series of stations which led one from the origin of oil to how to find oil in a structural trap. Lisa Kennedy of Southeastern Geophysical Society then had the girls create their own seismic energy which was monitored on a seismograph., This year we added a salt dome model. This was a great day of learning!

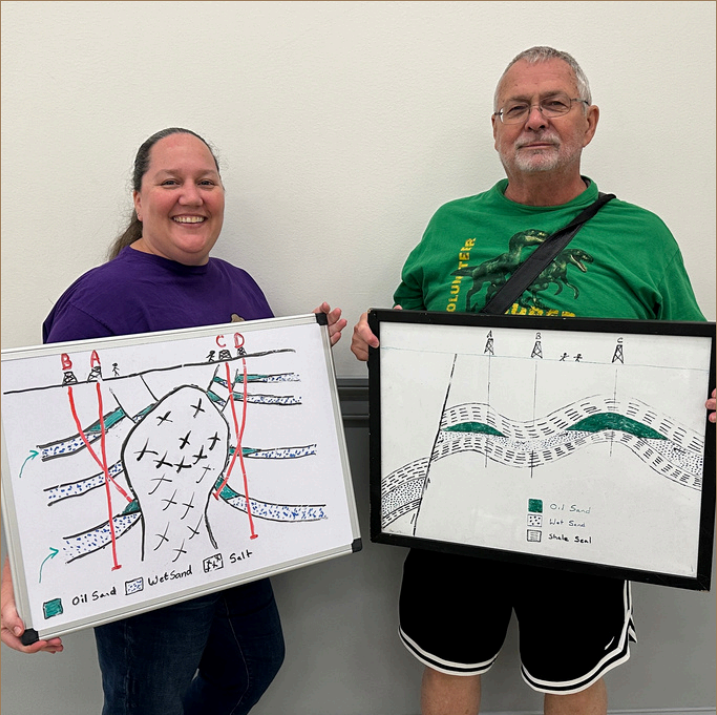


NOGS Outreach has a motto “Reach Just One”. If we approach each child as if our interaction could create a continued spark of scientific curiosity in just one child then all our efforts are worth it.



BELIEVE IN GIRLS EVENT

Sarah Bancroft of LSU attended one of our BIG events as a girl scout when she was in her teens and this exposure is what inspired her to be a petroleum geologist. This was very rewarding to hear. Sarah has already interned with Hilcorp and has worked with their geologists on an active well schedule.



My sincere thanks to all our great volunteers for making this happen, and we hope you will join us as a volunteer at future events!

Tom Bergeon

BELIEVE IN GIRLS EVENT



HOLIDAY

Kick Off Event

JOIN US TO KICK OFF THE HOLIDAY SEASON

SATURDAY, NOVEMBER 2, 2024
ROCK N BOWL

3016 S CARROLLTON AVE
NEW ORLEANS, LA 70118



1:30 pm - 4:00 pm

\$35.00 per person

includes bowling (optional)

food, beer, wine & softdrinks

18 & under accompanied by parent free

Food & Drinks
Bowling
Raffle Prizes
Fun

Bring Your
fAMILY

**Kids, family & friends
are all welcome!**

**Proceeds will benefit the
NOGS Memorial Foundation**

NOGS Monthly Meeting November 6, 2024

Zea's Northshore

11:30 a.m - Networking

12:00 p.m. Lunch & Presentation



UPPER CRETACEOUS EROSIONAL FEATURES IN THE SUBSURFACE OF LOUISIANA AND MISSISSIPPI



Presented by: Paul Lawless

Regional Upper Cretaceous mapping has shown two incisions cutting down into the Upper Cretaceous of Louisiana and Mississippi imprinted on a larger unconformity at the top of the Cretaceous. The first incision, the Pearl Basin Embayment is a rectangular section missing landward and parallel to the Upper Cretaceous Shelf Margin in Southeast Louisiana and Southern Mississippi. Upwards of 1,000'+ of the UK section is missing down into the Ector Chalk Member of the Austin Group. Microfossil analysis of cuttings in the HELIS #1 Poitevent (34-T7S-R12E) St Tammany Parish, LA, shows the upper 300' of the 420' of chalk section to be Paleogene Danian in age and not entirely Cretaceous as previously assumed. In addition, Danian chalk samples appear to have been deposited as a "jumbled mess" with Pg Danian section intermixed with Cretaceous fauna. This Pg chalk likely correlates with the updip Clayton Fm. The second incision, named the Mississippi Delta Incision (MDI), lies in the western most counties of Mississippi in the Delta and the east-central parishes in Louisiana. The MDI is perpendicular to the Upper Cretaceous Shelf Margin. As much as 1,250' of the UK section is missing down into the shales correlative to the updip Tokio Fm or the upper Austin Group. The MDI trend appears to go between the huge Monroe Uplift and the much smaller Jackson Dome. Kinsland (2016, 2021) published an interpretation of the JUSTISS #2 LA Central IPNH full core (2-T9N-R2E) LaSalle Pr, La. JUSTISS cored the Pg-K boundary in a similar section of the HELIS St Tammany Parish well. Initial paleontologic analysis of the JUSTISS core samples indicate that the LaSalle Pr section has Paleogene Danian chalk over a "jumbled mess" of Danian-Cretaceous section like the HELIS St Tammany Parish well.



NOGS Monthly Meeting DECEMBER 4, 2024

Drago's Metairie

11:30 a.m - Networking

12:00 p.m. Lunch & Presentation



EXPLORATION OF THE CONTROLS THAT SET THE SHAPE OF SUBMARINE FANS AND THEIR STRATIGRAPHIC ARCHITECTURE



Kyle Straub

Investigation of deepwater sediment routing systems has exploded in recent decades. We have learned so much, yet still lean on some foundational theory. We discuss recent advances in our understanding of deepwater sediment transport that determines the shape of submarine fans. First, we utilize a three-dimensional numerical model, EMStrata, to explore fluid and sediment transport field controls on the geomorphic shape of submarine fans. EMStrata solves depth-averaged equations that conserve fluid and sediment mass, as well as momentum and kinetic energy. Results highlight the dual control of input Froude and Rouse numbers on the shape of submarine fans. However, adverse slopes resulting from mobile substrates can lead to complex flow evolution not captured in layer averaged models, which we explore in physical experiments where turbidity currents interact with minibasin topography. Results illustrate the importance of three-dimensional flow evolution, specifically the development of circulation cells that alter depositional dynamics.

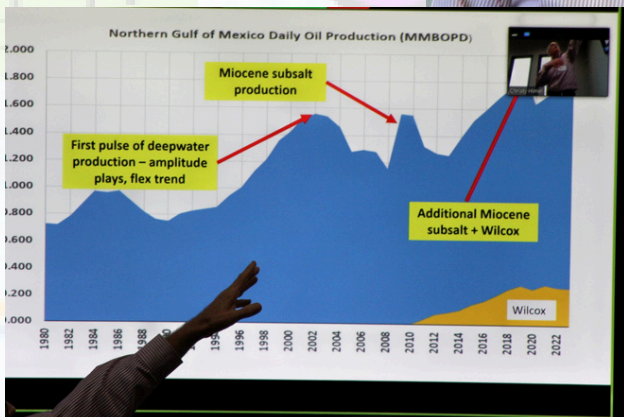
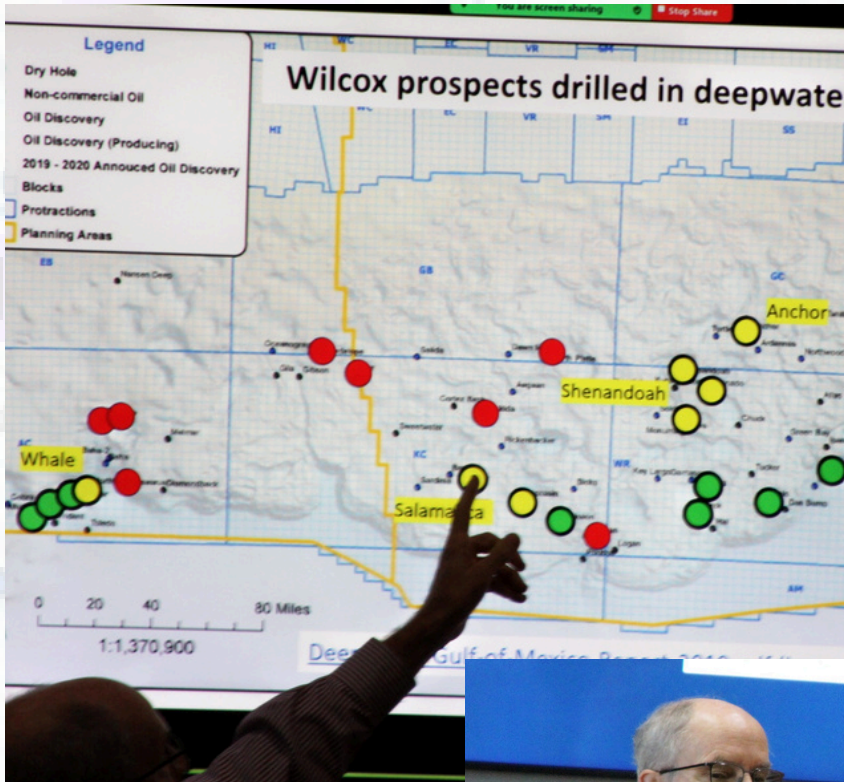
Kyle Straub joined the faculty of Tulane University in 2009 and is currently a professor and department chair of Earth and Environmental Sciences. His research group focuses on the transport of sediment from land through the ocean and into the stratigraphic record. Scales of interest range from the interaction of turbidity currents with submarine topography over minutes to the construction of deltas over millions of years. The sedimentary bodies that arise from these processes are home to millions of people, archives of past Earth conditions, and reservoirs of natural resources. He examines the morphodynamics and strata of these systems using carefully designed physical and numerical experiments, remote sensing of subsurface sedimentary deposits (visualization and interpretation of seismic data), field studies of modern and ancient sediment transport systems, and targeted quantitative analysis. He holds degrees from The Pennsylvania State University (BS) and The Massachusetts Institute of Technology (PhD).



NOGS Monthly Meeting October 9, 2024 Drago's Metairie



THE WILCOX IN THE NORTHERN DEEPWATER GULF OF MEXICO - PAST, PRESENT AND FUTURE BY BOB MELTZ





NOGS 2024

Kick-Off Party

AND MEMBERSHIP DRIVE

THURSDAY, SEPTEMBER 19, 2024

PAT'S REST A WHILE

Special Thanks to:



SEG

STRATAGRAPH ENERGY GROUP





NOGS 2024

Kick-Off Party

AND MEMBERSHIP DRIVE

WRONG IRON

ON THE GREENWAY
MID CITY, NOLA



Sponsored by:



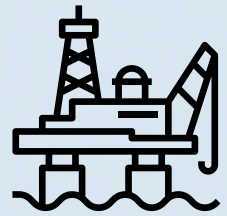
Leaf

environmental



DRILL BITS

OFFSHORE GULF OF MEXICO SHELF AND DEEPWATER ACTIVITIES BY AL BAKER



During September 2024, the Bureau of Safety and Environmental Enforcement (BSEE) approved 62 Gulf of Mexico (GoM) drilling permits. Six of the permits were for shelf wells, and the remaining 56 permits were for deepwater wells. There were 3 new well permits issued in deepwater.

The deepwater new well permits were for 3 exploration wells. Murphy Exploration & Production Company received a new well permit for their Green Canyon 478 #3 well. Shell Offshore obtained a permit to drill their #DV-1 well to test their Dover Prospect in Mississippi Canyon 612. LLOG Exploration Offshore was given a permit for their Alaminos Canyon 337 #1 well.

On October 4th, S&P Global Petrodata indicated that the GoM mobile offshore rig supply stood at 48, which is the same as last month. The marketed rig supply consisted of 35 rigs, of which 27 were under contract. The marketed rig supply was also the same as last month, and the contracted rig supply was 1 more than last month. The marketed contracted versus total rig supply utilization rate stood at 56.2%, and the marketed contracted versus marketed supply utilization rate stood at 77.1%. By comparison, the August 2023 total fleet utilization rate stood at 83.3% with 36 rigs in the marketed supply out of the 49 rigs in the fleet.

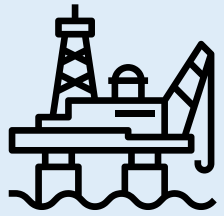
On October 4th, Baker Hughes reported that there are 16 active mobile offshore rigs in the GoM, which is 1 less than last month and 59.3% of the rigs under contract mentioned above. Currently, all 16 of the rigs are drilling in deepwater. The deepwater rigs include 6 rigs in the Mississippi Canyon Area, 4 rigs in the Green Canyon Area, 2 rigs each in the Alaminos Canyon and Keathley Canyon Areas, and 1 rig each in the Walker Ridge and Garden Banks Areas.

On October 4th, the Baker Hughes total U.S. rig count stood at 585 rigs, which is 2 more than reported at the end of August 2024. Of the 585 rigs, 479 (81.9%) are oil rigs and 102 (17.4%) are gas rigs. Four rigs are listed as miscellaneous. Of the 585 wells being drilled, 522 (89.2%) are horizontal and 14 (2.4%) are vertical. A year ago, there were 619 rigs working in the U.S. inferring that the current 34 rig decline corresponds to an 5.5% decrease in rigs year over year. Nationally, Texas has the largest number of rigs with 279, which is 47.7% of the total number of rigs in the U. S. Louisiana currently has a total of 40 rigs, which is the same as last month. Louisiana is tied for third with Oklahoma and ranks behind New Mexico, which has 101 rigs.

On September 5th, Talos Energy reported a commercial oil and gas discovery upon evaluation of their Ewing Bank 953 well. The discovery well found approximately 127 feet of net pay in the target sand near 19,000 feet true vertical depth. The estimated gross recoverable reserves are estimated between 15-25 MMboe. Plans are to perform a subsea tie back of the well to the South Timbalier 311 Megalodon host platform. An initial gross production rate of 8,000 to 10,000 boed is anticipated.

DRILL BITS

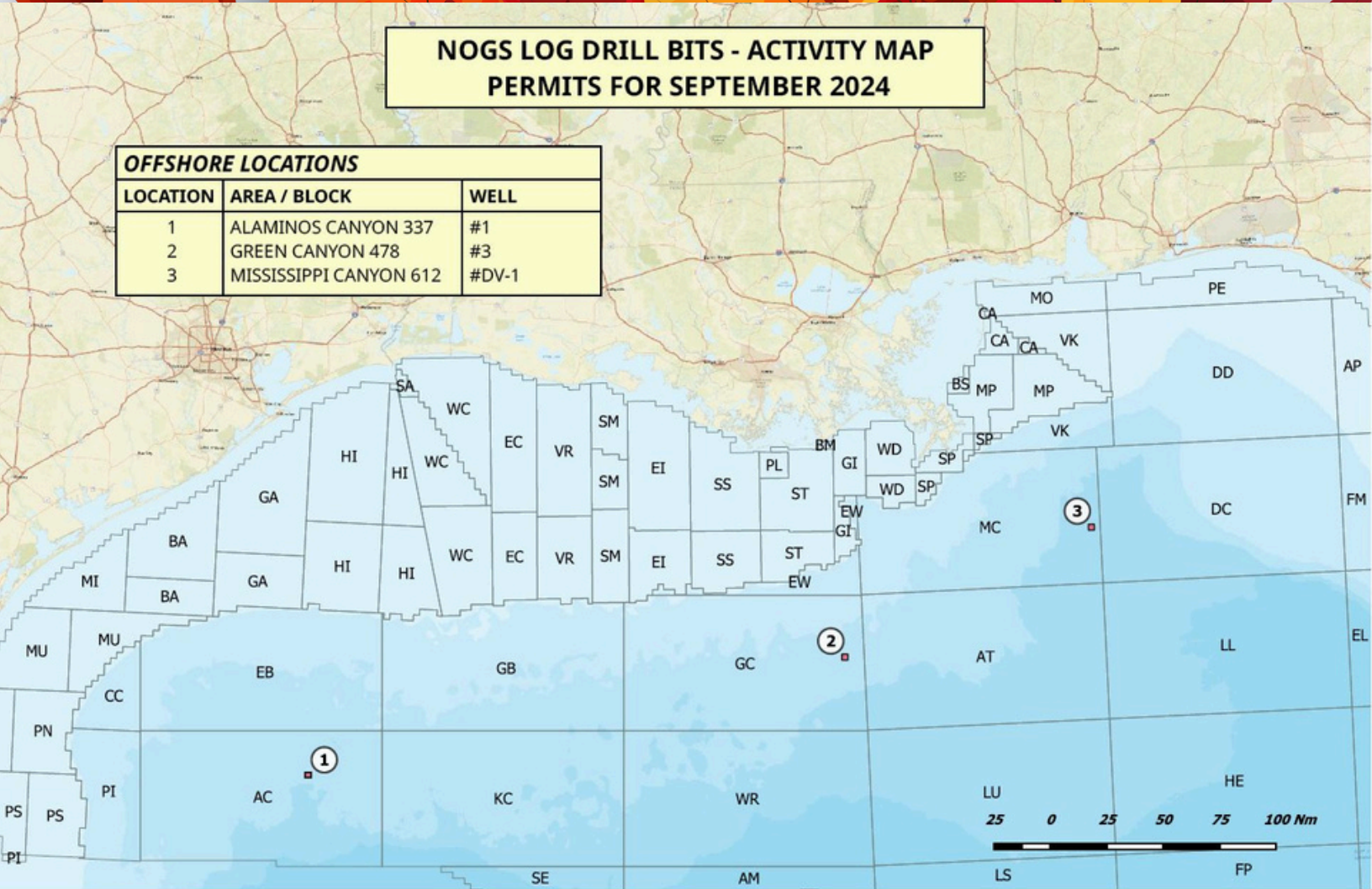
NEW WELL PERMITS OFFSHORE GULF OF MEXICO
SHELF AND DEEPWATER ACTIVITIES MAP BY
KEVIN TROSCLAIR



NOGS LOG DRILL BITS - ACTIVITY MAP PERMITS FOR SEPTEMBER 2024

OFFSHORE LOCATIONS

LOCATION	AREA / BLOCK	WELL
1	ALAMINOS CANYON 337	#1
2	GREEN CANYON 478	#3
3	MISSISSIPPI CANYON 612	#DV-1



Recent Energy Headlines

September 2024 Recap

9/25/2024 - Is Oil More Likely to go to \$60 or \$100 in 2024? - Is oil more likely to go to \$60 per barrel or \$100 per barrel this year? The answer to that question is \$100 per barrel, according to Michael Rubin, a Senior Fellow at the American Enterprise Institute (AEI), who expressed his view in an exclusive interview with Rigzone. "Oil will rebound to \$100," Rubin told Rigzone. "First, so many different regions are on the precipice of greater conflict. Second, the uncertainty surrounding the U.S. election will encourage rogues to act sooner rather than later," he added. [Read Full Article](#)

9/23/2024 - Congressman Higgins, Hageman Introduce Legislation to Enhance Oil and Gas Leasing - Congressman Clay Higgins (R-LA) and Congresswoman Harriet Hageman (R-WY) introduced the Federal Lands and Waters Leasing Transparency Act, which would hold energy regulators accountable and streamline the federal leasing process for lands and waters. In recent years, the oil and gas industry has experienced significant challenges regarding the leasing process managed by the Bureau of Ocean Energy Management (BOEM) and the Bureau of Land Management (BLM). Current evaluation methods by BOEM are problematic because they do not accurately reflect the true market value of resources. This leads to frequent rejections of industry bids with little explanation, causing uncertainty and discouraging investment in new energy exploration and production. [Read Full Article](#)

9/18/2024 - Oil and gas execs talk fracking, LNG pause and 'realistic science' -Executives from Chevron and other fossil fuel companies said Tuesday that natural gas is the primary option for slashing the energy industry's carbon emissions as a shift to emerging technologies drags on longer than expected. Chevron CEO Mike Wirth, speaking on the first day of this week's Gastech conference, called for a "balanced conversation" about changes in the energy sector and the role of natural gas based on "realistic science." He said the fuel can deliver reliability as well as lower carbon dioxide emissions, citing its role in power generation as coal plants are displaced. "Cutting these emissions by switching from coal to natural gas could represent the single greatest carbon reduction initiative in history," Wirth said in prepared remarks. "These reductions are achievable and not disruptive to national economies or individual lives." [Read Full Article](#)

9/16/2024 - Development of new fields in Gulf of Mexico to offset production decline in 2024 and 2025 - We recently implemented a new model for forecasting crude oil and natural gas production from the U.S. Federal Offshore Gulf of Mexico (GOM) in the Short-Term Energy Outlook (STEO). In our latest outlook, we forecast that GOM production will remain relatively flat with new fields offsetting the natural production declines from existing fields. We forecast that 1.8 million barrels per day (b/d) of crude oil will be produced in the GOM in 2024 and 1.9 million b/d in 2025, compared with 1.9 million b/d in 2023. We expect GOM natural gas production to average 1.8 billion cubic feet a day (Bcf/d) in both 2024 and 2025, compared with 2.0 Bcf/d in 2023. At these volumes, the GOM would contribute about 14% of U.S. oil production and 2% of U.S. marketed natural gas production. [Read Full Article](#)

CALL FOR SPEAKERS!

**Have a great topic that you
would like to present to NOGS
Members at a Monthly
Meeting?**

**Submit your topic and
presentation for our Program
Committee to review**

[CLICK HERE TO SUBMIT](#)





advertising rates

The New Orleans Geological Society was organized on October 3, 1941, as a non-profit organization for the purpose of facilitating the development of the profession and science of Geology, with specific emphasis to exploration and production of petroleum and natural gas. Secondary related objectives include the dissemination of pertinent geological and environmental technological data, and the maintenance of a high standard of professional conduct of its members. The full history of the Society can be found at nogs.org.

The NOGS LOG is now a digital magazine with live links to your site to reach NOGS Members and support your Society. Please contact Christy Himel admin@nogs.org for placement availability. Full page NOGS LOG advertisers will have their Company LOGO posted on the NOGS Website front page. All advertisers are included on the Society's monthly PowerPoint and listed on the website with a link to their home page. Please check out our website www.nogs.org

CURRENT AD RATES

Full Page 7.5" x 10" \$1,750

Half Page 3.75" x 10" or 7.5" x 5" \$925

Quarter Page 3.75" x 5" or 7.5" x 2.5" \$500

Eighth Page 3.75" x 2.5" \$300

Twelfth Page 3.75" x 1.65" \$188

Note Size 3.75" x 0.75" \$60

Premium Locations Inside Front Cover +30%

Opposite President's Page +20%

Opposite Oral Abstract +20%

Inside Back Cover +30%

Outside Back Cover +40%



Covington Office

1001 Ochsner Blvd., Suite 200

Covington, Louisiana 70433

p: 985.801.4300

f: 985.801.4796

Houston Office

CityCentre Three

842 W Sam Houston Pkwy N

Suite 600

Houston, Texas 77024

p: 281.752.1100

f: 281.752.1199

Scott Office

814 S. Frontage Rd.

Scott, LA 70583

p: 337.408.4000

f: 337.408.4049

www.llog.com

ROCK SOLID SERVICE



© 2013 Core Laboratories.
All rights reserved.



Core Lab
RESERVOIR OPTIMIZATION
www.corelab.com
337-837-8616



Open call for abstracts

Open Sept 1 - Dec 1

Sessions Include:

- Gulf Coast Geology
- Seismic Applications
- Salt Studies
- Lithium and Critical Minerals
- Haynesville, Eagle Ford & Other Shale Plays
- Deepwater GOM
- CCUS
- Geothermal
- Special Session: East Texas Basin
- ML, AI & Data Analysis
- And more

For more information visit:

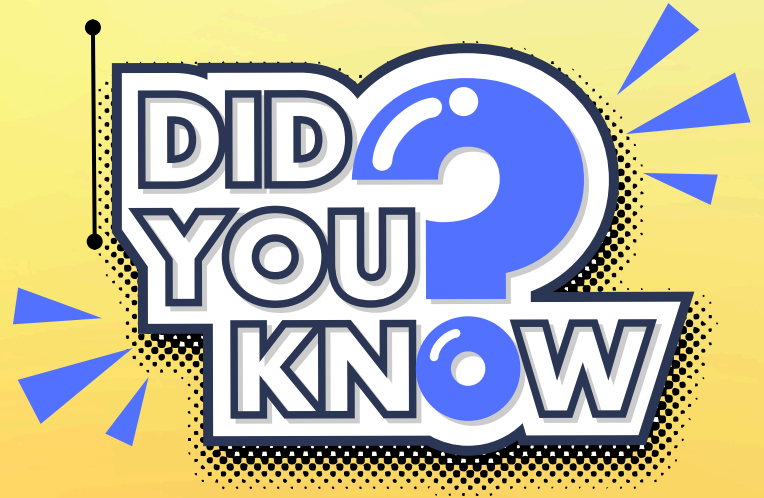
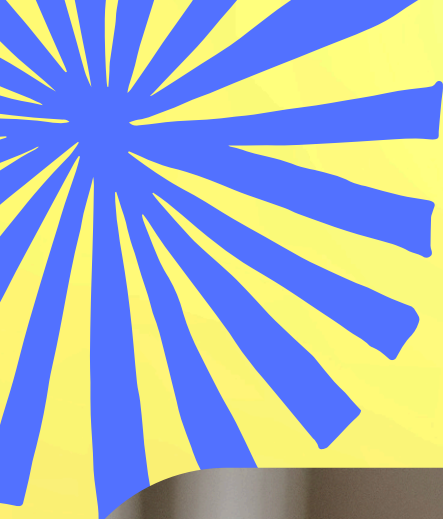
www.geogulf2025.org

Hosted by:

Or email

Kurt.Ley@kingwoodexploration.com





NOGS.org has a Member Directory available online!

Log in TODAY and UPDATE your profile with your current information and even add your PHOTO!

This is a great Member's Only Tool and a great networking and resource option for you!



D-O-R ENGINEERING, INC.

Reservoir Engineering - 3-D and Geoscience Services

6161 Perkins Rd.
P.O. Box 80812

Bus: (225) 765-1914
Baton Rouge, LA 70898



Thomas L. Davis
Geologist



+35 Years exploration & development
experience in the western US,
overseas and offshore.

Tel: 818-429-4278 tlDavisgeo@gmail.com
www.thomasldavisgeologist.com

Prospects, data and field assessments available. Lots of free petroleum geology info at the website.



LaBay
Exploration Co., L.L.C.

4 Autumn Lane, Mandeville LA
(985) 264-3700

PHOTOGRAPHY BY ARTHUR

Arthur F. Christensen

arthur_shalimar@yahoo.com

985-893-2013



**GEOLOGY
ENVIRONMENTAL
MANAGEMENT**

GEM Consulting, LTD

Emmitt Lockard
emlockard@yahoo.com

Michael Louis Merritt
admin@gemconsultingltd.com



WWW.NOGS.ORG



NEW ORLEANS
GEOLOGICAL SOCIETY
MEMORIAL
FOUNDATION INC.

Founded March 14, 1978, the mission of the New Orleans Geological Society Memorial Foundation is to promote earth-science related educational or scientific purpose by granting of scholarships to outstanding Geology students at the universities in Southeast Louisiana offering a degree in Geology. Donations given in memory of Bill Craig Memorial provide for any earth science related educational or scientific purpose that is a direct benefit to grades K-12 teacher or teachers within the Greater New Orleans Area. This area encompasses New Orleans, Jefferson, Plaquemines, St. Bernard and St. Tammany Parishes.

THE MEMORIAL
FOUNDATION IS
AN IRS TAX
EXEMPT CODE
#501(C)(3)
ORGANIZATION.
THE FEDERAL ID
IS 72-1220999.
PLEASE
CONSIDER
MAKING A
DONATION TO
THE FOUNDATION.
YOUR INDIVIDUAL
SUPPORT IN ANY
AMOUNT WILL
HELP MEET THE
IRS GUIDELINES
FOR OUR
FOUNDATION.
THANKS!

Thank you!
**TO OUR
DONORS**

Gibbet Hill Foundation - In Memory of Steve & Marion Millendorf, William J. Prutzman, Roger G. Vincent, Ron Youngblood, Uno Numella and Dr. Robert T. Sellars, Jr.

Edward B. Picou

in memory of M.R. "Bob" Douglass

Tom C. Bergeon

in memory of Art Johnson

Frances A. Wiseman

in memory of Steve Widdicombe, Bill Ward

Hilary James Brook

Bill Haworth

Candace V. Strahan

in memory of James R. Strahan

Robert Meltz

William Whiting

Robert Burnett

Mark Wojna

In memory of Case Petersen

DONATE



Help Support NOGS!

Spread the word
about these
resources available



PUBLICATIONS OF THE
**NEW ORLEANS
GEOLOGICAL SOCIETY
(NOGS) 1960-2003**



NEW ORLEANS GEOLOGICAL
SOCIETY

**OIL & GAS FIELDS OF
SOUTH LOUISIANA**



To purchase
these publications,
[Click here for the
NOGS Store!](#)



SPE DELTA SECTION 2024-2025 SCHEDULE

November 2024 Meeting: Decommissioning

Our next meeting is Tuesday, November 12, 2024, 11am at the Viking office, 400 Magazine, Suite 400, New Orleans, LA 70130. SPE Distinguished Lecturer Dwayne Purvis will speak on "Economic Surprises of Late-Life Production" (decommissioning and end-of-field life economics). A light lunch will be provided. It is free.

December 2024 Meeting: Carbon Capture

Our December meeting is Thursday December 5, 2024 at 11am at the Viking office, 400 Magazine Street, Suite 400, New Orleans, LA 70130. David Cook, CEO of Gulf Coast Sequestration, will speak on carbon capture. A light lunch will be provided. It is free.

January 2025 Meeting: LSU's new Chair of the Craft & Hawkins Petroleum Engineering Department, David Schechter will speak on Thursday, January 23, 2025 on the Northshore. Location is still being finalized. A light lunch will be provided. It is free.

February 2025 Meeting: SPE Distinguished Lecturer Kåre Langaas, Aker BP ASA will lecture on "Designing Optimal Wells with Inflow Control Technology." He will speak on February 4, 2025 at the Viking office. A light lunch will be provided. It is free.

March 14, 2025, Friday, SPE Delta Golf Tournament at Carter Plantation, Springfield, LA. Matt Wandstrat is coordinating. For more golf information contact Matt.wandstrat@gmail.com.

March, April and May 2025 meetings are in progress. Stay tuned. For more information contact Mary O'Neill at cyberbrat@msn.com.

Thanks for your support of our events.

JOIN US



YEARLY MEMBERSHIP ONLY \$35



Professional Development

Monthly presentations in
Geology, Energy and Coastal
Topics



Networking

Build your professional
network and tap into the
experienced members of
NOGS



Resources

NOGS LOG is our monthly
newsletter sharing resources
in our industry

JOIN NOW AT
WWW.NOGS.ORG