

NOGS LOG

OCTOBER 2019

Volume 60 No. 4

OCTOBER MEETING

**Breton Sound-A
Conventional Deep Water
Play in Shallow Louisiana
Waters
Presented by Mark Wojna**

**MONDAY
OCTOBER 7th**

**The new Louisiana
Children's Museum
Opens**

**See how NOGS left
its Mark**



UPCOMING EVENTS

OCT 7

NOGS Luncheon
Mark Wojna
Breton Sound -
A Conventional Deep
Water Play in Shallow
Louisiana State Waters

OCT 10

NOGS Kick-Off Event
5:00 pm - 8:00 pm
Tchoup Yard
405 Third Street NOLA

OCT 12

Dig Into Nature - Super
Science Saturday
Dinosaurs
**VOLUNTEERS
NEEDED**

OCT 13-19

Earth
Science
Week
www.earthsciweek.org

OCT 18-19

Louisiana
Geosciences
Symposium
LSU Energy, Coast
& Environment
Building

OCT 19

New Orleans Pelicans &
Saints Chevron STEM
Fest Benefitting Core
Element
VOLUNTEERS NEEDED

OCT 23

GEOGULF 19
Houston, Texas
www.2019.gcaghouston.com

NOV 4

NOGS Luncheon
John Dribus
Deepwater Discoveries
Offshore Guyana

DEC 2

NOGS Luncheon
Jim Booth
A Higher Resolution Look
at Lower Tertiary, Deep
Water Gulf of Mexico

Click Here to Register!

IN THIS ISSUE



NOGS Memorial Foundation Awards Scholarships for 2019



NOGA Meeting



NOGS Kick-Off
Planned



Wonja to speak
at NOGS October
Meeting



From the Editor...

First, thanks for the great feedback on the newly designed look of the LOG in the September issue. Christy has done a remarkable job and greatly appreciate her hard work on it. Everyone seems to like the PDF Flip feature we added online to view the LOG.

This issue is a bigger issue than in the past with the exciting news of the Louisiana Children's Museum grand opening along with some other upcoming meeting notice. We are not constrained with a page limitation by the budget now by doing the LOG in-house and can continue to delivery a remarkable LOG to our members.

If you have any suggestions for future issues or have an article/photo(s) to contribute, please email me at cmiller@ocsbbs.com. We would certainly love your input and any additional LOG content to be considered that may be of interest to NOGS members.

Thanks,

Charlie



Charles Miller III
NOGS LOG Editor

OCTOBER 2019 NOGS MEETING

Monday, October 7, 2019

Holiday Inn Downtown Superdome

Breton Sound – A Conventional Deep Water Play in Shallow Louisiana State Waters

The geopressured Middle Miocene section remains an attractive conventional exploration and development play in South Louisiana.

The geopressured Middle Miocene section produces at high flow rates, is liquid rich and generates strong cash flow. A deep-water depositional model is utilized to target new opportunities in the geopressured section. Seismic AVO analysis is used to high-grade prospects. All of these factors combined create an attractive opportunity for future exploration growth in South Louisiana.

**NOGS MEMBERS: \$30 WITH RESERVATION
GUESTS AND WALKINS: \$35**

**REGISTRATION DEADLINE - FRIDAY,
OCTOBER 4TH**



REGISTER



MARK J. WOJNA
Upstream Exploration

Mark J. Wojna has been Vice President of Exploration for Upstream Exploration since the company's inception in February 2016. Prior to Upstream, Mark served as Gulf Coast Exploration Manager for Century Exploration New Orleans from 2008 to 2015. Mark's 29 year career with Century was focused on oil and gas exploration and development in the federal OCS and state waters of Louisiana and onshore South Louisiana. Mark was instrumental in developing and growing the geopressured Middle Miocene trend in Breton Sound for Century Exploration and Upstream Exploration. Mark had a technical paper published on Century's discovery at Breton Sound 53 Field in the New Orleans Geological Society's 2010 South Louisiana Oil & Gas Fields publication. Mark has a Bachelor of Science degree in geology from Michigan State University and a Master of Science degree in geology from the University of Southern Mississippi.



NOGS at the Tchoup Yard *October 10th* *Free to Current & New Members*

NEW ORLEANS
 GEOLOGICAL
 SOCIETY

The NOGS Annual Fall Kick-Off Classic

- a Social Event
- a Membership Drive
- The Inaugural NOGS Cornhole Championship

RSVP to Christy Hime
admin@nogs.org

Thursday, Oct 10 5:00-8:00pm at the Tchoup Yard 405 Third St. New Orleans, LA 70130

<https://goo.gl/maps/bLRp4nCwyD6X2j566>



Thanks to our Sponsors



Click to Register Now!



Drill with confidence.

Diversified Well Logging, LLC brings the accuracy and expertise only a company with over sixty years in the oil and gas industry can deliver. We are your eyes and ears in the field, especially when it comes to deep water or high pressure, high temperature areas.

DWL offers 24-hour formation evaluation. We provide secure and customized real-time data communication, in-house research and development, and 24/7 on-call support for our equipment and our engineers.

Whether you have a 10-day job or a 110-day job, we provide the specialized attention you require. **Our experience means you can be confident in the safety and performance of your well.**



- *Formation Evaluation*
- *Geosteering*
- *Drilling Optimization*
- *Real-time Data Transmission*
- *Early Kick Detection*



Serving the Oil and Gas Industry for Over 60 Years

FROM THE NOGS PRESIDENT ROBERT ROONEY



Be proactive in shaping your own future, or somebody else will do it for you. This is paraphrased from a statement made by my son's world geography teacher. It made me stop and think about how we, as individuals, can help to shape our own future, and closer to the topic - the many ways that the New Orleans Geological Society takes a role in shaping the future of our community. One of the most impactful events of the NOGS fiscal year is the announcement of the New Orleans Geological Society Memorial Foundation's scholarships, awarded to local university geology students from LSU, Tulane, and UNO.

The Jules and Olga Braunstein Memorial Scholarship is awarded to 3 junior undergraduate students who receive \$2,000 each, and 3 senior undergraduate students who receive \$2,500 each. Scholarships in honor of J.A. Gilreath, Lee H. Meltzer, and Richard W. Boebel are awarded to 3 graduate students, one from each of the universities, each receiving \$3,000. The scholarship in honor of George W. Schneider of \$2,500 is awarded to one student each year, rotational among the three universities. Two additional scholarships, NOGS Memorial Foundation Scholarship A, and NOGS Memorial Foundation Scholarship B are awarded for \$2,500 each. In total, The NOGS Foundation awards \$30,000 per year in scholarships to outstanding geology students in our local universities.

The scholarship awards will be presented to the students at the October luncheon meeting. The student's bios and photographs are presented in this issue of the *NOGS LOG*. Please take time to read about these talented and dedicated students, and please join us at the October monthly luncheon to help celebrate their success!

An important milestone has occurred regarding community outreach since my last letter. On August 31st the Louisiana Children's Museum had their grand opening in City Park. NOGS and the NOGS Foundation each contribute \$5,000 per year to the Louisiana Children's Museum and also the Children's Museum of St. Tammany in Mandeville. The NOGS museum initiative is a 10-year commitment which began in 2015. Special thanks to Tom Bergeon for attending this event on behalf of NOGS. We can all be proud, as members of NOGS, and those who contribute to the NOGS Foundation, of the positive effect that is made to improve the understanding of the earth sciences which greatly benefits our state and region.

Another highlight of NOGS's continued contribution to earth sciences in our community was Chris McLindon's leadership in having organized the DWTS opening seminar. This seminar gave participants the opportunity to learn from the leaders in the field of Mesozoic Geology of the Northern Gulf of Mexico, and it also featured a core workshop. The seminar class-room space needed to be expanded to a larger meeting room to accommodate the high level of interested geoscientists, and the event had a sold-out attendance. Events such as this have broad-reaching benefits in keeping NOGS and our local petroleum industry vital in promoting geological understanding of the Gulf of Mexico Basin and its petroleum systems. Together, through association with NOGS, attendance at events, and by the creation of commercial opportunities that we make possible through our professional work, we, as geologists, take a proactive role to shape our community in a positive way.

On the social front, an important part of sharing the benefit of membership in the New Orleans Geological Society is our annual Kick-off Party and Membership drive. Members can meet the new board of directors and staff, and new members can join and be introduced to our organization. This year NOGS vice president, Toby Roesler, has taken the lead to organize the event which will be held on Thursday, October 10th from 5:00 to 8:00PM at the Tchoup Yard at 405 3rd Street in New Orleans. The event is free to NOGS members, and to new members with first year's dues. Special thanks to Toby for generating enthusiasm and getting sponsor support to make this event possible.

Don't forget to register for October's monthly luncheon and presentation by Mark Wojna of Upstream Exploration on the Petroleum Geology of the Breton Sound Area.

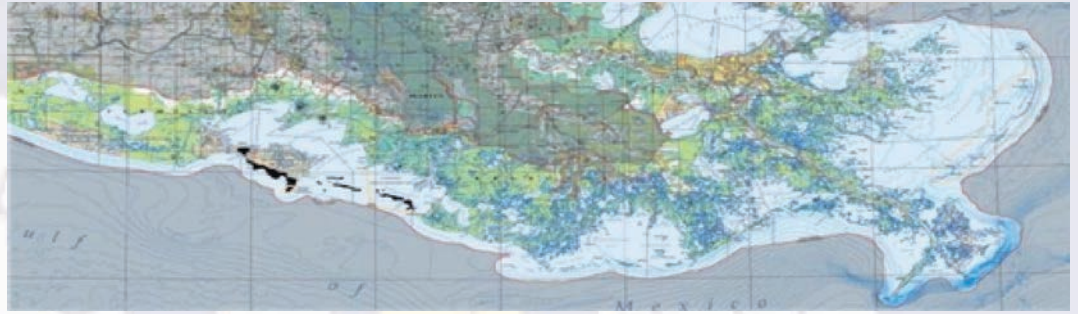
On behalf of the NOGS board of directors and staff, we look forward to meeting you personally at the Tchoup Yard on October 10th for the Kick-off party and membership drive!

A handwritten signature in blue ink, reading "Robert Rooney". The signature is written in a cursive, flowing style.

Third Annual

LOUISIANA GEOLOGICAL
SURVEY

COASTAL SYMPOSIUM



**Presented by Louisiana Geological Survey and
New Orleans Geological Society**
Dalton J. Woods Auditorium Energy, Coast & Environment Building

93 S. Quad Drive - Louisiana State University Baton Rouge, Louisiana

About the Symposium

The Coastal Symposium, the premier annual academic Louisiana coastal conference, will bring together scientists, engineers, geographers, and policy makers from across the range of geoscience-related disciplines to exchange ideas, interpretations, and insights into Louisiana coastal geology - both onshore and offshore - and on associated topics. This year's focus will be on coastal geoscience, specifically including coastal geology, geophysics, geomorphology, and geography.

John Johnston III of the Louisiana Geological Survey will serve as the symposium chair, and Chris McLindon of the New Orleans Geological Society will serve as the vice-chair and keynote speaker.

Continuing Ed

Credit hours will be available for licensed geologists. An ethics presentation will satisfy the Louisiana annual ethics requirements for both licensed geologists and licensed engineers.

Call for Abstracts

Submit abstracts for papers and posters via EasyChair.

Abstracts are to be submitted online for approval.

- ☐ There will also be a poster session.
- ☐ Graduate student posters/presentations are welcome.
- ☐ Talks should use PowerPoint and be timed for approximately 20 minutes; if more time is desired, please contact the symposium chair.

Abstract deadline: October 4, 2019.

Registration by October 1, 2019 is per individual.

Regular - \$30 LSU Faculty, Staff - \$15 Students - \$5

After October 1, 2019 - Regular - \$50
LSU Faculty, Staff - \$25 Students - \$10

Speakers and poster presenters receive free admission. Registration is still required. Register here.

For further information, please contact John Johnston III at hammer@lsu.edu.



NEW ORLEANS GEOLOGICAL SOCIETY MEMORIAL FOUNDATION INC.

The New Orleans Geological Society Memorial Foundation is pleased to announce the recipients of the 2019 Scholarship Awards. Scholarship awards are made in partial fulfillment of the mission of the foundation to provide a source of revenue for the support and promotion of earth science education. These scholarship awards have been made possible by the generous donations of individuals and other organizations to the NOGS Memorial Foundation.

2019 marks the 41st year of the NOGS Memorial Scholarship Program. Nearly \$800,000 in scholarships have been awarded over that time. Past scholarship recipients have gone on to careers in the oil and gas industry, the U.S. Geological Survey, the Bureau of Ocean Energy Management, the Louisiana Department of Natural Resources, the Water Institute of the Gulf and the Lake Pontchartrain Basin Foundation. Donations to the NOGS Memorial Foundation will provide for the continuation and expansion of the scholarship program and other programs supporting earth science education for years to come. Donations can be made at the foundation website.

**This year's
scholarships include
the Jules and Olga
Braunstein Memorial
Scholarship, the
Lee H. Meltzer
Graduate
Scholarship, the
George W. Schneider
Memorial
Scholarship, the
Richard W. Boebel
Graduate Scholarship
and the J.A. Gilreath
Graduate
Scholarship.**

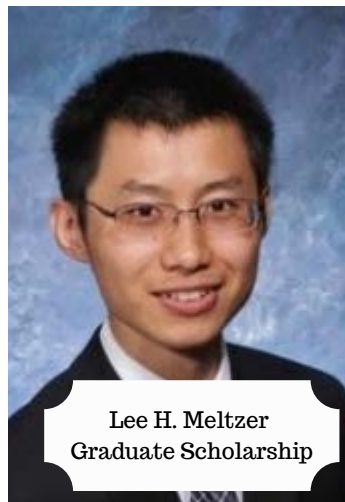
2019/2020 NOGS Memorial Foundation Board of Directors

Chris McLindon - President
Alex Janevski - Secretary
Toby Roesler - Trustee
Scott Wainwright - Trustee
David Reiter - Trustee

Make a donation: www.nogs.org/



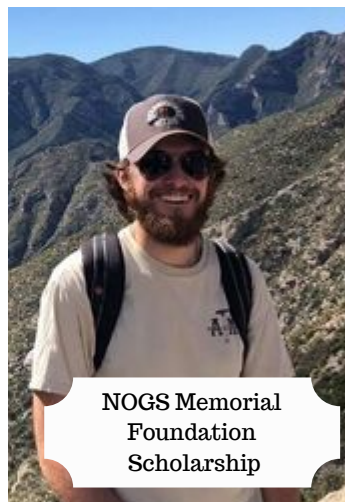
2019 Scholarship Recipients



Lee H. Meltzer
Graduate Scholarship



Jules & Olga
Braunstein Memorial
Scholarship



NOGS Memorial
Foundation
Scholarship



Jules & Olga
Braunstein Memorial
Scholarship

Zelong (Eric) Zhang

Mr. Zelong (Eric) Zhang is a fifth-year Ph.D. student in the Department of Geology & Geophysics at Louisiana State University. Under the supervision of Dr. Jianwei Wang, Zelong focuses on earth material research addressing fundamental issues on hydrocarbon recovery in shale formations and nuclear waste management. Zelong grew up in China and graduated from China University of Geosciences, where he majored in geochemistry. He received his master's degree from Stony Brook University in 2014. Shortly after he joined LSU, Zelong was selected for the Leadership LSU 2015. During his free time, Zelong enjoys reading books with his wife, playing piano, taking photos, and volunteering at animal shelters.

Larry Tuttle

My name is Larry Tuttle and I am a first year geology MS student at Louisiana State University where I am currently working on a metamorphic petrology thesis project with Darrell Henry. LSU is actually the second SEC school that I have attended, the first being Texas A&M where I received my BS in geology in December of 2017. While I grew up in Houston, I was born in Littleton, CO near Denver. My fondest memories as a child are going to the Denver Museum of Nature and Science with my mother which is where my love of science began. One look at the monstrous tyrannosaur that greets visitors when they first enter the museum was all it took. Taking summer trips into the Colorado Rockies with my grandfathers focused my scientific interests on geology as I grew older. My ultimate goal is to earn a PhD and pursue a research career as a metamorphic petrologist at an institution of higher learning. I am excited to be here at LSU as an MS student and I can't wait to see what the future has in store

Madison Elizabeth Avery

Ms. Madison Elizabeth Avery, was born and raised in New Orleans, Louisiana. Graduating from Ursuline Academy of New Orleans in 2017, she continued to further her education at Louisiana State University where she is currently a second-year undergraduate student, studying geology. Madison has been helping Dr. Peter Clift in his research on the Silurian of Western Ireland that focuses on the evolution of the sediment provenance in a post-Grampian forearc basin. In her free time, she enjoys traveling across the country to different universities to play frisbee on LSU Women's Ultimate frisbee club team of which she is the President for the 2018-2019 school year. Her career goal is to pursue a job in the private sector as a geologist in the field of petroleum geology or seismology.

Nikki Neubeck

Ms. Nikki Neubeck is an undergraduate student at Louisiana State University. Her current research involves samples collected from modern river systems in Vietnam, and examines how these relate to the Miocene-age systems. Her hypothesis states that these particular modern river systems were once connected, and have diverged over time. After completing her undergraduate research and obtaining a bachelors degree, she plans on securing an entry-level job or possibly joining the Navy to pursue a Naval geology career.



2019 Scholarship Recipients

Haily McDonald

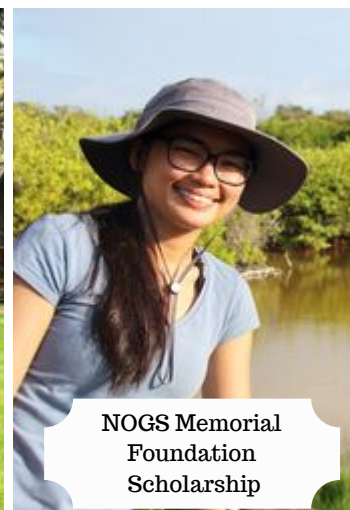
Ms. Haily MacDonald is currently an undergraduate, studying geology at Tulane University. She grew up in Quogue, New York, a small town on the coast of eastern Long Island. She has always been passionate about the environment, but did not become interested in pursuing geology until she moved to New Orleans and was exposed to the geological issues underlying the city. In the future, Haily hopes to continue her education in graduate school and to take advantage of any opportunities to travel that this field offers.

Udita Mukherjee

Ms. Udita Mukherjee is a 3rd year Ph.D. student at Tulane University, where she studies sediment transport along continental shelves using geophysical models and seismic datasets. Her current work deals with sea level change and its effect on paleovalley formation on the southern African shelf and Gulf of Mexico. Originally from Kolkata, India, she obtained a B.Sc. in Geology from Presidency College in Kolkata, and Master's Degree in Geological Sciences from the Indian Institute of Technology, specializing in Vertebrate Paleontology. She also worked for almost 3 years as a reservoir geomodeler with Schlumberger.



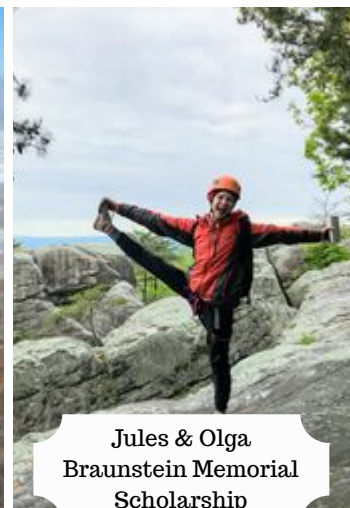
Jules & Olga
Braunstein Memorial
Scholarship



NOGS Memorial
Foundation
Scholarship



J.A. Gilreath
Graduate Scholarship



Jules & Olga
Braunstein Memorial
Scholarship

Sarah Jaye Oliva

Ms. Sarah Jaye Oliva is a Ph.D. candidate at Tulane University working in geophysics research. She uses seismology and modeling to understand fault-magma interactions in rifting and volcanic regions; e.g., East Africa, and the Galápagos. Her interest in earthquakes, volcanoes, and their related hazards was inspired by growing up in the Philippines, which are on the Pacific Ring of Fire. After getting a degree in physics and materials science in her home country, Sarah went to Italy to obtain a postgraduate diploma in earth system physics before eventually moving to the US to pursue her doctorate. In her career to-date, Sarah already has a growing list of publications, research awards, international fieldwork experience, conference presentations, and feature articles. When she is not doing research, Sarah is passionate about teaching and science communication, especially regarding STEM outreach. Her other hobbies include language learning, yoga, and travel.

Samantha Hilburn

Ms. Samantha Hilburn is an Honors student at Tulane University, double-majoring in Geology and Environmental Studies. She is grateful for her childhood experiences hiking and backpacking with family that cultivated her love of nature and strong affinity for Earth science from a young age. Samantha now leads fellow students on hiking, backpacking, canoeing, and rock-climbing excursions across the Gulf South as a trip leader for Tulane Outdoor Adventures. Samantha is also a Teaching Fellow for the Tulane Honors Program and an undergraduate research assistant in Dr. Nicole Gasparini's geomorphology lab, where she uses GIS to explore how hurricane-induced landslides impact landscape evolution and erosion in Puerto Rico. In the future, she hopes to study how anthropogenic practices influence Earth systems and amplify risks associated with natural hazards. Samantha ultimately aims to employ her background in science and outdoor recreation to promote environmental advocacy by helping others understand and appreciate the geological processes that shape our planet.



THE UNIVERSITY of NEW ORLEANS

2019 Scholarship Recipients

Wayne Alleyne

Mr. Wayne Alleyne is currently an Undergraduate at the University of New Orleans (UNO) pursuing a degree in Earth and Environmental Science. Prior to enrolling at UNO, Wayne served 11 years active duty with the U.S. Coast Guard, where his primary duties were overseeing the federal response and investigation into oil spills in the coastal zone. Wayne spent the majority of his career in the New Orleans area, and filled key roles during many large-scale incidents, including the Deepwater Horizon / MC 252 oil spill. While attending UNO, Wayne also provides consulting services for oil spills for several oil and transportation companies.

When not working or studying, Wayne enjoys spending time outdoors with his wife and two young sons. His children are becoming more and more impressed with his ever-growing knowledge of rocks and dinosaurs.

Jesssica Villers

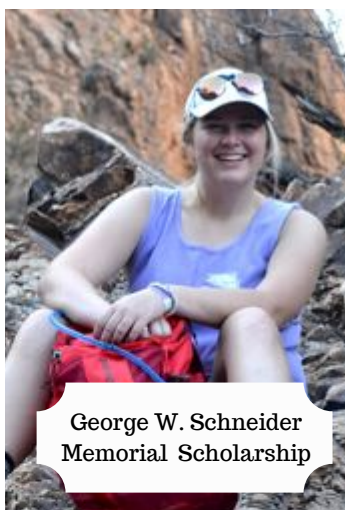
Ms. Jessica Villers is a master's candidate at the University of New Orleans investigating water and sediment exchange at marsh edge boundaries in restored and natural shorelines as her thesis. To do this, she will be comparing various restoration methods used as stabilization structures along shorelines to their natural counterparts by collecting data through field experimentation. Ms. Villers was born and raised in New Orleans and grew up spending her weekends along the Gulf Coast where she was exposed to the effects of the coastal crisis, which encouraged her interest in geology and coastal studies. In December 2017, she earned her bachelor's in geology from Louisiana State University (LSU). While at LSU, she conducted research on tourmaline as an indicator for economic ore deposits. She also worked on a project for ExxonMobil doing grain-size analysis on samples taken from the False River point bar system north of Baton Rouge. She joined Dr. Ioannis Georgiou's research group in August 2018. This spring she began an internship with the Coastal Protection and Restoration Authorities where she will complete a state report on the West Bay Sediment Diversion. She plans to complete her master's degree in May 2020.



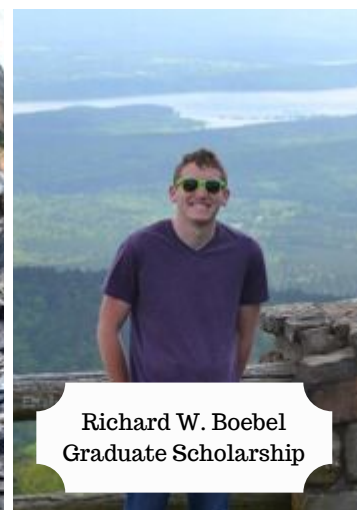
Jules & Olga
Braunstein Memorial
Scholarship



Jules & Olga
Braunstein Memorial
Scholarship



George W. Schneider
Memorial Scholarship



Richard W. Boebel
Graduate Scholarship

Leah Tevis

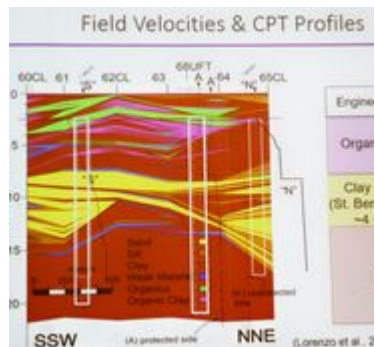
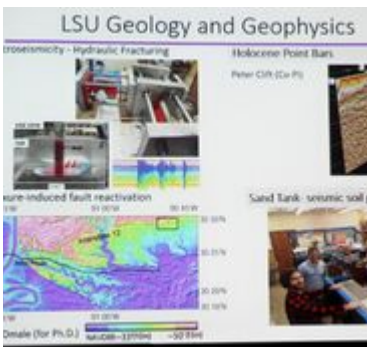
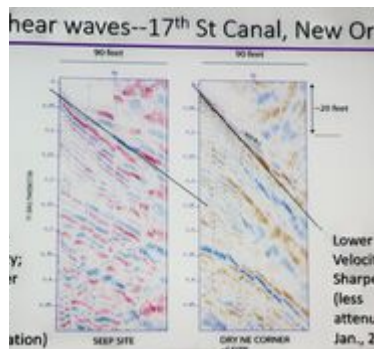
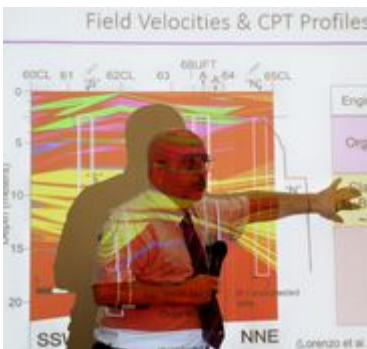
Ms. Leah Tevis is a senior at The University of New Orleans, pursuing a B.S. in Earth and Environmental Science with a focus in geoscience. Prior to transferring to UNO, she studied earth sciences at Delgado Community College and holds a B.F.A. from the International Academy of Design and Technology in Chicago. Leah is originally from eastern Iowa where she grew up exploring the terrain of the Midwest. She would search out local quarries after school looking for fossils, hike and climb through the various state parks and enjoyed spending summer vacations in the Black Hills and Badlands of South Dakota. During her time at UNO, she has become involved with different research projects including coastal Louisiana's barrier island erosion and beach nourishment projects, and conducting experiments involving fluid dynamics and sediment flow analysis in various fluvial conditions. She is interested in many facets of geology, and is excited to continue her education at UNO and go on to a graduate program after obtaining her B.S.

Robert W. Mohollen, Jr.

Mr. Robert W. Mohollen Jr. is a M.S. candidate at the University of New Orleans (UNO). He earned his B.S. in Geoscience from West Chester University of Pennsylvania, and originally hails from Pottstown, Pennsylvania. Prior to his enrollment at UNO, he gained valuable experience as a Geotechnical Associate for Advanced GeoServices Inc. However, his goal was to attain his Master's degree, and work in the petroleum industry.

At UNO, he competed with the UNO Imperial Barrel Award team, which achieved second place at the Gulf Coast regional competition in the spring of 2018. His M.S. thesis, which focuses on the Baton Rouge Fault System allowed him to conduct valuable research for the RESTORE Act Center of Excellence Program. Analysis of well logs, industry seismic data, shallow vibracores, and Compressed High-Intensity Radar Pulse (Chirp) seismic will allow him to assess the lateral continuity of the fault system as well as study the history of motion to determine if the fault system is affecting Holocene geomorphology. He plans to complete his M.S. degree in Fall 2019, and pursue a career in the oil and gas industry.

September
meeting



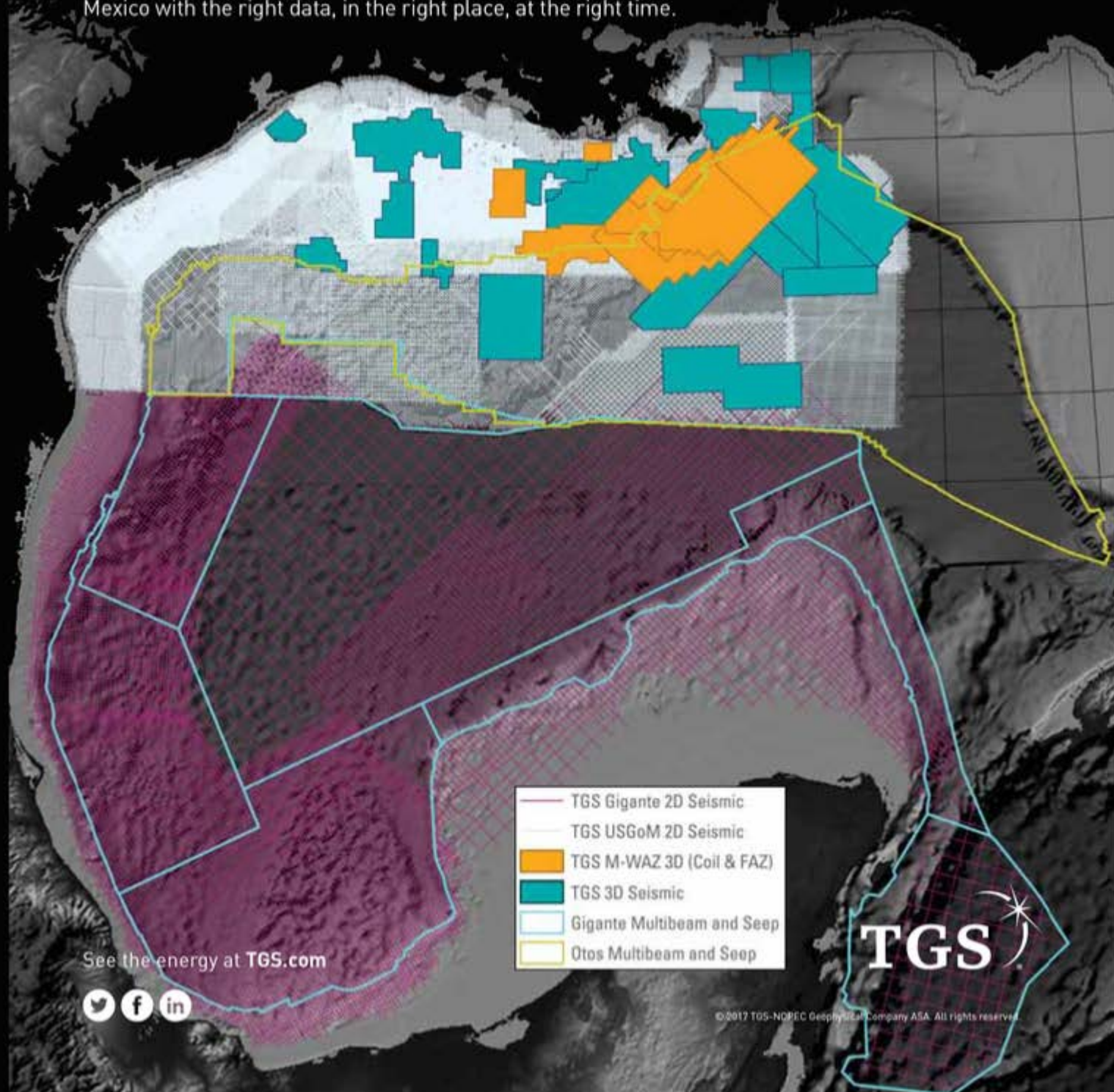
Juan M. Lorenzo PhD Levee Assessment in New Orleans: A Use for Near- Surface Geophysics?



**Photo Credit:
Art Christensen**

Set your sights. Gulf of Mexico

TGS provides industry-leading offshore seismic data using an innovative mix of technologies and unmatched imaging capabilities. Through strategic partnerships, we provide a comprehensive collection of advanced marine acquisition technologies for enhanced reservoir delineation, characterization and monitoring. TGS delivers the E&P industry unlimited potential with our collection of advanced offshore data including **Declaration M-WAZ 3D** survey, **Fusion M-WAZ 3D**, **Otos Multibeam and Seep** and **Gigante 2D Multibeam and Seep** programs. Explore the Gulf of Mexico with the right data, in the right place, at the right time.



PICTURE FROM THE PAST



April 1994

NOGS Luncheon – Guest Speaker UNO Professor Dr. Shea Penland* standing with arm raised, at Head Table (L to R) Irion Bordelon, Paul Jurik and Scott Spradley *Deceased

Submitted by

Ed Picou, Chairman - Historical Committee

SIPES

Society of Independent Professional
Earth Scientists

New Orleans Chapter



For membership info Contact:

Eric Broadbridge - eric@northcoastoil.com
504-884-0049

www.sipesneworleans.org

THE BOEBEL COMPANY

Oil and Gas Investments

New Orleans, LA 70153

(504) 866-4313

James S. Classen

CLASSEN & CO. LLC

6417 Plantation Lane • Boise, ID 83703



LaBay

Exploration Co., L.L.C.

1080 West Causeway Approach
Mandeville, Louisiana 70471

(985) 951-2011

www.labayexploration.com



Anthony Catalanotto
Manager

Geological
Geophysical
Land

Drafting & Graphics

516 Maryland Avenue
Metairie, LA 70003
(504) 481-7291

E-Mail: geodraft@bellsouth.net



NOW OPEN

LOUISIANA CHILDREN'S MUSEUM OPENS

On Saturday August 31st the city of New Orleans was blessed with a new landmark in City Park. The Louisiana Children's Museum opened its doors to excited children young and old. The dedication ceremony included speeches by Governor John Bel Edwards and other dignitaries. LCM CEO Julia Bland was recognized to an extended standing ovation for her tireless vision 13 years in the making. The procession was led by Eaton Marching Band through the Mist on the foot bridge over the lagoon. The museum is world-class in scope and located within an 8.5 acre area of City Park. The exhibits blend nicely with the natural environment. Inside the museum unfolds into 5 indoor themed areas spread over two floors. The exhibit galleries are Dig Into Nature, Follow That Food, Make Your Mark, Moving With the River and Play With Me. Everything is beyond impressive with plenty of detail with a local flair.

There are wonderful geologic surprises in the Dig Into Nature exhibit. The design team from Mithun of Seattle and local group Waggoner & Ball spared no expense in providing a great hands-on experience. Special thanks go out to Audrey Isaac who is the Dig Into Nature Gallery Manager. <https://www.lcm.org/experiences/dig-into-nature/>

The Sediment Table uses recycled plastic sand which washes off cleanly. Children soon learn to create tributaries, divert river flows and build imposing dam structures. Next door is the Wave Generator which develops sediment layering as you create an oscillating wave from offshore. The Sharing Station is a long wall of natural artifacts including plant and animal material, fossils and minerals. Children are able to take most materials out of jars and bring them over to the microscope area. There they can project the specimens onto a wonderful high resolution screen to share with family and friends. No nanofossils were harmed in the making of this exhibit.

In addition there is a series of tables where the kids use their imaginations to connect multi shape clear pieces lined with magnets to build drill rigs and other structures. The tables have legs underneath that depict subsea tie-backs and a salt dome cutaway. It was incredible to see what types of structures each child built.

Immediately adjacent to the oil platform display is a wonderful drawing of an offshore drilling rig by NOGS member Eric Zimmerman's 8 year old daughter Caroline. The text on the wooden plaque reads: "Exploring for energy in the Gulf of Mexico is challenging. Offshore platforms explore below the seabed. They can drill deep and extract and process oil and gas. Some rigs re made of man-made islands. New ideas improve energy exploration".





Upstairs the signature display of the museum – Moving With The River consists of a 100 foot long sinuous flowing river where kids learn hydrodynamics, tributaries, flood gates, industry, shipping and drainage control. One follows the license plates from Minnesota all the way down to the Birdfoot Delta. There is spillway diversion and an interactive pumping station the kids man that works more effectively than the drainage system in Orleans Parish.

Special thanks go out to NOGS members Liz and Rob McDade for providing a wide range of alligator materials and Richard George who is retired from Paleo-Data and donated a dino skull cast of a raptor named Deinonychus. The first major event that the museum will put on is October 12th. It will be the dedication of the Dig Into Nature Gallery. NOGS and the American Chemical Society have put together a hands on program that will be a very exciting. Please consider volunteering for this exciting event. NOGS has been recognized nicely in the Dig Into Nature exhibit. It is a testament to our involvement in the New Orleans community that NOGS donated \$50,000 to help build such a wonderful legacy for our children. This dream has become an engaging reality that we all can be proud of. The next geologist might find that spark creating a crevasse splay using their index finger, synthetic sand and a wild eyed imagination.



advertising rates

The New Orleans Geological Society was organized on October 3, 1941, as a non-profit organization for the purpose of facilitating the development of the profession and science of Geology, with specific emphasis to exploration and production of petroleum and natural gas. Secondary related objectives include the dissemination of pertinent geological and environmental technological data, and the maintenance of a high standard of professional conduct of its members. The full history of the Society can be found at nogs.org.

Advertising rates have not changed since 2008 but the printing process has allowed printing the LOG entirely in color. Please contact Christy Himel admin@nogs.org for placement availability. Full page NOGS LOG advertisers will have their Company LOGO posted on the NOGS Website front page. All advertisers are included on the Society's monthly powerpoint and listed on the website with a link to their home page. Please check out our website www.nogs.org

2018-19 RATES

Full Page 7.5" x 10" \$3,500

Half Page 3.75" x 10" or 7.5" x 5" \$1,850

Quarter Page 3.75" x 5" or 7.5" x 2.5" \$1,000

Eighth Page 3.75" x 2.5" \$ 600

Twelfth Page 3.75" x 1.65" \$ 375

Note Size 3.75" x 0.75" \$ 120

Premium Locations Inside Front Cover +30%

Opposite President's Page +20%

Opposite Oral Abstract +20%

Inside Back Cover +30%

Outside Back Cover +40%

LLOG
exploration



Covington Office

1001 Ochsner Blvd., Suite 200

Covington, Louisiana 70433

p: 985.801.4300

f: 985.801.4796

Houston Office

CityCentre Three

842 W Sam Houston Pkwy N

Suite 600

Houston, Texas 77024

p: 281.752.1100

f: 281.752.1199

Scott Office

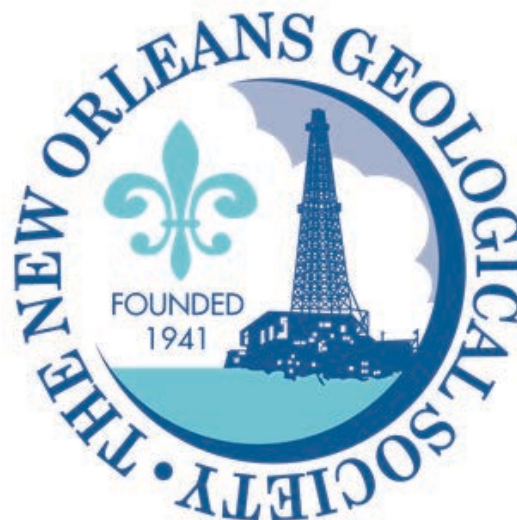
814 S. Frontage Rd.

Scott, LA 70583

p: 337.408.4000

f: 337.408.4049

www.llog.com



DOMESTIC &
INTERNATIONAL



BIOSTRATIGRAPHY

**ANYTIME.
ANYWHERE.
ANY FOSSIL.**

Complete paleo services

Largest single-source GoM database

Custom projects & mapping

Multiple fossil disciplines



504-488-3711
PALEODATA.COM

50
PALEO
1968 - 2018
DATA
NEW ORLEANS, LA

**ROCK SOLID
SERVICE**

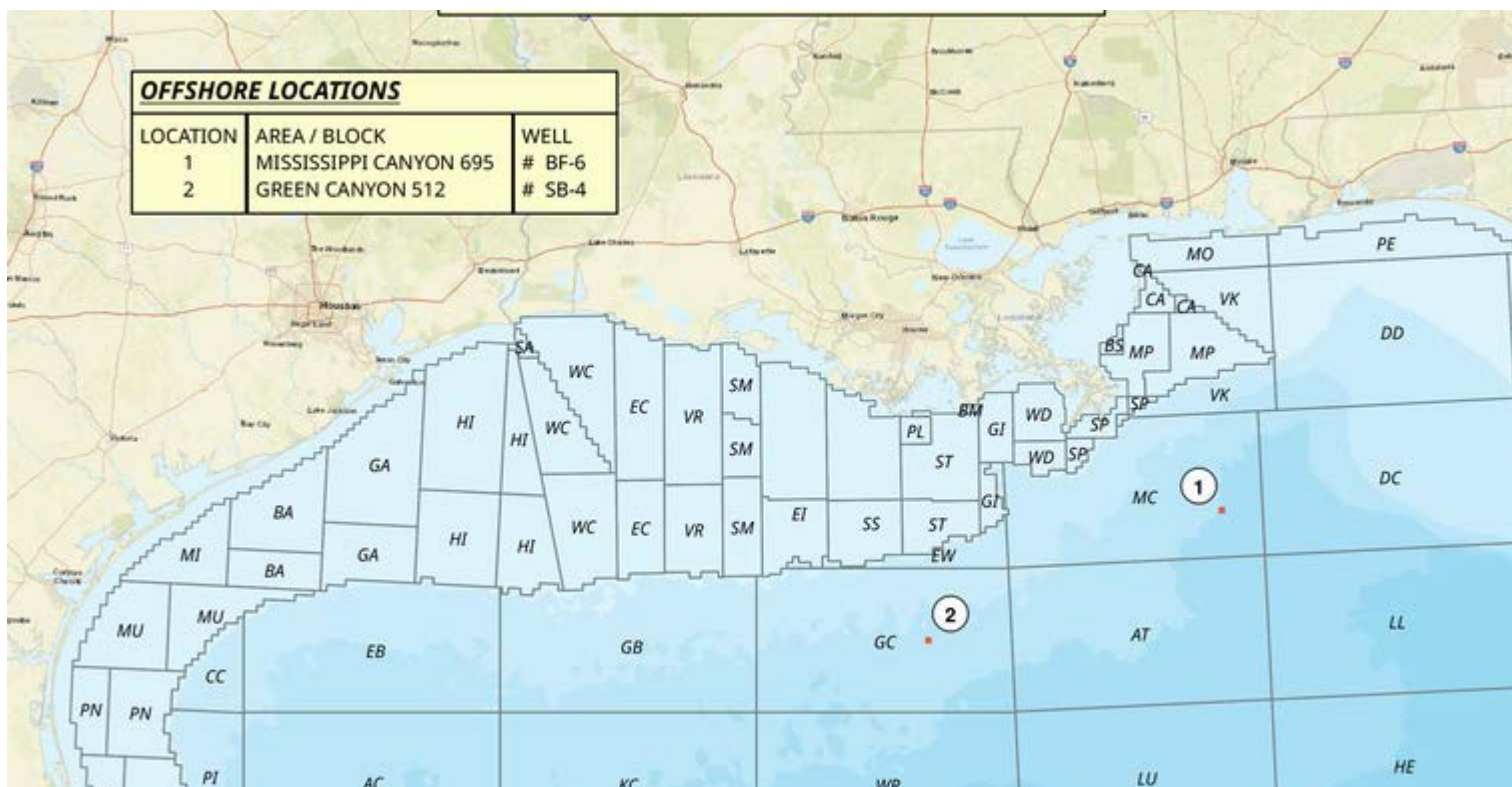


Core Lab
RESERVOIR OPTIMIZATION
www.corelab.com
337-837-8616



DRILL BITS

OFFSHORE GULF OF MEXICO SHELF AND
DEEPWATER ACTIVITIES
BY AL BAKER



During August 2019, the U.S. Department of the Interior Bureau of Safety and Environmental Enforcement (BSEE) approved 105 Gulf of Mexico (GoM) drilling permits. Twenty-nine of these were for shelf wells, and 76 were for deepwater wells. Of the total number of permits, there were 2 new well permits; both were issued in deepwater.

The 2 deepwater new well permits were for exploration wells. Chevron U.S.A. was awarded a new well permit for their Mississippi Canyon 695 #BF-6 well. Hess Corporation obtained the other new well permit for their Green Canyon 512 #SB-4 well.

On August 30th, IHS-Petrodata reported that the GoM mobile offshore rig supply stood at 72, which is 1 less than last month. The marketed rig supply consisted of 43 rigs, of which 36 were under contract. The marketed rig supply is the same as last month, while the contracted rig supply number is 1 less than last month. The marketed contracted versus total rig supply utilization rate stood at 50%, and the marketed contracted versus marketed supply utilization rate stood at 83.7%. By comparison, the August 2018 total fleet utilization rate stood at 48.1% with 37 rigs under contract out of the 77 rigs in the fleet.

DRILL BITS

OFFSHORE GULF OF MEXICO SHELF AND
DEEPWATER ACTIVITIES
BY AL BAKER

As of August 30th, BakerHughes indicated that there were 26 active mobile offshore rigs in the GoM, which is 72.2% of the rigs under contract mentioned above. This active rigs number is 3 more than reported last month. Of the 26 rigs, 7 are located on the shelf, and 19 are situated in deepwater. At the same time last year, there were 16 mobile offshore rigs operating in the GoM representing a 62.5% increase in active rigs year over year.

As of August 30th, the BakerHughes total U.S. rig count stood at 904 rigs, which are 42 fewer rigs than reported at the end of July 2019. Of the 904 rigs, 742 (82.1%) are oil rigs and 162 (17.9%) are gas rigs. A year ago, there were 1048 rigs working in the U.S. Thus, the current rig figure represents a 13.7% decrease in rigs year over year. Texas always has the largest number of rigs currently with 441, which is slightly under half (48.8%) of the total number of rigs in the U. S. Louisiana has a total of 60 rigs, down 2 rigs from last month. The majority (81.7%) of the Louisiana rigs are located in the Haynesville, which has 49 rigs.

On August 21st, the U.S. Department of Interior Bureau of Ocean Energy (BOEM) held OCS Sale 253 in New Orleans. A total of 165 bids on 151 tracts were submitted by the 27 companies participating in the sale. The sum of all bids was \$174.9 million versus a high bids total of \$159.4 million. Seventeen bids were entered on shelf blocks, and 148 bids were cast on deepwater blocks. The block receiving the greatest number of bids, 4, was Mississippi Canyon Block 253; Shell Offshore Inc. made the highest bid of \$836,004. BHP Billiton Petroleum (Deepwater) Inc. submitted the highest bid of the sale, \$22,510,319, for Green Canyon Block 124. They also spent the most money in the sale totaling \$41,849,104 on 20 deepwater blocks. Equinor Gulf of Mexico LLC was the most successful high bidder with 23 high bids totaling \$16,810,848. The most active shelf bidder was Juneau Oil & Gas, LLC, who made 9 high bids while spending \$1,680,993. They also ranked 6th in the sale for total number of high bids.

D-O-R ENGINEERING, INC.

Reservoir Engineering - 3rd and Geoscience Services

6161 Perkins Rd.
P.O. Box 80812

Bus: (225) 765-1914
Baton Rouge, LA 70898



GEOLOGY
ENVIRONMENTAL
MANAGEMENT

GEM Consulting, LTD

Emmitt Lockard
emlockard@yahoo.com

Michael Louis Merritt
admin@gemconsultingltd.com

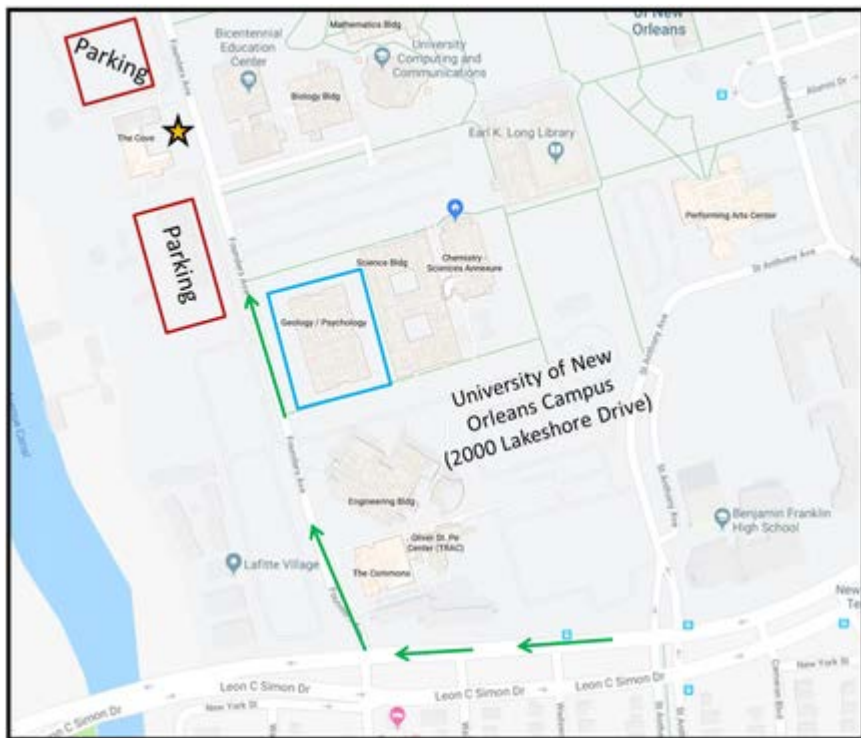
EDWARD B. PICOU, JR.

Shell - Retired
504-975-3096

C & R EXPLORATION, INC.

Carlo C. Christina

Lawrence G. Ringham



Directions:

- The University Address is 2000 Lakeshore Drive
- If you are traveling west on Leon C Simon you will take a right onto campus via Founders Ave road (before the London Avenue Canal)
- You will pass the geology building (blue) on your right and the Cove (star) is located approximately 500 ft on your left
- There is parking (red) available on either side of the Cove



Thomas L. Davis
Geologist



+35 Years exploration & development experience in the western US, overseas and offshore.

Tel: 818-429-4278 tdavisgeo@gmail.com
www.thomasldavisgeologist.com

Prospects, data and field assessments available. Lots of free petroleum geology info at the website.



610 E. Rutland St.
Covington, LA 70433
985-898-3577

Jack M. Rhorson
Eric C. Broadbridge
J. Daryl Gambrell



EARTH SCIENCE WEEK

October 13-19, 2019

"Geoscience is for Everyone"

www.earthsciweek.org

SEI® SEISMIC EXCHANGE

45 years 1975-2020

The upstream oil and gas industry's premiere resource for onshore and offshore seismic data.

Explore our expansive North American 2D and 3D seismic library using an interactive GIS interface



New Orleans | Houston | Dallas | Denver | Tulsa | Canada

201 St. Charles Ave, Suite 4300
New Orleans, LA 70170
504.581.7153

WWW.SEISMICEXCHANGE.COM

DEEPWATER TECHNICAL SYMPOSIUM

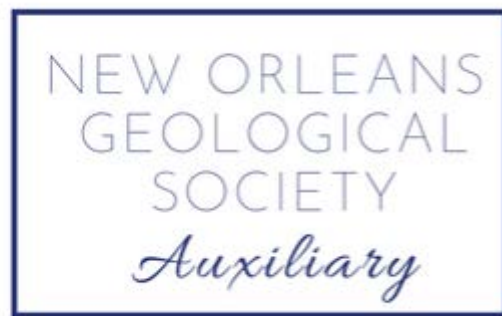
Another Successful Deepwater Technical Symposium. Still Going Strong After 23 Years

This year's Deepwater Technical Symposium held August 26-28, 2019 was a great success with well over 300 people in attendance. The event began on Monday, August 26 with the NOGS Geoscience Seminar featuring some excellent speakers discussing Mesozoic Overview of the Northern Gulf of Mexico Basin. There was over 11 service companies featured in the Exhibitor room with another handful of local societies as well. The entire symposium featured over 75 different session speakers with a wide-range of topics like Drilling Technology, Geoscience/Reservoir & Economics, Production Systems, Emerging Technology and Student Sessions. There was also 2 excellent keynote speakers. On Tuesday the Keynote Speaker was Richard Tallant, Vice-President of Production for Shell Exploration. On Wednesday the Keynote Speaker was Scott Angelle, Director of the Bureau of Safety & Environmental Enforcement (BSEE). Looking forward to another successful symposium in 2020 and hope you attend to be a part of it.

The NOGS Geoscience Seminar at the Deepwater Technical Symposium was held on Monday August 26, 2019. Titled "Mesozoic Overview Northern Gulf of Mexico Basin", the seminar brought together industry and academia to provide the sixty-six attendees a comprehensive review of the tectonics, paleogeography, paleontology and petroleum systems of the Lower Jurassic from onshore Alabama to the deepwater Gulf of Mexico. Assistant professors, and husband and wife team from the University of Alabama, Becky and Marcello Minzoni co-chaired the seminar. They provided excellent overviews of the depositional environments of the Smackover and Norphlet formations including several complete core sections through the formations. Ryan Weber of Paleo Data covered the dual responsibilities of a tectonic overview and paleontological applications in the Mesozoic. Ted Godo, who worked for both Shell and Murphy, provided a comprehensive review of the play history and petroleum systems of the Norphlet formation comparing and contrasting the onshore and offshore provinces. Toby Roesler of Talos Energy presented regional seismic profiles across the offshore province, and several producing Norphlet fields.



Photo credit: Art Christensen
Thanks to Chris McLindon and
Charlie Miller for their support and
organization of this event and article



The New Orleans Geological Auxiliary held their first luncheon of the 2019-20 year at Porter & Luke's restaurant in Metairie on Wednesday, September 11.

President, Camille Yeldell, welcomed everyone and thanked chairmen, Linda Peirce and Retta Stephens for planning the day. Retta was responsible for the lovely table arrangements which went home with four lucky members. The food was excellent and because of the very generous servings, many were able to take home enough for a light supper.



Louis Lemairié reminded everyone that it was the anniversary of the 9/11 attacks in New York and asked everyone to take a minute and think of all those affected on that day.

Those attending included Judy Lemairié, joined by Louis and daughter Jane Finn, Beverly and Chris Christina, Trudy Corona, Judy Sabaté, Alma Dunlap and Peggy Rogers and Jim Yeldell. Roy Walther was able to join Mary and enjoyed visiting with everyone.



Our next luncheon will be on November 13 at Filmore in the Oaks in City Park. Trudy Corona and Pat Williamson will chair that event.





NEW ORLEANS
GEOLOGICAL SOCIETY
MEMORIAL
FOUNDATION INC.

Founded March 14, 1978, the mission of the New Orleans Geological Society Memorial Foundation is to promote earth science related or scientific purpose by granting of scholarships to outstanding Geology students at the universities in Southeast Louisiana having a comprehensive curriculum and offering a degree in Geology. The

Bill Craig Memorial Fund provides for any earth science related educational or scientific purpose that is a direct benefit to grades K-12 teacher or teachers within the Greater New Orleans Area. This area is defined as the area encompassing New Orleans, Jefferson, Plaquemines, St. Bernard and St. Tammany Parishes.

THE MEMORIAL FOUNDATION IS AN IRS TAX EXEMPT CODE #501(C)(3) ORGANIZATION. THE FEDERAL ID IS 72-1220999. PLEASE CONSIDER MAKING A DONATION TO THE FOUNDATION. YOUR INDIVIDUAL SUPPORT IN ANY AMOUNT WILL HELP MEET THE IRS GUIDELINES FOR OUR FOUNDATION. THANKS!

click here to
DONATE



THANK YOU TO OUR DONORS!

\$10,000

Gibbet Hill Foundation - *In Memory of Steve & Marlon Millendorf, William J. Prutzman, Roger G. Vincent, Ron Youngblood, Uno Numella and Dr. Robert T. Sellars, Jr.*

\$1,000

Chevron Your Cause

\$250-\$499

Hillary James Brook

Edward B. Picou - *In Memory of Robert "Bob" Branson, Thomas Klekamp*

William M. Whiting - *In Memory of Robert "Bob" Branson, Gene Cobb, Thomas Klekamp*

UP TO \$249

Woods W. Allen, Jr. - *In Memory of Dr. William C. Ward*

Candace Strahan - *In Memory of James R. Strahan*

Phillip J. Valent

Joel Klekamp - *In Memory of Thomas Klekamp*

Linda P. Fulton - *In Memory of Thomas Klekamp*

Theresa M. O'Neill - *In Memory of Brian J. O'Neill*

Stephanie Klekamp - *In Memory of Thomas Klekamp*

Margaret McKinney

Donald & Marianne Klekamp - *In Memory of Thomas Klekamp*

Shell Oil Company Foundation

Alex Janeveski

**The Department of Earth and Environmental Sciences
University of New Orleans
Presents**

THE 45TH ANNUAL MINERAL AUCTION

**Friday, November 8th
6PM - TILL**



Minerals • Fossils • Jewelry • and More!

**Location: The Cove on UNO's Campus
2000 Lakeshore Drive**

**All proceeds will benefit our student
organizations: AAPG, SGE, & SEES!**

RSVP & Questions: jbulloc2@uno.edu

October 23-25, 2019 Houston, Texas

69th Annual Convention

Gulf Coast Association of Geological Societies
and Gulf Coast Section of SEPM

ANNOUNCEMENT



QR Code Link to
Convention Website

Spread the news!

Please share with your colleagues!

REGISTER NOW AT:

2019.gcagshouston.com

Hosted by the Houston Geological Society

**Pre-Registration
Discount Deadline:
September 19**

2019 GCAGS/GCSSEPM 68th Annual Convention & Exhibition



Welcome

The Houston Geological Society is proud to host the 69th annual GCAGS Convention. Now called GeoGulf, this popular convention remains a joint presentation by the Gulf Coast Association of Geological Societies (GCAGS) and the Gulf Coast Section of the Society for Sedimentary Geology (SEPM). Join us in Houston, TX on October 23-25, 2019 for the inaugural GeoGulf 2019 Houston.

The Exhibition

The Exhibit Hall will be the host area for a number of events, there will be plenty of opportunities to explore all that the exhibitors have to offer, see old acquaintances, and forge new ones.

- The traditional Icebreaker cocktail party held on Sunday in the Exhibit Hall;
- The President's Reception will be held in the Hall from 4:30 pm to 6:00 pm on Monday; and
- Breakfast items and extended breaks in the morning and afternoon oral sessions will permit in-depth discussions with the poster presenters.

Show Hours:

Wed, October 23 (Icebreaker) 6:00 pm–8:00 pm
Thurs, October 24 8:30 am–6:00 pm
Friday October 25 8:30 am–1:00 pm

INTERESTED IN EXHIBITING?

Space is still available. For more information please contact Justin Vandenbrink, Exhibitor Committee Chair (Justin.Vandenbrink@tgs.com) or Mike Erpenbeck, General Chair (mike.erpenbeck@hotmail.com).

SPONSORSHIP OPPORTUNITIES

Various levels of sponsorship are available. Enhance your firm's visibility to Gulf Coast geoscientists and their companies while contributing to the ongoing viability of GeoGulf. For further details, Contact Steve Brachman, Sponsorship Coordinator (SBrachman@WapitiEnergy.com) or Mike Erpenbeck, General Chair (mike.erpenbeck@hotmail.com).

Registration

REGISTER NOW AT: 2019.gcagshouston.com

Industry Professional

(Early Bird through Sept. 19)..... \$300.00

Industry Professional (After Sept. 19)..... \$375.00

Student (Valid Student ID required on site):..... \$60.00

*Student volunteers completing work assignments will be refunded their registration fee.

(Registration includes: technical program, icebreaker, admittance to exhibit hall, happy hour on Monday and Tuesday)

Wednesday, October 23:

Short Courses and Bus Tour Includes Buffet Luncheon

Short Courses 8:30am to 5:00pm at the Westchase Marriott (unless noted otherwise)

Tour Bus to the Houston Museum of Natural Science,
9:00 am–4:30 pm

SC 01: The Exploration Process After Drilling a Discovery

Fred Schroeder

Cost: \$250 (8:30am–5:00 pm)

SC 02: Understanding Deepwater Clastic Facies

John Dribus

Cost: \$195 (8:30 am–5:00 pm)

SC 03: Fundamentals of Deepwater Stratigraphy and Reservoirs

Jon Rotzien, Basin Dynamics

Cost: \$195 (8:30am–4:00 pm)

SC 04: Principles of Paleogeographic Evolutionary Synthesis (sponsored by GCSSEPM)

James Pindell, Tectonic Analysis, Ltd.

Cost: \$195 (8:30 am–4:00 pm)

SC 05: Introduction to Machine Learning for Interpreters (Half Day)

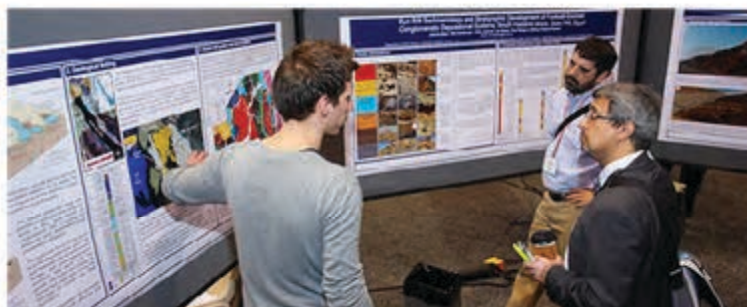
Rocky Roden, (Rocky Ridge Resources, Inc)

Cost: \$95

SC 6: Creativity for Geoscientists: Insights, Development and Practice (Half Day)

William (Bill) Fairhurst and Charles A. Sternbach

Cost: \$95



2019 GCAGS/GCSSEPM 68th Annual Convention & Exhibition

SC 07: Advanced Analytics – Understanding the Powers and Pitfalls of Multivariate Statistics for Upstream Oil & Gas

Andrew Silver, Adret LLC
Cost: \$95

SC 08: Core Workshop: Upper Cretaceous Stratigraphy and Reservoirs of Texas and Louisiana

William A. Ambrose and Robert G. Loucks (BEG) (8:30 am-4:00 pm). This class will be at the BEG Core Facility, 11611 W Little York Rd, Houston
Cost: \$195

SC 09: Introduction to Petrophysics

Randy Mitchell (PSI)
Cost: \$95 (8:30 am-4:00 pm)

SC 10: Reservoir Fluids Behavior and Analysis for Earth Scientists (half day)

Toddy Guidry, Core Lab
Cost: \$95

SC 11: A User's Guide to Micropaleontology and Biostratigraphy: Applications in Research and Industry (sponsored by GCSSEPM)

Thomas D. Demchuk, Ryan Weber, Rebecca Hackworth
Cost: \$95 (8:30 am-4:00 pm)

SC 12: Reservoir Modeling and Production Forecasting

W. Scott Meddaugh, Professor, McCoy College of Science
Cost: \$195 (8:30 am-4:00 pm)

Wednesday Evening

Opening Ceremony, Icebreaker, Student Poster Sessions

4:30 pm GeoGulf Convention Opening Ceremony
6:00 pm Exhibit Hall Icebreaker and special exhibits
6:00 pm Student Poster Sessions till 8 pm.

Thursday, October 24

7:00 am Speaker and Poster Presenters Breakfast
7:30 am AAPG House of Delegates Breakfast
7:30 am Student Posters on display till noon

Thursday Morning Sessions

- Energy Vision 2020 and Beyond- with Scott Tinker, Charles Sternbach
- Environmental Geology and Water Resources
- Understanding GOM and Offshore Mexico Plays
- Wilcox-Yegua-Vicksburg Onshore Conventional Plays

Thursday Afternoon Sessions

- 1:00 pm - Professional Posters on display in the Exhibit Hall
- Giant Fields Deepwater GOM
- Data Analytics and Seismic Interpretation
- Understanding GOM and Offshore Mexico Plays II
- Eagle Ford-Haynesville-Austin Chalk

Exhibit Hall reception and Networking Dinner Exhibit Hall Features Sediments from Hurricane Harvey Art and Cores from the Bureau of Economic Geology.

Friday October 25

7:00 am Speaker and Poster Presenter Breakfast
7:00 am Women's Networking Breakfast
8:00 am Professional Posters on display till 1 pm.

Friday Morning Sessions

- Business of Geology Panel Discussion
- After Harvey What Have We Learned?
- Integration of Seismic Processing, Gravity and Magnetics
- Global Deepwater Reservoirs I

AAPG DPA Luncheon-

John Jordan, Jordan Consulting, "Ethics Lecture"

GCSSEPM Luncheon

James Pindell, Tectonic Analysis, Ltd., "Mexico Tectonics"

Field Trip to Mason County early afternoon departure from the Westchase Marriott

Friday Afternoon Sessions

- Hurricane Harvey Art and Insights
- Discussion on Geo-Careers
- Rock Mechanics and Log Analysis
- Carbonate and Clastic Mega Regional Insights
- Global Deepwater Reservoirs II



BE A JUDGE! VOLUNTEERS NEEDED!

Your feedback in awarding oral and poster presenters is important. Please contact Sandy Rushworth/David Risch at (sandyrushw@aol.com).

2019 GCAGS/GCSSEPM 68th Annual Convention & Exhibition

Field Trips

Friday-Saturday October 25-26

Departures 8:30 am, return 4:30 pm other than Friday afternoon Mason County trip.

FT 1: Hands on Geophysical Data Acquisition

Dr. Robert Stewart

Cost: \$175.00

FT 2: World Class and Spectacular Late Cambrian Microbial Reef Outcrops in Mason County, Texas, (Friday to Sunday)

Dr. Andre Droxler, (3 days, departs early Friday afternoon from WestChase Marriott)

Cost: \$600.00

FT 3: Upper Texas Coastal Barrier Dynamics:

Observations Used in Digital Modeling,

Dr. Jeff Nitrouser

Cost: \$150.00

FT 4: Surface Faults in West Houston,

Carl Norman and Richard Howe (HGS)

Cost: \$150.00

FT 5: Visit the Hockley Salt Mine and Discover the Pleistocene Mega-Fauna Fossils from Northwest Harris County

Ken Theis

Cost: \$150.00

FT 6: Artistic, Human Impact and Geologic Investigation of Hurricane Harvey's Deposits Near Downtown Houston

Jerry Kendall

Cost: \$95.00 (half day)

FT 7: Panther Creek Outcrops and Fossil Collecting

Constantin Platon

Cost: \$95.00 (half day)

Luncheons

ALL CONVENTION LUNCHEON (Thursday Oct 24)

"Exploration Courage"

John Seitz, GulfSlope Energy

DPA LUNCHEON (Friday Oct 25)

"Gray Areas: Interactive Application of Business Ethics in the Geoscience Profession"

John Jordan, Jordan Consulting

GCSSEPM LUNCHEON (Friday Oct 25)

"The Geological Evolution of Mexico"

James Pindell, Tectonic Analysis, Ltd.

Panel Discussions

Business Panel, Friday Morning Oct 25

Deal Trends, Investment Outlooks, Capital Flow

Skills and Career Panel, Friday Afternoon Oct 25

Skills Outlook, Career Assessment and Management

Industry leaders will lead discussion in both panels

Convention Hotel

Houston Marriott Westchase, 2900 Briarpark Dr

Located in west Houston Westchase Business District just inside West Beltway 8

Large parking area and is FREE

Convention rate: \$169/night; see link in Convention Website, 2019.gcagshouston.com



**Pre-Registration
Discount Deadline:
September 19**

