

NOGS LOG

JUNE 2019

Volume 59, Number 12



JUNE 3 - NOGS LUNCHEON PRESENTATION
"Microbiotic Response to the Opening of the Gulf of Mexico:
Norphlet, Smackover, and Haynesville"

Guest Speaker: Ryan Weber
Paleo-Data, Inc. • New Orleans, Louisiana



NOGS MAY LUNCHEON

"LSU Mounds (16BTR6): Striking New Discoveries from the LSU Mounds, Now Dated as the Oldest Man-Made Extant Structures in the Western Hemisphere"

Dr. Brooks B. Ellwood

LSU Dept. of Geology and Geophysics • Baton Rouge, Louisiana





Published monthly by the New Orleans Geological Society. This issue was sent to press on May 29, 2019.

Interested in contributing to the NOGS LOG?

Please submit items by the 1st Friday of the month to nogseditor@gmail.com. Advertising requests should contact NOGS at admin@nogs.org.

IN THIS ISSUE

Regular Features:

On The Cover.....	3
From the Editor.....	3
From the President.....	4
NOGS Officers / Contacts	6
Upcoming Events & Activities	7
NOGS Luncheon Presentation.....	8
Calendar of Events: May-Oct 2019	12
Offshore GoM - Shelf & Deepwater Activities	14
NOGA News.....	15
NOGS Memorial Foundation & FONO Fund.....	17

Special Features:

May Luncheon Photos	2
2019 NOGS LOG Ad Rates.....	5
2019 NOGS/PLANO/SPWLA Golf Tournament.....	10
Picture From Our Past	12
Annual Louisiana Water Conference.....	19

on the cover

Cover photo credit: Fran Wiselady

Gulf National Seashore — Santa Rosa Island

The cover picture is from Gulf Islands National Seashore on Santa Rosa Island west of Pensacola Beach, Florida. The beautiful white sand beaches on the Gulf Coast attract many tourists and locals alike. The area is treasured as an acclaimed national park and is sometimes referred to as the Emerald Coast due to the aqua-green water. The park is also home to all kinds of wildlife ranging from the large osprey birds to tiny ghost crabs and possibly other strange creatures.

The dazzling white sand is made of quartz transported down from the Appalachian Mountains 20,000 years ago. The sediment reaching the Gulf of Mexico along the Florida Panhandle, Alabama, and Mississippi coasts is almost entirely from erosion of these quartz-rich rocks. Strong shoreline currents travel westward depositing the quartz grains on the beaches and shallow sea floor.

Sand dunes occur along the beach from east to west. The dunes are subject to erosion during powerful storms. Even heavy rainstorms cause destruction and flooding. Sea oats and grasses help to anchor the dunes, and wooden fences are also used to help sand accumulation and provide protection.

Santa Rosa Island is a barrier island and the park is located on the western end. This is also the location of Fort Pickens at the Pensacola Bay inlet. The fort was completed in 1834 as a strengthened coastal defense as a result of easy access by the British troops in the War of 1812. One of its most famous prisoners was the Apache warrior chief Geronimo, incarcerated there for two years before being moved to Alabama in 1887.

References: U.S. National Park Service, Encyclopaedia Britannica, Geocaching

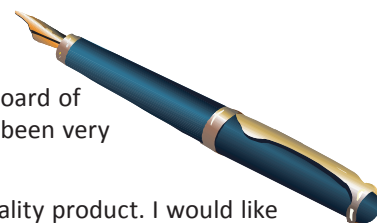


From the Editor

Thank you for the opportunity of being the editor of the *NOGS LOG* this year. Being on the Board of Directors is also a privilege that all members should experience. The Board of Directors have all been very professional and it was a pleasure to work with them.

The *NOGS LOG* has many contributors that work hard to get our issues out on time with a quality product. I would like to thank Ed Picou, Art Christensen, Mary Walther, Kristee Brown, Chris McLindon, Al Baker, Carlo Christina, Kevin Trosclair, Tom Bergeon, Christy Himel, Mike Fein, Robert Rooney and all guest contributors. Also, for the last few months Editor elect, Paul Post, has been a great help. If I left off anyone please forgive me.

Congratulations to Ed Picou for receiving the AAPG award for Distinguished Member of the House of Delegates. He has been a valuable member for AAPG and certainly for NOGS. Ed is the most knowledgeable person about all aspects of our organization. Ed and Annette Hudson were the ones to persuade me to be an officer (secretary) for the first time many years ago. He has been a great help to me through the years. Thanks Ed!



Fran
**Fran Wiselady, NOGS LOG Editor
RETIRED!**



FROM THE
PRESIDENT
CHRIS MCLINDON

Prior to his prolific career as an oil-finder at CNG, Dominion and Houston Energy Ed Zinni was one of the first to publish a shallow subsurface geological interpretation using oil and gas industry seismic data in south Louisiana. His 1995 paper “Subsurface fault detection using seismic data for hazardous-waste-injection well permitting: An example from St. John the Baptist Parish, Louisiana”, published in the journal *Geophysics*, effectively predicted one of the intended applications of industry seismic data that is now envisioned by the Louisiana Coastal Geohazards Atlas Project. Ed used seven 2-D seismic lines, provided to him by Seismic Exchange and Tomlinson Geophysical, in combination with four subsurface cross sections constructed from the geophysical logs from oil and gas wells, water wells and industrial waste disposal wells. He mapped five shallow subsurface horizons including the Covington Aquifer, which is the southern extension of the Kentwood Aquifer. This is significant because the Covington Aquifer is the source for municipal water wells at the northern edge of the study area. Two wells near Ruddock, Louisiana supplied drinking water for the residents of Laplace, fifteen miles to the south. At the southern edge of the study area the downdip equivalent of the Covington Aquifer lay stratigraphically between the 4700-ft and 3700-ft zones that were being used for wastewater injection at the Dupont Pontchartrain Works Facility on the Mississippi River near Laplace. Ed used his integrated data set to map three primary faults that intersected and offset the Covington Aquifer between the injection well and the municipal water wells.

These are the same faults that create the rollover anticlines that support Bonnet Carre, Frenier and Laplace Oil Fields, all of which are featured in the NOGS publication “Oil and Gas Fields of Southeast Louisiana – Volume 1”. It is commonly accepted in the industry that oil and gas reservoirs of this type were probably sourced with hydrocarbons that migrated vertically up

the faults and into the structurally closed reservoirs. Ed noted in his study that the fact that none of the reservoirs in these fields were filled below intersection with the faults suggest that juxtaposition of sand against sand across the faults allowed for leakage of reservoir fluids at these levels. Ed extrapolated from this observation to conclude that it may be possible that wastewater from the injection wells could migrate along and across the faults and ultimately find its way to the site of the municipal water wells. He noted that the regulations of Title 33 of the Louisiana Department of Environmental Quality require that “confining zones of a hazardous-waste-injection reservoir should be free of bisecting transmissive faults and fractures”.

Therein lies the problem. How can a regulatory body like the Louisiana Department of Environmental Quality enforce its regulations without any knowledge of where potentially transmissive faults occur? The intention of the Louisiana Coastal Geohazards Atlas Project is to provide a map of faults that are likely to intersect potential injection zones across south Louisiana. An atlas of this type can be used not only for groundwater resource management applications like this, but also for transportation infrastructure assessment, flood protection infrastructure assessment, and subsidence and wetlands studies. Ed Zinni provide the perfect model by which to construct such an atlas. He chose a defined study area and mapped it in detail at multiple horizons using an integrated set of seismic and subsurface data. He generated multiple horizon maps and fault plane maps, and pinpointed the most significant implications of his interpretation. By emulating this model and expanding it across south Louisiana with many similar research projects, the Atlas Project hopes to achieve an adequate body of interpretation of combine into a comprehensive atlas. The intended *modus operandi* of the Atlas Project is to have these type of research projects take place at area universities. The Atlas Project will endeavor to provide the universities with access to industry seismic and other data to conduct the research. The keys to success will be to secure adequate funding for the project, which may include the purchase of seismic research licenses, and to promote cooperative engagement with the oil and gas industry in support of the project.

Mr. McLindon has requested that there be no editing of his column. The editor and the editing staff are not responsible for grammatical errors or any other issues that would usually be edited.

Fran Wiselady, Editor, and the Editing Staff



Contact NOGS at:
admin@nogs.org

2019 ADVERTISING RATES

The New Orleans Geological Society was formed in 1941, with an initial membership of only 55. It has always been an active professional society and presently has a membership of 500.

AD SIZE	2015 RATE	NEW 2019 RATE!
Full Page (7.5"x10")	\$3500	\$1750
Half Page (3.75"x10" or 7.5"x5")	\$1850	\$925
Quarter Page (3.75"x5" or 7.5"x2.5")	\$1000	\$500
Eighth Page (3.75"x2.5")	\$600	\$300
Twelfth Page (3.75"x1.65")	\$375	\$188
Note Size (3.75"x.75")	\$120	\$60

PREMIUM LOCATIONS



Inside Front Cover.....	+30%
Opposite President's Page	+20%
Opposite Oral Abstract	+20%
Inside Back Cover.....	+30%
Outside Back Cover.....	+40%

23rd Annual Gulf of Mexico

Deepwater

Technical Symposium

August 26-28 2019

**New Orleans Downtown Marriott
at the Convention Center**

www.deepwaternola.org





NOGS Contact Information

Email: admin@nogs.org • Website: www.nogs.org

P.O. Box 58108 • New Orleans, LA 70158.

Correspondence and all luncheon reservations should be sent to the above address.

BOARD OF DIRECTORS

		Company	Phone	E-mail
President	Chris McLindon	Upstream Exploration LLC	504-756-2003	chris.mclindon@Upstreamexp.com
Vice President	TBA			
Secretary	Shara Gremillion	USM Student	504-554-0319	shara.gremillion@usm.edu
Treasurer	David B. Culpepper	The Culpepper Group, LLC	985-264-1677	dculpepper@theculpeppergroup.com
President-Elect	Robert Rooney	Robert M. Rooney Inc.	504-460-0319	robmrooney@aol.com
Editor	Fran Wiseman	Retired - BOEM	504-615-5170	snowde.fran@gmail.com
Director 2019	Jennifer Connolly	Shell	504-425-6411	jennifer.connolly@shell.com
Director 2020	David Reiter		504-593-3623	dreiter124@yahoo.com
Director 2021	Charles W. Holman	BSEE	504-975-6735	charleswholman@bellsouth.net

COMMITTEE

	Chairperson			
AAPG Delegates	William M. Whiting	Consultant	504-947-8495	bootscon@aol.com
AAPG Student Chapter	Rafael Villanueva	LSU		rvilla7@lsu.edu
AAPG Student Chapter	Kevin Reece	Tulane University		jreece@tulane.edu
AAPG Student Chapter	Jarrett Levesh	UNO		jlevesh@my.uno.edu
Advertising-Log	Fran Wiseman	Retired - BOEM	504-615-1570	snowde.fran@gmail.com
Auditing	Chris McLindon	Upstream Exploration LLC	504-756-2003	chris.mclindon@Upstreamexp.com
Awards	Michael N. Fein		504-717-6465	lfeinmn1@cox.net
Ballot	David B. Culpepper	The Culpepper Group, LLC	985-264-1677	dculpepper@theculpeppergroup.com
Best Paper	Bay Salmeron	Chevron	832-854-6431	bay.salmeron@chevron.com
Entertainment	Robert Rooney	Robert M. Rooney Inc.	504-460-0319	robmrooney@aol.com
Environmental	TBD			
External Affairs	John E. Johnston III	Louisiana Geological Survey	225-931-6622	hammer@lsu.edu
Finance and Investment	Margaret McKinney	TGS	504-524-3450	margaret.mckinney@tgs.com
Historical	Edward B. Picou, Jr.	Retired - Shell	504-975-3096	epicou@bellsouth.net
Membership/Directory	TBD			
New Geoscientists (NGNO)	Rachel Carter		913-710-8021	r_carter@me.com
Nominating	Brenda Reilly		504-430-4240	brendaereilly@hotmail.com
Non-Technical Education	Duncan Goldthwaite	Consultant	504-887-4377	DGldthwt@aol.com
Office Operations	Chris McLindon	Upstream Exploration LLC	504-756-2003	chris.mclindon@Upstreamexp.com
Publications Sales	Edward B. Picou, Jr.	Retired - Shell	504-975-3096	epicou@bellsouth.net
School Outreach	Thomas C. Bergeon	Upstream Exploration	504-832-3772	tom.bergeon@upstreamexp.com
Special Projects	TBD			

NOGS LOG STAFF

Editor	Fran Wiseman	Retired - BOEM	504-615-1570	snowde.fran@gmail.com
Editor-Elect	Paul Post	Pan's Geo, Inc.	504-736-2954	mutzko@webdsi.com
Auxiliary	NOGA Officers and Directors	NOGA		
Drill Bits	Al Baker	Beacon Exploration, LLC	504-836-2710	ABaker1006@aol.com
Drill Bits	Carlo C. Christina	Retired - C & R Expl. Inc.		carlocc398@aol.com
Drill Bits	Kevin Trosclair	BOEM	504-202-7997	kevintrosclair@gmail.com
Staff Photographer	Arthur Christensen	Shalimar Consulting	985-893-2013	arthur_shalimar@yahoo.com
Layout / Printing	Kristee Brown	Creative Graphics & Printing, LLC	985-626-5223	kpbrown@bellsouth.net
Webmaster	Charles Miller III	OCSBBS Website	504-733-3117	cmiller@ocsbbs.com

NOGS AUXILIARY

Officers		Phone	Directors	Year	Phone
President	Margie Conatser	504-469-2496	Penny Bryant	2017-19	504-831-7744
Vice-President	Camille Yeldell	504-835-7467	Loretto Stephens	2017-19	504-451-3472
Secretary	Linda Peirce	504-289-6585	Judy Lemarié	2018-20	504-393-8659
Treasurer	Mary Walther	504-392-9332	Peggy Rogers	2018-20	504-392-6323
Parliamentarian	Alma Dunlap	504-737-2678			
Member-at-Large	Trudy Corona	504-737-6101			



June 3 • NOGS Luncheon Presentation

Holiday Inn Downtown Superdome

\$3.00 validated parking in hotel garage

Presentation:

**Microbiotic Response to the Opening of the Gulf of Mexico:
Norphlet, Smackover, and Haynesville**

Guest Speaker:

Ryan Weber

Paleo-Data, Inc. • New Orleans, Louisiana

See page 8 for Abstract and Biography

HOLIDAY INN DOWNTOWN SUPERDOME

Check with concierge or
front desk for location.
Lunch served at 11:30 am

ADMISSION:

With reservation..... \$30.00
Without reservation \$35.00
Student Member with reservations..... FREE

July 1

NOGS Luncheon Presentation

Speaker: Linzy Foster - Hydrologist USGS
Holiday Inn Superdome • New Orleans, Louisiana

Oct 12

Energy Day

Louisiana Children's Museum • New Orleans, Louisiana
For more information: Tom Bergeon • 504-832-2772
tom.bergeon@upstreamexp.com

August 26-28

23rd Annual

Gulf of Mexico Deepwater Technical Symposium

N.O. Downtown Marriott Convention Center • New Orleans, Louisiana
For more information: <http://www.deepwaternola.org>

Oct 20

New Orleans Pelicans and New Orleans Saints

Chevron STEM Fest

Mercedes-Benz Superdome • New Orleans, Louisiana

NOGS CONTACT LIST

Continued from previous page

MEMORIAL FOUNDATION

BOARD OF TRUSTEES

2018-2019	Chairman	Chris McLindon
2018-2019	Secretary	G. Alex Janevski
2018-2019	Trustee	Kelli Hardesty
2018-2019	Trustee	William M. Whiting
2019-2020	Trustee	David Reiter
2019-2020	Trustee	TBD
2020-2021	Trustee	TBD
2020-2021	Trustee	TBD

AAPG DELEGATES

Term Ends

2018	Earl Cumming
2018	William M. Whiting
2018(a)	Dave Balcer
2020	Elizabeth McDade
2020(a)	G. Alex Janevski

Company

Upstream Exploration LLC
ERM
Consultant

Reservoir Frameworks LLC
Consultant

Phone

504-756-2003
504-425-6214
504-846-9245
504-947-8495
504-593-3623

985-630-6898
504-947-8495
504-352-0238
504-425-6214

E-mail

chris.mclindon@Upstreamexp.com
alexjanevski@gmail.com
kelli.hardesty@erm.com
bootscon@aol.com
dreiter124@yahoo.com

earlcumming@bellsouth.net
bootscon@aol.com
balcer@bellsouth.net
ecmcdade@bellsouth.net
alexjanevski@gmail.com



June 3 NOGS Luncheon Presentation

☆☆☆ at the Holiday Inn Superdome ☆☆☆

Microbiotic Response to the Opening of the Gulf of Mexico: Norphlet, Smackover, and Haynesville

Presented by

Ryan Weber

Paleo-Data, Inc. • New Orleans, Louisiana

ABSTRACT

The biotic response to an ever-changing paleogeography proves insight to depositional settings and sediment fairways as the Gulf of Mexico basin evolved into a passive margin. A data-supported biostratigraphic review of publicly-available exploration boreholes penetrating Lower Cretaceous and Upper Jurassic sediments located within the De Soto Canyon and Mississippi Canyon protraction areas in the Gulf of Mexico yields a repeatable and predictive evolutionary and paleoecological sequence with implications to paleogeography. A three phase paleogeographic model supported by microfossil assemblages will be presented: a sea-floor spreading phase (Oxfordian to Tithonian), a transitional phase (Tithonian to Valanginian), and a progradation/eustasy phase (Valanginian to Present). The differences in microfossil assemblages between these phases suggest significant perturbations in oceanic circulation, structure, and/or chemistry. Understanding these perturbations and the cause further suggests changes in depositional environments, paleogeography, and potentially, the petroleum system.

BIOGRAPHY

Ryan Weber is currently the President of Paleo-Data, Inc., a biostratigraphic consulting firm serving the Oil & Gas sector for 50 years. Ryan previously worked for BP-Houston providing biostratigraphic support for the developing and

producing fields in BP's Gulf of Mexico portfolio and co-developed a training module for the non-biostratigraphic staff. Ryan hails a BS and Education certificate from Minnesota State - Mankato, and an MS from the University of Nebraska - Lincoln.

While in Lincoln, Ryan researched calcareous nannofossils in Upper Cretaceous Pierre Shale stratigraphy in South Dakota and Nebraska as it relates to a bolide impact in Iowa. Ryan also served as the Earth Science Section Chair for the Nebraska Academy of Sciences before starting his career with Paleo-Data, Inc. in New Orleans as Staff Nannofossil Biostratigrapher. There, Ryan gained experience in applied biostratigraphy from onshore and deepwater Gulf of Mexico, Nile Delta, and Northwest Australian shelf, while developing a passion for Miocene and Jurassic stratigraphy and paleoceanography.



**THE JUNE LUNCHEON RESERVATION
DEADLINE IS MAY 31.**

"And Looking Ahead . . ."

The next luncheon will be held on July 1. Our guest speaker will be Linzy Foster, Hydrologist USGS. Reservations online at www.nogs.org or by email at admin@nogs.org or call 504-348-3500.



Drill with confidence.

Diversified Well Logging, LLC brings the accuracy and expertise only a company with over sixty years in the oil and gas industry can deliver. We are your eyes and ears in the field, especially when it comes to deep water or high pressure, high temperature areas.

DWL offers 24-hour formation evaluation. We provide secure and customized real-time data communication, in-house research and development, and 24/7 on-call support for our equipment and our engineers.

Whether you have a 10-day job or a 110-day job, we provide the specialized attention you require. **Our experience means you can be confident in the safety and performance of your well.**



- *Formation Evaluation*
- *Geosteering*
- *Drilling Optimization*
- *Real-time Data Transmission*
- *Early Kick Detection*



Serving the Oil and Gas Industry for Over 60 Years

2019 NOGS-PLANO-SPWLA Golf Tournament

The Annual NOGS-PLANO-SPWLA Golf tournament was held at New Orleans City Park Bayou Oaks South Course on May 3rd. With good weather, luck and much preparation, the tournament proceeded on schedule with partly sunny conditions. Special thanks to Diversified Well Logging for providing the 18th hole food and beverages starting at 7:30 AM with breakfast sausages and drinks throughout the tournament and ending with a delicious grilled steak lunch with sides for the awards ceremony. Leslie Broussard, Tim Kleibert, and Randy Kleibert deserve accolades and kudos for their generosity and time commitment to the NOGS organization over the years. Thanks go out to NOGS administrator Christy Himel who did an outstanding job in her first year as the point of contact and organizer for scheduling and arrangements, and to the rest of the Golf Tournament Committee: Ryan Schneider (PLANO), Steve Espinosa (SPWLA), Bill Moody (PLANO), Leslie Broussard, David Reiter, Tim Kleibert, Brenda Gaudin, and Chris McLindon. Arthur Christensen provided photography services for the tournament as he has done in past years. Art's photographic skills and attention to detail are superb and invaluable, documenting our NOGS events. He deserves our continued thanks for this.



Because of the success of this year's tournament, we were able to donate \$5,000 to the Louisiana Children's Museum as part of our \$50,000 commitment over a ten-year period. We look forward to continuing this golf tournament tradition as an important social event for our joint societies, and the main event to support the financial commitment to the Children's Museum.

Special thanks to EcoLab for cooking breakfast boudin in the pre-start AM, which was served by volunteers Carol Rooney (Consultant) and Chris Magliolo (Morgan Stanley) from the 9th hole throughout the day. Volunteers, who are so critical to keeping the tournament moving forward, worked as betting hole observers and snack/drink cart drivers among other things. These volunteers were Jared Bullock (UNO),

George Rhoads (Chevron), Diane Mayo (Chevron), Christine & Chuck Hopson (PLANO), Chris McLindon (Upstream), Shara Gremillon (USM), Margaret McKinney (TGS), S. Paul Provenza (Permitting & Regulatory), Al Baker (Beacon Exploration & Production, LLC), and Charlie Miller (OCSBBS).

Team Sponsors who generously contributed to the tournament success included: E&B Natural Resources, Baker Hughes, Paleo Data, Cantium, Upstream, GeoMark Research, Seitel, Diversified Well Logging, ANKOR, Newcastle, LaBay Exploration, SPWLA, PLANO, and Chevron Retirees. Wayne Cook and Seitel provided an additional cash donation, golf balls and tees, Steve Espinosa and SPWLA provided the coffee and donut service for the clubhouse registration table, and Rick Fowler and LLOG provided a generous donation toward support of the Children's Museum.

Hole sponsorships were provided by Shalimar Consulting, Weatherford Labs, Seismic Exchange, Inc., LLOG, OCSBBS Website, E&B Natural Resources, Baker Hughes a GE Company, Paleo Data Inc, Cantium, Upstream, GeoMark Research, and Seitel.

Tournament winners were as follows:

1st Place — Team Cantium

Mike Autry, Lance Bergeron, Jared Blanchard, and Bryan Clement

2nd Place — Team Seitel

Wayne Cook, Toby Roesler, Mike Schneider, and Ray Landeche

3rd Place — Team GeoMark

Scott Granger, Jon Wood, Corey Coles, and Bryce Beaubouef

Thanks to all for participating, and we look forward to next year's tournament!

Robert Rooney







CALENDAR OF EVENTS: JUNE - OCT 2019

If you know of upcoming seminars or academic events that may be of interest to our members, please email the event details to Fran Wiseman at nogseditor@gmail.com to be included in the monthly calendar.

2019	EVENT	LOCATION	CONTACT / INFO
3 Jun	NOGS Luncheon Presentation Speaker: Ryan Weber • PaleoData, Inc. "Microbiotic Response to Opening of the Gulf of Mexico: Norphlet, Smackover, Haynesville"	Holiday Inn Superdome	Reservations: www.nogs.org Email: admin@nogs.org Call: 504-348-3500
27-29 Jun	Oil History Symposium and Field Trip in New Brunswick, Canada	New Brunswick, Canada	www.petroleumhistory.org
1 Jul	NOGS Luncheon Presentation Speaker: Linzy Foster • Hydrologist USGS "Overviews of the Coastal Lowlands Aquifer System (CLAS)"	Holiday Inn Superdome	Reservations: www.nogs.org Email: admin@nogs.org Call: 504-348-3500
26-28 Aug	23rd Annual Gulf of Mexico Deepwater Technical Symposium	N.O. Downtown Marriott Convention Center	http://www.deepwaternola.org/
12 Oct	Energy Day	LA Children's Museum	Tom Bereon • 504-832-3772 tom.bergeon@upstreamexp.com
20 Oct	New Orleans Pelicans and New Orleans Saints Chevron STEM Fest Benefiting Core Element	10 am - 2 pm Mercedes-Benz Superdome	https://core4kids.org/team-view/join-core-element-the-n-o-pelicans-saints-for-stem-fest-presented-by-chevron-october-20

Picture From Our Past...

by Ed Picou - Chairman, Historical Committee

Dr. William W. "Bill" Craig displaying his Distinguished Service Award from NOGS, presented at the April 1994 Luncheon.

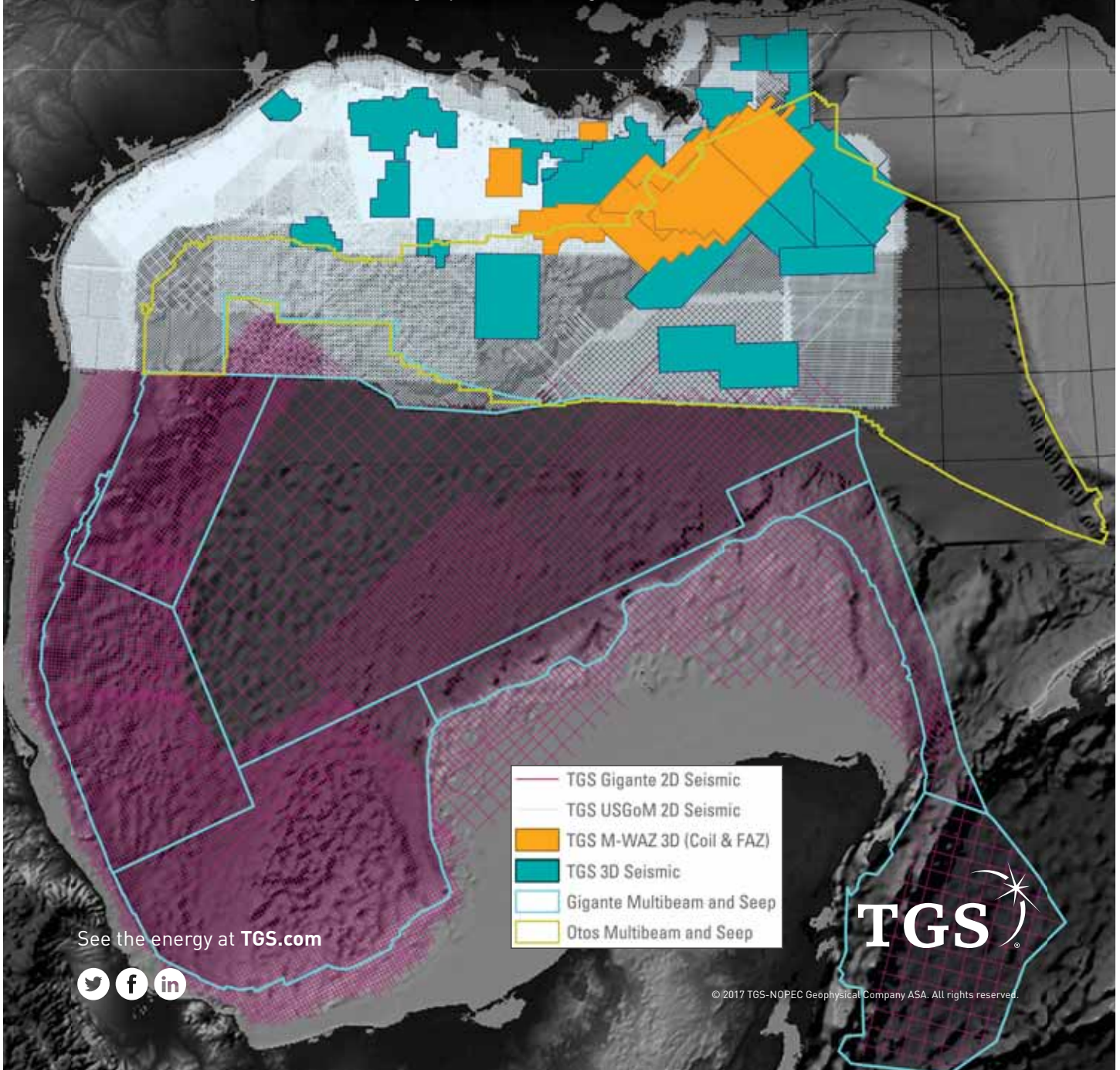


Bill was the NOGS President in 1983–84; however, his service to our Society and the geologic community in New Orleans was incredible, extending over decades. For many years, the Society's publications were warehoused in an interior room in the Geology Department at UNO. Bill had students fill book orders, ship them, and once a year, conduct a stock inventory. Bill always brought selected NOGS publications to our monthly luncheons, selling many through this effort. Also, he had a special bond with earth science teachers in the metropolitan area. Bill conducted many mini-short courses for them; additionally, in summers, he took as many as possible on a field trip visiting the Grand Canyon. During those years, NOGS supported these educational adventures with a thousand-dollar donation. Bill always volunteered to serve as a committee chair at all NOGS-hosted conventions, and was editor of the GCAGS Transactions several times. He twice served as Chairman of the UNO Geology Department, which he is credited with leading into the oil and gas era of the 1970's. Many of his students found employment locally in the industry and became NOGS members. Unfortunately, Bill died not long after he retired, on September 25, 2000, at age sixty-five.

If you would like a copy of the more extensive memorial written by UNO's Dr. Bill Ward and published in the *NOGS LOG* in December 2000, please contact Ed Picou at epicou@bellsouth.net.

Set your sights. **Gulf of Mexico**

TGS provides industry-leading offshore seismic data using an innovative mix of technologies and unmatched imaging capabilities. Through strategic partnerships, we provide a comprehensive collection of advanced marine acquisition technologies for enhanced reservoir delineation, characterization and monitoring. TGS delivers the E&P industry unlimited potential with our collection of advanced offshore data including **Declaration M-WAZ 3D** survey, **Fusion M-WAZ 3D**, **Otos Multibeam and Seep** and **Gigante 2D Multibeam and Seep** programs. Explore the Gulf of Mexico with the right data, in the right place, at the right time.





OFFSHORE GULF OF MEXICO - SHELF AND DEEPWATER ACTIVITIES

by Al Baker

During April 2019, the **Bureau of Safety and Environmental Enforcement (BSEE)** approved **94** Gulf of Mexico (GoM) drilling permits. **Nineteen** of these were for shelf wells, and **75** were for deepwater wells. Of the total number of permits, there were **four new well permits**; one was issued on the **shelf** and **three** were issued in **deepwater**.

The shelf permit was for a development well, the **Arena Offshore Eugene Island 276 #K-3**. The three deepwater new well permits were for **two** exploration wells and **one** development well. The two exploration new well permits were awarded to **BP Exploration & Production** for their **Green Canyon 826 #9** well and their **Mississippi Canyon 564 #1**. **Exxon Mobil** received the development new well permit for **Walker Ridge 584 #JU-106**.

On April 26th, **IHS-Petrodata** reported that the GoM mobile offshore rig supply stood at **71**, the **same** as last month. The marketed rig supply consisted of **41** rigs, of which **34** were under contract, also the **same** as last month. The contracted rig supply was one more than the previous month. The marketed contracted versus total rig supply utilization rate remained at **57.7%**, and the marketed contracted versus marketed supply utilization rate stood at **82.9%**. By comparison, the April 2018 total fleet utilization rate stood at 41.2% (**versus 47.9% today**) with 35 out of the 85 rigs under contract.

As of April 26th, **Baker Hughes** indicated that there were **21** active mobile offshore rigs in the GoM, which is **61.8%** of the rigs under contract mentioned above. This active rigs number is **two** fewer than reported last month. Of the 21 rigs, **four** are located on

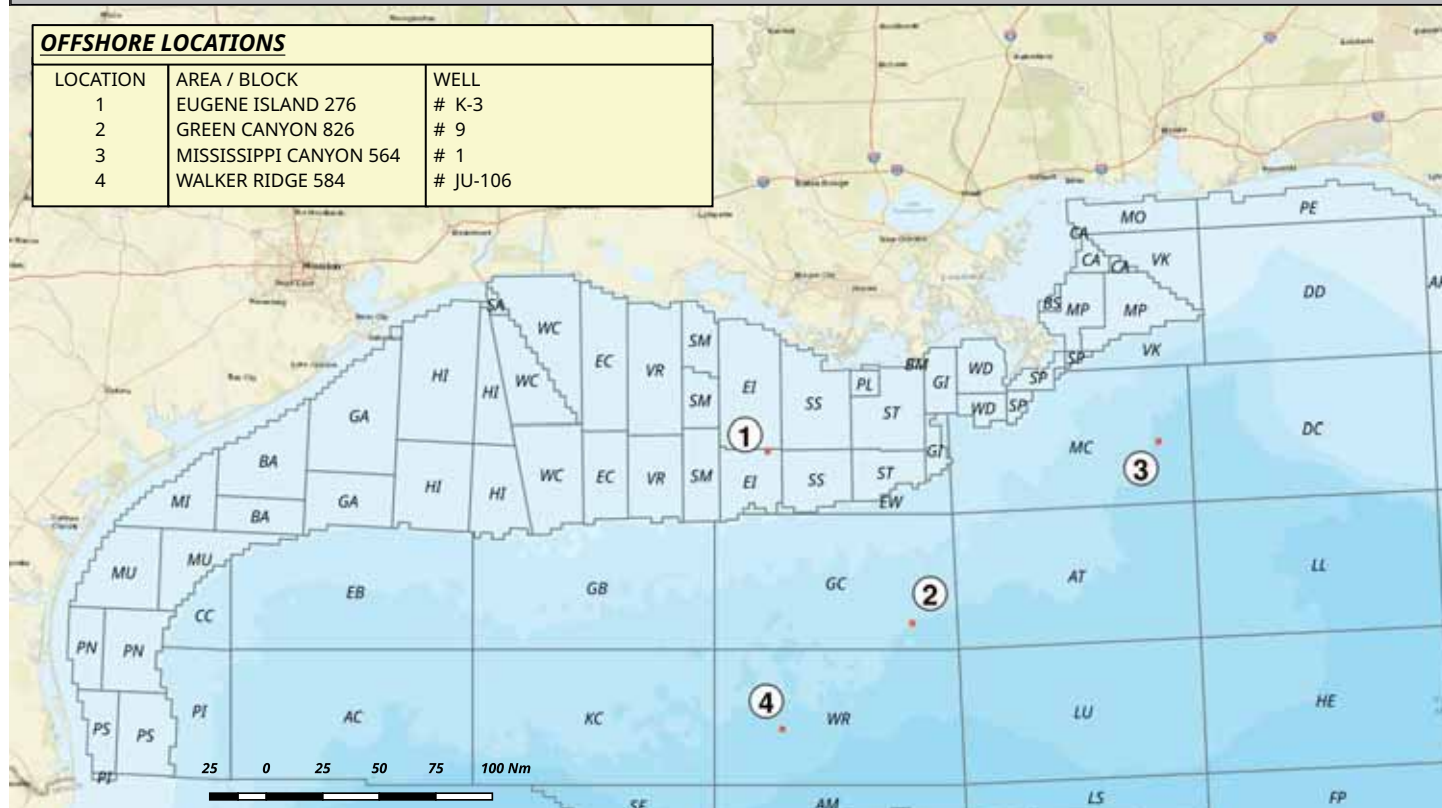
the **shelf**, and **17** are situated in **deepwater**. At the same time last year, there were 18 mobile offshore rigs operating in the GoM or a **16.7% increase** in rigs.

The **Baker Hughes** total U.S. rig count as of April 26th stood at **991** rigs, **15 fewer** rigs than reported at the end of March 2018. Of the 991 rigs, **805 (81.2%)** are “oil rigs” (rigs drilling in areas where the target is assumed to be oil) and **186 (18.8%)** are “gas rigs” (rigs drilling in areas where the target is assumed to be gas). A year ago, there were 1021 rigs working in the U.S. Thus, the current rig figure represents a **3% decrease** in rigs. **Texas** had the largest number of rigs with **491**, slightly under half (49.5%) of the total number of rigs in the U.S. **Louisiana** had a total of **62** rigs, 54 in the Haynesville of north Louisiana, **down 3** rigs in that play since last month.

On April 29th, the **Bureau of Ocean Energy (BOEM)** had accepted **28** of the **227** bids received at **OCS Sale 252**. The BOEM has until **June 18, 2019**, to either accept or reject the remaining **199** bids.

In a press release dated April 24, 2019, **Shell Offshore** reported a “significant” discovery at its **Blacktip Prospect in Alaminos Canyon Block 380**. The discovery is located about 250 miles south of Houston in approximately **6,200 feet of water**. As drilling continues on the initial well, Shell announced that it has encountered **more than 400 feet net oil pay** with good reservoir and fluid characteristics. The Blacktip well is a **Wilcox discovery** within the **Perdido Fold Belt**. It is situated approximately 30 miles from Shell’s Perdido Platform and their recent Whale discovery. Blacktip is operated by Shell (52.375%), and co-owned by Chevron U.S.A. Inc. (20%), Equinor Gulf of Mexico LLC (19.125%), and Repsol E&P USA Inc. (8.5%).

ACTIVITY MAP - PERMITS FOR APRIL 2019



New Orleans Geological Auxiliary News

"The objective of the Auxiliary is to promote fellowship among the wives of the members of the New Orleans Geological Society and to render assistance to NOGS upon request."

NOGA's Annual Meeting and Installation Luncheon

Members of NOGA gathered on Wednesday, May 8, at Metairie Country Club for their annual meeting and installation luncheon. After lunch, the new board members were introduced and elected unanimously.

The 2019-20 officers are: President Camille Yeldell, Vice President Alma Dunlap, Secretary Linda Peirce, Treasurer Mary Walther, Immediate Past President Marjorie Conatser, 2019-21 Board members Trudy Corona and Loretto Stephens. They were installed by past-president, Beverly Christina. They were joined by 2018-20 Board Members Judy Lemairie and Peggy Rogers and all were presented with a deep pink rose.

Alma Dunlap, of the Awards Committee, then presented a Lifetime Member Award to Camille. She has been a very active member of NOGA for many years, serving on the Board, chairing committees and offering her home for many events. Alma also reminded us that when Camille was first elected president in 1978, she could not get to the Installation Luncheon that year because it was held on the day of the May 3rd flood. The Board will be meeting in late May to plan the agenda for the coming year.

Mary Walther



Chairmen, Trudy Corona and Alma Dunlap



Camille Yeldell and Alma Dunlap



Camille Yeldell, immediate past president Margie Conatser and Trudy Corona



2019-20 NOGA Board Members

New Orleans Geological Auxiliary Membership Application

Name _____ Spouse's Name _____
Address _____ Home Phone _____
City, State, Zip _____ Cell Phone _____
Spouse's Company _____ Email _____

Dues: \$25 payable to New Orleans Geological Auxiliary
Please mail to Mary Walther, 2421 Prancer St., New Orleans, LA 70131



Like us on Facebook!

Our Facebook page for the New Orleans Geological Society is a great way to connect with other geologists and keep up to date with the latest NOGS events, videos, updates, and fun geology tidbits.

Find us at <https://www.facebook.com/nogs.org/>



610 E. Rutland St.
Covington, LA 70433
985.898.3577

Jack M. Thorson
Eric C. Broadbridge
J. Daryl Gambrell

ROCK SOLID SERVICE

© 2013 Core Laboratories.
All rights reserved.



Core Lab
RESERVOIR OPTIMIZATION
www.corelab.com
337-837-8616



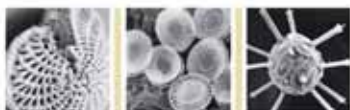
Anthony Catalanotto
Manager

Geological
Geophysical
Land
Drafting & Graphics

516 Maryland Avenue
Metairie, LA 70003
(504) 481-7291
E-Mail: geodraft@bellsouth.net



DOMESTIC &
INTERNATIONAL



BIOSTRATIGRAPHY

**ANYTIME.
ANYWHERE.
ANY FOSSIL.**

Complete paleo services

*Largest single-source GoM
database*

Custom projects & mapping

Multiple fossil disciplines



504-488-3711
PALEODATA.COM



Covington Office

1001 Ochsner Blvd., Suite 200
Covington, Louisiana 70433
p: 985.801.4300
f: 985.801.4796

Houston Office

CityCentre Three
842 W Sam Houston Pkwy N
Suite 600
Houston, Texas 77024
p: 281.752.1100
f: 281.752.1199

Scott Office

814 S. Frontage Rd.
Scott, LA 70583
p: 337.408.4000
f: 337.408.4049

www.llog.com

THE NEW ORLEANS GEOLOGICAL SOCIETY MEMORIAL FOUNDATION, INC.

The Memorial Foundation is an IRS Tax Exempt Code #501(c)(3) organization. The Federal I.D. is 72-1220999. Please consider making a donation to the Foundation. Your individual support in any amount will help meet the IRS Guidelines for our Foundation. Thanks!

\$10,000

Gibbet Hill Foundation

*In Memory of Steve & Marion Millendorf, William J. Prutzman,
Roger G. Vincent, Ron Youngblood, Uno Numella and Dr. Robert T. Sellars, Jr.*

\$7,783.87

NOGS/PLANO Golf Tournament

\$1,000

Chevron Your Cause

Volunteer Hours William D. Haworth and Allen J. Melillo

Mr. Armour C. Winslow

In Memory of Rita Menzel Winslow and Lawrence C. Menconi

\$500

Mr. Thomas C. Bergeon

Mr. Edward Falis, Sampling Associates International, LLC

In Memory of Willis E. Conatser and Mr. Arthur H. Johnson

\$250 TO \$499

Mr. Hillary James Brook

Penny and Jack Bryant

*In Memory of Art Johnson,
Willis Conatser and Frank Rogers*

Mr. Carlo C. Christina

In Memory of Al Gilreath

Mr. Jeff Jandegian

*In Memory of Dr. Raymond W. "Ray"
Stephens, Jr., Ron Youngblood
and Dr. William W. Craig*

Mr. Reuben J. Klibert, Jr.

In Memory of James Wade Klibert

Mr. Edward B. Picou, Jr.

*In Memory of Arthur H. Johnson,
Willis E. Conatser, Bernard L. Hill, Jr.,
and Russell H. Nordwell*

Mr. William M. Whiting

*In Memory of Tom Klekamp
In Memory of Gene Cobb*

UP TO \$249

Mr. Woods W. Allen, Jr.

In Memory of William C. Ward

Mr. Maurice Birdwell

In Memory of Al Gilreath

Mr. Rob Burnett

Chevron Humankind Matching Funds

Mr. Arthur Christiansen

In Memory of Tom Klekamp

Mr. Carlo C. Christina

In Memory of Willis E. Conatser

Carlo and Beverly Christina

In Memory of Arthur H. Johnson

Trudy and Charles Corona

*In Memory of Arthur H. Johnson,
Peter G. Gray, Willis E. Conatser,
James "Jim" A. Hartman, PhD
and all deceased former past
presidents of NOGS*

Mr. Merle J. Duplantis

Mrs. Linda P. Fulton

In Memory of Tom Klekamp

Mr. Edward J. Graham

Mr. Warren Huff

Mr. Kenneth Huffman

Mr. Alex G. Janevski

In Memory of Arthur H. Johnson

Mr. Gregory Janevski

Mr. & Mrs. Donald P. Klekamp

In Memory of Tom Klekamp

Mr. Joel K. Klekamp

In Memory of Tom Klekamp

Mr. Tom Klekamp

In Memory of Arthur H. Johnson

Ms. Laura LeBon

Ms. Margaret M. McKinney

Mr. Chris McLindon

Mr. Allan Melillo

New Orleans Geological Auxiliary (NOGA)

In Memory of Earleen Rodan

Mr. Richard Olsen

Mrs. Teresa M. O'Neill

In Memory of Brian J. O'Neill

Mr. William S. Peirce

FONO FUND

The FONO Fund accepts contributions that are invested and the income dedicated to assure sufficient financial resources will always be available to maintain the NOGS business office. Contributors are reminded that donations to the FONO Fund are not covered by the IRS 501(c)(3) tax exempt classification and should be reported as a business expense on your IRS tax report.

UP TO \$249

Mr. Joseph E. Boudreaux

Mr. Merle J. Duplantis

Mr. Dwight Easterly

Mr. Kenneth Huffman

Mr. Tom Klekamp

Mr. James R. Landrem

Ms. Jeannie F. Mallick

Ms. Margaret M. McKenney

Mr. William S. Peirce

Mr. Edward B. Picou, Jr.

Mr. Bay Salmeron

Mr. David M. Tatum

Mr. Roy C. Walther

Mr. Jack N. Peterson M.D. and Mr. Tom R. Young

In Memory of Arthur H. Johnson

Cecil and Tanya Pickens

In Memory of Willis E. Conatser

Mr. Edward B. Picou, Jr.

In Memory of James "Jim" A. Hartman, PhD

In Memory of Tom Klekamp

In Memory of Robert "Bob" Branson

Ms. Nancy Shepard

In Memory of Clark Kinler

In Memory of Alfred P. Daigle

Shell Matching Funds

Dr. J. O. Snowden

Ms. Candace V. Strahan

*In Memory of Raymond W. "Ray" Stephens, Jr.,
and James R. Strahan for The Bill Craig Fund*

Mr. David M. Tatum

Mr. William M. Whiting

In Memory of Arthur H. Johnson

Mr. and Mrs. James W. Yeldell

In Memory of Willis E. Conatser

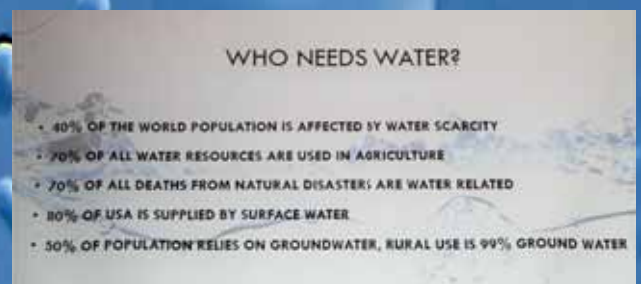
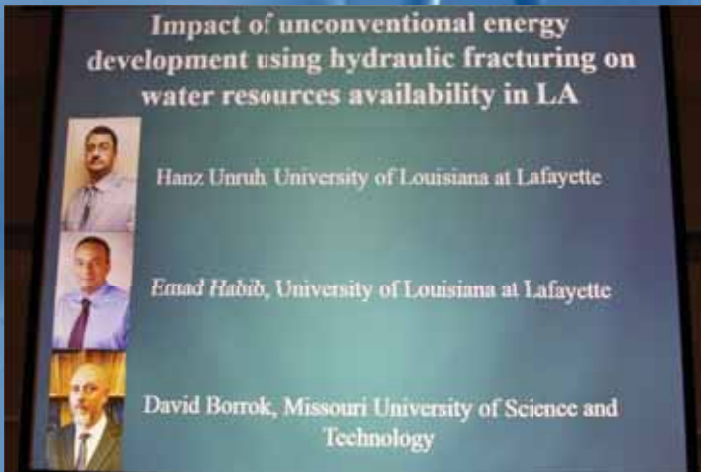
Contributions for both funds for one year through May 2019. Donations are listed for one year.

<p>ANSYTHE Donald I. Andrews 504-887-3432</p> 	<p>James S. Classen CLASSEN & CO. LLC 6417 Plantation Lane • Boise, ID 83703</p>
<p>THE BOEBEL COMPANY Oil and Gas Investments New Orleans, LA 70153 (504) 866-4313</p>	<p>D-O-R ENGINEERING, INC. 3-D and Geoscience Services 6161 Perkins Rd. P.O. Box 80812 Bus: (225) 765-1914 Baton Rouge, LA 70898</p>
<p>BOO-KER OIL & GAS CORP. Gray S. Parker 826 Union, Suite 300 New Orleans, LA 70112 Bus. (504) 581-2430 Fax (504) 566-4785</p>	<p>EDWARD B. PICOU, JR. Shell - Retired 504-975-3096</p>
<p>C & R EXPLORATION, INC. Carlo C. Christina Lawrence G. Ringham</p>	<p> GEOLOGY ENVIRONMENTAL MANAGEMENT GEM Consulting, LTD Emmitt Lockard emlockard@yahoo.com Michael Louis Merritt admin@gemconsultingltd.com</p>
<p>NOGS <i>Thanks Our Sponsors for Their Support!</i> \$2,500</p> <p> Diversified Well Logging</p>	<p> THOMAS L. DAVIS GEOLOGIST, Ventura, CA, 93001 tel: 818-429-4278, www.thomasldavisgeologist.com tldavisgeo@gmail.com. +35 yrs exploration & development experience in the western US, overseas and offshore. Prospects, data and field assessments available. Lots of free petroleum geology info at web site.</p>
	<p>ZOT OIL & GAS, LLC Jim Zotkiewicz - Petroleum Geologist Business Phone: 504.267.9138 Email: jimzot38@zotoil.com</p>
<p>SIPES Society of Independent Professional Earth Scientists New Orleans Chapter For membership info. Contact: Eric Broadbridge - eric@northcoastoil.com 504-884-0049 www.sipesneworleans.org</p> 	<p>SEI® Seismic Exchange Inc. Strategic Speculative Surveys Geophysical Data Marketing & Management</p> <p>YouR Full Service National Seismic Data Marketing Firm</p> <p>DALLAS DENVER NEW ORLEANS TULSA</p> <p>201 St. Charles Ave Suite 4300, New Orleans, La 70170 www.seismicexchange.com</p>
<p> LaBay Exploration Co., L.L.C. 1080 West Causeway Approach Mandeville, Louisiana 70471 (985) 951-2011 www.labayexploration.com</p>	

ANNUAL LOUISIANA WATER CONFERENCE

April 15-16, 2019

Louisiana State University • Baton Rouge, Louisiana





NEW ORLEANS GEOLOGICAL SOCIETY

5500 Prytania Street

#604

New Orleans, LA 70115

www.nogs.org



creative graphics & printing, llc

*Proudly designing and printing the NOGS LOG since 2012!
Specializing in design and printing for the oil and gas industry and their affiliates.*

ID Tags • Numbered Raffle Tickets • Banners • Signs • Posters

Letterhead • Envelopes • Business Cards • Postcards • Newsletters • Custom Forms

Logo Design • Push Cards • Table Tent Cards • Custom Invitations • Magnetic Signs & Business Cards

T-Shirts • Cups • Coozies • Pens • Hats & Caps • Coasters • USB Drives

Full Service, Custom Graphic Design & Printing!

985.626.5223 • 985.630.7824 • kpbrown@bellsouth.net