

# NOGS LOG

AUGUST 2019

Volume 60, Number 2



Rotzien (2018c)

**AUGUST 5 - NOGS LUNCHEON PRESENTATION**  
**"Stratigraphic Analysis of Sediment Gravity Flow Deposits and Implications"**  
**Guest Speaker: Jon R. Rotzien**  
**Basin Dynamics Consulting and Training • Houston, Texas**



23rd Annual Gulf of Mexico

# Deepwater

Technical Symposium

August 26-28  
**2019**

**New Orleans Downtown Marriott  
at the Convention Center**

[www.deepwaternola.org](http://www.deepwaternola.org)





Published monthly by the New Orleans Geological Society. This issue was sent to press on July 30, 2019.

***Interested in contributing to the NOGS LOG?***

Please submit items by the 1st Friday of the month to [nogseditor@gmail.com](mailto:nogseditor@gmail.com). Advertising requests should contact NOGS at [admin@nogs.org](mailto:admin@nogs.org).

## IN THIS ISSUE

### Regular Features:

On The Cover .....	3
From the Editor .....	3
From the President .....	4
NOGS Officers / Contacts .....	6
Upcoming Events & Activities .....	7
NOGS July Luncheon Presentation .....	8
Calendar of Events: Aug-Oct 2019 .....	10
Offshore GoM - Shelf & Deepwater Activities .....	12
NOGA News .....	16
NOGS Memorial Foundation & FONO Fund .....	19

### Special Features:

2019 GoM Deepwater Technical Symposium .....	2
Geoscience Opening Seminar .....	5
NOGS July Luncheon .....	10
LA Children's Museum Opens in City Park .....	13
LA Children's Museum Photo Timeline .....	14
Picture From Our Past .....	17
2019 NOGS LOG Ad Rates .....	17
In Memorium: Gary Spraul .....	21
Volunteers Needed .....	21

## on the cover

Cover by: **Jon R. Rotzien**

### August 5th NOGS Luncheon Presentation

#### "Stratigraphic Analysis of Sediment Gravity Flow Deposits and Implications"

The main processes in deep-water regions include pelagic and hemi-pelagic sedimentation, mass movements, ocean currents, tides, waves and biological processes. Some of the main deposits that function as petroleum reservoirs include deposits from turbidity currents (A, B, C), debris flows (D), and flows that experience both fluid turbulence and matrix strength, such as slurry flow deposits, hybrid event beds, transitional flow deposits or argillaceous sandstone beds.

**Jon R. Rotzien**

Basin Dynamics Consulting and Training  
Houston, Texas

# From the Editor

I hope everyone is enjoying the summer. It has definitely turned out to be a hot summer so far, but hopefully not an active hurricane season for us.

When I was asked recently to volunteer for the Editor-elect position, I was happy to get more involved. I want to thank Fran, Ed and Christy for helping me get up to speed for the transition much quicker into the Editor role now. I will do my best to jump in feet first and just ask for your patience while I learn the ropes.

I've been a member of NOGS and have been maintaining the NOGS website for some years. I've worked closely with Annette on society functions such as the joint PLANO/NOGS Golf Tournament and volunteering for the golf tournament over the years. I also have known Christy Himel for many years, and I am excited to be working with her on the website and any other assistance needed for NOGS.

For anyone that does not know me, I've been in the industry for nineteen years as a Landman and Chief Technology Officer for the OCS BBS website and Waring & Associates that offers online reports to track activity in the Gulf of Mexico. I was the recipient of the API-Delta Meritorious Service Award earlier this year in March 2019. I have always been an active member with API-Delta, PLANO, AAPL and Westbank Desk & Derrick. I have a bachelor's degree in Computer Science from Tulane University and a Master's in Public Administration from Troy State University. My wife Cheryl and I have two daughters, Victoria & Madelyn, and we currently reside in Madisonville.

**Charles Miller III**  
**NOGS LOG Editor**



## FROM THE PRESIDENT **ROBERT ROONEY**

Dear NOGS Members,

This month's *NOGS LOG* is a collaboration of our current board with the assistance of last year's editor, Fran Wiseman, and Ed Picou, pinch hitting for our new editor Charlie Miller, who along with many of us, are taking previously planned and well-deserved vacations. The dedication and knowledge of the NOGS board volunteers and past boards is amazing and humbling to see. Special thanks to NOGS administrator Christy Himel who has met yet another NOGS challenge straight-on, and to Al Baker for his monthly Drill-Bits column.

Sadly, NOGS mourns the loss of one of our members, Gary Spraul, whose obituary is presented on page 21 in this issue.

NOGS new Vice-President, Toby Roesler, has organized a first-class technical presentation by Jon Rotzien for August 5th on the topic of sediment gravity flows. This subject matter fits perfectly with NOGS goal of bringing valuable subsurface geological information to our membership to further the profession of petroleum geoscience.

Along the lines of bringing valuable technical presentations to our membership, coming up later in the Month on August 26th, Chris McLindon has organized the Geoscience Opening Seminar to the Deep Water Technical Symposium with leading experts for the Mesozoic Overview - Northern Gulf of Mexico Basin. This is a must-attend for geoscientists who make a living in the Gulf of Mexico. The NOGS Memorial Foundation

will pay admission of the first 10 student registrants. I encourage everyone to register for this important and rare opportunity to learn from the experts and pioneers in the trend.

As I write this column, I am passenger in a car driving on I-10 westbound and looking down at a torrent of river water entering Lake Pontchartrain at the Bonnet Carre Spillway. I stand amazed at the forethought, planning and engineering put into action decades ago which provided such an important protection system to our lives and property at minimal inconvenience. The moment also gives me reason and pause to reflect on the importance of the profession of petroleum geoscience which allows us, through our creative talents and intellect, to bring to market the energy which drives our society and provides jobs and investment opportunities. With all of the technical advancements in our profession such as big data, computer models, and algorithms, I paraphrase the words of Wallace Pratt .... oil is first found in the mind. So, as to the state of our industry in 2019, we still need the geological mind to provide context to subsurface and geophysical data of our age.

It is my hope in my brief tenure as president of NOGS, that we will continue to develop as a social organization that provides a platform for the presentation of technical material for the advancement of the geosciences. With your participation we hope to:

1. Grow attendance at our monthly luncheons;
2. Grow our membership through your personal invitations of colleagues to apply or renew membership;
3. Encourage you to attend as many of the social events that the society hosts for your professional and social benefit throughout the year.

Thank you all for allowing me this platform to address the NOGS membership in this monthly column.

  
**Robert Rooney**

# AADE Fin Feather Fur Food Festival



**AADE New Orleans 24th Annual F5**  
Join us at the kickoff event for the 2019  
**Gulf of Mexico Deepwater Technical Symposium**  
**Monday, August 26, 2019**

**Tickets on sale now at [www.aade.org/chapters/new-orleans](http://www.aade.org/chapters/new-orleans)**





Geoscience Opening Seminar  
Monday August 26, 2019



## MESOZOIC OVERVIEW NORTHERN GULF OF MEXICO BASIN

An integrated overview of the Jurassic Norphlet and Smackover Formations across the Mississippi Salt Basin and the Deepwater Gulf of Mexico, including discussions of onshore and offshore producing trends and an interactive core workshop



Scotese, C.R., 2002  
<http://www.scotese.com>

### PRESENTERS:

Rebecca Totten Minzoni - Asst. Professor, University of Alabama  
Marcello Minzoni - Asst. Professor, University of Alabama  
Ryan Weber - President, Paleodata, Inc.  
Ted Godo - Senior Geologic Advisor, Murphy Oil Co.





## NOGS Contact Information

Email: [admin@nogs.org](mailto:admin@nogs.org) • Website: [www.nogs.org](http://www.nogs.org)

5500 Prytania Street • #604 • New Orleans, LA 70115.

Correspondence and all luncheon reservations should be sent to the above address.

### BOARD OF DIRECTORS

		Company	Phone	E-mail
President	Robert M. Rooney	Cantium, LLC	504-460-0319	Robert.Rooney@cantium.us
Vice President	Toby Roesler	Talos Energy	504-201-2007	toby.roesler@talosenergy.com
Secretary	Sheri Richardson	Consultant	504-450-2109	sfrichardson00@yahoo.com
Treasurer	David B. Culpepper	The Culpepper Group, LLC	985-264-1677	dculpepper@theculpeppergroup.com
President-Elect	John Dribus	Consultant	504-232-2221	jdribus@hotmail.com
Editor	Charles Miller III	OCSBBS Website	504-733-3117	cmiller@ocsbbs.com
Director 2020	David Reiter		504-593-3623	dreiter124@yahoo.com
Director 2021	Charles W. Holman	BSEE	504-975-6735	charleswholman@bellsouth.net
Director 2022	Allan Melillo, PhD	Retired Chevron	504-491-0683	allanmelillo@bellsouth.net

### COMMITTEE

	Chairperson			
AAPG Delegates	William M. Whiting	Consultant	504-947-8495	bootscon@aol.com
AAPG Student Chapter	Rafael Villanueva	LSU		rvilla7@lsu.edu
AAPG Student Chapter	Kevin Reece	Tulane University		jreece@tulane.edu
AAPG Student Chapter	Jarrett Levesh	UNO		jlevesh@my.uno.edu
Advertising-Log	TBD			
Auditing	TBD			
Awards	Michael N. Fein		504-717-6465	lfeinmn1@cox.net
Ballot	David B. Culpepper	The Culpepper Group, LLC	985-264-1677	dculpepper@theculpeppergroup.com
Best Paper	Bay Salmeron	Chevron	832-854-6431	bay.salmeron@chevron.com
Entertainment	John Dribus	Consultant	504-232-2221	jdribus@hotmail.com
Environmental	TBD			
Finance and Investment	David B. Culpepper	The Culpepper Group, LLC	985-264-1677	dculpepper@theculpeppergroup.com
Historical	Edward B. Picou, Jr.	Retired - Shell	504-975-3096	epicou@bellsouth.net
Membership/Directory	TBD			
New Geoscientists (NGNO)	Rachel Carter		913-710-8021	r_carter@me.com
Nominating	Jennifer Connolly	Shell	504-425-6411	jennifer.connolly@shell.com
Non-Technical Education	Duncan Goldthwaite	Consultant	504-887-4377	DGldthwt@aol.com
Office Operations	Robert M. Rooney	Cantium, LLC	504-460-0319	Robert.Rooney@cantium.us
Publications Sales	Edward B. Picou, Jr.	Retired - Shell	504-975-3096	epicou@bellsouth.net
School Outreach	Thomas C. Bergeon	Upstream Exploration	504-832-3772	tom.bergeon@upstreamexp.com
Special Projects	TBD			

### NOGS LOG STAFF

Editor	Charles Miller III	OCSBBS Website	504-733-3117	cmiller@ocsbbs.com
Editor-Elect	TBD			
Auxiliary	NOGA Officers and Directors	NOGA		
Drill Bits	Al Baker	Beacon Exploration, LLC	504-836-2710	ABaker1006@aol.com
Drill Bits	Kevin Trosclair	BOEM	504-202-7997	kevintrrosclair@gmail.com
Staff Photographer	Arthur Christensen	Shalimar Consulting	985-893-2013	arthur_shalimar@yahoo.com
Layout / Printing	Kristee Brown	Creative Graphics & Printing, LLC	985-626-5223	kpbrown@bellsouth.net
Webmaster	Charles Miller III	OCSBBS Website	504-733-3117	cmiller@ocsbbs.com

### NOGS AUXILIARY

Officers		Phone	Directors	Phone
President	Camille Yeldell	504-835-7467	Trudy Corona	504-737-6101
Vice-President	Alma Dunlap	504-737-2678	Loretto Stephens	504-451-3472
Secretary	Linda Peirce	504-289-6585		
Treasurer	Mary Walther	504-392-9332		



# August 5 • NOGS Luncheon Presentation

**Holiday Inn Downtown Superdome**

\$3.00 validated parking in hotel garage

## Presentation:

**Stratigraphic Analysis of Sediment Gravity Flow Deposits and Implications**

## Guest Speaker:

**Jon R. Rotzien**

Basin Dynamics Consulting and Training • Houston, Texas

*See page 8 for Abstract and Biography*

### **HOLIDAY INN DOWNTOWN SUPERDOME**

Check with concierge or  
front desk for location.

Lunch served at 11:30 am

### **ADMISSION:**

**With reservation..... \$30.00**

**Without reservation ..... \$35.00**

**Student Member with reservations..... FREE**

**August 26**

**Geoscience Opening Seminar**

**at the Gulf of Mexico Deepwater Technical Symposium**

N.O. Downtown Marriott Convention Center • New Orleans, Louisiana

For more information: <http://www.deepwaternola.org>

**VOLUNTEERS  
NEEDED!**

**September 28**

**Girl Scouts B.I.G. Event**

9:30 am - 2 pm • Louisiana State University (LSU) • Baton Rouge, Louisiana

For more info: Tom Bergeon • 504-832-2772 • [tom.bergeon@upstreamexp.com](mailto:tom.bergeon@upstreamexp.com)

**August 26-28**

**23rd Annual**

**Gulf of Mexico Deepwater Technical Symposium**

N.O. Downtown Marriott Convention Center • New Orleans, Louisiana

For more information: <http://www.deepwaternola.org>

**October 12**

**Energy Day**

Louisiana Children's Museum • New Orleans, Louisiana

For more info: Tom Bergeon • 504-832-2772 • [tom.bergeon@upstreamexp.com](mailto:tom.bergeon@upstreamexp.com)

**VOLUNTEERS  
NEEDED!**

## **NOGS CONTACT LIST**

*Continued from previous page*

### **MEMORIAL FOUNDATION BOARD OF TRUSTEES**

2019-2020	Chairman	Chris McLindon
2019-2020	Secretary	G. Alex Janevski
2019-2020	Trustee	Toby Roesler
2019-2020	Trustee	Scott Wainwright
2019-2020	Trustee	Allan Melillo, PhD
2019-2020	Trustee	David Reiter

### **Company**

Upstream Exploration LLC
Talos Energy
Bret Exploration Co., Inc.
Chevron - Retired

### **Phone**

504-756-2003
504-425-6214
504-201-2007
504-905-9087
504-491-0683
504-593-3623

### **E-mail**

<a href="mailto:chris.mclindon@Upstreamexp.com">chris.mclindon@Upstreamexp.com</a>
<a href="mailto:alexjanevski@gmail.com">alexjanevski@gmail.com</a>
<a href="mailto:toby.roesler@talosenergy.com">toby.roesler@talosenergy.com</a>
<a href="mailto:scott_wainwright@hotmail.com">scott_wainwright@hotmail.com</a>
<a href="mailto:allanmelillo@bellsouth.net">allanmelillo@bellsouth.net</a>
<a href="mailto:dreiter124@yahoo.com">dreiter124@yahoo.com</a>

### **AAPG DELEGATES**

William M. Whiting
Elizabeth McDade
G. Alex Janevski

### **Consultant**

504-947-8495
504-352-0238
504-425-6214

<a href="mailto:bootscon@aol.com">bootscon@aol.com</a>
<a href="mailto:ecmcade@bellsouth.net">ecmcade@bellsouth.net</a>
<a href="mailto:alexjanevski@gmail.com">alexjanevski@gmail.com</a>





# August 5 NOGS Luncheon Presentation

☆☆☆ at the Holiday Inn Superdome ☆☆☆

## Stratigraphic Analysis of Sediment Gravity Flow Deposits and Implications

Presented by

**Jon R. Rotzien**

**Basin Dynamics Consulting and Training • Houston, Texas**

### ABSTRACT

Modern outcrops and subsurface data sets provide a mapping opportunity to characterize deep-water depositional systems from shelf edge to basin plain. This includes observations of the grain-to-basin-scale framework and key stratigraphic surfaces that subdivide the basin-fill. Analysis from recent mapping campaigns (2009-2019) from over 20 stratigraphic intervals in the Americas, Europe, Asia and New Zealand yields the following insights:

- (1) The range and variability in deep-water siliciclastic conventional petroleum reservoirs include deposits resulting from transport and deposition via fluid turbulence, matrix strength and a combination of those two mechanisms.
- (2) Sediment distribution patterns in the deep sea are controlled by several key factors including various aspects of grain size and sediment volume, gradient, accommodation and overall basin type.
- (3) Sub-bed-scale, semi-quantitative analysis of sedimentary fabric ratios, commonly gleaned from core and image logs, reveal critical information on bulk rock volume, net:gross, and porosity to help determine stock tank original oil in place (STOOIP).
- (4) Sedimentary provenance and source-to-sink routing systems are intimately linked to overall reservoir presence and reservoir quality in fine-grained turbidite reservoirs.
- (5) Downslope sediment gravity flow behavior can be used to calibrate and understand the predictive attributes in deep-water reservoir type from canyon head to basin plain.

The results of these mapping campaigns reveal

new observations on sediment gravity flows, their processes of transport and sedimentation, and their bearing on oil and gas exploration and development in deep-water depositional systems. This presentation incorporates observations from passive margins including faulted slopes and ponded mini-basins, and active margins including foreland, forearc, back-arc, strike-slip, intracratonic and hybrid basins.

### BIOGRAPHY

**Jon R. Rotzien** is President of Basin Dynamics, a US based consulting company providing innovative geoscience and reservoir characterization solutions. He has published peer-reviewed research papers and scientific conference proceedings pertaining to petroleum geology, reservoir quality, reservoir characterization, sequence stratigraphy, process sedimentology, basin analysis and geophysics, and he teaches petroleum reservoir courses in North America, South America, Europe, Asia and New Zealand. He is a Distinguished Service Award winner of GCSSEPM (2018), associate editor of the Bulletin of Canadian Petroleum Geology and co-founder of the Houston Explorers Club. Mr. Rotzien received a Ph.D. in Geological Sciences from Stanford University and a B.A. degree in Geology from Colorado College.



**THE JULY LUNCHEON RESERVATION  
DEADLINE IS AUGUST 2.**

### *"And Looking Ahead . . ."*

The next luncheon will be held on September 9. Our guest speaker will be announced at a later date. Reservations online at [www.nogs.org](http://www.nogs.org) or by email at [admin@nogs.org](mailto:admin@nogs.org) or call 504-348-3500.





# Drill with confidence.

Diversified Well Logging, LLC brings the accuracy and expertise only a company with over sixty years in the oil and gas industry can deliver. We are your eyes and ears in the field, especially when it comes to deep water or high pressure, high temperature areas.

DWL offers 24-hour formation evaluation. We provide secure and customized real-time data communication, in-house research and development, and 24/7 on-call support for our equipment and our engineers.

Whether you have a 10-day job or a 110-day job, we provide the specialized attention you require. **Our experience means you can be confident in the safety and performance of your well.**



- *Formation Evaluation*
- *Geosteering*
- *Drilling Optimization*
- *Real-time Data Transmission*
- *Early Kick Detection*



*Serving the Oil and Gas Industry for Over 60 Years*



# CALENDAR OF EVENTS: AUG - OCT 2019

*If you know of upcoming seminars or academic events that may be of interest to our members, please email the event details to Charles Miller at [nogseditor@gmail.com](mailto:nogseditor@gmail.com) to be included in the monthly calendar.*

2019	EVENT	LOCATION	CONTACT / INFO
5 Aug	<b>NOGS Luncheon Presentation</b> Speaker: Jon R. Rotzien Basin Dynamics Consulting and Training "Stratigraphic Analysis of Sediment Gravity Flow Deposits and Implications"	Holiday Inn Superdome	Reservations: <a href="http://www.nogs.org">www.nogs.org</a> Email: <a href="mailto:admin@nogs.org">admin@nogs.org</a> Call: 504-348-3500
26 Aug	<b>Geoscience Opening Seminar</b> Gulf of Mexico Deepwater Technical Symposium	N.O. Downtown Marriott Convention Center	<a href="http://www.deepwaternola.org/">http://www.deepwaternola.org/</a>
26-28 Aug	<b>23rd Annual</b> Gulf of Mexico Deepwater Technical Symposium	N.O. Downtown Marriott Convention Center	<a href="http://www.deepwaternola.org/">http://www.deepwaternola.org/</a>
9 Sept	<b>NOGS Luncheon Presentation</b> Speaker & Topic: To Be Announced	Holiday Inn Superdome	Reservations: <a href="http://www.nogs.org">www.nogs.org</a> Email: <a href="mailto:admin@nogs.org">admin@nogs.org</a> Call: 504-348-3500
28 Sept	<b>Girl Scouts B.I.G. Event</b> 9:30 a.m. - 2 p.m.	LSU - Baton Rouge, LA	Tom Bereon • 504-832-3772 <a href="mailto:tom.bergeon@upstreamexp.com">tom.bergeon@upstreamexp.com</a>
7 Oct	<b>NOGS Luncheon Presentation</b> Speaker & Topic: To Be Announced	Holiday Inn Superdome	Reservations: <a href="http://www.nogs.org">www.nogs.org</a> Email: <a href="mailto:admin@nogs.org">admin@nogs.org</a> Call: 504-348-3500
12 Oct	<b>Energy Day</b>	LA Children's Museum	Tom Bereon • 504-832-3772 <a href="mailto:tom.bergeon@upstreamexp.com">tom.bergeon@upstreamexp.com</a>
19 Oct	<b>New Orleans Pelicans and New Orleans Saints</b> Chevron STEM Fest Benefiting Core Element	10 am - 2 pm Mercedes-Benz Superdome	<a href="https://core4kids.org/team-view/join-core-element-the-n-o-pelicans-saints-for-stem-fest-presented-by-chevron-october-20">https://core4kids.org/team-view/join-core-element-the-n-o-pelicans-saints-for-stem-fest-presented-by-chevron-october-20</a>

## JULY 1st LUNCHEON



Toby Roesler presenting President's Award to Cathy Himel, NOGS Administrator



Ed Picou with Segun Adebayo, Tulane Graduate Student, and Dave Culpepper, NOGS Treasurer and recipient of the 2018-2019 Ed Picou Outstanding Member Award



Toby Roesler with July's luncheon speaker Linzy K. Foster

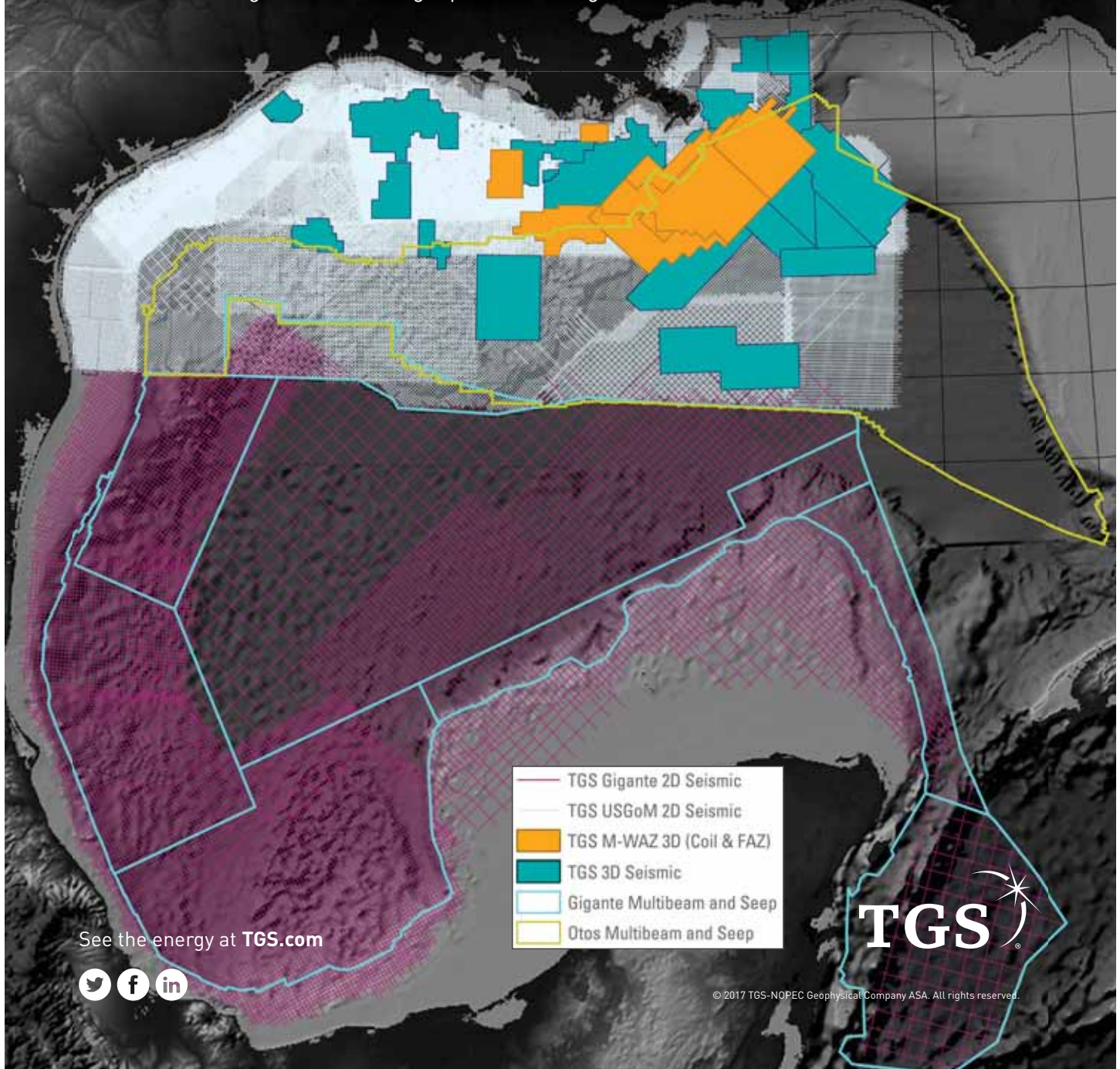


Fran Wiseman with Chuck Holman



# Set your sights. **Gulf of Mexico**

TGS provides industry-leading offshore seismic data using an innovative mix of technologies and unmatched imaging capabilities. Through strategic partnerships, we provide a comprehensive collection of advanced marine acquisition technologies for enhanced reservoir delineation, characterization and monitoring. TGS delivers the E&P industry unlimited potential with our collection of advanced offshore data including **Declaration M-WAZ 3D** survey, **Fusion M-WAZ 3D**, **Otos Multibeam and Seep** and **Gigante 2D Multibeam and Seep** programs. Explore the Gulf of Mexico with the right data, in the right place, at the right time.





# OFFSHORE GULF OF MEXICO - SHELF AND DEEPWATER ACTIVITIES

by Al Baker

During June 2019, the **U.S. Department of the Interior Bureau of Safety and Environmental Enforcement (BSEE)** approved **71** Gulf of Mexico (GoM) drilling permits. **Seventeen** of these were for shelf wells, and **54** were for deepwater wells. Of the total number of permits, there were **6 new well permits**; **1** was issued on the **shelf** and **5** were in **deepwater**.

The single shelf new well permit was for a development well that was issued to **Talos Energy Offshore** for their **Ewing Bank 305 #A-21** well.

The 5 deepwater new well permits were for **3** exploration wells and **2** development wells. Two exploration new well permits were awarded to **LLOG Exploration Offshore** for their **Ewing Bank 877 #1** well and their **Keathley Canyon 686 #3** well. **Fieldwood Energy** obtained the other exploration new well permit for their **Mississippi Canyon 519 #3** well. **BP Exploration & Production** received a development new well permit for their **Mississippi Canyon 776 #9** well, and **Shell Offshore** obtained the other development new well permit for their **Mississippi Canyon 812 #K-6** well.

On June 28th, **IHS-Petrodata** reported that the GoM mobile offshore rig supply stood at **72**, which is **the same** as last month. The marketed rig supply consisted of **42** rigs, of which **36** were under contract. The marketed rig supply is **the same** as last month, and the contracted rig supply number is **1 greater** than last month. The marketed contracted versus total rig supply utilization rate stood at **50%**, and the marketed contracted versus marketed supply utilization rate stood at **85.7%**. By comparison, the June 2018 total fleet utilization rate stood at 43.6% (**versus 50% today**) with 34 out of the 78 rigs under contract.

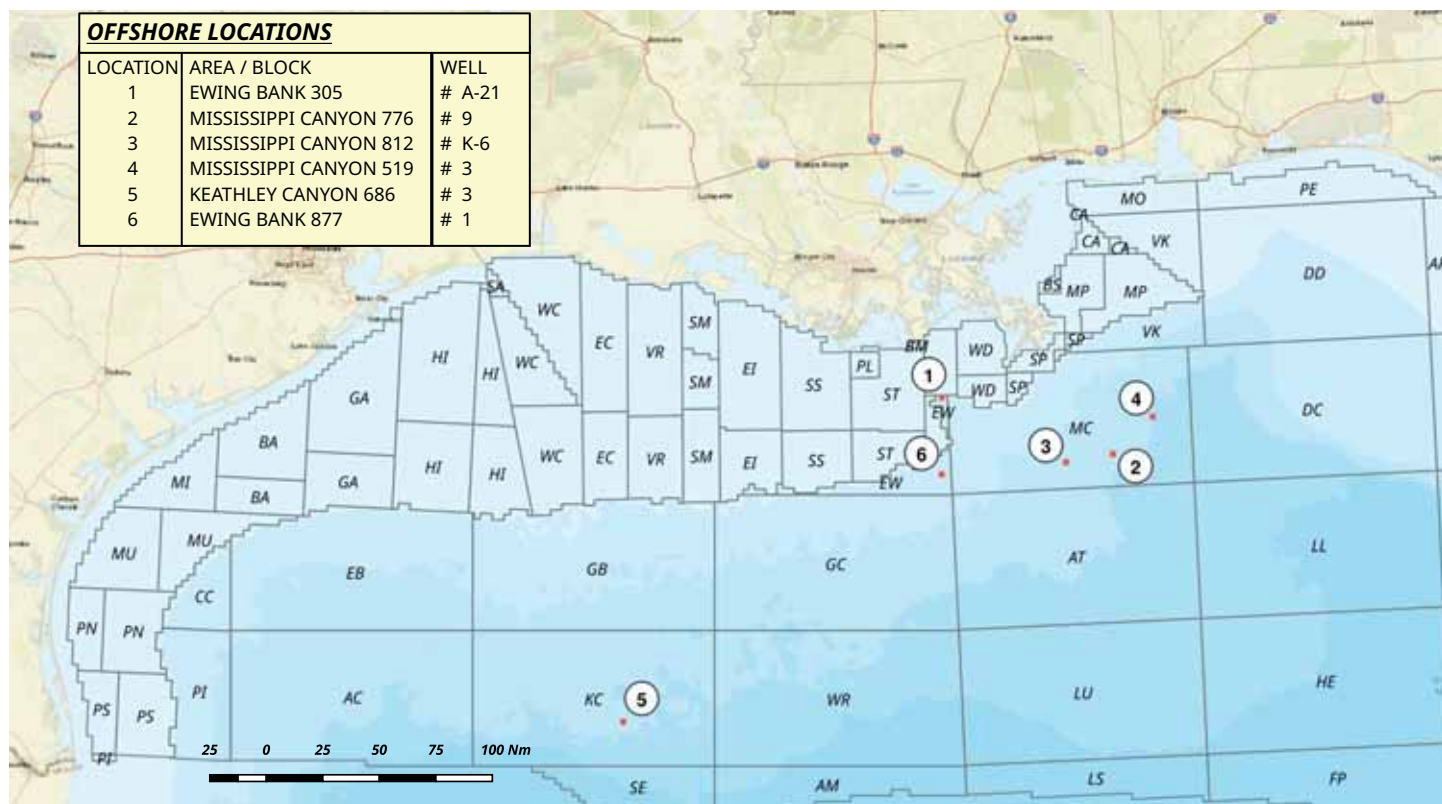
As of June 28th, **BakerHughes** indicated that there were **26** active mobile offshore rigs in the GoM, which is **72.2%** of the rigs under contract mentioned above. This active rig number is **3** greater than reported last month. Of the 26 rigs, **6** are located on the **shelf**, and **20** are situated in **deepwater**. At the same time last year, there were 18 mobile offshore rigs operating in the GoM representing a **44.4%** increase in active rigs year over year.

As of June 28th, the **BakerHughes** total U.S. rig count stood at **967** rigs, which are **17 fewer** rigs than reported at the end of May 2019. Of the 967 rigs, **793 (82%)** are **oil rigs** and **173 (18%)** are **gas rigs**. A year ago, there were 1047 rigs working in the U.S. Thus, the current rig figure represents a **7.6% decrease** in rigs year over year. **Texas** always has the largest number of rigs currently with **464**, which is slightly under half (48%) of the total number of rigs in the U.S. **Louisiana** has a total of **72** rigs, **up 8** rigs from last month.

On June 13th, the **U.S. Department of Interior Bureau of Ocean Energy (BOEM)** reported the final results of **OCS Sale 252**. The BOEM accepted **212** out of the **227** bids received at the sale. There were **15** rejected bids on deepwater tracts. The next offshore lease sale, **OCS Sale 253**, is planned in August 2019.

On June 6th, **W & T Offshore** announced on **oil discovery** at its **Gladden Deep Prospect** in **Mississippi Canyon Block 800**. The well is located in **3,000 feet of water** and was drilled to a **total measured depth of 18,324 feet**. A total of **201 feet of oil pay** was logged in the well. W&T plans a subsea tie-in to the existing Gladden pipeline that connects to the Medusa spar during the fourth quarter of 2019.

## NOGS LOG DRILL BITS - ACTIVITY MAP - PERMITS FOR JUNE 2019





# The Louisiana Children's Museum Opens in City Park!

On Saturday August 31st a major event is happening in New Orleans when the Louisiana Children's Museum opens its doors in the new City Park location!!! Julia Bland, the long-standing CEO of LCM, has realized the 15-year dream of the City Park concept now becoming a reality.

The museum first welcomed children in 1986 in the Warehouse District. After 33 years they will be closing the big iconic blue doors at 420 Julia Street and moving into their new home. What a new home it will be! The new museum offers five new interactive exhibits and re-interprets old favorites from the Julia Street location.

The Louisiana Children's Museum at City Park is world-class in scope. At 56,000 square feet the museum casts a playful welcoming environment within the 8.6-acre setting. Costs for the museum were \$47.5 million, with \$18 million in private donations and \$29.5 million in state capital outlay funds. Louisiana Governor John Bel Edwards stated, "We see the new Louisiana Children's Museum as an investment in the future of our state's children and families." The museum expects more than 250,000 visitors a year to the new facility.

The City Park location will overlook a vibrant lagoon with both indoor and outdoor exhibits to engage children of all ages. The museum has two wings connected by a large glass atrium. The South wing contains the education centers, café, toy and bookstore and entrance lobby. The North wing contains most of the major museum exhibits.

## ***Spoiler Alert!...***

As you enter the North wing you are greeted with the Play With Me 3-year-old and younger development center. Onward, the Follow that Food exhibit will start from the fields and waters of Louisiana, passing through busy ports and highways with stops at the market, kitchen, café and dinner table. Yes, you can still make groceries!

At the end of the 1st floor wing is the Dig Into Nature exhibit. This is where the action is from a geologist's perspective. The focus is on the natural resources of Louisiana involving the ecosystems, fauna and also the exploration and innovation section. The area will include a large-scale 5' by 15' sediment table where the children can watch rivers meander and utilize levee materials to constrain the river's flow. There will also be three oblong tables with clear legs showing oil rigs and salt domes where children will be able to create their own interlinked drilling and production platforms. A long slender glass wave generator will allow the children to create a turbidity flow. Finally, there will be a specimen section including modern artifacts, fossil and mineral identification. The samples will be able to be placed under a flexible microscope and projected on a large wall monitor for group viewing. Tulane and NOGS will be involved in putting together the specimen collection.

The second floor of the West wing will include the Make Your Mark art center including jazz themes and even a shotgun house. The Move with the River exhibit will contain a 100 foot long flowing Mississippi River model that the kids can

interact with in a number of ways. It is way beyond cool! The importance of the river will be shown from Minnesota to the Crescent City and down to the Delta. Outdoors there are a number of interactive exhibits under the oaks and along the lagoon.

The Dig Into Nature area is a major milestone. It will be the ideal place to promote the earth sciences and energy industry to children for many years to come. NOGS played a key role in establishing the Energy sector. In 2015 NOGS and the NOGS Memorial Fund committed to donating \$50,000 over 10 years to the LCM City Park museum. At this time NOGS is also donating \$50,000 to the Children's Museum of St. Tammany in Mandeville. NOGS has completed 4 years of these commitments.

Fourteen other oil industries societies donated toward the museum through PIPE – Petroleum Industry Promoting Education. These groups include the American Petroleum Institute Delta Chapter, Southeastern Geophysical Society and PLANO who co-sponsors the NOGS Golf Tournament. In addition, PIPE sponsored Family Fun Eat and Run events, raising over \$30,000 each year for the two museums.

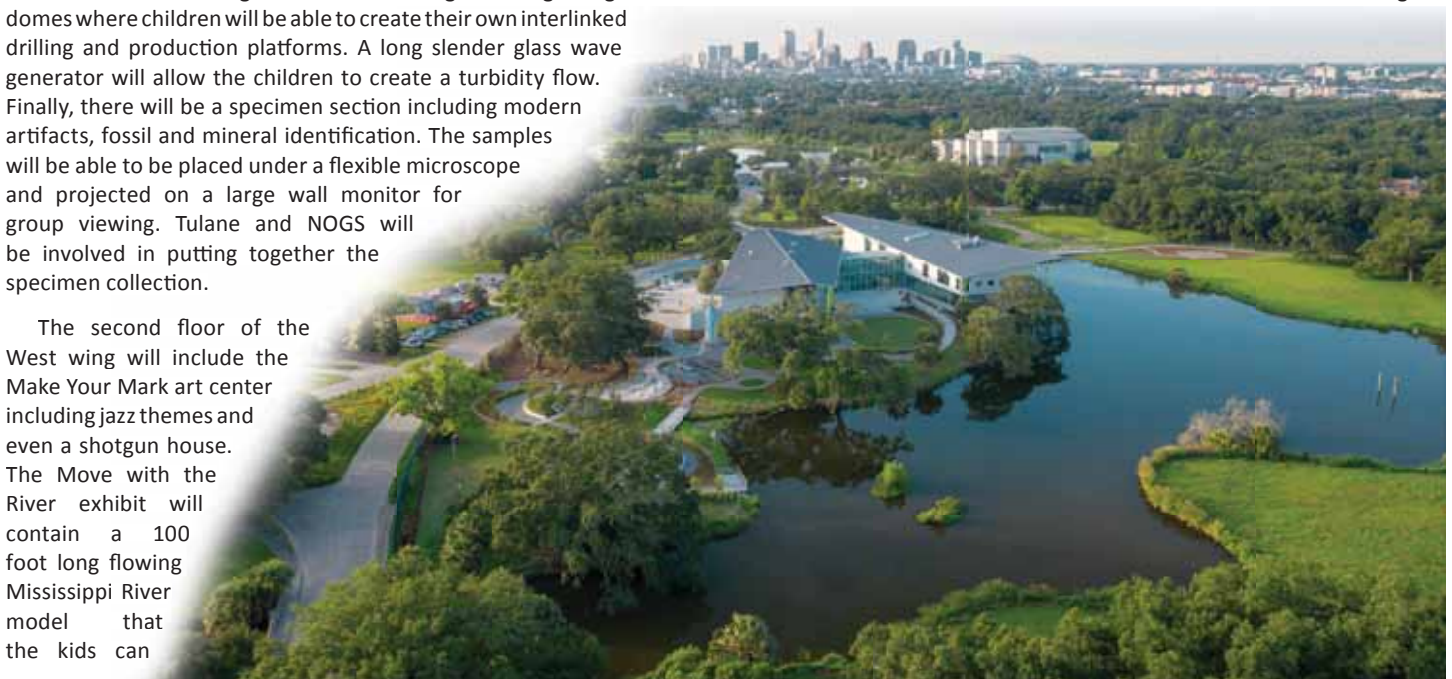
NOGS has left our mark on the museum in other ways. We have a 20-year relationship with LCM promoting science where they have graciously hosted NOGS events including the ever popular Super Saurus Saturday and Energy Day. It has been a real pleasure working with all the museum staff and nearly eight hundred NOGS volunteers over the years. It was only fitting in May 2018 that NOGS was invited to a special ceremony to leave our mark at the LCM final beam signing dedication.

I have made several trips to the museum with CEO Julia Bland and Audrey Isaac who will be coordinating the Dig Into Nature exhibit and ongoing outreach events. Even with the museum exhibits partially in place the space is very impressive. There were exciting things around every corner. This is a world-class Children's Museum. It is so nice that NOGS has been such a big part of it. Thank you!

The museum opens Labor Day weekend. The ribbon cutting ceremony will be 9:30 a.m. on August 31st. The first big event that LCM will put on will be Dig Into Nature Super Science Saturday October 12th.

Please consider volunteering and come join us in the fun!

Tom Bergeon





*View from the  
Dig Into Nature exhibit*

# The Louisiana Children's Museum at City Park

*"We have worked to take advantage of our new location, its natural landscape and environment and highlighting Louisiana's love of water and plants. A focus on stewardship and sustainability was a decision we've made in this process," said Julia Bland.*

MAY 2017





# Children's Museum Park



*Incorporating the park's  
unique ecosystem  
has guided every*



Audrey Isaac, Tom Bergeon  
and Julie Bland  
Dig Into Nature specimens area

New Orleans  
Geological  
Society



NOGS leaves its mark!



AUGUST 2019





# New Orleans Geological Auxiliary News

*"The objective of the Auxiliary is to promote fellowship among the wives of the members of the New Orleans Geological Society and to render assistance to NOGS upon request."*

## NOGA 2019-2020 Luncheons

The New Orleans Geological Auxiliary was formed to promote friendship among the wives of members of the Geological Society and also help the Society, when asked, with its events. The Auxiliary welcomes any spouse who would like to join our group. With the NOGS log only online now, would any Society member, whose wife isn't a member of the Auxiliary, please tell her about the Auxiliary?

The Auxiliary has 4 luncheons planned for the coming year:

September 11: Porter and Luke's on Metairie Road

November 13: Filmore in the Oaks in City Park

February 12: Andy's Bistro N. Turnbull

May 6: Metairie Country Club

We have no speakers this year. Our luncheons will be a time to socialize and are in a private room.

If a non-member would like to attend any of these meetings, please contact me.

Camille Yeldell, President NOGA

Home (504) 835-7467 • Cell (504) 289-1511 • Email [camilleyeldell@gmail.com](mailto:camilleyeldell@gmail.com)



2019-20 NOGA Board Members

### New Orleans Geological Auxiliary Membership Application

Name \_\_\_\_\_ Spouse's Name \_\_\_\_\_  
Address \_\_\_\_\_ Home Phone \_\_\_\_\_  
City, State, Zip \_\_\_\_\_ Cell Phone \_\_\_\_\_  
Spouse's Company \_\_\_\_\_ Email \_\_\_\_\_

**Dues: \$25 payable to New Orleans Geological Auxiliary**  
**Please mail to Mary Walther, 2421 Prancer St., New Orleans, LA 70131**



# Picture From Our Past...

by Ed Picou - Chairman, Historical Committee

## School Outreach Committee

Photo taken at the December 1998 NOGS Luncheon at the Petroleum Club



Back, from left: Bob Simon, Tom Bergeon, Brian O'Neill and Bill Furlong  
Front, from left: Therese Kwiecien and Adele Berthelot



Contact NOGS at:  
[admin@nogs.org](mailto:admin@nogs.org)

## 2019 ADVERTISING RATES

The New Orleans Geological Society was formed in 1941, with an initial membership of only 55.

### AD SIZE

Full Page (7.5"x10") .....	\$1750	Eighth Page (3.75"x2.5") .....	\$300
Half Page (3.75"x10" or 7.5"x5") .....	\$925	Twelfth Page (3.75"x1.65") .....	\$188
Quarter Page (3.75"x5" or 7.5"x2.5") .....	\$500	Note Size (3.75"x.75") .....	\$60

### PREMIUM LOCATIONS

Inside Front Cover .....	+30%	Opposite President's Page.....	+20%
Inside Back Cover .....	+30%	Opposite Oral Abstract.....	+20%
Outside Back Cover.....	+40%		



*Like us on Facebook!*

Our Facebook page for the New Orleans Geological Society is a great way to connect with other geologists and keep up to date with the latest NOGS events, videos, updates, and fun geology tidbits.

Find us at <https://www.facebook.com/nogs.org/>



610 E. Rutland St.  
Covington, LA 70433  
985.898.3577

Jack M. Thorson  
Eric C. Broadbridge  
J. Daryl Gambrell

**ROCK SOLID  
SERVICE**



**Core Lab**  
RESERVOIR OPTIMIZATION  
[www.corelab.com](http://www.corelab.com)  
337-837-8616

© 2013 Core Laboratories.  
All rights reserved.



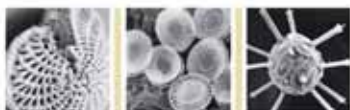
**Anthony Catalanotto**  
Manager

**Geological  
Geophysical  
Land**  
*Drafting & Graphics*

516 Maryland Avenue  
Metairie, LA 70003  
(504) 481-7291  
E-Mail: [geodraft@bellsouth.net](mailto:geodraft@bellsouth.net)



**DOMESTIC &  
INTERNATIONAL**



**BIOSTRATIGRAPHY**

**ANYTIME.  
ANYWHERE.  
ANY FOSSIL.**

*Complete paleo services*

*Largest single-source GoM  
database*

*Custom projects & mapping*

*Multiple fossil disciplines*



**504-488-3711  
PALEODATA.COM**

**LLDG**  
exploration



**Covington Office**

1001 Ochsner Blvd., Suite 200  
Covington, Louisiana 70433  
p: 985.801.4300  
f: 985.801.4796

**Houston Office**

CityCentre Three  
842 W Sam Houston Pkwy N  
Suite 600  
Houston, Texas 77024  
p: 281.752.1100  
f: 281.752.1199

**Scott Office**

814 S. Frontage Rd.  
Scott, LA 70583  
p: 337.408.4000  
f: 337.408.4049

[www.llog.com](http://www.llog.com)



## THE NEW ORLEANS GEOLOGICAL SOCIETY MEMORIAL FOUNDATION, INC.

The Memorial Foundation is an IRS Tax Exempt Code #501(c)(3) organization. The Federal I.D. is 72-1220999. Please consider making a donation to the Foundation. Your individual support in any amount will help meet the IRS Guidelines for our Foundation. Thanks!

### \$10,000

#### Gibbet Hill Foundation

*In Memory of Steve & Marion Millendorf, William J. Prutzman,  
Roger G. Vincent, Ron Youngblood, Uno Numella and Dr. Robert T. Sellars, Jr.*

### \$7,783.87

#### NOGS/PLANO Golf Tournament

### \$1,000

#### Chevron Your Cause

*Volunteer Hours William D. Haworth and Allen J. Melillo*

#### Mr. Armour C. Winslow

*In Memory of Rita Menzel Winslow and Lawrence C. Menconi*

### \$500

#### Mr. Thomas C. Bergeon

#### Mr. Edward Falis, Sampling Associates International, LLC

*In Memory of Willis E. Conatser and Mr. Arthur H. Johnson*

### \$250 TO \$499

#### Mr. Hillary James Brook

#### Penny and Jack Bryant

*In Memory of Art Johnson,  
Willis Conatser and Frank Rogers*

#### Mr. Carlo C. Christina

*In Memory of Al Gilreath*

#### Mr. Jeff Jandegian

*In Memory of Dr. Raymond W. "Ray"  
Stephens, Jr., Ron Youngblood  
and Dr. William W. Craig*

#### Mr. Reuben J. Klibert, Jr.

*In Memory of James Wade Klibert*

#### Mr. Edward B. Picou, Jr.

*In Memory of Arthur H. Johnson,  
Willis E. Conatser, Bernard L. Hill, Jr.,  
and Russell H. Nordwell*

#### Mr. William M. Whiting

*In Memory of Tom Klekamp  
In Memory of Gene Cobb*

### UP TO \$249

#### Mr. Woods W. Allen, Jr.

*In Memory of William C. Ward*

#### Mr. Maurice Birdwell

*In Memory of Al Gilreath*

#### Mr. Rob Burnett

#### Chevron Humankind Matching Funds

#### Mr. Arthur Christiansen

*In Memory of Tom Klekamp*

#### Mr. Carlo C. Christina

*In Memory of Willis E. Conatser*

#### Carlo and Beverly Christina

*In Memory of Arthur H. Johnson*

#### Trudy and Charles Corona

*In Memory of Arthur H. Johnson,  
Peter G. Gray, Willis E. Conatser,  
James "Jim" A. Hartman, PhD  
and all deceased former past  
presidents of NOGS*

#### Mr. Merle J. Duplantis

#### Mrs. Linda P. Fulton

*In Memory of Tom Klekamp*

#### Mr. Edward J. Graham

#### Mr. Warren Huff

#### Mr. Kenneth Huffman

#### Mr. Alex G. Janevski

*In Memory of Arthur H. Johnson*

#### Mr. Gregory Janevski

#### Mr. & Mrs. Donald P. Klekamp

*In Memory of Tom Klekamp*

#### Mr. Joel K. Klekamp

*In Memory of Tom Klekamp*

#### Mr. Tom Klekamp

*In Memory of Arthur H. Johnson*

#### Ms. Laura LeBon

#### Ms. Margaret M. McKinney

#### Mr. Chris McLindon

#### Mr. Allan Melillo

#### New Orleans Geological Auxiliary (NOGA)

*In Memory of Earleen Rodan*

#### Mr. Richard Olsen

#### Mrs. Teresa M. O'Neill

*In Memory of Brian J. O'Neill*

#### Mr. William S. Peirce

## FONO FUND

The FONO Fund accepts contributions that are invested and the income dedicated to assure sufficient financial resources will always be available to maintain the NOGS business office. Contributors are reminded that donations to the FONO Fund are not covered by the IRS 501(c)(3) tax exempt classification and should be reported as a business expense on your IRS tax report.

### UP TO \$249

#### Mr. Joseph E. Boudreaux

#### Mr. Merle J. Duplantis

#### Mr. Dwight Easterly

#### Mr. Kenneth Huffman

#### Mr. Tom Klekamp

#### Mr. James R. Landrem

#### Ms. Jeannie F. Mallick

#### Ms. Margaret M. McKenney

#### Mr. William S. Peirce

#### Mr. Edward B. Picou, Jr.

#### Mr. Bay Salmeron

#### Mr. David M. Tatum

#### Mr. Roy C. Walther

#### Mr. Jack N. Peterson M.D. and Mr. Tom R. Young

*In Memory of Arthur H. Johnson*

#### Cecil and Tanya Pickens

*In Memory of Willis E. Conatser*

#### Mr. Edward B. Picou, Jr.

*In Memory of James "Jim" A. Hartman, PhD*

*In Memory of Tom Klekamp*

*In Memory of Robert "Bob" Branson*

#### Ms. Nancy Shepard

*In Memory of Clark Kinler*

*In Memory of Alfred P. Daigle*

#### Shell Matching Funds

#### Dr. J. O. Snowden

#### Ms. Candace V. Strahan

*In Memory of Raymond W. "Ray" Stephens, Jr.,  
and James R. Strahan for The Bill Craig Fund*

#### Mr. David M. Tatum

#### Mr. William M. Whiting

*In Memory of Arthur H. Johnson*

#### Mr. and Mrs. James W. Yeldell

*In Memory of Willis E. Conatser*

Contributions for both funds for one year through May 2019. Donations are listed for one year.

<p><b>ANSYTHE</b> Donald I. Andrews <b>504-887-3432</b></p> 	<p>James S. Classen <b>CLASSEN &amp; CO. LLC</b> 6417 Plantation Lane • Boise, ID 83703</p>
<p><b>THE BOEBEL COMPANY</b> Oil and Gas Investments  New Orleans, LA 70153 <b>(504) 866-4313</b></p>	<p><b>D-O-R ENGINEERING, INC.</b> 3-D and Geoscience Services  6161 Perkins Rd. Bus: (225) 765-1914 P.O. Box 80812 Baton Rouge, LA 70898</p>
<p><b>BOO-KER OIL &amp; GAS CORP.</b> Gray S. Parker  826 Union, Suite 300 Bus. (504) 581-2430 New Orleans, LA 70112 Fax (504) 566-4785</p>	<p><b>EDWARD B. PICOU, JR.</b> Shell - Retired <b>504-975-3096</b></p>
<p><b>C &amp; R EXPLORATION, INC.</b>  Carlo C. Christina Lawrence G. Ringham</p>	<p> <b>GEOLOGY ENVIRONMENTAL MANAGEMENT</b> <b>GEM Consulting, LTD</b> Emmitt Lockard Michael Louis Merritt emlockard@yahoo.com admin@gemconsultingltd.com</p>
<div data-bbox="175 678 727 871">  </div> <div data-bbox="152 884 756 1024"> <p><i>Thanks Our Sponsors for Their Support!</i></p> </div> <div data-bbox="99 1035 810 1123"> <p><b>\$2,500</b></p> </div> <div data-bbox="99 1134 810 1203"> <p> <b>Diversified Well Logging</b></p> </div>	<p> <b>THOMAS L. DAVIS GEOLOGIST</b>, Ventura, CA, 93001 tel: 818-429-4278, www.thomasldavisgeologist.com tldavisgeo@gmail.com. +35 yrs exploration &amp; development experience in the western US, overseas and offshore. Prospects, data and field assessments available. Lots of free petroleum geology info at web site.</p>
	<p><b>ZOT OIL &amp; GAS, LLC</b> <b>Jim Zotkiewicz - Petroleum Geologist</b> Business Phone: 504.267.9138 Email: jimzot38@zotoil.com</p>
<p><b>SIPES</b> Society of Independent Professional Earth Scientists New Orleans Chapter   For membership info. Contact: Eric Broadbridge - eric@northcoastoil.com 504-884-0049 www.sipesneworleans.org</p>	<div data-bbox="852 1081 1485 1963">  <p><b>SEI®</b> <b>Seismic Exchange Inc.</b> Strategic Speculative Surveys Geophysical Data Marketing &amp; Management</p> <p><b>YouR</b> Full Service National Seismic Data Marketing Firm</p> <p>DALLAS DENVER NEW ORLEANS TULSA</p> <p>201 St. Charles Ave Suite 4300, New Orleans, La 70170 www.seismicexchange.com</p> </div>
<p> <b>LaBay</b> Exploration Co., L.L.C.  1080 West Causeway Approach Mandeville, Louisiana 70471 (985) 951-2011 www.labayexploration.com</p>	



# ~ In Memoriam ~



## Gary Spraul

**Gary Spraul**, a native of New Orleans, was born in 1931. He passed away Sunday, June 30, 2019 at the age of 88. He excelled at Holy Cross High School and in 1949 and was on the Championship Southern Baseball Team. An accomplished athlete, he participated in track and javelin. He graduated with a B.S. in Geology from LSU. While attending LSU he joined ROTC and then joined the Air Force serving in Savannah, Georgia. He was married to Jane Hyman in 1955. He returned to LSU and earned a Masters in Geology. His hobbies were photography and fishing, which he enjoyed especially while living with his family in Corpus Christi. He

worked for Mobile Oil as a Petroleum Geologist. He was a member of the New Orleans Geology Society and the American Association of Petroleum Geologists. After retirement he and Jane joined Mary Queen of Peace Catholic Church. He is survived by his wife and three children and two grandchildren. He died comfortably at his daughter's home surrounded by his family. The family thanks Notre Dame Hospice for their kind support. A Mass for Christian burial will be held at Mary Queen of Peace Catholic Church, 1501 W. Causeway Approach in Mandeville, LA on Tuesday, July 9, 2019 at 11:30 AM. Visitation from 10:30 AM until service time. Interment in Southeast Louisiana Veterans Cemetery, Slidell, LA. Bagnell & Son Funeral Home, Covington, LA in charge of arrangements. To view and sign the family guest book please visit [www.bagnellfuneralhome.com](http://www.bagnellfuneralhome.com).

Published in The Times-Picayune on July 7, 2019

## VOLUNTEERS NEEDED FOR FALL NOGS OUTREACH EVENTS!

**SEPTEMBER 28**  
at LSU



**girl scouts**  
louisiana east

*Women Geoscientist Role Model  
Volunteers Needed!*



**SUPER  
SCIENCE  
SATURDAY**  
DINOSAURS, EARTHQUAKES & OIL

*The dinosaurs are back!*

**October 12th**

At City Park in the new  
**Louisiana Children's Museum**

## COMMUNITY STEM FEST

with the New Orleans Saints and Pelicans

**October 19th**

at the  
Mercedes Benz Superdome



**TO VOLUNTEER EMAIL [TOM.BERGEON@UPSTREAM.COM](mailto:TOM.BERGEON@UPSTREAM.COM)**