

NOGS LOG

APRIL 2019

Volume 59, Number 10



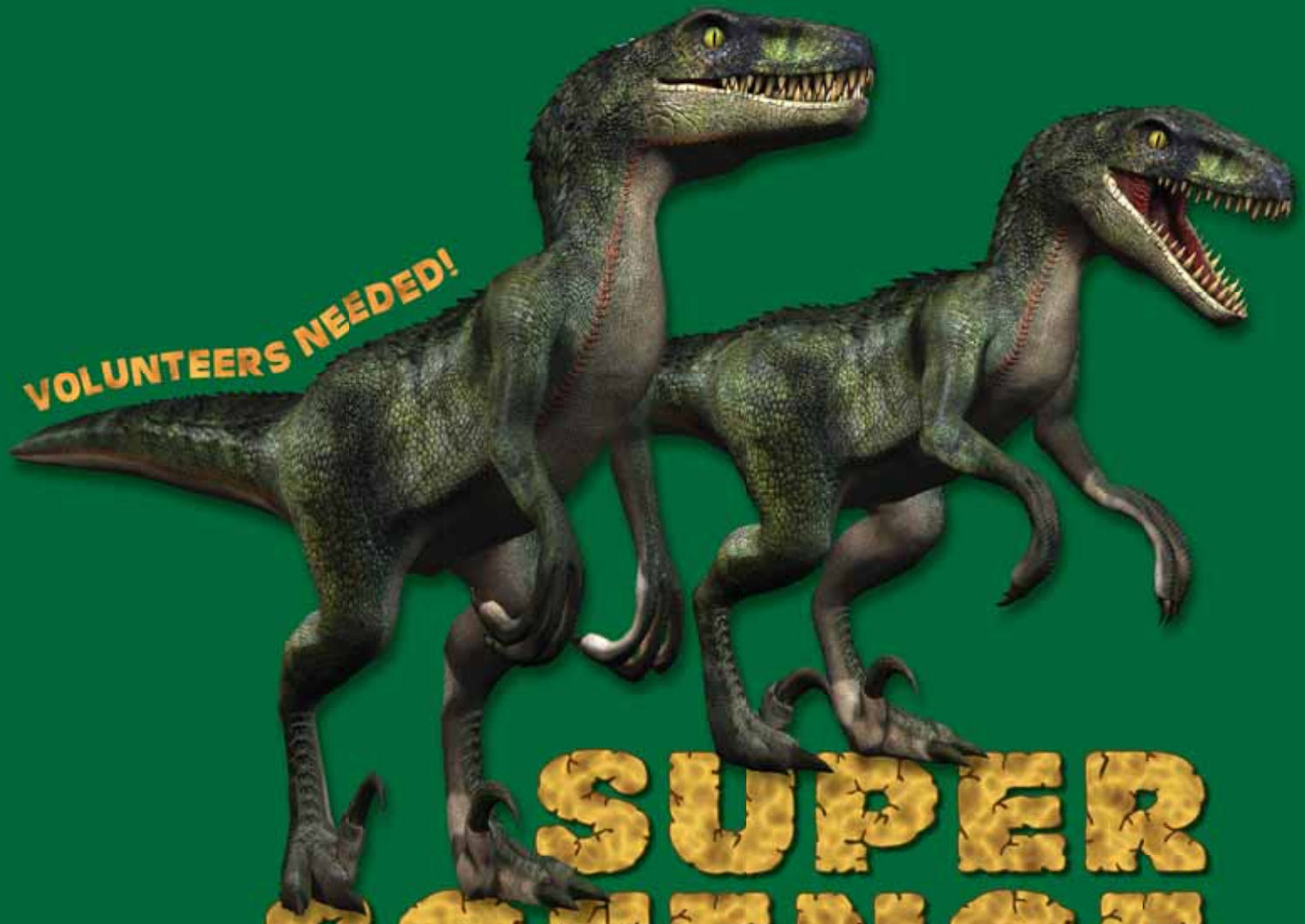
APRIL 1 - NOGS LUNCHEON PRESENTATION

"Non-Destructive, Automated Scanning of Fine-Scale Geological, Petrophysical and Geomechanical Rock Properties and Its Value in Reservoir Characterization"

**Guest Speaker: Dr. Ramil Ahmadov
New England Research, Inc. • Houston, Texas**

APRIL.6.2019

11:00 am - 3:00 pm



SUPER SCIENCE SATURDAY

DINOSAURS, EARTHQUAKES & OIL



BROUGHT TO YOU BY:
The Louisiana Children's Museum
The New Orleans Geological Society
The Southeastern Geophysical Society

To volunteer, contact Tom Bergeon at tom.bergeon@upstreamexp.com

420 Julia Street • New Orleans, Louisiana 70130



Published monthly by the New Orleans Geological Society. This issue was sent to press on March 29, 2019.

Interested in contributing to the NOGS LOG?

Please submit items by the 1st Friday of the month to nogseditor@gmail.com. Advertising requests should contact NOGS at admin@nogs.org.

IN THIS ISSUE

Regular Features:

On The Cover.....	3
From the Editor.....	3
From the President.....	4
NOGS Officers / Contacts	6
Upcoming Events & Activities	7
NOGS Luncheon Presentation.....	8
Calendar of Events: April-June 2019.....	10
Drill Bits	14
NOGS Memorial Foundation & FONO Fund.....	25

Special Features:

Super Science Saturday	2
2019 Louisiana Oil & Gas Symposium	5
SIPES Membership Drive Crawfish Boil.....	10
Pictures From Our Past	12
13th Annual LA Water Conference.....	13
GCAGS 2019 Convention	16
2019 Ad Rates.....	16
SPE/NOGS March Luncheon.....	17
2019-20 NOGS Board of Directors Candidates	18
History of the White House Easter Egg Roll.....	21
Region 9 GNOSEF Winners	22
Research Spotlight - A Study by Jarrett Levesh	23
2019 NOGS-PLANO-SPWLA Golf Tournament	27

on the cover

Cover photo credit: www.trover.com

Lava Beds National Monument — Medicine Lake, CA

The cover picture depicts a lava tube, part of the Lava Beds National Monument in Medicine Lake CA. Lava Beds National Monument sits on the north face of the Medicine Lake Shield Volcano. The lava tube caves found here were created by flows of smooth lava 10,500 to 65,000 years ago. As the lava flowed it began to cool and solidify on the top and sides. Once the eruption ceased, the tube emptied and drained, and a new lava tube cave is left behind. As the rock cooled, the inner surface of the tube cracked and collapsed, producing openings to the surface.



Horizontal traces near the floor of a cave wall are remnants of high stands of lava as it drained away during the final stages of lava-flow activity within the tube. Drip structures from the ceiling are formed as the top of the cave remelted and dripped downward due to the high temperatures within the tube system.

Lava tubes are being formed today in Hawaii. Below is a link to an interesting video by the National Park Service.

<https://www.nps.gov/media/video/view.htm?id=FF3C412C-AA80-39D5-ADB4619491F256FB>

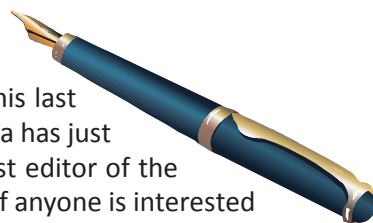
Cover photo credit: <https://www.trover.com/d/jlEv-lava-beds-national-monument-siskiyou-county-california>

Information was taken from the USGS and the National Park Service.

From the Editor

Our friend Carlo Christina is retiring from writing his column "Drill Bits." This will be his last report after faithfully reporting since 2010 (see page 14). Drilling activity in south Louisiana has just declined so much there is little to report. Carlo began writing "Drill Bits" when I was first editor of the *NOGS LOG* in 2010. He has been a real pleasure to work with then and now. He asks that if anyone is interested in continuing his column to contact him.

April 26 is an important day for all of us. This is Arbor Day and people are encouraged to plant trees. Our urban forest was greatly depleted after Hurricane Katrina. Most people don't understand the importance of trees in our neighborhoods and city. Trees remove the carbon dioxide from our air and provide needed shade during the scorching summers. There are many blocks in my neighborhood that have maybe only one tree or none at all. Some trees protect your house and should not be removed but after Katrina and continuing to this day trees are being removed with alacrity. I urge everyone who has space to plant a new tree.



Fran
Fran Wiselady,
NOGS LOG Editor



FROM THE
PRESIDENT
CHRIS MCLINDON

The Louisiana Coastal Geohazards Atlas is being developed with the intention of having a broad base of applications across coastal Louisiana. I find it a little bit surprising, but very gratifying, that one of the first direct applications of the research behind the Atlas has been in the transportation sector. In January of this year the Transportation Consortium of the South-Central States (Trans-SET) published this report:

Synthesis of Fault Traces in SE Louisiana Relative to Infrastructure

Lead author of the report is Dave Culpepper of Culpepper and Associates LLC, who is also currently the treasurer of the NOGS organization. Dave's co-authors are fellow NOGS members Liz McDade of Chinn-McDade Associates and Dr. Nancye Dawers, Chair of the Tulane School of Earth and Environmental Sciences, along with Dr. Mark Kulp, Director of the UNO Coastal Research Laboratory, and Dr. Rui Zhang, assistant professor at the ULL School of Geosciences. The report reviews "whether fault motion, either by slow creep or more sudden slip, can cause deformation of engineered structures resulting in increased infrastructure maintenance and repair costs."

The research team worked cooperatively with the Louisiana Transportation Research Center and the Louisiana Department of Transportation and Development to combine results from ongoing research at UNO, Tulane and ULL in three study areas where critical infrastructure projects were identified – Golden Meadow, Leeville and Lake Borgne. These same study areas will also eventually contribute to the Coastal Geohazards Atlas, and NOGS has coordinated access to oil and gas industry seismic data for the universities in these three areas to study the impact of faulting at the surface. The Trans-SET report recognizes that "the impact of surface, or near-surface, geologic faulting on critical infrastructure is insufficiently documented in southeastern Louisiana, but the state has a vast amount of energy-sector subsurface data

that to date has been under-utilized for transportation and other near-surface engineering applications."

Tran-SET is a collaborative partnership between eleven institutions including Louisiana State University, the University of New Mexico, Auburn University, Texas A&M, New Mexico State, Oklahoma State, Arkansas State, the University of Texas at San Antonio, Prairie View A&M, the Louisiana Transportation Research Center, Baton Rouge Community College and Navajo Technical. The theme of Tran-SET is "Solving Emerging Transportation Resiliency, Sustainability and Economic Challenges through the Use of Innovative Materials and Construction Methods: From Research to Implementation." The Center's mission is to support all phases of research, technology transfer, workforce development, and outreach activities of emerging technologies that can solve transportation challenges. NOGS is playing a key role in facilitating technology transfer, research and outreach activities through the development of the Coastal Geohazards Atlas.

I think the one of the most valuable aspects of the Trans-SET report is the development of descriptive criteria for reliability of fault locations. These criteria "were developed and are based on resources used in the interpretation and map scale: Level 1 suspected faults – described in the literature and included here from georeferenced maps; Level 2 identified faults – those observed on 2D or 3D seismic and mapped in a geographic reference system; and Level 3 confirmed faults – mapped on seismic and ground truth data with field methods including age-dated stratigraphic intervals and high-resolution seismic. We have compiled data resources in a GIS-based system for simple retrieval and map-based review so that additional work specific to critical infrastructure projects can be prioritized. The intent is to give LTRC and LADOTD personnel information so that they may quickly assess the importance of faulting in any particular project area and as a resource to identify areas that already have energy industry seismic available."

This type of systematic approach to the evaluation of faults and their potential to impact infrastructure will be essential to building and maintaining trust in the science of geology and its applications as the Atlas project is developed. I believe developing this type of trust with the engineering, construction and regulatory communities will be essential to the achieving the goals of a broad-based application of the Atlas.

The **Louisiana Geological Survey** and **LSU Center for Energy Studies**
present the

2019 Louisiana Oil & Gas Symposium

17 April 2019

Dalton J. Woods Auditorium
Energy, Coast & Environment Building
Louisiana State University



This symposium will bring together scientists, engineers, and policy makers from across a range of disciplines to discuss the current state of the oil and gas industry in Louisiana, and its interaction with our ecosystem. John E. Johnston III of the Louisiana Geological Survey and Greg Upton of the LSU Center for Energy studies will serve as the symposium chairs.

Registration fee

By 31 March 2019: \$25 for professionals; \$5 for LSU faculty, staff, and students

After 31 March 2019: \$50 for professionals; \$10 for LSU faculty, staff, and students

Continuing education

Attendees will be entitled to earn five continuing education credits/professional development hours. The LSU Center for Energy Studies is an approved continuing education sponsor/provider for the following:

- ♦ Louisiana State Bar Association
- ♦ Louisiana Professional Engineering and Land Surveying Board
- ♦ Louisiana Board of Professional Geoscientists

For more info

Visit www.lsu.edu/lgs/conferences/laoilgas2019/index.php

Or contact John E. Johnston III at hammer@lsu.edu



NOGS Contact Information

Email: admin@nogs.org • Website: www.nogs.org

P.O. Box 58108 • New Orleans, LA 70158.

Correspondence and all luncheon reservations should be sent to the above address.

BOARD OF DIRECTORS

		Company	Phone	E-mail
President	Chris McLindon	Upstream Exploration LLC	504-756-2003	chris.mclindon@Upstreamexp.com
Vice President	TBA			
Secretary	Shara Gremillion	USM Student	504-554-0319	shara.gremillion@usm.edu
Treasurer	David B. Culpepper	The Culpepper Group, LLC	985-264-1677	dculpepper@theculpeppergroup.com
President-Elect	Robert Rooney	Robert M. Rooney Inc.	504-460-0319	robmrooney@aol.com
Editor	Fran Wiseman	Retired - BOEM	504-615-5170	snowde.fran@gmail.com
Director 2019	Jennifer Connolly	Shell	504-425-6411	jennifer.connolly@shell.com
Director 2020	David Reiter		504-593-3623	dreiter124@yahoo.com
Director 2021	Charles W. Holman	BSEE	504-975-6735	charleswholman@bellsouth.net

COMMITTEE

	Chairperson			
AAPG Delegates	William M. Whiting	Consultant	504-947-8495	bootscon@aol.com
AAPG Student Chapter	Rafael Villanueva	LSU		rvilla7@lsu.edu
AAPG Student Chapter	Kevin Reece	Tulane University		jreece@tulane.edu
AAPG Student Chapter	Jarrett Levesh	UNO		jlevesh@my.uno.edu
Advertising-Log	Fran Wiseman	Retired - BOEM	504-615-1570	snowde.fran@gmail.com
Auditing	Chris McLindon	Upstream Exploration LLC	504-756-2003	chris.mclindon@Upstreamexp.com
Awards	Michael N. Fein		504-717-6465	lfeinmn1@cox.net
Ballot	David B. Culpepper	The Culpepper Group, LLC	985-264-1677	dculpepper@theculpeppergroup.com
Best Paper	Bay Salmeron	Chevron	832-854-6431	bay.salmeron@chevron.com
Entertainment	Robert Rooney	Robert M. Rooney Inc.	504-460-0319	robmrooney@aol.com
Environmental	TBD			
External Affairs	John E. Johnston III	Louisiana Geological Survey	225-931-6622	hammer@lsu.edu
Finance and Investment	Margaret McKinney	TGS	504-524-3450	margaret.mckinney@tgs.com
Historical	Edward B. Picou, Jr.	Retired - Shell	504-975-3096	epicou@bellsouth.net
Membership/Directory	TBD			
New Geoscientists (NGNO)	Rachel Carter		913-710-8021	r_carter@me.com
Nominating	Brenda Reilly		504-430-4240	brendaereilly@hotmail.com
Non-Technical Education	Duncan Goldthwaite	Consultant	504-887-4377	DGldthwt@aol.com
Office Operations	Chris McLindon	Upstream Exploration LLC	504-756-2003	chris.mclindon@Upstreamexp.com
Publications Sales	Edward B. Picou, Jr.	Retired - Shell	504-975-3096	epicou@bellsouth.net
School Outreach	Thomas C. Bergeon	Upstream Exploration	504-832-3772	tom.bergeon@upstreamexp.com
Special Projects	TBD			

NOGS LOG STAFF

Editor	Fran Wiseman	Retired - BOEM	504-615-1570	snowde.fran@gmail.com
Editor-Elect	Paul Post		504-736-2954	mutzko@webdsi.com
Auxiliary	NOGA Officers and Directors	NOGA		
Drill Bits	Al Baker	Beacon Exploration, LLC	504-836-2710	ABaker1006@aol.com
Drill Bits	Carlo C. Christina	Retired - C & R Expl. Inc.		carlocc398@aol.com
Drill Bits	Kevin Trosclair	BOEM	504-202-7997	kevintrosclair@gmail.com
Staff Photographer	Arthur Christensen	Shalimar Consulting	985-893-2013	arthur_shalimar@yahoo.com
Layout / Printing	Kristee Brown	Creative Graphics & Printing, LLC	985-626-5223	kpbrown@bellsouth.net
Webmaster	Charles Miller	OCSBBS Website		

NOGS AUXILIARY

Officers		Phone	Directors	Year	Phone
President	Margie Conatser	504-469-2496	Penny Bryant	2017-19	504-831-7744
Vice-President	Camille Yeldell	504-835-7467	Loretto Stephens	2017-19	504-451-3472
Secretary	Linda Peirce	504-289-6585	Judy Lemarié	2018-20	504-393-8659
Treasurer	Mary Walther	504-392-9332	Peggy Rogers	2018-20	504-392-6323
Parliamentarian	Alma Dunlap	504-737-2678			
Member-at-Large	Trudy Corona	504-737-6101			



April 1 • NOGS Luncheon

Holiday Inn Downtown Superdome

\$3.00 validated parking in hotel garage

Presentation:

Non-Destructive, Automated Scanning of Fine-Scale Geological, Petrophysical and Geomechanical Rock Properties and Its Value in Reservoir Characterization

Guest Speaker:

Dr. Ramil Ahmadov

New England Research, Inc. • Houston, Texas

See page 8 for Abstract and Biography

HOLIDAY INN DOWNTOWN SUPERDOME

Check with concierge or
front desk for location.

Lunch served at 11:30 am

ADMISSION:

With reservation..... \$30.00

Without reservation \$35.00

Student Member with reservations..... FREE

**VOLUNTEERS
NEEDED!**

April 6
Super Science Saturday

Louisiana Children's Museum • New Orleans, Louisiana

For more information: tom.bergeon@upstreamexp.com

**VOLUNTEERS
NEEDED!**

April 16

SIPEs 4th Annual Membership Drive Crawfish Boil

The Harbor Bar and Grill • Metairie, Louisiana

For more info: Eric Broadbridge, eric@northcoastoil.com or 504-884-0049

See announcement on page 10

May 3

NOGS-PLANO-SPWLA Golf Tournament

Bayou Oaks at City Park • New Orleans, Louisiana

4-Player Scramble • Shotgun Start at 8:30 a.m.

See page 27 for more details or www.nogs.org

May 19-22

AAPG Annual Convention

Henry B. Gonzalez Convention Center • San Antonio, Texas

For more information: <https://ace.aapg.org/2019>

NOGS CONTACT LIST

Continued from previous page

MEMORIAL FOUNDATION

BOARD OF TRUSTEES

2018-2019	Chairman	Chris McLindon
2018-2019	Secretary	G. Alex Janevski
2018-2019	Trustee	Kelli Hardesty
2018-2019	Trustee	William M. Whiting
2019-2020	Trustee	David Reiter
2019-2020	Trustee	TBD
2020-2021	Trustee	TBD
2020-2021	Trustee	TBD

AAPG DELEGATES

Term Ends

2018	Earl Cumming
2018	William M. Whiting
2018(a)	Dave Balcer
2020	Elizabeth McDade
2020(a)	G. Alex Janevski

Company

Upstream Exploration LLC
ERM
Consultant

Phone

504-756-2003
504-425-6214
504-846-9245
504-947-8495
504-593-3623

E-mail

chris.mclindon@Upstreamexp.com
alexjanevski@gmail.com
kelli.hardesty@erm.com
bootscon@aol.com
dreiter124@yahoo.com

Reservoir Frameworks LLC
Consultant

985-630-6898
504-947-8495
504-352-0238
504-425-6214

earlcumming@bellsouth.net
bootscon@aol.com
balcer@bellsouth.net
ecmcade@bellsouth.net
alexjanevski@gmail.com



April 1 NOGS Luncheon Presentation

☆☆☆ at the Holiday Inn Superdome ☆☆☆

Non-Destructive, Automated Scanning of Fine-Scale Geological, Petrophysical and Geomechanical Rock Properties and Its Value in Reservoir Characterization

Presented by

Dr. Ramil Ahmadov

New England Research, Inc. • Houston, Texas

ABSTRACT

The integration of plug and log scale characterization is key to generating representative geological, petrophysical and geomechanical models at all stages from exploration and development to production. The importance of whole core and plug measurements is especially vital in finely laminated rocks where well-log scale measurements miss mechanical heterogeneities that are required for realistic mechanical models. The presence of mechanical heterogeneity and anisotropy under the well log resolution is commonplace in unconventional plays and can deeply impact geomechanical assessments ranging from wellbore integrity to horizontal stress estimates. Yet, in order to fully realize the value of lab-based geological, petrophysical and geomechanical characterization, it appears critical that laboratory workflows be optimized in terms of both outputs and turnaround times. In this talk, we present an in-house fully automated core scanner for fast and non-destructive physical property measurements (not just scanning) of elastic, transport and compositional properties of rocks at a very fine scale (down to mm) as well as a set of workflows to incorporate aforementioned properties in conventional and unconventional reservoir characterization with examples from Permian Basin, Vaca Muerta Formation in Argentina and deepwater GOM.



BIOGRAPHY

Dr. Ramil Ahmadov is a Principal Geoscientist with New England Research, Inc. Prior to joining NER, Ramil has held various roles at BP and Ikon Science. He has over 10 years of experience in conducting pure and applied research in the area of rock physics, quantitative interpretation and petrophysics. Ramil has considerable experience integrating laboratory, well log, seismic and production data within integrated multidisciplinary teams at all stages from exploration and development to production.

**THE APRIL LUNCHEON RESERVATION
DEADLINE IS MARCH 29.**

"And Looking Ahead . . ."

The next luncheon will be held on May 6th. Our guest speaker will be Dr. Brooks Ellwood with LSU Campus Mound Excavations. Reservations online at www.nogs.org or by email at admin@nogs.org or call 504-348-3500.



Drill with confidence.

Diversified Well Logging, LLC brings the accuracy and expertise only a company with over sixty years in the oil and gas industry can deliver. We are your eyes and ears in the field, especially when it comes to deep water or high pressure, high temperature areas.

DWL offers 24-hour formation evaluation. We provide secure and customized real-time data communication, in-house research and development, and 24/7 on-call support for our equipment and our engineers.

Whether you have a 10-day job or a 110-day job, we provide the specialized attention you require. **Our experience means you can be confident in the safety and performance of your well.**



- *Formation Evaluation*
- *Geosteering*
- *Drilling Optimization*
- *Real-time Data Transmission*
- *Early Kick Detection*



Serving the Oil and Gas Industry for Over 60 Years



CALENDAR OF EVENTS: APRIL - JUNE 2019

If you know of upcoming seminars or academic events that may be of interest to our members, please email the event details to Fran Wiseman at nogseditor@gmail.com to be included in the monthly calendar.

2019	EVENT	LOCATION	CONTACT / INFO
1 Apr	NOGS Luncheon Presentation Speaker: Ramil Ahmadov • New England Research, Inc.	Holiday Inn Superdome	Reservations: www.nogs.org Email: admin@nogs.org Call: 504-348-3500
6 Apr	Super Science Saturday	LA Children's Museum	tom.bergeon@upstreamexp.com
15-16 Apr	13th Annual Louisiana Water Conference See page 17 for more information	Dalton Woods Auditorium LSU • Baton Rouge, LA	https://easychair.org/conferences/?conf=lawater2019
15 Apr	CALL FOR PAPERS Petroleum History Institute		Dr. William Brice wbrice@pitt.edu Marilyn Black 814-677-3152 mblack@oilregion.org
16 Apr	SIPES Annual Membership Drive Crawfish Boil 11:30 am - 1:30 pm	The Harbor Bar and Grill Metairie, LA	Eric Broadbridge eric@northcoastoil.com • 504-884-0049
17 Apr	LSU LGS Louisiana Oil and Gas Symposium 2019 Presented by Louisiana Geological Survey Center for Energy Studies	Dalton Woods Auditorium LSU • Baton Rouge, LA	www.lsu.edu/lgs/conferences/laoilgas2019
3 May	NOGS - PLANO - SPWLA Golf Tournament	Bayou Oaks at City Park New Orleans, LA	Reservations: www.nogs.org Email: admin@nogs.org Call: 504-348-3500
6 May	NOGS Luncheon Presentation Speaker: Dr. Brooks Ellwood Topic: LSU Campus Mound Excavations	Holiday Inn Superdome	Reservations: www.nogs.org Email: admin@nogs.org Call: 504-348-3500
19-22 May	AAPG 2019 Annual Convention & Exhibition Henry B. Gonzalez Convention Center	San Antonio, Texas	https://ace.aapg.org/2019
27-29 June	Oil History Symposium and Fieldtrip in New Brunswick, Canada	New Brunswick, Canada	www.petroleumhistory.org

New Orleans Chapter of
Society of Independent Professional Earth Scientists
presents it's
4th Annual Membership Drive Crawfish Boil

Think you can't join?, think again....
 You more than likely will fit one of these categories:
 1) Full 2) Limited 3) Affiliate
 Free to potential members to our SIPES New Orleans Chapter
 This will be a lunch time party on a Tuesday in Metairie
Tuesday, April 16th, 2019
11:30am to 1:30pm

**Crawfish, Corn, Potatoes,
Beer & Softdrinks**

*Nice Weather - outside in the patio
 Bad Weather - upstairs in party room*

SIPES Members - no cost
 Potential SIPES member -free
 Call for reservations
 SIPES Member guests -
 \$25/person



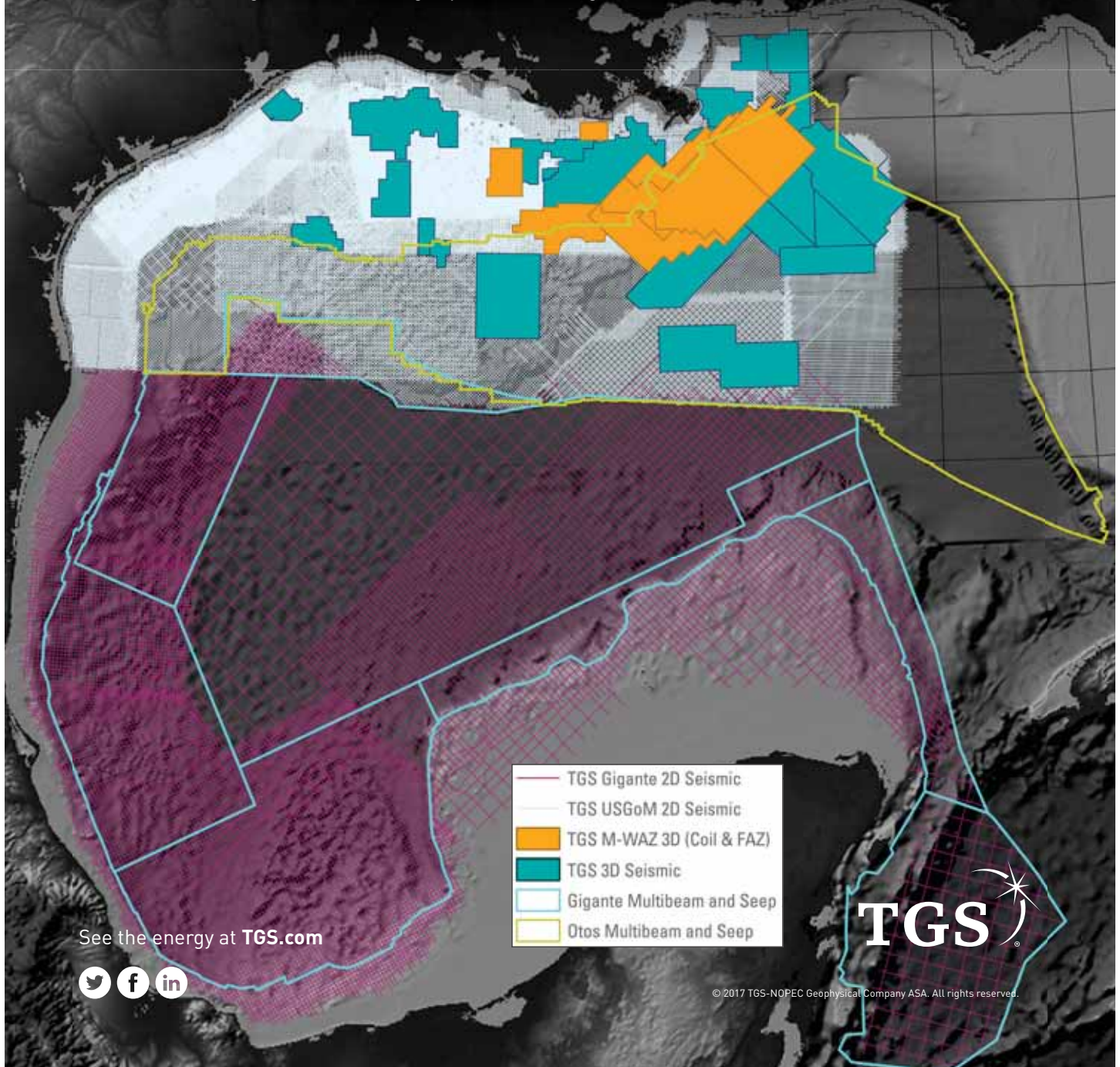
Check us out at: www.sipesneworleans.org
 or at: www.sipesorg

The Harbor Bar and Grill
 3024 17th Street
 Metairie, LA 70002
 (2 blocks north of Andrea's
 Restaurant)

If you are interested in joining
 our Society and attending the
 Crawfish Boil please contact:
Eric Broadbridge
eric@northcoastoil.com
 504-884-0049

Set your sights. **Gulf of Mexico**

TGS provides industry-leading offshore seismic data using an innovative mix of technologies and unmatched imaging capabilities. Through strategic partnerships, we provide a comprehensive collection of advanced marine acquisition technologies for enhanced reservoir delineation, characterization and monitoring. TGS delivers the E&P industry unlimited potential with our collection of advanced offshore data including **Declaration M-WAZ 3D** survey, **Fusion M-WAZ 3D**, **Otos Multibeam and Seep** and **Gigante 2D Multibeam and Seep** programs. Explore the Gulf of Mexico with the right data, in the right place, at the right time.



Picture From Our Past...

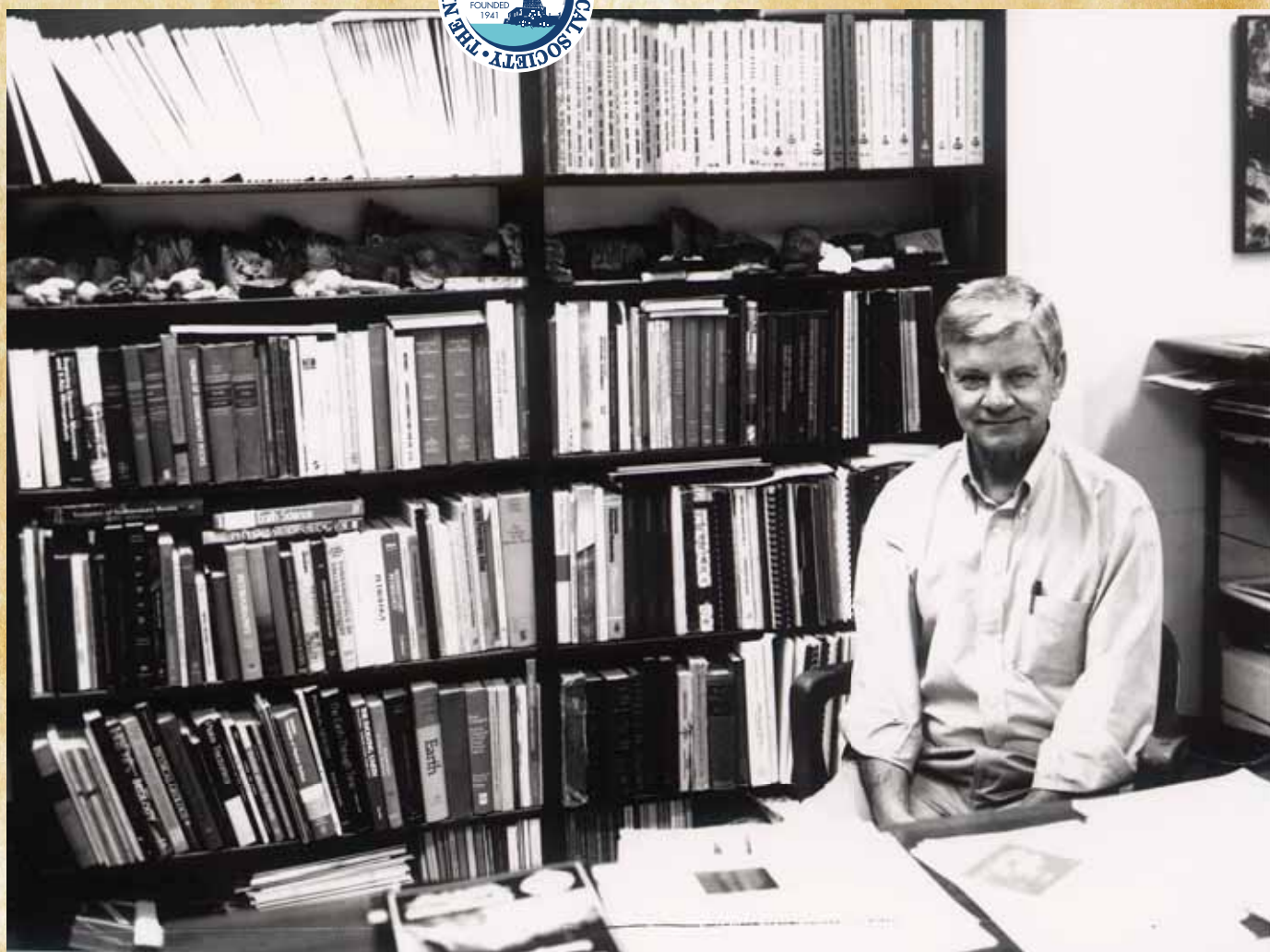
by Ed Picou - Chairman, Historical Committee

Bill Ward was an active NOGS member for decades and was instrumental in educating many NOGS members who received geology degrees at UNO. He also led many NOGS field trips for GCAGS and AAPG conventions. Bill received his BS and MS degrees in geology at UTX-Austin.

After a nine-year stint in the oil industry, he returned to school for his PhD at Rice University. He was Dr. James Lee Wilson's first PhD student at Rice. Bill taught geology at the University of New Orleans for 25 years and did academic research in limestone and other sedimentary rocks of Mexico, Spain, Puerto Rico, Egypt, and the US Gulf Coast.

In 1995 he retired from UNO as an Emeritus Professor of Geology and with his wife, Kathy (who taught math and science at Ben Franklin High School), returned to their native Central Texas, where he was an enthusiastic and well-loved volunteer teaching Texas Hill Country geology for several Master Naturalist chapters, as well as for the Cibolo Nature Center, the Gorge Preservation Society (Canyon Lake Gorge), and other groups.

Bill also was very active in the Native Plant Society of Texas, wrote a column on native plants for the Boerne Star, and was an avid birder. Bill suffered a major stroke and passed away on January 8, 2011. He was 79 years old.



Dr. William C. (Bill) Ward in his office in the Geology & Geophysics Department at University of New Orleans. Unfortunately, the photo is not dated.

13th Annual Louisiana Water Conference

April 15-16, 2019

Dear Colleagues:

Louisiana Geological Survey (LGS), LSU Agricultural Center (AgCenter), and Louisiana Water Resources Research Institute (LWRRRI) are co-hosting the 13th Annual Louisiana Water Conference, April 15-16, 2019 at Louisiana State University, Baton Rouge, Louisiana.

You are cordially invited to submit titles and abstracts to the Water Conference.

The Conference offers 1 PDH Ethics Lecture for Professional Geologists (PG) and Professional Engineers (PE) and certificates of Continuing Education Units (CEUs).

Conference announcement (LAWater 2019 CFP): <https://easychair.org/cfp/lawater2019>

Title/Abstract submission (LAWater 2019): <https://easychair.org/conferences/?conf=lawater2019>

Important Dates:

Title and Abstract Submission Open: Now

Registration Open: January 2, 2019

Title Due: February 15, 2019

Abstract Due: March 15, 2019

Early Registration Deadline: March 15, 2019

Conference Days: April 15-16, 2019

Ethics Lecture for Geoscientists and Engineers (1 PDH): TBA

Conference Location:

Dalton Woods Auditorium, Energy, Coast & Environmental Building,
Louisiana State University • Baton Rouge, Louisiana

Program Committee:

Douglas Carlson, Louisiana Geological Survey (co-chair)

Ryan Clark, The Water Institute of the Gulf

Stacia Davis Conger, LSU AgCenter, Red River Research Station

Mark Davis, Tulane University, Tulane Institute on Water Resources Law and Policy

Mary Gentry, Louisiana Department of Environmental Quality

Emad Habib, ULL, Department of Civil Engineering

Krishna Paudel, LSU AgCenter and LSU Agricultural Economics and Agribusiness (co-chair)

Frank Tsai, LSU Department of Civil and Environmental Engineering (co-chair)

Thomas Van Biersel, Louisiana Department of Natural Resources

Carol Wicks, LSU Department of Geology and Geophysics

Jun Xu, LSU School of Renewable Natural Resources

South Louisiana and Offshore Gulf of Mexico Exploration and Production Activities

LAFAYETTE DISTRICT, ONSHORE AREA

By Carlo C. Christina and Kevin J. Trosclair

During the month of February, the Louisiana Department of Conservation issued only seven permits to drill for oil and gas in the Lafayette District of South Louisiana. Of these seven permits, two were relative shallow development wells, one was a Lower Wilcox development well, one was a very deep test in an old field, and the remaining three were for Austin Chalk wells. My report this month will be limited to the deep field well and the three Austin Chalk wells.

NEW LOCATIONS

CANTIUM, LLC has permitted an interesting deep well in **Bay Marchand Block 2 Offshore Field, (A)**, Lafourche Parish. The #1 SL 21881, SN 251577, is located in Grand Isle Block 25, and will be drilled to a **total depth of 23,867 feet to test Tex W sands**. Bay Marchand Block 2 Offshore Field **was discovered in 1949**, and although more than 550 wells have been drilled in the field, more than 500 wells were shallow tests, less than 10,000 feet.

Cantium, LLL acquired the field from Chevron in 2017, along with 4 additional fields in the Gulf of Mexico. Since 1977 the field has produced more than 139 million barrels of oil and 141 billion feet of gas. Only 7 wells have been drilled deeper than 15,000 feet. If this well, the #1 SL 21881, finds production in the deep Tex W sands, perhaps Bay Marchand Block 2 Field, will produce for another 60 years.

In Avoyelles Parish, Torrent Oil has re-permitted the #1 Indigo Minerals, SN 251564, in **North Bayou Jack Field, (B)**. It will be drilled in Sec. 23, 2S-5E to a projected total depth of 15,624 feet to test the Austin Chalk. It is located offsetting an Austin Chalk well which was completed in 1987 and produced for more than 42 years, a total of 582,000 barrels of oil.

ConocoPhillips has permitted the #1 Erwin, SN 251551, as a horizontal well to test the Austin Chalk in **Southwest Common Church Field, (C)**, in West Feliciana Parish. It will be drilled to a total depth of 21,000 feet, or 15,500 feet, true vertical depth. The well is located in Sec. 47, 1S-1W, with the proposed bottom hole location N 22 E, 6154 feet in Sec. 46, 1S-1W. It is also located approximately 1 mile north of a well which was drilled as a Lower Tuscaloosa test but encountered those sands wet. However, the well was perforated from 13,246 to 13,279, overall, in the Austin Chalk. It was completed flowing 60 BOPD and 7 MCFD. It produced only 178 barrels of oil from these perforations in the vertical hole. ConocoPhillips will test the Chalk in a lateral leg measuring approximately 4,000 feet.

In St. Helena Parish, ConocoPhillips will also drill the #1 Soterra, SN 251550, in **Northeast Beaver Dam Creek Field, (D)**, in Sec. 5, 4S-5E to test the Austin Chalk. It will be drilled to a total depth of 21,000 feet, or 15,500 feet, true vertical depth. The proposed bottom hole location is S 22 W 6154 feet from the surface location in Sec. 37, 4S-5E., in a lateral leg measuring approximately 4,500 feet.

BREAKING NEWS

In October 2010, I submitted my first Drill Bits Report to NOGS Editor, Fran Wiseman, who is also our current editor. I am notifying Fran, and officers and members of the New Orleans Geological Society, that I will no longer be able to submit my monthly Drill Bits report. I must give special thanks to Ed Picou, who has edited my reports, to Kevin Trosclair, who has prepared the monthly Activity Map, and to Al Baker, who always had his Offshore report on time.

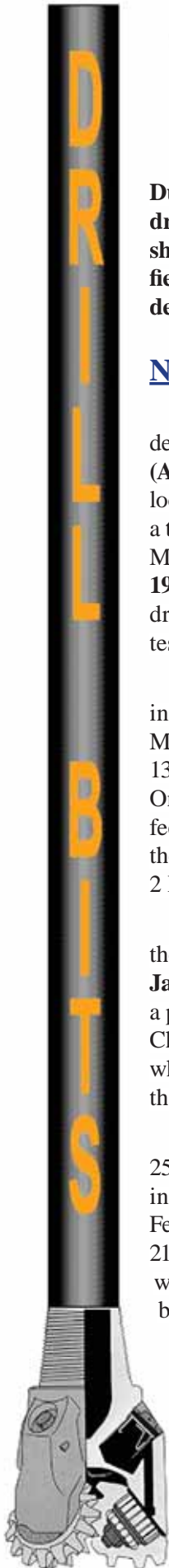
If anyone is interested in writing the Drill Bits reports, I will furnish my complete files to him or her. Contact me at carlocc398@icloud.com.

OFFSHORE GULF OF MEXICO SHELF AND DEEPWATER ACTIVITIES

by Al Baker

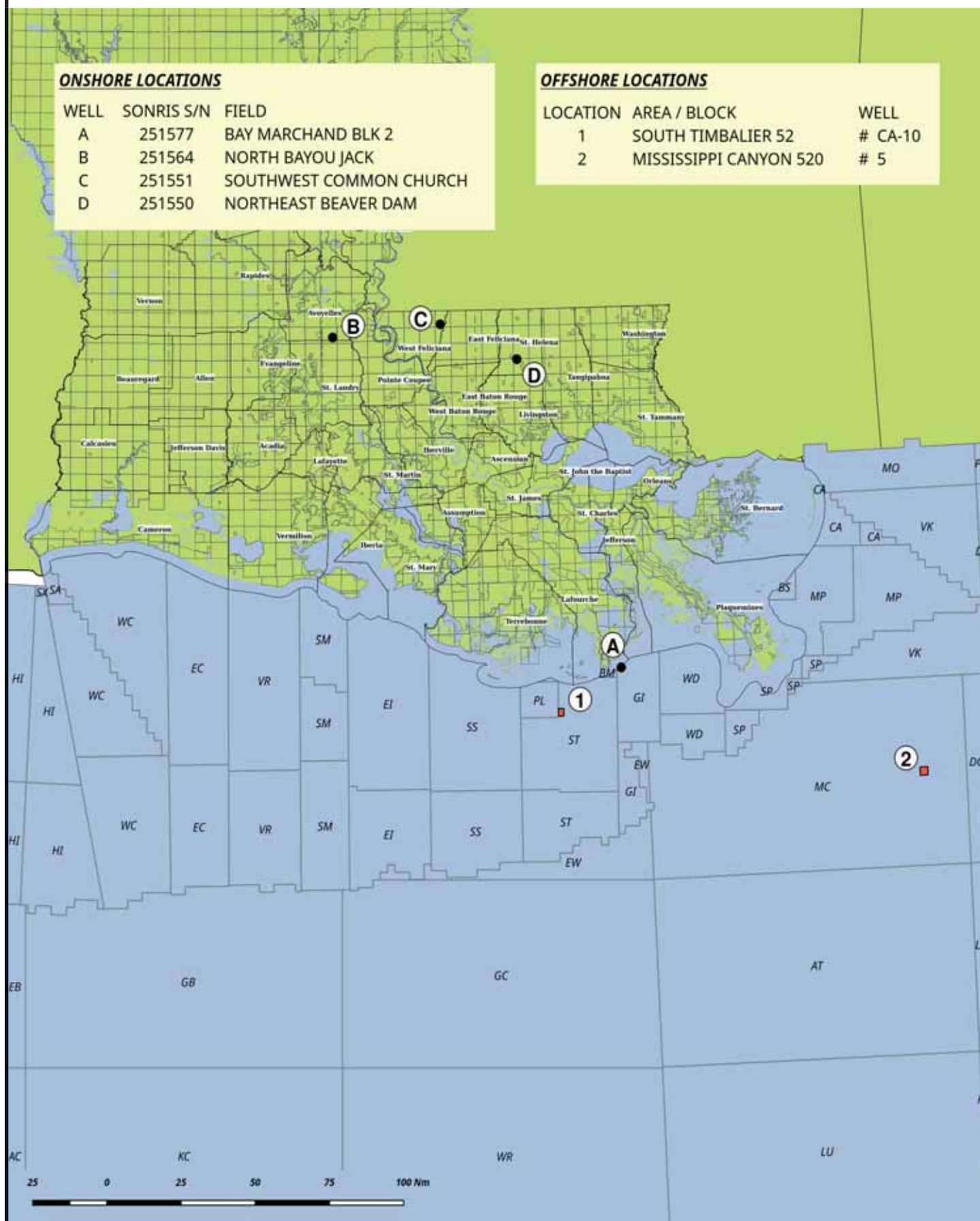
During **February 2019**, the **BSEE** approved **74** Gulf of Mexico drilling permits. **Twenty-six** of these were for shelf wells, and **48** were for deepwater wells. Of the total number of permits, there were **2 new well permits**; **1** was issued on the **shelf** and **1** in **deepwater**.

The 1 shelf new well permit was for a development well. It was given to **Arena Offshore** for their **South Timbalier 52 #CA-10** well. The 1 deepwater new well permit was for an exploration well. It was awarded to **BP Exploration & Production** for their **Mississippi Canyon 520 #5** well.



Onshore & Offshore Activity Map for South Louisiana

APRIL 2019



On February 22nd, IHS-Petrodata reported that the Gulf of Mexico mobile offshore rig supply stood at **71**, which is **1 less** than last month. The marketed rig supply consisted of **41** rigs, of which **31** were under contract. The marketed rig supply number was **1 less** than last month, and the contracted rig supply was **2 less** than the previous month. The marketed contracted versus total rig supply utilization rate stood at **57.7%**, and the marketed contracted versus marketed supply utilization rate stood at **75.6%**. By comparison, the February 2018 total fleet utilization rate stood at 43% (**versus 43.7% today**) with 37 out of the 86 rigs under contract.

As of February 22nd, BakerHughes indicated that there were **19** active mobile offshore rigs in the Gulf of Mexico, which is **61.3%** of the rigs under contract mentioned

above. This active rigs number is **2 more** than as reported last month. Of the 19 rigs, **5** are located on the **shelf**, and **14** are situated in **deepwater**. At the same time last year, there were 17 mobile offshore rigs operating in the Gulf of Mexico suggesting an **11.8% increase**.

As of February 22nd, the BakerHughes total U.S. rig count stood at **1047** rigs, which are **4 fewer** rigs than reported at the end of January 2018. Of the 1047 rigs, **853 (81.5%)** are **oil rigs** and **194 (18.5%)** are **gas rigs**. A year ago, there were 978 rigs working in the U.S. Thus, the current rig figure represents a **7.1% increase** in rigs. **Texas** had the largest number of rigs with **508**, which is slightly under half (48.5%) of the total number of rigs in the U. S. **Louisiana** had a total of **64** rigs, **up 1** rig from last month.

www.gcagshouston.com



69th Annual Gulf Coast Association of Geological Societies 2019 GCAGS Convention

October 23-25, Marriott Westchase, Houston

Hosted by the Houston Geological Society and the GCSSEPM

General Chair: Mike Erpenbeck, Vice Chair: Larry Bartell, GCAGS President: Deborah Sacrey



Contact NOGS at:
admin@nogs.org

2019 ADVERTISING RATES

The New Orleans Geological Society was formed in 1941, with an initial membership of only 55. It has always been an active professional society and presently has a membership of 500.

AD SIZE	2015 RATE	NEW 2019 RATE!
Full Page (7.5"x10")	\$3500	\$1750
Half Page (3.75"x10" or 7.5"x5")	\$1850	\$925
Quarter Page (3.75"x5" or 7.5"x2.5")	\$1000	\$500
Eighth Page (3.75"x2.5")	\$600	\$300
Twelfth Page (3.75"x1.65")	\$375	\$188
Note Size (3.75"x.75")	\$120	\$60



PREMIUM LOCATIONS

Inside Front Cover.....	+30%
Opposite President's Page.....	+20%
Opposite Oral Abstract.....	+20%
Inside Back Cover.....	+30%
Outside Back Cover.....	+40%

SPE/NOGS MARCH LUNCHEON

Energy Development on Outer Continental Shelf - Challenges and Opportunities

Keith Couvillion • Chevron USA, Inc.





2019-20 Board of Directors Candidates

For President Elect:

John Dribus

John Dribus is a Geologic Consultant living in Mandeville, Louisiana. He retired from Schlumberger in 2018 after a 42-year career at Bendix Field Engineering, Mobil Oil, and Schlumberger Oil Field Services. He began his career in Casper, Wyoming in uranium exploration for Bendix after graduating with an MS in Geology from Kent State University, Ohio in 1976. He joined Mobil Nuclear Fuels in 1980 in Corpus Christi and transferred to the Oil and Gas Division in New Orleans the following year. He left Mobil Oil after 20 years and joined Schlumberger where he worked 18 years as a Global deepwater Geologist.

He is the former Chair of the American Petroleum Institute (API) Delta Chapter, serves on the Imperial Barrel Award Committee of the AAPG, and is a member of the AAPG (40 years), New Orleans Geological Society (NOGS), Houston Geological Society (HGS), and



the Society of Petroleum Engineers (SPE), and European Association of Geoscientists and Engineers (EAGE). In 2013, he was recognized by the SPE with the Reservoir Description and Dynamics Award. In 2014, he received the Meritorious Service Award from the API Delta Section. In 2017, he was recognized as an AAPG Heritage Geologist at the 100th Annual Convention in Houston and received the Best Technical Paper of the Year Award from NOGS. In 2018, he received the A.I. Levorsen Award from the AAPG for best technical paper at the Gulf Coast Association of Geological Societies (GCAGS).

Over the years, he has made several technical presentations at NOGS, AADE, SPWLA, and SIPES luncheons in New Orleans, and at Deepwater Technology Symposiums. In 2017, he presented a one-day school on Petroleum Systems of the GOM Deepwater for the NOGS Geoscience Seminar preceding the Deepwater Symposium, and in 2018, he followed with a 6-hour seminar on the Digital Evolution of Exploration.

For Vice-President:

Toby Roesler

Toby Roesler is a geophysicist who has been employed by a number of oil and gas companies in New Orleans for nearly 30 years. He has primarily worked exploration projects in the deepwater Gulf of Mexico but has also worked projects

in the onshore Gulf basin, deepwater Brazil, offshore West Africa, and in north and south Alaska. He also mentors students at the University of New Orleans and the University of Western Kentucky for the AAPG Imperial Barrel Award competition. He is currently Chief Geophysicist at Talos Energy.



For Secretary:

Sheri Richardson

Sheri Richardson graduated from the University of New Orleans in 1996 with a BS in Geology and a BA in Anthropology. During her career, she has provided seismic and well data management, software support, and other geotechnical duties

to numerous companies including Forcenergy, Forest Oil, Murphy Exploration & Production, LaBay Exploration, and W&T Offshore. She is currently self-employed as a Consulting Geological Technician in the New Orleans area.



Sheri is married to fellow UNO Geology graduate, Philip Richardson, and they reside in Metairie with their eight-year-old son, Adam. Sheri is an active volunteer in her son's school, St. Louis King of France, where she has served as Parents' Club Vice President (2015-16) and President (2016-18). Sheri served as NOGS Editor-Elect (2012-13) and Editor (2013-14).

For Treasurer:

David B. Culpepper



David B. Culpepper is a Registered Professional Geoscientist in Louisiana, Treasurer of the New Orleans Geological Society, and serves as an appointed member of the Louisiana State Water Resources Commission. He has more than 30 years experience

in environmental and geoscience consulting.

Recently he has been working with a consortium of scholars and subject-matter experts to plan and administer projects aimed at leveraging energy sector technology in support of resiliency and coastal restoration. He provides expertise in coordinating with governmental departments and companies in response to complex geoscience issues. David holds a Bachelor of Science from Louisiana State University where he studied Physical Geography and Geology.

For Editor:

Paul Post

Paul Post is retired from the U.S. Department of Interior Bureau of Ocean Energy Management (BOEM) in New Orleans, LA. He worked as a staff geologist and has been a consultant, a Sr. Staff Geologist/Exploration



Supervisor, and worked in other exploration and management positions for independents and major companies. Paul has diverse global exploration experience in more than 80 basins, exploring in hundreds of petroleum systems and plays in a wide range of structural and stratigraphic settings.

He has lead authored publications for BOEM, and has been lead and co-author of papers published by GCSSEPM, GCAGS, and AAPG. Paul was co-editor and lead author of the Geological Society of London's SP 369 "Conjugate Divergent Margins." He convened or co-convened three GCSSEPM Research Conferences. He has edited more than 300 papers for GCSSEPM, AAPG, and the Geological Society of London. He has a BS in geology from Virginia Tech.

For Editor-Elect:

Charles Miller III

Charlie Miller has worked as the Chief Technology Director for the OCS BBS website for 19 years. This site for tracking activity in the Gulf of Mexico Oil & Gas industry. Over the years, Charlie helped develop innovative solutions for industry such as a Virtual Courthouse for the Gulf of Mexico, that allows easy search tools for running title, looking up liens, overrides, mortgages, etc. These allow customized, specialized reports to be created for a particular project. Recently, a Financial Assurance Module was created to help industry review an offshore Gulf of Mexico company's financial evaluation.



Charlie holds a bachelor's degree in Computer Science from Tulane University and a Master's in Public Administration from Troy State University. He has volunteered his time for the past 19 years with API-Delta on many different committees such as the Website Committee, Scholarship Committee, Golf Committee and more. He has also volunteered and participated for many API events held over his years with API-Delta such as Children Museum events, Golf Tournament and the Fun Run with his family.

Charlie also has been active for 11 years with the Westbank Desk & Derrick, active for 19 years with PLANO (Professional Landman's Association of New Orleans) and involved with NOGS and AADE as well.

Charlie and his wife Cheryl have two daughters, Victoria and Madelyn. They currently reside in Madisonville.

For Director:

Allan Melillo

Al Melillo joined Chevron in New Orleans in 1986 as a foraminiferal biostratigrapher for the GOM, and in 1994 switched over to development geology, working various GOM shelf fields until moving to the Deepwater Development Geology group in 2003 where he worked until retired from Chevron in 2014.

Al received a B.S. (1974) in geology from Montclair State College and stayed another year to obtain teaching certification. He was a 7th and 8th grade science teacher for four years before returning to graduate school. He earned an M.S. (1982) and Ph.D. (1985) from Rutgers University, where he was adjunct professor for 1-1/2 years and served as a shipboard biostratigrapher for Leg 101 of the Ocean Drilling Program.

Al has been active in NOGS, AAPG, and SEPM. He served as NOGS President from 2016 to 2017 and was the Memorial Foundation Chairman from 2017 to



2018. He was a trustee of NOGS Memorial Foundation from 2009-10 and NOGS Vice-President from 2008-2009. In 2018, Al was awarded Honorary Life Membership and received the NOGS Distinguished Service Award in 2010.

In 1993, he was the SEPM Technical Program Chairman for the AAPG-SEPM Annual Convention held in New Orleans. From 1992-96 he was on the SEPM K-12 Earth Science Education Committee, serving as Chairman for two years. He was a member of the AAPG K-12 Earth Science Education from 1999-2001. He organized the Earth Science Teachers Program which was presented to over 100 Louisiana teachers at the 1998 SEG Convention and presented a similar program at the 2000 AAPG Convention. He has participated in the NOGS-sponsored Supersaurus Saturday at the Children's Museum since its inception.

Al has participated in Rebuilding Together rebuilding homes of the elderly, handicapped, and veterans in New Orleans since 1990. He was Chairman of the Executive Committee from 2008 to 2016.

Happy Easter
from your NOGS LOG staff and NOGS Officers

Let The Good Times Roll: History of the White House Easter Egg Roll



Girls dancing around the maypole, circa 1930

On Easter Monday, with egg baskets in hands, unknowing egg rollers arrived at the Capitol, only to be turned away by the Capitol Hill police. This was thanks to The Turf Protection Law of 1876, which prohibited the practice of the traditional egg roll on the Capitol grounds.

However, President Rutherford B. Hayes kept the tradition alive by inviting children to the White House lawn for the Easter egg roll in 1878 after he was approached by a young boy who exclaimed, "Are you going to let us roll eggs in your yard?"

Today, the White House continues to open the South Lawn for Easter enthusiasts.

In 1889, President Benjamin Harrison started the egg roll music tradition by inviting "The President's Own" Marine Band to play at the event.



At her first Egg Roll in 1933, Eleanor Roosevelt greeted visitors and listeners alike for the first time over the radio, on a nationwide broadcast.

In 1969, Pat Nixon, introduced the White House Easter Bunny, usually a White House staffer dressed in a special White House rabbit suit. The tradition continues today.

First Lady Pat Nixon's staff initiated the first— and last— formal Easter egg hunt using real hard-boiled eggs. Only days later were all the eggs found, leaving their odorous mark on the South Lawn.

By 1974, the Nixon administration had a better grasp on the Easter Egg Roll. After borrowing some stainless steel spoons from the White House kitchen, the most famous of Easter Monday activities— organized egg-rolling races— was introduced.



The ultimate "eggcitement" happened in 1981, when guests discovered autographed wooden eggs during the straw pit egg hunt. By 1987, the event's theme was inscribed on each egg, and in 1989, President George H.W. Bush and First Lady Barbara Bush added their facsimile signatures. Years later, the Clintons' cat, Socks, even "paw-printed" a few eggs.

The Obamas made Easter Egg Roll history as the first White House to team up with Snapchat to create an Easter Egg Roll "Our Story." Using special Easter Egg Roll filters, Snapchatters shared their experiences in Snaps from the South Lawn.

Photos and article credit: <https://obamawhitehouse.archives.gov/blog/2015/04/06/day-history-white-house-easter-egg-roll-wrap>

NOGS FINDS WINNERS AT 2019 REGION 9 SCIENCE AND ENGINEERING FAIR

On February 19th and 20th, NOGS judged Junior Division and Senior Division Earth Science exhibits at the Region 9 Greater New Orleans Science and Engineering Fair at Tulane. My fellow judge for the opening day was **Eric Broadbridge**. Thanks Eric!

Five students shared the \$350 in cash prizes. We awarded only a second and a third prize in the Junior Division because we felt the exhibit quality did not measure up to the standards NOGS members expect to see.

Our **Senior Division winner** was **Isabella Pita** of **John Curtis**, who studied "Heavy Metal Analysis of Soil from Residential and Moton School Areas built Upon the Agriculture Street Landfill." The story is amazing, and the results stunning. People are dying. Isabella's teacher is **NOGS Honorary Life Member Cathy Boucvalt**. Isabella won her Earth and Environmental Category and will advance to State at LSU March 18-20. She also won the right to attend Genius Olympiad Global Environmental International High School Project Fair in Oswego, NY June 17-22nd, 2019; 1st place from Women for a Better LA, certificate + \$100; 2nd place New Orleans MENSA special award, certificate + \$50; Tulane School of Science & Engineering Summer Scholar alternate to attend a summer college course at Tulane and a Tulane bag and supplies.

NOGS **second-place Senior exhibit** was by **Tyler Dunn**, also a **John Curtis** student: "Photometric Abstraction of certain Astronomical Bodies and Differentiating Between Each." Dunn also received a fourth place Category Award; 1st place from the Pontchartrain Astronomy Society, certificate and an Orion Observer 80st 80 mm telescope; and 1st place from the Metric Association, certificate + \$75. The project used a mathematical calculation to determine, distance, mass, and age of stars.

The **third-place Senior exhibit** was by **Jordan Washington** of **Edna Karr High School**. Her project was "Investigation of Sedimentary Dredge Affecting the Accumulation of River Sand Being Deposited in Different Temperatures." Her teacher is **Sheila Lumod**. Her project showed that warmer temperatures were more effective in redepositing river sand, which can improve the economics of diversion.

In the Junior Division, the **second-place Junior winner** was **Claire Drucker** of the **International School of Louisiana** for "Let it Rain." This was an innovative porosity-permeability study where the student created her own paving material, in an effort to keep the underlying soil moist and stable. Her teacher is **Karen Marshall**.

Third Place went to **Madison Verbest** of **John Curtis**, who innovatively studied the effect of the subsurface in an avalanche in "Slippery Slope." Verbest also won her category and will move onto State competition; an invitation to Boradcom Masters national competition in Washington; and second place from the Society of American Military Engineers. Her teacher, **Cathy Boucvalt**, won the **2019 Teacher Mentor Award**, and the **NACE International Junior Division Teacher Award**, both with cash prizes.

I have been judging at this and innumerable school science fairs since the early 80's. It is one of the really fun things to do as a professional, and a real opportunity to encourage and assist young scientists to greater heights. However, our aging group, along with the passing of long-time judges, and difficulty in bringing in young judges, has left me in a position where if it was not for Eric, I would have been totally alone to judge this year. I will start in the fall of 2019 looking for judges for the 2020 Fair, but if there is no one to assist me by the time I need to register for the Fair itself, NOGS will have to discontinue its participation. If there is no one left to counter agenda over science, we will have no one to blame but ourselves.

Mike



Research Spotlight

A Study by Jarrett Levesh of UNO

NOGS student member Jarrett Levesh successfully defended his thesis in partial fulfillment of an M.S. degree in Geology from the University of New Orleans on March 1, 2019. Jarrett's thesis "Middle Miocene to Holocene History of the Delacroix Island Fault System" is the third M.S. thesis completed in cooperation with the NOGS/LGS Coastal Geohazards Atlas Project. Each of these theses used oil and gas industry 3-D seismic data to study faults, the history of fault movement, and the relationship between apparent recent fault movement and surface processes such as coastal wetlands loss.

Jarrett gained access to a 3-D seismic survey covering his research area in Plaquemines Parish, Louisiana through an internship at Upstream Exploration, LLC in Metairie in the summer of 2017. Through his internship, Jarrett did a complete geological evaluation of the Delacroix Island Field, a rollover anticline structure on the fault, and the surrounding area. This was a benefit to the hosting company, and it allowed Jarrett to take with him a set of subsurface depth structure maps, a fault plane map, and a set of correlated well logs. Using this data set Jarrett was able to construct detailed cross sections and interval thickness maps to study the patterns of fault movement over the last 13 million years. He found a close relationship between episodes of fault

movement and sediment loading from Miocene deltas, as well as an interesting pattern of increased fault movement in the Pleistocene. This latter finding looks like a great topic for future research.

Jarrett used historical imagery of the area to demonstrate a pattern of wetlands loss that strongly suggests a relationship to subsidence associated with fault movement. Comparing the Delacroix Island fault to the Lake Campo fault just to the east, he suggested that episodes of fault movement over the past few centuries have contributed to the regression of the St. Bernard Delta system, which extended past the Chandeleur Islands about 2,000 years ago. He also suggested that these faults impacted the alignment of distributary channels in this delta system, and this may be an indication of the phenomenon of footwall uplift along the faults. This combination of channel alignment and possible footwall uplift suggests that the upthrown sides of these faults may be relatively stable and should provide good locations for marsh creation projects to help sustain the wetlands.

Jarrett has been an active member of NOGS throughout his tenure at UNO. He attends most of the luncheons and has been a reliable volunteer at outreach events including the Children's Museum and the golf tournament. We should all be very proud – way to go Jarrett.



Jarrett Levesh (left) with Dr. Mark Kulp



Like us on Facebook!

Our Facebook page for the New Orleans Geological Society is a great way to connect with other geologists and keep up to date with the latest NOGS events, videos, updates, and fun geology tidbits.

Find us at <https://www.facebook.com/nogs.org/>



610 E. Rutland St.
Covington, LA 70433
985.898.3577

Jack M. Thorson
Eric C. Broadbridge
J. Daryl Gambrell

ROCK SOLID SERVICE

© 2013 Core Laboratories.
All rights reserved.



Core Lab
RESERVOIR OPTIMIZATION
www.corelab.com
337-837-8616



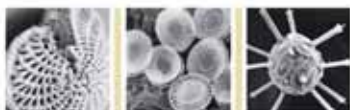
Anthony Catalanotto
Manager

**Geological
Geophysical
Land**
Drafting & Graphics

516 Maryland Avenue
Metairie, LA 70003
(504) 481-7291
E-Mail: geodraft@bellsouth.net
Website: www.geodraftinc.com



**DOMESTIC &
INTERNATIONAL**



BIOSTRATIGRAPHY

**ANYTIME.
ANYWHERE.
ANY FOSSIL.**

Complete paleo services

*Largest single-source GoM
database*

Custom projects & mapping

Multiple fossil disciplines



**504-488-3711
PALEODATA.COM**



Covington Office

1001 Ochsner Blvd., Suite 200
Covington, Louisiana 70433
p: 985.801.4300
f: 985.801.4796

Houston Office

CityCentre Three
842 W Sam Houston Pkwy N
Suite 600
Houston, Texas 77024
p: 281.752.1100
f: 281.752.1199

Scott Office

814 S. Frontage Rd.
Scott, LA 70583
p: 337.408.4000
f: 337.408.4049

www.llog.com

THE NEW ORLEANS GEOLOGICAL SOCIETY MEMORIAL FOUNDATION, INC.

The Memorial Foundation is an IRS Tax Exempt Code #501(c)(3) organization. The Federal I.D. is 72-1220999. Please consider making a donation to the Foundation. Your individual support in any amount will help meet the IRS Guidelines for our Foundation. Thanks!

\$10,000

Gibbet Hill Foundation

*In Memory of Steve & Marion Millendorf, William J. Prutzman,
Roger G. Vincent, Ron Youngblood, Uno Numella and Dr. Robert T. Sellars, Jr.*

\$7,783.87

NOGS/PLANO Golf Tournament

\$1,000

Chevron Your Cause

Volunteer Hours William D. Haworth and Allen J. Melillo

Mr. Armour C. Winslow

In Memory of Rita Menzel Winslow and Lawrence C. Menconi

\$500

Mr. Thomas C. Bergeon

Mr. Edward Falis, Sampling Associates International, LLC

In Memory of Willis E. Conatser and Mr. Arthur H. Johnson

\$250 TO \$499

Penny and Jack Bryant

*In Memory of Art Johnson,
Willis Conatser and Frank Rogers*

Mr. Carlo C. Christina

In Memory of Al Gilreath

Mr. Jeff Jandegian

*In Memory of Dr. Raymond W. "Ray"
Stephens, Jr., Ron Youngblood
and Dr. William W. Craig*

Mr. Reuben J. Klibert, Jr.

In Memory of James Wade Klibert

Mr. Edward B. Picou, Jr.

*In Memory of Arthur H. Johnson,
Willis E. Conatser, Bernard L. Hill, Jr.,
and Russell H. Nordwell*

Mr. William M. Whiting

*In Memory of Tom Klekamp
In Memory of Gene Cobb*

FONO FUND

The FONO Fund accepts contributions that are invested and the income dedicated to assure sufficient financial resources will always be available to maintain the NOGS business office. Contributors are reminded that donations to the FONO Fund are not covered by the IRS 501(c)(3) tax exempt classification and should be reported as a business expense on your IRS tax report.

UP TO \$249

Mr. Joseph E. Boudreaux

Mr. Merle J. Duplantis

Mr. Dwight Easterly

Mr. Kenneth Huffman

Mr. Tom Klekamp

Mr. James R. Landrem

Ms. Jeannie F. Mallick

Ms. Margaret M. McKenney

Mr. William S. Peirce

Mr. Edward B. Picou, Jr.

Mr. Bay Salmeron

Mr. David M. Tatum

Mr. Roy C. Walther

UP TO \$249

Mr. Woods W. Allen, Jr.

In Memory of William C. Ward

Mr. Maurice Birdwell

In Memory of Al Gilreath

Mr. Hilary James Brook

Mr. Rob Burnett

Chevron Humankind Matching Funds

Mr. Arthur Christiansen

In Memory of Tom Klekamp

Mr. Carlo C. Christina

In Memory of Willis E. Conatser

Carlo and Beverly Christina

In Memory of Arthur H. Johnson

Trudy and Charles Corona

*In Memory of Arthur H. Johnson,
Peter G. Gray, Willis E. Conatser,
James "Jim" A. Hartman, PhD
and all deceased former past
presidents of NOGS*

Mr. Merle J. Duplantis

Mrs. Linda P. Fulton

In Memory of Tom Klekamp

Mr. Edward J. Graham

Mr. Kenneth Huffman

Mr. Alex G. Janevski

In Memory of Arthur H. Johnson

Mr. Gregory Janevski

Mr. & Mrs. Donald P. Klekamp

In Memory of Tom Klekamp

Mr. Joel K. Klekamp

In Memory of Tom Klekamp

Mr. Tom Klekamp

In Memory of Arthur H. Johnson

Ms. Margaret M. McKinney

Mr. Chris McLindon

New Orleans Geological Auxiliary (NOGA)

In Memory of Earleen Rodan

Mr. Richard Olsen

Mrs. Teresa M. O'Neill

In Memory of Brian J. O'Neill

Mr. William S. Peirce

Mr. Jack N. Peterson M.D. and Mr. Tom R. Young

In Memory of Arthur H. Johnson

Cecil and Tanya Pickens

In Memory of Willis E. Conatser

Mr. Edward B. Picou, Jr.

In Memory of James "Jim" A. Hartman, PhD

In Memory of Tom Klekamp

In Memory of Robert "Bob" Branson

Ms. Nancy Shepard

In Memory of Clark Kinler

In Memory of Alfred P. Daigle

Shell Matching Funds

Dr. J. O. Snowden

Ms. Candace V. Strahan

*In Memory of Raymond W. "Ray" Stephens, Jr.,
and James R. Strahan for The Bill Craig Fund*

Mr. David M. Tatum

Mr. William M. Whiting

In Memory of Arthur H. Johnson

Mr. and Mrs. James W. Yeldell

In Memory of Willis E. Conatser

Contributions for both funds for one year through February 2019. Donations are listed for one year.

<p>ANSYTHE Donald I. Andrews 504-887-3432</p> 	<p>James S. Classen CLASSEN & CO. LLC 6417 Plantation Lane • Boise, ID 83703</p>
<p>THE BOEBEL COMPANY Oil and Gas Investments New Orleans, LA 70153 (504) 866-4313</p>	<p>D-O-R ENGINEERING, INC. 3-D and Geoscience Services 6161 Perkins Rd. P.O. Box 80812 Bus: (225) 765-1914 Baton Rouge, LA 70898</p>
<p>BOO-KER OIL & GAS CORP. Gray S. Parker 826 Union, Suite 300 New Orleans, LA 70112 Bus. (504) 581-2430 Fax (504) 566-4785</p>	<p>EDWARD B. PICOU, JR. Shell - Retired 504-975-3096</p>
<p>C & R EXPLORATION, INC. Carlo C. Christina Lawrence G. Ringham</p>	<p> GEOLOGY ENVIRONMENTAL MANAGEMENT GEM Consulting, LTD Emmitt Lockard emlockard@yahoo.com Michael Louis Merritt admin@gemconsultingltd.com</p>
<p>NOGS <i>Thanks Our Sponsors for Their Support!</i> \$2,500</p> <p> Diversified Well Logging</p>	<p> THOMAS L. DAVIS GEOLOGIST, Ventura, CA, 93001 tel: 818-429-4278, www.thomasldavisgeologist.com tldavisgeo@gmail.com. +35 yrs exploration & development experience in the western US, overseas and offshore. Prospects, data and field assessments available. Lots of free petroleum geology info at web site.</p>
	<p>ZOT OIL & GAS, LLC Jim Zotkiewicz - Petroleum Geologist Business Phone: 504.267.9138 Email: jimzot38@zotoil.com</p>
<p>SIPES Society of Independent Professional Earth Scientists New Orleans Chapter For membership info. Contact: Eric Broadbridge - eric@northcoastoil.com 504-884-0049 www.sipesneworleans.org</p> 	<p>SEI® Seismic Exchange Inc. Strategic Speculative Surveys Geophysical Data Marketing & Management</p> <p>YouR Full Service National Seismic Data Marketing Firm</p> <p>DALLAS DENVER NEW ORLEANS TULSA</p> <p>201 St. Charles Ave Suite 4300, New Orleans, La 70170 www.seismicexchange.com</p>
<p> LaBay Exploration Co., L.L.C. 1080 West Causeway Approach Mandeville, Louisiana 70471 (985) 951-2011 www.labayexploration.com</p>	

NOGS - PLANO - SPWLA



The combined proceeds from this event will benefit the Children's Museum Initiative on the North & South Shores

POST TOURNAMENT LUNCH
SPONSORED BY



Register Early!
Limited to only
120 players

2019 ANNUAL GOLF TOURNAMENT

BAYOU OAKS AT
CITY PARK

FRIDAY, MAY 3, 2019

4-PLAYER SCRAMBLE

SHOTGUN START 8:30 AM

Individuals - \$150

Corporate Team - \$700

PRICE INCLUDES GREEN FEES, CART, RANGE BALLS,
FOOD, DRINKS & PRIZES!

a portion of your tournament participation fee may be tax
deductible under the NOGS Memorial Foundation 501(c)3

*Promote Your
Business!*

HOLE SPONSORS \$125

or Join us at a hole with promotional / food / drink items

Contact us for more info!

Volunteers Needed - www.nogs.org





NEW ORLEANS GEOLOGICAL SOCIETY

P.O. Box 58108

New Orleans, LA 70158

www.nogs.org



creative graphics
& printing, llc

*Proudly designing and printing the NOGS LOG since 2012!
Specializing in design and printing for the oil and gas industry and their affiliates.*

ID Tags • Numbered Raffle Tickets • Banners • Signs • Posters

Letterhead • Envelopes • Business Cards • Postcards • Newsletters • Custom Forms

Logo Design • Push Cards • Table Tent Cards • Custom Invitations • Magnetic Signs & Business Cards

T-Shirts • Cups • Coozies • Pens • Hats & Caps • Coasters • USB Drives

Full Service, Custom Graphic Design & Printing!

985.626.5223 • 985.630.7824 • kpbrown@bellsouth.net