

Jefferson Island

NOGS LOG

Avery
Island

MARCH 2015

Volume 55, Number 9

Weeks Island

Cote Blanche

MARCH 2 - NOGS LUNCHEON

Presentation: Seismic Investigations of Gas Hydrates

Guest Speaker: Warren T. Wood

U.S. Naval Research Laboratory, Stennis Space Center • Mississippi





Please join NOGS as we celebrate spring at
the
New Orleans Lager & Ale (NOLA) Brewery

WHO:

New & seasoned
geoscientists*

WHERE:

NOLA BREWERY
3001 Tchoupitoulas Street
New Orleans, LA 70115

WHEN:

March 28th
from 12:00 - 3:00pm

2 Drink tickets & light
snacks provided

\$7 ENTRY

JOIN NOGS & ATTEND
FOR FREE!

RSVP BY March 20, 2015
JEREMY.PROUHET@CHEVRON.COM
985.773.0321

**21 & over, ID required*



Published monthly by the New Orleans Geological Society.
This issue was sent to press on February 22, 2015.

Interested in contributing to the NOGS LOG? Please submit items by the 1st Friday of the month to nogseditor@gmail.com. Advertising requests should contact the NOGS office at info@nogs.org.

IN THIS ISSUE

Regular Features:

On The Cover.....	3
From the Editor.....	3
From the President.....	5
NOGS Officers / Contacts	6
Upcoming Events & Activities	7
NOGS Luncheon Presentation.....	9
March & April Calendars.....	12
NOGA News.....	13
Drill Bits	22
NOGS Memorial Foundation.....	33
FONO Fund.....	33

Special Features:

Call for Volunteers! Supersaurus Saturday	15
LA Children's Museum's Learning Village	17-19
The Myles Companies of New Orleans.....	20
NOGS Welcomes	24
2015 Deepwater Symposium Call for Abstracts	26
Petroleum Geology for Non-Geologists Course.....	28
In Memoriam.....	29
NOGS 2015 Golf Tournament.....	30

ON THE COVER

Cover Photo Submitted by Tavia Prouhet

Salt Domes, LA (TM)

Data Source: EOSAT Landsat Thematic Mapper - 1995

Satellite image showing view of several well-known Louisiana salt domes.

Scale Bar = ~1.7 mi or 2.8 km

The Myles Companies of New Orleans

Jeff Spencerspencerj320@gmail.com

"It runs for Myles," a slogan for the Myles Salt Company, advertised one of the many products produced in the first half of the 20th century by this New Orleans-based company. Table salt, perfumed bath salts, stock (livestock) salt, ice cream salt, and various grades of rock salt were produced by the Myles Salt Company until the company was acquired by Morton Salt in 1947. Frederick F. Myles (1851-1915) and his attorney brother Beverly B. Myles (1855-1930) organized and operated successful Louisiana salt and land (mineral) companies during the late 1800s and early 1900s. The companies operated salt mines at Avery and Weeks Island salt domes (Iberia Parish). The brothers acquired land at the Pine Prairie salt dome (Evangeline Parish) and after evaluating and dismissing the potential for salt mining there, decided to drill for oil.

Read the complete article on page 20.



From the Editor

Hello NOGS Members. I hope everyone had a great Mardi Gras!

This month's *NOGS LOG* has several special features submitted by our membership. Tom Bergeon has put together an update for us on the expansion of the Louisiana Children's Museum and its future move to City Park. We also have a great story of the Myles Salt Company and the industrial development of the a few famous Louisiana salt dome resources submitted by geologist and oil industry historian, Jeff Spencer. Spencer is the Historian for the GCAGS.

The passing of several long-time NOGS members saddens us; we have included memorials for them inside this newsletter.

The New Geoscience committee has arranged a social activity for us to tour and sample beverages at NOLA Brewery in New Orleans. See the inside front cover for more information about the event. Please plan on attending our new Geoscience event at the end of March.

Tavia L. Prouhet - **NOGS LOG Editor**

These nodes change everything.

With absolutely no cables,
there's absolutely no stopping you.



True cable-free seismic

Dealing with tons of cable will hinder any seismic acquisition, land or marine. That's why our exclusive, true cable-free ZNodal® systems pay such huge dividends in any environment.

Our lightweight, compact ZLand® system lets your crews work faster and much more safely while recording high-resolution data, even in the most challenging terrain.

Our ZMarine® system, also completely self-contained, deploys easily and safely, even in congested areas, to water depths of 3000m, which makes it ideal for 4D reservoir monitoring.

Welcome to a new world of seismic acquisition.



FairfieldNodal.com



From the President

It seems like these past few letters have started off with holiday greetings, and this month will be no different: Happy Mardi Gras (belated). For those of us who live in New Orleans or other areas that celebrate this unique festival season, we encounter numerous treats like king cake, wild costumes, themed parades and extravagant throws. Then there is the undesirable that comes along with hosting such an event like no parking (not like we had much beforehand), not seeing friends or being able to buy groceries because they are on the "other" side of the parade route, and in my case an unruly neighbor who takes festival celebration to a whole other level. I understand why some natives leave during Mardi Gras.

Regardless if you participated or vacationed during Mardi Gras, there are a few upcoming and local opportunities in March for your consideration. First event is a fundraiser gala for the Children's Museum of St. Tammany (CMST) on Sunday, March 8th from 6 – 10 pm. The theme is Celebration – A Treasure Odyssey and the event will take place at the Castine Center in Mandeville. CMST is currently and actively raising funds to support building a dynamic and interactive learning facility that focuses on and uses our local environment to teach children.

Second event will be our NOGS spring social at the NOLA Brewing Company on Saturday, March 28th from 12–3 pm (must be 21 or older). The entrance fee of \$7 includes 2 drink tickets and some light snacks. If you are not yet a member, the entrance fee is waived with payment of our \$25 annual membership dues. This will be a great opportunity to sit, relax, talk rocks, network and socialize.

You can learn more about these events, plus everything NOGS-related on our new and improved website: www.nogs.org.

Hope to see all of you very soon!

ATTENTION!

NOGS has a *NEW and IMPROVED* WEBSITE!

WEB SITE

Come visit us at www.nogs.org

NOGS Office

Office Manager: Annette Hudson

Phone: 504-561-8980 • Email: info@nogs.org • Website: www.nogs.org

The office is located at 810 Union Street, Suite 300, New Orleans, LA 70112.

Correspondence and all luncheon reservations should be sent to the above address.

**BOARD OF DIRECTORS**

		Company	Phone	E-mail
President	Kelli Hardesty	Environmental Resources Mgmt.	504-831-6700	kelli.hardesty@erm.com
Vice President	Jennifer Connolly	Shell	504-728-6411	jennifer.connolly@shell.com
Secretary	Bryan Banks	Terracon	318-450-5300	jbbanks@terracon.com
Treasurer	Arthur H. Johnson	Hydrate Energy International	504-220-6208	artjohnson51@hotmail.com
President-Elect	David E. Reiter	Stone Energy Corporation	504-593-3623	reiterde@stoneenergy.com
Editor	Tavia Prouhet	Chevron	985-773-6737	tavia.prouhet@chevron.com
Director 2015	William M. Whiting	Consultant	504-947-8495	bootscon@aol.com
Director 2016	Jim Zotkiewicz	Zot Oil & Gas	504-452-5446	jimzot38@zotoil.com
Director 2017	J. David Cope	Rising Natural Resources LLC	504-214-6754	greatmre@aol.com

COMMITTEE

	Chairperson			
AAPG Delegates	William M. Whiting	Consultant	504-947-8495	bootscon@aol.com
AAPG Student Chapter	Derek Goff	LSU		Dgoff3@lsu.edu
AAPG Student Chapter	Alex Breau	Tulane University	337-519-0978	abreaux1@tulane.edu
AAPG Student Chapter	Rachel Carter	UNO	917-710-8021	r_carter@me.com
Advertising-Log	Kimberly Maginnis	LLOG Exploration	985-801-4761	kimberlym@llog.com
Auditing	Chuck Holman	Saratoga Resources	985-809-9292	charleswholman@bellsouth.net
Awards	Michael N. Fein	W & T Offshore	504-210-8148	mikef@wtoffshore.com
Ballot	Arthur H. Johnson	Hydrate Energy International	504-220-6208	artjohnson51@hotmail.com
Best Paper	Bay Salmeron	Chevron	832-854-6431	bay.salmeron@chevron.com
Entertainment	David E. Reiter	Stone Energy Corporation	504-593-3623	reiterde@stoneenergy.com
Environmental	Daisy Pate	Pontchartrain Partners	504-862-1775	daisy.pate@gmail.com
External Affairs	Michael A. Fogarty	Sylvan Energy, LLC	603-523-4808	mike.a.fogarty@gmail.com
Finance and Investment	Arthur H. Johnson	Hydrate Energy International	504-220-6208	artjohnson51@hotmail.com
Historical	Edward B. Picou, Jr.	Consultant	504-529-5155	epicou@bellsouth.net
Membership/Directory	David E. Reiter	Stone Energy Corporation	504-593-3623	reiterde@stoneenergy.com
New Geoscientists (NGNO)	Jeremy Prouhet	Chevron	985-773-6927	Jeremy.Prouhet@chevron.com
Nominating	Michael N. Fein	W & T Offshore	504-210-8148	mikef@wtoffshore.com
Non-Technical Education	Duncan Goldthwaite	Consultant	504-887-4377	DGldthwt@aol.com
Office Operations	Chuck Holman	Saratoga Resources	985-809-9292	charleswholman@bellsouth.net
Publications Sales	Edward B. Picou, Jr.	Consultant	504-529-5155	epicou@bellsouth.net
School Outreach	Thomas C. Bergeon	Century Exploration	504-832-3772	Tom.bergeon@centuryx.com
Special Projects	TBD			

NOGS LOG STAFF

Editor	Tavia Prouhet	Chevron	985-773-6737	tavia.prouhet@chevron.com
Editor-Elect	Tom Klekamp	Amber Resources LLC	985-630-2480	ekle1959@gmail.com
Auxiliary	Peggy Rogers	NOGA	504-392-6323	lrogers79@cox.net
Drill Bits	Al Baker	Beacon Exploration, LLC	504-836-2710	ABaker1006@aol.com
Drill Bits	Carlo C. Christina	Retired (C & R Expl. Inc)		drillbits81@yahoo.com
Drill Bits	Kevin Trosclair	Stone Energy Corporation	504-202-7997	kevintrosclair@gmail.com
Staff Photographer	Arthur Christensen	Shalimar Consulting	985-893-2013	arthur_shalimar@yahoo.com
Layout	Kristee Brown	Creative Graphics & Printing, LLC	985-626-5223	kpbrown@bellsouth.net
Webmaster	Fran Wiseman	Retired (BOEM)	504-615-5170	snowde.fran@gmail.com

NOGS AUXILIARY

Officers		Phone	Directors	Year	Phone
President	Mary Walther	504-392-9332	Trudy Corona	2013-15	504-737-6101
Vice-President	Mary Ellis Hasseltine	504-885-7657	Debra Fein	2013-15	504-831-0358
Secretary	Peggy Rogers	504-392-6323	Susan Baker	2014-16	504-466-4483
Treasurer	Judy Lemarié	504-393-8659	Judy Sabaté	2014-16	504-861-3179
Parliamentarian	Alma Dunlap	504-737-2678			
Member-at-Large	Jean Jones	504-738-8091			



UPCOMING Events & Activities



March 2 • NOGS Luncheon

Holiday Inn Downtown Superdome

\$3.00 validated parking in hotel garage

Presentation:

Seismic Investigations of Gas Hydrates
(and a brief description of other ongoing work at NRL)

Guest Speaker:

Warren T. Wood

U.S. Naval Research Laboratory • Stennis Space Center • Mississippi

See page 9 for Abstract and Biography

HOLIDAY INN DOWNTOWN SUPERDOME

Check with concierge or
front desk for location.
Lunch served at 11:30 am

ADMISSION:

With reservation \$30.00
Without reservation..... \$35.00
Student Member with reservations..... FREE

March 28

NOGS New Geoscience NOLA Brewery Spring Mixer
NOLA Brewery • New Orleans, LA
For more information, Jeremy.Prouhet@chevron.com

April 15

Petroleum Geology for Non-Geologists
Shell Auditorium Annex - One Shell Square • New Orleans, LA
For more information, www.nogs.org

**VOLUNTEERS
NEEDED!**

April 18

Fetch! Supersaurus Saturday
Louisiana Children's Museum • New Orleans, LA
For more information, www.nogs.org

April 27

NOGS Annual Golf Tournament
Money Hill Golf Course • Abita Springs, LA
For more information, www.nogs.org

NOGS CONTACT LIST

Continued from previous page

MEMORIAL FOUNDATION

BOARD OF TRUSTEES

2014-2015	Chairman	Chuck Holman
2014-2015	Secretary	Kelli Hardesty
2014-2015	Trustee	Rick Kear
2014-2015	Trustee	TBA
2015-2016	Trustee	William M. Whiting
2015-2016	Trustee	David E. Reiter
2016-2017	Trustee	J. David Cope
2016-2017	Trustee	Tom Klekamp

AAPG DELEGATES

Term Ends

2015	Susan A. Waters
2015	William M. Whiting
2015(a)	David E. Balcer
2015(a)	Earl W. Cumming
2017	Elizabeth McDade
2017(a)	G. Alex Janevski

NEW MEMBERS

Christipher B. Hatamian	Geologist
Josiah D. Hulsey	Geologist
Bruce V. Logan	Geologist
Philip A. Moses	President
Dana M. Smith	Earth Scientist

Company

Saratoga Resources Inc.
Environmental Resources Management
Retired - Schlumberger
Consultant
Stone Energy Corporation
Rising Natural Resources LLC
Amber Resources LLC

Phone

985-809-9292
504-831-6700
501-764-7100
504-947-8495
504-593-3623
504-214-6754
985-630-2480

E-mail

charleswholman@bellsouth.net
kelli.hardesty@erm.com
rkear@yahoo.com
bootscon@aol.com
reiterde@stoneenergy.com
greatmre@aol.com
ekle1959@gmail.com

Shell

Consultant
Chevron
Reservoir Frameworks LLC
McMoRan Exploration Company
Shell

504-728-0229
504-947-8495
985-773-6725
985-630-6898
504-582-4510
504-425-6214

susan.waters@shell.com
bootscon@aol.com
dbalcer@chevron.com
earlcumming@bellsouth.net
elizabeth_mcdade@fmi.com
gregory.janevski@shell.com

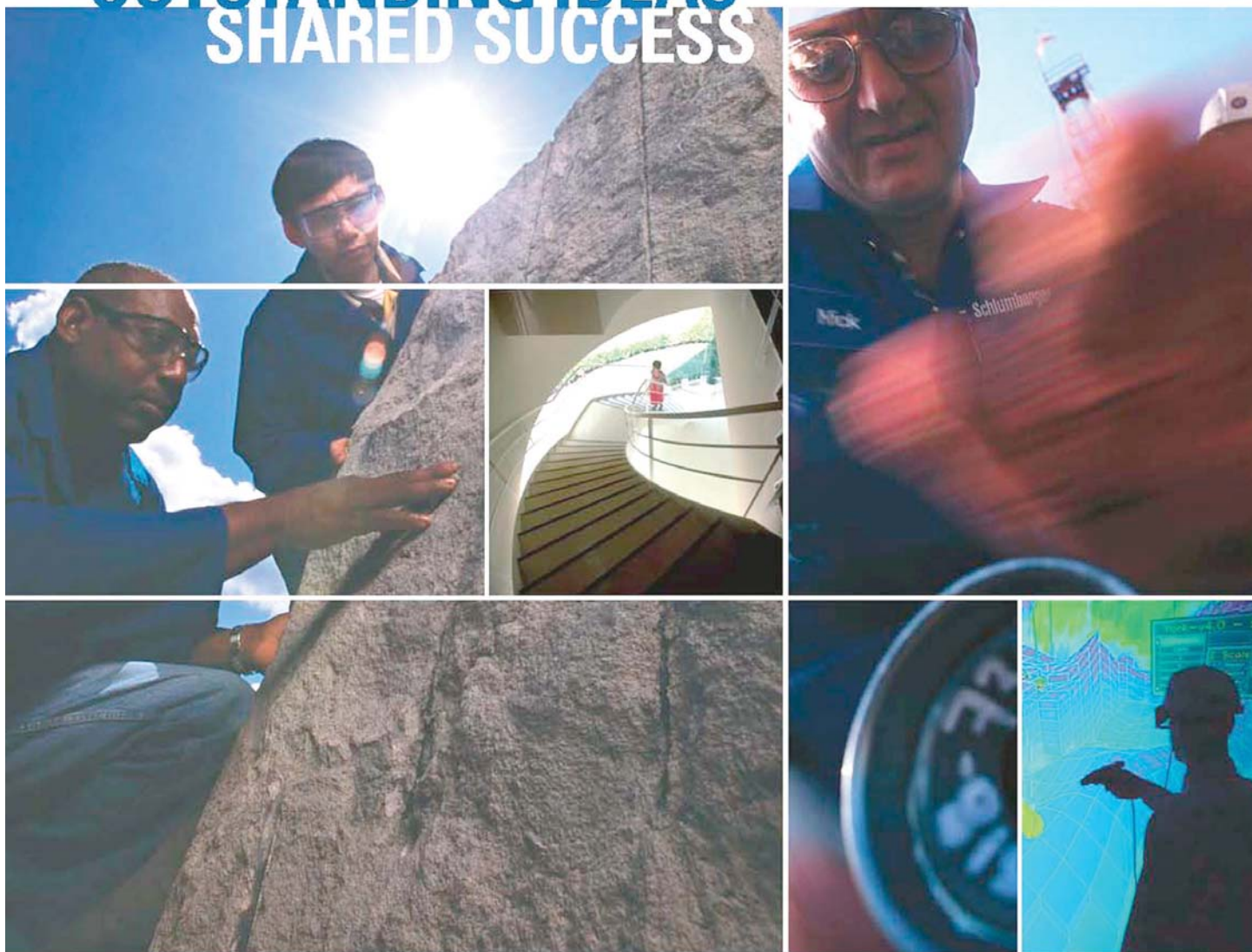
BOEM

Haland Energy Partners
Shell
Moses Petroleum Consulting, L.L.C.
Chevron NA E&P Co.

504-756-6452
618-975-0813
504-425-8936
504-616-6511
716-868-8656

chatamian@gmail.com
josiahh@halandenergy.com
bruce.logan@shell.com
philip_moses@hotmail.com
danamariogeo@gmail.com

OUTSTANDING IDEAS SHARED SUCCESS



WHAT CAN MILLIONS OF IDEAS, thousands of patents, and hundreds of nationalities deliver? Success. Listening to the ideas of our clients and colleagues around the globe has made Schlumberger the world's leading technical services company. Your experiences are catalysts for our innovation.

Schlumberger invests in a worldwide community of research and development centers—from Boston to Dhahran, Beijing to Moscow, Stavanger to Cambridge—encouraging our brightest minds to find new ways to improve efficiency, productivity, and safety, every day.

Through our commitment to technology research and the support of our global network of local experts, Schlumberger is leading the way into the future.

www.slb.com

Schlumberger



March 2 NOGS Luncheon Presentation

☆☆☆ at the Holiday Inn Superdome ☆☆☆



Seismic Investigations of Gas Hydrates

(and a brief description of other ongoing work at NRL)

Presented by

Warren T. Wood

(with significant contributions from colleagues

Joseph Gettrust, Richard Coffin, Ginger Barth,

David School, Paul Stoffa, and Mrinal Sen)

U.S. Naval Research Laboratory

Stennis Space Center

Mississippi



ABSTRACT

Gas hydrate was first identified in nature using seismic reflection techniques in the late 1970s, via the familiar bottom simulating reflectors (BSRs). Since then, gas hydrates have been investigated with a number of different seismic systems, including NRL's Deep Towed Acoustic Geophysics System (DTAGS). The nature of the gas and gas hydrate accumulations that manifest as seismic reflections or sound speed anomalies has also been the focus of significant efforts in rock physics, with the ultimate goal of inverting seismic reflection data for quantitative estimates of the concentration of gas hydrate. While this ultimate goal still eludes us, significant progress has been made in combining rock physics innovations with seismic inversion, such that we can better constrain the possible amounts and distribution of gas and gas hydrate from seismic data. Applying some of these techniques to data from the Bering Sea has provided detailed images of the distributions of gas and gas hydrate around the vertical conduits known as VAMPs (velocity-amplitude anomaly).

BIOGRAPHY

Warren T. Wood has been a geophysicist with the Naval Research Laboratory in Stennis Space Center, MS since 1993. He holds a BS degree in Physics from the University of Michigan, and MS and PhD degrees in Geophysics from the University of Texas at Austin. His specialties include high-resolution reflection seismic data processing and inversion, and his research interests include geophysical and hydrological aspects of seafloor phenomena, particularly marine methane hydrate systems. He is currently contributing to the rapidly developing field of seismic oceanography. He is a member of the American Geophysical Union and the Society of Exploration Geophysicists.

THE LUNCHEON RESERVATION DEADLINE IS FEB. 27 - CONTACT THE NOGS OFFICE

"And Looking Ahead . . ."

The next luncheon will be held on April 6. Our guest speaker, Dr. Zane Jobe, Shell, Clastics Research Team, will present "Channelized and Lobate Seafloor Analogs from Offshore Western Nigeria: Facies Architecture, Temporal Deposition Patterns, and Application to Turbidite Reservoirs." Contact the NOGS office at 561-8980 or use the PayPal link on the NOGS website (www.nogs.org) to make your reservation.

STRENGTH IN RESOURCES

Our history is rooted in exploration success in the natural resources business. With a growing portfolio of high-potential oil and gas targets, our future grows brighter.

www.fcx.com

 **FREEPORT-McMoRAN**

FCX
LISTED
NYSE

SEI[®]

STRATEGIC SPECULATIVE SEISMIC SURVEYS
GEOPHYSICAL DATA MARKETING & MANAGEMENT

LET US HELP YOU FIND ONE
WWW.SEISMICEXCHANGE.COM

NEW ORLEANS
DALLAS
HOUSTON
CORPUS CHRISTI
DENVER
OKLAHOMA CITY
TULSA

SEISMIC EXCHANGE, INC.
201 ST. CHARLES AVENUE SUITE 4300
NEW ORLEANS, LOUISIANA 70170-4300
PHONE: (504) 581-7153 FAX (504) 581-9591



Drill with confidence.

Diversified Well Logging, LLC brings the accuracy and expertise only a company with over sixty years in the oil and gas industry can deliver. We are your eyes and ears in the field, especially when it comes to deep water or high pressure, high temperature areas.

DWL offers 24-hour formation evaluation. We provide secure and customized real-time data communication, in-house research and development, and 24/7 on-call support for our equipment and our engineers.

Whether you have a 10-day job or a 110-day job, we provide the specialized attention you require. **Our experience means you can be confident in the safety and performance of your well.**



- *Formation Evaluation*
- *Geosteering*
- *Drilling Optimization*
- *Real-time Data Transmission*
- *Early Kick Detection*



Serving the Oil and Gas Industry for Over 60 Years

March 2015						
Sunday	Monday	Tuesday	Wednesday	Thursday	Friday	Saturday
1	2  Luncheon	3	4	5	6	7
8  CMST Gala	9	10	11	12	13	14
15	16	17 St. Patrick's Day	18  Board Mtg	19	20	21
22	23	24	25	26	27	28 
29	30	31				

March 2: NOGS Luncheon, Holiday Inn Superdome, 330 Loyola Ave. @11:30 am

Guest Speaker: Dr. Warren Wood, Naval Research Laboratory at Stennis Space Center, MS

Will Present: Seismic Investigations of Gas Hydrates

March 28: Celebrate spring at the New Orleans Lager & Ale (NOLA) Brewery 12:00 pm-3:00 pm

April 2015						
Sun	Mon	Tue	Wed	Thu	Fri	Sat
			1	2	3	4
5	6  Luncheon	7	8	9	10	11
12	13	14	15  Board Mtg	16  PLANO Exec Night	17	18 
19	20	21	22 	23	24	25
26	27  Golf Tourn.	28	29	30	Notes:	

April 6: NOGS Luncheon, Holiday Inn Superdome, 330 Loyola Ave. @11:30 am

Guest Speaker: Dr. Zane Jobe, Shell, Clastics Research Team

Will Present: Channelized and Lobate Seafloor Analogs from Offshore Western Nigeria: Facies Architecture, Temporal Deposition Patterns, and Application to Turbidite Reservoirs

April 18: FETCH! SuperSaurus Saturday, Louisiana Children's Museum

April 27: NOGS Golf Tournament, Money Hill Golf Course, Abita Springs, LA

New Orleans Geological Auxiliary News

"The objective of the Auxiliary is to promote fellowship among the wives of the members of the New Orleans Geological Society and to render assistance to NOGS upon request."



Celebrating 60 Years!



The February luncheon featuring Political Cartoonist Walt Handlesman has happened but due to LOG deadlines cannot be covered for this issue. Trudy Corona and Margie Conatser made all the arrangements. Look for all the details with pictures next month.

The Spring Social this year will be April 11th at the Bayou St. John home of Paul & June Perret.

Come and enjoy the beautiful sun setting over the bayou, good food and lots of fellowship. Susie Baker, Jean Jones, and Elizabeth Furlong, and hosts the Perrets, are planning to make this evening truly wonderful.

We are looking forward to the last event of our 60th year celebration with the Installation Luncheon, May 13th at the Café Adelaide, Loews Hotel. Debra Fein and Mary Ellis Hasseltine will be the committee for this luncheon.



Paul and June Perret

Our sincere sympathy goes to:

The Brumbaugh family on the death of Gene, January 25, 2015 and the death of our longtime NOGA member Mim, January 29, 2015.

NOGA member Sandy Green on the death of her husband, A.T., January 10, 2015.

The family of John Petrocco who died December 14, 2014, husband of Mary Petrocco, longtime NOGA member, who preceded John in death.

Longtime NOGA member Dot Edmund on the death of her husband, Dick, January 15, 2015.

Peggy Rogers, NOGS LOG

New Orleans Geological Auxiliary Membership Application

Name _____ Spouse's Name _____
Address _____ Home Phone _____
City, State, Zip _____ Cell Phone _____
Spouse's Company _____ Email _____

Dues: \$25 payable to New Orleans Geological Auxiliary
Please mail to Judy Lemarié, Treasurer, #2 Yosemite Dr., New Orleans, LA 70131

Why can Weatherford deliver more real time data at the wellsite than any other mudlogging company?

Tim has cabin fever.



**EXCELLENCE
FROM THE
GROUND UP™**

Our Global Operations Manager for Surface Logging Systems, Tim, is all smiles these days. That's because he and his team recently designed a new state-of-the-art mudlogging cabin. The spacious interior makes room for more laboratory services at the wellsite. Now exploration companies have access to more data in real time, so they can make better decisions faster. Combined with Weatherford's patented GC-TRACER™, IsoTube® AutoLoader™ and other Isotech technologies, it's one more way Weatherford Mudlogging is committed to Excellence from the Ground Up.

SURFACE LOGGING SYSTEMS

www.weatherford.com/surfacelogging
mudlogging.services@weatherford.com



Weatherford®

FETCH! SUPER SAURUS SATURDAY

**April 18, 2015
11:00 AM - 3:00 PM**



Volunteers Needed

**Shifts 11AM-1PM & 1PM-3PM
Contact Tom Bergeon at 504-832-3772
tom.bergeon@centuryx.com**



Petroleum Systems in “Rift” Basins

34th Annual GCSSEPM Foundation Bob F. Perkins Research Conference

Date: December 13–16, 2015

Location: The Omni Westside
Houston, TX

Conference registration information available in June 2015
@ http://www.gcssepm.org/conference/2015_conference.htm



reprocessed seismic data property of, and used courtesy of, Robertson GeoSpec, a CGG Company



Introducing the Fastest Log Printer in the Industry

At 11 inches per second, the NeuraLaserColor II operates seamlessly and requires no add-on software for automatically sensing top of form printing. Whether you are a service company printing thousands of logs a day or an exploration company looking for quality logs, the NeuraLaserColor II will change your expectations of well log printers.

- Record setting speeds - 11 inches per second
- Precision printing - On-the-fly length calibration
- Increased efficiency - 20,000 page yield toner
- Operational versatility - Native PDF support
- Hands free - Automated cut, feed and re-load

See More at:
www.NeuraLaserColor2.com



© 2014 Neuralog · www.Neuralog.com · sales@neuralog.com · 1.281.240.2525



The Louisiana Children's Museum's Early Learning Village

New Orleans City Park

The Louisiana Children's Museum (LCM) is in the process of impacting the GNO community in a grand way with a major new Early Learning Village campus in New Orleans City Park. A number of years in the making, LCM has designed the 58,000 sq. ft. space and is currently developing layout and exhibit details. The museum has raised a significant amount of public and private funding from major sponsors and will launch a public campaign in late 2015. LCM has signed a long term Cooperative Endeavor Agreement with New Orleans City Park. Also they were pleased to have received a significant gift from the Patrick Taylor Foundation in the amount of \$1 million dollars towards the museum's goals. LCM's ever exuberant CEO Julia Bland noted, "*construction*



will begin in early 2016 and the grand opening is anticipated for late 2017, just before the 300th Anniversary of New Orleans!"



LCM has a long standing impact on our local community. LCM opened their bright blue doors on Julia Street in the Warehouse District in 1986, two years after the World's Fair. The area is now an art haven with perhaps some of the exhibitors getting their start in the Art Lab at LCM. In 28 years, they have seen the area grow up around

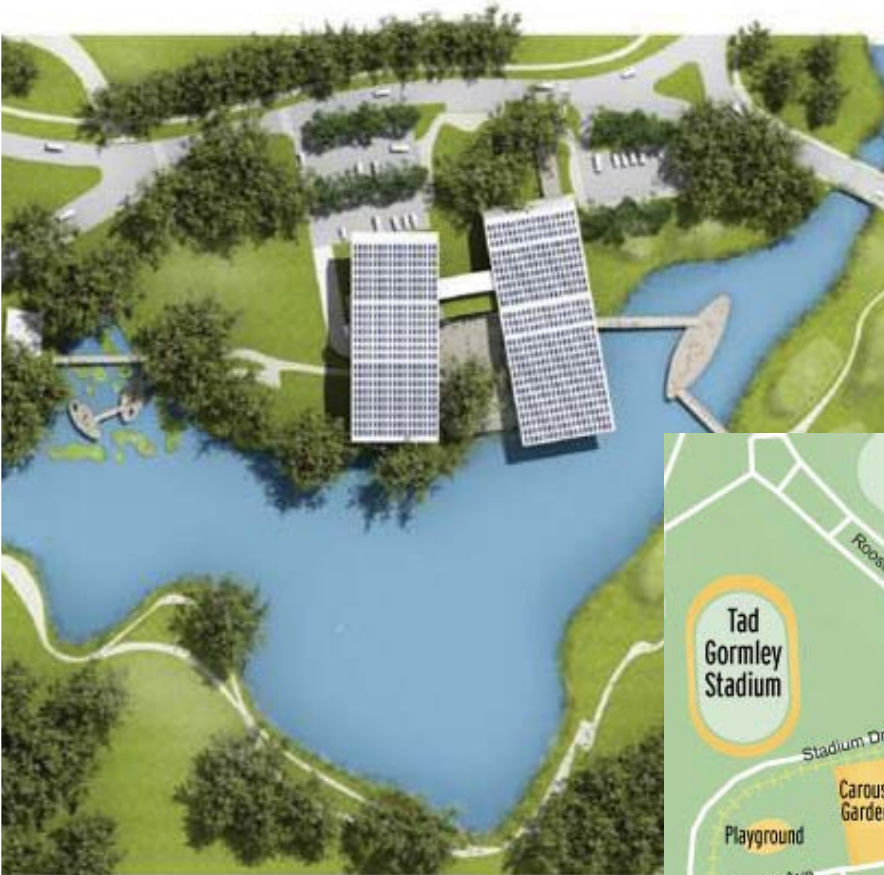
them and have been a vital learning resource for children on the local and regional level, as well as being a big

attraction for tourists visiting New Orleans. *122,000 people attended the Louisiana Children's Museum last year.*

The Louisiana Children's Museum Early Learning

New Orleans

The new City Park museum will be located northwest of the New Orleans Museum of Art lagoon. Guests will enter the museum from



NOGS has had a long standing relationship with the Louisiana Children's Museum. The museum has been such a great resource for science and the oil industry. Energy Day, summer camps

Going forward, LCM has a focus on science, the environment and permanent exhibits in the City Park.

We are proud to be involved with this great adventure. For a sneak peek, NOGS and SGS will be hosting the 2015 SuperSaurus event. We encourage you to consider volunteering, or bring your children, grandchildren, or friends. Again we are so excited about the Louisiana Children's Museum in City Park.

Tom Bergeon and Ed Picou
NOGS Museum Initiative

For more info: lcm.org/going

Children's Museum's Learning Village

City Park

located directly behind the Botanical Gardens and
Museum of Art on an 8 1/2 acre space located on the edge of a
lake, accessible from a bridge network over the lagoon.



**The museum will be incorporating
its ideal natural setting in many
learning experiences.**

The museum will contain a general area free to the public with various learning and reading resources. The main museum area beyond will include many displays regarding our area, culture, art and music, and many STEM (science, technology, engineering, and math) interactive exhibits.

This will be a world class museum!

Funding sources have included: state, federal and local government, local and national private individuals, corporations, foundations, and sale of the current Julia Street building.

Louisiana Children's Museum (LCM) dating back to 1998 when we held our first
great partner, opening their doors for great learning events to showcase geology,
and other special events have been fun-filled learning events.



**Focus on energy,
and discovery in
City Park Museum.**

those who want to get a sneak
Saturday on April 18th. Please
in and friends to the event.
Museum's Early Learning Village in



The Myles Companies of New Orleans

Jeff Spencerspencerj320@gmail.com

The Salt Company

Avery Island

The industrial development of south Louisiana's "Five Islands" salt domes began on Avery Island in 1862, though salt was processed from the island's salt springs many years earlier. Various individuals and companies operated salt works at Avery Island, including John Marsh Avery (1862-63), Chouteau and Price (1867-1870), and the American Salt Company (1880-86). The American Salt Company transferred their leases to the New Iberia Salt Company in 1886. In July, 1893, Myles and Company of New Orleans subleased the property and operated it until 1896. In 1895, the Avery family filed an annulment of the contract associated with the New Iberia and Myles companies' leases (The Times-Picayune, 11/1/1895). Myles and Company moved on to evaluate Weeks Island.

Weeks Island

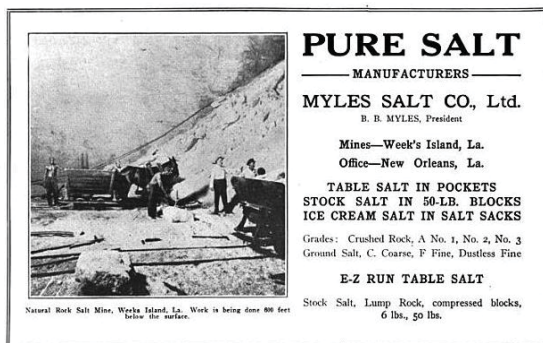
In the late 1800s, a few unsuccessful salt wells were dug at Weeks Island (also known as Grand Cote). With later success at Jefferson Island (1895) and Belle Isle (1896), "General" F. (Frederick) F. Myles took another look at Weeks Island. In March, 1897 drilling began at

Weeks Island and on July 25, 1897, salt was encountered at a depth of 276 feet in Myles' fourth well. A total of fourteen wells were drilled to further evaluate the extent of the salt.

The Myles Salt Company was organized in 1898. Additional salt delineation wells were drilled and in July a shaft was started near what had been determined to be the crest of the salt dome. Anthony F. Lucas (of Spindletop fame) had a contract with Myles and Company as the superintendent of the company's operation at the Avery Island mine. Lucas also worked for the Myles Salt Company at Weeks Island, but in 1898 the company filed a breach of contract suit against Lucas for delaying the operations at Weeks Island (The Times-Picayune, 6/16/1898).

The company developed a very successful salt mining operation at

Weeks Island. "We have 2800 acres of pure salt at Week's Island, which is from one to two miles thick. That means, to reduce to common terms, enough salt to supply the world for 10,000 years." (General Myles, in The Times-Picayune, 10/23/1900). Salt production began in March, 1902. The company's offices were initially located in the Whitney-Central Building in New Orleans with a warehouse at 410 S. Front Street. Later the offices were relocated to 1048 Constance Street.



LOUISIANA GEOLOGICAL SURVEY

REPORT OF 1907, BULL. NO. 7, PL. XV



FRONT VIEW OF THE MYLES SALT CO'S MILL, WEEKS, LA.

HARRIS PHOTO

In 1919, Eugene W. Mente (1857-1951) and Emanuel V. Benjamin Sr. (1886-1934) purchased all of the interests in Myles Salt Company. The original company name was retained by the new owners. The company completed a chemical plant at Weeks Island in 1926. In 1928, the Bay Chemical Company was chartered. The original officers included Emanuel V. Benjamin Sr. as president; Mente and Benjamin's son, Edward B. Benjamin Sr. (1897-1979) as vice-presidents. Bay Chemical Company shared the same Constance Street office address as Myles Salt Company. Myles Salt Company transferred the chemical plant to Bay Chemical Company in 1930.



Edward B. Benjamin Sr. served as the Myles Salt Company's president during the lengthy negotiations and subsequent leasing of the Weeks Island mineral rights to Shell Oil Company in 1945. These negotiations included the Bay Chemical Company. Another son, Emanuel Victor Benjamin, Jr. (1909?-1993) served as a vice president of the salt company.

Shell Oil leased offset mineral rights from the state of Louisiana and from the Smith family. In 1941, Shell's first well at Weeks Island was a dry hole. Shell completed the No. 1 Smith-State Unit well in 1945 as the discovery well for the Weeks Island oil field. Perforations in the No. 1 well were from 13,505-520 feet. A year later, the No. 2 well was completed at a depth of 13,788 feet. Both wells were claimed as the world's deepest oil production at the time. As Shell continued to develop the oil field, many wells were completed on the Myles lease. Shell sold the field to Meridian Resource Corporation in 1998. Meridian was acquired by the current operator, Alta Mesa Holdings, LP in 2010.

The Myles Mineral Company

The Myles Mineral Company was organized with \$500,000 of capital stock in 1909 to "develop gas and oil land." A 1912 company letterhead of the Myles Mineral Company shows a main office in New Orleans and a field office in Pine Prairie. Officers listed on the letterhead include F.F. Myles, president, B. B. Myles, vice-president, and H.M. Journee, secretary. The letterhead bears the captions, "mineral lands scientifically experted, bought, leased, and developed."

Pine Prairie

Before the Civil War, limestone was quarried from the Pine Prairie salt dome's caprock. The Myles Mineral

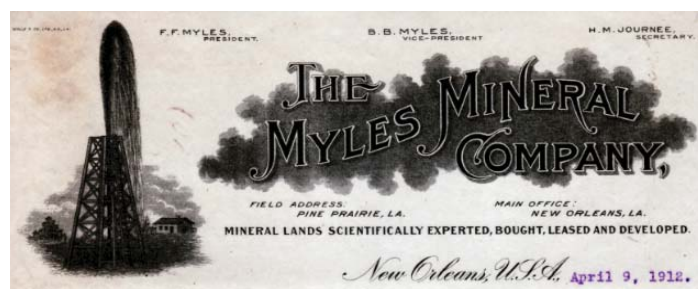
Company drilled their first well at Pine Prairie in 1909, which encountered a small amount of "asphaltic oil" before reaching salt at a depth of approximately 600 feet.

The Myles No. 8 Myles was the discovery well for the Pine Prairie oilfield. The well, drilled in 1912, tested at an estimated 1000-1200 barrels of oil per day at a depth of 1,225 feet, but sanded up after "a few minutes." Similar results were reported for two subsequent Myles' wells. Of the first 26 wells drilled

at Pine Prairie salt dome, half of those were operated by the Myles Mineral Company and drilled on Myles Mineral land. By 1920, only one oil operator, Price Oil Corporation, was active at Pine Prairie.

A 1920 geological report states that the Myles Company concluded that "they could not compete with other (salt) mines on account of the high freight rates." This report also suggests that the "Ledonis (sp) Land and Stone Company" (LeDanois) was the successor to Myles Mineral Company. A "Mr. Journee" is mentioned as the "president of this organization." No record has been found for when this transaction took place, but quite possibly the sale occurred after the death of Frederick (1915) or perhaps the surviving brother sold the mineral company when the salt company was sold (1919). H.M. Journee previously served as the secretary for the Myles Mineral Company. Mr. Journee would return to Pine Prairie in 1923 as one of the organizers of the Pine Prairie Development Company, with plans to drill for oil.

Evaluations of the potential for salt mining at Pine Prairie continued during the 1920s. Limestone was quarried for a few years during the 1930s. Economic oil production was finally established at Pine Prairie in 1941 with the completion of a well in a Cockfield sand at a depth of approximately 8200 feet. Subsequent drilling at Pine Prairie established production in Miocene through Eocene sands at depths ranging from 600-13,500 feet.



South Louisiana and Offshore Gulf of Mexico Exploration and Production Activities

LAFAYETTE DISTRICT, ONSHORE AREA

By Carlo C. Christina

The Office of Conservation, Lafayette District, Onshore Area, issued 21 permits to drill during the month of January 2014. Following are the most significant and interesting locations:

NEW LOCATIONS

In Cameron Parish, **Lacassine Refuge Field, (A)**, Shoreline Southeast has permitted its #14 Lacassine Co. B, a subsalt well to test the Tuscaloosa sands at a depth of 32,000 feet. It is located in Sec. 18, 12S-5W, 2 miles southwest of the McMoran the #1 Lacassane Co., a subsalt well which is drilling below 18,516 feet. It is also located 500 feet west of the Shoreline Southeast #13 which is drilling below 17,743 feet to test Miogyp sands at a depth of 18,700 feet. (248838)

Knight Resources will drill an interesting deep well in **Grand Bois Field, (B)**, Lafourche Parish, to test Cris I sands at 18,450 feet. The #1 ALM is located in Sec 19, 18S-20E. This field was discovered in 1981 but ceased production in 1999 after producing from Tex W sands between 11,600 feet and 12,700 feet. The deepest well in the field was drilled to 15,015 feet. This test has the potential for finding major reserves in Cris I sands. (248856)

Bison Energy has re-permitted its #1 SL 20781 in **Main Pass Block 35 Field, (C)**, to a proposed depth of 14,300 feet. Although the well is permitted in Block 35 Field, it is located 2 miles north of production in the field. (248855)

In St. Martin Parish, **Section 28 Field, (D)**, James A. Whitson, Jr. will drill the #1 Allemond in Sec. 66, 10S-7E, to a proposed depth of 13,215 feet to test Marg tex sands. Nearest production is 1½ miles to the northeast in a well which has produced more than 450,000 barrels of oil in 28 years. (248845)

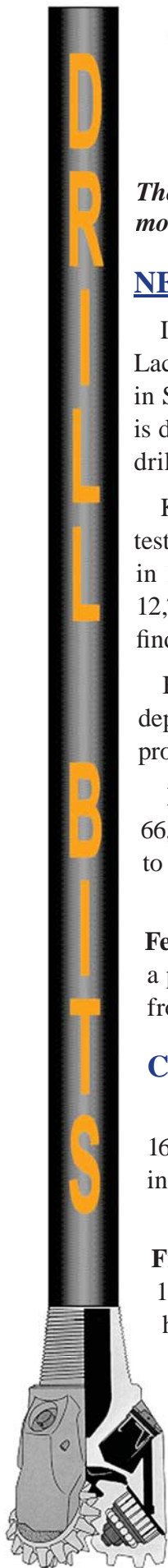
Swift Energy will attempt to extend Austin Chalk production 1 mile to the north in **South Burr Ferry Field, (E)**, Vernon Parish. The #1 Gasrs 13 is located in Sec. 1, 1S-11W and will be drilled to a projected depth of 20,821 feet in a 6,940 foot lateral leg. Currently, there are 10 wells producing from the Austin Chalk in the field. (248863)

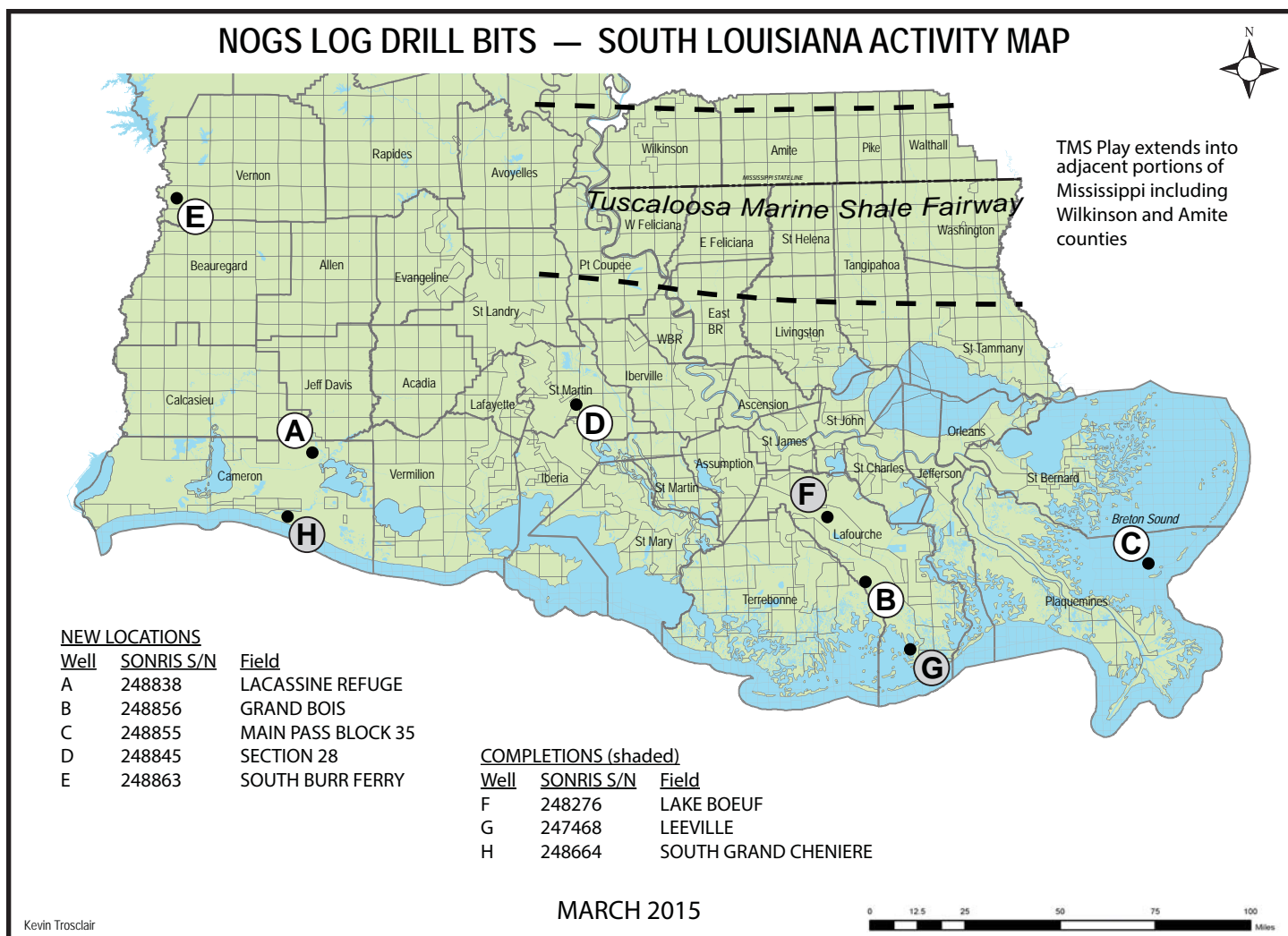
COMPLETIONS

In **Lake Boeuf Field, (F)**, Lafourche Parish, CX Operating has completed a gas well in flowing 168 BOPD and 3000 MCF through perforations 12,542 to 12,576. The #1 Bowie Lumber was located in Sec. 116, 15S-18E. Congratulations Doug C. (248276)

Shoreline Southeast has completed an excellent oil well on the extreme southwest flank of **Leeville Field, (G)**, Lafourche Parish, flowing 948 BOPD and 4825 MCF through perforations 18,964 to 19,020 feet. The #2 SL 20783 was drilled to a total depth of 19,470 feet in Sec. 31, 21S-22E, one-half mile west of the #1 SL 20783, which was drilled by Manti Exploration. As noted in my report dated March 2014, the #1 SL 20783 was drilled to a total depth of 19,203 feet where drill pipe was stuck. Subsequently, the well started flowing and the hole was lost. It was temporarily abandoned on August 18, 2013, and operations were turned over to Shoreline Southeast in October 2013. (247468)

In Cameron Parish, **South Grand Cheniere Field, (H)**, LLOX has plugged and abandoned the #1 Bravanec at a depth of 12,882 feet. The well was located in Sec. 13, 15S-6W, 1 mile southeast of current production. (248664)





OFFSHORE GULF OF MEXICO SHELF AND DEEPWATER ACTIVITIES

by Al Baker

During January 2015, the BOEM approved **72** Gulf of Mexico drilling permits. Of these, **18** were for shelf wells, and **54** were for deepwater wells. Of the total number of permits, there were only **2 new well permits** issued: 2 new wells situated on the shelf versus none in deepwater. Overall GOM permitting activity was 18.2% lower than in December 2014. Shelf permitting was down 14.3%, whereas deepwater permitting was down 19.4% since last month. These notable decreases are probably due to companies curtailing their drilling budgets as a result of the current depressed oil and gas prices.

The two shelf new development well permits were issued to **Tana Exploration Company** for their **Vermilion 284 #C-3** well and to **Arena Offshore** for their **West Delta 133 #F-4** well.

On January 30th, IHS-Petrodata reported that the Gulf of Mexico mobile offshore rig supply stood at **120**, which are 2 rigs greater than last month. The marketed rig supply consisted of **87** rigs, of which **67** were under contract. The contracted versus total rig supply utilization rate is **55.8%**, while the marketed contracted versus marketed supply utilization rate stands at **77.0%**. The marketed rig supply number reflects a decrease of 4 rigs in comparison to the number reported last month, while the contracted rig supply number decreased by 6 rigs during the same time period. In contrast, the December 2013 fleet utilization rate stood at 79.0% with 84 out of the 110 rigs under contract. It appears that more rigs have returned to the Gulf of Mexico just as the current regional rig market is declining and the reports of rigs being stacked or retired become more prevalent.

On January 30th, BakerHughes indicated that there were **49** active mobile offshore rigs in the Gulf, which is **73.1%** of the rigs under contract mentioned above. This active rigs number is **8** less than reported last month. The current active rigs count compares to 57 active rigs during the same period last year, representing a **14.0%** decrease in yearly rig activity.

The month of January was lacking in news-worthy items concerning recent discoveries, significant mergers and acquisitions, etc. With the drastic corporate budgetary adjustments taking place throughout the oil and gas business, it is anticipated that there will be less reportable good news to present in the near term.



Submitted by Tom Klekamp

Reinstated

Philip Moses, President of Moses Petroleum Consulting, LLC, 600 Brockenbraugh Ct., Metairie, LA 70005. He has a BS in geology (1972) and a BSc in International Relations (2011) from the University of London, and an MS in Petroleum Engineering (2001) from LSU. Phil has 45 years experience in petroleum geology, 33 of which are in the GOM/Deepwater. He is currently a lecturer in Petroleum Engineering at UNO. Philip and his wife Marly reside in New Orleans. Welcome back, Philip!

Active

Dana Smith, an earth scientist at Chevron's Northpark Covington campus, joins NOGS as a new member. She holds double degrees in Geoscience and Secondary Education (2011) from SUNY Genesco and a degree in Structural Geology from the University of Wisconsin-Madison. Dana lives in New Orleans.

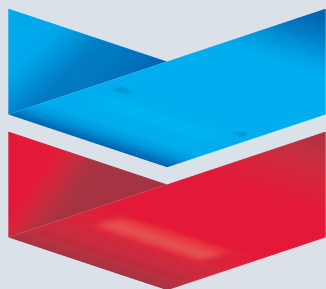
Christopher Hatamian, a new member, is a geologist with BOEM, 1201 Elmwood Park Blvd, New Orleans. He has a BS in Geology (2010) from LSU and an MS in geology (2013) from the University of Louisiana at Lafayette. While in Lafayette he worked as a geologist doing unitization work. Chris is an active member of AAPG. Born and raised in Kenner, he now resides in the Lakeside area of New Orleans.

Bruce Logan, geologist with Shell in New Orleans. He earned both his BS and MS in geology from the University of Texas – Austin. Bruce indicates he is interested in serving on our Field Trip Committee.

Student

Josiah Hulsey, a new student member, is a geologist with Haland Energy Partners, 400 Poydras St., New Orleans. Josiah earned his BA in Geology (2013) from Wheaton College and anticipates his MS in Geology from UNO in 2016. Josiah and his wife Courtney live in New Orleans.

Chevron



100 Northpark Blvd.
Covington, LA 70433

(985) 773-6000



LaBay

Exploration Co., L.L.C.

111 Veterans Memorial Blvd.
Suite 1550
Metairie, Louisiana 70005

Office (504) 371-5967
Fax (504) 371-5969

www.labayexploration.com

LLDG

exploration



Covington Office

1001 Ochsner Blvd., Suite 200
Covington, Louisiana 70433
p: 985.801.4300
f: 985.801.4796

Houston Office

CityCentre Three
842 W Sam Houston Pkwy N
Suite 600
Houston, Texas 77024
p: 281.752.1100
f: 281.752.1199

Scott Office

814 S. Frontage Rd.
Scott, LA 70583
p: 337.408.4000
f: 337.408.4049

www.llog.com

WELLSITE GEOSCIENCE SERVICES



When time is money, Wellsite Geoscience is money well spent.

Whether you're exploring a basin, producing a well or completing a shale play, time is money. That's why Weatherford Laboratories brings a suite of formation evaluation technologies right to the wellsite. Utilizing mud gas and cuttings, these technologies provide detailed data on gas composition, organic richness, mineralogy and chemostratigraphy in near real time. As a result, operators now have an invaluable tool to assist with sweet spot identification, wellbore positioning, completion design and hydraulic fracturing. We call it Science At the Wellsite. You'll call it money well spent.

SCIENCE AT THE WELLSITE™

www.weatherfordlabs.com



Formation Evaluation | Well Construction | Completion | Production

©2013 Weatherford. All rights reserved

19th Annual Gulf of Mexico

Deepwater

Technical Symposium

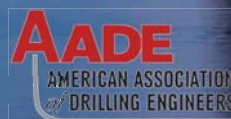
August 18-20, 2015

Hilton New Orleans Riverside
New Orleans, Louisiana

www.deepwaternola.org

Call for Abstracts!

Abstracts submission deadline
April 24, 2015



NORTH AMERICA KNOW-HOW

EXPERTS IN NORTH AMERICA SEISMIC



Download Case Study: www.globalgeophysical.com/NAM
or Contact us at NAM@globalgeophysical.com

North America. Our people know it. With hundreds of years of cumulative experience, our people have the know-how and capacity to get it done, no matter the job.

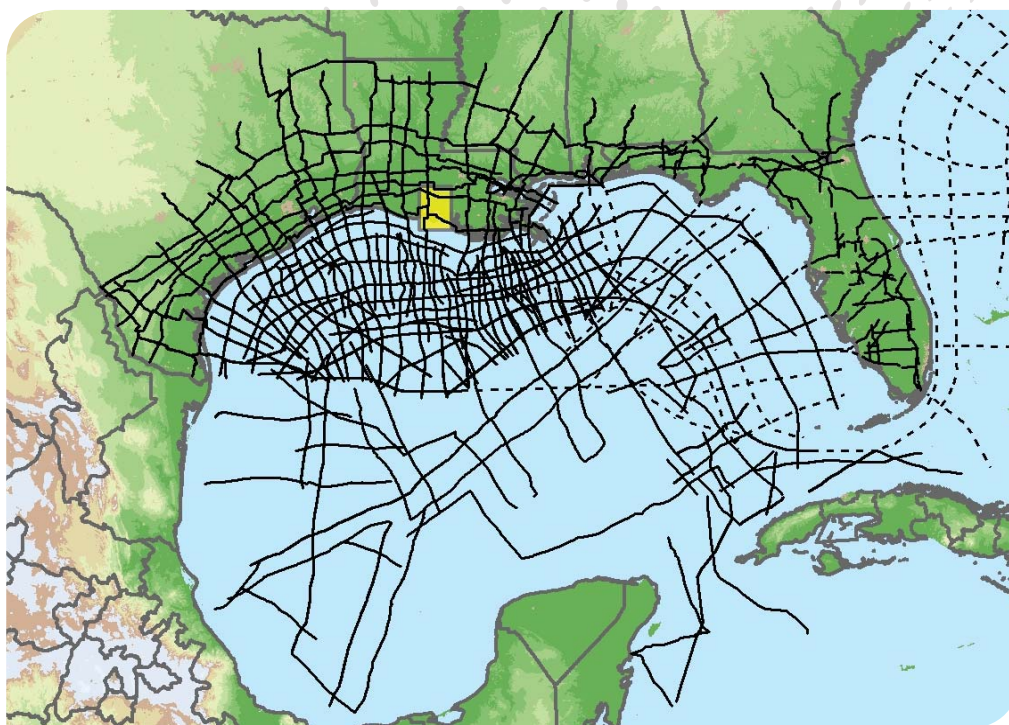
The efficiency and reliability of our crews are matched only by that of our technology. As the first company to go 100% nodal, we can offer total flexibility in terms of seismic survey design, program size and type of environment. Remarkably effective in all conditions, AutoSeis®, like our crews, delivers in any terrain, on every project. With the largest single inventory of nodal recording stations, we can record cost-effective data sets with high-density long offsets, rich azimuth, improved spatial resolution and increased signal-to-noise ratios.

Having worked in almost every major basin in the U.S., Global has proven successful across diverse terrains including arctic, mountain range, dense forest, farmland and urban environments. Explore the benefits of our North America expertise.

tel +1 713-972-9200
www.globalgeophysical.com

Global
Geophysical Services

Explore the Entire Gulf of Mexico



Position your company for the next 10 years of exploration with the most complete, modern time and depth-imaged data in the Gulf of Mexico. ION's interconnected dataset links the entire Gulf, from onshore to offshore deep water, from Texas to Florida and to Mexico. With over 40,000 miles (over 65,000 km) completed or in progress, and an additional 7,500 miles (over 12,000 km) planned for 2013 and beyond, no other data library provides as comprehensive a framework for understanding the Gulf of Mexico.

To learn more, visit iongeo.com/Gulf_of_Mexico

CONTACT

Ashley Garcia
Mobile: +1 281 781 1005
Email: ashley.garcia@iongeo.com

Alvin Rowbatham
Mobile: +1 832 372 2366
Email: alvin.rowbatham@iongeo.com

AREAS OF EXPERTISE

- Unconventional Reservoirs
- Challenging Environments
- Complex Geologies
- **Basin Exploration**
- Reservoir Exploitation



GEOVENTURES®

PETROLEUM GEOLOGY FOR NON-GEOLOGISTS

Sponsored by

The New Orleans Geological Society

Wednesday, April 15, 2015

8:30 am to 3:30 pm

Shell Auditorium Annex in the Shell Building

One Shell Square, 701 Poydras Street, New Orleans

COST: \$35.00 per participant

Course notes and mid-morning refreshments will be provided.

WHAT YOU WILL LEARN:

- Basic Geology
- How oil and gas are formed,
- What is an oil and gas reservoir
- Exploration and production tools and techniques
- How oil and gas wells are drilled and completed.

WHO SHOULD ATTEND?

- Anyone who works (or lives) with geologists or geophysicists
- Secretaries
- Landmen and land personnel
- Lease analysts
- Attorneys and Paralegals
- Draftsmen
- Engineers
- Technicians
- IT people and programmers



YOUR INSTRUCTORS AND FACILITATORS:

Duncan Goldthwaite, consulting geologist

Bob Branson, consulting geologist

Bruce Robertson, consulting geologist and geology professor, University of Southern Mississippi

HOW TO REGISTER:

1. PayPal using the NOGS Website www.nogs.org Payment Center. Scroll down to NOGS Special Events. Payments for multiple attendees can be made, and should be listed under the Instructions to Merchant.
2. By check for \$35.00, payable to the New Orleans Geological Society and mailed to: New Orleans Geological Society, 810 Union St., Ste. 300, New Orleans LA 70112

When registering, please give your name, mailing address, e-mail, telephone number and company affiliation, if any.

In Memoriam



Tom Blakey & Sheri Richardson

Thomas 'Tom' Blakey, an Army paratrooper who landed behind enemy lines early on D-Day to capture and successfully hold La Fièvre Bridge to keep Germans from sending reinforcements to Utah Beach, died Jan. 15; he was 94.

A native of Nacogdoches, Texas, Tom moved to New Orleans after World War II, had a successful career with Blakey's Log Service.

But World War II remained the defining, haunting experience of his life. After

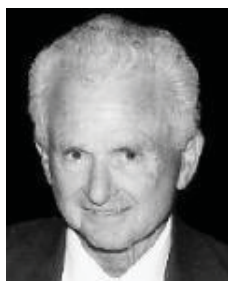
D-Day, he participated in Operation Market Garden and the Battle of the Bulge, during which he was pulled off the front line to be an aide to Lt. Gen. Lewis Brereton of the 1st Allied Airborne Army. He was named a *chevalier* (knight) in France's *Ordre national de la Légion d'honneur*. He returned to France eight times for the anniversaries of the D-Day invasion.

Upon returning to the United States, Tom settled in New Orleans and operated Blakey's Log Service, from 1946 to 1975. He was a member and staunch supporter of NOGS and the Auxiliary. Blakey's Log Service was located on the second and third floors of 822-1/2 Gravier St, which he sold in 1975 and moved away from New Orleans.

Eventually, Tom moved back to New Orleans and has been a volunteer at the National WWII Museum (formerly the National D-Day Museum) since its inception in 2000; he has volunteered over 13,000 hours.

A memorial service was held Jan. 19 in the U.S. Freedom Pavilion at the National World War II Museum. Please see the Sept. 2013 *NOGS LOG* for Sheri Richardson's article about Tom.

A T Green, Jr. of New Orleans, LA, passed away January 10. He was 82. Born in Joinerville, Texas, He is survived by his wife, Sandra Carter Green, and three children by his late wife Annette Green. He attended Texas A&M University where he was in the Corps of Cadets, and graduated in 1955 with a BS in Geology. He was an officer in the U.S. Army Reserves. An independent geologist for 44 years, he began his career with UNOCAL and was with Superior Oil before forming Green Exploration (GEX), specializing in South Louisiana prospects. He was a member of the New Orleans Geological Society and the AAPG. AT was instrumental in establishing the national Society of Independent Professional Earth Scientists and former national president of SIPES. He was a frequent participant in the New Orleans Chapter of SIPES. In 1984, he received the Distinguished Service Award from the GCAGS for his contributions to the oil and gas industry. On January 17th a funeral mass was held at Trinity Episcopal Church in New Orleans. Memorials may be directed to: Wounded Warrior Project, P O Box 758517, Topeka, KS 66675.



John Petrocco passed away on Sunday, December 14, 2014, at the age of 89. He was the husband of the late Mary Petrocco. Born and raised in Colorado, he served in the U.S. Army during World War II. John was awarded a Purple Heart with an Oak Leaf Cluster (ETO). He graduated in 1950 from Colorado School of Mines with a degree in Geophysical Engineering, where he played football. John worked for SOHIO, Kerr McGee, Florida

Gas Exploration, and Ansythe Exploration. He was a member of the New Orleans Geological Society, the SEG, SIPES, and SGS. A private memorial service was held in Marble, Colorado.



Eugene 'Gene' Brumbaugh was born in Altoona, Pennsylvania in 1924. He was married to Miriam "Mim" Brumbaugh, (See below) In 1942, he enlisted as an Aviation Cadet in Pensacola, Florida, completing flight training just as World War II ended. He returned to Juniata College, graduating in 1946 with a BS in Physics and Mathematics. His work toward an MS in Geology at the University of Colorado was interrupted when he took a job with Shell Oil in 1946 where he soon became party chief of seismic crews in California and Montana. He supervised crew operations and interpretation in several basins and locations in the western US. In 1968, he was assigned to New Orleans working the GoM, Atlantic offshore, and Gulf Coast onshore. He retired in 1981 and for the next 40 years, Gene consulted on data acquisition, processing, and interpretations.

Gene was a Past-President of NOGS (1999-2000), the SEG (1982-83) and the SGS Technical Program Chairman of the 40th and General Chairman of the 49th annual SEG meetings. He was also a member of the AAPG, SIPES, and EAGE.

Gene always made quality time with family and friends a priority. Gene and Mim loved to entertain. Gene was always up for an adventure. He loved to learn something new and make new friends. Gene was a mentor to many young people. Memorial donations for Gene may be directed to the National Parkinson Foundation, Gift Processing Center, PO Box 5018, Hagerstown, MD 21741-5018

Sadly and unexpectedly, **Miriam 'Mim' Brumbaugh**, Gene's wife of 68 years, passed away on February 6th in Pensacola, four days following the memorial service for Gene. For many years Mim was very active in the New Orleans Geological Auxiliary (NOGA). She joined NOGA in 1988 and was on many committees and hosted the 1999 Spring Social. She was NOGA Treasurer (1993-95), 1st Vice President (1995-96), and President (1996-97).



Richard A. "Dick" Edmund passed away January 15, 2015. He was born in Jefferson Co., Iowa on January 14, 1927. Dick is survived by his wife, Dorothy "Dot," three children, and three grandchildren. After graduating from high school in 1945, Dick enlisted in the Army Air Corps., and eventually served one year in the Army of Occupation in Japan after WWII. Following service, Dick graduated in 1950 from Augustana College with a BA in Geology. In 1951, he received his MA in Geology from the University of Iowa. He was an exploration geologist for the next 45 years working in Shreveport, Oklahoma City, Jackson, and finally New Orleans (1965-98). Dick was a Past-President (1986-87) of the New Orleans Geological Society. He was a member of AAPG since 1952, a Certified Petroleum Geologist and a member and Past-Chairman of the SIPES-New Orleans Chapter. He retired in 1998 and in 2006 moved from New Orleans to The Buckingham retirement community in Houston, TX. On January 22, 2015, a memorial funeral service was held at the Geo. H. Lewis and Sons Funeral Home in Houston. Memorial donations may be directed to The New Sweden Chapel, care of Marilyn Quick, 1014 Hillcrest Drive, Fairfield, IA 52556, for preservation of the Edmund family's original church and cemetery, a historic site in Iowa.



Proceeds from this event
will go to the
Children's Museum Initiative
on the north and south shores.

presents the
2015 Annual Golf Tournament

Money Hill Golf Course

Abita Springs, LA

Monday, April 27th



Format: 4-person scramble
with shotgun start at High Noon.

**Post tournament dinner sponsored by
Diversified Well Logging**

Registration opens at 10:00 a.m.
with Brunch served until tee time.

Price includes green fees, cart, range balls, food & drinks,
flight, prizes, and two Mulligans.

What else could you possibly ask for?

Costs:

\$140/individual • \$650/corporate • \$85/students

Hole sponsors are \$125

Donations of any kind are welcome!

TOURNAMENT REGISTRATION APPLICATION ON FOLLOWING PAGE

Louisiana Geoscientist Licensing

Did You Know...
that each NOGS Luncheon
you attend counts for
ONE HOUR OF
CONTINUING EDUCATION?

Everyone being licensed as a geoscientist in Louisiana has to complete 15 hours of continuing education each year and each NOGS luncheon counts for one hour. As part of the auditing process by the state board (LBOPG), proof of attendance will be required. There will be receipts available at the luncheons that will indicate the speaker and content. Annette or the treasurer will validate the receipt for you.

CHILDREN'S MUSEUM
OF ST. TAMMANY

Celebration

A TREASURE ODYSSEY

Sunday, March 8, 2015

6 PM TO 10 PM • CASTINE CENTER

ENTERTAINMENT: Groovy 7, Culinary Showcase,
Zoë's Desserts, Raffle, Live and Silent Auctions

GENERAL ADMISSION TICKET: \$100
RESERVED TABLE FOR EIGHT: \$1,200

For information, visit
cmstkids.org, email
celebration@cmstkids.org,
or call 504.615.8859.

Please register early!

This event always fills up and we are limited to only 120 players.
Remember you are not registered until NOGS has received payment and you are confirmed by Annette.

Make sure you supply your handicap or a score that typifies a set of rounds of golf
over recent time no greater than 2 years in the space provided.

We need volunteers!

If you can help out, you will be treated to a day of fun, food, and be eligible for some door prizes.

Donations of any kind are welcome!

FOR REGISTRATION, DONATIONS, OR TO VOLUNTEER, CONTACT:

Annette Hudson: 504-561-8980 or annette@nogs.org

Send cash or check (payable to NOGS):
NOGS Office • 810 Union St.
Suite 300 • New Orleans, LA 70112



Credit cards accepted with PayPal:
<http://nogs.org/payment-center/>
scroll down to NOGS Special Events

Name _____ (_____ Handicap) Phone _____ @ \$140 each (\$85 for students)

Company _____ Email _____

Team Member Names:

_____ (_____ Handicap) _____ (_____ Handicap)

_____ (_____ Handicap) _____ (_____ Handicap)

_____ (_____ Handicap) _____ (_____ Handicap)



610 E. Rutland St.
Covington, LA 70433
985.898.3577

Jack M. Thorson
Eric C. Broadbridge
Raymond W. Stephens
J. Daryl Gambrell



Anthony Catalanotto
President

**Geological
Geophysical
Land**
Drafting & Graphics

3349 Ridgelake Drive • Suite 202
Metairie, LA 70002
Office: (504) 836-2882
Fax: (504) 836-2877
Cell: (504) 481-7291
E-Mail: geodraft@bellsouth.net
Website: www.geodraftinc.com

NOGS

NEEDS YOUR ACTIVE MEMBERSHIP IN AAPG!

RENEW OR JOIN TODAY!

Collarini Energy Staffing, Inc.

Facilities • Drilling • Production • Reservoir Engineering
Land and Legal • Geosciences • Information Technology
Health and Safety • Management • Supply Chain
Accounting • Administrative Support



Full-Time and Temporary Personnel

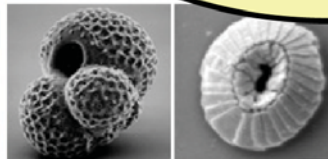
Energy Trading • Civil Engineering • Executives
Human Resources • Instrument and Electrical
Engineering • Marine Engineering • Project Management
Technical Writing • Sales and Marketing

10497 Town and Country Way, Suite 950, Houston, Texas 77024

Telephone: (832) 251-0553

www.collarini.com

DOMESTIC AND INTERNATIONAL BIOSTRATIGRAPHIC SERVICES



6619 Fleur de Lis Drive
New Orleans, LA 70124
(504) 488-3711

www.paleodata.com



Complete wellsite paleo services

**Supported offshore GoM and
onshore LA paleo databases**

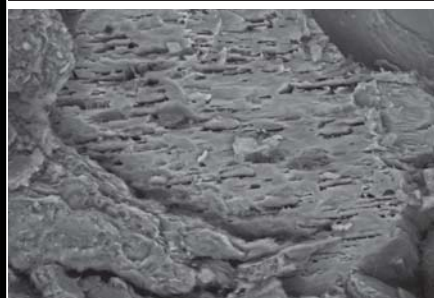
**Integrated foram/nannofossil
analyses**

**In-house sample preparation
lab for quality-monitoring
and efficiency**

**Comprehensive depositional
history study of the Gulf Basin
based on 200,000+ well data
analysis**



ROCK SOLID SERVICE



www.corelab.com
337-837-8616

© 2013 Core Laboratories.
All rights reserved.



**LAFAYETTE
GEOLOGICAL
RESEARCH
CENTER, LLC**

201 Heymann Blvd., Suite 33 • Lafayette, LA 70503
Tel: 337-233-8197 • Fax: 337-233-8177

COVERAGE:

Louisiana / Federal / State Offshore
• Multi State Geo Tech Services • Completion Data
Production Data • Well Logs • Maps

~ MEMBERSHIPS AVAILABLE ~
The Industry's Premier • Well Data Center

orders@lafayettegrc.com

CALL OR EMAIL TODAY FOR MORE INFORMATION!

THE NEW ORLEANS GEOLOGICAL SOCIETY MEMORIAL FOUNDATION, INC.

The Memorial Foundation is an IRS Tax Exempt Code #501(c)(3) organization. The Federal I.D. is 72-1220999. Please consider making a donation to the Foundation. Your individual support in any amount will help meet the IRS Guidelines for our Foundation. Thanks!

\$10,000

Gibbet Hill Foundation

*In Memory of Steve & Marion Millendorf, William J. Prutzman,
Roger G. Vincent, Ron Youngblood and Uno Numella*

\$6,000

NOGS Golf Tournament 2014

In Memory of Bill Craig

\$1,000

Exxon Mobil Foundation

Matching Gifts Program

Mr. Armour C. Winslow

In Memory of Rita Menzel Winslow and Lawrence C. Menconi

\$500

Mr. Reuben J. Klibert, Jr.

\$250 to \$499

Mr. Carlo C. Christina

*In Memory of Al Gilreath
In Memory of John C. "Jack" Langford*

Trudy and Charles Corona

*In Memory of Dick Edmund, AT Green,
Jack Langford & John Petrocco*

Mr. Lawrence B. Eustis

In Memory of John C. "Jack" Langford

Mr. Charles W. Holman

Mr. Kenneth Huffman

In Memory of James E. Rolf, Jr.

Paleo-Data Inc.

*In Memory of T. Wayne Campbell,
Peggy Campbell & John Dunlap*

Jeremiah N. and Tavia L. Prouhet

Mr. Arthur S. Waterman

In Memory of Peggy M. Campbell

FONO FUND

The FONO Fund accepts contributions that are invested and the income dedicated to assure sufficient financial resources will always be available to maintain the NOGS business office. Contributors are reminded that donations to the FONO Fund are not covered by the IRS 501(c)(3) tax exempt classification and should be reported as a business expense on your IRS tax report.

\$500

Mr. Reuben J. Klibert, Jr.

UP TO \$249

Mr. David E. Balcer

Mr. Joseph E. Boudreaux

Mr. Hilary James Brook

Ms. J. Sybil Callaway

Mr. Anthony Carollo, Jr.

Mr. John Dombrowski

Mr. Merle J. Duplantis

Mr. Dwight Easterly

Mr. Richard A. Edmund

Mr. Michael N. Fein

Mr. Duncan Goldthwaite

Mr. Bernard L. Hill, Jr.

Mr. Kenneth Huffman

Mr. Paul Jurik

Mr. Louis Lemarié

Mr. H. David Lynch

Ms. Jeannie F. Mallick

Mr. George M. Markey, Jr.

Mr. James A. McCarty

Ms. Margaret M. McKinney

Mr. Robert G. Murphy

Mr. Richard A. Olsen

Mr. Edward B. Picou, Jr.

Mr. Rudolf B. Siegert

Mr. Bryan P. Stephens

Mr. David M. Tatum

Mr. William M. Whiting

Ms. Frances A. Wiseman

UP TO \$249

Mr. Woods W. Allen, Jr.

In Memory of William C. Ward

Mr. Randall W. Altobelli

In Memory of Richard Saunders

Mr. Robert J. Ardell

In Memory of Ken Masters

Bob and Benjie Branson

In Memory of John C. "Jack" Langford

Ms. J. Sybil Callaway

Mr. Arthur F. Christensen

Beverly & Carlo Christina

In Memory of Peggy M. Campbell

Mr. James S. Classen

In Memory of John C. "Jack" Langford

Mrs. Alma Dunlap

In Memory of Peggy M. Campbell

Mr. Merle J. Duplantis

Mr. Michael N. Fein

Mr. Sherwood M. Gagliano

Mr. Mark J. Gallagher

Mr. Bernard L. Hill, Jr.

In Memory of Dr. William W. Craig

Mr. Jeff Jandegian

Mr. Paul Jurik

Lake Terrace Women's Club

In Memory of Peggy M. Campbell

Mr. H. David Lynch

Ms. Jeannie F. Mallick

Mr. Joseph H. McDuff

Ms. Margaret M. McKinney

Mr. Paul C. McWilliams

Mr. Robert G. Murphy

New Orleans Geological Auxiliary

In Memory of Mrs. James W. Swaney, Jr. (Gwenn)

In Memory of Mrs. Lawrence B. Eustis (Tatjana)

Mr. Richard A. Olsen

In Memory of John C. "Jack" Langford

Mrs. Teresa O'Neill

In Memory of Brian O'Neill

Mr. Edward B. Picou, Jr.

In Memory of John C. "Jack" Langford

Mrs. Earleen P. Rodan

In Memory of Peggy M. Campbell

Frank and Peggy Rogers

In Memory of Peggy M. Campbell

Shell Matching Funds

Mr. Rudolf B. Siegert

Dr. J. O. Snowden

Mr. David Sollenberger

In Memory of Shirley Sollenberger

Ms. Betsy M. Strachan Suppes

In Memory of Hubert C. Skinner

Ms. Candace V. Strahan

In Memory of James R. Strahan

Mr. David M. Tatum

Mr. William M. Whiting

In Memory of John "Jack" Henton

Ms. Frances A. Wiseman

In Memory of Steve Widdicombe

Contributions for both funds through February 3, 2015.
Donations are listed for one year.

<p>ANSYTHE Donald I. Andrews 504-887-3432</p> 	<p>CLASSEN EXPLORATION, INC. James S. Classen Looking for close in deals P.O. Box 140637 Boise, ID 83714 klassenllc@msn.com Bus. (208) 854-1037 Fax (208) 854-1029</p>
<p>THE BOEBEL COMPANY Oil and Gas Investments New Orleans, LA 70153 (504) 866-4313</p>	<p>D-O-R ENGINEERING, INC. 3-D and Geoscience Services 6161 Perkins Rd. Bus: (225) 765-1914 P.O. Box 80812 Baton Rouge, LA 70898</p>
<p>BOO-KER OIL & GAS CORP. Gray S. Parker 826 Union, Suite 300 Bus. (504) 581-2430 New Orleans, LA 70112 Fax (504) 566-4785</p>	<p>EDWARD B. PICOU, JR. Consulting Micropaleontologist - Retired 228 St. Charles Ave., Suite 1330 C Bus. (504) 529-5155 New Orleans, LA 70130 Res. (504) 282-3096</p>
<p>C & R EXPLORATION, INC. Carlo C. Christina Lawrence G. Ringham</p>	<p> GEM Consulting, LTD Michael Louis Merritt admin@gemconsultingltd.com</p>
<p>NOGS <i>Thanks Our Sponsors for Their Support!</i> \$2,500</p>	<p>Explore the ENTIRE Gulf of Mexico  Alvin Rowbatham 832-372-2366 • alvin.rowbatham@iongeo.com Ashley Garcia 281-781-1005 • ashley.garcia@iongeo.com www.iongeo.com/Gulf_of_Mexico</p> <p>PHELPS GEOSCIENCE LLC Onshore Gulf of Mexico Geology and Geophysics Prospect Generation and Evaluation Houston, TX jsfphelps@yahoo.com (281) 398-5208</p> <p> RAFIDI OIL & GAS, INC. Jaser N. Rafidi, President 4913 James Drive Office: 504.453.8580 Metairie, LA 70003 Res/Fax: 504.888.1661</p>
<p> Chevron  Diversified Well Logging  Seitel THE Onshore Seismic Data Company \$1,000</p>	<p>ROY C. WALTHER Petroleum Geologist 2421 Prancer Street Bus. (504) 392-8513 New Orleans, LA 70131 Res. (504) 392-9332</p>
<p> Hydrate Energy International  ION Geoventures  LaBay Exploration Co. LLC  Paleo Data Inc</p>	<p> STONE ENERGY www.StoneEnergy.com 625 E. Kaliste Saloom Lafayette, LA 70508 16800 Greenspoint Dr., Suite 225-S Houston, TX 77060 1100 Poydras St., Suite 1050 New Orleans, LA 70163</p> <p>ZOT OIL & GAS, LLC Jim Zotkiewicz Consulting, Evaluation, and Prospect Generation Metairie, LA 70002 Bus. 504.452.5446 Email: jimzot38@zotoil.com</p>

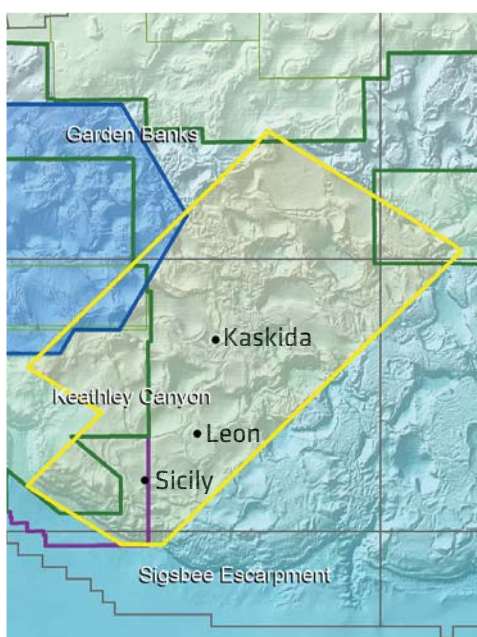
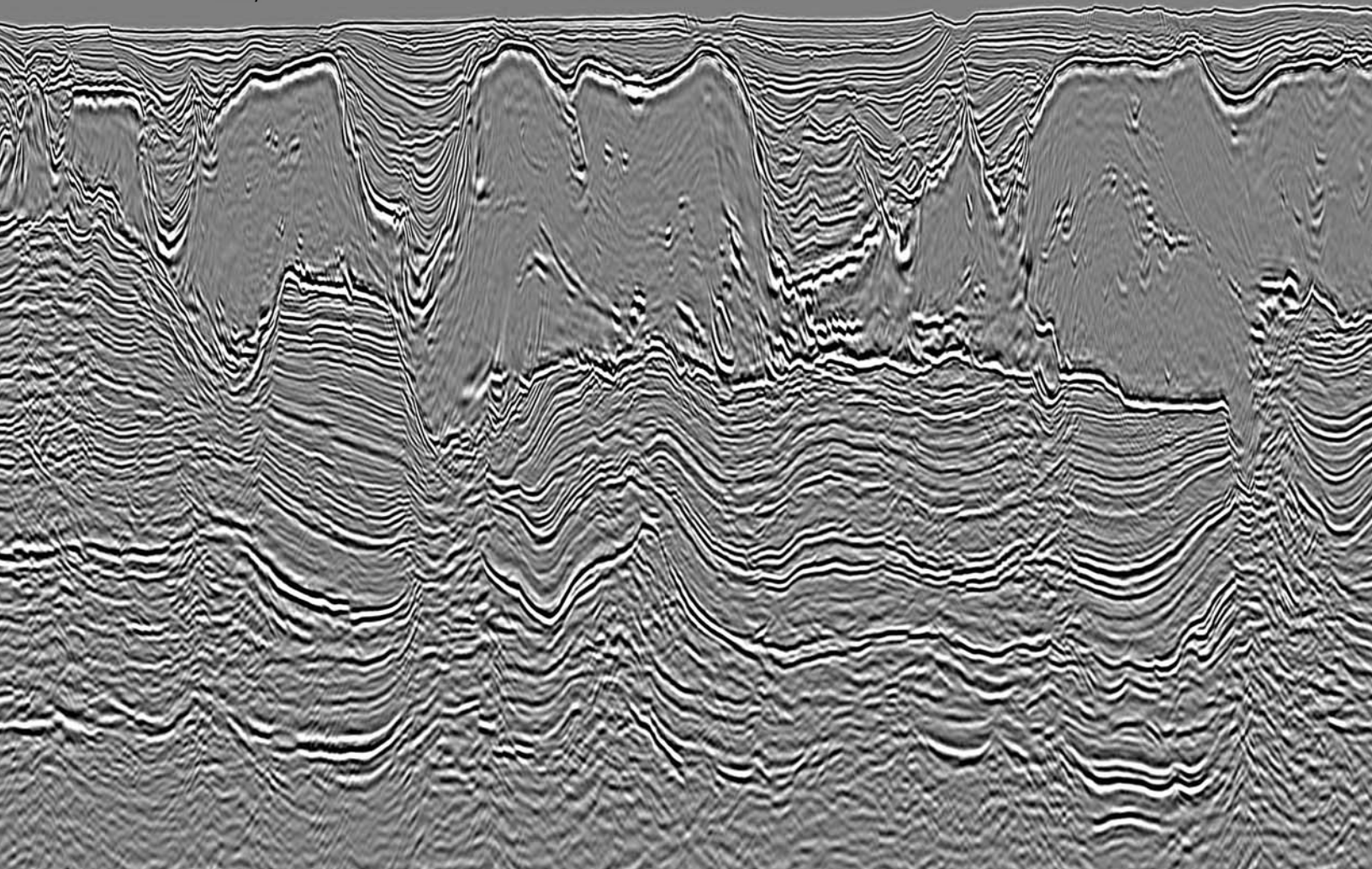


CENTURY EXPLORATION NEW ORLEANS, LLC

An independent gulf coast exploration, development and operating company

Three Lakeway Center, Suite 2800
3838 North Causeway Blvd.
Metairie, LA. 70002

Office: 504.832.3750
Fax: 504.832.3760
www.centuryx.com



TAP UNTAPPED POTENTIAL WITH SEISMIC CLARITY

Get the clearest images in Garden Banks/Keathley Canyon

- Using high-resolution hyperTomo
- Tilted transverse isotropy (TTI) velocity model building
- Anisotropic Pre-Stack Depth Migration (PSDM) with Reverse Time Migration (RTM)
- Sub-salt imaging is greatly enhanced
- Reduce your exploration risks
- Increase your chance of success

Crystal A and B - 580 OCS Blocks - Available Now

Please contact your PGS Account Manager today
+1 281 509 8000 or gominfo@pgs.com

A Clearer Image

www.pgs.com

MultiClient
Marine Contract
Imaging & Engineering
Operations





NEW ORLEANS GEOLOGICAL SOCIETY

810 Union Street, Suite 300
New Orleans, LA 70112-1430

PRESORT
STANDARD
US POSTAGE
PAID
MAIL TECH

www.nogs.org



MARINE PROPERTIES, LLC
BERKSHIRE EXPLORATION CO.

MONTE C. SHALETT, CPL, PRESIDENT

3030 Lausatz Street
Metairie, LA 70001-5924

BUS. (504) 831-7779
FAX (504) 831-8315

PCI

Paleo Control, Inc.

Houston, Texas
713-849-0044

Drilling Wells, Studies and Data Base

Loyd Tuttle

Frio, SE Texas

Bob Liska

Wilcox, S and SE Texas

Jim Thorpe

Miocene and Cam-Miogyp



creative graphics & printing, llc

*Proudly designing and printing the NOGS LOG since 2012!
Specializing in design and printing for the oil and gas industry and their affiliates.*

ID Tags • Numbered Raffle Tickets • Banners • Signs • Posters

Letterhead • Envelopes • Business Cards • Postcards • Newsletters • Custom Forms

Logo Design • Push Cards • Table Tent Cards • Custom Invitations • Magnetic Signs & Business Cards

T-Shirts • Cups • Coozies • Pens • Hats & Caps • Coasters • USB Drives

Full Service, Custom Graphic Design & Printing!

985.626.5223 • 985.630.7824 • kpbrown@bellsouth.net
or contact annette@nogs.org