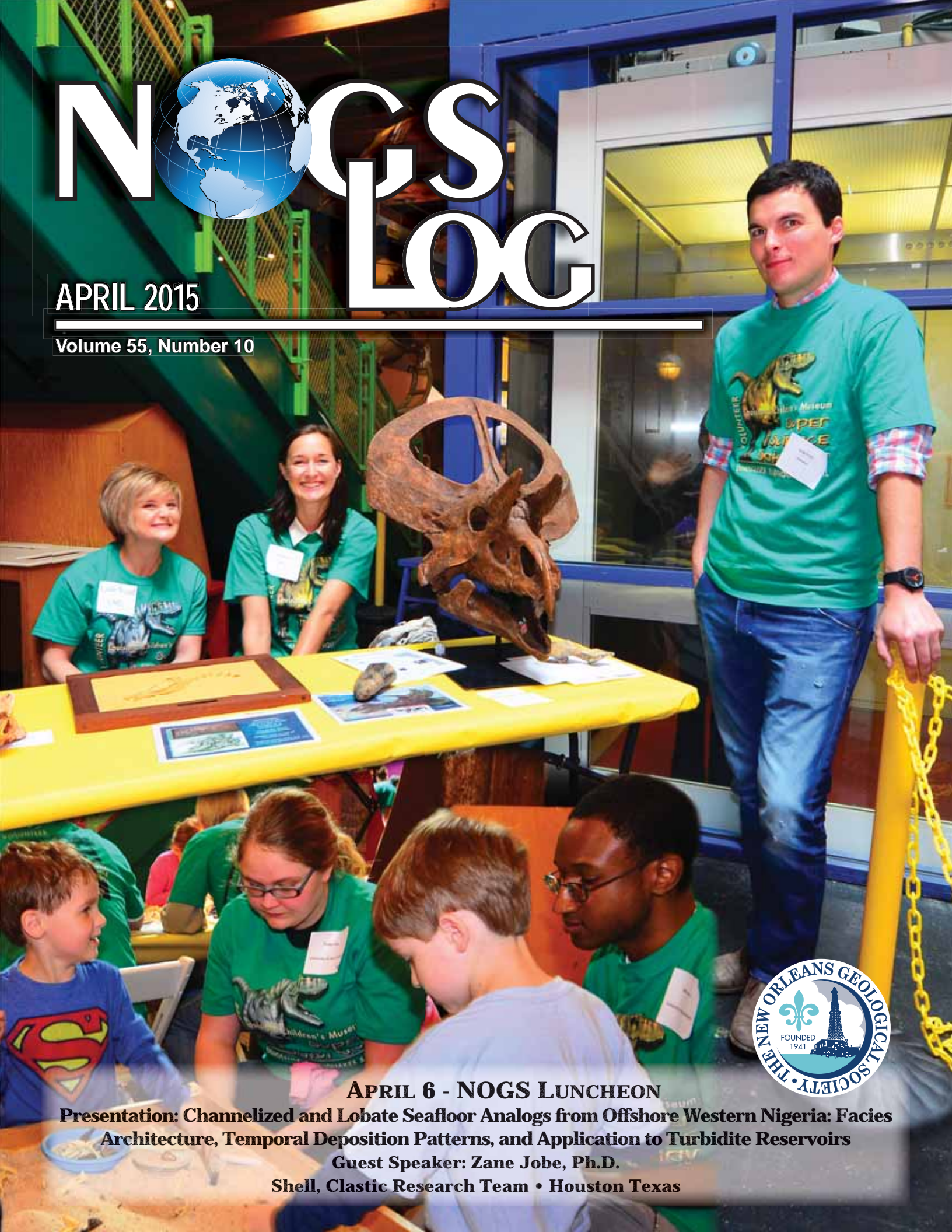


NOGS LOG

APRIL 2015

Volume 55, Number 10



APRIL 6 - NOGS LUNCHEON

Presentation: Channelized and Lobate Seafloor Analogs from Offshore Western Nigeria: Facies Architecture, Temporal Deposition Patterns, and Application to Turbidite Reservoirs

Guest Speaker: Zane Jobe, Ph.D.

Shell, Clastic Research Team • Houston Texas



Proceeds from this event
will go to the
Children's Museum Initiative
on the north and south shores.

presents the
2015 Annual Golf Tournament

Money Hill Golf Course

Abita Springs, LA

Monday, April 27th



Format: 4-person scramble
with shotgun start at High Noon.

**Post tournament dinner sponsored by
Diversified Well Logging**

Registration opens at 10:00 a.m.
with Brunch served until tee time.

Price includes green fees, cart, range balls, food & drinks,
flight, prizes, and two Mulligans.

What else could you possibly ask for?

Costs: \$140/individual • \$650/corporate • \$85/students
Hole sponsors are \$125

Donations of any kind are welcome!

FOR REGISTRATION, DONATIONS, OR TO VOLUNTEER, CONTACT:
Annette Hudson: 504-561-8980 or annette@nogs.org

TOURNAMENT REGISTRATION APPLICATION ON PAGE 24



Published monthly by the New Orleans Geological Society.
This issue was sent to press on March 25, 2015.

Interested in contributing to the NOGS LOG? Please submit items by the 1st Friday of the month to nogseditor@gmail.com. Advertising requests should contact the NOGS office at info@nogs.org.

IN THIS ISSUE

Regular Features:

On The Cover	3
From the Editor	3
From the President	5
NOGS Officers / Contacts	6
Upcoming Events & Activities	7
NOGS Luncheon Presentation	9
April & May Calendars	12
NOGA News	13
Drill Bits	20
NOGS Memorial Foundation	29
FONO Fund	29

Special Features:

NOGS 2015 Golf Tournament Announcement	2
Call for Volunteers! Supersaurus Saturday	14
15th Annual Super Science Saturday	15
Super Science Photo Collage	16-17
NOGS Welcomes	22
GNO Science & Engineering Fair	22
NOGS 2015 Golf Tournament Registration	24
Petroleum Geology for Non-Geologists Course	26
Info Tidbits	27

on the cover

Cover Photos Submitted by Jim Brooks, 2014

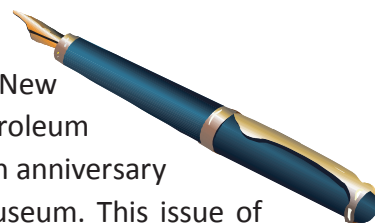
Super Science Saturday - Louisiana Children's Museum

The year marks the 15th year of Super Science Saturday. The event has been a major NOGS outreach program since 1999, in association with the Louisiana Children's Museum, our gracious host.

The interactive stations are thought-provoking and fun for children from ages 2 to 80. NOGS is so thankful for all the great volunteers that make everything possible, including geology students from the local universities.

Consider volunteering or attending April 18th. See our in-depth article on page 15 and a look back to the past in the photo collage on pages 16-17.

From the Editor



Welcome Spring! As this issue goes to print, we are getting excited about our New Geoscientist NOLA Brewery event occurring late March. We also have the Petroleum Geology for Non-geologist course in April (see ad pg 26 for more info) and the 15th anniversary of our involvement in the Super Saurus Saturday at the Louisiana Children's Museum. This issue of the *NOGS LOG* has a centerfold spread highlighting the event over the years. It's a great time to be a NOGS member! In our May *Log*, we will feature those who stepped up and accepted the challenge running for NOGS leadership positions. I send all those folks an early "Thank you!"

All the best,

Jana L. Proulx - NOGS LOG Editor

These nodes change everything.

With absolutely no cables,
there's absolutely no stopping you.



True cable-free seismic

Dealing with tons of cable will hinder any seismic acquisition, land or marine. That's why our exclusive, true cable-free ZNodal® systems pay such huge dividends in any environment.

Our lightweight, compact ZLand® system lets your crews work faster and much more safely while recording high-resolution data, even in the most challenging terrain.

Our ZMarine® system, also completely self-contained, deploys easily and safely, even in congested areas, to water depths of 3000m, which makes it ideal for 4D reservoir monitoring.

Welcome to a new world of seismic acquisition.



FairfieldNodal.com



From the President

In terms of seismology, March was the foreshock to our upcoming events scheduled for April, which should have you running for cover or running towards the action. Geologists usually run towards the chaos, so that means we should see a lot of each other these next few weeks.

We kick off the month with Dr. Zane Jobe presenting "Channelized and Lobate Seafloor Analogs from Offshore Western Nigeria" at our April 6th NOGS luncheon. Hopefully, everyone will be returning

from a good and safe holiday weekend and ready for intellectual discussion. Remember to sign up in advance from our new website.

Don't forget that there is the Petroleum Geology for Non-Geologists course being hosted by Duncan Goldthwaite and facilitators at One Shell Square on April 15th. I laughed to myself reading the flyer for the "Who Should Attend" because the first bullet is for anyone who works (or lives) with geologists or geophysicists. It makes me think of roommates I've had who were subjected to geologic cross-section drawings and maps strewn across the room, or who had to hear me and fellow geologists crack countless jokes using geology puns and wildly laughing at ourselves when we find the golden nugget witticism that is gneiss and clever. The bullet might need to be amended to include anyone who has geology friends!

Many of you who have attended luncheons, meetings, or opened your e-mails have seen the request for volunteers at FETCH! Super Saurus Saturday on April 18th at the Louisiana Children's Museum. **If you would like to volunteer for a shift or two, contact Tom Bergeon. Shifts are from 11 am to 1 pm and 1 pm to 3 pm.** It's an extremely fun and interactive event. Even if you can't volunteer, bring kids—your own, the neighbor's, or your friend's. Remember, this is not just for kiddos—it's informative for any age.

For all who have been waiting for nice weather to swing the irons, better start to practice now in anticipation of our Annual NOGS Golf Tournament on Monday, April 27th at Money Hill in Abita Springs, LA. There has been lots of chatter around this classic spring outing and the best aspect is that the proceeds will go to the Children's Museum Initiatives for both the north and south shores. This *NOGS LOG* and our website have details for registration, sponsoring, and volunteering. Plus this Monday is in between Jazz Fest weekends so if you know of other geologists in town, please extend the invite.

Happy Easter!

NOGS Office

Office Manager: Annette Hudson

Phone: 504-561-8980 • Email: info@nogs.org • Website: www.nogs.org

The office is located at 810 Union Street, Suite 300, New Orleans, LA 70112.

Correspondence and all luncheon reservations should be sent to the above address.



BOARD OF DIRECTORS

President	Kelli Hardesty
Vice President	Jennifer Connolly
Secretary	Bryan Banks
Treasurer	Arthur H. Johnson
President-Elect	David E. Reiter
Editor	Tavia Prouhet
Director 2015	William M. Whiting
Director 2016	Jim Zotkiewicz
Director 2017	J. David Cope

Company	Phone	E-mail
Environmental Resources Mgmt.	504-831-6700	kelli.hardesty@erm.com
Shell	504-728-6411	jennifer.connolly@shell.com
Terracon	318-450-5300	jbbanks@terracon.com
Hydrate Energy International	504-220-6208	artjohnson51@hotmail.com
Stone Energy Corporation	504-593-3623	reiterde@stoneenergy.com
Chevron	985-773-6737	tavia.prouhet@chevron.com
Consultant	504-947-8495	bootscon@aol.com
Zot Oil & Gas	504-452-5446	jimzot38@zotoil.com
Rising Natural Resources LLC	504-214-6754	greatmre@aol.com

COMMITTEE

	Chairperson
AAPG Delegates	William M. Whiting
AAPG Student Chapter	Derek Goff
AAPG Student Chapter	Alex Breau
AAPG Student Chapter	Rachel Carter
Advertising-Log	Kimberly Maginnis
Auditing	Chuck Holman
Awards	Michael N. Fein
Ballot	Arthur H. Johnson
Best Paper	Bay Salmeron
Entertainment	David E. Reiter
Environmental	Daisy Pate
External Affairs	Michael A. Fogarty
Finance and Investment	Arthur H. Johnson
Historical	Edward B. Picou, Jr.
Membership/Directory	David E. Reiter
New Geoscientists (NGNO)	Jeremy Prouhet
Nominating	Michael N. Fein
Non-Technical Education	Duncan Goldthwaite
Office Operations	Chuck Holman
Publications Sales	Edward B. Picou, Jr.
School Outreach	Thomas C. Bergeon
Special Projects	TBD

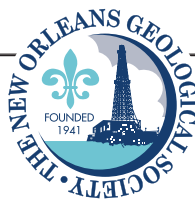
	Phone	E-mail
Consultant	504-947-8495	bootscon@aol.com
LSU		Dgoff3@lsu.edu
Tulane University	337-519-0978	abreaux1@tulane.edu
UNO	917-710-8021	r_carter@me.com
LLOG Exploration	985-801-4761	kimberlym@llog.com
Saratoga Resources	985-809-9292	charleswholman@bellsouth.net
W & T Offshore	504-210-8148	mikef@wtoffshore.com
Hydrate Energy International	504-220-6208	artjohnson51@hotmail.com
Chevron	832-854-6431	bay.salmeron@chevron.com
Stone Energy Corporation	504-593-3623	reiterde@stoneenergy.com
Pontchartrain Partners	504-862-1775	daisy.pate@gmail.com
Sylvan Energy, LLC	603-523-4808	mike.a.fogarty@gmail.com
Hydrate Energy International	504-220-6208	artjohnson51@hotmail.com
Consultant	504-529-5155	epicou@bellsouth.net
Stone Energy Corporation	504-593-3623	reiterde@stoneenergy.com
Chevron	985-773-6927	Jeremy.Prouhet@chevron.com
W & T Offshore	504-210-8148	mikef@wtoffshore.com
Consultant	504-887-4377	DGldthwt@aol.com
Saratoga Resources	985-809-9292	charleswholman@bellsouth.net
Consultant	504-529-5155	epicou@bellsouth.net
Century Exploration	504-832-3772	Tom.bergeon@centuryx.com

NOGS LOG STAFF

Editor	Tavia Prouhet	Chevron	985-773-6737	tavia.prouhet@chevron.com
Editor-Elect	Tom Klekamp	Amber Resources LLC	985-630-2480	ekle1959@gmail.com
Auxiliary	Peggy Rogers	NOGA	504-392-6323	lrogers79@cox.net
Drill Bits	Al Baker	Beacon Exploration, LLC	504-836-2710	ABaker1006@aol.com
Drill Bits	Carlo C. Christina	Retired (C & R Expl. Inc)		drillbits81@yahoo.com
Drill Bits	Kevin Trosclair	Stone Energy Corporation	504-202-7997	kevintrosclair@gmail.com
Staff Photographer	Arthur Christensen	Shalimar Consulting	985-893-2013	arthur_shalimar@yahoo.com
Layout	Kristee Brown	Creative Graphics & Printing, LLC	985-626-5223	kpbrown@bellsouth.net
Webmaster	Fran Wiseman	Retired (BOEM)	504-615-5170	snowde.fran@gmail.com

NOGS AUXILIARY

Officers		Phone	Directors	Year	Phone
President	Mary Walther	504-392-9332	Trudy Corona	2013-15	504-737-6101
Vice-President	Mary Ellis Hasseltine	504-885-7657	Debra Fein	2013-15	504-831-0358
Secretary	Peggy Rogers	504-392-6323	Susan Baker	2014-16	504-466-4483
Treasurer	Judy Lemarié	504-393-8659	Judy Sabaté	2014-16	504-861-3179
Parliamentarian	Alma Dunlap	504-737-2678			
Member-at-Large	Jean Jones	504-738-8091			



April 6 • NOGS Luncheon

Holiday Inn Downtown Superdome

\$3.00 validated parking in hotel garage

Presentation:

Channelized and Lobate Seafloor Analogs from Offshore Western Nigeria: Facies Architecture, Temporal Deposition Patterns, and Applications to Turbidite Reservoirs

Guest Speaker:

Zane Jobe, Ph.D.

Shell, Clastics Research Team • Houston, Texas

See page 9 for Abstract and Biography

HOLIDAY INN DOWNTOWN SUPERDOME

Check with concierge or
front desk for location.

Lunch served at 11:30 am

ADMISSION:

With reservation..... \$30.00

Without reservation \$35.00

Student Member with reservations..... FREE

April 15

Petroleum Geology for Non-Geologists

Shell Auditorium Annex - One Shell Square • New Orleans, LA

For more information, www.nogs.org

April 16

PLANO Executive Night

The Royal Sonesta Hotel • New Orleans, LA

For more information, www.planoweb.org

April 18

Fetch! Supersaurus Saturday

Louisiana Children's Museum • New Orleans, LA

For more information, www.nogs.org

April 27

NOGS Annual Golf Tournament

Money Hill Golf Course • Abita Springs, LA

For more information, www.nogs.org

**VOLUNTEERS
NEEDED!**

NOGS CONTACT LIST

Continued from previous page

MEMORIAL FOUNDATION

BOARD OF TRUSTEES

2014-2015	Chairman	Chuck Holman
2014-2015	Secretary	Kelli Hardesty
2014-2015	Trustee	Rick Kear
2014-2015	Trustee	TBA
2015-2016	Trustee	William M. Whiting
2015-2016	Trustee	David E. Reiter
2016-2017	Trustee	J. David Cope
2016-2017	Trustee	Tom Klekamp

AAPG DELEGATES

Term Ends

2015	Susan A. Waters
2015	William M. Whiting
2015(a)	David E. Balcer
2015(a)	Earl W. Cumming
2017	Elizabeth McDade
2017(a)	G. Alex Janevski

NEW MEMBERS

James C. Bloomquist	Business Development Manager	Integrity Seismic Services
---------------------	------------------------------	----------------------------

Company
Saratoga Resources Inc.
Environmental Resources Management
Retired - Schlumberger
Consultant
Stone Energy Corporation
Rising Natural Resources LLC
Amber Resources LLC

Phone
985-809-9292
504-831-6700
501-764-7100

504-947-8495
504-593-3623
504-214-6754
985-630-2480

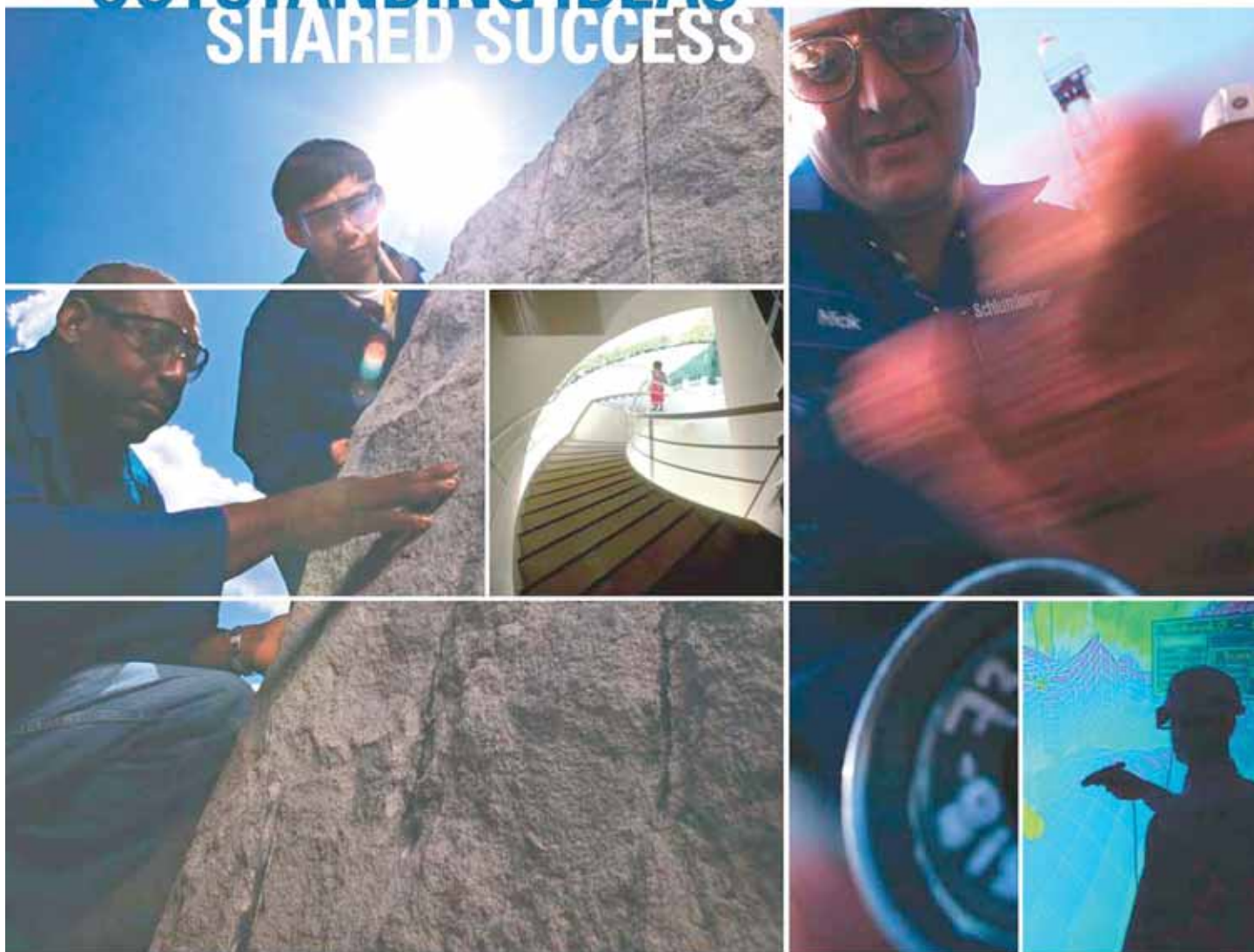
E-mail
charleswholman@bellsouth.net
kelli.hardesty@erm.com
rkear@yahoo.com
bootscon@aol.com
reiterde@stoneenergy.com
greatmre@aol.com
ekle1959@gmail.com

504-728-0229
504-947-8495
985-773-6725
985-630-6898
504-582-4510
504-425-6214

susan.waters@shell.com
bootscon@aol.com
dbalcer@chevron.com
earlcumming@bellsouth.net
elizabeth_mcdade@fmi.com
gregory.janevski@shell.com

713-357-4707	jbloomquist@integrityseismic.com
--------------	----------------------------------------------------------------------------------------

OUTSTANDING IDEAS SHARED SUCCESS



WHAT CAN MILLIONS OF IDEAS, thousands of patents, and hundreds of nationalities deliver? Success. Listening to the ideas of our clients and colleagues around the globe has made Schlumberger the world's leading technical services company. Your experiences are catalysts for our innovation.

Schlumberger invests in a worldwide community of research and development centers—from Boston to Dhahran, Beijing to Moscow, Stavanger to Cambridge—encouraging our brightest minds to find new ways to improve efficiency, productivity, and safety, every day.

Through our commitment to technology research and the support of our global network of local experts, Schlumberger is leading the way into the future.

www.slb.com

Schlumberger



April 6 NOGS Luncheon Presentation

☆☆☆ at the Holiday Inn Superdome ☆☆☆



Channelized and Lobate Seafloor Analogs from Offshore Western Nigeria: Facies Architecture, Temporal Deposition Patterns, and Application to Turbidite Reservoirs

Presented by

Zane Jobe, Ph.D.

Shell, Clastics Research Team
Houston, Texas



ABSTRACT

The study of the modern seafloor and shallow subsurface has long been a key source of high-fidelity information about morphology, architecture, and evolution of deep-water depositional systems. A dataset from the western Niger Delta slope allows for the detailed characterization of both channelized and lobate depositional systems, which are excellent scale and lithologic analogs for producing reservoirs. The dataset consists of industry-grade and high-resolution 3D seismic reflection data, ultra high-resolution 2D sub-bottom profiles, high-resolution multibeam bathymetry, backscatter, and sidescan sonar, and piston cores with radiocarbon ages and grain size analyses. In addition, the bathymetry was used as an input for the 3D numerical simulation of turbidity currents. Three submarine channels traverse the study area: the entrenched Y channel is fed by two tributaries, the X and Y' channels. The X channel feeds a perched apron on the slope before discharging into the Y channel. In contrast with models of downstream and lateral fining/thinning, piston cores reveal that there is no significant lateral or downslope change in sand content or quality. This sand-rich apron is similar in facies and scale to many producing fields in the Gulf of Mexico. The Y' channel is weakly confined and displays significant overbank sand deposition before discharging into the Y channel. Recent (50ka – 20ka) development of inner levee deposits in the Y channel is likely caused by changes in sediment supply related to tributary activity. The well-imaged, sampled, and dated deposits of the Y channel are analogous to many fields producing from channelized turbidites. The study of these inner levee deposits allows for the quantification of the potential upside of these out-of-channel deposits, which are often ignored with current development strategies.

BIOGRAPHY

Zane Jobe grew up in El Paso, TX and always had rocks in his pockets as a kid. He obtained an Honors B.S. in Geology (2004) from the University of Texas at Arlington, with a senior thesis on Permian conodont biostratigraphy in west Texas. After a short stint mapping Holocene Missouri river channels with the USGS, Zane did an internship with Pioneer Natural Resources and knew he wanted to study turbidites. He studied at Stanford University with Don Lowe and Steve Graham, securing a Ph.D. (2010) while researching channelized deep-water depositional systems using outcrop, 3D seismic, and core data. In 2010, Zane joined the Shell Clastics Research Team, and he performs applied research on deepwater depositional systems and teaches field-based courses in California, west Texas, Chile, and Ireland. Zane enjoys triathlons, running, and eating spicy food.

THE LUNCHEON RESERVATION DEADLINE IS APRIL 3 - CONTACT THE NOGS OFFICE

"And Looking Ahead . . ."

The next luncheon will be held on May 4. Our guest speaker, Kathy Haggar, Geologist, Dynamic Measurement, LLC, will present "Aquifers, Faults, Subsidence, and Lightning Databases." Contact the NOGS office at 561-8980 or use the PayPal link on the NOGS website (www.nogs.org) to make your reservation.

STRENGTH IN RESOURCES

Our history is rooted in exploration success in the natural resources business. With a growing portfolio of high-potential oil and gas targets, our future grows brighter.

www.fcx.com



FCX
LISTED
NYSE

SEI[®]

STRATEGIC SPECULATIVE SEISMIC SURVEYS
GEOPHYSICAL DATA MARKETING & MANAGEMENT

LET US HELP YOU FIND ONE
WWW.SEISMICEXCHANGE.COM

NEW ORLEANS
DALLAS
HOUSTON
CORPUS CHRISTI
DENVER
OKLAHOMA CITY
TULSA

SEISMIC EXCHANGE, INC.
201 ST. CHARLES AVENUE SUITE 4300
NEW ORLEANS, LOUISIANA 70170-4300
PHONE: (504) 581-7153 FAX (504) 581-9591



Drill with confidence.

Diversified Well Logging, LLC brings the accuracy and expertise only a company with over sixty years in the oil and gas industry can deliver. We are your eyes and ears in the field, especially when it comes to deep water or high pressure, high temperature areas.

DWL offers 24-hour formation evaluation. We provide secure and customized real-time data communication, in-house research and development, and 24/7 on-call support for our equipment and our engineers.

Whether you have a 10-day job or a 110-day job, we provide the specialized attention you require. **Our experience means you can be confident in the safety and performance of your well.**



- *Formation Evaluation*
- *Geosteering*
- *Drilling Optimization*
- *Real-time Data Transmission*
- *Early Kick Detection*



DIVERSIFIED
WELL LOGGING, LLC

Serving the Oil and Gas Industry for Over 60 Years

~ April 2015 ~						
Sun	Mon	Tue	Wed	Thu	Fri	Sat
			1	2	3 Good Friday	4
5 Easter	6  Luncheon	7	8 	9	10	11
12	13	14	15  Board Mtg/ Geol Class	16  PLANO Exec Night	17	18 
19	20	21	22 	23	24	25
26	27 Golf Tourn. 	28	29	30	Notes:	



April 6: NOGS Luncheon, Holiday Inn Superdome, 330 Loyola Ave. @11:30 am

Guest Speaker: Dr. Zane Jobe, Shell, Clastics Research Team

Will Present: Channelized and Lobate Seafloor Analogs from Offshore Western Nigeria: Facies Architecture, Temporal Deposition Patterns, and Application to Turbidite Reservoirs

April 18: FETCH! SuperSaurus Saturday, Louisiana Children's Museum

April 27: NOGS Golf Tournament, Money Hill Golf Course, Abita Springs, LA

~ May 2015 ~						
Sun	Mon	Tue	Wed	Thu	Fri	Sat
					1	2
3	4 Luncheon 	5	6	7	8	9
10 Mother's Day	11	12	13  Board Mtg	14	15	16
17	18	19	20	21	22	23
24	25 Memorial Day	26	27	28	29	30

May 4: NOGS Luncheon, Holiday Inn Superdome, 330 Loyola Ave. @11:30 am

Guest Speaker: Kathy Haggar, Geologist, Dynamic Measurement, LLC

Will Present: "Aquifers, Faults, Subsidence, and Lightning Databases"

New Orleans Geological Auxiliary News

"The objective of the Auxiliary is to promote fellowship among the wives of the members of the New Orleans Geological Society and to render assistance to NOGS upon request."

**Celebrating
60 Years!**

The Auxiliary was able to celebrate our 60th Anniversary with a wonderful year of including spouses and friends in several events. We had a great time on Wednesday, February 25th, when 42 members, spouses and friends gathered at the Chateau Golf and Country Club to hear a fun and informative presentation by political cartoonist Walt

Handlesman. Mr. Handlesman showed many of his recently published cartoons that now appear in the New Orleans Advocate newspaper. Mr. Handlesman finds New Orleans and Louisiana fertile grounds for humorous cartoons. He even had a cartoon concerning "baby boomers" supposedly to be apropos to his audience; however, some of us have children who would qualify. Hopefully, Mr. Handlesman will work us into a cartoon in the future. It was a really great day as we could look out at the cold rainy outdoors through a wall of windows. Margie Conatser and Trudy Corona did a great job making all the arrangements.

The Spring Social this year will be April 11th at the Bayou St. John home of Paul & June Perret. Once again spouses and guests are welcome. Susie Baker, Jean Jones, Elizabeth Furlong, and hosts the Perrets are planning another great party for us all.

We are looking forward to the last event of our 60th year celebration with the Installation Luncheon, May 13th at the Café Adelaide, Loews Hotel. Debra Fein and MaryEllis Hasseltine will be the committee for this luncheon. This will wind up our 60 year celebration. The planning committee for the 61st will be working hard to follow up with another really enjoyable year. If you want to come and enjoy 2015-2016 with the Auxiliary fill out the application below.



Peggy Rogers, *NOGS LOG*

Margie Conatser, Walt Handlesman, Trudy Corona

New Orleans Geological Auxiliary Membership Application

Name _____ Spouse's Name _____
Address _____ Home Phone _____
City, State, Zip _____ Cell Phone _____
Spouse's Company _____ Email _____

Dues: \$25 payable to New Orleans Geological Auxiliary
Please mail to Judy Lemarié, Treasurer, #2 Yosemite Dr., New Orleans, LA 70131

FETCH! SUPER SAURUS SATURDAY

**April 18, 2015
11:00 AM - 3:00 PM**



Volunteers Needed

**Shifts 11AM-1PM & 1PM-3PM
Contact Tom Bergeon at 504-832-3772
tom.bergeon@centuryx.com**





NOGS ANNUAL SUPER SCIENCE SATURDAY APRIL 18TH

It is hard to believe it has been 17 years since in 1998 NOGS teamed up with the Louisiana Children's Museum to put on an event geared to children. Super Science Saturday focuses on geology, the oil industry, and did we say dinosaurs? What's it all about?

Showing kids that geology and science are fun!

Super Science Saturday has grown each year from all the enthusiasm our members and area college students bring. It is the second most attended event at LCM every year, with crowds from 800-1200 people. Thank you all so much!

This year we celebrate our 15th event!

NOGS would not have been able to get here without **Bob Simon**.

Bob was instrumental in building our extensive fossil collection and provided NOGS with key bones, many he found himself. Bob helped develop the event and left Chevron after 21 years in 2003 to pursue his dreams to dig up dinosaur bones full time. Bob works in Shell, Wyoming, excavating Jurassic treasures including major finds like the most complete stegosaurus, which is housed in the prestigious London Natural History Museum.



Others who have had a major impact to our Super Science and School Outreach programs include **Bernie Regel, Lisa Kennedy, Brian O'Neill** and **Art Johnson**. They have been key trainers to teach volunteers the hands-on stations, many of whom have worked the event a number of years for which we are very grateful. **UNO's Kraig Derstler** and **UNO geology students** have really made a big impact, as well as **Southeastern, LSU, and Tulane geology students**. **Southeastern Geophysical Society (SGS)** has been a key partner. Our sincere thanks to LCM for giving us this opportunity all these years.

**Please consider joining
in the fun on April 18th!**



NOGS Annual Super



Earth Science Saturday



PHOTOS BY GERRAD SOTO, JIM BROOKS, TOM KLEKAMP, ERIC BROADBRIDGE, AND TOM BERGEON

Why can Weatherford deliver more real time data at the wellsite than any other mudlogging company?

Tim has cabin fever.



**EXCELLENCE
FROM THE
GROUND UP™**

Our Global Operations Manager for Surface Logging Systems, Tim, is all smiles these days. That's because he and his team recently designed a new state-of-the-art mudlogging cabin. The spacious interior makes room for more laboratory services at the wellsite. Now exploration companies have access to more data in real time, so they can make better decisions faster. Combined with Weatherford's patented GC-TRACER™, IsoTube® AutoLoader™ and other Isotech technologies, it's one more way Weatherford Mudlogging is committed to Excellence from the Ground Up.

SURFACE LOGGING SYSTEMS

www.weatherford.com/surfacelogging
mudlogging.services@weatherford.com



Weatherford®

Petroleum Systems in "Rift" Basins

34th Annual GCSSEPM Foundation Bob F. Perkins Research Conference

Date: December 13–16, 2015

Location: The Omni Westside
Houston, TX

Conference registration information available in June 2015
@ http://www.gcssepm.org/conference/2015_conference.htm



reprocessed seismic data property of, and used courtesy of, Robertson GeoSpec, a CGG Company



Introducing the Fastest Log Printer in the Industry

At 11 inches per second, the NeuraLaserColor II operates seamlessly and requires no add-on software for automatically sensing top of form printing. Whether you are a service company printing thousands of logs a day or an exploration company looking for quality logs, the NeuraLaserColor II will change your expectations of well log printers.

- Record setting speeds - 11 inches per second
- Precision printing - On-the-fly length calibration
- Increased efficiency - 20,000 page yield toner
- Operational versatility - Native PDF support
- Hands free - Automated cut, feed and re-load

See More at:
www.NeuraLaserColor2.com



© 2014 Neuralog · www.Neuralog.com · sales@neuralog.com · 1.281.240.2525



South Louisiana and Offshore Gulf of Mexico Exploration and Production Activities

LAFAYETTE DISTRICT, ONSHORE AREA

By Carlo C. Christina

During the month of February, only 18-permits to drill new wells were issued by the Office of Conservation, Lafayette District, Onshore Area. Following are the most significant locations and completions:

NEW LOCATIONS

Century Exploration will drill an interesting deep test in **Breton Sound Block 31 Field, (A)**. The #1 SL 21543 will be drilled to a depth of **18,250 feet to test the Cris I** sands. The field was discovered in 1966 and has produced from shallow sands above 6500 feet with one well producing from a Cib carst sand at 9600 feet. The field went off production in 2013. (248884)

In St. Martin Parish, **Section 28 Field, (B)**, James A. Whitson, Jr. will drill the #1 Burdin Properties in Sec. 34, 9S-7E to a proposed depth of **13,400 feet** to test the **Bol mex 2** sand. The well is located on the east flank of the field approximately 1 mile south of nearest production. Meanwhile, Whitson has drilled its #1 Allemond on the extreme southwest flank of the field to a depth of 13,088 feet and has set 5½ inch casing to total depth. As previously reported, the #1 Allemond was drilled 1½ miles southwest of the nearest production. (248885)

Square Mile Energy has permitted its #1 Mouton in **Abbeville Field, (C)**, Vermilion Parish, in Sec. 13, 12S-2E to a projected depth of **17,500 feet** to test deep **Camerina** sands. The well is located on the northwest flank of the field, approximately 2 miles west of nearest production. (248902)

In Vermilion Parish, **Fresh Water Bayou Field, (D)**, Hilcorp Energy will drill the #1 Exxon Mobil Corp. in Sec. 20, 16S-2E to a proposed depth of 15,375 feet. The well is located 2 miles northwest of gas production in the field and 2 miles southwest of gas production in North Fresh Water Field. Both fields have produced from prolific gas sands in the **Dis B** section, having more than 100 feet of net pay at depths of 18,500 feet to 19,000 feet. (248908)

Goodrich Petroleum will drill its #1 Alford 10 in **Little Silver Creek Field, (E)**, Washington Parish, to 20,000 feet as a **Tuscaloosa Marine Shale** well. It will be drilled in Sec. 10, 2S-9E in a 7,000 foot lateral. (248890)

COMPLETIONS

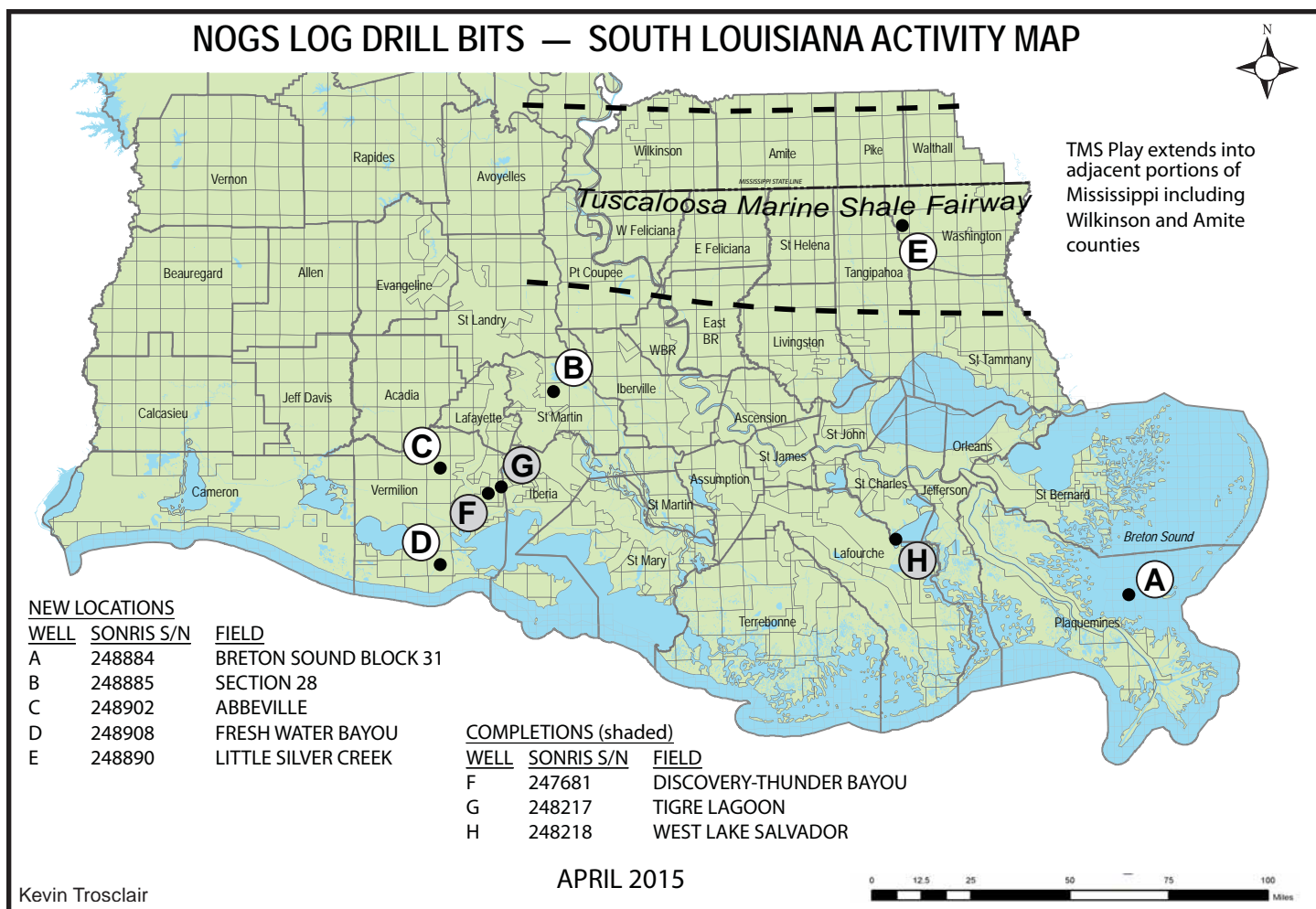
PetroQuest Energy has completed the #1 Hulin in Vermilion Parish, as a **new discovery** on its **Thunder Bay Prospect, (F)**, as a gas well flowing **16,600 MCFD** and **410 BCPD** in the Cris R2 sand through perforations 19,930 to 20,076 feet, overall. As previously reported in the February Drill Bits, the well logged **202 feet of net gas** in the Cris R2 sand. The well was drilled to a total depth of 20,995 feet in Sec. 36, 13S-4E and was originally permitted in Tiger Lagoon Field. (247681)

Also in Vermilion Parish, **Tigre Lagoon Field, (G)**, Hilcorp Energy has completed an excellent gas well flowing **14,126 MCG** and **199 BCPD** through perforations 13,073 to 13,092 feet in the **Planulina 2** sand. The #3 Planters was drilled a depth of 13,804 feet in Sec. 29, 13S-5E, approximately 2 miles northwest of the PetroQuest well, as described above. (248217)

Tri-C Resources has completed an oil well in **West Lake Salvador Field, (H)**, St. Charles Parish flowing 245 BOPD through perforations 13,334 to 13,346 feet in the **Cris I** sand. The #2 SL 20936 was drilled in 16S-21E to a depth of 14,041 feet and extended production 1 mile to the west. (248218)



NOGS LOG DRILL BITS — SOUTH LOUISIANA ACTIVITY MAP



OFFSHORE GULF OF MEXICO SHELF AND DEEPWATER ACTIVITIES

by Al Baker

During February 2015, the BOEM approved **66** Gulf of Mexico drilling permits. Of these, **13** were for shelf wells, and **55** were for deepwater wells. Of the total number of permits, there were **4 new well permits** issued: 2 new development wells situated on the shelf and 2 new exploration wells in deepwater. Monthly permitting activity continues downward with a **10.8%** decline from last month.

Both shelf development well permits were issued to **Arena Offshore** for their **Eugene Island 314 #C-2** and **Eugene Island 338 #K-20** wells. The two deepwater exploration permits were awarded to **Cobalt International Energy** for their **Garden Banks 959 #2** well and to **Shell Offshore** for their **Mississippi Canyon 811 #1** well.

On February 27th, IHS-Petrodata reported that the Gulf of Mexico mobile offshore rig supply stood at **119**, which is **1** rig less than last month. The marketed rig supply consisted of **77** rigs, of which **61** were under contract. The contracted versus total rig supply utilization rate is **51.3%**, while the marketed contracted versus marketed supply utilization rate stands at **79.2%**. The marketed rig supply number reflects a decrease of **10** rigs (cold stacked?) in comparison to the number reported last month, while the contracted rig supply number decreased by 6 rigs during the same time period. In contrast, the February 2014 fleet utilization rate stood at 76.6% with 85 out of the 111 rigs under contract.

On February 27th, BakerHughes indicated that there were **51** active mobile offshore rigs in the Gulf, which is **83.6%** of the rigs under contract mentioned above. This active rigs number is **2** more than reported last month. The current active rigs count compares to 55 active rigs during the same period last year, representing a **7.3%** decrease in yearly rig activity.

Positive industry news was sparse during the month of February. Therefore, there are no significant news items to include in this report.

NOGS WELCOMES

Submitted by Tom Klekamp

New member **James Bloomquist** is Business Development Manager for Integrity Seismic Services, LLC., 1640 Park Ten Place, Suite 240, Houston. Jim earned his BS in Geography in 1974 from the University of Florida. He has twenty years experience in the oil industry, including Digicon, Geotrace, Anschutz and now Integrity. Jim and his wife Kimberly reside in Houston. He is an active member of both AAPG and SEG. We welcome Jim to our NOGS ranks.

GREATER NEW ORLEANS SCIENCE AND ENGINEERING FAIR



L-R: Dale Moore (Atmos Energy), Mike Fein (W&T Offshore), Bill Whiting (Consultant), Dr. Hiranya Sahoo (Professor, UNO Dept of EES), Kathryn Rose (NOAA/ National Coastal Data and Development Center), George Haseltine (Consultant), not in photo-Tom Klekamp (Amber Resources)



GNOSEF volunteer support staff



A sea of exhibits

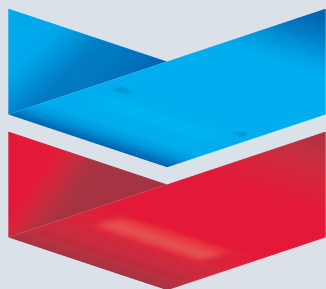


L-R: Bill Whiting, Mike Fein and George Haseltine hear about the best ways to clean up an oil spill from Hayden Waldvogel



Mike Fein loves writing checks to NOGS winners.

Chevron



100 Northpark Blvd.
Covington, LA 70433

(985) 773-6000



LaBay

Exploration Co., L.L.C.

111 Veterans Memorial Blvd.

Suite 1550

Metairie, Louisiana 70005

Office (504) 371-5967

Fax (504) 371-5969

www.labayexploration.com

LLDG

exploration



Covington Office

1001 Ochsner Blvd., Suite 200

Covington, Louisiana 70433

p: 985.801.4300

f: 985.801.4796

Houston Office

CityCentre Three

842 W Sam Houston Pkwy N

Suite 600

Houston, Texas 77024

p: 281.752.1100

f: 281.752.1199

Scott Office

814 S. Frontage Rd.

Scott, LA 70583

p: 337.408.4000

f: 337.408.4049

www.llog.com

WELLSITE GEOSCIENCE SERVICES



When time is money, Wellsite Geoscience is money well spent.

Whether you're exploring a basin, producing a well or completing a shale play, time is money. That's why Weatherford Laboratories brings a suite of formation evaluation technologies right to the wellsite. Utilizing mud gas and cuttings, these technologies provide detailed data on gas composition, organic richness, mineralogy and chemostratigraphy in near real time. As a result, operators now have an invaluable tool to assist with sweet spot identification, wellbore positioning, completion design and hydraulic fracturing. We call it Science At the Wellsite. You'll call it money well spent.

SCIENCE AT THE WELLSITE™

www.weatherfordlabs.com



Weatherford®

LABORATORIES

Formation Evaluation Well Construction Completion Production

©2013 Weatherford. All rights reserved

NORTH AMERICA KNOW-HOW

EXPERTS IN NORTH AMERICA SEISMIC



Download Case Study: www.globalgeophysical.com/NAM
or Contact us at NAM@globalgeophysical.com

North America. Our people know it. With hundreds of years of cumulative experience, our people have the know-how and capacity to get it done, no matter the job.

The efficiency and reliability of our crews are matched only by that of our technology. As the first company to go 100% nodal, we can offer total flexibility in terms of seismic survey design, program size and type of environment. Remarkably effective in all conditions, AutoSeis®, like our crews, delivers in any terrain, on every project. With the largest single inventory of nodal recording stations, we can record cost-effective data sets with high-density long offsets, rich azimuth, improved spatial resolution and increased signal-to-noise ratios.

Having worked in almost every major basin in the U.S., Global has proven successful across diverse terrains including arctic, mountain range, dense forest, farmland and urban environments. Explore the benefits of our North America expertise.

tel +1 713-972-9200
www.globalgeophysical.com

Global
Geophysical Services

NOGS GOLF TOURNAMENT REGISTRATION APPLICATION

Please register early!

This event always fills up and we are limited to only 120 players.
Remember you are not registered until NOGS has received payment and you are confirmed by Annette.
Make sure you supply your handicap or a score that typifies a set of rounds of golf over recent time no greater than 2 years in the space provided.

We need volunteers!

If you can help out, you will be treated to a day of fun, food, and be eligible for some door prizes.
Donations of any kind are welcome!

FOR REGISTRATION, DONATIONS, OR TO VOLUNTEER, CONTACT:

Annette Hudson: 504-561-8980 or annette@nogs.org

Send cash or check (payable to NOGS):
NOGS Office • 810 Union St.
Suite 300 • New Orleans, LA 70112



Credit cards accepted with PayPal:
<http://nogs.org/payment-center/>
scroll down to NOGS Special Events

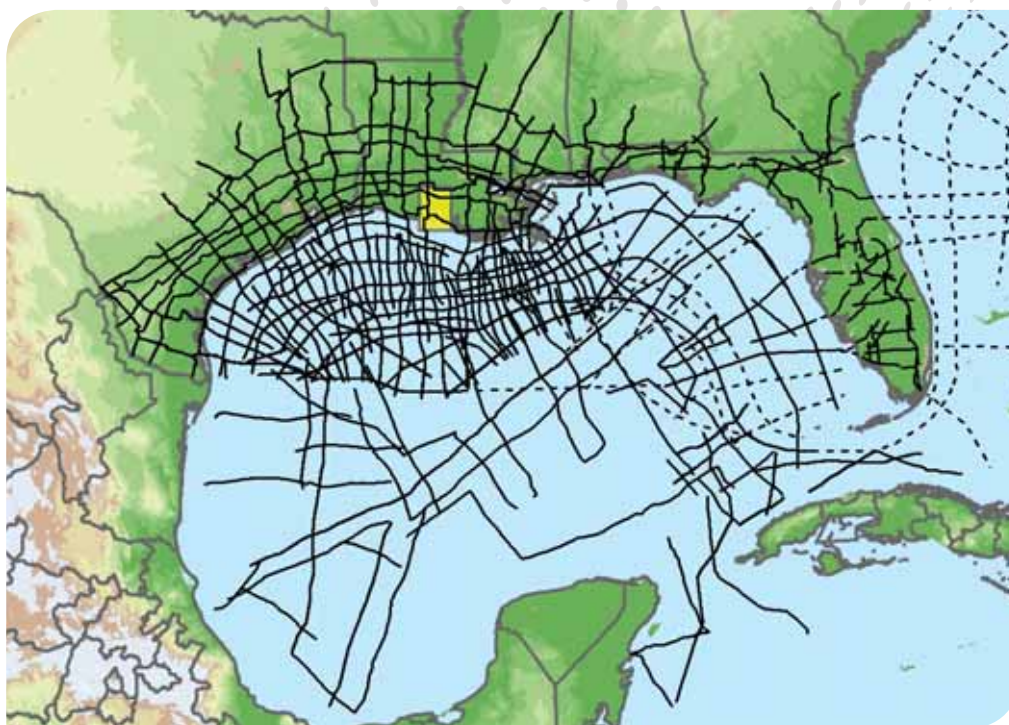
Name _____ (_____ Handicap) Phone _____ @ \$140 each (\$85 for students)

Company _____ Email _____

Team Member Names:

_____ (_____ Handicap) _____ (_____ Handicap)
_____ (_____ Handicap) _____ (_____ Handicap)
_____ (_____ Handicap) _____ (_____ Handicap)

Explore the Entire Gulf of Mexico



Position your company for the next 10 years of exploration with the most complete, modern time and depth-imaged data in the Gulf of Mexico. ION's interconnected dataset links the entire Gulf, from onshore to offshore deep water, from Texas to Florida and to Mexico. With over 40,000 miles (over 65,000 km) completed or in progress, and an additional 7,500 miles (over 12,000 km) planned for 2013 and beyond, no other data library provides as comprehensive a framework for understanding the Gulf of Mexico.

To learn more, visit iongeo.com/Gulf_of_Mexico

CONTACT

Ashley Garcia
Mobile: +1 281 781 1005
Email: ashley.garcia@iongeo.com

Alvin Rowbatham
Mobile: +1 832 372 2366
Email: alvin.rowbatham@iongeo.com

AREAS OF EXPERTISE

- Unconventional Reservoirs
- Challenging Environments
- Complex Geologies
- **Basin Exploration**
- Reservoir Exploitation



GEOVENTURES®

PETROLEUM GEOLOGY FOR NON-GEOLOGISTS

Sponsored by

The New Orleans Geological Society

Wednesday, April 15, 2015

8:30 am to 3:30 pm

Shell Auditorium Annex in the Shell Building

One Shell Square, 701 Poydras Street, New Orleans

COST: \$35.00 per participant

Course notes and mid-morning refreshments will be provided.

WHAT YOU WILL LEARN:

- Basic Geology
- How oil and gas are formed,
- What is an oil and gas reservoir
- Exploration and production tools and techniques
- How oil and gas wells are drilled and completed.

WHO SHOULD ATTEND?

- Anyone who works (or lives) with geologists or geophysicists
- Secretaries
- Landmen and land personnel
- Lease analysts
- Attorneys and Paralegals
- Draftsmen
- Engineers
- Technicians
- IT people and programmers



YOUR INSTRUCTORS AND FACILITATORS:

Duncan Goldthwaite, consulting geologist

Bob Branson, consulting geologist

Bruce Robertson, consulting geologist and geology professor, University of Southern Mississippi

HOW TO REGISTER:

1. PayPal using the NOGS Website www.nogs.org Payment Center. Scroll down to NOGS Special Events. Payments for multiple attendees can be made, and should be listed under the Instructions to Merchant.
2. By check for \$35.00, payable to the New Orleans Geological Society and mailed to: New Orleans Geological Society, 810 Union St., Ste. 300, New Orleans LA 70112

When registering, please give your name, mailing address, e-mail, telephone number and company affiliation, if any.

Did a Meteorite Fall in Audubon Park?

From Buddy Stall's *New Orleans*, this hoax, still very much believed by many New Orleanians, can be credited to a headline in the 1891 April 1 (All Fool's Day) issue of the *Picayune*, "A CELESTIAL VISITOR." The article screamed the eye-catching headline, "Enormous meteorite drops down on Audubon Park." "A marvelous conglomeration of minerals and metals." "It woke up ... Biloxi and Atlanta ... in transit."



One eyewitness claimed he saw a mass flame leap out and the frightful object plunged down above him and exploded. He was thrown into the gutter and thought the world had come to an end. The *Picayune* article goes on to quote a local fire captain and the public works commissioner as to the veracity of the event.

Buddy Stall notes that this phenomenal event was never mentioned in the other New Orleans newspapers, the *Times-Democrat* or the *Daily City Item*. In fact, subsequent issues of the daily *Picayune* did not even mention it.



Iron ore specimen in Audubon Park. The object is about six feet high. Photo by Frank Rogers.

But where did this rock—a rarity in these parts—come from? It was simply a sample of iron ore brought to New Orleans from Alabama for the 1884-85 World's Fair. Customarily, anything of value went on sale after the Fair, but no one had use for this chunk of iron ore. Today it rests in the Audubon Park, the site of the 1884-85 World's Fair, on the Audubon Golf Course near the 18th hole.

Further controversy regarding the object occurred in 1947, when two Tulane professors gave conflicting interpretations of the rock. One claimed it a true meteorite as popularly believed; the other thought it merely a chunk of iron ore. No doubt the face of one of the professors was as red as the fiery tail of a real meteor.

Hematite was mined for many years in the Valley and Ridge area of central and northeastern Alabama and was once the state's most developed

nonfuel mineral industry, and the occurrence of hematite with nearby deposits of coal and limestone (used as flux) led to the development of Birmingham as an industrial center. Iron ore mining in the state ceased in 1975 primarily owing to the availability of inexpensive higher-grade imported ores. Red iron ore (from the Red Mountain Formation) has been mined in north-central Alabama. Hematite occurs along the entire length of Red Mountain. From about 1840 to 1975, approximately 375 million tons of iron ore were mined principally from the Birmingham red-ore district. In 1904 Birmingham iron ore was used in casting the statue of Vulcan, which stands atop Red Mountain as the largest cast-iron structure ever made.



610 E. Rutland St.
Covington, LA 70433
985.898.3577

Jack M. Thorson
Eric C. Broadbridge
Raymond W. Stephens
J. Daryl Gambrell



Anthony Catalanotto
President

**Geological
Geophysical
Land
Drafting & Graphics**

3349 Ridgeline Drive • Suite 202
Metairie, LA 70002
Office: (504) 836-2882
Fax: (504) 836-2877
Cell: (504) 481-7291
E-Mail: geodraft@bellsouth.net
Website: www.geodraftinc.com

NOGS

needs your active
membership in
AAPG!

Renew or Join Today!

Collarini Energy Staffing, Inc.

Facilities • Drilling • Production • Reservoir Engineering
Land and Legal • Geosciences • Information Technology
Health and Safety • Management • Supply Chain
Accounting • Administrative Support



Full-Time and Temporary Personnel

Energy Trading • Civil Engineering • Executives
Human Resources • Instrument and Electrical
Engineering • Marine Engineering • Project Management
Technical Writing • Sales and Marketing

10497 Town and Country Way, Suite 950, Houston, Texas 77024

Telephone: (832) 251-0553

www.collarini.com

**DOMESTIC AND INTERNATIONAL
BIOSTRATIGRAPHIC SERVICES**



6619 Fleur de Lis Drive
New Orleans, LA 70124
(504) 488-3711

www.paleodata.com



Complete wellsite paleo services

**Supported offshore GoM and
onshore LA paleo databases**

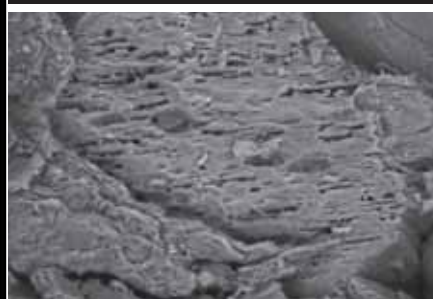
**Integrated foram/nannofossil
analyses**

**In-house sample preparation
lab for quality-monitoring
and efficiency**

**Comprehensive depositional
history study of the Gulf Basin
based on 200,000+ well data
analysis**



ROCK SOLID SERVICE



www.corelab.com
337-837-8616

© 2013 Core Laboratories.
All rights reserved.



**LAFAYETTE
GEOLOGICAL
RESEARCH
CENTER, LLC**

201 Heymann Blvd., Suite 33 • Lafayette, LA 70503
Tel: 337-233-8197 • Fax: 337-233-8177

COVERAGE:

Louisiana / Federal / State Offshore
• Multi State Geo Tech Services • Completion Data
Production Data • Well Logs • Maps

~ MEMBERSHIPS AVAILABLE ~
The Industry's Premier • Well Data Center

orders@lafayettegrc.com

CALL OR EMAIL TODAY FOR MORE INFORMATION!

THE NEW ORLEANS GEOLOGICAL SOCIETY MEMORIAL FOUNDATION, INC.

The Memorial Foundation is an IRS Tax Exempt Code #501(c)(3) organization. The Federal I.D. is 72-1220999. Please consider making a donation to the Foundation. Your individual support in any amount will help meet the IRS Guidelines for our Foundation. Thanks!

\$10,000

Gibbet Hill Foundation

*In Memory of Steve & Marion Millendorf, William J. Prutzman,
Roger G. Vincent, Ron Youngblood and Uno Numella*

\$6,000

NOGS Golf Tournament 2014

In Memory of Bill Craig

\$1,000

Exxon Mobil Foundation

Matching Gifts Program

Mr. Armour C. Winslow

In Memory of Rita Menzel Winslow and Lawrence C. Menconi

\$500

Mr. Reuben J. Klibert, Jr.

\$250 TO \$499

Mr. Carlo C. Christina

*In Memory of Al Gilreath
In Memory of John C. "Jack" Langford*

Trudy and Charles Corona

*In Memory of Dick Edmund, AT Green,
Jack Langford & John Petrocco*

Mr. Lawrence B. Eustis

In Memory of John C. "Jack" Langford

Mr. Charles W. Holman

Mr. Kenneth Huffman

In Memory of James E. Rolf, Jr.

Paleo-Data Inc.

*In Memory of T. Wayne Campbell,
Peggy Campbell & John Dunlap*

Jeremiah N. and Tavia L. Prouhet

Mr. Arthur S. Waterman

In Memory of Peggy M. Campbell

FONO FUND

The FONO Fund accepts contributions that are invested and the income dedicated to assure sufficient financial resources will always be available to maintain the NOGS business office. Contributors are reminded that donations to the FONO Fund are not covered by the IRS 501(c)(3) tax exempt classification and should be reported as a business expense on your IRS tax report.

\$500

Mr. Reuben J. Klibert, Jr.

UP TO \$249

Mr. David E. Balcer

Mr. Joseph E. Boudreaux

Mr. Hilary James Brook

Ms. J. Sybil Callaway

Mr. Anthony Carollo, Jr.

Mr. John Dombrowski

Mr. Merle J. Duplantis

Mr. Dwight Easterly

Mr. Richard A. Edmund

Mr. Michael N. Fein

Mr. Duncan Goldthwaite

Mr. Bernard L. Hill, Jr.

Mr. Kenneth Huffman

Mr. Paul Jurik

Mr. Louis Lemarié

Mr. H. David Lynch

Ms. Jeannie F. Mallick

Mr. George M. Markey, Jr.

Mr. James A. McCarty

Ms. Margaret M. McKinney

Mr. Robert G. Murphy

Mr. Richard A. Olsen

Mr. Edward B. Picou, Jr.

Mr. Rudolf B. Siegert

Mr. Bryan P. Stephens

Mr. David M. Tatum

Mr. William M. Whiting

Ms. Frances A. Wiseman

UP TO \$249

Mr. Woods W. Allen, Jr.

In Memory of William C. Ward

Mr. Randall W. Altobelli

In Memory of Richard Saunders

Mr. Robert J. Ardell

In Memory of Ken Masters

Bob and Benjie Branson

In Memory of John C. "Jack" Langford

Ms. J. Sybil Callaway

Mr. Arthur F. Christensen

Beverly & Carlo Christina

In Memory of Peggy M. Campbell

Mr. James S. Classen

In Memory of John C. "Jack" Langford

Mrs. Alma Dunlap

In Memory of Peggy M. Campbell

Mr. Merle J. Duplantis

Mr. Michael N. Fein

Mr. Sherwood M. Gagliano

Mr. Mark J. Gallagher

Mr. Bernard L. Hill, Jr.

In Memory of Dr. William W. Craig

Mr. Jeff Jandegian

Mr. Paul Jurik

Lake Terrace Women's Club

In Memory of Peggy M. Campbell

Mr. H. David Lynch

Ms. Jeannie F. Mallick

Mr. Joseph H. McDuff

Ms. Margaret M. McKinney

Mr. Paul C. McWilliams

Mr. Robert G. Murphy

New Orleans Geological Auxiliary

In Memory of Mrs. James W. Swaney, Jr. (Gwenn)

In Memory of Mrs. Lawrence B. Eustis (Tatjana)

Mr. Richard A. Olsen

In Memory of John C. "Jack" Langford

Mrs. Teresa O'Neill

In Memory of Brian O'Neill

Mr. Edward B. Picou, Jr.

In Memory of John C. "Jack" Langford

Mrs. Earleen P. Rodan

In Memory of Peggy M. Campbell

Frank and Peggy Rogers

In Memory of Peggy M. Campbell

Shell Matching Funds

Mr. Rudolf B. Siegert

Dr. J. O. Snowden

Mr. David Sollenberger

In Memory of Shirley Sollenberger

Ms. Betsy M. Strachan Suppes

In Memory of Hubert C. Skinner

Ms. Candace V. Strahan

In Memory of James R. Strahan

Mr. David M. Tatum

Mr. William M. Whiting

In Memory of John "Jack" Henton

Ms. Frances A. Wiseman

In Memory of Steve Widdicombe

Contributions for both funds through February 3, 2015.
Donations are listed for one year.

<p>ANSYTHE Donald I. Andrews 504-887-3432</p> 	<p>CLASSEN EXPLORATION, INC. James S. Classen Looking for close in deals P.O. Box 140637 Boise, ID 83714 classenllc@msn.com Bus. (208) 854-1037 Fax (208) 854-1029</p>
<p>THE BOEBEL COMPANY Oil and Gas Investments New Orleans, LA 70153 (504) 866-4313</p>	<p>D-O-R ENGINEERING, INC. 3-D and Geoscience Services 6161 Perkins Rd. Bus: (225) 765-1914 P.O. Box 80812 Baton Rouge, LA 70898</p>
<p>BOO-KER OIL & GAS CORP. Gray S. Parker 826 Union, Suite 300 Bus. (504) 581-2430 New Orleans, LA 70112 Fax (504) 566-4785</p>	<p>EDWARD B. PICOU, JR. Consulting Micropaleontologist - Retired 228 St. Charles Ave., Suite 1330 C Bus. (504) 529-5155 New Orleans, LA 70130 Res. (504) 282-3096</p>
<p>C & R EXPLORATION, INC. Carlo C. Christina Lawrence G. Ringham</p>	<p> GEOLOGY ENVIRONMENTAL MANAGEMENT GEM Consulting, LTD Michael Louis Merritt admin@gemconsultingltd.com</p>
<p>NOGS <i>Thanks Our Sponsors for Their Support!</i> \$2,500</p>	<p>Explore the ENTIRE Gulf of Mexico  Alvin Rowbatham 832-372-2366 • alvin.rowbatham@iongeo.com Ashley Garcia 281-781-1005 • ashley.garcia@iongeo.com www.iongeo.com/Gulf_of_Mexico</p>
<p> Chevron  Diversified Well Logging  Seitel <small>THE Onshore Seismic Data Company</small> \$1,000</p>	<p> RAFIDI OIL & GAS, INC. Jaser N. Rafidi, President 4913 James Drive Office: 504.453.8580 Metairie, LA 70003 Res/Fax: 504.888.1661</p>
<p> Hydrate Energy International  ION Geoventures  LaBay Exploration Co. LLC  Paleo Data Inc</p>	<p>ROY C. WALTHER Petroleum Geologist 2421 Prancer Street Bus. (504) 392-8513 New Orleans, LA 70131 Res. (504) 392-9332</p> <p> STONE ENERGY www.StoneEnergy.com 625 E. Kaliste Saloom Lafayette, LA 70508 16800 Greenspoint Dr., Suite 225-S Houston, TX 77060 1100 Poydras St., Suite 1050 New Orleans, LA 70163</p> <p>ZOT OIL & GAS, LLC Jim Zotkiewicz Consulting, Evaluation, and Prospect Generation Metairie, LA 70002 Bus. 504.452.5446 Email: jimzot38@zotoil.com</p>

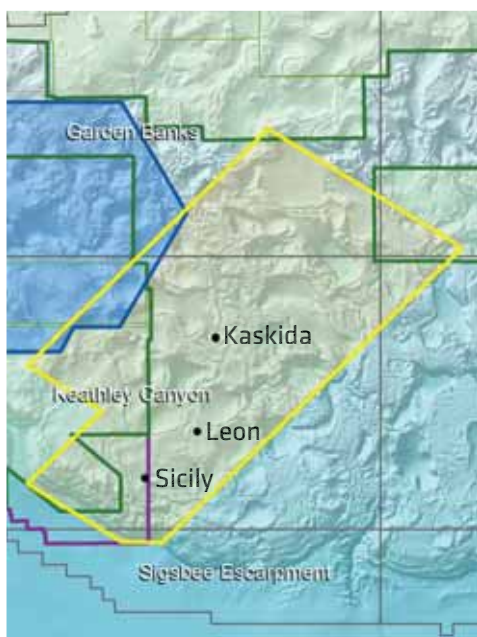
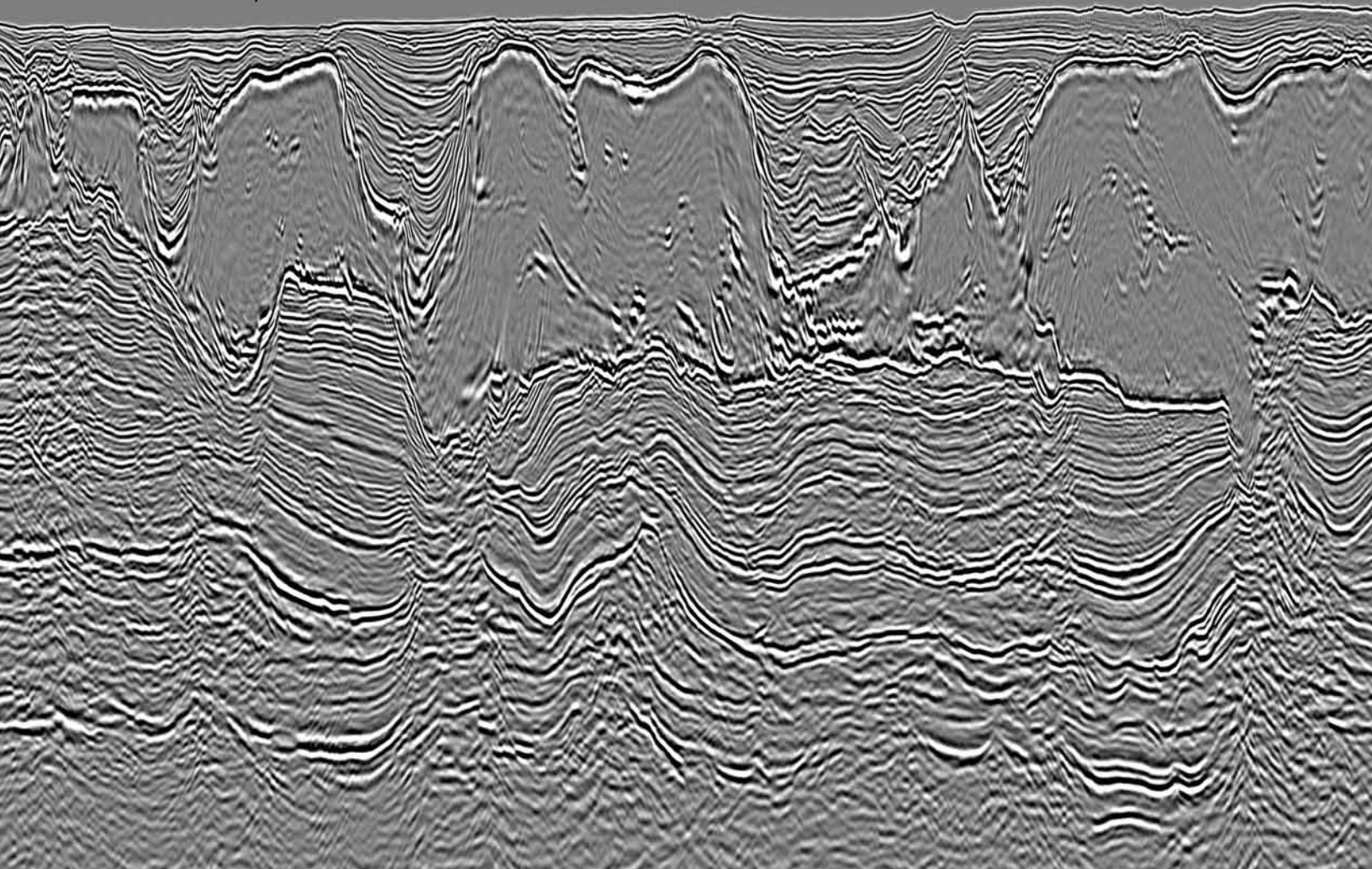


CENTURY EXPLORATION NEW ORLEANS, LLC

An independent gulf coast exploration, development and operating company

Three Lakeway Center, Suite 2800
3838 North Causeway Blvd.
Metairie, LA. 70002

Office: 504.832.3750
Fax: 504.832.3760
www.centuryx.com



TAP UNTAPPED POTENTIAL WITH SEISMIC CLARITY

Get the clearest images in Garden Banks/Keathley Canyon

- Using high-resolution hyperTomo
- Tilted transverse isotropy (TTI) velocity model building
- Anisotropic Pre-Stack Depth Migration (PSDM) with Reverse Time Migration (RTM)
- Sub-salt imaging is greatly enhanced
- Reduce your exploration risks
- Increase your chance of success

Crystal A and B - 580 OCS Blocks - Available Now

Please contact your PGS Account Manager today
+1 281 509 8000 or gominfo@pgs.com

A Clearer Image

www.pgs.com

MultiClient
Marine Contract
Imaging & Engineering
Operations





NEW ORLEANS GEOLOGICAL SOCIETY

810 Union Street, Suite 300
New Orleans, LA 70112-1430

PRESORT
STANDARD
US POSTAGE
PAID
MAIL TECH

www.nogs.org



MARINE PROPERTIES, LLC BERKSHIRE EXPLORATION CO.

MONTE C. SHALETT, CPL, PRESIDENT

3030 Lausatz Street
Metairie, LA 70001-5924

BUS. (504) 831-7779
FAX (504) 831-8315

PCI

Paleo Control, Inc.

Houston, Texas
713-849-0044

Drilling Wells, Studies and Data Base

Loyd Tuttle

Frio, SE Texas

Bob Liska

Wilcox, S and SE Texas

Jim Thorpe

Miocene and Cam-Miogyp



creative graphics & printing, llc

*Proudly designing and printing the NOGS LOG since 2012!
Specializing in design and printing for the oil and gas industry and their affiliates.*

ID Tags • Numbered Raffle Tickets • Banners • Signs • Posters

Letterhead • Envelopes • Business Cards • Postcards • Newsletters • Custom Forms

Logo Design • Push Cards • Table Tent Cards • Custom Invitations • Magnetic Signs & Business Cards

T-Shirts • Cups • Coozies • Pens • Hats & Caps • Coasters • USB Drives

Full Service, Custom Graphic Design & Printing!

985.626.5223 • 985.630.7824 • kpbrown@bellsouth.net
or contact annette@nogs.org