

NOGS LOG

OCTOBER 2014

Volume 55, Number 4



OCTOBER 13 - NOGS LUNCHEON

Presentation: Field Study in Grand Bay, Offshore Plaquemines Parish, Louisiana

Guest Speaker: Chuck Holman

Saratoga Resources Inc. • Covington, Louisiana

SEE THE ENERGY

DIRECTIONAL SURVEY PLUS

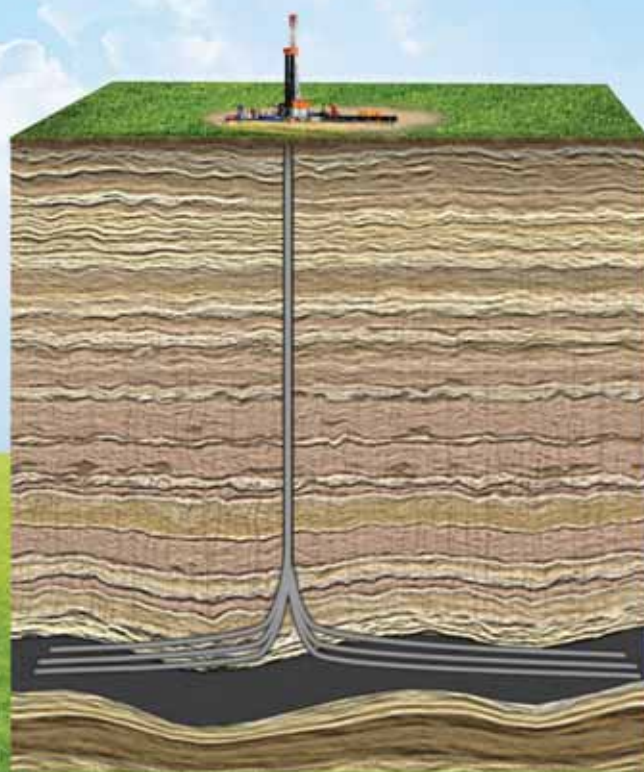
Directional Survey Plus (DS+) data goes beyond the simple capture of measured depth, azimuth and inclination. DS+ data are thoroughly researched, re-processed and standardized to create the most accurate spatial representation of the well path, from surface to total depth.

Access Directional Survey Plus data and the industry's largest collection of digital well logs quickly and easily through the online well data portal, LOG-LINE Plus!®

For more information, contact TGS at:

Tel: +1 713 860 2100

Email: info@tgs.com



WWW.TGS.COM

© 2013 TGS-NOPEC GEOPHYSICAL COMPANY ASA. ALL RIGHTS RESERVED.

TGS  See the energy.



Published monthly by the New Orleans Geological Society.
This issue was sent to press on September 22, 2014.

Interested in contributing to the NOGS LOG? Please submit items by the 1st Friday of the month to nogseditor@gmail.com. Advertising requests should contact the NOGS office at info@nogs.org.

IN THIS ISSUE

Regular Features:

From the Editor.....	3
From the President.....	5
NOGS Officers / Contacts	6
Upcoming Events & Activities	7
NOGS Luncheon Presentation.....	9
October & November Calendars	12
NOGA News.....	13
Drill Bits	24
Info-Tidbits	31
NOGS Memorial Foundation.....	33
FONO Fund	33

Special Features:

NOGS Welcomes	15
NOGS Memorial Foundation Scholarships.....	16-18
September Luncheon Photos	19
Earth Science Week	19
Save the Date! Rock-n-Bowl NOGS Social	23
44th NOLA Gem, Mineral, Fossil & Jewelry Show	27
UNO 40th Annual Mineral Auction	27
Save the Date! NOGS 2014 Holiday Party	27
GCAGS 2015 Convention Information.....	28
GCAGS 2015 Call for Papers.....	29

on the cover

Cover Photo Submitted by Rachel Carter

Clark Creek — Bayou Sarah-Thompson Creek Drainage Basin

This picture was taken at Clark Creek during the 2012 geomorphology field trip hosted by Dr. Michael Miner at the University of New Orleans. Clark Creek is located in the Bayou Sarah-Thompson Creek drainage basin in the Tunica Hills of southeastern Louisiana and southwestern Mississippi. The area represents the southernmost extent of the loess-covered uplands forming the bluffs along the eastern Lower Mississippi Valley wall. Over the day-long trip, students hike down the length of the creek as they journey into the past to discover the geomorphology processes that have shaped our world. They are able to observe the modern flood plain of the Mississippi River, the incising of streams, the development and migration of knickpoints, elements such as flute and scour marks, effects of glaciation, and the general processes of channels gullies and mass wasting. Students proceed further downward, negotiating multiple waterfalls and a boulder field, to eventually picnic under a waterfall and search for fossils. After a day in the sun and a long uphill hike to the vans, students leave Clark Creek reflecting upon the geomorphological wonders that lay only a short distance from New Orleans.

From the Editor

Geoscience Education is the focus of this issue as we honor our scholarship recipients.

Please take time to get to know each of the students through their bios in our centerfold; they represent our future geologic leaders! Field work and field trips are a fundamental building block for earth science education to help us understand modern and ancient depositional environments. This month we highlight a UNO geology field trip taken a couple of years ago (cover photo).

As we live amongst the modern depositional systems of South Louisiana, we become familiar with those systems, yet so many of us thirst for reminders of how those systems are preserved in the geologic record. Our NOGS Field Trip Committee needs a chair to organize such events. Several new and existing members have noted interest in the field trip committee. If you would like accept this role, please contact NOGS: info@nogs.org.

Jana L. Prouhet - NOGS LOG Editor

These nodes change everything.

With absolutely no cables,
there's absolutely no stopping you.



True cable-free seismic

Dealing with tons of cable will hinder any seismic acquisition, land or marine. That's why our exclusive, true cable-free ZNodal® systems pay such huge dividends in any environment.

Our lightweight, compact ZLand® system lets your crews work faster and much more safely while recording high-resolution data, even in the most challenging terrain.

Our ZMarine® system, also completely self-contained, deploys easily and safely, even in congested areas, to water depths of 3000m, which makes it ideal for 4D reservoir monitoring.

Welcome to a new world of seismic acquisition.



FairfieldNodal.com



From the President

October is a happening month for NOGS and other geoscience professionals. The following events are available for participation:

- **Rock-N-Bowl NOGS Social** (3000 S. Carrollton Ave):
Saturday, October 4th (4:30 – 7:00 pm)
Free for current NOGS members and one guest
- **GCAGS 64th Annual Convention** (Lafayette, LA):
Sunday, October 5th – Tuesday, October 7th
- **UNO 40th Annual Mineral Auction** (UNO Geology/Psychology Building Room 1000):
Friday, October 10th (7:00 pm)
- **NOGS Luncheon** (Holiday Inn):
Monday, October 13th - Guest Speaker Chuck Holman
We will also present the Best Paper award for 2013-2014 and recognize our college students receiving scholarships

It looks like we pack a lot of events in during the first part of this month, leaving the latter part for a little R&R as we get ready for the holiday season. And for all you baseball fans, including myself, October can be an entire month of festivities. Well that is unless your team doesn't make the playoffs.

If you missed our luncheon last month...then you missed the part where our current Board members were recognized for the work that they've accomplished in the first three months of our fiscal year. We have an energized, thoughtful, and dedicated group of volunteers who are serving as your leaders this year. I have been amazed at the tasks they are willing to take on to make our organization the best it can be. If you have been lax in your participation, please know that this year has already been one for the books and we still have nine months left. We are focused on increasing member participation and each of you will receive a special note from yours truly on the topic. Stay tuned!

NOGS Office

Office Manager: Annette Hudson

Phone: 504-561-8980 • Email: info@nogs.org • Website: www.nogs.org

The office is located at 810 Union Street, Suite 300, New Orleans, LA 70112.

Correspondence and all luncheon reservations should be sent to the above address.



BOARD OF DIRECTORS

		Company	Phone	E-mail
President	Kelli Hardesty	Environmental Resources Mgmt.	504-831-6700	kellihardesty@erm.com
Vice President	Jennifer Connolly	Shell	504-728-6411	jennifer.connolly@shell.com
Secretary	Bryan Banks	Terracon	318-450-5300	jbbanks@terracon.com
Treasurer	Arthur H. Johnson	Hydrate Energy International	504-220-6208	artjohnson51@hotmail.com
President-Elect	David E. Reiter	Stone Energy Corporation	504-593-3623	reiterde@stoneenergy.com
Editor	Tavia Prouhet	Chevron	985-773-6737	tavia.prouhet@chevron.com
Director 2015	William M. Whiting	Consultant	504-947-8495	bootscon@aol.com
Director 2016	Jim Zotkiewicz	Zot Oil & Gas	504-267-9131	jimzot38@zotoil.com
Director 2017	J. David Cope	Rising Natural Resources LLC	504-214-6754	greatmre@aol.com

COMMITTEE

	Chairperson			
AAPG Delegates	William M. Whiting	Consultant	504-947-8495	bootscon@aol.com
AAPG Student Chapter	Derek Goff	LSU		Dgoff3@lsu.edu
AAPG Student Chapter	W. Matt Benson	Tulane University		wbenson3@tulane.edu
AAPG Student Chapter	Rachel Carter	UNO	917-710-8021	r_carter@me.com
Advertising-Log	Kimberly Maginnis	LLOG Exploration	985-801-4761	kimberlym@llog.com
Auditing	Chuck Holman	Saratoga Resources	985-809-9292	charleswholman@bellsouth.net
Awards	Michael N. Fein	W & T Offshore	504-210-8148	mikef@wtoffshore.com
Ballot	Arthur H. Johnson	Hydrate Energy International	504-220-6208	artjohnson51@hotmail.com
Best Paper	Bay Salmeron	Chevron	832-854-6431	bay.salmeron@chevron.com
Entertainment	David E. Reiter	Stone Energy Corporation	504-593-3623	reiterde@stoneenergy.com
Environmental	Daisy Pate	Pontchartrain Partners	504-862-1775	daisy.pate@gmail.com
External Affairs	Michael A. Fogarty	Sylvan Energy, LLC	603-523-4808	mike.a.fogarty@gmail.com
Finance and Investment	Arthur H. Johnson	Hydrate Energy International	504-220-6208	artjohnson51@hotmail.com
Historical	Edward B. Picou, Jr.	Consultant	504-529-5155	epicou@bellsouth.net
Membership/Directory	David E. Reiter	Stone Energy Corporation	504-593-3623	reiterde@stoneenergy.com
New Geoscientists (NGNO)	Jeremy Prouhet	Chevron	985-773-6927	Jeremy.Prouhet@chevron.com
Nominating	Michael N. Fein	W & T Offshore	504-210-8148	mikef@wtoffshore.com
Non-Technical Education	Duncan Goldthwaite	Consultant	504-887-4377	DGldthwt@aol.com
Office Operations	Chuck Holman	Saratoga Resources	985-809-9292	charleswholman@bellsouth.net
Publications Sales	Edward B. Picou, Jr.	Consultant	504-529-5155	epicou@bellsouth.net
School Outreach	Thomas C. Bergeon	Century Exploration	504-832-3772	Tom.bergeon@centuryx.com
Special Projects	TBD			

NOGS LOG STAFF

Editor	Tavia Prouhet	Chevron	985-773-6737	tavia.prouhet@chevron.com
Editor-Elect	Tom Klekamp	Amber Resources LLC	985-630-2480	ekle1959@gmail.com
Auxiliary	Peggy Rogers	NOGA	504-392-6323	lrogers79@cox.net
Drill Bits	Al Baker	Beacon Exploration, LLC	504-836-2710	ABaker1006@aol.com
Drill Bits	Carlo C. Christina	Retired (C & R Expl. Inc)		drillbits81@yahoo.com
Drill Bits	Kevin Trosclair	Stone Energy Corporation	504-202-7997	kevintrosclair@gmail.com
Staff Photographer	Arthur Christensen	Shalimar Consulting	985-893-2013	arthur_shalimar@yahoo.com
Layout	Kristee Brown	Creative Graphics & Printing, LLC	985-626-5223	kpbrown@bellsouth.net
Webmaster	Kevin Trosclair	Stone Energy Corporation	504-202-7997	kevintrosclair@gmail.com

NOGS AUXILIARY

Officers		Phone	Directors	Year	Phone
President	Mary Walther	504-392-9332	Trudy Corona	2013-15	504-737-6101
Vice-President	Mary Ellis Hasseltine	504-885-7657	Debra Fein	2013-15	504-831-0358
Secretary	Peggy Rogers	504-392-6323	Susan Baker	2014-16	504-466-4483
Treasurer	Judy Lemarié	504-393-8659	Judy Sabaté	2014-16	504-861-3179
Parliamentarian	Alma Dunlap	504-737-2678			
Member-at-Large	Jean Jones	504-738-8091			



UPCOMING Events & Activities

October 13 • NOGS Luncheon

Holiday Inn Downtown Superdome

\$3.00 validated parking in hotel garage

Presentation:

Field Study in Grand Bay, Offshore Plaquemines Parish, Louisiana

Guest Speaker:

Chuck Holman

Saratoga Resources Inc. • Covington, Louisiana

See page 9 for Abstract and Biography

HOLIDAY INN DOWNTOWN SUPERDOME

Check with concierge or
front desk for location.

Lunch served at 11:30 am

ADMISSION:

With reservation \$30.00

Without reservation..... \$35.00

Student Member with reservations..... FREE

October 4

NOGS Social

Rock-n-Bowl • New Orleans, LA

For more information, www.nogs.org

October 5-7

64th Annual GCAGS Convention

Cajundome Convention Center • Lafayette, LA

For more information, www.gcags2014.com

October 10

UNO Mineral Auction

University of New Orleans • New Orleans, LA

For more information, www.nogs.org/calendar/

October 26-31

SEG International Exposition

Colorado Convention Center • Denver, CO

For more information, www.seg.org

NOGS CONTACT LIST

Continued from previous page

MEMORIAL FOUNDATION

BOARD OF TRUSTEES

2014-2015	Chairman	Chuck Holman
2014-2015	Secretary	Kelli Hardesty
2014-2015	Trustee	Rick Kear
2014-2015	Trustee	TBA
2015-2016	Trustee	William M. Whiting
2015-2016	Trustee	David E. Reiter
2016-2017	Trustee	J. David Cope
2016-2017	Trustee	Tom Klekamp

Company
Saratoga Resources Inc.
Environmental Resources Management
Retired - Schlumberger

Phone
985-809-9292
504-831-6700
504-858-2444

E-mail
charleswholman@bellsouth.net
kelli.hardesty@erm.com
kear1@slb.com

Consultant
Stone Energy Corporation
Rising Natural Resources LLC
Amber Resources LLC

504-947-8495
504-593-3623
504-214-6754
985-630-2480

bootscon@aol.com
reiterde@stoneenergy.com
greatmre@aol.com
ekle1959@gmail.com

AAPG DELEGATES

Term Ends

2015	Susan A. Waters
2015	William M. Whiting
2015(a)	David E. Balcer
2015(a)	Earl W. Cumming
2017	Elizabeth McDade
2017(a)	G. Alex Janevski

Shell
Consultant
Chevron
Reservoir Frameworks LLC
McMoRan Exploration Company
Shell

504-728-0229
504-947-8495
985-773-6725
985-630-6898
504-582-4510
504-425-6214

susan.waters@shell.com
bootscon@aol.com
dbalcer@chevron.com
earlcumming@bellsouth.net
elizabeth_mcdade@fmi.com
gregory.janevski@shell.com

NEW MEMBERS

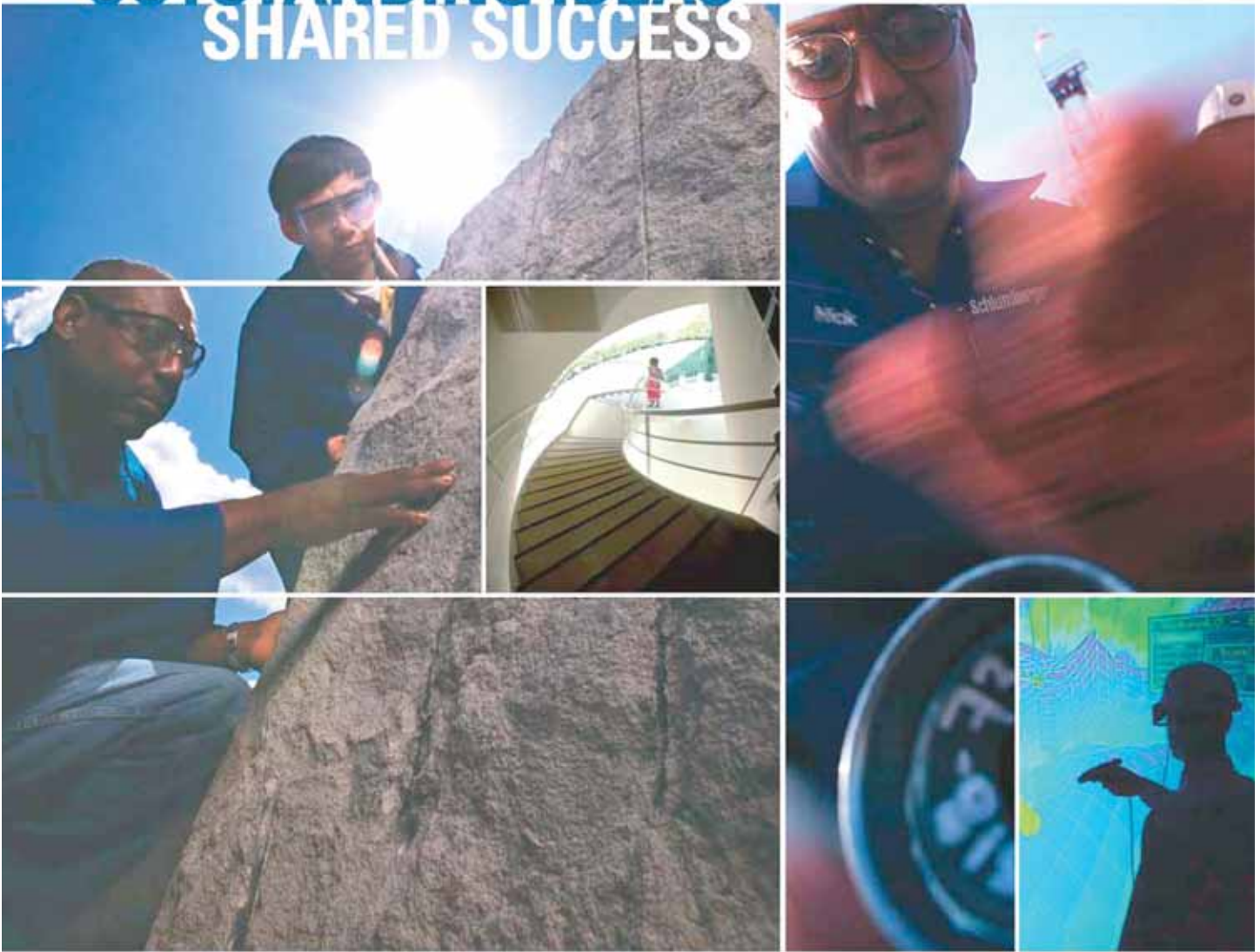
Jamie Caravella	Geophysical Advisor
Yanbin Lu	Staff Nannofossil Biostratigrapher
Nicholas Myers	Staff Paleontologist
Robert Pruitt	Petroleum Eng. Student
Ryan Weber	Biostratigraphy Manager

EnVen
Paleo Data, Inc.
Paleo Data, Inc.
LSU
Paleo Data, Inc.

504-830-7637
504-488-3711
504-488-3711
504-488-3711

jcaravella@enven.com
yanbin@paleodata.com
nicholas@paleodata.com
rpruitt@lsu.edu
ryan@paleodata.com

OUTSTANDING IDEAS SHARED SUCCESS



WHAT CAN MILLIONS OF IDEAS, thousands of patents, and hundreds of nationalities deliver? Success. Listening to the ideas of our clients and colleagues around the globe has made Schlumberger the world's leading technical services company. Your experiences are catalysts for our innovation.

Schlumberger invests in a worldwide community of research and development centers—from Boston to Dhahran, Beijing to Moscow, Stavanger to Cambridge—encouraging our brightest minds to find new ways to improve efficiency, productivity, and safety, every day.

Through our commitment to technology research and the support of our global network of local experts, Schlumberger is leading the way into the future.

www.slb.com

Schlumberger



Oct. 13 NOGS Luncheon Presentation

☆☆☆ at the Holiday Inn Superdome ☆☆☆



Field Study in Grand Bay, Offshore Plaquemines Parish, Louisiana

Presented by

Chuck Holman

Saratoga Resources Inc.
Covington, Louisiana



ABSTRACT

Grand Bay Field Study

Grand Bay Field is located on the east side of the Mississippi River in Plaquemines Parish, Louisiana. It was discovered by Gulf Oil in 1938 and through various operators has produced approximately 260 MMBOE (214 MMBO and 285 BCFG). Oil and gas have come from 65 different sands, ranging in depth from 1600 to 13,500 feet, with nearly all production in normally-pressured sands shallower than 11,000 feet. Peak production was in 1972 and current production is 700 bopd and 500 mmcfpd from approximately 80 wells. The structure is a faulted anticline that trends northwest to southeast and appears to have formed through uplift due to salt withdrawal in surrounding basins. The hydrocarbon source is believed to be a Cretaceous Shale and probably matured shortly after salt withdrawal. Hydrocarbons then migrated along fault traces and updip into reservoirs. The reservoirs are deltaic, neritic, and deep-water sandstones and hydrocarbons are laterally trapped by four-way closure, faults, and stratigraphic pinchout and vertically trapped by shale. Significant deeper potential remains in Grand Bay, as only 3 of the 411 wells that have been drilled in the field are deeper than 15,000 feet.

BIOGRAPHY

Chuck Holman received an MS from the University of Hawaii in 1982 and has worked in the oil industry since then as a geophysicist/geologist. He began his career with Mobil Oil in 1982 and then transferred to New Orleans in 1983 to work in Mobil Oil's Gulf of Mexico Exploration Department and in 1992 transferred to Dallas to work on the Mobil New Exploration Ventures Team on various projects in Latin America. After Mobil, Chuck worked as consultant from 1996 to 2006 for SCA, Tecpetrol, Interactive Interpretation and Training, CGG, Avanti Consulting, Corelab, and Gaffney-Cline and Associates. Chuck then returned to New Orleans in 2006 to work as a geophysicist for Dominion Exploration & Production Company, Eni Petroleum, the Bureau of Safety and Environmental Enforcement, and now for Saratoga Resources prospecting their Louisiana State Lease and OCS properties.

THE LUNCHEON RESERVATION DEADLINE IS OCT. 10 - CONTACT THE NOGS OFFICE

"And Looking Ahead . . ."

The next luncheon will be held on November 3. Our guest speaker, Norman L. Guinasso, Jr., Ph.D., Research Professor, Department of Oceanography, College of Geosciences, Texas A&M University, will present "Thirty Years of Deep Water Geochemistry: Bush Hill to the Deep Water Horizon." Contact the NOGS office at 561-8980 or use the PayPal link on the NOGS website (www.nogs.org) to make your reservation.

STRENGTH IN RESOURCES

Our history is rooted in exploration success in the natural resources business. With a growing portfolio of high-potential oil and gas targets, our future grows brighter.



www.fcx.com



FCX
LISTED
NYSE

SEI®

Seismic Exchange, Inc.

Strategic Speculative Surveys
Geophysical Data Marketing & Management

YOUR
Full Service
National
Seismic Data
Marketing Firm



DALLAS DENVER HOUSTON MIDLAND NEW ORLEANS OKLAHOMA CITY CORPUS CHRISTI TULSA
201 St Charles Avenue, Suite 4300, New Orleans, Louisiana 70170-4300 504-581-7153 FAX 504-581-9591

seismicexchange.com



Drill with confidence.

Diversified Well Logging, LLC brings the accuracy and expertise only a company with over sixty years in the oil and gas industry can deliver. We are your eyes and ears in the field, especially when it comes to deep water or high pressure, high temperature areas.

DWL offers 24-hour formation evaluation. We provide secure and customized real-time data communication, in-house research and development, and 24/7 on-call support for our equipment and our engineers.

Whether you have a 10-day job or a 110-day job, we provide the specialized attention you require. **Our experience means you can be confident in the safety and performance of your well.**









- *Formation Evaluation*
- *Geosteering*
- *Drilling Optimization*
- *Real-time Data Transmission*
- *Early Kick Detection*



DIVERSIFIED
WELL LOGGING, LLC



Serving the Oil and Gas Industry for Over 60 Years

October

Sunday	Monday	Tuesday	Wednesday	Thursday	Friday	Saturday
			1	2	3	4  Rock 'N' Bowl
5	6	7	8	9	10  Mineral Auction	11
12	13  Luncheon	14	15  Board Mtg	16	17	 EARTH SCIENCE WEEK October 12-18 2014
19	20	21	22	23	24	25
26	27	28	29	30	31  Halloween	

October 13th NOGS Luncheon Holiday Inn Superdome 330 Loyola Ave. @11:30 am
 Guest Speaker: **Chuck Holman** of Saratoga Resources Inc. – Covington, Louisiana
 Will Present: "Field Study in Grand Bay, Offshore Plaquemines Parish, Louisiana"

November

Sunday	Monday	Tuesday	Wednesday	Thursday	Friday	Saturday
						1
2	3  Luncheon	4	5	6	7	8
9	10	11  Veterans Day	12	13	14	15
16	17	18	19  Board Mtg	20	21	22
23	24	25	26	27  Thanksgiving Day	28	29

November 3rd NOGS Luncheon Holiday Inn Superdome 330 Loyola Ave. @11:30 am
 Guest Speaker: **Norman L. Guinasso, Jr., Ph.D.**, Research Professor,
 Department of Oceanography College of Geosciences, Texas A&M University
 Will Present: "Thirty Years of Deep Water Geochemistry: Bush Hill to the Deep Water Horizon"

New Orleans Geological Auxiliary News

"The objective of the Auxiliary is to promote fellowship among the wives of the members of the New Orleans Geological Society and to render assistance to NOGS upon request."



Celebrating 60 Years!



Our 60th anniversary special year has started but it is not too late for new members to enjoy some good times with old and new friends, spouses and special guests. The directories are printed but your name can be added and you won't miss out on the celebration. See the application below.

UPCOMING NOGA EVENTS, 2014-2015

November 12, 2014: Celebration with spouses and friends at Ralph's on the Park

February 25, 2015: Luncheon at Chateau Golf & Country Club, guests invited

April 11, 2015: Spring Social at the home of Paul & June Perret, spouses and guests invited

May 13, 2015: Installation Luncheon at Cafe Adelaide, Loews Hotel

The NOGS Christmas Party will be held at the Metairie Country Club on December 12th. Auxiliary member Camille Yeldell is on the committee.

Auxiliary members Mary Walther, Judy Lemarié, Alma Dunlap, Peggy Rogers, Debra Fein, Jean Jones and Elizabeth Furlong filled registrant's envelopes and helped at the registration desk for the Deepwater Technical Symposium held in August.

Peggy Rogers, *NOGS LOG*



PHOTO BY ARTHUR CHRISTENSEN

Judy Lemarié and Mary Walther tending a registration booth at the 2014 Deepwater Symposium

New Orleans Geological Auxiliary Membership Application

Name _____ Spouse's Name _____
Address _____ Home Phone _____
City, State, Zip _____ Cell Phone _____
Spouse's Company _____ Email _____

Dues: \$25 payable to New Orleans Geological Auxiliary
Please mail to Judy Lemarié, Treasurer, #2 Yosemite Dr., New Orleans, LA 70131

Why can Weatherford deliver more real time data at the wellsite than any other mudlogging company?

Tim has cabin fever.



**EXCELLENCE
FROM THE
GROUND UP™**

Our Global Operations Manager for Surface Logging Systems, Tim, is all smiles these days. That's because he and his team recently designed a new state-of-the-art mudlogging cabin. The spacious interior makes room for more laboratory services at the wellsite. Now exploration companies have access to more data in real time, so they can make better decisions faster. Combined with Weatherford's patented GC-TRACER™, IsoTube® AutoLoader™ and other Isotech technologies, it's one more way Weatherford Mudlogging is committed to Excellence from the Ground Up.

SURFACE LOGGING SYSTEMS

www.weatherford.com/surfacelogging
mudlogging.services@weatherford.com



NOGS WELCOMES

Submitted by Tom Klekamp

Yanbin Lu, a Staff Nannofossil Biostratigrapher with Paleo Data, Inc. joins NOGS as an active member. Yanbin holds a Ph.D. (2014) in Earth Science from the University of Nebraska at Lincoln where he was a student member of the AAPG.

Welcome **Nicholas Myers**, Staff Paleontologist with Paleo Data. Nicholas earned a B.A. (2009) and M.A. (2013) in geology from Florida State University. He is an active member of NOGS as well as the AAPG.

Robert Pruitt, a petroleum engineering student at LSU-Baton Rouge and a new student member. He holds a BS (2003) in mathematics from West Georgia University and an M.B.A. (2010) from Troy University. Robert is also a student member of the AAPG and indicates a desire to help our NOGS field trip committee.

Ryan Weber rejoins NOGS after returning from five years in Houston. He is a biostratigraphy manager at Paleo Data. Ryan earned a B.S. (2003) from Minnesota State University–Mankato and an M.S. (2006) in geoscience from the University of Nebraska. Ryan and his wife Lacie reside in Mandeville.

“Welcome back” to **Jamie Caravella**, Geophysical Advisor for EnVen in Metairie. Jamie holds a B.S. (1985) and an M.S. (1991) in earth science from the University of New Orleans. She and her husband Troy live in the Lakeview area of New Orleans. Jamie is an active member of the AAPG.



64th Annual GCAGS Convention

5–7 October 2014 | Lafayette, LA

Hosted by the Lafayette Geological Society

“Survivor: The Gulf Coast” Registration Now Open!

Visit www.GCAGS2014.com to Register
and for more information!

- 6 outstanding short courses
- 3 excellent field trips
- Educational forum featuring 4 leading industry experts
- Technical program with strong emphasis on deepwater deposition, emerging shelf trends, conventional plays, resource plays, and the environment

- Prospect alley
- Spouse/Guest program
- Industry sponsored night at the Lafayette Science Museum
- Special events for students and young professionals
- Rocks in your head – A workshop for teaching Earth Science

Exhibition and Sponsorship opportunities still available!



Tulane University

NOGS Memorial Foundation Scholarships



JAMES ALLEN GILREATH GRADUATE SCHOLARSHIP

Mr. Michael C. Hopkins - \$3,000 Cash Award

Michael was born and raised in Biloxi and graduated from Biloxi High in 2004. He received his bachelor's in geology from the University of Southern Mississippi in 2010 and was accepted into graduate studies at Tulane in 2010. Michael is currently in the fourth year of his PhD under Professor Nancye Dawers. His work is focused on studying the interaction between normal faults and surface processes, understanding how fluvial systems respond and interact to growth in normal fault systems. Michael intends to pursue a career in the petroleum industry.

NOGS MEMORIAL FOUNDATION SCHOLARSHIP

Mr. Alexander M. Breaux – \$2,500 Cash Award

Alex is a master's student in the Department of Earth and Environmental Sciences at Tulane. He is working with Professors Alex Kolker and Karen Johannesson, on groundwater flow through the Mississippi River Delta and has a research assistantship with the Louisiana Universities Marine Consortium (LUMCON). Alex is using geochemical and geophysical methods to identify likely flow paths of hydraulic head-driven groundwater discharge through sediments in the delta. Alex plans to pursue a career in either science policy or the energy industry.

JULES & OLGA BRAUNSTEIN MEMORIAL SCHOLARSHIPS

Mr. Daniel Coleman- \$2,500 Senior Cash Award

Dan has always been a naturalist. His early focus was biology but changed after working in a coastal geology lab at Tulane. He recently spent a semester in Germany modeling earthquakes and doing field mapping. Engaging the international scientific research community has further confirmed his love of geologic research, but made him cognizant of the unique geologic challenges of Mississippi River Delta. In addition to academics, Dan is an environmental activist, performs community service, and writes for Tulane's *Hullabaloo*. Being socially and politically active is the perfect complement to rigorous academics, a belief that keeps Dan quite busy.

Mr. Peter Reale - \$2,000 Junior Cash Award

Peter was born and raised in Enfield, Connecticut. A childhood of hiking and exploring the areas near his home inspired in Peter a goal to understand the world around him. Peter's passion for geology stems from this yearning to understand the geologic features and how these things have developed. He hopes to either work professionally or conduct field research, as he loves to hike and camp. Peter enjoys traveling, and because of the omnipresence of geologic processes he hopes to be able to utilize his skills abroad someday.

NOGS Memorial Foundation Scholarships

The NOGS Memorial Foundation Scholarships are granted each year to those students who have demonstrated exceptional talent in or commitment to their geologic studies and projects. It is the policy of the Memorial Foundation to posthumously name these scholarships after those members whose own extensive contributions to the profession have been particularly praiseworthy.

Lee Hilliard Meltzer for expertise in oil and gas appraisal and exploration, as well as manifold and unstinting support of and service to - from AAPG to NOGS - the region's professional geologic organizations.

James Allen "Al" Gilreath for his work as chief tool developer of down-hole instrumentation and 'pattern' interpretation, earning him—world-wide—the title, 'Mr. Dipmeter'.

Richard W. "Dick" Boebel for his outstanding abilities as an oil and gas finder and in being a unique individual who was most generous of his time and talent to the industry, his peers, and in his support of many professional organizations.

George W. Schneider, Sr. for exceptional leadership in exploration activities and for being a positive force in establishing the New Orleans Geological Society and serving as its first president in 1941-42.

Jules Braunstein gained wide recognition in the oil and gas industry not only for exceptional technical expertise but also as an exacting editor. His long career was conspicuous for selfless devotion and is carried on by his surviving wife, **Olga**, in her bequeathal of the residue of their estate to NOGS Memorial Foundation Scholarship Fund.

The University of New Orleans

NOGS Memorial Foundation Scholarships



RICHARD W. BOEBEL GRADUATE SCHOLARSHIP

Ms. Rachel Caroline Carter - \$3,000 Cash Award

Rachel completed her undergraduate degree at the UNO, and is now a first year graduate student working towards a masters in petroleum geology and geophysics. She would like to become an exploration geologist, with a specialty in deep water Gulf of Mexico exploration. In summer 2012, Rachel served as an intern for Murphy Oil in Houston. Rachel's master's thesis focuses on the stratigraphic variability of Horn Mountain, which is a region in Mississippi Canyon, Gulf of Mexico, integrating 3-D seismic data with stratigraphy to develop a comprehensive story underlying the structures. Rachel is very involved in the community at UNO, where she is a teaching assistant and holds board positions in both the Student Chapter of the American Association of Petroleum Geologists and the SGE Honorary Society.

GEORGE W. SCHNEIDER SR. MEMORIAL SCHOLARSHIP

Mr. Jon Derek Guidry - \$2,500 Cash Award

Jon was born in Baton Rouge and in his senior year at McKinley High he was awarded the "Award for Excellence in Achievement in Aerospace Science." In 2013 he earned a BS in earth and environmental science with a minor in chemistry at UNO and received a NOGS senior award. Jon served as president of the SGE honorary society and has facilitated several volunteer opportunities for members of his department. He was awarded the Graduate Master's Scholarship from UNO and is developing a thesis pertaining to the geochemistry and mineralogy of a pegmatite in Wisconsin. Jon will earn his master's in geochemistry in 2015 and seeks a career in exploration or mining. Jon works with UNO's MP2 Research Group. Last year he presented a paper at the Int'l Symposium for Granitic Pegmatites and at the Int'l Mineralogical Society's conference in South Africa this September.

JULES & OLGA BRAUNSTEIN MEMORIAL SCHOLARSHIPS

Mr. Andrew Adams - \$2,500 Senior Cash Award

Andrew was born in New Orleans, and attended Natchitoches High. In 2005, Andrew joined the Louisiana Army National Guard and started classes at Northwestern State University. Following a winter deployment to Japan with his Guard Unit, he returned to New Orleans. In 2008, he attended Nunez Community College, which was cut short in 2010 when his Unit was activated in Iraq. After his tour was up, he returned to Nunez and completed an associate degree in science. Andrew was keen about science and decided to attend UNO to pursue studies in earth and environmental sciences. He maintains a 3.8 GPA in EES and 3.6 cumulative, while finding time to volunteer in his community, in EES as treasurer for the Society for Earth & Environmental Sciences, secretary for the SGE Honorary Society and student mentor in UNO's AAPG Student Chapter. Following his bachelor's in 2014 he plans to continue in community service and attend graduate school.

Mr. Lewis Jones - \$2,000 Junior Cash Award

Lewis was born in Slidell and attended Salmen High where he was active member in many clubs and a band captain. He is currently at UNO working towards a bachelor's degree in geology. He has a great fascination in the environmental sciences and foresees using his experience and education to help society. Lewis is currently working in a lab with graduate students helping them compile their research under the supervision of Dr. William "Skip" Simmons. After college, Lewis is set on working in the petroleum industry as a geochemist, but is open to exploring other fields in the industry. Lewis loves community service projects and participates in clubs around campus.

Louisiana State University

NOGS Memorial Foundation Scholarships



LEE H. MELTZER GRADUATE SCHOLARSHIP

Mr. Nicholas Michael Daigle - \$3,000 Cash Award

Nick Daigle, a graduate student at LSU, was born and raised in Metairie, LA. Nick attended Jesuit High School. After enrolling at LSU and completing two geology courses Nick made an easy switch to geology, completing the curriculum in three years and earning his bachelor's degree. Nick's dedication led him to stay at LSU to pursue a master's degree. Presently, he is a research assistant and working on a project concerning high-grade metamorphic rocks in the Beartooth Mountains. Nick intends to continue his career as a geoscientist.

NOGS MEMORIAL FOUNDATION SCHOLARSHIP

Ms. Jillian Bambrick Banks - \$2,500 Cash Award

Jillian Banks was born and raised in Wolfville, Nova Scotia. Prior to enrolling in the PhD program in geology at LSU, she received a BSc in geology from Acadia University (NS), a BA in geography and anthropology from Saint Mary's University (Halifax, NS), and an MA in archaeology from Memorial University (St. John's, NL). She has been a lab instructor for environmental earth science courses and a project and research manager for the Environmental Sciences Research Center, at St. Francis Xavier University (Antigonish, NS). Jillian is currently a teaching assistant in the Geology and Geophysics Department at LSU and aspires to continue in academia. Her research is focused on using palynology, and sediment characteristics to reconstruct the paleoenvironment of Okak Bay, Labrador through the late Holocene.

JULES & OLGA BRAUNSTEIN MEMORIAL SCHOLARSHIPS

Ms. Catherine Hudson - \$2,500 Senior Cash Award

Catherine grew up in Portland, Oregon, with close ties to Baton Rouge through her family. Early on, she had an interest in math and science and frequently participated in science fairs and math competitions. At LSU, she's thrilled to be taking higher-level science classes and learning about the environment and how humans affect it. Catherine loves being an LSU Tiger and is looking forward to finishing her bachelor's degree before pursuing higher degrees. She enjoys playing the piano, music, singing, reading and geology-related travel.

Mr. Daniel Babin - \$2,000 Junior Cash Award

Daniel's interest in geology and the natural sciences began with family vacations to the great national parks of the American West. He is an avid hiker, kayaker and rock climber. While at MSU in Bozeman, Montana, Daniel's hiking partners—both geology students—explained the geology of the areas they traversed. Daniel was hooked on geology. He has distinguished himself with a passion for geology and a stellar GPA. Next year he will begin work on his undergraduate thesis at LSU with a focus on plate tectonics or structural geology. Daniel plans to pursue a master's degree and eventually become an exploration geologist combining his love of travel, the outdoors, and geology.

September 2014 Luncheon and Award Presentations



Mike Fein (former NOGS President) receiving a Snedden "Connectivity Diagram" T-shirt and DWTS Photo Collage as a thank you from the society for all his hard work and dedication to the successful DWTS 2014



Wilma Subra (Guest Speaker) receiving a speaker's plaque as a thank you on behalf of NOGS from Jennifer Connolly (NOGS Vice-President)



Alvin Rowbatham (ION Geophysical) receiving the Corporate Citizenship Award for their sponsorship and support of NOGS during the 2013-14 year

October 12-18, 2014 EARTH SCIENCE WEEK

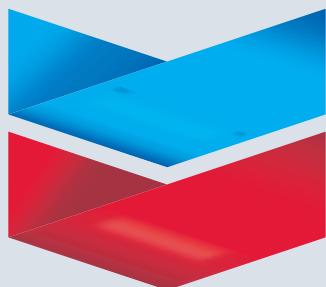


"EARTH'S CONNECTED SYSTEMS"

Take part in Earth Science Week 2014! ESW 2014 will promote awareness of the dynamic interactions of the planet's natural and human systems. "Earth's Connected Systems," the theme of ESW 2014, engages young people and others in exploring the ways that geoscience illuminates natural change processes. By deepening our understanding of interactions of Earth systems -- geosphere, hydrosphere, atmosphere, and biosphere -- Earth science helps us manage our greatest challenges and make the most of vital opportunities.

For additional information, logon to:
<http://www.earthsciweek.org/>

Chevron



100 Northpark Blvd.
Covington, LA 70433

(985) 773-6000



LaBay

Exploration Co., L.L.C.

111 Veterans Memorial Blvd.

Suite 1550

Metairie, Louisiana 70005

Office (504) 371-5967

Fax (504) 371-5969

www.labayexploration.com



**Shell has worked in partnership
with the NOGS for many years, and
is proud to count the society among
its closest business associates.**

The New Orleans Geological Society was organized in 1941 to foster scientific research and advance the science of geology. Particular emphasis is laid on the exploration for and production of petroleum and natural gas. Related objectives include encouraging the adoption of improved methods of exploration, disseminating pertinent geological and technological data, and maintaining a high standard of professional conduct among its members.

www.shell.com/us.sepco

WELLSITE GEOSCIENCE SERVICES



When time is money, Wellsite Geoscience is money well spent.

Whether you're exploring a basin, producing a well or completing a shale play, time is money. That's why Weatherford Laboratories brings a suite of formation evaluation technologies right to the wellsite. Utilizing mud gas and cuttings, these technologies provide detailed data on gas composition, organic richness, mineralogy and chemostratigraphy in near real time. As a result, operators now have an invaluable tool to assist with sweet spot identification, wellbore positioning, completion design and hydraulic fracturing. We call it Science At the Wellsite. You'll call it money well spent.

SCIENCE AT THE WELLSITE™

www.weatherfordlabs.com



Formation Evaluation Well Construction Completion Production

©2013 Weatherford. All rights reserved

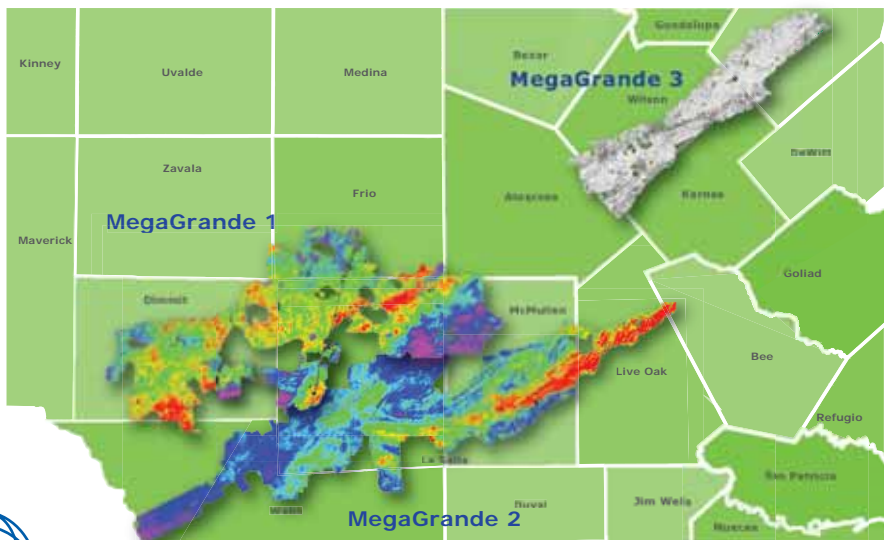
SOUTH TEXAS is MEGA GRANDE

NEW MERGED VOLUMES WITH PRESTACK VTI MIGRATION



Now our RG3D South Texas Multi Client data is better than ever. With over 4500 square miles of RG3D newly merged and reprocessed volumes you get:

- Common surface consistent processing solution including refraction statics covering the entire program area using input from all the individual surveys
- Flat PSTM gathers up to ~50 degrees (VTI correction included on PSTM)
- Continuous in-line/cross-line numbering processed on a single 3D CDP bin grid
- Wide azimuth superior data quality imaged seismic data
- Processing: VTI-Only Anisotropic Pre-Stack Time Migration
- Bin size 82.5 x 82.5 ft.



Global Geophysical Services, Inc.
tel +1 713-972-9200 www.globalgeophysical.com

CONTACT US at SoTex@globalgeophysical.com

Download the White Paper at: www.globalgeophysical.com/SouthTexasMerge

Gulf Coast Section SEPM

www.gcssepm.org

Petroleum Systems in "Rift" Basins

34th Annual GCSSEPM Foundation Bob F. Perkins Research Conference
Houston, Texas December 6-9 2015

💧 Rifts & Overlying/Related Sag basins

➤ Disproportionately

– "Rich"

- ~30% of the "giant" fields; *i.e.*, >500 MMBOE are found in rifts & overlying/related sag basins (Mann *et al.*, 2001, 2003, 2006, 2007)

– "Frustrating"

- "...each rift basin is a *UNIQUE* geological entity, yet all are variations on a common theme." (Lambiase, 1994)

CHECK OUR WEBSITE (WWW.GCSSEPM.ORG/CONFERENCE/2015_Conference.htm)

reprocessed seismic data property of, and used courtesy of, Robertson GeoSpec, a CGG Company



GCSSEPM



UNO 40th Annual Mineral Auction

A Tribute to Skip Simmons • Friday, October 10th

Coming October 10th is a fun-filled evening at UNO which is hosting their 40th Annual Mineral Auction. This auction is a special tribute to Dr. Skip Simmons – beloved UNO petrology professor, world traveler and auctioneer extraordinaire. In addition, Skip's endearing sidekick in mineralogical madness, UNO mineralogist/petrologist Al Falster will share his expertise and some charming type locality stories.

This is the last year the event will take place as Skip is retiring, or thinks he is, and Al has taken a lab research position at the Maine Mineral and Gem Museum in Maine in 2015.

The event features some rapid fire entertaining bidding on exotic minerals, fossils and jewelry.

No stone is left unturned. UNO students hosting the event will be providing fermented libations and snacks and an entertaining time will be had by all. Bring your friends and if you have a nice specimen you would consider donating contact Al at afalster@uno.edu by October 3rd so it can be entered in the auction database.

The event will be located in the UNO Geology/ Psychology Building, Room 1000 and the auctions start at 7 p.m. (Why someone would put shrinks and rock heads in the same building is beyond comprehension.)

The mineral auction benefits the student chapter of SEES (The Society for Earth and Environmental Sciences) and proceeds fund UNO geology student field trips, materials, and an end of year crawfish boil not to be missed. Let's show our strong support for the next generation of geos.

Bid high, bid often.
Tom Bergeon



Moh's Scale of Hardness Quiz Game

Directions: Do you remember the mineral hardness scale? Solve the missing minerals. Unscramble the letters in the rectangles to decode the secret message below.

Hardness	Mineral	Hardness	Mineral
1	__ _ <input type="text"/> _	6	__ _ _ _ _ <input type="text"/>
2	__ _ _ _ _ _	7	__ _ _ _ <input type="text"/> _
3	<input type="text"/> _ _ _ _ _	8	__ <input type="text"/> _ _ _
4	__ _ _ <input type="text"/> _ _ _	9	<input type="text"/> _ _ _ _ _
5	__ _ _ _ _ _	10	__ _ _ _ <input type="text"/> _

Secret Message: __ _ _ K - N - B _ W _ _ _ _ 4



Covington Office

1001 Ochsner Blvd., Suite 200
Covington, Louisiana 70433
p: 985.801.4300
f: 985.801.4796

Houston Office

CityCentre Three
842 W Sam Houston Pkwy N
Suite 600
Houston, Texas 77024
p: 281.752.1100
f: 281.752.1199

Scott Office

814 S. Frontage Rd.
Scott, LA 70583
p: 337.408.4000
f: 337.408.4049

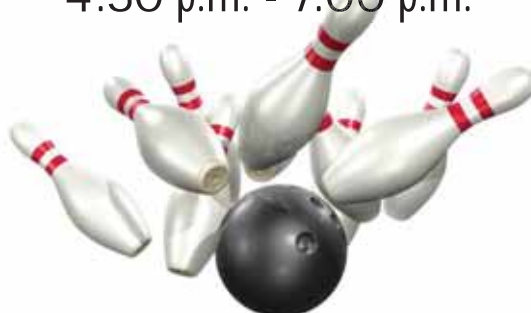
www.llog.com

Save the Date!

Rock-n-Bowl NOGS Social

Saturday, October 4th

4:30 p.m. - 7:00 p.m.



- **Rock-n-Bowl Lanes**
(3000 S. Carrollton Ave.)
- **Drinks, food, bowling and fun**
- **NOGS Members: FREE admission**
for you and a guest
- **Non-NOGS Members: \$25**
(includes NOGS membership)

Introducing the Fastest Log Printer in the Industry

At 11 inches per second, the NeuraLaserColor II operates seamlessly and requires no add-on software for automatically sensing top of form printing. Whether you are a service company printing thousands of logs a day or an exploration company looking for quality logs, the NeuraLaserColor II will change your expectations of well log printers.

- Record setting speeds - 11 inches per second
- Precision printing - On-the-fly length calibration
- Increased efficiency - 20,000 page yield toner
- Operational versatility - Native PDF support
- Hands free - Automated cut, feed and re-load

See More at:

www.NeuraLaserColor2.com



© 2014 Neuralog · www.Neuralog.com · sales@neuralog.com · 1.281.240.2525



South Louisiana and Offshore Gulf of Mexico Exploration and Production Activities

LAFAYETTE DISTRICT, ONSHORE AREA

By Carlo C. Christina

The Office of Conservation, Lafayette District, Onshore Area, issued 30 permits to drill during the month of August 2014. Following are the most significant locations:

NEW LOCATIONS

Texas Petroleum Investment Co. will drill the #5 Amoco Fee in **Jennings Townsite Field**, (A), in Jefferson Davis Field in Sec. 2, 10S-3W. The well will be drilled to **14,000 feet** to test Nonion struma sands which have produced in wells 1½ miles to the northwest. The well is also located offsetting wells producing from Camerina sands at 10,700 feet. (248311)

In St. Charles Parish, **West Lake Salvador Field**, (B), Tri-C Resources will drill the #1 SL 20857 to test the Cris I sands at 14,544 feet. The well is located in 16S-21E, 1½ miles southeast of Cris I production and approximately 1 mile west of shallow production in the old Lake Salvador Field. (248350)

Goodrich Petroleum Co. will drill another **Tuscaloosa Marine Shale** well in **Little Silver Creek Field**, (C), in Tangipahoa Parish. The #1 Verberne 5 H will be drilled in Sec. 5, 2S-8E to 20,000 feet in a 7600 foot lateral. It is located 1 mile south of the Goodrich #1 Blades, which was recently completed in the Tuscaloosa Marine Shale flowing 1250 BOPD and 115 MCFD. It has produced 70,000 barrels of oil in 4 months. (248323)

In West Baton Rouge Parish, **Erwinville Field**, (D), Vitrol Resources has permitted the #1 Harry Laws in Sec. 94, 7S-10E, at a location offsetting several horizontal Cockfield completions at 10,400 feet. It will be drilled to **19,782 feet** as a directional well to test deep Wilcox sands. This well is the first of several wells to be drilled in the **Fleetwood Project**, as detailed in my August report. Vitrol Resources will operate the well having 50% working interest with its partners, Petroquest Energy and Midstates Petroleum, each having 25% working interest. (248370)

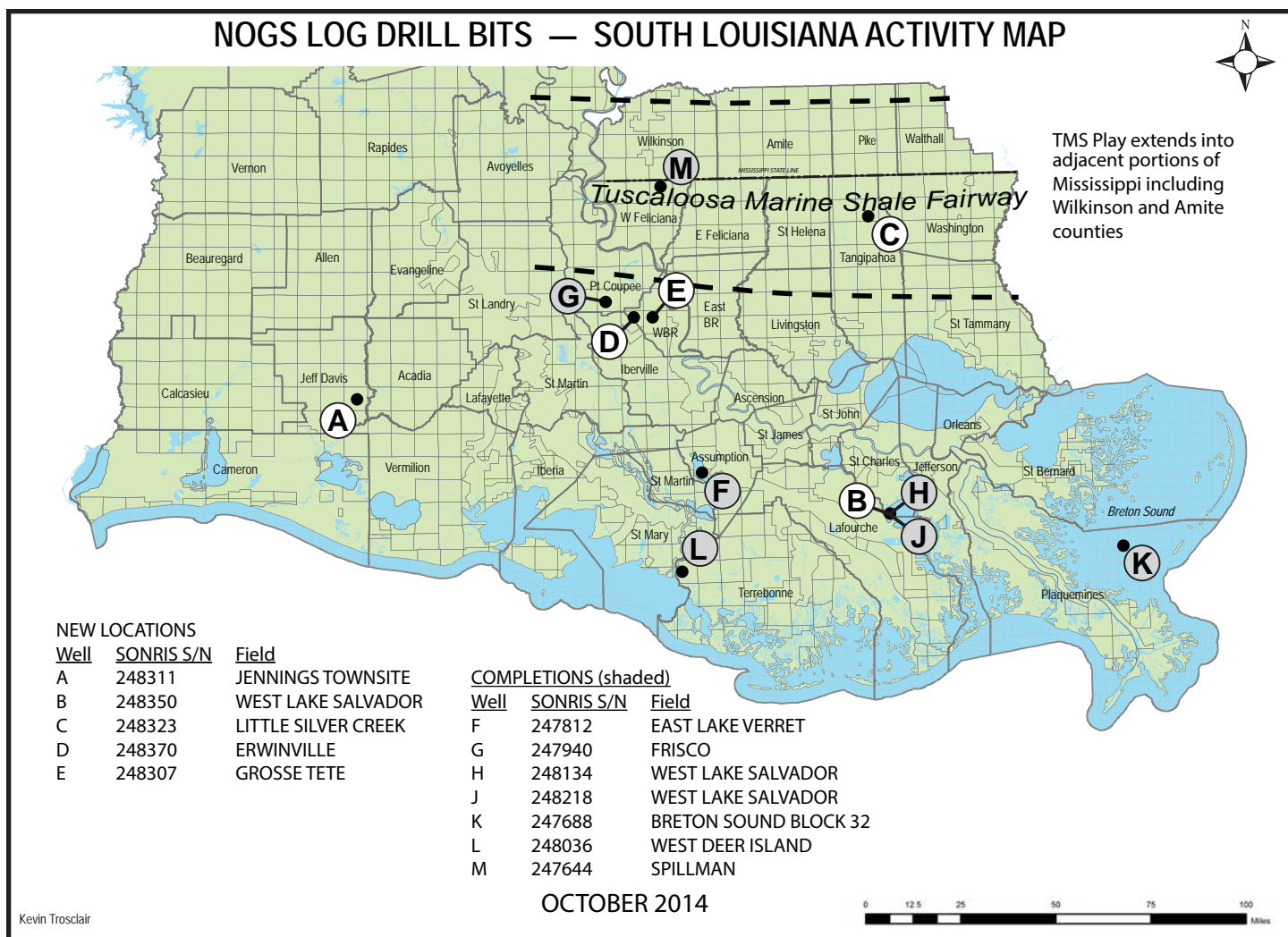
Also in West Baton Rouge Parish, Vitrol Resources will drill in **Grosse Tete Field**, (E), the #1 Wilberts Sons 30, to test the Sparta section at 14,404 feet. The well is drilling below 9700 feet in Sec. 30, 7S-11E. (248307)

COMPLETIONS

Petroquest Energy has completed its #1 Triche Estate in **East Lake Verret Field**, (F), Assumption Parish, as an oil well flowing 474 BOPD and 2187 MCFD through perforations 10,471 to 10,491 feet in the Rob 3-5 Sand. The well was drilled to a total depth of 11,023 feet in Sec. 28, 13S-13E, at a location 1½ miles southwest of the nearest producing well which had produced more than 600,000 barrels of oil in 14 years. (247812)

In Pointe Coupee Parish, **Frisco Field**, (H), Will-Drill Production has completed the #1 Henry in Sec. 8, 6S-9E as an oil well flowing 144 BOPD after perforating and **fracking 2 zones in the Wilcox** sands in the overall interval 11,240 to 11,799 feet. (247940)





In **West Lake Salvador Field**, (G), Saint Charles Parish, Tri-C Resources has completed an excellent oil well in the Cris I sand, flowing 840 BOPD through perforations 12,302 to 12,324 feet. The #1 SL 21183 was drilled 1 mile north of production in the field in 16S-21E. (248134)

Tri-C has also completed its #2 SL 20936 in **West Salvador Field**, (H), in the Cris I sand flowing 360 BOPD through perforations 13,334 to 13,372 feet. (248218)

West Lake Salvador Field continues to expand with the completion of these new oil wells. The field was discovered in 2011 and now has 16 producing wells, 10 oil and 6 gas, and 2 permitted locations. As previously reported here, it is one of the most significant discoveries in South Louisiana, Onshore, in recent years.

Lobo Operating has completed a significant oil well in **Breton Sound Block 32 Field**, (J), Plaquemines Parish. The # 29 SL 1227 was drilled as a **horizontal well** to a depth of 7178 feet and was completed in the 5800 Sand flowing **1531 BOPD** through perforations 6,445 to 7,178 feet. (247688)

In **West Deer Island Field**, (K), Terrebonne Parish, Castex Energy has completed the #7 CL&F as an oil well flowing 405 BOPD through perforations 13,683 to 13,720 feet. The well was drilled in Sec. 20, 18S-12E. Castex has now completed 3 oil wells in the past 3 months. (248036)

Goodrich Petroleum has completed the #1 SLC 81 H, a **Tuscaloosa Marine Shale** well, in **Spillman Field**, (L), West Feliciana Parish. The well was drilled in Sec. 81, 1S-2W to 21,344 feet and completed as an oil well flowing **860 BOPD** and **226 MCFD** through perforations 14,358 to 21,309 feet in a 6000 foot lateral. As previously reported, this well is located 10 miles southeast of nearest Tuscaloosa Marine Shale production. (247644)

OFFSHORE GULF OF MEXICO SHELF AND DEEPWATER ACTIVITIES

by Al Baker

During August 2014, the BOEM approved **109** Gulf of Mexico drilling permits. Of these, **56** were for shelf wells, and **53** were for deepwater wells. Of the total number of permits, there were **9 new well permits** issued. These included **5 shelf** (1 exploratory and 4 development), and **4 deepwater** (4 exploratory and 0 development) **new well permits**.

On the shelf, the single exploratory new well permit was granted to **GCER Offshore** for their **Grand Isle 82 #2** well. Two operators received the four development new well permits. **Arena Energy** obtained three permits for the **Vermilion 342 #A-5** well, the **Eugene Island 314 #C-19** well and the **Eugene Island 338 #K-13** well. **Chevron U.S.A.** was awarded one development new well permit for their **South Marsh Island 217 #236** well.

In deepwater, 4 exploratory new well permits were awarded to the following 3 operators: **Chevron U.S.A.** for their **Green Canyon 807 #2** and **Keathley Canyon 785 #2** wells, **Shell Offshore** for their **Mississippi Canyon 943 #1** well and **BP Exploration and Production** for their **Green Canyon 825 #2** well.

On August 29th, IHS-Petrodata reported that the Gulf of Mexico mobile offshore rig supply stood at **115**, the same number as last month. The marketed rig supply consisted of **90** rigs, of which **77** were under contract. The contracted versus total rig supply utilization rate is **67.0%**, while the marketed contracted versus marketed supply utilization rate stands at **85.6%**. The marketed rig supply number reflects an increase of 1 rig in comparison to the number reported last month, while the contracted rig supply number decreased by 3 rigs. In contrast, the August 2013 fleet utilization rate stood at 71.7% with 76 out of the 106 rigs under contract.

On August 29th, BakerHughes indicated that there were **66** active mobile offshore rigs in the Gulf, which is **85.7%** of the rigs under contract mentioned above. This active rigs number is 6 more than reported last month. The current active rigs count compares to 63 active rigs during the same period last year, representing a **4.8%** increase in yearly rig activity.

The industry's focus during the **August 20, 2014 Western Gulf of Mexico lease sale** was once again on the **Lower Tertiary Trend**. The areas of concentration included the Alaminos Canyon Area and the territory near the U.S.-Mexico maritime border that has been off limits for development until the two countries recently enacted a treaty to govern hydrocarbon development. A total of 24 out of the 167 blocks within the trans-boundary area received bids. **Alaminos Canyon Block 644**, situated in **10,229 feet of water**, was the deepest water depth block to receive a bid in the sale. On this block, LLOG Bluewater Holdings, L.L.C. placed a bid of \$576,000.

In **OCS Sale 238**, fourteen companies submitted **93 bids on 81 tracts**, attracting **\$109,951,644 in high bids**. The shallow water, **shelf activity** was anemic once more with only **6 single high bids** submitted. The **top four highest bidders** included **Chevron, ConocoPhillips, BP and BHP Billiton**. **Chevron**, the sale's top dollar bidder, exposed **\$25,796,605 on five blocks**. **ConocoPhillips** entered the sale's **highest bid** with **\$16,788,800 for Alaminos Canyon Block 431**, and they entered a total of \$23,423,000 on 10 tracts. **BP** was the sale's **most active bidder** submitting **27 high bids totaling \$22,837,729**.

On August 28th, **Noble Energy, Inc.** announced the successful drilling results at its **Katmai** exploration well and their **Dantzler** appraisal well. The **Katmai** discovery well, located in **Green Canyon Block 40**, was drilled to a **total depth of 27,900 feet in 2,100 feet of water**. The well found a total of **154 of oil pay** in multiple reservoirs, including **117 net feet in Middle Miocene sands** and **37 net feet in Lower Miocene sands**. The reserve potential of the initial well is estimated between **40 and 60 million barrels of oil equivalent**.

The **Dantzler #2** appraisal well is located in **Mississippi Canyon Block 782**. The well was drilled to a **total depth of 18,210 feet in 6,600 feet of water** and encountered **122 feet of oil pay in two high-quality Miocene reservoirs**. The results of the well increased the Dantzler reserve potential to between **65 and 100 million barrels of oil equivalent**. Dantzler is part of Noble Energy's Rio Grande development area that also includes discoveries at Big Bend and Troubadour. The first production from Big Bend is expected in the 4th quarter of 2015 and from Dantzler in the 1st quarter of 2016.

44th ANNUAL NEW ORLEANS GEM, MINERAL, FOSSIL & JEWELRY SHOW - 2014

BEST WESTERN LANDMARK HOTEL
2601 SEVERN AVENUE, METAIRIE, LA 70002



- PRECIOUS GEMSTONES, MINERALS, FOSSILS, BEADS, & JEWELRY!
- DEMONSTRATIONS of JEWELRY MAKING & CABOCHON CUTTING!
- DISPLAYS of FLUORESCENT MINERALS & DINOSAUR BONES!
- KIDS' GRAB BAGS & CAB CUTTING!

FRIDAY OCT. 10 10 AM TO 6 PM	SATURDAY OCT. 11 10 AM TO 6 PM	SUNDAY OCT. 12 10 AM TO 4 PM
--	--	--

Adults \$ 5	3-Day Pass \$ 8	Scouts in Uniform FREE
Students w/ID, Military w/ID - & Members \$ 3		Kids Under 12 FREE

FOR SHOW INFORMATION, CALL LEVETTE CARLOS@ (504) 214-3205
OR E-MAIL gemshow2014@gmail.com

SPECIAL DISCOUNT COUPON

\$1.00 OFF Adult Daily Admission
(PLEASE PRINT)

NAME _____

STREET _____

CITY/ST/ZIP _____

PHONE(H) _____ (C) _____

E-MAIL _____

Staying Mentally and Physically Fit in Retirement

By Cyril Lobo

As a Geo Retiree with a working spouse, I still wake up to a 5 a.m. alarm, have breakfast with my wife, and am on the computer by 5:30 a.m. After a quick scan of the news and emails and a few other sites, I go to **Sporcle** at www.sporcle.com/games, a free website with a variety of quizzes, try out their "daily dose" and other subjects of interest. Since 2011, I have taken almost 2800 quizzes which keep my mind alert and I recently contributed a 'Geology A-Z Quiz' which I urge NOGS members to try. Looks like Geology is given short shrift in Sporcle with only 66 quizzes and not listed among science subjects which include Biology with (229), Chemistry (218), Physics (337) and Geography over a thousand!

Retiring after ten years in academics and 36 years in oil and gas research, exploration and consulting, I find the New Orleans **People Program** a great place to learn something new. Established in 1974 for folks age 50 and over, it offers a variety of courses including Art, Crafts, Computer, Dance, Fitness, Languages, Games, Music, etc. at two campuses one on the Lakefront and the other on the Westbank. The program offers over 150 classes over two 15-week semesters at a current cost of \$150 per semester. For details visit www.peopleprogram.org.

I have benefited greatly from this program regularly taking Art, Bridge, Table Tennis and Tai Chi. Other courses I have taken include Digital Photography, Jin Shin Jyutsu, Music Appreciation, Piano, New Orleans History and several more. I am sure NOGS members with time to spare would benefit from **Sporcle** and the **People Program**.

Save the Date: 12/12/14



NOGS Christmas Party
Metairie Country Club
more details to come...

GCAGS Convention Houston in September 2015

Call for Presentation and Posters ends December 13 2014

By Linda Sternbach , Technical Chair

The Houston Geological Society will host the 65th Gulf Coast Association of Geological Societies (GCAGS) at the George R. Brown Convention Center, September 19-22, 2015. The Gulf Coast Section of SEPM (GCSSEPM) will co-host the GCAGS 2015 convention. GCSSEPM will be organizing oral talks, posters, judging and the SEPM awards program.

We are opening a “Call for Papers,” inviting authors to submit a 250-word abstract (MS-Word format) with title and authors by December 13, 2014 to Technical Program Chair Linda Sternbach at linda.sternbach@gmail.com, or check the convention web page and blog, hosted by GCAGS Secretary Dianna Phu at www.gcagshouston.com. Thirteen session themes are planned—see announcement on page 29 of this *NOGS LOG*.

Our General Chair is Larry Bartell (ldbartell@legendsexpl.com); GCAGS President for 2015 is Charles Sternbach (carbodude@gmail.com). GCAGS Non-Technical Chair is Deborah Sacrey. The Technical Program is coordinated by Linda Sternbach and Paul Basinski (pbasinski@comcast.com). Dianna Phu (dianna@exabyte.org) is both Secretary for the convention and publicity, website and social media chair. Mike Erpenbeck is convention Treasurer.

The convention is proud to have the following hard working volunteers: Short Courses, Robert Pledger (rpledger@hotmail.com); Field Trips, Dr. Julia Wellner, University of Houston (jwellner@uh.edu) and Dr. Robert Wellner (robert.w.wellner@exxonmobil.com). Contact them if you have ideas or want to participate.

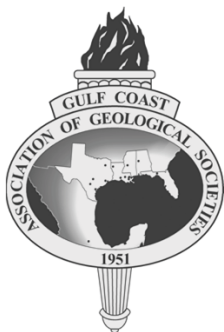
Poster Sessions will be coordinated by Meredith Faber (meredith.faber@swiftenergy.com). Judging, by Sandy Rushworth (sandyrushw@aol.com) and David Risch (davidlrish@aol.com).

The opening weekend will have one- and two-day field trips, open to professionals and university students, leaving from the Brown Convention Center. There will also be one- and two-day short courses the same weekend. We anticipate 100 or more talks in the technical presentation on Monday and Tuesday.

Check the convention website www.gcagshouston.com for more information on contacting volunteers and for the updates as the convention planning continues from now until mid-2015. Registration will open in August 2015.

The GCAGS *Transactions*, edited by Steve Levine (stephenlevine@sk.com) will contain the papers, abstracts, extended abstracts and posters at the 2015 Convention.

In addition, volume 3 of the *GCAGS Journal* will be available with full-length papers in hard copy as well as online. For inclusion in the vol. 3, 2015 *GCAGS Journal*, submit a 600-word abstract of your *Journal* paper by December 2, 2014. Contact Barry Katz, *Journal* Editor (barrykatz@chevron.com) for more information. GCSSEPM editor will be Patricia Santogrossi.



CALL FOR PAPERS

65th GCAGS Convention

September 19-22, 2015 •
George R. Brown center
Houston, Texas



New Oil and Gas Discoveries
Un-Conventional Plays
Development Field Studies
GOM Shelf and Onshore Plays
Salt Tectonics and Traps
Mexico and Caribbean Plays
Geophysical Technology
Gulf of Mexico Deepwater
Environmental Geology
Coastal Geology and Surface Impact
Geology-Geophysics-Engineering
Portfolio Management
Climate/ Public Awareness Issues

To participate in the 2015 GCAGS Convention

Oral and Poster presentations

An abstract of up to 250 words should be submitted no later than **December 13, 2014** to
Technical Program Chair, Linda Sternbach (linda.sternbach@gmail.com).

After notification of acceptance on **January 20, 2015**, authors submit extended abstracts (1-2 pages)
or full papers up to 12 pages to the GCAGS Transactions by **February 20, 2015** to
GCAGS Transactions Editor, Steve Levine.

Full instructions for manuscript submissions will be posted online at www.gcags2015.com.

Publish your work in the upcoming GCAGS Journal !!

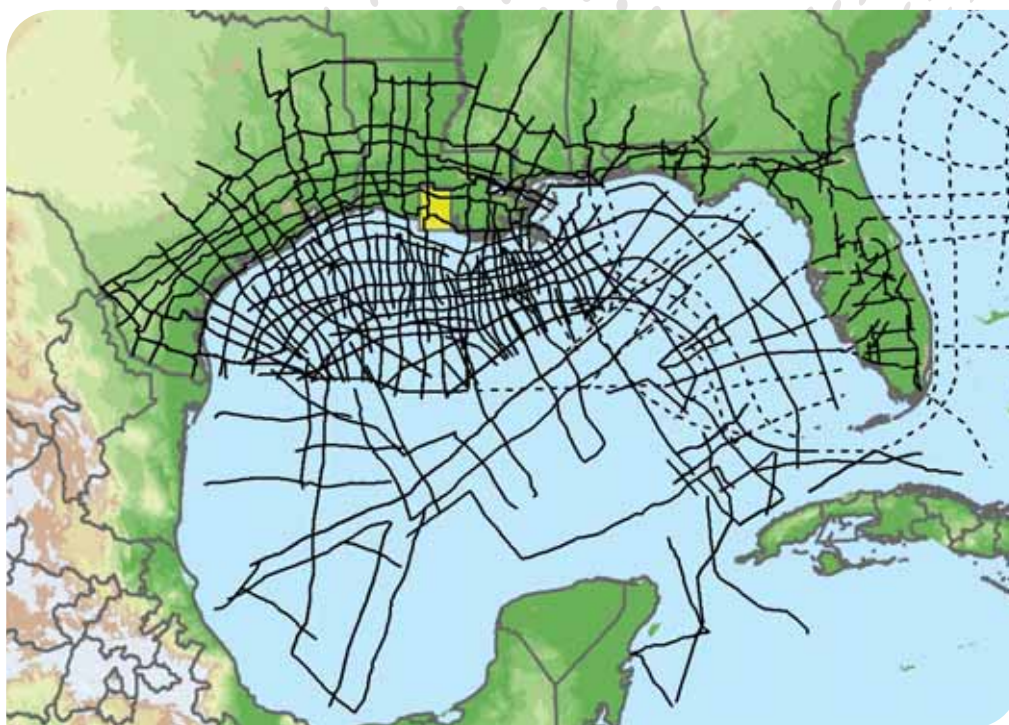
(a new peer-reviewed journal of Gulf Coast Geoscience).

Instructions: An extended abstract of at least 600 words, including 1–2 representative figures,
Should be submitted by **December 2, 2014** to Journal Editor, Barry Katz (BarryKatz@chevron.com).

After acceptance, a full manuscript must be submitted by **March 24, 2015**.

Full instructions for manuscript submissions will be posted online at www.gcags2015.com.

Explore the Entire Gulf of Mexico



Position your company for the next 10 years of exploration with the most complete, modern time and depth-imaged data in the Gulf of Mexico. ION's interconnected dataset links the entire Gulf, from onshore to offshore deep water, from Texas to Florida and to Mexico. With over 40,000 miles (over 65,000 km) completed or in progress, and an additional 7,500 miles (over 12,000 km) planned for 2013 and beyond, no other data library provides as comprehensive a framework for understanding the Gulf of Mexico.

To learn more, visit iongeo.com/Gulf_of_Mexico

CONTACT

Ashley Garcia
Mobile: +1 281 781 1005
Email: ashley.garcia@iongeo.com

Alvin Rowbatham
Mobile: +1 832 372 2366
Email: alvin.rowbatham@iongeo.com

AREAS OF EXPERTISE

- Unconventional Reservoirs
- Challenging Environments
- Complex Geologies
- **Basin Exploration**
- Reservoir Exploitation



GEOVENTURES®

Submitted by Tom Klekamp

Sandstone wonders explained

By Chris Paola, *Nature Geoscience*, July (2014)

Sandstone arches and other striking landforms are the showpieces of national parks around the globe. Experiments and numerical analyses show that they result from a self-organization process that involves vertical load, wind erosion and grain locking.

Michelangelo said that the sculptor's task is to discover the statue already present in the stone. What if, instead of a statue, a feedback mechanism is present in naturally occurring stone formations that would guide even an unthinking sculptor to create a surprisingly appealing form? Writing in *Nature Geoscience*, Bruthans et al, *Nature Geosci.* 7, 597–601 (2014) describe how natural sculptures can emerge from sandstone through the eroding action of wind, combined with the effect of gravitational stress on erosion.

Imagine a cake of sand, weakly cemented so that it does not just collapse in a heap. Grains can be removed from the faces of the cake by rubbing or, more naturally, by blowing air. But when something presses down on the cake, a stress is applied on the grains. Such a normal stress tends to interlock the grains. This effect makes it harder to remove them: imagine how much harder it would be to pull billiard balls out of the bottom of a tall pile than just taking them from the top. But the sand cake is irregular; by chance, some of the grains carry more of the load, others less. The more lightly loaded grains are not locked together so tightly, and as the surface erodes, the less loaded, and therefore more weakly locked, grains are removed first.

Bruthans and colleagues used experiments and numerical analyses to show that natural sandstones can be sculpted essentially by the same mechanism. When grains of sandstone are removed — usually by wind erosion — the total cross-sectional area of sandstone available to bear the weight of the stone is reduced, and the increase in normal stress locks the remaining grains together more tightly. The remaining weight-bearing regions are thus more resistant to erosion, whereas those parts of the sandstone that bear less stress are preferentially eroded.

This feedback loop continues until the locking normal stress on the entire remaining grain structure is large enough to allow the grains to resist further erosion — or until the structure collapses.

Bruthans and colleagues present nothing more or less than an mechanism for an elegant kind of landform. These natural bridges have delighted countless visitors, some of whom must have paused to wonder where they came to be. Here is an answer. The proposed feedback mechanism should be on the reading short list for anyone who enjoys the confluence of elegant science and natural beauty.



Double O Arch, NPS Photo / Neal Herbert

SAI *Geoconsulting, Inc.*

*Geological and Geophysical Consulting
3-D Seismic Interpretation*

Ben D. Sydboten, Jr. CPG

2 Flagg Pl., Suite 1
Lafayette, LA 70508
www.saigeoconsulting.com

Office (337) 504-3670
Cell (337) 456-8948



Anthony Catalanotto
President

**Geological
Geophysical
Land
Drafting & Graphics**

3349 Ridgeland Drive • Suite 202
Metairie, LA 70002
Office: (504) 836-2882
Fax: (504) 836-2877
Cell: (504) 481-7291
E-Mail: geodraft@bellsouth.net
Website: www.geodraftinc.com

NORTHCOAST OIL COMPANY

610 E. Rutland St.
Covington, LA 70433
(985) 898-3577
(985) 898-3585 Fax

Jack M. Thorson
Eric C. Broadbridge
J. Daryl Gambrell
Raymond W. Stephens

Answers to Moh's Scale of Hardness Quiz Game on page 22:

<u>Hardness</u>	<u>Mineral</u>	<u>Hardness</u>	<u>Mineral</u>
1	Talc	6	OrthoclaseFeldspar
2	Gypsum	7	Quartz
3	Calcite	8	Topaz
4	Fluorite	9	Corundom
5	Apatite	10	Diamond

Collarini Energy Staffing, Inc.

Facilities • Drilling • Production • Reservoir Engineering
Land and Legal • Geosciences • Information Technology
Health and Safety • Management • Supply Chain
Accounting • Administrative Support



Full-Time and Temporary Personnel

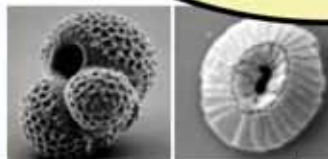
Energy Trading • Civil Engineering • Executives
Human Resources • Instrument and Electrical
Engineering • Marine Engineering • Project Management
Technical Writing • Sales and Marketing

10497 Town and Country Way, Suite 950, Houston, Texas 77024

Telephone: (832) 251-0553

www.collarini.com

DOMESTIC AND INTERNATIONAL BIOSTRATIGRAPHIC SERVICES



6619 Fleur de Lis Drive
New Orleans, LA 70124
(504) 488-3711

www.paleodata.com



Complete wellsite paleo services

**Supported offshore GoM and
onshore LA paleo databases**

**Integrated foram/nannofossil
analyses**

**In-house sample preparation
lab for quality-monitoring
and efficiency**

**Comprehensive depositional
history study of the Gulf Basin
based on 200,000+ well data
analysis**

ROCK SOLID SERVICE



www.corelab.com
337-837-8616

© 2013 Core Laboratories.
All rights reserved.



**LAFAYETTE
GEOLOGICAL
RESEARCH
CENTER, LLC**

201 Heymann Blvd., Suite 33 • Lafayette, LA 70503
Tel: 337-233-8197 • Fax: 337-233-8177

COVERAGE:

Louisiana / Federal / State Offshore
• Multi State Geo Tech Services • Completion Data
Production Data • Well Logs • Maps

~ MEMBERSHIPS AVAILABLE ~
The Industry's Premier • Well Data Center

orders@lafayettegrc.com

CALL OR EMAIL TODAY FOR MORE INFORMATION!

THE NEW ORLEANS GEOLOGICAL SOCIETY MEMORIAL FOUNDATION, INC.

The Memorial Foundation is an IRS Tax Exempt Code #501(c)(3) organization. The Federal I.D. is 72-1220999. Please consider making a donation to the Foundation. Your individual support in any amount will help meet the IRS Guidelines for our Foundation. Thanks!

\$10,000

Gibbet Hill Foundation

*In Memory of Steve & Marion Millendorf, William J. Prutzman,
Roger G. Vincent, Ron Youngblood and Uno Numella*

\$6,000

NOGS Golf Tournament 2014

In Memory of Bill Craig

\$1,000

Exxon Mobil Foundation

Matching Gifts Program

Mr. Armour C. Winslow

In Memory of Rita Menzel Winslow and Lawrence C. Menconi

\$500

Mr. Reuben J. Klibert, Jr.

\$250 TO \$499

Mr. Carlo C. Christina

*In Memory of John C. "Jack" Langford
In Memory of Al Gilreath*

Mr. Lawrence B. Eustit

In Memory of John C. "Jack" Langford

Mr. Kenneth Huffman

In Memory of James E. Rolf, Jr.

Mr. William M. Whiting

FONO FUND

The FONO Fund accepts contributions that are invested and the income dedicated to assure sufficient financial resources will always be available to maintain the NOGS business office. Contributors are reminded that donations to the FONO Fund are not covered by the IRS 501(c)(3) tax exempt classification and should be reported as a business expense on your IRS tax report.

\$500

Mr. James A. Hartman

Mr. Reuben J. Klibert, Jr.

UP TO \$249

Mr. David E. Balcer

Mr. Joseph E. Boudreaux

Ms. J. Sybil Callaway

Mr. Anthony Carollo, Jr.

Mr. John Dombrowski

Mr. Merle J. Duplantis

Mr. Dwight Easterly

Mr. Richard A. Edmund

Mr. Michael N. Fein

Mr. Duncan Goldthwaite

Mr. Kenneth Huffman

Mr. Paul Jurik

Mr. Louis Lemarié

Mr. H. David Lynch

Ms. Jeannie F. Mallick

Mr. George M. Markey, Jr.

Mr. James A. McCarty

Ms. Margaret M. McKinney

Mr. Robert G. Murphy

Mr. Richard A. Olsen

Mr. William S. Peirce

Mr. Edward B. Picou, Jr.

Mr. Rudolf B. Siegert

Mr. Bryan P. Stephens

Mr. David M. Tatum

Mr. Robert C. Weissmann

Mr. William M. Whiting

Ms. Frances A. Wiseman

UP TO \$249

Mr. Woods W. Allen, Jr.

In Memory of William C. Ward

Mr. Randall W. Altobelli

In Memory of Richard Saunderd

Mr. Robert J. Ardell

In Memory of Jim Seglund

Mr. Burton C. Bowen

Mr. Hilary James Brook

Ms. J. Sybil Callaway

Chevron Humankind Matching Funds

Mr. James S. Classen

In Memory of John C. "Jack" Langford

Mr. Merle J. Duplantis

Mr. Michael N. Fein

Mr. Sherwood M. Gagliano

Mr. Mark J. Gallagher

Mr. Bernard L. Hill, Jr.

Mr. Jeff Jandegian

Mr. Paul Jurik

Mr. Cyril F. Lobo

Mr. H. David Lynch

Ms. Jeannie F. Mallick

Mr. Joseph H. McDuff

Ms. Margaret M. McKinney

Mr. Paul C. McWilliams

Mr. Robert G. Murphy

New Orleans Geological Auxiliary

In Memory of Mrs. James W. Swaney, Jr. (Gwenn)

In Memory of Mrs. Lawrence B. Eustis (Tatjana)

Mr. Richard A. Olsen

In Memory of John C. "Jack" Langford

Mrs. Teresa O'Neill

In Memory of Brian O'Neill

Mr. William S. Peirce

Mr. Edward B. Picou, Jr.

In Memory of John C. "Jack" Langford

Shell Matching Funds

Mr. Rudolf B. Siegert

Dr. J. O. Snowden

Mr. David Sollenberger

In Memory of Shirley Sollenberger

Mr. Raymond O. Steinhoff

In Memory of Anne M. Steinhoff

In Memory of Harold E. Vokes

Ms. Betsy M. Strachan Suppes

In Memory of Hubert C. Skinner

Ms. Candace V. Strahan

In Memory of James R. Strahan

Mr. David M. Tatum

Mr. William M. Whiting

In Memory of John "Jack" Henton

Ms. Frances A. Wiseman

In Memory of Steve Widdicombe

BILL CRAIG FUND

Mr. Bernard L. Hill, Jr.

Contributions for both funds through September 8, 2014.
Donations are listed for one year.

<p>ANSYTHE Donald I. Andrews 504-887-3432</p> 	<p>CLASSEN EXPLORATION, INC. James S. Classen Looking for close in deals P.O. Box 140637 Boise, ID 83714 classenllc@msn.com Bus. (208) 854-1037 Fax (208) 854-1029</p>
<p>THE BOEBEL COMPANY Oil and Gas Investments New Orleans, LA 70153 (504) 866-4313</p>	<p>D-O-R ENGINEERING, INC. 3-D and Geoscience Services 6161 Perkins Rd. P.O. Box 80812 Bus: (225) 765-1914 Baton Rouge, LA 70898</p>
<p>BOO-KER OIL & GAS CORP. Gray S. Parker 826 Union, Suite 300 New Orleans, LA 70112 Bus. (504) 581-2430 Fax (504) 566-4785</p>	<p>EDWARD B. PICOU, JR. Consulting Micropaleontologist - Retired 228 St. Charles Ave., Suite 1330 C New Orleans, LA 70130 Bus. (504) 529-5155 Res. (504) 282-3096</p>
<p>C & R EXPLORATION, INC. Carlo C. Christina Lawrence G. Ringham</p>	<p> GEOLOGY ENVIRONMENTAL MANAGEMENT GEM Consulting, LTD Michael Louis Merritt admin@gemconsultingltd.com</p>
<p>TONY CAROLLO Consulting Geologist Unitization • Geosteering • Field Studies 1701 Peach Street Metairie, LA 70001 Bus. (504) 885-0004 Res. (504) 885-6829</p>	<p>Explore the ENTIRE Gulf of Mexico  Alvin Rowbatham 832-372-2366 • alvin.rowbatham@iongeo.com Ashley Garcia 281-781-1005 • ashley.garcia@iongeo.com www.iongeo.com/Gulf_of_Mexico</p>
 <i>Thanks our sponsors for their support!</i> <i>Special Thanks to</i>  DIVERSIFIED WELL LOGGING, LLC	<p>PHELPS GEOSCIENCE LLC Onshore Gulf of Mexico Geology and Geophysics Prospect Generation and Evaluation Houston, TX jsfphelps@yahoo.com (281) 398-5208</p>
	<p> RAFIDI OIL & GAS, INC. Jaser N. Rafidi, President 4913 James Drive Office: 504.453.8580 Metairie, LA 70003 Res/Fax: 504.888.1661</p>
	<p>ROY C. WALTHER Petroleum Geologist 2421 Prancer Street Bus. (504) 392-8513 New Orleans, LA 70131 Res. (504) 392-9332</p>
	<p> STONE ENERGY www.StoneEnergy.com 625 E. Kaliste Saloom Lafayette, LA 70508 16800 Greenspoint Dr., Suite 225-S Houston, TX 77060 1100 Poydras St., Suite 1050 New Orleans, LA 70163</p>
<p>ZOT OIL & GAS, LLC Jim Zotkiewicz Consulting, Evaluation, and Prospect Generation Metairie, LA 70002 Bus. 504.267.9131 Email: jimzot38@zotoil.com</p>	

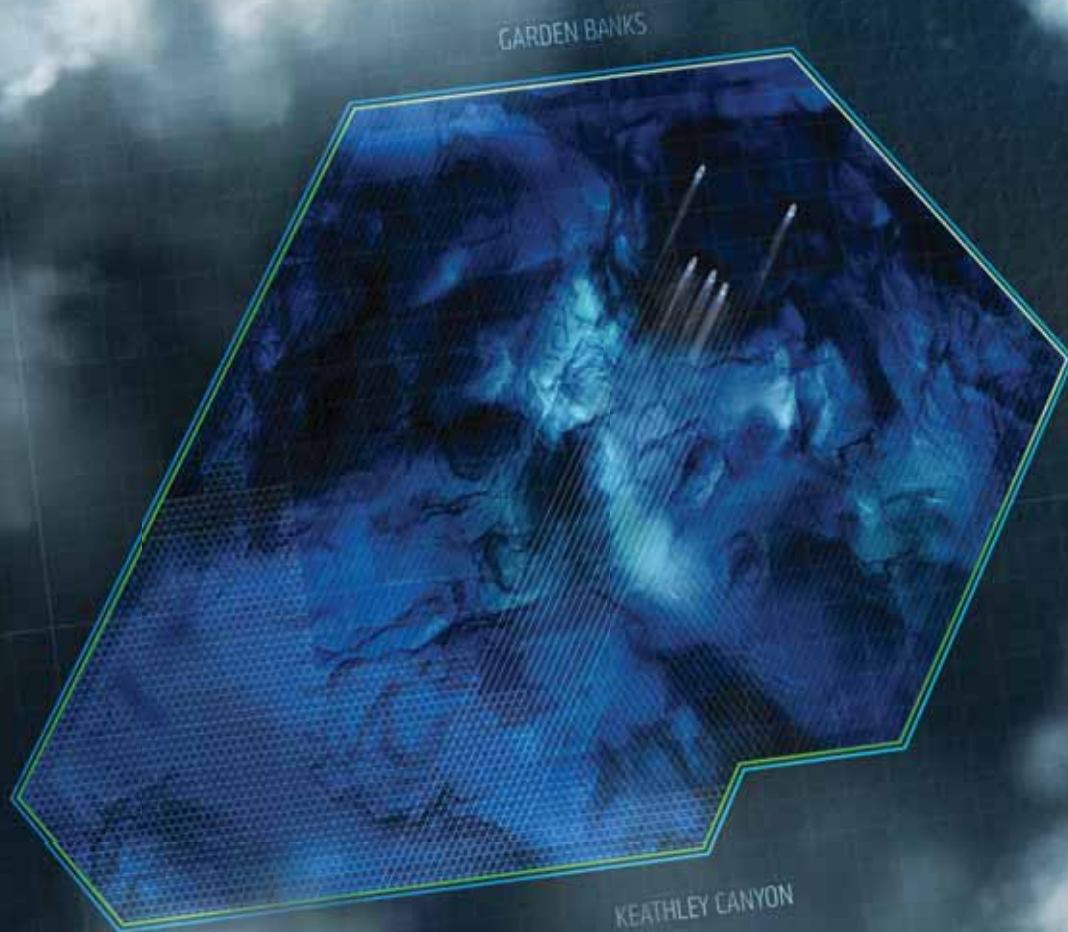


CENTURY EXPLORATION NEW ORLEANS, LLC

An independent gulf coast exploration, development and operating company

Three Lakeway Center, Suite 2800
3838 North Causeway Blvd.
Metairie, LA. 70002

Office: 504.832.3750
Fax: 504.832.3760
www.centuryx.com



MultiClient

Triton helps your exploration team:

- Explore 10,000 sq km of data, covering 390 OCS blocks in Garden Banks and Keathley Canyon
- Identify new prospects and better image previously challenging targets
- Achieve better illumination, deeper penetration, and improved clarity

TRITON: FULL SPEED AHEAD

PGS reports strong performance of the Triton GeoStreamer® full azimuth survey in the central and western Gulf of Mexico, with over 50% of acquisition now complete.

Triton represents the next important advance in tailored acquisition design and state-of-the-art depth imaging, both of which are critical to successful exploration in the deep-water salt-prone Gulf of Mexico. The Triton survey utilizes a total of five vessels in the unique Orion™ configuration to reveal the structures obscured beneath the salt with high fold, long-offset, dual-sensor full azimuth (FAZ) seismic data.

Steven Fishburn Tel: +1 281 509 8124, gominfo@pgs.com



NEW ORLEANS GEOLOGICAL SOCIETY

810 Union Street, Suite 300
New Orleans, LA 70112-1430

PRESORT
STANDARD
US POSTAGE
PAID
MAIL TECH

www.nogs.org



MARINE PROPERTIES, LLC BERKSHIRE EXPLORATION CO.

MONTE C. SHALETT, CPL, PRESIDENT

3030 Lausath Street
Metairie, LA 70001-5924

BUS. (504) 831-7779
FAX (504) 831-8315

PCI

Paleo Control, Inc.

Houston, Texas
713-849-0044

Drilling Wells, Studies and Data Base

Loyd Tuttle

Frio, SE Texas

Bob Liska

Wilcox, S and SE Texas

Jim Thorpe

Miocene and Cam-Miogy



creative graphics & printing, llc

*Proudly designing and printing the NOGS LOG since 2012!
Specializing in design and printing for the oil and gas industry and their affiliates.*



I have been interested in art and design since high school and after graduating in 1979, I honed my skills with different graphic and printing companies over the next 30+ years, becoming proficient in multiple printing methods and media. In the early 90's, graphic design and printing rapidly evolved with faster computers, graphic design software and digital presses. Graphic design programs continue to evolve, becoming more sophisticated and allowing unlimited possibilities for designers who stay current with the new technology. My digital presses, networked directly to my design software, allow for sharper prints, vibrant colors and almost unlimited printing capabilities.

985.626.5223 • 985.630.7824 • kpbrown@bellsouth.net
or contact annette@nogs.org