

NOGS LOG

NOVEMBER 2014

Volume 55, Number 5



NOVEMBER 3 - NOGS LUNCHEON

Presentation: Thirty Years of Deep Water Geochemistry: Bush Hill to the Deep Water Horizon

Guest Speaker: Dr. Norman L. Guinasso, Jr.

Texas A&M University • College Station, Texas

SEE THE ENERGY

DIRECTIONAL SURVEY PLUS

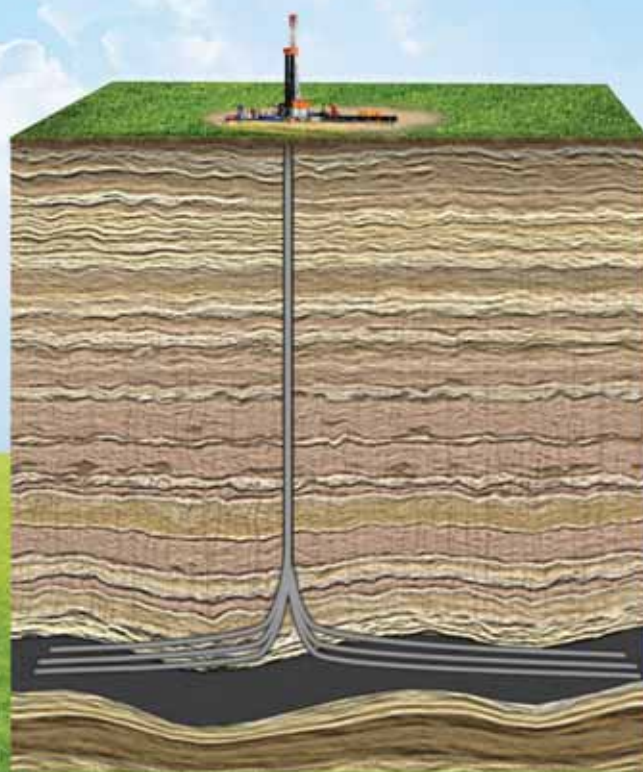
Directional Survey Plus (DS+) data goes beyond the simple capture of measured depth, azimuth and inclination. DS+ data are thoroughly researched, re-processed and standardized to create the most accurate spatial representation of the well path, from surface to total depth.

Access Directional Survey Plus data and the industry's largest collection of digital well logs quickly and easily through the online well data portal, LOG-LINE Plus!®

For more information, contact TGS at:

Tel: +1 713 860 2100

Email: info@tgs.com



WWW.TGS.COM

© 2013 TGS-NOPEC GEOPHYSICAL COMPANY ASA. ALL RIGHTS RESERVED.

TGS  See the energy.



Published monthly by the New Orleans Geological Society.
This issue was sent to press on October 25, 2014.

Interested in contributing to the NOGS LOG? Please submit items by the 1st Friday of the month to nogseditor@gmail.com. Advertising requests should contact the NOGS office at info@nogs.org.

IN THIS ISSUE

Regular Features:

| | |
|-------------------------------------|----|
| From the Editor..... | 3 |
| From the President..... | 5 |
| NOGS Officers / Contacts | 6 |
| Upcoming Events & Activities | 7 |
| NOGS Luncheon Presentation..... | 9 |
| November & December Calendars | 12 |
| NOGA News..... | 13 |
| Drill Bits | 22 |
| Info-Tidbits | 27 |
| NOGS Memorial Foundation..... | 29 |
| FONO Fund..... | 29 |

Special Features:

| | |
|--|-------|
| NOGS Welcomes | 15 |
| NOGS Memorial Foundation Scholarships..... | 15 |
| 2014 NOGS Kick Off Party & Rock N Bowl..... | 16-17 |
| NOGS Christmas Holiday Party | 18 |
| Robert Mims Jemison, Jr. Obituary..... | 21 |
| GCAGS 2014 Convention | 21 |
| 17th Annual Joint Energy Association Luncheon..... | 25 |

on the cover

Cover Photo Submitted by Tavia Prouhet

Laurel Falls — Smoky Mountains National Park, Tennessee

Taken from **Geology**, Great Smoky Mountains National Park

"Rocks along this trail belong to two geologic map units--Elkmount Sandstone and Thunderhead Sandstone. Both are components of the Great Smoky Group, and are of Proterozoic age (about 800-545 million years old).

Metamorphosed conglomerate and sandstone are common with quartzite, slate, and metasiltstone also present. Rock cleavage, a type of thin layering formed during metamorphism, is present in these rocks, causing them to break down into small chips commonly found along the trail. Two geologic faults are crossed along this stretch of the trail, but they are covered by soil and vegetation. These faults are more than 250 million years old and are not known to be associated with any recent earthquakes.

The second half of the hike to the falls has spectacular outcrops of very thick-bedded metamorphosed conglomerate and sandstone of the Thunderhead Sandstone. A closer look at the conglomerate shows that it consists of pebbles of white feldspar and dark gray-blue quartz surrounded by quartz sand grains. Also present are dark-gray black metasiltstone and slate pebbles, especially well exposed in outcrops at the base of the falls. Large fractures in rocks at the falls, known as joints, cut the original sedimentary bedding at a high angle. The location of the falls may in part be controlled by the orientation and density of these joints, which weakened the rocks."

From the Editor

The October social event at Rock 'N' Bowl was a great success and is featured in our photo spread centerfold. We had new and current members attend the event, join in a little friendly competition, and relax with fellow rock lovers. The pro bowlers out there would have been intimidated by the skill unleashed on the pins. Aside from our November and December luncheons, we also have the NOGS Christmas Holiday Party upcoming. Details for the Christmas Holiday Party are on page 18. Every NOGS event is an opportunity to know better our NOGS membership; please continue supporting these activities.

Keep your cameras with you as you trek out across the country this holiday season. We need great cover photos for our issues. Some of my favorite stops along any road trip are the road cuts and scenic overlooks. Each stop provides you an opportunity to examine the local geology and create a story for yourself of what caused the deposition revealed to you in the cut. Whole guide books "The Roadside Geology of..." are available for most states to provide geological descriptions of many such stops. Please send us any great geological travel stories and pictures. Inspire our next vacation and remind us all of the beauty of rocks.

Happy holidays!

Tavia L. Prouhet - NOGS LOG Editor

These nodes change everything.

With absolutely no cables,
there's absolutely no stopping you.



True cable-free seismic

Dealing with tons of cable will hinder any seismic acquisition, land or marine. That's why our exclusive, true cable-free ZNodal® systems pay such huge dividends in any environment.

Our lightweight, compact ZLand® system lets your crews work faster and much more safely while recording high-resolution data, even in the most challenging terrain.

Our ZMarine® system, also completely self-contained, deploys easily and safely, even in congested areas, to water depths of 3000m, which makes it ideal for 4D reservoir monitoring.

Welcome to a new world of seismic acquisition.



FairfieldNodal.com



From the President

If you missed our Rock 'n' Bowl event, you missed a great time. We had 50 members, guests, and new members in attendance. We had lots of food, beverages, bowling and best of all, socializing. It was a blast, even though I believe my bowling lane was slanted which led to most of my bowls drifting left to the gutter and thus providing a subpar score. As I described the situation to a friend later, he asked if I

tried bowling the ball slowly down the middle of the lane (aka – Granny style) to evaluate potential slant in the lane. Initially, I laughed at the suggestion, but later I realized that he was analyzing the problem and providing a scientific means to evaluate the hypothesis. I appreciated his insight, but maybe next time we will employ the bumpers.

Thank you to those who have taken the request for membership participation seriously by providing a response to committee service. It is vital to the growth of our organization and to our members to have a hand in our activities. There is still time to sign up, so please consider what committee sounds like a good fit for you.

There has been honest feedback for the committee call; some of you have reservations about the amount of time required for your input. Please know that your service as a volunteer and the time required is only what you want to put in. Do not let this be your hesitation to serve. As with any organization or activity, we get out what we put in.

Upcoming events include our NOGS Christmas Holiday Party on Friday, December 12th at the Metairie Country Club. Mark your calendars because you won't want to miss this event!

On behalf of our Board, we note with sadness the passing of **Robert M. "Bob" Jemison, Jr.** Bob was a past president of NOGS, having served his term in 1974-75. He died on October 1, 2014, in Baton Rouge. Bob was 92 years of age.

NOGS Office

Office Manager: Annette Hudson

Phone: 504-561-8980 • Email: info@nogs.org • Website: www.nogs.org

The office is located at 810 Union Street, Suite 300, New Orleans, LA 70112.

Correspondence and all luncheon reservations should be sent to the above address.



BOARD OF DIRECTORS

| | | Company | Phone | E-mail |
|-----------------|--------------------|-------------------------------|--------------|-----------------------------|
| President | Kelli Hardesty | Environmental Resources Mgmt. | 504-831-6700 | kellihardesty@erm.com |
| Vice President | Jennifer Connolly | Shell | 504-728-6411 | jennifer.connolly@shell.com |
| Secretary | Bryan Banks | Terracon | 318-450-5300 | jbbanks@terracon.com |
| Treasurer | Arthur H. Johnson | Hydrate Energy International | 504-220-6208 | artjohnson51@hotmail.com |
| President-Elect | David E. Reiter | Stone Energy Corporation | 504-593-3623 | reiterde@stoneenergy.com |
| Editor | Tavia Prouhet | Chevron | 985-773-6737 | tavia.prouhet@chevron.com |
| Director 2015 | William M. Whiting | Consultant | 504-947-8495 | bootscon@aol.com |
| Director 2016 | Jim Zotkiewicz | Zot Oil & Gas | 504-267-9131 | jimzot38@zotoil.com |
| Director 2017 | J. David Cope | Rising Natural Resources LLC | 504-214-6754 | greatmre@aol.com |

COMMITTEE

| | Chairperson | | | |
|--------------------------|----------------------|------------------------------|--------------|------------------------------|
| AAPG Delegates | William M. Whiting | Consultant | 504-947-8495 | bootscon@aol.com |
| AAPG Student Chapter | Derek Goff | LSU | | Dgoff3@lsu.edu |
| AAPG Student Chapter | Alex Breaux | Tulane University | 337-519-0978 | abreaux1@tulane.edu |
| AAPG Student Chapter | Rachel Carter | UNO | 917-710-8021 | r_carter@me.com |
| Advertising-Log | Kimberly Maginnis | LLOG Exploration | 985-801-4761 | kimberlym@llog.com |
| Auditing | Chuck Holman | Saratoga Resources | 985-809-9292 | charleswholman@bellsouth.net |
| Awards | Michael N. Fein | W & T Offshore | 504-210-8148 | mikef@wtoffshore.com |
| Ballot | Arthur H. Johnson | Hydrate Energy International | 504-220-6208 | artjohnson51@hotmail.com |
| Best Paper | Bay Salmeron | Chevron | 832-854-6431 | bay.salmeron@chevron.com |
| Entertainment | David E. Reiter | Stone Energy Corporation | 504-593-3623 | reiterde@stoneenergy.com |
| Environmental | Daisy Pate | Pontchartrain Partners | 504-862-1775 | daisy.pate@gmail.com |
| External Affairs | Michael A. Fogarty | Sylvan Energy, LLC | 603-523-4808 | mike.a.fogarty@gmail.com |
| Finance and Investment | Arthur H. Johnson | Hydrate Energy International | 504-220-6208 | artjohnson51@hotmail.com |
| Historical | Edward B. Picou, Jr. | Consultant | 504-529-5155 | epicou@bellsouth.net |
| Membership/Directory | David E. Reiter | Stone Energy Corporation | 504-593-3623 | reiterde@stoneenergy.com |
| New Geoscientists (NGNO) | Jeremy Prouhet | Chevron | 985-773-6927 | Jeremy.Prouhet@chevron.com |
| Nominating | Michael N. Fein | W & T Offshore | 504-210-8148 | mikef@wtoffshore.com |
| Non-Technical Education | Duncan Goldthwaite | Consultant | 504-887-4377 | DGldthwt@aol.com |
| Office Operations | Chuck Holman | Saratoga Resources | 985-809-9292 | charleswholman@bellsouth.net |
| Publications Sales | Edward B. Picou, Jr. | Consultant | 504-529-5155 | epicou@bellsouth.net |
| School Outreach | Thomas C. Bergeon | Century Exploration | 504-832-3772 | Tom.bergeon@centuryx.com |
| Special Projects | TBD | | | |

NOGS LOG STAFF

| | | | | |
|--------------------|--------------------|-----------------------------------|--------------|---------------------------|
| Editor | Tavia Prouhet | Chevron | 985-773-6737 | tavia.prouhet@chevron.com |
| Editor-Elect | Tom Klekamp | Amber Resources LLC | 985-630-2480 | ekle1959@gmail.com |
| Auxiliary | Peggy Rogers | NOGA | 504-392-6323 | lrogers79@cox.net |
| Drill Bits | Al Baker | Beacon Exploration, LLC | 504-836-2710 | ABaker1006@aol.com |
| Drill Bits | Carlo C. Christina | Retired (C & R Expl. Inc) | | drillbits81@yahoo.com |
| Drill Bits | Kevin Trosclair | Stone Energy Corporation | 504-202-7997 | kevintrosclair@gmail.com |
| Staff Photographer | Arthur Christensen | Shalimar Consulting | 985-893-2013 | arthur_shalimar@yahoo.com |
| Layout | Kristee Brown | Creative Graphics & Printing, LLC | 985-626-5223 | kpbrown@bellsouth.net |
| Webmaster | Fran Wiseman | Retired (BOEM) | 504-615-5170 | snowde.fran@gmail.com |

NOGS AUXILIARY

| Officers | | Phone | Directors | Year | Phone |
|-----------------|-----------------------|--------------|------------------|-------------|--------------|
| President | Mary Walther | 504-392-9332 | Trudy Corona | 2013-15 | 504-737-6101 |
| Vice-President | Mary Ellis Hasseltine | 504-885-7657 | Debra Fein | 2013-15 | 504-831-0358 |
| Secretary | Peggy Rogers | 504-392-6323 | Susan Baker | 2014-16 | 504-466-4483 |
| Treasurer | Judy Lemarié | 504-393-8659 | Judy Sabaté | 2014-16 | 504-861-3179 |
| Parliamentarian | Alma Dunlap | 504-737-2678 | | | |
| Member-at-Large | Jean Jones | 504-738-8091 | | | |



UPCOMING Events & Activities



November 3 • NOGS Luncheon

Holiday Inn Downtown Superdome

\$3.00 validated parking in hotel garage

Presentation:

*Thirty Years of Deep Water Geochemistry:
Bush Hill to the Deep Water Horizon*

Guest Speaker:

Dr. Norman L. Guinasso, Jr.

Department of Oceanography, Texas A&M University • College Station, Texas

See page 9 for Abstract and Biography

HOLIDAY INN DOWNTOWN SUPERDOME

Check with concierge or
front desk for location.
Lunch served at 11:30 am

ADMISSION:

With reservation \$30.00
Without reservation..... \$35.00
Student Member with reservations..... FREE

November 12
NOGA 60th Anniversary Party
Ralph's on the Park • New Orleans, LA

December 8
NOGS Luncheon
Holiday Inn Downtown Superdome • New Orleans, LA
For more information, www.nogs.org

December 12
NOGS Christmas Holiday Party
Metairie Country Club • Metairie, LA
For more information, www.nogs.org

The Staff at NOGS LOG
wishes everyone
A Safe and Happy Holiday Season!



NOGS CONTACT LIST

Continued from previous page

MEMORIAL FOUNDATION

BOARD OF TRUSTEES

| | | |
|-----------|-----------|--------------------|
| 2014-2015 | Chairman | Chuck Holman |
| 2014-2015 | Secretary | Kelli Hardesty |
| 2014-2015 | Trustee | Rick Kear |
| 2014-2015 | Trustee | TBA |
| 2015-2016 | Trustee | William M. Whiting |
| 2015-2016 | Trustee | David E. Reiter |
| 2016-2017 | Trustee | J. David Cope |
| 2016-2017 | Trustee | Tom Klekamp |

Company

Saratoga Resources Inc.
Environmental Resources Management
Retired - Schlumberger

Phone

985-809-9292
504-831-6700
501-764-7100

E-mail

charleswholman@bellsouth.net
kelli.hardesty@erm.com
rkear@yahoo.com

Consultant

Stone Energy Corporation
Rising Natural Resources LLC
Amber Resources LLC

Phone

504-947-8495
504-593-3623
504-214-6754
985-630-2480

E-mail

bootscon@aol.com
reiterde@stoneenergy.com
greatmre@aol.com
ekle1959@gmail.com

AAPG DELEGATES

Term Ends

| | |
|---------|--------------------|
| 2015 | Susan A. Waters |
| 2015 | William M. Whiting |
| 2015(a) | David E. Balcer |
| 2015(a) | Earl W. Cumming |
| 2017 | Elizabeth McDade |
| 2017(a) | G. Alex Janevski |

Shell

Consultant

Chevron
Reservoir Frameworks LLC
McMoRan Exploration Company
Shell

Phone

504-728-0229
504-947-8495
985-773-6725
985-630-6898
504-582-4510
504-425-6214

E-mail

susan.waters@shell.com
bootscon@aol.com
dbalcer@chevron.com
earlcumming@bellsouth.net
elizabeth_mcdade@fmi.com
gregory.janevski@shell.com

NEW MEMBERS

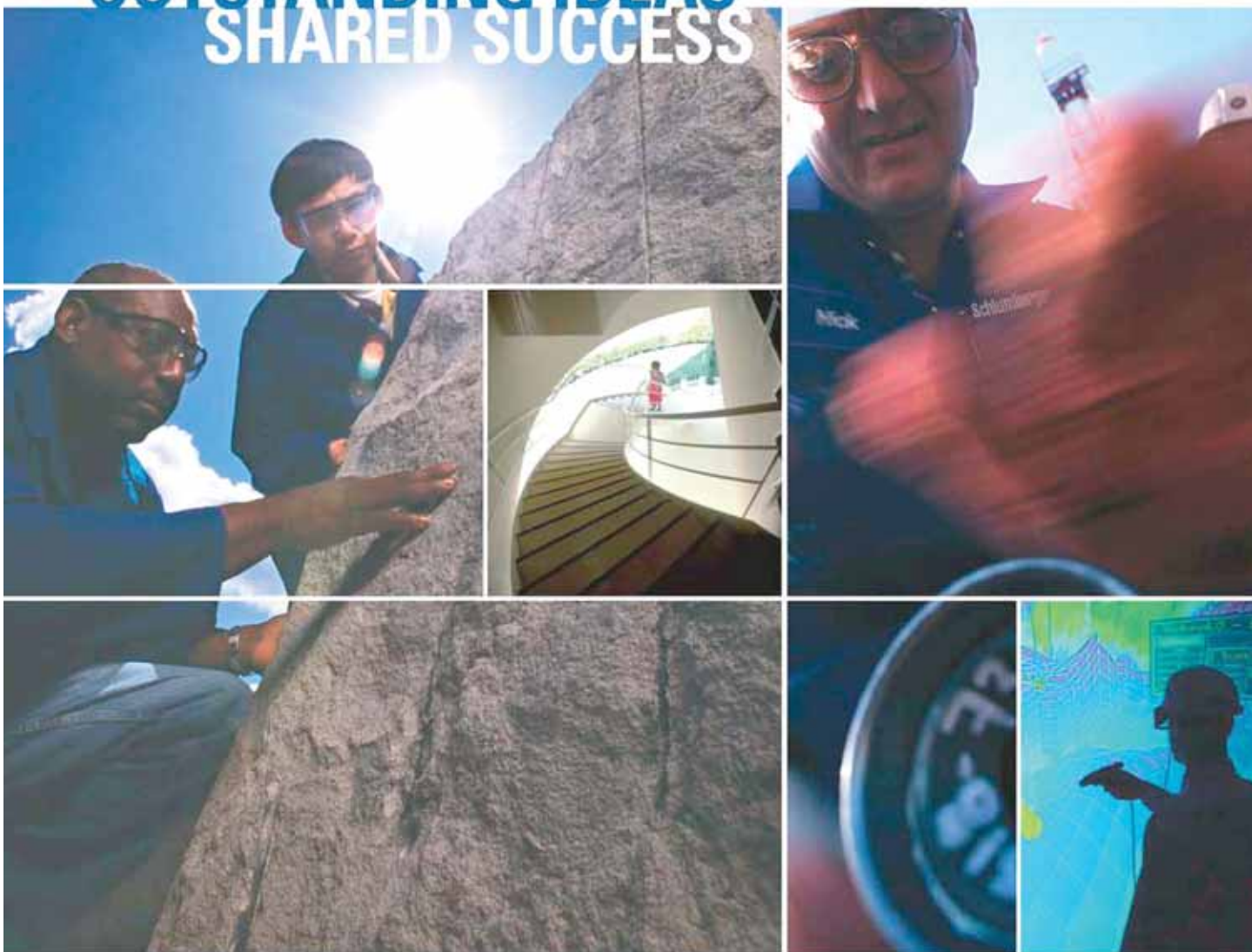
| | |
|-----------------|----------------|
| Connie Williams | Office Manager |
|-----------------|----------------|

| |
|----------------------------|
| Fordoché Operating Company |
|----------------------------|

504-883-8033

cwilliams178@cox.net

OUTSTANDING IDEAS SHARED SUCCESS



WHAT CAN MILLIONS OF IDEAS, thousands of patents, and hundreds of nationalities deliver? Success. Listening to the ideas of our clients and colleagues around the globe has made Schlumberger the world's leading technical services company. Your experiences are catalysts for our innovation.

Schlumberger invests in a worldwide community of research and development centers—from Boston to Dhahran, Beijing to Moscow, Stavanger to Cambridge—encouraging our brightest minds to find new ways to improve efficiency, productivity, and safety, every day.

Through our commitment to technology research and the support of our global network of local experts, Schlumberger is leading the way into the future.

www.slb.com

Schlumberger



Nov. 3 NOGS Luncheon Presentation

☆☆☆ at the Holiday Inn Superdome ☆☆☆



Thirty Years of Deep Water Geochemistry: Bush Hill to the Deep Water Horizon

Presented by

Dr. Norman L. Guinasso, Jr.

Dept. of Oceanography • Texas A&M University
College Station, Texas



ABSTRACT

Thirty Years of Deep Water Geochemistry: Bush Hill to the Deep Water Horizon

I have been working at the Geochemical and Environmental Research Group at Texas A&M University since 1986. I will talk about the early years of our efforts in Geochemical Exploration. With the support of the oil industry, we took about 10,000 piston cores world-wide and analyzed them for petroleum. This led to the discovery of chemosynthetic communities in the deep waters of the Gulf of Mexico. I will talk about how the U.S. Navy took an interest in our work and allowed us to use the nuclear Submarine NR-1 to explore sea floor in Green Canyon and Garden Banks. The Minerals Management Service funded us to study the chemosynthetic communities we discovered. We used the Johnson Sea Link to further explore the region. We were also fortunate to be given the Alvin to visit the Orca Basin, a large brine-filled depression. The immediate region around the Orca Basin is covered by a red flocculants that originate in the anoxic brine. Recently we have been examining the large water chemistry data set of measurements taken during and after the Macondo release. Petroleum hydrocarbons at low concentrations were present over a wide area in the deep waters during and for a time after the incident.

BIOGRAPHY

Dr. Norman L. Guinasso, Jr. has been engaged in the study of the oceans for 36 years. He is an author of over 40 scientific papers and numerous reports in the fields of marine chemistry, marine geology, and physical oceanography. He received his Ph.D and M.S. in Oceanography from Texas A & M University and a B.A. in Mathematics from San Jose State College. Currently D. Guinasso is the Director for Ocean Sciences with the Geochemical and Environmental Research Group, and an adjunct Professor in the Department of Oceanography at Texas A&M University. Since 2008, he has worked on the development of small responder buoy that could be quickly deployed near an oil spill to collect real-time data to aid oil recovery operations. He has also worked on a project to operate an underwater flow cytometer on a buoy to monitor *Karenia brevis* (responsible for "red tides") in the Gulf of Mexico. Dr. Guinasso is a Co-Principal Investigator on the NOAA program Mechanisms Controlling Hypoxia on the Louisiana Shelf, and has served as Program Manager at Texas A&M for the Texas Automated Buoy System.

THE LUNCHEON RESERVATION DEADLINE IS OCT. 31 - CONTACT THE NOGS OFFICE

"And Looking Ahead . . ."

The next luncheon will be held on December 8. Our guest speaker, Dr. Kyle Straub, Tulane University, will present "Internal Dynamics of Deltaic Systems and Their Influence on the Resolution of the Stratigraphic Record: A Laboratory Perspective." Contact the NOGS office at 561-8980 or use the PayPal link on the NOGS website (www.nogs.org) to make your reservation.

STRENGTH IN RESOURCES

Our history is rooted in exploration success in the natural resources business. With a growing portfolio of high-potential oil and gas targets, our future grows brighter.



www.fcx.com



FCX
LISTED
NYSE

SEI®

Seismic Exchange, Inc.

Strategic Speculative Surveys
Geophysical Data Marketing & Management

YOUR
Full Service
National
Seismic Data
Marketing Firm



DALLAS DENVER HOUSTON MIDLAND NEW ORLEANS OKLAHOMA CITY CORPUS CHRISTI TULSA
201 St Charles Avenue, Suite 4300, New Orleans, Louisiana 70170-4300 504-581-7153 FAX 504-581-9591

seismicexchange.com



Drill with confidence.

Diversified Well Logging, LLC brings the accuracy and expertise only a company with over sixty years in the oil and gas industry can deliver. We are your eyes and ears in the field, especially when it comes to deep water or high pressure, high temperature areas.

DWL offers 24-hour formation evaluation. We provide secure and customized real-time data communication, in-house research and development, and 24/7 on-call support for our equipment and our engineers.

Whether you have a 10-day job or a 110-day job, we provide the specialized attention you require. **Our experience means you can be confident in the safety and performance of your well.**






- *Formation Evaluation*
- *Geosteering*
- *Drilling Optimization*
- *Real-time Data Transmission*
- *Early Kick Detection*








Serving the Oil and Gas Industry for Over 60 Years

November

| Sunday | Monday | Tuesday | Wednesday | Thursday | Friday | Saturday |
|--------|---|--|--|---|--------|----------|
| | | | | | | 1 |
| 2 | 3  Luncheon | 4 | 5 | 6 | 7 | 8 |
| 9 | 10 | 11 Joint Energy Industry Association Luncheon Veterans Day | 12 NOGA 60 th Anniversary Party | 13 | 14 | 15 |
| 16 | 17 | 18 | 19  Board Mtg | 20 | 21 | 22 |
| 23 | 24 | 25 | 26 | 27  Thanksgiving Day | 28 | 29 |
| 30 | <p><i>November 3rd</i> NOGS Luncheon Holiday Inn Superdome 330 Loyola Ave. @11:30 am <i>Guest Speaker: Dr. Norman L. Guinasso Jr.</i>, Research Professor, Department of Oceanography College of Geosciences, Texas A&M University <i>Will Present: "Thirty Years of Deep Water Geochemistry: Bush Hill to the Deep Water Horizon"</i></p> | | | | | |

December

| Sunday | Monday | Tuesday | Wednesday | Thursday | Friday | Saturday |
|---|--|---------|--|---|--|----------|
| | 1 | 2 | 3 | 4 | 5 | 6 |
| 7 | 8  Luncheon | 9 | 10  Board Mtg | 11 | 12 NOGS Christmas Party  | 13 |
| 14 | 15 | 16 | 17 | 18 | 19 | 20 |
| 21 | 22 | 23 | 24 | 25 Christmas  | 26 | 27 |
| 28 | 29 | 30 | 31  | | | |
| <p><i>December 8</i> NOGS Luncheon Holiday Inn Superdome 330 Loyola Ave. @11:30 am <i>Guest Speaker: Dr. Kyle Straub</i>, Tulane University <i>Will Present: "Internal Dynamics of Deltaic Systems and Their Influence on the Resolution of the Stratigraphic Record: A Laboratory Perspective"</i></p> | | | | | | |

New Orleans Geological Auxiliary News

"The objective of the Auxiliary is to promote fellowship among the wives of the members of the New Orleans Geological Society and to render assistance to NOGS upon request."



Celebrating 60 Years!



There is a very special celebration coming soon! On November 12th, spouses and friends will join the Auxiliary at Ralph's on the Park for a 60th anniversary event. There will be music, wonderful food and some surprises that I have heard rumors about. Pat Williamson, Alma Dunlap and Judy Sabaté are making big plans for us. Be sure to attend!

The first luncheon of the 2014-2015 year was at the beautifully decorated home of Beverly Kastler in September. Beverly, Linda Peirce and Peggy Rogers came up with a special meal. The highlights of the day were the wonderful champagne punch and many delicious desserts, especially Linda's Zuppa Inglese cake. It was great to see old and new friends, and talk about the exciting upcoming activities for the Auxiliary.

The NOGS Christmas Holiday Party will be held at the Metairie Country Club on December 12th. Auxiliary member Camille Yeldell is on the committee. Save the date for your holiday celebrations.

Peggy Rogers, *NOGS LOG*



*September luncheon hostesses:
Linda Peirce, Beverly Kastler, Peggy Rogers*



*Ann Gilbert and new member Margie Conatser.
Margie and Trudy Corona will be the committee
for the February luncheon
at Chateau Golf and Country Club.*



Charter Member Ruth Bussey and Peggy Campbell

New Orleans Geological Auxiliary Membership Application

Name _____ Spouse's Name _____
Address _____ Home Phone _____
City, State, Zip _____ Cell Phone _____
Spouse's Company _____ Email _____

Dues: \$25 payable to New Orleans Geological Auxiliary
Please mail to Judy Lemarié, Treasurer, #2 Yosemite Dr., New Orleans, LA 70131

Why can Weatherford deliver more real time data at the wellsite than any other mudlogging company?

Tim has cabin fever.



**EXCELLENCE
FROM THE
GROUND UP™**

Our Global Operations Manager for Surface Logging Systems, Tim, is all smiles these days. That's because he and his team recently designed a new state-of-the-art mudlogging cabin. The spacious interior makes room for more laboratory services at the wellsite. Now exploration companies have access to more data in real time, so they can make better decisions faster. Combined with Weatherford's patented GC-TRACER™, IsoTube® AutoLoader™ and other Isotech technologies, it's one more way Weatherford Mudlogging is committed to Excellence from the Ground Up.

SURFACE LOGGING SYSTEMS

www.weatherford.com/surfacelogging
mudlogging.services@weatherford.com



Weatherford®

NOGS WELCOMES

Submitted by Tom Klekamp

Connie Williams is a new member of NOGS. She is the Office Manager for Fordoche Operating Co. in Houma, LA. Connie earned her BS in anthropology and statistics from the University of South Alabama in 1994. She's been involved with office operations at Fordoche since 2012 and looking forward to learning more through NOGS' Geology for Non-geologists Course. Welcome to NOGS, Connie!

NOGS Memorial Foundation Scholarships



L-R: Professor Alex Kolker,
Peter Reale - \$2000 Junior Cash Award,
Alexander Breaux - \$2500 Cash Award,
Michael Hopkins - \$3000 Cash Award,
Daniel Coleman - \$2500 Senior Cash Award,
Professor Törbjörn E. Törnqvist



LOUISIANA STATE UNIVERSITY

L-R: Chris Henry - Coordinator of Corporate
& Alumni Relations,
Jillian Banks - \$2500 Cash Award,
Catherine Hudson - \$2500 Senior Cash Award,
Nicholas Daigle, \$3000 Cash Award
Daniel Babin - \$2000 Junior Cash Award,



L-R: Professor Martin O'Connell,
Andrew Adams - \$2500 Senior Cash Award,
Jon Guidry - \$2500 Cash Award,
Lewis Jones - \$2000 Junior Cash Award,
Rachel Carter - \$3000 Cash Award



PHOTO BY ARTHUR CHRISTENSEN

2014 NOGS Kick Off Party & Rock n Bowl October 4, 2014





SUBMITTED BY TOM BERGEON

NOGS

Christmas Holiday Party

Metairie Country Club

580 Woodvine Avenue • Metairie, Louisiana

Friday, December 12, 2014 • 7:00 p.m.

*Send a check to the NOGS Office or pay online at
www.nogs.org/payment-center and use the Special Events category*

Members: \$60 per person

Students: \$25 per person

Sponsored in part by



Offline Networking

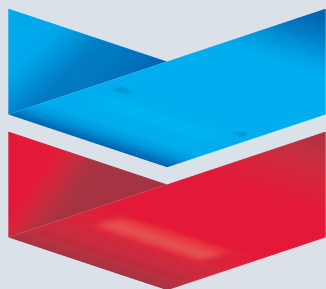
Open Bar (1st hour)

Buffet Dinner

Music by "The Profiles"



Chevron



100 Northpark Blvd.
Covington, LA 70433

(985) 773-6000



LaBay

Exploration Co., L.L.C.

111 Veterans Memorial Blvd.

Suite 1550

Metairie, Louisiana 70005

Office (504) 371-5967

Fax (504) 371-5969

www.labayexploration.com



**Shell has worked in partnership
with the NOGS for many years, and
is proud to count the society among
its closest business associates.**

The New Orleans Geological Society was organized in 1941 to foster scientific research and advance the science of geology. Particular emphasis is laid on the exploration for and production of petroleum and natural gas. Related objectives include encouraging the adoption of improved methods of exploration, disseminating pertinent geological and technological data, and maintaining a high standard of professional conduct among its members.

www.shell.com/us.sepco

WELLSITE GEOSCIENCE SERVICES



When time is money, Wellsite Geoscience is money well spent.

Whether you're exploring a basin, producing a well or completing a shale play, time is money. That's why Weatherford Laboratories brings a suite of formation evaluation technologies right to the wellsite. Utilizing mud gas and cuttings, these technologies provide detailed data on gas composition, organic richness, mineralogy and chemostratigraphy in near real time. As a result, operators now have an invaluable tool to assist with sweet spot identification, wellbore positioning, completion design and hydraulic fracturing. We call it Science At the Wellsite. You'll call it money well spent.

SCIENCE AT THE WELLSITE™

www.weatherfordlabs.com



Formation Evaluation Well Construction Completion Production

©2013 Weatherford. All rights reserved

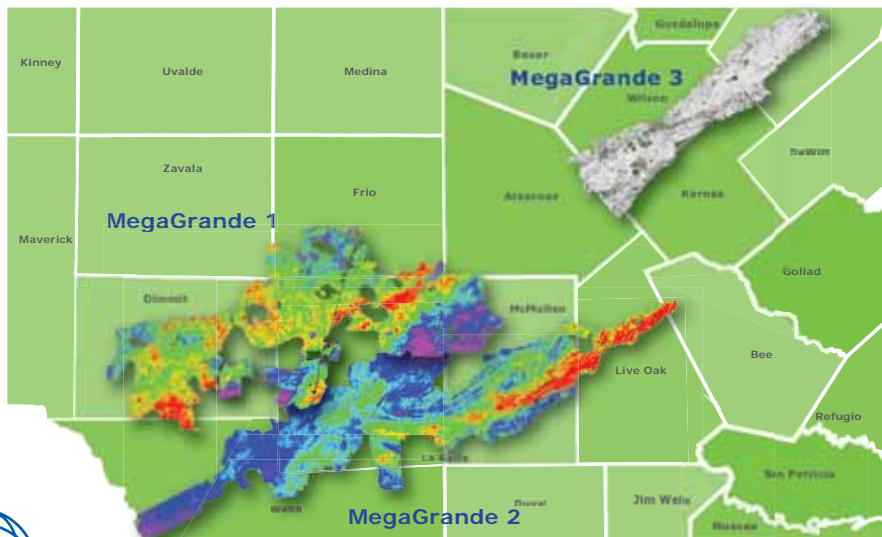
SOUTH TEXAS is MEGA GRANDE

NEW MERGED VOLUMES WITH PRESTACK VTI MIGRATION



Now our RG3D South Texas Multi Client data is better than ever. With over 4500 square miles of RG3D newly merged and reprocessed volumes you get:

- Common surface consistent processing solution including refraction statics covering the entire program area using input from all the individual surveys
- Flat PSTM gathers up to ~50 degrees (VTI correction included on PSTM)
- Continuous in-line/cross-line numbering processed on a single 3D CDP bin grid
- Wide azimuth superior data quality imaged seismic data
- Processing: VTI-Only Anisotropic Pre-Stack Time Migration
- Bin size 82.5 x 82.5 ft.



Global Geophysical Services, Inc.
tel +1 713-972-9200 www.globalgeophysical.com

CONTACT US at SoTex@globalgeophysical.com

Download the White Paper at: www.globalgeophysical.com/SouthTexasMerge

Gulf Coast Section SEPM

www.gcssepm.org

Petroleum Systems in "Rift" Basins

34th Annual GCSSEPM Foundation Bob F. Perkins Research Conference
Houston, Texas December 6-9 2015

💧 Rifts & Overlying/Related Sag basins

➤ Disproportionately

- "Rich"
 - ~30% of the "giant" fields; *i.e.*, >500 MMBOE are found in rifts & overlying/related sag basins (Mann *et al.*, 2001, 2003, 2006, 2007)
- "Frustrating"
 - "...each rift basin is a *UNIQUE* geological entity, yet all are variations on a common theme." (Lambiase, 1994)

CHECK OUR WEBSITE (WWW.GCSSEPM.ORG/CONFERENCE/2015_Conference.htm)

reprocessed seismic data property of, and used courtesy of, Robertson GeoSpec, a CGG Company



GCSSEPM





Covington Office

1001 Ochsner Blvd., Suite 200
Covington, Louisiana 70433
p: 985.801.4300
f: 985.801.4796

Houston Office

CityCentre Three
842 W Sam Houston Pkwy N
Suite 600
Houston, Texas 77024
p: 281.752.1100
f: 281.752.1199

Scott Office

814 S. Frontage Rd.
Scott, LA 70583
p: 337.408.4000
f: 337.408.4049

www.llog.com

ROBERT MIMS JEMISON, JR.



Robert Mims Jemison, Jr., a resident of St. James Place, passed away October 1, 2014, in Baton Rouge. Born March 7, 1922, in West Monroe, Louisiana, he was the son of Robert Mims and Eileen Bartlett Jemison. He was a graduate of LSU and worked as a geologist for over 58 years. After retiring from Freeport Oil Company (Freeport Sulphur), he did consulting work in the Lafayette area. He was a member of First Presbyterian Church in Baton Rouge and had served

as an Elder and Deacon in Presbyterian Churches while living in New Orleans and Lafayette. He was active in professional and civic organizations having served as President of the New Orleans Geological Society and New Orleans Kiwanis Club and held offices in many other professional organizations. He was a veteran of World War II, having served in the Air Force in North Africa and Italy. Preceded in death by his parents, his first wife of 50 years, Marguerite Hunstock Jemison, second wife, Jane Town Jemison, and his brother, Edgar Bartlett Jemison. He is survived by nieces Joy Butler and Melanie Jemison Lesko; nephews, Jack Butler and wife Diane, Robert Jemison and wife Linda, and Howard Jemison and wife Sherry. He is also survived by step children, Robert Smith, Hunter Smith and Mary Smith Cockerham and sister-in-law Mrs. Trish Jemison. A memorial service was held Monday, October 6, at 11:00 a.m. in the Dunham Chapel of First Presbyterian Church, conducted by The Reverend Dr. Gerrit Dawson and The Reverend Dr. Dick Gates. Memorial remembrances may be made to the First Presbyterian Church, 763 North Boulevard, Baton Rouge, 70802.

Published in TheAdvocate.com from Oct. 3 to Oct. 7, 2014

See more at: <http://www.legacy.com/obituaries/theadvocate/obituary.aspx?n=robert-mims-jemison-jr&pid=172674683&fhid=11073#sthash.vDXh8M7z.dpuf>



The 2014 GCAGS Convention

submitted by William "Bill" Haworth

The 2014 Gulf Coast Association of Geological Societies Convention was held October 4-7 at the Cajundome Convention Center in Lafayette. The theme for this year's convention was Survivor: the Gulf Coast, recognizing the longevity of the basin and the contributions of the oil finders who have worked here. The convention featured a great mix of field trips, short courses, technical talks, and social activities for both the long-time and new members of the societies.



The pre-convention activities kicked off with a well attended field trip to the Wax Lake Delta led by Dr. Harry Roberts, The Imperial Barrel Award Competition Training for students of the areas universities, and the highly rated More! Rocks in Your Head! – Workshop for elementary and secondary school Earth Science Teachers. Additional workshops and a field trip were offered on Sunday, leading up to the Young Professional and Students Meet and Greet and the Icebreaker Reception on Sunday Evening.

The technical program opened on Monday with a series of interesting sessions on timely topics, including: Emerging Shelf Plays of the Gulf, Salt Tectonics, Deepwater Turbidites, Conventional Onshore, Resource Plays, Environmental, and Ethics. The oral sessions alternated with poster sessions, and a section of the poster area became a "Prospect Alley" where companies had the opportunity to show their prospects to potential investors.

A unique Gulf of Mexico Educational Forum featured expanded talks by leading industry and academic experts on: Tectonics and Depositional Episodes, Turbidites, Characteristics of Carbonate Rocks, and Seismic Attribute Analysis of the Gulf of Mexico. The session was very well attended and was standing room only.

***Kudos to the entire GCAGS staff and organizing committee
for putting on a great convention!***



South Louisiana and Offshore Gulf of Mexico Exploration and Production Activities

LAFAYETTE DISTRICT, ONSHORE AREA

By Carlo C. Christina

During the month of September, 30 permits to drill were issued by the Office of Conservation, Lafayette District, Onshore Area. Following are the most significant locations and completions:

NEW LOCATIONS

Samson Exploration will drill in **Edgerly Field**, (A), Calcasieu Parish, its #1 Krause & Managan to test the Yegua sands at 14,900 feet. The well is located in Sec.18, 9S-11W, 2 miles southeast of Yegua production and 2 ½ miles northwest of nearest shallow production in the field. Edgerly Field is an old field which was discovered in 1905. More than 450 wells have been drilled in the field, but only 3 have been drilled deeper than 10,000 feet. (248379)

In Iberville Parish, **Dorcyville Field**, (B), Ponderosa Oil & Gas will drill the #1 Babin Co. in Sec. 31, 10S-13E to test the Marg vag sands at a depth of 12,500 feet. This location is an offset to a well drilled and completed in the Marg vag sand in 2012, but had produced less than 100 barrels of oil. (248463)

Will-Drill Production has permitted the #1 Smith to test the Upper Wilcox sands in **Frisco Field**, (C), Pointe Coupee Parish. The well will be drilled to 12,500 feet in Sec. 5, 6S-9E, 1 mile southeast of the #1 Henry, which was recently completed flowing 144 BOPD. It was perforated in the 559 foot interval between 11,240 and 11,799 feet, then fracked in 2 stages, and completed. (248407)

In **West Lake Salvador Field**, (D), St. Charles Parish, Tri-C Resources will attempt to extend the productive limits of the field to the northwest with the drilling of its #1 SL 21302 in 16S-21E. The well will be drilled to 13,400 feet to test the Cris I sands. (248403)

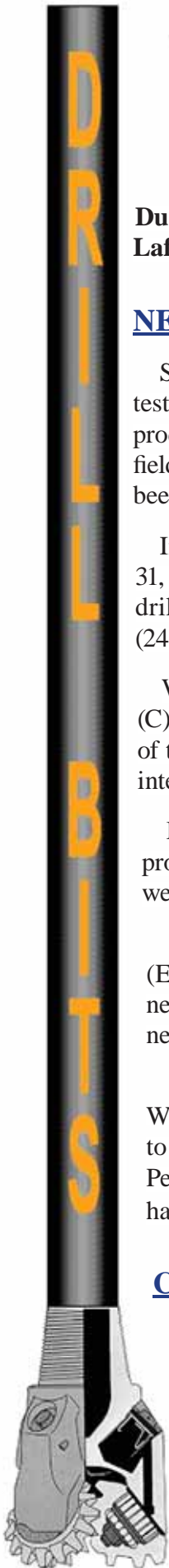
Comstock Oil & Gas will drill its first **Tuscaloosa Marine Shale** well in the **Day Branch Field**, (E), St. Helena Parish, in Sec. 56, 1S-5E. The #1 Meeks 56 H will be drilled to 14,000 feet. The nearest TMS production is 5 miles to the west of the proposed location. Comstock controls 52,000 net acres in the TMS play in Louisiana and Mississippi, and plans to drill 3 wells in 2014. (248441)

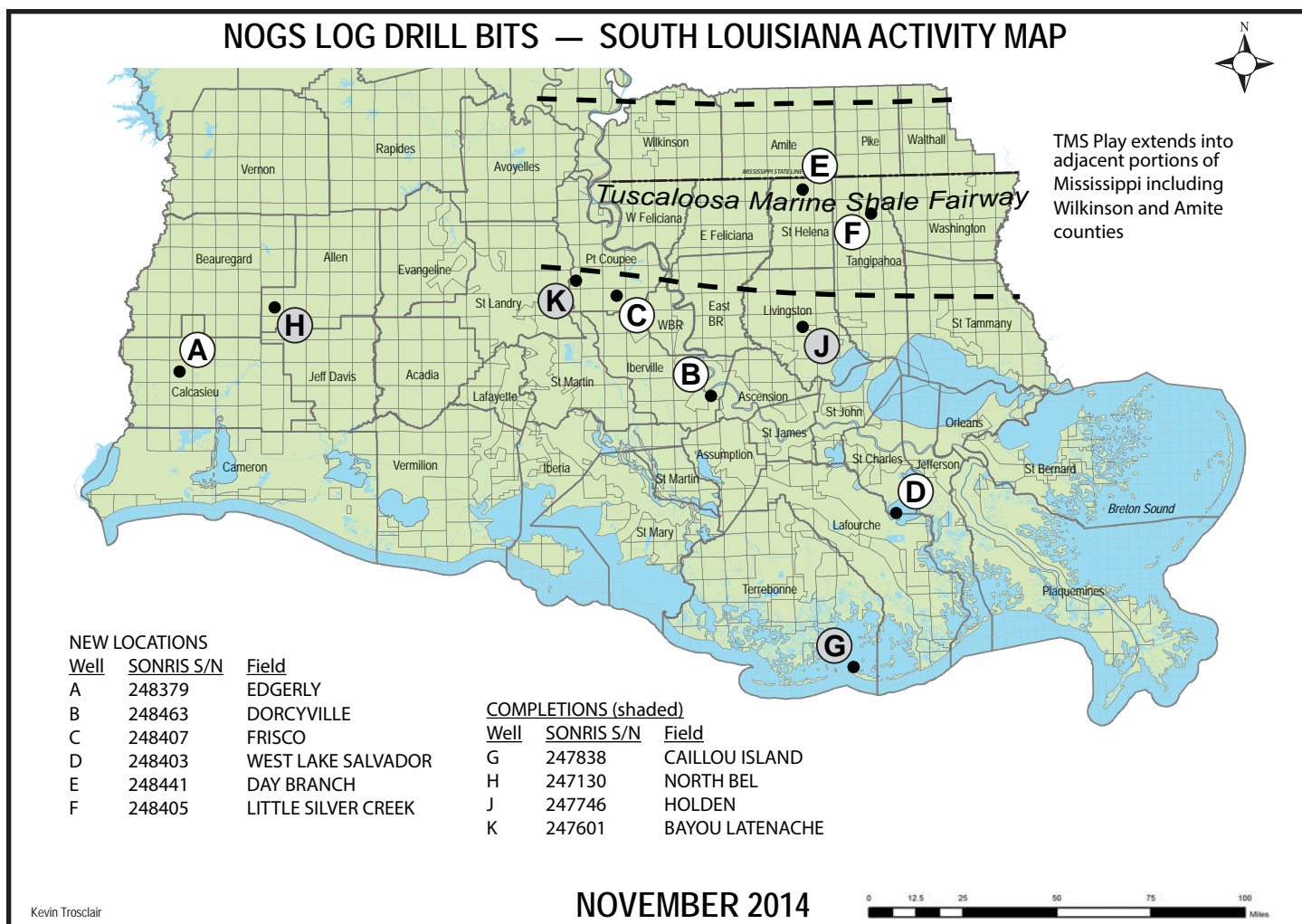
Goodrich Petroleum continues to develop its Tuscaloosa Marine Shale acreage with the #1 Williams 46 H in **Little Silver Creek Field**, (F), in Tangipahoa Parish. This well will be drilled to 21,000 feet, located in Sec. 46, 2S-8E. It is also located 1½ miles southeast of the Goodrich Petroleum #1 Blades 33 H, which was completed flowing 1,250 BOPD and 115 MCF. The #1 Blades has produced more than 69,700 barrels of oil in 4 months. (248405)

COMPLETIONS

In Terrebonne Parish, **Caillou Island Field**, (G), Hilcorp Energy has completed the #13 SL 2853 as an oil well flowing 351 BOPD and 3,000 MCF through perforations 18,645 to 18,686 feet. The well was drilled to a depth of 19,210 feet in 23S-19E, located on extreme northwest flank of the field. (247838)

Pennington Operating has completed its #1 Bel Minerals in **North Bel Field**, (H), Allen Parish flowing 265 BOPD through perforations 15,702 to 15,712 feet. The well was drilled in Sec. 16, 6S-7W, located 1½ miles northeast of Upper Wilcox production at 12,000 feet. (Note: the well was originally permitted in Clear Creek Field.) (247130)





In **Holden Field**, (J), Livingston Parish, Lake Ronel Oil has completed the #1 Weyerhaeuser as an oil well in a Wilcox sand, flowing 240 BOPD through perforations 10,274 to 10,290 feet. The well was drilled to a depth of 11,719 feet in Sec. 1, 7S-5E. (247746)

In Pointe Coupee Parish, **Bayou Latenache Field**, (K), Pennington Operating has completed a gas well in a Wilcox sand flowing 1,447 MCFD and 160 BCD through perforations 14,348 to 14,364 feet. The well is located in Sec. 39, 5S-7E, 1 mile from a well which had produced 320,000 barrels of oil in 32 years. (247601)

OFFSHORE GULF OF MEXICO SHELF AND DEEPWATER ACTIVITIES

by Al Baker

During September 2014, the BOEM approved **83** Gulf of Mexico drilling permits. Of these, **25** were for shelf wells, and **58** were for deepwater wells. Of the total number of permits, there were only **4 new well permits** issued, all situated in deepwater.

The 4 deepwater exploratory new well permits were awarded to the following 4 operators: **Freeport-McMoRan Oil & Gas** for their **Green Canyon 733 #2** well, **Marathon Oil** for their **Walker Ridge 578 #1** well, **LLOG Exploration Offshore** for their **Mississippi Canyon 208 #1** well, and **Murphy Exploration & Production Company - USA** for their **Mississippi Canyon 538 #6** well.

On September 26th, IHS-Petrodata reported that the Gulf of Mexico mobile offshore rig supply stood at **116**, which is 1 greater than last month. The marketed rig supply consisted of **92** rigs, of which **77** were under contract.

The contracted versus total rig supply utilization rate is **66.4%**, while the marketed contracted versus marketed supply utilization rate stands at **83.7%**. The marketed rig supply number reflects an increase of 2 rigs in comparison to the number reported last month, while the contracted rig supply number remained the same. In contrast, the September 2013 fleet utilization rate stood at 71.7% with 76 out of the 106 rigs under contract.

On September 26th, BakerHughes indicated that there were **62** active mobile offshore rigs in the Gulf, which is **80.5%** of the rigs under contract mentioned above. This active rigs number is **4** less than reported last month. The current active rigs count compares to 63 active rigs during the same period last year, representing a **1.6%** increase in yearly rig activity.

The **Phase I** lease awards for the **August 20, 2014, Western Gulf of Mexico OCS Sale 238** were announced on September 5th. A total of 11 tracts were deemed to have acceptable bids. The remaining 70 sale tracts have entered into the Phase II evaluation period. The total evaluation time period following an offshore lease sale typically lasts for 90 days.

On September 8th, **Shell Oil Co.** announced that it had begun production from its **Cardamom** subsea development, which is located about 225 miles southwest of New Orleans. The 2010 discovery is expected to produce **50,000 barrels of oil equivalent per day**. The oil production will be flowed to Shell's Auger production platform and will become the platform's seventh subsea development since 1994.

Another offshore independent company has announced its plan to exit from the federal offshore Gulf of Mexico this year. **Tana Exploration Company** opened a data room in Houston on September 30th with bids due by October 29th. The targeted closing date for the properties sale is December 17, 2014. Tana is offering **25 HBP leases and 25 primary term leases**. The company currently has **61 producing wells from 14 fields**. The producing properties are currently producing **1,504 BOPD and 15.5 MMCFD**, as of September 1, 2014. The company's net **proved reserves** as of this date are **5.73 MMBO and 63.5 BCF**, which have a **PV-10** value of **\$365 MM**. Their total net **3P reserves** are **6.6 MMBO and 79.8 BCF** with a **PV-10** value of **\$468 MM**.

Introducing the Fastest Log Printer in the Industry

At 11 inches per second, the NeuraLaserColor II operates seamlessly and requires no add-on software for automatically sensing top of form printing. Whether you are a service company printing thousands of logs a day or an exploration company looking for quality logs, the NeuraLaserColor II will change your expectations of well log printers.

- Record setting speeds - 11 inches per second
- Precision printing - On-the-fly length calibration
- Increased efficiency - 20,000 page yield toner
- Operational versatility - Native PDF support
- Hands free - Automated cut, feed and re-load

See More at:
www.NeuraLaserColor2.com



© 2014 Neuralog · www.Neuralog.com · sales@neuralog.com · 1.281.240.2525



GREATER NEW ORLEANS AREA OIL & GAS ASSOCIATIONS

American Association of
Drilling Engineers

American Petroleum Institute-
Delta Chapter

American Society of Mechanical
Engineers

American Society of
Nondestructive Testing

Council of Petroleum Accountants
Societies of New Orleans

Desk & Derrick Club of New Orleans

Desk & Derrick Club of the Westbank

Harvey Industrial Canal Association

Independent Petroleum Association of
America

International Society of Automation

NACE International
"The Corrosion Society"

National Society of Black Engineers

New Orleans Bar Association – Oil &
Gas Section

New Orleans Geological Society

Offshore Oil Scouts Association

Professional Landmen's Association
of New Orleans

Society of Independent Professional
Earth Scientists

Society of Petroleum Engineers –
Delta Section

Society of Petroleum Engineers
Delta Section Young Professionals

Society of Petrophysicists and Well
Log Analysts

Society of Women Engineers

Southeastern Geophysical Society

Women's Energy Network of
Southeast Louisiana

17th Annual Greater New Orleans Joint Energy Industry Association Luncheon Tuesday, November 11, 2014 Roosevelt Hotel – New Orleans



~ Key Note Speaker ~

John Young

**Jefferson Parish President and
Candidate for Lieutenant Governor**

As a lifelong resident of Louisiana, John Young has dedicated the last 20 years to working alongside others to make the Sportsman's Paradise the best place to live, work and raise a family.

In 2010, John was elected Parish President. Prior to that, John served on the Jefferson Parish Council. By removing government red tape, he has attracted thousands of new jobs to the parish and bolstered economic development. John Young also serves as President of PACE, Parishes Against Coastal Erosion, where he is leading a group of 20 coastal parishes to coordinate important efforts to fight for coastal protection and restoration. He is a former Assistant District Attorney and prosecutor, John attended Loyola University where he received a Bachelor of Public Administration and he attended the Loyola University School of Law. John Young is the father of five children and is dedicated to ensuring our state has a bright future.

Roosevelt Hotel – Waldorf-Astoria Ballroom

123 Baronne St.

New Orleans, LA

11:00 a.m. - 1:00 p.m.

\$40 in advance • \$50 at the door

Advance Reservations and Payment Strongly Recommended

Register online at www.api-delta.org and [pay via PayPal](#)

For more information contact: Rick Fowler or RickF@llog.com

*Make checks payable to API-Delta Chapter ▪ Credit Cards (MC/Visa) accepted at the door ▪ (MC/Visa/Discover/AMEX) accepted by **Paypal** via website registration.*

Table Sponsorships

Gold: \$1,000 – Includes table of 8 with preferred seating; company logo on *Welcome Banner* and listing in program.

Silver - \$500 – Includes reserved table of 8, listing in program.

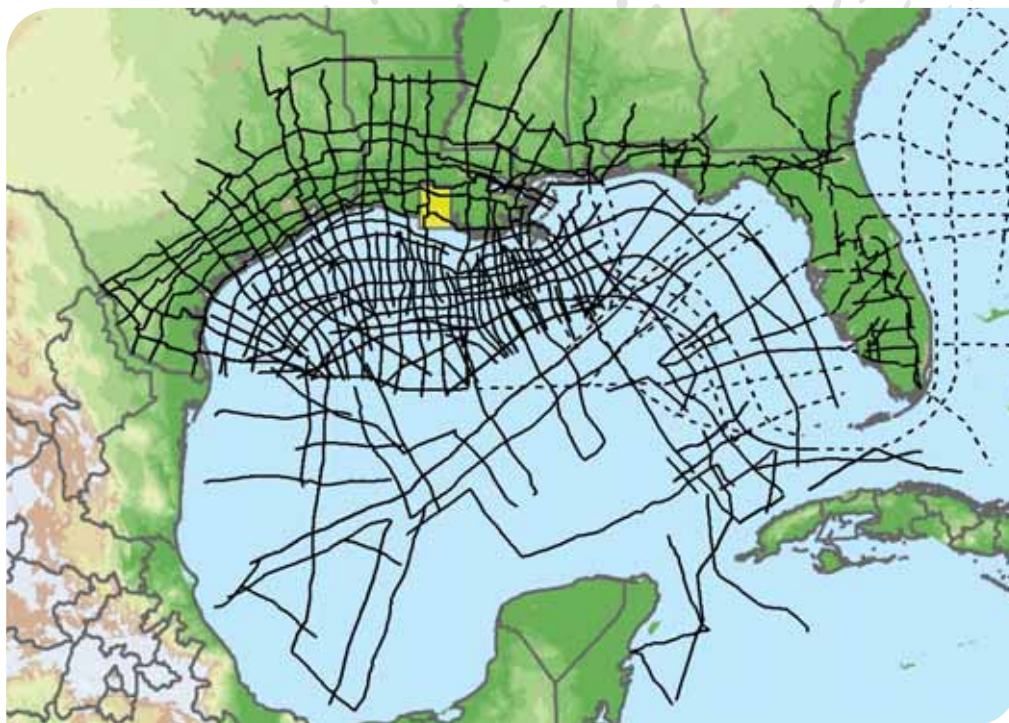
Bronze - \$100 – One ticket and listing in program.



New Orleans Bar Association
Oil & Gas Section



Explore the Entire Gulf of Mexico



Position your company for the next 10 years of exploration with the most complete, modern time and depth-imaged data in the Gulf of Mexico. ION's interconnected dataset links the entire Gulf, from onshore to offshore deep water, from Texas to Florida and to Mexico. With over 40,000 miles (over 65,000 km) completed or in progress, and an additional 7,500 miles (over 12,000 km) planned for 2013 and beyond, no other data library provides as comprehensive a framework for understanding the Gulf of Mexico. To learn more, visit iongeo.com/Gulf_of_Mexico

CONTACT

Ashley Garcia
Mobile: +1 281 781 1005
Email: ashley.garcia@iongeo.com

Alvin Rowbatham
Mobile: +1 832 372 2366
Email: alvin.rowbatham@iongeo.com

AREAS OF EXPERTISE

Unconventional Reservoirs
Challenging Environments
Complex Geologies
→ **Basin Exploration**
Reservoir Exploitation



GEOVENTURES®

Submitted by Tom Klekamp

Plate Tectonics on Ice

By Michelle Selvans

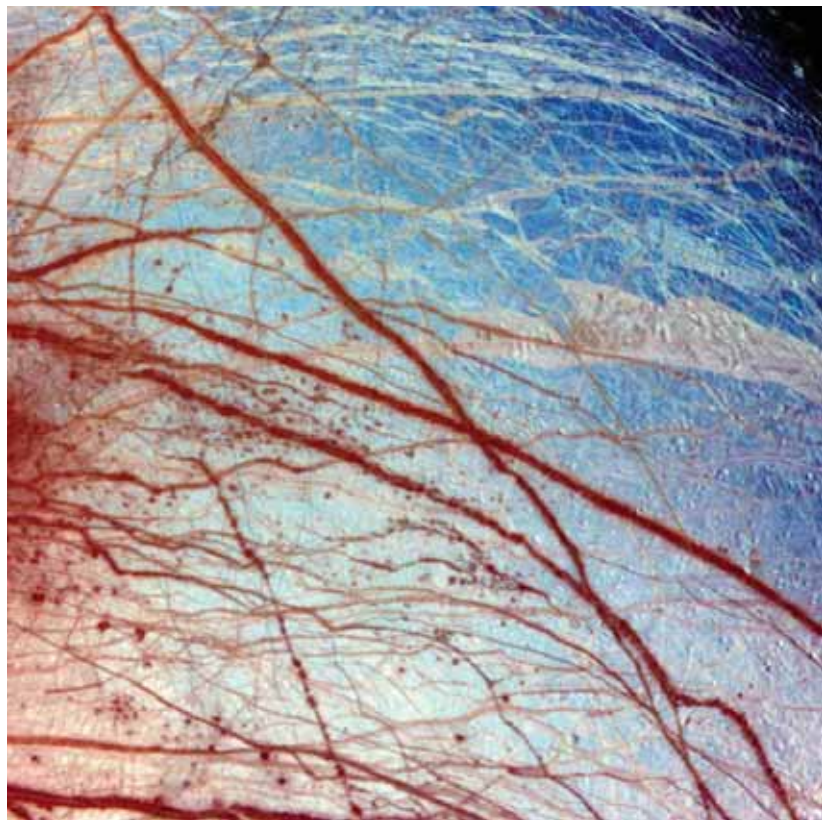
Excerpted from *Nature Geoscience*, 7, 695–696 (2014)

Jupiter's icy moon Europa is criss-crossed by extensional features. A tectonic reconstruction suggests that Europa's extension is balanced by subduction — if so, Earth may not be the only planetary body with a plate tectonic system.

Plate tectonics has been thought to be unique to our world. The Earth rids itself of internal heat through a convecting mantle and concentrates surface deformation along boundaries between rigid plates, which move away from, towards or alongside each other. Subduction zones, convergent boundaries where one tectonic plate slides under another and is recycled into the Earth's mantle, are unique to plate tectonic systems. Although Mercury, Venus and Mars show clear signs of tectonic activity, such as systems of thrust faults and rift valleys, none of these rocky planets have been convincingly shown to have a system of moving tectonic plates, either today or in the past. Writing in *Nature Geoscience*, Kattenhorn and Prockter present tantalizing evidence of plate tectonics operating on another Solar System body, Jupiter's icy moon Europa.

Slightly smaller than Earth's Moon, Europa has a silicate mantle that is surrounded by a global ocean thought to contain several times more water than all of Earth's oceans, enclosed by a water ice shell. The icy moon has a young surface crisscrossed by pervasive fractures and ridges that probably record less than 2% of the moon's geologic history, given the scarcity of preserved craters. The abundance of tectonic features, together with the young age of the surface, suggests that the moon might be experiencing ongoing tectonic activity. Such tectonism is predicted by models of surface stresses caused by both short-term tidal flexing as Europa moves closer to and farther from Jupiter with every orbit, and a longer-term change in the moon's shape as the ice shell slips around the tidally locked interior.

Perhaps the most puzzling aspects of Europa's surface are the widespread extensional features. These include bands of deformed ice that are often symmetric about a central axis. Based on tectonic reconstructions, these areas have been interpreted as zones of extension where new icy material is being added to the ice shell over time. Since it is unlikely that Europa has been growing in size, there must be convergent structures that are accommodating extension of the icy crust. However, few candidate features have been identified and Europa lacks the high topography indicative of zones of compression on Earth, such as the Andes or Himalaya mountain ranges.



Tectonic features on Europa, shown in false color (NASA imagery)



Geoconsulting, Inc.

Geological and Geophysical Consulting
3-D Seismic Interpretation

Ben D. Sydboten, Jr. CPG

2 Flagg Pl., Suite 1
Lafayette, LA 70508

www.saigeoconsulting.com

Office (337) 504-3670

Cell (337) 456-8948



Anthony Catalanotto
President

Geological
Geophysical
Land

Drafting & Graphics

3349 Ridgelake Drive • Suite 202
Metairie, LA 70002
Office: (504) 836-2882
Fax: (504) 836-2877
Cell: (504) 481-7291
E-Mail: geodraft@bellsouth.net
Website: www.geodraftinc.com

NORTHCOAST OIL COMPANY

610 E. Rutland St.
Covington, LA 70433

(985) 898-3577

(985) 898-3585 Fax

Jack M. Thorson

Eric C. Broadbridge

J. Daryl Gambrell

Raymond W. Stephens

THIS SPACE OPEN

Collarini Energy Staffing, Inc.

Facilities • Drilling • Production • Reservoir Engineering
Land and Legal • Geosciences • Information Technology
Health and Safety • Management • Supply Chain
Accounting • Administrative Support



Full-Time and Temporary Personnel

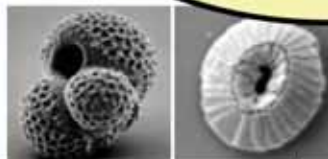
Energy Trading • Civil Engineering • Executives
Human Resources • Instrument and Electrical
Engineering • Marine Engineering • Project Management
Technical Writing • Sales and Marketing

10497 Town and Country Way, Suite 950, Houston, Texas 77024

Telephone: (832) 251-0553

www.collarini.com

DOMESTIC AND INTERNATIONAL BIOSTRATIGRAPHIC SERVICES



6619 Fleur de Lis Drive
New Orleans, LA 70124
(504) 488-3711

www.paleodata.com



Complete wellsite paleo services

**Supported offshore GoM and
onshore LA paleo databases**

**Integrated foram/nannofossil
analyses**

**In-house sample preparation
lab for quality-monitoring
and efficiency**

**Comprehensive depositional
history study of the Gulf Basin
based on 200,000+ well data
analysis**

ROCK SOLID SERVICE



www.corelab.com
337-837-8616

© 2013 Core Laboratories.
All rights reserved.



**LAFAYETTE
GEOLOGICAL
RESEARCH
CENTER, LLC**

201 Heymann Blvd., Suite 33 • Lafayette, LA 70503
Tel: 337-233-8197 • Fax: 337-233-8177

COVERAGE:

Louisiana / Federal / State Offshore
• Multi State Geo Tech Services • Completion Data
Production Data • Well Logs • Maps

~ MEMBERSHIPS AVAILABLE ~
The Industry's Premier • Well Data Center

orders@lafayettegrc.com

CALL OR EMAIL TODAY FOR MORE INFORMATION!

THE NEW ORLEANS GEOLOGICAL SOCIETY MEMORIAL FOUNDATION, INC.

The Memorial Foundation is an IRS Tax Exempt Code #501(c)(3) organization. The Federal I.D. is 72-1220999. Please consider making a donation to the Foundation. Your individual support in any amount will help meet the IRS Guidelines for our Foundation. Thanks!

\$10,000

Gibbet Hill Foundation

*In Memory of Steve & Marion Millendorf, William J. Prutzman,
Roger G. Vincent, Ron Youngblood and Uno Numella*

\$6,000

NOGS Golf Tournament 2014

In Memory of Bill Craig

\$1,000

Exxon Mobil Foundation

Matching Gifts Program

Mr. Armour C. Winslow

In Memory of Rita Menzel Winslow and Lawrence C. Menconi

\$500

Mr. Reuben J. Klibert, Jr.

\$250 TO \$499

Mr. Carlo C. Christina

*In Memory of John C. "Jack" Langford
In Memory of Al Gilreath*

Mr. Lawrence B. Eustit

In Memory of John C. "Jack" Langford

Mr. Kenneth Huffman

In Memory of James E. Rolf, Jr.

Mr. William M. Whiting

FONO FUND

The FONO Fund accepts contributions that are invested and the income dedicated to assure sufficient financial resources will always be available to maintain the NOGS business office. Contributors are reminded that donations to the FONO Fund are not covered by the IRS 501(c)(3) tax exempt classification and should be reported as a business expense on your IRS tax report.

\$500

Mr. James A. Hartman

Mr. Reuben J. Klibert, Jr.

UP TO \$249

Mr. David E. Balcer

Mr. Joseph E. Boudreaux

Ms. J. Sybil Callaway

Mr. Anthony Carollo, Jr.

Mr. John Dombrowski

Mr. Merle J. Duplantis

Mr. Dwight Easterly

Mr. Richard A. Edmund

Mr. Michael N. Fein

Mr. Duncan Goldthwaite

Mr. Kenneth Huffman

Mr. Paul Jurik

Mr. Louis Lemarié

Mr. H. David Lynch

Ms. Jeannie F. Mallick

Mr. George M. Markey, Jr.

Mr. James A. McCarty

Ms. Margaret M. McKinney

Mr. Robert G. Murphy

Mr. Richard A. Olsen

Mr. William S. Peirce

Mr. Edward B. Picou, Jr.

Mr. Rudolf B. Siegert

Mr. Bryan P. Stephens

Mr. David M. Tatum

Mr. Robert C. Weissmann

Mr. William M. Whiting

Ms. Frances A. Wiseman

UP TO \$249

Mr. Woods W. Allen, Jr.

In Memory of William C. Ward

Mr. Randall W. Altobelli

In Memory of Richard Saunderd

Mr. Robert J. Ardell

In Memory of Ken Masters

Mr. Burton C. Bowen

Mr. Hilary James Brook

Ms. J. Sybil Callaway

Chevron Humankind Matching Funds

Mr. James S. Classen

In Memory of John C. "Jack" Langford

Mr. Merle J. Duplantis

Mr. Michael N. Fein

Mr. Sherwood M. Gagliano

Mr. Mark J. Gallagher

Mr. Bernard L. Hill, Jr.

Mr. Jeff Jandegian

Mr. Paul Jurik

Mr. Cyril F. Lobo

Mr. H. David Lynch

Ms. Jeannie F. Mallick

Mr. Joseph H. McDuff

Ms. Margaret M. McKinney

Mr. Paul C. McWilliams

Mr. Robert G. Murphy

New Orleans Geological Auxiliary

In Memory of Mrs. James W. Swaney, Jr. (Gwenn)

In Memory of Mrs. Lawrence B. Eustis (Tatjana)

Mr. Richard A. Olsen

In Memory of John C. "Jack" Langford

Mrs. Teresa O'Neill

In Memory of Brian O'Neill

Mr. Edward B. Picou, Jr.

In Memory of John C. "Jack" Langford

Shell Matching Funds

Mr. Rudolf B. Siegert

Dr. J. O. Snowden

Mr. David Sollenberger

In Memory of Shirley Sollenberger

Mr. Raymond O. Steinhoff

In Memory of Anne M. Steinhoff

In Memory of Harold E. Vokes

Ms. Betsy M. Strachan Suppes

In Memory of Hubert C. Skinner

Ms. Candace V. Strahan

In Memory of James R. Strahan

Mr. David M. Tatum

Mr. William M. Whiting

In Memory of John "Jack" Henton

Ms. Frances A. Wiseman

In Memory of Steve Widdicombe

BILL CRAIG FUND

Mr. Bernard L. Hill, Jr.

Contributions for both funds through October 14, 2014.
Donations are listed for one year.

| | |
|--|--|
| ANSYTHE Donald I. Andrews 504-887-3432 |  CLASSEN EXPLORATION, INC. James S. Classen Looking for close in deals P.O. Box 140637 Boise, ID 83714 klassenllc@msn.com Bus. (208) 854-1037 Fax (208) 854-1029 |
| THE BOEBEL COMPANY Oil and Gas Investments New Orleans, LA 70153 (504) 866-4313 | D-O-R ENGINEERING, INC. 3-D and Geoscience Services 6161 Perkins Rd. P.O. Box 80812 Bus: (225) 765-1914 Baton Rouge, LA 70898 |
| BOO-KER OIL & GAS CORP. Gray S. Parker 826 Union, Suite 300 New Orleans, LA 70112 Bus. (504) 581-2430 Fax (504) 566-4785 | EDWARD B. PICOU, JR. Consulting Micropaleontologist - Retired 228 St. Charles Ave., Suite 1330 C New Orleans, LA 70130 Bus. (504) 529-5155 Res. (504) 282-3096 |
| C & R EXPLORATION, INC. Carlo C. Christina Lawrence G. Ringham |  GEOLOGY ENVIRONMENTAL MANAGEMENT GEM Consulting, LTD Michael Louis Merritt admin@gemconsultingltd.com |
| TONY CAROLLO Consulting Geologist Unitization • Geosteering • Field Studies 1701 Peach Street Metairie, LA 70001 Bus. (504) 885-0004 Res. (504) 885-6829 | Explore the ENTIRE Gulf of Mexico  Alvin Rowbatham 832-372-2366 • alvin.rowbatham@iongeo.com Ashley Garcia 281-781-1005 • ashley.garcia@iongeo.com www.iongeo.com/Gulf_of_Mexico |
|  <i>Thanks our sponsors for their support!</i> <i>Special Thanks to</i>  DIVERSIFIED WELL LOGGING, LLC | PHELPS GEOSCIENCE LLC Onshore Gulf of Mexico Geology and Geophysics Prospect Generation and Evaluation Houston, TX jsfphelps@yahoo.com (281) 398-5208 |
| |  RAFIDI OIL & GAS, INC. Jaser N. Rafidi, President 4913 James Drive Metairie, LA 70003 Office: 504.453.8580 Res/Fax: 504.888.1661 |
| | ROY C. WALTHER Petroleum Geologist 2421 Prancer Street New Orleans, LA 70131 Bus. (504) 392-8513 Res. (504) 392-9332 |
| |  STONE ENERGY www.StoneEnergy.com 625 E. Kaliste Saloom Lafayette, LA 70508 16800 Greenspoint Dr., Suite 225-S Houston, TX 77060 1100 Poydras St., Suite 1050 New Orleans, LA 70163 |
| | ZOT OIL & GAS, LLC Jim Zotkiewicz Consulting, Evaluation, and Prospect Generation Metairie, LA 70002 Bus. 504.267.9131 Email: jimzot38@zotoil.com |



CENTURY EXPLORATION NEW ORLEANS, LLC

An independent gulf coast exploration, development and operating company

Three Lakeway Center, Suite 2800
3838 North Causeway Blvd.
Metairie, LA. 70002

Office: 504.832.3750
Fax: 504.832.3760
www.centuryx.com



TRITON: Acquisition now complete

The Triton survey combines its unique full azimuth configuration with GeoStreamer® acquisition technology. GeoStreamer, with its unparalleled low frequency content, has a unique ability to record complementary wavefields and has enabled revolutionary imaging that utilizes both primary and multiple energy.

This technology has resulted in imaging of unseen clarity and is recognized as uniquely suited to producing superior velocity and reservoir property information. PGS is leveraging our full suite of proprietary model building tools, including our PGS hyperTomo technology and TTI RTM utilizing 3D angle gather output, allowing for image optimization and pre-stack data access throughout the model building sequence and for final imaging.

These imaging tools, take full advantage of PGS' unique GeoStreamer® technology, providing never before seen resolution of complex sub-salt structures.
Contact us today to find out more.

Steven Fishburn, Tel: +1 281 509 8124, gominfo@pgs.com

A Clearer Image

www.pgs.com/Triton

MultiClient
Marine Contract
Imaging & Engineering
Operations





NEW ORLEANS GEOLOGICAL SOCIETY

810 Union Street, Suite 300
New Orleans, LA 70112-1430

PRESORT
STANDARD
US POSTAGE
PAID
MAIL TECH

www.nogs.org



MARINE PROPERTIES, LLC BERKSHIRE EXPLORATION CO.

MONTE C. SHALETT, CPL, PRESIDENT

3030 Lausatz Street
Metairie, LA 70001-5924

BUS. (504) 831-7779
FAX (504) 831-8315

PCI

Paleo Control, Inc.

Houston, Texas
713-849-0044

Drilling Wells, Studies and Data Base

Loyd Tuttle

Frio, SE Texas

Bob Liska

Wilcox, S and SE Texas

Jim Thorpe

Miocene and Cam-Miogy



creative graphics & printing, llc

*Proudly designing and printing the NOGS LOG since 2012!
Specializing in design and printing for the oil and gas industry and their affiliates.*



I have been interested in art and design since high school and after graduating in 1979, I honed my skills with different graphic and printing companies over the next 30+ years, becoming proficient in multiple printing methods and media. In the early 90's, graphic design and printing rapidly evolved with faster computers, graphic design software and digital presses. Graphic design programs continue to evolve, becoming more sophisticated and allowing unlimited possibilities for designers who stay current with the new technology. My digital presses, networked directly to my design software, allow for sharper prints, vibrant colors and almost unlimited printing capabilities.

985.626.5223 • 985.630.7824 • kpbrown@bellsouth.net
or contact annette@nogs.org