

# NOGS LOG

MAY 2014

Volume 54, Number 11



**MAY 5 - NOGS LUNCHEON**

**Presentation: Subsidence and Sea-Level Rise: The Impact on the Southeastern Louisiana Coast**

**Guest Speaker: Tim Osborn  
NOAA • Lafayette, Louisiana**



# SEE THE ENERGY

## DIRECTIONAL SURVEY PLUS

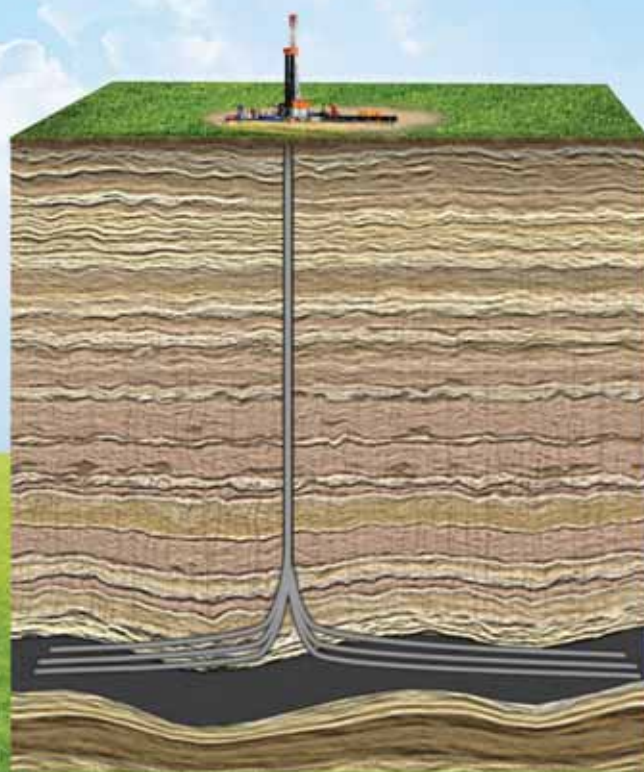
Directional Survey Plus (DS+) data goes beyond the simple capture of measured depth, azimuth and inclination. DS+ data are thoroughly researched, re-processed and standardized to create the most accurate spatial representation of the well path, from surface to total depth.

Access Directional Survey Plus data and the industry's largest collection of digital well logs quickly and easily through the online well data portal, LOG-LINE Plus!®

For more information, contact TGS at:

Tel: +1 713 860 2100

Email: [info@tgs.com](mailto:info@tgs.com)



[WWW.TGS.COM](http://WWW.TGS.COM)

© 2013 TGS-NOPEC GEOPHYSICAL COMPANY ASA. ALL RIGHTS RESERVED.

**TGS**  See the energy.



Published monthly by the New Orleans Geological Society.  
This issue was sent to press on April 21, 2014.

**Interested in contributing to the NOGS LOG?** Please submit items by the 1st Friday of the month to [nogseditor@gmail.com](mailto:nogseditor@gmail.com). Advertising requests should contact the NOGS office at [info@nogs.org](mailto:info@nogs.org).

## IN THIS ISSUE

### Regular Features:

From the Editor.....	3
From the President.....	5
NOGS Officers / Contacts .....	6
Upcoming Events & Activities .....	7
NOGS Luncheon Presentation.....	9
May & June Calendars .....	12
NOGA News.....	13
Drill Bits .....	24
Info-Tidbits .....	31
NOGS Memorial Foundation.....	33
FONO Fund .....	33

### Special Features:

NOGS Welcomes .....	10
API Meritorious Service Award.....	15
SuperSaurus Saturday Article .....	17
SuperSaurus Saturday Photo Collage.....	18-19
NOGS Committee News .....	22
NOGS Membership Application .....	27
NOGS Officer Elections.....	28

## on the cover

### Cover Photo Submitted by: Roy Walther

#### La Pice Field — St. James Parish, Louisiana

This late evening scene shows the testing and completion operations on the Layline #1 and #2 Schexnayder wells. These oil wells are located in the La Pice Field in St. James Parish, Louisiana. La Pice Field was discovered in 1938 with more than 150 wells drilled in the field since the discovery.

# From the Editor



I want to thank all of the volunteers that participated in the fun-filled Supersaurus Saturday event at the Louisiana Children's Museum on March 29. My family and I were in attendance and we had a great time. Even though my almost-four-year-old son has a very limited attention span, we managed to visit several stations, and he knew the answers to many of the questions that were asked of him. His favorite station was definitely the dino dig.

I also would like to thank NOGA for inviting the NOGS board members to their Spring Social that was held on April 5 at the home of Ann and Louis Gilbert. Ann and Louis were wonderful hosts and the planning committee did an excellent job as everyone enjoyed an evening filled with great food and friendly conversation.

A volunteer opportunity is available to NOGS Members on June 21 when the Girl Scouts Louisiana East hold their STEM Extravaganza at Dillard University. This is an opportunity for Girl Scouts in grades K-12 to learn about Science, Technology, Engineering, and Math with hands-on science experiments and technology presentations. This event was a big hit last year both for the Girl Scouts and NOGS volunteers. Contact Tom Bergeon at [tom.bergeon@centuryx.com](mailto:tom.bergeon@centuryx.com) if you're interested in volunteering.

**Sheri Richardson – NOGS LOG Editor**



# These nodes change everything.

With absolutely no cables,  
there's absolutely no stopping you.



True cable-free seismic

Dealing with tons of cable will hinder any seismic acquisition, land or marine. That's why our exclusive, true cable-free ZNodal® systems pay such huge dividends in any environment.

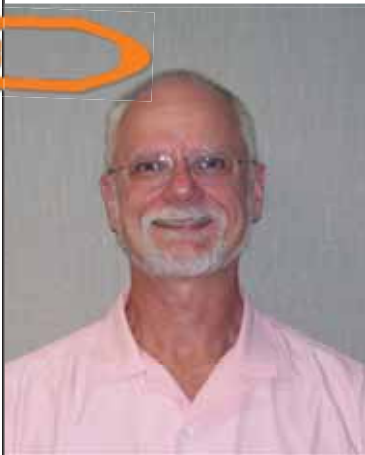
Our lightweight, compact ZLand® system lets your crews work faster and much more safely while recording high-resolution data, even in the most challenging terrain.

Our ZMarine® system, also completely self-contained, deploys easily and safely, even in congested areas, to water depths of 3000m, which makes it ideal for 4D reservoir monitoring.

Welcome to a new world of seismic acquisition.



FairfieldNodal.com



# From the President

I begin this month's President's Letter on a sad note. One of our members and a past President, Jack Langford, died on March 21 after a long illness. Jack served in the Navy at the end of World War II and founded a successful business that eventually merged with Schlumberger, but perhaps his greatest accomplishment and happiness was with his family: his wife, 3 daughters, 5 grandchildren, and 3 great-grandchildren. "My quiet joy is when you are all together talking and laughing." He will be missed.

## UPCOMING EVENTS

The Monthly Luncheon is May 5 with Tim Osborn of NOAA presenting "Subsidence and Sea-Level Rise: The Impact on the Southeastern Louisiana Coast." It should be a good follow-up to Chris McLindon's talk on "Rethinking Coastal Restoration."

## **REGION IX SCIENCE FAIR RECOGNITION**

This month's luncheon features the geology-themed winners of the February 19 Region IX Science Fair. The first place winners and their teachers have been invited to attend the luncheon and present their projects. All of the winners are listed below:

### THE SENIOR DIVISION WINNERS:

#### **First Place: Alexis Lang and Joshua Hartley**

*"Go with the Flow: Can Freshwater Diversion Water Flow Be Used to Create Green Energy Using Hydroelectric/Kinetic Power?"*

Teacher: Cathy Boucvalt, John Curtis Christian School

#### **Second Place: John Tran**

*"How Have Hurricanes Affected the Fishing Industry in Coastal Louisiana?"*

Teacher: Jannell Simpson, Patrick Taylor Science and Technology Academy

#### **Third Place: Alexandra Walsh**

*"What Is the Effect of Riprap Modification on Erosion Caused by Water?"*

Teacher: Jannell Simpson, Patrick Taylor Science and Technology Academy

### THE JUNIOR DIVISION WINNERS:

#### **First Place: Scott Hawkins**

*"Geothermal: Free Energy?"*

Teacher: Brother Laurence Konersmann, Christian Brothers School

#### **Second Place: Dax Ford**

*"Does the Rough Bottom Affect the Wave Velocity at Different Water Depths?"*

Teacher: Lauren Young, John Curtis Christian School

#### **Third Place co-winner: Trevan Burns**

*"What Type of Sedimentary Rock Best Absorbs Petroleum Oil?"*

Teacher: Tara Lavender, Holy Cross School

#### **Third Place co-winner: Cole Radetich**

*"Glacier Effects on Land"*

Teacher: Brother Laurence Konersmann, Christian Brothers School

We also honor two teachers this year for their outstanding contributions to science education: **Cathy Boucvalt** of John Curtis Christian School and **Brother Laurence Konersmann** of Christian Brothers School.

## CONCLUSION

As stated in the first paragraph of the NOGS Constitution, "This Society is organized as a non-profit for the express purpose of facilitating the development of the profession and the science of Geology..." If there is a purpose to life, it must apply from the smallest to the largest creatures. The one thing that links us all is that the purpose of life is to live and to perpetuate the species. Viewed from this perspective, the most important jobs of all, enabling humans to live and the species to continue, are that of parent and teacher; they are the ones that pass on the accumulated wisdom and skills so that future generations may flourish. This month at NOGS we celebrate our future.

Chuck

## NOGS Office

Office Manager: Annette Hudson

Phone: 504-561-8980 • Email: info@nogs.org • Website: www.nogs.org

The office is located at 810 Union Street, Suite 300, New Orleans, LA 70112.

Correspondence and all luncheon reservations should be sent to the above address.



## BOARD OF DIRECTORS

		<b>Company</b>	<b>Phone</b>	<b>E-mail</b>
President	Chuck Holman	Saratoga Resources Inc.	985-809-9292	charleswholman@bellsouth.net
Vice President	Fran Wiseman	Retired	504-831-8343	snowde.fran@gmail.com
Secretary	Margaret McKinney	TGS	504-524-3450	margaret.mckinney@tgs.com
Treasurer	Robert Clark	Foster Energy	504-704-5498	rbclark@uno.edu
President-Elect	Kelli Hardesty	Environmental Resources Mgmt.	504-831-6700	kelli.hardesty@erm.com
Editor	Sheri Richardson	W & T Offshore	504-210-8141	nogseditor@gmail.com
Director 2014	Michael N. Fein	W & T Offshore	504-210-8148	mikef@wtoffshore.com
Director 2015	William M. Whiting	Consultant	504-947-8495	bootscon@aol.com
Director 2016	Jim Zotkiewicz	Zot Oil & Gas	504-267-9131	jimzot38@zotoil.com

## COMMITTEE

	<b>Chairperson</b>			
AAPG Delegates	William M. Whiting	Consultant	504-947-8495	bootscon@aol.com
AAPG Student Chapter	Kathryn Denommee	LSU		kdenom1@lsu.edu
AAPG Student Chapter	W. Matt Benson	Tulane University		wbenson3@tulane.edu
AAPG Student Chapter	Rachel Carter	UNO	913-710-8021	r_carter@me.com
Advertising-Log	Kimberly Maginnis	LLOG Exploration	985-801-4761	kimberlym@llog.com
Auditing	Kelli Hardesty	Environmental Resources Mgmt.	504-831-6700	kelli.hardesty@erm.com
Awards	Michael N. Fein	W & T Offshore	504-210-8148	mikef@wtoffshore.com
Ballot	Robert Clark	Foster Energy	504-704-5498	rbclark@uno.edu
Best Paper	Bay Salmeron	Chevron	832-854-6431	bay.salmeron@chevron.com
Entertainment	Kelli Hardesty	Environmental Resources Mgmt.	504-831-6700	kelli.hardesty@erm.com
Environmental	Daisy Pate	Pontchartrain Partners	504-862-1775	daisy.pate@gmail.com
External Affairs	Michael A. Fogarty	Sylvan Energy, LLC	603-523-4808	mike.a.fogarty@gmail.com
Finance and Investment	Robert Clark	Foster Energy	504-704-5498	rbclark@uno.edu
Historical	Edward B. Picou, Jr.	Consultant	504-529-5155	epicou@bellsouth.net
Membership/Directory	David E. Reiter	Stone Energy Corporation	504-593-3623	reiterde@stoneenergy.com
New Geoscientists (NGNO)	Jeremy Prouhet	Chevron	985-713-6927	jeremyprouhet@chevron.com
Nominating	Edward B. Picou, Jr.	Consultant	504-529-5155	epicou@bellsouth.net
Non-Technical Education	Duncan Goldthwaite	Consultant	504-887-4377	DGldthwt@aol.com
Office Operations	Will Jorgensen	Shell	504-728-6339	william.r.jorgensen@shell.com
Publications Sales	Edward B. Picou, Jr.	Consultant	504-529-5155	epicou@bellsouth.net
School Outreach	Thomas C. Bergeon	Century Exploration	504-832-3772	Tom.bergeon@centuryx.com
Special Projects	Larissa Cupp		978-621-5074	Larissacupp@gmail.com

## NOGS LOG STAFF

Editor	Sheri Richardson	W & T Offshore	504-210-8141	srichardson@wtoffshore.com
Editor-Elect	Tavia Prouhet	Chevron	985-773-6737	tavia.prouhet@chevron.com
Auxiliary	Peggy Rogers	NOGA	504-392-6323	lrogers79@cox.net
Drill Bits	Al Baker	Beacon Exploration, LLC	504-836-2710	ABaker1006@aol.com
Drill Bits	Carlo C. Christina	Retired (C & R Expl. Inc)		drillbits81@yahoo.com
Drill Bits	Kevin Trosclair	Stone Energy	504-202-7997	kevintrosclair@gmail.com
Staff Photographer	Arthur Christensen	Shalimar Consulting	985-893-2013	arthur_shalimar@yahoo.com
Layout	Kristee Brown	Creative Graphics & Printing, LLC	985-626-5223	kpbrown@bellsouth.net
Webmaster	Kevin Trosclair	Stone Energy	504-202-7997	kevintrosclair@gmail.com

## NOGS AUXILIARY

<b>Officers</b>		<b>Phone</b>	<b>Directors</b>	<b>Year</b>	<b>Phone</b>
President	Mary Walther	504-392-9332	Beverly Kastler	2012-14	504-286-0879
Vice-President	Camille Yeldell	504-835-7467	Linda Peirce	2012-14	504-393-7365
Secretary	Beverly Christina	504-835-2383	June Perret	2012-14	504-664-0651
Treasurer	Judy Lemarié	504-393-8659	Trudy Corona	2013-15	504-737-6101
Parliamentarian	Alma Dunlap	504-737-2678	Debra Fein	2013-15	504-831-0358
Member-at-Large	Jean Jones	504-738-8091			



# UPCOMING Events & Activities

## May 5 • NOGS Luncheon

Holiday Inn Downtown Superdome

\$3.00 validated parking in hotel garage

### Presentation:

***Subsidence and Sea-Level Rise: The Impact on the Southeastern Louisiana Coast***

### Guest Speaker:

**Tim Osborn**

NOAA • Lafayette, Louisiana

See page 9 for Abstract and Biography

### HOLIDAY INN DOWNTOWN SUPERDOME

Check with concierge or  
front desk for location.

Lunch served at 11:30 am

### ADMISSION:

With reservation ..... \$30.00

Without reservation..... \$35.00

Student Member with reservations..... FREE

May 5-8

### Offshore Technology Conference

Reliant Park • Houston, TX

For more information, [www.otcnet.org](http://www.otcnet.org)

June 2

### NOGS Luncheon

Holiday Inn Downtown • New Orleans, LA

For more information, [www.nogs.org/calendar/](http://www.nogs.org/calendar/)

June 9-12

### SIPES Annual Meeting and Convention

Omni Royal Orleans • New Orleans, LA

For more information, [sipes.org/home/convention/](http://sipes.org/home/convention/)

August 5-7

### Gulf of Mexico Deepwater Technical Symposium

Hilton Riverside • New Orleans, LA

For more information, [www.deepwaternola.org](http://www.deepwaternola.org)

## NOGS CONTACT LIST

*Continued from previous page*

### MEMORIAL FOUNDATION

#### BOARD OF TRUSTEES

2013-2014	Chairman	Will Jorgensen
2013-2014	Secretary	Chuck Holman
2013-2014	Trustee	J.David Cope
2013-2014	Trustee	Tom Klekamp
2014-2015	Trustee	Rick Kear
2014-2015	Trustee	TBA
2015-2016	Trustee	William M. Whiting
2015-2016	Trustee	David E. Reiter

#### Company

Shell
Saratoga Resources Inc.
Rising Natural Resources LLC
Amber Resources LLC
Schlumberger Oil Field Services
Consultant
Stone Energy Corporation

#### Phone

504-728-6339
985-809-9292
504-214-6754
985-845-4046
504-858-2444
504-947-8495
504-593-3623

#### E-mail

<a href="mailto:william.r.jorgensen@shell.com">william.r.jorgensen@shell.com</a>
<a href="mailto:charleswholman@bellsouth.net">charleswholman@bellsouth.net</a>
<a href="mailto:klekamp@bellsouth.net">klekamp@bellsouth.net</a>
<a href="mailto:kearl@slb.com">kearl@slb.com</a>
<a href="mailto:bootscon@aol.com">bootscon@aol.com</a>
<a href="mailto:reiterde@stoneenergy.com">reiterde@stoneenergy.com</a>

### AAPG DELEGATES

#### Term Ends

2014	Arthur H. Johnson
2014	Brenda Reilly
2014(a)	Elizabeth C. McDade
2014(a)	Frances A. Wiseman
2015	Susan A. Waters
2015	William M. Whiting
2015(a)	David E. Balcer
2015(a)	Earl W. Cumming

Hydrate Energy International
AMROMCO Management LLC
McMoRan Exploration Co.
BOEM (retired)
Shell
Consultant
Chevron
Reservoir Frameworks LLC

504-464-6208
504-430-4240
504-582-4510
504-831-8343
504-728-0229
504-947-8495
985-773-6725
985-630-6898

<a href="mailto:artjohnson51@hotmail.com">artjohnson51@hotmail.com</a>
<a href="mailto:reillybe@yahoo.com">reillybe@yahoo.com</a>
<a href="mailto:ecmcade@bellsouth.net">ecmcade@bellsouth.net</a>
<a href="mailto:snowde.fran@gmail.com">snowde.fran@gmail.com</a>
<a href="mailto:susan.waters@shell.com">susan.waters@shell.com</a>
<a href="mailto:bootscon@aol.com">bootscon@aol.com</a>
<a href="mailto:dbalcer@chevron.com">dbalcer@chevron.com</a>
<a href="mailto:earlcumming@bellsouth.net">earlcumming@bellsouth.net</a>

### NEW MEMBERS

Jordan M. Adams	Graduate Student
Craig N. Zimmerman	Geological Contractor

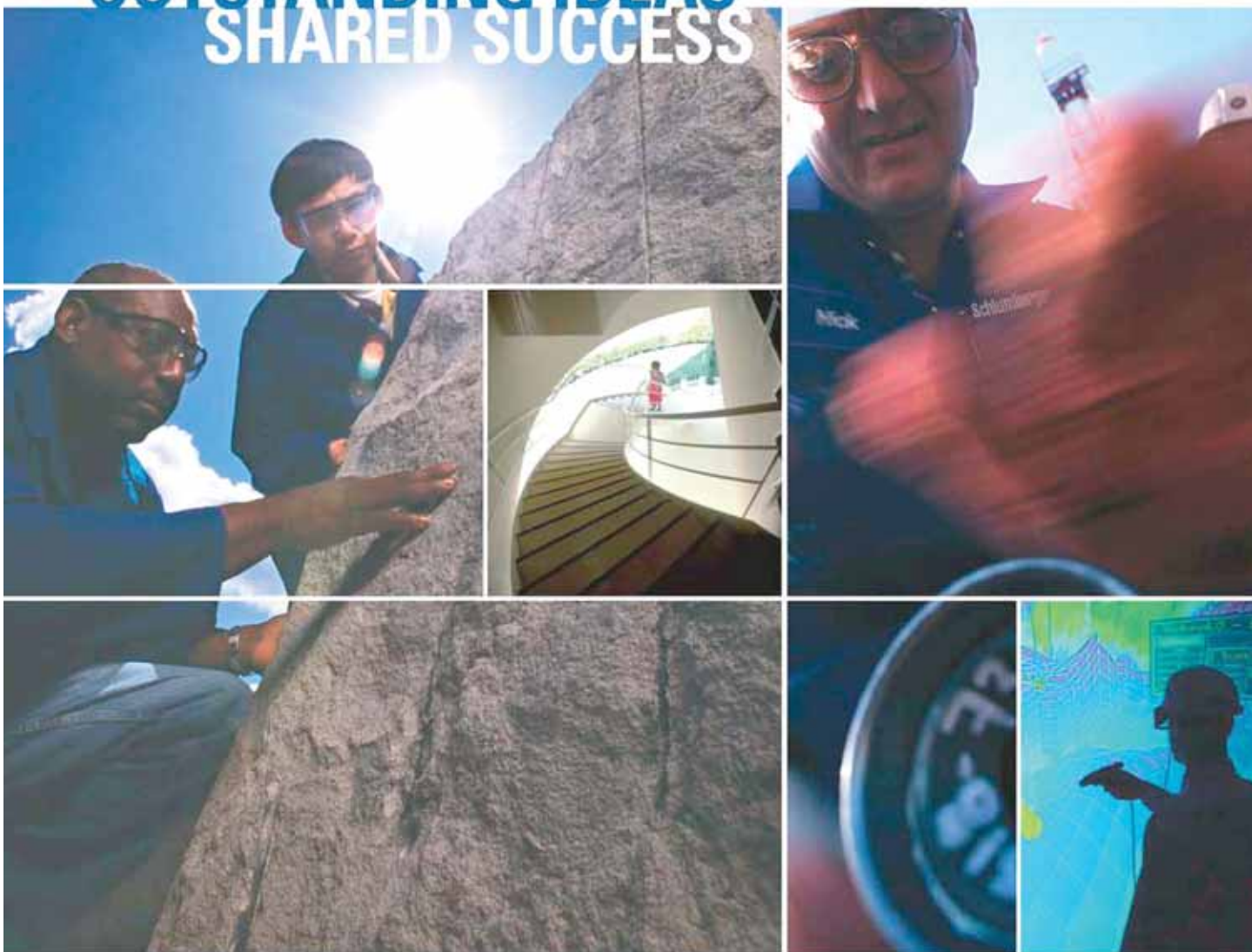
Tulane
EPL Oil & Gas

610-739-7582
985-264-8300

<a href="mailto:jadams15@tulane.edu">jadams15@tulane.edu</a>
<a href="mailto:czimmerman@eplweb.com">czimmerman@eplweb.com</a>



# OUTSTANDING IDEAS SHARED SUCCESS



**WHAT CAN MILLIONS OF IDEAS,** thousands of patents, and hundreds of nationalities deliver? Success. Listening to the ideas of our clients and colleagues around the globe has made Schlumberger the world's leading technical services company. Your experiences are catalysts for our innovation.

Schlumberger invests in a worldwide community of research and development centers—from Boston to Dhahran, Beijing to Moscow, Stavanger to Cambridge—encouraging our brightest minds to find new ways to improve efficiency, productivity, and safety, every day.

Through our commitment to technology research and the support of our global network of local experts, Schlumberger is leading the way into the future.

[www.slb.com](http://www.slb.com)

# Schlumberger





## May 5 NOGS Luncheon Presentation

☆☆☆ at the Holiday Inn Superdome ☆☆☆



### Subsidence and Sea-Level Rise: The Impact on the Southeastern Louisiana Coast



*Presented by*

**Tim Osborn**

NOAA

Lafayette, Louisiana

#### ABSTRACT

A review and briefing on the effects of sea level rise and subsidence on the coastal zone of Louisiana will be presented. Techniques and practices by NOAA to monitor and report these relative sea level rise rates will be provided.

With the World's largest relative sea level rise rates, the coastal zone of Louisiana will see huge changes this century.

#### BIOGRAPHY

Tim Osborn is the Regional Navigation Manager in the Office of Coast Survey at NOAA in Lafayette, Louisiana. His responsibilities include coastal restoration projects, coastal hurricane response, and the surveying and mapping of Gulf Coast waters, navigation channels, ports, and waterways.

Tim graduated from Florida State University in 1982 with a B.S. in Marine Biology and a secondary degree in Science Education. He also earned both an M.S. in Marine Sciences and a Masters of Public Administration from LSU in 1985.

**THE LUNCHEON RESERVATION DEADLINE IS MAY 1 - CONTACT THE NOGS OFFICE**

#### *"And Looking Ahead . . ."*

*The next luncheon will be held on June 2. Our guest speaker, Arthur "Art" Berman, a geological consultant in Sugar Land, Texas, will present "Reflections on a Decade of U.S. Shale Plays: Case Histories from the Haynesville and Eagle Ford Plays." Contact the NOGS office at 561-8980 or use the PayPal link on the NOGS website ([www.nogs.org](http://www.nogs.org)) to make your reservation.*

# NOGS WELCOMES

*Submitted by Tavia Prouhet*

**Jordan M. Adams** joins NOGS as a new student member. She is currently a PhD student at Tulane University studying surface process and landscape evolution. In 2010, Jordan earned her BS in environmental science from Moravian College in Bethlehem, Pennsylvania. Jordan received a NOGS Memorial Foundation Scholarship in 2013 and was a volunteer at the recent Supersaurus Saturday event. She is a member of AGU, GSA, and the Society for Integrated Math (Geosciences division).

**Craig N. Zimmerman**, Contract Geologist for EPL Oil and Gas, joins NOGS as a new active member. He recently graduated from LSU with a BS in geology. He is interested in being involved with the Environmental and New Geoscientists Committees of NOGS.

# SEI<sup>®</sup>

Seismic Exchange, Inc.

Strategic Speculative Surveys  
Geophysical Data Marketing & Management

**YOUR**  
Full Service  
National  
Seismic Data  
Marketing Firm



DALLAS DENVER HOUSTON MIDLAND NEW ORLEANS OKLAHOMA CITY CORPUS CHRISTI TULSA  
201 St Charles Avenue, Suite 4300, New Orleans, Louisiana 70170-4300 504-581-7153 FAX 504-581-9591

[seismicexchange.com](http://seismicexchange.com)





# Drill with confidence.

Diversified Well Logging, LLC brings the accuracy and expertise only a company with over sixty years in the oil and gas industry can deliver. We are your eyes and ears in the field, especially when it comes to deep water or high pressure, high temperature areas.

DWL offers 24-hour formation evaluation. We provide secure and customized real-time data communication, in-house research and development, and 24/7 on-call support for our equipment and our engineers.

Whether you have a 10-day job or a 110-day job, we provide the specialized attention you require. **Our experience means you can be confident in the safety and performance of your well.**



- *Formation Evaluation*
- *Geosteering*
- *Drilling Optimization*
- *Real-time Data Transmission*
- *Early Kick Detection*



**DIVERSIFIED**  
WELL LOGGING, LLC

*Serving the Oil and Gas Industry for Over 60 Years*



May						
Sunday	Monday	Tuesday	Wednesday	Thursday	Friday	Saturday
				1	2	3
4	5 NOGS Luncheon Holiday Inn	6	7 NOGA Installation Luncheon	8	9	10
	Offshore Technology Conference - Houston, TX					
11 Mother's Day	12	13	14	15	16	17
18	19	20	21 NOGS Board Meeting	22	23	24
25	26 Memorial Day	27	28	29	30	31

June						
Sunday	Monday	Tuesday	Wednesday	Thursday	Friday	Saturday
1	2 NOGS Luncheon Holiday Inn 11:30 AM	3	4	5	6	7
8	9	10	11	12	13	14
	SIPES Annual Meeting - New Orleans, LA					
15 Father's Day	16	17	18 NOGS Board Meeting	19	20	21 Girl Scouts LA E STEM Event Dillard University
22	23	24	25	26	27	28
29	30					

# New Orleans Geological Auxiliary News

*"The objective of the Auxiliary is to promote fellowship among the wives of the members of the New Orleans Geological Society and to render assistance to NOGS upon request."*

On March 10th, NOGS president Chuck Holman graciously invited the NOGA officers and board to join the regular NOGS meeting to have lunch and hear Mr. Chris McLindon speak on "Rethinking Coastal Restoration." Mary Walther, Trudy Corona, Jean Jones, Judy Lemarié, and NOGA columnist Peggy Rogers were present to enjoy the fascinating talk and delicious lunch.

A large group of NOGA members, spouses, and friends greatly enjoyed a wonderful evening at the beautiful home of Ann and Louis Gilbert on April 4th. Beverly Kastler, Linda Peirce, Earleen Rodan, and Ann Gilbert planned a sumptuous dinner with beverages and plentiful hors d'oeuvres to the great enjoyment of all the guests. The rain and threatening storms held off so everyone could enjoy the lovely gardens and pool area.



*Spring Social chairwomen,  
Beverly Kastler, Earleen Rodan,  
Hostess Ann Gilbert, Linda Peirce*



*President Mary Walther presenting  
hosts Ann and Louis Gilbert  
with a thank you gift.*

The Installation Luncheon at the New Orleans Country Club will be on May 14th. You won't want to miss it! Beverly Christina and Camille Yeldell are planning another enjoyable event for us.

Last month Tat Eustis, a Charter member of the Auxiliary, passed away. She was still a current member of NOGA. We also lost NOGS member Jack Langford. For many years Jack sought out the Auxiliary to be involved in a variety of NOGS activities. He kept up with the ladies even after his wife, Beverly, had passed away. Just this past November, Jack had a rose at each plate when NOGA had a luncheon at the Ormond Plantation. We miss them both.

**Peggy Rogers, NOGS LOG**

## New Orleans Geological Auxiliary Membership Application

Name \_\_\_\_\_ Spouse's Name \_\_\_\_\_  
Address \_\_\_\_\_ Home Phone \_\_\_\_\_  
City, State, Zip \_\_\_\_\_ Email \_\_\_\_\_  
Spouse's Company \_\_\_\_\_ DUES: \$25.00

**Please send \$25 check payable to NOGA to Judy Lemarié, Treasurer, #2 Yosemite Dr., New Orleans, LA 70131**

Why can Weatherford deliver more real time data at the wellsite than any other mudlogging company?

Tim has cabin fever.



**EXCELLENCE  
FROM THE  
GROUND UP™**

Our Global Operations Manager for Surface Logging Systems, Tim, is all smiles these days. That's because he and his team recently designed a new state-of-the-art mudlogging cabin. The spacious interior makes room for more laboratory services at the wellsite. Now exploration companies have access to more data in real time, so they can make better decisions faster. Combined with Weatherford's patented GC-TRACER™, IsoTube® AutoLoader™ and other Isotech technologies, it's one more way Weatherford Mudlogging is committed to Excellence from the Ground Up.

**SURFACE LOGGING SYSTEMS**

[www.weatherford.com/surfacelogging](http://www.weatherford.com/surfacelogging)  
[mudlogging.services@weatherford.com](mailto:mudlogging.services@weatherford.com)



**Weatherford®**



# API MERITORIOUS SERVICE AWARD

## Presented to **JOHN DRIBUS**



*On March 18, long-time NOGS member John Dribus, Global Geosciences Advisor for Schlumberger Oil Field Services, was presented with the API Meritorious Service Award in appreciation for all that he has done for the industry and for the broader community.*

The following details were listed in awarding John this honor:

John is a frequent and effective speaker on a variety of science and industry topics. Among his 2013 public engagements:

- ❖ Invited speaker at the AAPG Deep Water Reservoirs Workshop in Houston with the topic of "Gabon Pre-salt Clastic Reservoirs"
- ❖ Invited speaker at the SEG Technology Conference in Houston on the role of Plate Tectonics in Exploration
- ❖ Keynote Luncheon Speaker at the GCAGS in New Orleans on "Three Key Exploration Reservoirs," where he also played a key role in securing a corporate sponsorship from Schlumberger
- ❖ Invited speaker at the EAGE/AAPG Basin-Margin Wedge Workshop in Lisbon, Portugal, on "Deepwater Turbidite Facies"

It is worth noting that the four talks were on completely different subjects to different professional organizations.

In 2013, the Society of Petroleum Engineers (SPE) awarded John their Eastern North America Regional Reservoir Description and Dynamics Award (an award given by an engineering organization to a geologist).

His 2014 schedule has proven to be equally active and diverse with the following speaking engagements:

- ❖ In January on the topic of Abrupt Margin Turbidites at the PetroTech 2014 Convention in Delhi, India
- ❖ At the SIPES January Luncheon in Lafayette on the "Evolution of the Atlantic Margin Basin"
- ❖ At the January AAPG Playmakers Forum in Houston on "Key Global Reservoirs"

- ❖ Also in January at the 2014 AAPG Deep Water Reservoirs Workshop in Houston where he addressed Deep Water Drilling Hazards
- ❖ In March at an AAPG Deep Horizon and Deep Water Frontier Exploration Workshop in Trinidad/Tobago
- ❖ At the API luncheon in March, where he received the Meritorious Service Award, with an excellent presentation on Plate Tectonics in Exploration
- ❖ In April, at the AAPG Discovery Thinking Forum in Houston

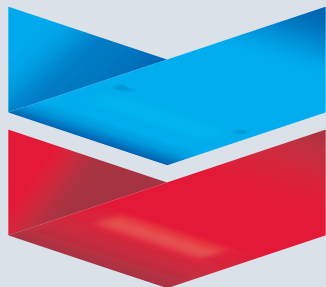
While this list is lengthy, it only includes his most recent activities. John has a long history of effectively sharing his vast knowledge with audiences in the New Orleans area, throughout the Gulf Coast, and around the world. These include AAPG and SPE technical workshops, AADE (in Houston, New Orleans, and Lafayette), SPWLA in New Orleans and Lafayette, the New Orleans Deep Water Symposium, and also at NOGS.

His on-going service includes the AAPG Imperial Barrel Judging Committee and he is a frequent participant in our events at the New Orleans Children's Museum where he does a spectacular job of engaging children with his personal rock, mineral, and fossil collection. He is an active member of AAPG, SPE, SEG, NOGS, and HGS. John's leadership was very apparent when he served as Chairman of the API Delta Chapter.

John's remarkable gifts for presenting new aspects of petroleum science, and his great willingness to share those gifts in service to such a broad audience made him an ideal candidate for the API Meritorious Service Award.

Art Johnson  
Hydrate Energy International, LLC

# Chevron



100 Northpark Blvd.  
Covington, LA 70433

(985) 773-6000



## LaBay

Exploration Co., L.L.C.

111 Veterans Memorial Blvd.

Suite 1550

Metairie, Louisiana 70005

Office (504) 371-5967

Fax (504) 371-5969

[www.labayexploration.com](http://www.labayexploration.com)



**Shell has worked in partnership  
with the NOGS for many years, and  
is proud to count the society among  
its closest business associates.**

The New Orleans Geological Society was organized in 1941 to foster scientific research and advance the science of geology. Particular emphasis is laid on the exploration for and production of petroleum and natural gas. Related objectives include encouraging the adoption of improved methods of exploration, disseminating pertinent geological and technological data, and maintaining a high standard of professional conduct among its members.

[www.shell.com/us.sepco](http://www.shell.com/us.sepco)

## WELLSITE GEOSCIENCE SERVICES



## When time is money, Wellsite Geoscience is money well spent.

Whether you're exploring a basin, producing a well or completing a shale play, time is money. That's why Weatherford Laboratories brings a suite of formation evaluation technologies right to the wellsite. Utilizing mud gas and cuttings, these technologies provide detailed data on gas composition, organic richness, mineralogy and chemostratigraphy in near real time. As a result, operators now have an invaluable tool to assist with sweet spot identification, wellbore positioning, completion design and hydraulic fracturing. We call it Science At the Wellsite. You'll call it money well spent.

### SCIENCE AT THE WELLSITE™

[www.weatherfordlabs.com](http://www.weatherfordlabs.com)



**Weatherford®**  
LABORATORIES

**Formation Evaluation   Well Construction   Completion   Production**

©2013 Weatherford. All rights reserved

# SUPERSAURUS SATURDAY

March 29, 2014  
Louisiana Children's Museum

Our 14th annual Supersaurus Saturday was our best one yet!

We had over 1,000 people attend this year's fun-filled event at the Louisiana Children's Museum. This event was co-hosted with the Southeastern Geophysical Society under the direction of **Lisa Kennedy**.

As enthusiastic as the kids were, our volunteers really energized the museum. Alongside our faithful NOGS members were a great group of students from UNO, LSU, Southeastern, Loyola, and Tulane.

All the volunteers were quickly interacting with the kids and we had a steady crowd the whole day.

The volunteer response was so great that the roster was full two weeks early, and I didn't even have to resort to last minute begging. Thank you all for stepping forward!



This year we added a few more displays and spread the exhibits out a little. We had a lot of faithful repeat volunteers and had the pleasure of meeting some new faces. I always enjoy the cross pollination of university students from the various schools and the opportunity for students to mingle with those in the earth science profession.

Our morning shift included **Jess DeBold, Jon Guidry, Sean Rotolo, Jeremy Prouhet, Emily Skitmore, Greg Orrell, Chris McLindon, David Reiter, Diana Di Leonardo, Britney Peterson, Liz Chamberlain, Mike Fein, Kelly Jemison, Bryan Banks, Dana Smith, Andrew Thorne, and NOGS President Chuck Holman.**

After a seamless transition the afternoon crew was off and running. Joining in the fun were **Robin Broussard, Pam Harry, Clair Ye, Sumit Gupta, Jordan Adams, Al Mellilo, Elizabeth Melillo, Gerad LeBlanc, Dave and Jane Balcer, Carmen Zuniga, Peyton Madere, Myles Felch, Louis Schneider, Liz Williams, Leah Frizell, Duncan Goldthwaite, and Liz and Wilson McDade.**

All day warriors included **Anna Farrugia, Lisa Kennedy, Jim Brooks, Dave Cope, Andrew Adamas, Rachel Garpard, Taylor Hux, Erica Lassen, Shara Clark, Lewis Jones, Gregory Pellerin, and David Brassieur.**

Although a few people had last minute conflicts and were unable to attend, I greatly appreciate your willingness to volunteer.

I owe a tremendous thanks to **Bernie Regel**, my long time co-conspirator trainer, who was a model of efficiency. Hats off to you Bernie!

Special thanks to **Tara Yocum and Andrew Adamas** for delivering the UNO T-Rex in a downpour Friday morning, **Sasha Kreinik and Jon Guidry** for coordinating all the UNO volunteers, **Kraig Derstler** for being Kraig, **Dave Cope** for his giveaway fossils of Louisiana, **Grace Connors**, the new LCM Educational Program Coordinator, for being such a joy to work with, and **Jim Brooks** for the fabulous photos.

A friend commented, "Well done inspiring the next generation of egg heads."

That's quite a complement and major thanks to all of you for making this happen.

*Tom Bergeon*





# SUPERSAUR

A  
T

U  
R  
D

A  
Y







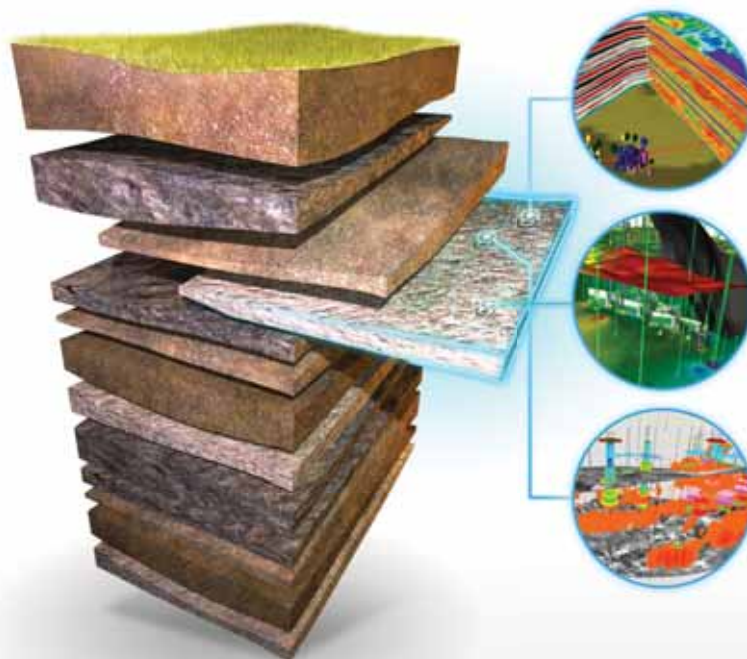
PHOTOS COURTESY OF TOM BERGEON AND JIM BROOKS



# YOU TACKLE TOUGH PROBLEMS

YOUR GEOSCIENCE SOFTWARE  
DOESN'T HAVE TO BE ONE OF THEM

IHS GEOSCIENCE: sophisticated science that's simple to use and simple to manage



## **SURFACE TO SUBSURFACE**

ONLY ONE ENERGY EXPERT  
PROVIDES SO MUCH TO SO MANY

From big picture to critical detail, proven capabilities to superior results, IHS geoscience does it all—backed by the world's most respected forecasting, analysis, and play-specific geological and geophysical data.

## **NOW GET THE POWER OF KINGDOM® AND PETRA®**

Only IHS geoscience simply yet scientifically links engineering, economics and interpretation software suites to give you a definitive edge. Spearheaded by industry-leading Kingdom® and Petra® software solutions IHS gives you the best in geophysics and geology.

Learn more at [IHS.com/NOGS](http://IHS.com/NOGS)

**IHS** GEOSCIENCE



Simply **Scientific**™



# April 2014 Luncheon and Short Course with Dr. Kurt Marfurt



Dr. Kurt Marfurt, Mike Fein (NOGS), Charlie Mayne (SPE), and Julius Doruelo (SGS)



Dave Cope and Dave Reiter



Julius Doruelo



Delta Section



Duncan Goldthwaite, Ed Picou, George Rhoades, and Bryan Banks



Dr. Kurt Marfurt in Shell Auditorium



Dr. Kurt Marfurt lecturing



Erin Brenneman, Bernie Regal, Dr. Kurt Marfurt, and Christy Gautre



Monte Shalett and Jim Zotkiewicz

PHOTOS COURTESY OF TOM KLEKAMP

Freeport-McMoRan is now  
**RESOURCE RICHER.**

**ROCK SOLID  
SERVICE**



[www.corelab.com](http://www.corelab.com)  
**337-837-8616**

© 2013 Core Laboratories.  
All rights reserved.



## COMMITTEES NEED YOU!

### Boy Scouts/Girl Scouts Committee:

***A Chairman is needed.***

This committee promotes and supports the Scouting movement and assists in all matters pertaining to geology, including the Geology Merit Badge Program. If you're interested, please contact Bill Whiting at [Bootscon@aol.com](mailto:Bootscon@aol.com) or [info@nogs.org](mailto:info@nogs.org). If there are any Eagle Scouts looking to assist in this worthy cause, it would be greatly appreciated.

### Sponsorship Committee:

***A Chairman is needed.***

This committee secures funding from sponsors to help finance various activities of the Society. This committee also ensures that sponsors are thanked and adequately recognized for their generosity.

**Freeport-McMoRan Copper & Gold Inc. provides resources to fuel global growth.**

With the acquisitions of Plains Exploration & Production Company and McMoRan Exploration Co., FCX's diverse portfolio of minerals assets now includes high-quality oil and gas resources in the United States. Matched with bright prospects for success in the global minerals industry, this expanded scope of operations provides exciting new opportunities for profitable growth to benefit shareholders, employees and communities. FCX is pleased to announce its new subsidiary Freeport-McMoRan Oil & Gas.

**Freeport-McMoRan  
Copper & Gold**  
[www.fcx.com](http://www.fcx.com)

**FCX  
LISTED  
NYSE**

**Freeport-McMoRan  
Oil & Gas**



# The Evolution of Log Printing is Here!

Neuralog has been developing purpose built well log printing solutions for 10 years. Our printers are designed to operate seamlessly and require no add-on software for automatically sensing top of form printing. Whether you are a service company printing thousands of logs a day or an exploration company looking for quality logs, the NeuraLaserColor II will change your expectations of well log printers.

- Record setting speeds - 11 inches per second
- Precision printing - On-the-fly length calibration
- Increased efficiency - 20,000 page yield toner
- Operational versatility - Native PDF support
- Hands free - Automated cut, feed and re-load

See More at:  
[www.NeuraLaserColor2.com](http://www.NeuraLaserColor2.com)



© 2013 Neuralog • [www.neuralog.com](http://www.neuralog.com) • [sales@neuralog.com](mailto:sales@neuralog.com) • 1.281.240.2525 • 1.800.364.8728



## WORLDWIDE LAND ACQUISITION CAPABILITIES

An expert provider of high-density Reservoir Grade 3D (RG3D) seismic data acquisition, Global Geophysical Services is a leader in acquisition technology. Using our AutoSeis® High Definition Recorder we are able to achieve record-setting production levels at a reduced cost.

With the largest single inventory of nodal recording stations, we can record cost-effective data sets with:

- High-Density, Long Offsets
- Rich Azimuth
- Improved Spatial Resolution
- Increased Signal-to-Noise Ratio



**Global Geophysical Services, Inc.**  
13927 S. Gessner Road • Missouri City, TX  
tel +1 713-972-9200

[www.globalgeophysical.com](http://www.globalgeophysical.com)



# South Louisiana and Offshore Gulf of Mexico Exploration and Production Activities

## LAFAYETTE DISTRICT, ONSHORE AREA

By Carlo C. Christina

*The Office of Conservation, Lafayette District, Onshore Area, issued 34 permits to drill during the month of March 2014. Following are the most significant and interesting locations and completions:*

### NEW LOCATIONS

Hilcorp Energy will drill the #1 Denham Springs Country Club in **Lockhart Crossing Field, (A)**, Livingston Parish. It will be drilled to test the **Tuscaloosa Sands** at a depth of 19,500 feet. This well is interesting because it will be drilled as a development well **35 years** after the discovery of the field, and because it located **on the Denham Springs Country Club property**, in Sec 29, 6S-3E. It is also located 1 mile southeast of the nearest producing well, a Tuscaloosa Sand well, which has produced a total of 27.7 billion cubic feet of gas and 939,000 barrels of oil in 32 years. (247713)

Lockhart Crossing Field was discovered in 1979 with the completion of the Amoco #1 Barnett in the Tuscaloosa Sand. Several wells were drilled and completed in Tuscaloosa sands at 16,900 feet. In 1982 Wilcox sands were found to be productive at 10,500 feet and a series of wells were drilled to develop the 1st Wilcox Sand. This Wilcox structure covers an area 5 miles by 1 mile, which was unitized with a 3500 acre unit. Within the following 4 years, 52 Wilcox wells were drilled and the field produced more than 10 million barrels of oil and 42 billion cubic feet of gas. In 1986 a water flood program was initiated followed by a CO<sub>2</sub> flood. Within 2 years this injection program had produced more than 2 million barrels of oil. Also of interest, 3 horizontal wells had been drilled in the Wilcox section, with one well having produced more than 45,000 barrels of oil.

Since the discovery in 1979, more than 100 wells have been drilled in the field which has produced 27.4 million barrels of oil and 105.8 billion cubic feet of gas.

For a complete review of the geology, reservoir parameters, water flood program, and the CO<sub>2</sub> project, I suggest that you Google, "Lockhart Crossing: Economically Efficient Reservoir Operations CO<sub>2</sub> Conference, July 13, 2011."

In Lafourche Parish, **Lafourche Crossing Field, (B)**, Square Mile Energy has permitted its #1 Kearns in Sec. 16, 15S-17E. The well will be drilled to a proposed depth of 15,590 feet to test the Rob L section. It is located 2 miles northwest of Rob 43 production in Southwest Lake Boeuf Field. (247735)

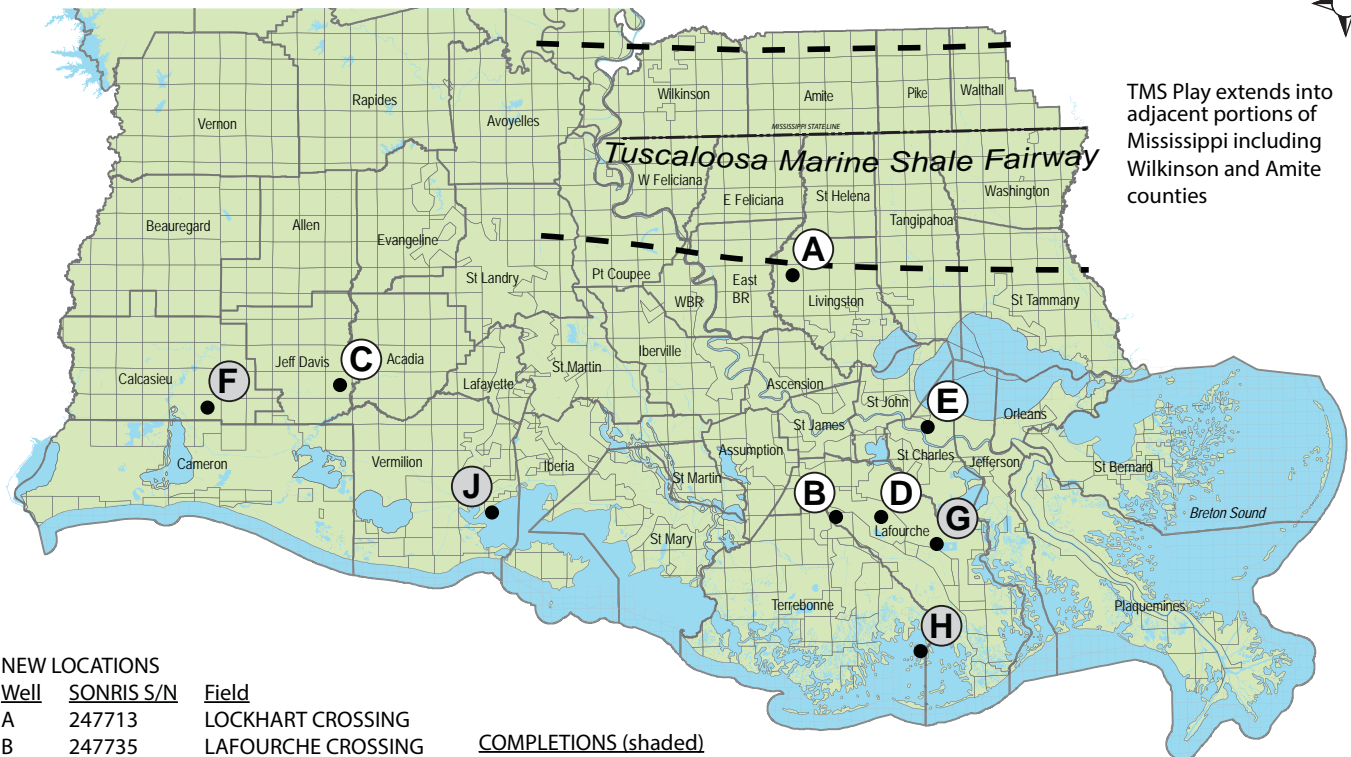
Square Mile Energy will drill the #1 Bieber in **Lake Arthur Field, (C)**, Jefferson Davis Parish, to a proposed depth of 13,200 feet to test Marg tex sands. The well is located in Sec. 19, 10S-3W, on the northeast flank of the field, 1 mile northeast of shallow production. (247736)

In Lafourche Parish, **Joe McHugh Field, (D)**, Castex Energy has permitted the #1 Foret to test the Gheens Sand in Sec. 39, 15S-19E. The well will be drilled to a projected depth of 14,144 feet, with the bottom hole to be located 5,567 feet from its surface location. (247745)

Mack Energy will drill the #1 Diversified GRP in **Good Hope Field, (E)**, St. Charles Parish. The well is located on the north flank of the field in Sec. 41, 12S-8E, and will be drilled to a projected depth of 13,300 feet. (247704)



# NOGS LOG DRILL BITS — SOUTH LOUISIANA ACTIVITY MAP



## NEW LOCATIONS

Well	SONRIS S/N	Field
A	247713	LOCKHART CROSSING
B	247735	LAFOURCHE CROSSING
C	247736	LAKE ARTHUR
D	247745	JOE MCHUGH
E	247704	GOOD HOPE

## COMPLETIONS (shaded)

Well	SONRIS S/N	Field
F	246607	SOUTH LAKE CHARLES
G	247276	WEST LAKE SALVADOR
H	246701	LAKE BARRE
J	246147	REDFISH POINT

Kevin Trosclair

MAY 2014



## COMPLETIONS

Intrepid Drilling has completed the #1 Williams in **South Lake Charles Field**, (F), Calcasieu Parish. The well was drilled to 15,330 feet in Sec. 19, 11S-8W. It was completed as an oil well in the Hackberry Sand flowing 400 BOPD and 1600 MCFG through perforations 15,150 to 15,170 feet. (246607)

This new oil well, the #1 Williams, was drilled 1,800 feet from the Moran Exploration #1 Andrus, a well which was drilled in 1984. The Hackberry sand was drilled and logged, but the well was plugged and abandoned without testing. (189907)

Castex Energy has completed another excellent well in **West Lake Salvador Field**, (G), in St. Charles Parish in 16S-21E. The #1-ALT SL 20643 was completed in the Cris I sand flowing 530 MCFD and 1089 BCPD through perforations 12,290 to 12,412 feet, overall. (247276)

In Terrebonne Parish, **Lake Barre Field**, (H), GCER Onshore has completed the #1 SL 21151 as a gas well through perforations 15,584 to 15,642 feet, overall, flowing 3089 MCFD and 41 BCPD. The well was drilled 1 mile southeast of recent production in 21S-20E. (246701)

Walter Oil & Gas has plugged and abandoned its #1 SL 21015 in **Redfish Point Field**, (J), Vermilion Parish, at a depth of 20,356 feet. As previously reported, the well was drilled in 15S-4E, on the north flank of the field, approximately 3 miles north of production. (246147)

# OFFSHORE GULF OF MEXICO SHELF AND DEEPWATER ACTIVITIES

*by Al Baker*

During March 2014, the BOEM approved **104** Gulf of Mexico drilling permits. Of these, **47** were for shelf wells, and **57** were for deepwater wells. Of the total number of permits, there were **10 new well permits** issued. These included **6 shelf** (2 exploratory and 4 development), and **4 deepwater** (3 exploratory and 1 development) **new well permits**.

On the shelf, the two exploratory new well permits were granted to **Arena Offshore** for their **South Timbalier 135 #8** well and to **EPL Oil & Gas** for their **Main Pass 151 #1** well. The four development well permits were issued to **Arena Offshore** for their **Eugene Island 314 #C-18** and **Eugene Island 338 #K-10** wells, to **Energy Resource Technology GOM** for their **Eugene Island 302 #C-2** well, and to **GoMex Energy Offshore** for their **Vermilion 282 #D-3** well.

In deepwater, the 3 exploratory new well permits were awarded to **Anadarko Petroleum** for their **Green Canyon 562 #5** well, to **Chevron U.S.A.** for their **Green Canyon 807 #1** well, and to **Murphy Exploration and Production** for their **Desoto Canyon 178 #1** well. **Shell Offshore** was awarded a development new well permit to drill their **Mississippi Canyon 935 #A-9** well.

On March 28th, IHS-Petrodata reported that the Gulf of Mexico mobile offshore rig supply stood at **112**. The marketed rig supply consisted of **86** rigs, of which **80** were under contract. The contracted versus total rig supply utilization rate is **71.4%**, while the marketed contracted versus marketed supply utilization rate stands at **93.0%**. The total and marketed rig supply figures reflect an increase of 1 rig each as to those reported last month. They also compare to 85 out of the 111 rigs that were available during March 2013, for a 76.6% fleet utilization rate.

On March 28th, BakerHughes indicated that there were **50** active mobile offshore rigs in the Gulf, which is **62.5%** of the rigs under contract mentioned above. This active rigs number is 5 less than reported last month. The current active rigs count compares to 45 active rigs during the same period last year, representing an **11.1%** increase in yearly activity.

On March 19th, the **BOEM** held the **Central Gulf of Mexico OCS Sale 231** in New Orleans. A total of **50** companies bidding individually or in combines submitted **380 bids** on **326 blocks** for a total bid exposure of **\$1,085,372,484**. The sum of the **high bids** was **\$850,809,921**. Of the 380 bids, **131 (34%)** were on **shelf** blocks versus **249 (66%)** on **deepwater** tracts. **Freeport-McMoRan Oil & Gas** turned out to be the sale-saver by making up **37.8%** of the total high bids. The company submitted **\$321.4 million** on **16 blocks**, including the sale's **highest bid** of **\$68.8 million** for **Atwater Valley 198**. This block also received the **highest number of bids** for a block with a total of **6 bids**; Exxon-Mobil was the second high bidder for the block with a bid of \$45,550,000. **Chevron U.S.A.** was the sale's **second** highest bidder with **\$103,316,968** exposed for **6** blocks. In addition, the most active bidding companies were **Cobalt International Energy** and **TOTAL E&P USA**, who each separately submitted **44 high bids** and spent **\$25,846,096** and **\$17, 230,731**, respectively.

Additionally, **BP** was granted permission to bid in the sale and did so by spending **\$41.6 million** on **24 high bid tracts**. Previously, a 16-month government contract suspension forced the company to sit out the last 3 lease sales. A deal between BP and the Environmental Protection Agency on March 13th allowed the company to participate in the sale.

The number of companies bidding in offshore lease sales continues to decline post-Macondo. During the March 2010 (OCS Sale 210) sale that was held 1 month prior to the BP Deepwater Horizon disaster, there were a total of 77 participating companies, which is 54% more than in the current Sale 231. The exodus of companies participating in Gulf of Mexico lease sales can be attributed to the increase in governmental regulations and oversight, plus the higher costs of doing business in the Gulf stemming from the BP blowout in April 2010. Lower natural gas prices over the last 4 years have also added to the less favorable economic environment particularly in the Gulf shelf region.



# THE NEW ORLEANS GEOLOGICAL SOCIETY, INC.

810 UNION STREET SUITE 300, NEW ORLEANS, LA 70112

TELEPHONE: (504) 561-8980 • FAX: (504) 561-8988 • E-MAIL: INFO@NOGS.ORG • WEBSITE: WWW.NOGS.ORG

## MEMBERSHIP APPLICATION

Name (First, middle intital, last + suffix, if any)

Date

Company

Title

( )

Phone Number

( )

Fax Number

E-mail Address

Business Address (PO Box/Street, City, State, Zip, Country)

Home Address (Street, City, State, Zip, Country)

( )

Phone Number

Preferred Mailing Address (check one): Office \_\_\_\_\_ or Home \_\_\_\_\_

Spouse's Name

Professional Society Memberships (AAPG\*, AIPG, GSA, etc.) \* Please indicate AAPG member category

College/University:

Degree

Year

Major

Explain, in brief, your experience in industry, government and/or education:

**Please mark appropriate classification:**

☐ New Member

☐ Reinstatement

☐ Renewal

**ANNUAL DUES: \$25.00 FOR ACTIVE OR ASSOCIATE**

**\$12.50 STUDENT MEMBERSHIP\***

\*No initial dues for students in the Sponsorship Program

-- Please mail application to the NOGS office with check payment or Visa/MasterCard/American Express acct# and exp. date --

**Committee preference** (please indicate choices):

☐ AAPG Student Chapter

☐ Advertising-LOG

☐ Awards

☐ Ballot

☐ Best Paper

☐ Continuing Education

☐ Employment Counseling

☐ Entertainment

☐ Environmental

☐ External Affairs

☐ Field Trip

☐ Finance & Audit

☐ Historical

☐ Membership/Directory

☐ Memorial Foundation

☐ NOGS LOG

☐ New Geoscientists (NGNO)

☐ Nominating

☐ Non-Technical Education

☐ Photography

☐ Program/Luncheon

☐ Publication Sales

☐ School Outreach

☐ Scouts: Boy and Girl

☐ Sponsorship

☐ Technical Projects

☐ Website

# NOGS OFFICER ELECTIONS

## **For President Elect: David E. Reiter**

David E. Reiter graduated from the University of New Mexico in 1980 with an M.S. in Geology. He began his career with Shell Oil Co. in New Orleans as Onshore Exploration Geologist. In 1984, he joined ODECO Oil & Gas (now Murphy E&P Co.) as Exploration Geologist working primarily the central offshore Louisiana shelf area. He later moved into development geology with responsibility for several GOM shelf and deepwater fields. In 2005, Mr. Reiter joined Dominion Exploration and Production Company as Development Geophysicist in their GOM Shelf Exploration Group. After a brief employment as Deepwater Exploration Geophysicist with EPL in New Orleans, he joined ENI Production Co. in 2008 as Reservoir Geologist and was later transferred to Houston in 2009. David joined Woodside Energy in Houston in 2011 as Development Geophysicist, and then returned to New Orleans in mid-2012 as a Deepwater Development Geophysicist with Stone Energy.



Mr. Reiter has been an active member of NOGS for the past 30 years. He has served on the Best Paper, Nominating, and Entertainment Committees and is currently chairman of the Membership Committee. David is currently a trustee of the NOGS Memorial Foundation Board. In 2008, Mr. Reiter was elected to serve as President of NOGS for the 2009-2010 fiscal year, but had to resign as President in July 2009 due to being transferred to Houston. David has served on several organizing committees for local conventions, including the 1997 and 2005 GCAGS Conventions, the 2000 and 2009 AAPG Conventions, and the 1996 SPWLA International Symposium. He was past V.P.-Public Relations, Treasurer, and President of the SPWLA New Orleans Chapter. David is an active member of NOGS, AAPG, SGS, and SEG.



## **For Vice President: Jennifer Connolly**

Jennifer Connolly is a Senior Production Geologist with Shell, currently working for the Brutus Subsea Development Team on the Glider project. She is a native of Kentucky and received her B.S. in Geology from the University of Kentucky. Moving to New Orleans in 2003, she went on to receive a M.S. in Geology from Tulane University before joining Shell in 2005.

Jennifer is a former Trustee on the Memorial Foundation's Board of Trustees and a past Secretary for NOGS. In addition, she is a wife and the proud mother of two.

## **For Secretary: Bryan Banks**

Bryan Banks is a Senior Geologist with more than 16 years of experience in the environmental consulting industry. He is well-versed in all aspects of project management, senior level review, health and safety, technical report preparation, marketing, and client relations. Bryan has conducted various projects including site investigations, risk evaluations, corrective action plans, construction, excavations, remediation/treatment systems, environmental audits, and other environmental related projects, also including Phase I Environmental Site Assessments (ESA) and National Environmental Policy Act (NEPA) projects.

Mr. Banks has worked closely with the Arkansas, Louisiana, Mississippi, and Texas Environmental Quality Offices, and has served as a regulatory liaison to his clients for multiple projects. He has concentrated his career on sites requiring corrective action, such as leaking underground storage tank sites, dry cleaner sites, and industrial remediation sites.

He received his B.S. in Geology from Louisiana Tech University in 1996, and his M.B.A. from Louisiana Tech University in 2011. Mr. Banks is a Professional Geologist/Geoscientist in Tennessee, Texas, and Utah.





### **For Treasurer: Art Johnson**

Art Johnson is Managing Partner of Hydrate Energy International, LLC (HEI) of Kenner, Louisiana, and is engaged in energy consulting in the U.S. and throughout the world. Prior to forming HEI in 2002, Art was a geologist with Chevron for 25 years. He attended Humboldt State University and LSU. Art served as the 2007-2008 NOGS President and has served on the NOGS Board of Directors. He was General Chairman of the 2013 GCAGS Convention and is a NOGS delegate to the AAPG House of Delegates. Art is an AAPG Visiting Geoscientist and makes numerous university presentations along with K-12 classroom visits each year. He chairs the AAPG/EMD Gas Hydrate Committee and has served as EMD Technical Program Chair and convention session chair.

In addition to NOGS and AAPG, Art is an active member of SGS, SEG, SIPES, GSA, SEPM, and NAGT. Art has published over 80 papers and articles, along with several books. These cover a diverse range of topics that include geology, geophysics, economics, and astrogeology.

### **For Editor Elect: Tom Klekamp**

Tom Klekamp began his career with Shell Oil Company. In 1977 he served as district geologist for Energy Reserves Group. In 1982 he co-founded EI-Can Exploration Inc., and was a director for EI-Can until 2009. He is presently president of Amber Resources, L.L.C. Tom received a B.S. from Xavier University and an M.S. from the University of Cincinnati. He established the Klekamp Student Travel Fund, for the University of Cincinnati Department of Geology.

Tom is a former president and active NOGS member and has served as a member of the AAPG House of Delegates (2004-07), NOGS Memorial Foundation (current), and editorial committee for the 2005 GCAGS Transactions. In 2010 he served on the editorial committee for the NOGS publication "Oil & Gas Fields of South Louisiana 2010." He was president of the GCAGS in 2013 and is currently chairman of the GCAGS Awards and Nominations Committee. He was SIPES New Orleans Chapter treasurer and was editor of that Chapter's Newsletter 2007-2012. He is a member of AAPG-DPA, AAPG's Astrogeology Committee, SPE, GSL, and GSA. He was also editor of the "PAS Times," newsletter of the Pontchartrain Astronomy Society, for which he received the Mabel Sterns Award in 2004. He reveres his manual typewriter for correspondence and No.2 pencils for drawing and sketching.

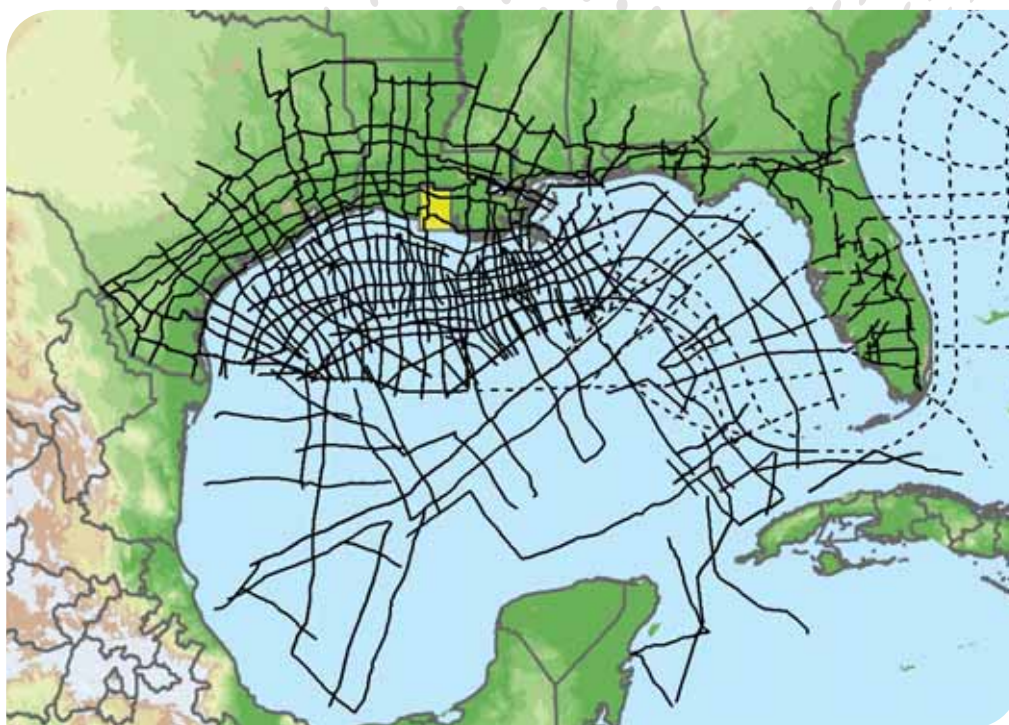


### **For Director: J. David Cope**

Dave Cope has been self-employed since March 2013, having formed Rising Natural Resources LLC in order to pursue a dream of funding a museum of natural history, science, and engineering in New Orleans. He has previously been employed by Schlumberger, CRC Wireline, Getty Oil, Texaco, ODECO, Murphy Oil, Taylor Energy, and ANKOR Energy since 1978, and has a B.A. in Physics from Rice University. He has previously served as Treasurer of NOGS, and of SPWLA, and also as a member of the NOGS Memorial Foundation Board, the Scholarship Committee of SPWLA, and is currently Treasurer and Field Trip Chair for the Gem & Mineral Society of Louisiana.



# Explore the Entire Gulf of Mexico



Position your company for the next 10 years of exploration with the most complete, modern time and depth-imaged data in the Gulf of Mexico. ION's interconnected dataset links the entire Gulf, from onshore to offshore deep water, from Texas to Florida and to Mexico. With over 40,000 miles (over 65,000 km) completed or in progress, and an additional 7,500 miles (over 12,000 km) planned for 2013 and beyond, no other data library provides as comprehensive a framework for understanding the Gulf of Mexico. To learn more, visit [iongeo.com/Gulf\\_of\\_Mexico](http://iongeo.com/Gulf_of_Mexico)

#### CONTACT

Ashley Garcia  
Mobile: +1 281 781 1005  
Email: [ashley.garcia@iongeo.com](mailto:ashley.garcia@iongeo.com)

Alvin Rowbatham  
Mobile: +1 832 372 2366  
Email: [alvin.rowbatham@iongeo.com](mailto:alvin.rowbatham@iongeo.com)

#### AREAS OF EXPERTISE

Unconventional Reservoirs  
Challenging Environments  
Complex Geologies  
→ **Basin Exploration**  
Reservoir Exploitation



GEOVENTURES®

Submitted by Sheri Richardson

## **Livescience.com – Becky Oskin**

**“‘Mother Lode’ of Amazingly Preserved Fossils Discovered in Canada.” February 11, 2014**

<http://www.livescience.com/43270-new-burgess-shale-fossils-canada.html>

A treasure trove of fossils chiseled out of a canyon in Canada's Kootenay National Park rivals the famous Burgess Shale, the best record of early life on Earth, scientists say.

"Once we started to break fresh rock, we realized we had discovered something incredibly special," said Robert Gaines, a geologist at Pomona College in Pomona, Calif., and co-author of a new study announcing the find. "It was an extraordinary moment."

The new site is also in the Burgess Shale formation, and seems to rival the 1909 original in fossil diversity and preservation, researchers report today (Feb. 11) in the journal *Nature Communications*. In just two weeks, the research team collected more than 3,000 fossils representing 55 species. Fifteen of these species are new to science.

Many of the fossils at the new site are better preserved than their quarry counterparts, the researchers report. The new fossils reveal the internal organs of several different arthropods, the most common type of animal in both the new and old Burgess Shale locations. Retinas, corneas, neural tissue, guts and even a possible heart and liver were found.

About half of the 55 species discovered at Marble Canyon so far are also found at the original Burgess Shale site, the researchers report. Some of the original site's rare species are more abundant in the canyon, such as the polychaete worm *Burgessochaeta*. But "sessile" species are scarce or missing. These creatures, such as sponges and brachiopods, spend their lives attached to the rocks or the seafloor.

Some species at Marble Canyon are also found in China's Chengjiang fossil beds, which are 10 million years older than the Burgess Shale. Until now, researchers thought these Cambrian animals went extinct by the time the Burgess Shale formed. Their discovery in Canada means that many Cambrian life forms were more widespread and longer-lived than previously thought, the researchers said.

Gaines and his colleagues discovered the Marble Canyon fossils in 2012 as they were tracing Cambrian rocks on foot across the Rockies, in hopes of finding more Burgess Shale-type deposits. They had started a couple of miles away, at a fossil site in shallow-water rocks near Stanley Glacier. Near Marble Canyon, the team suddenly crossed over an ancient cliff. Known as the Cathedral Escarpment, this cliff marked the underwater edge of Laurentia, the ancestral continent that forms the core of North America.

## **University of Louisiana at Lafayette**

**“Geology students best among 122 universities around the globe.” April 8, 2014**

<http://www.louisiana.edu/news-events/news/20140408/geology-students-best-among-122-universities-around-globe>

For the second time, a team of University of Louisiana at Lafayette geology students proved it's the world's best at determining where to drill for oil. It won first place in the 2014 Imperial Barrel Award Competition, which was held in Houston Friday through Sunday, and received a \$20,000 prize.

UL Lafayette is the first school to win the contest more than once. The University also earned first place in 2012.

The team competed against 122 schools from six U.S. regions and six international regions: Africa, Asia/Pacific, Canada, Europe, Latin America and the Middle East.

This year's team was composed of five students pursuing master's degrees in geology: Jordy Babineaux, Sam Ely, Nicholas Geyer, Jolie Helm and Daniel Sutton.

Dr. Brian Lock, the team's advisor, said the \$20,000 award will be used for scholarships, equipment and software for future teams. Lock is a professor of geology at UL Lafayette. Mary Broussard, an alumna, and her colleague, Mike Quinn, were industry mentors for the team. Broussard and Quinn are geologists employed at Freeport McMoRan Oil and Gas in Lafayette who are also adjunct faculty members.

Eight weeks before the competition, students are given datasets related to geology, geophysics, land, production infrastructure and other factors. Students analyze the information. Then, each team delivers a 25-minute presentation to a panel of industry experts and makes recommendations, such as "drill here" or "don't invest further," said Lock. The judges select the winning team on the basis of the technical quality, clarity and originality of its presentation.





## Geoconsulting, Inc.

Geological and Geophysical Consulting  
3-D Seismic Interpretation

Ben D. Sydboten, Jr. CPG

2 Flagg Pl., Suite 1  
Lafayette, LA 70508  
www.saigeoconsulting.com

Office (337) 504-3670  
Cell (337) 456-8948



**Anthony Catalanotto**  
President

Geological  
Geophysical  
Land  
Drafting & Graphics

3349 Ridgellake Drive • Suite 202  
Metairie, LA 70002  
Office: (504) 836-2882  
Fax: (504) 836-2877  
Cell: (504) 481-7291  
E-Mail: geodraft@bellsouth.net  
Website: www.geodraftinc.com

## NORTHCOAST OIL COMPANY

610 E. Rutland St.  
Covington, LA 70433  
(985) 898-3577  
(985) 898-3585 Fax

Jack M. Thorson  
Eric C. Broadbridge  
J. Daryl Gambrell  
Raymond W. Stephens



ETROA Resources LLC

Join us in pursuing gulf coast production,  
acquisitions and low-risk drilling opportunities

John C. Ebert  
Kevin McVey

128 Northpark Blvd.  
Covington, LA 70433  
(985) 809-3808

www.etroa.com

## Collarini Energy Staffing, Inc.

Facilities • Drilling • Production • Reservoir Engineering  
Land and Legal • Geosciences • Information Technology  
Health and Safety • Management • Supply Chain  
Accounting • Administrative Support



Full-Time and Temporary Personnel

Energy Trading • Civil Engineering • Executives  
Human Resources • Instrument and Electrical  
Engineering • Marine Engineering • Project Management  
Technical Writing • Sales and Marketing

10497 Town and Country Way, Suite 950, Houston, Texas 77024

Telephone: (832) 251-0553

www.collarini.com

## DOMESTIC AND INTERNATIONAL BIOSTRATIGRAPHIC SERVICES



6619 Fleur de Lis Drive  
New Orleans, LA 70124  
(504) 488-3711

www.paleodata.com



Complete wellsite paleo services

Supported offshore GoM and  
onshore LA paleo databases

Integrated foram/nannofossil  
analyses

In-house sample preparation  
lab for quality-monitoring  
and efficiency

Comprehensive depositional  
history study of the Gulf Basin  
based on 200,000+ well data  
analysis



LAFAYETTE  
GEOLOGICAL  
RESEARCH  
CENTER, LLC

201 Heymann Blvd., Suite 33 • Lafayette, LA 70503  
Tel: 337-233-8197 • Fax: 337-233-8177

### COVERAGE:

Louisiana / Federal / State Offshore  
• Multi State Geo Tech Services • Completion Data  
Production Data • Well Logs • Maps

~ MEMBERSHIPS AVAILABLE ~

The Industry's Premier • Well Data Center

orders@lafayettegrc.com

CALL OR EMAIL TODAY FOR MORE INFORMATION!



THIS AD SPACE AVAILABLE  
Contact: annette@nogs.org

## THE NEW ORLEANS GEOLOGICAL SOCIETY MEMORIAL FOUNDATION, INC.

The Memorial Foundation is an IRS Tax Exempt Code #501(c)(3) organization. The Federal I.D. is 72-1220999. Please consider making a donation to the Foundation. Your individual support in any amount will help meet the IRS Guidelines for our Foundation. Thanks!

**\$10,000**

### Gibbet Hill Foundation

*In Memory of Steve & Marion Millendorf, William J. Prutzman,  
Roger G. Vincent, Ron Youngblood and Uno Numella*

**\$5,000**

### NOGS Golf Tournament 2013

*In Memory of Bill Craig*

**\$2,000**

### Mr. Armour C. Winslow

*In Memory of Rita Menzel Winslow and Lawrence C. Menconi*

**\$500**

### Mr. Reuben J. Klibert, Jr.

*In Memory of Reuben S. Klibert, Sr. and Jame Wade Klibert*

**\$250 TO \$499**

### Mr. Thomas C. Bergeon

*In Memory of Erik Mason  
and Brian O'Neill*

### Mr. Carlo C. Christina

*In Memory of Al Gilreath*

### Mr. Marc Cooper

*Through the Marathon Oil Co.  
MEPAC Program*

### Mr. William M. Whiting

## FONO FUND

The FONO Fund accepts contributions that are invested and the income dedicated to assure sufficient financial resources will always be available to maintain the NOGS business office. Contributors are reminded that donations to the FONO Fund are not covered by the IRS 501(c)(3) tax exempt classification and should be reported as a business expense on your IRS tax report.

**\$500**

### Mr. James A. Hartman

**\$250 TO \$499**

### Mr. Reuben J. Klibert, Jr.

**UP TO \$249**

Mr. Donald I. Andrews  
Mr. Alfred H. Baker, Jr.  
Mr. David E. Balcer  
Mr. Joseph E. Boudreaux  
Ms. J. Sybil Callaway  
Mr. Anthony Carollo, Jr.  
Mr. John Dombrowski  
Mr. Merle J. Duplantis  
Mr. Richard A. Edmund  
Mr. Michael N. Fein  
Mr. William J. Furlong  
Mr. David Garner  
Mr. Bernard L. Hill, Jr.  
Mr. Kenneth Huffman  
Mr. Arthur H. Johnson  
Mr. Paul Jurik  
Mr. Tom Klekamp  
Mr. Louis Lemarié  
Mr. H. David Lynch  
Ms. Jeannie F. Mallick

Mr. George M. Markey, Jr.  
Ms. Margaret M. McKinney  
Mr. Paul C. McWilliams  
Mr. Richard A. Olsen  
Mr. William S. Peirce  
Mr. Edward B. Picou, Jr.  
Mr. Luther Franklin Rogers, Jr.  
Mr. C. R. Rondeau  
Mr. Bay Salmeron  
Mr. George D. Severson  
Mr. Rudolf B. Siegert  
Mr. Richard J. Stancliffe  
Mr. Bryan P. Stephens  
Mr. Raymond Stephens  
Mr. Robert K. Sylvester  
Dr. David M. Tatum  
Mr. Roy C. Walther  
Mr. Robert C. Weissmann  
Mr. William M. Whiting  
Ms. Frances A. Wiseman

**UP TO \$249**

### Mr. Woods W. Allen, Jr.

*In Memory of William C. Ward*

### Mr. Robert J. Ardell

*In Memory of L. David Collier  
In Memory of Jim Seglund*

### Mr. R. H. Baillio, Jr.

*In Memory of T. Wayne Campbell & Jack Dunlap*

### Mr. Maurice N. Birdwell

### Mr. Burton C. Bowen

### Mr. Hilary James Brook

### Ms. Robin A. Broussard

### Mr. Rob Burnett

### Ms. J. Sybil Callaway

### Chevron Humankind Matching Funds

### Mr. Arthur F. Christensen

### Mr. Merle J. Duplantis

### Mr. Michael N. Fein

### Mr. Sherwood M. Gagliano

### Mr. Arthur J. Garden

### Mr. Bernard L. Hill, Jr.

### Mr. Jeff Jandegian

### Mr. Robert M. Jemison, Jr.

### Mr. Paul Jurik

### Mr. Tom Klekamp

*In Memory of Kenneth J. Fulton*

### Mr. John C. Kucewicz, Jr.

### Mr. John C. "Jack" Langford

### Mr. Cyril F. Lobo

### Ms. Jeannie F. Mallick

### Ms. Margaret M. McKinney

### Mr. Paul C. McWilliams

### New Orleans Geological Auxiliary

*In Memory of Sybil Barton and Ruth Grimes*

### Mr. Richard A. Olsen

### Mrs. Teresa O'Neill

*In Memory of Brian O'Neill*

### Mr. William S. Peirce

### Mr. Edward B. Picou, Jr.

*In Memory of Lawrence C. Menconi*

*In Memory of Clarence F. Conrad*

### Mr. George W. Schneider, Jr.

*In Memory of George Schneider, Sr.*

### Mr. Robert T. Sellars, Jr.

*In Memory of Robert G. Williamson*

### Mr. George D. Severson

### Mr. Rudolf B. Siegert

### Dr. J. O. Snowden

### Mr. David Sollenberger

*In Memory of Shirley Sollenberger*

### Mr. Raymond O. Steinhoff

*In Memory of Anne M. Steinhoff & Harold E. Vokes*

### Ms. Betsy M. Strachan Suppes

### Mr. David M. Tatum

### Mr. Louis O. Vidrine

### Mr. Arthur S. Waterman

*In Memory of T. Wayne Campbell*

### Mr. William M. Whiting

*In Memory of John S. Bousfield*

*In Memory of John "Jack" Henton*

### Ms. Frances A. Wiseman

*In Memory of Steve Widdicombe*

## BILL CRAIG FUND

### Mr. Bernard L. Hill, Jr.

### Mr. Bay Salmeron

### Mr. John C. Scheldt

*In Memory of William C. Ward*

### Ms. Candace V. Strahan

*In Memory of James R. Strahan*

Contributions for both funds through April 7, 2014.  
Donations are listed for one year.



<b>ANSYTHE</b> Donald I. Andrews <b>504-887-3432</b>	 <b>CLASSEN EXPLORATION, INC.</b> <b>James S. Classen</b> Looking for close in deals P.O. Box 140637 Boise, ID 83714 classenllc@msn.com Bus. (208) 854-1037 Fax (208) 854-1029
<b>THE BOEBEL COMPANY</b> Oil and Gas Investments New Orleans, LA 70153 <b>(504) 866-4313</b>	<b>D-O-R ENGINEERING, INC.</b> <b>3-D and Geoscience Services</b> 6161 Perkins Rd. P.O. Box 80812 Bus: (225) 765-1914 Baton Rouge, LA 70898
<b>BOO-KER OIL &amp; GAS CORP.</b> Gray S. Parker 826 Union, Suite 300 New Orleans, LA 70112 Bus. (504) 581-2430 Fax (504) 566-4785	<b>EDWARD B. PICOU, JR.</b> Consulting Micropaleontologist - Retired 228 St. Charles Ave., Suite 1330 C New Orleans, LA 70130 Bus. (504) 529-5155 Res. (504) 282-3096
<b>C &amp; R EXPLORATION, INC.</b> Carlo C. Christina Lawrence G. Ringham	 <b>GEOLOGY ENVIRONMENTAL MANAGEMENT</b> <b>GEM Consulting, LTD</b> <b>Michael Louis Merritt</b> admin@gemconsultingltd.com
<b>TONY CAROLLO</b> Consulting Geologist Unitization • Geosteering • Field Studies 1701 Peach Street Metairie, LA 70001 Bus. (504) 885-0004 Res. (504) 885-6829	<b>Explore the ENTIRE Gulf of Mexico</b>  <b>Alvin Rowbatham</b> 832-372-2366 • alvin.rowbatham@iongeo.com <b>Ashley Garcia</b> 281-781-1005 • ashley.garcia@iongeo.com www.iongeo.com/Gulf_of_Mexico
 <i>Thanks our sponsors for their support!</i>  <i>Special Thanks to</i>  <b>DIVERSIFIED</b> WELL LOGGING, LLC	<b>PHELPS GEOSCIENCE LLC</b> Onshore Gulf of Mexico Geology and Geophysics Prospect Generation and Evaluation Houston, TX jsfphelps@yahoo.com (281) 398-5208
	 <b>RAFIDI OIL &amp; GAS, INC.</b> Jaser N. Rafidi, President 4913 James Drive Metairie, LA 70003 Office: 504.453.8580 Res/Fax: 504.888.1661
	<b>ROY C. WALTHER</b> Petroleum Geologist 2421 Prancer Street New Orleans, LA 70131 Bus. (504) 392-8513 Res. (504) 392-9332
	 <b>STONE ENERGY</b> www.StoneEnergy.com 625 E. Kaliste Saloom Lafayette, LA 70508 16800 Greenspoint Dr., Suite 225-S Houston, TX 77060 1100 Poydras St., Suite 1050 New Orleans, LA 70163
	<b>ZOT OIL &amp; GAS, LLC</b> <b>Jim Zotkiewicz</b> Consulting, Evaluation, and Prospect Generation Metairie, LA 70002 Bus. 504.267.9131 Email: jimzot38@zotoil.com

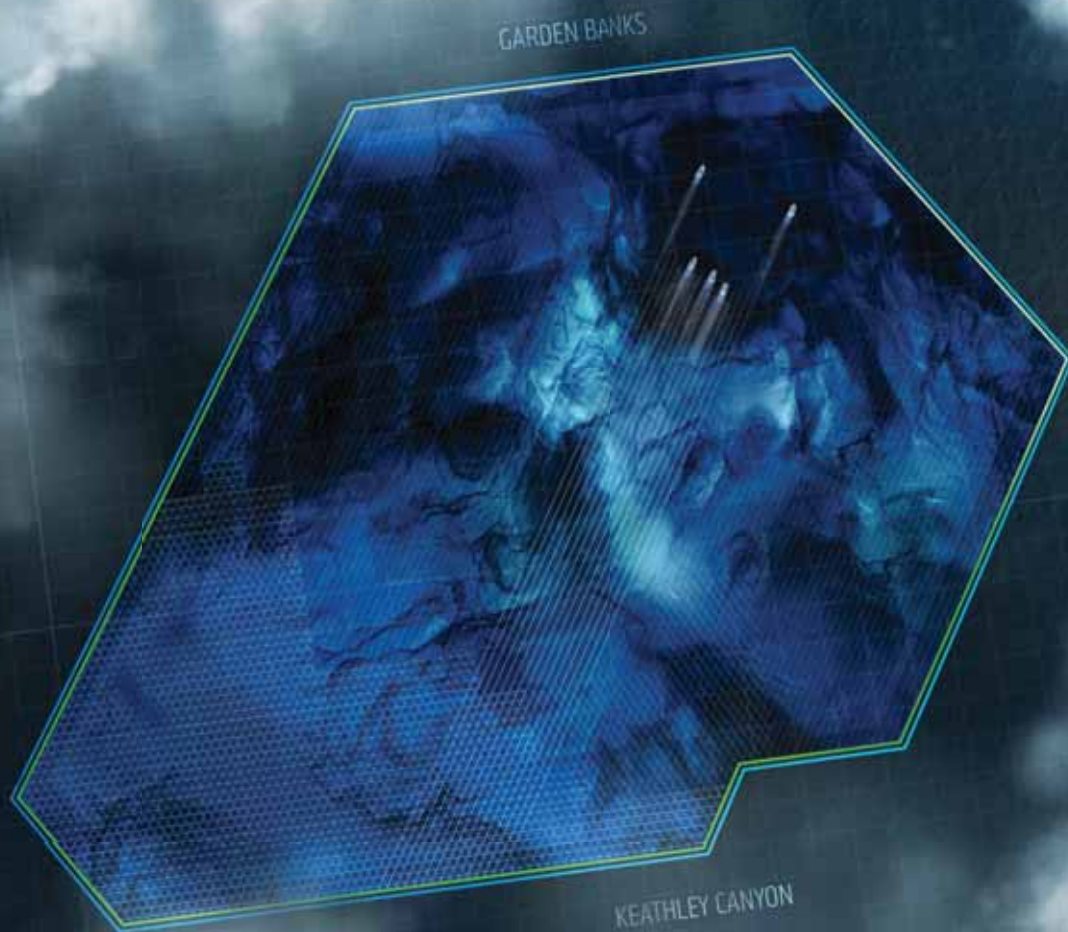


# CENTURY EXPLORATION NEW ORLEANS, LLC

*An independent gulf coast exploration, development and operating company*

Three Lakeway Center, Suite 2800  
3838 North Causeway Blvd.  
Metairie, LA. 70002

Office: 504.832.3750  
Fax: 504.832.3760  
[www.centuryx.com](http://www.centuryx.com)



## MultiClient

### Triton helps your exploration team:

- Explore 10,000 sq km of data, covering 390 OCS blocks in Garden Banks and Keathley Canyon
- Identify new prospects and better image previously challenging targets
- Achieve better illumination, deeper penetration, and improved clarity

## TRITON: FULL SPEED AHEAD

PGS reports strong performance of the Triton GeoStreamer® full azimuth survey in the central and western Gulf of Mexico, with over 50% of acquisition now complete.

Triton represents the next important advance in tailored acquisition design and state-of-the-art depth imaging, both of which are critical to successful exploration in the deep-water salt-prone Gulf of Mexico. The Triton survey utilizes a total of five vessels in the unique Orion™ configuration to reveal the structures obscured beneath the salt with high fold, long-offset, dual-sensor full azimuth (FAZ) seismic data.

Steven Fishburn Tel: +1 281 509 8124, [gominfo@pgs.com](mailto:gominfo@pgs.com)





## NEW ORLEANS GEOLOGICAL SOCIETY

810 Union Street, Suite 300  
New Orleans, LA 70112-1430

PRESORT  
STANDARD  
US POSTAGE  
**PAID**  
MAIL TECH

[www.nogs.org](http://www.nogs.org)



MARINE PROPERTIES, LLC  
BERKSHIRE EXPLORATION CO.

MONTE C. SHALETT, CPL, PRESIDENT

3030 Lausat Street  
Metairie, LA 70001-5924

BUS. (504) 831-7779  
FAX (504) 831-8315

**PCI**

**Paleo Control, Inc.**

Houston, Texas  
713-849-0044

Drilling Wells, Studies and Data Base

Loyd Tuttle

Frio, SE Texas

Bob Liska

Wilcox, S and SE Texas

Jim Thorpe

Miocene and Cam-Miogyp



# THIS AD SPACE AVAILABLE

Contact:

[annette@nogs.org](mailto:annette@nogs.org)