

# NOGS LOG

MARCH 2014

Volume 54, Number 9



**MARCH 10 - NOGS LUNCHEON**  
**Presentation: Rethinking Coastal Restoration**  
**Guest Speaker: Chris McLindon**  
**New Orleans, Louisiana**



# SEE THE ENERGY

## DIRECTIONAL SURVEY PLUS

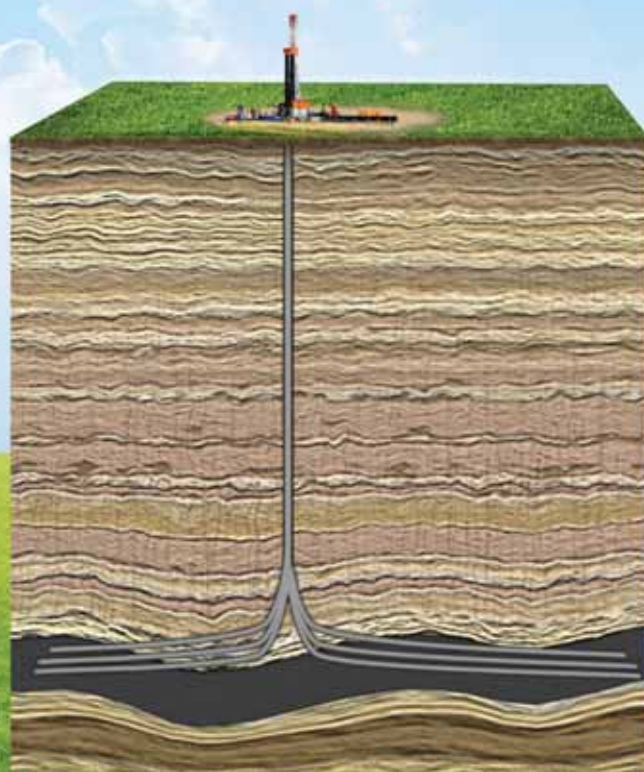
Directional Survey Plus (DS+) data goes beyond the simple capture of measured depth, azimuth and inclination. DS+ data are thoroughly researched, re-processed and standardized to create the most accurate spatial representation of the well path, from surface to total depth.

Access Directional Survey Plus data and the industry's largest collection of digital well logs quickly and easily through the online well data portal, LOG-LINE Plus!®

For more information, contact TGS at:

Tel: +1 713 860 2100

Email: [info@tgs.com](mailto:info@tgs.com)



[WWW.TGS.COM](http://WWW.TGS.COM)

© 2013 TGS-NOPEC GEOPHYSICAL COMPANY ASA. ALL RIGHTS RESERVED.

**TGS**  See the energy.



Published monthly by the New Orleans Geological Society.  
This issue was sent to press on February 22, 2014.

**Interested in contributing to the NOGS LOG?** Please submit items by the 1st Friday of the month to [nogseditor@gmail.com](mailto:nogseditor@gmail.com). Advertising requests should contact the NOGS office at [info@nogs.org](mailto:info@nogs.org).

## IN THIS ISSUE

### Regular Features:

From the Editor.....	3
From the President.....	5
NOGS Officers / Contacts .....	6
Upcoming Events & Activities .....	7
NOGS Luncheon Presentation.....	9
March & April Calendars.....	12
NOGA News.....	13
Drill Bits .....	24
Info-Tidbits .....	31
NOGS Memorial Foundation.....	33
FONO Fund .....	33

### Special Features:

NOGS Spring Social.....	15
NOGS Committee News .....	16
Supersaurus Saturday Call for Volunteers .....	17
NOGS Museum Initiative-Children's Museum St. Tamm.....	18-19
2014 Annual Golf Tournament .....	21
Children's Museum of St. Tammany Fundraiser .....	22
Petroleum Geology for Non-Geologists .....	27
Geology in Action .....	29
On the Lighter Side .....	29

## on the cover:

**Cover Photo Submitted by: Chris McLindon\***

### Mississippi River Sediment Plume — Louisiana

The Mississippi River carries roughly 550 million metric tonnes (500 million tons) of sediment into the Gulf of Mexico each year. This true-color image, acquired from the Moderate Resolution Imaging Spectroradiometer (MODIS) aboard NASA's Terra satellite via direct broadcast on March 5, 2001 at 10:55 AM local time, shows the murky brown water of the Mississippi mixing with the dark blue water of the Gulf two days after a rainstorm. The river brings enough sediment from its 3,250,000 square km (1,250,000 square mi) basin to extend the coast of Louisiana 91 m (300 ft) each year.

To the left of the Mississippi River delta is the Atchafalaya River, a "tributary" of the Mississippi that carries about 30% of the river's total flow.

*\*Photo and caption courtesy of NASA's Earth Observatory  
<http://earthobservatory.nasa.gov/IOTD/view.php?id=1257>*

# From the Editor

Happy Mardi Gras! I hope everyone is going to enjoy the holiday whether they're standing along the parade route or away on vacation.

We have a wonderful two-page spread this month regarding the NOGS Museum Initiative that is led by Tom Bergeon and Ed Picou. I would like to thank Tom for his dedication in presenting geological outreach events to the children of Greater New Orleans. His latest passion is helping the future Children's Museum of St. Tammany with their fundraising, networking, and exhibits. Please consider attending their fundraising event held on March 23 and support this worthy cause.

NOGS is having a Spring Social at the Old Rail Brewery in old Mandeville. Details are on page 15 and this event is open to all NOGS members, spouses, and anyone interested in joining NOGS. We would like to especially extend this invitation to attend to anyone interested in being a part of the newly reorganized New Geoscientists of New Orleans (NGNO). This will be the first event where NGNO will be able to meet in many years. Come on out for beer, wine, food, and friendship.

NOGS will be presenting a one-day course on "Petroleum Geology for Non-Geologists" on Tuesday, April 15. This is an excellent opportunity for students, teachers, friends, and fellow employees to learn about oil and gas exploration. See page 27 for details.

The details for our April luncheon are still being worked on as it will be a joint luncheon between SGS and NOGS. SGS is holding a short course on Thursday, April 10 that will be taught by Dr. Kurt Marfurt of the University of Oklahoma. He will be teaching about seismic interpretation, specifically focused on the use of seismic attributes for play-based exploration and development. The joint SGS-NOGS luncheon will be on April 10 at the Le Pavillon and will most likely be a condensed version of Dr. Marfurt's one-day class. Look for details about the course and the luncheon in the April *NOGS LOG* and on the website at [www.nogs.org](http://www.nogs.org).

**Sheri Richardson – NOGS LOG Editor**



# These nodes change everything.

With absolutely no cables,  
there's absolutely no stopping you.



True cable-free seismic

Dealing with tons of cable will hinder any seismic acquisition, land or marine. That's why our exclusive, true cable-free ZNodal® systems pay such huge dividends in any environment.

Our lightweight, compact ZLand® system lets your crews work faster and much more safely while recording high-resolution data, even in the most challenging terrain.

Our ZMarine® system, also completely self-contained, deploys easily and safely, even in congested areas, to water depths of 3000m, which makes it ideal for 4D reservoir monitoring.

Welcome to a new world of seismic acquisition.



[FairfieldNodal.com](http://FairfieldNodal.com)



# From the President

## UPCOMING EVENTS

March 10 is the date for our next monthly meeting (we will not meet on the first Monday of the month since it is Lundi Gras) and guest speaker Chris McClindon will present "Rethinking Coastal Restoration." It promises to be a most relevant talk as coastal restoration will have a direct impact on our lives in New Orleans and southern Louisiana.

March 29 is Supersaurus Saturday at the Louisiana Children's Museum. Bring your children or volunteer to help children learn about dinosaurs and geology. Contact Tom Bergeon at [tom.bergeon@centuryx.com](mailto:tom.bergeon@centuryx.com) to volunteer.

The Southeastern Geophysical Society plans to hold a one-day short course taught by Kurt Marfurt on April 10. The details have not yet been finalized, so watch the NOGS website for course details, cost, and how to register.

Finally, get your foursomes ready for the NOGS Bill Craig Memorial Golf Tournament. The date is Monday, April 28 and it will be held at the Money Hill Country Club outside of Abita Springs. Look for details on page 21 in this issue of the *NOGS LOG*.

---

Now I would like to discuss a topic that has been in the news lately: the current oil industry employment situation. Many articles and blogs about work in the oil industry have been written with titles like: "The Coming Employment Crisis," "The Great Crew Change," and "Where are the New Oil Workers?" These articles discuss how baby boomers are leaving the workforce, how there are not enough people to take their place, and how the industry cannot find workers of a certain age to fill the management and senior technical roles.

Even though my paycheck comes from petroleum exploration, I have little or no sympathy for oil companies' current employment plight as they brought it on themselves. Why do I say that?

I knew nothing of the oil industry when I graduated from the University of Hawaii in 1982. I needed a job and the industry was hiring, while the Reagan administration was cutting back on grants. I joined Mobil in Dallas and started work in their one-year geophysicist training program. Everything was new to me. I asked questions and I soaked up as much information as I could. I talked with other people in the training program and we shared life stories. I found out that a lot of the people in the training program had a relative in the industry or oil was part of the community where they lived. The oil industry was in fact one big family.

At that time oil was near \$35 a barrel and expected to go to \$40. There was money to be made and the oil the industry was on a hiring binge, but a few years later the price of oil collapsed to \$15 per barrel as OPEC flooded the market with cheap-to-produce oil. Projects that broke even at \$20 no longer made economic sense. At the same time big investors, arbitragers, and greenmailers bought large chunks of oil companies that they said were bloated, inefficient, and not returning shareholder value.

So, oil companies reduced expenses, cut back on exploration, closed offices, reorganized into business units, and laid off thousands. Everything from then on had to pay its way. If it didn't make money and lots of it, it was gone. When that wasn't enough, oil companies merged and got rid of redundant operations and people, anything that did not fit the core business. Next, the service companies merged to survive, as their once many clients became fewer and even more employees were laid off. People went from being assets to liabilities.

(continued on page 10)

## NOGS Office

Office Manager: Annette Hudson

Phone: 504-561-8980 • Email: [info@nogs.org](mailto:info@nogs.org) • Website: [www.nogs.org](http://www.nogs.org)

The office is located at 810 Union Street, Suite 300, New Orleans, LA 70112.

Correspondence and all luncheon reservations should be sent to the above address.



## BOARD OF DIRECTORS

		<b>Company</b>	<b>Phone</b>	<b>E-mail</b>
President	Chuck Holman	Saratoga Resources Inc.	985-809-9292	<a href="mailto:charleswholman@bellsouth.net">charleswholman@bellsouth.net</a>
Vice President	Fran Wiseman	Retired	504-831-8343	<a href="mailto:snowde.fran@gmail.com">snowde.fran@gmail.com</a>
Secretary	Margaret McKinney	TGS	504-524-3450	<a href="mailto:margaret.mckinney@tgs.com">margaret.mckinney@tgs.com</a>
Treasurer	Robert Clark	UNO	504-610-6861	<a href="mailto:rbclark@uno.edu">rbclark@uno.edu</a>
President-Elect	Kelli Hardesty	Environmental Resources Mgmt.	504-831-6700	<a href="mailto:kelli.hardesty@erm.com">kelli.hardesty@erm.com</a>
Editor	Sheri Richardson	W & T Offshore	504-210-8141	<a href="mailto:nogseditor@gmail.com">nogseditor@gmail.com</a>
Director 2014	Michael N. Fein	W & T Offshore	504-210-8148	<a href="mailto:mikef@wtoffshore.com">mikef@wtoffshore.com</a>
Director 2015	William M. Whiting	Consultant	504-947-8495	<a href="mailto:bootscon@aol.com">bootscon@aol.com</a>
Director 2016	Jim Zotkiewicz	Zot Oil & Gas	504-267-9131	<a href="mailto:jimzot38@zotoil.com">jimzot38@zotoil.com</a>

## COMMITTEE

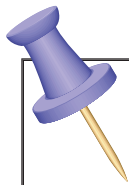
	<b>Chairperson</b>			
AAPG Delegates	William M. Whiting	Consultant	504-947-8495	<a href="mailto:bootscon@aol.com">bootscon@aol.com</a>
AAPG Student Chapter	Kathryn Denommee	LSU		<a href="mailto:kdenom1@lsu.edu">kdenom1@lsu.edu</a>
AAPG Student Chapter	W. Matt Benson	Tulane University		<a href="mailto:wbenson3@tulane.edu">wbenson3@tulane.edu</a>
AAPG Student Chapter	Rachel Carter	UNO	913-710-8021	<a href="mailto:r_carter@me.com">r_carter@me.com</a>
Advertising-Log	Kimberly Maginnis	LLOG Exploration	985-801-4761	<a href="mailto:kimberlym@llog.com">kimberlym@llog.com</a>
Auditing	Kelli Hardesty	Environmental Resources Mgmt.	504-831-6700	<a href="mailto:kelli.hardesty@erm.com">kelli.hardesty@erm.com</a>
Awards	Michael N. Fein	W & T Offshore	504-210-8148	<a href="mailto:mikef@wtoffshore.com">mikef@wtoffshore.com</a>
Ballot	Robert Clark	UNO	504-610-6861	<a href="mailto:rbclark@uno.edu">rbclark@uno.edu</a>
Best Paper	Bay Salmeron	Chevron	832-854-6431	<a href="mailto:bay.salmeron@chevron.com">bay.salmeron@chevron.com</a>
Entertainment	Kelli Hardesty	Environmental Resources Mgmt.	504-831-6700	<a href="mailto:kelli.hardesty@erm.com">kelli.hardesty@erm.com</a>
Environmental	Daisy Pate	Pontchartrain Partners	504-862-1775	<a href="mailto:daisy.pate@gmail.com">daisy.pate@gmail.com</a>
External Affairs	Michael A. Fogarty	Sylvan Energy, LLC	603-523-4808	<a href="mailto:mike.a.fogarty@gmail.com">mike.a.fogarty@gmail.com</a>
Finance and Investment	Robert Clark	UNO	504-610-6861	<a href="mailto:rbclark@uno.edu">rbclark@uno.edu</a>
Historical	Edward B. Picou, Jr.	Consultant	504-529-5155	<a href="mailto:epicou@bellsouth.net">epicou@bellsouth.net</a>
Membership/Directory	David E. Reiter	Stone Energy Corporation	504-593-3623	<a href="mailto:reiterde@stoneenergy.com">reiterde@stoneenergy.com</a>
New Geoscientists (NGNO)	Jeremy Prouhet	Chevron	985-713-6927	<a href="mailto:jeremyprouhet@chevron.com">jeremyprouhet@chevron.com</a>
Nominating	Edward B. Picou, Jr.	Consultant	504-529-5155	<a href="mailto:epicou@bellsouth.net">epicou@bellsouth.net</a>
Non-Technical Education	Duncan Goldthwaite	Consultant	504-887-4377	<a href="mailto:DGldthwt@aol.com">DGldthwt@aol.com</a>
Office Operations	Will Jorgensen	Shell	504-728-6339	<a href="mailto:william.r.jorgensen@shell.com">william.r.jorgensen@shell.com</a>
Publications Sales	Edward B. Picou, Jr.	Consultant	504-529-5155	<a href="mailto:epicou@bellsouth.net">epicou@bellsouth.net</a>
School Outreach	Thomas C. Bergeon	Century Exploration	504-832-3772	<a href="mailto:Tom.bergeon@centuryx.com">Tom.bergeon@centuryx.com</a>
Special Projects	Larissa Cupp		978-621-5074	<a href="mailto:Larissacupp@gmail.com">Larissacupp@gmail.com</a>

## NOGS LOG STAFF

Editor	Sheri Richardson	W & T Offshore	504-210-8141	<a href="mailto:srichardson@wtoffshore.com">srichardson@wtoffshore.com</a>
Editor-Elect	Tavia Prouhet	Chevron	985-773-6737	<a href="mailto:tavia.prouhet@chevron.com">tavia.prouhet@chevron.com</a>
Auxiliary	Peggy Rogers	NOGA	504-392-6323	<a href="mailto:lrogers79@cox.net">lrogers79@cox.net</a>
Drill Bits	Al Baker	Beacon Exploration, LLC	504-836-2710	<a href="mailto:ABaker1006@aol.com">ABaker1006@aol.com</a>
Drill Bits	Carlo C. Christina	Retired (C & R Expl. Inc)		<a href="mailto:drillbits81@yahoo.com">drillbits81@yahoo.com</a>
Drill Bits	Kevin Trosclair	Stone Energy	504-202-7997	<a href="mailto:kevintrosclair@gmail.com">kevintrosclair@gmail.com</a>
Staff Photographer	Arthur Christensen	Shalimar Consulting	985-893-2013	<a href="mailto:arthur_shalimar@yahoo.com">arthur_shalimar@yahoo.com</a>
Layout	Kristee Brown	Creative Graphics & Printing, LLC	985-626-5223	<a href="mailto:kpbrown@bellsouth.net">kpbrown@bellsouth.net</a>
Webmaster	Kevin Trosclair	Stone Energy	504-202-7997	<a href="mailto:kevintrosclair@gmail.com">kevintrosclair@gmail.com</a>

## NOGS AUXILIARY

<b>Officers</b>		<b>Phone</b>	<b>Directors</b>	<b>Year</b>	<b>Phone</b>
President	Mary Walther	504-392-9332	Beverly Kastler	2012-14	504-286-0879
Vice-President	Camille Yeldell	504-835-7467	Linda Peirce	2012-14	504-393-7365
Secretary	Beverly Christina	504-835-2383	June Perret	2012-14	504-664-0651
Treasurer	Judy Lemarié	504-393-8659	Trudy Corona	2013-15	504-737-6101
Parliamentarian	Alma Dunlap	504-737-2678	Debra Fein	2013-15	504-831-0358
Member-at-Large	Jean Jones	504-738-8091			



# UPCOMING Events & Activities



## March 10 • NOGS Luncheon

Holiday Inn Downtown Superdome

\$3.00 validated parking in hotel garage

### Presentation:

***Rethinking Coastal Restoration***

### Guest Speaker:

**Chris McLindon**

New Orleans, Louisiana

*See page 9 for Abstract and Biography*

### HOLIDAY INN DOWNTOWN SUPERDOME

Check with concierge or  
front desk for location.

Lunch served at 11:30 am

### ADMISSION:

**With reservation ..... \$30.00**

**Without reservation..... \$35.00**

**Student Member with reservations..... FREE**

**March 5-7**

World Heavy Oil Congress

Hyatt Regency • New Orleans, LA

For more information, [www.worldheavyoilcongress.com/2014/](http://www.worldheavyoilcongress.com/2014/)

**March 23**

Children's Museum of St. Tammany Celebration

Castine Center • Mandeville, LA

For more information, [www.cmstkids.org](http://www.cmstkids.org)

**March 28**

NOGS Spring Social

Old Rail Brewery • Mandeville, LA

For more information, [www.nogs.org/calendar/](http://www.nogs.org/calendar/)

**VOLUNTEERS  
NEEDED!**

**March 29**

Supersaurus Saturday

Louisiana Children's Museum • New Orleans, LA

For more information, [www.nogs.org](http://www.nogs.org)

## NOGS CONTACT LIST

*Continued from previous page*

### MEMORIAL FOUNDATION

#### BOARD OF TRUSTEES

2013-2014	Chairman	Will Jorgensen	Shell	504-728-6339	william.r.jorgensen@shell.com
2013-2014	Secretary	Chuck Holman	Saratoga Resources Inc.	985-809-9292	charleswholman@bellsouth.net
2013-2014	Trustee	J.David Cope	Rising Natural Resources LLC	504-214-6754	
2013-2014	Trustee	Tom Klekamp	Amber Resources LLC	985-845-4046	klekamp@bellsouth.net
2014-2015	Trustee	Rick Kear	Schlumberger Oil Field Services	504-858-2444	kear1@slb.com
2014-2015	Trustee	TBA			
2015-2016	Trustee	William M. Whiting	Consultant	504-947-8495	bootscon@aol.com
2015-2016	Trustee	David E. Reiter	Stone Energy Corporation	504-593-3623	reiterde@stoneenergy.com

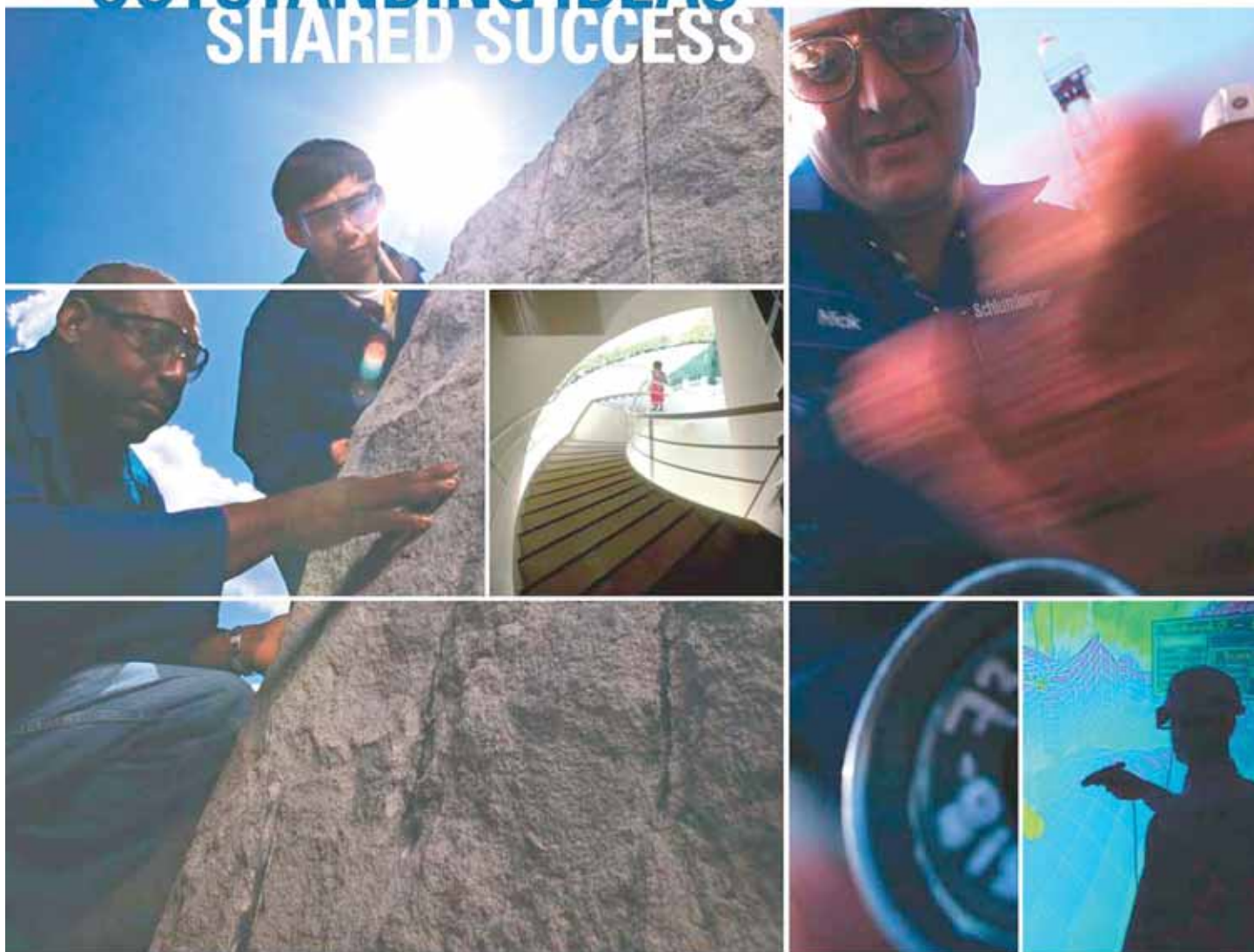
### AAPG DELEGATES

#### Term Ends

2014	Arthur H. Johnson	Hydrate Energy International	504-464-6208	artjohnson51@hotmail.com
2014	Brenda Reilly	AMROMCO Management LLC	504-430-4240	reillybe@yahoo.com
2014(a)	Elizabeth C. McDade	McMoRan Exploration Co.	504-582-4510	ecmcdade@bellsouth.net
2014(a)	Frances A. Wiseman	BOEM (retired)	504-831-8343	snowde.fran@gmail.com
2015	Susan A. Waters	Shell	504-728-0229	susan.waters@shell.com
2015	William M. Whiting	Consultant	504-947-8495	bootscon@aol.com
2015(a)	David E. Balcer	Chevron	985-773-6725	dbalcer@chevron.com
2015(a)	Earl W. Cumming	Reservoir Frameworks LLC	985-630-6898	earlcumming@bellsouth.net



# OUTSTANDING IDEAS SHARED SUCCESS



**WHAT CAN MILLIONS OF IDEAS,** thousands of patents, and hundreds of nationalities deliver? Success. Listening to the ideas of our clients and colleagues around the globe has made Schlumberger the world's leading technical services company. Your experiences are catalysts for our innovation.

Schlumberger invests in a worldwide community of research and development centers—from Boston to Dhahran, Beijing to Moscow, Stavanger to Cambridge—encouraging our brightest minds to find new ways to improve efficiency, productivity, and safety, every day.

Through our commitment to technology research and the support of our global network of local experts, Schlumberger is leading the way into the future.

[www.slb.com](http://www.slb.com)

# Schlumberger





## March 10 NOGS Luncheon Presentation

☆☆☆ at the Holiday Inn Superdome ☆☆☆



### Rethinking Coastal Restoration



*Presented by*

**Chris McLindon**

New Orleans, Louisiana

#### ABSTRACT

The fundamental concepts underlying coastal restoration were formulated in the 1960's and 1970's as it became obvious that the total surface area of the wetlands of south Louisiana was decreasing at a measurable rate. The situation has been generally characterized as an ecological crisis in which the wetlands are being deteriorated by coastal erosion and the rate of land loss is unprecedented in human history. The causes of coastal erosion have been universally attributed to the activities of humans. Oil and gas drilling and pipeline canals have allowed saltwater intrusion to accelerate erosion, and the levee system along the Mississippi River has prevented a natural cycle of flooding that would replenish the marsh with freshwater and sediment. The solution to this crisis, and the foundation of coastal restoration, is that humans must intercede to reverse the rate of wetlands loss. These concepts have become the axiomatic truths of the coastal restoration movement, and they are rarely questioned. An examination of the science behind the formation of the coastal wetlands brings into question all of these fundamental concepts, along with the viability of human intercession.

The coastal wetlands of southeast Louisiana are the delta marshes of the Mississippi River. Six to eight historical deltas are generally recognized to have deposited the sedimentary substrate of the marshes across the area during the Holocene highstand in global sea level. Each of these deltas exhibits the patterns of a natural lifecycle from emergence to abandonment to subsidence. The rates of sediment accumulation and subsidence of these deltas can be related to the underlying geologic structure of the coastal plain. The area of delta deposition during the Holocene is roughly coincident with the span of delta deposition during the Middle Miocene, and it is instructive to compare the relationship of patterns of sediment accumulation during these two epochs. This evaluation strongly suggests that the current rate of wetlands loss is due largely to subsidence driven by geologic processes that have been active on the coastal plain since the Middle Miocene.

An examination of coastal restoration projects that have been in operation over the past 20 years reveals that they have been largely ineffective in reversing the rate of wetlands loss in southeast Louisiana. In the face of the magnitude of geologic processes that are driving the rate of subsidence causing the submergence of the coastal wetlands it is unlikely that any of the active or proposed coastal restoration projects will be capable of offsetting that rate.

#### BIOGRAPHY

**Chris McLindon** received a B.S. in Geology degree from L.S.U. in 1979. He has been employed as an exploration geologist in the oil and gas industry in New Orleans since graduation, including eight years of self-employment. Throughout the course of his career Mr. McLindon maintained a very strong interest in the processes of the Mississippi River and its current and historical delta. He has actively researched the subject throughout his career with periods of scientific investigation and evaluation. All of the research and scientific evaluation included in this presentation were undertaken during periods of self-employment. All of the content and opinions expressed in the presentation are solely those of Chris McLindon, and he is not acting as a representative of any entity other than himself.

Mr. McLindon is a member of the American Association of Petroleum Geologists and the Geological Society of America.

**THE LUNCHEON RESERVATION DEADLINE IS MARCH 6 - CONTACT THE NOGS OFFICE**

#### *"And Looking Ahead . . ."*

*The next luncheon will most likely be on April 10 and held as a joint SGS-NOGS meeting with Kurt Marfurt, Ph.D., of the University of Oklahoma in Norman, Oklahoma, presenting. Look for more information as it becomes available on the website and in the April NOGS LOG. Contact the NOGS office at 561-8980 or use the PayPal link on the NOGS website ([www.nogs.org](http://www.nogs.org)) to make your reservation.*

At the same time oil companies stopped hiring so many college graduates because they did not need any more people; in fact they had too many. As a result, universities cut back or eliminated their petroleum industry programs. That was the time, about 1990 to 1995, that the oil industry employment dearth started.

When oil companies laid off their staff, the children of the oil industry workers felt and saw the ups and downs and insecurity of work in the oil industry. What had once been a good career with a steady income was no longer true. On top of that, oil was perceived as a bad, dirty, sunset industry, something from the past. Better to pursue the future, something with potential like investment banking, computers, or the internet and dotcom enterprises. The family had been broken.

When the price of oil increased and the shale boom started, oil companies looked to hire again in 2005, but the new people weren't there in the numbers needed. The universities didn't have many students studying petroleum disciplines, because there was no call for their services when they started college. Universities had to gear up to produce new petroleum graduates and the oil industry had to sell itself to a new generation. New workers have joined the industry and now the demographic picture is bimodal, with lots of people older than 50, very few between 35 and 50, and some between 25 and 35.

So now the employees from the hiring binge are retiring and there are not enough people to do the work in this new boom. The oil industry is struggling to find people to work in it just when it needs them once again. I am stunned that an industry that works to provide steady cash flow from a depleting resource would not also ensure a steady flow of people to keep that cash flowing.

The chain of events that I have related shows what we as earth scientists already know; everything is connected and that a change in one part of the system brings about changes in other parts of the system. When the oil industry laid off droves of people and stopped hiring new employees from the mid-eighties to the early aughts, it set in motion the events that have led to its current employment crisis. Sometimes I think that if we could see the effects of our actions years later, maybe we would make different choices in the present.

Chuck

**SEI<sup>®</sup>**  
**Seismic Exchange, Inc.**  
**Strategic Speculative Surveys**  
**Geophysical Data Marketing & Management**

**YOUR**  
**Full Service**  
**National**  
**Seismic Data**  
**Marketing Firm**

**SEISMIC EXCHANGE, INC.**  
**37th ANNIVERSARY**  
**1975-2012**

DALLAS DENVER HOUSTON MIDLAND NEW ORLEANS OKLAHOMA CITY CORPUS CHRISTI TULSA  
201 St Charles Avenue, Suite 4300, New Orleans, Louisiana 70170-4300 504-581-7153 FAX 504-581-9591

seismicexchange.com





# Drill with confidence.

Diversified Well Logging, LLC brings the accuracy and expertise only a company with over sixty years in the oil and gas industry can deliver. We are your eyes and ears in the field, especially when it comes to deep water or high pressure, high temperature areas.

DWL offers 24-hour formation evaluation. We provide secure and customized real-time data communication, in-house research and development, and 24/7 on-call support for our equipment and our engineers.

Whether you have a 10-day job or a 110-day job, we provide the specialized attention you require. **Our experience means you can be confident in the safety and performance of your well.**



- *Formation Evaluation*
- *Geosteering*
- *Drilling Optimization*
- *Real-time Data Transmission*
- *Early Kick Detection*



*Serving the Oil and Gas Industry for Over 60 Years*



March						
Sunday	Monday	Tuesday	Wednesday	Thursday	Friday	Saturday
						1
2	3	4 Mardi Gras	5	6	7	8
		World Heavy Oil Congress - N.O., LA				
9	10 NOGS Luncheon Holiday Inn 11:30 AM	11	12	13	14	15
16	17 St. Patrick's Day	18	19 NOGS Brd Mtg GOM Lease Sale 231 & 225	20	21	22
23 St. Tammany Children's Museum Benefit 6 -10 pm	24	25	26	27	28 NOGS Social Old Rail Brewery 5 - 8 pm	29 Supersaurus Saturday 11 am - 3 pm
30	31					

April						
Sunday	Monday	Tuesday	Wednesday	Thursday	Friday	Saturday
		1	2	3	4	5 NOGA Spring Social
6	7	8	9	10 SGS-NOGS Joint Luncheon SGS Short Course Dr. Kurt Marfurt	11	12
AAPG Annual Convention & Exhibition - Houston, TX						
13	14	15 NOGS Petroleum Geology for Non- Geologists	16 NOGS Board Meeting BRGS & LGS Symposia, B.R., LA	17	18 Good Friday	19
20 Easter	21	22 Earth Day	23	24	25	26
27	28 NOGS Golf Tournament Money Hill	29	30			

# New Orleans Geological Auxiliary News

*"The objective of the Auxiliary is to promote fellowship among the wives of the members of the New Orleans Geological Society and to render assistance to NOGS upon request."*

This month's *NOGS LOG* deadline happens to fall before the luncheon for spouses and friends at Porter and Luke's restaurant; therefore, I have been browsing my computer files of past NOGA officers and activities to find a memory-from-the-past photo. The big problem, of course, is deciding which photo to use. When I presented this idea at a recent board meeting everyone wanted the group to look younger and thinner than we are now. That part was pretty easy. I picked just one photo of attendees of the 2000 NOGA Past Presidents' Luncheon at Commander's Palace so that the image would be large enough for everyone to be recognizable. We will have to slip some other memory-photos into future articles.

The old photos remind me of all the years that have gone by for the Auxiliary. It has been sixty years since the New Orleans Geological Society President, Eugene Baysinger, and Past President, Ken McWilliams, requested that the ladies form an organization to promote fellowship among wives of members and to render assistance to NOGS upon request. The Auxiliary's first elected president was Mrs. D.D. Utterback.

Hopefully the members who have joined this past year and the future new members will find the fun, fellowship, and lifelong associations that have been the history of this organization.

## Peggy Rogers, *NOGS LOG*



**2000 Past Presidents' Luncheon at Commander's Palace**

Standing: Jean Stewart, Mary Petrocco, Nelwyn Stuart, Mary Walther, Alma Dunlap, Judy Sabaté, Ruth Grimes,  
Ruth Ingram, Carol Andrews, Peggy Rogers

Seated: Mim Brumbaugh, Earleen Rodan, June Perret, Betty Youngblood, GiGi Hancock

Why can Weatherford deliver more real time data at the wellsite than any other mudlogging company?

Tim has cabin fever.



**EXCELLENCE  
FROM THE  
GROUND UP™**

Our Global Operations Manager for Surface Logging Systems, Tim, is all smiles these days. That's because he and his team recently designed a new state-of-the-art mudlogging cabin. The spacious interior makes room for more laboratory services at the wellsite. Now exploration companies have access to more data in real time, so they can make better decisions faster. Combined with Weatherford's patented GC-TRACER™, IsoTube® AutoLoader™ and other Isotech technologies, it's one more way Weatherford Mudlogging is committed to Excellence from the Ground Up.

**SURFACE LOGGING SYSTEMS**

[www.weatherford.com/surfacelogging](http://www.weatherford.com/surfacelogging)  
[mudlogging.services@weatherford.com](mailto:mudlogging.services@weatherford.com)



**Weatherford®**





# *NOGS Spring Social*

*Join your colleagues for drinks, hors d'oeuvres, and fun!*

*Friday, March 28*

**5:00 p.m. – 8:00 p.m.**

**Old Rail Brewery  
639 Girod Street  
Mandeville, LA**

**\$10/person**



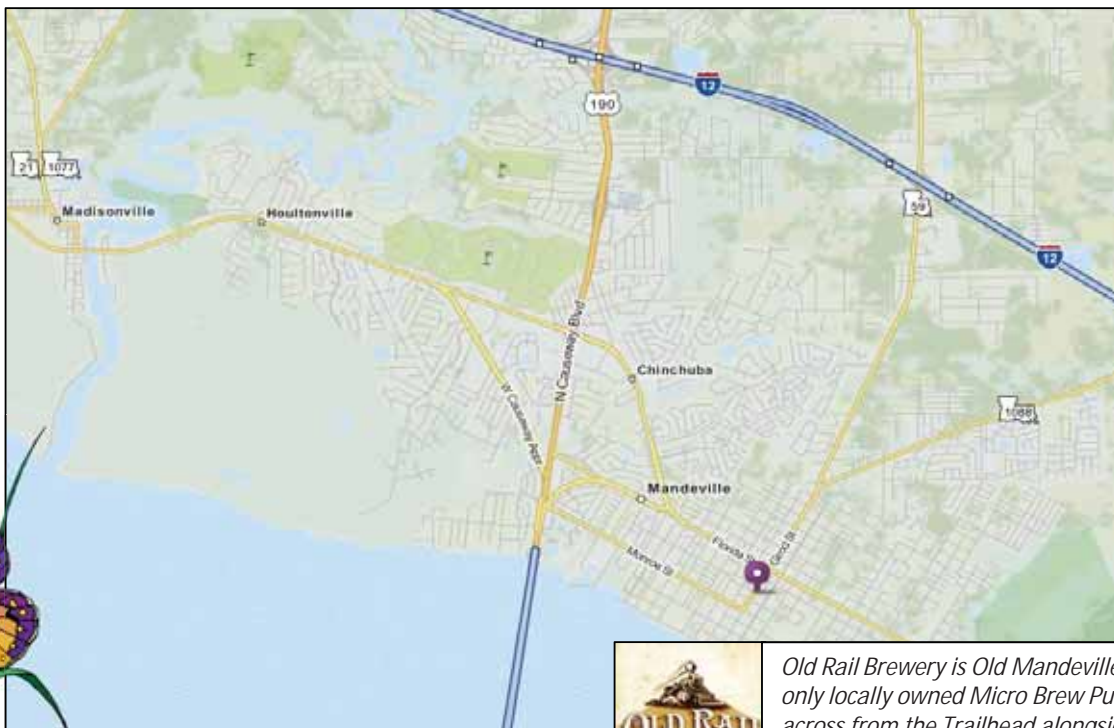
The Spring Social is open to all Members, spouses, and anyone wanting to join NOGS.

This event will also be the first gathering of the recently reorganized  
**New Geoscientists of New Orleans (NGNO)** group within NOGS.

We hope anyone interested in being a part of NGNO will be able to attend.

*Interested in joining NOGS?*

**Come party for free!** Register at the door and pay dues of \$25 (\$12.50 for students) and your admission fee will be waived.



*Old Rail Brewery is Old Mandeville's 1st & only locally owned Micro Brew Pub located across from the Trailhead alongside the St. Tammany Trace.*





## COMMITTEES NEED YOU!

### Boy Scouts/Girl Scouts Committee:

*A Chairman is needed.*

This committee promotes and supports the Scouting movement and assists in all matters pertaining to geology, including the Geology Merit Badge Program. If you're interested, please contact Bill Whiting at [Bootscon@aol.com](mailto:Bootscon@aol.com) or [info@nogs.org](mailto:info@nogs.org). If there are any Eagle Scouts looking to assist in this worthy cause, it would be greatly appreciated.

### Sponsorship Committee:

*A Chairman is needed.*

This committee secures funding from sponsors to help finance various activities of the Society. This committee also ensures that sponsors are thanked and adequately recognized for their generosity.



**Shell has worked in partnership  
with the NOGS for many years, and  
is proud to count the society among  
its closest business associates.**

The New Orleans Geological Society was organized in 1941 to foster scientific research and advance the science of geology. Particular emphasis is laid on the exploration for and production of petroleum and natural gas. Related objectives include encouraging the adoption of improved methods of exploration, disseminating pertinent geological and technological data, and maintaining a high standard of professional conduct among its members.

[www.shell.com/us.sepco](http://www.shell.com/us.sepco)

## WELLSITE GEOSCIENCE SERVICES



## When time is money, Wellsite Geoscience is money well spent.

Whether you're exploring a basin, producing a well or completing a shale play, time is money. That's why Weatherford Laboratories brings a suite of formation evaluation technologies right to the wellsite. Utilizing mud gas and cuttings, these technologies provide detailed data on gas composition, organic richness, mineralogy and chemostratigraphy in near real time. As a result, operators now have an invaluable tool to assist with sweet spot identification, wellbore positioning, completion design and hydraulic fracturing. We call it Science At the Wellsite. You'll call it money well spent.

### SCIENCE AT THE WELLSITE™

[www.weatherfordlabs.com](http://www.weatherfordlabs.com)



**Formation Evaluation   Well Construction   Completion   Production**

©2013 Weatherford. All rights reserved



# **SUPER SAURUS SATURDAY**

**Volunteers  
Needed**



**March 29, 2014**

**11:00 AM - 3:00 PM**

**To volunteer contact: Tom Bergeon**

**tom.bergeon@centuryx.com**

**504-832-3772**

**Louisiana Children's Museum**

**www.lcm.org**



**Bring your friends and family!**



# NOGS Museum Initiative - Child

by Tom



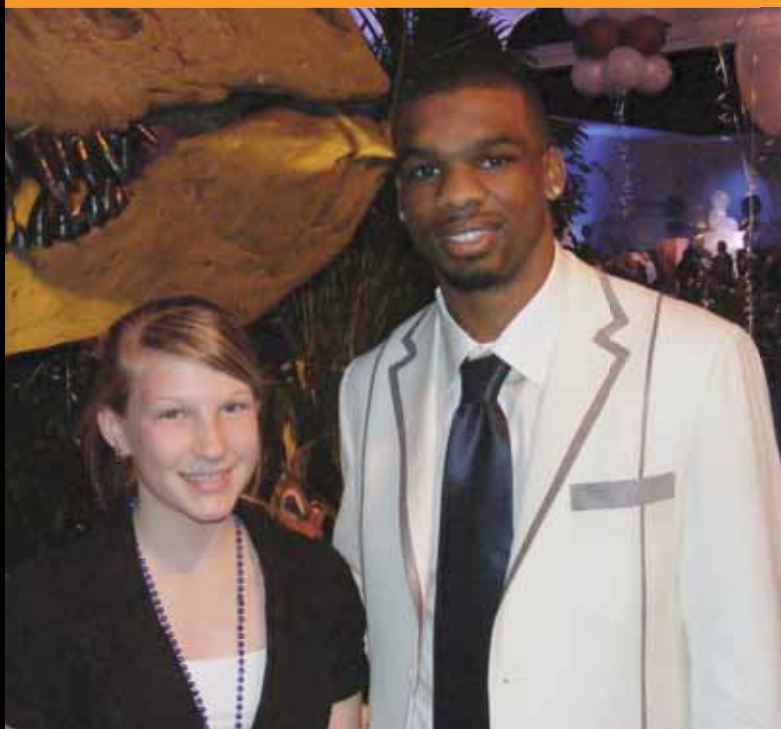
**St. Tammany Parish President Pat Brister  
with CMST President Lisa Barnett**

Some very exciting developments are occurring on the

The Children's Museum of St. Tammany, an initiative in partnership with St. Tammany Parish and St. Tammany Bay, is a 20,000 square foot, state-of-the-art children's museum located on I-12 just west of the Tchefuncte River and will be part of the Cultural Arts District which will include a performing arts center and trails. In addition, in partnership with the Trace Foundation, St. Tammany will have a presence in Kids' Town - a new development on the Trailhead which is expected to begin construction in March 2014.

The mission of the Children's Museum of St. Tammany is to provide children to imagine, explore, and create in an interactive environment. The museum envisions a community where play is encouraged, creativity is encouraged, and learning is enjoyed.

NOGS first became involved with CMST during their annual gala event. Kraig Derstler of UNO was kind enough to lend Bob Porter to the event. They were nearly as big a hit as N.O. Saint Tracy Porter. The event was a great success and this year's fundraiser is expected to be supporting this gala event.



**Helen Hafner (daughter of NOGS past president Bob Hafner)  
with Super Bowl hero Tracy Porter  
at the 2009 Children's Museum of St. Tammany's  
"Night at the Museum" fundraiser**



In the summer of 2013, with the NOGS Museum Initiative we are developing programs in the Greater St. Tammany area and energy. Ed is President of the Foundation in Baton Rouge.

Ed and I met with Lisa Barnett and Exhibit Design Advisor to discuss the project and the significance of the CMST site. The CMST site is part of a natural setting with walking trails.

Our vision are contagious. Kristi is an archeologist and member of the impressive Children's Museum of Indianapolis. We discuss key contacts, volunteers, and oil industry fundraising. I am on the Advisory Board, and I welcome your input as the project develops. There are some very exciting ideas that we are developing and related activities. The focus is on hands-on learning and we are proud to be involved with this vital community learning center.

For more information, visit the CMST website at <http://www.cmst.org>

For more information on the Children's Museum of St. Tammany fundraiser, please see their ad on page 22 of this newsletter.

# Children's Museum of St. Tammany

Bergeon

the North Shore.

of the Junior League of Greater Covington many Parish Public Schools, is developing museum. The museum will be located be part of the St. Tammany Parish arts center, amphitheatre, and nature foundation, the Children's Museum of a mini-town project on Koop Drive May 2014.

is to create a setting which inspires active learning environment. CMST creativity is nurtured, and learning is

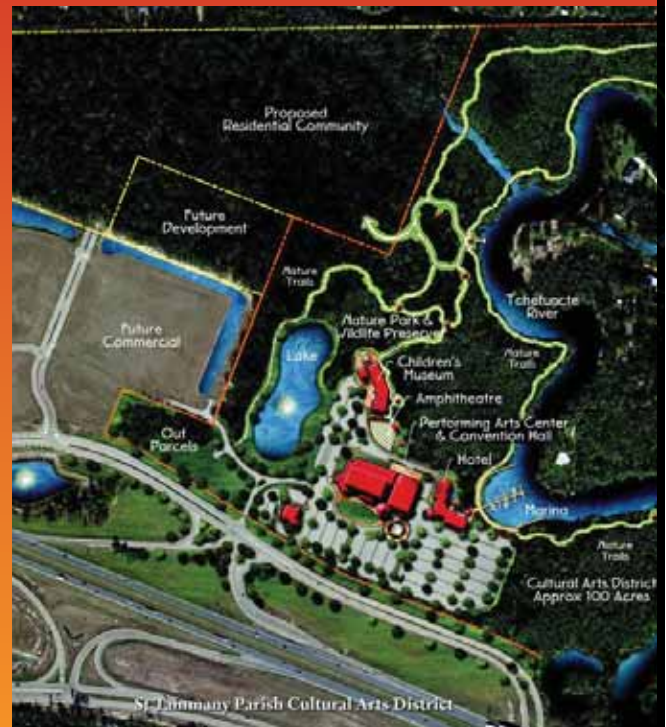
2009 fund drive where the theme was "Night at the Museum." Hafner and me the full scale T-Rex and Triceratops skull casts. er, the man of the hour, fresh off his Super Bowl victory pick. The on March 23 promises to be just as engaging. Please consider

in the support of the NOGS Board, Ed Picou and I kicked off the with the focus on becoming active with developing and ongoing New Orleans area with a focus on promoting earth sciences ent of the Friends of the Louisiana Museum of Natural History e and was the ideal partner to initiate this program.

arnett, President of CMST, and Kristi Jarrett, CMST Board Trustee sor. It was very exciting to see the large scope of their museum nt backing of local government and community business leaders. of a multi-purpose complex and incorporates the surrounding ng trails adjacent to the Tchefuncte River. Lisa's enthusiasm and useum specialist and was involved in developing the incredibly scussed areas where NOGS could assist with activities, designs, g support. I am honored to have been appointed to the CMST program moves forward. There both with dinosaurs and oil nd interaction. NOGS is very ng experience.

<http://cmstkids.org/>

c. Tammany Celebration yletter.

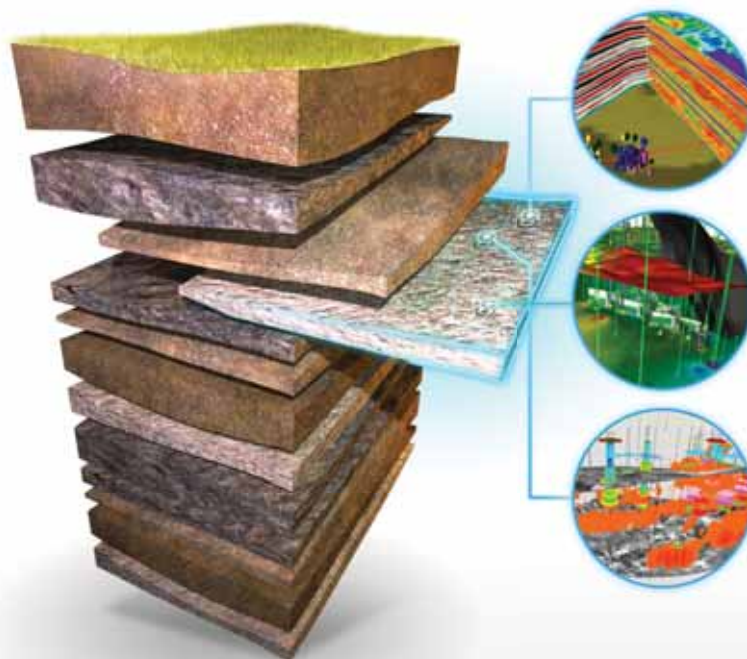




# YOU TACKLE TOUGH PROBLEMS

YOUR GEOSCIENCE SOFTWARE  
DOESN'T HAVE TO BE ONE OF THEM

IHS GEOSCIENCE: sophisticated science that's simple to use and simple to manage



## **SURFACE TO SUBSURFACE**

ONLY ONE ENERGY EXPERT  
PROVIDES SO MUCH TO SO MANY

From big picture to critical detail, proven capabilities to superior results, IHS geoscience does it all—backed by the world's most respected forecasting, analysis, and play-specific geological and geophysical data.

## **NOW GET THE POWER OF KINGDOM® AND PETRA®**

Only IHS geoscience simply yet scientifically links engineering, economics and interpretation software suites to give you a definitive edge. Spearheaded by industry-leading Kingdom® and Petra® software solutions IHS gives you the best in geophysics and geology.

Learn more at [IHS.com/NOGS](http://IHS.com/NOGS)

**IHS** GEOSCIENCE



Simply **Scientific™**





*Presents*

## THE 2014 ANNUAL GOLF OUTING

*Proceeds from this event fund the **Bill Craig Memorial Scholarship** 501(c)(3) organization.  
Last year the golf tournament generated \$5000. Let's keep it going!*

### MONEY HILL GOLF COURSE in ABITA SPRINGS on MONDAY, APRIL 28

Format: 4-person scramble with shotgun start at High Noon

Post tournament dinner sponsored by Diversified Well Logging

*Registration opens at 10:00 a.m. with Brunch served until tee time.*

*Price includes green fees, cart, range balls, food & drinks, flight, prizes, & 2 Mulligans.*

What else could you possibly ask for?

**Costs: \$140/individual, \$650/corporate, \$85/students. Hole sponsors are \$125.**

**Please register early!** This event always fills up and we are limited to **only 120 players**. Remember you are not registered until NOGS has received payment and you are confirmed by Annette. Make sure you supply your handicap or a score that typifies a set of rounds of golf over recent time no greater than 2 years in the space provided.

**We need volunteers.** If you can help out, you will be treated to a day of fun, food, and be eligible for some door prizes.

*Donations of any kind are welcome.*

**FOR REGISTRATION, DONATIONS, OR TO VOLUNTEER, CONTACT:**

**Annette Hudson: 504-561-8980 or [annette@nogs.org](mailto:annette@nogs.org)**

Send cash or check (payable to NOGS): NOGS Office • 810 Union St. • Suite 300 • New Orleans, LA 70112

Credit cards accepted with PayPal: [www.nogs.org/payment-center/](http://www.nogs.org/payment-center/)

Name _____	handicap _____ @ \$140 each (\$85 for students)
Company _____	@ \$650 each
Phone _____	Email _____
Names of others in your group:	Cash Donation: \$ _____
_____ handicap _____	_____ handicap _____
_____ handicap _____	_____ handicap _____
_____ handicap _____	_____ handicap _____

Freeport-McMoRan is now  
**RESOURCE RICHER.**

**ROCK SOLID  
SERVICE**



[www.corelab.com](http://www.corelab.com)  
**337-837-8616**

© 2013 Core Laboratories.  
All rights reserved.



**Freeport-McMoRan Copper & Gold Inc. provides resources to fuel global growth.**

With the acquisitions of Plains Exploration & Production Company and McMoRan Exploration Co., FCX's diverse portfolio of minerals assets now includes high-quality oil and gas resources in the United States. Matched with bright prospects for success in the global minerals industry, this expanded scope of operations provides exciting new opportunities for profitable growth to benefit shareholders, employees and communities. FCX is pleased to announce its new subsidiary Freeport-McMoRan Oil & Gas.



**CHILDREN'S  
MUSEUM**  
OF ST. TAMMANY  
*Celebration*

**SUNDAY  
MARCH 23, 2014**

**6:00 — 10:00 pm**

**The Castine Center - Mandeville, LA**

**Food • Drinks • Raffle • Auction**

*Fundraiser benefitting the future  
Children's Museum of St. Tammany*  
[www.cmstkids.org](http://www.cmstkids.org)

# The Evolution of Log Printing is Here!

Neuralog has been developing purpose built well log printing solutions for 10 years. Our printers are designed to operate seamlessly and require no add-on software for automatically sensing top of form printing. Whether you are a service company printing thousands of logs a day or an exploration company looking for quality logs, the NeuraLaserColor II will change your expectations of well log printers.

- Record setting speeds - 11 inches per second
- Precision printing - On-the-fly length calibration
- Increased efficiency - 20,000 page yield toner
- Operational versatility - Native PDF support
- Hands free - Automated cut, feed and re-load

See More at:  
[www.NeuraLaserColor2.com](http://www.NeuraLaserColor2.com)



© 2013 Neuralog • [www.neuralog.com](http://www.neuralog.com) • [sales@neuralog.com](mailto:sales@neuralog.com) • 1.281.240.2525 • 1.800.364.8728



**NOLEX**

NEW ORLEANS LAND AND EXPLORATION COMPANY, LLC

February, 2014

The New Orleans Land and Exploration Company (NOLEX) is pleased to announce its association with Talos Energy LLC.

NOLEX will complement Talos' Gulf of Mexico exploratory efforts by exclusively generating prospects onshore South Louisiana and adjacent trends. NOLEX will target a balanced portfolio of oil prospects and high potential gas/condensate plays. The Nolex team consists of highly experienced generators including Gary Fortier, Rand Turner and Scott Wainwright who will evaluate a high quality seismic data base of over 1,500 square miles. The generating team is led by Co-Owner, Kevin McMichael, former McMoRan consultant and Sr. V.P. Exploration for LL&E, Sonat Exploration and El Paso Oil & Gas.

Co-Owner, Jim Carrington, will be responsible for all legal, land and business development activities and retain a role in Talos as Sr. Business Development Advisor.

Talos Energy is a private company founded in 2012 and led by Tim Duncan with a \$600 million private equity commitment. The management team worked together at Gryphon Exploration and Phoenix Exploration, both companies were successful private equity backed start-ups focused on acquisitions and exploration. Talos has over 27,000 sq-miles of seismic data in the GOM and South LA and they operate 90% of their 400,000 gross acres of leasehold in the Gulf of Mexico Shelf, Deepwater and South Louisiana.



# South Louisiana and Offshore Gulf of Mexico Exploration and Production Activities

## LAFAYETTE DISTRICT, ONSHORE AREA

By Carlo C. Christina

*The Office of Conservation, Lafayette District, Onshore Area, issued 28 permits during the month of January 2014. Following are the most significant locations:*

### NEW LOCATIONS

Hilcorp Energy has permitted the #2 Labokay in **Lyles Field, (A)**, Allen Parish, located in Sec. 9, 6S-4W, to a proposed depth of 15,000 feet. The field has been abandoned since 2002. The proposed location is a direct offset to the #1 Labokay which was recently drilled to 14,620 feet. Casing was set to total depth and the operator is waiting on a completion rig. It has been reported that the well was perforated and fracked in the Upper Wilcox in several intervals between 12,600 feet and 14,362 feet. No information has been released on production tests. (247523)

In Lafourche Parish, **Leeville Field, (B)**, Shoreline Southeast will drill the #2 SL 20783 in Sec. 31, 21S-22E to a proposed depth of 20,235 feet. This location is approximately one-half mile southwest of the Shoreline #1 SL 20783 which was drilled and temporarily abandoned at a depth of 19,203 feet. The proposed well is located on the extreme southwest flank of Leeville Field, approximately 2 miles southeast of production. (247468)

Strand Energy will drill a **rank wildcat, (C)**, in Livingston Parish in Sec. 8, 8S-5E to a proposed depth of 10,200 feet. The well is 2 miles south of a deep test, the Tenneco #1 Crown Zellerback, which was drilled to a depth of 13,025 feet in 1986. It is also located 1 mile south of the nearest well control, a dry hole drilled in 1980 to a depth of 7,632 feet. (247586)

Bison Energy Partners will drill an interesting deep well in **Main Pass Block 35 Field, (D)**, to a proposed depth of 14,300 feet. Although the #1 SL 20781 is permitted in Main Pass Block 35 field, it is located 2 miles north of production in the field. (247491)

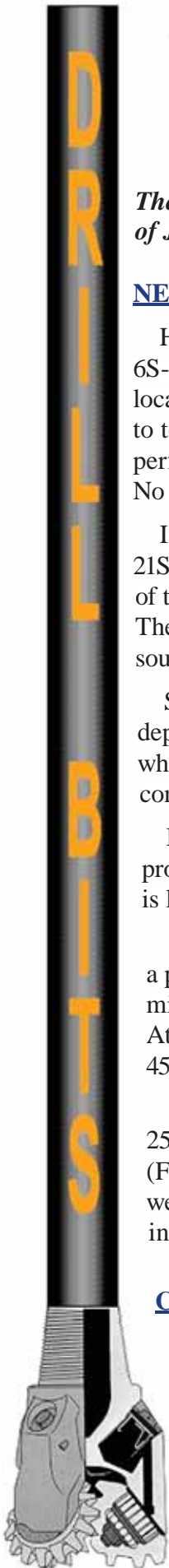
In **Atchafalaya Bay Field, (E)**, St. Mary Parish, Apache Corporation will drill the #3 SL 20035 to a proposed depth of 19,750 feet to test deep Cib op sands. The proposed location is approximately 1 mile south of the Phoenix #1 SL 20035, the discovery well for the deep Cib op sands in the old field. Atchafalaya Bay Field is now the #1 ranked gas producing field in south Louisiana, having produced 45 billion cubic feet of gas in 2013. (247479)

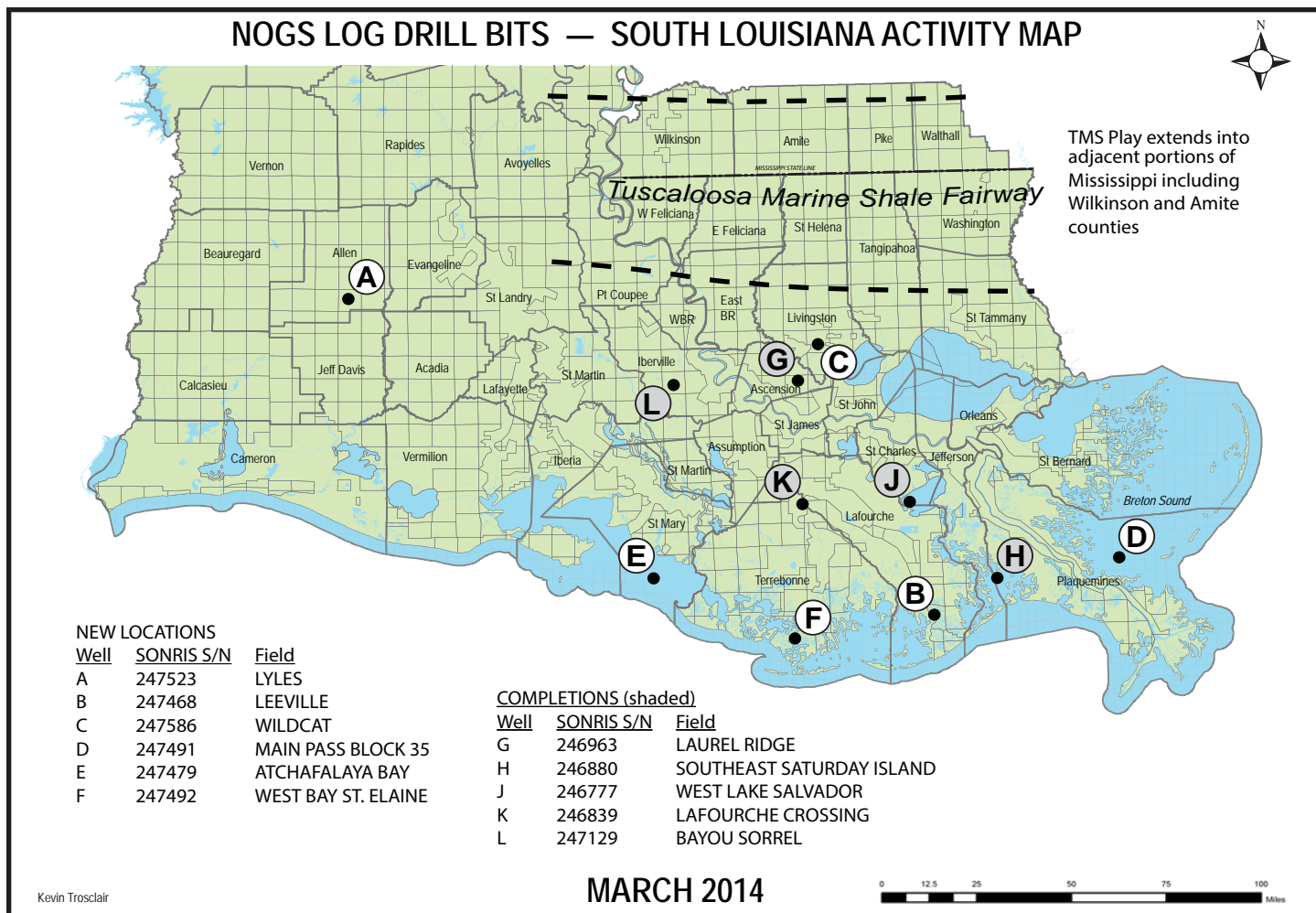
In Terrebonne Parish, GCER Onshore is currently drilling the #2 SL 21090 at a location in Sec. 25, 22S-16E, 2 miles west of its recently completed discovery well for **West Bay St. Elaine Field, (F)**. The discovery well, the #1 SL 21092, was drilled to a depth of 13,395 feet and completed as a gas well through perforations 12,441 to 12,489 feet, flowing 2192 MCFD. The discovery well is located in Sec. 21, 22S-17E, 4 miles southwest of production in the field. (247492)

### COMPLETIONS

In Ascension Parish, **Laurel Ridge Field, (G)**, Anglo-Dutch Energy failed in its attempt to establish deep production at 15,000 feet in the Marg tex-Bol mex section. The #1 Chatham was drilled in Sec. 64, 10S-4E, 1½ miles northeast of Mio gyp production at 12,400 feet. The well was drilled to a depth of 14,953 feet and was perforated in the objective section in the interval 14,269 to 14,280 feet. Tests were unsuccessful and the well was temporarily abandoned. (246963)

Badger Energy has plugged and abandoned the #1 SL 21081 in **Southeast Saturday Island Field, (H)**, Plaquemines Parish. The well was drilled 2 miles southeast of production in Sec. 27, 19-25E, to a depth of 11,799 feet. (246880)





In St. Charles Parish, Square Mile Energy has completed another gas well in **West Lake Salvador Field, (J)**. The #1 SL 21063 was drilled to a depth of 15,524 feet and completed flowing 2185 MCFD and 106 BCPD through perforations 13,534 to 13,547 feet. The well was drilled in Lake Salvador in 16S-21E, 1 mile south of production. (246777).

Square Mile Energy has plugged and abandoned its #1 Plater-Acadia in **Lafourche Crossing Field, (K)**, Terrebonne Parish at a depth of 15,000 feet. The well was located in Sec. 144, 15S-16E, 2 miles southwest of the productive limits of the field. (246839)

In Iberville Parish, **Bayou Sorrel Field, (L)**, Rozel Operating Co. has completed the #1 Wilberts Land as an oil well in the Cib haz section. The well was drilled in Sec. 29, 10S-11E, to a depth of 13,388 feet and completed flowing 182 BOPD through perforations 12,900 to 12,948 feet and 13,054 to 13,094 feet. (247129)

## OFFSHORE GULF OF MEXICO SHELF AND DEEPWATER ACTIVITIES

by Al Baker

During January 2014, the BOEM approved **72** Gulf of Mexico drilling permits. Of these, **29** were for shelf wells and **43** were for deepwater wells. Of the total number of permits, there were **9 new well permits** issued. These included **4 shelf** (2 exploratory and 2 development), and **5 deepwater** (3 exploratory and 2 development) **new well permits**.

On the shelf, the two exploratory new well permits were granted to **Walter Oil & Gas** for their **South Timbalier 72 #1** well and to **Arena Offshore** for their **South Timbalier 151 #1** well. The two development well permits were issued to **EPL Oil & Gas** for their **South Timbalier 26 #H-1** well and their **West Delta 28 #B-6** well.

In deepwater, **Shell Offshore** was awarded two exploratory well permits to drill their **Walker Ridge 96 #1** and **Mississippi Canyon 525 #1** wells. **Apache Deepwater** also received an exploratory well permit to drill their **Garden Banks 213 #1** well. The two development well permits were given to **Stone Energy** for their **Mississippi Canyon 29 #5** well and to **ANKOR Energy** for their **Mississippi Canyon 22 #B-11** well.

On January 31st, IHS-Petrodata reported that the Gulf of Mexico mobile offshore rig supply stood at **110**. The marketed rig supply consisted of **84** rigs, of which **79** were under contract. The contracted versus total rig supply utilization rate is **71.8%**, while the marketed contracted versus marketed supply utilization rate stands at **94.0%**. The total and marketed rig supply figures reflect a decrease of 1 rig each as to those reported last month. They also compare to 82 out of the 107 rigs that were available during January 2013, for a 76.6% fleet utilization rate.

On January 31st, the BakerHughes Rig Counts indicated that there were **57** active mobile offshore rigs in the Gulf, which is **72.2%** of the rigs under contract mentioned above. This active rigs number is four less than reported last month. The current active rigs count compares to 53 active rigs during the same period last year, representing a **7.5%** increase in yearly activity.

On January 7th, **SandRidge Energy** announced that it would sell its Gulf of Mexico operations to **Fieldwood Energy**, an affiliate of private equity firm Riverstone Holdings LLC for \$750 million, plus the assumption of \$370 million in abandonment liabilities. SandRidge Energy plans to focus on drilling onshore, including the Mississippi Lime oil play in northern Oklahoma and western Kansas. SandRidge Energy is the latest company to dispose its Gulf of Mexico assets, following Apache, Devon Energy, and Callon Petroleum.

On January 7th, **Energy XXI** provided an update on its operations in the Gulf of Mexico shelf region. The **Stricker** well in **West Delta 30** was drilled to 5,897 feet measured depth (MD)/5,168 feet true vertical depth (TVD) and logged **79 net feet of oil pay in six reservoirs**, of which five were previously untested and are new discoveries. The well is currently being sidetracked down dip to delineate the size of the five new discoveries. The Striker well is the first well Energy XXI has drilled in West Delta 30 since its acquisition of the field in December 2010.



At **West Delta 73**, their **Gunn** well was drilled to 11,843 feet MD/8,292 feet TVD with a **1,500-foot lateral** into the **F-40 Sand**. The well was placed on production at a rate of **300 BOPD, 125 MCFPD** and **2,225 BWPD** with a flowing tubing pressure of 490 psi. The next well at West Delta 73, **El Diente**, is preparing to spud with a proposed total depth of 10,100 feet MD/8,075 feet TVD, including a **1,000-foot lateral** into the **F-35 Sand**.

In Energy XXI's **Main Pass 61 Field**, the **Don Carlos** well was drilled to 10,450 feet MD/8,161 feet TVD. The well was currently unloading in excess of **1,250 BOPD** from a dual completion in the **BA-4B** and **BA-4AA sands**.

The **Merlin** well on **Vermilion 179** was drilled to 19,915 feet MD/15,700 feet TVD but subsequently **plugged and abandoned** after failing to find commercial hydrocarbons.

Within the ultra-deep shelf exploration program with McMoran Oil and Gas, the **Davy Jones offset** well is currently being completed. The **completion/production test** is expected during the **first half of 2014**.

Energy XXI has acquired the assets in **West Delta 32** from Black Elk Energy for **\$10.4 million**. Proved, probable, and possible reserves are estimated at **1 MMBOE**, of which **89 percent is oil**. The assets consist of 1,625 net acres and four platforms. Total production from the field was 250 BOEPD before being shut-in following an accident in November 2012.

 <p>100 Northpark Blvd. Covington, LA 70433 (985) 773-6000</p>	 <p><b>LaBay</b> Exploration Co., L.L.C.</p> <p>111 Veterans Memorial Blvd. Suite 1550 Metairie, Louisiana 70005</p> <p>Office (504) 371-5967 Fax (504) 371-5969 <a href="http://www.labayexploration.com">www.labayexploration.com</a></p>
---	---





# NOGS

## PETROLEUM GEOLOGY FOR NON-GEOLOGISTS

A One-Day Course

Tuesday, April 15, 2014

8:30 a.m. to 3:30 p.m.

Shell Auditorium • One Shell Square  
701 Poydras Street • New Orleans, LA

The New Orleans Geological Society is presenting a one-day course on “Petroleum Geology for Non-Geologists.” The course will consist of a brief introduction to Basic Geology, followed by a review of how oil and gas are formed, how they are concentrated into reservoirs, the geological and geophysical methods used in exploration, and an overview of drilling and completion practices.

This course should be of significant benefit and interest to anyone who in one way or another works with geologists and geological data, such as land personnel, administrative assistants, draftsmen, and computer programmers and processors.

Instructors will be Duncan Goldthwaite, consulting geologist, Bob Branson, consulting geologist, and Bruce Robertson, consulting geologist and geology professor at the University of Southern Mississippi.

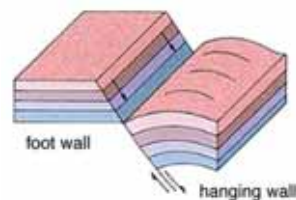
Cost will be \$35.00 per participant. Course notes and mid-morning refreshments will be provided. Interested persons can register and pay via PayPal through the Society's website [www.nogs.org/payment-center/](http://www.nogs.org/payment-center/), then click on “Buy Now” under NOGS Special Events, or by sending a check for \$35.00, made out to the New Orleans Geological Society, to:

New Orleans Geological Society  
810 Union Street • Suite 300 • New Orleans, LA 70112

When registering, please give your name, work or home address, email, telephone number and company affiliation, if any.

# Baton Rouge Geological Society & Louisiana Geological Survey

## *Fourth Annual Louisiana Subsidence & Land Loss Symposia Focus on Coastal Protection*



April 16, 2014

## *Eighth Annual Louisiana Groundwater & Water Resources Symposia Focus on Salt Water Intrusion*



April 17, 2014

Dalton Woods Auditorium  
Energy, Coast & Environment Building  
Louisiana State University  
Baton Rouge, Louisiana

**Presentation:**  
Titles due March 10, 2014  
Abstracts due April 1, 2014

For more information, email [dcarlson@lsu.edu](mailto:dcarlson@lsu.edu) or go to [www.brgs-la.org/](http://www.brgs-la.org/)

### **FOR EARLY REGISTRATION:**

Fill out the registration form below, detach and send the form with a check made out to Baton Rouge Geological Society to cover all costs to the address below.

Baton Rouge Geological Society  
L.S.U. Box 19151  
Baton Rouge, LA 70803

-----  
Name \_\_\_\_\_  
Address \_\_\_\_\_  
City \_\_\_\_\_ State \_\_\_\_\_ Zip Code \_\_\_\_\_  
Day Time Phone Number \_\_\_\_\_  
Email Address \_\_\_\_\_  
If you are registering as a student, state academic major and University you are attending:  
\_\_\_\_\_  
Signature of Advisor: \_\_\_\_\_

### **REGISTRATION FOR:**

Groundwater & Water Resources Symposia: Student \$10 \_\_\_\_\_ Professional \$50 \_\_\_\_\_  
Subsidence & Land Loss Symposia: Student \$10 \_\_\_\_\_ Professional \$50 \_\_\_\_\_  
Both of the symposia: Student \$10 \_\_\_\_\_ Professional \$75 \_\_\_\_\_





# GEOLOGY IN ACTION

**WKYT – “Sinkhole swallows 8 Corvettes at Kentucky museum.” – February 12, 2014**

<http://www.wkyt.com/home/headlines/Sinkhole-swallows-8-Corvettes-at-Kentucky-museum-245188261.html>

It has been confirmed that 8 vehicles were swallowed by a sinkhole at the Sky Dome at the National Corvette Museum. According to our sister station, WBKO in Bowling Green, the sinkhole is estimated to be around 40 feet wide and 20-30 feet deep.

The museum sent out the following release, detailing this morning's incident:

"We received a call at 5:44am from our security company alerting us of our motion detectors going off in our Skydome area of the Museum. Upon arrival it was discovered that a sinkhole had collapsed within the Museum. No one was in or around the Museum at the time. The Bowling Green Fire Department arrived on the scene and secured the area.

None of the cars affected were on loan from individuals. We have contacted a structural engineer who is arriving today to assess the existing damage and stability of the surrounding areas. While the Skydome area is closed, the remainder of the Museum is still open."



## ON THE LIGHTER SIDE

### Word Search: Rocks and Minerals

Search the grid horizontally, vertically, and diagonally in all directions for the words listed below. Words may overlap.

C	I	I	A	L	L	A	T	S	Y	R	C	M	Y	N	N
M	A	S	B	M	T	A	H	Y	C	T	I	I	I	E	N
Y	Z	T	R	A	U	Q	G	H	C	F	H	G	Y	C	A
E	U	O	M	I	N	E	R	A	L	A	P	R	R	I	A
L	R	P	A	E	M	A	R	I	T	F	R	A	A	M	A
A	I	A	E	S	H	B	N	F	L	E	O	N	T	U	O
H	T	Z	B	A	O	T	E	U	I	Y	M	I	N	P	D
S	E	C	O	N	G	L	O	M	E	R	A	T	E	C	N
S	L	M	A	D	D	R	P	Y	R	I	T	E	M	A	O
O	U	T	A	S	I	E	N	O	T	S	E	M	I	L	M
Y	E	O	P	T	J	A	S	P	E	R	M	D	D	C	A
L	B	A	E	O	I	S	A	P	P	H	I	R	E	I	I
M	R	U	C	N	I	T	T	L	A	S	A	B	S	T	D
R	N	N	R	E	G	A	E	L	B	B	E	P	R	E	U
E	C	L	N	N	L	I	Y	O	O	C	L	E	A	M	M
Z	J	G	A	C	G	D	E	T	R	U	E	P	L	M	P

AGATE  
AZURITE  
BASALT  
CALCITE  
CARBONATE  
CONGLOMERATE  
CRYSTAL  
DIAMOND  
FELDSPAR  
FLINT  
FLUORITE  
GEM  
GNEISS  
GRANITE  
HEMATITE  
IGNEOUS  
JASPER  
LIMESTONE  
METAMORPHIC  
MICA  
MINERAL  
OBSIDIAN  
PEBBLE

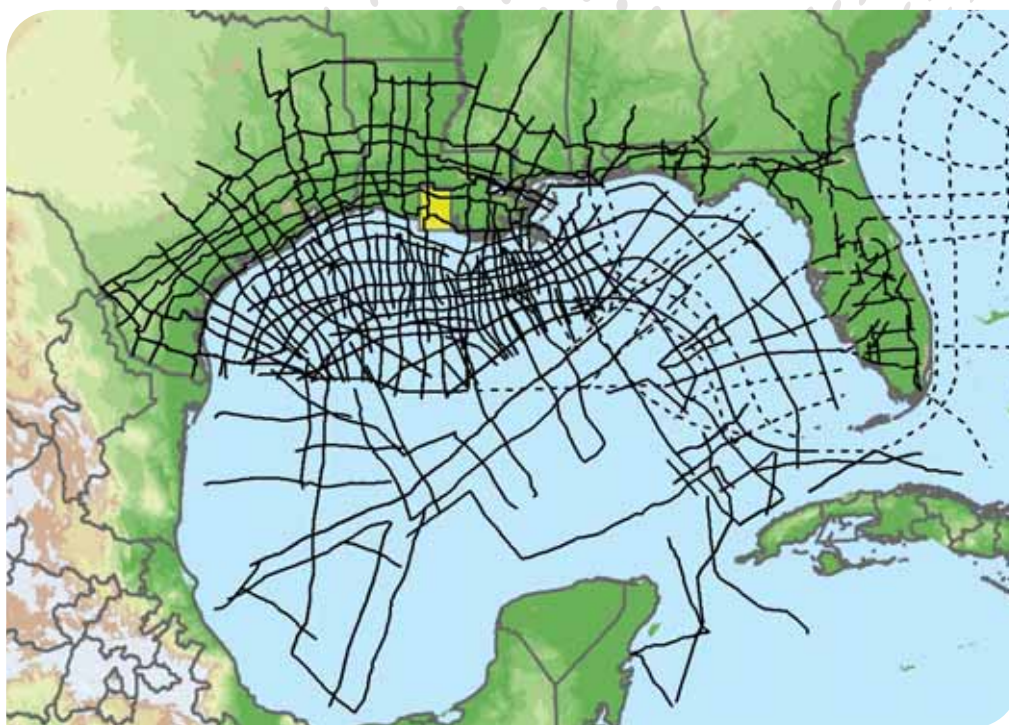
PUMICE  
PYRITE  
QUARTZ  
RUBY  
SANDSTONE  
SAPPHIRE  
SEDIMENTARY  
SHALE  
TALC  
TOPAZ

Puzzle created at  
[www.armoredpenguin.com/wordsearch/](http://www.armoredpenguin.com/wordsearch/)





# Explore the Entire Gulf of Mexico



Position your company for the next 10 years of exploration with the most complete, modern time and depth-imaged data in the Gulf of Mexico. ION's interconnected dataset links the entire Gulf, from onshore to offshore deep water, from Texas to Florida and to Mexico. With over 40,000 miles (over 65,000 km) completed or in progress, and an additional 7,500 miles (over 12,000 km) planned for 2013 and beyond, no other data library provides as comprehensive a framework for understanding the Gulf of Mexico.

To learn more, visit [iongeo.com/Gulf\\_of\\_Mexico](http://iongeo.com/Gulf_of_Mexico)

## CONTACT

Ashley Garcia  
Mobile: +1 281 781 1005  
Email: [ashley.garcia@iongeo.com](mailto:ashley.garcia@iongeo.com)

Alvin Rowbatham  
Mobile: +1 832 372 2366  
Email: [alvin.rowbatham@iongeo.com](mailto:alvin.rowbatham@iongeo.com)

## AREAS OF EXPERTISE

- Unconventional Reservoirs
- Challenging Environments
- Complex Geologies
- **Basin Exploration**
- Reservoir Exploitation



GEOVENTURES®

Submitted by Sheri Richardson

## **Rigzone.com – Karen Boman**

### ***“Production from Olympus Platform in U.S. Gulf Begins.” February 4, 2014***

[http://www.rigzone.com/news/article.asp?hpf=1&a\\_id=131416](http://www.rigzone.com/news/article.asp?hpf=1&a_id=131416)

Royal Dutch Shell plc has initiated production from the Mars B development through Olympus, the company's seventh and largest floating deepwater platform in the U.S. Gulf of Mexico.

Mars B is the first deepwater Gulf project to expand an existing oil and gas field with significant new infrastructure, which Shell said should extend the greater Mars basin's life to 2050 and beyond. Future production from Olympus and the original Mars platform should deliver 1 billion barrels of oil equivalent of resources.

The Shell Mars B development includes the Olympus drilling and production platform – located in approximately 3,100 feet (945 meters) of water -- subsea wells at the West Boreas and South Deimos fields, export pipelines, and a shallow water platform at West Delta Block 143 close to the Louisiana coast. Shell is operator of the Mars B development with 71.5 percent interest. BP plc holds 28.5 percent interest.

## **Nola.com - Jennifer Larino**

### ***“North shore exploration firm buys out competition in 80-year-old oilfield.” February 10, 2014***

[http://www.nola.com/business/index.ssf/2014/02/north\\_shore\\_exploration\\_firm\\_b.html](http://www.nola.com/business/index.ssf/2014/02/north_shore_exploration_firm_b.html)

A startup north shore exploration company targeting some of the south Louisiana's oldest oil and gas fields is in growth mode.

Covington-based Krewe Energy has purchased the wells and other assets of two Texas firms in the Lake Long oil and gas field in Lafourche Parish. The privately held company did not disclose a purchase price.

Managing Partner Tom De Brock said the recent purchases are part of an effort to consolidate ownership of wells and leases in the 80-year-old field, a target area for the young oil and gas firm.

Krewe Energy is one of a cluster of small oil and gas firms in the New Orleans area that continue to explore and develop parts of south Louisiana long abandoned by major oil companies, scouring decades-old well data and using newer technology to pinpoint remaining reserves. Interest in extracting oil from older fields is steady thanks to favorable oil prices.

De Brock, a geologist, founded Krewe Energy in September with longtime partner Barry Salisbury. Their previous venture, S2 Energy, ended when a third business partner retired late last year. Krewe now owns many of the wells and leases that were in the S2 Energy portfolio.

Lake Long, an onshore field with oil wells dating to 1935, and drilling areas off the coast of Plaquemines Parish are among the company's focus areas. The company secured a private equity investment last year from Sage Road Capital of Houston to help fund oil and gas development and acquisitions.

De Brock said Krewe's management team had been eyeing the acreage in Lake Long owned by BLG Resources of Dallas and PDP Energy Fund of Houston for months prior to the deal.

With the purchase, Krewe now owns about 1,700 gross acres in the field.

De Brock said about 10 of Krewe's wells in the area are producing oil and gas. The company is interested in using new techniques to bring another five or so dormant wells back into production. Around 50 wells have been drilled in the area total.

The next step is to file through stacks of old well records from Amoco Corp., the field's original owner, and later operators as well as updated digital seismic data to devise a strategy for coaxing the field back into production, he said. De Brock said the company recently hired a geologist and a reservoir engineer to guide the effort.

"It's not very romantic," De Brock said. "You make money just by going through the files, going through the notes, seeing what people were thinking back when Amoco owned it."

De Brock admitted the margins are tight for the amount of work that goes into bringing old wells back to life, a reason he said Krewe will continue to be aggressive in efforts to acquire leases in the Lake Long area owned by competitors.

De Brock guesses the company probably has about 20 prospects in the Lake Long area. But he noted only a handful of those will turn into successful wells.

"You always have to turn over 100 stones to find one diamond," De Brock said.



## Geoconsulting, Inc.

Geological and Geophysical Consulting  
3-D Seismic Interpretation

Ben D. Sydboten, Jr. CPG

2 Flagg Pl., Suite 1  
Lafayette, LA 70508

[www.saigeoconsulting.com](http://www.saigeoconsulting.com)

Office (337) 504-3670

Cell (337) 456-8948



**Anthony Catalanotto**  
President

Geological  
Geophysical  
Land

*Drafting & Graphics*

3349 Ridgelake Drive • Suite 202  
Metairie, LA 70002  
Office: (504) 836-2882  
Fax: (504) 836-2877  
Cell: (504) 481-7291  
E-Mail: [geodraft@bellsouth.net](mailto:geodraft@bellsouth.net)  
Website: [www.geodraftinc.com](http://www.geodraftinc.com)

## NORTHCOAST OIL COMPANY

610 E. Rutland St.  
Covington, LA 70433

(985) 898-3577

(985) 898-3585 Fax

Jack M. Thorson

Eric C. Broadbridge

J. Daryl Gambrell

Raymond W. Stephens



ETROA Resources LLC

Join us in pursuing gulf coast production,  
acquisitions and low-risk drilling opportunities

John C. Ebert  
Kevin McVey

128 Northpark Blvd.  
Covington, LA 70433  
(985) 809-3808

[www.etroa.com](http://www.etroa.com)

## Collarini Energy Staffing, Inc.

Facilities • Drilling • Production • Reservoir Engineering  
Land and Legal • Geosciences • Information Technology  
Health and Safety • Management • Supply Chain  
Accounting • Administrative Support



*Full-Time and Temporary Personnel*

Energy Trading • Civil Engineering • Executives  
Human Resources • Instrument and Electrical  
Engineering • Marine Engineering • Project Management  
Technical Writing • Sales and Marketing

10497 Town and Country Way, Suite 950, Houston, Texas 77024

Telephone: (832) 251-0553

[www.collarini.com](http://www.collarini.com)

## DOMESTIC AND INTERNATIONAL BIOSTRATIGRAPHIC SERVICES



6619 Fleur de Lis Drive  
New Orleans, LA 70124  
(504) 488-3711

[www.paleodata.com](http://www.paleodata.com)



Complete wellsite paleo services

Supported offshore GoM and  
onshore LA paleo databases

Integrated foram/nannofossil  
analyses

In-house sample preparation  
lab for quality-monitoring  
and efficiency

Comprehensive depositional  
history study of the Gulf Basin  
based on 200,000+ well data  
analysis



**LAFAYETTE  
GEOLOGICAL  
RESEARCH  
CENTER, LLC**

201 Heymann Blvd., Suite 33 • Lafayette, LA 70503  
Tel: 337-233-8197 • Fax: 337-233-8177

### COVERAGE:

Louisiana / Federal / State Offshore  
• Multi State Geo Tech Services • Completion Data  
Production Data • Well Logs • Maps

~ MEMBERSHIPS AVAILABLE ~

The Industry's Premier • Well Data Center

[orders@lafayetteegrc.com](mailto:orders@lafayetteegrc.com)

CALL OR EMAIL TODAY FOR MORE INFORMATION!



**THIS AD SPACE AVAILABLE**  
Contact: [annette@nogs.org](mailto:annette@nogs.org)



## THE NEW ORLEANS GEOLOGICAL SOCIETY MEMORIAL FOUNDATION, INC.

The Memorial Foundation is an IRS Tax Exempt Code #501(c)(3) organization. The Federal I.D. is 72-1220999. Please consider making a donation to the Foundation. Your individual support in any amount will help meet the IRS Guidelines for our Foundation. Thanks!

**\$10,000**

### Gibbet Hill Foundation

*In Memory of Steve & Marion Millendorf, William J. Prutzman,  
Roger G. Vincent, Ron Youngblood and Uno Numella*

**\$5,000**

### NOGS Golf Tournament 2013

*In Memory of Bill Craig*

**\$500**

### Mr. Reuben J. Klibert, Jr.

*In Memory of Reuben S. Klibert, Sr.  
and Jame Wade Klibert*

### Mr. Armour C. Winslow

*In Memory of Rita Menzel Winslow  
and Lawrence C. Menconi*

**\$250 TO \$499**

### Mr. Thomas C. Bergeon

*In Memory of Erik Mason  
and Brian O'Neill*

### Mr. Marc Cooper

*Through the Marathon Oil Co.  
MEPAC Program*

### Mr. Carlo C. Christina

*In Memory of Al Gilreath*

### Mr. William M. Whiting

**UP TO \$249**

### Mr. Woods W. Allen, Jr.

*In Memory of William C. Ward*

### Mr. Robert J. Ardell

*In Memory of L. David Collier  
In Memory of Jim Seglund*

### Mr. R. H. Baillio, Jr.

*In Memory of T. Wayne Campbell & Jack Dunlap*

### Mr. Maurice N. Birdwell

### Mr. Burton C. Bowen

### Mr. Hilary James Brook

### Ms. Robin A. Broussard

### Mr. Rob Burnett

### Ms. J. Sybil Callaway

### Chevron Humankind Matching Funds

### Mr. Arthur F. Christensen

### Mr. Merle J. Duplantis

### Mr. Michael N. Fein

### Mr. Sherwood M. Gagliano

### Mr. Arthur J. Garden

### Mr. Bernard L. Hill, Jr.

### Mr. Jeff Jandegian

### Mr. Robert M. Jemison, Jr.

### Mr. Paul Jurik

### Mr. Tom Klekamp

*In Memory of Kenneth J. Fulton*

### Mr. John C. Kucewicz, Jr.

### Mr. John C. "Jack" Langford

### Mr. Cyril F. Lobo

### Ms. Jeannie F. Mallick

### Ms. Margaret M. McKinney

### Mr. Paul C. McWilliams

### New Orleans Geological Auxiliary

*In Memory of Sybil Barton and Ruth Grimes*

### Mr. Richard A. Olsen

### Mrs. Teresa O'Neill

*In Memory of Brian O'Neill*

### Mr. William S. Peirce

### Mr. Edward B. Picou, Jr.

*In Memory of Lawrence C. Menconi*

*In Memory of Clarence F. Conrad*

### Mr. George W. Schneider, Jr.

*In Memory of George Schneider, Sr.*

### Mr. Robert T. Sellars, Jr.

*In Memory of Robert G. Williamson*

### Mr. George D. Severson

### Mr. Rudolf B. Siegert

## FONO FUND

The FONO Fund accepts contributions that are invested and the income dedicated to assure sufficient financial resources will always be available to maintain the NOGS business office. Contributors are reminded that donations to the FONO Fund are not covered by the IRS 501(c)(3) tax exempt classification and should be reported as a business expense on your IRS tax report.

**\$500**

### Mr. James A. Hartman

**\$250 TO \$499**

### Mr. Reuben J. Klibert, Jr.

**UP TO \$249**

### Mr. Donald I. Andrews

### Mr. Alfred H. Baker, Jr.

### Mr. David E. Balcer

### Mr. Joseph E. Boudreaux

### Ms. J. Sybil Callaway

### Mr. Anthony Carollo, Jr.

### Mr. John Dombrowski

### Mr. Merle J. Duplantis

### Mr. Richard A. Edmund

### Mr. Michael N. Fein

### Mr. William J. Furlong

### Mr. David Garner

### Mr. Bernard L. Hill, Jr.

### Mr. Kenneth Huffman

### Mr. Arthur H. Johnson

### Mr. Paul Jurik

### Mr. Tom Klekamp

### Mr. Louis Lemarié

### Mr. H. David Lynch

### Ms. Jeannie F. Mallick

### Mr. George M. Markey, Jr.

### Ms. Margaret M. McKinney

### Mr. Paul C. McWilliams

### Mr. Richard A. Olsen

### Mr. William S. Peirce

### Mr. Luther Franklin Rogers, Jr.

### Mr. C. R. Rondeau

### Mr. Bay Salmeron

### Mr. George D. Severson

### Mr. Rudolf B. Siegert

### Mr. Richard J. Stancliffe

### Mr. Bryan P. Stephens

### Mr. Raymond Stephens

### Mr. Robert K. Sylvester

### Dr. David M. Tatum

### Mr. Roy C. Walther

### Mr. Robert C. Weissmann

### Mr. William M. Whiting

### Ms. Frances A. Wiseman

## BILL CRAIG FUND

### Mr. Bernard L. Hill, Jr.

### Mr. Bay Salmeron

### Mr. John C. Scheldt

*In Memory of William C. Ward*

### Ms. Candace V. Strahan

*In Memory of James R. Strahan*

Contributions for both funds through February 9, 2014.  
Donations are listed for one year.

<p><b>ANSYTHE</b> Donald I. Andrews <b>504-887-3432</b></p> 	<p><b>CLASSEN EXPLORATION, INC.</b> <b>James S. Classen</b> Looking for close in deals P.O. Box 140637 Boise, ID 83714 klassenllc@msn.com Bus. (208) 854-1037 Fax (208) 854-1029</p>
<p><b>THE BOEBEL COMPANY</b> Oil and Gas Investments New Orleans, LA 70153 <b>(504) 866-4313</b></p>	<p><b>D-O-R ENGINEERING, INC.</b> <b>3-D and Geoscience Services</b> 6161 Perkins Rd. P.O. Box 80812 Bus: (225) 765-1914 Baton Rouge, LA 70898</p>
<p><b>BOO-KER OIL &amp; GAS CORP.</b> <b>Gray S. Parker</b> 826 Union, Suite 300 New Orleans, LA 70112 Bus. (504) 581-2430 Fax (504) 566-4785</p>	<p><b>EDWARD B. PICOU, JR.</b> <b>Consulting Micropaleontologist - Retired</b> 228 St. Charles Ave., Suite 1330 C New Orleans, LA 70130 Bus. (504) 529-5155 Res. (504) 282-3096</p>
<p><b>C &amp; R EXPLORATION, INC.</b> <b>Carlo C. Christina</b> <b>Lawrence G. Ringham</b></p>	<p> <b>GEOLOGY ENVIRONMENTAL MANAGEMENT</b> <b>GEM Consulting, LTD</b> <b>Michael Louis Merritt</b> admin@gemconsultingltd.com</p>
<p><b>TONY CAROLLO</b> Consulting Geologist Unitization • Geosteering • Field Studies 1701 Peach Street Metairie, LA 70001 Bus. (504) 885-0004 Res. (504) 885-6829</p>	<p><b>Explore the ENTIRE Gulf of Mexico</b>  <b>Alvin Rowbatham</b> 832-372-2366 • alvin.rowbatham@iongeo.com <b>Ashley Garcia</b> 281-781-1005 • ashley.garcia@iongeo.com www.iongeo.com/Gulf_of_Mexico</p>
 <p><i>Thanks our sponsors for their support!</i></p> <p><i>Special Thanks to</i></p>  <p><b>DIVERSIFIED</b> WELL LOGGING, LLC</p>	<p><b>PHELPS GEOSCIENCE LLC</b> Onshore Gulf of Mexico Geology and Geophysics Prospect Generation and Evaluation Houston, TX jsfphelps@yahoo.com (281) 398-5208</p>
	<p> <b>RAFIDI OIL &amp; GAS, INC.</b> Jaser N. Rafidi, President 4913 James Drive Metairie, LA 70003 Office: 504.453.8580 Res/Fax: 504.888.1661</p>
	<p><b>ROY C. WALTHER</b> Petroleum Geologist 2421 Prancer Street New Orleans, LA 70131 Bus. (504) 392-8513 Res. (504) 392-9332</p>
	<p> <b>STONE ENERGY</b> www.StoneEnergy.com 625 E. Kaliste Saloom Lafayette, LA 70508 16800 Greenspoint Dr., Suite 225-S Houston, TX 77060 1100 Poydras St., Suite 1050 New Orleans, LA 70163</p>
	<p><b>ZOT OIL &amp; GAS, LLC</b> <b>Jim Zotkiewicz</b> Consulting, Evaluation, and Prospect Generation Metairie, LA 70002 Bus. 504.267.9131 Email: jimzot38@zotoil.com</p>



# CENTURY EXPLORATION NEW ORLEANS, LLC

*An independent gulf coast exploration, development and operating company*

Three Lakeway Center, Suite 2800  
3838 North Causeway Blvd.  
Metairie, LA. 70002

Office: 504.832.3750  
Fax: 504.832.3760  
[www.centuryx.com](http://www.centuryx.com)



# You should see what you're missing

## Tap untapped potential with seismic clarity. Get the clearest images in Garden Banks/Keathley Canyon.

Using high-resolution geologically constrained hyperTomo and TTI RTM, sub-salt imaging is greatly enhanced, reducing exploration risk and increasing your chance of success.

- **Crystal A** - 250 OCS blocks available now
- **Crystal B** - 330 OCS blocks available December 2013

Houston  
Main: +1 281 509 8000  
gominfo@pgs.com

A Clearer Image | [www.pgs.com](http://www.pgs.com)







## NEW ORLEANS GEOLOGICAL SOCIETY

810 Union Street, Suite 300  
New Orleans, LA 70112-1430

PRESORT  
STANDARD  
US POSTAGE  
**PAID**  
MAIL TECH

[www.nogs.org](http://www.nogs.org)



MARINE PROPERTIES, LLC  
BERKSHIRE EXPLORATION CO.

MONTE C. SHALETT, CPL, PRESIDENT

3030 Lausatz Street  
Metairie, LA 70001-5924

BUS. (504) 831-7779  
FAX (504) 831-8315

**PCI**

**Paleo Control, Inc.**

Houston, Texas  
713-849-0044

Drilling Wells, Studies and Data Base

Loyd Tuttle

Frio, SE Texas

Bob Liska

Wilcox, S and SE Texas

Jim Thorpe

Miocene and Cam-Miogyp



# THIS AD SPACE AVAILABLE

Contact:

[annette@nogs.org](mailto:annette@nogs.org)