

# NOGS LOG

JULY 2014

Volume 55, Number 1



**JULY 7 - NOGS LUNCHEON**  
**Presentation: Climate Change: Facts and Fictions**  
**Guest Speaker: W.C. Rusty Riese, Ph.D.**  
**Rice University • Houston, Texas**



# SEE THE ENERGY

## DIRECTIONAL SURVEY PLUS

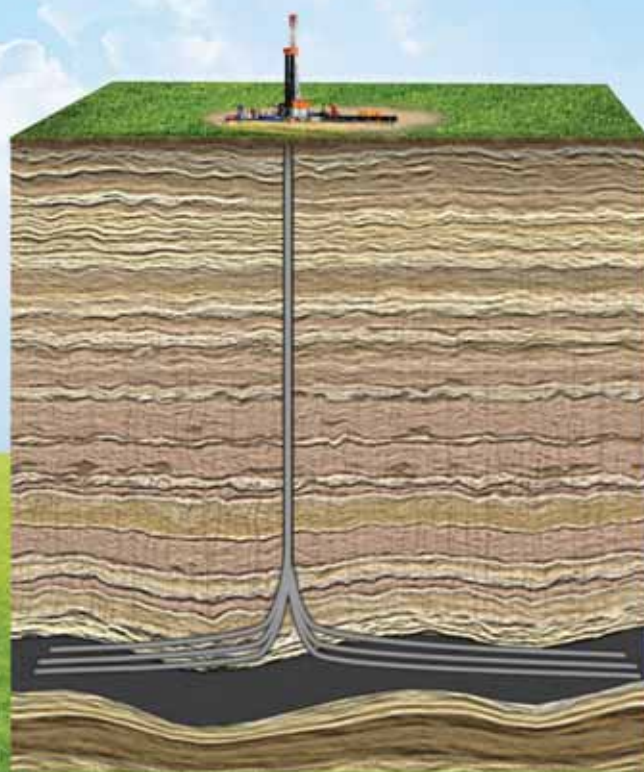
Directional Survey Plus (DS+) data goes beyond the simple capture of measured depth, azimuth and inclination. DS+ data are thoroughly researched, re-processed and standardized to create the most accurate spatial representation of the well path, from surface to total depth.

Access Directional Survey Plus data and the industry's largest collection of digital well logs quickly and easily through the online well data portal, LOG-LINE Plus!®

For more information, contact TGS at:

Tel: +1 713 860 2100

Email: [info@tgs.com](mailto:info@tgs.com)



[WWW.TGS.COM](http://WWW.TGS.COM)

© 2013 TGS-NOPEC GEOPHYSICAL COMPANY ASA. ALL RIGHTS RESERVED.

**TGS**  See the energy.



Published monthly by the New Orleans Geological Society.  
This issue was sent to press on June 24, 2014.

**Interested in contributing to the NOGS LOG?** Please submit items by the 1st Friday of the month to [nogseditor@gmail.com](mailto:nogseditor@gmail.com). Advertising requests should contact the NOGS office at [info@nogs.org](mailto:info@nogs.org).

## IN THIS ISSUE

### Regular Features:

From the Editor.....	3
From the President.....	5
NOGS Officers / Contacts .....	6
Upcoming Events & Activities .....	7
NOGS Luncheon Presentation.....	9
July & August Calendars .....	12
NOGA News.....	13
Drill Bits .....	24
Info-Tidbits .....	31
NOGS Memorial Foundation.....	33
FONO Fund .....	33

### Special Features:

NOGS Election Results .....	10
Geoscientists License Announcement .....	10
NOGS Welcomes .....	15
2014 Sr. Division Science Fair Winners .....	17
2014 Golf Tournament Photo Collage.....	18-19
Past Presidents' Luncheon .....	21
NOGS Committee News .....	22
AAPG Leadership Announcement .....	26
Schlumberger Inaugural Opening Seminar .....	28-29

## on the cover

**Cover Photo Taken & Submitted by: Dana Marion Smith**

### Mammoth Hot Springs — Yellowstone National Park

Mammoth Hot Springs is a large complex of hot springs on a hill of travertine in Yellowstone National Park adjacent to Fort Yellowstone and the Mammoth Hot Springs Historic District. It was created over thousands of years as hot water from the spring cooled and deposited calcium carbonate (over two tons flow into Mammoth each day in a solution). Although these springs lie outside the caldera boundary, their energy has been attributed to the same magmatic system that fuels other Yellowstone geothermal areas.

The hot water that feeds Mammoth comes from Norris Geyser Basin after traveling underground via a fault line that runs through limestone and roughly parallel to the Norris-to-Mammoth road. The limestone from rock formations along the fault is the source of the calcium carbonate. Shallow circulation along this corridor allows Norris' superheated water to slightly cool before surfacing at Mammoth, generally at about 170°F (80°C). Algae living in the warm pools have tinted the travertine shades of brown, orange, red, and green.

Source: [http://en.wikipedia.org/wiki/Mammoth\\_Hot\\_Springs](http://en.wikipedia.org/wiki/Mammoth_Hot_Springs)

# From the Editor



Ever since I moved to Louisiana seven years ago I have been impressed by the amount of rain we get in June. The result of all the downpours and gloomy days is the lush green landscape we see all around us. The new growth flourishes and the established growth becomes stronger, ready to endure the heat to come in late summer.

As a new geologist, I sometimes think of the work needed as we work together as geologists; "downpours" of work can be overwhelming. We plan and drill wells, in an established field the amount of data you synthesize quickly is full of learning with growth opportunities. You lean on your mentors, asking questions and mulling over concepts many times. Mentors are reminded of the sequence of skills they have come to rely on without thinking. We all use this "downpour" of activity to prepare for the heat of the next cycle of work.

As a Society, NOGS has membership on both ends of the career cycle. We lean on each other, share and grow together. In this issue you will see the Deep Water Technical Symposium is just around the corner. Take this and all other events as a chance to build relationships and mentor others!

**Tavia Prouhet – NOGS LOG Editor**



# These nodes change everything.

With absolutely no cables,  
there's absolutely no stopping you.



True cable-free seismic

Dealing with tons of cable will hinder any seismic acquisition, land or marine. That's why our exclusive, true cable-free ZNodal® systems pay such huge dividends in any environment.

Our lightweight, compact ZLand® system lets your crews work faster and much more safely while recording high-resolution data, even in the most challenging terrain.

Our ZMarine® system, also completely self-contained, deploys easily and safely, even in congested areas, to water depths of 3000m, which makes it ideal for 4D reservoir monitoring.

Welcome to a new world of seismic acquisition.



[FairfieldNodal.com](http://FairfieldNodal.com)



# From the President

Happy Independence Day and special thanks to our veterans and those who are currently serving our country! Hope all of you have a wonderful and safe holiday.

In the spirit of an Uncle Sam slogan, "I want you" to be active in NOGS. What does that mean? It means our NOGS organization would benefit from more than just your name on the roster. It means that participation from you, as either an active committee head, an active committee member, or even a Board member is the jump off point not only to the success of our organization, but also to you getting a more meaningful experience from NOGS.

Our monthly presentations with lunch, special events, networking opportunities and variety of technical conferences (e.g., Deepwater Symposium – August 5-7, 2014) are key services that NOGS facilitates for our members. Please continue to take advantage of those moments and encourage your fellow geo-colleagues to do the same.

Having said that, thank you all for being members and making NOGS what it is today! We strive to be better and can only do that with your help. There are 5 councils consisting of **29 committees** that have vacancy for you to head and/or be a member. That's **29 different opportunities** to find areas of our organization that you feel passionate about and willing to help NOGS grow. Below is a list of our councils and committees for your consideration:

**Activities Council:** Entertainment Committee, Program Committee, Best Paper Committee, Sponsorship Committee, NGNO (New Geologists of New Orleans) Committee

**Business Council:** AAPG Delegates Committee, Awards Committee, Ballot Committee, Employment Counseling Committee, Audit Committee, Nominating Committee, Publications Sales Committee, Technical Projects Committee, Office Operations Committee, Finance and Investment Committee

**Community Relations Council:** AAPG Student Chapter Committee, School Outreach Committee, External Affairs Committee, Scouting Committee

**Education Council:** Continuing Education Committee, Field Trip Committee, Non-Technical Education Committee, Environmental Committee

**Publicity & Records Council:** Advertising Committee, Directory Committee, Historical Committee, Membership Committee, *NOGS LOG* Committee, Photography Committee

Thank you to the 2013-2014 Board for your tireless service to our NOGS community. Your time, energy and dedication are recognized and appreciated by all!

Welcome to the 2014-2015 Board! We consist of seasoned leaders and fresh blood...a recipe for a rock star year!

So remember, where will you serve? Please contact me or the current committee chairperson (names & e-mail found on page 6 of *NOGS LOG*) to sign up or find out more information.

## NOGS Office

Office Manager: Annette Hudson

Phone: 504-561-8980 • Email: [info@nogs.org](mailto:info@nogs.org) • Website: [www.nogs.org](http://www.nogs.org)

The office is located at 810 Union Street, Suite 300, New Orleans, LA 70112.

Correspondence and all luncheon reservations should be sent to the above address.



## BOARD OF DIRECTORS

		<b>Company</b>	<b>Phone</b>	<b>E-mail</b>
President	Kelli Hardesty	Environmental Resources Mgmt.	504-831-6700	<a href="mailto:kellihardesty@erm.com">kellihardesty@erm.com</a>
Vice President	Jennifer Connolly	Shell	504-728-6411	<a href="mailto:jennifer.connolly@shell.com">jennifer.connolly@shell.com</a>
Secretary	Bryan Banks	Terracon	318-450-5300	<a href="mailto:jbbanks@terracon.com">jbbanks@terracon.com</a>
Treasurer	Arthur H. Johnson	Hydrate Energy International	504-220-6208	<a href="mailto:artjohnson51@hotmail.com">artjohnson51@hotmail.com</a>
President-Elect	David E. Reiter	Stone Energy Corporation	504-593-3623	<a href="mailto:reiterde@stoneenergy.com">reiterde@stoneenergy.com</a>
Editor	Tavia Prouhet	Chevron	985-773-6737	<a href="mailto:tavia.prouhet@chevron.com">tavia.prouhet@chevron.com</a>
Director 2015	William M. Whiting	Consultant	504-947-8495	<a href="mailto:bootscon@aol.com">bootscon@aol.com</a>
Director 2016	Jim Zotkiewicz	Zot Oil & Gas	504-267-9131	<a href="mailto:jimzot38@zotoil.com">jimzot38@zotoil.com</a>
Director 2017	J. David Cope	Rising Natural Resources LLC	504-214-6754	<a href="mailto:greatmre@aol.com">greatmre@aol.com</a>

## COMMITTEE

	<b>Chairperson</b>			
AAPG Delegates	William M. Whiting	Consultant	504-947-8495	<a href="mailto:bootscon@aol.com">bootscon@aol.com</a>
AAPG Student Chapter	Kathryn Denommee	LSU		<a href="mailto:kdenom1@lsu.edu">kdenom1@lsu.edu</a>
AAPG Student Chapter	W. Matt Benson	Tulane University		<a href="mailto:wbenson3@tulane.edu">wbenson3@tulane.edu</a>
AAPG Student Chapter	Rachel Carter	UNO	917-710-8021	<a href="mailto:r_carter@me.com">r_carter@me.com</a>
Advertising-Log	Kimberly Maginnis	LLOG Exploration	985-801-4761	<a href="mailto:kimberlym@llog.com">kimberlym@llog.com</a>
Auditing	Chuck Holman	Saratoga Resources	985-809-9292	<a href="mailto:charleswholman@bellsouth.net">charleswholman@bellsouth.net</a>
Awards	Michael N. Fein	W & T Offshore	504-210-8148	<a href="mailto:mikef@wtoffshore.com">mikef@wtoffshore.com</a>
Ballot	Arthur H. Johnson	Hydrate Energy International	504-220-6208	<a href="mailto:artjohnson51@hotmail.com">artjohnson51@hotmail.com</a>
Best Paper	Bay Salmeron	Chevron	832-854-6431	<a href="mailto:bay.salmeron@chevron.com">bay.salmeron@chevron.com</a>
Entertainment	David E. Reiter	Stone Energy Corporation	504-593-3623	<a href="mailto:reiterde@stoneenergy.com">reiterde@stoneenergy.com</a>
Environmental	Daisy Pate	Pontchartrain Partners	504-862-1775	<a href="mailto:daisy.pate@gmail.com">daisy.pate@gmail.com</a>
External Affairs	Michael A. Fogarty	Sylvan Energy, LLC	603-523-4808	<a href="mailto:mike.a.fogarty@gmail.com">mike.a.fogarty@gmail.com</a>
Finance and Investment	Arthur H. Johnson	Hydrate Energy International	504-220-6208	<a href="mailto:artjohnson51@hotmail.com">artjohnson51@hotmail.com</a>
Historical	Edward B. Picou, Jr.	Consultant	504-529-5155	<a href="mailto:epicou@bellsouth.net">epicou@bellsouth.net</a>
Membership/Directory	David E. Reiter	Stone Energy Corporation	504-593-3623	<a href="mailto:reiterde@stoneenergy.com">reiterde@stoneenergy.com</a>
New Geoscientists (NGNO)	Jeremy Prouhet	Chevron	985-713-6927	<a href="mailto:jeremyprouhet@chevron.com">jeremyprouhet@chevron.com</a>
Nominating	Michael N. Fein	W & T Offshore	504-210-8148	<a href="mailto:mikef@wtoffshore.com">mikef@wtoffshore.com</a>
Non-Technical Education	Duncan Goldthwaite	Consultant	504-887-4377	<a href="mailto:DGldthwt@aol.com">DGldthwt@aol.com</a>
Office Operations	Chuck Holman	Saratoga Resources	985-809-9292	<a href="mailto:charleswholman@bellsouth.net">charleswholman@bellsouth.net</a>
Publications Sales	Edward B. Picou, Jr.	Consultant	504-529-5155	<a href="mailto:epicou@bellsouth.net">epicou@bellsouth.net</a>
School Outreach	Thomas C. Bergeon	Century Exploration	504-832-3772	<a href="mailto:Tom.bergeon@centuryx.com">Tom.bergeon@centuryx.com</a>
Special Projects	TBD			

## NOGS LOG STAFF

Editor	Tavia Prouhet	Chevron	985-773-6737	<a href="mailto:tavia.prouhet@chevron.com">tavia.prouhet@chevron.com</a>
Editor-Elect	Tom Klekamp	Amber Resources LLC	985-630-2480	<a href="mailto:ekle1959@gmail.com">ekle1959@gmail.com</a>
Auxiliary	Peggy Rogers	NOGA	504-392-6323	<a href="mailto:lrogers79@cox.net">lrogers79@cox.net</a>
Drill Bits	Al Baker	Beacon Exploration, LLC	504-836-2710	<a href="mailto:ABaker1006@aol.com">ABaker1006@aol.com</a>
Drill Bits	Carlo C. Christina	Retired (C & R Expl. Inc)		<a href="mailto:drillbits81@yahoo.com">drillbits81@yahoo.com</a>
Drill Bits	Kevin Trosclair	Stone Energy Corporation	504-202-7997	<a href="mailto:kevintrosclair@gmail.com">kevintrosclair@gmail.com</a>
Staff Photographer	Arthur Christensen	Shalimar Consulting	985-893-2013	<a href="mailto:arthur_shalimar@yahoo.com">arthur_shalimar@yahoo.com</a>
Layout	Kristee Brown	Creative Graphics & Printing, LLC	985-626-5223	<a href="mailto:kpbrown@bellsouth.net">kpbrown@bellsouth.net</a>
Webmaster	Kevin Trosclair	Stone Energy Corporation	504-202-7997	<a href="mailto:kevintrosclair@gmail.com">kevintrosclair@gmail.com</a>

## NOGS AUXILIARY

<b>Officers</b>		<b>Phone</b>	<b>Directors</b>	<b>Year</b>	<b>Phone</b>
President	Mary Walther	504-392-9332	Trudy Corona	2013-15	504-737-6101
Vice-President	Mary Ellis Hasseltine	504-885-7657	Debra Fein	2013-15	504-831-0358
Secretary	Peggy Rogers	504-392-6323	Susan Baker	2014-16	504-466-4483
Treasurer	Judy Lemarié	504-393-8659	Judy Sabaté	2014-16	504-861-3179
Parliamentarian	Alma Dunlap	504-737-2678			
Member-at-Large	Jean Jones	504-738-8091			



# UPCOMING Events & Activities

## July 7 • NOGS Luncheon

Holiday Inn Downtown Superdome

\$3.00 validated parking in hotel garage

Presentation:

***Climate Change: Facts and Fictions***

Guest Speaker:

**W.C. Rusty Riese, Ph.D.**

Rice University • Houston, Texas

See page 9 for Abstract and Biography

### HOLIDAY INN DOWNTOWN SUPERDOME

Check with concierge or  
front desk for location.

Lunch served at 11:30 am

### ADMISSION:

With reservation ..... \$30.00

Without reservation..... \$35.00

Student Member with reservations..... FREE

**ONE-DAY  
SEMINAR**

**August 5**

**Dr. John W. Snedden**

8:30 am - 3:00 pm • Hilton Riverside • New Orleans, LA

See page 28 & 29 for details!

**August 5-7**

**Gulf of Mexico Deepwater Technical Symposium**

Hilton Riverside • New Orleans, LA

For more information, [www.deepwatermola.org](http://www.deepwatermola.org)

**August 20-22**

**Summer NAPE**

George R. Brown Convention Center • Houston, TX

For more information, [www.napeexpo.com](http://www.napeexpo.com)

**August 25-27**

**URTeC**

Colorado Convention Center • Denver, CO

For more information, [www.urtec.org](http://www.urtec.org)

*NOGS will not have an August luncheon due to the one-day seminar on August 5 - see page 28 & 29 for details.*

## NOGS CONTACT LIST

*Continued from previous page*

### MEMORIAL FOUNDATION BOARD OF TRUSTEES

2014-2015	Chairman	Chuck Holman
2014-2015	Secretary	Kelli Hardesty
2014-2015	Trustee	Rick Kear
2014-2015	Trustee	TBA
2015-2016	Trustee	William M. Whiting
2015-2016	Trustee	David E. Reiter
2016-2017	Trustee	TBA
2016-2017	Trustee	TBA

### AAPG DELEGATES

#### Term Ends

2015	Susan A. Waters
2015	William M. Whiting
2015(a)	David E. Balcer
2015(a)	Earl W. Cumming
2017	Elizabeth McDade
2017(a)	G. Alex Janevski

### NEW MEMBERS

Timothy P. Whitacre	Geologist
Corey R. Hinyup	Graduate Student

### Company

Saratoga Resources Inc.
Environmental Resources Management
Schlumberger Oil Field Services

Consultant
Stone Energy Corporation

### Phone

985-809-9292
504-831-6700
504-858-2444

504-947-8495
504-593-3623

### E-mail

<a href="mailto:charleswholman@bellsouth.net">charleswholman@bellsouth.net</a>
<a href="mailto:kelli.hardesty@erm.com">kelli.hardesty@erm.com</a>
<a href="mailto:kear1@slb.com">kear1@slb.com</a>

<a href="mailto:bootscon@aol.com">bootscon@aol.com</a>
<a href="mailto:reiterde@stoneenergy.com">reiterde@stoneenergy.com</a>

504-728-0229
504-947-8495
985-773-6725
985-630-6898
504-582-4510
504-425-6214

<a href="mailto:susan.waters@shell.com">susan.waters@shell.com</a>
<a href="mailto:bootscon@aol.com">bootscon@aol.com</a>
<a href="mailto:dbalcer@chevron.com">dbalcer@chevron.com</a>
<a href="mailto:earlcumming@bellsouth.net">earlcumming@bellsouth.net</a>
<a href="mailto:elizabeth_mcdade@fmi.com">elizabeth_mcdade@fmi.com</a>
<a href="mailto:gregory.janevski@shell.com">gregory.janevski@shell.com</a>

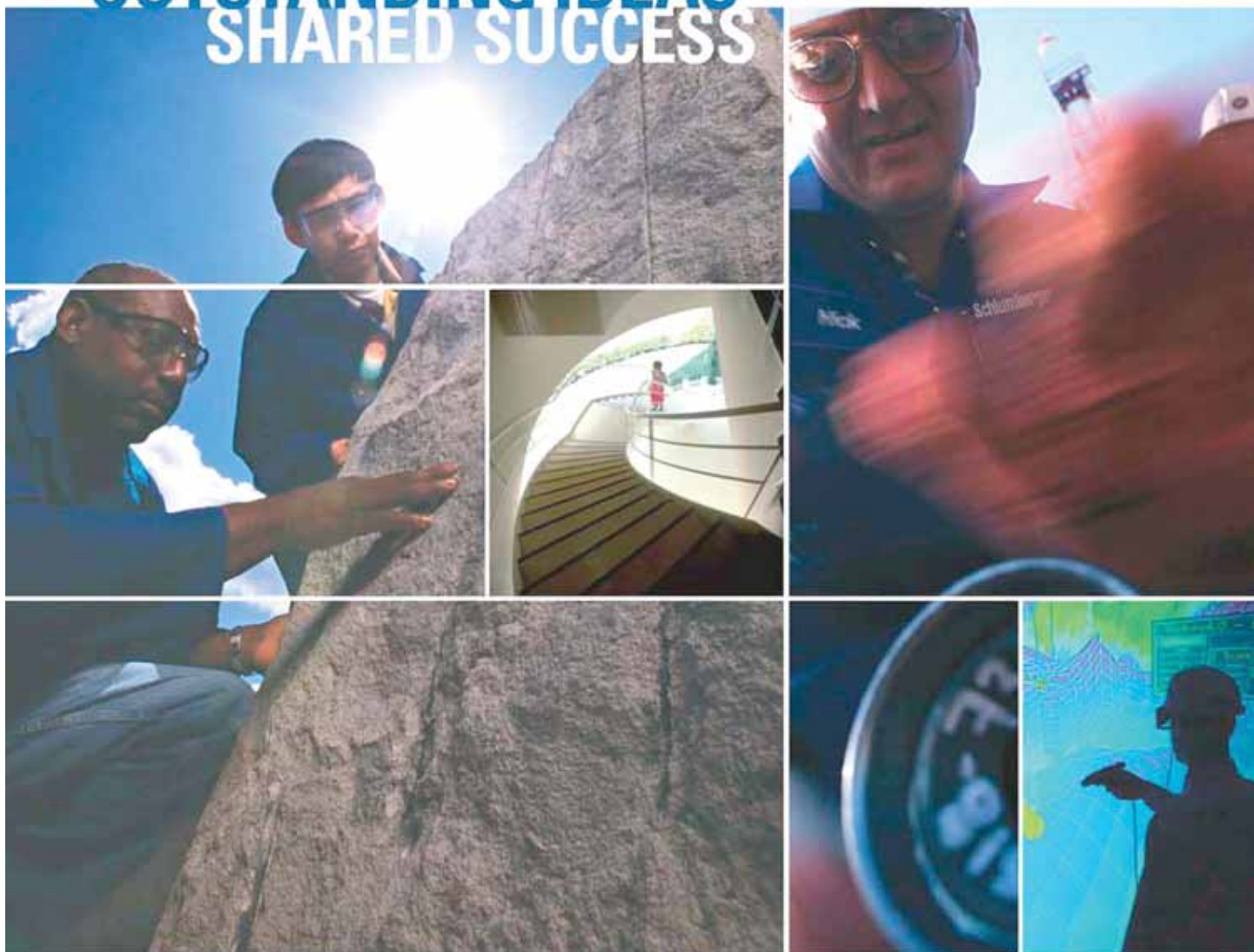
Shell
UNO

504-280-7488

<a href="mailto:timothy.whitacre@shell.com">timothy.whitacre@shell.com</a>
<a href="mailto:chinyup@uno.edu">chinyup@uno.edu</a>



# OUTSTANDING IDEAS SHARED SUCCESS



**WHAT CAN MILLIONS OF IDEAS,** thousands of patents, and hundreds of nationalities deliver? Success. Listening to the ideas of our clients and colleagues around the globe has made Schlumberger the world's leading technical services company. Your experiences are catalysts for our innovation.

Schlumberger invests in a worldwide community of research and development centers—from Boston to Dhahran, Beijing to Moscow, Stavanger to Cambridge—encouraging our brightest minds to find new ways to improve efficiency, productivity, and safety, every day.

Through our commitment to technology research and the support of our global network of local experts, Schlumberger is leading the way into the future.

[www.slb.com](http://www.slb.com)

# Schlumberger





# July 7 NOGS Luncheon Presentation

☆☆☆ at the Holiday Inn Superdome ☆☆☆

## Climate Change: Facts and Fictions



*Presented by*

**W.C. Rusty Riese, Ph.D.**

Adjunct Professor • Rice University  
Houston, Texas



### ABSTRACT

*(For the complete abstract, visit <http://www.nogs.org/calendar/>)*

The past several years have seen several opinion pieces regarding climate change appear in the pages of many publications, both scientific and secular. Although both sides of this now almost religious debate were represented, few if any real facts or data are provided to support the opinions expressed. The public deserves more, and specifically deserves to be properly informed.

The heat content of the atmosphere has remained largely unchanged since 1995. Data prepared and compiled by a number of climate scientists illustrate the wide divergence of climate model projections from what has been occurring: the climate has not been warming any more than would be expected as the world continues to move out of the Little Ice Age. These data have been accepted by the IPCC, whose chair admits that the climate modeling community does not understand what is happening.

Water vapor in the atmosphere is a more potent greenhouse gas than CO<sub>2</sub>. Climatologists have understood this for decades and this is a fact clearly expressed in all climatology textbooks. None of the climate models employed today adequately address the influence of water vapor. Cosmic radiation is the source of the particles which cause water droplet nucleation and cloud formation in the upper atmosphere. Its flux, in turn, is directly influenced by solar activity and the strength of the resulting solar wind. None of the climate models deal with either of these first-order climate influences.

The Earth's atmosphere has had far higher CO<sub>2</sub> content many times and for much of the geologic past, and major glacial events have occurred during those times, most notably during the Carboniferous and Silurian. The inescapable conclusion is that CO<sub>2</sub> has no relationship to the temperature of the Earth's atmosphere. This is a conclusion that was reached by many scientists who have looked at ice core data and found that increases in CO<sub>2</sub> in the atmosphere occur several hundred years after temperatures have risen – they do not change in lock-step as has been claimed, and an event 800 years in the future cannot impact events today.

### BIOGRAPHY

Dr. W.C. Rusty Riese is a geoscientist based in Houston, Texas. He is widely experienced having worked in both minerals and petroleum as a geologist, geochemist, and manager during more than 40 years in industry. He participated in the National Petroleum Council evaluation of natural gas supply and demand for North America which was conducted at the request of the Secretary of Energy; in the more recent analysis of global supply and demand requested by the same agency; and in the National Research Council analysis of coalbed produced waters and their management in the western United States. He is currently a member of the American Association of Petroleum Geologists Committee on Resource Evaluations, and a member of the House of Delegates, and past Sections Vice President.

Rusty has written extensively and lectured on various topics in economic geology including biogeochemistry, isotope geochemistry, uranium ore deposits, sequence stratigraphy, and coalbed methane petroleum systems; and he holds numerous domestic and international patents. He has more than thirty years of teaching experience including twenty eight years at Rice University where he developed the curricula in petroleum geology and industry risk and economic evaluation, as well as several other courses. He is currently an Adjunct Professor at Rice University and the University of New Mexico. He is a fellow in the Geological Society of America and the Society of Economic Geologists; and a member of the American Association of Petroleum Geologists and several other professional organizations.

He earned his PhD from the University of New Mexico in 1980; his M.S. in geology from the same university in 1977; and his B.S. in geology from the New Mexico Institute of Mining and Technology in 1973. He is a Certified Professional Geologist, a Certified Petroleum Geologist, and is a Licensed and Registered Geologist in the states of Texas and South Carolina respectively.

**THE LUNCHEON RESERVATION DEADLINE IS JULY 3 - CONTACT THE NOGS OFFICE**

***"And Looking Ahead . . ."***

*Please note: There will be no monthly luncheon in August due to the Inaugural Opening Seminar, presented by Schlumberger, of the 18th Annual Gulf of Mexico Deepwater Technical Symposium and Exhibition on Tuesday, August 5th. See page 28 & 29 for details.*

TO ALL MEMBERS AND FELLOW GEOLOGISTS:

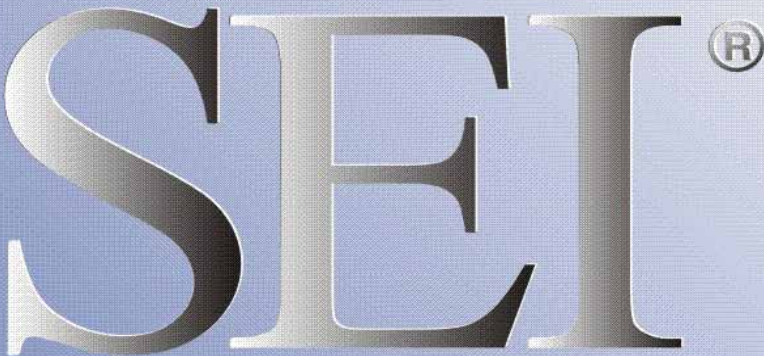
House Bill 167 by Representative Hunter Greene and pertaining to Professional Geoscientist licensing has been passed by the Louisiana Legislature and signed by Governor Jindal. This bill is effective immediately and extends the grandfather period for licensing until January 1, 2015. This is an extension of one year beyond the previous end of the grandfathering (January 1, 2014).

Qualified individuals with at least five years of experience by the end of 2014 can apply for PG licensing with grandfathered status. Grandfathered status allows you to be licensed without having examination (ASBOG exams).

## 2014 BOARD

President .....Kelli Hardesty  
Vice President .....Jennifer Connolly  
Secretary .....Bryan Banks  
Treasurer .....Art Johnson  
Editor ..... Tavia Prouhet

President-elect ..... David Reiter  
Editor-elect .....Tom Klekamp  
Director 2015 ..... Bill Whiting  
Director 2016 ..... Jim Zotkiewicz  
Director 2017 ..... Dave Cope




**SEI**®

**Seismic Exchange, Inc.**

**Strategic Speculative Surveys**  
Geophysical Data Marketing & Management

**YOUR**  
Full Service  
National  
Seismic Data  
Marketing Firm



DALLAS DENVER HOUSTON MIDLAND NEW ORLEANS OKLAHOMA CITY CORPUS CHRISTI TULSA  
201 St Charles Avenue, Suite 4300, New Orleans, Louisiana 70170-4300 504-581-7153 FAX 504-581-9591

seismicexchange.com





# Drill with confidence.

Diversified Well Logging, LLC brings the accuracy and expertise only a company with over sixty years in the oil and gas industry can deliver. We are your eyes and ears in the field, especially when it comes to deep water or high pressure, high temperature areas.

DWL offers 24-hour formation evaluation. We provide secure and customized real-time data communication, in-house research and development, and 24/7 on-call support for our equipment and our engineers.

Whether you have a 10-day job or a 110-day job, we provide the specialized attention you require. **Our experience means you can be confident in the safety and performance of your well.**



- *Formation Evaluation*
- *Geosteering*
- *Drilling Optimization*
- *Real-time Data Transmission*
- *Early Kick Detection*



*Serving the Oil and Gas Industry for Over 60 Years*

July						
Sunday	Monday	Tuesday	Wednesday	Thursday	Friday	Saturday
		1	2	3	4 Independence Day	5
6	7 NOGS Luncheon Holiday Inn 11:30 AM	8	9	10	11	12
13	14	15	16 NOGS Board Meeting	17	18	19
20	21	22	23	24	25	26
27	28	29	30	31	Details July Luncheon: Guest Speaker: W.C. Rusty Riese Rice University - Houston, Texas Presentation: "Climate Change: Facts and Fictions"	

August						
Sunday	Monday	Tuesday	Wednesday	Thursday	Friday	Saturday
					1	2
3	4	5 NOGS Seminar Dr. John Snedden	6	7	8	9
		GOM Deepwater Tech Symposium & Exhibition				
10	11	12	13	14	15	16
17	18	19	20 NOGS Brd Mtg	21	22	23
			Summer NAPE - Houston, TX			
24	25	26	27	28	29	30
	URTeC - Denver, CO					
31	Details Short Course - Dr. John Snedden (Aug 5): Gulf of Mexico Exploration and Reservoir Connectivity Analysis of Large Oil and Gas Field Development, Gulf of Mexico Deepwater and Other Basins For more information, visit <a href="http://www.deepwaternola.com">www.deepwaternola.com</a> Register at <a href="http://www.nogs.org/payment-center/">www.nogs.org/payment-center/</a> and scroll down to "Special Events Payment."					



# New Orleans Geological Auxiliary News

*"The objective of the Auxiliary is to promote fellowship among the wives of the members of the New Orleans Geological Society and to render assistance to NOGS upon request."*

Our final event of the 2013-2014 year was indeed a very beautiful day in every way. Beverly Christina and Camille Yeldell chaired the installation luncheon at the New Orleans Country Club. We had great food, a lovely setting and a chance to visit with good friends. The members who graciously accepted offices for next year are pictured below.

The Loyalty Award, which is given for outstanding, longtime service to the Auxiliary, was presented to Camille Yeldell. Camille is certainly a deserving recipient of this award. She has held many offices, chaired events, helped with conventions and has recently done a wonderful job as First Vice President in charge of programs for 2013-2014. Congratulations to Camille!

The Board has some exciting new plans in the works for 2014-2015. Use the application below and come join the Auxiliary for another enjoyable year.

The Auxiliary was sorry to lose longtime member Susan Danielson, who passed away May 11, 2014.



*Camille Yeldell, Beverly Christina*

## Peggy Rogers, NOGS LOG



*2014-2015 NOGA Officers:*

*Mary Ellis Hasseltine, Peggy Rogers, Debra Fein, Judy Sabaté, Susie Baker, Trudy Corona, Jean Jones, Judy Lemarié, Mary Walther*



*President Mary Walther,  
Loyalty Award recipient  
Camille Yeldell*

## New Orleans Geological Auxiliary Membership Application

Name \_\_\_\_\_ Spouse's Name \_\_\_\_\_  
Address \_\_\_\_\_ Home Phone \_\_\_\_\_  
City, State, Zip \_\_\_\_\_ Email \_\_\_\_\_  
Spouse's Company \_\_\_\_\_ DUES: \$25.00

***Please send \$25 check payable to NOGA to Judy Lemarié, Treasurer, #2 Yosemite Dr., New Orleans, LA 70131***

Why can Weatherford deliver more real time data at the wellsite than any other mudlogging company?

Tim has cabin fever.



**EXCELLENCE  
FROM THE  
GROUND UP™**

Our Global Operations Manager for Surface Logging Systems, Tim, is all smiles these days. That's because he and his team recently designed a new state-of-the-art mudlogging cabin. The spacious interior makes room for more laboratory services at the wellsite. Now exploration companies have access to more data in real time, so they can make better decisions faster. Combined with Weatherford's patented GC-TRACER™, IsoTube® AutoLoader™ and other Isotech technologies, it's one more way Weatherford Mudlogging is committed to Excellence from the Ground Up.

**SURFACE LOGGING SYSTEMS**

[www.weatherford.com/surfacelogging](http://www.weatherford.com/surfacelogging)  
[mudlogging.services@weatherford.com](mailto:mudlogging.services@weatherford.com)



**Weatherford®**



# NOGS WELCOMES

*Submitted by Tom Klekamp*

**Timothy P. Whitacre**, a geologist at Shell, rejoins after a 25-year hiatus since he worked in New Orleans with Texaco. Since then, he married Wendell Rhea (a recovering Texaco geologist), raised two children and is looking forward to enjoying life in the city where they first met. Timothy is a graduate of Wittenberg University (BA, Geology) and the University of Toledo (MS, Geology). Timothy is a member of AAPG and is interested in serving on the following NOGS committees: Field Trip, Entertainment, and Membership/Directory.

**Corey R. Hinyup**, a new student member, is a graduate student and research assistant at the University of New Orleans' Department of Earth and Environmental Sciences. Corey received a B.S. in Geology from UNO in 2012. He is an AAPG member and was active in the AAPG Student Chapter at UNO, serving as their Secretary and then Vice-President.



energy **API**

Delta  
Chapter

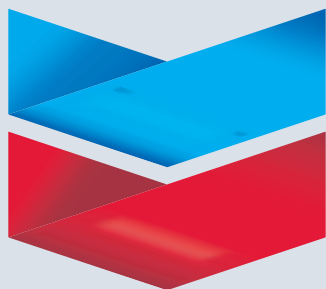
## August 12, 2014 Technical Meeting TUSCALOOSA & HAYNESVILLE SHALE PLAYS

**Speaker - Charlotte Batson**  
**Batson & Company**

Internationally-recognized expert on shale oil and gas from work as a petroleum engineer in oil and gas exploration and development, as well as presentations, publications, and a wide variety of projects. She serves on the Advisory Council for the Trent Lott National Center for Economic Development and Entrepreneurship, has served as a contract Influencer in the Future of Energy by Shell Group on LinkedIn, and was appointed in 2009 to the Mississippi Energy Policy Institute (MEPI) by Gov. Haley Barbour. She is frequently requested to speak on shale-related topics, and is a regular contributor to the "Energy Matters" radio show on KFYZ AM 550. Recent speaking engagements include the Transfield Worley Leading Practice Forum (TW LPF) 2013 in Brisbane and the 4th Shale Gas Southern Africa Summit in Cape Town, South Africa.

11:30 - Doors Open - 12:00 - Program begins  
Le Pavillon Hotel, 833 Poydras Street, New Orleans, LA

# Chevron



100 Northpark Blvd.  
Covington, LA 70433

(985) 773-6000



## LaBay

Exploration Co., L.L.C.

111 Veterans Memorial Blvd.

Suite 1550

Metairie, Louisiana 70005

Office (504) 371-5967

Fax (504) 371-5969

[www.labayexploration.com](http://www.labayexploration.com)



**Shell has worked in partnership  
with the NOGS for many years, and  
is proud to count the society among  
its closest business associates.**

The New Orleans Geological Society was organized in 1941 to foster scientific research and advance the science of geology. Particular emphasis is laid on the exploration for and production of petroleum and natural gas. Related objectives include encouraging the adoption of improved methods of exploration, disseminating pertinent geological and technological data, and maintaining a high standard of professional conduct among its members.

[www.shell.com/us.sepco](http://www.shell.com/us.sepco)

## WELLSITE GEOSCIENCE SERVICES



## When time is money, Wellsite Geoscience is money well spent.

Whether you're exploring a basin, producing a well or completing a shale play, time is money. That's why Weatherford Laboratories brings a suite of formation evaluation technologies right to the wellsite. Utilizing mud gas and cuttings, these technologies provide detailed data on gas composition, organic richness, mineralogy and chemostratigraphy in near real time. As a result, operators now have an invaluable tool to assist with sweet spot identification, wellbore positioning, completion design and hydraulic fracturing. We call it Science At the Wellsite. You'll call it money well spent.

### SCIENCE AT THE WELLSITE™

[www.weatherfordlabs.com](http://www.weatherfordlabs.com)



**Weatherford®**  
LABORATORIES

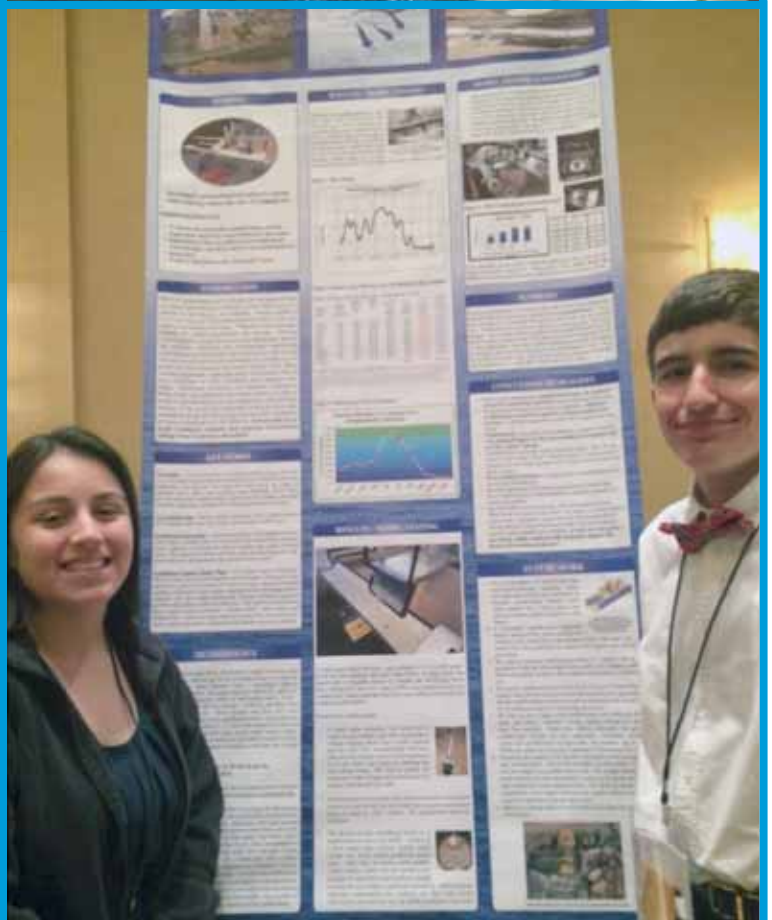
**Formation Evaluation   Well Construction   Completion   Production**

©2013 Weatherford. All rights reserved



# 2014 Senior Division Science Fair Winners

Alexis Lang and Josh Hartley received state medals at the National Stockholm Junior Water Prize Competition. They had a wonderful time meeting students from other states and learned about water problems and their solutions. They stayed a few extra days and toured the Capitol, several museums, a VIP tour of the Holocaust Museum, and Georgetown University.





# THE 2014 ANNUAL BILL CRAIG N



***NOGS and the Memorial Foundation thank the f***

**DIVERSIFIED WELL LOGGING** for the  
and the following **CORPORA**

ALS Empirica Surface Logging • ANKOR Energy • Baker Hughes • Beacon Exploration • Century Explo  
Halliburton • Hydrate Energy International • ION • Krewe Energy, LLC • LaBay Exploration Co. LLC • Jo  
Saratoga Resources, Inc. • Schlumberger • Seitel • Stone Energy Corporation • W & T





# MEMORIAL GOLF TOURNAMENT



PHOTOS COURTESY OF ARTHUR CHRISTENSEN

## Following sponsors for the 2014 Golf Tournament

air participation, support and sponsorship

### ATE and HOLE SPONSORS

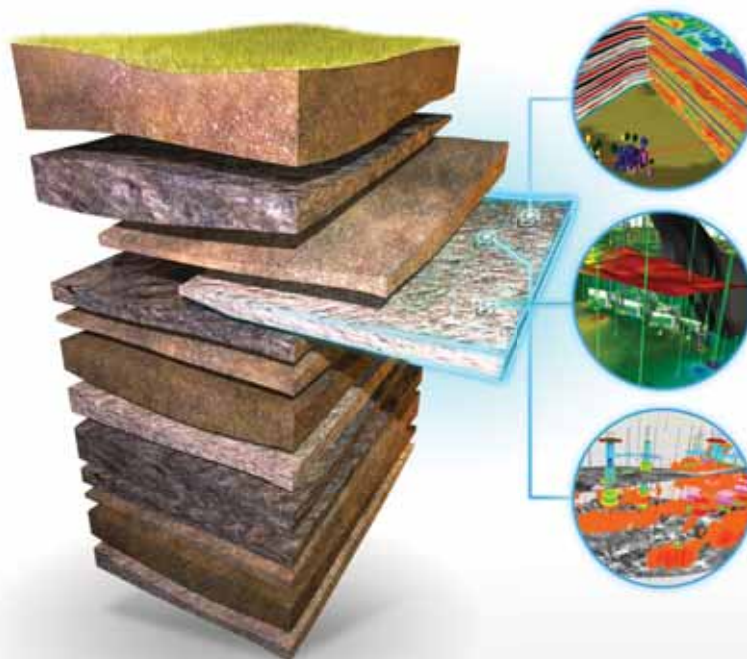
eration New Orleans • Clovelly Oil • Core Laboratories • EnVen Energy Ventures • ERM • Geo-Draft, Inc.  
e and Lisa McDuff • ORX Exploration, Inc. • Paleo-Data • Petro Log International • Quality Rental Tools  
T Offshore, Inc. • Weatherford Laboratories • William M. Whiting • Zot Oil & Gas, LLC



# YOU TACKLE TOUGH PROBLEMS

YOUR GEOSCIENCE SOFTWARE  
DOESN'T HAVE TO BE ONE OF THEM

IHS GEOSCIENCE: sophisticated science that's simple to use and simple to manage



## **SURFACE TO SUBSURFACE**

ONLY ONE ENERGY EXPERT  
PROVIDES SO MUCH TO SO MANY

From big picture to critical detail, proven capabilities to superior results, IHS geoscience does it all—backed by the world's most respected forecasting, analysis, and play-specific geological and geophysical data.

## **NOW GET THE POWER OF KINGDOM® AND PETRA®**

Only IHS geoscience simply yet scientifically links engineering, economics and interpretation software suites to give you a definitive edge. Spearheaded by industry-leading Kingdom® and Petra® software solutions IHS gives you the best in geophysics and geology.

Learn more at [IHS.com/NOGS](http://IHS.com/NOGS)

**IHS** GEOSCIENCE



Simply **Scientific™**





# PAST PRESIDENTS' LUNCHEON

## MAY 30, 2014



**Standing, left to right: Will Conatser (97-98), Paul Jurik (93-94), Duncan Goldthwaite (82-83), Ed Picou (92-93), Chuck Holman (13-14), Scott Wainwright (05-06), Bill Whiting (08-09), Art Johnson (07-08), Mike Fein (06-07)**

**Seated, left to right: Bill Hintze (65-66), Tom Klekamp (09-10), Brenda Reilly (04-05), Kelli Hardesty, (President-elect 13-14), Tom Bergeon (02-03), Don Andrews (63-64)**



**NOGS Past Presidents  
Don Andrews (63-64), Bill Hintze (65-66)**



**NOGS Past Presidents  
Ed Picou (92-93) left, Paul Jurik (93-94) right,  
with President Elect Kelli Hardesty (14-15) center**

PHOTOS COURTESY OF THOMAS KLEKAMP

Freeport-McMoRan is now  
**RESOURCE RICHER.**

**ROCK SOLID  
SERVICE**



**www.corelab.com**  
**337-837-8616**

© 2013 Core Laboratories.  
All rights reserved.



## COMMITTEES NEED YOU!

### Boy Scouts/Girl Scouts Committee:

***A Chairman is needed.***

This committee promotes and supports the Scouting movement and assists in all matters pertaining to geology, including the Geology Merit Badge Program. If you're interested, please contact Bill Whiting at [Bootscon@aol.com](mailto:Bootscon@aol.com) or [info@nogs.org](mailto:info@nogs.org). If there are any Eagle Scouts looking to assist in this worthy cause, it would be greatly appreciated.

### Sponsorship Committee:

***A Chairman is needed.***

This committee secures funding from sponsors to help finance various activities of the Society. This committee also ensures that sponsors are thanked and adequately recognized for their generosity.

**Freeport-McMoRan Copper & Gold Inc. provides resources to fuel global growth.**

With the acquisitions of Plains Exploration & Production Company and McMoRan Exploration Co., FCX's diverse portfolio of minerals assets now includes high-quality oil and gas resources in the United States. Matched with bright prospects for success in the global minerals industry, this expanded scope of operations provides exciting new opportunities for profitable growth to benefit shareholders, employees and communities. FCX is pleased to announce its new subsidiary Freeport-McMoRan Oil & Gas.

**Freeport-McMoRan  
Copper & Gold**  
[www.fcx.com](http://www.fcx.com)

**FCX  
LISTED  
NYSE**

**Freeport-McMoRan  
Oil & Gas**



# Introducing the Fastest Log Printer in the Industry

At 11 inches per second, the NeuraLaserColor II operates seamlessly and requires no add-on software for automatically sensing top of form printing. Whether you are a service company printing thousands of logs a day or an exploration company looking for quality logs, the NeuraLaserColor II will change your expectations of well log printers.

- Record setting speeds - 11 inches per second
- Precision printing - On-the-fly length calibration
- Increased efficiency - 20,000 page yield toner
- Operational versatility - Native PDF support
- Hands free - Automated cut, feed and re-load

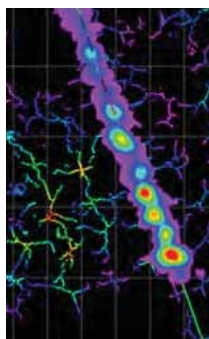
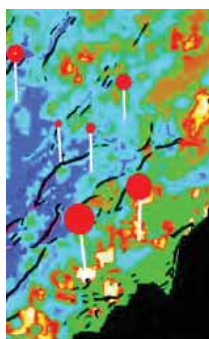
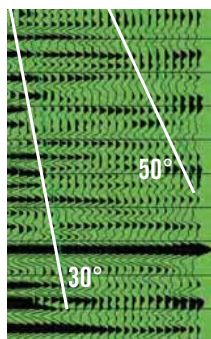
See More at:  
[www.NeuraLaserColor2.com](http://www.NeuraLaserColor2.com)



© 2014 Neuralog · [www.Neuralog.com](http://www.Neuralog.com) · [sales@neuralog.com](mailto:sales@neuralog.com) · 1.281.240.2525



## SEIZE THE CUMULATIVE ADVANTAGE



Unique value comes from the cumulative impact of the combined application of technologies, workflows and experience. Global's seismic solutions include data acquisition, processing, analysis and microseismic. Our objective is to help oil and gas companies identify and characterize prospectivity and productivity, reduce risk, optimize well completions and monitor changes in hydrocarbon reservoirs.

We encourage you to seize the cumulative advantage of our technologies, workflows and experience.

### ACQUISITION



### PROCESSING



### ANALYSIS



### MICROSEISMIC



Global Geophysical Services, Inc.  
[ADVANTAGE@globalgeophysical.com](mailto:ADVANTAGE@globalgeophysical.com)  
[www.globalgeophysical.com](http://www.globalgeophysical.com)  
+1 713.972.9200



DOWNLOAD THE  
WHITE PAPER AT

[www.globalgeophysical.com/advantage](http://www.globalgeophysical.com/advantage)

# South Louisiana and Offshore Gulf of Mexico Exploration and Production Activities

## LAFAYETTE DISTRICT, ONSHORE AREA

By Carlo C. Christina

*The Office of Conservation, Lafayette District, Onshore Area, issued 30 permits to drill during the month of May 2014. Following are the most significant locations:*

### NEW LOCATIONS

McMoRan Oil & Gas will drill a **deep subsalt Wildcat**, (A), the #1 Lacassane Company, in Cameron Parish in Sec. 9, 12S-5W to a projected depth of 24,000 feet to test the Yegua and Upper Wilcox sections. (247946)

This latest onshore subsalt well is located 20 miles north of the Chevron #1 SL 20571, the Lineham Creek Prospect, a subsalt well which has been drilled to 29,426 feet and has casing set at 24,400 feet. It has been reported that the #1 SL 20571 has logged productive Wilcox and Tuscaloosa sands. An independent reservoir engineer's report has been released citing an estimated proved, probable, and possible oil and gas reserve of 546 billion cubic feet of gas equivalent. Operations have been suspended prior to testing. (244039)

Union Gas Operating Company has permitted the #2 Doornbos-McPherson in **Hurricane Creek Field**, (B), Beauregard Parish, in Sec. 23, 5S-8W. It is located 1 mile northeast of the nearest production and will be drilled to a projected depth of 15,100 feet to test the Lower Wilcox sands. (247975)

In Iberville Parish, **Bayou Sorrel Field**, (C), Interstate Exploration will drill the #1 ABLD in Sec 25, 10S-10E to test the Marg vag sands at a depth of 13,906 feet. This well is located on the north flank of the old Bayou Sorrel Field and approximately 3 miles northwest of the recently completed #1 Wilberts, which was completed as an oil well on the extreme southwest flank of the field. (248010)

Hilcorp Energy will drill the #1 Shinn in **Garden City Field**, (D), St. Mary Parish, in Sec. 24, 16S-9E. It is located 1 mile west of current MA-7 and MA-9 production in the field and will be drilled to a proposed depth of 16,516 feet. (247989)

Square Mile Energy has permitted 2 wells in **Hollywood Field**, (E, F), Terrebonne Parish to test the Crescent Sand. Both wells will be drilled from a surface location in Sec. 14, 17S-16E, with the #1 Comeaux having the bottom hole located in Sec. 13. (247978)

The #1 Casente will have its bottom hole located in Sec 10, 17S-16E, approximately 1 mile southeast of the #1 Comeaux. (247949)

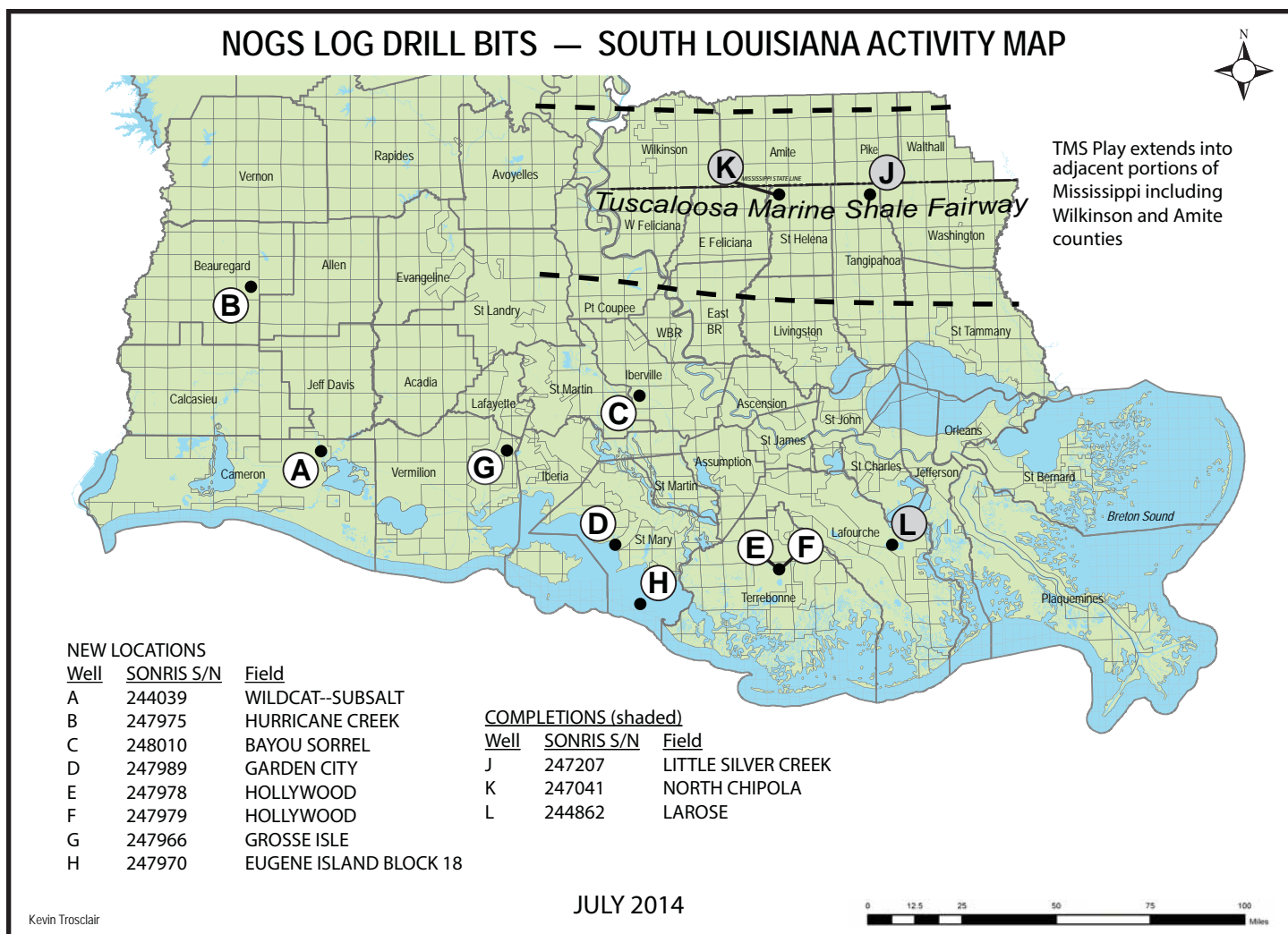
In Vermilion Parish, **Grosse Isle Field**, (G), Pennington Operating Co. will drill the #1 Broussard in Sec. 29, 12S-4E to a proposed depth of 15,705 feet. It is located 1 mile southwest of production. (247966)

Radiant Oil & Gas Operating has permitted the #1 SL 21313 in **Eugene Island Block 18 Field**, (H), St. Mary Parish to a proposed depth of 13,100 feet. This is a re-drill of the Cockrell Oil Company #2 SL 14354 which was drilled to a total depth of 16,237 feet and was plugged and abandoned in January 1995. It had been drilled as a "tight hole". (247970)

### COMPLETIONS

Goodrich Petroleum has completed an **excellent oil well** in the **Tuscaloosa Marine Shale in Little Silver Creek Field**, (J), Tangipahoa Parish. The #1 Blades 33 H was completed flowing **1250 BOPD** and 115 MCFD through perforations 12,064 to 17,009 feet. The well was drilled in Sec. 33, 1S-8E to a total depth of 17,136 feet. As previously reported the #1 Blades is located 5 miles southeast of the nearest TMS production. (247207)





Goodrich Petroleum has also completed its #1 Weyerhaeuser 51 H in the **Tuscaloosa Marine Shale** in **North Chipola Field**, (K), Saint Helena Parish. The well was drilled in Sec 51,1S-4E to 19,655 feet, and was completed through perforations 13,361 to 19,502 feet through a 23 multi-stage frac. The well was completed flowing only 141 BOPD and 25 MCF because of mechanical problems. (247041)

In Lafourche Parish, **Larose Field**, (L), Square Mile Energy has completed the #1 SL 20628 as a gas well in the Cris I sand flowing 3083 MCFD and 192 BCPD through perforations 13,980 to 14,027 feet. The well was drilled to 14,300 feet in Lake Salvador, 16S-21E. Although the well was permitted in Larose Field, it is a southerly extension to the West Lake Salvador Field. (244862)

## OFFSHORE GULF OF MEXICO SHELF AND DEEPWATER ACTIVITIES

*by Al Baker*

During May 2014, the BOEM approved **97** Gulf of Mexico drilling permits. Of these, **42** were for shelf wells, and **55** were for deepwater wells. Of the total number of permits, there were **12 new well permits** issued. These included **4 shelf** (0 exploratory and 4 development), and **8 deepwater** (7 exploratory and 1 development) **new well permits**.

On the shelf, the 2 development new well permits were granted to **Arena Offshore** for their **Eugene Island 339 #K-11** well and their **South Timbalier 128 #X-4** well. In addition, **Castex Offshore** also received one development new well permit for their **Vermilion 271 #I-3** well, and **EPL Oil & Gas** obtained one development new well permit for their **West Delta 29 #J-1** well.



In deepwater, the 2 exploratory new well permits were awarded to **BP Exploration & Production** for their **Atwater Valley 362 #1 and #2** wells. Single exploratory new well permits were issued to the following companies: **Chevron U.S.A.** for their **Keathley Canyon 10 #1** well, **Freeport-McMoRan Oil & Gas** for their **Keathley Canyon 627 #1** well, **LLOG Exploration Offshore** for their **Mississippi Canyon 79 #1** well, **Noble Energy** for their **Mississippi Canyon 782 #2** well and **Anadarko Petroleum** for their **Walker Ridge 52 #2** well. The single development new well permit was awarded to **BHP Billiton Petroleum (GOM)** for their **Green Canyon 653 #SB-104** well.

On May 30th, IHS-Petrodata reported that the Gulf of Mexico mobile offshore rig supply stood at **115**. The marketed rig supply consisted of **89** rigs, of which **82** were under contract. The contracted versus total rig supply utilization rate is **71.3%**, while the marketed contracted versus marketed supply utilization rate stands at **92.1%**. The total marketed rig supply figures reflect an increase of 2 rigs each compared to those figures reported last month, while the contracted rig supply number increased by 1 rig. In contrast, the May 2013 fleet utilization rate stood at 72.9% with 78 out of the 107 rigs under contract.

On May 30th, BakerHughes indicated that there were **59** active mobile offshore rigs in the Gulf, which is **72%** of the rigs under contract mentioned above. This active rigs number is **5** more than reported last month. The current active rigs count compares to 55 active rigs during the same period last year, representing a **7.3%** increase in yearly activity.

On May 30th, the **BOEM** updated the results of **Central Gulf of Mexico OCS Sale 231**. Out of the 326 tracts that received high bids at the sale, a total of 228 bids have been deemed acceptable. Seventeen tracts were awarded leases during Phase 1 of the evaluation period, whereas 211 have been awarded thus far in Phase 2. The evaluation period normally lasts 90 days following the date of the lease sale, which in this case was March 19, 2014.

On May 20th, **W&T Offshore** announced the acquisition of **Woodside Energy's** Gulf of Mexico deepwater properties by its wholly owned subsidiary, **W&T Energy VI, LLC**. The purchase price of **\$51 million** bought a 20% non-operated interest in **Neptune Field (Atwater Valley Blocks 574, 575 and 618)** and all of Woodside's interest in **24 deepwater exploration blocks**. Total net proved developed reserves are 1.9 million barrels of oil equivalent with a PV-10 of \$53 million and probable net reserves of 1.1 million barrels of oil equivalent. During January 2014, the average daily net production from Neptune Field was approximately 1660 barrels of oil equivalent, of which 87% was oil.

On April 30th, **Stone Energy** announced that it had found oil pay in a second deepwater test on the company's **Cardona** development. Stone reported that its **#5 well on Mississippi Canyon Block 29** encountered over **275 feet of net oil pay in three separate sections**. In mid-February 2014, Stone indicated that its first well (#4) on the Cardona development found approximately 96 feet of net oil pay. The production from both Cardona wells will be tied back to the nearby Pompano Platform.

Dear AAPG Gulf Coast Section members,

On behalf of AAPG Headquarters and Gulf Coast Section President Mary Broussard, we are pleased to announce the newly-elected leadership position for the AAPG Gulf Coast Section.

- Gulf Coast Section Member of the AAPG Advisory Council (Term: 2014-17)  
**John Jordan, Jr., Anadarko Petroleum, The Woodlands, Texas**

On 1 July 2014 he will join the current AAPG Gulf Coast Section leaders:

- Gulf Coast Section President (Term: 2014-15)  
**Mary Broussard, Freeport-McMoran Oil & Gas, Lafayette, Louisiana**
- Gulf Coast Section Vice President (Term: 2014-15)  
**Charles Sternbach, Star Creek Energy Company Inc., Houston, Texas**
- GCAGS Convention General Chair (Term: 2014-15)  
**Michael Quinn, Freeport-McMoran Oil & Gas, Lafayette, Louisiana**
- GCAGS Treasurer (Term: 2014-15)  
**Steve Hill, Decker Operating Company, Houston, Texas**
- Gulf Coast Section Member of the AAPG Advisory Council (Term: 2013-16):  
**William Whiting, Consultant, New Orleans, Louisiana**



***Congratulations and thank you to all outstanding leaders for their service to the AAPG Gulf Coast Section!***

18th Annual Gulf of Mexico

# Deepwater

Technical Symposium

WORKING IN THE  
**WORLD OF  
TOMORROW**



AUGUST  
5th, 6th & 7th  
**2014**

*The Hilton New Orleans  
Riverside Hotel*

[www.deepwaternola.org](http://www.deepwaternola.org)







# Schlumberger



## *The 18<sup>th</sup> Annual Gulf of Mexico Deepwater Technical Symposium and Exhibition*

Welcomes you to its Inaugural Opening Seminar

*Supported by AAPG*



### ***Gulf of Mexico Exploration and Reservoir Connectivity Analysis of Large Oil and Gas Field Development, Gulf of Mexico Deepwater and Other Basins***

**Presented by Schlumberger**

**Tuesday, August 5**

**Hilton Riverside**

Two Poydras St. • New Orleans, LA

8:30 AM – 3:00 PM

**Cost: \$199** (includes lunch)

Speaker:

**John W. Snedden, Ph.D.**

Senior Research Scientist

The University of Texas at Austin

*For more information visit [www.deepwaternola.org](http://www.deepwaternola.org)*

*Register at [www.nogs.org/payment-center/](http://www.nogs.org/payment-center/) and scroll down to "Special Events Payment."*

*Be sure to include your name so we know who you are!*



***Dr. John W. Snedden***

***Project Leader, Gulf Basin Depositional Synthesis Project***

Ph.D., Louisiana State University, Baton Rouge, LA 1985

M.S., Texas A&M University, College Station, TX 1979

B.A., Trinity University, San Antonio, TX, 1977

**Dr. John W. Snedden**, project leader of the Gulf of Mexico Basin Depositional Synthesis (GBDS) Project, has over 25 years of industry experience with Mobil and ExxonMobil, including 11 years in research. John's technical specialties include sequence and seismic stratigraphy, sedimentology, reservoir characterization, reservoir connectivity analysis, and unconventional resource evaluation. He has worked in a number of basins, including the U.S. Gulf Coast, West Texas Midland Basin, North Sea, Mid-Norway, Barents Sea, Papua New Guinea, Arkoma Basin, Niger Delta, Sarawak (Malaysia), Mahakam Delta (Indonesia), US Atlantic Shelf, Northwest Shelf-Australia, Pannonian Basin (Hungary), South Caspian Sea (Azerbaijan-Turkmenistan), China, Norwegian Sea, Gulf of Mexico shelf and slope, North Caspian Basin (Kazakhstan), Lower Saxony and Ruhr - Muensterland Basins, Germany (unconventional, CBM, Shale Gas, Light Tight Oil).

John has published over 30 scientific papers; he is the first author on 23 of these. John has a history of leadership in technical societies such as SEPM and the Gulf-Coast Section of SEPM. He has also served as technical chair of several large AAPG conventions.

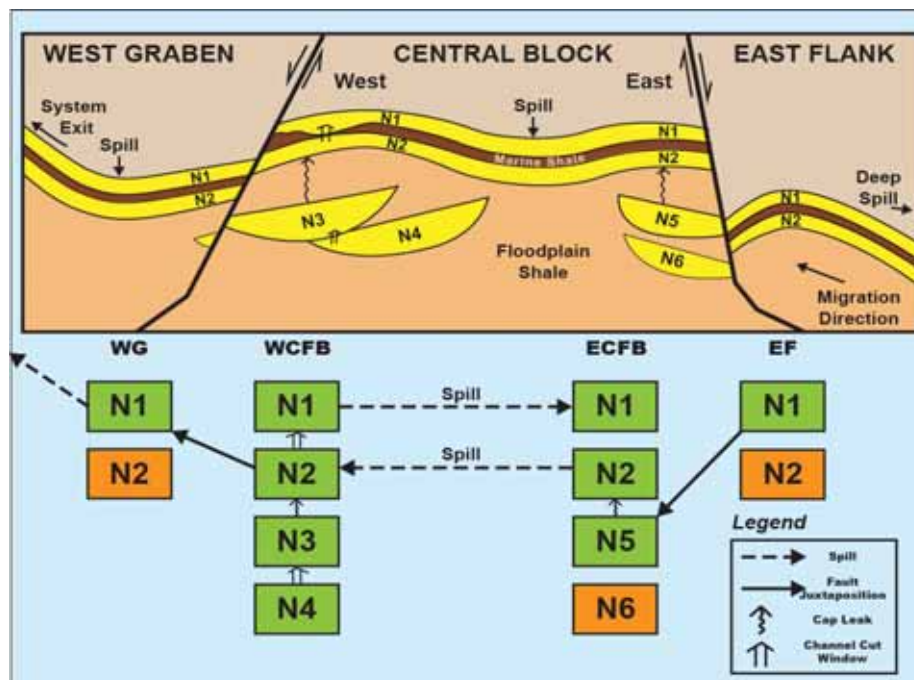
## Outline of One-day Seminar

### I. Morning Session: Gulf of Mexico Exploration

- A. Exploration success and failure: lessons learned
  - a. Established Gulf of Mexico slope and deepwater plays (Wilcox, Miocene)
  - b. Emerging New Mesozoic Plays (Norphlet, Tuscaloosa)
  - c. Diversity of Subsalt trap types
- B. The role of technology and its effect upon exploration play success
  - a. New process concepts (new deepwater reservoir models)
  - b. New seismic imaging approaches
  - c. Source to sink paleogeographic mapping

### II. Afternoon Session: Reservoir connectivity analysis in support of large oil and gas field development, Gulf of Mexico Deep-water and other basins

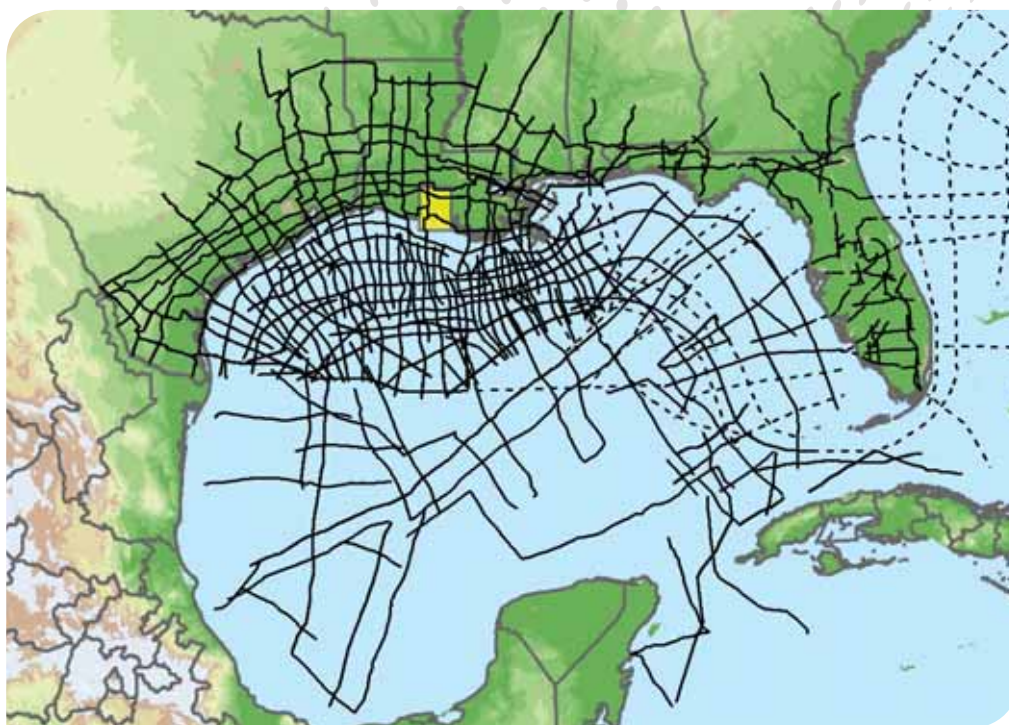
- C. Uncertainty after Discovery
  - a. The Good, the Bad, the Ugly (connectivity)
- D. Definitions: compartments and connections
- E. Static Connectivity
  - a. Topologic controls on original fluid contacts in channelized deepwater systems
  - b. Shale barriers and baffles: 1D versus 2D distributions
  - c. Fault Connectivity: when it hurts, when it helps
- F. Dynamic Connectivity
  - a. The role of channel-based scours
  - b. Comparative pressure declines, Channel-levee vs. Amalgamated channel complex reservoirs
  - c. Construction of Reservoir Connectivity Scenarios



Connectivity Diagram (from Snedden et al. 2007).



# Explore the Entire Gulf of Mexico



Position your company for the next 10 years of exploration with the most complete, modern time and depth-imaged data in the Gulf of Mexico. ION's interconnected dataset links the entire Gulf, from onshore to offshore deep water, from Texas to Florida and to Mexico. With over 40,000 miles (over 65,000 km) completed or in progress, and an additional 7,500 miles (over 12,000 km) planned for 2013 and beyond, no other data library provides as comprehensive a framework for understanding the Gulf of Mexico.

To learn more, visit [iongeo.com/Gulf\\_of\\_Mexico](http://iongeo.com/Gulf_of_Mexico)

## CONTACT

Ashley Garcia  
Mobile: +1 281 781 1005  
Email: [ashley.garcia@iongeo.com](mailto:ashley.garcia@iongeo.com)

Alvin Rowbatham  
Mobile: +1 832 372 2366  
Email: [alvin.rowbatham@iongeo.com](mailto:alvin.rowbatham@iongeo.com)

## AREAS OF EXPERTISE

- Unconventional Reservoirs
- Challenging Environments
- Complex Geologies
- **Basin Exploration**
- Reservoir Exploitation



GEOVENTURES®

Submitted by Tom Klekamp

**The Times-Picayune – Jennifer Larino – May 29, 2014**

**"Houston oil company sees active future for shallow water Gulf of Mexico," Forbes reports**

[http://www.nola.com/business/index.ssf/2014/05/houston\\_oil\\_company\\_sees\\_activ.html](http://www.nola.com/business/index.ssf/2014/05/houston_oil_company_sees_activ.html)

Full Forbes article by Christopher Helman at <http://www.forbes.com/sites/christopherhelman/2014/05/27/energy-xxi-seeking-a-new-boom-for-the-gulf-of-mexico/>

Big Oil abandoned the shallow water Gulf of Mexico decades ago in favor of oil finds that were cheaper and easier to drill, leaving the shallows mostly to independent drillers. But Forbes reports on one major company that is betting on a shallow water resurgence.

The article focuses on Energy XXI, a Houston-based company that is set to become the only publicly traded oil and gas exploration company with projects focused mostly in the shallow Gulf waters off the coast of Louisiana.

Low oil prices forced many major oil and gas companies to pull out of the area in the 1990s.

But Energy XXI CEO John Schiller tells Forbes that there is still plenty of oil left to drill, and prices are now right to do it.

Energy XXI's shallow water portfolio is expected to get a big boost when it completes its \$2.3 billion acquisition of EPL Oil & Gas later this year.

EPL, headquartered in New Orleans before moving to Houston in 2013, operates a number of oil and gas fields off the coast of Louisiana.

**The Denver Post – Bruce Finley – May 29, 2014**

**"Oil and gas industry building giant walls to try to ease impact."**

[http://www.denverpost.com/ci\\_25859469/oil-and-gas-industry-building-giant-walls-try-ixzz33abap3zO](http://www.denverpost.com/ci_25859469/oil-and-gas-industry-building-giant-walls-try-ixzz33abap3zO)

Mead, Colorado — Oil and gas companies are erecting a new style of walls around drilling and frack sites as the boom expands into Front Range communities.

Made of earthen-color fabric on steel frames up to 32 feet high and 800 feet long, the walls shield industrial machinery from a high school and wetlands greenbelt in Greeley, prairie homes in Windsor, and kids riding bikes and skateboards in Mead.

The walls help companies meet Colorado's noise limits (55-80 decibels during the day and 50-75 at night, and measured 350 feet from the source). Walls also are being considered for wildlife habitat where proposed drilling threatens mating of sage grouse.

Previously, oil and gas companies tried to ease impact of industrial operations near people by stacking hay bales and shipping containers around engines. Beyond cutting noise by 20 to 30 decibels, the fabric walls partially block the glare of floodlights and dust clouds during companies' multimonth period of drilling and hydraulic fracturing.

But industry officials are uncertain whether their voluntary installation of walls will quell the political storm over the oil and gas boom. Rising opposition in Colorado has led to nine statewide ballot initiatives to boost local control and increase required buffers between wells and houses.

**NASA – Jet Propulsion Laboratory – June 2, 2014**

**"Astronomers Confounded By Massive Rocky World"**

<http://www.nasa.gov/ames/kepler/astronomers-confounded-by-massive-rocky-world/#.U6b11ShS3fU>

Astronomers have discovered a rocky planet that weighs 17 times as much as Earth and is more than twice as large in size. This discovery has planet formation theorists challenged to explain how such a world could have formed.

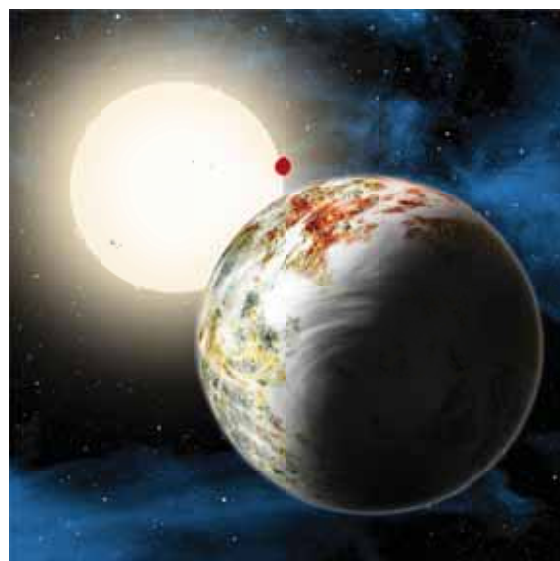
"We were very surprised when we realized what we had found," said astronomer Xavier Dumusque of the Harvard-Smithsonian Center for Astrophysics, Cambridge, Massachusetts, who led the analysis using data originally collected by NASA's Kepler space telescope.

Kepler-10c, as the planet had been named, had a previously measured size of 2.3 times larger than Earth, but its mass was not known until now. The team used the HARPS-North instrument on the Telescopio Nazionale Galileo in the Canary Islands to conduct follow-up observations to obtain a mass measurement of the rocky behemoth.

It was thought worlds such as this could not possibly exist. The enormous gravitational force of such a massive body would accrete a gas envelope during formation, ballooning the planet to a gas giant the size of Neptune or even Jupiter. However, this planet is thought to be solid, composed primarily of rock.

"Just when you think you've got it all figured out, nature gives you a huge surprise -- in this case, literally," said Natalie Batalha, Kepler mission scientist at NASA's Ames Research Center in Moffett Field, California. "Isn't science marvelous?"

Kepler-10c orbits a sun-like star every 45 days, making it too hot to sustain life as we know it. It is located about 560 light-years from Earth in the constellation Draco.







## Geoconsulting, Inc.

Geological and Geophysical Consulting  
3-D Seismic Interpretation

Ben D. Sydboten, Jr. CPG

2 Flagg Pl., Suite 1  
Lafayette, LA 70508  
www.saigeoconsulting.com

Office (337) 504-3670  
Cell (337) 456-8948



**Anthony Catalanotto**  
President

Geological  
Geophysical  
Land  
Drafting & Graphics

3349 Ridgeland Drive • Suite 202  
Metairie, LA 70002  
Office: (504) 836-2882  
Fax: (504) 836-2877  
Cell: (504) 481-7291  
E-Mail: geodraft@bellsouth.net  
Website: www.geodraftinc.com

## NORTHCOAST OIL COMPANY

610 E. Rutland St.  
Covington, LA 70433  
(985) 898-3577  
(985) 898-3585 Fax

Jack M. Thorson  
Eric C. Broadbridge  
J. Daryl Gambrell  
Raymond W. Stephens



ETROA Resources LLC

Join us in pursuing gulf coast production,  
acquisitions and low-risk drilling opportunities

John C. Ebert  
Kevin McVey

128 Northpark Blvd.  
Covington, LA 70433  
(985) 809-3808

www.etroa.com

## Collarini Energy Staffing, Inc.

Facilities • Drilling • Production • Reservoir Engineering  
Land and Legal • Geosciences • Information Technology  
Health and Safety • Management • Supply Chain  
Accounting • Administrative Support



Full-Time and Temporary Personnel

Energy Trading • Civil Engineering • Executives  
Human Resources • Instrument and Electrical  
Engineering • Marine Engineering • Project Management  
Technical Writing • Sales and Marketing

10497 Town and Country Way, Suite 950, Houston, Texas 77024

Telephone: (832) 251-0553

www.collarini.com

## DOMESTIC AND INTERNATIONAL BIOSTRATIGRAPHIC SERVICES



6619 Fleur de Lis Drive  
New Orleans, LA 70124  
(504) 488-3711

www.paleodata.com



Complete wellsite paleo services

Supported offshore GoM and  
onshore LA paleo databases

Integrated foram/nannofossil  
analyses

In-house sample preparation  
lab for quality-monitoring  
and efficiency

Comprehensive depositional  
history study of the Gulf Basin  
based on 200,000+ well data  
analysis



LAFAYETTE  
GEOLOGICAL  
RESEARCH  
CENTER, LLC

201 Heymann Blvd., Suite 33 • Lafayette, LA 70503  
Tel: 337-233-8197 • Fax: 337-233-8177

### COVERAGE:

Louisiana / Federal / State Offshore  
• Multi State Geo Tech Services • Completion Data  
Production Data • Well Logs • Maps

~ MEMBERSHIPS AVAILABLE ~

The Industry's Premier • Well Data Center

orders@lafayettegrc.com

CALL OR EMAIL TODAY FOR MORE INFORMATION!



THIS AD SPACE AVAILABLE  
Contact: annette@nogs.org

## THE NEW ORLEANS GEOLOGICAL SOCIETY MEMORIAL FOUNDATION, INC.

The Memorial Foundation is an IRS Tax Exempt Code #501(c)(3) organization. The Federal I.D. is 72-1220999. Please consider making a donation to the Foundation. Your individual support in any amount will help meet the IRS Guidelines for our Foundation. Thanks!

**\$10,000**

### Gibbet Hill Foundation

*In Memory of Steve & Marion Millendorf, William J. Prutzman,  
Roger G. Vincent, Ron Youngblood and Uno Numella*

**\$7,000**

### NOGS Golf Tournament 2014

*In Memory of Bill Craig*

**\$2,000**

### Mr. Armour C. Winslow

*In Memory of Rita Menzel Winslow and Lawrence C. Menconi*

**\$500**

### Mr. Reuben J. Klibert, Jr.

*In Memory of Reuben S. Klibert, Sr. and James Wade Klibert*

**\$250 TO \$499**

### Mr. Thomas C. Bergeon

*In Memory of Erik Mason  
and Brian O'Neill*

### Mr. Carlo C. Christina

*In Memory of Al Gilreath  
In Memory of John C. "Jack" Langford*

### Mr. Lawrence B. Eustit

*In Memory of John C. "Jack" Langford*

### Mr. Kenneth Huffman

*In Memory of James E. Rolf, Jr.*

### Mr. William M. Whiting

## FONO FUND

The FONO Fund accepts contributions that are invested and the income dedicated to assure sufficient financial resources will always be available to maintain the NOGS business office. Contributors are reminded that donations to the FONO Fund are not covered by the IRS 501(c)(3) tax exempt classification and should be reported as a business expense on your IRS tax report.

**\$500**

### Mr. James A. Hartman

### Mr. Reuben J. Klibert, Jr.

**UP TO \$249**

### Mr. Donald I. Andrews

### Mr. Alfred H. Baker, Jr.

### Mr. David E. Balcer

### Mr. Joseph E. Boudreaux

### Ms. J. Sybil Callaway

### Mr. Anthony Carollo, Jr.

### Mr. John Dombrowski

### Mr. Merle J. Duplantis

### Mr. Richard A. Edmund

### Mr. Michael N. Fein

### Mr. William J. Furlong

### Mr. David Garner

### Mr. Duncan Goldthwaite

### Mr. Bernard L. Hill, Jr.

### Mr. Kenneth Huffman

### Mr. Arthur H. Johnson

### Mr. Paul Jurik

### Mr. Tom Klekamp

### Mr. Louis Lemarié

### Mr. H. David Lynch

### Ms. Jeannie F. Mallick

### Mr. George M. Markey, Jr.

### Mr. James A. McCarty

### Ms. Margaret M. McKinney

### Mr. Paul C. McWilliams

### Mr. Robert G. Murphy

### Mr. Richard A. Olsen

### Mr. William S. Peirce

### Mr. Edward B. Picou, Jr.

### Mr. Luther Franklin Rogers, Jr.

### Mr. C. R. Rondeau

### Mr. Bay Salmeron

### Mr. George D. Severson

### Mr. Rudolf B. Siegert

### Mr. Richard J. Stancliffe

### Mr. Bryan P. Stephens

### Mr. Raymond Stephens

### Mr. Robert K. Sylvester

### Dr. David M. Tatum

### Mr. Roy C. Walther

### Mr. Robert C. Weissmann

### Mr. William M. Whiting

### Ms. Frances A. Wiseman

**UP TO \$249**

### Mr. Woods W. Allen, Jr.

*In Memory of William C. Ward*

### Mr. Robert J. Ardell

*In Memory of Jim Seglund*

### Mr. R. H. Baillio, Jr.

*In Memory of T. Wayne Campbell & Jack Dunlap*

### Mr. Maurice N. Birdwell

### Mr. Burton C. Bowen

### Mr. Hilary James Brook

### Ms. Robin A. Broussard

### Mr. Rob Burnett

### Ms. J. Sybil Callaway

### Chevron Humankind Matching Funds

### Mr. Arthur F. Christensen

### Mr. James S. Classen

*In Memory of John C. "Jack" Langford*

### Mr. Merle J. Duplantis

### Mr. Michael N. Fein

### Mr. Sherwood M. Gagliano

### Mr. Arthur J. Garden

### Mr. Bernard L. Hill, Jr.

### Mr. Jeff Jandegian

### Mr. Robert M. Jemison, Jr.

### Mr. Paul Jurik

### Mr. Tom Klekamp

*In Memory of Kenneth J. Fulton*

### Mr. John C. Kucewicz, Jr.

### Mr. John C. "Jack" Langford

### Mr. Cyril F. Lobo

### Mr. H. David Lynch

### Ms. Jeannie F. Mallick

### Mr. Joseph H. McDuff

### Ms. Margaret M. McKinney

### Mr. Paul C. McWilliams

### Mr. Robert G. Murphy

### New Orleans Geological Auxiliary

*In Memory of Sybil Barton and Ruth Grimes*

*In Memory of Mrs. James W. Swaney, Jr. (Gwenn)*

*In Memory of Mrs. Lawrence B. Eustis (Tatjana)*

### Mr. Richard A. Olsen

*In Memory of John C. "Jack" Langford*

### Mrs. Teresa O'Neill

*In Memory of Brian O'Neill*

### Mr. William S. Peirce

### Mr. Edward B. Picou, Jr.

*In Memory of John C. "Jack" Langford*

*In Memory of Lawrence C. Menconi*

*In Memory of Clarence Conrad*

### Mr. George W. Schneider, Jr.

*In Memory of George Schneider, Sr.*

### Mr. Robert T. Sellars, Jr.

*In Memory of Robert G. Williamson*

### Mr. George D. Severson

### Shell Matching Funds

### Mr. Rudolf B. Siegert

### Dr. J. O. Snowden

### Mr. David Sollenberger

*In Memory of Shirley Sollenberger*

### Mr. Raymond O. Steinhoff

*In Memory of Anne M. Steinhoff & Harold E. Vokes*

### Ms. Betsy M. Strachan Suppes

### Mr. David M. Tatum

### Mr. Louis O. Vidrine

### Mr. Arthur S. Waterman

*In Memory of T. Wayne Campbell*

### Mr. William M. Whiting

*In Memory of John "Jack" Henton*

*In Memory of John S. Bousfield*

### Ms. Frances A. Wiseman

*In Memory of Steve Widdicombe*

## BILL CRAIG FUND

### Mr. Bernard L. Hill, Jr.

### Mr. Bay Salmeron

### Mr. John C. Scheldt

*In Memory of William C. Ward*

### Ms. Candace V. Strahan

*In Memory of James R. Strahan*

Contributions for both funds through June 9, 2014.  
Donations are listed for one year.



<b>ANSYTHE</b> Donald I. Andrews <b>504-887-3432</b>	 <b>CLASSEN EXPLORATION, INC.</b> <b>James S. Classen</b> Looking for close in deals P.O. Box 140637 Boise, ID 83714 classenllc@msn.com Bus. (208) 854-1037 Fax (208) 854-1029
<b>THE BOEBEL COMPANY</b> Oil and Gas Investments New Orleans, LA 70153 <b>(504) 866-4313</b>	<b>D-O-R ENGINEERING, INC.</b> <b>3-D and Geoscience Services</b> 6161 Perkins Rd. P.O. Box 80812 Bus: (225) 765-1914 Baton Rouge, LA 70898
<b>BOO-KER OIL &amp; GAS CORP.</b> Gray S. Parker 826 Union, Suite 300 New Orleans, LA 70112 Bus. (504) 581-2430 Fax (504) 566-4785	<b>EDWARD B. PICOU, JR.</b> Consulting Micropaleontologist - Retired 228 St. Charles Ave., Suite 1330 C New Orleans, LA 70130 Bus. (504) 529-5155 Res. (504) 282-3096
<b>C &amp; R EXPLORATION, INC.</b> Carlo C. Christina Lawrence G. Ringham	 <b>GEOLOGY ENVIRONMENTAL MANAGEMENT</b> <b>GEM Consulting, LTD</b> <b>Michael Louis Merritt</b> admin@gemconsultingltd.com
<b>TONY CAROLLO</b> Consulting Geologist Unitization • Geosteering • Field Studies 1701 Peach Street Metairie, LA 70001 Bus. (504) 885-0004 Res. (504) 885-6829	<b>Explore the ENTIRE Gulf of Mexico</b>  <b>Alvin Rowbatham</b> 832-372-2366 • alvin.rowbatham@iongeo.com <b>Ashley Garcia</b> 281-781-1005 • ashley.garcia@iongeo.com www.iongeo.com/Gulf_of_Mexico
 <i>Thanks our sponsors for their support!</i>  <i>Special Thanks to</i>  <b>DIVERSIFIED</b> WELL LOGGING, LLC	<b>PHELPS GEOSCIENCE LLC</b> Onshore Gulf of Mexico Geology and Geophysics Prospect Generation and Evaluation Houston, TX jsfphelps@yahoo.com (281) 398-5208
	 <b>RAFIDI OIL &amp; GAS, INC.</b> Jaser N. Rafidi, President 4913 James Drive Metairie, LA 70003 Office: 504.453.8580 Res/Fax: 504.888.1661
	<b>ROY C. WALTHER</b> Petroleum Geologist 2421 Prancer Street New Orleans, LA 70131 Bus. (504) 392-8513 Res. (504) 392-9332
	 <b>STONE ENERGY</b> www.StoneEnergy.com 625 E. Kaliste Saloom Lafayette, LA 70508 16800 Greenspoint Dr., Suite 225-S Houston, TX 77060 1100 Poydras St., Suite 1050 New Orleans, LA 70163
	<b>ZOT OIL &amp; GAS, LLC</b> <b>Jim Zotkiewicz</b> Consulting, Evaluation, and Prospect Generation Metairie, LA 70002 Bus. 504.267.9131 Email: jimzot38@zotoil.com

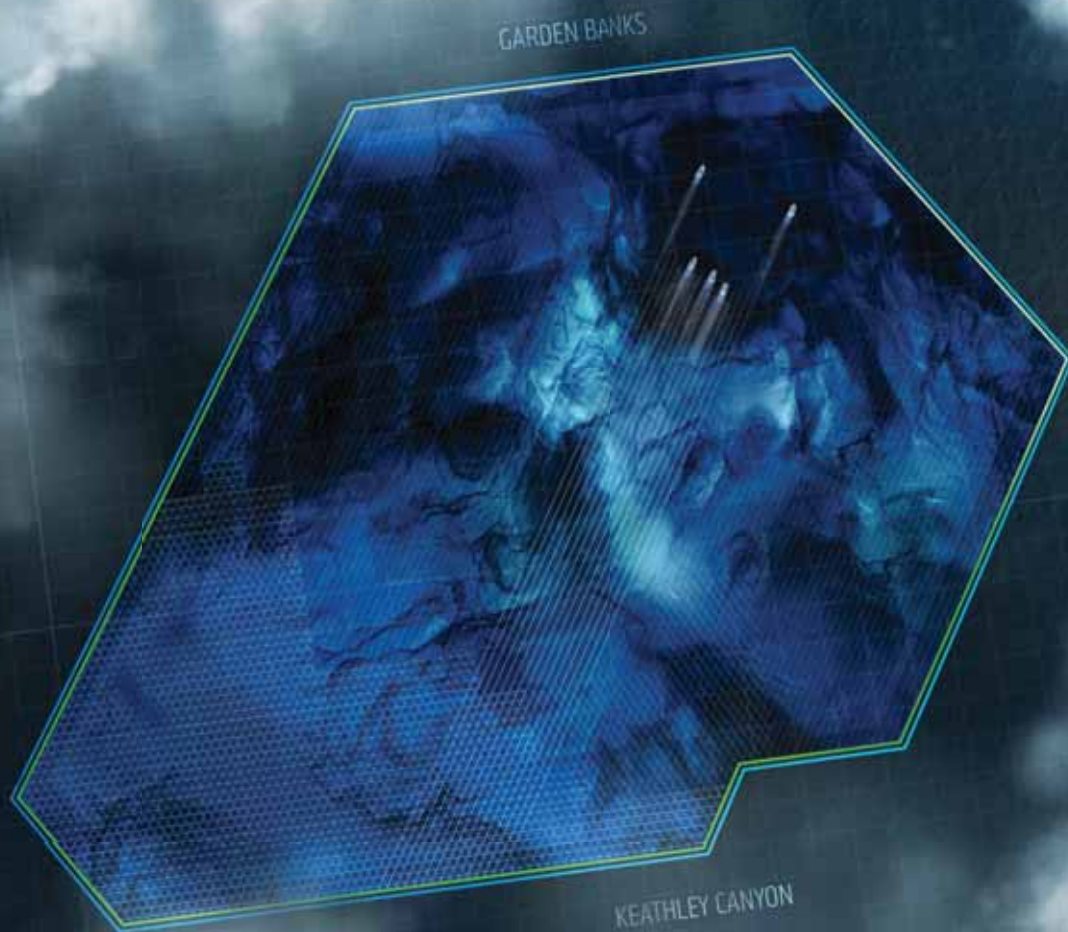


# CENTURY EXPLORATION NEW ORLEANS, LLC

*An independent gulf coast exploration, development and operating company*

Three Lakeway Center, Suite 2800  
3838 North Causeway Blvd.  
Metairie, LA. 70002

Office: 504.832.3750  
Fax: 504.832.3760  
[www.centuryx.com](http://www.centuryx.com)



## MultiClient

### Triton helps your exploration team:

- Explore 10,000 sq km of data, covering 390 OCS blocks in Garden Banks and Keathley Canyon
- Identify new prospects and better image previously challenging targets
- Achieve better illumination, deeper penetration, and improved clarity

## TRITON: FULL SPEED AHEAD

PGS reports strong performance of the Triton GeoStreamer® full azimuth survey in the central and western Gulf of Mexico, with over 50% of acquisition now complete.

Triton represents the next important advance in tailored acquisition design and state-of-the-art depth imaging, both of which are critical to successful exploration in the deep-water salt-prone Gulf of Mexico. The Triton survey utilizes a total of five vessels in the unique Orion™ configuration to reveal the structures obscured beneath the salt with high fold, long-offset, dual-sensor full azimuth (FAZ) seismic data.

Steven Fishburn Tel: +1 281 509 8124, [gominfo@pgs.com](mailto:gominfo@pgs.com)





## NEW ORLEANS GEOLOGICAL SOCIETY

810 Union Street, Suite 300  
New Orleans, LA 70112-1430

PRESORT  
STANDARD  
US POSTAGE  
**PAID**  
MAIL TECH

[www.nogs.org](http://www.nogs.org)



**MARINE PROPERTIES, LLC  
BERKSHIRE EXPLORATION CO.**

**MONTE C. SHALETT, CPL, PRESIDENT**

3030 Lausatz Street  
Metairie, LA 70001-5924

BUS. (504) 831-7779  
FAX (504) 831-8315

**PCI**

**Paleo Control, Inc.**

Houston, Texas  
713-849-0044

Drilling Wells, Studies and Data Base

Loyd Tuttle

Frio, SE Texas

Bob Liska

Wilcox, S and SE Texas

Jim Thorpe

Miocene and Cam-Miogyp



# THIS AD SPACE AVAILABLE

Contact:

[annette@nogs.org](mailto:annette@nogs.org)