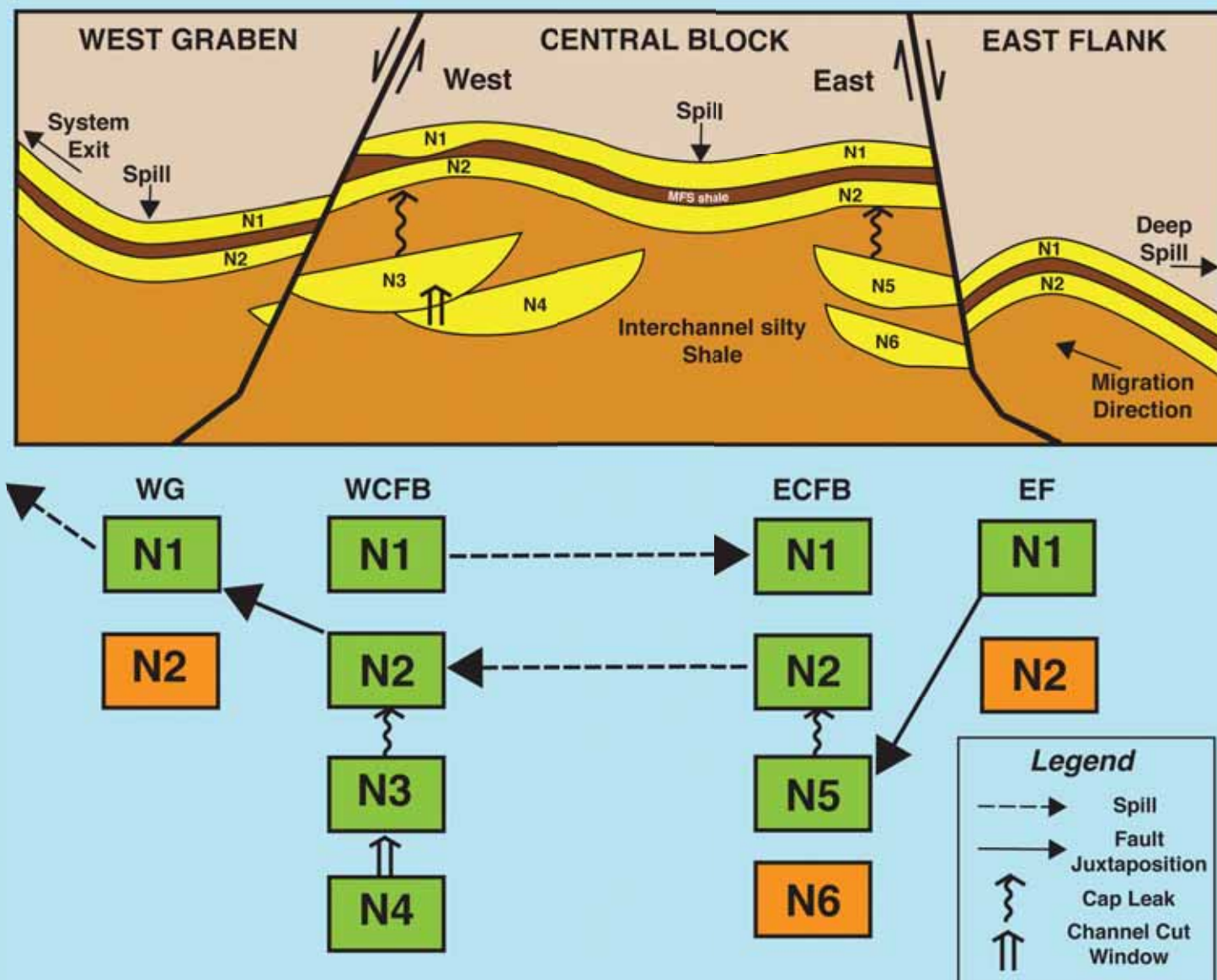


NGLS LOG



AUGUST 2014

Volume 55, Number 2



AUGUST 5 - 18TH ANNUAL GOM DEEPWATER TECHNICAL SYMPOSIUM & EXHIBITION INAUGURAL OPENING SEMINAR

Presentation: Gulf of Mexico Exploration and Reservoir Connectivity Analysis of Large Oil and Gas Field Development, Gulf of Mexico Deepwater and Other Basins

Speaker: John W. Snedden, Ph.D. • The University of Texas at Austin • Austin, Texas

SEE THE ENERGY

DIRECTIONAL SURVEY PLUS

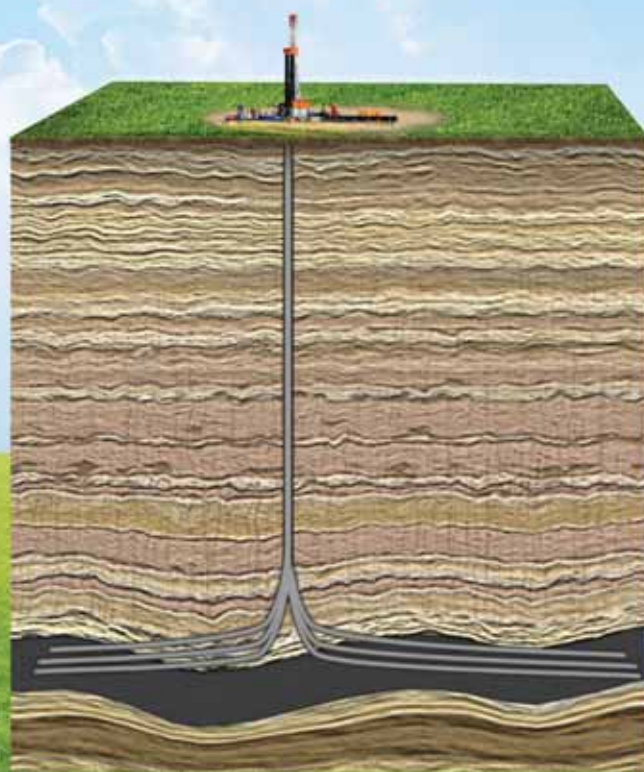
Directional Survey Plus (DS+) data goes beyond the simple capture of measured depth, azimuth and inclination. DS+ data are thoroughly researched, re-processed and standardized to create the most accurate spatial representation of the well path, from surface to total depth.

Access Directional Survey Plus data and the industry's largest collection of digital well logs quickly and easily through the online well data portal, LOG-LINE Plus!®

For more information, contact TGS at:

Tel: +1 713 860 2100

Email: info@tgs.com



WWW.TGS.COM

© 2013 TGS-NOPEC GEOPHYSICAL COMPANY ASA. ALL RIGHTS RESERVED.

TGS  See the energy.



Published monthly by the New Orleans Geological Society.
This issue was sent to press on July 24, 2014.

Interested in contributing to the NOGS LOG? Please submit items by the 1st Friday of the month to nogseditor@gmail.com. Advertising requests should contact the NOGS office at info@nogs.org.

IN THIS ISSUE

Regular Features:

From the Editor.....	3
From the President.....	5
NOGS Officers / Contacts	6
Upcoming Events & Activities	7
Looking Ahead	9
August & September Calendars.....	12
NOGA News.....	13
Drill Bits	24
Info-Tidbits	31
NOGS Memorial Foundation.....	33
FONO Fund.....	33

Special Features:

NOGS Welcomes	9
Girl Scouts Gone Geo	17
Girl Scouts Gone Geo Photo Collage.....	18-19
NOGS Awards Presentation.....	21
Save the Date! Rock-n-Bowl NOGS Social	22
On the Lighter Side!	23
Geoscientists License Announcement	26
Schlumberger Inaugural Opening Seminar	28-29

on the cover

Cover illustration by John Snedden, Ph.D.

A schematic of various reservoir connectivity scenarios by John Snedden.

Learn how this fits together at the Deep Water Symposium day-long seminar, "Gulf of Mexico Exploration and Reservoir Connectivity Analysis of Large Oil and Gas Field Development, Gulf of Mexico Deepwater and Other Basins."

Seminar details and registration information available on page 28 and 29 of the *NOGS LOG*.

From the Editor



This past month has been a very active month for NOGS. As you will see in our centerfold, Tom Bergeon and his volunteers proudly led our education efforts in promoting women in science and STEM education with the Girl Scouts. From the looks of the pictures, the girls and volunteers enjoyed the event and took away a greater appreciation of geoscience.

As we move into August, our efforts will focus on the Deepwater Technical Symposium and the short course offered by Dr. John Snedden. Please look at pages 28 & 29 for the overview of the meeting and course. Also just around the corner, we will have the Rock-n-Bowl NOGS Social. See page 22 for more information on this event. If you have submissions for cover art or interesting information shares for the info tidbits, please send your submissions to nogseditor@gmail.com.

Jana L. Prouhet - **NOGS LOG Editor**

These nodes change everything.

With absolutely no cables,
there's absolutely no stopping you.



True cable-free seismic

Dealing with tons of cable will hinder any seismic acquisition, land or marine. That's why our exclusive, true cable-free ZNodal® systems pay such huge dividends in any environment.

Our lightweight, compact ZLand® system lets your crews work faster and much more safely while recording high-resolution data, even in the most challenging terrain.

Our ZMarine® system, also completely self-contained, deploys easily and safely, even in congested areas, to water depths of 3000m, which makes it ideal for 4D reservoir monitoring.

Welcome to a new world of seismic acquisition.



FairfieldNodal.com



From the President

August comes with many exciting events, especially for the geoscientists. For starters, we have the Deepwater Technical Symposium from August 5-7th. The options are bountiful depending on your interest, but you have a seminar, daily lunches with keynote speakers, technical presentations on a variety of topics, panel discussions, evening social events, and my personal favorites are the student presentations and posters. It's wonderful to see a mix of professionals from industry, academia, and consulting along with the students who will be looking to enter the professional arena soon.

And speaking of students, those who are currently pursuing your degrees in geoscience will be looking to make your way back to the classroom to continue your endeavors this month. As a former professional student, according to my parents, August was exciting because it was the beginning of a fresh semester with new and interesting classes. There might be one class we're not so thrilled about (which for me was a geomorphology course taught by a geographer with a dislike for geologists...and not liking geologists is similar to not liking the Earth), but knowing other geos would be in it with me at least made it bearable.

Students, the Society wishes you the best for this semester and year! Learning, however, doesn't end with college. We all should look to continue the education and understanding of our dynamic field. That is why we host and attend conferences, seminars, and meetings. That is why we engage in organizations like NOGS, to stimulate thinking and ideas. We should all be evergreen learners and take advantage of the opportunities to learn new techniques and schools of thought.

Last but not least, August brings us another beginning. COLLEGE FOOTBALL!! So let's bust out our alma mater swag, gather with friends, and do what geologists do best...cheer on our team! WDE

NOGS Office

Office Manager: Annette Hudson

Phone: 504-561-8980 • Email: info@nogs.org • Website: www.nogs.org

The office is located at 810 Union Street, Suite 300, New Orleans, LA 70112.

Correspondence and all luncheon reservations should be sent to the above address.



BOARD OF DIRECTORS

President	Kelli Hardesty
Vice President	Jennifer Connolly
Secretary	Bryan Banks
Treasurer	Arthur H. Johnson
President-Elect	David E. Reiter
Editor	Tavia Prouhet
Director 2015	William M. Whiting
Director 2016	Jim Zotkiewicz
Director 2017	J. David Cope

Company

Environmental Resources Mgmt.
Shell
Terracon
Hydrate Energy International
Stone Energy Corporation
Chevron
Consultant
Zot Oil & Gas
Rising Natural Resources LLC

Phone

504-831-6700
504-728-6411
318-450-5300
504-220-6208
504-593-3623
985-773-6737
504-947-8495
504-267-9131
504-214-6754

E-mail

kellihardesty@erm.com
jennifer.connolly@shell.com
jbbanks@terracon.com
artjohnson51@hotmail.com
reiterde@stoneenergy.com
tavia.prouhet@chevron.com
bootscon@aol.com
jimzot38@zotoil.com
greatmre@aol.com

COMMITTEE

AAPG Delegates	William M. Whiting
AAPG Student Chapter	Kathryn Denommee
AAPG Student Chapter	W. Matt Benson
AAPG Student Chapter	Rachel Carter
Advertising-Log	Kimberly Maginnis
Auditing	Chuck Holman
Awards	Michael N. Fein
Ballot	Arthur H. Johnson
Best Paper	Bay Salmeron
Entertainment	David E. Reiter
Environmental	Daisy Pate
External Affairs	Michael A. Fogarty
Finance and Investment	Arthur H. Johnson
Historical	Edward B. Picou, Jr.
Membership/Directory	David E. Reiter
New Geoscientists (NGNO)	Jeremy Prouhet
Nominating	Michael N. Fein
Non-Technical Education	Duncan Goldthwaite
Office Operations	Chuck Holman
Publications Sales	Edward B. Picou, Jr.
School Outreach	Thomas C. Bergeon
Special Projects	TBD

Chairperson

Consultant

LSU
Tulane University
UNO
LLOG Exploration
Saratoga Resources
W & T Offshore
Hydrate Energy International
Chevron
Stone Energy Corporation
Pontchartrain Partners
Sylvan Energy, LLC
Hydrate Energy International
Consultant
Stone Energy Corporation
Chevron
W & T Offshore
Consultant
Saratoga Resources
Consultant
Century Exploration

504-947-8495
917-710-8021
985-801-4761
985-809-9292
504-210-8148
504-220-6208
832-854-6431
504-593-3623
504-862-1775
603-523-4808
504-220-6208
504-529-5155
504-593-3623
985-773-6927
504-210-8148
504-887-4377
985-809-9292
504-529-5155
504-832-3772

bootscon@aol.com
kdenom1@lsu.edu
wbenson3@tulane.edu
r_carter@me.com
kimberlym@llog.com
charleswholman@bellsouth.net
mikef@wtoffshore.com
artjohnson51@hotmail.com
bay.salmeron@chevron.com
reiterde@stoneenergy.com
daisy.pate@gmail.com
mike.a.fogarty@gmail.com
artjohnson51@hotmail.com
epicou@bellsouth.net
reiterde@stoneenergy.com
Jeremy.Prouhet@chevron.com
mikef@wtoffshore.com
DGldthwt@aol.com
charleswholman@bellsouth.net
epicou@bellsouth.net
Tom.bergeon@centuryx.com

NOGS LOG STAFF

Editor	Tavia Prouhet
Editor-Elect	Tom Klekamp
Auxiliary	Peggy Rogers
Drill Bits	Al Baker
Drill Bits	Carlo C. Christina
Drill Bits	Kevin Trosclair
Staff Photographer	Arthur Christensen
Layout	Kristee Brown
Webmaster	Kevin Trosclair

Chevron

Amber Resources LLC
NOGA
Beacon Exploration, LLC
Retired (C & R Expl. Inc)
Stone Energy Corporation
Shalimar Consulting
Creative Graphics & Printing, LLC
Stone Energy Corporation

985-773-6737
985-630-2480
504-392-6323
504-836-2710
504-202-7997
985-893-2013
985-626-5223
504-202-7997

tavia.prouhet@chevron.com
ekle1959@gmail.com
lrogers79@cox.net
ABaker1006@aol.com
drillbits81@yahoo.com
kevintrosclair@gmail.com
arthur_shalimar@yahoo.com
kpbrown@bellsouth.net
kevintrosclair@gmail.com

NOGS AUXILIARY

Officers

President	Mary Walther
Vice-President	Mary Ellis Hasseltine
Secretary	Peggy Rogers
Treasurer	Judy Lemarié
Parliamentarian	Alma Dunlap
Member-at-Large	Jean Jones

Phone

504-392-9332
504-885-7657
504-392-6323
504-393-8659
504-737-2678
504-738-8091

Directors

Trudy Corona
Debra Fein
Susan Baker
Judy Sabaté

Year

2013-15
2013-15
2014-16
2014-16

Phone

504-737-6101
504-831-0358
504-466-4483
504-861-3179



UPCOMING Events & Activities

August 5-7 • 18th Annual GOM Deepwater Technical Symposium & Exhibition "Working in the World of Tomorrow"

The Hilton New Orleans Riverside Hotel

SESSIONS:

**Geoscience • HS&E / Regulatory • Production Systems
Drilling Technology • Reservoir & Economics • Marine
Emerging Technology • Completions & Interventions
Pipelines/Subsea Infrastructure • Soft Skills Development
Student Papers • Concluding Plenary Session**

For more information: www.deepwaternola.org

**ONE-DAY
SEMINAR**

August 5

Dr. John W. Snedden

8:30 am - 3:00 pm • Hilton Riverside • New Orleans, LA

See page 28 & 29 for details!

August 20-22

Summer NAPE

George R. Brown Convention Center • Houston, TX

For more information, www.napeexpo.com

August 25-27

URTeC

Colorado Convention Center • Denver, CO

For more information, www.urtec.org

September 8

NOGS Luncheon

Holiday Inn Superdome • New Orleans, LA

For more information, www.nogs.org/calendar

NOGS will not have an August luncheon due to the one-day seminar on August 5 - see page 28 & 29 for details.

NOGS CONTACT LIST

Continued from previous page

MEMORIAL FOUNDATION BOARD OF TRUSTEES

2014-2015	Chairman	Chuck Holman
2014-2015	Secretary	Kelli Hardesty
2014-2015	Trustee	Rick Kear
2014-2015	Trustee	TBA
2015-2016	Trustee	William M. Whiting
2015-2016	Trustee	David E. Reiter
2016-2017	Trustee	TBA
2016-2017	Trustee	TBA

AAPG DELEGATES Term Ends

2015	Susan A. Waters
2015	William M. Whiting
2015(a)	David E. Balcer
2015(a)	Earl W. Cumming
2017	Elizabeth McDade
2017(a)	G. Alex Janevski

NEW MEMBERS

Lee Day	Senior Geologist
Nicholas Poole	Student
Charles Sternbach	President
Amy Laura Vanderhill	Senior Geologist

Company

Saratoga Resources Inc.
Environmental Resources Management
Schlumberger Oil Field Services

Consultant
Stone Energy Corporation

Shell
Consultant
Chevron
Reservoir Frameworks LLC
McMoRan Exploration Company
Shell

Toxicological & Environmental Associates
UNO
Star Creek Energy
Freeport-McMoRan Oil & Gas

Phone

985-809-9292
504-831-6700
504-858-2444

504-947-8495
504-593-3623

504-728-0229
504-947-8495
985-773-6725
985-630-6898
504-582-4510
504-425-6214

225-767-3880
281-679-7333
713-579-6486

E-mail

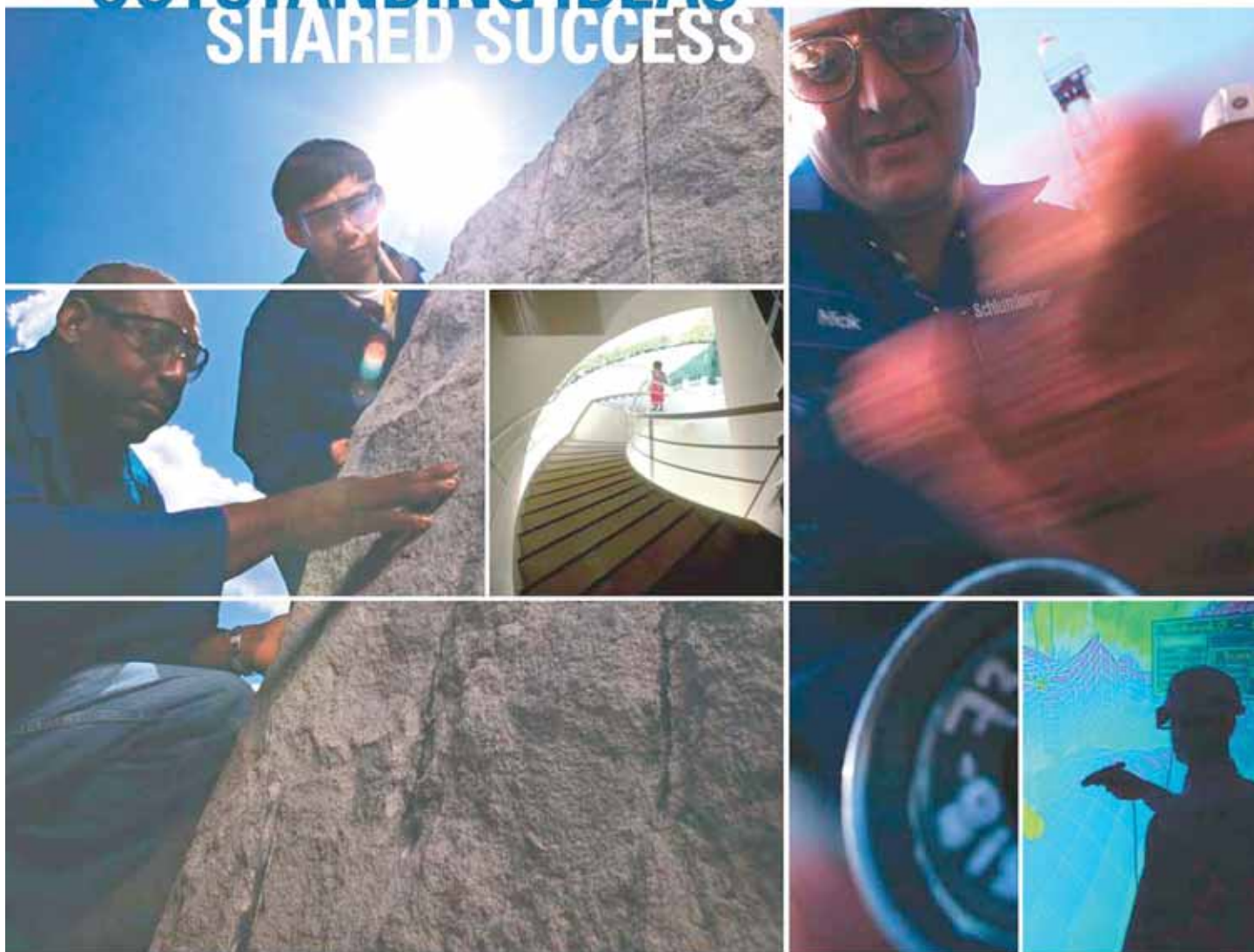
charleswholman@bellsouth.net
kelli.hardesty@erm.com
kearl@slb.com

bootscon@aol.com
reiterde@stoneenergy.com

susan.waters@shell.com
bootscon@aol.com
dbalcer@chevron.com
earlcumming@bellsouth.net
elizabeth_mcdade@fmi.com
gregory.janevski@shell.com

lday@teainconline.com
npooles@uno.edu
carbodude@gmail.com
amy.vanderhill@fmi.com

OUTSTANDING IDEAS SHARED SUCCESS



WHAT CAN MILLIONS OF IDEAS, thousands of patents, and hundreds of nationalities deliver? Success. Listening to the ideas of our clients and colleagues around the globe has made Schlumberger the world's leading technical services company. Your experiences are catalysts for our innovation.

Schlumberger invests in a worldwide community of research and development centers—from Boston to Dhahran, Beijing to Moscow, Stavanger to Cambridge—encouraging our brightest minds to find new ways to improve efficiency, productivity, and safety, every day.

Through our commitment to technology research and the support of our global network of local experts, Schlumberger is leading the way into the future.

www.slb.com

Schlumberger



Submitted by Tom Klekamp

Lee Day joined NOGS as an active member in June. Lee is a Senior Geologist with Toxicological & Environmental Associates in Baton Rouge. He holds a B.S. in Geology from Mississippi State University (1983) and a M.S. in Geology from the University of Southern Mississippi (1987). Lee is married to Denny; they reside in Baton Rouge. Welcome Lee!

We welcome **Nicholas Poole**, a student member at the University of New Orleans. He earned an A.S. in Geology from Austin Community College in 2013. Nick is a student member of AAPG. He resides in the Lakeview area of New Orleans. Originally from New Orleans, Nick grew up in Austin, then it was back to UNO to finish his B.S. degree. He's an outdoorsman which includes fly fishing, backpacking, mountain biking, and fossil hunting. "As much as I love being back in New Orleans I really miss the rocks of the Texas Hill Country," he reported.

Charles Sternbach (Active), with 27 years in the oil and gas business is well known to many in NOGS. He is President of Star Creek Energy in Houston. Charles is a past President of the HGS. In 2006, he was Convention Chairman of the AAPG Convention and an Honorary Member of the AAPG. He received a B.A. in Geology from Columbia in 1980. In 1981, he received an M.S. in Geology and, in 1984, a Ph.D. in Geology from Rensselaer Polytechnic Institute. Charles was both an editor and contributor to AAPG Memoir 98 – The Great American Carbonate Bank: The Geology and Economic Resources of the Cambrian-Ordovician Sauk Megasequence of Laurentia, published in 2013. You can find out more about Charles and his geologist wife, Linda Sternbach at <http://www.starcreekenergy.com/charles-sternbach.php>. Both Charles and Linda have been very active in the geoscience community.

Amy Laura Vanderhill (Active) has been a petroleum geologist since 1986 and is Senior Geologist with Freeport-McMoRan Oil & Gas in Houston. She has worked onshore, offshore and now the deepwater GoM with FMI. Amy earned a B.S. in Geological Sciences from the University of Texas at Austin in 1983. In 1986, she received an M.S. in Geology from Texas A&M University. Amy is an active member of the AAPG. She and her husband James live in the Bellaire area of Houston.

THE SEPT. LUNCHEON RESERVATION DEADLINE IS SEPT. 5 - CONTACT THE NOGS OFFICE

"And Looking Ahead . . ."

The next luncheon will be held on September 8. Our guest speaker, Wilma Subra, of Subra Company, New Iberia, Louisiana, will present "Leasing and Fracking the Tuscaloosa Marine Shale in St. Tammany Parish." Contact the NOGS office at 561-8980 or use the PayPal link on the NOGS website (www.nogs.org) to make your reservation.

STRENGTH IN RESOURCES

Our history is rooted in exploration success in the natural resources business. With a growing portfolio of high-potential oil and gas targets, our future grows brighter.



www.fcx.com



FCX
LISTED
NYSE

SEI®

Seismic Exchange, Inc.

Strategic Speculative Surveys
Geophysical Data Marketing & Management

YOUR
Full Service
National
Seismic Data
Marketing Firm



DALLAS DENVER HOUSTON MIDLAND NEW ORLEANS OKLAHOMA CITY CORPUS CHRISTI TULSA
201 St Charles Avenue, Suite 4300, New Orleans, Louisiana 70170-4300 504-581-7153 FAX 504-581-9591

seismicexchange.com



Drill with confidence.

Diversified Well Logging, LLC brings the accuracy and expertise only a company with over sixty years in the oil and gas industry can deliver. We are your eyes and ears in the field, especially when it comes to deep water or high pressure, high temperature areas.

DWL offers 24-hour formation evaluation. We provide secure and customized real-time data communication, in-house research and development, and 24/7 on-call support for our equipment and our engineers.

Whether you have a 10-day job or a 110-day job, we provide the specialized attention you require. **Our experience means you can be confident in the safety and performance of your well.**



- *Formation Evaluation*
- *Geosteering*
- *Drilling Optimization*
- *Real-time Data Transmission*
- *Early Kick Detection*



DIVERSIFIED
WELL LOGGING, LLC

Serving the Oil and Gas Industry for Over 60 Years

August 2014						
Sun	Mon	Tue	Wed	Thu	Fri	Sat
					1	2
3	4	5 Short Course	6	7	8	9
		Deepwater Technical Symposium, NOLA				
10	11	12	13	14	15	16
17	18	19	20 NOGS Board Meeting	21	22	23
24	25	26	27	28	29	30
31	Details Short Course (Aug 5): Gulf of Mexico Exploration and Reservoir Connectivity Analysis of Large Oil and Gas Field Development, Gulf of Mexico Deepwater and Other Basins; Dr. John Snedden For more information visit www.deepwaternola.org					

September 2014						
Sun	Mon	Tue	Wed	Thu	Fri	Sat
	1	2	3	4	5	6
7	8 NOGS Luncheon Holiday Inn 11:30	9	10	11	12	13
14	15	16	17 NOGS Board Meeting	18	19	20
21	22	23	24	25	26	27
28	29	30	<i>September</i> NOGS Luncheon Guest Speaker: Wilma Subra - Subra Company - New Iberia, Louisiana will Present: "Leasing and Fracking the Tuscaloosa Marine Shale in St Tammany Parish"			

New Orleans Geological Auxiliary News

"The objective of the Auxiliary is to promote fellowship among the wives of the members of the New Orleans Geological Society and to render assistance to NOGS upon request."



Celebrating 60 Years!



During his term as president of the New Orleans Geological Society, Mr. W. K. McWilliams appointed a committee to investigate the possibility of forming a ladies' auxiliary. He asked Mrs. D. D. Utterback and Mrs. C.A. Doh to serve as co-chairmen of that committee.

The meeting was held on October 13, 1954, for the purpose of organizing a ladies' auxiliary. At that meeting, Mr. E. M. Baysinger, then president of NOGS, noted that a need existed for an auxiliary to bring about better fellowship in the Society and to have an organization to support conventions and various social functions of the Society. There, it was decided that the name of the new organization would be New Orleans Geological Auxiliary (NOGA).

On November 17, 1954, a meeting was held at the Valencia Club with Mrs. D.D. Utterback presiding. NOGA adopted the constitution and bylaws. Following a recess, the attendees paid dues and signed the constitution; the meeting was called back to order and officers elected. The first president of the New Orleans Geological Auxiliary was Mrs. D. D. Utterback.

Today, 60 years later, NOGA continues to support the Society when asked. In 2013, we planned activities and hosted the Hospitality Room during the GCAGS Convention in New Orleans. This month we will be supporting the registration desk at the 18th Annual Gulf of Mexico Deepwater Technical Symposium. In December, we will help with the NOGS Christmas Party.

The Board of NOGA is planning activities to celebrate our 60th Anniversary. A special luncheon will be held in November at Ralph's on the Park. Please consider joining NOGA for this exciting anniversary year.

Mary Walther, President 2014-2015

New Orleans Geological Auxiliary Membership Application

Name _____ Spouse's Name _____
Address _____ Home Phone _____
City, State, Zip _____ Cell Phone _____
Spouse's Company _____ Email _____

Dues: \$25 payable to New Orleans Geological Auxiliary
Please mail to Judy Lemarié, Treasurer, #2 Yosemite Dr., New Orleans, LA 70131

Why can Weatherford deliver more real time data at the wellsite than any other mudlogging company?

Tim has cabin fever.



**EXCELLENCE
FROM THE
GROUND UP™**

Our Global Operations Manager for Surface Logging Systems, Tim, is all smiles these days. That's because he and his team recently designed a new state-of-the-art mudlogging cabin. The spacious interior makes room for more laboratory services at the wellsite. Now exploration companies have access to more data in real time, so they can make better decisions faster. Combined with Weatherford's patented GC-TRACER™, IsoTube® AutoLoader™ and other Isotech technologies, it's one more way Weatherford Mudlogging is committed to Excellence from the Ground Up.

SURFACE LOGGING SYSTEMS

www.weatherford.com/surfacelogging
mudlogging.services@weatherford.com



Weatherford®



64th Annual GCAGS Convention

5-7 October 2014 | Lafayette, LA

Hosted by the Lafayette Geological Society



"Survivor: The Gulf Coast" Registration Now Open!

Early bird rates extended to Sunday, August 17th

Visit www.GCAGS2014.com to Register
and for more information!



- 6 outstanding short courses
- 3 excellent field trips
- Educational forum featuring 4 leading industry experts
- Technical program with strong emphasis on deepwater deposition, emerging shelf trends, conventional plays, resource plays, and the environment
- Prospect alley
- Spouse/Guest program
- Industry sponsored night at the Lafayette Science Museum
- Special events for students and young professionals
- Rocks in your head – A workshop for teaching Earth Science

Exhibition and Sponsorship opportunities still available!



Delta
Chapter

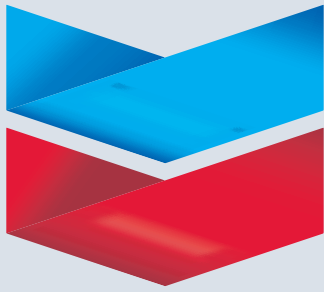
August 12, 2014 Technical Meeting TUSCALOOSA & HAYNESVILLE SHALE PLAYS

Speaker - Charlotte Batson
Batson & Company

Internationally-recognized expert on shale oil and gas from work as a petroleum engineer in oil and gas exploration and development, as well as presentations, publications, and a wide variety of projects. She serves on the Advisory Council for the Trent Lott National Center for Economic Development and Entrepreneurship, has served as a contract Influencer in the Future of Energy by Shell Group on LinkedIn, and was appointed in 2009 to the Mississippi Energy Policy Institute (MEPI) by Gov. Haley Barbour. She is frequently requested to speak on shale-related topics, and is a regular contributor to the "Energy Matters" radio show on KFYZ AM 550. Recent speaking engagements include the Transfield Worley Leading Practice Forum (TW LPF) 2013 in Brisbane and the 4th Shale Gas Southern Africa Summit in Cape Town, South Africa.

11:30 - Doors Open - 12:00 - Program begins
Le Pavillon Hotel, 833 Poydras Street, New Orleans, LA

Chevron



100 Northpark Blvd.
Covington, LA 70433

(985) 773-6000



LaBay

Exploration Co., L.L.C.

111 Veterans Memorial Blvd.
Suite 1550
Metairie, Louisiana 70005

Office (504) 371-5967
Fax (504) 371-5969

www.labayexploration.com



**Shell has worked in partnership
with the NOGS for many years, and
is proud to count the society among
its closest business associates.**

The New Orleans Geological Society was organized in 1941 to foster scientific research and advance the science of geology. Particular emphasis is laid on the exploration for and production of petroleum and natural gas. Related objectives include encouraging the adoption of improved methods of exploration, disseminating pertinent geological and technological data, and maintaining a high standard of professional conduct among its members.

www.shell.com/us.sepco

WELLSITE GEOSCIENCE SERVICES



When time is money, Wellsite Geoscience is money well spent.

Whether you're exploring a basin, producing a well or completing a shale play, time is money. That's why Weatherford Laboratories brings a suite of formation evaluation technologies right to the wellsite. Utilizing mud gas and cuttings, these technologies provide detailed data on gas composition, organic richness, mineralogy and chemostratigraphy in near real time. As a result, operators now have an invaluable tool to assist with sweet spot identification, wellbore positioning, completion design and hydraulic fracturing. We call it Science At the Wellsite. You'll call it money well spent.

SCIENCE AT THE WELLSITE™

www.weatherfordlabs.com



Weatherford®
LABORATORIES

Formation Evaluation Well Construction Completion Production

©2013 Weatherford. All rights reserved

girl scouts gone geo!

Saturday, June 21st NOGS and the Southeastern Geophysical Society presented aspects of the oil industry to Girl Scouts of Louisiana East region at Dillard University. There were over 500 girl scouts from as far away as Houma and Baton Rouge. The girls who attended our stations were treated to hands on demonstrations on how oil is formed, it's properties in a reservoir, the development of structures, porosity experiments, the concept of oil migration and development of a trap, the SGS seismograph and the use of seismic data on a workstation. Our oil materials are available for NOGS members to give school talks.



Morning shift, left to right: Cathy McCrae, Laura Dalton, Jessica Lopez, Lisa Kennedy, Tonya Richardson

The girls that attended really came away with a greater understanding of oil exploration and possible careers.

We had a great crew of women volunteers who were excellent role models for the girls. Rosie the Riveter eat your heart out!

Volunteering for the first shift were **Jessica Lopez** and **Tonya Richardson** from **Chevron**, **Cathy McCrae** from **Shell**, **Laura Dalton** from **BOEM**, and **Lisa Kennedy** also from **BOEM** bringing the SGS seismic station. In the afternoon **Shara Clark**, **Rachel Carter**, and **Leah Grassi** from **UNO**,



Afternoon shift, left to right: Elinor Gregory, Jordan Adams, Rachel Carter, Leah Grassi, Shara Clark

Jordan Adams from **Tulane** and **Elinor Gregory** who is retired from **Chevron**. Everyone was so enthusiastic and really related to the girls. Leah will be joining Chevron in July and as an added bonus was able to meet her new co-workers Jessica and Tonya, a pleasant surprise.

Special thanks go to **Kevin Shipp** the Program Coordinator for Girl Scouts East, **Dave Cope** who initiated our Girl Scout involvement last year, **Al Falster** at **UNO** for lending us the sand compression box, and **Tavia Prouhet** for helping coordinate the event.

Thanks to all of you for giving of your time and making this an ideal learning event!



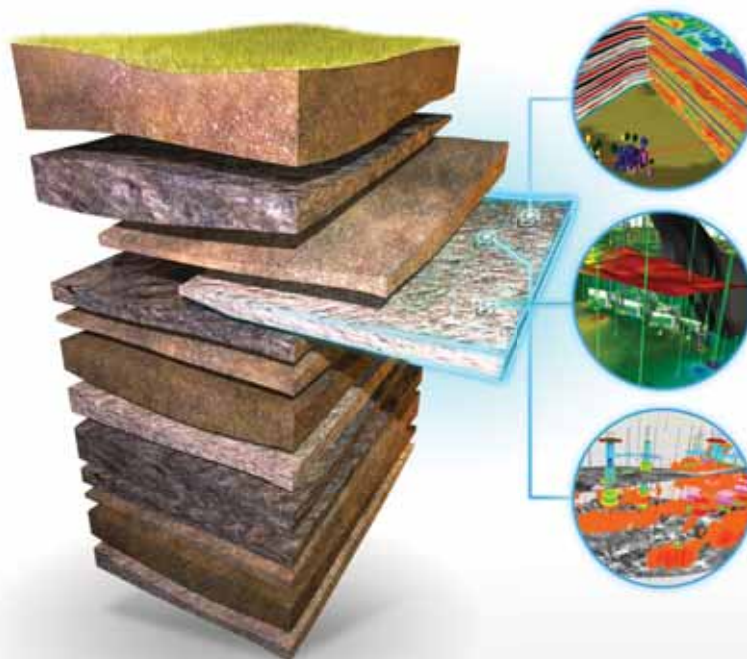


Photography by Tom Bergeon, Tonya Richardson and Lisa Kennedy

YOU TACKLE TOUGH PROBLEMS

YOUR GEOSCIENCE SOFTWARE
DOESN'T HAVE TO BE ONE OF THEM

IHS GEOSCIENCE: sophisticated science that's simple to use and simple to manage



SURFACE TO SUBSURFACE

ONLY ONE ENERGY EXPERT
PROVIDES SO MUCH TO SO MANY

From big picture to critical detail, proven capabilities to superior results, IHS geoscience does it all—backed by the world's most respected forecasting, analysis, and play-specific geological and geophysical data.

NOW GET THE POWER OF KINGDOM® AND PETRA®

Only IHS geoscience simply yet scientifically links engineering, economics and interpretation software suites to give you a definitive edge. Spearheaded by industry-leading Kingdom® and Petra® software solutions IHS gives you the best in geophysics and geology.

Learn more at IHS.com/NOGS

IHS GEOSCIENCE



Simply **Scientific™**

Awards Presentation July 2014



Outgoing President Charles "Chuck" Holman presented awards to the members of his 2013-14 NOGS Board of Directors.

Vice-President – Frances Wiseman

Secretary – Margaret McKinney

Treasurer – Robert Clark

Editor – Sheri Richardson

Director (2011-14) – Mike Fein



Our new President, Kelli Hardesty presented **Chuck Holman** with the **NOGS President's Plaque**, with detachable gavel for his service as President to the Society and its Board of Directors.

The **Edward B. Picou Outstanding Service Award** was presented to **Thomas C. Bergeon** for his countless hours in serving our educational outreach programs, including Super Science Saturdays at the Louisiana Children's Museum.



The **Honorary Life Member Award** was presented to **Paul Weimer**. "In recognition of his many outstanding contributions to the society, the profession of geology and to the development of the petroleum industry in general"

Ion Geophysical will receive the **Corporate Award** at a future meeting, for their assistance to the Society throughout the year.

The following members were presented with the President's Award 2013-14

Margaret McKinney,

for exemplary service to NOGS and the Board in several capacities.

Sheri Richardson,

for her diligence to the *NOGS LOG*.

Arthur Christensen,

for serving NOGS as photographer at many functions through the years.

Tavia Prouhet,

for volunteer coordination efforts and coordination of the NOGS Northshore social.

Rachel Carter,

served as a liaison from the AAPG Student chapter, and organized assistance for events such as Childrens Museum.



UNLEASH AMBIENT!



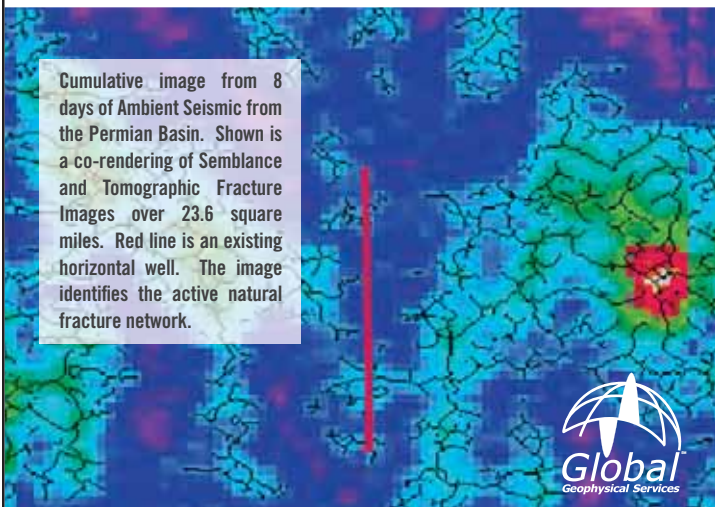
AGGRESSIVE PASSIVE SEISMIC

Ambient Seismic captures natural, continuous background seismicity and can be processed to reveal active natural fracture systems and stress regimes. The data can be collected during conventional 3D seismic surveys. Using patented processing techniques developed for microseismic monitoring, we produce highly sensitive images of cumulative seismic activity over extended time periods to identify active fracture areas, volumes and pathways.

Our objective is to help oil and gas companies identify and characterize prospectivity and productivity, reduce risk, optimize well completion techniques and monitor changes in hydrocarbon reservoirs.

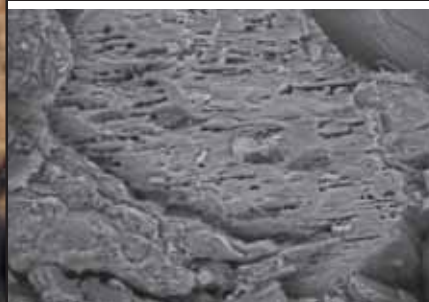
Contact AMBIENT@globalgeophysical.com

Download the White Paper at:
www.globalgeophysical.com/Ambient



Global Geophysical Services, Inc.
tel +1 713-972-9200 www.globalgeophysical.com

ROCK SOLID SERVICE



www.corelab.com
337-837-8616

© 2013 Core Laboratories.
All rights reserved.

Save the Date!



Rock-n-Bowl NOGS SOCIAL

Saturday, October 4th

4:30 p.m. - 7:00 p.m.

Drinks • Food • Bowling
...and fun!

Additional details coming soon...

Introducing the Fastest Log Printer in the Industry

At 11 inches per second, the NeuraLaserColor II operates seamlessly and requires no add-on software for automatically sensing top of form printing. Whether you are a service company printing thousands of logs a day or an exploration company looking for quality logs, the NeuraLaserColor II will change your expectations of well log printers.

- Record setting speeds - 11 inches per second
- Precision printing - On-the-fly length calibration
- Increased efficiency - 20,000 page yield toner
- Operational versatility - Native PDF support
- Hands free - Automated cut, feed and re-load

See More at:
www.NeuraLaserColor2.com



© 2014 Neuralog · www.Neuralog.com · sales@neuralog.com · 1.281.240.2525



On the lighter side!

E	Y	G	V	B	C	W	E	V	U	X	U	V	S	C	E	R	O	J	R
V	U	O	L	E	R	E	G	Z	S	C	R	F	T	U	O	S	O	E	V
E	M	T	K	I	D	B	L	E	C	Z	O	P	R	T	K	A	H	E	E
X	N	H	R	Q	Q	D	H	Y	Y	V	K	I	A	B	W	S	S	I	N
F	P	I	G	O	D	M	V	O	E	E	D	C	T	W	U	Y	N	T	W
I	H	P	L	I	P	P	M	R	Z	H	A	J	I	G	G	A	H	N	Y
G	E	W	P	C	L	H	U	A	Y	C	T	J	G	C	U	V	H	O	M
O	S	X	B	F	Y	T	I	D	J	W	U	Q	R	A	S	T	L	I	W
A	G	I	Q	M	C	S	R	C	Q	I	M	I	A	N	V	W	I	T	Q
K	N	X	S	U	D	O	O	V	A	H	K	Z	P	G	B	J	V	E	Q
J	V	T	R	E	C	S	N	L	T	T	U	F	H	U	Z	K	G	R	V
I	C	T	C	A	N	F	X	J	J	F	I	R	I	L	X	I	A	C	S
X	S	G	R	L	R	E	O	I	Q	Y	S	O	C	A	A	D	V	C	C
A	C	B	J	I	I	H	G	W	E	U	R	J	N	R	C	S	Z	A	Y
Q	O	B	V	X	O	N	D	A	V	T	P	R	O	S	P	E	C	T	G
N	N	S	T	R	I	K	E	H	I	Q	A	B	A	V	L	V	V	H	O
S	E	T	I	R	O	P	S	P	A	D	M	E	C	Z	L	A	T	B	L
L	K	Z	Q	M	F	G	W	M	H	A	B	W	R	Q	B	O	U	A	O
Z	O	S	N	N	N	O	I	T	C	A	P	M	O	C	P	V	R	V	E
N	P	F	O	B	N	U	Y	Z	V	V	C	S	A	J	K	M	G	O	G

Directions: Find the words below in the puzzle to your left

ACCRETION
ANGULAR
ANTCLINE
COAST
COMPACTION
DATUM
DIAGENESIS
DIP
EUTROPHICATION
GEOLOGY
GUSHER
HORIZON
HYDROCARBON
ORE
PROSPECT
SPORITE
STRATIGRAPHIC
STRIKE
STRUCTURE

South Louisiana and Offshore Gulf of Mexico Exploration and Production Activities

LAFAYETTE DISTRICT, ONSHORE AREA

By Carlo C. Christina

During the month of June 28 permits to drill were issued by the Office of Conservation, Lafayette District, Onshore Area. Following are the most significant locations and completions:

BREAKING NEWS

Petroquest Energy has announced that it has entered into a joint venture agreement with Midstates Petroleum to acquire a 50% working interest in 30,000 acres in the Fleetwood Project in Point Coupee, West Baton Rouge and Iberville Parishes. Petroquest will pay Midstates \$10 million in cash and \$14 million in future exploration drilling expenses, and will operate the properties.

Petroquest will have license to 3-D seismic data over a 200 square mile area. Supported by this seismic Petroquest will drill 2 exploration wells within the next 6 months, the Widgeon and Mallard prospects, and has identified more than 12 additional prospects in the area. The main objectives are Cockfield and Upper and Lower Wilcox sands. Current plans are to drill vertical and horizontal wells, some with fracking procedures.

Several years ago Midstates Petroleum conducted a similar program in Beauregard, Allen and Evangeline Parishes. This program was highly successful with Midstates drilling more than 150 wells in 8 fields within the area.

NEW LOCATIONS

Hilcorp Energy will drill an interesting well in **Lake Sand Field, (A)**, Iberia Parish. The #28 SL 1706 will be drilled to a proposed depth of 17,364 feet in 17S-7E to test the Operc Sand which is new production, located 2½ miles to the southwest of the proposed new location. (248111)

Lake Sand Field was discovered in 1949 and has had a total of 139 wells drilled in the field. Production has declined and only 10 wells remain on production. Within the past 5 years, 6 new wells have been drilled. The most recent completion, the Hilcorp #1 SL 3498, is significant for many reasons. The well was completed in the Operc Sand flowing 7157 MCFD and 209 BCPD through perforations 15,614 to 15,640 feet. **New production was found 65 years after the field was discovered.** This well has produced an average of 10,300 MCFD and 248 BCPD since placed on production 11 months ago. (245473)

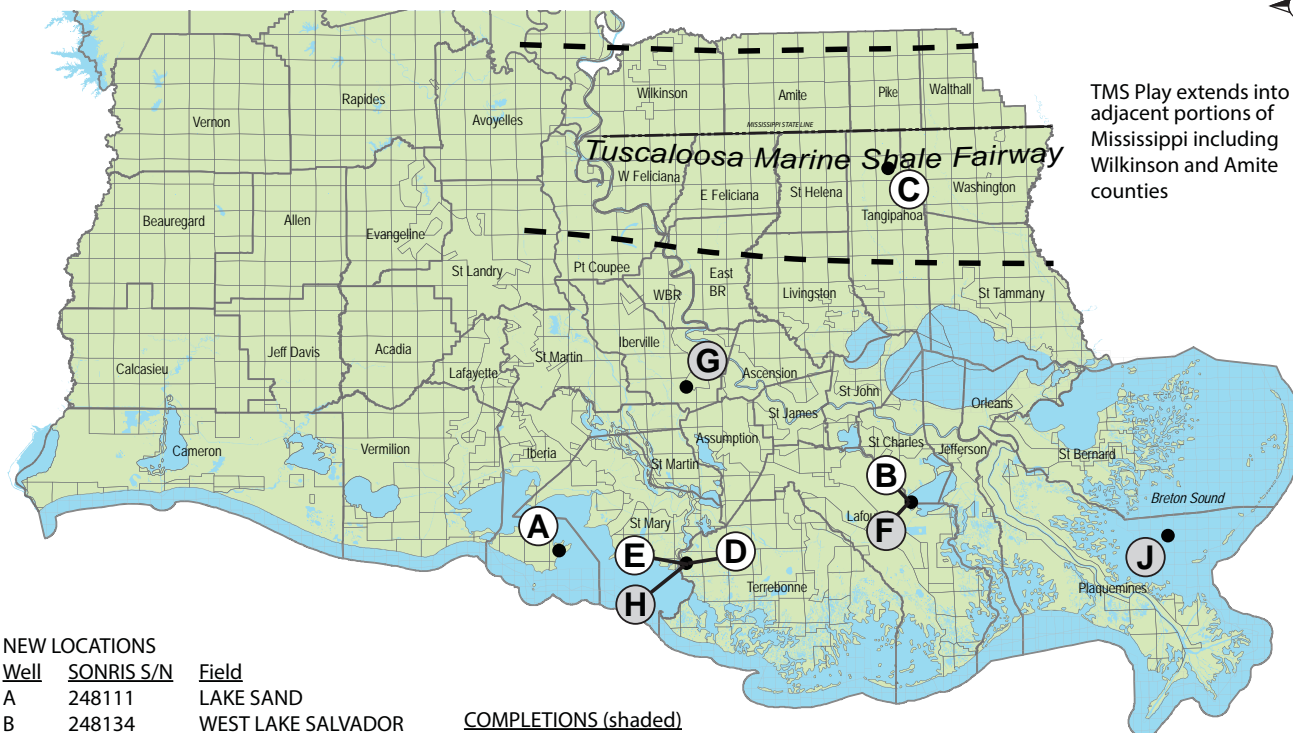
In St. Charles Parish, **West Lake Salvador Field, (B)**, Tri-C Resources will drill its #1 SL 21183, located 1 mile north of production in the field. The well will be drilled in 16S-21E, to a proposed depth of 14,000 feet. (248134)

Drilling activity in the **Tuscaloosa Marine Shale** continues to increase with the location of the Goodrich Petroleum #1 Kent 41 H, in **Northwest Wilmer Field, (C)**, Tangipahoa Parish. The well is located in Sec. 41, 2S-8E, approximately 1 mile southwest of the recently completed Goodrich #1 Blades 33 H, an excellent oil well flowing 1250 BOPD and 115 MCFD. Goodrich will drill the #1 Kent to a proposed depth of 19,500 feet, in a 7100 foot lateral. (248117)

Walter Oil & Gas will drill the #24 CL&F well in **Deer Island Field, (D)**, Terrebonne Parish, located in Sec. 24, 18S-12E. The well is offsetting a depleted well which had produced from 3 sands above 10,000 feet, and is also located 1 mile north of nearest Tex production. It will be drilled to 13,191 feet to test the Tex W sands. (248144)



NOGS LOG DRILL BITS — SOUTH LOUISIANA ACTIVITY MAP



NEW LOCATIONS

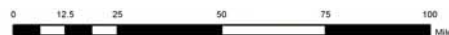
Well	SONRIS S/N	Field
A	248111	LAKE SAND
B	248134	WEST LAKE SALVADOR
C	248117	NORTHWEST WILMER
D	248144	DEER ISLAND
E	248036	WEST DEER ISLAND

COMPLETIONS (shaded)

Well	SONRIS S/N	Field
F	247637	WEST LAKE SALVADOR
G	247349	WHITE CASTLE
H	247421	WEST DEER ISLAND
J	247688	BRETON SOUND BLOCK 32

Kevin Trosclair

AUGUST 2014



Also in Terrebonne Parish, **West Deer Island Field**, (E), Castex Energy will drill the #7 CL&F to test the Lower Tex W sands at a projected total depth of 14,594 feet. The well is located in Sec. 20, 18S-12E, offsetting 4 producing oil wells. (248036)

COMPLETIONS

In St. Charles Parish, 16S-21E, Square Mile Energy has completed its #1 SL 20644 in **West Lake Salvador Field**, (F). It was drilled to 13,414 feet and completed as an oil well in the Cris I sand flowing 240 BOPD and 120 MCFD through perforations 12,808 to 12,813 feet. As previously reported, the well was drilled as a southerly extension to the field, which now has 16 producing wells. (247637)

Anglo-Dutch Energy has completed the #1 Wilbert in **White Castle Field**, (G), Iberville Parish, as an oil well sand flowing 270 BOPD and 1464 MCFD in the Cib Haz sand through perforations 13,561 to 13,590 feet. The well was drilled to 13,800 feet in Sec. 1, 11S-12E, located on the north flank of the field approximately 1 mile southwest of nearest production. (247349)

In Terrebonne Parish, **West Deer Island Field**, (H), Castex Energy has completed an excellent oil well flowing 648 BOPB and 1211 MCFD through perforations 13,213 to 13,282 feet in the Tex W sand. The #5 CL&F was drilled to 13,297 feet in Sec 20, 18S-12E. (247421)

In **Breton Sound Block 32 Field**, (J), Plaquemines Parish, Lobo Operating has completed the #29 SL 1227 flowing **1,531 BOPD** in a **horizontal** lateral through perforations 6445 to 7178 feet in the **5800 Miocene sand**. (247688)

OFFSHORE GULF OF MEXICO SHELF AND DEEPWATER ACTIVITIES

by Al Baker

During June 2014, the BOEM approved **83** Gulf of Mexico drilling permits. Of these, **34** were for shelf wells, and **49** were for deepwater wells. Of the total number of permits, there were **10 new well permits** issued. These included **8 shelf** (1 exploratory and 7 development), and **2 deepwater** (1 exploratory and 1 development) **new well permits**.

On the shelf, 3 development new well permits were granted to **Chevron U.S.A.** for their **Vermilion 245 #H-5** and **#H-6** wells and their **South Marsh Island 217 #235** well. In addition, development new well permits were awarded to the following operators: **Fieldwood Energy** for their **East Cameron 172 #2** well, **Arena Offshore** for their **Eugene Island 338 #K-12** well, **W&T Offshore** for their **Ship Shoal 359 #A-16** well, and **Rooster Petroleum** for their **High Island A-494 # B-5** well. **EPL Oil & Gas** obtained one exploratory new well permit for their **South Timbalier 125 #1** well.

In deepwater, 1 exploratory new well permit and 1 development new well permit were awarded to **BP Exploration & Production** for their **Green Canyon 627 #1** and their **Mississippi Canyon 776 #6** wells, respectively.

On June 27th, IHS-Petrodata reported that the Gulf of Mexico mobile offshore rig supply stood at **113**. The marketed rig supply consisted of **87** rigs, of which **79** were under contract. The contracted versus total rig supply utilization rate is **69.9%**, while the marketed contracted versus marketed supply utilization rate stands at **90.8%**. The total and marketed rig supply figures reflect a decrease of 2 rigs each compared to those figures reported last month, while the contracted rig supply number decreased by 3 rigs. In contrast, the June 2013 fleet utilization rate stood at 71.0% with 76 out of the 107 rigs under contract.

On June 27th, BakerHughes indicated that there were **54** active mobile offshore rigs in the Gulf, which is **68.4%** of the rigs under contract mentioned above. This active rigs number is **5** less than reported last month. The current active rigs count compares to 55 active rigs during the same period last year, representing a **1.8%** decrease in yearly activity.

On June 16th, **Noble Energy** announced that it will acquire a **50 percent interest** in **17 Gulf of Mexico leases** from **BP**. Noble Energy did not announce how much it will pay for its stake in the leases, nor did BP. The deal includes BP's **Bright Prospect**, which is currently drilling in a water depth of 5,600 feet. Noble Energy estimates that the prospect could have 90 to 350 million barrels of oil equivalent.

On June 25th, the **BOEM** reported the final results of **Central Gulf of Mexico OCS Sale 231**. Following extensive economic analysis, the BOEM awarded **320** leases out of the **326** tracts receiving high bids. Seventeen tracts were awarded leases during Phase 1 of the evaluation period, whereas 303 were awarded in Phase 2 of the 90-day bidding analysis period. The **accepted high bids** totaled **\$845,892,132**.

TO ALL MEMBERS AND FELLOW GEOLOGISTS:

House Bill 167 by Representative Hunter Greene and pertaining to Professional Geoscientist licensing has been passed by the Louisiana Legislature and signed by Governor Jindal. This bill is effective immediately and extends the grandfather period for licensing until January 1, 2015. This is an extension of one year beyond the previous end of the grandfathering (January 1, 2014).

Qualified individuals with at least five years of experience by the end of 2014 can apply for PG licensing with grandfathered status. Grandfathered status allows you to be licensed without having examination (ASBOG exams).

18th Annual Gulf of Mexico

Deepwater

Technical Symposium

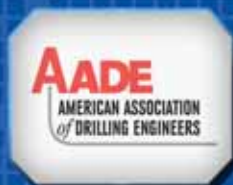
WORKING IN THE
**WORLD OF
TOMORROW**



AUGUST
5th, 6th & 7th
2014

*The Hilton New Orleans
Riverside Hotel*

www.deepwaternola.org





Schlumberger



The 18th Annual Gulf of Mexico Deepwater Technical Symposium and Exhibition

Welcomes you to its Inaugural Opening Seminar

Supported by AAPG



Gulf of Mexico Exploration and Reservoir Connectivity Analysis of Large Oil and Gas Field Development, Gulf of Mexico Deepwater and Other Basins

Presented by Schlumberger

Tuesday, August 5

Hilton Riverside

Two Poydras St. • New Orleans, LA

8:30 AM – 3:00 PM

Cost: \$199 (includes lunch)

Speaker:

John W. Snedden, Ph.D.

Senior Research Scientist

The University of Texas at Austin

For more information visit www.deepwaternola.org

Register at www.nogs.org/payment-center/ and scroll down to "Special Events Payment."

Be sure to include your name so we know who you are!



Dr. John W. Snedden

Project Leader, Gulf Basin Depositional Synthesis Project

Ph.D., Louisiana State University, Baton Rouge, LA 1985

M.S., Texas A&M University, College Station, TX 1979

B.A., Trinity University, San Antonio, TX, 1977

Dr. John W. Snedden, project leader of the Gulf of Mexico Basin Depositional Synthesis (GBDS) Project, has over 25 years of industry experience with Mobil and ExxonMobil, including 11 years in research. John's technical specialties include sequence and seismic stratigraphy, sedimentology, reservoir characterization, reservoir connectivity analysis, and unconventional resource evaluation. He has worked in a number of basins, including the U.S. Gulf Coast, West Texas Midland Basin, North Sea, Mid-Norway, Barents Sea, Papua New Guinea, Arkoma Basin, Niger Delta, Sarawak (Malaysia), Mahakam Delta (Indonesia), US Atlantic Shelf, Northwest Shelf-Australia, Pannonian Basin (Hungary), South Caspian Sea (Azerbaijan-Turkmenistan), China, Norwegian Sea, Gulf of Mexico shelf and slope, North Caspian Basin (Kazakhstan), Lower Saxony and Ruhr - Muensterland Basins, Germany (unconventional, CBM, Shale Gas, Light Tight Oil).

John has published over 30 scientific papers; he is the first author on 23 of these. John has a history of leadership in technical societies such as SEPM and the Gulf-Coast Section of SEPM. He has also served as technical chair of several large AAPG conventions.

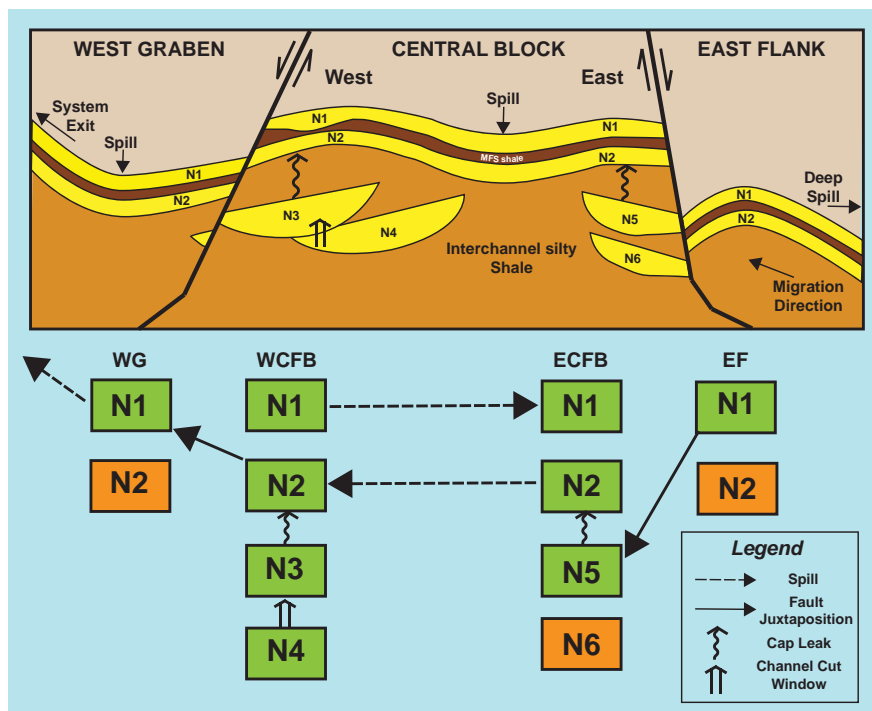
Outline of One-day Seminar

I. Morning Session: Gulf of Mexico Exploration

- A. Exploration success and failure: lessons learned
 - a. Established Gulf of Mexico slope and deepwater plays (Wilcox, Miocene)
 - b. Emerging New Mesozoic Plays (Norphlet, Tuscaloosa)
 - c. Diversity of Subsalt trap types
- B. The role of technology and its effect upon exploration play success
 - a. New process concepts (new deepwater reservoir models)
 - b. New seismic imaging approaches
 - c. Source to sink paleogeographic mapping

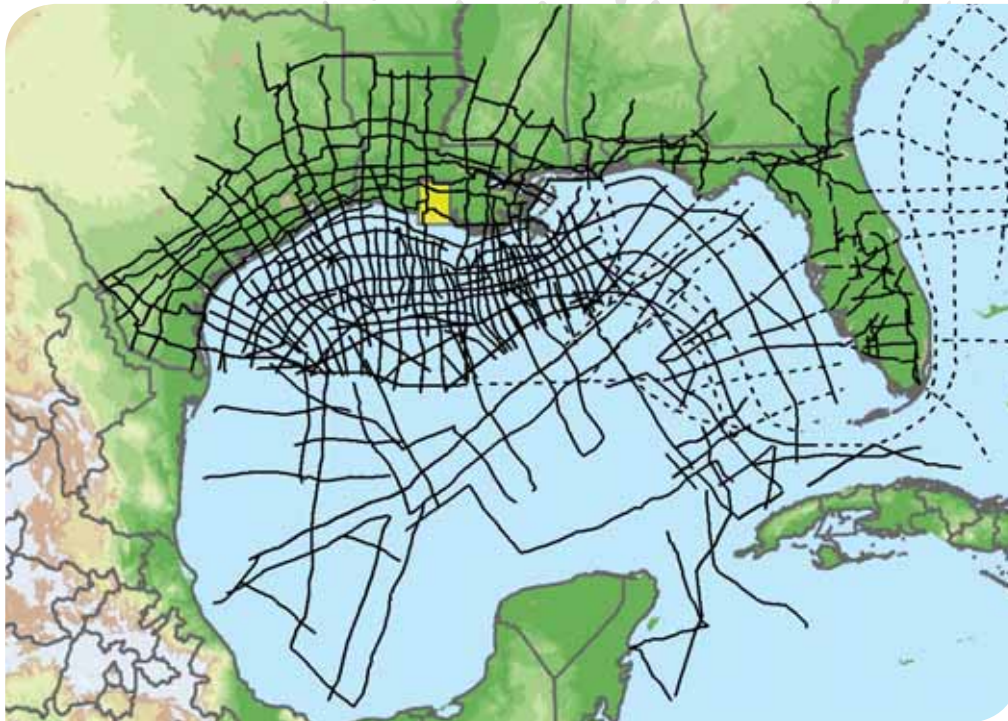
II. Afternoon Session: Reservoir connectivity analysis in support of large oil and gas field development, Gulf of Mexico Deep-water and other basins

- C. Uncertainty after Discovery
 - a. The Good, the Bad, the Ugly (connectivity)
- D. Definitions: compartments and connections
- E. Static Connectivity
 - a. Topologic controls on original fluid contacts in channelized deepwater systems
 - b. Shale barriers and baffles: 1D versus 2D distributions
 - c. Fault Connectivity: when it hurts, when it helps
- F. Dynamic Connectivity
 - a. The role of channel-based scours
 - b. Comparative pressure declines, Channel-levee vs. Amalgamated channel complex reservoirs
 - c. Construction of Reservoir Connectivity Scenarios



Connectivity Diagram (from Snedden et al. 2007).

Explore the Entire Gulf of Mexico



Position your company for the next 10 years of exploration with the most complete, modern time and depth-imaged data in the Gulf of Mexico. ION's interconnected dataset links the entire Gulf, from onshore to offshore deep water, from Texas to Florida and to Mexico. With over 40,000 miles (over 65,000 km) completed or in progress, and an additional 7,500 miles (over 12,000 km) planned for 2013 and beyond, no other data library provides as comprehensive a framework for understanding the Gulf of Mexico.

To learn more, visit iongeo.com/Gulf_of_Mexico

CONTACT

Ashley Garcia
Mobile: +1 281 781 1005
Email: ashley.garcia@iongeo.com

Alvin Rowbatham
Mobile: +1 832 372 2366
Email: alvin.rowbatham@iongeo.com

AREAS OF EXPERTISE

- Unconventional Reservoirs
- Challenging Environments
- Complex Geologies
- **Basin Exploration**
- Reservoir Exploitation



GEOVENTURES®

Submitted by Tom Klekamp

Guess who's coming to dinner!

Geologist and science writer **Nina Morgan** sympathizes with the geological wives

Geoscientist, **Geological Society of London, June 2014 issue**

Full story at <http://www.geolsoc.org.uk/Geoscientist/June-2014/Guess-whos-coming-to-dinner>

The important intellectual role played by women in geology during the 19th Century is now increasingly celebrated. But often these achievements went unrecognized at the time. The credit given by the geologist and paleontologist John Phillips (1800-1873) to his sister Anne in his 1848 Geological Survey Memoir on the Malverns, highlighting her discovery of a crucial piece of evidence about the origin of the Hills is a rare example of credit being given where it was due. More usually, the behind-the-scenes social and diplomatic skills of loyal wives, sisters and daughters in bringing together scientists and providing the favorable environment for discoveries to take place is hinted at only in posthumously published 'Lives and Letters', but not in scientific publications of the time.

In letters written on 29 March and 2 April 1839 to her sister Elizabeth Wedgwood, Emma Darwin (pictured), then just two months into her marriage to geologist and biologist Charles Darwin (1809-1882) reveals the difficulties of dealing with socially inept scientists, including geologists, Adam Sedgwick (1785-1873), Charles Lyell (1797-1875) and W H Fitton (1780-1858).



Emma Darwin,
wife of Charles Darwin,
by George Richmond, 1840
(image public domain, Wikipedia)

Hydrate petroleum system approach to natural gas hydrate exploration

NOGS' own **Art Johnson** co-authors a paper in major petroleum journal.

By M. D. Max and A. H. Johnson

Petroleum Geoscience, May 2014, v. 20, no. 2

<http://pg.lyellcollection.org/content/20/2/187.abstract>

(Abstract)

Natural gas hydrate (NGH) is a solid crystalline material composed of water and natural gas (primarily methane) that is stable under conditions of moderately high pressure and moderately low temperature found in permafrost and continental margin sediments. A NGH petroleum system is different in a number of important ways from conventional petroleum systems related to large concentrations of gas and petroleum. The critical elements of the NGH petroleum system are: (1) a gas hydrate stability zone (GHSZ) in which pressure and temperature lie within the field of hydrate stability, creating a thermodynamic trap of suitable thickness for NGH concentrations to form; (2) recent and modern gas flux into the GHSZ along migration pathways; and (3) suitable sediment host sands within the GHSZ. These elements have to be active now and in the recent geological past. Exploration in continental margin sediments includes basin analysis to identify source and host sediment likelihood and disposition, potential reservoir localization using existing seismic analysis tools for locating turbidite sands and estimating NGH saturation, and deposit characterization using drilling and logging. Drilling has validated first-order seismic analysis techniques for identifying and quantifying NGH using rock physics mechanical models.

Oil Boom Produces Jobs Bonanza for Archaeologists

Stop drilling! - they've kicked over a shard.

By Josh Wood, AP

New Orleans Advocate, June 29, 2014,

Full story at <http://www.theneworleansadvocate.com/home/9433012-172/oil-boom-produces-jobs-bonanza>

(Excerpted)

TIOGA, N.D. ... Across the oil fields of North Dakota, [drilling crews] often must wait for another team known for slow, meticulous study — archaeologists, whose job is to survey the land before a single spade of dirt can be turned. The routine surveys have produced a rare jobs bonanza in American archaeology, a field in which many highly educated professionals hop from project to project around the world and still struggle to make a living. The positions also come with a constant tension: The archaeologists are trained to find evidence of the past, but the companies that pay them would prefer not to turn up anything that gets in the way of profits. Archaeological surveys ... are a mandate for most federal drilling permits.

The work involves inspecting a site for any artifacts or evidence of past human habitation and cataloging the effort. If significant discoveries emerge, most oil companies will change their plans to avoid the hassle of drilling in a sensitive area.

At the heart of the work is a natural friction between the experts doing [the] surveys and the companies that hire them.

"While I'm out there looking for things, I know if I find them, it's a problem for the person who signs my paycheck. And there's a tension there."

"I think we all try to be professional," he added. "But I think it would be naive to ignore that."



Geoconsulting, Inc.

Geological and Geophysical Consulting
3-D Seismic Interpretation

Ben D. Sydboten, Jr. CPG

2 Flagg Pl., Suite 1
Lafayette, LA 70508

www.saigeoconsulting.com

Office (337) 504-3670

Cell (337) 456-8948



Anthony Catalanotto
President

Geological
Geophysical
Land

Drafting & Graphics

3349 Ridgelake Drive • Suite 202
Metairie, LA 70002
Office: (504) 836-2882
Fax: (504) 836-2877
Cell: (504) 481-7291
E-Mail: geodraft@bellsouth.net
Website: www.geodraftinc.com

NORTHCOAST OIL COMPANY

610 E. Rutland St.
Covington, LA 70433

(985) 898-3577

(985) 898-3585 Fax

Jack M. Thorson

Eric C. Broadbridge

J. Daryl Gambrell

Raymond W. Stephens



ETROA Resources LLC

Join us in pursuing gulf coast production,
acquisitions and low-risk drilling opportunities

John C. Ebert
Kevin McVey

128 Northpark Blvd.
Covington, LA 70433
(985) 809-3808

www.etroa.com

Collarini Energy Staffing, Inc.

Facilities • Drilling • Production • Reservoir Engineering
Land and Legal • Geosciences • Information Technology
Health and Safety • Management • Supply Chain
Accounting • Administrative Support



Full-Time and Temporary Personnel

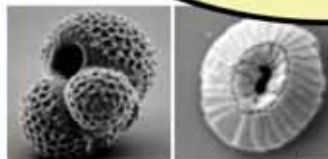
Energy Trading • Civil Engineering • Executives
Human Resources • Instrument and Electrical
Engineering • Marine Engineering • Project Management
Technical Writing • Sales and Marketing

10497 Town and Country Way, Suite 950, Houston, Texas 77024

Telephone: (832) 251-0553

www.collarini.com

DOMESTIC AND INTERNATIONAL
BIOSTRATIGRAPHIC SERVICES



6619 Fleur de Lis Drive
New Orleans, LA 70124
(504) 488-3711

www.paleodata.com



Complete wellsite paleo services

Supported offshore GoM and
onshore LA paleo databases

Integrated foram/nannofossil
analyses

In-house sample preparation
lab for quality-monitoring
and efficiency

Comprehensive depositional
history study of the Gulf Basin
based on 200,000+ well data
analysis



LAFAYETTE
GEOLOGICAL
RESEARCH
CENTER, LLC

201 Heymann Blvd., Suite 33 • Lafayette, LA 70503
Tel: 337-233-8197 • Fax: 337-233-8177

COVERAGE:

Louisiana / Federal / State Offshore
• Multi State Geo Tech Services • Completion Data
Production Data • Well Logs • Maps

~ MEMBERSHIPS AVAILABLE ~

The Industry's Premier • Well Data Center

orders@lafayetteegrc.com

CALL OR EMAIL TODAY FOR MORE INFORMATION!



THIS AD SPACE AVAILABLE
Contact: annette@nogs.org

THE NEW ORLEANS GEOLOGICAL SOCIETY MEMORIAL FOUNDATION, INC.

The Memorial Foundation is an IRS Tax Exempt Code #501(c)(3) organization. The Federal I.D. is 72-1220999. Please consider making a donation to the Foundation. Your individual support in any amount will help meet the IRS Guidelines for our Foundation. Thanks!

\$10,000

Gibbet Hill Foundation

*In Memory of Steve & Marion Millendorf, William J. Prutzman,
Roger G. Vincent, Ron Youngblood and Uno Numella*

\$5,000

NOGS Golf Tournament 2014

In Memory of Bill Craig

\$2,000

Mr. Armour C. Winslow

In Memory of Rita Menzel Winslow and Lawrence C. Menconi

\$500

Mr. Reuben J. Klibert, Jr.

In Memory of Reuben S. Klibert, Sr. and James Wade Klibert

\$250 TO \$499

Mr. Thomas C. Bergeon

*In Memory of Erik Mason
and Brian O'Neill*

Mr. Carlo C. Christina

*In Memory of Al Gilreath
In Memory of John C. "Jack" Langford*

Mr. Lawrence B. Eustit

In Memory of John C. "Jack" Langford

Mr. Kenneth Huffman

In Memory of James E. Rolf, Jr.

Mr. William M. Whiting

FONO FUND

The FONO Fund accepts contributions that are invested and the income dedicated to assure sufficient financial resources will always be available to maintain the NOGS business office. Contributors are reminded that donations to the FONO Fund are not covered by the IRS 501(c)(3) tax exempt classification and should be reported as a business expense on your IRS tax report.

\$500

Mr. James A. Hartman

Mr. Reuben J. Klibert, Jr.

UP TO \$249

Mr. Donald I. Andrews

Mr. Alfred H. Baker, Jr.

Mr. David E. Balcer

Mr. Joseph E. Boudreaux

Ms. J. Sybil Callaway

Mr. Anthony Carollo, Jr.

Mr. John Dombrowski

Mr. Merle J. Duplantis

Mr. Richard A. Edmund

Mr. Michael N. Fein

Mr. William J. Furlong

Mr. David Garner

Mr. Duncan Goldthwaite

Mr. Bernard L. Hill, Jr.

Mr. Kenneth Huffman

Mr. Arthur H. Johnson

Mr. Paul Jurik

Mr. Tom Klekamp

Mr. Louis Lemarié

Mr. H. David Lynch

Ms. Jeannie F. Mallick

Mr. George M. Markey, Jr.

Mr. James A. McCarty

Ms. Margaret M. McKinney

Mr. Paul C. McWilliams

Mr. Robert G. Murphy

Mr. Richard A. Olsen

Mr. William S. Peirce

Mr. Edward B. Picou, Jr.

Mr. Luther Franklin Rogers, Jr.

Mr. C. R. Rondeau

Mr. Bay Salmeron

Mr. George D. Severson

Mr. Rudolf B. Siegert

Mr. Richard J. Stancliffe

Mr. Bryan P. Stephens

Mr. Raymond Stephens

Mr. Robert K. Sylvester

Mr. David M. Tatum

Mr. Roy C. Walther

Mr. Robert C. Weissmann

Mr. William M. Whiting

Ms. Frances A. Wiseman

UP TO \$249

Mr. Randall W. Altobelli

In Memory of Richard Saunders

Mr. Woods W. Allen, Jr.

In Memory of William C. Ward

Mr. Robert J. Ardell

In Memory of Jim Seglund

Mr. R. H. Baillio, Jr.

In Memory of T. Wayne Campbell & Jack Dunlap

Mr. Maurice N. Birdwell

Mr. Burton C. Bowen

Mr. Hilary James Brook

Ms. Robin A. Broussard

Mr. Rob Burnett

Ms. J. Sybil Callaway

Chevron Humankind Matching Funds

Mr. Arthur F. Christensen

Mr. James S. Classen

In Memory of John C. "Jack" Langford

Mr. Merle J. Duplantis

Mr. Michael N. Fein

Mr. Sherwood M. Gagliano

Mr. Mark J. Gallagher

Mr. Arthur J. Garden

Mr. Bernard L. Hill, Jr.

Mr. Jeff Jandegian

Mr. Robert M. Jemison, Jr.

Mr. Paul Jurik

Mr. Tom Klekamp

In Memory of Kenneth J. Fulton

Mr. John C. Kucewicz, Jr.

Mr. John C. "Jack" Langford

Mr. Cyril F. Lobo

Mr. H. David Lynch

Ms. Jeannie F. Mallick

Mr. Joseph H. McDuff

Ms. Margaret M. McKinney

Mr. Paul C. McWilliams

Mr. Robert G. Murphy

New Orleans Geological Auxiliary

In Memory of Sybil Barton and Ruth Grimes

In Memory of Mrs. James W. Swaney, Jr. (Gwenn)

In Memory of Mrs. Lawrence B. Eustis (Tatjana)

Mr. Richard A. Olsen

In Memory of John C. "Jack" Langford

Mrs. Teresa O'Neill

In Memory of Brian O'Neill

Mr. William S. Peirce

Mr. Edward B. Picou, Jr.

In Memory of John C. "Jack" Langford

In Memory of Lawrence C. Menconi

In Memory of Clarence Conrad

Mr. George W. Schneider, Jr.

In Memory of George Schneider, Sr.

Mr. Robert T. Sellars, Jr.

In Memory of Robert G. Williamson

Mr. George D. Severson

Shell Matching Funds

Mr. Rudolf B. Siegert

Dr. J. O. Snowden

Mr. David Sollenberger

In Memory of Shirley Sollenberger

Mr. Raymond O. Steinhoff

In Memory of Anne M. Steinhoff & Harold E. Vokes

Ms. Betsy M. Strachan Suppes

In Memory of Hubert C. Skinner

Ms. Candace V. Strahan

In Memory of James R. Strahan

Mr. David M. Tatum

Mr. Louis O. Vidrine

Mr. Arthur S. Waterman

In Memory of T. Wayne Campbell

Mr. William M. Whiting

In Memory of John "Jack" Henton

In Memory of John S. Bousfield

Ms. Frances A. Wiseman

In Memory of Steve Widdicombe

BILL CRAIG FUND

Mr. Bernard L. Hill, Jr.

Mr. Bay Salmeron

Mr. John C. Scheldt

In Memory of William C. Ward

Ms. Candace V. Strahan

In Memory of James R. Strahan

Contributions for both funds through July 18, 2014.
Donations are listed for one year.

ANSYTHE Donald I. Andrews 504-887-3432	 CLASSEN EXPLORATION, INC. James S. Classen Looking for close in deals P.O. Box 140637 Boise, ID 83714 klassenllc@msn.com Bus. (208) 854-1037 Fax (208) 854-1029
THE BOEBEL COMPANY Oil and Gas Investments New Orleans, LA 70153 (504) 866-4313	D-O-R ENGINEERING, INC. 3-D and Geoscience Services 6161 Perkins Rd. P.O. Box 80812 Bus: (225) 765-1914 Baton Rouge, LA 70898
BOO-KER OIL & GAS CORP. Gray S. Parker 826 Union, Suite 300 New Orleans, LA 70112 Bus. (504) 581-2430 Fax (504) 566-4785	EDWARD B. PICOU, JR. Consulting Micropaleontologist - Retired 228 St. Charles Ave., Suite 1330 C New Orleans, LA 70130 Bus. (504) 529-5155 Res. (504) 282-3096
C & R EXPLORATION, INC. Carlo C. Christina Lawrence G. Ringham	 GEOLOGY ENVIRONMENTAL MANAGEMENT GEM Consulting, LTD Michael Louis Merritt admin@gemconsultingltd.com
TONY CAROLLO Consulting Geologist Unitization • Geosteering • Field Studies 1701 Peach Street Metairie, LA 70001 Bus. (504) 885-0004 Res. (504) 885-6829	Explore the ENTIRE Gulf of Mexico  Alvin Rowbatham 832-372-2366 • alvin.rowbatham@iongeo.com Ashley Garcia 281-781-1005 • ashley.garcia@iongeo.com www.iongeo.com/Gulf_of_Mexico
 <i>Thanks our sponsors for their support!</i> <i>Special Thanks to</i>  DIVERSIFIED WELL LOGGING, LLC	PHELPS GEOSCIENCE LLC Onshore Gulf of Mexico Geology and Geophysics Prospect Generation and Evaluation Houston, TX jsfphelps@yahoo.com (281) 398-5208
	 RAFIDI OIL & GAS, INC. Jaser N. Rafidi, President 4913 James Drive Metairie, LA 70003 Office: 504.453.8580 Res/Fax: 504.888.1661
	ROY C. WALTHER Petroleum Geologist 2421 Prancer Street New Orleans, LA 70131 Bus. (504) 392-8513 Res. (504) 392-9332
	 STONE ENERGY www.StoneEnergy.com 625 E. Kaliste Saloom Lafayette, LA 70508 16800 Greenspoint Dr., Suite 225-S Houston, TX 77060 1100 Poydras St., Suite 1050 New Orleans, LA 70163
	ZOT OIL & GAS, LLC Jim Zotkiewicz Consulting, Evaluation, and Prospect Generation Metairie, LA 70002 Bus. 504.267.9131 Email: jimzot38@zotoil.com

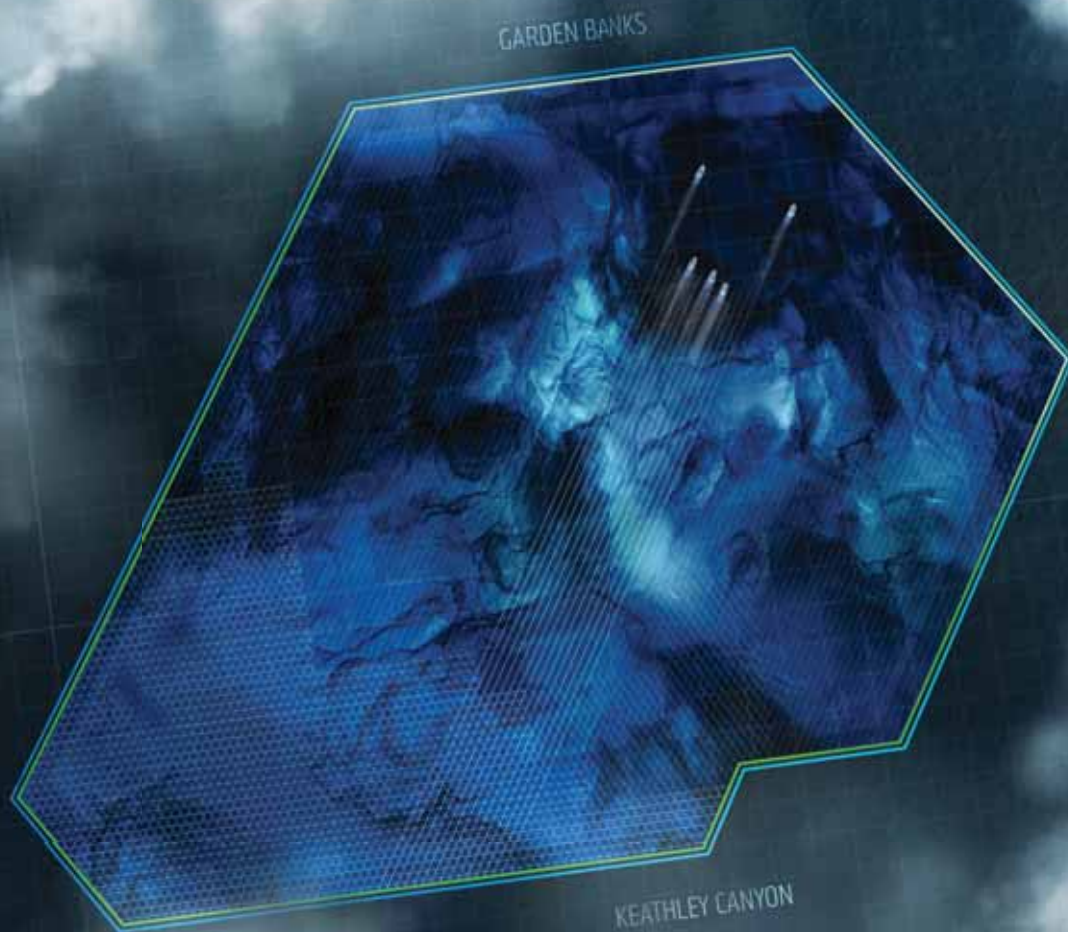


CENTURY EXPLORATION NEW ORLEANS, LLC

An independent gulf coast exploration, development and operating company

Three Lakeway Center, Suite 2800
3838 North Causeway Blvd.
Metairie, LA. 70002

Office: 504.832.3750
Fax: 504.832.3760
www.centuryx.com



MultiClient

Triton helps your exploration team:

- Explore 10,000 sq km of data, covering 390 OCS blocks in Garden Banks and Keathley Canyon
- Identify new prospects and better image previously challenging targets
- Achieve better illumination, deeper penetration, and improved clarity

TRITON: FULL SPEED AHEAD

PGS reports strong performance of the Triton GeoStreamer® full azimuth survey in the central and western Gulf of Mexico, with over 50% of acquisition now complete.

Triton represents the next important advance in tailored acquisition design and state-of-the-art depth imaging, both of which are critical to successful exploration in the deep-water salt-prone Gulf of Mexico. The Triton survey utilizes a total of five vessels in the unique Orion™ configuration to reveal the structures obscured beneath the salt with high fold, long-offset, dual-sensor full azimuth (FAZ) seismic data.

Steven Fishburn Tel: +1 281 509 8124, gominfo@pgs.com



NEW ORLEANS GEOLOGICAL SOCIETY

810 Union Street, Suite 300
New Orleans, LA 70112-1430

PRESORT
STANDARD
US POSTAGE
PAID
MAIL TECH

www.nogs.org



MARINE PROPERTIES, LLC
BERKSHIRE EXPLORATION CO.

MONTE C. SHALETT, CPL, PRESIDENT

3030 Lausatz Street
Metairie, LA 70001-5924

BUS. (504) 831-7779
FAX (504) 831-8315

PCI

Paleo Control, Inc.

Houston, Texas
713-849-0044

Drilling Wells, Studies and Data Base

Loyd Tuttle

Frio, SE Texas

Bob Liska

Wilcox, S and SE Texas

Jim Thorpe

Miocene and Cam-Miogyp



THIS AD SPACE AVAILABLE

Contact:

annette@nogs.org