

NOGS LOG

SEPTEMBER 2013

Volume 54, Number 3



SEPTEMBER 9 - NOGS LUNCHEON

Presentation: Bubble, Bubble, Tremors and Trouble: The Bayou Corne Sinkhole

Guest Speaker: Jeffrey A. Nunn

Louisiana State University • Baton Rouge, Louisiana

SEE THE ENERGY WITH TGS' DATA INTEGRATION SOLUTION

See and access all of your G&G data with Volant, TGS' geoscience data and application integration solution that:

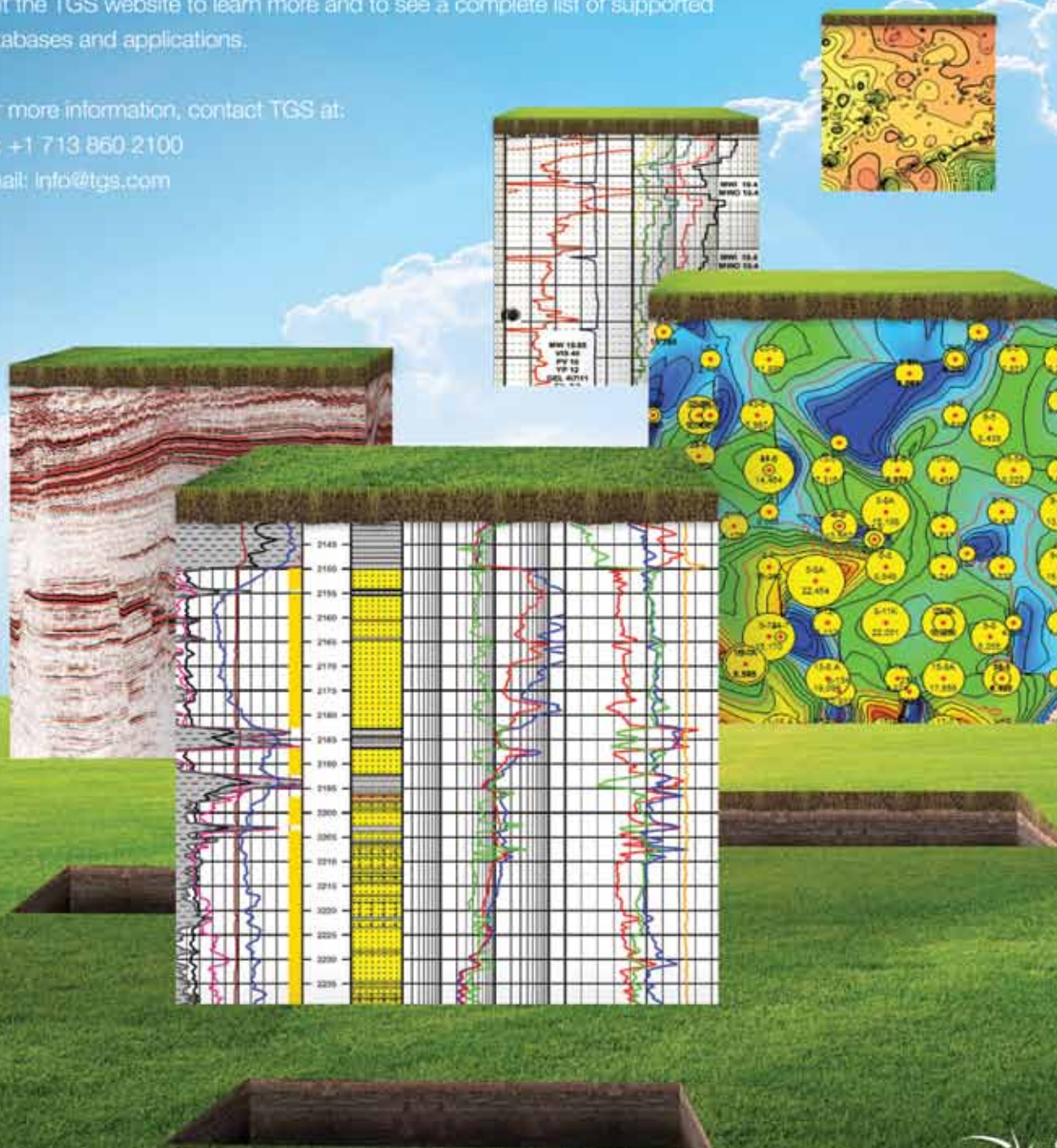
- Interconnects well and seismic data between geoscience databases and applications
- Reduces data duplication and maverick data purchasing
- Improves data governance by routing vendor data to corporate data stores

Visit the TGS website to learn more and to see a complete list of supported databases and applications.

For more information, contact TGS at:

Tel: +1 713 860 2100

Email: info@tgs.com



WWW.TGS.COM

© 2013 TGS-NOPEC GEOPHYSICAL COMPANY ASA. ALL RIGHTS RESERVED

TGS  See the energy.



Published monthly by the New Orleans Geological Society.
This issue was sent to press on August 24, 2013.

Interested in contributing to the NOGS LOG? Please submit items by the 1st Friday of the month to nogseditor@gmail.com. Advertising request should contact the NOGS office at info@nogs.org.

IN THIS ISSUE

Regular Features:

From the Editor	3
From the President	5
NOGS Officers / Contacts	6
Upcoming Events & Activities	7
NOGS Luncheon Presentation	9
September & October Calendars	12
Drill Bits	22
Info-Tidbits	29
NOGS Memorial Foundation.....	33
FONO Fund.....	33

Special Features:

NOGA News.....	13
NOGS Membership Renewal	16
AAPG Announcement	16
FETCH! Oil and Energy	18
Kick Off Party	21
NOGS Welcomes	27
A Visit With Tom Blakey	30
NGNO "Meet & Greet" at GCAGS	32

ON THE COVER:

Cover Photo Submitted by: Jeffrey Nunn

Bayou Corne Sinkhole — Assumption Parish, LA

Image shows the ground level view of Bayou Corne sinkhole from Oxy #3 well pad. Note degraded hydrocarbons in the water on the lower right.

WE WILL NEVER FORGET:



From the Editor

Hello NOGS members! It's good to know that our NOGS members are really reading the *NOGS LOG*. Three members have pointed out inaccuracies in the August *NOGS LOG* that need correcting.

An omission was made in regards to the funding of the Petroleum Geology class being offered this semester at the University of New Orleans. I was unaware of the significant contribution that the New Orleans Chapter of SIPES (Society of Independent Professional Earth Scientists) made in order to fulfill the students' wishes. Thank you SIPES for joining us to support such a worthy cause.

A correction must be made regarding the remembrance to James "Jim" A. Seglund. Jim was not the president of NOGS in 1967-1968, as was mentioned in the article. Wayne Grimes was president of NOGS and Jim's wife was president of the Auxiliary for the 1967-68 year. Jim was president of NOGS in 1980-1981.

The third error was the position of the Eugene Island Block 18 Field, (G), on the South Louisiana Activity Map in Drill Bits. The location should move due south of Point Chevreuil Field, (E).

Thank you to our astute readers for pointing out these important corrections.

Thanks,

Sheri Richardson – **NOGS LOG Editor**

These nodes change everything.

With absolutely no cables,
there's absolutely no stopping you.



True cable-free seismic

Dealing with tons of cable will hinder any seismic acquisition, land or marine. That's why our exclusive, true cable-free ZNodal® systems pay such huge dividends in any environment.

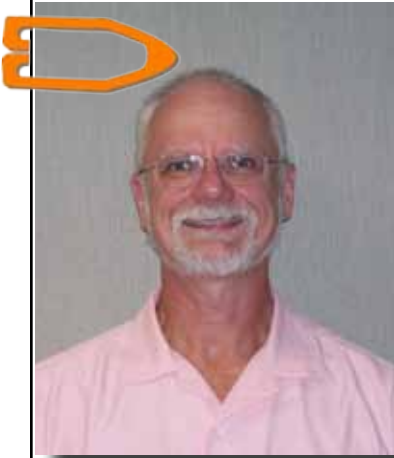
Our lightweight, compact ZLand® system lets your crews work faster and much more safely while recording high-resolution data, even in the most challenging terrain.

Our ZMarine® system, also completely self-contained, deploys easily and safely, even in congested areas, to water depths of 3000m, which makes it ideal for 4D reservoir monitoring.

Welcome to a new world of seismic acquisition.



FairfieldNodal.com



From the President

Let's look at August NOGS activities that happened before press time. So far no tropical storms in New Orleans, thank goodness.

Fetch!™ Oil and Energy Saturday competed with summer vacations, Whitney White Linen Night, and Satchmo Fest and still attracted a strong showing of parents and children at the Louisiana Children's Museum on Saturday, August 3rd. Volunteers from NOGS, SPE Delta Section, SPWLA, and API were there and NOGS' stations included a fossil collection, the dinosaur dig, and an oil on water and porosity demonstration. The seismic station was missing, but Jim Brooks of Schlumberger came to the rescue with "iSeismometer", an iPhone app that uses the accelerometer in an iPhone to display motion in the X, Y, and Z planes. Kudos to Jim for showing us a new way to measure local seismicity. Thank you to all the volunteers that came to encourage children's interest in science.

Bill Schramm and "Dutch" Donlon presented an excellent talk at the August luncheon on the importance of knowing and understanding the geology of salt domes before dissolving portions of a dome to create gas storage caverns. Bill and "Dutch" showed examples where a lack of understanding led to spectacular and disastrous salt cavern collapses and sinkholes.

UPCOMING EVENTS

The September Luncheon on the 9th will have Jeffrey Nunn, Professor in the LSU Geology and Geophysics Department, present "Bubble, Bubble, Tremors, and Trouble: The Bayou Corne Sinkhole". This talk will be an excellent follow-up to the August talk on environmental and safety issues with salt dome gas storage.

The NOGS Kickoff Party Beer Blast will be Friday, September 13th, at Lafreniere Park, Shelter #8, starting at 4:00 pm. Join in the casual setting and socializing.

The GCAGS Annual Convention is coming to New Orleans on October 6-8. The New Orleans Geological Society hosts the convention that includes papers and posters devoted to Gulf Coast geology, exhibitors, short courses, field trips, and parties. Show your support and go to www.gcags2013.com to register.

The AAPG-DPA is hosting the first annual Reserves Forum "Evaluating the Prize" on Thursday, October 31, 2013, at the Norris City Centre in Houston, Texas. Go to <http://www.aapg.org/forum/2013/reserves/index.cfm> for details on the program and registration.

The 2014 GCAGS Convention will be held in Lafayette and the technical committee has issued a call for papers. Go to www.gcags2014.com for details.

September is when the real NFL season starts and for New Orleans, that's Saint's time. I'm from the Chicago area and I should be a Bears fan like my father and brother, but I never really took to football. Baseball was my game; I wanted to be a professional ball player. As a Southsider, I should have been a White Sox fan, but I rooted for Northside Cubs because they played day baseball and I could watch them in the afternoon on WGN. Chicagoans loved the Cubs, win or lose, maybe even more than the White Sox that won the '59 Pennant. When I first moved to New Orleans in 1983, I noticed that same win-or-lose love for the Saints. I saw how much the city identified with the Saints, how the Saints brought the city together, how New Orleans lived and died with the Saints...and that is when I became a Saints fan for life.

Chuck

NOGS Office

Office Manager: Annette Hudson

Phone: 504-561-8980 • Email: info@nogs.org • Website: www.nogs.org

The office is located at 810 Union Street, Suite 300, New Orleans, LA 70112.

Correspondence and all luncheon reservations should be sent to the above address.

**BOARD OF DIRECTORS**

		Company	Phone	E-mail
President	Chuck Holman	Saratoga Resources Inc.	985-809-9292	charleswholman@bellsouth.net
Vice President	Fran Wiseman	Retired	504-831-8343	snowde.fran@gmail.com
Secretary	Margaret McKinney	TGS	504-524-3450	margaret.mckinney@tgs.com
Treasurer	Robert Clark	UNO	504-610-6861	rbclark@uno.edu
President-Elect	Kelli Hardesty	Environmental Resources Mgmt.	504-831-6700	kelli.hardesty@erm.com
Editor	Sheri Richardson	LaBay Exploration Co. LLC	504-371-5967	nogseditor@gmail.com
Director 2014	Michael N. Fein	W & T Offshore	504-210-8148	mikef@wtffshore.com
Director 2015	William M. Whiting	Consultant	504-947-8495	bootscon@aol.com
Director 2016	Jim Zotkiewicz	Zot Oil & Gas	504-267-9131	jimzot38@zotoil.com

COMMITTEE

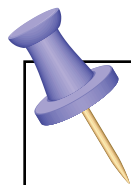
	Chairperson			
AAPG Delegates	William M. Whiting	Consultant	504-947-8495	bootscon@aol.com
AAPG Student Chapter	Hunter Berch	LSU	662-312-1300	hberch1@tigers.lsu.edu
AAPG Student Chapter	Michael Hopkins	Tulane University	228-209-2262	mhopkins@tulane.edu
AAPG Student Chapter	David Brassier	UNO	281-770-0809	dbrassie@uno.edu
Advertising-Log	Kimberly Maginnis	LLOG Exploration	985-801-4761	kimberlym@llog.com
Auditing	Kelli Hardesty	Environmental Resources Mgmt.	504-831-6700	kelli.hardesty@erm.com
Awards	Michael N. Fein	W & T Offshore	504-210-8148	mikef@wtffshore.com
Ballot	Robert Clark	UNO	504-610-6861	rbclark@uno.edu
Best Paper	Bay Salmeron	Chevron	832-854-6431	bay.salmeron@chevron.com
Entertainment	Kelli Hardesty	Environmental Resources Mgmt.	504-831-6700	kelli.hardesty@erm.com
Environmental	Daisy Pate	Pontchartrain Partners	504-862-1775	daisy.pate@gmail.com
External Affairs	Michael A. Fogarty	Sylvan Energy, LLC	603-523-4808	mike.a.fogarty@gmail.com
Finance and Investment	Robert Clark	UNO	504-610-6861	rbclark@uno.edu
Historical	Edward B. Picou, Jr.	Consultant	504-529-5155	epicou@bellsouth.net
Membership/Directory	David E. Reiter	Stone Energy Corporation	504-593-3623	reiterde@stoneenergy.com
Nominating	Edward B. Picou, Jr.	Consultant	504-529-5155	epicou@bellsouth.net
Non-Technical Education	Duncan Goldthwaite	Consultant	504-887-4377	DGldthwt@aol.com
Office Operations	Will Jorgensen	Shell	504-728-6339	william.r.jorgensen@shell.com
Publications Sales	Edward B. Picou, Jr.	Consultant	504-529-5155	epicou@bellsouth.net
School Outreach	Thomas C. Bergeon	Century Exploration	504-832-3772	Tom.bergeon@centuryx.com
Scouting	Carol Rooney	Consultant Geologist	504-835-1909	carolbrooney@aol.com
Special Projects	Larissa Cupp		978-621-5074	Larissacupp@gmail.com

NOGS LOG STAFF

Editor	Sheri Richardson	LaBay Exploration Co LLC	504-371-5967	nogseditor@gmail.com
Editor-Elect	Tavia Prouhet	Chevron	985-773-6737	tavia.prouhet@chevron.com
Auxiliary	Peggy Rogers	NOGA	504-392-6323	lrogers79@cox.net
Drill Bits	Al Baker	Beacon Exploration, LLC	504-836-2710	ABaker1006@aol.com
Drill Bits	Carlo C. Christina	Retired (C & R Expl. Inc)		drillbits81@yahoo.com
Drill Bits	Kevin Trosclair	Stone Energy Corporation	504-593-3624	trosclairkj@stoneenergy.com
Staff Photographer	Arthur Christensen	Shalimar Consulting	985-893-2013	arthur_shalimar@yahoo.com
Layout	Kristee Brown	Creative Graphics & Printing, LLC	985-626-5223	kpbrown@bellsouth.net
Co-Webmaster	Edward B. Picou, Jr.	Consultant	504-529-5155	epicou@bellsouth.net
Co-Webmaster	Kevin Trosclair	Stone Energy Corporation	504-593-3624	trosclairkj@stoneenergy.com

NOGS AUXILIARY

Officers		Phone	Directors	Year	Phone
President	Mary Walther	504-392-9332	Beverly Kastler	2012-14	504-286-0879
Vice-President	Camille Yeldell	504-835-7467	Linda Peirce	2012-14	504-393-7365
Secretary	Beverly Christina	504-835-2383	June Perret	2012-14	504-664-0651
Treasurer	Judy Lemarié	504-393-8659	Trudy Corona	2013-15	504-737-6101
Parliamentarian	Alma Dunlap	504-737-2678	Debra Fein	2013-15	504-831-0358
Member-at-Large	Jean Jones	504-738-8091			



UPCOMING Events & Activities

September 9 • NOGS Luncheon

Holiday Inn Downtown Superdome

\$2.00 validated parking in hotel garage

Presentation:

Bubble, Bubble, Tremors and Trouble: The Bayou Corne Sinkhole

Guest Speaker:

Jeffrey A. Nunn

Louisiana State University

Baton Rouge, Louisiana

See page 9 for Abstract and Biography

HOLIDAY INN DOWNTOWN SUPERDOME

Check with concierge or
front desk for location.

Lunch served at 11:30 am

ADMISSION:

With reservation \$30.00

Without reservation..... \$35.00

Student Member with reservations..... FREE

September 13

NOGS Kick Off Party

Lafreniere Park • Metairie, LA

For more information, www.nogs.org

September 22-27

SEG International Exposition & Meeting

Brown Convention Center • Houston, TX

For more information, www.nogs.org

September 30 - October 2

SPE Annual Technical Conference & Exhibit

Morial Convention Center • New Orleans, LA

For more information, www.spe.org/atce

October 6-8

GCAGS 63rd Annual Convention

Marriott • New Orleans, LA

For more information, www.gcags2013.com

NOGS CONTACT LIST

Continued from previous page

MEMORIAL FOUNDATION

BOARD OF TRUSTEES

2013-2014	Chairman	Will Jorgensen
2013-2014	Secretary	Chuck Holman
2013-2014	Trustee	J.David Cope
2013-2014	Trustee	Tom Klekamp
2014-2015	Trustee	Rick Kear
2014-2015	Trustee	TBA
2015-2016	Trustee	William M. Whiting
2015-2016	Trustee	David E. Reiter

Company

Shell
Saratoga Resources Inc.
Rising Natural Resources LLC
Amber Resources LLC
Schlumberger Oil Field Services

Phone

504-728-6339
985-809-9292
504-214-6754
985-845-4046
504-858-2444

E-mail

william.r.jorgensen@shell.com
charleswholman@bellsouth.net
klekamp@bellsouth.net
kearl@slb.com

Consultant
Stone Energy Corporation

504-947-8495
504-593-3623

bootscon@aol.com
reiterde@stoneenergy.com

AAPG DELEGATES

Term Ends

2014	Arthur H. Johnson
2014	Brenda Reilly
2014(a)	Elizabeth C. McDade
2014(a)	Frances A. Wiseman
2015	Susan A. Waters
2015	William M. Whiting
2015(a)	David E. Balcer
2015(a)	Earl W. Cumming

Hydrate Energy International
AMROMCO Management LLC
McMoRan Exploration Co.
BOEM (retired)
Shell
Consultant
Chevron
Reservoir Frameworks LLC

504-464-6208
504-430-4240
504-582-4510
504-831-8343
504-728-0229
504-947-8495
985-773-6725
985-630-6898

artjohnson51@hotmail.com
reillybe@yahoo.com
ecmdade@bellsouth.net
snowde.fran@gmail.com
susan.waters@shell.com
bootscon@aol.com
dbalcer@chevron.com
earlcumming@bellsouth.net

NEW MEMBERS

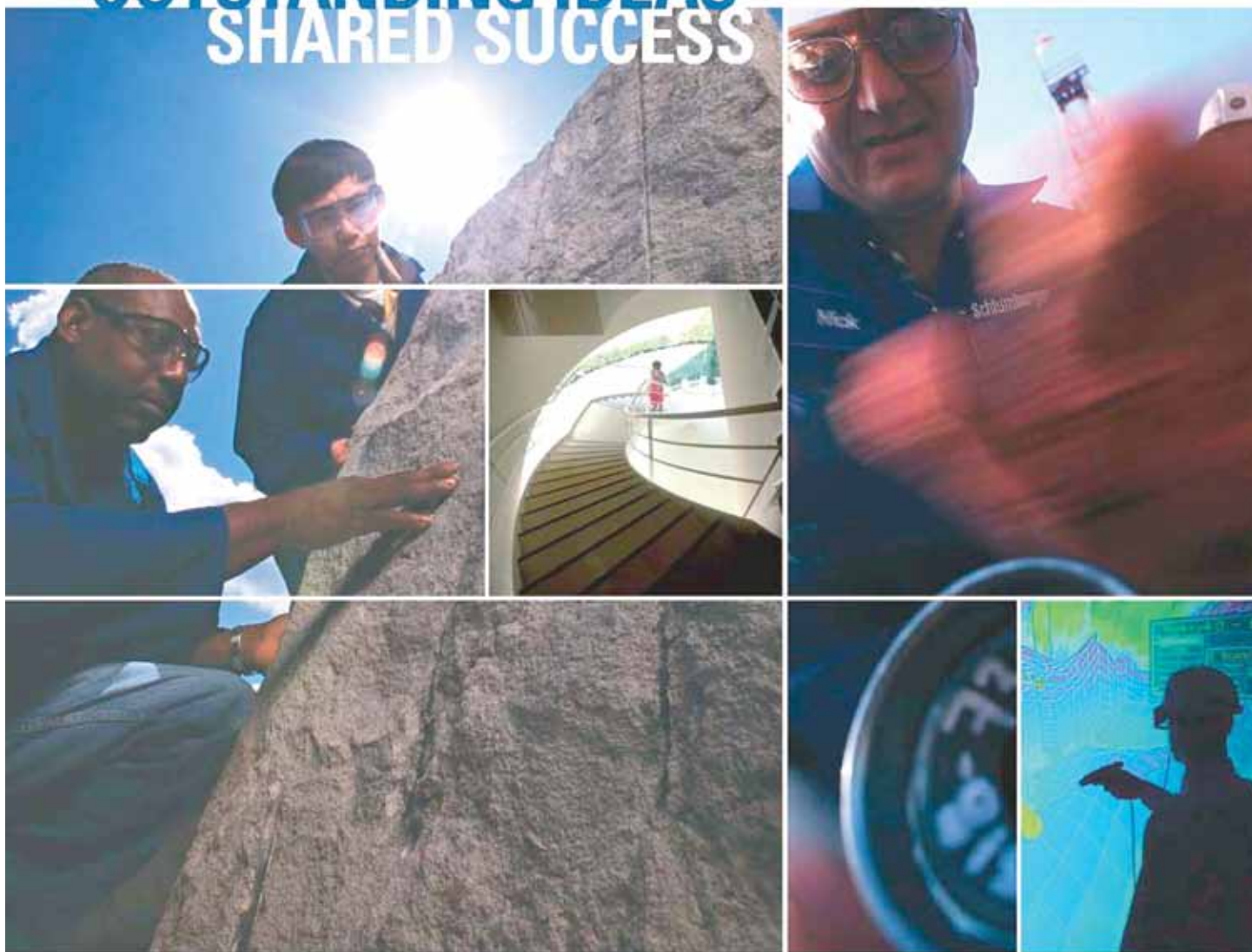
Elizabeth L. Chamberlain	Student
Christopher R. Esposito	Student
Ioannis Y. Georgiou	Professor
Amy L. Hill	Geophysicist
Jim L. Jarrell	Managing Director
Lisa K. Meeks	Geologist
Cynthia "Dianne" Palmore	Student
David J. Phillips	Sales Representative
Anna Thorson	Student

Tulane University
Tulane University
University of New Orleans
BOEM
ITG Investment Research
BOEM
Tulane University
SEISCO, Inc.
The University of the South

225-505-9956
732-485-6358
504-280-1373
504-736-2692
403-294-6487
504-736-5719
256-303-3014
504-858-5351
985-796-3550

echambel@tulane.edu
cesposit@tulane.edu
igeorgio@uno.edu
amy.hill@goem.gov
jim.jarrell@itg.com
lisa.meeks@boem.gov
cdpalmore3@gmail.com
Phillips@seiscoinc.com
thorsam0@sewanee.edu

OUTSTANDING IDEAS SHARED SUCCESS



WHAT CAN MILLIONS OF IDEAS, thousands of patents, and hundreds of nationalities deliver? Success. Listening to the ideas of our clients and colleagues around the globe has made Schlumberger the world's leading technical services company. Your experiences are catalysts for our innovation.

Schlumberger invests in a worldwide community of research and development centers—from Boston to Dhahran, Beijing to Moscow, Stavanger to Cambridge—encouraging our brightest minds to find new ways to improve efficiency, productivity, and safety, every day.

Through our commitment to technology research and the support of our global network of local experts, Schlumberger is leading the way into the future.

www.slb.com

Schlumberger



September 9 NOGS Luncheon Presentation

☆☆☆ at the Holiday Inn Superdome ☆☆☆



Bubble, Bubble, Tremors and Trouble: The Bayou Corne Sinkhole



Presented by

Jeffrey A. Nunn

Louisiana State University
Baton Rouge, Louisiana



ABSTRACT

At the end of May 2012, methane bubbles were first observed in Bayou Corne in northeast Assumption Parish, Louisiana. Geochemical analysis revealed that the methane was thermogenic rather than biogenic. Additional sites of methane bubbling in Bayou Corne, Grand Bayou, and on land have been discovered over time. As of June 2013, sixty four bubbling sites have been identified. Gas was also found in the top of the Mississippi River Alluvial Aquifer (MRAA) about 125 feet below the surface. Vent wells have been drilled into the MRAA and more than 15 million SCF of gas has been flared. Bayou Corne and Grand Bayou flow above the Napoleonville salt dome which has been an active area for oil and gas exploration since the 1920s. In addition, the dome is a site of dissolution salt mining which has produced numerous large caverns with diameters of up to 300 feet and heights of 2,000 feet. Some caverns are used for storage of natural gas and liquefied petroleum gas. In mid-July 2012, some local residents felt tremors. Microseismic activity was confirmed by the Earthscope seismic station in White Castle, Louisiana. A temporary array of microseismic stations set up in the area recorded more than 60 microseismic events in late July and the first couple of days of August 2012. These microseismic events were located on the western side of the dome. Estimated focal depths place the events just above the top of salt. In the first week of August 2012, a sinkhole approximately 400 feet in diameter developed overnight just to the northwest of a plugged and abandoned brine filled cavern. The sinkhole continues to grow in area to more than 19 acres and has consumed a pipeline right of way. Microseismic activity stopped for several weeks following the formation of the sinkhole. Microseismic events have reoccurred episodically since then with periods of frequent events preceding slumping of material into the sinkhole or a "burp" where fluid levels in the sinkhole drop and then rebound followed by a decrease in microseismic activity. A berm has been constructed around the sinkhole to prevent hydrocarbons or brine from entering the surrounding swamps. A relief well drilled into the abandoned brine cavern found that it is filling with sediment. As of March 2013, the cavern was 90% filled. A 2007 seismic survey suggests that the bottom of the abandon cavern is close to the edge of the salt dome potentially allowing direct contact with permeable formations.

BIOGRAPHY

Jeffrey A. Nunn is the Ernest and Alice Neal Professor of Geology and Pereboom Professor of Science at Louisiana State University in Baton Rouge. He received his Ph.D. from Northwestern University working on the Thermal-Mechanical Evolution of the Michigan Basin under the supervision of Norman H. Sleep and Lawrence L. Sloss. He has been a faculty member at Louisiana State University since 1981. His research interests include: geodynamics of sedimentary basins, thermal and pore pressure history of sediments in the Gulf of Mexico and Alaska, and subsurface fluid flow with associated heat and solute transport especially along faults/fracture networks and salt structures.

THE LUNCHEON RESERVATION DEADLINE IS SEPTEMBER 5 - CONTACT THE NOGS OFFICE

"And Looking Ahead . . ."

The next luncheon will be held on October 14th. Our guest speaker, Philip Fox of Halliburton in New Orleans, will present "Gulf of Mexico Deepwater Reservoir Surveillance Logging and Best Practices." Contact the NOGS office at 561-8980 or use the PayPal link on the NOGS website (www.nogs.org) to make your reservation.

The Evolution of Log Printing is Here!

Neuralog has been developing purpose built well log printing solutions for the O&G industry for 10 years. Our printers are designed to operate seamlessly and require no add-on software for automatically sensing top of form printing. The NeuraLaserColor II will change your expectations of well log printing.

What's New?

- Record setting speeds - 11 inches per second
- Precision printing - On-the-fly length calibration
- Increased efficiency - 20,000 page yield toner
- Operational versatility - Native PDF support

For More Information
www.NeuraLaserColor2.com



© 2013 Neuralog • www.neuralog.com • sales@neuralog.com • 1.281.240.2525 • 1.800.364.8728

SEI[®]

Seismic Exchange, Inc.

Strategic Speculative Surveys
Geophysical Data Marketing & Management

YOUR
Full Service
National
Seismic Data
Marketing Firm



DALLAS DENVER HOUSTON MIDLAND NEW ORLEANS OKLAHOMA CITY CORPUS CHRISTI TULSA
201 St Charles Avenue, Suite 4300, New Orleans, Louisiana 70170-4300 504-581-7153 FAX 504-581-9591

seismicexchange.com



Drill with confidence.

Diversified Well Logging, LLC brings the accuracy and expertise only a company with over sixty years in the oil and gas industry can deliver. We are your eyes and ears in the field, especially when it comes to deep water or high pressure, high temperature areas.

DWL offers 24-hour formation evaluation. We provide secure and customized real-time data communication, in-house research and development, and 24/7 on-call support for our equipment and our engineers.

Whether you have a 10-day job or a 110-day job, we provide the specialized attention you require. **Our experience means you can be confident in the safety and performance of your well.**



- *Formation Evaluation*
- *Geosteering*
- *Drilling Optimization*
- *Real-time Data Transmission*
- *Early Kick Detection*



Serving the Oil and Gas Industry for Over 60 Years

September						
Sunday	Monday	Tuesday	Wednesday	Thursday	Friday	Saturday
1	2 Labor Day	3	4	5	6	7
8	9 NOGS Luncheon Holiday Inn	10	11 NOGA Luncheon Trudy Corona	12	13 NOGS Kick Off Party Lafreniere Park	14
AAPG International Conference & Exhibition - Cartagena, Columbia						
15	16	17	18 NOGS Board Meeting	19	20	21
22	23	24	25	26	27	28
SEG Convention & Exhibition - Houston, TX						
29	30					
SPE Technical Conference & Exhibition						

October						
Sunday	Monday	Tuesday	Wednesday	Thursday	Friday	Saturday
		1	2	3	4	5
SPE Technical Conference & Exhibition						
6	7	8	9	10	11	12
GCAGS Annual Convention					N.O. Gem & Mineral Show	
13	14 NOGS Luncheon Holiday Inn 11:30	15	16 NOGS Board Meeting	17	18	19
N.O. Gem & Min						
20	21	22	23	24	25	26
LA Gulf Coast Oil Exposition - Lafayette, LA						
27	28	29	30	31 Halloween		
GSA Convention - Denver, CO						

New Orleans Geological Auxiliary News

"The objective of the Auxiliary is to promote fellowship among the wives of the members of New Orleans Geological Society and to render assistance to NOGS upon request."

I would like to thank all of the members of the Auxiliary who served on the Board and committees during this past year. I am especially grateful to all the members who attended the functions.

As noted in the August issue of the *NOGS LOG*, we will resume activities in September with a catered luncheon at the lovely home of Trudy & Charley Corona. It is always enjoyable to get back together and hear about the great vacations and visits with family that our members have had during the summer. Later this year, we have planned a short road trip to Ormond Plantation for a luncheon.

Sadly, this past year we lost two longtime members of the Auxiliary. Sybil Barton was a very active member for many years and Ruth Grimes, a charter member of NOGA, was a past President and remained active even after her presidency. We will miss them.

The Auxiliary will also be helping NOGS with the GCAGS Convention to be held here in October. If you would like to help in the Hospitality Room, please contact me at mwalther@earthlink.net.

Please consider joining the Auxiliary, by completing the application below, and join us at some of our events.

Mary Walther, *President*

UPCOMING EVENTS:

Luncheon, September 11, 2013

Home of Trudy Corona

Luncheon, November 13, 2013

Ormond Plantation

Luncheon, February 12, 2014

Porter and Luke Restaurant

Spring Social, April 5, 2014

Home of Ann & Louis Gilbert

Installation Luncheon, May 7, 2014

New Orleans Country Club

New Orleans Geological Auxiliary Membership Application

Name _____ Spouse's Name _____

Address _____ Home Phone _____

City, State, Zip _____ Email _____

Spouse's Company _____ **DUES: \$25.00**

Please send \$25 check payable to NOGA to Judy Lemarié, Treasurer, #2 Yosemite Dr., New Orleans, LA 70131

Countdown: We are 36 days from the convention!

The pre-registration deadline is September 15th. Register now and save money! The short courses, field trips, and Monday evening "View from the Top" are filling up quickly, so don't miss out!

Visit **www.gcags2013.com** to register.

We appreciate all who have agreed to volunteer to help at the convention, but we need more. If you can help out, contact Bill Whiting at Bootscon@aol.com.

Art Johnson
General Chairman
Artjohnson51@hotmail.com
504-464-6208



Second Lining

To Future Energy Resources



HOSTED BY



GCAGS 2013 ■ New Orleans

October 6-8, 2013

How do we ensure that every Weatherford mudlogger performs at the same high standards around the globe?

They all have to get past our man Wayland.



**EXCELLENCE
FROM THE
GROUND UP™**

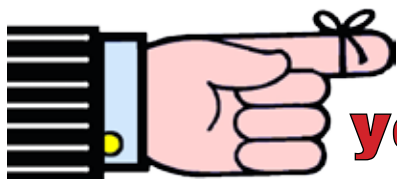
Weatherford is passionate about training, and that's where Wayland comes in. His mudlogging training program begins with hands-on classroom instruction and ends with rigorous tests at the wellsite. We call it Competency-Based Training. You'll call it another benefit of working with Weatherford. With courses for basic and advanced mudlogging, as well as for specialized services, Wayland's program helps mitigate hazards and enhance data accuracy. It's just one more way Weatherford Mudlogging is committed to Excellence from the Ground Up.

SURFACE LOGGING SYSTEMS

www.weatherford.com/surfacelogging
mudlogging.services@weatherford.com



Weatherford®



Have you renewed your NOGS Membership???

Dues are PAST DUE for the 2013-2014 Year!

Choose your renewal method:

1) Send a check (\$25 Active / \$12.50 Student) with your information updates to:
NOGS • 810 Union Street • Suite 300 • New Orleans, LA 70112-1430

2) Pay by PayPal: Go to www.nogs.org
and click on "Click here" on the left hand side of the page or go directly to:
http://nogs.org/nogs_checkout.html

Have you joined AAPG as a full voting “Member”?

**NOGS has lost a voting member
in the AAPG House of Delegates!**

**In order to get our fourth voting delegate back,
we need our NOGS members to become Full AAPG Members.**

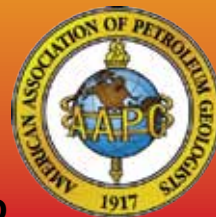
**In November a count will be done on the NOGS membership
and our AAPG Voting delegates will be determined.**

**Please sign up to become an AAPG Full Voting Member
or upgrade your membership!**



To join AAPG, <http://www.aapg.org/join/>

**To upgrade your AAPG membership:
<https://appmanager.aapg.org/site/account/default.asp>
and then click on Transfer to Member Application.**

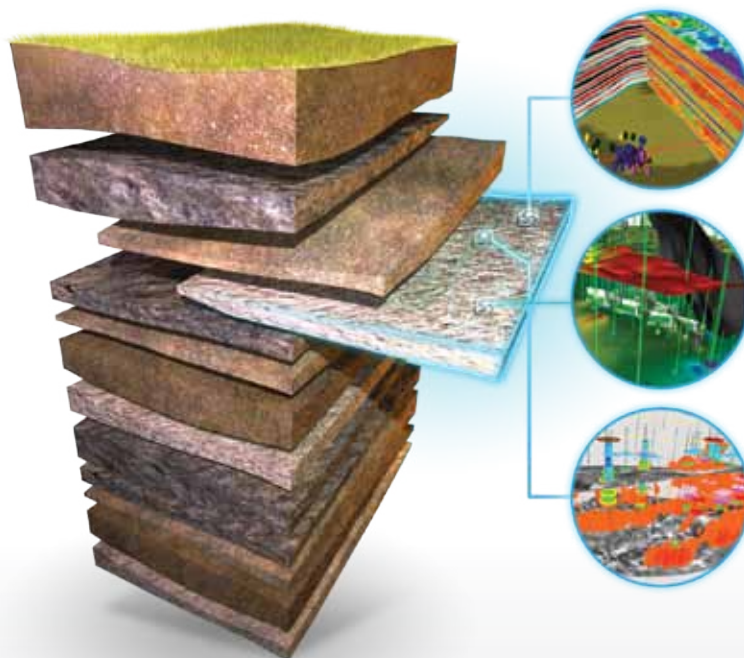


For more information email Jan Dorman at jdorman@aaapg.org.

YOU TACKLE TOUGH PROBLEMS

YOUR GEOSCIENCE SOFTWARE
DOESN'T HAVE TO BE ONE OF THEM

IHS GEOSCIENCE: sophisticated science that's simple to use and simple to manage



SURFACE TO SUBSURFACE

ONLY ONE ENERGY EXPERT
PROVIDES SO MUCH TO SO MANY

From big picture to critical detail, proven capabilities to superior results, IHS geoscience does it all—backed by the world's most respected forecasting, analysis, and play-specific geological and geophysical data.

NOW GET THE POWER OF KINGDOM® AND PETRA®

Only IHS geoscience simply yet scientifically links engineering, economics and interpretation software suites to give you a definitive edge. Spearheaded by industry-leading Kingdom® and Petra® software solutions IHS gives you the best in geophysics and geology.

Learn more at IHS.com/NOGS

IHS GEOSCIENCE



Simply **Scientific**™



NOGS was a key part of the 6th annual Fetch Oil and Energy 3rd. The event was a big success with children enjoying the SPE Delta Section, Oceaneering, SPWLA, API, Shell, SWE,

There were stations involving creating electricity out of le giveaways, gum drop hydrocarbon chains, and my favorite, down to the bottom to control subsea production facilities.

NOGS provided a large array of fossils, the dinosaur dig sand oil field and where oil occurs via porosity. SGS was unable Chuck Holman, asked if he could work the seismograph station and noted "Here's your seismograph!" Within a minute, kid That is true oil field ingenuity, thanks Jim!

Major thanks go out to our enthusiastic volunteers: Rachel Shell, Mike Fein of W&T Offshore, Chuck Holman of Saratoga Bill Whiting and Art Johnson (our co-trainer). They did a fabulous fun learning activities.

I would like to personally thank Jahnette deBlanc, an engineer the LCM Educational Program Coordinator, for making this so

Tom Bergeon



ND ENERGY!

Day at the Louisiana Children's Museum on Saturday, August 15, 2015. Various interactive exhibits. Eight organizations were present: Shell, Schlumberger, Baker Hughes, and NOGS.

Exhibits included: growing marsh grasses, Shell's wind power turbine, Baker Hughes's remote ROV simulator where kids could dive

into a box, and a station on oil formation, how it develops into an oil trap. To attend the event this year, so when our NOGS President, Jim Brooks, who overheard us, pulled out his cell phone and we were creating their own earthquakes using iSeismograph.

Participants included: I Carter of UNO, Robin Broussard & Karlein Meulenaars of Baker Hughes Resources, Jim Brooks of Schlumberger, and consultants from various job interacting with the kids and engaging them in some

activities. At Shell, who develops the Fetch program and Tracy Bruno, who was a positive, multi-disciplinary event.



Freeport-McMoRan is now
RESOURCE RICHER.

Offshore & South Louisiana Experts

- **CORE ANALYSIS**
- **PVT FLUID EVALUATION**
- **GEOLOGIC SERVICES**

New Orleans: 504-733-6583
Broussard: 337-837-8616
Houston: 713-328-2673
www.corelab.com



**Shell has worked in partnership
with the NOGS for many years, and
is proud to count the society among
its closest business associates.**

The New Orleans Geological Society was organized in 1941 to foster scientific research and advance the science of geology. Particular emphasis is laid on the exploration for and production of petroleum and natural gas. Related objectives include encouraging the adoption of improved methods of exploration, disseminating pertinent geological and technological data, and maintaining a high standard of professional conduct among its members.

www.shell.com/us.sepco



Freeport-McMoRan Copper & Gold Inc. provides resources to fuel global growth.

With the acquisitions of Plains Exploration & Production Company and McMoRan Exploration Co., FCX's diverse portfolio of minerals assets now includes high-quality oil and gas resources in the United States. Matched with bright prospects for success in the global minerals industry, this expanded scope of operations provides exciting new opportunities for profitable growth to benefit shareholders, employees and communities. FCX is pleased to announce its new subsidiary Freeport-McMoRan Oil & Gas.

**Freeport-McMoRan
Copper & Gold**
www.fcx.com

**FCX
LISTED
NYSE**

**Freeport-McMoRan
Oil & Gas**



2013 Kick Off Party

Lafreniere Park Shelter #8

Beer! Food! Friends!

**Friday
September 13, 2013
4:00 pm**

Free to all NOGS and NOGA members!

*Not a member? Come party with us and receive
a one-year membership for \$25.
(\$12.50 for students)*



**NOGS Party
September 13
4 PM at Shelter #8**

South Louisiana and Offshore Gulf of Mexico Exploration and Production Activities

LAFAYETTE DISTRICT, ONSHORE AREA

By Carlo C. Christina

THREE SUBSALT WELLS ARE CURRENTLY ACTIVE IN SOUTH LOUISIANA, ONSHORE.

McMoRan has permitted the #1 Williams in St. Martin Parish to a projected depth of **30,000 feet**. This location is 3 miles southeast of the McMoRan #1 Jeanerette Minerals, which is drilling below 24,287 feet.

McMoRan spudded the #1 Jeanerette Minerals on September 19, 2012, and has set 3 strings of pipe, with an 11 7/8 inch liner bottomed at 21,084 feet. It has been reported that total well costs to date is **more than 100 million dollars**. McMoRan plans to run 9 5/8 inch casing to total depth and then proceed to drill an additional 5,000 feet.

McMoRan has 36% working interest in the Chevron #1 SL 20571, the Lineham Creek Prospect, located in Cameron Parish. This well was spudded on December 31, 2011, and has been drilled to a depth of 29,426 feet where the drill pipe parted at 25,441 feet. The well was sidetracked at 22,097 feet and is currently drilling below 22,424 feet.

In February McMoRan announced that independent reservoir engineers had evaluated sands encountered above 24,000 feet in the Lineham Creek well and estimated proved, probable, and possible oil and gas reserves of **546.7 Bcfe (billion cubic feet of gas equivalent)**. These are the first reserves to be booked in the subsalt, ultra-deep trend in South Louisiana, onshore.

The Office of Conservation, Lafayette District, Onshore Area, issued 36 permits during the month of July, 2013. Following are wells of interest:

NEW LOCATIONS

Marlin Energy will drill the #1 Quatre Mineral in **Ragley Field, (A)**, Beauregard Parish, in Sec. 29, 6S-8W. The well is permitted to 13,000 feet to test Wilcox sands. It is located 1 mile northeast of production.

Ragley Field is an old field, discovered in 1959, which has produced from Frio and Cockfield sands. Although more than 60 wells were drilled in the field, only one well tested the Wilcox section at 13,000 feet. (246675)

In Calcasieu Parish Aspect Energy will drill a **rank wildcat, (B)**, in Sec. 8, 7S-10W to a proposed depth of 14,575 feet to test Lower Wilcox sands. The #1 Barrow is located 3 miles southwest of Wilcox production in West Gordon Field. (246705)

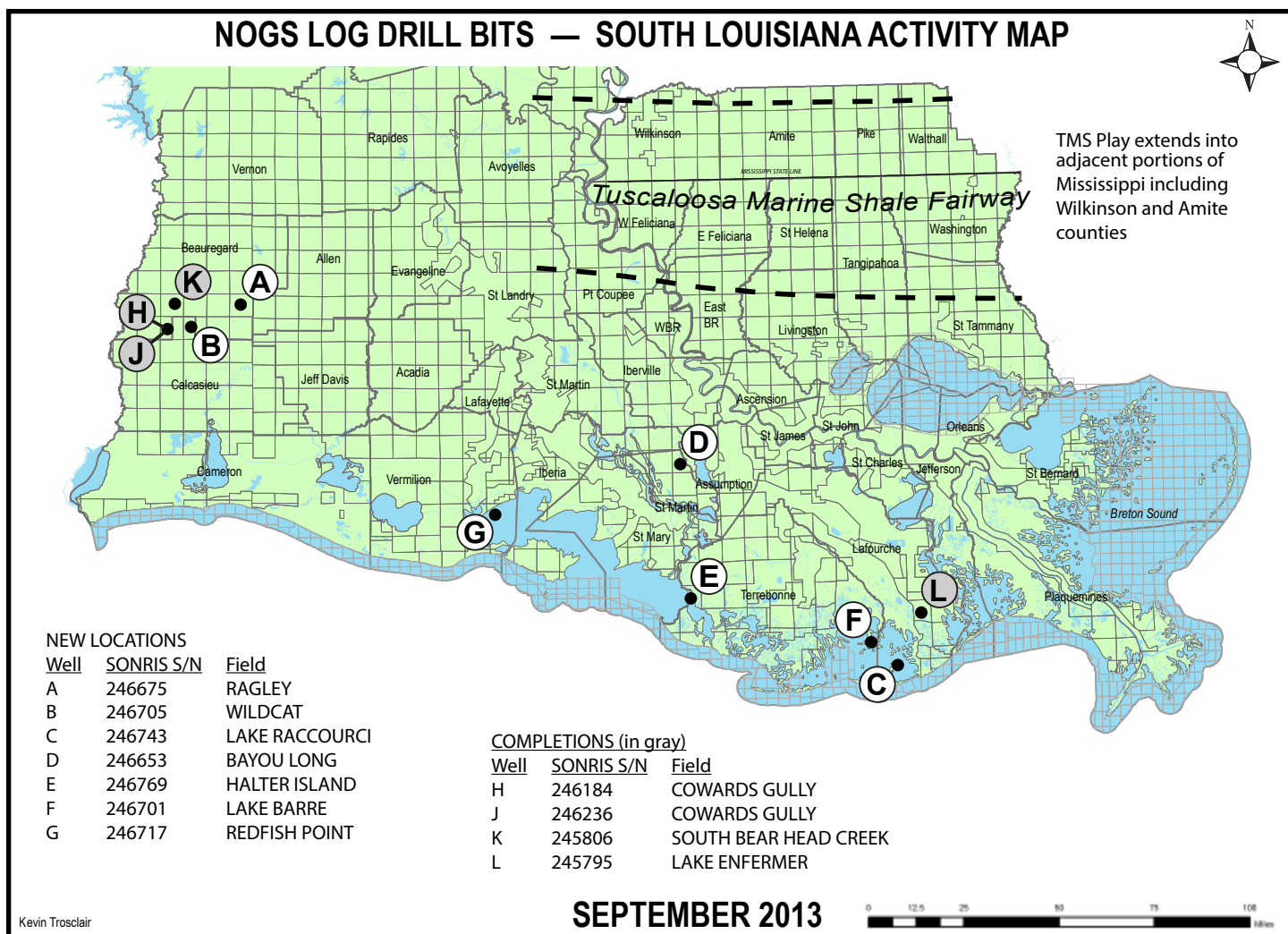
Hilcorp Energy will drill a deep test in **Lake Raccourci Field, (C)**, Lafourche Parish, in 22S-21E. The #1 SL 1480 is permitted to 17,585 feet at a location 2½ miles east of its recently completed excellent gas well, the #1 SL 20892, flowing **14,788 MCFG** and **1,115 BCPD** through perforations 13,933 to 13,968 feet, as previously reported in May.

This is an interesting well because it is located on State Lease 1480, which was acquired in April 1948 by Humble Oil & Refining Co. This lease has been held by production since that time. More than 200 wells have been drilled in the field, of which 10 are still producing. (246753)

McMoRan Oil and Gas has permitted a **30,000 foot subsalt** well in **Bayou Long Field, (D)**, St. Martin Parish. The #1 Williams Land will be drilled in Sec. 18, 13S-12E, more than 3 miles southeast of the McMoRan #1 Jeanerette Minerals, which is drilling below 24,287 feet. (246653)

In St. Mary Parish, **Halter Island Field, (E)**, Walter Oil & Gas will drill the #1 SL 21119 in 19S-12E to a projected depth of 13,500 feet. The proposed well is located 1 mile west of the productive limits of the field, which was discovered in 1952 and produced until 2011. (246769)





In Terrebonne Parish, **Lake Barre Field**, (F), GCER Onshore has permitted the #1 SL 21151 to a proposed depth of 16,550 feet. The well is located in Sec. 29, 21S-20E, 1 mile southeast of Hilcorp Energy's #1 SL 20946 which was recently completed flowing **18,881 MCFD** and **1,448 BCPD**. (246701)

Walter Oil & Gas will drill its #1 SL 21016 in **Redfish Point Field**, (G), Vermilion Parish on the northeast flank of the field in Sec. 27, 15S-4E, 2 miles from the nearest production. The well will be drilled to a depth of 15,900 feet. It is also located 2 miles southeast of Walter's #1 SL 21015 which is permitted to 21,000 feet and is currently drilling below 4,500 feet. (246717)

COMPLETIONS

In Beauregard Parish Midstates Petroleum has completed the #1 Olympia Minerals 16 H, a horizontal Upper Wilcox well in Sec. 16, 7S-11W, in the prolific **Cowards Gully Field**, (H). This well was the fourth in a series of 20 projected horizontal wells in the field. It was drilled to 16,921 feet and was completed in the Upper Wilcox flowing 190 BOPD and 468 MCFD through perforations 12,775 to 16,830 feet in a lateral leg of 5,300 feet. (246184)

Also in **Cowards Gully Field**, (J), Beauregard Parish, Midstates Petroleum has completed another horizontal oil well in the Upper Wilcox. The #2 Musser-Davis 8 H was drilled in Sec. 8, 7S-11W and was completed flowing 513 BOPD and 736 MCFD through perforations 12,450 to 15,680 in a lateral leg of 3,379 feet. (246236)

Swift Energy has completed its #1 Dolby H, a horizontal Upper Wilcox well in **South Bear Head Creek Field**, (K), Beauregard Parish, in Sec. 29, 6S-11W. The well was drilled to 16,356 feet, located 1½ miles northwest of production, and completed flowing 200 BOPD and 230 MCFD through perforations 11,643 to 14,986 feet in a lateral leg of 5,337 feet. (245806)

In Lafourche Parish Castex Energy has completed the #1 Castex Lafourche LP 13 in **Lake Enfermer Field**, (L), flowing 2,300 MCFD and 186 BCPD through perforations 14,045 to 14,061 feet. The well is located 1½ miles west of production in Sec. 13, 20S-22E. (245795)

OFFSHORE GULF OF MEXICO SHELF AND DEEPWATER ACTIVITIES

by Al Baker

During July 2013, the BOEM approved **79** Gulf of Mexico drilling permits. Of these, **37** were for shelf wells, and **42** were for deepwater wells. There were **4** shelf (3 exploratory and 1 relief) and **4** deepwater (all exploratory) **new well permits** issued. Through the first half of 2013, permitting activity kept pace with that of last year; **187** permits have been granted in 2013 versus 191 permits awarded through June 2012.

On the shelf, **GCER Offshore** obtained a new well exploratory permit for their **South Marsh Island 242 #2** well. **Northstar Offshore** was awarded a new well permit for their **South Marsh Island 8 #1** well. **Renaissance Offshore** received a new well permit for their **West Delta 28 #2** well, and **Walter Oil & Gas** was granted a permit for their **#1 relief well** on **South Timbalier 220**.

In deepwater, exploration permitting activity was for four operators. **Anadarko Petroleum** received 1 new well exploratory permit to drill their **East Breaks 645 #SS-1** well. **Shell Offshore** was granted a permit for their **Mississippi Canyon 894 #1** well. **Eni US Operating** obtained a permit for their **Mississippi Canyon 546 #3** well. In addition, **BP** was issued a permit for their **#1** well on **Keathley Canyon 57**.

Through the end of June 2013, a total of **183** wells have been started in the Gulf. This compares to 156 wells begun during the same time period of 2012, representing a **17.3% increase** in year-to-year activity. Of the 183 wells, **40** were classified as exploratory or new field wildcats, whereas **143** were considered to be development wells. During the first half of 2013, in **Offshore Louisiana** there were **107** wells started versus 101 in 2012. **Offshore Texas** saw **6** wells begun versus none during 2012. The **Northern Gulf** (deepwater) had **70** wells begun compared to 55 in 2012. In **Offshore Louisiana**, the 107 wells included **14 exploratory** and **93 development** wells. In **Offshore Texas**, the 6 wells included **2 exploratory** and **4 development** wells. In the **Northern Gulf**, the 70 wells were subdivided into **24 exploratory** and **46 development** wells.

On July 26th, IHS-Petrodata reported that the Gulf of Mexico mobile offshore rig supply totaled **110**, and the contracted rig count stood at **77** for a fleet utilization rate at **70%**. Both the rig supply and the contracted rig count are **1** more than reported last month. This compares to 75 out of the 114 rigs available during the same period in 2012 for a 65.8% fleet utilization rate.

In addition, there were **29** platform rigs under contract out of the **54** total in the rig fleet for a fleet utilization rate of **53.7%**. Both the current platform rig fleet and the number of platform rigs under contract in the Gulf is **1** greater than reported last month.

On July 26th, the BakerHughes Rig Counts indicated that there were **58** active mobile offshore rigs in the Gulf, which represents **75.3%** of the total rigs under contract. The total number is **3** more than reported last month. The current active rig count compares to 51 active rigs during the same period last year representing a **13.7%** increase in yearly activity. Additionally, of the 29 platform rigs that are under contract, **20** (or **69%**) are currently working. This is **2** more than the total number of working platform rigs reported last month.

On July 3rd, **Shell** reported that its **Vicksburg** deepwater well was successful, having found more than 500 feet of net oil pay in the Jurassic Norphlet sands. The discovery well is located 75 miles offshore in **De Soto Canyon Block 393**, and it was drilled to a total depth of **26,385 feet**. The well is estimated to contain potentially recoverable reserves of more than **100 million barrels of oil equivalent**. The Vicksburg discovery adds to the 500 million barrels of oil equivalent that have previously been found at the nearby Appomattox discovery.

On July 18th, **Apache** announced that it agreed to sell its Gulf of Mexico shelf properties and operations to **Fieldwood Energy LLC**, an affiliate of Riverstone Holdings, for **\$3.75 billion** in cash. Additionally, Fleetwood will assume all asset **retirement obligations** for the properties, which is estimated at **\$1.5 billion**. Apache will retain a 50 percent ownership interest in all exploration blocks and in horizons situated below the production on developed blocks. This includes **406** blocks that are held by production and **146** primary term blocks.

On July 22nd, the BOEM announced that it concluded the post-sale evaluation of bids received in **Central Gulf of Mexico OCS Sale 227**. The BOEM awarded leases on **307 tracts** of the **320 tracts** receiving high bids in the March 20, 2013 sale. Of these, **42 tracts** were deemed acceptable in the **Phase 1** review, and the remaining **265 tracts** were deemed acceptable in the **Phase 2** bid evaluation review. A total of **13** high bids were deemed insufficient and rejected by the BOEM. Two of the rejected bids were for shelf blocks and the remaining 11 bids were for deepwater tracts. The accepted high bids totaled \$1,199,052,037 in bonus monies.

On August 28th, the BOEM held an offshore lease sale, **OCS Sale 233**, which encompassed the **Western Gulf of Mexico** acreage.

On July 25th, **W&T Offshore** reported that it had made a subsalt discovery in a deep shelf exploratory well beneath its **Mahogany Field** located on **Ship Shoal Block 349**. The **Ship Shoal 349 #A-14** well logged more than 370 feet of oil pay. The well was completed in the deepest sand, the **T Sand**, at a depth of **17,200 feet**. The T Sand had an initial flow rate of **3,030 barrels of oil per day** and **5.6 million cubic feet of gas per day**. Additional pay was discovered in three sand levels, plus a thicker main field pay was also penetrated that will serve as a future recompletion. W&T estimates the unrisks reserve potential of the well in the range of 1.8 to 6.2 million barrels of oil equivalent. **Mahogany Field** is comprised of a two-block unit that includes **Ship Shoal Blocks 349 and 359**. The Ship Shoal 349 "A" Platform situated in 368 feet of water has produced 24.619 MMBO and 55 BCF from July 1994 through April 2013. The field was initially discovered and developed by Phillips Petroleum, who acquired the leases in March 1990 during OCS Sale 123.



The American Association of Petroleum Geologists and the **AAPG Division of Professional Affairs**

Announce the First Annual **Reserves Forum Evaluating the Prize**
October 31, 2013 • City Centre Houston

Four Sessions:

Global Reserves Assessments
The G and G Component of Reserve Assessment
The Engineering Component of Reserve Assessment
Reporting and Compliance

1 Day Short Course — Friday 1 November

SEC Reserves Rules and Unconventional Resources



Forum Only:

JCOPET Society Members.....\$395
Young Professional.....\$395
Non Member.....\$450

Forum and Short Course:

JCOPET Society Members.....\$750
Young Professional.....\$750
Non Member.....\$900



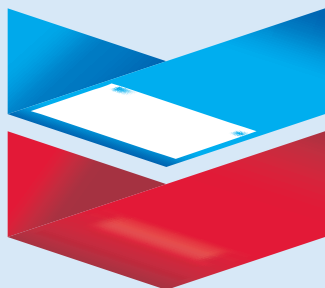
CENTURY EXPLORATION NEW ORLEANS, LLC

An independent gulf coast exploration, development and operating company

Three Lakeway Center, Suite 2800
3838 North Causeway Blvd.
Metairie, LA. 70002

Office: 504.832.3750
Fax: 504.832.3760
www.centuryx.com

Chevron



100 Northpark Blvd.
Covington, LA 70433

(985) 773-6000



LaBay

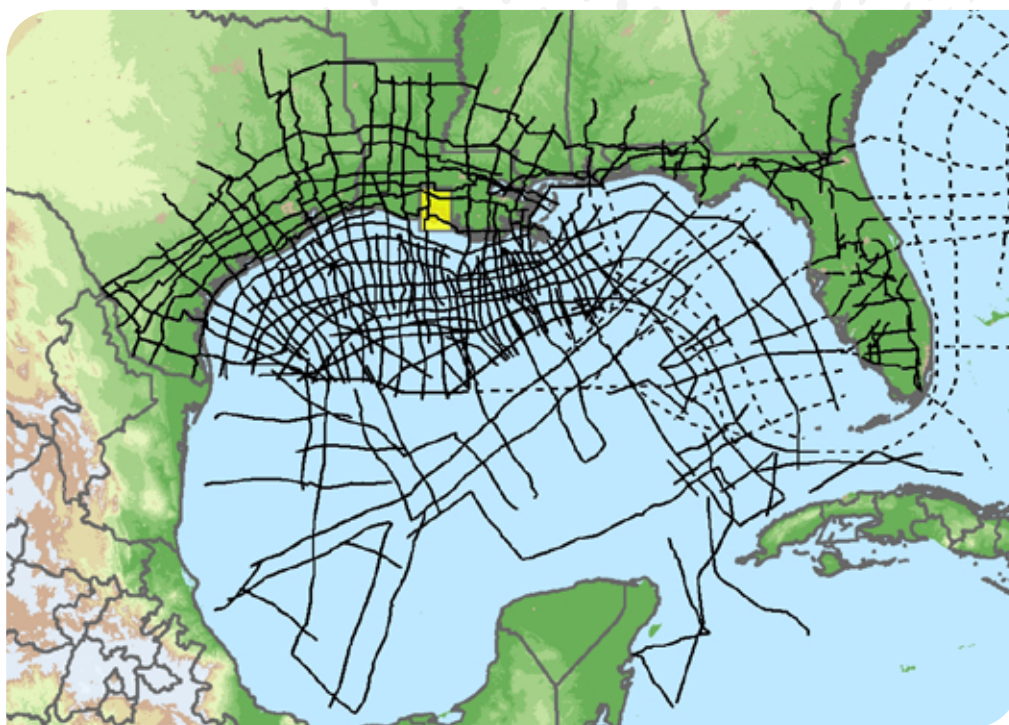
Exploration Co., L.L.C.

111 Veterans Memorial Blvd.
Suite 1550
Metairie, Louisiana 70005

Office (504) 371-5967
Fax (504) 371-5969

www.labayexploration.com

Explore the Entire Gulf of Mexico



Position your company for the next 10 years of exploration with the most complete, modern time and depth-imaged data in the Gulf of Mexico. ION's interconnected dataset links the entire Gulf, from onshore to offshore deep water, from Texas to Florida and to Mexico. With over 40,000 miles (over 65,000 km) completed or in progress, and an additional 7,500 miles (over 12,000 km) planned for 2013 and beyond, no other data library provides as comprehensive a framework for understanding the Gulf of Mexico.

To learn more, visit iongeo.com/Gulf_of_Mexico

CONTACT

Ashley Garcia
Mobile: +1 281 781 1005
Email: ashley.garcia@iongeo.com

Alvin Rowbatham
Mobile: +1 832 372 2366
Email: alvin.rowbatham@iongeo.com

AREAS OF EXPERTISE

Unconventional Reservoirs
Challenging Environments
Complex Geologies
→ **Basin Exploration**
Reservoir Exploitation



GEOVENTURES®



Submitted by Tavia Prouhet

Elizabeth L. Chamberlain is currently working on her PhD at Tulane University where she is researching the development and history of the Holocene in the Mississippi River Delta. Elizabeth earned her BS (2007) in Animal Science, her BA (2007) in Creative Writing and Lithography, and her MS (2011) in Geology all from LSU.

Christopher R. Esposito is a PhD student at Tulane University in the Earth and Environmental Sciences Department. He received his BA (2004) in Oceanography from Rutgers University and his MS (2011) in Earth and Environmental Sciences from UNO. Christopher is a member of AGU, GSA, and AAPG. He is interested in the Continuing Education, Environmental, and New Geoscientists committees of NOGS.

Ioannis Y. Georgiou is an associate professor at the University of New Orleans Department of Earth and Environmental Sciences. He earned his PhD (2002) in Coastal Processes and MS (1999) in Water Resources at UNO and his BS (1997) in Civil Engineering from LSU. Ioannis is interested in participating in the Best Paper, New Geoscientist, School Outreach, and Technical Projects committees of NOGS. Ioannis is also a member of GSA.

Amy L. Hill is a geophysicist for the Bureau of Ocean Energy Management. She received both her MS (2006) and BS (2005) in Geology from Tulane University. Since graduation she has worked as a geologist at Golder Associates until becoming a geoscientist for the MMS/BOEM in 2008. Amy is interested in working with NOGS' Continuing Education, Environmental, Non-Technical Education, Technical Projects, and New Geoscientist committees.

Jim L. Jarrell is Managing Director of Energy Research at ITG Investment Research in Calgary, Canada. He received his BS (1982) in Geological Engineering from Queen's University.

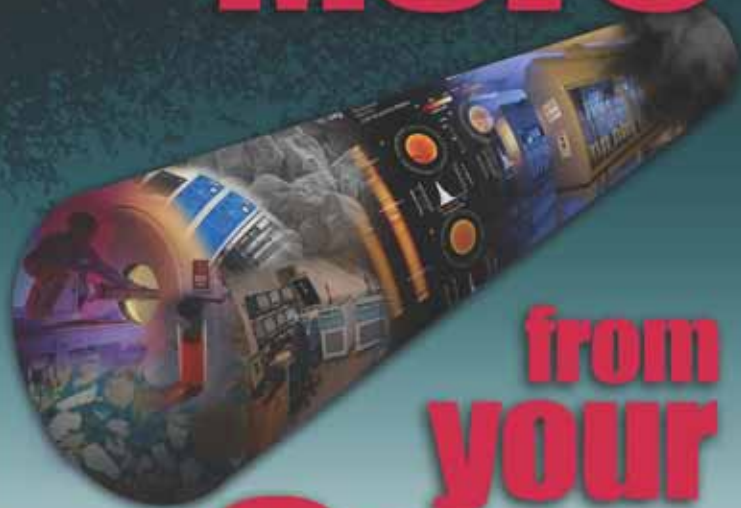
Lisa K. Meeks is currently working as a geologist for the Bureau of Ocean Energy Management. She received her PhD (1997) from the University of Iowa in Geology, and her MS (1990) and BS (1987) in Geology from the University of Arkansas—Fayetteville. Lisa's earth science career has spanned across government, industry, and academic roles serving as a geologist for BOEM, Exxon, and Kerr-McGee Corporation, and as a professor at Central Missouri State University and Ball State University.

Cynthia "Dianne" Palmore is a PhD student in Geochemistry at Tulane University. She received her BS (2012) in Geology, with a minor in Chemistry, from the University of South Alabama. Prior to completing her BS in 2012, she worked 15 years in the chemical manufacturing business. Dianne is also a member of AAPG and GSA.

David J. Phillips is a sales representative for SEISCO, Inc. in New Orleans. He received his BS (2009) in Organizational Studies from LSU. David is an associate member of AAPG and SEG.

Anna Thorson is a sophomore at The University of the South majoring in Geology. She is a pending student member of AAPG and expects to graduate with a BS in Geology in 2016.

Get More



from your Core

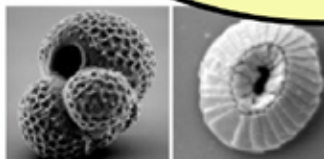
With reservoirs becoming increasingly complex, you need the most accurate information you can get to better understand your reservoir.

Weatherford Labs helps you get more from your core by combining an unsurpassed global team of geoscientists, engineers, technicians and researchers with the industry's most comprehensive, integrated laboratory services worldwide. From core analysis, sorption, geochemistry and isotopic composition to detailed basin modeling and comprehensive data packages, we provide you with real reservoir rock and fluid information that hasn't been distilled by a simulator or iterated by software.

We call it "The Ground Truth™" – giving you the accurate answers you need for better reservoir understanding. You'll call it a better return on your reservoir investment. To learn more, contact TheGroundTruth@weatherfordlabs.com.


© 2012 Weatherford. All rights reserved. Incomplete, proprietary and patented Weatherford technology.

DOMESTIC AND INTERNATIONAL BIOSTRATIGRAPHIC SERVICES



6619 Fleur de Lis Drive
New Orleans, LA 70124
(504) 488-3711

www.paleodata.com



Complete wellsite paleo services

Supported offshore GoM and onshore LA paleo databases

Integrated foram/nannofossil analyses

In-house sample preparation lab for quality-monitoring and efficiency

Comprehensive depositional history study of the Gulf Basin based on 200,000+ well data analysis



LAFAYETTE GEOLOGICAL RESEARCH CENTER, LLC

201 Heymann Blvd., Suite 33 • Lafayette, LA 70503
Tel: 337-233-8197 • Fax: 337-233-8177

COVERAGE:

Louisiana / Federal / State Offshore
• Multi State Geo Tech Services • Completion Data
Production Data • Well Logs • Maps

~ MEMBERSHIPS AVAILABLE ~

The Industry's Premier • Well Data Center

orders@lafayettegrc.com

CALL OR EMAIL TODAY FOR MORE INFORMATION!



THIS AD SPACE AVAILABLE
Contact: annette@nogs.org

Submitted by Sheri Richardson

Phys.org - Michael Graczyk (AP)

"Team examining Gulf shipwreck finds 2 other wrecks." July 26, 2013

<http://phys.org/news/2013-07-team-gulf-shipwreck.html>

Marine archaeologists made a thrilling discovery this week while examining a well-preserved shipwreck deep in the Gulf of Mexico—two other sunken vessels that likely went down with it during an early 19th century storm.

Much isn't known about the ships, including the flag or flags they sailed under and the year they sank about 170 miles southeast of Galveston. They came to rest 4,360 feet, or nearly three-quarters of a mile, below the surface, making them the deepest Gulf or North American shipwrecks to have been systematically investigated by archaeologists, the researchers said.

"We went out with a lot of questions and we returned with even more. The big question we're all asking is: What is the shipwreck? And the answer is we still don't know," said Fritz Hanselmann, a researcher from Texas State University in San Marcos' Meadows Center for Water and the Environment.

During eight days of exploration that ended Wednesday, the scientists used remote-controlled machines to recover more than 60 artifacts from the initial shipwreck site, including musket parts, ceramic cups and dishes, liquor bottles, clothing and even a toothbrush. The artifacts, including china from Britain, ceramics from Mexico and at least one musket from Canada, will help researchers determine the ships' histories, Hanselmann said.

A Shell Oil Co. survey crew notified federal Interior Department officials in 2011 that its sonar had detected something resembling a shipwreck. It also detected some other material.

A year later, a National Oceanic and Atmospheric Administration vessel examining seafloor habitat and naturally occurring gas seepage used a remote-controlled vehicle to briefly examine the wreck. Besides determining the ship's dimensions, the examination showed it to be undisturbed and likely from the early 19th century.

That ship has been dubbed the "Monterrey Shipwreck," adopting the name Shell had proposed for its development site.

The Advocate – Ted Griggs

"Mississippi complicates drilling choice for La." August 5, 2013

<http://theadvocate.com/news/6667219-123/mississippi-complicates-drilling-choice-for>

Developing Louisiana's section of the Tuscaloosa Marine Shale has been complicated by an unlikely competitor: Mississippi.

Earlier this year, the Mississippi Legislature passed a law that cut severance taxes in the Tuscaloosa from 6 percent to 1.3 percent for wells that begin production July 1 or afterward. Encana Corp. says the tax break will reduce its costs by around \$700,000 to \$800,000 per well.

The wells are so expensive to drill — Encana spent about \$20 million on its first one — that oil companies argued they needed the break to continue developing the formation, said Howard O. Leach, attorney for the Mississippi State Oil and Gas Board.

The industry convinced the Legislature, which also limited the severance-tax cut to 30 months or until well costs are recovered, whichever occurs first.

Baton Rouge landman Dan S. Collins said Mississippi's severance tax break is just a little better than Louisiana's incentive package. In Louisiana, the state waives severance taxes for up to two years or until well costs are recovered, whichever happens first.

However, Louisiana Oil and Gas Association President Don Briggs said Mississippi's incentives won't be the determining factor for energy companies. If there's more oil on the Louisiana side, energy companies are going to drill there, he said. Collins said the new severance tax rate is just one of the steps Mississippi has taken to make itself more attractive to energy companies.

Mississippi also has a "forced pooling" provision that allows well drillers to force mineral rights owners to join a drilling and production unit.

In addition, the Mississippi State Oil and Gas Board has permitted two much larger drilling units. In Louisiana, the typical drilling unit is 640 acres; Mississippi is allowing two units of close to 2,000 acres.

The larger units mean companies can hold onto their leases by drilling fewer wells, Collins said. That's good for the operating companies but not as good for landowners.

NOGS Members Vist Former NOGS Member and WWII Paratrooper, Tom Blakey

By Sheri Richardson

Seven NOGS members had the pleasure of meeting with former NOGS member, Thomas Blakey, on June 25, 2013, to have lunch and reminisce about “old times.” The meeting took place at the National World War II Museum in the American Sector restaurant in New Orleans, where Tom is a volunteer. NOGS members in attendance were: Don Andrews, Carlo Christina, Mike Fein, Jack Langford, Louis Lemarié, George Schneider, Jr., and Roy Walther.

Tom is a WWII veteran paratrooper of the 505th Parachute Infantry Regiment of the 82nd Airborne Division. He joined the U.S. Army in 1942, at the age of 22, and served for four years with missions from France to Holland, including the Battle of the Bulge.

On May 26, 2013, Tom was featured on the CBS television show, “Sunday Morning”, for his role as a WWII paratrooper on D-Day and for his dedication to the museum. As a result of this presentation, Carlo Christina organized the lunch meeting with Tom. All who attended enjoyed a great meal and camaraderie. Tom greeted his friends and proceeded to look through copies of the 1955 and 1960 NOGS photo directories. Tom, who will be 93 in October, has no shortage of memory. As he viewed the directory pages he recognized almost everyone that he came across and had a story or two about each one.

The NOGS members also learned about Tom’s experiences at Normandy. Tom told them that he parachuted at 1:00 AM on June 6, 1944, jumping at an altitude of 500 feet. He was one of 18 men who jumped from his plane behind enemy lines at Normandy and he landed in a cemetery at Sainte-Mère-Église, France. Ninety minutes went by before he saw another American soldier. Tom gathered his men and then proceeded to carry out their orders to capture and hold the small La Fiere Bridge over the Merderet River, west of Sainte-Mère-Église. Tom and his men held the bridge for four days while under continuous attack before they were relieved. Their success at holding the bridge prevented the reinforcement of German positions at Utah Beach.



*Photo courtesy of
The Historic New Orleans Collection
Acc. No. 1994.94.1.145*

Upon returning to the United States, Tom settled in New Orleans and opened “Blakey’s Log Service.” He owned and operated the company from 1946 to 1975, at which time he was a member of NOGS and a staunch supporter of both the Society and the Auxiliary. Blakey’s Log Service was located on the second and third floors of 822 ½ Gravier Street.

“Back in the days before SONRIS and the Internet, Blakey’s Log Service was the place that hundreds of geologists used as their source for South Louisiana electric logs,” said Louis Lemarié. Blakey’s Log Service also had a catalog of logs for Texas, Mississippi, and Alabama.

Tom sold his business in the spring of 1975 and retired to Picayune, Mississippi. However, during the following winter the business was destroyed by a fire. A vagrant had entered the business and set a small fire on the third floor to stay warm. Unfortunately, the fire quickly spread due to the oil used to clean the floors and the massive amounts of paper and films that were stored there.

Eventually, Tom moved back to New Orleans and has been a volunteer at the museum since it opened on June 6, 2000, as the National D-Day Museum. Now known as the National WWII Museum, Tom has volunteered an amazing 13,000 hours. He usually volunteers about four hours a day, almost every day. Tom is a favorite among visitors to the museum and if you ask to take a picture with him you’ll get a laugh when he jokes, “You want to break your camera?”

Editor’s Notes:

In the CBS “Sunday Morning” story, Tom reveals a secret that he has held for many years. The video can be viewed at <http://www.youtube.com/watch?v=vKUUMHR00Ak> or the transcript can be read at http://www.cbsnews.com/8301-3445_162-57586079/a-living-artifact-of-wwii-shares-his-story.

Since I was unable to attend the original meeting with Tom, Carlo Christina arranged for the two of us to meet with Tom on a later date. Upon viewing the NOGS directories, Tom once again quickly remembered colleagues and shared stories about them. He also told us some of his war and life experiences as well. I’m thankful for the opportunity to have met him and for participating in such a delightful lunch.

**Thank you Tom,
for your service to our country
and for the invaluable experience
you provide to the museum’s visitors.**



*Standing: Louis Lemarié, Roy Walther, Don Andrews, Carlo Christina, George Schneider, Jr., Mike Fein
Seated: Jack Langford, Tom Blakey*



Tom Blakey with Sheri Richardson



*Blakey's Log Service at 822½ Gravier Street,
New Orleans, LA, in 1956*



Geoconsulting, Inc.

*Geological and Geophysical Consulting
3-D Seismic Interpretation*

Ben D. Sydboten, Jr. CPG

2 Flagg Pl., Suite 1
Lafayette, LA 70508

www.saigeoconsulting.com

Office (337) 504-3670

Cell (337) 456-8948



Geo-Draft, Inc.

A Professional Drafting & Graphics Firm

Anthony Catalanotto

President

**Geological
Geophysical
Land**

Drafting & Graphics

3349 Ridgelake Drive • Suite 202
Metairie, LA 70002
Office: (504) 836-2882
Fax: (504) 836-2877
Cell: (504) 481-7291
E-Mail: geodraft@bellsouth.net
Website: www.geodraftinc.com

NORTHCOAST OIL COMPANY

610 E. Rutland St.
Covington, LA 70433

(985) 898-3577

(985) 898-3585 Fax

Jack M. Thorson

Eric C. Broadbridge

J. Daryl Gambrell

Raymond W. Stephens



ETROA Resources LLC

Join us in pursuing gulf coast production,
acquisitions and low-risk drilling opportunities

John C. Ebert
Kevin McVey

128 Northpark Blvd.
Covington, LA 70433
(985) 809-3808

www.etroa.com



ATTENTION ALL YOUNG GEOSCIENTISTS AND STUDENTS...

**The annual GCAGS convention in New Orleans is holding
a function just for you with your paid registration.**

Currently there is a lot of interest in the NGNO (New Geoscientists of New Orleans) Committee with new NOGS members. Unfortunately this committee lacks a local chairman. This event would be the perfect opportunity for you to meet with fellow NGNO members and GCAGS Young Professionals. If a local NOGS member is willing to lead this group, please contact info@nogs.org.

YOUNG PROFESSIONALS & STUDENTS' "MEET & GREET" AT GCAGS

(Sponsored by Chevron)

Date: Sunday, October 6

Time: 3:00 pm–4:00 pm

All young professionals and students are strongly encouraged to attend this complementary function. It is a great opportunity for those in the first few years in their careers to network with others and share their experiences. Experienced veterans are also encouraged to share their perspectives on working well in the geoscience community. Drinks will be available and following the reception all are encouraged to attend the Opening Session and Awards Ceremony.

THE NEW ORLEANS GEOLOGICAL SOCIETY MEMORIAL FOUNDATION, INC.

The Memorial Foundation is an IRS Tax Exempt Code #501(c)(3) organization. The Federal I.D. is 72-1220999. Please consider making a donation to the Foundation. Your individual support in any amount will help meet the IRS Guidelines for our Foundation. Thanks!

\$15,000 AND ABOVE

Gibbet Hill Foundation

*In Memory of Steve & Marion Millendorf, William J. Prutzman,
Roger G. Vincent, Ron Youngblood and Uno Numella*

\$5,000

NOGS Golf Tournament April 2013

In Memory of Bill Craig

\$500

Mr. Reuben J. Klibert, Jr.

*In Memory of Reuben S. Klibert, Sr.
and Jame Wade Klibert*

Mr. Foster E. Voelker

In Memory of Gene Rogas

Mr. Armour C. Winslow

*In Memory of Rita Menzel Winslow
and Lawrence C. Menconi*

\$250 TO \$499

Mr. Thomas C. Bergeon

*In Memory of Erik Mason
and Brian O'Neill*

Mr. Marc Cooper

Through the Marathon Oil Co MEPAC Program

UP TO \$249

Mr. Woods W. Allen, Jr.

In Memory of William C. Ward

Mr. Robert J. Ardell

In Memory of L. David Collier

Mr. R. H. Baillio, Jr.

In Memory of T. Wayne Campbell & Jack Dunlap

Mr. Maurice N. Birdwell

Mr. Hilary James Brook

Ms. Robin A. Broussard

Mr. Rob Burnett

Ms. J. Sybil Callaway

Chevron Humankind Matching Funds

Mr. Arthur F. Christensen

Mr. Merle J. Duplantis

Mr. Michael N. Fein

Mr. Sherwood M. Gagliano

Mr. Arthur J. Garden

Mr. Bernard L. Hill, Jr.

Mr. Robert M. Jemison, Jr.

Mr. Paul Jurik

Mr. Tom Klekamp

In Memory of Kenneth J. Fulton

Mr. Reuben J. Klibert, Jr.

Mr. John C. Kucewicz, Jr.

Mr. John C. "Jack" Langford

Mr. Cyril F. Lobo

Ms. Jeannie F. Mallick

Ms. Margaret M. McKinney

Mr. Paul C. McWilliams

New Orleans Geological Auxiliary

In Memory of Sybil Barton and Ruth Grimes

Mrs. Teresa O'Neill

In Memory of Brian O'Neill

Mr. Edward B. Picou, Jr.

In Memory of Lawrence C. Menconi

In Memory of Clarence F. Conrad

Mr. Bay Salmeron

Mr. George W. Schneider, Jr.

In Memory of George Schneider, Sr.

Mr. Robert T. Sellars, Jr.

In Memory of Robert G. Williamson

Mr. George D. Severson

Shell Matching Funds

Mr. Robert C. Shoup

Mr. Rudolf B. Siegert

Dr. J. O. Snowden

Mr. James M. Sothern

Mr. Raymond O. Steinhoff

In Memory of Anne M. Steinhoff & Harold E. Vokes

Ms. Betsy M. Strachan Suppes

Mr. Louis O. Vidrine

Mr. Arthur S. Waterman

In Memory of T. Wayne Campbell

Mr. William M. Whiting

In Memory of John S. Bousfield

Ms. Frances A. Wiseman

In Memory of Steve Widdicombe

BILL CRAIG FUND

Mr. Bernard L. Hill, Jr.

Mr. Bay Salmeron

Mr. John C. Scheldt

In Memory of William C. Ward

Ms. Candace V. Strahan

In Memory of James R. Strahan

Mr. William M. Whiting

FONO FUND

The FONO Fund accepts contributions that are invested and the income dedicated to assure sufficient financial resources will always be available to maintain the NOGS business office. Contributors are reminded that donations to the FONO Fund are not covered by the IRS 501(c)(3) tax exempt classification and should be reported as a business expense on your IRS tax report.

\$250 TO \$499

Mr. Reuben J. Klibert, Jr.

UP TO \$249

Mr. Donald I. Andrews

Mr. Alfred H. Baker, Jr.

Mr. David E. Balcer

Mr. Joseph E. Boudreaux

Ms. J. Sybil Callaway

Mr. Anthony Carollo, Jr.

Mr. John Dombrowski

Mr. Merle J. Duplantis

Mr. Richard A. Edmund

Mr. Michael N. Fein

Mr. William J. Furlong

Mr. David Garner

Mr. Bernard L. Hill, Jr.

Mr. Kenneth Huffman

Mr. Arthur H. Johnson

Mr. Paul Jurik

Mr. Tom Klekamp

Mr. Louis Lemarié

Mr. H. David Lynch

Ms. Jeannie F. Mallick

Mr. George M. Markey, Jr.

Ms. Margaret M. McKinney

Mr. Paul C. McWilliams

Mr. Luther Franklin Rogers, Jr.

Mr. C. R. Rondeau

Mr. Bay Salmeron

Mr. George D. Severson

Mr. Rudolf B. Siegert

Mr. Richard J. Stancliffe

Mr. Bryan P. Stephens

Mr. Raymond Stephens

Mr. Robert K. Sylvester

Mr. Roy C. Walther

Mr. William M. Whiting

Ms. Frances A. Wiseman

Contributions for both funds through August 5, 2013.
Donations are listed for one year.

ANSYTHE Donald I. Andrews 504-887-3432	 CLASSEN EXPLORATION, INC. James S. Classen Looking for close in deals classenllc@msn.com P.O. Box 140637 Boise, ID 83714 Bus. (208) 854-1037 Fax (208) 854-1029
THE BOEBEL COMPANY Oil and Gas Investments New Orleans, LA 70153 (504) 866-4313	D-O-R ENGINEERING, INC. 3-D and Geoscience Services 6161 Perkins Rd. P.O. Box 80812 Bus: (225) 765-1914 Baton Rouge, LA 70898
BOO-KER OIL & GAS CORP. Gray S. Parker 826 Union, Suite 300 New Orleans, LA 70112 Bus. (504) 581-2430 Fax (504) 566-4785	EDWARD B. PICOU, JR. Consulting Micropaleontologist - Retired 228 St. Charles Ave., Suite 1330 C New Orleans, LA 70130 Bus. (504) 529-5155 Res. (504) 282-3096
C & R EXPLORATION, INC. Carlo C. Christina Lawrence G. Ringham	 GEOLOGY ENVIRONMENTAL MANAGEMENT GEM Consulting, LTD Michael Louis Merritt admin@gemconsultingltd.com
C. R. RONDEAU Petroleum Geologist 119 W. Southland Ave. Ironwood, MI 49938 Res. (906) 932-4692	H. WARREN BELL Oil and Gas Exploration 2500 Tanglewilde, Suite 485 Houston, TX 77063-2126 Bus. (713) 266-7297 Fax (713) 266-7298
TONY CAROLLO Consulting Geologist Unitization • Geosteering • Field Studies 1701 Peach Street Metairie, LA 70001 Bus. (504) 885-0004 Res. (504) 885-6829	 Explore the ENTIRE Gulf of Mexico Alvin Rowbatham 832-372-2366 • alvin.rowbatham@iongeo.com Ashley Garcia 281-781-1005 • ashley.garcia@iongeo.com www.iongeo.com/Gulf_of_Mexico
 <i>Thanks our sponsors for their support!</i> <i>Special Thanks to</i> 	PHELPS GEOSCIENCE LLC Onshore Gulf of Mexico Geology and Geophysics Prospect Generation and Evaluation Houston, TX jsfphelps@yahoo.com (281) 398-5208
	RAFIDI OIL AND GAS, INC. Jaser N. Rafidi, President 4415 Shore Dr., Suite 202 Bus (504) 453-8580 Metairie, LA 70006 Fax (504) 888-5539 Res (504) 888-1661
	ROY C. WALTHER Petroleum Geologist 2421 Prancer Street New Orleans, LA 70131 Bus. (504) 392-8513 Res. (504) 392-9332
	 STONE ENERGY www.StoneEnergy.com 625 E. Kaliste Saloom Lafayette, LA 70508 16800 Greenspoint Dr., Suite 225-S Houston, TX 77060 1100 Poydras St., Suite 1050 New Orleans, LA 70163
	ZOT OIL & GAS, LLC Jim Zotkiewicz Prospect Generation and Evaluation 3909 Metairie Court Metairie, LA 70002 Bus. 504.267.9131 Email: jimzotoil.com

Collarini Energy Staffing, Inc.

Facilities • Drilling • Production • Reservoir Engineering
Land and Legal • Geosciences • Information Technology
Health and Safety • Management • Supply Chain
Accounting • Administrative Support



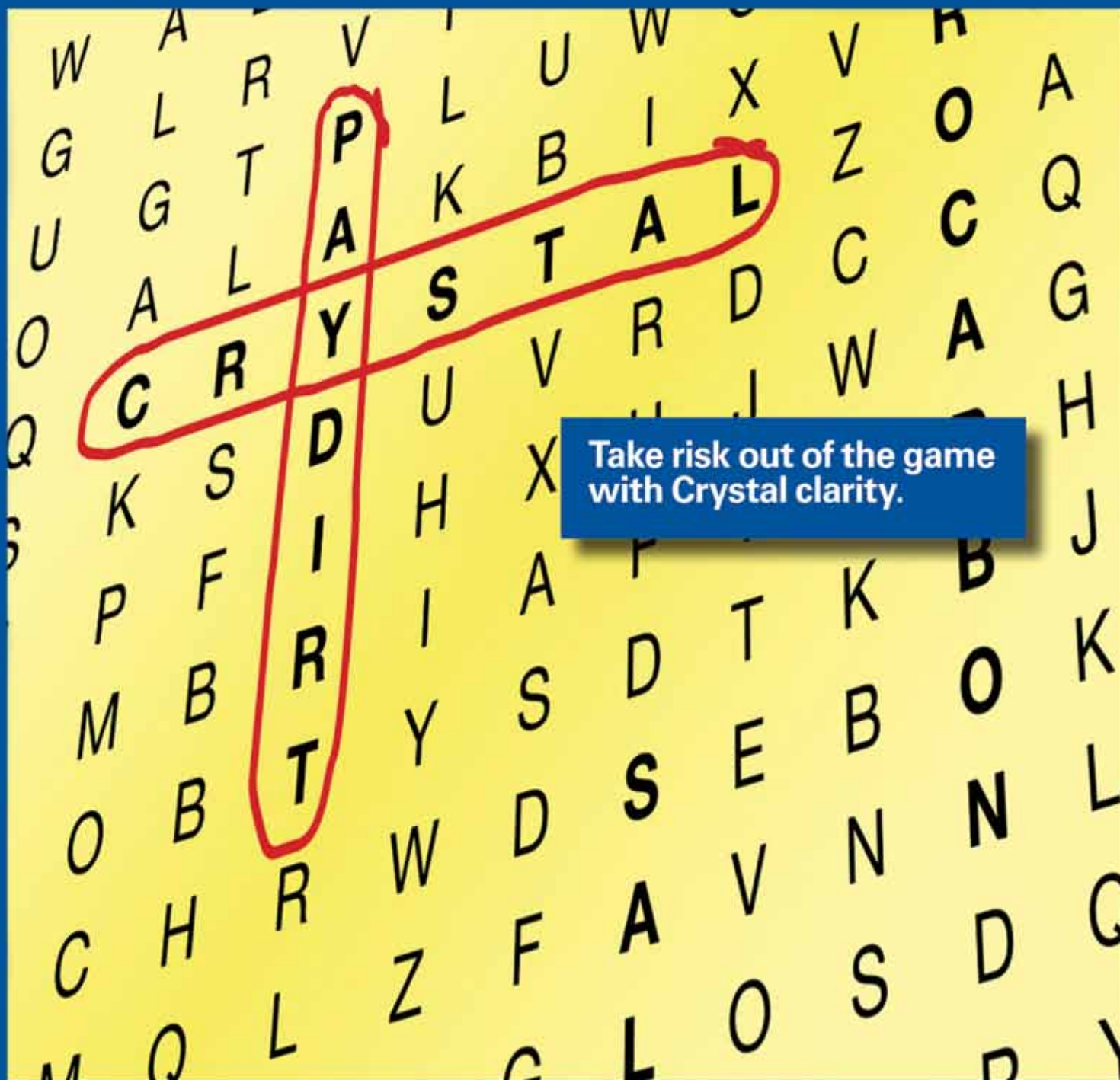
Full-Time and Temporary Personnel

Energy Trading • Civil Engineering • Executives
Human Resources • Instrument and Electrical
Engineering • Marine Engineering • Project Management
Technical Writing • Sales and Marketing

10497 Town and Country Way, Suite 950, Houston, Texas 77024

Telephone: (832) 251-0553

www.collarini.com



Take risk out of the game
with Crystal clarity.

PGS MultiClient GULF OF MEXICO

Revolutionary technology reveals Garden Banks/Keathley Canyon like never before.

SEE IT ALL. SEE IT NOW. With the clearest seismic data to-date in the Gulf of Mexico's most promising region, it's nothing less than a game changer.

- hyperTomo™ increases velocity conformity to geology with more detailed and accurate modeling
- Dramatically improved subsalt imaging via TTI RTM
- Best of all, it's **AVAILABLE NOW**

A Clearer Image
www.pgs.com





NEW ORLEANS GEOLOGICAL SOCIETY

810 Union Street, Suite 300
New Orleans, LA 70112-1430

PRESORT
STANDARD
US POSTAGE
PAID
MAIL TECH

www.nogs.org



**MARINE PROPERTIES, LLC
BERKSHIRE EXPLORATION CO.**

MONTE C. SHALETT, CPL, PRESIDENT

3030 Lausat Street
Metairie, LA 70001-5924

BUS. (504) 831-7779
FAX (504) 831-8315

PCI

Paleo Control, Inc.

Houston, Texas
713-849-0044

Drilling Wells, Studies and Data Base

Loyd Tuttle

Frio, SE Texas

Bob Liska

Wilcox, S and SE Texas

Jim Thorpe

Miocene and Cam-Miogyp



THIS AD SPACE AVAILABLE

Contact:

annette@nogs.org