

# NOGS LOG

NOVEMBER 2013

Volume 54, Number 5



## NOVEMBER 11 - NOGS LUNCHEON

**Presentation: Continuing Insights into Structure and Stratigraphy of the Onshore Gulf Basin from Pre-Stack Depth Imaging of Mega-Regional Strike Lines from South Texas to the Florida Panhandle**

**Guest Speaker: Ed Haire  
INEXS • Houston, Texas**



# SEE THE ENERGY

## U.S. SMART RASTERS AND WELL PERFORMANCE DATA

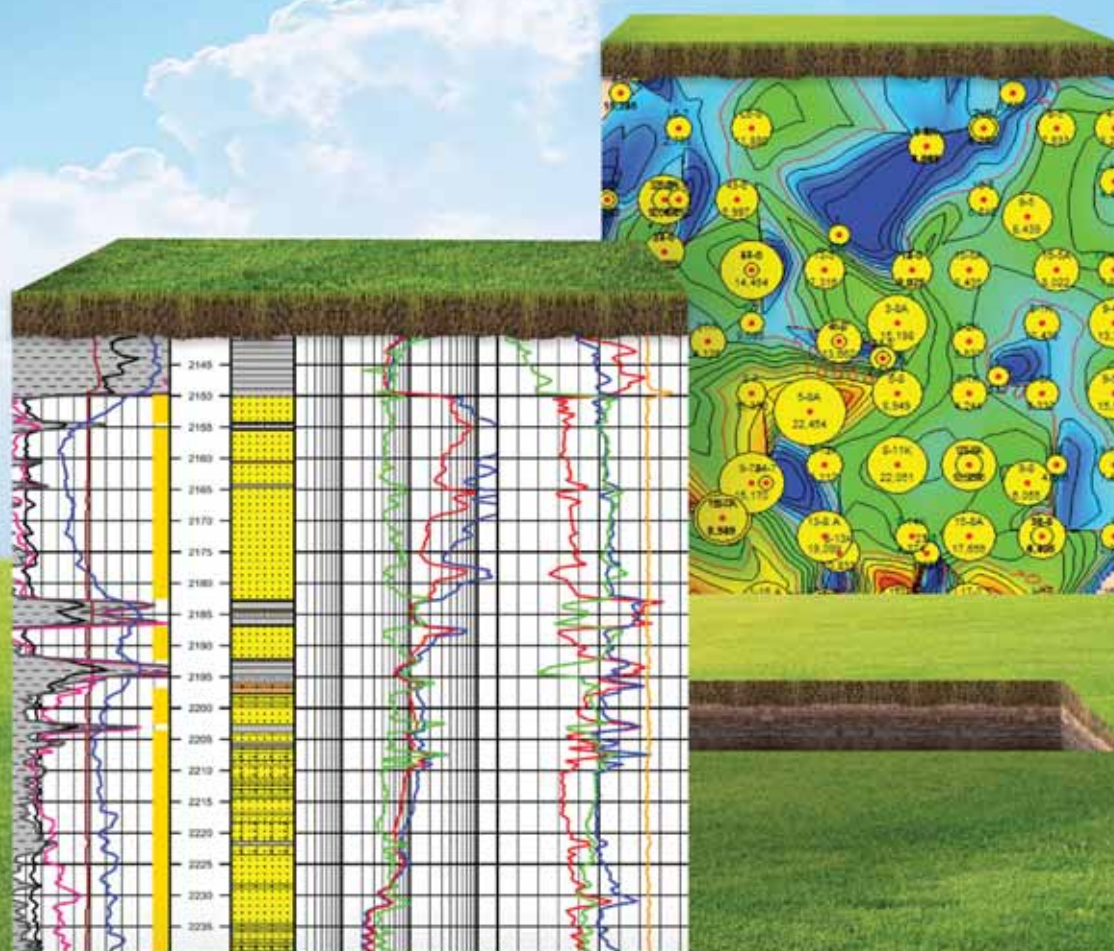
TGS offers a cost effective way for oil and gas companies to quickly identify and evaluate new prospects across the country.

- Nationwide well header/identification data for more than four million well records
- Depth-registered (smartRASTER®) log images and standard images from more than six million logs
- Detailed US production volumes for approximately 2.1 million wells
- Use of TGS Longbow™, a search and visualization tool

For more information, contact TGS at:

Tel: +1 713 860 2100

Email: [info@tgs.com](mailto:info@tgs.com)



[WWW.TGS.COM](http://WWW.TGS.COM)

© 2013 TGS-NOPEC GEOPHYSICAL COMPANY ASA. ALL RIGHTS RESERVED.

**TGS**  See the energy.



Published monthly by the New Orleans Geological Society.  
This issue was sent to press on October 25, 2013.

**Interested in contributing to the NOGS LOG?** Please submit items by the 1st Friday of the month to [nogseditor@gmail.com](mailto:nogseditor@gmail.com). Advertising request should contact the NOGS office at [info@nogs.org](mailto:info@nogs.org).

## IN THIS ISSUE

### Regular Features:

From the Editor .....	3
From the President .....	5
NOGS Officers / Contacts .....	6
Upcoming Events & Activities .....	7
NOGS Luncheon Presentation .....	9
November & December Calendars .....	12
Drill Bits .....	22
Info-Tidbits .....	28
NOGS Memorial Foundation.....	29
FONO Fund.....	29

### Special Features:

NOGS Christmas Holiday Party Announcement.....	8
NOGA News.....	13
GCAGS Convention Thanks .....	14
Girl Scouts S.T.E.M. Extravaganza .....	16-17
NOGS Committee News.....	21
NOGS News: Best Paper Award.....	25

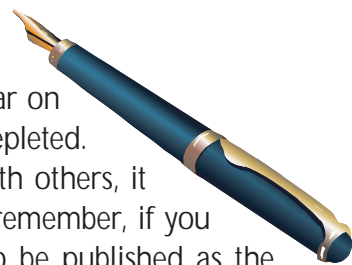
## on the cover:

**Cover Photo Submitted by: Alexander Falster**

### Amethyst Geode — Rio Grande do Sul, Brazil

Rio Grande do Sul, the southernmost state in Brazil, is one of the most prolific localities (the other being Uruguay) in the world for amethyst specimens. Amethyst geodes from southern Brazil and Uruguay occur in the basaltic rocks of the Parana Continental Flood Basalt Province. This violet variety of quartz obtains its color from trace amounts of iron and irradiation. This sample, as well as many other interesting mineral and fossil specimens, will be available at the 38th Annual Mineral Auction at UNO on November 7th.

# From the Editor



I hope you all have been enjoying the cover photographs that have appeared thus far on the *NOGS LOG*. Unfortunately, our supply of member-submitted photos has been depleted. While my husband and I have plenty of vacation photos and love to share them with others, it would be great to have some more photos sent in from other NOGS members. So remember, if you have a photo of geologic interest, please send it to [nogseditor@gmail.com](mailto:nogseditor@gmail.com) for it to be published as the *NOGS LOG* cover photo.

Our monthly luncheon is scheduled for November 11th and NOGS will present the award for Best Paper 2012-2013 to Ricky Boehme of Chevron. Perhaps some Chevron geoscientists will be able to congratulate Ricky in person at the luncheon.

This month we are advertising the NOGS Christmas Holiday Party that will be on December 7th. Please come out and join your fellow NOGS members for a festive night filled with music, food, free drinks, and camaraderie. The parking is free and I'm sure all who attend will have a great time.

Happy Thanksgiving!

**Sheri Richardson – NOGS LOG Editor**



# These nodes change everything.

With absolutely no cables,  
there's absolutely no stopping you.



True cable-free seismic

Dealing with tons of cable will hinder any seismic acquisition, land or marine. That's why our exclusive, true cable-free ZNodal® systems pay such huge dividends in any environment.

Our lightweight, compact ZLand® system lets your crews work faster and much more safely while recording high-resolution data, even in the most challenging terrain.

Our ZMarine® system, also completely self-contained, deploys easily and safely, even in congested areas, to water depths of 3000m, which makes it ideal for 4D reservoir monitoring.

Welcome to a new world of seismic acquisition.



FairfieldNodal.com



# From the President

Tropical Storm Karen formed during the first week of October and threatened to wipe out yet another GCAGS convention in New Orleans, but fortunately dry air from the northwest, shearing winds from the southwest, and cooler water kept Karen from being a major hurricane, like her older sister Katrina. Whew!

The GCAGS Annual Convention had about 800 attendees. Tropical Storm Karen kept some people away, so attendance was a little less than expected. There were a number of excellent talks and posters on all aspects of Gulf of Mexico geology. Many thanks go to Tom Klekamp, Art Johnson, George Rhoads, and Mary Walther for organizing the convention and to all the many volunteers who made it a success.

One talk from the GCAGS that stayed with me was "Retrospection on 30 years of E&P Risk Analysis" by Pete Rose. His discussion was about bias and what we think we know about our prospects. During the talk he showed a picture of some beans for about 5 seconds and asked the audience to give an 80% confidence range, low P(90) to high P(10), as to the number of beans in the picture. I estimated 500 on the low end and 1,100 on the high end. The actual number was 1,780, which means I was conservative in my estimate and probably shows I don't know how to count beans. However, the point was to show the bias of what we think we know and that our 80% confidence range on the number of "beans" or for petroleum exploration, reservoir parameters, may not adequately describe the range of risk associated with a prospect. We all have probably had an experience where we think we had it "wired" but were surprised when the subsurface turned out to be very different than what we had predicted.

## UPCOMING EVENTS

### November

Ed Haire, from INEXS and ION Geophysical, will present "Continuing Insights into Structure and Stratigraphy of the Onshore Gulf Basin from Pre-Stack Depth Imaging of Mega-Regional Strike Lines from South Texas to the Florida Panhandle" at the November 11th Luncheon. Ed will speak about ION Geophysical's effort to build a network of interpreted regional seismic lines for the entire Gulf of Mexico area. Come to the meeting to see the "Big Picture."

On November 13th, API will hold the 16th Annual Greater New Orleans Joint Energy Industry Association Luncheon at the Roosevelt Hotel in New Orleans. Bob Tippee, Editor of the Oil and Gas Journal, will be the speaker and the cost will be \$40 in advance and \$50 at the door. Register online at [www.api-delta.org](http://www.api-delta.org) and pay via PayPal. For more information contact Peggy Bourgeois at 504-367-1721.

### December

The NOGS Christmas Holiday Party will be on Saturday, December 7th from 7:00 pm to 10:00 pm at the Holiday Inn Superdome on Loyola Avenue. There will be free parking at the Holiday Inn and we will have an open bar, buffet dinner, and music from The Profiles. Please register for the Party by November 22nd and have a wonderful night out with your friends and fellow Society members.

Although fall officially started on September 21st it did not arrive in New Orleans until the first week of October when a cold front came down from the north. Temperatures dropped below 70 degrees at night and dry air replaced the oppressive humidity. For me, October, November, and December are the best months of the year to be in New Orleans. The temperatures are mild and it is dry. Sure, March and April have a similar temperature range, but they are usually rainier and more humid. Enjoy these pleasant days and "Go Saints!"

Chuck

## NOGS Office

Office Manager: Annette Hudson

Phone: 504-561-8980 • Email: info@nogs.org • Website: www.nogs.org

The office is located at 810 Union Street, Suite 300, New Orleans, LA 70112.

Correspondence and all luncheon reservations should be sent to the above address.



## BOARD OF DIRECTORS

		Company	Phone	E-mail
President	Chuck Holman	Saratoga Resources Inc.	985-809-9292	charleswholman@bellsouth.net
Vice President	Fran Wiseman	Retired	504-831-8343	snowde.fran@gmail.com
Secretary	Margaret McKinney	TGS	504-524-3450	margaret.mckinney@tgs.com
Treasurer	Robert Clark	UNO	504-610-6861	rbclark@uno.edu
President-Elect	Kelli Hardesty	Environmental Resources Mgmt.	504-831-6700	kelli.hardesty@erm.com
Editor	Sheri Richardson	W & T Offshore	504-210-8141	nogseditor@gmail.com
Director 2014	Michael N. Fein	W & T Offshore	504-210-8148	mikef@wtoffshore.com
Director 2015	William M. Whiting	Consultant	504-947-8495	bootscon@aol.com
Director 2016	Jim Zotkiewicz	Zot Oil & Gas	504-267-9131	jimzot38@zotoil.com

## COMMITTEE

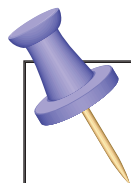
	Chairperson			
AAPG Delegates	William M. Whiting	Consultant	504-947-8495	bootscon@aol.com
AAPG Student Chapter	Kathryn Denommee	LSU		kdenom1@lsu.edu
AAPG Student Chapter	W. Matt Benson	Tulane University		wbenon3@tulane.edu
AAPG Student Chapter	Rachel Carter	UNO	913-710-8021	r_carter@me.com
Advertising-Log	Kimberly Maginnis	LLOG Exploration	985-801-4761	kimberlym@llog.com
Auditing	Kelli Hardesty	Environmental Resources Mgmt.	504-831-6700	kelli.hardesty@erm.com
Awards	Michael N. Fein	W & T Offshore	504-210-8148	mikef@wtoffshore.com
Ballot	Robert Clark	UNO	504-610-6861	rbclark@uno.edu
Best Paper	Bay Salmeron	Chevron	832-854-6431	bay.salmeron@chevron.com
Entertainment	Kelli Hardesty	Environmental Resources Mgmt.	504-831-6700	kelli.hardesty@erm.com
Environmental	Daisy Pate	Pontchartrain Partners	504-862-1775	daisy.pate@gmail.com
External Affairs	Michael A. Fogarty	Sylvan Energy, LLC	603-523-4808	mike.a.fogarty@gmail.com
Finance and Investment	Robert Clark	UNO	504-610-6861	rbclark@uno.edu
Historical	Edward B. Picou, Jr.	Consultant	504-529-5155	epicou@bellsouth.net
Membership/Directory	David E. Reiter	Stone Energy Corporation	504-593-3623	reiterde@stoneenergy.com
Nominating	Edward B. Picou, Jr.	Consultant	504-529-5155	epicou@bellsouth.net
Non-Technical Education	Duncan Goldthwaite	Consultant	504-887-4377	DGldthwt@aol.com
Office Operations	Will Jorgensen	Shell	504-728-6339	william.r.jorgensen@shell.com
Publications Sales	Edward B. Picou, Jr.	Consultant	504-529-5155	epicou@bellsouth.net
School Outreach	Thomas C. Bergeon	Century Exploration	504-832-3772	Tom.bergeon@centuryx.com
Scouting	Carol Rooney	Consultant Geologist	504-835-1909	carolbrooney@aol.com
Special Projects	Larissa Cupp		978-621-5074	Larissacupp@gmail.com

## NOGS LOG STAFF

Editor	Sheri Richardson	W & T Offshore	504-210-8141	srichardson@wtoffshore.com
Editor-Elect	Tavia Prouhet	Chevron	985-773-6737	tavia.prouhet@chevron.com
Auxiliary	Peggy Rogers	NOGA	504-392-6323	lrogers79@cox.net
Drill Bits	Al Baker	Beacon Exploration, LLC	504-836-2710	ABaker1006@aol.com
Drill Bits	Carlo C. Christina	Retired (C & R Expl. Inc)		drillbits81@yahoo.com
Drill Bits	Kevin Trosclair	UNO Graduate Student	504-202-7997	kjtrosccl@uno.edu
Staff Photographer	Arthur Christensen	Shalimar Consulting	985-893-2013	arthur_shalimar@yahoo.com
Layout	Kristee Brown	Creative Graphics & Printing, LLC	985-626-5223	kpbrown@bellsouth.net
Co-Webmaster	Edward B. Picou, Jr.	Consultant	504-529-5155	epicou@bellsouth.net
Co-Webmaster	Kevin Trosclair	UNO Graduate Student	504-202-7997	kjtrosccl@uno.edu

## NOGS AUXILIARY

Officers		Phone	Directors	Year	Phone
President	Mary Walther	504-392-9332	Beverly Kastler	2012-14	504-286-0879
Vice-President	Camille Yeldell	504-835-7467	Linda Peirce	2012-14	504-393-7365
Secretary	Beverly Christina	504-835-2383	June Perret	2012-14	504-664-0651
Treasurer	Judy Lemarié	504-393-8659	Trudy Corona	2013-15	504-737-6101
Parliamentarian	Alma Dunlap	504-737-2678	Debra Fein	2013-15	504-831-0358
Member-at-Large	Jean Jones	504-738-8091			



# UPCOMING Events & Activities

## November 11 • NOGS Luncheon

**Holiday Inn Downtown Superdome**

\$3.00 validated parking in hotel garage

### Presentation:

*Continuing Insights into Structure and Stratigraphy of the Onshore Gulf Basin from Pre-Stack Depth Imaging of Mega-Regional Strike Lines from South Texas to the Florida Panhandle*

### Guest Speaker:

**Ed Haire**

**INEXS**

**Houston, Texas**

*See page 9 for Abstract and Biography*

### **HOLIDAY INN DOWNTOWN SUPERDOME**

Check with concierge or  
front desk for location.  
Lunch served at 11:30 am

### **ADMISSION:**

**With reservation..... \$30.00**

**Without reservation..... \$35.00**

**Student Member with reservations..... FREE**

**November 8**

**UNO Mineral Auction**

University of New Orleans • New Orleans, LA

**November 13**

**16th Annual Greater New Orleans  
Joint Energy Industry Association Luncheon**

Roosevelt Hotel • New Orleans, LA

For more information, [www.api-delta.org](http://www.api-delta.org)

**December 7**

**NOGS CHRISTMAS HOLIDAY PARTY**

Holiday Inn Superdome • New Orleans, LA

For more information, [www.nogs.org](http://www.nogs.org)

**FREE PARKING**

**OPEN BAR • BUFFET DINNER**

**MUSIC BY "THE PROFILES"**

## NOGS CONTACT LIST

*Continued from previous page*

### MEMORIAL FOUNDATION

#### BOARD OF TRUSTEES

2013-2014	Chairman	Will Jorgensen
2013-2014	Secretary	Chuck Holman
2013-2014	Trustee	J.David Cope
2013-2014	Trustee	Tom Klekamp
2014-2015	Trustee	Rick Kear
2014-2015	Trustee	TBA
2015-2016	Trustee	William M. Whiting
2015-2016	Trustee	David E. Reiter

Company
Shell
Saratoga Resources Inc.
Rising Natural Resources LLC
Amber Resources LLC
Schlumberger Oil Field Services
Consultant
Stone Energy Corporation

Phone
504-728-6339
985-809-9292
504-214-6754
985-845-4046
504-858-2444
504-947-8495
504-593-3623

E-mail
<a href="mailto:william.r.jorgensen@shell.com">william.r.jorgensen@shell.com</a>
<a href="mailto:charleswholman@bellsouth.net">charleswholman@bellsouth.net</a>
<a href="mailto:klekamp@bellsouth.net">klekamp@bellsouth.net</a>
<a href="mailto:kear1@slb.com">kear1@slb.com</a>
<a href="mailto:bootscon@aol.com">bootscon@aol.com</a>
<a href="mailto:reiterde@stoneenergy.com">reiterde@stoneenergy.com</a>

### AAPG DELEGATES

#### Term Ends

2014	Arthur H. Johnson	Hydrate Energy International	504-464-6208	<a href="mailto:artjohnson51@hotmail.com">artjohnson51@hotmail.com</a>
2014	Brenda Reilly	AMROMCO Management LLC	504-430-4240	<a href="mailto:reillybe@yahoo.com">reillybe@yahoo.com</a>
2014(a)	Elizabeth C. McDade	McMoRan Exploration Co.	504-582-4510	<a href="mailto:ecmcade@bellsouth.net">ecmcade@bellsouth.net</a>
2014(a)	Frances A. Wiseman	BOEM (retired)	504-831-8343	<a href="mailto:snowde.fran@gmail.com">snowde.fran@gmail.com</a>
2015	Susan A. Waters	Shell	504-728-0229	<a href="mailto:susan.waters@shell.com">susan.waters@shell.com</a>
2015	William M. Whiting	Consultant	504-947-8495	<a href="mailto:bootscon@aol.com">bootscon@aol.com</a>
2015(a)	David E. Balcer	Chevron	985-773-6725	<a href="mailto:dbalcer@chevron.com">dbalcer@chevron.com</a>
2015(a)	Earl W. Cumming	Reservoir Frameworks LLC	985-630-6898	<a href="mailto:earlcumming@bellsouth.net">earlcumming@bellsouth.net</a>





# Christmas Holiday Party

Holiday Inn Downtown Superdome

330 Loyola Avenue • New Orleans, Louisiana

**Saturday, December 7, 2013 • 7:00 p.m.**

**Buffet Dinner**

*RSVP by Friday, November 22<sup>nd</sup>*

**Offline Networking**

*Send a check to the NOGS Office or pay online at  
[www.nogs.org/payment-center](http://www.nogs.org/payment-center) and use the Special Events category*



**FREE Parking**

**Members: \$45 per person**  
**Students: \$25 per person**

Sponsored in part by



**Open Bar**



**Music by "The Profiles"**







## November 11 NOGS Luncheon Presentation

☆☆☆ at the Holiday Inn Superdome ☆☆☆



### Continuing Insights into Structure and Stratigraphy of the Onshore Gulf Basin from Pre-Stack Depth Imaging of Mega-Regional Strike Lines from South Texas to the Florida Panhandle



*Presented by*

**Ed Haire\***

INEXS®

Houston, Texas

#### ABSTRACT

Mega-regional, 2D, pre-stack depth migrated (PSDM) strike lines can provide advances to the interpretation of the onshore Gulf Basin framework. Continuous seismic lines with consistent depth processing across nearly the full extent of the onshore portion of the basin allow onshore depocenters, structural axes, and canyons to be seen in their regional context. Plays dependent on new horizontal wells can be tied around the basin. A preliminary interpretation is presented of a key strike line that is made up of legacy onshore data and PSDM processed by ION Geophysical. The interpretation highlights a strike-view through the depoxes of shelf margins forming while gravity sliding is occurring along the Base Louann detachment. Plays below salt welds and shale decollements show improved imaging. This is one of a series of seven strike lines of approximately 8500 miles and 380 individual line segments that ranges from a line hugging the coast to line which traverses the East Texas Salt Basin, Sabine Uplift, North Louisiana Salt Basin, Mississippi Interior Salt Basin and Wiggins Arch to the Florida Panhandle. The strike lines tie together existing mega-regional dip lines and span across the basin from South Texas to Alabama and from the northern limit of the onshore Gulf Basin to the abyssal plain. The dip lines in some cases have been extended to tie the new strike grid. The interpretation has been tied to well control with a series of synthetics and check shot surveys and a comprehensive database of well tops.

*\*Co-authors: Don Howard, Barbara Radovich*

#### BIOGRAPHY

**Ed Haire** has been with INEXS® since 1993 where he is currently the VP of Technology. He has managed many of the interpretation projects for customers including providing much of the geophysical evaluation for certain projects. He has been on long term assignment to ION where he has worked on the regional interpretation of the GOM basin for the past four years.

Ed has worked on numerous projects for customers such as Hollimon Oil, Rutherford, Drill Partners, Aspect, BP, Meridian and Torch. His expertise includes fully integrated field and project evaluations, AVO processing and analysis and detailed analyses of analog production and nearby well control. While Ed has worked on projects in the UK, Colombia and Venezuela, plus Montana, Wyoming, Colorado, Oklahoma and New Mexico, his primary focus has been onshore Texas and Louisiana and the Gulf of Mexico.

Ed received his BS degree from Texas A&M in 1972, and began working at Seiscom-Delta where he started his interpretation career, was the computer on a field crew and a land data processor. He moved in 1975 to Michigan Wisconsin Pipeline working lease sales in the GOM and in 1978 to Conoco, working onshore Texas. In 1979 Ed joined Union Texas Petroleum working the Gulf of Mexico. In 1980 he was transferred to Denver as Division Geophysicist and in addition to managing the geophysical staff, he worked the Williston Basin, the Montana disturbed belt and the Green River Basin.

Ed joined Monsanto Oil Company in Denver in 1982 as Division Geophysicist, and continued to oversee and work the Williston, Paradox, Powder River, North Park and Wind River basins. In 1986, BHP Petroleum purchased Monsanto Oil, and Ed continued to work these basins until he moved to Houston in 1987 to work the Gulf of Mexico for BHP. Ed left BHP in 1993 and joined INEXS®.

**THE LUNCHEON RESERVATION DEADLINE IS NOVEMBER 7 - CONTACT THE NOGS OFFICE**

#### *"And Looking Ahead . . ."*

*The next luncheon will be held on December 2nd. Our guest speaker, Randy Broussard of Bureau of Ocean Energy Management (BOEM) in New Orleans, Louisiana, will present "A Structural Analysis of The Green Knoll Salt Dome, located in Southeast Green Canyon Deep Water Gulf of Mexico." Contact the NOGS office at 561-8980 or use the PayPal link on the NOGS website ([www.nogs.org](http://www.nogs.org)) to make your reservation.*

# The Evolution of Log Printing is Here!

Neuralog has been developing purpose built well log printing solutions for 10 years. Our printers are designed to operate seamlessly and require no add-on software for automatically sensing top of form printing. Whether you are a service company printing thousands of logs a day or an exploration company looking for quality logs, the NeuraLaserColor II will change your expectations of well log printers.

- Record setting speeds - 11 inches per second
- Precision printing - On-the-fly length calibration
- Increased efficiency - 20,000 page yield toner
- Operational versatility - Native PDF support
- Hands free - Automated cut, feed and re-load

See More at:  
[www.NeuraLaserColor2.com](http://www.NeuraLaserColor2.com)



© 2013 Neuralog • [www.neuralog.com](http://www.neuralog.com) • [sales@neuralog.com](mailto:sales@neuralog.com) • 1.281.240.2525 • 1.800.364.8728



# SEI<sup>®</sup>

**Seismic Exchange, Inc.**

**Strategic Speculative Surveys**  
Geophysical Data Marketing & Management

**YOUR**  
Full Service  
National  
Seismic Data  
Marketing Firm



DALLAS DENVER HOUSTON MIDLAND NEW ORLEANS OKLAHOMA CITY CORPUS CHRISTI TULSA  
201 St Charles Avenue, Suite 4300, New Orleans, Louisiana 70170-4300 504-581-7153 FAX 504-581-9591

[seismicexchange.com](http://seismicexchange.com)





# Drill with confidence.

Diversified Well Logging, LLC brings the accuracy and expertise only a company with over sixty years in the oil and gas industry can deliver. We are your eyes and ears in the field, especially when it comes to deep water or high pressure, high temperature areas.

DWL offers 24-hour formation evaluation. We provide secure and customized real-time data communication, in-house research and development, and 24/7 on-call support for our equipment and our engineers.

Whether you have a 10-day job or a 110-day job, we provide the specialized attention you require. **Our experience means you can be confident in the safety and performance of your well.**



- *Formation Evaluation*
- *Geosteering*
- *Drilling Optimization*
- *Real-time Data Transmission*
- *Early Kick Detection*



**DIVERSIFIED**  
WELL LOGGING, LLC

*Serving the Oil and Gas Industry for Over 60 Years*

November						
Sunday	Monday	Tuesday	Wednesday	Thursday	Friday	Saturday
					1	2
3	4	5	6	7	8 UNO Mineral Auction 7:00 PM	9
10	11 NOGS Luncheon Holiday Inn 11:30 AM	12	13 NOGA Luncheon Ormond Plantation GNO Joint Energy Industry Assoc. Luncheon	14	15	16
17	18	19	20 NOGS Board Meeting	21	22 RSVP for NOGS Christmas Holiday Party	23
24	25	26	27	28 Thanksgiving Day	29	30

December						
Sunday	Monday	Tuesday	Wednesday	Thursday	Friday	Saturday
1	2 NOGS Luncheon Holiday Inn 11:30 AM	3	4	5	6	7 NOGS Holiday Christmas Party Holiday Inn - 7 pm
8	9	10	11 NOGS Board Meeting	12	13	14
15	16	17	18	19	20	21
22	23	24	25 Christmas Day	26	27	28
29	30	31 New Year's Eve				



# New Orleans Geological Auxiliary News

*"The objective of the Auxiliary is to promote fellowship among the wives of the members of New Orleans Geological Society and to render assistance to NOGS upon request."*

What a way to start the NOGA 2013-2014 year! The first event was a very lovely luncheon at the home of Trudy Corona in September. Twenty-two guests, including new member Sandy Green, enjoyed great food and fellowship. NOGA welcomed Margie Conatser who joined the Auxiliary that day.



*Joanne Severson, Mary Walther,  
and Elizabeth Furlong*

The directories have been distributed. Information on any additional new members will be mailed to everyone having a directory to be incorporated in the membership. New members will be welcome to participate in all activities.

Much congratulations and appreciation goes to Mary Walther who was the NOGA representative to the GCAGS convention held in October. Mary was in charge of ladies activities and especially the Hospitality Room. The Hospitality Room was a beautiful room located on the 41st floor of the Marriott Hotel overlooking the crescent bend of the river. Refreshments were served Sunday afternoon and all day on Monday and Tuesday.

Registered spouses and guests picked up their convention gift, a cast metal dish decorated with fleurs de lis, and many came just to enjoy the view. Mary was assisted by Elizabeth Furlong, Joanne Severson, Trudy Corona, Peggy Rogers, and Judy Lemarié, who served as hostesses in the room.

Don't miss a luncheon trip to Ormond Plantation on November 13th. Susie Baker and Jean Jones are planning an exciting day. More details will be forthcoming.

**Peggy Rogers, NOGS LOG**



*Peggy Rogers, Elizabeth Furlong, and Mary Walther*

## New Orleans Geological Auxiliary Membership Application

Name \_\_\_\_\_ Spouse's Name \_\_\_\_\_  
Address \_\_\_\_\_ Home Phone \_\_\_\_\_  
City, State, Zip \_\_\_\_\_ Email \_\_\_\_\_  
Spouse's Company \_\_\_\_\_ DUES: \$25.00

**Please send \$25 check payable to NOGA to Judy Lemarié, Treasurer, #2 Yosemite Dr., New Orleans, LA 70131**

# GCAGS 2013 CONVENTION - THANKS!

NOGS and the GCAGS Board express their thanks to all who attended the recently concluded convention. You helped make it a success! We had a great convention and its success was the result of the efforts of many members of the convention team who have been working for more than a year to pull all of the pieces together. GCAGS President Tom Klekamp and I offer our sincere thanks to the following team members: Robert Clark, Larissa Cupp, Mike Fein, Duncan Goldthwaite, Leah Grassi, Jack Gross, Kathy Hagar, Roger Kocken, Mike Ledet, Bob Meltz, Ed Picou, Irv Prentice, George Rhoads, Kevin Trosclair, Mary Walther, and Bill Whiting.

Bill Whiting assembled a remarkable group of volunteers, many of whom worked more than one shift. Volunteers helped with registration and other tasks. We could not have been successful without their hard work under the direction of Bill and Annette Hudson. They include:

## **From NOGS**

Fran Wiseman, Bill Furlong and Terry Mattalino

## **From Desk & Derrik**

Dianne Badeaux

## **From UNO**

Ryan Jones, Gerald Raymond,  
Gregory Pellerin, Mark Johnson, Rachel Carter,  
Andrew Adams, Leah Frizell, Lindsay Aucoin,  
Spenser Slaton, Dominik Kardell, David Cross,  
Andrew Boudreaux, David Cross and Cory Hinyup

## **From Tulane**

Cynthia Palmore

## **From LSU**

Kathryn Denommee

## **From ULL**

Nicholas Geyer and Sydney Weitunat

## **From Baton Rouge Geological Society**

Amanda Zimmerman

Jeff Agnew, professor at Tulane University, taught the Saturday teacher training workshop which introduced teachers to inquiry based activities that address fundamental earth and life science concepts using fossil shark teeth and other hands on material. Each teacher went home with an amazing assortment of shark teeth, a shark jaw, and numerous classroom activities.

Our special thanks to Arthur Christensen who volunteered as photographer throughout the convention.

If we have omitted anyone, we extend our apologies. More news will be forthcoming.

**Art Johnson, General Chairman**





Why can Weatherford deliver more real time data at the wellsite than any other mudlogging company?

Tim has cabin fever.



**EXCELLENCE  
FROM THE  
GROUND UP™**

Our Global Operations Manager for Surface Logging Systems, Tim, is all smiles these days. That's because he and his team recently designed a new state-of-the-art mudlogging cabin. The spacious interior makes room for more laboratory services at the wellsite. Now exploration companies have access to more data in real time, so they can make better decisions faster. Combined with Weatherford's patented GC-TRACER™, IsoTube® AutoLoader™ and other Isotech technologies, it's one more way Weatherford Mudlogging is committed to Excellence from the Ground Up.

**SURFACE LOGGING SYSTEMS**

[www.weatherford.com/surfacelogging](http://www.weatherford.com/surfacelogging)  
[mudlogging.services@weatherford.com](mailto:mudlogging.services@weatherford.com)



**Weatherford®**



# girl sco

## S.T.E.M. Extrav

On Saturday, September 21st, over 900 girls from the Girl S Orleans Campus to take part in a Science, Technology, Engi involved including NASA, Audubon Zoo, Entergy, UNO Scienc Sewage and Water Board, and the Louisiana Department of V

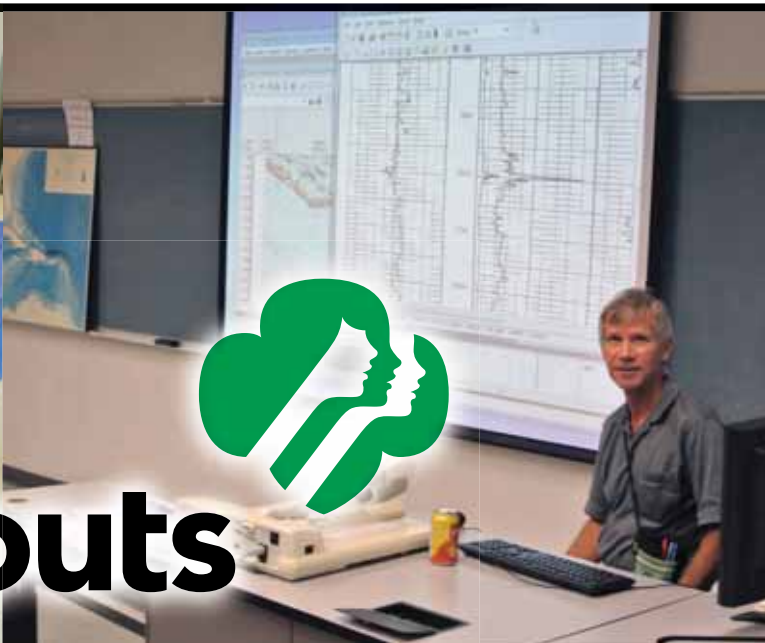
The New Orleans Geological Society presented stations on l how oil fields are formed. NOGS has some newly acquired demonstration. Chevron provided oil, core, paleo, mineral sa Resources gave a workstation demonstration on mapping oil The focus of our involvement was to show the girls that scie exploration.

Tavia Prouhet coordinated an excellent group of women earl Chloe Alexandre, Jessica Barnes, Tonya Richardson, and Jes conveying geologic concepts in understandable terms. The about what oil exploration is all about.

*Thanks to everyone for a*







outs

## aganza Event

scouts of Louisiana East converged on the University of New  
 engineering, and Mathematics event. Over 40 organizations were  
 ce Departments, Society of Women Engineers, New Orleans  
 Wildlife and Fisheries.

how oil is generated, concepts on oil and pore space, and  
 d subsurface models that were used very effectively in the  
 mples, and fluorescent displays. David Cope of Rising Natural  
 prospects using 3D seismic data.

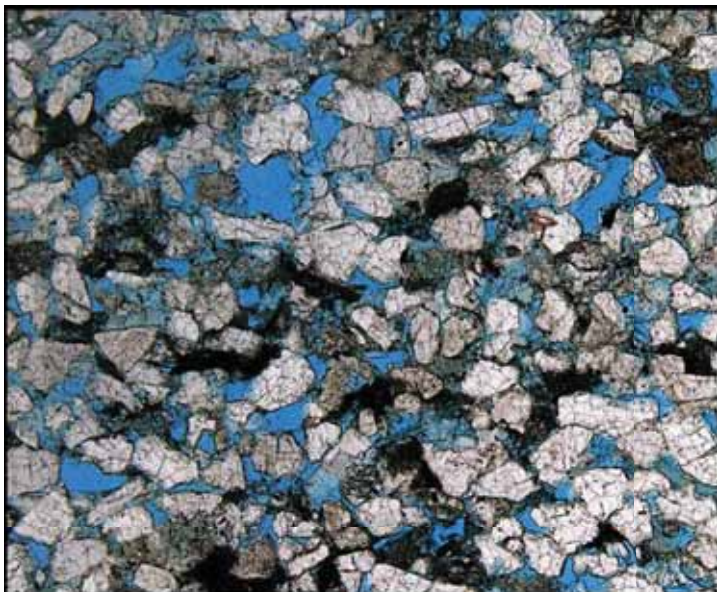
ence is fun and that there are very interesting careers in oil

th scientists from Chevron to serve as role models for the girls.  
 sica Lopez did an excellent job interacting with the girls and  
 e girl scouts really came away with a greater understanding

*wonderful learning event!*







### Offshore & South Louisiana Experts

- CORE ANALYSIS
- PVT FLUID EVALUATION
- GEOLOGIC SERVICES

New Orleans: 504-733-6583  
Broussard: 337-837-8616  
Houston: 713-328-2673  
[www.corelab.com](http://www.corelab.com)



Shell has worked in partnership  
with the NOGS for many years, and  
is proud to count the society among  
its closest business associates.

The New Orleans Geological Society was organized in 1941 to foster scientific research and advance the science of geology. Particular emphasis is laid on the exploration for and production of petroleum and natural gas. Related objectives include encouraging the adoption of improved methods of exploration, disseminating pertinent geological and technological data, and maintaining a high standard of professional conduct among its members.

[www.shell.com/us.sepc](http://www.shell.com/us.sepc)

Freeport-McMoRan is now  
**RESOURCE RICHER.**



### Freeport-McMoRan Copper & Gold Inc. provides resources to fuel global growth.

With the acquisitions of Plains Exploration & Production Company and McMoRan Exploration Co., FCX's diverse portfolio of minerals assets now includes high-quality oil and gas resources in the United States. Matched with bright prospects for success in the global minerals industry, this expanded scope of operations provides exciting new opportunities for profitable growth to benefit shareholders, employees and communities. FCX is pleased to announce its new subsidiary Freeport-McMoRan Oil & Gas.

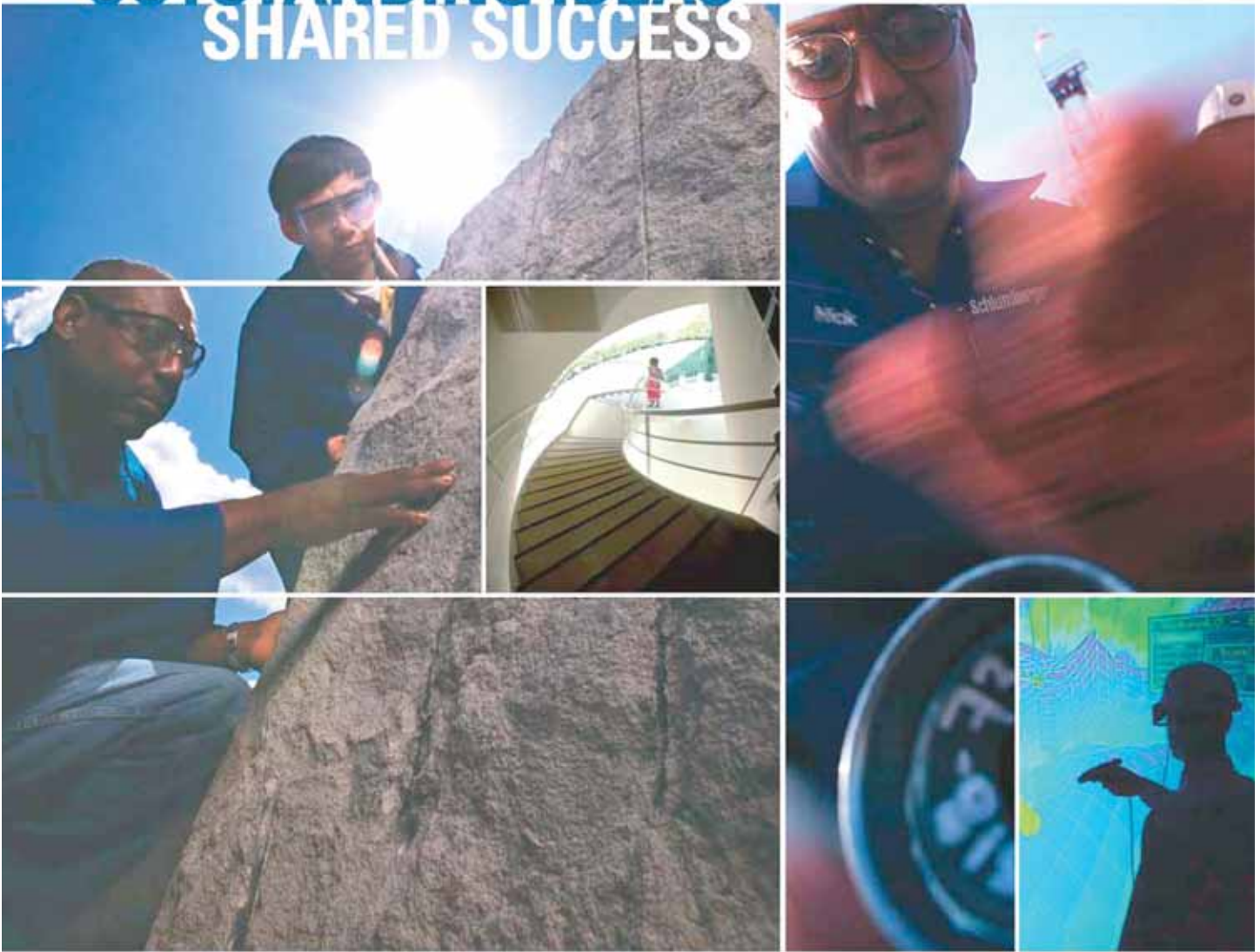
**Freeport-McMoRan**  
**COPPER & GOLD**  
[www.fcxc.com](http://www.fcxc.com)

**FCX**  
**LISTED**  
**NYSE**

**Freeport-McMoRan**  
**OIL & GAS**



# OUTSTANDING IDEAS SHARED SUCCESS



**WHAT CAN MILLIONS OF IDEAS,** thousands of patents, and hundreds of nationalities deliver? Success. Listening to the ideas of our clients and colleagues around the globe has made Schlumberger the world's leading technical services company. Your experiences are catalysts for our innovation.

Schlumberger invests in a worldwide community of research and development centers—from Boston to Dhahran, Beijing to Moscow, Stavanger to Cambridge—encouraging our brightest minds to find new ways to improve efficiency, productivity, and safety, every day.

Through our commitment to technology research and the support of our global network of local experts, Schlumberger is leading the way into the future.

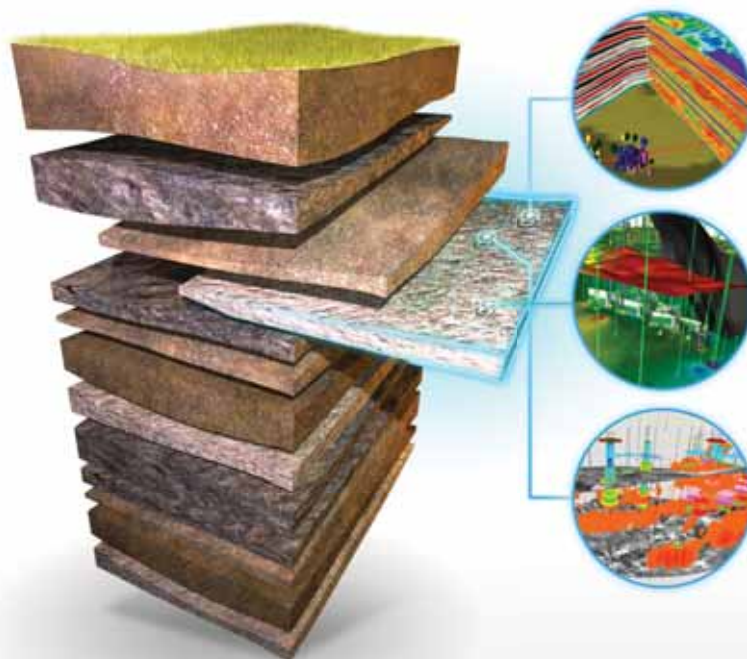
[www.slb.com](http://www.slb.com)

# Schlumberger

# YOU TACKLE TOUGH PROBLEMS

YOUR GEOSCIENCE SOFTWARE  
DOESN'T HAVE TO BE ONE OF THEM

IHS GEOSCIENCE: sophisticated science that's simple to use and simple to manage



## **SURFACE TO SUBSURFACE**

ONLY ONE ENERGY EXPERT  
PROVIDES SO MUCH TO SO MANY

From big picture to critical detail, proven capabilities to superior results, IHS geoscience does it all—backed by the world's most respected forecasting, analysis, and play-specific geological and geophysical data.

## **NOW GET THE POWER OF KINGDOM® AND PETRA®**

Only IHS geoscience simply yet scientifically links engineering, economics and interpretation software suites to give you a definitive edge. Spearheaded by industry-leading Kingdom® and Petra® software solutions IHS gives you the best in geophysics and geology.

Learn more at [IHS.com/NOGS](http://IHS.com/NOGS)

**IHS** GEOSCIENCE



Simply **Scientific™**





## When time is money, Wellsite Geoscience is money well spent.

Whether you're exploring a basin, producing a well or completing a shale play, time is money. That's why Weatherford Laboratories brings a suite of formation evaluation technologies right to the wellsite. Utilizing mud gas and cuttings, these technologies provide detailed data on gas composition, organic richness, mineralogy and chemostratigraphy in near real time. As a result, operators now have an invaluable tool to assist with sweet spot identification, wellbore positioning, completion design and hydraulic fracturing. We call it Science At the Wellsite. You'll call it money well spent.

**SCIENCE AT THE WELLSITE™**

[www.weatherfordlabs.com](http://www.weatherfordlabs.com)



**Formation Evaluation   Well Construction   Completion   Production**

©2013 Weatherford. All rights reserved



## COMMITTEE NEWS

### Membership/Directory:

Dave Reiter, upon returning from working in Houston, immediately accepted the position of Membership/Directory Chairman.

### New Geoscientists of New Orleans (NGNO):

Jeremy Prouhet has agreed to be Chairman of the NGNO Committee. The group will now receive funding to provide activities and be a support network for members of the Society that have less than 10 years of experience or are under 40 years of age. Anyone wishing to join that hasn't already signed up, please email [info@nogs.org](mailto:info@nogs.org).

### Boy Scouts/Girl Scouts Committee:

*A Chairman is needed.*

This committee promotes and supports the Scouting movement and assists in all matters pertaining to geology, including the Geology Merit Badge Program. If you're interested, please contact Bill Whiting at [Bootscon@aol.com](mailto:Bootscon@aol.com) or [info@nogs.org](mailto:info@nogs.org).

### Sponsorship Committee:

*A Chairman is needed.*

This committee secures funding from sponsors to help finance various activities of the Society. This committee also insures that sponsors are thanked and adequately recognized for their generosity.

# South Louisiana and Offshore Gulf of Mexico Exploration and Production Activities

LAFAYETTE DISTRICT, ONSHORE AREA

*By Carlo C. Christina*

The GCAGS Convention, held here in New Orleans last month, was pronounced a great success, thanks to General Chairman Art Johnson, GCAGS President Tom Klekamp, and the efforts of many members of the convention team.

My personal highlight was the All-Convention luncheon, where John Dribus presented a review of many excellent giant oil discoveries in conventional reservoirs, in deep waters around the world. I now feel very confident there will be no worldwide shortage of oil in the near future.

Preceding John's presentation an award was presented to James Robert "Jim Bob" Moffett, citing him as the "Ultimate Wildcatter." Bob Douglass presented the award on behalf of the New Orleans Geological Society, where Jim Bob served as a member and long-time supporter. We are proud to call him one of our own.

Jim Bob received his M.S. degree in geology from Tulane University in 1963 and worked in New Orleans as a consulting geologist. In 1969 he and two associates founded McMoRan Oil & Gas Co. which has become one of the world's leading natural resource companies.

*The Office of Conservation, Lafayette District, Onshore and Offshore Areas, issued 29 permits to drill during the month of September. Drilling activity during the month was curtailed because of the threat of Tropical Storm Karen.*

## NEW LOCATIONS

In Ascension Parish, in **Laurel Ridge Field**, (A), Anglo-American is drilling below 11,775 feet to test the Marg tex-Bol mex sections at 15,300 feet. The #1 Chatham Farms is located in Sec. 64, 10S-14E, 1½ miles northeast of Miogyp production at 12,400 feet. Two wells have produced more than 237,000 barrels of oil and 280 million cubic feet of gas in the past 4 years. (246963)

Goodrich Petroleum has staked a location for an important horizontal Tuscaloosa Marine Shale test in **North Chipola Field**, (B), in St. Helena Parish. The #1 Weyerhaeuser 51 H is located in Sec. 51, 1S-4E, 3 miles southeast of excellent Tuscaloosa Sand production at 12,800 feet. The well will be drilled in a horizontal leg of 6,500 feet, to 19,500 feet, or to a true vertical depth of 13,230 feet. (247041)

The Tuscaloosa Marine Shale play is back in the news. On the positive side, Goodrich Petroleum has announced that 3 TMS wells have produced an average of 1,120 barrels of oil equivalent per day. Goodrich has recently bought 120,000 net acres from Devon Energy for \$26 million, and now owns more than 320,000 net acres in the trend.

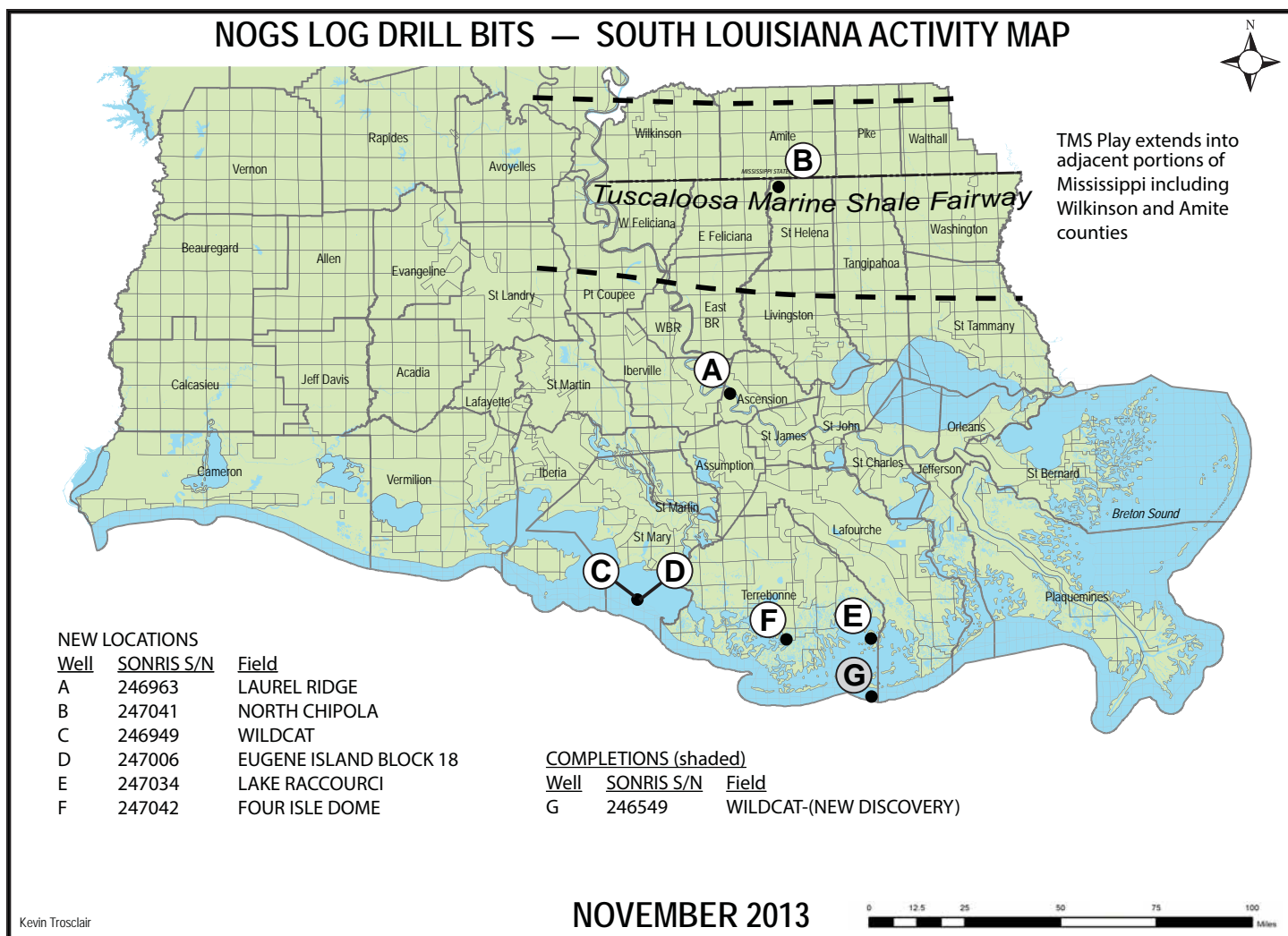
On the negative side, the average cost of these wells is \$13 million, whereas the cost must be reduced to \$10 million for the play to be profitable. Is \$100 oil here to stay?

## **Latest Tuscaloosa Marine Shale news:**

Goodrich Petroleum announced that its 2014 capital budget of \$375 million includes \$300 million in the Tuscaloosa Marine Shale, an increase from \$75 million, and will have 5 horizontal rigs running in the play by the end of 2014.







Castex Energy will drill a **wildcat**, (C), in St. Mary Parish to test *Cibicides carstensi* sands at 11,500 feet. The #1 SL 21122 is located in the Atchafalaya Bay, 3 miles north of Castex's excellent Cib carstensi production in Eugene Island Block 18 Field. Two wells have produced more than 675,000 barrels of oil in 2 years. (246949)

Castex Energy has also permitted the #1 SL 21120, located in **Eugene Island Block 18 Field**, (D), in St. Mary Parish. It will be drilled to test the Cib carstensi sands at 11,500 feet which are productive, as noted above. (247006)

In Terrebonne Parish, Hilcorp Energy will drill its #1 SL 21149 in **Lake Raccourci Field**, (E), to a projected depth of 18,000 feet in Sec. 27, 21S-20E. It is located 3½ miles southwest of Hilcorp's excellent production in the #1 SL 20892, which has produced more than 112,700 barrels of oil and 2.1 billion cubic feet of gas in 4½ months. (247034)

Also in Terrebonne Parish, Hilcorp Energy will drill the #1 LL&E in **Four Isle Dome Field**, (F), in Sec. 28, 21S-16E, located on the extreme southwest flank of the field, 2 miles west of an old shallow producing oil well. The well will be drilled to a depth of 17,400 feet. If productive, it will certainly open a new area for development. (247042).

## COMPLETIONS

Contango Operators has completed its #1 SL 21096 as a **gas discovery**, (G), in South Timbalier Block 17. The well was completed in the Cyclam 4 Sand flowing 11,103 MCFD and 132 BDPD through perforations 11,174 to 11,200 feet. As reported in the August Drill Bits, this well was a rank wildcat, located several miles south of the nearest production in Caillou Island Field. (246549)

## OFFSHORE GULF OF MEXICO SHELF AND DEEPWATER ACTIVITIES

*by Al Baker*

During September 2013, the BOEM approved **79** Gulf of Mexico drilling permits. Of these, **32** were for shelf wells, and **47** were for deepwater wells. There were **5 shelf** (2 exploratory and 3 development) and **8 deepwater** (1 exploratory and 7 development) **new well permits** issued.

On the shelf, exploratory new well permits were given to **Walter Oil & Gas** for their **South Marsh Island 277 #1** well and to **Dynamic Offshore Resources** for their **South Marsh Island 41 #16** well. The development well permits were given to three operators. **Arena Offshore** received a new well permit for their **Eugene Island 338 #K-9** well. **Tana Exploration** was awarded a new well permit for their **West Delta 59 #3** well, and **Energy XXI** was granted a permit for their **Main Pass 61 #C-11** well.

In deepwater, permitting activity was done by four operators. **BP Exploration & Production** was granted permits for 5 development wells off their **Mad Dog** spar platform, the **Green Canyon 782 #MD-12** and **#MD-15** through **#MD-18** wells. **BHP Billiton** received a new well permit to drill their **Green Canyon #SH-102** development well. **Shell** also obtained a permit for their **Mississippi Canyon 934 #A-8** development well. Lastly, **Marathon** was awarded a permit for their **Desoto Canyon 757 #1** exploration well.

On September 27th, IHS-Petrodata reported that the Gulf of Mexico mobile offshore rig supply totaled **106**. The marketed rig supply was comprised of **80** rigs, of which **76** were under contract. The contracted versus total rig supply utilization rate is **71.7%**, and the marketed contracted versus marketed supply utilization rate stands at **95.0%**. The total rig supply is **1** less than reported last month, whereas the number of contracted rigs remained the same. This compares to 77 out of the 109 rigs available during the same period in 2012 for a 70.6% fleet utilization rate.

On September 27th, the BakerHughes Rig Counts indicated that there were **63** active mobile offshore rigs in the Gulf. The total number is the same as reported last month. There were **50** rigs in offshore Louisiana, **9** rigs in offshore Texas, and **2** rigs in offshore Florida. The current active rig count compares to 50 active rigs during the same period last year representing a **26.0%** increase in yearly activity.

On September 11th, **LLOG Exploration** announced a discovery at its ultra-deepwater **Taggart Prospect** on **Mississippi Canyon Block 816**. A press release by their partner, **Stone Energy**, indicated that the **#1** well found 90 feet of net oil and gas condensate pay in 2 sands within the Upper Miocene and Pliocene sections. The well was drilled to a total depth of 11,820 feet in a water depth of 5,530 feet. A plan to tie-back the well to an existing facility is currently being formulated.

**Stone Energy** also reported a discovery on its **Taildancer Prospect** in **Ship Shoal Block 113**. The well encountered 130 feet of net oil and gas pay. Start-up of production from this discovery is forecast to occur during the fourth quarter of 2013.

On September 12th, **Noble Energy** made its second discovery within the company's ultra-deepwater **Rio Grande** exploration area. The **Troubadour Prospect** discovery was drilled in 7,285 feet of water on **Mississippi Canyon Block 699**, where their **#1** well reached a total depth of 19,510 feet. The well found approximately 50 feet of natural gas pay in a high quality, Miocene sand. **Troubadour** is east of and adjacent to Noble's **Big Bend** discovery on **Mississippi Canyon Block 698**. Approximately 150 feet of net oil pay in two, high quality, Miocene reservoirs was encountered in the Big Bend #1 well, which was drilled in fourth quarter of 2012.

On September 12th, the **BOEM** published the results of its **Phase I** evaluation of the bids received at **OCS Sale 233**, on August 28, 2013, in New Orleans. Only **1** bid was deemed acceptable out of the **61** bids on **53** blocks submitted by **12** companies at the lease sale. The remaining 60 bids now fall into the **Phase 2** evaluation period. The BOEM has 90-days following the sale date to either accept or reject the high bids.



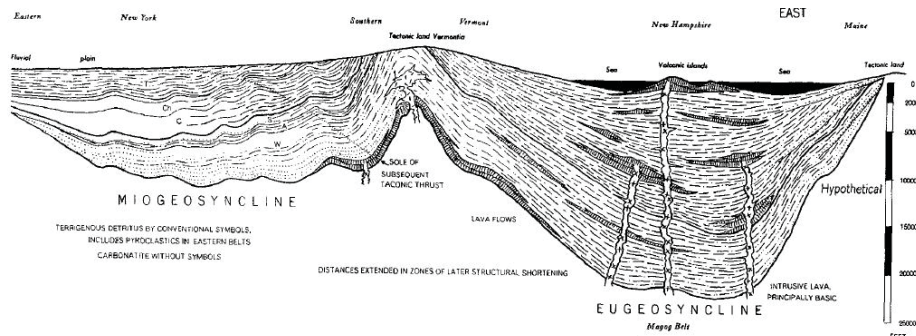


# NOGS News...

## NOGS 2012-13 BEST PAPER AWARD

At the November 11th NOGS Luncheon, Ricky Boehme, Staff Geologist with Chevron in Houston, Texas, will be presented with the Best Paper Award for the 2012-13 year.

Ricky was the speaker at the December 3, 2012, luncheon in which he presented "Big Foot Geology and Development Plan Overview."



*Look how far we've come!*

(Kay, Marshall [1951], *North American Geosyncline*:  
Geological Society of America Memoir 48)

**Sedimentary Basins:**  
Origins, Depositional Histories,  
and Petroleum Systems

33rd Annual GCSSEPM Foundation  
Bob F. Perkins Research Conference  
Houston, Texas  
January 26-28, 2014  
OMNI Hotel

More Information and Registration:  
[www.gcssepm.org](http://www.gcssepm.org)



100 Northpark Blvd.  
Covington, LA 70433

(985) 773-6000



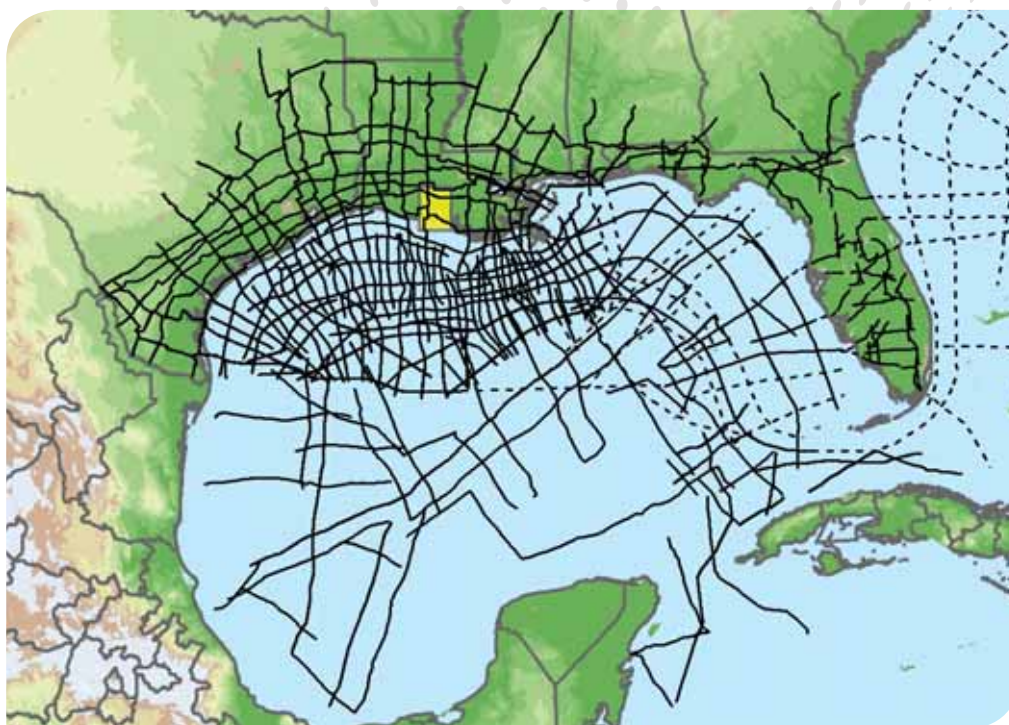
**LaBay**  
Exploration Co., L.L.C.

111 Veterans Memorial Blvd.  
Suite 1550  
Metairie, Louisiana 70005

Office (504) 371-5967  
Fax (504) 371-5969

[www.labayexploration.com](http://www.labayexploration.com)

# Explore the Entire Gulf of Mexico



Position your company for the next 10 years of exploration with the most complete, modern time and depth-imaged data in the Gulf of Mexico. ION's interconnected dataset links the entire Gulf, from onshore to offshore deep water, from Texas to Florida and to Mexico. With over 40,000 miles (over 65,000 km) completed or in progress, and an additional 7,500 miles (over 12,000 km) planned for 2013 and beyond, no other data library provides as comprehensive a framework for understanding the Gulf of Mexico.

To learn more, visit [iongeo.com/Gulf\\_of\\_Mexico](http://iongeo.com/Gulf_of_Mexico)

## CONTACT

Ashley Garcia  
Mobile: +1 281 781 1005  
Email: [ashley.garcia@iongeo.com](mailto:ashley.garcia@iongeo.com)

Alvin Rowbatham  
Mobile: +1 832 372 2366  
Email: [alvin.rowbatham@iongeo.com](mailto:alvin.rowbatham@iongeo.com)

## AREAS OF EXPERTISE

- Unconventional Reservoirs
- Challenging Environments
- Complex Geologies
- **Basin Exploration**
- Reservoir Exploitation



GEOVENTURES®





## Geoconsulting, Inc.

Geological and Geophysical Consulting  
3-D Seismic Interpretation

Ben D. Sydboten, Jr. CPG

2 Flagg Pl., Suite 1  
Lafayette, LA 70508

[www.saigeoconsulting.com](http://www.saigeoconsulting.com)

Office (337) 504-3670

Cell (337) 456-8948



**Anthony Catalanotto**  
President

Geological  
Geophysical  
Land  
Drafting & Graphics

3349 Ridgelake Drive • Suite 202  
Metairie, LA 70002  
Office: (504) 836-2882  
Fax: (504) 836-2877  
Cell: (504) 481-7291  
E-Mail: [geodraft@bellsouth.net](mailto:geodraft@bellsouth.net)  
Website: [www.geodraftinc.com](http://www.geodraftinc.com)

## NORTHCOAST OIL COMPANY

610 E. Rutland St.  
Covington, LA 70433

(985) 898-3577

(985) 898-3585 Fax

Jack M. Thorson

Eric C. Broadbridge

J. Daryl Gambrell

Raymond W. Stephens



ETROA Resources LLC

Join us in pursuing gulf coast production,  
acquisitions and low-risk drilling opportunities

John C. Ebert  
Kevin McVey

128 Northpark Blvd.  
Covington, LA 70433  
(985) 809-3808

[www.etroa.com](http://www.etroa.com)

## Collarini Energy Staffing, Inc.

Facilities • Drilling • Production • Reservoir Engineering  
Land and Legal • Geosciences • Information Technology  
Health and Safety • Management • Supply Chain  
Accounting • Administrative Support



Full-Time and Temporary Personnel

Energy Trading • Civil Engineering • Executives  
Human Resources • Instrument and Electrical  
Engineering • Marine Engineering • Project Management  
Technical Writing • Sales and Marketing

10497 Town and Country Way, Suite 950, Houston, Texas 77024

Telephone: (832) 251-0553

[www.collarini.com](http://www.collarini.com)

## DOMESTIC AND INTERNATIONAL BIOSTRATIGRAPHIC SERVICES



6619 Fleur de Lis Drive  
New Orleans, LA 70124  
(504) 488-3711

[www.paleodata.com](http://www.paleodata.com)



Complete wellsite paleo services

Supported offshore GoM and  
onshore LA paleo databases

Integrated foram/nannofossil  
analyses

In-house sample preparation  
lab for quality-monitoring  
and efficiency

Comprehensive depositional  
history study of the Gulf Basin  
based on 200,000+ well data  
analysis



LAFAYETTE  
GEOLOGICAL  
RESEARCH  
CENTER, LLC

201 Heymann Blvd., Suite 33 • Lafayette, LA 70503  
Tel: 337-233-8197 • Fax: 337-233-8177

### COVERAGE:

Louisiana / Federal / State Offshore  
• Multi State Geo Tech Services • Completion Data  
Production Data • Well Logs • Maps

~ MEMBERSHIPS AVAILABLE ~

The Industry's Premier • Well Data Center

[orders@lafayettegrc.com](mailto:orders@lafayettegrc.com)

CALL OR EMAIL TODAY FOR MORE INFORMATION!



**THIS AD SPACE AVAILABLE**  
Contact: [annette@nogs.org](mailto:annette@nogs.org)

Submitted by Sheri Richardson

**Reuters – Dmitry Zhdannikov**

***"U.S. Soon to Overtake Russia as Top Oil Producer."* October 11, 2013 6:04 EDT**

<http://www.reuters.com/article/2013/10/11/us-oil-iea-idUSBRE99A08N20131011>

The United States will become the world's largest oil producer next year - overtaking Russia - thanks to its shale oil boom which has transformed the global energy landscape, the West's energy watchdog said on Friday.

The prediction comes only days after estimates by the U.S. government showed the United States, the world's largest oil consumer, has ceded its ranking as top global oil importer to China, thanks to the shale revolution cutting import needs.

"The United States' place in the driver's seat of growth is also a throwback to decades past," the International Energy Agency said in its monthly report.

Major producers such as Russia are now forced to invest billions of dollars into new pipelines towards Asia as they can no longer rely on demand from the West, and have to deal with increasingly assertive Beijing.

"With output of more than 10 million barrels per day for the last two quarters, its highest in decades, the nation is set to become the largest non-OPEC liquids producer by the second quarter of 2014, overtaking Russia. And that's not even counting biofuels and refinery gains," the IEA said.

The spike in U.S. production will allow total non-OPEC supply to grow by an average of 1.7 million barrels per day in 2014, peaking at 1.9 million in the second quarter, the highest annual growth since the 1970s, the IEA said.

That robust growth will compensate for disruptions to Organization of the Petroleum Exporting Countries' production and provides a cushion for oil prices, which otherwise could have spiked much higher than the current \$110 a barrel.

OPEC crude supplies slipped to below 30 million bpd for the first time in almost two years, led by steep drops in Libyan and Iraqi exports due to unrest and terminal repairs, and despite Saudi Arabian output topping 10 million bpd for a third month running.

The IEA said that growth in non-OPEC production was so strong that it further reduced its estimates for demand for OPEC crude next year by an average of 100,000 bpd to 29 million bpd - effectively 1 million bpd below current pumping levels.

**The Independent – Neela Debnath**

***"Nasa releases images of new island formed in Pakistan earthquake."* September 30, 2013**

<http://www.independent.co.uk/news/world/asia/nasa-releases-images-of-new-island-formed-in-pakistan-earthquake-8849087.html>

The new outcropping off the shore of the Paddi Zirr near Gwadar has been captured by Nasa's Earth Observing-1 satellite. The island rose from the depths of the sea floor after the earthquake hit, it is estimated to be about 75 to 90 metres in diameter and 15 to 20 metres above the waterline.

It is believed that a shallow pocket of pressurised gas was released during the earthquake, the gas rose to the surface, taking mud and rock with it.

According to a group of people visiting the island, the sound of hissing gas was heard escaping from fissures even though there was no smell. The group found dead fish and other sea creatures on the surface of the island that had been carried up with the mud and clay.

Experts believe that this will only be a temporary island and that once the gas has escaped the mud will collapse and re-settle. Storms and waves are likely to play a part in shortening the lifespan of the island by washing away the soft clay and sand. It is thought that islands such as these only last a few months before sinking below the water again.

The devastating earthquake struck the Baluchistan province on Tuesday afternoon at a depth of 20km, with a magnitude of 7.7. Over 300 people have been killed and more than 700 have been injured. The Southwestern region of Pakistan has been hit by aftershocks which have left at least 15 people dead.



## THE NEW ORLEANS GEOLOGICAL SOCIETY MEMORIAL FOUNDATION, INC.

The Memorial Foundation is an IRS Tax Exempt Code #501(c)(3) organization. The Federal I.D. is 72-1220999. Please consider making a donation to the Foundation. Your individual support in any amount will help meet the IRS Guidelines for our Foundation. Thanks!

**\$10,000**

### Gibbet Hill Foundation

*In Memory of Steve & Marion Millendorf, William J. Prutzman,  
Roger G. Vincent, Ron Youngblood and Uno Numella*

**\$5,000**

### NOGS Golf Tournament April 2013

*In Memory of Bill Craig*

**\$500**

### Mr. Reuben J. Klibert, Jr.

*In Memory of Reuben S. Klibert, Sr.  
and Jame Wade Klibert*

### Mr. Armour C. Winslow

*In Memory of Rita Menzel Winslow  
and Lawrence C. Menconi*

**\$250 TO \$499**

### Mr. Thomas C. Bergeon

*In Memory of Erik Mason  
and Brian O'Neill*

### Mr. Marc Cooper

*Through the Marathon Oil Co MEPAC Program*

**UP TO \$249**

### Mr. Woods W. Allen, Jr.

*In Memory of William C. Ward*

### Mr. Robert J. Ardell

*In Memory of Jim Seglund  
In Memory of L. David Collier*

### Mr. R. H. Baillio, Jr.

*In Memory of T. Wayne Campbell & Jack Dunlap*

### Mr. Maurice N. Birdwell

### Mr. Hilary James Brook

### Ms. Robin A. Broussard

### Mr. Rob Burnett

### Ms. J. Sybil Callaway

### Chevron Humankind Matching Funds

### Chevron Humankind Matching Gift Program

### Mr. Arthur F. Christensen

### Mr. Merle J. Duplantis

### Mr. Michael N. Fein

### Mr. Sherwood M. Gagliano

### Mr. Arthur J. Garden

### Mr. Bernard L. Hill, Jr.

### Mr. Jeff Jandegian

### Mr. Robert M. Jemison, Jr.

### Mr. Paul Jurik

### Mr. Tom Klekamp

*In Memory of Kenneth J. Fulton*

### Mr. Reuben J. Klibert, Jr.

### Mr. John C. Kucewicz, Jr.

### Mr. John C. "Jack" Langford

### Mr. Cyril F. Lobo

### Ms. Jeannie F. Mallick

### Ms. Margaret M. McKinney

### Mr. Paul C. McWilliams

### New Orleans Geological Auxiliary

*In Memory of Sybil Barton and Ruth Grimes*

### Mr. Richard A. Olsen

### Mrs. Teresa O'Neill

*In Memory of Brian O'Neill*

### Mr. William S. Peirce

### Mr. Edward B. Picou, Jr.

*In Memory of Lawrence C. Menconi*

*In Memory of Clarence F. Conrad*

### Mr. George W. Schneider, Jr.

*In Memory of George Schneider, Sr.*

### Mr. Robert T. Sellars, Jr.

*In Memory of Robert G. Williamson*

### Mr. George D. Severson

### Shell Matching Funds

### Mr. Robert C. Shoup

### Mr. Rudolf B. Siegert

### Dr. J. O. Snowden

### Mr. James M. Sothorn

### Mr. Raymond O. Steinhoff

*In Memory of Anne M. Steinhoff & Harold E. Vokes*

### Ms. Betsy M. Strachan Suppes

### Mr. David M. Tatum

### Mr. Louis O. Vidrine

*In Memory of T. Wayne Campbell*

### Mr. William M. Whiting

*In Memory of John S. Bousfield*

### Ms. Frances A. Wiseman

*In Memory of Steve Widdicombe*

## BILL CRAIG FUND

### Mr. Bernard L. Hill, Jr.

### Mr. Bay Salmeron

### Mr. John C. Scheldt

*In Memory of William C. Ward*

### Ms. Candace V. Strahan

*In Memory of James R. Strahan*

## FONO FUND

The FONO Fund accepts contributions that are invested and the income dedicated to assure sufficient financial resources will always be available to maintain the NOGS business office. Contributors are reminded that donations to the FONO Fund are not covered by the IRS 501(c)(3) tax exempt classification and should be reported as a business expense on your IRS tax report.

**\$250 TO \$499**

### Mr. Reuben J. Klibert, Jr.

**UP TO \$249**

### Mr. Donald I. Andrews

### Mr. Alfred H. Baker, Jr.

### Mr. David E. Balcer

### Mr. Joseph E. Boudreaux

### Ms. J. Sybil Callaway

### Mr. Anthony Carollo, Jr.

### Mr. John Dombrowski

### Mr. Merle J. Duplantis

### Mr. Richard A. Edmund

### Mr. Michael N. Fein

### Mr. William J. Furlong

### Mr. David Garner

### Mr. Bernard L. Hill, Jr.

### Mr. Kenneth Huffman

### Mr. Arthur H. Johnson

### Mr. Paul Jurik

### Mr. Tom Klekamp

### Mr. Louis Lemarié

### Mr. H. David Lynch

### Ms. Jeannie F. Mallick

### Mr. George M. Markey, Jr.

### Ms. Margaret M. McKinney

### Mr. Paul C. McWilliams

### Mr. Richard A. Olsen

### Mr. William S. Peirce

### Mr. Luther Franklin Rogers, Jr.

### Mr. C. R. Rondeau

### Mr. Bay Salmeron

### Mr. George D. Severson

### Mr. Rudolf B. Siegert

### Mr. Richard J. Stancliffe

### Mr. Bryan P. Stephens

### Mr. Raymond Stephens

### Mr. Robert K. Sylvester

### Dr. David M. Tatum

### Mr. Roy C. Walther

### Mr. William M. Whiting

### Ms. Frances A. Wiseman

Contributions for both funds through October 9, 2013.  
Donations are listed for one year.

<p><b>ANSYTHE</b> Donald I. Andrews <b>504-887-3432</b></p> 	<p><b>CLASSEN EXPLORATION, INC.</b> <b>James S. Classen</b> Looking for close in deals P.O. Box 140637 Boise, ID 83714 classenllc@msn.com Bus. (208) 854-1037 Fax (208) 854-1029</p>
<p><b>THE BOEBEL COMPANY</b> Oil and Gas Investments New Orleans, LA 70153 <b>(504) 866-4313</b></p>	<p><b>D-O-R ENGINEERING, INC.</b> <b>3-D and Geoscience Services</b> 6161 Perkins Rd. P.O. Box 80812 Bus: (225) 765-1914 Baton Rouge, LA 70898</p>
<p><b>BOO-KER OIL &amp; GAS CORP.</b> <b>Gray S. Parker</b> 826 Union, Suite 300 New Orleans, LA 70112 Bus. (504) 581-2430 Fax (504) 566-4785</p>	<p><b>EDWARD B. PICOU, JR.</b> <b>Consulting Micropaleontologist - Retired</b> 228 St. Charles Ave., Suite 1330 C New Orleans, LA 70130 Bus. (504) 529-5155 Res. (504) 282-3096</p>
<p><b>C &amp; R EXPLORATION, INC.</b> <b>Carlo C. Christina</b> <b>Lawrence G. Ringham</b></p>	<p> <b>GEOLOGY ENVIRONMENTAL MANAGEMENT</b> <b>GEM Consulting, LTD</b> <b>Michael Louis Merritt</b> admin@gemconsultingltd.com</p>
<p><b>TONY CAROLLO</b> Consulting Geologist Unitization • Geosteering • Field Studies 1701 Peach Street Metairie, LA 70001 Bus. (504) 885-0004 Res. (504) 885-6829</p>	<p><b>Explore the ENTIRE Gulf of Mexico</b>  <b>Alvin Rowbatham</b> 832-372-2366 • alvin.rowbatham@iongeo.com <b>Ashley Garcia</b> www.iongeo.com/Gulf_of_Mexico 281-781-1005 • ashley.garcia@iongeo.com</p>
 <i>Thanks our sponsors for their support!</i> <i>Special Thanks to</i>  <b>DIVERSIFIED</b> WELL LOGGING, LLC	<p><b>PHELPS GEOSCIENCE LLC</b> Onshore Gulf of Mexico Geology and Geophysics Prospect Generation and Evaluation Houston, TX jsfphelps@yahoo.com (281) 398-5208</p>
	<p><b>RAFIDI OIL AND GAS, INC.</b> <b>Jaser N. Rafidi, President</b> 4913 James Drive Metairie, LA 70006 Bus (504) 722-2942 Fax (504) 888-5539 Res (504) 888-1661</p>
	<p><b>ROY C. WALTHER</b> Petroleum Geologist 2421 Prancer Street New Orleans, LA 70131 Bus. (504) 392-8513 Res. (504) 392-9332</p>
	<p> <b>STONE ENERGY</b> www.StoneEnergy.com 625 E. Kaliste Saloom Lafayette, LA 70508 16800 Greenspoint Dr., Suite 225-S Houston, TX 77060 1100 Poydras St., Suite 1050 New Orleans, LA 70163</p>
<p><b>ZOT OIL &amp; GAS, LLC</b> <b>Jim Zotkiewicz</b> Prospect Generation and Evaluation 3909 Metairie Court Metairie, LA 70002 Bus. 504.267.9131 Email: jimzotoil.com</p>	



# CENTURY EXPLORATION NEW ORLEANS, LLC

*An independent gulf coast exploration, development and operating company*

Three Lakeway Center, Suite 2800  
3838 North Causeway Blvd.  
Metairie, LA. 70002

Office: 504.832.3750  
Fax: 504.832.3760  
www.centuryx.com





# You should see what you're missing

## Tap untapped potential with seismic clarity. Get the clearest images in Garden Banks/Keathley Canyon.

Using high-resolution geologically constrained hyperTomo and TTI RTM, sub-salt imaging is greatly enhanced, reducing exploration risk and increasing your chance of success.

- **Crystal A** - 250 OCS blocks available now
- **Crystal B** - 330 OCS blocks available December 2013

Houston  
Main: +1 281 509 8000  
[gominfo@pgs.com](mailto:gominfo@pgs.com)

A Clearer Image | [www.pgs.com](http://www.pgs.com)





## NEW ORLEANS GEOLOGICAL SOCIETY

810 Union Street, Suite 300  
New Orleans, LA 70112-1430

PRESORT  
STANDARD  
US POSTAGE  
**PAID**  
MAIL TECH

[www.nogs.org](http://www.nogs.org)



MARINE PROPERTIES, LLC  
BERKSHIRE EXPLORATION CO.

MONTE C. SHALETT, CPL, PRESIDENT

3030 Lausatz Street  
Metairie, LA 70001-5924

BUS. (504) 831-7779  
FAX (504) 831-8315

**PCI**

**Paleo Control, Inc.**

Houston, Texas  
713-849-0044

Drilling Wells, Studies and Data Base

Loyd Tuttle

Frio, SE Texas

Bob Liska

Wilcox, S and SE Texas

Jim Thorpe

Miocene and Cam-Miogyp



# THIS AD SPACE AVAILABLE

Contact:

[annette@nogs.org](mailto:annette@nogs.org)