

NOGS LOG

MARCH 2013

Volume 53, Number 9

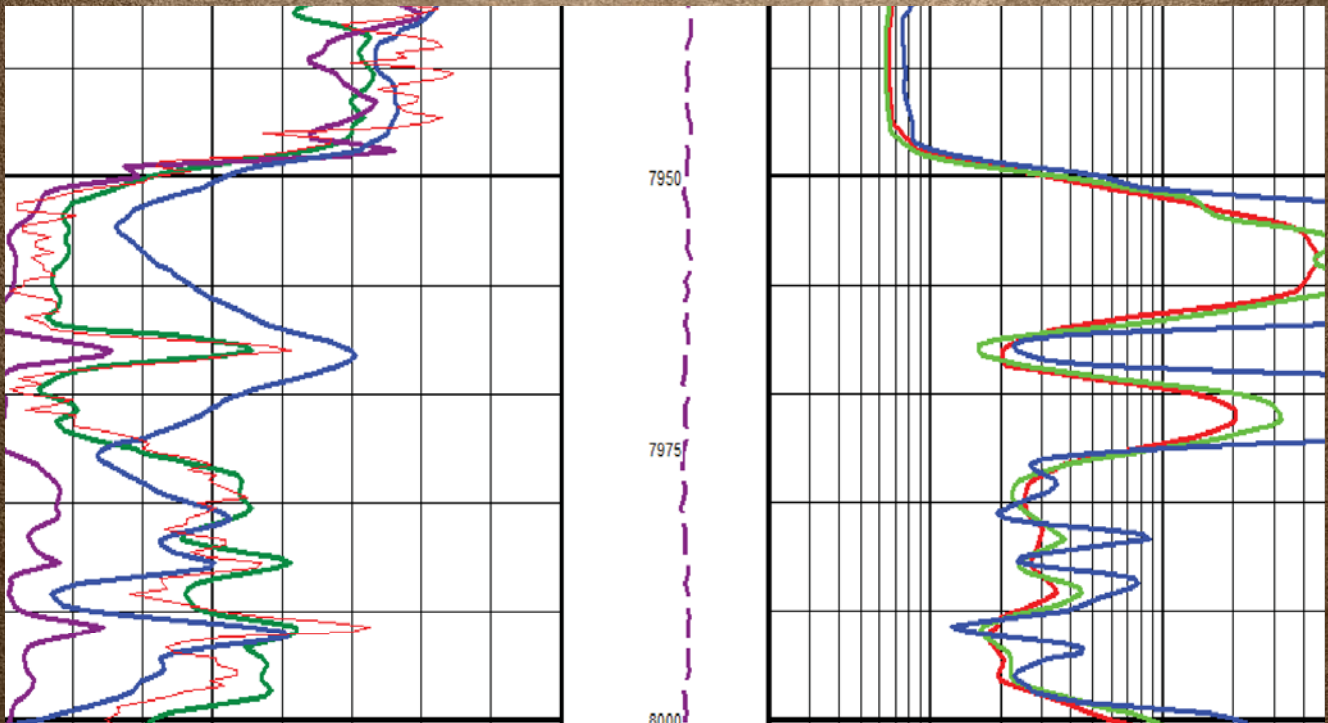


MARCH 4 - NOGS LUNCHEON

**Presentation: Chronological Geographical History of the Development of Oil
Throughout Louisiana: 1910-1960**

**Guest Speakers: Dr. Tonja Koob and Jennifer Snape
Gaea Consultants, LLC • New Orleans, Louisiana**

TGS DELIVERS LAS PLUS



More than just your standard LAS.

LAS Plus upgrades the standard LAS to a full curve suite, including all available gamma ray, spontaneous potential, caliper, resistivity, conductivity, sonic, density, density correction, neutron, tension and rate of penetration curves. This data has been closely examined for standardization and quality assurance and is ready for cross-section, formation evaluation and petrophysical analysis.

Access LAS Plus data quickly and easily through the online well data portal, LOG-LINE Plus®!



Learn more at WWW.TGS.COM



Published monthly by the New Orleans Geological Society.
This issue was sent to press on February 22, 2013.

Interested *NOGS LOG* contributors may send requests to
nogseditor@gmail.com. Requests for advertising should
contact the NOGS office at info@nogs.org

IN THIS ISSUE

Regular Features:

From the Editor	3
From the President.....	5
NOGS Officers / Contacts	6
Upcoming Events & Activities	7
NOGS Luncheon Presentation	9
March & April Calendars	12
NOGS Welcomes	13
Drill Bits	18
Info-Tidbits	27
NOGS Memorial Foundation.....	29
FONO Fund.....	29

Special Features:

NOGA News.....	13
2013 Annual NOGS Golf Outing	15
NOGS Petroleum Geology for Non Geologists.....	21

ON THE COVER:

Cover Photo Submitted by: Bill Hintze, Past President

Rainbow Bridge - Glen Canyon National Park, Utah

To reach the world's most spectacular natural bridge used to be an enfeebling twelve mile hike. Nowadays, speedboat rides on adjacent Lake Powell bring dozens of tourists per day to view the wonder.

Carved by Bridge Creek's erosion under massive Jurassic Navaho eolian sandstone, the span is 275 feet across and 292 feet high. Bridge Creek drains the north slope of 10,400 foot high Navaho Mountain (a laccolith). Thus, it may have amassed more cutting power, and so undercut the "gooseneck" more quickly than any other nearby streams.

Photograph was taken by Bill Hintze.

From the Editor

Hello again fellow NOGS members! On Page 21 of this month's edition of the *LOG* you will notice an announcement for the "Petroleum Geology for Non Geologists" course presented by the New Orleans Geological Society. The course will be offered on Wednesday April 17th in the Shell Auditorium. This is an excellent opportunity for students, friends or NOGS spouses to learn more about how oil and gas exploration works and what petroleum geologists do on a day-to-day basis. Who knows, the course may even inspire someone to pursue a career as a professional geologist.

Just a reminder to members, please send in a geological or industry-related photo to be featured on the cover of the *LOG*. This month's breathtaking cover photo was sent in by Bill Hintze, and it really exemplifies the type of cover art we are looking for. Also, if anyone has petroleum industry photos of drilling operations or production facilities in Louisiana, whether recent or historical, please send them in to grace our *NOGS LOG* cover.

Thanks,
Jordan Heltz – NOGS LOG Editor

These nodes change everything.

With absolutely no cables,
there's absolutely no stopping you.



True cable-free seismic

Dealing with tons of cable will hinder any seismic acquisition, land or marine. That's why our exclusive, true cable-free ZNodal® systems pay such huge dividends in any environment.

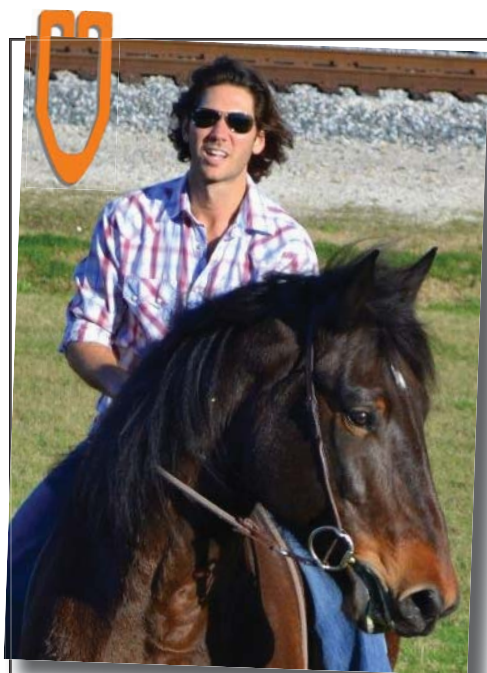
Our lightweight, compact ZLand® system lets your crews work faster and much more safely while recording high-resolution data, even in the most challenging terrain.

Our ZMarine® system, also completely self-contained, deploys easily and safely, even in congested areas, to water depths of 3000m, which makes it ideal for 4D reservoir monitoring.

Welcome to a new world of seismic acquisition.



FairfieldNodal.com



From the President

With Carnival season behind us, it is time to set our focus on what lies ahead for 2013. A few big ticket items include soliciting nominations for the 2013–2014 Board of Directors, Deepwater Technical Symposium and Gulf Coast Association of Geological Societies conference, as well as the annual NOGS Golf Tournament. I would encourage the NOGS membership to discover how you may be able to support, influence, and participate in one or two of these events.

The Deepwater Technical Symposium has contributed a great deal to NOGS through the distribution of its proceeds throughout the years.

Unfortunately I do not feel we (apart from a select few consistent active members) have done our part to deserve these funds. As an example, the Geoscience session, which is responsible for seven talks during DWS, has only one NOGS member out of the three session co-chairs. I thank all who have put the time and effort in to keeping NOGS the exceptional society it has been since 1941. Unfortunately, these select few have only as many hours in each day as the rest of us. I ask sincerely of NOGS membership to put forth an effort to represent NOGS in the planning and execution of this year's Deepwater Technical Symposium.

Art Johnson, Chairman of the 2013 GCAGS Convention, has done tremendous work in planning for an extraordinary assembly for October 6-8. Art is happy to report that the technical program is now in place with 97 abstracts submitted. He is working to secure sponsorships and acknowledges Carlo Christina and Ken Huffman for supplying contact information for more than 100 oil companies doing business in South Louisiana. A big "Thank You" goes out to Mr. Chairman and his team of extraordinary geoscientists for all of the effort and time donated to this convention.

NOGS virtually tripled the attendance of the regularly scheduled SGS luncheon last month. I realized there is energy behind 4-D seismic, but I was pleasantly surprised by NOGS turnout. Great Job! Also worth mentioning, Hunter Berch, the LSU AAPG Student Chapter President, took the initiative and shuttled LSU students over from Baton Rouge to attend this luncheon. Thank you SGS for being such great hosts!

Upcoming events for March: It is my pleasure to invite NOGA to the March 4th NOGS Luncheon. It is always a delight to have them grace us with their presence. What better way to reach out to our community than teaching children about science? Now is your chance to make a difference in a child's life through volunteering for Super Saurus Saturday at the Louisiana Children's Museum on March 23rd. Volunteers are being requested for 2 hour shifts between 11 a.m. and 3 p.m. Please contact Tom Bergeon if you are interested.

Crawfish season is upon us and NOGS plans to take advantage of the powers of camaraderie these little red mudbugs offer. Logistics are still being ironed out, but be on the lookout for an announcement soon via email as well as on the NOGS website for our Spring Crawfish Boil.

Dust off your clubs, put some divots in your backyard, and get ready for the 2013 Annual Golf Tournament at Money Hill Golf Course on April 29th. Shotgun start to begin at high noon. The details and flyer can be found on the NOGS website under Upcoming Events and here in the LOG as well. All proceeds benefit the NOGS Bill Craig Memorial Foundation, which provides over \$30,000 annually in scholarships and educational donations to local students and science education.

NOGS Office

Office Manager: Annette Hudson

Phone: 504-561-8980 • Email: info@nogs.org • Website: www.nogs.org

The office is located at 810 Union Street, Suite 300, New Orleans, LA 70112.

Correspondence and all luncheon reservations should be sent to the above address.

**BOARD OF DIRECTORS**

		Company	Phone	E-mail
President	Will Jorgensen	Shell	504-728-6339	william.r.jorgensen@shell.com
Vice President	Kevin McVey	ETROA Resources LLC	985-809-3808	kmcvey@etroa.com
Secretary	Bruce Bahlinger	Saratoga Resources Inc	985-809-9292	bbahlinger@charter.net
Treasurer	Kelli Hardesty	Environmental Resources Management	504-831-6700	kelli.hardesty@erm.com
President-Elect	Chuck Holman	BSEE	504-731-7837	charleswholman@bellsouth.net
Editor	Jordan Heltz	Chevron	985-773-7163	jordan.heltz@chevron.com
Director 2013	Edward B. Picou, Jr.	Consultant	504-529-5155	epicou@bellsouth.net
Director 2014	Michael N. Fein	W & T Offshore	504-210-8148	mikef@wtoffshore.com
Director 2015	Irion Bordelon, Jr.	NorthStar Energy, LLC	985-778-3827	nsenergy@bellsouth.net

COMMITTEE

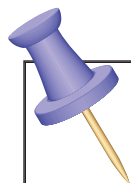
	Chairperson			
AAPG Delegates	Arthur H. Johnson	Hydrate Energy International	504-464-6208	artjohnson51@hotmail.com
AAPG Student Chapter	Hunter Berch	LSU	662-312-1300	hberch1@tigers.lsu.edu
AAPG Student Chapter	Michael Hopkins	Tulane University	228-209-2262	mhopkins@tulane.edu
AAPG Student Chapter	Drew Boudreaux	UNO	337-578-5587	apboudr1@uno.edu
Advertising-Log	Kimberly Maginnis	LLOG Exploration	985-801-4761	kimberlym@llog.com
Auditing	Bay Salmeron	Chevron	832-854-6431	bay.salmeron@chevron.com
Awards	Michael N. Fein	W & T Offshore	504-210-8148	mikef@wtoffshore.com
Ballot	Kelli Hardesty	Environmental Resources Management	504-831-6700	kelli.hardesty@erm.com
Best Paper	Bay Salmeron	Chevron	832-854-6431	bay.salmeron@chevron.com
Entertainment	Chuck Holman	BSEE	504-731-7837	charleswholman@bellsouth.net
Environmental	Daisy Pate	Pontchartrain Partners	504-862-1775	daisy.pate@gmail.com
External Affairs	Michael A. Fogarty	Sylvan Energy, LLC	603-523-4808	mike.a.fogarty@gmail.com
Finance and Investment	Kelli Hardesty	Environmental Resources Management	504-831-6700	kelli.hardesty@erm.com
Historical	Edward B. Picou, Jr.	Consultant	504-529-5155	epicou@bellsouth.net
Membership/Directory	Carlo C. Christina	Retired (C & R Expl. Inc)	504-835-4116	Carlocc398@aol.com
Nominating	Arthur H. Johnson	Hydrate Energy International	504-464-6208	artjohnson51@hotmail.com
Non-Technical Education	Duncan Goldthwaite	Consultant	504-887-4377	DGldthwt@aol.com
Office Operations	Daisy Pate	Pontchartrain Partners	504-862-1775	daisy.pate@gmail.com
Publications Sales	Edward B. Picou, Jr.	Consultant	504-529-5155	epicou@bellsouth.net
School Outreach	Thomas C. Bergeon	Century Exploration	504-832-3772	Tom.bergeon@centuryx.com
Scouting	Carol Rooney	Consultant Geologist	504-835-1909	carolbrooney@aol.com
Special Projects	Larissa Cupp		978-621-5074	Larissacupp@gmail.com
Sponsorship/Houston	David E. Reiter	Woodside Petroleum	713-401-0045	david.reiter@woodsideenergy.com

NOGS LOG STAFF

Editor	Jordan Heltz	Chevron	985-773-7163	nogseditor@gmail.com
Editor-Elect	Sheri Richardson	LaBay Exploration Co LLC	504-371-5967	srichardson@labayexploration.com
Auxiliary	Peggy Rogers	NOGA	504-392-6323	lrogers79@cox.net
Info Tidbits	Jordan Heltz	Chevron	985-773-7163	nogseditor@gmail.com
Drill Bits	Carlo C. Christina	Retired (C & R Expl. Inc)		drillbits81@yahoo.com
Drill Bits	Kevin Trosclair	UNO Graduate Student	504-202-7997	kjtrosc1@uno.edu
Staff Photographer	Arthur Christensen	Shalimar Consulting	985-893-2013	arthur_christensen@yahoo.com
Layout	Kristee Brown	Creative Graphics & Printing LLC	985-626-5223	kpbrown@bellsouth.net
Co-Webmaster	Edward B. Picou, Jr.	Consultant	504-529-5155	epicou@bellsouth.net
Co-Webmaster	Kevin Trosclair	UNO Grad Student	504-202-7997	kjtrosc1@uno.edu

NOGS AUXILIARY

Officers		Phone	Directors	Year	Phone
President	Mary Walther	504-392-9332	MaryEllis Hasseltine	2011-13	504-885-7657
1st Vice-President	Dolores Murphy	504-393-0878	Gwenn Swaney	2011-13	504-831-0748
2nd Vice-President	Camille Yeldell	504-835-7467	Pat Williamson	2011-13	985-626-6910
Secretary	Beverly Christina	504-835-2383	Beverly Kastler	2012-14	504-286-0879
Treasurer	Judy Lemarie'	504-393-8659	Linda Peirce	2012-14	504-393-7365
Parliamentarian	Alma Dunlap	504-737-2678	June Perret	2012-14	504-664-0651
Member-at-Large	Jean Jones	504-738-8091			



UPCOMING Events & Activities

March 4 • NOGS Luncheon

Holiday Inn Downtown Superdome

\$2.00 validated parking in hotel garage

Presentation:

Chronological Geographical History of the Development of Oil Throughout Louisiana 1910-1960

Guest Speaker:

Dr. Tonja Koob and Jennifer Snape

Gaea Consultants, LLC — New Orleans, Louisiana

See page 9 for Abstract and Biography

HOLIDAY INN DOWNTOWN SUPERDOME

Check with concierge or
front desk for location.

Lunch served at 11:30 am

ADMISSION:

With reservation\$30.00

Without reservation\$35.00

Student Member with reservations..... FREE

March 23

Super Saurus Saturday

Louisiana Children's Museum - New Orleans, LA

For more information, www.nogs.org or see page 26 of this issue.

April 23-25

29th Annual LaRSGIS - Remote Sensing & GIS Workshop

Cajundome Convention Center • Lafayette, LA

For more information, www.nogs.org or www.larsgis.org

April 1

NOGS Luncheon

Holiday Inn - New Orleans, LA

For more information, www.nogs.org

April 29

The 2013 Annual NOGS Golf Outing

Money Hill Golf Course • Abita Springs, LA

For more information, www.nogs.org or see page 15 of this issue.

NOGS CONTACT LIST

Continued from previous page

MEMORIAL FOUNDATION

BOARD OF TRUSTEES

2012-2013 Chairman	Daisy Pate
2012-2013 Secretary	Will Jorgensen
2012-13 Trustee	Jennifer Connolly
2012-13 Trustee	William M. Whiting
2013-14 Trustee	J. David Cope
2013-14 Trustee	Tom Klekamp
2014-15 Trustee	Rick Kear
2014-15 Trustee	TBA

Company

Pontchartrain Partners
Shell
Shell
Consultant
ANKOR Energy LLC
Amber Resources LLC
Schlumberger Oil Field Services

Phone

504-862-1775
504-728-6339
504-728-6411
504-947-8495
504-596-3672
985-845-4046
504-858-2444

E-mail

daisy.pate@gmail.com
william.r.jorgensen@shell.com
jennifer.connolly@shell.com
bootscon@aol.com
dcope@ankorenergy.com
klekamp@bellsouth.net
kearl@slb.com

AAPG DELEGATES

Term Ends

2014	Arthur H. Johnson	Hydrate Energy International	504-464-6208	artjohnson51@hotmail.com
2014	Brenda Reilly	AMROMCO Management LLC	504-430-4240	reillybe@yahoo.com
2014(a)	Elizabeth C. McDade	McMoRan Exploration Co.	504-582-4510	ecmcade@bellsouth.net
2014(a)	Frances A. Wiseman	BOEM (retired)	504-831-8343	snowde.fran@gmail.com
2015	Susan A. Waters	Shell	504-728-0229	susan.waters@shell.com
2015	William M. Whiting	Consultant	504-947-8495	bootscon@aol.com
2015(a)	David E. Balcer	Chevron	985-773-6725	dbalcer@chevron.com
2015(a)	Earl W. Cumming	Shell	504-728-6370	earlcumming@shell.com

NEW MEMBERS

Xu Zhou	Student	Tulane University	504-875-6158	mwzhouxu@gmail.com
---------	---------	-------------------	--------------	--------------------

Deep Water

WELL CONSTRUCTION

Are all your services deepwater ready?

Control Measures	Complexity/Process + Exposure	Preparedness				
		High				Low
		1	2	3	4	5
	5	-5	-10	-15	-20	-25
	4	-4	-8	-12	-16	-20
	3	-3	-6	-9	-12	-15
	2	-2	-4	-6	-8	-10
	1	-1	-2	-3	-4	-5
		People + Competency		Equipment + Technology		



Our Project Readiness Assessment (PRA) approach has been applied and improved over the last 5 years.

All deepwater projects in which Schlumberger participates benefit from our PRA process, which complies with new U.S. regulatory requirements. This helps deliver seamless, efficient startup, and reduced NPT.

Learn more at

www.slb.com/deepwaterready

Global Expertise
Innovative Technology
Measurable Impact

Schlumberger



March 4 NOGS Luncheon Presentation

☆☆☆ at the Holiday Inn Superdome ☆☆☆



Chronological Geographical History of the Development of Oil Throughout Louisiana 1910-1960



Presented by

Dr. Tonja Koob & Jennifer Snape

Gaea Consultants, LLC

New Orleans, Louisiana



ABSTRACT

Scott Heywood discovered oil in Jennings on September 21, 1901, starting a new industry for Louisiana. From the heart of Acadiana, oil fever spread north to Caddo and Pine Island, south to Hackberry and Cameron, east to Barataria and Lafourche, and into the Gulf of Mexico. The oil industry created a worker class in Louisiana that had not previously existed. Towns complete with schools, churches, and grocery stores, developed in oil fields; in fact, cabins with clothes hanging on the line to dry were adjacent to derricks and open oil pits.

Today, families proudly recount the number of their generations that have worked in the “oil patch,” and workers continue to contribute to a current crude oil production of nearly 200,000 barrels per day. The legacy of Louisiana’s first oil fields is evident in towns like Jennings, Evangeline, Oil City, Morgan City, Lake Charles, and Cameron, and the history of that once nascent industry is a permanent part of the culture of Louisiana.

Tonja Koob Marking and Jennifer Snape are civil engineers that study Louisiana’s oil history. The knowledge they gained during their research was too good to keep to themselves, and they wanted to share it with the people of Louisiana. Their work has led to this collection of vintage photographs from state and federal libraries and private collections.

The Images of America series celebrates the history of neighborhoods, towns, and cities across the country. Using archival photographs, each title presents the distinctive stories from the past that shape the character of the community today. Arcadia is proud to play a part in the preservation of local heritage, making history available to all.

BIOGRAPHY

Dr. Tonja Koob (pronounced “Tonya Kobe”) is the president of Gaea Consultants, a local, small business in the Irish Channel of New Orleans. She is currently the secretary of the New Orleans Chapter of ASCE where she also serves as the Chair of the Environmental and Water Resources Committee and the History and Heritage Committee. She is a licensed environmental engineer, a certified floodplain manager, and a LEED accredited professional.

Jennifer Snape is a project manager at Gaea Consultants with a degree in civil engineering from Tulane University. She is currently the treasurer/secretary for Groundwork New Orleans and is the Younger Member Chairperson for the Society of American Military Engineers. She is a licensed civil engineer and a certified coastal engineer.

THE LUNCHEON RESERVATION DEADLINE IS MARCH 1 - CONTACT THE NOGS OFFICE

"And Looking Ahead . . ."

The next luncheon will be held on April 1st. Our guest speaker, Alexander S. Kokler of Louisiana Universities Marine Consortium in New Orleans, will present “Modern Processes in Coastal Systems.” Contact the NOGS office at 561-8980 or use the PayPal link on the NOGS website (www.nogs.org) to make your reservation.

NeuraSection

Produce YOUR Interpretation

Working with logs, maps, sections and other data is critical to creating a meaningful interpretation. Whether you are working with data from internal files or a Master Data Management System like NeuraDB, **NeuraSection** allows you to focus on your interpretation.

- Advanced log correlation
- Auto and manual contouring
- Interactive map editing
- Collaborative cross sections
- Integrates with NeuraDB



Visit us at East Texas Oilfield Expo Booth 1001!

www.NeuraSection.com

Neuralog

Turning Paper Into Petroleum

© 2013 Neuralog • www.neuralog.com • 1.281.240.2525 • 1.800.364.8728

SEI[®]

Seismic Exchange, Inc.

Strategic Speculative Surveys
Geophysical Data Marketing & Management

YOUR
Full Service
National
Seismic Data
Marketing Firm



DALLAS DENVER HOUSTON MIDLAND NEW ORLEANS OKLAHOMA CITY CORPUS CHRISTI TULSA
201 St Charles Avenue, Suite 4300, New Orleans, Louisiana 70170-4300 504-581-7153 FAX 504-581-9591

seismicexchange.com



Drill with confidence.

Diversified Well Logging, LLC brings the accuracy and expertise only a company with over sixty years in the oil and gas industry can deliver. We are your eyes and ears in the field, especially when it comes to deep water or high pressure, high temperature areas.

DWL offers 24-hour formation evaluation. We provide secure and customized real-time data communication, in-house research and development, and 24/7 on-call support for our equipment and our engineers.

Whether you have a 10-day job or a 110-day job, we provide the specialized attention you require. **Our experience means you can be confident in the safety and performance of your well.**



- *Formation Evaluation*
- *Geosteering*
- *Drilling Optimization*
- *Real-time Data Transmission*
- *Early Kick Detection*



Serving the Oil and Gas Industry for Over 60 Years

March						
Sunday	Monday	Tuesday	Wednesday	Thursday	Friday	Saturday
					1	2
3	4 NOGS Luncheon Holiday Inn @ 11:30 A.M.	5	6	7	8	9
10	11	12 SMU Geothermal Conference	13 SMU Geothermal Conference	14 SMU Geothermal Conference	15	16
17 St. Patrick's Day	18	19	20 NOGS Board Meeting	21	22	23 Super Saurus Saturday 11 AM - 3 PM
24	25	26	27	28	29 Good Friday	30
31 Easter						

April						
Sunday	Monday	Tuesday	Wednesday	Thursday	Friday	Saturday
	1 NOGS Luncheon Holiday Inn @ 11:30 A.M.	2	3	4	5	6 NOGA Spring Social
7	8	9	10	11	12	13
14	15	16	17 NOGS Bd Meeting Petroleum Geology Course	18	19	20
21	22 Earth Day 2013	23 LaRSGIS - Remote Sensing & GIS Workshop	24 LaRSGIS - Remote Sensing & GIS Workshop	25 LaRSGIS - Remote Sensing & GIS Workshop	26	27
28	29 NOGS Annual Golf Tournament	30				

New Orleans Geological Auxiliary News

"The objective of the Auxiliary is to promote fellowship among the wives of the members of New Orleans Geological Society and to render assistance to NOGS upon request."

As we look forward to 2013 Spring events we look back on the good times and informative meetings of 2012. Our first meeting in the Fall was at the home of Margaret Goldthwaite, artist and collector. In November we enjoyed a wonderful lunch and talk by Virginia Barkley, owner of "Let's Get It Straight", at Vincent's Restaurant. Ms. Barkley's book, "Clutterbusting for Busy Women", was the best seller on Amazon the day the book came out. Ronald Drez, author, historian and lecturer, spoke to members, spouses and friends at the Metairie Country Club in February.

The Auxiliary now looks forward to the Spring Social when once again we will invite spouses and friends to the beautiful home of Trez and Jim Zotkiewicz. The event will be April 6th. Mary Ellis Hasseltine and Debra Fein are busy planning an evening of great food and fellowship. On May 8th Judy Sabaté and Pat Williamson will chair the Installation Luncheon at Zea Rotisserie and Grill on St. Charles Avenue, winding up a wonderful year and installing new officers for next year.

If your husband is a member of NOGS and you would like to join the Auxiliary for the remainder of the 2012-2013 year, you may fill in the membership application below and send only \$12.50 to Judy Lamarié.

Peggy Rogers, NOGS LOG

New Orleans Geological Auxiliary Membership Application

Name _____ Spouse's Name _____
Address _____ Home Phone _____
City, State, Zip _____ Email _____
Spouse's Company _____ DUES: \$25.00

Please send \$25 check payable to NOGA to Judy Lemarié, Treasurer, #2 Yosemite Dr., New Orleans, LA 70131



Submitted by Sheri Richardson

Xu Zhou is pursuing his MS in geology from Tulane University. His thesis will focus on tectonics and structural geology. Xu received his BS (2012) in geology from China University of Petroleum in Beijing. He is a member of AAPG, GSA, and AGU. As a new and enthusiastic member of NOGS, Xu is interested in the AAPG Student Chapter, Best Paper, Employment Counseling, Field Trip, and New Geoscientists Committees.

Countdown: We are 220 days from the convention!

The October convention is shaping up to be one of the best that GCAGS has ever had. The technical program team has pulled together an excellent set of abstracts and the papers for the Transactions are now coming in. The editing process will soon commence and if you would like to pitch in and help with this please let me know. We are also signing up sponsors at all levels of support. If your company (large or small) would like to be a sponsor, you can contact me or go to our website www.gcags2013.com. Our first confirmed sponsor was Bill Whiting who is underwriting the cost of the T-shirts for our volunteers.

There are many opportunities for volunteering to help with the convention. Bill is coordinating volunteer activities and registration and would be happy to hear from you (Bootscon@aol.com). There is much that remains to be done and we appreciate the help we are getting from so many NOGS members.

Art Johnson
General Chairman
Artjohnson51@hotmail.com • 504-464-6208



Second Lining

To Future Energy Resources

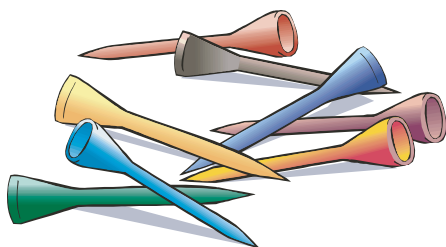


HOSTED BY



GCAGS 2013 ■ New Orleans

October 6-8, 2013



Presents

THE 2013 ANNUAL GOLF OUTING

*Proceeds from this event will help fund the **Bill Craig Memorial Fund*** 501(c)(3) organization
Last year, the golf tournament generated \$5,000.00. Let's keep it going!*

MONEY HILL GOLF COURSE
in ABITA SPRINGS on MONDAY, APRIL 29

The format will be a 4-person scramble w/shotgun start at High Noon

Food sponsored by Tim Klibert w/ Diversified Well Logging

Registration opens at 10:00 a.m. with Brunch served until tee time.
Price includes green fees, cart, range balls, food & drinks, flight, prizes & 2 Mulligans.

What else could you possibly ask for? Donations of any kind are welcome.

The cost is \$140 / individual or \$650 / corporate. Hole sponsors are \$125.

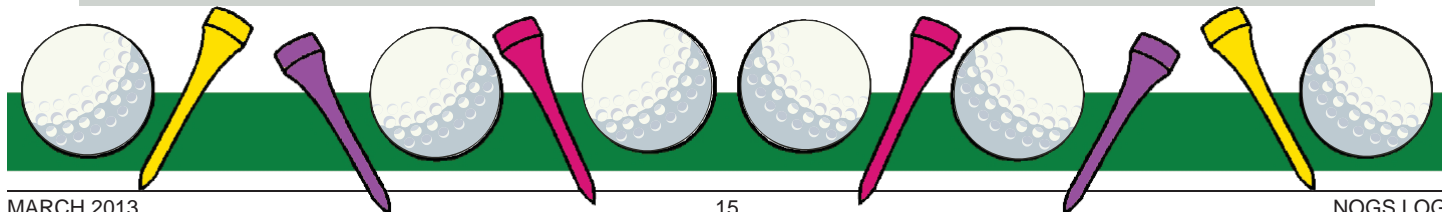
This event always fills up, and we are limited to **120 players only**. Please register early to avoid confusion. Remember you are not registered until NOGS has received payment and you are confirmed by Annette. As usual, we need volunteers. If you can help out, you will be treated to a day of fun, food, and be eligible for some door prizes. Make sure you supply your handicap or a score that typifies a set of rounds of golf over recent time no greater than 2 years in the space provided.

FOR REGISTRATION, DONATIONS OR TO VOLUNTEER, CONTACT:
Annette Hudson (504-561-8980) annette@nogs.org

To register, contact Annette Hudson at the NOGS
Office, 810 Union St. • Suite 300 • New Orleans, LA 70112 • 504-561-8980.

Cash, check (payable to NOGS). Credit cards accepted through NOGS PayPal account. Go to: www.nogs.org

Name _____	handicap _____	@\$140 each
Company _____		@\$650 each
Phone _____	Email _____	
Names of others in your group:	Cash Donation: \$ _____	
_____ handicap _____	_____ handicap _____	
_____ handicap _____	_____ handicap _____	
_____ handicap _____	_____ handicap _____	



17th Annual Gulf of Mexico

Deepwater

Technical Symposium



NEW CHALLENGES OPPORTUNITIES

August 21st & 22nd 2013

*The Hilton New Orleans
Riverside Hotel*

www.deepwaternola.org





**Geothermal Energy and Waste Heat to Power:
Utilizing Oil and Gas Plays
March 12-14, 2013
SMU Campus in Dallas, Texas**

The SMU Geothermal Lab is hosting its 6th Geothermal Energy Utilization Conference in March. We are excited to have **Jon Wellinghoff, Chairman of the Federal Energy Regulatory Commission**, as the keynote speaker and **Doug Hollett, Program Manager of the DOE Geothermal Technologies Program**, as our evening reception speaker.

This conference brings together individuals from all aspects of project development for electrical production from geothermal energy and the captured heat from surface equipment. The same technologies can be used for both of these applications in oil and gas fields. There is one track of talks for attendees, with 30 minute breaks designed for networking and team building. Tours of the pressure equipment demonstration will be available. The end goal is to advance the understanding of energy production so that companies can successfully produce emission-free energy, while extending the life of an oil or gas field.

The pre-conference workshop *A Primer on Geothermal Energy Resources and Waste Heat Technologies* will provide a great introduction for those new to the geothermal and waste-heat communities. Four Continuing Education Credits will be given.

The conference details are as follows:

Name: Geothermal Energy and Waste Heat to Power: Utilizing Oil and Gas Plays
Dates: Workshop March 12; Conference March 13-14, 2013
Price: \$500 by February 15th, \$600 by March 8th
Location: SMU James M. Collins Center in the Cox School of Business, Dallas, Texas
Website: <http://smu.edu/geothermal/Oil&Gas/GeothermalEnergyUtilization.htm>
Contact: Maria Richards, mrichard@smu.edu, 214-768-1975

Check the conference website for registration information, a list of conference presenters, the program itinerary, and a list of previous attendees. **Register by February 15th** to receive the early bird discount.

We look forward to discussing ideas with you at this event!



South Louisiana and Offshore Gulf of Mexico Exploration and Production Activities

LAFAYETTE DISTRICT, ONSHORE AREA

By Carlo C. Christina

GEOLOGICAL HOT SPOTS UPDATE

TUSCALOOSA MARINE SHALE

Devon Energy will sell its interest in 297,000 acres of leases it owns in the Tuscaloosa Marine Shale. Bids on the acreage are due March 13.

Kirk Barrell has been hired to market 40,000 net acres (73,000 gross acres) for an undisclosed client in the Tuscaloosa Marine Shale play. Bids are due April 15.

WILCOX TREND

In South Bearhead Creek Field, Midstates Petroleum reported a shallow **Miocene horizontal** well has produced **122,300** barrels of oil in less than 9 months. The well was drilled to 7,000 feet, completed and placed on production within 26 days. With the price of oil at \$100 per barrel, gross revenue is in the range of \$12,230,000. That's good old South Louisiana economics! (244543)

In North Cowards Gully Field, the Midstates #1-8 Musser-Davis, a **Wilcox horizontal** well, has produced more than **122,000** barrels of oil in less than 4 months. Significantly, Midstates projects more than **20 horizontal** well locations for future drilling in the field.

SUBSALT PLAY

McMoRan has moved the rig off its #1 Davy Jones well without getting a successful test of the deep Wilcox sands. The plans are to initiate a large scale hydraulic fracture program in the near future.

ATCHAFALAYA BAY AREA

Castex Energy will drill a 20,000 foot well in Eugene Island Block 13, located 3 miles south of production in Atchafalaya Bay Field. Adjoining this production, the State will receive bids on 45 tracts in the March 19 lease sale.

BAYOU CARLIN FIELD

Energy XXI has purchased 37.5 % interest in the "Laphroaig" Field from McMoRan for \$80 million dollars and will drill the #1 Duplantis to 20,000 feet to test deeper sands in the area.

The Office of Conservation, Lafayette District, Onshore Area, issued 35 permits to drill during the month of January. Following are several wells of interest:

NEW LOCATIONS

In Assumption Parish, Gulf Shore Operators has permitted to drill the #1 Alden Charlet on the north flank of **Napoleonville Field, (A)**, to a projected depth of 10,725 feet. The well is located in Sec 33, 12S-13E, 1 mile northeast of a producing gas well, which has been on production since 1992. (245837)

Also in Assumption Parish, Northwind Oil & Gas will drill the #1 Masur in **Napoleonville Field, (B)**, also located in Sec. 33, 12S-13E, 1 mile northeast of the Gulf Shore Operators well. It will be drilled to a projected depth of 13,318 feet. (245921)



Energy XXI will drill the #1 Williams in St. Martin Parish, **Duck Lake Field, (C)**, in Sec. 34, 14S-11E to a depth of 18,828 feet to test the MA-11 sand. The well is located 1 mile northwest of production at 13,000 feet in Operculinoides sands. This test continues exploration efforts for deep Marginulina ascensionensis sands throughout the region. (245922)

In St. Mary Parish, Energy XXI will drill the #1 Duplantis, in the “Laphroaig” area, but listed in **Bayou Carlin Field, (D)**, to a projected depth of 20,500 feet to test the MA-14 Sand. The well is located in Sec. 18, 15S-9E, offsetting 2 producing gas wells in the MA-7 sand. These wells are currently producing 80 million cubic feet of gas per day, ranking this field as the number 2 gas producing field in South Louisiana, Onshore, in 2011. (245920)

Walter Oil & Gas will drill the #1 SL 21021 in **Lac Blanc Field, (E)**, Vermilion Parish, in Sec. 24, 15S-1W. The well will be drilled on the northeast flank of the field to a projected depth of 15,000 feet. (245908)

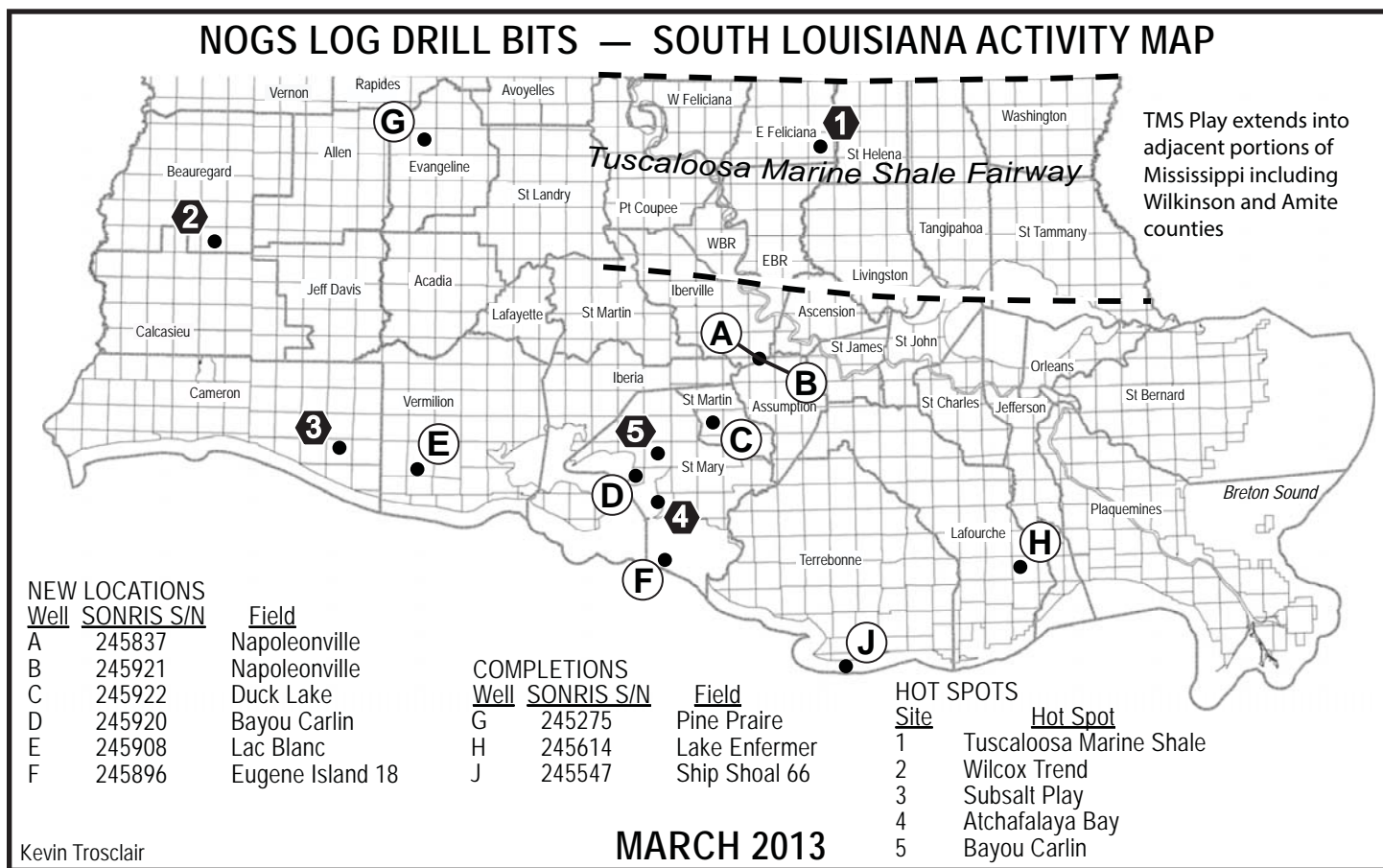
Castex Energy will drill a very significant deep wildcat in Eugene Island Block 13, however permitted in **Eugene Island Block 18 Field. (F)**. The #1 SL 20534 is projected to drill to 20,000 feet to test deep Cib op sands which currently produce large volumes of gas in Atchafalaya Bay Field, located 3 miles to the northeast. (245896)

COMPLETIONS

Midstates Petroleum has completed an excellent oil well in **Pine Prairie Field, (G)**, Evangeline Parish. The #1-36 Bullock was drilled in Sec. 2, 4S-1W, to a depth of 6044 feet and completed in the **Frio** reservoir, flowing **600 BOPD** through perforations 5746 to 5774. (245275)

In Lafourche Parish, **Lake Enfermer Field, (H)**, Brammer Engineering has plugged and abandoned the #1 Allan Golden Meadow at a depth of 11,513 feet. The well was drilled in Sec. 5, 20S-23E, 1 mile north of production. (245614)

In Ship Shoal Block 66 Field, (J), Offshore Terrebonne Parish, Bois D’Arc has plugged and abandoned its #1 SL 20843 at a depth of 11,256 feet. The well was drilled 1 mile north of production in Ship Shoal Block 65. (245547)



OFFSHORE GULF OF MEXICO SHELF AND DEEPWATER ACTIVITIES

by Al Baker

During January 2013, the BOEM approved **89** drilling permits. Of these, **39** were for Gulf of Mexico shelf wells, and **50** were for Gulf of Mexico deepwater wells. There were **13** shelf (5 exploratory and 8 development) and **3** deepwater (2 exploratory and 1 development) new well permits granted.

On the shelf, **W & T Offshore** received 3 new well drilling permits for an exploratory well on **Main Pass 159 #1** and **#2**, development wells on **Ship Shoal 126 #A-14** and **High Island 21 #A-1**. **Tana Exploration** was also granted 3 new well permits for their exploration wells on **Main Pass 119 #1** and **Breton Sound 25 #1** and 1 development well on **Main Pass 233 #2**. Two exploration well permits were given to: **LLOG Exploration Offshore** for their **South Timbalier 59 #1** well and to **Bois d'Arc** for their **Ship Shoal 170 #1** well. Five development well permits were awarded to **Apache** for **Ship Shoal 68 #11**, **Arena Offshore** for **Eugene Island 338 #K-5**, **Chevron** for **Bay Marchand # 84**, **Energy Partners** for **West Delta 27 #B-14** and **Hall-Houston Exploration** for **Ship Shoal 238 #C-2**.

In deepwater, two exploratory new well permits were awarded to: **Anadarko Petroleum** for **Desoto Canyon 535 #SS-1** and **Shell Offshore** for **Mississippi Canyon 807 #MB-1**. The 1 development new well permit was granted to **LLOG Exploration** for their **Mississippi Canyon 503 #5** well.

On February 1st, IHS-Petrodata reported that the Gulf of Mexico mobile offshore rig supply totaled **111**, and the contracted rig count stood at **76**. The total rig count is 2 less than reported last month, and the contracted rig count is 1 less than last month. The current fleet utilization rate stands at **68.5%**. This compares to 69 out of the 113 rigs available during the same period in 2012 for a 61.1% utilization rate.

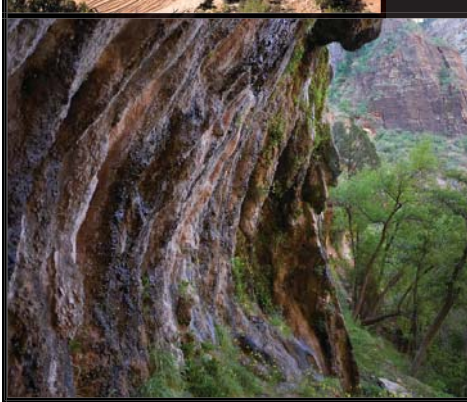
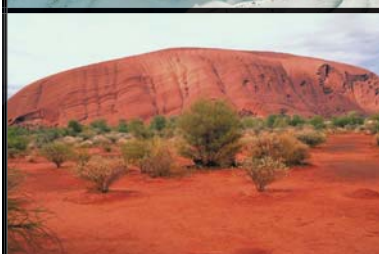
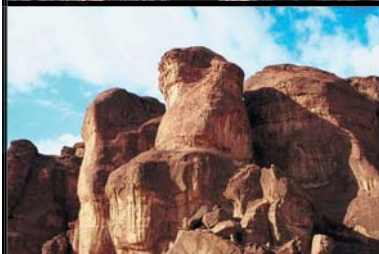
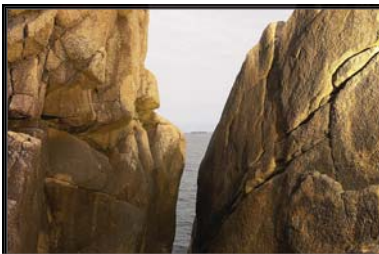
In addition, there were **27** platform rigs under contract out of the **52** total in the rig fleet for a fleet utilization rate of **51.9%**. The current number of platform rigs under contract in the Gulf is 1 less than reported last month.

On February 1st, the BakerHughes Rig Counts indicated that there were **53** active mobile offshore rigs in the Gulf, which represents **69.7%** of the total mobile rigs under contract. This is an increase of **2** rigs when compared to last month. The current active rig count compares to 42 active rigs during the same period last year. This 11-rig improvement number represents a **26.2%** increase in the active mobile offshore rig fleet on a year-to-year basis. Additionally, of the 27 platform rigs that are under contract, **19** (or **70.4%**) are currently working. This is 1 more than the total number of working platform rigs as reported last month.

On January 30th, **McMoRan Exploration Co.** provided an update on the status of its operations at its **Davy Jones Prospect** in South Marsh Island Block 230. McMoRan stated that the Davy Jones rig is being moved off location for several months while a large scale hydraulic fracture treatment is designed to penetrate the Wilcox reservoirs.

A summary of the 2012 Gulf of Mexico permitting activity indicates that a total of 358 permits were granted last year by the BOEM for new field wildcats and development wells. There were 87 new field wildcats and 271 development well permits for 2012. The 2012 permit total compares positively to the 295 drilling permits that were awarded in 2011 and represents a 21.4% increase on a yearly basis. In Offshore Louisiana during 2012, there were a total of 207 permits, which compares to 212 permits in 2011 (a 2.4% decrease in permitting activity). Likewise, during 2012 in offshore Texas, there were 3 permits granted, which negatively compares to 14 permits granted in 2011 (a 78.6% decrease in permitting activity). Most likely, continued low natural gas pricing during 2012 had a negative effect on the permitting activity in the gas-prone, offshore Texas region. Unlike the shelf region, the Northern Gulf saw a marked increase in permitting activity with 148 permits granted in 2012 versus 69 permits in 2011 (an 114.5% increase in permitting activity).

The Gulf of Mexico drilling starts in 2012 were much higher in comparison to the 2011 drilling starts with 329 wells spudded in 2012 versus 240 in 2011. In 2012, there were 73 new field wildcat wells started in addition to 256 development wells begun. Of the new field wildcats, 37 were in Offshore Louisiana, none were in Offshore Texas and 36 were in the Northern Gulf. The development well activity included 166 in Offshore Louisiana, 1 in Offshore Texas and 89 in the Northern Gulf. In comparison to 2011, Offshore Louisiana experienced a 21.6% increase in drilling starts, Offshore Texas saw a 93.3% decrease in drilling starts, and the Northern Gulf recorded a 115.5 % increase in drilling starts.



NOGS

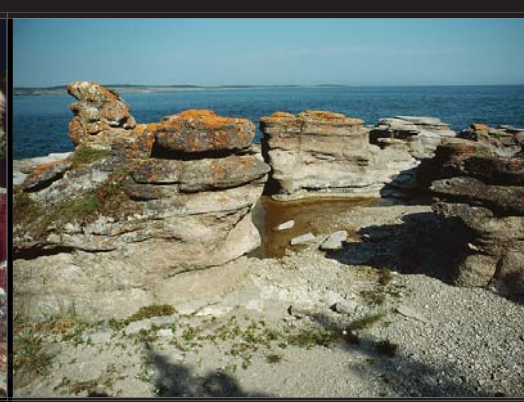
PETROLEUM GEOLOGY FOR NON GEOLOGISTS

The New Orleans Geological Society is presenting a one day course on "Petroleum Geology for Non Geologists," 8:30 a.m. to 3:30 p.m. on Wednesday April 17, 2013, in the Shell Auditorium, Shell Building, 701 Poydras Street, New Orleans. The course will consist of a brief introduction to Basic Geology, followed by a review of how oil and gas are formed, how they are concentrated into reservoirs, the geological and geophysical methods used in exploration, and an overview of drilling and completion practices.

This course should be of significant benefit and interest to anyone who in one way or another works with geologists and geological data, such as land personnel, secretaries, draftsmen, computer programmers and processors. Instructors will be consulting geologists Duncan Goldthwaite, Bob Branson and Bruce Robertson.

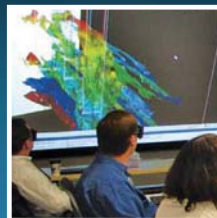
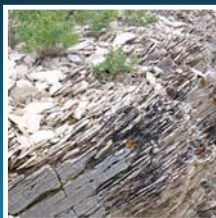
Cost will be \$35.00 per participant. Course notes and mid-morning refreshments will be provided. Persons interested can register and pay via PayPal through the Society's Website www.nogs.org on the left side of the home page, click then scroll down to NOGS Special Events or by sending a check for \$35.00, made out to the New Orleans Geological Society, to:

New Orleans Geological Society
810 Union St. • Suite 300
New Orleans LA 70112



This Changes Everything.

SAVE THE DATE:
12-14 AUGUST 2013



UNCONVENTIONAL

RESOURCES TECHNOLOGY CONFERENCE

FUELED BY SPE • AAPG • SEG

12-14 August 2013 • Colorado Convention Center • Denver

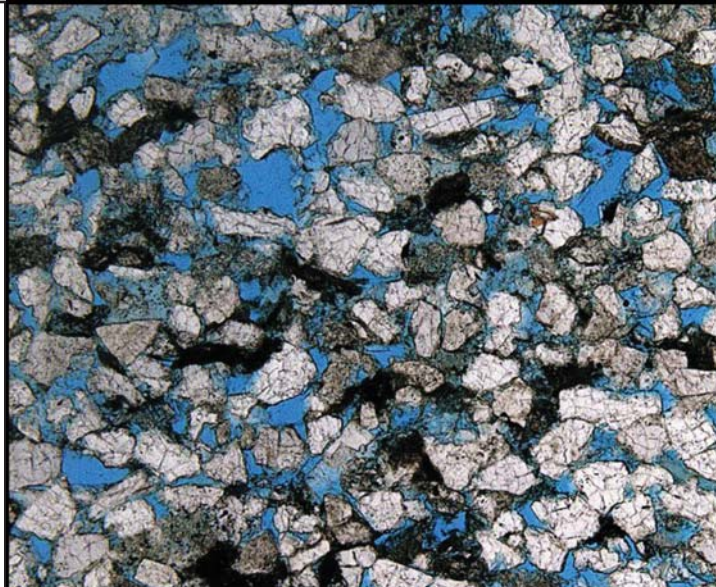
www.URTeC.org



**Shell has worked in partnership
with the NOGS for many years, and
is proud to count the society among
its closest business associates.**

The New Orleans Geological Society was organized in 1941 to foster scientific research and advance the science of geology. Particular emphasis is laid on the exploration for and production of petroleum and natural gas. Related objectives include encouraging the adoption of improved methods of exploration, disseminating pertinent geological and technological data, and maintaining a high standard of professional conduct among its members.

www.shell.com/us/sepc



Offshore & South Louisiana Experts

- CORE ANALYSIS
- PVT FLUID EVALUATION
- GEOLOGIC SERVICES

New Orleans: 504-733-6583
Broussard: 337-837-8616
Houston: 713-328-2673
www.corelab.com



Get More



from your Core

With reservoirs becoming increasingly complex, you need the most accurate information you can get to better understand your reservoir.

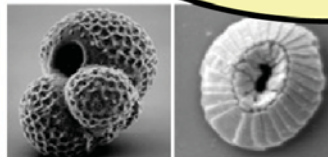
Weatherford Labs helps you get more from your core by combining an unsurpassed global team of geoscientists, engineers, technicians and researchers with the industry's most comprehensive, integrated laboratory services worldwide. From core analysis, sorption, geochemistry and isotopic composition to detailed basin modeling and comprehensive data packages, we provide you with real reservoir rock and fluid information that hasn't been distilled by a simulator or iterated by software.

We call it "**The Ground Truth™**" – giving you the accurate answers you need for better reservoir understanding. You'll call it a better return on your reservoir investment. To learn more, contact TheGroundTruth@weatherfordlabs.com.



© 2012 Weatherford. All rights reserved. Incorporates proprietary and patented Weatherford technology.

DOMESTIC AND INTERNATIONAL BIOSTRATIGRAPHIC SERVICES



6619 Fleur de Lis Drive
New Orleans, LA 70124
(504) 488-3711

www.paleodata.com



Complete wellsite paleo services

Supported offshore GoM and onshore LA paleo databases

Integrated foram/nannofossil analyses

In-house sample preparation lab for quality-monitoring and efficiency

Comprehensive depositional history study of the Gulf Basin based on 200,000+ well data analysis



MCMORAN EXPLORATION CO.



MCMORAN OIL & GAS

www.mcmoran.com

NYSE: MMR

16676 Northchase Dr.
Houston, TX 77060
(281) 539-7600
Fax: (281) 539-7655

1615 Poydras
New Orleans, LA 70112
(504) 582-4000
Fax: (504) 582-4155

110 Travis St., Suite 140
Lafayette, LA 70503
(337) 735-9150
Fax: (337) 735-9151

Technology Experience Performance



Voyage Explorer
Shallow water 2D/3D vessel capable
of 1 x 12km streamer and 2 x 12km
or 4 x 6km -3D with 4 sub arrays for
large output of single/dual source



SeaBird Exploration PLC "SeaBird" is a global provider
of marine 2D/3D/4D seismic data, and associated
products and services to the oil and gas industry.

SeaBird's main focus is providing high quality seismic
surveys (contract seismic) and source vessels. We
operate in both deep and shallow water with our
7 vessels conducting 2D and 3D.

The main success criteria for the company is our
unrelenting focus on Health, Safety, Security,
Environment and Quality (HSSEQ), combined with
efficient collection of high quality seismic data.

Aquila Explorer



Harrier Explorer



Hawk Explorer



Munin Explorer



Northern Explorer



Osprey Explorer



All SeaBird's vessels are capable of pulling a 12km streamer with 4 &/ or 6 sub arrays for very large source outputs.

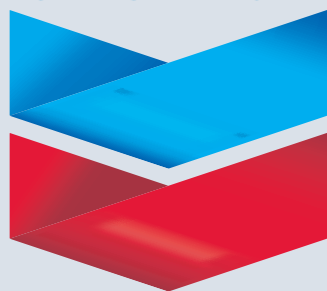
"with the Aquila Explorer in the Far East and the Osprey Explorer in Barents Sea and the balance of SeaBird's fleet (Harrier Explorer, Northern Explorer, Hawk Explorer and Munin Explorer) in Brazil and Africa we have all your 2D/ source vessels needs covered worldwide."

RAISING
THE STANDARD

www.sbexp.com

Dubai -Tel: +971 4 427 1700 | Oslo -Tel: +47 2240 2700 | Houston-Tel.: + 1 281 5561 666 | Singapore- Office: +65 68325593

Chevron



100 Northpark Blvd.
Covington, LA 70433

(985) 773-6000



LaBay

Exploration Co., L.L.C.

111 Veterans Memorial Blvd.

Suite 1550

Metairie, Louisiana 70005

Office (504) 371-5967

Fax (504) 371-5969

www.labayexploration.com

THIS AD SPACE AVAILABLE

Contact: annette@nogs.org



LAFAYETTE GEOLOGICAL RESEARCH CENTER, LLC

201 Heymann Blvd., Suite 33 • Lafayette, LA 70503
Tel: 337-233-8197 • Fax: 337-233-8177

COVERAGE:

Louisiana / Federal / State Offshore

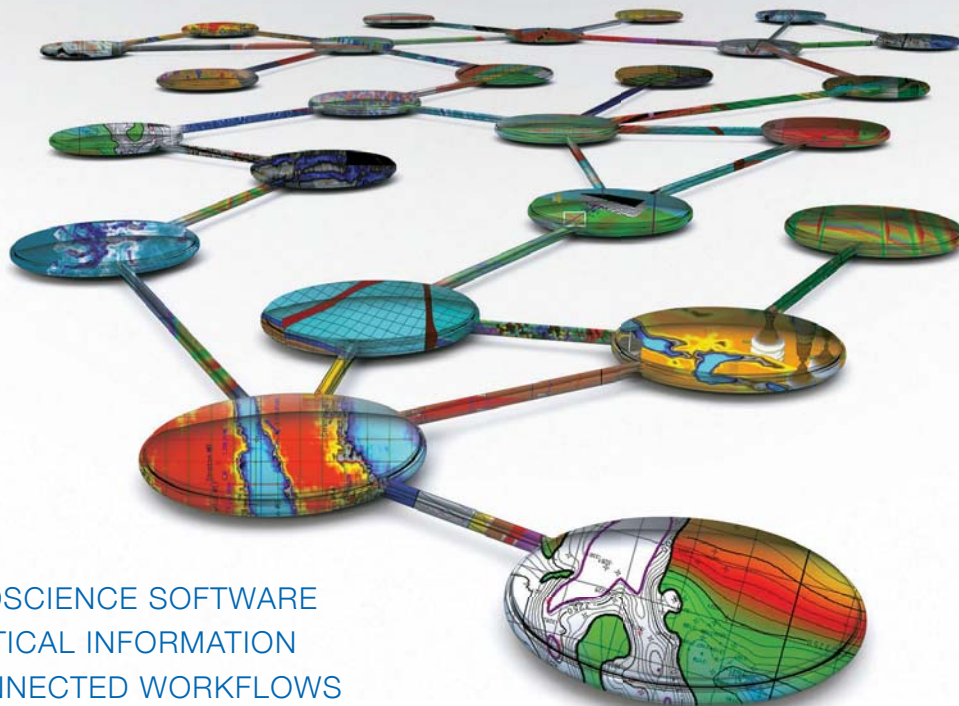
• Multi State Geo Tech Services • Completion Data
Production Data • Well Logs • Maps

~ MEMBERSHIPS AVAILABLE ~

The Industry's Premier • Well Data Center

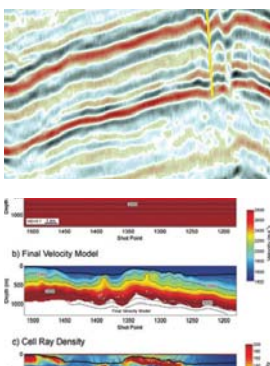
orders@lafayettegrc.com

CALL OR EMAIL TODAY FOR MORE INFORMATION!



- > GEOSCIENCE SOFTWARE
- > CRITICAL INFORMATION
- > CONNECTED WORKFLOWS

CONNECTED AT EVERY TOUCH POINT



Streamline data transfer and simplify project sharing with IHS geoscience software and critical O&G information.

The IHS suite of geoscience software—which includes IHS Petra®, Kingdom®, LOGarc™ and GeoSyn™—is designed to seamlessly connect to the industry's leading source of critical Oil & Gas information, eliminating the need to move data manually from source to source and project to project. With this powerful new combination, users can streamline data transfer, enhance database performance and simplify project sharing. The result? Workflows that connect like never before.

Connected workflows mean that IHS customers spend less time looking for data and more time looking for the next big opportunity. It's just one of the many ways that IHS helps to advance the decisions that advance the Oil & Gas industry.

Find out more at IHS.com/geoscience



SUPER SAURUS SATURDAY

**Volunteers
Needed**



March 23, 2013

11:00 AM - 3:00 PM

**To volunteer contact: Tom Bergeon
tom.bergeon@centuryx.com
504-832-3772**

**Louisiana Children's Museum
www.lcm.org**



Info Tidbits: Submitted by Jordan Heltz

Marine Log

“Offshore Lease Sale Seen as Barometer of Industry Interest” February 8th, 2013

http://www.marinelog.com/index.php?option=com_content&view=article&id=3586:upcoming-lease-sale-seen-as-barometer-of-industry-interest&catid=1:latest-news&Itemid=195

The Bureau of Ocean Energy Management (BOEM) said yesterday that Central Gulf of Mexico Lease Sale 227, to be held March 20, 2013, will offer 38.6 million acres offshore Louisiana, Mississippi, and Alabama for oil and gas exploration and development.

The sale, which will be held in New Orleans on March 20, 2013, includes all unleased areas in the Central Gulf of Mexico Planning Area. It will be the second sale under the Administration's new Outer Continental Shelf Oil and Gas Leasing Program for 2012-2017, and the first of five Central Gulf of Mexico lease sales that will be held under the program.

"We are seeing a very positive trend for the offshore industry in the Gulf of Mexico, and we look forward to Central Gulf sale 227," said National Ocean Industries Association (NOIA) President Randall Luthi. "It should provide a more accurate barometer of industry's interest in the region than the last Central Gulf sale, which was delayed for over a year and saw pent-up industry interest on display."

Lease Sale 227 encompasses 7,299 blocks located from three to about 230 miles offshore, in water depths ranging from nine to more than 11,115 feet (three to 3,400 meters). The BOEM estimates the lease sale could result in the production of 0.46 billion to 0.89 billion barrels of oil, and 1.9 trillion cubic feet to 3.9 trillion cubic feet of natural gas.

The Advocate – Elaine Kurtenbach

“Japanese Utility to Import LNG from Louisiana” February 9th, 2013

<http://theadvocate.com/news/5126789-123/japanese-utility-to-import-lng>

Tokyo Electric Power Co., operator of the devastated Fukushima Dai-Ichi nuclear power plant, plans to buy liquefied natural gas from the LNG terminal in Cameron Parish, raising expectations Japan will tap into the U.S. shale gas boom.

TEPCO plans to buy 400,000 tons of LNG a year, for 20 years beginning in 2017, from Cheniere Energy's Cameron project through trading house Mitsui & Co. It expects a similar deal with Mitsubishi Corp. and other deals that would boost its imports by 1.2 million tons a year, the company said.

Both deals link the LNG price to the Henry Hub benchmark, at about \$3.30 per million metric British thermal units, much lower than what Japan pays for its current gas imports. TEPCO said it was the first time it had set a long-term contract to the lower benchmark.

Mitsui and Mitsubishi are targeting 4 million metric tons a year in U.S. LNG exports from the Cameron project, the Nihon Keizai Shimbun newspaper reported.

Japan wants to cut costs for fuel imports that have surged after most of its nuclear plants were taken offline following the March 2011 accident at Fukushima Dai-Ichi. The cost of most of its LNG imports is linked to crude oil prices, nearly five times the Henry Hub level as of late last year.

SAI *Geoconsulting, Inc.*

*Geological and Geophysical Consulting
3-D Seismic Interpretation*

Ben D. Sydboten, Jr. CPG

2 Flagg Pl., Suite 1
Lafayette, LA 70508
www.saigeoconsulting.com

Office (337) 504-3670
Cell (337) 456-8948



Anthony Catalanotto
President

**Geological
Geophysical
Land
Drafting & Graphics**
3349 Ridgelake Drive • Suite 202
Metairie, LA 70002
Office: (504) 836-2882
Fax: (504) 836-2877
Cell: (504) 481-7291
E-Mail: geodraft@bellsouth.net
Website: www.geodraftinc.com

NORTHCOAST OIL COMPANY

610 E. Rutland St.
Covington, LA 70433
(985) 898-3577
(985) 898-3585 Fax

Jack M. Thorson
Eric C. Broadbridge
J. Daryl Gambrell
Raymond W. Stephens



ETROA Resources LLC

Join us in pursuing gulf coast production,
acquisitions and low-risk drilling opportunities

John C. Ebert
Kevin McVey

128 Northpark Blvd.
Covington, LA 70433
(985) 809-3808

www.etroa.com



*Thanks
our sponsors
for
their support!*

Special Thanks to



DIVERSIFIED
WELL LOGGING, LLC



St. Patrick's Day Block Party
Parasol's - Irish Channel

*Suck the heads and pinch the tail,
Find out more in a coming email!*



THE NEW ORLEANS GEOLOGICAL SOCIETY MEMORIAL FOUNDATION, INC.

The Memorial Foundation is an IRS Tax Exempt Code #501(c)(3) organization. The Federal I.D. is 72-1220999. Please consider making a donation to the Foundation. Your individual support in any amount will help meet the IRS Guidelines for our Foundation. Thanks!

\$15,000 AND ABOVE

Gibbet Hill Foundation

*In Memory of Steve & Marion Millendorf, William J. Prutzman,
Roger G. Vincent, Ron Youngblood & Uno Numella*

\$5,000

NOGS Golf Tournament April 2012

In Memory of Bill Craig

\$1000

Mr. Marc Cooper

*Through the Marathon Oil Co
MEPAC Program*

Mr. Richard G. Klibert

\$500

Mr. Richard G. Klibert

Mr. Foster E. Voelker

In Memory of Gene Rogas

\$250 to \$499

Beverly and Carlo Christina

In Memory of Jack Dunlap

Mr. Carlo C. Christina

In Memory of Al Gilreath

Paleo Data Inc.

In Memory of Jack Dunlap

Mr. James S. Classen

*In Memory of Jack Dunlap,
Louis L. McCormick, Jr. and
James P. Raymond, Jr.*

UP TO \$249

Mr. Woods W. Allen, Jr.

In Memory of William C. Ward

Mr. Robert J. Ardell

*In Memory of James P. Raymond, Jr.
In Memory of Jerry Goodman*

Mr. Thomas C. Bergeon

Mr. Maurice N. Birdwell

In Memory of Uno Nummela

Mr. Burton C. Bowen

In Memory of Louis L. McCormick, Jr.

Mr. Robert B. Branson

In Memory of Louis L. McCormick, Jr.

Mr. Hilary James Brook

Ms. Robin A. Broussard

Mr. Rob Burnett

Ms. J. Sybil Callaway

Chevron Humankind Matching Gift

Mr. Arthur F. Christensen

Beverly and Carlo Christina

In Memory of Beverly Langford

Mr. Carlo C. Christina

In Memory of Louis L. McCormick, Jr.

Mr. James S. Classen

In Memory of Robert G. Williamson

Mr. Willis E. Conatser

Mr. Clarence F. Conrad

Trudy and Charley Corona

In Memory of Beverly Langford

In Memory of Jack Dunlap

Mr. Charles J. Corona

In Memory of Carl Grieshaber

Mr. Michael Danos

In Memory of Max Durham

Mr. Merle Duplantis

Mr. Dwight Easterly

In Memory of James P. Raymond, Jr.

Dr. Brooks B. Ellwood PhD

Mr. Parrish N. Erwin, Jr.

Mr. James P. Evans III

In Memory of James P. Raymond, Jr.

Mr. Michael N. Fein

Mr. Mark J. Gallagher

Mr. Arthur J. Garden

Mr. Bernard L. Hill, Jr.

Mr. Tom (Thomas) A. Hudson

Mr. Kenneth Huffman

Mr. Jeff Jandegian

Mr. Philip W. Johnson

Mr. Tom Klekamp

In Memory of Jack Dunlap.

Mr. Reuben J. Klibert, Jr.

Mr. Tim Klibert

Mr. John C. "Jack" Langford

Mr. Frank E. Larkin

Mr. Cyril F. Lobo

Mr. H. David Lynch

Ms. Jeannie F. Mallick

Mr. Louis L. McCormick

Ms. Margaret M. McKinney

Mr. Robert G. Murphy

In Memory of Ronnie Youngblood

In Memory of Thomas A. Cullinan

New Orleans Geological Auxiliary

*In Memory of Joan Collier, Amber Klekamp
and Mary Petrocco*

Mr. Russell H. Nordwell

Mr. Richard A. Olsen

Mrs. Teresa M. O'Neill

In Memory of Brian O'Neill

Mr. William S. Peirce

Mr. Edward B. Picou, Jr.

In Memory of Jack Dunlap

In Memory of Terry D. Keegan

Mr. Richard D. Provensal

In Memory of Thomas H. Philpott and James Strahan

Mr. George W. Schneider III

In Memory of George W. Schneider, Sr.

Mr. Rudolf B. Siegert

In Memory of Louis L. McCormick, Jr.

Mr. Robert C. Shoup

FONO FUND

The FONO Fund accepts contributions that are invested and the income dedicated to assure sufficient financial resources will always be available to maintain the NOGS business office. Contributors are reminded that donations to the FONO Fund are not covered by the IRS 501(c)(3) tax exempt classification and should be reported as a business expense on your IRS tax report.

\$500

Mr. James A. Hartman

UP TO \$250

Mr. David E. Balcer

Mr. Joseph E. Boudreaux

Ms. J. Sybil Callaway

Mr. Anthony Carollo, Jr.

Mr. Richard P. Colomes

Mr. John Dombrowski

Mr. Merle J. Duplantis

Mr. Parrish N. Erwin, Jr.

Mr. Michael N. Fein

Mr. Mark J. Gallagher

Mr. Bernard L. Hill, Jr.

Mr. Daniel P. Huffman

Mr. Robert M. Jemison, Jr.

Mr. Arthur H. Johnson

Mr. Tom Klekamp

Mr. Russell J. Landry

Mr. Frank E. Larkin

Mr. Louis Lemarie'

Mr. H. David Lynch

Ms. Jeannie F. Mallick

Mr. Daniel G. Markey

Mr. Louis L. McCormick

Ms. Margaret M. McKinney

Mr. William J. O'Leary

Mr. Richard A. Olsen

Mr. William S. Peirce

Mr. James P. Raymond, Jr.

Mr. C. R. Rondeau

Mr. David M. Tatum

Mr. Roy C. Walther

Mr. Robert C. Weissmann

Mr. William M. Whiting

Dr. J.O. Snowden

Mr. James M. Sothorn

Mr. Raymond O. Steinhoff

In Memory of Anne M. Steinhoff and Harold E. Vokes

Ms. Betsy M. Strachan Suppes

In Memory of Hubert Skinner

Ms. Candace V. Strahan

In Memory of James R. Strahan

Mr. David M. Tatum

Mr. Leon G. Toups

In Memory of Robert G. Williamson

Mr. Arthur S. Waterman

In Memory of T. Wayne Campbell

Mr. William M. Whiting

In Memory of Don Rimsnider

Mr. Armour C. Winslow

In Memory of Rita Menzel Winslow

Ms. Frances A. Wiseman

In Memory of Steve Widdicombe

Mr. James W. Yeldell, Jr.

In Memory of Thomas A. Cullinan

In Memory of Robert G. Williamson

In Memory of Gene Rogas

BILL CRAIG FUND

Mr. Bernard L. Hill, Jr.

Ms. Hilary James Brook

Mr. John C. Scheldt




In Memory of William C. Ward

Ms. Candace V. Strahan

In Memory of James R. Strahan

In Memory of William C. Ward

Contributions for both funds
through February 22, 2013.
Donations are listed for one year.

ANSYTHE Donald I. Andrews 504-887-3432 	 GEM Consulting, LTD Michael Louis Merritt admin@gemconsultingltd.com
THE BOEBEL COMPANY Oil and Gas Investments New Orleans, LA 70153 (504) 866-4313	H. WARREN BELL Oil and Gas Exploration 2500 Tanglewilde, Suite 485 Houston, TX 77063-2126 Bus. (713) 266-7297 Fax (713) 266-7298
BOO-KER OIL & GAS CORP. Gray S. Parker 826 Union, Suite 300 New Orleans, LA 70112 Bus. (504) 581-2430 Fax (504) 566-4785	PHELPS GEOSCIENCE LLC Onshore Gulf of Mexico Geology and Geophysics Prospect Generation and Evaluation Houston, TX jsfphelps@yahoo.com (281) 398-5208
C & R EXPLORATION, INC. Carlo C. Christina Lawrence G. Ringham	RAFIDI OIL AND GAS, INC. Jaser N. Rafidi, President 4415 Shore Dr., Suite 202 Bus (504) 453-8580 Fax (504) 888-5539 Metairie, LA 70006 Res (504) 888-1661
C. R. RONDEAU Petroleum Geologist 119 W. Southland Ave. Ironwood, MI 49938 Res. (906) 932-4692	ROY C. WALTHER Petroleum Geologist 2421 Prancer Street New Orleans, LA 70131 Bus. (504) 392-8513 Res. (504) 392-9332
CLASSEN EXPLORATION, INC. James S. Classen Looking for close in deals P.O. Box 140637 Boise, ID 83714 Bus. (208) 854-1037 Fax (208) 854-1029 classenllc@msn.com	 625 E. Kaliste Saloom Lafayette, LA 70508 16800 Greenspoint Dr., Suite 225-S Houston, TX 77060 1100 Poydras St., Suite 1050 New Orleans, LA 70163 www.StoneEnergy.com
D-O-R ENGINEERING, INC. 3-D and Geoscience Services 6161 Perkins Rd. P.O. Box 80812 Bus: (225) 765-1914 Baton Rouge, LA 70898	TONY CAROLLO Consulting Geologist Unitization • Geosteering • Field Studies 1701 Peach Street Metairie, LA 70001 Bus. (504) 885-0004 Res. (504) 885-6829
EDWARD B. PICOU, JR. Consulting Micropaleontologist - Retired 228 St. Charles Ave., Suite 1330 C New Orleans, LA 70130 Bus. (504) 529-5155 Res. (504) 282-3096	ZOT OIL & GAS, LLC Jim Zotkiewicz Prospect Generation and Evaluation 3200 Ridgelake Dr., Suite 207 Metairie, LA 70002-4930 Bus. 504.831.4694 Email: jimzotoil.com

Collarini Energy Staffing, Inc.

Facilities • Drilling • Production • Reservoir Engineering
Land and Legal • Geosciences • Information Technology
Health and Safety • Management • Supply Chain
Accounting • Administrative Support



Full-Time and Temporary Personnel

Energy Trading • Civil Engineering • Executives
Human Resources • Instrument and Electrical
Engineering • Marine Engineering • Project Management
Technical Writing • Sales and Marketing

10497 Town and Country Way, Suite 950, Houston, Texas 77024

Telephone: (832) 251-0553

www.collarini.com



CENTURY EXPLORATION NEW ORLEANS, LLC

An independent gulf coast exploration, development and operating company

Three Lakeway Center, Suite 2800
3838 North Causeway Blvd.
Metairie, LA. 70002

Office: 504.832.3750
Fax: 504.832.3760
www.centuryx.com



Keathley Canyon. Garden Banks. Flex Trend. DeSoto Canyon.
Come and explore Central Gulf of Mexico

PGS MultiClient GULF OF MEXICO

Take a fresh look at the Gulf of Mexico for Lease Sale #227

We can provide the data and expertise which will help reveal opportunities and offer new geological insight in this highly prospective region. Our leading edge technology can help to define your search and give you the focus to support your exploration needs. We're ready where you are and committed to providing the right data in the right place at the right time.

Supporting your exploration success

gominfo@pgs.com

A Clearer Image
www.pgs.com





NEW ORLEANS GEOLOGICAL SOCIETY

810 Union Street, Suite 300
New Orleans, LA 70112-1430

PRESORT
STANDARD
US POSTAGE
PAID
MAIL TECH

www.nogs.org



MARINE PROPERTIES, LLC
BERKSHIRE EXPLORATION CO.

MONTE C. SHALETT, CPL, PRESIDENT

3030 Lausat Street
Metairie, LA 70001-5924

BUS. (504) 831-7779
FAX (504) 831-8315

PCI

Paleo Control, Inc.

Houston, Texas
713-849-0044

Drilling Wells, Studies and Data Base

Loyd Tuttle

Frio, SE Texas

Bob Liska

Wilcox, S and SE Texas

Jim Thorpe

Miocene and Cam-Miogyp



THIS AD SPACE AVAILABLE

Contact:

annette@nogs.org

