

NOGS LOG

JULY 2013

Volume 54, Number 1



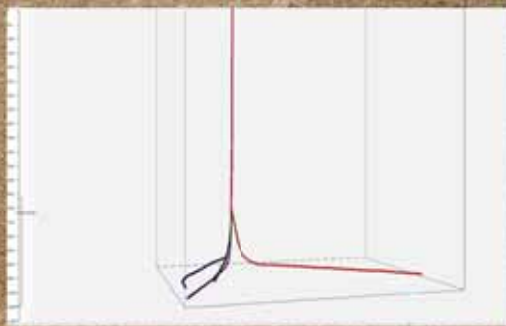
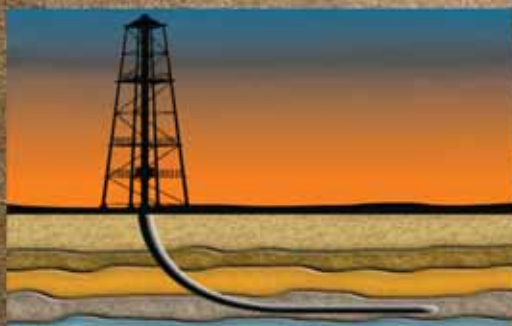
JULY 1 - NOGS LUNCHEON

**Presentation: An Evolutionary Model of a Retrograding Subdeltaic
Distributary of a River-Dominated System**

Guest Speaker: Robert Clark

**Department of Earth and Environmental Sciences • University of New Orleans
New Orleans, Louisiana**

TGS DELIVERS DIRECTIONAL SURVEY PLUS



More than just your standard directional survey.

Directional Survey Plus (DS+) data goes beyond the simple capture of measured depth, azimuth and inclination. DS+ data are thoroughly researched, re-processed and standardized to create the most accurate spatial representation of the well path, from surface to total depth.

Access Directional Survey Plus data and the industry's largest collection of digital well logs quickly and easily through the online well data portal, LOG-LINE Plus!®.

For more information, contact TGS at:

US

Tel: +1 713 860 2100

Email: info@tgs.com



Learn more at WWW.TGS.COM



Published monthly by the New Orleans Geological Society.
This issue was sent to press on June 20, 2013.

Interested in contributing to the *NOGS LOG*? Please submit items by the 1st Friday of the month to nogseditor@gmail.com. Advertising request should contact the NOGS office at info@nogs.org.

IN THIS ISSUE

Regular Features:

From the Editor	3
From the President	5
NOGS Officers / Contacts	6
Upcoming Events & Activities	7
NOGS Luncheon Presentation	9
July & August Calendars	12
Drill Bits	22
Info-Tidbits	31
NOGS Memorial Foundation.....	33
FONO Fund.....	33

Special Features:

NOGA News.....	13
Past Presidents' Luncheon	16
FETCH! Oil and Energy Saturday	17
NOGS Election Results	17
NOGS Golf Tournament Photo Collage.....	18-19
Important Update	26
On the Lighter Side	29
June Luncheon.....	30

on the cover:

Cover Photo Submitted by: Jeff Spencer

Welsh Oil Field - near Welsh, Louisiana



Postcard showing the Welsh oil field located in Secs. 21 and 22, 9S - 5W in Jefferson Davis parish. The postcard was postmarked on August 1, 1907, in nearby Fenton, Louisiana, approximately 12 miles northwest.

Welsh oil field was one of the early salt dome-related fields discovered after the Jennings (Evangeline) oil field. Though the first oil producer was probably completed in early 1903, the first well was drilled in late 1901 and at least one well blew out in 1902. Reed (1925 AAPG v. 9(3), p. 464-478 "The Welsh, Louisiana, Oil Field") stated that 40 wells were drilled in the field between 1901 and 1910.

From the Editor



This month I would like to direct your attention to a few noteworthy items that are being presented in this issue of *NOGS LOG*. Tom Klekamp has written an important update regarding the Louisiana Professional Geoscience Practices Act which is effective August 1, 2013. Many thanks to Tom for keeping us informed on such a significant matter. His letter is also available on the NOGS website.

If you're staying in town this Fourth of July please consider attending the upcoming NOGS Luncheon to be held on July 1st. Robert Clark, our new NOGS Treasurer and UNO graduate student, will be the guest speaker. A large attendance would be a great way to show support not only for Robert but for all of our local university students.

Lastly, there is an excellent opportunity to support our community by volunteering August 3rd at the Louisiana Children's Museum for their sixth annual FETCH! Oil and Energy Saturday. In 2012, the museum had 800 people attend this event, and they hope to duplicate that success again this year.

I hope everyone is enjoying their summer and Happy Fourth of July!

Thanks,

Sheri Richardson - *NOGS LOG* Editor

These nodes change everything.

With absolutely no cables,
there's absolutely no stopping you.



True cable-free seismic

Dealing with tons of cable will hinder any seismic acquisition, land or marine. That's why our exclusive, true cable-free ZNodal® systems pay such huge dividends in any environment.

Our lightweight, compact ZLand® system lets your crews work faster and much more safely while recording high-resolution data, even in the most challenging terrain.

Our ZMarine® system, also completely self-contained, deploys easily and safely, even in congested areas, to water depths of 3000m, which makes it ideal for 4D reservoir monitoring.

Welcome to a new world of seismic acquisition.



FairfieldNodal.com



From the President

I want to begin my Presidency by thanking the Society members for electing me to fill the President-elect position left vacant after Bay Salmeron resigned to take a position in Houston. Thank you for the opportunity to serve the Society once again.

Next I want to thank the previous Board for their dedicated service: President Will Jorgensen was a capable leader who ran the monthly meetings well and kept the Board focused on the tasks at hand, Vice President Kevin McVey provided a fine range of interesting monthly meeting speakers this past year, Secretary Bruce Bahlinger kept accurate Board meeting minutes, Treasurer Kelli Hardesty ably managed NOGS investments and budget during an up and down year, and *NOGS LOG* Editor Jordan Heltz continued to improve the *NOGS LOG*. On behalf of the Society I thank you for your good work.

I especially want to thank Annette Hudson for helping me to understand how NOGS works and for providing continuity to the Society year in and year out as Boards come and go.

The 2013-2014 NOGS Board will have Kelli Hardesty as President-elect, Fran Wiseman as Vice President, Margaret McKinney as Secretary, Robert Clark as Treasurer, *NOGS LOG* Editor Sheri Richardson, Editor-elect Tavia Prouhet, with Mike Fein, Bill Whiting, and Jim Zatkiewicz as Directors. If you have a suggestion for NOGS, please talk to one of the Board members and we will discuss it at our monthly Board meeting.

This coming year will be a special one for NOGS as we will be the hosting society to the GCAGS Convention on October 6-8 at the Marriott Hotel on Canal Street. Art Johnson is the General Chairman and I am sure he still needs volunteers to help make it a success. His contact information is on the *NOGS LOG* Committee Page or just talk to Art at the next meeting and say, "I want to volunteer."

Thank you again and I look forward to the coming year.

Chuck

NOGS Office

Office Manager: Annette Hudson

Phone: 504-561-8980 • Email: info@nogs.org • Website: www.nogs.org

The office is located at 810 Union Street, Suite 300, New Orleans, LA 70112.

Correspondence and all luncheon reservations should be sent to the above address.



BOARD OF DIRECTORS

		Company	Phone	E-mail
President	Chuck Holman	Saratoga Resources Inc.	985-809-9292	charleswholman@bellsouth.net
Vice President	Fran Wiseman	Retired	504-831-8343	snowde.fran@gmail.com
Secretary	Margaret McKinney	TGS	504-524-3450	margaret.mckinney@tgs.com
Treasurer	Robert Clark	UNO	504-610-6861	rbclark@uno.edu
President-Elect	Kelli Hardesty	Environmental Resources Mgmt.	504-831-6700	kelli.hardesty@erm.com
Editor	Sheri Richardson	LaBay Exploration Co. LLC	504-371-5967	nogseditor@gmail.com
Director 2014	Michael N. Fein	W & T Offshore	504-210-8148	mikef@wtoffshore.com
Director 2015	William M. Whiting	Consultant	504-947-8495	bootscon@aol.com
Director 2016	Jim Zotkiewicz	Zot Oil & Gas	504-267-9131	jimzot38@zotoil.com

COMMITTEE

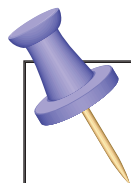
	Chairperson			
AAPG Delegates	William M. Whiting	Consultant	504-947-8495	bootscon@aol.com
AAPG Student Chapter	Hunter Berch	LSU	662-312-1300	hberch1@tigers.lsu.edu
AAPG Student Chapter	Michael Hopkins	Tulane University	228-209-2262	mhopkins@tulane.edu
AAPG Student Chapter	Drew Boudreaux	UNO	504-319-2537	apboudr1@uno.edu
Advertising-Log	Kimberly Maginnis	LLOG Exploration	985-801-4761	kimberlym@llog.com
Auditing	Kelli Hardesty	Environmental Resources Mgmt.	504-831-6700	kelli.hardesty@erm.com
Awards	Michael N. Fein	W & T Offshore	504-210-8148	mikef@wtoffshore.com
Ballot	Robert Clark	UNO	504-610-6861	rbclark@uno.edu
Best Paper	Bay Salmeron	Chevron	832-854-6431	bay.salmeron@chevron.com
Entertainment	Kelli Hardesty	Environmental Resources Mgmt.	504-831-6700	kelli.hardesty@erm.com
Environmental	Daisy Pate	Pontchartrain Partners	504-862-1775	daisy.pate@gmail.com
External Affairs	Michael A. Fogarty	Sylvan Energy, LLC	603-523-4808	mike.a.fogarty@gmail.com
Finance and Investment	Robert Clark	UNO	504-610-6861	rbclark@uno.edu
Historical	Edward B. Picou, Jr.	Consultant	504-529-5155	epicou@bellsouth.net
Membership/Directory	TBA			
Nominating	Edward B. Picou, Jr.	Consultant	504-529-5155	epicou@bellsouth.net
Non-Technical Education	Duncan Goldthwaite	Consultant	504-887-4377	DGldthwt@aol.com
Office Operations	Will Jorgensen	Shell	504-728-6339	william.r.jorgensen@shell.com
Publications Sales	Edward B. Picou, Jr.	Consultant	504-529-5155	epicou@bellsouth.net
School Outreach	Thomas C. Bergeon	Century Exploration	504-832-3772	Tom.bergeon@centuryx.com
Scouting	Carol Rooney	Consultant Geologist	504-835-1909	carolbrooney@aol.com
Special Projects	Larissa Cupp		978-621-5074	Larissacupp@gmail.com

NOGS LOG STAFF

Editor	Sheri Richardson	LaBay Exploration Co LLC	504-371-5967	nogseditor@gmail.com
Editor-Elect	Tavia Prouhet	Chevron	985-773-6737	tavia.prouhet@chevron.com
Auxiliary	Peggy Rogers	NOGA	504-392-6323	lrogers79@cox.net
Drill Bits	Al Baker	Beacon Exploration, LLC	504-836-2710	ABaker1006@aol.com
Drill Bits	Carlo C. Christina	Retired (C & R Expl. Inc)		drillbits81@yahoo.com
Drill Bits	Kevin Trosclair	UNO Graduate Student	504-202-7997	kjtrosc1@uno.edu
Staff Photographer	Arthur Christensen	Shalimar Consulting	985-893-2013	arthur_shalimar@yahoo.com
Layout	Kristee Brown	Creative Graphics & Printing LLC	985-626-5223	kpbrown@bellsouth.net
Co-Webmaster	Edward B. Picou, Jr.	Consultant	504-529-5155	epicou@bellsouth.net
Co-Webmaster	Kevin Trosclair	UNO Graduate Student	504-202-7997	kjtrosc1@uno.edu

NOGS AUXILIARY

Officers		Phone	Directors	Year	Phone
President	Mary Walther	504-392-9332	Beverly Kastler	2012-14	504-286-0879
Vice-President	Camille Yeldell	504-835-7467	Linda Peirce	2012-14	504-393-7365
Secretary	Beverly Christina	504-835-2383	June Perret	2012-14	504-664-0651
Treasurer	Judy Lemarié	504-393-8659	Trudy Corona	2013-15	504-737-6101
Parliamentarian	Alma Dunlap	504-737-2678	Debra Fein	2013-15	504-831-0358
Member-at-Large	Jean Jones	504-738-8091			



UPCOMING Events & Activities

July 1 • NOGS Luncheon

Holiday Inn Downtown Superdome

\$2.00 validated parking in hotel garage

Presentation:

An Evolutionary Model of a Retrograding Subdeltaic Distributary of a River-Dominated System

Guest Speaker:

Robert Clark

Department of Earth and Environmental Sciences • University of New Orleans

New Orleans, Louisiana

See page 9 for Abstract and Biography

HOLIDAY INN DOWNTOWN SUPERDOME

Check with concierge or
front desk for location.

Lunch served at 11:30 am

ADMISSION:

With reservation \$30.00

Without reservation..... \$35.00

Student Member with reservations..... FREE

August 3

FETCH Energy Saturday

Louisiana Children's Museum • New Orleans, LA

For more information, www.nogs.org

August 14-16

Summer NAPE

Brown Convention Center • Houston, TX

For more information, www.napeexpo.com

August 12-14

Unconventional Resources Technology Conference

Colorado Convention Center • Denver, CO

For more information, www.urtec.org

August 21-22

17th Annual Deepwater Symposium and Exhibition

Hilton New Orleans Riverside • New Orleans, LA

For more information, www.deepwaternola.org

NOGS CONTACT LIST

Continued from previous page

MEMORIAL FOUNDATION

BOARD OF TRUSTEES

2013-2014	Chairman	Will Jorgensen	Shell	504-728-6339	william.r.jorgensen@shell.com
2013-2014	Secretary	Chuck Holman	Saratoga Resource Inc.	985-809-9292	charleswholman@bellsouth.net
2013-2014	Trustee	J.David Cope	Rising Natural Resources LLC	504-214-6754	
2013-2014	Trustee	Tom Klekamp	Amber Resources LLC	985-845-4046	klekamp@bellsouth.net
2014-2015	Trustee	Rick Kear	Schlumberger Oil Field Services	504-858-2444	kear1@slb.com
2014-2015	Trustee	TBA			
2015-2016	Trustee	William M. Whiting	Consultant	504-947-8495	bootscon@aol.com
2015-2016	Trustee	TBA			

AAPG DELEGATES

Term Ends

2014	Arthur H. Johnson	Hydrate Energy International	504-464-6208	artjohnson51@hotmail.com
2014	Brenda Reilly	AMROMCO Management LLC	504-430-4240	reillybe@yahoo.com
2014(a)	Elizabeth C. McDade	McMoRan Exploration Co.	504-582-4510	ecmcade@bellsouth.net
2014(a)	Frances A. Wiseman	BOEM (retired)	504-831-8343	snowde.fran@gmail.com
2015	Susan A. Waters	Shell	504-728-0229	susan.waters@shell.com
2015	William M. Whiting	Consultant	504-947-8495	bootscon@aol.com
2015(a)	David E. Balcer	Chevron	985-773-6725	dbalcer@chevron.com
2015(a)	Earl W. Cumming	Reservoir Frameworks LLC	985-630-6898	earlcumming@bellsouth.net

Deep Water

WELL CONSTRUCTION

Are all your services deepwater ready?

Control Measures	Complexity/Process + Exposure	Preparedness				
		1	2	3	4	5
Low	-5	-5	-10	-15	-20	-25
	-4	-4	-8	-12	-16	-20
	-3	-3	-6	-9	-12	-15
	-2	-2	-4	-6	-8	-10
	-1	-1	-2	-3	-4	-5



Our Project Readiness Assessment (PRA) approach has been applied and improved over the last 5 years.

All deepwater projects in which Schlumberger participates benefit from our PRA process, which complies with new U.S. regulatory requirements. This helps deliver seamless, efficient startup, and reduced NPT.

Learn more at

www.slb.com/deepwaterready

Global Expertise
Innovative Technology
Measurable Impact

Schlumberger



July 1 NOGS Luncheon Presentation

☆☆☆ at the Holiday Inn Superdome ☆☆☆



An Evolutionary Model of a Retrograding Subdeltaic Distributary of a River-Dominated System



Presented by

Robert Clark

Department of Earth and Environmental Sciences
University of New Orleans
New Orleans, Louisiana

ABSTRACT

The Mississippi River delta is experiencing some of the highest rates of relative sea-level rise in the world. Confinement of its river course has resulted in drastic reductions in sediment discharge since the mid-20th century leading to dramatic land loss in the delta. During the past 20 years, dredging at Head of Passes and deepening of Southwest Pass has caused shoaling and decreased discharge in South Pass and Pass a Loutre. Reduced flow down South Pass has resulted in wave reworking of distributary mouth bars. As this sand is moved onshore subtidal bars and then barrier spits form, lengthen, and extend along shore. Tidal inlets develop as barriers are breached during major storms and backbarrier tidal prisms are exchanged through these openings. Gradually, the sand supply is diminished and the barriers become highly transgressive, dominated by washovers, spit extension, and updrift barrier erosion. Eventually, overwash fans and tidal inlet generation lead to the development of subtidal sand sheets. South Pass exhibits many different stages of this evolutionary trend.

BIOGRAPHY

Robert Clark is a teaching assistant at the University of New Orleans where he received his BS in Geology and will soon complete his MS in Geology. He is currently studying historical changes in the planform morphology of the South Pass distributary branch of the Mississippi River. Robert has presented his research at different venues, including an oral presentation to the Association for the Sciences of Limnology and Oceanography (ASLO) conference in February where he received an award for "Outstanding Student Presentation", the American Association of Petroleum Geologists (AAPG) Spring Break Student Expo where he received 2nd place in the geology section of the poster competition, and he was a guest speaker at the Schlumberger Fluvial-Deltaic Field Course in Arkansas in April. He also volunteers some of his time every month to produce slide shows for the monthly NOGS luncheon and provides IT support. Robert is the 2013-2014 NOGS Treasurer.

THE LUNCHEON RESERVATION DEADLINE IS JUNE 27 - CONTACT THE NOGS OFFICE

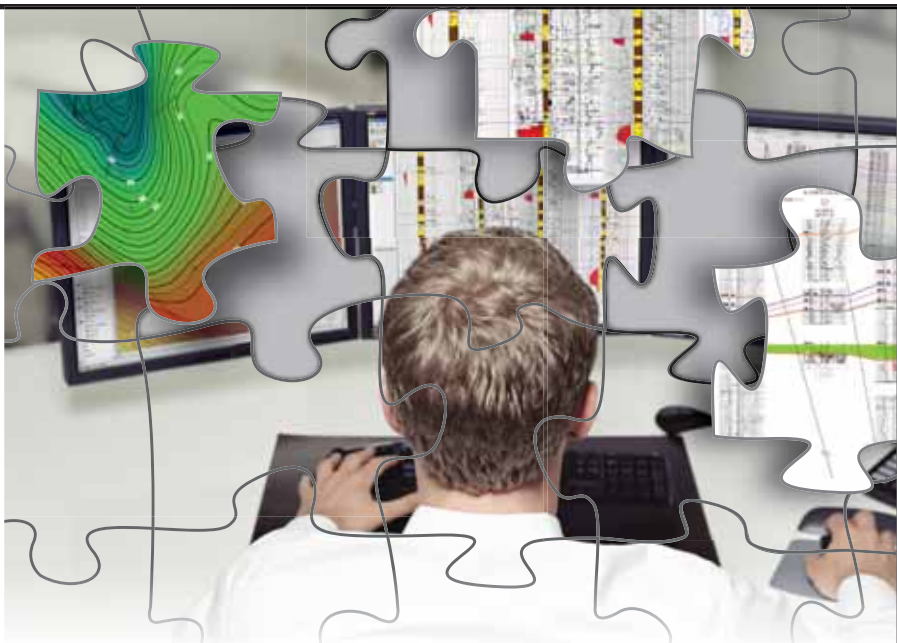
"And Looking Ahead . . ."

The next luncheon will be held on August 5th. Our guest speakers, William Schramm and Lewis "Dutch" Donlon of the Louisiana Department of Environmental Quality, will present "Salt Dome Gas Storage and Brine Production Facilities: Geological, Environmental and Safety Issues." Contact the NOGS office at 561-8980 or use the PayPal link on the NOGS website (www.nogs.org) to make your reservation.

Quality Analysis Starts with Quality Data

See how Neuralog brings your logs, maps, sections and other critical information together to get the most from your data.

- Log & map digitizing
- Geological evaluation
- Volumetrics & reserves
- Auto & manual contouring
- E&P Data Management
- Log Printing & Scanning



Learn more at www.Neuralog.com

Neuralog
Turning Paper Into Petroleum

© 2013 Neuralog • www.neuralog.com • 1.281.240.2525 • 1.800.364.8728

SEI[®]

Seismic Exchange, Inc.

Strategic Speculative Surveys
Geophysical Data Marketing & Management

YOUR
Full Service
National
Seismic Data
Marketing Firm



DALLAS DENVER HOUSTON MIDLAND NEW ORLEANS OKLAHOMA CITY CORPUS CHRISTI TULSA
201 St Charles Avenue, Suite 4300, New Orleans, Louisiana 70170-4300 504-581-7153 FAX 504-581-9591

seismicexchange.com



Drill with confidence.

Diversified Well Logging, LLC brings the accuracy and expertise only a company with over sixty years in the oil and gas industry can deliver. We are your eyes and ears in the field, especially when it comes to deep water or high pressure, high temperature areas.

DWL offers 24-hour formation evaluation. We provide secure and customized real-time data communication, in-house research and development, and 24/7 on-call support for our equipment and our engineers.

Whether you have a 10-day job or a 110-day job, we provide the specialized attention you require. **Our experience means you can be confident in the safety and performance of your well.**



- *Formation Evaluation*
- *Geosteering*
- *Drilling Optimization*
- *Real-time Data Transmission*
- *Early Kick Detection*



DIVERSIFIED
WELL LOGGING, LLC

Serving the Oil and Gas Industry for Over 60 Years

July						
Sunday	Monday	Tuesday	Wednesday	Thursday	Friday	Saturday
	1 NOGS Luncheon Holiday Inn 11:30 AM	2	3	4 Independence Day	5	6
7	8	9	10	11	12	13
14	15	16	17 NOGS Board Meeting	18	19	20
21	22	23	24	25	26	27
28	29	30	31			

August						
Sunday	Monday	Tuesday	Wednesday	Thursday	Friday	Saturday
				1	2	3 FETCH Energy Saturday 11:00 - 3:00
4	5 NOGS Luncheon Holiday Inn 11:30 AM	6	7	8	9	10
11	12	13	14	15	16	17
	URTEC - Denver, CO		Summer NAPE - Houston, TX			
18	19	20 NOGS Board Meeting	21	22	23	24
			GOM Deepwater Tech Symposium			
25	26	27	28 Western Gulf Lease Sale 233	29	30	31
			LA Oil & Gas: SONRIS to Sunset Conference - NO, LA			

New Orleans Geological Auxiliary News

"The objective of the Auxiliary is to promote fellowship among the wives of the members of New Orleans Geological Society and to render assistance to NOGS upon request."

Fifteen Past Presidents enjoyed a beautiful spring day and delicious lunch at Ralph's on the Park on May 15th. Judy Lemarié was unable to attend the Installation Luncheon held on May 8, so she was presented with her Lifetime Member Award at this gathering. Both she and Beverly Kastler, who had received the Loyalty Award, could bask in the fun of the day at this event. Thanks to Jean Jones for planning the day. It was great to see so many of our past presidents.

The planning committee for 2013-2014 is hard at work coming up with another interesting, fun-filled and enjoyable year. Please consider joining us to make new friends and get together with old friends. To be in the NOGA directory, you should send in your application by August 1st.

The GCAGS convention will be held in New Orleans on October 6-8, 2013. The Auxiliary will be called on to assist NOGS. President Mary Walther is the NOGA representative. Call her at (504) 392-9332 or contact her at mwalther@earthlink.net to volunteer.

Peggy Rogers, *NOGS LOG*



*Beverly Kastler - Loyalty Award
Judy Lemarié - Lifetime Member Award*

*Seated: Judy Lemarié, Mary Walther, Peggy Rogers, Camille Yeldell,
Earleen Rodan, Carol Andrews, Susie Baker
Standing: Joan Sylvester, Judy Sabaté, Pat Williamson, Beverly Christina,
Alma Dunlap, Linda Peirce, Beverly Kastler, Jean Jones*

New Orleans Geological Auxiliary Membership Application

Name _____ Spouse's Name _____
Address _____ Home Phone _____
City, State, Zip _____ Email _____
Spouse's Company _____ DUES: \$25.00

Please send \$25 check payable to NOGA to Judy Lemarié, Treasurer, #2 Yosemite Dr., New Orleans, LA 70131

Countdown: We are 98 days from the convention!

We are putting together the announcement brochure for the convention and registration will open in another month. We have a special "Emeritus" registration rate for those over 65. In addition to the great technical program, the short courses and field trips cover a range of Gulf Coast topics and will be a big draw. We are still lining up volunteers for on-site registration and other functions, so if you can help (even for half a day), let Bill Whiting know at Bootscon@aol.com.

Art Johnson
General Chairman
Artjohnson51@hotmail.com
504-464-6208



Second Lining

To Future Energy Resources



HOSTED BY



GCAGS 2013 ■ New Orleans
October 6-8, 2013

How do we ensure that every Weatherford mudlogger performs at the same high standards around the globe?

They all have to get past our man Wayland.



**EXCELLENCE
FROM THE
GROUND UP™**

Weatherford is passionate about training, and that's where Wayland comes in. His mudlogging training program begins with hands-on classroom instruction and ends with rigorous tests at the wellsite. We call it Competency-Based Training. You'll call it another benefit of working with Weatherford. With courses for basic and advanced mudlogging, as well as for specialized services, Wayland's program helps mitigate hazards and enhance data accuracy. It's just one more way Weatherford Mudlogging is committed to Excellence from the Ground Up.

SURFACE LOGGING SYSTEMS

www.weatherford.com/surfacelogging
mudlogging.services@weatherford.com



Weatherford®

PAST PRESIDENTS' LUNCHEON

MAY 14, 2013



Left to right: Tom Klekamp (09-10), Bill Hintze (65-66), Don Andrews (63-64), George Severson (72-73), Mike Fein (06-07), Scott Wainwright (05-06), Tom Bergeon (02-03), Bill Whiting (08-09), Kelli Hardesty (President-Elect 13-14), Will Jorgensen (12-13), Duncan Goldthwaite (82-83), Art Johnson (07-08), Bob Branson (90-91), Ed Picou (92-93), Paul Jurik (93-94), Jack Langford (91-92), Bob Douglass (87-88), Charles Corona (81-82).
 Attended but not in photo: Jack Bryant (02) and Will Conatser (97-98)



Fetch! OIL AND ENERGY!

YOU'RE INVITED!

What: FETCH! Oil and Energy Saturday

When: Saturday, August 3rd
11:00 am to 3:00 pm

Where: Louisiana Children's Museum

Who: You!

Volunteers are needed!

Please contact either:

Jahnette deBlanc

jahnette.deblanc@shell.com
504-728-6098

Tom Bergeon

tom.bergeon@centuryx.com
504-832-3772



NOGS

ELECTION RESULTS

An election was held in May for the NOGS officers for the 2013-2014 year. The results of the election are as follows:

President-elect Kelli Hardesty
Vice President Fran Wiseman
Secretary Margaret McKinney
Treasurer Robert Clark
Editor-elect Tavia Prouhet
Director 2013-2016 Jim Zotkiewicz

The NOGS Board 2012-2013 would like to announce that due to the resignation in April of Irion Bordelon, Jr., NOGS Director 2012-2015, the Board has approved that Bill Whiting will assume this position.

Freeport-McMoRan is now
RESOURCE RICHER.



Freeport-McMoRan Copper & Gold Inc. provides resources to fuel global growth.

With the acquisitions of Plains Exploration & Production Company and McMoRan Exploration Co., FCX's diverse portfolio of minerals assets now includes high-quality oil and gas resources in the United States. Matched with bright prospects for success in the global minerals industry, this expanded scope of operations provides exciting new opportunities for profitable growth to benefit shareholders, employees and communities. FCX is pleased to announce its new subsidiary Freeport-McMoRan Oil & Gas.

Freeport-McMoRan
COPPER & GOLD
www.fcx.com

FCX
LISTED
NYSE

Freeport-McMoRan
OIL & GAS

THE 2013 ANNUAL BILL CRAIG M

APRIL 2



Many Thanks to all of the

ANKOR Energy
Baker Hughes
Beacon Exploration
BOPCO
Century Exploration

Claymore Oil & Gas LP
Clovelly Oil
Core Laboratories
Diversified Well Logging, LLC
Geophysical Pursuit, Inc.

Hydrate Energy International
Joe & Lisa McDuff
LaBay Exploration Co. LLC
LLOG Exploration
McMoRan Oil & Gas LLC



MEMORIAL GOLF TOURNAMENT

29, 2013



Golf Tournament Sponsors!

Merrill Lynch
Mississippi Resources LLC
ORX Exploration, Inc.
Petro-Log Inc.
Saratoga Resources, Inc.

Schlumberger
Seismic Exchange
Seitel Data
Shell Retirees
W & T Offshore Inc.

Weatherford Laboratories
WesternGeco
William M. Whiting
Zot Oil & Gas



17th Annual Gulf of Mexico

Deepwater

Technical Symposium



NEW CHALLENGES OPPORTUNITIES

August 21st & 22nd 2013

*The Hilton New Orleans
Riverside Hotel*

www.deepwaternola.org



This Changes Everything.

SAVE THE DATE:
12-14 AUGUST 2013



UNCONVENTIONAL

RESOURCES TECHNOLOGY CONFERENCE

FUELED BY SPE • AAPG • SEG

12-14 August 2013 • Colorado Convention Center • Denver

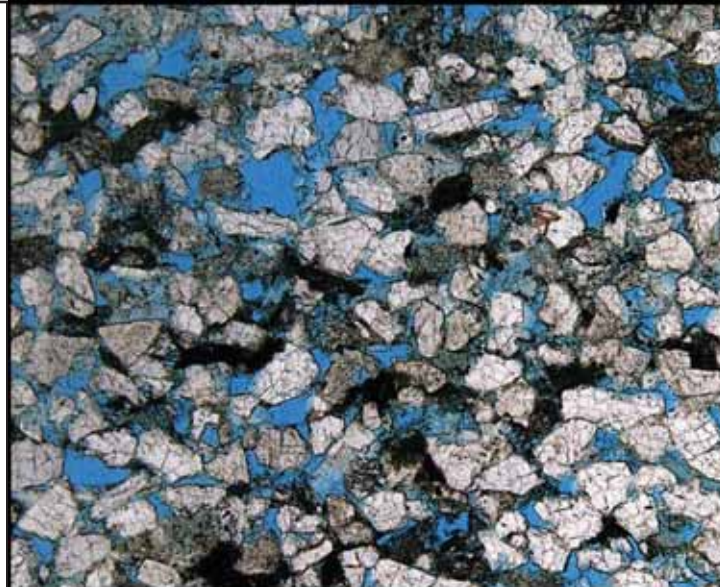
www.URTeC.org



Shell has worked in partnership
with the NOGS for many years, and
is proud to count the society among
its closest business associates.

The New Orleans Geological Society was organized in 1941 to foster scientific research and advance the science of geology. Particular emphasis is laid on the exploration for and production of petroleum and natural gas. Related objectives include encouraging the adoption of improved methods of exploration, disseminating pertinent geological and technological data, and maintaining a high standard of professional conduct among its members.

www.shell.com/us.sepco



Offshore & South Louisiana Experts

- CORE ANALYSIS
- PVT FLUID EVALUATION
- GEOLOGIC SERVICES

New Orleans: 504-733-6583
Broussard: 337-837-8616
Houston: 713-328-2673
www.corelab.com



South Louisiana and Offshore Gulf of Mexico Exploration and Production Activities

LAFAYETTE DISTRICT, ONSHORE AREA

By Carlo C. Christina

NEW LOCATIONS

In Allen Parish, Hilcorp Energy will drill an Upper Wilcox test in the depleted **Lyles Field**, (A), to a projected depth of 15,000 feet in Sec. 9, 6S-4W. The #1 Labokay is located 1½ miles northwest of a depleted well which produced for 15 years from an Upper Wilcox sand through perforations 12,777 to 12,984 feet. (246475)

In Beauregard Parish, **Skinner Lakes Field**, (B), J-LU LTD will drill its #1 Columbia Land & Timber in Sec. 9, 6S-13W to a projected depth of 10,000 feet. (246416)

Swift Energy has permitted an Upper Wilcox horizontal well in **South Bear Head Creek Field**, (C), in Beauregard Parish. The #1 Mercereau H will be drilled in Sec. 30, 6S-11W to a projected depth of 15,400 feet in a lateral leg of 5,019 feet. (246418)

This well is located 2 miles west of the recently completed #1 Dolby H oil well which flowed 800 BOPD through perforations 13,950 to 18,047 feet. (See details under COMPLETIONS--K)

Also in **South Bear Head Creek Field**, (D), Midstates Petroleum will drill the #12 Musser-Davis in Sec. 33, 6S-11W to a projected depth of 12,750 feet. (246462)

Trek Resources will drill a Lower Tuscaloosa Sand well in **Chipola Field**, (E), East Feliciana Parish, in Sec. 57, 1S-3E in an attempt to extend production to the west. The #1 Morrow will be drilled to 13,500 feet, offsetting the #1 Hurst, which has produced 100,400 barrels of oil in 5 months. The field was discovered in 2001 and has produced more than 1,460,000 barrels of oil. (246408)

In St. Charles Parish, **West Lake Salvador Field**, (F), Square Mile Energy has permitted the #1 SL 20937 to a projected depth of 14,114 feet in 16S-21E. (246470)

An interesting well will be drilled by GCER ONSHORE in **Lake Pelto Field**, (G), Terrebonne Parish, in Sec. 25, 23S-17E. The #1 SL 21102 will be drilled to 15,107 feet on the extreme south flank of the field, located 1½ miles from shallow production at 10,000 feet. (246484)

COMPLETIONS

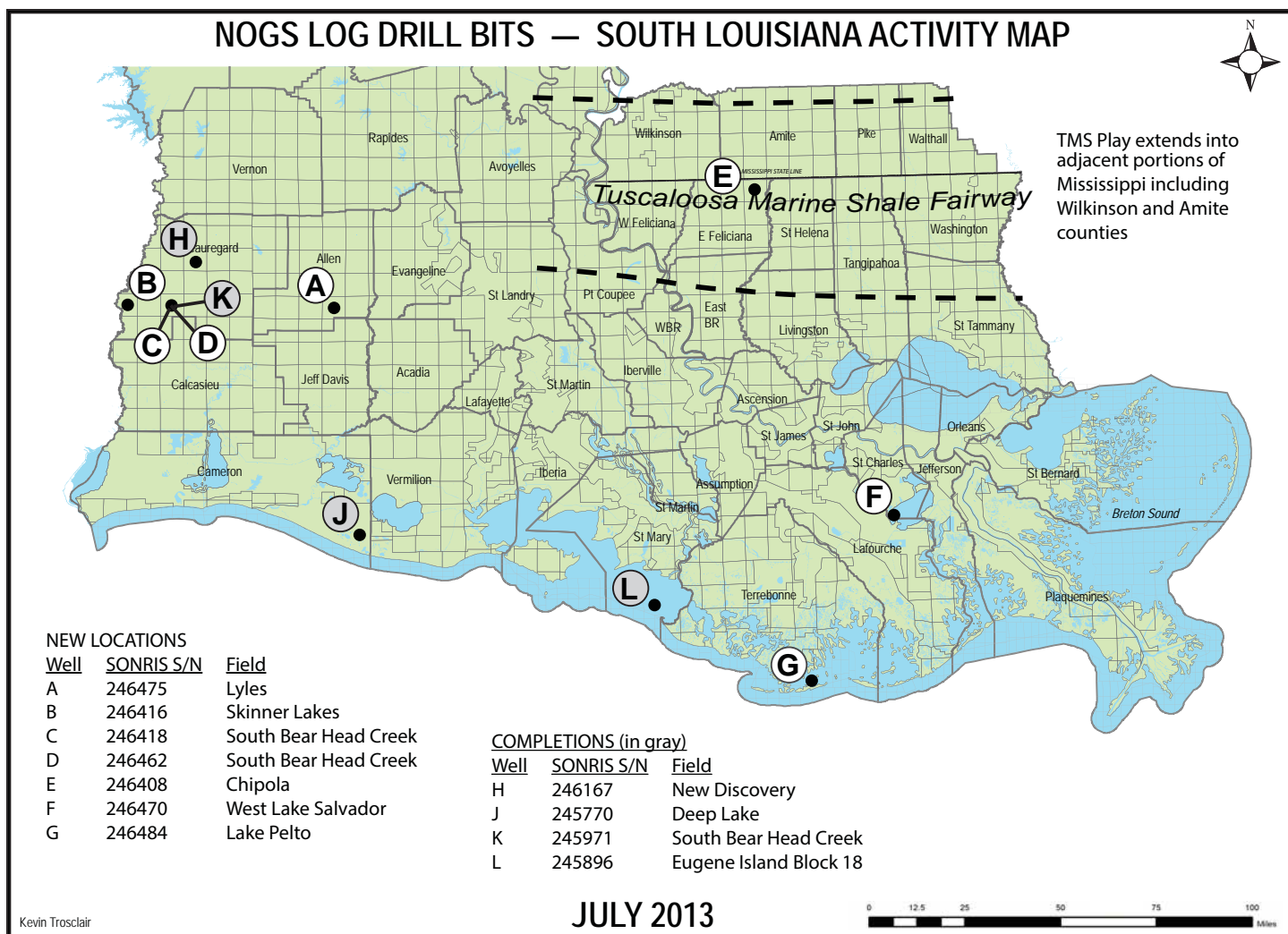
A **new discovery**, (H), by C.T.R. Oil has been reported in Beauregard Parish in Sec. 30, 4S-10W. The Drill Bits column of May 2013 listed 2 wildcats permitted by C.T.R. in the **North Singer** area 1 mile south of excellent Cockfield production. The #1-A Rice Land has been completed in a Cockfield Sand flowing 70 BOPD through perforations 6,982 to 6,984 feet. (246167)

Hilcorp Energy has completed the #1 SL 20580 as a gas well in **Deep Lake Field**, (J), Cameron Parish, in Sec. 7, 16S-3W. The well was drilled to 17,550 feet and completed flowing 3,653 MCFD and 54 BCPD through perforations 16,118 to 16,282 feet. (245770)

In Beauregard Parish, Midstates Petroleum has completed an excellent oil well in its Lower Wilcox horizontal well in **South Bear Head Creek Field**, (K), in Sec. 33, 6S-11W. The #1 Musser-Davis 33 H flowed 800 BOPD and 688 MCFD through perforations 13,950 to 18,047 feet in a 4100 foot lateral leg. (245971)

Castex Energy has completed its #1 SL 20534 which was permitted in **Eugene Island Block 18 Field**, (L), but drilled in Block 13. The well was completed in the Cib op reservoir flowing 9,032 MCFD and 317 BCPD through perforations 14,652 to 14,666 feet. This completion extends the Cib op play 3 miles to the south of production in the Atchafalaya Bay complex. (245896)





OFFSHORE GULF OF MEXICO SHELF AND DEEPWATER ACTIVITIES

by Al Baker

During May 2013, the BOEM approved **95** Gulf of Mexico drilling permits. Of these, **53** were for shelf wells, and **42** were for deepwater wells. There were **9** shelf (8 exploratory and 1 development) and **3** deepwater (all exploratory) **new well permits** issued.

On the shelf, exploration activity far outpaced development activity, which is a noticeable change of focus for the independents. **Tana Exploration** obtained 2 new well permits for their **South Marsh Island 118 #1** and **Main Pass 244 #1** wells. Both of Tana's leases are in their final months of their 5-year, primary term. **Northstar Offshore** was awarded a new well permit for their **West Cameron 106 #1** well. The lease on Block 106 expires at the end of July 2013. **Energy XXI** was granted a new well permit for their **Vermilion 179 #1** well. Energy XXI previously announced a discovery at its Pendragon well in adjacent Block 178. **Hall-Houston Exploration** received a permit for their **South Marsh Island 256 #1** well. **Walter Oil & Gas** was given a permit for their **South Timbalier 285 #1** well. The lease on Block 285 was set to expire at the end of May 2013. **Renaissance Offshore** was granted a permit for their **West Delta 28 #1** well. Renaissance paid \$1,426,000 for the lease on Block 28 in October 2012, outbidding both EPL and Castex. **Castex Offshore** obtained a permit for their **High Island 117 #1** well. Castex acquired the lease on Block 117 in April 2012 for a \$2,300,000 bonus. Lastly, **Rooster Petroleum** received a new well permit for their **#1** development well on **Eugene Island 44**. Rooster obtained its lease on Block 44 in November 2012 for a bonus of \$331,332 outbidding Tana for their lease.

Exploration activity in the deepwater **Mississippi Canyon Area** included three operators. **Eni US Operating** received a new well permit to drill their **Block 214 #1** well, **Shell Offshore** was granted a permit for their **Block 721 #1** well, and **Statoil** was issued a permit for their **#1** well on **Block 209**.

On May 31st, IHS-Petrodata reported that the Gulf of Mexico mobile offshore rig supply totaled **110**, and the contracted rig count stood at **79**. Both figures are the same as reported last month keeping the fleet utilization rate at **71.8%**. This compares to 75 out of the 115 rigs available during the same period in 2012 for a 65.2% fleet utilization rate. The 5-rig drop year-to-year represents a 4.3% decline in the rig supply in the Gulf.

In addition, there were **30** platform rigs under contract out of the **53** total in the rig fleet for a fleet utilization rate of **56.6%**. The current number of platform rigs under contract in the Gulf is also the same as reported last month.

On May 31st, the BakerHughes Rig Counts indicated that there were **55** active mobile offshore rigs in the Gulf, which represents **69.5%** of the total rigs under contract. Of these, **51** rigs are situated in **Offshore Louisiana**, and the remaining **4** are located in **Offshore Texas**. The total number increased by **5** rigs when compared to last month. This 5-rig improvement number represents a **10.2%** increase in the active mobile offshore rig fleet. The current active rig count compares to 48 active rigs during the same period last year representing a **14.6%** increase in yearly activity. Additionally, of the 30 platform rigs that are under contract, **21** (or **70%**) are currently working. This is **1** less than the total number of working platform rigs reported last month.

As of May 31st, the BOEM had awarded leases on **205 tracts** of the **320 tracts** receiving high bids on March 20, 2013 in **OCS Sale 227** in the **Central Gulf of Mexico**. Of these, **42 tracts** were deemed acceptable in the **Phase 1** review, and the remaining **163 tracts** were deemed acceptable in the current **Phase 2** bid evaluation review. A total of 115 tracts remain under evaluation by the BOEM. The BOEM has 90 days from the date of the sale to accept or reject the high bids.

On May 8th, Shell Offshore announced its plan to construct a floating production, storage, and offloading (FPSO) vessel and subsea infrastructure at its 100%-operated, **Stones** ultra-deep water project in the **Walker Ridge Area**. The development will be the world's deepest production facility. **Stones Field** is located in 9,500 feet of water approximately 200 miles southwest of New Orleans and is a **Lower Tertiary - Paleocene** discovery. The field comprises the 8-block **Walker Ridge 508 Field Unit** that includes **Blocks 507, 508, 509, 551, 552, 553, 596, and 597**. The development will begin with two subsea production wells tied back to the FPSO vessel, followed later by six additional wells. The tie-back wells are the **Walker Ridge 508 #1** (originally operated by BP in 2005) that was drilled to 28,639' in 9,556 feet of water and the Shell **Walker Ridge 508 #3 BP-2** that was drilled during 2008 to 29,528' MD/27,867' TVD in 7,452 feet of water. The initial phase of development is expected to have an annual peak production rate of 50,000 BOEPD from more than 250 million BOE of recoverable resources. Stones also has significant upside potential and is estimated to contain over 2 billion BOE of oil in place. Tankers will transport the oil from the Stones FPSO to U.S. refineries, and gas will be transported by pipeline.

On May 16th, **Pemex** reported that it made its third, ultra-deepwater Gulf of Mexico oil find at its **Maximino Field**. The field is located on the Mexican side of the **Perdido Basin**. Maximino, which Pemex officials have called "the jewel in the crown" of the company's deepwater portfolio, is situated in a water depth of 9,515 feet (2,900 meters) and is the deepest ever for the Mexican oil producer. Last year, Pemex made its first two commercially viable, deepwater discoveries in the Perdido Area approximately 200 miles (320 kilometers) east of the Texas-Mexican border in the Gulf of Mexico, after 23 attempts. Tests at the Maximino Field where the oil was found are still being made and volumes are being assessed.

Technology Experience Performance



Voyage Explorer
Shallow water 2D/3D vessel capable
of 1 x 12km streamer and 2 x 12km
or 4 x 6km -3D with 4 sub arrays for
large output of single/dual source



SeaBird Exploration PLC "SeaBird" is a global provider
of marine 2D/3D/4D seismic data, and associated
products and services to the oil and gas industry.

SeaBird's main focus is providing high quality seismic
surveys (contract seismic) and source vessels. We
operate in both deep and shallow water with our
7 vessels conducting 2D and 3D.

The main success criteria for the company is our
unrelenting focus on Health, Safety, Security,
Environment and Quality (HSSEQ), combined with
efficient collection of high quality seismic data.

Aquila Explorer



Harrier Explorer



Hawk Explorer



Munin Explorer



Northern Explorer



Osprey Explorer



All SeaBird's vessels are capable of pulling a 12km streamer with 4 &/ or 6 sub arrays for very large source outputs.

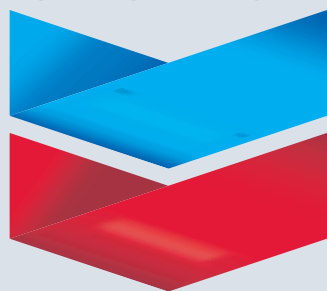
"with the Aquila Explorer in the Far East and the Osprey Explorer in Barents Sea and the balance of SeaBird's fleet (Harrier Explorer, Northern Explorer, Hawk Explorer and Munin Explorer) in Brazil and Africa we have all your 2D/ source vessels needs covered worldwide."

RAISING
THE STANDARD

www.sbexp.com

Dubai -Tel: +971 4 427 1700 | Oslo -Tel: +47 2240 2700 | Houston-Tel.: + 1 281 5561 666 | Singapore- Office: +65 68325593

Chevron



100 Northpark Blvd.
Covington, LA 70433

(985) 773-6000



LaBay

Exploration Co., L.L.C.

111 Veterans Memorial Blvd.

Suite 1550

Metairie, Louisiana 70005

Office (504) 371-5967

Fax (504) 371-5969

www.labayexploration.com

THIS AD SPACE AVAILABLE

Contact: annette@nogs.org



LAFAYETTE

GEOLOGICAL
RESEARCH
CENTER, LLC

201 Heymann Blvd., Suite 33 • Lafayette, LA 70503

Tel: 337-233-8197 • Fax: 337-233-8177

COVERAGE:

Louisiana / Federal / State Offshore

• Multi State Geo Tech Services • Completion Data
Production Data • Well Logs • Maps

~ MEMBERSHIPS AVAILABLE ~

The Industry's Premier • Well Data Center

orders@lafayettegrc.com

CALL OR EMAIL TODAY FOR MORE INFORMATION!

IMPORTANT UPDATE

Louisiana's Professional Geoscience Practices Act – June 3, 2013

By Tom Klekamp
2009-2010 NOGS President

FUNDING

The “Louisiana Geoscience Practice Act” (Act 974), was enacted on January 1, 2011. Act 974 was codified in the Louisiana Revised Statutes, Chapter 8-A (Section 711). Act 974, lacking any funding, had to wait until this year's Fiscal Session to be funded. HB 272 (Rep. Greene, Baton Rouge) provides for license application fees and renewal fees relative to Act 974. There are two parts to HB 272 funding:

First, an application fee for professional geoscientists or geoscientists-in-training shall be established at the discretion of the board but shall not exceed \$200 and shall not be increased by the board by more than \$30 in any three-year period. The \$200 application fee shall accompany the application. If the board denies the issuance of a license or certification to any applicant, the board shall retain the application fee. An unsuccessful applicant shall pay the prescribed fee for each subsequent application.

Second: Licensure and certification shall expire at a time specified by the board and shall become invalid after that date unless renewed. It shall be the duty of the executive secretary of the board to notify by letter to his or her last known address each licensee and certificate holder of the date of the expiration of the license or certificate and the requirements for its renewal. The notice shall be mailed at least one month in advance of the expiration of such license or certificate. Renewal of licensure as a professional geoscientist or geoscientist-in-training may be effected at any time during the two months prior to expiration by the payment of a fee not to exceed \$150 per year at the discretion of the board. The board shall not increase the renewal fee by more than \$20 in any one-year period. A maximum fee for late renewal shall not exceed three times the normal renewal fee.

HB 272 was signed by Governor Jindal on May 29, 2013; it is now Act 36, effective August 1, 2013. This means the “Louisiana Geoscience Practice Act” (Act 974) can be implemented and promulgated.

PETROLEUM GEOLOGISTS

In 2012 the Texas Board of Professional Geoscientists tried to adopt a measure that would, in essence, require petroleum geologists to become licensed. There was a focused and concerted effort on the part of AAPG, SIPES, as well as NOGS, to defeat this measure. Our letters were successful. The Texas PG Board sent a shock wave through the petroleum geology community. One petroleum geologist, a former state representative and senator, proposed amendments to forestall the Louisiana board from doing what Texas did, putting the onus of licensing on petroleum geologists. Subsequently, Act 974 was amended to give added protection to petroleum geologists. SB 128, Act 308 (Sen. Claitor, Baton Rouge) was adopted in the 2012 Regular Session. It states in part “... **no person employed or acting as a petroleum geologist shall be required to be licensed or certified by the board or to pay any fee to the board in order to practice or testify regarding any environmental geology or geoscientist case on any wells or facilities owned by the person or the company for which the petroleum geologist is employed.**” Additionally, “**No person employed or acting as a petroleum geologist shall be required to be licensed or certified by the board in order to testify or prepare and present an exhibit or document for the sole purpose of being placed in evidence before any entity of state government or its political subdivisions. If any change in state law requires the board to license petroleum geologists, the board shall provide written notice to the New Orleans Geological Society, the Baton Rouge Geological Society, the Shreveport Geological Society, and the Lafayette Geological Society at least ninety days prior to taking any action.**”

It should be noted that Act 974 had included exemptions for geoscientific work performed exclusively in exploring for and developing oil, gas, or other energy resources, base metals, or precious or nonprecious metals, including sand, gravel, or aggregate, if the work is done in and for the benefit of private industry. In addition, the following activities are exempt: geoscientific research, teaching, government geologists, archeological stratigraphic investigation, testifying or preparing and presenting exhibits or documents to be placed in evidence before administrative or judicial tribunals or hearings, and evaluation by a state agency or hearing examiner of exhibits or documents placed in evidence before an administrative tribunal.

GRANDFATHERING CLAUSE CHANGES

Sen. Claitor's amendment (SB 128, Act 308) furthermore extended the grandfathering provision of Act 974. **"An applicant who applies for licensure under this Chapter prior to January 1, 2014, shall be exempt from taking the examination ... if the applicant satisfies all the other requirements...."** The previous application date had been January 1, 2012. To be fair to everyone there was an attempt to extend the grandfathering date to the end of 2014 in the current HB 272. But 2013 is a fiscal session and only a few bills can have non-fiscal issues. It is expected they will have a bill next year (2014 session) to extend the grandfathering. The Board will announce before August 1, 2013 on the Board's website, and through the societies (NOGS, BRGS, SGS, Lafayette GS), and through neighboring states' PG boards that the grandfathering will be extended. We expect that the Board will announce that anyone requesting grandfathered status will be able to notify the Board before January 1, 2014 to say they intend to apply for grandfathering.

THE BOARD

Seven members have been appointed: the two direct appointments by Governor Jindal are **Dr. M.B. Kumar**, recently retired from the Louisiana Department of Conservation, and **Mr. L. Todd Perry** of Monroe.

The other five current members were nominated by the various societies:

William R. Meaney (Shreveport Geological Society)

John E. Johnston (Baton Rouge Geological Society)

Daisy B. Pate (New Orleans Geological Society)

Kelli A. Hardesty (New Orleans Geological Society)

Victor R. Donald, PE (Louisiana Engineering Society)

Several other individuals have been nominated by the societies and it is expected that the Governor will appoint the last two members soon.

BOARD CONTACT INFORMATION

Louisiana Board of Professional Geoscientists

c/o M.B. Kumar, Ph.D.

5802 Highland Road

Baton Rouge, LA 70808

Phone: (225) 769-2765

<https://www.legis.la.gov/legis/BoardMembers.aspx?boardId=932>

RELATED WEBPAGES WITH HISTORY AND TEXT OF BILLS

SB 788/Act 974 (Sen. Troy Hebert, St. Martinville)

Enacts the Louisiana Professional Geoscience Practice Act

<https://www.legis.la.gov/legis/BillInfo.aspx?s=10RS&b=SB788&sbi=y>

SB 128/Act 308 (Sen. Dan Claitor, Baton Rouge)

Provides relative to the Louisiana Professional Geoscience Practice Act (petroleum geologists amendment)

<https://www.legis.la.gov/legis/BillInfo.aspx?s=12RS&b=SB128&sbi=y>

HB272/Act 36 (Rep. Hunter Greene, Baton Rouge)

Provides for an application for licensure fee and licensure renewal fee for professional geoscientists and geoscientists-in-training

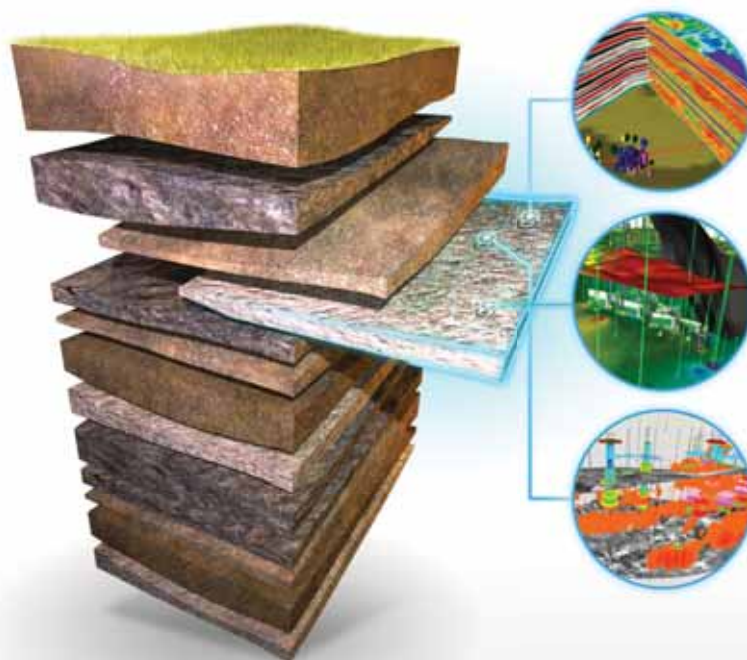
<https://www.legis.la.gov/legis/BillInfo.aspx?s=13RS&b=HB272&sbi=y>

The website for the new Board as well as the acts and bills mentioned in this update article will be available through URLs on the NOGS website.

YOU TACKLE TOUGH PROBLEMS

YOUR GEOSCIENCE SOFTWARE
DOESN'T HAVE TO BE ONE OF THEM

IHS GEOSCIENCE: sophisticated science that's simple to use and simple to manage



SURFACE TO SUBSURFACE

**ONLY ONE ENERGY EXPERT
PROVIDES SO MUCH TO SO MANY**

From big picture to critical detail, proven capabilities to superior results, IHS geoscience does it all—backed by the world's most respected forecasting, analysis, and play-specific geological and geophysical data.

NOW GET THE POWER OF KINGDOM® AND PETRA®

Only IHS geoscience simply yet scientifically links engineering, economics and interpretation software suites to give you a definitive edge. Spearheaded by industry-leading Kingdom® and Petra® software solutions IHS gives you the best in geophysics and geology.

Learn more at IHS.com/NOGS

IHS GEOSCIENCE



Simply **Scientific**™

Get More



from your Core

With reservoirs becoming increasingly complex, you need the most accurate information you can get to better understand your reservoir.

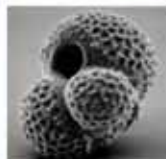
Weatherford Labs helps you get more from your core by combining an unsurpassed global team of geoscientists, engineers, technicians and researchers with the industry's most comprehensive, integrated laboratory services worldwide. From core analysis, sorption, geochemistry and isotopic composition to detailed basin modeling and comprehensive data packages, we provide you with real reservoir rock and fluid information that hasn't been distilled by a simulator or iterated by software.

We call it "The Ground Truth™" – giving you the accurate answers you need for better reservoir understanding. You'll call it a better return on your reservoir investment. To learn more, contact TheGroundTruth@weatherfordlabs.com.



© 2012 Weatherford. All rights reserved. Incorporates proprietary and patented Weatherford technology.

DOMESTIC AND INTERNATIONAL BIOSTRATIGRAPHIC SERVICES



6619 Fleur de Lis Drive
New Orleans, LA 70124
(504) 488-3711

www.paleodata.com



Complete wellsite paleo services

Supported offshore GoM and onshore LA paleo databases

Integrated foram/nannofossil analyses

In-house sample preparation lab for quality-monitoring and efficiency

Comprehensive depositional history study of the Gulf Basin based on 200,000+ well data analysis



On the Lighter Side. . . Word Search: National Parks

A	Y	E	E	T	J	A	A	G	R	A	N	D	T	E	T	O	N	T	S	S	B
R	S	D	F	A	R	O	N	U	Y	E	L	L	O	W	S	T	O	N	E	A	S
S	P	A	S	J	F	R	A	L	T	I	P	S	C	G	N	S	R	I	D	E	A
S	F	E	T	S	E	R	O	F	D	E	I	F	I	R	T	E	P	L	H	D	T
D	O	N	R	I	E	O	T	I	N	E	D	A	N	E	V	O	A	C	Y	E	B
V	E	A	C	E	R	C	A	S	R	E	W	R	A	A	K	N	R	M	I	A	L
D	Y	A	T	S	L	K	R	L	E	M	R	Y	C	T	D	A	H	A	D	T	L
B	L	S	I	N	O	Y	E	A	W	L	A	D	L	S	R	C	V	M	C	H	D
G	R	A	O	C	T	M	I	N	O	O	A	O	O	M	V	L	D	M	L	V	V
L	R	Y	W	E	I	O	N	D	T	B	O	S	V	O	Z	O	M	O	E	A	N
E	I	K	C	Y	P	U	I	S	S	L	D	O	N	K	Y	V	D	T	N	L	S
U	E	Y	C	E	A	N	A	L	L	Z	L	I	E	Y	T	I	G	H	A	L	S
R	N	E	S	E	C	T	R	I	I	S	O	E	S	M	E	I	L	C	L	E	O
D	U	E	R	O	M	A	T	O	V	E	L	M	S	O	A	A	E	A	N	Y	M
C	A	A	V	I	C	I	N	R	E	M	V	O	A	U	K	W	F	N	O	T	
S	I	I	S	A	D	N	U	Y	D	I	C	C	L	N	G	A	N	E	K	E	I
O	H	P	D	O	J	O	O	E	O	N	I	I	E	T	R	H	O	O	D	E	D
G	I	I	M	T	N	O	M	E	C	N	O	Y	N	A	C	D	N	A	R	G	D
O	A	I	E	Y	R	I	M	F	D	N	E	B	G	I	B	E	E	O	P	D	A
E	V	E	R	G	L	A	D	E	S	D	N	A	L	N	O	Y	N	A	C	I	A
Y	L	S	O	K	R	O	L	E	T	I	M	E	S	O	Y	S	A	T	O	F	
C	R	A	T	E	R	L	A	K	E	N	A	I	F	J	O	R	D	S	C	N	A

ACADIA
ARCHES
BADLANDS
BIG BEND
BRYCE CANYON
CANYONLANDS
CAPITOL REEF
CARLSBAD CAVERNS
CRATER LAKE
DEATH VALLEY
DENALI

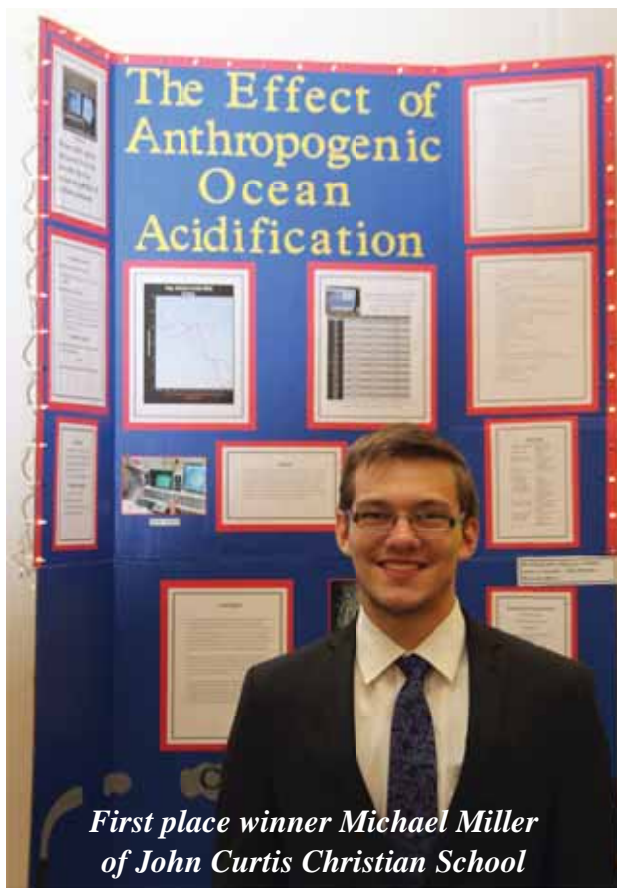
DEVILS TOWER
DINOSAUR
EVERGLADES
GLACIER
GRAND CANYON
GRAND TETON
GREAT SMOKY MOUNTAINS
GULF ISLANDS
HAWAII VOLCANOES
KENAI FJORDS
LASSEN VOLCANIC

MAMMOTH CAVE
MOJAVE
MOUNT RAINIER
NIAGARA FALLS
OLYMPIC
PETRIFIED FOREST
ROCKY MOUNTAIN
YELLOWSTONE
YOSEMITE
ZION

June 2013 Luncheon

2013 Region 9 Greater New Orleans Science and Engineering Fair Winner Michael Miller

NOGS welcomed Senior Division First Place Award Winner Michael Miller of John Curtis Christian School and his father, Dr. Mike Miller, Pastor at First Baptist Church in Kenner, to the June 3rd Luncheon. Michael's teacher, Cathy Boucvalt, was unable to attend the luncheon. Michael displayed his project in which he performed a detailed microscopic and pH study entitled, "The Effect of Anthropogenic Ocean Acidification." Michael's project also won 2nd Place in the 2013 State Science and Engineering Fair (Senior Division) in the category of Earth and Planetary Science. He will attend Louisiana Tech in the fall.



*First place winner Michael Miller
of John Curtis Christian School*



Mike Fein and Kelli Hardesty



Leslie Broussard and Annette Hudson



Cyril Lobo and Leslie Broussard



Will Jorgensen and Jack Langford

Submitted by Sheri Richardson

MIT Technology Review – Kevin Bullis

“EIA Says Worldwide Shale Oil and Gas Potential is Huge” June 10, 2013

<http://www.technologyreview.com/contributor/kevin-bullis/>

A surge in oil and gas production from shale rock has transformed energy in the United States, helping reverse declines in oil production and prompting a massive shift from coal to natural gas electricity production that has led to a significant drop in carbon dioxide emissions (since burning coal releases more carbon dioxide than burning natural gas). A new report from the U.S. Energy Information Administration lends support to the idea that a similar transformation could take place outside the United States.

The EIA report concludes that Russia has even more technically recoverable shale oil than the United States. Three countries have more shale gas—China, Argentina, and Algeria. Geologists have long known that some shale deposits contain large amounts of oil and gas, but it's only recently that hydraulic fracturing and horizontal drilling technology have made it feasible to extract.

While other countries may have more of these resources than the United States, the impact in some of them may not be as great, or happen as quickly. It could take many years to develop resources in other countries because the geology is somewhat different—the techniques that work in the United States might not quite work elsewhere. What's more, many countries don't have the needed technological expertise. Some countries make it difficult for companies to set up and find ways to exploit the resources.

Offshore Magazine – Russell McCulley

“Big Discoveries Drive Lower Tertiary Exploration and Development Rush” June 2013

<http://www.offshore-mag.com/articles/print/volume-73/issue-6/drilling-and-completion/big-discoveries-drive-lower-tertiary-exploration-and-development.html>

Significant technological and financial challenges to development notwithstanding, the past several months have witnessed a flurry of activity in the Gulf of Mexico's Paleogene play, also known as the Lower Tertiary. The ultra-deepwater region has been the site of some recent – and massive – discoveries, while some long-simmering development projects have been given the green light, leading some industry observers to declare the Lower Tertiary the scene of a 21st century "gold rush" for the offshore industry.

Innovation has helped address the Lower Tertiary's many challenges: very deep water; very deep reservoirs characterized by extreme temperatures and pressures; the need for artificial lift; the presence of thick salt formations; and the weight of umbilicals needed to reach seafloor depths of up to 10,000 ft.

In late April, Anadarko Petroleum Corp. announced that its Phobos-1 well in Sigsbee Escarpment block 39 had encountered 250 ft of high-quality oil in Lower Tertiary reservoirs. The well is in 8,500-ft water depths about 11 miles south of the company's Lucius discovery, now in development. The find came on the heels of a March announcement that Anadarko's Shenandoah-2 appraisal well, in 5,800-ft water depths in Walker Ridge block 51, had hit more than 1,000 ft of net pay, heralding one of the company's largest ever Gulf of Mexico discoveries.

Statoil has the Maersk Developer under long-term contract to conduct the company's drilling program in the deepwater Gulf of Mexico, including its Lower Tertiary prospects. In May, the rig was scheduled to spud an appraisal well at the 2011 Logan discovery, located in water depths of 7,500-8,000 ft in Walker Ridge blocks 925 and 969. The company has drilled at Bioko, a Lower Tertiary prospect in Walker Ridge block 698, north of the Lucius development.

"We hope to get recovery factors to north of 20%," Jason Nye, Statoil's VP of offshore in the US, said at OTC. "We're never going to get to 50% or 60% in the Paleogene. The rocks are just not going to get us there. But going from 10% to 20% is certainly a possibility, utilizing the technology that we've developed in Norway."

One strategy that has worked well in Norway, he said, is the drilling of multi-lateral wells. While water depths in the Lower Tertiary are far greater than those in the Norwegian North Sea, "there's no reason we can't do multilateral wells," Nye said. The technique will help reduce the overall cost of drilling programs in the Lower Tertiary, where drilling and completion of a single well can run \$200 million to \$300 million, he said.



Geoconsulting, Inc.

*Geological and Geophysical Consulting
3-D Seismic Interpretation*

Ben D. Sydboten, Jr. CPG

2 Flagg Pl., Suite 1
Lafayette, LA 70508
www.saigeoconsulting.com

Office (337) 504-3670
Cell (337) 456-8948



**Geological
Geophysical
Land**

Drafting & Graphics

3349 Ridgelake Drive • Suite 202
Metairie, LA 70002
Office: (504) 836-2882
Fax: (504) 836-2877
Cell: (504) 481-7291
E-Mail: geodraft@bellsouth.net
Website: www.geodraftinc.com

Anthony Catalanotto
President

NORTHCOAST OIL COMPANY

610 E. Rutland St.
Covington, LA 70433
(985) 898-3577
(985) 898-3585 Fax

Jack M. Thorson
Eric C. Broadbridge
J. Daryl Gambrell
Raymond W. Stephens



ETROA Resources LLC

Join us in pursuing gulf coast production,
acquisitions and low-risk drilling opportunities

John C. Ebert
Kevin McVey

128 Northpark Blvd.
Covington, LA 70433
(985) 809-3808

www.etroa.com



*Thanks
our sponsors
for
their support!*

Special Thanks to



DIVERSIFIED
WELL LOGGING, LLC

Happy Birthday America!

Thank you to the military men and women,
past and present, who have sacrificed so
much for the freedom we cherish!

from the  **NOGS**
LOG *Staff*

THE NEW ORLEANS GEOLOGICAL SOCIETY MEMORIAL FOUNDATION, INC.

The Memorial Foundation is an IRS Tax Exempt Code #501(c)(3) organization. The Federal I.D. is 72-1220999. Please consider making a donation to the Foundation. Your individual support in any amount will help meet the IRS Guidelines for our Foundation. Thanks!

\$15,000 AND ABOVE

Gibbet Hill Foundation

*In Memory of Steve & Marion Millendorf, William J. Prutzman,
Roger G. Vincent, Ron Youngblood and Uno Numella*

\$5,000

NOGS Golf Tournament April 2013

In Memory of Bill Craig

\$500

Mr. Reuben J. Klibert, Jr.

*In Memory of Reuben S. Klibert, Sr.
and Jame Wade Klibert*

Mr. Foster E. Voelker

In Memory of Gene Rogas

Mr. Armour C. Winslow

*In Memory of Rita Menzel Winslow
and Lawrence C. Menconi*

\$250 TO \$499

Mr. Thomas C. Bergeon

*In Memory of Erik Mason
and Brian O'Neill*

Mr. Marc Cooper

Through the Marathon Oil Co MEPAC Program

Mr. James S. Classen

*In Memory of Jack Dunlap, Louis L. McCormick, Jr.
and James P. Raymond, Jr.*

UP TO \$249

Mr. Woods W. Allen, Jr.

Mr. Robert J. Ardell

In Memory of L. David Collier and Jerry Goodman

Mr. Maurice N. Birdwell

Mr. Burton C. Bowen

In Memory of Louis L. McCormick, Jr.

Mr. Hilary James Brook

Ms. Robin A. Broussard

Mr. Rob Burnett

Ms. J. Sybil Callaway

Mr. Arthur F. Christensen

Mr. Willis E. Conatser, PhD

Mr. Merle J. Duplantis

Mr. Michael N. Fein

Mr. Arthur J. Garden

Mr. Bernard L. Hill, Jr.

Mr. Tom (Thomas) A. Hudson

Mr. Jeff Jandegian

Mr. Robert M. Jemison, Jr.

Mr. Paul Jurik

Mr. Tom Klekamp

In Memory of Kenneth J. Fulton

Mr. Reuben J. Klibert, Jr.

Mr. John C. "Jack" Langford

Mr. Frank E. Larkin

Mr. Cyril F. Lobo

Ms. Jeannie F. Mallick

Ms. Margaret M. McKinney

Mr. Paul C. McWilliams

New Orleans Geological Auxiliary

In Memory of Sybil Barton and Ruth Grimes

In Memory of Joan Collier, Amber Klekamp

and Mary Petrocco

Mr. Russell H. Nordwell

Mr. Richard A. Olsen

Mrs. Teresa O'Neill

In Memory of Brian O'Neill

Mr. William S. Peirce

Mr. Edward B. Picou, Jr.

In Memory of Clarence F. Conrad

In Memory of Lawrence C. Menconi

Mr. George W. Schneider, Jr.

In Memory of George W. Schneider, Sr.

Mr. George W. Schneider III

In Memory of George W. Schneider, Sr.

Mr. Robert T. Sellars, Jr.

In Memory of Robert G. Williamson

Mr. George D. Severson

Mr. Robert C. Shoup

FONO FUND

The FONO Fund accepts contributions that are invested and the income dedicated to assure sufficient financial resources will always be available to maintain the NOGS business office. Contributors are reminded that donations to the FONO Fund are not covered by the IRS 501(c)(3) tax exempt classification and should be reported as a business expense on your IRS tax report.

\$250 TO \$499

Mr. Reuben J. Klibert, Jr.

UP TO \$249

Mr. Donald I. Andrews

Mr. Alfred H. Baker, Jr.

Mr. David E. Balcer

Mr. Joseph E. Boudreaux

Ms. J. Sybil Callaway

Mr. Anthony Carollo, Jr.

Mr. John Dombrowski

Mr. Merle J. Duplantis

Mr. Dwight Easterly

Mr. Richard A. Edmund

Mr. Michael N. Fein

Mr. William J. Furlong

Mr. David Garner

Mr. Bernard L. Hill, Jr.

Mr. Kenneth Huffman

Mr. Arthur H. Johnson

Mr. Paul Jurik

Mr. Tom Klekamp

Mr. Frank E. Larkin

Mr. Louis Lemarié

Ms. Jeannie F. Mallick

Mr. George M. Markey, Jr.

Ms. Margaret M. McKinney

Mr. Paul C. McWilliams

Mr. Richard A. Olsen

Mr. William S. Peirce

Mr. Luther Franklin Rogers, Jr.

Mr. C. R. Rondeau

Mr. Bay Salmeron

Mr. George D. Severson

Mr. Rudolf B. Siegert

Mr. Bryan P. Stephens

Mr. Raymond Stephens

Mr. Robert K. Sylvester

Mr. Roy C. Walther

Mr. Robert C. Weissmann

Mr. William M. Whiting

Ms. Frances A. Wiseman

BILL CRAIG FUND

Mr. Bernard L. Hill, Jr.

Mr. Hilary James Brook

Mr. Bay Salmeron




Mr. John C. Scheldt

In Memory of William C. Ward

Ms. Candace V. Strahan

In Memory of James R. Strahan

Contributions for both funds through June 12, 2013.
Donations are listed for one year.

ANSYTHE Donald I. Andrews 504-887-3432 	 GEM Consulting, LTD Michael Louis Merritt admin@gemconsultingltd.com
THE BOEBEL COMPANY Oil and Gas Investments New Orleans, LA 70153 (504) 866-4313	H. WARREN BELL Oil and Gas Exploration 2500 Tanglewilde, Suite 485 Houston, TX 77063-2126 Bus. (713) 266-7297 Fax (713) 266-7298
BOO-KER OIL & GAS CORP. Gray S. Parker 826 Union, Suite 300 New Orleans, LA 70112 Bus. (504) 581-2430 Fax (504) 566-4785	PHELPS GEOSCIENCE LLC Onshore Gulf of Mexico Geology and Geophysics Prospect Generation and Evaluation Houston, TX jsfphelps@yahoo.com (281) 398-5208
C & R EXPLORATION, INC. Carlo C. Christina Lawrence G. Ringham	RAFIDI OIL AND GAS, INC. Jaser N. Rafidi, President 4415 Shore Dr., Suite 202 Bus (504) 453-8580 Fax (504) 888-5539 Metairie, LA 70006 Res (504) 888-1661
C. R. RONDEAU Petroleum Geologist 119 W. Southland Ave. Ironwood, MI 49938 Res. (906) 932-4692	ROY C. WALTHER Petroleum Geologist 2421 Prancer Street New Orleans, LA 70131 Bus. (504) 392-8513 Res. (504) 392-9332
CLASSEN EXPLORATION, INC. James S. Classen Looking for close in deals P.O. Box 140637 Boise, ID 83714 Bus. (208) 854-1037 Fax (208) 854-1029 classenllc@msn.com	 625 E. Kaliste Saloom Lafayette, LA 70508 16800 Greenspoint Dr., Suite 225-S Houston, TX 77060 1100 Poydras St., Suite 1050 New Orleans, LA 70163 www.StoneEnergy.com
D-O-R ENGINEERING, INC. 3-D and Geoscience Services 6161 Perkins Rd. P.O. Box 80812 Bus: (225) 765-1914 Baton Rouge, LA 70898	TONY CAROLLO Consulting Geologist Unitization • Geosteering • Field Studies 1701 Peach Street Metairie, LA 70001 Bus. (504) 885-0004 Res. (504) 885-6829
EDWARD B. PICOU, JR. Consulting Micropaleontologist - Retired 228 St. Charles Ave., Suite 1330 C New Orleans, LA 70130 Bus. (504) 529-5155 Res. (504) 282-3096	ZOT OIL & GAS, LLC Jim Zotkiewicz Prospect Generation and Evaluation 3909 Metairie Court Metairie, LA 70002 Bus. 504.267.9131 Email: jimzotoil.com

Collarini Energy Staffing, Inc.

Facilities • Drilling • Production • Reservoir Engineering
Land and Legal • Geosciences • Information Technology
Health and Safety • Management • Supply Chain
Accounting • Administrative Support



Full-Time and Temporary Personnel

Energy Trading • Civil Engineering • Executives
Human Resources • Instrument and Electrical
Engineering • Marine Engineering • Project Management
Technical Writing • Sales and Marketing

10497 Town and Country Way, Suite 950, Houston, Texas 77024

Telephone: (832) 251-0553

www.collarini.com

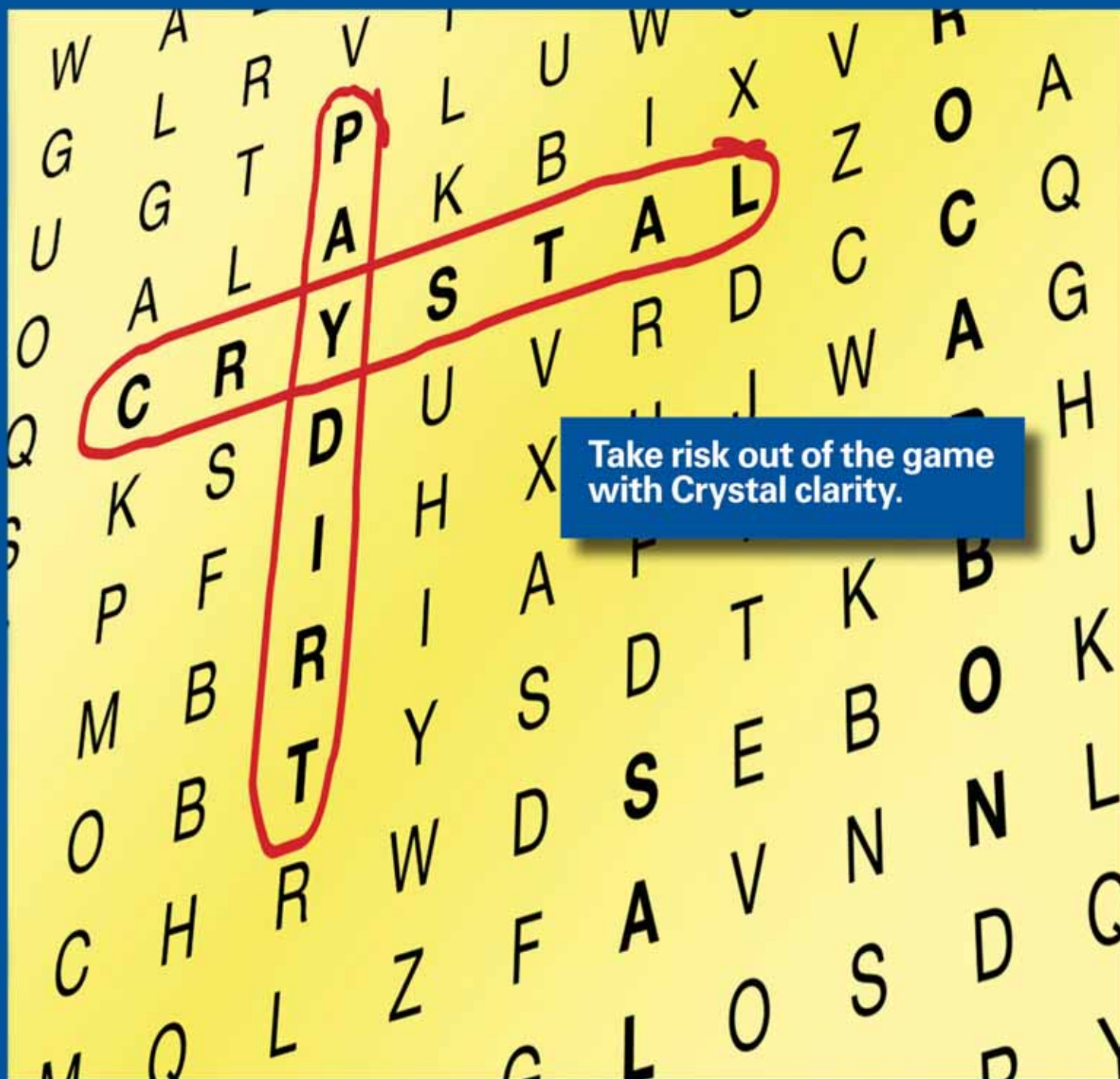


CENTURY EXPLORATION NEW ORLEANS, LLC

An independent gulf coast exploration, development and operating company

Three Lakeway Center, Suite 2800
3838 North Causeway Blvd.
Metairie, LA. 70002

Office: 504.832.3750
Fax: 504.832.3760
www.centuryx.com



Take risk out of the game
with Crystal clarity.

PGS MultiClient GULF OF MEXICO

Revolutionary technology reveals Garden Banks/Keathley Canyon like never before.

SEE IT ALL. SEE IT NOW. With the clearest seismic data to-date in the Gulf of Mexico's most promising region, it's nothing less than a game changer.

- hyperTomo™ increases velocity conformity to geology with more detailed and accurate modeling
- Dramatically improved subsalt imaging via TTI RTM
- Best of all, it's **AVAILABLE NOW**

A Clearer Image
www.pgs.com





NEW ORLEANS GEOLOGICAL SOCIETY

810 Union Street, Suite 300
New Orleans, LA 70112-1430

PRESORT
STANDARD
US POSTAGE
PAID
MAIL TECH

www.nogs.org



MARINE PROPERTIES, LLC
BERKSHIRE EXPLORATION CO.

MONTE C. SHALETT, CPL, PRESIDENT

3030 Lausat Street
Metairie, LA 70001-5924

BUS. (504) 831-7779
FAX (504) 831-8315

PCI

Paleo Control, Inc.

Houston, Texas
713-849-0044

Drilling Wells, Studies and Data Base

Loyd Tuttle

Frio, SE Texas

Bob Liska

Wilcox, S and SE Texas

Jim Thorpe

Miocene and Cam-Miogyp



THIS AD SPACE AVAILABLE

Contact:

annette@nogs.org

