

# NOGS LOG

FEBRUARY 2013

Volume 53, Number 8



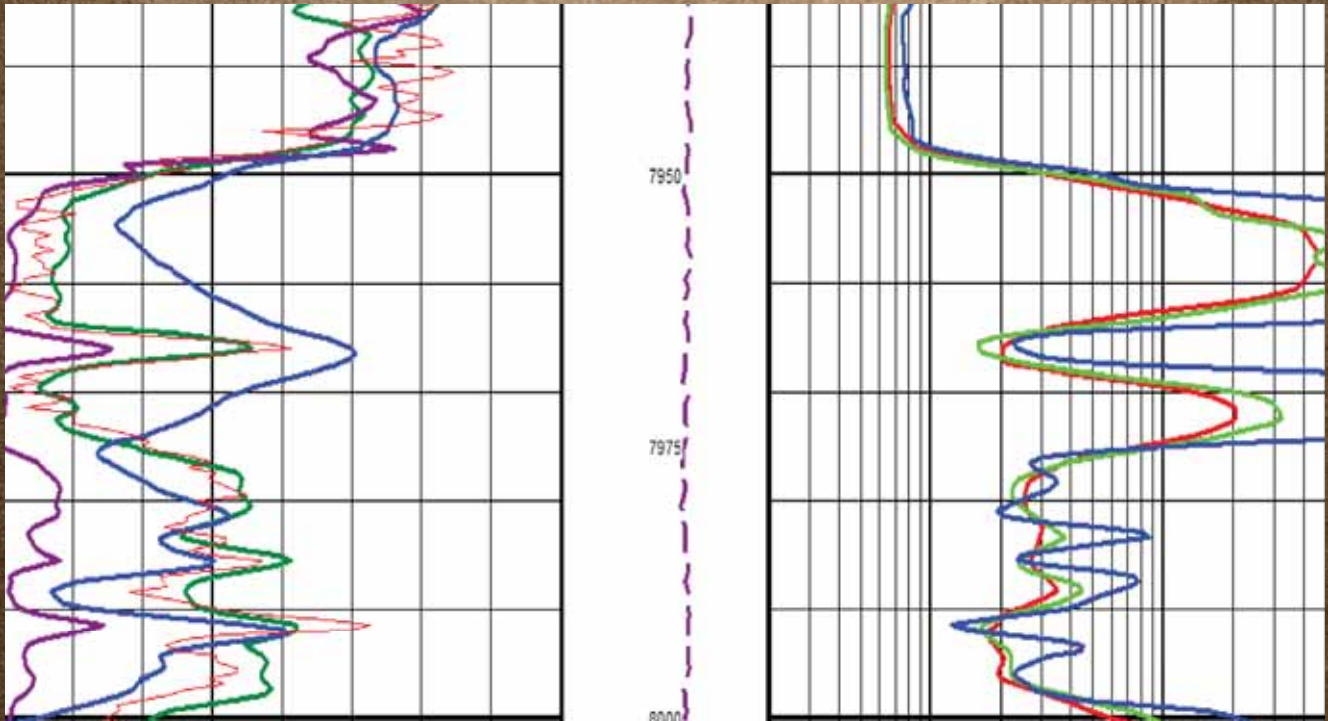
**FEBRUARY 14 - SGS / NOGS LUNCHEON**

**Presentation: 4D Time-Lapse Seismic Reservoir Monitoring of African Reservoirs**

**Guest Speaker: Rocco Detomo, Jr.**

**Shell Nigeria Exploration & Production Co., Inc. • Lagos, Nigeria**

# TGS DELIVERS LAS PLUS



## More than just your standard LAS.

LAS Plus upgrades the standard LAS to a full curve suite, including all available gamma ray, spontaneous potential, caliper, resistivity, conductivity, sonic, density, density correction, neutron, tension and rate of penetration curves. This data has been closely examined for standardization and quality assurance and is ready for cross-section, formation evaluation and petrophysical analysis.

Access LAS Plus data quickly and easily through the online well data portal, LOG-LINE Plus®!



Learn more at [WWW.TGS.COM](http://WWW.TGS.COM)





Published monthly by the New Orleans Geological Society.  
This issue was sent to press on January 26, 2013.

Interested *NOGS LOG* contributors may send requests to  
nogseditor@gmail.com. Requests for advertising should  
contact the NOGS office at info@nogs.org

## IN THIS ISSUE

### Regular Features:

From the Editor .....	3
From the President .....	5
NOGS Officers / Contacts .....	6
Upcoming Events & Activities .....	7
NOGS Luncheon Presentation .....	9
February & March Calendars .....	12
Drill Bits .....	18
Info-Tidbits .....	27
NOGS Memorial Foundation .....	29
FONO Fund .....	29
NOGS Welcomes .....	30

### Special Features:

NOGA News .....	13
2013 Annual NOGS Golf Outing .....	15
NOGS Christmas Holiday Party Photos .....	16
From The Bookshelf Book Review .....	17
A Look Back at 2012's NOGS' Activities .....	22

## on the cover:

### Cover Photo Submitted by: Roy Walther

This well is the Shell #1 Realty Operators Unit 4 located on the north flank of the Gibson Field in Terrebonne Parish. It was spudded in October 1941 and blew out at a depth of 6298'. The well cratered and the rig sank out of sight. It was never recovered.

Photograph was taken by an unknown roughneck.

# From the Editor



Hello again NOGS members! In this month's edition of the LOG you will notice several new announcements and columns. First off, a great recap of 2012 was submitted by Ed Picou where he provides a superb summary of what was an exciting year for our Society last year. A review was sent in by NOGS Member Jeff Spencer on the book entitled "Louisiana's Oil Heritage" by authors Tonja Koob Marking and Jennifer Snape. Tonja and Jennifer will be speakers at our March Luncheon, so if this book review piques your interest, be sure to join us for their talk in March. Also, we have included an announcement for the upcoming annual NOGS Golf Tournament which will be held this year at Money Hill on the Northshore. Please join us for a round of golf in April with your fellow NOGS members. Wouldn't you rather be out on the golf course than in the office on a Monday?

Thanks,  
**Jordan Heltz – NOGS LOG Editor**

# These nodes change everything.

With absolutely no cables,  
there's absolutely no stopping you.



True cable-free seismic

Dealing with tons of cable will hinder any seismic acquisition, land or marine. That's why our exclusive, true cable-free ZNodal® systems pay such huge dividends in any environment.

Our lightweight, compact ZLand® system lets your crews work faster and much more safely while recording high-resolution data, even in the most challenging terrain.

Our ZMarine® system, also completely self-contained, deploys easily and safely, even in congested areas, to water depths of 3000m, which makes it ideal for 4D reservoir monitoring.

Welcome to a new world of seismic acquisition.



FairfieldNodal.com



## From the President

First, let me recognize a couple of students who have really stepped up to the plate for NOGS, and have volunteered their time and technical expertise to help keep our organization remain remarkable. Robert Clark has done a fantastic job building our pre-meeting slideshow. Kevin Trosclair will take over as webmaster for the NOGS website. Thank you both very much for what you are doing.

It's Mardi Gras Time, y'all! Soon the streets will be filled with elaborate floats, limited edition coins and medallions, but best of all, joyful and peaceful carnival spectators. It is this time of year which excited me most about the proposition of moving to this wonderful city 6 years ago. I had my first 5 pounds of fresh boiled crawfish for the year last week. Feels a bit early, but the taste is as sweet as ever. Hearing live music in the French Quarter, watching alligators float down the Mississippi (I have seen this first hand), and enjoying a nice cold beverage under the shade of a 600 year old oak tree in City Park help pass a good time in the Big Easy.

Even with all the lagniappe New Orleans has to offer, I am sad to say some companies find it in their best interest to transfer employees out of town. This is evident in the decline of our AAPG membership, which unfortunately has lead to a decrease in the number of delegates for which NOGS is eligible. Beginning in 2014, NOGS will seat 3 delegates at the Houston AAPG meeting, which is a reduction by 1 from 2013.

On a lighter note, Super Saurus Saturday is once again on our radar. Tom Bergeon and his team of volunteers are preparing for another spectacular dinosaur display at the Louisiana Children's Museum, March 23, from 11-3. Please consider volunteering for this event, for it will be as rewarding for the volunteer as it is for the children.

Reminder: Our monthly luncheon will be hosted by Southeastern Geophysical Society on February 14 at LePavillon. The NOGS board decided that with the Super Bowl and Mardi Gras in full swing, the first Monday of February would be difficult for many of our members to attend.

Looking ahead, the NOGS Golf Tournament is scheduled for Monday, April 29 at Money Hill! Please come out and help find my lost balls. Golf has never been my forte, but it's hard to beat a beautiful day out on the course!

## NOGS Office

Office Manager: Annette Hudson

Phone: 504-561-8980 • Email: [info@nogs.org](mailto:info@nogs.org) • Website: [www.nogs.org](http://www.nogs.org)

The office is located at 810 Union Street, Suite 300, New Orleans, LA 70112.

Correspondence and all luncheon reservations should be sent to the above address.



## BOARD OF DIRECTORS

		<b>Company</b>	<b>Phone</b>	<b>E-mail</b>
President	Will Jorgensen	Shell	504-728-6339	<a href="mailto:william.r.jorgensen@shell.com">william.r.jorgensen@shell.com</a>
Vice President	Kevin McVey	ETROA Resources LLC	985-809-3808	<a href="mailto:kmcvey@etroa.com">kmcvey@etroa.com</a>
Secretary	Bruce Bahlinger	Saratoga Resources Inc	985-809-9292	<a href="mailto:bbahlinger@charter.net">bbahlinger@charter.net</a>
Treasurer	Kelli Hardesty	Environmental Resources Management	504-831-6700	<a href="mailto:kelli.hardesty@erm.com">kelli.hardesty@erm.com</a>
President-Elect	Chuck Holman	BSEE	504-731-7837	<a href="mailto:charleswholman@bellsouth.net">charleswholman@bellsouth.net</a>
Editor	Jordan Heltz	Chevron	985-773-7163	<a href="mailto:jordan.heltz@chevron.com">jordan.heltz@chevron.com</a>
Director 2013	Edward B. Picou, Jr.	Consultant	504-529-5155	<a href="mailto:epicou@bellsouth.net">epicou@bellsouth.net</a>
Director 2014	Michael N. Fein	W & T Offshore	504-210-8148	<a href="mailto:mikef@wt offshore.com">mikef@wt offshore.com</a>
Director 2015	Irion Bordelon, Jr.	NorthStar Energy, LLC	985-778-3827	<a href="mailto:irion.bordelon@yahoo.com">irion.bordelon@yahoo.com</a>

## COMMITTEE

	<b>Chairperson</b>			
AAPG Delegates	Arthur H. Johnson	Hydrate Energy International	504-464-6208	<a href="mailto:artjohnson51@hotmail.com">artjohnson51@hotmail.com</a>
AAPG Student Chapter	Hunter Berch	LSU	662-312-1300	<a href="mailto:hberch1@tigers.lsu.edu">hberch1@tigers.lsu.edu</a>
AAPG Student Chapter	Michael Hopkins	Tulane University	228-209-2262	<a href="mailto:mhopkins@tulane.edu">mhopkins@tulane.edu</a>
AAPG Student Chapter	Drew Boudreaux	UNO	337-578-5587	<a href="mailto:apboudr1@uno.edu">apboudr1@uno.edu</a>
Advertising-Log	Kimberly Maginnis	LLOG Exploration	985-801-4761	<a href="mailto:kimberlym@llog.com">kimberlym@llog.com</a>
Auditing	Bay Salmeron	Chevron	832-854-6431	<a href="mailto:bay.salmeron@chevron.com">bay.salmeron@chevron.com</a>
Awards	Michael N. Fein	W & T Offshore	504-210-8148	<a href="mailto:mikef@wt offshore.com">mikef@wt offshore.com</a>
Ballot	Kelli Hardesty	Environmental Resources Management	504-831-6700	<a href="mailto:kelli.hardesty@erm.com">kelli.hardesty@erm.com</a>
Best Paper	Bay Salmeron	Chevron	832-854-6431	<a href="mailto:bay.salmeron@chevron.com">bay.salmeron@chevron.com</a>
Entertainment	Chuck Holman	BSEE	504-731-7837	<a href="mailto:charleswholman@bellsouth.net">charleswholman@bellsouth.net</a>
Environmental	Daisy Pate	Pontchartrain Partners	504-862-1775	<a href="mailto:daisy.pate@gmail.com">daisy.pate@gmail.com</a>
External Affairs	Michael A. Fogarty	Sylvan Energy, LLC	603-523-4808	<a href="mailto:mike.a.fogarty@gmail.com">mike.a.fogarty@gmail.com</a>
Finance and Investment	Kelli Hardesty	Environmental Resources Management	504-831-6700	<a href="mailto:kelli.hardesty@erm.com">kelli.hardesty@erm.com</a>
Historical	Edward B. Picou, Jr.	Consultant	504-529-5155	<a href="mailto:epicou@bellsouth.net">epicou@bellsouth.net</a>
Membership/Directory	Carlo C. Christina	Retired (C & R Expl. Inc)	504-835-4116	<a href="mailto:Carlocc398@aol.com">Carlocc398@aol.com</a>
Nominating	Arthur H. Johnson	Hydrate Energy International	504-464-6208	<a href="mailto:artjohnson51@hotmail.com">artjohnson51@hotmail.com</a>
Non-Technical Education	Duncan Goldthwaite	Consultant	504-887-4377	<a href="mailto:DGldthwt@aol.com">DGldthwt@aol.com</a>
Office Operations	Daisy Pate	Pontchartrain Partners	504-862-1775	<a href="mailto:daisy.pate@gmail.com">daisy.pate@gmail.com</a>
Publications Sales	Edward B. Picou, Jr.	Consultant	504-529-5155	<a href="mailto:epicou@bellsouth.net">epicou@bellsouth.net</a>
School Outreach	Thomas C. Bergeon	Century Exploration	504-832-3772	<a href="mailto:Tom.bergeon@centuryx.com">Tom.bergeon@centuryx.com</a>
Scouting	Carol Rooney	Consultant Geologist	504-835-1909	<a href="mailto:carolbrooney@aol.com">carolbrooney@aol.com</a>
Special Projects	Larissa Cupp		978-621-5074	<a href="mailto:Larissacupp@gmail.com">Larissacupp@gmail.com</a>
Sponsorship/Houston	David E. Reiter	Woodside Petroleum	713-401-0045	<a href="mailto:david.reiter@woodsideenergy.com">david.reiter@woodsideenergy.com</a>

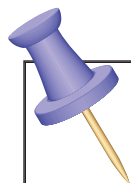
## NOGS LOG STAFF

Editor	Jordan Heltz	Chevron	985-773-7163	<a href="mailto:nogseditor@gmail.com">nogseditor@gmail.com</a>
Editor-Elect	Sheri Richardson	LaBay Exploration Co LLC	504-371-5967	<a href="mailto:srichardson@labayexploration.com">srichardson@labayexploration.com</a>
Auxiliary	Peggy Rogers	NOGA	504-392-6323	<a href="mailto:lrogers79@cox.net">lrogers79@cox.net</a>
Info Tidbits	Jordan Heltz	Chevron	985-773-7163	<a href="mailto:nogseditor@gmail.com">nogseditor@gmail.com</a>
Drill Bits	Carlo C. Christina	Retired (C & R Expl. Inc)		<a href="mailto:drillbits81@yahoo.com">drillbits81@yahoo.com</a>
Drill Bits	Kevin Trosclair	UNO Graduate Student	504-202-7997	<a href="mailto:kjtrosc1@uno.edu">kjtrosc1@uno.edu</a>
Staff Photographer	Arthur Christensen	Shalimar Consulting	985-893-2013	<a href="mailto:arthur_christensen@yahoo.com">arthur_christensen@yahoo.com</a>
Layout	Kristee Brown	Creative Graphics & Printing LLC	985-626-5223	<a href="mailto:kpbrown@bellsouth.net">kpbrown@bellsouth.net</a>
Webmaster	Edward B. Picou, Jr.	Consultant	504-529-5155	<a href="mailto:epicou@bellsouth.net">epicou@bellsouth.net</a>

## NOGS AUXILIARY

<b>Officers</b>		<b>Phone</b>	<b>Directors</b>	<b>Year</b>	<b>Phone</b>
President	Mary Walther	504-392-9332	MaryEllis Hasseltine	2011-13	504-885-7657
1st Vice-President	Dolores Murphy	504-393-0878	Gwenn Swaney	2011-13	504-831-0748
2nd Vice-President	Camille Yeldell	504-835-7467	Pat Williamson	2011-13	985-626-6910
Secretary	Beverly Christina	504-835-2383	Beverly Kastler	2012-14	504-286-0879
Treasurer	Judy Lemarie'	504-393-8659	Linda Peirce	2012-14	504-393-7365
Parliamentarian	Alma Dunlap	504-737-2678	June Perret	2012-14	504-664-0651
Member-at-Large	Jean Jones	504-738-8091			





# UPCOMING Events & Activities

**February 14 • SGS-NOGS Luncheon**

**LePavillon Hotel**

New Orleans

**Presentation:**

***4D Time-Lapse Seismic Reservoir Monitoring of African Reservoirs***

**Guest Speaker:**

**Rocco Detomo, Jr.**

Shell Nigeria Exploration & Production Co., Inc. – Lagos, Nigeria

*See page 9 for Abstract and Biography*

**LEPAVILLON HOTEL**

Check with concierge or  
front desk for location.

Lunch served at 11:30 am

**ADMISSION:**

**With reservation .....\$30.00**

**Without reservation .....\$35.00**

**Student Member with reservations..... FREE**

**March 4**

**NOGS Luncheon**

Holiday Inn - New Orleans, LA

For more information, [www.nogs.org](http://www.nogs.org)

**April 29**

The 2013 Annual NOGS Golf Outing  
Money Hill Golf Course • Abita Springs, LA

For more information, [www.nogs.org](http://www.nogs.org) or see page 15 of this issue.

**March 23**

**Super Saurus Saturday**

Louisiana Children's Museum - New Orleans, LA

**VOLUNTEERS NEEDED!**

Contact Tom Bergeon

[tom.bergeon@centuryx.com](mailto:tom.bergeon@centuryx.com)

504-832-3772

For more information,

[www.nogs.org](http://www.nogs.org)

or see page 26 of this issue.

## NOGS CONTACT LIST

*Continued from previous page*

### MEMORIAL FOUNDATION

#### BOARD OF TRUSTEES

		Company	Phone	E-mail
2012-2013 Chairman	Daisy Pate	Pontchartrain Partners	504-862-1775	daisy.pate@gmail.com
2012-2013 Secretary	Will Jorgensen	Shell	504-728-6339	william.r.jorgensen@shell.com
2012-13 Trustee	Jennifer Connolly	Shell	504-728-6411	jennifer.connolly@shell.com
2012-13 Trustee	William M. Whiting	Consultant	504-947-8495	bootscon@aol.com
2013-14 Trustee	J. David Cope	ANKOR Energy LLC	504-596-3672	dcope@ankorenergy.com
2013-14 Trustee	Tom Klekamp	Amber Resources LLC	985-845-4046	klekamp@bellsouth.net
2014-15 Trustee	Rick Kear	Schlumberger Oil Field Services	504-858-2444	kearl@slb.com
2014-15 Trustee	TBA			

### AAPG DELEGATES

#### Term Ends

2014	Arthur H. Johnson	Hydrate Energy International	504-464-6208	artjohnson51@hotmail.com
2014	Brenda Reilly	AMROMCO Management LLC	504-430-4240	reillybe@yahoo.com
2014(a)	Elizabeth C. McDade	McMoRan Exploration Co.	504-582-4510	ecmcdade@bellsouth.net
2014(a)	Frances A. Wiseman	BOEM (retired)	504-831-8343	snowde.fran@gmail.com
2015	Susan A. Waters	Shell	504-728-0229	susan.waters@shell.com
2015	William M. Whiting	Consultant	504-947-8495	bootscon@aol.com
2015(a)	David E. Balcer	Chevron	985-773-6725	dbalcer@chevron.com
2015(a)	Earl W. Cumming	Shell	504-728-6370	earlcumming@shell.com

### NEW MEMBERS

Carrol J. Michael	Owner	SciMin Technical Consulting	315-600-7398	splinterexpert@gmail.com
Tavia L. Prouhet	Geologist	Chevron	985-773-6737	tavia.prouhet@chevron.com

# Deep Water

WELL CONSTRUCTION

## Are all your services deepwater ready?

Control Measures	Complexity/Process + Exposure	Preparedness				
		1	2	3	4	5
Low	-5	-5	-10	-15	-20	-25
	-4	-4	-8	-12	-16	-20
	-3	-3	-6	-9	-12	-15
	-2	-2	-4	-6	-8	-10
	-1	-1	-2	-3	-4	-5



**Our Project Readiness Assessment (PRA) approach has been applied and improved over the last 5 years.**

All deepwater projects in which Schlumberger participates benefit from our PRA process, which complies with new U.S. regulatory requirements. This helps deliver seamless, efficient startup, and reduced NPT.

Learn more at

[www.slb.com/deepwaterready](http://www.slb.com/deepwaterready)

Global Expertise  
Innovative Technology  
**Measurable Impact**

# Schlumberger





## February 14 SGS-NOGS Luncheon Presentation

☆☆☆ at the LePavillon Hotel ☆☆☆



### 4D Time-Lapse Seismic Reservoir Monitoring of African Reservoirs



*Presented by*

**Rocco Detomo, Jr.**

Shell Nigeria Exploration & Production Co., Inc.

Lagos, Nigeria

#### ABSTRACT

The world's growing attention to our industry's prudent operations has given rise to an increased demand for assessing the applicability of reservoir monitoring. The technical and visual demonstration of what is happening in a reservoir deep in the Earth, especially away from the immediate well bore, is of key importance for insuring that fluids are moving as we have modeled them, and that the integrity of the reservoir is being maintained. 4D time-lapse seismic monitoring offers an effective method for detailing laterally extensive areas to monitor changes in both the geomechanical and elastic properties of the Earth.

The key to the 4D method is to insure that the 4D signals are detectable and identifiable from the noise and from other repeatable signals for which we cannot explicitly account. A 4D signal's detectability is dependent on the magnitude of the change in rock and fluid properties associated with the reservoir's production and on the level of random seismic noise. The ability to identify and interpret this 4D signal depends strongly on the repeatability of the seismic surveys, and the complexity of any other changes in the Earth, such as in the overburden. The greatest value in 4D is attained by assuring that the seismic experiment is repeated accurately and that the only changes seen are attributable to changes in the reservoir. There have been numerous reported examples where 4D measurements would have added key information to a field's operation, and a surprising number of examples where the most significant value derived from a 4D measurement was in seeing what was previously unexpected. We often make strong assumptions about what we know about our reservoirs between our points of well control.

Dr. Detomo will discuss how to assess the applicability of this technique to different geologic situations, examine key features of seismic acquisition, repeatability and seismic data-processing methods, and discuss repeat-survey interpretation strategies. Different acquisition strategies and systems will be highlighted, including marine and onshore cases. Industry examples of 4D time-lapse survey data from the Middle East and Africa will be shown with areas of typical value and business impact discussed. Fortunately, there are many African reservoirs where 4D time-lapse methodologies can be applied. Hopefully, at the end of this lecture, you will find yourself asking, "If I can detect the 4D signal, why would I not monitor my reservoir?"

#### BIOGRAPHY

**Rocco Detomo, Jr.** received his B.Sc. and M.Sc. in physics from the Ohio State University in 1973 and 1975, respectively. He served as an experimental research associate at the Ohio State University Van de Graaff Accelerator Laboratory where he received his Ph.D. in experimental nuclear physics in 1981. Rocky then joined Shell Western E&P as a geophysicist where he supervised Land Acquisition and Seismic Processing teams and interpreted onshore seismic in the continental and western United States. From 1991 until 2005, Rocky was in New Orleans managing and interpreting for Shell Offshore, Inc and Shell International E&P in the Gulf of Mexico, focusing on subsalt and structurally complex and technically challenging areas. He was the lead geophysical interpreter for a number of Shell's subsalt developments until he returned to Houston to lead Global Deep Water Exploration Evaluation and Quantitative Integrated Evaluation Capability Deployment, and serve as Shell's Gulf of Mexico Exploration Seismic manager. In 2008, Rocky moved to Lagos, Nigeria to serve as head of Reservoir Geophysics/Quantitative Interpretation for Shell in Sub-Saharan Africa. He is the recipient of the Houston Geological Society 1997 Best Paper of the Year, co-recipient of the 1997 A.I. Levorsen Award for GCAGS Best Paper, and Shell's 1991 President's Award. Rocky was president of the Southeastern Geophysical Society, the Technical Program Chairman for the 2006 SEG Annual Meeting, is Chairman of the SEG Travel Grants Committee, and serves as a Trustee Associate of the SEG Foundation. He is also a member of EAGE, APS, Sigma Xi, Phi Kappa Phi, and Who's Who in "Teaching in America." He spends his spare time traveling, sailing, and playing and coaching soccer.

**THE LUNCHEON RESERVATION DEADLINE IS FEBRUARY 8 - CONTACT THE NOGS OFFICE**

*"And Looking Ahead . . ."*

*The next luncheon will be held on March 4th. Our guest speakers, Dr. Tonja Koob and Jennifer Snape of Gaea Consultants in New Orleans, will present "Chronological Geographical History of the Development of Oil throughout Louisiana 1910-1960." Contact the NOGS office at 561-8980 or use the PayPal link on the NOGS website ([www.nogs.org](http://www.nogs.org)) to make your reservation.*

## Accurate Analysis Starts with Quality Data

Neuralog helps increase the value of your paper logs with digital data. Solutions for log scanning, automated digitizing and log analysis quickly improve the way you work.

### NeuraScanner

- Scan logs at 10" per second
- Color, grayscale and b&w

### NeuraLog

- Automated digitizing
- Log data validation
- Log analysis & curve calculations



Visit us at NAPE Booth 3025!

[www.neuralog.com](http://www.neuralog.com)



**Neuralog**  
*Turning Paper Into Petroleum*

© 2012 Neuralog • [www.neuralog.com](http://www.neuralog.com) • 1.281.240.2525 • 1.800.364.8728

# SEI<sup>®</sup>

**Seismic Exchange, Inc.**

**Strategic Speculative Surveys**  
**Geophysical Data Marketing & Management**

**YOUR**  
Full Service  
National  
Seismic Data  
Marketing Firm



DALLAS DENVER HOUSTON MIDLAND NEW ORLEANS OKLAHOMA CITY CORPUS CHRISTI TULSA  
201 St Charles Avenue, Suite 4300, New Orleans, Louisiana 70170-4300 504-581-7153 FAX 504-581-9591

[seismicexchange.com](http://seismicexchange.com)





# Drill with confidence.

Diversified Well Logging, LLC brings the accuracy and expertise only a company with over sixty years in the oil and gas industry can deliver. We are your eyes and ears in the field, especially when it comes to deep water or high pressure, high temperature areas.

DWL offers 24-hour formation evaluation. We provide secure and customized real-time data communication, in-house research and development, and 24/7 on-call support for our equipment and our engineers.

Whether you have a 10-day job or a 110-day job, we provide the specialized attention you require. **Our experience means you can be confident in the safety and performance of your well.**



- *Formation Evaluation*
- *Geosteering*
- *Drilling Optimization*
- *Real-time Data Transmission*
- *Early Kick Detection*



**DIVERSIFIED**  
WELL LOGGING, LLC

*Serving the Oil and Gas Industry for Over 60 Years*



## February

Sunday	Monday	Tuesday	Wednesday	Thursday	Friday	Saturday
					1	2
3	4	5	6	7	8	9
10	11	12 Mardi Gras!	13	14 SGS-NOGS Luncheon LePavillon @ 11:30 A.M.	15	16
17	18 President's Day	19	20 NOGS Board Mtg NOGA Luncheon	21	22	23
24	25	26	27	28		

## March

Sunday	Monday	Tuesday	Wednesday	Thursday	Friday	Saturday
					1	2
3	4 NOGS Luncheon Holiday Inn @ 11:30 A.M.	5	6	7	8	9
10	11	12	13	14	15	16
17	18	19	20 NOGS Board Meeting	21	22	23 Super Saurus Saturday 11 AM - 3 PM
24	25	26	27	28	29 Good Friday	30
31 Easter						

# New Orleans Geological Auxiliary News

*"The objective of the Auxiliary is to promote fellowship among the wives of the members of New Orleans Geological Society and to render assistance to NOGS upon request."*

Hopefully everyone has returned or recovered from a joyous Christmas and New Year celebration and is looking forward to the next very exciting NOGA event coming up February 20th when we will invite spouses and friends to join us at the Metairie Country Club to hear Ronald Drez, author, historian and lecturer.



Ronald Drez was born and educated in New Orleans. He was a commissioned officer in the U.S. Marine Corps from 1962-69, serving in combat in Vietnam 1968-69. He was awarded two Bronze Stars, the Vietnamese Cross of Gallantry with Silver Star for heroism in combat, and the Presidential Unit Citation.

Ron was the assistant director and research associate to the late historian Dr. Stephen E. Ambrose at the Eisenhower Center and to Dr. Douglas Brinkley at the University of New Orleans, 1987-2007. He is currently president of Stephen Ambrose Tours, Inc., historian and leader for Normandy, Civil War, Lewis & Clark, War in the Pacific, and Italian Campaign tours.

He is the author of many award winning books and contributing writer/editor for magazines and the Encyclopedia Britannica.

We are privileged to have such an exciting and interesting speaker talk to us about the War of 1812, especially the battle of New Orleans.

Susie Baker, Jean Jones and Camille Yeldell will be planning the day.

Don't miss out and bring your spouse and/or friend.

**Peggy Rogers, NOGS LOG**



## New Orleans Geological Auxiliary Membership Application

Name \_\_\_\_\_ Spouse's Name \_\_\_\_\_  
Address \_\_\_\_\_ Home Phone \_\_\_\_\_  
City, State, Zip \_\_\_\_\_ Email \_\_\_\_\_  
Spouse's Company \_\_\_\_\_ DUES: \$25.00

**Please send \$25 check payable to NOGA to Judy Lemarié, Treasurer, #2 Yosemite Dr., New Orleans, LA 70131**

**Countdown: We are 248 days from the convention!**

Things are coming together very well with plans for the October convention. Abstracts were due in mid-January, and we should have the technical program nailed down this month. The technical program team has done a great job lining up session chairs and pulling in papers. Special thanks to George Rhoads, Roger Kocken, Bob Meltz, and Dick Fillon.

An important next step will be in editing the papers submitted for the GCAGS Transactions. Mike Ledet is Senior Editor, and we have lined up a team of Associate Editors, but we need more help with this. If you would like to pitch in and help with the editing process, please let me know. Looking to the future, there will be a need for many volunteers to help with registration and other tasks.

Art Johnson  
General Chairman  
Artjohnson51@hotmail.com • 504-464-6208



# *Second Lining*

## *To Future Energy Resources*



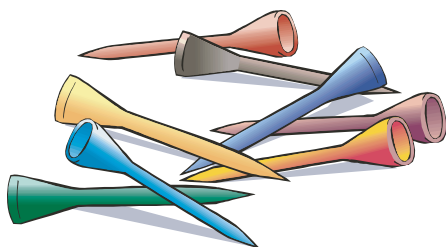
HOSTED BY



# **GCAGS 2013 ■ New Orleans**

## **October 6-8, 2013**





# THE 2013 ANNUAL GOLF OUTING

Proceeds from this event will help fund the **Bill Craig Memorial Fund\*** 501(c)(3) organization  
Last year, the golf tournament generated \$5,000.00. Let's keep it going!

## MONEY HILL GOLF COURSE in ABITA SPRINGS on MONDAY, APRIL 29

The format will be a 4-person scramble w/shotgun start at High Noon

Food sponsored by Tim Klibert w/ Diversified Well Logging

**Registration opens at 10:00 a.m. with Brunch served until tee time.**  
**Price includes green fees, cart, range balls, food & drinks, flight, prizes & 2 Mulligans.**

What else could you possibly ask for? Donations of any kind are welcome.

**The cost is \$140 / individual or \$650 / corporate. Hole sponsors are \$125.**

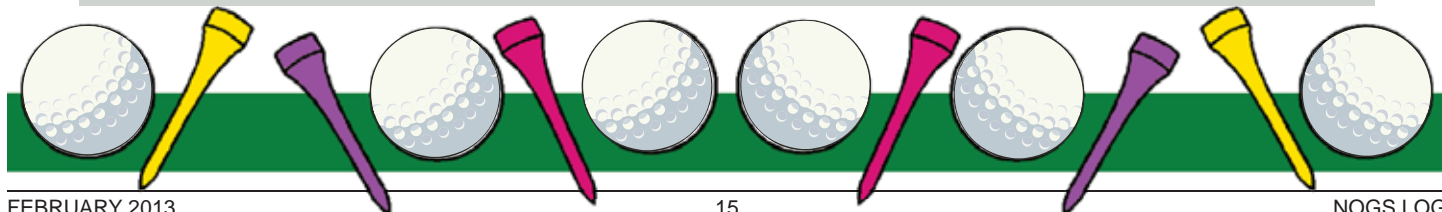
This event always fills up, and we are limited to **120 players only**. Please register early to avoid confusion. Remember you are not registered until NOGS has received payment and you are confirmed by Annette. As usual, we need volunteers. If you can help out, you will be treated to a day of fun, food, and be eligible for some door prizes. Make sure you supply your handicap or a score that typifies a set of rounds of golf over recent time no greater than 2 years in the space provided.

**FOR REGISTRATION, DONATIONS OR TO VOLUNTEER, CONTACT:**  
**Annette Hudson (504-561-8980) [annette@nogs.org](mailto:annette@nogs.org)**

To register, contact Annette Hudson at the NOGS  
Office, 810 Union St. • Suite 300 • New Orleans, LA 70112 • 504-561-8980.

Cash, check (payable to NOGS). Credit cards accepted through NOGS PayPal account. Go to: [www.nogs.org](http://www.nogs.org)

Name _____	handicap _____	@\$140 each
Company _____		@\$650 each
Phone _____	Email _____	
Names of others in your group:	Cash Donation: \$ _____	
_____ handicap _____	_____ handicap _____	
_____ handicap _____	_____ handicap _____	
_____ handicap _____	_____ handicap _____	



# NOGS

JOINT SOCIETY

## Christmas Holiday Party





## FROM THE BOOKSHELF: *A Review of Louisiana's Oil Heritage*

*Louisiana's Oil Heritage* is a new release (October, 2012) in Arcadia Publishing Company's *Images of America* book series. The authors, Tonja Koob Marking and Jennifer Snape, are civil engineers in New Orleans. There are several books in the *Images of America* series that capture the oil industry's beginnings and growth in North America. As one of the leading states in oil and gas production for over 100 years, it is satisfying to see a book of Louisiana's oil industry images included in this series. This book includes a good mix of images with informative captions.

The opening chapter, *Acadiana Louisiana*, contains great images of the Jennings (Evangeline) oilfield, Louisiana's first. Most of the images come from the Jennings Carnegie Public Library, a source for great local oilfield photography that other authors have relied upon. Nice additions to this chapter include an early stock certificate and some newspaper advertisements. Other, more challenging sources of south Louisiana oilfield images do exist and could have provided additional coverage of other early Louisiana oilfields (Welsh, Hackberry, Vinton, the "Five Islands" salt domes, etc.).

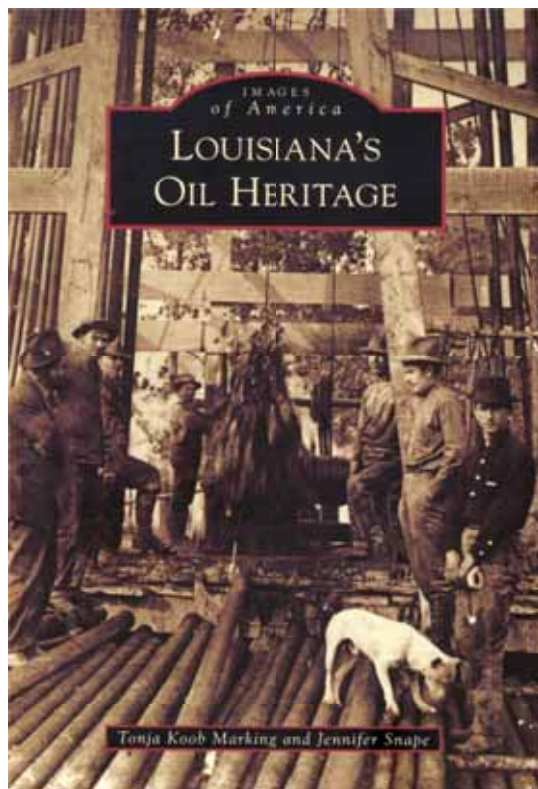
Chapter Two, *Northwest Louisiana* relies heavily on another prime source of early Louisiana oilfield material, the Louisiana State Oil and Gas Museum in Oil City. Both chapters one and two include excellent views of wooden

derricks, crews posing on the derrick floors, gushers, and oilfield fires, all with well-written captions. The introduction to chapter two includes a common historical inaccuracy that the "nation's first offshore well" was drilled in Caddo Lake (1911). A photograph caption (p. 63) takes that inaccuracy even further: "world's first oil well in inland waters." Over-water drilling occurred in Grand Lake St. Marys, Ohio as early as 1891 and in Baku (Azerbaijan) much earlier (1840s).

Chapter Three, *Coastal and Offshore Louisiana*, contains a variety of views of drilling operations in inland and offshore waters, including some excellent views of rig life. Chapters Four (*Oil Transportation*) and Five (*Life in the Camps and Celebrating the Oil Industry*) include great views of mule, oxen, and horse teams pulling loads of oilfield equipment, barge transportation, and early pipeline laying crews. The book ends with scenes in

early oilfield camps and the 1951 Golden Oil Jubilee in Jennings.

Reviewer: Jeff Spencer is a NOGS member and geologist, employed by Midstates Petroleum in Houston. He currently serves as the GCAGS Historian and as the Vice-president of the Petroleum History Institute. Jeff has authored/co-authored papers on Louisiana's Jennings, Vinton, and Hackberry oil field histories. He co-authored *Ohio Oil and Gas*, in Arcadia's *Images of America* book series and is currently working on another Arcadia oil-related book.





# South Louisiana and Offshore Gulf of Mexico Exploration and Production Activities

## LAFAYETTE DISTRICT, ONSHORE AREA

*By Carlo C. Christina*

During the month of December, 28 permits to drill were issued by the Office of Conservation, Lafayette District, Onshore Area.

### WEST LAKE SALVADOR---LAKE SALVADOR---LAROSE COMPLEX

A review of drilling activities and production figures for the past 2 years in South Louisiana, Onshore, reveals several “geological hot spots.” These areas include 3 trend plays, namely, the **Tuscaloosa Marine Shale Play**, (A), in the Florida parishes, the **Wilcox Trend**, (B), in Beauregard, Allen and Evangeline Parishes, and the **Subsalt Play**, (C), now in Cameron and St. Martin Parishes.

In addition to the trend plays, 4 fields have had a tremendous impact on drilling and production, namely **Atchafalaya Bay Field**, (D), **Bayou Carlin Field**, (E), **Pine Prairie Field**, (F), and **South Bearhead Creek Field**, (G).

The most recent “hot spot” in South Louisiana is the **West Lake Salvador-Lake Salvador-Larose Complex**, (H), located in St. Charles and Lafourche Parishes, in T15S, T16S and T17S, and R21E and R22E. In November, 2012, 16 state leases were acquired in the area, with Square Mile Energy obtaining 11 leases and Castex Energy receiving 5 leases.

In West Lake Salvador Field, within the past 4 months, Castex Energy has permitted 4 wells projected to 16,000 feet and 1 well to 13,500 feet. Previously, 3 wells had been completed in the Cris I and Cib op sections.

In Lake Salvador Field, Castex has permitted a 16,000 foot test located 1 mile west of production and is now drilling a wildcat to 16,000 feet, located 2 miles southwest of production.

On the north flank of Larose Field, Square Mile Energy has 4 wells currently active in the area. With the recent acquisition of 16 new state leases we can anticipate more drilling in the near future.

### NEW LOCATIONS

In Lafourche Parish, Castex Energy has staked location for the #1 Castex LP13 in **Lake Enfermer Field**, located in Sec. 13, 20S-22E. The well is located 1 1/2 miles northeast of the Castex #1 LP 23, a recent well awaiting completion at a depth of 14,940 feet. (245795)

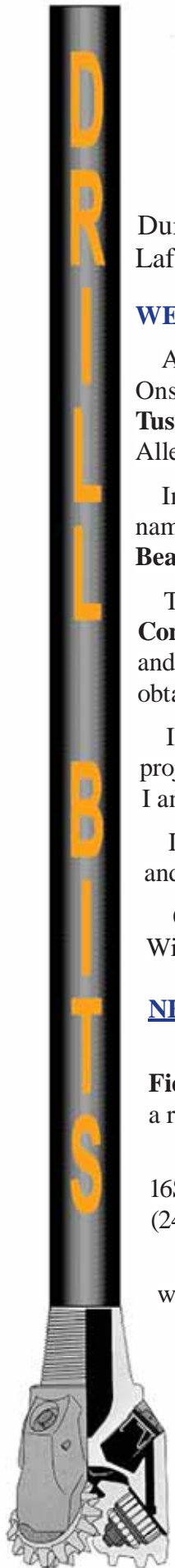
In St Charles Parish, Castex Energy has permitted 2 wells in the **West Lake Salvador Field**, in 16S-21E. The #1 SL 20643, and the #3 SL 19744 are projected to a proposed depth of 16,000 feet. (245820 and 245778)

Castex has also permitted the #2 SL 19201 in **Lake Salvador Field**, 16S-21E., located 1 mile west of production. It will be drilled to 16,000 feet. (245805)

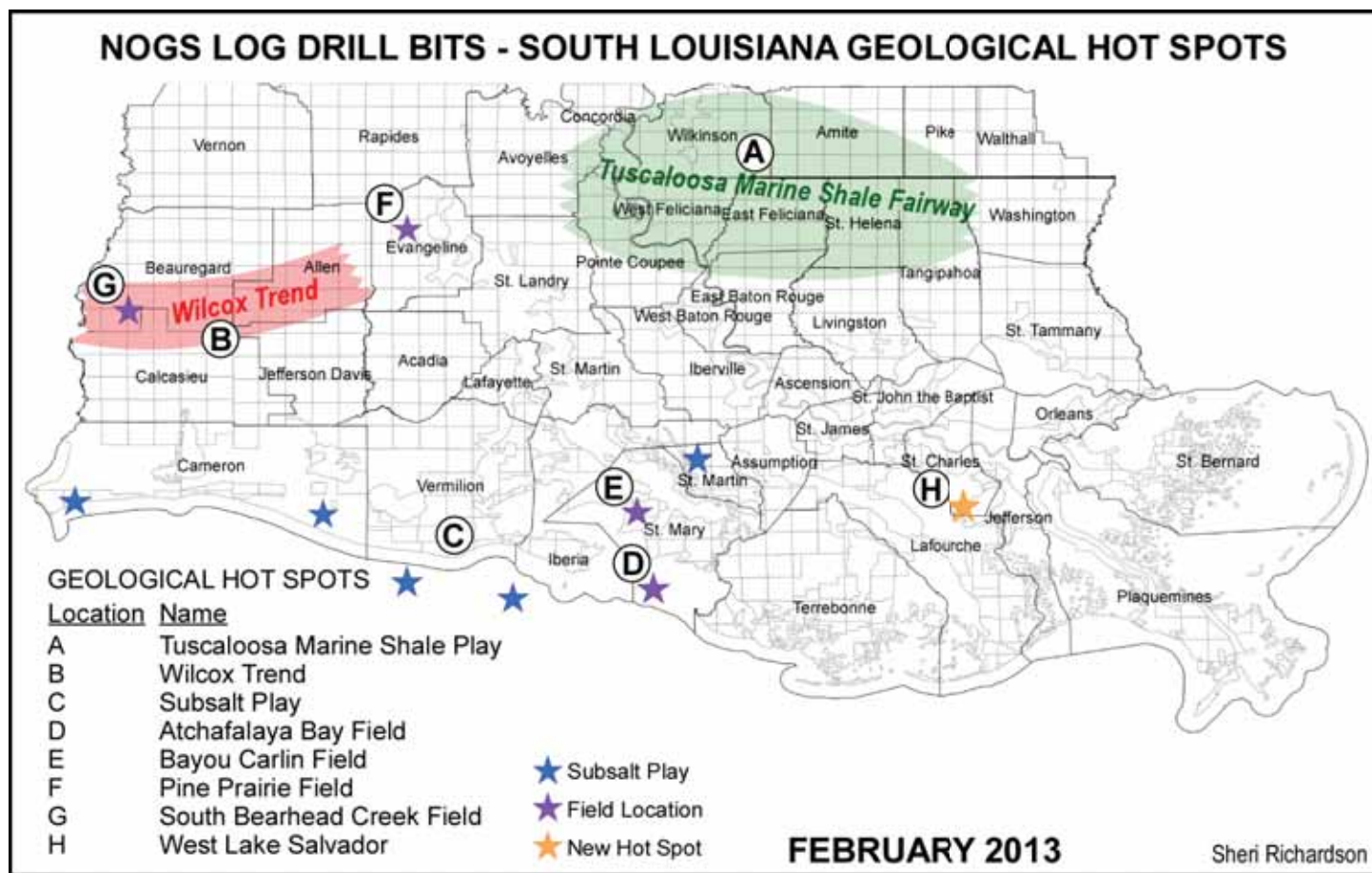
### COMPLETIONS

In St. Charles Parish, **Bayou Villars Field**, Badger Energy had plugged and abandoned its #1 SL 21041 at a depth of 10,600 feet. The well was located in T15S-R22E, approximately 1 mile north of production in the field. (245593)

Square Mile Energy has completed the #2 SL 20627 in **West Lake Salvador Field** as an oil well, flowing 293 BPOD through perforations 12,957 to 12,997, overall, in the Cris I section. The well is located in St. Charles Parish, in T16S-R21E, and was drilled to a total depth of 13,372 feet. (245575)



In **Main Pass Block 49 Field**, Brammer Engineering has extended production 1 mile to the north with the completion of the #1 SL 20835. The well was drilled to 10,500 feet, and completed in the Q Sand, flowing 3005 MCFD and 96 BCPD, through perforations 9254 to 9259. (245086)



## OFFSHORE GULF OF MEXICO SHELF AND DEEPWATER ACTIVITIES

*by Al Baker*

During December 2012, the BOEM approved **80** drilling permits. Of these, **40** were for Gulf of Mexico shelf wells, and **40** were for Gulf of Mexico deepwater wells. There were **4** shelf (3 exploratory and 1 development) and **10** deepwater (4 exploratory and 6 development) new well permits granted.

On the shelf, **Apache** received 2 new well drilling permits for their **#1** exploratory well on **Main Pass 295** and their **#A-6** development well on **Eugene Island 126**. **Castex** was also granted a permit for their **#1** exploration test on **South Marsh Island 12**, and **Hall-Houston Exploration IV** was given a permit to drill their **#1** exploration well on **High Island 155**.

In deepwater, exploratory new well permits were awarded for the following four wells: **Exxon Mobil-Keathley Canyon 918 #2**, **Cobalt International Energy-Green Canyon 896 #1**, **Noble Energy-Mississippi Canyon 992 #1** and **Shell Offshore-Mississippi Canyon 393 #1**. Of the six development new well permits, two were granted to **Exxon Mobil** for their **Keathley Canyon 964 #2** and **#3** wells, and 2 were awarded to **Petrobras America** for their **Walker Ridge 206 #5** and **Walker Ridge 425 #3** wells. **BHP Billiton** received one development new well permit for their **Green Canyon 653 #SC-103** well. The other development new well permit was granted to **Shell Offshore** for their **Mississippi Canyon 765 #P-6** well.

On December 28th, IHS-Petrodata reported that the Gulf of Mexico mobile offshore rig supply totaled **113**, and the contracted rig count stood at **77**. The total rig count is 2 less than reported last month. The region's fleet

utilization rate currently stands at **68.1%**. This compares to 71 out of the 118 rigs available during the same period in 2011 for a 60.2% utilization rate.

In addition, there were **28** platform rigs under contract out of the **52** total in the rig fleet for a fleet utilization rate of **53.9%**. The current number of platform rigs under contract in the Gulf is the same as reported last month.

On December 28th, the BakerHughes Rig Counts indicated that there were **51** active mobile offshore rigs in the Gulf, which represents **66.2%** of the total mobile rigs under contract. This is an increase of **1** rig when compared to last month. The majority of the drilling continues to remain in the Offshore Louisiana and deepwater Northern Gulf regions. However, Offshore Texas saw the arrival of its first rig in 2012 on the **Hall Houston-High Island 155** exploratory well mentioned above. The current active rig count compares to 42 active rigs during the same period last year. This 9-rig improvement number represents a **21.4%** increase in the active mobile offshore rig fleet on a year-to-year basis. Additionally, of the 28 platform rigs that are under contract, **18** (or **64.3%**) are currently working. This is the same total number of working platform rigs as reported last month.

On December 13th, **Helix Energy Solutions Group** announced that it was selling its oil and gas subsidiary, **Energy Resources Technology GOM**, to the privately held Houston firm **Talos Energy**. The \$610 million deal would divest Helix of all its Gulf of Mexico assets including its **Wang (#5) exploration well** currently drilling in **Green Canyon Block 237**. Under the terms of the deal, the final purchase price could range between \$600 and \$700 million depending upon the results of that well. On December 19th, Helix reported that the Wang well in the Phoenix Field was determined to be a commercial oil discovery. The well is situated about 93 miles offshore Louisiana in approximated 2,300 feet of water and was drilled to a total depth of 18,300 feet. The well found more than 100 feet of high quality oil pay with over 11,800 psi bottom-hole pressure. The well is currently being completed via a subsea tie back system to the Helix-owned Helix Producer I floating production unit. First production from the well is expected early second quarter 2013. The final purchase price of the deal is now contingent upon the ultimate success of the Wang well completion.

On December 27th, **McMoRan Exploration Co.** provided an update on the production test operations at its **Davy Jones Prospect** in South Marsh Island Block 230. McMoRan said the operations are ongoing and that recent attempts to unblock the perforations using a propellant stimulation gun had limited success. McMoRan is initiating operations to re-perforate the well using electric wireline through-tubing guns.

**McMoRan** also announced that the **Blackbeard West #2** ultra-deep exploration well on Ship Shoal Block 188 was drilled to a total depth of 25,584 feet. McMoRan is planning to set a production liner. Through logs and core data, McMoRan has identified three potential hydrocarbon bearing Miocene sand sections between 20,800 and 24,000 feet. Initial completion efforts will focus on the development of approximately 50 net feet of laminated sands in the Middle Miocene near 24,000 feet. Additional development opportunities in the well bore include approximately 80 net feet of potential low-resistivity pay near 22,400 feet and approximately 75 feet gross section near 20,900 feet. Pressure and temperature data indicate that completions at these depths require conventional equipment and technologies.



# CENTURY EXPLORATION NEW ORLEANS, LLC

*An independent gulf coast exploration, development and operating company*

Three Lakeway Center, Suite 2800  
3838 North Causeway Blvd.  
Metairie, LA. 70002

Office: 504.832.3750  
Fax: 504.832.3760  
[www.centuryx.com](http://www.centuryx.com)





**SMU** | GEOTHERMAL  
LABORATORY

Dr. David Blackwell and Maria Richards  
Roy M. Huffington Department of Earth Sciences  
Dallas, TX 75275-0395

This two-day international conference brings together leaders from business, engineering, finance, law, and research to explore specific topics relevant to capturing energy often overlooked or discarded during oil and gas production. The same technology can be used for both the waste heat to power (WHP) from surface equipment and the geothermal energy in well fluids to generate electrical power. Generating electricity on-site in the field reduces overall project expenses, eliminates CO2 emissions, and decreases dependency on the local grid. Projects producing electricity using oil wells were successfully completed in Mississippi and Wyoming. Extensive geothermal research is ongoing in the Williston Basin. WHP installations are widespread in manufacturing sectors. Combining surface and reservoir sources of thermal energy maximizes the opportunity for return on investment.

While the concept may sound easy, extracting heat from either below ground or surface sources, it draws on many diverse skill sets. This conference provides the necessary knowledge, procedures, and networking opportunities for optimizing on-site electrical production for field use or to sell to the grid. State-of-the-art technology will be showcased. Attend, and you'll be part of the clean energy solution: producing emission-free renewable energy while extending the life of an oil or gas field.

Go-Getters wanted.



## Geothermal Energy and Waste Heat to Power Utilizing Oil and Gas Plays

*Plan to attend the Conference!*

**March 12-14, 2013**

**SMU campus in Dallas, Texas**

**Keynote Speaker**

**Chairman Jon Wellinghoff**  
**Federal Energy Regulatory Commission**

**Interested in Sponsorship?**

Maria Richards 214-768-1975 [mrichard@smu.edu](mailto:mrichard@smu.edu)

Speaker abstracts requested: [geothermal@smu.edu](mailto:geothermal@smu.edu)

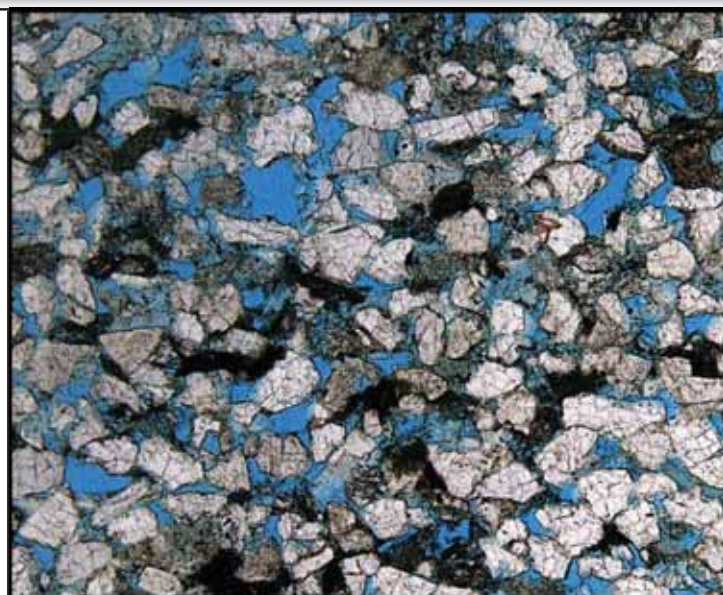
Details & registration: <http://smu.edu/geothermal>



**Shell has worked in partnership  
with the NOGS for many years, and  
is proud to count the society among  
its closest business associates.**

The New Orleans Geological Society was organized in 1941 to foster scientific research and advance the science of geology. Particular emphasis is laid on the exploration for and production of petroleum and natural gas. Related objectives include encouraging the adoption of improved methods of exploration, disseminating pertinent geological and technological data, and maintaining a high standard of professional conduct among its members.

[www.shell.com/us.sepc](http://www.shell.com/us.sepc)



## Offshore & South Louisiana Experts

- **CORE ANALYSIS**
- **PVT FLUID EVALUATION**
- **GEOLOGIC SERVICES**

**New Orleans: 504-733-6583**  
**Broussard: 337-837-8616**  
**Houston: 713-328-2673**  
**[www.corelab.com](http://www.corelab.com)**



This Changes Everything.

SAVE THE DATE:  
12-14 AUGUST 2013



# UNCONVENTIONAL

## RESOURCES TECHNOLOGY CONFERENCE

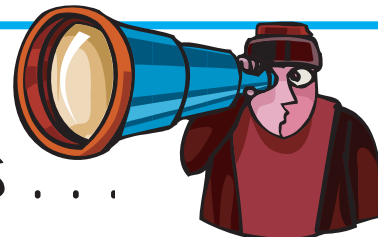
FUELED BY SPE • AAPG • SEG

12-14 August 2013 • Colorado Convention Center • Denver

[www.URTeC.org](http://www.URTeC.org)



## A Look Back at 2012's NOGS' Activities . . .



On March 24th, NOGS volunteers led by Tom Bergeon, participated in a Super Saurus Saturday event at the Louisiana Children's Museum. Approximately 650 to 700 children with their parents and friends enjoyed the event. The annual Golf Tournament was held on April 16th at the Tchefuncta Country Club Golf Course. Despite weather uncertainty, fifteen teams participated and enjoyed a good round of golf, plus great camaraderie, and a fabulous meal furnished by Diversified Well Logging. After expenses, the tournament provided in excess of \$5000 to the NOGS Memorial Foundation for the Bill Craig Memorial Fund.

With the publication of the June NOGS LOG, we saw the departure of Jannette Mexic-Sturm, who had formatted the LOG for the past two decades. During her tenure she had brought about many improvements for the publication. The July NOGS LOG issue witnessed a complete transformation in formatting, including the liberal use of color. All advertisements can now be printed in color. The "new" LOG is being produced by Kristee Brown, owner of Creative Graphics and Printing LLC of Mandeville, Louisiana. Recognition goes to former LOG Editor Dave Tatum and to current Editor Jordan Heltz for their efforts in making this noteworthy transition.

The 16th Annual Deepwater Symposium was held at the Hilton Riverside Hotel on August 15-16. NOGS is a co-sponsor of the event with SPE-Delta and the local chapter of the AADE. This year's symposium set a new attendance record. On September 21st NOGS hosted the annual Kickoff Party at the Rock 'n' Bowl Lanes. Over eighty folks attended, including a good number of student members. President-elect Bay Salmeron did a great job of organizing this event. The Annual Christmas Holiday Party was held on December 7th at the Chateau Country Club in Kenner, Louisiana. Although the attendance was a modest eighty, including ten students from LSU, the food was excellent and the music provided by The Profiles was most enjoyable. Mary Walther, assisted by Bay Salmeron, did a magnificent job of handing out the door prizes.

Note: The highlights of each year are archives in the "About Us" page of the NOGS website.



# Get More



# from your Core

With reservoirs becoming increasingly complex, you need the most accurate information you can get to better understand your reservoir.

Weatherford Labs helps you get more from your core by combining an unsurpassed global team of geoscientists, engineers, technicians and researchers with the industry's most comprehensive, integrated laboratory services worldwide. From core analysis, sorption, geochemistry and isotopic composition to detailed basin modeling and comprehensive data packages, we provide you with real reservoir rock and fluid information that hasn't been distilled by a simulator or iterated by software.

We call it **"The Ground Truth"**™ – giving you the accurate answers you need for better reservoir understanding. You'll call it a better return on your reservoir investment. To learn more, contact [TheGroundTruth@weatherfordlabs.com](mailto:TheGroundTruth@weatherfordlabs.com).



© 2012 Weatherford. All rights reserved. Incorporates proprietary and patented Weatherford technology.

## DOMESTIC AND INTERNATIONAL BIOSTRATIGRAPHIC SERVICES



6619 Fleur de Lis Drive  
New Orleans, LA 70124  
(504) 488-3711

[www.paleodata.com](http://www.paleodata.com)



**Complete wellsite paleo services**

**Supported offshore GoM and onshore LA paleo databases**

**Integrated foram/nannofossil analyses**

**In-house sample preparation lab for quality-monitoring and efficiency**

**Comprehensive depositional history study of the Gulf Basin based on 200,000+ well data analysis**



## MCMORAN EXPLORATION CO.



## MCMORAN OIL & GAS

[www.mcmoran.com](http://www.mcmoran.com)

NYSE: MMR

16676 Northchase Dr.  
Houston, TX 77060  
(281) 539-7600  
Fax: (281) 539-7655

1615 Poydras  
New Orleans, LA 70112  
(504) 582-4000  
Fax: (504) 582-4155

110 Travis St., Suite 140  
Lafayette, LA 70503  
(337) 735-9150  
Fax: (337) 735-9151



## Technology Experience Performance



**Voyage Explorer**  
Shallow water 2D/3D vessel capable  
of 1 x 12km streamer and 2 x 12km  
or 4 x 6km -3D with 4 sub arrays for  
large output of single/dual source



SeaBird Exploration PLC "SeaBird" is a global provider  
of marine 2D/3D/4D seismic data, and associated  
products and services to the oil and gas industry.

SeaBird's main focus is providing high quality seismic  
surveys (contract seismic) and source vessels. We  
operate in both deep and shallow water with our  
7 vessels conducting 2D and 3D.

The main success criteria for the company is our  
unrelenting focus on Health, Safety, Security,  
Environment and Quality (HSSEQ), combined with  
efficient collection of high quality seismic data.

**Aquila Explorer**



**Harrier Explorer**



**Hawk Explorer**



**Munin Explorer**



**Northern Explorer**



**Osprey Explorer**



All SeaBird's vessels are capable of pulling a 12km streamer with 4 &/ or 6 sub arrays for very large source outputs.

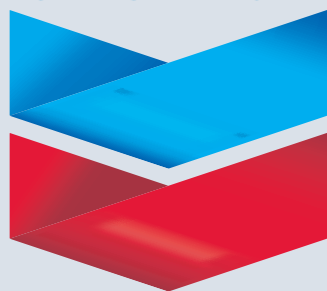
"with the Aquila Explorer in the Far East and the Osprey Explorer in Barents Sea and the balance of SeaBird's fleet (Harrier Explorer, Northern Explorer, Hawk Explorer and Munin Explorer) in Brazil and Africa we have all your 2D/ source vessels needs covered worldwide."

RAISING  
THE STANDARD

[www.sbexp.com](http://www.sbexp.com)

Dubai -Tel: +971 4 427 1700 | Oslo -Tel: +47 2240 2700 | Houston-Tel.: + 1 281 5561 666 | Singapore- Office: +65 68325593

# Chevron



100 Northpark Blvd.  
Covington, LA 70433

(985) 773-6000



# LaBay

  
Exploration Co., L.L.C.

111 Veterans Memorial Blvd.

Suite 1550

Metairie, Louisiana 70005

Office (504) 371-5967

Fax (504) 371-5969

[www.labayexploration.com](http://www.labayexploration.com)

## GENERAL GEOPHYSICAL SERVICES

**Fugro Gravity & Magnetic Services Inc.**

6100 Hillcroft, Suite 500 (77081)

P.O. Box 740010

Houston, TX 77274

Direct : 713-369-6139

Cell : 281-380-1460

Email : [nbowers@fugro.com](mailto:nbowers@fugro.com)

[www.fugro-gravmag.com](http://www.fugro-gravmag.com)



**NANCY E. BOWERS, Ph.D.**

senior geophysicist

licensed professional geoscientist



## LAFAYETTE GEOLOGICAL RESEARCH CENTER, LLC

201 Heymann Blvd., Suite 33 • Lafayette, LA 70503

Tel: 337-233-8197 • Fax: 337-233-8177

### COVERAGE:

Louisiana / Federal / State Offshore

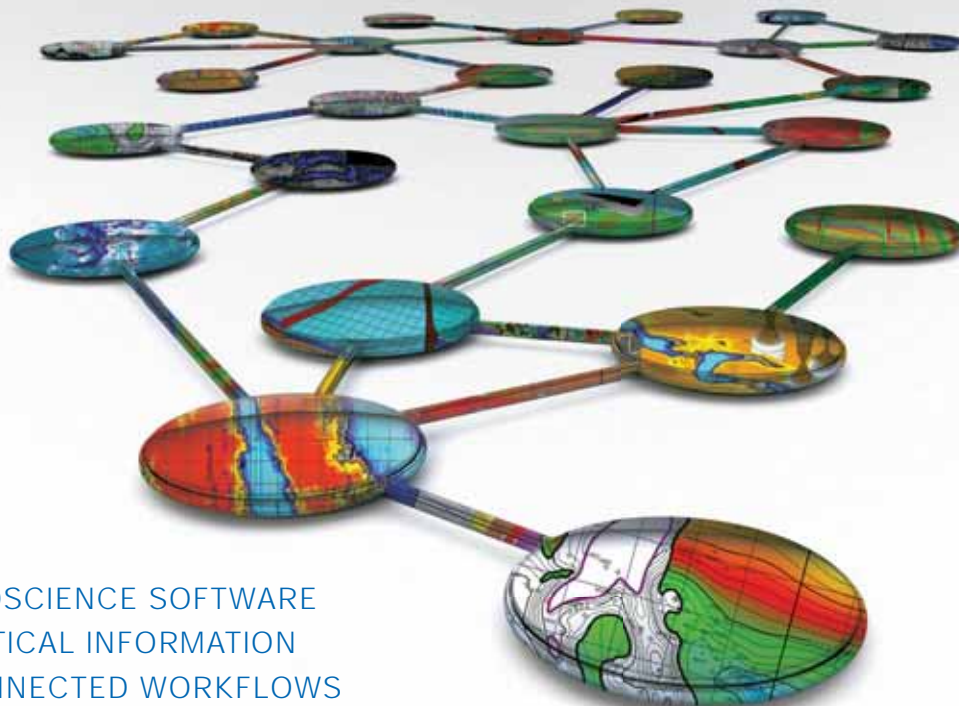
• Multi State Geo Tech Services • Completion Data  
Production Data • Well Logs • Maps

~ MEMBERSHIPS AVAILABLE ~

The Industry's Premier • Well Data Center

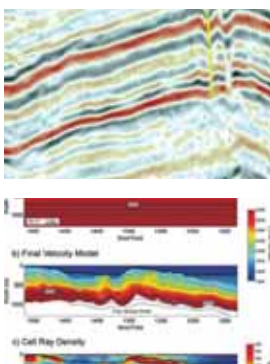
[orders@lafayettegrc.com](mailto:orders@lafayettegrc.com)

CALL OR EMAIL TODAY FOR MORE INFORMATION!



- > GEOSCIENCE SOFTWARE
- > CRITICAL INFORMATION
- > CONNECTED WORKFLOWS

# CONNECTED AT EVERY TOUCH POINT



Streamline data transfer and simplify project sharing with IHS geoscience software and critical O&G information.

The IHS suite of geoscience software—which includes IHS Petra®, Kingdom®, LOGarc™ and GeoSyn™—is designed to seamlessly connect to the industry's leading source of critical Oil & Gas information, eliminating the need to move data manually from source to source and project to project. With this powerful new combination, users can streamline data transfer, enhance database performance and simplify project sharing. The result? Workflows that connect like never before.

Connected workflows mean that IHS customers spend less time looking for data and more time looking for the next big opportunity. It's just one of the many ways that IHS helps to advance the decisions that advance the Oil & Gas industry.

[Find out more at IHS.com/geoscience](http://IHS.com/geoscience)





# **SUPER SAURUS SATURDAY**

**Volunteers  
Needed**



**March 23, 2013**

**11:00 AM - 3:00 PM**

**To volunteer contact: Tom Bergeon  
tom.bergeon@centuryx.com  
504-832-3772**

**Louisiana Children's Museum  
www.lcm.org**





## Info Tidbits: Submitted by Jordan Heltz

### Bloomberg Businessweek – Matthew Phillips

#### ***“Falling U.S. Oil Imports Will Reshape the World Crude Market” January 16, 2013***

<http://www.businessweek.com/articles/2013-01-16/falling-u-dot-s-dot-oil-imports-will-reshape-the-world-crude-market>

By 2014, the U.S. will import just 6 million barrels of crude oil per day, or roughly a third of what it uses, according to a recent forecast from the federal Energy Information Administration. That's less than half the amount of 2006, when imports accounted for 60 percent of total U.S. oil consumption.

America's domestic oil boom is revamping decades' worth of established trading patterns. As the U.S. continues to ramp up production—which grew at the fastest pace ever last year—the imports that do continue coming into the U.S. will depend as much on what type of oil it is as on how far it must travel. For those reasons, Canada will remain America's biggest oil supplier. Not only is Canada close, and can pipe its oil over the border, but its heavy, sour crude is exactly what U.S. refiners want.

Before the shale fracturing boom hit a few years ago, it seemed that the future belonged to heavy, sour crude like the stuff in western Canada's oil sands, while the light, sweet variety would become increasingly dear. U.S. refiners spent billions installing new coking equipment to increase their ability to process this gunky, sulfury type of oil into gasoline. The irony is that by the time many of these projects were completed, the U.S. was suddenly awash in light, sweet crude gushing out of shale formations in North Dakota, Texas, Pennsylvania, and elsewhere.

### Oil and Gas Journal

#### ***“North Platte is Giant Lower Tertiary Gulf Oil Discovery” December 26, 2012***

<http://www.ogj.com/articles/2012/12/north-platte-is-giant-lower-tertiary-gulf-oil-discovery.html>

Cobalt International Energy Inc. has made a Lower Tertiary Wilcox oil discovery in the southeastern part of the Garden Banks planning area in the deepwater Gulf of Mexico.

The discovery's potential is several hundred million barrels of oil, said Total SA, which has a 40% non-operated interest in the project in which Cobalt is operator with 60%.

Extensive wireline evaluation indicates that the well on its North Platte prospect on Garden Banks Block 959 encountered several hundred feet of net oil pay in multiple Inboard Lower Tertiary sands, Cobalt said. That thickness is in line with the predrill estimate, the company said.

James H. Painter, executive vice-president, Gulf of Mexico, said, “North Platte was one of the most challenging wells that the industry has drilled in the Gulf of Mexico, and to have drilled this well to total depth in a safe manner and in near record time is especially gratifying.”

North Platte went to 34,500 ft in 4,400 ft of water. Cobalt had a rig preparing to spud North Platte in May 2010 when the Department of the Interior implemented the 2010 drilling moratorium, requiring Cobalt to move off the rig.



**Geoconsulting, Inc.**

*Geological and Geophysical Consulting  
3-D Seismic Interpretation*

**Ben D. Sydboten, Jr. CPG**

2 Flagg Pl., Suite 1  
Lafayette, LA 70508  
[www.saigeoconsulting.com](http://www.saigeoconsulting.com)

Office (337) 504-3670  
Cell (337) 456-8948



**Geological  
Geophysical  
Land**

*Drafting & Graphics*

3349 Ridgelake Drive • Suite 202  
Metairie, LA 70002  
Office: (504) 836-2882  
Fax: (504) 836-2877  
Cell: (504) 481-7291  
E-Mail: [geodraft@bellsouth.net](mailto:geodraft@bellsouth.net)  
Website: [www.geodraftinc.com](http://www.geodraftinc.com)

**Anthony Catalanotto**  
*President*

## NORTHCOAST OIL COMPANY

610 E. Rutland St.  
Covington, LA 70433  
(985) 898-3577  
(985) 898-3585 Fax

**Jack M. Thorson**  
**Eric C. Broadbridge**  
**J. Daryl Gambrell**  
**Raymond W. Stephens**



**ETROA Resources LLC**

Join us in pursuing gulf coast production,  
acquisitions and low-risk drilling opportunities

John C. Ebert  
Kevin McVey

128 Northpark Blvd.  
Covington, LA 70433  
(985) 809-3808

[www.etroa.com](http://www.etroa.com)



*Thanks  
our sponsors  
for  
their support!*

*Special Thanks to*



**DIVERSIFIED**  
WELL LOGGING, LLC

## **Collarini Energy Staffing, Inc.**

Facilities • Drilling • Production • Reservoir Engineering  
Land and Legal • Geosciences • Information Technology  
Health and Safety • Management • Supply Chain  
Accounting • Administrative Support



*Full-Time and Temporary Personnel*

Energy Trading • Civil Engineering • Executives  
Human Resources • Instrument and Electrical  
Engineering • Marine Engineering • Project Management  
Technical Writing • Sales and Marketing

10497 Town and Country Way, Suite 950, Houston, Texas 77024

Telephone: (832) 251-0553

[www.collarini.com](http://www.collarini.com)

*Have a safe and happy Mardi Gras!*



from the **NOGS**  
**LOG** Staff



## THE NEW ORLEANS GEOLOGICAL SOCIETY MEMORIAL FOUNDATION, INC.

The Memorial Foundation is an IRS Tax Exempt Code #501(c)(3) organization. The Federal I.D. is 72-1220999. Please consider making a donation to the Foundation. Your individual support in any amount will help meet the IRS Guidelines for our Foundation. Thanks!

### \$15,000 AND ABOVE

#### Gibbet Hill Foundation

*In Memory of Steve & Marion Millendorf, William J. Prutzman,  
Roger G. Vincent, Ron Youngblood & Uno Numella*

### \$5,000

#### NOGS Golf Tournament April 2012

*In Memory of Bill Craig*

### \$1000

#### Mr. Marc Cooper

*Through the Marathon Oil Co  
MEPAC Program*

#### Mr. Richard G. Klibert

### \$500

#### Mr. Richard G. Klibert

#### Mr. Foster E. Voelker

*In Memory of Gene Rogas*

### \$250 TO \$499

#### Beverly and Carlo Christina

*In Memory of Jack Dunlap*

#### Mr. Carlo C. Christina

*In Memory of Al Gilreath*

#### Paleo Data Inc.

*In Memory of Jack Dunlap*

#### Mr. James S. Classen

*In Memory of Jack Dunlap,  
Louis L. McCormick, Jr. and  
James P. Raymond, Jr.*

### UP TO \$249

#### Mr. Woods W. Allen, Jr.

*In Memory of William C. Ward*

#### Mr. Robert J. Ardell

*In Memory of James P. Raymond, Jr.  
In Memory of Jerry Goodman*

#### Mr. Thomas C. Bergeon

#### Mr. Maurice N. Birdwell

*In Memory of Uno Nummela*

#### Mr. Burton C. Bowen

*In Memory of Louis L. McCormick, Jr.*

#### Mr. Robert B. Branson

*In Memory of Louis L. McCormick, Jr.*

#### Mr. Hilary James Brook

#### Ms. Robin A. Broussard

#### Mr. Rob Burnett

#### Ms. J. Sybil Callaway

#### Chevron Humankind Matching Gift

#### Mr. Arthur F. Christensen

#### Beverly and Carlo Christina

*In Memory of Beverly Langford*

#### Mr. Carlo C. Christina

*In Memory of Louis L. McCormick, Jr.*

#### Mr. James S. Classen

*In Memory of Robert G. Williamson*

#### Mr. Willis E. Conatser

#### Mr. Clarence F. Conrad

#### Trudy and Charley Corona

*In Memory of Beverly Langford*

*In Memory of Jack Dunlap*

#### Mr. Charles J. Corona

*In Memory of Carl Grieshaber*

#### Mr. Michael Danos

*In Memory of Max Durham*

#### Mr. Merle Duplantis

#### Mr. Dwight Easterly

*In Memory of James P. Raymond, Jr.*

#### Dr. Brooks B. Ellwood PhD

#### Mr. Parrish N. Erwin, Jr.

#### Mr. James P. Evans III

*In Memory of James P. Raymond, Jr.*

#### Mr. Michael N. Fein

#### Mr. Mark J. Gallagher

#### Mr. Arthur J. Garden

#### Mr. Bernard L. Hill, Jr.

#### Mr. Tom (Thomas) A. Hudson

#### Mr. Kenneth Huffman

#### Mr. Jeff Jandegian

#### Mr. Philip W. Johnson

#### Mr. Tom Klekamp

*In Memory of Jack Dunlap.*

#### Mr. Reuben J. Klibert, Jr.

#### Mr. Tim Klibert

#### Mr. John C. "Jack" Langford

#### Mr. Frank E. Larkin

#### Mr. Cyril F. Lobo

#### Mr. H. David Lynch

#### Ms. Jeannie F. Mallick

#### Mr. Louis L. McCormick

#### Ms. Margaret M. McKinney

#### Mr. Robert G. Murphy

*In Memory of Ronnie Youngblood*

*In Memory of Thomas A. Cullinan*

#### New Orleans Geological Auxiliary

*In Memory of Joan Collier, Amber Klekamp  
and Mary Petrocco*

#### Mr. Russell H. Nordwell

#### Mr. Richard A. Olsen

#### Mrs. Teresa M. O'Neill

*In Memory of Brian O'Neill*

#### Mr. William S. Peirce

#### Mr. Edward B. Picou, Jr.

*In Memory of Jack Dunlap*

*In Memory of Terry D. Keegan*

#### Mr. Richard D. Provensal

*In Memory of Thomas H. Philpott and James Strahan*

#### Mr. George W. Schneider III

*In Memory of George W. Schneider, Sr.*

#### Mr. Rudolf B. Siegert

*In Memory of Louis L. McCormick, Jr.*

#### Mr. Robert C. Shoup

## FONO FUND

The FONO Fund accepts contributions that are invested and the income dedicated to assure sufficient financial resources will always be available to maintain the NOGS business office. Contributors are reminded that donations to the FONO Fund are not covered by the IRS 501(c)(3) tax exempt classification and should be reported as a business expense on your IRS tax report.

### \$500

#### Mr. James A. Hartman

### UP TO \$250

#### Mr. David E. Balcer

#### Mr. Joseph E. Boudreaux

#### Ms. J. Sybil Callaway

#### Mr. Anthony Carollo, Jr.

#### Mr. Richard P. Colomes

#### Mr. John Dombrowski

#### Mr. Merle J. Duplantis

#### Mr. Parrish N. Erwin, Jr.

#### Mr. Michael N. Fein

#### Mr. Mark J. Gallagher

#### Mr. Bernard L. Hill, Jr.

#### Mr. Daniel P. Huffman

#### Mr. Robert M. Jemison, Jr.

#### Mr. Arthur H. Johnson

#### Mr. Tom Klekamp

#### Mr. Russell J. Landry

#### Mr. Frank E. Larkin

#### Mr. Louis Lemarie'

#### Mr. H. David Lynch

#### Ms. Jeannie F. Mallick

#### Mr. Daniel G. Markey

#### Mr. Louis L. McCormick

#### Ms. Margaret M. McKinney

#### Mr. William J. O'Leary

#### Mr. Richard A. Olsen

#### Mr. William S. Peirce

#### Mr. James P. Raymond, Jr.

#### Mr. C. R. Rondeau

#### Mr. David M. Tatum

#### Mr. Roy C. Walther

#### Mr. Robert C. Weissmann

#### Mr. William M. Whiting

#### Dr. J.O. Snowden

#### Mr. James M. Sothern

#### Mr. Raymond O. Steinhoff

*In Memory of Anne M. Steinhoff and Harold E. Vokes*

#### Ms. Betsy M. Strachan Suppes

*In Memory of Hubert Skinner*

#### Ms. Candace V. Strahan

*In Memory of James R. Strahan*

#### Mr. David M. Tatum

#### Mr. Leon G. Toups

*In Memory of Robert G. Williamson*

#### Mr. Arthur S. Waterman

*In Memory of T. Wayne Campbell*

#### Mr. William M. Whiting

*In Memory of Don Rimsnider*

#### Mr. Armour C. Winslow

*In Memory of Rita Menzel Winslow*

#### Ms. Frances A. Wiseman

*In Memory of Steve Widdicombe*

#### Mr. James W. Yeldell, Jr.

*In Memory of Thomas A. Cullinan*

*In Memory of Robert G. Williamson*

*In Memory of Gene Rogas*

### BILL CRAIG FUND

#### Mr. Bernard L. Hill, Jr.

#### Ms. Hilary James Brook

#### Mr. John C. Scheldt

*In Memory of William C. Ward*




#### Ms. Candace V. Strahan

*In Memory of James R. Strahan*

*In Memory of William C. Ward*

Contributions for both funds  
through January 25, 2013.  
Donations are listed for one year.



<b>ANSYTHE</b> Donald I. Andrews <b>504-887-3432</b> 	 <b>GEM Consulting, LTD</b> <b>Michael Louis Merritt</b> admin@gemconsultingltd.com
<b>THE BOEBEL COMPANY</b> Oil and Gas Investments New Orleans, LA 70153 <b>(504) 866-4313</b>	<b>H. WARREN BELL</b> Oil and Gas Exploration 2500 Tanglewilde, Suite 485 Houston, TX 77063-2126 Bus. (713) 266-7297 Fax (713) 266-7298
<b>BOO-KER OIL &amp; GAS CORP.</b> Gray S. Parker 826 Union, Suite 300 New Orleans, LA 70112 Bus. (504) 581-2430 Fax (504) 566-4785	<b>PHELPS GEOSCIENCE LLC</b> Onshore Gulf of Mexico Geology and Geophysics Prospect Generation and Evaluation Houston, TX jsfphelps@yahoo.com (281) 398-5208
<b>C &amp; R EXPLORATION, INC.</b> <b>Carlo C. Christina</b> <b>Lawrence G. Ringham</b>	<b>RAFIDI OIL AND GAS, INC.</b> <b>Jaser N. Rafidi, President</b> 4415 Shore Dr., Suite 202 Bus (504) 453-8580 Fax (504) 888-5539 Metairie, LA 70006 Res (504) 888-1661
<b>C. R. RONDEAU</b> Petroleum Geologist 119 W. Southland Ave. Ironwood, MI 49938 Res. (906) 932-4692	<b>ROY C. WALTHER</b> Petroleum Geologist 2421 Prancer Street New Orleans, LA 70131 Bus. (504) 392-8513 Res. (504) 392-9332
<b>CLASSEN EXPLORATION, INC.</b> James S. Classen Looking for close in deals P.O. Box 140637 Boise, ID 83714 Bus. (208) 854-1037 Fax (208) 854-1029 classenllc@msn.com	 625 E. Kaliste Saloom Lafayette, LA 70508 16800 Greenspoint Dr., Suite 225-S Houston, TX 77060 1100 Poydras St., Suite 1050 New Orleans, LA 70163 www.StoneEnergy.com
<b>D-O-R ENGINEERING, INC.</b> 3-D and Geoscience Services 6161 Perkins Rd. P.O. Box 80812 Bus: (225) 765-1914 Baton Rouge, LA 70898	<b>TONY CAROLLO</b> Consulting Geologist Unitization • Geosteering • Field Studies 1701 Peach Street Metairie, LA 70001 Bus. (504) 885-0004 Res. (504) 885-6829
<b>EDWARD B. PICOU, JR.</b> Consulting Micropaleontologist - Retired 228 St. Charles Ave., Suite 1330 C New Orleans, LA 70130 Bus. (504) 529-5155 Res. (504) 282-3096	<b>ZOT OIL &amp; GAS, LLC</b> Jim Zotkiewicz Prospect Generation and Evaluation 3200 Ridgelake Dr., Suite 207 Metairie, LA 70002-4930 Bus. 504.831.4694 Email: jimzotoil.com



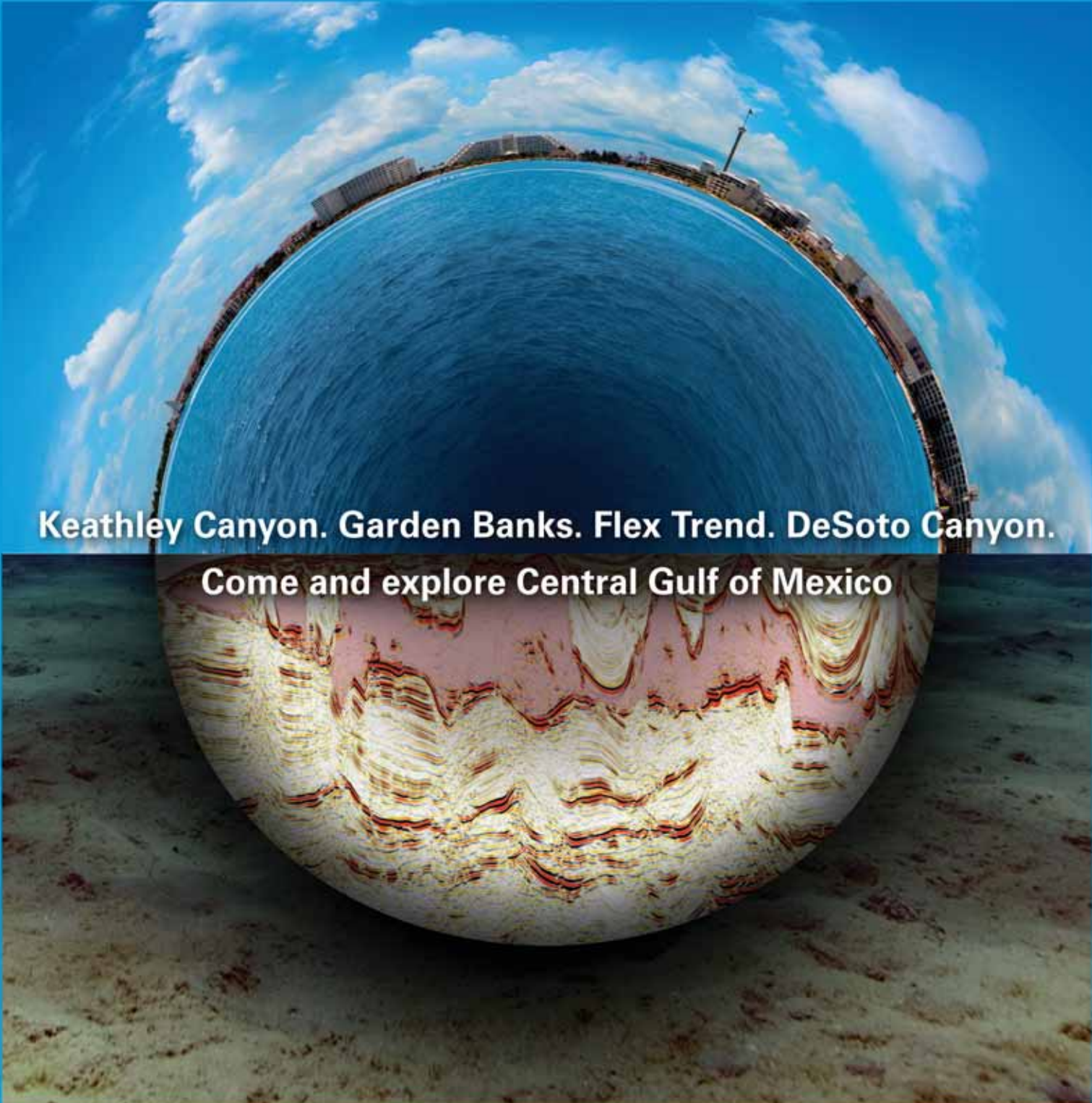
*Submitted by Sheri Richardsor.*

Carrol J. Michael is the owner of SciMin Technical Consulting in Brasher Falls, New York. She is working as a contractor for George C. Hawley & Associates. Carrol received a BA (2000) in anthropology from Texas A&M University and a BS (2010) in geology, with a minor in chemistry, from Louisiana State University. While at LSU she worked as a Lab Manager for Dr. Laurie Anderson, participating in GOM oil spill studies. She also received a Jules and Olga Braunstein Memorial Scholarship in her junior year at LSU.

Carrol and her husband Todd, a Coast Guardsman, live in Brasher Falls, NY. As a Coast Guard spouse, she has learned to adapt to frequent relocations. Because she misses working in the field, Carrol has started a collection of Roadside Geology books and keeps her rock hammer in her car for any interesting road cuts. Carrol has a step-daughter who is attending college in Sitka, Alaska, and a step-son who recently joined the Coast Guard.

Tavia L. Prouhet, a native of League City, Texas, is a geologist at Chevron in Covington, Louisiana. She earned both her BS (2002) in Ocean and Coastal Research and her MS (2007) in geoscience from Texas A&M University. Tavia has previously been employed as an earth science teacher, a geologist with Halliburton and provided application support at Chevron. Tavia is a member of AAPG and is also interested in the following NOGS Committees: Continuing Education, Field Trip, New Geoscientists and School Outreach.

Tavia and her husband, Jeremiah, live in Covington with their two young children, Olivia and Charlie.



**Keathley Canyon. Garden Banks. Flex Trend. DeSoto Canyon.**  
**Come and explore Central Gulf of Mexico**

**PGS MultiClient** GULF OF MEXICO

**Take a fresh look at the Gulf of Mexico for Lease Sale #227**

We can provide the data and expertise which will help reveal opportunities and offer new geological insight in this highly prospective region. Our leading edge technology can help to define your search and give you the focus to support your exploration needs. We're ready where you are and committed to providing the right data in the right place at the right time.

**Supporting your exploration success**

[gominfo@pgs.com](mailto:gominfo@pgs.com)

**A Clearer Image**  
[www.pgs.com](http://www.pgs.com)







## NEW ORLEANS GEOLOGICAL SOCIETY

810 Union Street, Suite 300  
New Orleans, LA 70112-1430

PRESORT  
STANDARD  
US POSTAGE  
**PAID**  
MAIL TECH

[www.nogs.org](http://www.nogs.org)



MARINE PROPERTIES, LLC  
BERKSHIRE EXPLORATION CO.

MONTE C. SHALETT, CPL, PRESIDENT

3030 Lausat Street  
Metairie, LA 70001-5924

BUS. (504) 831-7779  
FAX (504) 831-8315

**PCI**

**Paleo Control, Inc.**

Houston, Texas  
713-849-0044

Drilling Wells, Studies and Data Base

Loyd Tuttle

Frio, SE Texas

Bob Liska

Wilcox, S and SE Texas

Jim Thorpe

Miocene and Cam-Miogyp



# THIS AD SPACE AVAILABLE

Contact:

[annette@nogs.org](mailto:annette@nogs.org)

