

NOGS LOG

APRIL 2013

Volume 53, Number 10



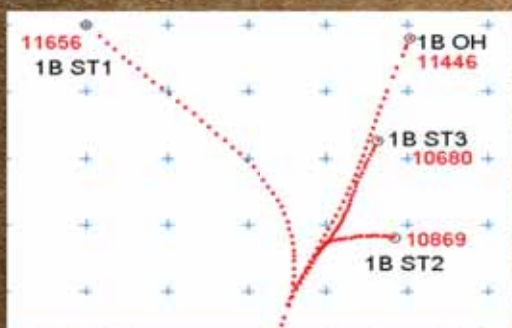
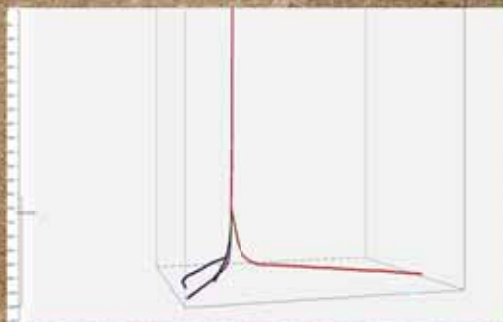
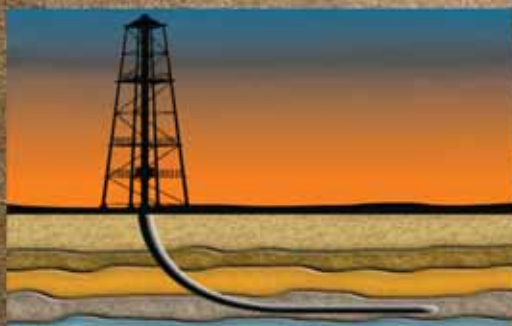
APRIL 1 - NOGS LUNCHEON

Presentation: Modern Processes in Coastal Systems

Guest Speaker: Alexander S. Kolker

Louisiana Universities Marine Consortium - Tulane University • New Orleans, Louisiana

TGS DELIVERS DIRECTIONAL SURVEY PLUS



More than just your standard directional survey.

Directional Survey Plus (DS+) data goes beyond the simple capture of measured depth, azimuth and inclination. DS+ data are thoroughly researched, re-processed and standardized to create the most accurate spatial representation of the well path, from surface to total depth.

Access Directional Survey Plus data and the industry's largest collection of digital well logs quickly and easily through the online well data portal, LOG-LINE Plus!®.

For more information, contact TGS at:

US

Tel: +1 713 860 2100

Email: info@tgs.com



Learn more at WWW.TGS.COM



Published monthly by the New Orleans Geological Society.
This issue was sent to press on March 22, 2013.

Interested *NOGS LOG* contributors may send requests to
nogseditor@gmail.com. Requests for advertising should
contact the NOGS office at info@nogs.org

IN THIS ISSUE

Regular Features:

From the Editor	3
From the President	5
NOGS Officers / Contacts	6
Upcoming Events & Activities	7
NOGS Luncheon Presentation	9
April & May Calendars.....	12
Drill Bits	18
Info-Tidbits	27
NOGS Memorial Foundation.....	29
FONO Fund.....	29

Special Features:

NOGA News.....	13
2013 Annual NOGS Golf Outing	15
NOGS Petroleum Geology for Non Geologists.....	17
NOGS Welcomes	22
February Luncheon Photos	22
March Luncheon Photos.....	23
PLANO-NOGS Crawfish Boil Announcement	26
PLANO Executive Night	27

on the cover:

Cover Photo Submitted by: Bob Douglass, NOGS President (1987-88)
with the help of Ben Murphy

Sideling Hill Cut - Hancock, Maryland

The cover photo is the Sideling Hill Cut on I-69, just west of Hancock, Maryland. This spectacular Cut shows south facing Early Mississippian Purslane and Rockwall clastics. The older Rockwall is shallow marine grading upward into mainly terrestrial Purslane. The dark layers are coal and shale. The lighter layers are predominantly sands. Folding is Pennsylvanian, Alleghenian caused by the collision of Africa and North America.

Sideling Hill, this 80 mile ridge, has been a major barrier to east-west travel into the interior of this country since colonial times. It was first crossed by The National Road (Federal Project 1806). This pioneering project crossed the Sideling Hill with a long narrow dangerous hairpin turn. Later it became US-40, part of a major transcontinental highway, but still with the hairpin turn. Construction of I-69 connecting I-79 with I-70 commenced in 1983, utilizing a notch at the crest of Sideling Hill, and a massive 116 meter cut. I-69 now is a four lane gently curved, safe crossing. This remarkable engineering feat was completed and opened August 1991.

From the Editor



Hello again NOGS members. Well, April certainly promises to be an exciting and event-filled month for our readers. Starting with our NOGS Luncheon on the 1st, then on the 11th, PLANO is holding their Annual Executive Night with guest speaker Steve Gleason. The following night, UNO is hosting a screening of the film, "Switch," an energy film on which I have heard very good reviews. On the 17th is the Petroleum Geology for Non-Geologists course, then on the 26th, NOGS and PLANO are joining forces to host a Crawfish Boil at the Southern Yacht Club. Finally on the 29th, hopefully you have enough energy left in the tank to join us at the NOGS Annual Golf Tournament at Money Hill. Please refer to our calendars on page 12 for a full listing of events in the months of April and May.

Our Luncheon speaker on the 1st will be Alexander Kokler of Louisiana Universities Marine Consortium at Tulane and he will be talking about "Modern Processes in Coastal Systems." I am sure this topic will be of particular interest to many of you and it certainly is to me since the topics of coastal land loss, sea level rise and subsidence were a focus of my thesis work at LSU. I hope to see you all at the April Luncheon as well as the other events we have lined up for our members this Spring.

Thanks,
Jordan Heltz – NOGS LOG Editor

These nodes change everything.

With absolutely no cables,
there's absolutely no stopping you.



True cable-free seismic

Dealing with tons of cable will hinder any seismic acquisition, land or marine. That's why our exclusive, true cable-free ZNodal® systems pay such huge dividends in any environment.

Our lightweight, compact ZLand® system lets your crews work faster and much more safely while recording high-resolution data, even in the most challenging terrain.

Our ZMarine® system, also completely self-contained, deploys easily and safely, even in congested areas, to water depths of 3000m, which makes it ideal for 4D reservoir monitoring.

Welcome to a new world of seismic acquisition.



FairfieldNodal.com



From the President

March 20th marked the Vernal Equinox, a day which the sun is directly over the equator on its way from the Southern Hemisphere to the Northern Hemisphere. Spring is upon us, and it is time to begin the ritual spring cleaning festivities. I personally look forward to the warming temperatures, increased daylight hours, and rebirth of the beautiful flora we enjoy down south. Happy Spring Everyone!

NOGS would not be the vibrant society we take delight in without the hard work of its members throughout the generations. It is with great pleasure that I am able to recognize two outstanding gentlemen who have impacted the identity of NOGS for half a century. At this time 50 years ago, President Donald I. Andrews and Secretary A.T. Green ran the show we continue to enjoy to

this day. Congratulations on your 50th anniversary as NOGS Board Members, and thank you for your loyalty to our organization.

Last month's luncheon meeting hosted two charming civil engineers, Tonja Koob and Jennifer Snape, who shared some remarkable vintage photos of the Jennings Oil field they uncovered during their research. As we all now know, with its discovery in 1901, the Jennings Field was the first successful oil prospect in Louisiana. One of our very own members, Jeff Spencer, donated a print of the Jennings Oil Field that was personally signed and numbered by the artist. Camille Yeldell of the NOGS Auxiliary was the lucky winner of this magnificent work of art. Thank you very much Jeff for your very timely donation, and congratulations to Camille, one fine lucky lady!



I would like to recognize UNO's AAPG student chapter President Drew Boudreaux for bringing to our attention a free screening of the Switch Energy Project, Friday April 12th at the University of New Orleans Geology Lecture Hall, 6:00 PM. Funded by American Association of Petroleum Geologists (AAPG), American Geosciences Institute (AGI), The Geological Society of America (GSA), plus a few others, this film will be on display for free admission across the globe throughout 2013 and into 2014. It is advertised as "...the first truly balanced energy film," discovering how the transition from fossil fuels to renewable energy will take place. I recommend that NOGS members attend the UNO screening and decide for yourself.

A proposal for a new internal organization "Petroleum Structures and Geomechanics Division" was submitted to the AAPG. This group contributed to the November 2009 Bulletin which focused on fractures. This would make only a fourth division recognized within AAPG. Thank you, Tom Klekamp, for this information.

Five of our most active NOGS members graciously represented our society as judges at the Greater New Orleans Science and Engineering Fair. Thank you, Judges George Hasseltine, Art Johnson, Tom Klekamp, Bill Whiting, and Mike Fein for your time. Let's express our gratitude by giving these great men a gentle pat on the back. Fortunately for the rest of us, the winning projects will be on display along with the attendance of the students and teachers who deserved these awards at either the May or June Luncheon. I am relieved to know science and engineering are still a part of today's curriculum, and I hope you are as excited as I to see these projects.

It is a sad day when we realize this is the last announcement I will make for the annual Golf Tournament within the confines of the *NOGS LOG*. Please come out on Monday, April 29, and support the students just like those previously mentioned, who work intensely to be accepted into a college that will further their knowledge to the benefit of us all. As stated before, proceeds support the NOGS Bill Craig Memorial Foundation, which provides over \$30,000 annually in scholarships and educational donations to local students and science education. Details about the tournament can be found both on the NOGS website as well as within this NOGS publication. I will be there, and I hope to see all of you out there also.

Last Minute Event!! PLANO will host a joint Crawfish Boil with NOGS at the Southern Yacht Club on Wednesday, April 24, between 4 and 7 p.m. Professionals and students can eat all of the crawfish, fried fish, and responsibly consume all of the beer they desire. Entry fee comes with a year of NOGS membership for 2013-2014. The cost is \$15 for students and \$40 for non-students. I know I've been craving some mud bugs; have you?

NOGS Office

Office Manager: Annette Hudson

Phone: 504-561-8980 • Email: info@nogs.org • Website: www.nogs.org

The office is located at 810 Union Street, Suite 300, New Orleans, LA 70112.

Correspondence and all luncheon reservations should be sent to the above address.



BOARD OF DIRECTORS

		Company	Phone	E-mail
President	Will Jorgensen	Shell	504-728-6339	william.r.jorgensen@shell.com
Vice President	Kevin McVey	ETROA Resources LLC	985-809-3808	kmcvey@etroa.com
Secretary	Bruce Bahlinger	Saratoga Resources Inc	985-809-9292	bbahlinger@charter.net
Treasurer	Kelli Hardesty	Environmental Resources Management	504-831-6700	kelli.hardesty@erm.com
President-Elect	Chuck Holman	BSEE	504-731-7837	charleswholman@bellsouth.net
Editor	Jordan Heltz	Chevron	985-773-7163	jordan.heltz@chevron.com
Director 2013	Edward B. Picou, Jr.	Consultant	504-529-5155	epicou@bellsouth.net
Director 2014	Michael N. Fein	W & T Offshore	504-210-8148	mikef@wtoffshore.com
Director 2015	Irion Bordelon, Jr.	NorthStar Energy, LLC	985-778-3827	nsenergy@bellsouth.net

COMMITTEE

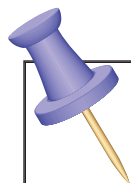
	Chairperson			
AAPG Delegates	Arthur H. Johnson	Hydrate Energy International	504-464-6208	artjohnson51@hotmail.com
AAPG Student Chapter	Hunter Berch	LSU	662-312-1300	hberch1@tigers.lsu.edu
AAPG Student Chapter	Michael Hopkins	Tulane University	228-209-2262	mhopkins@tulane.edu
AAPG Student Chapter	Drew Boudreaux	UNO	504-319-2537	apboudr1@uno.edu
Advertising-Log	Kimberly Maginnis	LLOG Exploration	985-801-4761	kimberlym@llog.com
Auditing	Bay Salmeron	Chevron	832-854-6431	bay.salmeron@chevron.com
Awards	Michael N. Fein	W & T Offshore	504-210-8148	mikef@wtoffshore.com
Ballot	Kelli Hardesty	Environmental Resources Management	504-831-6700	kelli.hardesty@erm.com
Best Paper	Bay Salmeron	Chevron	832-854-6431	bay.salmeron@chevron.com
Entertainment	Chuck Holman	BSEE	504-731-7837	charleswholman@bellsouth.net
Environmental	Daisy Pate	Pontchartrain Partners	504-862-1775	daisy.pate@gmail.com
External Affairs	Michael A. Fogarty	Sylvan Energy, LLC	603-523-4808	mike.a.fogarty@gmail.com
Finance and Investment	Kelli Hardesty	Environmental Resources Management	504-831-6700	kelli.hardesty@erm.com
Historical	Edward B. Picou, Jr.	Consultant	504-529-5155	epicou@bellsouth.net
Membership/Directory	Carlo C. Christina	Retired (C & R Expl. Inc)	504-835-4116	Carlocc398@aol.com
Nominating	Arthur H. Johnson	Hydrate Energy International	504-464-6208	artjohnson51@hotmail.com
Non-Technical Education	Duncan Goldthwaite	Consultant	504-887-4377	DGldthwt@aol.com
Office Operations	Daisy Pate	Pontchartrain Partners	504-862-1775	daisy.pate@gmail.com
Publications Sales	Edward B. Picou, Jr.	Consultant	504-529-5155	epicou@bellsouth.net
School Outreach	Thomas C. Bergeon	Century Exploration	504-832-3772	Tom.bergeon@centuryx.com
Scouting	Carol Rooney	Consultant Geologist	504-835-1909	carolbrooney@aol.com
Special Projects	Larissa Cupp		978-621-5074	Larissacupp@gmail.com
Sponsorship/Houston	David E. Reiter	Woodside Petroleum	713-401-0045	david.reiter@woodsideenergy.com

NOGS LOG STAFF

Editor	Jordan Heltz	Chevron	985-773-7163	nogseditor@gmail.com
Editor-Elect	Sheri Richardson	LaBay Exploration Co LLC	504-371-5967	srichardson@labayexploration.com
Auxiliary	Peggy Rogers	NOGA	504-392-6323	lrogers79@cox.net
Info Tidbits	Jordan Heltz	Chevron	985-773-7163	nogseditor@gmail.com
Drill Bits	Carlo C. Christina	Retired (C & R Expl. Inc)		drillbits81@yahoo.com
Drill Bits	Kevin Trosclair	UNO Graduate Student	504-202-7997	kjtrosc1@uno.edu
Staff Photographer	Arthur Christensen	Shalimar Consulting	985-893-2013	arthur_christensen@yahoo.com
Layout	Kristee Brown	Creative Graphics & Printing LLC	985-626-5223	kpbrown@bellsouth.net
Co-Webmaster	Edward B. Picou, Jr.	Consultant	504-529-5155	epicou@bellsouth.net
Co-Webmaster	Kevin Trosclair	UNO Grad Student	504-202-7997	kjtrosc1@uno.edu

NOGS AUXILIARY

Officers		Phone	Directors	Year	Phone
President	Mary Walther	504-392-9332	MaryEllis Hasseltine	2011-13	504-885-7657
1st Vice-President	Dolores Murphy	504-393-0878	Gwenn Swaney	2011-13	504-831-0748
2nd Vice-President	Camille Yeldell	504-835-7467	Pat Williamson	2011-13	985-626-6910
Secretary	Beverly Christina	504-835-2383	Beverly Kastler	2012-14	504-286-0879
Treasurer	Judy Lemarie'	504-393-8659	Linda Peirce	2012-14	504-393-7365
Parliamentarian	Alma Dunlap	504-737-2678	June Perret	2012-14	504-664-0651
Member-at-Large	Jean Jones	504-738-8091			



UPCOMING Events & Activities

April 1 • NOGS Luncheon

Holiday Inn Downtown Superdome

\$2.00 validated parking in hotel garage

Presentation:

Modern Processes in Coastal Systems

Guest Speaker:

Alexander S. Kolker

Louisiana Universities Marine Consortium • Tulane University – New Orleans, Louisiana

See page 9 for Abstract and Biography

HOLIDAY INN DOWNTOWN SUPERDOME

Check with concierge or
front desk for location.

Lunch served at 11:30 am

ADMISSION:

With reservation\$30.00

Without reservation\$35.00

Student Member with reservations..... FREE

April 17

NOGS Petroleum Geology for Non Geologists

Shell Auditorium • Shell Building - New Orleans, LA

For more information, www.nogs.org or see page 21 of this issue.

April 29

The 2013 Annual NOGS Golf Outing

Money Hill Golf Course • Abita Springs, LA

For more information, www.nogs.org or see page 15 of this issue.

April 23-25

29th Annual LaRSGIS - Remote Sensing & GIS Workshop

Cajundome Convention Center • Lafayette, LA

For more information, www.nogs.org or www.larsgis.org

May 19-22

AAPG Annual Convention and Exhibition

David L. Lawrence Convention Center • Pittsburgh, PA

For more information, www.aapg.org

NOGS CONTACT LIST

Continued from previous page

MEMORIAL FOUNDATION

BOARD OF TRUSTEES

2012-2013 Chairman	Daisy Pate
2012-2013 Secretary	Will Jorgensen
2012-13 Trustee	Jennifer Connolly
2012-13 Trustee	William M. Whiting
2013-14 Trustee	J. David Cope
2013-14 Trustee	Tom Klekamp
2014-15 Trustee	Rick Kear
2014-15 Trustee	TBA

Company
Pontchartrain Partners
Shell
Shell
Consultant
ANKOR Energy LLC
Amber Resources LLC
Schlumberger Oil Field Services

Phone
504-862-1775
504-728-6339
504-728-6411
504-947-8495
504-596-3672
985-845-4046
504-858-2444

E-mail
daisy.pate@gmail.com
william.r.jorgensen@shell.com
jennifer.connolly@shell.com
bootscon@aol.com
dcope@ankorenergy.com
klekamp@bellsouth.net
kear1@slb.com

AAPG DELEGATES

Term Ends

2014	Arthur H. Johnson	Hydrate Energy International	504-464-6208	artjohnson51@hotmail.com
2014	Brenda Reilly	AMROMCO Management LLC	504-430-4240	reillybe@yahoo.com
2014(a)	Elizabeth C. McDade	McMoRan Exploration Co.	504-582-4510	ecmcdade@bellsouth.net
2014(a)	Frances A. Wiseman	BOEM (retired)	504-831-8343	snowde.fran@gmail.com
2015	Susan A. Waters	Shell	504-728-0229	susan.waters@shell.com
2015	William M. Whiting	Consultant	504-947-8495	bootscon@aol.com
2015(a)	David E. Balcer	Chevron	985-773-6725	dbalcer@chevron.com
2015(a)	Earl W. Cumming	Shell	504-728-6370	earlcumming@shell.com

NEW MEMBERS

Jeff L. Bittner	President	SMS Assembly Inc & Road Runner Resources LLC	239-596-2254	jeff@smsassembly.com
Elizabeth Burns	Manager	Capital One	504-874-5155	ecburns17@yahoo.com
Wayne A. Cook	Marketing	Seitel	504-582-2290	wcook@seitel-inc.com

Deep Water

WELL CONSTRUCTION

Are all your services deepwater ready?

Control Measures	Complexity/Process + Exposure	Preparedness				
		People + Competency		Equipment + Technology		
		1	2	3	4	5
-5	High	-4	-8	-12	-16	-20
-4		-3	-6	-9	-12	-15
-3		-2	-4	-6	-8	-10
-2		-1	-2	-3	-4	-5
-1	Low					



Our Project Readiness Assessment (PRA) approach has been applied and improved over the last 5 years.

All deepwater projects in which Schlumberger participates benefit from our PRA process, which complies with new U.S. regulatory requirements. This helps deliver seamless, efficient startup, and reduced NPT.

Learn more at

www.slb.com/deepwaterready

Global Expertise
Innovative Technology
Measurable Impact

Schlumberger

*Mark of Schlumberger. Measurable Impact is a mark of Schlumberger. © 2013 Schlumberger. 10-de-0079



April 1 NOGS Luncheon Presentation

☆☆☆ at the Holiday Inn Superdome ☆☆☆



Modern Processes in Coastal Systems



Presented by

Alexander S. Kolker

Louisiana Universities Marine Consortium
Tulane University
New Orleans, Louisiana

ABSTRACT

Interannual fluctuations in sea level are often orders of magnitude greater than the long-term trend. While this variability is sometimes regarded as "noise," it is spatially coherent over spatial scales of 100-1000 km, indicating a regional or broader-scale control. Indeed, this sea level is associated with meteorological processes. This presentation will employ an understanding of this dynamically-driven sea-level variability to translate tide gauge records at Grand Isle, LA, and Galveston, TX into subsidence records. Such records are strongly correlated with the history of fluid withdrawal and wetland loss, particularly in the Mississippi River Delta. Interestingly, these records show decelerations in subsidence rates and wetland loss rates as onshore oil and gas production decreased in recent decades. This potentially implies lower levels of sediments are needed to restore the Mississippi River Delta. The talk will close with an examination of recent geophysical, geochemical and sedimentological data from crevasse splays in the lower Mississippi River Delta. An understanding of the processes driving the evolution of such systems must play a critical role in plans to restore coastal Louisiana.

BIOGRAPHY

Alexander S. Kolker is an Assistant Professor at the Louisiana Universities Marine Consortium. He is a coastal geologist who has worked in systems around the nation, including the Florida Everglades, the wetlands surrounding Long Island, NY, and more recently, the Mississippi River Delta. His work has examined the dynamical drivers of sea level variability, the influence of climate change on coastal wetlands, and the role that subsidence plays as a driver of wetland loss in the Mississippi River Delta. He is also actively involved in examining how natural deltaic processes can be used to restore the Mississippi River Delta and the coast of Louisiana. In addition to his research, Dr. Kolker teaches at Tulane University's Department of Earth and Environmental Science. He received his Bachelors degree from the University of California, Santa Cruz and his Masters and Doctoral degrees from Stony Brook University. He currently lives in New Orleans, LA. For more information, please see www.lumcon.edu/research/faculty.asp?name=akolker.

THE LUNCHEON RESERVATION DEADLINE IS MARCH 29 - CONTACT THE NOGS OFFICE

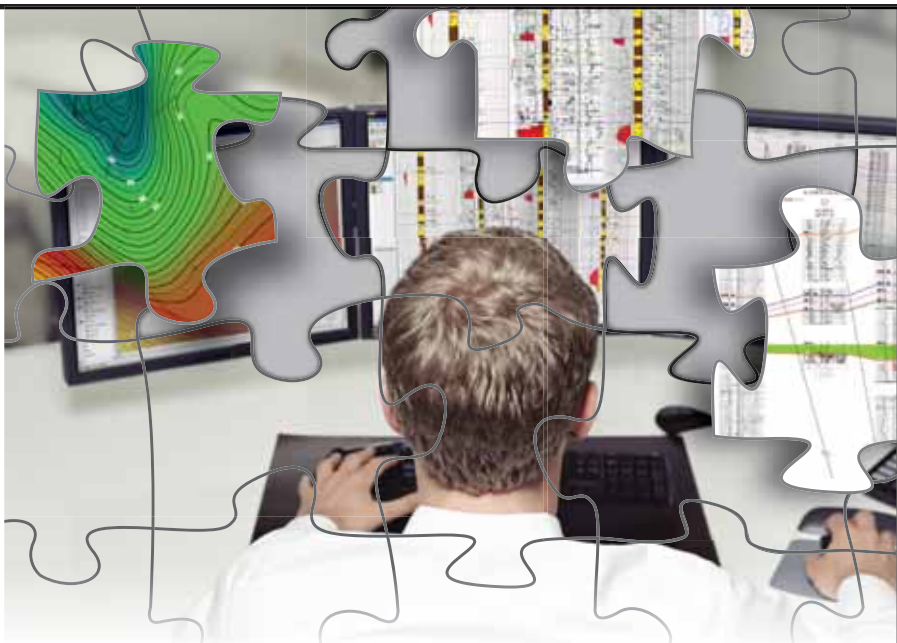
"And Looking Ahead . . ."

The next luncheon will be held on May 6th. Our guest speaker, Milly Wright of Chemostrat International Ltd in Houston, will present "Using High Resolution Chemostratigraphy to Determine Well-bore Pathways in Multilateral Drilling Campaigns: An Example from the Horn River Formation, British Columbia, Canada." Contact the NOGS office at 561-8980 or use the PayPal link on the NOGS website (www.nogs.org) to make your reservation.

Quality Analysis Starts with Quality Data

See how Neuralog brings your logs, maps, sections and other critical information together to get the most from your data.

- Log & map digitizing
- Geological evaluation
- Volumetrics & reserves
- Auto & manual contouring
- E&P Data Management
- Log Printing & Scanning



Learn more at www.Neuralog.com

Neuralog
Turning Paper Into Petroleum

© 2013 Neuralog • www.neuralog.com • 1.281.240.2525 • 1.800.364.8728

SEI[®]

Seismic Exchange, Inc.

Strategic Speculative Surveys
Geophysical Data Marketing & Management

YOUR
Full Service
National
Seismic Data
Marketing Firm



DALLAS DENVER HOUSTON MIDLAND NEW ORLEANS OKLAHOMA CITY CORPUS CHRISTI TULSA
201 St Charles Avenue, Suite 4300, New Orleans, Louisiana 70170-4300 504-581-7153 FAX 504-581-9591

seismicexchange.com



Drill with confidence.

Diversified Well Logging, LLC brings the accuracy and expertise only a company with over sixty years in the oil and gas industry can deliver. We are your eyes and ears in the field, especially when it comes to deep water or high pressure, high temperature areas.

DWL offers 24-hour formation evaluation. We provide secure and customized real-time data communication, in-house research and development, and 24/7 on-call support for our equipment and our engineers.

Whether you have a 10-day job or a 110-day job, we provide the specialized attention you require. **Our experience means you can be confident in the safety and performance of your well.**



- *Formation Evaluation*
- *Geosteering*
- *Drilling Optimization*
- *Real-time Data Transmission*
- *Early Kick Detection*



DIVERSIFIED
WELL LOGGING, LLC

Serving the Oil and Gas Industry for Over 60 Years

April						
Sunday	Monday	Tuesday	Wednesday	Thursday	Friday	Saturday
	1 NOGS Luncheon Holiday Inn @ 11:30 A.M.	2	3	4	5	6 NOGA Spring Social
7	8	9	10	11 PLANO Annual Executive Night 5:30 P.M.	12 Switch Energy Project Screening @ UNO 6 P.M.	13
14	15	16	17 NOGS Board Meeting	18		20
21	22 Earth Day 2013	23 LaRSGIS - Remote Sensing & GIS Workshop	24 PLANO-NOGS Crawfish Boil 4-7 PM	25 LaRSGIS - Remote Sensing & GIS Workshop	26	27
28	29 NOGS Annual Golf Tournament	30				

May						
Sunday	Monday	Tuesday	Wednesday	Thursday	Friday	Saturday
			1	2	3	4
5	6 NOGS Luncheon Holiday Inn @ 11:30 A.M.	7	8 NOGA Luncheon @ Zea Rotisserie Grill	9	10	11
12	13	14	15 NOGS Board Meeting	16	17	18
19 AAPG National Convention Pittsburgh, PA	20 AAPG National Convention Pittsburgh, PA	21 AAPG National Convention Pittsburgh, PA	22 AAPG National Convention Pittsburgh, PA	23	24	25
27	27 Memorial Day	28	29	30	31	

New Orleans Geological Auxiliary News

"The objective of the Auxiliary is to promote fellowship among the wives of the members of New Orleans Geological Society and to render assistance to NOGS upon request."

In February, fifty Auxiliary members, spouses and guests enjoyed an exciting and enjoyable day at the Metairie Country Club. Ronald Drez's talk, *"Absurd History: The Academic Proclamation That the Battle of New Orleans Was Fought After the War Was Over,"* was fascinating and offered the eager listeners some new perspectives on history made here in our area. Ron Drez is currently doing research for a book which should be available in 2015 for the bicentennial of the Battle of New Orleans.



Co-Chairperson Camille Yeldell, Speaker Ronald Drez and his wife Judy, Roy Walther and President Mary Walther



Co-Chairperson Camille Yeldell, Speaker Ronald Drez and Co-Chairperson Susie Baker



Judy and Speaker Ronald Drez



Elizabeth Furlong, Mary Schulte, June Perret and Ruth Grimes

It was good to visit with some members who have been unable to attend events recently and to greet NOGA friends and spouses. Thanks to Camille Yeldell and Susie Baker for being chairpersons and to President Mary Walther who arranged for such a prestigious speaker and his wife, Judy, to attend our luncheon.

Mary Ellis Hasseltine and Debra Fein are planning the Spring Social to be held April 6th at the beautiful home of Trez and Jim Zotkiewicz. More details and pictures will appear next month in the NOGS LOG. On May 8th Judy Sabaté and Pat Williamson will chair the Installation Luncheon at Zea Rotisserie and Grill on St. Charles Avenue, winding up a wonderful year and installing new officers for next year.

Peggy Rogers, NOGS LOG

New Orleans Geological Auxiliary Membership Application

Name _____ Spouse's Name _____
Address _____ Home Phone _____
City, State, Zip _____ Email _____
Spouse's Company _____ DUES: \$25.00

Please send \$25 check payable to NOGA to Judy Lemarié, Treasurer, #2 Yosemite Dr., New Orleans, LA 70131

Countdown: We are 189 days from the convention!

The technical program for the convention is all set, with 103 abstracts submitted. Many of you have volunteered to help with the editing of the manuscripts for the Transactions, but we could use a few more. Let me know if you can help. We have many volunteers for on-site registration and other functions, but we are going to need more. If you can help (even for half a day) let Bill Whiting know at Bootscon@aol.com.

Art Johnson

General Chairman

Artjohnson51@hotmail.com

504-464-6208



Second Lining

To Future Energy Resources

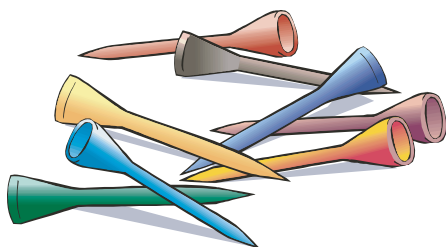


HOSTED BY



GCAGS 2013 ■ New Orleans

October 6-8, 2013



THE 2013 ANNUAL GOLF OUTING

Proceeds from this event will help fund the **Bill Craig Memorial Fund*** 501(c)(3) organization
Last year, the golf tournament generated \$5,000.00. Let's keep it going!

MONEY HILL GOLF COURSE in ABITA SPRINGS on MONDAY, APRIL 29

The format will be a 4-person scramble w/shotgun start at High Noon

Food sponsored by Tim Klibert w/ Diversified Well Logging

Registration opens at 10:00 a.m. with Brunch served until tee time.
Price includes green fees, cart, range balls, food & drinks, flight, prizes & 2 Mulligans.

What else could you possibly ask for? Donations of any kind are welcome.

The cost is \$140 / individual or \$650 / corporate. Hole sponsors are \$125.

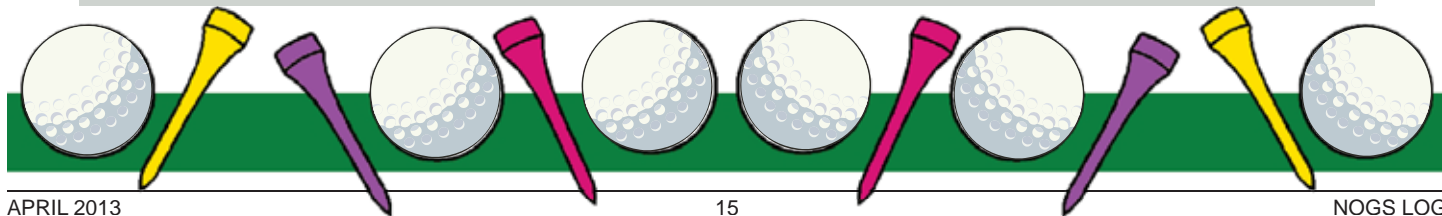
This event always fills up, and we are limited to **120 players only**. Please register early to avoid confusion. Remember you are not registered until NOGS has received payment and you are confirmed by Annette. As usual, we need volunteers. If you can help out, you will be treated to a day of fun, food, and be eligible for some door prizes. Make sure you supply your handicap or a score that typifies a set of rounds of golf over recent time no greater than 2 years in the space provided.

FOR REGISTRATION, DONATIONS OR TO VOLUNTEER, CONTACT:
Annette Hudson (504-561-8980) annette@nogs.org

To register, contact Annette Hudson at the NOGS
Office, 810 Union St. • Suite 300 • New Orleans, LA 70112 • 504-561-8980.

Cash, check (payable to NOGS). Credit cards accepted through NOGS PayPal account. Go to: www.nogs.org

Name _____	handicap _____	@\$140 each
Company _____		@\$650 each
Phone _____	Email _____	
Names of others in your group:	Cash Donation: \$ _____	
_____ handicap _____	_____ handicap _____	
_____ handicap _____	_____ handicap _____	
_____ handicap _____	_____ handicap _____	



17th Annual Gulf of Mexico

Deepwater

Technical Symposium



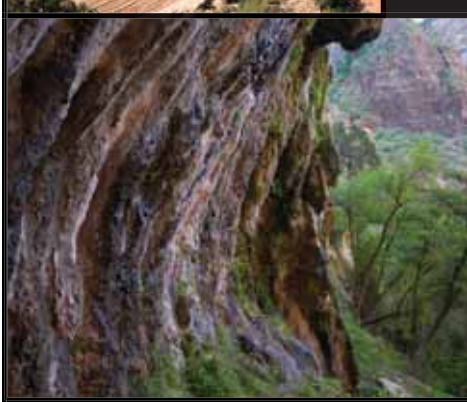
NEW CHALLENGES OPPORTUNITIES

August 21st & 22nd 2013

*The Hilton New Orleans
Riverside Hotel*

www.deepwaternola.org





NOGS

PETROLEUM GEOLOGY FOR NON GEOLOGISTS

The New Orleans Geological Society is presenting a one day course on "Petroleum Geology for Non Geologists," 8:30 a.m. to 3:30 p.m. on Wednesday April 17, 2013, in the Shell Auditorium, Shell Building, 701 Poydras Street, New Orleans. The course will consist of a brief introduction to Basic Geology, followed by a review of how oil and gas are formed, how they are concentrated into reservoirs, the geological and geophysical methods used in exploration, and an overview of drilling and completion practices.

This course should be of significant benefit and interest to anyone who in one way or another works with geologists and geological data, such as land personnel, secretaries, draftsmen, computer programmers and processors. Instructors will be consulting geologists Duncan Goldthwaite, Bob Branson and Bruce Robertson.

Cost will be \$35.00 per participant. Course notes and mid-morning refreshments will be provided. Persons interested can register and pay via PayPal through the Society's Website www.nogs.org on the left side of the home page, click then scroll down to NOGS Special Events or by sending a check for \$35.00, made out to the New Orleans Geological Society, to:

New Orleans Geological Society
810 Union St. • Suite 300
New Orleans LA 70112



South Louisiana and Offshore Gulf of Mexico Exploration and Production Activities

LAFAYETTE DISTRICT, ONSHORE AREA

By Carlo C. Christina

Today, there are **1,757** rigs running in the continental United States. Of these, 76% are drilling for oil, and 24% are drilling for gas. Horizontal drilling accounts for 65% of these wells, 24% are vertical wells and 11% are directional wells.

In December 1981, **4,530** rigs were drilling compared to a **low** of **488** rigs running in April 1999.

The Office of Conservation, Lafayette District, Onshore Area, issued 43 permits during the month of February 2013. Following are the most significant locations:

NEW LOCATIONS

In Beauregard Parish, **Skinner Lakes Field, (A)**, Halcon Operating will drill an interesting Lower Wilcox test in Sec. 9, 6S-13W, to a projected depth of 15,000 feet. This well is located one-half mile east of 3 Upper Wilcox wells, which have been on production more than 38 years, producing from sands at 9,800 feet. A recent well was drilled to 13,700 feet and completed in the same Upper Wilcox zones at 9,800 feet, but did not evaluate the Lower Wilcox sands. The Halcon Operating permitted location, the #1 Stump 9, will test these lower sands, and if found to be productive, could possibly set off a series of deep wells in the field. (245942)

Halcon has also permitted the #1 Indigo, located 1 mile northeast of the previously described producing wells. It is located in Sec. 3, 6S-13W and will be drilled as an Upper Wilcox test to a projected depth of 11,000 feet. (245486)

Midstates Petroleum is drilling a very deep, long lateral horizontal well in **South Bear Head Creek Field, (B)**, Beauregard Parish. The #1 Musser-Davis 33 H will be drilled to **18,700** feet in a **4100** foot lateral leg, located in Sec. 33, 6S-11W to test Lower Wilcox sands. (245971)

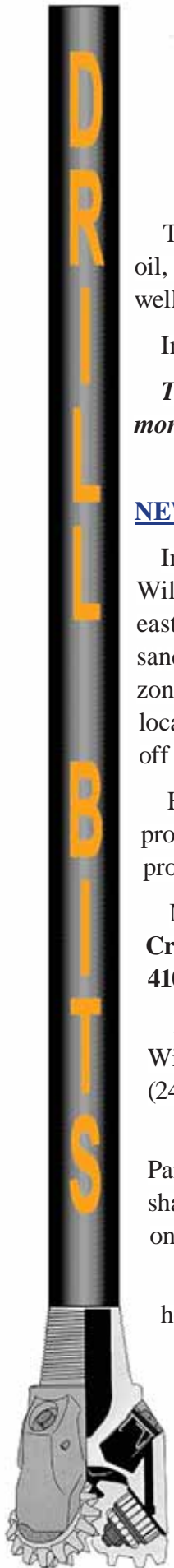
Also in **South Bear Head Creek Field, (C)**, Swift Energy is currently drilling a horizontal Upper Wilcox well to 15,568 feet. The #1 Dolby H is located 1½ miles to the northwest in Sec. 29, 6S-11W. (245806)

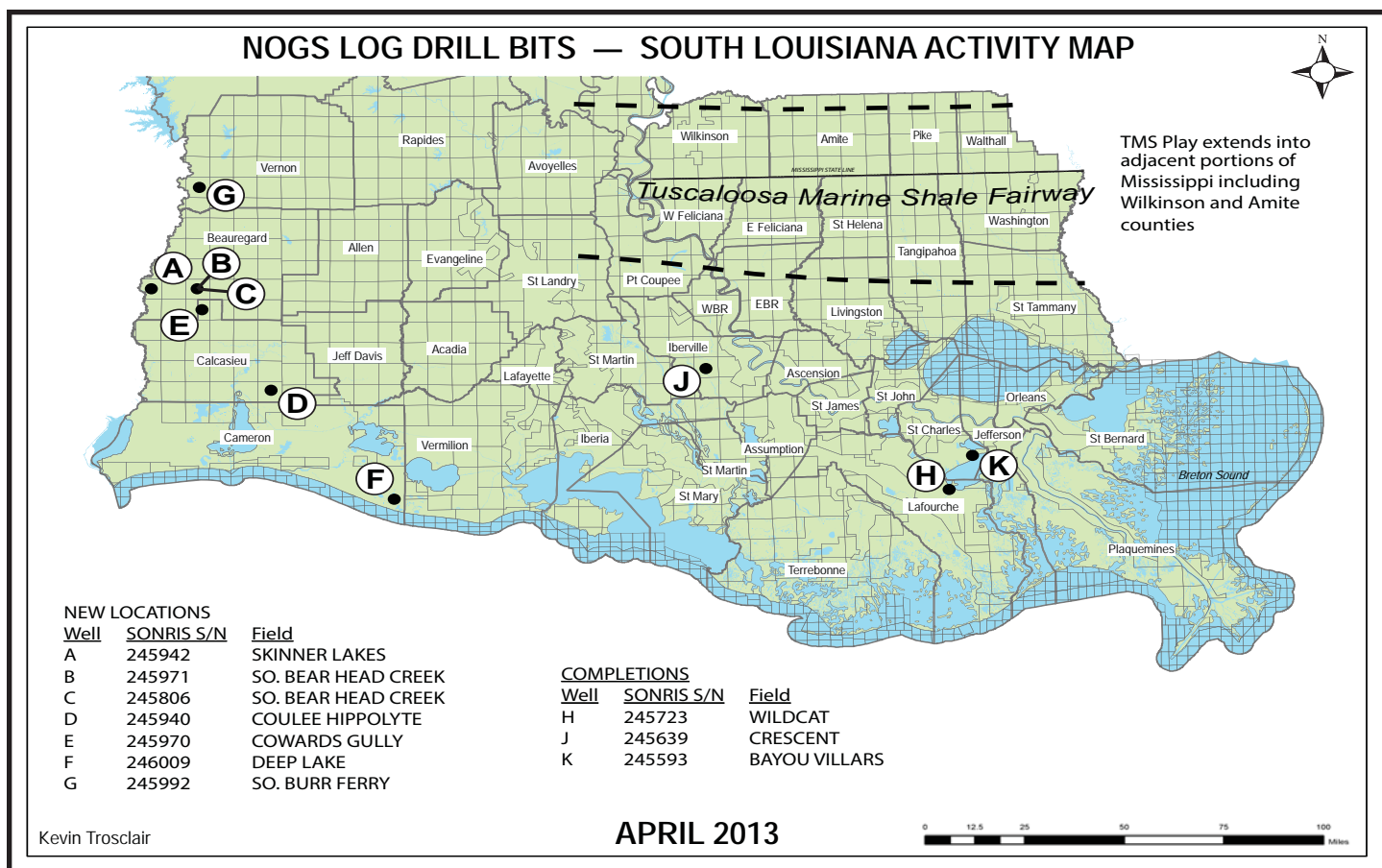
Brammer Engineering will drill to 16,000 feet in **Coulee Hippolyte Field, (D)**, in Calcasieu Parish, Sec. 5, 11S-8W. This test, the #1 BOR-DU-LAC, is typical of current deep drilling in old, shallow fields. The deepest well in the field was drilled twelve years ago to 12,929 feet and produced only 45,000 barrels of oil over a 3 year period. (245940)

In Calcasieu Parish, **Cowards Gully Field, (E)**, Midstates Petroleum has staked a location for a horizontal well in Sec. 10, 7S-11W. The #1 Wood 10 H will be drilled to 17,500 feet, in a 3782- foot lateral leg to test Wilcox sands. (245970)

In Cameron Parish, Hilcorp Energy will drill its #1 SL 20579 on the northwest flank of **Deep Lake Field, (F)**, to a projected depth of 16,500 feet. The well is located in Sec. 7, 16S-3W. Within the past 2 years, Hilcorp has completed 2 excellent gas condensate wells in the field. (246009)

Hilcorp Energy is currently drilling the #1 SL 20580 to 19,000 feet, offsetting these recent completions. (245770)





In **South Burr Ferry Field**, (G), Vernon Parish, Anadarko E&P will drill the #1 Indigo in Sec. 17, 1S-11W to a projected depth of 19,542 feet, in an attempt to extend Austin Chalk production on the northwest flank of the field. The field was discovered in 1996 and is currently producing from 10 wells, of which 7 were drilled within the past 3 years. Production during this period has been only 480,000 barrels of condensate and 4 billion cubic feet of gas. (245992)

COMPLETIONS

Castex Energy has plugged and abandoned the #1 SL 20859, drilled as a **wildcat**, (H), in Lafourche Parish, located in 16S-21E. The well was permitted to 16,000 feet but was plugged after logging at 11,500 feet. (245723)

In Iberville Parish, Dynamic Exploration has completed its #1 Templet in **Crescent Field**, (J), as an oil well in Sec. 4, 10S-11E. The well was drilled to 11,600 feet and completed flowing 153 BOPD through perforations 11,470 to 11,473 feet. (245639)

Badger Energy has plugged and abandoned the #1 SL 21041 in St. Charles Parish at a depth of 10,611 feet. It was drilled as an extension to **Bayou Villars Field**, (K), in 15S-22E. (245593)

OFFSHORE GULF OF MEXICO SHELF AND DEEPWATER ACTIVITIES

by Al Baker

During February 2013, the BOEM approved **65** drilling permits. Of these, **33** were for Gulf of Mexico shelf wells and **32** were for Gulf of Mexico deepwater wells. There was **1** shelf (development) and 3 deepwater (2 exploratory and 1 development) new well permits granted.

On the shelf, **Castex Offshore** received a new well drilling permit for their **#5** development well on **Vermilion 252**.

In deepwater, **LLOG Exploration** received a permit to drill their #1 exploration well on **Mississippi Canyon 258**, and Shell was awarded a drilling permit for their #1 exploratory well on **Desoto Canyon 529**. The single development new well permit was issued to **Petrobras America** for their #6 well on **Walker Ridge 206**.

On March 1st, IHS-Petrodata reported that the Gulf of Mexico mobile offshore rig supply totaled **110**, and the contracted rig count stood at **76**. The total rig count is 1 less than reported last month, and the contracted rig count is the same last month. The fleet utilization rate currently stands at **69.1%**. This compares to 74 out of the 117 rigs available during the same period in 2012 for a 63.2% utilization rate.

In addition, there were **27** platform rigs under contract out of the **53** total in the rig fleet for a fleet utilization rate of **50.9%**. The current number of platform rigs under contract in the Gulf is 1 greater than reported last month.

On February 1st, the BakerHughes Rig Counts indicated that there were **52** active mobile offshore rigs in the Gulf, which represents **68.4%** of the total rigs under contract. This is a decrease of **1** rig when compared to last month. The current active rig count compares to 40 active rigs during the same period last year. This 12-rig improvement number represents a **30%** increase in the active mobile offshore rig fleet on a year-to-year basis. Additionally, of the 27 platform rigs that are under contract, **21** (or **77.8%**) are currently working. This is **2** more than the total number of working platform rigs as reported last month.

On February 20th, **W&T Offshore** provided an update of its operational activity in the Gulf of Mexico. The 2013 year began with activity that was weighted toward exploration projects, and currently W&T has four working rigs in the Gulf. At its highly successful, multi-well drilling program in the **Mahogany Field** in Ship Shoal 349, W&T brought on production from its fifth well, the #A-9, at a rate of 2,700 BOEPD. Current average daily gross production from the Field is approximately 9,150 BOEPD (roughly 75% oil), which is up from about 1,300 BOEPD in late 2011. On January 15th, W&T spudded its sixth well, the Ship Shoal 349 #A-14 well, which is an exploratory well designed to test the T Sand, a deeper play beneath the main field reservoir. Following the #A-14 well, W&T intends to drill the #A-15 well, which is planned to target multiple, stacked amplitudes in the sub-salt section in addition to expanding the reservoir limits of the main field reservoir, the P Sand. Mahogany Field was one of the first sub-salt oil developments in the Gulf having been discovered by Phillips Petroleum in 1993. As of November 2012, the Field has produced 7.757 MMBO and 16.5 BCF.

In addition, W&T is currently drilling two exploration wells in their **Main Pass 108 Field**. The #B-1 well is targeting the Middle Miocene, Tex. W-6 Sand and will be followed by the #B-2 well. In deepwater, W&T is also drilling a development well at its **Matterhorn Field** in Mississippi Canyon 243. The #A-2 ST-1 well is anticipated to add approximately 1,000 BOEPD of production to the Field. W&T intends to follow-up this well with the Mississippi Canyon 243 #A-5 well, which is planned as a water injection well that will be used for pressure maintenance in the Field. Another development well on the 2013 schedule is the **High Island 21 #A-1** well that is targeting the Upper Oligocene, LH-20 Sand.

On February 28th, **Chevron Corporation** announced that it had conducted a successful production test on the #PS-3 well in its **St. Malo Field**, which is situated within the prolific Lower Tertiary trend of the deepwater Gulf of Mexico. Though limited by testing equipment constraints, oil flow rates exceeded 13,000 BOPD from the well. The #PS-3 well, which is located in Walker Ridge 678, targeted Lower Tertiary sands below 20,000 feet subsea. This is the first development well in the St. Malo Field, which is being jointly developed with the **Jack Field**. The two fields are located within 25 miles of each other and are being co-developed with a host floating production unit located between the two fields in 7,000 feet of water, approximately 280 miles south of New Orleans. The facility is planned to have a design capacity of 177,000 barrels of oil-condensate per day to accommodate production from the Jack/St. Malo development, which is estimated at a maximum total daily rate of 94,000 barrel of oil-equivalent, plus production from third party tiebacks. The total project cost for the initial phase of development is estimated at \$7.5 billion.

This Changes Everything.

SAVE THE DATE:
12-14 AUGUST 2013



UNCONVENTIONAL

RESOURCES TECHNOLOGY CONFERENCE

FUELED BY SPE • AAPG • SEG

12-14 August 2013 • Colorado Convention Center • Denver

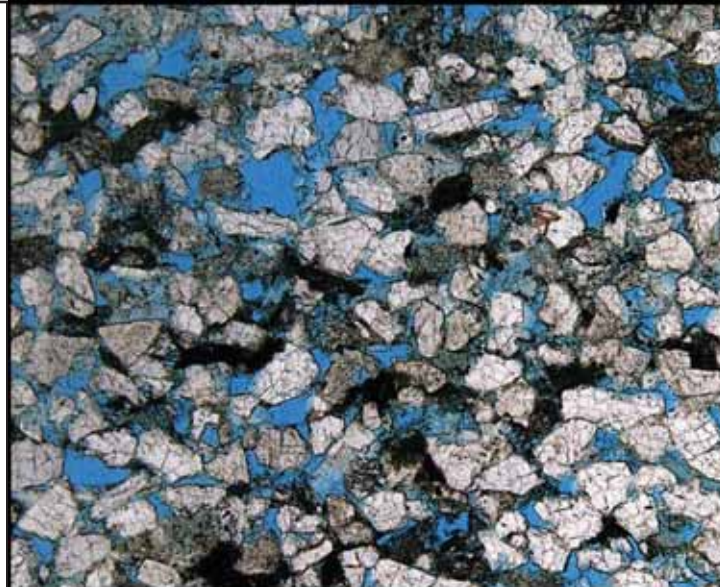
www.URTeC.org



Shell has worked in partnership
with the NOGS for many years, and
is proud to count the society among
its closest business associates.

The New Orleans Geological Society was organized in 1941 to foster scientific research and advance the science of geology. Particular emphasis is laid on the exploration for and production of petroleum and natural gas. Related objectives include encouraging the adoption of improved methods of exploration, disseminating pertinent geological and technological data, and maintaining a high standard of professional conduct among its members.

www.shell.com/us.sepc



Offshore & South Louisiana Experts

- CORE ANALYSIS
- PVT FLUID EVALUATION
- GEOLOGIC SERVICES

New Orleans: 504-733-6583
Broussard: 337-837-8616
Houston: 713-328-2673
www.corelab.com





February 2013 Luncheon



NOGS

WELCOMES

Submitted by Sheri Richardsor.

Jeff L. Bittner started working in the Oklahoma oil fields at the age of eleven, helping his father to activate old wells and assemble tank batteries for oil transport. By the age of fifteen he was grading roads to wells as the sites were being drilled, piped, logged, and fracked. He also helped his father acquire leases from land owners who were not always willing to have their land developed.

After leaving the oil field, Jeff moved to California to pursue a career in the electronics industry, in which he has been employed for over twenty-five years. After receiving an oil royalty check from one of his father's wells, his interest in the oil industry was renewed. He is now an investor in minerals, ORRI and WI in wells in Oklahoma, Louisiana and Texas.

Jeff graduated from the UCLA Executive Program and has been the owner of Roadrunner Well Services (1980-1985) and President of Dynamic Electronics, Inc. (1985-1994). He is currently the President of SMS Assembly, Inc. and Road Runner Resources, LLC.

He and his wife, Jennifer, reside in Naples, Florida, and have two children, Brittney (age 13) and Kyle (age 22).

Elizabeth Burns is a Small Business Services Transformation Manager at Capital One, where she has worked for over twenty years. She received her BS (1987) in education and geology and general science from the University of New Orleans, so that she could teach High School Geology and General Sciences. Elizabeth has always had a passion for geology and is especially interested in the geology of Southeast Louisiana and the Gulf Coast, mineralogy, and geoanthropology.

As a new member of NOGS, she is interested in the Program/Luncheon Committee. Elizabeth lives in Metairie with her husband, Barry.

Wayne A. Cook is in marketing at Seitel in New Orleans. In 2001, Wayne graduated from Southeastern Louisiana University with a bachelor's degree in history. Wayne is a reinstated member of NOGS.

March 2013 Luncheon



Technology Experience Performance



Voyage Explorer
Shallow water 2D/3D vessel capable
of 1 x 12km streamer and 2 x 12km
or 4 x 6km -3D with 4 sub arrays for
large output of single/dual source



SeaBird Exploration PLC "SeaBird" is a global provider
of marine 2D/3D/4D seismic data, and associated
products and services to the oil and gas industry.

SeaBird's main focus is providing high quality seismic
surveys (contract seismic) and source vessels. We
operate in both deep and shallow water with our
7 vessels conducting 2D and 3D.

The main success criteria for the company is our
unrelenting focus on Health, Safety, Security,
Environment and Quality (HSSEQ), combined with
efficient collection of high quality seismic data.

Aquila Explorer



Harrier Explorer



Hawk Explorer



Munin Explorer



Northern Explorer



Osprey Explorer



All SeaBird's vessels are capable of pulling a 12km streamer with 4 &/ or 6 sub arrays for very large source outputs.

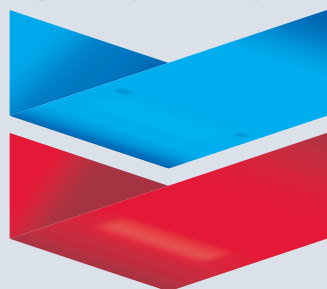
"with the Aquila Explorer in the Far East and the Osprey Explorer in Barents Sea and the balance of SeaBird's fleet (Harrier Explorer, Northern Explorer, Hawk Explorer and Munin Explorer) in Brazil and Africa we have all your 2D/ source vessels needs covered worldwide."

RAISING
THE STANDARD

www.sbexp.com

Dubai -Tel: +971 4 427 1700 | Oslo -Tel: +47 2240 2700 | Houston-Tel.: + 1 281 5561 666 | Singapore- Office: +65 68325593

Chevron



100 Northpark Blvd.
Covington, LA 70433

(985) 773-6000



LaBay

Exploration Co., L.L.C.

111 Veterans Memorial Blvd.

Suite 1550

Metairie, Louisiana 70005

Office (504) 371-5967

Fax (504) 371-5969

www.labayexploration.com

THIS AD SPACE AVAILABLE

Contact: annette@nogs.org



LAFAYETTE GEOLOGICAL RESEARCH CENTER, LLC

201 Heymann Blvd., Suite 33 • Lafayette, LA 70503

Tel: 337-233-8197 • Fax: 337-233-8177

COVERAGE:

Louisiana / Federal / State Offshore

• Multi State Geo Tech Services • Completion Data
Production Data • Well Logs • Maps

~ MEMBERSHIPS AVAILABLE ~

The Industry's Premier • Well Data Center

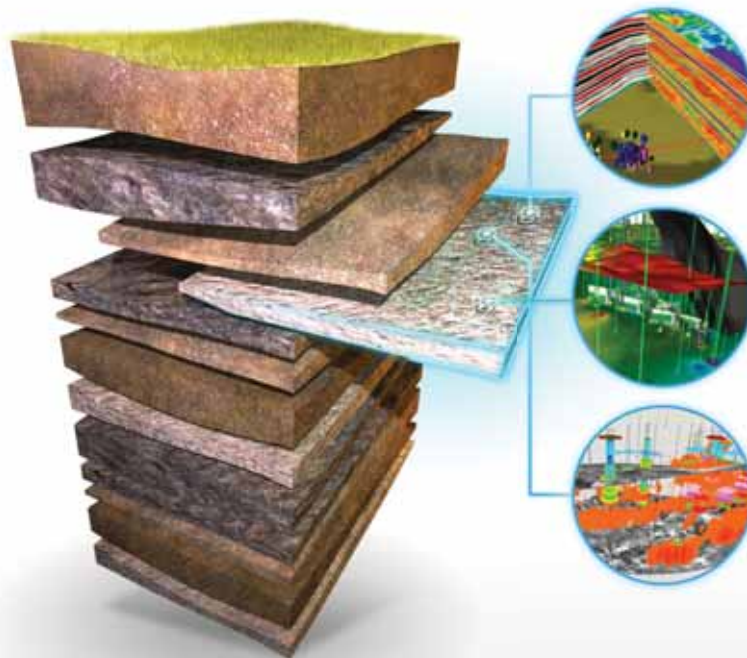
orders@lafayettegrc.com

CALL OR EMAIL TODAY FOR MORE INFORMATION!

YOU TACKLE TOUGH PROBLEMS

YOUR GEOSCIENCE SOFTWARE
DOESN'T HAVE TO BE ONE OF THEM

IHS GEOSCIENCE: sophisticated science that's simple to use and simple to manage



SURFACE TO SUBSURFACE

**ONLY ONE ENERGY EXPERT
PROVIDES SO MUCH TO SO MANY**

From big picture to critical detail, proven capabilities to superior results, IHS geoscience does it all—backed by the world's most respected forecasting, analysis, and play-specific geological and geophysical data.

NOW GET THE POWER OF KINGDOM® AND PETRA®

Only IHS geoscience simply yet scientifically links engineering, economics and interpretation software suites to give you a definitive edge. Spearheaded by industry-leading Kingdom® and Petra® software solutions IHS gives you the best in geophysics and geology.

Learn more at IHS.com/NOGS

IHS GEOSCIENCE



Simply **Scientific**™



PLANO - NOGS CRAWFISH BOIL

Wednesday, April 24, 2013

4:00 - 7:00 p.m.

Southern Yacht Club



Includes Crawfish, Mini Po-Boys, Beer, Soft Drinks, Dessert

\$40

NOGS Members & Non-Members

(Includes 2013-2014 NOGS Membership)

\$15

Students

(Includes 2013-2014 Student Membership)



PROFESSIONAL LANDMEN'S ASSOCIATION OF NEW ORLEANS

**PROUDLY ANNOUNCES
ITS
ANNUAL EXECUTIVE NIGHT**

**THURSDAY, APRIL 11, 2013 ~ 5:30 P.M. – 8:30 P.M.
(Eve of the French Quarter Festival)**

**SPEAKER: STEVE GLEASON,
New Orleans Saints "Special Teams Player of the Year - 2006"
and Founder of Team Gleason**

TOPIC:

Core Elements and Mission of Steve Gleason and Team Gleason are to help people with ALS (Amyotrophic Lateral Sclerosis) live productive, inspired lives by providing access to life-affirming events and assistive technology until a cure is found.

NEW ORLEANS HILTON RIVERSIDE & TOWERS

Ballroom B (1st floor)

Poydras Street at the Mississippi River, New Orleans, Louisiana

TICKETS: \$70.00 PLANO Members \$85.00 Non-PLANO Members
Open to all industry associations and oil and gas industry executives.

Program Format

Opening Reception – 5:30 p.m. – 6:15 p.m.

Presentation of Colors

Speaker – 6:30 p.m. to 7:00 p.m.

Buffet & Cocktails (Ballroom A, 1st Floor) – 7:00 p.m. to 8:30 p.m.

Tickets must be purchased on or prior to Thursday, April 4, 2013, to ensure industry executives' names are included in the program.
Tickets WILL NOT BE AVAILABLE at the door.

Special PLANO room rates available at the
New Orleans Hilton Riverside & Towers, #2 Poydras Street, New Orleans, LA (Group Code PLO),
call 504-584-3959 (9:00 a.m.-5:00 p.m.) or 1-800-445-8667,
and at the Royal Sonesta Hotel, 300 Bourbon Street, New Orleans, LA, 504-586-0300.
(Refer to PLANO to obtain the special rate of \$199/night at the Royal Sonesta)
PLEASE MAKE ROOM RESERVATIONS EARLY.

Purchase of tickets, contact lmorgan@hjainc.com, Telephone (504) 276-5858,
or margaretcameron@charter.net, Telephone (985) 640-0352



THE PROFESSIONAL LANDMEN'S ASSOCIATION OF NEW ORLEANS

P.O. Box 51123 • New Orleans, Louisiana 70151-1123



STEVE GLEASON

New Orleans Saints

"SPECIAL TEAMS PLAYER OF THE YEAR"

September 25, 2006

Steve Gleason was born March 19, 1977, in Spokane, Washington. He attended Gonzaga Preparatory School, where he earned consecutive Greater Spokane League Defensive MVP awards as a linebacker and was inducted into the Gonzaga Prep Hall of Fame. Following graduation in 1995, he accepted a scholarship to attend Washington State University (WSU), where he was selected as an honorable mention all-Pac 10 in 1997 and received his degree in 2000 from WSU's College of Business and Economics in Management Information Systems.

After graduation, Steve was signed by the Indianapolis Colts as an undrafted free agent in 2000. He was released by the team after the preseason and was signed to the New Orleans Saints' practice squad in November. As a special teams standout and captain of the special teams, on September 25, 2006, Steve was responsible for one of the most dramatic moments in the Saints thirty-nine year history when he blocked a punt in the first quarter against the Atlanta Falcons, which was recovered in the Falcons' end zone for a touchdown. It was the first score in the Saints' first home game in nearly 21 months, during which time Hurricane Katrina had devastated the city. The Saints won the game and, unexpectedly, went on to have the most successful season in their history up to that time. That year, he won the "Special Teams Player of the Year" award for the Saints.

As a Saint, Steve formed the One Sweet World Foundation, a charitable foundation that focuses on literacy and environmentalism. In the wake of Hurricane Katrina, Steve's foundation led a group of foundations and institutions in launching "Backpacks for Hope," an initiative to provide relief to young hurricane victims in the form of backpacks and school supplies. More than 7,000 backpacks and other assistance were donated from across the country. He spent much of his career visiting patients at the New Orleans Children's Hospital.

Steve, known for his long locks hanging out of his helmet, regularly donated his hair to "Lock for Love," which provides hair for wigs for children with cancer.

After retiring from football in 2008, Steve attended Tulane University. In 2009 he received his Master of Business Administration degree and began his second career with Shaw Environmental, Inc.

Steve is married to native New Orleanian Michel Varisco. In October 2011, they had their first child, Rivers. In an effort to capture the essence of himself and his life, Steve is currently building a video journal library for Rivers.

In January 2011, he was diagnosed with Amyotrophic Lateral Sclerosis (ALS) — also known as Lou Gehrig's disease. Steve is determined to inspire others by continuing to pursue life adventures despite his diagnosis and has challenged the worlds of technology and science to identify their most promising developments toward new treatments and a cure.

Steve and his friends and family started Team Gleason to generate public awareness for ALS, raise funding to empower those with ALS to live a rewarding life, and ultimately end ALS. The core elements and mission of Steve and Team Gleason are to help people with ALS live productive, inspired lives by providing access to life-affirming events and assistive technology until a cure is found. This work includes:

- Together with St. Margaret's Skilled Nursing Center, Team Gleason has partnered to develop and build the Team Gleason House for Innovative Living at St. Margaret's Mercy Campus, the second residence of its kind in the world, whereby people diagnosed with an incurable neuro-muscular disorder can live in an innovative living environment by the use of extensive state of the art technology and networking, such as opening doors, turn up or down their bedroom shades, or call for the elevator, all with the help of a computer and a sensor that tracks head/eye movement allowing these residents to maintain their physical independence even as their physical abilities diminish, under the care of the specially trained St. Margaret's staff.
- Partnering with leading technology companies to purchase eye-tracking portable computers in bulk for an economy of scale to give more ALS patients the ability to afford a simple communication device.
- Sharing his quest to explore life, love of the outdoors and adventures and events by providing lifetime experiences without the limitation of ALS, by hosting and documenting adventures that raise awareness about the disease globally, these adventures and events having included music festivals, canoeing and camping on the Missouri River, the 2012 Super Bowl in Indianapolis, a white water rafting trip in Italy, a cruise through the Panama Canal, the 2013 Super Bowl in New Orleans and a trip in April to climb Machu Picchu in Peru.

On behalf of PLANO and its Board of Directors, we look forward to seeing you at Executive Night on Thursday, April 11th at the New Orleans Hilton Riverside and hearing Steve's keen sense of humor and inspirational message.

Michael (Mitch) Ackal, Jr.
PLANO President

PLANO'S EXECUTIVE NIGHT

Thursday, April 11, 2013
5:30 - 8:30 p.m.
(The eve of the French Quarter Festival)



Featured Speaker:

New Orleans Hilton
Riverside Hotel
Grand Ballroom A

STEVE GLEASON

New Orleans Saints Special Team Player of the Year 2006

Reception Immediately Following

☐ I plan to attend this event. My check for \$_____ is enclosed. ♦ Ticket Cost: \$70 PLANO Members - \$85 Non-PLANO Members

Name _____ Email _____

Company _____ Job Title _____

Address _____

City _____ State _____ Zip _____

Get More



from your Core

With reservoirs becoming increasingly complex, you need the most accurate information you can get to better understand your reservoir.

Weatherford Labs helps you get more from your core by combining an unsurpassed global team of geoscientists, engineers, technicians and researchers with the industry's most comprehensive, integrated laboratory services worldwide. From core analysis, sorption, geochemistry and isotopic composition to detailed basin modeling and comprehensive data packages, we provide you with real reservoir rock and fluid information that hasn't been distilled by a simulator or iterated by software.

We call it "**The Ground Truth™**" – giving you the accurate answers you need for better reservoir understanding. You'll call it a better return on your reservoir investment. To learn more, contact TheGroundTruth@weatherfordlabs.com.



Weatherford
LABORATORIES
weatherfordlabs.com

© 2012 Weatherford. All rights reserved. Incorporates proprietary and patented Weatherford technology.

DOMESTIC AND INTERNATIONAL BIOSTRATIGRAPHIC SERVICES



6619 Fleur de Lis Drive
New Orleans, LA 70124
(504) 488-3711

www.paleodata.com



Complete wellsite paleo services

**Supported offshore GoM and
onshore LA paleo databases**

**Integrated foram/nannofossil
analyses**

**In-house sample preparation
lab for quality-monitoring
and efficiency**

**Comprehensive depositional
history study of the Gulf Basin
based on 200,000+ well data
analysis**



MCMORAN EXPLORATION CO.



MCMORAN
OIL & GAS

www.mcmoran.com

NYSE: MMR

16676 Northchase Dr.
Houston, TX 77060
(281) 539-7600
Fax: (281) 539-7655

1615 Poydras
New Orleans, LA 70112
(504) 582-4000
Fax: (504) 582-4155

110 Travis St., Suite 140
Lafayette, LA 70503
(337) 735-9150
Fax: (337) 735-9151

Info Tidbits: Submitted by Jordan Heltz

Dow Jones Newswires - Ben Lefebvre

***"Despite Shale Boom, Deep-Water Gulf Still Lures Oil Drillers"* February 19th, 2013**

<http://www.foxbusiness.com/news/2013/02/19/despite-shale-boom-deep-water-gulf-still-lures-oil-drillers/#ixzz2NfEVvko9>

As the U.S. energy boom heats up in landlocked states from North Dakota to Oklahoma, some oil companies are still making multibillion-dollar bets on finding crude in the deepest waters of the Gulf of Mexico. About 600 workers at a shipyard in Corpus Christi, Texas are building three-story steel structures that will make up Chevron Corp.'s (CVX) outpost many miles offshore, in an area that geologists say is promising, but where almost no oil has yet been pumped.

"It'll be the first house in the neighborhood," said Glenn Lohfink, the Chevron construction manager at the site. The target Chevron is aiming at is called the Lower Tertiary, considered by many to be the Gulf of Mexico's last frontier. Its heart is buried thousands of feet below sea level, hundreds of miles from shore and almost a three-hour helicopter ride from New Orleans.

Lower Tertiary oil fields haven't been fully decoded by geologists, but Chevron is investing \$7.5 billion just to start tapping its first two discoveries there, the Jack and St. Malo fields. The company expects to install a platform with the capacity to produce 177,000 barrels of oil and natural gas a day, generating annual revenue worth billions of dollars at current prices of roughly \$96 a barrel for decades to come.

Chevron's gamble underscores how deep-water frontiers remain alluring despite the massive reserves unlocked by hydraulic fracturing in the onshore U.S. Such interest has pushed oil and gas drilling in the Gulf above the levels reached in 2010 before the Deepwater Horizon disaster, which temporarily cooled activity there.

The bang oil companies get for their bucks spent in deep-water developments is so prodigious that it can beat drilling thousands of onshore wells and dealing with hundreds of landowners, experts said.

Dow Jones Newswires - Ben Lefebvre & Tom Fowler

***"Apache Could Earn \$3B on Rumored Deepwater US Gulf Sale"* March 8th, 2013**

http://www.rigzone.com/news/oil_gas/a/124907/Apache_Could_Earn_3B_on_Rumored_Deepwater_US_Gulf_Sale

Apache Corp. could realize up to \$3 billion in a rumored sale of its deep water Gulf of Mexico oil and natural-gas assets, analysts said Thursday.

Apache was said to be considering an exit from the Gulf to concentrate on its onshore North America drilling assets, an unnamed person told Bloomberg Wednesday. Apache declined to comment on the rumors, only noting that it announced in its fourth-quarter earnings release that it planned to sell \$2 billion in assets.

"When we have something concrete to share, we will do so," Apache spokesman Bill Mintz said. A sale would undo Apache's relatively recent investment in the Gulf of Mexico, when it acquired Mariner Energy in 2010 for about \$2.4 billion in debt and cash.

Operating costs in the Gulf of Mexico have risen since the deadly 2010 Deepwater Horizon accident due to new safety requirements.

SAI *Geoconsulting, Inc.*

*Geological and Geophysical Consulting
3-D Seismic Interpretation*

Ben D. Sydboten, Jr. CPG

2 Flagg Pl., Suite 1
Lafayette, LA 70508
www.saigeoconsulting.com

Office (337) 504-3670
Cell (337) 456-8948



Anthony Catalanotto
President

**Geological
Geophysical
Land
Drafting & Graphics**

3349 Ridgelake Drive • Suite 202
Metairie, LA 70002
Office: (504) 836-2882
Fax: (504) 836-2877
Cell: (504) 481-7291
E-Mail: geodraft@bellsouth.net
Website: www.geodraftinc.com

NORTHCOAST OIL COMPANY

610 E. Rutland St.
Covington, LA 70433
(985) 898-3577
(985) 898-3585 Fax

Jack M. Thorson
Eric C. Broadbridge
J. Daryl Gambrell
Raymond W. Stephens



ETROA Resources LLC

Join us in pursuing gulf coast production,
acquisitions and low-risk drilling opportunities

John C. Ebert
Kevin McVey

128 Northpark Blvd.
Covington, LA 70433
(985) 809-3808

www.etroa.com



*Thanks
our sponsors
for
their support!*

Special Thanks to



DIVERSIFIED
WELL LOGGING, LLC



Spring has sprung!

THE NEW ORLEANS GEOLOGICAL SOCIETY MEMORIAL FOUNDATION, INC.

The Memorial Foundation is an IRS Tax Exempt Code #501(c)(3) organization. The Federal I.D. is 72-1220999. Please consider making a donation to the Foundation. Your individual support in any amount will help meet the IRS Guidelines for our Foundation. Thanks!

\$15,000 AND ABOVE

Gibbet Hill Foundation

*In Memory of Steve & Marion Millendorf, William J. Prutzman,
Roger G. Vincent, Ron Youngblood & Uno Numella*

\$5,000

NOGS Golf Tournament April 2012

In Memory of Bill Craig

\$1000

Mr. Marc Cooper

*Through the Marathon Oil Co
MEPAC Program*

Mr. Richard G. Klibert

\$500

Mr. Richard G. Klibert

Mr. Foster E. Voelker

In Memory of Gene Rogas

\$250 TO \$499

Beverly and Carlo Christina

In Memory of Jack Dunlap

Mr. Carlo C. Christina

In Memory of Al Gilreath

Paleo Data Inc.

In Memory of Jack Dunlap

Mr. James S. Classen

*In Memory of Jack Dunlap,
Louis L. McCormick, Jr. and
James P. Raymond, Jr.*

UP TO \$249

Mr. Woods W. Allen, Jr.

In Memory of William C. Ward

Mr. Robert J. Ardell

*In Memory of James P. Raymond, Jr.
In Memory of Jerry Goodman*

Mr. Thomas C. Bergeon

Mr. Maurice N. Birdwell

In Memory of Uno Nummela

Mr. Burton C. Bowen

In Memory of Louis L. McCormick, Jr.

Mr. Robert B. Branson

In Memory of Louis L. McCormick, Jr.

Mr. Hilary James Brook

Ms. Robin A. Broussard

Mr. Rob Burnett

Ms. J. Sybil Callaway

Chevron Humankind Matching Gift

Mr. Arthur F. Christensen

Beverly and Carlo Christina

In Memory of Beverly Langford

Mr. Carlo C. Christina

In Memory of Louis L. McCormick, Jr.

Mr. James S. Classen

In Memory of Robert G. Williamson

Mr. Willis E. Conatser

Mr. Clarence F. Conrad

Trudy and Charley Corona

In Memory of Beverly Langford

In Memory of Jack Dunlap

Mr. Charles J. Corona

In Memory of Carl Grieshaber

Mr. Michael Danos

In Memory of Max Durham

Mr. Merle Duplantis

Mr. Dwight Easterly

In Memory of James P. Raymond, Jr.

Dr. Brooks B. Ellwood PhD

Mr. Parrish N. Erwin, Jr.

Mr. James P. Evans III

In Memory of James P. Raymond, Jr.

Mr. Michael N. Fein

Mr. Mark J. Gallagher

Mr. Arthur J. Garden

Mr. Bernard L. Hill, Jr.

Mr. Tom (Thomas) A. Hudson

Mr. Kenneth Huffman

Mr. Jeff Jandegian

Mr. Philip W. Johnson

Mr. Tom Klekamp

In Memory of Jack Dunlap.

Mr. Reuben J. Klibert, Jr.

Mr. Tim Klibert

Mr. John C. "Jack" Langford

Mr. Frank E. Larkin

Mr. Cyril F. Lobo

Mr. H. David Lynch

Ms. Jeannie F. Mallick

Mr. Louis L. McCormick

Ms. Margaret M. McKinney

Mr. Robert G. Murphy

In Memory of Ronnie Youngblood

In Memory of Thomas A. Cullinan

New Orleans Geological Auxiliary

*In Memory of Joan Collier, Amber Klekamp
and Mary Petrocco*

Mr. Russell H. Nordwell

Mr. Richard A. Olsen

Mrs. Teresa M. O'Neill

In Memory of Brian O'Neill

Mr. William S. Peirce

Mr. Edward B. Picou, Jr.

In Memory of Jack Dunlap

In Memory of Terry D. Keegan

Mr. Richard D. Provensal

In Memory of Thomas H. Philpott and James Strahan

Mr. George W. Schneider III

In Memory of George W. Schneider, Sr.

Mr. Rudolf B. Siegert

In Memory of Louis L. McCormick, Jr.

Mr. Robert C. Shoup

FONO FUND

The FONO Fund accepts contributions that are invested and the income dedicated to assure sufficient financial resources will always be available to maintain the NOGS business office. Contributors are reminded that donations to the FONO Fund are not covered by the IRS 501(c)(3) tax exempt classification and should be reported as a business expense on your IRS tax report.

\$500

Mr. James A. Hartman

UP TO \$250

Mr. David E. Balcer

Mr. Joseph E. Boudreaux

Ms. J. Sybil Callaway

Mr. Anthony Carollo, Jr.

Mr. Richard P. Colomes

Mr. John Dombrowski

Mr. Merle J. Duplantis

Mr. Parrish N. Erwin, Jr.

Mr. Michael N. Fein

Mr. Mark J. Gallagher

Mr. Bernard L. Hill, Jr.

Mr. Daniel P. Huffman

Mr. Robert M. Jemison, Jr.

Mr. Arthur H. Johnson

Mr. Tom Klekamp

Mr. Russell J. Landry

Mr. Frank E. Larkin

Mr. Louis Lemarie'

Mr. H. David Lynch

Ms. Jeannie F. Mallick

Mr. Daniel G. Markey

Mr. Louis L. McCormick

Ms. Margaret M. McKinney

Mr. William J. O'Leary

Mr. Richard A. Olsen

Mr. William S. Peirce

Mr. James P. Raymond, Jr.

Mr. C. R. Rondeau

Mr. David M. Tatum

Mr. Roy C. Walther

Mr. Robert C. Weissmann

Mr. William M. Whiting

Dr. J.O. Snowden

Mr. James M. Sothern

Mr. Raymond O. Steinhoff

In Memory of Anne M. Steinhoff and Harold E. Vokes

Ms. Betsy M. Strachan Suppes

In Memory of Hubert Skinner

Ms. Candace V. Strahan

In Memory of James R. Strahan

Mr. David M. Tatum

Mr. Leon G. Touns

In Memory of Robert G. Williamson

Mr. Arthur S. Waterman

In Memory of T. Wayne Campbell

Mr. William M. Whiting

In Memory of Don Rimsnider

Mr. Armour C. Winslow

In Memory of Rita Menzel Winslow

Ms. Frances A. Wiseman

In Memory of Steve Widdicombe

Mr. James W. Yeldell, Jr.

In Memory of Thomas A. Cullinan

In Memory of Robert G. Williamson

In Memory of Gene Rogas

BILL CRAIG FUND

Mr. Bernard L. Hill, Jr.

Ms. Hilary James Brook

Mr. John C. Scheldt




In Memory of William C. Ward

Ms. Candace V. Strahan

In Memory of James R. Strahan

In Memory of William C. Ward

Contributions for both funds
through March 19, 2013.
Donations are listed for one year.

ANSYTHE Donald I. Andrews 504-887-3432 	 GEM Consulting, LTD Michael Louis Merritt admin@gemconsultingltd.com
THE BOEBEL COMPANY Oil and Gas Investments New Orleans, LA 70153 (504) 866-4313	H. WARREN BELL Oil and Gas Exploration 2500 Tanglewilde, Suite 485 Houston, TX 77063-2126 Bus. (713) 266-7297 Fax (713) 266-7298
BOO-KER OIL & GAS CORP. Gray S. Parker 826 Union, Suite 300 New Orleans, LA 70112 Bus. (504) 581-2430 Fax (504) 566-4785	PHELPS GEOSCIENCE LLC Onshore Gulf of Mexico Geology and Geophysics Prospect Generation and Evaluation Houston, TX jsfphelps@yahoo.com (281) 398-5208
C & R EXPLORATION, INC. Carlo C. Christina Lawrence G. Ringham	RAFIDI OIL AND GAS, INC. Jaser N. Rafidi, President 4415 Shore Dr., Suite 202 Bus (504) 453-8580 Fax (504) 888-5539 Metairie, LA 70006 Res (504) 888-1661
C. R. RONDEAU Petroleum Geologist 119 W. Southland Ave. Ironwood, MI 49938 Res. (906) 932-4692	ROY C. WALTHER Petroleum Geologist 2421 Prancer Street New Orleans, LA 70131 Bus. (504) 392-8513 Res. (504) 392-9332
CLASSEN EXPLORATION, INC. James S. Classen Looking for close in deals P.O. Box 140637 Boise, ID 83714 Bus. (208) 854-1037 Fax (208) 854-1029 classenllc@msn.com	 625 E. Kaliste Saloom Lafayette, LA 70508 16800 Greenspoint Dr., Suite 225-S Houston, TX 77060 1100 Poydras St., Suite 1050 New Orleans, LA 70163 www.StoneEnergy.com
D-O-R ENGINEERING, INC. 3-D and Geoscience Services 6161 Perkins Rd. P.O. Box 80812 Bus: (225) 765-1914 Baton Rouge, LA 70898	TONY CAROLLO Consulting Geologist Unitization • Geosteering • Field Studies 1701 Peach Street Metairie, LA 70001 Bus. (504) 885-0004 Res. (504) 885-6829
EDWARD B. PICOU, JR. Consulting Micropaleontologist - Retired 228 St. Charles Ave., Suite 1330 C New Orleans, LA 70130 Bus. (504) 529-5155 Res. (504) 282-3096	ZOT OIL & GAS, LLC Jim Zotkiewicz Prospect Generation and Evaluation 3200 Ridgelake Dr., Suite 207 Metairie, LA 70002-4930 Bus. 504.831.4694 Email: jimzotoil.com

Collarini Energy Staffing, Inc.

Facilities • Drilling • Production • Reservoir Engineering
Land and Legal • Geosciences • Information Technology
Health and Safety • Management • Supply Chain
Accounting • Administrative Support



Full-Time and Temporary Personnel

Energy Trading • Civil Engineering • Executives
Human Resources • Instrument and Electrical
Engineering • Marine Engineering • Project Management
Technical Writing • Sales and Marketing

10497 Town and Country Way, Suite 950, Houston, Texas 77024

Telephone: (832) 251-0553

www.collarini.com

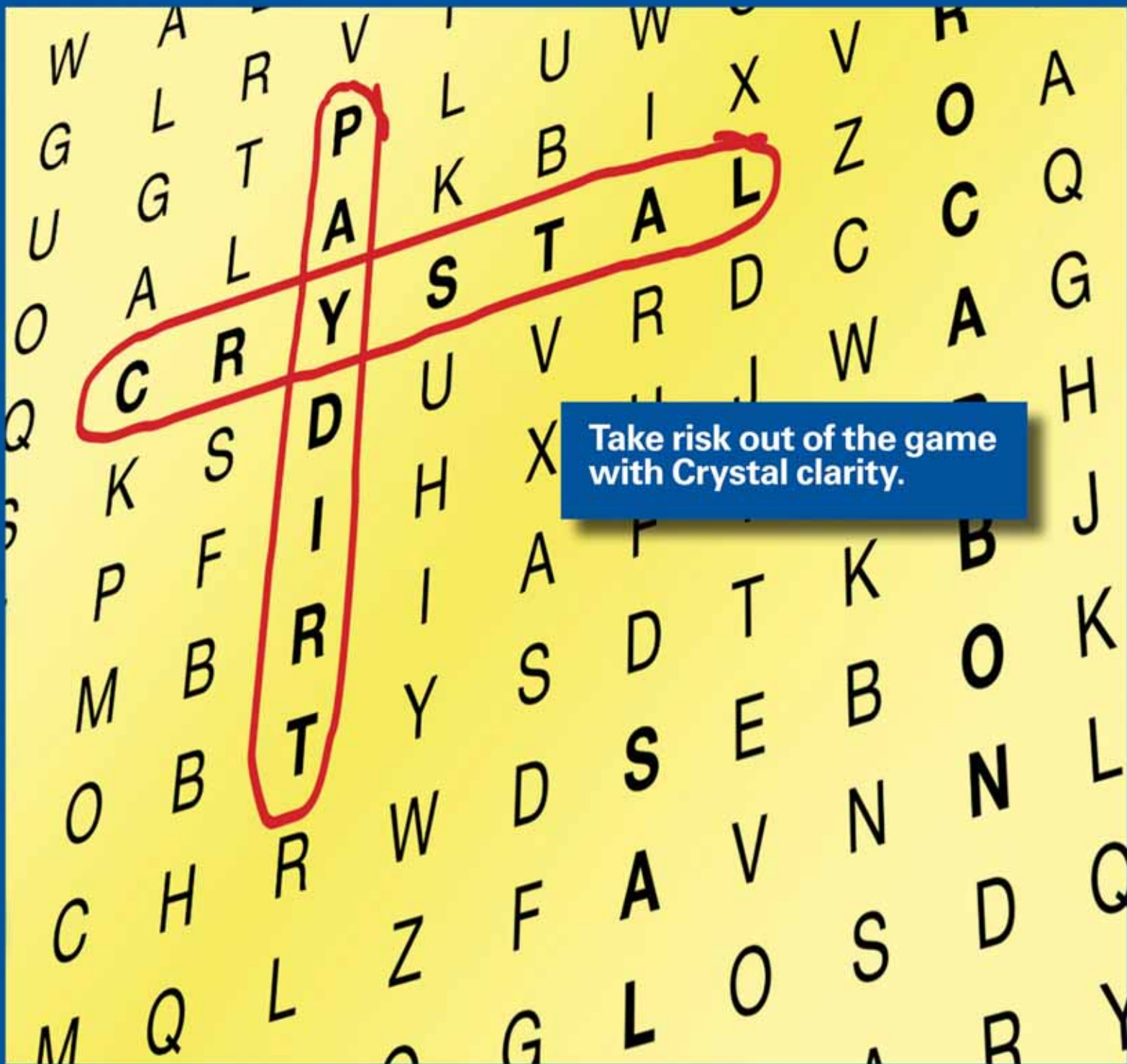


CENTURY EXPLORATION NEW ORLEANS, LLC

An independent gulf coast exploration, development and operating company

Three Lakeway Center, Suite 2800
3838 North Causeway Blvd.
Metairie, LA. 70002

Office: 504.832.3750
Fax: 504.832.3760
www.centuryx.com



Take risk out of the game
with Crystal clarity.

PGS MultiClient GULF OF MEXICO

Revolutionary technology reveals Garden Banks/Keathley Canyon like never before.

SEE IT ALL. SEE IT NOW. With the clearest seismic data to-date in the Gulf of Mexico's most promising region, it's nothing less than a game changer.

- hyperTomo™ increases velocity conformity to geology with more detailed and accurate modeling
- Dramatically improved subsalt imaging via TTI RTM
- Best of all, it's **AVAILABLE NOW**

A Clearer Image
www.pgs.com





NEW ORLEANS GEOLOGICAL SOCIETY

810 Union Street, Suite 300
New Orleans, LA 70112-1430

PRESORT
STANDARD
US POSTAGE
PAID
MAIL TECH

www.nogs.org



MARINE PROPERTIES, LLC
BERKSHIRE EXPLORATION CO.

MONTE C. SHALETT, CPL, PRESIDENT

3030 Lausat Street
Metairie, LA 70001-5924

BUS. (504) 831-7779
FAX (504) 831-8315

PCI

Paleo Control, Inc.

Houston, Texas
713-849-0044

Drilling Wells, Studies and Data Base

Loyd Tuttle

Frio, SE Texas

Bob Liska

Wilcox, S and SE Texas

Jim Thorpe

Miocene and Cam-Miogyp



THIS AD SPACE AVAILABLE

Contact:

annette@nogs.org

