

NOGS LOG

OCTOBER 2012

Volume 53, Number 4



OCTOBER 1 - NOGS LUNCHEON

**Presentation: Treasures of the T-Zone — An Overview of Louisiana's Transition Zone:
Past, Present and Future**

Guest Speaker: Andy C. Clifford - Saratoga Resources, Inc.

TGS WELL DATA DELIVERS THE WORLD



With over **6,000,000** well logs available, TGS provides high quality data from the most popular hydrocarbon plays around the globe.

TGS has expanded its well data library to include production data, directional surveys, mud log data and formation tops. Each format can be conveniently accessed online, through the online well data portal LOG-LINE Plus!®.



Learn more at WWW.TGS.COM

IN THIS ISSUE

Regular Features:

From the Editor	3
From the President.....	5
NOGS Officers / Contacts	6
Upcoming Events & Activities	7
NOGS Luncheon Presentation	9
October & November Calendar.....	12
Drill Bits	16
Info-Tidbits	30
NOGS Memorial Foundation.....	33
FONO Fund.....	33

Special Features:

NOGA News.....	14
NOGS August 2012 Luncheon Awards	19
GOM 2012 DeepWater Symposium Photos.....	19
NOGS Memorial Foundation Scholarships.....	20
"Oily Odes" Book Review	32

ON THE COVER:

Cover Photo Submitted by: Thomas Klekamp

Cover photo is the White House ruin in Canyon de Chelly National Mounument, Arizona. The name De Chelly is a Spanish corruption of the Navajo word "Tsegi," which means roughly "rock canyon." The Spanish pronunciation "day shay-yee" has gradually changed through English usage, and the name is now pronounced "d'SHAY." The canyon walls are aeolian cross-bedded sandstones of the Permian-aged De Chelly Formation. Vertical marks are surface stains.

Photograph taken by Thomas Klekamp

From the Editor

Hello again NOGS members! My favorite month of the year, October, has arrived once again with temperatures cooling down and the sounds of football filling the South Louisiana air. This month also looks to be exciting if you are an earth scientist, with several events lined up starting off with our NOGS Luncheon on October 1st. At the luncheon, Andy Clifford of Saratoga Resources will present "Treasures of the T-Zone: An Overview of Louisiana's Transition Zone, Past, Present and Future." Come join us on Monday the 1st to learn about recent drilling activity and future potential in this region of the South Louisiana coastline and also to take advantage of another opportunity to catch up with your fellow NOGS members. Later in October, the Society of Independent Professional Earth Scientists, or SIPES, has organized a continuing education seminar on shale play assessment methods in Houston and the following week in Austin is the annual GCAGS convention which is always ripe with excellent technical content and discussion. Please see our monthly calendar update for a complete list of upcoming events of interest in October and November.

Thanks,

Jordan Heltz – NOGS LOG Editor

These nodes change everything.

With absolutely no cables,
there's absolutely no stopping you.



True cable-free seismic

Dealing with tons of cable will hinder any seismic acquisition, land or marine. That's why our exclusive, true cable-free ZNodal® systems pay such huge dividends in any environment.

Our lightweight, compact ZLand® system lets your crews work faster and much more safely while recording high-resolution data, even in the most challenging terrain.

Our ZMarine® system, also completely self-contained, deploys easily and safely, even in congested areas, to water depths of 3000m, which makes it ideal for 4D reservoir monitoring.

Welcome to a new world of seismic acquisition.



FairfieldNodal.com



From the President

This year's hurricane season is tapering off after an exciting and impressive final week of August. Hurricane Isaac slowly ramped up to a Category 1 hurricane as it crawled up the Louisiana coast and dumped several inches of rain while generating wind gusts over 90 miles per hour. Southeast Louisiana, as you very well know, is extremely vulnerable to storm surges. Measures are in place to protect and preserve our lives, our property, and our way of life. Fortunately for us geoscientists, we have an intimate knowledge of the hurricane protection system put in place. We understand how levees can be breached if overtopping occurs or if pressures become too strong for them to handle. We also recognize that the topography created by artificial levees can easily become inundated by a storm surge. I believe it is our duty as New Orleanians to share this knowledge with our neighbors to ensure they are making well informed and intelligent decisions whether to evacuate or ride out a storm. Please share the risks and uncertainties in storm prediction as well as the surge protection limits with your relatives, friends, and neighbors (yes, even neighbor Dwight who blows his leaves into your driveway and throws cigarette butts in your front lawn). Who knows? ...one day you might save someone's life.

I'm pretty rootin tootin excited about this year's kickoff party! Bay Salmeron has done a wonderful job selecting the venue and planning this event. I understand we have around 70 people already RSVP'd, and I look forward to seeing and speaking with each of you.

If you are able to attend the Gulf Coast Association of Geological Societies convention this October 21-24, I would highly recommend it. Dallas Dunlap, the GCAGS General Chair, gave a glimpse into what is on the agenda during last month's luncheon meeting. From Gulf of Mexico Geology to Geology and the Environment, this year's theme is "Solving for E3 – Where Energy, Environment, and Economy Intersect". Enjoy the science, networking, and Austin, TX ain't that bad either.

One more ongoing reminder – mark your calendars for the NOGS Christmas Party on Friday, December 7 at the Chateau Country Club in Kenner. Guaranteed to be one Jingle of a Jangle!



NOGS Office

Office Manager: Annette Hudson

Office Hours: 8:30 am — 3:30 pm on Monday-Wednesday-Friday

Phone: 504-561-8980 • Fax: 504-561-8988

Email: info@nogs.org • Website: www.nogs.org

The office is located at 810 Union Street, Suite 300, New Orleans, LA 70112.

Correspondence and all luncheon reservations should be sent to the above address.

**BOARD OF DIRECTORS**

		Company	Phone	E-mail
President	Will Jorgensen	Shell	504-728-6339	william.r.jorgensen@shell.com
Vice President	Kevin McVey	ETROA Resources LLC	985-809-3808	kmcvey@etroa.com
Secretary	Bruce Bahlinger	Saratoga Resources Inc	985-809-9292	bbahlinger@charter.net
Treasurer	Kelli Hardesty	Environmental Resources Management	504-831-6700	kelli.hardesty@erm.com
President-Elect	Bay Salmeron	Chevron	832-854-6431	bay.salmeron@chevron.com
Editor	Jordan Heltz	Chevron	985-773-7163	jordan.heltz@chevron.com
Director 2013	Edward B. Picou, Jr.	Consultant	504-529-5155	epicou@bellsouth.net
Director 2014	Michael N. Fein	W & T Offshore	504-210-8148	mikef@wtoffshore.com
Director 2015	Irion Bordelon, Jr.	NorthStar Energy, LLC	985-778-3827	irion.bordelon@yahoo.com

COMMITTEE

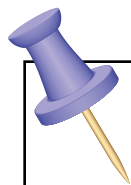
	Chairperson			
AAPG Delegates	Arthur H. Johnson	Hydrate Energy International	504-464-6208	artjohnson51@hotmail.com
AAPG Student Chapter	Hunter Berch	LSU	662-312-1300	hberch1@tigers.lsu.edu
AAPG Student Chapter	Michael Hopkins	Tulane University	228-209-2262	mhopkins@tulane.edu
AAPG Student Chapter	Drew Boudreaux	UNO	337-578-5587	apboudr1@uno.edu
Advertising-Log	Kimberly Maginnis	W & T Offshore Inc	504-210-8174	kmaginnis@wtoffshore.com
Auditing	Bay Salmeron	Chevron	832-854-6431	bay.salmeron@chevron.com
Awards	Michael N. Fein	W & T Offshore	504-210-8148	mikef@wtoffshore.com
Ballot	Kelli Hardesty	Environmental Resources Management	504-831-6700	kelli.hardesty@erm.com
Best Paper	Bay Salmeron	Chevron	832-854-6431	bay.salmeron@chevron.com
Continuing Education	TBA			
Employment Counseling	TBA			
Entertainment	Bay Salmeron	Chevron	832-854-6431	bay.salmeron@chevron.com
Environmental	Daisy Pate	Pontchartrain Partners	504-862-1775	daisy.pate@gmail.com
External Affairs	Michael A. Fogarty	Sylvan Energy, LLC	603-523-4808	mike.a.fogarty@gmail.com
Field Trip	Larissa Cupp		978-621-5074	Larissacupp@gmail.com
Finance and Investment	Kelli Hardesty	Environmental Resources Management	504-831-6700	kelli.hardesty@erm.com
Historical	Edward B. Picou, Jr.	Consultant	504-529-5155	epicou@bellsouth.net
Membership/Directory	Carlo C. Christina	Retired (C & R Expl. Inc)	504-835-4116	Carlocc398@aol.com
New Geoscientists (NGNO)	TBA			
Nominating	Arthur H. Johnson	Hydrate Energy International	504-464-6208	artjohnson51@hotmail.com
Non-Technical Education	Duncan Goldthwaite	Consultant	504-887-4377	DGldthwt@aol.com
Office Operations	Daisy Pate	Pontchartrain Partners	504-862-1775	daisy.pate@gmail.com
Publications Sales	Edward B. Picou, Jr.	Consultant	504-529-5155	epicou@bellsouth.net
Photography	Tom Klekamp	Amber Resources LLC	985-845-4046	klekamp@bellsouth.net
School Outreach	Thomas C. Bergeon	Century Exploration	504-832-3772	Tom.bergeon@centuryx.com
Scouting	Carol Rooney	Consultant Geologist	504-835-1909	carolbrooney@aol.com
Sponsorship/Houston	David E. Reiter	Woodside Petroleum	713-401-0045	david.reiter@woodsideenergy.com
Technical Projects	TBA			
Ad Hoc Committee				
on University Support	Michael J. Gallagher	Eni Petroleum	713-393-6100	Michael.Gallagher@enipetroleum.com

NOGS LOG STAFF

Editor	Jordan Heltz	Chevron	985-773-7163	nogseditor@gmail.com
Editor-Elect	Sheri Richardson	LaBay Exploration Co LLC	504-371-5967	srichardson@labayexploration.com
Auxiliary	Peggy Rogers	NOGA	504-392-6323	lrogers79@cox.net
Info Tidbits	Jordan Heltz	Chevron	985-773-7163	nogseditor@gmail.com
Drill Bits	Carlo C. Christina	Retired (C & R Expl. Inc)		drillbits81@yahoo.com
Drill Bits	Kevin Trosclair	UNO Graduate Student	504-202-7997	kjtrosc1@uno.edu
Layout	Kristee Brown	Creative Graphics & Printing LLC	985-626-5223	kpbrown@bellsouth.net
Webmaster	Edward B. Picou, Jr.	Consultant	504-529-5155	epicou@bellsouth.net

NOGS AUXILIARY

Officers		Phone	Directors	Year	Phone
President	Mary Walther	504-392-9332	MaryEllis Hasseltine	2011-13	504-885-7657
1st Vice-President	Dolores Murphy	504-393-0878	Gwenn Swaney	2011-13	504-831-0748
2nd Vice-President	Camille Yeldell	504-835-7467	Pat Williamson	2011-13	985-626-6910
Secretary	Beverly Christina	504-835-2383	Beverly Kastler	2012-14	504-286-0879
Treasurer	Judy Lemarie'	504-393-8659	Linda Peirce	2012-14	504-393-7365
Parliamentarian	Alma Dunlap	504-737-2678	June Perret	2012-14	504-664-0651
Member-at-Large	Jean Jones	504-738-8091			



UPCOMING Events & Activities

October 1 • NOGS Luncheon

Holiday Inn Downtown Superdome

\$2.00 validated parking in hotel garage

Presentation:

Treasures of the T-Zone – An Overview of Louisiana's Transition Zone: Past, Present and Future

Guest Speaker:

Andy C. Clifford

Saratoga Resources, Inc. - Houston, TX and Covington, LA

See page 9 for Abstract and Biography

HOLIDAY INN DOWNTOWN SUPERDOME

Check with concierge or
front desk for location.

Lunch served at 11:30 am

ADMISSION:

With reservation\$30.00

Without reservation\$35.00

Student Member with reservations..... FREE

October 21-24

62nd Annual Convention of the Gulf Coast Association
of Geological Studies

Austin, Texas

For more information, www.gcags2012.com

November 4-7

Geological Society of America
Annual Meeting & Exposition

Charlotte, NC

For more information, www.geosociety.org/meetings/2012

Please Note: Due to unforeseen circumstances, including Hurricane Isaac, BRGS' combined 5th Annual Louisiana Subsidence, Land Loss and General Geology Symposium, the 7th Annual Louisiana Groundwater and Water Resources Symposium, and the 3rd Annual Louisiana Oil and Gas Symposium scheduled for September 26-28, 2012, at LSU will be rescheduled to April 4-6, 2013. A follow-up email will be sent early this fall with revised details.

NOGS CONTACT LIST

Continued from previous page

MEMORIAL FOUNDATION

BOARD OF TRUSTEES

		Company	Phone	E-mail
2012-2013 Chairman	Daisy Pate	Pontchartrain Partners	504-862-1775	daisy.pate@gmail.com
2012-2013 Secretary	Will Jorgensen	Shell	504-728-6339	william.r.jorgensen@shell.com
2012-13 Trustee	Jennifer Connolly	Shell	504-728-6411	jennifer.connolly@shell.com
2012-13 Trustee	William M. Whiting	Consultant	504-947-8495	bootscon@aol.com
2013-14 Trustee	J. David Cope	ANKOR Energy LLC	504-596-3672	dcope@ankorenergy.com
2013-14 Trustee	Tom Klekamp	Amber Resources LLC	985-845-4046	klekamp@bellsouth.net
2014-15 Trustee	Rick Kear	Schlumberger Oil Field Services	504-858-2444	kearl@slb.com
2014-15 Trustee	TBA			

AAPG DELEGATES

Term Ends

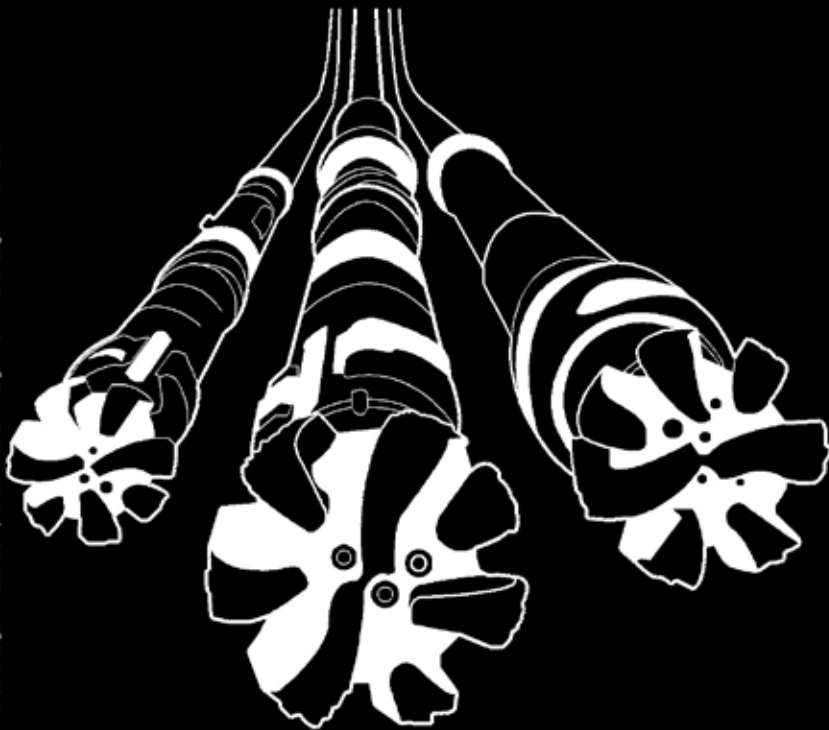
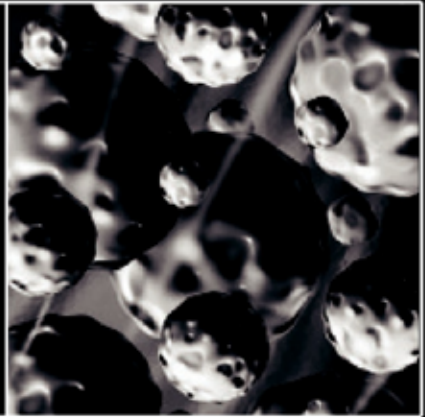
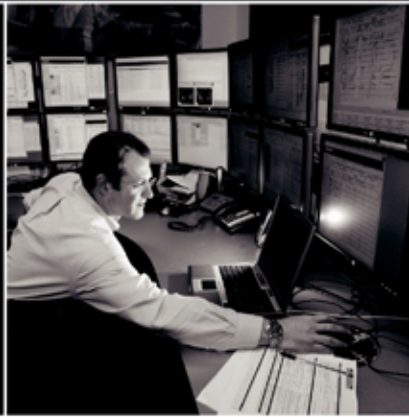
2014	Arthur H. Johnson	Hydrate Energy International	504-464-6208	artjohnson51@hotmail.com
2014	Brenda Reilly	AMROMCO Management LLC	504-430-4240	reillybe@yahoo.com
2014(a)	Elizabeth C. McDade	McMoRan Exploration Co.	504-582-4510	ecmcade@bellsouth.net
2014(a)	Frances A. Wiseman	BOEM (retired)	504-831-8343	snowde.fran@gmail.com
2015	Susan A. Waters	Shell	504-728-0229	susan.waters@shell.com
2015	William M. Whiting	Consultant	504-947-8495	bootscon@aol.com
2015(a)	David E. Balcer	Chevron	985-773-6725	dbalcer@chevron.com
2015(a)	Earl W. Cumming	Shell	504-728-6370	earlcumming@shell.com

Deep Water

WELL CONSTRUCTION

Are all your services deepwater ready?

Control Measures	Complexity/Process + Exposure	-5	-10	-15	-20	-25
		-4	-8	-12	-16	-20
		-3	-6	-9	-12	-15
		-2	-2	-4	-6	-8
-1	-1	-2	-3	-4	-5	
		Preparedness				
		People + Competency		Equipment + Technology		
		1	2	3	4	5



Our Project Readiness Assessment (PRA) approach has been applied and improved over the last 5 years.

All deepwater projects in which Schlumberger participates benefit from our PRA process, which complies with new U.S. regulatory requirements. This helps deliver seamless, efficient startup, and reduced NPT.

Learn more at

www.slb.com/deepwaterready

Global Expertise
Innovative Technology
Measurable Impact

Schlumberger

*Mark of Schlumberger. Measurable Impact is a mark of Schlumberger. © 2010 Schlumberger. 10-dw-0079

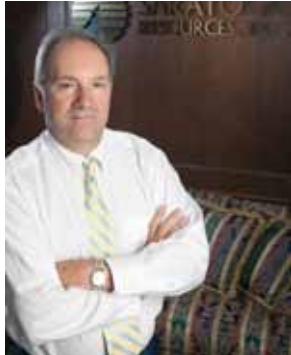


October 1 NOGS Luncheon Presentation

☆☆☆ at the Holiday Inn Superdome ☆☆☆



Treasures of the T-Zone — An Overview of Louisiana's Transition Zone: Past, Present and Future



Presented by

Andy C. Clifford

Saratoga Resources, Inc.

Houston, TX and Covington, LA

ABSTRACT

In a geophysical sense, the Transition Zone is defined as an area in which water is too shallow for acquisition of marine seismic data with towed streamers, such as near the shoreline, marshes and lagoons with water depths of typically less than five feet. The author prefers to apply the term "T-Zone" in a broader sense to the area of marshland and swamp that constitutes a swath of Southern Louisiana 30 to 50 miles wide, running parallel to the coastline. This area poses not just geophysical difficulties, but also logistical problems in terms of oil and gas operations, where barge rigs are the order of the day and where access to wells is by boat rather than by truck.

Many of the Gulf Coast's giant oil and gas discoveries have been made in the Transition Zone but the majority of these discoveries were made in the 1950s or earlier using potential field and 2D seismic data and certainly before the advent of 3D seismic data. Even when 3D seismic data were eventually acquired, data was notoriously of inferior quality because of the difficulties and cost of data acquisition across the land/sea interface. Acquisition of high-quality seismic data was also hindered by the presence of field facilities and infrastructure such as tank batteries, compressors and pipelines. Because of the high cost of acquisition, many of the earlier surveys were either compromised in terms of quality or limited to the crests and immediate flanks of salt domes, with little or no 3D data coverage between known fields.

By the time high-quality 3D seismic data became available in the T-Zone in the mid to late 1990s, most of the larger independents and majors had been lured away into the deepwater Gulf of Mexico or West Africa. Even though companies such as Gulf Oil, Texaco, Chevron, Exxon, and Shell cut their teeth in the Louisiana Gulf Coast and discovered most of the giant fields, they have pretty much left the domain to smaller independents which have been able to access cutting-edge seismic technology and focus their efforts on this niche environment.

Companies such as Flores & Rucks and Swift Energy had tremendous success in the T-Zone. The author will show examples of some notable successes among the independents and will try to demonstrate that there is substantial untapped potential remaining in the T-Zone, not just in the "ultra-deep" plays, but also at conventional depths and even in the "ultra-shallow" play, showing trap styles, seismic and log data. He will ask you "Are you brave enough to enter the T-Zone?"

BIOGRAPHY

Andy C. Clifford has served as President and Director of Saratoga Resources, Inc., an independent exploration and production company with offices in Houston, Texas and Covington, Louisiana since 2007. Saratoga's principal holdings cover 32,185 gross/net acres, mostly HBP, located in the transitional coastline and protected in-bay environment on parish and state leases of south Louisiana. Saratoga is publically traded on NYSE MKT with the stock ticker SARA.

Mr. Clifford has over 30 years of experience in the domestic and international oil and natural gas arena and is accredited with the discovery of over 1 billion barrels of oil and gas in various continents. Prior to joining Saratoga, Mr. Clifford was a co-founder and Executive VP of Aurora Gas, LLC and served in various leadership roles with BHP Billiton, where he helped lead their push into deepwater GoM in 1995-96 with the subsequent discovery of Atlantis, Cascade, Chinook, Mad Dog and Neptune fields. He has also worked in a full-time and consulting capacity for KUPPEC and Exxon. Mr. Clifford holds a Bachelor of Science in Geology from London University and is a frequent speaker and published author on a variety of energy industry topics.

THE LUNCHEON RESERVATION DEADLINE IS SEPTEMBER 28 - CONTACT THE NOGS OFFICE

"And Looking Ahead . . ."

The next luncheon will be held on November 5th. Our guest speaker, Hani Elshahawi of Shell in Houston will present "Linear Pressure Gradients: Myth or Reality?" Contact the NOGS office at 561-8980 or use the PayPal link on the NOGS website (www.nogs.org) to make your reservation.

NeuraSection

Produce YOUR Interpretation

NeuraSection brings together logs, maps, sections and other critical information allowing you to focus on interpretation. With real-time editing of computer generated results, your interpretation becomes clear and meaningful.

- Auto and manual contouring
- Cross section generation
- Real-time editing
- Reserves calculations
- Presentation montaging



www.NeuraSection.com

1.281.240.2525



Neuralog

Turning Paper Into Petroleum

© 2012 Neuralog • www.neuralog.com • 1.281.240.2525 • 1.800.364.8728

SEI®

Seismic Exchange, Inc.

Strategic Speculative Surveys
Geophysical Data Marketing & Management

YOUR
Full Service
National
Seismic Data
Marketing Firm



DALLAS DENVER HOUSTON MIDLAND NEW ORLEANS OKLAHOMA CITY CORPUS CHRISTI TULSA
201 St Charles Avenue, Suite 4300, New Orleans, Louisiana 70170-4300 504-581-7153 FAX 504-581-9591

seismicexchange.com



Drill with confidence.

Diversified Well Logging, LLC brings the accuracy and expertise only a company with over sixty years in the oil and gas industry can deliver. We are your eyes and ears in the field, especially when it comes to deep water or high pressure, high temperature areas.

DWL offers 24-hour formation evaluation. We provide secure and customized real-time data communication, in-house research and development, and 24/7 on-call support for our equipment and our engineers.

Whether you have a 10-day job or a 110-day job, we provide the specialized attention you require. **Our experience means you can be confident in the safety and performance of your well.**



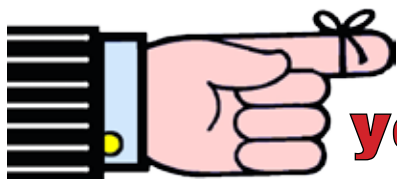
- *Formation Evaluation*
- *Geosteering*
- *Drilling Optimization*
- *Real-time Data Transmission*
- *Early Kick Detection*



Serving the Oil and Gas Industry for Over 60 Years

October						
Sunday	Monday	Tuesday	Wednesday	Thursday	Friday	Saturday
	1 NOGS Luncheon Holiday Inn @ 11:30 A.M.	2	3 NOGA Luncheon	4	5	6
7	8	9	10	11	12	13
14	15	16	17 NOGS Board Mtg NOGA Luncheon	18	19 SIPES Shale Play Seminar Houston, TX	20
21 GCAGS Convention Austin, TX	22 GCAGS Convention Austin, TX	23 GCAGS Convention Austin, TX	24 GCAGS Convention Austin, TX	25	26	27
28	29	30	31 Halloween			

November						
Sunday	Monday	Tuesday	Wednesday	Thursday	Friday	Saturday
				1	2	3
4 GSA Annual Meeting Charlotte, NC	5 NOGS Luncheon Holiday Inn @ 11:30 A.M.	6 GSA Annual Meeting Charlotte, NC	7 GSA Annual Meeting Charlotte, NC	8	9	10
11	12	13	14 NOGA Luncheon	15	16	17
18	19	20	21	22 Thanksgiving	23	24
25	26	27	28	29	30	



Have you renewed your NOGS Membership???

Dues are past due for the 2012-2013 Year!

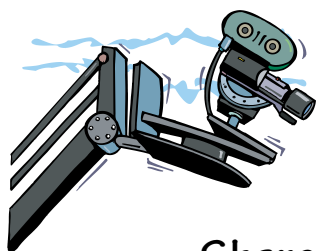
Last month, members were contacted by email to renew your NOGS dues.

Many members did not receive or did not respond to this request.

NOW IS THE TIME TO RENEW!

Take these easy steps:

- 1) Send a check (\$25 Active / \$12.50 Student) with your information updates to:
NOGS • 810 Union Street • Suite 300 • New Orleans, LA 70112-1430
- 2) Pay by PayPal: Go to www.nogs.org and click on the left hand side of the page or go directly to:
http://nogs.org/nogs_checkout.html



NOGS Member Updates: NOGS LOG wants you!



Share the latest information about your life, career or anything else of interest to have it published in an upcoming *NOGS LOG*.

ETROA

ETROA Resources LLC

Join us in pursuing gulf coast production, acquisitions and low-risk drilling opportunities.

John C. Ebert
Kevin McVey

128 Northpark Blvd.
Covington, LA 70433
(985) 809-3808

www.etroa.com

Send an email to:
nogseditor@gmail.com

or mail your news to:
"NOGS Member News"
810 Union Street • Suite 300
New Orleans, LA 70112



CENTURY EXPLORATION NEW ORLEANS, LLC

An independent gulf coast exploration, development and operating company

Three Lakeway Center, Suite 2800
3838 North Causeway Blvd.
Metairie, LA. 70002

Office: 504.832.3750
Fax: 504.832.3760
www.centuryx.com

New Orleans Geological Auxiliary News

"The objective of the Auxiliary is to promote fellowship among the wives of the members of New Orleans Geological Society and to render assistance to NOGS upon request."

The 2012-2013 year of the New Orleans Geological Auxiliary has begun with 54 members listed in the yearbook which contains a schedule of the events for the year. If you wish to add your name and join in the many fun and exciting activities it is not too late. Fill out the attached application and you will receive the yearbook and your name will be in the addenda. The Auxiliary will be very happy to have you join in the many opportunities we will have in the coming year for fellowship and being of service to NOGS.

On November 14th the Auxiliary will meet at Vincent's restaurant for lunch and to hear Virginia Barkley, owner of "Let's Get It Straight", who will speak to us about getting organized and reducing clutter in our lives. President Mary Walther reports after recently hearing Virginia speak that it will be a very enjoyable and informative day for us.

It won't be very long before we can start to help NOGS plan their upcoming Christmas Party to be held December 7th at the Chateau Estates Country Club.

The Auxiliary is also looking forward to helping to organize the Hospitality Room and Spouse Activities for the 2013 GCAGS Convention which will be held at the Marriott Hotel.

Peggy Rogers, NOGS LOG

Note:

Due to Hurricane Isaac, the September Luncheon has been rescheduled for October 3rd at the home of Margaret and Duncan Goldthwaite.



Hostesses for the "Thank You" Luncheon

Yeldell Home — June 6, 2012

First Vice-President Alma Dunlap, Second Vice-President Camille Yeldell, President Jean Jones

New Orleans Geological Auxiliary Membership Application

Name _____ Spouse's Name _____

Address _____ Home Phone _____

City, State, Zip _____ Email _____

Spouse's Company _____ **DUES: \$25.00**

Please send \$25 check payable to NOGA to Judy Lemarié, Treasurer, #2 Yosemite Dr., New Orleans, LA 70131

Get More



from your Core

With reservoirs becoming increasingly complex, you need the most accurate information you can get to better understand your reservoir.

Weatherford Labs helps you get more from your core by combining an unsurpassed global team of geoscientists, engineers, technicians and researchers with the industry's most comprehensive, integrated laboratory services worldwide. From core analysis, sorption, geochemistry and isotopic composition to detailed basin modeling and comprehensive data packages, we provide you with real reservoir rock and fluid information that hasn't been distilled by a simulator or iterated by software.

We call it **"The Ground Truth"™** – giving you the accurate answers you need for better reservoir understanding. You'll call it a better return on your reservoir investment. To learn more, contact TheGroundTruth@weatherfordlabs.com.



Weatherford
LABORATORIES
weatherfordlabs.com

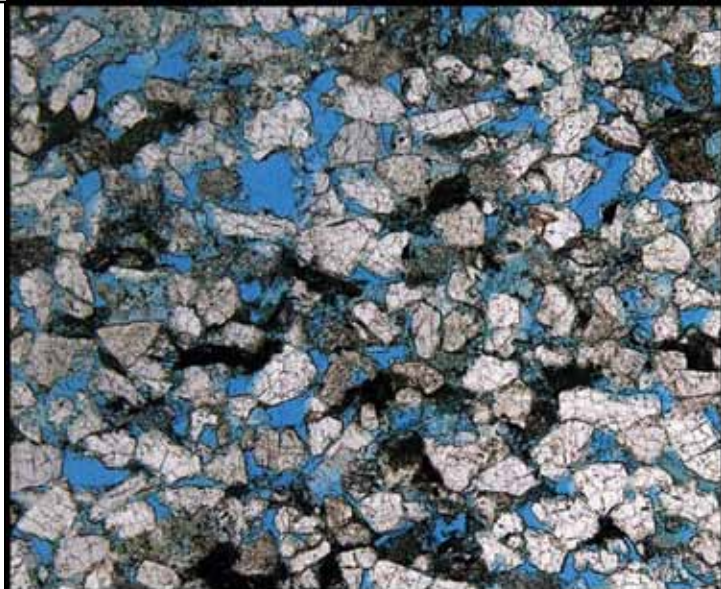
© 2011 Weatherford. All rights reserved. Incorporates proprietary and patented Weatherford technology.



**Shell has worked in partnership
with the NOGS for many years, and
is proud to count the society among
its closest business associates.**

The New Orleans Geological Society was organized in 1941 to foster scientific research and advance the science of geology. Particular emphasis is laid on the exploration for and production of petroleum and natural gas. Related objectives include encouraging the adoption of improved methods of exploration, disseminating pertinent geological and technological data, and maintaining a high standard of professional conduct among its members.

www.shell.com/us.sepco



Offshore & South Louisiana Experts

- **CORE ANALYSIS**
- **PVT FLUID EVALUATION**
- **GEOLOGIC SERVICES**

New Orleans: 504-733-6583
Broussard: 337-837-8616
Houston: 713-328-2673
www.corelab.com



South Louisiana and Offshore Gulf of Mexico Exploration and Production Activities

LAFAYETTE DISTRICT, ONSHORE AREA

By Carlo C. Christina

During the month of August, the Office of Conservation issued only 33 permits to drill new wells in the Lafayette District, Onshore Area. Hurricane Isaac closed many offices in the state and caused operators to shut down many wells during this period.

NEW LOCATIONS

In Allen Parish, **Righthand Creek Field**, (A), Fort Apache Energy will drill the #1 Joseph Hudson in Sec. 31, 5S-7W, to a proposed depth of 11,500 feet. This test is located 1 mile southwest of excellent Wilcox production in the field. The Wilcox "A" and the Wilcox "B" sands are excellent producers, currently producing approximately 50,000 barrels of oil per year.

Righthand Creek Field was one of the featured fields in the NOGS publication, "Oil & Gas Fields of South Louisiana 2010". (245244)

Petrodome Operating will drill the #1 Hensarling on the northeast flank of **Napoleonville Field**, (B), Assumption Parish, in Sec. 54, 12S-14E. The well will be drilled to 13,276 feet to test the CR III zone which was productive in a well located 1 mile to the west. (245293)

In Beauregard Parish, El Paso will drill a rank wildcat, (C), in Sec. 6, 6S-12W. The **#1 BP 6** is located 4 miles southeast of North Bancroft Field and 3 miles northwest of North Fields Field. It will be drilled to a proposed depth of 15,100 feet. (245302)

In Calcasieu Parish, Brammer Engineering will drill the #1 Jasper in **Manchester Field**, (D), in Sec. 16, 10S-7W, located 1 mile southeast of its recent completion, the #1 Spears. The projected total depth is 13,500 feet. Prior to the completion of the #1 Spears, Manchester Field had been off production since 1986. (245339)

United World Energy will drill the #1 Coastal Club 6 in **South Chalkley Field**, (E), Cameron Parish, in Sec. 6, 13S-6W. The well is located 1 mile southwest of nearest production, and will be drilled to 13,341. (245258)

Also in Cameron Parish, Shoreline Southeast will drill in **North Sabine Lake Field**, (F), in 13S-14W, to a permitted depth of 13,000 feet. The #1 SL 20341 is located 1 mile south of the field, which went off production in 2004. (245281)

In Lafourche Parish, Walter Oil & Gas will drill an interesting wildcat, (G), in Sec. 21, 16S-22E. The **#1 SL 20862** is located 3 ½ miles northwest of Delta Farms Field and 3 miles southeast of Lake Salvador Field and will be drilled to 12,500 feet. (245268)

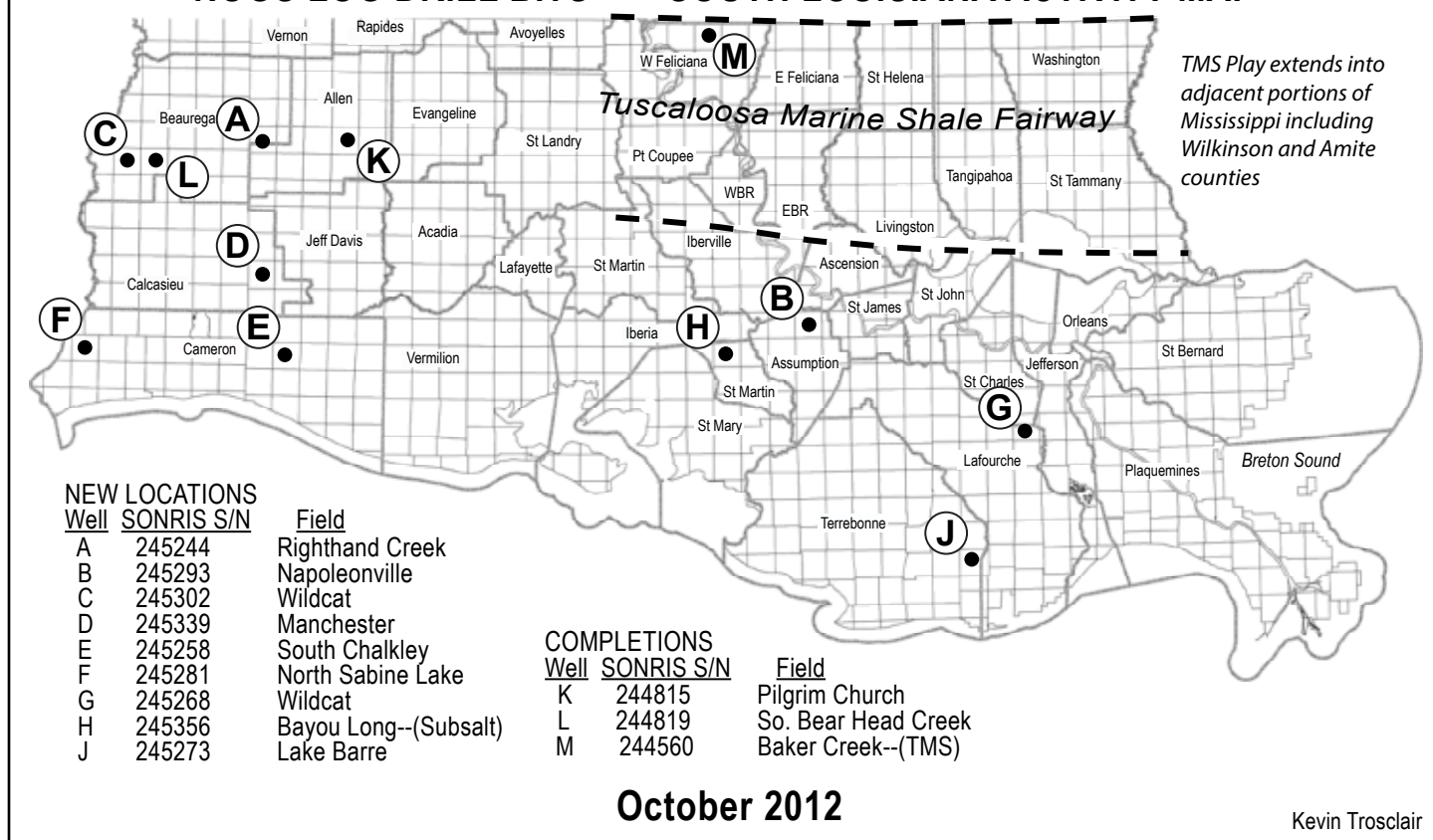
The long awaited onshore subsalt well has been permitted in **Bayou Long Field**, (H), in St Martin Parish. McMoRan will drill the #1 Jeanerette Minerals to 30,000 feet in Sec. 11, 13S-11E to test the Wilcox section, and possibly older formations. As previously reported McMoRan has assembled 68,000 acres on this Highlander Prospect and plans to commence operations later this year.

McMoRan owns a 36% working interest in another subsalt play, the Lineham Creek Prospect, in Cameron Parish. It is permitted to 29,000 feet, and is currently drilling at 22,800 feet. Needless to say, the industry is keenly awaiting the results of these subsalt wells which will have a great impact on future deep drilling in South Louisiana. (245356)

In Terrebonne Parish, Hilcorp Energy will drill the #1 SL 20946 in **Lake Barre Field**, (J), in 21S-20E. The well is located on the northeast flank of the field, 1 mile north of production, and is projected to a proposed total depth of 16,700 feet. (245273)



NOGS LOG DRILL BITS — SOUTH LOUISIANA ACTIVITY MAP



COMPLETIONS

In Allen Parish, Midstates Petroleum has completed the #1 Moreau in **Pilgrim Church Field**, (K), in Sec. 17, 5S-4W. It was completed as an oil well in the Lower Wilcox flowing 500 BOPD and 1034 MCFD through perforations 14,498 to 15,350. (244815)

Midstates has also completed the #2 CKX Lands 27 in **South Bearhead Creek Field**, Beauregard Parish, (L), flowing 570 BOPD and 804 MCFD in the Lower Wilcox through perforations 14,848 to 14,900 feet. It was drilled in Sec. 27, 6S-11W. (244819)

In West Feliciana Parish, Devon Energy has completed the #1 Murphy 63 H in **Baker Creek Field**, (M), in the Tuscaloosa Marine Shale flowing 408 BOPD and 301 MCFD through perforations 14,428 to 19,190. The well was drilled in Sec. 63, 1S-3W to a total depth of 19,300 feet in a 5327' lateral. (244560)

OFFSHORE GULF OF MEXICO SHELF AND DEEPWATER ACTIVITIES

by Al Baker

During August, the BOEM approved 57 drilling permits, of which 32 were for Gulf of Mexico shelf wells and 25 were for Gulf of Mexico deep water wells. There were 7 shelf (2 exploratory and 5 development) and 3 deepwater (3 exploratory) new well permits granted. On the shelf, LLOG Exploration was given a permit for the **South Timbalier 232 #1** exploratory well, and Bois d'Arc Exploration was awarded a permit for the **South Pelto 20 #1** exploratory well. Development well permits were given to Arena Energy for the **Eugene Island 338 #K-2** and the **Vermilion 342 #A-2**, Conn Energy for the **West Cameron 171 #14**, Rooster Petroleum for the **South Timbalier 112 #3**, and Energy Partners for the **West Delta 27 #B-1**. In the deepwater, exploratory well permits were awarded to Statoil for the **Green Canyon 36 #1**, Noble Energy for the **Mississippi Canyon 698** and Murphy Exploration and Production for the **Desoto Canyon 134 #1**.

Through July 2012, there have been a total of 214 drilling permits granted. Of these, 121 were for wells located in the Offshore Louisiana shelf, none in the Offshore Texas shelf and 93 in the deepwater or the Northern Gulf. This compares to 121 Offshore Louisiana wells, 8 Offshore Texas wells and 25 Northern Gulf wells for a total of 154 wells during the same time period of 2011. Of the 2012 Offshore Louisiana shelf permits, 22 were for new field wildcats, and 99 were for development wells. The 2012 Northern Gulf permits included 26 new field wildcats and 67 development wells.

Since the BP Macondo oil spill and through July 2012, the average permit approval time now stands at 111 days compared to the 5-year historical average of 61 days. This represents an 82% increase in the time it now takes to receive a drilling permit from the BOEM. The current trend indicates that the approval time is on the increase rather than on an expected decrease.

On August 31st, IHS-Petrodata reported that the Gulf of Mexico mobile offshore rig supply remained at 114, and the contracted rig count decreased by one to 74 as compared to last month. Therefore, the region's fleet utilization rate currently stands at 64.9%. This compares to 62 out of the 118 rigs available during the same period in 2011 (a 52.5% utilization rate). Even though the contracted rigs have increased by 19.4% since last year, the overall fleet is 4 rigs fewer than last year. The majority of the available but unused rigs are cold-stacked and currently not marketed for contract.

Additionally, there were 27 platform rigs under contract out of the 52 total in the fleet for a fleet utilization rate of 51.9%. The current number of platform rigs under contract in the Gulf is 3 more than reported last month.

On August 31st, the BakerHughes Rig Counts indicated that there were 51 active mobile offshore rigs in the Gulf, which is the same as last month and represents 68.9% of the total mobile rigs under contract. All of the drilling remains in Offshore Louisiana and the deepwater Northern Gulf. The current active rig count compares to 33 active rigs during the same period last year. This represents a 54.5% increase in the active rig fleet on a year-to-year basis. Additionally, of the 24 platform rigs that are under contract, only 2 were currently working due to the occurrence of Hurricane Isaac in the Gulf at rig report time.

Through July 2012, there were a total of 179 wells spudded in the Gulf. This compares to 129 wells begun during the same time period of 2011. During 2012, there were 114 wells started in Offshore Louisiana, no wells in Offshore Texas and 65 wells in the Northern Gulf. As a comparison, the 2011 starts included 96 wells in Offshore Louisiana, 8 wells in Offshore Texas and 25 wells in the Northern Gulf.

On August 2nd, Marathon Oil announced plans to re-enter its **Innsbruck** test well in Mississippi Canyon Block 993 more than two years following the cessation of drilling as a result of the 2010 deepwater drilling moratorium enforced during the aftermath of the BP Macondo oil spill. The water depth in the area is 6,300 feet. Initially, the #1 well was drilled to 19,800 feet; however, the proposed total depth of the well is 30,000 feet. Marathon estimates that the Innsbruck Prospect has a gross unrisks reserve potential of 75-150 million barrels of oil equivalent.

On August 3rd, LLOG Exploration announced 2 deepwater discoveries. Their **Son of Bluto 2** well in Mississippi Canyon 431 was drilled to a total depth of 18,500 feet and encountered one oil-bearing zone and a gas-bearing zone. The well was suspended pending a completion during the 1st quarter of 2013. Their **Marmalard** well in Mississippi Canyon 300 that was drilled to a total depth of 18,100 feet found two oil-bearing zones. The well was also suspended pending a 2nd quarter 2013 completion. The two wells are LLOG's first exploration wells since the 2010 drilling moratorium.

On August 9th, Stone Energy reported that drilling operations by its partner, Apache Corporation, concluded on their deepwater **Parmer Prospect** situated in Green Canyon 823. Well log, pressure and fluid test data indicate the presence of approximately 240 net feet of condensate-rich gas pay in two Miocene sands that are full-to-base, as well as 40 net feet of oil pay in two sands of which each have oil/water contacts. Plans forward are currently under evaluation.

On August 14th, BP announced that they are seeking up to \$7.9 billion in the sale of a group of deepwater Gulf of Mexico oil fields. The list of assets includes **Holstein, Horn Mountain, Diana, Hoover and Ram Powell fields**. Two of the fields being sold, Holstein and Horn Mountain, are producing and two others are under development. The entire group of fields has estimated proven reserves near 120 million barrels of oil, and production was approximately 58,000 barrels of oil per day during the 1st quarter of 2012. Likely bidders include Chevron and ExxonMobil, as well as some international oil companies.

McMoRan Exploration Co. on September 4, 2012 provided an update of its activities at the **Davy Jones #1** well in South Marsh Island Block 230. Prior to the landfall of Hurricane Isaac, McMoRan had made considerable progress on its workover/recompletion activities on the well. As reported, McMoRan has removed the production tubing and has cleaned the wellbore to approximately 27,500 feet. The remaining steps required prior to flow testing the well include cleaning out the bottom 900 feet of hole, installing the seal assembly, packer and production tubing, removing the blowout preventer and installing the production tree. McMoran currently expects to conduct a measurable flow test during the month of September.



August 2012 Luncheon Awards



NOGS Awards Chairman Mike Fein presents Daisy Pate with her NOGS President's Plaque for her 2011-12 term as President.



August Speaker, Dr. Juan Lorenzo (LSU Geology and Geophysics) is presented a speaker's gift by NOGS VP and Program Chairman, Kevin McVey (right).



NOGS Director, Mike Fein (W&T Offshore) multitasking at the Deepwater Symposium Registration Booth.

16th Annual Gulf of Mexico Deepwater Technical Symposium

August 15th & 16th, 2012



16th Annual GOM Deepwater Symposium Plenary Session, "Permitting: A 5D View." Session Moderator, Joe Leimkuhler (LLOG - VP Drilling). Participants included Mike Celata (BOEM Deputy Regional Director - GOM), Mike Saucier (BSEE GOM Regional Field Operations Supervisor), Philip B. Smith (Shell - Regulatory Affairs Manager), Rick Fowler (LLOG - VP Deepwater Projects), Kelly Fortin (EPA - OCS Air Permits Coordinator).

Louisiana State University

NOGS Memorial Foundation Scholarships



LEE H. MELTZER GRADUATE SCHOLARSHIP

Logan G. Kirst - \$3,000 Cash Award

Growing up with geologists as parents isn't as fun as it seems. Frequently moving across the country, Logan learned the skill of adapting to change at an early age. With his hometown changing once every four years, Logan's main forms of support were his family and his curiosity for the outdoors. Living in so many different places in such short periods of time allowed Logan to appreciate a diverse spread of geologic environments and natural settings, cultivating this curiosity into a passion for the outdoors. Although he found some stability while living in Houston, Logan decided to once again move away, this time to Baton Rouge for college. Being alone on this venture, Logan found adapting more difficult. However, Logan embraced his past experiences from his nomadic youth and persevered. Upon graduating with his B.S. in geology from LSU, Logan decided to challenge himself and relocate yet again; this time to the heart of the oil patch. After a demanding eight months as night shift mud logger on drilling rigs in the Eagle Ford, Logan returned to LSU for graduate school. The geosciences have been at the very core of Logan since the day he was born in Denver, to the day he earned his crossed rock hammers tattoo after field camp. He looks forward to an exciting career doing the work that he loves while expanding it to a global perspective, always grateful of the knowledge and geologic polish he gained from LSU. The only thing Logan is uncertain of now is what exciting and challenging adventures lie ahead. Throughout his life Logan has been assured of one thing: geology isn't just a job or a hobby, it's a philosophy and simply a way of life.

NOGS MEMORIAL FOUNDATION SCHOLARSHIP

Thomas J. Schramm - \$2,500 Cash Award

Originally from Smithtown, New York, Tom Schramm has always been an avid outdoorsman with hobbies that include fishing, hunting, and hiking. Tom attended SUNY New Paltz, in New York's Hudson Valley and was originally interested in environmental science but was later captivated by the study of geology. While a geology major at SUNY New Paltz, he conducted a research project on the paleoecology of the Devonian Marcellus Subgroup. Tom then received a master's degree at the University of Cincinnati studying Ordovician sequence stratigraphy of the Cincinnati Arch. Currently entering the second year of a PhD program at LSU, Tom is continuing Ordovician research using magnetic susceptibility as an abiotic mechanism for the global correlation of strata.

NOGS Memorial Foundation Scholarships

The NOGS Memorial Foundation Scholarships are granted each year to those students who have demonstrated exceptional talent in or commitment to their geologic studies and projects. It is the policy of the Memorial Foundation to posthumously name these scholarships after those members whose own extensive contributions to the profession have been particularly praiseworthy.

Lee Hilliard Meltzer for expertise in oil and gas appraisal and exploration, as well as manifold and unstinting support of and service to - from AAPG to NOGS - the region's professional geologic organizations.

James Allen "Al" Gilreath for his work as chief tool developer of down-hole instrumentation and 'pattern' interpretation, earning him - world-wide - the title, 'Mr. Dipmeter'.

Richard W. "Dick" Boebel for his outstanding abilities as an oil and gas finder and in being a unique individual who was most generous of his time and talent to the industry, his peers, and in his support of many professional organizations.

George W. Schneider, Sr. for exceptional leadership in exploration activities and for being a positive force in establishing the New Orleans Geological Society and serving as its first president in 1941-42.

Jules Braunstein gained wide recognition in the oil and gas industry not only for exceptional technical expertise but also as an exacting editor. His long career was conspicuous for selfless devotion - and as carried on by his surviving wife, **Olga**, in her bequeathal of the residue of their estate to NOGS Memorial Foundation Scholarship Fund.

Louisiana State University

NOGS Memorial Foundation Scholarships



JULES & OLGA BRAUNSTEIN MEMORIAL SCHOLARSHIPS

Lindsay Prothro - \$2,500 Senior Cash Award

Lindsay Prothro didn't know what she wanted to study in college until she applied. Taking a chance, she picked geology as her major and has never regretted her decision. Through LSU's Geology Department, she has been given some of the greatest experiences she has ever had. Lindsay has traveled to Iceland with a geology class and has been a member of Dr. Brooks Ellwood's lab group since starting at LSU. She has gone on sampling trips with her lab group to locations across the southeast U.S., as well as to Colorado's Florissant Fossil Beds National Monument. Lindsay has held a leadership position and participated in several outreach events with the Geology Club. She has also designed a "Minerals in our Daily Lives" exhibit to be used by the Geology Club and the department at science outreach events. In addition, she had the privilege of leading a geology workshop for tenth grade students participating in the FOCUS program, in which she introduced them to topics in climate change, tectonics, and mineralogy. Lindsay will complete a senior honors thesis and defend this upcoming spring. She hopes to go on to earn her M.S. and PhD.

Sara Ates - \$2,000 Junior Cash Award

As a child, Sara Ates grew up with two brothers and a town full of boys, enabling her to develop a competitive spirit and a genuine love for nature. She thrives outdoors, with hobbies ranging from tent camping, hiking, traveling, exploring, fishing, biking and running, to NASCAR. She is fascinated with the idea of plate tectonics, earthquakes, volcanoes, and the how and why associated with them. Maintaining an A average throughout her college career, she is motivated to accomplish her goal of one day working for the USGS after Graduate School. Invited to be a member of over twelve honors societies, Sara Ates will never take for granted the opportunity to have a degree from a high ranking university such as LSU. Never a quitter, she has overcome many obstacles to be where she is today. Sara Ates is a motivated student that has experienced the world without college for eighteen years and understands the value of education. As a mother of four teenage daughters and a grandmother to one, she believes in setting a good example for her children: work hard to achieve a higher education with a motto of "Find a career you love and you will never have to work a day in your life." Not being a "traditional" student poses many challenges, and she is sacrificing a great deal to attend LSU. Living near Alexandria, Louisiana, with her family means that Sara pays rent for on-campus housing and drives home on weekends in order to accomplish her ultimate education goal. Weekly responsibilities at home, parenting, transporting children, school functions, as well as the full financial responsibility to support the family, fall on her spouse. Aside from financial aid and student loans, scholarships are the only other avenue for Sara Ates to continue her education at LSU.

The University of New Orleans

NOGS Memorial Foundation Scholarships



RICHARD W. BOEBEL GRADUATE SCHOLARSHIP

Robert Clark - \$3,000 Cash Award

Robert Clark was born in Monroe, Louisiana, on December 25, 1979. For the first fifteen years of his life, Robert lived on a small farm near Rocky Branch, Louisiana. He spent much of his free time roaming the woods, learning the names of all the plants, animals, and rocks around him. In his early teen years, he became involved in rodeo events, such as team roping and bull riding. At the age of 15, Robert was accepted to the Louisiana School for Math, Science, and the Arts, a publicly funded boarding school for gifted high school juniors and seniors. After high school Robert attended Louisiana Tech University where he majored in electrical engineering and photography but left before obtaining a degree.

In 2002, he moved to New Orleans and worked as a chemist for MSE Environmental for some time. Over the years, Robert worked many other jobs before deciding to return to school and pursue his love of science once again. In the spring of 2009, Robert enrolled in the Earth and Environmental Sciences program at the University of New Orleans, and in 2011, he received a B.S. in geology. Robert is currently a master's degree student working with Dr. Ioannis Georgiou studying coastal processes. He will be studying young tidal inlet evolution with special attention to processes, stratigraphy, and sediment supply. Robert plans to pursue a PhD and become an educator and a researcher.

NOGS MEMORIAL FOUNDATION SCHOLARSHIP

Andrew P. Boudreaux - \$2,500 Cash Award

Drew (Andrew) Boudreaux was born on December 18th, 1989, in Kenner, Louisiana, to Brenda Borne Boudreaux and Paul Boudreaux. He was raised in nearby Luling, Louisiana, and attended Hahnville High School. Academic achievement has always been important to him, thus he graduated from HHS with magna cum laude in the spring of 2008. He was offered a full-ride scholarship to the University of New Orleans for the term Fall 2008 – Spring 2012, and enrolled immediately thereafter. Originally intending to study film and set-design, he defaulted to his strong background in science and mathematics and decided to major in earth science.

University life has afforded Drew many opportunities for growth. He has excelled academically, socially, and professionally through involvement in the department and a myriad of campus organizations. In January of 2011, he also began working in the Pontchartrain Institute for Environmental Sciences' Coastal Research Laboratory where he was able to gain valuable experience in research. Drew graduated in May of 2012, with a B.S. in geology and plans to be a UNO teaching assistant and graduate student in the MP2 (mineralogy, petrology, and pegmatology) research laboratory in the fall. His thesis will involve a description, classification, and correlation of the chemical signatures of pegmatites in the Erongo Mountains of west-central Namibia. His long-term goal is the upstart of a research and consulting company for rare-element and gem stock mining companies.

The University of New Orleans

NOGS Memorial Foundation Scholarships



JULES & OLGA BRAUNSTEIN MEMORIAL SCHOLARSHIPS

Jon D. Guidry - \$2,500 Senior Cash Award

Jon Guidry was born on December 29, 1974, in Baton Rouge, Louisiana. He is the son of Marjorie and Dexter Guidry. Having grown up in south Louisiana, Jon was instilled with a love of fishing and hunting at an early age. Spending much of his time outdoors, a love for the environment as well as the earth sciences ensued. In Baton Rouge, Jon attended St. Thomas Moore School through the eighth grade. His high school years were spent at McKinley Sr. High School where his love for the sciences grew. In his senior year, Jon earned the award for excellence in achievement in Aerospace Science.

All the while, Jon played basketball, earned a black belt in taekwondo, and was an avid skateboarder. Jon also had the opportunity to travel, as his grandparents would take him on summer treks across the US. His grandmother would collect rock samples from nearly each stop along the way, thus allowing Jon to accrue a sizable rock collection. His sophomore science fair project was on the fluorescence of minerals when exposed to ultraviolet light.

Somewhere along the way, Jon fell in love with architecture. When it was time to begin his college career, he chose Louisiana State University's architecture program as his focus of study. However Jon's passion was more suited to the earth sciences. After a decade break from school, during which he managed restaurants, Jon moved to New Orleans. Here, he decided to attend the University of New Orleans, entering the Department of Earth and Environmental Science. For the past two and a half years, Jon has maintained a 4.0 in his curriculum. He is a member of the Sigma Gamma Epsilon honors program. In addition, Jon is active in UNO's chapter of the Society for Earth and Environmental Sciences. In May of 2012, he attended the Maine Pegmatite Workshop with faculty and students from the department. Jon plans to graduate with honors in May of 2013, with a bachelor's degree in earth and environmental science as well as a minor in chemistry. He expects to join the MP2 research group at the University of New Orleans while pursuing a master's degree in geochemistry.

Jon's hobbies include disc golf, reading, hiking, and making thin-sections. He has volunteered at New Orleans City Park since 2010, as a member of the Couturie Corps. This group aids in beautification and maintenance of the Couturie Forest therein.

Dominik Kardell - \$2,000 Junior Cash Award

Dominik Kardell was born in West Berlin, Germany, on September 12, 1989. Dominik grew up in Iserlohn, a small town in the west of Germany. He graduated from Gymnasium An der Stenner in 2008, completing his German "Abitur" (high school diploma) with concentrations in physics and English. While fulfilling a mandatory civil service working in a hospital for one year, Dominik was recruited to play intercollegiate tennis for William Carey University in Hattiesburg, MS. He started his college career in the fall of 2009, majoring in mathematics. His coach promoted him to be the team captain in his sophomore year. Looking for a school with a good geology department and a competitive tennis program, Dominik decided to transfer to the University of New Orleans in the fall of 2011, and changed his major to Earth and Environmental Science with a concentration in geology and a minor in mathematics. While taking his first geology classes, he determined structural geology, geophysics, and geotechnical engineering to be potential fields of interest, hoping to learn more about each field during his remaining undergraduate semesters. After finishing his bachelor's degree and his career as a college athlete, Dominik plans on pursuing a master's degree in geology or a related area of study. His hobbies include all kinds of sports and physical activities, rock music, and meeting interesting people. He hopes to gain plenty of practical experience attending an off-campus field course in the summer of 2013.

JAMES ALLEN GILREATH GRADUATE SCHOLARSHIP

T. Jade Mohajerin Haug - \$3,000 Cash Award

The one driving factor for all of T. Jade Mohajerin Haug's career decisions has been the desire to help find a balance between anthropogenic appetites and their environmental impacts. After graduating with her bachelor's degree, T. Jade spent two years as a volunteer with the Peace Corps in Madagascar, where she developed an environmental education program for the local school. She also helped organize local community groups to plant trees on barren hill slopes to prevent sediment from the small island from washing into the ocean and smothering the coral community near the coast.

After returning to the U.S., T. Jade spent several years working for the National Park Service, mainly focused on mitigating the impact of exotic invasive plant species. In addition to working on a management plan for the invasives of Joshua Tree National Park, she also served as a resource advisor during wildfires and assisted in writing the budget for post-fire management.

After several years, T. Jade realized that weeding national parks was not her calling, and she decided to pursue higher education. She hopes to use her knowledge of geochemistry to enable communities to enjoy the luxuries of modern civilization, while mitigating the impact to fresh water sources.

GEORGE W. SCHNEIDER SR. MEMORIAL SCHOLARSHIP

Erin Cunningham - \$2,500 Cash Award

Erin Cunningham was born and raised in the northwest suburbs of Chicago. Although she thoroughly enjoyed all that the Chicago area had to offer: museums, concerts, ethnic festivals, and zoos, she gained an interest in the natural world from the numerous hiking and camping trips taken every summer with her family. She was recruited for the Women's Swim Team at Tulane and was excited to be a part of bringing the swim team back to Tulane after the sport had been suspended due to Katrina. Erin had originally decided to major in physics at Tulane, but after taking her first geology class, she quickly changed to geology as her major and physics as a minor. This past year, Erin was able to gain experience by working in Tulane's sedimentology lab. She successfully balances a full academic schedule, lab work, and collegiate swimming. This summer, Erin continued her education in geology and gained research experience through an IRIS seismology internship program.

After graduation, Erin plans to attend graduate school and continue her studies in geology.

Tulane University
NOGS Memorial Foundation Scholarship



JULES & OLGA BRAUNSTEIN MEMORIAL SCHOLARSHIPS

Thomas Schrilla - \$2,500 Senior Cash Award

Tom Schrilla is a geology major at Tulane University. A native of Geneva, Illinois, he found himself drawn to the music, food, and culture of New Orleans. He enrolled at Tulane as an undecided freshman and after sampling a few courses, found a home in Tulane's Department of Earth and Environmental Sciences. This summer, he attended field camp in the Rocky Mountains through Miami University. So far, he has enjoyed his undergraduate experience in geology and hopes to continue his education further. He is currently planning on pursuing a Master's Degree in a geology-related field, and ultimately, finding a career in the geosciences.

Christiane Alepuz - \$2,000 Junior Cash Award

Christiane Alepuz was born in New Orleans, Louisiana, and lived there until Hurricane Katrina. Christiane and her family relocated to Houston, Texas, where she finished high school. While living in Texas, she traveled around the state and started to realize how beautiful it was. With a passion for science and exploration, Christiane entered Tulane, but she was undecided as to what science to pursue. Since she had always enjoyed the outdoors, she decided to take Physical Geology and discovered that she loved it. She has been a geology major ever since and plans on pursuing a graduate degree in geology after graduation.

<p>DOMESTIC AND INTERNATIONAL BIOSTRATIGRAPHIC SERVICES</p> <p>6619 Fleur de Lis Drive New Orleans, LA 70124 (504) 488-3711 www.paleodata.com</p> <p>Complete wellsite paleo services</p> <p>Supported offshore GoM and onshore LA paleo databases</p> <p>Integrated foram/nannofossil analyses</p> <p>In-house sample preparation lab for quality-monitoring and efficiency</p> <p>Comprehensive depositional history study of the Gulf Basin based on 200,000+ well data analysis</p>	<p>MCMORAN EXPLORATION CO.</p> <p>MCMORAN OIL & GAS</p> <p>www.mcmoran.com NYSE: MMR</p> <table border="0"> <tr> <td>16676 Northchase Dr. Houston, TX 77060 (281) 539-7600 Fax: (281) 539-7655</td> <td>1615 Poydras New Orleans, LA 70112 (504) 582-4000 Fax: (504) 582-4155</td> <td>110 Travis St., Suite 140 Lafayette, LA 70503 (337) 735-9150 Fax: (337) 735-9151</td> </tr> </table>	16676 Northchase Dr. Houston, TX 77060 (281) 539-7600 Fax: (281) 539-7655	1615 Poydras New Orleans, LA 70112 (504) 582-4000 Fax: (504) 582-4155	110 Travis St., Suite 140 Lafayette, LA 70503 (337) 735-9150 Fax: (337) 735-9151
16676 Northchase Dr. Houston, TX 77060 (281) 539-7600 Fax: (281) 539-7655	1615 Poydras New Orleans, LA 70112 (504) 582-4000 Fax: (504) 582-4155	110 Travis St., Suite 140 Lafayette, LA 70503 (337) 735-9150 Fax: (337) 735-9151		

Technology Experience Performance



Voyage Explorer
Shallow water 2D/3D vessel capable
of 1 x 12km streamer and 2 x 12km
or 4 x 6km -3D with 4 sub arrays for
large output of single/dual source



SeaBird Exploration PLC "SeaBird" is a global provider
of marine 2D/3D/4D seismic data, and associated
products and services to the oil and gas industry.

SeaBird's main focus is providing high quality seismic
surveys (contract seismic) and source vessels. We
operate in both deep and shallow water with our
7 vessels conducting 2D and 3D.

The main success criteria for the company is our
unrelenting focus on Health, Safety, Security,
Environment and Quality (HSSEQ), combined with
efficient collection of high quality seismic data.

Aquila Explorer



Harrier Explorer



Hawk Explorer



Munin Explorer



Northern Explorer



Osprey Explorer



All SeaBird's vessels are capable of pulling a 12km streamer with 4 &/ or 6 sub arrays for very large source outputs.

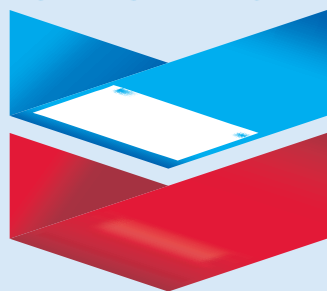
"with the Aquila Explorer in the Far East and the Osprey Explorer in Barents Sea and the balance of SeaBird's fleet (Harrier Explorer, Northern Explorer, Hawk Explorer and Munin Explorer) in Brazil and Africa we have all your 2D/ source vessels needs covered worldwide."

RAISING
THE STANDARD

www.sbexp.com

Dubai -Tel: +971 4 427 1700 | Oslo -Tel: +47 2240 2700 | Houston-Tel.: + 1 281 5561 666 | Singapore- Office: +65 68325593

Chevron



100 Northpark Blvd.
Covington, LA 70433

(985) 773-6000



LaBay

Exploration Co., L.L.C.

111 Veterans Memorial Blvd.

Suite 1550

Metairie, Louisiana 70005

Office (504) 371-5967

Fax (504) 371-5969

www.labayexploration.com

GENERAL GEOPHYSICAL SERVICES

Fugro Gravity & Magnetic Services Inc.

6100 Hillcroft, Suite 500 (77081)

P.O. Box 740010

Houston, TX 77274

Direct : 713-369-6139

Cell : 281-380-1460

Email : nbowers@fugro.com

www.fugro-gravmag.com



NANCY E. BOWERS, Ph.D.

senior geophysicist

licensed professional geoscientist



LAFAYETTE GEOLOGICAL RESEARCH CENTER, LLC

201 Heymann Blvd., Suite 33 • Lafayette, LA 70503

Tel: 337-233-8197 • Fax: 337-233-8177

COVERAGE:

Louisiana / Federal / State Offshore

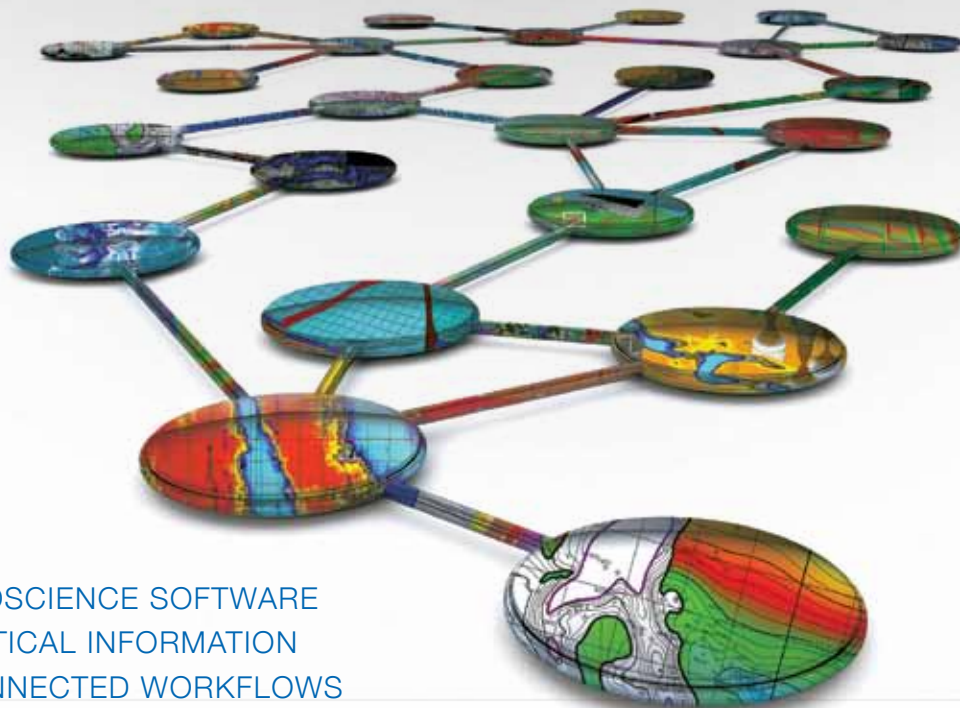
• Multi State Geo Tech Services • Completion Data
Production Data • Well Logs • Maps

~ MEMBERSHIPS AVAILABLE ~

The Industry's Premier • Well Data Center

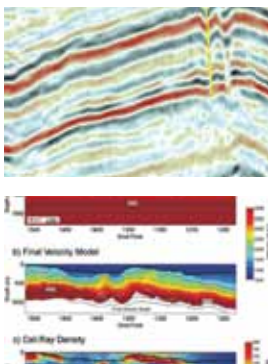
orders@lafayettegrc.com

CALL OR EMAIL TODAY FOR MORE INFORMATION!



- > GEOSCIENCE SOFTWARE
- > CRITICAL INFORMATION
- > CONNECTED WORKFLOWS

CONNECTED AT EVERY TOUCH POINT



Streamline data transfer and simplify project sharing with IHS geoscience software and critical O&G information.

The IHS suite of geoscience software—which includes IHS Petra®, Kingdom®, LOGarc™ and GeoSyn™—is designed to seamlessly connect to the industry's leading source of critical Oil & Gas information, eliminating the need to move data manually from source to source and project to project. With this powerful new combination, users can streamline data transfer, enhance database performance and simplify project sharing. The result? Workflows that connect like never before.

Connected workflows mean that IHS customers spend less time looking for data and more time looking for the next big opportunity. It's just one of the many ways that IHS helps to advance the decisions that advance the Oil & Gas industry.

Find out more at IHS.com/geoscience



SIPES CONTINUING EDUCATION SEMINAR

Shale Play Assessment Methods

*"Moving from the Love Affair
to the Relationship"*



Friday, October 19, 2012

8:00am – 4:00pm

Halliburton Conference Theater
300 North Sam Houston Parkway
Houston, TX 77032

**The SOCIETY OF
INDEPENDENT
PROFESSIONAL EARTH
SCIENTISTS (SIPES)-Houston**



invites you to this year's Continuing Educational Seminar on ***Practical Methods and Approaches to Evaluate Shale Plays***. This shale symposium will present factual assessments of resource plays and showcase methods to measure a play's profitability. Participants will take away tools and techniques to make better investment decisions on plays and deals.

Register at sipeshouston.org/fall2012CES.html

Speakers and panel discussions include the following resource play experts:

John Lee, University of Houston Petroleum Engineer, is an expert on reserve forecasting and how the SEC views shale reserve bookings.

Art Berman, (SIPES CES Event Chair) and **Lynn Pittinger**, Independent Geologist & Petroleum Engineer, will present their contrarian work on shale play reserves and economics.

Kurt Steffen, ExxonMobil Geologist, will describe how to create profits through integration of Geology, Reservoir Engineering and Commercial Factors for Evaluation of Unconventional Resource Opportunities.

Mark Kaiser, Center for Energy Studies at Louisiana State University, will review his comprehensive and probabilistic approach to reserves, economics and profitability of the Haynesville Shale.

J. Michael Bodell, Independent Geologist & Geophysicist and expert on oil and natural gas market fundamentals will share his work on future pricing and its impact on resource plays.

Trevor Sloan, Director of Energy research at ITG –Calgary. Recently completed comprehensive Eagle Ford Shale reserve and economic analysis.

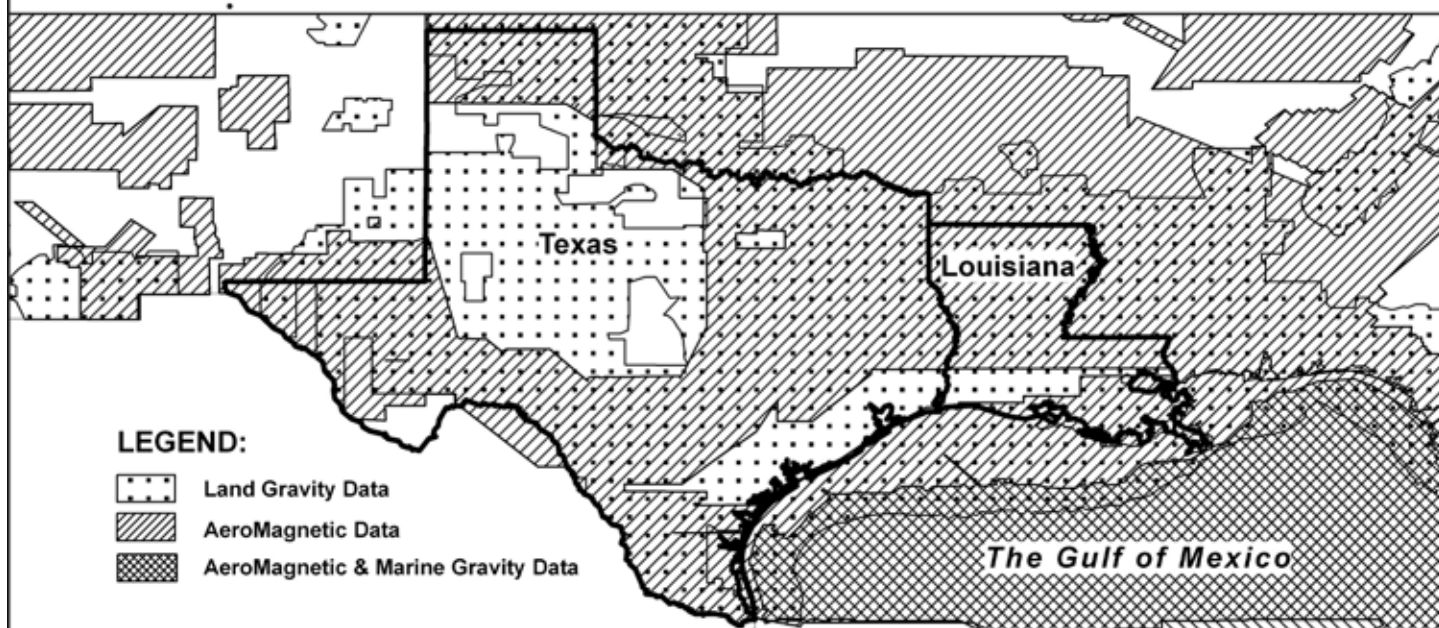
Includes Continental breakfast at 7:30am, seminar at 8:30, lunch, and refreshments.

Qualifies for Professional Development hours for licensed professionals.

SIPES Members \$195
NonMembers \$245
(good thru 9/30/12) go to:
sipeshouston.org/fall2012CES.html

This promises to be a Sell Out! Make your reservations early.

For Gravity and Magnetic Data in Texas and Louisiana **Count on Fugro— Mapping Geology to the Basement...**



...And beyond with the most comprehensive non-exclusive airborne, land and marine potential fields geophysical database, including AeroMagnetic, Land Gravity, Marine Gravity and Bathymetry data around the world. Interpretation includes:

- Basement architecture
- Tectonic elements
- Structural/geologic fabric
- Salt mapping
- Depth to basement
- ArcGIS deliverables



Fugro Gravity & Magnetic Services

For personal assistance & consultation,
please contact fgmsdata@fugro.com or 713-369-6123.

www.fugro-gravmag.com

Submitted by Jordan Heltz

Dow Jones Newswires – Saabira Chaudhuri - “BP Sells Non-Strategic GOM Assets for \$5.5B”

September 10th, 2012

http://www.rigzone.com/news/oil_gas/a/120561/BP_Sells_NonStrategic_GOM_Assets_for_55B

Plains Exploration & Production Co. has agreed to buy BP PLC's deepwater Gulf of Mexico oil and gas properties for \$5.55 billion. BP is selling its interests in three assets: the Marlin hub--consisting of the Marlin, Dorado and King Fields--Horn Mountain, and Holstein. The deal also includes BP's stake in two non-operated assets: Ram Powell and Diana Hoover, which BP had revealed it would sell in May.

Monday, BP said the divestment is in line with its global strategy of playing to its strengths, including the development of giant fields and deepwater exploration. The British oil giant also said the move reflects a greater focus in the Gulf of Mexico on producing more high-margin barrels from fewer, larger assets.

"While these assets no longer fit our business strategy, the Gulf of Mexico remains a key part of BP's global exploration and production portfolio and we intend to continue investing at least \$4 billion there annually over the next decade," BP Group Chief Executive Bob Dudley said.

Bloomberg Businessweek – Kasia Klimasinska- “EOG Says U.S. Fracking Rule to Cost \$1.5 Billion a Year”

September 7th, 2012

<http://www.businessweek.com/news/2012-09-07/eog-says-u-dot-s-dot-fracking-rule-to-cost-1-dot-5-billion-a-year>

The Obama administration's plan to tighten regulation of hydraulic fracturing for natural gas on public land may cost more than 20 times U.S. estimates, energy companies and local governments said.

EOG Resources Inc. (EOG), the top oil producer in a Texas shale formation, and officials from Wyoming and Utah cite a study by John Dunham and Associates that said it will cost \$253,839 per well to meet the proposal for disclosing chemicals being used and certifying the well is isolated to avoid leaks. The Bureau of Land Management estimated costs at \$11,833 per well.

"The proposed rule is unnecessary, excessive and requires actions that no state currently regulating oil and natural gas production deems necessary," Eric Dille, government affairs director for Houston-based EOG, said in comments posted on a U.S. website Aug. 31. "The proposed rule will also place undue economic burdens and time delays on independent oil and natural-gas producers that will inevitably drive many smaller companies away from exploring for oil and natural gas on federal lands."

The rules for disclosing chemicals and well integrity were crafted after environmentalists and homeowners said hydraulic fracturing, or fracking, may taint drinking water supplies or cause earthquakes. Fracking helped boost U.S. oil production by 11 percent and natural gas output by 25 percent from 2006 through 2011, according to U.S. data.

Pre-registration deadline August 15th

Gulf Coast Association of Geological Societies
and Gulf Coast Section of SEPM

62nd Annual Convention

October 21–24, 2012—Austin, Texas

ANNOUNCEMENT



Solving for E^3 — where
energy, environment, and
economy intersect

www.gcags2012.com

Hosted by the Austin Geological Society

SAI

Geoconsulting, Inc.
*Geological and Geophysical Consulting,
3-D Seismic Interpretation*

Ben D. Sydboten, Jr. CPG

2 Flagg Pl., Suite 1
Lafayette, LA 70508
www.saigeoconsulting.com

Office (337) 504-3670
Cell (337) 456-8948

"Serving The Oil & Gas Industry Since 1983"
Geological,
Geophysical &
Land Drafting



Anthony Catalanotto
President
Stefani Foster
Drafting & Design

Geo-Draft, Inc.

A Professional Drafting & Graphics Firm

3349 Ridgelake Drive • Suite 202 • Metairie, LA • 70002
Office: (504) 836-2882 Fax: (504) 836-2877 (Cell) (504) 481-7291
E-Mail: geodraft@bellsouth.net
Website: www.geodraftinc.com

NORTHCOAST OIL COMPANY

610 E. Rutland St.
Covington, LA 70433
(985) 898-3577
(985) 898-3585 FAX

Jack M. Thorson
Eric C. Broadbridge
J. Daryl Gambrell
Raymond W. Stephens

**NOGS thanks our
sponsors for their support:**

GOLD LEVEL SPONSORS:
CHEVRON
LA BAY EXPLORATION CO, LLC.

**SPECIAL THANKS TO
DIVERSIFIED WELL LOGGING**

Book Review by Jeff Spencer

Oil Industry Landmarks, 2009, 62 pages; softbound. The book is available through the Drake Well Museum (814) 827-2799 x107 – Sheri Hamilton - \$15.00 + shipping)

Oily Odes by Kathy Flaherty

Kathy, an oilfield historian and geologist, celebrates the 150th anniversary of the Drake well with 22 of her original oil-related poems, accompanied by historical and recent photographs. A "notes" section at the end of the book provides some insight into the inspiration for each poem. Kathy read a few of her poems at the 2009 Oil History Symposium, recently held in Titusville, PA, to much applause. The verses are cleverly written with catchy titles such as, *Goin' Fishin'*, *What's in a Barrel?* and *A Crude Lesson*.

Oily Odes would make a great gift for anyone with an interest in any aspect of the oil business. The book is available through the Drake Well Museum (814) 827-2799 x107 – Sheri Hamilton - \$15.00 + shipping).

With Kathy's permission, enjoy this short poem (we've all been there)! ■

So-so Wells

*You'd think I'd be discouraged,
And give up on my dreams,
When all I drill are so-so wells,
Or so it sometimes seems.*

*Not good enough to pay the bills,
Not bad enough to plug,
It won't improve nor get much worse,
This oil well I dug.*

*It spits and spurts in fits and starts,
It really doesn't flow,
Is it fun to bring a gusher in?
I really wouldn't know.*



Book Review

THE NEW ORLEANS GEOLOGICAL SOCIETY MEMORIAL FOUNDATION, INC.

The Memorial Foundation is an IRS Tax Exempt Code #501(c)(3) organization. The Federal I.D. is 72-1220999. Please consider making a donation to the Foundation. Your individual support in any amount will help meet the IRS Guidelines for our Foundation. Thanks!

\$15,000 AND ABOVE

Gibbet Hill Foundation

*In Memory of Steve & Marion Millendorf, William J. Prutzman,
Roger G. Vincent, Ron Youngblood & Uno Numella*

\$5,000

NOGS Golf Tournament April 2012

In Memory of Bill Craig

\$1000

Marc Cooper

*Through the Marathon Oil Co
MEPAC Program*

Richard G. Klibert

\$500

Mr. Richard G. Klibert

Mr. Foster E. Voelker

In Memory of Gene Rogas

\$250 to \$499

Beverly and Carlo Christina

In Memory of Jack Dunlap

Mr. Carlo C. Christina

In Memory of Al Gilreath

Paleo Data Inc

In Memory of Jack Dunlap

Mr. James S. Classen

*In Memory of Jack Dunlap,
Louis L. McCormick, Jr. and
James P. Raymond, Jr.*

UP TO \$249

Mr. Woods W. Allen Jr.

In Memory of William C. Ward

Mr. Robert J. Ardell

*In Memory of James P. Raymond, Jr.
In Memory of Jerry Goodman*

Mr. Thomas C. Bergeon

Mr. Maurice N. Birdwell

In Memory of Uno Nummela

Mr. Burton C. Bowen

In Memory of Louis L. McCormick, Jr.

Mr. Robert B. Branson

In Memory of Louis L. McCormick, Jr.

Mr. Hilary James Brook

Ms. Robin A. Broussard

Mr. Rob Burnett

Ms. J. Sybil Callaway

Mr. Arthur F. Christensen

Beverly and Carlo Christina

In Memory of Beverly Langford

Mr. Carlo C. Christina

In Memory of Louis L. McCormick, Jr.

Mr. James S. Classen

In Memory of Robert G. Williamson

Mr. Willis E. Conatser

Mr. Clarence F. Conrad

Trudy and Charley Corona

In Memory of Beverly Langford

In Memory of Jack Dunlap

Mr. Charles J. Corona

In Memory of Carl Grieshaber

Mr. Michael Danos

In Memory of Max Durham

Mr. Merle Duplantis

Mr. Dwight Easterly

In Memory of James P. Raymond, Jr.

Dr. Brooks B. Ellwood PhD

Mr. Parrish N. Erwin Jr.

Mr. James P. Evans III

In Memory of James P. Raymond, Jr.

Mr. Michael N. Fein

Mr. Mark J. Gallagher

Mr. Arthur J. Garden

Mr. Bernard L. Hill Jr.

Mr. Tom (Thomas) A. Hudson

Mr. Kenneth Huffman

Mr. Jeff Jandegian

Philip W. Johnson

Mr. Tom Klekamp

In Memory of Jack Dunlap.

Mr. Reuben J. Klibert Jr.

Mr. Tim Klibert

Mr. John C. "Jack" Langford

Mr. Frank E. Larkin

Mr. H. David Lynch

Ms. Jeannie F. Mallick

Mr. Louis L. McCormick

Ms. Margaret M. McKinney

Mr. Robert G. Murphy

In Memory of Ronnie Youngblood

In Memory of Thomas A. Cullinan

New Orleans Geological Auxiliary

*In Memory of Joan Collier, Amber Klekamp
and Mary Petrocco*

Mr. Russell H. Nordwell

Mr. Richard A. Olsen

Mr. William S. Peirce

Mr. Edward B. Picou Jr.

In Memory of Jack Dunlap

In Memory of Terry D. Keegan

Mr. Richard D. Provensal

In Memory of Thomas H. Philpott and James Strahan

Mr. George W. Schneider III

In Memory of George W. Schneider, Sr.

Mr. Rudolf B. Siegert

In Memory of Louis L. McCormick, Jr.

FONO FUND

The FONO Fund accepts contributions that are invested and the income dedicated to assure sufficient financial resources will always be available to maintain the NOGS business office. Contributors are reminded that donations to the FONO Fund are not covered by the IRS 501(c)(3) tax exempt classification and should be reported as a business expense on your IRS tax report.

\$500

Mr. James A. Hartman

UP TO \$250

Mr. David E. Balcer

Mr. Joseph E. Boudreaux

Ms. J. Sybil Callaway

Mr. Anthony Carollo Jr.

Mr. Richard P. Colomes

Mr. John Dombrowski

Mr. Merle J. Duplantis

Mr. Parrish N. Erwin Jr.

Mr. Michael N. Fein

Mr. Mark J. Gallagher

Mr. Bernard L. Hill Jr.

Mr. Daniel P. Huffman

Mr. Robert M. Jemison Jr.

Mr. Arthur H. Johnson

Mr. Tom Klekamp

Mr. Russell J. Landry

Mr. Frank E. Larkin

Mr. Louis Lemarie'

Mr. H. David Lynch

Ms. Jeannie F. Mallick

Mr. Daniel G. Markey

Mr. Louis L. McCormick

Ms. Margaret M. McKinney

Mr. William J. O'Leary

Mr. Richard A. Olsen

Mr. William S. Peirce

Mr. James P. Raymond Jr.

Mr. C. R. Rondeau

Mr. David M. Tatum

Mr. Roy C. Walther

Mr. Robert C. Weissmann

Mr. William M. Whiting

Dr. J.O. Snowden

Mr. James M. Sothorn

Mr. Raymond O Steinhoff

In Memory of Anne M. Steinhoff and Harold E. Vokes

Ms. Betsy M. Strachan Suppes

In Memory of Hubert Skinner

Candace V. Strahan

In Memory of James R. Strahan

Mr. David M. Tatum

Mr. Leon G. Touns

In Memory of Robert G. Williamson

Mr. Arthur S. Waterman

In Memory of T. Wayne Campbell

Mr. William M. Whiting

In Memory of Don Rimsnider

Mr. Armour C. Winslow

In Memory of Rita Menzel Winslow

Ms. Frances A. Wiseman

In Memory of Steve Widdicombe

Mr. James W. Yeldell Jr.

In Memory of Thomas A. Cullinan

In Memory of Robert G. Williamson

In Memory of Gene Rogas

BILL CRAIG FUND

Chevron

Bernard L. Hill, Jr.

Hilary James Brook

John C. Scheldt

In Memory of William C. Ward

Candace V. Strahan

In Memory of James R. Strahan

In Memory of William C. Ward

Contributions for both funds
through July 7, 2012.
Donations are listed for one year.

<p>ANSYTHE Donald I. Andrews 504-887-3432</p> 	 <p>GEOLOGY ENVIRONMENTAL MANAGEMENT</p> <p>GEM Consulting LTD Michael Louis Merritt admin@gemconsultingltd.com</p> <p>1451 Applewood Road • Baton Rouge, LA 70808</p>
<p>THE BOEBEL COMPANY Oil and Gas Investments</p> <p>New Orleans, LA 70153 (504) 866-4313</p>	<p>H. WARREN BELL Oil and Gas Exploration</p> <p>2500 Tanglewilde, Suite 485 Houston, TX 77063-2126 Bus (713) 266-7297 Fax (713) 266-7298</p>
<p>BOO-KER OIL & GAS CORP. Gray S. Parker</p> <p>826 Union, Suite 300 New Orleans, LA 70112 Bus. (504) 581-2430 Fax (504) 566-4785</p>	<p>PHELPS GEOSCIENCE LLC Onshore Gulf of Mexico Geology and Geophysics Prospect Generation and Evaluation</p> <p>Houston, TX jsfphelps@yahoo.com (281) 398-5208</p>
<p>C & R EXPLORATION, INC.</p> <p>Carlo C. Christina Lawrence G. Ringham</p>	<p>RAFIDI OIL AND GAS, INC. Jaser N. Rafidi, President</p> <p>4415 Shore Dr., Suite 202 Metairie, LA 70006 Bus. (504) 453-8580 Fax (504) 888-5539; Res. (504) 888-1661</p>
<p>C. R. RONDEAU Petroleum Geologist</p> <p>119 W Southland Ave. Ironwood, MI 49938 Res. (906) 932-4692</p>	<p>ROY C. WALTHER Petroleum Geologist</p> <p>2421 Prancer Street New Orleans, LA 70131 Bus. (504) 392-8513 Res. (504) 392-9332</p>
<p>CLASSEN EXPLORATION, INC. James S. Classen Looking for close in deals</p> <p>P.O. Box 140637 Boise, ID 83714 Bus. (208) 854-1037 Fax (208) 854-1029 classenllc@msn.com</p>	 <p>625 E. Kaliste Saloom Lafayette, LA 70508 16800 Greenspoint Dr., Suite 225-S Houston, TX 77060 1100 Poydras St., Suite 1050 New Orleans, LA 70163 www.StoneEnergy.com</p>
<p>D-O-R ENGINEERING, INC. 3-D and Geoscience Services</p> <p>6161 Perkins Rd. P O Box 80812 Bus : (225) 765-1914 Baton Rouge LA 70898</p>	<p>TONY CAROLLO Consulting Geologist Unitization Geosteering Field Studies</p> <p>1701 Peach Street Metairie, LA 70001 Bus. (504) 885-0004 Res. (504) 885-6829</p>
<p>EDWARD B. PICOU, JR. Consulting Micropaleontologist - Retired</p> <p>228 St. Charles Ave., Suite 1330 C New Orleans, LA 70130 Bus. (504) 529-5155 Res. (504) 282-3096</p>	<p>Zot Oil & Gas, LLC Jim Zotkiewicz Prospect Generation and Evaluation</p> <p>3200 Ridgelake Dr. Suite 207 Metairie, LA 70002-4930 Business: 504.831.4694 Email: jimzot38@zotoil.com</p>

Collarini Energy Staffing, Inc.

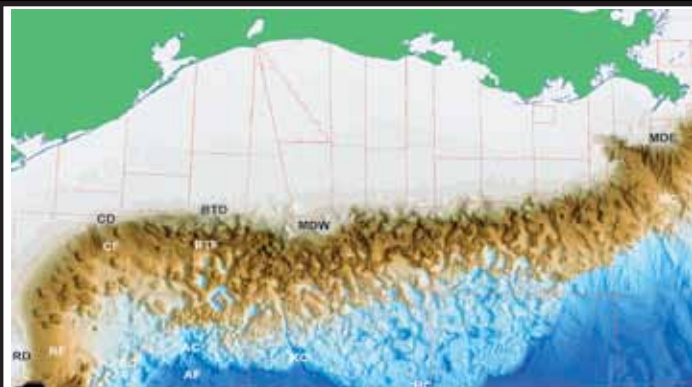
Facilities • Drilling • Production • Reservoir Engineering
Land and Legal • Geosciences • Information Technology
Health and Safety • Management • Supply Chain
Accounting • Administrative Support



Full-Time and Temporary Personnel

Energy Trading • Civil Engineering • Executives
Human resources • Instrument and Electrical
Engineering • Marine Engineering • Project Management
Technical Writing • Sales and Marketing

10497 Town and Country Way, Suite 950, Houston, Texas 77094 Telephone: (832) 251-0553 www.collarini.com

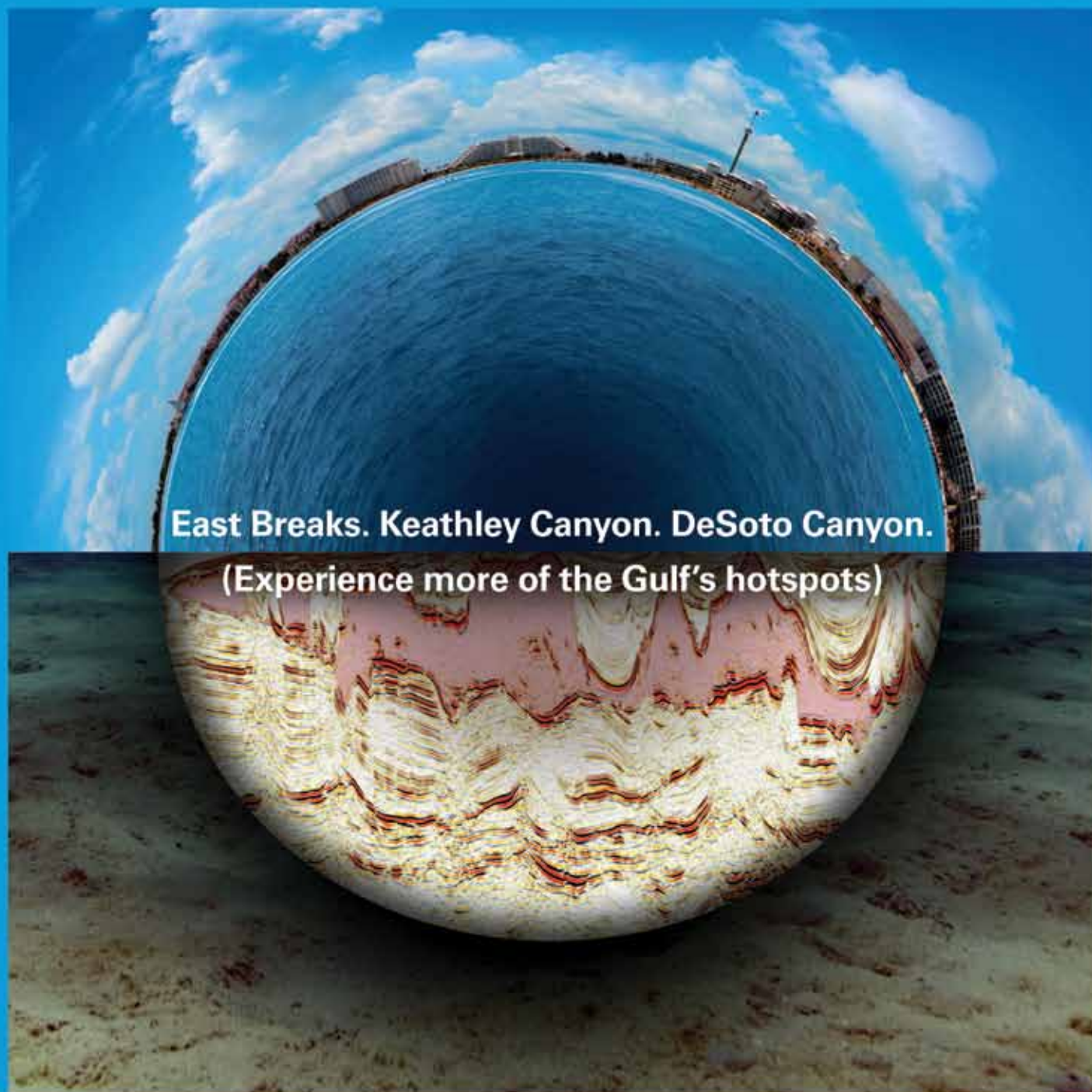


Northern Gulf of Mexico continental slope, by F.A. Diegel, based on NOAA data

New Understanding of the Petroleum Systems of Continental Margins of the World

32nd Annual GCSSEPM Foundation
Bob F. Perkins Research Conference
Houston, Texas
December 2-5, 2012
OMNI Westside Hotel

More Information and Registration: www.gcssepm.org



East Breaks. Keathley Canyon. DeSoto Canyon.
(Experience more of the Gulf's hotspots)

PGS MultiClient GULF OF MEXICO

Take a fresh look at the Gulf of Mexico and identify new prospects

We can provide the data and expertise which will help de-risk your prospects and reveal opportunities in key frontier areas. Our cutting edge technology can help to define your search and give you the focus to support your exploration needs. We're ready where you are and committed to providing the right data in the right place at the right time.

Supporting your exploration success

A Clearer Image
www.pgs.com



gominfo@pgs.com



NEW ORLEANS GEOLOGICAL SOCIETY

810 Union Street, Suite 300
New Orleans, LA 70112-1430

PRESORT
STANDARD
US POSTAGE
PAID
MAIL TECH

www.nogs.org



MARINE PROPERTIES, LLC BERKSHIRE EXPLORATION CO.

MONTE C. SHALETT, CPL, PRESIDENT

3030 Lausar Street
Metairie, LA 70001-5924

BUS. (504) 831-7779
FAX. (504) 831-8315

PCI

Paleo Control, Inc.

Houston, Texas
713-849-0044

Drilling Wells, Studies and Data Base

Loyd Tuttle

Frio, SE Texas

Bob Liska

Wilcox, S and SE Texas

Jim Thorpe

Miocene and Cam-Miogyp



SEE YOUR DATA IN A WHOLE NEW LIGHT!

Take the pressure out of exploration
and drilling by seeing what you
are going to encounter.

eSeis

www.e-seis.com
713.531.1447

- Lithology & Fluids
- Depositional Facies
- Pore Pressure from V & Q
- Well Planning Consultation

