

NOGS LOC

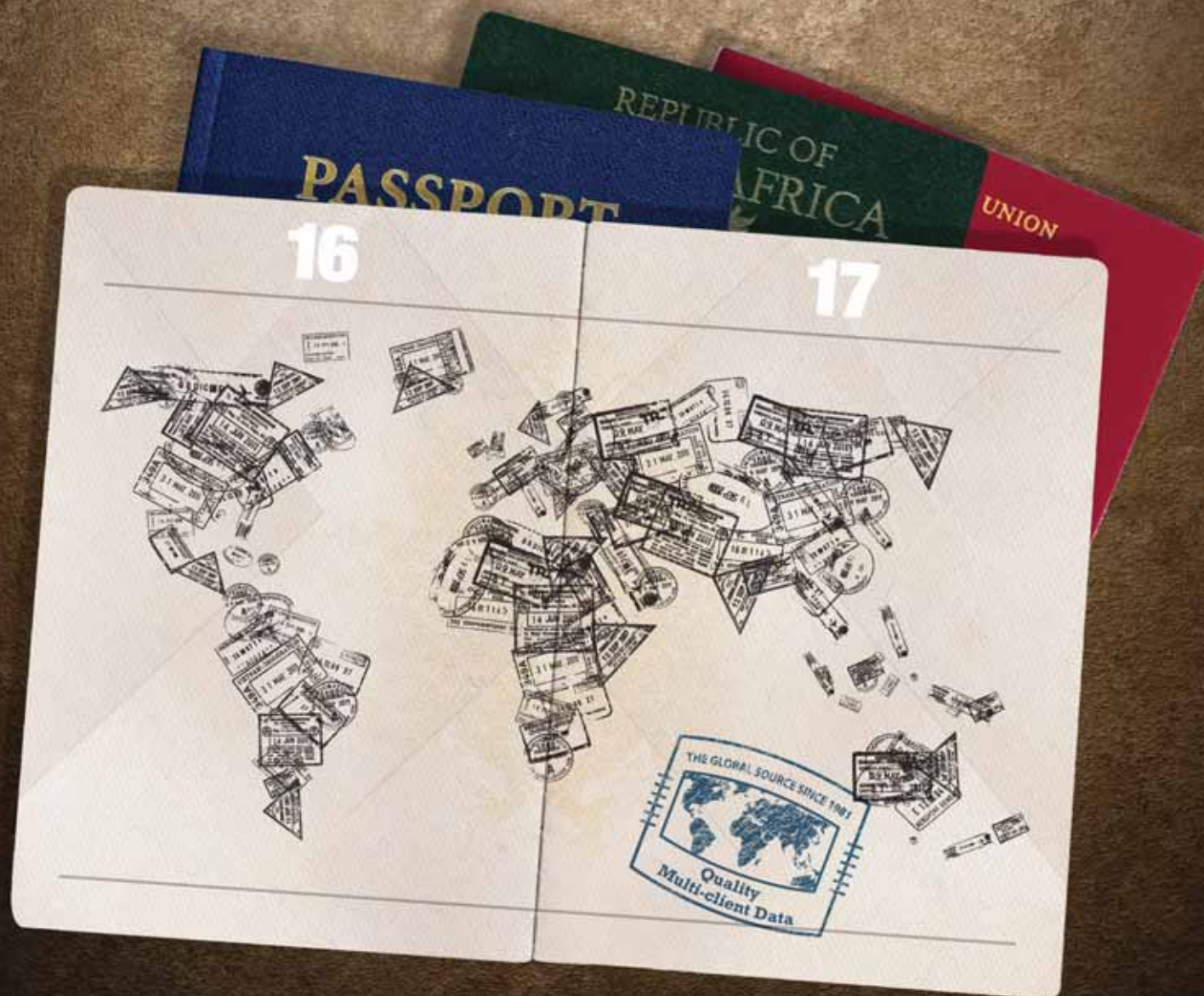
NOVEMBER 2012

Volume 53, Number 5



NOVEMBER 5 - NOGS LUNCHEON
Presentation: Linear Pressure Gradients: Myth or Reality?
Guest Speaker: Hani Elshahawi - Shell • Houston, Texas

TGS WELL DATA DELIVERS THE WORLD



With over **6,000,000** well logs available, TGS provides high quality data from the most popular hydrocarbon plays around the globe.

TGS has expanded its well data library to include production data, directional surveys, mud log data and formation tops. Each format can be conveniently accessed online, through the online well data portal LOG-LINE Plus!®.



Learn more at WWW.TGS.COM

IN THIS ISSUE

Regular Features:

From the Editor	3
From the President.....	5
NOGS Officers / Contacts	6
Upcoming Events & Activities	7
NOGS Luncheon Presentation	9
November & December Calendars	12
Drill Bits	16
NOGS Welcomes New Members.....	19
Info-Tidbits	27
NOGS Memorial Foundation.....	29
FONO Fund.....	29

Special Features:

NOGA News.....	14
NOGS 2012 Kick Off Party Photos	18
NOGS Memorial Foundation Scholarships.....	20
NOGS Christmas Holiday Party Announcement.....	28

on the cover:

Cover Photo Submitted by: David Tatum

Location: Mt. Kidd, Banff National Park, Canadian Rockies, Alberta, Canada.

Looking north, Mt. Kidd demonstrates a classic look at fault propagation folds. The Lewis Thrust, which runs 230 km to the south and has 100 km of displacement, tips out at the base of Mt. Kidd. This location is a great example of a fold pair at the termination of a major thrust fault. Fault propagation folds are observed all over the Western United States. They are also observed along the Mississippi and Perdido fold and thrust belts in Deepwater Gulf of Mexico.

Photograph taken by David Tatum

From the Editor



Hello again NOGS members! I want to start off this Editor's Note by thanking Tom Klekamp for sending in such a breathtaking and professional photo from Canyon de Chelly for last month's NOGS LOG cover. The cover photo earned rave reviews from several LOG readers so your contribution is very much appreciated, Tom. Not to be outdone, my good friend David Tatum has sent in a photo of his own from a recent trip to the Canadian Rockies. His photo of Mt Kidd graces our November cover and is another example of just the sort of cover art we are seeking for our monthly publication.

Looking ahead to the November Luncheon on the 5th, Hani Elshahawi of Shell in Houston will present "Linear Pressure Gradients: Myth or Reality?" I am personally looking forward with interest in this topic since I deal with formation pressure gradient interpretation often and am keen to learn more about this subdiscipline from a recognized industry expert. I hope to see many of you there!

Thanks,
Jordan Heltz – NOGS LOG Editor

These nodes change everything.

With absolutely no cables,
there's absolutely no stopping you.



True cable-free seismic

Dealing with tons of cable will hinder any seismic acquisition, land or marine. That's why our exclusive, true cable-free ZNodal® systems pay such huge dividends in any environment.

Our lightweight, compact ZLand® system lets your crews work faster and much more safely while recording high-resolution data, even in the most challenging terrain.

Our ZMarine® system, also completely self-contained, deploys easily and safely, even in congested areas, to water depths of 3000m, which makes it ideal for 4D reservoir monitoring.

Welcome to a new world of seismic acquisition.



FairfieldNodal.com



From the President

It was fantastic seeing so many new faces during last month's Kickoff Party at Rock N Bowl. We had around 80 people in attendance, and the NOGA ladies graced us with their presence. Bay Salmeron's efforts certainly succeeded in topping last year's kickoff social, and I expect these gatherings to continue exceeding expectations for years to come.

By the time you come to read this, the 62nd annual Gulf Coast Association of Geological Societies convention in Austin, Texas, will have taken place, and all eyes will be focused on planning for next year. GCAGS 2013 will be particularly special for NOGS, for it will be held here in wonderful New Orleans! Thankfully, our own Art Johnson is taking charge and is the General Chairman for the 63rd annual GCAGS Convention. Certainly, volunteers are always essential for the smooth operation of a function of this magnitude, so please contact Art at ArtJohnson51@hotmail.com if you would like to help out.

For our November Luncheon, the Southeastern Geophysical Society will be joining us in enjoying a presentation by Hani Elshahawi on using formation pressures in delineating pressure gradients of hydrocarbon reservoirs. I look forward to socializing with our "other half" geoscience friends on our home turf.

Stay tuned, as our planning team is preparing something extra special for next year's annual golf tournament.

Happy Belated Halloween and Premature Thanksgiving!



NOGS Office

Office Manager: Annette Hudson

Office Hours: 8:30 am — 3:30 pm on Monday-Wednesday-Friday

Phone: 504-561-8980 • Fax: 504-561-8988

Email: info@nogs.org • Website: www.nogs.org

The office is located at 810 Union Street, Suite 300, New Orleans, LA 70112.

Correspondence and all luncheon reservations should be sent to the above address.



BOARD OF DIRECTORS

President	Will Jorgensen
Vice President	Kevin McVey
Secretary	Bruce Bahlinger
Treasurer	Kelli Hardesty
President-Elect	Bay Salmeron
Editor	Jordan Heltz
Director 2013	Edward B. Picou, Jr.
Director 2014	Michael N. Fein
Director 2015	Irion Bordelon, Jr.

Company	Phone
Shell	504-728-6339
ETROA Resources LLC	985-809-3808
Saratoga Resources Inc	985-809-9292
Environmental Resources Management	504-831-6700
Chevron	832-854-6431
Chevron	985-773-7163
Consultant	504-529-5155
W & T Offshore	504-210-8148
NorthStar Energy, LLC	985-778-3827

E-mail
william.r.jorgensen@shell.com
kmcvey@etroa.com
bbahlinger@charter.net
kelli.hardesty@erm.com
bay.salmeron@chevron.com
jordan.heltz@chevron.com
epicou@bellsouth.net
mikef@wtoffshore.com
irion.bordelon@yahoo.com

COMMITTEE

Committee	Chairperson
AAPG Delegates	Arthur H. Johnson
AAPG Student Chapter	Hunter Berch
AAPG Student Chapter	Michael Hopkins
AAPG Student Chapter	Drew Boudreaux
Advertising-Log	Kimberly Maginnis
Auditing	Bay Salmeron
Awards	Michael N. Fein
Ballot	Kelli Hardesty
Best Paper	Bay Salmeron
Continuing Education	TBA
Employment Counseling	TBA
Entertainment	Bay Salmeron
Environmental	Daisy Pate
External Affairs	Michael A. Fogarty
Field Trip	Larissa Cupp
Finance and Investment	Kelli Hardesty
Historical	Edward B. Picou, Jr.
Membership/Directory	Carlo C. Christina
New Geoscientists (NGNO)	TBA
Nominating	Arthur H. Johnson
Non-Technical Education	Duncan Goldthwaite
Office Operations	Daisy Pate
Publications Sales	Edward B. Picou, Jr.
Photography	Tom Klekamp
School Outreach	Thomas C. Bergeon
Scouting	Carol Rooney
Sponsorship/Houston	David E. Reiter
Technical Projects	TBA
Ad Hoc Committee	
on University Support	Michael J. Gallagher

Company	Phone
Hydrate Energy International	504-464-6208
LSU	662-312-1300
Tulane University	228-209-2262
UNO	337-578-5587
W & T Offshore Inc	504-210-8174
Chevron	832-854-6431
W & T Offshore	504-210-8148
Environmental Resources Management	504-831-6700
Chevron	832-854-6431
Chevron	832-854-6431
Pontchartrain Partners	504-862-1775
Sylvan Energy, LLC	603-523-4808
	978-621-5074
Environmental Resources Management	504-831-6700
Consultant	504-529-5155
Retired (C & R Expl. Inc)	504-835-4116
Hydrate Energy International	504-464-6208
Consultant	504-887-4377
Pontchartrain Partners	504-862-1775
Consultant	504-529-5155
Amber Resources LLC	985-845-4046
Century Exploration	504-832-3772
Consultant Geologist	504-835-1909
Woodside Petroleum	713-401-0045
Eni Petroleum	713-393-6100

E-mail
artjohnson51@hotmail.com
hberch1@tigers.lsu.edu
mhopkins@tulane.edu
apboudr1@uno.edu
kmaginnis@wtoffshore.com
bay.salmeron@chevron.com
mikef@wtoffshore.com
kelli.hardesty@erm.com
bay.salmeron@chevron.com
bay.salmeron@chevron.com
daisy.pate@gmail.com
mike.a.fogarty@gmail.com
Larissacupp@gmail.com
kelli.hardesty@erm.com
epicou@bellsouth.net
Carlocc398@aol.com
artjohnson51@hotmail.com
DGldthwt@aol.com
daisy.pate@gmail.com
epicou@bellsouth.net
klekamp@bellsouth.net
Tom.bergeon@centuryx.com
carolbrooney@aol.com
david.reiter@woodsideenergy.com
Michael.Gallagher@enipetroleum.com

NOGS LOG STAFF

Editor	Jordan Heltz
Editor-Elect	Sheri Richardson
Auxiliary	Peggy Rogers
Info Tidbits	Jordan Heltz
Drill Bits	Carlo C. Christina
Drill Bits	Kevin Trosclair
Layout	Kristee Brown
Webmaster	Edward B. Picou, Jr.

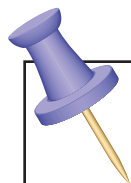
Company	Phone
Chevron	985-773-7163
LaBay Exploration Co LLC	504-371-5967
NOGA	504-392-6323
Chevron	985-773-7163
Retired (C & R Expl. Inc)	
UNO Graduate Student	504-202-7997
Creative Graphics & Printing LLC	985-626-5223
Consultant	504-529-5155

E-mail
nogseditor@gmail.com
srichardson@labayexploration.com
lroggers79@cox.net
nogseditor@gmail.com
drillbits81@yahoo.com
kjtrosc@uno.edu
kpbrown@bellsouth.net
epicou@bellsouth.net

NOGS AUXILIARY

Officers	Phone
President	Mary Walther
1st Vice-President	Dolores Murphy
2nd Vice-President	Camille Yeldell
Secretary	Beverly Christina
Treasurer	Judy Lemarie'
Parliamentarian	Alma Dunlap
Member-at-Large	Jean Jones

Directors	Year	Phone
MaryEllis Hasseltine	2011-13	504-885-7657
Gwenn Swaney	2011-13	504-831-0748
Pat Williamson	2011-13	985-626-6910
Beverly Kastler	2012-14	504-286-0879
Linda Peirce	2012-14	504-393-7365
June Perret	2012-14	504-664-0651



UPCOMING Events & Activities

November 5 • NOGS Luncheon

Holiday Inn Downtown Superdome

\$2.00 validated parking in hotel garage

Presentation:

Linear Pressure Gradients: Myth or Reality?

Guest Speaker:

Hani Elshahawi

Shell - Houston, Texas

See page 9 for Abstract and Biography

HOLIDAY INN DOWNTOWN SUPERDOME

Check with concierge or
front desk for location.
Lunch served at 11:30 am

ADMISSION:

With reservation\$30.00

Without reservation\$35.00

Student Member with reservations..... FREE

November 4-7

Geological Society of America Annual Meeting & Exposition
Charlotte, NC

For more information, www.geosociety.org/meetings/2012

December 2-5

32nd Annual GCSSEPM Foundation Bob F. Perkins Research Conference
OMNI Houston Westside - Houston, TX

For more information, www.gcssepm.org

December 7

NOGS Christmas Holiday Party • Chateau Golf & Country Club - Kenner, LA

Please reserve no later than December 3, 2012 • For more information, www.nogs.org

NOGS CONTACT LIST

Continued from previous page

MEMORIAL FOUNDATION

BOARD OF TRUSTEES Company

2012-2013 Chairman	Daisy Pate
2012-2013 Secretary	Will Jorgensen
2012-13 Trustee	Jennifer Connolly
2012-13 Trustee	William M. Whiting
2013-14 Trustee	J. David Cope
2013-14 Trustee	Tom Klekamp
2014-15 Trustee	Rick Kear
2014-15 Trustee	TBA

Phone

Pontchartrain Partners
Shell
Shell
Consultant
ANKOR Energy LLC
Amber Resources LLC
Schlumberger Oil Field Services

E-mail

504-862-1775	daisy.pate@gmail.com
504-728-6339	william.r.jorgensen@shell.com
504-728-6411	jennifer.connolly@shell.com
504-947-8495	bootscon@aol.com
504-596-3672	dcope@ankorenergy.com
985-845-4046	klekamp@bellsouth.net
504-858-2444	kear1@slb.com

AAPG DELEGATES

Term Ends

2014	Arthur H. Johnson	Hydrate Energy International	504-464-6208	artjohnson51@hotmail.com
2014	Brenda Reilly	AMROMCO Management LLC	504-430-4240	reillybe@yahoo.com
2014(a)	Elizabeth C. McDade	McMoRan Exploration Co.	504-582-4510	ecmcade@bellsouth.net
2014(a)	Frances A. Wiseman	BOEM (retired)	504-831-8343	snowde.fran@gmail.com
2015	Susan A. Waters	Shell	504-728-0229	susan.waters@shell.com
2015	William M. Whiting	Consultant	504-947-8495	bootscon@aol.com
2015(a)	David E. Balcer	Chevron	985-773-6725	dbalcer@chevron.com
2015(a)	Earl W. Cumming	Shell	504-728-6370	earlcumming@shell.com

NEW MEMBERS

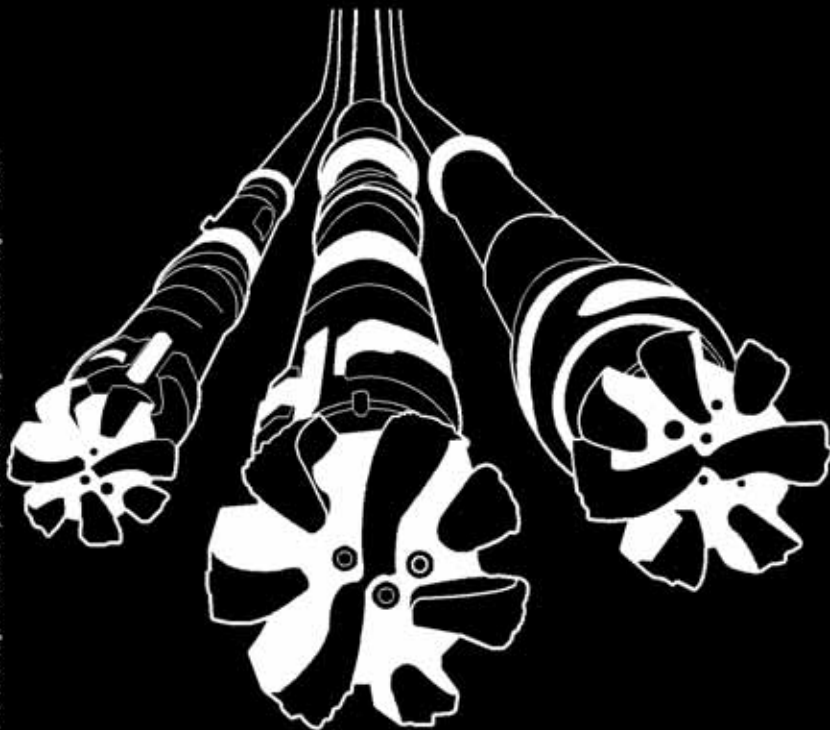
Philip J. Richardson	Geological/GIS Technician	Helis Oil & Gas Co. - New Orleans	504-523-1831	psrichardson@cox.net
Timothy P. Sheehan	Senior Geologist	Shell - New Orleans	504-728-6113	timothy.sheehan@shell.com
Beth Y. Strickland	Staff Production Geologist	Shell - New Orleans	504-728-7113	beth.strickland@shell.com

Deep Water

WELL CONSTRUCTION

Are all your services deepwater ready?

Control Measures	Complexity/Process + Exposure	Preparedness				
		High				Low
		1	2	3	4	5
	-5	-5	-10	-15	-20	-25
	-4	-4	-8	-12	-16	-20
	-3	-3	-6	-9	-12	-15
	-2	-2	-4	-6	-8	-10
	-1	-1	-2	-3	-4	-5



Our Project Readiness Assessment (PRA) approach has been applied and improved over the last 5 years.

All deepwater projects in which Schlumberger participates benefit from our PRA process, which complies with new U.S. regulatory requirements. This helps deliver seamless, efficient startup, and reduced NPT.

Learn more at

www.slb.com/deepwaterready

Global Expertise
Innovative Technology
Measurable Impact

Schlumberger

*Mark of Schlumberger. Measurable Impact is a mark of Schlumberger. © 2010 Schlumberger. 10-dw-0079



November 5 NOGS Luncheon Presentation

☆☆☆ at the Holiday Inn Superdome ☆☆☆



Linear Pressure Gradients: Myth or Reality?



Presented by

Hani Elshahawi

Shell

Houston, Texas

ABSTRACT

For decades, formation-testing practitioners have adopted the practice of connecting straight lines to pressure trends in order to define reservoir fluid gradients and contacts. This practice was convenient for a long time due to the general unavailability of sufficiently precise pressure and density measurements, but the underlying assumption of constant density in the hydrocarbon column is often simplistic or even invalid. It is widely accepted now that reservoir and fluid complexities are the norm rather than the exception. We have missed these realities mainly because we did not look hard enough for them, because we did not have the enabling technologies to do so, but also because simplicity is usually more convenient than complexity.

In principle, the linear approximation of the reservoir pressure gradient is only valid if the reservoir fluid density varies over the fitted interval by an amount less than the accuracy of the measurement and of the fitting technique. Based on the examination of thousands of data sets, it is safe to say that this basic assumption is frequently violated. Even more disturbing is the widely observed practice of extrapolating linear trends beyond the existing data set to establish fluid contacts without independent corroborating data.

In this presentation, we show that nonlinear hydrocarbon gradients are the rule rather than the exception. Any attempt to force linearity or to extrapolate a pressure data set in a manner that is inconsistent with this understanding can lead to incorrect fluid contacts and inaccurate estimates of in-place hydrocarbon volumes, which have further implications in terms of well locations and proposed development schemes. We propose guidelines for the extraction of fluid gradient and contacts and establish criteria for the range of validity of conventional techniques.

BIOGRAPHY

Hani Elshahawi is Shell Deepwater Technology Advisor. Previously, he led FEAST, Shell's Fluid Evaluation and Sampling Technologies centre of excellence and before that spent 15 years with Schlumberger in over 10 countries in Africa, Asia, and North America during which he has held various positions in interpretation, consulting, operations, marketing, and technology development. He holds several patents and has authored close to a hundred technical papers in various areas of petroleum engineering and the geosciences. He was the 2009-2010 president of the SPWLA and was distinguished lecturer for the SPE and the SPWLA 2010-2011 and is recipient of 2012 SPWLA Distinguished Technical Achievement Award. His email is Elshahawi@gmail.com.

THE LUNCHEON RESERVATION DEADLINE IS NOVEMBER 2 - CONTACT THE NOGS OFFICE

"And Looking Ahead . . ."

The next luncheon will be held on December 3rd. Our guest speaker, Ricky Boehme of Chevron in Houston, will present "Big Foot Geology and Development Plan Overview." Contact the NOGS office at 561-8980 or use the PayPal link on the NOGS website (www.nogs.org) to make your reservation.

NeuraSection

Produce YOUR Interpretation

NeuraSection brings together logs, maps, sections and other critical information allowing you to focus on interpretation. With real-time editing of computer generated results, your interpretation becomes clear and meaningful.

- Auto and manual contouring
- Cross section generation
- Real-time editing
- Reserves calculations
- Presentation montaging



www.NeuraSection.com

1.281.240.2525



Neuralog

Turning Paper Into Petroleum

© 2012 Neuralog • www.neuralog.com • 1.281.240.2525 • 1.800.364.8728

SEI[®]

Seismic Exchange, Inc.

Strategic Speculative Surveys
Geophysical Data Marketing & Management

YOUR
Full Service
National
Seismic Data
Marketing Firm



DALLAS DENVER HOUSTON MIDLAND NEW ORLEANS OKLAHOMA CITY CORPUS CHRISTI TULSA
201 St Charles Avenue, Suite 4300, New Orleans, Louisiana 70170-4300 504-581-7153 FAX 504-581-9591

seismicexchange.com



Drill with confidence.

Diversified Well Logging, LLC brings the accuracy and expertise only a company with over sixty years in the oil and gas industry can deliver. We are your eyes and ears in the field, especially when it comes to deep water or high pressure, high temperature areas.

DWL offers 24-hour formation evaluation. We provide secure and customized real-time data communication, in-house research and development, and 24/7 on-call support for our equipment and our engineers.

Whether you have a 10-day job or a 110-day job, we provide the specialized attention you require. **Our experience means you can be confident in the safety and performance of your well.**



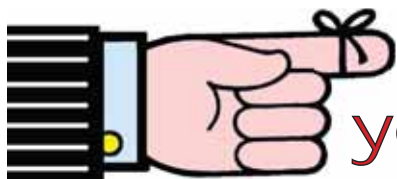
- *Formation Evaluation*
- *Geosteering*
- *Drilling Optimization*
- *Real-time Data Transmission*
- *Early Kick Detection*



Serving the Oil and Gas Industry for Over 60 Years

November						
Sunday	Monday	Tuesday	Wednesday	Thursday	Friday	Saturday
				1	2	3
4 GSA Annual Meeting Charlotte, NC	5 NOGS Luncheon Holiday Inn @ 11:30 A.M.	6 GSA Annual Meeting Charlotte, NC	7 GSA Annual Meeting Charlotte, NC	8	9	10
11	12	13	14 NOGA Luncheon	15	16	17
18	19	20	21 NOGS Board Meeting	22 Thanksgiving	23	24
25	26	27	28	29	30	

December						
Sunday	Monday	Tuesday	Wednesday	Thursday	Friday	Saturday
						1
2 GCSSEPM Research Conference Houston, TX	3 NOGS Luncheon Holiday Inn @ 11:30 A.M.	4 GCSSEPM Research Conference Houston, TX	5 GCSSEPM Research Conference Houston, TX	6	7 NOGS/NOGA Christmas Party Chateau Golf & CC	8
9	10	11	12	13	14	15
16	17	18	19 NOGS Board Meeting	20	21	22
23	24	25 Christmas	26	27	28	29
20	31 New Year's Eve					



Have you renewed your NOGS Membership???

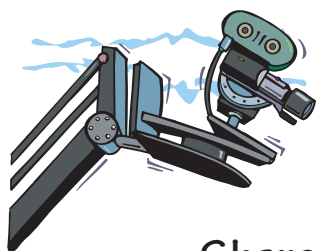
Dues are past due for the 2012-2013 Year!

In September, members were contacted by email to renew your NOGS dues.
Many members did not receive or did not respond to this request.

Now is the time to renew!

Take these easy steps:

- 1) Send a check (\$25 Active / \$12.50 Student) with your information updates to:
NOGS • 810 Union Street • Suite 300 • New Orleans, LA 70112-1430
- 2) Pay by PayPal: Go to www.nogs.org and click on the left hand side of the page or go directly to:
http://nogs.org/nogs_checkout.html



NOGS Member Updates: NOGS LOG wants you!



Share the latest information about your life, career or
anything else of interest to have it published in an upcoming *NOGS LOG*.

ETROA

ETROA Resources LLC

Join us in pursuing gulf coast production,
acquisitions and low-risk drilling opportunities.

John C. Ebert
Kevin McVey

128 Northpark Blvd.
Covington, LA 70433
(985) 809-3808

www.etroa.com

Send an email to:
nogseditor@gmail.com

or mail your news to:
"NOGS Member News"
810 Union Street • Suite 300
New Orleans, LA 70112



CENTURY EXPLORATION NEW ORLEANS, LLC

An independent gulf coast exploration, development and operating company

Three Lakeway Center, Suite 2800
3838 North Causeway Blvd.
Metairie, LA. 70002

Office: 504.832.3750
Fax: 504.832.3760
www.centuryx.com

New Orleans Geological Auxiliary News

"The objective of the Auxiliary is to promote fellowship among the wives of the members of New Orleans Geological Society and to render assistance to NOGS upon request."

NOGS held their Kickoff Party at a new venue this year, Rock 'n' Bowl. A lively crowd enjoyed good food and fellowship. The NOGA officers were introduced and presented with white roses in appreciation of their support. It was good to see Gwenn Swaney feeling well and back with us after a year off due to an illness.

The 2012-2013 year of the New Orleans Geological Auxiliary had a great day to start the new season. On October 3rd, twenty-eight members visited the beautiful home of Margaret Goldthwaite. The ladies enjoyed a delicious lunch provided by committee members Earleen Rodan and Ann Gilbert. The home was three stories of art and treasures that Duncan and Margaret have collected. The third story is artist Margaret's studio overlooking the levee and Lake Pontchartrain. Margaret, who volunteers in the butterfly garden at the Botanical Garden in City Park, arranged to have a myriad of yellow butterflies flying about her own butterfly garden just outside the den windows to enchant the guests. It was a great way to greet and visit friends old and new after an interruption of summer vacations and Hurricane Isaac.

On November 14th, the Auxiliary will meet at Vincent's Restaurant for lunch and to hear Virginia Barkley, owner of "Let's Get It Straight", who will speak to us about getting organized and reducing clutter in our lives. Committee members Joan Sylvester and Dorothy Jean Hill are in charge of arrangements. If you start decluttering before the luncheon you can come and brag to your friends. It will be another interesting day for auxiliary members.

Peggy Rogers, NOGS LOG



Committee Members for the October 3rd Luncheon

Ann Gilbert and Earleen Rodan with Margaret Goldthwaite, Hostess

New Orleans Geological Auxiliary Membership Application

Name _____ Spouse's Name _____
Address _____ Home Phone _____
City, State, Zip _____ Email _____
Spouse's Company _____ DUES: \$25.00

Please send \$25 check payable to NOGA to Judy Lemarié, Treasurer, #2 Yosemite Dr., New Orleans, LA 70131



Dr. David Blackwell and Maria Richards
Roy M. Huffington Department of Earth Sciences
Dallas, TX 75275-0395

This two-day international conference brings together leaders from business, engineering, finance, law, and research to explore specific topics relevant to capturing energy often overlooked or discarded during oil and gas production. The same technology can be used for both the waste heat to power (WHP) from surface equipment and the geothermal energy in well fluids to generate electrical power. Generating electricity on-site in the field reduces overall project expenses, eliminates CO2 emissions, and decreases dependency on the local grid. Projects producing electricity using oil wells were successfully completed in Mississippi and Wyoming. Extensive geothermal research is ongoing in the Williston Basin. WHP installations are widespread in manufacturing sectors. Combining surface and reservoir sources of thermal energy maximizes the opportunity for return on investment.

While the concept may sound easy, extracting heat from either below ground or surface sources, it draws on many diverse skill sets. This conference provides the necessary knowledge, procedures, and networking opportunities for optimizing on-site electrical production for field use or to sell to the grid. State-of-the-art technology will be showcased. Attend, and you'll be part of the clean energy solution: producing emission-free renewable energy while extending the life of an oil or gas field.

Go-Getters wanted.



Geothermal Energy and Waste Heat to Power Utilizing Oil and Gas Plays

Plan to attend the Conference!
March 12-14, 2013
SMU campus in Dallas, Texas

Keynote Speaker
Chairman Jon Wellinghoff
Federal Energy Regulatory Commission

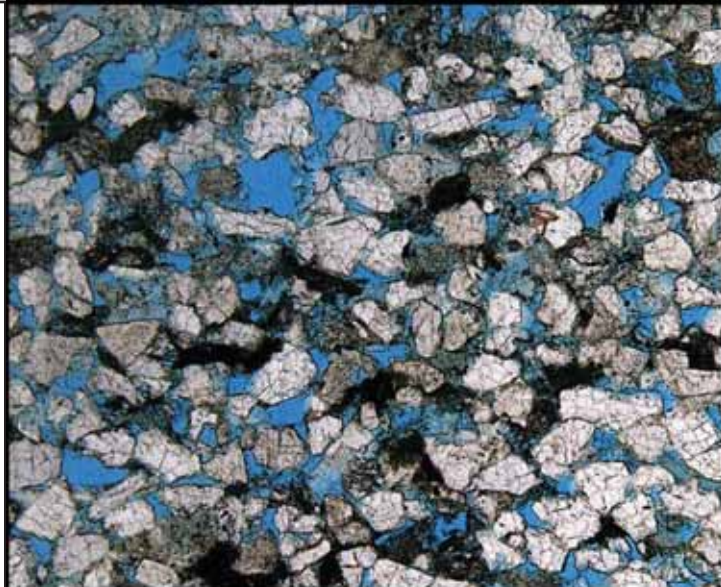
Interested in Sponsorship?
Maria Richards 214-768-1975 mrichard@smu.edu
Speaker abstracts requested: geothermal@smu.edu
Details & registration: <http://smu.edu/geothermal>



**Shell has worked in partnership
with the NOGS for many years, and
is proud to count the society among
its closest business associates.**

The New Orleans Geological Society was organized in 1941 to foster scientific research and advance the science of geology. Particular emphasis is laid on the exploration for and production of petroleum and natural gas. Related objectives include encouraging the adoption of improved methods of exploration, disseminating pertinent geological and technological data, and maintaining a high standard of professional conduct among its members.

www.shell.com/us.sepc



Offshore & South Louisiana Experts

- **CORE ANALYSIS**
- **PVT FLUID EVALUATION**
- **GEOLOGIC SERVICES**

New Orleans: 504-733-6583
Broussard: 337-837-8616
Houston: 713-328-2673
www.corelab.com



South Louisiana and Offshore Gulf of Mexico Exploration and Production Activities

LAFAYETTE DISTRICT, ONSHORE AREA

By Carlo C. Christina

STUCK DRILL PIPE

Sorry, due to unforeseen circumstances the ONSHORE REPORT is not available this month.

OFFSHORE GULF OF MEXICO SHELF AND DEEPWATER ACTIVITIES

by Al Baker

During September, the BOEM approved 64 drilling permits, of which 28 were for Gulf of Mexico shelf wells and 36 were for Gulf of Mexico deep water wells. There were 3 shelf (1 exploratory and 2 development) and 7 deepwater (all exploratory) new well permits granted. On the shelf, Castex Offshore received a permit for the **South Pelto 18 #A-1** exploratory well. Development well permits were given to Arena Offshore for the **Vermilion 341 #A-3** well and to Dynamic Offshore Resources for the **Main Pass 116 #10** well. In deepwater, two exploratory new well permits were awarded to Anadarko for the **Green Canyon 727 #SS-2** well and the **Walker Ridge 51 #2** well. The remaining 5 exploratory new well permits were granted to Shell for their **Mars Field** expansion drilling program. These wells include the Mississippi Canyon 763 #MB-10, #MB-12 and #MB-14, plus the Mississippi Canyon 806 #MB-16 and #MB-23 wells.

On September 28th, IHS-Petrodata reported that the Gulf of Mexico mobile offshore rig supply stood at 115 with 76 rigs currently under contract. Thus, the region's fleet utilization rate presently stands at 66.1%. This compares to 61 out of the 115 rigs available during the same time period in 2011 (a 52.6% utilization rate). The year-to-year comparison indicates that the contracted rigs count has risen by 24.6% since last year.

Additionally, there were 27 platform rigs under contract out of the 52 total in the fleet for a fleet utilization rate of 51.9%. The current number of platform rigs under contract in the Gulf is the same as reported last month.

On September 28th, the BakerHughes Rig Counts indicated that there were 50 active mobile offshore rigs in the Gulf, which is one less than last month and represents 65.8% of the total mobile rigs under contract. All of the drilling remains in Offshore Louisiana and the deepwater Northern Gulf. The current active rig count compares to 31 active rigs during the same period last year. This represents a 61.3% increase in the active rig fleet on a year-to-year basis. Additionally, of the 27 platform rigs that are under contract, 14 (or 51.9%) were currently working.

The month of September was one of acquisitions within the industry as evidenced by the following activities:

On September 10th, BP announced that Plains Exploration & Production Co. had agreed to buy a number of BP PLC's deepwater Gulf of Mexico oil and gas properties for \$5.55 billion. BP is selling its interest in three operated assets: the Marlin Hub (Viosca Knoll Area), consisting of the **Marlin, Dorado and King Fields**, plus **Horn Mountain Field** (Mississippi Canyon 127) and Holstein Field (Green Canyon 644). Also included in the deal are BP's non-operated assets in **Ram Powell Field** (Viosca Knoll 956) and **Diana Field** (East Beaks 945) and **Hoover Field** (Alaminos Canyon 25). BP anticipates closing the deal by the end of the year, subject to regulatory approvals, certain pre-emptive rights and customary post-closing adjustments.

On September 17th, EPL Oil & Gas, Inc. reported that it executed a purchase and sale agreement to acquire certain shallow water Gulf of Mexico shelf oil and gas properties from Hilcorp Energy GOM Holdings, LLC for \$550 million. EPL indicated that the properties include underexploited legacy assets in three fields, **Ship Shoal 208, South Pass 78** and **South Marsh Island 239** that Hilcorp had previously acquired from Chevron. All three fields are in the vicinity of EPL's existing "core" offshore Louisiana portfolio. The assets are currently producing approximately 10,000 barrels of oil equivalent (boe) per day, of which about 50% are oil. The estimated proved reserves totaled approximately 36.3 million boe, of which 54% are oil.

On September 18th, W & T Offshore Inc. said it is buying Newfield Exploration Co.'s exploration



and production properties in the Gulf of Mexico for \$228 million. The transaction involves 78 federal offshore blocks, with 65 deepwater blocks. W & T said that the deal comprises proved reserves of 6.6 million barrels of oil equivalent plus probable reserves of 1.2 million barrels of oil equivalent. The transaction should close around October 1st. Newfield stated that it has now sold all of its Gulf of Mexico assets for about \$300 million in total proceeds. The company has made roughly \$580 million in 2012 from the sale of its non-core assets.

On September 20th, Nexen, Inc. shareholders, as expected, overwhelmingly voted their approval of CNOOC Ltd.'s proposed \$15.1 billion takeover of the Calgary-based energy company. (See the September 2012 NOGS LOG for additional details of the buyout.) However, the closely scrutinized offer still requires approvals from the Canadian industry ministry, as well as, from the U.S. and European regulators.

On October 1st, Energy XXI announced an asset purchase and exploration joint venture with ExxonMobil. The company executed a purchase and sale agreement to acquire certain shallow water Gulf of Mexico interests in the Vermilion Area, offshore Louisiana. The agreement covers ExxonMobil's **Vermilion 164**, which is currently producing approximately 1,100 barrels of oil equivalent per day. In addition, the two companies have entered into a joint venture agreement to explore for oil and gas on a nine contiguous block area adjacent to Vermilion 164. Energy XXI will operate the joint venture and the drilling of the initial prospect, called **Pendragon**, by the end of the year.

Energy XXI's total capital commitment is estimated at \$75 million, assuming the successful completions of two earning wells.

On September 19th, The BOEM extended by 30 days its post-sale evaluation period for bids received at OCS Sale 216/222 on June 20, 2012. The extension was necessitated by the 7-day temporary closure of the BOEM Gulf of Mexico Regional Office building in New Orleans and other effects related to the impact of Hurricane Isaac.

The original 90-day evaluation period was set to expire on September 18th. With the post-sale evaluation period extension, the BOEM will complete the evaluation of all bids by October 18, 2012. As of September 21st, 156 of the 454 total tracts were still under evaluation by the BOEM.

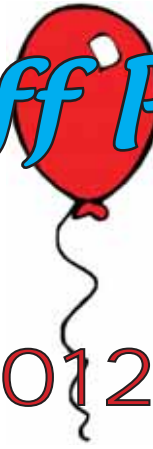
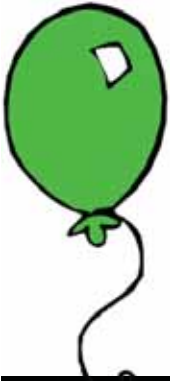
The upcoming dates of the next two federal offshore Gulf of Mexico lease sales are November 28, 2012 for OCS Sale 229 in the Western Gulf Planning Area and March 20, 2013 for OCS Sale 227 in the Central Planning Area. Both sales will be conducted in New Orleans.

<p>DOMESTIC AND INTERNATIONAL BIOSTRATIGRAPHIC SERVICES</p>   <p>6619 Fleur de Lis Drive New Orleans, LA 70124 (504) 488-3711 www.paleodata.com</p>  <p>Complete wellsite paleo services</p> <p>Supported offshore GoM and onshore LA paleo databases</p> <p>Integrated foram/nannofossil analyses</p> <p>In-house sample preparation lab for quality-monitoring and efficiency</p> <p>Comprehensive depositional history study of the Gulf Basin based on 200,000+ well data analysis</p> 	<p>MCMORAN EXPLORATION CO.</p>  <p>MCMORAN OIL & GAS</p> <p>www.mcmoran.com</p> <p>NYSE: MMR</p> <table border="0"> <tr> <td>16676 Northchase Dr. Houston, TX 77060 (281) 539-7600 Fax: (281) 539-7655</td> <td>1615 Poydras New Orleans, LA 70112 (504) 582-4000 Fax: (504) 582-4155</td> <td>110 Travis St., Suite 140 Lafayette, LA 70503 (337) 735-9150 Fax: (337) 735-9151</td> </tr> </table>	16676 Northchase Dr. Houston, TX 77060 (281) 539-7600 Fax: (281) 539-7655	1615 Poydras New Orleans, LA 70112 (504) 582-4000 Fax: (504) 582-4155	110 Travis St., Suite 140 Lafayette, LA 70503 (337) 735-9150 Fax: (337) 735-9151
16676 Northchase Dr. Houston, TX 77060 (281) 539-7600 Fax: (281) 539-7655	1615 Poydras New Orleans, LA 70112 (504) 582-4000 Fax: (504) 582-4155	110 Travis St., Suite 140 Lafayette, LA 70503 (337) 735-9150 Fax: (337) 735-9151		



2012 Kick Off Party

Friday
September 21, 2012





Philip J. Richardson is employed at Helis Oil & Gas Company in New Orleans as a geological/GIS technician. He has over ten years of experience in oil and gas exploration and GIS industries and five years in the mining industry. Philip received both his BS (1993) and MS (1998) in geology from UNO. He is married to Sheri, a fellow NOGS member, and they reside in Metairie with their two-year-old son, Adam.

Timothy P. Sheehan is a senior geologist with Shell in New Orleans. He has been employed at Shell for five years, previously as a production geologist - Mars. He graduated with his BS (2001) in geology from Milsaps College in Jackson, MS. In 2007, Timothy earned a PhD from Tulane University in structural geology/neotectonics.

Beth Y. Strickland is a staff production geologist with Shell in New Orleans. She has eight years of experience working as an appraisal and development geologist for Shell. Beth graduated from LSU with a BS (2001) in geology and earned her MS (2003) in geoscience from Penn State University. She is a member of AAPG and SEG. As a member of NOGS, Beth is interested in the Membership/Directory, Non-Technical Education and School Outreach committees. Beth and her husband, Paul, reside in New Orleans.

Get More
from your Core

© 2012 Weatherford. All rights reserved. Incorporates proprietary and patented Weatherford technology.

With reservoirs becoming increasingly complex, you need the most accurate information you can get to better understand your reservoir.

Weatherford Labs helps you get more from your core by combining an unsurpassed global team of geoscientists, engineers, technicians and researchers with the industry's most comprehensive, integrated laboratory services worldwide. From core analysis, sorption, geochemistry and isotopic composition to detailed basin modeling and comprehensive data packages, we provide you with real reservoir rock and fluid information that hasn't been distilled by a simulator or iterated by software.

We call it "**The Ground Truth™**" – giving you the accurate answers you need for better reservoir understanding. You'll call it a better return on your reservoir investment. To learn more, contact TheGroundTruth@weatherfordlabs.com.





Memorial Foundation Scholarships

The NOGS Memorial Foundation Scholarships are granted each year to those students who have demonstrated exceptional talent in or commitment to their geologic studies and projects. It is the policy of the Memorial Foundation to posthumously name these scholarships after those members whose own extensive contributions to the profession have been particularly praiseworthy.

Lee Hilliard Meltzer for expertise in oil and gas appraisal and exploration, as well as manifold and unstinting support of and service to - from AAPG to NOGS - the region's professional geologic organizations.

James Allen "Al" Gilreath for his work as chief tool developer of down-hole instrumentation and 'pattern' interpretation, earning him - world-wide - the title, 'Mr. Dipmeter'.

Richard W. "Dick" Boebel for his outstanding abilities as an oil and gas finder and in being a unique individual who was most generous of his time and talent to the industry, his peers, and in his support of many professional organizations.

George W. Schneider, Sr. for exceptional leadership in exploration activities and for being a positive force in establishing the New Orleans Geological Society and serving as its first president in 1941-42.

Jules Braunstein gained wide recognition in the oil and gas industry not only for exceptional technical expertise but also as an exacting editor. His long career was conspicuous for selfless devotion - and as carried on by his surviving wife, **Olga**, in her bequeathal of the residue of their estate to NOGS Memorial Foundation Scholarship Fund.



From left to right are NOGS Memorial Foundation Scholarship award winners from Louisiana State University:

Dr. Philip J. Bart, NOGS Memorial Foundation Board of Trustees Chairman Daisy Pate,
Dr. Sophie Warny, Logan G. Kirst, Lindsay Prothro and Sara Ates
(Photo courtesy of Arthur Christensen)





From left to right are NOGS Memorial Foundation Scholarship award winners from University of New Orleans: Dominik Kardell, Andrew Boudreaux, Jon Guidry, Dr. Ioannis Georgiou, NOGS Memorial Foundation Board of Trustees Chairman Daisy Pate, Dr. Skip Simmons and Robert Clark
(Photo courtesy of Arthur Christensen)



From left to right are NOGS Memorial Foundation Scholarship award winners from Tulane University: Thomas Schrilla, NOGS Memorial Foundation Board of Trustees Chairman Daisy Pate, Professor Torbjorn Tornqvist, Erin Cunningham and Jade Mohajerin Haug
(Photo courtesy of Arthur Christensen)

The Gulf Coast Association of Geological Societies and the Gulf Coast Section of SEPM

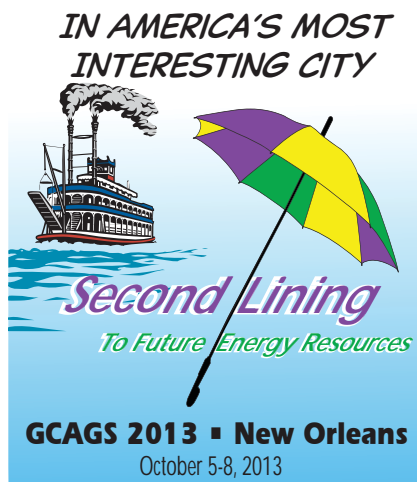
GCAGS Convention

Oct 5-8, 2013

New Orleans

CALL
FOR
PAPERS!

- | The GOM Basin - the Big Picture
- | Shallow-Water/Ultra-Deep plays
- Wilcox - the Up-, Down- & Between-Dip plays
- Gulf Coast Resource plays | Offshore Mexico
- | World-wide analogs to local plays | Reservoir Management
- | Converting Resources to Reserves to Revenue | Enhanced Recovery
- | New Seismic Acquisition Techniques & Revelations through Reprocessing
- | Gravity, Magnetics & Geochemistry techniques | Data Management
- | New Regs & Permitting | Spill Prevention, Clean-up & Recovery
- | Coastal Processes | Geoscience Education & Hiring
- | Economics - Oil/Gas, Shallow/Deep, Sand/Shale



ABSTRACTS of not more than 250 words
should be submitted for review online or by email to the
Technical Program Chair, George Rhoads (grhoads@chevron.com)

Submissions due no later than Dec. 2, 2012.

Notification of acceptance by Jan 13, 2013.

Oral and poster presenters must submit either a paper 10-12 pages or an extended abstract with key figures for review by at least two reviewers by March 23, 2013. Instructions for authors at www.GCAGS2013.com

This Changes Everything.



UNCONVENTIONAL

RESOURCES TECHNOLOGY CONFERENCE

FUELED BY SPE • AAPG • SEG

12-14 August 2013 • Colorado Convention Center • Denver

www.URTeC.org

Be a part of the integrated event for unconventional resources

**CALL FOR PAPERS
DEADLINE:
15 NOVEMBER 2012**

Announcing the Call for Papers for the Unconventional Resources Technology Conference (URTeC), 12-14 August 2013 at the Colorado Convention Center in Denver. Brought to you by three of the world's leading scientific associations dedicated to the oil and gas industry — SPE (Society of Petroleum Engineers), AAPG (American Association of Petroleum Geologists) and SEG (Society of Exploration Geophysicists) — this event is designed to reach all E&P professionals involved in unconventional resources. Submit your paper on one of these themes by 15 November 2012.



URTeC was developed based on input from oil company professionals who expressed the importance of geologists, geophysicists, engineers and business managers working together to help asset teams hit the sweet spot.

- Theme 1: Unconventional Project Development
- Theme 2: Unconventional Reservoir Characterization
- Theme 3: Unconventional Shale Plays
- Theme 4: Unconventional Tight Oil and Tight Gas
- Theme 5: Unconventional Coal Seam/Bed Methane
- Theme 6: Other Unconventional Reservoirs
- Theme 7: Formation Evaluation of Unconventional Reservoirs
- Theme 8: Fracture Characterization
- Theme 9: Lateral Well Characterization
- Theme 10: Flow Mechanics in Tight Reservoirs
- Theme 11: Laboratory Methodologies
- Theme 12: Reservoir Monitoring
- Theme 13: Organic Geochemistry
- Theme 14: Well Performance Prediction
- Theme 15: Fluid Behaviors
- Theme 16: Drilling Optimization
- Theme 17: Completion Optimization
- Theme 18: Rock Mechanics
- Theme 19: 3-D Seismic Applications
- Theme 20: Health, Safety and Environmental Issues

Technology Experience Performance



Voyage Explorer
Shallow water 2D/3D vessel capable
of 1 x 12km streamer and 2 x 12km
or 4 x 6km -3D with 4 sub arrays for
large output of single/dual source



SeaBird Exploration PLC "SeaBird" is a global provider
of marine 2D/3D/4D seismic data, and associated
products and services to the oil and gas industry.

SeaBird's main focus is providing high quality seismic
surveys (contract seismic) and source vessels. We
operate in both deep and shallow water with our
7 vessels conducting 2D and 3D.

The main success criteria for the company is our
unrelenting focus on Health, Safety, Security,
Environment and Quality (HSSEQ), combined with
efficient collection of high quality seismic data.

Aquila Explorer



Harrier Explorer



Hawk Explorer



Munin Explorer



Northern Explorer



Osprey Explorer



All SeaBird's vessels are capable of pulling a 12km streamer with 4 &/ or 6 sub arrays for very large source outputs.

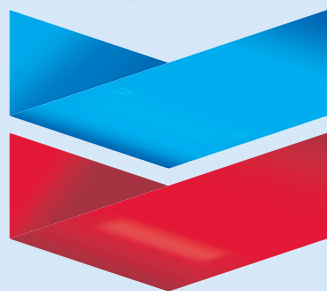
"with the Aquila Explorer in the Far East and the Osprey Explorer in Barents Sea and the balance of SeaBird's fleet (Harrier Explorer, Northern Explorer, Hawk Explorer and Munin Explorer) in Brazil and Africa we have all your 2D/ source vessels needs covered worldwide."

RAISING
THE STANDARD

www.sbexp.com

Dubai -Tel: +971 4 427 1700 | Oslo -Tel: +47 2240 2700 | Houston-Tel.: + 1 281 5561 666 | Singapore- Office: +65 68325593

Chevron



100 Northpark Blvd.
Covington, LA 70433

(985) 773-6000



LaBay
Exploration Co., L.L.C.

111 Veterans Memorial Blvd.

Suite 1550

Metairie, Louisiana 70005

Office (504) 371-5967

Fax (504) 371-5969

www.labayexploration.com

GENERAL GEOPHYSICAL SERVICES

Fugro Gravity & Magnetic Services Inc.

6100 Hillcroft, Suite 500 (77081)

P.O. Box 740010

Houston, TX 77274

Direct : 713-369-6139

Cell : 281-380-1460

Email : nbowers@fugro.com

www.fugro-gravmag.com



NANCY E. BOWERS, Ph.D.

senior geophysicist

licensed professional geoscientist



**LAFAYETTE
GEOLOGICAL
RESEARCH
CENTER, LLC**

201 Heymann Blvd., Suite 33 • Lafayette, LA 70503

Tel: 337-233-8197 • Fax: 337-233-8177

COVERAGE:

Louisiana / Federal / State Offshore

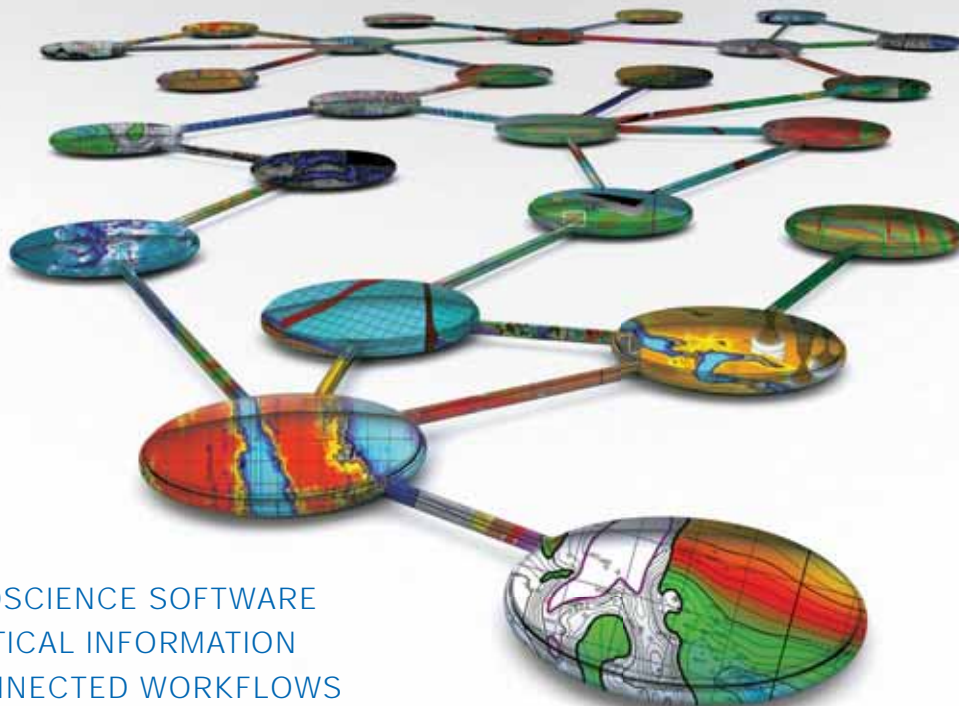
• Multi State Geo Tech Services • Completion Data
Production Data • Well Logs • Maps

~ MEMBERSHIPS AVAILABLE ~

The Industry's Premier • Well Data Center

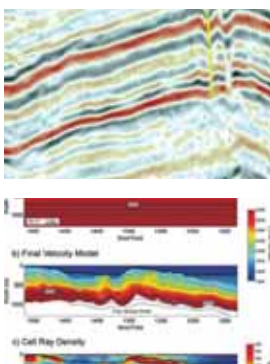
orders@lafayettegrc.com

CALL OR EMAIL TODAY FOR MORE INFORMATION!



- > GEOSCIENCE SOFTWARE
- > CRITICAL INFORMATION
- > CONNECTED WORKFLOWS

CONNECTED AT EVERY TOUCH POINT



Streamline data transfer and simplify project sharing with IHS geoscience software and critical O&G information.

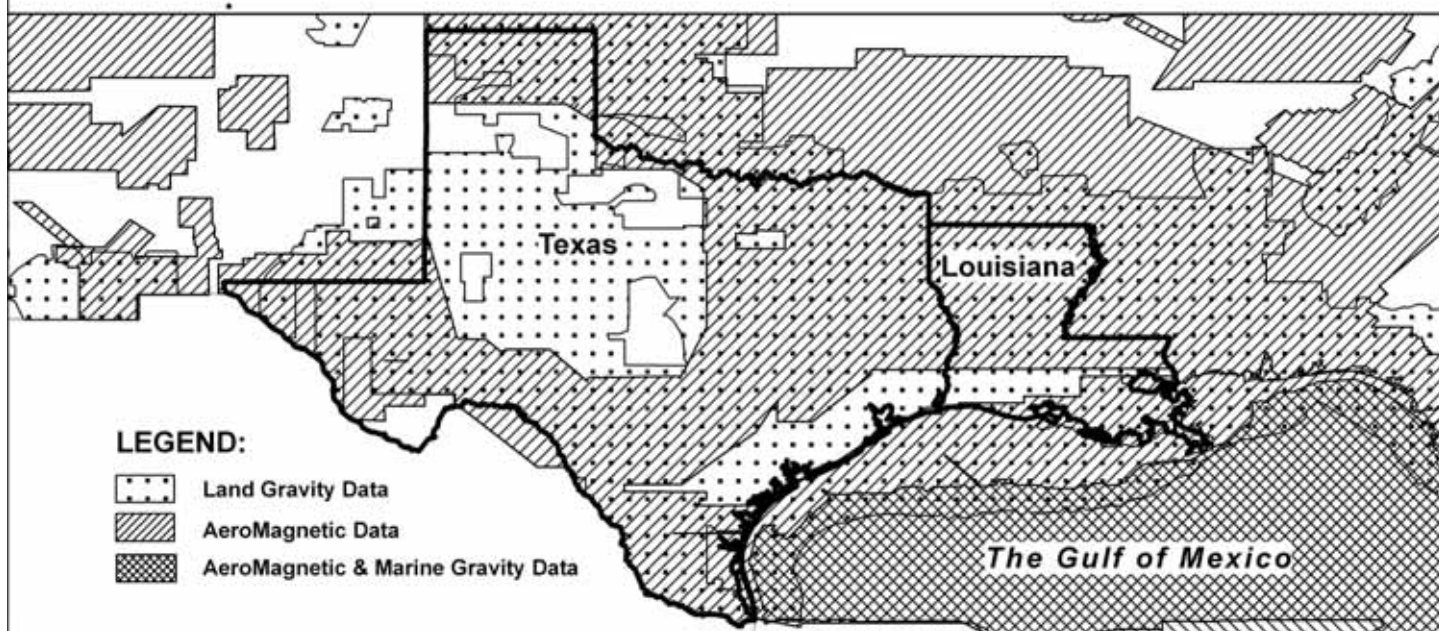
The IHS suite of geoscience software—which includes IHS Petra®, Kingdom®, LOGarc™ and GeoSyn™—is designed to seamlessly connect to the industry's leading source of critical Oil & Gas information, eliminating the need to move data manually from source to source and project to project. With this powerful new combination, users can streamline data transfer, enhance database performance and simplify project sharing. The result? Workflows that connect like never before.

Connected workflows mean that IHS customers spend less time looking for data and more time looking for the next big opportunity. It's just one of the many ways that IHS helps to advance the decisions that advance the Oil & Gas industry.

[Find out more at IHS.com/geoscience](http://IHS.com/geoscience)



For Gravity and Magnetic
Data in Texas and Louisiana
**Count on Fugro—
Mapping Geology
to the Basement...**



...And beyond with the most comprehensive non-exclusive airborne, land and marine potential fields geophysical database, including AeroMagnetic, Land Gravity, Marine Gravity and Bathymetry data around the world. Interpretation includes:

- Basement architecture
- Tectonic elements
- Structural/geologic fabric
- Salt mapping
- Depth to basement
- ArcGIS deliverables



Fugro Gravity & Magnetic Services

For personal assistance & consultation,
please contact fgmsdata@fugro.com or 713-369-6123.

www.fugro-gravmag.com

Submitted by Jordan Heltz

Offshore Magazine – “GoM reaching ‘new equilibrium’ in post-Macondo deepwater activity” October 3, 2012
<http://www.offshore-mag.com/articles/2012/10/gom-reaching-new-equilibrium-in-post.html>

E&P activity in deepwater Gulf of Mexico is resurging and will reach a “new equilibrium” in 2013, says Wood Mackenzie.

The Macondo incident slowed industry momentum in the Gulf, but it now is seeing a high level of investment, a wide range of opportunities, and a large number of explorers, notes the industry research company.

Wood Mackenzie predicts that more than \$20 billion will be spent through 2015 on drilling development wells alone for onstream projects. Over that time, \$27 billion will go to subsea and facility spending on big new projects such as Jack/St. Malo and Hadrian.

After a decline due in part to low drilling levels in 2010/2011, “we expect regional production to exceed 2009’s peak in 2018 at 2 MMboe/d,” says Lauren Payne, GoM analyst for Upstream Research at Wood Mackenzie.

As for exploration, Julie Wilson, senior analyst in Exploration Service says, “We expect more than \$70 billion to be spent ... in the region by 2030, more than all the other key deepwater provinces combined.”

The variety of opportunities offered in the GoM and the number of active operators sets the region apart from the rest of the world. Despite regulatory changes, the environment “above-ground” in the United States still is among the most attractive anywhere.

Technology challenges and constraints on capital, equipment, and personnel supplies will affect project selection, but “we are well on our way to achieving this ‘new equilibrium’ in the GoM in 2013 and the future of GoM from there is very bright,” says Payne.

The Advocate –Chad Calder “Louisiana Chemical Industry Booming” October 3, 2012
<http://theadvocate.com/news/3995847-123/la-chemical-industry-booming>

Louisiana’s petrochemical industry is in a renaissance period due to low natural gas prices and major discoveries, including northwest Louisiana’s Haynesville Shale, a chemical industry executive said Wednesday.

Dan Borné, president of the Louisiana Chemical Association and the Louisiana Chemical Industry Alliance, told the Rotary Club of Baton Rouge that the industry was in perilous times just five years ago.

The price of natural gas, a fuel and feedstock for the chemical industry, was high. Many ammonia plants had shut down and Louisiana chemical plants along the Mississippi River and Interstate 10 corridor from Baton Rouge to New Orleans had cut back. Chemical companies found it more advantageous to open and expand overseas.

Employment in the industry had fallen from 34,000 in 1999 to 24,000 only 10 years later. But Borné credited “the magic of the marketplace,” in the form of falling natural gas prices and development of the Haynesville Shale for bringing the good times back.

SAI Geoconsulting, Inc.

*Geological and Geophysical Consulting,
3-D Seismic Interpretation*

Ben D. Sydboten, Jr. CPG

2 Flagg Pl., Suite 1
Lafayette, LA 70508
www.saigeoconsulting.com

Office (337) 504-3670
Cell (337) 456-8948

"Serving The Oil & Gas Industry Since 1983"
Geological,
Geophysical &
Land Drafting



Anthony Catalanotto
President
Stefani Foster
Drafting & Design

Geo-Draft, Inc.

A Professional Drafting & Graphics Firm

3349 Ridgelake Drive • Suite 202 • Metairie, LA • 70002
Office: (504) 836-2882 Fax: (504) 836-2877 (Cell) (504) 481-7291
E-Mail: geodraft@bellsouth.net
Website: www.geodraftinc.com

NORTHCOAST OIL COMPANY

610 E. Rutland St.
Covington, LA 70433
(985) 898-3577
(985) 898-3585 FAX

Jack M. Thorson
Eric C. Broadbridge
J. Daryl Gambrell
Raymond W. Stephens

**NOGS thanks our
sponsors for their support:**

GOLD LEVEL SPONSORS:

CHEVRON
LA BAY EXPLORATION CO, LLC.

**SPECIAL THANKS TO
DIVERSIFIED WELL LOGGING**

NOGS

JOINT SOCIETY

Christmas Holiday Party

Chateau Golf & Country Club
3600 Chateau Boulevard • Kenner, Louisiana

Friday, December 7, 2012 • 7:00 p.m.

*Please reserve no later than December 3rd by sending your check to the NOGS office
or going to the NOGS website, http://nogs.org/nogs_checkout.html,
and use the Special Events category.*

Open Bar

Buffet Dinner

Hors d'oeuvres throughout the evening

Members: \$45 per person

Students: \$20 per person



THE NEW ORLEANS GEOLOGICAL SOCIETY MEMORIAL FOUNDATION, INC.

The Memorial Foundation is an IRS Tax Exempt Code #501(c)(3) organization. The Federal I.D. is 72-1220999. Please consider making a donation to the Foundation. Your individual support in any amount will help meet the IRS Guidelines for our Foundation. Thanks!

\$15,000 AND ABOVE

Gibbet Hill Foundation

*In Memory of Steve & Marion Millendorf, William J. Prutzman,
Roger G. Vincent, Ron Youngblood & Uno Numella*

\$5,000

NOGS Golf Tournament April 2012

In Memory of Bill Craig

\$1000

Mr. Marc Cooper

*Through the Marathon Oil Co
MEPAC Program*

Mr. Richard G. Klibert

\$500

Mr. Richard G. Klibert

Mr. Foster E. Voelker

In Memory of Gene Rogas

\$250 TO \$499

Beverly and Carlo Christina

In Memory of Jack Dunlap

Mr. Carlo C. Christina

In Memory of Al Gilreath

Paleo Data Inc

In Memory of Jack Dunlap

Mr. James S. Classen

*In Memory of Jack Dunlap,
Louis L. McCormick, Jr. and
James P. Raymond, Jr.*

UP TO \$249

Mr. Woods W. Allen Jr.

In Memory of William C. Ward

Mr. Robert J. Ardell

*In Memory of James P. Raymond, Jr.
In Memory of Jerry Goodman*

Mr. Thomas C. Bergeon

Mr. Maurice N. Birdwell

In Memory of Uno Nummella

Mr. Burton C. Bowen

In Memory of Louis L. McCormick, Jr.

Mr. Robert B. Branson

In Memory of Louis L. McCormick, Jr.

Mr. Hilary James Brook

Ms. Robin A. Broussard

Mr. Rob Burnett

Ms. J. Sybil Callaway

Mr. Arthur F. Christensen

Beverly and Carlo Christina

In Memory of Beverly Langford

Mr. Carlo C. Christina

In Memory of Louis L. McCormick, Jr.

Mr. James S. Classen

In Memory of Robert G. Williamson

Mr. Willis E. Conatser

Mr. Clarence F. Conrad

Trudy and Charley Corona

In Memory of Beverly Langford

In Memory of Jack Dunlap

Mr. Charles J. Corona

In Memory of Carl Grieshaber

Mr. Michael Danos

In Memory of Max Durham

Mr. Merle Duplantis

Mr. Dwight Easterly

In Memory of James P. Raymond, Jr.

Dr. Brooks B. Ellwood PhD

Mr. Parrish N. Erwin Jr.

Mr. James P. Evans III

In Memory of James P. Raymond, Jr.

Mr. Michael N. Fein

Mr. Mark J. Gallagher

Mr. Arthur J. Garden

Mr. Bernard L. Hill Jr.

Mr. Tom (Thomas) A. Hudson

Mr. Kenneth Huffman

Mr. Jeff Jandegian

Mr. Philip W. Johnson

Mr. Tom Klekamp

In Memory of Jack Dunlap.

Mr. Reuben J. Klibert Jr.

Mr. Tim Klibert

Mr. John C. "Jack" Langford

Mr. Frank E. Larkin

Mr. H. David Lynch

Ms. Jeannie F. Mallick

Mr. Louis L. McCormick

Ms. Margaret M. McKinney

Mr. Robert G. Murphy

In Memory of Ronnie Youngblood

In Memory of Thomas A. Cullinan

New Orleans Geological Auxiliary

*In Memory of Joan Collier, Amber Klekamp
and Mary Petrocco*

Mr. Russell H. Nordwell

Mr. Richard A. Olsen

Mr. William S. Peirce

Mr. Edward B. Picou Jr.

In Memory of Jack Dunlap

In Memory of Terry D. Keegan

Mr. Richard D. Provensal

In Memory of Thomas H. Philpott and James Strahan

Mr. George W. Schneider III

In Memory of George W. Schneider, Sr.

Mr. Rudolf B. Siegert

In Memory of Louis L. McCormick, Jr.

FONO FUND

The FONO Fund accepts contributions that are invested and the income dedicated to assure sufficient financial resources will always be available to maintain the NOGS business office. Contributors are reminded that donations to the FONO Fund are not covered by the IRS 501(c)(3) tax exempt classification and should be reported as a business expense on your IRS tax report.

\$500

Mr. James A. Hartman

UP TO \$250

Mr. David E. Balcer

Mr. Joseph E. Boudreaux

Ms. J. Sybil Callaway

Mr. Anthony Carollo Jr.

Mr. Richard P. Colomes

Mr. John Dombrowski

Mr. Merle J. Duplantis

Mr. Parrish N. Erwin Jr.

Mr. Michael N. Fein

Mr. Mark J. Gallagher

Mr. Bernard L. Hill Jr.

Mr. Daniel P. Huffman

Mr. Robert M. Jemison Jr.

Mr. Arthur H. Johnson

Mr. Tom Klekamp

Mr. Russell J. Landry

Mr. Frank E. Larkin

Mr. Louis Lemarie'

Mr. H. David Lynch

Ms. Jeannie F. Mallick

Mr. Daniel G. Markey

Mr. Louis L. McCormick

Ms. Margaret M. McKinney

Mr. William J. O'Leary

Mr. Richard A. Olsen

Mr. William S. Peirce

Mr. James P. Raymond Jr.

Mr. C. R. Rondeau

Mr. David M. Tatum

Mr. Roy C. Walther

Mr. Robert C. Weissmann

Mr. William M. Whiting

Dr. J.O. Snowden

Mr. James M. Sothorn

Mr. Raymond O Steinhoff

In Memory of Anne M. Steinhoff and Harold E. Vokes

Ms. Betsy M. Strachan Suppes

In Memory of Hubert Skinner

Ms. Candace V. Strahan

In Memory of James R. Strahan

Mr. David M. Tatum

Mr. Leon G. Touns

In Memory of Robert G. Williamson

Mr. Arthur S. Waterman

In Memory of T. Wayne Campbell

Mr. William M. Whiting

In Memory of Don Rimsnider

Mr. Armour C. Winslow

In Memory of Rita Menzel Winslow

Ms. Frances A. Wiseman

In Memory of Steve Widdicombe

Mr. James W. Yeldell Jr.

In Memory of Thomas A. Cullinan

In Memory of Robert G. Williamson

In Memory of Gene Rogas

BILL CRAIG FUND

Chevron

Mr. Bernard L. Hill, Jr.

Ms. Hilary James Brook

Mr. John C. Scheldt

In Memory of William C. Ward

Ms. Candace V. Strahan

In Memory of James R. Strahan

In Memory of William C. Ward

Contributions for both funds
through July 7, 2012.
Donations are listed for one year.

<p>ANSYTHE Donald I. Andrews 504-887-3432</p> 	<p>GEOLOGY ENVIRONMENTAL MANAGEMENT  1451 Applewood Road • Baton Rouge, LA 70808</p> <p>GEM Consulting LTD Michael Louis Merritt admin@gemconsultingltd.com</p>
<p>THE BOEBEL COMPANY Oil and Gas Investments New Orleans, LA 70153 (504) 866-4313</p>	<p>H. WARREN BELL Oil and Gas Exploration 2500 Tanglewilde, Suite 485 Houston, TX 77063-2126 Bus (713) 266-7297 Fax (713) 266-7298</p>
<p>BOO-KER OIL & GAS CORP. Gray S. Parker 826 Union, Suite 300 New Orleans, LA 70112 Bus. (504) 581-2430 Fax (504) 566-4785</p>	<p>PHELPS GEOSCIENCE LLC Onshore Gulf of Mexico Geology and Geophysics Prospect Generation and Evaluation Houston, TX jsfphelps@yahoo.com (281) 398-5208</p>
<p>C & R EXPLORATION, INC. Carlo C. Christina Lawrence G. Ringham</p>	<p>RAFIDI OIL AND GAS, INC. Jaser N. Rafidi, President 4415 Shore Dr., Suite 202 Metairie, LA 70006 Bus. (504) 453-8580 Fax (504) 888-5539; Res. (504) 888-1661</p>
<p>C. R. RONDEAU Petroleum Geologist 119 W Southland Ave. Ironwood, MI 49938 Res. (906) 932-4692</p>	<p>ROY C. WALTHER Petroleum Geologist 2421 Prancer Street New Orleans, LA 70131 Bus. (504) 392-8513 Res. (504) 392-9332</p>
<p>CLASSEN EXPLORATION, INC. James S. Classen Looking for close in deals P.O. Box 140637 Boise, ID 83714 classenllc@msn.com Bus. (208) 854-1037 Fax (208) 854-1029</p>	<p> 625 E. Kaliste Saloom Lafayette, LA 70508 16800 Greenspoint Dr., Suite 225-S Houston, TX 77060 1100 Poydras St., Suite 1050 New Orleans, LA 70163 www.StoneEnergy.com</p>
<p>D-O-R ENGINEERING, INC. 3-D and Geoscience Services 6161 Perkins Rd. P O Box 80812 Bus : (225) 765-1914 Baton Rouge LA 70898</p>	<p>TONY CAROLLO Consulting Geologist Unitization Geosteering Field Studies 1701 Peach Street Metairie, LA 70001 Bus. (504) 885-0004 Res. (504) 885-6829</p>
<p>EDWARD B. PICOU, JR. Consulting Micropaleontologist - Retired 228 St. Charles Ave., Suite 1330 C New Orleans, LA 70130 Bus. (504) 529-5155 Res. (504) 282-3096</p>	<p>Zot Oil & Gas, LLC Jim Zotkiewicz Prospect Generation and Evaluation 3200 Ridgelake Dr. Suite 207 Metairie, LA 70002-4930 Business: 504.831.4694 Email: jimzot38@zotoil.com</p>

Collarini Energy Staffing, Inc.

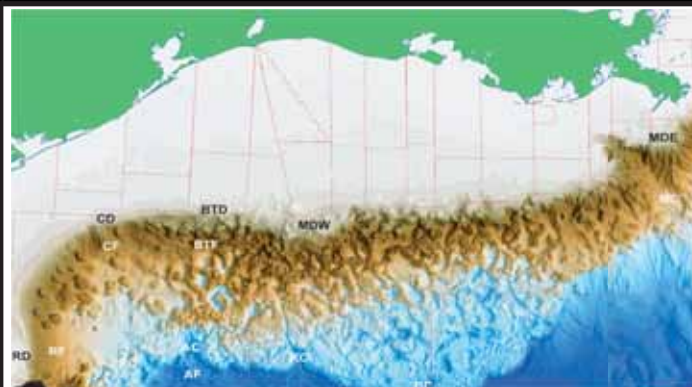
Facilities · Drilling · Production · Reservoir Engineering
Land and Legal · Geosciences · Information Technology
Health and Safety · Management · Supply Chain
Accounting · Administrative Support



Full-Time and Temporary Personnel

Energy Trading · Civil Engineering · Executives
Human resources · Instrument and Electrical
Engineering · Marine Engineering · Project Management
Technical Writing · Sales and Marketing

10497 Town and Country Way, Suite 950, Houston, Texas 77094 Telephone: (832) 251-0553 www.collarini.com



Northern Gulf of Mexico continental slope, by F.A. Diegel, based on NOAA data

New Understanding of the Petroleum Systems of Continental Margins of the World

32nd Annual GCSSEPM Foundation
Bob F. Perkins Research Conference
Houston, Texas
December 2-5, 2012
OMNI Westside Hotel

More Information and Registration: www.gcssepm.org



**Looking for the next hotspot?
(Come and explore Western Gulf of Mexico)**

PGS MultiClient GULF OF MEXICO

Revealing and de-risking hotspots starts here

Lease Sale #229 in the Western Gulf of Mexico, the industry's next big frontier, is open. PGS data and experts can offer new geological insights into simplifying your path to success in this frontier territory. Gain the perspective that can lead to new prospects, and make Western Gulf of Mexico a key part of your portfolio.

Supporting your exploration success

A Clearer Image
www.pgs.com



gominfo@pgs.com



NEW ORLEANS GEOLOGICAL SOCIETY

810 Union Street, Suite 300
New Orleans, LA 70112-1430

PRESORT
STANDARD
US POSTAGE
PAID
MAIL TECH

www.nogs.org



MARINE PROPERTIES, LLC BERKSHIRE EXPLORATION CO.

MONTE C. SHALETT, CPL, PRESIDENT

3030 Lausat Street
Metairie, LA 70001-5924

BUS. (504) 831-7779
FAX. (504) 831-8315

PCI

Paleo Control, Inc.

Houston, Texas
713-849-0044

Drilling Wells, Studies and Data Base

Loyd Tuttle

Frio, SE Texas

Bob Liska

Wilcox, S and SE Texas

Jim Thorpe

Miocene and Cam-Miogyp



THIS AD SPACE AVAILABLE

Contact:

annette@nogs.org

