

# NOGS LOG



March 2012

Volume 52, Number 9



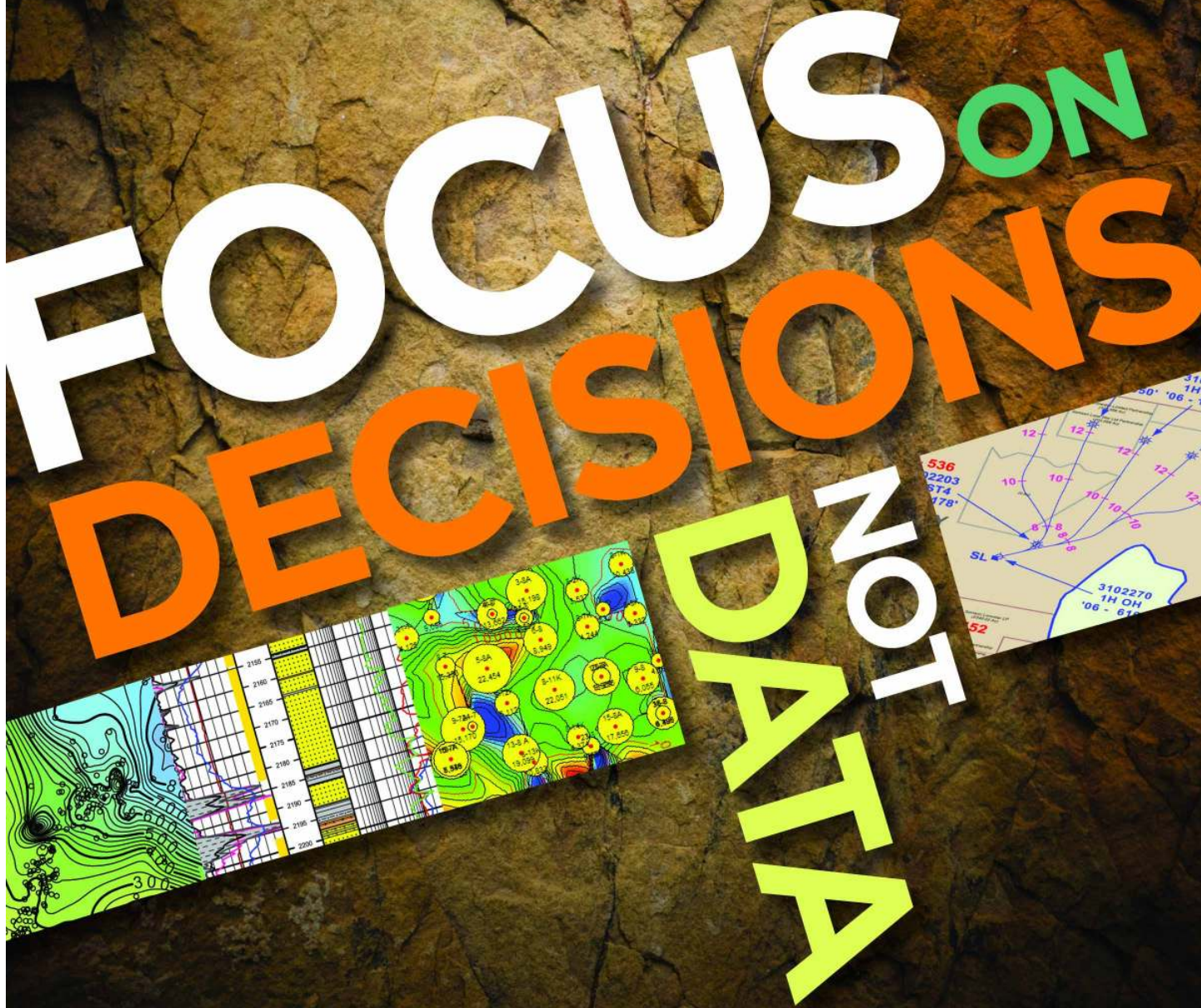
## **March 5 - NOGS Luncheon**

Presentation: Integrated Water Management for E&P: Experience from the  
Texas Eagle Ford Shale and Potential Applications in Louisiana

Guest speaker: Franz K. Hiebert, Ph.D., Environmental Resources Management, Metairie, Louisiana



# FOCUS ON DECISIONS NOT DATA



Why spend valuable time searching for data when you have important decisions to make?

Let TGS focus on the data. With worldwide well data experience and a dedicated customer support team, TGS provides high quality data in the formats you need.

Email [WellData@tgsnopec.com](mailto:WellData@tgsnopec.com) to learn more about TGS' well data library that includes production data, directional surveys and the largest online collection of well logs.



Learn more at [www.tgsnopec.com/welldata](http://www.tgsnopec.com/welldata)

# NOGS LOG

Published monthly by the New Orleans Geological Society. This issue was sent to press on February 14, 2012.

Interested *NOGS LOG* contributors may send requests to [nogseditor@gmail.com](mailto:nogseditor@gmail.com). Requests for advertising should contact the NOGS office at [info@nogs.org](mailto:info@nogs.org).

## INSIDE THIS ISSUE

### Special Features:

March Luncheon Abstract and Biography .....	Page 9
Super Saurus Saturday Announcement and Call for Volunteers .....	11
2012 Golf Outing Announcement .....	13
2011 NOGS Highlights .....	18
LSU Wilbert Lecture Series .....	23
Petroleum Geology for Non Geologists Course Announcement .....	30

### Regular Features:

President's Letter .....	Page 5
Upcoming Events and Activities .....	7
Drill Bits .....	20
Info & Tidbits .....	26

## ON THE COVER

Cover photo submitted by Jordan Heltz

Location: The Balanced Rock at Garden of the Gods Park in Colorado Springs, Colorado. This rock feature is part of the Fountain Formation, an arkose sandstone of Pennsylvanian age, which was originally deposited by alluvial fans and braided streams draining off the Ancestral Rockies.

## FROM THE EDITOR

Hello fellow NOGS members! Here are a few announcements that I wanted to highlight. April 11th, the New Orleans Geological Society is putting on a "Petroleum Geology for Non Geologists" course. It will be April 11th at the Shell Auditorium. This is a good opportunity for environmental or student geologists, neighbors, spouses and friends that would like to know more about how energy companies explore for oil and gas. Also in this edition of the *LOG*, we are highlighting the Louisiana State University lecture series schedule. I encourage anyone to attend these talks.

Just a reminder to members, please send in a geological or industry-related photo. Throughout the year, I have been highlighting on great geological photos. Now, I would like to see some petroleum industry photos come submitted. If anyone has old photos of drilling operations or production facilities, please send to me.

Thanks, David Tatum - *NOGS LOG* Editor

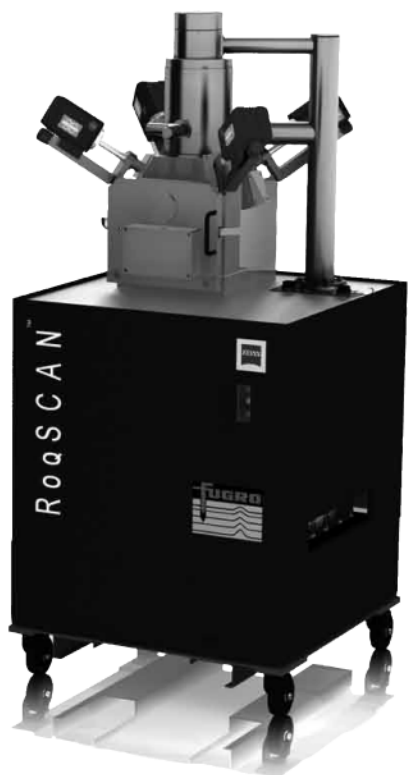


# WHEN REAL-TIME RESULTS COUNT...



## ...COUNT ON FUGRO

- Understand rock properties and lithology in order to make confident decisions in real time
- Know when to steer horizontal wells in order to stay in section, minimizing time to drill and complete each well
- Estimate rock brittleness for cost effective hydraulic fracturing designs to maximize recovery



### RoqSCAN™ ...

*...REAL-TIME RESULTS ARE A MATTER OF FRAC.*

**Fugro Robertson Inc.**

Tel: +1 713 369 6122

Email: [info@fugro-roqscan.com](mailto:info@fugro-roqscan.com)

[www.fugro-robertson.com/roqscan](http://www.fugro-robertson.com/roqscan)







### *from the President*

Hoping everyone had a great carnival season! I am currently living on the parade route uptown not far from a popular music venue, so I get my fill of the season without even trying. It also forces me to ride my bicycle to work (and everywhere else) so that I can actually make it home around the floats and revelers alike. I have managed to survive "le bon temps de Mardi Gras" once again and I am ready to keep the good times rolling on with lots of geological society activities.

On March 19th, the Louisiana Children's Museum will be transported back into the Jurassic Period for Super Saurus Saturday. This annual event is great way to reach out to the community developing little science buds that will blossom into scientists one day. We are in need of volunteers to "play" in between 11:00 A.M. and 3:00 P.M. Come out so that you may remember that science is fun, and in doing so you may teach the same to a child. If you prefer jokes, then maybe you can hand some coprolites to a child and then explain what it is they are holding. Just please make sure you are ready to catch the fossil when they drop it. Contact Tom Bergeon if you can make it.

On Wednesday April 11, 2011, the Society is presenting a one-day course on "Petroleum Geology for Non Geologists," from 8:30 A.M. to 3:30 P.M. in the Shell Auditorium, Shell Building, 701 Poydras Street, New Orleans. The course will consist of a brief introduction to Basic Geology, followed by a review of how oil and gas are formed, how they are concentrated into reservoirs, the geological and geophysical methods used in exploration, and an overview of drilling and completion practices. This course should be of significant benefit and interest to anyone who, in one way or another,

works with geologists and geological data, such as land personnel, secretaries, draftsmen and computer programmers and processors. Please distribute this information to anyone who may benefit from the class; it is only \$35.00. You can register on our website or by contacting the office.

We are also working on the plans for the Annual Golf Tournament which will be Monday, April 16th, 2012. The extra funds generated from this event are donated to the NOGS Memorial Foundation in memorium of Dr. Craig. He was my first geology professor and the sole reason that I changed my major from physics to the geosciences. I hope everyone will mark their calendars for this event which is sure to be a great time for a great cause.

The American Petroleum Institute - Delta Chapter is offering scholarships for the 2012 - 2013 school year. This program is to help students of exceptional promise reach their full potential through education. Although open to a wide variety of applicants, preference will be given to those pursuing a career in Petroleum/Chemical Engineering, Geology and other sciences. More information is available on their website at [www.api-delta.org](http://www.api-delta.org).

Looking much further into the future, the Deepwater Technical Symposium registration is now open and more information can be found on the website, [www.deepwaternola.org](http://www.deepwaternola.org)

Hope to see you all at a luncheon soon.

*Daisy*

**NOGS Office**

Office Manager: Annette Hudson

Office Hours: 8:30 a.m. – 3:30 p.m. on Monday-Wednesday-Friday

Tel: 504-561-8980 Fax: 504-561-8988

E-mail: info@nogs.org Website: www.nogs.org

The office is located at Suite 300, 810 Union Street, New Orleans, LA 70112.

Correspondence and all luncheon reservations should be sent to the above address.

**BOARD OF DIRECTORS**

President	Daisy Pate
Vice President	Fran Wiseman
Secretary	Chuck Holman
Treasurer	Bay Salmeron
President-Elect	Will Jorgensen
Editor	David Tatum
Director 2012	Arthur H. Johnson
Director 2013	Jack Langford
Director 2014	Michael N. Fein

**Company**

US Army Corp of Engineers	504-862-1775
Independent	504-831-8343
TGS	504-975-6735
Shell	504-524-3450
Chevron	504-728-6339
Hydrate Energy International	832-854-3126
J C L Services	504-464-6208
W & T Offshore	985-764-2527
	504-210-8148

**Phone****E-mail**

daisy.pate@gmail.com
snowde.fran@gmail.com
charleswholman@bellsouth.net
bay.salmeron@tgsnopec.com
william.r.jorgensen@shell.com
nogseditor@gmail.com
artjohnson51@hotmail.com
jclangford@latterblum.com
mikef@wtffshore.com

**COMMITTEE**

AAPG Delegates
AAPG Student Chapter
AAPG Student Chapter
Advertising-LOG
Auditing
Awards
Ballot
Best Paper
Continuing Education
Employment Counseling
Entertainment
Environmental
External Affairs
Field Trip
Finance and Investment
Historical
Membership/Directory
New Geoscientists (NGNO)
Nominating
Non-Technical Education
Office Operations
Publications Sales
Photography
School Outreach
Scouting
Sponsorship/Houston
Technical Projects
Ad Hoc Committee on
University Support

**Chairperson**

William M. Whiting
Michael Hopkins
Drew Boudreaux
Kimberly Maginnis
Will Jorgensen
Michael N. Fein
Bay Salmeron
Brenda Reilly
TBA
TBA
Will Jorgensen
Daisy Pate
Michael A. Fogarty
TBA
Bay Salmeron
Edward B. Picou, Jr.
Carlo C. Christina
Tom Klekamp
TBA
Scott A. Wainwright
Duncan Goldthwaite
Rick Kear
Edward B. Picou, Jr.
Tom Klekamp
Thomas C. Bergeon
Carol Rooney
David E. Reiter
TBA
Michael J. Gallagher

Consultant	504-947-8495
Tulane University	228-209-2262
UNO	337-578-5587
W & T Offshore Inc	504-210-8174
Shell	504-728-6339
W & T Offshore	504-210-8148
TGS	504-524-3450
Geological Consulting LLC.	504-430-4240
Shell	504-728-6339
US Army Corp of Engineers	504-862-1775
Sylvan Energy, LLC	603-523-4808
TGS	504-524-3450
Consultant	504-529-5155
Retired (C & R Expl. Inc)	504-835-4116
Amber Resources	985-845-4046
Bret Exploration Co Inc	504-889-2700
Consultant	504-887-4377
Schlumberger	504-592-5376
Consultant	504-529-5155
Amber Resources LLC	985-845-4046
Century Exploration	504-832-3772
Consultant Geologist	504-835-1909
Eni Petroleum	
Eni Petroleum	713-393-6100

bootscon@aol.com
mhopkin2@tulane.edu
apboudr1@uno.edu
kmaginnis@wtffshore.com
william.r.jorgensen@shell.com
mikef@wtffshore.com
bay.salmeron@tgsnopec.com
reillybe@yahoo.com
william.r.jorgensen@shell.com
daisy.pate@gmail.com
mike.a.fogarty@gmail.com
bay.salmeron@tgsnopec.com
epicou@bellsouth.net
Carlocc398@aol.com
klekamp@bellsouth.net
Scott_wainwright@hotmail.com
DGldthwt@aol.com
kear1@new-orleans.oilfield.slb.com
epicou@bellsouth.net
klekamp@bellsouth.net
Tom.bergeon@centuryx.com
carolbrooney@aol.com
david.reiter@enipetroleum.com
Michael.Gallagher@enipetroleum.com

**NOGS LOG STAFF**

Editor	David Tatum	Chevron	832-854-3126	nogseditor@gmail.com
Editor-Elect	Jordan Heltz	Chevron	985-773-7163	jordan.heltz@chevron.com
Auxiliary	Susie Baker	NOGA	504-466-4483	sbaker1650@aol.com
Info Tidbits	David Tatum	Chevron	985-773-6477	nogseditor@gmail.com
Drill Bits	Carlo C. Christina	Retired (C & R Expl. Inc)		drillbits81@yahoo.com
Layout	Jannette Inc.			
Webmaster	Edward B. Picou, Jr.	Consultant	504-529-5155	epicou@bellsouth.net

**NOGS AUXILIARY****Officers**

President	Jean Jones	504-738-8091
1st Vice-President	Alma Dunlap	504-737-2678
2nd Vice-President	Camille Yeldell	504-835-7467
Secretary	Peggy Rogers	504-392-6323
Treasurer	Judy Lemarie'	504-393-8659
Parliamentarian	Beverly Kastler	504-286-0879
Member-at-Large	Linda Peirce	504-393-7365

**Directors**

Carol Andrews	2010-12	504-887-3432
Susie Baker	2010-12	504-466-4483
Mary Walther	2010-12	504-392-9332
MaryEllis Hasseltine	2011-13	504-885-7657
Gwenn Swaney	2011-13	504-831-0748
Pat Williamson	2011-13	985-626-6910

# **Upcoming Events and Activities**

## **March 5 - NOGS Luncheon**

\*\*\* At the Holiday Inn Downtown Superdome \*\*\*  
\$2.00 validated parking in hotel garage

Guest speaker: Franz K. Hiebert, Ph.D., Environmental Resources Management, Metairie, Louisiana  
Presentation: Integrated Water Management for E&P: Experience from the  
Texas Eagle Ford Shale and Potential Applications in Louisiana

(See page 9 for Abstract and Biography)

HOLIDAY INN DOWNTOWN SUPERDOME

ADMISSION:

Check with concierge or  
front desk for location

Lunch served at 11:30am

**with reservation ..... \$30.00**

**without reservation ..... \$35.00**

**Student Member with reservation ..... Free**

## **March 24 - Super Saurus Saturday**

Louisiana Children's Museum. Announcement on page 11.

## **April 2 - NOGS Luncheon**

Holiday Inn Downtown Superdome

Guest speaker and presentation: To be announced

## **April 11 - Petroleum Geology for Non Geologists Course**

Shell Building Auditorium. Announcement on page 31.

## **April 16 - NOGS Annual Golf Tournament**

Tchefuncta Country Club. Announcement on page 13.

## **NOGS CONTACT LIST**

--- continued from previous page ---

### **MEMORIAL FOUNDATION**

#### **BOARD OF TRUSTEES**

		<b>Company</b>	<b>Phone</b>	<b>E-mail</b>
2011-12 Chairman	Rick Kear	Schlumberger	504-592-5376	kearl1@new-orleans.oilfield.slb.com
2011-12 Secretary	Daisy Pate	US Army Corp of Engineers	504-862-1775	daisy.pate@gmail.com
2011-12 Trustee	Monte Shalett	Berkshire Exploration Co	504-831-7779	mshalett@gmail.net
2011-12 Trustee	James Swaney	BOEM	504-736-2677	james.swaney@boemre.gov
2012-13 Trustee	Jennifer Connolly	Shell	504-728-6411	jennifer.connolly@shell.com
2012-13 Trustee	William M. Whiting	Consultant	504-947-8495	bootscon@aol.com
2013-14 Trustee	J. David Cope	ANKOR Energy LLC	504-596-3672	dcope@ankorenergy.com
2013-14 Trustee	Tom Klekamp	Amber Resources LLC	985-845-4046	klekamp@bellsouth.net

### **AAPG DELEGATES**

#### **Term Ends**

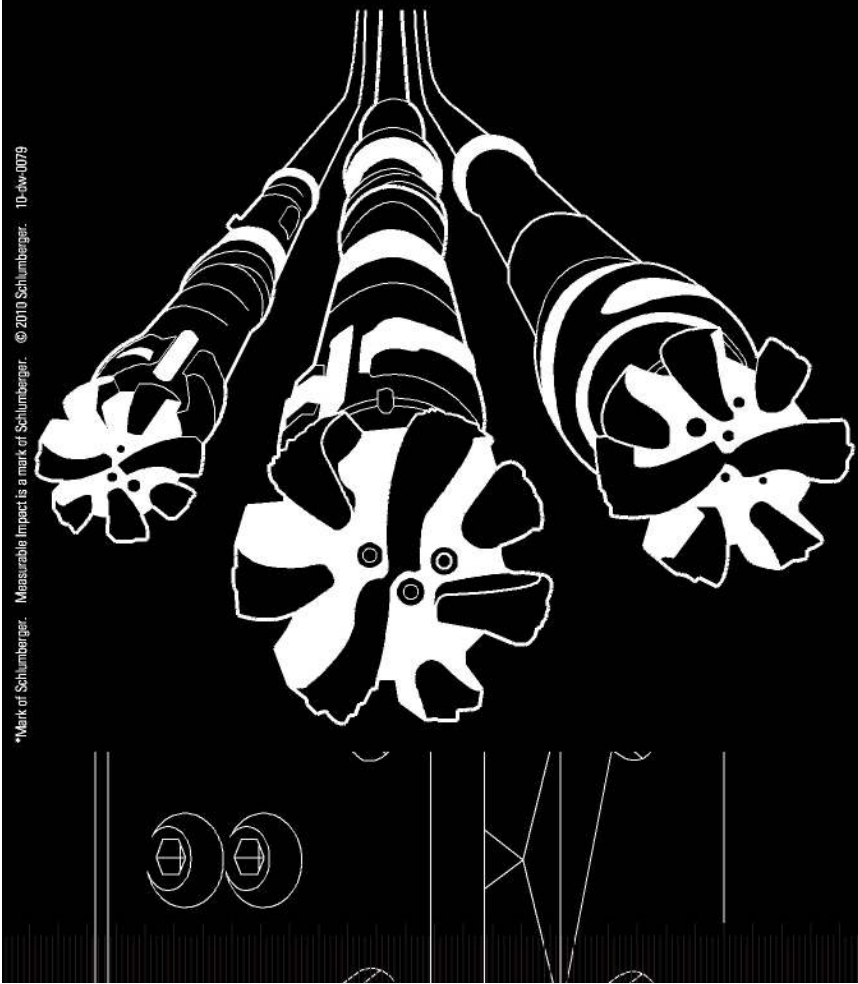
2012	William Whiting	Consultant	504-947-8495	bootscon@aol.com
2012	Jim Zotkiewicz	Zot Oil & Gas	504-831-4694	jimzot38@zotoil.com
2012(a)	David E. Balcer	Chevron	985-773-6725	dbalcer@Chevron.com
2012(a)	Richard J. Stancliffe	Shell Expl & Prod Co.	504-728-7553	richard.stancliffe@shell.com
2014	Arthur H. Johnson	Hydrate Energy International	504-464-6208	artjohnson51@hotmail.com
2014	Brenda Reilly	Geological Consulting LLC.	504-430-4240	reillybe@yahoo.com
2014(a)	Elizabeth C. McDade	McMoRan Exploration Co	504-582-4510	ecmcdade@bellsouth.net
2014(a)	Frances A. Wiseman		504-831-8343	snowde.fran@gmail.com

# Deep Water

WELL CONSTRUCTION

## Are all your services deepwater ready?

Control Measures	Complexity/Process + Exposure	Preparedness				
		High				Low
-5	High	-5	-10	-15	-20	-25
	-4	-4	-8	-12	-16	-20
	-3	-3	-6	-9	-12	-15
	-2	-2	-4	-6	-8	-10
	Low	-1	-2	-3	-4	-5
		People + Competency				
		1	2	3	4	5



**Our Project Readiness Assessment (PRA) approach has been applied and improved over the last 5 years.**

All deepwater projects in which Schlumberger participates benefit from our PRA process, which complies with new U.S. regulatory requirements. This helps deliver seamless, efficient startup, and reduced NPT.

Learn more at

[www.slb.com/deepwaterready](http://www.slb.com/deepwaterready)

Global Expertise  
Innovative Technology  
**Measurable Impact**

# Schlumberger

\*Mark of Schlumberger. Measurable Impact is a mark of Schlumberger. © 2010 Schlumberger. 10-dw-0079



## March 5 NOGS Luncheon Presentation

\*\*\*At the Holiday Inn Downtown Superdome\*\*\*

### Integrated Water Management for E&P: Experience from the Texas Eagle Ford Shale and Potential Applications in Louisiana

presented by

**Franz K. Hiebert, Ph.D.**

**Environmental Resources Management, Metairie, Louisiana**

#### ABSTRACT

Water has emerged as one of the top planning concerns of operators in the Texas Eagle Ford. Most operators currently have sufficient water supply, and water operations management, transportation, and final disposition plans in place. However, with significant increases in capital investment and aggressive drilling programs planned for the next few years, most operators are concerned that water issues will cause delays in scheduled operations, or in a worst case scenario, cause

interruption in the execution of capital programs. This presentation will provide an overview of water issues in the Texas Eagle Ford, including recent information on supply, current management strategies, and options for disposition including strategies for reuse and disposal of flowback/formation water. We will explore similarities to the Louisiana Eagle Ford and future operating strategies.

#### BIOGRAPHY

**Franz Hiebert** is a Senior Partner with ERM, and is based in Austin, Texas. There he founded ERM's Center for Excellence in Water Resources, an oil and gas-focused team with particular expertise in unconventional hydrocarbon development techniques. Under Dr. Hiebert's leadership, ERM has executed six regional integrated water management strategies in shale plays in North America. He is a frequent presenter at conferences aimed at environmental and social issues related to the development of shale, with a specific focus

on water. He has broad experience in environmental science, policy, state government, and the practice of environmental restoration of contaminated areas. He began his career in the upstream oil and gas industry, and gained expertise in enhanced oil recovery operations. Dr. Hiebert holds a B.A. from Harvard (1981) in History and Science and a Ph.D. from the University of Texas at Austin (1994) from the Department of geological Sciences.

**THE LUNCHEON RESERVATION DEADLINE IS FEBRUARY 29 - CONTACT THE NOGS OFFICE**

#### “And Looking Ahead . . .”

The next luncheon will be held on April 2nd. Guest speaker and presentation to be announced. Contact the NOGS office at 561-8980, or use the PayPal link on the NOGS website ([www.nogs.org](http://www.nogs.org)) to make your reservation.



(L to R) NOGS President Daisy Pate, February Luncheon Speaker Mike Stack, and NOGS Vice President Fran Wiseman



From ZNodal Systems to ZNodal Imaging

# We are full spectrum ZNodal™ technology

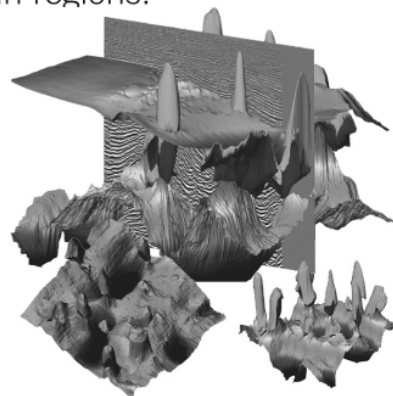
FairfieldNodal.com



We admit it. We're seismic nodal fanatics. Always have been. Which explains our one-of-a-kind, cable-free ZNodal™ systems. They work wonders in dense urban areas and pristine wilderness, in shallow water and deep ocean regions.

In fact, our exclusive ZNodal technology is behind everything we do, from acquisition and licensing to advanced processing and imaging, bringing nodal data to life in amazing ways.

Right now, our ZNodal systems are on the job in some of the world's most challenging fields, making a powerful difference. So when you're ready to go nodal, count on us to lead the way. ZNodal technology: It's what you need. It's what we're all about.



**fairfield**nodal

SYSTEMS ACQUISITION LICENSING PROCESSING IMAGING

# **SUPER SAURUS SATURDAY**

**Volunteers  
Needed**

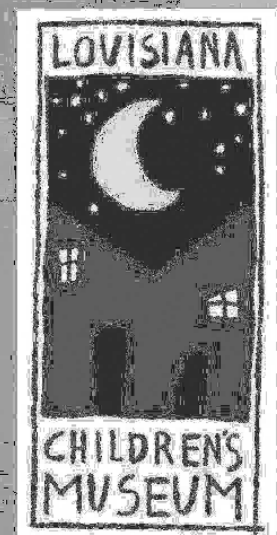


**March 24, 2012**

**11:00 AM - 3:00 PM**

**To volunteer contact: Tom Bergeon  
[tom.bergeon@centuryx.com](mailto:tom.bergeon@centuryx.com)**

**Louisiana Children's Museum  
[www.lcm.org](http://www.lcm.org)**

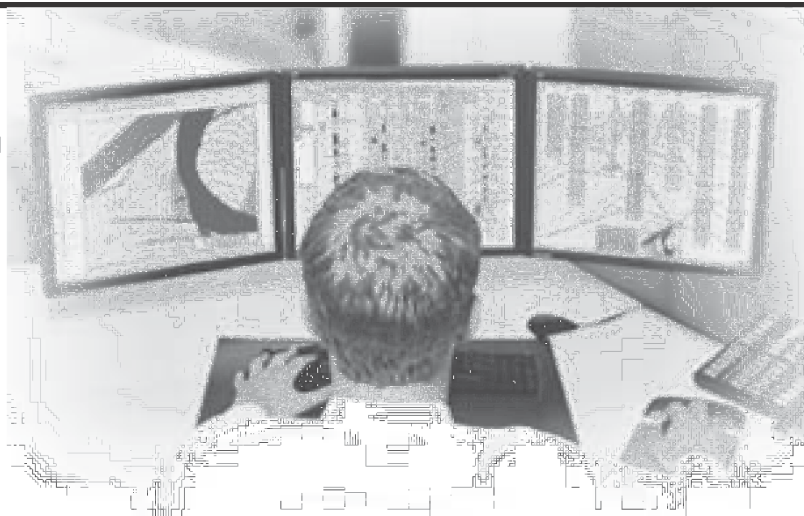


# NeuraSection

## Produce YOUR Interpretation

NeuraSection brings together logs, maps, sections and other critical information allowing you to focus on interpretation. With real-time editing of computer generated results, your interpretation becomes clear and meaningful.

- Auto and manual contouring
- Cross section generation
- Real-time editing
- Reserves calculations
- Presentation montaging



[www.NeuraSection.com](http://www.NeuraSection.com)

1.281.240.2525



© 2012 Neuralog • [www.neuralog.com](http://www.neuralog.com) • 1.281.240.2525 • 1.800.364.8728

# SEI®

## Seismic Exchange, Inc.

**Strategic Speculative Surveys  
Geophysical Data Marketing & Management**

**YOUR**  
Full Service  
National  
Seismic Data  
Marketing Firm

New Orleans  
Dallas  
Houston  
Denver  
Oklahoma City  
Corpus Christi  
Tulsa

201 St. Charles Avenue, Suite 4300, New Orleans, Louisiana 70170-4300  
Telephone 504.581.7153 Fax 504.581.9591  
[www.seismicexchange.com](http://www.seismicexchange.com)



# NOGS PRESENTS THE 2012 ANNUAL GOLF OUTING

PROCEEDS FROM THIS EVENT WILL HELP FUND THE *BILL CRAIG MEMORIAL FUND*\* 501 C (3) ORGANIZATION  
LAST YEAR, THE GOLF TOURNAMENT GENERATED OVER \$4700.00. LET'S KEEP IT GOING!

## TCHEFUNCTA COUNTRY CLUB

IN COVINGTON ON **MONDAY, APRIL 16**

THE FORMAT WILL BE A 4-PERSON SCRAMBLE W/SHOTGUN START AT **HIGH NOON**

**FOOD SPONSORED BY TIM KLIBERT W/ DIVERSIFIED WELL LOGGING**

REGISTRATION OPENS AT **9:30 A.M.** WITH BRUNCH SERVED UNTIL TEE TIME. PRICE INCLUDES GREEN FEES,  
CART, RANGE BALLS, FOOD & DRINKS, FLIGHT, PRIZES & 2 MULLIGANS.

WHAT ELSE COULD YOU POSSIBLY ASK FOR? DONATIONS OF ANY KIND ARE WELCOME.  
THE COST IS \$125 / INDIVIDUAL OR \$600 / CORPORATE. HOLE SPONSORS ARE \$125.

THIS EVENT ALWAYS FILLS UP, AND WE ARE LIMITED TO **120 PLAYERS** ONLY. PLEASE REGISTER EARLY TO AVOID  
CONFUSION. REMEMBER YOU ARE NOT REGISTERED UNTIL NOGS HAS RECEIVED PAYMENT AND YOU ARE  
CONFIRMED BY ANNETTE. AS USUAL, WE NEED VOLUNTEERS. IF YOU CAN HELP OUT, YOU WILL BE TREATED TO  
A DAY OF FUN, FOOD, AND BE ELIGIBLE FOR SOME DOOR PRIZES. MAKE SURE YOU SUPPLY YOUR HANDICAP OR  
A SCORE THAT TYPIFIES A SET OF ROUNDS OF GOLF OVER RECENT TIME NO GREATER THAN 2 YEARS IN THE  
SPACE PROVIDED.

### FOR DONATIONS OR TO VOLUNTEER, CONTACT:

**ANNETTE HUDSON (504-561-8980) ANNETTE@NOGS.ORG OR TIM KLIBERT (985-536-4143)**

TO REGISTER, CONTACT ANNETTE HUDSON AT THE NOGS  
OFFICE, 810 UNION ST. STE.300 NEW ORLEANS, LA 70112,  
504-561-8980. CASH, CHECK (PAYABLE TO NOGS), CREDIT  
CARDS ACCEPTED THROUGH PAY PAL GO TO  
WWW.NOGS.ORG

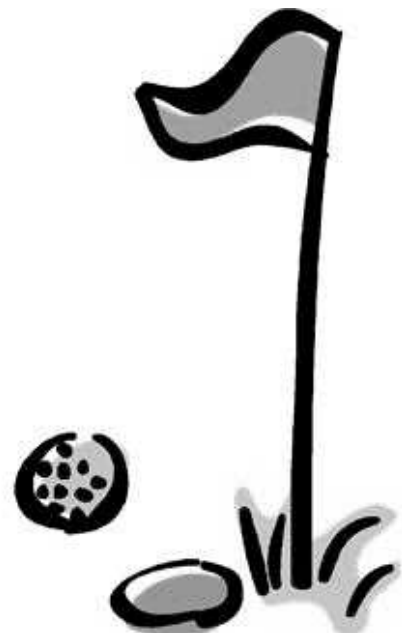
NAME: \_\_\_\_\_

COMPANY: \_\_\_\_\_

PHONE: \_\_\_\_\_

NAMES OF OTHERS IN YOUR GROUP:

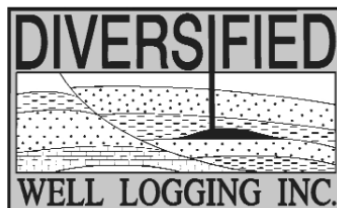
\_\_\_\_\_  
\_\_\_\_\_  
\_\_\_\_\_





## Relax. We'll keep you posted.

Your rig is offshore and you are not. How do you know what's going on so many miles away? You know because we tell you. Daily or even hourly, Diversified Well Logging's engineers update you on the status of your rig. We are your eyes and ears, especially when it comes to deep water or high pressure, high temperature areas. Diversified offers 24-hour surface evaluation. We provide secure and customized real-time data communication, in-house research and development and 24/7 on-call support for our equipment and our engineers. Whether you have a 10-day job or 110-day job, we provide the specialized attention you require. So, relax. We're with you every step of the way.



*Serving the Gulf Coast for over 40 years.*

New Orleans • Lafayette • Houston • Dallas • Corpus

800.280.2096

711 West 10th Street • Reserve, LA 70084 • Phone: 985.536.4143 • Fax: 985.536.2427  
sales@dwl-usa.com

March						
Sunday	Monday	Tuesday	Wednesday	Thursday	Friday	Saturday
				1	3	3
4	5 NOGS Luncheon Holiday Inn @ 11:30 A.M.	6	7	8	9	10
11	12	13	14	15	16	17
18	19	20	21	22	23	24 Super Saurus Saturday 11:00 A.M - 3:00 P.M.
25	26	27	28	29	30	31

April						
Sunday	Monday	Tuesday	Wednesday	Thursday	Friday	Saturday
1	2	3	4	5	6 Good Friday	7
8 Easter Sunday	9	10	11 NOGS: Petroleum Geology for Non- Geologists	12	13	14
15	16 NOGS Annual Golf Tournament Tchefunta CC	17	18	19	20	21
22	23	24	25	26	27	28
29	30					



# An Integrated Workflow Solution

Get the full picture with comprehensive integration of IHS PETRA®, IHS PetraSeis® and IHS GeoSyn™.

When these three solutions seamlessly connect, geological and seismic workflows are streamlined with easy-to-interpret data and modeling tools. This integrated bundle allows you to access, view and manipulate information within the same project; create multidimensional seismic models and synthetics; improve workflow collaboration; and deliver comprehensive proposals for new prospects. Get to the field faster with seismic, well, production, log and economic data at your fingertips.

See more solutions at [www.ih.com/nogs](http://www.ih.com/nogs)



**The Source**  
for Critical Information and Insights™



# 2011 Oil History Symposium – Marietta, Ohio

## Plans for 2012 - Houston

The Petroleum History Institute (PHI), in collaboration with the Ohio Oil and Gas Energy Education Program, held its 2011 annual symposium and field trip at historic Marietta, Ohio, on the banks of the Ohio River. Participants were treated to a wide variety of talks and poster presentations ranging from the history of oil and gas in Ohio to the many contributions to the industry from Baku. On the field trip, the group visited the Thorla-McKee Well, a salt water well drilled in 1814 that produced the first commercial oil in Ohio as well as seeing an old, but still operating, natural gas engine attached to a very large band wheel driving several pump-jacks (shackle line) – still producing Ohio crude after about 100 years, and a wonderful stop at the Parkersburg Oil and Gas Museum in Parkersburg, West Virginia. The trip ended with a tour of the Petroleum Engineering Department at Marietta College. **The next Oil History Symposium and Field Trip will be held in Houston, Texas, March 8-10, 2012.**

In the past, we have held the symposium in Oil City, PA, Long Beach, CA, Wichita, KS, Shreveport, LA, Lafayette, LA., Oil Springs, Ontario, and in WV.

**Mission of PHI:** To pursue the history, heritage, and development of the modern oil industry from its 1859 inception in Oil Creek Valley, Pennsylvania, to its early roots in other regions in North American and the subsequent spread throughout the world to its current global status. See the following web site for more information: [www.petroleumhistory.org](http://www.petroleumhistory.org).

PHI also publishes a yearly journal, *Oil-Industry History*. Our membership includes geoscientists, engineers, historians, museum curators, authors, etc.

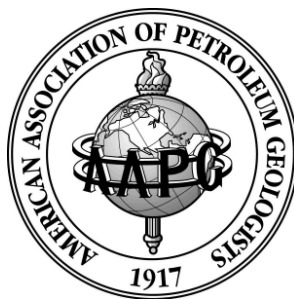
We look forward to another stimulating symposium next year at the Houston meeting, March 8-10, 2012. The abstract deadline is January 15, 2012, so start thinking about your subject and send the abstract to Bill Brice, [wbrice@pitt.edu](mailto:wbrice@pitt.edu). For more information contact Jeff Spencer ([spencerj320@gmail.com](mailto:spencerj320@gmail.com)). Plans are to hold a meeting soon for those interested in serving on the 2012 Oil History Symposium committee.

<p><b>DOMESTIC AND INTERNATIONAL BIOSTRATIGRAPHIC SERVICES</b></p>  <p><b>PALEO DATA</b></p>  <p>6619 Fleur de Lis Drive New Orleans, LA 70124 (504) 488-3711</p> <p><a href="http://www.paleodata.com">www.paleodata.com</a></p>  <p><b>Complete wellsite paleo services</b></p> <p><b>Available single-source regional biostratigraphic databases for accuracy and consistency</b></p> <p><b>Integrated foram / nannofossil analyses</b></p>  <p><b>In-house sample preparation lab for quality-monitoring and efficiency</b></p> <p><b>Supported Gulf Coast biostratigraphic databases</b></p>	<p><b>MCMORAN EXPLORATION CO.</b></p>  <p><b>MCMORAN OIL &amp; GAS</b></p> <p><a href="http://www.mcmoran.com">www.mcmoran.com</a></p> <p><b>NYSE: MMR</b></p> <table border="0"> <tr> <td>16676 Northchase Dr. Houston, TX 77060 (281) 539-7600 Fax: (281) 539-7655</td> <td>1615 Poydras New Orleans, LA 70112 (504) 582-4000 Fax: (504) 582-4155</td> <td>110 Travis St., Suite 140 Lafayette, LA 70503 (337) 735-9150 Fax: (337) 735-9151</td> </tr> </table>	16676 Northchase Dr. Houston, TX 77060 (281) 539-7600 Fax: (281) 539-7655	1615 Poydras New Orleans, LA 70112 (504) 582-4000 Fax: (504) 582-4155	110 Travis St., Suite 140 Lafayette, LA 70503 (337) 735-9150 Fax: (337) 735-9151
16676 Northchase Dr. Houston, TX 77060 (281) 539-7600 Fax: (281) 539-7655	1615 Poydras New Orleans, LA 70112 (504) 582-4000 Fax: (504) 582-4155	110 Travis St., Suite 140 Lafayette, LA 70503 (337) 735-9150 Fax: (337) 735-9151		

## NOGS 2011 HIGHLIGHTS – A review of significant events

- Kudos to NOGS Member, Dr. Mark Culp, for his guidance as chairman for the successful South Central Section GSA meeting held in New Orleans March 27-29. In the Exhibits Hall, NOGS was represented with a booth promoting the recently published *Oil & Gas Fields of South Louisiana, 2010*. Several NOGS members presented papers at the well-attended convention.
- On March 19, many members volunteered for the annual Super Science Saturday event at the Louisiana Children's Museum. Tom Bergeon, volunteer-in-chief, did a super job in keeping all the display stations staffed.
- On April 4, a joint NOGS-SGS-SPWLA Fish Fry lunch was held on the parking lot at Loyola and Perdido, sponsored by Diversified Well Logging, Inc. Mini-lectures and demonstrations of the latest in onsite well logging techniques were offered to attendees.
- The annual short course, Petroleum Geology for Non-Geologists, was held on April 6 in the Shell auditorium. Over the past few years, the course has attracted an average of 20 attendees.
- The Tchefuncta Country Club was the site of the annual Golf Tournament on April 18. As always, this was an outstanding, well-attended event which netted \$4,700 for the Memorial Foundation in the memory of Dr. William W. "Bill" Craig.
- In July, the *NOGS LOG* put on a new face by having a color, geologic-themed photograph on the cover. Editor Dave Tatum initiated several other innovative formatting changes, including a new aquamarine cover.
- On August 11 & 12, NOGS co-sponsored with SPE-Delta and the AADE, the 15<sup>th</sup> Annual Deep Water Technical Symposium at the Hilton Riverside Hotel. The event attracted over 350 attendees.
- The 61<sup>st</sup> Annual GCAGS Convention schedule to be held October 16-19 in Vera Cruz, Mexico, was cancelled due to security problems. This is only the second time a convention had been cancelled. In 2005, the NOGS-hosted convention was scuttled by Hurricane Katrina.
- On November 5, NOGS co-sponsored the Core Element's "Strike for S.T.E.M." fundraising event at Mid City Lanes Rock 'n Bowl. The NOGS Memorial Foundation contributed \$2000.00 to Core Element for their educational efforts in metropolitan area schools.
- The Annual Christmas Party was cosponsored with SPE-Delta on December 9 at the Metairie Country Club. Over a hundred attended the gala event and enjoyed a fine buffet dinner, some smooth libations and wonderful music by Randy Herbert's four-piece band.

**Ed Picou** Note: These highlights will be posted on the "About Us" page on our website.



## Burial and Thermal History of the Haynesville Shale: Implications for Gas Generation, Overpressure, and Natural Hydrofracture

Nunn, Jeffrey<sup>1</sup>

(1) Geology & Geophysics, Louisiana State University, Baton Rouge, LA.

The Haynesville Shale is a thin organic rich sedimentary rock found in Northwest Louisiana, Eastern Texas, and Southwest Arkansas. It was deposited during the Late Jurassic in a shallow marine environment. The Haynesville Shale is typically found at depths of 3 km (10,000 ft) or more and is characterized by ultra low permeability. Nunn et al. (1984) showed that subsidence of the Northern Gulf Coast is consistent with crustal extension by a factor of 1.5 to 2 during Late Triassic to Early Jurassic. Results from a thermal-mechanical model suggest that Jurassic temperature gradients were more than twice the current regional value of 25 to 35 °C/km. Thus, Jurassic age sediments have been close to their current temperatures for the last 100 m.y. Using subsurface data, a simple model of heat transport and fluid flow was used to estimate temperature versus time for the Haynesville Shale. Three erosion cases associated with the Mid-Cretaceous unconformity were considered: no erosion; erosion prior to deposition of the Tuscaloosa-Eagle Ford; and erosion both prior and after deposition of the Tuscaloosa-Eagle Ford. In all cases, total burial at time present is the same and heat flow is assumed to decay with elapsed time since rifting. Two cases for present day basal heat flow are considered: Low Heat Flow (60 mW/m<sup>2</sup>) and High Heat Flow (75 mW/m<sup>2</sup>). Additional deposition followed by erosion generates temperatures as much as 10 °C higher in the Cretaceous than the no erosion case. As expected, the high basal heat flow case generates substantially higher temperatures at all times. Computed vitrinite reflectance for the low heat flow case indicates that the Haynesville Shale should not reach gas generation. The high heat flow simulation has gas generation for all three erosion cases. However, gas generation occurs 10-25 m.y. early for the erosion cases. For ultralow permeability (~ nanoDarcy), disequilibrium compaction can generate significant overpressure within the Haynesville Shale. This overpressure cannot be maintained over geologic time because the unit is too thin. However, if overpressure generation due to formation of oil and gas is synchronous with rapid sediment loading, then it is possible that fluid pressures would be sufficient to naturally hydrofracture the Haynesville Shale at approximately 105 Ma.

AAPG© 2011 “Reprinted by permission of the AAPG whose permission is required for further use.”



# CENTURY EXPLORATION NEW ORLEANS, LLC

*An independent gulf coast exploration, development and operating company*

Three Lakeway Center, Suite 2800  
3838 North Causeway Blvd.  
Metairie, LA. 70002

Office: 504.832.3750  
Fax: 504.832.3760  
[www.centuryx.com](http://www.centuryx.com)

# South Louisiana and Offshore Gulf of Mexico

## Exploration and Production Activities

LAFAYETTE DISTRICT, ONSHORE AREA

By Carlo C. Christina

During the month of January, the Office of Conservation issued 36 new permits to drill in the Lafayette District of South Louisiana. Again, the Deep Wilcox Play continues to attract a significant number of wells. This report includes 6 new Wilcox locations, primarily in Beauregard Parish. It is interesting to note that 1 field, the **South Bear Head Creek Field**, produced more than 1 million barrels of oil in 2011, and at the current price of oil at \$100 per barrel, — well, you can calculate the gross income from that field.

### NEW LOCATIONS

In Allen Parish, **Harmony Church Field**, (A), Union Gas Operating Company has permitted the #1 Meriwether in Sec. 6, 6S-5W, to be drilled to a proposed depth of 13,000 feet. This is a deep test for the area, offsetting a poor producing oil well completed from perforations at 9400 feet. (244278)

Union Gas Operating Company has also staked a location for a deep test in **Hurricane Creek Field**, (B), in Beauregard Parish. The #1 Doornbos-McPherson will be drilled to 16,000 feet in Sec. 23, 5S-8W, located 1 mile north of abandoned Cockfield production at 8300 feet. (244287)

Also in Beauregard Parish, El Paso will drill the #1-28 Columbia Land in **South Bancroft Field**, (C). The well is permitted to a depth of 15,100 feet. It is located in Sec. 28, 6S-13W, 1 mile northwest of a producing gas well which was completed from perforations 10,914 to 12,272 feet. (244293)

Midstates Petroleum Company continues to develop the **South Bear Head Creek Field**, (D), in Beauregard Parish. The #1-27 CKX Lands in Sec. 27, 6S-11W will be drilled to 15,300 feet, offsetting 2 excellent Lower Wilcox producing oil wells. In the past 2 years, Midstates has completed 14 oil wells in the Lower Wilcox sands in this field. In 2011, the field produced 1,107,000 barrels of oil and 4.47 billion cubic feet gas. At the current price of oil at \$100 per barrel, the field has generated more than 100 million dollars. At this time there are 2 wells waiting on completion rigs. (244327)

There is more drilling activity in Beauregard Parish by El Paso in **West DeQuincy Field**, (E) with the drilling of the #1-21 Olympia. The well is located in Sec. 21, 7S-11W, and will be drilled to 15,100 feet. It is located 1 mile northeast of Upper Wilcox production between 12,890 and 13,620 feet. (244342)

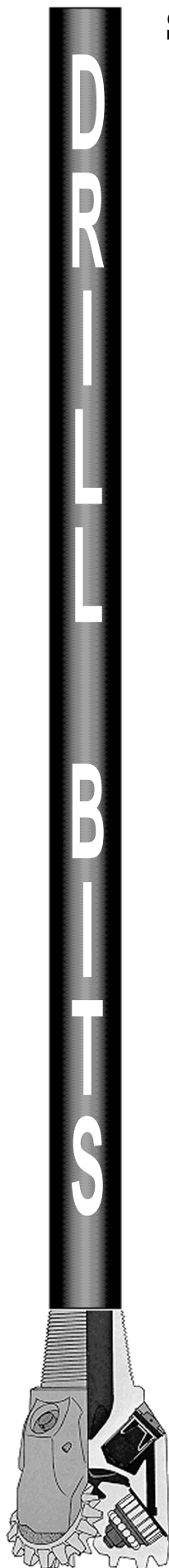
Also in Beauregard Parish, Midstates will drill the #5 Forestar Minerals in **West Gordon Field**, (F), to a projected depth of 13,800 feet. The well is located in Sec. 7, 7S-9W, offsetting the #3 Forestar Minerals, which was completed in the Wilcox flowing 455 BOPD and 592 MCFD. In 2011 the field produced 125,000 barrels of oil and the operator currently has 3 wells waiting on completion rigs. (244344)

Gulfport Energy Corporation will drill an interesting well in **East Hackberry Field**, (G), Cameron Parish. The #97 M. P. Erwin is located in Sec. 12, 12S-10W and is permitted to a depth of 11,947 feet. The well is offset by several producing oil wells, producing from Miocene sands at depths of 8,000 feet. (244302)

In Point Coupee Parish, **Livonia Field**, (H), Neumin Production Company will drill the #1 Kimball Properties to a proposed depth of 16,000 feet. The well is location in Sec. 20, 6S-10E, offsetting 3 Wilcox wells which are producing from depths of 14,000 feet to 14,400 feet. A completion in these deeper Wilcox sands will open the area for additional drilling. (244279)

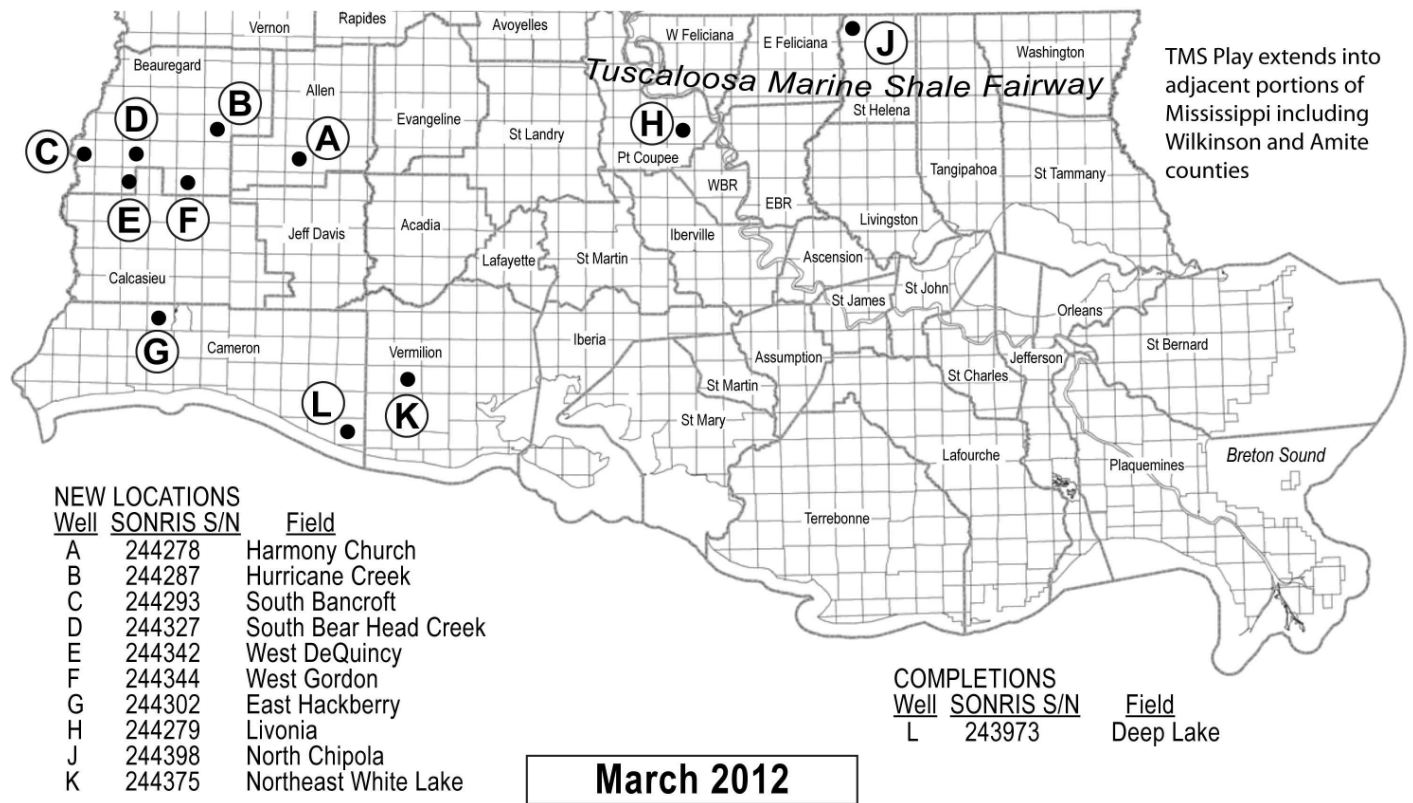
A **Tuscaloosa Marine Shale** well has been permitted in **North Chipola Field**, (J), St. Helena Parish. Encana Oil & Gas will drill the #1 Weyerhaeuser 60 H in Sec. 60, 1S-4E to a depth of 19,000 feet. The well is located 1 mile south of the Denbury #1 Weyerhaeuser, a completed Tuscaloosa Marine Shale completion, and 1 ½ miles southwest of the Encana #1 73 H, also a completed Tuscaloosa Marine Shale completion. The well will be drilled on a unit to 19,000 feet, in a lateral 6,000' leg. (244398)

Walter Oil & Gas will drill the #1 SL 20569, a 19,000 foot test located is 14S-1W in White Lake





## NOGS LOG DRILL BITS — SOUTH LOUISIANA ACTIVITY MAP



in Vermilion Parish. Although the well is permitted in **Northeast White Lake Field**, (K), it is a rank wildcat with no production within 4 miles to the southwest in North White Lake Field and 4 miles to the southeast in East White Lake Field. (244375)

### COMPLETIONS

Hilcorp Energy has completed the #1 SL 20139 in **Deep Lake Field**, (L), Cameron Parish. The well was drilled to 16,427 feet and completed as a gas well flowing 6157 MCFD and 370 BCPD through perforations 15,642 to 156,751, overall. The well is located in Sec. 7, 16S-3W, and extended production 1 mile to the southwest. (243973)

### OFFSHORE GULF OF MEXICO SHELF AND DEEPWATER ACTIVITIES

By Al Baker

A recap of the 2011 Gulf of Mexico permitting activity indicates that a total of 295 permits were granted by the BOEM for new field wildcats and development wells. There were 40 new field wildcats and 255 development well permits for 2011. The 2011 permit total compares positively to the 273 drilling permits that were given in 2010 and represents an 8.1% increase on a yearly basis. In Offshore Louisiana during 2011, there were a total of 212 permits, which compares to 165 permits in 2010 (a 28.5% increase in permitting activity). However, during 2011 in offshore Texas, there were 14 permits granted, which is reduced comparable to 31 permits granted in 2010 (a 45.2% decrease in permitting activity). Most likely, lower natural gas pricing during 2011 had a negative effect on the permitting activity in the gas-prone, offshore Texas region. Similarly, the Northern Gulf saw a decline in permitting activity with 69 permits granted in 2011 versus 77 permits in 2010 (an 11.6% decrease in permitting activity). The decrease may perhaps be related to the increase in regulatory requirements in order to obtain a drilling permit in the Gulf following the BP Macondo accident.

--- continued on next page ---

## Drill Bits (continued from previous page)

The Gulf of Mexico drilling starts in 2011 were virtually flat in comparison to the 2010 drilling starts – 240 in 2011 versus 244 in 2010. In 2011, there were 30 new field wildcat wells started in addition to 210 development wells begun. Of the new field wildcats, 11 were in Offshore Louisiana, 4 were in Offshore Texas, and 15 were in the Northern Gulf (deep water). The development well activity included 156 in Offshore Louisiana, 11 in Offshore Texas and 43 in the Northern Gulf. In comparison to 2010, Offshore Louisiana experienced a 8.4% increase in drilling starts, Offshore Texas saw a 33.3% decrease in drilling starts, and the Northern Gulf recorded a 20.7 % decrease in drilling starts.

Between January 1<sup>st</sup> and January 30<sup>th</sup>, the BOEM issued 60 drilling permits, of which 29 were for Gulf of Mexico shelf wells and 31 were for Gulf of Mexico deepwater wells. Eight of the above permits are for new wells; 5 permits are in shallow water, and 3 permits are in deepwater.

The shelf new well permits are for 2 exploratory and 3 development wells. The two exploratory wells include the Walter Oil and Gas, Eugene Island 290 #1 and the Tarpon Operating, Eugene Island 305 #1. The shelf development activity includes one well each by Rooster Petroleum (Vermilion 376 #A-3), Stone Energy (South Pelto 25 #6) and Tana Exploration (Main Pass 207 #A-3).

The deepwater new well permits are for 3 exploratory wells. Anadarko will spud their #1 well on Walker Ridge 793. LLOG plans to drill the Mississippi Canyon 431 #2 well. Shell is planning their #2 well on Mississippi Canyon 940.

According to IHS-Petrodata, as of January 27<sup>th</sup>, there were 70 mobile offshore drilling rigs under contract out of 113 rigs available in the Gulf of Mexico, which represents a 61.9% fleet utilization rate. The current total available rig number is 5 fewer rigs than reported last month in the Gulf. In addition, there were 22 platform rigs under contract out of the 51 total in the fleet for a contracted fleet utilization rate of 43.1%.

On January 27<sup>th</sup>, the BakerHughes Rig Counts indicated that there were 42 active mobile offshore rigs in the Gulf, which represents 60% of the total mobile rigs under contract. The current active rig count compares to 26 active rigs during the same period last year. This represents a 61.5% increase in the active rig fleet on a year-to-year basis. Of the 22 platform rigs that are under contract, 15 (or 68.2 %) are currently working.

On January 25<sup>th</sup>, the BOEM announced that it plans to hold the Consolidated Central Gulf of Mexico Planning Area Sale 216/222 on June 20, 2012 in New Orleans. This will be the first Central Gulf of Mexico lease sale since OCS Sale 213 held in March 2010, which occurred one month prior to the BP Deepwater Horizon blowout. OCS Sale 216 was originally scheduled for March 2011, but was postponed by the Obama Administration. It was later announced that this sale would be combined with OCS Sale 222 and that the consolidated sale would be held in 2012. More information regarding CPA Sale 216/222 can be found on the BOEM website at [www.boem.gov](http://www.boem.gov).

---

Dear NOGS Members,

*Thanks to a generous donation from NOGS, the University of New Orleans team competing in AAPG's Imperial Barrel Award Program is better equipped. The Imperial Barrel Award Program (IBA) is an annual prospective basin evaluation competition for geoscience graduate students. Our team will be competing against university teams from around the world to win scholarship funds for the UNO Earth and Environmental Sciences Department, and the international recognition that comes from competing in this prestigious program. In this competition we will be analyzing a real world data set over an eight-week period and producing a 25-minute presentation that we will give to a panel of industry experts. The IBA competition is designed to be a hands-on opportunity for students to experience the creative process and the high-tech science that is the foundation of the Energy Industry today.*

*Recently, Chevron generously donated four computer workstations that can handle the demanding data processing that we will be doing. When the call went out for funds to purchase monitors for these workstations, NOGS and Art Johnson graciously responded. This substantial donation has allowed us to acquire four 27" monitors. Two of our workstations are now fully equipped and have KINGDOM software installed on them.*

*Having access to industry standard technology is crucial to our success in this competition as well as our education. Our team has the knowhow, the desire and the drive to excel in the Imperial Barrel Award Program. We are extremely grateful to NOGS and its members for the donation that has helped us acquire the tools we need to be competitive.*

*Thank You!*

*The University of New Orleans IBA Team*

*Kevin Trosclair (Team Leader), Dillion Asher, Robert Clark and Corey Hinyup*



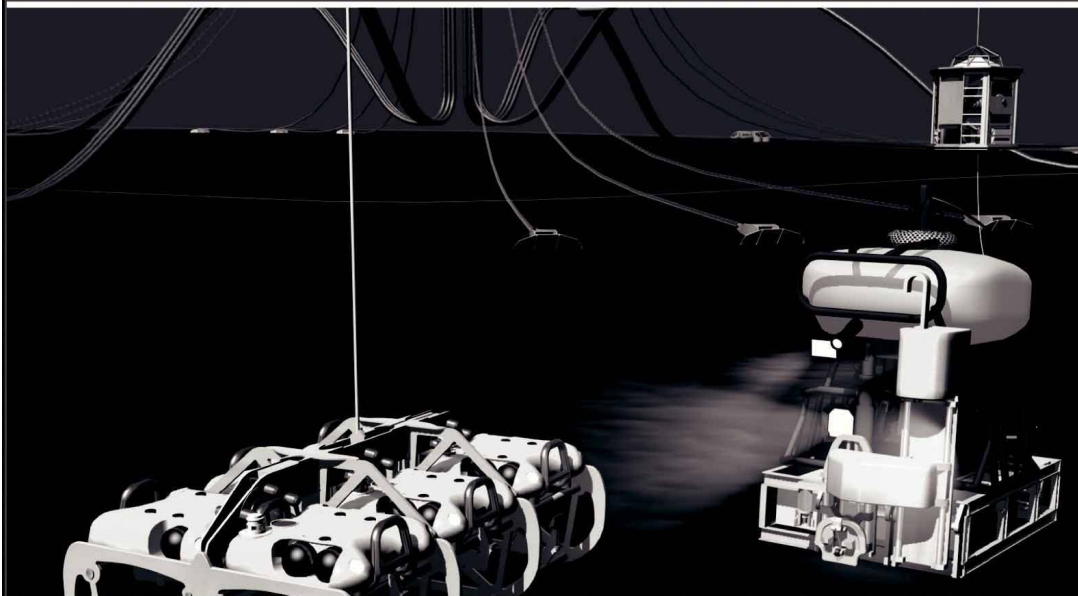
# Wilbert Lecture Series

Sponsored by the Department of Geology and Geophysics

*All talks in E137 Howe-Russell Bldg at 3:40pm*

Date	Speaker Institution	Title	Host
Feb 3	<b>Dr. Syvitski</b> INSTAAR U Colorado	<i>The Anthropocene: Are We There Yet?</i>  Special Lecture at 9:40am <i>Plug and Play Modeling: An Introduction to the Community Surface Dynamics Modeling System</i>	Dr. Sam Bentley
Feb 10		Pending	
Feb 17	<b>Dr. Steve Pekar</b> Queens College	<i>IODP in Antarctica</i> Consortium for Ocean Leadership Distinguished Lecturer	Dr. Sophie Warny
Mar 2	<b>Dr. Jeff Vervoort</b> Washington State University	<i>Origin and Growth of the Continental Crust</i>	Dr. Darrell Henry
Mar 9	<b>Dr. Andreas Lüttge</b> Rice Univ.	<i>Fluid-Rock Interactions</i>	Dr. Barb Dutrow
Mar 16	TBA	<i>Biogeochemistry Candidate</i>	Search Comm.
Mar 23	TBA	<i>Biogeochemistry Candidate</i>	Search Comm.
Mar 30	TBA	<i>Biogeochemistry Candidate</i>	Search Comm.
Apr 6	<b>Dr. Louise Kellogg</b> UC-Davis	<i>Heterogeneities in the Mantle</i> AWG Distinguished Lecturer	Drs. Barb Dutrow, Jeff Nunn
Apr 13	---	<i>Spring Break - No Lecture</i>	---
Apr 20	<b>Dr. Abby Kavner</b> UCLA	<i>The Electrochemical Earth</i> COMPRES Distinguished Lecturer	Drs. Barb Dutrow, Alex Webb
Apr 27	<b>Dr. Art Donovan</b> BP	<i>Eagle Ford shale</i> BP Lecture Series	Dr. Philip Bart

# Finally - An answer for getting reservoir seismic **OVER THE RESERVOIR!**



- 4C/4D Node Seismic
- ANGOLA
- GoM
- NIGERIA



**"Coming Soon to an Oilfield Near You!"**

[www.sbexp.com](http://www.sbexp.com)

**Dubai**  
T: +971 4 4271700

**Houston**  
T: +1 281 566 1666

**Oslo**  
T: +47 2240 2700

**Rio**  
T: +55 21 2494-0283

**Singapore**  
T: +65 9180 2605

**Trondheim**  
T: +47 7 3879500

RAISING  
THE **STANDARD**



100 Northpark Blvd.  
Covington, LA 70433

(985) 773-6000



**LaBay**  
Exploration Co., L.L.C.

111 Veterans Memorial Blvd.,  
Suite 1550  
Metairie, Louisiana 70005

[www.labayexploration.com](http://www.labayexploration.com)

Office (504) 371-5967  
Fax (504) 371-5969

## *For Gravity and Magnetic Data* **Count on Fugro...**

Brenda Robinson: + 1 713-369-6072

[brobinson@fugro.com](mailto:brobinson@fugro.com)

Jeff Rowe: + 1 613-520-7713

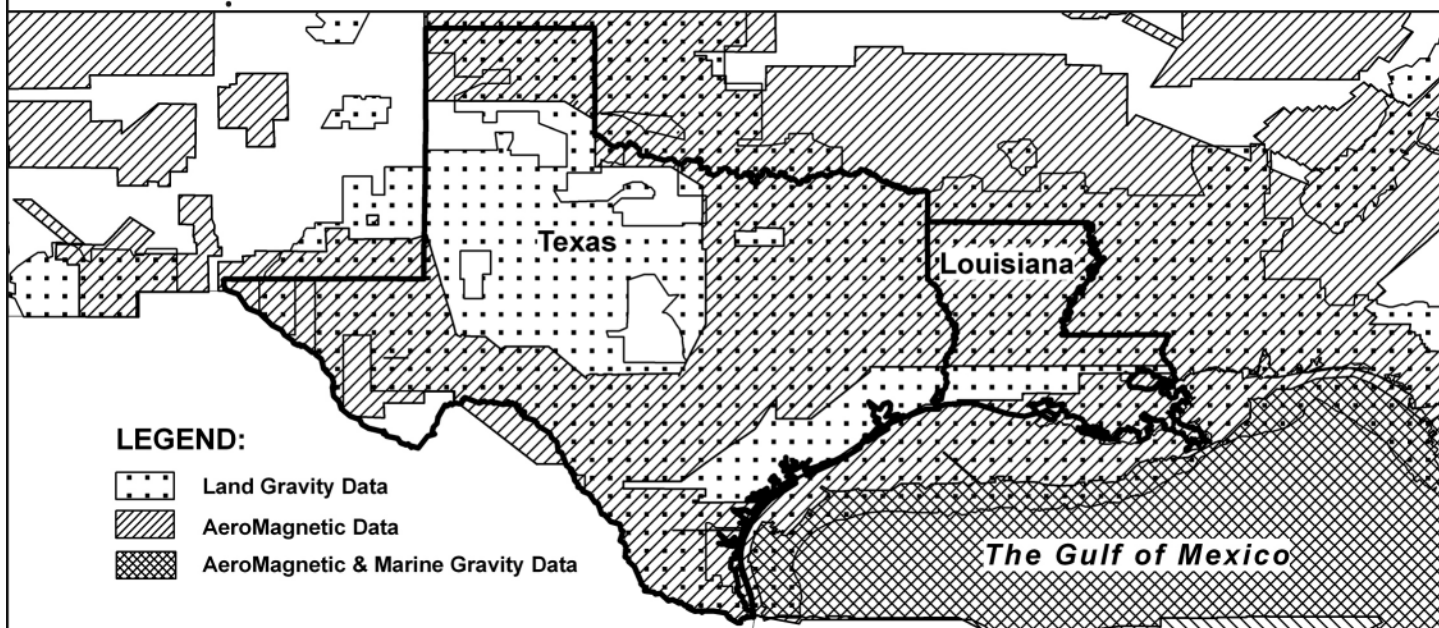
[jrowe@fugro.com](mailto:jrowe@fugro.com)

[www.fugro-gravmag.com](http://www.fugro-gravmag.com)



*This advertising  
space is available!  
Contact the  
NOGS office.*

# For Gravity and Magnetic Data in Texas and Louisiana **Count on Fugro— Mapping Geology to the Basement...**



**...And beyond** with the most comprehensive non-exclusive airborne, land and marine potential fields geophysical database, including AeroMagnetic, Land Gravity, Marine Gravity and Bathymetry data around the world. Interpretation includes:

- Basement architecture
- Tectonic elements
- Structural/geologic fabric
- Salt mapping
- Depth to basement
- ArcGIS deliverables



**Fugro Gravity & Magnetic Services**

**For personal assistance & consultation,**  
please contact [fgmsdata@fugro.com](mailto:fgmsdata@fugro.com) or 713-369-6123.

[www.fugro-gravmag.com](http://www.fugro-gravmag.com)



*Isabel Ordonez, RigZone* - "ExxonMobil's Natural-Gas Push Could Hit Small US Producers"  
[http://www.rigzone.com/news/article.asp?a\\_id=114877](http://www.rigzone.com/news/article.asp?a_id=114877)

*Exxon Mobil Corp.'s decision to leave its U.S. natural-gas output untouched despite low commodity prices may push some smaller producers out of the business, force consolidation in the industry and make the oil company an even more powerful force in the oilpatch.*

*The biggest U.S. natural-gas producer puzzled some analysts and investors Tuesday when during its earnings report, it said it had no plans to curtail its output despite that a glut has driven the price of the commodity to its lowest level in more than a decade. Other companies including Chesapeake Energy Corp., the second-largest U.S. natural-gas producer, recently have announced drilling cutbacks as natural-gas production in some areas becomes a money-losing business.*

*The Irving, Texas, company argued although it is doing its best to switch drilling to oil-rich areas, it still needs to keep drilling for natural gas to meet previously agreed-to contractual terms that let it retain expensive land leases. Raising some market observers' eyebrows, it also said drilling for natural gas in some areas is still profitable even at current prices.*

*The decision could "drive out marginal operators, perhaps consolidate the industry and rationalize long-term production," Paul Sankey, an analyst at Deutsche Bank, said in a note to clients. That could turn Exxon into the Wal-Mart Stores Inc. of the U.S. natural-gas sector, he added, referring to the strategy of the world's largest retailer to keep sales prices lower than competitors' by reducing profit margins.*

*It is highly unlikely Exxon Mobil's main motivation to keep the foot on the gas pedal is "to bankrupt" rivals in the natural-gas sector, but intentionally or not the company's decision could put a strain on small rivals that can't compete with its deep pockets, Fadel Gheit, an analyst with Oppenheimer & Co., said.*

*Oil and Gas Journal* - "McMoRan logs Sparta, Vicksburg pay at Blackbeard East"  
<http://www.ogj.com/articles/2012/01/mcmoran-logs-sparta-vicksburg-pay-at-blackbeard-east.html>

*McMoRan Exploration Co., New Orleans, said its Blackbeard East ultradeep exploratory bypass well on the Gulf of Mexico shelf encountered potential hydrocarbons in the Sparta carbonate section of Eocene and Vicksburg section of Oligocene.*

*Wireline logs, core, and sonic logs at Blackbeard East, drilled to a total depth of 33,318 ft true vertical depth in 80 ft of water on South Timbalier Block 144, indicate that the Sparta interval is 300 ft thick and appears to be a hydrocarbon-bearing fractured carbonate. The Vicksburg sand is credited with 10 net ft of pay over a 40-ft gross interval. These new intervals are in addition to the 178 net ft of hydrocarbons previously announced above 25,000 feet in the Miocene and the hydrocarbon bearing sands in the Oligocene (Frio) with good porosity below 30,000 ft.*

*Meanwhile, completion activities at the Davy Jones-1 discovery well on South Marsh Island Block 230 are in an advanced stage. Oil-base drilling mud is being displaced with completion fluid.*

# Get More from your Core

**With reservoirs becoming increasingly complex, you need the most accurate information you can get to better understand your reservoir.**

Weatherford Labs helps you get more from your core by combining an unsurpassed global team of geoscientists, engineers, technicians and researchers with the industry's most comprehensive, integrated laboratory services worldwide. From core analysis, sorption, geochemistry and isotopic composition to detailed basin modeling and comprehensive data packages, we provide you with real reservoir rock and fluid information that hasn't been distilled by a simulator or iterated by software.

We call it **"The Ground Truth"** – giving you the accurate answers you need for better reservoir understanding. You'll call it a better return on your reservoir investment. To learn more, contact [TheGroundTruth@weatherfordlabs.com](mailto:TheGroundTruth@weatherfordlabs.com).



© 2011 Weatherford. All rights reserved. Incorporates proprietary and patented Weatherford technology.



**Shell has worked in partnership  
with the NOGS for many years, and  
is proud to count the society among  
its closest business associates.**

The New Orleans Geological Society was organized in 1941 to foster scientific research and advance the science of geology. Particular emphasis is laid on the exploration for and production of petroleum and natural gas. Related objectives include encouraging the adoption of improved methods of exploration, disseminating pertinent geological and technological data, and maintaining a high standard of professional conduct among its members.

[www.shell.com/us/sepcos](http://www.shell.com/us/sepcos)

**It's no illusion...  
Core Lab offers everything you need.**



©2009 Core Laboratories. All rights reserved.

Unconventional resource exploitation • Gas shale experts • Deepwater GOM authority  
Capacity for fast turnaround • High-quality people • Global support  
Industry leadership and reliability • Proprietary and patented technologies • Experience

[www.corelab.com/rd/petroleumservices](http://www.corelab.com/rd/petroleumservices) • 24-hour wellsite service hotline: 504-733-6583

# **SAI** Geoconsulting, Inc.

*Geological and Geophysical Consulting,  
3-D Seismic Interpretation*

**Ben D. Sydboten, Jr. CPG**

2 Flagg Pl., Suite 1  
Lafayette, LA 70508  
[www.saigeoconsulting.com](http://www.saigeoconsulting.com)

Office (337) 504-3670  
Cell (337) 456-8948

*"Serving The Oil & Gas Industry Since 1983"*

Geological,  
Geophysical &  
Land Drafting

Anthony Catalano  
*President*  
Stefani Foster  
*Drafting & Design*

**Geo-Draft, Inc.**  
*A Professional Drafting & Graphics Firm*

3349 Ridgeline Drive • Suite 202 • Metairie, LA • 70002  
Office: (504) 836-2882 Fax: (504) 836-2877 (Cell) (504) 481-7291  
E-Mail: [geodraft@bellsouth.net](mailto:geodraft@bellsouth.net)  
Website: [www.geodraftinc.com](http://www.geodraftinc.com)

## **NORTHCOAST OIL COMPANY**

610 E. Rutland St.  
Covington, LA 70433  
(985) 898-3577  
(985) 898-3585 FAX

**Jack M. Thorson**  
**Eric C. Broadbridge**  
**J. Daryl Gambrell**  
**Raymond W. Stephens**

## **Collarini Energy Staffing, Inc.**

Facilities • Drilling • Production • Reservoir Engineering  
Land and Legal • Geosciences • Information Technology  
Health and Safety • Management • Supply Chain  
Accounting • Administrative Support



## ***Full-Time and Temporary Personnel***

Energy Trading • Civil Engineering • Executives  
Human resources • Instrument and Electrical  
Engineering • Marine Engineering • Project Management  
Technical Writing • Sales and Marketing

**10497 Town and Country Way, Suite 950, Houston, Texas 77094 Telephone: (832) 251-0553 [www.collarini.com](http://www.collarini.com)**

**NOGS thanks our  
sponsors for their support:**

**GOLD LEVEL SPONSORS:**  
**CHEVRON**  
**LA BAY EXPLORATION CO, LLC.**

**SPECIAL THANKS TO  
DIVERSIFIED WELL LOGGING**

***This advertising space is available!***

***Contact the NOGS office.***

# THE NEW ORLEANS GEOLOGICAL SOCIETY MEMORIAL FOUNDATION, INC.

The Memorial Foundation is an IRS Tax Exempt Code #501 (c)(3) organization. The Federal I.D. is 72-1220999. Please consider making a donation to the Foundation prior to the close of this year's fiscal cycle on June 30, 2012. Your individual support in any amount will help meet the IRS Guidelines for our Foundation. *Thanks!*

## \$15,000 AND ABOVE

### Gibbet Hill Foundation

*In Memory of Steve & Marion Millendorf, William J. Prutzman, Roger G. Vincent,  
Ron Youngblood & Uno Numella*

## \$10,000

### GCAGS

*Matching funds*

## \$500

### Richard G. Klibert

### Foster E. Voelker

*In Memory of Gene Rogas*

## \$250 TO \$499

### Burton C. Bowen

*In Memory of Joffre J. Crouere*

### Marc Cooper

*Through the Marathon Oil Co MEPAC Program*

### Carlo C. Christina

*In Memory of Al Gilreath*

### Mrs. Ruth K. Grimes

*In Memory of Fred G. Williams*

*In Memory of Richard Drew*

## UP TO \$249

### Woods W. Allen, Jr.

*In Memory of William C. Ward*

### Robert J. Ardell

*In Memory of James P. Raymond, Jr.*

### Joan L. Bicocchi

*In Memory of Louis L. McCormick, Jr.*

### John B. Butz

*In Memory of Louis L. McCormick, Jr.*

### Maurice N. Birdwell

*In Memory of Uno Nummela*

### Hilary James Brook

### Rob Burnett

### J. Sybil Callaway

### Chevron

*Matching Funds*

### Arthur F. Christensen

### James S. Classen

*In Memory of Robert C. Treadwell*

*In Memory of Robert G. Williamson*

### Clarence F. Conrad

### Charley Corona

*In Memory of Professor Hubert Skinner*

### Trudy and Charley Corona

*In Memory of Carl Grieshaber*

*In Memory of Beverly Langford*

*In Memory of Erik Mason*

### Mildred D. Crouere

*In Memory of Louis L. McCormick, Jr.*

### Robert M. Danos

*In Memory of Max H. Durham*

### Dr. Brooks B. Ellwood

### Parrish N. Erwin, Jr.

### Dwight Easterly

*In Memory of James P. Raymond, Jr.*

### James P. Evans III

*In Memory of James P. Raymond, Jr.*

### Exxon Mobil Matching Funds

### Michael N. Fein

### Mark J. Gallagher

### Arthur J. Garden

### Bernard L. Hill, Jr.

### Kenneth Huffman

### Jeffrey E. Jandegian

### Philip W. Johnson

### Tom Klekamp

### Reuben J. Klibert, Jr.

*In Memory of Dale Klibert*

### Tim Klibert

### John C. Kuciewicz, Jr.

### John C. Langford

### H. David Lynch

### Jeannie F. Mallick

### Margaret M. McKinney

### Mr. and Mrs. Jack Fye Minor

*In Memory of Louis L. McCormick, Jr.*

### Robert G. Murphy

*In Memory of Ron Youngblood*

*In Memory of Thomas A. Cullinan*

### New Orleans Geological Auxiliary

*In memory of Beverly Langford*

### Nexen Petroleum USA Inc.

*Matching Funds*

### Richard A. Olsen

### Teresa M. O'Neill

*In Memory of Brian J. O'Neill*

### Linda and Bill Peirce

### Edward B. Picou Jr.

*In Memory of Terry D. Keegan*

### Richard D. Provensal

*In Memory of Thomas H. Philpott*

*In Memory of James Strahan*

### George W. Schneider III

*In Memory of George W. Schneider, Sr.*

### Mrs. Etheldra S. Scoggin

*In Memory of Louis L. McCormick, Jr.*

# FONO FUND

The FONO Fund accepts contributions that are invested and the income dedicated to assure sufficient financial resources will always be available to maintain the NOGS business office. Contributors are reminded that donations to the FONO Fund are not covered by the IRS 501 (c)(3) tax exempt classification and should be reported as a business expense on your IRS tax report.

## \$500

### James A. Hartman

## UP TO \$250

### David E. Balcer

### Joseph E. Boudreaux

### J. Sybil Callaway

### Anthony Carollo, Jr.

### Richard P. Colomes

### Michael A. Danahy

### John Dombrowski

### Merle J. Duplantis

### Parrish N. Erwin, Jr.

### Richard A. Edmund

### Michael N. Fein

### Mark J. Gallagher

### Bernard L. Hill, Jr.

### Kenneth Huffman

### Robert M. Jemison, Jr.

### Arthur H. Johnson

### Tom Klekamp

### Russell J. Landry

### Louis Lemarie'

### H. David Lynch

### Jeannie F. Mallick

### George M. Markey, Jr.

### Louis L. McCormick

### Margaret M. McKinney

### Robert G. Murphy

### William J. O'Leary

### Richard A. Olsen

### Linda and Bill. Peirce

### Edward B. Picou, Jr.

### James P. Raymond, Jr.

### C. R. Rondeau

### David M. Tatum

### Roy C. Walther

### Robert C. Weissmann

### William M. Whiting

CONTRIBUTIONS FOR BOTH FUNDS THROUGH FEBRUARY 8, 2012.

DONATIONS ARE LISTED FOR ONE YEAR.

### Rudolph B. Siegert

*In Memory of Louis L. McCormick, Jr.*

### Dr. J. O. Snowden

### James M. Sothern

### Raymond O. Steinhoff

*In Memory of Harold E. Vokes*

### Betsy M. Strachan Suppes

*In Memory of Hubert Skinner*

### David M. Tatum

### Leon G. Touns

*In Memory Robert G. Williamson*

### Roy C. Walther

### William M. Whiting

### Arthur S. Waterman

*In Memory of T. Wayne Campbell*

### Armour C. Winslow

*In Memory of Rita Menzel Winslow*

### Frances A. Wiseman

*In Memory of Steve Widdicombe*

### Camille and Jim Yeldell

*In Memory of Thomas A. Cullinan*

*In Memory of Gene Rogas*

*In Memory of Robert G. Williamson*

## In Memory of Bill Craig

### Chevron

### Bernard L. Hill, Jr.

### John C. Scheldt

*In Memory of William C. Ward*

### Candace V. Strahan

*In Memory of James Strahan*

*In Memory of William C. Ward*

<p><b>ANSYTHE</b> Donald I. Andrews 504-887-3432</p> 	 <p><b>GEOLOGY ENVIRONMENTAL MANAGEMENT</b></p> <p><b>GEM Consulting LTD</b> Michael Louis Merritt admin@gemconsultingltd.com 1451 Applewood Road • Baton Rouge, LA 70808</p>
<p><b>THE BOEBEL COMPANY</b> Oil and Gas Investments New Orleans, LA 70153 (504) 866-4313</p>	<p><b>H. WARREN BELL</b> Oil and Gas Exploration 2500 Tanglewilde, Suite 485 Houston, TX 77063-2126 Bus (713) 266-7297 Fax (713) 266-7298</p>
<p><b>BOO-KER OIL &amp; GAS CORP.</b> Gray S. Parker 826 Union, Suite 300 New Orleans, LA 70112 Bus. (504) 581-2430 Fax (504) 566-4785</p>	<p><b>PHELPS GEOSCIENCE LLC</b> Onshore Gulf of Mexico Geology and Geophysics Prospect Generation and Evaluation Houston, TX jsfphelps@yahoo.com (281) 398-5208</p>
<p><b>C &amp; R EXPLORATION, INC.</b> Carlo C. Christina Lawrence G. Ringham</p>	<p><b>RAFIDI OIL AND GAS, INC.</b> Jaser N. Rafidi, President 4415 Shore Dr., Suite 202 Metairie, LA 70006 Bus. (504) 453-8580 Fax (504) 888-5539; Res. (504) 888-1661</p>
<p><b>C. R. RONDEAU</b> Petroleum Geologist 119 W Southland Ave. Ironwood, MI 49938 Res. (906) 932-4692</p>	<p><b>ROY C. WALTHER</b> Petroleum Geologist 2421 Prancer Street New Orleans, LA 70131 Bus. (504) 392-8513 Res. (504) 392-9332</p>
<p><b>CLASSEN EXPLORATION, INC.</b> James S. Classen Looking for close in deals P.O. Box 140637 Boise, ID 83714 classenllc@msn.com Bus. (208) 854-1037 Fax (208) 854-1029</p>	 <p>625 E. Kaliste Saloom Lafayette, LA 70508 16800 Greenspoint Dr., Suite 225-S Houston, TX 77060 1100 Poydras St., Suite 1050 New Orleans, LA 70163 www.StoneEnergy.com</p>
<p><b>D-O-R ENGINEERING, INC.</b> 3-D and Geoscience Services 6161 Perkins Rd. P O Box 80812 Bus : (225) 765-1914 Baton Rouge LA 70898</p>	<p><b>TONY CAROLLO</b> Consulting Geologist Unitization Geosteering Field Studies 1701 Peach Street Metairie, LA 70001 Bus. (504) 885-0004 Res. (504) 885-6829</p>
<p><b>EDWARD B. PICOU, JR.</b> Consulting Micropaleontologist - Retired 228 St. Charles Ave., Suite 1330 C New Orleans, LA 70130 Bus. (504) 529-5155 Res. (504) 282-3096</p>	<p><b>Zot Oil &amp; Gas, LLC</b> Jim Zotkiewicz Prospect Generation and Evaluation 3200 Ridgelake Dr. Suite 207 Metairie, LA 70002-4930 Business: 504.831.4694 Email: jimzot38@zotoil.com</p>

## PETROLEUM GEOLOGY FOR NON GEOLOGISTS

The New Orleans Geological Society is presenting a one-day course on "Petroleum Geology for Non Geologists," 8:30 A.M. to 3:30 P.M. on Wednesday April 11, 2011 in the Shell Auditorium, Shell Building, 701 Poydras Street, New Orleans. The course will consist of a brief introduction to Basic Geology, followed by a review of how oil and gas are formed, how they are concentrated into reservoirs, the geological and geophysical methods used in exploration and an overview of drilling and completion practices.

This course should be of significant benefit and interest to anyone who in one way or another works with geologists and geological data, such as land personnel, secretaries, draftsmen and computer programmers and processors. Instructors will be consulting geologists, Duncan Goldthwaite, Bob Branson and Bruce Robertson.

Cost will be \$35.00 per participant. Course notes and mid-morning refreshments will be provided. Persons interested can register and pay via PayPal or credit card online at [www.nogs.org](http://www.nogs.org), or by sending a check for \$35.00, payable to the New Orleans Geological Society, to:

New Orleans Geological Society  
810 Union St - Suite 300  
New Orleans LA 70112

When registering, please give your name, your work or home address, telephone number and company affiliation if applicable.





### **MultiClient Wide Azimuth: Crystal III bringing near-surgical precision to East Breaks, WGOM.**

When you know precisely where you're going, getting there is a lot more profitable. With unprecedented clarity of imaging, we've opened the gates to a bold, new sub-salt frontier in the Western Gulf of Mexico's Miocene and Lower Paleogene. Never before has the path to potential been so vividly defined.

Wide Azimuth Acquisition | hyperBeam™ Velocity Modeling  
TTI Reverse Time Migration | MegaSurveys

**A Clearer Image**  
[www.pgs.com](http://www.pgs.com)



## NEW ORLEANS GEOLOGICAL SOCIETY



810 Union Street, Suite 300  
New Orleans, LA 70112-1430

# WWW.NOGS.ORG

### MARINE PROPERTIES, LLC BERKSHIRE EXPLORATION CO.

MONTE C. SHALETT, CPL, PRESIDENT

3030 Lausar Street  
Metairie, LA 70001-5924

BUS. (504) 831-7779  
FAX. (504) 831-8315

### PCI

### Paleo Control, Inc.

Houston, Texas  
713-849-0044

Drilling Wells, Studies and Data Base

Loyd Tuttle

Frio, SE Texas

Bob Liska

Wilcox, S and SE Texas

Jim Thorpe

Miocene and Cam-Miogyp



## SEE YOUR DATA IN A WHOLE NEW LIGHT!

Take the pressure out of exploration  
and drilling by seeing what you  
are going to encounter.



### eSeis

www.e-seis.com  
713.531.1447

- Lithology & Fluids
- Depositional Facies
- Pore Pressure from V & Q
- Well Planning Consultation

