

# NOGS LOG

AUGUST 2012

Volume 53, Number 2



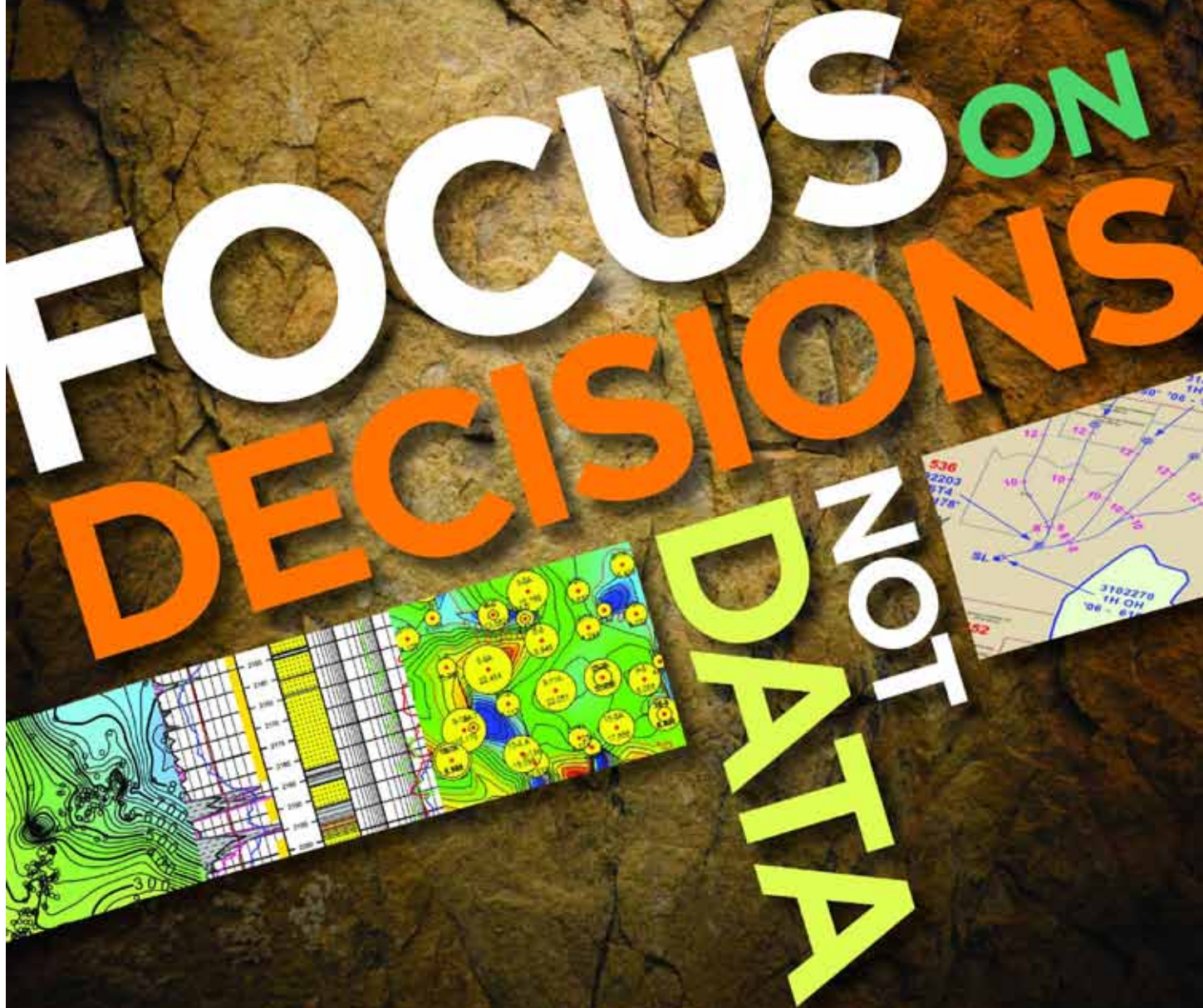
## AUGUST 6 - NOGS LUNCHEON

Presentation: Geophysical Monitoring of Artificial Earthen Levees

Guest Speaker: Juan Lorenzo, Ph.D. - Geology and Geophysics Dept. • LSU - Baton Rouge, LA



# FOCUS ON DECISIONS NOT DATA



Why spend valuable time searching for data when you have important decisions to make?

Let TGS focus on the data. With worldwide well data experience and a dedicated customer support team, TGS provides high quality data in the formats you need.

Email [WellData@tgsnopec.com](mailto:WellData@tgsnopec.com) to learn more about TGS' well data library that includes production data, directional surveys and the largest online collection of well logs.



Learn more at [www.tgsnopec.com/welldata](http://www.tgsnopec.com/welldata)

## IN THIS ISSUE

### Regular Features:

From the Editor .....	3
From the President.....	5
NOGS Officers / Contacts .....	6
Upcoming Events & Activities .....	7
NOGS Luncheon Presentation .....	9
August & September Calendar .....	12
NOGS Welcomes .....	16
Drill Bits .....	18
Info-Tidbits .....	26
NOGS Memorial Foundation.....	29
FONO Fund.....	29

### Special Features:

In Remembrance.....	13
NOGS Election Results .....	13
July 9th Luncheon & Awards .....	14
NOGA News.....	20

## ON THE COVER:

### Cover Photo Submitted by: Dr. Juan Lorenzo

LSU graduate student James Crane places a string of 100-Hz vertical-component geophones (left) and 30-Hz horizontal component geophones (right) at 15-cm intervals, along an east-west section of levee just east of the Lake Villa Pump Station (Surburban Canal), Metairie, Louisiana. Four surface impact sources spaced 3.6 m apart were applied on either side of the strings to sample a zone of seepage. Seeps had been located by the Southeast Flood Protection Authority-East and US Army Corps of Engineers. No significant changes in velocity structure were detected and seeps were attributed to a hanging aquifer within the flood-protection levee. Student field work for geophysical levee monitoring is provided to UNO and LSU by the Southeast Louisiana Flood Protection Authorities-East and -West, The New Orleans Geological Society, the Southeastern Geophysical Society, and the American Petroleum Institute, New Orleans Chapter.

## From the Editor

Hello again fellow NOGS members! I want to start off by thanking those of you who provided feedback on the new look of the *LOG*. It sounds like the general consensus is the color formatting and modern style are an overwhelming success. Significant credit for this improvement goes to our new formatter and publisher, Kristee Brown, and our previous editor, David Tatum. In addition to the new look of our monthly publication, we also look forward to bringing you additional features in the *LOG* that I think you will all enjoy. Some of those enhancements are the “NOGS Welcomes” feature, which introduces our new members to the rest of our Society, as well as the “NOGS Member Updates,” which will give you the chance to provide a personal update to our fellow members regarding any life or career events you want to share.

I also want to make special note of the upcoming Deepwater Technical Symposium at the Hilton Riverside on August 15th and 16th. These events are always great networking opportunities and are especially rich in technical learning opportunities, especially for those of us who work in the Deepwater, myself included. Next month’s Luncheon speaker will be Dr. Juan Lorenzo, a former professor of mine in the LSU Department of Geology and Geophysics, and he will be talking about utilizing geophysical methods to investigate levee integrity in the New Orleans area, a topic of interest for many who call this area home. And finally I want to recognize the newly elected NOGS officers for the 2012-2013 year. Congratulations to you all and I look forward to working with you during this upcoming year.

Thanks,

**Jordan Heltz – NOGS LOG Editor**



# These nodes change everything.

With absolutely no cables,  
there's absolutely no stopping you.



True cable-free seismic

Dealing with tons of cable will hinder any seismic acquisition, land or marine. That's why our exclusive, true cable-free ZNodal® systems pay such huge dividends in any environment.

Our lightweight, compact ZLand® system lets your crews work faster and much more safely while recording high-resolution data, even in the most challenging terrain.

Our ZMarine® system, also completely self-contained, deploys easily and safely, even in congested areas, to water depths of 3000m, which makes it ideal for 4D reservoir monitoring.

Welcome to a new world of seismic acquisition.



FairfieldNodal.com



## *From the President*

The New Orleans Geological Society could not exist without the dedication and service of volunteers. These individuals maintain the books, organize luncheon speakers and events, and keep the best interests of NOGS members at heart. Thank you to all who ran for office and congratulations to those who won. This year's board is diverse with respect to the different geological disciplines in today's industry. I am excited to have the unique opportunity of working with this enthusiastic and talented group of professionals.

One person in particular has helped NOGS make great strides as a professional organization continuously for the last 20 years. She runs the office of NOGS like a well-oiled machine and keeps the board in check. Without her assistance, being an officer may feel like a full-time job. Thank you, Annette Hudson for all the hard work you have put in for us.

A quick reminder about the Deepwater Technical Symposium which will be held August 15-16 at the Riverside Hilton Hotel, where deepwater offshore Mexico, the Wilcox play, and 4-D seismic are just a few topics available. Many NOGS members had a hand in organizing this event, so it is sure to be fascinating with an incorporation of multiple geological elements.

Last month, Carlo Christina reported a deficit in membership with respect to last year's numbers. One of our goals this year is to increase our membership through social events and creating an environment attractive to all geological disciplines.

I hope to see you all at this month's luncheon, on August 6th, when Dr. Juan Lorenzo of the G&G department at LSU will present "Geophysical Monitoring of Artificial Earthen Levees." This is a topic that, as a New Orleanian, I am very interested in: flood protection. We have had great turnouts for our last few luncheon meetings, and I anticipate us continuing the tradition.

One last note, if you haven't noticed, last month we had our very first full color version of the NOGS LOG. I applaud the editors and staff that put the time and effort into making this happen. I am very pleased with how it turned out.

*Will Jorgensen*

## NOGS Office

Office Manager: Annette Hudson  
Office Hours: 8:30 am — 3:30 pm on Monday-Wednesday-Friday  
Phone: 504-561-8980 • Fax: 504-561-8988  
Email: info@nogts.org • Website: www.nogs.org  
The office is located at 810 Union Street, Suite 300, New Orleans, LA 70112.  
Correspondence and all luncheon reservations should be sent to the above address.



## BOARD OF DIRECTORS

President	Will Jorgensen
Vice President	Kevin McVey
Secretary	Bruce Bahlinger
Treasurer	Kelli Hardesty
President-Elect	Bay Salmeron
Editor	Jordan Heltz
Director 2013	Edward B. Picou, Jr.
Director 2014	Michael N. Fein
Director 2015	Irion Bordelon, Jr.

Company	Phone
Shell	504-728-6339
ETROA Resources LLC	985-809-3808
Saratoga Resources Inc	985-809-9292
Environmental Resources Management	504-831-6700
Chevron	832-854-6431
Chevron	985-773-7163
Consultant	504-529-5155
W & T Offshore	504-210-8148
NorthStar Energy, LLC	985-778-3827

E-mail
william.r.jorgensen@shell.com
kmcvey@etroa.com
bbahlinger@charter.net
kelli.hardesty@erm.com
bay.salmeron@chevron.com
jordanheltz@chevron.com
epicou@bellsouth.net
mikef@wtoffshore.com
irion.bordelon@yahoo.com

## COMMITTEE

AAPG Delegates	Arthur H. Johnson
AAPG Student Chapter	Hunter Berch
AAPG Student Chapter	Michael Hopkins
AAPG Student Chapter	Drew Boudreaux
Advertising-Log	Kimberly Maginnis
Auditing	Bay Salmeron
Awards	Michael N. Fein
Ballot	Kelli Hardesty
Best Paper	Bay Salmeron
Continuing Education	TBA
Employment Counseling	TBA
Entertainment	Bay Salmeron
Environmental	Daisy Pate
External Affairs	Michael A. Fogarty
Field Trip	TBA
Finance and Investment	Kelli Hardesty
Historical	Edward B. Picou, Jr.
Membership/Directory	Carlo C. Christina
New Geoscientists (NGNO)	TBA
Nominating	Arthur H. Johnson
Non-Technical Education	Duncan Goldthwaite
Office Operations	Daisy Pate
Publications Sales	Edward B. Picou, Jr.
Photography	Tom Klekamp
School Outreach	Thomas C. Bergeon
Scouting	Carol Rooney
Sponsorship/Houston	David E. Reiter
Technical Projects	TBA
Ad Hoc Committee	
on University Support	Michael J. Gallagher

Company	Phone
Hydrate Energy International	504-464-6208
LSU	662-312-1300
Tulane University	228-209-2262
UNO	337-578-5587
W & T Offshore Inc	504-210-8174
Chevron	832-854-6431
W & T Offshore	504-210-8148
Environmental Resources Management	504-831-6700
Chevron	832-854-6431
Chevron	832-854-6431
Pontchartrain Partners	504-862-1775
Sylvan Energy, LLC	603-523-4808
Environmental Resources Management	504-831-6700
Consultant	504-529-5155
Retired (C & R Expl. Inc)	504-835-4116
Hydrate Energy International	504-464-6208
Consultant	504-887-4377
Pontchartrain Partners	504-862-1775
Consultant	504-529-5155
Amber Resources LLC	985-845-4046
Century Exploration	504-832-3772
Consultant Geologist	504-835-1909
Woodside Petroleum	713-401-0045
Eni Petroleum	713-393-6100

E-mail
artjohnson51@hotmail.com
hberch1@tigers.lsu.edu
mhopkins@tulane.edu
apboudr1@uno.edu
kmaginnis@wtoffshore.com
bay.salmeron@chevron.com
mikef@wtoffshore.com
kelli.hardesty@erm.com
bay.salmeron@chevron.com
bay.salmeron@chevron.com
daisy.pate@gmail.com
mike.a.fogarty@gmail.com
kelli.hardesty@erm.com
epicou@bellsouth.net
Carlocc398@aol.com
artjohnson51@hotmail.com
DGldthwt@aol.com
daisy.pate@gmail.com
epicou@bellsouth.net
klekamp@bellsouth.net
Tom.bergeon@centuryx.com
carolbrooney@aol.com
david.reiter@woodsideenergy.com
Michael.Gallagher@enipetroleum.com

## NOGS LOG STAFF

Editor	Jordan Heltz
Editor-Elect	Sheri Richardson
Auxiliary	Peggy Rogers
Info Tidbits	Jordan Heltz
Drill Bits	Carlo C. Christina
Drill Bits	Kevin Trosclair
Layout	Kristee Brown
Webmaster	Edward B. Picou, Jr.

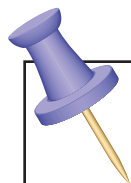
Company	Phone
Chevron	985-773-7163
LaBay Exploration Co LLC	504-371-5967
NOGA	504-392-6323
Chevron	985-773-7163
Retired (C & R Expl. Inc)	
UNO Graduate Student	504-202-7997
Creative Graphics & Printing LLC	985-626-5223
Consultant	504-529-5155

E-mail
nogseditor@gmail.com
srichardson@labayexploration.com
lrogers79@cox.net
nogseditor@gmail.com
drillbits81@yahoo.com
kjtrosc@uno.edu
kpbrown@bellsouth.net
epicou@bellsouth.net

## NOGS AUXILIARY

Officers	Phone
President	Mary Walther
1st Vice-President	Dolores Murphy
2nd Vice-President	Camille Yeldell
Secretary	Beverly Christina
Treasurer	Judy Lemarie'
Parliamentarian	Alma Dunlap
Member-at-Large	Jean Jones

Directors	Year	Phone
MaryEllis Hasseltine	2011-13	504-885-7657
Gwenn Swaney	2011-13	504-831-0748
Pat Williamson	2011-13	985-626-6910
Beverly Kastler	2012-14	504-286-0879
Linda Peirce	2012-14	504-393-7365
June Perret	2012-14	504-664-0651



# UPCOMING Events & Activities

## August 6 • NOGS Luncheon

Holiday Inn Downtown Superdome

\$2.00 validated parking in hotel garage

### Presentation:

*Geophysical Monitoring of Artificial Earthen Levees*

### Guest Speaker:

**Juan M. Lorenzo, Ph.D.**

Department of Geology and Geophysics • Louisiana State University — Baton Rouge, LA

*See page 9 for Abstract and Biography*

### HOLIDAY INN DOWNTOWN SUPERDOME

Check with concierge or  
front desk for location.

Lunch served at 11:30 am

### ADMISSION:

With reservation .....\$30.00

Without reservation .....\$35.00

Student Member with reservations..... FREE

## August 15-16

## 16th Annual Gulf of Mexico Deepwater Technical Symposium

New Orleans Riverside Hilton Hotel • New Orleans

For more information or to register, visit [www.deepwaternola.org](http://www.deepwaternola.org)

## NOGS CONTACT LIST

*Continued from previous page*

### MEMORIAL FOUNDATION

#### BOARD OF TRUSTEES

2012-2013 Chairman	Daisy Pate
2012-2013 Secretary	Will Jorgensen
2012-13 Trustee	Jennifer Connolly
2012-13 Trustee	William M. Whiting
2013-14 Trustee	J. David Cope
2013-14 Trustee	Tom Klekamp
2014-15 Trustee	TBA
2014-15 Trustee	TBA

Company
Pontchartrain Partners
Shell
Shell
Consultant
ANKOR Energy LLC
Amber Resources LLC

Phone
504-862-1775
504-728-6339
504-728-6411
504-947-8495
504-596-3672
985-845-4046

E-mail
daisy.pate@gmail.com
william.r.jorgensen@shell.com
jennifer.connolly@shell.com
bootscon@aol.com
dcope@ankorenergy.com
klekamp@bellsouth.net

### AAPG DELEGATES

#### Term Ends

2014	Arthur H. Johnson	Hydrate Energy International	504-464-6208	artjohnson51@hotmail.com
2014	Brenda Reilly	AMROMCO Management LLC	504-430-4240	reillybe@yahoo.com
2014(a)	Elizabeth C. McDade	McMoRan Exploration Co.	504-582-4510	ecmcade@bellsouth.net
2014(a)	Frances A. Wiseman	BOEM (retired)	504-831-8343	snowde.fran@gmail.com
2015	Susan A. Waters	Shell	504-728-0229	susan.waters@shell.com
2015	William M. Whiting	Consultant	504-947-8495	bootscon@aol.com
2015(a)	David E. Balcer	Chevron	985-773-6725	dbalcer@chevron.com
2015(a)	Earl W. Cumming	Shell	504-728-6370	earlcumming@shell.com

### NEW MEMBERS

Phillip G. Gregory	Geologist	Shell E&P	281-544-2919	p.gregory@shell.com
Mark A. Margason	CEO	Haland Energy Partners	312-263-2438	markm@halandenergy.com
Todd C. Meyer	Seismic Source	Geokinetics	504-287-3608	todd.meyer@geokinetics.com
Dean E. Wolcott	Program Manager	Thompson Consulting Services	504-256-5386	dwolcott@thompsoncs.net

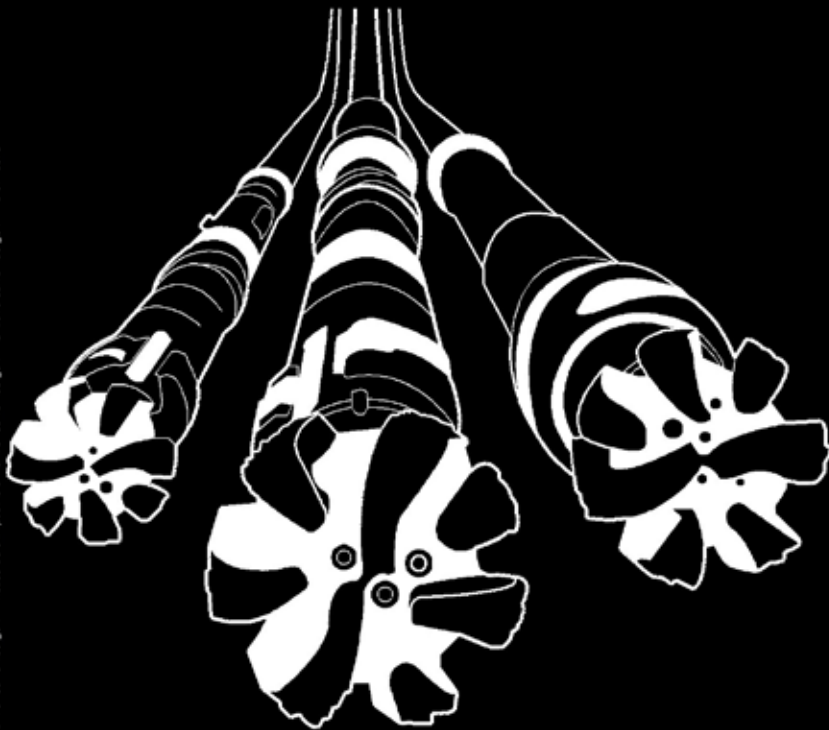
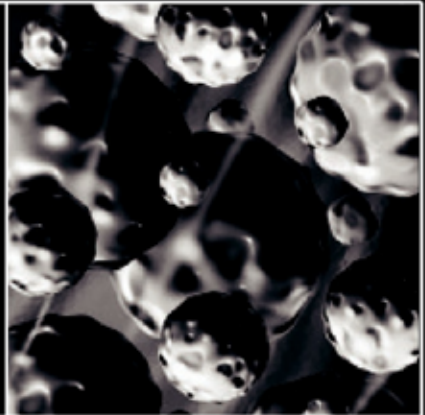
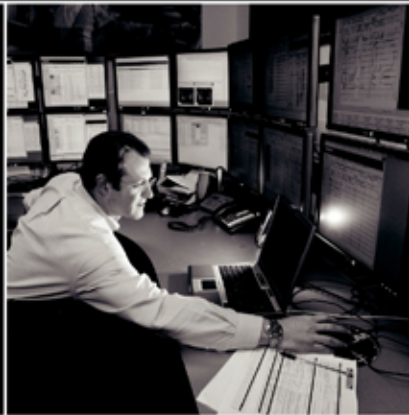


# Deep Water

WELL CONSTRUCTION

## Are all your services deepwater ready?

Control Measures	Complexity/Process + Exposure	Preparedness				
		High	Preparedness			Low
		People + Competency		Equipment + Technology		
		1	2	3	4	5
-5	-5	-4	-8	-12	-16	-20
-4	-3	-6	-9	-12	-15	-18
-3	-2	-4	-6	-8	-10	-12
-2	-1	-2	-3	-4	-5	-6
-1	-1	-2	-3	-4	-5	-6



\*Mark of Schlumberger. Measurable Impact is a mark of Schlumberger. © 2010 Schlumberger. 10-dw-0079

**Our Project Readiness Assessment (PRA) approach has been applied and improved over the last 5 years.**

All deepwater projects in which Schlumberger participates benefit from our PRA process, which complies with new U.S. regulatory requirements. This helps deliver seamless, efficient startup, and reduced NPT.

Learn more at

[www.slb.com/deepwaterready](http://www.slb.com/deepwaterready)

Global Expertise  
Innovative Technology  
Measurable Impact

# Schlumberger





## August 6 NOGS Luncheon Presentation

☆☆☆ at the Holiday Inn Superdome ☆☆☆



### Geophysical Monitoring of Artificial Earthen Levees



*presented by*

**Juan M. Lorenzo, Ph.D.**

Department of Geology and Geophysics  
Louisiana State University  
Baton Rouge, LA

#### ABSTRACT

A growing societal need exists for scientific involvement in the study of flood protection systems, addressable by near-surface seismic methods. Both deep- and near-surface hydro-geologic processes can contribute to the structural failure of artificial flood protection embankments, dikes, or artificial levees. Recently, seismic geophysical methods have attempted to develop a proxy for engineering shear strength, by mapping changes in the transmission velocity of shear waves through artificial levees. In the absence of electromagnetic methods VP/VS ratios can be used as good indicators of variations in the fluid (water, and air or gas) saturation.

A distressed section of an artificial earthen levee, suitable for seismic investigation, lies ~15 km S of the city of New Orleans, Louisiana. A 100-m section of the crest shows continuous cracks which are as much as 10 cm wide, and 30 cm deep at their northern end. Between September 2007 and February 2008 we collected horizontally polarized shear and compressional wave data in pseudo-walk-away tests focusing on the natural soils (upper 30 m) of the protected (west) flank of the earthen levee 30 m away from the crest. Two profiles lie parallel and on either flank of the damaged levee crest and, for reference, two profiles sample undamaged portions of the protected levee flank. Cone-Penetration Tests (CPT) are spaced at 300 m intervals along the levee crest.

In the first 30 m (~100 feet) of sediment below the lower delta plain of the Greater New Orleans area, a complex and dynamic interaction of freshwater and marine sedimentary environments has juxtaposed a diverse set of facies. From the integration of VP and VS velocity maps (from body and Love Waves), surface facies maps, and laboratory-derived physical properties we interpret greater soil saturation on the protected side of the levee, adjacent to crestal cracks. Subsurface fluvial-deltaic facies are too variable to be predictable from physical properties at widely-spaced CPT sites alone. Future preventive, monitoring of flood-protection barriers stand to benefit from integration of geophysical profiles, calibrated to geotechnical information at point locations and integrated with geological and topographic information.

#### BIOGRAPHY

Juan Lorenzo became a geologist through the University of Barcelona in 1983. His interest in geophysics was kindled after a summer internship in Italy with Western Geophysical in 1982. The following year he came to the US as a Fulbright student where he concentrated on Marine Seismology for his graduate degrees at the Lamont-Doherty Observatory of Columbia University. For his Ph.D. he worked on the structure and mechanics of continental transform margins. He has participated in seven marine geophysical and drilling cruises in all the major oceans except the Arctic and has led two land-based seismic field surveys lasting several months to central and northern Chile: in 2001 and in 2007-8.

From 1993 until 1999 while at LSU he used marine seismic images to study the flexure and failure of northern Australia during collision with Indonesia. Since 1999 he turned to land-based seismic studies to look at shallow faulting in the Gulf Coast (0-500 m), microearthquake activity induced by hydraulic fracturing and soil saturation in a physical seismic modeling tank and in the field beneath New Orleans levees. Field work on the geophysical monitoring of levees forms part of a collaboration with the University of New Orleans and is funded by South-East Louisiana Flood Protection Authorities-West and East. Student scholarships for the work are supported by New Orleans Geological Society, Inc. and Memorial Foundation, Southeastern Geophysical Society and American Petroleum Institute Delta Chapter.

**THE LUNCHEON RESERVATION DEADLINE IS JULY 31 - CONTACT THE NOGS OFFICE**

*"And Looking Ahead . . ."*

*The next luncheon will be held on September 10th. Our guest speakers will be Erik Scott and Richard Denne of Marathon Oil Company and they will present "Effect of the K/Pg Boundary Chicxulub Impact on the Northern Gulf of Mexico." Contact the NOGS office at 504-561-8980 or use the PayPal link on the NOGS website ([www.nogs.org](http://www.nogs.org)) to make your reservation.*

# NeuraSection

## Produce YOUR Interpretation

NeuraSection brings together logs, maps, sections and other critical information allowing you to focus on interpretation. With real-time editing of computer generated results, your interpretation becomes clear and meaningful.

- Auto and manual contouring
- Cross section generation
- Real-time editing
- Reserves calculations
- Presentation montaging



[www.NeuraSection.com](http://www.NeuraSection.com)

1.281.240.2525



**Neuralog**

*Turning Paper Into Petroleum*

© 2012 Neuralog • [www.neuralog.com](http://www.neuralog.com) • 1.281.240.2525 • 1.800.364.8728

# SEI<sup>®</sup>

**Seismic Exchange, Inc.**

**Strategic Speculative Surveys**  
Geophysical Data Marketing & Management

**YOUR**  
Full Service  
National  
Seismic Data  
Marketing Firm



DALLAS DENVER HOUSTON MIDLAND NEW ORLEANS OKLAHOMA CITY CORPUS CHRISTI TULSA  
201 St Charles Avenue, Suite 4300, New Orleans, Louisiana 70170-4300 504-581-7153 FAX 504-581-9591

[seismicexchange.com](http://seismicexchange.com)





# Drill with confidence.

Diversified Well Logging, LLC brings the accuracy and expertise only a company with over sixty years in the oil and gas industry can deliver. We are your eyes and ears in the field, especially when it comes to deep water or high pressure, high temperature areas.

DWL offers 24-hour formation evaluation. We provide secure and customized real-time data communication, in-house research and development, and 24/7 on-call support for our equipment and our engineers.

Whether you have a 10-day job or a 110-day job, we provide the specialized attention you require. **Our experience means you can be confident in the safety and performance of your well.**



- *Formation Evaluation*
- *Geosteering*
- *Drilling Optimization*
- *Real-time Data Transmission*
- *Early Kick Detection*



*Serving the Oil and Gas Industry for Over 60 Years*

August						
Sunday	Monday	Tuesday	Wednesday	Thursday	Friday	Saturday
			1	2	3	4
5	6 NOGS Luncheon Holiday Inn @ 11:30 A.M.	7	8	9	10	11
12	13	14	15 GOM Deepwater Technical Symposium	16 GOM Deepwater Technical Symposium	17	18
19	20	21	22	23	24	25
26	27	28	29 NOGS Board Meeting	30	31	

September						
Sunday	Monday	Tuesday	Wednesday	Thursday	Friday	Saturday
						1
2	3 Labor Day	4	5	6	7	8
9	10 NOGS Luncheon Holiday Inn @ 11:30 A.M.	11	12 NOGA Luncheon	13	14	15
16	17	18	19 NOGS Board Meeting	20	21 NOGS "Kickoff Party"	22
23	24	25	26 LA Subsidence, Land Loss, Geology Symposia	27 LA Subsidence, Land Loss, Geology Symposia	28 Louisiana Oil and Gas Symposium	29
30						





## *In Remembrance Steve and Marion Millendorf*

The media, newspapers and television have reminded us that, 30 years ago this month, Pam Am Flight #759 crashed on takeoff in Kenner, killing all on board plus 8 on the ground.

NOGS particularly felt that tragedy in that NOGS members Steve and Marion Millendorf were passengers on that flight. We deeply miss them, and at the same time, we are greatly appreciative that the Gibbet Hill Foundation bestowed a most generous donation to our Memorial Scholarship fund in their memory.

It is gratifying and impressive to think of how many geology students have benefitted, and how many more will continue to benefit from this scholarship fund.

Many thanks,  
*Duncan Goldthwaite*  
(NOGS President 1982-1983)

## **Results of the Recent NOGS Elections**

An election was held in May for the NOGS officers for the 2012-2013 year. The results of the election are as follows:

President-Elect .....	Bay Salmeron	Treasurer .....	Kelli Hardesty
Vice President .....	Kevin McVey	Editor-Elect .....	Sheri Richardson
Secretary .....	Bruce Bahlinger	Director (2012-2015) .....	Irion Bordelon, Jr.

NOGS would like to give a special thanks to all of the dedicated members who agreed to be candidates for office this year.

### ***NOGS Member Updates: NOGS LOG wants you!***

Share the latest information about your life, career or anything else of interest  
to have it published in an upcoming NOGS LOG.

Send an email to [nogseditor@gmail.com](mailto:nogseditor@gmail.com) or mail your news to:

"NOGS Member News" • 810 Union Street • Suite 300 • New Orleans, LA 70112



# **CENTURY EXPLORATION NEW ORLEANS, LLC**

*An independent gulf coast exploration, development and operating company*

Three Lakeway Center, Suite 2800  
3838 North Causeway Blvd.  
Metairie, LA. 70002

Office: 504.832.3750  
Fax: 504.832.3760  
[www.centuryx.com](http://www.centuryx.com)

# JULY 9TH LUNCHEON



At the July 9th NOGS luncheon, the Board gave out awards to outgoing officers and for exceptional service to the NOGS organization. Mike Fein, NOGS Director and Awards Chairman, presented the following awards:

**Frances Wiseman** for volunteering as Vice President after Daisy Pate assumed the Presidency

**Charles Holman** for his work as Secretary

**Bay Salmeron** for his work as Treasurer

**David Tatum** for his work as Editor

**Art Johnson** for his role as director for 2009-2012

**Daisy Pate** for her work as President after taking over the role when Bob Hafner moved to Houston

**Tom Klekamp** was awarded **Honorary Life Membership** for his long-time work as committee member and chair, President, Chairman of the Memorial Foundation, and President of GCAGS.

**The President's Award** was presented to the following three individuals; **Leslie Broussard** for her support of NOGS and for all her help with the NOGS Golf Tournament; **Kelli Hardesty** for presenting, bringing in a presenter, bringing in new members, volunteering at Super Saurus Saturday, and running successfully for Treasurer; and, **Will Jorgensen** who as President-Elect put on a great kickoff party and Christmas party, which succeeded in attracting younger members of the organization.

A special award was presented to **Jannette Sturm-Mexic** as a thank you for her many years of service on the *NOGS LOG*.

In celebration of **Annette Hudson's** 20th anniversary with NOGS, Jack Langford, who hired Annette in 1992, presented her with a Citation, four tickets to the Louisiana Philharmonic, and a silver locket inscribed with her initials, NOGS, and 20 years.

Mike also announced that the NOGS Outstanding Service Award would now be named **The Edward B. Picou Outstanding Service Award**. It will be given to a member who embodies Ed's spirit of giving to his company, his profession, his alma mater, and mankind in general. The first recipient of this special award was **David Tatum**. David was responsible for not only saving NOGS considerable money with the *NOGS LOG*, but also upgraded it to full color.

NOGS appreciates the work of all its volunteers, members, and especially its advertisers and sponsors.



# Get More from your Core

With reservoirs becoming increasingly complex, you need the most accurate information you can get to better understand your reservoir.

Weatherford Labs helps you get more from your core by combining an unsurpassed global team of geoscientists, engineers, technicians and researchers with the industry's most comprehensive, integrated laboratory services worldwide. From core analysis, sorption, geochemistry and isotopic composition to detailed basin modeling and comprehensive data packages, we provide you with real reservoir rock and fluid information that hasn't been distilled by a simulator or iterated by software.

We call it "The Ground Truth™" – giving you the accurate answers you need for better reservoir understanding. You'll call it a better return on your reservoir investment. To learn more, contact [TheGroundTruth@weatherfordlabs.com](mailto:TheGroundTruth@weatherfordlabs.com).



**Weatherford**  
LABORATORIES  
[weatherfordlabs.com](http://weatherfordlabs.com)

© 2011 Weatherford. All rights reserved. Incorporates proprietary and patented Weatherford technology.

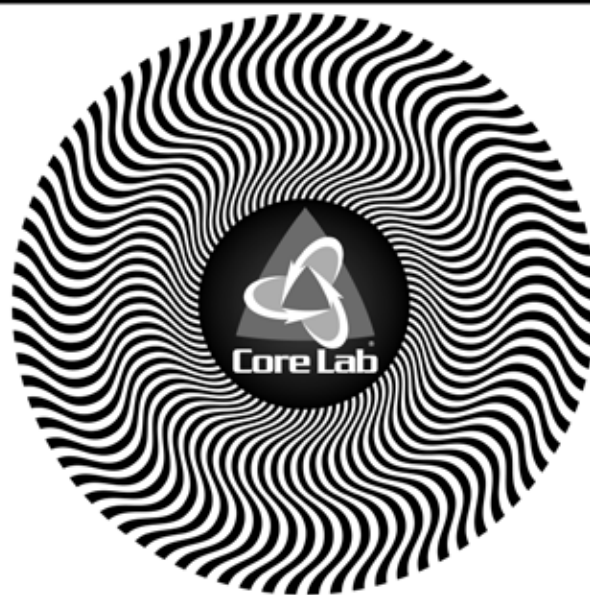


**Shell has worked in partnership  
with the NOGS for many years, and  
is proud to count the society among  
its closest business associates.**

The New Orleans Geological Society was organized in 1941 to foster scientific research and advance the science of geology. Particular emphasis is laid on the exploration for and production of petroleum and natural gas. Related objectives include encouraging the adoption of improved methods of exploration, disseminating pertinent geological and technological data, and maintaining a high standard of professional conduct among its members.

[www.shell.com/us.sepcos](http://www.shell.com/us.sepcos)

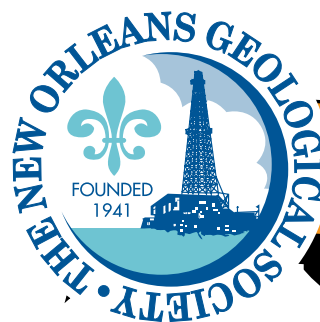
**It's no illusion...  
Core Lab offers everything you need.**



©2009 Core Laboratories. All rights reserved.

Unconventional resource exploitation • Gas shale experts • Deepwater GOM authority  
Capacity for fast turnaround • High-quality people • Global support  
Industry leadership and reliability • Proprietary and patented technologies • Experience

[www.corelab.com/rd/petroleumservices](http://www.corelab.com/rd/petroleumservices) • 24-hour wellsite service hotline: 504-733-6583



# WELCOMES

**Hunter C. Berch**, a geoscience intern at Chevron ES, is working on his MS degree in Geology at LSU with an interest in unconventional petroleum systems. His Master's thesis is titled "Determination of the Lateral Continuity and Hydrocarbon Potential of the Tuscaloosa Marine Shale in the North Louisiana Salt Basin Using the Modified Passey Log Overlay Method to Characterize Spatial Variations in Total Organic Content." Hunter, a native of Starkville, MS, received his BS (2011) in geology from Millsaps College in Jackson, MS. He is a new student member of NOGS and is LSU's AAPG Student Chapter representative to NOGS this year.

**Charles P. Chaisson**, a native of New Orleans, is attending the University of Louisiana at Lafayette as a MS candidate in geology. He is also working as a geologist for Covington Exploration in Covington where he is generating prospects by subsurface mapping and interpreting 3D seismic. Charles graduated from UNO with a BS (2011) in Geology and was a 2010-2011 recipient of the Jules & Olga Braunstein Memorial Scholarship. He currently resides in Madisonville.

**Martin Owen Miller II** is a native New Orleanian. As an attorney and land co-owner in Cameron and Vermilion Parishes, he works with geologists and geophysicists, negotiates leases/trades and prepares lease documents to have prospects drilled and, as he hopes, developed. M. O. earned his BBA in Finance (1962) from the University of Notre Dame and his JD (1969) from Tulane University School of Law. He is a member of Professional Landmen's Association of New Orleans (PLANO), LA State Bar Association, ABA and other professional organizations. He and his wife, Diane, have been married for 45 years.

**Ashley B. Scriber**, a mineral owner and organizer with Scriber Land Company, has been employed in Equities Sales at Johnson Rice since 2007. He previously was employed at Howard Weil also in Equities Sales. He is a native of Pine Bluff, AR and received both a BA (1994) in economics and a MBA (2000) from Tulane University. Ashley is interested in both the Non-Technical Education and the Scouts committees of NOGS. Ashley and his wife, Anina, have three children and reside in New Orleans.

**Andrew M. Thorne** is a geologist with Northwind Energy in New Orleans. Andrew graduated from George Mason University, in Virginia, with a BS (1988) in geology. In 1992 he earned a MS in Geology from LSU. While working as a geologist at Texaco, Andrew received his MBA from Tulane University in 1999. Andrew has been reinstated into NOGS and is an associate member in AAPG with an active membership pending. He is married to Judith and they reside in New Orleans with their two young children.



**Scott R. Tipple** is a student in the MS program at LSU where he recently participated in the Imperial Barrel competition. Scott's thesis title is "A 2-D, Variable-Density Numerical Model of Carbonate Subsurface Fluid Flow through the Edwards Aquifer, New Braunfels, TX: Mechanisms Inhibiting Flow Across the Freshwater/Saline-Water Interface." For the past two summers he has been a teaching assistant for LSU at their Senior Geology Field Camp in Colorado Springs, CO. This summer he is a geoscience intern at Chesapeake Energy. He is a member of AAPG Student Chapter in which he served as president for 2011-2012 and was the LSU Student Chapter representative to NOGS last year. Scott also received his BS (2009) in geology from LSU.

**Torbjörn E. Törnqvist**, PhD. is a professor in the Quaternary research group in the Department of Earth and Environmental Sciences at Tulane University where he has been employed since 2005. He is a native of Uppsala, Sweden. Torbjörn majored in physical geography and earned both his MS (1988) and his PhD (1993) at Utrecht University in The Netherlands. For his PhD, Torbjörn researched the Holocene evolution of the fluvial part of the Rhine-Meuse Delta. Some of Torbjörn's research interests include Quaternary geology, sea-level change, and fluvial and deltaic sedimentology. He is a member of AGU, GSA, SEPM, and IAS.

**Phillip G. Gregory**, a geologist with Shell E&P, has thirty years of experience as a geoscientist in the oil and gas industry. He was employed with Texaco in New Orleans from 1981-2001 and has been with Shell in Houston since 2002. However, he is looking forward to moving back to New Orleans soon and working with Shell's Eastern GOM Deepwater team. Phillip was born in Birmingham, AL but calls Memphis, TN home since moving there during high school. He received both his BS (1979) and MS (1981) in geology from Memphis State University. He is married to Elinor, a fellow NOGS member, who is from New Orleans and is a geophysicist at Chevron in Houston. Phillip is an active member of AAPG and HGS, and has been reinstated into NOGS.

**Mark A. Margason**, CEO of Haland Energy Partners in Chicago, is an oil and gas investor. Haland Energy is a private exploration and development company drilling wells in the Wilcox trend and Miocene sands of South Louisiana. Mark received his BS/BA in Business and MBA in 1979 from the University of Denver. He and his wife, Cheryl, live in Hinsdale, Illinois.

**Todd C. Meyer** is employed as a seismic source at Geokinetics, an independent, international land and shallow water geophysical service company based in Houston. Todd received his degree in media arts in 2003 from Tulane University. He has worked in the seismic industry for ten years and has developed a great passion for geology and geophysics. Todd is interested in the Historical, Photography, School Outreach and Technical Projects committees. Todd is also an associate member of SEG. He currently resides in Slidell.

**Dean E. Wolcott** is a program manager for Thompson Consulting Services in New Orleans. He has twenty years of experience in environmental consulting, site investigations and natural resource management. Dean earned his BS (1986) in geology from Tulane University. As a new member of the NOGS community he is interested in the Environmental committee.

# South Louisiana and Offshore Gulf of Mexico Exploration and Production Activities

## LAFAYETTE DISTRICT, ONSHORE AREA

*By Carlo C. Christina*

During the month of June, the Office of Conservation issued 55 permits to drill new wells in the Lafayette District, Onshore Area.

### NEW LOCATIONS

In Allen Parish, Midstates will drill a deep field extension to **North Bel Field, (A)**, in Sec. 16, 6S-7W. The #1 Bel Minerals will be drilled to 16,000 feet to test deep Wilcox sands in the field which have been penetrated only to 12,300 feet. The field was discovered in 1978, but produced only 15,712 barrels of oil over a 5 year period. Nearest production is 11/2 miles to the southwest in Clear Creek Field, which is producing from a Wilcox sand at 11,900 feet. (245047)

Midstates will also drill a **Wilcox horizontal well** in **Cowards Gully Field, (B)**, Beauregard Parish in Sec. 8, 7S-11W. The #1 Musser-Davis 8 H will be drilled to 15,055 feet to test the Upper Wilcox section at 11,800 feet and then drilled in a 3250' horizontal leg. The proposed well is also located offsetting 3 recently completed vertical Wilcox completions. (244983)

Midstates continues its aggressive drilling program in **South Bear Head Creek Field, (C)**, in Beauregard Parish, with another **Wilcox horizontal well**. The #1 Musser-Davis 28 H will be drilled to 14,500 feet to test the Upper Wilcox section at 10,900 feet in a 3191' horizontal leg. The location in Sec. 28, 6S-11W is offsetting 4 Lower Wilcox vertical completions which produced more than 1,220,000 barrels of oil and 5 billion cubic feet of gas last year. (245065)

In Cameron Parish, **South Grand Cheniere Field, (D)**, Square Mile Energy has permitted the #1 Doland 14,600 RC SUA in Sec. 7, 15S-5W. The well is located 2 miles northwest of the nearest production, which is in Crab Lake Field. (245063)

In **Pine Prairie Field, (E)**, Evangeline Parish, Midstates will drill a deep test on the north flank of the field in Sec. 26, 3S-1W. The #1 Crowell will be drilled to a proposed depth of 14,200 feet to test deep Wilcox sands. (245043)

Luca Operation, LLC will drill a Camerina test in **Laurel Grove Field, (F)**, in Sec. 10, 10S-13E. The #1 Belle Plantation will be drilled to a depth of 12,900 feet, and is located 1 mile west of production in the field. (245111)

In Lafourche Parish Walter Oil & Gas will re-enter the old Exxon #1 Bowie which was drilled in **Lake Boeuf Field, (G)**, and plugged in 1967. The well is located in Sec. 116, 15S-18E, 1 mile north of Rob L production, and will be drilled to 14,100 feet. (245046)

### COMPLETIONS

Sanchez Oil & Gas has drilled and completed the #3 Denkman as an oil well in **Fluker Field, (H)**, in Tangipohoa Parish. The shallow Wilcox completion was drilled to 6700 feet in Sec. 31, 2S-7E and completed through perforations 6497 to 6501, overall, flowing 25 BOPD. (244816)

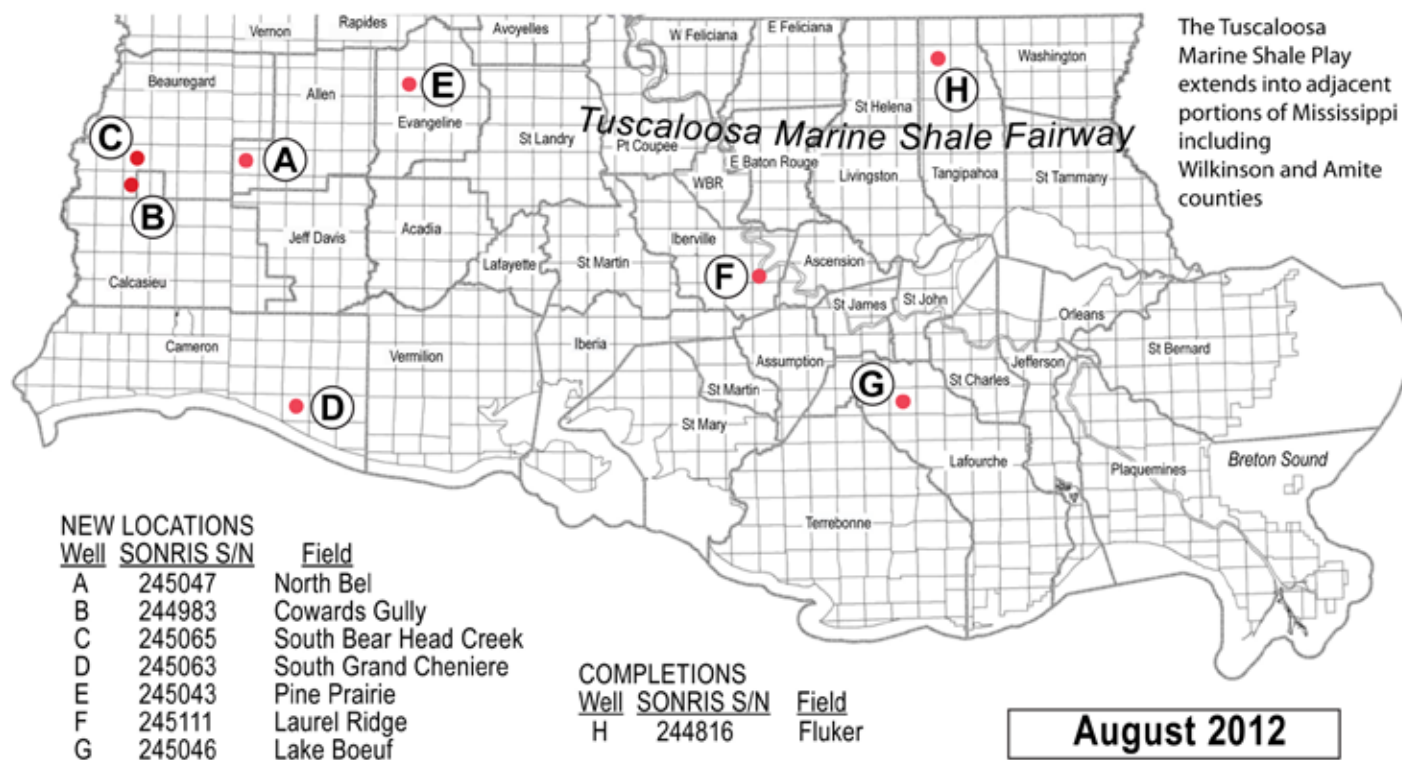
## OFFSHORE GULF OF MEXICO SHELF AND DEEPWATER ACTIVITIES

*by Al Baker*

During June, the BOEM approved 69 drilling permits, 35 of which were for Gulf of Mexico shelf wells and 34 were for Gulf of Mexico deepwater wells. There were 2 shelf (1 exploratory and 1 development) and 9 deepwater (5 exploratory and 4 development) new well permits granted. On the shelf, Stone Energy was awarded a permit for the **Ship Shoal 93 #E-2** development well, and Hall-Houston was awarded a permit for the **Ship Shoal 238 #7** exploratory well. In deepwater, BP received 4 development well permits for the **Green Canyon 743 #DC-321, #DC-322, #DC-323, and #DC-324** wells. Deepwater exploratory well permits were granted for the following wells: Chevron **Keathley Canyon 829 #1**, BHP Billiton **Green Canyon 507 #2**, Shell **Walker Ridge 508 #1** (Stones Field), Hess **Mississippi Canyon 726 #6** and Eni **Lloyd Ridge 411 #1**.

Between January 1st and May 31st, there have been a total of 160 drilling permits granted. Of these, 91 were for wells located in the Offshore Louisiana shelf, none in the Offshore Texas shelf and 69 in the deepwater or the Northern Gulf. This compares to 89 Offshore Louisiana wells, 6 Offshore Texas wells and 13 Northern Gulf wells for a total of 108 wells during the same period during 2011. The Northern Gulf activity has increased dramatically, whereas drilling activity in Offshore Texas has been abruptly curtailed since last year. The catalyst for the increase in Northern Gulf activity is the current high oil price, and the deterrent for Offshore Texas drilling is the low price of natural gas. Of the 2012 Offshore Louisiana shelf

## NOGS LOG DRILL BITS — SOUTH LOUISIANA ACTIVITY MAP



Tom Klekamp

permits, 17 were for new field wildcats, and 74 were for development wells. The 2012 Northern Gulf permits included 21 new field wildcats and 48 development wells.

On June 29th, IHS-Petrodata stated that the Gulf of Mexico rig supply had decreased by 2 to 112, while the contracted rig count had fallen by 1 to 75. This impacted the region's fleet utilization rate by increasing it to 67.0%. This compares to 65 out of the 122 rigs available during the same period in 2011. Even though the contracted rigs have increased by 13.7% since last year, the overall fleet is now 10 rigs fewer than this time last year. The majority of the available but unused rigs are cold-stacked and not marketed for contract.

Additionally, there were 24 platform rigs under contract out of the 52 total in the fleet for a fleet utilization rate of 46.2%. The current number of platform rigs under contract in the Gulf is one more than that reported last month.

On June 29th, the BakerHughes Rig Counts indicated that there were 48 active mobile offshore rigs in the Gulf, which represents 64.0% of the total mobile rigs under contract. All of the drilling remains in Offshore Louisiana and the deepwater Northern Gulf. The current active rig count compares to 29 active rigs during the same period last year. This represents a 60.4% increase in the active rig fleet on a year-to-year basis. Additionally, of the 24 platform rigs that are under contract, only 5 (or 20.8%) are currently working.

Between January 1st and May 31st, there were a total of 114 wells spudded in the Gulf of Mexico. This compares to 82 wells initiated during the same timeframe of 2011. In 2012, there were 77 wells started in Offshore Louisiana, no wells in Offshore Texas and 37 wells in the Northern Gulf. As a comparison, the 2011 starts included 58 wells in Offshore Louisiana, 8 wells in Offshore Texas and 16 wells in the Northern Gulf.

The BOEM held OCS Sale 216/222 on June 20, 2012 in New Orleans. This was the first Central Gulf lease sale held since March 2010. The Obama Administration had postponed OCS Sale 216, originally scheduled for March 2011, due to the BP/Macondo oil spill resulting in the later combination of that sale with OCS Sale 222. The recent sale attracted \$1,704,500,995 in high bids, which was nearly double the \$949.3 million in high bids received in the previous lease sale. In terms of money spent, OCS Sale 216/222 was the fourth highest in central Gulf leasing history. However, one disturbing fact that has been underreported was that there were 27.3% fewer companies participating in this sale when compared to the March 2010 sale. In 2010, there were 77 companies involved versus 56 companies this year or a 21-company reduction. One has to wonder if perhaps this decrease might be related to today's higher operating costs in the Gulf and the increase in regulatory oversight resulting from the BP/Macondo oil spill.

The 56 participating companies posted 593 bids on 454 tracts, which were 7.6% fewer bids on 3.1% fewer tracts in comparison to March 2010. There were 193 bids on tracts in less than 200 meters of water, 115 bids on tracts between 200 and 1600 meters of water and 146 bids on tracts in greater than 1600 meters of water. The highest bid in the sale was submitted by Statoil, which spent \$157.1 million for **Mississippi Canyon 718**. This is a deepwater tract situated immediately north of Shell's prolific Mars Field. Statoil was high bidder on 26 tracts spending a total of \$333,259,056. However, they came in second place to Shell, which spent \$406,594,560 on 24 tracts. Among the independent companies, Apache Deepwater was also active with 29 high bids totaling \$72,150,373. Apache Corp. also submitted 61 high bids, the highest number of total bids submitted by all participants.



# New Orleans Geological Auxiliary News

*"The objective of the Auxiliary is to promote fellowship among the wives of the members of New Orleans Geological Society and to render assistance to NOGS upon request."*

Our members meet four times during the year for luncheons in restaurants or in the homes of members. Sometimes we have speakers and, if it is one that we think will appeal to the spouses, they are invited to attend. We also have an evening social in the spring at the home of one of our members which includes spouses and significant others.

This year the Board of NOGA has planned a variety of events. We will begin the year with a luncheon at the home of Duncan and Margaret Goldthwaite in September. In November, we will be going to Vincent's Restaurant in Metairie. Virginia Barkley, owner of "Let's Get it Straight" will speak to us about getting organized and reducing clutter in our lives. After Mardi Gras, we will head to Metairie Country Club and, at that time, we will hear from Ronald Drez, historian and author. Ron has published several books on World War II and is currently working on a history of New Orleans. Our spring social will be held at the home of Jim and Trez Zotkiewicz who have graciously hosted this event in the past. We will end the year in May, with the installation of the new officers at Zea's on St. Charles Avenue.

Please take a minute to complete the membership application below and join us for some of these events in the coming year.

Mary Walther, President



## NOGA Past Presidents gathered at Metairie Country Club in May

*Seated: Linda Peirce, Earleen Rodan, Susie Baker and Jean Jones - Immediate Past President*

*Standing: Mary Walther, Beverly Kastler, Camille Yeldell, Pat Williamson, Peggy Rogers,  
Judy Lemarié, Judy Sabaté, Beverly Christina, Alma Dunlap and June Perret*

### New Orleans Geological Auxiliary Membership Application

Name \_\_\_\_\_ Spouse's Name \_\_\_\_\_

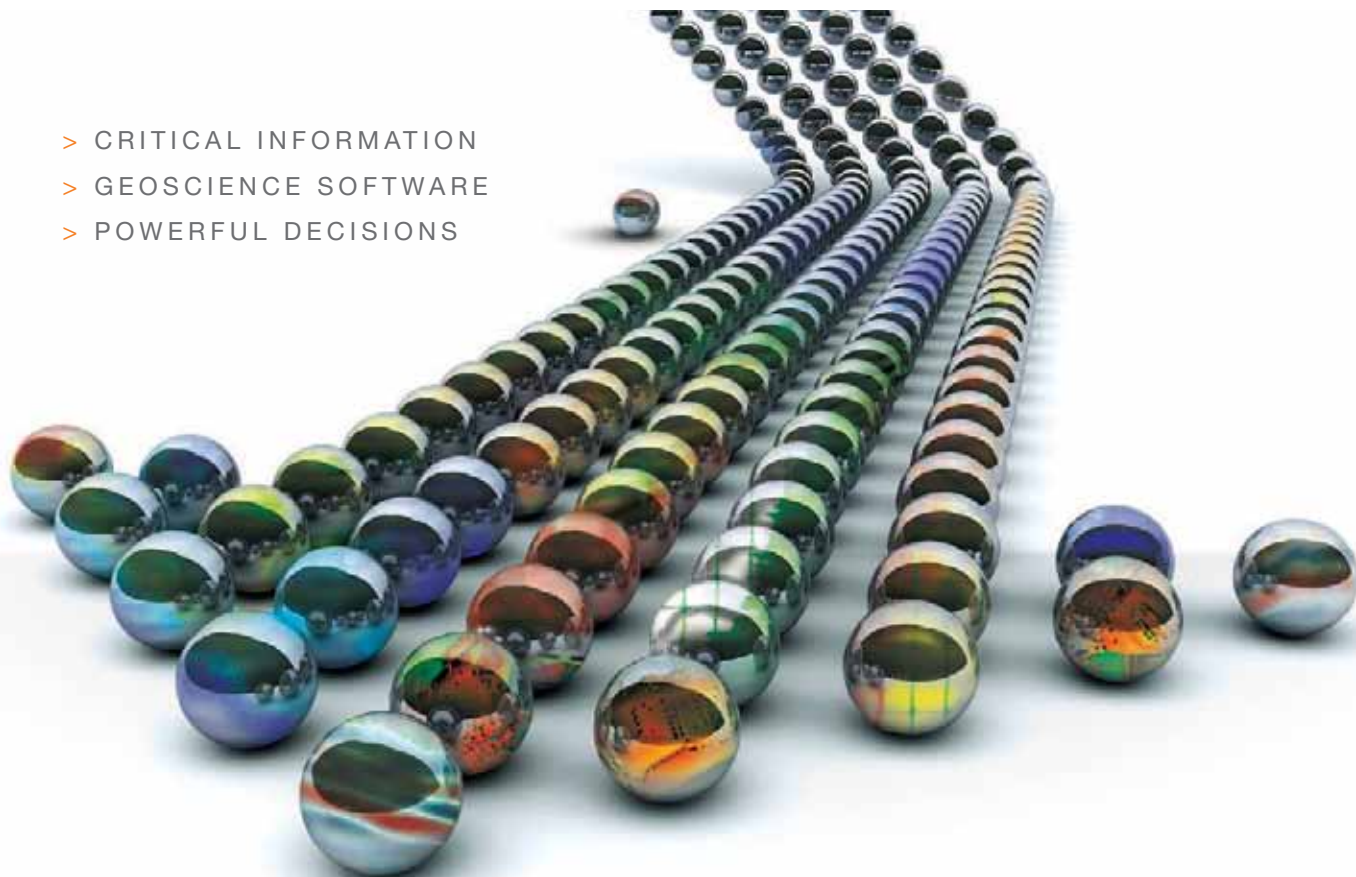
Address \_\_\_\_\_ Home Phone \_\_\_\_\_

City, State, Zip \_\_\_\_\_ Email \_\_\_\_\_

Spouse's Company \_\_\_\_\_ **DUES: \$25.00**

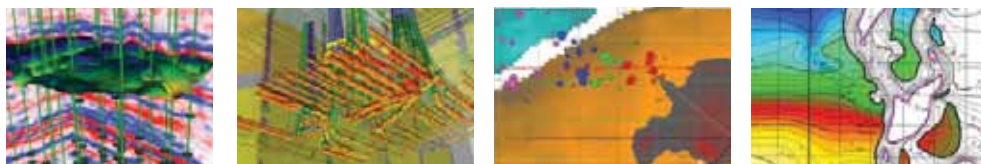
**Please send \$25 check payable to NOGA to Judy Lamarié, Treasurer, #2 Yosemite Dr., New Orleans, LA 70131**

- > CRITICAL INFORMATION
- > GEOSCIENCE SOFTWARE
- > POWERFUL DECISIONS



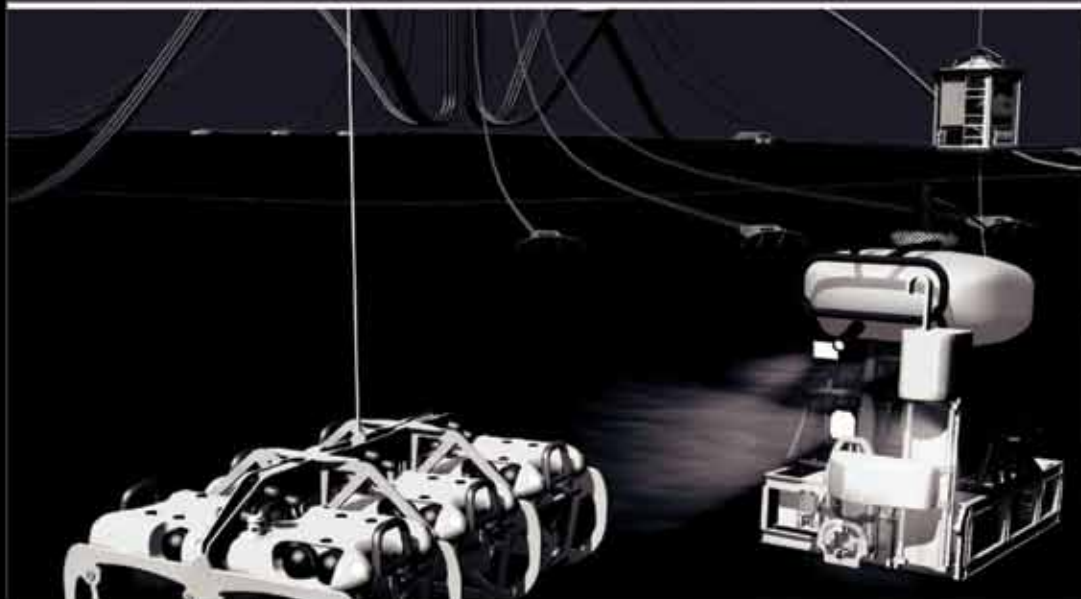
# INTELLIGENT A NEW DIRECTION IN GEOSCIENCE SOFTWARE. WORKFLOWS

Prospect generation just got easier. From simple to complex plays, or reservoirs for conventional, unconventional and deepwater, only IHS has the integrated geosciences software solution that meets your upstream oil and gas needs. IHS Petra and IHS Kingdom have come together to streamline exploration, exploitation and field development in a single workflow directly connected to IHS well, production and log data within the same project. Seamless integration and fast, in-depth interpretation and analysis of oil and gas opportunities are finally available—only from IHS.



[ihs.com/geoscience](http://ihs.com/geoscience)

# Finally - An answer for getting reservoir seismic OVER THE RESERVOIR!



- 4C/4D Node Seismic
- ANGOLA
- GoM
- NIGERIA



**"Coming Soon to an Oilfield Near You!"**

[www.sbexp.com](http://www.sbexp.com)

**Dubai**  
T: +971 4 4271700

**Houston**  
T: +1 281 566 1666

**Oslo**  
T: +47 2240 2700

**Rio**  
T: +55 21 2494 0283

**Singapore**  
T: +65 9180 2605

**Trondheim**  
T: +47 7 3879500

RAISING  
THE STANDARD

## Chevron



100 Northpark Blvd.  
Covington, LA 70433

(985) 773-6000



**LaBay**  
Exploration Co., L.L.C.

111 Veterans Memorial Blvd.,  
Suite 1550  
Metairie, Louisiana 70005

[www.labayexploration.com](http://www.labayexploration.com)

Office (504) 371-5967  
Fax (504) 371-5969

## For Gravity and Magnetic Data Count on Fugro...

Brenda Robinson: + 1 713-369-6072

[brobinson@fugro.com](mailto:brobinson@fugro.com)

Jeff Rowe: + 1 613-520-7713

[jrowe@fugro.com](mailto:jrowe@fugro.com)

[www.fugro-gravmag.com](http://www.fugro-gravmag.com)



**LAFAYETTE  
GEOLOGICAL  
RESEARCH  
CENTER, LLC**

201 Heymann Blvd., Suite 33 • Lafayette, LA 70503  
Tel: 337-233-8197 • Fax: 337-233-8177

### COVERAGE:

- Louisiana / Federal / State Offshore
- Multi State Geo Tech Services • Completion Data
- Production Data • Well Logs • Maps

~ MEMBERSHIPS AVAILABLE ~  
The Industry's Premier • Well Data Center

[orders@lafayettegrc.com](mailto:orders@lafayettegrc.com)

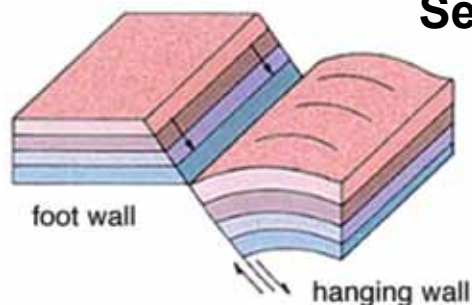
CALL OR EMAIL TODAY FOR MORE INFORMATION!



Baton Rouge Geological Society & Louisiana Geological Survey

# Fifth Annual Louisiana Subsidence, Land Loss and General Geology Symposia

September 26 & 27



Dalton Woods Auditorium  
Energy Coast & Environment Building  
Louisiana State University  
Baton Rouge, Louisiana

Please visit the NOGS Website's Events Page for:

- Announcement Flyer
- Registration Form for Fifth Annual Land Loss & General Geology Symposium
- Registration Form for Seventh Annual Louisiana Groundwater & Groundwater Resources Symposium

For more information send an e-mail to: [dcarlson@lsu.edu](mailto:dcarlson@lsu.edu)

## DOMESTIC AND INTERNATIONAL BIOSTRATIGRAPHIC SERVICES



6619 Fleur de Lis Drive  
New Orleans, LA 70124  
(504) 488-3711

[www.paleodata.com](http://www.paleodata.com)



Complete wellsite paleo services

Supported offshore GoM and  
onshore LA paleo databases

Integrated foram/nannofossil  
analyses

In-house sample preparation  
lab for quality-monitoring  
and efficiency

Comprehensive depositional  
history study of the Gulf Basin  
based on 200,000+ well data  
analysis



## MCMORAN EXPLORATION CO.



# MCMORAN OIL & GAS

[www.mcmoran.com](http://www.mcmoran.com)

NYSE: MMR

16676 Northchase Dr.  
Houston, TX 77060  
(281) 539-7600  
Fax: (281) 539-7655

1615 Poydras  
New Orleans, LA 70112  
(504) 582-4000  
Fax: (504) 582-4155

110 Travis St., Suite 140  
Lafayette, LA 70503  
(337) 735-9150  
Fax: (337) 735-9151

16th Annual Gulf of Mexico

# Deepwater

Technical Symposium

## R<sup>3</sup> RENEWAL RESPONSIBILITY RESEARCH

August 15th and 16th, 2012  
at the Hilton New Orleans  
Riverside Hotel



The Sixteenth Annual Gulf of Mexico Deepwater Technical Symposium continues to focus on Gulf of Mexico case studies and key technologies in the following sessions:

- ▶ Drilling
- ▶ Well Completions
- ▶ Production Systems
- ▶ Reservoir / Economics
- ▶ HS&E Regulatory
- ▶ Pipelines / Subsea Infrastructure
- ▶ Emerging Technologies
- ▶ Geoscience

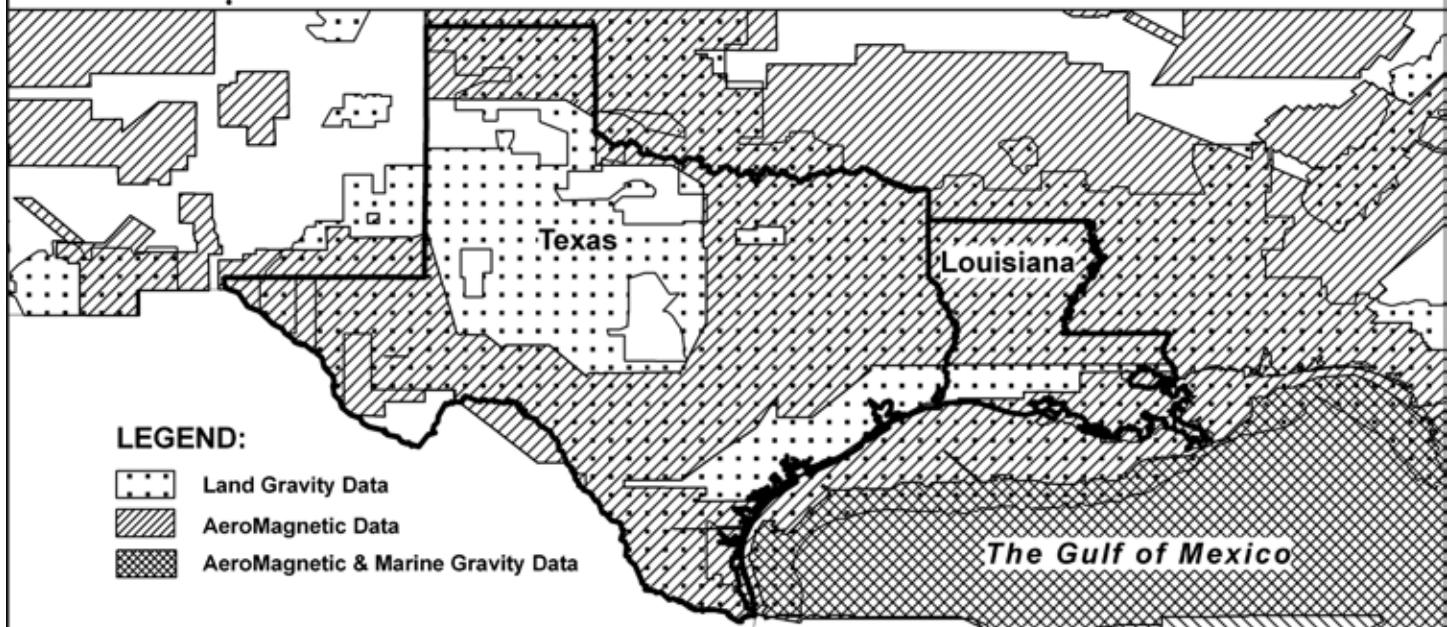
PROUDLY HOSTED BY



[www.deepwaternola.org](http://www.deepwaternola.org)



# For Gravity and Magnetic Data in Texas and Louisiana **Count on Fugro— Mapping Geology to the Basement...**



**...And beyond** with the most comprehensive non-exclusive airborne, land and marine potential fields geophysical database, including AeroMagnetic, Land Gravity, Marine Gravity and Bathymetry data around the world. Interpretation includes:

- Basement architecture
- Tectonic elements
- Structural/geologic fabric
- Salt mapping
- Depth to basement
- ArcGIS deliverables



**Fugro Gravity & Magnetic Services**

For personal assistance & consultation,  
please contact [fgmsdata@fugro.com](mailto:fgmsdata@fugro.com) or 713-369-6123.

[www.fugro-gravmag.com](http://www.fugro-gravmag.com)



Submitted by Jordan Heltz

*Dow Jones Newswires – Laurence Iliff - “Pemex Finds Natural Gas Reserves in Deep-Water Gulf”  
July 3rd, 2012*

[http://www.rigzone.com/news/oil\\_gas/a/119086/Pemex\\_Finds\\_Natural\\_Gas\\_Reserves\\_in\\_DeepWater\\_Gulf](http://www.rigzone.com/news/oil_gas/a/119086/Pemex_Finds_Natural_Gas_Reserves_in_DeepWater_Gulf)

Mexico's state-owned oil company Petroleos Mexicanos, or Pemex, said Tuesday that it had discovered as much as two billion cubic feet of natural gas reserves in the deep waters of the Gulf of Mexico.

Pemex said that the Kunah-1 well at a water depth of 2,157 meters was the firm's most productive well in deep waters during exploratory tests. The well allowed Pemex to identify five wet gas deposits at different drilling levels.

The find at Kunah-1, located 125 kilometers northeast of the port of Veracruz, has allowed the oil monopoly to estimate that it can certify reserves between 1.5 trillion and two trillion cubic feet of gas using the proven, possible and probable, or 3P, measurement of reserves.

The five fields discovered had depths between 2,845 and 4,103 meters and had superior temperatures and pressures than had been expected, the oil firm said. Production tests reached 34 million cubic feet a day of wet gas, and 110 barrels of liquids, Pemex said.

*Offshore Technology International – Zarina de Ruiter - “Pacific Drilling awarded five-year contract by Chevron for the Pacific Sharav” June 26th, 2012*

<http://www.offshore-publication.com/index.php/subsea/241-pacific-sharav>

Pacific Drilling S.A. has announced that its ultra-deepwater drillship, the Pacific Sharav, has been awarded a five-year contract by Chevron U.S.A. Inc for operations in the United States Gulf of Mexico.

Estimated maximum contract revenue, including mobilization and client requested modifications, is expected to be approximately \$1,076 million, bringing Pacific Drilling's total contract backlog as of June 22, 2012, to approximately \$3.2 billion.

Pacific Drilling CEO Chris Beckett stated: "We are proud to announce the expansion of our relationship with Chevron to include a third drillship. This contract exemplifies our strategic commitment to building strong customer relationships and allows us to leverage the operations support infrastructure which we have already developed in the region."

Pacific Sharav is scheduled for delivery by Samsung Heavy Industries in Korea in the fourth quarter of 2013, upon completion of construction and client requested modifications. The drillship will be capable of operating in water depths of up to 12,000 feet and drilling wells up to 40,000 feet deep.

Pre-registration deadline August 15<sup>th</sup>

Gulf Coast Association of Geological Societies  
and Gulf Coast Section of SEPM

## 62nd Annual Convention

October 21–24, 2012—Austin, Texas

# ANNOUNCEMENT



Solving for  $E^3$ — where  
energy, environment, and  
economy intersect

[www.gcags2012.com](http://www.gcags2012.com)

Hosted by the Austin Geological Society

# **SAI** Geoconsulting, Inc.

*Geological and Geophysical Consulting,  
3-D Seismic Interpretation*

**Ben D. Sydboten, Jr. CPG**

2 Flagg Pl., Suite 1  
Lafayette, LA 70508  
[www.saigeoconsulting.com](http://www.saigeoconsulting.com)

Office (337) 504-3670  
Cell (337) 456-8948

*"Serving The Oil & Gas Industry Since 1983"*

Geological,  
Geophysical &  
Land Drafting



**Anthony Catalanotto**  
*President*  
**Stefani Foster**  
*Drafting & Design*

## **Geo-Draft, Inc.**

*A Professional Drafting & Graphics Firm*

3349 Ridgelake Drive • Suite 202 • Metairie, LA • 70002  
Office: (504) 836-2882 Fax: (504) 836-2877 (Cell) (504) 481-7291  
E-Mail: [geodraft@bellsouth.net](mailto:geodraft@bellsouth.net)  
Website: [www.geodraftinc.com](http://www.geodraftinc.com)

## **NORTHCOAST OIL COMPANY**

610 E. Rutland St.  
Covington, LA 70433  
(985) 898-3577  
(985) 898-3585 FAX

**Jack M. Thorson**  
**Eric C. Broadbridge**  
**J. Daryl Gambrell**  
**Raymond W. Stephens**

**NOGS thanks our  
sponsors for their support:**

**GOLD LEVEL SPONSORS:**  
**CHEVRON**  
**LA BAY EXPLORATION CO, LLC.**

**SPECIAL THANKS TO  
DIVERSIFIED WELL LOGGING**

**Baton Rouge Geological Society, Louisiana Geological Survey,  
Louisiana Department of Natural Resources and Louisiana Oil & Gas Association**

## **The Third Annual Louisiana Oil and Gas Symposium**

**September 28**



Dalton Woods Auditorium  
Energy Coast & Environment Building  
Louisiana State University  
Baton Rouge, Louisiana

Please visit the NOGS Website's Events Page for:

- Announcement Flyer
- Registration Form for Third Annual Louisiana O&G Symposium

*For more information, contact symposium chairman, John Johnson III at [hammer@lsu.edu](mailto:hammer@lsu.edu)*



## THE NEW ORLEANS GEOLOGICAL SOCIETY MEMORIAL FOUNDATION, INC.

The Memorial Foundation is an IRS Tax Exempt Code #501(c)(3) organization. The Federal I.D. is 72-1220999. Please consider making a donation to the Foundation. Your individual support in any amount will help meet the IRS Guidelines for our Foundation. Thanks!

### \$15,000 AND ABOVE

#### Gibbet Hill Foundation

*In Memory of Steve & Marion Millendorf, William J. Prutzman,  
Roger G. Vincent, Ron Youngblood & Uno Numella*

### \$5,000

#### NOGS Golf Tournament April 2012

*In Memory of Bill Craig*

### \$1000

#### Marc Cooper

*Through the Marathon Oil Co  
MEPAC Program*

#### Richard G. Klibert

#### Foster E. Voelker

*In Memory of Gene Rogas*

### \$250 to \$499

#### Beverly and Carlo Christina

*In Memory of Jack Dunlap*

#### Mr. Carlo C. Christina

*In Memory of Al Gilreath*

#### Paleo Data Inc

*In Memory of Jack Dunlap*

### \$500

#### Mr. Richard G. Klibert

#### Mr. Foster E. Voelker

*In Memory of Gene Rogas*

#### Mr. James S. Classen

*In Memory of Jack Dunlap,  
Louis L. McCormick, Jr. and  
James P. Raymond, Jr.*

## FONO FUND

The FONO Fund accepts contributions that are invested and the income dedicated to assure sufficient financial resources will always be available to maintain the NOGS business office. Contributors are reminded that donations to the FONO Fund are not covered by the IRS 501(c)(3) tax exempt classification and should be reported as a business expense on your IRS tax report.

### \$500

#### Mr. James A. Hartman

### UP TO \$250

#### Mr. David E. Balcer

#### Mr. Joseph E. Boudreaux

#### Ms. J. Sybil Callaway

#### Mr. Anthony Carollo Jr.

#### Mr. Richard P. Colomes

#### Mr. John Dombrowski

#### Mr. Merle J. Duplantis

#### Mr. Parrish N. Erwin Jr.

#### Mr. Michael N. Fein

#### Mr. Mark J. Gallagher

#### Mr. Bernard L. Hill Jr.

#### Mr. Daniel P. Huffman

#### Mr. Robert M. Jemison Jr.

#### Mr. Arthur H. Johnson

#### Mr. Tom Klekamp

#### Mr. Russell J. Landry

#### Mr. Frank E. Larkin

#### Mr. Louis Lemarie'

#### Mr. H. David Lynch

#### Ms. Jeannie F. Mallick

#### Mr. Daniel G. Markey

#### Mr. Louis L. McCormick

#### Ms. Margaret M. McKinney

#### Mr. William J. O'Leary

#### Mr. Richard A. Olsen

#### Mr. William S. Peirce

#### Mr. James P. Raymond Jr.

#### Mr. C. R. Rondeau

#### Mr. David M. Tatum

#### Mr. Roy C. Walther

#### Mr. Robert C. Weissmann

#### Mr. William M. Whiting

### UP TO \$249

#### Mr. Woods W. Allen Jr.

*In Memory of William C. Ward*

#### Mr. Robert J. Ardell

*In Memory of James P. Raymond, Jr.  
In Memory of Jerry Goodman*

#### Mr. Thomas C. Bergeon

#### Mr. Maurice N. Birdwell

*In Memory of Uno Nummella*

#### Mr. Burton C. Bowen

*In Memory of Louis L. McCormick, Jr.*

#### Mr. Robert B. Branson

*In Memory of Louis L. McCormick, Jr.*

#### Mr. Hilary James Brook

#### Ms. Robin A. Broussard

#### Mr. Rob Burnett

#### Ms. J. Sybil Callaway

#### Mr. Arthur F. Christensen

#### Beverly and Carlo Christina

*In Memory of Beverly Langford*

#### Mr. Carlo C. Christina

*In Memory of Louis L. McCormick, Jr.*

#### Mr. James S. Classen

*In Memory of Robert G. Williamson*

#### Mr. Willis E. Conatser

#### Mr. Clarence F. Conrad

#### Trudy and Charley Corona

*In Memory of Beverly Langford*

#### Mr. Charles J. Corona

*In Memory of Carl Grieshaber*

#### Mr. Michael Danos

*In Memory of Max Durham*

#### Mr. Merle Duplantis

#### Mr. Dwight Easterly

*In Memory of James P. Raymond, Jr.*

#### Dr. Brooks B. Ellwood PhD

#### Mr. Parrish N. Erwin Jr.

#### Mr. James P. Evans III

*In Memory of James P. Raymond, Jr.*

#### Mr. Michael N. Fein

#### Mr. Mark J. Gallagher

#### Mr. Arthur J. Garden

#### Mr. Bernard L. Hill Jr.

#### Mr. Tom (Thomas) A. Hudson

#### Mr. Kenneth Huffman

#### Mr. Jeff Jandegian

#### Philip W. Johnson

#### Mr. Tom Klekamp

*In Memory of Jack Dunlap.*

#### Mr. Reuben J. Klibert Jr.

#### Mr. Tim Klibert

#### Mr. John C. "Jack" Langford

#### Mr. Frank E. Larkin

#### Mr. H. David Lynch

#### Ms. Jeannie F. Mallick

#### Mr. Louis L. McCormick

#### Ms. Margaret M. McKinney

#### Mr. Robert G. Murphy

*In Memory of Ronnie Youngblood*

*In Memory of Thomas A. Cullinan*

#### New Orleans Geological Auxiliary

*In Memory of Joan Collier, Amber Klekamp*

*and Mary Petrocco*

#### Mr. Russell H. Nordwell

#### Mr. Richard A. Olsen

#### Mr. William S. Peirce

#### Mr. Edward B. Picou Jr.

*In Memory of Jack Dunlap*

*In Memory of Terry D. Keegan*

#### Mr. Richard D. Provensal

*In Memory of Thomas H. Philpott and James Strahan*

#### Mr. George W. Schneider III

*In Memory of George W. Schneider, Sr.*

#### Mr. Rudolf B. Siegert

*In Memory of Louis L. McCormick, Jr.*

#### Dr. J.O. Snowden

#### Mr. James M. Sothorn

#### Mr. Raymond O Steinhoff

*In Memory of Anne M. Steinhoff and Harold E. Vokes*

#### Ms. Betsy M. Strachan Suppes

*In Memory of Hubert Skinner*

#### Candace V. Strahan

*In Memory of James R. Strahan*

#### Mr. David M. Tatum

#### Mr. Leon G. Touns

*In Memory of Robert G. Williamson*

#### Mr. Arthur S. Waterman

*In Memory of T. Wayne Campbell*

#### Mr. William M. Whiting

*In Memory of Don Rimsnider*

#### Mr. Armour C. Winslow

*In Memory of Rita Menzel Winslow*

#### Ms. Frances A. Wiseman

*In Memory of Steve Widdicombe*

#### Mr. James W. Yeldell Jr.

*In Memory of Thomas A. Cullinan*

*In Memory of Robert G. Williamson*

*In Memory of Gene Rogas*

### BILL CRAIG FUND

#### Chevron

#### Bernard L. Hill, Jr.

#### Hilary James Brook

#### John C. Scheldt

*In Memory of William C. Ward*

#### Candace V. Strahan

*In Memory of James R. Strahan*

*In Memory of William C. Ward*

Contributions for both funds  
through July 7, 2012.  
Donations are listed for one year.

<p><b>ANSYTHE</b> Donald I. Andrews 504-887-3432</p> 	 <p><b>GEOLOGY ENVIRONMENTAL MANAGEMENT</b></p> <p><b>GEM Consulting LTD</b> Michael Louis Merritt admin@gemconsultingltd.com</p> <p>1451 Applewood Road • Baton Rouge, LA 70808</p>
<p><b>THE BOEBEL COMPANY</b> Oil and Gas Investments</p> <p>New Orleans, LA 70153 (504) 866-4313</p>	<p><b>H. WARREN BELL</b> Oil and Gas Exploration</p> <p>2500 Tanglewilde, Suite 485 Houston, TX 77063-2126 Bus (713) 266-7297 Fax (713) 266-7298</p>
<p><b>BOO-KER OIL &amp; GAS CORP.</b> Gray S. Parker</p> <p>826 Union, Suite 300 New Orleans, LA 70112 Bus. (504) 581-2430 Fax (504) 566-4785</p>	<p><b>PHELPS GEOSCIENCE LLC</b> Onshore Gulf of Mexico Geology and Geophysics Prospect Generation and Evaluation</p> <p>Houston, TX jsfphelps@yahoo.com (281) 398-5208</p>
<p><b>C &amp; R EXPLORATION, INC.</b></p> <p>Carlo C. Christina Lawrence G. Ringham</p>	<p><b>RAFIDI OIL AND GAS, INC.</b> Jaser N. Rafidi, President</p> <p>4415 Shore Dr., Suite 202 Metairie, LA 70006 Bus. (504) 453-8580 Fax (504) 888-5539; Res. (504) 888-1661</p>
<p><b>C. R. RONDEAU</b> Petroleum Geologist</p> <p>119 W Southland Ave. Ironwood, MI 49938 Res. (906) 932-4692</p>	<p><b>ROY C. WALTHER</b> Petroleum Geologist</p> <p>2421 Prancer Street New Orleans, LA 70131 Bus. (504) 392-8513 Res. (504) 392-9332</p>
<p><b>CLASSEN EXPLORATION, INC.</b> James S. Classen Looking for close in deals</p> <p>P.O. Box 140637 Boise, ID 83714 classenllc@msn.com Bus. (208) 854-1037 Fax (208) 854-1029</p>	 <p>625 E. Kaliste Saloom Lafayette, LA 70508 16800 Greenspoint Dr., Suite 225-S Houston, TX 77060 1100 Poydras St., Suite 1050 New Orleans, LA 70163 www.StoneEnergy.com</p>
<p><b>D-O-R ENGINEERING, INC.</b> 3-D and Geoscience Services</p> <p>6161 Perkins Rd. P O Box 80812 Bus : (225) 765-1914 Baton Rouge LA 70898</p>	<p><b>TONY CAROLLO</b> Consulting Geologist Unitization Geosteering Field Studies</p> <p>1701 Peach Street Metairie, LA 70001 Bus. (504) 885-0004 Res. (504) 885-6829</p>
<p><b>EDWARD B. PICOU, JR.</b> Consulting Micropaleontologist - Retired</p> <p>228 St. Charles Ave., Suite 1330 C New Orleans, LA 70130 Bus. (504) 529-5155 Res. (504) 282-3096</p>	<p><b>Zot Oil &amp; Gas, LLC</b> Jim Zotkiewicz Prospect Generation and Evaluation</p> <p>3200 Ridgelake Dr. Suite 207 Metairie, LA 70002-4930 Business: 504.831.4694 Email: jimzot38@zotoil.com</p>

## Collarini Energy Staffing, Inc.

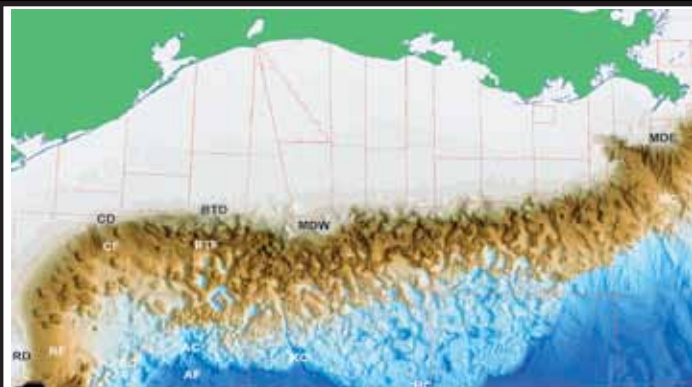
Facilities • Drilling • Production • Reservoir Engineering  
Land and Legal • Geosciences • Information Technology  
Health and Safety • Management • Supply Chain  
Accounting • Administrative Support



## Full-Time and Temporary Personnel

Energy Trading • Civil Engineering • Executives  
Human resources • Instrument and Electrical  
Engineering • Marine Engineering • Project Management  
Technical Writing • Sales and Marketing

10497 Town and Country Way, Suite 950, Houston, Texas 77094 Telephone: (832) 251-0553 www.collarini.com



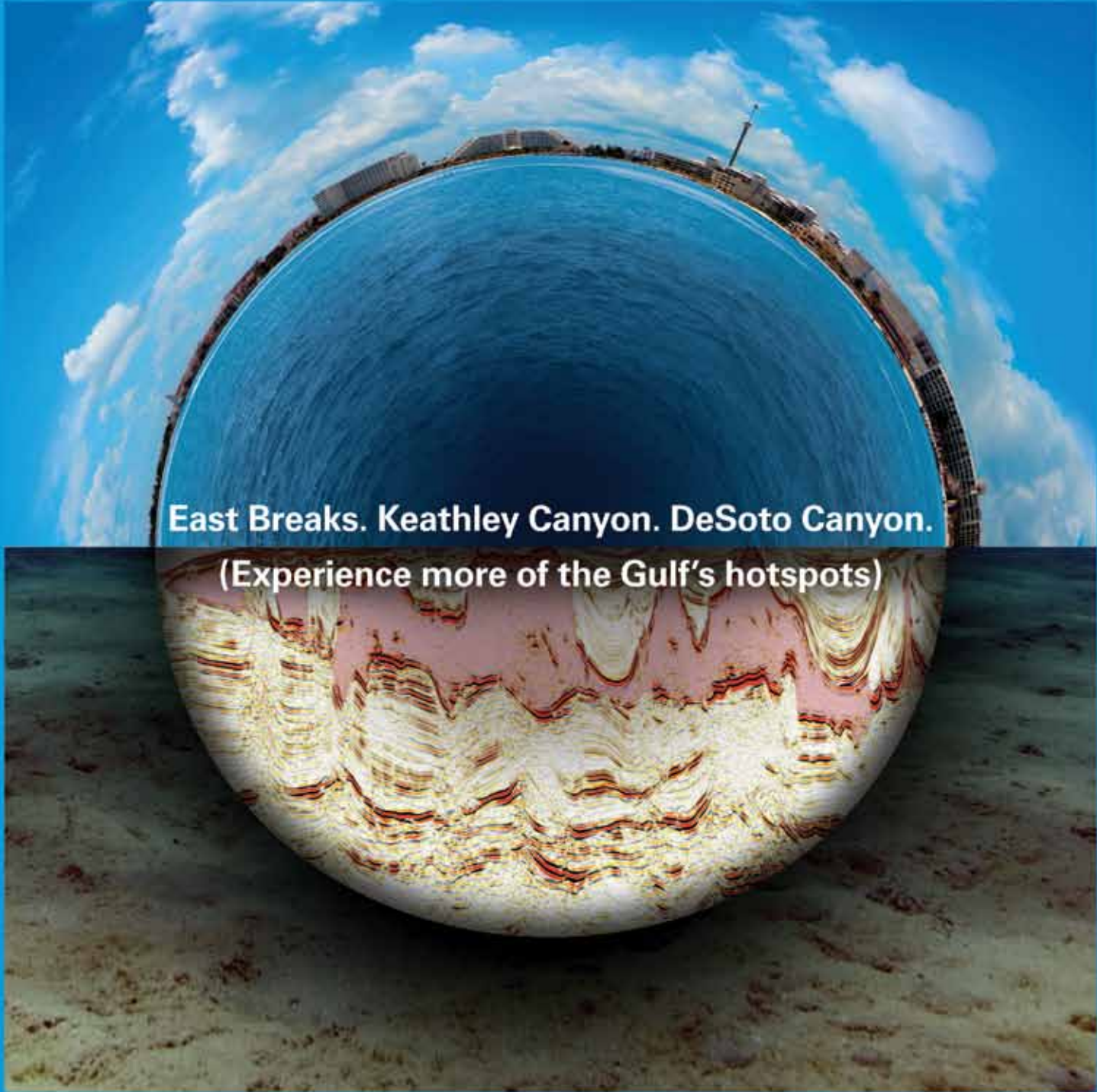
Northern Gulf of Mexico continental slope, by F.A. Diegel, based on NOAA data

## New Understanding of the Petroleum Systems of Continental Margins of the World

32nd Annual GCSSEPM Foundation  
Bob F. Perkins Research Conference  
Houston, Texas  
December 2-5, 2012  
OMNI Westside Hotel

More Information and Registration: [www.gcssepm.org](http://www.gcssepm.org)





**East Breaks. Keathley Canyon. DeSoto Canyon.**  
**(Experience more of the Gulf's hotspots)**

## **PGS MultiClient** GULF OF MEXICO

### **Take a fresh look at the Gulf of Mexico and identify new prospects**

We can provide the data and expertise which will help de-risk your prospects and reveal opportunities in key frontier areas. Our cutting edge technology can help to define your search and give you the focus to support your exploration needs. We're ready where you are and committed to providing the right data in the right place at the right time.

**Supporting your exploration success**

**A Clearer Image**  
[www.pgs.com](http://www.pgs.com)







## NEW ORLEANS GEOLOGICAL SOCIETY

810 Union Street, Suite 300  
New Orleans, LA 70112-1430

PRESORT  
STANDARD  
US POSTAGE  
**PAID**  
MAIL TECH

[www.nogs.org](http://www.nogs.org)



### MARINE PROPERTIES, LLC BERKSHIRE EXPLORATION CO.

MONTE C. SHALETT, CPL, PRESIDENT

3030 Lausar Street  
Metairie, LA 70001-5924

BUS. (504) 831-7779  
FAX. (504) 831-8315

**PCI**

**Paleo Control, Inc.**

Houston, Texas  
713-849-0044

Drilling Wells, Studies and Data Base

Loyd Tuttle

Frio, SE Texas

Bob Liska

Wilcox, S and SE Texas

Jim Thorpe

Miocene and Cam-Miogyp



# SEE YOUR DATA IN A WHOLE NEW LIGHT!

Take the pressure out of exploration  
and drilling by seeing what you  
are going to encounter.



**eSeis**

[www.e-seis.com](http://www.e-seis.com)  
713.531.1447

- Lithology & Fluids
- Depositional Facies
- Pore Pressure from V & Q
- Well Planning Consultation

