

NOGS LOG



April 2012

Volume 52, Number 10

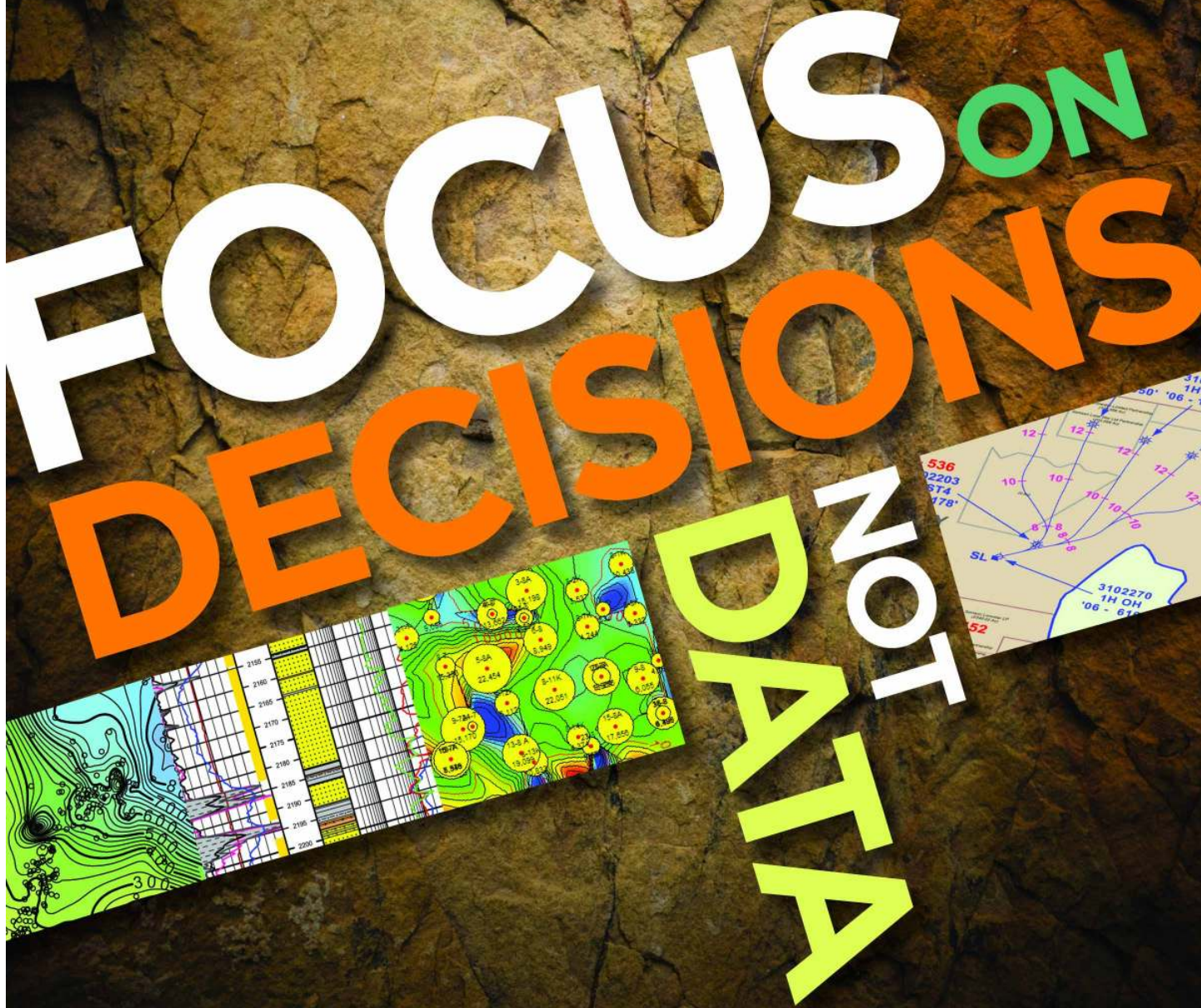


April 2 - NOGS Luncheon

Presentation: Conquering the complexity of southeast Louisiana soil conditions

Guest speaker: Richard J. Varuso, Ph.D., P.E., US Army Corps of Engineers, New Orleans

FOCUS ON DECISIONS NOT DATA



Why spend valuable time searching for data when you have important decisions to make?

Let TGS focus on the data. With worldwide well data experience and a dedicated customer support team, TGS provides high quality data in the formats you need.

Email WellData@tgsnopec.com to learn more about TGS' well data library that includes production data, directional surveys and the largest online collection of well logs.



Learn more at www.tgsnopec.com/welldata

NOGS LOG

Published monthly by the New Orleans Geological Society. This issue was sent to press on March 13, 2012.

Interested *NOGS LOG* contributors may send requests to nogseditor@gmail.com. Requests for advertising should contact the NOGS office at info@nogs.org.

INSIDE THIS ISSUE

Special Features:

April Luncheon Abstract and Biography	Page 9
2012 Golf Outing Announcement	11
Memorials	14-16

Regular Features:

President's Letter	Page 5
Upcoming Events and Activities	7
Drill Bits	20
Info & Tidbits	26

ON THE COVER

Oil & Gas News 79.37 Sept. 14, 1973

"Going for the 'Basement.'" CED Co. crews make up a joint of drill pipe on the Taratuta 1-13, a Shell deep test wildcat in the SW NW SE of section 13, Metz township, Presque Isle County, Michigan, in the early 1970s. Permitted for formations within the Cambrian layer, at about 6700 feet, the hole is a departure from current emphasis on the Niagaran, a Silurian formation created during a later geologic period."

Pictured in the photo - NOGS Member Chris Tatum

Photo by Julie Wyrembelski

FROM THE EDITOR

This has been a great couple of months for continuing education in geology. AAPG hosted a study looking at the Eagle Ford Play in San Antonio. I attended the Houston Geological Society's Mudstone Conference, which was informative. Unconventional resource plays are scattered all over North America, and they are all unique. The conference focused on both the geological and engineering sides of exploiting these large and very different resource plays.

Just a reminder that we have the NOGS annual golf tournament on April 16th, and I hope folks can attend. If anyone has any good industry photos of themselves or some of the projects they have worked, please send them!

Thanks, David Tatum - *NOGS LOG* Editor





From ZNodal Systems to ZNodal Imaging

We are full spectrum ZNodal™ technology

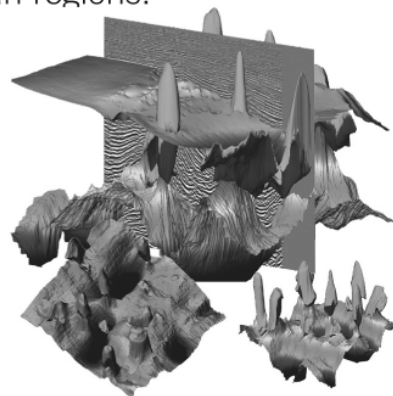
FairfieldNodal.com



We admit it. We're seismic nodal fanatics. Always have been. Which explains our one-of-a-kind, cable-free ZNodal™ systems. They work wonders in dense urban areas and pristine wilderness, in shallow water and deep ocean regions.

In fact, our exclusive ZNodal technology is behind everything we do, from acquisition and licensing to advanced processing and imaging, bringing nodal data to life in amazing ways.

Right now, our ZNodal systems are on the job in some of the world's most challenging fields, making a powerful difference. So when you're ready to go nodal, count on us to lead the way. ZNodal technology: It's what you need. It's what we're all about.



fairfieldnodal

SYSTEMS ACQUISITION LICENSING PROCESSING IMAGING



from the President

With all the mainstream news articles about fracking recently, last month's presentation was very timely. Coming from a geophysical background, I recently read an interesting article published in the Journal for Physical Review. Research at Boise State University, in cooperation with Colorado School of Mines and Conoco Phillips, have created a new way to study fractures by producing elastic waves using high intensity light focused directly at the fracture itself. This obviously is of great importance in earthquake dynamics but also man-made faults through hydraulic fracturing. Without having read all the related research, I would venture a guess that the quality of these images is very high without processing. It brings up many questions and new areas of research in ways to "excite" fractures.

I am hoping that everyone has already registered for the Deepwater Technical Symposium, but if you haven't, you can go to the events page on our website, www.nogs.org, where we have a link to the registration. We are currently soliciting for Geoscience presentations for the 2012 symposium. If you have some deepwater technical work that you would be willing to present, send

an abstract directly to me as I am serving as a Geoscience session chair. Please send that to Daisy.Pate@gmail.com. Last year's Geoscience session included talks from Chevron, on understanding salt welds in characterizing exploration plays, multiple presentations by Hess on structural and stratigraphic challenges associated with the development of the Pony Field in the prolific Miocene trend of southeast Green Canyon and a discussion on advanced water flood surveillance techniques by Shell on the giant Mars Field. The abstract deadline is April 27th, 2012. For more information, you can visit the symposium website at www.deepwaternola.org

I hope that someone from NOGS will be a presenter at this year's symposium.

Also anyone looking for scholarships should see the special note on our website about the Lafayette SIPES chapter. They are soliciting applications for their "Jack Shirley Memorial Scholarship" for which the application deadline is April 23, 2012. You can find a link to the application on our website.

Daisy



CENTURY EXPLORATION NEW ORLEANS, LLC

An independent gulf coast exploration, development and operating company

Three Lakeway Center, Suite 2800
3838 North Causeway Blvd.
Metairie, LA. 70002

Office: 504.832.3750
Fax: 504.832.3760
www.centuryx.com

NOGS Office

Office Manager: Annette Hudson

Office Hours: 8:30 a.m. – 3:30 p.m. on Monday-Wednesday-Friday

Tel: 504-561-8980 Fax: 504-561-8988

E-mail: info@nogs.org Website: www.nogs.org

The office is located at Suite 300, 810 Union Street, New Orleans, LA 70112.

Correspondence and all luncheon reservations should be sent to the above address.



BOARD OF DIRECTORS

		Company	Phone	E-mail
President	Daisy Pate	Pontchartrain Partners	504-862-1775	daisy.pate@gmail.com
Vice President	Fran Wiseman		504-831-8343	snowde.fran@gmail.com
Secretary	Chuck Holman	BSEE	504-731-7837	charleswholman@bellsouth.net
Treasurer	Bay Salmeron	TGS	504-524-3450	bay.salmeron@tgsnopec.com
President-Elect	Will Jorgensen	Shell	504-728-6339	william.r.jorgensen@shell.com
Editor	David Tatum	Chevron	832-854-3126	nogseditor@gmail.com
Director 2012	Arthur H. Johnson	Hydrate Energy International	504-464-6208	artjohnson51@hotmail.com
Director 2013	Jack Langford	JCL Services	985-764-2527	jclangford851@gmail.com
Director 2014	Michael N. Fein	W & T Offshore	504-210-8148	mikef@wt offshore.com

COMMITTEE

	Chairperson			
AAPG Delegates	William M. Whiting	Consultant	504-947-8495	bootscon@aol.com
AAPG Student Chapter	Michael Hopkins	Tulane University	228-209-2262	mhopkin2@tulane.edu
AAPG Student Chapter	Drew Boudreaux	UNO	337-578-5587	apboudr1@uno.edu
Advertising-LOG	Kimberly Maginnis	W & T Offshore Inc	504-210-8174	kmaginnis@wt offshore.com
Auditing	Will Jorgensen	Shell	504-728-6339	william.r.jorgensen@shell.com
Awards	Michael N. Fein	W & T Offshore	504-210-8148	mikef@wt offshore.com
Ballot	Bay Salmeron	TGS	504-524-3450	bay.salmeron@tgsnopec.com
Best Paper	Bay Salmeron	TGS	504-524-3450	bay.salmeron@tgsnopec.com
Continuing Education	TBA			
Employment Counseling	TBA			
Entertainment	Will Jorgensen	Shell	504-728-6339	william.r.jorgensen@shell.com
Environmental	Daisy Pate	Pontchartrain Partners	504-862-1775	daisy.pate@gmail.com
External Affairs	Michael A. Fogarty	Sylvan Energy, LLC	603-523-4808	mike.a.fogarty@gmail.com
Field Trip	TBA			
Finance and Investment	Bay Salmeron	TGS	504-524-3450	bay.salmeron@tgsnopec.com
Historical	Edward B. Picou, Jr.	Consultant	504-529-5155	epicou@bellsouth.net
Membership/Directory	Carlo C. Christina	Retired (C & R Expl. Inc)	504-835-4116	Carlocc398@aol.com
	Tom Klekamp	Amber Resources	985-845-4046	klekamp@bellsouth.net
New Geoscientists (NGNO)	TBA			
Nominating	Scott A. Wainwright	Bret Exploration Co Inc	504-889-2700	Scott_wainwright@hotmail.com
Non-Technical Education	Duncan Goldthwaite	Consultant	504-887-4377	DGldthwt@aol.com
Office Operations	Rick Kear	Schlumberger	504-592-5376	kear1@new-orleans.oilfield.slb.com
Publications Sales	Edward B. Picou, Jr.	Consultant	504-529-5155	epicou@bellsouth.net
Photography	Tom Klekamp	Amber Resources LLC	985-845-4046	klekamp@bellsouth.net
School Outreach	Thomas C. Bergeon	Century Exploration	504-832-3772	Tom.bergeon@centuryx.com
Scouting	Carol Rooney	Consultant Geologist	504-835-1909	carolbrooney@aol.com
Sponsorship/Houston	David E. Reiter	Eni Petroleum		david.reiter@enipetroleum.com
Technical Projects	TBA			
Ad Hoc Committee on				
University Support	Michael J. Gallagher	Eni Petroleum	713-393-6100	Michael.Gallagher@enipetroleum.com

NOGS LOG STAFF

Editor	David Tatum	Chevron	832-854-3126	nogseditor@gmail.com
Editor-Elect	Jordan Heltz	Chevron	985-773-7163	jordan.heltz@chevron.com
Auxiliary	Susie Baker	NOGA	504-466-4483	sbaker1650@aol.com
Info Tidbits	David Tatum	Chevron	832-854-3126	nogseditor@gmail.com
Drill Bits	Carlo C. Christina	Retired (C & R Expl. Inc)		drillbits81@yahoo.com
Drill Bits	Kevin Trosclair	UNO Graduate Student		kjtroscrl@uno.edu
Layout	Jannette Inc.			
Webmaster	Edward B. Picou, Jr.	Consultant	504-529-5155	epicou@bellsouth.net

NOGS AUXILIARY

Officers		Phone	Directors	Year	Phone
President	Jean Jones	504-738-8091	Carol Andrews	2010-12	504-887-3432
1st Vice-President	Alma Dunlap	504-737-2678	Susie Baker	2010-12	504-466-4483
2nd Vice-President	Camille Yeldell	504-835-7467	Mary Walther	2010-12	504-392-9332
Secretary	Peggy Rogers	504-392-6323	MaryEllis Hasseltine	2011-13	504-885-7657
Treasurer	Judy Lemarie'	504-393-8659	Gwenn Swaney	2011-13	504-831-0748
Parliamentarian	Beverly Kastler	504-286-0879	Pat Williamson	2011-13	985-626-6910
Member-at-Large	Linda Peirce	504-393-7365			

Upcoming Events and Activities

April 2 - NOGS Luncheon

*** At the Holiday Inn Downtown Superdome ***
\$2.00 validated parking in hotel garage

Presentation: Conquering the complexity of southeast Louisiana soil conditions
Guest speaker: Richard J. Varuso, Ph.D., P.E., US Army Corps of Engineers, New Orleans

(See page 9 for Abstract and Biography)

HOLIDAY INN DOWNTOWN SUPERDOME

Check with concierge or
front desk for location
Lunch served at 11:30am

ADMISSION:

with reservation \$30.00
without reservation \$35.00
Student Member with reservation Free

April 11 - Petroleum Geology for Non Geologists Course

Shell Building Auditorium. Announcement on page 30.

April 16 - NOGS Annual Golf Tournament

Tchefuncta Country Club. Announcement on page 11.

May 7 - NOGS Luncheon

Holiday Inn Downtown Superdome
Guest speaker : Kirk A. Barrell, Amelia Resources LLC, The Woodlands, Texas
Will present: Tuscaloosa Marine Shale: An Emerging Play

NOGS CONTACT LIST

--- continued from previous page ---

MEMORIAL FOUNDATION

BOARD OF TRUSTEES

		Company	Phone	E-mail
2011-12 Chairman	Rick Kear	Schlumberger	504-592-5376	kearl1@new-orleans.oilfield.slb.com
2011-12 Secretary	Daisy Pate	Pontchartrain Partners	504-862-1775	daisy.pate@gmail.com
2011-12 Trustee	Monte Shalett	Berkshire Exploration Co	504-831-7779	mshalett@gmail.net
2011-12 Trustee	James Swaney	BOEM	504-736-2677	james.swaney@boemre.gov
2012-13 Trustee	Jennifer Connolly	Shell	504-728-6411	jennifer.connolly@shell.com
2012-13 Trustee	William M. Whiting	Consultant	504-947-8495	bootscon@aol.com
2013-14 Trustee	J. David Cope	ANKOR Energy LLC	504-596-3672	dcope@ankorenergy.com
2013-14 Trustee	Tom Klekamp	Amber Resources LLC	985-845-4046	klekamp@bellsouth.net

AAPG DELEGATES

Term Ends

2012	William Whiting	Consultant	504-947-8495	bootscon@aol.com
2012	Jim Zotkiewicz	Zot Oil & Gas	504-831-4694	jimzot38@zotoil.com
2012(a)	David E. Balcer	Chevron	985-773-6725	dbalcer@Chevron.com
2012(a)	Richard J. Stancliffe	Shell Expl & Prod Co.	504-728-7553	richard.stancliffe@shell.com
2014	Arthur H. Johnson	Hydrate Energy International	504-464-6208	artjohnson51@hotmail.com
2014	Brenda Reilly	Geological Consulting LLC.	504-430-4240	reillybe@yahoo.com
2014(a)	Elizabeth C. McDade	McMoRan Exploration Co	504-582-4510	ecmcade@bellsouth.net
2014(a)	Frances A. Wiseman		504-831-8343	snowde.fran@gmail.com

Deep Water

WELL CONSTRUCTION

Are all your services deepwater ready?

Control Measures	Complexity/Process + Exposure	Preparedness				
		High				Low
	High	-5	-10	-15	-20	-25
	-4	-4	-8	-12	-16	-20
	-3	-3	-6	-9	-12	-15
	-2	-2	-4	-6	-8	-10
	Low	-1	-2	-3	-4	-5
		People + Competency		Equipment + Technology		
		1	2	3	4	5



Our Project Readiness Assessment (PRA) approach has been applied and improved over the last 5 years.

All deepwater projects in which Schlumberger participates benefit from our PRA process, which complies with new U.S. regulatory requirements. This helps deliver seamless, efficient startup, and reduced NPT.

Learn more at

www.slb.com/deepwaterready

Global Expertise
Innovative Technology
Measurable Impact

Schlumberger

*Mark of Schlumberger. Measurable Impact is a mark of Schlumberger. © 2010 Schlumberger. 10-dw-0079

April 2 NOGS Luncheon Presentation

*****At the Holiday Inn Downtown Superdome*****

Conquering the complexity of southeast Louisiana soil conditions

presented by

Richard J. Varuso, Ph.D., P.E.
US Army Corps of Engineers, New Orleans

ABSTRACT

Southeast Louisiana is known for having some of the weakest and most complex soil conditions in the world when they are relied upon to resist the forces associated with navigation and storm surge projects. By using innovative science and working closely with colleagues in the geologic, engineering, and construction industry on a compressed timeline, the U.S. Army Corps of Engineers, New Orleans District, has nearly completed construction of the approximately \$15 billion

Greater New Orleans Hurricane and Storm Damage Risk Reduction System.

At this meeting, you will hear Rich Varuso, Deputy Chief of the New Orleans District's Geotechnical Branch, discuss how the Corps and its construction contractors conquered challenging soil conditions to build the largest Civil Works project in Corps history in only six years.

BIOGRAPHY

Dr. Richard Varuso obtained his Bachelor of Science degree in civil engineering from the University of New Orleans in 1994 and began working for the New Orleans District of the US Army Corps of Engineers as a geotechnical engineer. While working for the Corps, he obtained his Masters degree from the University of New Orleans in 1998 and his Doctorate degree from Louisiana State University in 2010. Dr. Varuso's major areas of expertise include levee and floodwall design,

deep foundations, retaining walls and braced excavations, and design and utilization of geosynthetics. He has been routinely relied upon by the Corps' attorneys as well as those from the U.S. Department of Justice for his expertise in the field of geotechnical engineering. In addition, as Levee Safety Program Manager, Dr. Varuso is leading efforts to manage and implement the New Orleans District Levee Safety Program.

THE LUNCHEON RESERVATION DEADLINE IS MARCH 28 - CONTACT THE NOGS OFFICE

“And Looking Ahead . . .”

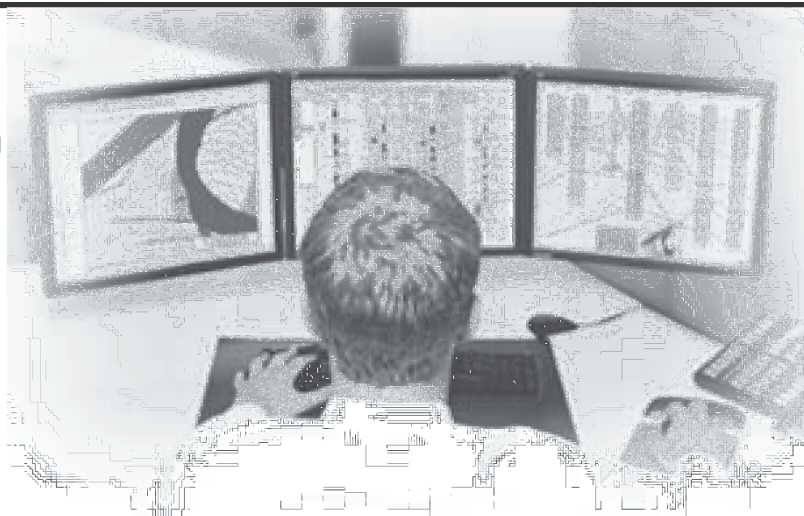
The next luncheon will be held on May 7th. Guest speaker: Kirk A. Barrell, Amelia Resources LLC, The Woodlands, Texas, will present “Tuscaloosa Marine Shale: An Emerging Play.” Contact the NOGS office at 561-8980, or use the PayPal link on the NOGS website (www.nogs.org) to make your reservation.

NeuraSection

Produce YOUR Interpretation

NeuraSection brings together logs, maps, sections and other critical information allowing you to focus on interpretation. With real-time editing of computer generated results, your interpretation becomes clear and meaningful.

- Auto and manual contouring
- Cross section generation
- Real-time editing
- Reserves calculations
- Presentation montaging



www.NeuraSection.com

1.281.240.2525



© 2012 Neuralog • www.neuralog.com • 1.281.240.2525 • 1.800.364.8728

SEI®

Seismic Exchange, Inc.

**Strategic Speculative Surveys
Geophysical Data Marketing & Management**

YOUR
Full Service
National
Seismic Data
Marketing Firm

New Orleans
Dallas
Houston
Denver
Oklahoma City
Corpus Christi
Tulsa

201 St. Charles Avenue, Suite 4300, New Orleans, Louisiana 70170-4300
Telephone 504.581.7153 Fax 504.581.9591
www.seismicexchange.com

NOGS PRESENTS THE 2012 ANNUAL GOLF OUTING

PROCEEDS FROM THIS EVENT WILL HELP FUND THE *BILL CRAIG MEMORIAL FUND** 501 C (3) ORGANIZATION
LAST YEAR, THE GOLF TOURNAMENT GENERATED OVER \$4700.00. LET'S KEEP IT GOING!

TCHEFUNCTA COUNTRY CLUB

IN COVINGTON ON **MONDAY, APRIL 16**

THE FORMAT WILL BE A 4-PERSON SCRAMBLE W/SHOTGUN START AT **HIGH NOON**

FOOD SPONSORED BY TIM KLIBERT W/ DIVERSIFIED WELL LOGGING

REGISTRATION OPENS AT **9:30 A.M.** WITH BRUNCH SERVED UNTIL TEE TIME. PRICE INCLUDES GREEN FEES,
CART, RANGE BALLS, FOOD & DRINKS, FLIGHT, PRIZES & 2 MULLIGANS.

WHAT ELSE COULD YOU POSSIBLY ASK FOR? DONATIONS OF ANY KIND ARE WELCOME.
THE COST IS \$125 / INDIVIDUAL OR \$600 / CORPORATE. HOLE SPONSORS ARE \$125.

THIS EVENT ALWAYS FILLS UP, AND WE ARE LIMITED TO **120 PLAYERS** ONLY. PLEASE REGISTER EARLY TO AVOID
CONFUSION. REMEMBER YOU ARE NOT REGISTERED UNTIL NOGS HAS RECEIVED PAYMENT AND YOU ARE
CONFIRMED BY ANNETTE. AS USUAL, WE NEED VOLUNTEERS. IF YOU CAN HELP OUT, YOU WILL BE TREATED TO
A DAY OF FUN, FOOD, AND BE ELIGIBLE FOR SOME DOOR PRIZES. MAKE SURE YOU SUPPLY YOUR HANDICAP OR
A SCORE THAT TYPIFIES A SET OF ROUNDS OF GOLF OVER RECENT TIME NO GREATER THAN 2 YEARS IN THE
SPACE PROVIDED.

FOR DONATIONS OR TO VOLUNTEER, CONTACT:

ANNETTE HUDSON (504-561-8980) ANNETTE@NOGS.ORG OR TIM KLIBERT (985-536-4143)

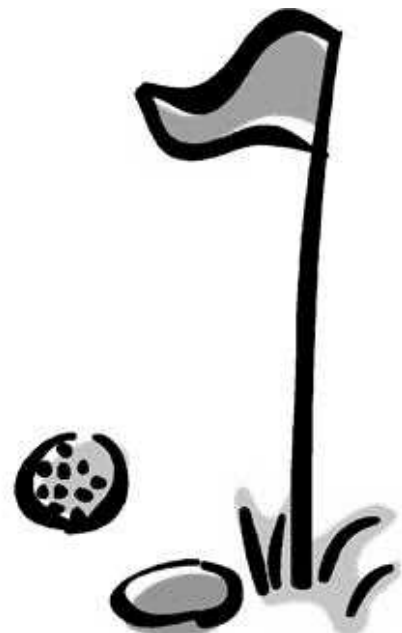
TO REGISTER, CONTACT ANNETTE HUDSON AT THE NOGS
OFFICE, 810 UNION ST. STE.300, NEW ORLEANS, LA 70112,
PHONE 504-561-8980. CASH, CHECK (PAYABLE TO NOGS),
CREDIT CARDS ACCEPTED THROUGH PAY PAL GO TO
WWW.NOGS.ORG

NAME: _____

COMPANY: _____

PHONE: _____

NAMES OF OTHERS IN YOUR GROUP:



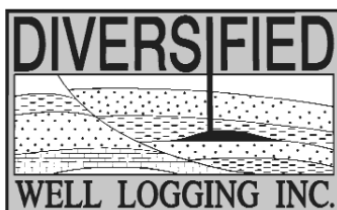
April						
Sunday	Monday	Tuesday	Wednesday	Thursday	Friday	Saturday
1	2 NOGS Luncheon Holiday Inn @ 11:30 A.M.	3	4	5	6 Good Friday	7
8 Easter Sunday	9	10	11 NOGS: Petroleum Geology for Non- Geologist	12	13	14
15	16 NOGS Annual Golf Tournament Tchefunta CC	17	18	19	20	21
22	23	24	25	26	27	28
29	30					

May						
Sunday	Monday	Tuesday	Wednesday	Thursday	Friday	Saturday
		1	2	3	4	5
6	7 NOGS Luncheon Holiday Inn @ 11:30 A.M.	8	9	10	11	12
13 Mother's Day	14	15	16	17	18	19
20	21	22	23	24	25	26
27	28 Memorial Day	29	30	31		



Relax. We'll keep you posted.

Your rig is offshore and you are not. How do you know what's going on so many miles away? You know because we tell you. Daily or even hourly, Diversified Well Logging's engineers update you on the status of your rig. We are your eyes and ears, especially when it comes to deep water or high pressure, high temperature areas. Diversified offers 24-hour surface evaluation. We provide secure and customized real-time data communication, in-house research and development and 24/7 on-call support for our equipment and our engineers. Whether you have a 10-day job or 110-day job, we provide the specialized attention you require. So, relax. We're with you every step of the way.



Serving the Gulf Coast for over 40 years.

New Orleans • Lafayette • Houston • Dallas • Corpus

800.280.2096

711 West 10th Street • Reserve, LA 70084 • Phone: 985.536.4143 • Fax: 985.536.2427
sales@dwl-usa.com

Editor's Note: Many readers of this publication are aware that surplus funds generated by the Annual NOGS Golf Tournament are donated to the NOGS Memorial Foundation in the memory of Dr. Bill Craig. In that he died over a decade ago, some members may not fully understand why Dr. Craig continues to be so honored or have only a cursory memory of him. Truthfully, Dr. Craig was a legendary figure in the Society and within the geologic community at large. For those who may want to know more about Dr. Craig's fantastic career, we are republishing the Memorial which appeared in the December 2000 *NOGS LOG*. It is well-worth reading.



William Warren "Bill" Craig - A Memorial

1935-2000

The huge crowd that swelled the Schoen Funeral Home on the evening of September 28 was testimony to the fact that Bill Craig had touched more lives than any other geologist in New Orleans. The mourners

included four, not necessarily separable groups: family and personal friends; students, alumni, and colleagues from the University of New Orleans; science teachers from Bill's program in earth science education; and members of the professional geologic community.

William Warren Craig grew up as a pharmacist's son in the small Missouri town of Excelsior Springs, played football at the University of Missouri at Columbia while earning a degree in geology, served in Korea as a lieutenant in the US Army, and went home to marry Patricia Neal, the pretty girl he had met as a teenager and dated in high school. Marrying Pat was the luckiest thing he ever did, because she became a true partner and helpmate, an integral participant in most of Bill's accomplishments. Together Bill and Pat raised five children: Jeff, Kate, Andrew, Jennifer and David. Following their parents' example, these siblings always were supportive of each other and some of them took in friends whose home life was not as happy as theirs. All the Craig children and now three grandchildren live in New Orleans and continue to be a tight-knit family group.

Bill Craig was always a major player in shaping the geology department at UNO. He joined the small faculty at LSUNO in 1968 after teaching three years at Northeast Missouri State University, where he went just after his Ph.D. work at the University of Texas at Austin. At UNO Bill was instrumental in building the integrated geology-geophysics department that became one of the University's

most respected departments. Before UNO had a field camp in Saltillo, Bill Craig single-handedly conducted the first field camp, taking a large group to the northwestern US. Those field campers were so enthusiastic about the experience that they helped Bill win the Outstanding Undergraduate Teaching Award at LSUNO in 1970.

Over the years Bill was called on twice to chair the Department, from 1976 to 1981 and from 1990 to 1996. His wise judgments and special ability to work with people successfully guided the department through some growing pains and won Bill admiration of his faculty and the university administration. Many of the Chairman's tasks were made a great deal easier by the constant support and involvement of Pat. She worked alongside Bill into the wee hours many nights when a budget or annual report was due.

From the time he started at LSUNO, Bill was a magnet for attracting students, and a large number of geologists chose their career after encountering Bill Craig in freshman geology. One of the first things I noticed when I arrived at LSUNO was that there was always a crowd of students at Bill's office door. He was so popular with students that it was difficult for him to accomplish much between classes except student counseling. Bill had a special empathy for people that made him loved and admired by almost everyone with whom he dealt.

Another trait that impressed everyone who knew him, even on first meeting, was his sense of humor. He was legendary among his students and friends for his humorous stories, and that humor was a definite asset in his administrative duties. His humor actually was used as a recruiting tool in the early days of building a geology faculty at UNO. A recruit always was scheduled for a faculty lunch at which Bill Craig kept everyone laughing throughout the meal. That certainly made me want to join that faculty when I came for an interview.

However, another habit for which he was famous gave me hope of landing the job. Now I know Bill was

known for taking a lot of catnaps, anywhere and everywhere. But at the time I was thoroughly discouraged when the faculty member on the front row went to sleep during my interview presentation. Luckily he must not have voted against me, and through the years at UNO I heard most younger faculty members confess that they too thought they had blown the interview when Bill Craig went to sleep during their seminars. There is a rumor that Bill even went to sleep during his own lectures. He certainly did not stay awake during other lectures. The strange thing is that as soon as the lights went on at the end of the talk, Bill woke up, raised his hand, and asked highly pertinent questions.

At UNO Bill built on the research he had started in graduate school on the lower Paleozoic rocks of the Ozarks and Ouachitas in Arkansas. This work led to several publications for the Arkansas Geological Commission and the Oklahoma Geological Survey. In recent years he was Louisiana Coordinator for the SE MAPS Project. Just before his death, he and Pat finished the final report on that project.

Despite his considerable administrative chores, Bill continued his research, mainly through supervising a large number of UNO master's students. Most of his students did projects in Arkansas, and they loved their experiences in the field with Bill. They always came back with stories about how much they learned and about how they had endured some unusual and funny experiences with Craig. Most of the time they had a tale about getting lost, because Dr. Craig had been taking a catnap instead of giving them directions. When Pat went along to do the driving, as she usually did on a Craig car trip, they never got lost. A special and lasting comradeship developed among the Craig graduate students, and their love for Bill extended to Pat, who generously shared her time, advice, and home cooking with them.

If a geology professor ever attracted groupies, Bill Craig did. He had a large fan club among the earth science teachers in the New Orleans area. Many years ago Bill saw the need to give the science teachers of the area special training in earth sciences. He took on the job himself and introduced into the geology curriculum at UNO courses for training practicing teachers. These were a success, and many teachers requested additional courses. In addition to the training at UNO, Bill and Pat arranged summer field experiences in areas of spectacular geology, such as the Grand Canyon. Many of those teachers went year after year, and they developed a special bond with "Doc" and "Ms. Pat." They were preparing to leave on this year's adventure to Mt. Rushmore when Bill's illness canceled the trip. For his work in earth science education, Bill won the National

Association of Geoscience Teachers' prestigious Neil Miner Award for Exceptional Contribution to the Stimulation of Interest in Earth Sciences in 1997. That same year he was also given the Distinguished Service to Science Education Award by the Louisiana Science Teachers Association. Bill was on the Board of Regents Steering Committee of the Louisiana Collaborative for Excellence in the Preparation of Teachers (LaCEPT). In addition, he was chairman of the Task Force on Science Curricula for LaCEPT, faculty consultant to Louisiana Earth Science Teachers Association, and National Association of Geoscience Teachers Coordinator for the State of Louisiana.

In addition to his considerable efforts in education, Bill Craig also served the professional geologic community in several capacities. He was President of the New Orleans Geological Society during 1983-1984. Bill was awarded Outstanding Member of NOGS in 1981, was given an Honorary Life Membership Award in 1991, and won the NOGS President's Distinguished Service Award in 1994. Bill was made a Fellow of the GSA in 1982, and he was general Chairman of the GSA Annual Convention in 1995. Bill headed some committee or another for virtually every New Orleans convention of the GCAGS, AAPG and GSA during the last 30 years. He served as Editor of the GCAGS Transactions in 1997. Bill was a long-time member of the NOGS Library Committee and Chairman of the Publication Sales Committee. For many years Bill managed the archives of NOGS publications at UNO and supervised their shipment to buyers. For every GCAGS and AAPG convention, he and Pat loaded their truck with NOGS publications and other paraphernalia for the NOGS exhibit booth. They were fixtures in the exhibit halls of conventions for years. At the GCAGS convention this October, Pat continued the tradition.

Early in his career at UNO, Bill Craig became known at "Big Guy." That affectionate nickname, not only described his physical stature, but also the admiration with which he was held by his colleagues and students. It also is a fitting description of his contributions to geologic education and of his service to the geologic community of New Orleans.

Bill Ward

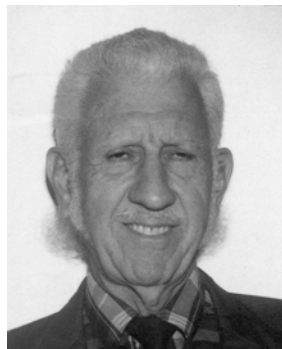
Note: Dr. Bill Craig died on September 25, 2000 at 5:05 p.m.

Published in the *NOGS LOG*, Volume 41, Number 3, December 2000

MEMORIALS

HINDMAN DOXEY, JR.

1931 - 2012



Hindman Doxe, Jr., a geologist and a long-time NOGS member, died unexpectedly of a brain aneurysm at his home in Jackson, Mississippi, on January 16, 2012. He was 80.

Hindman, a native of Holly Springs, Mississippi, graduated from Holly Springs High School, attended Davidson College, graduated from Ole Miss, and earned a Master's degree in Geology from LSU. He worked many years for CITGO in Jackson and also kept a membership with NOGS, in which he was often humorous and delightful companion on many NOGS field trips. In addition to the NOGS field trips, he frequently attended regular NOGS monthly meetings, riding the early morning Panama Limited down from Jackson to New Orleans, and returning on the same train northbound at 4:30 P.M. to Jackson.

He is survived by his sisters, Sarah Doxe Greer and Frances Doxe Winter, and numerous nieces and cousins.

Duncan Goldthwaite

LOUIS L. MCCORMICK, JR.

1922-2011

Lou McCormick, a retired petroleum geologist, died Tuesday, December 13, 2011 at his home in the Christwood Apartments in Covington. He was eighty-nine years old and the husband of sixty-five years to the late Marge McCormick. He was a generous and determined father to Colin (Celia), Peggy, Barry (Toni), Dana and to his grandsons: Ian and Connor.

Lou was a native of New Orleans and a resident of Christwood since 2005 where he led an active social life and developed many friendships. He was a World War II veteran of the U.S. Navy where he served as a flight instructor.

He received Bachelor's and Master's degrees in Geology at LSU where he also served as a graduate assistant lab instructor. He was first employed by The California Company (Chevron) in New Orleans. In 1956, Lou left Chevron to go with Natural Gas and Oil (and their successors). He later joined Pelto and retired from that company. He also served as a consultant.

Lou was an active member of the New Orleans Geological Society, receiving the Outstanding Service Award in 1984. He was a former officer and co-edited *Oil and Gas Fields of Southeast Louisiana, Volume 3*. He was also a member of the American Association of Petroleum Geologists and the Baton Rouge Geological Society.

Lou enjoyed traditional New Orleans Jazz. He was an enthusiastic and inquisitive traveler, whether with family or on trips sponsored by geological societies. His list of trips includes Yucatan and the Mayan culture, Machu Picchu, the upper Amazon, China and Mongolia as well as family vacations in the Rockies and Appalachians. In 2011, he planned a Rhine cruise with his daughter, Peggy, which he eventually had to cancel because of his health.



Bob Branson

Get More from your Core

With reservoirs becoming increasingly complex, you need the most accurate information you can get to better understand your reservoir.

Weatherford Labs helps you get more from your core by combining an unsurpassed global team of geoscientists, engineers, technicians and researchers with the industry's most comprehensive, integrated laboratory services worldwide. From core analysis, sorption, geochemistry and isotopic composition to detailed basin modeling and comprehensive data packages, we provide you with real reservoir rock and fluid information that hasn't been distilled by a simulator or iterated by software.

We call it **"The Ground Truth"**™ – giving you the accurate answers you need for better reservoir understanding. You'll call it a better return on your reservoir investment. To learn more, contact TheGroundTruth@weatherfordlabs.com.



© 2011 Weatherford. All rights reserved. Incorporates proprietary and patented Weatherford technology.



**Shell has worked in partnership
with the NOGS for many years, and
is proud to count the society among
its closest business associates.**

The New Orleans Geological Society was organized in 1941 to foster scientific research and advance the science of geology. Particular emphasis is laid on the exploration for and production of petroleum and natural gas. Related objectives include encouraging the adoption of improved methods of exploration, disseminating pertinent geological and technological data, and maintaining a high standard of professional conduct among its members.

www.shell.com/us/sepc

**It's no illusion...
Core Lab offers everything you need.**



©2009 Core Laboratories. All rights reserved.

Unconventional resource exploitation • Gas shale experts • Deepwater GOM authority
Capacity for fast turnaround • High-quality people • Global support
Industry leadership and reliability • Proprietary and patented technologies • Experience

www.corelab.com/rd/petroleumservices • 24-hour wellsite service hotline: 504-733-6583

New Orleans Geological Auxiliary News

On behalf of the Auxiliary, our very special thanks to June and Paul Perret for their gracious hospitality in offering their home for our "Spring Social." If you were one of the few who did not attend, you certainly missed a great opportunity to eat delicious food and mingle with wonderful friends. All I can say is it was the most fun I have had on St. Patrick's Day in years.

The Nominating Committee met at Beverly Kastler's home in February, and we are lucky and blessed to have the 2012-2013 Nominees accept their positions. Soon, you will be receiving your ballot in the mail. Wish I could give you more information; however, I will have to keep you in suspense! Our President ("in waiting" as she has accepted the opportunity to serve) has been a dedicated, hard working and loyal member for years. Are you curious now?

The Installation Luncheon will be held at Ralph's on the Park. Thanks to Peggy Rogers, Mary Ellis Hasseltine and Shirley Mosely for coordinating our last get-together of the year before we have to say good-bye for the summer!

Also, if you have any news that you would like to share with the ladies, please give Pat Williamson a call. We are very grateful to her "gift" of putting together the Newsletter. Anyway, it is so interesting to hear about your travels, grandbabies, children and what's happening in "your world."

Thanks to Linda Peirce for organizing our Past Presidents Luncheon. Just think, Linda; next time this year it will be Jean Jones' responsibility. Speaking of responsibility has anyone seen or have the President's gavel? It seems to be lost or misplaced!!

Our next Board Meeting will be at the home of Judy Lemarie' on April 18th.

In closing, our deepest sympathies to Alma Dunlap on the loss of her husband, Jack. Just know you have a ton of friends who care about you very much.

See you next month,

Susie Baker

NOGA Application Form

Dues: \$25.00

Name _____

Home Address _____

Home phone _____

Husband's Name _____

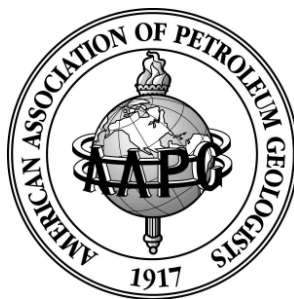
Husband's Company _____

*Please make check payable to New Orleans Geological Auxiliary
and mail with application to:*

Judy Lemarié

2 Yosemite Dr

New Orleans LA 70131



Silvertip Field Development in the Ultra-Deep Water, Perdido Foldbelt, Gulf of Mexico

Eikrem, Vern¹; Kostenko, Olga¹; Medeiros, Michael¹; Stroud, Terrell¹; Gonzalez, Yvonne¹;
Gray, Gary¹; Li, Ruijian¹; Hamilton, Julia¹

(1) Perdido Development, Shell Exploration and Production Americas, Houston, TX.

The Silvertip Field is a Middle Oligocene hydrocarbon accumulation within an anticlinal structure located in the ultra-deep water region of the Perdido fold-belt. The hydrocarbon reservoirs are stacked series of Middle Frio turbiditic sands, which are oil-bearing in the northern part of the anticline. Depositional architecture is characterized by amalgamated and channelized turbidite sheets and lobes, which are bisected by a number of deep water sand-filled canyons. The thickest, best quality reservoir sands are the canyon-fill sands at the top of the Middle Frio sequence. These are composed primarily of amalgamated channel sands without significant mud drape coverage. The sheet and lobe sand reservoirs are composed of both amalgamated sheet and channel sands with highly heterogeneous internal architecture and lateral variability across the field. Interpretation of individual horizons is of high confidence, but the internal architecture of lobes and channels is poorly imaged. Faults with E-W and NE-SW orientations are present in the southwestern and northeastern parts of the structure. The hydrocarbon accumulations are trapped by combined structural-stratigraphic closures. Most of the hydrocarbon accumulations are amplitude supported with presence of well defined flat-spots in the channel sands. Reservoir fluid pressures taken by MDT indicate the presence of multiple seal-reservoir pairs within the field. The seismic resolution is poor in the northeastern part of the anticline due to the proximity of the salt overhang extension in front of an allochthonous salt body. Development of the Silvertip Middle Frio reservoirs is technically challenging and carries significant reservoir uncertainty and risk, including: reservoir rock properties, compaction, permeability, and compartmentalization. In addition, well mechanical integrity and skin remain significant uncertainties. This development will therefore be staged. The first stage consisted of two horizontal development wells that have been successfully drilled and completed in Q4 2008, targeting the two best canyon-fill reservoirs. These two development wells were executed in world-record water depth (9300 ft), and they exceeded the rock property predictions made in the earlier static reservoir models. Production from these wells will start in Q4 2010. The second stage will include additional horizontal development wells targeting deeper Middle Frio levels represented by canyon-fill and lobe reservoirs.

AAPG© 2012 *“Reprinted by permission of the AAPG whose permission is required for further use.”*

South Louisiana and Offshore Gulf of Mexico

Exploration and Production Activities

LAFAYETTE DISTRICT, ONSHORE AREA

By Carlo C. Christina

DEEP WILCOX AND SHALLOW OIL

The Office of Conservation has issued 34 new permits to drill in the Lafayette District between February 1 and February 23, 2012. Among these permits are 5 Wilcox tests and 8 shallow oil tests.

Of the 5 Wilcox tests, 2 wells are attempting to extend present Wilcox production one mile or more, 1 test is in an old, shallow, depleted field, and 2 tests are attempting to find deeper Lower Wilcox production in offsetting Upper Wilcox producing sands.

The shallow oil wells are development wells in an old field where drilling and completion can be accomplished in 9 days or less. Although production is usually less than 100 barrels of oil per day, the payout is excellent with today's oil price at \$127 per barrel.

NEW LOCATIONS

In Beauregard Parish, El Paso will drill a Lower Wilcox well in **Cowpen Creek Field**, (A), in Sec. 10, 6S-9W to a projected depth of 15,000 feet. The #1 PWK 10 is located 1 mile southwest of the recently completed Sherry Miller, which tested 405 BOPD and 126 MCF through perforations 10,988 to 11,004 feet. The #1 Miller was drilled on the northeast flank of the old Cowpen Creek Field, which was discovered in 1951 and produced from Frio and Cockfield sands before depleting in 2002. (244494)

Midstates has staked locations for 2 Wilcox wells in **West Gordon Field**, (B), in Beauregard Parish. The #1 McNiel will be drilled in Sec. 4, 7S-9W to a depth of 12,800 feet, and is located 1 mile east of the recently completed #1 Forestar Minerals 5, which tested 600 BOPD and 1500 MCF. (244445)

The second permitted well, the #2 Forestar Minerals, will be drilled 3 miles to the southwest in Sec. 12, 7S-10W to a projected depth of 14,143 feet. (244497).

West Gordon Field is one of the most active fields in the deep Wilcox play. Within the last 8 months, Midstates has completed 6 Wilcox wells, has 4 wells waiting on completion rigs and currently has 3 wells preparing locations. The #1 AKS 5 H, located in Section 5, is the first Wilcox horizontal well to be drilled. It is presently waiting on a completion rig after reaching a depth of 16,695 feet.

In Evangeline Parish in **Reddell Field**, (C), Century Exploration Houston will drill in Sec. 21, 4S-1W. The #1 Evangeline Security Co. will be drilled to 14,400 feet for Lower Wilcox sands which are productive 1 mile to the east in Upper Wilcox sands. (244478)

Neumin Production Company will drill its #1 Sidney Dreyfus in **Bayou Fardoche Field**, (D), in Pointe Coupee Parish, Sec. 46, 5S-8E. The projected total depth is 13,000 feet to test Lower Wilcox sands which are productive 1 mile to the northeast in the Upper Wilcox at 11,600 feet in the #1 Kissner Land. (224404)

In Vermilion Parish, **Bayou Hebert Field**, (E), Petroquest Energy is drilling the #2 Broussard below 4900 feet to a projected depth of 19,447 feet. The well is located in Sec. 17, 14S-5E, 1 mile southeast of the operator's #1 Thibodeaux, an excellent gas well which was completed in the Cris R sand flowing 10,983 MCFD and 168 BCPD. (244457)

Anadarko will drill 2 Austin Chalk wells in **South Burr Ferry Field**, (F), in Vernon Parish. The #1 GASRS 23 is located in Sec. 23, 1S-11W and will be drilled to a depth of 22,227 feet. The well is located 2 miles northeast of production. (244416)

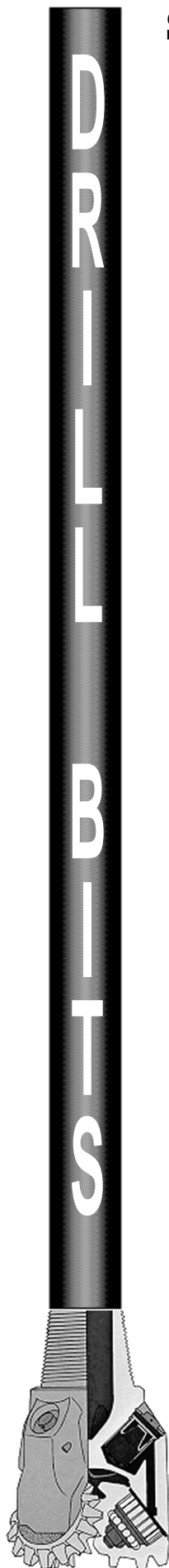
The #1 GASRS 29 will be drilled to 21,003 feet and is located in Sec. 29, 1S-11W. The completion of this well will extend production 2 miles to the northwest. (244429)

South Burr Ferry Field, discovered in 1996, was one of the early Austin Chalk discoveries. To date, the field has produced 1.4 million barrels of oil and 8.6 billion cubic feet of gas. Recent completion techniques have resulted in increased production rates.

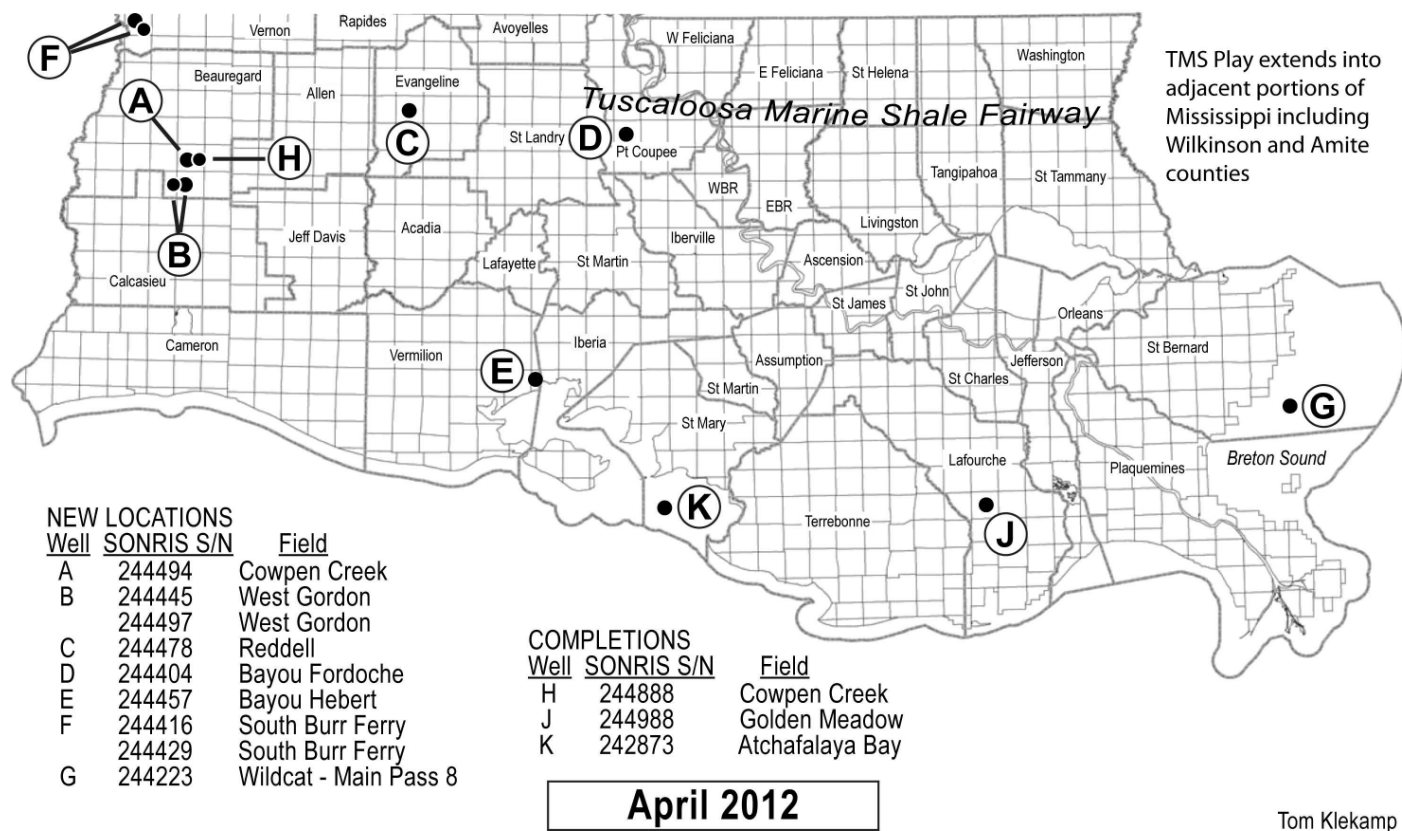
Apache Corporation will drill the #1 SL 20549, a wildcat in **Main Pass Block 8**. (G). The well will be drilled to 13,000 feet. If successful, this would be the first production on Block 8 although several attempts have been made in recent years. (244223)

COMPLETIONS

El Paso has completed the #1 Sherry Miller in **Cowpen Creek Field**, (H), in Beauregard Parish. The well was drilled in Sec. 11, 6S-9W to 14,265 feet and was completed in the Wilcox flowing 405 BCPC and 126 MCFD through perforations 10,988 to 11,004 feet. This completion is significant because it is the first



NOGS LOG DRILL BITS — SOUTH LOUISIANA ACTIVITY MAP



Wilcox production the field, which had produced from shallow Frio and Cockfield sands which depleted in 2002. (243888)

In Lafourche Parish, Walter Oil & Gas has extended production 3 miles to the north in **Golden Meadow Field**, (J), with the completion of the #1 LL&E. The well was drilled in Sec. 61, 19S-21E to a depth of 13,884 feet and completed in the BIG HUM reservoir flowing 6432 MCFC and 336 BCPD through perforations 12,988 to 13,013 and 13,353 to 13,368 feet. (243988).

Castex Energy has completed an excellent gas well in **Atchafalaya Bay Field**, (K), in St. Mary Parish. The #1 SL 20369 was drilled to 21,160 feet and completed in the CIB OP 5 sand flowing 10,185 MCFG and 88 BCPD through perforations 18,080 to 18,160 feet. (242873)

OFFSHORE GULF OF MEXICO SHELF AND DEEPWATER ACTIVITIES

By Al Baker

Between February 1st and February 29th, the BOEM approved 87 drilling permits, of which 32 were for Gulf of Mexico shelf wells and 55 were for Gulf of Mexico deep water wells. Twenty-nine of the above permits are for new wells; 7 permits are in shallow water, and 22 permits are in deep water.

The shelf new well permits comprise 2 exploratory and 5 development wells. The two exploratory wells include the Walter Oil and Gas, South Timbalier 311 #2 and the Tana Exploration, Main Pass 186 #1. The shelf development activity includes three wells by Apache (Main Pass 308 #A-4, #A-5 and #A-6), one well by Rooster Petroleum (Vermilion 376 #A-4), plus one well by GOM Shelf (Main Pass 314 #A-23).

The deep water new well permits include 21 exploratory wells and 1 development well. BHP Billiton will drill their #SH101 development well on Green Canyon 609. Chevron plans to drill 13 exploration wells on Walker Ridge 29 (Big Foot Field), and Shell is planning 6 exploration wells on Mississippi Canyon Blocks 762, 763, 806 and 807 (Mars Field). Shell will also drill an initial exploratory test on Mississippi Canyon 391 with their partner, Nexen. Finally, LLOG intends to drill their #1 exploratory well on Mississippi 300.

--- continued on next page ---

Drill Bits (continued from previous page)

According to IHS-Petrodata, as of February 24th, there were 72 mobile offshore drilling rigs under contract out of 116 rigs available in the Gulf of Mexico, which represents a 62.1% fleet utilization rate. The current total available rig number in the Gulf is 3 greater than that reported last month. In addition, there were 21 platform rigs under contract out of the 51 total in the fleet for a contracted fleet utilization rate of 41.2%.

On February 24th, the BakerHughes Rig Counts indicated that there were 43 active mobile offshore rigs in the Gulf, which represents 59.7% of the total mobile rigs under contract. The current active rig count compares to 23 active rigs during the same period last year. This represents an 87% increase in the active rig fleet on a year-to-year basis. Additionally, of the 21 platform rigs that are under contract, 15 (or 71.4 %) are currently working.

The February 24th BOEM update, concerning OCS Sale 218 (Western Planning Area) that was held on December 14, 2011, indicates that 152 of the 191 total bids have been accepted. A total of 39 bids remain under evaluation by the BOEM. Typically, the BOEM has 90 days after the sale date to either approve or reject the submitted bids. Thus, March 13th should be the final determination date for OCS Sale 218.

On February 7th, Quantum Energy Partners, a \$6.5 billion Houston-based private-equity firm, announced that it provided \$300 million in financing for its new start-up company, Renaissance Offshore, which will acquire offshore U.S. oil fields. Renaissance made its first acquisition on December 30, 2011 by purchasing Ship Shoal Block 266 Field from Chevron. Chevron had leased Block 266 in 1962 and had produced over 17 MMBO and 75 BCF from the Field prior to selling it to Renaissance Offshore. Energy producers such as Chevron and Exxon have recently been divesting some of their Gulf of Mexico assets in favor of drilling unconventional oil and natural gas prospects in the onshore shale resource plays.

On January 31st, McMoRan Exploration Co. updated its ultra-deep exploration and development activities in the shallow waters of the Gulf of Mexico. Their most significant activity involves the completion phase of their Davy Jones No. 1 discovery well in South Marsh Island Block 230. Completion activities are in progress with an anticipated flow test to occur during the first quarter of 2012. The wellbore has been cleaned out to total depth and completion fluid is in place. The remaining steps include pulsed neutron logging, perforating, running production tubing and installation of the production tree.

During January 2012, there were a total of 15 new wells started in the Gulf of Mexico. Three wells were classified as new field wildcats, and the other 12 were deemed development wells. Five new wells (2 exploratory and 3 development) were situated in deepwater, and 10 wells (1 exploratory and 9 development) were located on the shelf. The 15 total new well-count compares to 8 new well starts in December 2011. This represents an 87.5% increase on a monthly basis. Drilling and permitting activities appear to be off to a good start in 2012!

New NOGS Members January and February 2012

Andrew P. Boudreaux

Student - UNO
Dept of Earth and Env. Sci.
2000 Lakeshore Dr GP 1065
New Orleans, LA 70148
504-319-2537

Nancy E. Bowers

Fugro Gravity and Magnetic
Sr. Geophysicist
Ste 500 - 6100 Hillcroft
Houston, TX 77081
713-369-6139

Larissa M. Cupp

Apt 423 - 920 Poeyfarre St
New Orleans, LA 70130
978-621-5074

W. Neel Fallis

Energy Partners Ltd
VP Reserves
Ste 3400 - 210 St Charles Ave
New Orleans, LA 70170
504-799-1922

Louis C. Schneider

Schlumberger
General Field Engineer
13304 West Main St
LaRose, LA 70373
513-349-5835

G. Alex Janevski PhD

Shell
Production Geologist
701 Poydras St 2445
New Orleans, LA 70161
504-728-6214



An Integrated Workflow Solution

Get the full picture with comprehensive integration of IHS PETRA®, IHS PetraSeis® and IHS GeoSyn™.

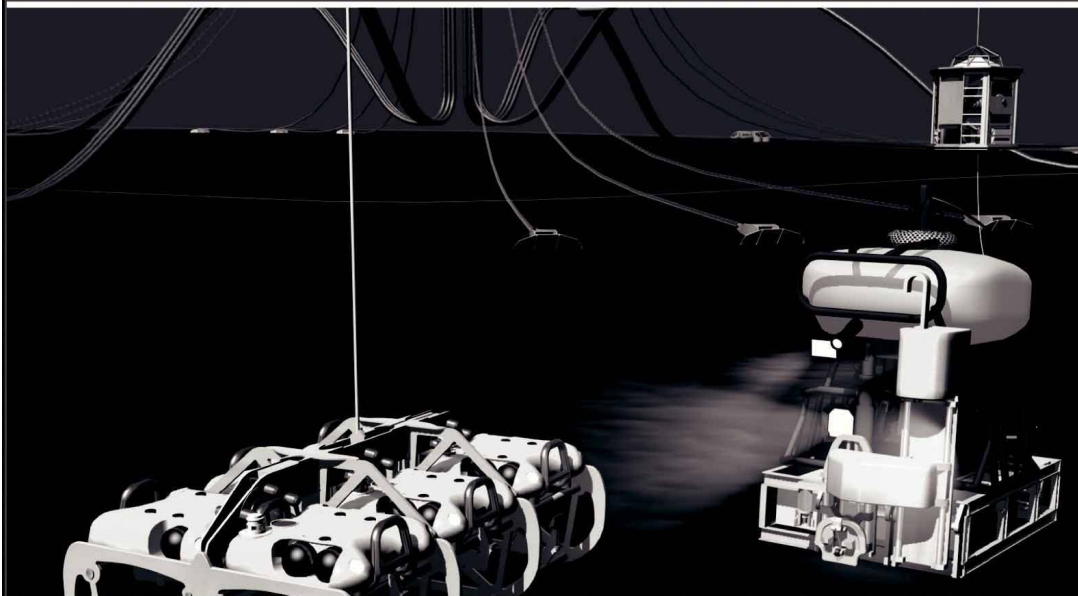
When these three solutions seamlessly connect, geological and seismic workflows are streamlined with easy-to-interpret data and modeling tools. This integrated bundle allows you to access, view and manipulate information within the same project; create multidimensional seismic models and synthetics; improve workflow collaboration; and deliver comprehensive proposals for new prospects. Get to the field faster with seismic, well, production, log and economic data at your fingertips.

See more solutions at www.ih.com/nogs



The Source
for Critical Information and Insight™

Finally - An answer for getting reservoir seismic **OVER THE RESERVOIR!**



- 4C/4D Node Seismic
- ANGOLA
- GoM
- NIGERIA



“Coming Soon to an Oilfield Near You!”

www.sbexp.com

Dubai
T: +971 4 4271700

Houston
T: +1 281 566 1666

Oslo
T: +47 2240 2700

Rio
T: +55 21 2494-0283

Singapore
T: +65 9180 2605

Trondheim
T: +47 7 3879500

RAISING
THE **STANDARD**



100 Northpark Blvd.
Covington, LA 70433

(985) 773-6000



LaBay
Exploration Co., L.L.C.

111 Veterans Memorial Blvd.,
Suite 1550
Metairie, Louisiana 70005

www.labayexploration.com

Office (504) 371-5967
Fax (504) 371-5969

For Gravity and Magnetic Data **Count on Fugro...**

Brenda Robinson: + 1 713-369-6072

brobinson@fugro.com

Jeff Rowe: + 1 613-520-7713

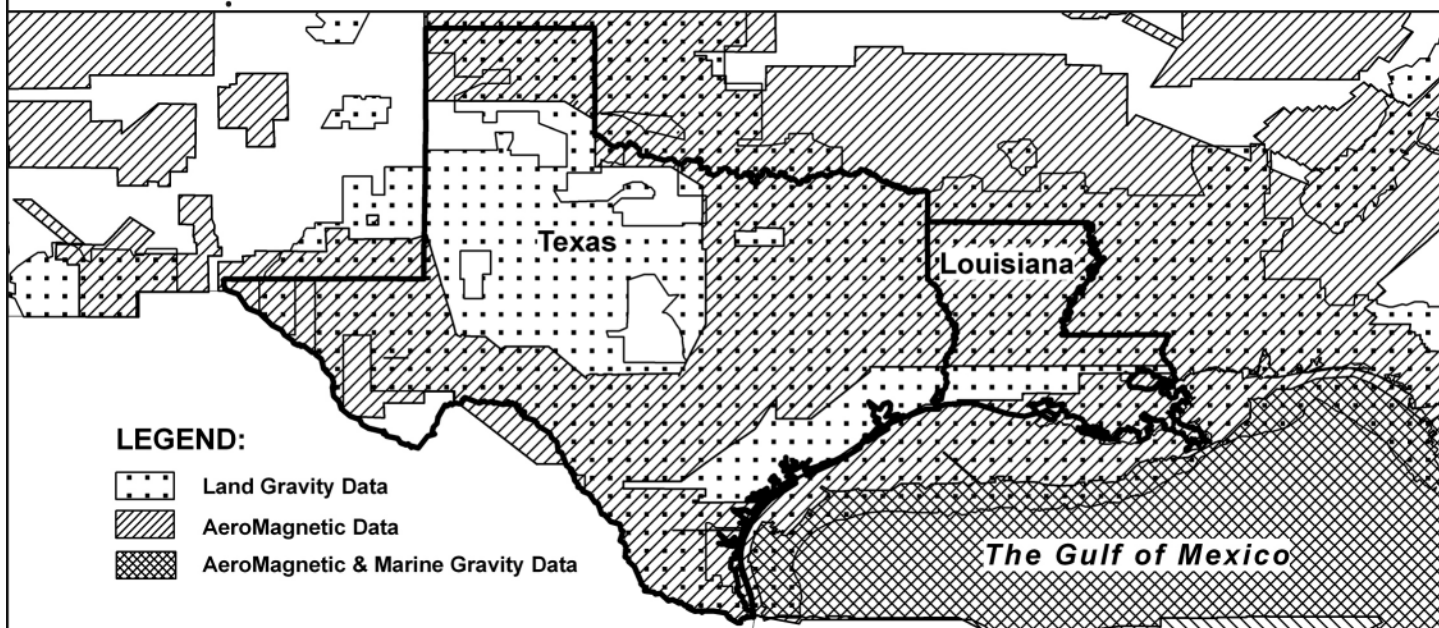
jrowe@fugro.com

www.fugro-gravmag.com



*This advertising
space is available!
Contact the
NOGS office.*

For Gravity and Magnetic Data in Texas and Louisiana **Count on Fugro— Mapping Geology to the Basement...**



...And beyond with the most comprehensive non-exclusive airborne, land and marine potential fields geophysical database, including AeroMagnetic, Land Gravity, Marine Gravity and Bathymetry data around the world. Interpretation includes:

- Basement architecture
- Tectonic elements
- Structural/geologic fabric
- Salt mapping
- Depth to basement
- ArcGIS deliverables



Fugro Gravity & Magnetic Services

For personal assistance & consultation,
please contact fgmsdata@fugro.com or 713-369-6123.

www.fugro-gravmag.com

Submitted by David Tatum

Don Briggs - Legacy Lawsuits, Louisiana Oil & Gas Association - "LA drilling hampered by 'legacy' lawsuits, LSU report says" March 5th 2012 <http://loga.la/loganews/?cat=32>

Oil and gas drilling in southern Louisiana is lagging behind some other states in part from the threat of so-called "legacy" lawsuits, in which landowners who have leased property for drilling later sue for alleged contamination from oil-field wastes and saltwater, according to a report released this week by a Louisiana State University professor.

Industry officials point to a 2003 lawsuit over site contamination that led to a \$54 million award, when the land was worth about \$108,000, as having spurred more landowners to file claims for damages.

In some cases, the suits have been filed decades later, and the drop-off in conventional drilling activity has cost the state billions in mineral revenue collections, according to the report by David Dismukes, professor and associate executive director of LSU's Center for Energy Studies

The study updates work originally included in a 2005 report produced for the state Department of Natural Resources and the Department of Economic Development that assessed Louisiana drilling activity and the economic impacts of decreased activity.

The new report estimates that over the past eight years, legacy lawsuits have led to a loss of about 1,200 new wells, costing the state about \$6.7 billion in drilling investment, not counting on oil and natural gas production, and the mineral revenues generated by foregone production.

Last year, the House Natural Resources Committee rejected a measure that would have stripped primary jurisdiction over the lawsuits from local courts and given it to the Louisiana Department of Natural Resources.

Oil and gas representatives told lawmakers that the House bill, sponsored by Rep. Page Cortez, R-Lafayette, would expedite cleanups of oil fields that are now the subject of the lawsuits. Supporters of the measure say the history of the suits and the threat of new torts hamper business. Opponents framed the Cortez bill as a way to shield oil and gas firms from liability.

Under the proposed legislation, state officials would have been responsible for overseeing the cleanup and have had more authority over the claims process, including those already filed but lacking an approved plan to evaluate potential environmental damage.

A 2006 law that governs legacy lawsuits essentially held that damages awarded to a landowner for oil-field surface damage did not have to be tied to the land's value and that the landowner was not required to use the settlement payments to clean up the effects of the damage.

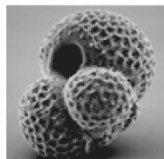
Industry officials lauded the report this week and decried the lasting impact felt by the lawsuits. Don Briggs, president of the Louisiana Oil and Gas Association, called the suits "court sanctioned extortion, where there is no need for remediation in most cases."

"The study strips away any doubt about what is going on: Louisiana's poor legal climate toward the oil and gas industry is causing the state to lose out on substantial conventional drilling opportunities and thousands of well-paying jobs to other states, most notably Texas," said Chris John, president of Louisiana Mid-Continent Oil and Gas Association. "I hope the study is analyzed in its entirety, so that the full magnitude of this problem can be understood."

Keefer Douglas - Gas Competition Service Manager, PFC Energy - "U.S. Widens Lead Over Russia as Top Gas Producer" March 6th, 2012 http://www.rigzone.com/news/article.asp?a_id=115782

Russia retained its spot as the world's #1 gas producer during the past decade until 2009, when a sharp, recession-induced drop in demand for Russian gas, rather than a decline in production capacity, allowed the United States to edge into first place.

**DOMESTIC AND INTERNATIONAL
BIOSTRATIGRAPHIC SERVICES**



6619 Fleur de Lis Drive
New Orleans, LA 70124
(504) 488-3711

www.paleodata.com



Complete wellsite paleo services

**Available single-source regional
biostratigraphic databases for
accuracy and consistency**

**Integrated foram / nannofossil
analyses**

**In-house sample preparation
lab for quality-monitoring
and efficiency**

**Supported Gulf Coast
biostratigraphic databases**



MCMORAN EXPLORATION CO.



**MCMORAN
OIL & GAS**

www.mcmoran.com

NYSE: MMR

16676 Northchase Dr.
Houston, TX 77060
(281) 539-7600
Fax:(281) 539-7655

1615 Poydras
New Orleans, LA 70112
(504) 582-4000
Fax:(504) 582-4155

110 Travis St., Suite 140
Lafayette, LA 70503
(337) 735-9150
Fax:(337) 735-9151

Russian production recovered quickly in 2010, but U.S. shale gas production had been rising since 2006 and it continued to narrow the gap with Russia. By 2010, marketed dry gas production in the United States reached 634 bcm according to the U.S. Energy Information Administration (EIA), the highest level since a 1973 peak of 641 bcm. As a result, the 2010 U.S. marketed gas production was very close to, and probably larger than, Russian marketed production.

Data from CDU TEK, Russia's equivalent to the U.S. EIA, put total Russian production in 2010 at 665 bcm, but this is a wellhead production number that includes flared gas. Using the U.S. National Oceanic and Atmospheric Administration's (NOAA) estimate of gas flaring derived from satellite imagery performed in 2010, PFC Energy estimates that Russia produced a net 630 bcm, with 35 bcm flared. The margin of error on the NOAA estimate was +/- 4 bcm, meaning that Russia could have produced as little as 626 bcm or as much as 634 bcm. Thus, the United States likely produced more gas in 2010, but the data is not definitive.

For 2011, the data is much less ambiguous. The EIA puts total US marketed gas production at 684 bcm, or 8% higher than in 2010. Russian wellhead production reached 688 bcm in 2011. While NOAA has not yet released 2011 flaring estimates, PFC Energy's conservative view, based on the flaring trend reduction since 2005, puts 2011 flaring at 34 bcm, some 4 percent below 2010 levels.

Using the same +/- 4 bcm margin of error as for 2010 yields a maximum net marketed Russian production estimate of 658 bcm: this is 26 bcm lower than the US number. In fact, Russian gas flaring would ultimately have to come in at less than 4 bcm in 2011, representing an 89 percent reduction from 2010, for marketed gas production to have surpassed the United States.

As that level of flaring reduction in Russia is highly unlikely, the United States became the clear leader in global gas production as of 2011.

SAI Geoconsulting, Inc.

*Geological and Geophysical Consulting,
3-D Seismic Interpretation*

Ben D. Sydboten, Jr. CPG

2 Flagg Pl., Suite 1
Lafayette, LA 70508
www.saigeoconsulting.com

Office (337) 504-3670
Cell (337) 456-8948

"Serving The Oil & Gas Industry Since 1983"

Geological,
Geophysical &
Land Drafting

Anthony Catalanotto
President
Stefani Foster
Drafting & Design

Geo-Draft, Inc.
A Professional Drafting & Graphics Firm

3349 Ridgelake Drive • Suite 202 • Metairie, LA • 70002
Office: (504) 836-2882 Fax: (504) 836-2877 (Cell) (504) 481-7291
E-Mail: geodraft@bellsouth.net
Website: www.geodraftinc.com

NORTHCOAST OIL COMPANY

610 E. Rutland St.
Covington, LA 70433
(985) 898-3577
(985) 898-3585 FAX

Jack M. Thorson
Eric C. Broadbridge
J. Daryl Gambrell
Raymond W. Stephens

**NOGS thanks our
sponsors for their support:**

GOLD LEVEL SPONSORS:
CHEVRON
LA BAY EXPLORATION CO, LLC.

**SPECIAL THANKS TO
DIVERSIFIED WELL LOGGING**

Collarini Energy Staffing, Inc.

Facilities • Drilling • Production • Reservoir Engineering
Land and Legal • Geosciences • Information Technology
Health and Safety • Management • Supply Chain
Accounting • Administrative Support



Full-Time and Temporary Personnel

Energy Trading • Civil Engineering • Executives
Human resources • Instrument and Electrical
Engineering • Marine Engineering • Project Management
Technical Writing • Sales and Marketing

10497 Town and Country Way, Suite 950, Houston, Texas 77094 Telephone: (832) 251-0553 www.collarini.com

This advertising space is available!

Contact the NOGS office.

THE NEW ORLEANS GEOLOGICAL SOCIETY MEMORIAL FOUNDATION, INC.

The Memorial Foundation is an IRS Tax Exempt Code #501 (c)(3) organization. The Federal I.D. is 72-1220999. Please consider making a donation to the Foundation prior to the close of this year's fiscal cycle on June 30, 2012. Your individual support in any amount will help meet the IRS Guidelines for our Foundation. *Thanks!*

\$15,000 AND ABOVE

Gibbet Hill Foundation

*In Memory of Steve & Marion Millendorf, William J. Prutzman, Roger G. Vincent,
Ron Youngblood & Uno Numella*

\$10,000

GCAGS

Matching funds

\$500

Richard G. Klibert

Foster E. Voelker

In Memory of Gene Rogas

\$250 TO \$499

Burton C. Bowen

In Memory of Joffre J. Crouere

Marc Cooper

Through the Marathon Oil Co MEPAC Program

Beverly and Carlo Christina

In Memory of Jack Dunlap

\$4,700

NOGS Golf Tournament May 2011

In Memory of Bill Craig

Carlo C. Christina

In Memory of Al Gilreath

Mrs. Ruth K. Grimes

In Memory of Fred G. Williams

In Memory of Richard Drew

UP TO \$249

Woods W. Allen, Jr.

In Memory of William C. Ward

Robert J. Ardell

In Memory of James P. Raymond, Jr.

Joan L. Biccocchi

In Memory of Louis L. McCormick, Jr.

Robert B. Branson

In Memory of Louis L. McCormick, Jr.

John B. Butz

In Memory of Louis L. McCormick, Jr.

Maurice N. Birdwell

In Memory of Uno Nummela

Hilary James Brook

Rob Burnett

J. Sybil Callaway

Chevron

Matching Funds

Arthur F. Christensen

James S. Classen

In Memory of Robert C. Treadwell

In Memory of Robert G. Williamson

Clarence F. Conrad

Charley Corona

In Memory of Professor Hubert Skinner

Trudy and Charley Corona

In Memory of Jack Dunlap

Chevron

Matching Funds

Arthur F. Christensen

Carlo C. Christina

In Memory of Louis L. McCormick, Jr.

Mildred D. Crouere

In Memory of Louis L. McCormick, Jr.

Robert M. Danos

In Memory of Max H. Durham

Dr. Brooks B. Ellwood

Parrish N. Erwin, Jr.

Dwight Easterly

In Memory of James P. Raymond, Jr.

James P. Evans III

In Memory of James P. Raymond, Jr.

Exxon Mobil Matching Funds

Michael N. Fein

Mark J. Gallagher

Arthur J. Garden

Bernard L. Hill, Jr.

Kenneth Huffman

Jeffrey E. Jandegian

Philip W. Johnson

Tom Klekamp

Reuben J. Klibert, Jr.

In Memory of Dale Klibert

Tim Klibert

John C. Kucewicz, Jr.

John C. Langford

H. David Lynch

Jeannie F. Mallick

Bill and Edwina McCormick

In Memory of Louis L. McCormick, Jr.

Margaret M. McKinney

Mr. and Mrs. Jack Fye Minor

In Memory of Louis L. McCormick, Jr.

Robert G. Murphy

In Memory of Ron Youngblood

In Memory of Thomas A. Cullinan

New Orleans Geological Auxiliary

In memory of Beverly Langford

Nexen Petroleum USA Inc.

Matching Funds

Richard A. Olsen

Teresa M. O'Neill

In Memory of Brian J. O'Neill

Linda and Bill Peirce

FONO FUND

The FONO Fund accepts contributions that are invested and the income dedicated to assure sufficient financial resources will always be available to maintain the NOGS business office. Contributors are reminded that donations to the FONO Fund are not covered by the IRS 501 (c)(3) tax exempt classification and should be reported as a business expense on your IRS tax report.

\$500

James A. Hartman

UP TO \$250

David E. Balcer

Joseph E. Boudreaux

J. Sybil Callaway

Anthony Carollo, Jr.

Richard P. Colomes

Michael A. Danahy

John Dombrowski

Merle J. Duplantis

Parrish N. Erwin, Jr.

Richard A. Edmund

Michael N. Fein

Mark J. Gallagher

Bernard L. Hill, Jr.

Kenneth Huffman

Robert M. Jemison, Jr.

Arthur H. Johnson

Tom Klekamp

Russell J. Landry

Louis Lemarie'

H. David Lynch

Jeannie F. Mallick

George M. Markey, Jr.

Louis L. McCormick

Margaret M. McKinney

Robert G. Murphy

William J. O'Leary

Richard A. Olsen

Linda and Bill. Peirce

Edward B. Picou, Jr.

James P. Raymond, Jr.

C. R. Rondeau

David M. Tatum

Roy C. Walther

Robert C. Weissmann

William M. Whiting

CONTRIBUTIONS FOR BOTH FUNDS THROUGH MARCH 1, 2012.

DONATIONS ARE LISTED FOR ONE YEAR.

Edward B. Picou Jr.

In Memory of Terry D. Keegan

Richard D. Provensal

In Memory of Thomas H. Philpott

In Memory of James Strahan

Mrs. William B. Rodan

In Memory of Jack Dunlap

Mr. and Mrs. Jack F. Schindler

In Memory of Louis L. McCormick, Jr.

George W. Schneider III

In Memory of George W. Schneider, Sr.

Mrs. Etheldra S. Scoggin

In Memory of Louis L. McCormick, Jr.

Rudolph B. Siegert

In Memory of Louis L. McCormick, Jr.

Dr. J. O. Snowden

James M. Sothern

Raymond O. Steinhoff

In Memory of Harold E. Vokes

Betsy M. Strachan Suppes

In Memory of Hubert Skinner

David M. Tatum

Leon G. Toups

In Memory Robert G. Williamson

Roy C. Walther

William M. Whiting

Arthur S. Waterman

In Memory of T. Wayne Campbell

Armour C. Winslow

In Memory of Rita Menzel Winslow

Frances A. Wiseman

In Memory of Steve Widdicombe

Camille and Jim Yeldell

In Memory of Thomas A. Cullinan

In Memory of Gene Rogas

In Memory of Robert G. Williamson

In Memory of Bill Craig

Chevron

Bernard L. Hill, Jr.

John C. Scheldt

In Memory of William C. Ward

Candace V. Strahan

In Memory of James Strahan

In Memory of William C. Ward

<p>ANSYTHE Donald I. Andrews 504-887-3432</p> 	 <p>GEOLOGY ENVIRONMENTAL MANAGEMENT</p> <p>GEM Consulting LTD Michael Louis Merritt admin@gemconsultingltd.com 1451 Applewood Road • Baton Rouge, LA 70808</p>
<p>THE BOEBEL COMPANY Oil and Gas Investments New Orleans, LA 70153 (504) 866-4313</p>	<p>H. WARREN BELL Oil and Gas Exploration 2500 Tanglewilde, Suite 485 Houston, TX 77063-2126 Bus (713) 266-7297 Fax (713) 266-7298</p>
<p>BOO-KER OIL & GAS CORP. Gray S. Parker 826 Union, Suite 300 New Orleans, LA 70112 Bus. (504) 581-2430 Fax (504) 566-4785</p>	<p>PHELPS GEOSCIENCE LLC Onshore Gulf of Mexico Geology and Geophysics Prospect Generation and Evaluation Houston, TX jsfphelps@yahoo.com (281) 398-5208</p>
<p>C & R EXPLORATION, INC. Carlo C. Christina Lawrence G. Ringham</p>	<p>RAFIDI OIL AND GAS, INC. Jaser N. Rafidi, President 4415 Shore Dr., Suite 202 Metairie, LA 70006 Bus. (504) 453-8580 Fax (504) 888-5539; Res. (504) 888-1661</p>
<p>C. R. RONDEAU Petroleum Geologist 119 W Southland Ave. Ironwood, MI 49938 Res. (906) 932-4692</p>	<p>ROY C. WALTHER Petroleum Geologist 2421 Prancer Street New Orleans, LA 70131 Bus. (504) 392-8513 Res. (504) 392-9332</p>
<p>CLASSEN EXPLORATION, INC. James S. Classen Looking for close in deals P.O. Box 140637 Boise, ID 83714 Bus. (208) 854-1037 Fax (208) 854-1029 classenllc@msn.com</p>	 <p>625 E. Kaliste Saloom Lafayette, LA 70508 16800 Greenspoint Dr., Suite 225-S Houston, TX 77060 1100 Poydras St., Suite 1050 New Orleans, LA 70163 www.StoneEnergy.com</p>
<p>D-O-R ENGINEERING, INC. 3-D and Geoscience Services 6161 Perkins Rd. P O Box 80812 Bus : (225) 765-1914 Baton Rouge LA 70898</p>	<p>TONY CAROLLO Consulting Geologist Unitization Geosteering Field Studies 1701 Peach Street Metairie, LA 70001 Bus. (504) 885-0004 Res. (504) 885-6829</p>
<p>EDWARD B. PICOU, JR. Consulting Micropaleontologist - Retired 228 St. Charles Ave., Suite 1330 C New Orleans, LA 70130 Bus. (504) 529-5155 Res. (504) 282-3096</p>	<p>Zot Oil & Gas, LLC Jim Zotkiewicz Prospect Generation and Evaluation 3200 Ridgelake Dr. Suite 207 Metairie, LA 70002-4930 Business: 504.831.4694 Email: jimzot38@zotoil.com</p>

PETROLEUM GEOLOGY FOR NON GEOLOGISTS

The New Orleans Geological Society is presenting a one-day course on "Petroleum Geology for Non Geologists," 8:30 A.M. to 3:30 P.M. on Wednesday April 11, 2011 in the Shell Auditorium, Shell Building, 701 Poydras Street, New Orleans. The course will consist of a brief introduction to Basic Geology, followed by a review of how oil and gas are formed, how they are concentrated into reservoirs, the geological and geophysical methods used in exploration and an overview of drilling and completion practices.

This course should be of significant benefit and interest to anyone who in one way or another works with geologists and geological data, such as land personnel, secretaries, draftsmen and computer programmers and processors. Instructors will be consulting geologists, Duncan Goldthwaite, Bob Branson and Bruce Robertson.

Cost will be \$35.00 per participant. Course notes and mid-morning refreshments will be provided. Persons interested can register and pay via PayPal or credit card online at www.nogs.org, or by sending a check for \$35.00, payable to the New Orleans Geological Society, to:

New Orleans Geological Society
810 Union St - Suite 300
New Orleans LA 70112

When registering, please give your name, your work or home address, telephone number and company affiliation if applicable.



MultiClient Wide Azimuth: Crystal III bringing near-surgical precision to East Breaks, WGOM.

When you know precisely where you're going, getting there is a lot more profitable. With unprecedented clarity of imaging, we've opened the gates to a bold, new sub-salt frontier in the Western Gulf of Mexico's Miocene and Lower Paleogene. Never before has the path to potential been so vividly defined.

Wide Azimuth Acquisition | hyperBeam™ Velocity Modeling
TTI Reverse Time Migration | MegaSurveys

A Clearer Image
www.pgs.com



NEW ORLEANS GEOLOGICAL SOCIETY



810 Union Street, Suite 300
New Orleans, LA 70112-1430

WWW.NOGS.ORG

MARINE PROPERTIES, LLC BERKSHIRE EXPLORATION CO.

MONTE C. SHALETT, CPL, PRESIDENT

3030 Lausar Street
Metairie, LA 70001-5924

BUS. (504) 831-7779
FAX. (504) 831-8315

PCI

Paleo Control, Inc.

Houston, Texas
713-849-0044

Drilling Wells, Studies and Data Base

Loyd Tuttle

Frio, SE Texas

Bob Liska

Wilcox, S and SE Texas

Jim Thorpe

Miocene and Cam-Miogyp



SEE YOUR DATA IN A WHOLE NEW LIGHT!

Take the pressure out of exploration
and drilling by seeing what you
are going to encounter.



eSeis

www.e-seis.com
713.531.1447

- Lithology & Fluids
- Depositional Facies
- Pore Pressure from V & Q
- Well Planning Consultation

