

NOGS LOG



October 2011

Volume 52, Number 4



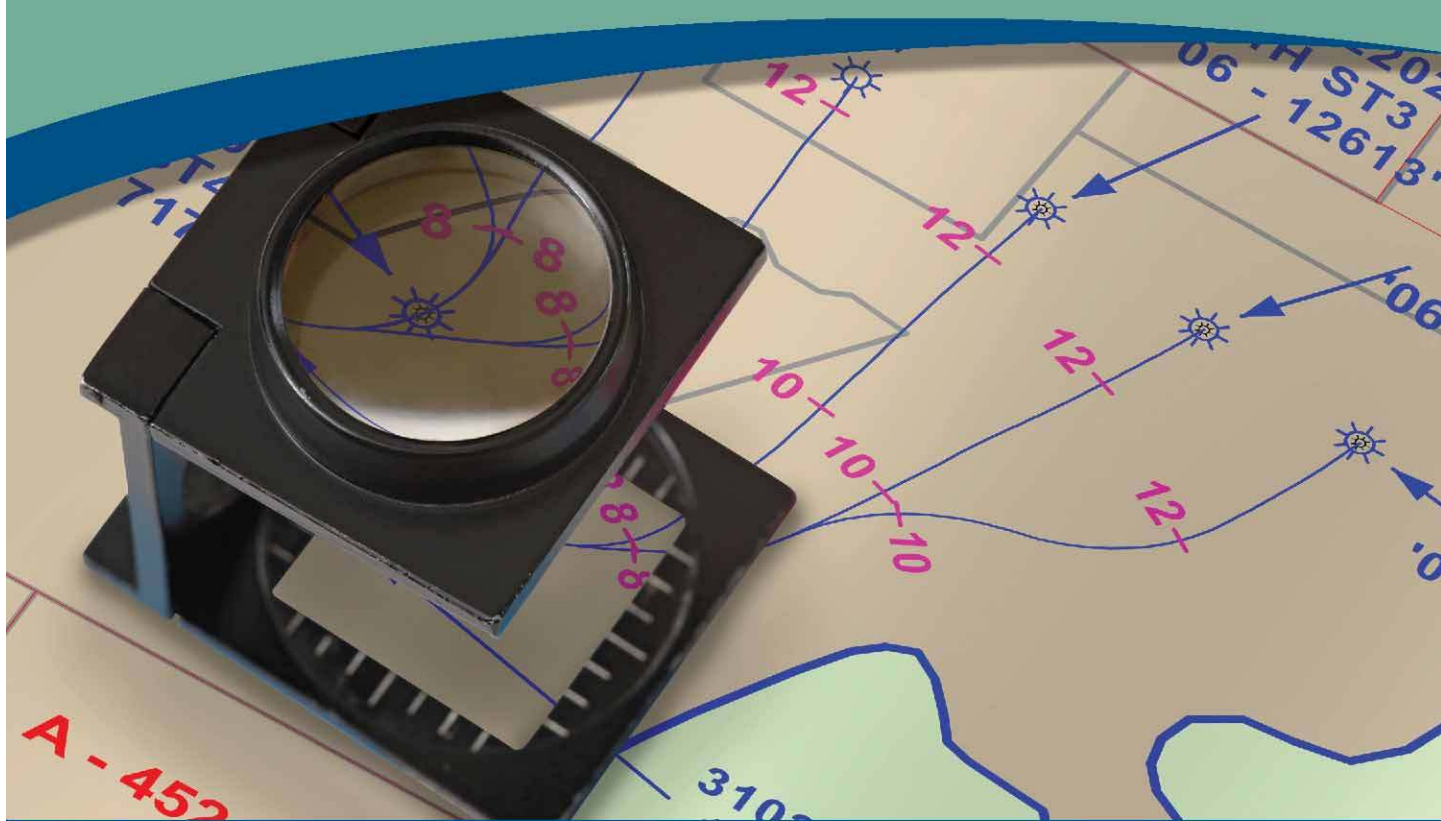
October 3 - NOGS Luncheon

Presentation: Discovery Thinking Has Led to 70 Years of Continuous Exploration and Development
at Stella Salt Dome, Plaquemines Parish, Louisiana

Guest speaker: Dan Smith, of Sandalwood Oil & Gas, Inc. in Houston

See page 9 for more information

Magnified Well Data Quality



That is TGS' Focus

Save time and money – TGS has already closely examined and processed well data for standardization and quality assurance, backed by a focused customer support team.

Complete Curve Digital Wells

LAS and LAS Plus library expanding across North America

Spatially Accurate Directional Surveys

Directional Survey Plus data thoroughly researched and reprocessed

Nationwide Production Data

Query entire US with **Longbow™** visualization and export tool

Formation Tops Picked

Available in major basins across North America

For more information contact TGS at:

Tel: +1 888 564 5463

Email: WellData@tgsnopec.com

Web: www.tgsnopec.com/welldata



www.tgsnopec.com

NOGS LOG

Published monthly by the New Orleans Geological Society. This issue was sent to press on September 12, 2011.

Interested *NOGS LOG* contributors may send requests to nogseditor@gmail.com. Requests for advertising should contact the NOGS office at info@nogs.org.

INSIDE THIS ISSUE

Special Features:

- October Luncheon Abstract
and Biography Page 9
2011 GCAGS Convention
Information Page 15
2010-2011 NOGS Memorial
Foundation Scholarships Pages 16-20

Regular Features:

- President's Letter Page 5
Upcoming Events and
Activities Page 7
NOGA News Page 22
Drill Bits Pages 26-28
Info & Tidbits Page 30

ON THE COVER

Photo Taken by: David Tatum

Location: Point Lobos State Reserve, California

Carmelo Formation - Paleocene in Age

The Carmelo formation is composed of layers of conglomerate, sandstone and mudstone, which have been deposited as turbidites. The mudstone was deposited as marine mud. Most pebbles in the conglomerate are of volcanic origin. The Carmelo formation was deposited in a submarine canyon cut into granodiorite. Deepwater turbidite deposits have proven to be world class reservoirs and represent some of the large discoveries in the Gulf of Mexico.

FROM THE EDITOR

First, I want to recognize former presidents Carlo Christina, Charles Corona and Ed Picou for representing and being recognized in the recent AAPG *Explorer*. Their hard work and those by other NOGS members has made the *Oil & Gas Fields of South Louisiana 2010* a great publication. I also wanted to remind everyone that Earth Science Week will be held October 9th-15th. This internationally organized event has been taking place since the fall of 1998 and is a great opportunity to get involved in your community. Other events this month include the Louisiana Gulf Coast Oil Exposition (October 25th-27th), the 61st Annual GCAS Convention and the AAPG International Conference and Exhibition in Milan, Italy.

NOGS and NOGA celebrated their new administrative year with a Kick Off Party at Deutsches Haus on September 9th. Approximately 70 members and their guests enjoyed a fine buffet dinner and cool libations, plus much conversation. We were glad to see so many UNO students at this event. Thanks go to Will Jorgensen and the NOGA ladies for the arrangements. Look for a gallery of photos of the event in the November *NOGS LOG*.

Thanks, David Tatum - *NOGS LOG* Editor



Get More from your Core

With reservoirs becoming increasingly complex, you need the most accurate information you can get to better understand your reservoir.

Weatherford Labs helps you get more from your core by combining an unsurpassed global team of geoscientists, engineers, technicians and researchers with the industry's most comprehensive, integrated laboratory services worldwide. From core analysis, sorption, geochemistry and isotopic composition to detailed basin modeling and comprehensive data packages, we provide you with real reservoir rock and fluid information that hasn't been distilled by a simulator or iterated by software.

We call it **"The Ground Truth™"** – giving you the accurate answers you need for better reservoir understanding. You'll call it a better return on your reservoir investment. To learn more, contact TheGroundTruth@weatherfordlabs.com.



© 2011 Weatherford. All rights reserved. Incorporates proprietary and patented Weatherford technology.



**Shell has worked in partnership
with the NOGS for many years, and
is proud to count the society among
its closest business associates.**

The New Orleans Geological Society was organized in 1941 to foster scientific research and advance the science of geology. Particular emphasis is laid on the exploration for and production of petroleum and natural gas. Related objectives include encouraging the adoption of improved methods of exploration, disseminating pertinent geological and technological data, and maintaining a high standard of professional conduct among its members.

www.shell.com/us/sepc

**It's no illusion...
Core Lab offers everything you need.**



©2009 Core Laboratories. All rights reserved.

Unconventional resource exploitation • Gas shale experts • Deepwater GOM authority
Capacity for fast turnaround • High-quality people • Global support
Industry leadership and reliability • Proprietary and patented technologies • Experience

www.corelab.com/rd/petroleumservices • 24-hour wellsite service hotline: 504-733-6583



from the President

Last month, I was visiting some friends in New Jersey, and Dr. Peter Wooley, a Fairleigh Dickinson University political science professor, asked me about my perspective on the future of the oil and gas industry. We started the conversation with President Obama's declaration about oil being yesterday's fuel. Because Dr. Wooley does many surveys and polls about politically charged issues, he was interested in what an oil industry individual had to say in response. The long term future of the oil and gas industry should also be of concern to our younger and more junior NOGS members.

I explained to him the statement that oil is yesterday's fuel is really ridiculous because there is no economical replacement today. Nothing has already replaced oil or even comes close. The replacements that antagonists to the oil and gas industry often mention are solar, wind, hydro, biomass/biofuel, geothermal and nuclear. The total amount of energy contributed to the United States from renewable energy resources is about 11% with nuclear energy being 11% as well (U.S. Energy Administration EIA). Therefore, renewable sources have pulled even with nuclear.

With the recent Japanese nuclear power plant disaster and nuclear waste's inherent problem, nuclear is expected to decline from its present level.

This puts oil and gas at 78% of all U.S. energy production. That in itself puts it firmly in "today's fuel

category." The professor and I discussed the electric car concept. To ignore the fact that it requires electric production from coal, oil and natural gas is misleading to the whole energy picture. The U.S. subsidizes ethanol production so it is not an economic source of fuel by itself. Every conversion of energy from one form to another form costs money and loses energy efficiency during the conversion. Natural gas may someday become the fuel for most cars but the purely electric car has some difficult challenges.

As the country is learning, the U. S. is blessed with extremely large natural gas deposits trapped in shale plays. This fossil fuel, while not renewable, is competitive in price, abundant, cleaner burning than coal and can be transported with an already existing infrastructure. The natural gas exploration and extraction business should have a long history ahead.

Oil is used by many other industries besides the energy sector. The base stocks for most pharmaceuticals are from oil. The synthetic material that industries like plastics use are sourced from oil. In fact, if oil did not exist naturally, our chemists would be trying to create an artificial version of it. I left the professor with the thought that the oil and gas industry was vital now and for at least another generation.

Bob

NOGS Office

Office Manager: Annette Hudson

Office Hours: 8:30 a.m. – 3:30 p.m. on Monday-Wednesday-Friday

Tel: 504-561-8980 Fax: 504-561-8988

E-mail: info@nogs.org Website: www.nogs.org

The office is located at Suite 300, 810 Union Street, New Orleans, LA 70112.

Correspondence and all luncheon reservations should be sent to the above address.

**BOARD OF DIRECTORS**

President	Bob Hafner
Vice President	Daisy Pate
Secretary	Chuck Holman
Treasurer	Bay Salmeron
President-Elect	Will Jorgensen
Editor	David Tatum
Director 2012	Arthur H. Johnson
Director 2013	Jack Langford
Director 2014	Michael N. Fein

Company**Phone****E-mail**

US Army Corp of Engineers	504-862-1775	ottohaf@aol.com
Independent	504-975-6735	daisy.pate@gmail.com
TGS	504-524-3450	charleswholman@bellsouth.net
Shell	504-728-6339	bay.salmeron@tgsnopec.com
Chevron	985-773-6477	william.r.jorgensen@shell.com
Hydrate Energy International	504-464-6208	nogseditor@gmail.com
J C L Services	985-764-2527	artjohnson51@hotmail.com
W & T Offshore	504-210-8148	jclangford@latterblum.com
		mikef@wtoffshore.com

COMMITTEE**Chairperson**

AAPG Delegates	William M. Whiting
AAPG Student Chapter	Gabriella March
AAPG Student Chapter	Andrew Ranson
Advertising-Log	Nicole Cammarata
Auditing	Will Jorgensen
Awards	Michael N. Fein
Ballot	Bay Salmeron
Best Paper	Brenda Reilly
Continuing Education	TBA
Employment Counseling	TBA
Entertainment	Will Jorgensen
Environmental	Daisy Pate
External Affairs	Michael A. Fogarty
Field Trip	TBA
Finance and Investment	Bay Salmeron
Historical	Edward B. Picou, Jr.
Membership/Directory	Carlo C. Christina
	Tom Klekamp
New Geoscientists (NGNO)	TBA
Nominating	Scott A. Wainwright
Non-Technical Education	Duncan Goldthwaite
Office Operations	Rick Kear
Publications Sales	Edward B. Picou, Jr.
Photography	Tom Klekamp
School Outreach	Thomas C. Bergeon
Scouting	Carol Rooney
Sponsorship/Houston	David E. Reiter
Technical Projects	TBA
Ad Hoc Committee on University Support	Michael J. Gallagher

Consultant	504-947-8495
Tulane University	
UNO	337-578-5587
Schlumberger	504-592-5317
Shell	504-728-6339
W & T Offshore	504-210-8148
TGS	504-524-3450
Geological Consulting LLC.	504-430-4240

bootscon@aol.com
gmarch@tulane.edu
aranson@uno.edu
ncammarata@slb.com
william.r.jorgensen@shell.com
mikef@wtoffshore.com
bay.salmeron@tgsnopec.com
reillybe@yahoo.com

Shell	504-728-6339
US Army Corp of Engineers	504-957-4372
Sylvan Energy, LLC	603-523-4808

william.r.jorgensen@shell.com
daisy.pate@gmail.com
mike.a.fogarty@gmail.com

TGS	504-524-3450
Consultant	504-529-5155
Retired (C & R Expl. Inc)	504-835-4116
Amber Resources	985-845-4046

bay.salmeron@tgsnopec.com
epicou@bellsouth.net
Carlocc398@aol.com
klekamp@bellsouth.net

Bret Exploration Co Inc	504-889-2700
Consultant	504-887-4377
Schlumberger	504-592-5376
Consultant	504-529-5155
Amber Resources LLC	985-845-4046
Century Exploration	504-832-3772
Consultant Geologist	504-835-1909
Eni Petroleum	

Scott_wainwright@hotmail.com
DGldthwt@aol.com
kear1@new-orleans.oilfield.slb.com
epicou@bellsouth.net
klekamp@bellsouth.net
Tom.bergeon@centuryx.com
carolbrooney@aol.com
david.reiter@enipetroleum.com

Eni Petroleum	713-393-6100
---------------	--------------

Michael.Gallagher@enipetroleum.com

NOGS LOG STAFF

Editor	David Tatum
Editor-Elect	Jordan Heltz
Auxiliary	Susie Baker
Info Tidbits	David Tatum
Drill Bits	Carlo C. Christina
Layout	Jannette Inc.
Webmaster	Edward B. Picou, Jr.

Chevron	985-773-6477
Chevron	985-773-7163
NOGA	504-466-4483
Chevron	985-773-6477
Retired (C & R Expl. Inc)	
Consultant	504-529-5155

nogseditor@gmail.com
jordan.heltz@chevron.com
sbaker1650@aol.com
nogseditor@gmail.com
drillbits81@yahoo.com
epicou@bellsouth.net

NOGS AUXILIARY**Officers**

President	Jean Jones
1st Vice-President	Alma Dunlap
2nd Vice-President	Camille Yeldell
Secretary	Peggy Rogers
Treasurer	Judy Lemarie'
Parliamentarian	Beverly Kastler
Member-at-Large	Linda Peirce

Phone
504-738-8091
504-737-2678
504-835-7467
504-392-6323
504-393-8659
504-286-0879
504-393-7365

Directors**Year****Phone**

Carol Andrews	2010-12	504-887-3432
Susie Baker	2010-12	504-466-4483
Mary Walther	2010-12	504-392-9332
MaryEllis Haseltine	2011-13	504-885-7657
Gwenn Swaney	2011-13	504-831-0748
Pat Williamson	2011-13	985-626-6910

Upcoming Events and Activities

October 3 - NOGS Luncheon

*** At the Holiday Inn Downtown Superdome ***
\$2.00 validated parking in hotel garage

Guest speaker: Dan Smith, of Sandalwood Oil & Gas, Inc. in Houston
Will present: Discovery Thinking Has Led to 70 Years of Continuous Exploration
and Development at Stella Salt Dome, Plaquemines Parish, Louisiana.

(See page 9 for Abstract and Biography)

HOLIDAY INN DOWNTOWN SUPERDOME

Check with concierge or
front desk for location
Lunch served at 11:30am

ADMISSION:

with reservation \$30.00
without reservation \$35.00
Student Member with reservation Free

October 16-19 - 61st. Annual GCAGS Convention

In Veracruz, Mexico. See announcement on page 11.

October 23-26 - AAPG International Conference & Exhibition

In Milan, Italy. For more information: <http://www.aapg.org/Milan2011/>.

October 25-27 - Louisiana Gulf Coast Oil Exposition

Cajundome & Convention Center in Lafayette. For more information: <http://www.lagcoe.com/>.

November 7 - NOGS Luncheon

Holiday Inn Downtown Superdome. Guest speaker Kelli Hardesty, of Environmental Resources
Management in Metairie, will present: "Noise to signal: A microtremor study at liquefaction sites
in the New Madrid Seismic Zone."

NOGS CONTACT LIST

--- continued from previous page ---

MEMORIAL FOUNDATION

BOARD OF TRUSTEES

		Company	Phone	E-mail
2011-12 Chairman	Rick Kear	Schlumberger	504-592-5376	kearl1@new-orleans.oilfield.slb.com
2011-12 Secretary	Bob Hafner			ottohaf@aol.com
2011-12 Trustee	Monte Shalett	Berkshire Exploration Co	504-831-7779	mshalett@gmail.net
2011-12 Trustee	James Swaney	BOEMRE	504-736-2677	james.swaney@boemre.gov
2012-13 Trustee	Jennifer Connolly	Shell	504-728-6411	jennifer.connolly@shell.com
2012-13 Trustee	William M. Whiting	Consultant	504-947-8495	bootscon@aol.com
2013-14 Trustee	J. David Cope	ANKOR Energy LLC	504-596-3672	dcope@ankorenergy.com
2013-14 Trustee	Tom Klekamp	Amber Resources LLC	985-845-4046	klekamp@bellsouth.net

AAPG DELEGATES

Term Ends

2012	William Whiting	Consultant	504-947-8495	bootscon@aol.com
2012	Jim Zotkiewicz	Zot Oil & Gas	504-831-4694	jimzot38@zotoil.com
2012(a)	David E. Balcer	Chevron	985-773-6725	dbalcer@Chevron.com
2012(a)	Richard J. Stancliffe	Shell Expl & Prod Co.	504-728-7553	richard.stancliffe@shell.com
2014	Arthur H. Johnson	Hydrate Energy International	504-464-6208	artjohnson51@hotmail.com
2014	Brenda Reilly	Geological Consulting LLC.	504-430-4240	reillybe@yahoo.com
2014(a)	Elizabeth C. McDade	McMoRan Exploration Co	504-582-4510	ecmcdade@bellsouth.net
2014(a)	Frances A. Wiseman	BOEMRE	504-736-2912	frances.wiseman@boemre.gov

Deep Water

WELL CONSTRUCTION

Are all your services deepwater ready?

Control Measures	Complexity/Process + Exposure	Preparedness				
		High				Low
	High	-5	-10	-15	-20	-25
	-4	-4	-8	-12	-16	-20
	-3	-3	-6	-9	-12	-15
	-2	-2	-4	-6	-8	-10
	-1	-1	-2	-3	-4	-5
	Low					
		People + Competency		Equipment + Technology		
		1	2	3	4	5



Our Project Readiness Assessment (PRA) approach has been applied and improved over the last 5 years.

All deepwater projects in which Schlumberger participates benefit from our PRA process, which complies with new U.S. regulatory requirements. This helps deliver seamless, efficient startup, and reduced NPT.

Learn more at

www.slb.com/deepwaterready

Global Expertise
Innovative Technology
Measurable Impact

Schlumberger

*Mark of Schlumberger. Measurable Impact is a mark of Schlumberger. © 2010 Schlumberger. 10-dw-0079

October 3 NOGS Luncheon Presentation

At the Holiday Inn Downtown Superdome

Discovery Thinking Has Led to 70 Years of Continuous Exploration and Development at Stella Salt Dome, Plaquemines Parish, LA

presented by

Dan Smith

Sandalwood Oil & Gas, Inc. - Houston

ABSTRACT

The Stella Salt Dome, located just east of New Orleans, Louisiana, was discovered by the California Company in 1940. The dome has seen continuous exploration for seventy years and is an excellent example of implementation of advancements in technology and discovery thinking.

This paper is much more than just a field study. The author has worked the dome for fifty years and will illustrate how discovery thinking has been applied during each decade. Interesting anecdotes are used throughout to emphasize the difficulties that were encountered and eventually overcome in this tough operating area.

Some of these difficulties are as follows:

1) The area includes the Mississippi River, a military air base, residential subdivision, industrial complexes, thick vegetation,

marshes and open water. 2) Operations are very difficult. 3) The structure and stratigraphy are very complex. 4) Seismic 2-D data are nearly nonexistent. 5) 3-D seismic is difficult to acquire. 6) Most of the wells must be drilled directionally.

In spite of all the difficulties, discovery and creative thinking utilizing technology transfer, paleo environmental studies, gravity data, 3-D seismic, all types of well information, team work, patience, perseverance, continuous problem solving, flexible management and determination has led to the discovery of approximately 15.5 million barrels of oil and 106.5 BCF gas. At today's prices, this equals a value of \$2.5 Billion.

Stella Field is an inspiration for exploration discovery thinking virtually everywhere that oil and gas accumulates.

BIOGRAPHY

Dan Smith has 53 years of oil and gas exploration and production experience. His background includes prospect generation, property evaluation, structural and stratigraphic interpretations, well log analysis, geophysics and business and financial management. He is responsible for discovering numerous new fields.

Mr. Smith started his career at Amoco after graduation from UT-Austin with a degree in Geology. He became Executive Vice President and part owner of Texoil after a period at Roberts and Whitson Petroleum. In 1992, he joined Meridian Resources Corporation as a consultant, accepting a position as Vice President in 1996. He continued with Meridian until 1999 when he again became an independent. Mr. Smith joined Sandalwood Oil & Gas, Inc. as Executive Vice President in 2001. He also manages his own independent company.

Mr. Smith has served as President of HGS, AAPG and the SIPES Foundation. He received the Distinguished Service and Honorary Life Membership Awards from HGS, GCAGS and SIPES. He received HGS' highest honor, the Gerald A. Cooley Award. He also received the Distinguished Service Award and

Honorary Member Awards from AAPG as well as the Honorary Member Award of the House of Delegates. In April, he received the AAPG Michel T. Halbouty Outstanding Leadership Award. He is a co-founder of the Onshore Exploration Independents. Mr. Smith is currently the AAPG representative to the American Geological Institute Member Council and Chairman of the Houston SIPES Chapter Political Affairs Committee.

Mr. Smith has been a dedicated and active contributor to his alma mater, The University of Texas at Austin. He has served on the Jackson School of Geosciences Advisory Council for approximately ten years, during which time the Jackson School was created as a separate school that includes the Geoscience Department, the Bureau of Economic Geology and the Institute of Geophysics. In 2007, he was recruited to create and organize the alumni association of the Jackson School (which numbers about 5,000 worldwide), and he became the first president. He was instrumental in starting local chapters in a number of cities. As past-president, he represents the school on the overall University of Texas Alumni Council. In addition, he serves on several committees dealing with various university issues.

THE LUNCHEON RESERVATION DEADLINE IS SEPTEMBER 28 - CONTACT THE NOGS OFFICE

“And Looking Ahead...”

The next luncheon will be held on November 7th. Guest speaker Kelli Hardesty, of Environmental Resources Management in Metairie, will present: “Noise to signal: A microtremor study at liquefaction sites in the New Madrid Seismic Zone.” Contact the NOGS office at 561-8980, or use the PayPal link on the NOGS website (www.nogs.org) to make your reservation.



From ZNodal Systems to ZNodal Imaging

We are full spectrum ZNodal™ technology

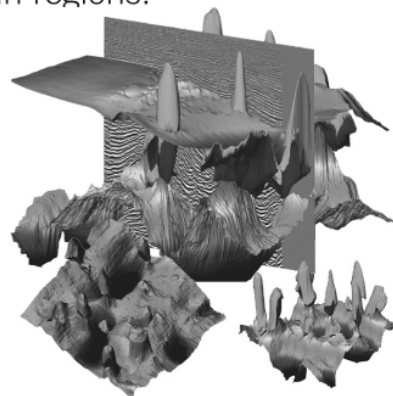
FairfieldNodal.com



We admit it. We're seismic nodal fanatics. Always have been. Which explains our one-of-a-kind, cable-free ZNodal™ systems. They work wonders in dense urban areas and pristine wilderness, in shallow water and deep ocean regions.

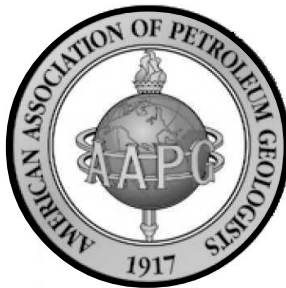
In fact, our exclusive ZNodal technology is behind everything we do, from acquisition and licensing to advanced processing and imaging, bringing nodal data to life in amazing ways.

Right now, our ZNodal systems are on the job in some of the world's most challenging fields, making a powerful difference. So when you're ready to go nodal, count on us to lead the way. ZNodal technology: It's what you need. It's what we're all about.



fairfieldnodal

SYSTEMS ACQUISITION LICENSING PROCESSING IMAGING



The Pony Discovery, Green Canyon Block 468, U.S. Gulf of Mexico: Structural Evolution and Salt Tectonics

Kilsdonk, Martin W.¹; Mann, Ryan¹; Zollinger, Henry¹; Grush, Ken¹; Graves, John E.¹
(1) Hess Corporation, Houston, TX

In 2006 Hess Corporation drilled the Pony discovery well in Green Canyon Block 468. A 4-way dip closure in sub-salt Middle and Lower Miocene reservoirs traps reserves at depths near 30,000 feet and extends southward into adjoining blocks. Resources are currently being evaluated through a program of drilling, seismic reprocessing, and detailed interpretation. We combine regional and local transect restorations with regional salt maps and local isochore maps to derive the structural setting and structural evolution of the Pony structure. The structure developed in response to salt tectonics on both regional and local scales which deformed the “primary” section: the section that is in uninterrupted stratigraphic succession above the Louann salt but often below an allochthonous canopy or weld. Regionally, Pony abuts against the structural boundary between interconnected and isolated primary depo-centers. It is among the most landward of interconnected primary depo-centers and fundamentally differs from structural and depositional settings of the isolated depo-centers to the north. It has experienced semi-regional translation and minor shortening, particularly adjacent to a salt stock NE of the field - detached on underlying salt. Strata surrounding the stock were folded into a high which may have been an early focal point for hydrocarbon migration. An adjacent NE-SW elongated salt high, which influenced corresponding stratigraphic variations, developed in the Middle Miocene, possibly as a gentle fold. The structure was later deformed in response to differential movement of underlying salt as it fed the overlying canopy - an amalgamation of salt sourced through multiple stocks. This phase was important for present-day structural configuration and secondary oil migration. Post canopy evacuation of deep salt beneath the high was accommodated by at least one large offset fault that strikes NE-SW and cuts the entire basin from canopy to the depleted deep salt layer. Faults in a second set are also post-canopy in age and also strike NE-SW, but tip out with depth. These smaller faults accommodated dip changes associated with “outer arc extension” during turtle formation.

AAPG© 2011 “Reprinted by permission of the AAPG whose permission is required for further use.”



An Integrated Workflow Solution

Get the full picture with comprehensive integration of IHS PETRA®, IHS PetraSeis® and IHS GeoSyn™.

When these three solutions seamlessly connect, geological and seismic workflows are streamlined with easy-to-interpret data and modeling tools. This integrated bundle allows you to access, view and manipulate information within the same project; create multidimensional seismic models and synthetics; improve workflow collaboration; and deliver comprehensive proposals for new prospects. Get to the field faster with seismic, well, production, log and economic data at your fingertips.

See more solutions at www.ih.com/nogs



The Source
for Critical Information and Insights™

2011 Oil History Symposium – Marietta, Ohio

Plans for 2012 - Houston

The Petroleum History Institute (PHI), in collaboration with the Ohio Oil and Gas Energy Education Program, held its 2011 annual symposium and field trip at historic Marietta, Ohio, on the banks of the Ohio River. Participants were treated to a wide variety of talks and poster presentations ranging from the history of oil and gas in Ohio to the many contributions to the industry from Baku. On the field trip, the group visited the Thorla-McKee Well, a salt water well drilled in 1814 that produced the first commercial oil in Ohio as well as seeing an old, but still operating, natural gas engine attached to a very large band wheel driving several pump-jacks (shackle line) – still producing Ohio crude after about 100 years, and a wonderful stop at the Parkersburg Oil and Gas Museum in Parkersburg, West Virginia. The trip ended with a tour of the Petroleum Engineering Department at Marietta College. **The next Oil History Symposium and Field Trip will be held in Houston, Texas, March 8-10, 2012.**


In the past, we have held the symposium in Oil City, PA, Long Beach, CA, Wichita, KS, Shreveport, LA, Lafayette, LA., Oil Springs, Ontario, and in WV.

Mission of PHI: To pursue the history, heritage, and development of the modern oil industry from its 1859 inception in Oil Creek Valley, Pennsylvania, to its early roots in other regions in North American and the subsequent spread throughout the world to its current global status. See the following web site for more information: www.petroleumhistory.org.

PHI also publishes a yearly journal, *Oil-Industry History*. Our membership includes geoscientists, engineers, historians, museum curators, authors, etc.

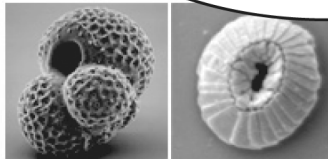
We look forward to another stimulating symposium next year at the Houston meeting, March 8-10, 2012. The abstract deadline is January 15, 2012, so start thinking about your subject, and send the abstract to Bill Brice, wbrice@pitt.edu. For more information, contact Jeff Spencer (spencerj320@gmail.com). Plans are to hold a meeting soon for those interested in serving on the 2012 Oil History Symposium Committee.

**DOMESTIC AND INTERNATIONAL
BIOSTRATIGRAPHIC SERVICES**




6619 Fleur de Lis Drive
New Orleans, LA 70124
(504) 488-3711

www.paleodata.com




Complete wellsite paleo services

**Available single-source regional
biostratigraphic databases for
accuracy and consistency**



**Integrated foram / nannofossil
analyses**



**In-house sample preparation
lab for quality-monitoring
and efficiency**

**Supported Gulf Coast
biostratigraphic databases**

MCMORAN EXPLORATION CO.



**MCMORAN
OIL & GAS**

www.mcmoran.com

NYSE: MMR

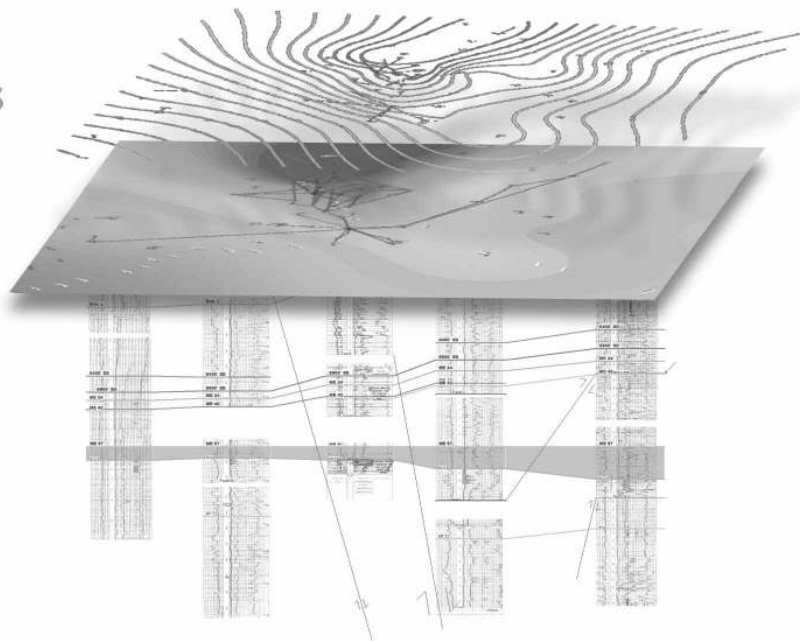
16676 Northchase Dr. Houston, TX 77060 (281) 539-7600 Fax: (281) 539-7655	1615 Poydras New Orleans, LA 70112 (504) 582-4000 Fax: (504) 582-4155	110 Travis St., Suite 140 Lafayette, LA 70503 (337) 735-9150 Fax: (337) 735-9151
--	--	---

NeuraSection

Trusted Reservoir Analysis

NeuraSection brings together real-time editing of your logs, maps, sections and other critical information allowing you to focus on interpretation.

- Auto and manual contouring
- Cross section generation
- Interactive editing
- Reserves calculations
- Presentation montaging



Neuralog
Turning Paper Into Petroleum

© 2011 Neuralog • www.neuralog.com • 1.281.240.2525 • 1.800.364.8728

www.NeuraSection.com

Visit Booth 42 - GCAGS



SEI®

Seismic Exchange, Inc.

**Strategic Speculative Surveys
Geophysical Data Marketing & Management**

Your
**Full Service
National
Seismic Data
Marketing Firm**

New Orleans
Dallas
Houston
Denver
Oklahoma City
Corpus Christi
Tulsa

201 St. Charles Avenue, Suite 4300, New Orleans, Louisiana 70170-4300
Telephone 504.581.7153 Fax 504.581.9591
www.seismicexchange.com



Sharing knowledge to add value

OCTOBER 16-19, 2011 VERACRUZ, MÉXICO

This Convention will take place in an emblematic city of Mexico: the port of Veracruz, one of the most privileged places on the American Continent, where the universal interchange of goods and ideas led the way to the actual configuration of the modern world.

For two consecutive days, three oral technical sessions each morning and afternoon will be presented simultaneously with poster sessions all through the day. These twelve technical sessions will cover relevant topics about petroleum geology, seismic interpretation, climate change, sustainable development, geohydrology, and education, enhanced by three field trips, six short courses, a luncheon conference, and an industrial exhibition. On the third day, a Symposium on "Jurassic regional framework and reservoirs in the Gulf of Mexico" will be held. Student activities have been designed as an integral part of the Convention.

12 Topics: 103 oral presentations 51 poster presentations
6 Short courses, 3 Field Trips, and 1 Symposium.



	EDMUNDO CEPEDA DE LA GARZA ROOM	MANUEL ALVAREZ Jr ROOM	TEODORO DIAZ ROOM
Monday 8:25 – 11:30	Remaining potential in circum - Gulf of Mexico petroleum provinces	Stratigraphy framework of the Gulf of Mexico and adjacent areas	Climate change, geohydrology, geological risks, environmental challenges and sustainable development
Monday 11:30 – 13:25 PM	Luncheon Conference		
Monday 13:25 – 16:35	The Gulf of Mexico deepwater setting – geology and economics	Seismic imaging and interpretation of geological complex areas	Learning and teaching in the geosciences to meet new challenges.
Tuesday AM 8:25 – 11:30	New perspectives in fractured reservoirs.	New insights into the geodynamic evolution of the Gulf of Mexico	New concepts and methods in biostratigraphy
Tuesday PM 13:25 – 16:30	Petroleum systems and oil quality controls in the Gulf of Mexico	Interaction between salt tectonics and sedimentation.	New approaches in sandstone reservoirs characterization and diagenetic modeling.
Walk & Talk Luncheon at the Exhibition			
Wednesday AM 8:25 – 11:45	GUILLERMO P. SALAS ROOM		
Wednesday PM 13:30 – 15:30	Ralph W. Inlay Symposium: "Jurassic tectonic framework and reservoirs in the Gulf of Mexico"		

No.	COURSE NAME	INSTRUCTOR(S)	DAYS	FEE
1	Characterization of fractured reservoirs: examples from southeastern Mexico	Faustino Monroy, Miguel Hernández, Lilia Hernández, Norma Olazá and Clobide Prieto <i>Pemex Exploración y Producción</i>	Saturday, October 15; and Sunday, October 16	\$215
2	Petroleum provinces of Mexico	Ernesto Miranda, Lourdes Clara, Mariano Téllez, Juan Rogelio Román, Víctor Valdivieso, José Ruiz and Carlos Williams <i>Pemex Exploración y Producción</i>	Saturday, October 15; and Sunday, October 16	\$225
3	Regional trends in Upper Jurassic and Lower Cretaceous carbonate sequence stratigraphy and depositional systems and their application to carbonate reservoir case studies, onshore northern Gulf of Mexico	Ernest A. Mancini <i>Texas A&M University</i>	Sunday, October 16	\$150
4	Practical aspects of seismic depth imaging in complex geology areas	Rubén Darío Martínez <i>Petroleum Geo-Services</i>	Sunday, October 16	\$225
5	Fundamentals of siliciclastic sequence stratigraphy	John Holbrook <i>University of Texas at Arlington</i>	Sunday, October 16	\$250
6	Formation evaluation of thinly bedded reservoirs	Quinn R. Passay <i>Exxon-Mobil</i>	Sunday, October 16	\$185

Students activities

- Presentation and discussion on the latest version of the Geologic Map of Mexico by geologists of the Mexican Geological Service.
- Meet and Greet at the Exhibit Hall.
- Round Table after Learning and Teaching Session.



Field Trip	Objetivo
Field Trip # 1 Thursday 13 to Sunday 16 October	Facies and development of turbiditic deposits from Chicotepec Formation, western margin of Chicotepec paleochannel, Mexico
Field Trip # 2 Saturday 15 to Sunday 16 October	Stratigraphic, sedimentological and structural elements of an exhumed Cretaceous reservoir at the frontal Sierra Madre thrust and fold-belt, Veracruz, Mexico
Field Trip # 3 Wednesday 12 to Sunday 15 October	Meaning of the stratigraphy and structure at Sierra de Chiapas in the Tectonic Evolution and Petroleum Systems of the southeastern Mexico



GCAGS President
Jaime Patiño - Ruiz / jaime.patino@pemex.com
Convention General Chairman
Javier Meneses - Rocha / jmenesesrocha@gmail.com

www.gcags2011-com

@gcags2011

2010-2011 NOGS Memorial Foundation Scholarships

Lee H. Meltzer Memorial Graduate Award

\$3,000 Cash Award

LSU - Isis Fukai

Isis Fukai interests in geology began at a young age with a curiosity about the natural world and Earth processes. An Advanced Earth Science class augmented her interest in high school and influenced her to pursue geology as a major in college. Isis explored this interest in petrology by participating in the Oberlin College Summer Research Institute 2008, the Keck Geology Consortium of Undergraduate Research and doing Independent High Honors Undergraduate Research under Frederick Zeb Page, Ph.D. Isis believes strongly in community involvement and improvement via education. She has been an America Reads and America Counts volunteer tutor for elementary students (2005-2008) as well as a tutor for Oberlin Public High School in Oberlin, OH (2007-2008). Isis' mother dedicated her life to improving and promoting the welfare of children, instilling in her principles of community service and compassion. Unfortunately, social work is not a financially prolific field for a single mother. In order to pursue her interests in Earth Sciences and attend college, Isis had to rely on scholarships. Currently, Isis' sole source of income is a Graduate Student Teaching Assistantship of \$15,000 for the nine-month academic year that LSU has generously offered. She hopes to be able to continue her education and research at LSU in order to effectively teach and inspire interest in Earth Sciences.

James Allen Gilreath Memorial Graduate Award

\$3,000 Cash Award

Tulane - Yinan Wang

Yinan Wang was born in Zibo, known as ancient Linzi, the cradle of Qi culture in Chinese civilization. Due to the atmosphere in his family, Yinan's favorite hobby is reading books especially ancient works. Beyond the family's expectation, Yinan became the only person in his family studying subjects in the field of science and engineering when he was recruited into China University of Geosciences in 2004. Restricted and diverse undergraduate education there did help Yinan build up a strong knowledge basis. However, it is at Tulane University that he started to know what a research and corresponding scientific attitude are.

Richard W. "Dick" Boebel Memorial Graduate Award

\$3,000 Cash Award

UNO- Kevin Trosclair

Kevin Trosclair is a Master's Degree candidate at the University of New Orleans, Department of Earth and Environmental Sciences. His thesis will focus on wave and surge attenuation in saltmarshes, specifically addressing the role of the marsh edge in attenuating storm generated waves. His research will include collecting field data during storms as well as conducting numerical modeling to help understand and describe this dynamic environment. Kevin has a diverse background. He has a Health Sciences degree and has practiced as an Emergency Room Registered Nurse for several years before beginning his career in the Earth Sciences. He is a lifelong resident of Southern Louisiana and would like to remain in the region and work as a coastal geologist.

2010-2011 NOGS Memorial Foundation Scholarships

George W. Schneider Sr. Memorial Scholarship

\$2,500 Cash Award

LSU - Philip Bergeron

Philip Bergeron participated in several geologic research opportunities in both undergraduate and graduate careers at LSU. While working on undergraduate courses, he accompanied Dr. Philip Bart to the Ross Sea, Antarctica, for two seismic tours abroad on the NSF research vessel, and he also traveled with Dr. Annette Engel to an International Karst Field School and subsequent water/bacterial sampling throughout Slovenia. He similarly assisted two masters' students: one with water sampling of the Atchafalaya basin and Mississippi river aquifer to determine salinity and one with collection of metamorphic rocks from the Sawtooth Metamorphic Complex, central Idaho. His work in the Sawtooth Mountain Range propelled his interest in hard rock petrology and the influence of tectonics on the Paleozoic North American craton. Philip's current thesis work is to further constrain the southwestern edge of the Laurentia craton by determining provenance and geochronology of an exposure of the underlying basement (Sawtooth Metamorphic Complex) within the Sawtooth Mountains.

NOGS Memorial Foundation Scholarships

The NOGS Memorial Foundation Scholarships are granted each year to those students who have demonstrated exceptional talent in or commitment to their geologic studies and projects. It is the policy of the Memorial Foundation to posthumously name these scholarships after those members whose own extensive contributions to the profession have been particularly praiseworthy.

Lee Hilliard Meltzer for expertise in oil and gas appraisal and exploration as well as manifold and unstinting support of and service to - from AAPG to NOGS - the region's professional geologic organizations.

James Allen "Al" Gilreath for his work as chief tool developer of down-hole instrumentation and pattern interpretation, earning him - world-wide - the title, "Mr. Dipmeter."

Richard W. "Dick" Boebel for his outstanding abilities as an oil and gas finder and in being a unique individual who was most generous of his time and talent to the industry, his peers and in his support of many professional organizations .

George W. Schneider, Sr. for exceptional leadership in exploration activities and for being a positive force in establishing the New Orleans Geological Society and serving as its first president in 1941-42.

Jules Braunstein gained wide recognition in the oil and gas industry not only for exceptional technical expertise but also as an exacting editor. His long career was conspicuous for selfless devotion - and as carried on by his surviving wife, **Olga**, in her bequeathal of the residue of their estate to NOGS Memorial Foundation Scholarship Fund.

NOGS Memorial Award - The Board approved two additional scholarships for 2010-2011 which will follow the Schneider Award in rotation.

2010-2011 NOGS Memorial Foundation Scholarships

SENIOR

Jules & Olga Braunstein Memorial

\$2,500 Cash Award

LSU - Shane Cone

Shane Cone graduated from high school and moved to Louisiana in 2009 when he received the Golden Oaks Award at LSU. Shane quickly became very interested in geology and became active in the Geology Department at LSU. He was fortunate enough to be offered a position in Dr. Engel's lab, which researches Geomicrobiology. Shane has been active in the lab and the field ever since, accompanying the lab group on several field sampling trips as well as helping out on several projects in the laboratory. He looks forward to designing and completing a project of his own while an undergraduate and also to obtaining a master's in Geology.

Tulane - Holly Jeffries

Holly Jeffries was born in Guam and spent half of her life near the Pacific Ocean and the other half of near the Atlantic living in California, Virginia, Hawaii, and now, Louisiana. She grew up hiking mountains and volcanoes most of her life, developing a healthy love of rocks. However, most of Holly's work experience involves water or mud-related geology, so she started to feel a connection with our Louisiana mud-bugs, crawfish and feels destined for a career in marine geology.

UNO - Charles Chaisson

Charles Chaisson was born in New Orleans, Louisiana, on October 26, 1988, growing up in South Louisiana, primarily in Destrehan and Harahan, Louisiana. He attended Destrehan High School, where he was involved in activities such as 5A varsity football, basketball and elementary school mentoring. He then began his college career at the University of New Orleans in the fall of 2007, majoring in Mechanical Engineering. Charles changed his area of study to Geology in the fall of 2008. Along with remaining a full-time student, he worked with a Geotechnical Engineering firm for a little over a year before transitioning to a small independent exploration company on the Northshore. Charles has been with Covington Exploration for a year now, where he has correlated well logs, created subsurface structure maps, interpreted 3D seismic and evaluated prospect potential. Charles plans to graduate in the summer of 2011 with a Bachelor of Science in Geology. Some of his main interests are 3D seismic interpretation, prospect generation, fieldwork and sedimentary rock properties. Some of his hobbies include custom automobiles, lifting weights, traveling, exploring new places and having a good time. Charles hopes to attend Louisiana State University in the spring of 2012, where he will start a master's degree program in Geology. He plans on studying processes related to hydrocarbon generation, deposition and migration.

2010-2011 NOGS Memorial Foundation Scholarships

JUNIOR

Jules & Olga Braunstein Memorial

\$2,000 Cash Award

LSU - Lindsay Prothro

As a Geology major, Lindsay Prothro had the opportunity to work as a research assistant in Dr. Brooks Ellwood's lab for two years, volunteer and hold a leadership position in the Geology Club and study abroad with the Geology in Iceland program. She also enrolled in the LSU Honors College and has been a Sophomore and Junior Representative in the Honors College Student Council. In addition, Lindsay had the privilege of leading a Geology Workshop for tenth grade students participating in the 2011 FOCUS program, where she introduced them to topics in climate change, tectonics and mineralogy.

Tulane - Katie Ahlstrom

Growing up in rural South Dakota, Katie Ahlstrom spent the majority of her time swimming in Lake Campbell, stomping through fields and pastures, climbing on rocks and in trees, sledding, ice-skating; you name it. Her ideal life incorporates this love of the outdoors along with a fascination of the great natural landscapes of the earth. Katie still has many questions and looks forward to spending a lifetime studying the transformations Earth has undergone during its billions of orbits around the Sun. Topography tells a story, and she aims to be one of those able to translate scenery into history. Katie has held numerous leadership positions not only in a school setting but also in the workforce. She possesses a passion for music which she believes enriches life. Katie's areas of interest are broad, and she considers herself well-rounded. Wherever Katie ends up later in life, she is confident the work she does will have meaning.

UNO - Andrew Boudreaux

Andrew Boudreaux hates moving. Packing, storing, transporting, unpacking... it's just too much work. Guess it comes as no surprise then that he has been living in the New Orleans region for the entire twenty-one years of his life. Eighteen of that was spent in the town of Luling, about a thirty-minute drive west-southwest of the city. He shared those years with two of his sisters and his incredibly hard-working and single-parent mother, Brenda. By his junior year in Hahnville High School, he became well aware of the importance of a higher education. He worked extremely hard in school to increase his chances of getting recognized, and hopefully funded, by a respectable university. It worked. For the past three years, he has been studying geology at the University of New Orleans on a full scholarship and loving it. This is a very important time in the scheme of his life, and he feels very certain that he's on the right track. After completion of his undergraduate degree, he plans to head to LSU to pursue a Master's degree and eventually, hopefully, get noticed by an up-and-coming company. Unfortunately, that means moving to Baton Rouge, but he's confident that it will be worth it.

2010-2011 NOGS Memorial Foundation Scholarships

NOGS Memorial Awards

\$2,500 Cash Award

Tulane - Elizabeth Williams

A native of New Orleans, Louisiana, Elizabeth K Williams graduated as valedictorian from West Jefferson High School in Harvey, LA in 2005 and went on to obtain a Bachelor of Science in Chemistry from Howard University in Washington, DC. She graduated magna cum laude and with Phi Beta Kappa honors in 2009. Upon completion of her undergraduate studies, she returned to New Orleans, where she enrolled in the Ph.D. program at Tulane University in the Department of Earth and Environmental Sciences. Currently, Elizabeth is interested in sedimentary organic geochemistry and carbon cycling in wetlands and deltaic environments. During her spare time, she enjoys tutoring high school and college students. Her long-term goals are to become a university professor in geochemistry and to start a program to introduce geology to students in southeastern Louisiana high schools.

UNO - Jennifer Brizzolara

Jennifer Brizzolara was born and raised in northern New Jersey, spending her summers on Long Beach Island, New Jersey. Before college, her interests were extremely varied, and she participated in many activities including music, soccer, track and field, theater, surfing, snowboarding and horseback riding. She has held an interest in the sciences since she was young, but that interest was rivaled by a love for creating music. While applying for college, she made the initial decision to pursue music as a career. After a year of study in the School of Music at Ithaca College, she decided that a career in the arts was not for her. This resulted in the decision not only to switch majors but to transfer schools. Jennifer knew that she wanted to study the sciences but was unsure of the specific field until she encountered the Earth and Environmental Sciences program at the University of New Orleans. This led to a whole new search for similar undergraduate programs in Geology, but the program at UNO proved to be a perfect fit. Jennifer is now enthusiastic about earning her undergraduate degree in Geology and plans to continue her education in graduate school. She hopes to study Geological Oceanography, including Carbonate Stratigraphy and Geomorphology. She has gone through the graduate school application process but has decided to take a year "off" to gain some experience and narrow-down her research interests. During her year off, she hopes to gain some experience through an internship or job while she applies to graduate programs for the fall of 2012.

**Save the Date
NOGS Christmas Holiday Party
Friday, December 9**

**Metairie Country Club
580 Woodvine Avenue**

Core Element Strike for STEM Fundraiser

“Strike for STEM”

Saturday, November 5th, 2011

Time: 7 to 10 pm

Mid-City Lanes Rock ‘n Bowl Located On Carrollton Avenue

Cost: \$50 per person

Music provided by: The Boogiemmen

Food, Premium Beverages and Bowling Competition for Sponsor Teams

Core Element is a regional collaborative between K-12, higher education, economic development, and business and industry institutions that are committed to improve the caliber of math and science education in our schools. (Website: <http://www.core4kids.org/>)

Core Element provides:

- Essential professional development training for K-12 science and math teachers
- Proven education kits that encourage hands-on learning experiences in the classroom for students
- Support for out-of-classroom enrichment activities such as science fairs and robotics competitions

**New NOGS
Members
August 2011**

Benjamin T. Kirkland

Student UNO

3443 Esplanade Ave - # 619
New Orleans, LA 70119

Scott M. Palazzo

BOEMRE

Geologist

1201 Elmwood Park Blvd
New Orleans, LA 70123
504-338-7268

New Orleans Geological Auxiliary News

Finally, we are officially falling into “Fall.” I guess we should be thankful as our friends who live in Houston and Dallas have experienced drought and extreme heat these past few months. However, it’s difficult to not look back and be grateful that we only had to bear 100 degree days, not 108!

Thanks to **Elizabeth** and **Bill Furlong** for inviting NOGA members to enjoy a day of “catching-up” while having a delicious lunch at their North Carrollton Avenue home. In addition, we are grateful to **Mary Walther**, **Judy Lemarie’** and **Trez Zotkiewicz** for co-chairing our September Luncheon. As usual, these ladies did an outstanding job.

Thanks to the NOGA Members who assisted NOGS in putting together their Kick-Off Party at Deutes Haus. Short notice Ladies, but we did it!! Do you think these men realize just how lucky they are? I have to admit, being “party planners” has become part of our repertoire’, and I think we have become expert. If you missed this party, you surely missed a great time. But guys, you may want to experience **our** next Event. November 9th, we will be having our Luncheon at The Palace Café’. Our guest speaker will be **Rafael Goyeneche**, President of the Metropolitan Crime Commission. So if your “significant other” is a member of NOGA, send your check as soon as the invitation is received. This is definitely a “no miss” Luncheon.

Congrats to **Mary Walther** for agreeing to take over on the Board for **Joan Collier’s** remaining term as Director. **Mary** was unanimously voted by the Board to assume this position. Actually, we want to say “thanks,” and once again, we are grateful for your time and input **Mary**. **Joan**, thank you so much for your service to NOGA, and we’re sending along “Get-Well Wishes” from all of us, and we are hoping to see you soon.

Just in case you are reading this column and are not a member of NOGA, we would love to meet you and have you join us. Our numbers are listed on the Directory page of the LOG and feel free to call any of us to get informed as to who we are and what we do.

In closing, thanks to the Ladies who attended the Board Meeting at my home. I have to admit, I did not want it to end. Lots of laughs and great conversations abounded. So, if you are not involved in NOGA, this is another reason to be a part of this wonderful organization. **Beverly**, keep up the good work in staying healthy; you look great. **Mary Walther**, need I say “Congrats” once again, GCAGS, “really”!!!!

See you next month,
Susie Baker

NOGA Application Form

Dues: \$25.00

Name _____

Home Address _____

Home phone _____

Husband's Name _____

Husband's Company _____

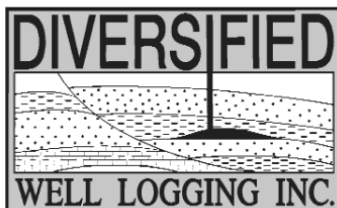
*Please make check payable to New Orleans Geological Auxiliary
and mail with application to:*

*Judy Lemarié
2 Yosemite Dr
New Orleans LA 70131*



Relax. We'll keep you posted.

Your rig is offshore and you are not. How do you know what's going on so many miles away? You know because we tell you. Daily or even hourly, Diversified Well Logging's engineers update you on the status of your rig. We are your eyes and ears, especially when it comes to deep water or high pressure, high temperature areas. Diversified offers 24-hour surface evaluation. We provide secure and customized real-time data communication, in-house research and development and 24/7 on-call support for our equipment and our engineers. Whether you have a 10-day job or 110-day job, we provide the specialized attention you require. So, relax. We're with you every step of the way.



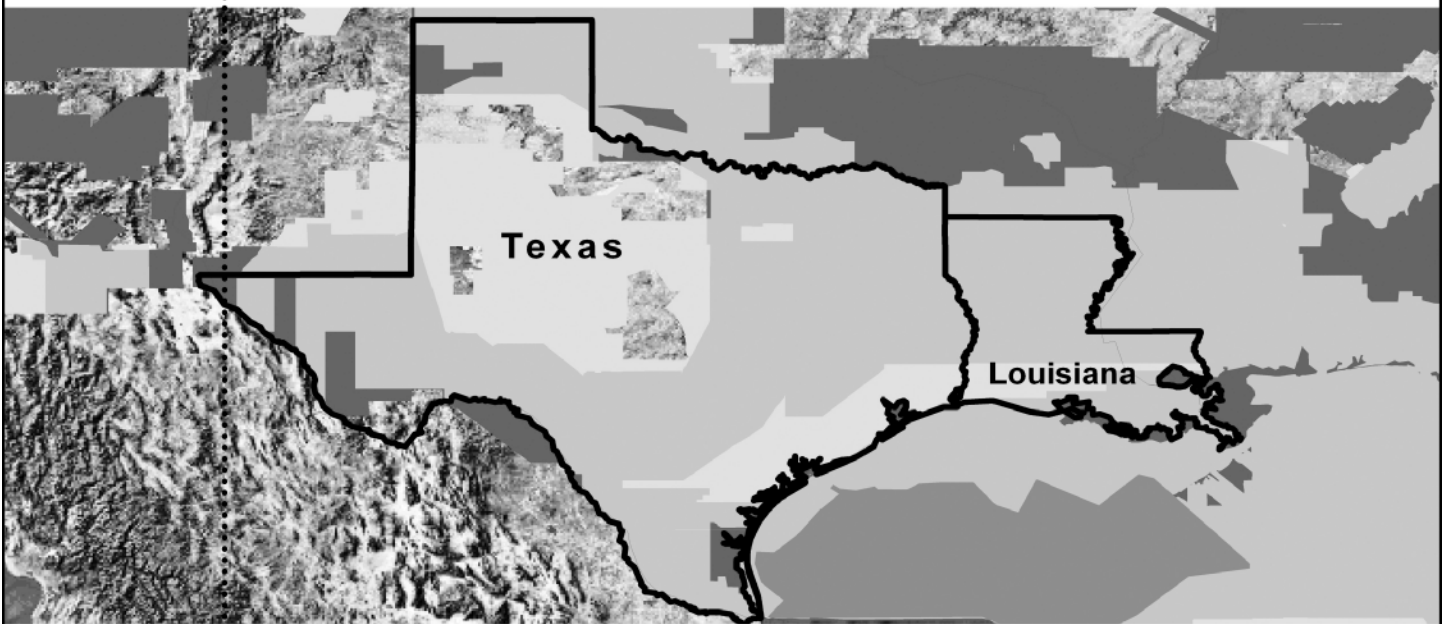
Serving the Gulf Coast for over 40 years.

New Orleans • Lafayette • Houston • Dallas • Corpus

800.280.2096

711 West 10th Street • Reserve, LA 70084 • Phone: 985.536.4143 • Fax: 985.536.2427
sales@dwl-usa.com

For Gravity and Magnetic
Data in Texas and Louisiana
**Count on Fugro—
Mapping Geology
to the Basement...**



...And beyond with the most comprehensive non-exclusive airborne, land and marine potential fields geophysical database, including AeroMagnetic, Land Gravity, Marine Gravity and Bathymetry data around the world. Interpretation includes:

- Basement architecture
- Tectonic elements
- Structural/geologic fabric
- Salt mapping
- Depth to basement
- ArcGIS deliverables



Fugro Gravity & Magnetic Services

For personal assistance & consultation,
please contact fgmsdata@fugro.com or 713-369-6123.

www.fugro-gravmag.com

Memorial Foundation Accounts as of June 30, 2011

MorganStanley-SmithBarney	06/30/10	06/30/11	% change	Mix
Money Fund + Cash	\$ 63,862	\$ 83,340		9%
ETFs & CEFs	\$ 87,230	\$ 103,438		12%
Pref Stocks	\$ 289,234	\$ 319,729		36%
Mutual Funds	\$ 241,954	\$ 359,475		40%
Corporate Bonds	\$ 53,503	\$ 26,248		3%
Total	\$ 735,783	\$ 892,230	21%	
Vanguard				
500 Index Fund Adm*	\$59,027	\$ 72,018		
Windsor II Fund Inv	\$30,811	\$ 36,976		
Total	\$89,838	\$ 108,994	21%	
Total MF as of June 30, 2011	\$	1,001,224		

What we spent 2010-2011

Income		
MorganStanley-SmithBarney (MS-SB)	\$	42,633
Vanguard	\$	2,765
Total income from investments	\$	45,398
Outflow		
Scholarships	\$	30,000
Grant to LSU (Lorenzo)	\$	3,500
La Sec of State	\$	7
D&O Liability	\$	725
STEM Teachers	\$	500
Administrative	\$	1,200
Accounting (Malcom Dienes, CPA)	\$	725
Imperial Barrel Award (AAPG)	\$	1,500
Scholarship dinners	\$	450
Total	\$	38,607
Unspent budget	\$	6,791

Changes to MS-SB account (sold/purchased/matured)
--

Bought	Franklin Templeton FKINX	\$	30,000	1/31/2011
	Franklin Templeton FKINX	\$	10,000	5/4/2011
	Thornberg Investment Income TIBAX	\$	30,000	1/31/2011
	Thornberg Investment Income TIBAX	\$	10,000	5/4/2011
	Black Rock Global Energy BGR	\$	30,000	1/31/2011
	Black Rock Global Energy BGR	\$	20,000	5/4/2011
Sold	iShares S&P Midcap 400 Index Fd (IJH)	\$	56,578	1/31/2011
Matured	Kellogg 04/01/2011	\$	25,000	4/1/2011

South Louisiana and Offshore Gulf of Mexico

Exploration and Production Activities

LOUISIANA DISTRICT, ONSHORE AREA

By Carlo C. Christina

Since my last report, 40 new permits to drill in the Lafayette District, Onshore, have been approved by the Office of Conservation. The most significant wells are listed below, including field extensions, deeper objectives in old shallow fields, a Frio Wildcat, deep development wells and 2 horizontal chalk wells.

NEW LOCATIONS

In Acadia Parish, **Morse Field**, (A), Clayton Williams will drill the #1 Pruitt in Sec. 15, 11S-1W to 16,800 feet. This well will be drilled 1 mile south of the Petro-Hunt #1 Thibodeaux, a 17,000' Marg tex well which is drilling ahead at 15,903' after setting a 7-5/8" liner. If productive, the #1 Thibodeaux well will extend production 3 miles to the southeast of Miogyp production at 12,500' in the field. (243630)

El Paso will drill the #1 Brown Timber in **North Gordon Field**, (B), Beauregard Parish, in Sec. 11, 6S-10W, a deep Wilcox test to a proposed depth of 15,000 feet. This well is located between shallow Frio production at 8400 feet and a 12,000' dry hole which was drilled in 2004. This test will evaluate deep Wilcox sands in an old shallow field. (243606)

In Beauregard Parish, **South Fulton Field**, (C), Midstates has permitted the #1 A & H Farms, Sec. 7, 7S-8W, a 14,700 foot test. The field has been off production since 1984, after producing only 16,487 barrels of oil in 7 years from the Cockfield section. Once again, a deep Wilcox wildcat is to be drilled 2 miles south and west of an old shallow field. (243661)

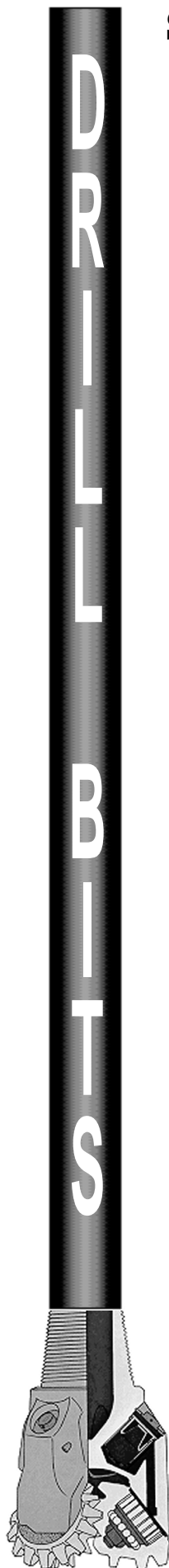
El Paso continues to attempt to extend the productive limits of **Fields Field**, (D), in Beauregard Parish with the drilling of the #1 Olympia in Sec. 4, 7S-12W, to a proposed depth of 16,055 feet. Within the last 9 months, El Paso has completed 5 Lower Wilcox wells with extended perforated intervals ranging from 600 feet to 1300 feet. (243687)

In East Feliciana Parish, Vaquero Resources will drill a **Frio Wildcat**, (E), the #1 James Harvey, located in Sec. 83, 2S-3E to a projected depth of 2995 feet. The proposed test is located 2 miles northwest of the Vaquero #1 Bologna, a producing Frio well flowing approximately 500 MCFG per day for the past 6 months. This is a rank wildcat with no other production within 3 miles. (243633)

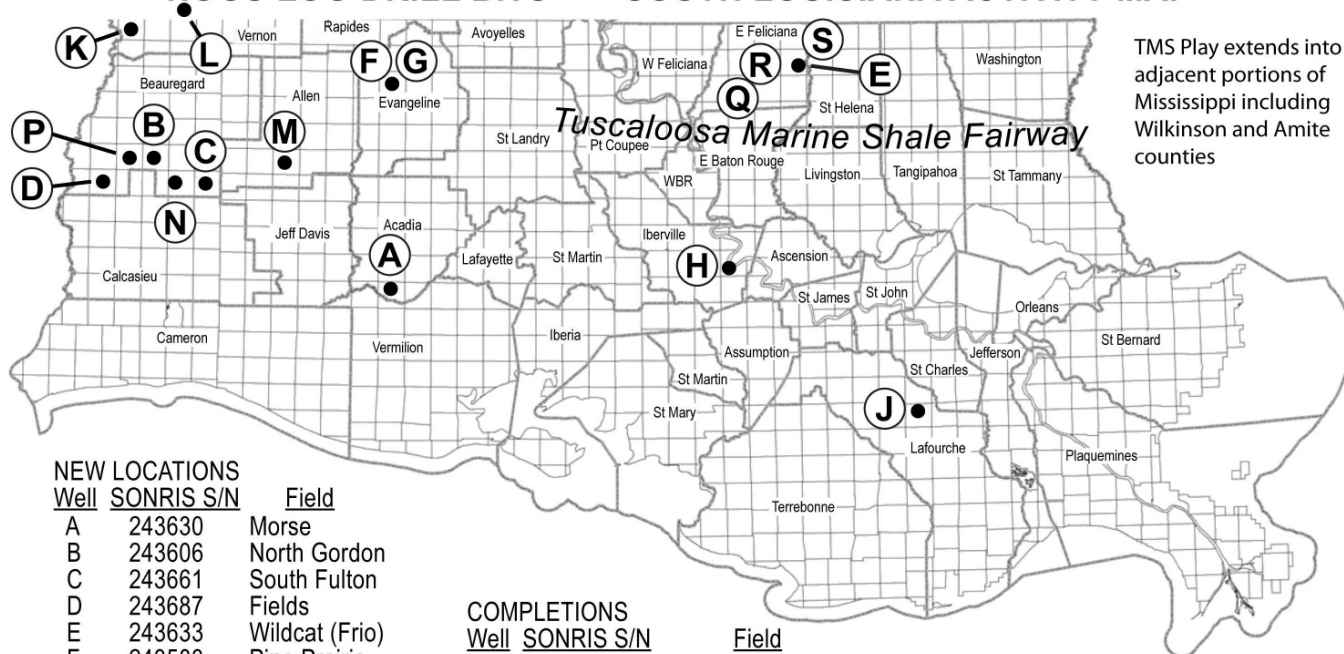
Midstates Petroleum has staked 2 new locations in **Pine Prairie Field**, Evangeline Parish, both located in Sec. 35, 3S- 1W. The #2 Dubuisson is permitted to 12,500 feet, (243583), (F) and the #4 Ledanois Land, is permitted to 12,200 feet. (243584). (G). Within the past 7 months, Midstates has completed 11 oil wells in the field, from reservoirs including Miocene, Frio and Upper Wilcox sands. Production figures through June of 2011 ranks this field fourth in oil production in the Lafayette District, Onshore.

Pine Prairie Field was featured in the recent New Orleans Geological Society's publication, "Oil & Gas Fields of South Louisiana 2010." NOGS members Brad Broekstra and Michael White contributed to the field study, which includes the history, geology, stratigraphy, production plots, composite log, structure map and a cross section of the field.

For a detailed study of this field, and 25 additional fields, go to www.nogs.org to order a CD-ROM disc and black and white or color paper copies of the publication.



NOGS LOG DRILL BITS — SOUTH LOUISIANA ACTIVITY MAP



NEW LOCATIONS

Well	SONRIS S/N	Field
A	243630	Morse
B	243606	North Gordon
C	243661	South Fulton
D	243687	Fields
E	243633	Wildcat (Frio)
F	243583	Pine Prairie
G	243584	Pine Prairie
H	243671	Dorcyville
J	243672	Gheens
K	243636	South Burr Ferry
L	243644	Pinewood

COMPLETIONS

Well	SONRIS S/N	Field
M	241930	South Harmony Church
N	243190	West Gordon
P	243109	South Bear Head Creek

TUSCALOOSA MARINE SHALE

Well	SONRIS S/N	Parish
Q	243108	East Feliciana
R	243337	East Feliciana
S	243414	St. Helena

October 2011

Tom Klekamp

In Iberville Parish, in **Dorcyville Field**, (H), Manti Exploration will drill the #1 Luke Babin in Sec. 31, 10S-13E to a proposed depth of 13,865 feet. The proposed test is located approximately 1 mile west of a producing Myogyp well which has been on production more than 13 years, with cumulative production 284,000 barrels of oil and 510 MMCF gas. (243671)

Samson Contour Energy will drill the #3 CRIS I, DM Minerals in **Gheens Field**, (J), Lafourche Parish, in Sec. 37, 16S-20E. The projected 16,200' test is offsetting a producing CRIS I well completed at 13,262 feet. (243672)

In Vernon Parish, **South Burr Ferry Field**, (K), Anadarko will drill the #1 AUS C GARS 23, in Sec. 23, 1S-11W, to a depth of 22,227 feet in a horizontal hole. (243636)

Also in Vernon Parish, in **Pinewood Field**, (L), Anadarko will drill the #1 AUS C GARS 31, in Sec. 31, 1N-9W to a projected depth of 20,747 feet. The proposed well is located 4 miles northwest of chalk production in the field. (243644)

COMPLETIONS

In Allen Parish, in **South Harmony Church Field**, (M), EOG Resources has completed the #1 Bel Mineral in the Upper Wilcox, flowing 45 BOPD and 250 MCFG through perforations 12,606 to 12,954 feet, (OA). The well is located in Sec. 11 6S-5W, and was completed on 7/8/2011. (241930)

Midstates has completed the #2 Forestar Minerals in **West Gordon Field**, (N), Beauregard Parish. The well is located in Sec. 7, 7S-9W as an oil well in the Upper Wilcox, flowing 590 BOPD and 2190 MCFG through perforations 13,094 to 13,240 feet, (OA). (243190)

Also in Beauregard Parish, in **South Bear Head Creek Field**, (P), Midstates has completed the #2 Musser-Davis in Sec. 28, 6S-11W, as oil well in the Lower Wilcox flowing 106 BOPD and 1263 MCFG through perforations 13,950 to 14,932 feet, (OA) (243109)

--- continued on next page ---

Drill Bits (continued from previous page)

TUSCALOOSA MARINE SHALE ACTIVITY

Activity in the Tuscaloosa Marine Shale continues to expand, in both the Florida Parishes of Louisiana and to the north in the offsetting counties of Amite and Wilkinson Counties of Mississippi.

In East Feliciana Parish, Devon Energy has reached total depth of 15,228 feet in a vertical hole and has set casing to total depth. The #1 Lane is located in T3S-R1E, (Q), and is waiting on a completion rig. (243108)

Devon is drilling the #1 Beech Grove Land, a horizontal well, also in East Feliciana Parish, in T2S-R2E, (R). The well is directionally drilling at 14,154 feet to a projected depth of 18,590 feet. (243337)

In St. Helena Parish, Encana Oil & Gas has permitted the #1 Weyerhaeuser to a projected depth of 19,400 feet in a horizontal hole in T1S-R4E. (S) (243414)

In Mississippi, in Amite County, Encana has completed the #1 Board of Education, which was originally drilled by Encore in T1N-R5E. The well was drilled to a depth of 16,500 feet in a horizontal hole and was completed flowing 373 BOPD. It was reported that additional testing had the well flowing more than 500 BOPD. Additional drilling is projected if these production rates can be maintained.

Encana has applied for a 1040-acre drilling unit immediately offsetting the #1 Board of Education. The proposed #1 Anderson will be drilled to a horizontal depth of 19,117 feet.

In Wilkinson County, Encana has permitted the #1 Horshoe Hill, in T1N-R1W, a horizontal well, to the proposed depth of 20,141 feet.



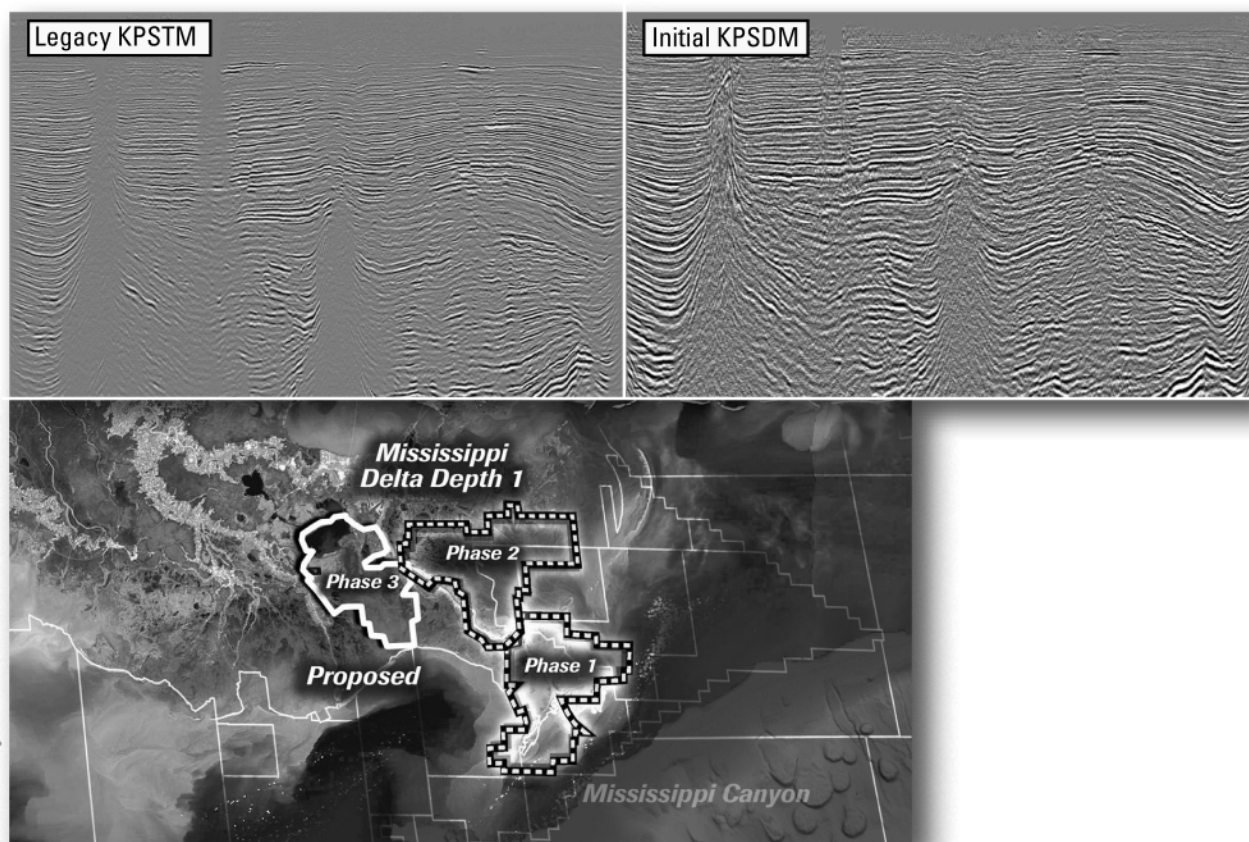
EARTH SCIENCE WEEK

October 9-15

This Year's Theme:
"Our Ever-Changing Earth"

For information:
<http://globe.gov/news/articles/earth-science-week-2011>

Improved depth imaging in the Mississippi Delta



In the Mississippi Delta region, WesternGeco is utilizing state-of-the-art processing designed to eliminate fault shadows and enhance deep imaging. The Mississippi Delta - Depth 1 survey, now in progress, incorporates the processing and remigration of twelve legacy surveys covering 1,855 square miles. High-quality time imaging using relative amplitude anisotropic Kirchhoff prestack time migration will be followed by improved structural imaging utilizing anisotropic Kirchhoff prestack depth migration.

To learn more about this and other Multiclient products, call +1 713 689 1000.

www.multiclient.westerngeco.com/la

Multiclient to the Power of E



Chevron Corp. -Rigzone- "Chevron Strikes Oil in Deepwater GOM" http://www.rigzone.com/news/article.asp?all=HG2&a_id=110756

Chevron announced a new oil discovery at the Moccasin prospect in the deepwater U.S. Gulf of Mexico.

The Keathley Canyon Block 736 Well No. 1 encountered more than 380 feet of net pay in the Lower Tertiary Wilcox Sands. The well is located approximately 216 miles off the Louisiana coast in 6,759 feet of water and was drilled to a depth of 31,545 feet.

"The Moccasin discovery underscores the importance of the deepwater Gulf of Mexico as a source of domestic energy for the United States and as a focus area for Chevron's worldwide exploration portfolio," said George Kirkland, vice chairman, Chevron Corporation. "Moccasin is an important addition to our queue of high-quality opportunities around the globe."

Chevron began drilling the Moccasin well in March 2010. That activity was stopped in June 2010 when the U.S. government imposed a moratorium on deepwater drilling in the Gulf of Mexico. Drilling resumed in March 2011 after the U.S. Bureau of Ocean Energy Management, Regulation and Enforcement approved Chevron's revised drilling permit application.

The well results are still being evaluated, and additional work will be needed to determine the extent of the resource. Chevron, with a 43.75 percent working interest in the prospect, was the operator of the Moccasin discovery well. Other Moccasin owners are BP, with 43.75 percent, and Samson Offshore Company, with 12.5 percent.

Chevron is one of the largest leaseholders in the Gulf of Mexico and is currently developing the \$7.5 billion Jack/St. Malo and the \$4.1 billion Big Foot projects.

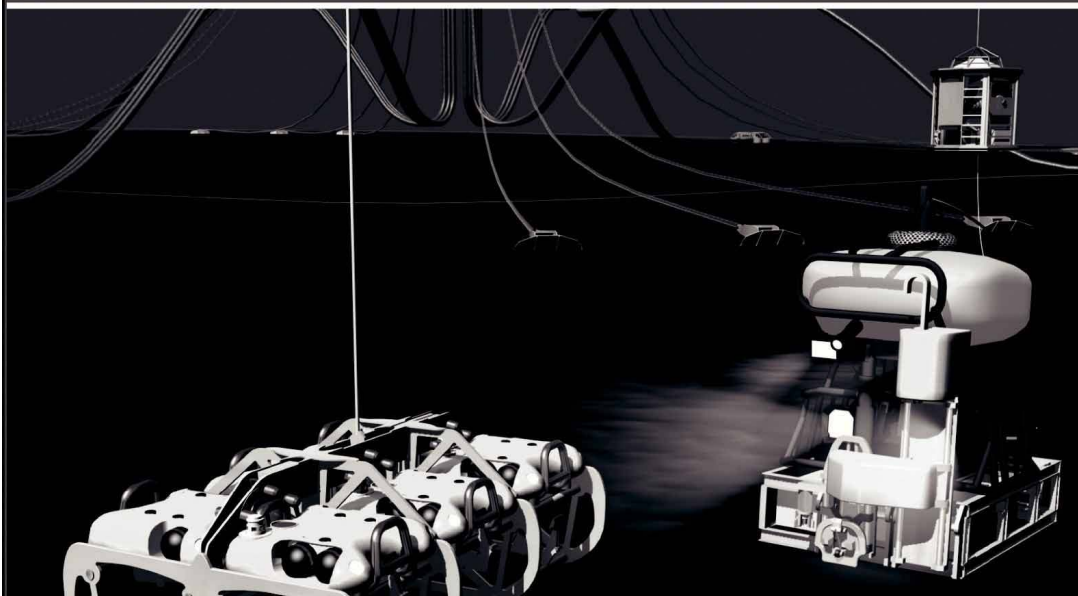
BP Plc. -Rigzone - "BP Unleashes Additional Reserves at Mad Dog Field" http://www.rigzone.com/news/article.asp?a_id=110769

BP has successfully appraised a previously untested northern section of the Mad Dog field in the Gulf of Mexico. Appraisal results confirmed a significant resource increase for the Mad Dog field complex, which includes the existing field, and appraisal drilling of the Mad Dog South field in 2008 and 2009.

The operator stated that overall hydrocarbons initially in place, in Mad Dog, are estimated at 4 Bbbl of oil equivalent (pending confirmation through further appraisal drilling). Drilled by the GSF Development Driller I, the well discovered 166 feet (51 meters) of hydrocarbons in the objective Miocene hydrocarbon-bearing sands and an oil column of more than 300 feet (91 meters). BP plans to increase production from Mad Dog by installing another spar production facility with a production capacity of 120,000 to 140,000 boed.

The well is located on Gulf of Mexico's Green Canyon Block 738 in approximately 4,500 feet (1,554 meters) of water. BP holds a 60.5% working interest in the field; Chevron holds a 15.6% interest; and BHP holds the remaining 23.9% interest.

Finally - An answer for getting reservoir seismic **OVER THE RESERVOIR!**



- 4C/4D Node Seismic
- ANGOLA
- GoM
- NIGERIA



"Coming Soon to an Oilfield Near You!"

www.sbexp.com

Dubai
T: +971 4 4271700

Houston
T: +1 281 566 1666

Oslo
T: +47 2240 2700

Rio
T: +55 21 2494-0283

Singapore
T: +65 9180 2605

Trondheim
T: +47 7 3879500

RAISING
THE **STANDARD**



100 Northpark Blvd.
Covington, LA 70433

(985) 773-6000



LaBay
Exploration Co., L.L.C.

111 Veterans Memorial Blvd.,
Suite 1560
Metairie, Louisiana 70005

www.labayexploration.com

Office (504) 371-5967
Fax (504) 371-5969

For Gravity and Magnetic Data **Count on Fugro...**

Brenda Robinson: + 1 713-369-6072

brobinson@fugro.com

Jeff Rowe: + 1 613-520-7713

jrowe@fugro.com

www.fugro-gravmag.com



*This advertising
space is available!
Contact the
NOGS office.*

THE NEW ORLEANS GEOLOGICAL SOCIETY MEMORIAL FOUNDATION, INC.

The Memorial Foundation is an IRS Tax Exempt Code #501 (c)(3) organization. The Federal I.D. is 72-1220999. Please consider making a donation to the Foundation prior to the close of this year's fiscal cycle on June 30, 2012. Your individual support in any amount will help meet the IRS Guidelines for our Foundation. *Thanks!*

\$15,000 AND ABOVE

Gibbet Hill Foundation

*In Memory of Steve & Marion Millendorf, William J. Prutzman,
Roger G. Vincent & Ron Youngblood*

\$10,000

GCAGS

Matching funds

\$500

Richard G. Klibert

Foster E. Voelker

In Memory of Gene Rogas

\$250 TO \$499

Burton C. Bowen

In Memory of Joffre J. Crouere

Marc Cooper

Through the Marathon Oil Co MEPAC Program

Carlo C. Christina

In Memory of Al Gilreath

UP TO \$249

Woods W. Allen, Jr.

In Memory of William C. Ward

Maurice N. Birdwell

In Memory of Uno Nummela

Hilary James Brook

Rob Burnett

J. Sybil Callaway

Chevron

Matching Funds

Arthur F. Christensen

James S. Classen

In Memory of Robert C. Treadwell

In Memory of Robert G. Williamson

Clarence F. Conrad

Charley Corona

In Memory of Professor Hubert Skinner

Trudy and Charley Corona

In Memory of Carl Grieshaber

In Memory of Beverly Langford

In Memory of Erik Mason

Robert M. Danos

In Memory of Max H. Durham

Dr. Brooks B. Ellwood

Parrish N. Erwin, Jr.

Exxon Mobil Matching Funds

Michael N. Fein

Mark J. Gallagher

Arthur J. Garden

Bernard L. Hill, Jr.

Kenneth Huffman

Jeffrey E. Jandegian

Tom Klekamp

Reuben J. Klibert, Jr.

In Memory of Dale Klibert

Tim Klibert

John C. Kucewicz, Jr.

John C. Langford

H. David Lynch

Jeannie F. Mallick

Louis L. McCormick

Margaret M. McKinney

Robert G. Murphy

In Memory of Ron Youngblood

In Memory of Thomas A. Cullinan

New Orleans Geological Auxiliary

In memory of Beverly Langford

Nexen Petroleum USA Inc.

Matching Funds

Richard A. Olsen

Teresa M. O'Neill

In Memory of Brian J. O'Neill

Linda and Bill Peirce

Edward B. Picou Jr.

In Memory of Terry D. Keegan

Richard D. Provensal

In Memory of Thomas H. Philpott

In Memory of James Strahan

Dr. J. O. Snowden

James M. Sothern

Raymond O. Steinhoff

In Memory of Harold E. Vokes

Betsy M. Strachan Suppes

In Memory of Hubert Skinner

David M. Tatum

Leon G. Toups

In Memory Robert G. Williamson

Roy C. Walther

William M. Whiting

Arthur S. Waterman

In Memory of T. Wayne Campbell

Armour C. Winslow

In Memory of Rita Menzel Winslow

FONO FUND

The FONO Fund accepts contributions that are invested and the income dedicated to assure sufficient financial resources will always be available to maintain the NOGS business office. Contributors are reminded that donations to the FONO Fund are not covered by the IRS 501 (c)(3) tax exempt classification and should be reported as a business expense on your IRS tax report.

\$500

James A. Hartman

In Memory of Hal Hudson

In Memory of Robert G. Williamson

UP TO \$250

David E. Balcer

Joseph E. Boudreaux

J. Sybil Callaway

Anthony Carollo, Jr.

Richard P. Colomes

Clarence F. Conrad

Michael A. Danahy

John Dombrowski

Merle J. Duplantis

Parrish N. Erwin, Jr.

Richard A. Edmund

Michael N. Fein

Mark J. Gallagher

Bernard L. Hill, Jr.

Kenneth Huffman

Robert M. Jemison, Jr.

Arthur H. Johnson

Tom Klekamp

Russell J. Landry

Louis Lemarie'

H. David Lynch

Jeannie F. Mallick

George M. Markey, Jr.

Louis L. McCormick

Margaret M. McKinney

Robert G. Murphy

William J. O'Leary

Richard A. Olsen

Linda and Bill. Peirce

Edward B. Picou, Jr.

James P. Raymond, Jr.

C. R. Rondeau

David M. Tatum

Roy C. Walther

Robert C. Weissmann

William M. Whiting

CONTRIBUTIONS FOR BOTH FUNDS
THROUGH SEPTEMBER 1, 2011.
DONATIONS ARE LISTED FOR ONE YEAR.

In Memory of Bill Craig

Chevron

Bernard L. Hill, Jr.

John C. Scheldt

In Memory of William C. Ward

Candace V. Strahan

In Memory of James Strahan

In Memory of William C. Ward

SAI

Geoconsulting, Inc.

*Geological and Geophysical Consulting,
3-D Seismic Interpretation*

Ben D. Sydboten, Jr. CPG

2 Flagg Pl., Suite 1
Lafayette, LA 70508
www.saigeoconsulting.com

Office (337) 504-3670
Cell (337) 456-8948

"Serving The Oil & Gas Industry Since 1983"

Geological,
Geophysical &
Land Drafting

Anthony Catalano
President

Stefani Foster
Drafting & Design

Geo-Draft, Inc.

A Professional Drafting & Graphics Firm

3349 Ridgeland Drive • Suite 202 • Metairie, LA • 70002
Office: (504) 836-2882 Fax: (504) 836-2877 Cell: (504) 481-7291
E-Mail: geodraft@bellsouth.net
Website: www.geodraftinc.com

**NOGS thanks our
sponsors for their support:**

GOLD LEVEL SPONSORS:

CHEVRON

LA BAY EXPLORATION CO, LLC.

**SPECIAL THANKS TO
DIVERSIFIED WELL LOGGING**

NORTHCOAST OIL COMPANY

610 E. Rutland St.
Covington, LA 70433
(985) 898-3577
(985) 898-3585 FAX

Jack M. Thorson
Eric C. Broadbridge
J. Daryl Gambrell
Raymond W. Stephens

(832) 242-6000 (O)
(713) 917-0493 (O)

(504) 931-7506 (C)
johnjurasin@jurasinoilgas.com

JURASIN OIL & GAS

9700 Richmond Ave., Suite # 124
Houston, TX 77042-4821

JOHN M. JURASIN
President

Cert. Pet. Geologist #4284
Cert. Prof. Earth Scientist #1961

Collarini Energy Staffing, Inc.

Facilities • Drilling • Production • Reservoir Engineering
Land and Legal • Geosciences • Information Technology
Health and Safety • Management • Supply Chain
Accounting • Administrative Support



Full-Time and Temporary Personnel

Energy Trading • Civil Engineering • Executives
Human Resources • Instrument and Electrical
Engineering • Marine Engineering • Project Management
Technical Writing • Sales and Marketing

10497 Town and Country Way, Suite 950, Houston, Texas 77024

Telephone: (832) 251-0553

www.collarini.com

This advertising space is available!

Contact the NOGS office.

<p>ANSYTHE Donald I. Andrews 504-887-3432</p> 	 <p>GEOLOGY ENVIRONMENTAL MANAGEMENT</p> <p>GEM Consulting LTD Michael Louis Merritt admin@gemconsultingltd.com 1451 Applewood Road • Baton Rouge, LA 70808</p>
<p>THE BOEBEL COMPANY Oil and Gas Investments 170 Broadway Street, Suite 321 New Orleans, LA 70118 (504) 866-4313</p>	<p>H. WARREN BELL Oil and Gas Exploration 2500 Tanglewilde, Suite 485 Houston, TX 77063-2126 Bus (713) 266-7297 Fax (713) 266-7298</p>
<p>BOO-KER OIL & GAS CORP. Gray S. Parker 826 Union, Suite 300 New Orleans, LA 70112 Bus. (504) 581-2430 Fax (504) 566-4785</p>	<p>PHELPS GEOSCIENCE Onshore Gulf of Mexico Geology and Geophysics Prospect Generation and Evaluation Houston, TX jsphelps@yahoo.com (281) 398-5208</p>
<p>C & R EXPLORATION, INC. Carlo C. Christina Lawrence G. Ringham</p>	<p>RAFIDI OIL AND GAS, INC. Jaser N. Rafidi, President 4415 Shore Dr., Suite 202 Metairie, LA 70006 Bus. (504) 722-2942 Fax (504) 888-5539; Res. (504) 888-1661</p>
<p>C. R. RONDEAU Petroleum Geologist 119 W Southland Ave. Ironwood, MI 49938 Res. (906) 932-4692</p>	<p>ROY C. WALTHER Petroleum Geologist 2421 Prancer Street New Orleans, LA 70131 Bus. (504) 392-8513 Res. (504) 392-9332</p>
<p>CLASSEN EXPLORATION, INC. James S. Classen Looking for close in deals P.O. Box 140637 Boise, ID 83714 classenllc@msn.com Bus. (208) 854-1037 Fax (208) 854-1029</p>	 <p>625 E. Kaliste Saloom Lafayette, LA 70508 16800 Greenspoint Dr., Suite 225-S Houston, TX 77060 1100 Poydras St., Suite 1050 New Orleans, LA 70163 www.StoneEnergy.com</p>
<p>D-O-R ENGINEERING, INC. 3-D and Geoscience Services 6161 Perkins Rd. P O Box 80812 Bus : (225) 765-1914 Baton Rouge LA 70898</p>	<p>TONY CAROLLO Consulting Geologist Unitization Geosteering Field Studies 1701 Peach Street Metairie, LA 70001 Bus. (504) 885-0004 Res. (504) 885-6829</p>
<p>EDWARD B. PICOU, JR. Consulting Micropaleontologist - Retired 228 St. Charles Ave., Suite 1330 C New Orleans, LA 70130 Bus. (504) 529-5155 Res. (504) 282-3096</p>	<p>Zot Oil & Gas, LLC Jim Zotkiewicz Prospect Generation and Evaluation 3200 Ridgelake Dr. Suite 207 Metairie, LA 70002-4930 Business: 504.831.4694 Email: jimzot38@zotoil.com</p>

Attributes

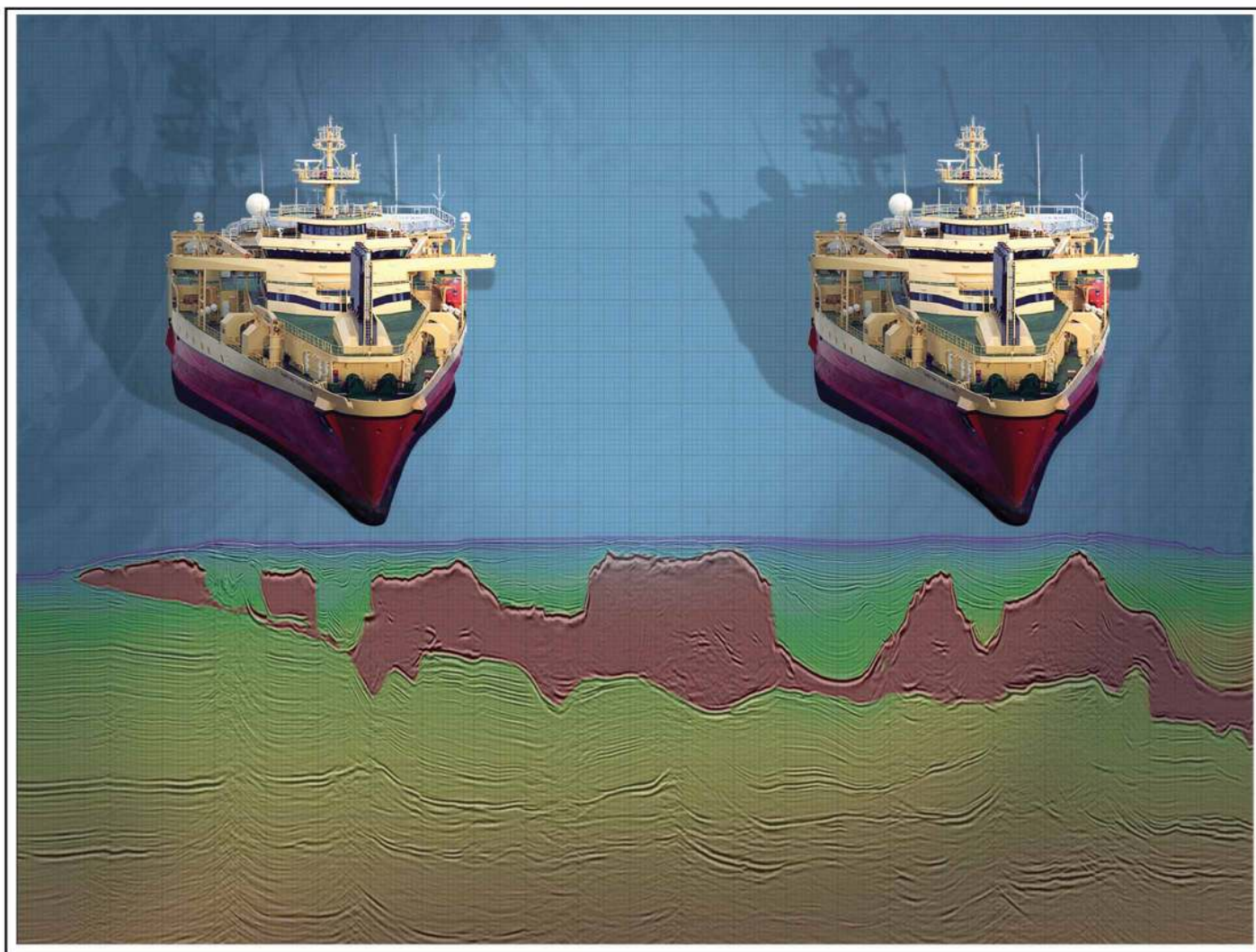
New Views on Seismic Imaging—Their Use in Exploration and Production



**31st Annual GCSSEPM Foundation
Bob F. Perkins Research Conference**
Houston, Texas
December 4-7, 2011

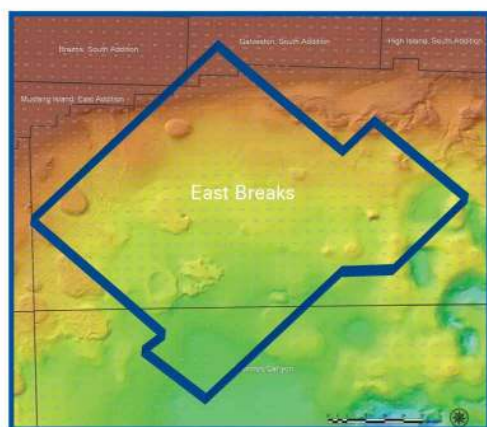
Conference information and
online registration
available on our Web site:
www.gcssepm.org





Crystal III, East Breaks

MultiClient Wide Azimuth



- **Size** - 480 OCS blocks
- **Focus** - Sub-Salt Miocene & Paleogene
- **Technology** - TTI Beam and RTM Imaging
- **Delivery** - Available Q4 2010

Houston
Tel: +1 281 509 8000
Fax: +1 281 509 8500

Oslo
Tel: +47 67 52 6400
Fax: +47 67 52 6464

London
Tel: +44 1932 37 6000
Fax: +44 1932 37 6100

A Clearer Image
www.pgs.com



NEW ORLEANS GEOLOGICAL SOCIETY



810 Union Street, Suite 300
New Orleans, LA 70112-1430

WWW.NOGS.ORG

MARINE PROPERTIES, LLC BERKSHIRE EXPLORATION CO.

MONTE C. SHALETT, CPL, PRESIDENT

3030 Lausat Street
Metairie, LA 70001-5924

BUS. (504) 831-7779
FAX. (504) 831-8315

PCI

Paleo Control, Inc.

Houston, Texas
713-849-0044

Drilling Wells, Studies and Data Base

Loyd Tuttle

Frio, SE Texas

Bob Liska

Wilcox, S and SE Texas

Jim Thorpe

Miocene and Cam-Miogyp



SEE YOUR DATA IN A WHOLE NEW LIGHT!

Take the pressure out of exploration
and drilling by seeing what you
are going to encounter.



eSeis

www.e-seis.com
713.531.1447

- Lithology & Fluids
- Depositional Facies
- Pore Pressure from V & Q
- Well Planning Consultation

