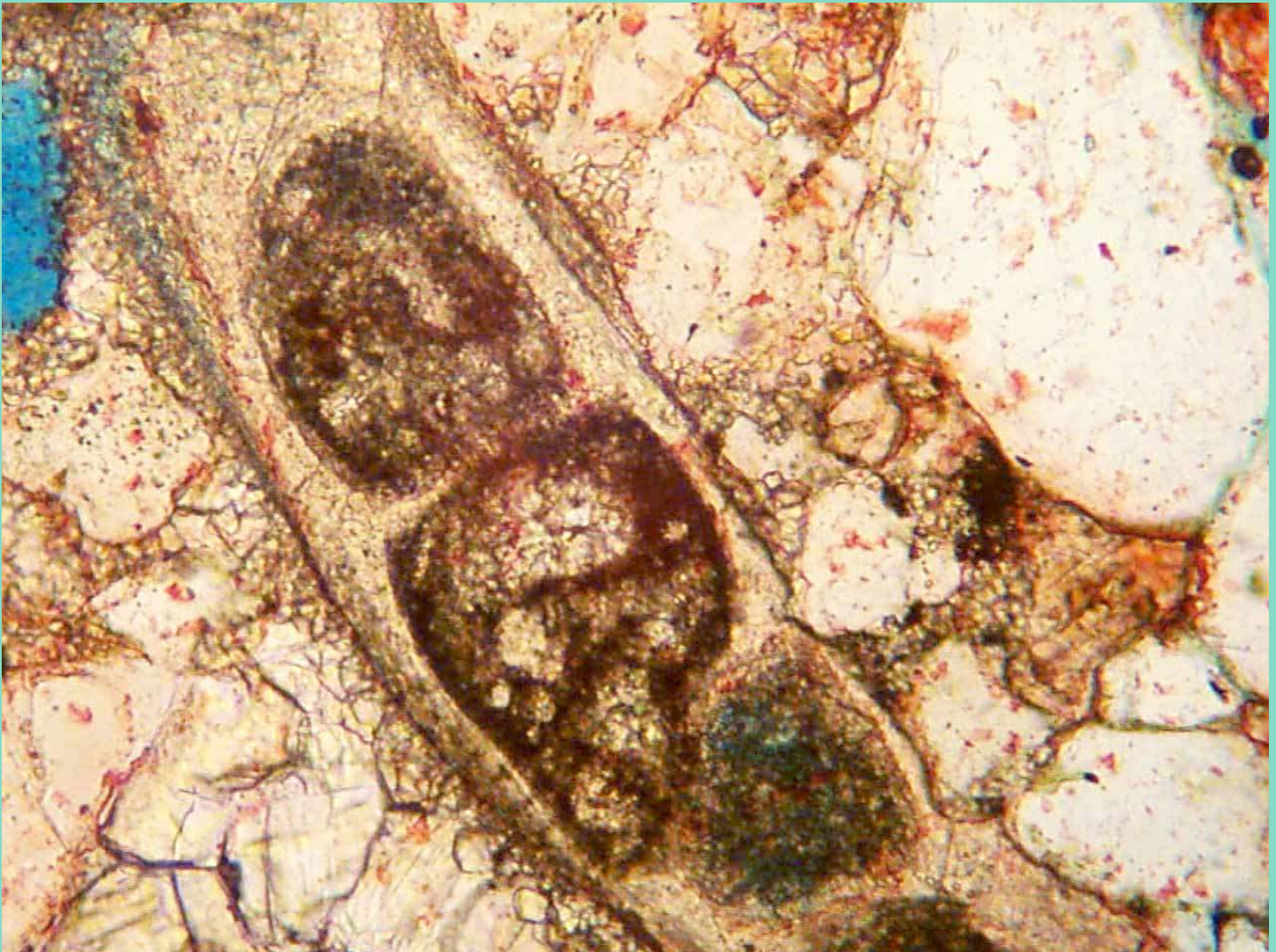


NOGS LOG



November 2011

Volume 52, Number 5



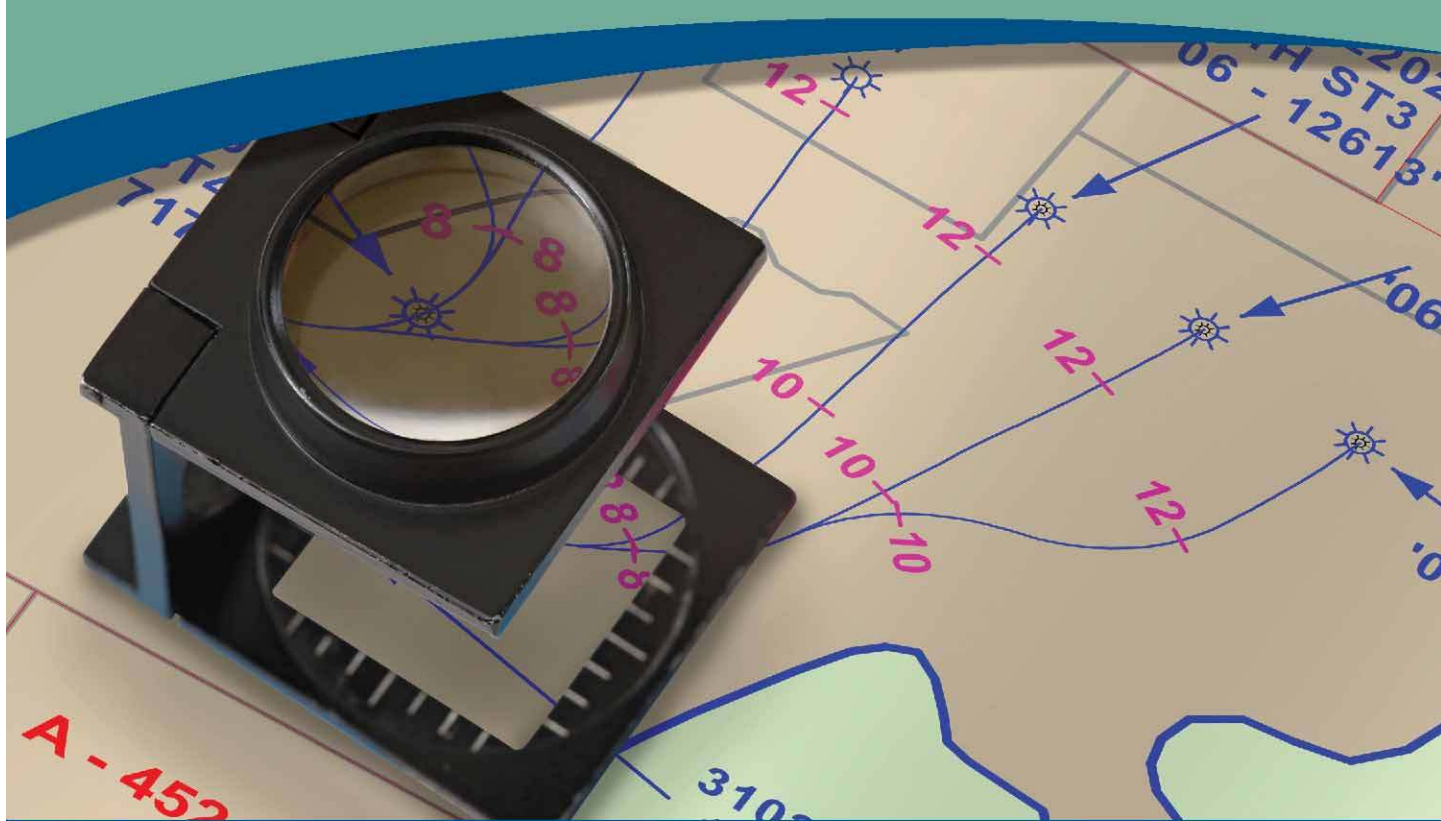
November 7 - Joint NOGS-SGS Luncheon

Presentation: Noise to signal: A microtremor study at liquefaction sites in the New Madrid Seismic Zone

Guest speaker: Kelli Hardesty of Environmental Resources Management in Metairie

See page 9 for more information

Magnified Well Data Quality



That is TGS' Focus

Save time and money – TGS has already closely examined and processed well data for standardization and quality assurance, backed by a focused customer support team.

Complete Curve Digital Wells

LAS and LAS Plus library expanding across North America

Spatially Accurate Directional Surveys

Directional Survey Plus data thoroughly researched and reprocessed

Nationwide Production Data

Query entire US with **Longbow™** visualization and export tool

Formation Tops Picked

Available in major basins across North America

For more information contact TGS at:

Tel: +1 888 564 5463

Email: WellData@tgsnopec.com

Web: www.tgsnopec.com/welldata



www.tgsnopec.com

NOGS LOG

Published monthly by the New Orleans Geological Society. This issue was sent to press on October 20, 2011.

Interested *NOGS LOG* contributors may send requests to nogseditor@gmail.com. Requests for advertising should contact the NOGS office at info@nogs.org.

INSIDE THIS ISSUE

Special Features:

- November Luncheon Abstract
and Biography Page 9
Pioneers of NOGS -
George W. Schneider, Sr. Pages 16-17
2011 NOGS Kick Off
Party Photos Pages 18-20

Regular Features:

- President's Letter Page 5
Upcoming Events and
Activities Page 7
Drill Bits Pages 24-27
Info & Tidbits Pages 30-31

ON THE COVER

Photo Taken by: David Tatum

**Location: Cayonlands National Park; Needles
District, Utah**

Cedar Mesa Sandstone; Permian (Wolfcampian)

This is a moderately well sorted subrounded to rounded sandstone with clast size averaging 190 microns. The collected sample contains an average of 50% quartz, 19.67% calcite cement, 5.00% fossils fragments and clay cement 3.5%. Less than 1% is composed of feldspar, and porosity averages 17.77%. Fossil fragments include bryozoans, crinoids and brachiopods. Smaller void spaces associated with the late stage calcite indicate that this cement formed prior to the dissolution of the very large pores.

FROM THE EDITOR

There are several announcements I need to make for this month's *NOGS LOG*. First, I would like to inform everyone that Bob Hafner is stepping down as President, and Vice President Daisy Pate will be taking over the duties of President of NOGS effective immediately. Please thank and welcome Daisy as our new President. Secondly, Fran Wiseman has volunteered to take over as Vice President. As you might recall, Fran served as last year's *NOGS LOG* Editor. Welcome Fran!

We have added a new recurring addition to the *LOG* entitled Pioneers of the New Orleans Geological Society. In the first edition, George W. Schneider, Jr. recalls stories about his father, George W. Schneider, Sr., who was the Society's first president.

The Gulf Coast Association of Geological Societies (GCAGS) is putting together a Memoir Series, Gulf Coast Geology. The Memoir will consist of ten to twenty articles selected by the Editorial Board. Scott Tinker, President-Elect of GCAGS, is asking that anyone interested in Associate Editor positions to contact myself or another board member of NOGS to have their name forwarded to GCAGS.

Thanks, David Tatum - *NOGS LOG* Editor



Get More from your Core

With reservoirs becoming increasingly complex, you need the most accurate information you can get to better understand your reservoir.

Weatherford Labs helps you get more from your core by combining an unsurpassed global team of geoscientists, engineers, technicians and researchers with the industry's most comprehensive, integrated laboratory services worldwide. From core analysis, sorption, geochemistry and isotopic composition to detailed basin modeling and comprehensive data packages, we provide you with real reservoir rock and fluid information that hasn't been distilled by a simulator or iterated by software.

We call it **"The Ground Truth"**™ – giving you the accurate answers you need for better reservoir understanding. You'll call it a better return on your reservoir investment. To learn more, contact TheGroundTruth@weatherfordlabs.com.



© 2011 Weatherford. All rights reserved. Incorporates proprietary and patented Weatherford technology.



**Shell has worked in partnership
with the NOGS for many years, and
is proud to count the society among
its closest business associates.**

The New Orleans Geological Society was organized in 1941 to foster scientific research and advance the science of geology. Particular emphasis is laid on the exploration for and production of petroleum and natural gas. Related objectives include encouraging the adoption of improved methods of exploration, disseminating pertinent geological and technological data, and maintaining a high standard of professional conduct among its members.

www.shell.com/us/sepc

**It's no illusion...
Core Lab offers everything you need.**



©2009 Core Laboratories. All rights reserved.

Unconventional resource exploitation • Gas shale experts • Deepwater GOM authority
Capacity for fast turnaround • High-quality people • Global support
Industry leadership and reliability • Proprietary and patented technologies • Experience

www.corelab.com/rd/petroleumservices • 24-hour wellsite service hotline: 504-733-6583



from the President

Over the last few months, I discussed the relevance of what Earth Science and Geology is to our students and citizens in general and the future of the oil and gas industry, especially for new graduates. This month the board of directors and I want to discuss membership dues and their relationship to the cost of publishing the *NOGS LOG*.

The first point is the value of your \$25 membership dues to the organization. Most members don't realize the "bang for the buck" we all get. Besides access to the monthly luncheon, you receive a professionally produced monthly magazine. Recently, a photo on the cover was added for a dramatic effect. It certainly shouts out "Geology." Up-to-date breaking news in the oil patch has been expanded and improved with a location map for the drilling sites. Several articles,

covering various issues/news/discoveries within the geology and oil industry, have been included this year as well as an updated membership directory. Many members use this publication as a reference in their networking efforts.

The cost of the printing and mailing this outstanding piece has gone unnoticed by most of the membership. I will briefly outline the costs of the hard copies. Each copy of the monthly *LOG* costs about \$5.23. Therefore, after the second issue, a member receives back about 42% of their annual dues! At the end of the year, NOGS has returned \$62.80 of *LOG*'s cost/value to each of you. I doubt many of you ever realized what an outstanding deal you are getting.

This past September, NOGS had a free kickoff party at DeutschesHaus. Last year, NOGS helped subsidize the cost of the annual Christmas party. Of course, no one can quantify the total value of being a member of NOGS. I hope you are proud of this organization and the role it plays in your community. At least you now know the cost basis of the *LOG*. Please consider if the online version (which saves printing and mailing costs) seems the best choice for you as well. Enjoy the benefits of being a member of NOGS.

Bob

Core Element Strike for STEM Fundraiser

"Strike for STEM"

Saturday, November 5th, 2011

Time: 7 to 10 p.m.

Mid-City Lanes Rock 'n Bowl Located On Carrollton Avenue

Cost: \$50 per person

Music provided by: The Boogiemen

Food, Premium Beverages and Bowling Competition for Sponsor Teams

Core Element is a regional collaboration between K-12, higher education, economic development, and business and industry institutions that are committed to improve the caliber of math and science education in our schools. (Website: <http://www.core4kids.org/>)

Core Element provides:

- Essential professional development training for K-12 science and math teachers
- Proven education kits that encourage hands-on learning experiences in the classroom for students
- Support for out-of-classroom enrichment activities such as science fairs and robotics competitions

NOGS Office

Office Manager: Annette Hudson

Office Hours: 8:30 a.m. – 3:30 p.m. on Monday-Wednesday-Friday

Tel: 504-561-8980 Fax: 504-561-8988

E-mail: info@nogs.org Website: www.nogs.org

The office is located at Suite 300, 810 Union Street, New Orleans, LA 70112.

Correspondence and all luncheon reservations should be sent to the above address.

**BOARD OF DIRECTORS**

		Company	Phone	E-mail
President	Daisy Pate	US Army Corp of Engineers	504-862-1775	daisy.pate@gmail.com
Vice President	Fran Wiseman	BOEM	504-736-2912	snowde.fran@gmail.com
Secretary	Chuck Holman	Independent	504-975-6735	charleswholman@bellsouth.net
Treasurer	Bay Salmeron	TGS	504-524-3450	bay.salmeron@tgsnopec.com
President-Elect	Will Jorgensen	Shell	504-728-6339	william.r.jorgensen@shell.com
Editor	David Tatum	Chevron	985-773-6477	nogseditor@gmail.com
Director 2012	Arthur H. Johnson	Hydrate Energy International	504-464-6208	artjohnson51@hotmail.com
Director 2013	Jack Langford	J C L Services	985-764-2527	jclangford@latterblum.com
Director 2014	Michael N. Fein	W & T Offshore	504-210-8148	mikef@wt offshore.com

COMMITTEE

	Chairperson			
AAPG Delegates	William M. Whiting	Consultant	504-947-8495	bootscon@aol.com
AAPG Student Chapter	Drew Boudreaux	UNO		apboudr1@uno.edu
Advertising-LOG	Kimberly Maginnis	W & T Offshore Inc	504-210-8174	kmaginnis@wt offshore.com
Auditing	Will Jorgensen	Shell	504-728-6339	william.r.jorgensen@shell.com
Awards	Michael N. Fein	W & T Offshore	504-210-8148	mikef@wt offshore.com
Ballot	Bay Salmeron	TGS	504-524-3450	bay.salmeron@tgsnopec.com
Best Paper	Brenda Reilly	Geological Consulting LLC.	504-430-4240	reillybe@yahoo.com
Continuing Education	TBA			
Employment Counseling	TBA			
Entertainment	Will Jorgensen	Shell	504-728-6339	william.r.jorgensen@shell.com
Environmental	Daisy Pate	US Army Corp of Engineers	504-862-1775	daisy.pate@gmail.com
External Affairs	Michael A. Fogarty	Sylvan Energy, LLC	603-523-4808	mike.a.fogarty@gmail.com
Field Trip	TBA			
Finance and Investment	Bay Salmeron	TGS	504-524-3450	bay.salmeron@tgsnopec.com
Historical	Edward B. Picou, Jr.	Consultant	504-529-5155	epicou@bellsouth.net
Membership/Directory	Carlo C. Christina	Retired (C & R Expl. Inc)	504-835-4116	Carlocc398@aol.com
	Tom Klekamp	Amber Resources	985-845-4046	klekamp@bellsouth.net
New Geoscientists (NGNO)	TBA			
Nominating	Scott A. Wainwright	Bret Exploration Co Inc	504-889-2700	Scott_wainwright@hotmail.com
Non-Technical Education	Duncan Goldthwaite	Consultant	504-887-4377	DGLdthwt@aol.com
Office Operations	Rick Kear	Schlumberger	504-592-5376	kear1@new-orleans.oilfield.slb.com
Publications Sales	Edward B. Picou, Jr.	Consultant	504-529-5155	epicou@bellsouth.net
Photography	Tom Klekamp	Amber Resources LLC	985-845-4046	klekamp@bellsouth.net
School Outreach	Thomas C. Bergeon	Century Exploration	504-832-3772	Tom.bergeon@centuryx.com
Scouting	Carol Rooney	Consultant Geologist	504-835-1909	carolbrooney@aol.com
Sponsorship/Houston	David E. Reiter	Eni Petroleum		david.reiter@enipetroleum.com
Technical Projects	TBA			
Ad Hoc Committee on University Support	Michael J. Gallagher	Eni Petroleum	713-393-6100	Michael.Gallagher@enipetroleum.com

NOGS LOG STAFF

Editor	David Tatum	Chevron	985-773-6477	nogseditor@gmail.com
Editor-Elect	Jordan Heltz	Chevron	985-773-7163	jordan.heltz@chevron.com
Auxiliary	Susie Baker	NOGA	504-466-4483	sbaker1650@aol.com
Info Tidbits	David Tatum	Chevron	985-773-6477	nogseditor@gmail.com
Drill Bits	Carlo C. Christina	Retired (C & R Expl. Inc)		drillbits81@yahoo.com
Layout	Jannette Inc.			
Webmaster	Edward B. Picou, Jr.	Consultant	504-529-5155	epicou@bellsouth.net

NOGS AUXILIARY

Officers		Phone	Directors	Year	Phone
President	Jean Jones	504-738-8091	Carol Andrews	2010-12	504-887-3432
1st Vice-President	Alma Dunlap	504-737-2678	Susie Baker	2010-12	504-466-4483
2nd Vice-President	Camille Yeldell	504-835-7467	Mary Walther	2010-12	504-392-9332
Secretary	Peggy Rogers	504-392-6323	MaryEllis Haseltine	2011-13	504-885-7657
Treasurer	Judy Lemarie'	504-393-8659	Gwenn Swaney	2011-13	504-831-0748
Parliamentarian	Beverly Kastler	504-286-0879	Pat Williamson	2011-13	985-626-6910
Member-at-Large	Linda Peirce	504-393-7365			

Upcoming Events and Activities

November 5 - "Strike for STEM" Fundraiser

Mid-City Lanes Rock N' Bowl. See page 5 for more information.

November 7 - Joint NOGS-SGS Luncheon

*** At the Holiday Inn Downtown Superdome ***

\$2.00 validated parking in hotel garage

Guest speaker: Kelli Hardesty, of Environmental Resources Management in Metairie
will present: Noise to signal: A microtremor study at liquefaction sites in the New Madrid Seismic Zone

(See page 9 for Abstract and Biography)

HOLIDAY INN DOWNTOWN SUPERDOME

ADMISSION:

Check with concierge or
front desk for location

with reservation \$30.00

without reservation \$35.00

Lunch served at 11:30am

Student Member with reservation Free

November 8 - 14th Annual Greater New Orleans

Joint Energy Industry Association Luncheon

Keynote Speaker: Scott A. Angelle, Secretary Louisiana Department of Natural Resources

Roosevelt Hotel - Waldorf-Astoria Ballroom. \$45 in advance - \$50 at door.

See <http://www.api-delta.org/> for more information and to register online.

December 5 - NOGS Luncheon

Holiday Inn Downtown Superdome. Guest speaker: John R. Dribus, of Schlumberger Oil Field
Services in New Orleans, will present: The Formation of Atlantic Margin Salt Basins and an
overview of the challenges created by salt in exploration for Oil and Gas.

December 9 - NOGS-SPE Christmas Holiday Party

Metairie Country Club. More details to come.

NOGS CONTACT LIST

--- continued from previous page ---

MEMORIAL FOUNDATION

BOARD OF TRUSTEES

		Company	Phone	E-mail
2011-12 Chairman	Rick Kear	Schlumberger	504-592-5376	kearl1@new-orleans.oilfield.slb.com
2011-12 Secretary	Daisy Pate	US Army Corp of Engineers	504-862-1775	daisy.pate@gmail.com
2011-12 Trustee	Monte Shalett	Berkshire Exploration Co	504-831-7779	mshalett@gmail.net
2011-12 Trustee	James Swaney	BOEMRE	504-736-2677	james.swaney@boemre.gov
2012-13 Trustee	Jennifer Connolly	Shell	504-728-6411	jennifer.connolly@shell.com
2012-13 Trustee	William M. Whiting	Consultant	504-947-8495	bootscon@aol.com
2013-14 Trustee	J. David Cope	ANKOR Energy LLC	504-596-3672	dcope@ankorenergy.com
2013-14 Trustee	Tom Klekamp	Amber Resources LLC	985-845-4046	klekamp@bellsouth.net

AAPG DELEGATES

Term Ends

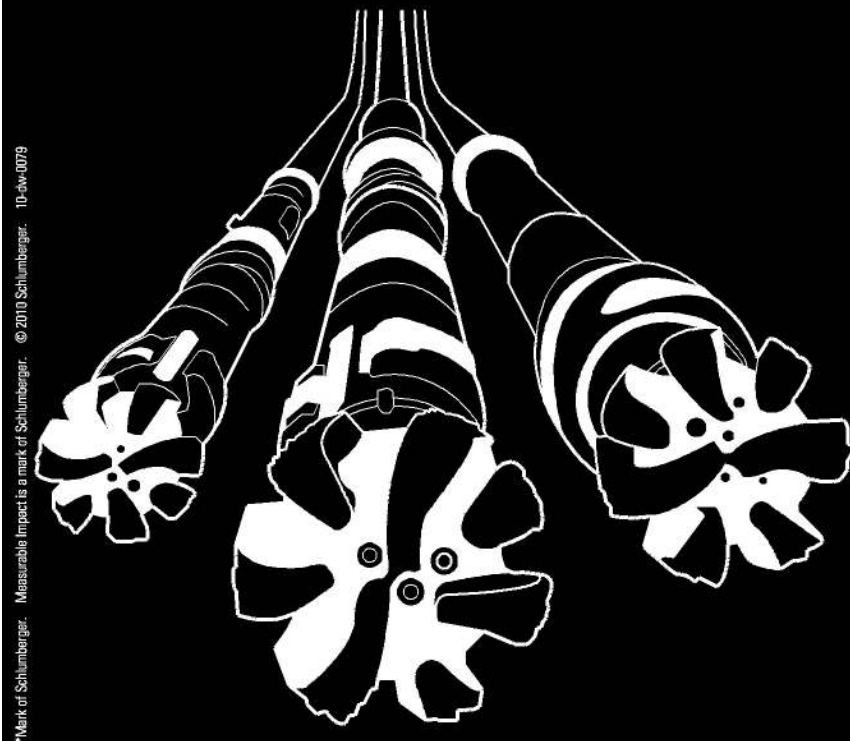
2012	William Whiting	Consultant	504-947-8495	bootscon@aol.com
2012	Jim Zotkiewicz	Zot Oil & Gas	504-831-4694	jimzot38@zotoil.com
2012(a)	David E. Balcer	Chevron	985-773-6725	dbalcer@Chevron.com
2012(a)	Richard J. Stancliffe	Shell Expl & Prod Co.	504-728-7553	richard.stancliffe@shell.com
2014	Arthur H. Johnson	Hydrate Energy International	504-464-6208	artjohnson51@hotmail.com
2014	Brenda Reilly	Geological Consulting LLC.	504-430-4240	reillybe@yahoo.com
2014(a)	Elizabeth C. McDade	McMoRan Exploration Co	504-582-4510	ecmcdade@bellsouth.net
2014(a)	Frances A. Wiseman	BOEMRE	504-736-2912	frances.wiseman@boemre.gov

Deep Water

WELL CONSTRUCTION

Are all your services deepwater ready?

Control Measures	Complexity/Process + Exposure	Preparedness				
		High				Low
	High	-5	-10	-15	-20	-25
	-4	-4	-8	-12	-16	-20
	-3	-3	-6	-9	-12	-15
	-2	-2	-4	-6	-8	-10
	-1	-1	-2	-3	-4	-5
	Low					
		People + Competency		Equipment + Technology		
		1	2	3	4	5



Our Project Readiness Assessment (PRA) approach has been applied and improved over the last 5 years.

All deepwater projects in which Schlumberger participates benefit from our PRA process, which complies with new U.S. regulatory requirements. This helps deliver seamless, efficient startup, and reduced NPT.

Learn more at

www.slb.com/deepwaterready

Global Expertise
Innovative Technology
Measurable Impact

Schlumberger

*Mark of Schlumberger. Measurable Impact is a mark of Schlumberger. © 2010 Schlumberger. 10-dw-0079

November 7 Joint NOGS-SGS Luncheon Presentation

*****At the Holiday Inn Downtown Superdome*****

Noise to signal: A microtremor study at liquefaction sites in the New Madrid Seismic Zone

presented by

Kelli Hardesty

Environmental Resources Management - Metairie, LA

ABSTRACT

This study explores the use of microtremors, or ambient noise, for evaluating site effects such as resonant periods, wave amplification factors, and liquefaction vulnerability in sedimentary basins by analyzing and interpreting horizontal to vertical (H/V) spectral ratios. The results from two basins with significant historical and current seismic activity, the Mississippi Embayment and the Los Angeles Basin, are compared to understand

the potential relationship between site effects and structural basin properties (i.e., stratigraphic units, basin geometry). This study indicates that microtremor data might be useful for determining resonant periods in sedimentary basins, but the application of microtremors for amplification factors and liquefaction vulnerability requires further evaluation.

BIOGRAPHY

Kelli Hardesty is a staff geologist for Environmental Resources Management (ERM). She graduated from Missouri State University in 2005 with a B.S. in Geology, and then from Auburn University in 2008 with an M.S. in Geology. During graduate school, she taught labs for Physical Geology, Historical Geology, and Geophysics and also tutored student athletes. Since graduating from Auburn, she has been employed at ERM

for the last 3 years and works on projects focused in Contaminated Site Management and Site Investigation and Remediation. Her affiliations with current and past organizations include the New Orleans Geological Society (NOGS), Geological Society of America (GSA), American Geophysical Union (AGU), Sigma Gamma Epsilon (SGE), and Alpha Kappa Psi Professional Business Fraternity.

THE LUNCHEON RESERVATION DEADLINE IS NOVEMBER 3 - CONTACT THE NOGS OFFICE

“And Looking Ahead . . .”

The next luncheon will be held on December 5th. Guest speaker John R. Dribus, of Schlumberger Oil Field Services in New Orleans, will present: “The Formation of Atlantic Margin Salt Basins and an overview of the challenges created by salt in exploration for Oil and Gas.” Contact the NOGS office at 561-8980, or use the PayPal link on the NOGS website (www.nogs.org) to make your reservation.



From ZNodal Systems to ZNodal Imaging

We are full spectrum ZNodal™ technology

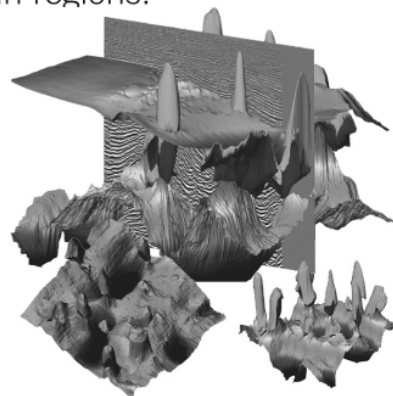
FairfieldNodal.com



We admit it. We're seismic nodal fanatics. Always have been. Which explains our one-of-a-kind, cable-free ZNodal™ systems. They work wonders in dense urban areas and pristine wilderness, in shallow water and deep ocean regions.

In fact, our exclusive ZNodal technology is behind everything we do, from acquisition and licensing to advanced processing and imaging, bringing nodal data to life in amazing ways.

Right now, our ZNodal systems are on the job in some of the world's most challenging fields, making a powerful difference. So when you're ready to go nodal, count on us to lead the way. ZNodal technology: It's what you need. It's what we're all about.



fairfieldnodal

SYSTEMS ACQUISITION LICENSING PROCESSING IMAGING



*2011 NOGS-IPE
Christmas Holiday Party*

December 9, 2011

*Metairie Country Club
580 Woodvine Ave.*

Festivities begin at 7:00 p.m.

**New NOGS
Members
October 2011**

Jared M. Bosch

Chevron
Geologist
100 Northpark Blvd
Covington, LA 70433
985-773-6251

Lindsay L. Dunaj

Student UNO
Graduate Student Res. Asst.
604 St Roch Ave
New Orleans, LA 70117
413-883-1156

Erin K. Gilmore

CGGVeritas
Business Development Spec.
10300 Town Park Dr
Houston, TX 77072
713-876-6708

T. Jade Mohajeri Haug

Student Tulane
Graduate Student Res. Asst.
2219 Jefferson Ave
New Orleans, LA 70115
504-343-9456

Monica L. Rasmussen

Student Tulane
Sylvan Energy LLC
Apr B 1309 General Pershing
New Orleans LA 70115
504-444-2004

REINSTATED

Ellen F. Clark

Chevron
Geophysicist
100 Northpark Blvd
Covington, LA 70433-5069
985-773-6427

REINSTATED

William K. Reynolds

Chevron
Geologist
100 Northpark Blvd
Covington, LA 70433
985-773-6288



An Integrated Workflow Solution

Get the full picture with comprehensive integration of IHS PETRA®, IHS PetraSeis® and IHS GeoSyn™.

When these three solutions seamlessly connect, geological and seismic workflows are streamlined with easy-to-interpret data and modeling tools. This integrated bundle allows you to access, view and manipulate information within the same project; create multidimensional seismic models and synthetics; improve workflow collaboration; and deliver comprehensive proposals for new prospects. Get to the field faster with seismic, well, production, log and economic data at your fingertips.

See more solutions at www.ih.com/nogs



The Source
for Critical Information and Insights™

2011 Oil History Symposium – Marietta, Ohio

Plans for 2012 - Houston

The Petroleum History Institute (PHI), in collaboration with the Ohio Oil and Gas Energy Education Program, held its 2011 annual symposium and field trip at historic Marietta, Ohio, on the banks of the Ohio River. Participants were treated to a wide variety of talks and poster presentations ranging from the history of oil and gas in Ohio to the many contributions to the industry from Baku. On the field trip, the group visited the Thorla-McKee Well, a salt water well drilled in 1814 that produced the first commercial oil in Ohio as well as seeing an old, but still operating, natural gas engine attached to a very large band wheel driving several pump-jacks (shackle line) – still producing Ohio crude after about 100 years, and a wonderful stop at the Parkersburg Oil and Gas Museum in Parkersburg, West Virginia. The trip ended with a tour of the Petroleum Engineering Department at Marietta College. **The next Oil History Symposium and Field Trip will be held in Houston, Texas, March 8-10, 2012.**

In the past, we have held the symposium in Oil City, PA, Long Beach, CA, Wichita, KS, Shreveport, LA, Lafayette, LA, Oil Springs, Ontario, and in WV.

Mission of PHI: To pursue the history, heritage, and development of the modern oil industry from its 1859 inception in Oil Creek Valley, Pennsylvania, to its early roots in other regions in North American and the subsequent spread throughout the world to its current global status. See the following web site for more information: www.petroleumhistory.org.

PHI also publishes a yearly journal, *Oil-Industry History*. Our membership includes geoscientists, engineers, historians, museum curators, authors, etc.

We look forward to another stimulating symposium next year at the Houston meeting, March 8-10, 2012. The abstract deadline is January 15, 2012, so start thinking about your subject, and send the abstract to Bill Brice, wbrice@pitt.edu. For more information, contact Jeff Spencer (spencerj320@gmail.com). Plans are to hold a meeting soon for those interested in serving on the 2012 Oil History Symposium Committee.

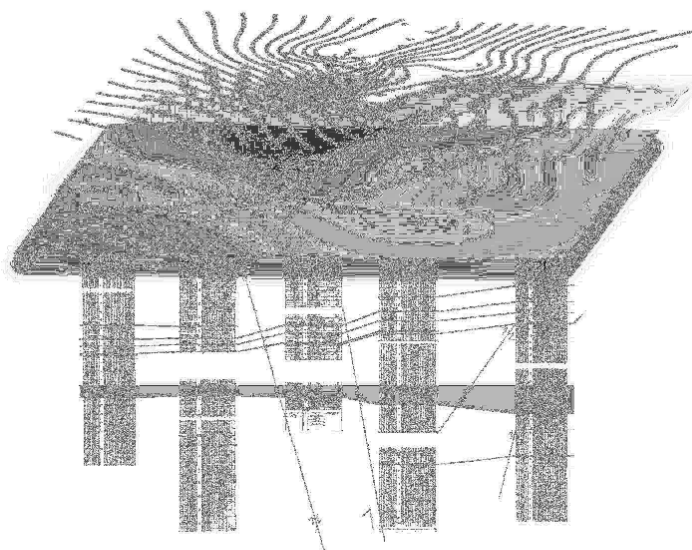
<p>DOMESTIC AND INTERNATIONAL BIOSTRATIGRAPHIC SERVICES</p>  <p>P A L E O D A T A</p>  <p>6619 Fleur de Lis Drive New Orleans, LA 70124 (504) 488-3711</p> <p>www.paleodata.com</p>  <p>Complete wellsite paleo services</p> <p>Available single-source regional biostratigraphic databases for accuracy and consistency</p> <p>Integrated foram / nannofossil analyses</p>  <p>In-house sample preparation lab for quality-monitoring and efficiency</p> <p>Supported Gulf Coast biostratigraphic databases</p>	<p>MCMORAN EXPLORATION CO.</p>  <p>MCMORAN OIL & GAS</p> <p>www.mcmoran.com</p> <p>NYSE: MMR</p> <table border="0"> <tr> <td>16676 Northchase Dr. Houston, TX 77060 (281) 539-7600 Fax: (281) 539-7655</td> <td>1615 Poydras New Orleans, LA 70112 (504) 582-4000 Fax: (504) 582-4155</td> <td>110 Travis St., Suite 140 Lafayette, LA 70503 (337) 735-9150 Fax: (337) 735-9151</td> </tr> </table>	16676 Northchase Dr. Houston, TX 77060 (281) 539-7600 Fax: (281) 539-7655	1615 Poydras New Orleans, LA 70112 (504) 582-4000 Fax: (504) 582-4155	110 Travis St., Suite 140 Lafayette, LA 70503 (337) 735-9150 Fax: (337) 735-9151
16676 Northchase Dr. Houston, TX 77060 (281) 539-7600 Fax: (281) 539-7655	1615 Poydras New Orleans, LA 70112 (504) 582-4000 Fax: (504) 582-4155	110 Travis St., Suite 140 Lafayette, LA 70503 (337) 735-9150 Fax: (337) 735-9151		

NeuraSection

Produce YOUR Interpretation

NeuraSection brings together logs, maps, sections and other critical information allowing you to focus on interpretation. With real-time editing of computer generated results, your interpretation becomes clear and meaningful.

- Auto and manual contouring
- Cross section generation
- Real-time editing
- Reserves calculations
- Presentation montaging



For more information:
www.NeuraSection.com

Neuralog
Turning Paper Into Petroleum

© 2011 Neuralog • www.neuralog.com • 1.281.240.2525 • 1.800.364.8728



SEI®

Seismic Exchange, Inc.

**Strategic Speculative Surveys
Geophysical Data Marketing & Management**

YOUR
**Full Service
National
Seismic Data
Marketing Firm**

New Orleans
Dallas
Houston
Denver
Oklahoma City
Corpus Christi
Tulsa

201 St. Charles Avenue, Suite 4300, New Orleans, Louisiana 70170-4300
Telephone 504.581.7153 Fax 504.581.9591
www.seismicexchange.com

New Orleans Geological Society Calendar

2011

November 2011

Sunday	Monday	Tuesday	Wednesday	Thursday	Friday	Saturday
		1	2	3	4	5 "Strike for STEM" Mid City Lanes
6	7 NOGS Luncheon Holiday Inn	8 14th Annual Joint Energy Luncheon Roosevelt Hotel	9	10	11	12
13	14	15	16	17	18	19
20	21	22	23	24 Thanksgiving	25	26
27	28	29	30			

December 2011

Sunday	Monday	Tuesday	Wednesday	Thursday	Friday	Saturday
				1	2	3
4	5 NOGS Luncheon Holiday Inn	6	7	8	9 Holiday Party Metairie Country Club	10
11	12	13	14	15	16	17
18	19	20	21	22	23	24
25 Christmas Day	26	27	28	29	30	31 New Years Eve



Pioneers of the New Orleans Geological Society (NOGS)

George W. Schneider, Sr. New Orleans Geological Societies First President (1941-1963)

A group of NOGS members have suggested that retracing stories of those involved in the 1941 formation of the Society would enhance its historical significance for today's members - 70 years later.

They asked George W. Schneider, Jr. to recall stories about his father, George W. Schneider, Sr., who was an organizing founder and first President in 1941.

George W. Schneider, Sr. relayed many stories to his son about his early days after college, surface mapping in Montana and Wyoming, and then joining The Texas Company in 1924, eventually becoming District Geologist of one of the most successful oil and gas exploration companies in the Gulf Coast.

An attempt to pass on some of these stories will cover a period of time from 1921-1941 and 1941 to 1954.

George W. Schneider, Sr. was born and grew up in West Denver, Colorado on West Colfax Avenue, living at the rear of a grocery/bakery which his parents owned and operated. Since his parents had emigrated from Germany, George learned the German language. He graduated from Colorado School of Mines in Golden, CO in 1921 with an "Engineer of Mines" degree.

From 1921 to 1924, George worked as a surface geologist for Amerada Petroleum and Arkansas Natural Gas. In 1924, he began his geological career with The Texas Company as it was referred to at that time (later to be called Texaco).

The oil industry was primarily located in Tulsa, Oklahoma and eventually shifted to Shreveport, Louisiana in the early 1930's.

In 1927, George authored and published a paper with permission of The Texas Company. The paper was presented to the AAPG meeting in Tulsa on March 26, 1927 and was entitled "Urania Oil Field, Lasalle, Winn and Grant Parishes Louisiana." It was significant that the Urania Field was the first oil field to produce oil from the Tertiary formation in northern Louisiana. At its peak of production in October 1926, it was producing 514,000 bbls/month. The anticlinal structure was 20 miles long and 8 miles wide. This is the only known paper authored by George Schneider as his reputation was geared more to exploration for oil and gas for The Texas Company.

Another interesting fact of his career in Shreveport was the hiring of a sixteen-year-old woman named Gloria Knox as a land-geological secretary. Gloria became known as the first "Land Woman." Her career took her to Lafayette, LA during the infancy of the Heymann Oil Center. She was District Land Woman for American Republic Oil Company and later became an Independent Land Woman. She is known as the founder and organizer of "LAGCOE," the oil industry trade show and also the founder of the Krewe of Troubadors Mardi Gras Ball.

George Schneider was District Geologist in Shreveport when W.T Burton of Sulphur, Louisiana bid and was awarded Louisiana State leases #335 and #340 on February 7, 1936, including water bottoms in seven different parishes. Burton assigned those leases to The Texas Company on February 15, 1936, reserving a one-eighth overriding royalty interest. That override became known as the “Win or Lose” interest. Several of the oil and gas fields discovered on these leases are still producing today - 75 years later - including Vermillion Bay, Cote Blanche Island Dome and others.

The gravity meter survey tool was one of the primary catalysts in the 1930's in the Gulf Coast Area. It primarily reflected the presence of salt and salt domes in the subsurface. This, of course, led to the discovery of many oil and gas fields, not only in Louisiana but in Mississippi, Alabama and Florida.

Two notable gravity surveys, one in Santa Rosa County, Florida and one in Mobile County, Alabama, were drilled by Texaco. Both wells drilled on these prospects did not reach the Norphlet Formation in Santa Rosa County or the Rhodessa Formation in Mobile County. Humble Oil discovered Jay Field in the 1960's and Gulf Oil discovered Citronelle Field in the mid-1950's. A gravity map of Florida circa 1945 indicated a kidney-shaped structure. Every acre within that map was proven productive. Denbury Petroleum now operates Citronelle Field where 65 wells are producing via secondary recovery methods.

The exploration efforts by many of the “majors” in Shreveport caused the exodus to New Orleans. Commencing in the early 1940's, along with the major companies, independent operators began establishing offices in New Orleans and Lafayette, Louisiana. This was the next major shift of the oil and gas exploration industry in Louisiana.

The majority of the geological staff in Texaco's Shreveport office moved to New Orleans in early 1940-41. B.E Bremer, Gene Baysinger, Louis Kilbourne and George Schneider formed the nucleus of the geological staff. The war took its toll on the staff. The move to New Orleans was interesting in that the “locals” could not believe the wages being paid by the “transient” oil company!!

Shell Oil, California Company, Gulf Oil, and Freeport-Sulphur were some of the majors opening offices in New Orleans. Representatives from their companies met upstairs in Tranchina's Restaurant on Common Street in the spring of 1941 and organized the New Orleans Geological Society. They held their first meeting at the St. Charles Hotel on October 6, 1941. George Schneider was elected President. He had served in that capacity with the Shreveport Geological Society.

During the four-plus years of WWII, many geologists were called to active duty with the remaining staff left to run the exploration for oil and gas. Oil and gas production was a very necessary component of the war effort. It was during that time George Schneider developed a malignant growth on his vocal chord which required surgery. As a result, it left his voice a hoarse whisper. It did not deter him, however, from continuing a productive business and social life.

George Schneider retired in 1954 after 30 productive years with Texaco and continued to be active as a consultant. Some of his friends and associates included Bill Helis, Earl Bateman, Harry Fotiadis, Temple Hargrove, Ken McWilliams, John F. Bricker, Bob Frankel and John Mecom -all pioneers in the oil and gas business.

In 1961, George was awarded Honorary Life Membership in the New Orleans Geological Society. He died two years later at his home in New Orleans.

NOGS 2011 Kick Off Party

photos by Ed Picou



Will Jorgensen, Jade Haug, Daisy Pate,
and Bay Salmeron



Darren Chevis, Krista Jankowski,
Kat Telfeyan and Kelly Williams



Beverly Christina, Pat Williamson (seated), Mary
Walther, Earleen Rodan and Amber Klekamp



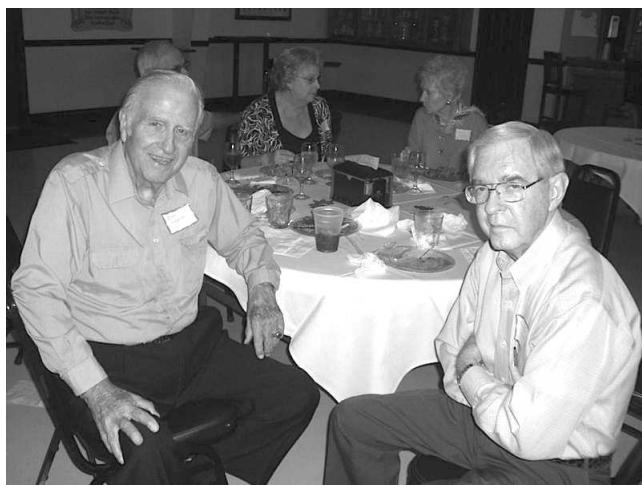
Ruth and Bob Bussey with
Bill and Elizabeth Furlong



Frank and Peggy Rogers



Carol Andrews, Ed Picou and Pat Williamson



Don Andrews and George Severson



NOGA Officers: (L-R)
Susie Baker, Carol
Andrews, Pat Williamson,
Beverly Kastler, Jean
Jones, Mary Walther, Judy
Lemarié, Alma Dunlap



Mike and Debra Fein



Gene and Betty Cobb



Carol Andrews, Alma Dunlap and Judy Lemarié



Everett and Beverly Kastler



Ruthie Grimes, Chris Joachim and guest



Taylor and Debra Blood with Al Baker



Trez Zotkiewicz and Will Jorgensen

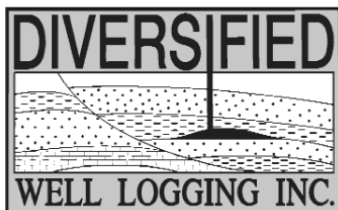


Ashley Breaux and Andrew Ranson (UNO)



Relax. We'll keep you posted.

Your rig is offshore and you are not. How do you know what's going on so many miles away? You know because we tell you. Daily or even hourly, Diversified Well Logging's engineers update you on the status of your rig. We are your eyes and ears, especially when it comes to deep water or high pressure, high temperature areas. Diversified offers 24-hour surface evaluation. We provide secure and customized real-time data communication, in-house research and development and 24/7 on-call support for our equipment and our engineers. Whether you have a 10-day job or 110-day job, we provide the specialized attention you require. So, relax. We're with you every step of the way.



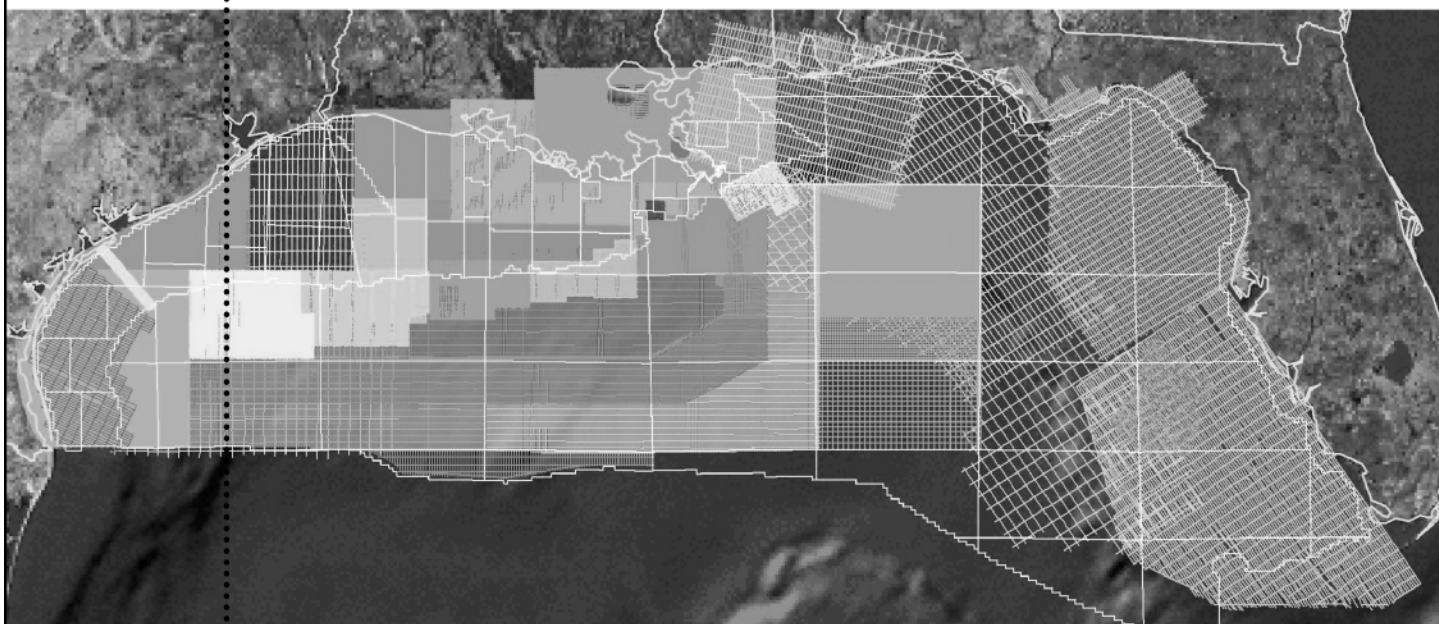
Serving the Gulf Coast for over 40 years.

New Orleans • Lafayette • Houston • Dallas • Corpus

800.280.2096

711 West 10th Street • Reserve, LA 70084 • Phone: 985.536.4143 • Fax: 985.536.2427
sales@dwl-usa.com

For Gravity and Magnetic
Data in the Gulf of Mexico
**Count on Fugro—
Mapping Geology
to the Basement...**



...And beyond with the most comprehensive non-exclusive airborne, land and marine potential fields geophysical database, including AeroMagnetic, Marine Gravity and Bathymetry data in the Gulf of Mexico. Interpretation includes:

- Basement architecture
- Tectonic elements
- Structural/geologic fabric
- Salt mapping
- Depth to basement
- ArcGIS deliverables



Fugro Gravity & Magnetic Services

For personal assistance & consultation,
please contact fgmsdata@fugro.com or 713-369-6123.

www.fugro-gravmag.com

NOGS FINANCIAL STATEMENT: Fiscal Year July 1, 2010 to June 30, 2011

- I. Hibernia Homestead Checking Account: Used for day to day operation of NOGS activities.

Balance as of June 30, 2011: \$126,427.23, up \$117,671.18 from \$8,756.05 on July 1, 2010.

Note: NOGS received \$170,367.09 from AAPG and \$8,926.51 from the 2010 Deepwater Technical Symposium in 2010.

- II. Morgan Stanley Smith Barney manages NOGS' Investments and there are three sub-accounts.

1. Operations Account: Account used to supplement the checking account

Balance as of June 30, 2011: \$139,811.04, up \$13,286.21 from \$126,524.83 on July 1, 2010.

Interest income from Bonds and CDs for the Operations Account was \$4,530.04.

2. FONO Account: Funded by donations to the Friends of the NOGS Office Fund. There are no expenses charged to this account and income from this account is used for office operations and is transferred to the Operations Account.

Balance as of June 30, 2011: \$150,427.04, up \$7,587.87 from \$142,839.17 on July 1, 2010.

Interest income from Bonds and CDs for the FONO Account was \$2,817.56.

3. Publications Account: Funded by NOGS publications sales. Expenses charged to this account include postage, refunds and amounts due to Houston Geological Society.

Balance as of June 30, 2011: \$53,845.76, down \$23,023.32 from \$76,869.08 on July 1, 2010.

Interest income from Bonds and CDs for the Publications Account was \$4,792.59.

III.	Totals: Sum of all Accounts as of June 30, 2010	\$354,989.13
	Sum of all Accounts as of June 30, 2011	\$416,665.31
	Increase	\$ 90,676.18

2010-2011 NOGS Income vs. Expenses

Income	\$304,145.74
Expenses	\$232,879.30
Net	\$ 71,266.44

Major projects	Income	Expenses	Net
NOGS Log	\$46,558.82	\$40,822.72	\$ 5,736.10
Luncheons	\$17,315.00	\$13,658.76	\$ 3,656.24
Golf Tournament	\$14,408.00	\$ 9,685.38	\$ 4,722.62
Entertainment	\$ 4,260.00	\$ 7,115.16	\$ -2,855.16
Publications	\$ 8,502.00	\$56,842.55	\$-48,340.55

William R. Jorgensen
2010-2011 Treasurer
504-728-6339

South Louisiana and Offshore Gulf of Mexico

Exploration and Production Activities

LOUISIANA DISTRICT, ONSHORE AREA

By Carlo C. Christina

Since my last report, 39 new permits to drill in the Lafayette District, Onshore have been approved by the Office of Conservation. The most significant wells are listed below and include 6 deep Wilcox wells in Beauregard Parish, a deep Wilcox rank wildcat, two Tuscaloosa Marine Shale horizontal wells, and a shallow Wilcox wildcat.

Several significant completions have been filed, including an extension to Southeast Black Bay Field, and a significant extension to Breton Sound Block 51 Field. This completion, the Lobo #1 SL 20436, proves that South Louisiana is a wildcatter's paradise to wit:

Lobo Operating Inc. acquired State Lease 20436 in September, 2010, paying only \$38,228. Lobo spudded a well on the lease on July 23, 2011. Within 16 days, the well had been drilled to 10,410 feet, logged and production casing had been set. The well was officially completed on August 30, 2011, **flowing 1142 barrels of oil per day and some gas**, all within 12 months after acquiring the state lease. Assuming the well will produce 500 barrels per day, and the price of oil is \$106 per barrel, the gross income will be **\$1,600,000 per month**, and the project will pay out within one year. Excellent South Louisiana economics!!

WILCOX WELLS:

Within the past 9 months, 27 deep Wilcox wells have been permitted, drilled or completed in southwest Louisiana, primarily in Beauregard Parish. These wells have found new production in shallow fields or have extended deep production in old fields. Several wells have been completed in perforated intervals of 600 feet to 1000 feet in massive Wilcox sands. MidStates Petroleum Company has been the most active operator in the Wilcox play.

These new productive massive sands have sparked new drilling in several new areas, including Allen Parish, Cameron Parish, Evangeline Parish and St. Martin Parish.

NEW LOCATIONS

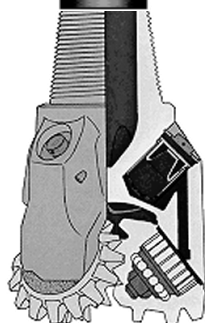
In Beauregard Parish, **Fields Field**, (A), El Paso will attempt to extend production to the west once more. The #1 Olympia 36 is located 1 mile west of the recently completed BP 31, which was completed flowing 2835 MCF gas and 212 BCPD. The proposed well is located in Sec. 36, T6S-R13W and will be drilled to a depth of 15,000 feet. (243729)

MidStates will drill the #1 Charles Jones 23 in Beauregard Parish in **South Bear Head Creek Field**, (B). It is located in Sec. 23, T6S-R11W, 1 ½ miles northeast of production. It will be drilled to 15,200 feet with the Lower Wilcox sands as the objective section. (243747).

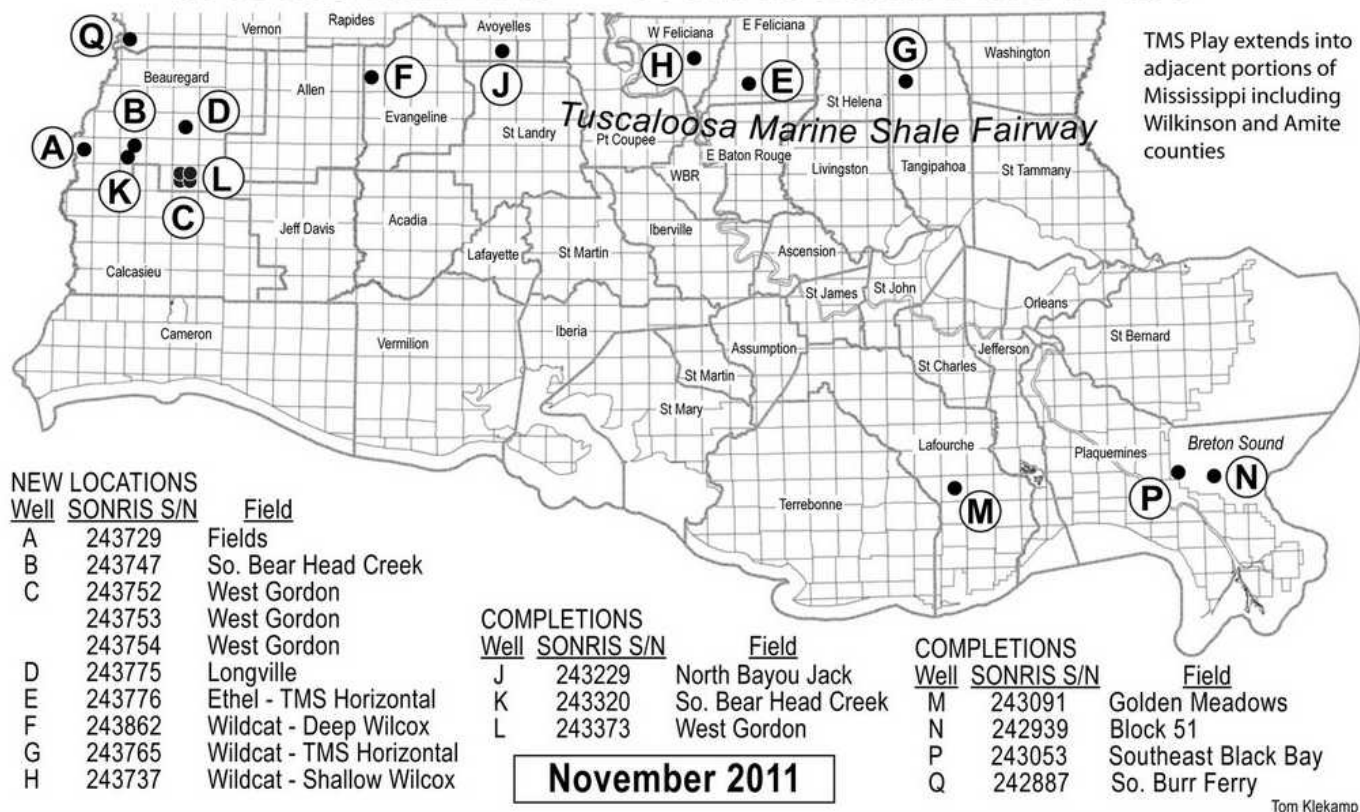
MidStates has permitted 3 wells in **West Gordon Field**, (C), in Beauregard Parish. The wells will be drilled to extend production 1 mile to the north and west of current Wilcox producers. The wells will be drilled in Sec. 6, 7S-9W, and Sec. 1, 7S-10W. (243752, 243753, 243754).

In Beauregard Parish, **Longville Field**, (D), El Paso will drill the #1 Anita Midriffs in Sec. 33, 5S-9W, 1 mile north of depleted Cockfield production. The field went off

DRILL BITS



NOGS LOG DRILL BITS — SOUTH LOUISIANA ACTIVITY MAP



production in 2006. This test will be drilled to 16,050 feet and is another example of a deep test seeking Wilcox production on the flank of an old field. (243775)

In East Feliciana Parish, Devon Energy will drill a **Tuscaloosa Marine Shale** horizontal well in **Ethel Field, (E)**, to a depth of 20,100 feet. The horizontal leg will be drilled 5080 feet, with the bottom hole located in section 67. The TMS RA #1 Lane 64 H surface location is in Sec. 64, 3S-1E, offsetting the Devon #1 Lane, which has been drilled to a depth of 15,528 feet in a vertical hole. Production casing has been run to total depth, and it has been “rumored” that the well has been perforated and tested with good results. It will be important to compare the test results of the vertical hole with the anticipated completion of the long horizontal hole. (243776)

Ventex Operating Co. will drill a deep **rank wildcat, (F)**, located 3 miles west of Pine Prairie Field in Evangeline Parish. The well will be drilled in Sec. 36, 3S-2W and will evaluate Wilcox sands at a depth of 17,500 feet. (243862)

Devon Energy has permitted a **Tuscaloosa Marine Shale wildcat, (G)**, well in Tangipahoa Parish in Sec. 6, 3S-7E, 1 mile south of Fluker Field, a one-well shallow Wilcox field. The #1 Soterra will be drilled to 15,850 feet, 3403 feet in a horizontal hole. Devon has applied for 2 drilling units. (243765)

In West Feliciana Parish, Vaquero Resources will drill a **rank wildcat, (H)**, the #1 Mooney in Sec. 61, 2S-2W. The well is permitted to 9999 feet. There is no production within 10 miles of this test, and the nearest control is one mile to the southwest, the Amoco #1 Landry, which was drilled to 18,932’ in 1996 and was plugged and abandoned. (243737)

COMPLETIONS

In Avoyelles Parish, **North Bayou Jack Field, (J)**, Anadarko has completed the #1 Dominique 27 in the Austin Chalk flowing 753 BOPD and 1154 MCFD through perforations 15,805 to 22,293 feet. The well is located in Sec. 27, 2S-4E and was completed 9/6/2011. (243229)

MidStates Petroleum has completed the #9 ALT Musser-Davis in **Bear Head Creek, South, (K)** in Beauregard Parish, Sec. 33, 6S-11W, flowing 240 BOPD and 1325 MCFD through Wilcox perforations 13,151 to 14,164 feet. (243320)

--- continued on next page ---

Drill Bits (continued from previous page)

In **West Gordon Field**, (L), Beauregard Parish, Midstates has completed the #3 Forestar Minerals in the Wilcox flowing 455 BOPD and 592 MCFD through perforations 13,236 to 13,459. The well is located in Sec.7, 7S-9W. (243373)

ConocoPhillips has plugged and abandoned the #1 LL&E in **Golden Meadows Field**, (M), Lafourche Parish, at a depth of 15,032 feet. The well was permitted to 23,000' but had encountered mechanical problems for the past two months. It is located in Sec. 71, 19S-21E. (243091)

In Plaquemines Parish, **Breton Sound 51 Field**, (N), Lobo Operating has completed the #1 SL 20436, flowing 1142 BOPD and 606 MCFD through perforations 10,074 to 10,082 feet. The well is located 1 mile south of production, and was drilled on a new State Lease taken in September, 2010, at a cost of \$38,228. The well was drilled to 10,410 and completed within 30 days. (See discussion above). (242939)

In Plaquemines Parish, **Southeast Black Bay Field**, (P), Helis Oil & Gas Co. has completed a significant extension, 1 mile east of the field, with the completion of the #39 SL 195. The well was completed in the O Sand, flowing 182 BOPD, through perforations 7628 to 7646 feet. (243053)

For a complete report on the Black Bay Complex, with detailed maps, logs, cross-sections, etc. on two fields within the complex, refer to the NOGS publication, "Oil & Gas Fields of South Louisiana 2010." This publication is available in **CD-ROM disc, color or black and white paper copies. For information to purchase go to www.nogs.org.**

Anadarko has completed the #1 GARS 16 in **South Burr Ferry Field**, (Q), in Vernon Parish, in Sec. 16, 2S-11W. The well was completed in the Austin Chalk flowing 1127 MCFD and 203 BCPD, through perforations 14,324 to 20,886 feet. (242887)

OFFSHORE GULF OF MEXICO ACTIVITIES

By Al Baker

Between July 27th and August 24th, the BOEMRE issued 63 drilling permits, of which 27 were for Gulf of Mexico shelf wells and 36 were for Gulf of Mexico deepwater wells. Only two of the above permits are for new wells, one each in shallow water and deepwater. The shelf new well permit is for the #A-1 development well to be drilled by Apache in Main Pass Block 308. In deepwater, an exploratory new well permit was issued to Anadarko for their Green Canyon Block 903 #2 well.

According to ODS-Petrodata, as of August 19th, there were 59 rigs under contract out of the 119 rigs available in the Gulf of Mexico. This represents a 49.6% utilization rate and is a decrease of six rigs under contract and two from the rig fleet when compared to last month.

The BakerHughes Rig Counts on August 19th indicated that there were 34 active rigs, which represents 57.6% of the total rigs under contract. The 34 active rigs compares to 21 active rigs during the same time last year. This represents a significant increase in the active rig fleet on a year-to-year basis. However, a month ago there were 37 active rigs in the Gulf of Mexico, three more than the current total.

On August 19th, the BOEMRE issued a press release announcing the proposed Western Gulf of Mexico Lease Sale 218 scheduled to be held in New Orleans on December 14, 2011. The sale will include all available unleased areas in the Western Gulf Planning Area offshore Texas. This will be the first lease sale held in the Gulf of Mexico since March 17, 2010 when OCS Sale 213 was held in the Central Gulf Planning Area offshore Louisiana. The Western Gulf of Mexico lease sale that was planned for August 2010 was cancelled following the Deepwater Horizon catastrophe at the BP Macondo wellsite in Mississippi Canyon Area. Lease Sale 218 is the last remaining Western Gulf Planning Area sale scheduled in the 2007 – 2012 Outer Continental Shelf Oil and Natural Gas Leasing Program. The terms and conditions outlined in the Proposed Notice of Sale Package are not final. Different terms

and conditions may be employed in the Final Notice of Sale, which will be published at least 30 days before the sale. However, the minimum bid amount for leases in the heavily explored and produced shallower water depths will remain at \$25 per acre, whereas the minimum bid amount for leases in deepwater (water depths greater than 400 meters) will increase from \$37.50 to \$100 per acre. For additional detail concerning the lease sale announcement, please visit the BOEMRE website: <http://www.doi.gov/news/pressreleases/Salazar-Bromwich-Announce-Proposed-Gulf-of-Mexico-Oil-and-Gas-Lease-Sale.cfm>.

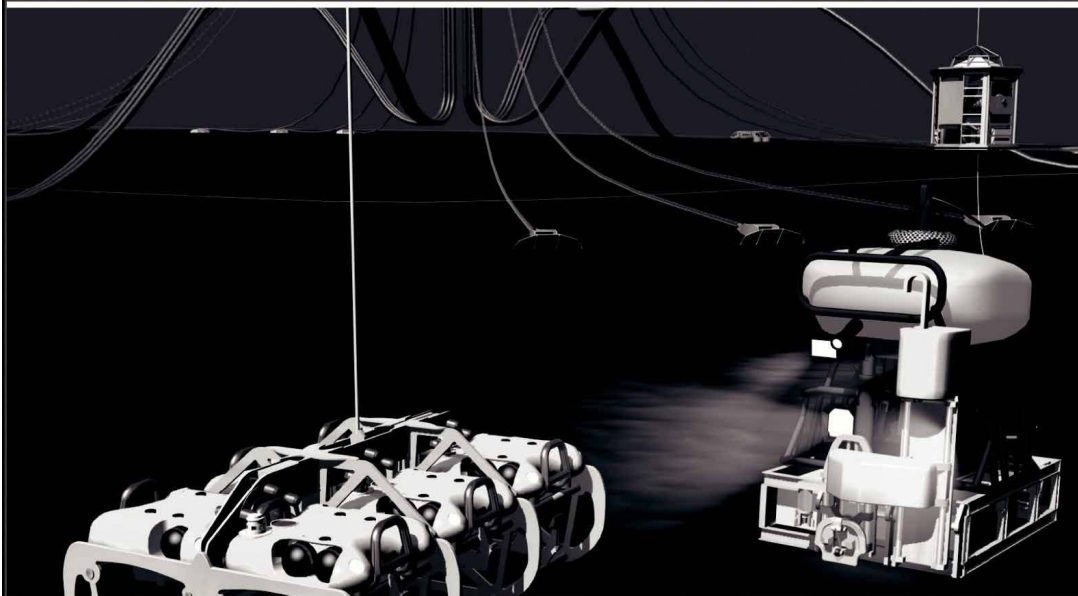
On August 1st, LLOG Exploration provided an update on four of their recent discoveries being developed in the deepwater Gulf of Mexico. The Mandy development, located in Mississippi Canyon Block 199, consists of three wells tied back to the Matterhorn Tension Leg Platform (TLP) in Mississippi Canyon Block 243. The three wells have been successfully flow tested, and modifications to Matterhorn are in progress. Mandy Field is anticipated to produce at an initial rate of 15,000 BOPD and 12 MMCFD beginning in the fourth quarter of 2011. Gross reserves from the field are expected to be between 10 and 30 MMBOE. LLOG's Condor discovery in Green Canyon 448 was placed on production in June as a single-well subsea tieback to their existing production manifold located in Green Canyon Block 52. The well has been flowing at a rate near 3000 BOPD and 4 MMCFD. Their Anduin discovery at Mississippi Canyon 754 has also been placed on production as a single-well subsea tieback to the Innovator Floating Production System (FPS) in Mississippi Canyon Block 711. LLOG's Goose development, located in Mississippi Canyon 751, is designed as a single-well subsea tieback to their existing production manifold in Mississippi Canyon Block 707. LLOG completed the well in two zones. The 12800' zone tested 5300 BOPD and 12 MMCFD, and the 12600' zone tested 2700 BOPD and 16 MMCFD. The Goose Development is the last of a seven-well completion program that began in the second quarter of 2010. In addition, LLOG recently received approval of the exploration plan for the Son of Bluto II Prospect in Mississippi Canyon Blocks 387 and 431. This is their first approved plan since the BP Macondo accident. Presently, LLOG has a number of additional plans that are under review by the BOEMRE.

On August 11th, W&T Offshore completed their recent property acquisition from Shell. The acquisition included the three deepwater producing fields known as Tahoe, SE Tahoe and Droshky plus Shell's interest in Fairway Field. The Fairway Field is situated in shallow state waters south of Mobile, Alabama, and has associated with it the Yellowhammer gas processing plant that is located onshore approximately 17 miles northwest of Fairway Field.

In offshore Texas, Entek recently announced that its recent gas discovery in Galveston Block A-133 has been placed on production. Their well that is operated by Peregrine Oil & Gas is flowing at a rate of 9.5 MMCFD. The discovery was drilled in December 2010, and its gross reserve potential is approximately 10 BCF.

Within their ultra-deep shelf drilling program, McMoRan and Energy XXI expect the Rowan EXL-3 rig to arrive at the Davy Jones #1 well in mid-October to commence completion operations. A successful completion would provide a tremendous boost to their ultra-deep shelf drilling program.

Finally - An answer for getting reservoir seismic **OVER THE RESERVOIR!**



- 4C/4D Node Seismic
- ANGOLA
- GoM
- NIGERIA



"Coming Soon to an Oilfield Near You!"

www.sbexp.com

Dubai
T: +971 4 4271700

Houston
T: +1 281 566 1666

Oslo
T: +47 2240 2700

Rio
T: +55 21 2494-0283

Singapore
T: +65 9180 2605

Trondheim
T: +47 7 3879500

RAISING
THE **STANDARD**



100 Northpark Blvd.
Covington, LA 70433

(985) 773-6000



LaBay
Exploration Co., L.L.C.

111 Veterans Memorial Blvd.,
Suite 1550
Metairie, Louisiana 70005

www.labayexploration.com

Office (504) 371-5967
Fax (504) 371-5969

For Gravity and Magnetic Data **Count on Fugro...**

Brenda Robinson: + 1 713-369-6072

brobinson@fugro.com

Jeff Rowe: + 1 613-520-7713

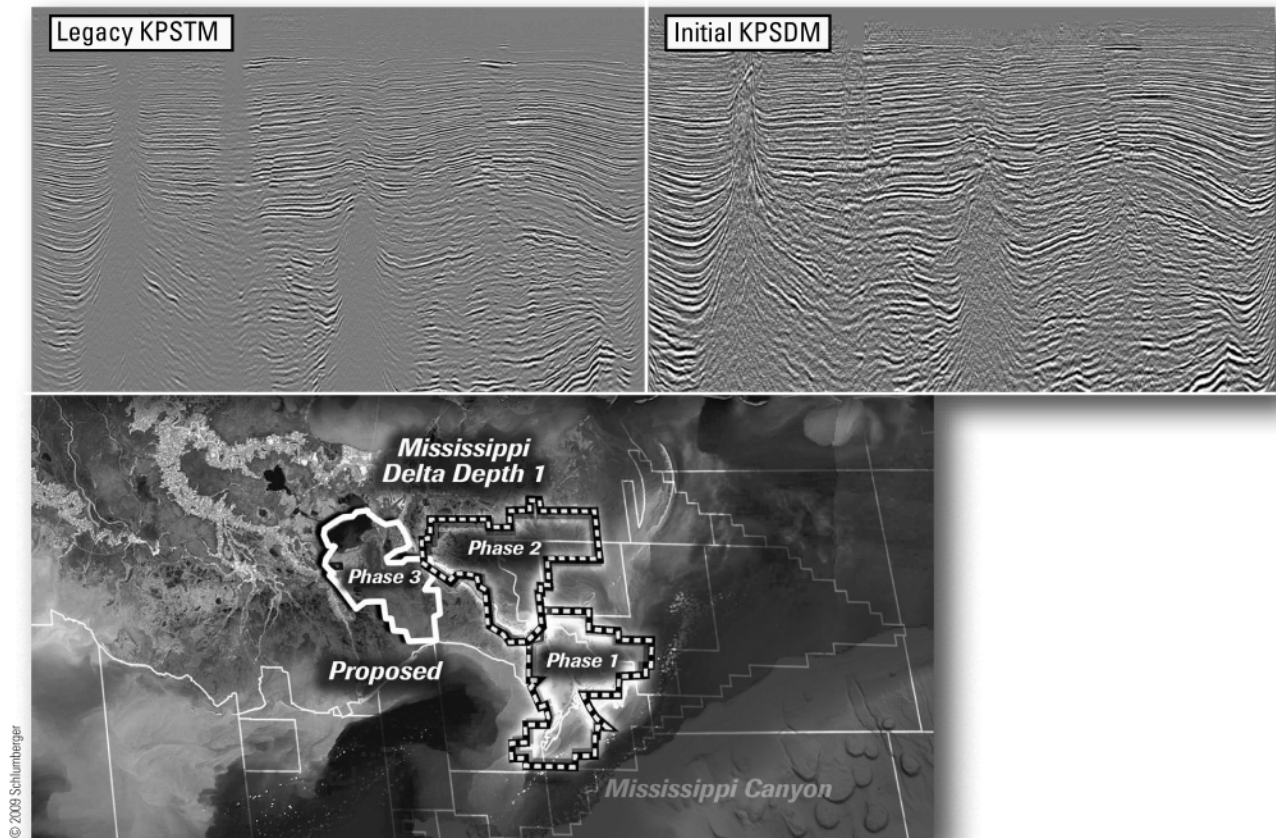
jrowe@fugro.com

www.fugro-gravmag.com



*This advertising
space is available!
Contact the
NOGS office.*

Improved depth imaging in the Mississippi Delta



In the Mississippi Delta region, WesternGeco is utilizing state-of-the-art processing designed to eliminate fault shadows and enhance deep imaging. The Mississippi Delta - Depth 1 survey, now in progress, incorporates the processing and remigration of twelve legacy surveys covering 1,855 square miles. High-quality time imaging using relative amplitude anisotropic Kirchhoff prestack time migration will be followed by improved structural imaging utilizing anisotropic Kirchhoff prestack depth migration.

To learn more about this and other Multiclient products, call +1 713 689 1000.

www.multiclient.westerngeco.com/la

Multiclient to the Power of E



Tennille Tracy - Dow Jones Newswires - "US to Allow BP to Bid on New Oil Drilling Leases in Gulf"
http://www.rigzone.com/news/article.asp?a_id=111790&hmpn=1

The U.S. has decided to allow BP to bid on new oil-drilling leases that go up for sale in the Gulf of Mexico later this year, less than two years after BP's Macondo well erupted and caused the worst offshore oil spill in U.S. history.

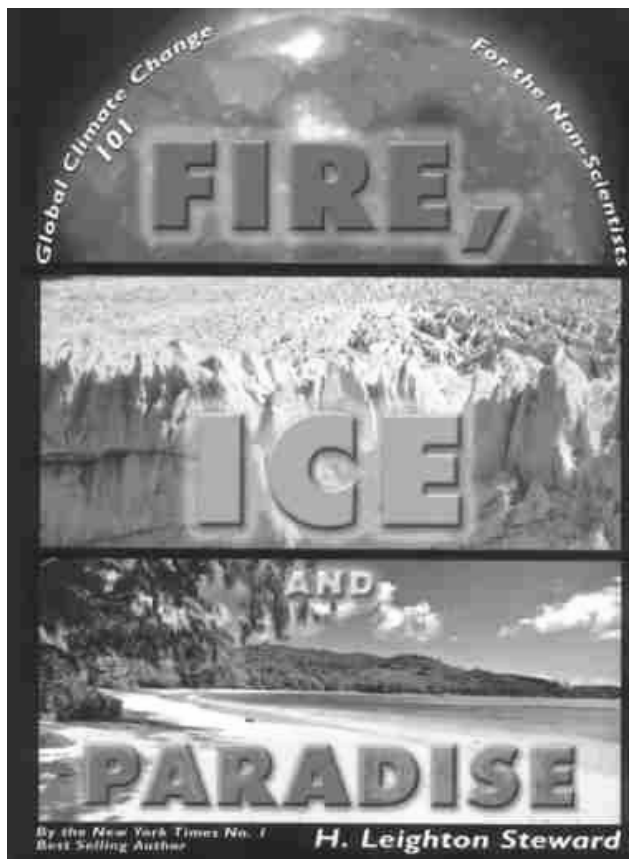
While testifying at a House hearing Thursday, offshore safety chief Michael Bromwich said his agency "considered and thought about this issue quite a lot," but eventually determined to allow the British oil giant to bid for leases in an upcoming auction known as Lease Sale 218.

"We don't think it's appropriate [to exclude BP] in these circumstances," said Bromwich, director of the Interior Department's Bureau of Safety and Environmental Enforcement.

On Wednesday, the Interior Department issued its first set of citations related to the spill at the Deepwater Horizon rig, accusing BP and two of its contractors of breaking several rules. The citations are likely to carry fines.

Scheduled for Dec. 14 in New Orleans, the upcoming lease auction will involve leases in the western Gulf of Mexico. The leases cover about 21 million acres, in water depths of up to 11,000 feet. It will be the first lease auction since the Deepwater Horizon spill.

The Interior Department said production on the available leases could reach 420 million barrels of oil and 2.7 trillion cubic feet of natural gas.

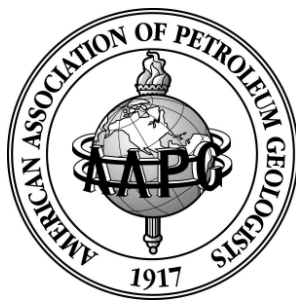


Are You Interested in Global Climate Change?

H. Leighton Steward, long-time NOGS member and former CEO of the Louisiana Land and Exploration Company, has published an excellent book that lays out all of the "science" that bears on the issue. However, he makes no judgments. The text avoids technical terms as much as possible and has 39 excellent figures, plus a glossary and references. His book was reviewed in the October 2008 AAPG **EXPLORER** by Lee C. Gerhard.

Book copies may be ordered from:
www.authorhouse.com or 1-888-519-5121

Price: \$19.95 for a grayscale (B&W) version with soft cover, which is the default version if you order online. The color version is much easier to decipher. Best to phone and specify the color version, which is \$25.00, plus shipping and handling.



Salt Welds in the Deepwater Gulf of Mexico – Uncertainties in the Amount of Remnant Salt: Seismic and Well Examples

Liro, Louis¹; Holdaway, Steven M.¹

(1) CNAEP, Chevron, Houston, TX

Salt welds mark the disconformable surface resulting from the removal of salt from a stratigraphic sequence. Tertiary welds represent the removal of salt from a canopy (areally extensive) while secondary welds often represent the compressive deformation of a salt stock (areally limited). Whereas a true salt weld represents total removal of salt, in practice variable amounts of salt may remain along the weld surface.

Part of the uncertainty lies in the distinction between an true weld and a “seismic weld”, that is, where there is the inference of prior salt being reduced to zero or negligible thickness, but the practical limits of seismic resolution could allow for 50 meters of salt to be present but “absent” in the seismic response.

Formation of a salt weld typically results in a significant stratal disconformity; this is the primary means of identifying salt welds. Most typically, the strata underlying the disconformity will correspond to the regional canopy emplacement age although rubble zones can be present locally; the overlying material may vary in age depending on the amount of translation of supra-salt strata and the time of deflation, ranging from old, rafted blocks to young minibasins. In the limiting case, a young minibasin may form above a collapsing salt stock, ultimately juxtaposing very young strata on Jurassic.

The Ponza well (KC 774) encountered perhaps the most “typical” salt weld. Condensed Paleogene and Cretaceous section overlie Miocene section, with no salt encountered. The corresponding seismic clearly indicates a dramatically thinned weld in continuity with two significant salt canopies.

The Sumatra well (GB 941) encountered a significant age disconformity, with Cretaceous overlying Oligocene, interpreted as a salt weld with no salt apparent in the limited logging suite. While the Paleogene/Cretaceous section is interpreted as a canopy raft, the regional extent of the interpreted salt weld appears to be limited.

The Cortez Bank well (KC 244) drilled through approximately 260 feet of salt at the equivalent position of the base of adjacent salt canopy. This seismic weld bears similarities to the Sumatra well in having limited areal extent.

AAPG© 2011 “Reprinted by permission of the AAPG whose permission is required for further use.”

SAI

Geoconsulting, Inc.
*Geological and Geophysical Consulting,
3-D Seismic Interpretation*

Ben D. Sydboten, Jr. CPG

2 Flagg Pl., Suite 1
Lafayette, LA 70508
www.saigeoconsulting.com

Office (337) 504-3670
Cell (337) 456-8948

"Serving The Oil & Gas Industry Since 1983"

Geological,
Geophysical &
Land Drafting

Anthony Catalanotto
President
Stefani Foster
Drafting & Design

Geo-Draft, Inc.
A Professional Drafting & Graphics Firm

3349 Ridgeline Drive • Suite 202 • Metairie, LA • 70002
Office: (504) 836-2882 Fax: (504) 836-2877 (Cell) (504) 481-7291
E-Mail: geodraft@bellsouth.net
Website: www.geodraftinc.com

**NOGS thanks our
sponsors for their support:**

GOLD LEVEL SPONSORS:

**CHEVRON
LA BAY EXPLORATION CO, LLC.**

**SPECIAL THANKS TO
DIVERSIFIED WELL LOGGING**

NORTHCOAST OIL COMPANY

610 E. Rutland St.
Covington, LA 70433
(985) 898-3577
(985) 898-3585 FAX

Jack M. Thorson
Eric C. Broadbridge
J. Daryl Gambrell
Raymond W. Stephens

(832) 242-6000 (O)
(713) 917-0493 (O)

(504) 931-7506 (C)
johnjurasin@jurasinoilgas.com

JURASIN OIL & GAS

9700 Richmond Ave., Suite # 124
Houston, TX 77042-4821

JOHN M. JURASIN
President

Cert. Pet. Geologist #4284
Cert. Prof. Earth Scientist #1961

Collarini Energy Staffing, Inc.

Facilities • Drilling • Production • Reservoir Engineering
Land and Legal • Geosciences • Information Technology
Health and Safety • Management • Supply Chain
Accounting • Administrative Support



Full-Time and Temporary Personnel

Energy Trading • Civil Engineering • Executives
Human Resources • Instrument and Electrical
Engineering • Marine Engineering • Project Management
Technical Writing • Sales and Marketing

10497 Town and Country Way, Suite 950, Houston, Texas 77024

Telephone: (832) 251-0553

www.collarini.com

This advertising space is available!

Contact the NOGS office.

THE NEW ORLEANS GEOLOGICAL SOCIETY MEMORIAL FOUNDATION, INC.

The Memorial Foundation is an IRS Tax Exempt Code #501 (c)(3) organization. The Federal I.D. is 72-1220999. Please consider making a donation to the Foundation prior to the close of this year's fiscal cycle on June 30, 2012. Your individual support in any amount will help meet the IRS Guidelines for our Foundation. *Thanks!*

\$15,000 AND ABOVE

Gibbet Hill Foundation

*In Memory of Steve & Marion Millendorf, William J. Prutzman, Roger G. Vincent,
Ron Youngblood & Uno Numella*

\$10,000

GCAGS

Matching funds

\$500

Richard G. Klibert

Foster E. Voelker

In Memory of Gene Rogas

\$250 TO \$499

Burton C. Bowen

In Memory of Joffre J. Crouere

Marc Cooper

Through the Marathon Oil Co MEPAC Program

Carlo C. Christina

In Memory of Al Gilreath

UP TO \$249

Woods W. Allen, Jr.

In Memory of William C. Ward

Maurice N. Birdwell

In Memory of Uno Nummela

Hilary James Brook

Rob Burnett

J. Sybil Callaway

Chevron

Matching Funds

Arthur F. Christensen

James S. Classen

In Memory of Robert C. Treadwell

In Memory of Robert G. Williamson

Clarence F. Conrad

Charley Corona

In Memory of Professor Hubert Skinner

Trudy and Charley Corona

In Memory of Carl Grieshaber

In Memory of Beverly Langford

In Memory of Erik Mason

Robert M. Danos

In Memory of Max H. Durham

Dr. Brooks B. Ellwood

Parrish N. Erwin, Jr.

James P. Evans III

In Memory of James P. Raymond, Jr.

Exxon Mobil Matching Funds

Michael N. Fein

Mark J. Gallagher

Arthur J. Garden

Bernard L. Hill, Jr.

Kenneth Huffman

Jeffrey E. Jandegian

Tom Klekamp

Reuben J. Klibert, Jr.

In Memory of Dale Klibert

Tim Klibert

John C. Kuciewicz, Jr.

John C. Langford

H. David Lynch

Jeannie F. Mallick

Louis L. McCormick

Margaret M. McKinney

Robert G. Murphy

In Memory of Ron Youngblood

In Memory of Thomas A. Cullinan

New Orleans Geological Auxiliary

In memory of Beverly Langford

Nexen Petroleum USA Inc.

Matching Funds

Richard A. Olsen

Teresa M. O'Neill

In Memory of Brian J. O'Neill

Linda and Bill Peirce

Edward B. Picou Jr.

In Memory of Terry D. Keegan

Richard D. Provensal

In Memory of Thomas H. Philpott

In Memory of James Strahan

Dr. J. O. Snowden

James M. Sothorn

Raymond O. Steinhoff

In Memory of Harold E. Vokes

Betsy M. Strachan Suppes

In Memory of Hubert Skinner

David M. Tatum

Leon G. Toups

In Memory Robert G. Williamson

Roy C. Walther

William M. Whiting

Arthur S. Waterman

In Memory of T. Wayne Campbell

FONO FUND

The FONO Fund accepts contributions that are invested and the income dedicated to assure sufficient financial resources will always be available to maintain the NOGS business office. Contributors are reminded that donations to the FONO Fund are not covered by the IRS 501 (c)(3) tax exempt classification and should be reported as a business expense on your IRS tax report.

\$500

James A. Hartman

In Memory of Hal Hudson

In Memory of Robert G. Williamson

UP TO \$250

David E. Balcer

Joseph E. Boudreaux

J. Sybil Callaway

Anthony Carollo, Jr.

Richard P. Colomes

Clarence F. Conrad

Michael A. Danahy

John Dombrowski

Merle J. Duplantis

Parrish N. Erwin, Jr.

Richard A. Edmund

Michael N. Fein

Mark J. Gallagher

Bernard L. Hill, Jr.

Kenneth Huffman

Robert M. Jemison, Jr.

Arthur H. Johnson

Tom Klekamp

Russell J. Landry

Louis Lemarie'

H. David Lynch

Jeannie F. Mallick

George M. Markey, Jr.

Louis L. McCormick

Margaret M. McKinney

Robert G. Murphy

William J. O'Leary

Richard A. Olsen

Linda and Bill. Peirce

Edward B. Picou, Jr.

James P. Raymond, Jr.

C. R. Rondeau

David M. Tatum

Roy C. Walther

Robert C. Weissmann

William M. Whiting

CONTRIBUTIONS FOR BOTH FUNDS

THROUGH OCTOBER 4, 2011.

DONATIONS ARE LISTED FOR ONE YEAR.

Armour C. Winslow

In Memory of Rita Menzel Winslow

Frances A. Wiseman

In Memory of Steve Widdicombe

In Memory of Bill Craig

Chevron

Bernard L. Hill, Jr.

John C. Scheldt

In Memory of William C. Ward

Candace V. Strahan

In Memory of James Strahan

In Memory of William C. Ward

<p>ANSYTHE Donald I. Andrews 504-887-3432</p> 	 <p>GEOLOGY ENVIRONMENTAL MANAGEMENT</p> <p>GEM Consulting LTD Michael Louis Merritt admin@gemconsultingltd.com 1451 Applewood Road • Baton Rouge, LA 70808</p>
<p>THE BOEBEL COMPANY Oil and Gas Investments 170 Broadway Street, Suite 321 New Orleans, LA 70118 (504) 866-4313</p>	<p>H. WARREN BELL Oil and Gas Exploration 2500 Tanglewilde, Suite 485 Houston, TX 77063-2126 Bus (713) 266-7297 Fax (713) 266-7298</p>
<p>BOO-KER OIL & GAS CORP. Gray S. Parker 826 Union, Suite 300 New Orleans, LA 70112 Bus. (504) 581-2430 Fax (504) 566-4785</p>	<p>PHELPS GEOSCIENCE LLC Onshore Gulf of Mexico Geology and Geophysics Prospect Generation and Evaluation Houston, TX jsphelps@yahoo.com (281) 398-5208</p>
<p>C & R EXPLORATION, INC. Carlo C. Christina Lawrence G. Ringham</p>	<p>RAFIDI OIL AND GAS, INC. Jaser N. Rafidi, President 4415 Shore Dr., Suite 202 Metairie, LA 70006 Bus. (504) 722-2942 Fax (504) 888-5539; Res. (504) 888-1661</p>
<p>C. R. RONDEAU Petroleum Geologist 119 W Southland Ave. Ironwood, MI 49938 Res. (906) 932-4692</p>	<p>ROY C. WALTHER Petroleum Geologist 2421 Prancer Street New Orleans, LA 70131 Bus. (504) 392-8513 Res. (504) 392-9332</p>
<p>CLASSEN EXPLORATION, INC. James S. Classen Looking for close in deals P.O. Box 140637 Boise, ID 83714 classenllc@msn.com Bus. (208) 854-1037 Fax (208) 854-1029</p>	 <p>625 E. Kaliste Saloom Lafayette, LA 70508 16800 Greenspoint Dr., Suite 225-S Houston, TX 77060 1100 Poydras St., Suite 1050 New Orleans, LA 70163 www.StoneEnergy.com</p>
<p>D-O-R ENGINEERING, INC. 3-D and Geoscience Services 6161 Perkins Rd. P O Box 80812 Bus : (225) 765-1914 Baton Rouge LA 70898</p>	<p>TONY CAROLLO Consulting Geologist Unitization Geosteering Field Studies 1701 Peach Street Metairie, LA 70001 Bus. (504) 885-0004 Res. (504) 885-6829</p>
<p>EDWARD B. PICOU, JR. Consulting Micropaleontologist - Retired 228 St. Charles Ave., Suite 1330 C New Orleans, LA 70130 Bus. (504) 529-5155 Res. (504) 282-3096</p>	<p>Zot Oil & Gas, LLC Jim Zotkiewicz Prospect Generation and Evaluation 3200 Ridgelake Dr. Suite 207 Metairie, LA 70002-4930 Business: 504.831.4694 Email: jimzot38@zotoil.com</p>

Attributes

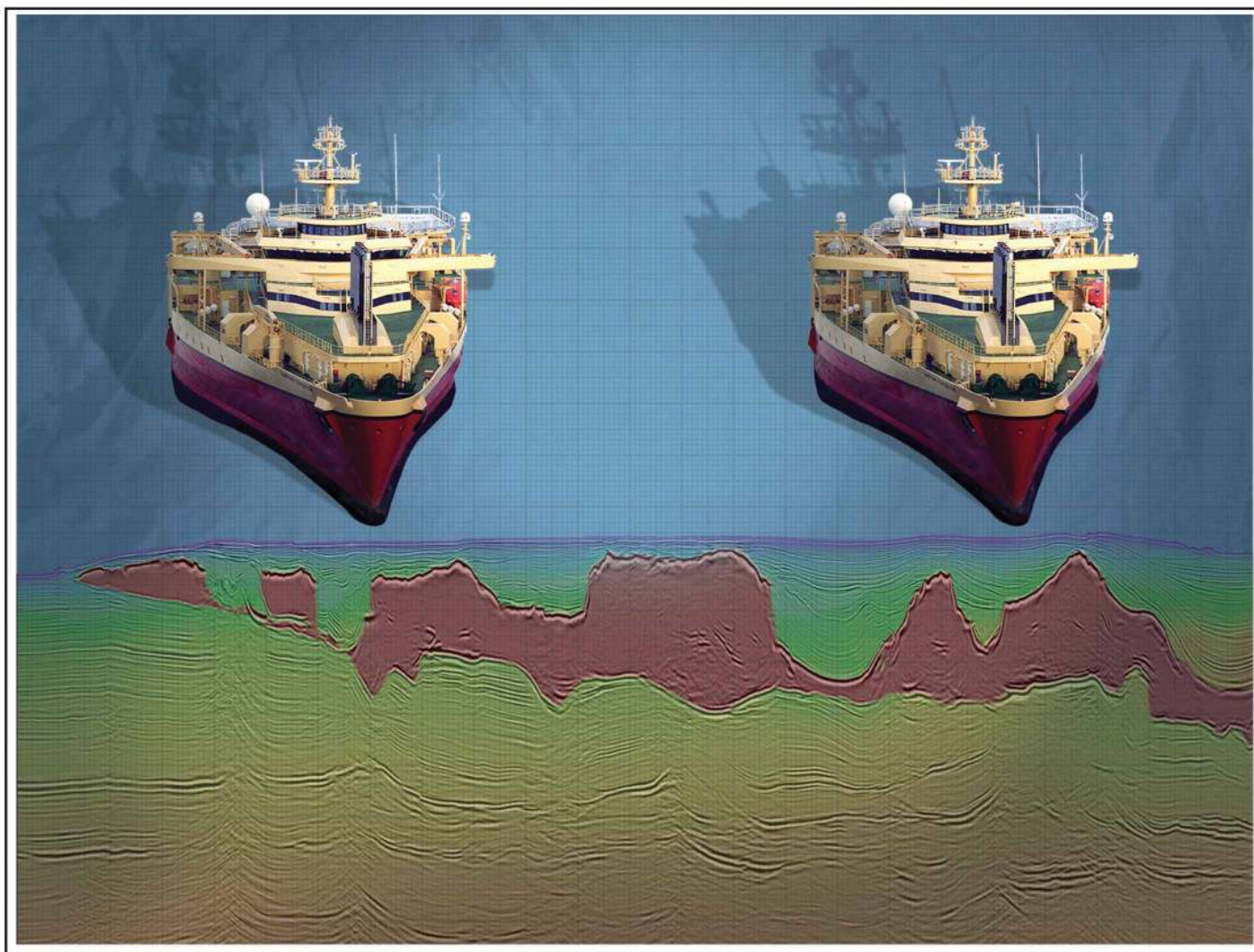
New Views on Seismic Imaging—Their Use in Exploration and Production



**31st Annual GCSSEPM Foundation
Bob F. Perkins Research Conference**
Houston, Texas
December 4-7, 2011

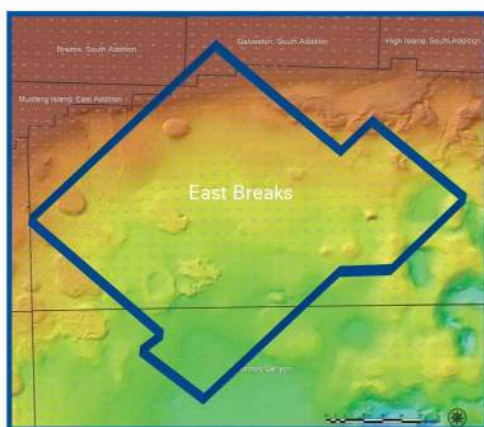
Conference information and
online registration
available on our Web site:
www.gcssepm.org





Crystal III, East Breaks

MultiClient Wide Azimuth



- **Size** - 480 OCS blocks
- **Focus** - Sub-Salt Miocene & Paleogene
- **Technology** - TTI Beam and RTM Imaging
- **Delivery** - Available Q4 2010

Houston
Tel: +1 281 509 8000
Fax: +1 281 509 8500

Oslo
Tel: +47 67 52 6400
Fax: +47 67 52 6464

London
Tel: +44 1932 37 6000
Fax: +44 1932 37 6100

A Clearer Image
www.pgs.com



NEW ORLEANS GEOLOGICAL SOCIETY



810 Union Street, Suite 300
New Orleans, LA 70112-1430

WWW.NOGS.ORG

MARINE PROPERTIES, LLC BERKSHIRE EXPLORATION CO.

MONTE C. SHALETT, CPL, PRESIDENT

3030 Lausar Street
Metairie, LA 70001-5924

BUS. (504) 831-7779
FAX. (504) 831-8315

PCI

Paleo Control, Inc.

Houston, Texas
713-849-0044

Drilling Wells, Studies and Data Base

Loyd Tuttle

Frio, SE Texas

Bob Liska

Wilcox, S and SE Texas

Jim Thorpe

Miocene and Cam-Miogyp



SEE YOUR DATA IN A WHOLE NEW LIGHT!

Take the pressure out of exploration
and drilling by seeing what you
are going to encounter.



eSeis

www.e-seis.com
713.531.1447

- Lithology & Fluids
- Depositional Facies
- Pore Pressure from V & Q
- Well Planning Consultation

