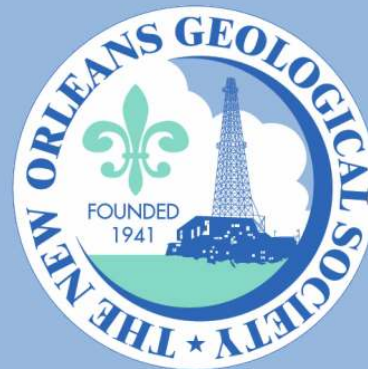


NOGS LOG



May 2011

Volume 51, Number 6

Upcoming Events and Activities

May 2 - NOGS-SGS Joint Luncheon

*** At the Holiday Inn Downtown Superdome ***

\$2.00 validated parking in hotel garage

Holiday Inn Downtown Superdome. Guest speaker William W. "Toddy" Guidry III, of Core Laboratories in Lafayette, will present "Introduction to Reservoir Fluids and PVT Analyses for Geologists."

(See page 7 for Abstract and Biography)

HOLIDAY INN DOWNTOWN SUPERDOME

Check with concierge or
front desk for location

Lunch served at 11:30am

ADMISSION:

with reservation \$30.00

without reservation \$35.00

Student Member with reservation Free

May 3-5 - 27th Annual Louisiana Remote Sensing & GIS Workshop

Hampton Inn & Suites, New Orleans Convention Center.

Info: <http://lagic00.lsu.edu/rsgis>.

June 6 - NOGS Luncheon

Holiday Inn Downtown Superdome. Guest speaker Kimberly L. Faulk, Geoscience Earth & Marine Services (GEMS) in Houston, will present "Marine Archaeology in the Gulf of Mexico."

June 20-24 - SIPES 48th Annual Meeting

Jackson Hole, Wyoming. Info: www.sipes.org

June 23-25 - Oil History Symposium & Fieldtrip

Marietta, Ohio. Info: www.petroleumhistory.org

Get Ahead of the Game



Directional Survey Plus



Production Data



Digital Well Logs



With High Quality Well Data From TGS

Need an extra edge on the competition? TGS' high quality well data, comprehensive coverage and dedicated customer support can get you to the finish line.



Directional Survey Plus

Beyond simple directional survey data capture, Directional Survey Plus data are thoroughly researched, reprocessed and standardized.



US Production Data

TGS' nationwide production database features a visualization tool, leading industry exports and daily incremental updates.



Complete Curve LAS

Over 500,000 LAS well logs are now available in North America. Over six million well logs available in 30+ countries worldwide.

Find out more at www.tgsnopec.com/welldata or contact TGS Well Data at 888-LOG-LINE or WellData@tgsnopec.com



Geophysical
Products



Geological
Products



Imaging
Services



www.tgsnopec.com

NOGS Office

Office Manager: Annette Hudson
Office Hours: 8:30 a.m. – 3:30 p.m. on Monday-Wednesday-Friday
Tel: 504-561-8980 □ Fax: 504-561-8988
E-mail: info@nogs.org □ Website: www.nogs.org
The office is located at Suite 300, 810 Union Street, New Orleans, LA 70112.
Correspondence and all luncheon reservations should be sent to the above address.
Sent to press on April 22, 2011.



BOARD OF DIRECTORS

President	Rick Kear
Vice President	Eric Zimmermann
Secretary	Penne Rappold
Treasurer	Will Jorgensen
President-Elect	Bob Hafner
Editor	Fran Wiseman
Director 2011	Scott A. Wainwright
Director 2012	Arthur H. Johnson
Director 2013	Jack Langford

Company

Schlumberger	504-592-5376
LLOG Exploration	985-801-4338
Shell	504-728-4338
Shell	504-728-6339
BOEMRE	504-736-2912
Bret Exploration Co Inc	504-889-2700
Hydrate Energy International	504-464-6208
J C L Services	985-764-2527

Phone

E-mail

kearl1@new-orleans.oilfield.slb.com
ericz@llog.com
prappold@gmail.com
william.r.jorgensen@shell.com
ottohaf@aol.com
frances.wiseman@boemre.gov
scott_wainwright@hotmail.com
artjohnson51@hotmail.com
jclangford@latterblum.com

COMMITTEE

AAPG Delegates
AAPG Student Chapter
AAPG Student Chapter
Advertising-Log
Auditing
Awards
Ballot
Best Paper
Continuing Education
Employment Counseling
Entertainment
Environmental
External Affairs
Field Trip
Finance and Investment
Historical
Membership/Directory
New Geoscientists (NGNO)
Nominating
Non-Technical Education
Office Operations
Publications Sales
Photography
School Outreach
Scouting
Sponsorship/Houston
Technical Projects
Ad Hoc Committee on
University Support

Chairperson

William M. Whiting
Michael Hopkins
Andrew Ranson
Nicole Cammarata
Chuck Holman
Michael N. Fein
Will Jorgensen
Brenda Reilly
TBA
Bob Hafner
Daisy Pate
Michael A. Fogarty
David Garner
Will Jorgensen
Edward B. Picou, Jr.
Carlo C. Christina
Tom Klekamp
TBA
Mike Ledet
Duncan Goldthwaite
Tom Klekamp
Edward B. Picou, Jr.
Tom Klekamp
Thomas C. Bergeon
Carol Rooney
David E. Reiter
TBA
Michael J. Gallagher

Consultant	504-947-8495
Tulane University	228-209-2262
UNO	337-578-5587
Schlumberger	504-592-5317
Independent	504-891-4878
W & T Offshore	504-210-8148
Shell	504-728-6339
Energy Partners Ltd.	504-799-4811
Corps of Engineers	504-957-4372
Sylvan Energy, LLC	603-523-4808
Shell	504-728-6154
Shell	504-728-6339
Consultant	504-529-5155
Retired (C & R Expl.)	
Amber Resources	985-845-4046
Consultant	504-394-9636
Amber Resources	504-887-4377
Consultant	985-845-4046
Amber Resources	504-529-5155
Century Exploration	985-845-4046
Consultant Geologist	504-832-3772
Eni Petroleum	504-835-1909
Eni Petroleum	713-393-6100

bootscon@aol.com
mhopkins@tulane.edu
aranson@uno.edu
ncammarata@slb.com
charleswholman@bellsouth.net
mikef@wtoffshore.com
william.r.jorgensen@shell.com
breilly@eplweb.com
ottohaf@aol.com
daisy.pate@gmail.com
mike.a.fogarty@gmail.com
David.Garner@shell.com
william.r.jorgensen@shell.com
epicou@bellsouth.net
Carlocc398@aol.com
klekamp@bellsouth.net
mikeledet@cox.net
DGldthwt@aol.com
klekamp@bellsouth.net
epicou@bellsouth.net
klekamp@bellsouth.net
Tom.bergeon@centuryx.com
carolbrooney@aol.com
david.reiter@enipetroleum.com
Michael.Gallagher@enipetroleum.com

NOGS LOG STAFF

Editor	Fran Wiseman	BOEMRE	504-736-2912
Editor-Elect	David Tatum	Chevron	985-773-6477
Auxiliary	Susie Baker	NOGA	504-466-4483
Info Tidbits	Fran Wiseman	BOEMRE	504-736-2912
Drill Bits	Carlo C. Christina	Retired (C & R Expl.)	
Webmaster	Edward B. Picou, Jr.	Consultant	504-529-5155
Layout	Jannette Inc.		

NOGS AUXILIARY

Officers		Phone	Directors	Year	Phone
President	Jean Jones	504-738-8091	Peggy Campbell	2009-11	504-283-2505
1st Vice-President	Alma Dunlap	504-737-2678	Ruth Grimes	2009-11	504-392-8103
2nd Vice-President	Judy Sabatè	504-861-4335	Gerry Waguespack	2009-11	504-737-0532
Secretary	Peggy Rogers	504-392-6323	Carol Andrews	2010-12	504-887-3432
Treasurer	Judy Lemarie'	504-393-8659	Susie Baker	2010-12	504-466-4483
Parliamentarian	Beverly Kastler	504-286-0879	Joan Collier	2010-12	504-833-1738
Member-at-Large	Linda Peirce	504-393-7365			

--- NOGS Contact List continued on page 10 ---

Get More from your Core



With reservoirs becoming increasingly complex, you need the most accurate information you can get to better understand your reservoir.

Weatherford Labs helps you get more from your core by combining an unsurpassed global team of geoscientists, engineers, technicians and researchers with the industry's most comprehensive, integrated laboratory services worldwide. From core analysis, sorption, geochemistry and isotopic composition to detailed basin modeling and comprehensive data packages, we provide you with real reservoir rock and fluid information that hasn't been distilled by a simulator or iterated by software.

We call it **"The Ground Truth"**™ – giving you the accurate answers you need for better reservoir understanding. You'll call it a better return on your reservoir investment. To learn more, contact TheGroundTruth@weatherfordlabs.com.



© 2011 Weatherford. All rights reserved. Incorporates proprietary and patented Weatherford technology.

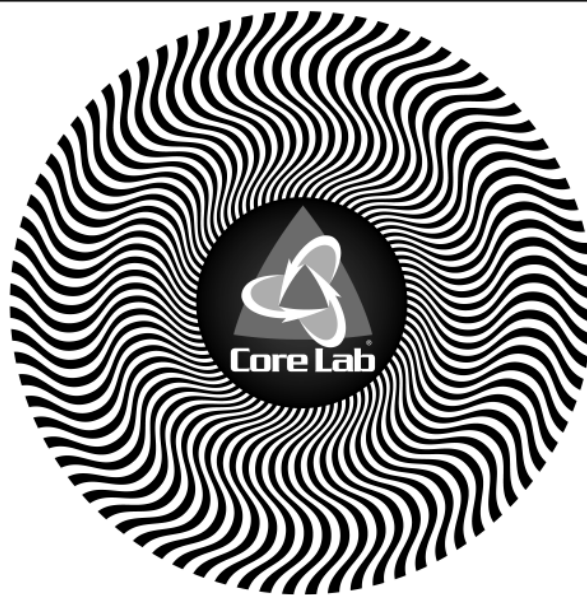


**Shell has worked in partnership
with the NOGS for many years, and
is proud to count the society among
its closest business associates.**

The New Orleans Geological Society was organized in 1941 to foster scientific research and advance the science of geology. Particular emphasis is laid on the exploration for and production of petroleum and natural gas. Related objectives include encouraging the adoption of improved methods of exploration, disseminating pertinent geological and technological data, and maintaining a high standard of professional conduct among its members.

www.shell.com/us/sepc

**It's no illusion...
Core Lab offers everything you need.**



©2009 Core Laboratories. All rights reserved.

Unconventional resource exploitation • Gas shale experts • Deepwater GOM authority
Capacity for fast turnaround • High-quality people • Global support
Industry leadership and reliability • Proprietary and patented technologies • Experience

www.corelab.com/rd/petroleumservices • 24-hour wellsite service hotline: 504-733-6583



from the President

NOGS will host GCAGS in 2013!

We are beginning the process of identifying individuals who are capable and interested in serving in a number of capacities and leadership roles on the NOGS 2013 Team. There is much to prepare over the next two years, but we have started. Also, the assistance and documentation from the Continuity Committee for hosting conventions, lead by Ken Nemeth and the GCAGS Board, has significantly increased. Their work will be a big help to us. This is a fantastic opportunity to showcase NOGS, the entire New Orleans geoscience community and the New Orleans area!

Several fellow NOGS members and I were able to join the crowd at this year's AAPG ACE in Houston, Texas. Total attendance at the 2011 AAPG ACE exceeded 8,200! Wow, who says this is a dying industry? Clearly, we are back and gaining strength to exceed our past accomplishments. Our "pond out back," commonly referred to as the Gulf of Mexico, has seen some recovering drilling activity recently with much more likely yet this year! The land rig count is high, and general activity is, too. However, the clear bind is people, especially senior, experienced ones. This is the very demographic which is seriously considering retirement. Most organizations have reduced staff to the point that employees are doing what was two and three people's work. Companies are now trying to hire and add staff to get back in the game. This means employment opportunities for both experienced and junior geosciences professionals alike.

Speaking of employment, Andrew Ranson, this past year's UNO AAPG Student Chapter president, has come up with a good suggestion which the Board of Directors recently passed for implementation. The suggestion is that NOGS could be a means for companies to hire geoscience students for summer employment either as formal internships or less restrictive employment arrangements, including part time work. This would afford some relief from the overload just mentioned above as well as provide work experience for a group of highly interested young professionals eager to learn. So please NOGS members and NOGS-represented companies contact the NOGS office with any openings for summer or internship employment within your organization. The complete details of this program will be forthcoming.

Thanks to all our members who volunteered helping to facilitate our booth at AAPG ACE 2011 under the direction of Carlo Christina and Charlie Corona. We were able to sell a good number of CDs of the 2010 Oil and Gas Fields of South Louisiana, 2010, as well as some of the color printed versions.

Lastly, please join me in remembering one of our members who has passed. Max Durham Jr., a long-time NOGS member, died on Monday, April 19th and was buried in Hammond, LA. Max, eighty-one years old.

God bless,

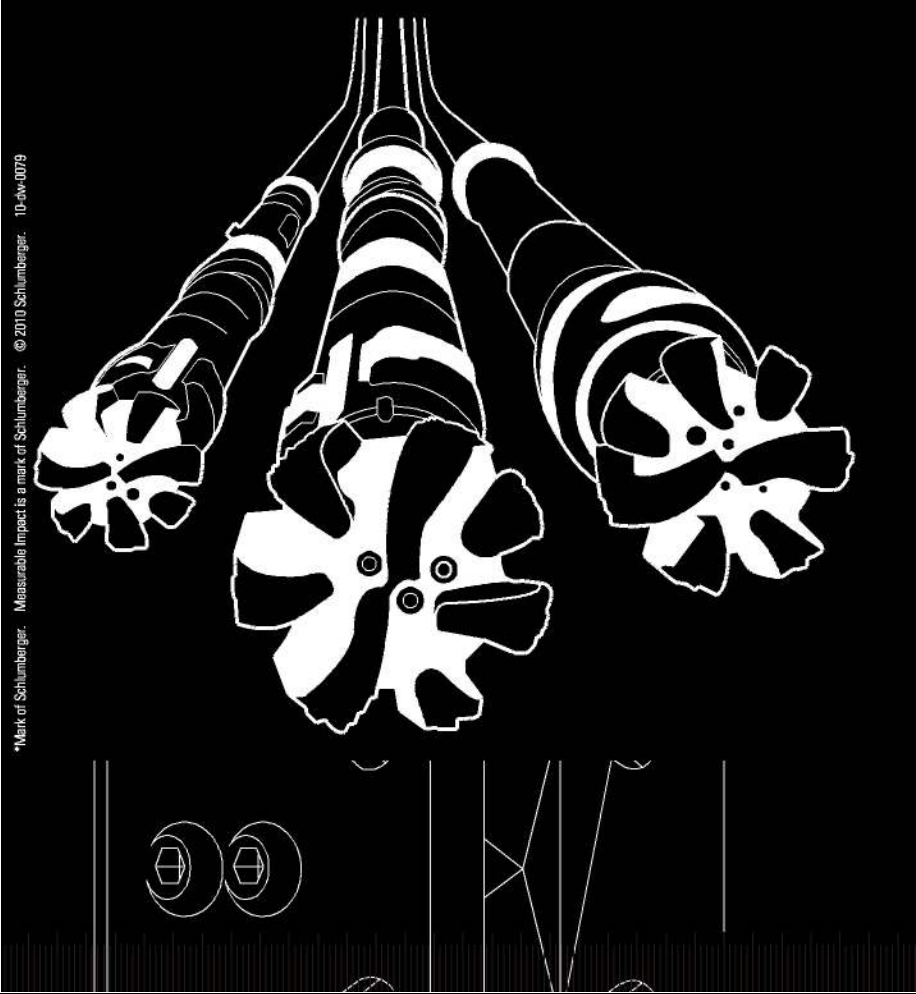
Rick

Deep Water

WELL CONSTRUCTION

Are all your services deepwater ready?

Control Measures	Complexity/Process + Exposure	Preparedness				
		High	1	2	3	Low
5	High	-5	-10	-15	-20	-25
4		-4	-8	-12	-16	-20
3		-3	-6	-9	-12	-15
2		-2	-4	-6	-8	-10
1	Low	-1	-2	-3	-4	-5
		People + Competency				
		Equipment + Technology				



Our Project Readiness Assessment (PRA) approach has been applied and improved over the last 5 years.

All deepwater projects in which Schlumberger participates benefit from our PRA process, which complies with new U.S. regulatory requirements. This helps deliver seamless, efficient startup, and reduced NPT.

Learn more at

www.slb.com/deepwaterready

Global Expertise
Innovative Technology
Measurable Impact

Schlumberger

*Mark of Schlumberger. Measurable Impact is a mark of Schlumberger. © 2010 Schlumberger. 10-dw-0079

May 2 NOGS-SGS Joint Luncheon Presentation

At the Holiday Inn Downtown Superdome

Introduction to Reservoir Fluids and PVT Analyses for Geologists

presented by

William W. "Toddy" Guidry III

Core Laboratories, Lafayette, LA

ABSTRACT

The need for good, representative reservoir fluid samples is critical to the effective design and operation of any development project. The decision to build and deploy production facilities exposes producers to several billion dollars of investment risk and a solid understanding of formation fluids right after discovery plays an essential part in mitigating that risk. Whether obtaining formation test tool samples from 20,000 feet or surface separator samples, fluid analysis provides the ammunition needed for more efficient use of assets.

The "big picture" may include many separate investigations, including determining drive mechanisms, formation rock properties, geophysical properties and formation fluid properties. Fluids analysis provides data critical to predicting well and

reservoir performance, fluid quality assessment, surface and subsea facilities and design fluid quality assessment for determining market price. These data also can provide vital information on what hardware will be needed, including metallurgy for wells and production facilities, valve sizes and type, maximum flow line length and optimum diameters for subsea tiebacks as well as a host of other factors in deepwater development.

Many times the only exposure that geologists get to fluids is hearing the reservoir engineer talk about getting "PVT samples." This presentation will touch on the main points of fluids behavior, sampling and analyses and cover experimental methods performed as part of the blueprint for a comprehensive fluids program.

BIOGRAPHY

Toddy Guidry is senior Technical Advisor for The Petroleum Services Division of Core Laboratories, based in Lafayette. Toddy has a MS in Mathematics from the University of Southwestern Louisiana (now Louisiana at Lafayette) and joined PENCOR (formerly Weatherly Laboratories) in 1982 while in graduate school. His duties with Weatherly/PENCOR varied from lab work to programming to operations before assuming the position of PVT Analyst and eventually being named Vice President in 1989. He carried the title of Technical Manager, and since Weatherly/Pencor's merger with Core

Laboratories in June 2000, he is Technical Advisor. His current duties involve technical QA/QC, operations issues, client technical support/sales and corporate business development for Core Labs many disciplines, focusing on core and fluids analysis.

Guidry has authored and contributed to technical papers and magazine articles regarding hydrocarbon reservoir fluid behavior, analysis and sampling, and he has given many technical seminars, short courses, and presentations. He can be reached in Lafayette at 337-839-9060 or through email: toddy.guidry@corelab.com.

THE LUNCHEON RESERVATION DEADLINE IS APRIL 27 - CONTACT THE NOGS OFFICE

"And Looking Ahead..."

The next NOGS Luncheon will be held on June 6 at Holiday Inn Downtown Superdome. Guest speaker Kimberly L. Faulk, Geoscience Earth & Marine Services (GEMS) in Houston, will present "Marine Archaeology in the Gulf of Mexico." Contact the NOGS office to make your reservation.

NOGS Booth at GSA Regional Meeting



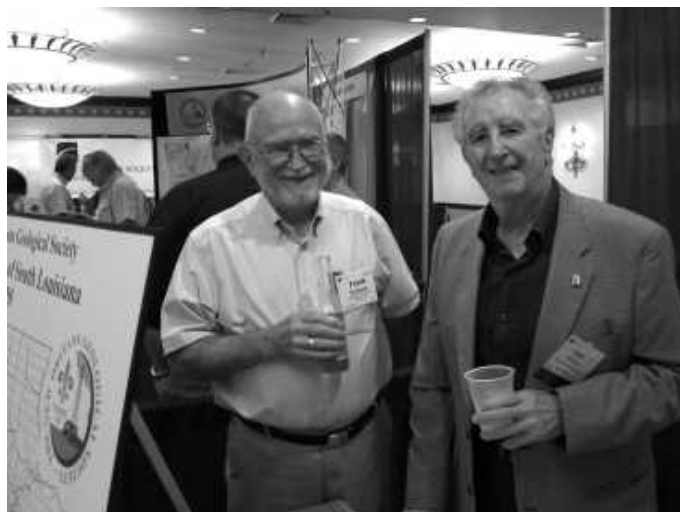
Tulane alum, Charley Corona and
Tulane's Professor Ron Parsley



Bryan Stephens (BOEMRE), Kelly and Kathy
Hagggar (Riparian, Inc.) examine the field
distribution map for the new NOGS publication



L-R: Carlo Christina, Art Johnson,
Charley Corona and Bryan Stephens

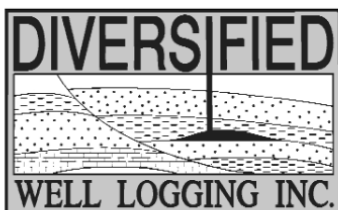


Frank Dickson and Carlo Christina



Relax. We'll keep you posted.

Your rig is offshore and you are not. How do you know what's going on so many miles away? You know because we tell you. Daily or even hourly, Diversified Well Logging's engineers update you on the status of your rig. We are your eyes and ears, especially when it comes to deep water or high pressure, high temperature areas. Diversified offers 24-hour surface evaluation. We provide secure and customized real-time data communication, in-house research and development and 24/7 on-call support for our equipment and our engineers. Whether you have a 10-day job or 110-day job, we provide the specialized attention you require. So, relax. We're with you every step of the way.



Serving the Gulf Coast for over 40 years.

New Orleans • Lafayette • Houston • Dallas • Corpus

800.280.2096

711 West 10th Street • Reserve, LA 70084 • Phone: 985.536.4143 • Fax: 985.536.2427
sales@dwl-usa.com

**DOMESTIC AND INTERNATIONAL
BIOSTRATIGRAPHIC SERVICES**



6619 Fleur de Lis Drive
New Orleans, LA 70124
(504) 488-3711

www.paleodata.com



Complete wellsite paleo services

**Available single-source regional
biostratigraphic databases for
accuracy and consistency**

**Integrated foram / nannofossil
analyses**

**In-house sample preparation
lab for quality-monitoring
and efficiency**

**Supported Gulf Coast
biostratigraphic databases**



MCMORAN EXPLORATION CO.



**MCMORAN
OIL & GAS**

www.mcmoran.com

NYSE: MMR

16676 Northchase Dr.
Houston, TX 77060
(281) 539-7600
Fax: (281) 539-7655

1615 Poydras
New Orleans, LA 70112
(504) 582-4000
Fax: (504) 582-4155

110 Travis St., Suite 140
Lafayette, LA 70503
(337) 735-9150
Fax: (337) 735-9151

NOGS CONTACT LIST

--- continued from page 3 ---

MEMORIAL FOUNDATION

BOARD OF TRUSTEES

2010-11 Chairman	Tom Klekamp
2010-11 Secretary	Rick Kear
2010-11 Trustee	Chuck Holman
2010-11 Trustee	Michael N. Fein
2011-12 Trustee	Monte Shalett
2011-12 Trustee	James Swaney
2012-13 Trustee	Jennifer Connolly
2012-13 Trustee	William M. Whiting

Company
Amber Resources LLC
Schlumberger
Independent
W & T Offshore
Berkshire Exploration Co
BOEMR E
Shell
Consultant

Phone
985-845-4046
504-592-5376
504-891-4878
504-210-8148
504-831-7779
504-736-2677
504-728-6411
504-947-8495

E-mail
klekamp@bellsouth.net
kearl1@new-orleans.oilfield.slb.com
charleswholman@bellsouth.net
mikef@wtoffshore.com
mshalett@gmail.net
james.swaney@boemre.gov
jennifer.connolly@shell.com
bootscon@aol.com

AAPG DELEGATES

Term Ends

2011	Tom Hudson
2011	Edward B. Picou, Jr.
2011a)	Brenda Reilly
2011a)	Robert Rooney
2012	William Whiting
2012	Jim Zotkiewicz
2012 a)	David E. Balcer
2012 a)	Richard J. Stancliffe

Chevron
Consultant
Energy Partners Ltd.
Century Exploration
Consultant
Zot Oil & Gas
Chevron
Shell Expl & Prod Co.

504-529-5155
504-799-4811
504-832-3777
504-947-8495
504-831-4694
985-773-6725
504-728-7553

tom.hudson@chevron.com
epicou@bellsouth.net
breilly@eplweb.com
Robert.rooney@centuryx.com
bootscon@aol.com
jimzot38@zotoil.com
dbalcer@Chevron.com
richard.stancliffe@shell.com



From ZNodal Systems to ZNodal Imaging

We are full spectrum ZNodal™ technology

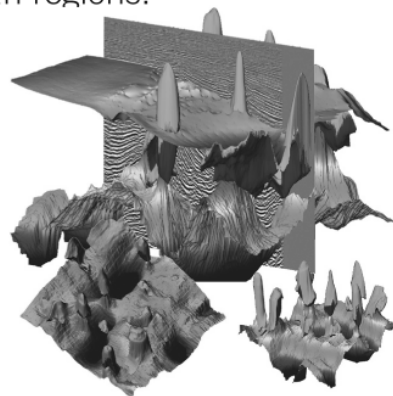
FairfieldNodal.com



We admit it. We're seismic nodal fanatics. Always have been. Which explains our one-of-a-kind, cable-free ZNodal™ systems. They work wonders in dense urban areas and pristine wilderness, in shallow water and deep ocean regions.

In fact, our exclusive ZNodal technology is behind everything we do, from acquisition and licensing to advanced processing and imaging, bringing nodal data to life in amazing ways.

Right now, our ZNodal systems are on the job in some of the world's most challenging fields, making a powerful difference. So when you're ready to go nodal, count on us to lead the way. ZNodal technology: It's what you need. It's what we're all about.



fairfieldnodal

SYSTEMS ACQUISITION LICENSING PROCESSING IMAGING



THE MARKET LEADER FOR
UNCONVENTIONAL INTERPRETATION *INTRODUCES*

NEXT GENERATION FIELD DEVELOPMENT

PLAN

Well Path Planning

OPTIMIZE

**Microseismic
Fracture Analysis**

DRILL

**Real-Time
Geosteering**

LEARN MORE AT SEISMICMICRO.COM/SMT/DEVELOPMENT



NOGS April Luncheon - Diversified Mudlogging Fish Fry



*More photos on the
following pages ...*





NOGS 2011-2012 CANDIDATES

For **PRESIDENT ELECT**

JORGENSEN



Will Jorgensen graduated from Texas A&M University, receiving BS degrees in both Geology and Geophysics in 2004. In 2007, after completing his Master's degree in Geology at A&M, he began working for Shell in New Orleans. He is presently a Production Geologist developing mature fields in the deepwater Gulf of Mexico.

Will is currently the 2010 – 2011 NOGS Treasurer, as well as a member of AAPG and SGS.

For **VICE PRESIDENT**

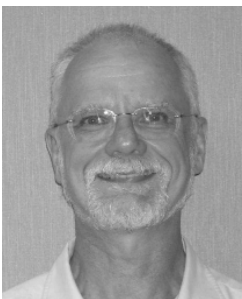
PATE



Daisy Pate was born in Dayton, Ohio and grew up between Pensacola, Florida and Slidell, Louisiana. She attended Florida Institute of Technology on an academic scholarship, studying Space Physics where she discovered her primary interest was the physics of her home planet, Earth. She then transferred to the University of New Orleans in 2002 where she received a BS in Geophysics. She then attended Graduate school at Wright State University studying Geophysics and Environmental Geology. After Hurricane Katrina she enjoyed working for Eustis Engineering in Design of the Hurricane Storm Damage Risk Reduction System, as well as various Environmental restoration projects. She currently works for the U.S. Army Corp of Engineers as a Quality manager. Professional memberships include, The Geological Society of America, The Association of Engineering Geologists and The New Orleans Geological Society.

For **SECRETARY**

HOLMAN



Chuck Holman received an MS from the University of Hawaii in 1982 and began his career with Mobil Oil in 1982. He transferred to the New Orleans Mobil office in 1983 and worked in various positions in the Gulf of Mexico Exploration Department. In 1992 he transferred to Dallas to work on the Mobil New Exploration Ventures Team and worked on various projects in Latin America. After Mobil, Chuck worked as consultant from 1996 to 2006 for SCA, Tecpetrol, Interactive Interpretation and Training, CGG, Avanti Consulting, Corelab, and Gaffney-Cline and Associates. Chuck then returned to New Orleans in 2006 to work as a geophysicist for Dominion Exploration & Production Company, now Eni Petroleum. Chuck is now an independent geological/geophysical consultant.

Chuck has been an active member of the local geophysical and geological societies where he has lived, was NOGS Treasurer in 2009-2010, and NOGS Auditor in 2010-2011, and is also an active member of the SEG and AAPG.

NOGS 2011-2012 CANDIDATES

For **TREASURER**

SALMERON



Bay Salmeron is a native of Nicaragua and a long time resident of New Orleans. He received a Bachelor's of Science from the Department of Geology and Geophysics at the University Of New Orleans in 1996. He also attended LSU for his Geologic field camp study in Colorado. He joined Houston-based TGS in 2002 as a well log analyst and currently works for its Geological Products division under agreement with the BOEMRE to manage all new drill well logs in the Gulf of Mexico.

Bay is the proud new father of a nine-month-old son and enjoys spending his spare time with his family and church. He is an active member of his church community and volunteers for local organizations helping to rebuild homes. He has traveled as far as South Africa for a community building mission in faith.

For **EDITOR-ELECT**

HELTZ



Jordan Heltz was born and raised in Louisiana and earned his BS in Geology from Louisiana State University in 2000. He then joined Pathfinder Energy Services and spent two years working as an LWD field engineer before returning to LSU to pursue graduate studies. After earning an MS in Engineering Science from LSU in 2005, Jordan then joined Unocal in Houston as a geologist working development of a deepwater Indonesian gas field. Upon the acquisition of Unocal by Chevron, Jordan then continued his international experience by appraising fields offshore Angola. He currently resides just outside of New Orleans, Louisiana and is a development geologist for Chevron's Tahiti Asset in the Deepwater GOM. Aside from memberships in AAPG and SPE, he is also a husband and father to two young girls who love to keep him busy.

For **DIRECTOR 2011-2014** **FEIN**



Originally from New Jersey, **Mike Fein** has a BS in Geology from Cincinnati, and an MS in Geology from Florida. Over a 36-year career, he worked 5 years for the USGS (now BOEMRE), 15 years for CNG (now ENI), consulted one year for Century, and has spent the last 14 years with W&T Offshore, Inc.

Mike has been a member or chairman of numerous NOGS committees, such as Continuing Education, Membership, Directory, and School Outreach, and has been Chairman of the Awards Committee since 1983. He has been NOGS Secretary (1982-83), Vice-President (1984-85), and President (2006-07). He has received the NOGS President's Award three times, the Outstanding Service Award in 1979 and the 50th Anniversary Distinguished Service Award in 1992. He has been an AAPG delegate and chairman of the delegation three times, and has served in committee or leadership positions for numerous AAPG, GCAGS, and GSA conventions. Mike and Debra have been married 30 years and have two collegiate children.

NEW!
AVAILABLE
NOW

Oil & Gas Fields of South Louisiana 2010

26 FIELDS NEW PRODUCTION

BAYOU POSTILLION

BAYOU VILLARS

BLACK BAY COMPLEX

BLACK BAY EAST - NORTHERN BLOCK

BLACK BAY NORTH - EASTERN EXTENSION

BRETON SOUND BLOCK 53

CREOLE - WEST CAMERON BLOCK 2

EUGENE ISLAND BLOCKS 10/24

FRESHWATER BAYOU

JUDGE DIGBY

KENT BAYOU (ETOUFFEE)

LAC BLANC

LAKE BOEUF SOUTHWEST

LAKE BOUDREAUX

LAKE SALVADOR

LAKE WASHINGTON

MANILA VILLAGE SOUTHEAST

MYETTE POINT NORTHWEST

PATTERSON

PINE PRAIRIE

PORT HUDSON

RAMOS (LILY BOOM)

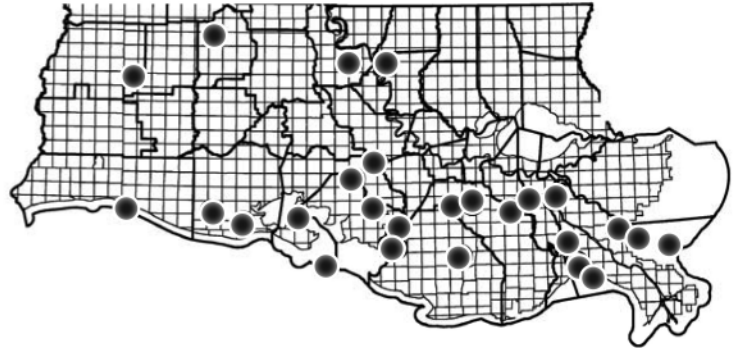
RIGHTHAND CREEK

SATURDAY ISLAND SOUTHEAST

STELLA

THIBODAUX AND ROUSSEAU

WEST COTE BLANCHE BAY



CD VERSION LOADED WITH DETAILS AND FEATURES

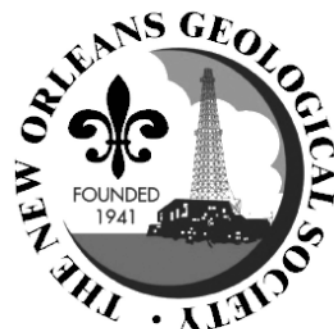
*GEOLOGY, GEOPHYSICS, MAPS, X-SECTIONS,
LOGS, STRAT AND PALEO*

IN COLOR!

*UPPER MIOCENE
THROUGH CRETACEOUS TUSCALOOSA*

*EXCLUSIVE IN-DEPTH
EXPLORATION-ECONOMICS ANALYSIS OF
SOUTH LOUISIANA*

*VALUABLE REFERENCE FOR
EXPLORATIONISTS EVERYWHERE*





Order Form

Oil & Gas Fields of South Louisiana 2010 Full-Color CD-ROM Edition

QUANTITY	ITEM	PRICE	EXTENSION
	CD-ROM EDITION - FULL COLOR - PC OR MAC	\$75.00	
	POSTAGE AND HANDLING		
		TOTAL	

POSTAGE & HANDLING RATES	
NUMBER OF CDs	ADD TO ORDER
1	\$7.00
2-5	\$11.00
5-10	\$16.00
10-20	\$20.00

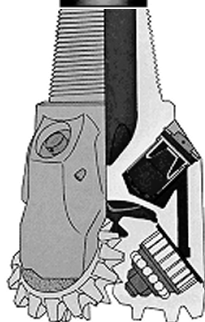
SHIPPING ADDRESS			
NAME			
ORGANIZATION			
STREET OR PO BOX			SUITE OR APT
CITY	STATE	ZIP	
PHONE			

PAYMENT	INDICATE PAYMENT TYPE: CHECK <input type="checkbox"/> AMERICAN EXPRESS CARD <input type="checkbox"/> VISA CARD <input type="checkbox"/> MASTERCARD <input type="checkbox"/> DISCOVER CARD <input type="checkbox"/>			
CARDHOLDER'S NAME				
CREDIT CARD NUMBER	<div style="border: 1px solid black; width: 20px; height: 20px; display: inline-block;"></div> <div style="border: 1px solid black; width: 20px; height: 20px; display: inline-block;"></div> <div style="border: 1px solid black; width: 20px; height: 20px; display: inline-block;"></div> <div style="border: 1px solid black; width: 20px; height: 20px; display: inline-block;"></div> <div style="border: 1px solid black; width: 20px; height: 20px; display: inline-block;"></div> <div style="border: 1px solid black; width: 20px; height: 20px; display: inline-block;"></div> <div style="border: 1px solid black; width: 20px; height: 20px; display: inline-block;"></div> <div style="border: 1px solid black; width: 20px; height: 20px; display: inline-block;"></div> <div style="border: 1px solid black; width: 20px; height: 20px; display: inline-block;"></div> <div style="border: 1px solid black; width: 20px; height: 20px; display: inline-block;"></div> <div style="border: 1px solid black; width: 20px; height: 20px; display: inline-block;"></div> <div style="border: 1px solid black; width: 20px; height: 20px; display: inline-block;"></div>			

MAIL THIS FORM AND CHECK, PAYABLE TO "NOGS", OR CREDIT CARD INFORMATION TO:

NOGS
P.O. BOX 50089
NEW ORLEANS, LA 70150-0089

FOR NOGS OFFICE USE	
NUMBER OF COPIES SOLD THIS ORDER	
DATE COMPLETED	



South Louisiana and Offshore Exploration and Production Activity

South Louisiana and Offshore GOM Exploration and Production Activity

By Carlo C. Christina

LAFAYETTE DISTRICT, ONSHORE AREA

*****BREAKING NEWS FOLLOW-UP

My report in the March Drill Bits on leasing activities in the Florida parishes asked, “Can we expect to see more horizontal drilling in the near future?” The answer is, yes—now. A reliable source reports that Devon Energy has filed for their first Tuscaloosa Marine Shale Unit, a 720-acre unit in East Feliciana Parish. The proposed well will be located in Sec. 63, 3S-1E, offsetting the Exchange Oil & Gas #1 Price, a dry hole drilled in 1979 to a total depth of 15,575 feet. Devon will drill a 5000-foot lateral well which will encounter the objective Tuscaloosa Marine Shale at 15,100 feet. This horizontal well is the first of 3 proposed tests in the TMS Play.

Twenty-five permits to drill have been approved in the Lafayette District since my last report. The most significant wells are listed below. Every well drilled in the State of Louisiana receives a serial number. The serial number for each well is noted in parenthesis and can be accessed through the SONRIS website.

NEW LOCATIONS—

In Beauregard Parish, El Paso will drill a very interesting deep Wilcox well in **Shoats Creek Field**. The #2 Fisher-Lindsey, located in Sec. 9, 7S-12W, is projected to a total depth of 15,435 feet. (242928)

Also in **Shoats Creek Field**, El Paso is currently drilling the #1-9, Fisher-Lindsey below 10,560 feet, to a projected depth of 15,221 feet. (242982)

Shoats Creek Field was discovered in 1956 with sporadic drilling occurring through 1990, producing mainly from Cockfield sands at depths of 9400 feet. In September, 2010, El Paso drilled the #1 Olympia Minerals to 12,410 feet, and completed it as an oil well in the Wilcox, through perforations 11,380 to 11,700 feet. The well flowed 258 BOPD and 993 MCF and was the first Wilcox production in the Field.

In **Fields Field**, Beauregard Parish, El Paso continues with its aggressive drilling program and will drill the #1 BP in Sec. 31, 6S-12W. It will be drilled to a total depth of 15,000 feet. Production in the Field had been on a steep decline for the past 7 years, but production has been extended in the Field with the completion of 3 recent deep Wilcox wells. (242928)

Apache Corp. has spotted a location for the #1 Apache LA Minerals in Lafourche Parish, in **Grand Bois Field**. The well is located in Sec. 19, 18S-20E, with the projected total depth of 15,256 feet. Apache will attempt to re-establish production in the Field, which has been off production since 1999. The Field was discovered in 1982 and has produced 1.8 million barrels of oil from Tex. W sands at a depth of 12,800 feet. (242918)

Lobo Operating Inc. has permitted 2 wells in Plaquemines Parish in the Breton Sound Area. The #1 SL 20436 will be drilled in **Breton Sound Block 53 Field** and is permitted to a depth of 10,500 feet. (242939)

The second well, #1 SL 20435, is permitted as a **Wildcat in Breton Sound Block 50** and will be drilled to a depth of 10,300 feet. (242954)

Within offshore Plaquemines Parish in **Breton Sound Block 53 Field**, Century Exploration, N.O. will drill the #1 SL 19051 to a projected depth of 11,700 feet. (242984)

Multiple sands are productive in Breton Sound 53 Field, including the Uvigerina 3 series at 10,800 feet, the Tex W sands at 11,800 feet, the deeper Big. hum. sands at 14,000 feet and Cris. I sands at 15,600 feet.

A complete report on Breton Sound Block 53 Field is available in the new NOGS publication, "Oil & Gas Fields of South Louisiana 2010," which can be ordered at www.nogs.org.

Manti Exploration is drilling below 6750 feet, on the #1 C.J. Hanks in **Leleux Field**, located in Vermilion Parish. The well is projected to a depth of 16,150 feet. (242950)

COMPLETIONS—

In **Midland Field**, Acadia Parish, Caza Exploration has plugged and abandoned the #1 Marion Baker et al, at a total depth of 15,462 feet. (242437)

Lymac Exploration and Production has completed its Wildcat in Acadia Parish, located in Sec. 5, 4S-5W. The #1 Meriwether LA Land & Timber was drilled to 5990 feet and completed in a Frio reservoir, flowing 550 MCFG through perforations 4469 to 4477.5 feet. (242399)

El Paso has completed the #1 BP 32 in **Fields Field** in Beauregard Parish. The well was drilled in Sec. 32, 6S-12W to a depth of 13,580 feet. It was completed flowing 1032 MCFG and 72 BCPD through perforations 12,646 to 13,524 feet. (242431)

Samson Contour Energy has plugged and abandoned its Labokay Corp 5 in **Houston River Field**. The well was drilled in Sec 4, 9S-11W, to 17,507 feet. (242300)

In Cameron Parish, **Deep Lake Field**, Walter Oil & Gas has completed the #1 SL 20350 in the DB-1 reservoir flowing 5356 MCFG and 15 BCPD through perforations 13,480 to 13,516 feet (OA). The well is located in Sec. 5, 16S-3W. (242633)

In Jefferson Davis Parish, **Jennings Townsite Field**, Texas Petroleum Investment Co. completed the #1 TPIC Fee as an oil well in the Camerina 2 sand, flowing 157 BOPD and 100 MCFG through perforations 10,866 to 10,874 feet. The well was permitted to a depth of 14,307 feet but stuck drill pipe at 12,016 feet failing to reach its objective section, the Bol. mex. This well was designed to re-establish production in the Bol. Mex., which last produced in 1988. (242276)

In St. Mary Parish, McMoRan is preparing to complete the #1 Valentine Pontiff at a total depth of 21,099 feet. The well is located in Sec. 18, 15S-9E and encountered 140 feet net gas as the confirmation well to McMoRan's #1 Peterman, which tested 40.642 MMCFPD through perforations 19,908 to 19,974 feet in the MA-7 Sand. The Peterman was drilled as McMoRan's Laphroaig Prospect, but was included in **Bayou Carlin Field** by the Department of Natural Resources even though it is located 2 miles north of Bayou Carlin production. (242891)

OFFSHORE GULF OF MEXICO SHELF and DEEP WATER ACTIVITIES

By Al Baker and Eric Zimmerman

Between March 19th and April 4th, the BOEMRE issued four new GOM shelf-well drilling permits. The offshore operators receiving the permits include Apache, Arena and Castex. Apache received two permits to drill two development wells (#D-13 and #D-14) on Eugene Island Block 330. Arena received a permit to drill a development well (#C-4) on East Cameron Block 328. Castex received a single new well permit to drill a development well (#8) on Eugene Island Block 224. According to the BOEMRE website, a total of 42 new well permits have been issued on the shelf since June 8, 2010, whereas only six new well permits have been granted in deepwater since October 12, 2010. During the same time period, the BOEMRE has approved only three new exploration plans on the shelf and none thus far in deepwater.

--- continued on next page ---

As of April 1st, the Baker Hughes Rig Counts show that there are 27 active rigs in the Gulf of Mexico versus 51 active rigs at the same time in 2010. This 24-rig decrease represents a 47.1% decline on a year-to-year basis. According to ODS-Petrodata, the Gulf of Mexico drilling rig fleet stands at 124 rigs (one less than last month's report). Of these, 70 rigs are under contract, which equals a 56.5% rig utilization rate.

Contango recently reported a gas and condensate discovery at its Swimmy Prospect located in Vermilion Block 170. The successful exploratory well is estimated to have proven reserves totaling 48 BCF and 1.2 MMBO. Contango's working interest position is 68%. Production is forecast to begin this fall at an estimated rate of 15 MMCFPD net to Contango. Contango's estimated costs to acquire, drill, complete and bring to production are approximately \$26.5 MM.

Deep shelf and ultra-deep shelf driller, McMoRan Oil and Gas, recently updated its activities on the GOM shelf. Their ultra-deep Davy Jones #2 well is drilling below 29,800 feet TVD towards a proposed total depth of 30,450 feet. McMoRan believes that the well has possibly found Upper Cretaceous sands and may be immediately above the Lower Tuscaloosa section. As previously reported, the #2 well logged pay in the shallower Wilcox section that consequently confirmed the sand continuity between it and the Davy Jones #1 discovery well.

The Blackbeard East, ultra-deep exploration well in South Timbalier Block 144 has been drilled to a TVD of 32,559 feet. This previously-announced Oligocene, Frio discovery well has recently encountered a mechanical issue that is currently being addressed. McMoRan believes that the well has penetrated the Sparta sands within the Eocene. Wireline logs will be required to evaluate this interval.

In Eugene Island Block 223, McMoRan is drilling below 20,200 feet in its Lafitte, ultra-deep exploration well. The proposed total depth is 29,950 feet. The targets for this well include Middle and Lower Miocene objectives and possibly the Oligocene, Frio section beneath a salt weld.

McMoRan's Hurricane Deep well in South Marsh Island Block 217 is currently drilling below 14,100 feet on its way towards a total depth of 20,000 feet. The well is targeting the thick Gyroidina sands encountered in the Hurricane Deep #226 well in 2007 plus deeper Gyroidina sand potential.

In Eugene Island Block 26, McMoRan is drilling below 8,000 feet on its Boudin Prospect. This deep gas exploration well has a proposed total depth of 23,100 feet and will test Miocene objectives.

In offshore Texas, McMoRan is drilling a 16,120-foot, development well in Brazos Block A-23. This block lies within the Corsair Trend that targets the expanded, *Bigenerina humblei* sand section. The McMoRan well is twinning an old Shell well that established proved, undeveloped gas reserves on a prior lease.

The Bureau of Ocean Energy Management, Regulation and Enforcement (BOEMRE) approved a deepwater permit for the drilling of a sidetrack of ENI US Operating Co Inc.'s Well #SS001 in Mississippi Canyon Block 460 in 2,823 ft. water depth.

Regulators also granted Chevron the first U.S. permit to drill and complete exploratory well in a new reservoir since the end of the moratorium that followed the BP oil spill. That well, Moccasin, had nearly been completed last year before it was put on hold.

BHP Billiton Ltd. resumed drilling a deepwater well in the Gulf of Mexico, the first drilling activity to take place since the U.S. government banned deepwater drilling. Chief Executive, J. Michael Yeager, stated that a rig had moved onto BHP's Shenzi Prospect and resumed drilling a well there. The Anglo-Australian conglomerate's permit is one of eight that U.S. regulators have issued in deepwater in recent weeks. Yeager further stated that the drilling ban stalled work on 11 Gulf of Mexico wells, trimming BHP's expected 2011 output of the equivalent of 165 million barrels of oil per day by 12 million barrels.

Private forecaster Accuweather has forecast an above-average Atlantic hurricane season with a greater threat to Gulf of Mexico oil production areas. About 25% of U.S. crude comes from U.S.-regulated areas in the Gulf of Mexico and over 40% of U.S. refining capacity stretches from Corpus Christi, Texas, to Pascagoula, Mississippi.

Gulf Coast Association of Geological Societies



Sharing knowledge to add value

**Gulf Coast Association of Geological Societies
61st Annual Convention
October 16 – 19, 2011
Veracruz, Mexico**

**For more information:
<http://gcags2011.com>**

SEI®

Seismic Exchange, Inc.

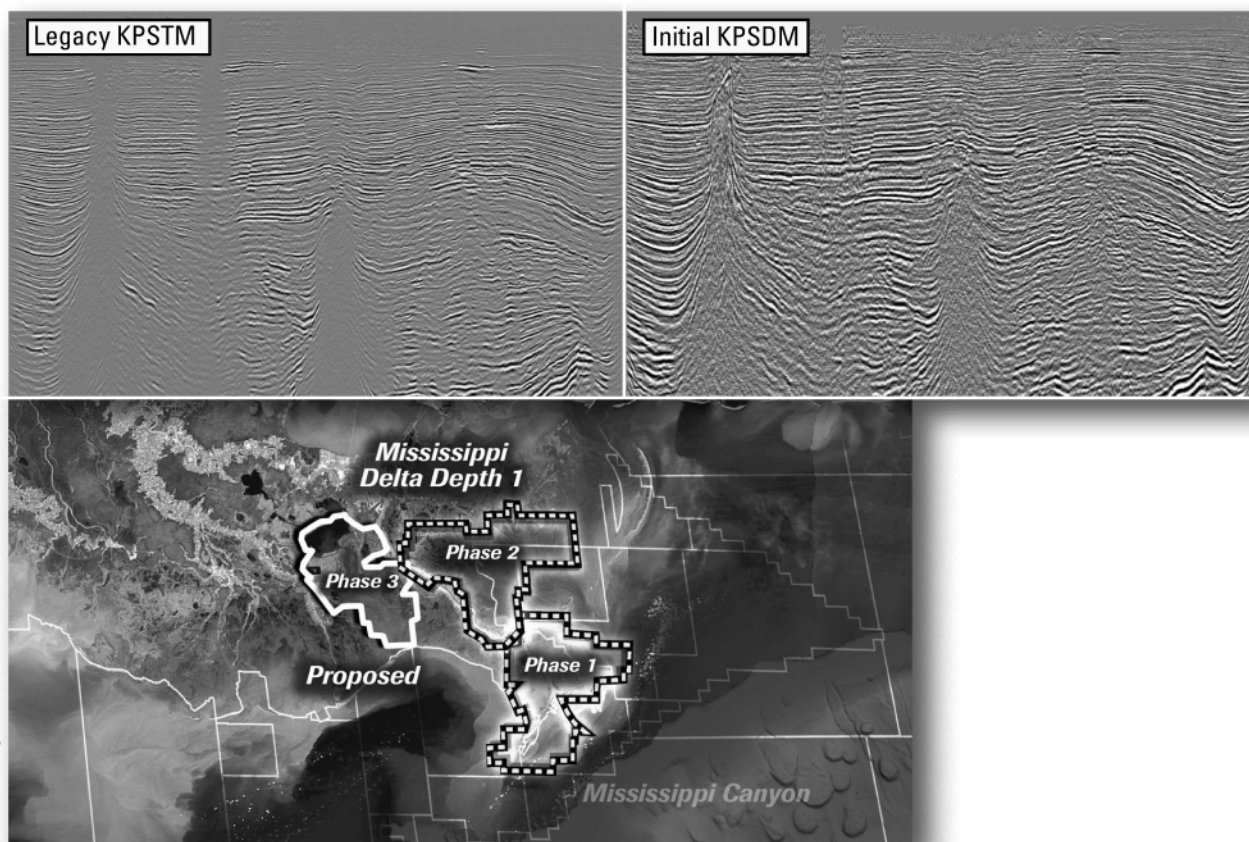
**Strategic Speculative Surveys
Geophysical Data Marketing & Management**

Your
**Full Service
National
Seismic Data
Marketing Firm**

New Orleans
Dallas
Houston
Denver
Oklahoma City
Corpus Christi
Tulsa

201 St. Charles Avenue, Suite 4300, New Orleans, Louisiana 70170-4300
Telephone 504.581.7153 Fax 504.581.9591
www.seismicexchange.com

Improved depth imaging in the Mississippi Delta



In the Mississippi Delta region, WesternGeco is utilizing state-of-the-art processing designed to eliminate fault shadows and enhance deep imaging. The Mississippi Delta - Depth 1 survey, now in progress, incorporates the processing and remigration of twelve legacy surveys covering 1,855 square miles. High-quality time imaging using relative amplitude anisotropic Kirchhoff prestack time migration will be followed by improved structural imaging utilizing anisotropic Kirchhoff prestack depth migration.

To learn more about this and other Multiclient products, call +1 713 689 1000.

www.multiclient.westerngeco.com/la

Multiclient to the Power of E



World shale Gas Resources: April 13|2011|Energy Information Administration - The shale gas boom that started in the United States has spread to countries worldwide. The Energy Information Administration has released a report that summarizes the shale gas resource for 14 regions outside of the United States. For more information go to: <http://geology.com/energy/world-shale-gas/>

13% of H.S. Biology Teachers Advocate Creationism in Class: April 12,2011|Live Science - The majority of high-school biology teachers don't take a solid stance on evolution with their students, mostly to avoid conflicts, and fewer than 30 percent of teachers take an adamant pro-evolutionary stance on the topic, a new study finds. Also, 13 percent of these teachers advocate creationism in their classrooms.

University students film tsunami striking Nakatsugawa City: Uploaded on YouTube by CHMiniGPwns on Apr 10, 2011 - University students film tsunami striking Nakatsugawa City to see the video go to: http://www.youtube.com/watch?v=at7KgXEKRs&feature=player_embedded&safety_mode=true&persist_safety_mode=1

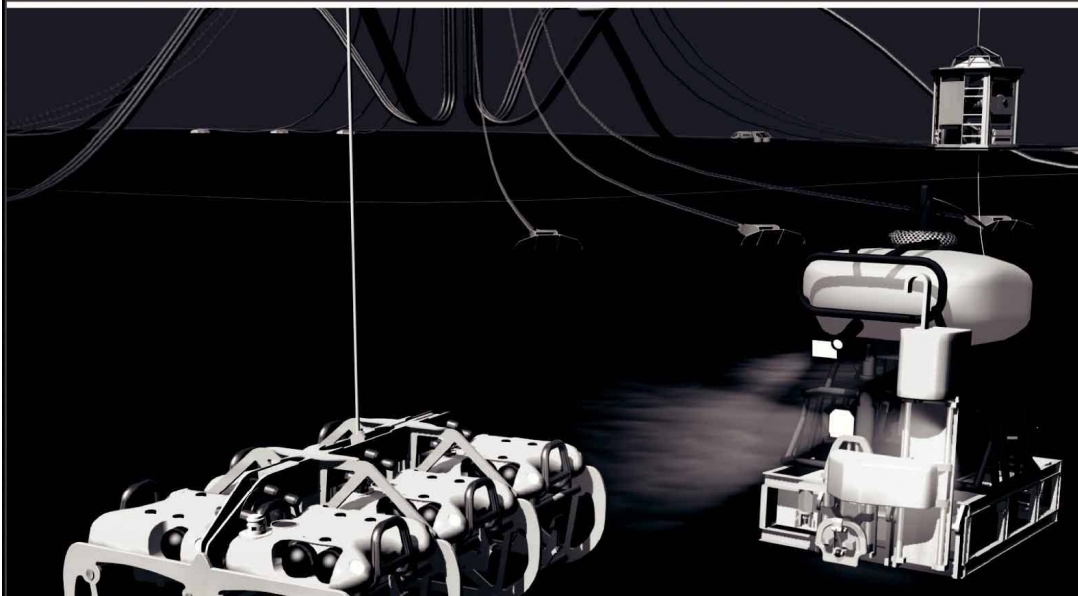
Electric Yellowstone: Conductivity Image Hints Supervolcano Plume Is Bigger Than Thought: ScienceDaily (Apr. 11, 2011) - University of Utah geophysicists made the first large-scale picture of the electrical conductivity of the gigantic underground plume of hot and partly molten rock that feeds the Yellowstone supervolcano. The image suggests the plume is even bigger than it appears in earlier images made with earthquake waves. For more information go to: <http://www.sciencedaily.com/releases/2011/04/110411083533.htm>

New "Buck-Toothed Evil Spirit" Dinosaur Found: National Geographic News|April 13, 2011 - A newly discovered dinosaur species bridges the gap between the earliest known group of predators and more advanced beasts such as Tyrannosaurus rex, according to a new study. Found at New Mexico's Ghost Ranch fossil site, the primitive dinosaur lived about 205 million years ago. For more information go to: <http://news.nationalgeographic.com/news/2011/04/110413-new-species-dinosaur-bucktoothed-evil-spirit-fossils-animals-science/>

OIL FOUND ON MOON!: April 16th, 2011|Weekly World News - Huge oil reserves have been found on the moon. Gas prices will fall to \$0.10 a gallon as OPEC oil becomes obsolete! A NASA space probe has reportedly discovered a huge mother lode of oil on the moon - and the astounding find could usher in a new era of peace and prosperity for America! For more information go to: <http://weeklyworldnews.com/headlines/31990/oil-found-on-moon>

Wiselady

Finally - An answer for getting reservoir seismic **OVER THE RESERVOIR!**



• 4C/4D Node Seismic

- ANGOLA
- GoM
- NIGERIA



“Coming Soon to an Oilfield Near You!”

www.sbexp.com

Dubai
T: +971 4 4271700

Houston
T: +1 281 566 1666

Oslo
T: +47 2240 2700

Rio
T: +55 21 2494-0283

Singapore
T: +65 9180 2605

Trondheim
T: +47 7 3879500

RAISING
THE **STANDARD**



100 Northpark Blvd.
Covington, LA 70433

(985) 773-6000



LaBay
Exploration Co., L.L.C.

111 Veterans Memorial Blvd.,
Suite 1550
Metairie, Louisiana 70005

www.labayexploration.com

Office (504) 371-5967
Fax (504) 371-5969

***This advertising space is available!
Contact the NOGS office.***

THE NEW ORLEANS GEOLOGICAL SOCIETY MEMORIAL FOUNDATION, INC.

The Memorial Foundation is an IRS Tax Exempt Code #501 (c)(3) organization. The Federal I.D. is: 72-1220999. Please consider making a donation to the Foundation prior to the close of this year's fiscal cycle on June 30, 2011. Your individual support in any amount will help meet the IRS Guidelines for our Foundation. *Thanks!*

\$15,000 AND ABOVE

Olga Braunstein Succession

Gibbet Hill Foundation

*In Memory of Steve & Marion Millendorf, William J. Prutzman,
Roger G. Vincent & Ron Youngblood*

\$10,000

George W. Schneider, Jr. and Family

*In Memory of George W. Schneider, Sr.
GCAGS
Matching funds*

\$2,000 TO \$3,000

NOGS Golf Tournament May 2010

In Memory of Bill Craig

UP TO \$249

Donald I. Andrews

*In Memory of Ray F. Havard
In Memory of Harlan(Lanny) Northcott
Robert J. Ardell*

*In Memory of Al Gilbreath
In Memory of Bill Malin
In Memory of Bob Williamson*

Mr. and Mrs. Wesley Barton
In Memory of Thomas A. Cullinan

Abraham Biadgelgne
Maurice N. Birdwell
Irion Bordelon, Sr.

In Memory of Robert G. Williamson

Hilary James Brook
Robin Broussard
Rob Burnett

J. Sybil Callaway
Chevron
Matching Funds

Arthur F. Christensen
Ellen F. Clark
James S. Classen

In Memory of Robert C. Treadwell

Willis E. Conatser PhD
Clarence F. Conrad

Charley Corona
In Memory of Professor Hubert Skinner

Trudy and Charley Corona
In Memory of Erik Mason

Michael A. Danahy
M. R. "Bob" Douglass
In Memory of Robert G. Williamson

Merle J. Duplantis
Dr. Brooks B. Ellwood
Parrish N. Erwin, Jr.

Exxon Mobil Matching Funds
Michael N. Fein
Laurens Gaarenstroom

\$7,000 TO \$9,000

Paul C. McWilliams

\$250 TO \$499

Burton C. Bowen
In Memory of Joffre J. Crouere
Carlo C. Christina
In Memory of Al Gilbreath
Tom Klekamp
Richard G. Klibert

Sherwood M. Gagliano
Arthur J. Garden
David Garner
Larry Galloway
Peter G. Gray
In Memory of Robert G. Williamson

Bret Hampton
Angela M. Hessler
Through the Chevron Humankind Program

Bernard L. Hill, Jr.
In Memory of Robert E. Osborne

Dan E. Hudson
Kenneth Huffman
Jeffrey E. Jandegian
Paul Jurik
In Memory of Thomas A. Cullinan

Reuben J. Klibert, Jr.
In Memory of Dale Klibert

John C. Kucwicz, Jr.
John C. Langford
Jeannie F. Mallick
Paul C. McWilliams
In Memory of Russell D. "Rusty" Morris

New Orleans Geological Auxiliary
*In Memory of Dee Baysinger
In Memory of Doris Meltzer
In Memory of Terri Smith*

Nexen Petroleum USA Inc. Matching Funds

Russell H. Nordwell
William J. O'Leary
Richard A. Olsen
*In Memory of Richard W. Boebel
In Memory of William J. Malin
In Memory of Robert W. Sabate'*

Teresa M. O'Neill
In Memory of Brian J. O'Neill

FONO FUND

The FONO Fund accepts contributions that are invested and the income dedicated to assure sufficient financial resources will always be available to maintain the NOGS business office. Contributors are reminded that donations to the FONO Fund are not covered by the IRS 501 (c)(3) tax exempt classification and should be reported as a business expense on your IRS tax report.

\$500

James A. Hartman

*In Memory of Hal Hudson
In Memory of Robert G. Williamson*

UP TO \$250

Donald I. Andrews
Alfred H. Baker Jr.
Joseph E. Boudreaux
Hillary James Brook
Jack G. Bryant
J. Sybil Callaway
Arthur F. Christensen
Richard P. Colomes
Clarence F. Conrad
Michael A. Danahy
John Dombrowski
Merle J. Duplantis
Richard A. Edmund
Mark J. Gallagher
William J. Furlong
Duncan Goldthwaite
James A. Hartman

*In Memory of Hal Hudson
In Memory of Robert G. Williamson*

Bernard L. Hill, Jr.
Thomas A. Hudson
Kenneth Huffman
C. M. (Max) Jacobs
Robert M. Jemison, Jr.
Tom Klekamp
Louis Lemarie'

William J. Malin
Jeannie F. Mallick
George M. Markey, Jr.
James A. McCarty
Louis L. McCormick
Robert G. Murphy
William J. O'Leary
Richard A. Olsen
Erwin Parrish, Jr.
Linda and Bill. Peirce
Edward B. Picou, Jr.
Richard D. Provensal
James P. Raymond, Jr.
Brenda E. Reilly
C. R. Rondeau
George D. Severson
Rudolf B. Siegert
Richard J. Standcliffe
Bryan P. Stephens
Raymond Stephens
Roy C. Walther
Robert C. Weissmann
William M. Whiting
James W. Yeldell, Jr.
Jim Zotkiewicz

CONTRIBUTIONS FOR BOTH FUNDS THROUGH MARCH 18, 2011.
DONATIONS ARE LISTED FOR ONE YEAR.

Linda and Bill Peirce
Edward B. Picou Jr.
*In Memory of William J. Malin
In Memory of Robert G. Williamson*

Richard D. Provensal
In Memory of Thomas H. Philpott
Scott Purinton
Brenda E. Reilly
Mrs. William B. Rodan
In Memory of Robert G. Williamson
Robert T. Sellars, Jr.
In Memory of Robert G. Williamson

George D. Severson
Rudolph B. Siegert
Dr. J. O. Snowden
Gary L. Spraul
In Memory of H. Grady Collier
Raymond O. Steinhoff
In Memory of Harold E. Vokes

Roy C. Walther
William M. Whiting
In Memory of William J. Malin
Armour C. Winslow
In Memory of Rita Menzel Winslow
Frances A. Wiseman
In Memory of Steve Widdicombe
James W. Yeldell, Jr.
Jim Zotkiewicz

In Memory of Bill Craig

Chevron
Bernard L. Hill, Jr.
John C. Scheldt
Candace V. Strahan
In Memory of James Strahan



Geoconsulting, Inc.

*Geological and Geophysical Consulting,
3-D Seismic Interpretation*

Ben D. Sydboten, Jr. CPG

124 Heymann Blvd., Suite 202

Lafayette, LA 70503

www.saigeoconsulting.com

Office (337) 234-5288

Cell (337) 234-5491

ATWATER CONSULTANTS, LTD.

REGISTERED AND CERTIFIED PETROLEUM PROFESSIONALS

*GEOLOGICAL, ENGINEERING, GEOPHYSICAL,
TRAINING AND EXPERT WITNESS SERVICES*

3525 Hessmer Ave, Ste 304

Metairie LA 70002

Tel. (504) 581-6527

Fax (504) 524-7798

"Serving The Oil & Gas Industry Since 1983"

Geological,
Geophysical &
Land Drafting



Anthony Catalanotto
President

Stefani Foster
Drafting & Design

Geo-Draft, Inc.

A Professional Drafting & Graphics Firm

3349 Ridgeline Drive • Suite 202 • Metairie, LA • 70002

Office: (504) 836-2882 Fax: (504) 836-2877 (Cell) (504) 481-7291

E-Mail: geodraft@bellsouth.net

Website: www.geodraftinc.com

NORTHCOAST OIL COMPANY

610 E. Rutland St.

Covington, LA 70433

(985) 898-3577

(985) 898-3585 FAX

Jack M. Thorson

Eric C. Broadbridge

J. Daryl Gambrell

Raymond W. Stephens

**NOGS thanks our
sponsors for their support:**

GOLD LEVEL SPONSORS:

CHEVRON

LA BAY EXPLORATION CO, LLC.

**SPECIAL THANKS TO
DIVERSIFIED WELL LOGGING**

(832) 242-6000 (O)

(713) 917-0493 (O)

(504) 931-7506 (C)

johnjurasin@jurasinoilgas.com

JURASIN OIL & GAS

9700 Richmond Ave., Suite # 124

Houston, TX 77042-4821

JOHN M. JURASIN
President

Cert. Pet. Geologist #4284
Cert. Prof. Earth Scientist #1961

Collarini Energy Staffing

Full-Time and Temporary Personnel

Facilities • Drilling • Production • Reservoir Engineering
Land and Legal • Geoscience • Information Technology •
Health and Safety • Management • Supply Chain
Accounting • Administrative Support

10497 Town and Country Way, Suite 950
Houston, Texas 77024

832-251-0553



www.collarini.com

Collarini Associates

Reservoir Engineering
Oil & Gas Property Evaluation
3-D Seismic Interpretation
Integrated Field Studies

832-251-0160

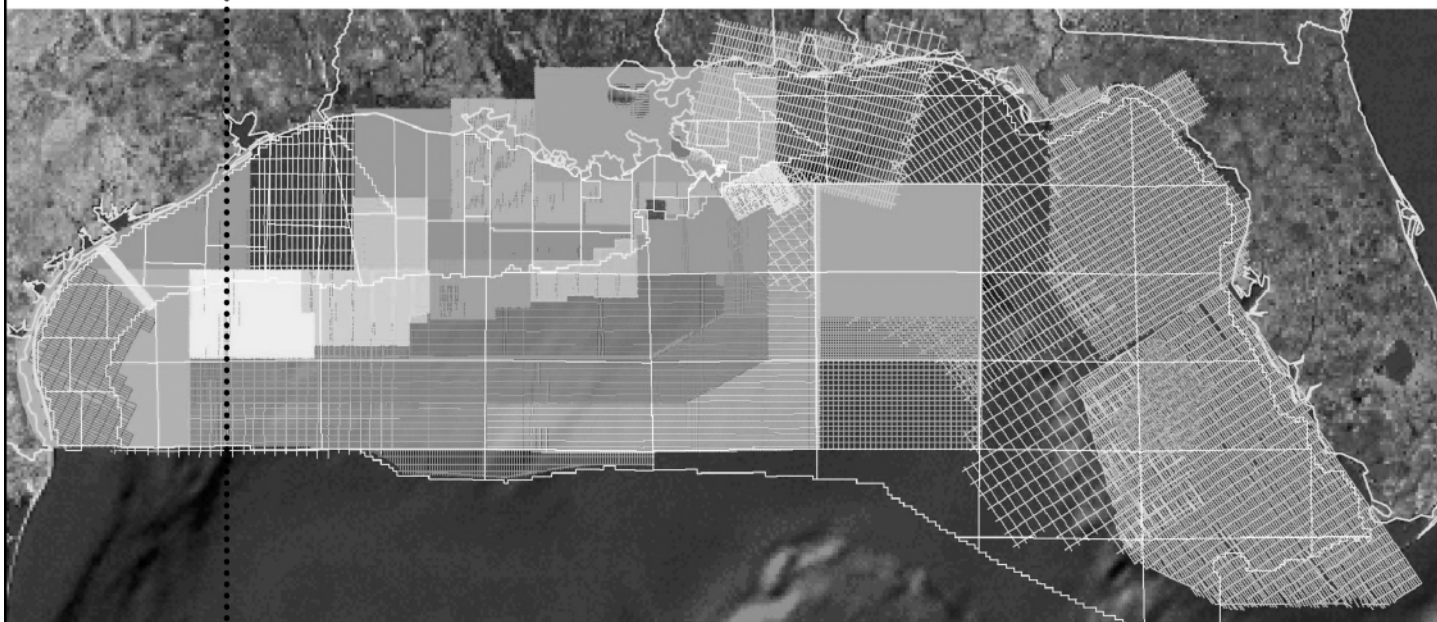
504-887-7127

Houston

New Orleans

***This advertising space is available!
Contact the NOGS office.***

For Gravity and Magnetic
Data in the Gulf of Mexico
**Count on Fugro—
Mapping Geology
to the Basement...**



...And beyond with the most comprehensive non-exclusive airborne, land and marine potential fields geophysical database, including AeroMagnetic, Marine Gravity and Bathymetry data in the Gulf of Mexico. Interpretation includes:

- Basement architecture
- Tectonic elements
- Structural/geologic fabric
- Salt mapping
- Depth to basement
- ArcGIS deliverables



Fugro Gravity & Magnetic Services

For personal assistance & consultation,
please contact fgmsdata@fugro.com or 713-369-6123.

www.fugro-gravmag.com

<p>ANSYTHE Donald I. Andrews 504-887-3432</p> 	 <p>GEOLOGY ENVIRONMENTAL MANAGEMENT</p> <p>GEM Consulting LTD Michael Louis Merritt admin@gemconsultingltd.com 1451 Applewood Road • Baton Rouge, LA 70808</p>
<p>THE BOEBEL COMPANY Oil and Gas Investments 170 Broadway Street, Suite 321 New Orleans, LA 70118 (504) 866-4313</p>	<p>H. WARREN BELL Oil and Gas Exploration 2500 Tanglewilde, Suite 485 Houston, TX 77063-2126 Bus (713) 266-7297 Fax (713) 266-7298</p>
<p>BOO-KER OIL & GAS CORP. Gray S. Parker 826 Union, Suite 300 New Orleans, LA 70112 Bus. (504) 581-2430 Fax (504) 566-4785</p>	<p>PHELPS GEOSCIENCE Onshore Gulf of Mexico Geology and Geophysics Prospect Generation and Evaluation Houston, TX jsphelps@yahoo.com (281) 398-5208</p>
<p>C & R EXPLORATION, INC. Carlo C. Christina Lawrence G. Ringham</p>	<p>RAFIDI OIL AND GAS, INC. Jaser N. Rafidi, President 4415 Shore Dr., Suite 202 Metairie, LA 70006 Bus. (504) 722-2942 Fax (504) 888-5539; Res. (504) 888-1661</p>
<p>C. R. RONDEAU Petroleum Geologist 119 W Southland Ave. Ironwood, MI 49938 Res. (906) 932-4692</p>	<p>ROY C. WALTHER Petroleum Geologist 2421 Prancer Street New Orleans, LA 70131 Bus. (504) 392-8513 Res. (504) 392-9332</p>
<p>CLASSEN EXPLORATION, INC. James S. Classen Looking for close in deals P.O. Box 140637 Boise, ID 83714 classenllc@msn.com Bus. (208) 854-1037 Fax (208) 854-1029</p>	 <p>625 E. Kaliste Saloom Lafayette, LA 70508 16800 Greenspoint Dr., Suite 225-S Houston, TX 77060 1100 Poydras St., Suite 1050 New Orleans, LA 70163 www.StoneEnergy.com</p>
<p>D-O-R ENGINEERING, INC. 3-D and Geoscience Services 6161 Perkins Rd. P O Box 80812 Bus : (225) 765-1914 Baton Rouge LA 70898</p>	<p>TONY CAROLLO Consulting Geologist Unitization Geosteering Field Studies 1701 Peach Street Metairie, LA 70001 Bus. (504) 885-0004 Res. (504) 885-6829</p>
<p>EDWARD B. PICOU, JR. Consulting Micropaleontologist - Retired 228 St. Charles Ave., Suite 1330 C New Orleans, LA 70130 Bus. (504) 529-5155 Res. (504) 282-3096</p>	<p>Zot Oil & Gas, LLC Jim Zotkiewicz Prospect Generation and Evaluation 3200 Ridgelake Dr. Suite 207 Metairie, LA 70002-4930 Business: 504.831.4694 Email: jimzot38@zotoil.com</p>

Attributes

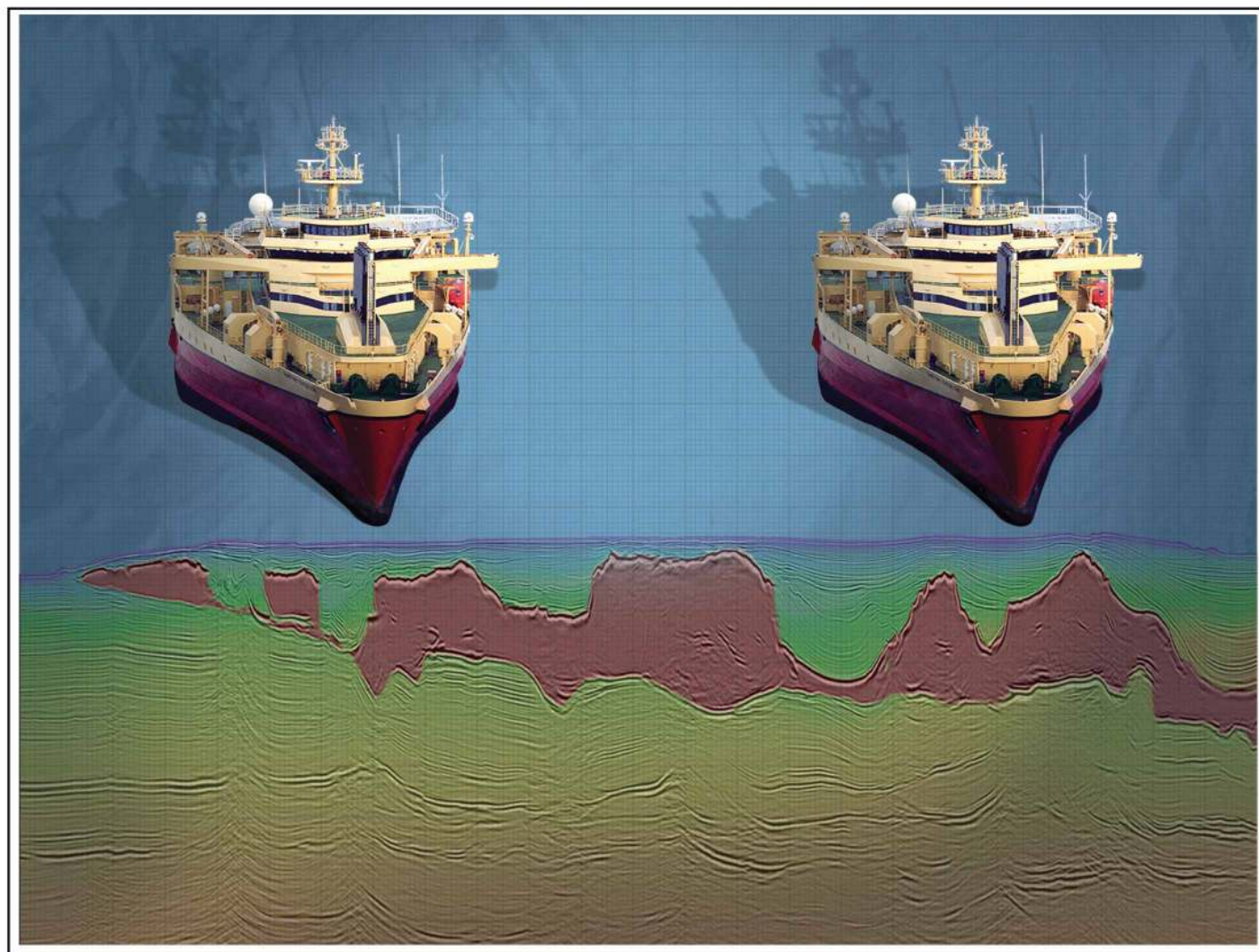
New Views on Seismic Imaging—Their Use in Exploration and Production



**31st Annual GCSSEPM Foundation
Bob F. Perkins Research Conference**
Houston, Texas
December 4-7, 2011
Houston Marriott Westchase Hotel

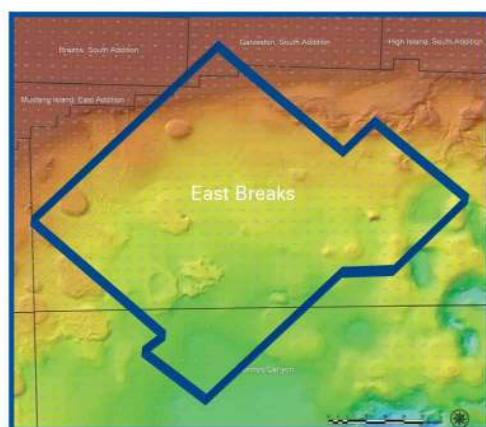
Conference information and
online registration
available on our Web site:
www.gcssepm.org





Crystal III, East Breaks

MultiClient Wide Azimuth



- **Size** - 480 OCS blocks
- **Focus** - Sub-Salt Miocene & Paleogene
- **Technology** - TTI Beam and RTM Imaging
- **Delivery** - Available Q4 2010

Houston
Tel: +1 281 509 8000
Fax: +1 281 509 8500

Oslo
Tel: +47 67 52 6400
Fax: +47 67 52 6464

London
Tel: +44 1932 37 6000
Fax: +44 1932 37 6100

A Clearer Image
www.pgs.com



NEW ORLEANS GEOLOGICAL SOCIETY



810 Union Street, Suite 300
New Orleans, LA 70112-1430

WWW.NOGS.ORG

MARINE PROPERTIES, LLC BERKSHIRE EXPLORATION CO.

MONTE C. SHALETT, CPL, PRESIDENT

3030 Lausar Street
Metairie, LA 70001-5924

BUS. (504) 831-7779
FAX. (504) 831-8315

PCI

Paleo Control, Inc.

Houston, Texas
713-849-0044

Drilling Wells, Studies and Data Base

Loyd Tuttle

Frio, SE Texas

Bob Liska

Wilcox, S and SE Texas

Jim Thorpe

Miocene and Cam-Miogyp



SEE YOUR DATA IN A WHOLE NEW LIGHT!

Take the pressure out of exploration
and drilling by seeing what you
are going to encounter.



eSeis

www.e-seis.com
713.531.1447

- Lithology & Fluids
- Depositional Facies
- Pore Pressure from V & Q
- Well Planning Consultation

