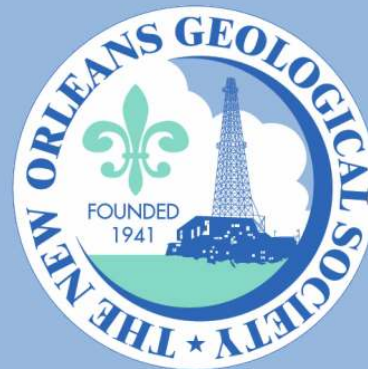


# NOGS LOG



March 2011

Volume 51, Number 4

## Upcoming Events and Activities

---

### March 14 - NOGS-SGS Joint Luncheon

\*\*\* At the Holiday Inn Downtown Superdome \*\*\*

\$2.00 validated parking in hotel garage

Holiday Inn Downtown Superdome. Guest speaker Dr. Darrell Henry, Department of Geology & Geophysics at Louisiana State University, will present: "Tourmaline: Can it record geologic information like a DVD?"

(See page 7 for Abstract and Biography)

#### HOLIDAY INN DOWNTOWN SUPERDOME

Check with concierge or  
front desk for location

Lunch served at 11:30am

#### ADMISSION:

with reservation ..... \$30.00

without reservation ..... \$35.00

Student Member with reservation .... Free

---

### March 19 - Super Science Saturday

Louisiana Childrens Museum. Volunteers needed. See announcement on page 16.

---

### March 22 - American Petroleum Institute - Delta Chapter Meritorious Service Award Luncheon

Sheraton Hotel - New Orleans @ 12 Noon. Keynote Speaker: Michael Bromwich, Director of BOEMRE. See announcement on page 27.

---

### April 6 - Petroleum Geology for Non-Geologists

Shell Auditorium, Shell Building, New Orleans. See announcement on page 13.

---

### April 10-13 - AAPG 2011 Annual Convention & Exhibition

Houston. Website: [www.aapg.org/houston2011](http://www.aapg.org/houston2011)

---

### April 18 - NOGS Annual Golf Outing

Tchefuncta Country Club in Covington. See announcement on page 17.

---

### May 2 - NOGS Luncheon

Holiday Inn Downtown Superdome. Guest speaker William W. "Toddy" Guidry III, of Core Laboratories in Lafayette, will present "Introduction to Reservoir Fluids and PVT Analyses for Geologists."

# Get Ahead of the Game



## Directional Survey Plus



## Production Data



## Digital Well Logs



## With High Quality Well Data From TGS

Need an extra edge on the competition? TGS' high quality well data, comprehensive coverage and dedicated customer support can get you to the finish line.



### **Directional Survey Plus**

Beyond simple directional survey data capture, Directional Survey Plus data are thoroughly researched, reprocessed and standardized.



### **US Production Data**

TGS' nationwide production database features a visualization tool, leading industry exports and daily incremental updates.



### **Complete Curve LAS**

Over 500,000 LAS well logs are now available in North America. Over six million well logs available in 30+ countries worldwide.

Find out more at [www.tgsnopec.com/welldata](http://www.tgsnopec.com/welldata) or contact TGS Well Data at 888-LOG-LINE or [WellData@tgsnopec.com](mailto:WellData@tgsnopec.com)



Geophysical  
Products



Geological  
Products



Imaging  
Services



[www.tgsnopec.com](http://www.tgsnopec.com)

# NOGS Office

Office Manager: Annette Hudson

Office Hours: 8:30 a.m. – 3:30 p.m. on Monday-Wednesday-Friday

Tel: 504-561-8980 □ Fax: 504-561-8988

E-mail: info@nogs.org □ Website: www.nogs.org

The office is located at Suite 300, 810 Union Street, New Orleans, LA 70112.

Correspondence and all luncheon reservations should be sent to the above address.

Sent to press on February 25, 2011.



## BOARD OF DIRECTORS

President	Rick Kear
Vice President	Eric Zimmermann
Secretary	Penne Rappold
Treasurer	Will Jorgensen
President-Elect	Bob Hafner
Editor	Fran Wiseman
Director 2011	Scott A. Wainwright
Director 2012	Arthur H. Johnson
Director 2013	Jack Langford

## Company

Schlumberger	504-592-5376
LLOG Exploration	985-801-4338
Shell	504-728-4338
Shell	504-728-6339
BOEMRE	504-736-2912
Bret Exploration Co Inc	504-889-2700
Hydrate Energy International	504-464-6208
J C L Services	985-764-2527

## Phone

## E-mail

kearl1@new-orleans.oilfield.slb.com
ericz@llog.com
prappold@gmail.com
william.r.jorgensen@shell.com
ottohaf@aol.com
frances.wiseman@boemre.gov
scott_wainwright@hotmail.com
artjohnson51@hotmail.com
jclangford@latterblum.com

## COMMITTEE

AAPG Delegates
AAPG Student Chapter
AAPG Student Chapter
Advertising-Log
Auditing
Awards
Ballot
Best Paper
Continuing Education
Employment Counseling
Entertainment
Environmental
External Affairs
Field Trip
Finance and Investment
Historical
Membership/Directory
New Geoscientists (NGNO)
Nominating
Non-Technical Education
Office Operations
Publications Sales
Photography
School Outreach
Scouting
Sponsorship/Houston
Technical Projects
Ad Hoc Committee on
University Support

## Chairperson

William M. Whiting
Michael Hopkins
Andrew Ranson
Andrea Stancin
Chuck Holman
Michael N. Fein
Will Jorgensen
Brenda Reilly
TBA
Bob Hafner
Daisy Pate
Michael A. Fogarty
David Garner
Will Jorgensen
Edward B. Picou, Jr.
Carlo C. Christina
Tom Klekamp
TBA
Mike Ledet
Duncan Goldthwaite
Tom Klekamp
Edward B. Picou, Jr.
J. David Cope
Thomas C. Bergeon
Carol Rooney
David E. Reiter
TBA
Michael J. Gallagher

Consultant	504-947-8495
Tulane University	228-209-2262
UNO	337-578-5587
Shell	504-728-0431
Independent	504-891-4878
W & T Offshore	504-210-8148
Shell	504-728-6339
Energy Partners Ltd.	504-799-4811
Corps of Engineers	504-957-4372
Sylvan Energy, LLC	603-523-4808
Shell	504-728-6154
Shell	504-728-6339
Consultant	504-529-5155
Retired (C & R Expl.)	
Amber Resources	985-845-4046
	504-394-9636
	504-887-4377
Consultant	985-845-4046
Amber Resources	504-529-5155
Consultant	504-596-3672
Ankor Energy	504-832-3772
Century Exploration	504-835-1909
Consultant Geologist	
Eni Petroleum	
	713-393-6100

bootscon@aol.com
mhopkins@tulane.edu
aranson@uno.edu
Andrea.a.stancin@shell.com
charleswholman@bellsouth.net
mikef@wtoffshore.com
william.r.jorgensen@shell.com
breilly@eplweb.com
ottohaf@aol.com
daisy.pate@gmail.com
mike.a.fogarty@gmail.com
David.Garner@shell.com
william.r.jorgensen@shell.com
epicou@bellsouth.net
Carlocc398@aol.com
klekamp@bellsouth.net
mikeledet@cox.net
DGldthwt@aol.com
klekamp@bellsouth.net
epicou@bellsouth.net
dcoupe@ankorenergy.com
Tom.bergeon@centuryx.com
carolbrooney@aol.com
david.reiter@enipetroleum.com
Michael.Gallagher@enipetroleum.com

## NOGS LOG STAFF

Editor	Fran Wiseman	BOEMRE	504-736-2912
Editor-Elect	David Tatum	Chevron	985-773-6477
Auxiliary	Susie Baker	NOGA	504-466-4483
Info Tidbits	Fran Wiseman	BOEMRE	504-736-2912
Drill Bits	Carlo C. Christina	Retired (C & R Expl.)	
Webmaster	Edward B. Picou, Jr.	Consultant	504-529-5155
Layout	Jannette Inc.		

## NOGS AUXILIARY

Officers		Phone	Directors	Year	Phone
President	Jean Jones	504-738-8091	Peggy Campbell	2009-11	504-283-2505
1st Vice-President	Alma Dunlap	504-737-2678	Ruth Grimes	2009-11	504-392-8103
2nd Vice-President	Judy Sabatè	504-861-4335	Gerry Waguespack	2009-11	504-737-0532
Secretary	Peggy Rogers	504-392-6323	Carol Andrews	2010-12	504-887-3432
Treasurer	Judy Lemarie'	504-393-8659	Susie Baker	2010-12	504-466-4483
Parliamentarian	Beverly Kastler	504-286-0879	Joan Collier	2010-12	504-833-1738
Member-at-Large	Linda Peirce	504-393-7365			

--- NOGS Contact List continued on page 10 ---

# SYNERGY ENERGY



**Weatherford®**  
LABORATORIES

Your success increasingly depends upon a better understanding of your reservoir. At Weatherford Laboratories, we provide a single source for comprehensive laboratory analyses, creating a synergy previously unknown in laboratory services. This single source includes distinguished geologists, geochemists, analysts, engineers, technicians and software developers, 38 worldwide laboratories, and the broadest portfolio of services for acquiring and interpreting data from physical samples. The end result is an unsurpassed combination of intellectual capital and technical resources — all working together to help you enhance development planning and reduce reservoir uncertainty.

Put our union of Synergy and Energy to work for you.

**Weatherfordlabs.com**

**HIGHER STANDARDS**

**NORTH AMERICA**  
NAInquiries@weatherfordlabs.com

**EUROPE**  
EUIInquiries@weatherfordlabs.com

**LATIN AMERICA**  
LAIInquiries@weatherfordlabs.com

**MIDDLE EAST/NORTH AFRICA**  
MENAIInquiries@weatherfordlabs.com

**ASIA PACIFIC**  
APIInquiries@weatherfordlabs.com





*from the President*

New Orleans Geological Society - NOGS - a name, and yet without involved, active members, it is a name only! I tossed out a challenge to the membership last month, and so far, I am sorry to say, the membership has not risen to that challenge! You, as geoscientists, are well aware that nothing stays static, especially organizations; they are either improving or degrading. The needs of NOGS are increasing not decreasing,

We have been embarrassed by not having representation in the initial 2011 New Orleans Deepwater Symposium organizational meetings of which NOGS is a co-sponsor. NOGS needs volunteers to join the Golf Tournament Committee to assist with our golf tournament coming up April 25th and to lay the foundation for the 2012 tournament.

We are still in need of volunteers to serve in the numerous roles identified in my last letter. The only two people that came forward are Daisy Pate, who agreed to continue as our Environmental Committee Chair, and Nicole Cammarata, who just renewed her membership after being out on extended maternity leave and has agreed to chair the Advertising Committee. By the way, hats off to Daisy for already bringing us a new member from the environmental community, Anna Strimas. Welcome Anna!

So to be all NOGS can be and improve, I again call on you to step out of the comfort of the crowd and routine of attending monthly luncheon meetings and increase your involvement. Your entire board of directors including myself will welcome you and assist you in any way we can in making your contribution!

Speaking of contributions, I want to recognize Carlo Christina and Tom Klekamp for the "above and beyond" work they have done as Co-Chairs of our Membership Committee. These two have taken our past membership role along with their extensive list of contacts and solicited new members and membership

renewals along with involvement in NOGS. Other NOGS members including Ed Picou, Al Baker, and Duncan Goldthwaite assisted in contacting "lost" members. Well done, gentlemen!

Don't miss out on the GSA South-Central Section Meeting in New Orleans March 28 & 29, or the AAPG ACE in Houston, Texas April 10-13th at which NOGS will have a booth to represent the society and market the *Oil & Gas Fields of South Louisiana 2010*. These are additional opportunities to serve NOGS as a volunteer by staffing our booth. This will lessen the burden on those who have already volunteered. It would allow those of you already attending these two conferences to represent and be identified as NOGS members, something you should be proud of!

On behalf of the society, I want to thank Tom Klekamp for his hosting of our February luncheon speaker, Kadira Singh, meeting her at the airport, taking her to a wonderful dinner and squiring her to our meeting and back to the airport. Thanks Tom! Several of our members went out of their way to meet and make Kadira welcome at our meeting, encouraging her before, during and after her presentation. Thank ya'll!

Please make your reservations early for our upcoming series of interesting luncheon meetings and speakers including the joint NOGS-SGS March 14th with Dr. Darrell Henry of LSU sharing his work on "Tourmaline: Can it record geological information like a DVD." The April 4th joint NOGS-SGS-SPWLA Fish Fry Luncheon, sponsored by Diversified Well Logging Inc., will focus on the latest developments in Mudlogging, and there will be a walk-through of a wellsite logging unit.

God bless,

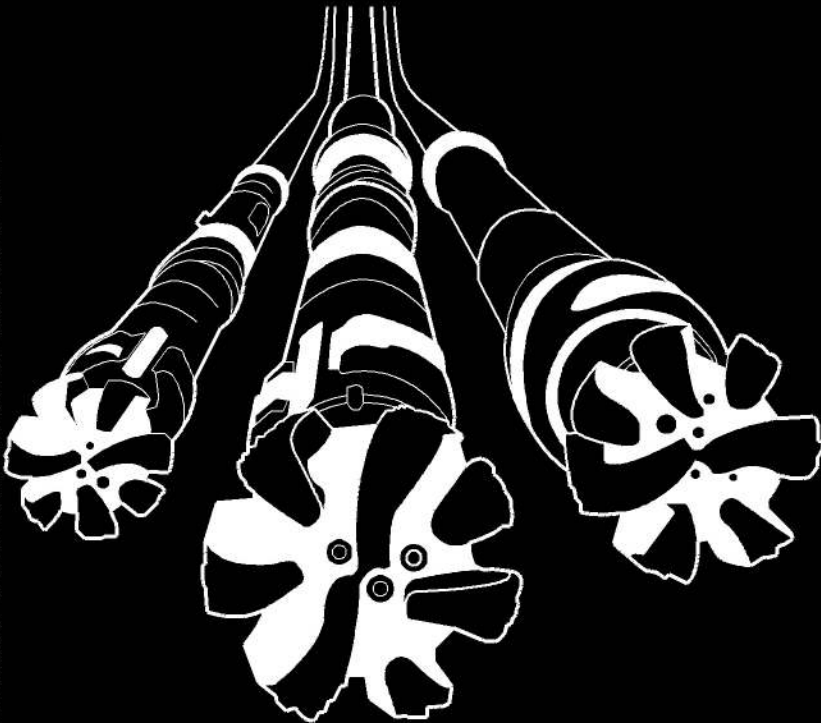
*Rick*

# Deep Water

WELL CONSTRUCTION

## Are all your services deepwater ready?

Control Measures	Complexity/Process + Exposure	Preparedness				
		High				Low
		People + Competency				
		1	2	3	4	5
-5	High	-5	-10	-15	-20	-25
-4		-4	-8	-12	-16	-20
-3		-3	-6	-9	-12	-15
-2		-2	-4	-6	-8	-10
-1	Low	-1	-2	-3	-4	-5



**Our Project Readiness Assessment (PRA) approach has been applied and improved over the last 5 years.**

All deepwater projects in which Schlumberger participates benefit from our PRA process, which complies with new U.S. regulatory requirements. This helps deliver seamless, efficient startup, and reduced NPT.

Learn more at

[www.slb.com/deepwaterready](http://www.slb.com/deepwaterready)

Global Expertise  
Innovative Technology  
**Measurable Impact**

# Schlumberger

\*Mark of Schlumberger. Measurable Impact is a mark of Schlumberger. © 2010 Schlumberger. 10-dw-0079

# March 14 NOGS-SGS Joint Luncheon Presentation

\*\*\*At the Holiday Inn Downtown Superdome\*\*\*

## Tourmaline: Can it record geologic information like a DVD?

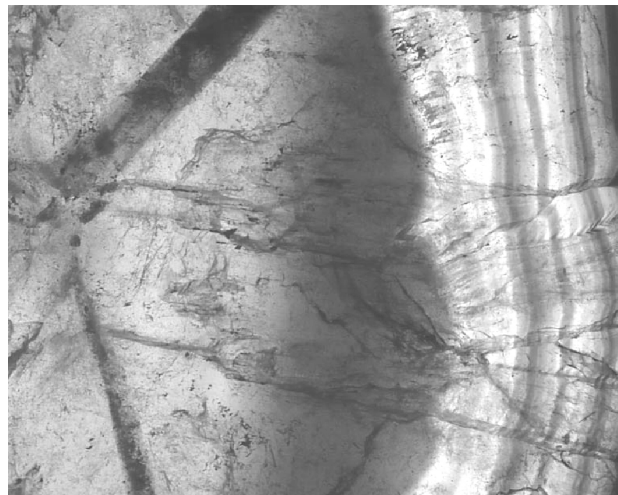
presented by

**Darrell Henry**

Department of Geology and Geophysics, Louisiana State University

### ABSTRACT

Tourmaline is commonly regarded as a semi-precious mineral that is nice in mineral collections or jewelry but not much more. However, tourmaline is actually one of the most important natural repositories for geological information that can be found in rocks. This is a consequence of tourmaline being the major sink for boron in the Earth's crust, having an extreme range of stability at almost all crustal conditions, exhibiting mechanical resistance in clastic sedimentary environments, and containing a wide range of potential chemical constituents. The challenge is to be able to interpret the textural and chemical signals, much like is done on a DVD.



### BIOGRAPHY



**Darrell Henry** is a petrologist with interests in tectonometamorphism of Paleozoic to Archean metamorphic terranes, in crystal chemistry and petrologic applications of minerals in metamorphic and sedimentary environments, and in geoscience

education. He received his B.S. (1973), M.S. (1976) and Ph.D. (1981) from the University of Wisconsin - Madison. He was a postdoctoral fellow at Arizona State University (calorimetry of silicate glasses), NASA - Johnson Space Center (early crustal genesis of the Earth) and consultant to ARCO - Oil and Gas Co. (development of micro-analytical facilities). In 1985

he moved to Louisiana State University where he is the Campanile Charities Professor of Geology.

Since coming to LSU, Darrell Henry has attained a number of distinctions. He is Fellow of the Geological Society of America (2010) and Fellow of the Mineralogical Society of America (1996). He was elected Treasurer of the Mineralogical Society of America (2008-2012). He is co-editor of upcoming special volumes in the journal "Elements" on "Tourmaline" (2011) and in the journal "Canadian Mineralogist" on "Tourmaline as an Ideal Indicator of Environmental Conditions" (2011). He has been associate editor of the American Mineralogist (2006-

--- continued on page 30 ---

**THE LUNCHEON RESERVATION DEADLINE IS MARCH 9 - CONTACT THE NOGS OFFICE**

### "And Looking Ahead..."

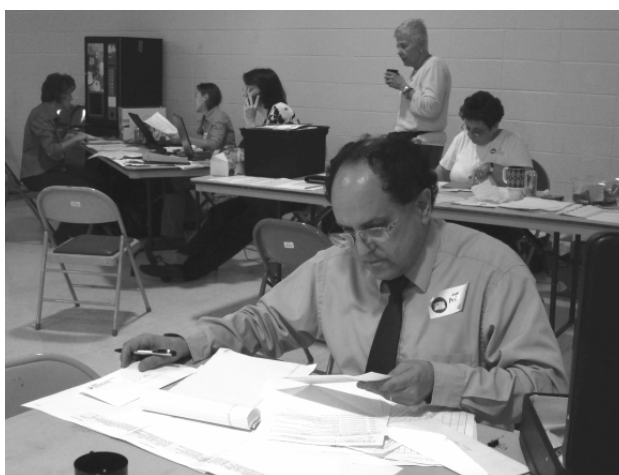
The next NOGS Luncheon will be held on May 2 at Holiday Inn Downtown Superdome. Guest speaker William W. "Toddy" Guidry III, of Core Laboratories in Lafayette, will present "Introduction to Reservoir Fluids and PVT Analyses for Geologists." Contact the NOGS office to make your reservation.

# Greater New Orleans Science & Engineering Fair, 2011



Greater New Orleans Science and Engineering Fair 2011  
Senior and Junior exhibits

Mike Fein prepares to  
write NOGS checks to  
top-ranking Earth  
Science exhibitors

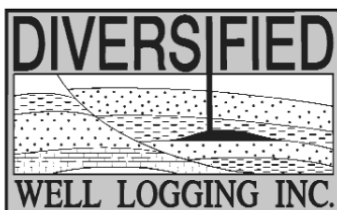






## Relax. We'll keep you posted.

Your rig is offshore and you are not. How do you know what's going on so many miles away? You know because we tell you. Daily or even hourly, Diversified Well Logging's engineers update you on the status of your rig. We are your eyes and ears, especially when it comes to deep water or high pressure, high temperature areas. Diversified offers 24-hour surface evaluation. We provide secure and customized real-time data communication, in-house research and development and 24/7 on-call support for our equipment and our engineers. Whether you have a 10-day job or 110-day job, we provide the specialized attention you require. So, relax. We're with you every step of the way.



*Serving the Gulf Coast for over 40 years.*

New Orleans • Lafayette • Houston • Dallas • Corpus

800.280.2096

711 West 10th Street • Reserve, LA 70084 • Phone: 985.536.4143 • Fax: 985.536.2427  
sales@dwl-usa.com

**DOMESTIC AND INTERNATIONAL  
BIOSTRATIGRAPHIC SERVICES**



6619 Fleur de Lis Drive  
New Orleans, LA 70124  
(504) 488-3711

[www.paleodata.com](http://www.paleodata.com)



**Complete wellsite paleo services**

**Available single-source regional  
biostratigraphic databases for  
accuracy and consistency**

**Integrated foram / nannofossil  
analyses**

**In-house sample preparation  
lab for quality-monitoring  
and efficiency**

**Supported Gulf Coast  
biostratigraphic databases**



**MCMORAN EXPLORATION CO.**



**MCMORAN  
OIL & GAS**

[www.mcmoran.com](http://www.mcmoran.com)

**NYSE: MMR**

16676 Northchase Dr.  
Houston, TX 77060  
(281) 539-7600  
Fax: (281) 539-7655

1615 Poydras  
New Orleans, LA 70112  
(504) 582-4000  
Fax: (504) 582-4155

110 Travis St., Suite 140  
Lafayette, LA 70503  
(337) 735-9150  
Fax: (337) 735-9151

**NOGS CONTACT LIST**

--- continued from page 3 ---

**MEMORIAL FOUNDATION**

**BOARD OF TRUSTEES**

		<b>Company</b>	<b>Phone</b>	<b>E-mail</b>
2010-11 Chairman	Tom Klekamp	Amber Resources LLC	985-845-4046	klekamp@bellsouth.net
2010-11 Secretary	Rick Kear	Schlumberger	504-592-5376	kearl@new-orleans.oilfield.slb.com
2010-11 Trustee	Chuck Holman	Independent	504-891-4878	charleswholman@bellsouth.net
2010-11 Trustee	Michael N. Fein	W & T Offshore	504-210-8148	mikef@wtoffshore.com
2011-12 Trustee	Monte Shalett	Berkshire Exploration Co	504-831-7779	mshalett@gmail.net
2011-12 Trustee	James Swaney	BOEMR E	504-736-2677	james.swaney@boemre.gov
2012-13 Trustee	Jennifer Connolly	Shell	504-728-6411	jennifer.connolly@shell.com
2012-13 Trustee	William M. Whiting	Consultant	504-947-8495	bootscon@aol.com

**AAPG DELEGATES**

**Term Ends**

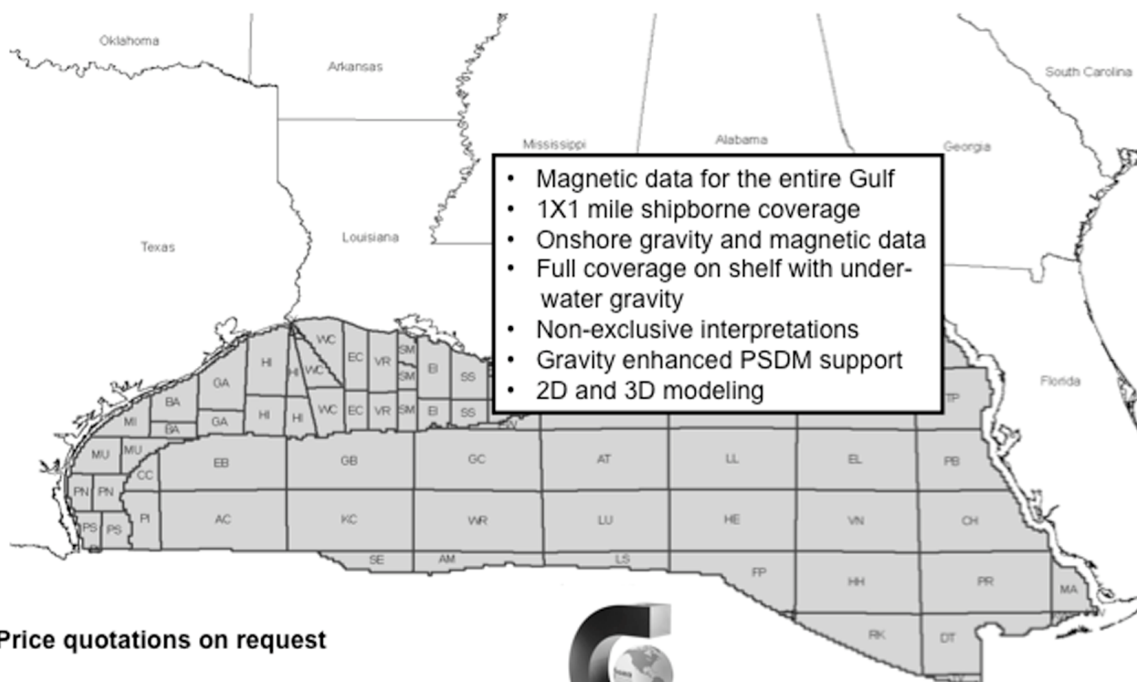
		<b>Company</b>	<b>Phone</b>	<b>E-mail</b>
2011	Tom Hudson	Chevron		tom.hudson@chevron.com
2011	Edward B. Picou, Jr.	Consultant	504-529-5155	epicou@bellsouth.net
2011a)	Brenda Reilly	Energy Partners Ltd.	504-799-4811	breilly@eplweb.com
2011a)	Robert Rooney	Century Exploration	504-832-3777	Robert.rooney@centuryx.com
2012	William Whiting	Consultant	504-947-8495	bootscon@aol.com
2012	Jim Zotkiewicz	Zot Oil & Gas	504-831-4694	jimzot38@zotoil.com
2012 a)	David E. Balcer	Chevron	985-773-6725	dbalcer@Chevron.com
2012 a)	Richard J. Stancliffe	Shell Expl & Prod Co.	504-728-7553	richard.stancliffe@shell.com



## Fugro Gravity & Magnetic Services

LAND • AIRBORNE • UNDERWATER • SHIPBORNE

The most complete coverage Onshore and Offshore Gulf of Mexico



Price quotations on request

Fugro Gravity & Magnetic Services  
[www.Fugro-GravMag.com](http://www.Fugro-GravMag.com)  
 Tel: 713-369-6123



Gravity Inspired. Magnetically Inclined.



**Shell has worked in partnership  
 with the NOGS for many years, and  
 is proud to count the society among  
 its closest business associates.**

The New Orleans Geological Society was organized in 1941 to foster scientific research and advance the science of geology. Particular emphasis is laid on the exploration for and production of petroleum and natural gas. Related objectives include encouraging the adoption of improved methods of exploration, disseminating pertinent geological and technological data, and maintaining a high standard of professional conduct among its members.

[www.shell.com/us/sepcos](http://www.shell.com/us/sepcos)

**It's no illusion...  
 Core Lab offers everything you need.**



©2009 Core Laboratories. All rights reserved.

Unconventional resource exploitation • Gas shale experts • Deepwater GOM authority  
 Capacity for fast turnaround • High-quality people • Global support  
 Industry leadership and reliability • Proprietary and patented technologies • Experience

[www.corelab.com/rd/petroleumservices](http://www.corelab.com/rd/petroleumservices) • 24-hour wellsite service hotline: 504-733-6583



From ZNodal Systems to ZNodal Imaging

# We are full spectrum ZNodal™ technology

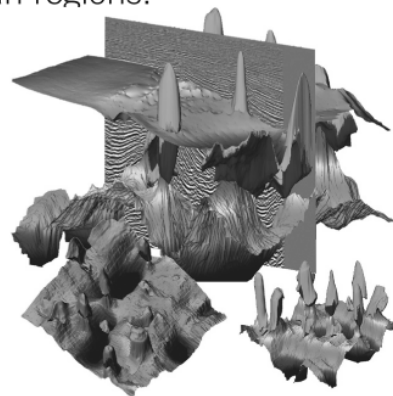
FairfieldNodal.com



We admit it. We're seismic nodal fanatics. Always have been. Which explains our one-of-a-kind, cable-free ZNodal™ systems. They work wonders in dense urban areas and pristine wilderness, in shallow water and deep ocean regions.

In fact, our exclusive ZNodal technology is behind everything we do, from acquisition and licensing to advanced processing and imaging, bringing nodal data to life in amazing ways.

Right now, our ZNodal systems are on the job in some of the world's most challenging fields, making a powerful difference. So when you're ready to go nodal, count on us to lead the way. ZNodal technology: It's what you need. It's what we're all about.



**fairfield**nodal

SYSTEMS ACQUISITION LICENSING PROCESSING IMAGING



## NOGS February Luncheon



Right: Mike Fein soliciting for judges at the Greater New Orleans Science and Engineering Fair which was held on February 23rd



Left: Kadira Singh speaks on hydrocarbon potential associated with astroblemes



Rick Kear making announcements



William Horvath, SPWLA president, invites NOGS members to Feb 17th and Mar 16th meetings

---

## PETROLEUM GEOLOGY FOR NON GEOLOGISTS

The New Orleans Geological Society is presenting a one day course on "Petroleum Geology for Non Geologists," 8:30 AM to 3:30 PM on Wednesday April 6, 2011 in the Shell Auditorium, Shell Building, 701 Poydras Street, New Orleans. The course will consist of a brief introduction to basic geology, including a review of how oil and gas form, and accumulate into reservoirs. The course will discuss the geological and geophysical methods used in exploration, followed by an overview of drilling and completion practices.

This course should be of significant benefit and interest to anyone who works with geologists and geological data, such as land personnel, secretaries, draftsmen, computer programmers and data processors.

Instructors will be consulting geologists, Duncan Goldthwaite, Robert Branson, and Bruce Robertson.

Cost will be \$35.00 per participant. Course notes and mid-morning refreshments will be provided. To register, send a check for \$35.00, made out to the New Orleans Geological Society, to:

New Orleans Geological Society  
810 Union St., Ste 300  
New Orleans LA 70112

When registering, please give your name, your work or home address and telephone number and company affiliation, if any.

## **A Memorial**

### **Joffre J. (Joff) Crouere**

**1918 – 2011**

Joffre J. Crouere died on January 30, 2011 from complications of kidney failure and pneumonia. One of three children, he was born on August 9, 1918 to Rose and Paul Crouere in New Orleans. After graduating from Warren Easton High School in 1935, he enrolled at LSU, receiving a Bachelor of Science in Geology in 1941. While at LSU, Joff was an all-Conference shortstop on LSU's baseball team, helping them to win the school's first SEC Championship in 1939.

He joined the U.S. Army after graduating and among his many assignments he served as a navigator on trans-Atlantic transport missions for the Army Air Force. After the war, Joff was employed by The California Company (Calco) as a geologist in the South Louisiana division. During this period, Calco was a very active operator, making many discoveries, both onshore and offshore. After leaving Calco in 1950, he worked briefly for British American. In 1952 he opened an exploration office, here in New Orleans, for Natural Gas and Oil, a division of Mississippi River Fuel Corporation, which under his direction, participated in the discovery or development of a number of south Louisiana fields, including Little Lake, King's Ridge, East Golden Meadow, Stella, Simon's Pass, Pelican Lake, Pass Wilson, and East Cameron Block 4.

After leaving Natural Gas he headed up an office for Woods Petroleum before establishing his own firm, Mercator Oil Company. He also represented numerous clients as an independent consultant. Joff was a true explorationist, always looking forward to the next prospect. During his long career, Joff followed a pattern of hiring and mentoring young geologists and he helped many get started in the industry. He was a long time member of NOGS and AAPG.

In 1943 he met and married Mildred D'Aubert and they were blessed with six children, Paulette Gamard, Patricia Denechaud, Katherine Lagarde, Jeanne Monsour, Suzanne Neal and Joffre Crouere, Jr., 20 grandchildren and 15 great-grandchildren. Joff was an active member of the Petroleum Club of New Orleans, as well as a number of civic and social organizations. He was a generous contributor to a variety of local and national Catholic charities. He truly lived life to the fullest and will be sadly missed by all whose lives he touched. He was a great friend and colleague.



Louis E. Lemarié

---

## **Bill Ward Memorial**

There will be a memorial service for Dr. Bill Ward at 1pm on Saturday March 19<sup>th</sup> at the Newman Center on UNO's main campus across from the University Center.

For those who wish to celebrate Bill's life in the manner and place where he celebrated for so many years, beer and other refreshments will be available immediately following the memorial service across campus in UNO's Department of Earth and Environmental Sciences (nee Geology) on the first floor of the Geology/ Psychology building. Celebrants may wish to bring a change of clothes.

Everyone is encouraged to bring photographs of Bill, his colleagues, students, family and friends. A scanner will be available to download these photos into a memorial photographic archive.

Dr. Kraig L Derstler

New NOGS  
Members  
December 2010 -  
February 2011

Huiming Bao PhD  
Louisiana State University  
Associate Professor  
Department of Geology  
Baton Rouge, LA 70803  
225-578-3419

Gary R. Byerly PhD  
Louisiana State University  
Professor and Dean  
Department of Geology  
Baton Rouge, LA 70803  
225-578-5318

R. Kirk Clem  
Swift Energy Co  
Sr. Geoscientist  
16825 Northchase Dr  
Houston, TX 77060  
281-874-2678

Kelli A. Hardesty  
Environ. Resources Manag't  
Staff Geologist  
Ste 2725, 3838 N Causeway  
Metairie, LA 70002  
504-831-6700

Darrell J. Henry PhD  
Louisiana State University  
Professor  
Department of Geology  
Baton Rouge, LA 70803

Michael C. Hopkins  
Tulane-Student  
101 Blessey Hall  
Tulane University  
6823 Saint Charles Ave  
New Orleans, LA 70118

Piero A. Lombardi  
Schlumberger  
Sales Eng.  
Ste 900, 1515 Poydras St  
New Orleans, LA 70112  
504-234-0719

Sheri F. Richardson  
LaBay Exploration Co. LLC  
Geological Technician  
Ste 1550, 111 Veterans Mem.  
Metairie, LA 70005  
504-371-5967

Melanie T. Stiegler PhD  
Louisiana State University  
Dept of Geology  
and Geophysics  
Baton Rouge, LA 70803  
504-722-9253

Will S. Yount  
Schlumberger  
Engineer  
Ste 900, 1515 Poydras St  
New Orleans, LA 70112  
504-210-5547

REINSTATED

Bradley R. Broekstra  
Midstates Petroleum Co LLC  
V.P. Exploration  
Ste 1900, 4400 Post Oak Pkwy  
Houston, TX 77027  
713-595-9406

REINSTATED

David P. Callaway  
BOEMRE  
Geologist  
1201 Elmwood Park Blvd  
New Orleans, LA 70123  
504-736-2772

REINSTATED

Nicole G. Cammarata  
Schlumberger  
Log Analyst  
Ste 2700, 1515 Poydras St  
New Orleans, LA 70112  
504-655-1897

# **SUPER SCIENCE SATURDAY**

**DINOSAURS, EARTHQUAKES AND OIL**



**March 19, 2011**

**Louisiana Children's Museum**

**11:00 AM - 3:00 PM**

**Volunteers Needed**

**Contact Tom Bergeon at 504-832-3772**

**[tom.bergeon@centuryx.com](mailto:tom.bergeon@centuryx.com)**





# NOGS PRESENTS THE *2011* ANNUAL GOLF OUTING

PROCEEDS FROM THIS EVENT WILL HELP FUND *THE BILL CRAIG MEMORIAL FUND\**.  
LAST YEAR, THE GOLF TOURNAMENT GENERATED OVER \$2,500.00. LET'S KEEP IT GOING!

A NEW AND EXCITING VENUE THIS YEAR

***TcHEFUNCTA COUNTRY CLUB***

IN COVINGTON ON **MONDAY, APRIL 18.**

THE FORMAT WILL BE A 4-PERSON SCRAMBLE W/SHOTGUN START AT **11:00AM.**

FOOD SPONSORED BY TIM KLIBERT W/ DIVERSIFIED LOGGING

REGISTRATION OPENS AT 9:30 AM WITH BRUNCH SERVED UNTIL TEE TIME. PRICE INCLUDES GREEN FEES, CART, RANGE BALLS, FOOD & DRINKS, FLIGHT, PRIZES & 2 MULLIGANS. WHAT ELSE COULD YOU POSSIBLY ASK FOR? DONATIONS OF ANY KIND ARE WELCOME. THE COST IS \$125.00 / INDIVIDUAL OR \$600/CORPORATE. HOLE SPONSORS ARE \$125.

THIS EVENT ALWAYS FILLS UP AND WE ARE LIMITED TO 120 PLAYERS ONLY. PLEASE REGISTER EARLY TO AVOID CONFUSION. REMEMBER YOU ARE NOT REGISTERED UNTIL NOGS HAS RECEIVED PAYMENT AND YOU ARE CONFIRMED BY ANNETTE. AS USUAL WE NEED VOLUNTEERS. IF YOU CAN HELP OUT YOU WILL BE TREATED TO A DAY OF FUN, FOOD, AND BE ELIGIBLE FOR SOME DOOR PRIZES. MAKE SURE YOU SUPPLY YOUR HANDICAP OR A SCORE THAT TYPIFIES A SET OF ROUNDS OF GOLF OVER RECENT TIME NO GREATER THAN 2 YEARS IN THE SPACE PROVIDED.

DONATIONS AND TO VOLUNTEER CONTACT

BOB HAFNER (504-561-8980) OR TIM KLIBERT (985-536-4143)

TO REGISTER, CONTACT ANNETTE HUDSON AT THE NOGS OFFICE, 810 UNION ST. STE. 300 NEW ORLEANS, LA 70112 504-561-8980; FAX 504-561-8988. CASH, CHECK (PAYABLE TO NOGS), VISA, MC, AND AMEX ARE ACCEPTED.

Name: \_\_\_\_\_

Company: \_\_\_\_\_

Phone: \_\_\_\_\_

Names of others in your group;

\_\_\_\_\_  
\_\_\_\_\_  
\_\_\_\_\_

V MC Disc Am Ex # \_\_\_\_\_

Exp Date \_\_\_\_\_ Total Paid \_\_\_\_\_

**NEW!**  
**AVAILABLE**  
**NOW**

# Oil & Gas Fields of South Louisiana 2010

## **26 FIELDS NEW PRODUCTION**

*BAYOU POSTILLION*

*BAYOU VILLARS*

*BLACK BAY COMPLEX*

*BLACK BAY EAST - NORTHERN BLOCK*

*BLACK BAY NORTH - EASTERN EXTENSION*

*BRETON SOUND BLOCK 53*

*CREOLE - WEST CAMERON BLOCK 2*

*EUGENE ISLAND BLOCKS 10/24*

*FRESHWATER BAYOU*

*JUDGE DIGBY*

*KENT BAYOU (ETOUFFEE)*

*LAC BLANC*

*LAKE BOEUF SOUTHWEST*

*LAKE BOUDREAUX*

*LAKE SALVADOR*

*LAKE WASHINGTON*

*MANILA VILLAGE SOUTHEAST*

*MYETTE POINT NORTHWEST*

*PATTERSON*

*PINE PRAIRIE*

*PORT HUDSON*

*RAMOS (LILY BOOM)*

*RIGHTHAND CREEK*

*SATURDAY ISLAND SOUTHEAST*

*STELLA*

*THIBODAUX AND ROUSSEAU*

*WEST COTE BLANCHE BAY*



## **CD VERSION LOADED WITH DETAILS AND FEATURES**

*GEOLOGY, GEOPHYSICS, MAPS, X-SECTIONS,  
LOGS, STRAT AND PALEO*

*IN COLOR!*

*UPPER MIOCENE  
THROUGH CRETACEOUS TUSCALOOSA*

*EXCLUSIVE IN-DEPTH  
EXPLORATION-ECONOMICS ANALYSIS OF  
SOUTH LOUISIANA*

*VALUABLE REFERENCE FOR  
EXPLORATIONISTS EVERYWHERE*





# Order Form

## Oil & Gas Fields of South Louisiana 2010 Full-Color CD-ROM Edition

QUANTITY	ITEM	PRICE	EXTENSION
	CD-ROM EDITION - FULL COLOR - PC OR MAC	\$75.00	
	POSTAGE AND HANDLING		
		TOTAL	

POSTAGE & HANDLING RATES	
NUMBER OF CDs	ADD TO ORDER
1	\$7.00
2-5	\$11.00
5-10	\$16.00
10-20	\$20.00

SHIPPING ADDRESS			
NAME			
ORGANIZATION			
STREET OR PO BOX			SUITE OR APT
CITY	STATE	ZIP	
PHONE			

PAYMENT	INDICATE PAYMENT TYPE: CHECK <input type="checkbox"/> AMERICAN EXPRESS CARD <input type="checkbox"/> VISA CARD <input type="checkbox"/> MASTERCARD <input type="checkbox"/> DISCOVER CARD <input type="checkbox"/>			
CARDHOLDER'S NAME				
CREDIT CARD NUMBER	<input type="text"/>	<input type="text"/>	<input type="text"/>	<input type="text"/>
	EXPIRATION DATE MM/YY	<input type="text"/>	SECURITY # (BACK OF CARD)	<input type="text"/>
SIGNATURE				
STREET OR PO BOX				
CITY	STATE	ZIP		
PHONE				

MAIL THIS FORM AND CHECK, PAYABLE TO "NOGS", OR CREDIT CARD INFORMATION TO:

**NOGS**  
**P.O. BOX 50089**  
**NEW ORLEANS, LA 70150-0089**

FOR NOGS OFFICE USE	
NUMBER OF COPIES SOLD THIS ORDER	
DATE COMPLETED	

## South Louisiana and Offshore Exploration and Production Activity

### South Louisiana and Offshore GOM Exploration and Production Activity

Lafayette District, Onshore Area and Offshore Area

By Carlo C. Christina

**BREAKING NEWS**—Leasing activity throughout the Florida Parishes is making headline news again. As reported in the Baton Rouge Morning Advocate, February 13, more than 500,000 acres have been leased, with landowners earning \$100 to \$150 an acre, with 1/6 base royalty. I know of one landowner who received \$300 an acre. This activity is the result of the renewed interest in the Tuscaloosa section, but this time it is the Tuscaloosa Marine Shale. On February 16, WWL-TV reported recent leasing in Tangipahoa Parish, paying \$100 an acre on approximately 12,900 acres. In our January Drill Bits column we asked, “can we expect to see more horizontal drilling in the Florida Parishes in the near future?” The answer is—the future is now.

The most significant completions in South Louisiana in recent months have been the Phoenix Exploration wells in St. Mary Parish, extending production in **Atchafalaya Bay Field** to the north, and into the Cib. op. sands. This is deeper than any previous production since the field was discovered in 1951.

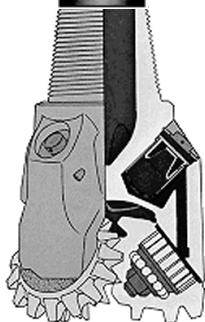
Phoenix Exploration completed the #1 SL 20035 testing 10,500 MCFGD and 108 BOPD from perforations 18,256 to 18,328 feet in the Lower Cib. op. Sand. The well was drilled to a total depth of 18,772 feet. Phoenix followed with the #1 SL 20221, flowing 15,240 MCFGD and 122 BOPD through perforations 18,194 to 18,314 feet in the Cib. op. 6 Sand. This well was drilled to 19,100 feet. Both wells encountered shut in pressures greater than 13,200 psi. The #2 SL 20035, which is located between the first two wells, is drilling ahead at 11,674 feet. It is interesting to note that Petsec Energy Ltd, an Australian independent company, has a working interest in these wells. Petsec has an office located in Lafayette, Louisiana.

Also of interest, thirteen new leases were taken in the La State Mineral Board’s January Lease Sale in and around the new Phoenix wells. The leases were taken in the name of Theophilus Oil & Gas & Land Services, LLC, a lease broker in this area. Theophilus exposed \$1,835,499 to acquire 4553.62 acres, which was 83.3% of the money exposed at this sale. Other than these tracts, \$366,377.68 was bid on all other winning tracts. The leases were acquired averaging more than \$400 an acre with 25% royalty.

### NEW LOCATIONS SINCE LAST REPORT

**Beauregard Parish** continues to attract drilling activity, with 5 new locations staked in the past month. The new locations are as follows:

- In **Fields Field** El Paso will drill the #1 Olympia in Sec. 5, T7S-R12W to a projected depth of 15,100 feet.
- El Paso has staked a location **Shoats Creek Field** for the #1 Fisher-Lindsey in Sec. 8, T7S-R12W. It is permitted to 15,221 feet.
- El Paso will drill a 15,000’ test, the #2-20 U WX, Olympia, in **West Dequincy Field** in Sec. 20, T7S-R11W.
- Mid States has permitted 2 wells in **South Bear Head Creek Field**. The #8-33 Musser-Davis is located in Sec 33, T6S-R11W. It is permitted to 15,035 feet and is drilling below 7100 feet.
- In **South Bear Head Creek**, the Dahlquist #1-6, Mid States has a proposed 17,000’ test at a location in Sec. 6-T7S-R11W.



**South Bear Head Creek Field** was discovered in 1958 and produced 5.6 million barrels of oil, and 11.9 billion cubic feet of gas since 1977, when the State Department of Natural Resources began making digital production data available. However, in the past 4 years the field has produced 1.8 million barrels of oil, or 33% of the previous 34-year total. Likewise, in the past 4 years the field has produced 4.7 billion cubic feet of gas, or 49% of the previous 34-year total.

Additional locations of interest include:

- ▲ In **Deep Lake Field**, Cameron Parish, Walter Oil & Gas will drill #1 SL 20350 in Sec. 5, T16S-R5W to a projected depth of 14,472 feet.
- ▲ In Vermilion Parish, **Maurice Field**, CEL Properties will drill a 15,000' test in Sec. 35, T10S-R3E.

#### COMPLETIONS:

Mid States has recently completed the Forestar Minerals #1-12 in **North Gordon Field**. The well was completed in the Lower Wilcox, flowing 819 MCFGD and 2 BOPD through perforations 15,896 to 15,960 feet, (OA).

Hunt Oil Co. has released the rig on the #1 Hero-Cris. I well in **Stella Field** after sticking drill pipe at total depth of 11,803 feet. (#241910)

In **Riceville Field** Murphy Exploration is waiting on a completion rig on its #1 John A. Baker in Sec. 26, T11S-R2W. The well was drilled to a total depth of 17,072 feet in the Miogyp. Res. A.

#### OFFSHORE—

##### GOM ACTIVITIES

By Al Baker

The Blackbeard East exploratory well has become the first Gulf of Mexico shelf or deepwater well to encounter hydrocarbon-bearing sands in the **Oligocene Frio** formation below 30,000 feet. As of January 18th, the well, which is situated in 80 feet of water on South Timbalier Block 144, was drilling below 31,400 feet towards a proposed total depth of 34,000 feet.

The Frio sand section is geologically older than the drilled section at Blackbeard West (TD 32,997 feet) about 10 miles west on South Timbalier Block 168, said operator McMoRan Exploration Co. The Frio pay sands are in addition to the 178 net feet of hydrocarbons previously reported in the Miocene section above 25,000 feet in the Blackbeard East well.

Forza Operating Co. has permitted 3 wells in the rapidly developing **Creole Offshore Field in Cameron Parish**. The #4 SL 18423 is permitted to 9387 feet, and the #4 SL 18521 is projected to 9085 feet. The #5 SL 18521 is permitted to 10,020 feet. This field was one of the 26 featured field studies in the recently completed NOGS publication, "Oil & Gas Fields of South Louisiana, 2010". The Creole study, by Bill Finley, includes the history, new development, and geology of the field, along with 3 structure maps, production figures and a composite type log. Also included are copies of four eye-popping 5" logs of productive zones in the field. This publication is now available in CD form, and in paper, black and white, and in color. It can be ordered through the New Orleans Geological Society at [www.nogs.org](http://www.nogs.org). Buy it—you'll like it.

Between January 12th and February 8th, one permit has been granted on the Gulf of Mexico shelf. McMoRan Oil & Gas LLC has been given the "go-ahead" by the BOEMRE to drill their #A-9 well on Brazos Block A-23 in 134 feet of water. Since June 8th, a total of 28 new well permits have been granted on the shelf, whereas only two new well permits have been granted in deep water since October 12th, the deep water drilling moratorium lifting date.

The current BakerHughes Rig Counts indicate that there were 27 active rigs in the Gulf as of February 4th. This compares to 44 active rigs at this time last year. This 17-rig decrease represents a -38.6% decline on a year-to-year basis. According

--- continued on next page ---

## Drill Bits (continued from page 21)

to ODS-Petrodata, there are currently 62 rigs out of the 131 GOM rig fleet that are under contract, which translates to a 47.3% utilization rate. Gulf operators obviously remain frustrated with the continuation of the "permitorium" created by the BOEMRE.

### COMPLETIONS:

Clayton Williams Energy, Inc. has announced a new discovery in **Eugene Island Block 10**. The #1 SL 19720 was completed flowing 6725 MCFGD through perforations 14,304 to 14,368 feet (OA), in the Tex. L-2 Sand. The well was drilled to 14,550 feet. (#242401)

McMoRan has plugged and abandoned the #2 ExxonMobil fee in **Rollover Bayou Field** at the total depth of 17,300 feet. The well was drilled from Vermilion Block 4 to the bottom hole located in Sec 8, T17S-R1W. (#242134)

## Gulf Coast Association of Geological Societies



**Sharing knowledge to add value**

**Gulf Coast Association of Geological Societies**

**61<sup>st</sup> Annual Convention**

**October 16 – 19, 2011**

**Veracruz, Mexico**

**For more information:**

**<http://gcags2011.com>**

# SEI®

**Seismic Exchange, Inc.**

**Strategic Speculative Surveys  
Geophysical Data Marketing & Management**

**Your**  
**Full Service  
National  
Seismic Data  
Marketing Firm**

New Orleans  
Dallas  
Houston  
Denver  
Oklahoma City  
Corpus Christi  
Tulsa

201 St. Charles Avenue, Suite 4300, New Orleans, Louisiana 70170-4300  
Telephone 504.581.7153 Fax 504.581.9591  
[www.seismicexchange.com](http://www.seismicexchange.com)



**Thirty Three Countries with Land Areas Below Sea Level:** February 6, 2011 | Geology.com Did you know that 33 countries have land below sea level? Explore some of these below sea level locations in an article by Dr David Lynch accompanied by a Google map of the ten deepest. For more information go to <http://geology.com/below-sea-level>.

**The Basics of Enhanced Geothermal Systems:** What Are Enhanced Geothermal Systems? :

Enhanced geothermal systems (EGS) are engineered reservoirs created to produce energy from geothermal resources that are otherwise not economical due to a lack of fluid and/or permeability. For more information go to: <http://geology.com/energy/enhanced-geothermal-systems/>

**The 6 Myths About Oil:** By Alex Epstein Published December 29, 2010

FoxNews.com Every American consumes an average of three gallons of oil a day. Some public policy people call this reliance on oil an "addiction" - an irrational, self-destructive habit that must be broken as soon as possible. This year's BP oil spill disaster is only making the chorus to "end our addiction to oil" louder. But if we examine the most common arguments for this idea, we see that they are myths. Oil is a vital, viable, and desirable part of our energy future. For more information go to: <http://www.foxnews.com/opinion/2010/12/29/myths-oil/#ixzz1AVIyXYCe>

**When Was the Last Time Earth's Atmosphere Was Like Today's:** February 10, 2011 | National Science Foundation : "The magnitude of climate change during Earth's deep past suggests that future temperatures may eventually rise far more than projected if society continues its pace of emitting greenhouse gases, a new analysis concludes." Quoted from the NSF press release. For more information go to: [http://www.nsf.gov/news/news\\_summ.jsp?org=NSF&cntn\\_id=118363&preview=false](http://www.nsf.gov/news/news_summ.jsp?org=NSF&cntn_id=118363&preview=false)

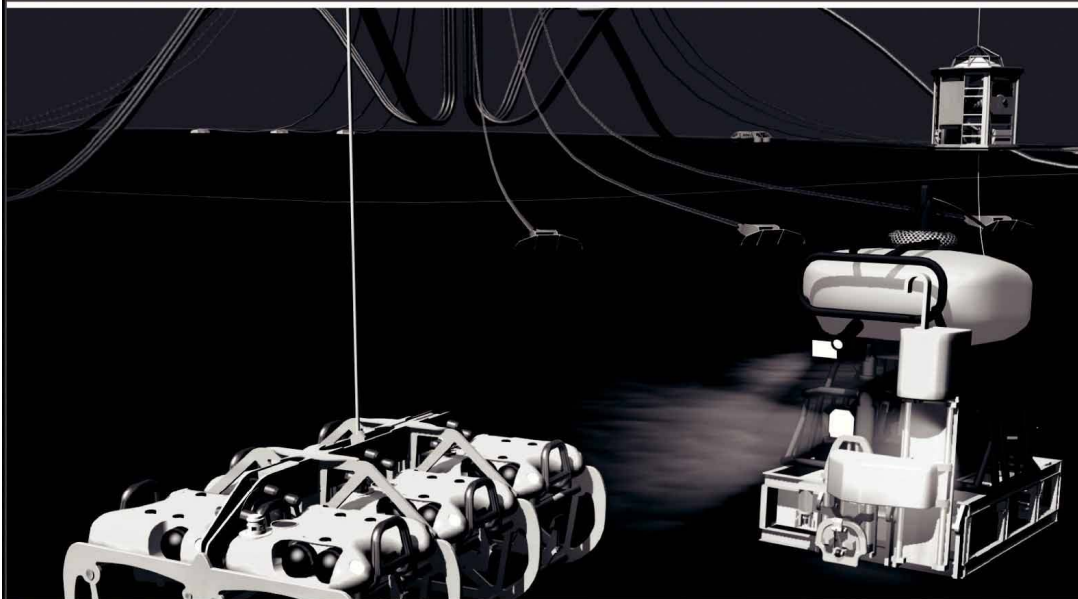
Q: How many dinosaurs can fit in an empty box ?

A: One. After that, the box isn't empty anymore!

Wiselady HA HA HA!



# Finally - An answer for getting reservoir seismic **OVER THE RESERVOIR!**



- 4C/4D Node Seismic
- ANGOLA
- GoM
- NIGERIA



**"Coming Soon to an Oilfield Near You!"**

[www.sbexp.com](http://www.sbexp.com)

**Dubai**  
T: +971 4 4271700

**Houston**  
T: +1 281 566 1666

**Oslo**  
T: +47 2240 2700

**Rio**  
T: +55 21 2494-0283

**Singapore**  
T: +65 9180 2605

**Trondheim**  
T: +47 7 3879500

RAISING  
THE **STANDARD**



100 Northpark Blvd.  
Covington, LA 70433

(985) 773-6000



**LaBay**  
Exploration Co., L.L.C.

111 Veterans Memorial Blvd.,  
Suite 1550  
Metairie, Louisiana 70005

[www.labayexploration.com](http://www.labayexploration.com)

Office (504) 371-5967  
Fax (504) 371-5969

***This advertising space is available!  
Contact the NOGS office.***

# THE NEW ORLEANS GEOLOGICAL SOCIETY MEMORIAL FOUNDATION, INC.

The Memorial Foundation is an IRS Tax Exempt Code #501 (c)(3) organization. The Federal I.D. is: 72-1220999. Please consider making a donation to the Foundation prior to the close of this year's fiscal cycle on June 30, 2011. Your individual support in any amount will help meet the IRS Guidelines for our Foundation. *Thanks!*

## \$15,000 AND ABOVE

**Olga Braunstein Succession**

**Gibbet Hill Foundation**

*In Memory of Steve & Marion Millendorf, William J. Prutzman,  
Roger G. Vincent & Ron Youngblood*

## \$10,000

**George W. Schneider, Jr. and Family**

*In Memory of George W. Schneider, Sr.  
GCAGS  
Matching funds*

## \$2,000 TO \$3,000

**NOGS Golf Tournament May 2010**

*In Memory of Bill Craig*

## UP TO \$249

**Donald I. Andrews**

*In Memory of Ray F. Havard  
In Memory of Harlan (Lanny) Northcott*

**Robert J. Ardell**

*In Memory of Al Gibeath  
In Memory of Bill Malin  
In Memory of Bob Williamson*

**Mr. and Mrs. Wesley Barton**

*In Memory of Thomas A. Cullinan*

**Abraham Biadgelgne**

**Maurice N. Birdwell**

**Irion Bordelon, Sr.**

*In Memory of Robert G. Williamson*

**Hilary James Brook**

**Robin Broussard**

**Rob Burnett**

**J. Sybil Callaway**

**Chevron**

*Matching Funds*

**Arthur F. Christensen**

**Ellen F. Clark**

**Willis E. Conatser PhD**

**Clarence F. Conrad**

**Charley Corona**

*In Memory of Professor Hubert Skinner*

**Trudy and Charley Corona**

*In Memory of Erik Mason*

**Michael A. Danahy**

**M. R. "Bob" Douglass**

*In Memory of Robert G. Williamson*

**Merle J. Duplantis**

**Dr. Brooks B. Ellwood**

**Parrish N. Erwin, Jr.**

**Exxon Mobil Matching Funds**

**Michael N. Fein**

**Laurens Gaarenstroom**

**Sherwood M. Gagliano**

**Arthur J. Garden**

**David Garner**

## \$7,000 TO \$9,000

**Paul C. McWilliams**

## \$250 TO \$499

**Carlo C. Christina**

*In Memory of Al Gibeath  
Tom Klekamp  
Richard G. Klibert*

**Larry Galloway**

**Peter G. Gray**

*In Memory of Robert G. Williamson*

**Bret Hampton**

*Angela M. Hessler  
Through the Chevron Humankind  
Program*

**Bernard L. Hill, Jr.**

*In Memory of Robert E. Osborne*

**Dan E. Hudson**

**Kenneth Huffman**

**Jeffrey E. Jandegian**

**Paul Jurik**

*In Memory of Thomas A. Cullinan*

**Reuben J. Klibert, Jr.**

*In Memory of Dale Klibert*

**John C. Kucewicz, Jr.**

**John C. Langford**

**Jeannie F. Mallick**

**Paul C. McWilliams**

*In Memory of Russell D. "Rusty" Morris*

**New Orleans Geological Auxiliary**

*In Memory of Dee Baysinger*

*In Memory of Doris Meltzer*

*In Memory of Terri Smith*

**Nexen Petroleum USA Inc. Matching Funds**

**Russell H. Nordwell**

**William J. O'Leary**

**Richard A. Olsen**

*In Memory of Richard W. Boebel*

*In Memory of William J. Malin*

*In Memory of Robert W. Sabate'*

**Teresa M. O'Neill**

*In Memory of Brian J. O'Neill*

**Linda and Bill Peirce**

**Edward B. Picou Jr.**

*In Memory of William J. Malin*

*In Memory of Robert G. Williamson*

# FONO FUND

The FONO Fund accepts contributions that are invested and the income dedicated to assure sufficient financial resources will always be available to maintain the NOGS business office. Contributors are reminded that donations to the FONO Fund are not covered by the IRS 501 (c)(3) tax exempt classification and should be reported as a business expense on your IRS tax report.

## \$500

**James A. Hartman**

*In Memory of Hal Hudson*

*In Memory of Robert G. Williamson*

## UP TO \$250

**Donald I. Andrews**

**Alfred H. Baker Jr.**

**Joseph E. Boudreaux**

**Hillary James Brook**

**Jack G. Bryant**

**J. Sybil Callaway**

**Arthur F. Christensen**

**Richard P. Colomes**

**Richard P. Colomes**

**Clarence F. Conrad**

**Michael A. Danahy**

**John Dombrowski**

**Merle J. Duplantis**

**Richard A. Edmund**

**Mark J. Gallagher**

**William J. Furlong**

**Duncan Goldthwaite**

**James A. Hartman**

*In Memory of Hal Hudson*

*In Memory of Robert G. Williamson*

**Bernard L. Hill, Jr.**

**Thomas A. Hudson**

**Kenneth Huffman**

**C. M. (Max) Jacobs**

**Robert M. Jemison, Jr.**

**Tom Klekamp**

**Louis Lemarie'**

**William J. Malin**

**Jeannie F. Mallick**

**George M. Markey, Jr.**

**James A. McCarty**

**Louis L. McCormick**

**Robert G. Murphy**

**William J. O'Leary**

**Richard A. Olsen**

**Erwin Parrish, Jr.**

**Linda and Bill. Peirce**

**Edward B. Picou, Jr.**

**Richard D. Provensal**

**James P. Raymond, Jr.**

**Brenda E. Reilly**

**C. R. Rondeau**

**George D. Severson**

**Rudolf B. Siegert**

**Richard J. Stancliffe**

**Bryan P. Stephens**

**Raymond Stephens**

**Roy C. Walther**

**Robert C. Weissmann**

**William M. Whiting**

**James W. Yeldell, Jr.**

**Jim Zotkiewicz**

CONTRIBUTIONS FOR BOTH FUNDS THROUGH DECEMBER 16, 2010.  
DONATIONS ARE LISTED FOR ONE YEAR.

**Richard D. Provensal**

*In Memory of Thomas H. Philpott*

**Scott Purinton**

**Brenda E. Reilly**

**Mrs. William B. Rodan**

*In Memory of Robert G. Williamson*

**Robert T. Sellars, Jr.**

*In Memory of Robert G. Williamson*

**George D. Severson**

**Rudolph B. Siegert**

**Dr. J. O. Snowden**

**Gary L. Spraul**

*In Memory of H. Grady Collier*

**Raymond O. Steinhoff**

*In Memory of Harold E. Vokes*

**Roy C. Walther**

**William M. Whiting**

*In Memory of William J. Malin*

**Armour C. Winslow**

*In Memory of Rita Menzel Winslow*

**Frances A. Wiseman**

*In Memory of Steve Widdicombe*

**James W. Yeldell, Jr.**

**Jim Zotkiewicz**

*In Memory of Bill Craig*

**Chevron**

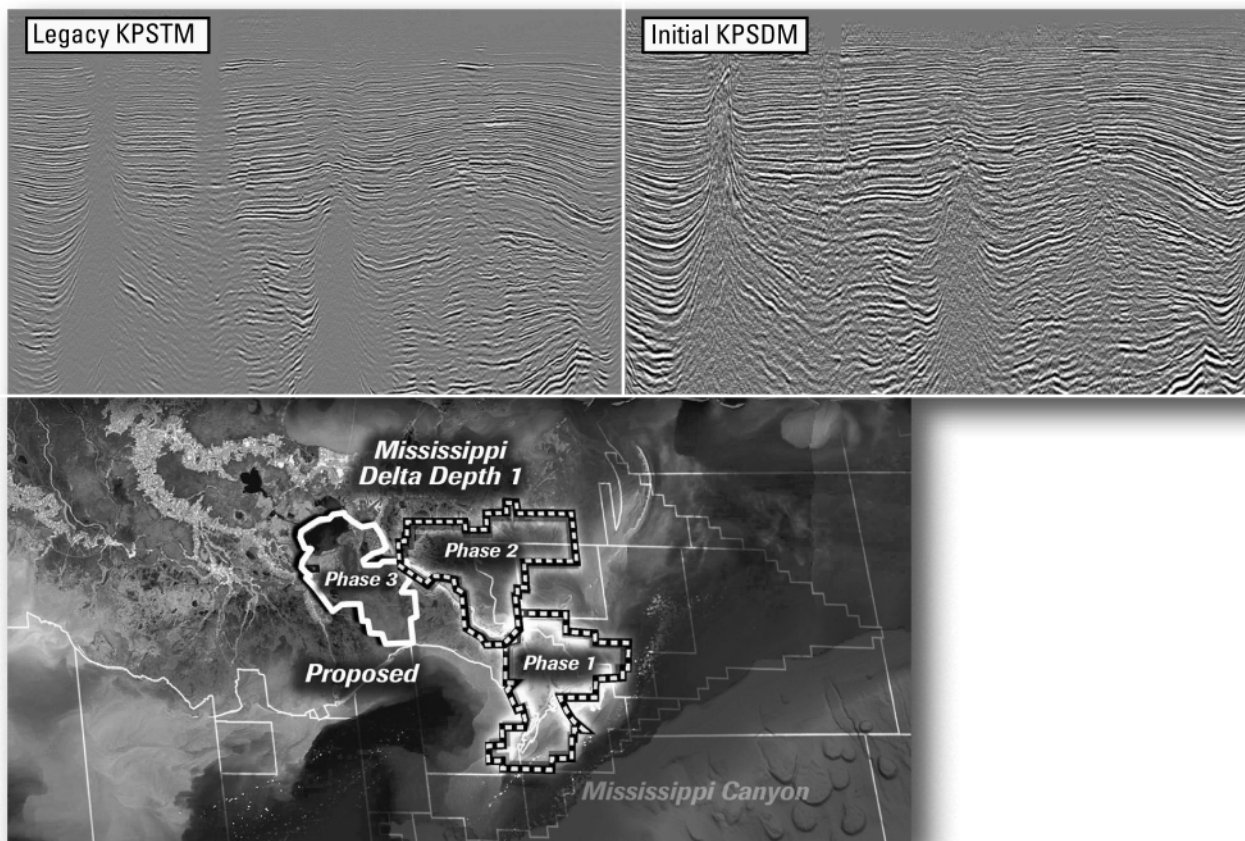
**Bernard L. Hill, Jr.**

**John C. Scheldt**

**Candace V. Strahan**

*In Memory of James Strahan*

## Improved depth imaging in the Mississippi Delta



In the Mississippi Delta region, WesternGeco is utilizing state-of-the-art processing designed to eliminate fault shadows and enhance deep imaging. The Mississippi Delta - Depth 1 survey, now in progress, incorporates the processing and remigration of twelve legacy surveys covering 1,855 square miles. High-quality time imaging using relative amplitude anisotropic Kirchhoff prestack time migration will be followed by improved structural imaging utilizing anisotropic Kirchhoff prestack depth migration.

To learn more about this and other Multiclient products, call +1 713 689 1000.

[www.multiclient.westerngeco.com/la](http://www.multiclient.westerngeco.com/la)

**Multiclient to the Power of E**



# New Orleans Geological Auxiliary News

The luncheon at Café Adelaide was very well attended, and the food was delicious. A huge "Thank You" goes to Jean Jones, Elizabeth Furlong and Judy Sabate for helping to co-chair this event. Susan Langinhenning, Fashion writer from the Times-Picayune, was our Guest Speaker. Consequently, I am not sure whether we all attended for the food, for the fellowship or to learn something new regarding our outer appearance! For whatever reason, it was a lovely luncheon with a great turnout.

Shirley and Clarkson Moseley have graciously offered their Coliseum Street home for our Spring Social this year on April 16th. With Josie Markey, Mary Walther and Trez Zotkiewicz co-chairing this year's Social, it is sure to be an event no one will want to miss. This particular party provides our members, along with spouses and/or guests, a special time for socializing and catching up with each other in a beautiful setting. I guess you could call this our "Post-Christmas Party", where we can show our NOGS members how to really throw a party. Please R.S.V.P. as soon as possible, if you have not done so by now.

Our sincerest and deepest sympathies are extended to Carol and Don Andrews for the loss of their son, Larry. Please be assured of our love and support for you both.

In choosing a special member to highlight this month, Carol came to mind for several reasons. The duties Carol has volunteered for since 1956, when Carol became a member, are too numerous to name and would require an entire page in the NOGS LOG. Here are just a few to mention: Director, President, Photographer, Parliamentarian, Co-Chairmen of numerous Luncheons and Socials. However, what strikes me most is her gift of "Hospitality"! Without a doubt, Carol is the most hospitable, kind, gracious and unpretentious woman that I along with others have had the good fortune to meet, know and love. Thank you Carol for your service; you are an inspiration to us all.

Also, coming in May will be our Installation Luncheon at Southern Yacht Club. More on that next month!

Susie Baker

## *NOGA Application Form*

*Dues: \$25.00*

*Name* \_\_\_\_\_

*Home Address* \_\_\_\_\_

*Home phone* \_\_\_\_\_

*Husband's Name* \_\_\_\_\_

*Husband's Company* \_\_\_\_\_

*Please make check payable to New Orleans Geological Auxiliary and  
mail with application to:* *Judy Lemarie'*

*# 2 Yosemite Dr*

*New Orleans LA 70131*

BOEMRE Director Bromwich to Address

API/Delta Chapter Luncheon

Meritorious Service Awards Luncheon

Tuesday, March 22, 2011

12:00 PM doors open, 12:30 program begins

\$45 for a single registrant, \$450 for a table of 10

\$30 for students with ID

Only Online payments are accepted.

Go to: [http://www.api-delta.org/register.asp?event\\_id=22](http://www.api-delta.org/register.asp?event_id=22)

Key Note Speaker: Mr.  
Michael R. Bromwich

Director: Bureau of Ocean  
Energy, Management  
Regulation and Enforcement  
(BOEMRE)



# SAI

**Sydboten & Associates, Inc.**  
*Geological and Geophysical Consulting,  
3-D Seismic Interpretation*

**Ben D. Sydboten, Jr. CPG**

124 Heymann Blvd., Suite 202

Lafayette, LA 70503

www.saigeoconsulting.com

Office (337) 234-5288

Cell (337) 234-5491

## ATWATER CONSULTANTS, LTD.

REGISTERED AND CERTIFIED PETROLEUM PROFESSIONALS

GEOLOGICAL, ENGINEERING, GEOPHYSICAL,  
TRAINING AND EXPERT WITNESS SERVICES

3525 Hessmer Ave, Ste 304

Metairie LA 70002

Tel. (504) 581-6527

Fax (504) 524-7798

*"Serving The Oil & Gas Industry Since 1983"*

Geological,  
Geophysical &  
Land Drafting



Anthony Catalanotto  
*President*

Stefani Foster  
*Drafting & Design*

**Geo-Draft, Inc.**

*A Professional Drafting & Graphics Firm*

3349 Ridgely Drive • Suite 202 • Metairie, LA • 70002

Office: (504) 836-2882 Fax: (504) 836-2877 (Cell) (504) 481-7291

E-Mail: geodraft@bellsouth.net

Website: www.geodraftinc.com

**NOGS thanks our  
sponsors for their support:**

**GOLD LEVEL SPONSORS:**

**CHEVRON**

**LA BAY EXPLORATION CO, LLC.**

**SPECIAL THANKS TO  
DIVERSIFIED WELL LOGGING**

## NORTHCOAST OIL COMPANY

610 E. Rutland St.  
Covington, LA 70433

(985) 898-3577

(985) 898-3585 FAX

**Jack M. Thorson**

**Eric C. Broadbridge**

**J. Daryl Gambrell**

**Raymond W. Stephens**

(832) 242-6000 (O)

(713) 917-0493 (O)

(504) 931-7506 (C)

johnjurasin@jurasinoilgas.com

## **JURASIN OIL & GAS**

9700 Richmond Ave., Suite # 124

Houston, TX 77042-4821

JOHN M. JURASIN  
President

Cert. Pet. Geologist #4284  
Cert. Prof. Earth Scientist #1961

### **Collarini Energy Staffing**

Full-Time and Temporary Personnel

Facilities • Drilling • Production • Reservoir Engineering  
Land and Legal • Geoscience • Information Technology •  
Health and Safety • Management • Supply Chain  
Accounting • Administrative Support

10497 Town and Country Way, Suite 950  
Houston, Texas 77024

832-251-0553



www.collarini.com

### **Collarini Associates**

Reservoir Engineering  
Oil & Gas Property Evaluation  
3-D Seismic Interpretation  
Integrated Field Studies

832-251-0160

504-887-7127

Houston

New Orleans

***This advertising space is available! Contact the NOGS office.***

# THE NEW ORLEANS GEOLOGICAL SOCIETY, INC.

810 UNION STREET SUITE 300, NEW ORLEANS, LA 70112

TELEPHONE: (504) 561-8980

FAX: (504) 561-8988

E-MAIL: INFO@NOGS.ORG

WEBSITE: WWW.NOGS.ORG

## MEMBERSHIP APPLICATION

Name (First, middle intital, last + suffix, if any)

Date

Company

Title

( )

Phone Number

( )

Fax Number

E-mail Address

Business Address (PO Box/Street, City, State, Zip, Country)

Home Address (Street, City, State, Zip, Country)

( )

Phone Number

Preferred Mailing Address (check one): Office \_\_\_\_\_ or Home \_\_\_\_\_

Spouse's Name

Professional Society Memberships (AAPG\*, AIPG, GSA, etc.) \* Please indicate AAPG member category

College/University:

Degree

Year

Major

Explain, in brief, your experience in industry, government and/or education:

**Please mark appropriate classification:**

☐ New Member

☐ Reinstatement

☐ Renewal

**ANNUAL DUES: \$25.00 FOR ACTIVE OR ASSOCIATE**

**\$12.50 STUDENT MEMBERSHIP\***

\*No intial dues for students in the Sponsorship Program

**-- Please mail application to the NOGS office with check payment or Visa/MasterCard/American Express acct# and exp. date --**

**Committee preference** (please indicate choices):

☐ AAPG Student Chapter

☐ Advertising-LOG

☐ Awards

☐ Ballot

☐ Best Paper

☐ Continuing Education

☐ Employment Counseling

☐ Entertainment

☐ Environmental

☐ External Affairs

☐ Field Trip

☐ Finance & Audit

☐ Historical

☐ Membership/Directory

☐ Memorial Foundation

☐ NOGS LOG

☐ New Geoscientists (NGNO)

☐ Nominating

☐ Non-Technical Education

☐ Photography

☐ Program/Luncheon

☐ Publication Sales

☐ School Outreach

☐ Scouts: Boy and Girl

☐ Sponsorship

☐ Technical Projects

☐ Website

<p><b>ANSYTHE</b> Donald I. Andrews 504-887-3432</p> 	 <p><b>GEOLOGY ENVIRONMENTAL MANAGEMENT</b></p> <p><b>GEM Consulting LTD</b> Michael Louis Merritt admin@gemconsultingltd.com 1451 Applewood Road • Baton Rouge, LA 70808</p>
<p><b>THE BOEBEL COMPANY</b> Oil and Gas Investments 170 Broadway Street, Suite 321 New Orleans, LA 70118 (504) 866-4313</p>	<p><b>H. WARREN BELL</b> Oil and Gas Exploration 2500 Tanglewilde, Suite 485 Houston, TX 77063-2126 Bus (713) 266-7297 Fax (713) 266-7298</p>
<p><b>BOO-KER OIL &amp; GAS CORP.</b> Gray S. Parker 826 Union, Suite 300 New Orleans, LA 70112 Bus. (504) 581-2430 Fax (504) 566-4785</p>	<p><b>PHELPS GEOSCIENCE</b> Onshore Gulf of Mexico Geology and Geophysics Prospect Generation and Evaluation Houston, TX jsfphelps@yahoo.com (281) 398-5208</p>
<p><b>C &amp; R EXPLORATION, INC.</b> Carlo C. Christina Lawrence G. Ringham</p>	<p><b>RAFIDI OIL AND GAS, INC.</b> Jaser N. Rafidi, President 4415 Shore Dr., Suite 202 Metairie, LA 70006 Bus. (504) 722-2942 Fax (504) 888-5539; Res. (504) 888-1661</p>
<p><b>C. R. RONDEAU</b> Petroleum Geologist 119 W Southland Ave. Ironwood, MI 49938 Res. (906) 932-4692</p>	<p><b>ROY C. WALTHER</b> Petroleum Geologist 2421 Prancer Street New Orleans, LA 70131 Bus. (504) 392-8513 Res. (504) 392-9332</p>
<p><b>CLASSEN EXPLORATION, INC.</b> James S. Classen Looking for close in deals P.O. Box 140637 Boise, ID 83714 Bus. (208) 854-1037 Fax (208) 854-1029 classenllc@msn.com</p>	 <p>625 E. Kaliste Saloom Lafayette, LA 70508 16800 Greenspoint Dr., Suite 225-S Houston, TX 77060 1100 Poydras St., Suite 1050 New Orleans, LA 70163 www.StoneEnergy.com</p>
<p><b>D-O-R ENGINEERING, INC.</b> 3-D and Geoscience Services 6161 Perkins Rd. P O Box 80812 Bus : (225) 765-1914 Baton Rouge LA 70898</p>	<p><b>TONY CAROLLO</b> Consulting Geologist Unitization Geosteering Field Studies 1701 Peach Street Metairie, LA 70001 Bus. (504) 885-0004 Res. (504) 885-6829</p>
<p><b>EDWARD B. PICOU, JR.</b> Consulting Micropaleontologist - Retired 228 St. Charles Ave., Suite 1330 C New Orleans, LA 70130 Bus. (504) 529-5155 Res. (504) 282-3096</p>	<p><b>Zot Oil &amp; Gas, LLC</b> Jim Zotkiewicz Prospect Generation and Evaluation 3200 Ridgelake Dr. Suite 207 Metairie, LA 70002-4930 Business: 504.831.4694 Email: jimzot38@zotoil.com</p>

## March Luncheon Speaker Bio (continued from page 7)

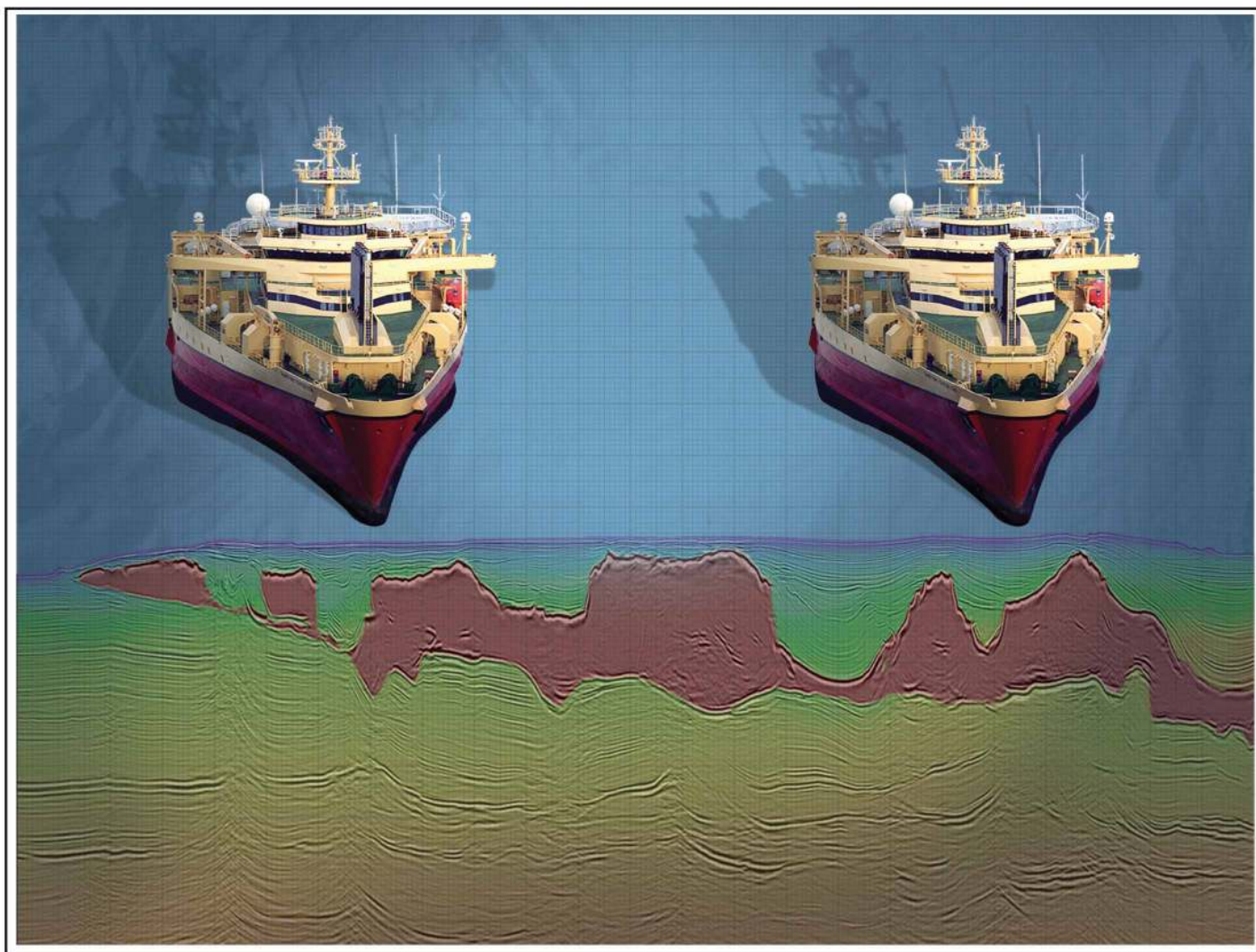
2010) and of the Handbook of Mineralogy (2006-2010). He was editor of "The Lattice" - newsletter of the Mineralogical Society of America (1995-2000). In 2000, he received the "Outstanding Service Award" from the Mineralogical Society of America. He was on the Board of Directors of DOSECC (Continental Scientific Drilling Program - 1998-2001). At LSU he was the chair of the LSU University Assessment Council (2006-2010) - tasked with issues of university accreditation. He has received a number of awards related to research and teaching at LSU including the Distinguished Faculty Award (2009), the Tiger Athletic Foundation President's Award (2005), LSU Alumni Association Faculty Excellence Award (1999) and the LSU Faculty Award for classroom instruction (Student Government Association - 1991).

## FROM THE EDITOR

*Editor's Note: In our February 2011 NOGS LOG we misidentified one of the Christmas party pictures.*

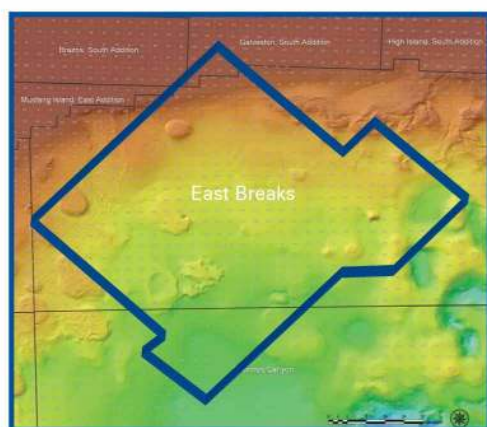
*The couple identified as Arleen and Martin Falchhook is actually Josie and George Markey along with Tatjana Eustis. We apologize for this error; please excuse our mistake.*





## Crystal III, East Breaks

## MultiClient Wide Azimuth



- **Size** - 480 OCS blocks
- **Focus** - Sub-Salt Miocene & Paleogene
- **Technology** - TTI Beam and RTM Imaging
- **Delivery** - Available Q4 2010

Houston  
Tel: +1 281 509 8000  
Fax: +1 281 509 8500

Oslo  
Tel: +47 67 52 6400  
Fax: +47 67 52 6464

London  
Tel: +44 1932 37 6000  
Fax: +44 1932 37 6100

**A Clearer Image**  
[www.pgs.com](http://www.pgs.com)





## NEW ORLEANS GEOLOGICAL SOCIETY



810 Union Street, Suite 300  
New Orleans, LA 70112-1430

# WWW.NOGS.ORG

### MARINE PROPERTIES, LLC BERKSHIRE EXPLORATION CO.

MONTE C. SHALETT, CPL, PRESIDENT

3030 Lausar Street  
Metairie, LA 70001-5924

BUS. (504) 831-7779  
FAX. (504) 831-8315

### PCI

### Paleo Control, Inc.

Houston, Texas  
713-849-0044

Drilling Wells, Studies and Data Base

Loyd Tuttle

Frio, SE Texas

Bob Liska

Wilcox, S and SE Texas

Jim Thorpe

Miocene and Cam-Miogyp



## SEE YOUR DATA IN A WHOLE NEW LIGHT!

Take the pressure out of exploration  
and drilling by seeing what you  
are going to encounter.



### eSeis

www.e-seis.com  
713.531.1447

- Lithology & Fluids
- Depositional Facies
- Pore Pressure from V & Q
- Well Planning Consultation

