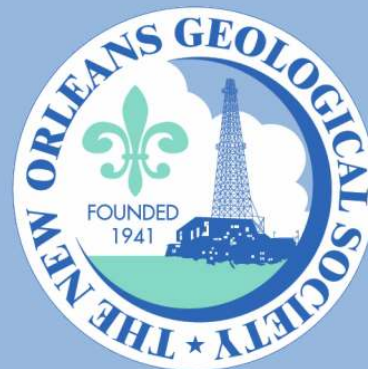


NOGS LOG



June 2011

Volume 51, Number 12

Upcoming Events and Activities

June 6 - NOGS Luncheon

*** At the Holiday Inn Downtown Superdome ***
\$2.00 validated parking in hotel garage

Holiday Inn Downtown Superdome. Guest speaker Kimberly L. Faulk, Geoscience Earth & Marine Services (GEMS) in Houston, will present "Marine Archaeology in the Gulf of Mexico."

(See page 7 for Abstract and Biography)

HOLIDAY INN DOWNTOWN SUPERDOME

Check with concierge or
front desk for location

Lunch served at 11:30am

ADMISSION:

with reservation \$30.00

without reservation \$35.00

Student Member with reservation Free

June 10 - Coastal Restoration Forum: Our Wetlands, Our Future

Free symposium. 8:30am - 3:00pm, Our Lady of Holy Cross College.
See announcement on page 8.

June 20-24 - SIPES 48th Annual Meeting

Jackson Hole, Wyoming. Info: www.sipes.org

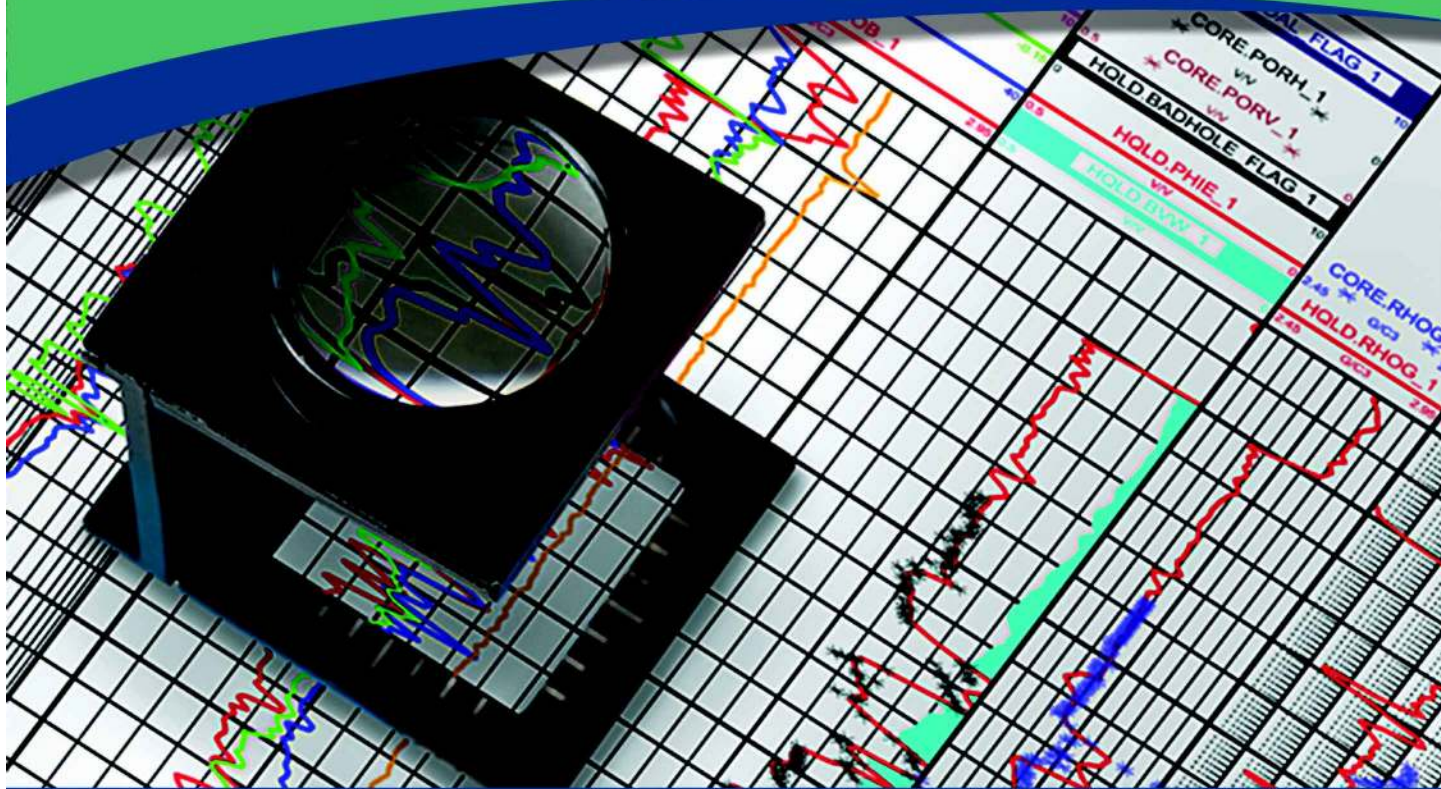
June 23-25 - Oil History Symposium & Fieldtrip

Marietta, Ohio. Info: www.petroleumhistory.org

July 11 - NOGS Luncheon

Holiday Inn Downtown Superdome. Guest speaker David Garner, Shell Exploration & Production Co. in New Orleans, will present: Integrating Technologies to Unlock New Volumes in a Mature Deepwater Gulf of Mexico Field."

Magnified Well Data Quality



That is TGS' Focus

Save time and money – TGS has already closely examined and processed well data for standardization and quality assurance, backed by a focused customer support team.

Complete Curve Digital Wells

LAS and LAS Plus library expanding across North America

Spatially Accurate Directional Surveys

Directional Survey Plus data thoroughly researched and reprocessed

Nationwide Production Data

Daily incremental updates available with visualization software

Formation Tops Picked

Available in major basins across North America

Find out more at www.tgsnopec.com/welldata or contact TGS Well Data at 281-319-4944 or WellData@tgsnopec.com



Geophysical
Products



Geological
Products



Imaging
Services



www.tgsnopec.com

NOGS Office

Office Manager: Annette Hudson

Office Hours: 8:30 a.m. – 3:30 p.m. on Monday-Wednesday-Friday

Tel: 504-561-8980 □ Fax: 504-561-8988

E-mail: info@nogs.org □ Website: www.nogs.org

The office is located at Suite 300, 810 Union Street, New Orleans, LA 70112.

Correspondence and all luncheon reservations should be sent to the above address.

Sent to press on May 16, 2011.

**BOARD OF DIRECTORS**

President	Rick Kear
Vice President	Eric Zimmermann
Secretary	Penne Rappold
Treasurer	Will Jorgensen
President-Elect	Bob Hafner
Editor	Fran Wiseman
Director 2011	Scott A. Wainwright
Director 2012	Arthur H. Johnson
Director 2013	Jack Langford

Company

Schlumberger
LLOG Exploration
Shell
Shell
BOEMRE
Bret Exploration Co Inc
Hydrate Energy International
J C L Services

Phone

504-592-5376
985-801-4338
504-728-4338
504-728-6339
504-736-2912
504-889-2700
504-464-6208
985-764-2527

E-mail

kearl1@new-orleans.oilfield.slb.com
ericz@llog.com
prappold@gmail.com
william.r.jorgensen@shell.com
ottohaf@aol.com
frances.wiseman@boemre.gov
scott_wainwright@hotmail.com
artjohnson51@hotmail.com
jclangford@latterblum.com

COMMITTEE

AAPG Delegates
AAPG Student Chapter
AAPG Student Chapter
Advertising-Log
Auditing
Awards
Ballot
Best Paper
Continuing Education
Employment Counseling
Entertainment
Environmental
External Affairs
Field Trip
Finance and Investment
Historical
Membership/Directory
New Geoscientists (NGNO)
Nominating
Non-Technical Education
Office Operations
Publications Sales
Photography
School Outreach
Scouting
Sponsorship/Houston
Technical Projects
Ad Hoc Committee on
University Support

Chairperson

William M. Whiting
Michael Hopkins
Andrew Ranson
Nicole Cammarata
Chuck Holman
Michael N. Fein
Will Jorgensen
Brenda Reilly
TBA
Bob Hafner
Daisy Pate
Michael A. Fogarty
David Garner
Will Jorgensen
Edward B. Picou, Jr.
Carlo C. Christina
Tom Klekamp
TBA
Mike Ledet
Duncan Goldthwaite
Tom Klekamp
Edward B. Picou, Jr.
Tom Klekamp
Thomas C. Bergeon
Carol Rooney
David E. Reiter
TBA
Michael J. Gallagher

Consultant
Tulane University
UNO
Schlumberger
Independent
W & T Offshore
Shell
Energy Partners Ltd.
Corps of Engineers
Sylvan Energy, LLC
Shell
Shell
Consultant
Retired (C & R Expl.)
Amber Resources

504-947-8495
228-209-2262
337-578-5587
504-592-5317
504-891-4878
504-210-8148
504-728-6339
504-799-4811
504-957-4372
603-523-4808
504-728-6154
504-728-6339
504-529-5155
985-845-4046

bootscon@aol.com
mhopkins@tulane.edu
aranson@uno.edu
ncamarata@slb.com
charleswholman@bellsouth.net
mikef@wtoffshore.com
william.r.jorgensen@shell.com
breilly@eplweb.com

ottohaf@aol.com
daisy.pate@gmail.com
mike.a.fogarty@gmail.com
David.Garner@shell.com
william.r.jorgensen@shell.com
epicou@bellsouth.net
Carlocc398@aol.com
klekamp@bellsouth.net
mikeledet@cox.net
DGldthwt@aol.com
klekamp@bellsouth.net
epicou@bellsouth.net
klekamp@bellsouth.net
Tom.bergeon@centuryx.com
carolbrooney@aol.com
david.reiter@enipetroleum.com

Michael.Gallagher@enipetroleum.com

NOGS LOG STAFF

Editor	Fran Wiseman	BOEMRE
Editor-Elect	David Tatum	Chevron
Auxiliary	Susie Baker	NOGA
Info Tidbits	Fran Wiseman	BOEMRE
Drill Bits	Carlo C. Christina	Retired (C & R Expl.)
Webmaster	Edward B. Picou, Jr.	Consultant
Layout	Jannette Inc.	

504-736-2912	nogseditor@gmail.com
985-773-6477	davidtatum@chevron.com
504-466-4483	abaker1006@aol.com
504-736-2912	nogseditor@gmail.com
504-529-5155	drillbits81@yahoo.com
	epicou@bellsouth.net

NOGS AUXILIARY

Officers		Phone	Directors	Year	Phone
President	Jean Jones	504-738-8091	Peggy Campbell	2009-11	504-283-2505
1st Vice-President	Alma Dunlap	504-737-2678	Ruth Grimes	2009-11	504-392-8103
2nd Vice-President	Judy Sabatè	504-861-4335	Gerry Waguespack	2009-11	504-737-0532
Secretary	Peggy Rogers	504-392-6323	Carol Andrews	2010-12	504-887-3432
Treasurer	Judy Lemarie'	504-393-8659	Susie Baker	2010-12	504-466-4483
Parliamentarian	Beverly Kastler	504-286-0879	Joan Collier	2010-12	504-833-1738
Member-at-Large	Linda Peirce	504-393-7365			

--- NOGS Contact List continued on page 10 ---

Get More from your Core

With reservoirs becoming increasingly complex, you need the most accurate information you can get to better understand your reservoir.

Weatherford Labs helps you get more from your core by combining an unsurpassed global team of geoscientists, engineers, technicians and researchers with the industry's most comprehensive, integrated laboratory services worldwide. From core analysis, sorption, geochemistry and isotopic composition to detailed basin modeling and comprehensive data packages, we provide you with real reservoir rock and fluid information that hasn't been distilled by a simulator or iterated by software.

We call it **"The Ground Truth™"** – giving you the accurate answers you need for better reservoir understanding. You'll call it a better return on your reservoir investment. To learn more, contact TheGroundTruth@weatherfordlabs.com.



© 2011 Weatherford. All rights reserved. Incorporates proprietary and patented Weatherford technology.



**Shell has worked in partnership
with the NOGS for many years, and
is proud to count the society among
its closest business associates.**

The New Orleans Geological Society was organized in 1941 to foster scientific research and advance the science of geology. Particular emphasis is laid on the exploration for and production of petroleum and natural gas. Related objectives include encouraging the adoption of improved methods of exploration, disseminating pertinent geological and technological data, and maintaining a high standard of professional conduct among its members.

www.shell.com/us/sepco

**It's no illusion...
Core Lab offers everything you need.**



©2009 Core Laboratories. All rights reserved.

Unconventional resource exploitation • Gas shale experts • Deepwater GOM authority
Capacity for fast turnaround • High-quality people • Global support
Industry leadership and reliability • Proprietary and patented technologies • Experience

www.corelab.com/rd/petroleumservices • 24-hour wellsite service hotline: 504-733-6583



from the President

New Orleans Geological Society - NOGS' 2011-2012 leadership team is beginning their tour on July 1st and I wish them all the best. We all need to offer them our full support and encouragement. I would encourage you to ask, "What can I do to help?" It's a pretty safe bet that they will have something for you.

We still have a number of vacancies within the NOGS committees and the Chairs thereof:

1. Continuing Education
2. Fields Trips (which resides within the Continuing Education group)
3. New Geoscientists - NGNOGS - in conjunction with the SPE Young Professionals

Additionally, with NOGS hosting the 2013 GCAGS Convention, the following Chairs will need committee members for us to be successful:

1. General
2. Treasurer
3. Exhibits
4. Technical Program
5. Registration
6. Field Trips
7. Short Courses
8. Publicity
9. Printing
10. Spouses/Guest Program
11. Entertainment

There are many other opportunities to serve besides those mentioned above. Volunteering to assist the society in one of these roles can at first seemed quite scary. So to take away some of the fear factor

we are asking our senior members and those members who have had the experience previously to assist anyone willing to step up for 2013.

Please make every effort to bring a friend or colleague to our July 11th luncheon meeting and hear our own David Garner of Shell Exploration and Production, speak on "Integrating Technologies to Unlock New Volumes in a Mature Deepwater Gulf of Mexico Field." Also don't forget to support the 15th Annual Deepwater Technical Symposium, August 11-12 at the Hilton Riverside.

Please take note of the passing of our member and colleague, Terry Keegan on April 27th and Director Jack Langford's wife, Beverly on May 3rd.

I want to thank the entire membership for my opportunity to serve as your president this past year. I received hearty support from so many of you especially our past presidents and senior members. I could not have done it without ya'll and the strong board of directors that has served the society during the 2010-2011 term. It has been an honor and a privilege to have served for and with you. But even though I have moved to Conway, Arkansas, and finished my term as your President you won't be completely rid of me yet, as I look forward to visiting with you at least once a month.

God bless you all,

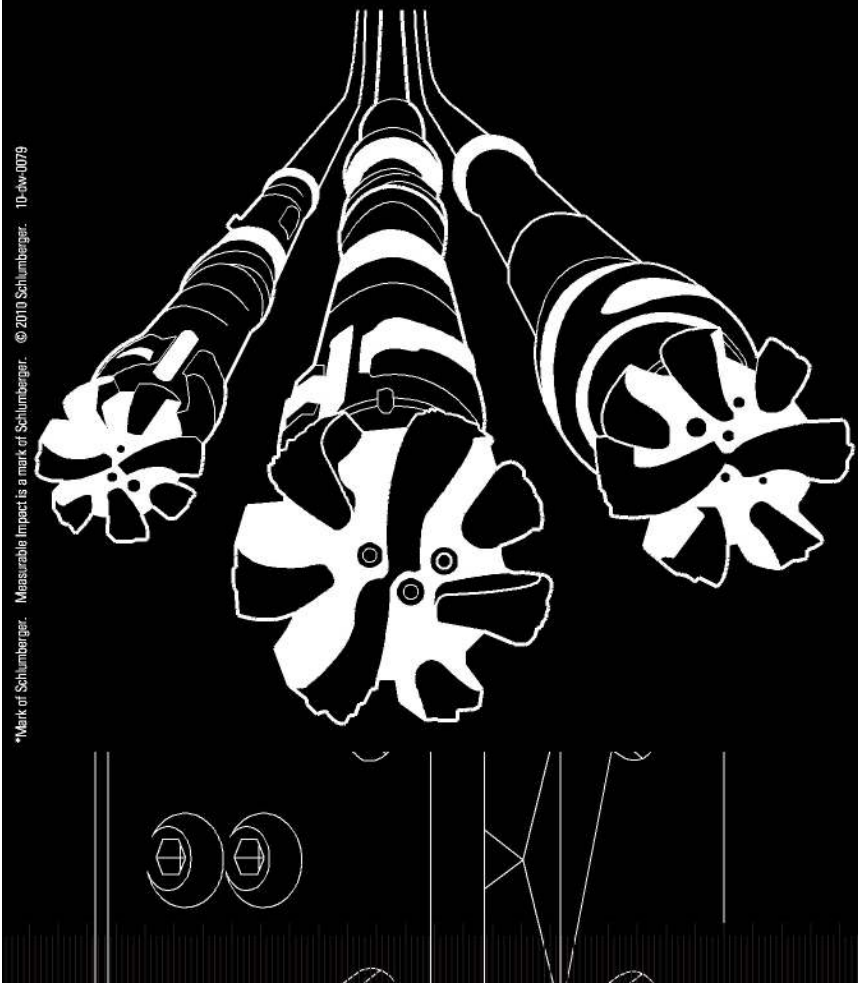
Rick

Deep Water

WELL CONSTRUCTION

Are all your services deepwater ready?

Control Measures	Complexity/Process + Exposure	Preparedness				
		High				Low
		People + Competency				
		1	2	3	4	5
-5	High	-5	-10	-15	-20	-25
-4		-4	-8	-12	-16	-20
-3		-3	-6	-9	-12	-15
-2		-2	-4	-6	-8	-10
-1	Low	-1	-2	-3	-4	-5



Our Project Readiness Assessment (PRA) approach has been applied and improved over the last 5 years.

All deepwater projects in which Schlumberger participates benefit from our PRA process, which complies with new U.S. regulatory requirements. This helps deliver seamless, efficient startup, and reduced NPT.

Learn more at

www.slb.com/deepwaterready

Global Expertise
Innovative Technology
Measurable Impact

Schlumberger

*Mark of Schlumberger. Measurable Impact is a mark of Schlumberger. © 2010 Schlumberger. 10-dw-0079

June 6 NOGS Luncheon Presentation

At the Holiday Inn Downtown Superdome

Marine Archaeology in the Gulf of Mexico

presented by

Kimberly L. Faulk

Geoscience Earth & Marine Services (GEMS), Houston, TX

ABSTRACT

Marine Archaeology is still a relatively young field, having only been around a few decades; but its impact on the offshore oil and gas industry has been steadily growing. With recent regulatory changes by the Bureau of Ocean Energy Management, Regulation and Enforcement the field is swiftly becoming a larger part of the energy industry. In the recent past, projects only hired marine archaeologists if they were working in a designated "archaeology block." Today marine archaeologists are reviewing data for every block in the Gulf of Mexico.

At present, there are fewer than 20 archaeologists working for private companies in the oil and gas industry in the Gulf of Mexico region. Our responsibilities include setting up deepwater surveys for clients, assisting our clients in complying with federal guidelines established by the Bureau of Ocean Energy Management, Regulation and Enforcement

(BOEMRE, formerly the Minerals Management Service), assessing data from deepwater surveys, making recommendations regarding pipeline routing and subsea infrastructure placement, monitoring ROV surveys of potential cultural targets, and working with the BOEMRE and private industry to protect submerged cultural resources.

This presentation focuses on several questions: Why are marine archaeologists working in the oil and gas industry? What do they bring to the table? What are they looking for, and how do they identify what they find? How can marine archaeologists help you at the start of a project to minimize downtime caused by archaeological discoveries? What does marine archaeology have to do with geohazard and geotechnical studies? What has been found in the past? How does marine archaeology fit into your offshore program?

BIOGRAPHY



Kimberly L. Faulk (née Eslinger) is currently the Marine Archaeologist for Geoscience Earth & Marine Services (GEMS) in Houston, Texas. She holds an MA in Maritime History and Nautical Archaeology from East Carolina University, and a BA in History from Roanoke College. She is the Vice Chair for the Advisory Council on Underwater Archaeology, the chair for the Society of Historic Archaeology's Technologies Committee, an elected member of the Society for Underwater Technology's

Offshore Site Investigation Group, and the chair for the first sessions on marine archaeology at the Offshore Technology Conference 2011. Her current work utilizes Autonomous Underwater Vehicles, Remotely Operated Vehicles, and conventional remote sensing equipment in deepwater to survey, investigate, and assess potential archaeological sites. Ms. Faulk has published several articles on marine archaeology, and acted as producer and historical consultant on several documentaries and videos about history and marine archaeology.

THE LUNCHEON RESERVATION DEADLINE IS JUNE 1 - CONTACT THE NOGS OFFICE

"And Looking Ahead..."

The next NOGS Luncheon will be held on July 11 at Holiday Inn Downtown Superdome. Guest speaker David Garner, Shell Exploration & Production Co. in New Orleans, will present: Integrating Technologies to Unlock New Volumes in a Mature Deepwater Gulf of Mexico Field." Contact the NOGS office to make your reservation.

Register Today!

Coastal Restoration Forum

Friday, June 10, 2011

8:30am-3:00pm

A FREE Symposium

Our Wetlands, Our Future

Hosted by Our Lady of Holy Cross College

Moderated by John Snell of Fox 8 News

Lunch Provided

An open dialog on the next five years of wetland renewal in SE Louisiana

Technical, ecological, economic, & societal issues concerning coastal restoration

SPEAKERS INCLUDE:

**Mike Blum, Tulane - Shirley Laska, UNO-CHART – John Lopez, Lake Pontchartrain
Basin Foundation – Doug Meffert, Tulane – Ehab Messehle, ULL – Robert Moreau,
SE La University – Kristina Peterson, UNO-CHART – Denise Reed, UNO – Torbjorn Tornqvist, Tulane – Karim
Belhadjali, OCPR – Mark Wingate, Corps of Engineers**

Discussion of impacts to: Communities, Estuaries, and Livelihoods

To Register for this FREE Symposium go to:

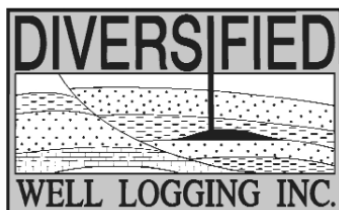
<http://www.olhcc.edu/x4070.xml>

**Sponsored by Our Lady of Holy Cross College – Louisiana Engineering Society &
Louisiana Office of Coastal Protection and Restoration**



Relax. We'll keep you posted.

Your rig is offshore and you are not. How do you know what's going on so many miles away? You know because we tell you. Daily or even hourly, Diversified Well Logging's engineers update you on the status of your rig. We are your eyes and ears, especially when it comes to deep water or high pressure, high temperature areas. Diversified offers 24-hour surface evaluation. We provide secure and customized real-time data communication, in-house research and development and 24/7 on-call support for our equipment and our engineers. Whether you have a 10-day job or 110-day job, we provide the specialized attention you require. So, relax. We're with you every step of the way.



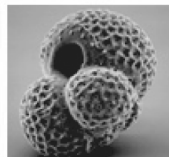
Serving the Gulf Coast for over 40 years.

New Orleans • Lafayette • Houston • Dallas • Corpus

800.280.2096

711 West 10th Street • Reserve, LA 70084 • Phone: 985.536.4143 • Fax: 985.536.2427
sales@dwl-usa.com

**DOMESTIC AND INTERNATIONAL
BIOSTRATIGRAPHIC SERVICES**



6619 Fleur de Lis Drive
New Orleans, LA 70124
(504) 488-3711

www.paleodata.com



Complete wellsite paleo services

**Available single-source regional
biostratigraphic databases for
accuracy and consistency**

**Integrated foram / nannofossil
analyses**

**In-house sample preparation
lab for quality-monitoring
and efficiency**

**Supported Gulf Coast
biostratigraphic databases**



MCMORAN EXPLORATION CO.



**MCMORAN
OIL & GAS**

www.mcmoran.com

NYSE: MMR

16676 Northchase Dr.
Houston, TX 77060
(281) 539-7600
Fax:(281) 539-7655

1615 Poydras
New Orleans, LA 70112
(504) 582-4000
Fax:(504) 582-4155

110 Travis St., Suite 140
Lafayette, LA 70503
(337) 735-9150
Fax:(337) 735-9151

NOGS CONTACT LIST

--- continued from page 3 ---

MEMORIAL FOUNDATION

BOARD OF TRUSTEES

2010-11 Chairman	Tom Klekamp
2010-11 Secretary	Rick Kear
2010-11 Trustee	Chuck Holman
2010-11 Trustee	Michael N. Fein
2011-12 Trustee	Monte Shalett
2011-12 Trustee	James Swaney
2012-13 Trustee	Jennifer Connolly
2012-13 Trustee	William M. Whiting

Company
Amber Resources LLC
Schlumberger
Independent
W & T Offshore
Berkshire Exploration Co
BOEMR E
Shell
Consultant

Phone
985-845-4046
504-592-5376
504-891-4878
504-210-8148
504-831-7779
504-736-2677
504-728-6411
504-947-8495

E-mail
klekamp@bellsouth.net
kearl1@new-orleans.oilfield.slb.com
charleswholman@bellsouth.net
mikef@wtoffshore.com
mshalett@gmail.net
james.swaney@boemre.gov
jennifer.connolly@shell.com
bootscon@aol.com

AAPG DELEGATES

Term Ends

2011	Tom Hudson
2011	Edward B. Picou, Jr.
2011a)	Brenda Reilly
2011a)	Robert Rooney
2012	William Whiting
2012	Jim Zotkiewicz
2012 a)	David E. Balcer
2012 a)	Richard J. Stancliffe

Chevron
Consultant
Energy Partners Ltd.
Century Exploration
Consultant
Zot Oil & Gas
Chevron
Shell Expl & Prod Co.

504-529-5155
504-799-4811
504-832-3777
504-947-8495
504-831-4694
985-773-6725
504-728-7553

tom.hudson@chevron.com
epicou@bellsouth.net
breilly@eplweb.com
Robert.rooney@centuryx.com
bootscon@aol.com
jimzot38@zotoil.com
dbalcer@Chevron.com
richard.stancliffe@shell.com



From ZNodal Systems to ZNodal Imaging

We are full spectrum ZNodal™ technology

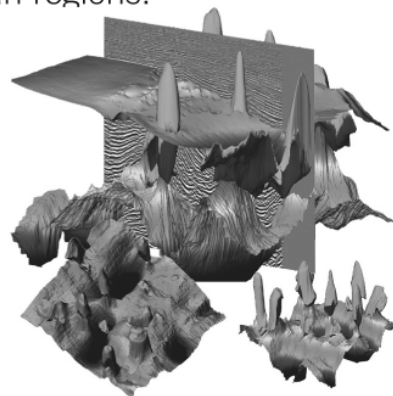
FairfieldNodal.com



We admit it. We're seismic nodal fanatics. Always have been. Which explains our one-of-a-kind, cable-free ZNodal™ systems. They work wonders in dense urban areas and pristine wilderness, in shallow water and deep ocean regions.

In fact, our exclusive ZNodal technology is behind everything we do, from acquisition and licensing to advanced processing and imaging, bringing nodal data to life in amazing ways.

Right now, our ZNodal systems are on the job in some of the world's most challenging fields, making a powerful difference. So when you're ready to go nodal, count on us to lead the way. ZNodal technology: It's what you need. It's what we're all about.



fairfieldnodal

SYSTEMS ACQUISITION LICENSING PROCESSING IMAGING



THE MARKET LEADER FOR
UNCONVENTIONAL INTERPRETATION *INTRODUCES*

NEXT GENERATION FIELD DEVELOPMENT

PLAN

Well Path Planning

OPTIMIZE

**Microseismic
Fracture Analysis**

DRILL

**Real-Time
Geosteering**

LEARN MORE AT SEISMICMICRO.COM/SMT/DEVELOPMENT



NOGS Annual Golf Outing

*Photos courtesy of
Arthur Christensen*



Winner Tim Moran after 18 holes



2011 First Place Foursome

L-R: Roy Lassus, Kevin Guilbeau, Rivie Cary, & Tim Moran
Bob Hafner (NOGS Entertainment Chair) and
Tchefuncta Golf Pro Ed Carlisle



Don DuBose, Scott Wandler,
Daniel Huffman, Jeff Durant



Dave Walz, Paul Dubroc,
Mike Anderson, Richard Klibert



David Schneider, William Hagar,
Wayne Cook, Mike Schneider



Willis Conatser and Roddy Norvell



Matt Malouf, Glenn Baudoin, Lance Sims



Richard Fossier and Toby Roesler



Toby Roesler, Eric Zimmerman



Art Johnson pitching NOGS new field studies volume



Ken Huffman, Jean Abadie, Chris Baynas, Bill Peirce



Gary Trinchard, Al Brown, Ken Meyers, Mark Kelly



Jay Morales, Anthony Catalanotto Jr.,
Anthony Catalanotto Sr., Ray Spain



Doug Manning, Ward Bannerman,
Mike Robinson, Bo Wolcott



Janine Klibert



Bob Hafner, Annette Hudson and
Tchefuncta Golf Pro Ed Carlisle present awards

NOGS 2011 Golf Outing

On a pleasantly warm but not hot Monday in May, NOGS held its annual golf outing. The NOGS 2011 Golf Outing raised \$4,700 toward the NOGS Memorial Scholarship Fund. The real winners are the future students at UNO, LSU, and Tulane that are awarded the scholarship monies. The entire NOGS board wishes to thank the following sponsors.

Diversified Well Logging (deserves a special thanks for the great cook out to end the day)

ANKOR Energy LLC
Baker Hughes
Beacon Exploration LLC
Black Fin P & A LLC
Century Exploration New Orleans Inc
CGG Veritas
Clovelly Oil
Core Labs
FairfieldNodal
Geo-Draft Inc
Geophysical Pursuit Inc
Hydrate Energy International
Joe & Lisa McDuff
LaBay Exploration Co LLC
LLOG Exploration
McMoRan Oil & Gas
ORX
Petrolog International Inc
Saratoga Resources Inc
Schlumberger
Schlumberger
Seismic Exchange Inc
Seitel Data
W & T Offshore
Weatherford Labs
WesternGeco
William M. Whiting
Zot Oil & Gas

Please continue to support this noble cause next year and attend a fun event with your golfing friends.

Bob Hafner

South Louisiana and Offshore Exploration and Production Activity

South Louisiana and Offshore Gulf of Mexico Exploration and Production Activities

By Carlo C. Christina

LAFAYETTE DISTRICT, ONSHORE AREA

Changes to the Drill Bits column.

In an attempt to make the Drill Bits column more informative, and to allow you, the reader, to better follow the onshore activity, the following changes will be incorporated in future reports:

Each new location and completion will carry a letter identification, (A), (B), etc., which will be posted on the attached map of South Louisiana in order to quickly pinpoint that activity. Also, each well will be identified with its serial number so that the reader can activate the complete history of that well by visiting the **SONRIS Lite** website and clicking on the "Wells by Serial Number" link. Tom Klekamp has provided the activity map.

NEW LOCATIONS

Forty-six new drilling permits have been approved in the Lafayette District since my last report.

In Avoyelles Parish (A), Nelson Energy will drill in **North Bayou Jack Field** the #1 Deshotels to a depth of 20,146 feet in Sec 13, T2S-R5E, shown as "A" on the activity map. The objective section is the Austin Chalk, which will be penetrated at 15,380 feet and drilled in a horizontal lateral approximately 4700 feet in length (243093).

El Paso has permitted another location in Beauregard Parish (B), in **Shoats Creek Field** located in Sec. 10, T7S-R12 W. The #1 Olympia Minerals will be drilled to 15,000 feet (243065).

Also, in Beauregard Parish (C), Midstates has permitted the #2 Musser-Davis in **South Bear Head Creek Field** in Sec. 28, T6S-R11W and will drill to 15,500 feet (243109).

In East Feliciana Parish (D), Devon Energy has permitted its Lane #64-1 in **Ethel Field**. This well is the first in a series of deep **Tuscaloosa Marine Shale** wells to be drilled in the Marine Shale Fairway shown on the activity map. It will be drilled in Sec. 64, T3S-R1E. It is now reported that the well will be drilled as a straight hole to 15,500 feet (243108). Devon had previously filed for a 720-acre unit for a horizontal well to be drilled with a 5200-foot lateral leg. Several horizontal wells are reported to be drilled in the near future.

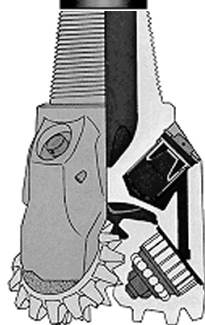
The leasing activity in this area has increased in the past few months with more than 800,000 acres being leased or traded.

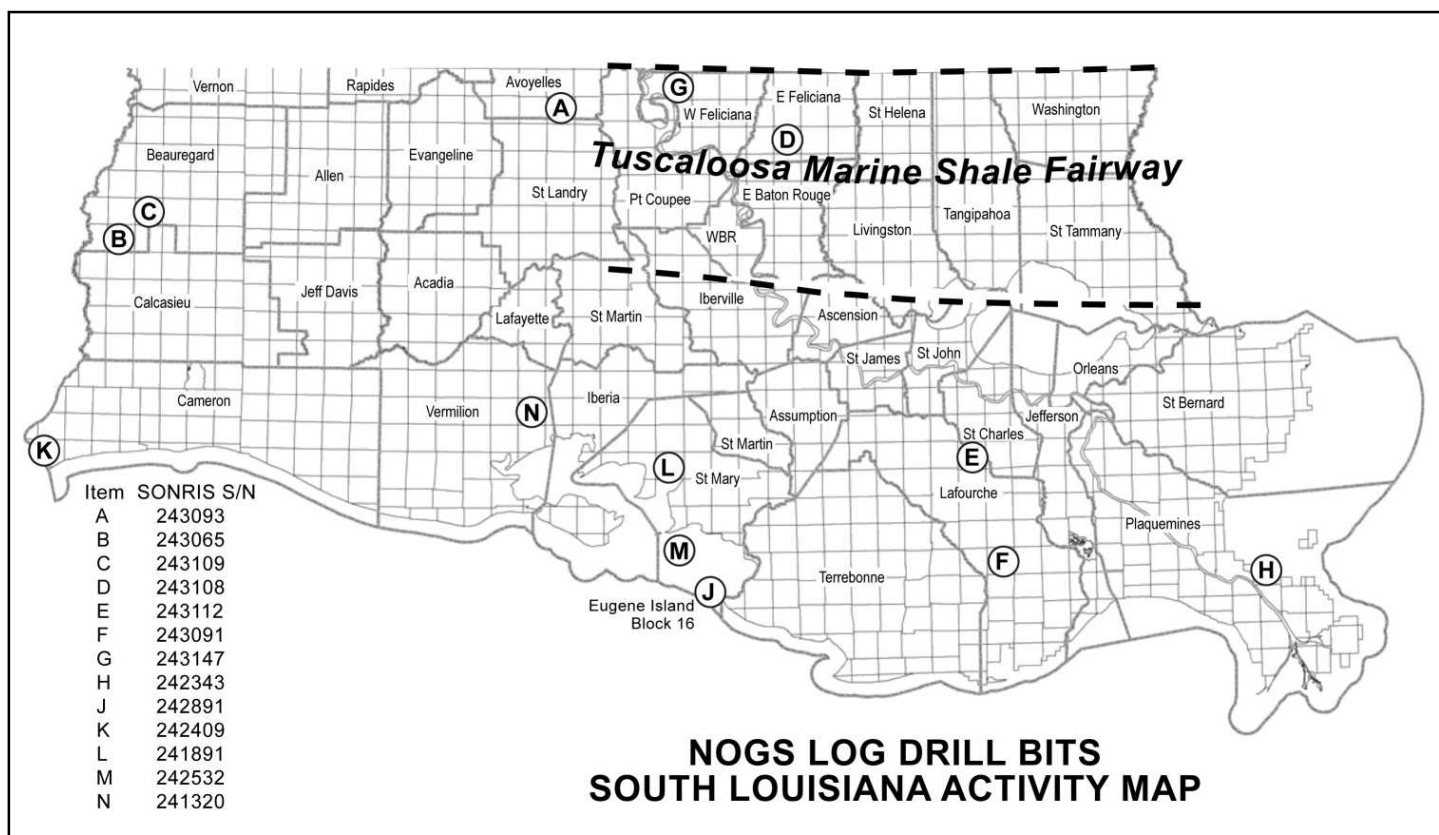
The **Tuscaloosa Marine Shale** has been the target of several horizontal wells drilled in recent years. Encore Operating Limited has drilled 4 wells, 2 in Louisiana and 2 wells in Mississippi, completing 3 of the 4 wells drilled.

In East Feliciana Parish, Encore re-established production in **Richland Plantation Field** with the #1 Richland Plantation. It was drilled in Sec. 69, T1S-R2E to a total depth of 16,209 feet in a 3720-foot horizontal hole and completed through the interval 13,850 to 15,900 feet. Since being completed in May 2008, it has produced 10,831 barrels of oil.

Encore's #1 Weyerhaeuser was drilled in St. Helena Parish and completed as the discovery well for the **North Chipola Field**. It was drilled in Sec.60, T1S-R4E to a depth of 17,032 feet in a 4100-foot horizontal hole. It was completed in November 2008 through perforations 14,750' to 16,703' flowing 323 BOPD. Total production is 28,087 barrels of oil in 27 months.

The Tuscaloosa equivalent section in Texas is the **Eagle Ford**, which has been successfully drilled and completed in the shale in recent months. In LaSalle County, Texas, wells came online at 600 to 940 BOEPD. Some of the major operators are Newfield Exploration with 335,000 net





acres and Cabot Oil & Gas having more than 40,000 net acres. Horizontal drilling of the **Eagle Ford** in Texas has proven to be very successful. The question now is will it be as successful in the Florida Parishes of Louisiana.

In Jefferson Parish (E), Manti Exploration Co. is drilling a step-out to **Bayou Villars Field**. The #1 SL 20413 is located in Sec. 20, T15S-R20E (243112).

A deep test has been permitted in Lafourche Parish (F). ConocoPhillips has permitted the #1 LL&E, a 23,000-foot well in **Golden Meadows Field**. It will be drilled in Sec. 71, T19S-R21E (243091).

In West Feliciana Parish (G), Griffin & Griffin will drill the #1 McGaw in **Tunica Bayou Field**. The 9100-foot test will be drilled in West Feliciana Parish within Sec. 57, T1S-R4W (243147). The field was originally discovered by the Radzewicz #1 Clintwood Plantation in 1988 and completed flowing 100 BOPD through perforations 8792 to 8800 feet. The well produced only 7900 barrels over a period of 3 years. In 2007, Griffin & Griffin drilled a Frio discovery and completed the #1 Faust flowing 236 MCFG through perforations 2347 to 2349 feet. This well was drilled under a program of Frio and Miocene Sand Bright Spot Prospects. The latest proposed test will probably evaluate both the Frio and deeper oil sand potential.

COMPLETIONS

Martin-Marks has completed an oil well in Plaquemines Parish in **Coquille Bay Field** (H), located in T19S-R18E. The #1 R. F. Price, Jr. was drilled to 11,527 feet and tested 528 BOPD and 2300 MCFPD gas through perforations 11,352 to 11,362 feet in the S-3 Sand (242343).

In **Eugene Island Block 16** (J), Clayton Williams has plugged and abandoned its wildcat, the #1 SL 19924, at a depth of 14,000 feet (242891).

Forza Operating Co. has completed the #2 SL 19067 in **Sabine Lake Field** located in T14S-R15W of Cameron Parish (K). The well was drilled to 13,818 feet and completed in the Hackberry reservoir flowing 2690 MCFG and 180 BCPD through perforations 13,020 to 13,142 feet (OA) with FTP 7200 psi (242409).

In St. Mary Parish (L), **Bayou Carlin Field**, McMoRan is preparing to complete the #1 Valentine after testing the well at 54 MMCF gas per day with flowing tubing pressure of 9989 psi. The well is located in Sec. 18, T15S-R9E and is an offset to the #1 Peterman, which McMoRan completed in 2007. The Peterman has produced more than 509,300 barrels of

--- continued on next page ---

Drill Bits (continued from previous page)

oil and 30.6 billion cubic feet gas in 46 months. These wells were drilled as McMoRan's Laphroaig Prospect but are carried in **Bayou Carlin Field** by the State's records (241891).

In St. Mary Parish within **Atchafalaya Bay Field (M)**, Phoenix Exploration is waiting on a completion rig for the #2 SL 20035 after drilling to a total depth of 18,974 feet and setting a liner at 18,971 feet (242532).

Phoenix is also drilling the #1 SL 20369 below 12,700 feet to a projected total depth of 20,500 feet (242873). Phoenix had previously completed the #1 SL 20035 and the #1 SL 20221 in 2010, which are now producing more than 32 MCFGPD.

In Erath Field, Vermilion Parish, (N), Manti #1 Moss, Cris R unit is preparing to complete at a depth of 20,225 feet. The well is located in Se. 33, 13S-4E, 2 miles south of production. (241320). The well is located in Sec. 33, T13S-R4E (242320).

Erath Field was discovered in 1940 and has produced more than 9 million barrels of oil and 86 billion cubic feet of gas since 1977. Production has been declining since 2006, with no drilling activity since 1983. The deepest well in the Field was drilled to 17,100 feet, so the results of this 20,225 foot test will be interesting.

LEASING NEWS

In the March 9th State Lease Sale, six tracts totaling 11,264 acres were acquired for \$4,872,000 in Cameron Parish. The leases, SL 20571 through SL 20576, are located in T15 and 16S and R3,4 and 5W and were taken in the name of Theophilus Oil & Gas & Land Services. The bids averaged \$432 per acre with 25% royalty.

The tracts are located west and south of Deep Lake and West Deep Lake fields, and east of Price Lake Field, in an area of deep prolific sands. A 1445-square mile 3-D seismic survey of has been shot in this area. With a 4.8 million dollar investment in leases, we can expect requests for drilling permits in the near future.

OFFSHORE GULF OF MEXICO SHELF ACTIVITIES

By Al Baker

Between April 5th and May 5th, the BOEMRE issued forty-nine drilling permits. Nine permits were for new wells two of which are exploratory and seven are development. The exploratory wells include the Vermilion Block 342 #1 operated by Peregrine Oil & Gas and the ANKOR Energy Ship Shoal Block 290 #3. The development well permits were issued to Arena Offshore for the East Cameron Block 328 #C-4, to Apache Corporation for the Eugene Island Block 330 #D-15, to Pisces Energy for the Ship Shoal Block 151 #A-2 and to Chevron for the South Timbalier Block 52 #CK-33, #CK-34, #CK-35 and #CK-36.

According to RigOutlook, as of March 31st there were 55 active jackup rigs out of the 107 available rigs in the U.S. Gulf of Mexico, which translates into a 51% utility rate. The average dayrate for a jackup rig was \$75,000 per day. In the floater rig market, there were 29 active out the 39 vessels available, which equates to a 74% utilization rate. The dayrate average for a floater rig was \$373,000 per day.

On April 19th, the BOEMRE announced the completion of a draft supplemental environmental impact statement (SEIS) for the proposed oil and gas Lease Sale 218 in the Western Planning Area in the Gulf of Mexico. This draft SEIS updates the findings in several previously published EISs covering the Gulf of Mexico, as well as new analyses using the latest available information following the Deepwater Horizon explosion and spill. A public comment period extending to June 6, 2011 is now underway prior to issuing the final draft. The public comment period will include meetings in Houston and New Orleans. Currently, OCS Sale 218 is tentatively scheduled for late 2011 or early 2012.

In an April 19th press release, McMoRan Exploration reported that their Davy Jones #2 well had reached a total depth of 30,546 feet. McMoRan was preparing to evaluate exploration objectives in the Cretaceous section below the previously identified Wilcox pay sands. Based upon interpretations of drilling data, McMoRan believes that the well encountered the Cretaceous section. If confirmed, McMoRan further believes that the combination of productive Wilcox and Cretaceous sections on the same geologic structure could enhance the prospectivity of Davy Jones and the value of McMoRan's other ultra-deep shelf prospects on its acreage position within the Davy Jones Trend.

NeuraSection

"Works the way a geologist thinks"

Quickly see the whole geological picture with NeuraSection. This intuitive package puts you back in control of your work. See why geologists everywhere are switching to NeuraSection.



- Advanced log correlation
- Interactive cross sections
- Automated geological contouring
- Interactive map editing
- Presentation montaging

For more information:
visit www.NeuraSection.com
call 1.281.240.2525

Neuralog
Turning Paper Into Petroleum

© 2011 Neuralog, Inc. • www.neuralog.com • 1.281.240.2525 • 1.800.364.8728

SEI®

Seismic Exchange, Inc.

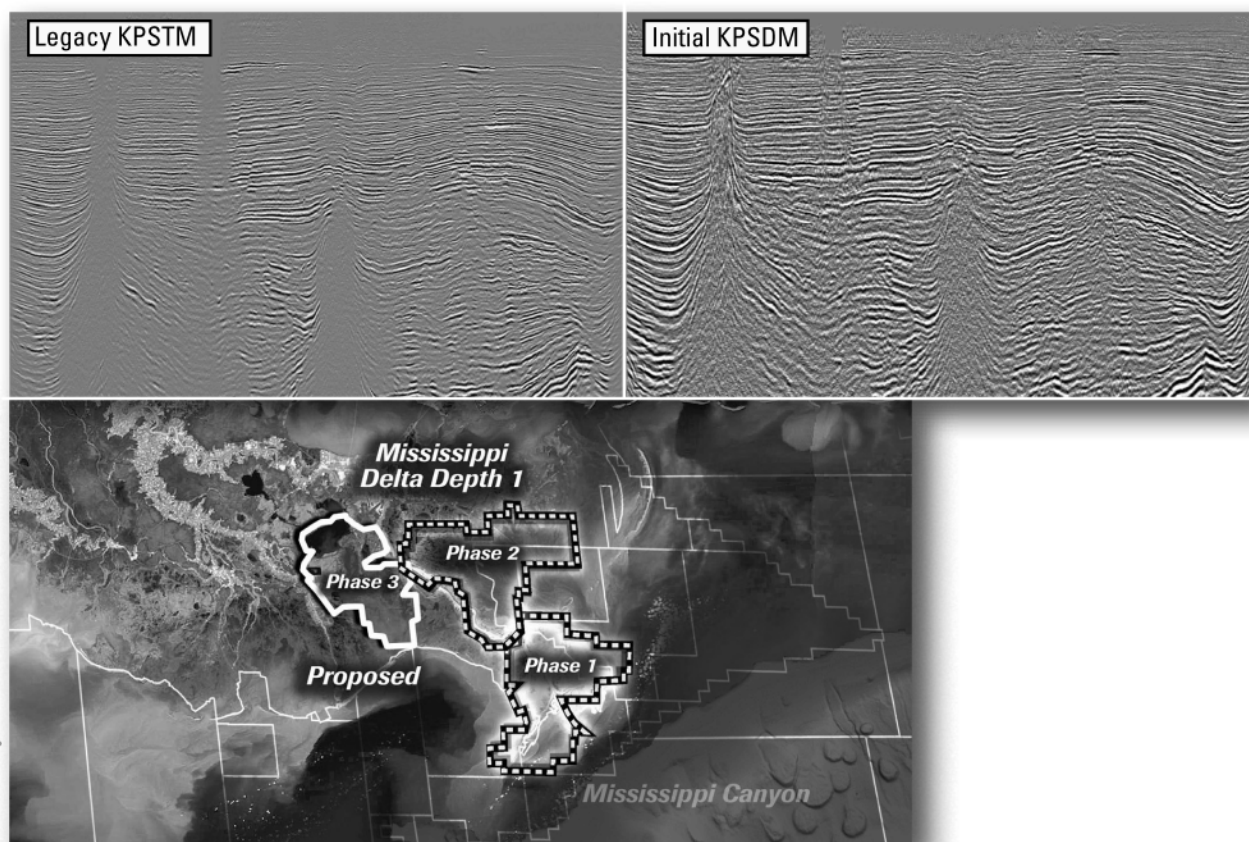
**Strategic Speculative Surveys
Geophysical Data Marketing & Management**

YOUR
**Full Service
National
Seismic Data
Marketing Firm**

New Orleans
Dallas
Houston
Denver
Oklahoma City
Corpus Christi
Tulsa

201 St. Charles Avenue, Suite 4300, New Orleans, Louisiana 70170-4300
Telephone 504.581.7153 Fax 504.581.9591
www.seismicexchange.com

Improved depth imaging in the Mississippi Delta



In the Mississippi Delta region, WesternGeco is utilizing state-of-the-art processing designed to eliminate fault shadows and enhance deep imaging. The Mississippi Delta - Depth 1 survey, now in progress, incorporates the processing and remigration of twelve legacy surveys covering 1,855 square miles. High-quality time imaging using relative amplitude anisotropic Kirchhoff prestack time migration will be followed by improved structural imaging utilizing anisotropic Kirchhoff prestack depth migration.

To learn more about this and other Multiclient products, call +1 713 689 1000.

www.multiclient.westerngeco.com/la

Multiclient to the Power of E



Great Images of the Lopsided Meathook Galaxy - May 6, 2011 | NASA:

"The Meathook Galaxy, or NGC 2442, has a dramatically lopsided shape. One spiral arm is tightly folded in on itself and host to a recent supernova, while the other, dotted with recent star formation, extends far out from the nucleus." Quoted from the NASA photo release. For more information go to: <http://www.spacetelescope.org/news/heic1108/>

Record Dive in a New Zealand Cave - May 5, 2011 | National Geographic:

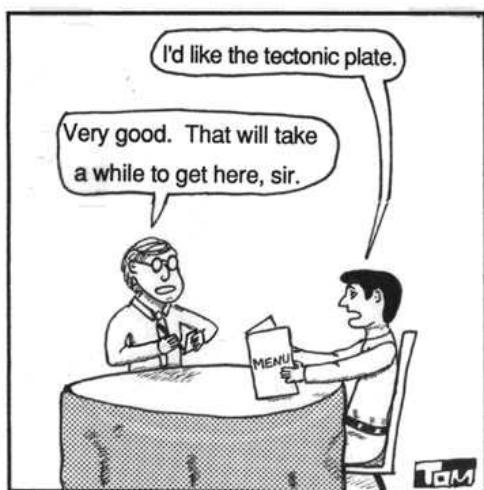
National Geographic posted this video of a dive into a deep, cold-water New Zealand cave. The cave has a strong, cold current and the divers are searching for its source. For more information go to: <http://video.nationalgeographic.com/video/player/news/culture-places-news/new-zealand-cave-diving-vin.html/>

Gulf of Mexico Microfossils and Climate Change - May 5, 2011 | USGS on YouTube:

"Proxy data such as tree rings, ice cores, and microorganisms are collected and analyzed by scientists to unlock past climate records stretching back thousands to millions of years ago. This video podcast examines how scientists can decipher past climate from such records by focusing on a proxy calibration study in the Gulf of Mexico." Quoted from the USGS video release. For more information go to: <http://gallery.usgs.gov/videos/378/>

A Renewable Twist on Fossil Fuels - April 26, 2011 | UDaily, 1:04 p.m.: Pulling valuable fuels out of thin air? It sounds like magic, but Joel Rosenthal, a chemist at the University of Delaware, is working to transform carbon dioxide (CO₂), a greenhouse gas in the atmosphere, into gas for your car and clean-energy future fuels. For more information go to: <http://www.udel.edu/udaily/2011/apr/rosenthal-greenhouse-gas-042611.html/>

GEOLOGIST AT LUNCH



©1993 Tom Swanson

Fran Wiselady

FROM THE EDITOR

Editor's Note:

I have been honored to serve as your editor this last year and I got to work with some terrific people. I

would like to thank Annette Hudson, Ed Picou, and Jannette Sturm-Mexic for their patience and help.

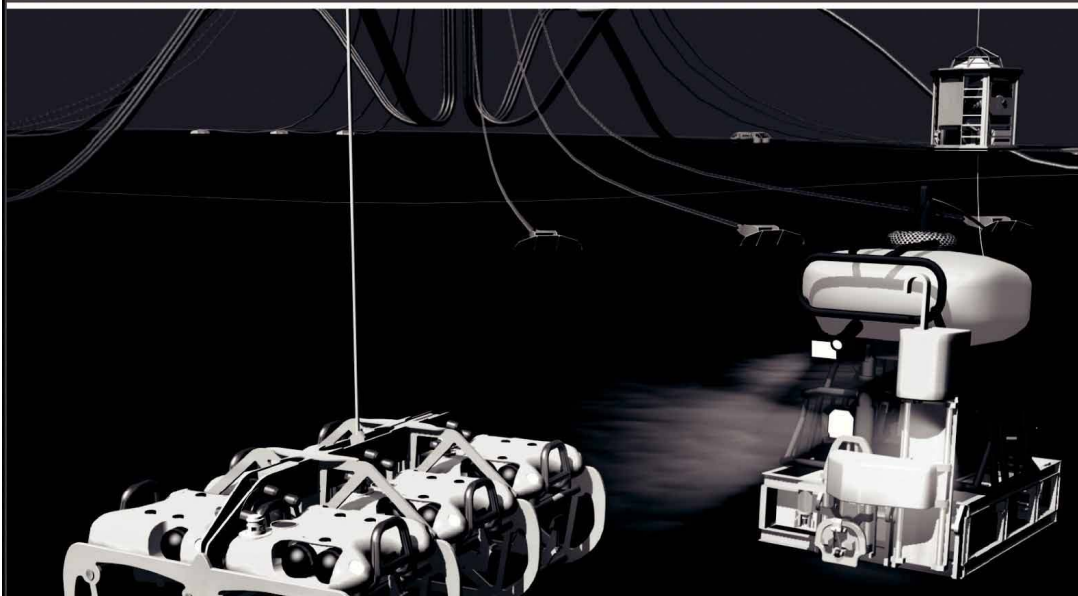
Next month the new editor, Dave Tatum, will be editing the articles for the NOGS Log. We have been working together and he is a very good editor. I know he will do a great job.

Also I wish to congratulate the new NOGS board members and thank the NOGA organization for their time and help with the parties and AAPG convention.

Fran Wiselady



Finally - An answer for getting reservoir seismic **OVER THE RESERVOIR!**



- 4C/4D Node Seismic
- ANGOLA
- GoM
- NIGERIA



"Coming Soon to an Oilfield Near You!"

www.sbexp.com

Dubai
T: +971 4 4271700

Houston
T: +1 281 566 1666

Oslo
T: +47 2240 2700

Rio
T: +55 21 2494-0283

Singapore
T: +65 9180 2605

Trondheim
T: +47 7 3879500

RAISING
THE **STANDARD**



100 Northpark Blvd.
Covington, LA 70433

(985) 773-6000



LaBay
Exploration Co., L.L.C.

111 Veterans Memorial Blvd.,
Suite 1550
Metairie, Louisiana 70005

www.labayexploration.com

Office (504) 371-5967
Fax (504) 371-5969

For Gravity and Magnetic Data **Count on Fugro...**

Brenda Robinson: + 1 713-369-6072

brobinson@fugro.com

Jeff Rowe: + 1 613-520-7713

jrowe@fugro.com

www.fugro-gravmag.com



*This advertising
space is available!
Contact the
NOGS office.*

THE NEW ORLEANS GEOLOGICAL SOCIETY MEMORIAL FOUNDATION, INC.

The Memorial Foundation is an IRS Tax Exempt Code #501 (c)(3) organization. The Federal I.D. is: 72-1220999. Please consider making a donation to the Foundation prior to the close of this year's fiscal cycle on June 30, 2011. Your individual support in any amount will help meet the IRS Guidelines for our Foundation. *Thanks!*

\$15,000 AND ABOVE

Olga Braunstein Succession

Gibbet Hill Foundation

In Memory of Steve & Marion Millendorf, William J. Prutzman,

Roger G. Vincent & Ron Youngblood

\$10,000

George W. Schneider, Jr. and Family

In Memory of George W. Schneider, Sr.

GCAGS

Matching funds

\$2,000 TO \$3,000

NOGS Golf Tournament May 2010

In Memory of Bill Craig

\$7,000 TO \$9,000

Paul C. McWilliams

\$250 TO \$499

Burton C. Bowen

In Memory of Joffre J. Crouere

Carlo C. Christina

In Memory of Al Gilbeath

Tom Klekamp

Richard G. Klibert

UP TO \$249

Donald I. Andrews

In Memory of Ray F. Havard

In Memory of Harlan(Lanny) Northcott

Robert J. Ardell

In Memory of Al Gilbeath

In Memory of Bill Malin

In Memory of Bob Williamson

Mr. and Mrs. Wesley Barton

In Memory of Thomas A. Cullinan

Abraham Biadgelgne

Maurice N. Birdwell

Irion Bordelon, Sr.

In Memory of Robert G. Williamson

Hilary James Brook

Robin Broussard

Rob Burnett

J. Sybil Callaway

Chevron

Matching Funds

Arthur F. Christensen

Ellen F. Clark

James S. Classen

In Memory of Robert C. Treadwell

Willis E. Conatser PhD

Clarence F. Conrad

Charley Corona

In Memory of Professor Hubert Skinner

Trudy and Charley Corona

In Memory of Erik Mason

Michael A. Danahy

M. R. "Bob" Douglass

In Memory of Robert G. Williamson

Merle J. Duplantis

Dr. Brooks B. Ellwood

Parrish N. Erwin, Jr.

Exxon Mobil Matching Funds

Michael N. Fein

Laurens Gaarenstroom

Sherwood M. Gagliano

Arthur J. Garden

David Garner

Larry Galloway

Peter G. Gray

In Memory of Robert G. Williamson

Bret Hampton

Angela M. Hessler

Through the Chevron Humankind Program

Bernard L. Hill, Jr.

In Memory of Robert E. Osborne

Dan E. Hudson

Kenneth Huffman

Jeffrey E. Jandegian

Paul Jurik

In Memory of Thomas A. Cullinan

Reuben J. Klibert, Jr.

In Memory of Dale Klibert

John C. Kucewicz, Jr.

John C. Langford

Jeannie F. Mallick

Paul C. McWilliams

In Memory of Russell D. "Rusty" Morris

New Orleans Geological Auxiliary

In Memory of Dee Baysinger

In Memory of Doris Meltzer

In Memory of Terri Smith

Nexen Petroleum USA Inc. Matching Funds

Russell H. Nordwell

William J. O'Leary

Richard A. Olsen

In Memory of Richard W. Boebel

In Memory of William J. Malin

In Memory of Robert W. Sabate'

Teresa M. O'Neill

In Memory of Brian J. O'Neill

FONO FUND

The FONO Fund accepts contributions that are invested and the income dedicated to assure sufficient financial resources will always be available to maintain the NOGS business office. Contributors are reminded that donations to the FONO Fund are not covered by the IRS 501 (c)(3) tax exempt classification and should be reported as a business expense on your IRS tax report.

\$500

James A. Hartman

In Memory of Hal Hudson

In Memory of Robert G. Williamson

UP TO \$250

Donald I. Andrews

Alfred H. Baker Jr.

Joseph E. Boudreaux

Hillary James Brook

Jack G. Bryant

J. Sybil Callaway

Arthur F. Christensen

Richard P. Colomes

Clarence F. Conrad

Michael A. Danahy

John Dombrowski

Merle J. Duplantis

Richard A. Edmund

Mark J. Gallagher

William J. Furlong

Duncan Goldthwaite

James A. Hartman

In Memory of Hal Hudson

In Memory of Robert G. Williamson

Bernard L. Hill, Jr.

Thomas A. Hudson

Kenneth Huffman

C. M. (Max) Jacobs

Robert M. Jemison, Jr.

Tom Klekamp

Louis Lemarie'

William J. Malin

Jeannie F. Mallick

George M. Markey, Jr.

James A. McCarty

Louis L. McCormick

Robert G. Murphy

William J. O'Leary

Richard A. Olsen

Erwin Parrish, Jr.

Linda and Bill. Peirce

Edward B. Picou, Jr.

Richard D. Provensal

James P. Raymond, Jr.

Brenda E. Reilly

C. R. Rondeau

George D. Severson

Rudolf B. Siegert

Richard J. Stancliffe

Bryan P. Stephens

Raymond Stephens

Roy C. Walther

Robert C. Weissmann

William M. Whiting

James W. Yeldell, Jr.

Jim Zotkiewicz

CONTRIBUTIONS FOR BOTH FUNDS THROUGH MAY 12, 2011.

DONATIONS ARE LISTED FOR ONE YEAR.

Linda and Bill Peirce

Edward B. Picou Jr.

In Memory of William J. Malin

In Memory of Robert G. Williamson

Richard D. Provensal

In Memory of Thomas H. Philpott

Scott Purinton

Brenda E. Reilly

Mrs. William B. Rodan

In Memory of Robert G. Williamson

Robert T. Sellars, Jr.

In Memory of Robert G. Williamson

George D. Severson

Rudolph B. Siegert

Dr. J. O. Snowden

Gary L. Spraul

In Memory of H. Grady Collier

Raymond O. Steinhoff

In Memory of Harold E. Vokes

Leon G. Touns

In Memory of Robert G. Williamson

Roy C. Walther

William M. Whiting

In Memory of William J. Malin

Armour C. Winslow

In Memory of Rita Menzel Winslow

Frances A. Wiseman

In Memory of Steve Widdicombe

James W. Yeldell, Jr.

Jim Zotkiewicz

In Memory of Bill Craig

Chevron

Bernard L. Hill, Jr.

John C. Scheldt

Candace V. Strahan

In Memory of James Strahan

SAI

Geoconsulting, Inc.
*Geological and Geophysical Consulting,
3-D Seismic Interpretation*

Ben D. Sydboten, Jr. CPG

124 Heymann Blvd., Suite 202

Lafayette, LA 70503

www.saigeoconsulting.com

Office (337) 234-5288

Cell (337) 234-5491

ATWATER CONSULTANTS, LTD.

REGISTERED AND CERTIFIED PETROLEUM PROFESSIONALS

GEOLOGICAL, ENGINEERING, GEOPHYSICAL,
TRAINING AND EXPERT WITNESS SERVICES

3525 Hessmer Ave, Ste 304

Metairie LA 70002

Tel. (504) 581-6527

Fax (504) 524-7798

"Serving The Oil & Gas Industry Since 1983"

Geological,
Geophysical &
Land Drafting

Anthony Catalanotto
President

Stefani Foster
Drafting & Design

Geo-Draft, Inc.

A Professional Drafting & Graphics Firm

3349 Ridgeline Drive • Suite 202 • Metairie, LA • 70002
Office: (504) 836-2882 Fax: (504) 836-2877 (Cell) (504) 481-7291
E-Mail: geodraft@bellsouth.net
Website: www.geodraftinc.com

NORTHCOAST OIL COMPANY

610 E. Rutland St.
Covington, LA 70433

(985) 898-3577

(985) 898-3585 FAX

Jack M. Thorson
Eric C. Broadbridge
J. Daryl Gambrell
Raymond W. Stephens

**NOGS thanks our
sponsors for their support:**

GOLD LEVEL SPONSORS:

CHEVRON

LA BAY EXPLORATION CO, LLC.

**SPECIAL THANKS TO
DIVERSIFIED WELL LOGGING**

(832) 242-6000 (O)
(713) 917-0493 (O)

(504) 931-7506 (C)
johnjurasin@jurasinoilgas.com

JURASIN OIL & GAS

9700 Richmond Ave., Suite # 124
Houston, TX 77042-4821

JOHN M. JURASIN
President

Cert. Pet. Geologist #4284
Cert. Prof. Earth Scientist #1961

Collarini Energy Staffing

Full-Time and Temporary Personnel

Facilities • Drilling • Production • Reservoir Engineering
Land and Legal • Geoscience • Information Technology •
Health and Safety • Management • Supply Chain
Accounting • Administrative Support

10497 Town and Country Way, Suite 950
Houston, Texas 77024

832-251-0553

COLLARINI

www.collarini.com

Collarini Associates

Reservoir Engineering
Oil & Gas Property Evaluation
3-D Seismic Interpretation
Integrated Field Studies

832-251-0160
504-887-7127

Houston
New Orleans

***This advertising space is available!
Contact the NOGS office.***

New Orleans Geological Auxiliary News

Our deepest and sincerest sympathies are extended to the Jack Langford Family on the recent passing of Beverly Langford. Beverly joined the New Orleans Geological Auxiliary in 1959 and served in various positions on the Board, as well as, chairing many of our events. Beverly's long and enduring friendship with many of our members proved what a wonderful and loving person Beverly was. She is still in the hearts of all of her family and friends, who will miss her dearly.

Well, it's that time of year to say "Thank You" to all the ladies who have offered their time and their homes this past year for all of us to enjoy several luncheons, coffees and an unforgettable Spring Social at the Moseley's Garden District home. If space would permit, I would love to personally thank you individually: however, your efforts will not go unnoticed when we celebrate "You" on June 2nd at our annual "Thank You Luncheon"!

In addition, our organization would not exist if it wasn't for the fabulous Board members who graciously agreed to serve yet once again for our benefit. We told you, Jean, "it would be a breeze"! Jean, Alma, Judy (Lemarie'), Peggy, Beverly (Kastler) and Linda, please accept our debt of gratitude to all of you. Judy Sabate', thanks for getting great and interesting speakers for this past year. We are now up to date on fashion and sports. If you are not a member, I would encourage you to sign up as we not only eat well, but we do seem to acquire very interesting speakers (not to mention the many friends that you will meet).

Congrats to Beverly Christina and Ruthie Grimes for receiving the Loyalty and Service Awards, respectively. Your dedication and time that you have offered to NOGA all these past years has been invaluable. You deserve more! We hope that you were surprised and realize that you are much appreciated and greatly loved.

The Installation Luncheon was a huge success thanks to Camille Yeldell and Alma Dunlap. Metairie Country Club is always a beautiful venue for this special day. It seems awkward to say that this is the last luncheon of the year, but, before you know it, September will be here sooner than you think!

Our Planning Committee will gather soon to discuss the events for the 2011-2012 year. Good luck, as anyone who knows that has served on the Committee, this takes time and lots of phone calls concerning the venues and contacting members to chair events. Please consider making their job easier by participating where and when you can.

Have a safe and happy summer,

Susie Baker

NOGA Application Form

Dues: \$25.00

Name _____

Home Address _____

Home phone _____

Husband's Name _____

Husband's Company _____

*Please make check payable to New Orleans Geological Auxiliary and
mail with application to:* *Judy Lemarie'*

2 Yosemite Dr

New Orleans LA 70131

NOGS Student Members Receive Research Grants

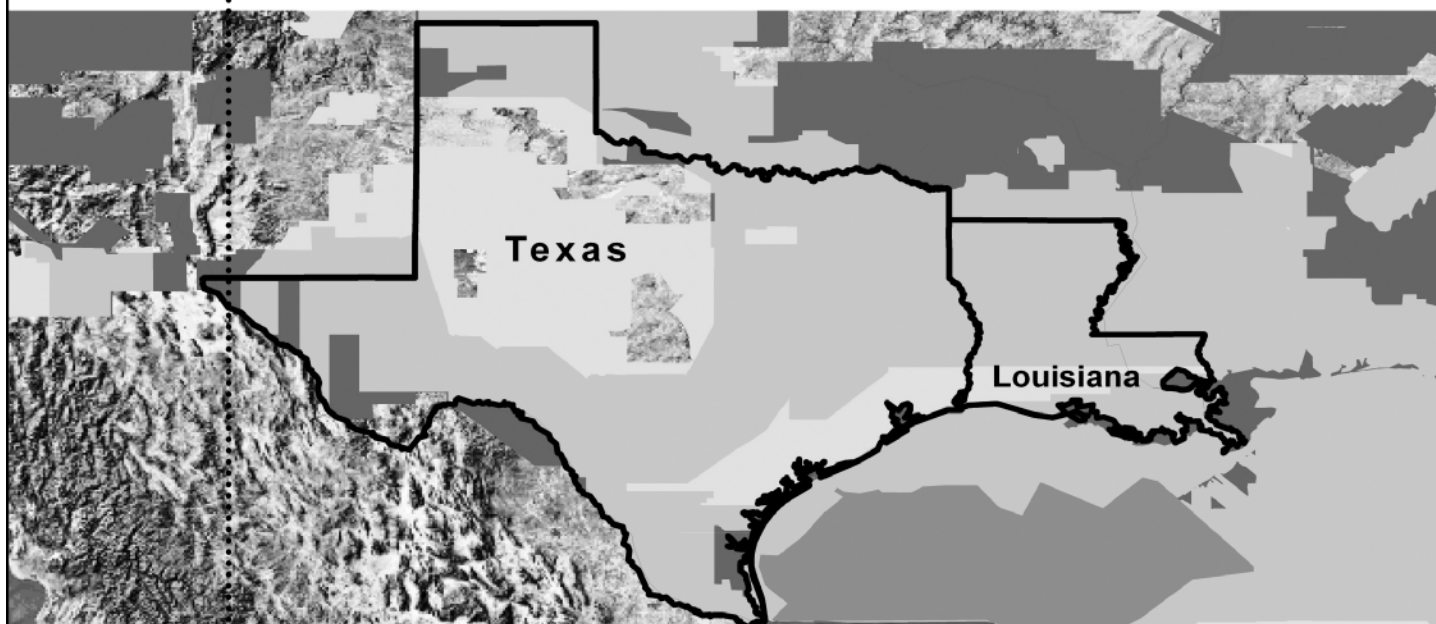
The AAPG Foundation Grants-in-Aid program recently announced their 2011 recipients. Included were NOGS Student members: **Clint Edrington** of LSU who received the R. Dana Russell Memorial Grant, and **Andrew Ranson** of UNO who received the Richard C. Hasson Memorial Grant.



15th Annual Gulf of Mexico Deepwater Technical Symposium August 11-12, 2011 New Orleans LA

For more information go to the website:
<http://www.deepwaternola.org/swf/deep.html>

For Gravity and Magnetic
Data in Texas and Louisiana
**Count on Fugro—
Mapping Geology
to the Basement...**



...And beyond with the most comprehensive non-exclusive airborne, land and marine potential fields geophysical database, including AeroMagnetic, Land Gravity, Marine Gravity and Bathymetry data around the world. Interpretation includes:

- Basement architecture
- Tectonic elements
- Structural/geologic fabric
- Salt mapping
- Depth to basement
- ArcGIS deliverables



Fugro Gravity & Magnetic Services

For personal assistance & consultation,
please contact fgmsdata@fugro.com or 713-369-6123.

www.fugro-gravmag.com

<p>ANSYTHE Donald I. Andrews 504-887-3432</p> 	 <p>GEOLOGY ENVIRONMENTAL MANAGEMENT</p> <p>GEM Consulting LTD Michael Louis Merritt admin@gemconsultingltd.com 1451 Applewood Road • Baton Rouge, LA 70808</p>
<p>THE BOEBEL COMPANY Oil and Gas Investments 170 Broadway Street, Suite 321 New Orleans, LA 70118 (504) 866-4313</p>	<p>H. WARREN BELL Oil and Gas Exploration 2500 Tanglewilde, Suite 485 Houston, TX 77063-2126 Bus (713) 266-7297 Fax (713) 266-7298</p>
<p>BOO-KER OIL & GAS CORP. Gray S. Parker 826 Union, Suite 300 Bus. (504) 581-2430 New Orleans, LA 70112 Fax (504) 566-4785</p>	<p>PHELPS GEOSCIENCE Onshore Gulf of Mexico Geology and Geophysics Prospect Generation and Evaluation Houston, TX jsphelps@yahoo.com (281) 398-5208</p>
<p>C & R EXPLORATION, INC. Carlo C. Christina Lawrence G. Ringham</p>	<p>RAFIDI OIL AND GAS, INC. Jaser N. Rafidi, President 4415 Shore Dr., Suite 202 Bus. (504) 722-2942 Metairie, LA 70006 Fax (504) 888-5539; Res. (504) 888-1661</p>
<p>C. R. RONDEAU Petroleum Geologist 119 W Southland Ave. Ironwood, MI 49938 Res. (906) 932-4692</p>	<p>ROY C. WALTHER Petroleum Geologist 2421 Prancer Street New Orleans, LA 70131 Bus. (504) 392-8513 Res. (504) 392-9332</p>
<p>CLASSEN EXPLORATION, INC. James S. Classen Looking for close in deals P.O. Box 140637 Bus. (208) 854-1037 Boise, ID 83714 Fax (208) 854-1029 classenllc@msn.com</p>	 <p>625 E. Kaliste Saloom Lafayette, LA 70508 16800 Greenspoint Dr., Suite 225-S Houston, TX 77060 1100 Poydras St., Suite 1050 New Orleans, LA 70163 www.StoneEnergy.com</p>
<p>D-O-R ENGINEERING, INC. 3-D and Geoscience Services 6161 Perkins Rd. Bus : (225) 765-1914 P O Box 80812 Baton Rouge LA 70898</p>	<p>TONY CAROLLO Consulting Geologist Unitization Geosteering Field Studies 1701 Peach Street Bus. (504) 885-0004 Metairie, LA 70001 Res. (504) 885-6829</p>
<p>EDWARD B. PICOU, JR. Consulting Micropaleontologist - Retired 228 St. Charles Ave., Suite 1330 C Bus. (504) 529-5155 New Orleans, LA 70130 Res. (504) 282-3096</p>	<p>Zot Oil & Gas, LLC Jim Zotkiewicz Prospect Generation and Evaluation 3200 Ridgelake Dr. Suite 207 Business: 504.831.4694 Metairie, LA 70002-4930 Email: jimzot38@zotoil.com</p>

Attributes

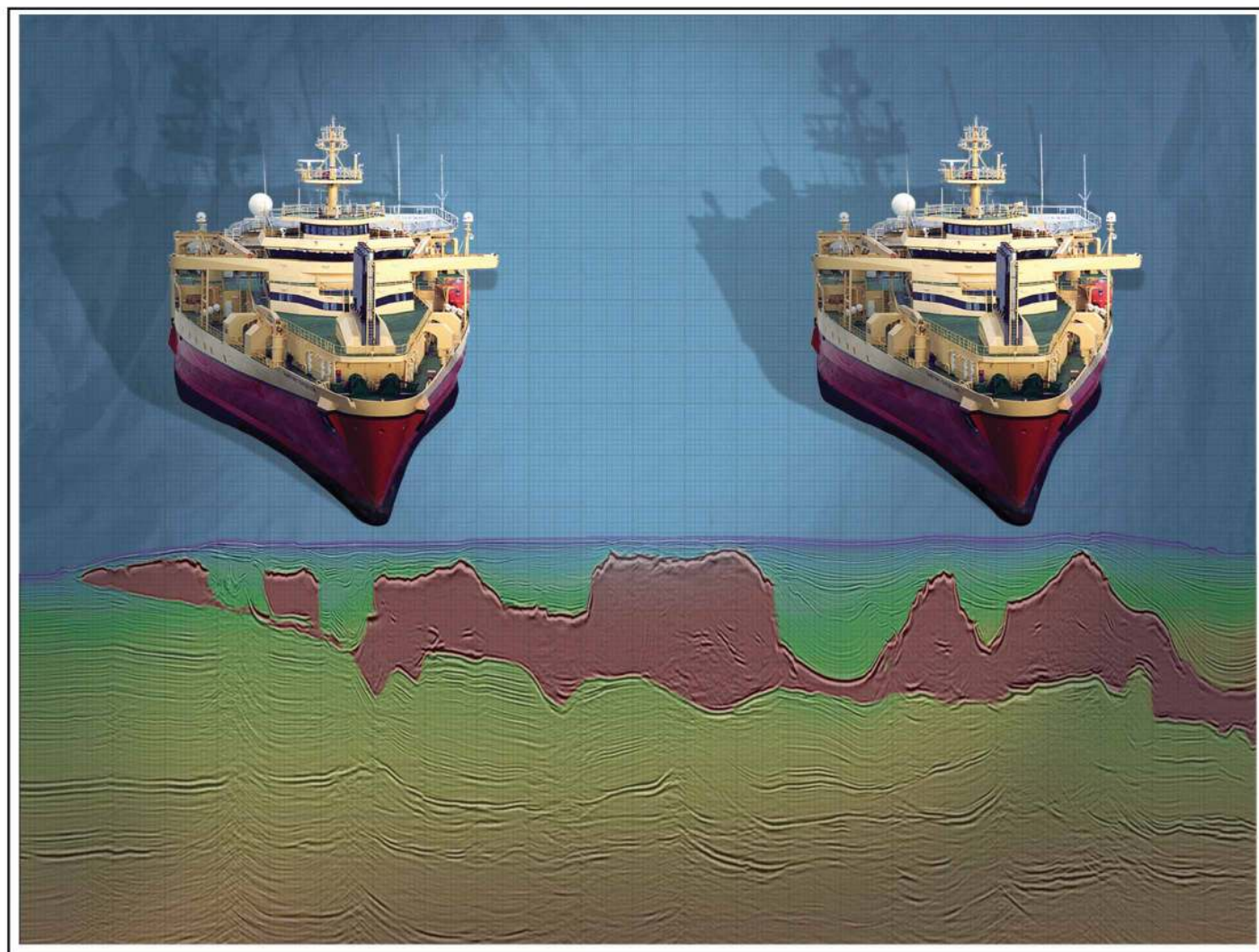
New Views on Seismic Imaging—Their Use in Exploration and Production



**31st Annual GCSSEPM Foundation
Bob F. Perkins Research Conference**
Houston, Texas
December 4-7, 2011
Houston Marriott Westchase Hotel

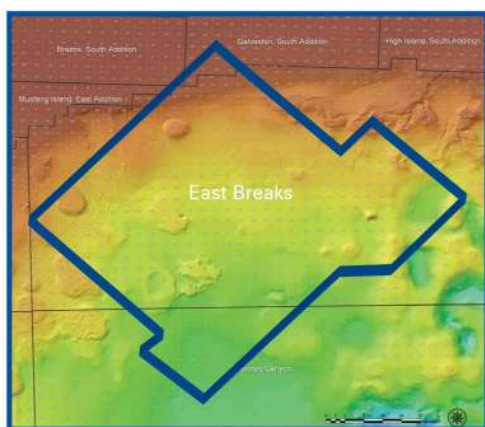
Conference information and
online registration
available on our Web site:
www.gcssepm.org





Crystal III, East Breaks

MultiClient Wide Azimuth



- **Size** - 480 OCS blocks
- **Focus** - Sub-Salt Miocene & Paleogene
- **Technology** - TTI Beam and RTM Imaging
- **Delivery** - Available Q4 2010

Houston
Tel: +1 281 509 8000
Fax: +1 281 509 8500

Oslo
Tel: +47 67 52 6400
Fax: +47 67 52 6464

London
Tel: +44 1932 37 6000
Fax: +44 1932 37 6100

A Clearer Image
www.pgs.com



NEW ORLEANS GEOLOGICAL SOCIETY



810 Union Street, Suite 300
New Orleans, LA 70112-1430

WWW.NOGS.ORG

MARINE PROPERTIES, LLC BERKSHIRE EXPLORATION CO.

MONTE C. SHALETT, CPL, PRESIDENT

3030 Lausat Street
Metairie, LA 70001-5924

BUS. (504) 831-7779
FAX. (504) 831-8315

PCI

Paleo Control, Inc.

Houston, Texas
713-849-0044

Drilling Wells, Studies and Data Base

Loyd Tuttle

Frio, SE Texas

Bob Liska

Wilcox, S and SE Texas

Jim Thorpe

Miocene and Cam-Miogyp



SEE YOUR DATA IN A WHOLE NEW LIGHT!

Take the pressure out of exploration
and drilling by seeing what you
are going to encounter.



eSeis

www.e-seis.com
713.531.1447

- Lithology & Fluids
- Depositional Facies
- Pore Pressure from V & Q
- Well Planning Consultation

