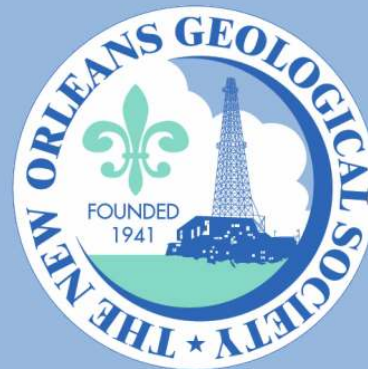


NOGS LOG



January 2011

Volume 51, Number 7

Upcoming Events and Activities

January 10 - NOGS Luncheon

*** At the Holiday Inn Downtown Superdome ***

\$2.00 validated parking in hotel garage

Guest speaker John Dacy, of Core Laboratories in Houston, will present "Core Tests for Relative Permeability of Unconventional Gas Reservoirs."

(See page 7 for Abstract and Biography)

HOLIDAY INN DOWNTOWN SUPERDOME

Check with concierge or
front desk for location

Lunch served at 11:30am

ADMISSION:

with reservation \$30.00

without reservation \$35.00

Student Member with reservation Free

January 11-12 - Fifth Annual Louisiana Groundwater, Coastal Geology and Subsidence Land Loss

Baton Rouge. See announcement on page 14.

February 7 - NOGS Luncheon

Holiday Inn Downtown Superdome. Guest speaker Kadira Analisa Singh, of Anadarko Petroleum Corporation in Houston, will present "The Impact of Meteorites on Earth's History and its Implications for Hydrocarbon Production."

February 7-8 - HGS Applied Geoscience Mudrocks Conference

Houston. See announcement on page 27.

February 7-9 - AAPG Arctic Technology Conference

Houston. Info: www.arctictechnologyconference.org

Get Ahead of the Game



Directional Survey Plus



Production Data



Digital Well Logs



With High Quality Well Data From TGS

Need an extra edge on the competition? TGS' high quality well data, comprehensive coverage and dedicated customer support can get you to the finish line.



Directional Survey Plus

Beyond simple directional survey data capture, Directional Survey Plus data are thoroughly researched, reprocessed and standardized.



US Production Data

TGS' nationwide production database features a visualization tool, leading industry exports and daily incremental updates.



Complete Curve LAS

Over 500,000 LAS well logs are now available in North America. Over six million well logs available in 30+ countries worldwide.

Find out more at www.tgsnopec.com/welldata or contact TGS Well Data at 888-LOG-LINE or WellData@tgsnopec.com



Geophysical
Products



Geological
Products



Imaging
Services



www.tgsnopec.com

NOGS Office

Office Manager: Annette Hudson

Office Hours: 8:30 a.m. – 3:30 p.m. on Monday-Wednesday-Friday

Tel: 504-561-8980 □ Fax: 504-561-8988

E-mail: info@nogs.org □ Website: www.nogs.org

The office is located at Suite 300, 810 Union Street, New Orleans, LA 70112.

Correspondence and all luncheon reservations should be sent to the above address.

Sent to press on December 27, 2010.



BOARD OF DIRECTORS

President	Rick Kear
Vice President	Eric Zimmermann
Secretary	Penne Rappold
Treasurer	Will Jorgensen
President-Elect	Bob Hafner
Editor	Fran Wiseman
Director 2011	Scott A. Wainwright
Director 2012	Arthur H. Johnson
Director 2013	Jack Langford

Company

Schlumberger	504-592-5376
LLOG Exploration	985-801-4338
Shell	504-728-4338
Shell	504-728-6339
BOEMRE	504-736-2912
Bret Exploration Co Inc	504-889-2700
Hydrate Energy International	504-464-6208
J C L Services	985-764-2527

Phone

E-mail

kearl1@new-orleans.oilfield.slb.com
ericz@llog.com
prappold@gmail.com
william.r.jorgensen@shell.com
ottohaf@aol.com
frances.wiseman@boemre.gov
scott_wainwright@hotmail.com
artjohnson51@hotmail.com
jclangford@latterblum.com

COMMITTEE

AAPG Delegates
AAPG Student Chapter
AAPG Student Chapter
Advertising-Log
Auditing
Awards
Ballot
Best Paper
Continuing Education
Employment Counseling
Entertainment
Environmental
External Affairs
Field Trip
Finance and Investment
Historical
Membership/Directory
New Geoscientists (NGNO)
Nominating
Non-Technical Education
Office Operations
Publications Sales
Photography
School Outreach
Scouting
Sponsorship/Houston
Technical Projects
Ad Hoc Committee on
University Support

Chairperson

William M. Whiting
Gabriella March
Andrew Ranson
Andrea Stancin
Chuck Holman
Michael N. Fein
Will Jorgensen
Brenda Reilly
TBA
Bob Hafner
Daisy Pate
Michael A. Fogarty
David Garner
Will Jorgensen
Edward B. Picou, Jr.
Carlo C. Christina
Tom Klekamp
TBA
Mike Ledet
Duncan Goldthwaite
Tom Klekamp
Edward B. Picou, Jr.
J. David Cope
Thomas C. Bergeon
Carol Rooney
David E. Reiter
TBA
Michael J. Gallagher

Consultant	504-947-8495
Tulane University	
UNO	337-578-5587
Shell	504-728-0431
Independent	504-891-4878
W & T Offshore	504-210-8148
Shell	504-728-6339
Energy Partners Ltd.	504-799-4811
Corps of Engineers	504-957-4372
Sylvan Energy, LLC	603-523-4808
Shell	504-728-6154
Shell	504-728-6339
Consultant	504-529-5155
Retired (C & R Expl.)	
Amber Resources	985-845-4046
Consultant	504-394-9636
Amber Resources	504-887-4377
Consultant	985-845-4046
Ankor Energy	504-529-5155
Century Exploration	504-596-3672
Consultant Geologist	504-832-3772
Eni Petroleum	504-835-1909
Eni Petroleum	713-393-6100

bootscon@aol.com
gmarch@tulane.edu
aranson@uno.edu
Andrea.a.stancin@shell.com
charleswholman@bellsouth.net
mikef@wtoffshore.com
william.r.jorgensen@shell.com
breilly@eplweb.com
ottohaf@aol.com
daisy.pate@gmail.com
mike.a.fogarty@gmail.com
David.Garner@shell.com
william.r.jorgensen@shell.com
epicou@bellsouth.net
Carlocc398@aol.com
klekamp@bellsouth.net
mikeledet@cox.net
DGldthwt@aol.com
klekamp@bellsouth.net
epicou@bellsouth.net
dcoupe@ankorenergy.com
Tom.bergeon@centuryx.com
carolbrooney@aol.com
david.reiter@enipetroleum.com
Michael.Gallagher@enipetroleum.com

NOGS LOG STAFF

Editor	Fran Wiseman	BOEMRE	504-736-2912
Editor-Elect	David Tatum	Chevron	985-773-6477
Auxiliary	Susie Baker	NOGA	504-466-4483
Info Tidbits	Fran Wiseman	BOEMRE	504-736-2912
Drill Bits	Carlo C. Christina	Retired (C & R Expl.)	
Webmaster	Edward B. Picou, Jr.	Consultant	504-529-5155
Layout	Jannette Inc.		

NOGS AUXILIARY

Officers		Phone	Directors	Year	Phone
President	Jean Jones	504-738-8091	Peggy Campbell	2009-11	504-283-2505
1st Vice-President	Alma Dunlap	504-737-2678	Ruth Grimes	2009-11	504-392-8103
2nd Vice-President	Judy Sabatè	504-861-4335	Gerry Waguespack	2009-11	504-737-0532
Secretary	Peggy Rogers	504-392-6323	Carol Andrews	2010-12	504-887-3432
Treasurer	Judy Lemarie'	504-393-8659	Susie Baker	2010-12	504-466-4483
Parliamentarian	Beverly Kastler	504-286-0879	Joan Collier	2010-12	504-833-1738
Member-at-Large	Linda Peirce	504-393-7365			

--- NOGS Contact List continued on page 10 ---

SYNERGY ENERGY



Weatherford®
LABORATORIES

Your success increasingly depends upon a better understanding of your reservoir. At Weatherford Laboratories, we provide a single source for comprehensive laboratory analyses, creating a synergy previously unknown in laboratory services. This single source includes distinguished geologists, geochemists, analysts, engineers, technicians and software developers, 38 worldwide laboratories, and the broadest portfolio of services for acquiring and interpreting data from physical samples. The end result is an unsurpassed combination of intellectual capital and technical resources — all working together to help you enhance development planning and reduce reservoir uncertainty.

Put our union of Synergy and Energy to work for you.

Weatherfordlabs.com

HIGHER STANDARDS

NORTH AMERICA
NAInquiries@weatherfordlabs.com

EUROPE
EUIquiries@weatherfordlabs.com

LATIN AMERICA
LAIquiries@weatherfordlabs.com

MIDDLE EAST/NORTH AFRICA
MENAIquiries@weatherfordlabs.com

ASIA PACIFIC
APIquiries@weatherfordlabs.com



from the President

Merry Christmas and Happy Holidays to the entire NOGS Membership!

We need to be thankful for all our many blessings as we celebrate this holiday season! We have been blessed individually but I was thinking corporately. NOGS is an outstanding organization - alive and vibrant! We have an involved membership and numerous member/leaders. We enjoy the guidance and leadership of experienced former officers. NOGS is financially solid and strong. But most of all NOGS isn't looking backward, we are looking forward! What, where and whom can we help, get involved with, or just touch. Our fellow professional societies in the New Orleans area are seeking our cooperation with mutual respect and interest. NOGS is people - us and those who are soon to be "us." So across the holidays, be thankful for what you and your family have and be thankful that you are a NOGS member and think of how you can contribute in 2011.

I believe the consensus opinion is that our joint meeting with SGS on December 9th at the Le Pavillon Hotel was a success. Dr. John Wagner, Chief Geologist for Nexen, didn't disappoint us with his talk "A Discussion concerning the depositional processes of aeolian systems within the deep-water Norphlet in relation to ancient and modern analogues." We can appreciate the fine line John was walking between sharing and not sharing too much. Thanks Johnny!

Many thanks to Beverly and Carlo Christina for hosting the 2010 NOGA/NOGS Christmas Party at the Metairie Country Club on Friday, December 10th! Thanks also to our NOGA for a beautiful setting and good tunes! We can't leave out President Elect Bob Hafner and his team in our appreciation for bringing out the best at a reasonable price and without the imposition of dealing with finances on the evening of the party. The evening was fun! Those attending got to visit and share with old and new friends and members. This was Roslyn's and my first NOGS Christmas party but I certainly doubt it will be our last even if we're not living in South Louisiana.

Don't miss our January 10th luncheon meeting with speaker John Darcy with Core Laboratories, Houston, Texas, will present his paper on "Core Tests for Relative Permeability of Unconventional Gas Reservoirs." And then

on February 7th 2011, Eric has Kadira Singh lined up to present "The Impact of Meteorites on Earth's History and its Implications for Hydrocarbon Production."

We are still seeking volunteers to share the manning of the NOGS booth at AAPG 2011 ACE in Houston, April 10 - 13th. We will be selling and taking orders for our just completed NOGS Oil & Gas Fields of South Louisiana 2010 from the NOGS booth and the more volunteers the merrier.

Speaking of which, we all are proud of the fantastic product produced by the NOGS Oil & Gas Fields of South Louisiana 2010 leadership team, contributors and numerous volunteers. This crew spent many man-years on the volume and it is first class! Congratulations to Carlo Christina, Charlie Corona, Tom Klekamp, Art Johnson and so many others. Ya'll make every NOGS member proud!

Mark your calendar and make your plans to attend the South-Central GSA 45th Annual Meeting in New Orleans, March 28 and 29, 2011. NOGS member Dr. Mark Kulp is chairing this meeting and is still soliciting sponsors, session chairs and volunteers. Read the announcement in the LOG.

Also HGS is putting on "The HGS Applied Geoscience Mudrocks Conference" to be held on February 7, 2011. Learn about reservoir characterization advances of multiple Gulf Coast shale target systems, including the Haynesville / Bossier. Develop your understanding of what other productive mudrock systems may occur within the US Gulf Region. Register early! This sold out in 2007, 2009, & 2010. The complete technical program is available for download on the NOGS website in the February events listing.

Dave Garner, Shell, has served NOGS admirably as Field Trip Chair for a number of years but is stepping aside. Thanks Dave for all you have done! If any of you are interested in serving in this manner, please contact me or any board member.

One more thing, please consider who you might invite to a NOGS meeting or ask to join. For professional societies such as NOGS there literally is strength in numbers. Let's keep our membership active and growing.

Enjoy your blessings this season and God bless,

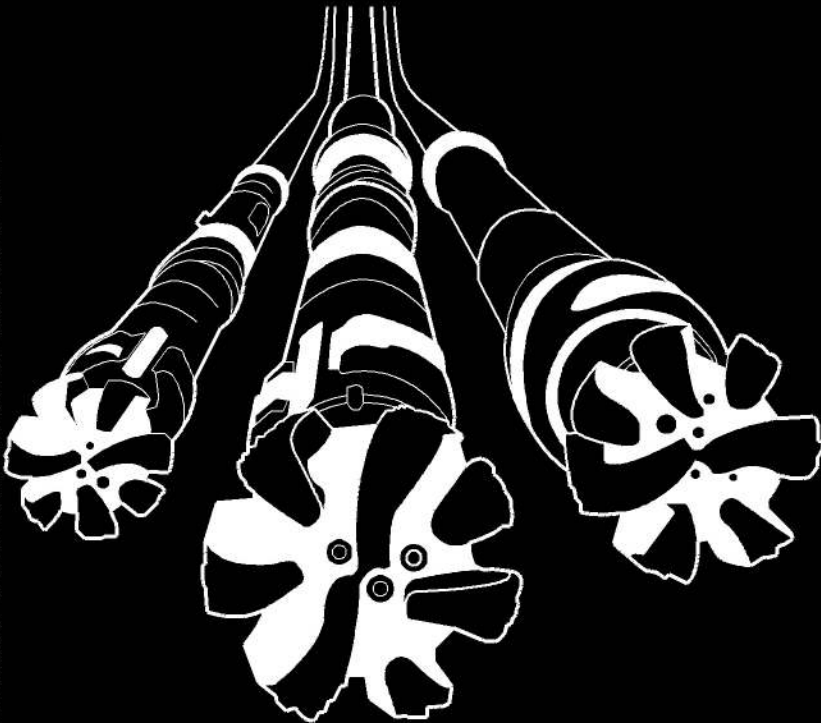
Rick

Deep Water

WELL CONSTRUCTION

Are all your services deepwater ready?

Control Measures	Complexity/Process + Exposure	Preparedness				
		High				Low
-5	High	-5	-10	-15	-20	-25
	-4	-4	-8	-12	-16	-20
	-3	-3	-6	-9	-12	-15
	-2	-2	-4	-6	-8	-10
	Low	-1	-2	-3	-4	-5
		People + Competency				
		Equipment + Technology				
		1	2	3	4	5



Our Project Readiness Assessment (PRA) approach has been applied and improved over the last 5 years.

All deepwater projects in which Schlumberger participates benefit from our PRA process, which complies with new U.S. regulatory requirements. This helps deliver seamless, efficient startup, and reduced NPT.

Learn more at

www.slb.com/deepwaterready

Global Expertise
Innovative Technology
Measurable Impact

Schlumberger

*Mark of Schlumberger. Measurable Impact is a mark of Schlumberger. © 2010 Schlumberger. 10-dw-0079

January 10 NOGS Luncheon Presentation

At the Holiday Inn Downtown Superdome

Core Tests for Relative Permeability of Unconventional Gas Reservoirs

presented by

John Dacy

Core Laboratories, Houston, Texas

ABSTRACT

A combination of up to seven or more core tests provides a practical approach to k_{rg} and k_{rw} function definition even when absolute permeability is at the sub-microdarcy level. The method is designed to provide data needed to define function parameters required by traditional engineering equations for relative permeability. This is accomplished with cores by determining end point specific permeabilities, end point non-wetting phase trapping capacity, critical gas saturation, and a small but sufficient number of effective gas permeabilities to define both drainage and imbibition k_{rg} as functions of water saturation. Assessment of the k_{rw} function is handled variously and is described. This combination-method is used because traditional core tests involving somewhat continuous displacement are invalid or not practical when cores have absolute permeability approaching a microdarcy and lower.

Conventional analysis of gas shale and tight gas sand cores provides a snap-shot of reservoir permeability. The more complete view of flow capacity

needed by engineers and petrophysicists comes with the availability of gas-water relative permeability. Measured relative permeability data are used for reservoir simulation, production forecasting, interpretation of formation damage, and to develop detailed reservoir permeability versus depth profiles.

Sample and test conditions are described. Data for several tight gas sand and gas shale cores are presented along with the required data integration steps to combine the separate test results and to generate relative permeability functions of water saturation. Results show these unconventional rocks can be characterized with well-known relative permeability equations and that traditional rock-property logic can be followed during data integration.

The significance of this work lies in presentation of a novel yet practical solution for acquiring rock curves from unconventional rocks. It is believed to represent the first treatment of core tests for k_{rg} hysteresis in tight gas sands and of core-based development of relative permeability functions in gas shales.

BIOGRAPHY

John Dacy is Technical Director for the Petroleum Services division of Core Laboratories and is based in their Houston, Texas office. He graduated from the University of Texas at Arlington with a BS degree in geology in 1972 and began his career with Core Lab the same year working in their Dallas Advanced Rock Properties lab. He has held a variety of

technical and administrative positions with Core. As technical director he provides training and other support to Core Lab's worldwide network of rock properties laboratories on issues of technology transfer, testing protocols, data applications, and quality assurance. He is a member of SPWLA, SPE, AAPG, SEG, and the Society of Core Analysts.

THE LUNCHEON RESERVATION DEADLINE IS JANUARY 5 - CONTACT THE NOGS OFFICE

“And Looking Ahead...”

The next NOGS Luncheon will be held on February 7 at Holiday Inn Downtown Superdome. Guest speaker Kadira Analisa Singh, of Anadarko Petroleum Corporation in Houston, will present “The Impact of Meteorites on Earth's History and its Implications for Hydrocarbon Production.” Contact the NOGS office to make your reservation.

SUPER SCIENCE SATURDAY

DINOSAURS, EARTHQUAKES AND OIL



March 19, 2011

Louisiana Children's Museum

11:00 AM - 3:00 PM

Volunteers Needed

Contact Tom Bergeon at 504-832-3772

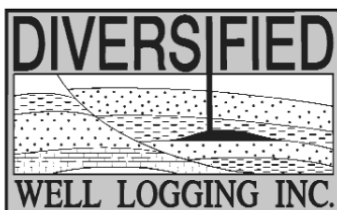
tom.bergeon@centuryx.com





Relax. We'll keep you posted.

Your rig is offshore and you are not. How do you know what's going on so many miles away? You know because we tell you. Daily or even hourly, Diversified Well Logging's engineers update you on the status of your rig. We are your eyes and ears, especially when it comes to deep water or high pressure, high temperature areas. Diversified offers 24-hour surface evaluation. We provide secure and customized real-time data communication, in-house research and development and 24/7 on-call support for our equipment and our engineers. Whether you have a 10-day job or 110-day job, we provide the specialized attention you require. So, relax. We're with you every step of the way.



Serving the Gulf Coast for over 40 years.

New Orleans • Lafayette • Houston • Dallas • Corpus

800.280.2096

711 West 10th Street • Reserve, LA 70084 • Phone: 985.536.4143 • Fax: 985.536.2427
sales@dwl-usa.com

**DOMESTIC AND INTERNATIONAL
BIOSTRATIGRAPHIC SERVICES**



6619 Fleur de Lis Drive
New Orleans, LA 70124
(504) 488-3711

www.paleodata.com



Complete wellsite paleo services

**In-house sample preparation
lab for quality-monitoring
and efficiency**

**Integrated foram / nannofossil
analyses**

**In-house sample preparation
lab for quality-monitoring
and efficiency**

**Supported Gulf Coast
biostratigraphic databases**



MCMORAN EXPLORATION CO.



**MCMORAN
OIL & GAS**

www.mcmoran.com

NYSE: MMR

16676 Northchase Dr.
Houston, TX 77060
(281) 539-7600
Fax: (281) 539-7655

1615 Poydras
New Orleans, LA 70112
(504) 582-4000
Fax: (504) 582-4155

110 Travis St., Suite 140
Lafayette, LA 70503
(337) 735-9150
Fax: (337) 735-9151

NOGS CONTACT LIST

--- continued from page 3 ---

MEMORIAL FOUNDATION

BOARD OF TRUSTEES

2010-11 Chairman	Tom Klekamp
2010-11 Secretary	Rick Kear
2010-11 Trustee	Chuck Holman
2010-11 Trustee	Michael N. Fein
2011-12 Trustee	Monte Shalett
2011-12 Trustee	James Swaney
2012-13 Trustee	Jennifer Connolly
2012-13 Trustee	William M. Whiting

Company
Amber Resources LLC
Schlumberger
Independent
W & T Offshore
Berkshire Exploration Co
BOEMR E
Shell
Consultant

Phone
985-845-4046
504-592-5376
504-891-4878
504-210-8148
504-831-7779
504-736-2677
504-728-6411
504-947-8495

E-mail
klekamp@bellsouth.net
kearl1@new-orleans.oilfield.slb.com
charleswholman@bellsouth.net
mikef@wtoffshore.com
mshalett@gmail.net
james.swaney@boemre.gov
jennifer.connolly@shell.com
bootscon@aol.com

AAPG DELEGATES

Term Ends

2011	Tom Hudson
2011	Edward B. Picou, Jr.
2011a)	Brenda Reilly
2011a)	Robert Rooney
2012	William Whiting
2012	Jim Zotkiewicz
2012 a)	David E. Balcer
2012 a)	Richard J. Stancliffe

Chevron
Consultant
Energy Partners Ltd.
Century Exploration
Consultant
Zot Oil & Gas
Chevron
Shell Expl & Prod Co.

504-529-5155
504-799-4811
504-832-3777
504-947-8495
504-831-4694
985-773-6725
504-728-7553

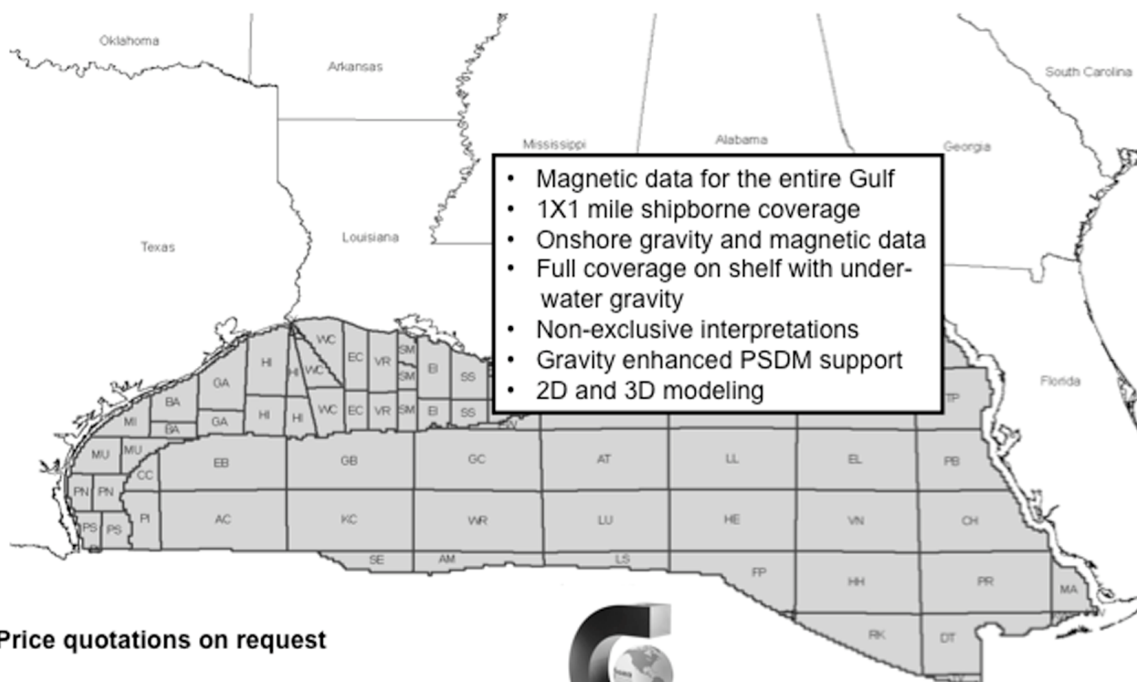
tom.hudson@chevron.com
epicou@bellsouth.net
breilly@eplweb.com
Robert.rooney@centuryx.com
bootscon@aol.com
jimzot38@zotoil.com
dbalcer@Chevron.com
richard.stancliffe@shell.com



Fugro Gravity & Magnetic Services

LAND • AIRBORNE • UNDERWATER • SHIPBORNE

The most complete coverage Onshore and Offshore Gulf of Mexico



Price quotations on request

Fugro Gravity & Magnetic Services
www.Fugro-GravMag.com
Tel: 713-369-6123



Gravity Inspired. Magnetically Inclined.



**Shell has worked in partnership
with the NOGS for many years, and
is proud to count the society among
its closest business associates.**

The New Orleans Geological Society was organized in 1941 to foster scientific research and advance the science of geology. Particular emphasis is laid on the exploration for and production of petroleum and natural gas. Related objectives include encouraging the adoption of improved methods of exploration, disseminating pertinent geological and technological data, and maintaining a high standard of professional conduct among its members.

www.shell.com/us/sepcos

**It's no illusion...
Core Lab offers everything you need.**



©2009 Core Laboratories. All rights reserved.

Unconventional resource exploitation • Gas shale experts • Deepwater GOM authority
Capacity for fast turnaround • High-quality people • Global support
Industry leadership and reliability • Proprietary and patented technologies • Experience

www.corelab.com/rd/petroleumservices • 24-hour wellsite service hotline: 504-733-6583



From ZNodal Systems to ZNodal Imaging

We are full spectrum ZNodal™ technology

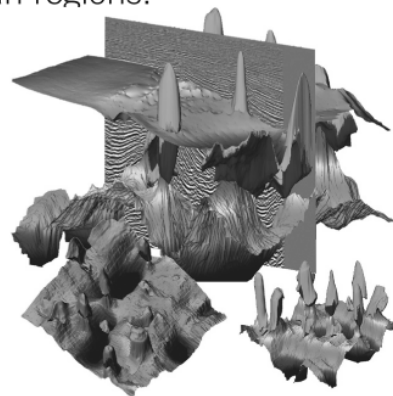
FairfieldNodal.com



We admit it. We're seismic nodal fanatics. Always have been. Which explains our one-of-a-kind, cable-free ZNodal™ systems. They work wonders in dense urban areas and pristine wilderness, in shallow water and deep ocean regions.

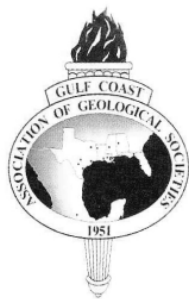
In fact, our exclusive ZNodal technology is behind everything we do, from acquisition and licensing to advanced processing and imaging, bringing nodal data to life in amazing ways.

Right now, our ZNodal systems are on the job in some of the world's most challenging fields, making a powerful difference. So when you're ready to go nodal, count on us to lead the way. ZNodal technology: It's what you need. It's what we're all about.



fairfieldnodal

SYSTEMS ACQUISITION LICENSING PROCESSING IMAGING



The Gulf Coast Association of Geological Societies

CALL FOR PAPERS

61th Annual Convention

October 16-19, 2011

Veracruz, Mexico

Hosted by the Asociación Mexicana de Geólogos Petroleros



The Asociación Mexicana de Geólogos Petroleros (AMGP) is proud to host the 2011 GCAGS Annual Convention to be held in Veracruz, Mexico. The meeting will be running from October 16th-19th and will gather geoscientists from more than 15 geological societies from around the Gulf of Mexico.

Our theme, **“Sharing knowledge to add value”**, highlights the importance of sharing knowledge to maximize the value of the resources lying in the subsurface. GCAGS Transactions derived from annual conventions have long been recognized for gathering the best geoscience from the Gulf Coast. We invite geoscientists from all around the Gulf of Mexico to submit their contributions to the technical program as oral or poster presentations. This will be a great opportunity to exchange ideas. Veracruz and AMGP are looking forward to have you in an unforgettable Convention.

PROPOSED TECHNICAL SESSIONS INCLUDE

- ✓ Remaining potential in circum-Gulf of Mexico Petroleum Provinces
- ✓ Cenozoic sequence stratigraphic framework of the deep Gulf of Mexico and adjacent areas
- ✓ Climate change, environmental challenges and sustainable development
- ✓ Learning and teaching in the geosciences to meet new challenges
- ✓ New perspectives in fractured reservoirs
- ✓ New concepts and methods in biostratigraphy
- ✓ The Gulf of Mexico deepwater setting – Geology, economics, and technology
- ✓ Interaction between salt tectonics and sedimentation
- ✓ Seismic imaging and interpretation of geologically complex areas
- ✓ Petroleum systems and oil quality controls in the Gulf of Mexico
- ✓ New approaches in sandstone reservoirs characterization and diagenetic modeling
- ✓ New insights into the geodynamic evolution of the Gulf of Mexico

SYMPOSIUM

Jurassic Reservoirs of the Gulf Region: Stratigraphy, sedimentology, diagenesis and modeling

HOW TO SUBMIT:

Abstracts (not more than 250 words) should be submitted for review online or via e-mail to the technical program chair. Papers should have application to Gulf Coast and Gulf of Mexico geology. Include your full mailing address, telephone and FAX numbers, e-mail address, and whether you are submitting for oral, poster or either (preferred).

Submit abstracts by February 4, 2011 as instructed on the website www.gcags2011.com

Notification of acceptance by March 4, 2011. All presenters, both oral or poster, must submit either a paper (10 to 12 pages) or an extended abstract with key figures for review by April 22, 2011 for inclusion in the Transactions. Full instructions for authors will be posted at www.gcags2011.com.

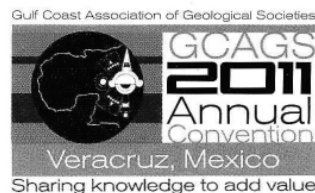
ABSTRACT DEADLINE: FEBRUARY 4, 2011

Questions or ideas for the technical program should be directed to:

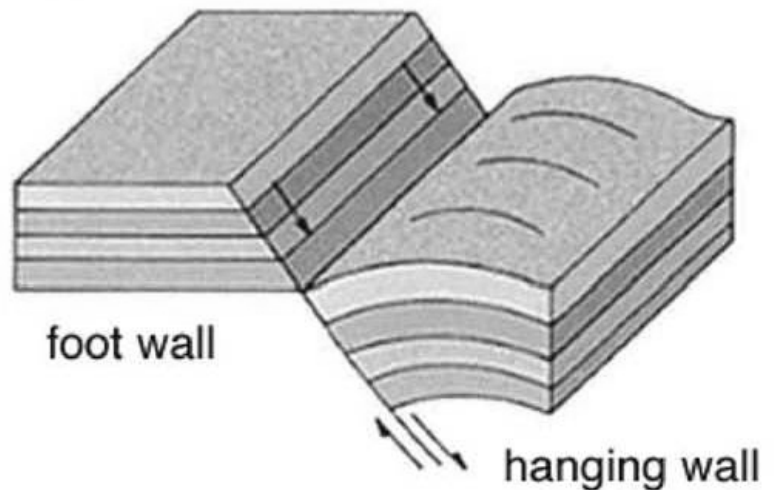
Antonio Cuevas Leree

Technical Program chair

juan.antonio.cuevas@pemex.com, Tel. +52(993) 3164588



***Fifth Annual Louisiana
Groundwater, Coastal Geology
and Subsidence- Land Loss
Symposia***



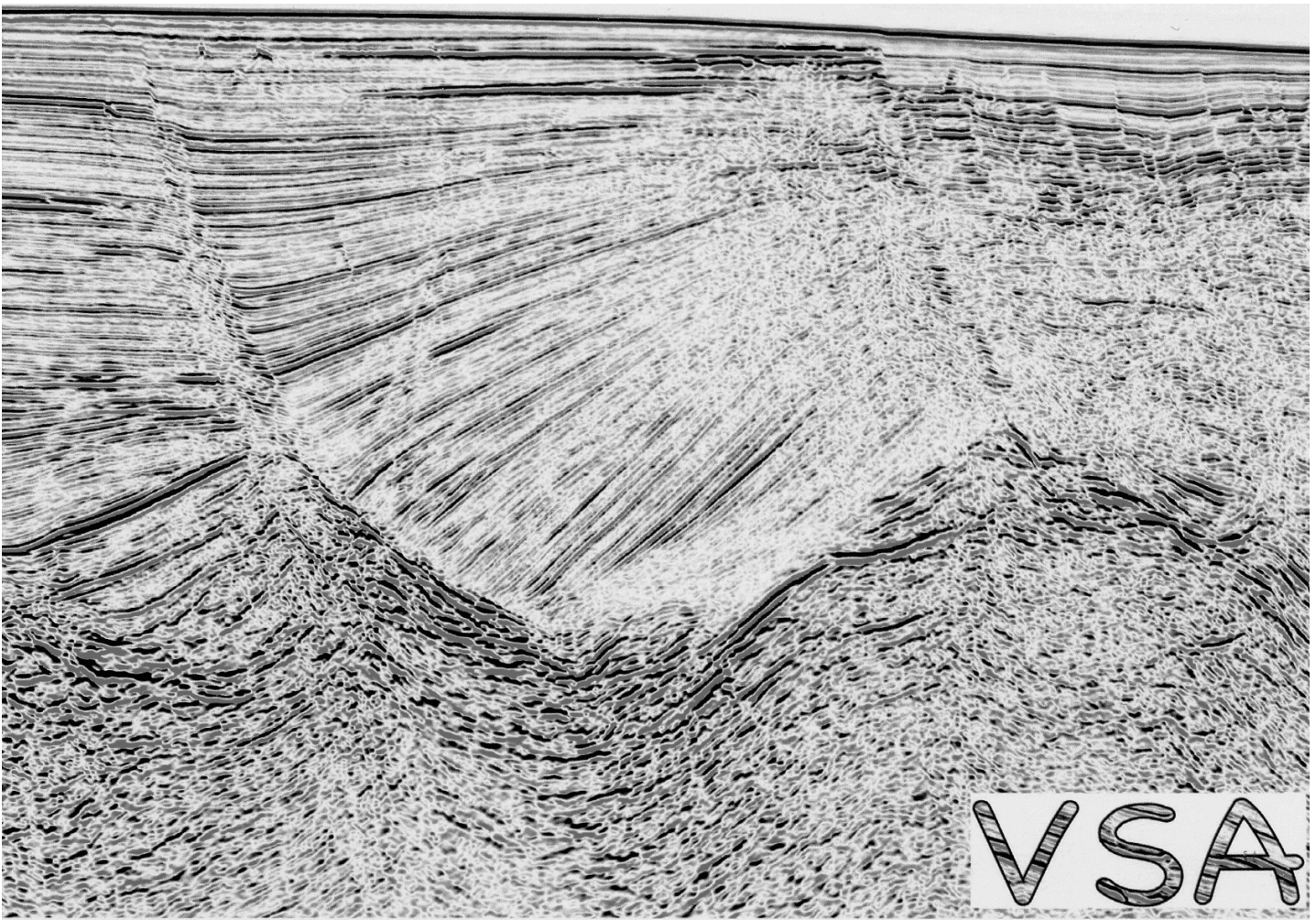
January 11 & 12, 2011

Dalton Woods Auditorium
Energy Coast & Environment Building
Louisiana State University
Baton Rouge, Louisiana

For more information go to the NOGS website:
[http://www.nogs.org/GroundwaterSubsidence%
20Symposia%20-%20Talks%20Scxhedule.pdf](http://www.nogs.org/GroundwaterSubsidence%20Symposia%20-%20Talks%20Scxhedule.pdf)

The Virtual Seismic Atlas – www.seismicatlas.org

Anyone who generates prospects using 3D seismic would appreciate the information on this free website. In essence, it is the new virtual “AAPG Bally Seismic Atlas.” The site contains numerous analogues for your consideration when interpreting your data. This site is populated with examples by contributors from around the world and you are asked to consider uploading a unique example from your work. The site had its debut here in New Orleans at the AAPG convention in April. As of September, there were about 800 images from 83 surveys on the Virtual Seismic Atlas site. These display a wide range of geological environments and ways of using seismic imaging and data. The site’s director is Rob Butler of the University of Aberdeen and is supported by Bill McCaffery and Graham Stuart at the University of Leeds. The project is supported by the UK's Natural Environmental Research Council, the Geological Society of London, the Petroleum Exploration Society of Great Britain and many energy companies. Please take some time to explore this exciting website.



Ed Picou

Joint SGS-NOGS December Luncheon



John Wagner, Nexen Petroleum, Inc.
Luncheon Guest Speaker

Rick Kear,
NOGS President



Eric
Zimmermann,
NOGS Vice
President

New NOGS Members November 2010

Steven Brachman
Petro-Hunt LLC
Exploration Manager
Ste 250 -2901 Wilcrest Dr
Houston, TX 77450
713-268-8810

William R. Finley
Rozel LLC
Sr Geoscientist
P O Box 52150
Lafayette, LA 70505
337-237-7788

John A. Gambill
Century Exploration Houston
Manager Geology
Ste 300 - 10210 Grogan's Mill
The Woodlands, TX 77380
281-362-3632

Thomas A. Mc Whorter
Blue Moon Exploration Inc
Vice President
Ste 380 - 2121 Sage Rd
Houston, TX 77056
713-963-8160

Jordyn A. Spizale
Student - UNO
4809 Carondelet St
New Orleans, LA 70115
985-637-0255

REINSTATED

Neil Barnes
Capstone Energy Portfolios LLC
Manager
Ste 100 - 602 Crescent Pl
Ridgeland, MS 39157
601-969-1122

REINSTATED

Jack M. Thorson
Northcoast Oil Co
610 E Rutland St
Covington, LA 70433
985-898-3577



MERITORIOUS SERVICE AWARD

Application Form for 2010 Recipient/s Award

Awards Ceremony – Tuesday, March 22, 2011

Name: _____

Current Employer: _____

Occupation: _____

Address: _____

Work Phone: _____ Cell Phone: _____

Past Employment: _____

Industry Societies: _____

Volunteer Work: _____

Special Interests: _____

NOTE: Submit digital picture of nominee (if available) and biography to:

Barbara Edmonds – Secretary, API Delta Chapter

c/o Energy Partners, Ltd.

201 St. Charles Ave., Suite 3400

New Orleans, LA 70170-1026

OR email: bedmonds@eplweb.com

South-Central Section Meeting

Geological Society of America

March 27-29, 2011 New Orleans LA



An Invitation to Sponsors

November 28, 2010

March 27-29, 2011 marks the annual meeting of the Geological Society of America's South-Central Section. This meeting is hosted by the University of New Orleans, and will be held at the Chateau Bourbon, A Wyndham Historic Hotel in New Orleans. The meeting will have a diverse slate of scientific sessions, workshops, and field trips that highlight the important role of the geosciences in addressing important issues facing the mid-continent, the entire nation, and our world. We have assembled a remarkably diverse array of technical sessions, which meld academic and industrial geosciences in our region.

This will certainly be an outstanding meeting, but it can be even better with a sponsorship from your company. Sponsorships support a wide range of activities that would otherwise be impossible: 1) Student travel assistance; 2) Student Research Awards; 3) K-12 teacher registration support; 4) printing the program booklet; 5) receptions for conference attendees; 6) travel awards and registration for Mexican and Canadian geoscientists (now part of the GSA Sections), 7) coffee breaks; and 8) Happy Hour!

We invite you to become a sponsor of the 2011 meeting. We invite you to assist us in this important activity and its impact for the geosciences in our region and contact us at your earliest convenience.

Major Sponsor commitments will be widely advertised in upcoming meeting announcements. Sponsoring company names and logos will be prominently displayed on the large meeting poster that will be mailed to all geology departments within the region and in neighboring states. We will also provide booth space and free registration for certain participants selected by Major Sponsors as part of their sponsorship.

Please note that it is also possible to **target your sponsorship** toward one or more specific events at the meeting such as the welcoming reception, refreshment breaks during the meeting, or during a Happy Hour! **Specific Event Sponsors** will be clearly recognized during each event.

Inquires regarding sponsorship levels and specific events may be directed to:

Dr. Mark Kulp
504-280-1170
mkulp@uno.edu

Thank you so much for your support,

Mark Kulp

Invigorate Your Mind and Career with Timely Training from AAPG!

New E-Symposia coming up in January – sign up now to reserve your spot!

- Integrating Disciplines, Data and Workflows in Resource Plays: Surface Seismic to Stimulation, January 25, 2011, at 2:00 p.m., CST. This e-symposium takes a close look at workflows associated with resource plays, and analyzes where integration must occur between disciplines, data, and workflows at all phases of the process. Operational efficiency and effectiveness can be improved from surface seismic to stimulation.

Call for Papers for new Hedberg Conference

New Hedberg in China in 2011: AAPG's Hedberg Conference on Natural Gas Geochemistry: Recent Developments, Applications, and Technologies will be held May 9-12, 2011, in Beijing, China. This meeting will review the application of natural geochemistry to the solution of key problems; attendees will share and broaden the understanding of current applications, best practices and future directions of natural gas geochemistry. The meeting will include four days of interactive oral and poster sessions, as well as some optional field trips to surrounding Chinese landmarks. Abstract deadline is **January 5, 2011**.

A note from a Student Volunteer for AAPG 2010 in New Orleans:

Bill Whiting,

I hope all is well in New Orleans and the NOGS is still keeping you busy. I was one of the graduate helpers at the conference and I said I would keep in touch and let you know how I get on in the future.

I recently graduated from the University of Aberdeen in September and accepted a job as a geologist for a private oil company based in London. They have put a lot of ownership on me to organize any training and course I think will be beneficial. The work load will increase dramatically over the next few months which I am looking forward to.

I hope you are well and looking forward to Christmas, thank you again for looking after me at the Conference.

Kind Regards,

Ian Stephens
Geologist

Editor's Note: Ian also was a great help at the WWII function. Another volunteer, Scott Wessell from UNO, is now working in Houston and Adam D'Quin, a volunteer from LSU, is working in Houston with Devon.

FROM THE EDITOR



South Louisiana and Offshore Exploration and Production Activity

Lafayette District, Onshore Area and Offshore Area

By Carlo C. Christina

NEW LOCATIONS

Twenty-eight drilling permits were issued this past month. Although the number of permits decreased, several significant locations were approved.

Beauregard Parish continues to be an active area with another location by Midstates Petroleum Co. in the **Bearhead Creek, South Field**. The #8 Musser-Davis test will be drilled in Sec. 28, 6S-11W, to a projected depth of 15,035 feet.

In the **Houston River Field**, in Calcasieu Parish, Samson Contour Energy E&P will drill its #1 Labokay in Sec. 4, 9S-11W to the permitted depth of 16,668 feet. This is an interesting test because no wells in the field have been drilled deeper than 8600 feet. Houston River was discovered in 1997 and has produced 1,800,000 barrels of oil from the Hackberry. The expected target zones are believed to be deep Wilcox sands.

A **rank wildcat** has been permitted in Evangeline Parish by Rhino Operating Co. in Sec. 30, 2S-3E. The #1 Floyed is permitted to 11,650 feet.

Jennings Townsite Field in Jefferson Davis Parish is the site of the Texas Petroleum Investments #1 TPIC Fee. The 14,307' well, (TVD 13,500') will be drilled in Sec. 1, 10S-3W. This field was discovered in 1974 and has produced more than 27 million barrels of oil and more than 50 billion cubic feet gas. It produces from multiple formations, Marginulina howei through Nonion struma. This is an interesting test because the last significant production was found in 1991.

In Plaquemines Parish, **Garden Island Bay Field**, Orx Resources has staked the much anticipated location for the #1 SL 214 Garden Island well. It is located in Sec. 24, 23S-32E, and is permitted to a depth of 19,643 feet.

Leleux Field, in Vermillion Parish, is the site of a deep Bol mex test. The operator, Square Mile Energy LLC, will drill in Sec. 6, 11S-2E, to a depth of 18,500 feet.

Offshore, in **Eugene Island Block 18 Field**, Phoenix Exploration Co. has spudded the #1 SL 20224. It is drilling below 3650 feet.

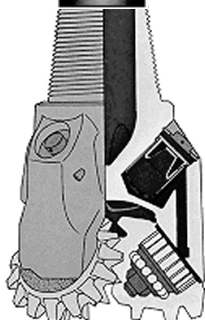
COMPLETIONS

In Jefferson Parish, **Bayou Villars Field**, Royal Production Co. has plugged and abandoned the #1 SL 20262, (#242103). It was drilled to a total depth of 10,200 feet, and plugged on 10/25/2010.

Dynamic Offshore Resources had completed the #2 SL 19269, (#240836) in **Eugene Island Block 10 Field**. It was completed through perforations 16,222 to 16,372 feet, and tested 10,440 MCFGPD and 770 BCPD, on 14/64" choke with flowing tubing pressure of 10,520#.

In **Burr Ferry, South Field** a significant Austin Chalk completion was reported by Anadarko E&P Co. The #5 Gasrs, (#241312) was completed from 2 horizontal lateral holes. The well tested 12,663 MCFGPD and 1073 BCPD. The #1 lateral produced from the interval 13,868' to 18,158', and the #2 lateral produced from the interval 13,876' to 15,546'.

North Bayou Jack Field in Avoyelles Parish has been the center of considerable activity lately. The Nelson Energy, #1 Deshotels, located in Sec. 20, 2S-5E, is preparing for



completion at a total depth of 18,748 feet, with the horizontal leg measuring 3755 feet. Nelson Energy, the operator, is joined by Pryme Oil & Gas Limited, an Australian company, as a 40% working interest partner. Pryme's prospect, named "Turner Bayou", consists of a proprietary 3D seismic survey over 80 square miles. The primary targets are contained in six prospective formations ranging in depth from the Frio, at 3,000 feet, to the Tuscaloosa at 18,000 feet. The successful completion of the #1 Deshotels could set off a new wave of activity in the area.

The **Tuscaloosa Marine shale** has been the target of several horizontal wells recently. Encore Operating Limited has drilled 4 wells, 2 in Louisiana and 2 in Mississippi, completing 3 of the 4 wells drilled.

In East Feliciana Parish, Encore re-established production in **Richland Plantation Field** with the #1 Richland Plantation. It was drilled in Sec. 69, 1S-2E to a total depth of 16,209' in a 3720 foot horizontal hole and completed through the interval 13,850 to 15,900 feet. Completed and producing since May, 2008 it has produced 10,162 barrels of oil.

In St. Helena Parish, Encore's #1 Weyerhaeuser was completed as the discovery well for the **North Chipola Field**. It was drilled in Sec. 60 1S-4E to a depth of 17,032' in a 5200 foot horizontal hole. It was completed in November 2008, through perforations 14,750 to 16,703' flowing 323 BOPD. Total production is 26,365 barrels of oil in 22 months.

LEASING ACTIVITY

Leasing activity in the Florida parishes has been at a high level not seen since the Tuscaloosa frenzy in the late 1970s and early 1980s. There are 6 or more major or large companies assembling large blocks of acreage. One major company has acquired at least 80,000 acres and several other large blocks have been assembled. Can we expect to see more horizontal drilling in the Florida parishes in the near future???

OFFSHORE

GOM SHELF ACTIVITIES—Al Baker

Between October 1st and November 15th, there have been no new drilling permits issued on the Gulf of Mexico shelf by the BOEMRE. As of November 12th, there are 23 active rigs working in the Gulf of Mexico, down 14 from the same time last year.

An article in The Oil & Gas Journal states that the Gulf of Mexico Lease Sale 216, slated for March 2011, will likely be cancelled. The primary reason for the cancellation is to allow the BOEMRE time to prepare Supplemental Environmental Impact Statements (which commonly take six months or longer to finalize) for this sale and future lease sales. Although not officially cancelled by government officials, the companies most likely affected by the resulting lost revenues include marine seismic companies, such as Schlumberger Ltd., Petroleum Geo-Services ASA and CGG Veritas.

DEEP WATER ACTIVITIES—Eric Zimmerman

W&T Offshore to acquire fields from Shell

W&T Offshore Inc. and its subsidiary has acquired or intends to acquire interests in six Gulf of Mexico oil and gas producing fields from Shell Offshore Inc. for \$450 million and the assumption of \$50 million for asset retirement obligations.

W&T Energy VI LLC, the subsidiary actually acquiring the fields, noted the transaction amounts are subject to change based on the number of properties ultimately acquired.

--- continued on next page ---

Drill Bits (continued from previous page)

The acquired interests are in the Tahoe, Southeast Tahoe, Marlin, Dorado, and Droshty fields in the deepwater gulf. The sixth field, which is subject to a letter of intent with Shell, is a producing shelf property along with associated assets.

Combined production, net to Shell's interest, in the six fields is 6,840 BOPD and 68.8 MMCFPD of natural gas. Proved reserves associated with the acquisitions are 7 million bbl of liquids and 112.2 bcf of gas.

Shell owns 70% working interest in Tahoe field on Viosca Knoll 783, and 100% interest in Southeast Tahoe field on Viosca Knoll Block 784. Shell owns 25% working interest or less on each of the Marlin, Dorado, and Droshty fields. Both Marlin and Dorado share Viosca Knoll Blocks 871 and 915. Droshty is on Green Canyon Block 244.


Apache completes merger with Mariner Energy

Apache Corporation announced that it has completed its merger with Mariner Energy. The merger closed following its approval by Mariner's stockholders and subsequent completion of documentation. Apache issued approximately 17.5 million shares of its common stock and paid approximately \$800 million in cash to Mariner stockholders. Apache also assumed Mariner's debt with current fair value of approximately \$1.6 billion. As a result of the merger, former Mariner stockholders own approximately 5 percent of Apache's outstanding shares of common stock.

Please give me your comments on the contents of this column—too many details, not enough information, etc. by contacting me at drillbits81@yahoo.com.

Tune in next month <<<<

Carlo C. Christina



SEI®

Seismic Exchange, Inc.

Strategic Speculative Surveys
Geophysical Data Marketing & Management

201 St. Charles Avenue, Suite 4300, New Orleans, Louisiana 70170-4300
Telephone 504.581.7153 Fax 504.581.9591
www.seismicexchange.com

Your
Full Service
National
Seismic Data
Marketing Firm

New Orleans
Dallas
Houston
Denver
Oklahoma City
Corpus Christi
Tulsa

Geoscience Starting Salaries for 2010 Graduates: According to data collected by the National Association of Colleges and Employers in their 2010 Fall Salary Survey, starting salary offers for geoscience graduates were highest for those graduating with geoscience-related engineering degrees (e.g. petroleum engineering, mining engineering, and environmental engineering). For more information go to:


<http://www.agiweb.org/workforce/Currents/Currents-040-StartingSalaries.pdf>

Raven Maps - Spectacular State Wall Maps: December 13, 2010 | Raven Maps - Raven Maps are some of the most beautiful wall maps that you can find. They show the elevation and relief of a complete state through a skillful use of vibrant colors and topographic shading. Maps are available for individual states, the Conterminous United States, North America, Mexico and the world. For more information go to: <http://geology.com/store/wall-maps/>

Searching for Natural Gas (on Google): December 2, 2010 | Geology.com - The public has been drilling Google for information on the natural gas shales that have been making news across the country. Google allows you to investigate this search volume over time and geographically on their Google Trends website. For more information go to:

<http://geology.com/news/2010/searching-for-natural-gas-on-google.shtml>

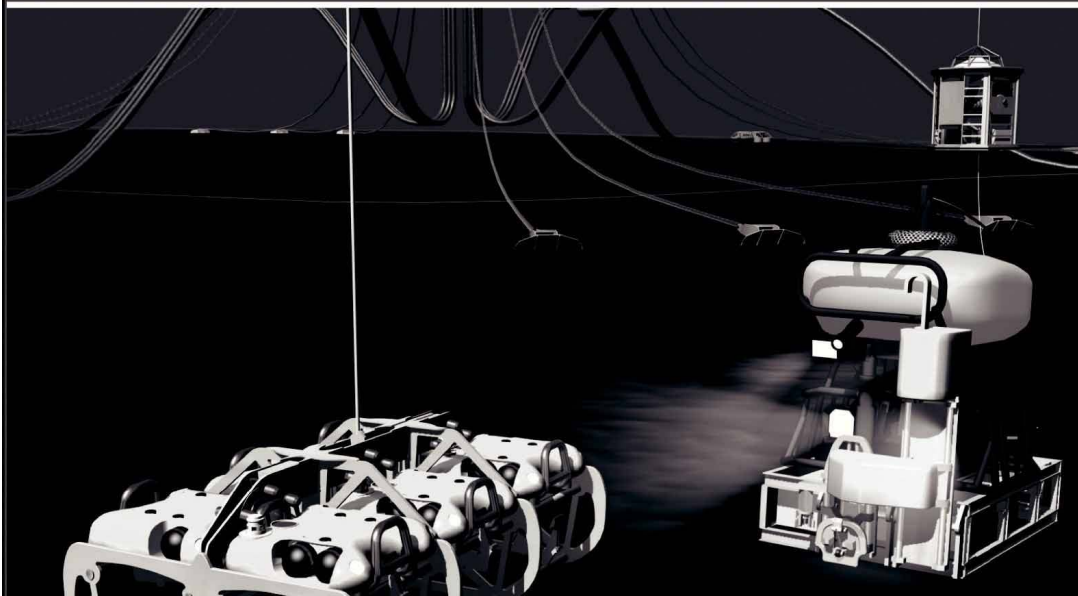
Meteor Craters - Asteroid Impact Sites: Click an Icon and Zoom In!: Explore fifty of earth's most obvious asteroid impact sites with satellite images and maps. Use the buttons in the upper left to navigate and change your zoom level. To see the craters go to: <http://geology.com/meteor-impact-craters.shtml>

Q: What do you call Tyrannosaurus rex  when it wears

a cowboy hat and boots  ? A: Tyrannosaurus tex! Ha Ha Ha

- Fran Wiselady

Finally - An answer for getting reservoir seismic **OVER THE RESERVOIR!**



- 4C/4D Node Seismic
- ANGOLA
- GoM
- NIGERIA



“Coming Soon to an Oilfield Near You!”

www.sbexp.com

Dubai
T: +971 4 4271700

Houston
T: +1 281 566 1666

Oslo
T: +47 2240 2700

Rio
T: +55 21 2494-0283

Singapore
T: +65 9180 2605

Trondheim
T: +47 7 3879500

RAISING
THE **STANDARD**



100 Northpark Blvd.
Covington, LA 70433

(985) 773-6000



LaBay
Exploration Co., L.L.C.

111 Veterans Memorial Blvd.,
Suite 1550
Metairie, Louisiana 70005

www.labayexploration.com

Office (504) 371-5967
Fax (504) 371-5969

***This advertising space is available!
Contact the NOGS office.***

THE NEW ORLEANS GEOLOGICAL SOCIETY MEMORIAL FOUNDATION, INC.

The Memorial Foundation is an IRS Tax Exempt Code #501 (c)(3) organization. The Federal I.D. is: 72-1220999. Please consider making a donation to the Foundation prior to the close of this year's fiscal cycle on June 30, 2011. Your individual support in any amount will help meet the IRS Guidelines for our Foundation. *Thanks!*

\$15,000 AND ABOVE

Olga Braunstein Succession

Gibbet Hill Foundation

*In Memory of Steve & Marion Millendorf, William J. Prutzman,
Roger G. Vincent & Ron Youngblood*

\$10,000

George W. Schneider, Jr. and Family

*In Memory of George W. Schneider, Sr.
GCAGS
Matching funds*

\$2,000 TO \$3,000

NOGS Golf Tournament May 2009

In Memory of Bill Craig

UP TO \$249

Donald I. Andrews

*In Memory of Ray F. Havard
In Memory of Harlan (Lanny) Northcott*

Robert J. Ardell

*In Memory of Al Gibeath
In Memory of Bill Malin
In Memory of Bob Williamson*

Mr. and Mrs. Wesley Barton

In Memory of Thomas A. Cullinan

Abraham Biadgelgne

Maurice N. Birdwell

Irion Bordelon, Sr.

In Memory of Robert G. Williamson

Hilary James Brook

Robin Broussard

Rob Burnett

J. Sybil Callaway

Chevron

Matching Funds

Arthur F. Christensen

Ellen F. Clark

Willis E. Conatser PhD

Clarence F. Conrad

Charley Corona

In Memory of Professor Hubert Skinner

Trudy and Charley Corona

In Memory of Erik Mason

Michael A. Danahy

M. R. "Bob" Douglass

In Memory of Robert G. Williamson

Merle J. Duplantis

Dr. Brooks B. Ellwood

Parrish N. Erwin, Jr.

Exxon Mobil Matching Funds

Michael N. Fein

Laurens Gaarenstroom

Sherwood M. Gagliano

Arthur J. Garden

David Garner

\$7,000 TO \$9,000

Paul C. McWilliams

\$250 TO \$499

Carlo C. Christina

In Memory of Al Gibeath

Tom Klekamp

Richard G. Klibert

Larry Galloway

Peter G. Gray

In Memory of Robert G. Williamson

Bret Hampton

*Angela M. Hessler
Through the Chevron Humankind
Program*

Bernard L. Hill, Jr.

In Memory of Robert E. Osborne

Dan E. Hudson

Kenneth Huffman

Jeffrey E. Jandegian

Paul Jurik

In Memory of Thomas A. Cullinan

Reuben J. Klibert, Jr.

In Memory of Dale Klibert

John C. Kucewicz, Jr.

John C. Langford

Jeannie F. Mallick

Paul C. McWilliams

In Memory of Russell D. "Rusty" Morris

New Orleans Geological Auxiliary

In Memory of Dee Baysinger

In Memory of Doris Meltzer

In Memory of Terri Smith

Nexen Petroleum USA Inc. Matching Funds

Russell H. Nordwell

William J. O'Leary

Richard A. Olsen

In Memory of Richard W. Boebel

In Memory of William J. Malin

In Memory of Robert W. Sabate'

Teresa M. O'Neill

In Memory of Brian J. O'Neill

Linda and Bill Peirce

Edward B. Picou Jr.

In Memory of William J. Malin

In Memory of Robert G. Williamson

FONO FUND

The FONO Fund accepts contributions that are invested and the income dedicated to assure sufficient financial resources will always be available to maintain the NOGS business office. Contributors are reminded that donations to the FONO Fund are not covered by the IRS 501 (c)(3) tax exempt classification and should be reported as a business expense on your IRS tax report.

\$500

James A. Hartman

In Memory of Hal Hudson

In Memory of Robert G. Williamson

UP TO \$250

Donald I. Andrews

Alfred H. Baker Jr.

Joseph E. Boudreaux

Hillary James Brook

Jack G. Bryant

J. Sybil Callaway

Arthur F. Christensen

Richard P. Colomes

Richard P. Colomes

Clarence F. Conrad

Michael A. Danahy

John Dombrowski

Merle J. Duplantis

Richard A. Edmund

Mark J. Gallagher

William J. Furlong

Duncan Goldthwaite

James A. Hartman

In Memory of Hal Hudson

In Memory of Robert G. Williamson

Bernard L. Hill, Jr.

Thomas A. Hudson

Kenneth Huffman

C. M. (Max) Jacobs

Robert M. Jemison, Jr.

Tom Klekamp

Louis Lemarie'

William J. Malin

Jeannie F. Mallick

George M. Markey, Jr.

James A. McCarty

Louis L. McCormick

Robert G. Murphy

William J. O'Leary

Richard A. Olsen

Erwin Parrish, Jr.

Linda and Bill. Peirce

Edward B. Picou, Jr.

Richard D. Provensal

James P. Raymond, Jr.

Brenda E. Reilly

C. R. Rondeau

George D. Severson

Rudolf B. Siegert

Richard J. Stancliffe

Bryan P. Stephens

Raymond Stephens

Roy C. Walther

Robert C. Weissmann

William M. Whiting

James W. Yeldell, Jr.

Jim Zotkiewicz

CONTRIBUTIONS FOR BOTH FUNDS THROUGH DECEMBER 16, 2010.
DONATIONS ARE LISTED FOR ONE YEAR.

Richard D. Provensal

In Memory of Thomas H. Philpott

Scott Purinton

Brenda E. Reilly

Mrs. William B. Rodan

In Memory of Robert G. Williamson

Robert T. Sellars, Jr.

In Memory of Robert G. Williamson

George D. Severson

Rudolph B. Siegert

Dr. J. O. Snowden

Gary L. Spraul

In Memory of H. Grady Collier

Raymond O. Steinhoff

In Memory of Harold E. Vokes

Roy C. Walther

William M. Whiting

In Memory of William J. Malin

Armour C. Winslow

In Memory of Rita Menzel Winslow

Frances A. Wiseman

In Memory of Steve Widdicombe

James W. Yeldell, Jr.

Jim Zotkiewicz

In Memory of Bill Craig

Chevron

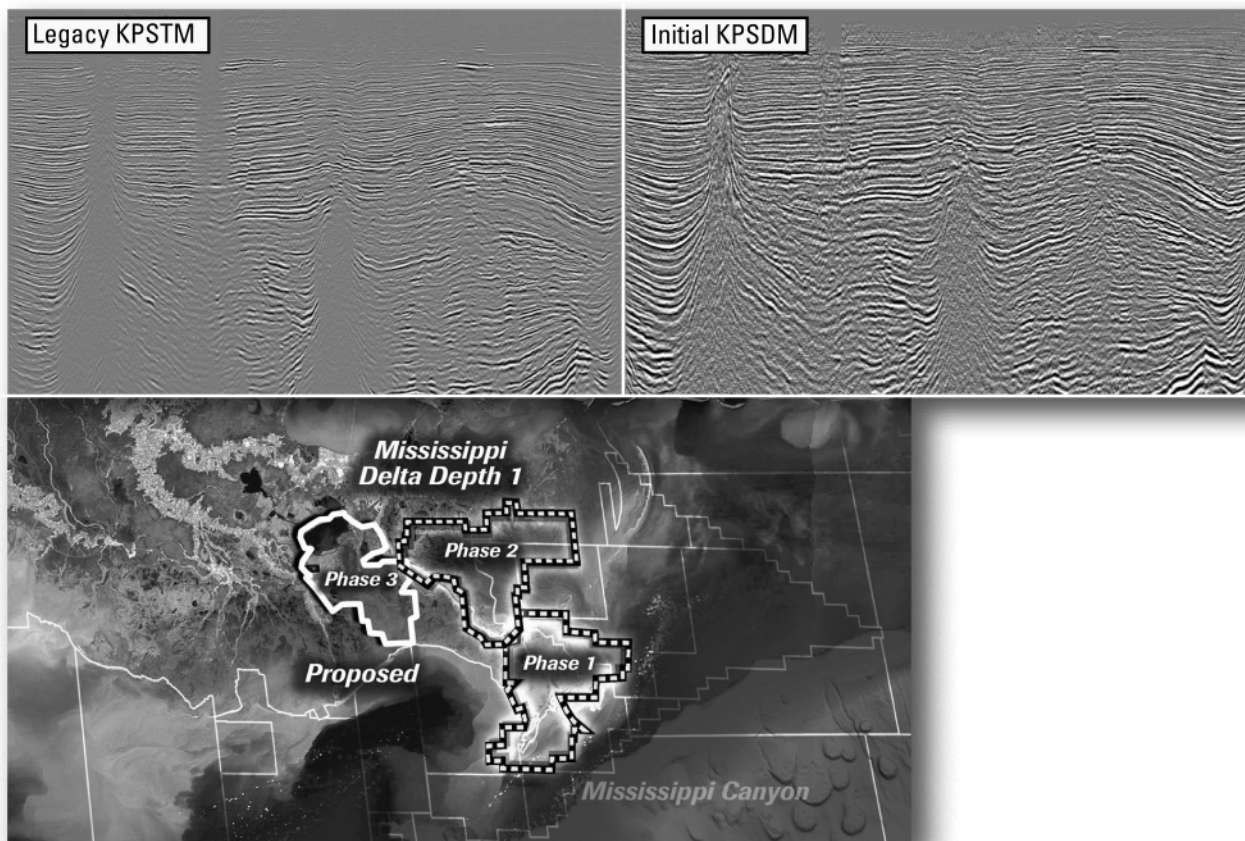
Bernard L. Hill, Jr.

John C. Scheldt

Candace V. Strahan

In Memory of James Strahan

Improved depth imaging in the Mississippi Delta



In the Mississippi Delta region, WesternGeco is utilizing state-of-the-art processing designed to eliminate fault shadows and enhance deep imaging. The Mississippi Delta - Depth 1 survey, now in progress, incorporates the processing and remigration of twelve legacy surveys covering 1,855 square miles. High-quality time imaging using relative amplitude anisotropic Kirchhoff prestack time migration will be followed by improved structural imaging utilizing anisotropic Kirchhoff prestack depth migration.

To learn more about this and other Multiclient products, call +1 713 689 1000.

www.multiclient.westerngeco.com/la

Multiclient to the Power of E





HOUSTON GEOLOGICAL SOCIETY
Explore Our Connections

Applied Geoscience Conference (AGC)

2011 AGC OF US GULF REGION MUDROCKS AS UNCONVENTIONAL SHALE GAS/OIL RESERVOIRS

February 7-8, 2011

**APPLIED RESERVOIR CHARACTERIZATION OF
US GULF MUDROCKS AS SHALE GAS/OIL RESERVOIRS
THE WOODLANDS TEXAS WATERWAY MARRIOTT**

HOUSTON'S PREMIER TECHNICAL GULF SHALE EVENT

*For Geologists, Geophysicists, Geochemists,
Nanno Experts, Geomechanics Log Analysts, Reservoir,
Completions and Stimulation Engineers*

FOUR (4) TECHNICAL DISCIPLINE SESSIONS:

GEOLOGY GEOCHEMISTRY

GEOPHYSICS COMPLETIONS

**INVITED TECHNICAL SUBJECT MATTER EXPERTS
OF INDUSTRY, UNIVERSITY, & GOVERNMENT
NEW TECHNICAL PERSPECTIVES OF MUDROCKS**

INCLUDING HAYNESVILLE, BOSSIER & EAGLEFORD

APPLIED GEOSCIENCE (AGC) PROGRAM RESERVOIR CHARACTERIZATION SPEAKERS

**JOE MACQUAKER
MEMORIAL UNIVERSITY**

**JURGEN SCHIEBER
INDIANA UNIVERSITY**

**INGO STEINHOFF
BP**

**MIKE MOLDOWAN
STANFORD UNIVERSITY**

**YONGCHUN TANG
PEER INSTITUTE (CALTECH)**

**TIM RUBLE
WEATHERFORD**

**DIEGO ORTIZ
WEATHERFORD
COLIN SAYERS
SCHLUMBERGER**

**GALEN TREADGOLD
WEINMAN GEOSCIENCE
PETER DUNCAN
MICROSEISMIC**

**MURRAY ROTH
TRANSFORM**

**RANDY LAFOLLETTE
BAKER HUGHES**

**KEVIN BOHACS
EXXONMOBIL**

**GARY SCHEIN
DALE RESSOURCES**

SEVENTEEN (17) EXPERT SPEAKERS ACCEPTED

LIMITED SEATING AVAILABLE!

SOLD OUT SINCE 2007

ACT NOW FOR A SEAT

REGISTER AT:

WWW.HGS.ORG/EN/CEV/1056

A PROFESSIONAL DEVELOPMENT TECHNICAL EVENT!

HGS TECHNICAL PROGRAM COMMITTEE

**FRANK WALLES SR. GEOL. ADVISOR
DEVON ENERGY**

**MICHAEL VAN HORN, VP
NEWFIELD EXPLORATION**

**MIKE CAMERON SR. GEOLOGIST
NEWFIELD EXPLORATION**

**BRUCE MARTIN, CONSULTANT
UCR CONSULTING**

**KATHY McDONALD STAFF GEOLOGIST
SOUTHWESTERN ENERGY**

**DAVE TONNER MANAGER
WEATHERFORD**

**JAMES SCHUELKE SR. GEOPHYSICAL ADVISOR
DEVON ENERGY CORPORATION**

**RANDY LAFOLLETTE SHALE GAS TECHNOLOGY
BAKER HUGHES**

& HGS SUPPORTING COMMITTEES



SAI

Sydboten & Associates, Inc.
*Geological and Geophysical Consulting,
3-D Seismic Interpretation*

Ben D. Sydboten, Jr. CPG

124 Heymann Blvd., Suite 202

Lafayette, LA 70503

www.saigeoconsulting.com

Office (337) 234-5288

Cell (337) 234-5491

ATWATER CONSULTANTS, LTD.

REGISTERED AND CERTIFIED PETROLEUM PROFESSIONALS

GEOLOGICAL, ENGINEERING, GEOPHYSICAL,
TRAINING AND EXPERT WITNESS SERVICES

3525 Hessmer Ave, Ste 304

Metairie LA 70002

Tel. (504) 581-6527

Fax (504) 524-7798

"Serving The Oil & Gas Industry Since 1983"

Geological,
Geophysical &
Land Drafting



Anthony Catalanotto
President

Stefani Foster
Drafting & Design

Geo-Draft, Inc.

A Professional Drafting & Graphics Firm

3349 Ridgelake Drive • Suite 202 • Metairie, LA • 70002

Office: (504) 836-2882 Fax: (504) 836-2877 (Cell) (504) 481-7291

E-Mail: geodraft@bellsouth.net

Website: www.geodraftinc.com

**NOGS thanks our
sponsors for their support:**

GOLD LEVEL SPONSORS:

CHEVRON

LA BAY EXPLORATION CO, LLC.

**SPECIAL THANKS TO
DIVERSIFIED WELL LOGGING**

NORTHCOAST OIL COMPANY

610 E. Rutland St.
Covington, LA 70433

(985) 898-3577

(985) 898-3585 FAX

Jack M. Thorson

Eric C. Broadbridge

J. Daryl Gambrell

Raymond W. Stephens

(832) 242-6000 (O)

(713) 917-0493 (O)

(504) 931-7506 (C)

johnjurasin@jurasinoilgas.com

JURASIN OIL & GAS

9700 Richmond Ave., Suite # 124

Houston, TX 77042-4821

JOHN M. JURASIN
President

Cert. Pet. Geologist #4284
Cert. Prof. Earth Scientist #1961

Collarini Energy Staffing

Full-Time and Temporary Personnel

Facilities • Drilling • Production • Reservoir Engineering
Land and Legal • Geoscience • Information Technology •
Health and Safety • Management • Supply Chain
Accounting • Administrative Support

10497 Town and Country Way, Suite 950
Houston, Texas 77024

832-251-0553



www.collarini.com

Collarini Associates

Reservoir Engineering
Oil & Gas Property Evaluation
3-D Seismic Interpretation
Integrated Field Studies

832-251-0160

504-887-7127

Houston

New Orleans

This advertising space is available! Contact the NOGS office.

New Orleans Geological Auxiliary News

Hopefully, by the time you read this column, you all have recuperated from the Christmas and New Years holidays. I am not sure of anyone else, but for me, it takes me longer to regroup these days! Speaking of which, NOGS put together a wonderful, festive and entertaining event for the Christmas Party. Metairie Country Club looked magical. It was a memorable venue to begin the holiday season. Thanks NOGS and the Ladies from the Auxiliary (Beverly Cristina and Amber Klekamp) who helped to coordinate this night for all of us to enjoy.

Beverly Cristina is the lucky recipient of this months member highlight "pull"!! As everyone knows, Beverly is the beautiful wife of Carlo Cristina. Thank you for all you have done in making our Auxiliary what it is today. Beverly has endeared the hearts of many of us who know and have worked with her throughout the years on soooo many functions for which she has volunteered. "Gracious" and "humble" are two of the many adjectives that come to mind when thinking of Beverly. She has twice served as President since 1961, and has offered her time and talents to numerous committees since joining NOGA. From being Director to Chairing and Co-Chairing events (too countless to name), she has done it all. In addition to NOGA, Beverly has also assisted NOGS with their social gatherings as well. Beverly's dedication goes beyond NOGA commitments; she devotes her energies to civic, cultural and charitable organizations. Those of us who know Beverly have the utmost admiration and respect for this wonderful "Outstanding Service Award" recipient and are in awe of all she does to make our lives and this city a better place to live. Beverly you are a great inspiration to us all. Thank you for your years of service to NOGA. You are indeed the example of a true "Southern Lady".

Our February Luncheon will be held at Café Adelaide on Wednesday, the 9th. Looking forward to seeing you all there!

Susie Baker

NOGA Application Form

Dues: \$25.00

Name _____

Home Address _____

Home phone _____

Husband's Name _____

Husband's Company _____

*Please make check payable to New Orleans Geological Auxiliary and
mail with application to:*

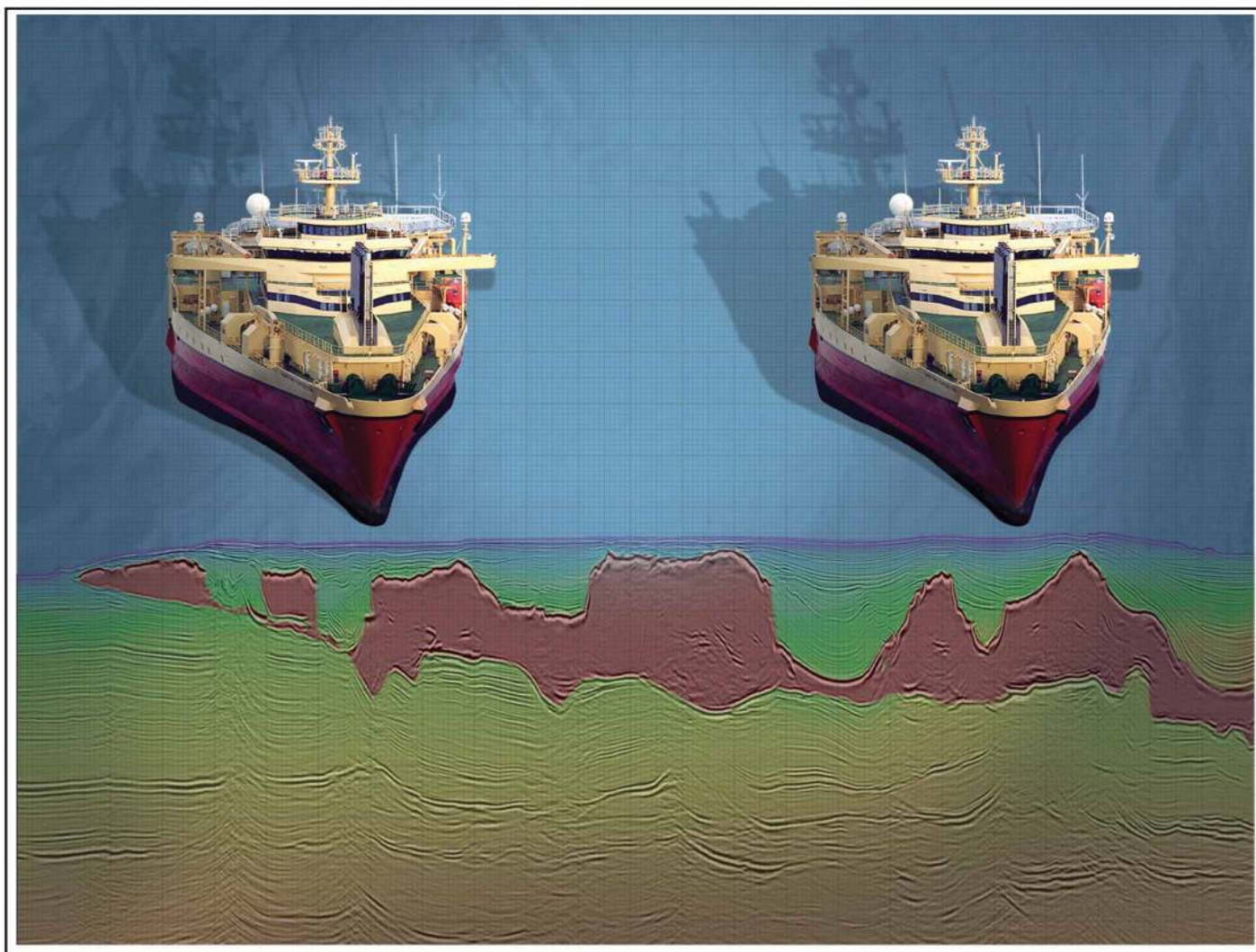
Judy Lemarie'

2 Yosemite Dr

New Orleans LA 70131

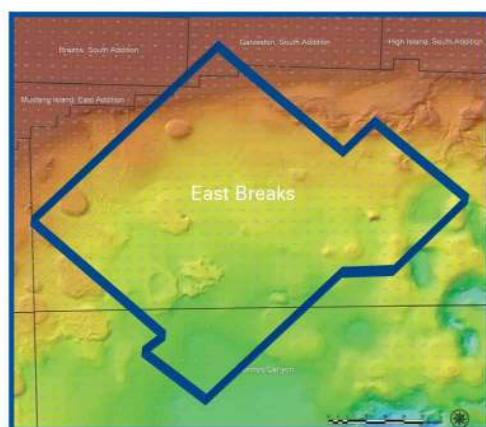
<p>ANSYTHE Donald I. Andrews 504-887-3432</p> 	 <p>GEOLOGY ENVIRONMENTAL MANAGEMENT</p> <p>GEM Consulting LTD Michael Louis Merritt admin@gemconsultingltd.com</p> <p>1451 Applewood Road • Baton Rouge, LA 70808</p>
<p>THE BOEBEL COMPANY Oil and Gas Investments 170 Broadway Street, Suite 321 New Orleans, LA 70118 (504) 866-4313</p>	<p>H. WARREN BELL Oil and Gas Exploration 2500 Tanglewilde, Suite 485 Houston, TX 77063-2126 Bus (713) 266-7297 Fax (713) 266-7298</p>
<p>BOO-KER OIL & GAS CORP. Gray S. Parker 826 Union, Suite 300 New Orleans, LA 70112 Bus. (504) 581-2430 Fax (504) 566-4785</p>	<p>PHELPS GEOSCIENCE Onshore Gulf of Mexico Geology and Geophysics Prospect Generation and Evaluation Houston, TX jsphelps@yahoo.com (281) 398-5208</p>
<p>C & R EXPLORATION, INC. Carlo C. Christina Lawrence G. Ringham</p>	<p>RAFIDI OIL AND GAS, INC. Jaser N. Rafidi, President 4415 Shore Dr., Suite 202 Metairie, LA 70006 Bus. (504) 722-2942 Fax (504) 888-5539; Res. (504) 888-1661</p>
<p>C. R. RONDEAU Petroleum Geologist 119 W Southland Ave. Ironwood, MI 49938 Res. (906) 932-4692</p>	<p>ROY C. WALTHER Petroleum Geologist 2421 Prancer Street New Orleans, LA 70131 Bus. (504) 392-8513 Res. (504) 392-9332</p>
<p>CLASSEN EXPLORATION, INC. James S. Classen Looking for close in deals P.O. Box 140637 Boise, ID 83714 Bus. (208) 854-1037 Fax (208) 854-1029 classenllc@msn.com</p>	 <p>625 E. Kaliste Saloom Lafayette, LA 70508 16800 Greenspoint Dr., Suite 225-S Houston, TX 77060 1100 Poydras St., Suite 1050 New Orleans, LA 70163 www.StoneEnergy.com</p>
<p>D-O-R ENGINEERING, INC. 3-D and Geoscience Services 6161 Perkins Rd. P O Box 80812 Bus : (225) 765-1914 Baton Rouge LA 70898</p>	<p>TONY CAROLLO Consulting Geologist Unitization Geosteering Field Studies 1701 Peach Street Metairie, LA 70001 Bus. (504) 885-0004 Res. (504) 885-6829</p>
<p>EDWARD B. PICOU, JR. Consulting Micropaleontologist - Retired 228 St. Charles Ave., Suite 1330 C New Orleans, LA 70130 Bus. (504) 529-5155 Res. (504) 282-3096</p>	<p>Zot Oil & Gas, LLC Jim Zotkiewicz Prospect Generation and Evaluation 3200 Ridgelake Dr. Suite 207 Metairie, LA 70002-4930 Business: 504.831.4694 Email: jimzot38@zotoil.com</p>

Save the date!
NOGS Annual Golf Tournament
April 25, 2011



Crystal III, East Breaks

MultiClient Wide Azimuth



- **Size** - 480 OCS blocks
- **Focus** - Sub-Salt Miocene & Paleogene
- **Technology** - TTI Beam and RTM Imaging
- **Delivery** - Available Q4 2010

Houston
Tel: +1 281 509 8000
Fax: +1 281 509 8500

Oslo
Tel: +47 67 52 6400
Fax: +47 67 52 6464

London
Tel: +44 1932 37 6000
Fax: +44 1932 37 6100

A Clearer Image
www.pgs.com



NEW ORLEANS GEOLOGICAL SOCIETY



810 Union Street, Suite 300
New Orleans, LA 70112-1430

WWW.NOGS.ORG

MARINE PROPERTIES, LLC BERKSHIRE EXPLORATION CO.

MONTE C. SHALETT, CPL, PRESIDENT

3030 Lausat Street
Metairie, LA 70001-5924

BUS. (504) 831-7779
FAX. (504) 831-8315

PCI

Paleo Control, Inc.

Houston, Texas
713-849-0044

Drilling Wells, Studies and Data Base

Loyd Tuttle

Frio, SE Texas

Bob Liska

Wilcox, S and SE Texas

Jim Thorpe

Miocene and Cam-Miogyp



SEE YOUR DATA IN A WHOLE NEW LIGHT!

Take the pressure out of exploration
and drilling by seeing what you
are going to encounter.



eSeis

www.e-seis.com
713.531.1447

- Lithology & Fluids
- Depositional Facies
- Pore Pressure from V & Q
- Well Planning Consultation

