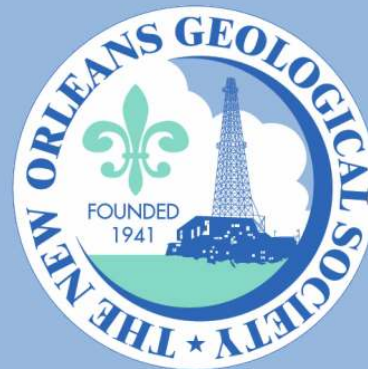


NOGS LOG



February 2011

Volume 51, Number 8

Upcoming Events and Activities

February 7 - NOGS Luncheon

*** At the Holiday Inn Downtown Superdome ***

\$2.00 validated parking in hotel garage

Guest speaker Kadira Analisa Singh, of Anadarko Petroleum Corporation in Houston, will present "The Impact of Meteorites on Earth's History and its Implications for Hydrocarbon Production."

(See page 7 for Abstract and Biography)

HOLIDAY INN DOWNTOWN SUPERDOME

Check with concierge or
front desk for location

Lunch served at 11:30am

ADMISSION:

with reservation \$30.00

without reservation \$35.00

Student Member with reservation Free

February 7-8 - HGS Applied Geoscience Mudrocks Conference

Houston. See announcement on page 31.

February 7-9 - AAPG Arctic Technology Conference

Houston. Info: www.arctictechnologyconference.org

February 16-18 - NAPE Exposition

Houston. Info: www.napeexpo.com. See announcement on page 33.

March 14 - NOGS Luncheon

Holiday Inn Downtown Superdome. Guest speaker Dr. Darrell Henry, Department of Geology & Geophysics at Louisiana State University, will present: "Tourmaline: Can it record geologic information like a DVD?"

March 19 - Super Science Saturday

Louisiana Childrens Museum. Volunteers needed. See announcement on page 8.

Get Ahead of the Game



Directional Survey Plus



Production Data



Digital Well Logs



With High Quality Well Data From TGS

Need an extra edge on the competition? TGS' high quality well data, comprehensive coverage and dedicated customer support can get you to the finish line.



Directional Survey Plus

Beyond simple directional survey data capture, Directional Survey Plus data are thoroughly researched, reprocessed and standardized.



US Production Data

TGS' nationwide production database features a visualization tool, leading industry exports and daily incremental updates.



Complete Curve LAS

Over 500,000 LAS well logs are now available in North America. Over six million well logs available in 30+ countries worldwide.

Find out more at www.tgsnopec.com/welldata or contact TGS Well Data at 888-LOG-LINE or WellData@tgsnopec.com



Geophysical
Products



Geological
Products



Imaging
Services



www.tgsnopec.com

NOGS Office

Office Manager: Annette Hudson

Office Hours: 8:30 a.m. – 3:30 p.m. on Monday-Wednesday-Friday

Tel: 504-561-8980 □ Fax: 504-561-8988

E-mail: info@nogs.org □ Website: www.nogs.org

The office is located at Suite 300, 810 Union Street, New Orleans, LA 70112.

Correspondence and all luncheon reservations should be sent to the above address.

Sent to press on January 21, 2011.

**BOARD OF DIRECTORS**

President	Rick Kear
Vice President	Eric Zimmermann
Secretary	Penne Rappold
Treasurer	Will Jorgensen
President-Elect	Bob Hafner
Editor	Fran Wiseman
Director 2011	Scott A. Wainwright
Director 2012	Arthur H. Johnson
Director 2013	Jack Langford

Company

Schlumberger
LLOG Exploration
Shell
Shell
BOEMRE
Bret Exploration Co Inc
Hydrate Energy International
J C L Services

Phone

504-592-5376
985-801-4338
504-728-4338
504-728-6339
504-736-2912
504-889-2700
504-464-6208
985-764-2527

E-mail

kearl1@new-orleans.oilfield.slb.com
ericz@llog.com
prappold@gmail.com
william.r.jorgensen@shell.com
ottohaf@aol.com
frances.wiseman@boemre.gov
scott_wainwright@hotmail.com
artjohnson51@hotmail.com
jclangford@latterblum.com

COMMITTEE

AAPG Delegates
AAPG Student Chapter
AAPG Student Chapter
Advertising-Log
Auditing
Awards
Ballot
Best Paper
Continuing Education
Employment Counseling
Entertainment
Environmental
External Affairs
Field Trip
Finance and Investment
Historical
Membership/Directory
New Geoscientists (NGNO)
Nominating
Non-Technical Education
Office Operations
Publications Sales
Photography
School Outreach
Scouting
Sponsorship/Houston
Technical Projects
Ad Hoc Committee on
University Support

Chairperson

William M. Whiting
Michael Hopkins
Andrew Ranson
Andrea Stancin
Chuck Holman
Michael N. Fein
Will Jorgensen
Brenda Reilly
TBA
Bob Hafner
Daisy Pate
Michael A. Fogarty
David Garner
Will Jorgensen
Edward B. Picou, Jr.
Carlo C. Christina
Tom Klekamp
TBA
Mike Ledet
Duncan Goldthwaite
Tom Klekamp
Edward B. Picou, Jr.
J. David Cope
Thomas C. Bergeon
Carol Rooney
David E. Reiter
TBA
Michael J. Gallagher

Consultant
Tulane University
UNO
Shell
Independent
W & T Offshore
Shell
Energy Partners Ltd.
Corps of Engineers
Sylvan Energy, LLC
Shell
Shell
Consultant
Retired (C & R Expl.)
Amber Resources
Consultant
Amber Resources
Consultant
Ankor Energy
Century Exploration
Consultant Geologist
Eni Petroleum
Eni Petroleum

504-947-8495
228-209-2262
337-578-5587
504-728-0431
504-891-4878
504-210-8148
504-728-6339
504-799-4811
504-957-4372
603-523-4808
504-728-6154
504-728-6339
504-529-5155
985-845-4046
504-394-9636
504-887-4377
985-845-4046
504-529-5155
504-596-3672
504-832-3772
504-835-1909
713-393-6100

bootscon@aol.com
mhopkins@tulane.edu
aranson@uno.edu
Andrea.a.stancin@shell.com
charleswholman@bellsouth.net
mikef@wtoffshore.com
william.r.jorgensen@shell.com
breilly@eplweb.com
ottohaf@aol.com
daisy.pate@gmail.com
mike.a.fogarty@gmail.com
David.Garner@shell.com
william.r.jorgensen@shell.com
epicou@bellsouth.net
Carlocc398@aol.com
klekamp@bellsouth.net
mikeledet@cox.net
DGldthwt@aol.com
klekamp@bellsouth.net
epicou@bellsouth.net
dcupe@ankorenergy.com
Tom.bergeon@centuryx.com
carolbrooney@aol.com
david.reiter@enipetroleum.com
Michael.Gallagher@enipetroleum.com

NOGS LOG STAFF

Editor	Fran Wiseman	BOEMRE
Editor-Elect	David Tatum	Chevron
Auxiliary	Susie Baker	NOGA
Info Tidbits	Fran Wiseman	BOEMRE
Drill Bits	Carlo C. Christina	Retired (C & R Expl.)
Webmaster	Edward B. Picou, Jr.	Consultant
Layout	Jannette Inc.	

504-736-2912	nogseditor@gmail.com
985-773-6477	davidtatum@chevron.com
504-466-4483	abaker1006@aol.com
504-736-2912	nogseditor@gmail.com
504-529-5155	drillbits81@yahoo.com
	epicou@bellsouth.net

NOGS AUXILIARY

Officers		Phone	Directors	Year	Phone
President	Jean Jones	504-738-8091	Peggy Campbell	2009-11	504-283-2505
1st Vice-President	Alma Dunlap	504-737-2678	Ruth Grimes	2009-11	504-392-8103
2nd Vice-President	Judy Sabatè	504-861-4335	Gerry Waguespack	2009-11	504-737-0532
Secretary	Peggy Rogers	504-392-6323	Carol Andrews	2010-12	504-887-3432
Treasurer	Judy Lemarie'	504-393-8659	Susie Baker	2010-12	504-466-4483
Parliamentarian	Beverly Kastler	504-286-0879	Joan Collier	2010-12	504-833-1738
Member-at-Large	Linda Peirce	504-393-7365			

--- NOGS Contact List continued on page 10 ---

SYNERGY ENERGY



Weatherford®
LABORATORIES

Your success increasingly depends upon a better understanding of your reservoir. At Weatherford Laboratories, we provide a single source for comprehensive laboratory analyses, creating a synergy previously unknown in laboratory services. This single source includes distinguished geologists, geochemists, analysts, engineers, technicians and software developers, 38 worldwide laboratories, and the broadest portfolio of services for acquiring and interpreting data from physical samples. The end result is an unsurpassed combination of intellectual capital and technical resources — all working together to help you enhance development planning and reduce reservoir uncertainty.

Put our union of Synergy and Energy to work for you.

Weatherfordlabs.com

HIGHER STANDARDS

NORTH AMERICA
NAInquiries@weatherfordlabs.com

EUROPE
EUIInquiries@weatherfordlabs.com

LATIN AMERICA
LAIInquiries@weatherfordlabs.com

MIDDLE EAST/NORTH AFRICA
MENAIInquiries@weatherfordlabs.com

ASIA PACIFIC
APIInquiries@weatherfordlabs.com



from the President

2011 has started with an absolute bang! Many NOGS members are super busy and feeling overloaded and we are only one month into the New Year. Is it because the offshore drilling moratorium has been lifted? I don't think so! We in the industry recognize that the spinning up of our offshore drilling activity is going to be a slow and painful process. And it would sure be nice to know where and in what form that pain is coming. Drilling activities on land and inland waters are carrying on and even increasing. Offshore shelf drilling certainly has a better chance of springing back sooner than deepwater. I call on NOGS members to continue to be vocal and engaged politically and professionally to get the truth out and promote our very safe industry.

NOGS has a slew of unfilled committee chairs and inactive committees, inactive in part because the committee has no leader and quite possibly because we no longer need certain committees. Please take note of the existing "vacancies" below:

Under Director A Scott Wainwright:

- Employment Counseling
- Technical Projects
- Continuing Education
- Field Trips
- University Support

Under Director B Art Johnson

- Sponsorship - New Orleans
- Sponsorship - Houston
- Scouting

Under Director C Jack Langford

- New GeoScientists - NGNO
- Advertising

NOGS members, I am "calling you out" to become more involved in your society, step up and indicate your interest in one of these areas of service, either as a committee member or a committee chair. If you want to know more about a particular committee such as what the work actually entails, we'd be happy to fill

you in. There is much more we could and should be doing. If you care to identify your interest or such an area to me, any board member or Annette Hudson, please go right ahead.

Mark your calendar and make your plans to attend the South-Central GSA 45th Annual Meeting in New Orleans, March 28 and 29, 2011. NOGS member Dr. Mark Kulp is chairing this meeting and is still soliciting sponsors, session chairs and volunteers. Read the announcement in the LOG.

Remember that HGS is putting on "**The HGS Applied Geoscience Mudrocks Conference**" to be held on February 7 - 8, 2011. Learn about reservoir characterization advances of multiple Gulf Coast shale target systems, including the Haynesville/Bossier. Develop your understanding of what other productive mudrock systems may occur within the US Gulf Region. Register early! This sold out in 2007, 2009, & 2010. The complete technical program is available for download on the NOGS website in the February events listing.

Many NOGS members are planning on attending AAPG 2011 ACE in Houston, April 10 - 13th. NOGS could use your help as a volunteer to spend a portion of your time in the NOGS booth. We will be selling and taking orders for our just completed NOGS Oil & Gas Fields of South Louisiana 2010. The more volunteers the less work for any of us and your time would certainly assist the society.

Don't forget to make your reservation(s) for the February 7th 2011 NOGS Luncheon Meeting. Dr. Kadira Singh will present "The Impact of Meteorites on Earth's History and its Implications for Hydrocarbon Production." Also our March 14th Luncheon Meeting with Dr. Darrell Henry of LSU speaking on "Tourmaline: Can it record geologic information like a DVD?" Read the announcements in the LOG.

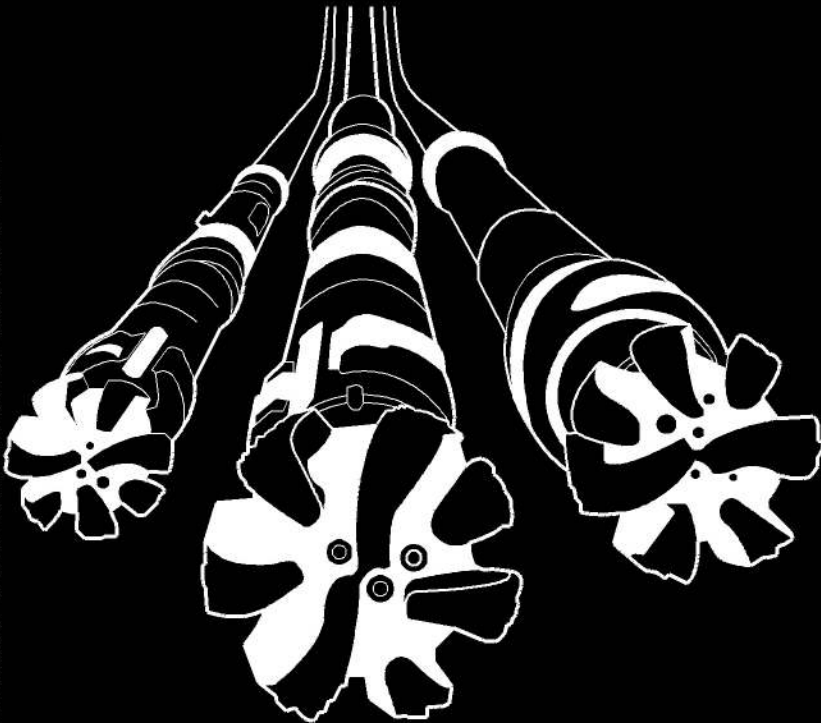
--- continued on page 34 ---

Deep Water

WELL CONSTRUCTION

Are all your services deepwater ready?

Control Measures	Complexity/Process + Exposure	Preparedness				
		High				Low
		1	2	3	4	5
5	High	-5	-10	-15	-20	-25
4		-4	-8	-12	-16	-20
3		-3	-6	-9	-12	-15
2		-2	-4	-6	-8	-10
1	Low	-1	-2	-3	-4	-5
		People + Competency		Equipment + Technology		



Our Project Readiness Assessment (PRA) approach has been applied and improved over the last 5 years.

All deepwater projects in which Schlumberger participates benefit from our PRA process, which complies with new U.S. regulatory requirements. This helps deliver seamless, efficient startup, and reduced NPT.

Learn more at

www.slb.com/deepwaterready

Global Expertise
Innovative Technology
Measurable Impact

Schlumberger

*Mark of Schlumberger. Measurable Impact is a mark of Schlumberger. © 2010 Schlumberger. 10-dw-0079

February 7 NOGS Luncheon Presentation

At the Holiday Inn Downtown Superdome

The Impact of Meteorites on Earth's History and its Implications for Hydrocarbon Production

presented by

Kadira Singh*

Anadarko Petroleum Corporation, Houston, Texas

ABSTRACT

To meet the world's growing energy demands, the need to explore for unconventional sources of oil and gas is becoming ever more popular. Each year, smaller new discoveries are made. Exploration within impact structures may prove to increase the number and size of hydrocarbon targets in the future, as they have shown to host many prolific oil and gas fields. Meteorite impacts are known to release a great deal of energy, which can result in more than 15 m of vertical ground motion. Sedimentological mechanisms associated with the latter include gravity driven transport (mass transport complexes), ballistic sedimentation and reworking by tsunamigenic currents. Consequently, an understanding of such impacts can prove to be a valuable source of hydrocarbons.

To date, 174 bolides have been reported to blemish the earth's surface. Seventeen confirmed impact structures occur in petroliferous areas of North America, nine of which are being exploited for commercial amounts of hydrocarbons. In the Ames

impact feature, Oklahoma, 53 million barrels of oil are estimated to be recovered ultimately from the fractured carbonates and granite reservoir rock. The Cantarell field, the largest oil field in Mexico, produces from a thick carbonate breccia that is genetically related to the Chixulub meteorite impact event which occurred in Northern Yucatan. To date, this field has produced more than 6.5 billion barrels of oil along with 3 trillion cubic feet of gas.

The Jebel Hadid structure, Libya, is another prospective impact crater which houses a promising source rock, stored in the lower stratigraphic units of the crater. Migration pathways are provided by regional faults as well as impact generated conduits. From these examples, it is evident that the processes associated with bolide impacts favor the generation of all elements necessary for a successful petroleum system.

*Co-author: Lesli Wood

BIOGRAPHY



Kadira Analisa Singh pursued her Cambridge London A level examinations at Hillview College, Trinidad and Tobago. She later pursued her Bachelor of Science degree in Petroleum Geoscience, at the University of the West Indies, where she graduated in 2007 with honors. In the Spring of 2008, she entered the Jackson School of Geosciences, of the University of Texas -Austin, to pursue a Master of Science degree in geological sciences. There, her thesis involved the study of the nature and

geometry of mass transport deposits worldwide. During her graduate degree studies she accepted summer internships with Occidental Petroleum and Anadarko Petroleum Corporation. Kadira also served as a teaching assistant for Dr. Leon Long conducting laboratory sessions for an Introduction to Geology course. At the Bureau of Economic Geology, she worked as a research assistant to Dr. William Ambrose studying the impacts of meteors on the earth's surface and their implications for hydrocarbon accumulations.

THE LUNCHEON RESERVATION DEADLINE IS JANUARY 5 - CONTACT THE NOGS OFFICE

"And Looking Ahead..."

The next NOGS Luncheon will be held on March 14 at Holiday Inn Downtown Superdome. Guest speaker Dr. Darrell Henry, Department of Geology & Geophysics at Louisiana State University, will present: "Tourmaline: Can it record geologic information like a DVD?" Contact the NOGS office to make your reservation.

SUPER SCIENCE SATURDAY

DINOSAURS, EARTHQUAKES AND OIL



March 19, 2011

Louisiana Children's Museum

11:00 AM - 3:00 PM

Volunteers Needed

Contact Tom Bergeon at 504-832-3772

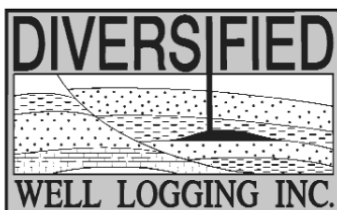
tom.bergeon@centuryx.com





Relax. We'll keep you posted.

Your rig is offshore and you are not. How do you know what's going on so many miles away? You know because we tell you. Daily or even hourly, Diversified Well Logging's engineers update you on the status of your rig. We are your eyes and ears, especially when it comes to deep water or high pressure, high temperature areas. Diversified offers 24-hour surface evaluation. We provide secure and customized real-time data communication, in-house research and development and 24/7 on-call support for our equipment and our engineers. Whether you have a 10-day job or 110-day job, we provide the specialized attention you require. So, relax. We're with you every step of the way.



Serving the Gulf Coast for over 40 years.

New Orleans • Lafayette • Houston • Dallas • Corpus

800.280.2096

711 West 10th Street • Reserve, LA 70084 • Phone: 985.536.4143 • Fax: 985.536.2427
sales@dwl-usa.com

**DOMESTIC AND INTERNATIONAL
BIOSTRATIGRAPHIC SERVICES**



6619 Fleur de Lis Drive
New Orleans, LA 70124
(504) 488-3711

www.paleodata.com



Complete wellsite paleo services

**Available single-source regional
biostratigraphic databases for
accuracy and consistency**

**Integrated foram / nannofossil
analyses**

**In-house sample preparation
lab for quality-monitoring
and efficiency**

**Supported Gulf Coast
biostratigraphic databases**



MCMORAN EXPLORATION CO.



**MCMORAN
OIL & GAS**

www.mcmoran.com

NYSE: MMR

16676 Northchase Dr.
Houston, TX 77060
(281) 539-7600
Fax: (281) 539-7655

1615 Poydras
New Orleans, LA 70112
(504) 582-4000
Fax: (504) 582-4155

110 Travis St., Suite 140
Lafayette, LA 70503
(337) 735-9150
Fax: (337) 735-9151

NOGS CONTACT LIST

--- continued from page 3 ---

MEMORIAL FOUNDATION

BOARD OF TRUSTEES

2010-11 Chairman	Tom Klekamp
2010-11 Secretary	Rick Kear
2010-11 Trustee	Chuck Holman
2010-11 Trustee	Michael N. Fein
2011-12 Trustee	Monte Shalett
2011-12 Trustee	James Swaney
2012-13 Trustee	Jennifer Connolly
2012-13 Trustee	William M. Whiting

Company
Amber Resources LLC
Schlumberger
Independent
W & T Offshore
Berkshire Exploration Co
BOEMR E
Shell
Consultant

Phone
985-845-4046
504-592-5376
504-891-4878
504-210-8148
504-831-7779
504-736-2677
504-728-6411
504-947-8495

E-mail
klekamp@bellsouth.net
kearl1@new-orleans.oilfield.slb.com
charleswholman@bellsouth.net
mikef@wtoffshore.com
mshalett@gmail.net
james.swaney@boemre.gov
jennifer.connolly@shell.com
bootscon@aol.com

AAPG DELEGATES

Term Ends

2011	Tom Hudson
2011	Edward B. Picou, Jr.
2011a)	Brenda Reilly
2011a)	Robert Rooney
2012	William Whiting
2012	Jim Zotkiewicz
2012 a)	David E. Balcer
2012 a)	Richard J. Stancliffe

Chevron
Consultant
Energy Partners Ltd.
Century Exploration
Consultant
Zot Oil & Gas
Chevron
Shell Expl & Prod Co.

504-529-5155
504-799-4811
504-832-3777
504-947-8495
504-831-4694
985-773-6725
504-728-7553

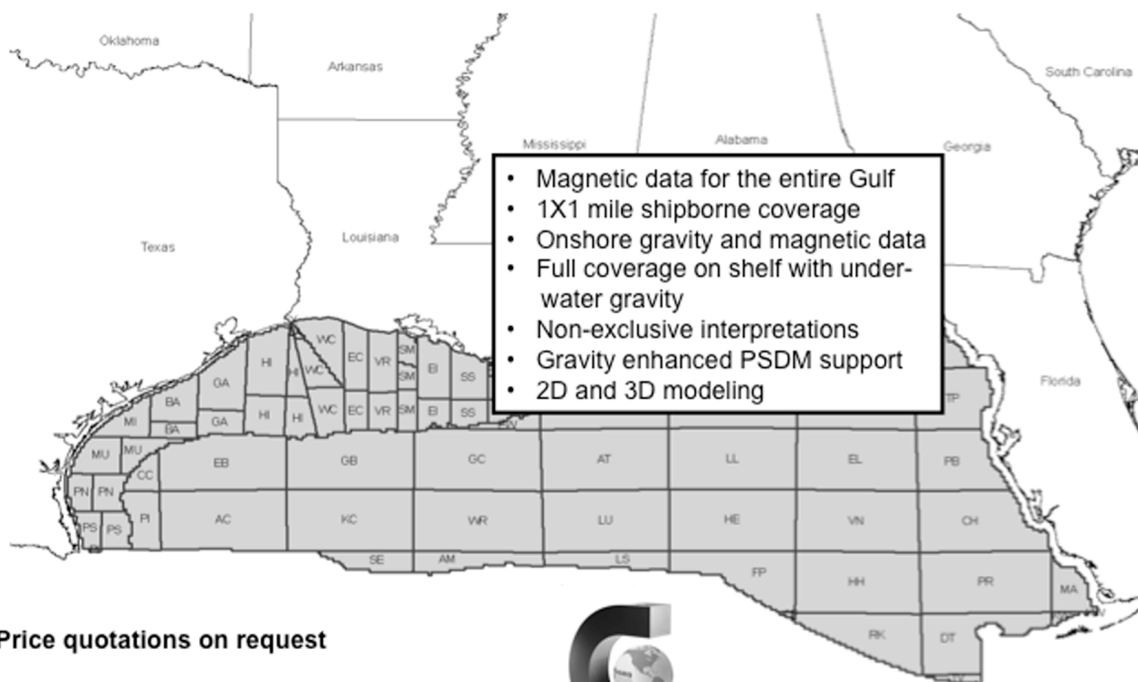
tom.hudson@chevron.com
epicou@bellsouth.net
breilly@eplweb.com
Robert.rooney@centuryx.com
bootscon@aol.com
jimzot38@zotoil.com
dbalcer@Chevron.com
richard.stancliffe@shell.com



Fugro Gravity & Magnetic Services

LAND • AIRBORNE • UNDERWATER • SHIPBORNE

The most complete coverage Onshore and Offshore Gulf of Mexico



Price quotations on request

Fugro Gravity & Magnetic Services
www.Fugro-GravMag.com
Tel: 713-369-6123



Gravity Inspired. Magnetically Inclined.



**Shell has worked in partnership
with the NOGS for many years, and
is proud to count the society among
its closest business associates.**

The New Orleans Geological Society was organized in 1941 to foster scientific research and advance the science of geology. Particular emphasis is laid on the exploration for and production of petroleum and natural gas. Related objectives include encouraging the adoption of improved methods of exploration, disseminating pertinent geological and technological data, and maintaining a high standard of professional conduct among its members.

www.shell.com/us/sepcos

**It's no illusion...
Core Lab offers everything you need.**



©2009 Core Laboratories. All rights reserved.

Unconventional resource exploitation • Gas shale experts • Deepwater GOM authority
Capacity for fast turnaround • High-quality people • Global support
Industry leadership and reliability • Proprietary and patented technologies • Experience

www.corelab.com/rd/petroleumservices • 24-hour wellsite service hotline: 504-733-6583



From ZNodal Systems to ZNodal Imaging

We are full spectrum ZNodal™ technology

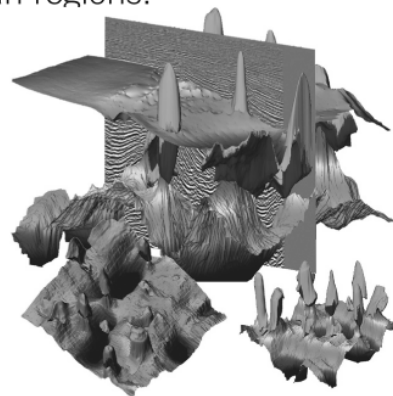
FairfieldNodal.com



We admit it. We're seismic nodal fanatics. Always have been. Which explains our one-of-a-kind, cable-free ZNodal™ systems. They work wonders in dense urban areas and pristine wilderness, in shallow water and deep ocean regions.

In fact, our exclusive ZNodal technology is behind everything we do, from acquisition and licensing to advanced processing and imaging, bringing nodal data to life in amazing ways.

Right now, our ZNodal systems are on the job in some of the world's most challenging fields, making a powerful difference. So when you're ready to go nodal, count on us to lead the way. ZNodal technology: It's what you need. It's what we're all about.



fairfieldnodal

SYSTEMS ACQUISITION LICENSING PROCESSING IMAGING

South-Central Section Meeting
Geological Society of America
March 27-29, 2011 New Orleans LA



An Invitation to Sponsors

November 28, 2010

March 27-29, 2011 marks the annual meeting of the Geological Society of America's South-Central Section. This meeting is hosted by the University of New Orleans, and will be held at the Chateau Bourbon, A Wyndham Historic Hotel in New Orleans. The meeting will have a diverse slate of scientific sessions, workshops, and field trips that highlight the important role of the geosciences in addressing important issues facing the mid-continent, the entire nation, and our world. We have assembled a remarkably diverse array of technical sessions, which meld academic and industrial geosciences in our region.

This will certainly be an outstanding meeting, but it can be even better with a sponsorship from your company. Sponsorships support a wide range of activities that would otherwise be impossible: 1) Student travel assistance; 2) Student Research Awards; 3) K-12 teacher registration support; 4) printing the program booklet; 5) receptions for conference attendees; 6) travel awards and registration for Mexican and Canadian geoscientists (now part of the GSA Sections), 7) coffee breaks; and 8) Happy Hour!

We invite you to become a sponsor of the 2011 meeting. We invite you to assist us in this important activity and its impact for the geosciences in our region and contact us at your earliest convenience.

Major Sponsor commitments will be widely advertised in upcoming meeting announcements. Sponsoring company names and logos will be prominently displayed on the large meeting poster that will be mailed to all geology departments within the region and in neighboring states. We will also provide booth space and free registration for certain participants selected by Major Sponsors as part of their sponsorship.

Please note that it is also possible to **target your sponsorship** toward one or more specific events at the meeting such as the welcoming reception, refreshment breaks during the meeting, or during a Happy Hour! **Specific Event Sponsors** will be clearly recognized during each event.

Inquiries regarding sponsorship levels and specific events may be directed to:

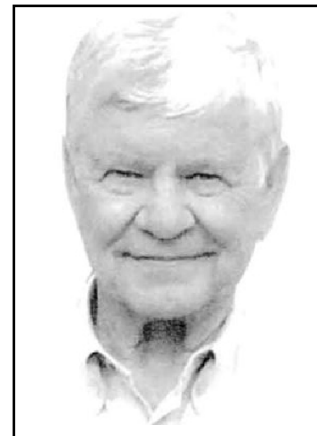
Dr. Mark Kulp
504-280-1170
mkulp@uno.edu

Thank you so much for your support,
Mark Kulp

A Memorial

William C. “Bill” Ward 1933 -2011

William (Bill) C. Ward of Boerne Texas died early in the morning of January 8, 2011 after a stroke. He was born in Waco, Texas in 1933 to Bruce and Louise Ward and was the oldest of five. After attending Jefferson High School in San Antonio, he received his BS and MS in geology from the University of Texas at Austin and, after a nine year stint in the oil industry, returned to school to get his PhD at Rice University. He taught geology at the University of New Orleans for 25 years and did academic research in limestone and other sedimentary rocks of Mexico, Spain, Puerto Rico, Egypt, and the US Gulf Coast.



During his tenure on the Geology faculty at UNO, Bill participated in many NOGS events. He always played a role on GCAGS convention committees when NOGS hosted the meeting. Additionally, he was a coauthor of several NOGS publications. These included “Geology of Greater New Orleans: Its Relationship to Land Subsidence and Flooding,” published in 1980. He was the coauthor and a field trip leader for several convention-associated field trips to the Yucatan Peninsula of Mexico. These activities spanned more than a decade, from 1974 through 1985, and are preserved in three guide books. These excursions provided a detailed examination of carbonate sedimentation and stratigraphy, the hydrogeology and the Quaternary geology of the area.

In 1995 he retired from UNO as an Emeritus Professor of Geology and with his wife, Kathy, returned to their native Central Texas, where he was an enthusiastic and well-loved volunteer teaching Texas Hill Country geology for several Master Naturalist chapters, as well as for the Cibolo Nature Center, the Gorge Preservation Society (Canyon Lake Gorge), and other groups. Bill also was very active in the Native Plant Society of Texas, wrote a column on native plants for the Boerne Star, and was an avid birder.

He and his wife, Kathy Agnew, enjoyed 53 years of marriage. Bill will be missed by his mother Louise (Momo) Ward, daughters Laura Good and Diane Sparkman, son Bruce Ward, sister Jeanne West and two brothers, Lee Allen Ward and Phil Ward, and grandchildren Will and Walker Good and Joshua, Dillon and Ashley Sparkman; son-in-laws, Jim Good and JM Sparkman; daughter-in-law, Abby Matteson; aunts Eugenia James and Miriam Warlick, and numerous nieces, nephews and cousins. Bill will also be missed by all of his former students and colleagues.

Ed Picou
Fran Wiseman

Note: Acknowledgement is made and appreciation expressed to Express-News, the source of much of the information in this memorial.

A Lookback at 2010 Notable NOGS Activities & Other Events

- On March 16th NOGS member Art Johnson was presented the American Petroleum Institute-Delta Chapter's prestigious Meritorious Award in recognition of his outstanding volunteer efforts for so many organizations..
- NOGS hosted a very successful AAPG Convention April 11-14 with an attendance of 5,700. Of note was the larger than anticipated turnout for the special convention event billed as "An Evening with the Greatest Generation" at the National World War II Museum.
- On April 19 NOGS held its popular Golf Tournament at Tchefuncte Country Club with an almost sellout participation. Tim Klibert did a magnificent job organizing the tourney.
- The following day, April 20, changed our industry in many significant ways with the Deepwater Horizon blowout at BP's Macondo prospect in Mississippi Canyon 252. Shortly, a federal moratorium was imposed on all deep water drilling which was subsequently extended to shelf drilling, as well. The long-range impacts of this disaster will be played out over the next few years.
- The joint NOGS-SGS Spring Social was held at Zephyrs Field on May 14 where our home team played the Fresno Grizzlies. Although attendance was light, all had a good time.
- On July 15 the Fourth Annual Flood Protection Symposium "Geologic Facts of Life for Flood Protection in Coastal Louisiana" was held in the Jefferson Parish Office Building in Gretna, La. The symposium was video taped and broadcast over the local Fox news channel.
- Regrettably, Eni Petroleum announced their relocation to Houston in June. Eni's geological staff had supported NOGS in many significant ways, including board officers and committee chairs. As a consequence of their departure, President David Reiter resigned and Vice President Rick Kear took the reins of the Society in September.
- On August 18-19 NOGS co-sponsored with SPE Delta and AADE the 14th Annual Deepwater Technical Symposium at the Hilton Riverside Hotel. Attendance was remarkably high. The topic of the Panel Discussion prior to the conclusion of the symposium focused on the Macondo blowout and oil spill.
- The annual Kick Off Party took a very different venue on September 13th. As an "experiment," it took the place of the regular monthly luncheon. Special activities at the luncheon/party were the presentation of NOGS Foundation Scholarships to university students and the introduction of NOGA officers.
- On December 10th the NOGA/NOGS Annual Christmas Party was held at the Metairie Country Club with approximately 85 attending. This festive event featured live music and a bountiful holiday buffet.
- Without a doubt, the most important event of the year happened in late December with the publication of the *Oil and Gas Fields of South Louisiana 2010*. After a full year of dedicated work by co-chairs Carlo Christina and Charley Corona and the Steering Committee, the publication on CD-ROM was delivered on December 29th, thus honoring the date in its title.

Ed Picou

NEW!
AVAILABLE
NOW

Oil & Gas Fields of South Louisiana 2010

26 FIELDS NEW PRODUCTION

BAYOU POSTILLION

BAYOU VILLARS

BLACK BAY COMPLEX

BLACK BAY EAST - NORTHERN BLOCK

BLACK BAY NORTH - EASTERN EXTENSION

BRETON SOUND BLOCK 53

CREOLE - WEST CAMERON BLOCK 2

EUGENE ISLAND BLOCKS 10/24

FRESHWATER BAYOU

JUDGE DIGBY

KENT BAYOU (ETOUFFEE)

LAC BLANC

LAKE BOEUF SOUTHWEST

LAKE BOUDREAUX

LAKE SALVADOR

LAKE WASHINGTON

MANILA VILLAGE SOUTHEAST

MYETTE POINT NORTHWEST

PATTERSON

PINE PRAIRIE

PORT HUDSON

RAMOS (LILY BOOM)

RIGHTHAND CREEK

SATURDAY ISLAND SOUTHEAST

STELLA

THIBODAUX AND ROUSSEAU

WEST COTE BLANCHE BAY



CD VERSION LOADED WITH DETAILS AND FEATURES

*GEOLOGY, GEOPHYSICS, MAPS, X-SECTIONS,
LOGS, STRAT AND PALEO*

IN COLOR!

*UPPER MIOCENE
THROUGH CRETACEOUS TUSCALOOSA*

*EXCLUSIVE IN-DEPTH
EXPLORATION-ECONOMICS ANALYSIS OF
SOUTH LOUISIANA*

*VALUABLE REFERENCE FOR
EXPLORATIONISTS EVERYWHERE*





Order Form

Oil & Gas Fields of South Louisiana 2010 Full-Color CD-ROM Edition

QUANTITY	ITEM	PRICE	EXTENSION
	CD-ROM EDITION - FULL COLOR - PC OR MAC	\$75.00	
	POSTAGE AND HANDLING		
		TOTAL	

POSTAGE & HANDLING RATES	
NUMBER OF CDs	ADD TO ORDER
1	\$7.00
2-5	\$11.00
5-10	\$16.00
10-20	\$20.00

SHIPPING ADDRESS			
NAME			
ORGANIZATION			
STREET OR PO BOX			SUITE OR APT
CITY	STATE	ZIP	
PHONE			

PAYMENT	INDICATE PAYMENT TYPE: CHECK <input type="checkbox"/> AMERICAN EXPRESS CARD <input type="checkbox"/> VISA CARD <input type="checkbox"/> MASTERCARD <input type="checkbox"/> DISCOVER CARD <input type="checkbox"/>		
CARDHOLDER'S NAME			
CREDIT CARD NUMBER	<div style="display: flex; justify-content: space-between;"> <div><input type="text"/></div> <div><input type="text"/></div> <div><input type="text"/></div> <div><input type="text"/></div> </div>		
	EXPIRATION DATE MM/YY	SECURITY # (BACK OF CARD)	
SIGNATURE			
STREET OR PO BOX			
CITY	STATE	ZIP	
PHONE			

MAIL THIS FORM AND CHECK, PAYABLE TO "NOGS", OR CREDIT CARD INFORMATION TO:

NOGS
P.O. BOX 50089
NEW ORLEANS, LA 70150-0089

FOR NOGS OFFICE USE	
NUMBER OF COPIES SOLD THIS ORDER	
DATE COMPLETED	



Christmas Holiday decor at Metairie Country Club

Christmas Holiday Party Photos



Brenda Reilly, Brian Broussard
and Rhonda Roederer



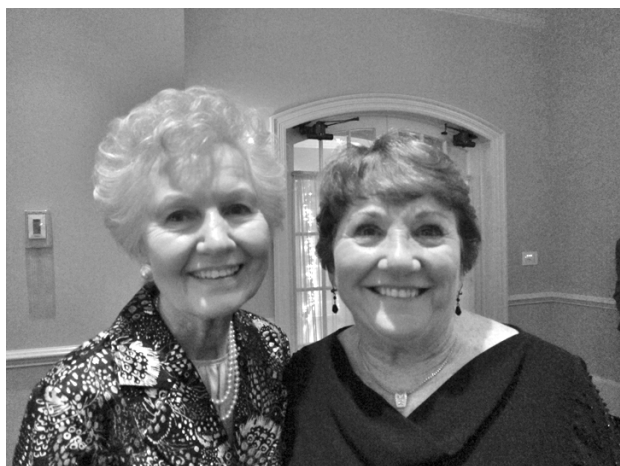
Scott and Kacy Wainwright;
Trudy and Charley Corona



Linda and William Peirce;
Beverly and Everett Kastler



Rick Kear (NOGS President), Jim Yeddell
and Carlo Christina



Joanne Severson and Jeanne Martin



Sandy and Scott Avanzino;
Sandy and A T Green



Rebecca McVey, Rhonda Roederer
and Brian Broussard



Tom and Amber Klekamp



The Jazzman Trio



Bill Whiting, Carlo Christina
and Gretchen Bomboy



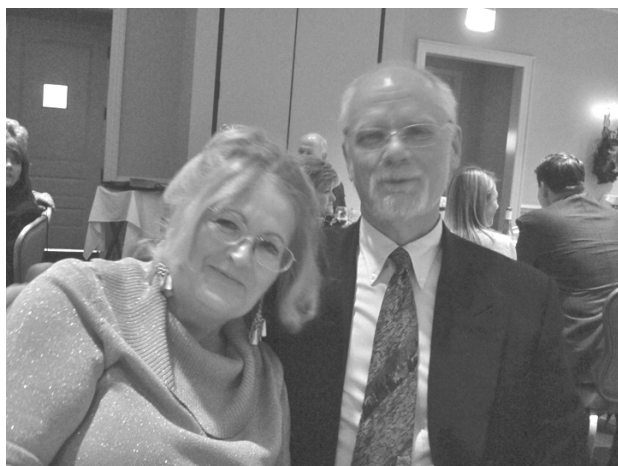
Roy and Mary Walther



NOGS President Rick Kear and
President-Elect Bob Hafner



NOGA Christmas Party Co-chairs
Amber Klekamp and Beverly Christina



Kathy Rush and Chuck Holman



Judy Lemarie', Dolores Murphy,
Jane Finn and Jean Jones



Jeff Brooke and Denise Schaffer



Jack Dunlap and Al Baker



Eric and Kelly Zimmermann



Frank and Peggy Rogers



Ed Picou, Jack and Beverly Langford



Fran Wiseman and Kevin McVey



Don Andrews, Jack Bryant and Al Baker



Alma and Jack Dunlap, Dan Armstrong



Dolores Murphy and Bob Douglass



Debra and Mike Fein



Diane Huffman and Susie Baker



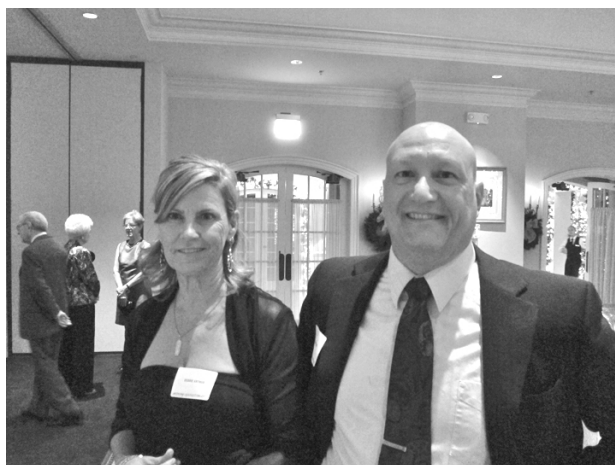
Arleen and Martin Falchook;
Tatjana Eustis



Bill and Elizabeth Furlong



Art and Ana Cerniglia;
Carlo and Beverly Christina



Debbie Arthur and Bob Hafner
(NOGS Entertainment Chairman)



Andrew Ranson and Ashley Breau



Alice, Art and Emily Johnson



Don and Carol Andrews;
Joanne and George Severson



David and Shirley Sollenberger

South Louisiana and Offshore Exploration and Production Activity

South Louisiana and Offshore GOM Exploration and Production Activity

Lafayette District, Onshore Area and Offshore Area

By Carlo C. Christina

Forty-four drilling permits have been issued since my last report, a significant increase since the previous total of 28. The most significant locations are as follows:

In Acadia Parish, **Midland Field**, Caza Operating has permitted the #1 Baker in Sec. 18, T10S-R1W. It will be drilled to **16,000'**, significantly deeper than previous wells in the field.

Pennington Operating Co. is drilling a Planulina test in **Oakley Field**, Assumption Parish. The #1 Clause is located in Sec. 79, T14S-R14E, approx. 5,000' east of production, and is drilling below 3,500'.

In **North Bayou Jack Field**, Avoyelles Parish, the Nelson Energy, #H-1 Deshotels, Sec. 20., T2S-R5E flowed 600 BOPD and 500 MCFG on 20/64" ck. through 640' of perforations in the Austin Chalk. As reported last month, the well was drilled to TD 18,748' in a 3,755' horizontal leg. Additional acidizing and testing to continue.

El Paso E&P Co. will drill the #1 BP-32 in **Fields Field**, Beauregard Parish, located in Sec. 32, T6S-R12W to a depth of 14,166'. It is located approximately 1 mile west of the recently completed #1 Hennican, completed flowing 4377 MCFG and 309 BOPD.

Beauregard Parish continues to attract drilling activity.

In **West Gordon Field**, Midwest Petroleum Co. has completed the #1-6 Forestar LWxRB, flowing 132 BOPD through perforations 12,560' to 14,280'. The well was drilled in Sec. 6, T7S-R9W to TD 14,584'.

Midwest has staked the #1-7 Forestar, a deep **18,000'** test, approximately 1 mile south of the #1-6 Forestar in **West Gordon Field**. It will be drilled in Sec. 7, T7S-R9W.

In **Bear Field**, Midwest has drilled the #1 Barrow-20, and is waiting on a completion rig. The well was drilled to TD 15,075' in Sec. 20, T6S-R9W.

Also in **Bear Field**, a new location has been staked by Midwest in Sec. 29, T6S-R9W. The #1 AKS Properties is permitted to a depth of 15,035'.

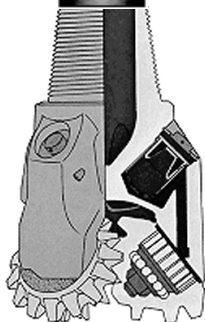
In **Coward's Gully Field**, Midwest Petroleum Co. has completed the #1 Unkel in the Wilcox flowing 100 BOPD through perforations 12,014' to 12,096' overall. It is located in Sec. 4, T7S-R11W. (*#241884)

In Calcasieu Parish, Mayne & Mertz has completed the #1 Drew Estate in **Pine Ridge Field**, flowing 667 BCPD and 3,004 MCFG. Completion is in the Hackberry, through perforations 11,097' to 11,102'. The well is located in Sec. 20, T10S-R11W. (*#241584)

South Manchester Field, in Calcasieu Parish, has a new location by Mayne & Mertz. The #1 Martone is located in Sec. 24, T10S-R7W, and is permitted to 13,300'.

My previous report of activity in **Cameron Meadows Field**, Cameron Parish, listed 4 wells permitted by Apollo Energy Co. All wells are located in Sec. 22, T14S-R13W. The #2 Dore was completed in the 5100' Sand flowing 3125 MCFG and 2 BCPD through perforations 5,058' to 5,090' (OA), and the #3 Dore was completed in the 1250' Sand flowing 75 BOPD through perforations 1,240' to 1,270' (OA). The #4 Dore is waiting on a completion rig, and the #5 and the #6 Dore are preparing locations.

In reviewing the production history of the field, I discovered that several very old wells have had remarkable recoveries of oil and gas. The #37 Cameron Meadows, drilled in the late 1970s, has produced more than 2,220,000 barrels of oil since 1977, when records were first recorded by the La. Dept. of Natural Resources. Most importantly, the well has produced more than **140,000 barrels of oil in the past 12 months**; not bad for an old well. With the price of oil at \$90 per barrel, this well generated more than **\$12,600,000 during this 12 month period**.



Also in Cameron Parish, **Sabine Lake Field**, Forza Operating LLC, will drill the #2 SL 19067 to a depth of 13,500'.

Pine Prairie Field in Evangeline Parish has been very active in the past few months. Midstates Petroleum Co has recently completed the #2 Johnson in the Upper Wilcox Reservoir, flowing 225 BOPD and 375 MCFG, through perforations 12,014' to 12,120'. (OA) .(*#241999)

Also in **Pine Prairie Field**, Midstates Petroleum Co. completed the #3 Cromwell-27 in the Frio Sand, flowing 225 BOPD through perforations 5,210' to 5,236'. (*#241918)

Forest Oil Co. will drill its #1 SL 19743 in **Garden Island Field** in Plaquemines Parish. The well is permitted to 13,600' in Sec.2, T23S-R32E.

Lymac Operating is drilling a Tuscaloosa well in the **North Liverpool Field** in St. Helena Parish. The #1 Weyerhaeuser is drilling below 12,240' in Sec. 62, T1S-R5E.

A **St. Mary Parish 19,500'** wildcat will be drilled by Phoenix Exploration in Atchafalaya Bay. The #2 SL 20035 is drilling below 11,195'.

Clayton Williams Energy has drilled to 14,450' in its #1 SL 19720 wildcat in **Eugene Island Block 10**.

In **Bayou Hebert Field**, Vermilion Parish, Petroquest will drill the #1 Thibodeaux. The well will be drilled to 19,800'.

Anadarko has a significant completion in the Austin Chalk in **South Burr Ferry Field** in Vernon Parish. The GARS #1, Sec.18, T1S-R10W was drilled to TD 19,260' in a horizontal hole (TVD 13,349') and flowed 7,000 MCFG and 500 BOPD from perforations 13,445' to 18,727'. South Burr Ferry Field was discovered in 1996 and has produced 1,200,000 barrels of oil and 6.4 billion cubic feet gas. (*#241814)

OFFSHORE

GOM SHELF ACTIVITIES – Al Baker

In the past sixty days (from November 11, 2010 to January 11, 2011), there have been three new well drilling permits granted on the Gulf of Mexico shelf. The fortunate companies include Apache, Castex and W&T Offshore. They received drilling approvals for wells on Matagorda Island Block 623, High Island Block 176 and Main Pass Block 180, respectively.

According to the BakerHughes Rig Counts, as of January 7th there were 25 active rigs in the Gulf of Mexico, down 17 rigs (or 40%) from a year ago. In a January 3, 2011 Wall Street Journal article entitled "New Scrutiny Slams Near-Shore Exploration" by Daniel Gilbert, the author notes that of the 83 shallow-water rigs in the Gulf, only 29 were leased as of December 20th. This compares to 39 leased rigs on April 20th, the date of the BP Macondo blowout. The article goes on to state that many of the currently leased rigs are working at discounted day-rates, such that the rig owners are losing millions of dollars each month in revenue and in costs to maintain idle rigs. Among the hardest hit are two Houston-based companies, Hercules Offshore, Inc. and Seahawk Drilling Inc., which own a combined 68% of the shallow-water drilling fleet.

On December 1st, Secretary of the Interior, Ken Salazar, announced a revised OCS Leasing Program. In essence, the lease sales in the Central (March) and Western (August) Gulf of Mexico under the current 2007-2012 leasing program are being delayed until late 2011 or early 2012 in order to allow sufficient time for the Bureau of Ocean Energy Management, Regulation and Enforcement (BOEMRE) to complete its environmental analyses of these regions. This is not good news to companies who regularly participate in offshore lease sales. The BOEMRE is also reviewing the Alaska OCS and the Mid and South Atlantic OCS areas for the 2012-2017 leasing program.

In the shallow water, deep gas and ultra-deep gas exploration activities continue for McMoRan at Lafitte (Eugene Island Block 223), Blackbeard East (South Timbalier Block 144) and the Davy Jones offset well (South Marsh Island Block 234). In November, McMoRan announced production test results on the previously reported 105 net feet of hydrocarbon-bearing sands found in the Blueberry Hill #9 ST-1 well. The well flowed at a rate as high as 22 MMCF/D and 1,250 BC/D on a 22/64" choke with 13,090 psi flowing tubing pressure. At the end of the test period, the rate was 16 MMCF/D and 838

--- continued on next page ---

Drill Bits (continued from previous page)

BC/D on a 23/64" choke with 7,750 psi flowing tubing pressure. The well has been shut-in pending the evaluation of the flow test results to assess the decrease in flowing tubing pressure.

On January 5, 2011, Entek announced an offshore Texas, shelf discovery in Galveston Block A-133. The well was operated by Peregrine Oil and Gas who had farmed in a 50% working interest from Entek. According to the press release, the well found approximately 200 feet of net gas pay and is presently being temporarily abandoned while awaiting tie-in to nearby production facilities. The anticipated initial production date is late 2nd quarter 2011, and an initial production rate of 10 to 20 MMCF/D is expected. The prospect reserve ranges from 2 BCF (3P) to 18 BCF (prospective resource).

Gulf Coast Association of Geological Societies



**GCAGS
2011
Annual
Convention**

Veracruz, Mexico

Sharing knowledge to add value

Gulf Coast Association of Geological Societies

61st Annual Convention

October 16-19, 2011

Veracruz, Mexico

For more information:

<http://gcags2011.com/>

SEI®

Seismic Exchange, Inc.

**Strategic Speculative Surveys
Geophysical Data Marketing & Management**

**Your
Full Service
National
Seismic Data
Marketing Firm**

New Orleans
Dallas
Houston
Denver
Oklahoma City
Corpus Christi
Tulsa

201 St. Charles Avenue, Suite 4300, New Orleans, Louisiana 70170-4300

Telephone 504.581.7153 Fax 504.581.9591

www.seismicexchange.com

Haynesville Shale Well Drilled to 22,000 Feet: January 13, 2011 | Mainland Resources

Mainland Resources announced that they spent \$9.5 million to drill a Haynesville Shale well to 22,000 feet, recover 21 feet of Haynesville core from a depth of 20,415 feet and set production casing. For more information go to: <http://www.prnewswire.com/news-releases/mainland-sets-production-casing-on-its-22000-foot-deep-haynesville-shale-well-in-mississippi-112860619.html>

The Wandering Magnetic North Pole: January 11, 2011 | Tampa Bay Online

The magnetic North Pole is moving at a speed of about 40 miles per year as changes occur in the core of the Earth. For more information go to: <http://www2.tbo.com/content/2011/jan/05/060831/shift-of-earths-magnetic-north-pole-impacts-tampa-/news-money/>

Hydraulic Fracturing Proppants are in Short Supply: January 9, 2011 | Bloomberg.com

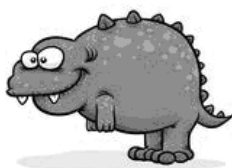
An article on Bloomberg.com reports that the proppants used in hydraulic fracturing of oil and gas wells are in short supply. For more information go to: <http://www.bloomberg.com/news/2011-01-09/tiny-particles-used-by-oil-drillers-in-big-demand.html>

34,000-Year-Old Organisms Found Buried Alive!:

It's a tale that has all the trappings of a cult 1960s sci-fi movie: Scientists bring back ancient salt crystals, dug up from deep below Death Valley for climate research. The sparkling crystals are carefully packed away until, years later, a young, unknown researcher takes a second look at the 34,000-year-old crystals and discovers, trapped inside, something strange. Something ... alive. For more information go to: http://news.yahoo.com/s/livescience/20110113/sc_livescience/34000yearoldorganismsfoundburiedalive/

Q: How can you tell there's a Stegosaurus in your refrigerator?

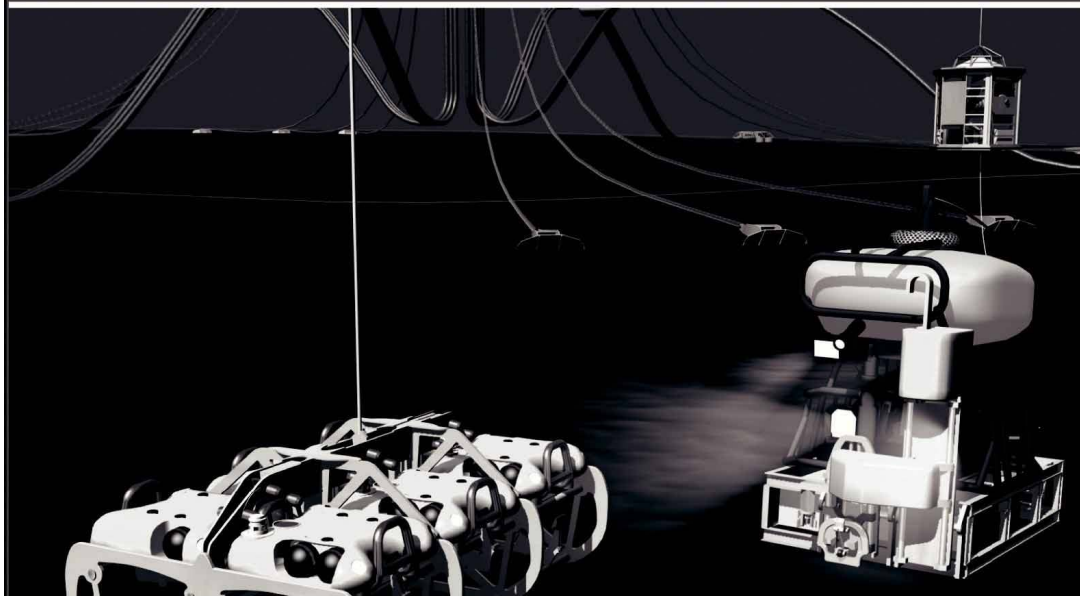
A: The door won't close! Ha ha ha!



- Fran Wiselady

Save the date!
NOGS Annual Golf Tournament
April 25, 2011

Finally - An answer for getting reservoir seismic **OVER THE RESERVOIR!**



• **4C/4D Node Seismic**

- **ANGOLA**
- **GoM**
- **NIGERIA**



"Coming Soon to an Oilfield Near You!"

www.sbexp.com

Dubai
T: +971 4 4271700

Houston
T: +1 281 566 1666

Oslo
T: +47 2240 2700

Rio
T: +55 21 2494-0283

Singapore
T: +65 9180 2605

Trondheim
T: +47 7 3879500

RAISING
THE **STANDARD**



**100 Northpark Blvd.
Covington, LA 70433**

(985) 773-6000



LaBay
Exploration Co., L.L.C.

111 Veterans Memorial Blvd.,
Suite 1550
Metairie, Louisiana 70005

www.labayexploration.com

Office (504) 371-5967
Fax (504) 371-5969

***This advertising space is available!
Contact the NOGS office.***

THE NEW ORLEANS GEOLOGICAL SOCIETY MEMORIAL FOUNDATION, INC.

The Memorial Foundation is an IRS Tax Exempt Code #501 (c)(3) organization. The Federal I.D. is: 72-1220999. Please consider making a donation to the Foundation prior to the close of this year's fiscal cycle on June 30, 2011. Your individual support in any amount will help meet the IRS Guidelines for our Foundation. *Thanks!*

\$15,000 AND ABOVE

Olga Braunstein Succession

Gibbet Hill Foundation

*In Memory of Steve & Marion Millendorf, William J. Prutzman,
Roger G. Vincent & Ron Youngblood*

\$10,000

George W. Schneider, Jr. and Family

*In Memory of George W. Schneider, Sr.
GCAGS
Matching funds*

\$2,000 TO \$3,000

NOGS Golf Tournament May 2009

In Memory of Bill Craig

UP TO \$249

Donald I. Andrews

*In Memory of Ray F. Havard
In Memory of Harlan (Lanny) Northcott*

Robert J. Ardell

*In Memory of Al Gibeath
In Memory of Bill Malin
In Memory of Bob Williamson*

Mr. and Mrs. Wesley Barton

In Memory of Thomas A. Cullinan

Abraham Biadgelgne

Maurice N. Birdwell

Irion Bordelon, Sr.

In Memory of Robert G. Williamson

Hilary James Brook

Robin Broussard

Rob Burnett

J. Sybil Callaway

Chevron

Matching Funds

Arthur F. Christensen

Ellen F. Clark

Willis E. Conatser PhD

Clarence F. Conrad

Charley Corona

In Memory of Professor Hubert Skinner

Trudy and Charley Corona

In Memory of Erik Mason

Michael A. Danahy

M. R. "Bob" Douglass

In Memory of Robert G. Williamson

Merle J. Duplantis

Dr. Brooks B. Ellwood

Parrish N. Erwin, Jr.

Exxon Mobil Matching Funds

Michael N. Fein

Laurens Gaarenstroom

Sherwood M. Gagliano

Arthur J. Garden

David Garner

\$7,000 TO \$9,000

Paul C. McWilliams

\$250 TO \$499

Carlo C. Christina

*In Memory of Al Gibeath
Tom Klekamp
Richard G. Klibert*

Larry Galloway

Peter G. Gray

In Memory of Robert G. Williamson

Bret Hampton

*Angela M. Hessler
Through the Chevron Humankind
Program*

Bernard L. Hill, Jr.

In Memory of Robert E. Osborne

Dan E. Hudson

Kenneth Huffman

Jeffrey E. Jandegian

Paul Jurik

In Memory of Thomas A. Cullinan

Reuben J. Klibert, Jr.

In Memory of Dale Klibert

John C. Kucewicz, Jr.

John C. Langford

Jeannie F. Mallick

Paul C. McWilliams

In Memory of Russell D. "Rusty" Morris

New Orleans Geological Auxiliary

In Memory of Dee Baysinger

In Memory of Doris Meltzer

In Memory of Terri Smith

Nexen Petroleum USA Inc. Matching Funds

Russell H. Nordwell

William J. O'Leary

Richard A. Olsen

In Memory of Richard W. Boebel

In Memory of William J. Malin

In Memory of Robert W. Sabate'

Teresa M. O'Neill

In Memory of Brian J. O'Neill

Linda and Bill Peirce

Edward B. Picou Jr.

In Memory of William J. Malin

In Memory of Robert G. Williamson

FONO FUND

The FONO Fund accepts contributions that are invested and the income dedicated to assure sufficient financial resources will always be available to maintain the NOGS business office. Contributors are reminded that donations to the FONO Fund are not covered by the IRS 501 (c)(3) tax exempt classification and should be reported as a business expense on your IRS tax report.

\$500

James A. Hartman

In Memory of Hal Hudson

In Memory of Robert G. Williamson

UP TO \$250

Donald I. Andrews

Alfred H. Baker Jr.

Joseph E. Boudreaux

Hillary James Brook

Jack G. Bryant

J. Sybil Callaway

Arthur F. Christensen

Richard P. Colomes

Richard P. Colomes

Clarence F. Conrad

Michael A. Danahy

John Dombrowski

Merle J. Duplantis

Richard A. Edmund

Mark J. Gallagher

William J. Furlong

Duncan Goldthwaite

James A. Hartman

In Memory of Hal Hudson

In Memory of Robert G. Williamson

Bernard L. Hill, Jr.

Thomas A. Hudson

Kenneth Huffman

C. M. (Max) Jacobs

Robert M. Jemison, Jr.

Tom Klekamp

Louis Lemarie'

William J. Malin

Jeannie F. Mallick

George M. Markey, Jr.

James A. McCarty

Louis L. McCormick

Robert G. Murphy

William J. O'Leary

Richard A. Olsen

Erwin Parrish, Jr.

Linda and Bill. Peirce

Edward B. Picou, Jr.

Richard D. Provensal

James P. Raymond, Jr.

Brenda E. Reilly

C. R. Rondeau

George D. Severson

Rudolf B. Siegert

Richard J. Stancliffe

Bryan P. Stephens

Raymond Stephens

Roy C. Walther

Robert C. Weissmann

William M. Whiting

James W. Yeldell, Jr.

Jim Zotkiewicz

CONTRIBUTIONS FOR BOTH FUNDS THROUGH DECEMBER 16, 2010.
DONATIONS ARE LISTED FOR ONE YEAR.

Richard D. Provensal

In Memory of Thomas H. Philpott

Scott Purinton

Brenda E. Reilly

Mrs. William B. Rodan

In Memory of Robert G. Williamson

Robert T. Sellars, Jr.

In Memory of Robert G. Williamson

George D. Severson

Rudolph B. Siegert

Dr. J. O. Snowden

Gary L. Spraul

In Memory of H. Grady Collier

Raymond O. Steinhoff

In Memory of Harold E. Vokes

Roy C. Walther

William M. Whiting

In Memory of William J. Malin

Armour C. Winslow

In Memory of Rita Menzel Winslow

Frances A. Wiseman

In Memory of Steve Widdicombe

James W. Yeldell, Jr.

Jim Zotkiewicz

In Memory of Bill Craig

Chevron

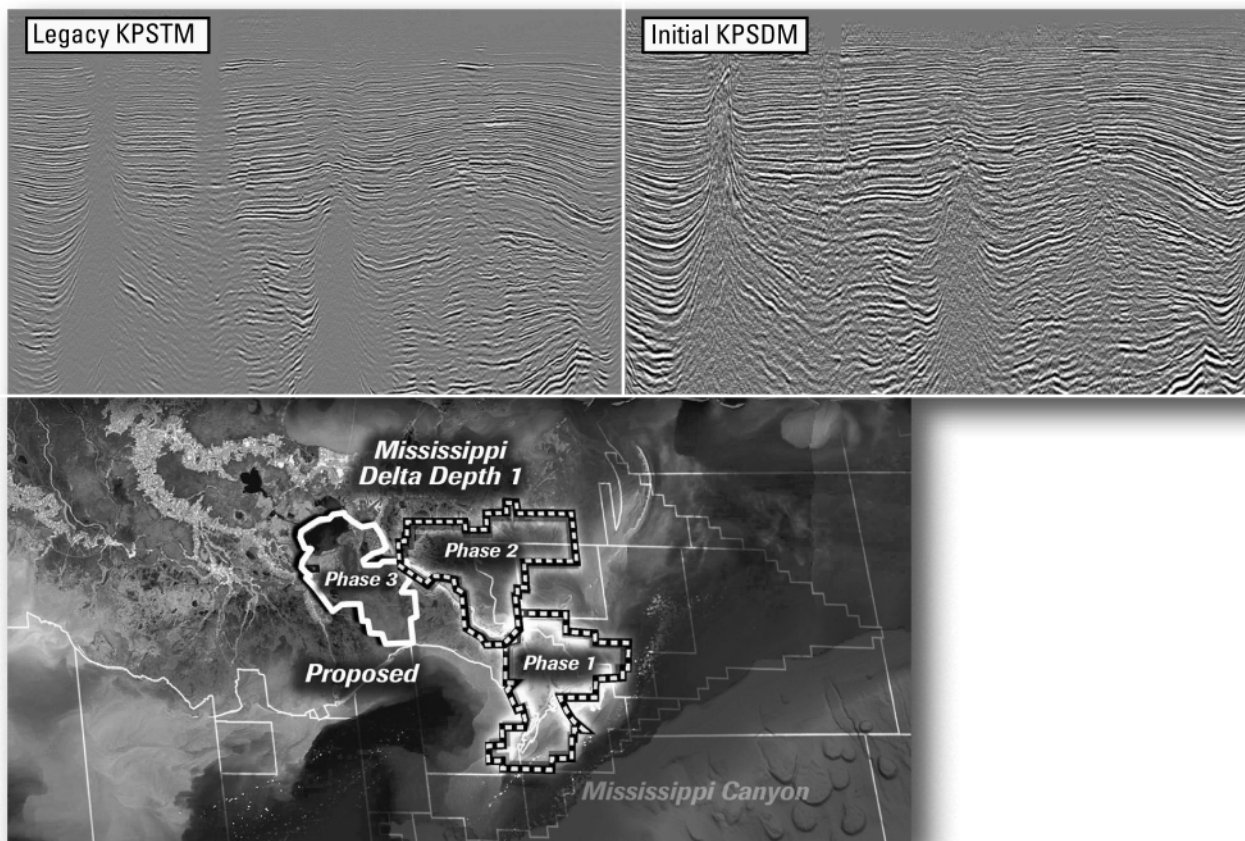
Bernard L. Hill, Jr.

John C. Scheldt

Candace V. Strahan

In Memory of James Strahan

Improved depth imaging in the Mississippi Delta



In the Mississippi Delta region, WesternGeco is utilizing state-of-the-art processing designed to eliminate fault shadows and enhance deep imaging. The Mississippi Delta - Depth 1 survey, now in progress, incorporates the processing and remigration of twelve legacy surveys covering 1,855 square miles. High-quality time imaging using relative amplitude anisotropic Kirchhoff prestack time migration will be followed by improved structural imaging utilizing anisotropic Kirchhoff prestack depth migration.

To learn more about this and other Multiclient products, call +1 713 689 1000.

www.multiclient.westerngeco.com/la

Multiclient to the Power of E





HOUSTON GEOLOGICAL SOCIETY

Explore Our Connections

Applied Geoscience Conference (AGC)

2011 AGC OF US GULF REGION MUDROCKS AS UNCONVENTIONAL SHALE GAS/OIL RESERVOIRS

February 7-8, 2011

**APPLIED RESERVOIR CHARACTERIZATION OF
US GULF MUDROCKS AS SHALE GAS/OIL RESERVOIRS
THE WOODLANDS TEXAS WATERWAY MARRIOTT**

HOUSTON'S PREMIER TECHNICAL GULF SHALE EVENT

*For Geologists, Geophysicists, Geochemists,
Nanno Experts, Geomechanics Log Analysts, Reservoir,
Completions and Stimulation Engineers*

FOUR (4) TECHNICAL DISCIPLINE SESSIONS:

GEOLOGY GEOCHEMISTRY

GEOPHYSICS COMPLETIONS

**INVITED TECHNICAL SUBJECT MATTER EXPERTS
OF INDUSTRY, UNIVERSITY, & GOVERNMENT
NEW TECHNICAL PERSPECTIVES OF MUDROCKS**

INCLUDING HAYNESVILLE, BOSSIER & EAGLEFORD

APPLIED GEOSCIENCE (AGC) PROGRAM RESERVOIR CHARACTERIZATION SPEAKERS

**JOE MACQUAKER
MEMORIAL UNIVERSITY**

**JURGEN SCHIEBER
INDIANA UNIVERSITY**

**INGO STEINHOFF
BP**

**MIKE MOLDOWAN
STANFORD UNIVERSITY**

**YONGCHUN TANG
PEER INSTITUTE (CALTECH)**

**TIM RUBLE
WEATHERFORD**

**DIEGO ORTIZ
WEATHERFORD
COLIN SAYERS
SCHLUMBERGER**

**GALEN TREADGOLD
WEINMAN GEOSCIENCE
PETER DUNCAN
MICROSEISMIC**

**MURRAY ROTH
TRANSFORM**

**RANDY LAFOLLETTE
BAKER HUGHES**

**KEVIN BOHACS
EXXONMOBIL**

**GARY SCHEIN
DALE RESSOURCES**

SEVENTEEN (17) EXPERT SPEAKERS ACCEPTED

LIMITED SEATING AVAILABLE!

SOLD OUT SINCE 2007

ACT NOW FOR A SEAT

REGISTER AT:

WWW.HGS.ORG/EN/CEV/1056

A PROFESSIONAL DEVELOPMENT TECHNICAL EVENT!

HGS TECHNICAL PROGRAM COMMITTEE

**FRANK WALLES SR. GEOL. ADVISOR
DEVON ENERGY**

**MICHAEL VAN HORN, VP
NEWFIELD EXPLORATION**

**MIKE CAMERON SR. GEOLOGIST
NEWFIELD EXPLORATION**

**BRUCE MARTIN, CONSULTANT
UCR CONSULTING**

**KATHY McDONALD STAFF GEOLOGIST
SOUTHWESTERN ENERGY**

**DAVE TONNER MANAGER
WEATHERFORD**

**JAMES SCHUELKE SR. GEOPHYSICAL ADVISOR
DEVON ENERGY CORPORATION**

**RANDY LAFOLLETTE SHALE GAS TECHNOLOGY
BAKER HUGHES**

& HGS SUPPORTING COMMITTEES



SAI

Sydboten & Associates, Inc.
*Geological and Geophysical Consulting,
3-D Seismic Interpretation*

Ben D. Sydboten, Jr. CPG

124 Heymann Blvd., Suite 202

Lafayette, LA 70503

www.saigeoconsulting.com

Office (337) 234-5288

Cell (337) 234-5491

ATWATER CONSULTANTS, LTD.

REGISTERED AND CERTIFIED PETROLEUM PROFESSIONALS

GEOLOGICAL, ENGINEERING, GEOPHYSICAL,
TRAINING AND EXPERT WITNESS SERVICES

3525 Hessmer Ave, Ste 304

Metairie LA 70002

Tel. (504) 581-6527

Fax (504) 524-7798

"Serving The Oil & Gas Industry Since 1983"

Geological,
Geophysical &
Land Drafting



Anthony Catalanotto
President

Stefani Foster
Drafting & Design

Geo-Draft, Inc.

A Professional Drafting & Graphics Firm

3349 Ridgelake Drive • Suite 202 • Metairie, LA • 70002

Office: (504) 836-2882 Fax: (504) 836-2877 (Cell) (504) 481-7291

E-Mail: geodraft@bellsouth.net

Website: www.geodraftinc.com

**NOGS thanks our
sponsors for their support:**

GOLD LEVEL SPONSORS:

CHEVRON

LA BAY EXPLORATION CO, LLC.

**SPECIAL THANKS TO
DIVERSIFIED WELL LOGGING**

NORTHCOAST OIL COMPANY

610 E. Rutland St.
Covington, LA 70433

(985) 898-3577

(985) 898-3585 FAX

Jack M. Thorson

Eric C. Broadbridge

J. Daryl Gambrell

Raymond W. Stephens

(832) 242-6000 (O)

(713) 917-0493 (O)

(504) 931-7506 (C)

johnjurasin@jurasinoilgas.com

JURASIN OIL & GAS

9700 Richmond Ave., Suite # 124

Houston, TX 77042-4821

JOHN M. JURASIN
President

Cert. Pet. Geologist #4284
Cert. Prof. Earth Scientist #1961

Collarini Energy Staffing

Full-Time and Temporary Personnel

Facilities • Drilling • Production • Reservoir Engineering
Land and Legal • Geoscience • Information Technology •
Health and Safety • Management • Supply Chain
Accounting • Administrative Support

10497 Town and Country Way, Suite 950
Houston, Texas 77024

832-251-0553



www.collarini.com

Collarini Associates

Reservoir Engineering
Oil & Gas Property Evaluation
3-D Seismic Interpretation
Integrated Field Studies

832-251-0160

504-887-7127

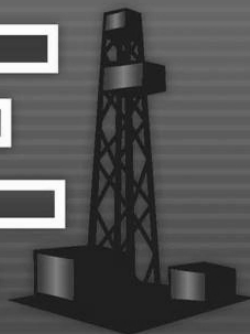
Houston

New Orleans

This advertising space is available! Contact the NOGS office.

Billions of Dollars
Looking for Deals

NAPE EXPO



February 16-18, 2011

REGISTER NOW

GRB CONVENTION CENTER
HOUSTON TEXAS



www.napeexpo.com

<p>ANSYTHE Donald I. Andrews 504-887-3432</p> 	 <p>GEOLOGY ENVIRONMENTAL MANAGEMENT</p> <p>GEM Consulting LTD Michael Louis Merritt admin@gemconsultingltd.com 1451 Applewood Road • Baton Rouge, LA 70808</p>
<p>THE BOEBEL COMPANY Oil and Gas Investments 170 Broadway Street, Suite 321 New Orleans, LA 70118 (504) 866-4313</p>	<p>H. WARREN BELL Oil and Gas Exploration 2500 Tanglewilde, Suite 485 Houston, TX 77063-2126 Bus (713) 266-7297 Fax (713) 266-7298</p>
<p>BOO-KER OIL & GAS CORP. Gray S. Parker 826 Union, Suite 300 New Orleans, LA 70112 Bus. (504) 581-2430 Fax (504) 566-4785</p>	<p>PHELPS GEOSCIENCE Onshore Gulf of Mexico Geology and Geophysics Prospect Generation and Evaluation Houston, TX jsphelps@yahoo.com (281) 398-5208</p>
<p>C & R EXPLORATION, INC. Carlo C. Christina Lawrence G. Ringham</p>	<p>RAFIDI OIL AND GAS, INC. Jaser N. Rafidi, President 4415 Shore Dr., Suite 202 Metairie, LA 70006 Bus. (504) 722-2942 Fax (504) 888-5539; Res. (504) 888-1661</p>
<p>C. R. RONDEAU Petroleum Geologist 119 W Southland Ave. Ironwood, MI 49938 Res. (906) 932-4692</p>	<p>ROY C. WALTHER Petroleum Geologist 2421 Prancer Street New Orleans, LA 70131 Bus. (504) 392-8513 Res. (504) 392-9332</p>
<p>CLASSEN EXPLORATION, INC. James S. Classen Looking for close in deals P.O. Box 140637 Boise, ID 83714 Bus. (208) 854-1037 Fax (208) 854-1029 classenllc@msn.com</p>	 <p>625 E. Kaliste Saloom Lafayette, LA 70508 16800 Greenspoint Dr., Suite 225-S Houston, TX 77060 1100 Poydras St., Suite 1050 New Orleans, LA 70163 www.StoneEnergy.com</p>
<p>D-O-R ENGINEERING, INC. 3-D and Geoscience Services 6161 Perkins Rd. P O Box 80812 Bus : (225) 765-1914 Baton Rouge LA 70898</p>	<p>TONY CAROLLO Consulting Geologist Unitization Geosteering Field Studies 1701 Peach Street Metairie, LA 70001 Bus. (504) 885-0004 Res. (504) 885-6829</p>
<p>EDWARD B. PICOU, JR. Consulting Micropaleontologist - Retired 228 St. Charles Ave., Suite 1330 C New Orleans, LA 70130 Bus. (504) 529-5155 Res. (504) 282-3096</p>	<p>Zot Oil & Gas, LLC Jim Zotkiewicz Prospect Generation and Evaluation 3200 Ridgelake Dr. Suite 207 Metairie, LA 70002-4930 Business: 504.831.4694 Email: jimzot38@zotoil.com</p>

President's Letter (continued from page 5)

If you haven't seen the **NOGS Oil & Gas Fields of South Louisiana 2010** you are missing a wonderful experience. You can now order the publication, available either in CD or print format, including the color Executive edition, on the NOGS website.

Whom are you inviting to our next NOGS meeting? Whom do you need to ask to join? Consider and take action now, Annette is happy to take your reservation or applications early!

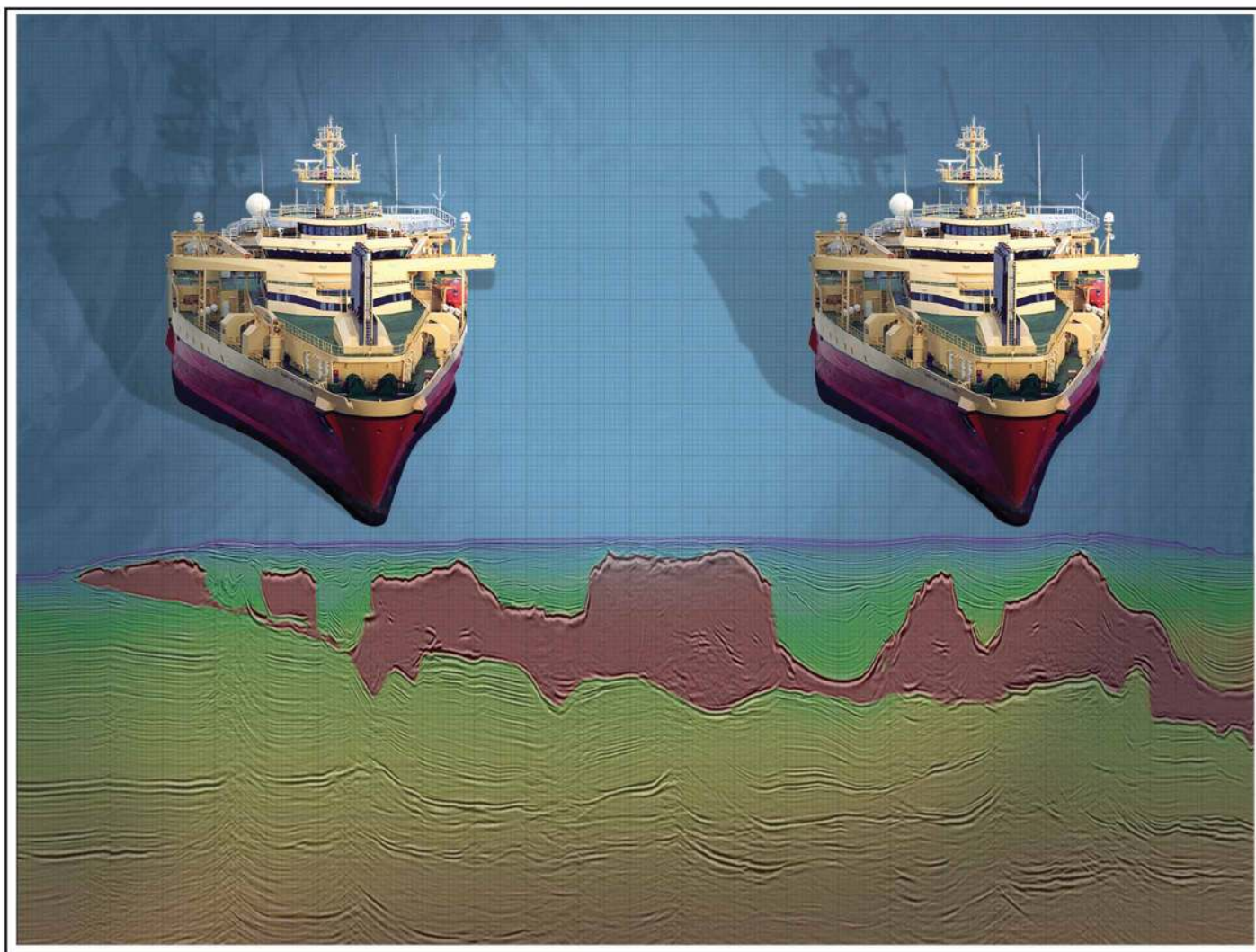
God bless,

Rick

FROM THE EDITOR

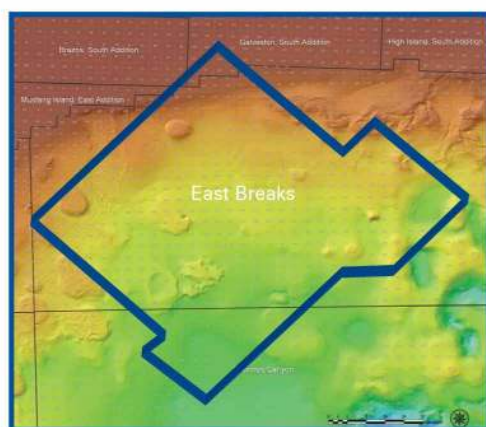
Editor's Note: To order the Oil and Gas Fields of South Louisiana 2010 publication go to: www.nogs.org/ on the left side of the screen under WHERE TO GO choose Conferences, Conventions and Meetings The first item is a link to the order form.





Crystal III, East Breaks

MultiClient Wide Azimuth



- **Size** - 480 OCS blocks
- **Focus** - Sub-Salt Miocene & Paleogene
- **Technology** - TTI Beam and RTM Imaging
- **Delivery** - Available Q4 2010

Houston
Tel: +1 281 509 8000
Fax: +1 281 509 8500

Oslo
Tel: +47 67 52 6400
Fax: +47 67 52 6464

London
Tel: +44 1932 37 6000
Fax: +44 1932 37 6100

A Clearer Image
www.pgs.com



NEW ORLEANS GEOLOGICAL SOCIETY



810 Union Street, Suite 300
New Orleans, LA 70112-1430

WWW.NOGS.ORG

MARINE PROPERTIES, LLC BERKSHIRE EXPLORATION CO.

MONTE C. SHALETT, CPL, PRESIDENT

3030 Lausat Street
Metairie, LA 70001-5924

BUS. (504) 831-7779
FAX. (504) 831-8315

PCI

Paleo Control, Inc.

Houston, Texas
713-849-0044

Drilling Wells, Studies and Data Base

Loyd Tuttle

Frio, SE Texas

Bob Liska

Wilcox, S and SE Texas

Jim Thorpe

Miocene and Cam-Miogyp



SEE YOUR DATA IN A WHOLE NEW LIGHT!

Take the pressure out of exploration
and drilling by seeing what you
are going to encounter.



eSeis

www.e-seis.com
713.531.1447

- Lithology & Fluids
- Depositional Facies
- Pore Pressure from V & Q
- Well Planning Consultation

