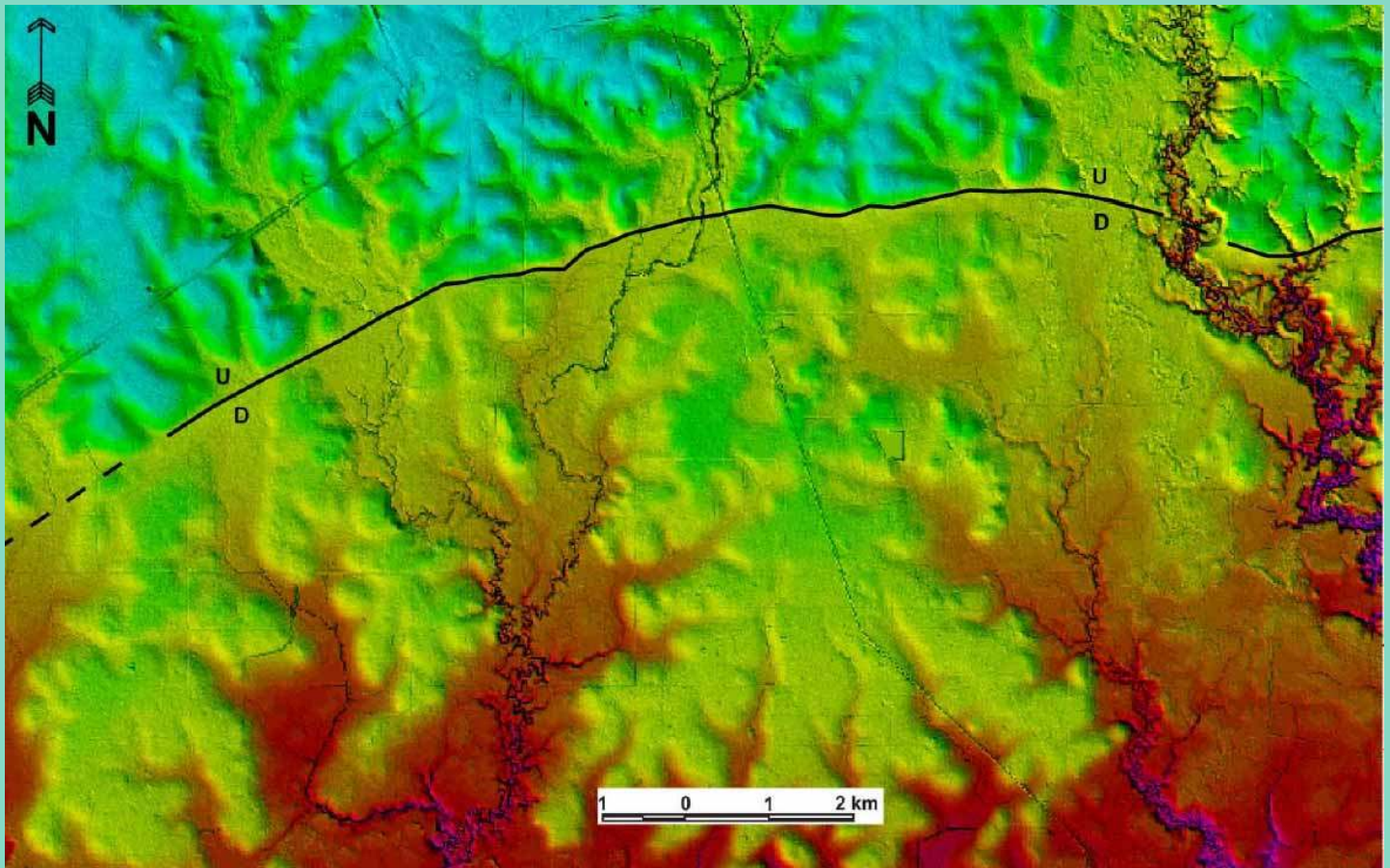


NOGS LOG



December 2011

Volume 52, Number 6



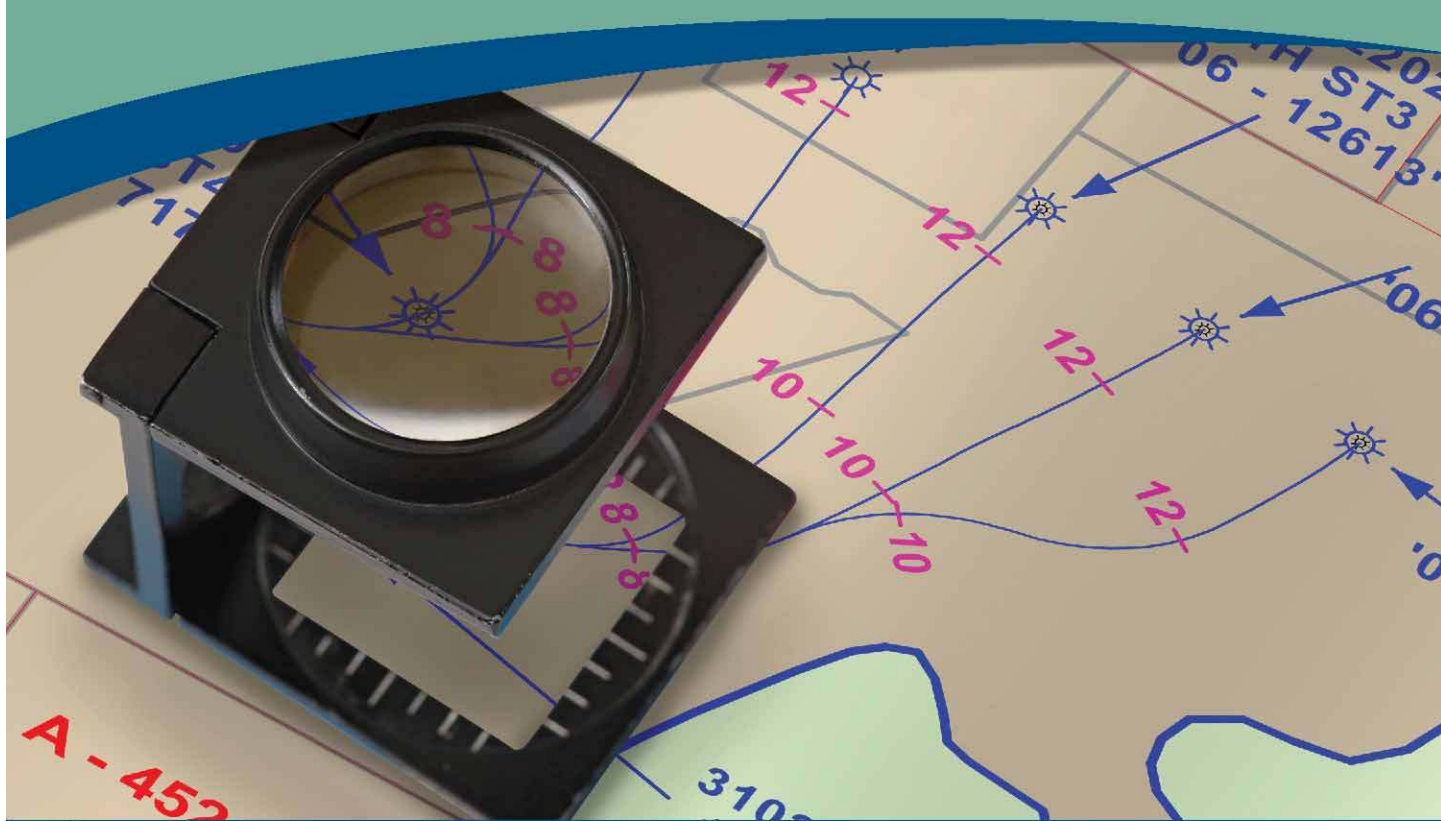
December 5 - NOGS Luncheon

Presentation: The Formation of Atlantic Margin Salt Basins and an overview
of the challenges created by salt in exploration for Oil and Gas

Guest speaker: John R. Dribus, of Schlumberger Oil Field Services in New Orleans

See page 9 for more information

Magnified Well Data Quality



That is TGS' Focus

Save time and money – TGS has already closely examined and processed well data for standardization and quality assurance, backed by a focused customer support team.

Complete Curve Digital Wells

LAS and LAS Plus library expanding across North America

Spatially Accurate Directional Surveys

Directional Survey Plus data thoroughly researched and reprocessed

Nationwide Production Data

Query entire US with **Longbow™** visualization and export tool

Formation Tops Picked

Available in major basins across North America

For more information contact TGS at:

Tel: +1 888 564 5463

Email: WellData@tgsnopec.com

Web: www.tgsnopec.com/welldata



www.tgsnopec.com

NOGS LOG

Published monthly by the New Orleans Geological Society. This issue was sent to press on November 15, 2011.

Interested *NOGS LOG* contributors may send requests to nogseditor@gmail.com. Requests for advertising should contact the NOGS office at info@nogs.org.

INSIDE THIS ISSUE

Special Features:

- December Luncheon Abstract
and Biography Page 9
- NOGS-SPE Christmas Holiday
Party Announcement Page 11
- Highlights of the GCAGS Annual
Board Meeting Pages 16-17

Regular Features:

- President's Letter Page 5
- Upcoming Events and
Activities Page 7
- Drill Bits Pages 20-23
- Info & Tidbits Page 27

ON THE COVER

Photo Taken by: Jordan Heltz

LIDAR imagery showing the surface expression of the DeQuincy fault segment north of Lake Charles, LA. This fault is part of the larger Tepetate fault zone which runs through South Louisiana and is easily mapped on LIDAR due to the significant relief (2 to 8 m) it creates. The fault is down-to-the-south, with the beds on the downthrown side dipping into the fault in a rollover pattern. In the subsurface, this fault is a major down-to-the-south listric fault and is associated with the DeQuincy, Perkins and East Perkins oil and gas fields in Northern Calcasieu Parish. For reference, LA State Hwy 27 runs north-south through the middle of the image, and a branch of the Calcasieu River can be seen in the eastern portion of the LIDAR image.

FROM THE EDITOR

Members, as we near the end of the year, I want to remind folks that the annual Christmas party is coming up soon. I encourage everyone to attend as this is the first year that we are holding a joint party with the Society of Petroleum Engineers. Again, welcome Daisy Pate as our new President of NOGS. Also, I would like to reiterate her message and encourage active members to contact board members with any suggestions for speakers. I also recognize George Schneider Jr. on an excellent column on the Pioneers of NOGS. This was an extremely interesting and historical overview of our Society. I would like to close by reminding people that we are looking for submissions of interesting geological pictures. Your photo could be selected to be on the cover of the *NOGS LOG*!



Thanks, David Tatum - *NOGS LOG* Editor

Get More from your Core

With reservoirs becoming increasingly complex, you need the most accurate information you can get to better understand your reservoir.

Weatherford Labs helps you get more from your core by combining an unsurpassed global team of geoscientists, engineers, technicians and researchers with the industry's most comprehensive, integrated laboratory services worldwide. From core analysis, sorption, geochemistry and isotopic composition to detailed basin modeling and comprehensive data packages, we provide you with real reservoir rock and fluid information that hasn't been distilled by a simulator or iterated by software.

We call it **"The Ground Truth"**™ – giving you the accurate answers you need for better reservoir understanding. You'll call it a better return on your reservoir investment. To learn more, contact TheGroundTruth@weatherfordlabs.com.



© 2011 Weatherford. All rights reserved. Incorporates proprietary and patented Weatherford technology.

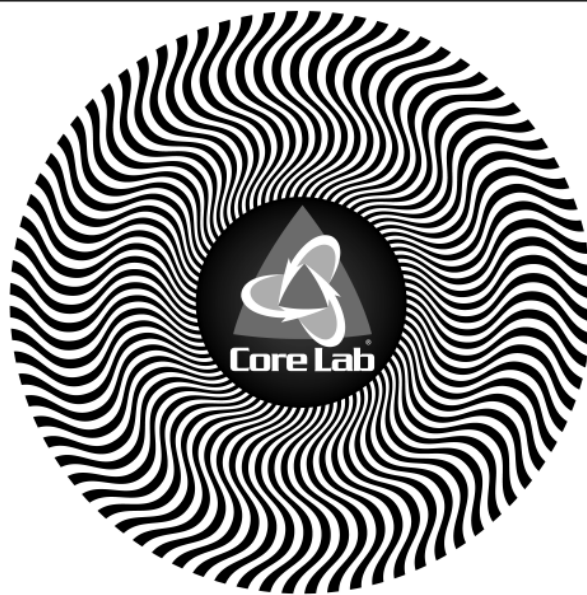


**Shell has worked in partnership
with the NOGS for many years, and
is proud to count the society among
its closest business associates.**

The New Orleans Geological Society was organized in 1941 to foster scientific research and advance the science of geology. Particular emphasis is laid on the exploration for and production of petroleum and natural gas. Related objectives include encouraging the adoption of improved methods of exploration, disseminating pertinent geological and technological data, and maintaining a high standard of professional conduct among its members.

www.shell.com/us/sepco

**It's no illusion...
Core Lab offers everything you need.**



©2009 Core Laboratories. All rights reserved.

Unconventional resource exploitation • Gas shale experts • Deepwater GOM authority
Capacity for fast turnaround • High-quality people • Global support
Industry leadership and reliability • Proprietary and patented technologies • Experience

www.corelab.com/rd/petroleumservices • 24-hour wellsite service hotline: 504-733-6583



from the President

Happy Holidays New Orleans,

With the New Year approaching, NOGS adjusts to changes of our own. Former President Bob Hafner has moved to Houston, Texas to pursue a new career opportunity. At the same time, the board of directors transitioned Fran Wiseman into Vice President and me, Daisy Pate, into President of NOGS.

It is an honor and privilege to serve as the President of NOGS. I have enjoyed staying in touch with the geologic profession through the NOGS academic articles, which is why I originally became vice-president, a position which schedules all our speakers. Earth Science is a lifelong passion for me; I started studying astrophysics and space science in Florida when I decided I would concentrate my physics studies on my home planet, Earth, and a possibly more lucrative occupation. Working in the geologic profession has always been enjoyable especially because it allows me to get away from traditional office work and into the field, my preferred environment. Hurricane Katrina shifted my path to engineering and environmental geology and rebuilding south Louisiana.

The four most enjoyable field work assignments of my career have included mapping karsts features in the Midwestern U.S., observing carbonate depositional environments while scuba diving in the Bahamas, bathymetric mapping of ocean floor features in the Pacific Ocean and the Mississippi River diversion and marsh creation project at Lake Hermitage in southern Plaquemines Parish, Louisiana.

One last detail about myself, I support professional registration for Environmental and Engineering Geologists (as opposed to those solely working in petroleum). I have been nominated to serve

on the State Board of Registered Professional Geologists, for which I am honored and look forward to the hard work required. We are still looking for a geoscientist to serve on the Board from the 1st Congressional District. If you are interested, please contact me directly. Look for more information about the ongoing Louisiana legislation of ACT 974 in my January president's column. I am enthusiastic about the upcoming events we have planned for the holiday season. In celebration of the holidays and to honor the board and members, current and past, we are hosting a joint Holiday Party with SPE. It will take place December 9 at the Metairie Country Club. I look forward to good times and hope that we will see all the faces from the Kick-off party as well as some new faces.

We are rapidly approaching the time to renew NOGS membership. I encourage each of you to reaffirm NOGS and the growth of science in the community through membership. Chairpersons for the membership committee will be contacting those members that have not yet renewed. Please take this time to discuss any improvements to the organization or any committees you may be interested in joining. Also, I encourage you to contact one of the board members, but especially Fran, with any suggestions for speakers you feel will be appropriate for our organization. Her contact information is snowde.fran@gmail.com.

After the New Year, we are also looking forward to a joint meeting with SGS. Once again, I am very excited about serving as president for the duration of the 2011-2012 term.

Daisy

NOGS Office

Office Manager: Annette Hudson

Office Hours: 8:30 a.m. – 3:30 p.m. on Monday-Wednesday-Friday

Tel: 504-561-8980 Fax: 504-561-8988

E-mail: info@nogs.org Website: www.nogs.org

The office is located at Suite 300, 810 Union Street, New Orleans, LA 70112.

Correspondence and all luncheon reservations should be sent to the above address.

**BOARD OF DIRECTORS**

		Company	Phone	E-mail
President	Daisy Pate	US Army Corp of Engineers	504-862-1775	daisy.pate@gmail.com
Vice President	Fran Wiseman	BOEM	504-736-2912	snowde.fran@gmail.com
Secretary	Chuck Holman	Independent	504-975-6735	charleswholman@bellsouth.net
Treasurer	Bay Salmeron	TGS	504-524-3450	bay.salmeron@tgsnopec.com
President-Elect	Will Jorgensen	Shell	504-728-6339	william.r.jorgensen@shell.com
Editor	David Tatum	Chevron	985-773-6477	nogseditor@gmail.com
Director 2012	Arthur H. Johnson	Hydrate Energy International	504-464-6208	artjohnson51@hotmail.com
Director 2013	Jack Langford	J C L Services	985-764-2527	jclangford@latterblum.com
Director 2014	Michael N. Fein	W & T Offshore	504-210-8148	mikef@wt offshore.com

COMMITTEE

	Chairperson			
AAPG Delegates	William M. Whiting	Consultant	504-947-8495	bootscon@aol.com
AAPG Student Chapter	Drew Boudreaux	UNO		apboudr1@uno.edu
Advertising-LOG	Kimberly Maginnis	W & T Offshore Inc	504-210-8174	kmaginnis@wt offshore.com
Auditing	Will Jorgensen	Shell	504-728-6339	william.r.jorgensen@shell.com
Awards	Michael N. Fein	W & T Offshore	504-210-8148	mikef@wt offshore.com
Ballot	Bay Salmeron	TGS	504-524-3450	bay.salmeron@tgsnopec.com
Best Paper	Brenda Reilly	Geological Consulting LLC.	504-430-4240	reillybe@yahoo.com
Continuing Education	TBA			
Employment Counseling	TBA			
Entertainment	Will Jorgensen	Shell	504-728-6339	william.r.jorgensen@shell.com
Environmental	Daisy Pate	US Army Corp of Engineers	504-862-1775	daisy.pate@gmail.com
External Affairs	Michael A. Fogarty	Sylvan Energy, LLC	603-523-4808	mike.a.fogarty@gmail.com
Field Trip	TBA			
Finance and Investment	Bay Salmeron	TGS	504-524-3450	bay.salmeron@tgsnopec.com
Historical	Edward B. Picou, Jr.	Consultant	504-529-5155	epicou@bellsouth.net
Membership/Directory	Carlo C. Christina	Retired (C & R Expl. Inc)	504-835-4116	Carlocc398@aol.com
	Tom Klekamp	Amber Resources	985-845-4046	klekamp@bellsouth.net
New Geoscientists (NGNO)	TBA			
Nominating	Scott A. Wainwright	Bret Exploration Co Inc	504-889-2700	Scott_wainwright@hotmail.com
Non-Technical Education	Duncan Goldthwaite	Consultant	504-887-4377	DGLdthwt@aol.com
Office Operations	Rick Kear	Schlumberger	504-592-5376	kear1@new-orleans.oilfield.slb.com
Publications Sales	Edward B. Picou, Jr.	Consultant	504-529-5155	epicou@bellsouth.net
Photography	Tom Klekamp	Amber Resources LLC	985-845-4046	klekamp@bellsouth.net
School Outreach	Thomas C. Bergeon	Century Exploration	504-832-3772	Tom.bergeon@centuryx.com
Scouting	Carol Rooney	Consultant Geologist	504-835-1909	carolbrooney@aol.com
Sponsorship/Houston	David E. Reiter	Eni Petroleum		david.reiter@enipetroleum.com
Technical Projects	TBA			
Ad Hoc Committee on University Support	Michael J. Gallagher	Eni Petroleum	713-393-6100	Michael.Gallagher@enipetroleum.com

NOGS LOG STAFF

Editor	David Tatum	Chevron	985-773-6477	nogseditor@gmail.com
Editor-Elect	Jordan Heltz	Chevron	985-773-7163	jordan.heltz@chevron.com
Auxiliary	Susie Baker	NOGA	504-466-4483	sbaker1650@aol.com
Info Tidbits	David Tatum	Chevron	985-773-6477	nogseditor@gmail.com
Drill Bits	Carlo C. Christina	Retired (C & R Expl. Inc)		drillbits81@yahoo.com
Layout	Jannette Inc.			
Webmaster	Edward B. Picou, Jr.	Consultant	504-529-5155	epicou@bellsouth.net

NOGS AUXILIARY

Officers		Phone	Directors	Year	Phone
President	Jean Jones	504-738-8091	Carol Andrews	2010-12	504-887-3432
1st Vice-President	Alma Dunlap	504-737-2678	Susie Baker	2010-12	504-466-4483
2nd Vice-President	Camille Yeldell	504-835-7467	Mary Walther	2010-12	504-392-9332
Secretary	Peggy Rogers	504-392-6323	MaryEllis Haseltine	2011-13	504-885-7657
Treasurer	Judy Lemarie'	504-393-8659	Gwenn Swaney	2011-13	504-831-0748
Parliamentarian	Beverly Kastler	504-286-0879	Pat Williamson	2011-13	985-626-6910
Member-at-Large	Linda Peirce	504-393-7365			

Upcoming Events and Activities

December 4-7 - 31st. Annual GCSSEPM Foundation Bob F. Perkins Research Conference

In Houston. Topic: Seismic Attributes: Their Use in Exploration & Production.

More information: www.gcssepm.org

December 5 - NOGS Luncheon

*** At the Holiday Inn Downtown Superdome ***

\$2.00 validated parking in hotel garage

Guest speaker: John R. Dribus, of Schlumberger Oil Field Services in New Orleans,
will present: The Formation of Atlantic Margin Salt Basins and an overview
of the challenges created by salt in exploration for Oil and Gas

(See page 9 for Abstract and Biography)

HOLIDAY INN DOWNTOWN SUPERDOME

Check with concierge or
front desk for location

Lunch served at 11:30am

ADMISSION:

with reservation \$30.00

without reservation \$35.00

Student Member with reservation Free

December 9 - NOGS-SPE Christmas Holiday Party

Metairie Country Club. See page 11 for details.

January 12 - Joint SGS-NOGS Luncheon

Holiday Inn Downtown Superdome. Guest speaker and topic to be announced.

NOGS CONTACT LIST

--- continued from previous page ---

MEMORIAL FOUNDATION

BOARD OF TRUSTEES

		Company	Phone	E-mail
2011-12 Chairman	Rick Kear	Schlumberger	504-592-5376	kearl1@new-orleans.oilfield.slb.com
2011-12 Secretary	Daisy Pate	US Army Corp of Engineers	504-862-1775	daisy.pate@gmail.com
2011-12 Trustee	Monte Shalett	Berkshire Exploration Co	504-831-7779	mshalett@gmail.net
2011-12 Trustee	James Swaney	BOEMR E	504-736-2677	james.swaney@boemre.gov
2012-13 Trustee	Jennifer Connolly	Shell	504-728-6411	jennifer.connolly@shell.com
2012-13 Trustee	William M. Whiting	Consultant	504-947-8495	bootscon@aol.com
2013-14 Trustee	J. David Cope	ANKOR Energy LLC	504-596-3672	dcope@ankorenergy.com
2013-14 Trustee	Tom Klekamp	Amber Resources LLC	985-845-4046	klekamp@bellsouth.net

AAPG DELEGATES

Term Ends

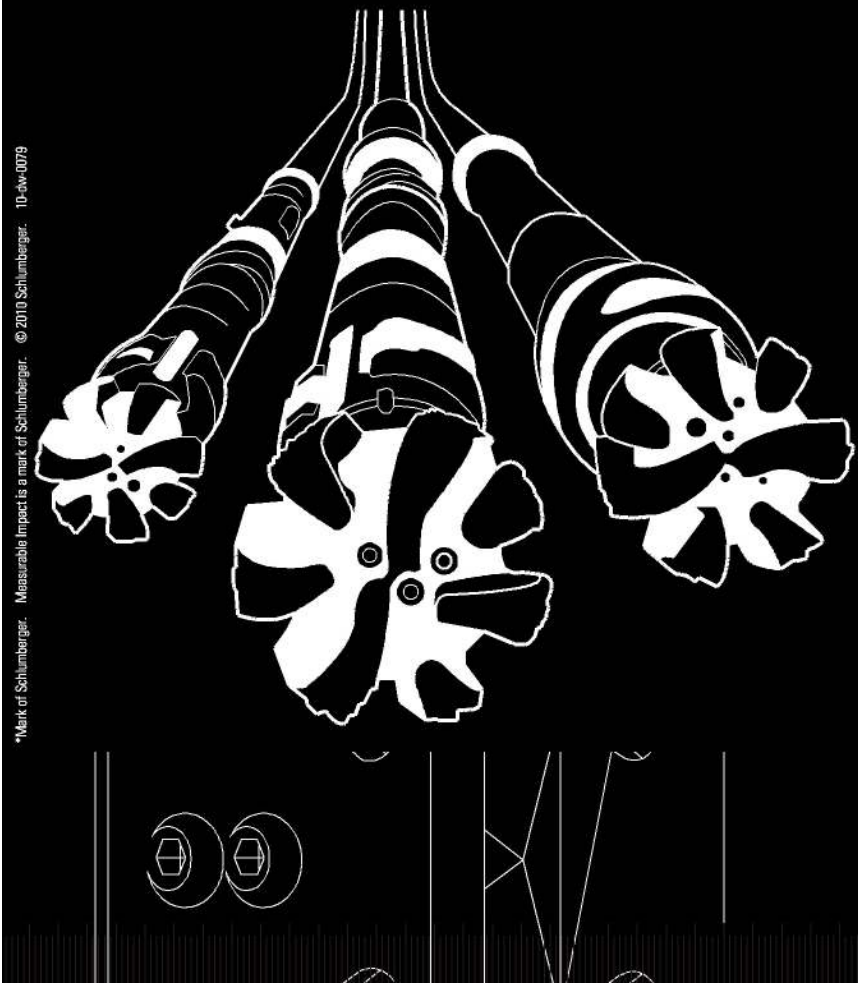
2012	William Whiting	Consultant	504-947-8495	bootscon@aol.com
2012	Jim Zotkiewicz	Zot Oil & Gas	504-831-4694	jimzot38@zotoil.com
2012(a)	David E. Balcer	Chevron	985-773-6725	dbalcer@Chevron.com
2012(a)	Richard J. Stancliffe	Shell Expl & Prod Co.	504-728-7553	richard.stancliffe@shell.com
2014	Arthur H. Johnson	Hydrate Energy International	504-464-6208	artjohnson51@hotmail.com
2014	Brenda Reilly	Geological Consulting LLC.	504-430-4240	reillybe@yahoo.com
2014(a)	Elizabeth C. McDade	McMoRan Exploration Co	504-582-4510	ecmcade@bellsouth.net
2014(a)	Frances A. Wiseman	BOEMRE	504-736-2912	frances.wiseman@boemre.gov

Deep Water

WELL CONSTRUCTION

Are all your services deepwater ready?

Control Measures	Complexity/Process + Exposure	Preparedness				
		High				Low
	High	-5	-10	-15	-20	-25
	-4	-4	-8	-12	-16	-20
	-3	-3	-6	-9	-12	-15
	-2	-2	-4	-6	-8	-10
	-1	-1	-2	-3	-4	-5
	Low					
		People + Competency		Equipment + Technology		
		1	2	3	4	5



Our Project Readiness Assessment (PRA) approach has been applied and improved over the last 5 years.

All deepwater projects in which Schlumberger participates benefit from our PRA process, which complies with new U.S. regulatory requirements. This helps deliver seamless, efficient startup, and reduced NPT.

Learn more at

www.slb.com/deepwaterready

Global Expertise
Innovative Technology
Measurable Impact

Schlumberger

*Mark of Schlumberger. Measurable Impact is a mark of Schlumberger. © 2010 Schlumberger. 10-dw-0079

December 5 NOGS Luncheon Presentation

*****At the Holiday Inn Downtown Superdome*****

The Formation of Atlantic Margin Salt Basins and an overview of the challenges created by salt in exploration for Oil and Gas

presented by

John R. Dribus

Schlumberger Oil Field Services - New Orleans, LA

ABSTRACT

Salt is becoming an ever increasing item that we must accommodate in our exploration and drilling processes. This talk discusses the formation of major salt basins along the Atlantic Margin (Gulf of Mexico,

Angola/Gabon, and Brazil), and describes several of the key challenges that salt creates in seismic imaging and in exploring for prospects below the salt.

BIOGRAPHY

John Dribus is the Global Geosciences Advisor for Schlumberger Oil Field Services. He is a Reservoir Geologist with over 35 years experience, and has worked all aspects of exploration, exploitation, and production geology for Schlumberger (11 years) and for a major oil and gas company (25 years), including over 15 years working in the deepwater Gulf of Mexico including the Subsalt fold belt province. His expertise is in exploration geosciences, petroleum systems analysis, deepwater

analogs, exploring around salt, and geological risk analysis. He is the former Chairman of the Advisory Board of the American Petroleum Institute (API) Delta Chapter, and currently serves on the Public Outreach and Imperial Barrel Award Committees of the American Association of Petroleum Geologists (AAPG), and is a member of the New Orleans Geological Society (NOGS), Society of Petroleum Engineers (SPE), and Society for Sedimentary Geology (SEPM).

THE LUNCHEON RESERVATION DEADLINE IS NOVEMBER 30 - CONTACT THE NOGS OFFICE

“And Looking Ahead . . .”

The next luncheon will be held on January 12th and will be a joint SGS-NOGS event. Guest speaker and topic to be announced. Contact the NOGS office at 561-8980, or use the PayPal link on the NOGS website (www.nogs.org) to make your reservation.



From ZNodal Systems to ZNodal Imaging

We are full spectrum ZNodal™ technology

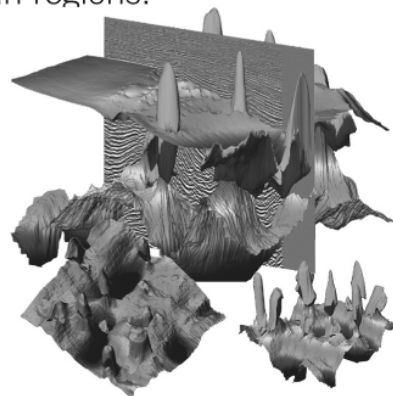
FairfieldNodal.com



We admit it. We're seismic nodal fanatics. Always have been. Which explains our one-of-a-kind, cable-free ZNodal™ systems. They work wonders in dense urban areas and pristine wilderness, in shallow water and deep ocean regions.

In fact, our exclusive ZNodal technology is behind everything we do, from acquisition and licensing to advanced processing and imaging, bringing nodal data to life in amazing ways.

Right now, our ZNodal systems are on the job in some of the world's most challenging fields, making a powerful difference. So when you're ready to go nodal, count on us to lead the way. ZNodal technology: It's what you need. It's what we're all about.



fairfieldnodal

SYSTEMS ACQUISITION LICENSING PROCESSING IMAGING

New Orleans Geological Society
Society of Petroleum Engineers (Delta)

2011 Christmas Holiday Party



Where: Metairie Country Club

When: December 9, 7:00pm - 10:00pm

What: Buffet style meal, 2 drink tickets included

Entertainment: Dance Band

Cost: \$50 per person

Advance ticket sales only - deadline to purchase tickets is December 7

Tickets can be purchased online at the NOGS and SPE
websites, or by mail to the NOGS office

Please join your fellow industry colleagues for an evening of mirth at the Metairie Country Club. Meet and mingle as we ring in the holidays. After so much hard work by all in 2011, we all deserve a night off at which we can kick back and have fun!



An Integrated Workflow Solution

Get the full picture with comprehensive integration of IHS PETRA®, IHS PetraSeis® and IHS GeoSyn™.

When these three solutions seamlessly connect, geological and seismic workflows are streamlined with easy-to-interpret data and modeling tools. This integrated bundle allows you to access, view and manipulate information within the same project; create multidimensional seismic models and synthetics; improve workflow collaboration; and deliver comprehensive proposals for new prospects. Get to the field faster with seismic, well, production, log and economic data at your fingertips.

See more solutions at www.ih.com/nogs



The Source
for Critical Information and Insights™

2011 Oil History Symposium – Marietta, Ohio

Plans for 2012 - Houston

The Petroleum History Institute (PHI), in collaboration with the Ohio Oil and Gas Energy Education Program, held its 2011 annual symposium and field trip at historic Marietta, Ohio, on the banks of the Ohio River. Participants were treated to a wide variety of talks and poster presentations ranging from the history of oil and gas in Ohio to the many contributions to the industry from Baku. On the field trip, the group visited the Thorla-McKee Well, a salt water well drilled in 1814 that produced the first commercial oil in Ohio as well as seeing an old, but still operating, natural gas engine attached to a very large band wheel driving several pump-jacks (shackle line) – still producing Ohio crude after about 100 years, and a wonderful stop at the Parkersburg Oil and Gas Museum in Parkersburg, West Virginia. The trip ended with a tour of the Petroleum Engineering Department at Marietta College. **The next Oil History Symposium and Field Trip will be held in Houston, Texas, March 8-10, 2012.**

In the past, we have held the symposium in Oil City, PA, Long Beach, CA, Wichita, KS, Shreveport, LA, Lafayette, LA, Oil Springs, Ontario, and in WV.

Mission of PHI: To pursue the history, heritage, and development of the modern oil industry from its 1859 inception in Oil Creek Valley, Pennsylvania, to its early roots in other regions in North America and the subsequent spread throughout the world to its current global status. See the following web site for more information: www.petroleumhistory.org.

PHI also publishes a yearly journal, *Oil-Industry History*. Our membership includes geoscientists, engineers, historians, museum curators, authors, etc.

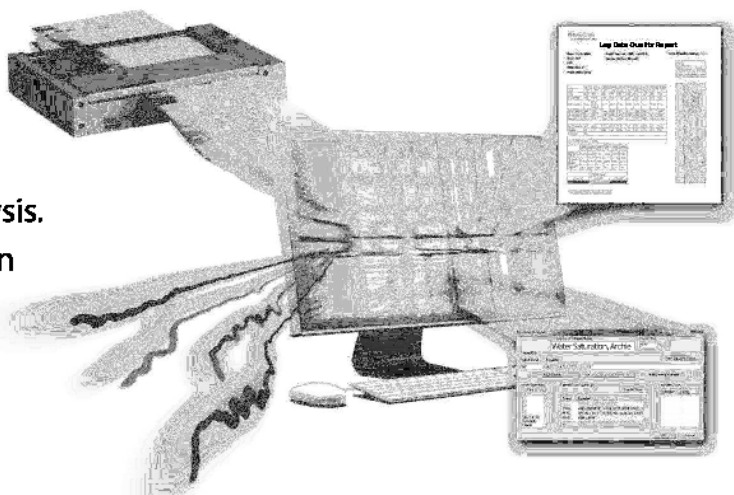
We look forward to another stimulating symposium next year at the Houston meeting, March 8-10, 2012. The abstract deadline is January 15, 2012, so start thinking about your subject, and send the abstract to Bill Brice, wbrice@pitt.edu. For more information, contact Jeff Spencer (spencerj320@gmail.com). Plans are to hold a meeting soon for those interested in serving on the 2012 Oil History Symposium Committee.

<p>DOMESTIC AND INTERNATIONAL BIOSTRATIGRAPHIC SERVICES</p>  <p>P A L E O D A T A</p>  <p>6619 Fleur de Lis Drive New Orleans, LA 70124 (504) 488-3711</p> <p>www.paleodata.com</p>  <p>Complete wellsite paleo services</p> <p>Available single-source regional biostratigraphic databases for accuracy and consistency</p> <p>Integrated foram / nannofossil analyses</p>  <p>In-house sample preparation lab for quality-monitoring and efficiency</p> <p>Supported Gulf Coast biostratigraphic databases</p>	<p>MCMORAN EXPLORATION CO.</p>  <p>MCMORAN OIL & GAS</p> <p>www.mcmoran.com</p> <p>NYSE: MMR</p> <table border="0"> <tr> <td>16676 Northchase Dr. Houston, TX 77060 (281) 539-7600 Fax: (281) 539-7655</td> <td>1615 Poydras New Orleans, LA 70112 (504) 582-4000 Fax: (504) 582-4155</td> <td>110 Travis St., Suite 140 Lafayette, LA 70503 (337) 735-9150 Fax: (337) 735-9151</td> </tr> </table>	16676 Northchase Dr. Houston, TX 77060 (281) 539-7600 Fax: (281) 539-7655	1615 Poydras New Orleans, LA 70112 (504) 582-4000 Fax: (504) 582-4155	110 Travis St., Suite 140 Lafayette, LA 70503 (337) 735-9150 Fax: (337) 735-9151
16676 Northchase Dr. Houston, TX 77060 (281) 539-7600 Fax: (281) 539-7655	1615 Poydras New Orleans, LA 70112 (504) 582-4000 Fax: (504) 582-4155	110 Travis St., Suite 140 Lafayette, LA 70503 (337) 735-9150 Fax: (337) 735-9151		

Powerful Log Data

Create the most powerful log data available with the NeuraScanner for log capture and NeuraLog for automated digitizing and analysis. See how the NeuraScanner and NeuraLog can help you complete your projects efficiently.

- Scan logs at 10" per second
- Color, grayscale and b&w
- Automated digitizing
- Log Data Validation
- Curve Calculations



**Year-End Packages
Now Available**

1.281.240.2525



Neuralog
Turning Paper Into Petroleum

© 2011 Neuralog • www.neuralog.com • 1.281.240.2525 • 1.800.364.8728

SEI®

Seismic Exchange, Inc.

**Strategic Speculative Surveys
Geophysical Data Marketing & Management**

Your
**Full Service
National
Seismic Data
Marketing Firm**

New Orleans
Dallas
Houston
Denver
Oklahoma City
Corpus Christi
Tulsa

201 St. Charles Avenue, Suite 4300, New Orleans, Louisiana 70170-4300
Telephone 504.581.7153 Fax 504.581.9591
www.seismicexchange.com

New Orleans Geological Society Calendar

2011-2012

December 2011

Sunday	Monday	Tuesday	Wednesday	Thursday	Friday	Saturday
				1	2	3
4	5 NOGS Luncheon Holiday Inn	6	7	8	9 Holiday Party Metairie Country Club	10
11	12	13	14	15	16	17
18	19	20	21	22	23	24
25 Christmas Day	26	27	28	29	30	31 New Year's Eve

January 2012

Sunday	Monday	Tuesday	Wednesday	Thursday	Friday	Saturday
1 New Year's Day	2	3	4	5	6	7
8	9	10	11	12 SGS-NOGS Joint Luncheon Le Pavillon	13	14
15	16	17	18	19	20	21
22	23	24	25		27	28
29	30	31				

Highlights of the GCAGS Annual Board Meeting
October 18, 2011
Bureau of Economic Geology Houston Research Center, Houston TX
Reported by Tom Klekamp

The final set of minutes will be available later

2011 Vera Cruz Convention

GCAGS 2010-11 President Patiño-Ruiz gave a time-line account of the events leading up to the sad and most unfortunate events leading to the subsequent decision to cancel this meeting. He stated that the committee handling the Vera Cruz meeting could not assure the safety of the attendees, in spite of all the added security measures emplaced during the months leading up to the Convention. This included personal involvement by the Governor of the State of Vera Cruz who worked closely with the GCAGS Vera Cruz Convention Committee. There is still uncertainty about whether the insurance will cover the expenditures by GCAGS for the meeting. **Bruce Lemmon** of GEM, Inc. said the first decision from the insurance underwriters was “no,” though this is being appealed. The Board approved that he could contact legal counsel on a possible action in the courts in the event the insurers did not come through. Obviously there was a cost/benefit to be considered before pursuing legal action. Meanwhile, the GCAGS is in the process of refunding registration, short course and field trip monies to registrants. Some major supporters have donated all or a portion of their contributions, and others are still being negotiated. It was decided at the Board meeting that the *Transactions* would be made available to all the principal authors. Others may obtain a copy through the GCAGS Bookstore or upon registration at the 2012 Austin Convention. The 2011 *Transactions* received a total of 155 abstracts, out of that number, 44 papers and 28 extended abstracts were accepted. Incoming GCAGS President Scott Tinker said every effort would be made to integrate the salient papers from the Vera Cruz meeting into the 2012 Austin Convention. Judging for the Grover Murray Award was discussed; traditionally the editors of the *Transactions* handled this award. Would the editors again want this responsibility?

Gulf Coast Geology Memoir Series

Scott Tinker detailed progress on this important new publication. An editorial staff is in place. This will be a once a year publication with 12-15 peer-reviewed papers. There was some discussion about how this would impact the papers submitted to the *Transactions*. It was decided that the *Transactions* would carry a version of the *Memoir Series* articles a year later. Financing will be through sponsorship (major company), fees through convention registration, and sales through GCAGS and AAPG bookstores. Several member society representatives, including NOGS, objected to the individual societies underwriting the *Memoir Series* from funds obtained through their conventions. **Brian Lock** expressed concern that the *Memoir Series* would downgrade the *Transactions*. President **Jaime Patiño-Ruiz** said that he had not heard anything against the *Memoir Series*. A motion to move forward on the *Memoir Series* was approved with operational details to be worked out.

Awards and Nominations Committee

Highlights include the approval of the following awards for 2011

Ernest Mancini	Don R. Boyd Medal
Danny Harrelson	Distinguished Service Award
Jose Carrillo-Bravo	Special Commendation Awards
Jaime Rueda-Gaxiola	Outstanding Educator Award

At the Executive Council meeting Awards were presented to the 2011 Convention Committee. (*See photographs*)

The GCAGS will endorse **Sue Ellen Lyons**, our NOGS candidate for AAPG Teacher of the Year Award. Thanks go to NOGS member **Eric Zimmerman** for proposing her name.

2012 Austin Convention

Dallas Dunlap reported on the 2012 Convention, which looks to be a major event. The Austin Geological Society has a website dedicated to their Convention. Plans are to add a day or half day in order to incorporate those authors from the cancelled 2011 Vera Cruz convention, who would still like to present their work. Obviously not all papers could be considered and some culling may be effected.

2013 New Orleans Convention

Tom Klekamp gave a very brief report on progress on the NOGS effort. **Art Johnson** is Convention General Chairman and **Mike Fein** is Convention Treasurer. We have dates (October 5th-9th, 2013) and the Marriott Hotel on Canal will house the events. **Bruce Lemmon** at GEM will handle all the Convention arrangements.

Continuity Committee

This committee met the previous evening at the Cattleguard Restaurant in Houston with **Ken Nemeth** presiding. There is a schedule for future GCAGS meetings; New Orleans is not on the agenda after the 2013 Convention. There is a commitment to having another AMPG-hosted meeting in Mexico, but it will need to wait for broader security and safety issues to be resolved. Ken Nemeth noted that the Cuban geological association has expressed a desire to join the GCAGS, notwithstanding probable legal issues. The situation about Cuban involvement is evolving. Some papers scheduled for the Vera Cruz meeting were by Cuban authors.



Scott W. Tinker receives 2011 GCAGS Vice-President's Award from Bonnie Weiss, Chairman of Awards and Presentations Committee



Javier Meneses-Rocha receives 2011 GCAGS Convention General Chairman Award from Bonnie Weiss, Chairman of Awards and Presentations Committee



Ulises Hernández-Romano receives 2011 GCAGS Convention Secretary Award from Bonnie Weiss, Chairman of Awards and Presentations Committee



Ivan Alor-Ortiz receives 2011 GCAGS Treasurer Award from Bonnie Weiss, Chairman of Awards and Presentations Committee

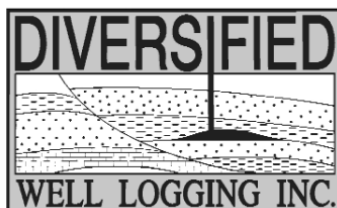


Jaime Patiño-Ruiz receives 2011 GCAGS President Award from Bonnie Weiss, Chairman of Awards and Presentations Committee



Relax. We'll keep you posted.

Your rig is offshore and you are not. How do you know what's going on so many miles away? You know because we tell you. Daily or even hourly, Diversified Well Logging's engineers update you on the status of your rig. We are your eyes and ears, especially when it comes to deep water or high pressure, high temperature areas. Diversified offers 24-hour surface evaluation. We provide secure and customized real-time data communication, in-house research and development and 24/7 on-call support for our equipment and our engineers. Whether you have a 10-day job or 110-day job, we provide the specialized attention you require. So, relax. We're with you every step of the way.

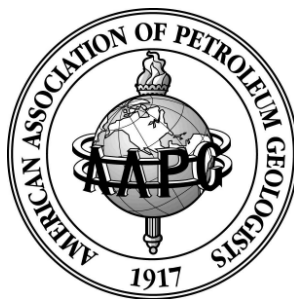


Serving the Gulf Coast for over 40 years.

New Orleans • Lafayette • Houston • Dallas • Corpus

800.280.2096

711 West 10th Street • Reserve, LA 70084 • Phone: 985.536.4143 • Fax: 985.536.2427
sales@dwl-usa.com



Reducing Reservoir Uncertainty in a Phased Development – Tahiti Field, Deepwater Gulf of Mexico, USA

Billiter, Travis¹; Bretches, John¹; Clark, Wesley²; Goff, Bree¹; Guillory, Ryan²; Hanrahan, Sean²;
Heltz, Jordan²; Hudson, Tom²; Rivera, Nestor¹; Picornell, Carlos¹; Rowland, Greg²;
Sawyer, Mark¹; Swanston, Alastair M.¹; Tatum, David M.²; Wiggins, Russell D.¹

(1) Chevron, Houston, TX (2) Chevron, Covington, LA

Tahiti-2 is the next phase of development for the Tahiti Field and provides the opportunity to continue development of the high potential asset. The field was discovered in April 2002, and after drilling exploration, appraisal, and the first phase of development wells, oil production began in May 2009. Tahiti is a subsalt, three-way structural closure trapped against a salt keel/root. The primary Miocene-aged M-21 reservoir interval ranges in depth from 23,000 to 28,000 feet subsea. In addition, structural dips range from approximately 20° near the oil-water contact to 70° or more near the salt face.

Due to significant uncertainties remaining after appraisal, which include reservoir connectivity, well productivity, and aquifer strength, a phased development strategy was developed to address whether a water injection project was necessary for reservoir pressure support, as well as the quantity, location, and timing of water injection and/or additional production wells.

The 9 to 12 month surveillance period after first oil collected critical reservoir data for the next phase of development in the field including: well ramp-up bottom-hole pressures for understanding connectivity, production performance to better understand oil in-place and aquifer strength, and geochemical analysis to recognize zonal flow contributions. In addition, a wide-azimuth 3D seismic survey was reprocessed to improve subsalt structure, faulting, and salt-sediment imaging and integrated with the surveillance data. Key findings from the surveillance period include better than expected pressure connectivity between wells and field-wide pressure decline is trending toward lower aquifer strength.

The asset team's recommendations are as follows: a water injection project is required and additional production wells are necessary, both of which improve estimated ultimate recovery compared to primary recovery only. Reservoir surveillance data indicates that incremental resource will be obtained from implementation of a pressure maintenance project in the M-21 Sand.

Approaching Tahiti through a phased development strategy allows the project team to reduce subsurface uncertainty, apply reservoir management best practices, and maximize return on investment.

The Tahiti Asset is a Chevron operated joint venture with its partners Total and Statoil.

AAPG© 2011 "Reprinted by permission of the AAPG whose permission is required for further use."

South Louisiana and Offshore Gulf of Mexico

Exploration and Production Activities

LOUISIANA DISTRICT, ONSHORE AREA and OFFSHORE AREA

By Carlo C. Christina

Since my last report, 54 new permits to drill have been approved by the Office of Conservation in the Lafayette District, 48 in the Onshore Area and 6 in the Offshore Area. The most significant wells are listed below, including 9 locations in Beauregard Parish.

The most exciting news centers on Wilcox exploration, with a very deep wildcat well permitted in Cameron Parish, a horizontal well in Beauregard Parish and several development wells in Evangeline Parish.

NEW LOCATIONS

In Cameron Parish, Chevron U.S.A. will drill a deep wildcat, the **#1 SL 20571**, (A), to a proposed depth of 29,000 feet with the **Lower Wilcox** listed as the objective section. The well is located in Sec.19, 15S-4W. The Drill Bits report in the September *NOGS LOG* reviewed the leasing of 11,264 acres taken in the March State Lease sale. Six state leases were granted for a total bonus of \$4,600,000, covering acreage in T15 and 16S and R3, 4 and 5W. (244039)

Midstates will drill a Wilcox horizontal well in **West Gordon Field**, (B), Beauregard Parish, in Sec. 5, 7S-9W, to a proposed depth of 15,667 feet. The #1 AKS Properties 5 H will be drilled in a 2000' horizontal leg to test the Upper Wilcox Sands. If successfully completed, the well is projected to produce 4 to 8 times the normal production rates recovered in conventional completions. (244018)

Also in **West Gordon Field**, Midstates has staked the #2 Forestar Minerals in Sec. 6, 7S-9W. It will be drilled to 14,210 feet. (243932)

In Evangeline Parish, **Pine Prairie Field**, (C), Midstates has staked 5 new locations in T3 South and 4 South, R1W, ranging in depths from 8400 feet to 12,400 feet. A significant new location is a re-drill of an old well which was plugged and abandoned in 1974 after testing the Sparta Lime at 8400 feet. The operator currently has 11 active wells in the field: 4 wells waiting on completion rigs, 1 well drilling, and 6 permitted locations.

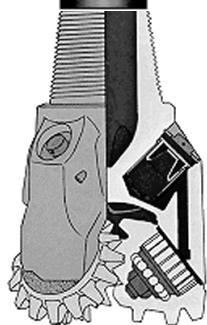
In Avoyelles Parish, Anadarko has permitted the #1 Rabalais 35 in **North Bayou Jack Field**, (D), in Sec. 35, 1S-6E. The well will be drilled horizontally in the Chalk to a depth of 21,848 feet. Although the well is permitted in Bayou Jack, North field, it is located 4 miles north of the nearest production. (244014)

El Paso has drilled the #1 Sherry Miller in **Cow Pen Creek Field**, (E), in Beauregard Parish in Sec. 11, 6S-9W. The field has been off production since 2001. The #1 Miller was drilled to a depth of 14,269 feet and is waiting on a completion rig after setting 5" casing to total depth. (243888)

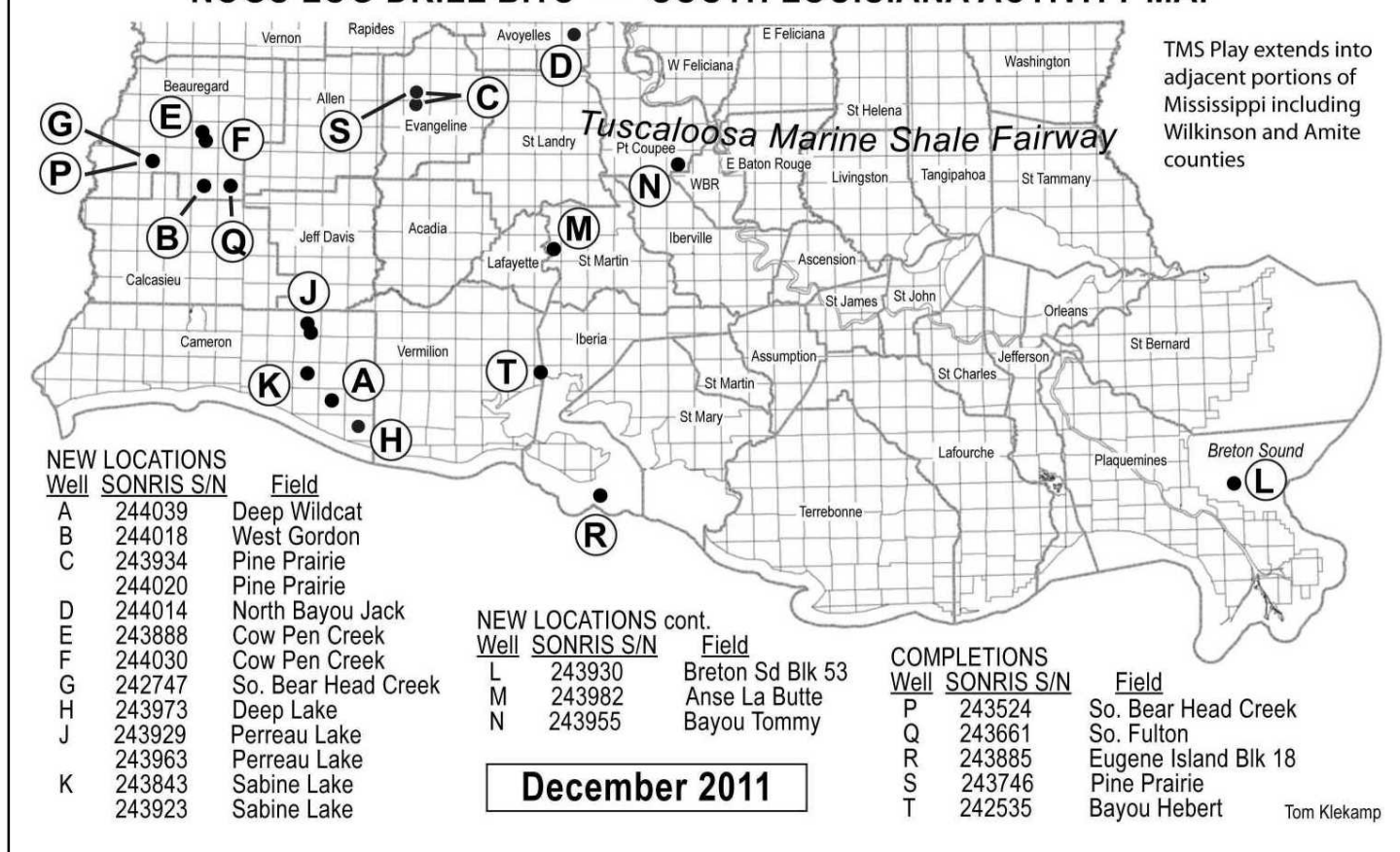
After drilling the #1 Sherry Miller, El Paso permitted the #1 Crosby Land in **Cow Pen Creek**, (F), in Sec. 7, 6S-9W, approximately 3 miles west of the #1 Miller. The #1 Crosby Land will be drilled to a proposed depth of 15,000 feet. (244030)

Midstates has permitted and drilled the #1 James Trust in **South Bear Head Creek**, (G), in Beauregard Parish in Sec. 23, 6S-11W. It was drilled to 15,250 feet and is waiting on a completion rig after setting casing to total depth. (242747)

DRILL BITS



NOGS LOG DRILL BITS — SOUTH LOUISIANA ACTIVITY MAP



In Cameron Parish, Hilcorp will drill an 18,000' test in **Deep Lake Field**, (H), on the northwest flank of the field, in Sec. 7, 16S-3W. It is located 1 mile southwest of the recent Walter Oil & Gas #1 SL 20350, a gas well in Sec. 5, 16S-3W. (243973)

Smith Production Co. has staked 2 interesting locations in the old and depleted **Perreau Island Field**, (J), in Cameron Parish. The field was discovered in 1981 and produced until 1997, with cumulative production of 1,633,722 barrels of oil and 716,226 Million cubic feet of gas.

The Smith #1 Larco 25 is located in Sec. 26, 12S-4W, with bottom hole location in Section 25. Projected total depth is 10,600 feet. (243929).

The Smith #1 Larco 35 will be drilled to a projected total depth of 11,500 feet, with the bottom whole location in Sec. 35, 12S-4W. (242963)

Also in Cameron Parish Ballard Exploration has staked 2 locations in **Sabine Lake Field**. (K). The #1 SL 19067 will be drilled in Sabine Lake, 14S-5W, to a projected depth of 14,500 feet. (243843)

Ballard's #1 SL 20453 in **Sabine Lake Field**, (K), was spudded on 10/8/2011 and is drilling below 10,667 feet. It will be drilled to 14,500 feet. (243923)

In Plaquemines Parish, in **Breton Sound Block 53 Field**, (L), Century Exploration N.O. will drill its #2 SL 19391 to a projected depth of 17,350 feet. (243930)

BOPCO will drill the #1 Ida Green in Saint Martin Parish on the north flank of **Anse La Butte Field**, (M) in Sec. 140, 9S-5E to a projected depth of 13,400 feet. The objective section is down-thrown to a large down-to-the north fault. (243982)

In West Baton Rouge Parish, Neumin Production Co. will drill the #1 Kimball Properties to 15,000 feet to evaluate deep Wilcox sands in **Bayou Tommy Field**, (N) in Sec. 32, 6S-10E. The field has been off production since 1996, having produced only 135,746 barrels of oil from Sparta and Upper Wilcox sands. (243955)

--- continued on next page ---

COMPLETIONS

Midstates has completed the #1 Cooper in **South Bear Head Creek**, (P), as an oil well flowing 603 BOPD and 2429 MCFD through perforations 13,360 to 13,992' in the Lower Wilcox reservoir. The well is located in Beauregard Parish in Sec. 28, 6S-11W. (243524)

Also in Beauregard Parish, Midstates has completed a gas well in **South Fulton Field**, (Q), in Sec. 7, 7S-8W. The #1 A&H Farms was drilled to a depth of 14,500 feet and was completed in the Wilcox Reservoir flowing 3131 MCFD and 389 BCPD through perforations 13,122 to 13,832. As noted in the October Drill Bits report, the A&H Farms was drilled as an extension to a shallow field which had been off production since 1984. (243661)

In St. Mary Parish, Castex Energy has completed the #1 SL 20223 as an oil well in **Eugene Island Block 18 Field**, (R), flowing 431 BOPD through perforations 10,940 to 10,960 feet. (242885)

Midstates has completed a good oil well in Pine Prairie Field, (S), in Evangeline Parish. The #1 Perkins was drilled in Sec. 34, 3S-1W, and completed flowing 498 BOPD in the Upper Wilcox through perforations 10,684 to 10,856. (243746)

In Vermilion Parish, in **Bayou Hebert Field**, (T), Petroquest has completed its #1 Thibodeaux in Sec. 17, 14S-5E as an excellent gas well flowing 10,983 MCFD and 168 BCPD through perforations 18,104 to 18,234 feet in the Cris R Reservoir. The well encountered more than 225 feet of gas sand. (242535)

OFFSHORE GULF OF MEXICO SHELF AND DEEPWATER ACTIVITIES

By Al Baker

Between August 25th and October 25th, the BOEMRE issued 80 drilling permits, of which 47 were for Gulf of Mexico shelf wells and 33 were for Gulf of Mexico deepwater wells. Seventeen of the above permits are for new wells; 12 permits are in shallow water, and 5 permits are in deepwater.

The shelf new well permits are for 3 exploratory wells and 9 development wells. The exploratory wells that are to be drilled include the High Island 205 Hall-Houston #1, the High Island Block A-171 Walter Oil & Gas #1 and the Eugene Island 51 Walter Oil & Gas #1. The shelf development activity includes three wells by Apache (High Island A-155 #1, Eugene Island 330 #D-16 & #D-17), 2 wells by Chevron (Vermilion 245 #G-5 and Main Pass 41 #CC-151), 2 wells by Pisces Energy (South Marsh Island 166 #A-6 and South Timbalier 204 #B-10), 1 well by ANKOR Energy (Ship Shoal 218 #B-8) and 1 well by Arena Offshore (Matagorda Island 669 #A-13).

The deepwater new well permits are for 4 exploratory wells and 1 development well. Shell will drill 2 of the exploratory wells and the 1 development well. Their exploration tests include the Mississippi Canyon 805 #WB-1 and the Mississippi Canyon 806 #SD-1. Their development activity will occur on the Alaminos Canyon 857 #GD-1. Eni plans to drill their #6 exploration test on Mississippi Canyon 772, and Statoil will drill their #1 exploratory well on Keathley Canyon 698.

According to ODS-Petrodata, as of October 21st, there were 63 rigs under contract out of the 116 rigs available in the Gulf of Mexico, which translates to 45.7% of the rig fleet remaining idle in the Gulf. On the same date, the BakerHughes Rig counts indicated that there were 36 active rigs in the Gulf, which represents 57.1% of the total rigs under contract. The 36 active rigs compares to 23 active rigs during the same period last year. This represents a 56.5% increase in the active rig fleet on a year-to-year basis.

In the ultra-deep shelf, McMoran is preparing to drill another deep, exploratory test on Ship Shoal Block 185. Their Barbosa Prospect is a Miocene play with an estimated gross potential of 2 TCFE. McMoran recently won approval from the BOEMRE for their initial exploration plan for two wells on Block 185. McMoran was awarded the lease on Block 185 for \$526,667 at OCS Sale 208 held in March 2009.

Century Exploration New Orleans intends to drill a third development test on Breton Sound Block 45 in state water bottoms. Their proposed total depth is 17,350' MD/16,500' TVD. During the past 6 months, Century has drilled two successful deep tests in Block 45 on different state leases. Lobo Operating Inc. also has established a nearby drilling program in Breton Sound Blocks 50 and 51, southwest of the Century activity. In August 2011, Lobo completed its State Lease 20436 #1 well on Block 51. The well was perforated from 10,074' to 10,082' and initially flowed 1,145 BOPD and 606 MCFPD.

Tarpon Operating & Development recently secured the rights to drill an exploratory well on Eugene Island Block 305 from Seneca Resources. Seneca was originally awarded their lease in March 2008 for \$2,100,319 at OCS Sale 206. (Seneca also recently divested their remaining GOM properties to Walter Oil & Gas and Castex.) According to Tarpon's initial exploration plan, their well is located in the northern portion of Block 305 in 226 feet of water and is situated west of an abandoned Texaco "A" Platform.

Walter Oil & Gas and Castex also have jointly secured the rights to drill an exploratory well on High Island Block A-171 from Helis Oil & Gas, Red Willow Offshore and Houston Energy. Helis et al. had originally acquired the lease on Block A-171 in December 2006 at OCS Sale 200 for a bonus of \$3,565,713. The well is the first well under the current lease and will extend the lease beyond its primary term, which ends November 30, 2011. This well will be located in the northeast corner of the block in a water depth of 53 feet. However, its proposed bottom hole location is not reported. Walter Oil & Gas is the operator and has contracted the Hercules 251 jackup rig to drill the well.

In mid-July 2011, Metairie-based, Pisces Energy completed an Upper Miocene gas well on Ship Shoal Block 151 in 66 feet of water. Their #A-2 well was drilled to a total depth of 12,230' MD/11,954' TVD. It was perforated in a *Textularia* X sand from 12,003' to 12,028'. Between 11,770' and 11,850' MD in the Ship Shoal Block 151 #A-1 well, the *Textularia* X sand produced 2.865 MBO and 2.1 BCF from July 1998 to July 2011.

Lastly and surprisingly, a rig was slated for the state of Georgia, which has not had a rig under contract since mid-2006. According to Baker Hughes, the rig is contracted to work in the far-eastern part of the state in Burke County. For those unfamiliar with Georgia geography, the city of Augusta is located in the northern part of Burke County. Georgia offers a \$1,000,000 reward to the entity that discovers oil for the very first time within its borders. To date, the Pre-Cambrian and Cambrian metamorphic stratigraphy that crop out and underlie the subsurface in the state do not offer the best source rock or reservoir rock for hydrocarbon exploration. Perhaps, the Piedmont coastal plain region south of Augusta will provide some other options.



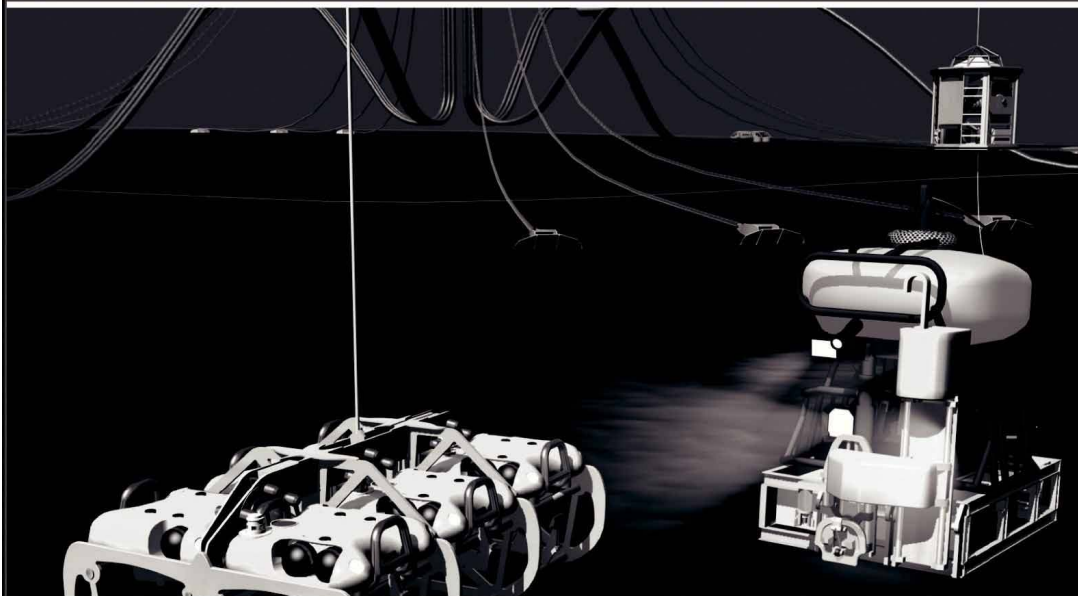
CENTURY EXPLORATION NEW ORLEANS, LLC

An independent gulf coast exploration, development and operating company

Three Lakeway Center, Suite 2800
3838 North Causeway Blvd.
Metairie, LA. 70002

Office: 504.832.3750
Fax: 504.832.3760
www.centuryx.com

Finally - An answer for getting reservoir seismic **OVER THE RESERVOIR!**



- 4C/4D Node Seismic
- ANGOLA
- GoM
- NIGERIA



“Coming Soon to an Oilfield Near You!”

www.sbexp.com

Dubai
T: +971 4 4271700

Houston
T: +1 281 566 1666

Oslo
T: +47 2240 2700

Rio
T: +55 21 2494-0283

Singapore
T: +65 9180 2605

Trondheim
T: +47 7 3879500

RAISING
THE **STANDARD**



100 Northpark Blvd.
Covington, LA 70433

(985) 773-6000



LaBay
Exploration Co., L.L.C.

111 Veterans Memorial Blvd.,
Suite 1550
Metairie, Louisiana 70005

www.labayexploration.com

Office (504) 371-5967
Fax (504) 371-5969

For Gravity and Magnetic Data **Count on Fugro...**

Brenda Robinson: + 1 713-369-6072

brobinson@fugro.com

Jeff Rowe: + 1 613-520-7713

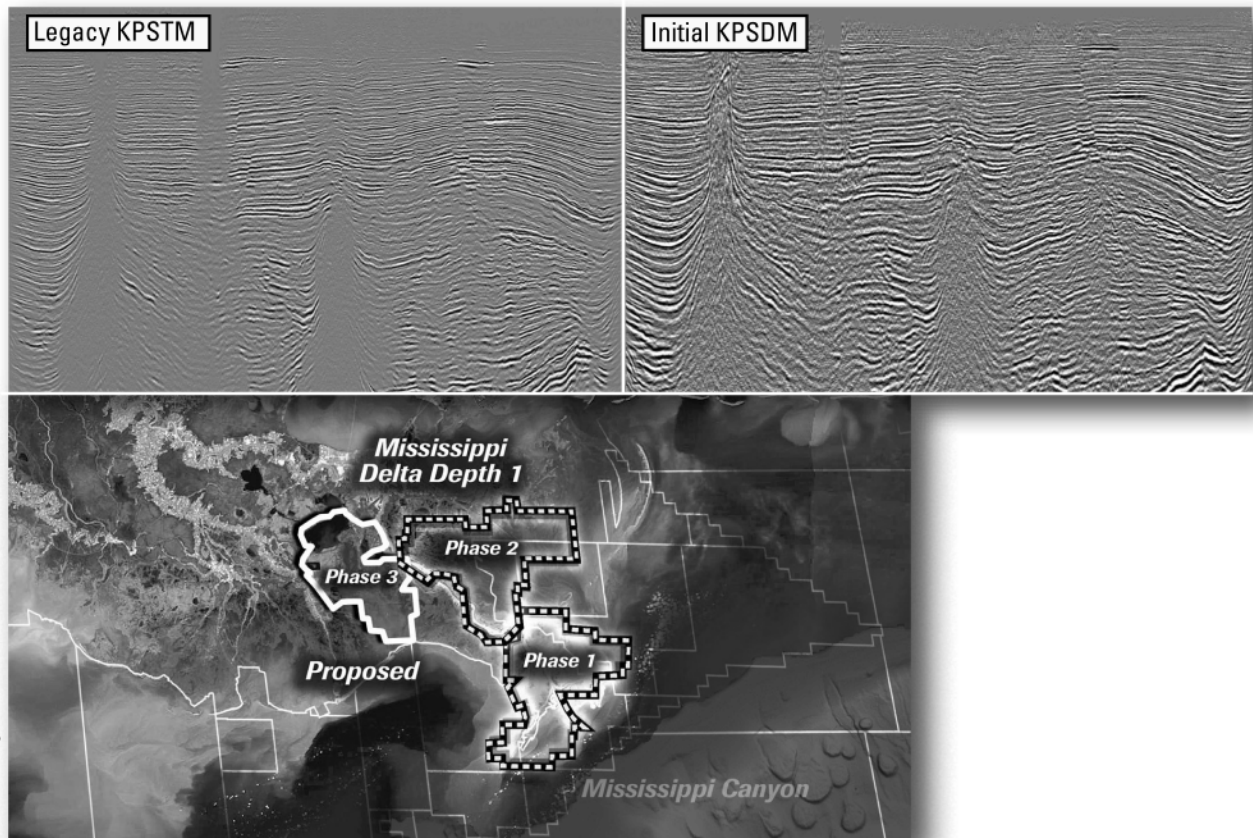
jrowe@fugro.com

www.fugro-gravmag.com



*This advertising
space is available!
Contact the
NOGS office.*

Improved depth imaging in the Mississippi Delta



In the Mississippi Delta region, WesternGeco is utilizing state-of-the-art processing designed to eliminate fault shadows and enhance deep imaging. The Mississippi Delta - Depth 1 survey, now in progress, incorporates the processing and remigration of twelve legacy surveys covering 1,855 square miles. High-quality time imaging using relative amplitude anisotropic Kirchhoff prestack time migration will be followed by improved structural imaging utilizing anisotropic Kirchhoff prestack depth migration.

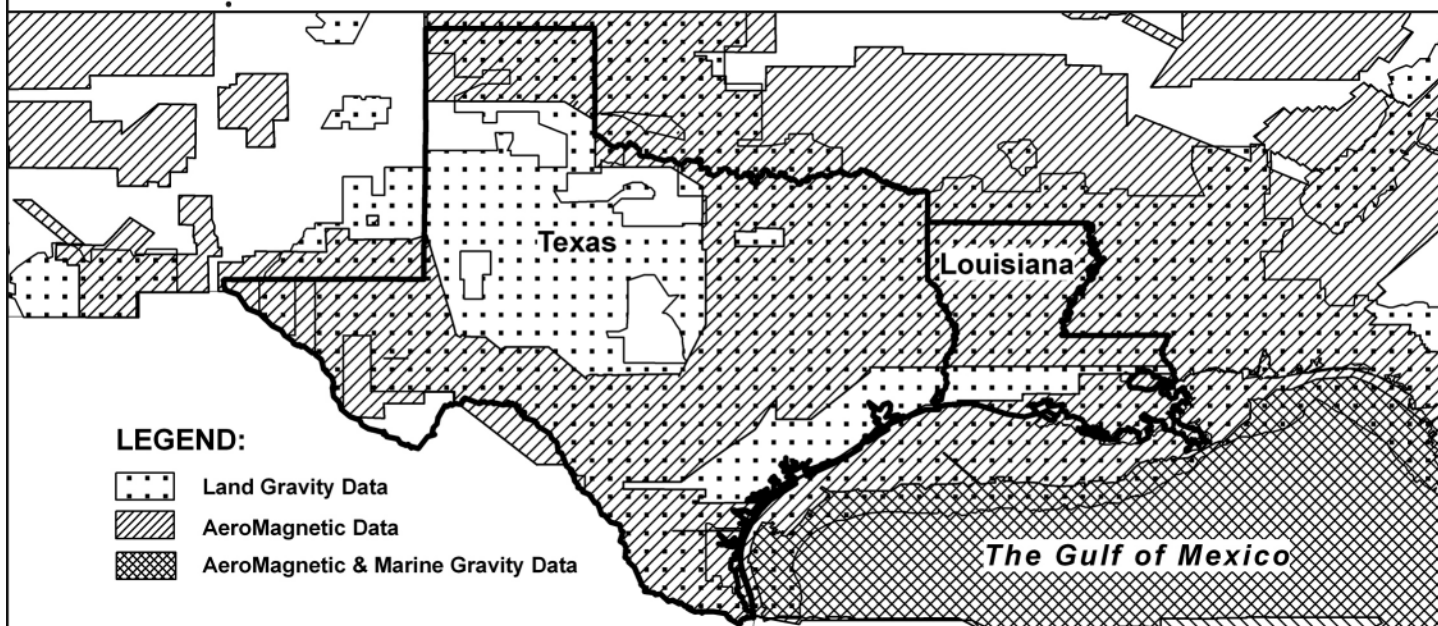
To learn more about this and other Multiclient products, call +1 713 689 1000.

www.multiclient.westerngeco.com/la

Multiclient to the Power of E



For Gravity and Magnetic Data in Texas and Louisiana **Count on Fugro— Mapping Geology to the Basement...**



...And beyond with the most comprehensive non-exclusive airborne, land and marine potential fields geophysical database, including AeroMagnetic, Land Gravity, Marine Gravity and Bathymetry data around the world. Interpretation includes:

- Basement architecture
- Tectonic elements
- Structural/geologic fabric
- Salt mapping
- Depth to basement
- ArcGIS deliverables



Fugro Gravity & Magnetic Services

For personal assistance & consultation,
please contact fgmsdata@fugro.com or 713-369-6123.

www.fugro-gravmag.com

Ted Griggs—The Advocate - “Louisiana Top Crude Producer”

<http://theadvocate.com/news/1214095-123/la.-top-crude-producer>

Louisiana’s oil and gas industry supports 310,217 jobs and generated more than \$16.1 billion in annual household earnings for the state, according to a study released Monday by the Louisiana Mid-Continent Oil and Gas Association.

The survey includes the impact of oil and gas extraction, refining and pipelines.

The study shows that Louisiana is the United States’ No. 1 producer of crude oil, including production from federal waters; No. 2 in petroleum refining capacity; and No. 3 in natural gas production.

The study says the three oil and gas-related industries paid local governments \$298 million in taxes in 2009. In addition, the \$16.1 billion the industries generated in household earnings added around \$707 million indirectly to local governments’ coffers in fiscal year 2010.

Every parish in Louisiana has at least one person working in the oil and gas industry, and Lafayette Parish has close to 15,000. The industry’s jobs pay well, for those in the extraction sector, the average weekly pay is close to \$2,000; refinery workers average around \$1,750; and pipeline workers around \$1,500 a week. The average weekly pay for a manufacturing job is around \$1,100 a week.

Robin Dupre - RigZone - “Petrobras Finds New Oil Source in GOM”

http://www.rigzone.com/news/article.asp?hpf=1&a_id=112396

Statoil has made an oil discovery on the Logan prospect, located at the southeast end of the Walker Ridge concession area in the Gulf of Mexico. The discovery confirms the potential of the Lower Tertiary formation in this area, stated Petrobras, a partner in the concession.

Drilled by the Discoverer Americas drillship, the well reached a total depth of 27,400 feet. Transocean’s dynamic positioning drillship is rated to work in water depths of up to 12,000 feet and can reach a drilling depth of up to 40,000 feet.

Statoil made the Logan discovery through well WE 969 No. 1 in Block WR 969. Gathered data will be assessed to determine the commerciality of the find.

The Logan field is located about 249 miles to the southeast of New Orleans in a water depth of 8,642 feet. Statoil serves as the operator and holds a 35 percent working interest. Partners in the block include Petrobras America (35 percent), Ecopetrol America (20 percent) and OOGC (10 percent).



Geoconsulting, Inc.

*Geological and Geophysical Consulting,
3-D Seismic Interpretation*

Ben D. Sydboten, Jr. CPG

2 Flagg Pl., Suite 1
Lafayette, LA 70508
www.saigeoconsulting.com

Office (337) 504-3670

Cell (337) 456-8948

"Serving The Oil & Gas Industry Since 1983"

Geological,
Geophysical &
Land Drafting

Anthony Catalanotto
President

Stefani Foster
Drafting & Design

Geo-Draft, Inc.

A Professional Drafting & Graphics Firm

3349 Ridgeline Drive • Suite 202 • Metairie, LA • 70002
Office: (504) 836-2882 Fax: (504) 836-2877 (Cell) (504) 481-7291
E-Mail: geodraft@bellsouth.net
Website: www.geodraftinc.com

**NOGS thanks our
sponsors for their support:**

GOLD LEVEL SPONSORS:

CHEVRON

LA BAY EXPLORATION CO, LLC.

**SPECIAL THANKS TO
DIVERSIFIED WELL LOGGING**

NORTHCOAST OIL COMPANY

610 E. Rutland St.
Covington, LA 70433
(985) 898-3577
(985) 898-3585 FAX

Jack M. Thorson
Eric C. Broadbridge
J. Daryl Gambrell
Raymond W. Stephens

(832) 242-6000 (O)
(713) 917-0493 (O)

(504) 931-7506 (C)
johnjurasin@jurasinoilgas.com

JURASIN OIL & GAS

9700 Richmond Ave., Suite # 124
Houston, TX 77042-4821

JOHN M. JURASIN
President

Cert. Pet. Geologist #4284
Cert. Prof. Earth Scientist #1961

Collarini Energy Staffing, Inc.

Facilities • Drilling • Production • Reservoir Engineering
Land and Legal • Geosciences • Information Technology
Health and Safety • Management • Supply Chain
Accounting • Administrative Support



Full-Time and Temporary Personnel

Energy Trading • Civil Engineering • Executives
Human resources • Instrument and Electrical
Engineering • Marine Engineering • Project Management
Technical Writing • Sales and Marketing

10497 Town and Country Way, Suite 950, Houston, Texas 77094 Telephone: (832) 251-0553 www.collarini.com

This advertising space is available!

Contact the NOGS office.

THE NEW ORLEANS GEOLOGICAL SOCIETY MEMORIAL FOUNDATION, INC.

The Memorial Foundation is an IRS Tax Exempt Code #501 (c)(3) organization. The Federal I.D. is 72-1220999. Please consider making a donation to the Foundation prior to the close of this year's fiscal cycle on June 30, 2012. Your individual support in any amount will help meet the IRS Guidelines for our Foundation. *Thanks!*

\$15,000 AND ABOVE

Gibbet Hill Foundation

*In Memory of Steve & Marion Millendorf, William J. Prutzman, Roger G. Vincent,
Ron Youngblood & Uno Numella*

\$10,000

GCAGS

Matching funds

\$500

Richard G. Klibert

Foster E. Voelker

In Memory of Gene Rogas

\$250 TO \$499

Burton C. Bowen

In Memory of Joffre J. Crouere

Marc Cooper

Through the Marathon Oil Co MEPAC Program

Carlo C. Christina

In Memory of Al Gilreath

UP TO \$249

Woods W. Allen, Jr.

In Memory of William C. Ward

Maurice N. Birdwell

In Memory of Uno Nummela

Hilary James Brook

Rob Burnett

J. Sybil Callaway

Chevron

Matching Funds

Arthur F. Christensen

James S. Classen

In Memory of Robert C. Treadwell

In Memory of Robert G. Williamson

Clarence F. Conrad

Charley Corona

In Memory of Professor Hubert Skinner

Trudy and Charley Corona

In Memory of Carl Grieshaber

In Memory of Beverly Langford

In Memory of Erik Mason

Robert M. Danos

In Memory of Max H. Durham

Dr. Brooks B. Ellwood

Parrish N. Erwin, Jr.

Dwight Easterly

In Memory of James P. Raymond, Jr.

James P. Evans III

In Memory of James P. Raymond, Jr.

Exxon Mobil Matching Funds

Michael N. Fein

Mark J. Gallagher

Arthur J. Garden

Bernard L. Hill, Jr.

Kenneth Huffman

Jeffrey E. Jandegian

Philip W. Johnson

Tom Klekamp

Reuben J. Klibert, Jr.

In Memory of Dale Klibert

Tim Klibert

John C. Kuciewicz, Jr.

John C. Langford

H. David Lynch

Jeannie F. Mallick

Louis L. McCormick

Margaret M. McKinney

Robert G. Murphy

In Memory of Ron Youngblood

In Memory of Thomas A. Cullinan

New Orleans Geological Auxiliary

In memory of Beverly Langford

Nexen Petroleum USA Inc.

Matching Funds

Richard A. Olsen

Teresa M. O'Neill

In Memory of Brian J. O'Neill

Linda and Bill Peirce

Edward B. Picou Jr.

In Memory of Terry D. Keegan

Richard D. Provensal

In Memory of Thomas H. Philpott

In Memory of James Strahan

Dr. J. O. Snowden

James M. Sothorn

Raymond O. Steinhoff

In Memory of Harold E. Vokes

Betsy M. Strachan Suppes

In Memory of Hubert Skinner

David M. Tatum

Leon G. Toups

In Memory Robert G. Williamson

Roy C. Walther

FONO FUND

The FONO Fund accepts contributions that are invested and the income dedicated to assure sufficient financial resources will always be available to maintain the NOGS business office. Contributors are reminded that donations to the FONO Fund are not covered by the IRS 501 (c)(3) tax exempt classification and should be reported as a business expense on your IRS tax report.

\$500

James A. Hartman

In Memory of Hal Hudson

In Memory of Robert G. Williamson

UP TO \$250

David E. Balcer

Joseph E. Boudreaux

J. Sybil Callaway

Anthony Carollo, Jr.

Richard P. Colomes

Clarence F. Conrad

Michael A. Danahy

John Dombrowski

Merle J. Duplantis

Parrish N. Erwin, Jr.

Richard A. Edmund

Michael N. Fein

Mark J. Gallagher

Bernard L. Hill, Jr.

Kenneth Huffman

Robert M. Jemison, Jr.

Arthur H. Johnson

Tom Klekamp

Russell J. Landry

Louis Lemarie'

H. David Lynch

Jeannie F. Mallick

George M. Markey, Jr.

Louis L. McCormick

Margaret M. McKinney

Robert G. Murphy

William J. O'Leary

Richard A. Olsen

Linda and Bill. Peirce

Edward B. Picou, Jr.

James P. Raymond, Jr.

C. R. Rondeau

David M. Tatum

Roy C. Walther

Robert C. Weissmann

William M. Whiting

CONTRIBUTIONS FOR BOTH FUNDS
THROUGH NOVEMBER 3, 2011.
DONATIONS ARE LISTED FOR ONE YEAR.

William M. Whiting

Arthur S. Waterman

In Memory of T. Wayne Campbell

Armour C. Winslow

In Memory of Rita Menzel Winslow

Frances A. Wiseman

In Memory of Steve Widdicombe

In Memory of Bill Craig

Chevron

Bernard L. Hill, Jr.

John C. Scheldt

In Memory of William C. Ward

Candace V. Strahan

In Memory of James Strahan

In Memory of William C. Ward

<p>ANSYTHE Donald I. Andrews 504-887-3432</p> 	 <p>GEOLOGY ENVIRONMENTAL MANAGEMENT</p> <p>GEM Consulting LTD Michael Louis Merritt admin@gemconsultingltd.com 1451 Applewood Road • Baton Rouge, LA 70808</p>
<p>THE BOEBEL COMPANY Oil and Gas Investments 170 Broadway Street, Suite 321 New Orleans, LA 70118 (504) 866-4313</p>	<p>H. WARREN BELL Oil and Gas Exploration 2500 Tanglewilde, Suite 485 Houston, TX 77063-2126 Bus (713) 266-7297 Fax (713) 266-7298</p>
<p>BOO-KER OIL & GAS CORP. Gray S. Parker 826 Union, Suite 300 New Orleans, LA 70112 Bus. (504) 581-2430 Fax (504) 566-4785</p>	<p>PHELPS GEOSCIENCE LLC Onshore Gulf of Mexico Geology and Geophysics Prospect Generation and Evaluation Houston, TX jsphelps@yahoo.com (281) 398-5208</p>
<p>C & R EXPLORATION, INC. Carlo C. Christina Lawrence G. Ringham</p>	<p>RAFIDI OIL AND GAS, INC. Jaser N. Rafidi, President 4415 Shore Dr., Suite 202 Metairie, LA 70006 Bus. (504) 722-2942 Fax (504) 888-5539; Res. (504) 888-1661</p>
<p>C. R. RONDEAU Petroleum Geologist 119 W Southland Ave. Ironwood, MI 49938 Res. (906) 932-4692</p>	<p>ROY C. WALTHER Petroleum Geologist 2421 Prancer Street New Orleans, LA 70131 Bus. (504) 392-8513 Res. (504) 392-9332</p>
<p>CLASSEN EXPLORATION, INC. James S. Classen Looking for close in deals P.O. Box 140637 Boise, ID 83714 Bus. (208) 854-1037 Fax (208) 854-1029 classenllc@msn.com</p>	 <p>625 E. Kaliste Saloom Lafayette, LA 70508 16800 Greenspoint Dr., Suite 225-S Houston, TX 77060 1100 Poydras St., Suite 1050 New Orleans, LA 70163 www.StoneEnergy.com</p>
<p>D-O-R ENGINEERING, INC. 3-D and Geoscience Services 6161 Perkins Rd. P O Box 80812 Bus : (225) 765-1914 Baton Rouge LA 70898</p>	<p>TONY CAROLLO Consulting Geologist Unitization Geosteering Field Studies 1701 Peach Street Metairie, LA 70001 Bus. (504) 885-0004 Res. (504) 885-6829</p>
<p>EDWARD B. PICOU, JR. Consulting Micropaleontologist - Retired 228 St. Charles Ave., Suite 1330 C New Orleans, LA 70130 Bus. (504) 529-5155 Res. (504) 282-3096</p>	<p>Zot Oil & Gas, LLC Jim Zotkiewicz Prospect Generation and Evaluation 3200 Ridgelake Dr. Suite 207 Metairie, LA 70002-4930 Business: 504.831.4694 Email: jimzot38@zotoil.com</p>

Attributes

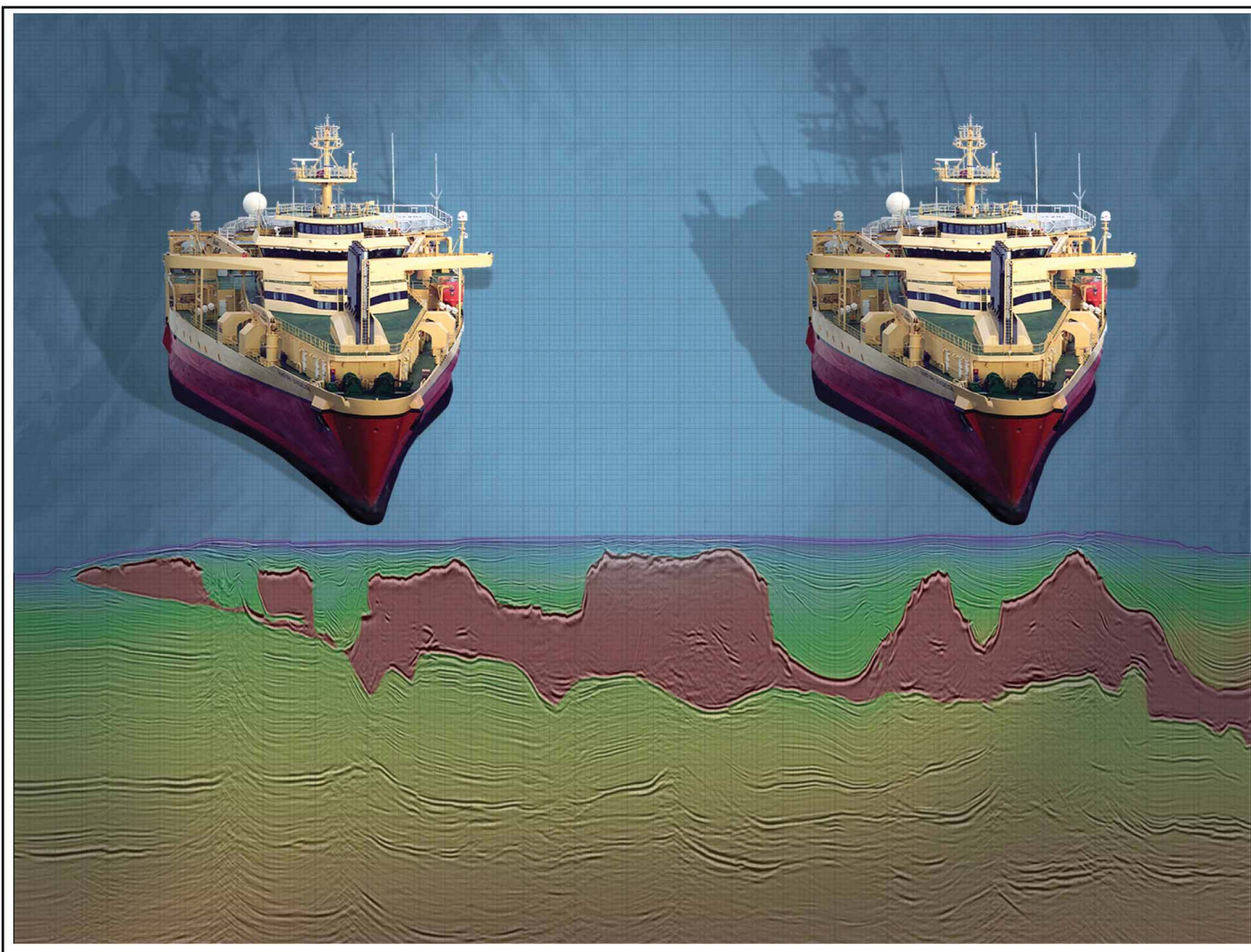
New Views on Seismic Imaging—Their Use in Exploration and Production



**31st Annual GCSSEPM Foundation
Bob F. Perkins Research Conference**
Houston, Texas
December 4-7, 2011

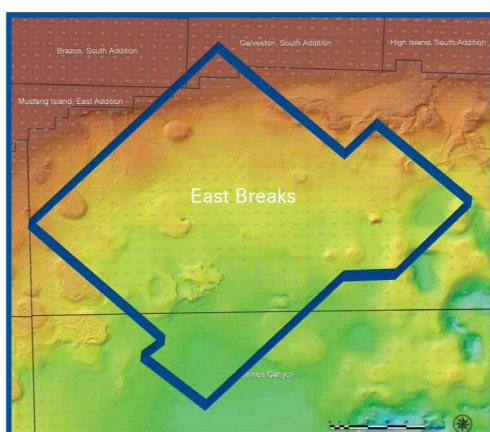
Conference information and
online registration
available on our Web site:
www.gcssepm.org





Crystal III, East Breaks

MultiClient Wide Azimuth



- **Size** - 480 OCS blocks
- **Focus** - Sub-Salt Miocene & Paleogene
- **Technology** - TTI Beam and RTM Imaging
- **Delivery** - Available Q4 2010

Houston
Tel: +1 281 509 8000
Fax: +1 281 509 8500

Oslo
Tel: +47 67 52 6400
Fax: +47 67 52 6464

London
Tel: +44 1932 37 6000
Fax: +44 1932 37 6100

A Clearer Image
www.pgs.com



NEW ORLEANS GEOLOGICAL SOCIETY



810 Union Street, Suite 300
New Orleans, LA 70112-1430

WWW.NOGS.ORG

MARINE PROPERTIES, LLC BERKSHIRE EXPLORATION CO.

MONTE C. SHALETT, CPL, PRESIDENT

3030 Lausar Street
Metairie, LA 70001-5924

BUS. (504) 831-7779
FAX. (504) 831-8315

PCI

Paleo Control, Inc.

Houston, Texas
713-849-0044

Drilling Wells, Studies and Data Base

Loyd Tuttle

Frio, SE Texas

Bob Liska

Wilcox, S and SE Texas

Jim Thorpe

Miocene and Cam-Miogyp



SEE YOUR DATA IN A WHOLE NEW LIGHT!

Take the pressure out of exploration
and drilling by seeing what you
are going to encounter.



eSeis

www.e-seis.com
713.531.1447

- Lithology & Fluids
- Depositional Facies
- Pore Pressure from V & Q
- Well Planning Consultation

