

# NOGS LOG



April 2011

Volume 51, Number 5

## Upcoming Events and Activities

---

### **April 4 - Joint NOGS-SGS-SPWLA Fish Fry Luncheon**

\*\*\* At the Holiday Inn Downtown Superdome's  
Parking lot at the corner of Perdido St. and Loyola Ave.\*\*\*

Lunch 11:30AM. Sponsored by Diversified Well Logging Inc.

(See page 7 for announcement)

---

### **April 6 - Petroleum Geology for Non-Geologists**

Shell Auditorium, Shell Building, New Orleans. See announcement on page 4.

---

### **April 10-13 - AAPG 2011 Annual Convention & Exhibition**

Houston. Website: [www.aapg.org/houston2011](http://www.aapg.org/houston2011)

---

### **April 18 - NOGS Annual Golf Outing**

Tchefuncta Country Club in Covington. See announcement on page 19.

---

### **May 2 - NOGS Luncheon**

Holiday Inn Downtown Superdome. Guest speaker William W. "Toddy"  
Guidry III, of Core Laboratories in Lafayette, will present "Introduction to  
Reservoir Fluids and PVT Analyses for Geologists."

# Get Ahead of the Game



## Directional Survey Plus



## Production Data



## Digital Well Logs



## With High Quality Well Data From TGS

Need an extra edge on the competition? TGS' high quality well data, comprehensive coverage and dedicated customer support can get you to the finish line.



### **Directional Survey Plus**

Beyond simple directional survey data capture, Directional Survey Plus data are thoroughly researched, reprocessed and standardized.



### **US Production Data**

TGS' nationwide production database features a visualization tool, leading industry exports and daily incremental updates.



### **Complete Curve LAS**

Over 500,000 LAS well logs are now available in North America. Over six million well logs available in 30+ countries worldwide.

Find out more at [www.tgsnopec.com/welldata](http://www.tgsnopec.com/welldata) or contact TGS Well Data at 888-LOG-LINE or [WellData@tgsnopec.com](mailto:WellData@tgsnopec.com)



Geophysical  
Products



Geological  
Products



Imaging  
Services



[www.tgsnopec.com](http://www.tgsnopec.com)

# NOGS Office

Office Manager: Annette Hudson

Office Hours: 8:30 a.m. – 3:30 p.m. on Monday-Wednesday-Friday

Tel: 504-561-8980 □ Fax: 504-561-8988

E-mail: info@nogs.org □ Website: www.nogs.org

The office is located at Suite 300, 810 Union Street, New Orleans, LA 70112.

Correspondence and all luncheon reservations should be sent to the above address.

Sent to press on March 26, 2011.



## BOARD OF DIRECTORS

President	Rick Kear
Vice President	Eric Zimmermann
Secretary	Penne Rappold
Treasurer	Will Jorgensen
President-Elect	Bob Hafner
Editor	Fran Wiseman
Director 2011	Scott A. Wainwright
Director 2012	Arthur H. Johnson
Director 2013	Jack Langford

## Company

Schlumberger	504-592-5376
LLOG Exploration	985-801-4338
Shell	504-728-4338
Shell	504-728-6339
BOEMRE	504-736-2912
Bret Exploration Co Inc	504-889-2700
Hydrate Energy International	504-464-6208
J C L Services	985-764-2527

## Phone

## E-mail

kearl1@new-orleans.oilfield.slb.com
ericz@llog.com
prappold@gmail.com
william.r.jorgensen@shell.com
ottohaf@aol.com
frances.wiseman@boemre.gov
scott_wainwright@hotmail.com
artjohnson51@hotmail.com
jclangford@latterblum.com

## COMMITTEE

AAPG Delegates
AAPG Student Chapter
AAPG Student Chapter
Advertising-Log
Auditing
Awards
Ballot
Best Paper
Continuing Education
Employment Counseling
Entertainment
Environmental
External Affairs
Field Trip
Finance and Investment
Historical
Membership/Directory
New Geoscientists (NGNO)
Nominating
Non-Technical Education
Office Operations
Publications Sales
Photography
School Outreach
Scouting
Sponsorship/Houston
Technical Projects
Ad Hoc Committee on
University Support

## Chairperson

William M. Whiting
Michael Hopkins
Andrew Ranson
Nicole Cammarata
Chuck Holman
Michael N. Fein
Will Jorgensen
Brenda Reilly
TBA
Bob Hafner
Daisy Pate
Michael A. Fogarty
David Garner
Will Jorgensen
Edward B. Picou, Jr.
Carlo C. Christina
Tom Klekamp
TBA
Mike Ledet
Duncan Goldthwaite
Tom Klekamp
Edward B. Picou, Jr.
J. David Cope
Thomas C. Bergeon
Carol Rooney
David E. Reiter
TBA
Michael J. Gallagher

Consultant	504-947-8495
Tulane University	228-209-2262
UNO	337-578-5587
Schlumberger	504-592-5317
Independent	504-891-4878
W & T Offshore	504-210-8148
Shell	504-728-6339
Energy Partners Ltd.	504-799-4811
Corps of Engineers	504-957-4372
Sylvan Energy, LLC	603-523-4808
Shell	504-728-6154
Shell	504-728-6339
Consultant	504-529-5155
Retired (C & R Expl.)	
Amber Resources	985-845-4046
Consultant	504-394-9636
Amber Resources	504-887-4377
Consultant	985-845-4046
Ankor Energy	504-529-5155
Century Exploration	504-596-3672
Consultant Geologist	504-832-3772
Eni Petroleum	504-835-1909
Eni Petroleum	713-393-6100

bootscon@aol.com
mhopkins@tulane.edu
aranson@uno.edu
ncammarata@slb.com
charleswholman@bellsouth.net
mikef@wtoffshore.com
william.r.jorgensen@shell.com
breilly@eplweb.com
ottohaf@aol.com
daisy.pate@gmail.com
mike.a.fogarty@gmail.com
David.Garner@shell.com
william.r.jorgensen@shell.com
epicou@bellsouth.net
Carlocc398@aol.com
klekamp@bellsouth.net
mikeledet@cox.net
DGldthwt@aol.com
klekamp@bellsouth.net
epicou@bellsouth.net
dcoupe@ankorenergy.com
Tom.bergeon@centuryx.com
carolbrooney@aol.com
david.reiter@enipetroleum.com
Michael.Gallagher@enipetroleum.com

## NOGS LOG STAFF

Editor	Fran Wiseman	BOEMRE	504-736-2912
Editor-Elect	David Tatum	Chevron	985-773-6477
Auxiliary	Susie Baker	NOGA	504-466-4483
Info Tidbits	Fran Wiseman	BOEMRE	504-736-2912
Drill Bits	Carlo C. Christina	Retired (C & R Expl.)	
Webmaster	Edward B. Picou, Jr.	Consultant	504-529-5155
Layout	Jannette Inc.		

## NOGS AUXILIARY

Officers		Phone	Directors	Year	Phone
President	Jean Jones	504-738-8091	Peggy Campbell	2009-11	504-283-2505
1st Vice-President	Alma Dunlap	504-737-2678	Ruth Grimes	2009-11	504-392-8103
2nd Vice-President	Judy Sabatè	504-861-4335	Gerry Waguespack	2009-11	504-737-0532
Secretary	Peggy Rogers	504-392-6323	Carol Andrews	2010-12	504-887-3432
Treasurer	Judy Lemarie'	504-393-8659	Susie Baker	2010-12	504-466-4483
Parliamentarian	Beverly Kastler	504-286-0879	Joan Collier	2010-12	504-833-1738
Member-at-Large	Linda Peirce	504-393-7365			

--- NOGS Contact List continued on page 10 ---

# Get More from your core



**With reservoirs becoming increasingly complex, you need the most accurate information you can get to better understand your reservoir.**

Weatherford Labs helps you get more from your core by combining an unsurpassed global team of geoscientists, engineers, technicians and researchers with the industry's most comprehensive, integrated laboratory services worldwide. From core analysis, sorption, geochemistry and isotopic composition to detailed basin modeling and comprehensive data packages, we provide you with real reservoir rock and fluid information that hasn't been distilled by a simulator or iterated by software.

We call it **"The Ground Truth™"** – giving you the accurate answers you need for better reservoir understanding. You'll call it a better return on your reservoir investment. To learn more, contact [TheGroundTruth@weatherfordlabs.com](mailto:TheGroundTruth@weatherfordlabs.com).



© 2011 Weatherford. All rights reserved. Incorporates proprietary and patented Weatherford technology.

## PETROLEUM GEOLOGY FOR NON GEOLOGISTS

The New Orleans Geological Society is presenting a one day course on "Petroleum Geology for Non Geologists," 8:30 AM to 3:30 PM on Wednesday April 6, 2011 in the Shell Auditorium, Shell Building, 701 Poydras Street, New Orleans. The course will consist of a brief introduction to basic geology, including a review of how oil and gas form, and accumulate into reservoirs. The course will discuss the geological and geophysical methods used in exploration, followed by an overview of drilling and completion practices.

This course should be of significant benefit and interest to anyone who works with geologists and geological data, such as land personnel, secretaries, draftsmen, computer programmers and data processors.

Instructors will be consulting geologists, Duncan Goldthwaite, Robert Branson, and Bruce Robertson.

Cost will be \$35.00 per participant. Course notes and mid-morning refreshments will be provided. To register, send a check for \$35.00, made out to the New Orleans Geological Society, to:

New Orleans Geological Society  
810 Union St., Ste 300  
New Orleans LA 70112

When registering, please give your name, your work or home address and telephone number and company affiliation, if any.





*from the President*

We are blessed in many ways to be members of New Orleans Geological Society - NOGS. We are engaged and interested in a dynamic understanding of our earth with so much more to be learned and applied. Anyone can contribute to the body of geoscience knowledge and understanding - and these are not always the same tasks. Sharing of ideas through NOGS promotes the members' and the Industry's intellectual health and growth. Varied and high caliber society talks and presentations are a significant portion of our intellectual nourishment. I want to thank Eric Zimmermann, NOGS Vice President, and a number of our members for bringing home to NOGS luncheons a range of high quality speaker presentations. Thank you! We need you to keep it up!

I am happy to be able to report that several of you have responded to my challenge to either become more involved or involved in your society in new and different ways. Thank you to those members who did step out of their comfort zones! We still need many more of our members to do the same. I repeat an earlier comment, "The needs of NOGS are increasing not decreasing."

Some of our members, including our students members, have increased involvement related to the staffing of our NOGS booth at the recent GSA South-Central Section Meeting in New Orleans March 28 & 29 and the AAPG ACE Meeting in Houston Texas April 10-13. We will be marketing the Oil and Gas Fields of South Louisiana 2010 publication. Thank ya'll!

Another opportunity for you to be involved is our upcoming election of officers. Thanks to Mike Ledet and his committee for drafting an excellent slate of officers for the coming society year. This committee has done its work and now it's up to each of us to possibly tender an alternate candidate and to vote.

Lastly on a personal note, I want to thank many members of the society who expressed their concern and who were diligent in their prayers on behalf of my younger son, Josh, for his healing following his recent gun accident. Your efforts mean the world to me and to Josh who the Lord has seen fit to marvelously heal!

Thanks and God bless,

*Rick*

# Attributes

New Views on Seismic Imaging—Their Use in Exploration and Production



**31st Annual GCSSEPM Foundation  
Bob F. Perkins Research Conference**  
Houston, Texas  
December 4-7, 2011  
Houston Marriott Westchase Hotel

Conference information and  
online registration  
available on our Web site:  
[www.gcssepm.org](http://www.gcssepm.org)

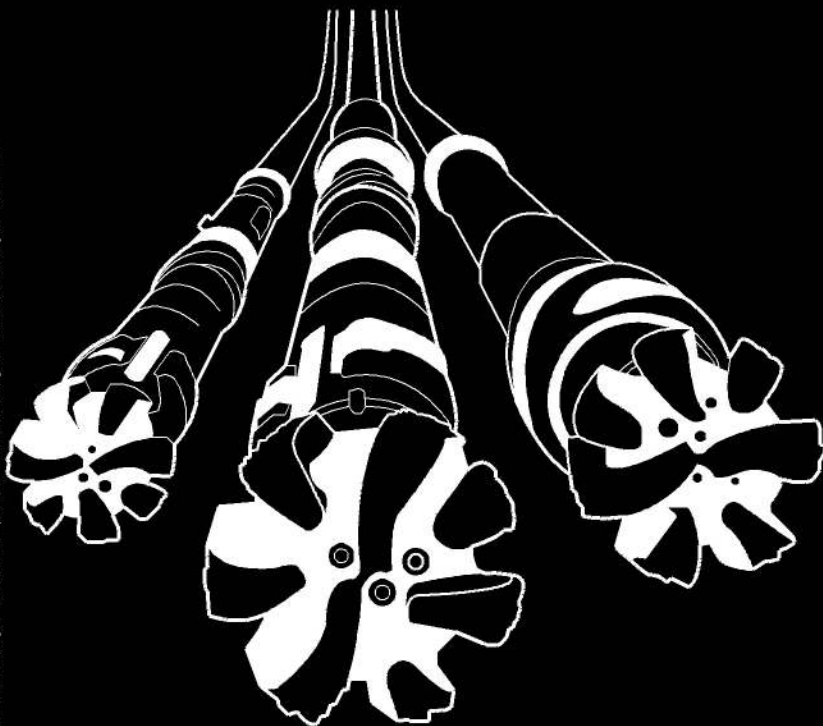


# Deep Water

WELL CONSTRUCTION

## Are all your services deepwater ready?

Control Measures	Complexity/Process + Exposure	Preparedness				
		High	People + Competency			Low
Low	High	1	2	3	4	5
	Low	1	2	3	4	5
-5	-5	-10	-15	-20	-25	-30
-4	-4	-8	-12	-16	-20	-24
-3	-3	-6	-9	-12	-15	-18
-2	-2	-4	-6	-8	-10	-12
-1	-1	-2	-3	-4	-5	-6



**Our Project Readiness Assessment (PRA) approach has been applied and improved over the last 5 years.**

All deepwater projects in which Schlumberger participates benefit from our PRA process, which complies with new U.S. regulatory requirements. This helps deliver seamless, efficient startup, and reduced NPT.

Learn more at

[www.slb.com/deepwaterready](http://www.slb.com/deepwaterready)

Global Expertise  
Innovative Technology  
**Measurable Impact**

# Schlumberger

\*Mark of Schlumberger. Measurable Impact is a mark of Schlumberger. © 2010 Schlumberger. 10-dw-0079

# **Diversified Well Logging, Inc.**

Serving the Gulf Coast for over 40 years.

## **Geologists - Engineers**

**Come and tour DWL's mud logging unit and learn more about our Technology**



**This function is in association with the NOGS, SGS AND SPWLA New Orleans Chapter monthly luncheon.**

**COME JOIN US FOR A FISH FRY & JAMBALAYA**

**Monday, April 4, 2011**

**11:30 A.M. – 2:00 P.M.**

**RSVP to NOGS / SGS / SPWLA**

**For more detailed information on all Diversified's products and services, please visit us online at <http://www.dwl-usa.net>**

**Corner of Perdido and Loyola**

**330 Loyola**

**\*Holiday Inn Parking Lot\***



## March Luncheon Meeting

NOGS VP & Program  
Chairman, Eric Zimmerman  
and LSU's Dr. Darrell Henry.

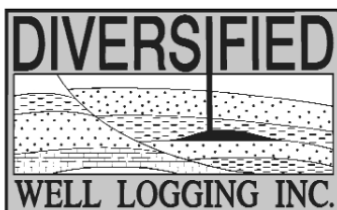


LSU Geology & Geophysics alumni. L-R: Jared Bosch, Doug Cristina, Al Baker, Art Johnson, Ray Stephens, Dr. Barb Dutrow, Dr. Darrel Henry, Jim Raymond, Roy Walthers, Carlo Christina, Elizabeth McDade.



## Relax. We'll keep you posted.

Your rig is offshore and you are not. How do you know what's going on so many miles away? You know because we tell you. Daily or even hourly, Diversified Well Logging's engineers update you on the status of your rig. We are your eyes and ears, especially when it comes to deep water or high pressure, high temperature areas. Diversified offers 24-hour surface evaluation. We provide secure and customized real-time data communication, in-house research and development and 24/7 on-call support for our equipment and our engineers. Whether you have a 10-day job or 110-day job, we provide the specialized attention you require. So, relax. We're with you every step of the way.



*Serving the Gulf Coast for over 40 years.*

New Orleans • Lafayette • Houston • Dallas • Corpus

800.280.2096

711 West 10th Street • Reserve, LA 70084 • Phone: 985.536.4143 • Fax: 985.536.2427  
sales@dwl-usa.com



**DOMESTIC AND INTERNATIONAL  
BIOSTRATIGRAPHIC SERVICES**



6619 Fleur de Lis Drive  
New Orleans, LA 70124  
(504) 488-3711

[www.paleodata.com](http://www.paleodata.com)



**Complete wellsite paleo services**

**Available single-source regional  
biostratigraphic databases for  
accuracy and consistency**

**Integrated foram / nannofossil  
analyses**

**In-house sample preparation  
lab for quality-monitoring  
and efficiency**

**Supported Gulf Coast  
biostratigraphic databases**



**MCMORAN EXPLORATION CO.**



**MCMORAN  
OIL & GAS**

[www.mcmoran.com](http://www.mcmoran.com)

**NYSE: MMR**

16676 Northchase Dr.  
Houston, TX 77060  
(281) 539-7600  
Fax: (281) 539-7655

1615 Poydras  
New Orleans, LA 70112  
(504) 582-4000  
Fax: (504) 582-4155

110 Travis St., Suite 140  
Lafayette, LA 70503  
(337) 735-9150  
Fax: (337) 735-9151

**NOGS CONTACT LIST**

--- continued from page 3 ---

**MEMORIAL FOUNDATION**

**BOARD OF TRUSTEES**

		<b>Company</b>	<b>Phone</b>	<b>E-mail</b>
2010-11 Chairman	Tom Klekamp	Amber Resources LLC	985-845-4046	klekamp@bellsouth.net
2010-11 Secretary	Rick Kear	Schlumberger	504-592-5376	kearl1@new-orleans.oilfield.slb.com
2010-11 Trustee	Chuck Holman	Independent	504-891-4878	charleswholman@bellsouth.net
2010-11 Trustee	Michael N. Fein	W & T Offshore	504-210-8148	mikef@wtoffshore.com
2011-12 Trustee	Monte Shalett	Berkshire Exploration Co	504-831-7779	mshalett@gmail.net
2011-12 Trustee	James Swaney	BOEMR E	504-736-2677	james.swaney@boemre.gov
2012-13 Trustee	Jennifer Connolly	Shell	504-728-6411	jennifer.connolly@shell.com
2012-13 Trustee	William M. Whiting	Consultant	504-947-8495	bootscon@aol.com

**AAPG DELEGATES**

**Term Ends**

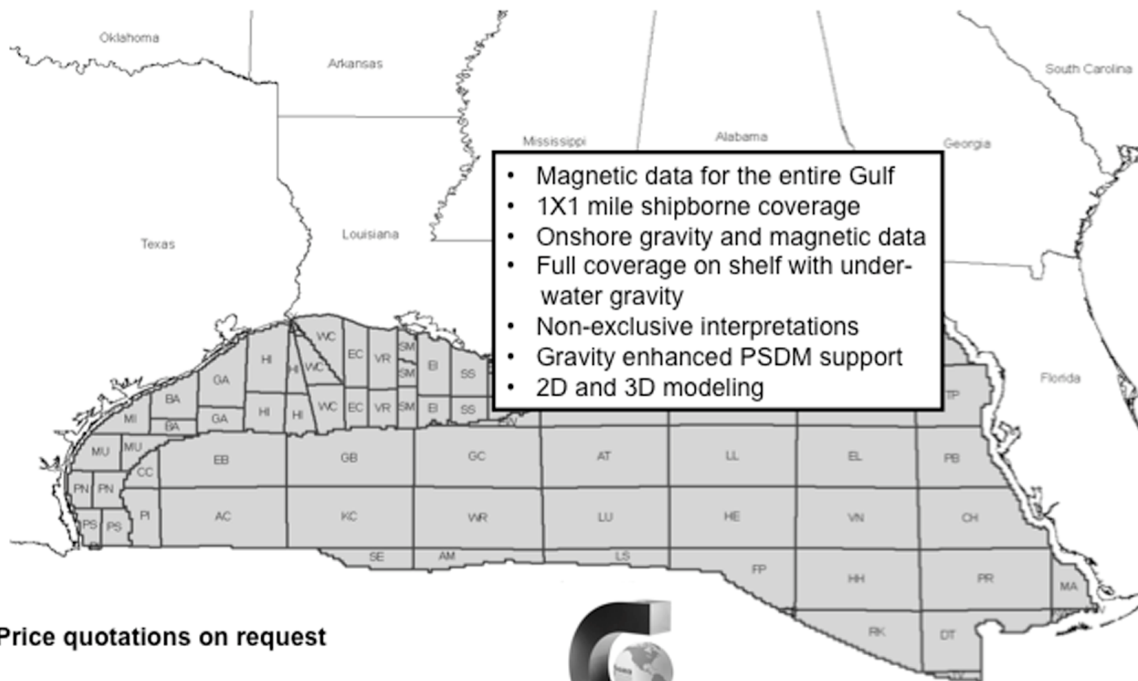
		<b>Company</b>	<b>Phone</b>	<b>E-mail</b>
2011	Tom Hudson	Chevron		tom.hudson@chevron.com
2011	Edward B. Picou, Jr.	Consultant	504-529-5155	epicou@bellsouth.net
2011a)	Brenda Reilly	Energy Partners Ltd.	504-799-4811	breilly@eplweb.com
2011a)	Robert Rooney	Century Exploration	504-832-3777	Robert.rooney@centuryx.com
2012	William Whiting	Consultant	504-947-8495	bootscon@aol.com
2012	Jim Zotkiewicz	Zot Oil & Gas	504-831-4694	jimzot38@zotoil.com
2012 a)	David E. Balcer	Chevron	985-773-6725	dbalcer@Chevron.com
2012 a)	Richard J. Stancliffe	Shell Expl & Prod Co.	504-728-7553	richard.stancliffe@shell.com



## Fugro Gravity & Magnetic Services

LAND • AIRBORNE • UNDERWATER • SHIPBORNE

The most complete coverage Onshore and Offshore Gulf of Mexico



Price quotations on request

Fugro Gravity & Magnetic Services  
[www.Fugro-GravMag.com](http://www.Fugro-GravMag.com)  
 Tel: 713-369-6123



Gravity Inspired. Magnetically Inclined.



**Shell has worked in partnership  
 with the NOGS for many years, and  
 is proud to count the society among  
 its closest business associates.**

The New Orleans Geological Society was organized in 1941 to foster scientific research and advance the science of geology. Particular emphasis is laid on the exploration for and production of petroleum and natural gas. Related objectives include encouraging the adoption of improved methods of exploration, disseminating pertinent geological and technological data, and maintaining a high standard of professional conduct among its members.

[www.shell.com/us/sepcos](http://www.shell.com/us/sepcos)

**It's no illusion...  
 Core Lab offers everything you need.**



©2009 Core Laboratories. All rights reserved.

Unconventional resource exploitation • Gas shale experts • Deepwater GOM authority  
 Capacity for fast turnaround • High-quality people • Global support  
 Industry leadership and reliability • Proprietary and patented technologies • Experience

[www.corelab.com/rd/petroleumservices](http://www.corelab.com/rd/petroleumservices) • 24-hour wellsite service hotline: 504-733-6583



From ZNodal Systems to ZNodal Imaging

# We are full spectrum ZNodal™ technology

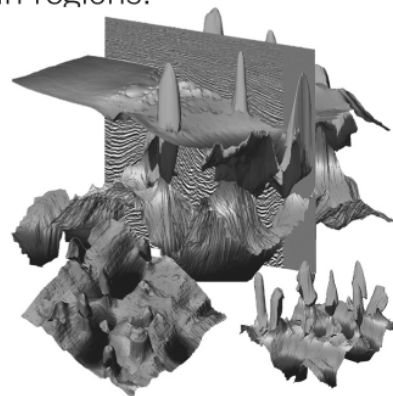
FairfieldNodal.com



We admit it. We're seismic nodal fanatics. Always have been. Which explains our one-of-a-kind, cable-free ZNodal™ systems. They work wonders in dense urban areas and pristine wilderness, in shallow water and deep ocean regions.

In fact, our exclusive ZNodal technology is behind everything we do, from acquisition and licensing to advanced processing and imaging, bringing nodal data to life in amazing ways.

Right now, our ZNodal systems are on the job in some of the world's most challenging fields, making a powerful difference. So when you're ready to go nodal, count on us to lead the way. ZNodal technology: It's what you need. It's what we're all about.



**fairfield**nodal

SYSTEMS ACQUISITION LICENSING PROCESSING IMAGING

## **A Memorial**

### **ROBERT G. WILLIAMSON 1937-2010**



Bob Williamson was a native New Orleanian, born February 8, 1937. He was one of three children of John A., and Eva K. Williamson. On September 7, 1957 he married his high school sweetheart, Pat Geoghegan. They had three children; Robert Michael, Julianne, and Linda. He passed away on March 3, 2010 after a long illness. In addition to Pat, his daughters, son and their spouses, a sister, Eva Mae, seven grandchildren, a great-grand child and a number of nieces, nephews, and other relatives, survive him. He had been a resident of Mandeville for the past thirty-two years.

Bob graduated from New Orleans' Fortier High School in 1954. Supported by a scholarship provided by his father's employer, he earned a Bachelor of Science Degree in Geology from Tulane University in 1959. While at Tulane he was a member of Kappa Sigma fraternity and played the clarinet in the Green Wave Marching Band. He was an avid sports fan, and among other things he was a strong supporter of Tulane baseball and football that was culminated by the 1998 undefeated season and Liberty Bowl victory plus the subsequent celebration at the Peabody Hotel. He showed perseverance as a long time supporter of the Saints, attended their first regular season NFL game and lived to see them achieve the ultimate by winning the Super Bowl.

His first hands-on oil and gas industry experience came as a geological trainee at Sohio Petroleum's Offshore District Office during his senior year at Tulane. After graduation he worked as a consultant for Fred E. Simmons, Jr. Beginning in 1962 he spent nine years as the gulf coast geologist for Bob Frankel at Frankel Oil & Gas, Co., where with his help Frankel was able to add considerable oil and gas reserves to the company's account. From 1974 to 1977 he was employed by DEPCO, Inc. as their Gulf Coast Area Geologist/Manager. Beginning in the late seventies Bob had various consultant relationships including World Producers, Jeanerette Lumber, and from 1988 to 2005 he consulted for Club Oil and Gas in their exploration activities in south Louisiana.

Bob was a good geologist and oilman. He was honest and had professional integrity and brought a high level of professionalism and practicality into his work. Bob was a member of the American Association of Petroleum Geologists and served as Vice Chairman of the AAPG House of Delegates. He was a member of the New Orleans Geological Society and served as Secretary in 1968. In 1971 he was General Chairman of the Gulf Coast Association of Geological Societies Annual Convention.

Devotion to his family, and his personal and professional values were central aspects of his character. Bob was always a devoted husband, father and a very attentive and loving family man. He devoted quality time in family activities. At one time he acquired a sailboat, the Papaya Mama on which the family and friends spent many happy hours on Lake Pontchartrain. And, being a geologist, there were rock and fossil hunting on trips to the mountains. As his daughter Julie put it in a late letter to her father, "we are still not very good at hitting a baseball, or catching a football, but we loved the time that you spent trying to teach us."

He was an active member of the Methodist Church, serving on the board on his congregation and committed himself to other duties. But, most important, he served as a role model for his children and brought spirituality into their lives. This was a part of a set of values that Bob had for living that he passed on to his children.

One of his many sayings was that, "if anything was worth doing, it was worth doing right". This was fundamental to his personal and professional life. His pleasant demeanor, wit, and sense of humor made liking him easy and unavoidable. An important thing about Bob was that he had a way about him that generated respect.

Bob Williamson will be greatly missed and fondly remembered by all who knew him. He was an honorable man and we were fortunate to have shared part of life with him.

Thanks to Bob's wife Pat and his daughter Julie plus friends Charley Corona and Leon Toups for their contributions to this memorial.

By Robert T. Sellars, Jr.  
Denver, Colorado

**NEW!**  
**AVAILABLE**  
**NOW**

# Oil & Gas Fields of South Louisiana 2010

## **26 FIELDS NEW PRODUCTION**

*BAYOU POSTILLION*

*BAYOU VILLARS*

*BLACK BAY COMPLEX*

*BLACK BAY EAST - NORTHERN BLOCK*

*BLACK BAY NORTH - EASTERN EXTENSION*

*BRETON SOUND BLOCK 53*

*CREOLE - WEST CAMERON BLOCK 2*

*EUGENE ISLAND BLOCKS 10/24*

*FRESHWATER BAYOU*

*JUDGE DIGBY*

*KENT BAYOU (ETOUFFEE)*

*LAC BLANC*

*LAKE BOEUF SOUTHWEST*

*LAKE BOUDREAUX*

*LAKE SALVADOR*

*LAKE WASHINGTON*

*MANILA VILLAGE SOUTHEAST*

*MYETTE POINT NORTHWEST*

*PATTERSON*

*PINE PRAIRIE*

*PORT HUDSON*

*RAMOS (LILY BOOM)*

*RIGHTHAND CREEK*

*SATURDAY ISLAND SOUTHEAST*

*STELLA*

*THIBODAUX AND ROUSSEAU*

*WEST COTE BLANCHE BAY*



## **CD VERSION LOADED WITH DETAILS AND FEATURES**

*GEOLOGY, GEOPHYSICS, MAPS, X-SECTIONS,  
LOGS, STRAT AND PALEO*

*IN COLOR!*

*UPPER MIOCENE  
THROUGH CRETACEOUS TUSCALOOSA*

*EXCLUSIVE IN-DEPTH  
EXPLORATION-ECONOMICS ANALYSIS OF  
SOUTH LOUISIANA*

*VALUABLE REFERENCE FOR  
EXPLORATIONISTS EVERYWHERE*







# Order Form

## Oil & Gas Fields of South Louisiana 2010 Full-Color CD-ROM Edition

QUANTITY	ITEM	PRICE	EXTENSION
	CD-ROM EDITION - FULL COLOR - PC OR MAC	\$75.00	
	POSTAGE AND HANDLING		
		TOTAL	

POSTAGE & HANDLING RATES	
NUMBER OF CDs	ADD TO ORDER
1	\$7.00
2-5	\$11.00
5-10	\$16.00
10-20	\$20.00

SHIPPING ADDRESS			
NAME			
ORGANIZATION			
STREET OR PO BOX			SUITE OR APT
CITY	STATE	ZIP	
PHONE			

PAYMENT	INDICATE PAYMENT TYPE: CHECK <input type="checkbox"/> AMERICAN EXPRESS CARD <input type="checkbox"/> VISA CARD <input type="checkbox"/> MASTERCARD <input type="checkbox"/> DISCOVER CARD <input type="checkbox"/>		
CARDHOLDER'S NAME			
CREDIT CARD NUMBER	<div style="border: 1px solid black; width: 20px; height: 20px;"></div>	<div style="border: 1px solid black; width: 20px; height: 20px;"></div>	<div style="border: 1px solid black; width: 20px; height: 20px;"></div>
	EXPIRATION DATE MM/YY	<div style="border: 1px solid black; width: 20px; height: 20px;"></div>	SECURITY # (BACK OF CARD)
SIGNATURE			
STREET OR PO BOX			
CITY	STATE	ZIP	
PHONE			

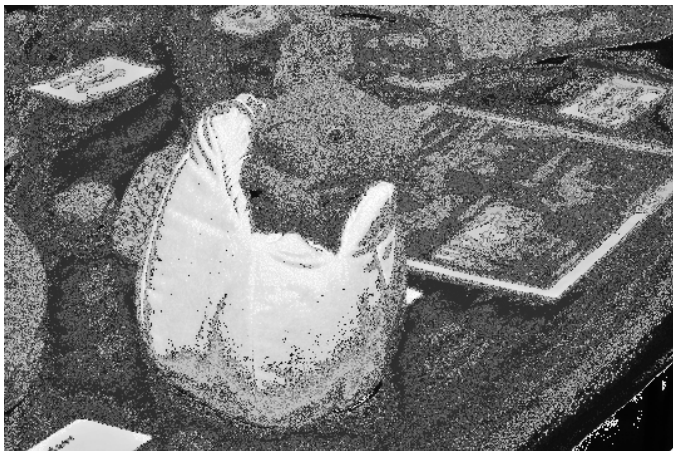
MAIL THIS FORM AND CHECK, PAYABLE TO "NOGS", OR CREDIT CARD INFORMATION TO:

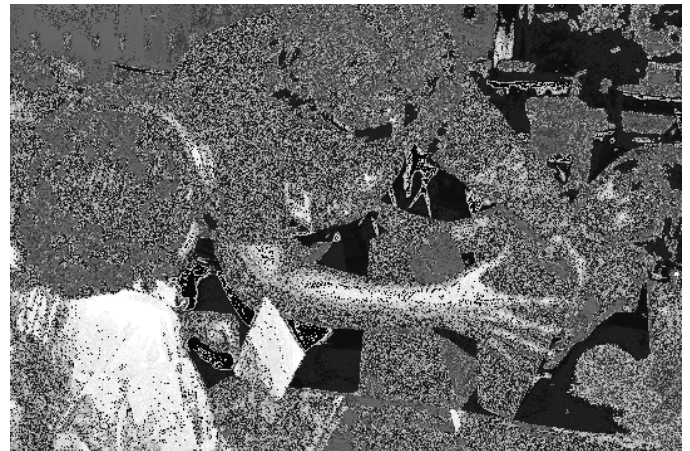
**NOGS**  
**P.O. BOX 50089**  
**NEW ORLEANS, LA 70150-0089**

FOR NOGS OFFICE USE	
NUMBER OF COPIES SOLD THIS ORDER	
DATE COMPLETED	

## Super Science Saturday 2011







# NOGS PRESENTS THE *2011* ANNUAL GOLF OUTING

PROCEEDS FROM THIS EVENT WILL HELP FUND *THE BILL CRAIG MEMORIAL FUND\**.  
LAST YEAR, THE GOLF TOURNAMENT GENERATED OVER \$2,500.00. LET'S KEEP IT GOING!

## *TCHEFUNCTA COUNTRY CLUB*

IN COVINGTON ON **MONDAY, APRIL 18.**

THE FORMAT WILL BE A 4-PERSON SCRAMBLE W/SHOTGUN START AT **11:00AM.**  
FOOD SPONSORED BY TIM KLIBERT W/ DIVERSIFIED LOGGING

REGISTRATION OPENS AT 9:30 AM WITH BRUNCH SERVED UNTIL TEE TIME. PRICE INCLUDES GREEN FEES, CART, RANGE BALLS, FOOD & DRINKS, FLIGHT, PRIZES & 2 MULLIGANS. WHAT ELSE COULD YOU POSSIBLY ASK FOR? DONATIONS OF ANY KIND ARE WELCOME. THE COST IS \$125.00 / INDIVIDUAL OR \$600/CORPORATE. HOLE SPONSORS ARE \$125.

THIS EVENT ALWAYS FILLS UP AND WE ARE LIMITED TO 120 PLAYERS ONLY. PLEASE REGISTER EARLY TO AVOID CONFUSION. REMEMBER YOU ARE NOT REGISTERED UNTIL NOGS HAS RECEIVED PAYMENT AND YOU ARE CONFIRMED BY ANNETTE. AS USUAL WE NEED VOLUNTEERS. IF YOU CAN HELP OUT YOU WILL BE TREATED TO A DAY OF FUN, FOOD, AND BE ELIGIBLE FOR SOME DOOR PRIZES. MAKE SURE YOU SUPPLY YOUR HANDICAP OR A SCORE THAT TYPIFIES A SET OF ROUNDS OF GOLF OVER RECENT TIME NO GREATER THAN 2 YEARS IN THE SPACE PROVIDED.

DONATIONS AND TO VOLUNTEER CONTACT  
BOB HAFNER (504-561-8980) OR TIM KLIBERT (985-536-4143)

TO REGISTER, CONTACT ANNETTE HUDSON AT THE NOGS OFFICE, 810 UNION ST. STE. 300 NEW ORLEANS, LA 70112 504-561-8980; FAX 504-561-8988. CASH, CHECK (PAYABLE TO NOGS), VISA, MC, AND AMEX ARE ACCEPTED.

Name: \_\_\_\_\_

Company: \_\_\_\_\_

Phone: \_\_\_\_\_

Names of others in your group;

\_\_\_\_\_  
\_\_\_\_\_  
\_\_\_\_\_

V MC Disc Am Ex # \_\_\_\_\_

Exp Date \_\_\_\_\_ Total Paid \_\_\_\_\_



# DRILL BITS

## South Louisiana and Offshore Exploration and Production Activity

### South Louisiana and Offshore GOM Exploration and Production Activity

By Carlo C. Christina

#### LAFAYETTE DISTRICT, ONSHORE AREA

Since my last report 32 permits to drill have been filed. The most significant wells are listed below.

#### NEW LOCATIONS—

An important deep test has been permitted in Calcasieu Parish. Samson Contour Energy will drill the #1 Nabours in **West Buxton Creek Field** to a proposed total depth of 19,072 feet. The well is located in Sec. 18, 8S-11W. Prior drilling in the field was limited to a 3 oil producers from the Yegua, (Cockfield), at 11,700' in the early 1990's, and a 14,100' dry hole in 2006. Production has declined severely in the past few years. Only 20,000 barrels of oil have been produced in the past 3 years, and no gas has been produced in the past 6 years. The proposed well will be an important test of the deep Wilcox sands, and possibly deeper stratigraphic sections.

In Beauregard Parish, Vetra Exploration will drill in **Bivens Field** the #2 Olympia Minerals in Sec. 18, 5S-11W. The proposed total depth is 12,313 feet.

St. Mary Parish has attracted more drilling activity. In **Atchafalaya Bay Field** Phoenix Exploration will drill the #1 S.L. 20369 to a proposed depth of 20,500 feet. The recently completed #1 S.L. 20035 and the #1 S.L. 20221 are each currently producing approximately 25 million cubic feet of gas per day from deep Cib. op sands, deeper than 18,200 feet.

Also in St. Mary Parish, Clayton Williams has permitted a **wildcat** in **Eugene Island Block 16**. The #1 (VUA) S.L.19924 will be drilled to 15,225 feet.

Phoenix will drill an 11,500' test, the #1 S.L. 20223, in **Eugene Island Block 18 Field**.

Walter Oil & Gas is drilling the #1 S.L. 20271 below 12,728 feet on its **wildcat** in **West Cameron Block 29**.

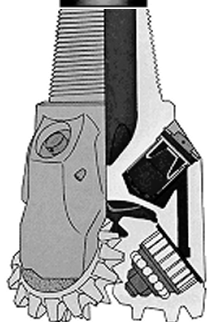
A deep test has been permitted in **Bayou Hebert Field** in Vermilion Parish. Petroquest will drill the #1 Thibodeaux to 19,800 feet to test the Cris. R sands in Sec. 17, 14S-5E.

In Vernon Parish Anadarko will drill to 21,912 feet in **South Burr Ferry Field**. The #1 -16 GASRS is located in Sec. 16, 2S-11W.

Other locations of interest are:

In **Terrebonne Parish, Isles Dernieres Field**, Brammer Engr. Co. will drill #1 S.L. 20485, a 10,000' test located in Sec. 28, 23S-17E, and in **Lake DeCade Field**,

Petroquest will drill #1 S.L. 20183 in Sec. 19, 19S-16E. Proposed total depth is 10,200 feet.



## **COMPLETIONS**

In Assumption Parish Pennington Operating Co. has plugged and abandoned the #1 Clause in **Oakley Field**. It had been drilled to a total depth of 14,342 feet in Sec.79, 14S-14E. (242472)

In **Lake Boeuf Field**, Lafourche Parish, Paxton Oil Co. has completed the #1 Bowie Lumber as a new shallow oil well flowing 70 BOPD. The well is located in Sec. 116, 15S-18E, and was completed through perforations 4183 to 4188 feet, in the "Lemarie' Sand". Congratulations, Louis L. (242271)

Manti Exploration has plugged and abandoned the #1 LL&E in **Bayou Pointe Au Chene Field**, Terrebonne Parish. The well was drilled to a total depth of 15,107 feet in Sec. 20. 19S-20E. (242599)

## **OFFSHORE—GOM Activities**

By Al Baker

According to a recent *Bloomberg Report* article, as of February 25th, the BOEMRE had 270 shallow-water permits and 52 deep-water permits awaiting regulatory approval. Their office has just six drilling engineers to process all permit applications pending in the Gulf of Mexico.

A February 9th through March 18th query of the drilling permit database on the BOEMRE website shows that eleven new well drilling permits have been granted during that time period. The offshore operators receiving the permits include Apache, Arena, Chevron, Contango, Hall-Houston and McMoRan. Eight permits are for shelf leases, and the remaining three are for deepwater leases. Chevron obtained the three deepwater drilling permits for Green Canyon Blocks 640 (2) and 641 (1) within their Tahiti Field. According to the website, a total of 38 new well permits have been issued on the shelf since June 8, 2010, whereas only five new well permits have been granted in deepwater since October 12, 2010.

As of March 11th, the BakerHughes Rig Counts show that there are 24 active rigs in the Gulf of Mexico versus 51 active rigs at the same time in 2010. This 27-rig decrease represents a -47.1% decline on a year-to-year basis. According to ODS-Petrodata, the Gulf of Mexico drilling rig fleet remains unchanged at 125 rigs. Of these, 69 rigs are under contract which translates to a 55.2% utilization rate. The small leap in the count from last month is a result of an increase of four rigs under contract. It is obvious that we are beginning to see an uptick in drilling activity as a direct result of the increase in permitting by the BOEMRE. However, the offshore activity pace still has a long way to go to return to pre-Macondo activity levels and will depend upon how quickly the BOEMRE personnel can process the back-log of the permit applications mentioned above.

In addition, the BOEMRE has indicated that the next Central Gulf of Mexico lease sale, which had been scheduled for March 2011, will not occur until March 2012. The next Western Gulf of Mexico lease sale that is usually held during August will not occur until either late 2011 or 2012, as well, adding further to the delays.

Gulf Coast Association of Geological Societies



**Sharing knowledge to add value**

**Gulf Coast Association of Geological Societies  
61<sup>st</sup> Annual Convention  
October 16 – 19, 2011  
Veracruz, Mexico**

**For more information:  
<http://gcags2011.com>**

# SEI®

**Seismic Exchange, Inc.**

**Strategic Speculative Surveys  
Geophysical Data Marketing & Management**

**Your**  
**Full Service  
National  
Seismic Data  
Marketing Firm**

New Orleans  
Dallas  
Houston  
Denver  
Oklahoma City  
Corpus Christi  
Tulsa

201 St. Charles Avenue, Suite 4300, New Orleans, Louisiana 70170-4300  
Telephone 504.581.7153 Fax 504.581.9591  
[www.seismicexchange.com](http://www.seismicexchange.com)

**Japan Earthquake Shortens Earth's Day:** March 16, 2011 | NASA

"The March 11, magnitude 9.0 earthquake in Japan may have shortened the length of each Earth day and shifted its axis, but don't worry-you won't notice the difference." Quoted from the NASA press release. For more information go to: <http://geology.com/nasa/japan-earthquake/>

**Gasoline Prices and Oil Drilling Sentiment:** March 15, 2011 | USA Today

As the price of gasoline rises more and more Americans become supportive of oil drilling. For more information go to: <http://content.usatoday.com/communities/greenhouse/post/2011/03/gallup-oil-drilling-us/1>

**US overdue, under-prepared for huge Pacific quake:** March 16, 2011 |

Balita.com

The western United States is overdue for a huge earthquake and tsunami much like the one that devastated Japan last week, and is nowhere near ready to cope with the disaster, experts say. For more information go to: <http://balita.com/2011/03/16/us-overdue-under-prepared-for-huge-pacific-quake/>

**Nyiragongo Crater: Journey to the Center of the World:** February 28, 2011

| The Boston Globe

In June 2010, a team of scientists and intrepid explorers stepped onto the shore of the lava lake boiling in the depths of Nyiragongo Crater, in the heart of the Great Lakes region of Africa. The team had dreamed of this: walking on the shores of the world's largest lava lake. For more information and fabulous pictures go to: [http://www.boston.com/bigpicture/2011/02/nyiragongo\\_crater\\_journey\\_to\\_t.html](http://www.boston.com/bigpicture/2011/02/nyiragongo_crater_journey_to_t.html)

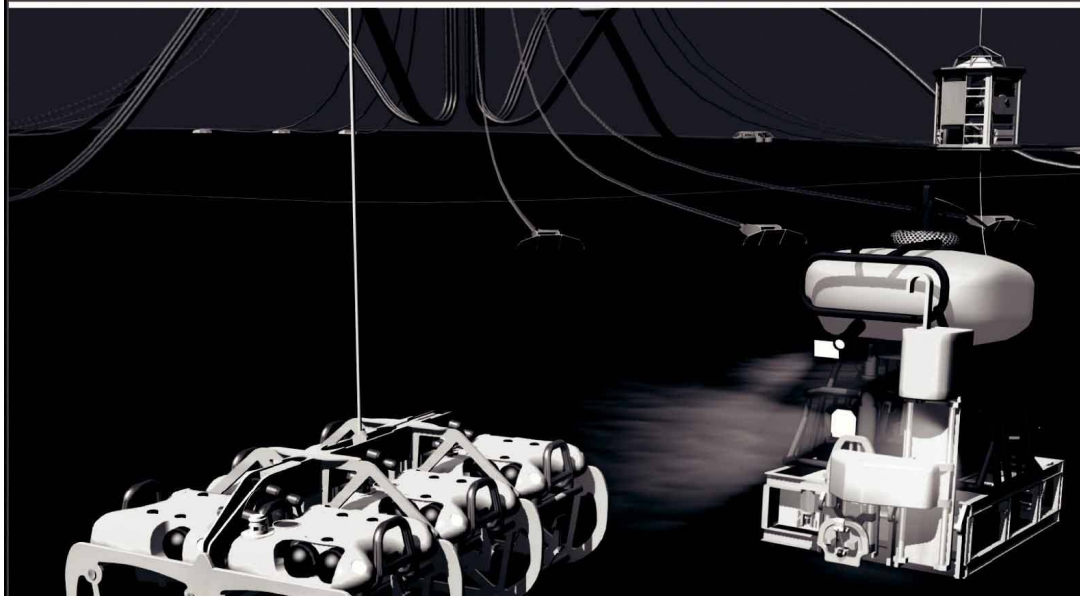
Q: Why did the dinosaurs  go extinct?

A: Because they wouldn't take a bath!

Wiselady Ha! Ha! Ha!



# Finally - An answer for getting reservoir seismic **OVER THE RESERVOIR!**



## • 4C/4D Node Seismic

- ANGOLA
- GoM
- NIGERIA



**“Coming Soon to an Oilfield Near You!”**

[www.sbexp.com](http://www.sbexp.com)

**Dubai**  
T: +971 4 4271700

**Houston**  
T: +1 281 566 1666

**Oslo**  
T: +47 2240 2700

**Rio**  
T: +55 21 2494-0283

**Singapore**  
T: +65 9180 2605

**Trondheim**  
T: +47 7 3879500

RAISING  
THE **STANDARD**



100 Northpark Blvd.  
Covington, LA 70433

(985) 773-6000



**LaBay**  
Exploration Co., L.L.C.

111 Veterans Memorial Blvd.,  
Suite 1550  
Metairie, Louisiana 70005

[www.labayexploration.com](http://www.labayexploration.com)

Office (504) 371-5967  
Fax (504) 371-5969

***This advertising space is available!  
Contact the NOGS office.***



# THE NEW ORLEANS GEOLOGICAL SOCIETY MEMORIAL FOUNDATION, INC.

The Memorial Foundation is an IRS Tax Exempt Code #501 (c)(3) organization. The Federal I.D. is: 72-1220999. Please consider making a donation to the Foundation prior to the close of this year's fiscal cycle on June 30, 2011. Your individual support in any amount will help meet the IRS Guidelines for our Foundation. *Thanks!*

## \$15,000 AND ABOVE

**Olga Braunstein Succession**

**Gibbet Hill Foundation**

*In Memory of Steve & Marion Millendorf, William J. Prutzman,  
Roger G. Vincent & Ron Youngblood*

## \$10,000

**George W. Schneider, Jr. and Family**

*In Memory of George W. Schneider, Sr.  
GCAGS  
Matching funds*

## \$2,000 TO \$3,000

**NOGS Golf Tournament May 2010**

*In Memory of Bill Craig*

## UP TO \$249

**Donald I. Andrews**

*In Memory of Ray F. Havard  
In Memory of Harlan(Lanny) Northcott  
Robert J. Ardell*

*In Memory of Al Gilreath  
In Memory of Bill Malin  
In Memory of Bob Williamson*

**Mr. and Mrs. Wesley Barton**  
*In Memory of Thomas A. Cullinan*

**Abraham Biadgelgne**  
**Maurice N. Birdwell**  
**Irion Bordelon, Sr.**

*In Memory of Robert G. Williamson*

**Hilary James Brook**  
**Robin Broussard**  
**Rob Burnett**

**J. Sybil Callaway**  
**Chevron**  
*Matching Funds*

**Arthur F. Christensen**  
**Ellen F. Clark**  
**James S. Classen**

*In Memory of Robert C. Treadwell*

**Willis E. Conatser PhD**

**Clarence F. Conrad**  
**Charley Corona**  
*In Memory of Professor Hubert Skinner*

**Trudy and Charley Corona**  
*In Memory of Erik Mason*

**Michael A. Danahy**  
**M. R. "Bob" Douglass**  
*In Memory of Robert G. Williamson*

**Merle J. Duplantis**  
**Dr. Brooks B. Ellwood**  
**Parrish N. Erwin, Jr.**  
**Exxon Mobil Matching Funds**  
**Michael N. Fein**  
**Laurens Gaarenstroom**

## \$7,000 TO \$9,000

**Paul C. McWilliams**

## \$250 TO \$499

**Burton C. Bowen**  
*In Memory of Joffre J. Crouere*  
**Carlo C. Christina**  
*In Memory of Al Gilreath*  
**Tom Klekamp**  
**Richard G. Klibert**

**Sherwood M. Gagliano**  
**Arthur J. Garden**  
**David Garner**  
**Larry Galloway**  
**Peter G. Gray**  
*In Memory of Robert G. Williamson*  
**Bret Hampton**  
**Angela M. Hessler**  
*Through the Chevron Humankind Program*  
**Bernard L. Hill, Jr.**  
*In Memory of Robert E. Osborne*

**Dan E. Hudson**  
**Kenneth Huffman**  
**Jeffrey E. Jandegian**  
**Paul Jurik**  
*In Memory of Thomas A. Cullinan*  
**Reuben J. Klibert, Jr.**  
*In Memory of Dale Klibert*  
**John C. Kucwicz, Jr.**  
**John C. Langford**  
**Jeannie F. Mallick**  
**Paul C. McWilliams**  
*In Memory of Russell D. "Rusty" Morris*  
**New Orleans Geological Auxiliary**  
*In Memory of Dee Baysinger*  
*In Memory of Doris Meltzer*  
*In Memory of Terri Smith*

**Nexen Petroleum USA Inc. Matching Funds**  
**Russell H. Nordwell**  
**William J. O'Leary**  
**Richard A. Olsen**  
*In Memory of Richard W. Boebel*  
*In Memory of William J. Malin*  
*In Memory of Robert W. Sabate'*  
**Teresa M. O'Neill**  
*In Memory of Brian J. O'Neill*

# FONO FUND

The FONO Fund accepts contributions that are invested and the income dedicated to assure sufficient financial resources will always be available to maintain the NOGS business office. Contributors are reminded that donations to the FONO Fund are not covered by the IRS 501 (c)(3) tax exempt classification and should be reported as a business expense on your IRS tax report.

## \$500

**James A. Hartman**

*In Memory of Hal Hudson  
In Memory of Robert G. Williamson*

## UP TO \$250

**Donald I. Andrews**  
**Alfred H. Baker Jr.**  
**Joseph E. Boudreaux**  
**Hillary James Brook**  
**Jack G. Bryant**  
**J. Sybil Callaway**  
**Arthur F. Christensen**  
**Richard P. Colomes**  
**Clarence F. Conrad**  
**Michael A. Danahy**  
**John Dombrowski**  
**Merle J. Duplantis**  
**Richard A. Edmund**  
**Mark J. Gallagher**  
**William J. Furlong**  
**Duncan Goldthwaite**  
**James A. Hartman**

*In Memory of Hal Hudson  
In Memory of Robert G. Williamson*

**Bernard L. Hill, Jr.**  
**Thomas A. Hudson**  
**Kenneth Huffman**  
**C. M. (Max) Jacobs**  
**Robert M. Jemison, Jr.**  
**Tom Klekamp**  
**Louis Lemarie'**

**William J. Malin**  
**Jeannie F. Mallick**  
**George M. Markey, Jr.**  
**James A. McCarty**  
**Louis L. McCormick**  
**Robert G. Murphy**  
**William J. O'Leary**  
**Richard A. Olsen**  
**Erwin Parrish, Jr.**  
**Linda and Bill. Peirce**  
**Edward B. Picou, Jr.**  
**Richard D. Provensal**  
**James P. Raymond, Jr.**  
**Brenda E. Reilly**  
**C. R. Rondeau**  
**George D. Severson**  
**Rudolf B. Siegert**  
**Richard J. Standcliffe**  
**Bryan P. Stephens**  
**Raymond Stephens**  
**Roy C. Walther**  
**Robert C. Weissmann**  
**William M. Whiting**  
**James W. Yeldell, Jr.**  
**Jim Zotkiewicz**

CONTRIBUTIONS FOR BOTH FUNDS THROUGH MARCH 18, 2011.  
DONATIONS ARE LISTED FOR ONE YEAR.

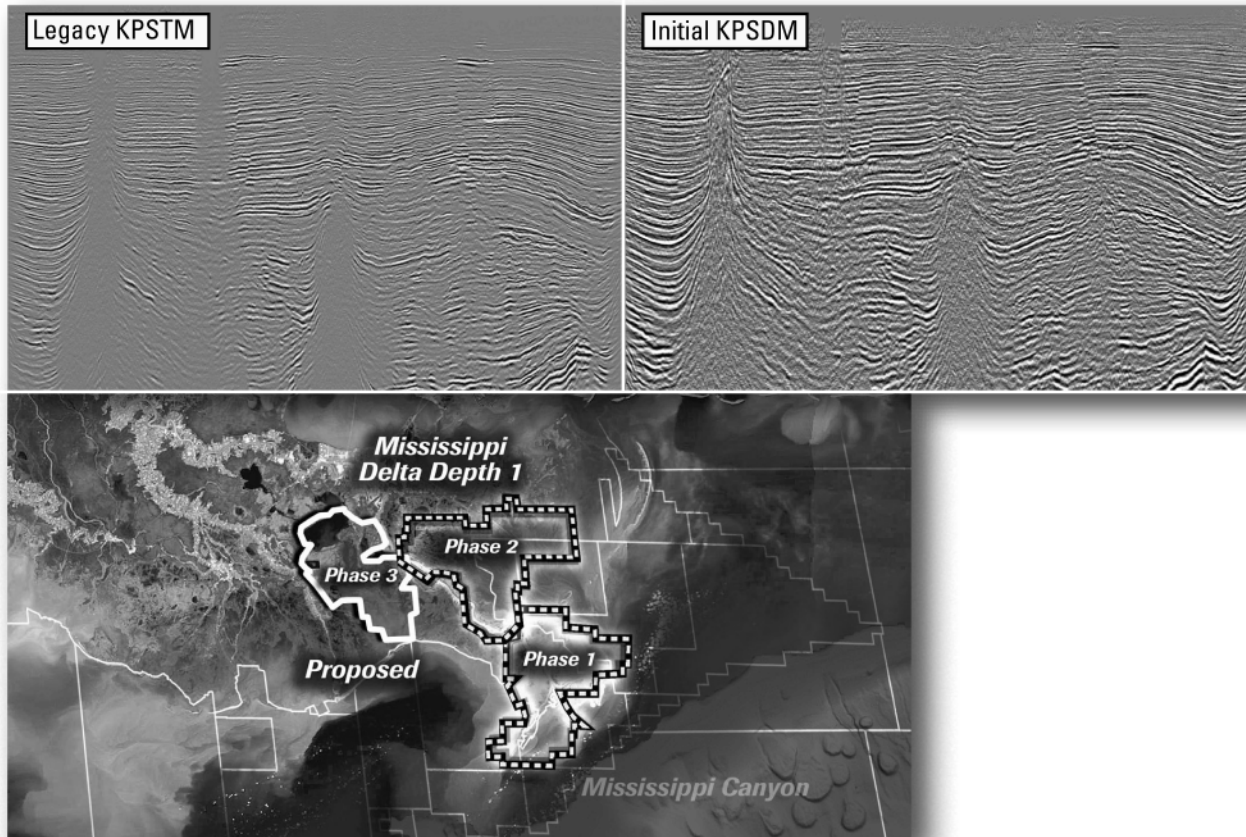
**Linda and Bill Peirce**  
**Edward B. Picou Jr.**  
*In Memory of William J. Malin*  
*In Memory of Robert G. Williamson*  
**Richard D. Provensal**  
*In Memory of Thomas H. Philpott*  
**Scott Purinton**  
**Brenda E. Reilly**  
**Mrs. William B. Rodan**  
*In Memory of Robert G. Williamson*  
**Robert T. Sellars, Jr.**  
*In Memory of Robert G. Williamson*  
**George D. Severson**  
**Rudolph B. Siegert**  
**Dr. J. O. Snowden**  
**Gary L. Spraul**  
*In Memory of H. Grady Collier*  
**Raymond O. Steinhoff**  
*In Memory of Harold E. Vokes*

**Roy C. Walther**  
**William M. Whiting**  
*In Memory of William J. Malin*  
**Armour C. Winslow**  
*In Memory of Rita Menzel Winslow*  
**Frances A. Wiseman**  
*In Memory of Steve Widdicombe*  
**James W. Yeldell, Jr.**  
**Jim Zotkiewicz**

*In Memory of Bill Craig*

**Chevron**  
**Bernard L. Hill, Jr.**  
**John C. Scheldt**  
**Candace V. Strahan**  
*In Memory of James Strahan*

## Improved depth imaging in the Mississippi Delta



In the Mississippi Delta region, WesternGeco is utilizing state-of-the-art processing designed to eliminate fault shadows and enhance deep imaging. The Mississippi Delta - Depth 1 survey, now in progress, incorporates the processing and remigration of twelve legacy surveys covering 1,855 square miles. High-quality time imaging using relative amplitude anisotropic Kirchhoff prestack time migration will be followed by improved structural imaging utilizing anisotropic Kirchhoff prestack depth migration.

To learn more about this and other Multiclient products, call +1 713 689 1000.

[www.multiclient.westerngeco.com/la](http://www.multiclient.westerngeco.com/la)

**Multiclient to the Power of E**



## UNO AAPG Student Chapter Bulldog Talk (Feb 24, 2011)



UNO EES Department's AAPG Student  
Rep, Andrew M. Ranson and Bulldog  
Talk co-speaker Cheryl Collarini



2009-10 UNO AAPG Student Chapter  
President Mary Ellison and Paris Ervin, BS  
geology, UNO 2008 at Bulldog Session



Kevin McVey,  
co-speaker at  
Bulldog talk

# SAI

**Sydboten & Associates, Inc.**  
*Geological and Geophysical Consulting,  
3-D Seismic Interpretation*

**Ben D. Sydboten, Jr. CPG**

124 Heymann Blvd., Suite 202

Lafayette, LA 70503

www.saigeoconsulting.com

Office (337) 234-5288

Cell (337) 234-5491

## ATWATER CONSULTANTS, LTD.

REGISTERED AND CERTIFIED PETROLEUM PROFESSIONALS

GEOLOGICAL, ENGINEERING, GEOPHYSICAL,  
TRAINING AND EXPERT WITNESS SERVICES

3525 Hessmer Ave, Ste 304

Metairie LA 70002

Tel. (504) 581-6527

Fax (504) 524-7798

*"Serving The Oil & Gas Industry Since 1983"*  
Geological,  
Geophysical &  
Land Drafting



Anthony Catalanotto  
President

Stefani Foster  
Drafting & Design

*A Professional Drafting & Graphics Firm*

3349 Ridgelake Drive • Suite 202 • Metairie, LA • 70002

Office: (504) 836-2882 Fax: (504) 836-2877 (Cell) (504) 481-7291

E-Mail: geodraft@bellsouth.net

Website: www.geodraftinc.com

## NORTHCOAST OIL COMPANY

610 E. Rutland St.

Covington, LA 70433

(985) 898-3577

(985) 898-3585 FAX

**Jack M. Thorson**

**Eric C. Broadbridge**

**J. Daryl Gambrell**

**Raymond W. Stephens**

**NOGS thanks our  
sponsors for their support:**

**GOLD LEVEL SPONSORS:**

**CHEVRON**

**LA BAY EXPLORATION CO, LLC.**

**SPECIAL THANKS TO  
DIVERSIFIED WELL LOGGING**

(832) 242-6000 (O)

(713) 917-0493 (O)

(504) 931-7506 (C)

johnjurasin@jurasinoilgas.com

## **JURASIN OIL & GAS**

9700 Richmond Ave., Suite # 124

Houston, TX 77042-4821

JOHN M. JURASIN  
President

Cert. Pet. Geologist #4284  
Cert. Prof. Earth Scientist #1961

### **Collarini Energy Staffing**

Full-Time and Temporary Personnel

Facilities • Drilling • Production • Reservoir Engineering  
Land and Legal • Geoscience • Information Technology •  
Health and Safety • Management • Supply Chain  
Accounting • Administrative Support

10497 Town and Country Way, Suite 950  
Houston, Texas 77024

832-251-0553



www.collarini.com

### **Collarini Associates**

Reservoir Engineering  
Oil & Gas Property Evaluation  
3-D Seismic Interpretation  
Integrated Field Studies

832-251-0160

504-887-7127

Houston

New Orleans

***This advertising space is available!  
Contact the NOGS office.***

## NOGS FINDS WINNERS AT 2011 SCIENCE FAIR

On February 23<sup>rd</sup>, NOGS members judged Junior and Senior Earth Science exhibits at the Region 9 Greater New Orleans Science and Engineering Fair. Judges for the Awards Committee were Jim Brooks (Schlumberger), Dick Fillon (Consultant), Art Johnson (Hydrate Energy), Tom Klekamp (Amber Resources), Rudy Wilhelm (Shell), and Fran Wiseman (BOEMRE). Thank you judges, who gave up work time and clients, Also, thank you also to many of you who answered my call for judges. I was blessed with an overabundance of offers, and I hope I can contact you in the future.

Whereas in the early post-storm years, there was an abundance of quality Junior division projects, those students have moved to the Senior division and the Junior division was quite deficient. As a result, the committee decided to award only one third place prize in the Junior division, and no first or second place prize. All three prizes were awarded in the Senior division, and there was a spirited discussion on how the projects would be ranked.

The Senior Division project first place award went to what we would best describe as one of the most unique clay mineralogical studies we have ever seen, and certainly a project unique to the Fair itself. Ms Ayla Miller, a Junior at Ben Franklin High School in New Orleans, created a project entitled “The Effect of Kiln-firing on the Percent Water Absorption of Mud-Dauber Wasp Nests”. She compared the change in water absorption at different temperatures of natural clay minerals used in pottery, versus the material the wasps use to build their nests and had some unexpected results. Her teacher is Ms. Clare Davis-Wheeler.

The other two winning projects were “Are Dispersants a Good Choice for Oil Spill Clean-Up?”, by Jessica Lawrence, a Senior at John Curtis Christian School. This unique study simulated and documented what remained in the water system long after the Macondo dispersants ceased to be used. Her teacher was Cathy Boucvalt. The third place winner was Brandon Theodore, a Senior at Abramson High School, who did an excellent sedimentology study entitled “Let’s Blow up the Levees!” His teacher was Elkhana Akhundov. Brandon worked with the assistance of Dr. Kyle Straub and his incredible sedimentation lab at Tulane University.

Our sole Junior division winner was Trevor Hawkins, a sixth-grader at John Curtis Christian School. His teacher was Kathy Bush. His project looked at rip-rap from the perspective “What Shape of Gravel Works Best at Slowing Erosion”.

We are planning to have Ms. Miller and her teacher display the winning Senior division project at the May NOGS luncheon. Come on out early and get a good look at some of the outstanding work being done in a local high school.

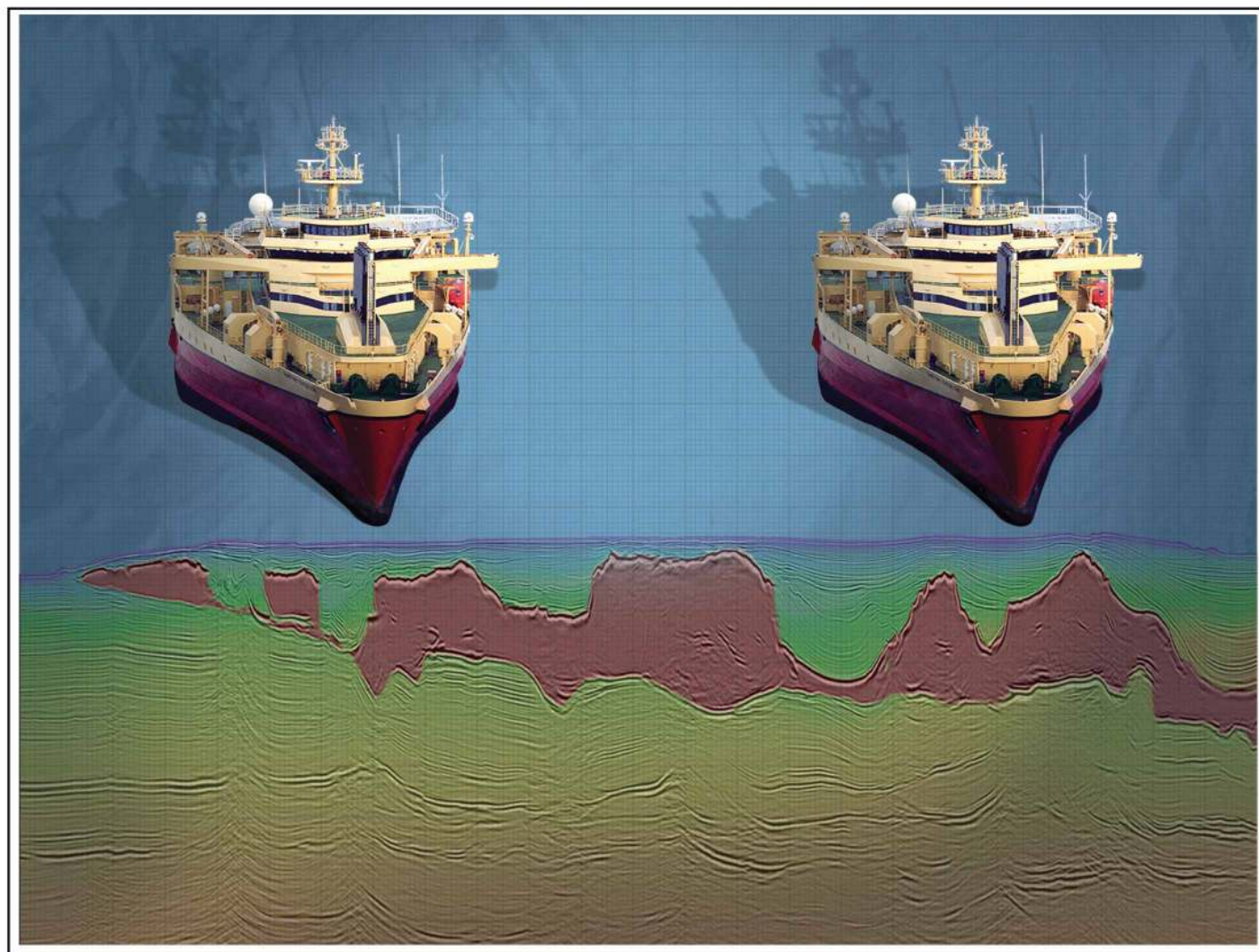
Michael N. Fein  
Chairman, Awards Committee

<p><b>ANSYTHE</b> Donald I. Andrews 504-887-3432</p> 	 <p><b>GEOLOGY ENVIRONMENTAL MANAGEMENT</b></p> <p><b>GEM Consulting LTD</b> Michael Louis Merritt admin@gemconsultingltd.com</p> <p>1451 Applewood Road • Baton Rouge, LA 70808</p>
<p><b>THE BOEBEL COMPANY</b> Oil and Gas Investments 170 Broadway Street, Suite 321 New Orleans, LA 70118 (504) 866-4313</p>	<p><b>H. WARREN BELL</b> Oil and Gas Exploration 2500 Tanglewilde, Suite 485 Houston, TX 77063-2126 Bus (713) 266-7297 Fax (713) 266-7298</p>
<p><b>BOO-KER OIL &amp; GAS CORP.</b> Gray S. Parker 826 Union, Suite 300 New Orleans, LA 70112 Bus. (504) 581-2430 Fax (504) 566-4785</p>	<p><b>PHELPS GEOSCIENCE</b> Onshore Gulf of Mexico Geology and Geophysics Prospect Generation and Evaluation Houston, TX jsphelps@yahoo.com (281) 398-5208</p>
<p><b>C &amp; R EXPLORATION, INC.</b> Carlo C. Christina Lawrence G. Ringham</p>	<p><b>RAFIDI OIL AND GAS, INC.</b> Jaser N. Rafidi, President 4415 Shore Dr., Suite 202 Metairie, LA 70006 Bus. (504) 722-2942 Fax (504) 888-5539; Res. (504) 888-1661</p>
<p><b>C. R. RONDEAU</b> Petroleum Geologist 119 W Southland Ave. Ironwood, MI 49938 Res. (906) 932-4692</p>	<p><b>ROY C. WALTHER</b> Petroleum Geologist 2421 Prancer Street New Orleans, LA 70131 Bus. (504) 392-8513 Res. (504) 392-9332</p>
<p><b>CLASSEN EXPLORATION, INC.</b> James S. Classen Looking for close in deals P.O. Box 140637 Boise, ID 83714 Bus. (208) 854-1037 Fax (208) 854-1029 classenllc@msn.com</p>	 <p>625 E. Kaliste Saloom Lafayette, LA 70508 16800 Greenspoint Dr., Suite 225-S Houston, TX 77060 1100 Poydras St., Suite 1050 New Orleans, LA 70163 www.StoneEnergy.com</p>
<p><b>D-O-R ENGINEERING, INC.</b> 3-D and Geoscience Services 6161 Perkins Rd. P O Box 80812 Bus : (225) 765-1914 Baton Rouge LA 70898</p>	<p><b>TONY CAROLLO</b> Consulting Geologist Unitization Geosteering Field Studies 1701 Peach Street Metairie, LA 70001 Bus. (504) 885-0004 Res. (504) 885-6829</p>
<p><b>EDWARD B. PICOU, JR.</b> Consulting Micropaleontologist - Retired 228 St. Charles Ave., Suite 1330 C New Orleans, LA 70130 Bus. (504) 529-5155 Res. (504) 282-3096</p>	<p><b>Zot Oil &amp; Gas, LLC</b> Jim Zotkiewicz Prospect Generation and Evaluation 3200 Ridgelake Dr. Suite 207 Metairie, LA 70002-4930 Business: 504.831.4694 Email: jimzot38@zotoil.com</p>

### “And Looking Ahead...”

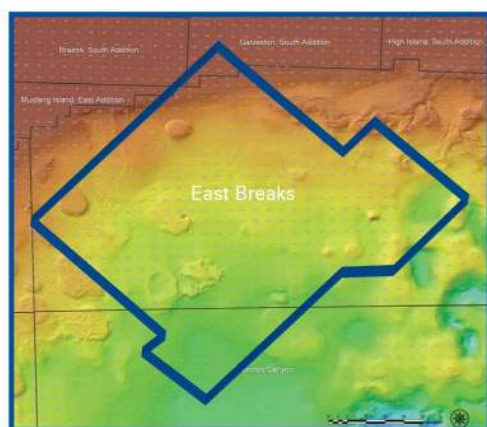
The next NOGS Luncheon will be held on May 2 at Holiday Inn Downtown Superdome. Guest speaker William W. "Toddy" Guidry III, of Core Laboratories in Lafayette, will present “Introduction to Reservoir Fluids and PVT Analyses for Geologists.” Contact the NOGS office to make your reservation.





## Crystal III, East Breaks

## MultiClient Wide Azimuth



- **Size** - 480 OCS blocks
- **Focus** - Sub-Salt Miocene & Paleogene
- **Technology** - TTI Beam and RTM Imaging
- **Delivery** - Available Q4 2010

Houston  
Tel: +1 281 509 8000  
Fax: +1 281 509 8500

Oslo  
Tel: +47 67 52 6400  
Fax: +47 67 52 6464

London  
Tel: +44 1932 37 6000  
Fax: +44 1932 37 6100

**A Clearer Image**  
[www.pgs.com](http://www.pgs.com)



## NEW ORLEANS GEOLOGICAL SOCIETY



810 Union Street, Suite 300  
New Orleans, LA 70112-1430

# WWW.NOGS.ORG

### MARINE PROPERTIES, LLC BERKSHIRE EXPLORATION CO.

MONTE C. SHALETT, CPL, PRESIDENT

3030 Lausat Street  
Metairie, LA 70001-5924

BUS. (504) 831-7779  
FAX. (504) 831-8315

### PCI

### Paleo Control, Inc.

Houston, Texas  
713-849-0044

Drilling Wells, Studies and Data Base

Loyd Tuttle

Frio, SE Texas

Bob Liska

Wilcox, S and SE Texas

Jim Thorpe

Miocene and Cam-Miogyp



## SEE YOUR DATA IN A WHOLE NEW LIGHT!

Take the pressure out of exploration  
and drilling by seeing what you  
are going to encounter.



### eSeis

www.e-seis.com  
713.531.1447

- Lithology & Fluids
- Depositional Facies
- Pore Pressure from V & Q
- Well Planning Consultation

