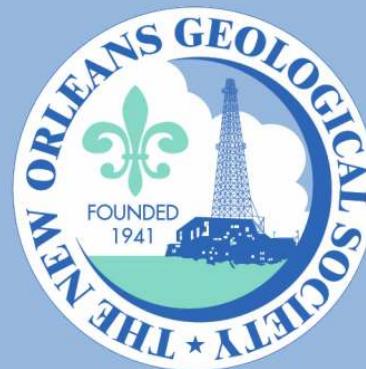


NOGS LOG



September 2010

Volume 51, Number 3

Upcoming Events and Activities

September 12-15 - AAPG 2010 International Conference & Exhibition

Calgary, Canada. See short courses and field trips information on page 14.

September 13 - NOGS Luncheon

*** At the Holiday Inn Downtown Superdome ***

\$2.00 validated parking in hotel garage

Activities include Foundation Scholarship Awards and introduction of New Orleans Geological Auxiliary Officers – Spouses and Significant Others are welcome.

(See page 7 for Announcement)

HOLIDAY INN DOWNTOWN SUPERDOME

Check with concierge or
front desk for location

Lunch served at 11:30am

ADMISSION:

with reservation \$30.00

without reservation \$35.00

Student Member with reservation Free

October 4 - NOGS Luncheon

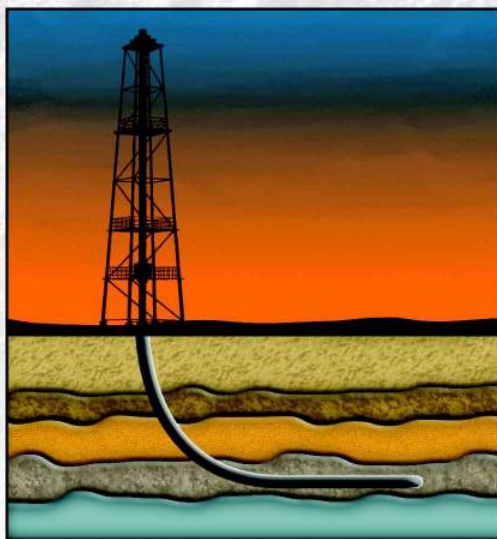
Holiday Inn Downtown Superdome. Guest speaker Terrence A. McCloskey, LSU School of the Coast and Environment, will present “Long-term variability in hurricane activity: using the study of ancient hurricanes to improve both long-term hazard risk assessment and short-term forecast of landfall location.”

October 10-15 - GCAGS 2010 Convention

60th Annual Convention in San Antonio, TX.

Check the “NOGS website” for updated information and see information on pages 22-23.

Looking for Accurate Directional Data?



Directional Survey Plus data now available online

Let TGS lead you in the right direction

Get on the right well path with Directional Survey Plus (DS+) data. DS+ data moves beyond the simple capture of measured depth, azimuth and inclination to create the most accurate spatial representation of the well path, from surface to total depth.

TGS researches DS+ wells to identify all wellbores, entering all runs and composites in original form with extensive metadata and superb quality control. The data are then processed and composited using proprietary workflows. The resulting standardized, high quality data is available in multiple industry formats.

Current coverage includes many of the hottest basins in the US, and multi-client coverage is expanding everyday. TGS also provides DS+ processing to clients worldwide.

Find out more at www.tgsnopec.com/welldata
888-LOG-LINE or WellData@tgsnopec.com



Geophysical
Products



Geological
Products



Imaging
Services



www.tgsnopec.com

NOGS Office

Office Manager: Annette Hudson

Office Hours: 8:30 a.m. – 3:30 p.m. on Monday-Wednesday-Friday

Tel: 504-561-8980 □ Fax: 504-561-8988

E-mail: info@nogs.org □ Website: www.nogs.org

The office is located at Suite 300, 810 Union Street, New Orleans, LA 70112.

Correspondence and all luncheon reservations should be sent to the above address.

Sent to press on August 12, 2010.

**BOARD OF DIRECTORS**

		Company	Phone	E-mail
President	Rick Kear	Schlumberger	504-592-5376	kearl@new-orleans.oilfield.slb.com
Vice President	TBA			
Secretary	Penne Rappold	Shell	504-728-4338	prappold@gmail.com
Treasurer	Will Jorgensen	Shell	504-728-6339	william.r.jorgensen@shell.com
President-Elect	Bob Hafner			ottohaf@aol.com
Editor	Fran Wiseman	BOEMRE	504-736-2912	frances.wiseman@boemre.gov
Director 2011	Scott A. Wainwright	Bret Exploration Co Inc	504-889-2700	scott_wainwright@hotmail.com
Director 2012	Arthur H. Johnson	Hydrate Energy International	504-464-6208	artjohnson51@hotmail.com
Director 2013	Jack Langford	J C L Services	985-764-2527	jclangford@latterblum.com

COMMITTEE

	Chairperson			
AAPG Delegates	William M. Whiting	Consultant	504-947-8495	bootscon@aol.com
AAPG Student Chapter	Gabriella March	Tulane University		gmarch@tulane.edu
AAPG Student Chapter	Andrew Ranson	UNO	337-578-5587	aranson@uno.edu
Advertising-Log	Andrea Stancin	Shell	504-728-0431	Andrea.a.stancin@shell.com
Auditing	Chuck Holman	Independent	504-891-4878	charleswholman@bellsouth.net
Awards	Michael N. Fein	W & T Offshore	504-210-8148	mikef@wtoffshore.com
Ballot	Will Jorgensen	Shell	504-728-6339	william.r.jorgensen@shell.com
Best Paper	Brenda Reilly	Energy Partners Ltd.	504-799-4811	breilly@eplweb.com
Continuing Education	TBA			
Employment Counseling	TBA			
Entertainment	Bob Hafner			ottohaf@aol.com
Environmental	Daisy Pate	Corps of Engineers	504-957-4372	daisy.pate@gmail.com
External Affairs	Michael A. Fogarty	Sylvan Energy, LLC	603-523-4808	mike.a.fogarty@gmail.com
Field Trip	David Garner	Shell	504-728-6154	David.Garner@shell.com
Finance and Investment	Will Jorgensen	Shell	504-728-6339	william.r.jorgensen@shell.com
Historical	Edward B. Picou, Jr.	Consultant	504-529-5155	epicou@bellsouth.net
Membership/Directory	Penne Rappold	Shell	504-728-4338	prappold@gmail.com
New Geoscientists (NGNO)	TBA			
Nominating	Mike Ledet		504-394-9636	mikeledet@cox.net
Non-Technical Education	Duncan Goldthwaite	Consultant	504-887-4377	DGldthwt@aol.com
Office Operations	Tom Klekamp	Amber Resources	985-845-4046	klekamp@bellsouth.net
Publications Sales	Edward B. Picou, Jr.	Consultant	504-529-5155	epicou@bellsouth.net
Photography	J. David Cope	Ankor Energy	504-596-3672	dcope@ankorenergy.com
School Outreach	Thomas C. Bergeon	Century Exploration	504-832-3772	Tom.bergeon@centuryx.com
Scouting	Carol Rooney	Consultant Geologist	504-835-1909	carolbrooney@aol.com
Technical Projects	TBA			
Ad Hoc Committee on University Support	Michael J. Gallagher	Eni Petroleum	504-593-7480	Michael.Gallagher@enipetroleum.com

NOGS LOG STAFF

Editor	Fran Wiseman	BOEMRE	504-736-2912	nogseditor@gmail.com
Editor-Elect	David Tatum	Chevron	985-773-6477	davidtatum@chevron.com
Auxiliary	Susie Baker	NOGA	504-466-4483	abaker1006@aol.com
Info Tidbits	Fran Wiseman	BOEMRE	504-736-2912	nogseditor@gmail.com
Drill Bits	Carlo Christina			carlocc398@aol.com
Webmaster	Edward B. Picou, Jr.	Consultant	504-529-5155	epicou@bellsouth.net
Layout	Jannette Inc.			

NOGS AUXILIARY

Officers		Phone	Directors	Year	Phone
President	Jean Jones	504-738-8091	Peggy Campbell	2009-11	504-283-2505
1st Vice-President	Alma Dunlap	504-737-2678	Ruth Grimes	2009-11	504-392-8103
2nd Vice-President	Judy Sabatè	504-861-4335	Gerry Waguespack	2009-11	504-737-0532
Secretary	Peggy Rogers	504-392-6323	Carol Andrews	2010-12	504-887-3432
Treasurer	Judy Lemarie'	504-393-8659	Susie Baker	2010-12	504-466-4483
Parliamentarian	Beverly Kastler	504-286-0879	Joan Collier	2010-12	504-833-1738
Member-at-Large	Linda Peirce	504-393-7365			

--- NOGS Contact List continued on page 10 ---

SYNERGY ENERGY



Weatherford®
LABORATORIES

Your success increasingly depends upon a better understanding of your reservoir. At Weatherford Laboratories, we provide a single source for comprehensive laboratory analyses, creating a synergy previously unknown in laboratory services. This single source includes distinguished geologists, geochemists, analysts, engineers, technicians and software developers, 38 worldwide laboratories, and the broadest portfolio of services for acquiring and interpreting data from physical samples. The end result is an unsurpassed combination of intellectual capital and technical resources — all working together to help you enhance development planning and reduce reservoir uncertainty.

Put our union of Synergy and Energy to work for you.

Weatherfordlabs.com

HIGHER STANDARDS

NORTH AMERICA
NAInquiries@weatherfordlabs.com

EUROPE
EUInquiries@weatherfordlabs.com

LATIN AMERICA
LAInquiries@weatherfordlabs.com

MIDDLE EAST/NORTH AFRICA
MENAIquiries@weatherfordlabs.com

ASIA PACIFIC
APIquiries@weatherfordlabs.com



from the President

One of the few constants is change. We experience change personally, as an industry, as a nation, and as a professional society. Naturally, we all want to have only positive change in each of these areas but it doesn't always happen like that. We recognize we have no choice but to experience change. What we do have is some control over how we deal with or manage the impact of change in our lives.

The first change that I want to address is that my good friend and long time colleague, Mr. David Reiter, has transferred with his firm, Eni Petroleum to Houston, Texas. He had to resign as President of NOGS, a position from which he had long wanted to serve the society. David will try to return for a number of NOGS meetings and events so he's not "gone-gone." David's resignation placed me as your new president with a direct charge from David to take care of and improve NOGS. I will do my best to fulfill this commitment with the assistance of the current board, past presidents, and our many experienced and helpful members. So change one is that NOGS has a new president.

Change two is that BP's Mocondo well is no longer spewing oil and gas unrestricted into the Gulf of Mexico. In fact, the blowout has been successfully stopped and the well plugged with cement via a "top kill" process. There is currently a lot of debate as to the amount of hydrocarbons and dispersant still in the Gulf waters, as well as where it is located. But this a huge positive change! We all recognize that what we cannot see can still hurt us, our environment, our industry, and our nation. How do we handle this change? We need to voice intelligent, educated, experienced and constructive comments across the board. One of our members, Director Art Johnson, has been asked several times by the media to bring such insight, and he has done so in his unique style. If given the opportunity I encourage you do the same within the limitations imposed by your employer and within the context of your personal and professional ethics.

Another positive change is the forthcoming NOGS publication, "Oil & Gas Fields of South Louisiana 2010." I was fortunate to sit in on a recent committee meeting and want to praise this team for their excellent efforts at a considerable and difficult task. We can all be proud of the

new volume and our colleagues. The committee exhibits the highest levels of professionalism and ethics under the leadership of Carlo Christina and Charley Corona. We can all be proud of the "Oil & Gas Fields of South Louisiana 2010!" Thanks to Art Johnson for his fine job of previewing this publication in his lecture at the August luncheon meeting. I for one intend to order the CD as soon as possible, and note that the graphics on the CD are in color!

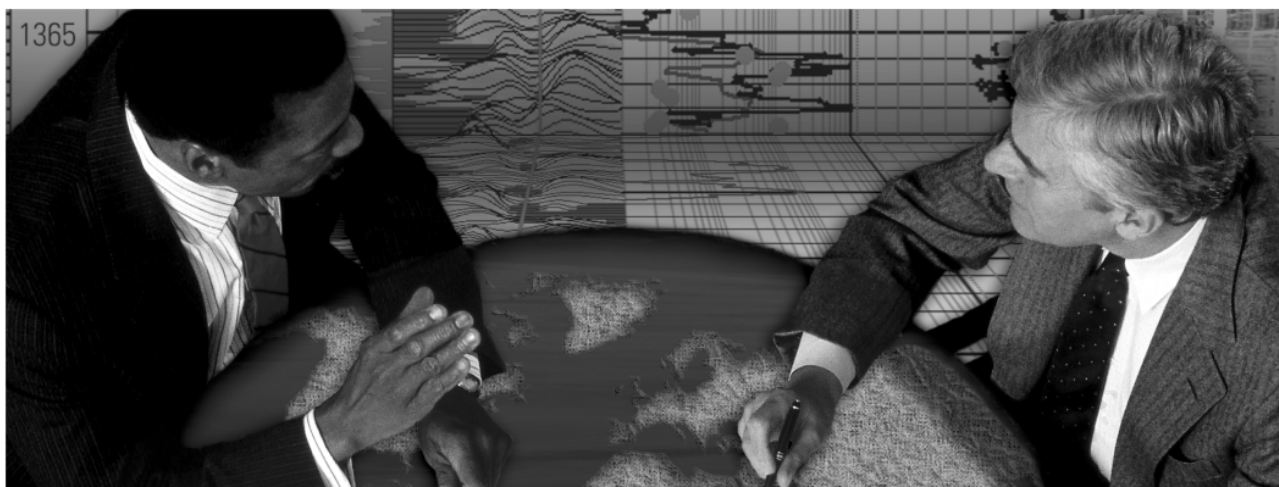
The most rapid change in our industry that I have seen in my career struck us unexpectedly when President Obama ordered the immediate cessation of all drilling activity in the deepwater Gulf of Mexico. The mandate has expanded to include the shelf waters also for a period of six (6) months following the Mocondo blowout. The President has appointed a board to study how to go forward, and that group has begun their efforts, but what will be left of our personnel and drilling rigs by the time their work is completed and the mandate is lifted? Deepwater rigs are leaving the Gulf of Mexico for other deepwater areas such as offshore Brazil and West Africa. The rigs leaving won't be returning any time soon. There were eight (8) new rigs set to move into the GOM before the end of this year, now those are not coming. The rigs remaining in the Gulf are for the most part "hot stacked" and those holding their contracts are playing a waiting game.

The result of the President's moratorium is that many, many people are going to be leaving this area and some leaving the petroleum industry. How do we find a way to turn this into a positive? Well we can do a number of things:

- 1) We can exert whatever influence we have to have the moratorium terminated as soon as possible.
- 2) We can assist our friends, colleagues and associates in securing employment within the industry but possibly with a different firm, a new role, or in a new location.
- 3) We can turn our focus to land exploration and development. The new NOGS publication "Oil & Gas Fields of South Louisiana 2010" definitely gives us a strong push to pursue this avenue.

--- continued on page 30 ---

Schlumberger formation evaluation solutions deliver the answers you need. Our extensive portfolio of services, leading-edge technology, and advanced conveyance options keep you in communication with your well throughout its life cycle.



With formation evaluation technologies from Schlumberger, you can make the best decisions for optimized performance in every well.

The formation evaluation one-stop shop

Whether you are logging in open hole or behind the casing, our broad selection of services ensures the best solution for acquiring formation evaluation data. Tools can be conveyed while drilling or on wireline or pipe. We offer many specialized evaluation capabilities, from density, neutron porosity, and resistivity to borehole imaging, nuclear magnetic resonance logging, borehole seismic, formation pressure testing, and fluid sampling. Advanced triple-combo logging options include the VISION* formation evaluation and imaging-while-drilling services. Coupled with Pulse* telemetry and surveying services, the VISION family provides real-time formation evaluation data and enables optimum well placement.

High-speed wireline measurements are recorded with the Platform Express* logging services. The SlimXtreme* platform is designed for high-pressure, high-temperature environments and the ABC* Analysis Behind Casing services are used after casing is set.

Expert interpretation from the engineers and geoscientists of Schlumberger Data & Consulting Services brings all your data together to give you the answers you need. This expertise is available after logging is complete or as real-time two-way wellsite communication through the InterACT* real-time monitoring and data delivery system.

Schlumberger delivers leading-edge technology and interpretation expertise for all your formation evaluation needs, so every well benefits from the very best information.

For more information visit
www.slb.com/oilfield/formation_evaluation/

*Mark of Schlumberger

04-FE-114

Schlumberger



NOGS Kick Off Luncheon ***September 13***

Holiday Inn 330 Loyola Ave. @ 11:30 am
Admission \$30.00 - \$2.00 Validated Parking
Cash Bar

Reservations: info@nogs.com

Special event as you will have an opportunity to
meet and mingle with the new NOGS Board.
Activities include: Foundation Scholarship Awards,
presentation of the NOGS Best Paper Award
to Bryan Stephens of the BOEMRE for his June paper,
and introduction of the
New Orleans Geological Auxiliary Officers.
Spouses and Significant Others are welcome!
Cost: \$30.00 per person
Cash Bar



Invite a geoperson to
join NOGS and come
to the Kickoff Luncheon



Seismic Imaging of Depositional and Geomorphic Systems

30th Annual GCSSEPM Foundation
Bob F. Perkins Research Conference

Houston, Texas
December 5-8, 2010
Houston Marriott Westchase Hotel



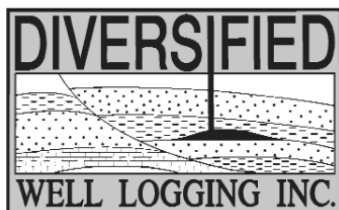
Conference information and
online registration available
on our new Web site:

www.gcssepm.org



Relax. We'll keep you posted.

Your rig is offshore and you are not. How do you know what's going on so many miles away? You know because we tell you. Daily or even hourly, Diversified Well Logging's engineers update you on the status of your rig. We are your eyes and ears, especially when it comes to deep water or high pressure, high temperature areas. Diversified offers 24-hour surface evaluation. We provide secure and customized real-time data communication, in-house research and development and 24/7 on-call support for our equipment and our engineers. Whether you have a 10-day job or 110-day job, we provide the specialized attention you require. So, relax. We're with you every step of the way.



Serving the Gulf Coast for over 40 years.

New Orleans • Lafayette • Houston • Dallas • Corpus

800.280.2096

711 West 10th Street • Reserve, LA 70084 • Phone: 985.536.4143 • Fax: 985.536.2427
sales@dwl-usa.com



**FULLY INTEGRATED AND
CENTRALIZED BIOSTRATIGRAPHIC
SERVICES**

▼ *Single-source biostratigraphic databases
for increased accuracy and consistency*

▼ *Integrated foram / nannofossil analyses*

▼ *Complete wellsite paleo services*

▼ *In-house sample preparation
lab for quality-monitoring
and efficiency*

▼ *Sample pick-up service*

6619 Fleur de Lis Drive
New Orleans, LA 70124
(504) 488-3711

www.paleodata.com

MCMORAN EXPLORATION CO.



**MCMORAN
OIL & GAS**

www.mcmoran.com

NYSE: MMR

16676 Northchase Dr.
Houston, TX 77060
(281) 539-7600
Fax: (281) 539-7655

1615 Poydras
New Orleans, LA 70112
(504) 582-4000
Fax: (504) 582-4155

110 Travis St., Suite 140
Lafayette, LA 70503
(337) 735-9150
Fax: (337) 735-9151

NOGS CONTACT LIST

--- continued from page 3 ---

MEMORIAL FOUNDATION

BOARD OF TRUSTEES

2010-11 Chairman	Tom Klekamp
2010-11 Secretary	Rick Kear
2010-11 Trustee	Chuck Holman
2010-11 Trustee	Michael N. Fein
2011-12 Trustee	Monte Shalett
2011-12 Trustee	James Swaney
2012-13 Trustee	Jennifer Connolly
2012-13 Trustee	William M. Whiting

Company
Amber Resources LLC
Schlumberger
Independent
W & T Offshore
Berkshire Exploration Co
MMS
Shell
Consultant

Phone
985-845-4046
504-592-5376
504-891-4878
504-210-8148
504-831-7779
504-736-2677
504-728-6411
504-947-8495

E-mail
klekamp@bellsouth.net
kearl1@new-orleans.oilfield.slb.com
charleswholman@bellsouth.net
mikef@wtoffshore.com
mshalett@gmail.net
james.swaney@mms.gov
jennifer.connolly@shell.com
bootscon@aol.com

AAPG DELEGATES

Term Ends

2011	Tom Hudson
2011	Edward B. Picou, Jr.
2011a)	Brenda Reilly
2011a)	Robert Rooney
2012	William Whiting
2012	Jim Zotkiewicz
2012 a)	David E. Balcer
2012 a)	Richard J. Stancliffe

Chevron
Consultant
Energy Partners Ltd.
Century Exploration
Consultant
Zot Oil & Gas
Chevron
Shell Expl & Prod Co.

985-773-7163
504-529-5155
504-799-4811
504-832-3777
504-947-8495
504-831-4694
985-773-6725
504-728-7553

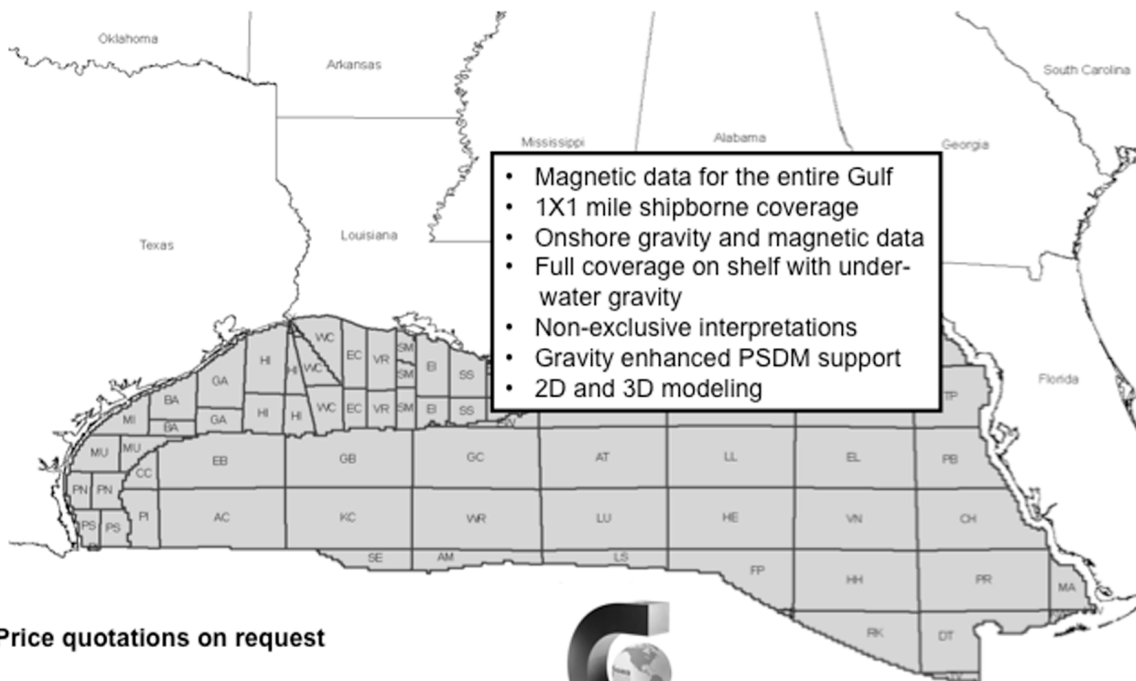
tom.hudson@chevron.com
epicou@bellsouth.net
breilly@eplweb.com
Robert.rooney@centuryx.com
bootscon@aol.com
jimzot38@zotoil.com
dbalcer@Chevron.com
richard.stancliffe@shell.com



Fugro Gravity & Magnetic Services

LAND • AIRBORNE • UNDERWATER • SHIPBORNE

The most complete coverage Onshore and Offshore Gulf of Mexico



Price quotations on request

Fugro Gravity & Magnetic Services
www.Fugro-GravMag.com
Tel: 713-369-6123



Gravity Inspired. Magnetically Inclined.



Shell has worked in partnership
with the NOGS for many years, and
is proud to count the society among
its closest business associates.

The New Orleans Geological Society was organized in 1941 to foster scientific research and advance the science of geology. Particular emphasis is laid on the exploration for and production of petroleum and natural gas. Related objectives include encouraging the adoption of improved methods of exploration, disseminating pertinent geological and technological data, and maintaining a high standard of professional conduct among its members.

www.shell.com/us.sepcoc



GOM
smart

An ocean
of GOM DATA...
updated for you 24/7

Introducing GOMsmart. Web-based GOM data with
real-time updates. No special software or training.
Access data via intuitive interface or customizable maps.

- Wells: header, production, tests, 250,000+ logs
- Production Data: historical and current
- Paleo Data: access to 100,000+ observations
- Affordable: monthly and annual subscriptions

Visit www.GOMsmart.com for your FREE trial.



From ZNodal Systems to ZNodal Imaging

We are full spectrum ZNodal™ technology

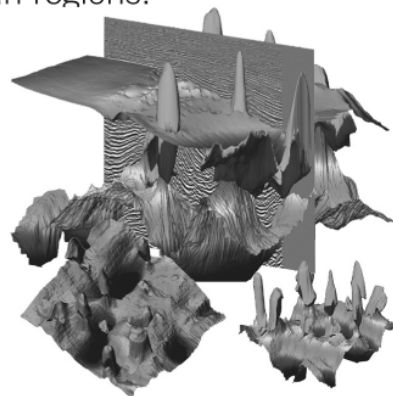
FairfieldNodal.com



We admit it. We're seismic nodal fanatics. Always have been. Which explains our one-of-a-kind, cable-free ZNodal™ systems. They work wonders in dense urban areas and pristine wilderness, in shallow water and deep ocean regions.

In fact, our exclusive ZNodal technology is behind everything we do, from acquisition and licensing to advanced processing and imaging, bringing nodal data to life in amazing ways.

Right now, our ZNodal systems are on the job in some of the world's most challenging fields, making a powerful difference. So when you're ready to go nodal, count on us to lead the way. ZNodal technology: It's what you need. It's what we're all about.



fairfieldnodal

SYSTEMS ACQUISITION LICENSING PROCESSING IMAGING

Awards Presentations at July NOGS Luncheon



Al Melillo receives the 2010 NOGS Outstanding Service Award from Tom Klekamp



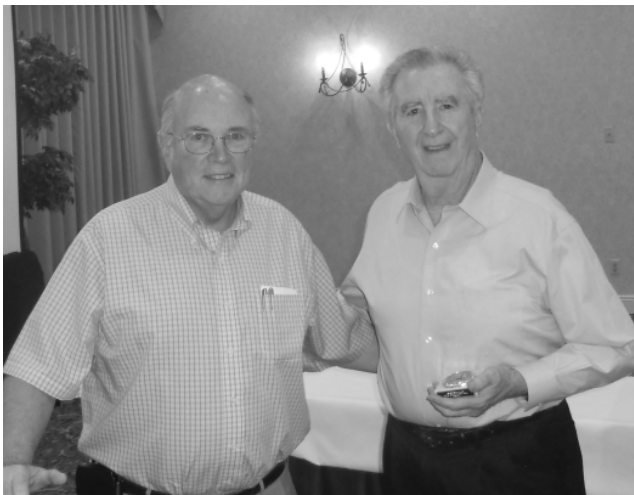
Tom Klekamp presenting Honorary Lifetime Member award to Art Johnson



Bill Whiting presenting Memorial Foundation honorarium to outgoing President Tom Klekamp



Tom Klekamp presenting Vice President award to Bob Hafner



Tom Klekamp presenting his president's Award to Carlo Christina



Tom Klekamp presenting Chuck Holman the Treasurer's Award for 2009 -2010



For more information and to register, visit: <http://www.aapg.org/calgary/>

Conference at a Glance

Sunday, September 12

- Opening Ceremony
- Icebreaker Reception
- Exhibition

Monday, September 13

- Technical Program and Posters
- Exhibition
- Plenary Session — Canada: Our Resources to International Exploration
- Management Forum — E&P Challenges in Complex Environments: From the Arctic to Deep Water
- Special Lecture — Burgess Shale Tales — Mud Volcanism and Chemosynthetic Communities on the Middle Cambrian Seafloor of Southeastern British Columbia
- Featured Speaker Luncheon — The Unconventional Future: Where Ideas and Technology Converge
- Student Reception
- James Joyce Pub Social Activity

Tuesday, September 14

- Technical Program and Posters
- Exhibition
- Business Forum — Unconventional Exploration and Development Geoscientists' Toolbox
- Special Lecture — Geology of a Major SAGD Bitumen Development — A Case Study from Long Lake, Northwestern Alberta
- Unconventionals Day Topical Luncheon — Global Challenges in Shale Reservoir Development
- Calgary Zoo Social Activity

Wednesday, September 15

- Technical Program and Posters
- Exhibition
- Forum — The Value of Diversity in Leadership: Global Perspectives
- DPA Luncheon — Evaluation and Classification Issues of Unconventional Resources
- Exhibitor-Sponsored Luncheon

Recharge Your Mind, Body and Career with Timely Training with AAPG!

Popular Online Course Available Again: Introduction to Geological Reservoir Characterization, will begin September 13 and run through December 17, 2010. This course is taught by Dr. Roger Slatt with University of Oklahoma, and covers the principles and practice of characterizing petroleum reservoirs using geologic and engineering data, including well logs, sample descriptions, routine and special core analyses, and well tests. There are weekly assignments, and interaction with the instructor on a regular basis. The price is \$1495 per person.

Short Course with Field Trip: Application of Structural Geology in Prospecting in Thrusted and Extensional Terrain is scheduled for November 8-12, in Las Vegas, Nevada and is taught by industry experts Chuck Kluth and Wayne Narr. Participants will learn to apply sound structural principles and techniques, and integrate a variety of data types to understand and predict overall trap shape, the character and impact of distribution of secondary structures (e.g., fractures) that may have a critical impact on reservoir performance, and identify likely exploration targets in each of the structural styles covered. Registration is \$1695 for AAPG members, \$1795 for non-members up until October 11

Fall Education Conference on Unconventional Resources

AAPG's Fifth Annual Fall Education Conference will take place October 4-8, in Houston, with all 10 courses revolving around the topic of Unconventional Resources. There will be 3 concurrent sessions each day, and topics include Reservoir Characterization and Production Properties of Gas Shales; Source Rocks 101 – What Geoscientists and Engineers Need to Know about Petroleum Source Rocks; The Varying Role of Natural Fractures in Unconventional Reservoirs; Log Analysis of Shaly Sand Reservoirs, and MORE! Registration for the week is \$1595 for AAPG members, \$1695 for non-members, and badges are transferrable. Courses are also individually priced if you can't attend the entire week. Hurry and reserve your spot before courses fill up. The early-bird prices expire September 6.

· New Ways to Look at Old Data: New Pay Zones, Increased Production, Expanded Regional Plays is planned for November 8-9, in Houston. How are new ways to look at old data resulting in new pay zones, increased production, and even new regional plays? How can you find and determine the best way to produce oil that's been "left behind?" This AAPG Geoscience Technology Workshop provides you with answers, ideas, and opportunities. Opportunities are still available if you'd like to give a presentation – contact Susan Nash snash@aapg.org at AAPG if you are interested. Registration to attend is \$695 for AAPG members, and \$795 for non-members, but only through October 11, so sign up now to save!

Upcoming Features

Drill Bits will return in the *NOGS LOG* next month written by Carlo Christina. He is looking for a few good "scouts" to assist him. Contact Carlo at carlocc398@aol.com.

The new membership directory will be published in the near future. If you are not a member please see our membership form in this issue or refer to the NOGS website at www.nogs.org.

Geological data can be used to predict storms: Answers found in layers of earth

By Kari Dequine
Times-Picayune Contributing writer

While the methods and data may seem abstract to those not trained in the sciences, the implications of the research presented at the flood protection symposium in the Jefferson Parish Council chambers in Gretna could not be of greater consequence for the long-term survival of southeastern Louisiana.

The “Geological Facts of Life for Flood Protection in Coastal Louisiana” discussion was the second held in front of the Southeast Louisiana Flood Protection Authorities, a joint meeting of the West Bank and east bank panels. The idea to discuss the local geologic research was born as a result of Hurricane Katrina in an effort to keep decision-makers informed on the best ways to ensure flood protection from the perspective of the ground on which we stand — and the layers far beneath.

The panel, moderated by Baton Rouge attorney and former television anchor Julie Baxter, included Terrence

McCloskey, Stephen Nelson, James Sothern and Kathleen Haggard.

While there were more questions asked than definitive answers given, the questions are critical ones.

The first question, called a “literally a multi-billion dollar question” and presented by McCloskey from the School of Coast and Environment at Louisiana State University, was “How likely is New Orleans to take a direct hit by another intense hurricane like Katrina?”

Layers of earth

Records have only been kept since 1851, which for geologists, is far too short of a time period to accurately predict storm cycles that span thousands of years.

Thus comes into play the data collected from a relatively new field of study, paleotempestology, the study of ancient hurricanes, or by definition, the study of “past tropical cyclone activity by means of geological proxies as well as historical documentary records.”

To delve thousands of years into the past, McCloskey, filling in for his colleague Kam-biu Liu, whom he called the “father of paleotempestology” presented photographs and diagrams showing the layers of earth taken in core samples. Certain layers, described McCloskey, give evidence of a “high energy event” coming ashore. When an oceanic sand layer is found sandwiched between mud at a certain distance inland, for example, it can be inferred that the sand was washed ashore by a hurricane. Along with carbon dating, other information can be deducted about the ancient storms, including frequency, intensity and the direction of travel.

McCloskey and Liu concluded that a “Gulf of Mexico coast catastrophic hurricanes of category 4-5 intensities typically have return periods in the order of 300 years.”

McCloskey also detailed how the research can help designate the active and quiet periods over thousands of years. On a long term scale, we are in a quiet period now, he said, but warned that people must be aware of potential dramatic changes, in which activity could increase five- or tenfold.

Increased vulnerability

Nelson, from the department of Earth and Environmental Sciences at Tulane University, explored the geological and historical factors that make New Orleans vulnerable to hurricanes and addressed the question of what can be done to reduce that vulnerability, as well as “Why did the levees break.”



LSU's custom-crafted “Seismeauxmobile” and sound generators displayed at the Fourth NOGS Flood Protection Symposium in Gretna. The research instruments are used to detect weak/problem spots in levees in south Louisiana.

Nelson noted the natural causes of vulnerability, like location and subsidence, but also pointed out that “human endeavors have increased the vulnerability substantially in the last 100 years.” Nelson spoke about how the levees protect from flooding, but also prevent the accumulation of sediment necessary to sustain and build land in the river delta.

Other factors that have increased vulnerability, Nelson said, are population growth and expansion into low-lying areas and invasive species — especially the notorious nutria, brought from South America in the 1960s. He also detailed the factors that have led to erosion and thus the massive land loss over recent decades. Nelson also criticized the manmade components of the hurricane protection system as, “inadequate, poorly designed, incomplete,” and a structure that did not sufficiently consider geology in its construction.

Nelson, whose primary area of study is volcanoes, said that because Tulane was closed in the weeks after Katrina, he had a lot of time on his hands and decided to seek out the geological component of the problem that led to the levee failures.

Nelson became passionate about educating people on just what happened with the levee breaks, taking students on field trips to each rupture site.

“The geology underneath is very important and can’t be ignored,” he said. All breaches occurred on man-made levees, and not all were overtopped, he noted, showing diagrams of each break and his assessment of what went wrong.

When constructing the levees, Nelson felt strongly that the makeup of the soil, which can vary considerably in short distances, was not taken in account. Problematic weak material, like sand that is highly permeable (thus compacts and shifts when wet), and certain types of clay and peat must be taken into serious consideration when constructing levees.

Nelson also criticized the use of the less expensive but also less sturdy I-walls versus the T-walls. By building stronger and smarter, taking geology into account, Nelson said, we can reduce vulnerability.

Extraction and elevation

Sothorn, adjunct instructor of geology at Fletcher Technical Community College in Houma, asked the hopeful question, “Is the rate at which we are sinking slowing down?”

Sothorn showed the correlation between oil and gas extraction and elevation in Houma, Chauvin, Grand Caillou, Savoie and Bourg. Nearly all of Terrebonne Parish he said, is “a virtual oil field.”

Using Army Corps of Engineers elevation benchmarks beginning in 1942, Sothorn showed that when extraction

(L to R) Jason Jicks, Mike Merritt, Riley Milner, Paul Henrich, Rick McCulloh to back, Juan Lorenzo and Kathy Haggar standing in front of the LSU Seismeauxmobile.



was at it peak in the 1960s, subsidence was also at its peak, with elevations dropping approximately three feet. As extraction slowed, Sothorn said, so did elevation loss. From the 1980s to 2000, subsidence appeared to have slowed considerably.

And if indeed the rate is slowing, said Sothorn — then it will be much more likely to get approval for coastal restoration funds and projects, giving a counter response to the question “Why spend all this money on coastal restoration when we are sinking?”

Haggar presented a detailed study of Goose Point — an area on the Northshore just south of Lacombe that juts out into Lake Pontchartrain. Haggar chose the location because it is not an area that has experienced much human meddling, yet had gone through changes over time.

Haggar’s concern and question was with the current models used to justify marsh-restoration projects. There are natural factors contributing to subsidence not being taken into enough consideration, she argued, chiefly tectonic forces associated with the Baton Rouge Fault system.

“This place is riddled with faults,” Haggar stated — a fact likely unknown to many residents. Based on her observations of Goose Point, including changes in plant communities, Haggar concluded that it would be dangerous and potentially a waste of time and resources to address restoration without taking tectonic forces into account.

Editor’s note: This article was published in the July 22, 2010, edition of the Algiers Picayune section of the Times Picayune and is published here with their permission.



Eni Petroleum

1250 Poydras Street
Suite 2000
New Orleans, LA 70113
Tel: (504) 593-7000
Fax: (504) 593-7745

1201 Louisiana Street
Suite 3500
Houston, TX 77002
Tel: (713) 393-6100
Fax: (713) 393-6205

It's no illusion...
Core Lab offers everything you need.



©2009 Core Laboratories. All rights reserved.

Unconventional resource exploitation • Gas shale experts • Deepwater GOM authority
Capacity for fast turnaround • High-quality people • Global support
Industry leadership and reliability • Proprietary and patented technologies • Experience

www.corelab.com/rd/petroleumservices • 24-hour wellsite service hotline: 504-733-6583

SEI®

Seismic Exchange, Inc.

Strategic Speculative Surveys
Geophysical Data Marketing & Management

201 St. Charles Avenue, Suite 4300, New Orleans, Louisiana 70170-4300
Telephone 504.581.7153 Fax 504.581.9591
www.seismicexchange.com

Your
Full Service
National
Seismic Data
Marketing Firm

New Orleans
Dallas
Houston
Denver
Oklahoma City
Corpus Christi
Tulsa

New Orleans Geological Auxiliary News

Oops, sorry for the last month's computer glitch!!! Now to finish my "bio" on our "Madam President", Jean Jones. Jean enjoys playing Bridge, Golf and serves on the Board of her Garden Club. Jean, this job should be a "piece of cake" for you. Thank you for allowing us to convince and harass you into becoming President. You have a great sense of humor...

Mark your calendars for our upcoming Events for 2010-2011. I know we all extend our heartfelt appreciation to everyone who has agreed to donate their time in acquiring the various venues, and once again, thanks to the Chairs and Hostesses for welcoming us into their homes. Thank you Ruth Grimes for hosting our September 8th Coffee. I know Peggy Rogers and Dolores Murphy will make this a very special day. November 10th Luncheon will be held at Austin's with Jim Henderson as our Guest Speaker. Guests will be invited, what a turnout this will be! February 9th will find us at Café Adelaide. As far as our Spring Social is concerned, Shirley Moseley has graciously offered her home on March 26th and finally our Installation Luncheon will be held at the Southern Yacht Club on May 11th. I, along with others, am very excited about these future events, and thanks to our Planning Committee for securing the dates, times and places for us.

Lastly, congratulations to Pat Williamson and Jean Jones on receiving the Loyalty and Service Awards (respectively) presented at our Installation Luncheon. To all of you who are very loyal and always lend a helping hand, we are rewarded by your generosity.

See you in October,

Susie Baker

NOGA Application Form

Dues: \$25.00

Name _____

Home Address _____

Home phone _____

Husband's Name _____

Husband's Company _____

*Please make check payable to New Orleans Geological Auxiliary and
mail with application to: Judy Lemarie'*

2 Yosemite Dr

New Orleans LA 70131

INFO TIDBITS

International Energy Outlook 2010 presents an assessment for the international energy markets through 2035. U.S. projections appearing in IE 2010 are consistent with those published in EIA's Annual Energy Outlook 2010 (AEO2010) (April 2010). For more information go to <http://www.eia.doe.gov/oiaf/ieo/>

Oil Industry Rethinks Cost, Risk Of Drilling In U.S. - The BP spill in the Gulf of Mexico is bound to have repercussions for the oil industry and America's energy future, but experts say it could be a while before they are all sorted out - and the final consequences could prove surprising. For more information go to <http://www.npr.org/templates/story/story.php?storyId=128831285>

Horizontal Drilling for Natural Gas in Shale - Marcellus Shale Coalition - The Marcellus Shale Coalition website has a video that presents the process used to drill and hydrofracture a horizontal well in a formation such as the Marcellus Shale. To see the video go to <http://marcelluscoalition.org/2009/01/drilling-process-video/>

New Madrid Quakes Caused by Mississippi River Erosion - Over the last several thousand years the Mississippi River has removed millions of tons of clay, silt, sand and gravel from the continent. This unloading has caused the earth to adjust to the lower weight level and those adjustments have produced earthquakes. For more information go to http://www.msnbc.msn.com/id/38454786/ns/technology_and_science-science/

BOEMRE has nothing to do with barrels of oil or meals ready to eat. The is the new acronym for the MMS. It stands for Bureau of Ocean Energy Management Regulation and Enforcement, a real mouthful.

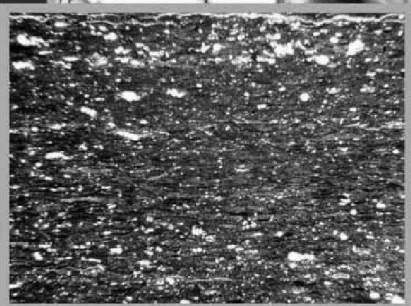
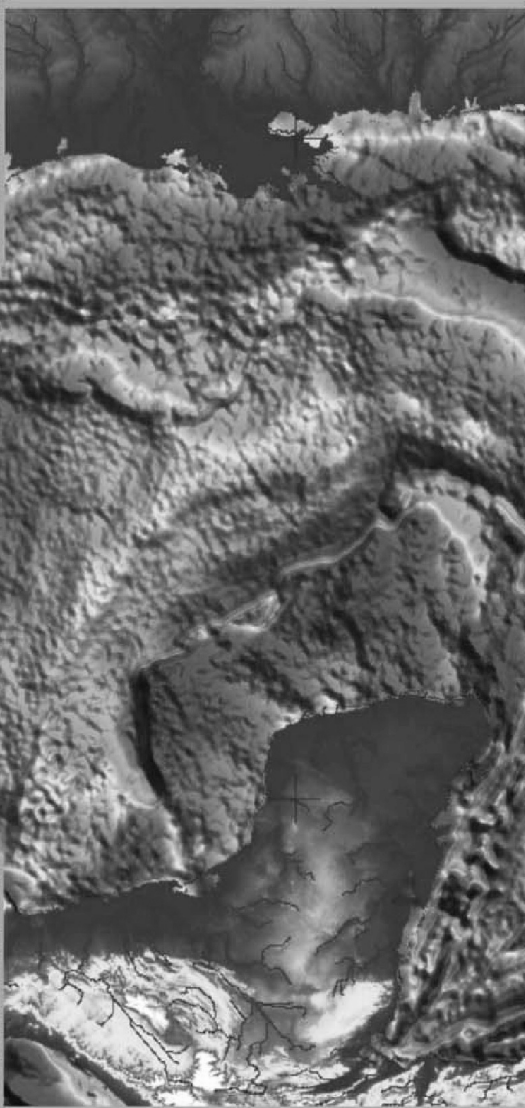
- Fran Wiselady



Photos from the NOGS Golf Tournament







**GULF COAST ASSOCIATION OF GEOLOGICAL SOCIETIES
AND GULF COAST SECTION SEPM**

**60TH ANNUAL CONVENTION
SAN ANTONIO, TEXAS**



October 10 - 15

**Complete Details
can be found at:
<http://www.gcags2010.com>**

HOSTED BY THE SOUTH TEXAS GEOLOGICAL SOCIETY

60th Annual GCAGS/GCSSEPM Convention

Presents

The Stricklin Symposium: Forming and Filling of the Gulf of Mexico Basin: Triassic, Jurassic, and Cretaceous Tectonics, Source Rocks, and Petroleum Systems

Tuesday, October 12, 2010 ÿ 8:20 am – 4:10 pm, San Antonio, Texas

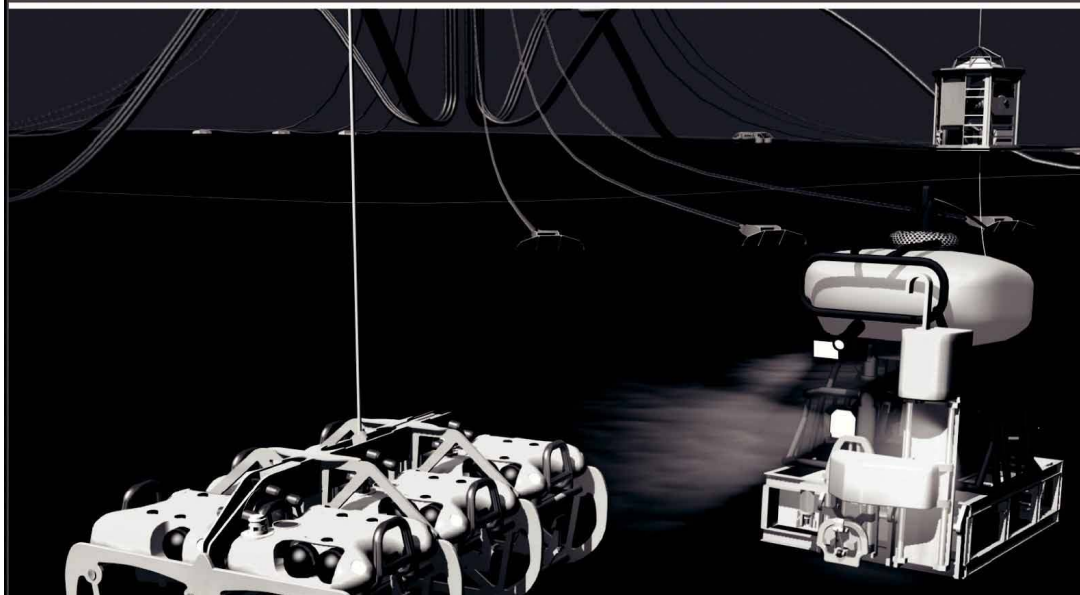
Symposium Conveners:

T. E. Ewing, Frontera Exploration Consultants, San Antonio, Texas
E. A. Mancini, Texas A&M University, College Station, Texas

- 8:20 **Thomas Ewing:** Introduction to the Stricklin Symposium
- 8:30 **James Pindell:** History of Tectonic Modeling and Implications for Depositional Architecture in the Gulf of Mexico (GOM): Where we Should Go from Here
- 9:00 **Jim Harris, Rob Crossley, Nick Stronach, Paul Valdes, and Roger Proctor:** The Plate Tectonic, Paleogeographic, and Paleoclimatic Context for the Development of the Mesozoic Gulf of Mexico
- 9:30 **Steve Creaney:** A View of the Genetic Development of Gulf of Mexico Petroleum Systems
- 10:00 **Break**
- 10:30 **Ernest Mancini and Wayne Ahr:** Jurassic Depositional Systems, Facies, and Reservoirs of the Northern Gulf of Mexico
- 11:00 **Thomas Lovell and Amy Weislogel:** Detrital Zircon U-Pb Age Constraints on the Provenance of the Late Jurassic Norphlet Formation, Eastern Gulf of Mexico: Implications for Paleogeography
- 11:30 – 1:00 **GCSSEPM and Stricklin Symposium Luncheon (ticketed event): Roger Sassen:** Preservation of Methane in Deep, Hot Reservoir Rocks
- 1:10 **Robert Scott:** Cretaceous Stratigraphy, Depositional Systems, and Reservoir Facies of the Northern Gulf of Mexico
- 1:40 **Thomas Ewing:** Pre-Pearsall Geology and Exploration Plays in South Texas
- 2:10 **Marco Flores Flores, Jorge Lavín, Noemí Aguilera, Marco Peña:** The Kimmeridgian Oolitic Banks and their Exploration Potential in the Marina de Campeche Zone, Southeastern Mexico: Biostratigraphical and Sedimentological Implications
- 2:40 **Roger Sassen:** Laminated Lime Mudstone of the Upper Jurassic Smackover Formation: Source of High-Sulfur Oil and Gas
- 3:10 **Andrew Petty:** Stratigraphy and Petroleum Exploration History of the Smackover Formation (Oxfordian), Northeastern Gulf of Mexico
- 3:40 **Russell Dubiel, Peter Warwick, Lauri Burke, James Coleman, Kristin Dennen, Colin Doolan, Catherine Enomoto, Paul Hackley, Alexander Karlsen, Matthew Merrill, Krystal Pearson, Ofori Pearson, Janet Pitman, Richard Pollastro, Elisabeth Rowan, Sharon Swanson, and Brett Valentine:** Geology and Assessment of Undiscovered Oil and Gas Resources in Mesozoic (Jurassic and Cretaceous) Rocks of the Onshore and State Waters of the U.S. Gulf of Mexico Region

To register, sponsor or exhibit for the GCAGS2010 Convention, please go to www.gcags2010.com

Finally - An answer for getting reservoir seismic **OVER THE RESERVOIR!**



• 4C/4D Node Seismic

- ANGOLA
- GoM
- NIGERIA



“Coming Soon to an Oilfield Near You!”

www.sbexp.com

Dubai
T: +971 4 4271700

Houston
T: +1 281 566 1666

Oslo
T: +47 2240 2700

Rio
T: +55 21 2494-0283

Singapore
T: +65 9180 2605

Trondheim
T: +47 7 3879500

RAISING
THE **STANDARD**



100 Northpark Blvd.
Covington, LA 70433

(985) 773-6000



LaBay
Exploration Co., L.L.C.

111 Veterans Memorial Blvd.,
Suite 1550
Metairie, Louisiana 70005

www.labayexploration.com

Office (504) 371-5967
Fax (504) 371-5969

***This advertising space is available!
Contact the NOGS office.***

THE NEW ORLEANS GEOLOGICAL SOCIETY MEMORIAL FOUNDATION, INC.

The Memorial Foundation is an IRS Tax Exempt Code #501 (c)(3) organization. The Federal I.D. is: 72-1220999. Please consider making your donation prior to the close of this year's fiscal cycle which is June 30, 2010. Your individual support in any amount will help meet the IRS Guidelines for our Foundation. *Thanks!*

\$15,000 AND ABOVE

Olga Braunstein Succession

Gibbet Hill Foundation

*In Memory of Steve & Marion Millendorf, William J. Prutzman,
Roger G. Vincent & Ron Youngblood*

\$10,000

George W. Schneider, Jr. and Family

In Memory of George W. Schneider, Sr.

\$2,000 TO \$3,000

NOGS Golf Tournament May 2009

In Memory of Bill Craig

\$7,000 TO \$9,000

Paul C. Mc Williams

\$250 TO \$499

Carlo C. Christina

In Memory of Al Gilreath

Tom Klekamp

Richard G. Klibert

John C. Kucewicz, Jr.

In Memory of Bill Craig.

UP TO \$249

Donald I. Andrews

In Memory of Ray F. Havard

In Memory of Harlan (Lanny) Northcott

Robert J. Ardell

In Memory of Al Gilreath

In Memory of Bill Malin

In Memory of Bob Williamson

Mr. and Mrs. Wesley Barton

In Memory of Thomas A. Cullinan

Abraham Biadgelgne

Maurice N. Birdwell

Irion Bordelon, Sr.

In Memory of Robert G. Williamson

Hilary James Brook

Robin Broussard

Rob Burnett

F. Robert Bussey

In Memory Robert S. Kline

J. Sybil Callaway

Chevron

Matching Funds

Arthur F. Christensen

Ellen F. Clark

Willis E. Conatser PhD

Clarence F. Conrad

Charley Corona

In Memory of Professor Hubert Skinner

Trudy and Charley Corona

In Memory of Thomas A. Cullinan

In Memory of Robert G. Williamson

Michael A. Danahy

M. R. "Bob" Douglass

In Memory of Robert G. Williamson

Merle J. Duplantis

Parrish N. Erwin, Jr.

Exxon Mobil Matching Funds

Niles R. Faulk

Michael N. Fein

Sherwood M. Gagliano

Arthur J. Garden

David Garner

Laurens Gaarenstroom

Mark J. Gallagher

Larry Galloway

Peter G. Gray

In Memory of Robert G. Williamson

Bret Hampton

Angela M. Hessler

*Through the Chevron Humankind
Program*

Bernard L. Hill, Jr.

In Memory of Robert E. Osborne

Owen R. Hopkins

Dan E. Hudson

Kenneth Huffman

Jeffrey E. Jandegian

Paul Jurik

In Memory of Thomas A. Cullinan

Reuben J. Klibert, Jr.

In Memory of Dale Klibert

John C. Langford

William J. Malin

Jeannie F. Mallick

George M. Markey, Jr.

Paul C. McWilliams

In Memory of Russell D. "Rusty" Morris

Robert G. Murphy

New Orleans Geological Auxiliary

In Memory of Dee Baysinger

In Memory of Doris Meltzer

In Memory of Terri Smith

Nexen Petroleum USA Inc. Matching Funds

Russell H. Nordwell

William J. O'Leary

Richard A. Olsen

In Memory of Richard W. Boebel

In Memory of William J. Malin

In Memory of Robert W. Sabate'

Teresa M. O'Neill

In Memory of Brian J. O'Neill

Linda and Bill Peirce

FONO FUND

The FONO Fund accepts contributions that are invested and the income dedicated to assure sufficient financial resources will always be available to maintain the NOGS business office. Contributors are reminded that donations to the FONO Fund are not covered by the IRS 501 (c)(3) tax exempt classification and should be reported as a business expense on your IRS tax report.

\$500

James A. Hartman

In Memory of Hal Hudson

In Memory of Robert G. Williamson

UP TO \$250

Donald I. Andrews

Alfred H. Baker Jr.

Joseph E. Boudreaux

Hillary James Brook

Jack G. Bryant

J. Sybil Callaway

Arthur F. Christensen

Richard P. Colomes

Clarence F. Conrad

Michael A. Danahy

John Dombrowski

Merle J. Duplantis

Richard A. Edmund

Mark J. Gallagher

William J. Furlong

Duncan Goldthwaite

James A. Hartman

In Memory of Hal Hudson

In Memory of Robert G. Williamson

Bernard L. Hill, Jr.

Thomas A. Hudson

Kenneth Huffman

C. M. (Max) Jacobs

Robert M. Jemison, Jr.

Tom Klekamp

Louis Lemarie'

William J. Malin

Jeannie F. Mallick

James A. McCarty

Louis L. McCormick

Robert G. Murphy

William J. O'Leary

Richard A. Olsen

Erwin Parrish, Jr.

Linda and Bill. Peirce

Edward B. Picou, Jr.

Richard D. Provensal

James P. Raymond, Jr.

Brenda E. Reilly

C. R. Rondeau

George D. Severson

Rudolf B. Siegert

Richard J. Stancliffe

Bryan P. Stephens

Raymond Stephens

Roy C. Walther

Robert C. Weissmann

William M. Whiting

James W. Yeldell, Jr.

Jim Zotkiewicz

CONTRIBUTIONS FOR BOTH FUNDS THROUGH JULY 28, 2010.
DONATIONS ARE LISTED FOR ONE YEAR.

Edward B. Picou Jr.

In Memory of William J. Malin

In Memory of Robert G. Williamson

Richard D. Provensal

In Memory of Thomas H. Philpott

Scott Purinton

Brenda E. Reilly

Mrs. William B. Rodan

In Memory of Robert G. Williamson

Edmund L. Russell

Robert T. Sellars, Jr.

In Memory of Robert G. Williamson

George D. Severson

Robert C. Shoup

Rudolph B. Siegert

John D. Silvernail

In Memory of Colles C. Stowell

Dr. J. O. Snowden

Gary L. Spraul

In Memory of H. Grady Collier

Raymond O. Steinhoff

In Memory of Professor Hubert C. Skinner

In Memory of Harold E. Vokes

Stephen Szydluk

Roy C. Walther

William M. Whiting

In Memory of William J. Malin

Armour C. Winslow

In Memory of Rita Mangel Winslow

Frances A. Wiseman

In Memory of Steve Widdicombe

James W. Yeldell, Jr.

Jim Zotkiewicz

In Memory of Bill Craig

Robin A. Broussard

Chevron

Bernard L. Hill, Jr.

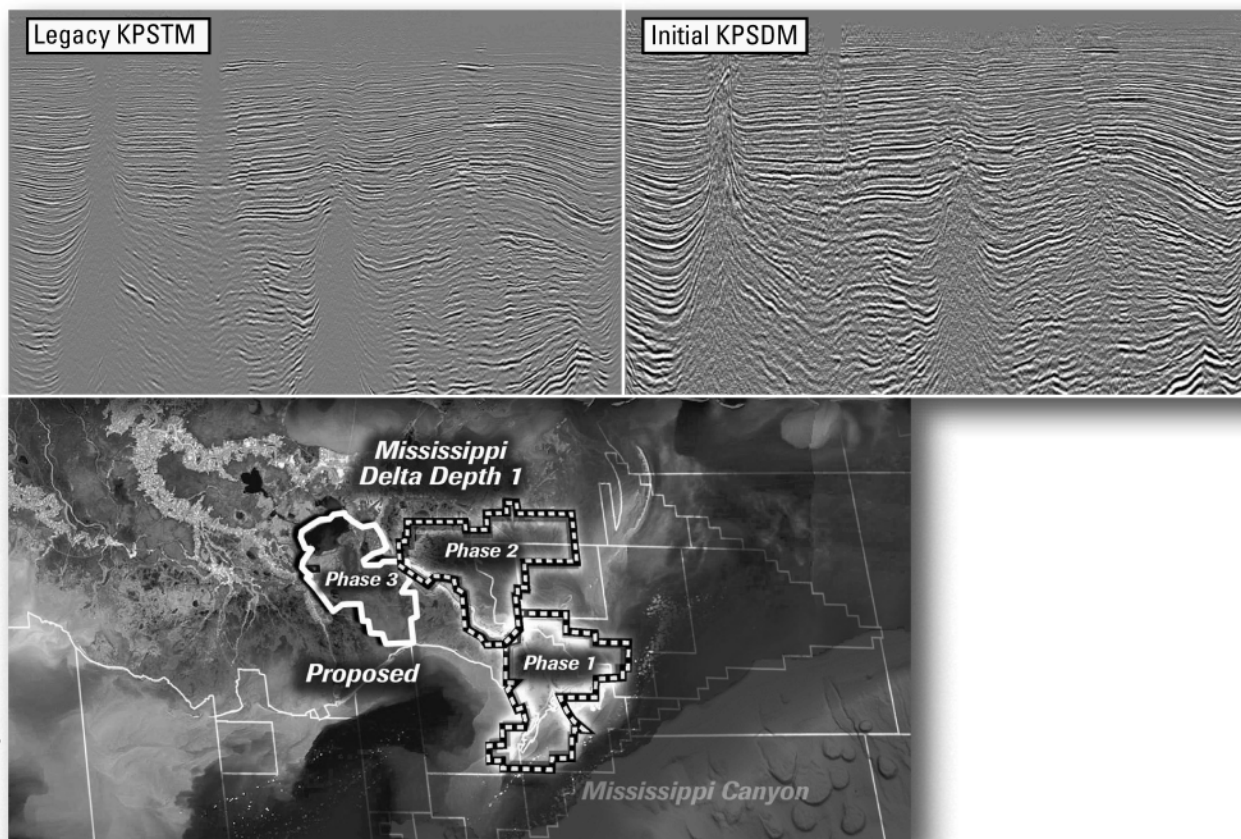
Jeff Jandegian

John C. Scheldt

Candace V. Strahan

In Memory of James Strahan

Improved depth imaging in the Mississippi Delta



In the Mississippi Delta region, WesternGeco is utilizing state-of-the-art processing designed to eliminate fault shadows and enhance deep imaging. The Mississippi Delta - Depth 1 survey, now in progress, incorporates the processing and remigration of twelve legacy surveys covering 1,855 square miles. High-quality time imaging using relative amplitude anisotropic Kirchhoff prestack time migration will be followed by improved structural imaging utilizing anisotropic Kirchhoff prestack depth migration.

To learn more about this and other Multiclient products, call +1 713 689 1000.

www.multiclient.westerngeco.com/la

Multiclient to the Power of E



THE NEW ORLEANS GEOLOGICAL SOCIETY, INC.

810 UNION STREET SUITE 300, NEW ORLEANS, LA 70112

TELEPHONE: (504) 561-8980 FAX: 561-8988 E-MAIL: NOGS@GS.NET WEBSITE: WWW.NOGS.ORG

MEMBERSHIP APPLICATION

Name (Last, first, middle intital)

Date

Company

Title

() _____
Phone Number

() _____
Fax Number

E-mail Address

Work Address (PO Box/Street, City, State, Zip, Country)

Home Address (Street, City, State, Zip, Country)

() _____
Phone Number

Preferred Mailing Address (check one): Work _____ or Home _____

Spouse's Name

Other Professional Society Memberships (AAPG*, AIPG, GSA, etc.) * Please indicate AAPG member category

College/University:

Degree

Year

Major

Explain, in brief, your affiliation with the petroleum industry:

Please mark appropriate classification:

☐ New Member

☐ Reinstatement

☐ Renewal

ANNUAL DUES: \$25.00 FOR ACTIVE OR ASSOCIATE

\$12.50 STUDENT MEMBERSHIP*

*No intial dues for students in the Sponsorship Program

-- Please mail application to the NOGS office with check payment or Visa/MasterCard/American Express acct# and exp. date --

Committee preference (please indicate choices):

☐ AAPG Student Chapter

☐ Advertising

☐ Awards

☐ Ballot

☐ Best Paper

☐ Computer Applications

☐ Continuing Education

☐ Employment Counseling

☐ Entertainment

☐ Environmental

☐ External Affairs

☐ Field Trip

☐ Finance & Audit

☐ Historical

☐ Membership/Directory

☐ Memorial Foundation

☐ NOGS LOG

☐ New Geoscientists (NGNO)

☐ Nominating

☐ Non-Technical Education

☐ Photography

☐ Program/Luncheon

☐ Publication Sales

☐ School Outreach

☐ Scouts: Boy and Girl

☐ Sponsorship

☐ Technical Projects

SAI

Sydboten & Associates, Inc.
*Geological and Geophysical Consulting,
3-D Seismic Interpretation*

Ben D. Sydboten, Jr. CPG

124 Heymann Blvd., Suite 202
Lafayette, LA 70503

Office (337) 234-5288
Cell (337) 234-5491

ATWATER CONSULTANTS, LTD.

REGISTERED AND CERTIFIED PETROLEUM PROFESSIONALS

GEOLOGICAL, ENGINEERING, GEOPHYSICAL,
TRAINING AND EXPERT WITNESS SERVICES

3525 Hessmer Ave, Ste 304
Metairie LA 70002

Tel. (504) 581-6527
Fax (504) 524-7798

"Serving The Oil & Gas Industry Since 1983"

Geological,
Geophysical &
Land Drafting

Anthony Catalanotto
President

Stefani Foster
Drafting & Design

Geo-Draft, Inc.

A Professional Drafting & Graphics Firm

3349 Ridgeline Drive • Suite 202 • Metairie, LA • 70002
Office: (504) 836-2882 Fax: (504) 836-2877 (Cell) (504) 481-7291
E-Mail: geodraft@bellsouth.net
Website: www.geodraftinc.com

*This advertising space is available!
Contact the NOGS office.*

NORTHCOAST OIL COMPANY

610 E. Rutland St.
Covington, LA 70433
(985) 898-3577
(985) 898-3585 FAX

Jack M. Thorson
Eric C. Broadbridge
J. Daryl Gambrell
Raymond W. Stephens

**NOGS thanks our
sponsors for their support:**

GOLD LEVEL SPONSORS:

CHEVRON
LA BAY EXPLORATION CO, LLC.

**SPECIAL THANKS TO
DIVERSIFIED WELL LOGGING**



CIMAREX ENERGY CO.

GULF OF MEXICO REGION
GOM, SE La., N. La., MS, AL

1100 Poydras St.; Suite 1100

New Orleans, Louisiana 70163

504-586-1815 / Fax 504-586-9035

Keith Gourgues
Region Manager

(832) 242-6000 (O)
(713) 917-0493 (O)

(504) 931-7506 (C)
johnjurasin@jurasinoilgas.com

JURASIN OIL & GAS

9700 Richmond Ave., Suite # 124
Houston, TX 77042-4821

JOHN M. JURASIN
President

Cert. Pet. Geologist #4284
Cert. Prof. Earth Scientist #1961

Collarini Energy Staffing

Full-Time and Temporary Personnel

Facilities • Drilling • Production • Reservoir Engineering
Land and Legal • Geoscience • Information Technology •
Health and Safety • Management • Supply Chain
Accounting • Administrative Support

10497 Town and Country Way, Suite 950
Houston, Texas 77024

832-251-0553



www.collarini.com

Collarini Associates

Reservoir Engineering
Oil & Gas Property Evaluation
3-D Seismic Interpretation
Integrated Field Studies

832-251-0160
504-887-7127

Houston
New Orleans

CALL US **SMT**...

SEISMIC **AND GEOLOGICAL** MICRO-TECHNOLOGY
JUST TAKES TOO LONG TO SAY!

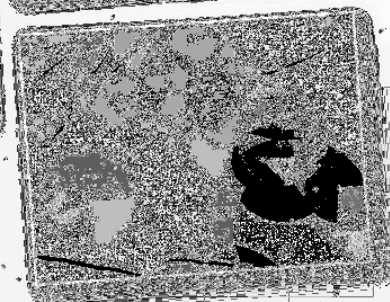


NEXT GENERATION GEOLOGY



KINGDOM Integrates

- Structural Frameworks
- 3D Geomodeling
- Economic Analysis
- Production Forecasting



HAMMER THE COMPETITION

See your new tools at www.seismicmicro.com/geology

ANSYTHE Donald I. Andrews 504-887-3432 	H. WARREN BELL Oil and Gas Exploration 2500 Tanglewilde, Suite 485 Houston, TX 77063-2126 Bus (713) 266-7297 Fax (713) 266-7298
THE BOEBEL COMPANY Oil and Gas Investments 170 Broadway Street, Suite 321 New Orleans, LA 70118 (504) 866-4313	PHELPS GEOSCIENCE Onshore Gulf of Mexico Geology and Geophysics Prospect Generation and Evaluation Houston, TX jsfphelps@yahoo.com (281) 398-5208
BOO-KER OIL & GAS CORP. Gray S. Parker 826 Union, Suite 300 New Orleans, LA 70112 Bus. (504) 581-2430 Fax (504) 566-4785	RAFIDI OIL AND GAS, INC. Jaser N. Rafidi, President 4415 Shore Dr., Suite 202 Metairie, LA 70006 Bus. (504) 722-2942 Fax (504) 888-5539; Res. (504) 888-1661
C & R EXPLORATION, INC. Carlo C. Christina Lawrence G. Ringham	ROY C. WALTHER Petroleum Geologist 2421 Prancer Street New Orleans, LA 70131 Bus. (504) 392-8513 Res. (504) 392-9332
C. R. RONDEAU Petroleum Geologist 119 W Southland Ave. Ironwood, MI 49938 Res. (906) 932-4692	 Shoreline Gas Inc. www.shorelinegas.com Full Service Natural Gas Marketing
CLASSEN EXPLORATION, INC. James S. Classen Looking for close in deals P.O. Box 140637 Boise, ID 83714 Bus. (208) 854-1037 Fax (208) 854-1029 classenllc@msn.com	 625 E. Kaliste Saloom Lafayette, LA 70508 16800 Greenspoint Dr., Suite 225-S Houston, TX 77060 www.StoneEnergy.com
D-O-R ENGINEERING, INC. 3-D and Geoscience Services 6161 Perkins Rd. P O Box 80812 Bus : (225) 765-1914 Baton Rouge LA 70898	TONY CAROLLO Consulting Geologist Unitization Geosteering Field Studies 1701 Peach Street Metairie, LA 70001 Bus. (504) 885-0004 Res. (504) 885-6829
EDWARD B. PICOU, JR. Consulting Micropaleontologist - Retired 228 St. Charles Ave., Suite 1330 C New Orleans, LA 70130 Bus. (504) 529-5155 Res. (504) 282-3096	Zot Oil & Gas, LLC Jim Zotkiewicz Prospect Generation and Evaluation 3200 Ridgelake Dr. Suite 207 Metairie, LA 70002-4930 Business: 504.831.4694 Email: jimzot38@zotoil.com

President's Letter (continued from page 5)

4) We can encourage and make valid business cases for oil & gas companies to locate and operate out of South Louisiana. This takes work and doesn't come quickly, but it is doable.

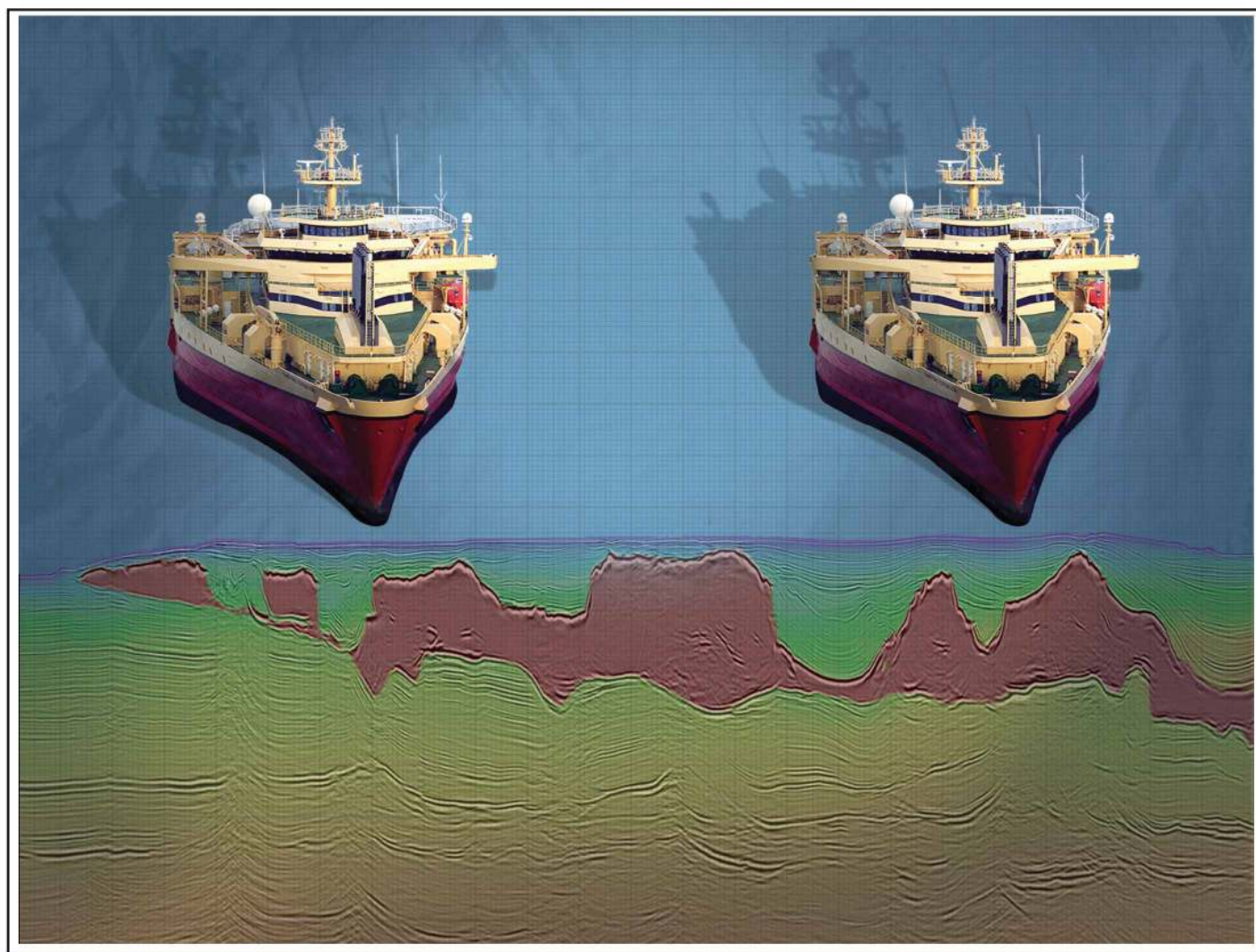
5) Reach out and invite colleagues, associates, and representatives from our local universities to attend our meetings and join us as new members.

Let's face it the worst fear is the fear of the unknown and we are "knowing" more as we go forward. I would hope you take advantage of every available opportunity to learn and to network. Several such opportunities are coming up. The Louisiana Oil and Gas Symposium: "The BP Gulf" will be held August 16th and 17th in Baton Rouge. Symposium Chair, John Johnston, Louisiana Geological Survey, moved the Symposium so as not to conflict with another opportunity, the 14th Annual Gulf of Mexico Deepwater Technical Symposium at the Hilton Riverside August 18th and 19th of which NOGS is a co-host. The 60th Annual Convention of GCAGS will be held in San Antonio, Texas October 10-12, 2010. Consider cooling off a bit by attending the AAPG International Conference and Exhibition in Calgary, Canada September 12-15th. Definitely do not miss our September "NOGS Kickoff Luncheon" on September 13th with the presentation of the NOGS Foundation Scholarship Awards and the introduction of the New Orleans Geological Auxiliary Officers. Please consider bringing your spouse or significant other to this event. We have interesting speakers lined up for our October and November Luncheon meetings which you will want to hear.

We have much to do to create positive change, let's get to it!

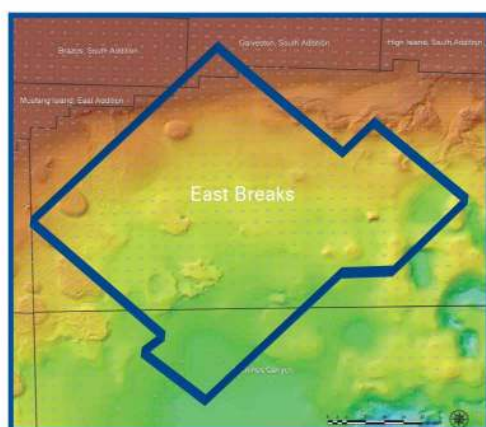
God bless,

Rick



Crystal III, East Breaks

MultiClient Wide Azimuth



- **Size** - 480 OCS blocks
- **Focus** - Sub-Salt Miocene & Paleogene
- **Technology** - TTI Beam and RTM Imaging
- **Delivery** - Available Q4 2010

Houston
Tel: +1 281 509 8000
Fax: +1 281 509 8500

Oslo
Tel: +47 67 52 6400
Fax: +47 67 52 6464

London
Tel: +44 1932 37 6000
Fax: +44 1932 37 6100

A Clearer Image
www.pgs.com



NEW ORLEANS GEOLOGICAL SOCIETY



810 Union Street, Suite 300
New Orleans, LA 70112-1430

WWW.NOGS.ORG

MARINE PROPERTIES, LLC BERKSHIRE EXPLORATION CO.

MONTE C. SHALETT, CPL, PRESIDENT

3030 Lausat Street
Metairie, LA 70001-5924

BUS. (504) 831-7779
FAX. (504) 831-8315

PCI

Paleo Control, Inc.

Houston, Texas
713-849-0044

Drilling Wells, Studies and Data Base

Loyd Tuttle

Frio, SE Texas

Bob Liska

Wilcox, S and SE Texas

Jim Thorpe

Miocene and Cam-Miogyp



SEE YOUR DATA IN A WHOLE NEW LIGHT!

Take the pressure out of exploration
and drilling by seeing what you
are going to encounter.



eSeis

www.e-seis.com
713.531.1447

- Lithology & Fluids
- Depositional Facies
- Pore Pressure from V & Q
- Well Planning Consultation

