

NOGS LOG



October 2010

Volume 51, Number 4

Upcoming Events and Activities

October 4 - NOGS Luncheon

*** At the Holiday Inn Downtown Superdome ***
\$2.00 validated parking in hotel garage

Guest speaker Terrence A. McCloskey, LSU School of the Coast and Environment, will present "Long-term variability in hurricane activity: using the study of ancient hurricanes to improve both long-term hazard risk assessment and short-term forecast of landfall location."

(See page 7 for Abstract and Biography)

HOLIDAY INN DOWNTOWN SUPERDOME

Check with concierge or
front desk for location
Lunch served at 11:30am

ADMISSION:

with reservation \$30.00
without reservation \$35.00
Student Member with reservation Free

October 10-15 - GCAGS 2010 Convention

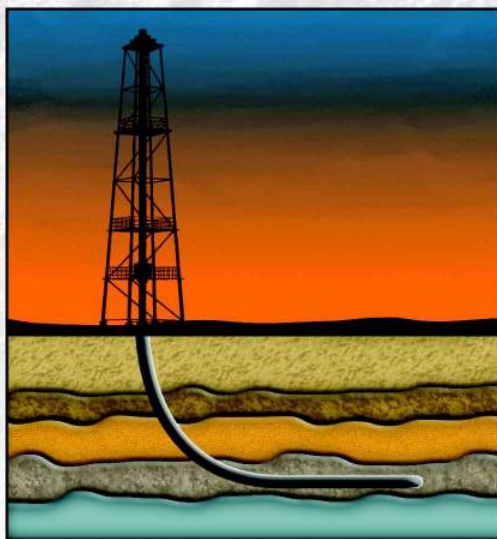
60th Annual Convention in San Antonio, TX.

Check the "NOGS website" for updated information and see information on pages 26-27.

November 1 - NOGS Luncheon

Holiday Inn Downtown Superdome. Guest speaker Andrew J. Petty, Bureau of Ocean Energy Management, Regulation and Enforcement in New Orleans, will present "Stratigraphy and Petroleum Exploration History of the Smackover Formation (Oxfordian), Northeastern Gulf of Mexico."

Looking for Accurate Directional Data?



Directional Survey Plus data now available online

Let TGS lead you in the right direction

Get on the right well path with Directional Survey Plus (DS+) data. DS+ data moves beyond the simple capture of measured depth, azimuth and inclination to create the most accurate spatial representation of the well path, from surface to total depth.

TGS researches DS+ wells to identify all wellbores, entering all runs and composites in original form with extensive metadata and superb quality control. The data are then processed and composited using proprietary workflows. The resulting standardized, high quality data is available in multiple industry formats.

Current coverage includes many of the hottest basins in the US, and multi-client coverage is expanding everyday. TGS also provides DS+ processing to clients worldwide.

Find out more at www.tgsnopec.com/welldata
888-LOG-LINE or WellData@tgsnopec.com



Geophysical
Products



Geological
Products



Imaging
Services



www.tgsnopec.com

NOGS Office

Office Manager: Annette Hudson

Office Hours: 8:30 a.m. – 3:30 p.m. on Monday-Wednesday-Friday

Tel: 504-561-8980 □ Fax: 504-561-8988

E-mail: info@nogs.org □ Website: www.nogs.org

The office is located at Suite 300, 810 Union Street, New Orleans, LA 70112.

Correspondence and all luncheon reservations should be sent to the above address.

Sent to press on September 15, 2010.

**BOARD OF DIRECTORS**

		Company	Phone	E-mail
President	Rick Kear	Schlumberger	504-592-5376	kearl@new-orleans.oilfield.slb.com
Vice President	TBA			
Secretary	Penne Rappold	Shell	504-728-4338	prappold@gmail.com
Treasurer	Will Jorgensen	Shell	504-728-6339	william.r.jorgensen@shell.com
President-Elect	Bob Hafner			ottohaf@aol.com
Editor	Fran Wiseman	BOEMRE	504-736-2912	frances.wiseman@boemre.gov
Director 2011	Scott A. Wainwright	Bret Exploration Co Inc	504-889-2700	scott_wainwright@hotmail.com
Director 2012	Arthur H. Johnson	Hydrate Energy International	504-464-6208	artjohnson51@hotmail.com
Director 2013	Jack Langford	J C L Services	985-764-2527	jclangford@latterblum.com

COMMITTEE

	Chairperson			
AAPG Delegates	William M. Whiting	Consultant	504-947-8495	bootscon@aol.com
AAPG Student Chapter	Gabriella March	Tulane University		gmarch@tulane.edu
AAPG Student Chapter	Andrew Ranson	UNO	337-578-5587	aranson@uno.edu
Advertising-Log	Andrea Stancin	Shell	504-728-0431	Andrea.a.stancin@shell.com
Auditing	Chuck Holman	Independent	504-891-4878	charleswholman@bellsouth.net
Awards	Michael N. Fein	W & T Offshore	504-210-8148	mikef@wtoffshore.com
Ballot	Will Jorgensen	Shell	504-728-6339	william.r.jorgensen@shell.com
Best Paper	Brenda Reilly	Energy Partners Ltd.	504-799-4811	breilly@eplweb.com
Continuing Education	TBA			
Employment Counseling	Bob Hafner			ottohaf@aol.com
Entertainment	Daisy Pate	Corps of Engineers	504-957-4372	daisy.pate@gmail.com
Environmental	Michael A. Fogarty	Sylvan Energy, LLC	603-523-4808	mike.a.fogarty@gmail.com
External Affairs	David Garner	Shell	504-728-6154	David.Garner@shell.com
Field Trip	Will Jorgensen	Shell	504-728-6339	william.r.jorgensen@shell.com
Finance and Investment	Edward B. Picou, Jr.	Consultant	504-529-5155	epicou@bellsouth.net
Historical	Carlo C. Christina	Retired (C & R Expl. Inc)	504-835-4116	Carlocc398@aol.com
Membership/Directory	Tom Klekamp	Amber Resources	985-845-4046	klekamp@bellsouth.net
New Geoscientists (NGNO)	TBA			
Nominating	Mike Ledet		504-394-9636	mikeledet@cox.net
Non-Technical Education	Duncan Goldthwaite	Consultant	504-887-4377	DGldthwt@aol.com
Office Operations	Tom Klekamp	Amber Resources	985-845-4046	klekamp@bellsouth.net
Publications Sales	Edward B. Picou, Jr.	Consultant	504-529-5155	epicou@bellsouth.net
Photography	J. David Cope	Ankor Energy	504-596-3672	dcope@ankorenergy.com
School Outreach	Thomas C. Bergeon	Century Exploration	504-832-3772	Tom.bergeon@centuryx.com
Scouting	Carol Rooney	Consultant Geologist	504-835-1909	carolbrooney@aol.com
Sponsorship/Houston	David E. Reiter	Eni Petroleum		david.reiter@enipetroleum.com
Technical Projects	TBA			
Ad Hoc Committee on University Support	Michael J. Gallagher	Eni Petroleum	713-393-6100	Michael.Gallagher@enipetroleum.com

NOGS LOG STAFF

Editor	Fran Wiseman	BOEMRE	504-736-2912	nogseditor@gmail.com
Editor-Elect	David Tatum	Chevron	985-773-6477	davidtatum@chevron.com
Auxiliary	Susie Baker	NOGA	504-466-4483	abaker1006@aol.com
Info Tidbits	Fran Wiseman	BOEMRE	504-736-2912	nogseditor@gmail.com
Drill Bits	Carlo C. Christina	Retired (C & R Expl. Inc)	504-835-4116	carlocc398@aol.com
Webmaster	Edward B. Picou, Jr.	Consultant	504-529-5155	epicou@bellsouth.net
Layout	Jannette Inc.			

NOGS AUXILIARY

Officers		Phone	Directors	Year	Phone
President	Jean Jones	504-738-8091	Peggy Campbell	2009-11	504-283-2505
1st Vice-President	Alma Dunlap	504-737-2678	Ruth Grimes	2009-11	504-392-8103
2nd Vice-President	Judy Sabatè	504-861-4335	Gerry Waguespack	2009-11	504-737-0532
Secretary	Peggy Rogers	504-392-6323	Carol Andrews	2010-12	504-887-3432
Treasurer	Judy Lemarie'	504-393-8659	Susie Baker	2010-12	504-466-4483
Parliamentarian	Beverly Kastler	504-286-0879	Joan Collier	2010-12	504-833-1738
Member-at-Large	Linda Peirce	504-393-7365			

--- NOGS Contact List continued on page 10 ---

SYNERGY ENERGY



Weatherford®
LABORATORIES

Your success increasingly depends upon a better understanding of your reservoir. At Weatherford Laboratories, we provide a single source for comprehensive laboratory analyses, creating a synergy previously unknown in laboratory services. This single source includes distinguished geologists, geochemists, analysts, engineers, technicians and software developers, 38 worldwide laboratories, and the broadest portfolio of services for acquiring and interpreting data from physical samples. The end result is an unsurpassed combination of intellectual capital and technical resources — all working together to help you enhance development planning and reduce reservoir uncertainty.

Put our union of Synergy and Energy to work for you.

Weatherfordlabs.com

HIGHER STANDARDS

NORTH AMERICA
NAInquiries@weatherfordlabs.com

EUROPE
EUInquiries@weatherfordlabs.com

LATIN AMERICA
LAInquiries@weatherfordlabs.com

MIDDLE EAST/NORTH AFRICA
MENAIquiries@weatherfordlabs.com

ASIA PACIFIC
APIquiries@weatherfordlabs.com



from the President

Louisiana Children's Museum held their Energy FETCH Saturday, August 21, 2010. This event was quite well-attended and not just by youth. Many thanks to Tom Bergeon and the "Helpers" who volunteered their time and expertise to staff the NOGS interactive exhibits at FETCH. The "Helpers", wearing hats for NOGS and SPWLA, included Mike Fein, Robin Broussard, Taylor Benoit, Tom Klekamp, Ed Picou, and Dave Cope. Our young people deserve our best and that's what the NOGS volunteers delivered.

NOGS was a co-host for the 14th Annual Gulf of Mexico Deepwater Technical Symposium held at the Hilton Riverside Hotel on August 18th and 19th. The Symposium was well-attended and I saw several of our members present in the sessions and the exhibit area. I requested to be more deeply involved in the planning and organizing the Deepwater Symposium next year so that we can increase the geological content and NOGS involvement.

The NOGS Memorial Foundation, Inc. and New Orleans Geological Society boards have tentatively voted to fund \$3,500 each for a total of \$7,000 for research on flood protection levees. "A Geoscience Strategy to Monitor Flood Protection Levees" is a collaboration between LSU Department of Geology and Geophysics, and UNO Departments of Earth and Environmental Sciences, Physics, and Mathematics. The project was submitted by Dr. Juan M. Lorenzo (LSU-Geology and Geophysics), Dr. Mark A. Kulp (UNO-Earth and Environmental Sciences), Drs. Juliette W. Ioup (UNO-Physics), and Dr. George E. Ioup (UNO-Physics). The project will utilize a shallow surface seismic approach to evaluate and monitor levee conditions.

The 60th Annual Convention of GCAGS is being held in San Antonio, Texas October 10-12, 2010. If you have not yet registered, please consider doing so. NOGS will have a booth at the convention and we will be highlighting our NOGS publication, "Oil & Gas Fields of South Louisiana 2010." The volume will not be completed by then but we want to tease those present with what is coming. Any member who would care to assist with the booth should contact me or a board member. We could use your help. I look forward to seeing you in San Antonio!

We are looking into one or more joint meetings both with SPE Delta Section and with SGS at another time. The discussions thus far with SPE are targeting the April 2011 luncheon meeting. SPE is currently visiting with McMoRan to inquire about their interest in providing a speaker for their deep Wilcox play in the shallow GOM. If that is something that appeals to you, please let me or a member of the Board know so we can arrange this joint meeting.

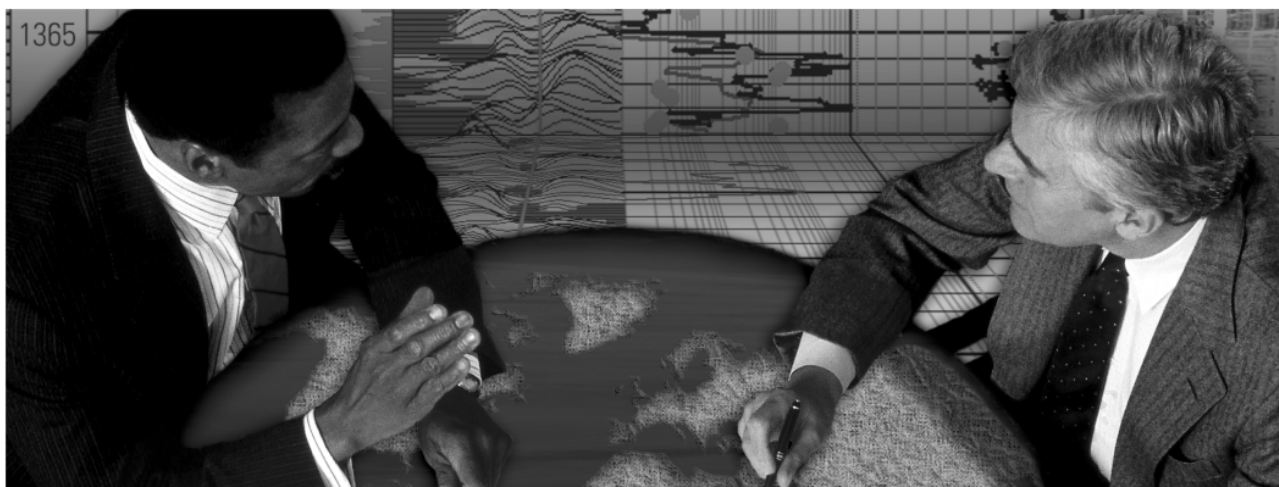
Carlo Christina brings back "Drill Bits" to the NOGS LOG in this issue, and Carlo is recruiting additional "Scouts" to contribute. So, we know that you know - so share it with Carlo and he will share it with the membership.

The NOGS Board is actively investigating ways to increase and enhance our membership and your ideas and suggestions are welcome. Please bring them forth to the Board or myself. We want to hear from you and we will listen.

God bless,

Rick

Schlumberger formation evaluation solutions deliver the answers you need. Our extensive portfolio of services, leading-edge technology, and advanced conveyance options keep you in communication with your well throughout its life cycle.



With formation evaluation technologies from Schlumberger, you can make the best decisions for optimized performance in every well.

The formation evaluation one-stop shop

Whether you are logging in open hole or behind the casing, our broad selection of services ensures the best solution for acquiring formation evaluation data. Tools can be conveyed while drilling or on wireline or pipe. We offer many specialized evaluation capabilities, from density, neutron porosity, and resistivity to borehole imaging, nuclear magnetic resonance logging, borehole seismic, formation pressure testing, and fluid sampling. Advanced triple-combo logging options include the VISION* formation evaluation and imaging-while-drilling services. Coupled with Pulse* telemetry and surveying services, the VISION family provides real-time formation evaluation data and enables optimum well placement.

High-speed wireline measurements are recorded with the Platform Express* logging services. The SlimXtreme* platform is designed for high-pressure, high-temperature environments and the ABC* Analysis Behind Casing services are used after casing is set.

Expert interpretation from the engineers and geoscientists of Schlumberger Data & Consulting Services brings all your data together to give you the answers you need. This expertise is available after logging is complete or as real-time two-way wellsite communication through the InterACT* real-time monitoring and data delivery system.

Schlumberger delivers leading-edge technology and interpretation expertise for all your formation evaluation needs, so every well benefits from the very best information.

For more information visit
www.slb.com/oilfield/formation_evaluation/

*Mark of Schlumberger

04-FE-114

Schlumberger

October 4 NOGS Luncheon Presentation

At the Holiday Inn Downtown Superdome

Long-term variability in hurricane activity: using the study of ancient hurricanes to improve both long-term hazard risk assessment and short-term forecast of landfall location

presented by

Terrence A. McCloskey, Ph.D.

Postdoctoral Researcher, Department of Oceanography and Coastal Sciences,
School of the Coast and Environment, Louisiana State University

ABSTRACT

Hurricanes present one of the major obstacles to successful human use of coastal environments in many parts of the world, including the Gulf coast of the United States. Long-term planning and sustainable use of coastal resources require quantifiable information concerning the average frequency of strong hurricanes. However, as hurricane risk assessments are generally based on NOAA's "best track" record which only extends with decreasing accuracy to 1851 is too short to completely capture the average frequency of landfall. This is particularly true for major hurricanes (category 3 or greater), which typically have return intervals on the order of a century or longer. Therefore, the instrumental record provides the least

accurate information for the most socially significant storms, thereby introducing large levels of uncertainty into the probability calculations for the reoccurrence of such devastating storms as Hurricanes Andrew and Katrina.

Paleotempestology, the study of ancient hurricanes, attempts to rectify this situation by increasing the number of data points for specific locations, especially in regard to major hurricanes. During the past two decades, we have developed research methodologies and produced geological proxy records of paleohurricane activities from the U.S. Gulf and Atlantic coasts to the Caribbean region

--- continued on page 34 ---

BIOGRAPHY

Terry McCloskey is a Postdoctoral Researcher at Louisiana State University. After spending more than 20 years as a small farmer in Belize, Central America, he returned to the United States in 2000 to pursue his education. In 2003 he earned a BA in Geosciences with certificates in Environmental Studies and the Woodrow Wilson School of Public and International Affairs from Princeton University, graduating magna cum laude. That fall he entered the Department of Geography and Anthropology at LSU, completing his General Examinations in that department in 2006. However, in 2007 he followed his major professor, Dr. Kam-biu Liu, over to the Department of Oceanography and Coastal

Sciences, where he obtained his Ph.D. in December 2008. Dr. McCloskey's main interest is paleotempestology, with his dissertation based on the establishment of long-term landfall records from the southern and western Caribbean. He led or participated in coring trips to New England, all coastal states from Georgia through Texas, as well as Mexico, the Dominican Republic, Barbados, Belize, Honduras, and Nicaragua. He taught Introductory Physical Geography classes at LSU and tutored a large variety of Earth Sciences (Geography/Geology/Oceanography) courses at the Cox Student Athlete Academic Center there.

THE LUNCHEON RESERVATION DEADLINE IS SEPTEMBER 29 - CONTACT THE NOGS OFFICE

"And Looking Ahead..."

The next NOGS Luncheon will be held on November 1. Guest speaker Andrew J. Petty, Bureau of Ocean Energy Management, Regulation and Enforcement in New Orleans, will present "Stratigraphy and Petroleum Exploration History of the Smackover Formation (Oxfordian), Northeastern Gulf of Mexico." Contact the NOGS office to make your reservation.

Seismic Imaging of Depositional and Geomorphic Systems

30th Annual GCSSEPM Foundation
Bob F. Perkins Research Conference

Houston, Texas
December 5-8, 2010
Houston Marriott Westchase Hotel



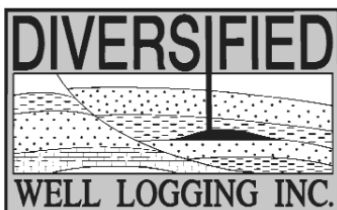
Conference information and
online registration available
on our new Web site:

www.gcssepm.org



Relax. We'll keep you posted.

Your rig is offshore and you are not. How do you know what's going on so many miles away? You know because we tell you. Daily or even hourly, Diversified Well Logging's engineers update you on the status of your rig. We are your eyes and ears, especially when it comes to deep water or high pressure, high temperature areas. Diversified offers 24-hour surface evaluation. We provide secure and customized real-time data communication, in-house research and development and 24/7 on-call support for our equipment and our engineers. Whether you have a 10-day job or 110-day job, we provide the specialized attention you require. So, relax. We're with you every step of the way.



Serving the Gulf Coast for over 40 years.

New Orleans • Lafayette • Houston • Dallas • Corpus

800.280.2096

711 West 10th Street • Reserve, LA 70084 • Phone: 985.536.4143 • Fax: 985.536.2427
sales@dwl-usa.com



**FULLY INTEGRATED AND
CENTRALIZED BIOSTRATIGRAPHIC
SERVICES**

▼ *Single-source biostratigraphic databases
for increased accuracy and consistency*

▼ *Integrated foram / nannofossil analyses*

▼ *Complete wellsite paleo services*

▼ *In-house sample preparation
lab for quality-monitoring
and efficiency*

▼ *Sample pick-up service*

6619 Fleur de Lis Drive
New Orleans, LA 70124
(504) 488-3711

www.paleodata.com

MCMORAN EXPLORATION CO.



**MCMORAN
OIL & GAS**

www.mcmoran.com

NYSE: MMR

16676 Northchase Dr.
Houston, TX 77060
(281) 539-7600
Fax: (281) 539-7655

1615 Poydras
New Orleans, LA 70112
(504) 582-4000
Fax: (504) 582-4155

110 Travis St., Suite 140
Lafayette, LA 70503
(337) 735-9150
Fax: (337) 735-9151

NOGS CONTACT LIST

--- continued from page 3 ---

MEMORIAL FOUNDATION

BOARD OF TRUSTEES

2010-11 Chairman	Tom Klekamp
2010-11 Secretary	Rick Kear
2010-11 Trustee	Chuck Holman
2010-11 Trustee	Michael N. Fein
2011-12 Trustee	Monte Shalett
2011-12 Trustee	James Swaney
2012-13 Trustee	Jennifer Connolly
2012-13 Trustee	William M. Whiting

Company

Amber Resources LLC
Schlumberger
Independent
W & T Offshore
Berkshire Exploration Co
BOEMR E
Shell
Consultant

Phone

985-845-4046
504-592-5376
504-891-4878
504-210-8148
504-831-7779
504-736-2677
504-728-6411
504-947-8495

E-mail

klekamp@bellsouth.net
kearl1@new-orleans.oilfield.slb.com
charleswholman@bellsouth.net
mikef@wtoffshore.com
mshalett@gmail.net
james.swaney@boemre.gov
jennifer.connolly@shell.com
bootscon@aol.com

AAPG DELEGATES

Term Ends

2011	Tom Hudson
2011	Edward B. Picou, Jr.
2011a)	Brenda Reilly
2011a)	Robert Rooney
2012	William Whiting
2012	Jim Zotkiewicz
2012 a)	David E. Balcer
2012 a)	Richard J. Stancliffe

Chevron
Consultant
Energy Partners Ltd.
Century Exploration
Consultant
Zot Oil & Gas
Chevron
Shell Expl & Prod Co.

504-529-5155
504-799-4811
504-832-3777
504-947-8495
504-831-4694
985-773-6725
504-728-7553

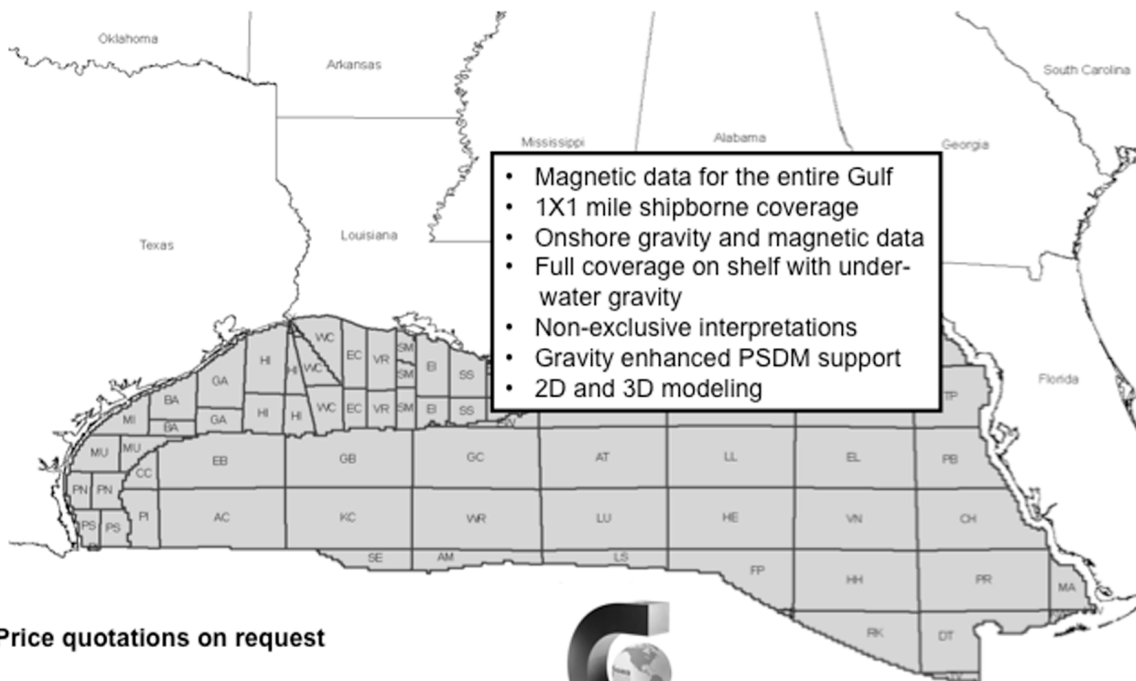
tom.hudson@chevron.com
epicou@bellsouth.net
breilly@eplweb.com
Robert.rooney@centuryx.com
bootscon@aol.com
jimzot38@zotoil.com
dbalcer@Chevron.com
richard.stancliffe@shell.com



Fugro Gravity & Magnetic Services

LAND • AIRBORNE • UNDERWATER • SHIPBORNE

The most complete coverage Onshore and Offshore Gulf of Mexico



Price quotations on request

Fugro Gravity & Magnetic Services
www.Fugro-GravMag.com
Tel: 713-369-6123



Gravity Inspired. Magnetically Inclined.



Shell has worked in partnership
with the NOGS for many years, and
is proud to count the society among
its closest business associates.

The New Orleans Geological Society was organized in 1941 to foster scientific research and advance the science of geology. Particular emphasis is laid on the exploration for and production of petroleum and natural gas. Related objectives include encouraging the adoption of improved methods of exploration, disseminating pertinent geological and technological data, and maintaining a high standard of professional conduct among its members.

www.shell.com/us.sepcor



GOM
smart

An ocean
of GOM DATA...
updated for you 24/7

Introducing GOMsmart. Web-based GOM data with
real-time updates. No special software or training.
Access data via intuitive interface or customizable maps.

- Wells: header, production, tests, 250,000+ logs
- Production Data: historical and current
- Paleo Data: access to 100,000+ observations
- Affordable: monthly and annual subscriptions

Visit www.GOMsmart.com for your FREE trial.



From ZNodal Systems to ZNodal Imaging

We are full spectrum ZNodal™ technology

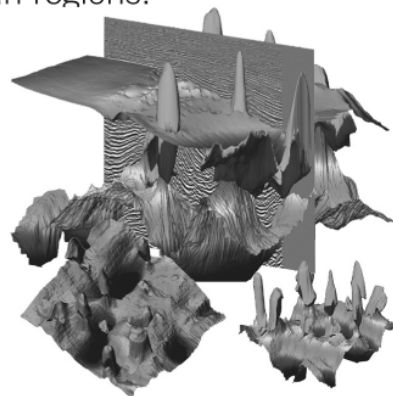
FairfieldNodal.com



We admit it. We're seismic nodal fanatics. Always have been. Which explains our one-of-a-kind, cable-free ZNodal™ systems. They work wonders in dense urban areas and pristine wilderness, in shallow water and deep ocean regions.

In fact, our exclusive ZNodal technology is behind everything we do, from acquisition and licensing to advanced processing and imaging, bringing nodal data to life in amazing ways.

Right now, our ZNodal systems are on the job in some of the world's most challenging fields, making a powerful difference. So when you're ready to go nodal, count on us to lead the way. ZNodal technology: It's what you need. It's what we're all about.



fairfieldnodal

SYSTEMS ACQUISITION LICENSING PROCESSING IMAGING



SIPES FOUNDATION

4925 Greenville Avenue Suite 1106 Dallas, Texas 75206-4019 (214) 363-1780

Fax (214) 363-8195 <http://www.sipes.org> e-mail: sipes@sipes.org

FOR IMMEDIATE RELEASE

August 24, 2010

Contact: Diane Finstrom
Dallas, Texas
Telephone (214) 363-1780

Dallas, Texas – The SIPES Foundation, administering the scientific, educational and charitable programs of the Society of Independent Professional Earth Scientists, is very pleased to announce that ten outstanding earth science students have been selected to receive scholarship awards this year, the highest number presented in the foundation's history. Applications were accepted from upper-division or graduate students who were U.S. Citizens studying any field of earth science or engineering, and who had a cumulative grade point average of 3.5 or higher.

Receiving \$2,000 awards from the Marvolene Speed Bennett and Carleton D. Speed, Jr. Endowed Fund; the Stephen. E. Collins Scholarship Fund; and the Edward A. McCullough Endowed Fund are **Janette E. England**, a master's degree student in geology at Stephen F. Austin State University; **Tom H. Shimura**, an undergraduate student in petroleum engineering at New Mexico Tech University; and **Katharine M. Knoph**, a graduate student in geology at the University of Kansas. A \$2,000 award, funded by donations from the SIPES Houston Chapter, was presented to **Alexandra E. Kirshner**, a doctoral candidate in sedimentology at Rice University. A \$1,500 award, funded by an individual petroleum engineer and SIPES Member, was presented to **Racha Boukadi**, a master's degree student in petroleum engineering at the University of Louisiana at Lafayette.

\$1,250 scholarship awards were presented to **Christopher D. Althoff**, a master's degree student in geology at the University of Oklahoma; **Alexandra K. Breeding**, an undergraduate student in geology at Texas A&M University – Kingsville; **Katie M. Hulsey**, a master's degree student in geology at the University of Oklahoma; **Sean Kerrin**, a master's degree student in geology at Louisiana State University; and **Andrea Nolting**, an undergraduate student in geological engineering at Colorado School of Mines.

Since its establishment in 1981, the SIPES Foundation has awarded scholarships to more than 180 promising earth science students. Funding for the 2010 awards was made available through donations from SIPES members; a bequest from the estate of Marvolene Speed Bennett, widow of the society's founding member, Carleton D. Speed, Jr.; the Stephen E. Collins Scholarship Fund; the Edward A. McCullough Endowed Fund; and the SIPES Houston Chapter. The SIPES Foundation also conducts and films educational seminars, contributes funding to earth science publications and continuing education programs, and also maintains an extensive library of earth science films.

The Society of Independent Professional Earth Scientists is a national organization of more than 1250 self-employed geologists, geophysicists and engineers engaged primarily in domestic energy exploration and development. SIPES has eleven chapters located in oil and gas centers of the United States.

INFOETIDBITS

Dinosaurs Unleashed on Oxford Street, London, an animatronic dinosaur experience, "Something is Stirring on Oxford Street in London." Dinosaurs Unleashed is the UK's largest animatronic, life-sized dinosaur experience, with 24 full-size dinosaurs in a Jurassic forest. For pictures go to the following website and look at the picture gallery in the upper right corner.

<http://www.telegraph.co.uk/science/picture-galleries/7094881/Dinosaurs-Unleashed-on-Oxford-Street-London-an-animatronic-dinosaur-experience.html>

Helicopter Triggers a Landslide: The Norwegian Public Roads Administration uses a helicopter equipped with a "wrecking ball" to bash down potential rock fall hazards. To see the video go to: <http://137.227.0.202/?URL=http://www.youtube.com/watch?v=af158PRmTJ0&feature=related&IP=10.20.175.59&CAT=RRATED&USER=IPGROUP>

Unusual Release of Carbon Dioxide from the Southern Ocean: A study of carbon-14 in the shells of fossil foraminifera living at the end of the last ice age, about 18,000 years ago, suggests an unusual release of carbon dioxide from the Southern Ocean at that time. For more information go to: <http://geology.com/press-release/southern-ocean-carbon-dioxide-release/>

What was T-Rex's favorite number? Eight (ate)



Ha Ha Ha

- Fran Wiselady

NOGS FINANCIAL STATEMENT: Fiscal Year July 1, 2009 to June 30, 2010

- I. Hibernia Homestead Checking Account: Used for day to day operation of NOGS activities.

Balance as of June 30, 2010: \$8,756.05, down \$2711.73 from \$11,467.78 on July 1, 2009.

- II. Morgan Stanley Smith Barney manages NOGS' Investments and there are three sub-accounts.

1. Operations Account: Account used to supplement the checking account

Balance as of June 30, 2010: \$126,524.83, up \$2793.43 from \$123,731.40 on July 1, 2009.
Interest income from Bonds and CDs for the Operations Account was \$7,007.46.

2. FONO Account: Funded by donations to the Friends of the NOGS Office Fund. There are no expenses charged to this account and income from this account is used for office operations and is transferred to the Operations Account.

Balance as of June 30, 2010: \$142,839.17, up \$5238.54 from \$137,600.63 on July 1, 2009.
Note: NOGS withdrew \$23,500.00 from FONO as a loan to pay AAPG WW II Museum Event expenses and repaid the \$23,500 in June 2010.
Interest income from Bonds and CDs for the FONO Account was \$3,836.74.

3. Publications Account: Funded by NOGS publications sales. Expenses charged to this account include postage, refunds, and amounts due to Houston Geological Society. This account contributes \$300.00 per quarter to the Hibernia checking account to be used for office operations.

Balance as of June 30, 2010: \$76,869.08, up \$105.69 from \$76,763.39 on July 1, 2009.
Interest income from Bonds and CDs for the Publications Account was \$4,432.23.

III. Totals:	Sum of all Accounts as of June 30, 2009	\$349,563.20
	Sum of all Accounts as of June 30, 2010	\$354,989.13
	Increase	\$ 5,400.93

2009-2010 NOGS Income vs. Expenses

Income	\$136,915.73
Expenses	\$137,482.46
Net	\$ - 566.93

Major projects	Income	Expenses	Net
NOGS Log	\$57,219.08	\$41,335.28	\$15,883.80
AAPG WW II	\$35,100.00	\$30,147.89	\$ 3,296.11
Luncheons	\$20,802.50	\$19,367.99	\$ 1,434.51
Golf Tournament	\$15,202.00	\$11,497.43	\$ 3,704.57
Deepwater Symp.	\$ 7,781.01	\$ 0.00	\$ 7,781.01
Entertainment	\$ 6,630.00	\$ 8,812.72	\$ -2,182.72

Charles W. Holman
2009-2010 Treasurer

NOGS MEMORIAL FOUNDATION FINANCIAL STATEMENT FISCAL YEAR 2009-2010

Portfolio Values	June 30, 2009		Income		
	MS Smith Barney	\$652,049		MS Smith Barney	
	Vanguard	\$79,084		Dividends	\$18,950.38
				Interest	\$18,831.10
	Total	\$731,133		Vanguard	
				Dividends	\$2,010.54
Portfolio Values	June 30, 2010			Total	\$39,792.02
	MS Smith Barney	\$736,125		Estimated Annualized Income 2010	\$41,740
	Vanguard	\$89,837			
				Donations through 6/30/2010	\$31,889.26
	Total	\$825,962		Total Cash In	\$71,681.28
	Difference	\$94,829			
			Expenses		
				Scholarships (10)	\$25,000.00
				Scholarships Luncheon	\$360.00
				GCAGS/AAPG IBA	\$1,000.00
				NOGS Administrative	\$1,200.00
				State Registration Fee	\$5.00
				Board Liability (O&D) Insurance	\$725.40
				CPA Tax Accountant	\$680.00
				Total Expenses	\$28,970.40

Bill Whiting July 20, 2010

NOGS MEMORIAL FOUNDATION ANNUAL REPORT 2009-2010:

The NOGS Memorial Foundation, impacted by the declines in the financial markets this Spring, is reflected in the decrease in value of our investment accounts. However, income for the Foundation's programs was less impacted due to the balance of funds with secure yields. Contributions to the Memorial Foundation's funds continue to be generous.

A new scholarship was added for 2009-10 in the amount of \$2,500.00 per year. It was named in memory of George W. Schnieder, Sr. The Schnieder Scholarship will be rotated through three universities, with a student from the University of New Orleans being the first recipient. The next and third year will go to Tulane and LSU, respectively. In addition to the Schnieder Scholarship, the Board approved two additional scholarships for 2010-11, which will follow the Schnieder in rotation. The awards are in the amount of \$2,500.00 each. The Memorial Foundation by-laws were amended to reflect these changes.

2009-2010 NOGS Memorial Foundation Scholarships

Lee H. Meltzer Memorial Graduate Award

\$3,000 Cash Award

LSU - Yongbo Peng

Yongbo Peng was born in Shandong Province, China, on June 11, 1978. He received his B.S. degree in biological sciences from Ludong University in 2003 and a M.S. in Geology and Paleontology from the Nanjing Institute of Geology and Paleontology, Chinese Academy of Sciences in 2007. He enrolled in the Ph.D. program at the Department of Geology and Geophysics at Louisiana State University in the spring of 2006. He worked as a teaching assistant and research assistant in the laboratory of Dr. Huiming Bao. His research focuses on the fossil record of early eukaryotes and the overall biosphere, hydrosphere, and atmospheric conditions in the Proterozoic Eon (2500 to 542 million years ago). One particular subject is the origin of barite deposition at the immediate aftermath of Marinoan "snowball earth" at 635 million years ago. His future plans are to work as a post doctorate for several years after obtaining his Ph.D. and then look for a faculty position. Peng was awarded the Second-Class Scholarship, Weifang College in June 2003. He is a student member of AGU and AAPG. His hobbies are badminton and traveling. Yongbo is married and has children.

James Allen Gilreath Memorial Graduate Award

\$3,000 Cash Award

Tulane - Janwei Han

Janwei Han was born in Harbin, a big city in the northeast of China. After finishing high school in his hometown, he continued his studies in Beijing. He received both his Bachelor (2005) and Master (2008) degrees in physical geography from Peking University. His research in Peking University mainly focused on the response of ecosystems to climate change. Based on remote sensing and modeling methods, he monitored and simulated the water transfer in the soil-plant-atmosphere continuum of typical steppe in Inner Mongolia. In the fall of 2008 after he finished his studies at Peking University, he studied for his Ph.D. at Tulane University. He is now engaged in two projects: one is modeling the orographic precipitation and landscape evolution, and the other project is the comparison of vertical profiles of suspended sediment in laboratory turbidity currents with models developed for fluvial transport. Janwei's goal is to finish his Ph.D. Program at Tulane University and then continue his career in a research institute or university. Janwei is married, and his hobbies include basketball and swimming. His jobs have included being a teaching assistant at Peking University and Tulane University. Scholastic awards include the Prize for Excellent Students of Peking University, 2005-06, Geography Science Major Scholarship, 2004-05, and Geography Science Major Scholarship, 2003-04. He is a member of the Tulane Chinese Students and Scholars Association.

Richard W. "Dick" Boebel Memorial Graduate Award

\$3,000 Cash Award

UNO- Hiranya Sahoo

After his M.S. degree in Geology, Hiranya Sahoo attended IIT Bombay, India with a Schlumberger Fellowship (2004-2006). There he pursued a Schlumberger-British Gas sponsored thesis titled "A geological and geophysical analysis of seismic data attributes from the post rift stratigraphy of a North Sea 3D seismic dataset." He graduated with M.Tech. (Master in Technology) degree in Geo-exploration. Later, he presented part of his work as a poster at the 2009 AAPG annual convention. In 2008, his interest in petroleum geology led him to pursue a Ph.D. at the University of New Orleans (UNO). He focuses his Ph.D. research on "Sequence stratigraphy and channel architecture of the Cretaceous Blackhawk formation in the Wasatch Plateau, Utah". The work is partially sponsored by Chevron Corporation, USA, and he just received a 2010 ExxonMobil student grant to additionally contribute toward the Ph.D. research. At UNO, he is a member of the student honor society Phi Kappa Phi and Golden Key International Honor Society, along with student membership in AAPG, SEPM, IAS, GSA, AGU and SPE. He is also an AAPG 2010 Grants in Aid Recipient - the Kenneth H. Crandall Memorial Grant. Hiranya was also a student volunteer at the AAPG 2010 Convention. His future plans are to pursue a career in research, either as faculty in a university or as an exploration and development geoscientist in the Petroleum Industry.

2009-2010 NOGS Memorial Foundation Scholarships

George W. Schneider Sr. Memorial Scholarship

\$2,500 Cash Award

UNO- Austin Nijhuis

Austin Nijhuis hails from New Hampshire, where he spent the first eighteen years of his life. While growing up in the picturesque state, he gained an appreciation for the natural world as an avid fisherman, kayaker, and snowboarder. Austin took that interest in nature and is now majoring in Geology at Tulane University, where he will graduate from in the spring of 2011. From there, he plans on attending graduate school to further his education in Geology. Austin's plan in graduate school is to obtain a Ph.D. in Geology, with concentration in Sedimentology, with the goal of obtaining a faculty position at a university. His scholastic awards include the Dean's list (Spring '08, Fall '09), and a research grant by the Louisiana Sea Grant College Program for project titled "Quantifying wetland accretion rates in the Mississippi Delta using recent crevasse-splay deposits as natural analogs for river diversion (summer 2010)." Student recreational activities are intramural soccer, and intramural softball. His hobbies are camping, guitar, ukulele and piano. Austin worked as a student worker for the Tulane University Card Services, and as an Audubon Zoo Volunteer.

NOGS Memorial Foundation Scholarships

The NOGS Memorial Foundation Scholarships are granted each year to those students who have demonstrated exceptional talent in or commitment to their geologic studies and projects. It is the policy of the Memorial Foundation to posthumously name these scholarships after those members whose own extensive contributions to the profession have been particularly praiseworthy.

Lee Hilliard Meltzer for expertise in oil and gas appraisal and exploration, as well as manifold and unstinting support of and service to - from AAPG to NOGS - the region's professional geologic organizations.

James Allen "Al" Gilreath for his work as chief tool developer of down-hole instrumentation and 'pattern' interpretation, earning him - world-wide - the title, "Mr. Dipmeter".

Richard W. "Dick" Boebel for his outstanding abilities as an oil and gas finder and in being a unique individual who was most generous of his time and talent to the industry, his peers, and in his support of many professional organizations .

George W. Schneider, Sr. for exceptional leadership in exploration activities and for being a positive force in establishing the New Orleans Geological Society and serving as its first president in 1941-42.

Jules Braunstein gained wide recognition in the oil and gas industry not only for exceptional technical expertise but also as an exacting editor. His long career was conspicuous for selfless devotion - and as carried on by his surviving wife, **Olga**, in her bequeathal of the residue of their estate to NOGS Memorial Foundation Scholarship Fund.

NOGS Memorial Award - The Board approved two additional scholarships for 2010-2011 which will follow the Schneider Award in rotation.

2009-2010 NOGS Memorial Foundation Scholarships

SENIOR

Jules & Olga Braunstein Memorial

\$2,500 Cash Award

LSU - Bryan Killingsworth

Bryan Killingsworth is currently in his senior year of an undergraduate degree in geology at Louisiana State University. He intends to continue studies at LSU as a Master's of Science candidate beginning in the spring of 2011. Bryan's involvement in a research project on the Mississippi River water sulfate at LSU's Oxy-Anion Stable Isotope Center (OASIC) has sparked his interest in future investigations of present-day and ancient earth processes using the powerful tool isotope geochemistry. He was awarded the Leo W. Hough Scholarship for Fall 2009. Bryan's future plans are to pursue a Master's or PhD degree in Geology with the eventual goal of research and teaching. He is a student member of the Mineralogical Society of America, and the Meteoritical Society. His hobbies are music, visual arts, and travel. Bryan is married and has children.

Tulane - Jordan Doig

Jordan Doig was born in December of 1988 and spent the first eight years of his life living in Mount Prospect, Illinois, a northwestern suburb of Chicago. In the summer of '97, his family moved to Colorado Springs to quench his father's thirst for nature and sunshine. It was in these first few years that his father and he took full advantage of their new home, regularly taking weekend hikes around the state with Phoebe, the nicest dog he had ever known. It wasn't until high school that he realized his love for nature and the surrounding mountains. In his short time here at Tulane, he has learned again to appreciate city life and the diversity of the people of New Orleans while struggling with the city's overwhelming flat topography. His scholastic awards include: Stewart Martin Lane Memorial Scholarship, President's Scholarship, National Merit Scholar (high school), Academic Letter (high school), and Honor Roll (high school). After graduation, Jordan plans on working in the field while he focuses on academic choices at grad school. His hobbies include hiking, rock climbing and cooking. Jordan has held jobs as a warehouse hand (West Electric Group), and as day laborer (Art Klien Construction).

UNO - Jennifer Brizzolara

Jennifer Brizzolara was born and raised in northern New Jersey and spent her summers on Long Beach Island, New Jersey. She held an interest in the sciences since she was young, but that interest was rivaled by a love for creating music. After a year of study in the School of Music at Ithaca College, she decided that a career in the arts was not for her. She knew she wanted to study the sciences but was unsure of the specific field until she encountered the Earth and Environmental Science program at the University of New Orleans. She is very enthusiastic about earning an undergraduate degree in geology and plans to continue her education in graduate school. Jennifer is a member of SEES (Society for Earth and Environmental Science) and Vice President of the Rock Climbing Club. Her interests are oceanography, coastal geology, coastal geomorphology, and coastal/ocean engineering.

2009-2010 NOGS Memorial Foundation Scholarships

JUNIOR

Jules & Olga Braunstein Memorial

\$2,000 Cash Award

LSU - Carrol Michael

Carrol Michael first discovered geology through her parents and their casual interest, and she is now pursuing her undergraduate degree from LSU. The family recreationally explored the geology of Tennessee and Kentucky. She always had her Golden Guide to Rocks and Minerals. Carrol lived in Ohio, Georgia and Tennessee, relocating to Texas in 1980. She attended high school in Corpus Christi and won a scholarship to Texas A&M. She enrolled as an aerospace engineering major and graduated eleven years later with a B.A. in Anthropology and six years of experience repairing home appliances. Carrol moved to Alaska and held a variety of paid positions, in addition to performing EMT volunteer work. After meeting her husband, a Coast Guardsman, they relocated to Gonzales, Louisiana and she enrolled at LSU to obtain a chemistry degree. Eventually, Carrol realized that she belonged in the geology department and will have her B.S. degree with chemistry minor next December. Her future plans are employment with the National Park Service, Forest Service, Geodetic Survey, or Army Corp of Engineers. Her scholastic awards are the President's Endowed Scholarship, Texas A&M, National Merit, Merit Plus, Halliburton Field Camp Scholarship, Major J. Stewart Slack, Jr. Memorial Scholarship, and Devon Energy Corporation Scholarship. Her hobbies are emergency medicine, motorcycling, dogs, and geology. Carrol is married and has children.

Tulane - Holly Ann Jeffries

Holly Ann Jeffries was born in Guam to Teresa and Richard Jefferis (now both US Navy retired). She spent her childhood in Monterey, California; Norfolk, Virginia; Honolulu, Hawaii and Louisiana. While living in Hawaii, she fell in love with geology through weekends of hiking and exploring the mountains and extinct volcanoes of Oahu and numerous trips to the Big Island and Volcano National Park. Louisiana taught her to love rivers. She attended Northshore High School in Slidell, Louisiana, graduating as the valedictorian in 2008. She currently attends Tulane University as a full-time junior and works summers at the Naval Oceanographic Office Geo-technical Analysis Lab. She plans on earning her Masters degree in Geology from Tulane University. Following graduate school, she hopes to continue working at the Naval Oceanographic Office in the Geo-technical Analysis Lab. Her scholastic awards include the Tulane University Louisiana Legislative Scholarship, Tulane Valedictorian Scholarship, TOPS, National Beta Club Scholarship 2008, and the SEG Scholarship 2008. She is the Publicity Chair for the Tulane Catholic Center 2009-present, and is an active member in Tulane Students for Life 2008-present, and Relay for Life of New Orleans Universities 2009-present.

UNO - Krisztian Megyeri

Krisztian Megyeri was born in Hungary, lived in Germany for several years, then moved to the United States with his parents at the age of 12. He has always been passionate about the environment. The increased degradation of the environment inspired him to devote his life understanding complex environmental systems and seeking solutions to the many issues. Currently, he is pursuing a B.S. in Environmental Science with a concentration in coastal restoration. Krisztian is an active member of the Society for Environmental Science(SEES) and is also involved with several coastal restoration nonprofit organizations. After graduating from the University of New Orleans, he plans to continue his education at the graduate level, and the support offered by the New Orleans Geological Society is an enormous help toward achieving these academic goals. Krisztian is a member of SEES, NOGS, Society for Ecological Restoration International, the Honor Society of Sigma Gamma Epsilon, and The Honor Society of Phi Kappa Phi. He was on the Dean's List: Fall 2007, Spring 2009, Fall 2009, Spring 2010 and was a nominee for the 2009 UNO Morris K. Udall Foundation. His hobbies include hiking, canoeing, gardening, wood working, and music.

2009-2010 NOGS Memorial Foundation Scholarships

NOGS Memorial Awards

\$2,500 Cash Award

LSU - Matthew Clark

Matthew Clark is currently a Ph.D. student in the Department of Geology and Geophysics at Louisiana State University. Matthew was first introduced to geology in the mountains of southern Colorado on family trips as a child. Matthew developed an interest in stratigraphy as an undergraduate at LSU and currently works with Dr. Brooks Ellwood. Matthew is most interested in carbonate and evaporites cyclostratigraphy and is beginning some of his initial work on the Guadalupian and Lopingian section in West Texas. This spring he was a member of LSU's Imperial Barrel team and presented the stratigraphy and petrophysics component of the group's Danish North Sea prospect. Matthew will work with Chesapeake Energy's Permian Basin group this summer and looks forward to a career in the petroleum industry after graduation. Matthew is a student member of AAPG, Geology Club, SEG, AGU, and GSA. He was awarded the Board of Regents Fellowship (2009-10), LSU Geology sophomore (2007) and junior (2008) of the year. His hobbies are astronomy, computers, and outdoor activities such as camping and hiking.

UNO - Chris Esposito

Chris Esposito is a Master's Degree Candidate in the University of New Orleans' Earth and Environmental Sciences Department. His thesis examines the short term sediment dynamics of a crevasse splay in the Cubit's Gap subdelta of the Mississippi River. His fieldwork will provide data showing the hydrodynamic processes that govern the growth of a small delta feature in a river-dominated wetland. He hopes the resulting analysis will aid in the planning and design of diversion based restoration projects in southeast Louisiana. Chris holds an undergraduate degree in Mathematics and Physical Oceanography (double major) from Rutgers University from his home state of New Jersey. Prior to attending graduate school he was an educator, teaching high school math at schools in New Jersey and in New Orleans. He founded an environmental education program at a school for adjudicated youths in rural Louisiana. Chris's future plans are to obtain a Ph.D. in Coastal Sciences and teach at a university level. His hobbies include gardening, kayaking, reading and trapeze.

New Orleans Geological Auxiliary News

Thank you for the opportunity to serve as President of the New Orleans Geological Auxiliary for 2010-2011. I really enjoyed being involved with the Auxiliary and its members as the past years have been a memorable experience for me. We have a great year planned and invite those who have not joined or who are inactive to come and have fun with us at our upcoming events.

I want to thank Linda Peirce for holding my hand during the transition, and Alma Dunlap, Judy Sabate, Peggy Rogers and Judy Lemarie for serving with me on the Board. By accepting these positions it makes my job much less complicated.

I am looking forward to all of the events planned this year by our Chairs and Co-Chairs. Ladies, we all know how time consuming the preparation is for these events and your help and attendance is greatly appreciated. The September luncheon at Ruth Grimes' house on September 8th was a great success. The food supplied by Foxtrot was delicious as always and we had a great turnout. Thank you Ruth for opening up your beautiful home for us.

A reminder that the November 10th Luncheon at Austin's Restaurant is for NOGA members and their spouses/significant others only as seating is limited. Reservations need to be made a week in advance.

See you in November.

Jean Jones
President NOGA



Eni Petroleum

1250 Poydras Street
Suite 2000
New Orleans, LA 70113
Tel: (504) 593-7000
Fax: (504) 593-7745

1201 Louisiana Street
Suite 3500
Houston, TX 77002
Tel: (713) 393-6100
Fax: (713) 393-6205

It's no illusion...
Core Lab offers everything you need.



©2009 Core Laboratories. All rights reserved.

Unconventional resource exploitation • Gas shale experts • Deepwater GOM authority
Capacity for fast turnaround • High-quality people • Global support
Industry leadership and reliability • Proprietary and patented technologies • Experience

www.corelab.com/rd/petroleumservices • 24-hour wellsite service hotline: 504-733-6583

SEI[®]

Seismic Exchange, Inc.

**Strategic Speculative Surveys
Geophysical Data Marketing & Management**

YOUR
**Full Service
National
Seismic Data
Marketing Firm**

New Orleans
Dallas
Houston
Denver
Oklahoma City
Corpus Christi
Tulsa

201 St. Charles Avenue, Suite 4300, New Orleans, Louisiana 70170-4300
Telephone 504.581.7153 Fax 504.581.9591
www.seismicexchange.com

**New NOGS
Members
June - September
2010**

Natanya M. Black
Chevron
100 Northpark Blvd
Covington, LA 70433
985-773-6426

Brooks B. Ellwood
Louisiana State University
Professor, Department of
Geology and Geophysics
Baton Rouge, LA 70803
225-578-3416

Donald F. Haefner
Black Mountain Geophysical
Service LLC
Member
985-778-3030

Jeffrey S. Hanor
Louisiana State University
Professor, Department of
Geology and Geophysics
Baton Rouge, LA 70803
225-578-3418

Matthew R. Hoffman
Chevron
Geologist
100 Northpark Blvd (N3217)
Covington, LA 70433
985-286-3054

Soazig Leveque
Schlumberger
Well Placement Instructor
Ste 932, 1515 Poydras St
New Orleans, LA 70112
504-256-5429

Jeffrey A. Nunn
Louisiana State University
Professor, Department of
Geology and Geophysics
Baton Rouge, LA 70806
225-578-3353

Sophie Warny AC
Louisiana State University
Asst. Prof., Department of
Geology and Geophysics
Baton Rouge, LA 70803
225-578-5089

REINSTATED

W. Naylor Stone
Consultant - McMoRan
Exploration
1615 Poydras St
New Orleans, LA 70112
504-582-4008

REINSTATED

Mark Wojna
Century Expl. New Orleans Inc.
Ste 2800, 3838 N Causeway
Metairie, LA 70002
504-832-3755



Governor
Bobby Jindal

Proclamation

WHEREAS, the earth sciences are integral to the discovery development, and conserving of mineral, energy, and water resources needed for Louisiana's continuing prosperity; and

WHEREAS, the earth sciences provide the basis for and mitigating wetland loss and natural hazards such as earthquakes, floods, coastal erosion, hurricanes, landslides, droughts, and subsidence experienced from time to time in Louisiana; and

WHEREAS, the earth sciences are critical to environmental and ecological issues ranging from surface water, ground water, oil spills and air quality to waste disposal; and

WHEREAS, geological factors of resources, hazards, and environmental are vital to land management and land use decisions made in Louisiana; and

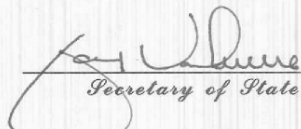
WHEREAS, the Louisiana Geological Survey, since its establishment in 1934 has served the state and its citizens with valuable and relevant earth science investigations and information.

NOW, THEREFORE, I, Bobby Jindal, Governor of the State of Louisiana, do hereby proclaim October 10 – 16, 2009 as

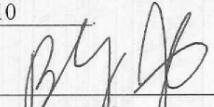
EARTH SCIENCE WEEK
in the State of Louisiana.



Attest By
The Governor


Secretary of State

*In Witness Whereof, I have hereunto set
my hand officially and caused to be affixed the
Great Seal of the State of Louisiana, at the
Capitol, in the City of Baton Rouge, on this*
the 10th day of October
A.D., 2010


Governor of Louisiana

DRILL BITS

South Louisiana and Offshore Exploration and Production Activity

- **Back by Popular Demand:** Drill Bits has returned after a brief absence from the LOG, and I have agreed to report on the most significant and interesting exploration activities in south Louisiana. In order to accomplish this task, I have invited several “scouts” to assist me in writing this column.

Bob Branson will be reporting the Tuscaloosa activities. Bob, a Tuscaloosa expert, was employed by Chevron in the glory days of the Tuscaloosa Trend drilling activities and he remains active in that area today. Our offshore “scout” is Al Baker. In addition, we have 2 or 3 roving scouts participating. We also extend an invitation to YOU, THE READER, to contact us about any exciting industry news to add to this column. Today, all major oil companies and most mid-sized companies employ scouts to gather oil field activities to assist in the exploration efforts of their companies.

The local scouting organizations are the South Louisiana Oil Scouts Association (SLOSA) and the Offshore Oil Scouts Association (OOSA). Both are members of the International Oil Scouts Association. SLOSA and OOSA meet weekly to give updates on every well drilled within its area. SLOSA covers land rigs drilling within the lower 40 parishes of Louisiana, including State Water Bottom Lands; OOSA covers the offshore wells outside the State of Louisiana’s jurisdiction. Each well is followed from the day it is permitted to the day it is completed.

- **A Brief History of Scouting:** In 1870, the first group of oil “scouts” was formed in Pennsylvania for the purpose of exchanging current and correct information about drilling wells. A common sight found scouts hiding in bushes or stationed high in a tree to count the stands of drill pipe going in and out of the hole. Formation tops were noted based on the drilling time through the formations.

By 1882, “Oil Scout” was an accepted profession with more than 100 scouts listed. In July 1924, a charter was adopted for the “National Oil Scouts Association.” By 1940, due to the large number of landmen in the association, it was renamed “National Oil Scouts and Landman’s Association.” Membership peaked at 900. Fifteen years later the landmen formed their own association, resulting in the name change to the “International Oil Scouts Association”.



*“Pennsylvania – Scene in the Oil Regions
- An Oil Scout Under Fire”*

- **Current South Louisiana Activities:** In Beauregard Parish, Midstates Petroleum Corp. is active in Bearhead Creek, South Field, having completed two Lower Wilcox wells, and is waiting on a completion rig for a third well while drilling its fourth well. The #2 Musser-Davis, located in Sec. 34, T6S-R11W, was drilled to a total depth of 15,034’ and completed in the Lower Wilcox, flowing 125 BOPD through perforations 11,188’ to 13,977’ (overall). The #6, located in Sec. 33, tested 220 BOPD. In the past five years, the field has produced approximately 2 MBO and 4.5 BCFG.

Apollo Energy Operating, Inc. has permitted four wells in the old Cameron Meadows Field, ranging in depth from 5800’ to 7100’. Since 1975 the field has produced more than 10 MBO and 18 BCFG but has been in rapid decline in the last six years. Drill Bits will report on the progress of this Cameron Parish drilling program.

Also in Cameron Parish, Samuel Gary & Associates are preparing to test its #1 Texaco E&P in Marceaux Island Field. The well is located in Sec. 9, T13S-R14W, and has had 5-1/2” liner set at 13,830’. This field was discovered in 2001 and produces from the Hackberry. Since then, it has produced more than 3 MBO and 41 BCFG.

The Tuscaloosa Trend in the Baton Rouge area is still active 35 years after the discovery of False River Field, with four recently completed wells and additional drilling activity scheduled.

In East Baton Rouge Parish, Maritech Resources Inc. has completed an extension well to the previously depleted Irene Field. Maritech completed the #1 Acme Brick, located in Sec. 44, T5S-R1W. The well was drilled to total depth 20,508’, plugged back to 19,512’ and perforated 18,886’ to 18,912’. It flowed 6346 MCFGD + 239 BCPD, on 12/64” CK, FTP 7258#, Gvt 52. The well was directionally drilled 3169’ SW of the surface location of the Slapco #1 McVey, a depleted gas well. The #1 Acme Brick was

Maritech's first venture into the Tuscaloosa Trend and established the most southerly production in the field. Irene Field went off production in 2000, after producing 4.2 MMBC and 157 BCFG.

Also in East Baton Rouge Parish, BP America is waiting on a completion rig for its #1 Edwards in Comite Field. The well was drilled to a total depth of 19,200' in Sec. 1, T6S-R1E. BP America is also preparing location for its #1 Barber, a proposed 19,927' test.

In Point Coupee Parish, in Moore-Sams Field, Energy Producing Co. has completed its #2 Deville, located in Sec. 51, T5S-R9E. The well was drilled to a total depth of 21,497' and tested 2400 MCFGPD through perforations 20,855 to 20,865'. The completion was in the 19,900' Sand, the first completion in this sand.

Still in the Tuscaloosa Trend, in False River Field, West Baton Rouge Parish, the Energy Producing Co. #1 H.H. White, was drilled to total depth 21,171 and flowed 3057 MCFGPD and 378 BCPD through perforations 19,543 TO 19,590'. The well is located in Sec. 6, T6S-R12E, approximately 5 miles east of the discovery well.

In St. Mary Parish, Hunt Oil Co. has completed the #3 State Lease 14914 in Myette Point, NW Field, located in T13S-R10E. The well was drilled to a total depth of 16,740' and was perforated 16,248' to 16,304' (overall) in the Liebuesella 2 sand. It was completed flowing 2752 MCFG and 181 BCPD.

Dynamic Offshore has completed its #2 State Lease 19269 in Eugene Island Block 1, flowing 10,440 MCFG and 770 BCPD through perforations 16,222' to 16,372'. The well was drilled to a total depth of 16,866 feet.

In Atchafalaya Bay, Phoenix has completed the #1 State Lease 20035 through perforations 18,256' to 18,328', flowing 10,500 MCFG and 108 BCPD, after drilling to a depth of 18,772 feet. Phoenix has a new location for the #1 State Lease 20221, a proposed 19,500' test, and is drilling below 11,615'.

In Erath Field, Manti Exploration is drilling a proposed 21,500' test. The #1 Moss, located in section 33, T13S-R4E, is currently drilling below 18,000'.

OFFSHORE LOUISIANA: Six months ago, there were 92 rigs running in the Gulf of Mexico. Today, the old saying "The Gulf of Mexico is dead" pretty much rings true, not by reservoir depletions but by federal bureaucratic intervention, causing a great deal of uncertainty for the petroleum industry. The realization is that the deepwater drilling moratorium imposed until November 30, 2010 by the Department of the Interior transgresses the 500-foot water depth contour and engulfs the shelf drilling activity as well, creating a de-facto shelf drilling moratorium for the companies who wish to operate in shallow water. One of the major problems on the shelf is the inability to obtain a drilling permit in a timely fashion from the BOEMRE (which is the new government title for the "old" MMS). According to the BOEMRE's website, since June 1st a total of 21 drilling permits have been issued in the Gulf. Of these, two were for new wells, and the remaining 19 were for sidetracking existing wellbores. The new wells are located on the shelf and include Hilcorp's South Marsh Island Block 78, OCS-G 1210 #D-3 and Apache's High Island Block 179, OCS-G 1848 #21. Thus, it is apparent that the new set of rules for operators that are being created and imposed are definitely slowing the pace of the shelf drilling activity. Even after the moratorium is lifted, many operators do not predict a surge in drilling activity in the Gulf because of the changes in the way that business operations will then be done. So stay tuned, and don't expect much exciting news concerning an abundance of new Gulf discoveries.

However, one of the more active independents still drilling wells on the shelf is McMoran Oil and Gas. They currently have three rigs under contract that are drilling wells in their deep shelf and ultra-deep shelf drilling program. McMoran recently announced a new discovery at their Blueberry Hill Prospect in South Marsh Island Block 225. On August 3, 2010, McMoran reported that their State Lease 340 #9 ST-1 well has been drilled to 24,385' MD/23,630' TVD and found a 105-foot hydrocarbon-bearing zone of high quality sand in the well. They have continued deepening the well to a proposed total depth of 24,885' MD/24,000' TVD. The McMoran's Davy Jones well, OCS-G 2300 #4, in South Marsh Island Block 243 and its Blackbeard East well, OCS-G 21667 #1 in South Timaballier Block 144 are both drilling ahead towards proposed total depths of 29,950 feet.

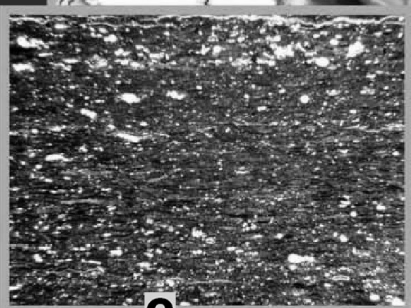
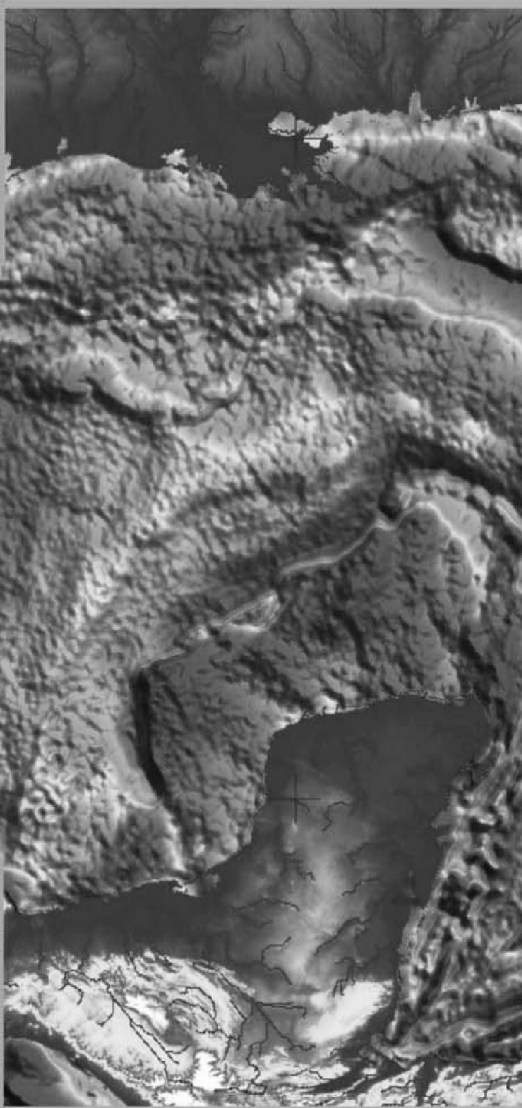
- BITS AND PIECES: BP America has announced their plans to sell all Tuscaloosa Trend properties.

Reported, but not confirmed, a 26,000' well is proposed for Johnson Bayou Field in Cameron Parish by an unnamed company (Armstrong?), possibly a Canadian company.

Also rumored (which is scout's terminology for "I don't know") is that two major oil companies will join as working interest partners.

Tune in next month--

C C C (Carlo Christina)



**GULF COAST ASSOCIATION OF GEOLOGICAL SOCIETIES
AND GULF COAST SECTION SEPM**

**60TH ANNUAL CONVENTION
SAN ANTONIO, TEXAS**



October 10 - 12

**Complete Details
can be found at:
<http://www.gcags2010.com>**

HOSTED BY THE SOUTH TEXAS GEOLOGICAL SOCIETY

60th Annual GCAGS/GCSSEPM Convention

Presents

The Stricklin Symposium: Forming and Filling of the Gulf of Mexico Basin: Triassic, Jurassic, and Cretaceous Tectonics, Source Rocks, and Petroleum Systems

Tuesday, October 12, 2010 • 8:20 am – 4:10 pm, San Antonio, Texas

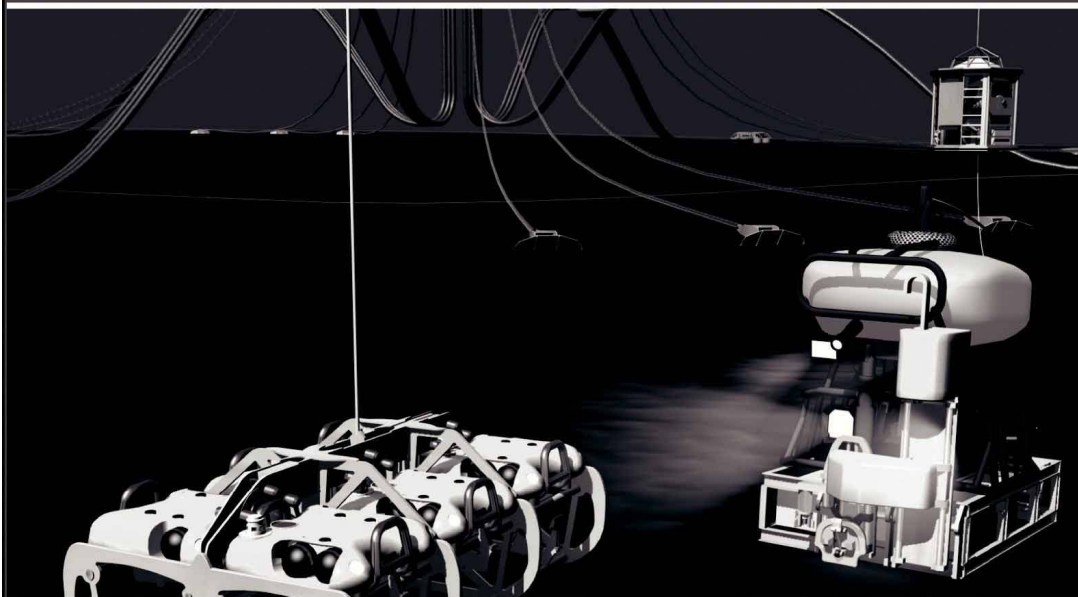
Symposium Conveners:

T. E. Ewing, Frontera Exploration Consultants, San Antonio, Texas
E. A. Mancini, Texas A&M University, College Station, Texas

- 8:20 **Thomas Ewing:** Introduction to the Stricklin Symposium
- 8:30 **James Pindell:** History of Tectonic Modeling and Implications for Depositional Architecture in the Gulf of Mexico (GOM): Where we Should Go from Here
- 9:00 **Jim Harris, Rob Crossley, Nick Stronach, Paul Valdes, and Roger Proctor:** The Plate Tectonic, Paleogeographic, and Paleoclimatic Context for the Development of the Mesozoic Gulf of Mexico
- 9:30 **Steve Creaney:** A View of the Genetic Development of Gulf of Mexico Petroleum Systems
- 10:00 **Break**
- 10:30 **Ernest Mancini and Wayne Ahr:** Jurassic Depositional Systems, Facies, and Reservoirs of the Northern Gulf of Mexico
- 11:00 **Thomas Lovell and Amy Weislogel:** Detrital Zircon U-Pb Age Constraints on the Provenance of the Late Jurassic Norphlet Formation, Eastern Gulf of Mexico: Implications for Paleogeography
- 11:30 – 1:00 **GCSSEPM and Stricklin Symposium Luncheon (ticketed event): Roger Sassen:** Preservation of Methane in Deep, Hot Reservoir Rocks
- 1:10 **Robert Scott:** Cretaceous Stratigraphy, Depositional Systems, and Reservoir Facies of the Northern Gulf of Mexico
- 1:40 **Thomas Ewing:** Pre-Pearsall Geology and Exploration Plays in South Texas
- 2:10 **Marco Flores Flores, Jorge Lavín, Noemí Aguilera, Marco Peña:** The Kimmeridgian Oolitic Banks and their Exploration Potential in the Marina de Campeche Zone, Southeastern Mexico: Biostratigraphical and Sedimentological Implications
- 2:40 **Roger Sassen:** Laminated Lime Mudstone of the Upper Jurassic Smackover Formation: Source of High-Sulfur Oil and Gas
- 3:10 **Andrew Petty:** Stratigraphy and Petroleum Exploration History of the Smackover Formation (Oxfordian), Northeastern Gulf of Mexico
- 3:40 **Russell Dubiel, Peter Warwick, Lauri Burke, James Coleman, Kristin Dennen, Colin Doolan, Catherine Enomoto, Paul Hackley, Alexander Karlsen, Matthew Merrill, Krystal Pearson, Ofori Pearson, Janet Pitman, Richard Pollastro, Elisabeth Rowan, Sharon Swanson, and Brett Valentine:** Geology and Assessment of Undiscovered Oil and Gas Resources in Mesozoic (Jurassic and Cretaceous) Rocks of the Onshore and State Waters of the U.S. Gulf of Mexico Region

To register, sponsor or exhibit for the GCAGS2010 Convention, please go to www.gcags2010.com

Finally - An answer for getting reservoir seismic **OVER THE RESERVOIR!**



• 4C/4D Node Seismic

- ANGOLA
- GoM
- NIGERIA



“Coming Soon to an Oilfield Near You!”

www.sbexp.com

Dubai
T: +971 4 4271700

Houston
T: +1 281 566 1666

Oslo
T: +47 2240 2700

Rio
T: +55 21 2494-0283

Singapore
T: +65 9180 2605

Trondheim
T: +47 7 3879500

RAISING
THE **STANDARD**



**100 Northpark Blvd.
Covington, LA 70433**

(985) 773-6000



LaBay
Exploration Co., L.L.C.

111 Veterans Memorial Blvd.,
Suite 1550
Metairie, Louisiana 70005

www.labayexploration.com

Office (504) 371-5967
Fax (504) 371-5969

***This advertising space is available!
Contact the NOGS office.***

THE NEW ORLEANS GEOLOGICAL SOCIETY MEMORIAL FOUNDATION, INC.

The Memorial Foundation is an IRS Tax Exempt Code #501 (c)(3) organization. The Federal I.D. is: 72-1220999. Please consider making a donation to the Foundation prior to the close of this year's fiscal cycle on June 30, 2010. Your individual support in any amount will help meet the IRS Guidelines for our Foundation. *Thanks!*

\$15,000 AND ABOVE

Olga Braunstein Succession

Gibbet Hill Foundation

In Memory of Steve & Marion Millendorf, William J. Prutzman,

Roger G. Vincent & Ron Youngblood

\$10,000

George W. Schneider, Jr. and Family

In Memory of George W. Schneider, Sr.

\$2,000 TO \$3,000

NOGS Golf Tournament May 2009

In Memory of Bill Craig

UP TO \$249

Donald I. Andrews

In Memory of Ray F. Havard

In Memory of Harlan (Lanny) Northcott

Robert J. Ardell

In Memory of Al Gilheath

In Memory of Bill Malin

In Memory of Bob Williamson

Mr. and Mrs. Wesley Barton

In Memory of Thomas A. Cullinan

Abraham Biadgelgne

Maurice N. Birdwell

Irion Bordelon, Sr.

In Memory of Robert G. Williamson

Hilary James Brook

Robin Broussard

Rob Burnett

J. Sybil Callaway

Chevron

Matching Funds

Arthur F. Christensen

Ellen F. Clark

Willis E. Conatser PhD

Clarence F. Conrad

Charley Corona

In Memory of Professor Hubert Skinner

Trudy and Charley Corona

In Memory of Erik Mason

Michael A. Danahy

M. R. "Bob" Douglass

In Memory of Robert G. Williamson

Merle J. Duplantis

Dr. Brooks B. Ellwood

Parrish N. Erwin, Jr.

Exxon Mobil Matching Funds

Michael N. Fein

Laurens Gaarenstroom

Sherwood M. Gagliano

Arthur J. Garden

David Garner

\$7,000 TO \$9,000

Paul C. McWilliams

\$250 TO \$499

Carlo C. Christina

In Memory of Al Gilheath

Tom Klekamp

Richard G. Klibert

Larry Galloway

Peter G. Gray

In Memory of Robert G. Williamson

Bret Hampton

Angela M. Hessler

Through the Chevron Humankind

Program

Bernard L. Hill, Jr.

In Memory of Robert E. Osborne

Dan E. Hudson

Kenneth Huffman

Jeffrey E. Jandegian

Paul Jurik

In Memory of Thomas A. Cullinan

Reuben J. Klibert, Jr.

In Memory of Dale Klibert

John C. Kucewicz, Jr.

John C. Langford

Jeannie F. Mallick

Paul C. McWilliams

In Memory of Russell D. "Rusty" Morris

New Orleans Geological Auxiliary

In Memory of Dee Baysinger

In Memory of Doris Meltzer

In Memory of Terri Smith

Nexen Petroleum USA Inc. Matching Funds

Russell H. Nordwell

William J. O'Leary

Richard A. Olsen

In Memory of Richard W. Boebel

In Memory of William J. Malin

In Memory of Robert W. Sabate'

Teresa M. O'Neill

In Memory of Brian J. O'Neill

Linda and Bill Peirce

Edward B. Picou Jr.

In Memory of William J. Malin

In Memory of Robert G. Williamson

FONO FUND

The FONO Fund accepts contributions that are invested and the income dedicated to assure sufficient financial resources will always be available to maintain the NOGS business office. Contributors are reminded that donations to the FONO Fund are not covered by the IRS 501 (c)(3) tax exempt classification and should be reported as a business expense on your IRS tax report.

\$500

James A. Hartman

In Memory of Hal Hudson

In Memory of Robert G. Williamson

UP TO \$250

Donald I. Andrews

Alfred H. Baker Jr.

Joseph E. Boudreaux

Hillary James Brook

Jack G. Bryant

J. Sybil Callaway

Arthur F. Christensen

Richard P. Colomes

Clarence F. Conrad

Michael A. Danahy

John Dombrowski

Merle J. Duplantis

Richard A. Edmund

Mark J. Gallagher

William J. Furlong

Duncan Goldthwaite

James A. Hartman

In Memory of Hal Hudson

In Memory of Robert G. Williamson

Bernard L. Hill, Jr.

Thomas A. Hudson

Kenneth Huffman

C. M. (Max) Jacobs

Robert M. Jemison, Jr.

Tom Klekamp

Louis Lemarie'

William J. Malin

Jeannie F. Mallick

James A. McCarty

Louis L. McCormick

Robert G. Murphy

William J. O'Leary

Richard A. Olsen

Erwin Parrish, Jr.

Linda and Bill. Peirce

Edward B. Picou, Jr.

Richard D. Provensal

James P. Raymond, Jr.

Brenda E. Reilly

C. R. Rondeau

George D. Severson

Rudolf B. Siegert

Richard J. Stancliffe

Bryan P. Stephens

Raymond Stephens

Roy C. Walther

Robert C. Weissmann

William M. Whiting

James W. Yeldell, Jr.

Jim Zotkiewicz

CONTRIBUTIONS FOR BOTH FUNDS THROUGH SEPTEMBER 9, 2010.

DONATIONS ARE LISTED FOR ONE YEAR.

Richard D. Provensal

In Memory of Thomas H. Philpott

Scott Purinton

Brenda E. Reilly

Mrs. William B. Rodan

In Memory of Robert G. Williamson

Robert T. Sellars, Jr.

In Memory of Robert G. Williamson

George D. Severson

Rudolph B. Siegert

Dr. J. O. Snowden

Gary L. Spraul

In Memory of H. Grady Collier

Raymond O. Steinhoff

In Memory of Harold E. Vokes

Roy C. Walther

William M. Whiting

In Memory of William J. Malin

Armour C. Winslow

In Memory of Rita Menzel Winslow

Frances A. Wiseman

In Memory of Steve Widdicombe

James W. Yeldell, Jr.

Jim Zotkiewicz

In Memory of Bill Craig

Chevron

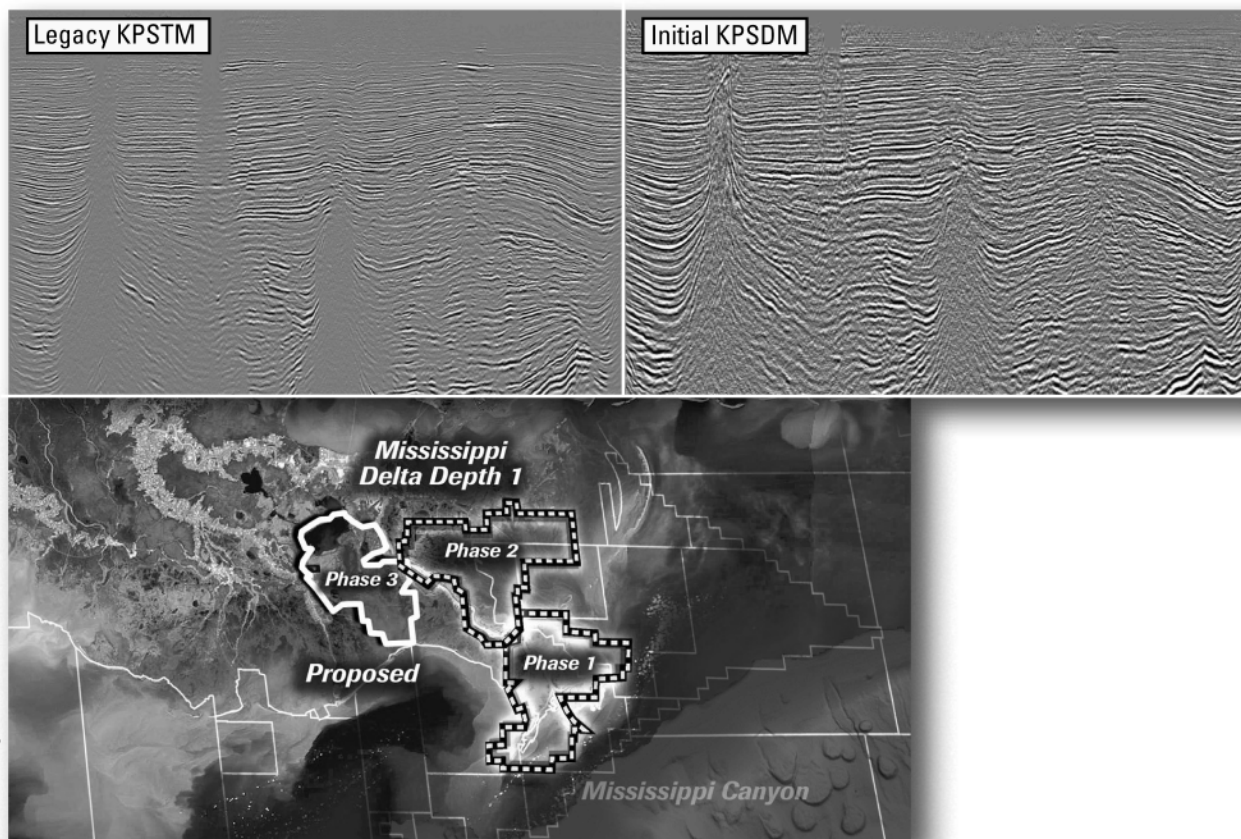
Bernard L. Hill, Jr.

John C. Scheldt

Candace V. Strahan

In Memory of James Strahan

Improved depth imaging in the Mississippi Delta



In the Mississippi Delta region, WesternGeco is utilizing state-of-the-art processing designed to eliminate fault shadows and enhance deep imaging. The Mississippi Delta - Depth 1 survey, now in progress, incorporates the processing and remigration of twelve legacy surveys covering 1,855 square miles. High-quality time imaging using relative amplitude anisotropic Kirchhoff prestack time migration will be followed by improved structural imaging utilizing anisotropic Kirchhoff prestack depth migration.

To learn more about this and other Multiclient products, call +1 713 689 1000.

www.multiclient.westerngeco.com/la

Multiclient to the Power of E



Recharge Your Mind, Body and Career with Timely Training with AAPG!

Popular Online Course Available Again: Introduction to Geological Reservoir Characterization, will begin September 13 and run through December 17, 2010. This course is taught by Dr. Roger Slatt with University of Oklahoma, and covers the principles and practice of characterizing petroleum reservoirs using geologic and engineering data, including well logs, sample descriptions, routine and special core analyses, and well tests. There are weekly assignments, and interaction with the instructor on a regular basis. The price is \$1495 per person.

Short Course with Field Trip: Application of Structural Geology in Prospecting in Thrusted and Extensional Terrain is scheduled for November 8-12, in Las Vegas, Nevada and is taught by industry experts Chuck Kluth and Wayne Narr. Participants will learn to apply sound structural principles and techniques, and integrate a variety of data types to understand and predict overall trap shape, the character and impact of distribution of secondary structures (e.g., fractures) that may have a critical impact on reservoir performance, and identify likely exploration targets in each of the structural styles covered. Registration is \$1695 for AAPG members, \$1795 for non-members up until October 11.

Fall Education Conference on Unconventional Resources

AAPG's Fifth Annual Fall Education Conference will take place October 4-8, in Houston, with all 10 courses revolving around the topic of Unconventional Resources. There will be 3 concurrent sessions each day, and topics include Reservoir Characterization and Production Properties of Gas Shales; Source Rocks 101 – What Geoscientists and Engineers Need to Know about Petroleum Source Rocks; The Varying Role of Natural Fractures in Unconventional Reservoirs; Log Analysis of Shaly Sand Reservoirs, and MORE! Registration for the week is \$1595 for AAPG members, \$1695 for non-members, and badges are transferrable. Courses are also individually priced if you can't attend the entire week. Hurry and reserve your spot before courses fill up. The early-bird prices expire September 6.

· New Ways to Look at Old Data: New Pay Zones, Increased Production, Expanded Regional Plays is planned for November 8-9, in Houston. How are new ways to look at old data resulting in new pay zones, increased production, and even new regional plays? How can you find and determine the best way to produce oil that's been "left behind?" This AAPG Geoscience Technology Workshop provides you with answers, ideas, and opportunities. Opportunities are still available if you'd like to give a presentation – contact Susan Nash snash@aapg.org at AAPG if you are interested. Registration to attend is \$695 for AAPG members, and \$795 for non-members, but only through October 11, so sign up now to save!

MONTHLY LUNCHEON MEETING SURVEY RESULTS

The results of the survey on the monthly luncheon meetings, distributed on August 2, have been tabulated. The attending members at the August meeting were surveyed to see if they wanted the monthly meetings to continue throughout the year (including the summer months) or if two or three of the summer meetings should be discontinued. The results are:

Meet Year Round: 21
Meet September – May: 10
Meet September – June: 8

The results are not conclusive and the NOGS board has elected to not pursue the issue any further at this time.

SAI

Sydboten & Associates, Inc.
*Geological and Geophysical Consulting,
3-D Seismic Interpretation*

Ben D. Sydboten, Jr. CPG

124 Heymann Blvd., Suite 202
Lafayette, LA 70503

Office (337) 234-5288
Cell (337) 234-5491

ATWATER CONSULTANTS, LTD.

REGISTERED AND CERTIFIED PETROLEUM PROFESSIONALS

GEOLOGICAL, ENGINEERING, GEOPHYSICAL,
TRAINING AND EXPERT WITNESS SERVICES

3525 Hessmer Ave, Ste 304
Metairie LA 70002

Tel. (504) 581-6527
Fax (504) 524-7798

"Serving The Oil & Gas Industry Since 1983"

Geological,
Geophysical &
Land Drafting

Anthony Catalanotto
President

Stefani Foster
Drafting & Design

Geo-Draft, Inc.

A Professional Drafting & Graphics Firm

3349 Ridgelake Drive • Suite 202 • Metairie, LA • 70002
Office: (504) 836-2882 Fax: (504) 836-2877 (Cell) (504) 481-7291
E-Mail: geodraft@bellsouth.net
Website: www.geodraftinc.com

*This advertising space is available!
Contact the NOGS office.*

NORTHCOAST OIL COMPANY

610 E. Rutland St.
Covington, LA 70433
(985) 898-3577
(985) 898-3585 FAX

Jack M. Thorson
Eric C. Broadbridge
J. Daryl Gambrell
Raymond W. Stephens

**NOGS thanks our
sponsors for their support:**

GOLD LEVEL SPONSORS:

CHEVRON
LA BAY EXPLORATION CO, LLC.

**SPECIAL THANKS TO
DIVERSIFIED WELL LOGGING**



CIMAREX ENERGY CO.

GULF OF MEXICO REGION
GOM, SE La., N. La., MS, AL

1100 Poydras St.; Suite 1100

New Orleans, Louisiana 70163

504-586-1815 / Fax 504-586-9035

Keith Gourgues
Region Manager

(832) 242-6000 (O)
(713) 917-0493 (O)

(504) 931-7506 (C)
johnjurasin@jurasinoilgas.com

JURASIN OIL & GAS

9700 Richmond Ave., Suite # 124
Houston, TX 77042-4821

JOHN M. JURASIN
President

Cert. Pet. Geologist #4284
Cert. Prof. Earth Scientist #1961

Collarini Energy Staffing

Full-Time and Temporary Personnel

Facilities • Drilling • Production • Reservoir Engineering
Land and Legal • Geoscience • Information Technology •
Health and Safety • Management • Supply Chain
Accounting • Administrative Support

10497 Town and Country Way, Suite 950
Houston, Texas 77024

832-251-0553



www.collarini.com

Collarini Associates

Reservoir Engineering
Oil & Gas Property Evaluation
3-D Seismic Interpretation
Integrated Field Studies

832-251-0160
504-887-7127

Houston
New Orleans

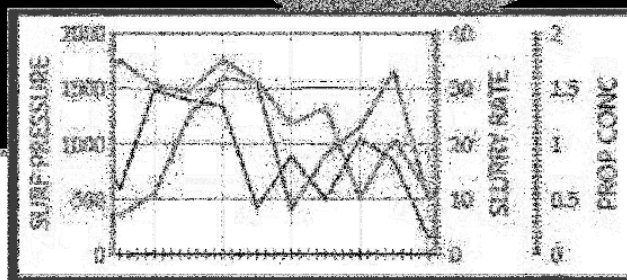
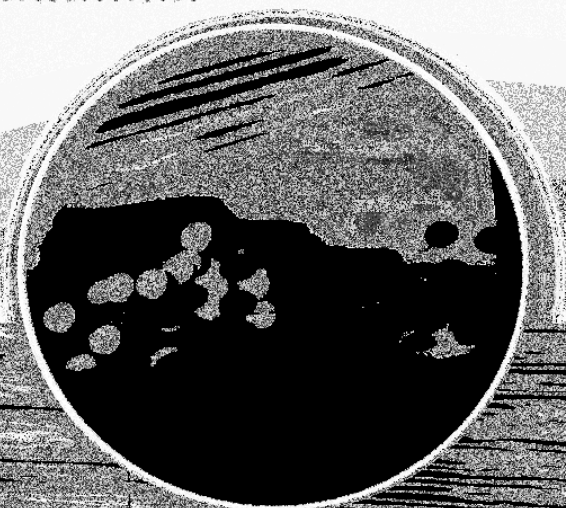
The market leader for
Unconventional Interpretation
just got better...



Introducing **KINGDOM Advanced**

MICROSEISMIC INTERPRETATION

for Geomechanical Characterization



Primary interpretation platform for
75% of US onshore companies

See The Future Of Unconventional Exploration: www.seismicmicro.com/unconventional

ANSYTHE Donald I. Andrews 504-887-3432 	H. WARREN BELL Oil and Gas Exploration 2500 Tanglewilde, Suite 485 Houston, TX 77063-2126 Bus (713) 266-7297 Fax (713) 266-7298
THE BOEBEL COMPANY Oil and Gas Investments 170 Broadway Street, Suite 321 New Orleans, LA 70118 (504) 866-4313	PHELPS GEOSCIENCE Onshore Gulf of Mexico Geology and Geophysics Prospect Generation and Evaluation Houston, TX jsfphelps@yahoo.com (281) 398-5208
BOO-KER OIL & GAS CORP. Gray S. Parker 826 Union, Suite 300 New Orleans, LA 70112 Bus. (504) 581-2430 Fax (504) 566-4785	RAFIDI OIL AND GAS, INC. Jaser N. Rafidi, President 4415 Shore Dr., Suite 202 Metairie, LA 70006 Bus. (504) 722-2942 Fax (504) 888-5539; Res. (504) 888-1661
C & R EXPLORATION, INC. Carlo C. Christina Lawrence G. Ringham	ROY C. WALTHER Petroleum Geologist 2421 Prancer Street New Orleans, LA 70131 Bus. (504) 392-8513 Res. (504) 392-9332
C. R. RONDEAU Petroleum Geologist 119 W Southland Ave. Ironwood, MI 49938 Res. (906) 932-4692	 Shoreline Gas Inc. www.shorelinegas.com Full Service Natural Gas Marketing
CLASSEN EXPLORATION, INC. James S. Classen Looking for close in deals P.O. Box 140637 Boise, ID 83714 Bus. (208) 854-1037 Fax (208) 854-1029 classenllc@msn.com	 625 E. Kaliste Saloom Lafayette, LA 70508 16800 Greenspoint Dr., Suite 225-S Houston, TX 77060 www.StoneEnergy.com
D-O-R ENGINEERING, INC. 3-D and Geoscience Services 6161 Perkins Rd. P O Box 80812 Bus : (225) 765-1914 Baton Rouge LA 70898	TONY CAROLLO Consulting Geologist Unitization Geosteering Field Studies 1701 Peach Street Metairie, LA 70001 Bus. (504) 885-0004 Res. (504) 885-6829
EDWARD B. PICOU, JR. Consulting Micropaleontologist - Retired 228 St. Charles Ave., Suite 1330 C New Orleans, LA 70130 Bus. (504) 529-5155 Res. (504) 282-3096	Zot Oil & Gas, LLC Jim Zotkiewicz Prospect Generation and Evaluation 3200 Ridgelake Dr. Suite 207 Metairie, LA 70002-4930 Business: 504.831.4694 Email: jimzot38@zotoil.com

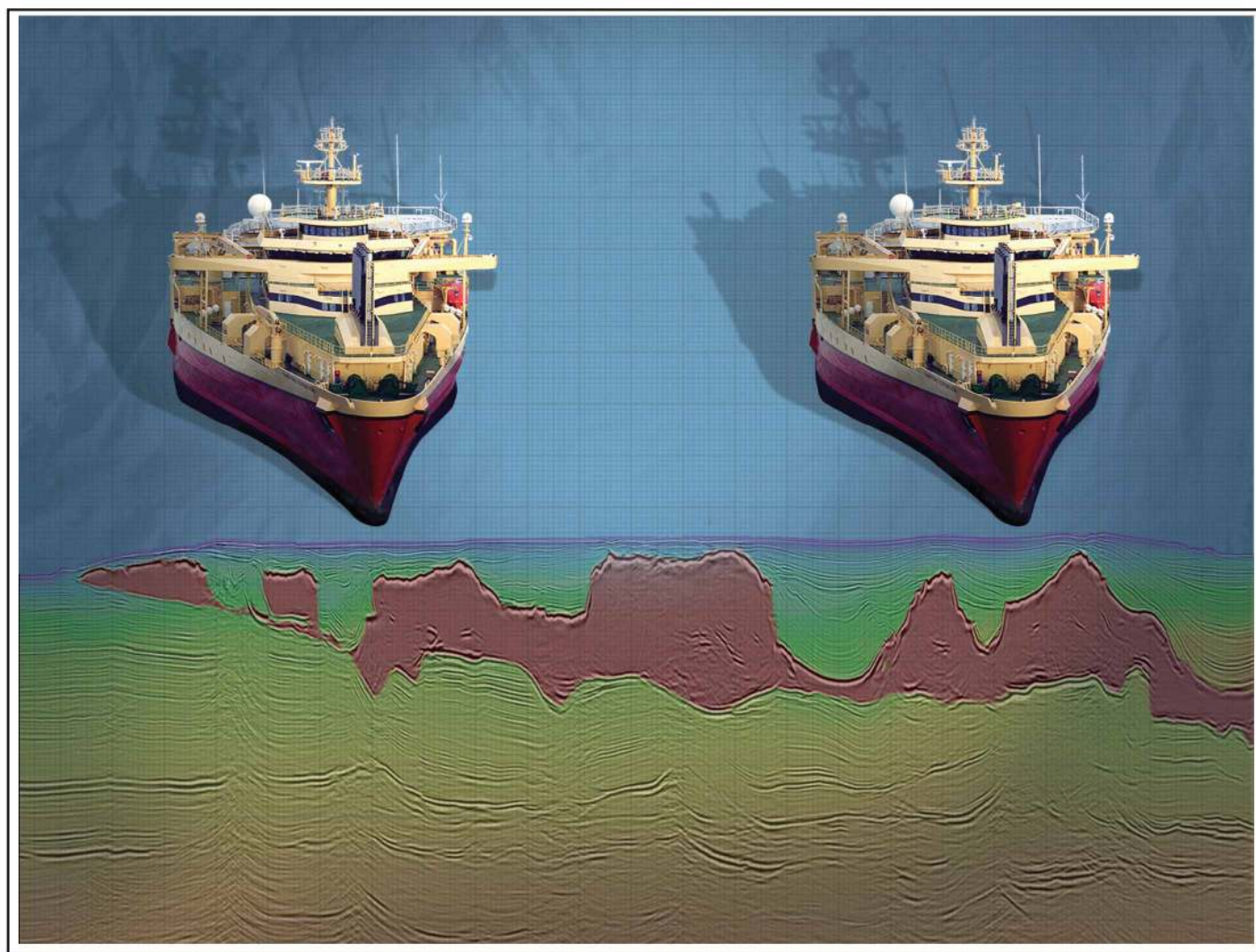
NOGS Luncheon Presentation Abstract (continued from page 7)

and the Pacific coast of Mexico. Research findings suggest that on the Gulf of Mexico coast catastrophic hurricanes of category 4-5 intensities typically have return periods on the order of ~300 years. However, frequency of occurrence has not remained constant. Over the last 5000 years, hurricane activities along the Gulf Coast has exhibited alternating active and quiet periods with hurricane landfall being 3-5 times as frequent during the active periods.

New data from Nicaragua show that the most recent millennium of inactivity on the Gulf Coast coincides with a period of heightened hurricane activity in the southern Caribbean, supporting the notion that long-term hurricane landfall risks in the U.S. and Caribbean coastal regions are governed by latitudinal shifts in the positions of the Bermuda High and the Intertropical Convergence Zone (ITCZ) as a function of global climate changes.

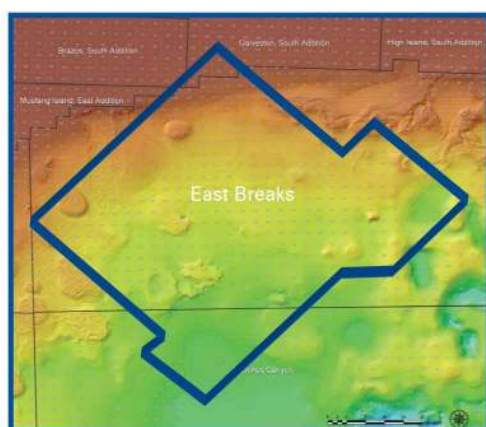
A new method of plotting storm tracks suggests that location of landfall is controlled by the steering exerted by atmospheric/climatic conditions, with landfall probabilities for different regions either increasing or decreasing under specific, identifiable conditions. Currently, pre-season forecasting focuses upon the estimation of storm frequency and the incorporation of this information may improve spatial predictability as well.

A long-term perspective learned from paleotempestology is vital for hurricane risk assessment and should be incorporated in any plans for coastal protection and restoration in Louisiana and along the Gulf of Mexico coast.



Crystal III, East Breaks

MultiClient Wide Azimuth



- **Size** - 480 OCS blocks
- **Focus** - Sub-Salt Miocene & Paleogene
- **Technology** - TTI Beam and RTM Imaging
- **Delivery** - Available Q4 2010

Houston
Tel: +1 281 509 8000
Fax: +1 281 509 8500

Oslo
Tel: +47 67 52 6400
Fax: +47 67 52 6464

London
Tel: +44 1932 37 6000
Fax: +44 1932 37 6100

A Clearer Image
www.pgs.com



NEW ORLEANS GEOLOGICAL SOCIETY



810 Union Street, Suite 300
New Orleans, LA 70112-1430

WWW.NOGS.ORG

MARINE PROPERTIES, LLC BERKSHIRE EXPLORATION CO.

MONTE C. SHALETT, CPL, PRESIDENT

3030 Lausat Street
Metairie, LA 70001-5924

BUS. (504) 831-7779
FAX. (504) 831-8315

PCI

Paleo Control, Inc.

Houston, Texas
713-849-0044

Drilling Wells, Studies and Data Base

Loyd Tuttle

Frio, SE Texas

Bob Liska

Wilcox, S and SE Texas

Jim Thorpe

Miocene and Cam-Miogyp



SEE YOUR DATA IN A WHOLE NEW LIGHT!

Take the pressure out of exploration
and drilling by seeing what you
are going to encounter.



eSeis

www.e-seis.com
713.531.1447

- Lithology & Fluids
- Depositional Facies
- Pore Pressure from V & Q
- Well Planning Consultation

