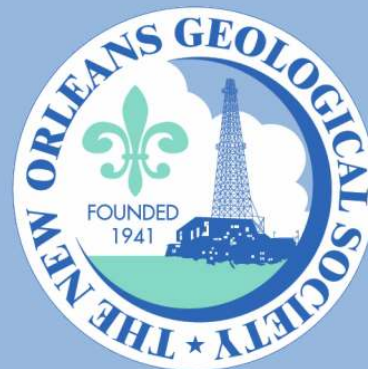


NOGS LOG



November 2010

Volume 51, Number 5

Upcoming Events and Activities

November 1 - NOGS Luncheon

*** At the Holiday Inn Downtown Superdome ***
\$2.00 validated parking in hotel garage

Guest speaker Andrew J. Petty, Bureau of Ocean Energy Management, Regulation and Enforcement in New Orleans, will present "Stratigraphy and Petroleum Exploration History of the Smackover Formation (Oxfordian), Northeastern Gulf of Mexico."

(See page 7 for Abstract and Biography)

HOLIDAY INN DOWNTOWN SUPERDOME

Check with concierge or
front desk for location
Lunch served at 11:30am

ADMISSION:

with reservation \$30.00
without reservation \$35.00
Student Member with reservation Free

November 5 - 35th Annual Mineral Auction

UNO. See announcement on page 24.

November 9 - SGS 2010 Technical Symposium

Roosevelt Hotel. See announcement on pages 16-17.

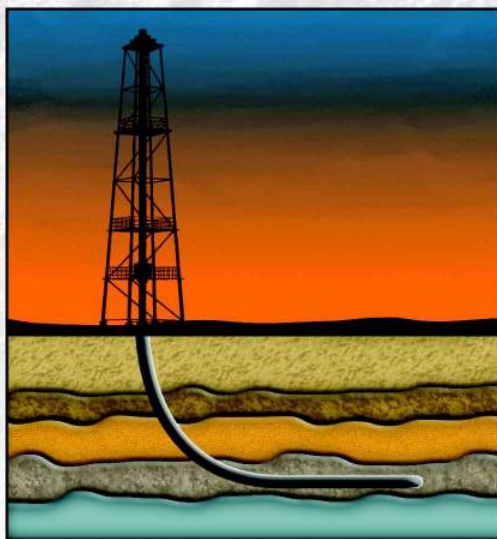
December 9 - Joint SGS-NOGS Luncheon

LePavillon Hotel. Guest speaker John B. Wagner, Nexen Petroleum, Inc. in Dallas, will present "Depositional Processes of Aeolian Systems within the Deep-Water Norphlet in Relation to Ancient and Modern Analogues."

December 10 - NOGS Christmas Holiday Party

Metairie Country Club. See announcement on page 15.

Looking for Accurate Directional Data?



Directional Survey Plus data now available online

Let TGS lead you in the right direction

Get on the right well path with Directional Survey Plus (DS+) data. DS+ data moves beyond the simple capture of measured depth, azimuth and inclination to create the most accurate spatial representation of the well path, from surface to total depth.

TGS researches DS+ wells to identify all wellbores, entering all runs and composites in original form with extensive metadata and superb quality control. The data are then processed and composited using proprietary workflows. The resulting standardized, high quality data is available in multiple industry formats.

Current coverage includes many of the hottest basins in the US, and multi-client coverage is expanding everyday. TGS also provides DS+ processing to clients worldwide.

Find out more at www.tgsnopec.com/welldata
888-LOG-LINE or WellData@tgsnopec.com



Geophysical
Products



Geological
Products



Imaging
Services



www.tgsnopec.com

NOGS Office

Office Manager: Annette Hudson

Office Hours: 8:30 a.m. – 3:30 p.m. on Monday-Wednesday-Friday

Tel: 504-561-8980 □ Fax: 504-561-8988

E-mail: info@nogs.org □ Website: www.nogs.org

The office is located at Suite 300, 810 Union Street, New Orleans, LA 70112.

Correspondence and all luncheon reservations should be sent to the above address.

Sent to press on October 13, 2010.

**BOARD OF DIRECTORS**

President	Rick Kear
Vice President	Eric Zimmermann
Secretary	Penne Rappold
Treasurer	Will Jorgensen
President-Elect	Bob Hafner
Editor	Fran Wiseman
Director 2011	Scott A. Wainwright
Director 2012	Arthur H. Johnson
Director 2013	Jack Langford

Company

Schlumberger
LLOG Exploration
Shell
Shell
BOEMRE
Bret Exploration Co Inc
Hydrate Energy International
J C L Services

Phone

504-592-5376
985-801-4338
504-728-4338
504-728-6339
504-736-2912
504-889-2700
504-464-6208
985-764-2527

E-mail

kearl1@new-orleans.oilfield.slb.com
ericz@llog.com
prappold@gmail.com
william.r.jorgensen@shell.com
ottohaf@aol.com
frances.wiseman@boemre.gov
scott_wainwright@hotmail.com
artjohnson51@hotmail.com
jclangford@latterblum.com

COMMITTEE

AAPG Delegates
AAPG Student Chapter
AAPG Student Chapter
Advertising-Log
Auditing
Awards
Ballot
Best Paper
Continuing Education
Employment Counseling
Entertainment
Environmental
External Affairs
Field Trip
Finance and Investment
Historical
Membership/Directory
New Geoscientists (NGNO)
Nominating
Non-Technical Education
Office Operations
Publications Sales
Photography
School Outreach
Scouting
Sponsorship/Houston
Technical Projects
Ad Hoc Committee on
University Support

Chairperson

William M. Whiting
Gabriella March
Andrew Ranson
Andrea Stancin
Chuck Holman
Michael N. Fein
Will Jorgensen
Brenda Reilly
TBA
Bob Hafner
Daisy Pate
Michael A. Fogarty
David Garner
Will Jorgensen
Edward B. Picou, Jr.
Carlo C. Christina
Tom Klekamp
TBA
Mike Ledet
Duncan Goldthwaite
Tom Klekamp
Edward B. Picou, Jr.
J. David Cope
Thomas C. Bergeon
Carol Rooney
David E. Reiter
TBA
Michael J. Gallagher

Consultant
Tulane University
UNO
Shell
Independent
W & T Offshore
Shell
Energy Partners Ltd.
Corps of Engineers
Sylvan Energy, LLC
Shell
Shell
Consultant
Retired (C & R Expl. Inc)
Amber Resources
Consultant
Amber Resources
Consultant
Ankor Energy
Century Exploration
Consultant Geologist
Eni Petroleum
Eni Petroleum

504-947-8495
337-578-5587
504-728-0431
504-891-4878
504-210-8148
504-728-6339
504-799-4811
504-957-4372
603-523-4808
504-728-6154
504-728-6339
504-529-5155
504-835-4116
985-845-4046
504-394-9636
504-887-4377
985-845-4046
504-529-5155
504-596-3672
504-832-3772
504-835-1909
713-393-6100

bootscon@aol.com
gmarch@tulane.edu
aranson@uno.edu
Andrea.a.stancin@shell.com
charleswholman@bellsouth.net
mikef@wtoffshore.com
william.r.jorgensen@shell.com
breilly@eplweb.com
ottohaf@aol.com
daisy.pate@gmail.com
mike.a.fogarty@gmail.com
David.Garner@shell.com
william.r.jorgensen@shell.com
epicou@bellsouth.net
Carlocc398@aol.com
klekamp@bellsouth.net
mikeledet@cox.net
DGldthwt@aol.com
klekamp@bellsouth.net
epicou@bellsouth.net
dcupe@ankorenergy.com
Tom.bergeon@centuryx.com
carolbrooney@aol.com
david.reiter@enipetroleum.com
Michael.Gallagher@enipetroleum.com

NOGS LOG STAFF

Editor	Fran Wiseman	BOEMRE
Editor-Elect	David Tatum	Chevron
Auxiliary	Susie Baker	NOGA
Info Tidbits	Fran Wiseman	BOEMRE
Drill Bits	Carlo C. Christina	Retired (C & R Expl. Inc)
Webmaster	Edward B. Picou, Jr.	Consultant
Layout	Jannette Inc.	

504-736-2912
985-773-6477
504-466-4483
504-736-2912
504-529-5155

nogseditor@gmail.com
davidtatum@chevron.com
abaker1006@aol.com
nogseditor@gmail.com
carlocc398@aol.com
epicou@bellsouth.net

NOGS AUXILIARY**Officers**

President
1st Vice-President
2nd Vice-President
Secretary
Treasurer
Parliamentarian
Member-at-Large

Jean Jones
Alma Dunlap
Judy Sabatè
Peggy Rogers
Judy Lemarie'
Beverly Kastler
Linda Peirce

Phone

504-738-8091
504-737-2678
504-861-4335
504-392-6323
504-393-8659
504-286-0879
504-393-7365

Directors

Peggy Campbell
Ruth Grimes
Gerry Waguespack
Carol Andrews
Susie Baker
Joan Collier

Year

2009-11
2009-11
2009-11
2010-12
2010-12
2010-12

Phone

504-283-2505
504-392-8103
504-737-0532
504-887-3432
504-466-4483
504-833-1738

--- NOGS Contact List continued on page 10 ---

SYNERGY ENERGY



Weatherford®
LABORATORIES

Your success increasingly depends upon a better understanding of your reservoir. At Weatherford Laboratories, we provide a single source for comprehensive laboratory analyses, creating a synergy previously unknown in laboratory services. This single source includes distinguished geologists, geochemists, analysts, engineers, technicians and software developers, 38 worldwide laboratories, and the broadest portfolio of services for acquiring and interpreting data from physical samples. The end result is an unsurpassed combination of intellectual capital and technical resources — all working together to help you enhance development planning and reduce reservoir uncertainty.

Put our union of Synergy and Energy to work for you.

Weatherfordlabs.com

HIGHER STANDARDS

NORTH AMERICA
NAInquiries@weatherfordlabs.com

EUROPE
EUInquiries@weatherfordlabs.com

LATIN AMERICA
LAInquiries@weatherfordlabs.com

MIDDLE EAST/NORTH AFRICA
MENAIquiries@weatherfordlabs.com

ASIA PACIFIC
APIquiries@weatherfordlabs.com



from the President

I'm excited ya'll!

It is great to see more students and professors attending NOGS luncheon meetings. We had several from UNO and Dr. Stephen Nelson from Tulane at the October meeting. These young people and their professors are smart and generally not shy. They are using the opportunity to make industry contacts, and ask questions both related to their studies and about the oil and gas business. I encourage all of us as members of NOGS and as professionals to reach out to our future - these students, and to their professors, who are teaching, stimulating and emotionally supporting them. Please speak with any university contact you may have and tell them "to come on down." We need to be leading the effort to educate and expand the possibilities for our younger colleagues!

NOGS committed to provide our local AAPG Student Chapters with a \$100 contribution for their chapters, at UNO, Tulane, LSU, USM, and ULL. NOGS also committed to assist these student chapters with speakers as well as technical support. Andrew Ransom is the new UNO Chapter President and attended the Student Chapter Leadership Summit and the AAPG Leadership Days in Tulsa, August 27-29.

I wrote and sent off the NOGS Report to GCAGS the other day and will speak on some of the points mentioned in the report as your society president at GCAGS in San Antonio, Sunday, Oct. 10th. It required six (6) pages to tell the rest of GCAGS what NOGS has been up to for the past year and what NOGS has upcoming.

It is a truth that we are always moving, either forward or retreating, so we need to make every effort to look for and embrace the new while we carefully preserve the best of the past. One of the first things that struck me years ago at my first few NOGS

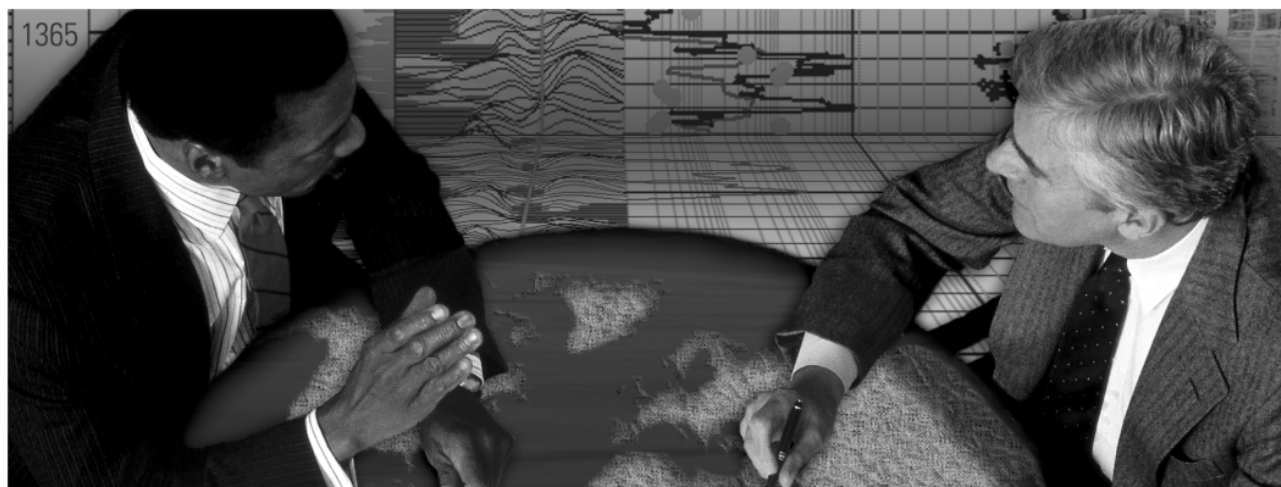
meetings was our society's tradition of our members introducing our guests, visitors, and new members at our luncheon meetings. If I forget to solicit these introductions, I ask that someone please speak up and remind me of this important courtesy.

We are seeking means to strengthen our society and the other New Orleans professional societies. One way we see to accomplish this is by having a few joint meetings with other New Orleans chapters and societies. We are having our first joint meeting of the 2010-2011 year this December 9th. We will not have our usual Monday meeting, but instead we will be joining SGS, the Southeastern Geophysical Society, for a joint SGS/NOGS meeting held at SGS's venue, the LePavillon Hotel on the Thursday, Dec. 9th. The speaker will be Dr John Wagner, Chief Geologist for Nexen, and the title of the talk is "A Discussion concerning the depositional processes of aeolian systems within the deep-water Norphlet in relation to ancient and modern analogues." I know and respect Johnny and have talked with him about engaging in corporately cooperative efforts before. I am looking forward to his presentation and the discussion he will instigate.

The very next night is the NOGA/NOGS Christmas Party at the Metairie Country Club commencing at 7:00 pm. NOGA/NOGS is once again being hosted at Metairie Country Club by Carlo Christina. "Thank You Carlo ahead of time!" Please remember that although we are returning to a traditional event, payment will be in a new and different manner from last year. Specifically, all monies must be prepaid prior to the evening's event. There will be no provision for payment at the door or during the party.

--- continued on page 31 ---

Schlumberger formation evaluation solutions deliver the answers you need. Our extensive portfolio of services, leading-edge technology, and advanced conveyance options keep you in communication with your well throughout its life cycle.



With formation evaluation technologies from Schlumberger, you can make the best decisions for optimized performance in every well.

The formation evaluation one-stop shop

Whether you are logging in open hole or behind the casing, our broad selection of services ensures the best solution for acquiring formation evaluation data. Tools can be conveyed while drilling or on wireline or pipe. We offer many specialized evaluation capabilities, from density, neutron porosity, and resistivity to borehole imaging, nuclear magnetic resonance logging, borehole seismic, formation pressure testing, and fluid sampling. Advanced triple-combo logging options include the VISION* formation evaluation and imaging-while-drilling services. Coupled with Pulse* telemetry and surveying services, the VISION family provides real-time formation evaluation data and enables optimum well placement.

High-speed wireline measurements are recorded with the Platform Express* logging services. The SlimXtreme* platform is designed for high-pressure, high-temperature environments and the ABC* Analysis Behind Casing services are used after casing is set.

Expert interpretation from the engineers and geoscientists of Schlumberger Data & Consulting Services brings all your data together to give you the answers you need. This expertise is available after logging is complete or as real-time two-way wellsite communication through the InterACT* real-time monitoring and data delivery system.

Schlumberger delivers leading-edge technology and interpretation expertise for all your formation evaluation needs, so every well benefits from the very best information.

For more information visit
www.slb.com/oilfield/formation_evaluation/

*Mark of Schlumberger

04-FE-114

Schlumberger

November 1 NOGS Luncheon Presentation

At the Holiday Inn Downtown Superdome

Stratigraphy and Petroleum Exploration History of the Smackover Formation (Oxfordian), Northeastern Gulf of Mexico

presented by

Andrew J. Petty

Bureau of Ocean Energy Management, Regulation and Enforcement, New Orleans

ABSTRACT

The Smackover Formation, a prolific producer in basins onshore Mississippi, Alabama, and Northern Florida, has yet to produce in federal waters. Reservoir facies are localized over paleotopographic features: e.g., salt-cored anticlines and/or salt-rollers, high-relief salt structures or adjacent to a peripheral or marginal fault systems. The facies consist of oolitic or pellet grainstones and packstones, and thrombotitic microbial patch reef boundstones.

Deposited in outer and inner ramp, marginal marine sabkhas and nearshore environments, the Smackover Formation overlies the uneven bedding surface of the underlying Norphlet Formation. The Norphlet consists primarily of sand dunes that vary in thickness from little or no sand in interdune areas to over 300 meters (1000 feet) in major dunes.

Despite sparse drilling in the offshore Destin Dome and Pensacola protraction areas, Pensacola 996-1 demonstrated a working petroleum system in these offshore Florida areas. Pensacola 996-1 had 10 meters (33 feet) of oil, by core and log analysis, in an oolitic packstone reservoir in the Smackover encountered on an upthrown structure associated with the peripheral (marginal) fault system.

Basement topographic features are generally smaller along the Pensacola Ridge Complex compared to those on the Southern Platform. Thrombotitic buildups are postulated to occur on, or associated with, these topographic features. Although thrombolite buildups remain undrilled in federal waters, drilling approval was granted in 1997 on Pensacola 933 lease block.

BIOGRAPHY



Andrew J. Petty is currently a geologist with the Bureau of Ocean Energy, Management, Regulation and Enforcement (BOEMRE), formally Minerals Management Service (MMS) in New Orleans, Louisiana. He joined the MMS in 1979, where he worked in the Rate Control Section. He then served as the Corpus Christi District Geologist, and he is now with the Regional Framework Unit. Andy received his B.S. degree in Geology from Stephen F. Austin State University in 1973 and his M.S. degree in Geology from the University of Texas at El Paso in 1975.

THE LUNCHEON RESERVATION DEADLINE IS OCTOBER 27 - CONTACT THE NOGS OFFICE

“And Looking Ahead...”

The next NOGS Luncheon will be held on THURSDAY, December 9, and will be a Joint SGS-NOGS Luncheon at LePavillon Hotel. Guest speaker John B. Wagner, Nexen Petroleum, Inc. in Dallas, will present “Depositional Processes of Aeolian Systems within the Deep-Water Norphlet in Relation to Ancient and Modern Analogues.” Contact the NOGS office to make your reservation.

Seismic Imaging of Depositional and Geomorphic Systems

30th Annual GCSSEPM Foundation
Bob F. Perkins Research Conference

Houston, Texas
December 5-8, 2010
Houston Marriott Westchase Hotel



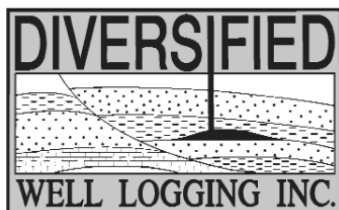
Conference information and
online registration available
on our new Web site:

www.gcssepm.org



Relax. We'll keep you posted.

Your rig is offshore and you are not. How do you know what's going on so many miles away? You know because we tell you. Daily or even hourly, Diversified Well Logging's engineers update you on the status of your rig. We are your eyes and ears, especially when it comes to deep water or high pressure, high temperature areas. Diversified offers 24-hour surface evaluation. We provide secure and customized real-time data communication, in-house research and development and 24/7 on-call support for our equipment and our engineers. Whether you have a 10-day job or 110-day job, we provide the specialized attention you require. So, relax. We're with you every step of the way.



Serving the Gulf Coast for over 40 years.

New Orleans • Lafayette • Houston • Dallas • Corpus

800.280.2096

711 West 10th Street • Reserve, LA 70084 • Phone: 985.536.4143 • Fax: 985.536.2427
sales@dwl-usa.com



**FULLY INTEGRATED AND
CENTRALIZED BIOSTRATIGRAPHIC
SERVICES**

▼ *Single-source biostratigraphic databases
for increased accuracy and consistency*

▼ *Integrated foram / nannofossil analyses*

▼ *Complete wellsite paleo services*

▼ *In-house sample preparation
lab for quality-monitoring
and efficiency*

▼ *Sample pick-up service*

6619 Fleur de Lis Drive
New Orleans, LA 70124
(504) 488-3711

www.paleodata.com

MCMORAN EXPLORATION CO.



**MCMORAN
OIL & GAS**

www.mcmoran.com

NYSE: MMR

16676 Northchase Dr.
Houston, TX 77060
(281) 539-7600
Fax: (281) 539-7655

1615 Poydras
New Orleans, LA 70112
(504) 582-4000
Fax: (504) 582-4155

110 Travis St., Suite 140
Lafayette, LA 70503
(337) 735-9150
Fax: (337) 735-9151

NOGS CONTACT LIST

--- continued from page 3 ---

MEMORIAL FOUNDATION

BOARD OF TRUSTEES

2010-11 Chairman	Tom Klekamp
2010-11 Secretary	Rick Kear
2010-11 Trustee	Chuck Holman
2010-11 Trustee	Michael N. Fein
2011-12 Trustee	Monte Shalett
2011-12 Trustee	James Swaney
2012-13 Trustee	Jennifer Connolly
2012-13 Trustee	William M. Whiting

Company
Amber Resources LLC
Schlumberger
Independent
W & T Offshore
Berkshire Exploration Co
BOEMR E
Shell
Consultant

Phone
985-845-4046
504-592-5376
504-891-4878
504-210-8148
504-831-7779
504-736-2677
504-728-6411
504-947-8495

E-mail
klekamp@bellsouth.net
kearl1@new-orleans.oilfield.slb.com
charleswholman@bellsouth.net
mikef@wtoffshore.com
mshalett@gmail.net
james.swaney@boemre.gov
jennifer.connolly@shell.com
bootscon@aol.com

AAPG DELEGATES

Term Ends

2011	Tom Hudson
2011	Edward B. Picou, Jr.
2011a)	Brenda Reilly
2011a)	Robert Rooney
2012	William Whiting
2012	Jim Zotkiewicz
2012 a)	David E. Balcer
2012 a)	Richard J. Stancliffe

Chevron	504-529-5155
Consultant	504-799-4811
Energy Partners Ltd.	504-832-3777
Century Exploration	504-947-8495
Consultant	504-831-4694
Zot Oil & Gas	985-773-6725
Chevron	504-728-7553
Shell Expl & Prod Co.	

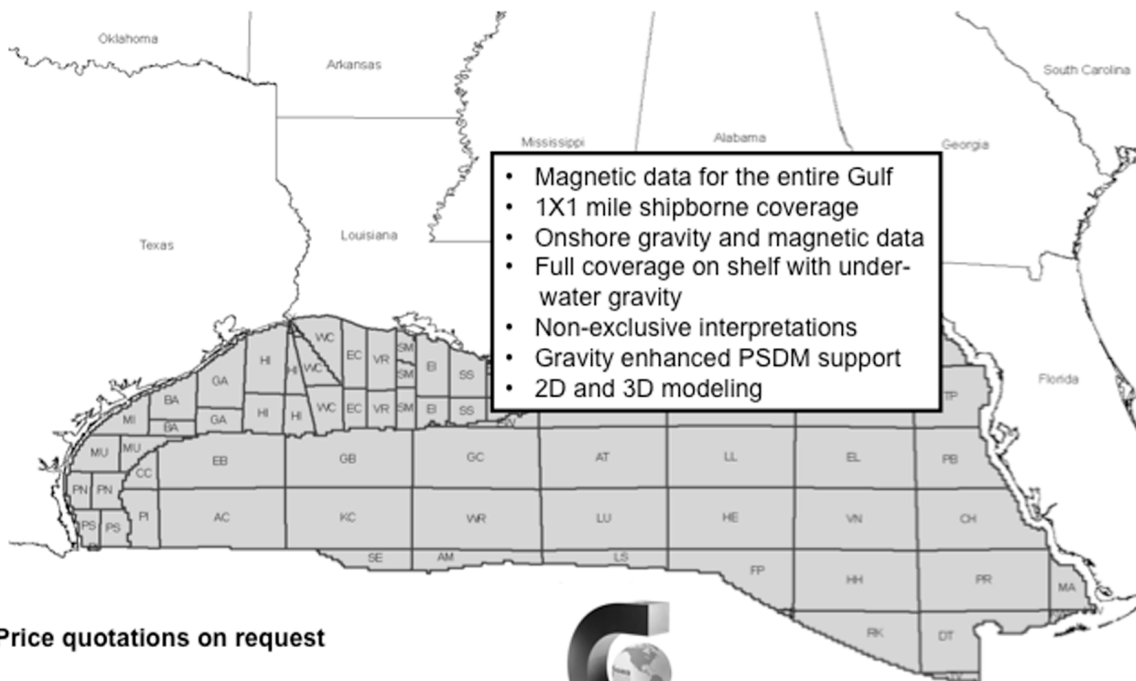
tom.hudson@chevron.com
epicou@bellsouth.net
breilly@eplweb.com
Robert.rooney@centuryx.com
bootscon@aol.com
jimzot38@zotoil.com
dbalcer@Chevron.com
richard.stancliffe@shell.com



Fugro Gravity & Magnetic Services

LAND • AIRBORNE • UNDERWATER • SHIPBORNE

The most complete coverage Onshore and Offshore Gulf of Mexico



Price quotations on request

Fugro Gravity & Magnetic Services
www.Fugro-GravMag.com
Tel: 713-369-6123



Gravity Inspired. Magnetically Inclined.



Shell has worked in partnership
with the NOGS for many years, and
is proud to count the society among
its closest business associates.

The New Orleans Geological Society was organized in 1941 to foster scientific research and advance the science of geology. Particular emphasis is laid on the exploration for and production of petroleum and natural gas. Related objectives include encouraging the adoption of improved methods of exploration, disseminating pertinent geological and technological data, and maintaining a high standard of professional conduct among its members.

www.shell.com/us.sepcor



GOM
smart

An ocean
of GOM DATA...
updated for you 24/7

Introducing GOMsmart. Web-based GOM data with
real-time updates. No special software or training.
Access data via intuitive interface or customizable maps.

- Wells: header, production, tests, 250,000+ logs
- Production Data: historical and current
- Paleo Data: access to 100,000+ observations
- Affordable: monthly and annual subscriptions

Visit www.GOMsmart.com for your FREE trial.



From ZNodal Systems to ZNodal Imaging

We are full spectrum ZNodal™ technology

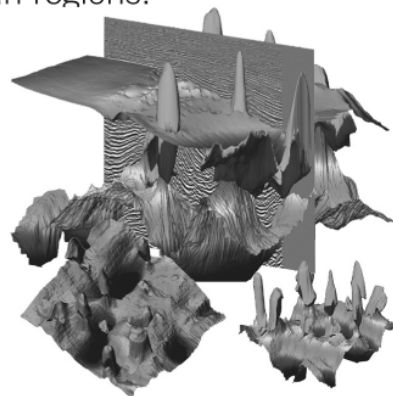
FairfieldNodal.com



We admit it. We're seismic nodal fanatics. Always have been. Which explains our one-of-a-kind, cable-free ZNodal™ systems. They work wonders in dense urban areas and pristine wilderness, in shallow water and deep ocean regions.

In fact, our exclusive ZNodal technology is behind everything we do, from acquisition and licensing to advanced processing and imaging, bringing nodal data to life in amazing ways.

Right now, our ZNodal systems are on the job in some of the world's most challenging fields, making a powerful difference. So when you're ready to go nodal, count on us to lead the way. ZNodal technology: It's what you need. It's what we're all about.



fairfieldnodal

SYSTEMS ACQUISITION LICENSING PROCESSING IMAGING

Ornate 15-Horned Dinosaur Discovered in Utah (AP): Scientists said Wednesday they've discovered fossils in the southern Utah desert of two new dinosaur species closely related to the Triceratops, including one with 15 horns on its large head. For more information go to: <http://www.cbsnews.com/stories//2010/09/22/tech/main6891167.shtml>

Is Mining Rare Minerals on the Moon Vital to National Security? The supply of certain rare earth elements is very limited on earth with China controlling a very large portion of the known resource. These elements are becoming increasingly important in defense and renewable energy applications. A reliable source is a matter of national security. Local concentrations of these elements are known to exist on the moon. Could they be mined there someday and transported back to Earth? For more information go to: <http://lunarscience.arc.nasa.gov/articles/is-mining-rare-minerals-on-the-moon-vital-to-national-security>

Photos of Mexico's Giant Crystal Cave: National Geographic has a photo gallery that takes you on a trip to one of the giant crystal caves of Naica, Mexico. To see the amazing photos, go to: <http://channel.nationalgeographic.com/episode/into-the-lost-crystal-caves-4636/Overview39#tab-Photos/>

A Texas Library Without Books: There are no books in the new Applied Engineering and Technology Library at the University of Texas in San Antonio. None. Its collection of 425,000 volumes and 18,000 journal articles is available only online, reports Inside Higher Ed, which calls the library a "symbol of the inevitability of electronic as the prevailing medium of academe." The idea of libraries with no bound books has been a recurring theme in discussions about the future of higher education, the journal says. But there are few, if any, other libraries that have gone completely bookless. Books are not the only reason people go to libraries, said the school's dean of libraries, Krisellen Maloney. They go to study, she said, and "for the services - to consult, get instruction, and find content and use the content."

From *The New York Times*, September 19, 2010

What vehicle does T-Rex use to go from planet to planet?

A Dinosaucer



Ha Ha Ha

- Fran Wiselady

Editor's Note: The State of Louisiana Proclamation of Earth Science Week 2010 October 10-16 was published in the NOGS October log. It was issued at the request of the Louisiana Geological Survey, signed by Governor Bobby Jindal, and graciously provided to NOGS by Riley Miner, with the Louisiana Geological Survey. This note was regretablely an omission on the part of the editor.

FROM THE EDITOR



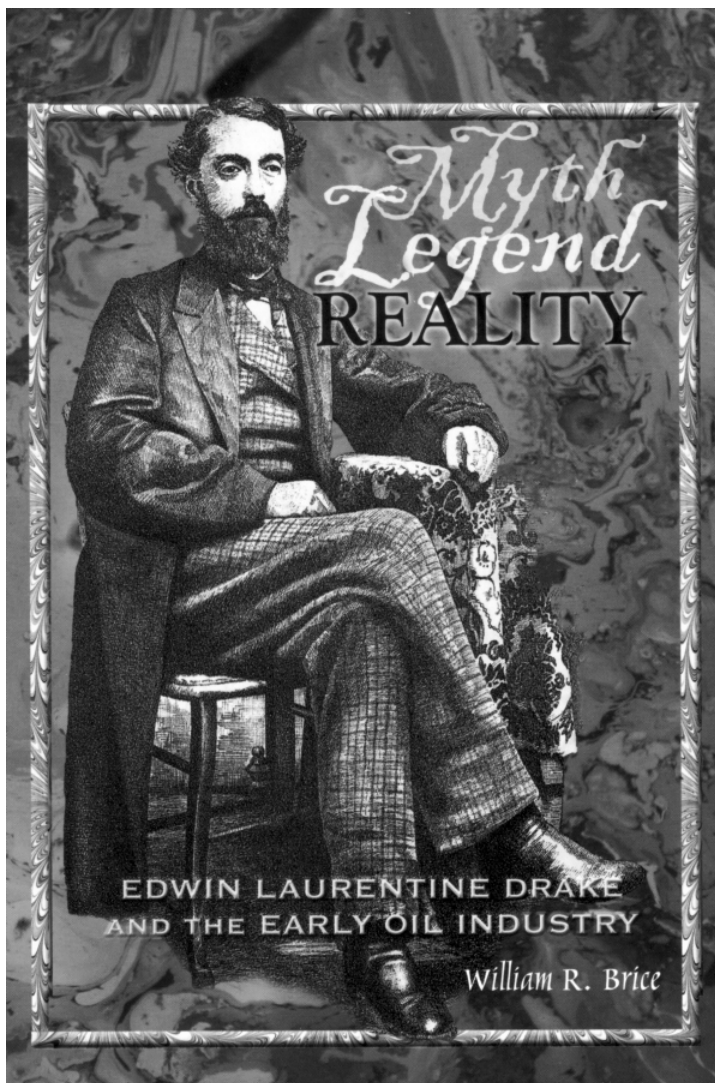
Book Review: *Myth, Legend, Reality. Edwin Laurentine Drake and the Early Oil Industry*, by William R. Brice.

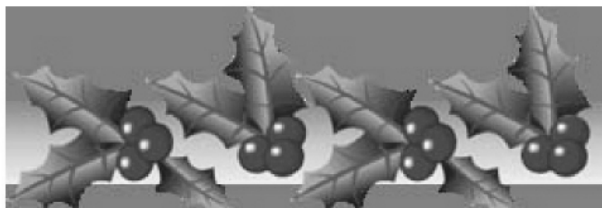
Book Review by Jeff Spencer,
jeff.spencer@midstatespetroleum.com

William Brice, retired Professor of Geology and Planetary Science at the University of Pittsburgh at Johnstown, and current editor of the journal, *Oil-Industry History*, has written the definitive biography of Edwin Drake. This 2009 book commemorates the 150th anniversary of the Drake Well by chronicling the life and legacy of Edwin Drake (1819-1880) with chapters on his early life, personal tragedies and triumphs, and his years after the famous well. As the title implies, the book separates the reality from the fiction surrounding Drake's life. Brice describes Drake as the equivalent to a modern day "project manager" who had to use all his "personality, perseverance, and ingenuity" to reach that successful day of August 27, 1859 when oil first rose from the well near Titusville, Pennsylvania.

The book is much more than just a biography of Drake. Introductory chapters cover the early history of petroleum (Chapter 1) and Petroleum in the New World (Chapter 2). Subsequent chapters cover Drake's life, but also discuss the lives of many others involved in the birth of the North American petroleum industry (Bissell, Gesner, Kier, to name just a few). Brice includes many excerpts from letters that provide added insight into Drake's roller coaster life, as well as the development and financing of the early oil industry.

This 661-page book contains many color illustrations, maps, photographs, and extensive appendices and references. The book is published by the Oil Region Alliance, Oil City, PA. A highly recommended book that all those working in the petroleum industry should read to fully appreciate our roots.





The New Orleans Geological Society

invites you to the

Christmas Holiday Party

Elegant buffet dinner with complimentary wine

Cash bar

Presentation dessert

Music and dancing

Friday, December 10, 2010

7 pm - 10 pm

Metairie Country Club

580 Woodvine Avenue

Metairie, Louisiana 70005

Complimentary valet parking

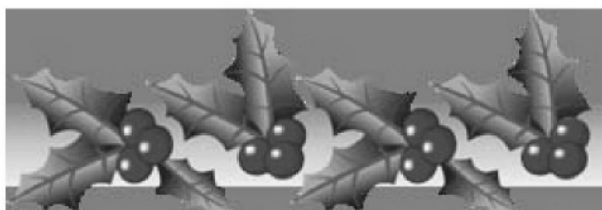
Cost per person \$50.00

Reservations via NOGS Office 561-8980

or email info@nogs.org

Reservations and payment must be made

by Tuesday, December 7, 2010





Southeastern Geophysical Society
2010 Technical Symposium

Seismic Velocities as an Exploration Tool

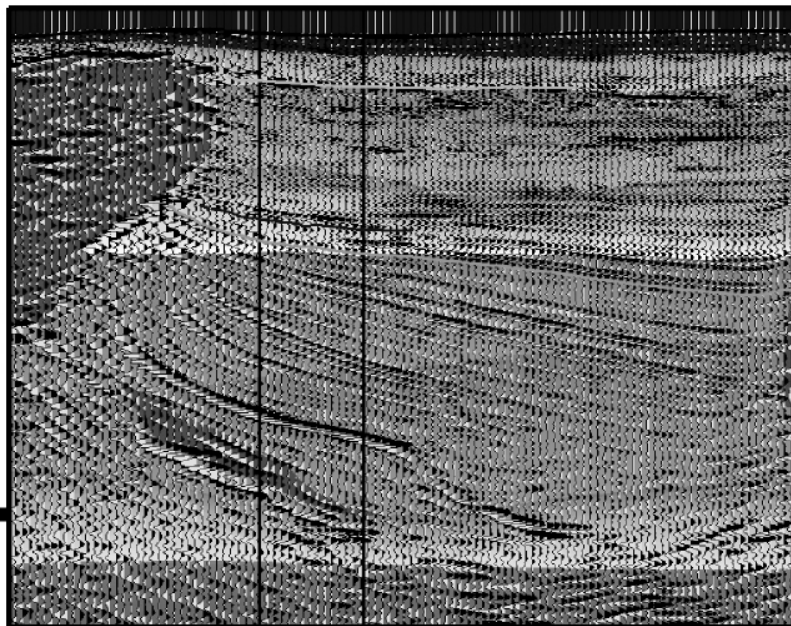


Image courtesy of
CGGVeritas

November 9, 2010
Roosevelt Hotel – Downtown New Orleans
Breakfast and Registration Begins at 7:00 a.m.

Name: _____
Company: _____
E-Mail: _____

☐ \$30 Symposium Registration for SGS members
☐ \$35 Symposium Registration for non-members
☐ \$0 Symposium Registration for students
☐ \$40 Registration for API Joint Society Lunch
☐ Total

Mail Payments to...
Southeastern Geophysical Society
P.O. Box 57141
New Orleans, LA 70157-7141

or

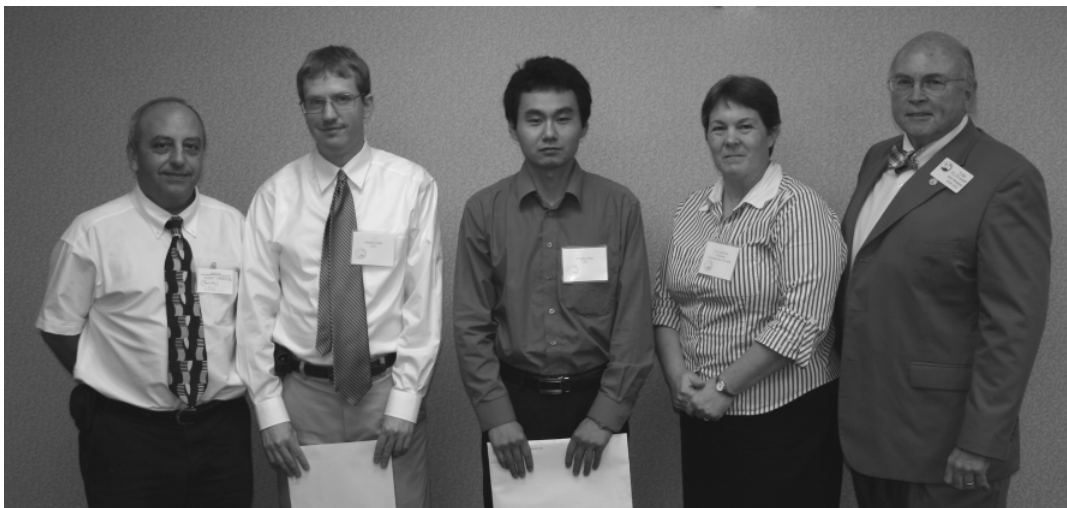
Pay by credit card and join SGS on-line at www.sgs-neworleans.org
Space is limited, registration for lunch not guaranteed after Oct. 29.



***The Southeastern Geophysical Society
2010 Technical Symposium Agenda
November 9, 2010, Roosevelt Hotel – New Orleans***

- 7:00** Breakfast and Registration
- 8:00** Welcome and Introduction
Ken Reynolds, Chevron, President Southeastern Geophysical Society
- 8:15** Structural Exploration Risk Assessed by Earth Model Building Uncertainty Analysis
Konstantin Osyrov, WesternGeco
- 8:40** Risk Reduction in Estimation of Fracture Density and Orientation Through Azimuthal Velocity Analysis
Alvaro Chaveste, Geokinetics
- 9:05** Seismic Velocity Analysis As An Exploration Tool- A Case Study
John Hollins, LLOG Exploration
- 9:30** Break
- 9:45** Can Seismic Frequencies Be Used as a Proxy for Seismic Velocity?
Roger Young, E-Seis
- 10:10** Interval Velocity Inversion (IVI) for Enhanced Time & Depth Imaging
Mark Miyaoka, TerraData GeoSciences
- 10:35** VES from VI as an Exploration Tool
Rudy Wilhelm, Shell
- 11:00** Break and Conclusion of Symposium
- 11:30** API Joint Societies Lunch
Speaker - Scott Angelle, Lt. Governor – State of Louisiana

2009-2010 NOGS Memorial Foundation Scholarship Recipients



LSU, pictured L-R:
Professor Juan
Lorenzo, Bryan
Killingsworth,
graduate student
Yongbo Peng,
Professor and
Department Chair
Carol Wicks, and Tom
Klekamp (NOGS)

Tulane, pictured L-R:
Austin Nijhuis, Holly Ann
Jefferies, Professor and
Department Chair Stephen
Nelson, Jordan Doig,
graduate student Janwei
Han, and Tom Klekamp



UNO, pictured L-R:
Krisztian Megyeri,
Christopher Esposito,
graduate student Hiranya
Sahoo, Jennifer
Brizzolara, Professor
Ioannis Georgiou, and
Tom Klekamp

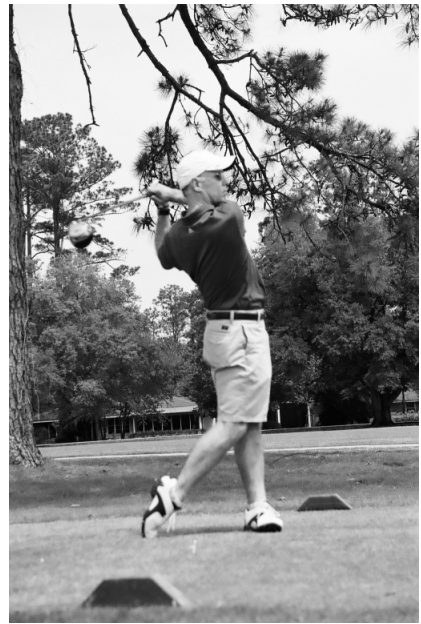


UNO NOGS Student
Chapter Past President
Mary Ellison and
current President
Andrew Ranson

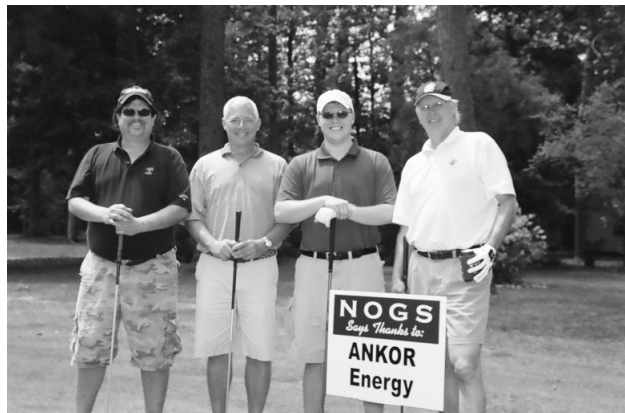
Best Paper winner Bryan
Stephens with NOGS
President Rick Kear

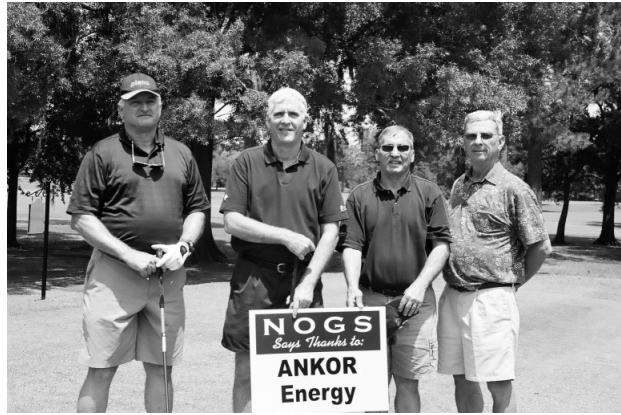


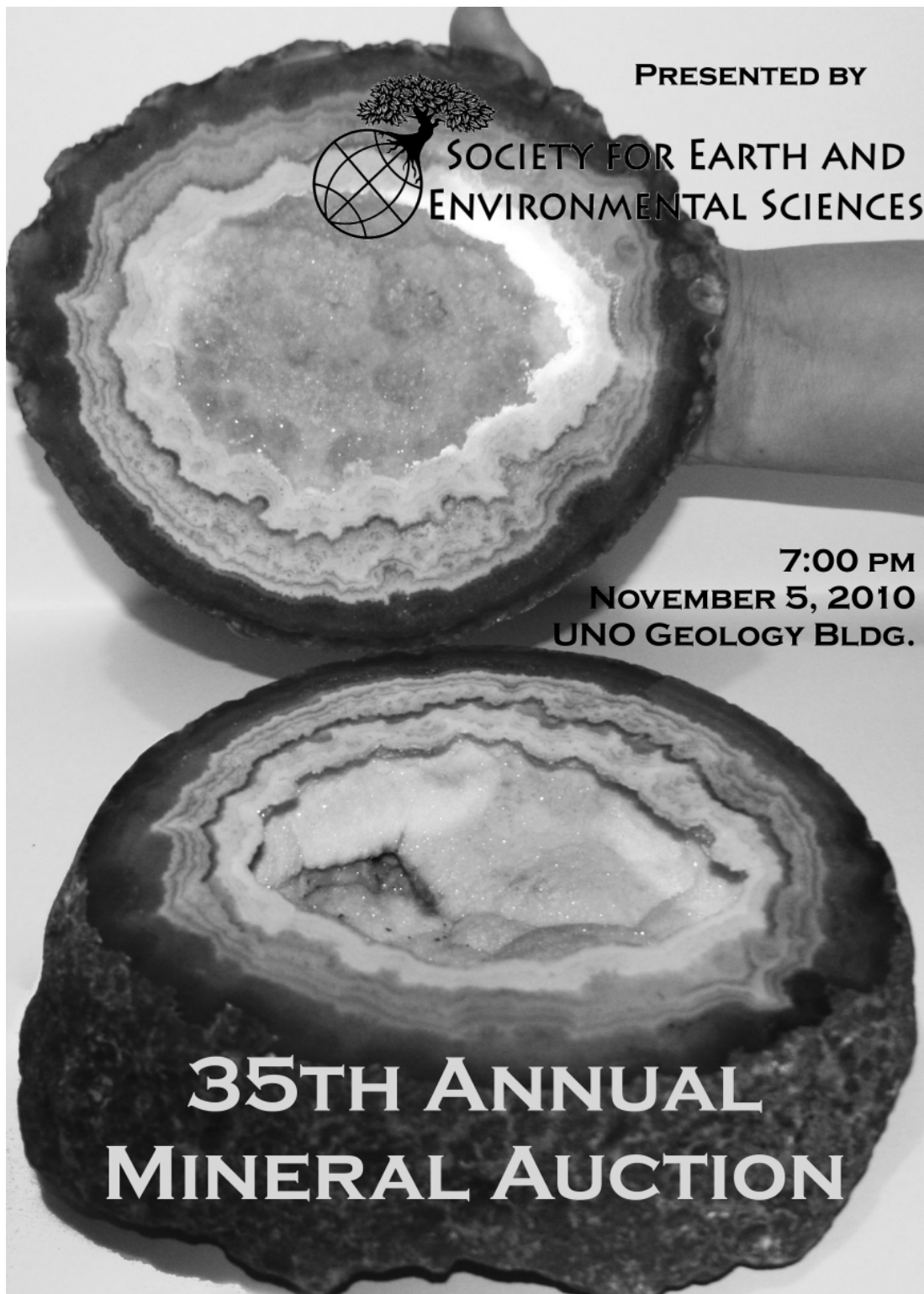
More NOGS Golf Tournament Photos











PRESENTED BY



SOCIETY FOR EARTH AND
ENVIRONMENTAL SCIENCES

7:00 PM
NOVEMBER 5, 2010
UNO GEOLOGY BLDG.

35TH ANNUAL MINERAL AUCTION

It's that time of year again!! The 35th Annual Mineral Auction, presented by the Society for Earth and Environmental Sciences (SEES), will be held this year on Friday, November 5 at 7pm. Check-in and registration will start at 6:00pm at the north side of the Geology and Psychology building located on the University of New Orleans Lakeshore campus. As always, all items up for bid have been hand-selected by the EES department's world renowned mineralogist, Dr. Skip Simmons, and will surely take your breath away. Refreshments will be provided. Just bring your checkbooks and a sense of humor to enjoy this great time among friends and colleagues. Questions, detailed directions, and pre-registration can be directed to sees_uno@yahoo.com.



Eni Petroleum

1250 Poydras Street
Suite 2000
New Orleans, LA 70113
Tel: (504) 593-7000
Fax: (504) 593-7745

1201 Louisiana Street
Suite 3500
Houston, TX 77002
Tel: (713) 393-6100
Fax: (713) 393-6205

It's no illusion...
Core Lab offers everything you need.



©2009 Core Laboratories. All rights reserved.

Unconventional resource exploitation • Gas shale experts • Deepwater GOM authority
Capacity for fast turnaround • High-quality people • Global support
Industry leadership and reliability • Proprietary and patented technologies • Experience

www.corelab.com/rd/petroleumservices • 24-hour wellsite service hotline: 504-733-6583

SEI®

Seismic Exchange, Inc.

Strategic Speculative Surveys
Geophysical Data Marketing & Management

YOUR
Full Service
National
Seismic Data
Marketing Firm

New Orleans
Dallas
Houston
Denver
Oklahoma City
Corpus Christi
Tulsa

201 St. Charles Avenue, Suite 4300, New Orleans, Louisiana 70170-4300
Telephone 504.581.7153 Fax 504.581.9591
www.seismicexchange.com

South Louisiana and Offshore Exploration and Production Activity

DRILL BITS

Drill Bits returned to the NOGS LOG last month and that column was my first attempt to report on drilling and exploration activities in South Louisiana. After writing the column, I thought it was a good effort to give you a quick overview of this activity.

However, after *reading* the column, when the LOG was published, I realized that it did not accomplish my goals. I am now planning to establish new guidelines for future reports.

I will report on important new locations as they are permitted, followed by completions on wells of interest. My report will also contain weekly up-dates on significant wells, wildcats, deep wells within old fields, and completed wells with extra-ordinary pay sections or tests. The report will include any industry news of significance to this area.

I stated that several "scouts" had furnished information to add to the column. Since then, I have picked up a new "scout", namely, the Louisiana Department of Natural Resources web-site, "SONRIS". Most of the following information included in this report has been retrieved from SONRIS. If you are not familiar with this site, I suggest that you try it at http://sonris-www.dnr.state.la.us/www_root/sonris_portal_1.htm. I think you will like it.

Drilling activity has increased in the last 4 months, with 113 new wells permitted in the Lafayette Onshore District. Of these new locations, I have selected the following to report:

- In **Beauregard Parish**, Midstates Petroleum has staked a location for the #1 Barrow, an 18,000' well in **Bear Field**, located in section 20, T6S-R9W. To date, the deepest test in the immediate area is 14,250'.
- A recent completion of note in **Beauregard Parish** is the El Paso #1 Hennican, located in **Fields Field**. This field had been off production since 2003, after producing 21.25 billion cubic feet gas and 2.544 million barrels of condensate. The Hennican was completed flowing 4377 MCFG and 309 barrels condensate, restoring production to this old field.
- Midstates Petroleum's activity in **Beauregard Parish** includes 3 drilling wells in **Cowards Gully Field**, 2 wells waiting on completion rigs in **South Bear Head Creek**, and 1 well drilling in **North Gordon Field**.
- In **Evangeline Parish**, Midstates is drilling its #1 Johnson in **Pine Prairie Field**, located in section 35, T3S-R1W. Pine Prairie Field is a very old field with recent increases in oil and gas production. This field will be featured in the new NOGS Publication, "Oil & Gas Fields of South Louisiana 2010".
- In **Iberia Parish**, Castex is drilling a wildcat in East Cote Blanche Bay, near **Rabbit Island Field**. The #1 State Lease 19527, a 12,621' test is drilling below 9100 feet.
- A very important new deep test is drilling in **Saint Mary Parish** in **Bayou Carlin Field**. McMoRan is drilling a 21,200 foot test in section 19, T15S-R9E. The #1 Pontiff is an offset to its #1 Peterman, which was completed in March, 2007. The well tested 40.642 million cubic feet gas per day, through perforations 19,908 to 19,974' in the MA-7 sand. It should be noted that this well has produced more than 28.7 billion cubic feet of gas and almost 500,000 barrels of condensate in 34 months.
- In **Vermilion Parish**, in **Erath Field**, Manti Exploration is drilling below 18,240' on its 21,500' well located in section 33, T13S-R3E.

OFFSHORE REPORTS:

- Since May, only five new drilling permits have been issued on the Gulf of Mexico shelf. Activity in the Gulf is anemic at best. As of September 17th, the Baker Hughes offshore GOM rotary rig count stood at 21. Three drilling contactors announced that at least 5 deep-water rigs have left or are planning to leave the GOM: 1 to the Congo, 2 to Egypt, and 2 to Saudi Arabia. The deep-water moratorium and “de facto” shelf moratorium are scheduled to end on November 30th; however, the industry remains cautious due to the uncertainty in regulations. Some sources estimate it will take up to two years before the industry can recover. This news is not welcomed by the Gulf Coast economies that rely on the support from the oil and gas industry activities in the Gulf. Nor is it good news for a nation that increasingly relies on unsympathetic, foreign sources of oil and gas for its energy needs.
- McMoRan Exploration Co. updated its exploration activities in the shallow waters of the Gulf of Mexico. The Blackbeard East well on South Timbalier Block 144 is currently drilling ahead below 24,100 feet towards a proposed total depth of 29,950 feet. Logging-while-drilling (LWD) tools and mud logs indicate the presence of Miocene sands below 24,100 feet that may be hydrocarbon bearing. Wireline logs will be run to fully evaluate these zones of interest. In their Davy Jones offset appraisal well (#2) in South Marsh Island Block 234, McMoRan is currently setting an 11 7/8” liner to 15,152 feet prior to drilling ahead to a proposed total depth of 29,950 feet. In their previously announced #9 ST1BP2 discovery well, Blueberry Hill, on Louisiana State lease 340, McMoRan drilled to a total depth of 24,990 feet and confirmed with wireline logs the presence of 105 feet of hydrocarbon-bearing Miocene sands near 24,200 feet. Lastly, McMoRan announced that they were moving a rig onto location in Eugene Island Block 223 to drill their ultra-deep, Middle to Lower Miocene, sub-salt weld, Lafitte Prospect. The initial well on the Lafitte Prospect also has a proposed total depth of 29,950 feet.
- Plains Exploration & Production announced that it and certain of its subsidiaries have executed an agreement with McMoRan Exploration to divest Plains’ interests in properties located in the Gulf of Mexico shallow water for a combination of cash and stock. Plains will receive \$75 million in cash and 51 million shares of McMoRan common stock in exchange for Plains’ interests in all of its Gulf of Mexico leasehold located in less than 500 feet of water. These properties are currently producing approximately 45 million cubic feet of natural gas equivalents per day net to Plains, and include estimated proved reserves of approximately 63.9 BCFE natural gas equivalents as of June 30, 2010. Plains will have the right to designate two directors to McMoRan’s Board of Directors. Separately, Plains has begun the process of marketing the company’s Gulf of Mexico deepwater assets.

BITS AND PIECES:

- Did you know that the drilling rig tally in the United States, during the height of the oil boom, peaked at 4,530 in 1981? The industry posted a record low of 488 rigs running in 1999.
As of June 10, 2010, the number of active rigs running in the United States is 1,654, compared to a year ago when the count was 999.

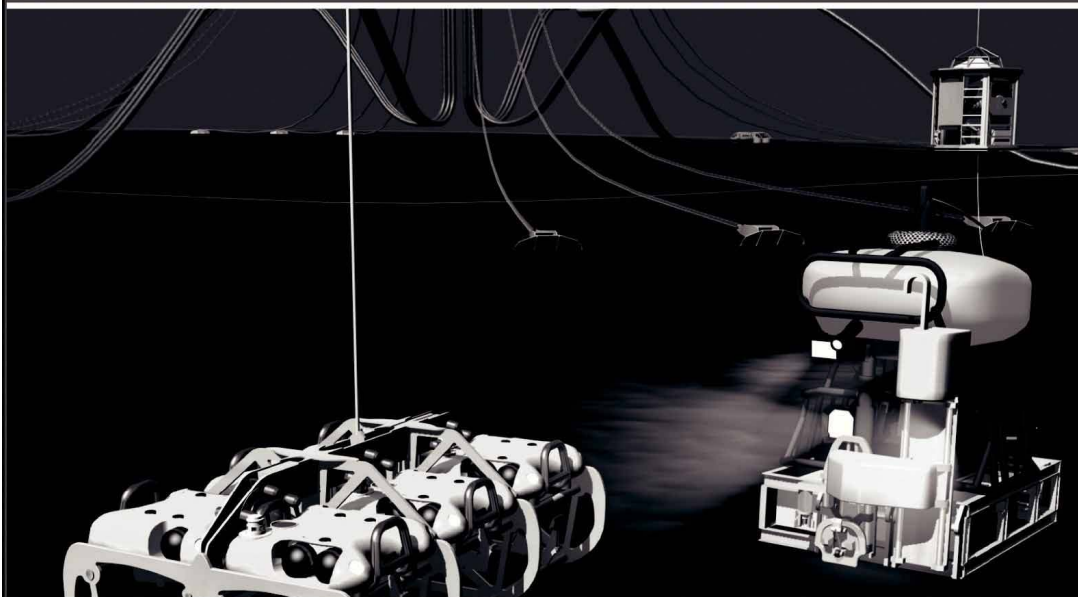
Tune in next month <<<<

Carlo C. Christina and Al Baker

In the meantime, live each day as if it were the last day of your life.

Deanna Edwards

Finally - An answer for getting reservoir seismic **OVER THE RESERVOIR!**



• 4C/4D Node Seismic

- ANGOLA
- GoM
- NIGERIA



“Coming Soon to an Oilfield Near You!”

www.sbexp.com

Dubai
T: +971 4 4271700

Houston
T: +1 281 566 1666

Oslo
T: +47 2240 2700

Rio
T: +55 21 2494-0283

Singapore
T: +65 9180 2605

Trondheim
T: +47 7 3879500

RAISING
THE **STANDARD**



**100 Northpark Blvd.
Covington, LA 70433**

(985) 773-6000



LaBay
Exploration Co., L.L.C.

111 Veterans Memorial Blvd.,
Suite 1550
Metairie, Louisiana 70005

www.labayexploration.com

Office (504) 371-5967
Fax (504) 371-5969

***This advertising space is available!
Contact the NOGS office.***

THE NEW ORLEANS GEOLOGICAL SOCIETY MEMORIAL FOUNDATION, INC.

The Memorial Foundation is an IRS Tax Exempt Code #501 (c)(3) organization. The Federal I.D. is: 72-1220999. Please consider making a donation to the Foundation prior to the close of this year's fiscal cycle on June 30, 2010. Your individual support in any amount will help meet the IRS Guidelines for our Foundation. *Thanks!*

\$15,000 AND ABOVE

Olga Braunstein Succession

Gibbet Hill Foundation

In Memory of Steve & Marion Millendorf, William J. Prutzman,

Roger G. Vincent & Ron Youngblood

\$10,000

George W. Schneider, Jr. and Family

In Memory of George W. Schneider, Sr.

\$2,000 TO \$3,000

NOGS Golf Tournament May 2009

In Memory of Bill Craig

UP TO \$249

Donald I. Andrews

In Memory of Ray F. Havard

In Memory of Harlan (Lanny) Northcott

Robert J. Ardell

In Memory of Al Gilheath

In Memory of Bill Malin

In Memory of Bob Williamson

Mr. and Mrs. Wesley Barton

In Memory of Thomas A. Cullinan

Abraham Biadgelgne

Maurice N. Birdwell

Irion Bordelon, Sr.

In Memory of Robert G. Williamson

Hilary James Brook

Robin Broussard

Rob Burnett

J. Sybil Callaway

Chevron

Matching Funds

Arthur F. Christensen

Ellen F. Clark

Willis E. Conatser PhD

Clarence F. Conrad

Charley Corona

In Memory of Professor Hubert Skinner

Trudy and Charley Corona

In Memory of Erik Mason

Michael A. Danahy

M. R. "Bob" Douglass

In Memory of Robert G. Williamson

Merle J. Duplantis

Dr. Brooks B. Ellwood

Parrish N. Erwin, Jr.

Exxon Mobil Matching Funds

Michael N. Fein

Laurens Gaarenstroom

Sherwood M. Gagliano

Arthur J. Garden

David Garner

\$7,000 TO \$9,000

Paul C. McWilliams

\$250 TO \$499

Carlo C. Christina

In Memory of Al Gilheath

Tom Klekamp

Richard G. Klibert

Larry Galloway

Peter G. Gray

In Memory of Robert G. Williamson

Bret Hampton

Angela M. Hessler

Through the Chevron Humankind

Program

Bernard L. Hill, Jr.

In Memory of Robert E. Osborne

Dan E. Hudson

Kenneth Huffman

Jeffrey E. Jandegian

Paul Jurik

In Memory of Thomas A. Cullinan

Reuben J. Klibert, Jr.

In Memory of Dale Klibert

John C. Kucewicz, Jr.

John C. Langford

Jeannie F. Mallick

Paul C. McWilliams

In Memory of Russell D. "Rusty" Morris

New Orleans Geological Auxiliary

In Memory of Dee Baysinger

In Memory of Doris Meltzer

In Memory of Terri Smith

Nexen Petroleum USA Inc. Matching Funds

Russell H. Nordwell

William J. O'Leary

Richard A. Olsen

In Memory of Richard W. Boebel

In Memory of William J. Malin

In Memory of Robert W. Sabate'

Teresa M. O'Neill

In Memory of Brian J. O'Neill

Linda and Bill Peirce

Edward B. Picou Jr.

In Memory of William J. Malin

In Memory of Robert G. Williamson

FONO FUND

The FONO Fund accepts contributions that are invested and the income dedicated to assure sufficient financial resources will always be available to maintain the NOGS business office. Contributors are reminded that donations to the FONO Fund are not covered by the IRS 501 (c)(3) tax exempt classification and should be reported as a business expense on your IRS tax report.

\$500

James A. Hartman

In Memory of Hal Hudson

In Memory of Robert G. Williamson

UP TO \$250

Donald I. Andrews

Alfred H. Baker Jr.

Joseph E. Boudreaux

Hillary James Brook

Jack G. Bryant

J. Sybil Callaway

Arthur F. Christensen

Richard P. Colomes

Clarence F. Conrad

Michael A. Danahy

John Dombrowski

Merle J. Duplantis

Richard A. Edmund

Mark J. Gallagher

William J. Furlong

Duncan Goldthwaite

James A. Hartman

In Memory of Hal Hudson

In Memory of Robert G. Williamson

Bernard L. Hill, Jr.

Thomas A. Hudson

Kenneth Huffman

C. M. (Max) Jacobs

Robert M. Jemison, Jr.

Tom Klekamp

Louis Lemarie'

William J. Malin

Jeannie F. Mallick

James A. McCarty

Louis L. McCormick

Robert G. Murphy

William J. O'Leary

Richard A. Olsen

Erwin Parrish, Jr.

Linda and Bill. Peirce

Edward B. Picou, Jr.

Richard D. Provensal

James P. Raymond, Jr.

Brenda E. Reilly

C. R. Rondeau

George D. Severson

Rudolf B. Siegert

Richard J. Stancliffe

Bryan P. Stephens

Raymond Stephens

Roy C. Walther

Robert C. Weissmann

William M. Whiting

James W. Yeldell, Jr.

Jim Zotkiewicz

CONTRIBUTIONS FOR BOTH FUNDS THROUGH OCTOBER 7, 2010.

DONATIONS ARE LISTED FOR ONE YEAR.

Richard D. Provensal

In Memory of Thomas H. Philpott

Scott Purinton

Brenda E. Reilly

Mrs. William B. Rodan

In Memory of Robert G. Williamson

Robert T. Sellars, Jr.

In Memory of Robert G. Williamson

George D. Severson

Rudolph B. Siegert

Dr. J. O. Snowden

Gary L. Spraul

In Memory of H. Grady Collier

Raymond O. Steinhoff

In Memory of Harold E. Vokes

Roy C. Walther

William M. Whiting

In Memory of William J. Malin

Armour C. Winslow

In Memory of Rita Menzel Winslow

Frances A. Wiseman

In Memory of Steve Widdicombe

James W. Yeldell, Jr.

Jim Zotkiewicz

In Memory of Bill Craig

Chevron

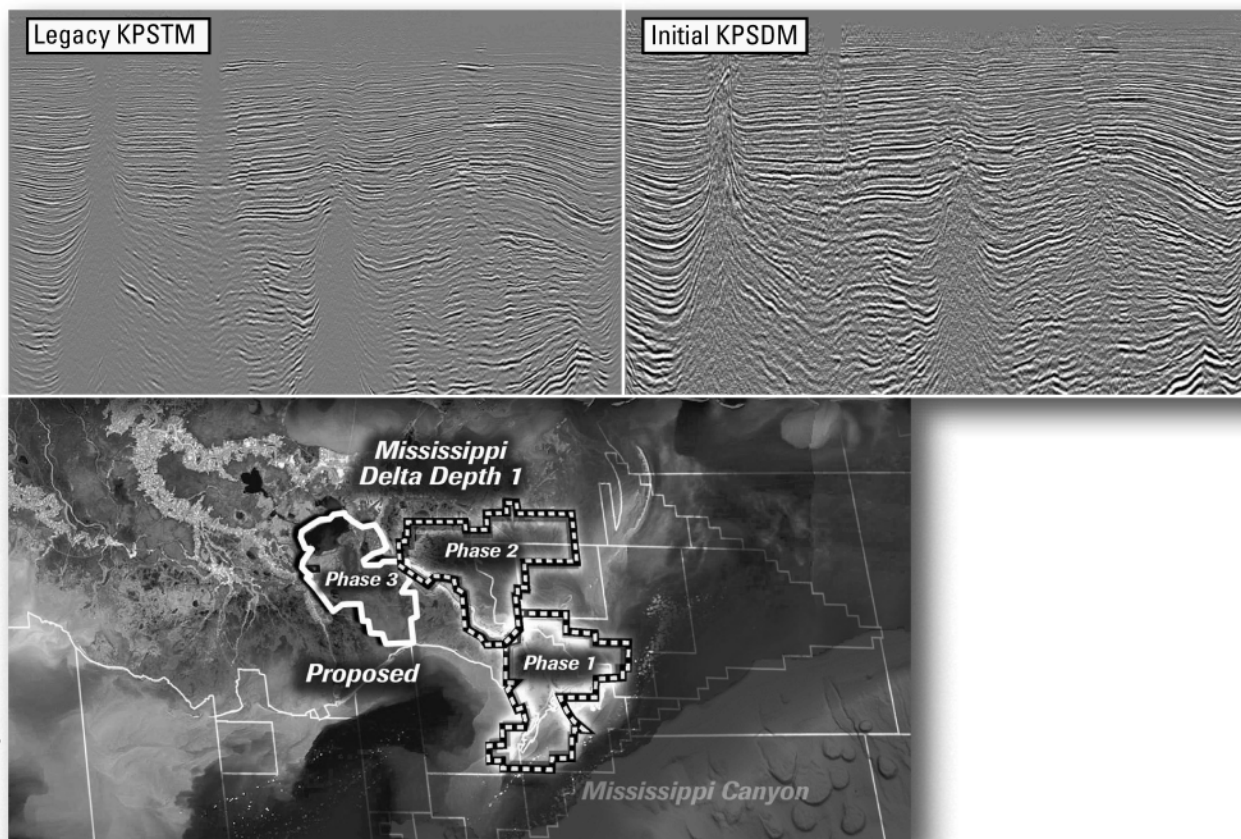
Bernard L. Hill, Jr.

John C. Scheldt

Candace V. Strahan

In Memory of James Strahan

Improved depth imaging in the Mississippi Delta



In the Mississippi Delta region, WesternGeco is utilizing state-of-the-art processing designed to eliminate fault shadows and enhance deep imaging. The Mississippi Delta - Depth 1 survey, now in progress, incorporates the processing and remigration of twelve legacy surveys covering 1,855 square miles. High-quality time imaging using relative amplitude anisotropic Kirchhoff prestack time migration will be followed by improved structural imaging utilizing anisotropic Kirchhoff prestack depth migration.

To learn more about this and other Multiclient products, call +1 713 689 1000.

www.multiclient.westerngeco.com/la

Multiclient to the Power of E





Thomas Hudson was awarded Honorary Life Membership in NOGS at the July awards ceremony. Tom was the General Chairman of the 2010 AAPG Annual Convention and Exhibition. By all accounts the Convention was a success for both AAPG and NOGS. In 2009 he was the General Chairman for the Deep Water Symposium. Tom is now on an extended assignment for Chevron in Thailand.

President's Letter (continued from page 5)

NOGS and the NOGS Memorial Foundation have each contributed \$3,500 in support of "A *Geoscience Strategy to Monitor Flood Protection Levees*" collaboration between LSU Department of Geology and Geophysics and UNO departments of Earth and Environmental Sciences, Physics, and Mathematics. This request was submitted by:

Dr. Juan M. Lorenzo (LSU-Geology and Geophysics).

Dr. Mark A. Kulp (UNO- Earth and Environmental Sciences),

Drs. Juliette W. Ioup (UNO- Physics),

Dr. George E. Ioup (UNO- Physics), and

Dr. Ken W. Holladay (UNO-Mathematics)

This project emphasizes quick, repeatable geophysical monitoring as a practical, long-term solution to isolate anomalous damage zones along floodwalls (levees). This project will establish the best monitoring geophysical models and techniques that can help PREDICT and IDENTIFY damaged areas. The project will complement and strengthen current engineering practices. It will train young scientists in the use of geophysical exploration methods, applied to the monitoring of flood protection levees. Additional federal grants will be used to expand and move the project forward.

We are all waiting to see what comes next with the Offshore Drilling Moratorium. Is it really going to be lifted the end of November? Are the forthcoming regulations and financial requirements such that all operating companies can fully participate in the Gulf of Mexico? Is there going to be an onerous amount dollar binder such that only the Super Majors can work in deepwater? I pray it ends and that the industry recovers back to full employment, finding and proving up new reserves sooner rather than later. *Editor's Note: The moratorium was lifted on 10/12/10.*

To end this month on a positive note, I have saved some good news for last. We have a new Vice President, Mr. Eric Zimmermann. Eric is a personal friend, professional colleague and client of mine. He is a geologist with LLOG and recent past president of SGS. I am delighted that Eric has accepted the position. He will serve NOGS well! Please make it a point to welcome Eric and assist him in any way possible, one of which would be to clue him to great speakers and talks. Thank you.

Rick

SAI

Sydboten & Associates, Inc.
*Geological and Geophysical Consulting,
3-D Seismic Interpretation*

Ben D. Sydboten, Jr. CPG

124 Heymann Blvd., Suite 202
Lafayette, LA 70503

Office (337) 234-5288
Cell (337) 234-5491

ATWATER CONSULTANTS, LTD.

REGISTERED AND CERTIFIED PETROLEUM PROFESSIONALS

GEOLOGICAL, ENGINEERING, GEOPHYSICAL,
TRAINING AND EXPERT WITNESS SERVICES

3525 Hessmer Ave, Ste 304
Metairie LA 70002

Tel. (504) 581-6527
Fax (504) 524-7798

"Serving The Oil & Gas Industry Since 1983"

Geological,
Geophysical &
Land Drafting

Anthony Catalanotto
President

Stefani Foster
Drafting & Design

Geo-Draft, Inc.

A Professional Drafting & Graphics Firm

3349 Ridgelake Drive • Suite 202 • Metairie, LA • 70002
Office: (504) 836-2882 Fax: (504) 836-2877 (Cell) (504) 481-7291
E-Mail: geodraft@bellsouth.net
Website: www.geodraftinc.com

*This advertising space is available!
Contact the NOGS office.*

NORTHCOAST OIL COMPANY

610 E. Rutland St.
Covington, LA 70433
(985) 898-3577
(985) 898-3585 FAX

Jack M. Thorson
Eric C. Broadbridge
J. Daryl Gambrell
Raymond W. Stephens

**NOGS thanks our
sponsors for their support:**

GOLD LEVEL SPONSORS:

CHEVRON
LA BAY EXPLORATION CO, LLC.

**SPECIAL THANKS TO
DIVERSIFIED WELL LOGGING**



CIMAREX ENERGY CO.

GULF OF MEXICO REGION
GOM, SE La., N. La., MS, AL

1100 Poydras St.; Suite 1100

New Orleans, Louisiana 70163

504-586-1815 / Fax 504-586-9035

Keith Gourgues
Region Manager

(832) 242-6000 (O)
(713) 917-0493 (O)

(504) 931-7506 (C)
johnjurasin@jurasinoilgas.com

JURASIN OIL & GAS

9700 Richmond Ave., Suite # 124
Houston, TX 77042-4821

JOHN M. JURASIN
President

Cert. Pet. Geologist #4284
Cert. Prof. Earth Scientist #1961

Collarini Energy Staffing

Full-Time and Temporary Personnel

Facilities • Drilling • Production • Reservoir Engineering
Land and Legal • Geoscience • Information Technology •
Health and Safety • Management • Supply Chain
Accounting • Administrative Support

10497 Town and Country Way, Suite 950
Houston, Texas 77024

832-251-0553



www.collarini.com

Collarini Associates

Reservoir Engineering
Oil & Gas Property Evaluation
3-D Seismic Interpretation
Integrated Field Studies

832-251-0160
504-887-7127

Houston
New Orleans

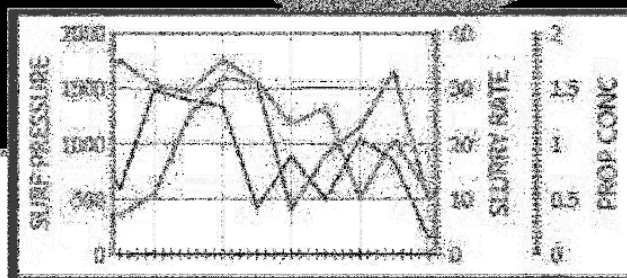
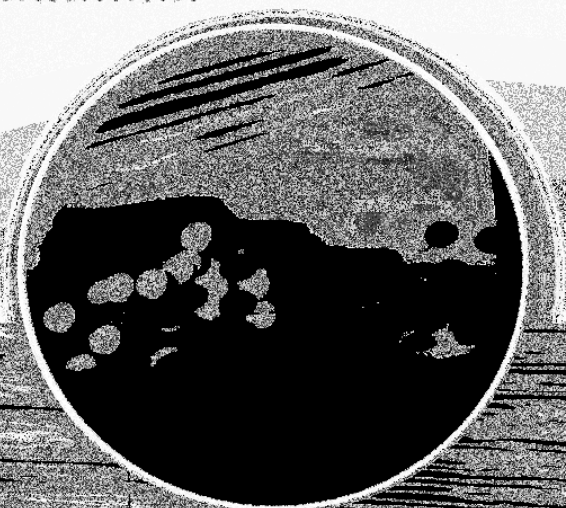
The market leader for
Unconventional Interpretation
just got better...



Introducing **KINGDOM Advanced**

MICROSEISMIC INTERPRETATION

for Geomechanical Characterization

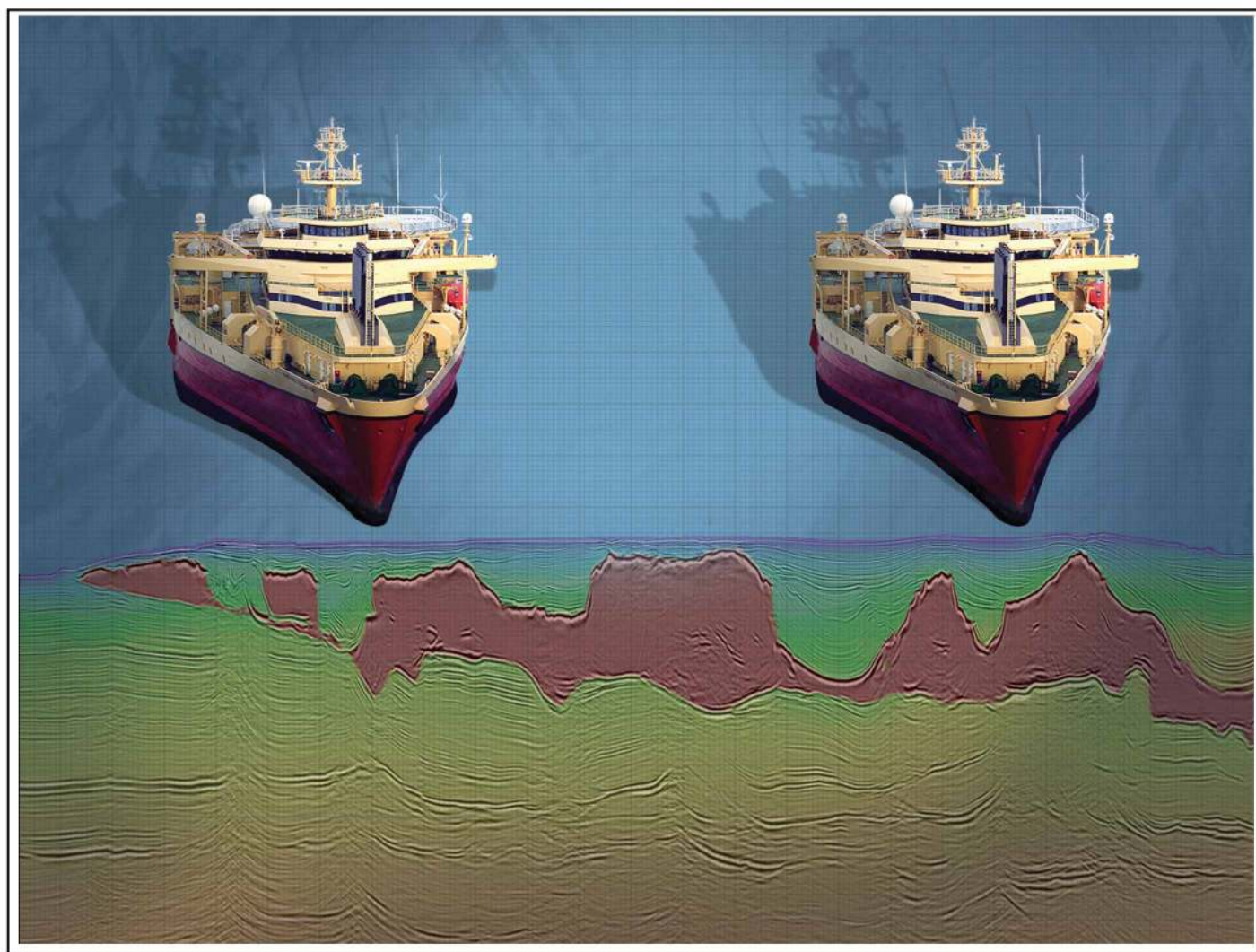


Primary interpretation platform for
75% of US onshore companies

See The Future Of Unconventional Exploration: www.seismicmicro.com/unconventional

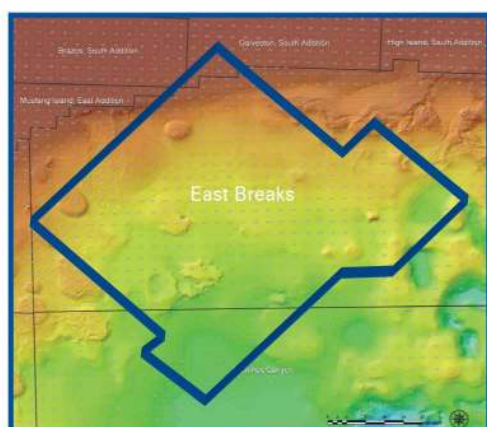
ANSYTHE Donald I. Andrews 504-887-3432 	H. WARREN BELL Oil and Gas Exploration 2500 Tanglewilde, Suite 485 Houston, TX 77063-2126 Bus (713) 266-7297 Fax (713) 266-7298
THE BOEBEL COMPANY Oil and Gas Investments 170 Broadway Street, Suite 321 New Orleans, LA 70118 (504) 866-4313	PHELPS GEOSCIENCE Onshore Gulf of Mexico Geology and Geophysics Prospect Generation and Evaluation Houston, TX jsfphelps@yahoo.com (281) 398-5208
BOO-KER OIL & GAS CORP. Gray S. Parker 826 Union, Suite 300 New Orleans, LA 70112 Bus. (504) 581-2430 Fax (504) 566-4785	RAFIDI OIL AND GAS, INC. Jaser N. Rafidi, President 4415 Shore Dr., Suite 202 Metairie, LA 70006 Bus. (504) 722-2942 Fax (504) 888-5539; Res. (504) 888-1661
C & R EXPLORATION, INC. Carlo C. Christina Lawrence G. Ringham	ROY C. WALTHER Petroleum Geologist 2421 Prancer Street New Orleans, LA 70131 Bus. (504) 392-8513 Res. (504) 392-9332
C. R. RONDEAU Petroleum Geologist 119 W Southland Ave. Ironwood, MI 49938 Res. (906) 932-4692	 Shoreline Gas Inc. www.shorelinegas.com Full Service Natural Gas Marketing
CLASSEN EXPLORATION, INC. James S. Classen Looking for close in deals P.O. Box 140637 Boise, ID 83714 Bus. (208) 854-1037 Fax (208) 854-1029 classenllc@msn.com	 625 E. Kaliste Saloom Lafayette, LA 70508 16800 Greenspoint Dr., Suite 225-S Houston, TX 77060 www.StoneEnergy.com
D-O-R ENGINEERING, INC. 3-D and Geoscience Services 6161 Perkins Rd. P O Box 80812 Bus : (225) 765-1914 Baton Rouge LA 70898	TONY CAROLLO Consulting Geologist Unitization Geosteering Field Studies 1701 Peach Street Metairie, LA 70001 Bus. (504) 885-0004 Res. (504) 885-6829
EDWARD B. PICOU, JR. Consulting Micropaleontologist - Retired 228 St. Charles Ave., Suite 1330 C New Orleans, LA 70130 Bus. (504) 529-5155 Res. (504) 282-3096	Zot Oil & Gas, LLC Jim Zotkiewicz Prospect Generation and Evaluation 3200 Ridgelake Dr. Suite 207 Metairie, LA 70002-4930 Business: 504.831.4694 Email: jimzot38@zotoil.com

Save the date!
NOGS Annual Golf Tournament
April 25, 2011



Crystal III, East Breaks

MultiClient Wide Azimuth



- **Size** - 480 OCS blocks
- **Focus** - Sub-Salt Miocene & Paleogene
- **Technology** - TTI Beam and RTM Imaging
- **Delivery** - Available Q4 2010

Houston
Tel: +1 281 509 8000
Fax: +1 281 509 8500

Oslo
Tel: +47 67 52 6400
Fax: +47 67 52 6464

London
Tel: +44 1932 37 6000
Fax: +44 1932 37 6100

A Clearer Image
www.pgs.com



NEW ORLEANS GEOLOGICAL SOCIETY



810 Union Street, Suite 300
New Orleans, LA 70112-1430

WWW.NOGS.ORG

MARINE PROPERTIES, LLC BERKSHIRE EXPLORATION CO.

MONTE C. SHALETT, CPL, PRESIDENT

3030 Lausar Street
Metairie, LA 70001-5924

BUS. (504) 831-7779
FAX. (504) 831-8315

PCI

Paleo Control, Inc.

Houston, Texas
713-849-0044

Drilling Wells, Studies and Data Base

Loyd Tuttle

Frio, SE Texas

Bob Liska

Wilcox, S and SE Texas

Jim Thorpe

Miocene and Cam-Miogyp



SEE YOUR DATA IN A WHOLE NEW LIGHT!

Take the pressure out of exploration
and drilling by seeing what you
are going to encounter.



eSeis

www.e-seis.com
713.531.1447

- Lithology & Fluids
- Depositional Facies
- Pore Pressure from V & Q
- Well Planning Consultation

