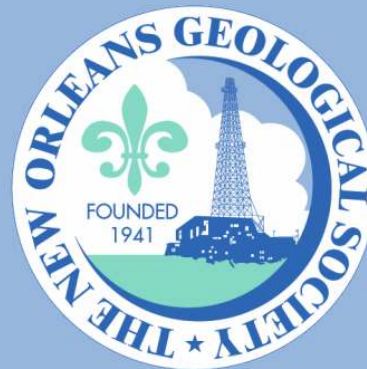


# NOGS LOG



May 2010

Volume 50, Number 11

## Upcoming Events and Activities

---

### April 29 - May 1 - 2010 Oil History Symposium

Lafayette. See announcement on page 25.

---

### May 3-6 - 2010 Offshore Technology Conference

Houston. Website: <http://www.otcnet.org/2010/>

---

### May 10 - NOGS Luncheon

\*\*\* At the Holiday Inn Superdome \*\*\*

\$2.00 validated parking in hotel garage

Guest Speaker Charler E. Cusack III, Petrohawk Energy Corporation, Houston,  
will present "The Haynesville Shale Boom."

(See page 7 for Abstract and Biography)

#### LEPAVILLON HOTEL

Check with concierge or  
front desk for location

Lunch served at 11:30am

#### ADMISSION:

**with reservation** ..... \$30.00

**without reservation** ..... \$35.00

Student Member with reservation .... Free

---

### May 14 - NOGS and SGS Summer Social

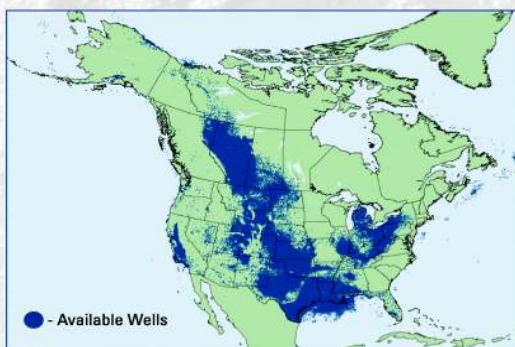
Zephyrs game. See announcement on page 19.

---

### June 14 - NOGS Luncheon

Holiday Inn Downtown Superdome. Guest speaker Bryan P. Stephens, United States Department of the Interior, Minerals Management Service, New Orleans, will present "Basement Controls on Subsurface Geologic Patterns and Coastal Geomorphology across the Northern Gulf of Mexico: Implications for Subsidence Studies and Coastal Restoration."

# Missing Well Data?



## Let TGS complete the picture.

TGS adds hundreds of complete LAS everyday to the **world's largest LAS library**, with well logs in 29 countries.

And since you asked for it, we now have nationwide **US Production Data**.

Our well data is online, available immediately, with a team of **dedicated customer support** specialists there for you.

If your own proprietary well files are piling up, our new team of **well data solutions** experts can build a custom solution suited to your needs.

Learn more at [www.tgsnopec.com/welldata](http://www.tgsnopec.com/welldata)  
888-LOG-LINE | [WellData@tgsnopec.com](mailto:WellData@tgsnopec.com)



Geophysical  
Products



Geological  
Products



Imaging  
Services



[www.tgsnopec.com](http://www.tgsnopec.com)

**NOGS Office**

Office Manager: Annette Hudson

Office Hours: 8:30am – 3:30pm on Monday-Wednesday-Friday

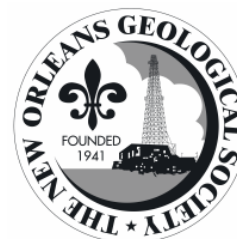
Tel: 504-561-8980 • Fax: 504-561-8988

E-mail: info@nogs.org • Website: www.nogs.org

The office is located at Suite 300, 810 Union Street, New Orleans, LA 70112.

Correspondence and all luncheon reservations should be sent to the above address.

Sent to press on April 4, 2010.

**BOARD OF DIRECTORS**

		<b>Company</b>	<b>Phone</b>	<b>E-mail</b>
President	Tom Klekamp	Amber Resources LLC	985-845-4046	klekamp@bellsouth.net
Vice President	Bob Hafner	ENI Petroleum	504-593-7605	Robert.Hafner@enipetroleum.com
Secretary	Jennifer Connolly	Shell	504-728-6411	jennifer.connolly@shell.com
Treasurer	Chuck Holman	ENI	504-593-7869	chuck.holman@enipetroleum.com
President-Elect	David E. Reiter	ENI	504-593-7606	david.reiter@enipetroleum.com
Editor	Elizabeth Petro	MMS	504-736-2866	nogseditor@gmail.com
Director 2010	Michael M. Ledet		504-394-9636	mikeledet@cox.net
Director 2011	Scott A. Wainwright	Bret Exploration Co Inc	504-889-2700	scott_wainwright@hotmail.com
Director 2012	Arthur H. Johnson	Hydrate Energy International	504-464-6208	artjohnson51@hotmail.com

**COMMITTEE**

	<b>Chairperson</b>			
AAPG Delegates	William M. Whiting	Consultant	504-947-8495	bootscon@aol.com
AAPG Student Chapter	Gabriella March	Tulane University		gmarch@tulane.edu
AAPG Student Chapter	Mary Ellison	UNO	504-535-6472	mellison4@gmail.com
Advertising-Log	Andrea Stancin	Shell	504-728-0431	Andrea.a.stancin@shell.com
Auditing	James Swaney	MMS	504-736-2677	james.swaney@mms.gov
Awards	Michael N. Fein	W & T Offshore	504-210-8148	mikef@wtffshore.com
Ballot	Chuck Holman	ENI	504-593-7869	chuck.holman@enipetroleum.com
Best Paper	David E. Reiter	ENI	504-593-7606	david.reiter@enipetroleum.com
Continuing Education	TBA			
Employment Counseling	TBA			
Entertainment	David E. Reiter	ENI	504-593-7606	david.reiter@enipetroleum.com
Environmental	Daisy Pate	Core of Engineers	504-957-4372	daisy.pate@gmail.com
External Affairs	Michael A. Fogarty	Sylvan Energy, LLC	603-523-4808	mike.a.fogarty@gmail.com
Field Trip	David Garner	Shell	504-728-6154	David.Garner@shell.com
Finance and Investment	Chuck Holman	ENI	504-593-7869	chuck.holman@enipetroleum.com
Historical	Edward B. Picou, Jr.	Consultant	504-529-5155	epicou@bellsouth.net
Membership/Directory	Penne Rappold	Shell	504-728-4338	prappold@gmail.com
New Geoscientists (NGNO)	TBA			
Nominating	Willis E. Conatser		504-466-9749	weconatser@aol.com
Non-Technical Education	Duncan Goldthwaite	Consultant	504-887-4377	DGldthwt@aol.com
Office Operations	William M. Whiting	Consultant	504-947-8495	bootscon@aol.com
Publications Sales	Edward B. Picou, Jr.	Consultant	504-529-5155	epicou@bellsouth.net
Photography	J. David Cope	Taylor Energy Co LLC	504-589-0419	dcope@taylorenergy.com
School Outreach	Thomas C. Bergeon	Century Exploration	504-832-3772	Tom.bergeon@centuryx.com
Scouting	Carol Rooney	Consultant Geologist	504-835-1909	carolbrooney@aol.com
Technical Projects	TBA			
Ad Hoc Committee on University Support	Michael J. Gallagher	Eni Petroleum	504-593-7480	Michael.Gallagher@enipetroleum.com

**NOGS LOG STAFF**

Editor	Elizabeth Petro	MMS	504-736-2866	nogseditor@gmail.com
Editor-Elect	Fran Wiseman	MMS	504-736-2912	frances.wiseman@mms.gov
Auxiliary	Susie Baker	NOGA	504-466-4483	abaker1006@aol.com
Info Tidbits	Fran Wiseman	MMS	504-736-2912	Frances.wiseman@mms.gov
Drill Bits	TBA			
Webmaster	Edward B. Picou, Jr.	Consultant	504-529-5155	epicou@bellsouth.net
Layout	Jannette Inc.			

**NOGS AUXILIARY**

<b>Officers</b>		<b>Phone</b>	<b>Directors</b>	<b>Year</b>	<b>Phone</b>
President	Linda Peirce	504-393-7365	Beverly Christina	2009-10	504-835-2383
1st Vice-President	Jean Jones	504-738-8091	Peggy Rogers	2009-10	504-392-6323
2nd Vice-President	Beverly Kastler	504-286-0879	Judy Sabate	2009-10	504-861-3179
Secretary	Dolores Murphy	504-393-0878	Peggy Campbell	2009-11	504-283-2505
Treasurer	Judy Lemarie	504-393-8659	Ruth Grimes	2009-11	504-392-8103
Parliamentarian	Carol Andrews	504-887-3432	Gerry Waguespack	2009-11	504-737-0532
Member-at-Large	Susie Baker	504-466-4483			

--- NOGS Contact List continued on page 10 ---

# SYNERGY ENERGY



**Weatherford®**  
LABORATORIES

Your success increasingly depends upon a better understanding of your reservoir. At Weatherford Laboratories, we provide a single source for comprehensive laboratory analyses, creating a synergy previously unknown in laboratory services. This single source includes distinguished geologists, geochemists, analysts, engineers, technicians and software developers, 38 worldwide laboratories, and the broadest portfolio of services for acquiring and interpreting data from physical samples. The end result is an unsurpassed combination of intellectual capital and technical resources — all working together to help you enhance development planning and reduce reservoir uncertainty.

Put our union of Synergy and Energy to work for you.

**Weatherfordlabs.com**

**HIGHER STANDARDS**

**NORTH AMERICA**  
NAInquiries@weatherfordlabs.com

**EUROPE**  
EUInquiries@weatherfordlabs.com

**LATIN AMERICA**  
LAInquiries@weatherfordlabs.com

**MIDDLE EAST/NORTH AFRICA**  
MENAIquiries@weatherfordlabs.com

**ASIA PACIFIC**  
APIquiries@weatherfordlabs.com





## *from the President*

It was spring break in the Texas schools, we gathered our Texas grandkids along with the parents and headed for the Hill Country. On a fabulous Sunday afternoon, I dropped the crew off at a golf course and then headed out examine rocks near Marble Falls. At one outcrop I was soon joined by another car with geologists. What a surprise when it turned out to be Houston-based NOGS member Tammy Christopher, along with geologist-husband Chris and their son Christian (see photo below). Tammy has maintained a membership ever since leaving New Orleans and was quite interested in the progress reports with the forthcoming NOGS publication, "Oil and Gas Fields of South Louisiana - 2010." Tammy, I can report NOGS will have Ramos Field ready to show people at the Convention, along with a list of perhaps two dozen additional (maybe more) fields that will be included in final version. Anthony Catalanotto at Geo-Draft, Inc. will be handling the maps, cross sections and type logs, thus insuring a quality product.

Plans are underway for a new Children's Museum on the Northshore. The Museum's major sponsor is the Junior League of Greater Covington. Land has been donated by St. Tammany Parish and about one-fifth of \$12M projected cost has been raised thus far. The JLGC is being helped by the parish and several corporate sponsors. At a recent

JLGC fundraiser NOGS was represented by Tom Bergeon and Bob Hafner along with the two large Triceratops and T-rex skulls. These proved the second biggest hit of the evening-after the Saints' Tracy Porter. NOGS has been welcomed back and the JLGC is definitely looking to more input. NOGS can help with exhibit design and arrange for contacts with major and mid-cap oil companies. There are also independents tucked away on the Northshore. For more information on how you can get involved contact Chairman Lisa Barnett, 985-502-4321

Art Johnson recently received the API Delta Chapter's Meritorious Service Award. The other recipient was Charlie Speed, a consulting materials engineer who is active in educational outreach. Art is President and Chief of Exploration for Hydrate Energy International and is engaged in energy consulting in the U.S. and throughout the world. He has advised Congress and the White House on energy issues since 1997. Art has an on-going role coordinating the research efforts of industry, universities, and government agencies. He serves as an AAPG Visiting Geoscientist and is a frequent K-12 speaker on energy and geoscience topics. His recent publications include "Economic Geology of Natural Gas Hydrate" (Springer), "Alternative Energy and Fuels Technology" (Catalyst Group), and "AAPG Memoir 89: Natural Gas Hydrates - Energy Resource Potential." Featured speaker at the Awards luncheon was Louisiana Dept of Conservation Secretary Scott Angelle. Mike Merritt represented NOGS at the awards.

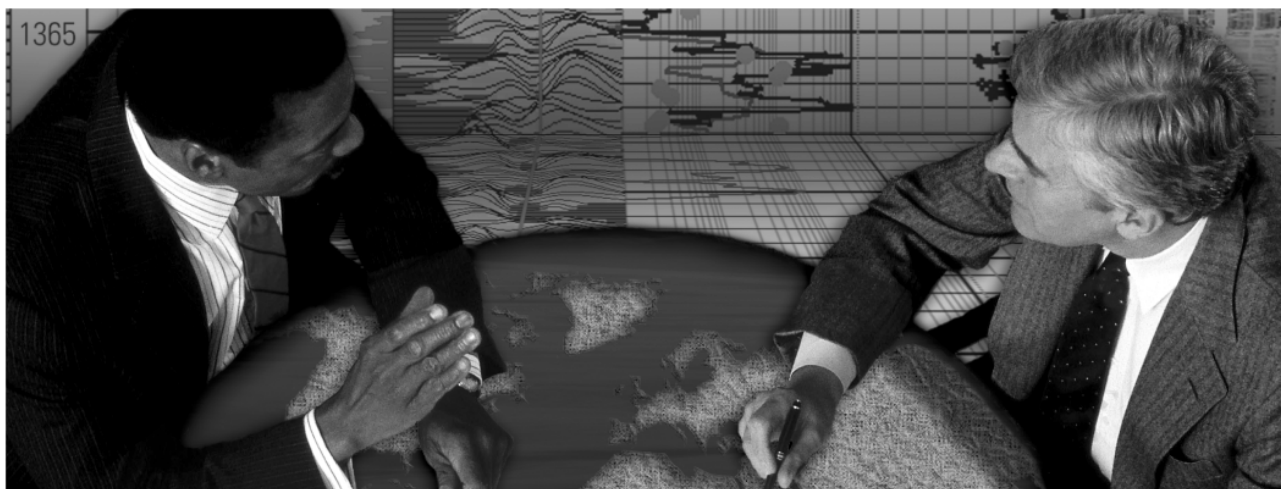
It's the New Orleans Zephyr's vs. Sacramento Bears. Make plans and bring your family or a friend to the NOGS-SGS evening game on Friday, May 14th. The game starts at 7 p.m. and we're hoping to have seats along the 3rd base line so a bright sun will be minimized. Friday nights include fireworks. We're also including Ball Park Bucks with your tickets. Thanks to Chevron's Tim Maciejewski for once again planning and handling the details with the Zephyr's. Call the NOGS Office for reservations.

*Tam*

L-R: Houston NOGS member Tammy Christopher, Tom Klekamp, Christian Christopher and Chris Christopher at an outcrop of a Llanite (a rhyolite porphyry) dike, near Llano, Texas on March 14th



**Schlumberger formation evaluation solutions deliver the answers you need.** Our extensive portfolio of services, leading-edge technology, and advanced conveyance options keep you in communication with your well throughout its life cycle.



*With formation evaluation technologies from Schlumberger, you can make the best decisions for optimized performance in every well.*

## **The formation evaluation one-stop shop**

Whether you are logging in open hole or behind the casing, our broad selection of services ensures the best solution for acquiring formation evaluation data. Tools can be conveyed while drilling or on wireline or pipe. We offer many specialized evaluation capabilities, from density, neutron porosity, and resistivity to borehole imaging, nuclear magnetic resonance logging, borehole seismic, formation pressure testing, and fluid sampling. Advanced triple-combo logging options include the VISION\* formation evaluation and imaging-while-drilling services. Coupled with Pulse\* telemetry and surveying services, the VISION family provides real-time formation evaluation data and enables optimum well placement.

High-speed wireline measurements are recorded with the Platform Express\* logging services. The SlimXtreme\* platform is designed for high-pressure, high-temperature environments and the ABC\* Analysis Behind Casing services are used after casing is set.

Expert interpretation from the engineers and geoscientists of Schlumberger Data & Consulting Services brings all your data together to give you the answers you need. This expertise is available after logging is complete or as real-time two-way wellsite communication through the InterACT\* real-time monitoring and data delivery system.

Schlumberger delivers leading-edge technology and interpretation expertise for all your formation evaluation needs, so every well benefits from the very best information.

**For more information visit**  
**[www.slb.com/oilfield/formation\\_evaluation/](http://www.slb.com/oilfield/formation_evaluation/)**

\*Mark of Schlumberger

04-FE-114

# Schlumberger

# May 10 NOGS Luncheon Presentation

\*\*\*At the Holiday Inn Downtown Superdome\*\*\*

## The Haynesville Shale Boom

presented by

**Charles E. Cusack III**

**Petrohawk Energy Corporation, Houston**

### ABSTRACT

The Haynesville Shale Boom is the most exciting event to have occurred in the Oil and Gas business in years, and certainly in Northwest Louisiana and Northeast Texas. Not only is the incredible productivity of the formation so unique, but the leasing history is unique, as well. It's doubtful that any play has had such an accelerated leasing frenzy and subsequent leasing drop-off in modern-day history. A brief history of Petrohawk's involvement in the Haynesville, our current and planned activities, and a discussion of some of the geological attributes that make this a world-class gas field will be presented. A more abbreviated look at Petrohawk's Eagle Ford Shale activity and the geologic attributes that also make it a world-class discovery will also be covered.

### BIOGRAPHY

**Charles Cusack** is responsible for the exploration and land efforts of the company and serves as one of the team leaders for both the Haynesville and Eagle Ford shale projects. He is a co-founder of Petrohawk which began in 2003. Mr. Cusack has 27 years of industry experience having held various positions with 3TEC Energy, Cockrell Oil, Amerada Hess, Chevron, Tenneco Oil, and Gulf Oil. He holds an engineering geology degree from Texas A&M University.

**THE LUNCHEON RESERVATION DEADLINE IS MAY 5 - CONTACT THE NOGS OFFICE**

### “And Looking Ahead...”

The next NOGS Luncheon will be held on June 14. Guest speaker Bryan P. Stephens, United States Department of the Interior, Minerals Management Service, New Orleans, will present “Basement Controls on Subsurface Geologic Patterns and Coastal Geomorphology across the Northern Gulf of Mexico: Implications for Subsidence Studies and Coastal Restoration.” Contact the NOGS office to make your reservation.

**QUESTION:  
WHAT IS THE BEST  
BARGAIN IN TOWN?**

**ANSWER:  
WWW.NOGS.ORG!  
SEE PAGES 16-17.**

## ***CALL FOR ABSTRACTS***

# **2010 Flood Protection Geological Symposium**

*Geologic Facts of Life for Flood Protection in Coastal Louisiana*

**Thursday, July 15, 2009**

**Jefferson Parish Council Chambers**

**Joseph Yenni Building**

**1221 Elmwood Park Blvd.,**

**Jefferson, LA 70123**

### **Abstract Submission Protocol:**

The unique purpose of this conference is to convene public agencies and provide the officials in charge, and the public, with the latest geological research affecting flood protection efforts along the Gulf of Mexico Coastal Zone. Again this year, the Flood Protection Geological Symposium Committee invites up to five PowerPoint lectures approximately 30 minutes in length representing diverse geoscience topics such as paleotempestology, subsidence and sea-level rise, geological considerations for coastal restoration and protection, geotechnical hazards and other relevant topics.

### **Abstract Submission Deadline is June 15, 2010, 11:59 pm CST**

Abstracts of no more than 400 words with up to 2 key figures must be submitted by this deadline for review by the Flood Protection Geological Symposium Committee to: [mmerritt@slfpaw.org](mailto:mmerritt@slfpaw.org).

***Please note:*** All presenters customarily remain after their lecture and participate in a concluding panel discussion. Proceedings of the conference are to be published digitally. Upon abstract acceptance, presenters are asked provide a digital summary of key points and illustrations for sponsors to post in press releases beforehand and in the public domain on their web sites afterwards.

## **SPONSORS**

New Orleans Geological Society

Louisiana State Geological Survey

Southeast Louisiana Flood Protection Authority - East Bank Board of Commissioners

Southeast Louisiana Flood Protection Authority - West Bank Board of Commissioners

### **For Information:**

Mike Merritt (504) 340-0318

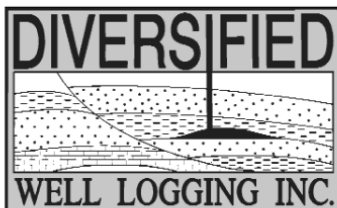
NOGS: [info@nogs.org](mailto:info@nogs.org) or (504)561-8980





## Relax. We'll keep you posted.

Your rig is offshore and you are not. How do you know what's going on so many miles away? You know because we tell you. Daily or even hourly, Diversified Well Logging's engineers update you on the status of your rig. We are your eyes and ears, especially when it comes to deep water or high pressure, high temperature areas. Diversified offers 24-hour surface evaluation. We provide secure and customized real-time data communication, in-house research and development and 24/7 on-call support for our equipment and our engineers. Whether you have a 10-day job or 110-day job, we provide the specialized attention you require. So, relax. We're with you every step of the way.



*Serving the Gulf Coast for over 40 years.*

New Orleans • Lafayette • Houston • Dallas • Corpus

800.280.2096

711 West 10th Street • Reserve, LA 70084 • Phone: 985.536.4143 • Fax: 985.536.2427  
sales@dwl-usa.com



**PALEO  
DATA**

**FULLY INTEGRATED AND  
CENTRALIZED BIOSTRATIGRAPHIC  
SERVICES**

- ▼ Single-source biostratigraphic databases  
for increased accuracy and consistency
- ▼ Integrated foram / nannofossil analyses
- ▼ Complete wellsite paleo services
- ▼ In-house sample preparation  
lab for quality-monitoring  
and efficiency
- ▼ Sample pick-up service

6619 Fleur de Lis Drive  
New Orleans, LA 70124  
(504) 488-3711

**www.paleodata.com**

## MCMORAN EXPLORATION CO.



## MCMORAN OIL & GAS

[www.mcmoran.com](http://www.mcmoran.com)

NYSE: MMR

16676 Northchase Dr.  
Houston, TX 77060  
(281) 539-7600  
Fax: (281) 539-7655

1615 Poydras  
New Orleans, LA 70112  
(504) 582-4000  
Fax: (504) 582-4155

110 Travis St., Suite 140  
Lafayette, LA 70503  
(337) 735-9150  
Fax: (337) 735-9151

## NOGS CONTACT LIST

--- continued from page 3 ---

### MEMORIAL FOUNDATION

#### BOARD OF TRUSTEES

2009-10 Chairman	William M. Whiting
2009-10 Secretary	Tom Klekamp
2009-10 Trustee	Michael C. Fauquier
2009-10 Trustee	J. David Cope
2010-11 Trustee	Timothy J. Piwowar
2010-11 Trustee	Michael N. Fein
2011-12 Trustee	Monte Shalett
2011-12 Trustee	James Swaney

#### Company

Consultant
Amber Resources LLC
W & T Offshore
Ankor Energy
Shell
W & T Offshore
Berkshire Exploration Co
MMS

#### Phone

504-947-8495
985-845-4046
504-210-8192
504-596-3672
504-728-4066
504-210-8148
504-831-7779
504-736-2677

#### E-mail

bootscon@aol.com
klekamp@bellsouth.net
mfauquier@wtoffshore.inc
dcope@ankorenergy.com
tim.piwowar@shell.com
mikef@wtoffshore.com
mshalett@gmail.net
james.swaney@mms.gov

### AAPG DELEGATES

#### Term Ends

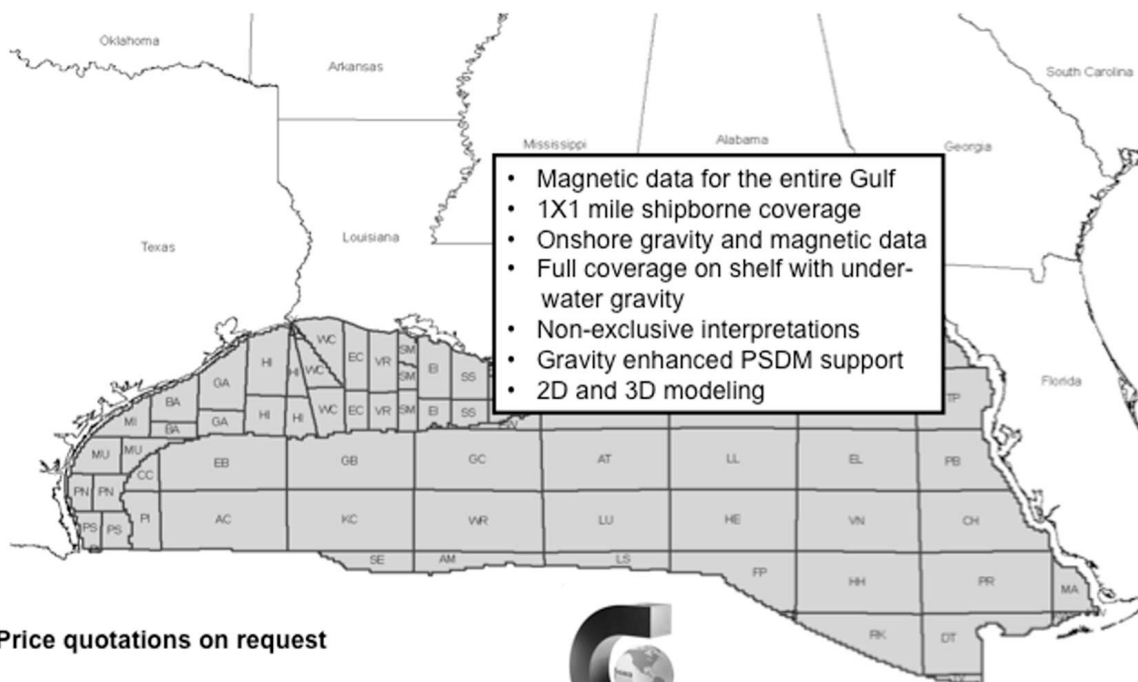
2011	Tom Hudson	Chevron	985-773-7163	tom.hudson@chevron.com
2011	Edward B. Picou, Jr.	Consultant	504-529-5155	epicou@bellsouth.net
2011a)	Brenda Reilly	Energy Partners Ltd.	504-799-4811	breilly@eplweb.com
2011a)	Robert Rooney	Century Exploration	504-832-3777	Robert.rooney@centuryx.com
2012	William Whiting	Consultant	504-947-8495	bootscon@aol.com
2012	Jim Zotkiewicz	Zot Oil & Gas	504-831-4694	jimzot38@zotoil.com
2012 a)	David E. Balcer	Chevron	985-773-6725	dbalcer@Chevron.com
2012 a)	Richard J. Stancliffe	Shell Expl & Prod Co.	504-728-7553	richard.stancliffe@shell.com



# Fugro Gravity & Magnetic Services

LAND • AIRBORNE • UNDERWATER • SHIPBORNE

The most complete coverage Onshore and Offshore Gulf of Mexico



Price quotations on request

Fugro Gravity & Magnetic Services  
www.Fugro-GravMag.com  
Tel: 713-369-6123



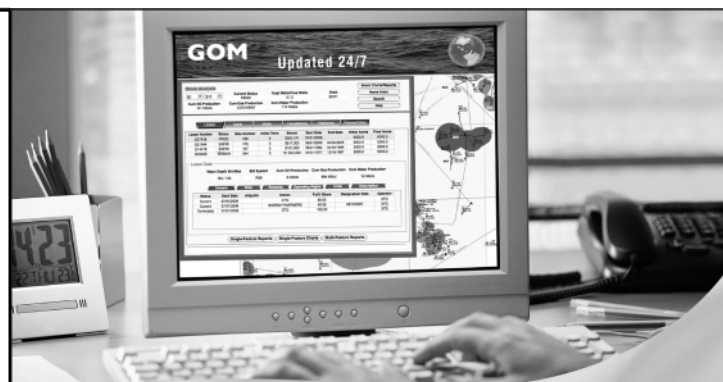
Gravity Inspired. Magnetically Inclined.



**Shell has worked in partnership  
with the NOGS for many years, and  
is proud to count the society among  
its closest business associates.**

The New Orleans Geological Society was organized in 1941 to foster scientific research and advance the science of geology. Particular emphasis is laid on the exploration for and production of petroleum and natural gas. Related objectives include encouraging the adoption of improved methods of exploration, disseminating pertinent geological and technological data, and maintaining a high standard of professional conduct among its members.

[www.shell.com/us.sepc](http://www.shell.com/us.sepc)



**GOM**  
smart

**An ocean  
of GOM DATA...  
updated for you 24/7**

Introducing GOMsmart. Web-based GOM data with real-time updates. No special software or training. Access data via intuitive interface or customizable maps.

- Wells: header, production, tests, 250,000+ logs
- Production Data: historical and current
- Paleo Data: access to 100,000+ observations
- Affordable: monthly and annual subscriptions

Visit [www.GOMsmart.com](http://www.GOMsmart.com) for your FREE trial.



From ZNodal Systems to ZNodal Imaging

# We are full spectrum ZNodal™ technology

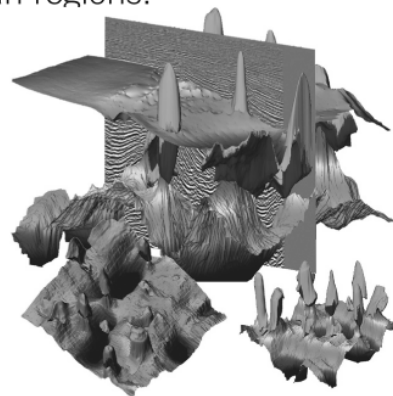
FairfieldNodal.com



We admit it. We're seismic nodal fanatics. Always have been. Which explains our one-of-a-kind, cable-free ZNodal™ systems. They work wonders in dense urban areas and pristine wilderness, in shallow water and deep ocean regions.

In fact, our exclusive ZNodal technology is behind everything we do, from acquisition and licensing to advanced processing and imaging, bringing nodal data to life in amazing ways.

Right now, our ZNodal systems are on the job in some of the world's most challenging fields, making a powerful difference. So when you're ready to go nodal, count on us to lead the way. ZNodal technology: It's what you need. It's what we're all about.



**fairfield**nodal

SYSTEMS ACQUISITION LICENSING PROCESSING IMAGING

# Excerpt from Oil & Gas Fields of South Louisiana 2010

## JUDGE DIGBY FIELD

By Bob Branson

Judge Digby Field is a 4-way, faulted, rollover closure; downthrown to a major north-bounding growth fault on the northwestern end of the False River anticline. Twelve hundred feet of north dip into the fault at the 20350 Sand horizon can be demonstrated with the existing well control.

Judge Digby is currently the largest producing gas field in south Louisiana. It was discovered in 1977 by the Chevron Parlange #1 which blew out during drilling operations from the 20350 Sand and produced at initial rates which probably exceeded 120 million cubic feet per day. Chevron followed with a drilling program that resulted in 8 producers and 5 dry holes and by 1984 the first phase of development was complete.

In 1991 Chevron sold their interest in the Tuscaloosa Trend to Pennzoil who, after a short time, traded these properties to Amoco. In 1993, Amoco commenced acquiring a 3D seismic survey over Judge Digby and other Tuscaloosa fields. The 3D survey at Judge Digby led Amoco, and subsequently BP, to a very successful second phase development program which began in 1996. The 3D survey, for the first time, imaged a fault pattern on the 4-way closure which provided targets for the second phase Amoco-BP wells. The peak production year for the field was 2001 when 70.7 BCF was produced. Cumulative for the field presently stands at 692 BCF and 1,252 MBO.

The field is unitized on 1280 acre units and 8 sand definitions are recognized by the Office of Conservation. The richest of these sands has been the 20350, the second from the top. The 20350 Sand blew out in the Parlange #1 and produced 59.9 BCF in Chevron LeBlanc-Lejeune, an eastern flank well. Two wells in the same unit on the south flank, Ivy Major 4 and Ivy Major 7, have produced a combined 75 BCF in the last 3 1/2 years from the 20350.

The bulk of the production has been from the downthrown closure, but six wells have been completed upthrown to the major growth fault and have accounted for about 40 BCF.

**NOTE: Judge Digby Field will be one of approximately 25 fields included in the forthcoming NOGS publication: Oil & Gas Fields of South Louisiana 2010, due for publication late this year.**

---

### Southeast Louisiana Flood Protection Authority-West Certificates of Appreciation



L-R: Edward B. Picou, Consultant; Dr. John Lopez, Lake Pontchartrain Basin Foundation; Dr. Mark Kulp, Chairman Dept of Earth and Environmental Sciences, University of New Orleans; Hon. Dr. Mike Merritt, Board member, Southeast Louisiana Flood Protection Authority – West



## Eni Petroleum

1250 Poydras Street  
Suite 2000  
New Orleans, LA 70113  
Tel: (504) 593-7000  
Fax: (504) 593-7745

1201 Louisiana Street  
Suite 3500  
Houston, TX 77002  
Tel: (713) 393-6100  
Fax: (713) 393-6205

**It's no illusion...**  
**Core Lab offers everything you need.**



©2009 Core Laboratories. All rights reserved.

Unconventional resource exploitation • Gas shale experts • Deepwater GOM authority  
Capacity for fast turnaround • High-quality people • Global support  
Industry leadership and reliability • Proprietary and patented technologies • Experience

[www.corelab.com/rd/petroleumservices](http://www.corelab.com/rd/petroleumservices) • 24-hour wellsite service hotline: 504-733-6583

# SEI<sup>®</sup>

*Seismic Exchange, Inc.*

**Strategic Speculative Surveys**  
**Geophysical Data Marketing & Management**

201 St. Charles Avenue, Suite 4300, New Orleans, Louisiana 70170-4300  
Telephone 504.581.7153 Fax 504.581.9591  
[www.seismicexchange.com](http://www.seismicexchange.com)

**Your**  
**Full Service**  
**National**  
**Seismic Data**  
**Marketing Firm**

New Orleans  
Dallas  
Houston  
Denver  
Oklahoma City  
Corpus Christi  
Tulsa



## NOGS FINDS WINNERS AT 2010 SCIENCE FAIR

On March 17th, the Awards Committee judged the Earth Science and related projects at the Region 9 Greater New Orleans Science and Engineering Fair. The Fair was in the Human Performance Center at the University of New Orleans. Judges for NOGS were Art Johnson, Bill Whiting, Dave Reiter, Chuck Holman, Bob Hafner and I. NOGS thanks our management and clients for their support in allowing our participation.

NOGS members continue to be very concerned how pure geology is continuing to disappear from the exhibits. This is a direct result of the failure of the state to support geology in the schools, and to train its teachers in earth science. This makes it even more important for its members to be geologically visible in the schools and in the community.

NOGS gave all three awards to winners in the Senior Division and in the Junior Division. With a team project winning, there were four female and four male winners. Two parochial and four public schools were represented, with topics on levee stability, crude spill recovery, wetlands, soil compaction, wind erosion, and craters. Winners were:

### Junior Division

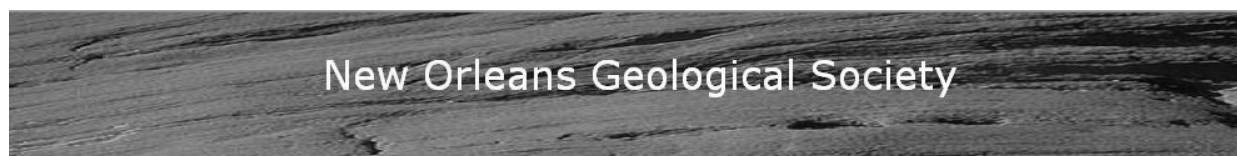
Samuel Simpson	Meisler	“Effect of Materials Used on Levee Stability”
Stephanie Clavin	St. Rita	“Will They Stay or Will They Go” (wetlands)
Jessica Mancuso	St. Rita	(team project)
Jennifer Rando	St. Rita	(team project)
Jasmine McBride	Abramson	“Antipollutionist Hairs”

### Senior Division

Justin West	Haynes Academy	“Do Different Amounts of Water and Compaction Affect the Strength of Soil?”
Jaspar Balsomo	Taylor Academy	“The Effect of Angle of Impact on Crater Diameter and Depth”
Logan Thibodeaux	John Curtis	“Wind Erosion: Gone With the Wind”

NOGS will be inviting our first-place winners and their teachers to the May 10th luncheon. Sue Stephens of Haynes becomes the first teacher to bring first-place winners to NOGS from two different schools, and Leslie Nicks has the first-ever winner from Meisler. Please come a few minutes early, take a look at some fine work, and congratulate our students and teachers on their achievements.

Michael N. Fein  
Chairman



## New Orleans Geological Society

### Stay Connected

Become a member of the NOGS. We'll keep you informed on news and events as they happen.

[Join NOGS!](#)

### Events



NOGS is the host of the AAPG 2010 Annual Convention & Exhibition to be held 11-14 April in New Orleans. See how you or your company can benefit from participating. For more information visit us at [www.aapg.org/neworleans](http://www.aapg.org/neworleans)

### Upcoming Events

### The Latest

April 4, 2010

#### WHERE TO GO

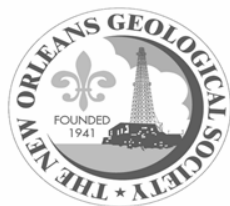
Find out about upcoming [Conferences, Conventions and Meetings](#)

#### LATEST NEWS

Member search is available from the Member Info section

[TRANSACTIONS](#) are now available on DVD!

### Welcome Center



### Welcome to The New Orleans Geological Society Site

The New Orleans Geological Society was organized on October 3, 1941, as a non-profit organization for the purpose of facilitating the development of the profession and science of Geology, with specific emphasis to exploration and production of petroleum and natural gas. Secondary related objectives include the dissemination of pertinent geological and environmental technological data, and the maintenance of a high standard of professional conduct of its members.

### Resources



[Local Societies](#)



[US Government Offshore](#)



[Geological and Other Societies](#)



[Employment Opportunities](#)



[State Oil & Gas Board](#)



[Articles and Presentations](#)

Suite 300, 810 Union Street, New Orleans, LA 70112

E-mail: [info@nogs.org](mailto:info@nogs.org)

Telephone: 504-561-8980, Fax: 504-561-8988

Office Manager: Annette Hudson, [annette@nogs.org](mailto:annette@nogs.org)

Office Hours: 8:30am - 3:30pm Monday-Wednesday-Friday

### NOGS LOG

[External Affairs](#)

[Inside NOGS](#)

[NOGS Publications](#)

[Advertisers](#)

[Sponsors](#)

[Member Info](#)

[About Us](#)

[Galleries](#)

[Links](#)

## New Orleans Geological Society

### Articles and Presentations

#### Articles of Interest

[Evolution](#)

[National Science Teachers Association - Resources on Evolution](#)

[Earth Science Education](#)

[Earth Science Literacy Initiative](#)

#### Presentations of Interest

[The Rise and Disappearance of Southeast Louisiana](#) by the Times-Picayune. This presentation focuses on the geologic construction of southeast Louisiana and the challenging circumstances with subsidence.

[How Oil Wells are Drilled](#) - by Corpus Christi Geological Society.

[Subsidence of South Louisiana: Measurement, Causes, and Human Implications](#) - Presented by Dr. Roy Dokka of the Center for Geoinformatics,

[NOGS Home](#)

[NOGS LOG](#)

[Inside NOGS](#)

[NOGS Publications](#)

[Advertisers](#)

[Sponsors](#)

[Member Info](#)

[About Us](#)

[Galleries](#)

[Links](#)

# New Orleans Geological Society

## Local Societies

[American Petroleum Institute – Delta Chapter](#)

[Society of Independent Professional Earth Scientists \(SIPES\) – New Orleans](#)

[Society of Petroleum Engineers, International – Delta Section](#)

[Society of Petrophysicists & Well Log Analysts \(New Orleans\)](#)

[Southeastern Geophysical Society](#)

[NOGS Home](#)

[NOGS LOG](#)

[External Affairs](#)

[Inside NOGS](#)

[NOGS Publications](#)

[Advertisers](#)

[Sponsors](#)

[Member Info](#)

[About Us](#)

[Galleries](#)

## Geological and Other Societies

[AAPG](#)

[American Geophysical Union](#)

[Baton Rouge Geological Society](#)

[Corpus Christi Geological Society](#)

[Lafayette Geological Society](#)

[GCAGS](#)

[GCSSEPM](#)

[Geological Society of America](#)

[Geological Society of London](#)

[Houston Geological Society](#)

[SEPM Society for Sedimentary Geology](#)

[Society of Independent Professional Earth Scientists \(SIPES\)](#)

[Society of Petroleum Engineers](#)

[Society of Petrophysicists & Well Log Analysts](#)

## Government Surveys and Organizations

[Louisiana Geological Survey](#)

[NASA Earth Observatory](#)

[Texas Bureau of Economic Geology](#)

[U.S. Army Corps of Engineers, New Orleans District](#)

[U.S. Geological Survey](#)

## State Oil and Gas Board Resources

[Alabama Oil and Gas Board](#)

[Alabama Oil and Gas Board \(Production Database\)](#)

[Louisiana DNR](#)

[Louisiana SONRIS \(Strategic Online Natural Resources Information System\)](#)

[Louisiana SONRIS Lite](#)

[Mississippi DEQ \(Office of Geology - Energy Library Home\)](#)

[Mississippi Oil and Gas Board](#)

[Texas Railroad Commission](#)

[Texas Railroad Commission \(Production Data\)](#)

[Texas Railroad Commission \(Oil and Gas Directory\)](#)

## U.S. Government Offshore Resources

[Minerals Management Service](#)

## University Earth Science Departments

[Louisiana State University, Center for Energy Studies](#)

[Louisiana State University, Dept. of Geology and Geophysics](#)

[Tulane University, Dept. of Earth and Environmental Science](#)

[University of New Orleans, Dept. of Earth and Environmental Science](#)

## Job Links

[Devon Energy](#)

[Earthworks](#)

[Gates Weiss & Associates, L.L.C.](#)

[InfoOil Careers](#)

[Houston Geological Society](#)

[MMS Gulf of Mexico Region](#)

[Resource Personnel Oil & Gas Jobs](#)

[TIG First Source](#)

# Solicitation for Field Studies

The abstract below is from a presentation at the May 2003, NOGS South Louisiana Onshore Petroleum Exploration Symposium. A special NOGS Ad Hoc Committee is currently soliciting Field Studies from members for publication in the forthcoming Oil and Gas Fields Volume IV. Please consider contributing a field study. For details contact: Carlo Christina CarloCC398@cox.net or Charles Corona cjcorona@cox.net.

---

## Augen Prospect, a *Cristellaria I* Stratigraphic Trap

Don Frye and Gar Willis  
Cabot Corporation, Houston, TX

### ABSTRACT

Cabot Oil & Gas participated with Union Pacific Resources (now Anadarko Petroleum) in a 1998 3-D survey shot by Geco-Prakla (now WesternGeco) covering 260 square miles over the Continental Land and Fur acreage in Terrebonne Parish. To date this project has resulted in three productive prospects. Cabot and Union Pacific Resources participated in the deeper (18,000 feet) Etouffee prospect while Cabot, with Palace Exploration, pursued the shallower *Cristellaria* prospects.

Although the *Cristellaria I* section had been heavily explored by others, including earlier 3-D surveys over Turtle Bayou, Kent Bayou and the Orange Grove area, we felt that good geologic work in conjunction with detailed geophysical interpretation based on new data could yield worthwhile results.

Our first efforts were to find structural or stratigraphic locales that could be prospective. A large channelized interval was deposited between the Turtle Bayou and Orange Grove fields during the

Bourg, or second Hollywood depositional interval. The channel had been penetrated by several wells, including a Unocal well in Section 58 of T18S-R14E. That well logged over 200 feet of good quality wet sand. Seismic modeling showed that amplitudes could be an indicator of hydrocarbons in the *Cristellaria I* section if the pay were sufficiently thick. The Augen Prospect was based on seismic amplitude increasing to the east of this Unocal well. This particular area occurs near the boundary of the Geco survey and one recorded three years earlier by SEI. The SEI survey covered the prospect, but does not show an amplitude anomaly.

It is estimated that the Augen Prospect will produce 30 to 40 BCF with 20 barrels of liquid per million cubic feet of gas.

Much of South Louisiana has been covered by 3-D surveys, but in the gaps and low fold areas of current surveys, there is potential for meaningful discoveries at reasonable depths, as demonstrated by the Augen Prospect.



Shell "Ex's" at January Luncheon - Ex-Shell geo's gather at January NOGS Luncheon. L-R: Leighton Steward (speaker), Doug Holmes, Tom Klekamp, Cyril Lobo, and Ed Picou. Photographer - Arthur Christensen



## 2010 NOGS and SGS Summer Social



**-VS-**



### May 14th New Orleans Zephyrs vs. the Fresno Grizzlies

Game starts at 7:00pm

We will have someone standing outside with your tickets to avoid the congestion at the will-call window. Location will be announced before the game

#### **\* Friday night Fireworks \***

We will have a block of seats down the third base line. Come out and bring the family

**\*Cost:**

5 \$ – Member of either society and close relatives

Non member Adults 5 \$ + membership fee ( SGS or NOGS )

\* Parking is usually an additional 3-5 \$ per car

Please RSVP by May 7'th through Annette at the NOGS office ([annette@nogs.org](mailto:annette@nogs.org)) or phone 504-561-8980. Please let us know how many will be in your party.

**Thanks and we will see you at the game!**



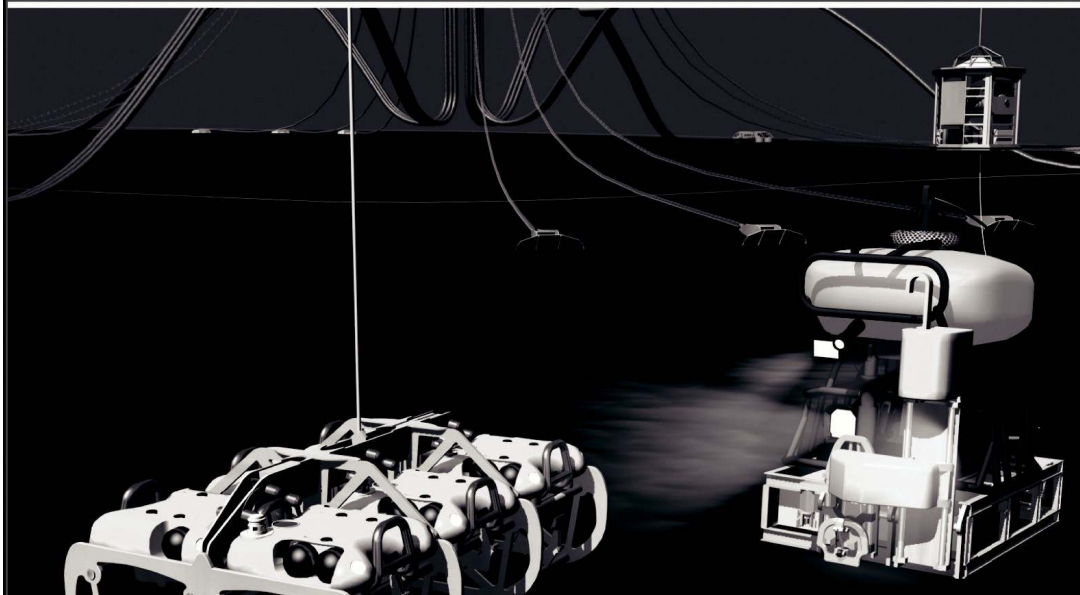
# **Super Science Saturday Louisiana Childrens Museum**







# Finally - An answer for getting reservoir seismic OVER THE RESERVOIR!



## • 4C/4D Node Seismic

- ANGOLA
- GoM
- NIGERIA



**"Coming Soon to an Oilfield Near You!"**

[www.sbexp.com](http://www.sbexp.com)

**Dubai**  
T: +971 4 4271700

**Houston**  
T: +1 281 566 1666

**Oslo**  
T: +47 2240 2700

**Rio**  
T: +55 21 2494-0283

**Singapore**  
T: +65 9180 2605

**Trondheim**  
T: +47 7 3879500

RAISING  
THE STANDARD



100 Northpark Blvd.  
Covington, LA 70433

(985) 773-6000



**LaBay**  
Exploration Co., L.L.C.

111 Veterans Memorial Blvd.,  
Suite 1550  
Metairie, Louisiana 70005

[www.labayexploration.com](http://www.labayexploration.com)

Office (504) 371-5967  
Fax (504) 371-5969

## LAURENT OIL & GAS

is interested in purchasing low risk oil prospect  
ideas in the Gulf Coast onshore and state waters.  
We will obtain leases, pay a finders fee and  
assign an override.

Call: Scott Laurent

Office: 713-464-0299

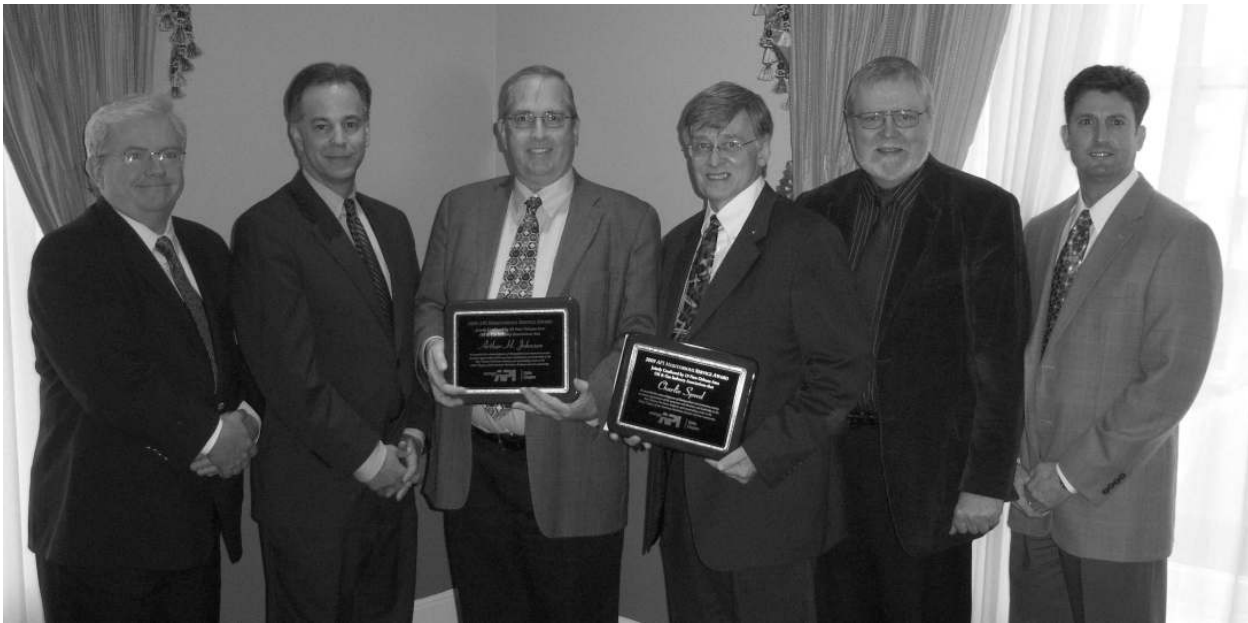
Cell: 713-515-0675

# American Petroleum Institute (API) 2009-10 Meritorious Awards

March 16, 2010 - Le Pavillion Hotel

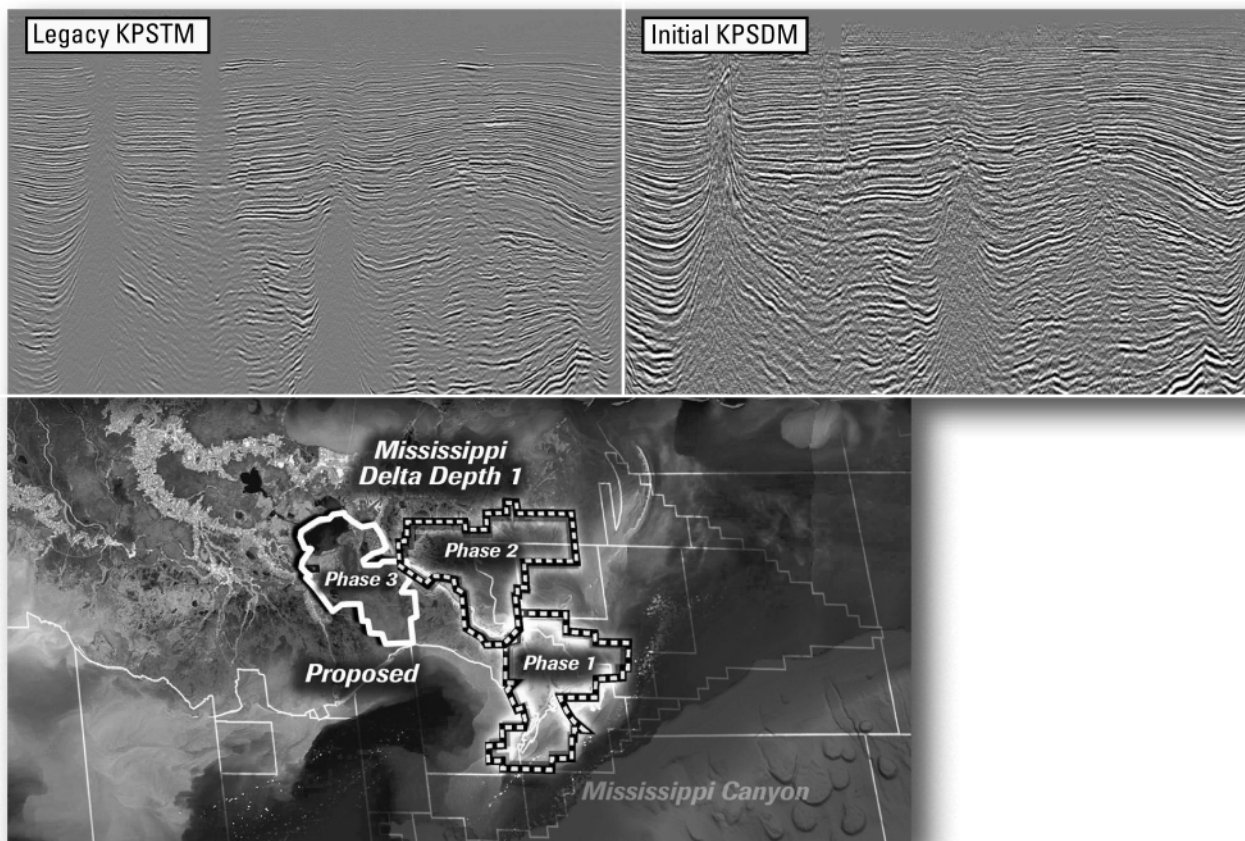


Art Johnson, President of Hydrate International (L) is presented the API Meritorious Award by the Hon. Mike Merritt, Secretary and Board member of the Southeast Louisiana Flood Protection Authority-West. Mike was the NOGS representative at the ceremony.



L-R: NOGS Representative - Mike Merritt, Southeast La Flood Protection Authority-West; Featured Speaker - Scott A. Angelle, Secretary, Louisiana Department of Natural Resources; Awardee - Art Johnson, Hydrate International; Awardee - Charlie Speed, Consultant; 2010 API Delta Chapter Chairman - John Dribus, Schlumberger; 2009 API Delta Chapter Chairman - Ken Meyers

## Improved depth imaging in the Mississippi Delta



In the Mississippi Delta region, WesternGeco is utilizing state-of-the-art processing designed to eliminate fault shadows and enhance deep imaging. The Mississippi Delta - Depth 1 survey, now in progress, incorporates the processing and remigration of twelve legacy surveys covering 1,855 square miles. High-quality time imaging using relative amplitude anisotropic Kirchhoff prestack time migration will be followed by improved structural imaging utilizing anisotropic Kirchhoff prestack depth migration.

To learn more about this and other Multiclient products, call +1 713 689 1000.

[www.multiclient.westerngeco.com/la](http://www.multiclient.westerngeco.com/la)

**Multiclient to the Power of E**



# THE NEW ORLEANS GEOLOGICAL SOCIETY MEMORIAL FOUNDATION, INC.

The Memorial Foundation is an IRS Tax Exempt Code #501 (c)(3) organization. The Federal I.D. is: 72-1220999. Please consider making your donation prior to the close of this year's fiscal cycle which is June 30, 2010. Your individual support in any amount will help meet the IRS Guidelines for our Foundation. *Thanks!*

## \$15,000 AND ABOVE

**Olga Braunstein Succession**

**Gibbet Hill Foundation**

*In Memory of Steve & Marion Millendorf, William J. Prutzman,  
Roger G. Vincent & Ron Youngblood*

## \$10,000

**George W. Schneider, Jr. and Family**

*In Memory of George W. Schneider, Sr.*

## \$2,000 TO \$3,000

**NOGS Golf Tournament May 2009**

*In Memory of Bill Craig*

## \$250 TO \$499

**Carlo C. Christina**

*In Memory of Al Gilreath*

**Fotiades Mineral Interests**

**Julie Fotiades, Joan Fotiades**

**Evelyn Fotiades Poulos**

*In Memory of George W. Schneider, Sr.*

**Kathy King Family**

*In Memory of George W. Schneider, Sr.*

## \$7,000 TO \$9,000

**Paul C. Mc Williams**

**Bill Schneider Family**

*In Memory of George W. Schneider, Sr.*

**Susan King Family**

*In Memory of George W. Schneider, Sr.*

**John C. Kuciewicz, Jr.**

*In Memory of Bill Craig.*

# FONO FUND

The FONO Fund accepts contributions that are invested and the income dedicated to assure sufficient financial resources will always be available to maintain the NOGS business office. Contributors are reminded that donations to the FONO Fund are not covered by the IRS 501 (c)(3) tax exempt classification and should be reported as a business expense on your IRS tax report.

## UP TO \$250

**Donald I. Andrews**

**Alfred H. Baker Jr.**

**Joseph E. Boudreaux**

**Hillary James Brook**

**J. Sybil Callaway**

**Clarence F. Conrad**

**John Dombrowski**

**Merle J. Duplantis**

**Richard A. Edmund**

**Mark J. Gallagher**

**Duncan Goldthwaite**

**James A. Hartman**

*In Memory of Hal Hudson*

*In Memory of Robert G. Williamson*

**Bernard L. Hill, Jr.**

**Kenneth Huffman**

**Tom Klekamp**

**William J. Malin**

**Jeannie F. Mallick**

**James A. McCarty**

**Robert G. Murphy**

**William J. O'Leary**

**Richard A. Olsen**

**Erwin Parrish, Jr.**

**Linda and Bill. Peirce**

**James P. Raymond, Jr.**

**C. R. Rondeau**

**Rudolf B. Siegert**

**Raymond Stephens**

**Roy C. Walther**

**Robert C. Weissmann**

**William M. Whiting**

**Jim Zotkiewicz**

CONTRIBUTIONS FOR BOTH FUNDS THROUGH MARCH 29, 2010.  
DONATIONS ARE LISTED FOR ONE YEAR.

## UP TO \$249

**Donald I. Andrews**

*In Memory of Ray F. Havard*

*In Memory of Harlan (Lanny) Northcott*

**Robert J. Ardell**

*In Memory of Al Gilreath*

**Mr. and Mrs. Wesley Barton**

*In Memory of Thomas A. Cullinan*

**Abraham Biadgelgne**

**Maurice N. Birdwell**

*In Memory of Texaco*

**Irion Bordelon, Sr.**

*In Memory of Robert G. Williamson*

**Hilary James Brook**

**Robin Broussard**

**Rob Burnett**

**F. Robert Bussey**

*In Memory Robert S. Kline*

**J. Sybil Callaway**

**Chevron**

*Matching Funds*

**Arthur F. Christensen**

**Ellen F. Clark**

**Clarence F. Conrad**

**Charley Corona**

*In Memory of Professor Hubert Skinner*

**Trudy and Charley Corona**

*In Memory of Thomas A. Cullinan*

*In Memory of Robert G. Williamson*

**Michael A. Danahy**

**M. R. "Bob" Douglass**

*In Memory of Jack Read*

**Merle J. Duplantis**

**Parrish N. Erwin, Jr.**

**Exxon Mobil Matching Funds**

**Niles R. Faulk**

**David Garner**

**Laurens Gaarenstroom**

**Mark J. Gallagher**

**Peter G. Gray**

*In Memory of Robert G. Williamson*

**Bernard L. Hill, Jr.**

**Owen R. Hopkins**

**Dan E. Hudson**

**Kenneth Huffman**

**Jeffrey E. Jandegian**

**Tom Klekamp**

**Richard G. Klibert**

**Reuben J. Klibert, Jr.**

**William J. Malin**

**Jeannie F. Mallick**

**George M. Markey, Jr.**

**Michael L. Merritt**

**Robert G. Murphy**

*In Memory of Thomas A. Cullinan*

**New Orleans Geological Auxiliary**

**Nexen Petroleum USA Inc.**

*Matching Funds*

**Russell H. Nordwell**

**Richard A. Olsen**

*In Memory of Richard W. Boebel*

*In Memory of Robert W. Sabate'*

**Teresa M. O'Neill**

*In Memory of Brian J. O'Neill*

**Linda and Bill Peirce**

**Edward B. Picou Jr.**

*In Memory of William J. Malin*

*In Memory of Robert G. Williamson*

**Mrs. William B. Rodan**

*In Memory of Robert G. Williamson*

**Edmund L. Russell**

**Robert T. Sellars, Jr.**

*In Memory of Robert G. Williamson*

**Robert C. Shoup**

**Rudolph B. Siegert**

**Daniel L. Smith**

**Diana "Dee" E. Smith**

**John D. Silvernail**

*In Memory of Colles C. Stowell*

**Dr. J. O. Snowden**

**Raymond O. Steinhoff**

*In Memory of Hubert C. Skinner*

**Stephen Szydlak**

**Roy C. Walther**

**William M. Whiting**

**Armour C. Winslow**

*In Memory of Rita Menzel Winslow*

**Frances A. Wiseman**

*In Memory of Steve Widdicombe*

**Jim Zotkiewicz**

*In Memory of Bill Craig*

**Robin A. Broussard**

**Chevron**

**Bernard L. Hill, Jr.**

**Jeff Jandegian**

**John C. Scheldt**

**Candace V. Strahan**

*In Memory of James Strahan*

## 2010 OIL HISTORY SYMPOSIUM

**April 29<sup>th</sup> - May 1<sup>st</sup>  
Lafayette, Louisiana**

Co-sponsors:  
Petroleum History Institute  
Lafayette Geological Society

CALL FOR ABSTRACTS  
Oral Presentations and Posters

Fieldtrips to: Jennings, LA;  
Texas Energy Museum; &  
Spindletop/Gladys City

Oil history Authors & Book Signings

For more information:  
[www.petroleumhistory.org](http://www.petroleumhistory.org)






— Short Courses —

**60<sup>th</sup> Annual Convention**

October 10-12, 2010      San Antonio, Texas

Hosted by the South Texas Geological Society



**Short Course #1 – Critical Elements of Gas Shale Evaluation**

**Instructor:** Randall S. “Randy” Miller, Core Laboratories

**Date:** One Day Short Course, Saturday October 9th, 2010

**Short Course #2 – Evaluation of Shale Gas Reservoirs with Focus on the Eagleford**

**Instructor:** Rick Lewis, Schlumberger

**Date:** One Day Short Course, Sunday, October 10<sup>th</sup>, 2010

**Short Course #3: Geology & Geophysics Applied in Industry**

**Instructor:** Fred W. Schroeder (ExxonMobil Retired)

**Date:** One Day Short Course, Saturday, October 9, 2010

**Short Course #4 - Multicomponent Seismic Stratigraphy & Technology for Evaluating Fracture Systems of Unconventional Reservoirs**

**Instructor:** Bob A. Hardage, Bureau of Economic Geology

**Date:** One Day Short Course, Sunday, October 10, 2010

**Short Course #5 – Basic Log Analysis**

**Instructor:** Tom Fett, Consulting Petrophysicist, San Antonio, Texas

**Dates:** Half Day Short Course, Saturday Afternoon, October 9, 2010

**Short Course #6 – Advanced Log Analysis of Shale Gas and Tight Gas Reservoirs**

**Instructor:** Tom Fett, Consulting Petrophysicist, San Antonio, Texas; Others TBA

**Dates:** One Day Short Course, Sunday, October 10, 2010

**Short Course #7 – Carbon Sequestration**

**Instructors:** Sue Hovorka, Ramon Trevino, J.P. Nicot, Bureau of Economic Geology, The University of Texas at Austin, Steven Bryant, Sanjay Srinivasan, Larry Lake, Carlos Torres-Verdin, Department of Petroleum and Geosystems Engineering, The University of Texas, Austin, Sandia Technologies Personnel, Houston, TX, Hilary Olson, Institute for Geophysics, The University of Texas at Austin

**Dates:** One Day Short Course, Sunday October 10<sup>th</sup>, 2010

**Short Course #8 – Career Development, Adaptive Skills, Ethics, & Project Management**

**Instructor:** TBA

**Dates:** One Day Short Course, Sunday, October 10, 2010

**Short Course #9 – Ethics I**

**Instructor:** Cary Barton (Barton, East & Caldwell, LLP)

**Dates:** One Hour Short Course, Monday, October 11, 2010

**Short Course #10 – Ethics II**

**Instructor:** Cary Barton (Barton, East & Caldwell, LLP)

**Dates:** One Hour Short Course, Tuesday, October 12, 2010

*Complete course details can  
be found at:*

*[http://www.gcags2010.com/  
Continuing.Education/  
Continuing.Education.html](http://www.gcags2010.com/Continuing.Education/Continuing.Education.html)*

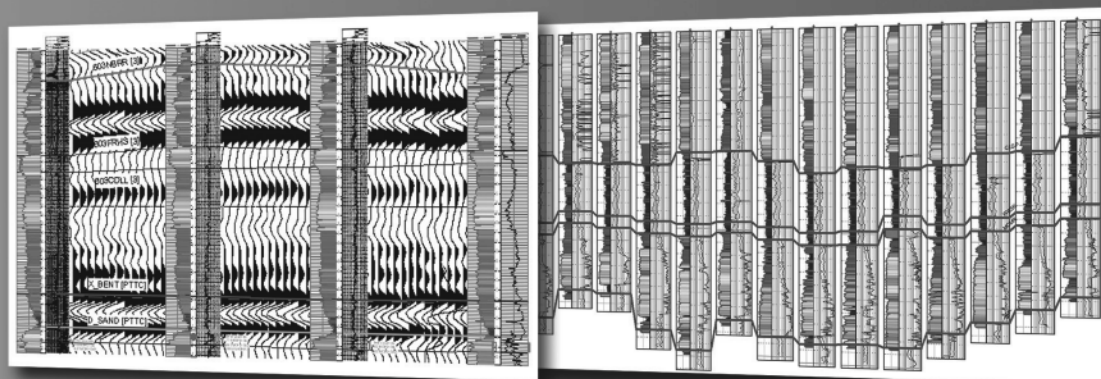


# Define your geological model faster than ever before

**NO MORE WAITING! Available today from IHS, easy and affordable access to one of the largest U.S. digital log collections**

- More than 185,000 LAS files with over 1.5 million curves
- Regional subscription packages for today's active play areas
- Indexed to IHS well and production data
- Linked to the IHS Enerdeq® Browser for quick regional studies and log selection
- Available via IHSLogNet.com or on DVD
- Ready to use in PETRA and other log packages

Request a free 2' x 3' IHS digital log coverage map at [ihs.com/energy/DigitalLogs](http://ihs.com/energy/DigitalLogs)



Use PETRA® to integrate digital log, well, production, perf, seismic and tops data. IHS is the only company to provide you with the complete picture

Why wait? Subscribe today! Call 888.OIL.DATA (645.3282) or e-mail [sales.energy@ihs.com](mailto:sales.energy@ihs.com)



**The Source**  
for Critical Information and Insight™

# SAI

**Sydboten & Associates, Inc.**  
*Geological and Geophysical Consulting,  
3-D Seismic Interpretation*

**Ben D. Sydboten, Jr. CPG**

124 Heymann Blvd., Suite 202  
Lafayette, LA 70503

Office (337) 234-5288  
Cell (337) 234-5491

## ATWATER CONSULTANTS, LTD.

REGISTERED AND CERTIFIED PETROLEUM PROFESSIONALS

GEOLOGICAL, ENGINEERING, GEOPHYSICAL,  
TRAINING AND EXPERT WITNESS SERVICES

3525 Hessmer Ave, Ste 304  
Metairie LA 70002

Tel. (504) 581-6527  
Fax (504) 524-7798

*"Serving The Oil & Gas Industry Since 1983"*

Geological,  
Geophysical &  
Land Drafting

Anthony Catalanotto  
*President*

Stefani Foster  
*Drafting & Design*

### Geo-Draft, Inc.

*A Professional Drafting & Graphics Firm*

3349 Ridgelake Drive • Suite 202 • Metairie, LA • 70002  
Office: (504) 836-2882 Fax: (504) 836-2877 (Cell) (504) 481-7291

E-Mail: [geodraft@bellsouth.net](mailto:geodraft@bellsouth.net)  
Website: [www.geodraftinc.com](http://www.geodraftinc.com)

**NOGS thanks our  
sponsors for their support:**

**GOLD LEVEL SPONSORS:**

**CHEVRON**

**LA BAY EXPLORATION CO, LLC.**

**SPECIAL THANKS TO  
DIVERSIFIED WELL LOGGING**

*This advertising space is available!  
Contact the NOGS office.*



**CIMAREX ENERGY CO.**

GULF OF MEXICO REGION  
GOM, SE La., N. La., MS, AL

1100 Poydras St.; Suite 1100

New Orleans, Louisiana 70163

504-586-1815 / Fax 504-586-9035

Keith Gourgues

Region Manager

## NORTHCOAST OIL COMPANY

610 E. Rutland St.  
Covington, LA 70433

(985) 898-3577  
(985) 898-3585 FAX

Jack M. Thorson  
Eric C. Broadbridge

J. Daryl Gambrell  
Raymond W. Stephens

(832) 242-6000 (O)  
(713) 917-0493 (O)

(504) 931-7506 (C)  
[johnjurasin@jurasinoilgas.com](mailto:johnjurasin@jurasinoilgas.com)

## JURASIN OIL & GAS

9700 Richmond Ave., Suite # 124  
Houston, TX 77042-4821

JOHN M. JURASIN  
President

Cert. Pet. Geologist #4284  
Cert. Prof. Earth Scientist #1961

### Collarini Energy Staffing

Full-Time and Temporary Personnel

Facilities • Drilling • Production • Reservoir Engineering  
Land and Legal • Geoscience • Information Technology •  
Health and Safety • Management • Supply Chain  
Accounting • Administrative Support

10497 Town and Country Way, Suite 950  
Houston, Texas 77024

832-251-0553



[www.collarini.com](http://www.collarini.com)

### Collarini Associates

Reservoir Engineering  
Oil & Gas Property Evaluation  
3-D Seismic Interpretation  
Integrated Field Studies

832-251-0160  
504-887-7127

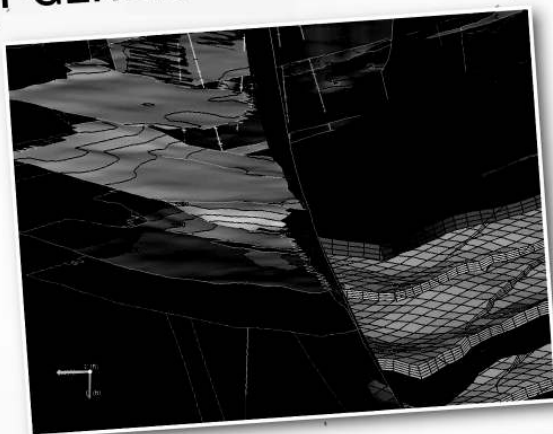
Houston  
New Orleans

# CALL US **SMT...**

SEISMIC **AND GEOLOGICAL** MICRO-TECHNOLOGY  
JUST TAKES TOO LONG TO SAY!

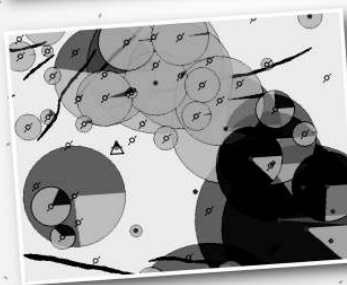
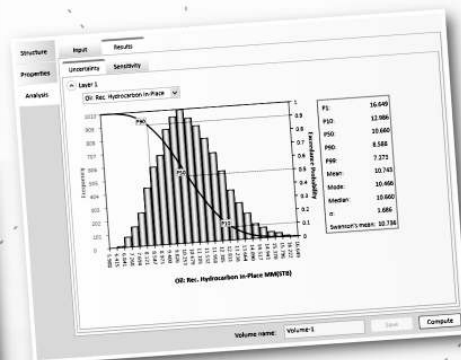


## NEXT GENERATION GEOLOGY






## **KINGDOM** Integrates

- Structural Frameworks
- 3D Geomodeling
- Economic Analysis
- Production Forecasting



## **HAMMER THE COMPETITION**

See your new tools at [www.seismicmicro.com/geology](http://www.seismicmicro.com/geology)

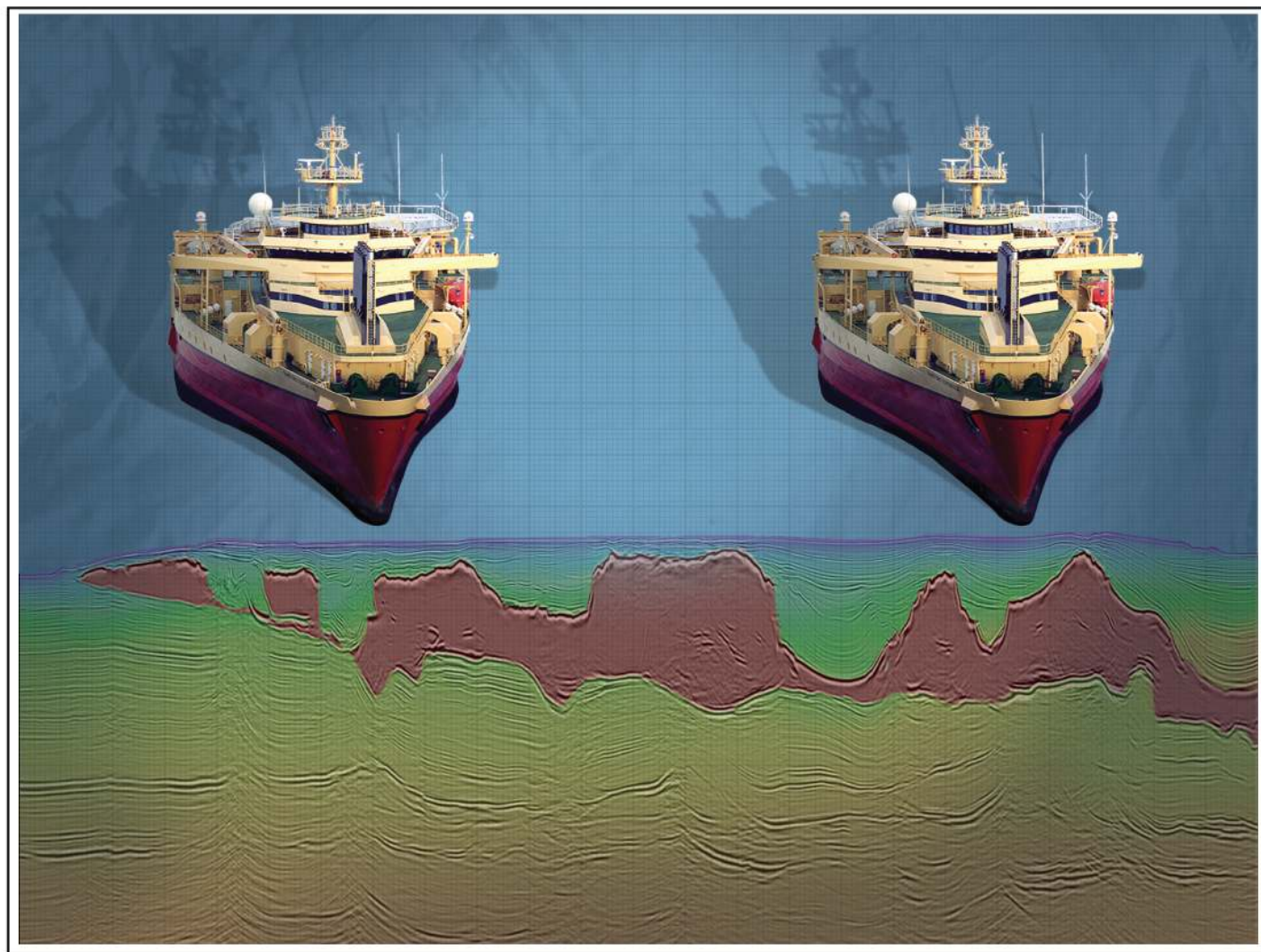
<b>ANSYTHE</b> <b>Donald I. Andrews</b> 504-887-3432 	<b>H. WARREN BELL</b> <b>Oil and Gas Exploration</b> 2500 Tanglewilde, Suite 485 Houston, TX 77063-2126 Bus (713) 266-7297 Fax (713) 266-7298
<b>THE BOEBEL COMPANY</b> <b>Oil and Gas Investments</b> 170 Broadway Street, Suite 321 New Orleans, LA 70118 (504) 866-4313	<b>PHELPS GEOSCIENCE</b> <b>Onshore Gulf of Mexico Geology and Geophysics</b> <b>Prospect Generation and Evaluation</b> Houston, TX jsfphelps@yahoo.com (281) 398-5208
<b>BOO-KER OIL &amp; GAS CORP.</b> <b>Gray S. Parker</b> 826 Union, Suite 300 New Orleans, LA 70112 Bus. (504) 581-2430 Fax (504) 566-4785	<b>RAFIDI OIL AND GAS, INC.</b> <b>Jaser N. Rafidi, President</b> 4415 Shore Dr., Suite 202 Metairie, LA 70006 Bus. (504) 722-2942 Fax (504) 888-5539; Res. (504) 888-1661
<b>C &amp; R EXPLORATION, INC.</b> <b>Carlo C. Christina</b> <b>Lawrence G. Ringham</b>	<b>ROY C. WALTHER</b> <b>Petroleum Geologist</b> 2421 Prancer Street New Orleans, LA 70131 Bus. (504) 392-8513 Res. (504) 392-9332
<b>C. R. RONDEAU</b> <b>Petroleum Geologist</b> 119 W Southland Ave. Ironwood, MI 49938 Res. (906) 932-4692	 <b>Shoreline Gas Inc.</b> <b>www.shorelinegas.com</b> <b>Full Service Natural Gas Marketing</b>
<b>CLASSEN EXPLORATION, INC.</b> <b>James S. Classen</b> Looking for close in deals P.O. Box 140637 Boise, ID 83714 Bus. (208) 854-1037 Fax (208) 854-1029 classenllc@msn.com	 625 E. Kaliste Saloom Lafayette, LA 70508 16800 Greenspoint Dr., Suite 225-S Houston, TX 77060 www.StoneEnergy.com
<b>D-O-R ENGINEERING, INC.</b> <b>3-D and Geoscience Services</b> 6161 Perkins Rd. P O Box 80812 Bus : (225) 765-1914 Baton Rouge LA 70898	<b>TONY CAROLLO</b> <b>Consulting Geologist</b> Unitization Geosteering Field Studies 1701 Peach Street Metairie, LA 70001 Bus. (504) 885-0004 Res. (504) 885-6829
<b>EDWARD B. PICOU, JR.</b> <b>Consulting Micropaleontologist - Retired</b> 228 St. Charles Ave., Suite 1330 C New Orleans, LA 70130 Bus. (504) 529-5155 Res. (504) 282-3096	<b>Zot Oil &amp; Gas, LLC</b> <b>Jim Zotkiewicz</b> Prospect Generation and Evaluation 3200 Ridgelake Dr. Suite 207 Metairie, LA 70002-4930 Business: 504.831.4694 Email: jimzot38@zotoil.com



### A recent meeting of the Oil and Gas Fields of South La 2010 group

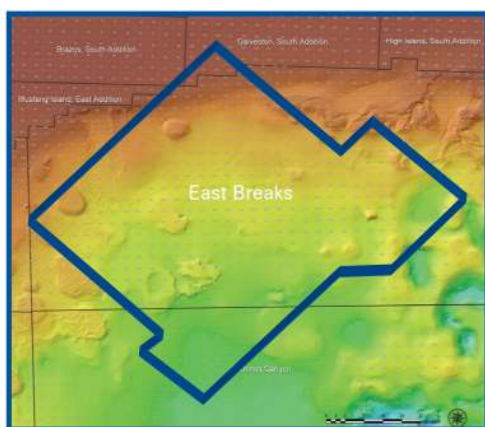
Seated: Jack Dunlap, Carlo Christina, Ed Picou, Will Conatser, Tom Klekamp.  
Standing: Ken Huffman, Bob Branson, Duncan Goldthwaite, Charley Corona, Art Johnson, Paul Lawless, Al Baker. Note: Several members were not present.





## Crystal III, East Breaks

## MultiClient Wide Azimuth



- **Size** - 480 OCS blocks
- **Focus** - Sub-Salt Miocene & Paleogene
- **Technology** - TTI Beam and RTM Imaging
- **Delivery** - Available Q4 2010

Houston  
Tel: +1 281 509 8000  
Fax: +1 281 509 8500

Oslo  
Tel: +47 67 52 6400  
Fax: +47 67 52 6464

London  
Tel: +44 1932 37 6000  
Fax: +44 1932 37 6100

**A Clearer Image**  
[www.pgs.com](http://www.pgs.com)



## NEW ORLEANS GEOLOGICAL SOCIETY



810 Union Street, Suite 300  
New Orleans, LA 70112-1430

# WWW.NOGS.ORG

### MARINE PROPERTIES, LLC BERKSHIRE EXPLORATION CO.

MONTE C. SHALETT, CPL, PRESIDENT

3030 Lausatz Street  
Metairie, LA 70001-5924

BUS. (504) 831-7779  
FAX. (504) 831-8315

### PCI

### Paleo Control, Inc.

Houston, Texas  
713-849-0044

Drilling Wells, Studies and Data Base

Loyd Tuttle

Frio, SE Texas

Bob Liska

Wilcox, S and SE Texas

Jim Thorpe

Miocene and Cam-Miogyp



## SEE YOUR DATA IN A WHOLE NEW LIGHT!

Take the pressure out of exploration  
and drilling by seeing what you  
are going to encounter.



### eSeis

www.e-seis.com  
713.531.1447

- Lithology & Fluids
- Depositional Facies
- Pore Pressure from V & Q
- Well Planning Consultation

