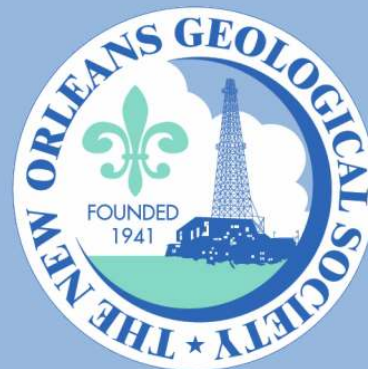


NOGS LOG



March 2010

Volume 50, Number 9

Upcoming Events and Activities

March 11 - Joint NOGS-SGS Technical Luncheon

*** At LePavillon Hotel ***

Guest speaker Mike Gallagher, ENI US Operating Co. Inc., will present "Pay Sand Mapping using Seismic multi-attribute calibration proved to be effective from Development to Near Field Exploration stages: A Case Study from De Soto Canyon, Gulf of Mexico."

LEPAVILLON HOTEL

Check with concierge or
front desk for location
Lunch served at 11:30am

ADMISSION:

with reservation \$30.00
without reservation \$35.00
Student Member with reservation Free

March 20 - Super Science Saturday

Louisiana Childrens Museum. See announcement on page 17.

April 5 - NOGS Luncheon

Guest Speaker will be Martin Perlmutter, topic to be announced. Check NOGS website for updates.

April 6 - Petroleum Geology for Non Geologists

Shell Auditorium, Shell Building. See announcement on page 8.

April 6 & 7 - 4th Annual Louisiana Groundwater & Water Resource Symposium

Baton Rouge. See announcement on page 13.

April 11-14- AAPG Annual Convention & Exhibition

New Orleans. See announcement on page 15.

April 13 - An Evening with "America's Greatest Generation"

National World War II Museum. See announcement on page 8.

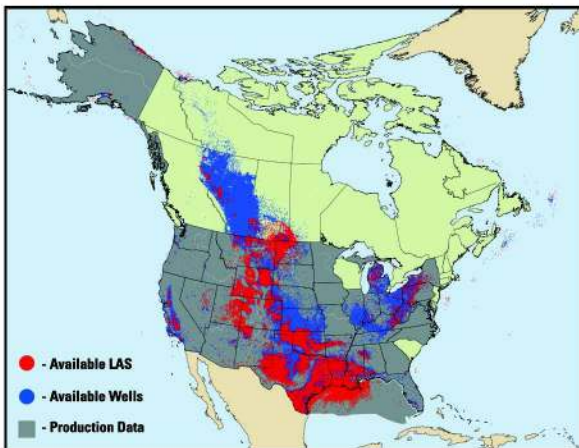
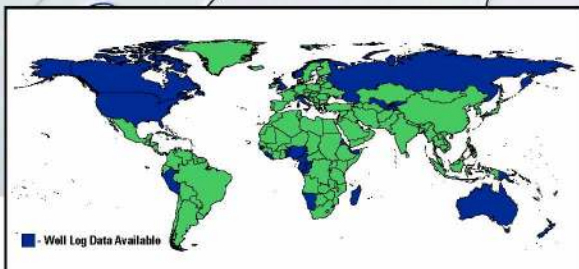
April 19 - NOGS Annual Golf Tournament

Tchefuncte Country Club, Covington. See announcement on page 19.

April 29 - May 1 - 2010 Oil History Symposium

Lafayette. See announcement on page 23.

Missing well data?



Let TGS complete the picture.

TGS adds hundreds of complete LAS everyday to the **world's largest LAS library**, with well logs in 29 countries.

And since you asked for it, we now have nationwide **US Production Data**.

Our well data is online, available immediately, with a team of **dedicated customer support** specialists there for you.

If your own proprietary well files are piling up, our new team of **well data solutions** experts can build a custom solution suited to your needs.

For more information, call 888 LOG-LINE or email us at WellData@tgsnopec.com



Geophysical
Products



Geological
Products



Imaging
Services

www.tgsnopec.com

NORWAY +47 66 76 99 00 | USA +1 713 860 2100 | UK +44 (0) 1234 272122 | AUSTRALIA +61 8 9480 0000

© TGS-NOPEC Geophysical Company. All rights reserved.

NOGS Office

Office Manager: Annette Hudson

Office Hours: 8:30am – 3:30pm on Monday-Wednesday-Friday

Tel: 504-561-8980 □ Fax: 504-561-8988

E-mail: info@nogs.org □ Website: www.nogs.org

The office is located at Suite 300, 810 Union Street, New Orleans, LA 70112.

Correspondence and all luncheon reservations should be sent to the above address.

Sent to press on February 17, 2010.

**BOARD OF DIRECTORS**

President	Tom Klekamp
Vice President	Bob Hafner
Secretary	Jennifer Connolly
Treasurer	Chuck Holman
President-Elect	David E. Reiter
Editor	Elizabeth Petro
Director 2010	Michael M. Ledet
Director 2011	Scott A. Wainwright
Director 2012	Arthur H. Johnson

Company

Amber Resources LLC	985-845-4046
ENI Petroleum	504-593-7605
Shell	504-728-6411
ENI	504-593-7869
ENI	504-593-7606
MMS	504-736-2866
	504-394-9636
Bret Exploration Co Inc	504-889-2700
Hydrate Energy International	504-464-6208

Phone**E-mail**

klekamp@bellsouth.net
Robert.Hafner@enipetroleum.com
jennifer.connolly@shell.com
chuck.holman@enipetroleum.com
david.reiter@enipetroleum.com
nogseditor@gmail.com
mikeledet@cox.net
scott_wainwright@hotmail.com
artjohnson51@hotmail.com

COMMITTEE

AAPG Delegates
AAPG Student Chapter
AAPG Student Chapter
Advertising-Log
Auditing
Awards
Ballot
Best Paper
Continuing Education
Employment Counseling
Entertainment
Environmental
External Affairs
Field Trip
Finance and Investment
Historical
Membership/Directory
New Geoscientists (NGNO)
Nominating
Non-Technical Education
Office Operations
Publications Sales
Photography
School Outreach
Scouting
Technical Projects
Ad Hoc Committee on University Support

Chairperson

William M. Whiting
Gabriella March
Mary Ellison
Andrea Stancin
James Swaney
Michael N. Fein
Chuck Holman
David E. Reiter
TBA
TBA
David E. Reiter
Daisy Pate
Michael A. Fogarty
David Garner
Chuck Holman
Edward B. Picou, Jr.
Penne Rappold
TBA
Willis E. Conatser
Duncan Goldthwaite
William M. Whiting
Edward B. Picou, Jr.
J. David Cope
Thomas C. Bergeon
Carol Rooney
TBA
Michael J. Gallagher

Consultant
Tulane University
UNO
Shell
MMS
W & T Offshore
ENI
ENI
ENI
Eustis Geotechnical Eng.
Sylvan Energy, LLC
Shell
ENI
Consultant
Shell
Consultant
Consultant
Consultant
Taylor Energy Co LLC
Century Exploration
Consultant Geologist

504-947-8495
504-535-6472
504-728-0431
504-736-2677
504-210-8148
504-593-7869
504-593-7606
504-593-7606
504-613-5798
603-523-4808
504-728-6154
504-593-7869
504-529-5155
504-728-4338
504-466-9749
504-887-4377
504-947-8495
504-529-5155
504-589-0419
504-832-3772
504-835-1909

bootscon@aol.com
gmarch@tulane.edu
mellison4@gmail.com
Andrea.a.stancin@shell.com
james.swaney@mms.gov
mikef@wtoffshore.com
chuck.holman@enipetroleum.com
david.reiter@enipetroleum.com
david.reiter@enipetroleum.com
dpate@eustiseng.com
mike.a.fogarty@gmail.com
David.Garner@shell.com
chuck.holman@enipetroleum.com
epicou@bellsouth.net
prappold@gmail.com
weconatser@aol.com
DGldthwt@aol.com
bootscon@aol.com
epicou@bellsouth.net
dcope@taylorenergy.com
Tom.bergeon@centuryx.com
carolbrooney@aol.com
Michael.Gallagher@enipetroleum.com

NOGS LOG STAFF

Editor	Elizabeth Petro
Editor-Elect	Fran Wiseman
Auxiliary	Susie Baker
Info Tidbits	FranWiseman
Drill Bits	TBA
Webmaster	Edward B. Picou, Jr.
Layout	Jannette Inc.

MMS	504-736-2866
MMS	504-736-2912
NOGA	504-466-4483
MMS	504-736-2912
Consultant	504-529-5155

nogseditor@gmail.com
frances.wiseman@mms.gov
abaker1006@aol.com
Frances.wiseman@mms.gov
epicou@bellsouth.net

NOGS AUXILIARY**Officers**

President	Linda Peirce	504-393-7365
1st Vice-President	Jean Jones	504-738-8091
2nd Vice-President	Beverly Kastler	504-286-0879
Secretary	Dolores Murphy	504-393-0878
Treasurer	Judy Lemarie'	504-393-8659
Parliamentarian	Carol Andrews	504-887-3432
Member-at-Large	Susie Baker	504-466-4483

Phone**Directors**

Beverly Christina	2009-10	504-835-2383
Peggy Rogers	2009-10	504-392-6323
Judy Sabate'	2009-10	504-861-3179
Peggy Campbell	2009-11	504-283-2505
Ruth Grimes	2009-11	504-392-8103
Gerry Waguespack	2009-11	504-737-0532

Year**Phone**

SYNERGY ENERGY



Weatherford®
LABORATORIES

Your success increasingly depends upon a better understanding of your reservoir. At Weatherford Laboratories, we provide a single source for comprehensive laboratory analyses, creating a synergy previously unknown in laboratory services. This single source includes distinguished geologists, geochemists, analysts, engineers, technicians and software developers, 38 worldwide laboratories, and the broadest portfolio of services for acquiring and interpreting data from physical samples. The end result is an unsurpassed combination of intellectual capital and technical resources — all working together to help you enhance development planning and reduce reservoir uncertainty.

Put our union of Synergy and Energy to work for you.

Weatherfordlabs.com

HIGHER STANDARDS

NORTH AMERICA
NAInquiries@weatherfordlabs.com

EUROPE
EUIquiries@weatherfordlabs.com

LATIN AMERICA
LAIquiries@weatherfordlabs.com

MIDDLE EAST/NORTH AFRICA
MENAIquiries@weatherfordlabs.com

ASIA PACIFIC
APIquiries@weatherfordlabs.com



from the President

We are in need of members, especially younger members, to manage NOGS for 2010-11 and beyond. It requires a little bit of effort each month and there are many intangible benefits, the most important of which is working with other people in industry, education and government. If you are interested in becoming a NOGS officer, please give me a call.

The Volume IV South Louisiana field studies volume progresses under the direction of Carlo Christina. Carlo has elicited response from additional geologists since my February column. A number of members and their affiliated companies have tentatively stepped forward to offer data. Carlo says he has honed a value-order list of at least twenty fields. If you would like to be part of the Volume 4 efforts call Carlo Christina.

Tulane's Department of Earth and Environmental Sciences has a new AAPG student representative, Ms. Gabriella March, a senior. She reports the department, now in Blessey Hall, is undergoing growth adding students and faculty.

WebEx teleconferencing is proving a useful tool. The NOGS Office will soon have a wireless router and teleconferencing can be handled through the NOGS laptop. WebEx allows sharing of documents and a record of the audio can be recorded and temporarily stored for playback. The Volume 4 field studies group has already used it in some of their meetings.

Tim Klibert of Diversified Well Logging is in charge of the golf tournament this year, which will be held Monday, April 19th at Tchefuncte Country Club, off La Hwy 21 in Covington. You can be a hole sponsor - look for details in this LOG.

Judging for the 2010 Greater New Orleans Science and Engineering Fair (GNOSEF) is Wednesday, March 17th, at the UNO Human Performance Center (HPC), located at Elysian Fields and Leon C. Simon on UNO's campus (building 18 on the campus map go online to download a UNO map - <http://www.uno.edu/maps/pdf/maincampusmap.pdf>).

This is an opportunity to affect the potential career of some budding earth scientist. You are not just judging, but also mentoring to these students. Your enthusiasm,

questions and advice on further avenues of research can make the difference in their life paths.

NOGS judges and presents cash prizes for outstanding exhibits in Earth Sciences, Senior and Junior Divisions: 1st Prize: \$100, 2nd Prize: \$75, and 3rd Prize: \$50. 1st Place winners and their teachers invited to NOGS spring meeting. If you can come out please contact Mike Fein by email mikef@wtoffshore.com.

Most of us have had a teacher, neighbor, or friend who was a trigger in getting us hooked on geology. Among those who made a difference in my own life path, was Joe Springfield. Joe and I graduated from high school together. Cincinnati has been called the "Mother City of Geologists" which included three from our Purcell High Class of '59. Joe was infectious about mineralogy. The trunk of his '49 Ford was weighed down by an assortment of sledgehammers, pickaxes and spud bars, all for taking apart outcrops and quarry walls in the quest for minerals. "Paul Frank," "Corydon Stone," and "Plum Run" were some of the local quarries we would hit on a weekend afternoon.

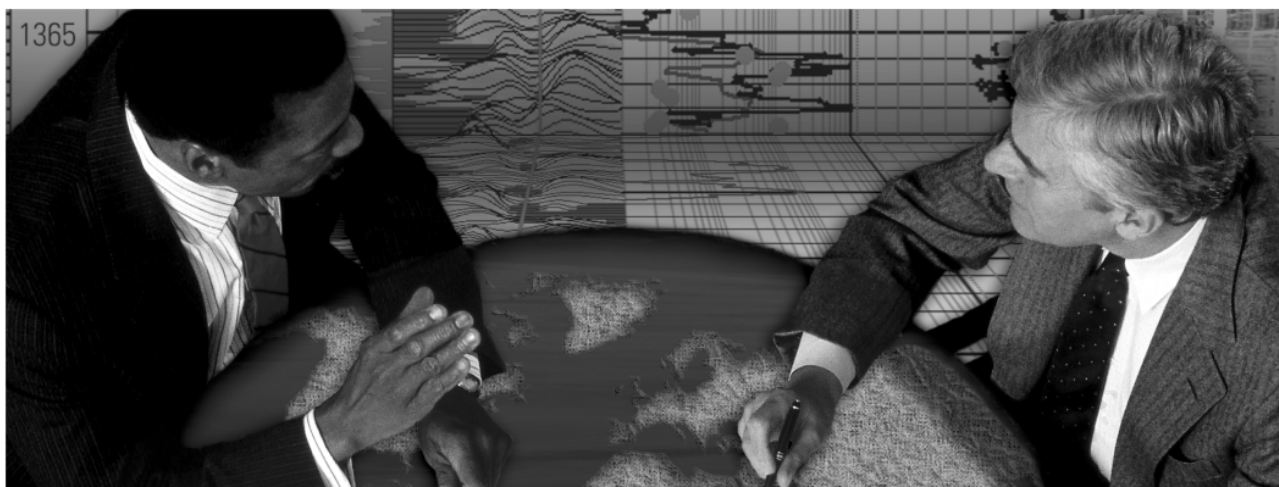
A favorite Joe story involved a trip to collect fossils in the railroad cuts east of the hamlet of Weisburg, Indiana. It was in the cool late afternoon of the early spring. I was picking through the fossil talus on the cuts. With no minerals to collect, Joe bored of the hunt and searched for a place to nap. The only level spot was the ballast beside the tracks. Bundled and cushioned in a Korean War Army surplus parka, Joe was sound asleep within minutes.

The engineer blasted a signal at Weisburg Crossing and let out the throttle down a straight grade into the cuts - it was the "John Witcomb Riley" NY Central's crack express train from Chicago. Ninty mph, with no time to warn Joe still asleep on the ballast, it screamed past us in a few seconds. Joe was okay, nonplussed by his sudden awakening.

It was late when we started the long trek back the tracks to Weisburg. What came next was like something out of a Grade B movie. Far up the tracks a crowd

--- continued on page 21 ---

Schlumberger formation evaluation solutions deliver the answers you need. Our extensive portfolio of services, leading-edge technology, and advanced conveyance options keep you in communication with your well throughout its life cycle.



With formation evaluation technologies from Schlumberger, you can make the best decisions for optimized performance in every well.

The formation evaluation one-stop shop

Whether you are logging in open hole or behind the casing, our broad selection of services ensures the best solution for acquiring formation evaluation data. Tools can be conveyed while drilling or on wireline or pipe. We offer many specialized evaluation capabilities, from density, neutron porosity, and resistivity to borehole imaging, nuclear magnetic resonance logging, borehole seismic, formation pressure testing, and fluid sampling. Advanced triple-combo logging options include the VISION* formation evaluation and imaging-while-drilling services. Coupled with Pulse* telemetry and surveying services, the VISION family provides real-time formation evaluation data and enables optimum well placement.

High-speed wireline measurements are recorded with the Platform Express* logging services. The SlimXtreme* platform is designed for high-pressure, high-temperature environments and the ABC* Analysis Behind Casing services are used after casing is set.

Expert interpretation from the engineers and geoscientists of Schlumberger Data & Consulting Services brings all your data together to give you the answers you need. This expertise is available after logging is complete or as real-time two-way wellsite communication through the InterACT* real-time monitoring and data delivery system.

Schlumberger delivers leading-edge technology and interpretation expertise for all your formation evaluation needs, so every well benefits from the very best information.

For more information visit
www.slb.com/oilfield/formation_evaluation/

*Mark of Schlumberger

04-FE-114

Schlumberger

March 11 Joint NOGS-SGS Technical Luncheon Presentation

*** at LePavillon Hotel ***

Pay Sand Mapping using Seismic multi-attribute calibration proved to be effective from Development to Near Field Exploration stages: A Case Study from De Soto Canyon, Gulf of Mexico*

presented by

Mike Gallagher

ENI US Operating Co. Inc., New Orleans

ABSTRACT

Reservoir characterization using elastic attributes has become a routine practice in the oil industry. Our experience in the GOM has shown that P-impedance derived by acoustic impedance (AI) processing followed by a multi-attribute calibration, can be effectively used to assess pay thickness and characterization of reservoir quality. This methodology requires a minimum time-cost expenditure and gives quite accurate results.

A robust petro-acoustic model can be defined when enough well data are available, to represent a significant 'training dataset'. A multi-

attribute approach is then adopted to characterize the reservoir in terms of pay sand thickness, within the 'modeled field'. The same model, applied to stratigraphically equivalent productive targets outside the original 'modeled field', ('blind test' approach), resulted in reasonable pay thickness estimations, even if no substantial DHI's were present.

*Co-authors: E. Pavanel, M. Fervari and A. Corrao
ENI E&P, Milan; M. Gallagher and B. Ciurlo
ENI US Operating Co. Inc., New Orleans

BIOGRAPHY

Michael Gallagher is a Geologic Advisor with Eni Petroleum. He has worked twenty-eight years with various companies as an exploration and development geologist in the onshore, shelf, and deep-water Gulf of Mexico. He has widely varied experience in exploration technologies and play types. He started his career working the Cretaceous/Jurassic trends of the onshore Mississippi Salt Basin, moved to prospect generation and field development on the shelf in the Western, Central and Eastern Gulf of Mexico, and most recently, worked field development and prospect generation in the Central and Eastern GOM Deep

Water. He is a member of AAPG, NOGS, SEG and SGS. He has chaired and served as a trustee of several NOGS committees and the NOGS Memorial Scholarship Fund. He served as NOGS Secretary, Vice President and President (1995-1996). He served as Program Chair / Oral Sessions for the 1993 AAPG convention, and presently serves as Chair of the Ad Hoc Committee on University Support. Mike earned his Bachelor of Science Degree in Biology in 1974 from Tulane University and his Master of Science Degree in Geology in 1989 from University of New Orleans.

THE LUNCHEON RESERVATION DEADLINE IS MARCH 5 - CONTACT THE NOGS OFFICE

"And Looking Ahead..."

The next NOGS Luncheon will be held on April 5. Guest Speaker will be Martin Perlmutter, topic to be announced; check NOGS website for updates. Contact the NOGS office to make your reservation.

PETROLEUM GEOLOGY FOR NON GEOLOGISTS

The New Orleans Geological Society is presenting a one day course on “Petroleum Geology for Non Geologists,” 8:30 AM to 3:30 PM on Tuesday April 6, 2010 in the Shell Auditorium, Shell Building, 701 Poydras Street, New Orleans. The course will consist of a brief introduction to Basic Geology, followed by a review of how oil and gas are formed, how they are concentrated into reservoirs, the geological and geophysical methods used in exploration, and an overview of drilling and completion practices.

This course should be of significant benefit and interest to anyone who in one way or another works with geologists and geological data, such as land personnel, secretaries, draftsmen and computer programmers and processors.

Instructors will be Duncan Goldthwaite, Consulting Geologist, Robert Branson, Consulting Geologist and Bruce Robertson, Consulting Geologist.

Cost will be \$35.00 per participant. Course notes and mid morning refreshments will be provided.

Persons interested can register by sending a check for \$35.00, made out to the New Orleans Geological Society , to:

New Orleans Geological Society
Ste 300
810 Union St
New Orleans LA 70112

When registering, please give your name, your work or home address and telephone number and company affiliation, if any.

Celebrate with the New Orleans Geological Society An Evening with “America’s Greatest Generation” at the National World War II Museum

Tuesday, April 13, 2010 from 7:00 to 10:00 p.m.

- * Enjoy a memorable and relaxed evening with your friends and colleagues
- * Open bar social
- * Fabulous Southern buffet dinner catered by world-renowned Chef John Besh
- * Access to all the Museum’s exhibit areas for touring at your leisure.
- * For more information about the Museum and its various amenities, please visit www.nationalww2museum.org
- * Round-trip bus transportation will be provided from the AAPG Convention Headquarters Hotel to the Museum and will be available 6:15 to 10:45 p.m.
- * Cost of admission: \$50 per person

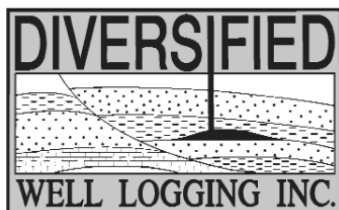
<http://www.aapg.org/neworleans/documents/NOSponsorBrochure.pdf>
or contact

Robert Rooney at (504) 832-3777 — robert.rooney@centuryx.com
or Al Baker at (504) 836-2710 — ABaker1006@aol.com



Relax. We'll keep you posted.

Your rig is offshore and you are not. How do you know what's going on so many miles away? You know because we tell you. Daily or even hourly, Diversified Well Logging's engineers update you on the status of your rig. We are your eyes and ears, especially when it comes to deep water or high pressure, high temperature areas. Diversified offers 24-hour surface evaluation. We provide secure and customized real-time data communication, in-house research and development and 24/7 on-call support for our equipment and our engineers. Whether you have a 10-day job or 110-day job, we provide the specialized attention you require. So, relax. We're with you every step of the way.



Serving the Gulf Coast for over 40 years.

New Orleans • Lafayette • Houston • Dallas • Corpus

800.280.2096

711 West 10th Street • Reserve, LA 70084 • Phone: 985.536.4143 • Fax: 985.536.2427
sales@dwl-usa.com



**FULLY INTEGRATED AND
CENTRALIZED BIOSTRATIGRAPHIC
SERVICES**

▼ *Single-source biostratigraphic databases
for increased accuracy and consistency*

▼ *Integrated foram / nannofossil analyses*

▼ *Complete wellsite paleo services*

▼ *In-house sample preparation
lab for quality-monitoring
and efficiency*

▼ *Sample pick-up service*

6619 Fleur de Lis Drive
New Orleans, LA 70124
(504) 488-3711

www.paleodata.com

MCMORAN EXPLORATION CO.



**MCMORAN
OIL & GAS**

www.mcmoran.com

NYSE: MMR

16676 Northchase Dr.
Houston, TX 77060
(281) 539-7600
Fax: (281) 539-7655

1615 Poydras
New Orleans, LA 70112
(504) 582-4000
Fax: (504) 582-4155

110 Travis St., Suite 140
Lafayette, LA 70503
(337) 735-9150
Fax: (337) 735-9151

NOGS CONTACT LIST

--- continued from page 3 ---

MEMORIAL FOUNDATION

BOARD OF TRUSTEES

2009-10 Chairman	William M. Whiting
2009-10 Secretary	Tom Klekamp
2009-10 Trustee	Michael C. Fauquier
2009-10 Trustee	J. David Cope
2010-11 Trustee	Timothy J. Piwowar
2010-11 Trustee	Michael N. Fein
2011-12 Trustee	Monte Shalett
2011-12 Trustee	James Swaney

Company
Consultant
Amber Resources LLC
W & T Offshore
Ankor Energy
Shell
W & T Offshore
Berkshire Exploration Co
MMS

Phone
504-947-8495
985-845-4046
504-210-8192
504-596-3672
504-728-4066
504-210-8148
504-831-7779
504-736-2677

E-mail
bootscon@aol.com
klekamp@bellsouth.net
mfauquier@wtoffshore.inc
dcope@ankorenergy.com
tim.piwowar@shell.com
mikef@wtoffshore.com
mshalett@gmail.net
james.swaney@mms.gov

AAPG DELEGATES

Term Ends

2011	Tom Hudson
2011	Edward B. Picou, Jr.
2011a)	Brenda Reilly
2011a)	Robert Rooney
2012	William Whiting
2012	Jim Zotkiewicz
2012 a)	David E. Balcer
2012 a)	Richard J. Stancliffe

Chevron
Consultant
Energy Partners Ltd.
Century Exploration
Consultant
Zot Oil & Gas
Chevron
Shell Expl & Prod Co.

985-773-7163
504-529-5155
504-799-4811
504-832-3777
504-947-8495
504-831-4694
985-773-6725
504-728-7553

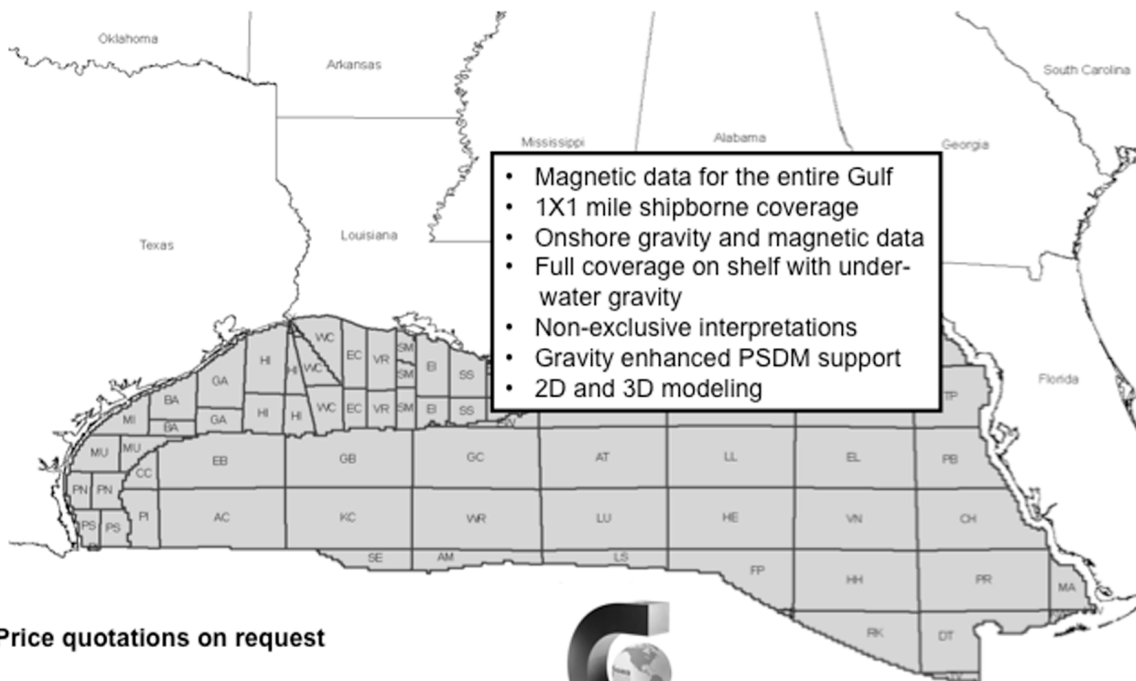
tom.hudson@chevron.com
epicou@bellsouth.net
breilly@eplweb.com
Robert.rooney@centuryx.com
bootscon@aol.com
jimzot38@zotoil.com
dbalcer@Chevron.com
richard.stancliffe@shell.com



Fugro Gravity & Magnetic Services

LAND • AIRBORNE • UNDERWATER • SHIPBORNE

The most complete coverage Onshore and Offshore Gulf of Mexico



Price quotations on request

Fugro Gravity & Magnetic Services
www.Fugro-GravMag.com
Tel: 713-369-6123



Gravity Inspired. Magnetically Inclined.



**Shell has worked in partnership
with the NOGS for many years, and
is proud to count the society among
its closest business associates.**

The New Orleans Geological Society was organized in 1941 to foster scientific research and advance the science of geology. Particular emphasis is laid on the exploration for and production of petroleum and natural gas. Related objectives include encouraging the adoption of improved methods of exploration, disseminating pertinent geological and technological data, and maintaining a high standard of professional conduct among its members.

www.shell.com/us.sepc



GOM
smart

**An ocean
of GOM DATA...
updated for you 24/7**

Introducing GOMsmart. Web-based GOM data with real-time updates. No special software or training. Access data via intuitive interface or customizable maps.

- Wells: header, production, tests, 250,000+ logs
- Production Data: historical and current
- Paleo Data: access to 100,000+ observations
- Affordable: monthly and annual subscriptions

Visit www.GOMsmart.com for your FREE trial.

From ZNodal Systems to ZNodal Imaging

We are full spectrum ZNodal™ technology

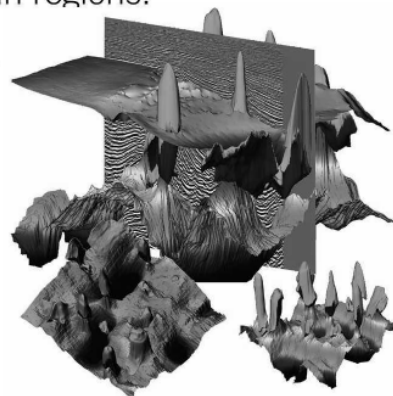
FairfieldNodal.com



We admit it. We're seismic nodal fanatics. Always have been. Which explains our one-of-a-kind, cable-free ZNodal™ systems. They work wonders in dense urban areas and pristine wilderness, in shallow water and deep ocean regions.

In fact, our exclusive ZNodal technology is behind everything we do, from acquisition and licensing to advanced processing and imaging, bringing nodal data to life in amazing ways.

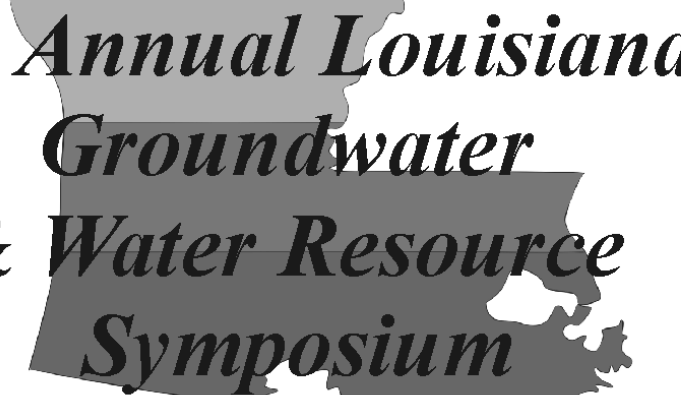
Right now, our ZNodal systems are on the job in some of the world's most challenging fields, making a powerful difference. So when you're ready to go nodal, count on us to lead the way. ZNodal technology: It's what you need. It's what we're all about.



fairfieldnodal

SYSTEMS ACQUISITION LICENSING PROCESSING IMAGING

Baton Rouge Geological Society



4th Annual Louisiana Groundwater & Water Resource Symposium

April 6 & 7, 2010

Louisiana Water a Valuable Resource

Energy Coast & Environment Building
Louisiana State University
Baton Rouge, Louisiana

Hosts:

Louisiana Geological Survey
Baton Rouge Geological Society



Eni Petroleum

1250 Poydras Street
Suite 2000
New Orleans, LA 70113
Tel: (504) 593-7000
Fax: (504) 593-7745

1201 Louisiana Street
Suite 3500
Houston, TX 77002
Tel: (713) 393-6100
Fax: (713) 393-6205

It's no illusion...
Core Lab offers everything you need.



©2009 Core Laboratories. All rights reserved.

Unconventional resource exploitation • Gas shale experts • Deepwater GOM authority
Capacity for fast turnaround • High-quality people • Global support
Industry leadership and reliability • Proprietary and patented technologies • Experience

www.corelab.com/rd/petroleumservices • 24-hour wellsite service hotline: 504-733-6583

SEI[®]

Seismic Exchange, Inc.

Strategic Speculative Surveys
Geophysical Data Marketing & Management

201 St. Charles Avenue, Suite 4300, New Orleans, Louisiana 70170-4300
Telephone 504.581.7153 Fax 504.581.9591
www.seismicexchange.com

Your
Full Service
National
Seismic Data
Marketing Firm

New Orleans
Dallas
Houston
Denver
Oklahoma City
Corpus Christi
Tulsa



AAPG

2010 ANNUAL CONVENTION & EXHIBITION

NEW ORLEANS, LOUISIANA, USA | 11-14 APRIL 2010

UNMASKING

THE POTENTIAL OF EXPLORATION & PRODUCTION

MEMBERS

REGISTER BY 16 FEBRUARY
AND SAVE \$200!

**Hear from industry experts
at these special events**

Michel T. Halbouty Lecture

featuring Aubrey K. McClendon of
Chesapeake Energy Corporation

All-Convention Luncheon

featuring Bobby Ryan of Chevron
Global Upstream and Gas



Solicitation for Field Studies

The abstract below is from a presentation at the May 2003, NOGS South Louisiana Onshore Petroleum Exploration Symposium. A special NOGS Ad Hoc Committee is currently soliciting Field Studies from members for publication in the forthcoming Oil and Gas Fields Volume IV. Please consider contributing a field study. For details contact: Carlo Christina CarloCC398@cox.net or Charles Corona cjcorona@cox.net.

Augen Prospect, a *Cristellaria I* Stratigraphic Trap

Don Frye and Gar Willis
Cabot Corporation, Houston, TX

ABSTRACT

Cabot Oil & Gas participated with Union Pacific Resources (now Anadarko Petroleum) in a 1998 3-D survey shot by Geco-Prakla (now WesternGeco) covering 260 square miles over the Continental Land and Fur acreage in Terrebonne Parish. To date this project has resulted in three productive prospects. Cabot and Union Pacific Resources participated in the deeper (18,000 feet) Etouffee prospect while Cabot, with Palace Exploration, pursued the shallower *Cristellaria* prospects.

Although the *Cristellaria I* section had been heavily explored by others, including earlier 3-D surveys over Turtle Bayou, Kent Bayou and the Orange Grove area, we felt that good geologic work in conjunction with detailed geophysical interpretation based on new data could yield worthwhile results.

Our first efforts were to find structural or stratigraphic locales that could be prospective. A large channelized interval was deposited between the Turtle Bayou and Orange Grove fields during the Bourg, or second Hollywood depositional interval.

The channel had been penetrated by several wells, including a Unocal well in Section 58 of T18S-R14E. That well logged over 200 feet of good quality wet sand. Seismic modeling showed that amplitudes could be an indicator of hydrocarbons in the *Cristellaria I* section if the pay were sufficiently thick. The Augen Prospect was based on seismic amplitude increasing to the east of this Unocal well. This particular area occurs near the boundary of the Geco survey and one recorded three years earlier by SEI. The SEI survey covered the prospect, but does not show an amplitude anomaly.

It is estimated that the Augen Prospect will produce 30 to 40 BCF with 20 barrels of liquid per million cubic feet of gas.

Much of South Louisiana has been covered by 3-D surveys, but in the gaps and low fold areas of current surveys, there is potential for meaningful discoveries at reasonable depths, as demonstrated by the Augen Prospect.

SUPER SCIENCE SATURDAY



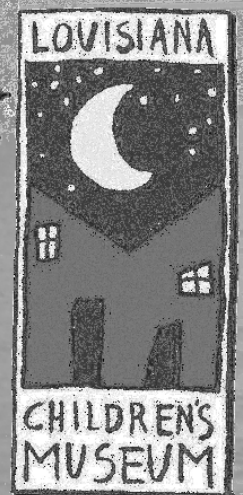
MARCH 20, 2010 11:00AM - 3:00PM

LOUISIANA CHILDREN'S MUSEUM

VOLUNTEERS NEEDED

CONTACT TOM BERGEON AT 504-832-3772

TOM.BERGEON@CENTURYX.COM



Gulf Coast Association of Geological Societies *TRANSACTIONS*

Now available on a single DVD! This disk includes a fully searchable archive of the Transactions from the first meeting in 1951 through the recent conventions. It replaces the set of CDs that were previously available, updates through the more recent meetings (the CDs covered 1951 through 2003) and utilizes current search software. The DVD is available through the GCAGS Bookstore at the Bureau of Economic Geology or through AAPG-Datapages – purchase and contact information below.

The purchase price of the DVD is \$250.00, but for holders of the old CD set, a major discount is available if the DVD is purchased through Datapages (note – special discount NOT available through the Bureau of Economic Geology). If you send in a 1998 or 2001 Master Disc, your cost for the DVD is \$75.00. If you had the latest version of the CD set, send in the 2003 Master Disc and the DVD is free!

Order from GCAGS Bookstore:

Visit the BEG Bookstore web site for order forms and instructions at
<http://www.beg.utexas.edu/mainweb/publications/pubs-toorder.htm>

Order from AAPG-Datapages:

e-mail - aapgdata@aapg.org
phone - (918) 560-9423
fax - (918) 560-9418
mail - AAPG/Datapages, 1444 South Boulder Ave., Tulsa, OK 74119
or
P.O. Box 979, Tulsa, OK 74101

INFO TIDBITS

- Stalagmites in Arizona caves are providing new information on climate change shifts from 55 to 11 thousand years ago. The climate shifts lasted anywhere from hundreds to thousands of years. http://www.geologytimes.com/research/Cave_reveals_Southwests_abrupt_climate_swings_during_Ice_Age.asp
- Yale researchers have discovered a four-winged dinosaur, *Anchiornis huxleyi*, with a orange "mohawk like crest." <http://www.cbc.ca/technology/story/2010/02/04/tech-dinosaur-feather-pattern.html>
- If yachting is in your summer plans the International SeaKeepers Society, could use your assistance. Over the past ten years, these sea farers have collected more than 300 million meteorologic, dimatologic and oceanographic measurements. Units attached to the superyachts collect a wealth of information daily. <http://www.cnn.com/2010/WORLD/europe/01/27/seakeepers.superyachts.data.collection/index.html>
- New research points to hydrothermal seafloor vents as the origin of life on earth. No primordial soup for you? <http://www.sciencedaily.com/releases/2010/02/100202101245.htm>

- *Liz Petro*

NOGS PRESENTS THE 2010 ANNUAL GOLF OUTING

PROCEEDS FROM THIS EVENT WILL HELP FUND *THE BILL CRAIG MEMORIAL FUND**.
LAST YEAR, THE GOLF TOURNAMENT GENERATED OVER \$2,500.00. LET'S KEEP IT GOING!

A NEW AND EXCITING VENUE THIS YEAR

TcHEFUNCTE COUNTRY CLUB

IN COVINGTON ON **MONDAY, APRIL 19.**

THE FORMAT WILL BE A 4-PERSON SCRAMBLE W/SHOTGUN START AT **12:00 NOON.**
FOOD SPONSORED BY TIM KLIBERT W/ DIVERSIFIED LOGGING

REGISTRATION OPENS AT 10:00 AM WITH BRUNCH SERVED UNTIL TEE TIME. PRICE
INCLUDES GREEN FEES, CART, RANGE BALLS, FOOD & DRINKS, FLIGHT, PRIZES & 2 MULLIGANS.
WHAT ELSE COULD YOU POSSIBLY ASK FOR? DONATIONS OF ANY KIND ARE WELCOME. THE
COST IS \$125.00 / INDIVIDUAL OR \$600/CORPORATE. HOLE SPONSORS ARE \$125.

THIS EVENT ALWAYS FILLS UP AND WE ARE LIMITED TO **120 PLAYERS** ONLY. PLEASE
REGISTER EARLY TO AVOID CONFUSION. REMEMBER YOU ARE NOT REGISTERED UNTIL
NOGS HAS RECEIVED PAYMENT AND YOU ARE CONFIRMED BY ANNETTE. AS USUAL WE NEED
VOLUNTEERS. IF YOU CAN HELP OUT YOU WILL BE TREATED TO A DAY OF FUN, FOOD, AND
BE ELIGIBLE FOR SOME DOOR PRIZES. MAKE SURE YOU SUPPLY YOUR HANDICAP OR A
SCORE THAT TYPIFIES A SET OF ROUNDS OF GOLF OVER RECENT TIME NO GREATER THAN 2
YEARS IN THE SPACE PROVIDED.

DONATIONS AND TO VOLUNTEER CONTACT

DAVID REITER (504-593-7606) OR TIM KLIBERT (985-536-4143)

TO REGISTER, CONTACT ANNETTE HUDSON AT THE NOGS OFFICE, 810 UNION ST. STE. 300
NEW ORLEANS, LA 70112 504-561-8980; FAX 504-561-8988. CASH, CHECK (PAYABLE TO
NOGS), VISA, MC, AND AMEX ARE ACCEPTED.

Name: _____

Company: _____

Phone: _____

Names of others in your group;

V MC Disc Am Ex # _____

Exp Date _____ Total Paid _____

_____ @ \$125 each = _____

_____ @ \$600 each = _____

Cash Donations = _____

Hole Sponsorship = _____

TOTAL = _____

* Information
concerning *The Bill
Craig Memorial
Fund* is available at
www.nogs.org.

THE NEW ORLEANS GEOLOGICAL SOCIETY, INC.

810 UNION STREET SUITE 300, NEW ORLEANS, LA 70112

TELEPHONE: (504) 561-8980 FAX: 561-8988 E-MAIL: NOGS@GS.NET WEBSITE: WWW.NOGS.ORG

MEMBERSHIP APPLICATION

Name (Last, first, middle intital)

Date

Company

Title

() _____
Phone Number

() _____
Fax Number

E-mail Address

Work Address (PO Box/Street, City, State, Zip, Country)

Home Address (Street, City, State, Zip, Country)

() _____
Phone Number

Preferred Mailing Address (check one): Work _____ or Home _____

Spouse's Name

Other Professional Society Memberships (AAPG*, AIPG, GSA, etc.) * Please indicate AAPG member category

College/University:

Degree

Year

Major

Explain, in brief, your affiliation with the petroleum industry:

Please mark appropriate classification:

☐ New Member

☐ Reinstatement

☐ Renewal

ANNUAL DUES: \$25.00 FOR ACTIVE OR ASSOCIATE

\$12.50 STUDENT MEMBERSHIP*

*No intial dues for students in the Sponsorship Program

-- Please mail application to the NOGS office with check payment or Visa/MasterCard/American Express acct# and exp. date --

Committee preference (please indicate choices):

☐ AAPG Student Chapter

☐ Advertising

☐ Awards

☐ Ballot

☐ Best Paper

☐ Computer Applications

☐ Continuing Education

☐ Employment Counseling

☐ Entertainment

☐ Environmental

☐ External Affairs

☐ Field Trip

☐ Finance & Audit

☐ Historical

☐ Membership/Directory

☐ Memorial Foundation

☐ NOGS LOG

☐ New Geoscientists (NGNO)

☐ Nominating

☐ Non-Technical Education

☐ Photography

☐ Program/Luncheon

☐ Publication Sales

☐ School Outreach

☐ Scouts: Boy and Girl

☐ Sponsorship

☐ Technical Projects

New NOGS
Members
January 2010

James D. Asher Sr.
Arrowhead Wireline Services
Managing Member
35 Bentley Ave
Whitesburg, KY 41858
606-335-5508

Jennifer L. Brizzolara
UNO-Student
UNO Dept of Geology
335 W Robert E. Lee Blvd
New Orleans, LA 70124
551-427-8623

Polly M. Burns
UNO-Student
3108 Esplanade Ave
New Orleans, LA 70119
504-669-2805

Bart P. Dellinger Jr.
UNO-Student
518 Folse St
River Ridge, LA 70123

Michelle N. Dellinger
UNO-Student
518 Folse St
River Ridge, LA 70123

Christopher R. Esposito
UNO-Student
3138 Dauphine St
New Orleans, LA 70117

REINSTATED

Kellie K. Lemoine
Minerals Management Service
Geologist
1201 Elmwood Park Blvd
New Orleans, LA 70123-2394
504-736-2892

President's Letter (continued from page 5)

approached. Soon we were surrounded by troopers, sheriff's deputies and dozens of Weisburg's citizens, armed with shotguns, clubs and pitchforks. "Whatcha fellas doin' down here?" demanded the sheriff. Opening our knapsack, the haul of fossils defused the very tense situation.

Next, "Did you see any dead man down the tracks?" a deputy asked.

"Nope, been there most of the day - never saw any dead body."

The posse proceeded with their hunt for a body and possibly a killer. We continued to the car - and hightailed it back home.

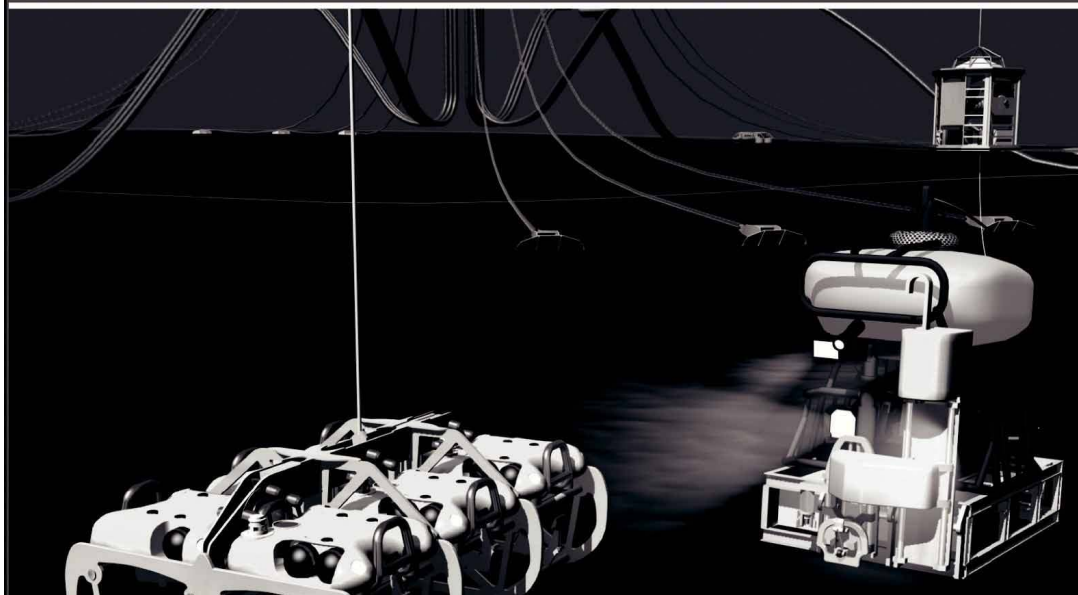
Joe had an incurable wanderlust and would head out to Mexico - both Old and New, Butte, and other mining

districts searching for minerals. Not surprising, he ended up a hard rock geologist. Economic and mining geology were Joe's passions. Cleverly inventive, he soon became a pro in gold and diamond exploration in Africa and North America. Eventually Joe and his wife Alice came to reside in Colorado where they raised Chris, who sports a physics Ph.D. from Cal Tech. Joe's '09 Christmas greetings noted he had retired, though knowing Joe, he's not given up mineralogy, science fiction, or his wicked sense of humor.

Here's to you, Joe!

Tam

Finally - An answer for getting reservoir seismic OVER THE RESERVOIR!



• 4C/4D Node Seismic

- ANGOLA
- GoM
- NIGERIA



“Coming Soon to an Oilfield Near You!”

www.sbexp.com

Dubai
T: +971 4 4271700

Houston
T: +1 281 566 1666

Oslo
T: +47 2240 2700

Rio
T: +55 21 2494-0283

Singapore
T: +65 9180 2605

Trondheim
T: +47 7 3879500

RAISING THE STANDARD



**100 Northpark Blvd.
Covington, LA 70433**

(985) 773-6000



LaBay
Exploration Co., L.L.C.

111 Veterans Memorial Blvd.,
Suite 1550
Metairie, Louisiana 70005

www.labayexploration.com

Office (504) 371-5967
Fax (504) 371-5969

LAURENT OIL & GAS

is interested in purchasing low risk oil prospect ideas in the Gulf Coast onshore and state waters. We will obtain leases, pay a finders fee and assign an override.

Call: Scott Laurent

Office: 713-464-0299

Cell: 713-515-0675

NOGS Memorial Foundation

ANNOUNCEMENT

The Board of the NOGS Memorial Foundation at its November meeting approved the addition of two Scholarships to be awarded at the September 2010 Luncheon Meeting.

This action brings our total number of Scholarships to twelve. The Foundations Bylaws have been amended to reflect these additions. Four scholarships will now be available to each of our primary three Universities: Tulane, LSU and UNO. The two new scholarships will follow the George W. Schneider, Sr. scholarship in rotation and each stipend will be for \$2500 available to a graduate, senior or junior student majoring in the Earth Sciences. The scholarship announcement packets for all scholarships will be sent the 1st week of February.

The Board at this time would like to recognize the Gibbett Hill Foundation, which through its generosity has donated some \$187,000 over the past 26 years to the NOGS Memorial Foundation. Special thanks to NOGS member and Gibbet Hill Foundation Director Stephen M. Strachan.

William M. Whiting
Chairman NOGS Memorial Foundation

2010

OIL HISTORY SYMPOSIUM



LOUISIANA STRIKES OIL!

The first oil strike in the State of Louisiana was made on September 21, 1901 on the farm of Jules Clement in the community of Evangeline. The well was known as both Jules Clement No. 1 and Jennings Oil No. 1 after the company that drilled the well. The discovery caused a boom resulting in the Evangeline Oil Field and the start of the oil and gas industry in Louisiana. The oil and gas industry has since been an integral part of the economy of Louisiana and the lifestyles of its residents.

Reproduced with permission of the Louisiana Department of Cultural Affairs

April 29th - May 1st
Lafayette, Louisiana

Co-sponsors:
Petroleum History Institute
Lafayette Geological Society



Jennings Oil Field, Jennings, La.

CALL FOR ABSTRACTS
Oral Presentations and Posters



Lafayette Geological Society
Founded 1992
Lafayette, Louisiana

**Fieldtrips to: Jennings, LA;
Texas Energy Museum; &
Spindletop/Gladys City**

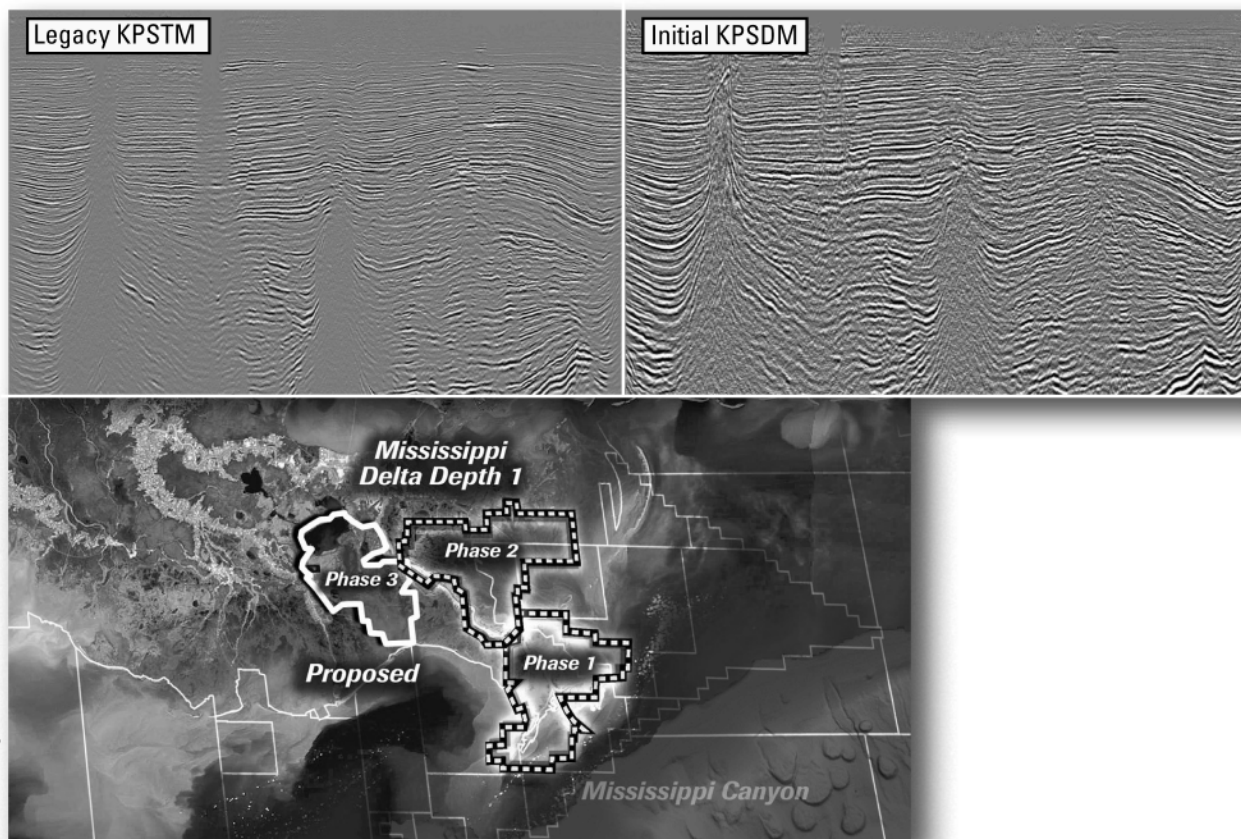
Oil history Authors & Book Signings

For more information:
www.petroleumhistory.org



PETROLEUM HISTORY INSTITUTE

Improved depth imaging in the Mississippi Delta



In the Mississippi Delta region, WesternGeco is utilizing state-of-the-art processing designed to eliminate fault shadows and enhance deep imaging. The Mississippi Delta - Depth 1 survey, now in progress, incorporates the processing and remigration of twelve legacy surveys covering 1,855 square miles. High-quality time imaging using relative amplitude anisotropic Kirchhoff prestack time migration will be followed by improved structural imaging utilizing anisotropic Kirchhoff prestack depth migration.

To learn more about this and other Multiclient products, call +1 713 689 1000.

www.multiclient.westerngeco.com/la

Multiclient to the Power of E



THE NEW ORLEANS GEOLOGICAL SOCIETY MEMORIAL FOUNDATION, INC.

The Memorial Foundation is an IRS Tax Exempt Code #501 (c)(3) organization. The Federal I.D. is: 72-1220999. Please consider making your donation prior to the close of this year's fiscal cycle which is June 30, 2010. Your individual support in any amount will help meet the IRS Guidelines for our Foundation. *Thanks!*

\$15,000 AND ABOVE

Olga Braunstein Succession

Gibbet Hill Foundation

*In Memory of Steve & Marion Millendorf, William J. Prutzman,
Roger G. Vincent & Ron Youngblood*

\$10,000

George W. Schneider, Jr. and Family

In Memory of George W. Schneider, Sr.

\$2,000 TO \$3,000

NOGS Golf Tournament May 2008

In Memory of Bill Craig

\$250 TO \$499

Carlo C. Christina

In Memory of Al Gilbreath

Fotiades Mineral Interests

Julie Fotiades, Joan Fotiades

Evelyn Fotiades Poulos

In Memory of George W. Schneider, Sr.

Kathy King Family

In Memory of George W. Schneider, Sr.

\$7,000 TO \$9,000

Paul C. Mc Williams

\$1,000

John M. Henton, Jr.

In Memory of Dr. Gordon Frey

Bill Schneider Family

In Memory of George W. Schneider, Sr.

Susan King Family

In Memory of George W. Schneider, Sr.

John C. Kuciewicz, Jr.

In Memory of Bill Craig.

FONO FUND

The FONO Fund accepts contributions that are invested and the income dedicated to assure sufficient financial resources will always be available to maintain the NOGS business office. Contributors are reminded that donations to the FONO Fund are not covered by the IRS 501 (c)(3) tax exempt classification and should be reported as a business expense on your IRS tax report.

UP TO \$250

Woods W. Allen, Jr.

Donald I. Andrews

Alfred H. Baker Jr.

Philip Beron, Jr.

Joseph E. Boudreaux

Hillary James Brook

Jack G. Bryant

J. Sybil Callaway

Anthony Carolla, Jr.

Arthur F. Christensen

James S. Classen

Richard P. Colomes

John Dombrowski

Merle J. Duplantis

Richard A. Edmund

Parrish N. Erwin, Jr.

Niles R. Faulk

Michael N. Fein

Laurens Gaarenstroom

Mark J. Gallagher

Arthur J. Garden

Duncan Goldthwaite

Peter G. Gray

James A. Hartman

In Memory of Hal Hudson

In Memory of Brian J. O'Neill

Bernard L. Hill, Jr.

Owen R. Hopkins

Thomas A. Hudson

Kenneth Huffman

C. M. (Max) Jacobs

Robert M. Jemison, Jr.

Paul Jurik

Terry Keegan

Tom Klekamp

Reuben J. Klibert, Jr.

William J. Malin

Jeannie F. Mallick

George M. Markey, Jr.

James A. McCarty

Robert H. Monahan

Robert G. Murphy

William J. O'Leary

Richard A. Olsen

William S. Peirce

Jaser N. Rafidi

James P. Raymond, Jr.

C. R. Rondeau

George D. Severson

Rudolf B. Siegert

Diana "Dee" E. Smith

Raymond Stephens

Scott A. Wainwright

Roy C. Walther

Robert C. Weissmann

William M. Whiting

Louis E. Willhoit, Jr.

Thomas V. Wilson

Jim Zotkiewicz

Donald I. Andrews

In Memory of Ray F. Havard

In Memory of Harlan (Lanny) Northcott

Robert J. Ardell

In Memory of Dr. Gordon Frey

Mr. and Mrs. Wesley Barton

In Memory of Thomas A. Cullinan

Abraham Biadgelgne

Maurice N. Birdwell

In Memory of Texaco

Hilary James Brook

Jack G. Bryant

Rob Burnett

F. Robert Bussey

In Memory Robert S. Kline

J. Sybil Callaway

Chevron

Matching Funds

Arthur F. Christensen

Ellen F. Clark

James S. Classen

In Memory of Thomas A. Cullinan

In Memory of George W. Schneider, Sr.

Clarence F. Conrad

Charley Corona

In Memory of McLain Forman

In Memory of Professor Hubert Skinner

Trudy and Charley Corona

In Memory of Thomas A. Cullinan

Michael A. Danahy

M. R. "Bob" Douglass

In Memory of Jack Read

Merle J. Duplantis

Parrish N. Erwin, Jr.

Exxon Mobil Matching Funds

Niles R. Faulk

Michael N. Fein

David Garner

Laurens Gaarenstroom

Mark J. Gallagher

Peter G. Gray

In Memory of Thomas A. Cullinan

Angela M. Hessler

Bernard L. Hill, Jr.

Owen R. Hopkins

Dan E. Hudson

Thomas A. Hudson

Kenneth Huffman

Jeffrey E. Jandegian

Arthur H. Johnson

In Memory of George W. Schneider, Sr.

Tom Klekamp

Richard G. Klibert

William J. Malin

Jeannie F. Mallick

George M. Markey, Jr.

Michael L. Merritt

Robert G. Murphy

In Memory of Thomas A. Cullinan

New Orleans Geological Auxiliary

Nexen Petroleum USA Inc. Matching

Funds Russell H. Nordwell

Richard A. Olsen

In Memory of Richard W. Boebel

In Memory of Robert W. Sabate'

Teresa M. O'Neill

In Memory of Brian J. O'Neill

Linda and Bill Peirce

CONTRIBUTIONS FOR BOTH FUNDS
THROUGH DECEMBER 17, 2009.
DONATIONS ARE LISTED FOR ONE YEAR.

Edward B. Picou Jr.

In Memory of Dr. M. Gordon Frey

In Memory of Brian J. O'Neill

Richard D. Provensal

Edmund L. Russell

George D. Severson

Robert C. Shoup

Rudolph B. Siegert

Daniel L. Smith

Diana "Dee" E. Smith

John D. Silvernail

In Memory of Colles C. Stowell

Dr. J. O. Snowden

Raymond O. Steinhoff

In Memory of Hubert C. Skinner

In Memory of Harold E. Vokes

Stephen Syzdlík

Scott A. Wainwright

Roy C. Walther

Arthur S. Waterman

In Memory of T. Wayne Campbell

William M. Whiting

Louis E. Willhoit, Jr.

Armour C. Winslow

In Memory of Rita Menzel

Winslow

Frances A. Wiseman

In Memory of Steve Widdicombe

Jim Zotkiewicz

In Memory of Bill Craig

Robin A. Broussard

Chevron

Bernard L. Hill, Jr.

Jeff Jandegian

John C. Scheldt

Candace V. Strahan

In Memory of James Strahan

CALL FOR PAPERS

60th Annual Convention
October 10-12, 2010
San Antonio, Texas

Hosted by the South Texas Geological Society



Welcome back to San Antonio! Our theme this year is ***"Weathering the Cycles"*** – a challenge that resource geologists certainly have faced and overcome in the past! How do we weather the economic cycles? We...

- ✓ Network with our community
- ✓ Experience the latest technology in the technical exhibition
- ✓ Take a course or a trip and grow new and diverse skills
- ✓ Listen to special presentations on strategies to endure and prosper during an economic downtime and prepare for the inevitable rebound.

By celebrating our successes, facing our challenges, and learning from the research results of our peers, we are paid back many fold by sharing ideas and experiences among our professional community. So come and share your experiences! Suggest a session topic, present an oral paper or a poster, learn about the latest ideas and technologies in our field. Come to San Antonio and enjoy the Gulf's own geoscience convention!

PROPOSED TECHNICAL SESSIONS INCLUDE...

- ✓ **Organic 'Shales' of the Gulf Coast – Controls on Reservoir Quality and Producibility**
- ✓ **Gulf of Mexico Paleogene – Reservoirs, Events and Controversies**
- ✓ **Eastern Gulf of Mexico – Exploration Potential and Environmental Challenges**
- ✓ **Texas/Mexico Borderlands – Structures, Resources, and Lessons Learned**
- ✓ **Unconventional Resources – Exploration Decisions and Production Issues**
- ✓ **Integration of Seismic Geomorphology and Wellbore Data – Case Studies**
- ✓ **New and Evolving Technologies – Impact on Commerciality**
- ✓ **Horizontal Drilling and Formation Stimulation – Edwards, Wilcox, and elsewhere**
- ✓ **Carbon Sequestration – Risks, Opportunities, and Implications for EOR**
- ✓ **Alternative Energy Solutions – The Role of Geoscience**
- ✓ **Water for a Growing Region – Geology, Water Quality, and Resource Management**
- ✓ **Geologic Training and Education – Preparing for the Crew Change**

HOW TO SUBMIT:

Abstracts (not more than 250 words) should be submitted for review online or via email to the technical program chair. Papers should have application to Gulf Coast and Gulf of Mexico geology. Include your full mailing address, telephone and FAX numbers, email address, and whether you are submitting for **oral** or **poster** or **either** (preferred).

Submit abstracts by February 1, 2010 as instructed on the website www.gcags2010.com

Notification of acceptance by March 1, 2010. All presenters, both oral or poster, must submit either a paper (10-12 pages) or an extended abstract with key figures for review by **April 16, 2010**, for inclusion in the *Transactions*. Full instructions for authors will be posted at www.gcags2010.com.

ABSTRACT DEADLINE: FEBRUARY 1, 2010!

Questions or ideas for the technical program should be directed to:

Dr. Mary Feeley
Technical Program Chair
281-654-3588

missy.feeley@exxonmobil.com

Dr. Alan Dutton
GCSSEPM Co-Chair
210-458-5746

alan.dutton@utsa.edu

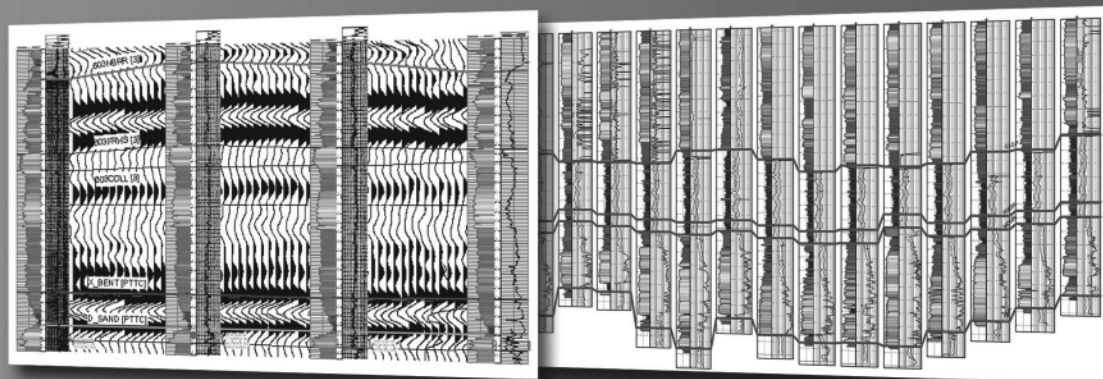


Define your geological model faster than ever before

NO MORE WAITING! Available today from IHS, easy and affordable access to one of the largest U.S. digital log collections

- More than 185,000 LAS files with over 1.5 million curves
- Regional subscription packages for today's active play areas
- Indexed to IHS well and production data
- Linked to the IHS Enerdeq® Browser for quick regional studies and log selection
- Available via IHSLogNet.com or on DVD
- Ready to use in PETRA and other log packages

Request a free 2' x 3' IHS digital log coverage map at ihs.com/energy/DigitalLogs



Use PETRA® to integrate digital log, well, production, perf, seismic and tops data. IHS is the only company to provide you with the complete picture

Why wait? Subscribe today! Call 888.OIL.DATA (645.3282) or e-mail sales.energy@ihs.com



The Source
for Critical Information and Insight™

SAI

Sydboten & Associates, Inc.
*Geological and Geophysical Consulting,
3-D Seismic Interpretation*

Ben D. Sydboten, Jr. CPG

124 Heymann Blvd., Suite 202
Lafayette, LA 70503

Office (337) 234-5288
Cell (337) 234-5491

ATWATER CONSULTANTS, LTD.

REGISTERED AND CERTIFIED PETROLEUM PROFESSIONALS

GEOLOGICAL, ENGINEERING, GEOPHYSICAL,
TRAINING AND EXPERT WITNESS SERVICES

3525 Hessmer Ave, Ste 304
Metairie LA 70002

Tel. (504) 581-6527
Fax (504) 524-7798

"Serving The Oil & Gas Industry Since 1983"

Geological,
Geophysical &
Land Drafting

Anthony Catalanotto
President

Stefani Foster
Drafting & Design

Geo-Draft, Inc.

A Professional Drafting & Graphics Firm

3349 Ridgelake Drive • Suite 202 • Metairie, LA • 70002
Office: (504) 836-2882 Fax: (504) 836-2877 (Cell) (504) 481-7291
E-Mail: geodraft@bellsouth.net
Website: www.geodraftinc.com

*This advertising space is available!
Contact the NOGS office.*

NORTHCOAST OIL COMPANY

610 E. Rutland St.
Covington, LA 70433
(985) 898-3577
(985) 898-3585 FAX

Jack M. Thorson
Eric C. Broadbridge
J. Daryl Gambrell
Raymond W. Stephens

**NOGS thanks our
sponsors for their support:**

GOLD LEVEL SPONSORS:

CHEVRON
LA BAY EXPLORATION CO, LLC.

**SPECIAL THANKS TO
DIVERSIFIED WELL LOGGING**



CIMAREX ENERGY CO.

GULF OF MEXICO REGION
GOM, SE La., N. La., MS, AL

1100 Poydras St.; Suite 1100

New Orleans, Louisiana 70163

504-586-1815 / Fax 504-586-9035

Keith Gourgues
Region Manager

(832) 242-6000 (O)
(713) 917-0493 (O)

(504) 931-7506 (C)
johnjurasin@jurasinoilgas.com

JURASIN OIL & GAS

9700 Richmond Ave., Suite # 124
Houston, TX 77042-4821

JOHN M. JURASIN
President

Cert. Pet. Geologist #4284
Cert. Prof. Earth Scientist #1961

Collarini Energy Staffing

Full-Time and Temporary Personnel

Facilities • Drilling • Production • Reservoir Engineering
Land and Legal • Geoscience • Information Technology •
Health and Safety • Management • Supply Chain
Accounting • Administrative Support

11111 Richmond Ave., Suite 126
Houston, Texas 77082

832-251-0553



www.collarini.com

Collarini Associates

Reservoir Engineering
Oil & Gas Property Evaluation
3-D Seismic Interpretation
Integrated Field Studies

832-251-0160
504-887-7127

Houston
New Orleans



Introducing **KINGDOM ADVANCED**

The Future of Interpretation

For The Most Unconventional OI Plays

SMT's ease of use has made it the geoscience software choice for 2500+ customers in 95 countries. KINGDOM Advanced takes SMT's science into the next generation on the largest of data sets.

Best of all, it's so cost effective you can make the best science available to every interpreter. At every location. Even in remote offices that lack IT support.

*Never again sacrifice your workflow
because of the software.*

See the future
today!

Register for our webinar
How To Cut Your Cycle Time In Unconventional Plays
www.seismicmicro.com/webinar

ANSYTHE Donald I. Andrews 504-887-3432 	H. WARREN BELL Oil and Gas Exploration 2500 Tanglewilde, Suite 485 Houston, TX 77063-2126 Bus (713) 266-7297 Fax (713) 266-7298
THE BOEBEL COMPANY Oil and Gas Investments 170 Broadway Street, Suite 321 New Orleans, LA 70118 (504) 866-4313	PHELPS GEOSCIENCE Onshore Gulf of Mexico Geology and Geophysics Prospect Generation and Evaluation Houston, TX jsfphelps@yahoo.com (281) 398-5208
BOO-KER OIL & GAS CORP. Gray S. Parker 826 Union, Suite 300 New Orleans, LA 70112 Bus. (504) 581-2430 Fax (504) 566-4785	RAFIDI OIL AND GAS, INC. Jaser N. Rafidi, President 4415 Shore Dr., Suite 202 Metairie, LA 70006 Bus. (504) 722-2942 Fax (504) 888-5539; Res. (504) 888-1661
C & R EXPLORATION, INC. Carlo C. Christina Lawrence G. Ringham	ROY C. WALTHER Petroleum Geologist 2421 Prancer Street New Orleans, LA 70131 Bus. (504) 392-8513 Res. (504) 392-9332
C. R. RONDEAU Petroleum Geologist 119 W Southland Ave. Ironwood, MI 49938 Res. (906) 932-4692	 Shoreline Gas Inc. www.shorelinegas.com Full Service Natural Gas Marketing
CLASSEN EXPLORATION, INC. James S. Classen Looking for close in deals P.O. Box 140637 Boise, ID 83714 Bus. (208) 854-1037 Fax (208) 854-1029 classenllc@msn.com	 625 E. Kaliste Saloom Lafayette, LA 70508 16800 Greenspoint Dr., Suite 225-S Houston, TX 77060 www.StoneEnergy.com
D-O-R ENGINEERING, INC. 3-D and Geoscience Services 6161 Perkins Rd. P O Box 80812 Bus : (225) 765-1914 Baton Rouge LA 70898	TONY CAROLLO Consulting Geologist Unitization Geosteering Field Studies 1701 Peach Street Metairie, LA 70001 Bus. (504) 885-0004 Res. (504) 885-6829
EDWARD B. PICOU, JR. Consulting Micropaleontologist - Retired 228 St. Charles Ave., Suite 1330 C New Orleans, LA 70130 Bus. (504) 529-5155 Res. (504) 282-3096	Zot Oil & Gas, LLC Jim Zotkiewicz Prospect Generation and Evaluation 3200 Ridgelake Dr. Suite 207 Metairie, LA 70002-4930 Business: 504.831.4694 Email: jimzot38@zotoil.com

Imperial Barrel Award

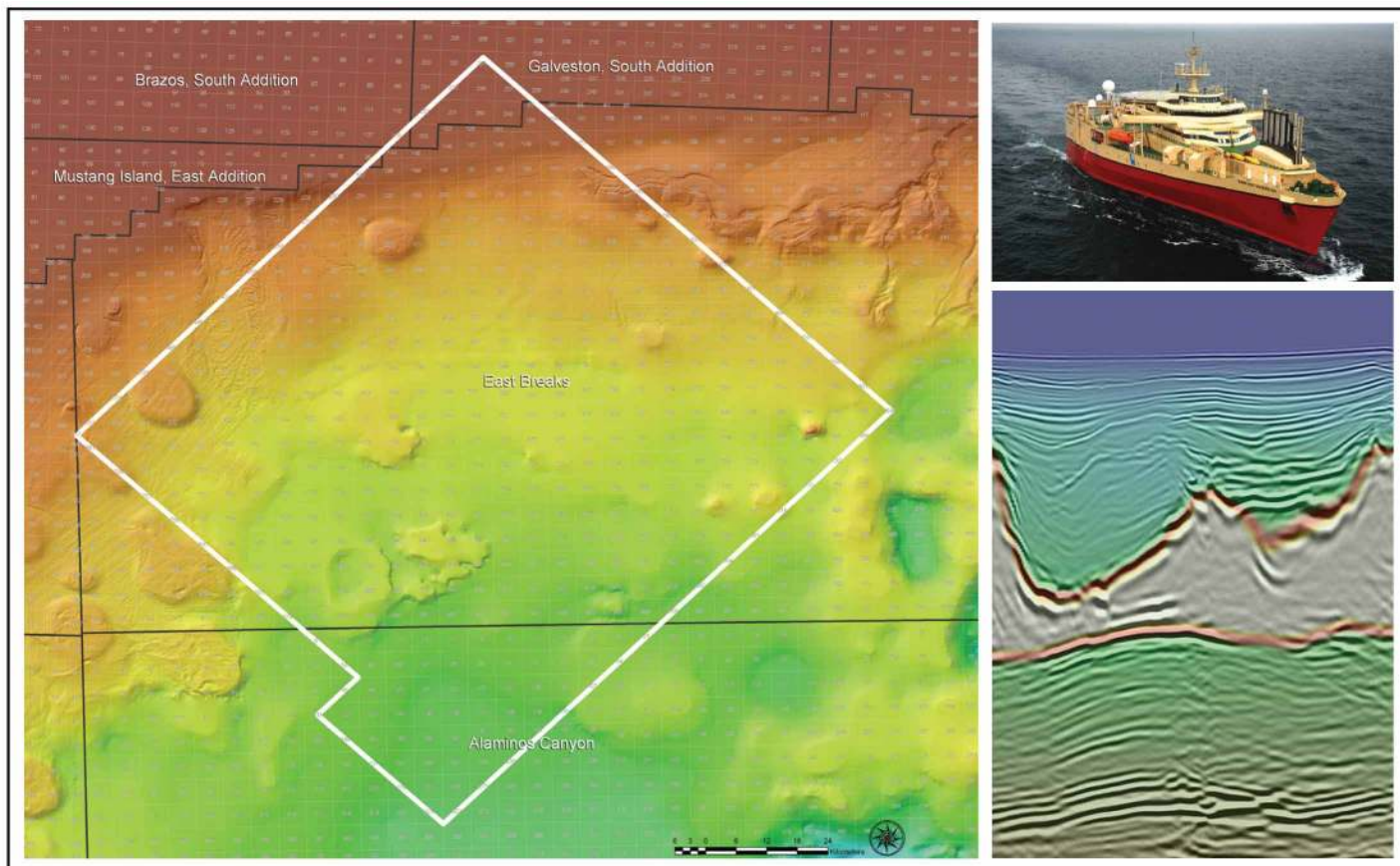
AAPG's Imperial Barrel Award Program (IBA) is a global competition, where University teams analyze a complete dataset (geology, geophysics, land, economics, production infrastructure, and other relevant materials) in six to eight weeks prior to the competition. Each team delivers their results in a 25-minute presentation to a panel of industry experts.

The Gulf Coast competition will take place in March, with the winning team competing in the finals against teams from throughout the world. The finals will be held during the 2010 AAPG Convention in New Orleans. Among the teams entering the Gulf Coast regional competition are LSU, UNO, and Alabama.

Help needed from NOGS members:

- Mentors to make presentations at one or more schools on topics such as basin analysis, subsurface mapping, prospect economics, etc.
- Sponsors to help defray the travel costs for the students

If you would like to help or want additional information, contact Art Johnson (artjohnson51@hotmail.com).



East Breaks

MultiClient Wide Azimuth

- **Size** - 450 OCS blocks
- **Focus** - Sub-Salt Paleogene
- **Technology:**
 - Ramform Acquisition with 4.2 km Crossline Offset
 - True Azimuth 3DSRME & TTI Beam and TTI RTM Imaging
- **Delivery** - Available Q1 2010

PGS MultiClient Wide Azimuth - Delivering a Clearer Image Sub-Salt

Houston
Tel: +1 281 509 8000
Fax: +1 281 509 8500

Oslo
Tel: +47 67 52 6400
Fax: +47 67 52 6464

London
Tel: +44 1932 37 6000
Fax: +44 1932 37 6100

A Clearer Image
www.pgs.com



NEW ORLEANS GEOLOGICAL SOCIETY



810 Union Street, Suite 300
New Orleans, LA 70112-1430

WWW.NOGS.ORG

MARINE PROPERTIES, LLC BERKSHIRE EXPLORATION CO.

MONTE C. SHALETT, CPL, PRESIDENT

3030 Lausatz Street
Metairie, LA 70001-5924

BUS. (504) 831-7779
FAX. (504) 831-8315

PCI

Paleo Control, Inc.

Houston, Texas
713-849-0044

Drilling Wells, Studies and Data Base

Loyd Tuttle

Frio, SE Texas

Bob Liska

Wilcox, S and SE Texas

Jim Thorpe

Miocene and Cam-Miogyp



SEE YOUR DATA IN A WHOLE NEW LIGHT!

Take the pressure out of exploration
and drilling by seeing what you
are going to encounter.



eSeis

www.e-seis.com
713.531.1447

- Lithology & Fluids
- Depositional Facies
- Pore Pressure from V & Q
- Well Planning Consultation

