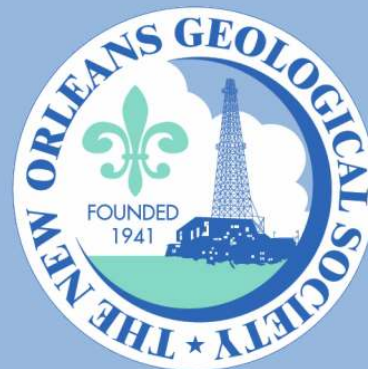


# NOGS LOG



January 2010

Volume 50, Number 7

## Upcoming Events and Activities

### January 11 - NOGS Luncheon

\*\*\* At the Holiday Inn Downtown Superdome \*\*\*

\$2.00 validated parking in hotel garage

Guest Speaker H. Leighton Steward, Chairman of Plants Need CO<sub>2</sub> Foundation, will present a talk on "Global Climate Change."

(See page 7 for Abstract and Biography)

HOLIDAY INN DOWNTOWN SUPERDOME

ADMISSION:

Check with concierge or  
front desk for location

Lunch served at 11:30am

**with reservation** ..... \$30.00

**without reservation** ..... \$35.00

Student Member with reservation .... Free

### February 1 - NOGS Luncheon

Guest Speaker Kraig L. Derstler will present a talk on "Comparative taphonomy of tyrannosaurid dinosaurs from the Late Cretaceous of the western United States."

### April 6 & 7 - 4th Annual Louisiana Groundwater & Water Resource Symposium

Baton Rouge. See announcement on page 13.

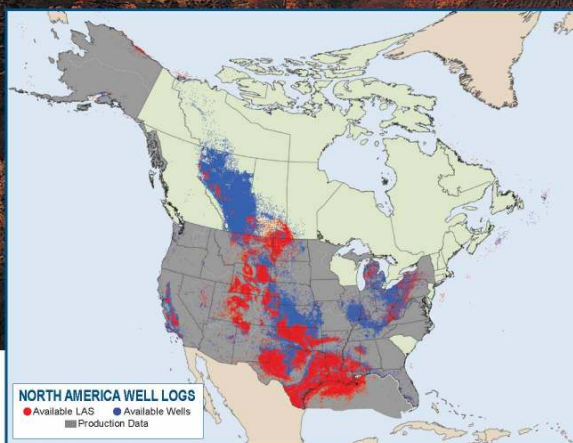
### April 11-14- AAPG Annual Convention & Exhibition

New Orleans. See announcement on page 14.

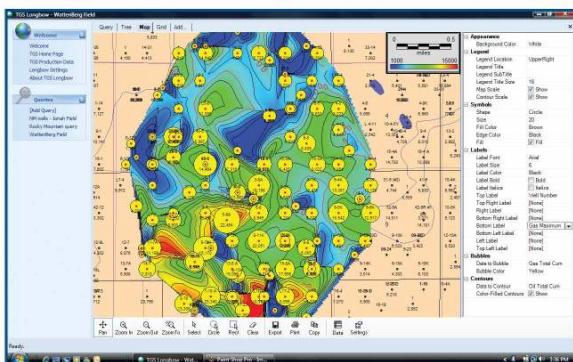
### April 13 - An Evening with "America's Greatest Generation"

National World War II Museum. See announcement on page 16.

# You Trust Our Well Logs.



States with Production Data



Longbow: Production Cumulatives

## Now Have the Same Confidence with Production Data.

For our production database, we applied the same dedication to data quality, coverage completeness and ongoing updates that helped grow our well log collection into the industry's largest and most trusted. Working with users across disciplines, we designed our collection, delivery mechanics and the LONGBOW query and export tool to create an alternative that provides continuity and increased capabilities: all at an extremely competitive price.

For more information, contact your TGS account representative, or call toll free 1 (888) LOG-LINE.



Geophysical  
Products



Geological  
Products



Imaging  
Services

[www.tgsnopec.com](http://www.tgsnopec.com)

NORWAY +47 66 76 99 00 | USA +1 713 860 2100 | UK +44 (0) 1234 272122 | AUSTRALIA +61 8 9480 0000

© TGS-NOPEC Geophysical Company. All rights reserved.

**NOGS Office**

Office Manager: Annette Hudson

Office Hours: 8:30am – 3:30pm on Monday-Wednesday-Friday

Tel: 504-561-8980 □ Fax: 504-561-8988

E-mail: info@nogs.org □ Website: www.nogs.org

The office is located at Suite 300, 810 Union Street, New Orleans, LA 70112.

Correspondence and all luncheon reservations should be sent to the above address.

Sent to press on December 15, 2009.

**BOARD OF DIRECTORS**

		<b>Company</b>	<b>Phone</b>	<b>E-mail</b>
President	Tom Klekamp	Amber Resources LLC	985-845-4046	klekamp@bellsouth.net
Vice President	Bob Hafner	ENI Petroleum	504-593-7605	Robert.Hafner@enipetroleum.com
Secretary	Jennifer Connolly	Shell	504-728-6411	jennifer.connolly@shell.com
Treasurer	Chuck Holman	ENI	504-593-7869	chuck.holman@enipetroleum.com
President-Elect	David E. Reiter	ENI	504-593-7606	david.reiter@enipetroleum.com
Editor	Elizabeth Petro	MMS	504-736-2866	nogseditor@gmail.com
Director 2010	Michael M. Ledet		504-394-9636	mikeledet@cox.net
Director 2011	Scott A. Wainwright	Bret Exploration Co Inc	504-889-2700	scott_wainwright@hotmail.com
Director 2012	Arthur H. Johnson	Hydrate Energy International	504-464-6208	artjohnson51@hotmail.com

**COMMITTEE**

	<b>Chairperson</b>			
AAPG Delegates	Dave Balcer	Chevron	985-773-6725	dbalcer@Chevron.com
AAPG Student Chapter	Bobby Cosentino	Tulane University	504-495-9475	rcosenti@tulane.edu
AAPG Student Chapter	Bryan Rogers	UNO	504-736-2772	thgem@gmail.com
Advertising-Log	Andrea Stancin	Shell	504-728-0431	Andrea.a.stancin@shell.com
Auditing	James Swaney	MMS	504-736-2677	james.swaney@mms.gov
Awards	Michael N. Fein	W & T Offshore	504-210-8148	mikef@wtoffshore.com
Ballot	Chuck Holman	ENI	504-593-7869	chuck.holman@enipetroleum.com
Best Paper	David E. Reiter	ENI	504-593-7606	david.reiter@enipetroleum.com
Continuing Education	TBA			
Employment Counseling	TBA			
Entertainment	David E. Reiter	ENI	504-593-7606	david.reiter@enipetroleum.com
Environmental	Daisy Pate	Eustis Geotechnical Eng.	504-613-5798	dpate@eustiseng.com
External Affairs	Michael A. Fogarty	Sylvan Energy, LLC	603-523-4808	mike.a.fogarty@gmail.com
Field Trip	David Garner	Shell	504-728-6154	David.Garner@shell.com
Finance and Investment	Chuck Holman	ENI	504-593-7869	chuck.holman@enipetroleum.com
Historical	Edward B. Picou, Jr.	Consultant	504-529-5155	epicou@bellsouth.net
Membership/Directory	Penne Rappold	Shell	504-728-4338	prappold@gmail.com
New Geoscientists (NGNO)	TBA			
Nominating	Willis E. Conatser		504-466-9749	weconatser@aol.com
Non-Technical Education	Duncan Goldthwaite	Consultant	504-887-4377	DGldthwt@aol.com
Office Operations	William M. Whiting	Consultant	504-947-8495	bootscom@aol.com
Publications Sales	Edward B. Picou, Jr.	Consultant	504-529-5155	epicou@bellsouth.net
Photography	J. David Cope	Taylor Energy Co LLC	504-589-0419	dcope@taylorenergy.com
School Outreach	Thomas C. Bergeon	Century Exploration	504-832-3772	Tom.bergeon@centuryx.com
Scouting	Carol Rooney	Consultant Geologist	504-835-1909	carolbrooney@aol.com
Technical Projects	TBA			
Ad Hoc Committee on University Support	Michael J. Gallagher	Eni Petroleum	504-593-7480	Michael.Gallagher@enipetroleum.com

**NOGS LOG STAFF**

Editor	Elizabeth Petro	MMS	504-736-2866	nogseditor@gmail.com
Editor-Elect	Fran Wiseman	MMS	504-736-2912	frances.wiseman@mms.gov
Auxiliary	Susie Baker	NOGA	504-466-4483	abaker1006@aol.com
Info Tidbits	Elizabeth Petro and Fran Wiseman	MMS	504-736-2866	nogseditor@gmail.com
Drill Bits	TBA			
Webmaster	Edward B. Picou, Jr.	Consultant	504-529-5155	epicou@bellsouth.net
Layout	Jannette Sturm-Mexic			

**NOGS AUXILIARY**

<b>Officers</b>		<b>Phone</b>	<b>Directors</b>	<b>Year</b>	<b>Phone</b>
President	Linda Peirce	504-393-7365	Beverly Christina	2009-10	504-835-2383
1st Vice-President	Jean Jones	504-738-8091	Peggy Rogers	2009-10	504-392-6323
2nd Vice-President	Beverly Kastler	504-286-0879	Judy Sabate'	2009-10	504-861-3179
Secretary	Dolores Murphy	504-393-0878	Peggy Campbell	2009-11	504-283-2505
Treasurer	Judy Lemarie'	504-393-8659	Ruth Grimes	2009-11	504-392-8103
Parliamentarian	Carol Andrews	504-887-3432	Gerry Waguespack	2009-11	504-737-0532
Member-at-Large	Susie Baker	504-466-4483			

--- NOGS Contact List continued on page 10 ---



# SYNERGY ENERGY



**Weatherford®**  
LABORATORIES

Your success increasingly depends upon a better understanding of your reservoir. At Weatherford Laboratories, we provide a single source for comprehensive laboratory analyses, creating a synergy previously unknown in laboratory services. This single source includes distinguished geologists, geochemists, analysts, engineers, technicians and software developers, 38 worldwide laboratories, and the broadest portfolio of services for acquiring and interpreting data from physical samples. The end result is an unsurpassed combination of intellectual capital and technical resources — all working together to help you enhance development planning and reduce reservoir uncertainty.

Put our union of Synergy and Energy to work for you.

**[Weatherfordlabs.com](http://Weatherfordlabs.com)**

**HIGHER STANDARDS**

**NORTH AMERICA**  
[NAInquiries@weatherfordlabs.com](mailto:NAInquiries@weatherfordlabs.com)

**EUROPE**  
[EUInquiries@weatherfordlabs.com](mailto:EUInquiries@weatherfordlabs.com)

**LATIN AMERICA**  
[LAInquiries@weatherfordlabs.com](mailto:LAInquiries@weatherfordlabs.com)

**MIDDLE EAST/NORTH AFRICA**  
[MENAIquiries@weatherfordlabs.com](mailto:MENAIquiries@weatherfordlabs.com)

**ASIA PACIFIC**  
[APIquiries@weatherfordlabs.com](mailto:APIquiries@weatherfordlabs.com)





### *from the President*

Good news is hard to come by in these moribund financial times. However, Bill Whiting, Chairman of the NOGS Memorial Foundation, has something to cheer about. Because of the conservative investments, the Memorial accounts weathered the storm (better than some personal portfolios). The Foundation continues to thrive on your individual contributions and from an anonymous foundation that has been giving generously for 26 years. Working with the fund's annual yield, a yellow legal tablet and #2 pencils, Bill concluded that he could establish two new scholarships. His eight-member board scrutinized his analysis and concurred. We have two new scholarships named after you, the numerous contributors to the Foundation since its inception. The two new scholarships along with the William C. Schneider, Sr. Scholarship will rotate among LSU, UNO, and Tulane. They will benefit junior, senior or graduate level students and in some cases make the difference of a student working an outside job to make ends meet. The "bottom line" is that our Memorial Foundation will be delivering \$30,000 in scholarships annually! The first of these new scholarships will be awarded, along with the other scholarships in 2010.

NOGS' Al Baker and Robert Rooney are looking for contributors for the World War II Museum event, "An Evening with America's Finest Generation," Tuesday evening during the 2010 AAPG Convention. Presently \$3,000 been received and another \$750 pledged. That's \$3,750 yet we need \$6,000 for the per person cost to be an attractive \$50. The World War II Museum is unique in the country; this evening will prove memorable for the AAPG, the spouses and their guests. There are new exhibits, a place where you and your friends can enjoy drinks together, sample John Besh's cuisine and explore the many galleries and dioramas.

Mary Ellison, our AAPG Student Representative at UNO's Department of Earth and Environmental Science, asked if she and her fellow students could see and hear our NOGS luncheon speakers via WebEx, as Chevron has been for the past year. Even though students can enjoy a free luncheon, there were conflicts with class schedules "No *problemo*." NOGS now has a WebEx account and we were able to beam our talks to UNO and Chevron. Blame me for any glitches in that first attempt. Syncing the new WebEx, NOGS' laptop, the projector, audio, telephone and Holiday Inn's Wifi system with the two remote locations is a challenge to anyone who has tried it. Last year's Vice-president, Al Melillo was an ace.

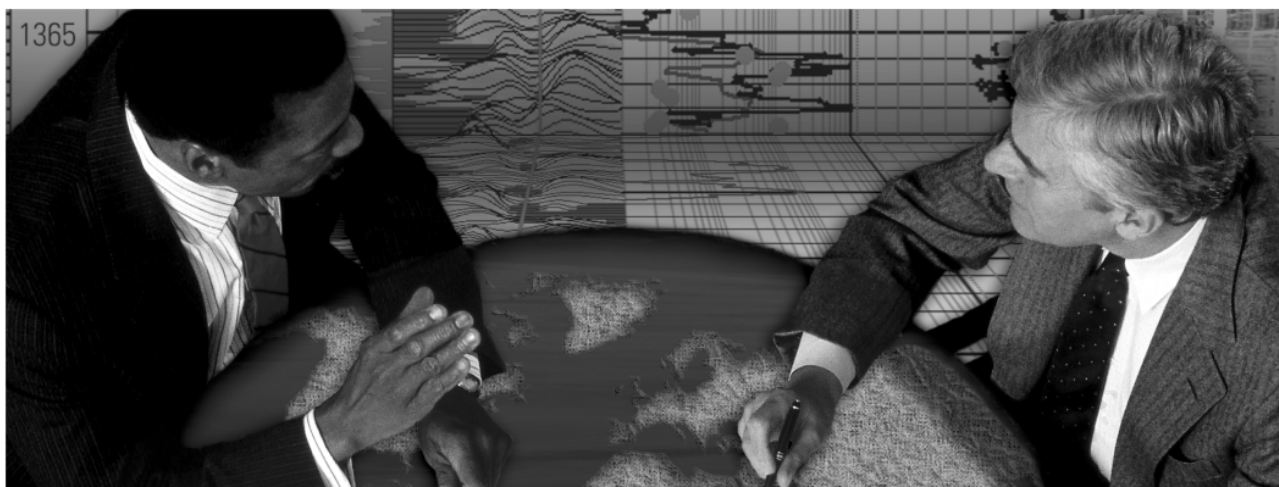
Not unlike flying---the pilot died at the stick and now Art Johnson and George Rhoads in the tower were talking me down to a landing. "Tom have you dialed in yet?" asked George. Was that, "Landing gear down, dammit!" Three go-rounds and finally we set it down. I got through the news items and turned the program over to Bob Hafner who finally pried the microphone from my sweaty hand. Did I have a death grip on the stick?

Not frightened to fly again, NOGS has been using this same system for teleconferencing the Memorial Foundation meetings and the regular Board meetings. The next step is to see about sending our monthly luncheon talks to the Northshore, not just to the folks at Chevron-I am looking for email or phone feedback from Northshore geoscientists who would be interested.

Do you have a field study somewhere in your files? The NOGS Log is looking to publish these with the idea of eventually compiling them into Volume 4: Oil and Gas Fields of Southeast Louisiana, which is Tom Bergeon's idea. He regrets that long days at the

--- continued on page 8 ---

**Schlumberger formation evaluation solutions deliver the answers you need.** Our extensive portfolio of services, leading-edge technology, and advanced conveyance options keep you in communication with your well throughout its life cycle.



*With formation evaluation technologies from Schlumberger, you can make the best decisions for optimized performance in every well.*

## **The formation evaluation one-stop shop**

Whether you are logging in open hole or behind the casing, our broad selection of services ensures the best solution for acquiring formation evaluation data. Tools can be conveyed while drilling or on wireline or pipe. We offer many specialized evaluation capabilities, from density, neutron porosity, and resistivity to borehole imaging, nuclear magnetic resonance logging, borehole seismic, formation pressure testing, and fluid sampling. Advanced triple-combo logging options include the VISION\* formation evaluation and imaging-while-drilling services. Coupled with Pulse\* telemetry and surveying services, the VISION family provides real-time formation evaluation data and enables optimum well placement.

High-speed wireline measurements are recorded with the Platform Express\* logging services. The SlimXtreme\* platform is designed for high-pressure, high-temperature environments and the ABC\* Analysis Behind Casing services are used after casing is set.

Expert interpretation from the engineers and geoscientists of Schlumberger Data & Consulting Services brings all your data together to give you the answers you need. This expertise is available after logging is complete or as real-time two-way wellsite communication through the InterACT\* real-time monitoring and data delivery system.

Schlumberger delivers leading-edge technology and interpretation expertise for all your formation evaluation needs, so every well benefits from the very best information.

**For more information visit**  
**[www.slb.com/oilfield/formation\\_evaluation/](http://www.slb.com/oilfield/formation_evaluation/)**

\*Mark of Schlumberger

04-FE-114

# Schlumberger

# January 11 NOGS Luncheon Presentation

\*\*\* at the Holiday Inn Downtown Superdome \*\*\*

## Global Climate Change

presented by

**H. Leighton Steward**

Chairman of Plants Need CO<sub>2</sub> Foundation

### ABSTRACT

The science regarding the impact of man-made carbon dioxide (CO<sub>2</sub>), or of CO<sub>2</sub> in general, in causing global warming has not been settled. The speaker will present educational illustrations relating to the factors that influence climate change to a greater or lesser degree. From these factors and other climate related illustrations, the audience can draw its own conclusions on what is causing climate change although the speaker will share his own opinions. The interactions of factors that affect climate change are very complex but a few major conclusions stand out. There are at least 18 climate drivers (causes) of climate change. Changes in Earth's temperatures have been shown to precede changes in CO<sub>2</sub> levels by several hundred years. A cause does not follow an effect CO<sub>2</sub>'s capacity to trap additional heat radiated from

Earth's surface declines very rapidly, logarithmically, as CO<sub>2</sub> levels increase so additional CO<sub>2</sub> being added today is having very little effect on Earth's temperatures. Empirical evidence, the ultimate test of a hypothesis does not support a significant role of CO<sub>2</sub> in causing climate change and therefore the hypothesis that CO<sub>2</sub> is causing global warming is false. Additionally, the speaker will present concise evidence, summarized from thousands of peer reviewed studies, that adding more CO<sub>2</sub> to Earth's atmosphere would be very beneficial to humanity and the plant and animal kingdoms. You will find that your industry, inadvertently, has played a major role in the recent "greening" of the Earth and that you have become "greener" than those that claim to be so "green" but insist that we try to lower the atmospheric CO<sub>2</sub> levels.

### BIOGRAPHY

Leighton Steward is a geologist, environmentalist, author, and former executive in the energy industry. He spent 25 years of his career in New Orleans, first with Shell in managing their offshore division lease sales in the late 60's and early 70's and then becoming CEO of LL&E in 1989 until 1997. He has been chairman of the U.S. Oil and Gas Association, The Natural Gas Supply Association, and the Louisiana Mid-Continent Oil and Gas Association. Leighton also represented the independent sector of the energy industry on both Republican and Democratic Presidential Missions to the former Soviet Union, Turkey and Pakistan. He currently serves on the boards or board of visitors of EOG Resources, the Southwest Research Institute, M. D. Anderson Cancer Center, the Buffalo Bill

Historical Center, and is chairman of The Institute of Earth and Man at SMU. He is twice past chairman of the Audubon Nature Institute, and was chairman of the National Wetland Coalition for 10 years. Leighton has been presented with API's Gold Medal for Distinguished Service, IPAA's Carney Cochran Award, AAPG's Public Service Award and the API's 25 Year Club's Distinguished Leadership Award. He has written about the nation's disappearing wetlands (Louisiana's National Treasure), global climate change (Fire, Ice and Paradise), and even nutrition and health (Sugar Busters), the latter of which became a New York Times No. 1 Best Seller. His current interests are on the benefits of CO<sub>2</sub> to humanity and the plant and animal kingdoms as well as the misplaced blame on CO<sub>2</sub> for causing global climate change.

**THE LUNCHEON RESERVATION DEADLINE IS JANUARY 6 - CONTACT THE NOGS OFFICE**

### “And Looking Ahead...”

The next NOGS Luncheon will be February 1. Guest Speaker Kraig L. Derstler will present a talk on “Comparative taphonomy of tyrannosaurid dinosaurs from the Late Cretaceous of the western United States.” Contact the NOGS office to make your reservation.



## President's Letter (continued from page 5)

office coupled with responsibilities at home have placed this publication on the rear burner. Give me a call if you would like to give some airing to a favorite piece of southeastern Louisiana geology or production.

Three weeks ago I was at the Lunar and Planetary Institute in Houston. They have a great library dedicated to astro-geology and -biology. One of the features of this library is a collection of globes. Some of these are one-of-a-kind built for a specific mission. There are globes of our Moon, built for the Apollo Era. Globes, bald, with mere pieces of Mars and Venus data, snagged on a flyby. Globes of Mars and Venus in full colorful regalia, buy 'em off-the-shelf. There are even one-of-a-kind oddly shaped "globes" of asteroids. Just as I was leaving I spotted Kurt Ziesing's Tectonic Globe. I had heard of this globe but never seen one. It was built in 1972, just about the time global tectonics was revolutionizing geology, by Geograph.-Cartograph. Institute in Gotha. It appears from the numbering that about 150 of these were turned out. Globes are hard to store and the LPI Librarian allocates precious room to these balls that would otherwise take up space in someone's office at NASA.

For geologists, one of the best globes ever built was the geophysical globe by the National Geographic Society in the 1970s. It came in 12- and 16-inches, showed the sea floor, shelves, mid-ocean ridges, trenches, sea mounts, transform faults and land surface. No political lines to detract from the geologic message. Their utility was the ease by which you could explain and teach global tectonics; the globe rested in an acrylic cradle, and could be easily cradled in your hand. Like NASA, I too, had a space problem for my globe. In one of my relocations, I donated mine to a library in Houston. Sadly, NGS stopped making them twenty years ago and now these are collectables on eBay. The NGS flat geophysical maps are no substitute. National Geographic, if you can read this, bring back your geophysical globes!

Tom

---

November 20, 2009

### Letter to the editor NOGS Log,

Today I attended a meeting of a group NOGS members hosted by Carlo Christina. Carlo did it out of concern for the falling participation in NOGS by the local geologic community. Meeting and event participation is steadily eroding. Tom Klekamp acted as moderator. Much was said about trying to change the way we are conducting our society. Do we need to change: our meeting venues, our after hours fun events, the type of technical programs? Ideas were suggested. The discussion was vigorous. Much was said about the generational changes and the job uncertainties that exist today. We came away with a feeling that we have a big problem and no clear solution. Driving home with Jack Langford, the discussion revolved about what each of us received from NOGS. Certainly great technical help headed the list. Interestingly, the conversation moved to the associations with other members as a strong second. Both of us believe here lays one of the great benefits of this organization. Of course everyone develops strong friendships within your company. Both Jack and I have worked for large companies and developed strong friendships there. Both of us have endured lost employment from severe downturns every bit as severe as is happening today. What we both agreed on: the friends we had outside our companies were the ones that helped us when jobs were lost and times were tough. Almost without exception these were people I met through activity in NOGS. Think about it. Here is one of the finest virtues of our society that we never talk about. This, I leave with you.

Sincerely,

Bob Douglass

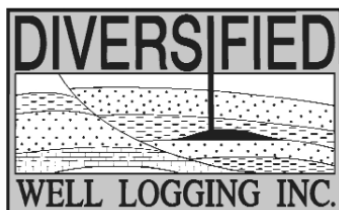
### LETTER TO THE EDITOR





## Relax. We'll keep you posted.

Your rig is offshore and you are not. How do you know what's going on so many miles away? You know because we tell you. Daily or even hourly, Diversified Well Logging's engineers update you on the status of your rig. We are your eyes and ears, especially when it comes to deep water or high pressure, high temperature areas. Diversified offers 24-hour surface evaluation. We provide secure and customized real-time data communication, in-house research and development and 24/7 on-call support for our equipment and our engineers. Whether you have a 10-day job or 110-day job, we provide the specialized attention you require. So, relax. We're with you every step of the way.



*Serving the Gulf Coast for over 40 years.*

New Orleans • Lafayette • Houston • Dallas • Corpus

800.280.2096

711 West 10th Street • Reserve, LA 70084 • Phone: 985.536.4143 • Fax: 985.536.2427  
sales@dwl-usa.com



**FULLY INTEGRATED AND  
CENTRALIZED BIOSTRATIGRAPHIC  
SERVICES**

▼ *Single-source biostratigraphic databases  
for increased accuracy and consistency*

▼ *Integrated foram / nannofossil analyses*

▼ *Complete wellsite paleo services*

▼ *In-house sample preparation  
lab for quality-monitoring  
and efficiency*

▼ *Sample pick-up service*

6619 Fleur de Lis Drive  
New Orleans, LA 70124  
(504) 488-3711

[www.paleodata.com](http://www.paleodata.com)

**MCMORAN EXPLORATION CO.**



**MCMORAN  
OIL & GAS**

[www.mcmoran.com](http://www.mcmoran.com)

NYSE: MMR

16676 Northchase Dr.  
Houston, TX 77060  
(281) 539-7600  
Fax: (281) 539-7655

1615 Poydras  
New Orleans, LA 70112  
(504) 582-4000  
Fax: (504) 582-4155

110 Travis St., Suite 140  
Lafayette, LA 70503  
(337) 735-9150  
Fax: (337) 735-9151

**NOGS CONTACT LIST**

--- continued from page 3 ---

**MEMORIAL FOUNDATION**

**BOARD OF TRUSTEES**

2009-10 Chairman	William M. Whiting
2009-10 Secretary	Tom Klekamp
2009-10 Trustee	Michael C. Fauquier
2009-10 Trustee	J. David Cope
2010-11 Trustee	Timothy J. Piwowar
2010-11 Trustee	Michael N. Fein
2011-12 Trustee	Monte Shalett
2011-12 Trustee	James Swaney

<b>Company</b>
Consultant
Amber Resources LLC
W & T Offshore
Ankor Energy
Shell
W & T Offshore
Berkshire Exploration Co
MMS

<b>Phone</b>
504-947-8495
985-845-4046
504-210-8192
504-596-3672
504-728-4066
504-210-8148
504-831-7779
504-736-2677

<b>E-mail</b>
bootscon@aol.com
klekamp@bellsouth.net
mfauquier@wtoffshore.inc
dcope@ankorenergy.com
tim.piwowar@shell.com
mikef@wtoffshore.com
mshalett@gmail.net
james.swaney@mms.gov

**AAPG DELEGATES**

**Term Ends**

2011	Tom Hudson
2011	Edward B. Picou, Jr.
2011a)	Brenda Reilly
2011a)	Robert Rooney
2012	William Whiting
2012	Jim Zotkiewicz
2012 a)	David E. Balcer
2012 a)	Richard J. Stancliffe

Chevron
Consultant
Energy Partners Ltd.
Century Exploration
Consultant
Zot Oil & Gas
Chevron
Shell Expl & Prod Co.

985-773-7163
504-529-5155
504-799-4811
504-832-3777
504-947-8495
504-831-4694
985-773-6725
504-728-7553

tom.hudson@chevron.com
epicou@bellsouth.net
breilly@eplweb.com
Robert.rooney@centuryx.com
bootscon@aol.com
jimzot38@zotoil.com
dbalcer@Chevron.com
richard.stancliffe@shell.com

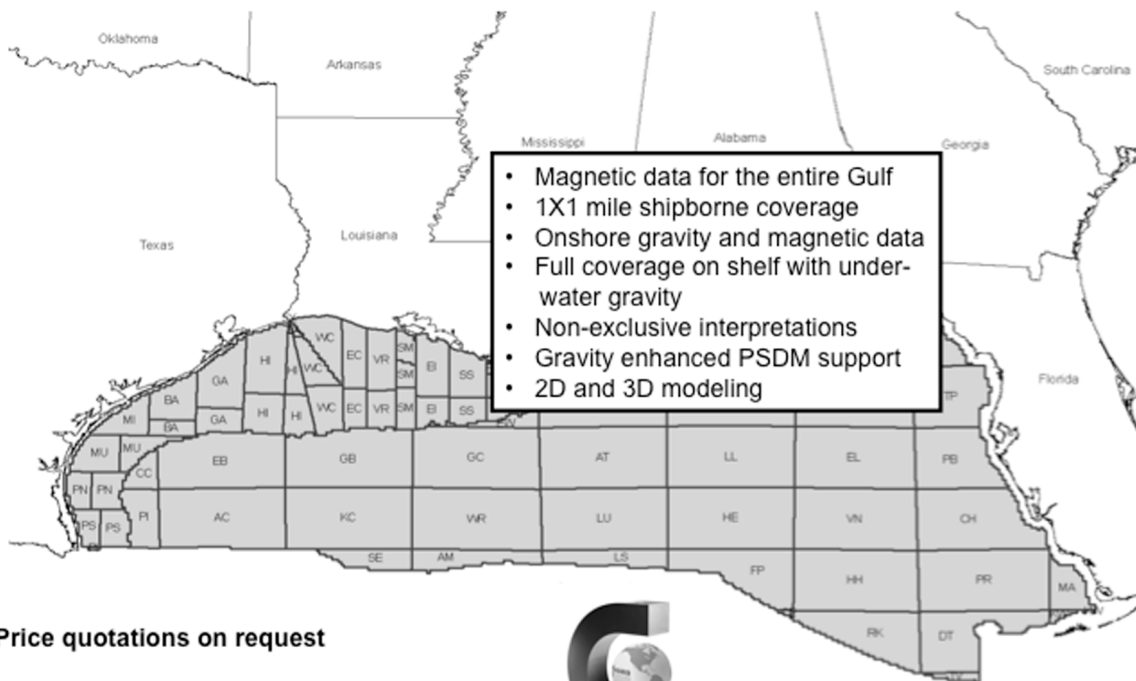




# Fugro Gravity & Magnetic Services

LAND • AIRBORNE • UNDERWATER • SHIPBORNE

The most complete coverage Onshore and Offshore Gulf of Mexico



Price quotations on request

Fugro Gravity & Magnetic Services  
www.Fugro-GravMag.com  
Tel: 713-369-6123



Gravity Inspired. Magnetically Inclined.

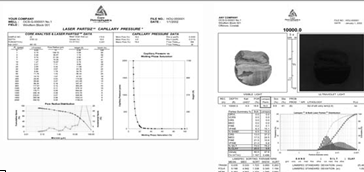


## Sidewall Core Specialists

**Experts in Small Sample, Laminated and Shaly Sand Analysis**

### Laboratory Services:

- Core / Log Integration
- Laser Enhanced Permeability
- Porosity
- Fluid Saturations
- Measured Descriptions
- Critical Water
- Capillary Pressure Simulation
- UV Photography /Digital Images
- Lamination Characterization
- NMR Measurements
- Petrology

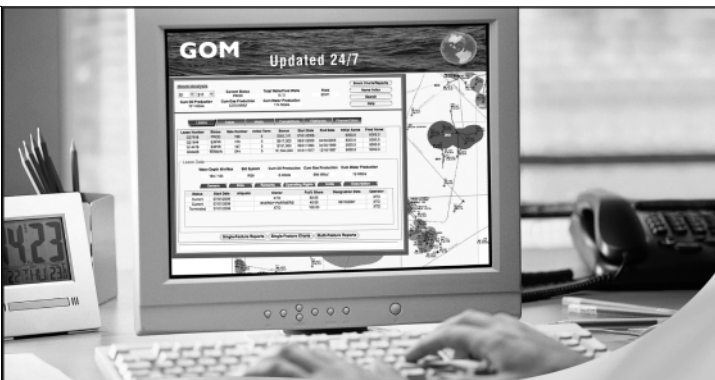


Core Lab has made many improvements to sidewall core testing which have had a positive synergistic effect on overall data quality.

Laser particle size analysis, Lamination specific analysis, UV-Visible Spectroscopy, lamination classification, Photospec summary reports, digital data bases via our website and capillary pressure simulation are all innovations introduced by Core Lab to help our clients obtain maximum benefit from their samples and analyses.



Core Laboratories 504-733-6583



**GOM**  
smart

**An ocean of GOM DATA... updated for you 24/7**

Introducing GOMsmart. Web-based GOM data with real-time updates. No special software or training. Access data via intuitive interface or customizable maps.

- Wells: header, production, tests, 250,000+ logs
- Production Data: historical and current
- Paleo Data: access to 100,000+ observations
- Affordable: monthly and annual subscriptions

Visit [www.GOMsmart.com](http://www.GOMsmart.com) for your FREE trial.



## At Fairfield the future is now.

Our updated seismic vessels equipped with Fairfield's Z700 ocean bottom node systems will be fully operational in the Gulf of Mexico during 2009. By utilizing longer offsets and the continuous recording capability of Z700, Fairfield will be able to image data to unprecedented depths of over 75,000 feet.

By the end of 2009 our entire database will have been processed using Curved Ray Migration and an additional 500 blocks of depth data will have been added.



The Future begins today. Don't be left in the past.

SEISMIC  
SYSTEMS

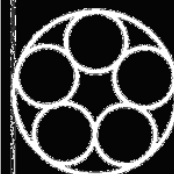
DATA  
ACQUISITION

DATA  
PROCESSING

DATA  
LICENSING

281 278 7500

[Fairfield.com](http://Fairfield.com)



Fairfield  
INDUSTRIES

# Baton Rouge Geological Society



## *4th Annual Louisiana Groundwater & Water Resource Symposium*

April 6 & 7, 2010

## **Louisiana Water a Valuable Resource**

Energy Coast & Environment Building  
Louisiana State University  
Baton Rouge, Louisiana

Hosts:

Louisiana Geological Survey  
Baton Rouge Geological Society





## Eni Petroleum

1250 Poydras Street  
Suite 2000  
New Orleans, LA 70113  
Tel: (504) 593-7000  
Fax: (504) 593-7745

1201 Louisiana Street  
Suite 3500  
Houston, TX 77002  
Tel: (713) 393-6100  
Fax: (713) 393-6205



**Shell has worked in partnership  
with the NOGS for many years, and  
is proud to count the society among  
its closest business associates.**

The New Orleans Geological Society was organized in 1941 to foster scientific research and advance the science of geology. Particular emphasis is laid on the exploration for and production of petroleum and natural gas. Related objectives include encouraging the adoption of improved methods of exploration, disseminating pertinent geological and technological data, and maintaining a high standard of professional conduct among its members.

[www.shell.com/us.sepc](http://www.shell.com/us.sepc)

# SEI®

## Seismic Exchange, Inc.

**Strategic Speculative Surveys  
Geophysical Data Marketing & Management**

**Your**  
**Full Service**  
**National**  
**Seismic Data**  
**Marketing Firm**

New Orleans  
Dallas  
Houston  
Denver  
Oklahoma City  
Corpus Christi  
Tulsa

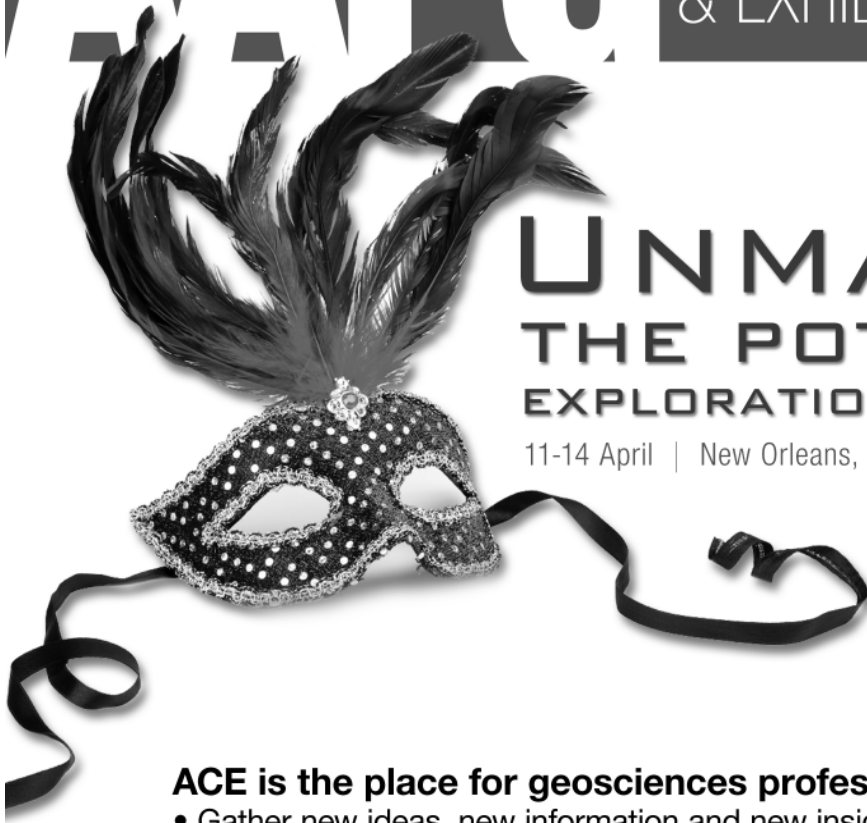
201 St. Charles Avenue, Suite 4300, New Orleans, Louisiana 70170-4300  
Telephone 504.581.7153 Fax 504.581.9591  
[www.seismicexchange.com](http://www.seismicexchange.com)



# AAPG

## 2010 ANNUAL CONVENTION & EXHIBITION

Registration  
opens December  
2009



# UNMASKING THE POTENTIAL OF EXPLORATION & PRODUCTION

11-14 April | New Orleans, LA | Ernest N. Morial Convention Center

**ACE is the place for geosciences professionals to:**

- Gather new ideas, new information and new insights
- Discuss industry issues with peers from nearly 90 countries
- Meet cutting-edge partners who can help optimize their operation
- Gain new industry knowledge and learn about competitors
- See the latest products, technologies and services



[www.AAPG.org/NewOrleans](http://www.AAPG.org/NewOrleans)

## Excerpts from External Affairs

Michael Fogarty

Chair – External Affairs Committee



The first in a series of the ethics courses and examinations is now online!

**“The Ethics Storybooks with Tales from the Oil Patch” by John Gibson** is a video that takes about an hour to complete along with questions that follow. Watch the video as many times as you like. Successfully completing the questions qualifies each person **for one (1) Professional Development Hour (PDH)**. <http://www.aapg.org/dpa/video/video.aspx>

**OnePetro** is a new multi-society library hosted by SPE where you can search for and purchase documents from multiple societies in a single transaction. Current participants include American Rock Mechanics Association (ARMA), NACE International, Society of Petroleum Engineers (SPE), Society of Petrophysicists and Well Log Analysts (SPWLA), and World Petroleum Council (WPC). OnePetro is the first online availability of individual ARMA and WPC documents. OnePetro is expected to continue to grow as new organizations join.

<http://www.onepetro.org>

AAPG 2010 Congressional Visits Day, May 10-12, 2010.

Planning is underway for the AAPG 2010 Congressional Visits Day. Registration has not yet opened for this event. But if you would like more information as it becomes available, please send an email with contact information indicating your interest and we will add you to our contact list.

<http://www.aapg.org> contact David Curtiss. Please go to [http://www.nogs.org/nogs\\_external\\_affairs.html](http://www.nogs.org/nogs_external_affairs.html) for more events and information.

---

## Celebrate with the New Orleans Geological Society An Evening with “America’s Greatest Generation” at the National World War II Museum

**Tuesday, April 13, 2010 from 7:00 to 10:00 p.m.**

- \* Enjoy a memorable and relaxed evening with your friends and colleagues
- \* Open bar social
- \* Fabulous Southern buffet dinner catered by world-renowned Chef John Besh
- \* Access to all the Museum’s exhibit areas for touring at your leisure.
- \* For more information about the Museum and its various amenities, please visit [www.nationalww2museum.org](http://www.nationalww2museum.org)
- \* Round-trip bus transportation will be provided from the AAPG Convention Headquarters Hotel to the Museum and will be available 6:15 to 10:45 p.m.
- \* Cost of admission: \$50 per person

<http://www.aapg.org/neworleans/documents/NOSponsorBrochure.pdf>  
or contact

Robert Rooney at (504) 832-3777 — [robert.rooney@centuryx.com](mailto:robert.rooney@centuryx.com)  
or Al Baker at (504) 836-2710 — [ABaker1006@aol.com](mailto:ABaker1006@aol.com)



## NOGS CONGRATULATES THE FOLLOWING FOR THEIR YEARS OF MEMBERSHIP IN THE SOCIETY

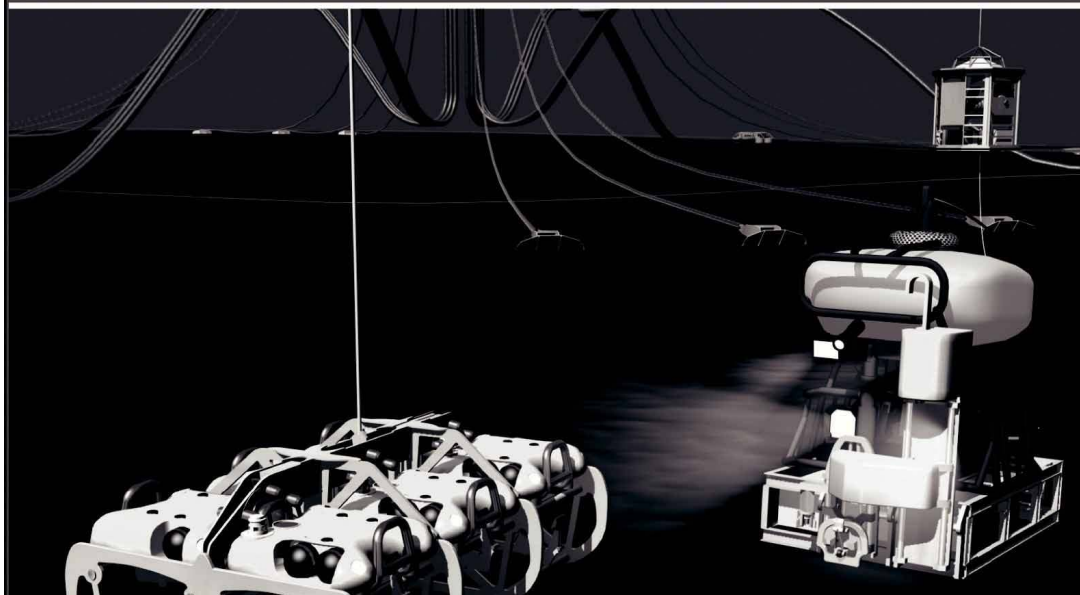
<p style="text-align: center;"><b>70 Years</b> Lawrence B. Eustis</p>		<p style="text-align: center;"><b>60 Years</b> Uno Nummela John T. Velkas</p>
<p style="text-align: center;"><b>50 Years</b> Leo R. Bader Jr. Richard E. Bennett Philip Beron Jr. Charles A. Brinkley Eugene E. Cobb Rhys J. Davies F. Wilson Hood Russell H. Nordwell Edward B. Picou Jr. Jaser N. Rafidi George W. Schneider Jr. Robert G. Williamson James W. Yeldell Jr.</p>	<p style="text-align: center;"><b>40 Years</b> Michel J. Bechtel Maurice N. Birdwell Arthur F. Christensen James A. Christian Phil Dupler Thomas E. Johnson Roger D. Linder John H. McCandless Calvin A. Parker James Swaney Jr.</p>	<p style="text-align: center;"><b>25 Years</b> J. Sybil Callaway Karen M. Chambers Larry Galloway Bret Hampton Terry A. Johnston Gil Klefstad Michael J. Roberts Jackie D. Stewart Mark T. Sunwall Susan A. Waters</p>

## INFOETIDBITS

- New studies have determined that the Arctic may hold up to 22% of the world's undiscovered oil and gas reserves. Expensive to produce and predominantly natural gas, development of these areas is not expected to be extensive in the near term.  
<http://geology.com/energy/arctic-oil-and-gas-potential>
- "The khaki pants and the funny hat, and you know it's a geologist." Scientists discover the greatest location possible to study the San Andreas Fault ... DeRose Vineyards.  
<http://online.wsj.com/article/SB125936328750267155.html>
- Researchers with PLUME (Plume-Lithosphere Undersea Melt Experiment) have produced the first high resolution seismic images of "hot spots." The mantle plumes were detected at depths of 1500 meters (932 miles), which is much deeper than originally thought.  
[http://www.geologytimes.com/research/Hawaiian\\_hot\\_spot\\_has\\_deep\\_roots.asp](http://www.geologytimes.com/research/Hawaiian_hot_spot_has_deep_roots.asp)
- The Hudson Canyon is critical for healthy Atlantic Ocean marine ecosystems. Newly discovered "pits" which form after the dissolution of hydrates, provide shelter and nutrients which allow benthic communities to thrive.  
<http://news.rutgers.edu/medrel/news-releases/2009/12/a-closer-look-at-the-20091201>

**- Liz Petro and Fran Wiseman**

# Finally - An answer for getting reservoir seismic **OVER THE RESERVOIR!**



## • 4C/4D Node Seismic

- ANGOLA
- GoM
- NIGERIA



**“Coming Soon to an Oilfield Near You!”**

[www.sbexp.com](http://www.sbexp.com)

**Dubai**  
T: +971 4 4271700

**Houston**  
T: +1 281 566 1666

**Oslo**  
T: +47 2240 2700

**Rio**  
T: +55 21 2494-0283

**Singapore**  
T: +65 9180 2605

**Trondheim**  
T: +47 7 3879500

**RAISING THE STANDARD**



**100 Northpark Blvd.  
Covington, LA 70433**

**(985) 773-6000**

*“Serving the Oil & Gas Industry Since 1983”*

Geological,  
Geophysical &  
Land Drafting

**Anthony Catalanotto**

*President*

**Stefani Kelone**

*Drafting and Design*



**Geo-Draft, Inc.**

*A Professional Drafting & Graphics Firm*

3349 Ridgelake Drive □ Suite 202 □ Metairie, LA □ 70002

Office: (504) 836-2882 Fax: (504) 836-2877

[geodraft@bellsouth.net](mailto:geodraft@bellsouth.net)



**LaBay**  
**Exploration Co., L.L.C.**


111 Veterans Memorial Blvd.,  
Suite 1550  
Metairie, Louisiana 70005


[www.labayexploration.com](http://www.labayexploration.com)


Office (504) 371-5967  
Fax (504) 371-5969

***This advertising space is  
available! Contact the  
NOGS office.***

# A Company that Shines

 Geophysical Products

 Geological Products

 Imaging Services



TGS has been providing best-in-class multi-client data and services to successful E&P companies for over a quarter century. Our geophysical and geological data products are distributed around the globe and include one of the youngest and best targeted multi-client seismic libraries, extensive magnetic and gravity data, the industry's largest global database of digital well logs, and regional interpretive products. We also provide high-end depth imaging services to help resolve complex seismic imaging problems. Together, our products and services give you a more complete picture of the subsurface to help your exploration program *shine*.

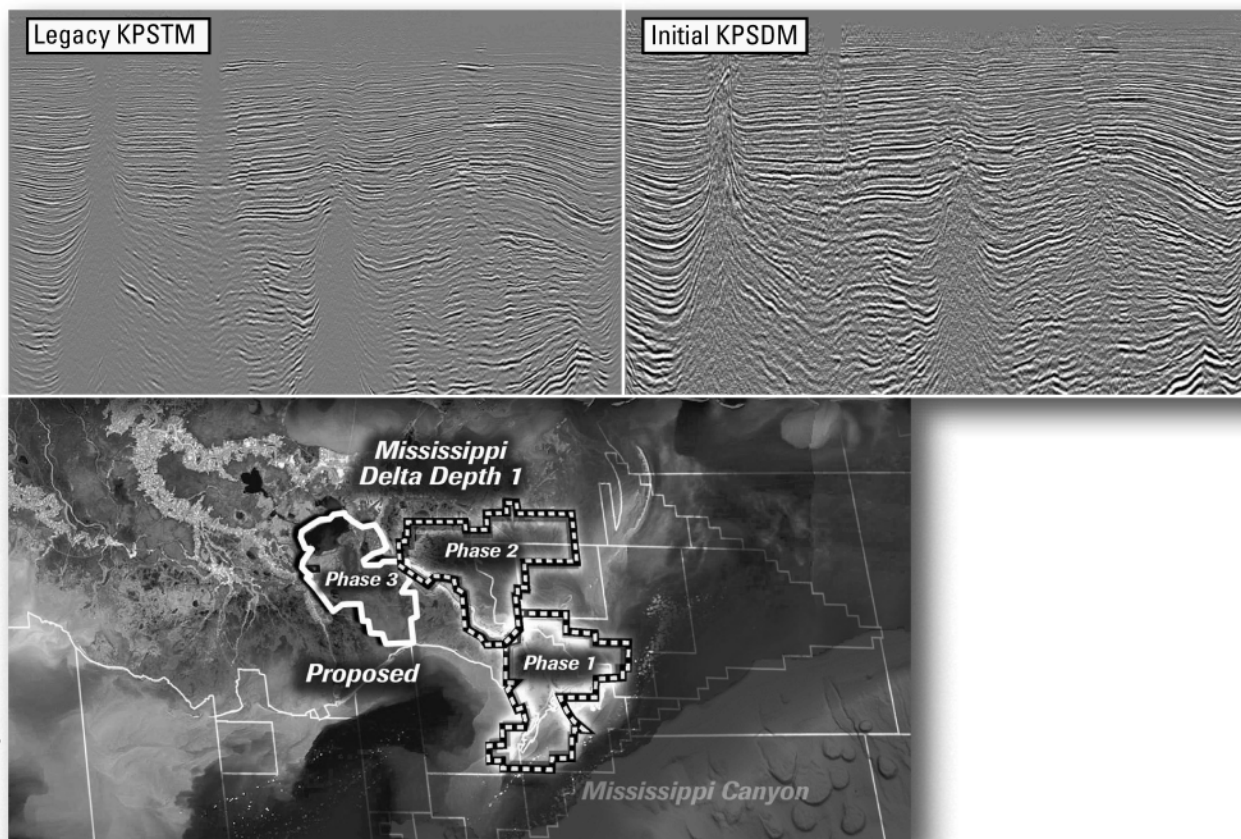
For more information, visit [www.tgsnopec.com](http://www.tgsnopec.com) today.



[www.tgsnopec.com](http://www.tgsnopec.com)

NORWAY +47 66 76 99 00 | USA +1 713 860 2100 | UK +44 (0) 1234 272122 | AUSTRALIA +61 8 9480 0000 | RUSSIA +7 495 959 8117  
©TGS-NOPEC Geophysical Company. All Rights Reserved.

## Improved depth imaging in the Mississippi Delta



In the Mississippi Delta region, WesternGeco is utilizing state-of-the-art processing designed to eliminate fault shadows and enhance deep imaging. The Mississippi Delta - Depth 1 survey, now in progress, incorporates the processing and remigration of twelve legacy surveys covering 1,855 square miles. High-quality time imaging using relative amplitude anisotropic Kirchhoff prestack time migration will be followed by improved structural imaging utilizing anisotropic Kirchhoff prestack depth migration.

To learn more about this and other Multiclient products, call +1 713 689 1000.

[www.multiclient.westerngeco.com/la](http://www.multiclient.westerngeco.com/la)

**Multiclient to the Power of E**



# THE NEW ORLEANS GEOLOGICAL SOCIETY MEMORIAL FOUNDATION, INC.

The Memorial Foundation is an IRS Tax Exempt Code #501 (c)(3) organization. The Federal I.D. is: 72-1220999. Please consider making your donation prior to the close of this year's fiscal cycle which is September 30, 2010. Your individual support in any amount will help meet the IRS Guidelines for our Foundation. *Thanks!*

## \$15,000 AND ABOVE

**Olga Braunstein Succession**

**Gibbett Hill Foundation**

*In Memory of Steve & Marion Millendorf, William J. Prutzman,  
Roger G. Vincent & Ron Youngblood*

## \$10,000

**George W. Schneider, Jr. and Family**

*In Memory of George W. Schneider, Sr.*

## \$2,000 TO \$3,000

**NOGS Golf Tournament May 2008**

*In Memory of Bill Craig*

## \$250 TO \$499

**Carlo C. Christina**

*In Memory of Al Gilbreath*

**Fotiades Mineral Interests**

**Julie Fotiades, Joan Fotiades**

**Evelyn Fotiades Poulos**

*In Memory of George W. Schneider, Sr.*

**Kathy King Family**

*In Memory of George W. Schneider, Sr.*

## \$7,000 TO \$9,000

**Paul C. Mc Williams**

## \$1,000

**John M. Henton, Jr.**

*In Memory of Dr. Gordon Frey*

**Bill Schneider Family**

*In Memory of George W. Schneider, Sr.*

**Susan King Family**

*In Memory of George W. Schneider, Sr.*

**John C. Kuczewicz, Jr.**

*In Memory of Bill Craig.*

# FONO FUND

The FONO Fund accepts contributions that are invested and the income dedicated to assure sufficient financial resources will always be available to maintain the NOGS business office. Contributors are reminded that donations to the FONO Fund are not covered by the IRS 501 (c)(3) tax exempt classification and should be reported as a business expense on your IRS tax report.

## UP TO \$250

**Woods W. Allen, Jr.**

**Donald I. Andrews**

**Alfred H. Baker Jr.**

**Philip Beron, Jr.**

**Joseph E. Boudreaux**

**Hillary James Brook**

**Jack G. Bryant**

**J. Sybil Callaway**

**Anthony Carolla, Jr.**

**Arthur F. Christensen**

**James S. Classen**

**Richard P. Colomes**

**John Dombrowski**

**Merle J. Duplantis**

**Richard A. Edmund**

**Parrish N. Erwin, Jr.**

**Niles R. Faulk**

**Michael N. Fein**

**Laurens Gaarenstroom**

**Mark J. Gallagher**

**Arthur J. Garden**

**Duncan Goldthwaite**

**Peter G. Gray**

**James A. Hartman**

*In Memory of Hal Hudson*

*In Memory of Brian J. O'Neill*

**Bernard L. Hill, Jr.**

**Owen R. Hopkins**

**Thomas A. Hudson**

**Kenneth Huffman**

**C. M. (Max) Jacobs**

**Robert M. Jemison, Jr.**

**Paul Jurik**

**Terry Keegan**

**Tom Klekamp**

**Reuben J. Klibert, Jr.**

**William J. Malin**

**Jeannie F. Mallick**

**George M. Markey, Jr.**

**James A. McCarty**

**Robert H. Monahan**

**Robert G. Murphy**

**William J. O'Leary**

**Richard A. Olsen**

**William S. Peirce**

**Jaser N. Rafidi**

**James P. Raymond, Jr.**

**C. R. Rondeau**

**George D. Severson**

**Rudolf B. Siegert**

**Diana "Dee" E. Smith**

**Raymond Stephens**

**Scott A. Wainwright**

**Roy C. Walther**

**Robert C. Weissmann**

**William M. Whiting**

**Louis E. Willhoit, Jr.**

**Thomas V. Wilson**

**Jim Zotkiewicz**

## UP TO \$249

**Donald I. Andrews**

*In Memory of Ray F. Havard*

*In Memory of Harlan (Lanny) Northcott*

**Robert J. Ardell**

*In Memory of Dr. Gordon Frey*

**Mr. and Mrs. Wesley Barton**

*In Memory of Thomas A. Cullinan*

**Abraham Biadgelgne**

**Maurice N. Birdwell**

*In Memory of Texaco*

**Hilary James Brook**

**Jack G. Bryant**

**Rob Burnett**

**F. Robert Bussey**

*In Memory Robert S. Kline*

**J. Sybil Callaway**

**Chevron**

*Matching Funds*

**Arthur F. Christensen**

**Ellen F. Clark**

**James S. Classen**

*In Memory of Thomas A. Cullinan*

*In Memory of George W. Schneider, Sr.*

**Clarence F. Conrad**

**Charley Corona**

*In Memory of McLain Forman*

*In Memory of Professor Hubert Skinner*

**Trudy and Charley Corona**

*In Memory of Thomas A. Cullinan*

**Michael A. Danahy**

**M. R. "Bob" Douglass**

*In Memory of Jack Read*

**Merle J. Duplantis**

**Parrish N. Erwin, Jr.**

**Exxon Mobil Matching Funds**

**Niles R. Faulk**

**Michael N. Fein**

**David Garner**

**Laurens Gaarenstroom**

**Mark J. Gallagher**

**Peter G. Gray**

*In Memory of Thomas A. Cullinan*

**Angela M. Hessler**

**Bernard L. Hill, Jr.**

**Owen R. Hopkins**

**Dan E. Hudson**

**Thomas A. Hudson**

**Kenneth Huffman**

**Jeffrey E. Jandegian**

**Arthur H. Johnson**

*In Memory of George W. Schneider, Sr.*

**Tom Klekamp**

**Richard G. Klibert**

**William J. Malin**

**Jeannie F. Mallick**

**George M. Markey, Jr.**

**Michael L. Merritt**

**Robert G. Murphy**

*In Memory of Thomas A. Cullinan*

**New Orleans Geological Auxiliary**

**Russell H. Nordwell**

**Richard A. Olsen**

*In Memory of Richard W. Boebel*

*In Memory of Robert W. Sabate'*

**Teresa M. O'Neill**

*In Memory of Brian J. O'Neill*

**Linda and Bill Peirce**

**Edward B. Picou Jr.**

*In Memory of Dr. M. Gordon Frey*

*In Memory of Brian J. O'Neill*

**Richard D. Provensal**

**Edmund L. Russell**

**George D. Severson**

**Robert C. Shoup**

**Rudolph B. Siegert**

**Daniel L. Smith**

**Diana "Dee" E. Smith**

**John D. Silvernail**

*In Memory of Colles C. Stowell*

**Dr. J. O. Snowden**

**Raymond O. Steinhoff**

*In Memory of Hubert C. Skinner*

*In Memory of Harold E. Vokes*

**Stephen Szydlak**

**Scott A. Wainwright**

**Roy C. Walther**

**Arthur S. Waterman**

*In Memory of T. Wayne Campbell*

**William M. Whiting**

**Louis E. Willhoit, Jr.**

**Armour C. Winslow**

*In Memory of Rita Menzel*

*Winslow*

**Frances A. Wiseman**

*In Memory of Steve Widdicombe*

**Jim Zotkiewicz**

*In Memory of Bill Craig*

**Robin A. Broussard**

**Chevron**

**Bernard L. Hill, Jr.**

**Jeff Jandegian**

**John C. Scheldt**

**Candace V. Strahan**

*In Memory of James Strahan*



## **CALL FOR PAPERS**

**60<sup>th</sup> Annual Convention**  
**October 10-12, 2010**  
**San Antonio, Texas**

*Hosted by the South Texas Geological Society*



Welcome back to San Antonio! Our theme this year is ***"Weathering the Cycles"*** – a challenge that resource geologists certainly have faced and overcome in the past! How do we weather the economic cycles? We...

- ✓ Network with our community
- ✓ Experience the latest technology in the technical exhibition
- ✓ Take a course or a trip and grow new and diverse skills
- ✓ Listen to special presentations on strategies to endure and prosper during an economic downtime and prepare for the inevitable rebound.

By celebrating our successes, facing our challenges, and learning from the research results of our peers, we are paid back many fold by sharing ideas and experiences among our professional community. So come and share your experiences! Suggest a session topic, present an oral paper or a poster, learn about the latest ideas and technologies in our field. Come to San Antonio and enjoy the Gulf's own geoscience convention!

### **PROPOSED TECHNICAL SESSIONS INCLUDE...**

- ✓ **Organic 'Shales' of the Gulf Coast – Controls on Reservoir Quality and Producibility**
- ✓ **Gulf of Mexico Paleogene – Reservoirs, Events and Controversies**
- ✓ **Eastern Gulf of Mexico – Exploration Potential and Environmental Challenges**
- ✓ **Texas/Mexico Borderlands – Structures, Resources, and Lessons Learned**
- ✓ **Unconventional Resources – Exploration Decisions and Production Issues**
- ✓ **Integration of Seismic Geomorphology and Wellbore Data – Case Studies**
- ✓ **New and Evolving Technologies – Impact on Commerciality**
- ✓ **Horizontal Drilling and Formation Stimulation – Edwards, Wilcox, and elsewhere**
- ✓ **Carbon Sequestration – Risks, Opportunities, and Implications for EOR**
- ✓ **Alternative Energy Solutions – The Role of Geoscience**
- ✓ **Water for a Growing Region – Geology, Water Quality, and Resource Management**
- ✓ **Geologic Training and Education – Preparing for the Crew Change**

### **HOW TO SUBMIT:**

Abstracts (not more than 250 words) should be submitted for review online or via email to the technical program chair. Papers should have application to Gulf Coast and Gulf of Mexico geology. Include your full mailing address, telephone and FAX numbers, email address, and whether you are submitting for **oral** or **poster** or **either** (preferred).

**Submit abstracts by February 1, 2010 as instructed on the website [www.gcags2010.com](http://www.gcags2010.com)**

Notification of acceptance by March 1, 2010. All presenters, both oral or poster, must submit either a paper (10-12 pages) or an extended abstract with key figures for review by **April 16, 2010**, for inclusion in the *Transactions*. Full instructions for authors will be posted at [www.gcags2010.com](http://www.gcags2010.com).

### **ABSTRACT DEADLINE: FEBRUARY 1, 2010!**

Questions or ideas for the technical program should be directed to:

Dr. Mary Feeley  
Technical Program Chair  
281-654-3588

[missy.feeley@exxonmobil.com](mailto:missy.feeley@exxonmobil.com)

Dr. Alan Dutton  
GCSSEPM Co-Chair  
210-458-5746

[alan.dutton@utsa.edu](mailto:alan.dutton@utsa.edu)

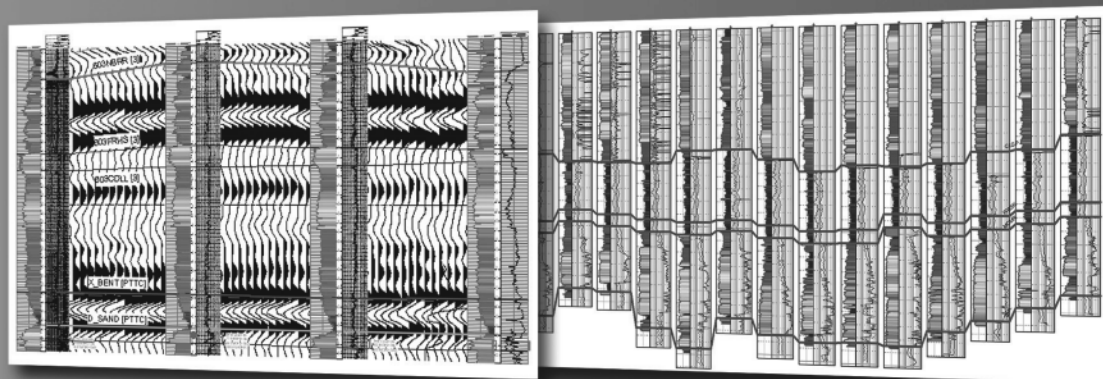


# Define your geological model faster than ever before

**NO MORE WAITING! Available today from IHS, easy and affordable access to one of the largest U.S. digital log collections**

- More than 185,000 LAS files with over 1.5 million curves
- Regional subscription packages for today's active play areas
- Indexed to IHS well and production data
- Linked to the IHS Enerdeq® Browser for quick regional studies and log selection
- Available via IHSLogNet.com or on DVD
- Ready to use in PETRA and other log packages

Request a free 2' x 3' IHS digital log coverage map at [ihs.com/energy/DigitalLogs](http://ihs.com/energy/DigitalLogs)



Use PETRA® to integrate digital log, well, production, perf, seismic and tops data. IHS is the only company to provide you with the complete picture

Why wait? Subscribe today! Call 888.OIL.DATA (645.3282) or e-mail [sales.energy@ihs.com](mailto:sales.energy@ihs.com)



**The Source**  
for Critical Information and Insight™



**Shoreline Gas Inc.**  
**www.shorelinegas.com**  
**Full Service Natural Gas Marketing**



**Sydboten & Associates, Inc.**  
*Geological and Geophysical Consulting,  
 3-D Seismic Interpretation*

**Ben D. Sydboten, Jr. CPG**

124 Heymann Blvd., Suite 202  
 Lafayette, LA 70503

Office (337) 234-5288  
 Cell (337) 234-5491

## ATWATER CONSULTANTS, LTD.

REGISTERED AND CERTIFIED PETROLEUM PROFESSIONALS

GEOLOGICAL, ENGINEERING, GEOPHYSICAL,  
 TRAINING AND EXPERT WITNESS SERVICES

3525 Hessmer Ave, Ste 304  
 Metairie LA 70002

Tel. (504) 581-6527  
 Fax (504) 524-7798

*Please support NOGS advertisers!*



626 E. Kaliste Saloom  
 Lafayette, La 70508

16900 Greenspoint Dr, Suite 225-S,  
 Houston, Tx 77060

[www.stoneenergy.com](http://www.stoneenergy.com)



**CIMAREX ENERGY CO.**

GULF OF MEXICO REGION  
 GOM, SE La., N. La., MS, AL

1100 Poydras St.; Suite 1100

New Orleans, Louisiana 70163

504-586-1815 / Fax 504-586-9035

Keith Gourgues  
 Region Manager

## NORTHCOAST OIL COMPANY

610 E. Rutland St.  
 Covington, LA 70433  
**(985) 898-3577**  
**(985) 898-3585 FAX**

**Jack M. Thorson**  
**Eric C. Broadbridge**  
**J. Daryl Gambrell**  
**Raymond W. Stephens**

(832) 242-6000 (O)  
 (713) 917-0493 (O)

(504) 931-7506 (C)  
[johnjurasin@jurasinoilgas.com](mailto:johnjurasin@jurasinoilgas.com)

## JURASIN OIL & GAS

9700 Richmond Ave., Suite # 124  
 Houston, TX 77042-4821

JOHN M. JURASIN  
 President

Cert. Pet. Geologist #4284  
 Cert. Prof. Earth Scientist #1961

### Collarini Energy Staffing

Full-Time and Temporary Personnel

Facilities • Drilling • Production • Reservoir Engineering  
 Land and Legal • Geoscience • Information Technology •  
 Health and Safety • Management • Supply Chain  
 Accounting • Administrative Support

11111 Richmond Ave., Suite 126  
 Houston, Texas 77082

832-251-0553



[www.collarini.com](http://www.collarini.com)

### Collarini Associates

Reservoir Engineering  
 Oil & Gas Property Evaluation  
 3-D Seismic Interpretation  
 Integrated Field Studies

832-251-0160  
 504-887-7127

Houston  
 New Orleans

**NOGS thanks our  
 sponsors for their support:**

### GOLD LEVEL SPONSORS:

**CHEVRON**

**LA BAY EXPLORATION CO, LLC.**

**SPECIAL THANKS TO  
 DIVERSIFIED WELL LOGGING**



Introducing  
**KINGDOM  
ADVANCED**

The Future of Interpretation


## Taking Geoscience To New Frontiers

SMT's ease of use has made it the geoscience software choice for 2500 customers in 95 countries. KINGDOM Advanced takes SMT's science into the next generation on the largest of data sets.

Best of all, it's so cost effective you can make the best science available to every interpreter. At every location. Even in remote offices that lack IT support.

*Never again sacrifice your workflow because of the software.*

See the future today - at [www.seismicmicro.com/advanced](http://www.seismicmicro.com/advanced)

<b>ANSYTHE</b> Donald I. Andrews 504-887-3432 	<b>D-O-R ENGINEERING, INC.</b> 3-D and Geoscience Services P O Box 80812 Baton Rouge LA 70898
<b>THE BOEBEL COMPANY</b> Oil and Gas Investments 170 Broadway Street, Suite 321 New Orleans, LA 70118 (504) 866-4313	<b>EDWARD B. PICOU, JR.</b> Consulting Micropaleontologist - Retired 228 St. Charles Ave., Suite 1330 C New Orleans, LA 70130 Bus. (504) 529-5155 Res. (504) 282-3096
<b>BOO-KER OIL &amp; GAS CORP.</b> Gray S. Parker 826 Union, Suite 300 New Orleans, LA 70112 Bus. (504) 581-2430 Fax (504) 566-4785	<b>H. WARREN BELL</b> Oil and Gas Exploration 2500 Tanglewilde, Suite 485 Houston, TX 77063-2126 Bus (713) 266-7297 Fax (713) 266-7298
<b>C &amp; R EXPLORATION, INC.</b> Carlo C. Christina Lawrence G. Ringham	<b>PHELPS GEOSCIENCE</b> Onshore Gulf of Mexico Geology and Geophysics Prospect Generation and Evaluation Houston, TX jsfphelps@yahoo.com (281) 398-5208
<b>C. R. RONDEAU</b> Petroleum Geologist 119 W Southland Ave. Ironwood, MI 49938 Res. (906) 932-4692	<b>RAFIDI OIL AND GAS, INC.</b> Jaser N. Rafidi, President 4415 Shore Dr., Suite 202 Metairie, LA 70006 Bus. (504) 722-2942 Fax (504) 888-5539; Res. (504) 888-1661
<b>CLASSEN EXPLORATION, INC.</b> James S. Classen Looking for close in deals P.O. Box 140637 Boise, ID 83714 Bus. (208) 854-1037 Fax (208) 854-1029 classenllc@msn.com	<b>ROY C. WALTHER</b> Petroleum Geologist 2421 Prancer Street New Orleans, LA 70131 Bus. (504) 392-8513 Res. (504) 392-9332
<i><b>This advertising space is available!</b></i> <i><b>Contact the NOGS office.</b></i>	<b>TONY CAROLLO</b> Consulting Geologist Unitization Geosteering Field Studies 1701 Peach Street Metairie, LA 70001 Bus. (504) 885-0004 Res. (504) 885-6829

## Imperial Barrel Award

AAPG's Imperial Barrel Award Program (IBA) is a global competition, where University teams analyze a complete dataset (geology, geophysics, land, economics, production infrastructure, and other relevant materials) in six to eight weeks prior to the competition. Each team delivers their results in a 25-minute presentation to a panel of industry experts.

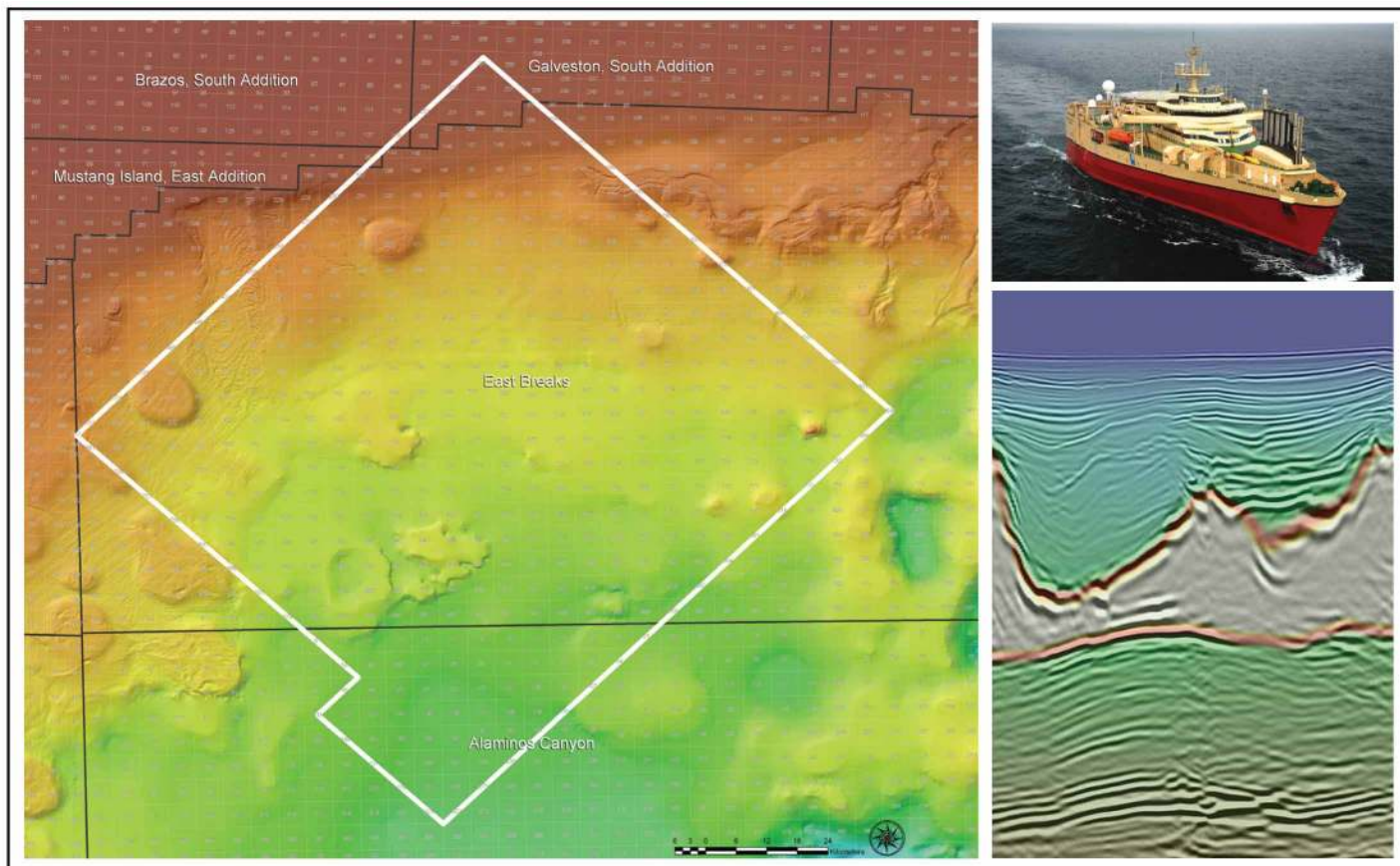
The Gulf Coast competition will take place in March, with the winning team competing in the finals against teams from throughout the world. The finals will be held during the 2010 AAPG Convention in New Orleans. Among the teams entering the Gulf Coast regional competition are LSU, UNO, and Alabama.

Help needed from NOGS members:

- Mentors to make presentations at one or more schools on topics such as basin analysis, subsurface mapping, prospect economics, etc.
- Sponsors to help defray the travel costs for the students

If you would like to help or want additional information, contact Art Johnson (artjohnson51@hotmail.com).





## East Breaks

## MultiClient Wide Azimuth

- **Size** - 450 OCS blocks
- **Focus** - Sub-Salt Paleogene
- **Technology:**
  - Ramform Acquisition with 4.2 km Crossline Offset
  - True Azimuth 3DSRME & TTI Beam and TTI RTM Imaging
- **Delivery** - Available Q1 2010

### PGS MultiClient Wide Azimuth - Delivering a Clearer Image Sub-Salt

Houston  
Tel: +1 281 509 8000  
Fax: +1 281 509 8500

Oslo  
Tel: +47 67 52 6400  
Fax: +47 67 52 6464

London  
Tel: +44 1932 37 6000  
Fax: +44 1932 37 6100

**A Clearer Image**  
[www.pgs.com](http://www.pgs.com)



## NEW ORLEANS GEOLOGICAL SOCIETY



810 Union Street, Suite 300  
New Orleans, LA 70112-1430

# WWW.NOGS.ORG

### MARINE PROPERTIES, LLC BERKSHIRE EXPLORATION CO.

MONTE C. SHALETT, CPL, PRESIDENT

3030 Lausat Street  
Metairie, LA 70001-5924

BUS. (504) 831-7779  
FAX. (504) 831-8315

### PCI

### Paleo Control, Inc.

Houston, Texas  
713-849-0044

Drilling Wells, Studies and Data Base

Loyd Tuttle

Frio, SE Texas

Bob Liska

Wilcox, S and SE Texas

Jim Thorpe

Miocene and Cam-Miogyp



## SEE YOUR DATA IN A WHOLE NEW LIGHT!

Take the pressure out of exploration  
and drilling by seeing what you  
are going to encounter.



### eSeis

www.e-seis.com  
713.531.1447

- Lithology & Fluids
- Depositional Facies
- Pore Pressure from V & Q
- Well Planning Consultation

