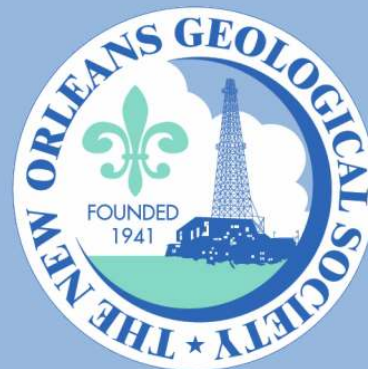


NOGS LOG



February 2010

Volume 50, Number 8

Upcoming Events and Activities

February 1 - NOGS Luncheon

*** At the Holiday Inn Downtown Superdome ***

\$2.00 validated parking in hotel garage

Guest Speaker Kraig L. Derstler will present a talk on "Comparative taphonomy of tyrannosaurid dinosaurs from the Late Cretaceous of the western United States."

(See page 7 for Abstract and Biography)

HOLIDAY INN DOWNTOWN SUPERDOME

ADMISSION:

Check with concierge or

front desk for location

Lunch served at 11:30am

with reservation \$30.00

without reservation \$35.00

Student Member with reservation Free

March 11 - Joint SGS-NOGS Luncheon

Le Pavillon Hotel. Guest speaker and topic to be announced. Check NOGS website for updates.

March 20 - Super Science Saturday

Louisiana Childrens Museum. See announcement on page 20.

April 6 & 7 - 4th Annual Louisiana Groundwater & Water Resource Symposium

Baton Rouge. See announcement on page 13.

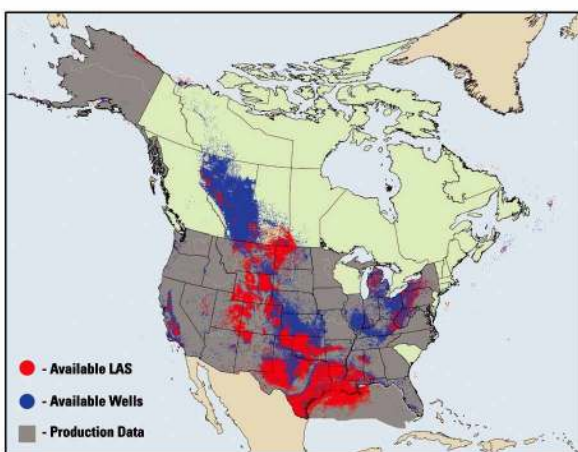
April 11-14- AAPG Annual Convention & Exhibition

New Orleans. See announcement on page 14.

April 13 - An Evening with "America's Greatest Generation"

National World War II Museum. See announcement on page 16.

Missing well data?



Let TGS complete the picture.

TGS adds hundreds of complete LAS everyday to the **world's largest LAS library**, with well logs in 29 countries.

And since you asked for it, we now have nationwide **US Production Data**.

Our well data is online, available immediately, with a team of **dedicated customer support** specialists there for you.

If your own proprietary well files are piling up, our new team of **well data solutions** experts can build a custom solution suited to your needs.

For more information, call 888 LOG-LINE or email us at WellData@tgsnopec.com



Geophysical
Products



Geological
Products



Imaging
Services

www.tgsnopec.com

NORWAY +47 66 76 99 00 | USA +1 713 860 2100 | UK +44 (0) 1234 272122 | AUSTRALIA +61 8 9480 0000
© TGS-NOPEC Geophysical Company. All rights reserved.

NOGS Office

Office Manager: Annette Hudson

Office Hours: 8:30am – 3:30pm on Monday-Wednesday-Friday

Tel: 504-561-8980 □ Fax: 504-561-8988

E-mail: info@nogs.org □ Website: www.nogs.org

The office is located at Suite 300, 810 Union Street, New Orleans, LA 70112.

Correspondence and all luncheon reservations should be sent to the above address.

Sent to press on January 15, 2010.

**BOARD OF DIRECTORS**

President	Tom Klekamp
Vice President	Bob Hafner
Secretary	Jennifer Connolly
Treasurer	Chuck Holman
President-Elect	David E. Reiter
Editor	Elizabeth Petro
Director 2010	Michael M. Ledet
Director 2011	Scott A. Wainwright
Director 2012	Arthur H. Johnson

Company

Amber Resources LLC	985-845-4046
ENI Petroleum	504-593-7605
Shell	504-728-6411
ENI	504-593-7869
ENI	504-593-7606
MMS	504-736-2866
	504-394-9636
Bret Exploration Co Inc	504-889-2700
Hydrate Energy International	504-464-6208

Phone**E-mail**

klekamp@bellsouth.net
Robert.Hafner@enipetroleum.com
jennifer.connolly@shell.com
chuck.holman@enipetroleum.com
david.reiter@enipetroleum.com
nogseditor@gmail.com
mikeledet@cox.net
scott_wainwright@hotmail.com
artjohnson51@hotmail.com

COMMITTEE

AAPG Delegates
AAPG Student Chapter
AAPG Student Chapter
Advertising-Log
Auditing
Awards
Ballot
Best Paper
Continuing Education
Employment Counseling
Entertainment
Environmental
External Affairs
Field Trip
Finance and Investment
Historical
Membership/Directory
New Geoscientists (NGNO)
Nominating
Non-Technical Education
Office Operations
Publications Sales
Photography
School Outreach
Scouting
Technical Projects
Ad Hoc Committee on
University Support

Chairperson

Dave Balcer
Bobby Cosentino
Bryan Rogers
Andrea Stancin
James Swaney
Michael N. Fein
Chuck Holman
David E. Reiter
TBA
TBA
David E. Reiter
Daisy Pate
Michael A. Fogarty
David Garner
Chuck Holman
Edward B. Picou, Jr.
Penne Rappold
TBA
Willis E. Conatser
Duncan Goldthwaite
William M. Whiting
Edward B. Picou, Jr.
J. David Cope
Thomas C. Bergeon
Carol Rooney
TBA
Michael J. Gallagher

Chevron	985-773-6725
Tulane University	504-495-9475
UNO	504-736-2772
Shell	504-728-0431
MMS	504-736-2677
W & T Offshore	504-210-8148
ENI	504-593-7869
ENI	504-593-7606
ENI	504-593-7606
Eustis Geotechnical Eng.	504-613-5798
Sylvan Energy, LLC	603-523-4808
Shell	504-728-6154
ENI	504-593-7869
Consultant	504-529-5155
Shell	504-728-4338
	504-466-9749
Consultant	504-887-4377
Consultant	504-947-8495
Consultant	504-529-5155
Taylor Energy Co LLC	504-589-0419
Century Exploration	504-832-3772
Consultant Geologist	504-835-1909
Eni Petroleum	504-593-7480

dbalcer@Chevron.com
rcosenti@tulane.edu
thgem@gmail.com
Andrea.a.stancin@shell.com
james.swaney@mms.gov
mikef@wtoffshore.com
chuck.holman@enipetroleum.com
david.reiter@enipetroleum.com
david.reiter@enipetroleum.com
dpate@eustiseng.com
mike.a.fogarty@gmail.com
David.Garner@shell.com
chuck.holman@enipetroleum.com
epicou@bellsouth.net
prappold@gmail.com
weconatser@aol.com
DGldthwt@aol.com
bootscom@aol.com
epicou@bellsouth.net
dcope@taylorenergy.com
Tom.bergeon@centuryx.com
carolbrooney@aol.com
Michael.Gallagher@enipetroleum.com

NOGS LOG STAFF

Editor	Elizabeth Petro
Editor-Elect	Fran Wiseman
Auxiliary	Susie Baker
Info Tidbits	Elizabeth Petro and Fran Wiseman
Drill Bits	TBA
Webmaster	Edward B. Picou, Jr.
Layout	Jannette Sturm-Mexic

MMS	504-736-2866	nogseditor@gmail.com
MMS	504-736-2912	frances.wiseman@mms.gov
NOGA	504-466-4483	abaker1006@aol.com
MMS	504-736-2866	nogseditor@gmail.com
Consultant	504-529-5155	epicou@bellsouth.net

NOGS AUXILIARY

Officers		Phone	Directors	Year	Phone
President	Linda Peirce	504-393-7365	Beverly Christina	2009-10	504-835-2383
1st Vice-President	Jean Jones	504-738-8091	Peggy Rogers	2009-10	504-392-6323
2nd Vice-President	Beverly Kastler	504-286-0879	Judy Sabate'	2009-10	504-861-3179
Secretary	Dolores Murphy	504-393-0878	Peggy Campbell	2009-11	504-283-2505
Treasurer	Judy Lemarie'	504-393-8659	Ruth Grimes	2009-11	504-392-8103
Parliamentarian	Carol Andrews	504-887-3432	Gerry Waguespack	2009-11	504-737-0532
Member-at-Large	Susie Baker	504-466-4483			

--- NOGS Contact List continued on page 10 ---

SYNERGY ENERGY



Weatherford®
LABORATORIES

Your success increasingly depends upon a better understanding of your reservoir. At Weatherford Laboratories, we provide a single source for comprehensive laboratory analyses, creating a synergy previously unknown in laboratory services. This single source includes distinguished geologists, geochemists, analysts, engineers, technicians and software developers, 38 worldwide laboratories, and the broadest portfolio of services for acquiring and interpreting data from physical samples. The end result is an unsurpassed combination of intellectual capital and technical resources — all working together to help you enhance development planning and reduce reservoir uncertainty.

Put our union of Synergy and Energy to work for you.

Weatherfordlabs.com

HIGHER STANDARDS

NORTH AMERICA
NAInquiries@weatherfordlabs.com

EUROPE
EUIInquiries@weatherfordlabs.com

LATIN AMERICA
LAIInquiries@weatherfordlabs.com

MIDDLE EAST/NORTH AFRICA
MENAIInquiries@weatherfordlabs.com

ASIA PACIFIC
APIInquiries@weatherfordlabs.com



from the President

All of the feedback on the Christmas Party has been positive. We are grateful to Carlo and Beverly Christina for securing the Metairie Country Club. In addition, the following helped to financially underwrite some of the expenses of the party: Ed Picou, Charles Corona, Carlo Christina, Tom Klekamp, Willis Conatser, Bill Furlong, Chuck Holman, George Severson and Bill Whiting. Dolores Murphy picked the winning number for the "Half-n-Half."

Special thanks to Dave Reiter who handled the arrangements with Metairie Country Club and to Darby Reiter who graciously helped out with the registration. The New Orleans Geological Auxiliary also helped in planning the event. NOGA committee chairman was Judy Lemarie' assisted by Beverly Christina, Jean Jones and Amber Klekamp.

The music was by Jerry Embree and Jazzmen Trio. Several people have asked about booking them. If you liked the music and want to arrange them for your own event, call 504-529-9626.

The food was superb. The newly renovated Metairie Country Club manages to retain much of its old charm along with major improvements. Carlo Christina explained that the club's ballrooms were under renovation, following Katrina's ravages, when he secured their use by NOGS. Our thanks to Michelle Gilchrist and her staff at Metairie Country Club for all their help in making this a very successful party.

If you liked the venue please let us know through the NOGS Office in order that we might make it even better next year.

The Volume IV Oil and Gas Fields of Southeastern Louisiana has been resuscitated. It has been 22 years since NOGS last published a field studies volume and much has changed in that period. The extensive use of 3D seismic being the most notable. In addition there have been advances in tubulars, directional drilling, and hydraulic fracturing. The SONRIS database of the Louisiana Department of Conservation will be a huge asset in the project. This data retrieval system is probably the most advanced of any oil and gas producing state.

Thus far the field studies committee consists of NOGS members including Carlo Christina, Charlie Corona, Mike Ledet, Will Conatser, Mike Gallagher and Tom Bergeon. Carlo is still looking for people to step forward.

Previous NOGS field studies volumes were based on onshore, offshore as well as a separate set just on salt dome fields. "Majors tended to have their divisions based on the shoreline," said Christina. "With the majors selling these assets to independents all the division has been erased." Therefore he felt that the new field studies volume would necessarily be a hybrid across geographic boundaries. "It will probably include both onshore and offshore, and maybe some deepwater data," he concluded.

Members of the field studies committee were quick to realize that the resources for producing such a volume had changed. "Twenty years ago we had major company draftsmen aiding in producing these field studies," Bergeon noted. "Now, drafting is all CAD," Bergeon added. "We're confident that digital well logs can be brought into the mix." The committee also wants to add seismic data to each field study.

Initially each field study will appear as a stand-alone article in the NOGS Log, adding greatly to reader interest in this monthly newsletter. When twenty fields have been assembled the final publication will be in digital PDF format. With digital formatting color can greatly enhance the final product. Hardcopy can be done on a desktop color printer.

The list of possible fields for the NOGS volume includes Lake Washington, Bayou Postillion, Judge Digby, Flat Rock, Etouffe, Main Pass 69, Bayou Segnette, the Cris I stratigraphic traps, Lockhart Crossing and West Lake Pontchartrain. If you want to submit a field, contact Carlo Christina at 504-835-2383 (office) or 504-810-7286 (mobile).

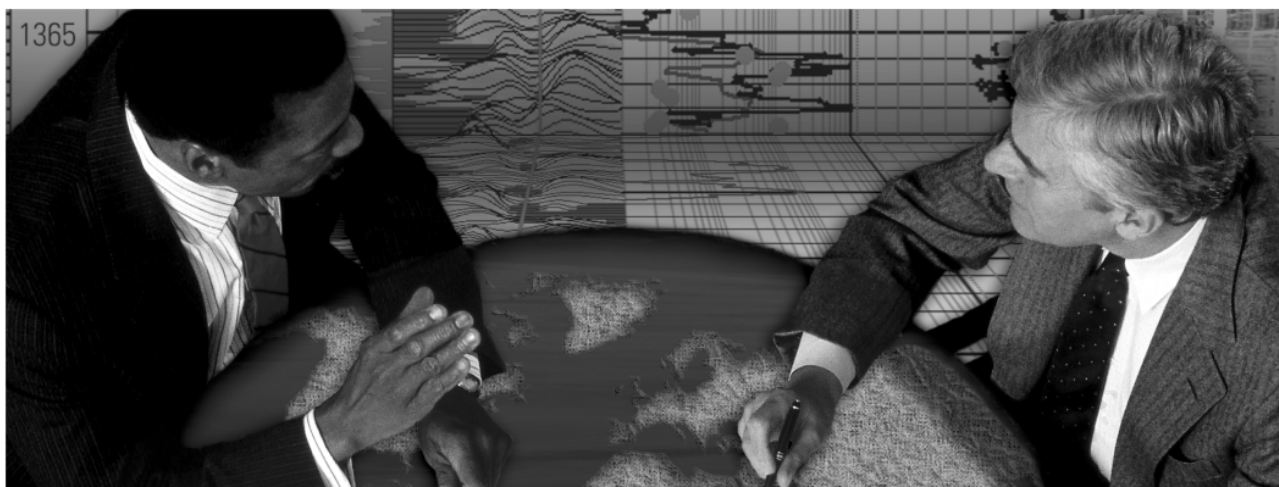
Lastly, we note that NOGS member David Cooke was appointed Regional Supervisor for Resource Evaluation at the Elmwood Office of Minerals Management Service. Dave has been a long-time supporter of the society. Congratulations Dave.

Tom

energyinformation

Business solutions for
the oil & gas industry

Schlumberger formation evaluation solutions deliver the answers you need. Our extensive portfolio of services, leading-edge technology, and advanced conveyance options keep you in communication with your well throughout its life cycle.



With formation evaluation technologies from Schlumberger, you can make the best decisions for optimized performance in every well.

The formation evaluation one-stop shop

Whether you are logging in open hole or behind the casing, our broad selection of services ensures the best solution for acquiring formation evaluation data. Tools can be conveyed while drilling or on wireline or pipe. We offer many specialized evaluation capabilities, from density, neutron porosity, and resistivity to borehole imaging, nuclear magnetic resonance logging, borehole seismic, formation pressure testing, and fluid sampling. Advanced triple-combo logging options include the VISION* formation evaluation and imaging-while-drilling services. Coupled with Pulse* telemetry and surveying services, the VISION family provides real-time formation evaluation data and enables optimum well placement.

High-speed wireline measurements are recorded with the Platform Express* logging services. The SlimXtreme* platform is designed for high-pressure, high-temperature environments and the ABC* Analysis Behind Casing services are used after casing is set.

Expert interpretation from the engineers and geoscientists of Schlumberger Data & Consulting Services brings all your data together to give you the answers you need. This expertise is available after logging is complete or as real-time two-way wellsite communication through the InterACT* real-time monitoring and data delivery system.

Schlumberger delivers leading-edge technology and interpretation expertise for all your formation evaluation needs, so every well benefits from the very best information.

For more information visit
www.slb.com/oilfield/formation_evaluation/

*Mark of Schlumberger

04-FE-114

Schlumberger

February 1 NOGS Luncheon Presentation

*** at the Holiday Inn Downtown Superdome ***

Comparative taphonomy of tyrannosaurid dinosaurs from the Late Cretaceous of the western United States

presented by

Kraig Derstler, Ph.D.

Department of Earth & Environmental Science, University of New Orleans

ABSTRACT

Tyrannosaurid dinosaurs are well-known from the Late Cretaceous of Western North America. Dozens of skeletons have been collected; many are exhibited in the world's natural history museums. Most were collected as museum trophies, without any effort to determine 1.) why they are relatively abundant, and 2.) why they are often very well preserved. Between 1997 and 2007, the writer excavated several tyrannosaurids from the Hell Creek, Lance, and Judith River Formations. Careful study of the taphonomy of these skeletons and comparison with available information on other specimens from the same rocks provided some general answers.

First, tyrannosaurid fossils are relatively abundant because their remains are more likely to

survive paleoenvironmental destruction than other dinosaurs ~ 1A.) huge fossils are favored during fossilization in fluvial settings and 1B.) tyrannosaurids had unusually tough bones.

Second, museums have many high-quality tyrannosaurid skeletons because 2A.) the bones are unusually tough, so they resist penecontemporaneous and Recent abuse, 2B.) paleontologists are willing to devote extra field, lab, and restoration effort to these high-value skeletons, and 2C.) we have a very large sample of tyrannosaurids. In short, we seldom collect or write papers about the fossils that are relatively poorly preserved; the wealth of fossils generates the perception that most tyrannosaurids are unusually well preserved.

BIOGRAPHY

Kraig Derstler is an Associate Professor and Undergraduate Advisor in the Department of Earth & Environmental Sciences at the University of New Orleans. He began teaching paleontology and computer applications at UNO in August 1982. For most of his time in New Orleans, he has organized and led summer dinosaur expeditions into the Western Interior. He earned his BA, cum laude from Franklin & Marshall College (1975), an MS from the University of Rochester (1977), and a PhD from the

University of California, Davis (1985). His research has ranged from Early Paleozoic echinoderms, to mosasaurs, Upper Cretaceous dinosaurs, bird origins, as well as fossil and modern sea turtles. On the side, he grows endangered cycads, collects modern snails called pleurotomarians and xenophorids, and hangs out with his dog Benjamin Franklin Derstler. He won the Westinghouse Talent Search, is a member of Phi Beta Kappa, and this year was awarded the UNO College of Science Undergraduate Teaching Award.

THE LUNCHEON RESERVATION DEADLINE IS JANUARY 27 - CONTACT THE NOGS OFFICE

“And Looking Ahead...”

The next NOGS Luncheon will be at Le Pavillon Hotel on Thursday, March 11, and will be a joint SGS-NOGS event. Guest speaker and topic to be announced; check NOGS website for updates. Contact the NOGS office to make your reservation.

2009 NOGS Highlights

In March, NOGS launched its new Web site. The new site is designed to give the membership more information on events and has restored the “Member Search” capability. After having three months of only monthly luncheon meetings, activities picked up in April when three events were held. On April 17, the NOGS-SGS Summer Social was held at Zephyr Field for a game between the Nashville Sounds and our Zephyrs. Although it was billed as a “Summer Social,” it was a very chilly evening requiring warm jackets. On April 27, the annual NOGS Golf Tournament was held at Money Hill Country Club and Golf Course. Participation was down from last year, but almost back to pre-Katrina levels. The annual Petroleum Geology for Non-Geologists short course was held on April 29 with about 40 participants. Dr. Royhan Gani, of the UNO Department of Earth and Environmental Sciences, presented a one-day Technical Seminar and Core Display at the One Shell Square Auditorium on May 14. The seminar focused on deltaic reservoir analogs integrating outcrop, core, ground penetrating radar and fluid-flow modeling in Cretaceous sequences in the Powder River Basin in Wyoming. Although attendance was light, the seminar provided Dr. Gani with his first opportunity to interface with NOGS members.

On July 16, the third “Geologic Facts of Life for Flood Protection in Coastal Louisiana” symposium was held in the Jefferson Parish Council Chambers. As a ‘first,’ the entire session was video recorded by local Fox News. NOGS, with cosponsors SPE-Delta and local chapter of AADE, held a very successful 13th Annual Gulf of Mexico Deepwater Technical Symposium at the Hilton Riverside Hotel. The event drew an attendance of approximately 400 industry geoscientists and engineers. As a community endeavor, a few NOGS members participated in the “Beach Sweep” sponsored by the Lake Pontchartrain Basin Foundation on September 19. Over eight tons of debris were collected – quite a successful event! On October 2, an outstanding “Kick Off” Party was hosted by NOGS president and spouse, Amber, in their home in Mandeville. With the combination of a beautifully appointed home and delicious repast furnished by Patton’s Catering of Slidell, success was assured. With an attendance of over a hundred, it is testimony that NOGS social events can be held on the north shore. On December 3, a luncheon meeting was held by a few senior members concerned about the moribund efforts for publishing Oil and Gas Fields Volume 4. Carlo Christina has volunteered to spearhead the effort. The last social event of the year was the NOGA-NOGS Christmas Party held on December 4 at the Metairie Country Club. Although the weather was cold, stormy and rainy, this didn’t dampen the festivities of the party which was attended a hundred or so folks. Both the club’s food and the music provided by the popular The Jazzmen Trio, added to the enjoyment of the evening.

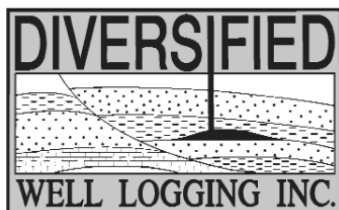
As a closing note, NOGS obtained a WebEx license and began hosting its monthly luncheon meetings to the north shore and UNO. Starting in December, the Board of Directors, as well as the Memorial Foundation Board, have used the WebEx for meetings. With the increasing difficulty of meeting “in person” at the NOGS office, this advanced way of conducting meetings has many advantages, as any NOGS member can dial in and participate. Welcome to the future!

Ed Picou



Relax. We'll keep you posted.

Your rig is offshore and you are not. How do you know what's going on so many miles away? You know because we tell you. Daily or even hourly, Diversified Well Logging's engineers update you on the status of your rig. We are your eyes and ears, especially when it comes to deep water or high pressure, high temperature areas. Diversified offers 24-hour surface evaluation. We provide secure and customized real-time data communication, in-house research and development and 24/7 on-call support for our equipment and our engineers. Whether you have a 10-day job or 110-day job, we provide the specialized attention you require. So, relax. We're with you every step of the way.



Serving the Gulf Coast for over 40 years.

New Orleans • Lafayette • Houston • Dallas • Corpus

800.280.2096

711 West 10th Street • Reserve, LA 70084 • Phone: 985.536.4143 • Fax: 985.536.2427
sales@dwl-usa.com



**FULLY INTEGRATED AND
CENTRALIZED BIOSTRATIGRAPHIC
SERVICES**

▼ *Single-source biostratigraphic databases
for increased accuracy and consistency*

▼ *Integrated foram / nannofossil analyses*

▼ *Complete wellsite paleo services*

▼ *In-house sample preparation
lab for quality-monitoring
and efficiency*

▼ *Sample pick-up service*

6619 Fleur de Lis Drive
New Orleans, LA 70124
(504) 488-3711

www.paleodata.com

MCMORAN EXPLORATION CO.



**MCMORAN
OIL & GAS**

www.mcmoran.com

NYSE: MMR

16676 Northchase Dr.
Houston, TX 77060
(281) 539-7600
Fax: (281) 539-7655

1615 Poydras
New Orleans, LA 70112
(504) 582-4000
Fax: (504) 582-4155

110 Travis St., Suite 140
Lafayette, LA 70503
(337) 735-9150
Fax: (337) 735-9151

NOGS CONTACT LIST

--- continued from page 3 ---

MEMORIAL FOUNDATION

BOARD OF TRUSTEES

2009-10 Chairman	William M. Whiting
2009-10 Secretary	Tom Klekamp
2009-10 Trustee	Michael C. Fauquier
2009-10 Trustee	J. David Cope
2010-11 Trustee	Timothy J. Piwowar
2010-11 Trustee	Michael N. Fein
2011-12 Trustee	Monte Shalett
2011-12 Trustee	James Swaney

Company
Consultant
Amber Resources LLC
W & T Offshore
Ankor Energy
Shell
W & T Offshore
Berkshire Exploration Co
MMS

Phone
504-947-8495
985-845-4046
504-210-8192
504-596-3672
504-728-4066
504-210-8148
504-831-7779
504-736-2677

E-mail
bootscon@aol.com
klekamp@bellsouth.net
mfauquier@wtoffshore.inc
dcope@ankorenergy.com
tim.piwowar@shell.com
mikef@wtoffshore.com
mshalett@gmail.net
james.swaney@mms.gov

AAPG DELEGATES

Term Ends

2011	Tom Hudson
2011	Edward B. Picou, Jr.
2011a)	Brenda Reilly
2011a)	Robert Rooney
2012	William Whiting
2012	Jim Zotkiewicz
2012 a)	David E. Balcer
2012 a)	Richard J. Stancliffe

Chevron
Consultant
Energy Partners Ltd.
Century Exploration
Consultant
Zot Oil & Gas
Chevron
Shell Expl & Prod Co.

985-773-7163
504-529-5155
504-799-4811
504-832-3777
504-947-8495
504-831-4694
985-773-6725
504-728-7553

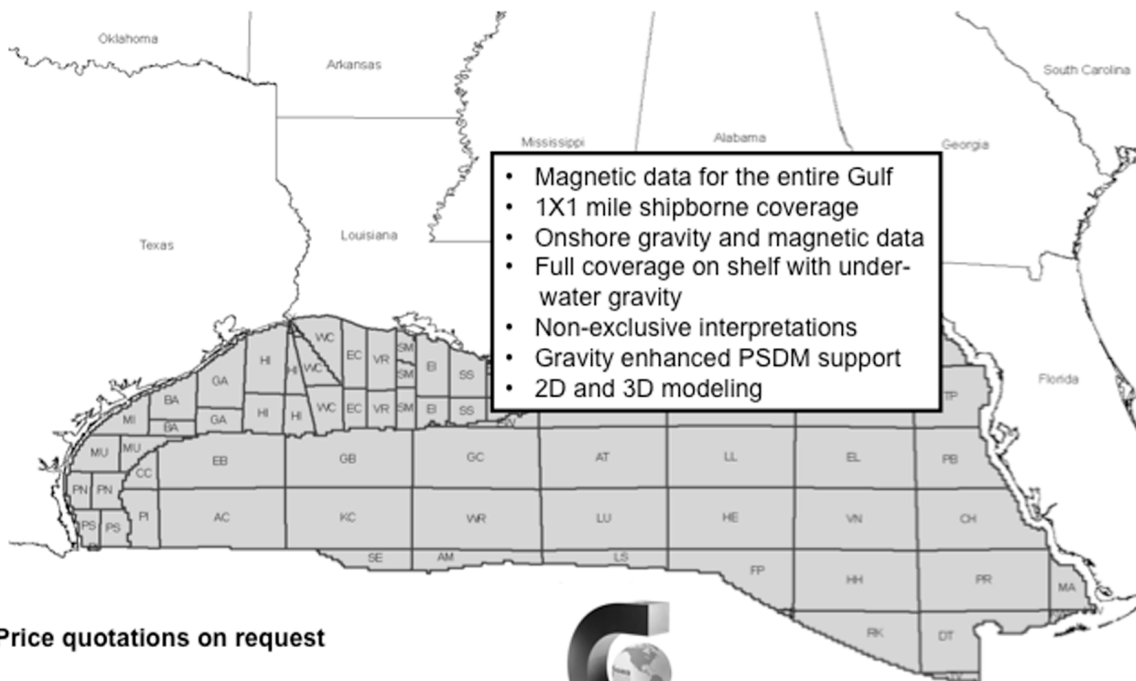
tom.hudson@chevron.com
epicou@bellsouth.net
breilly@eplweb.com
Robert.rooney@centuryx.com
bootscon@aol.com
jimzot38@zotoil.com
dbalcer@Chevron.com
richard.stancliffe@shell.com



Fugro Gravity & Magnetic Services

LAND • AIRBORNE • UNDERWATER • SHIPBORNE

The most complete coverage Onshore and Offshore Gulf of Mexico



Price quotations on request

Fugro Gravity & Magnetic Services
www.Fugro-GravMag.com
Tel: 713-369-6123



Gravity Inspired. Magnetically Inclined.



**Shell has worked in partnership
with the NOGS for many years, and
is proud to count the society among
its closest business associates.**

The New Orleans Geological Society was organized in 1941 to foster scientific research and advance the science of geology. Particular emphasis is laid on the exploration for and production of petroleum and natural gas. Related objectives include encouraging the adoption of improved methods of exploration, disseminating pertinent geological and technological data, and maintaining a high standard of professional conduct among its members.

www.shell.com/us.sepc



GOM
smart

**An ocean
of GOM DATA...
updated for you 24/7**

Introducing GOMsmart. Web-based GOM data with real-time updates. No special software or training. Access data via intuitive interface or customizable maps.

- Wells: header, production, tests, 250,000+ logs
- Production Data: historical and current
- Paleo Data: access to 100,000+ observations
- Affordable: monthly and annual subscriptions

Visit www.GOMsmart.com for your FREE trial.



At Fairfield the future is now.

Our updated seismic vessels equipped with Fairfield's Z700 ocean bottom node systems will be fully operational in the Gulf of Mexico during 2009. By utilizing longer offsets and the continuous recording capability of Z700, Fairfield will be able to image data to unprecedented depths of over 75,000 feet.

By the end of 2009 our entire database will have been processed using Curved Ray Migration and an additional 500 blocks of depth data will have been added.



The Future begins today. Don't be left in the past.

SEISMIC
SYSTEMS

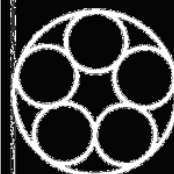
DATA
ACQUISITION

DATA
PROCESSING

DATA
LICENSING

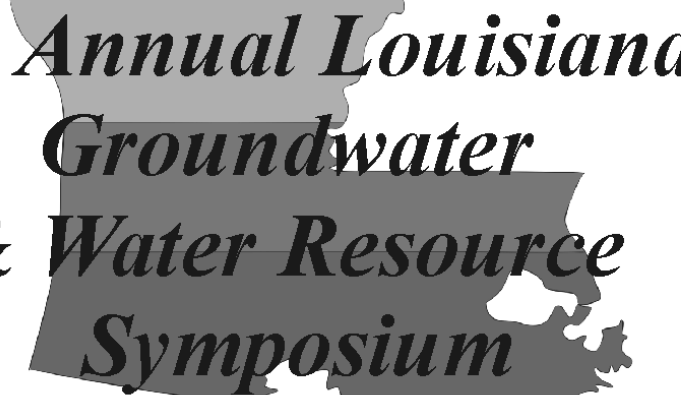
281 278 7500

Fairfield.com



Fairfield
INDUSTRIES

Baton Rouge Geological Society



4th Annual Louisiana Groundwater & Water Resource Symposium

April 6 & 7, 2010

Louisiana Water a Valuable Resource

Energy Coast & Environment Building
Louisiana State University
Baton Rouge, Louisiana

Hosts:

Louisiana Geological Survey
Baton Rouge Geological Society



Eni Petroleum

1250 Poydras Street
Suite 2000
New Orleans, LA 70113
Tel: (504) 593-7000
Fax: (504) 593-7745

1201 Louisiana Street
Suite 3500
Houston, TX 77002
Tel: (713) 393-6100
Fax: (713) 393-6205

It's no illusion...
Core Lab offers everything you need.



©2009 Core Laboratories. All rights reserved.

Unconventional resource exploitation • Gas shale experts • Deepwater GOM authority
Capacity for fast turnaround • High-quality people • Global support
Industry leadership and reliability • Proprietary and patented technologies • Experience

www.corelab.com/rd/petroleumservices • 24-hour wellsite service hotline: 504-733-6583

SEI[®]

Seismic Exchange, Inc.

Strategic Speculative Surveys
Geophysical Data Marketing & Management

201 St. Charles Avenue, Suite 4300, New Orleans, Louisiana 70170-4300
Telephone 504.581.7153 Fax 504.581.9591
www.seismicexchange.com

Your
Full Service
National
Seismic Data
Marketing Firm

New Orleans
Dallas
Houston
Denver
Oklahoma City
Corpus Christi
Tulsa



AAPG

2010 ANNUAL CONVENTION & EXHIBITION

NEW ORLEANS, LOUISIANA, USA | 11-14 APRIL 2010

UNMASKING

THE POTENTIAL OF EXPLORATION & PRODUCTION

MEMBERS

REGISTER BY 16 FEBRUARY
AND SAVE \$200!

**Hear from industry experts
at these special events**

Michel T. Halbouty Lecture

featuring Aubrey K. McClendon of
Chesapeake Energy Corporation

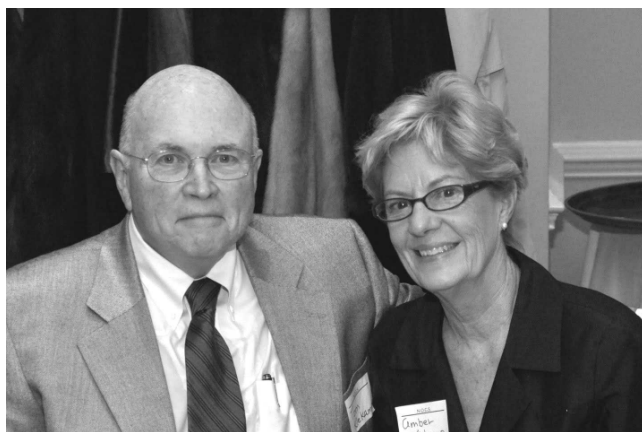
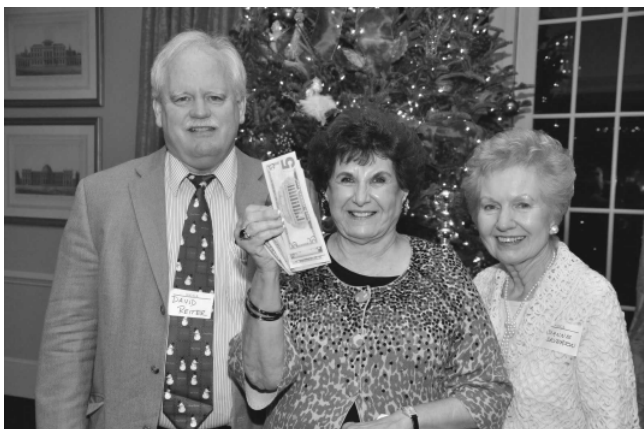
All-Convention Luncheon

featuring Bobby Ryan of Chevron
Global Upstream and Gas



NOGS Christmas Holiday Party







SUPER SCIENCE SATURDAY



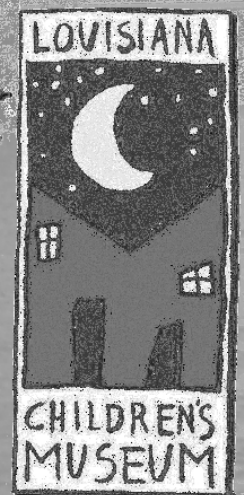
MARCH 20, 2010 11:00AM - 3:00PM

LOUISIANA CHILDREN'S MUSEUM

VOLUNTEERS NEEDED

CONTACT TOM BERGEON AT 504-832-3772

TOM.BERGEON@CENTURYX.COM



New NOGS
Members
November 2009

Mary C. Bell
Doyle Land Services Inc
Project Manager
Ste 104, 880 Commerce Rd W.
New Orleans, LA 70123
504-620-5056

Kathryn V.G. Rose
UNOStudent

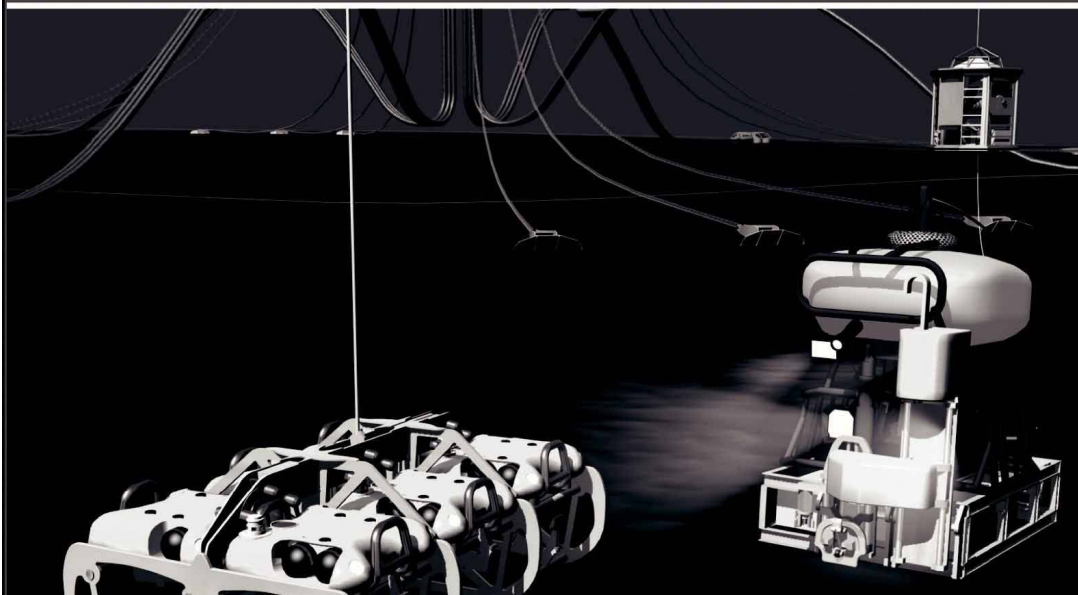
Kimberly T. Clark
UNOStudent
870-378-2461

INFO TIDBITS

- There is a proposal in place to create the first underground natural gas storage facility in Arizona. It is located north of Eloy, Az and utilizes salt caverns.
<http://arizonageology.blogspot.com/2009/12/arizonas-first-underground-natural-gas.html>
- This lovely article explores the age old relationship between geologists and beer consumption. The article also includes some great tips for chilling said beverage when in remote locations like Mongolia.
<http://www.wired.com/wiredscience/2009/12/15943/>
- The North Pole is shifting rapidly these days, as much as 34-37 miles a year and headed off to Siberia. Make sure your magnetic field maps are up to date before you head off anywhere using a compass.
<http://news.nationalgeographic.com/news/2009/12/091224-north-pole-magnetic-russia-earth-core.html>

- *Liz Petro and Fran Wiseman*

Finally - An answer for getting reservoir seismic **OVER THE RESERVOIR!**



• 4C/4D Node Seismic

- ANGOLA
- GoM
- NIGERIA



"Coming Soon to an Oilfield Near You!"

www.sbexp.com

Dubai
T: +971 4 4271700

Houston
T: +1 281 566 1666

Oslo
T: +47 2240 2700

Rio
T: +55 21 2494-0283

Singapore
T: +65 9180 2605

Trondheim
T: +47 7 3879500

RAISING THE STANDARD



100 Northpark Blvd.
Covington, LA 70433

(985) 773-6000



LaBay
Exploration Co., L.L.C.

111 Veterans Memorial Blvd.,
Suite 1550
Metairie, Louisiana 70005

www.labayexploration.com

Office (504) 371-5967
Fax (504) 371-5969

*This advertising
space is
available!
Contact the
NOGS office.*

Excerpts from External Affairs

Michael Fogarty

Chair – External Affairs Committee

SPE launches new journal - *SPE Economics & Management*: *SPE Economics & Management* covers the business side of petroleum engineering - asset management, portfolio planning, strategic decision-making, knowledge management, petroleum economics, and more. Available online only, access to the first issue is free to members (login required).
<http://www.spe.org/ejournals/jsp/journalapp.jsp?jid=EEM&pageType=Issue>



The AAPG- Division of Environment Geology: The Division of Environmental Geology (DEG) offers AAPG members an opportunity to increase their knowledge about the environment and the petroleum industry. DEG approaches basic environmental issues from a geological standpoint, so the profession's understanding of geological, geochemical, geophysical and hydrogeological principles and methodologies can be applied to environmental problems. The DEG relies on the active participation of its members to accomplish its goals and objectives. There are a number of committees that members can join. For more info: deg@aapg.org
Please go to http://www.nogs.org/nogs_external_affairs.html for more events and information.

Celebrate with the New Orleans Geological Society An Evening with “America’s Greatest Generation” at the National World War II Museum

Tuesday, April 13, 2010 from 7:00 to 10:00 p.m.

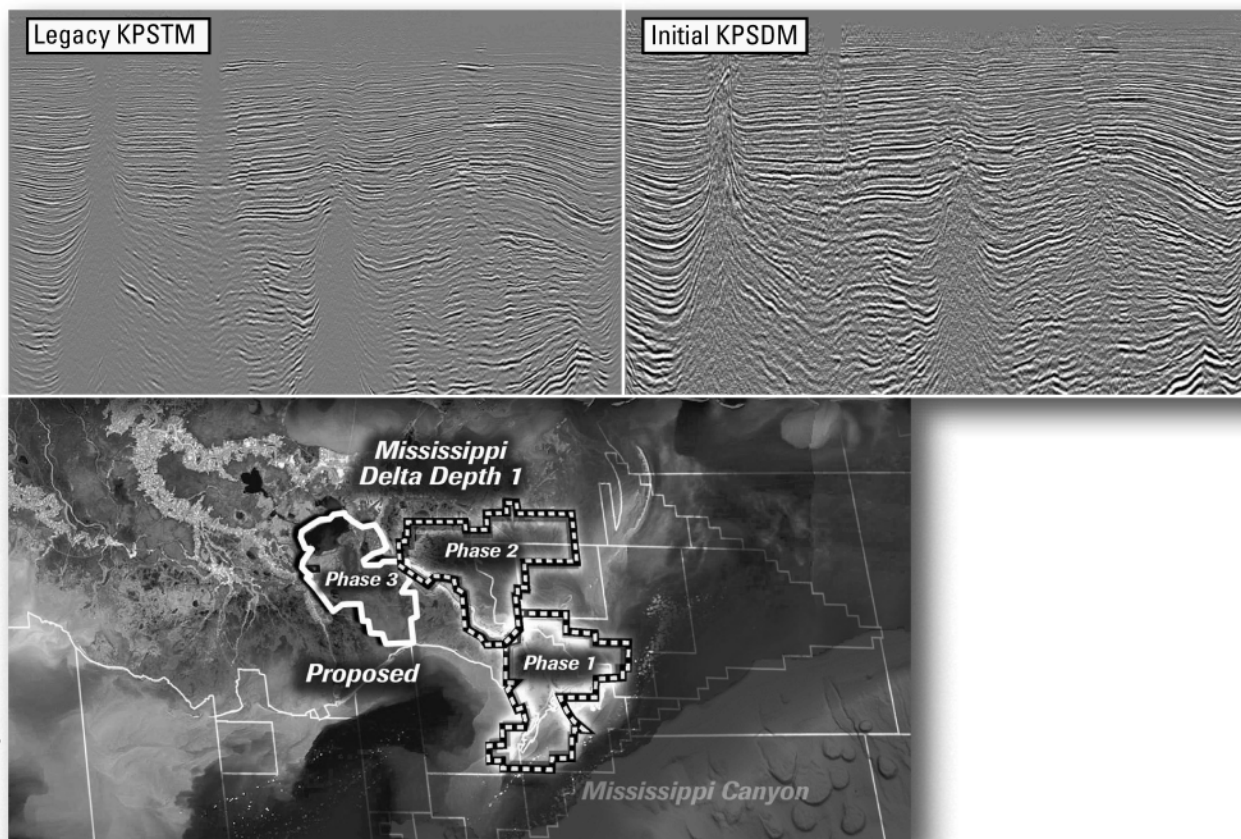
- * Enjoy a memorable and relaxed evening with your friends and colleagues
- * Open bar social
- * Fabulous Southern buffet dinner catered by world-renowned Chef John Besh
- * Access to all the Museum’s exhibit areas for touring at your leisure.
- * For more information about the Museum and its various amenities, please visit www.nationalww2museum.org
- * Round-trip bus transportation will be provided from the AAPG Convention Headquarters Hotel to the Museum and will be available 6:15 to 10:45 p.m.
- * Cost of admission: \$50 per person

<http://www.aapg.org/neworleans/documents/NOSponsorBrochure.pdf>

or contact

Robert Rooney at (504) 832-3777 — robert.rooney@centuryx.com
or Al Baker at (504) 836-2710 — ABaker1006@aol.com

Improved depth imaging in the Mississippi Delta



In the Mississippi Delta region, WesternGeco is utilizing state-of-the-art processing designed to eliminate fault shadows and enhance deep imaging. The Mississippi Delta - Depth 1 survey, now in progress, incorporates the processing and remigration of twelve legacy surveys covering 1,855 square miles. High-quality time imaging using relative amplitude anisotropic Kirchhoff prestack time migration will be followed by improved structural imaging utilizing anisotropic Kirchhoff prestack depth migration.

To learn more about this and other Multiclient products, call +1 713 689 1000.

www.multiclient.westerngeco.com/la

Multiclient to the Power of E



THE NEW ORLEANS GEOLOGICAL SOCIETY MEMORIAL FOUNDATION, INC.

The Memorial Foundation is an IRS Tax Exempt Code #501 (c)(3) organization. The Federal I.D. is: 72-1220999. Please consider making your donation prior to the close of this year's fiscal cycle which is September 30, 2010. Your individual support in any amount will help meet the IRS Guidelines for our Foundation. *Thanks!*

\$15,000 AND ABOVE

Olga Braunstein Succession

Gibbett Hill Foundation

*In Memory of Steve & Marion Millendorf, William J. Prutzman,
Roger G. Vincent & Ron Youngblood*

\$10,000

George W. Schneider, Jr. and Family

In Memory of George W. Schneider, Sr.

\$2,000 TO \$3,000

NOGS Golf Tournament May 2008

In Memory of Bill Craig

\$250 TO \$499

Carlo C. Christina

In Memory of Al Gilbreath

Fotiades Mineral Interests

Julie Fotiades, Joan Fotiades

Evelyn Fotiades Poulos

In Memory of George W. Schneider, Sr.

Kathy King Family

In Memory of George W. Schneider, Sr.

\$7,000 TO \$9,000

Paul C. Mc Williams

\$1,000

John M. Henton, Jr.

In Memory of Dr. Gordon Frey

Bill Schneider Family

In Memory of George W. Schneider, Sr.

Susan King Family

In Memory of George W. Schneider, Sr.

John C. Kuciewicz, Jr.

In Memory of Bill Craig.

UP TO \$249

Donald I. Andrews

In Memory of Ray F. Havard

In Memory of Harlan (Lanny) Northcott

Robert J. Ardell

In Memory of Dr. Gordon Frey

Mr. and Mrs. Wesley Barton

In Memory of Thomas A. Cullinan

Abraham Biadgelgne

Maurice N. Birdwell

In Memory of Texaco

Hilary James Brook

Jack G. Bryant

Rob Burnett

F. Robert Bussey

In Memory Robert S. Kline

J. Sybil Callaway

Chevron

Matching Funds

Arthur F. Christensen

Ellen F. Clark

James S. Classen

In Memory of Thomas A. Cullinan

In Memory of George W. Schneider, Sr.

Clarence F. Conrad

Charley Corona

In Memory of McLain Forman

In Memory of Professor Hubert Skinner

Trudy and Charley Corona

In Memory of Thomas A. Cullinan

Michael A. Danahy

M. R. "Bob" Douglass

In Memory of Jack Read

Merle J. Duplantis

Parrish N. Erwin, Jr.

Exxon Mobil Matching Funds

Niles R. Faulk

Michael N. Fein

David Garner

Laurens Gaarenstroom

Mark J. Gallagher

Peter G. Gray

In Memory of Thomas A. Cullinan

Angela M. Hessler

Bernard L. Hill, Jr.

Owen R. Hopkins

Dan E. Hudson

Thomas A. Hudson

Kenneth Huffman

Jeffrey E. Jandegian

Arthur H. Johnson

In Memory of George W. Schneider, Sr.

Tom Klekamp

Richard G. Klibert

William J. Malin

Jeannie F. Mallick

George M. Markey, Jr.

Michael L. Merritt

Robert G. Murphy

In Memory of Thomas A. Cullinan

New Orleans Geological Auxiliary

Nexen Petroleum USA Inc. Matching

Funds Russell H. Nordwell

Richard A. Olsen

In Memory of Richard W. Boebel

In Memory of Robert W. Sabate'

Teresa M. O'Neill

In Memory of Brian J. O'Neill

Linda and Bill Peirce

FONO FUND

The FONO Fund accepts contributions that are invested and the income dedicated to assure sufficient financial resources will always be available to maintain the NOGS business office. Contributors are reminded that donations to the FONO Fund are not covered by the IRS 501 (c)(3) tax exempt classification and should be reported as a business expense on your IRS tax report.

UP TO \$250

Woods W. Allen, Jr.

Donald I. Andrews

Alfred H. Baker Jr.

Philip Beron, Jr.

Joseph E. Boudreaux

Hillary James Brook

Jack G. Bryant

J. Sybil Callaway

Anthony Carolla, Jr.

Arthur F. Christensen

James S. Classen

Richard P. Colomes

John Dombrowski

Merle J. Duplantis

Richard A. Edmund

Parrish N. Erwin, Jr.

Niles R. Faulk

Michael N. Fein

Laurens Gaarenstroom

Mark J. Gallagher

Arthur J. Garden

Duncan Goldthwaite

Peter G. Gray

James A. Hartman

In Memory of Hal Hudson

In Memory of Brian J. O'Neill

Bernard L. Hill, Jr.

Owen R. Hopkins

Thomas A. Hudson

Kenneth Huffman

C. M. (Max) Jacobs

Robert M. Jemison, Jr.

Paul Jurik

Terry Keegan

Tom Klekamp

Reuben J. Klibert, Jr.

William J. Malin

Jeannie F. Mallick

George M. Markey, Jr.

James A. McCarty

Robert H. Monahan

Robert G. Murphy

William J. O'Leary

Richard A. Olsen

William S. Peirce

Jaser N. Rafidi

James P. Raymond, Jr.

C. R. Rondeau

George D. Severson

Rudolf B. Siegert

Diana "Dee" E. Smith

Raymond Stephens

Scott A. Wainwright

Roy C. Walther

Robert C. Weissmann

William M. Whiting

Louis E. Willhoit, Jr.

Thomas V. Wilson

Jim Zotkiewicz

CONTRIBUTIONS FOR BOTH FUNDS
THROUGH DECEMBER 17, 2009.
DONATIONS ARE LISTED FOR ONE YEAR.

Edward B. Picou Jr.

In Memory of Dr. M. Gordon Frey

In Memory of Brian J. O'Neill

Richard D. Provensal

Edmund L. Russell

George D. Severson

Robert C. Shoup

Rudolph B. Siegert

Daniel L. Smith

Diana "Dee" E. Smith

John D. Silvernail

In Memory of Colles C. Stowell

Dr. J. O. Snowden

Raymond O. Steinhoff

In Memory of Hubert C. Skinner

In Memory of Harold E. Vokes

Stephen Syzlik

Scott A. Wainwright

Roy C. Walther

Arthur S. Waterman

In Memory of T. Wayne Campbell

William M. Whiting

Louis E. Willhoit, Jr.

Armour C. Winslow

In Memory of Rita Menzel

Winslow

Frances A. Wiseman

In Memory of Steve Widdicombe

Jim Zotkiewicz

In Memory of Bill Craig

Robin A. Broussard

Chevron

Bernard L. Hill, Jr.

Jeff Jandegian

John C. Scheldt

Candace V. Strahan

In Memory of James Strahan

CALL FOR PAPERS

60th Annual Convention
October 10-12, 2010
San Antonio, Texas

Hosted by the South Texas Geological Society



Welcome back to San Antonio! Our theme this year is ***"Weathering the Cycles"*** – a challenge that resource geologists certainly have faced and overcome in the past! How do we weather the economic cycles? We...

- ✓ Network with our community
- ✓ Experience the latest technology in the technical exhibition
- ✓ Take a course or a trip and grow new and diverse skills
- ✓ Listen to special presentations on strategies to endure and prosper during an economic downtime and prepare for the inevitable rebound.

By celebrating our successes, facing our challenges, and learning from the research results of our peers, we are paid back many fold by sharing ideas and experiences among our professional community. So come and share your experiences! Suggest a session topic, present an oral paper or a poster, learn about the latest ideas and technologies in our field. Come to San Antonio and enjoy the Gulf's own geoscience convention!

PROPOSED TECHNICAL SESSIONS INCLUDE...

- ✓ **Organic 'Shales' of the Gulf Coast – Controls on Reservoir Quality and Producibility**
- ✓ **Gulf of Mexico Paleogene – Reservoirs, Events and Controversies**
- ✓ **Eastern Gulf of Mexico – Exploration Potential and Environmental Challenges**
- ✓ **Texas/Mexico Borderlands – Structures, Resources, and Lessons Learned**
- ✓ **Unconventional Resources – Exploration Decisions and Production Issues**
- ✓ **Integration of Seismic Geomorphology and Wellbore Data – Case Studies**
- ✓ **New and Evolving Technologies – Impact on Commerciality**
- ✓ **Horizontal Drilling and Formation Stimulation – Edwards, Wilcox, and elsewhere**
- ✓ **Carbon Sequestration – Risks, Opportunities, and Implications for EOR**
- ✓ **Alternative Energy Solutions – The Role of Geoscience**
- ✓ **Water for a Growing Region – Geology, Water Quality, and Resource Management**
- ✓ **Geologic Training and Education – Preparing for the Crew Change**

HOW TO SUBMIT:

Abstracts (not more than 250 words) should be submitted for review online or via email to the technical program chair. Papers should have application to Gulf Coast and Gulf of Mexico geology. Include your full mailing address, telephone and FAX numbers, email address, and whether you are submitting for **oral** or **poster** or **either** (preferred).

Submit abstracts by February 1, 2010 as instructed on the website www.gcags2010.com

Notification of acceptance by March 1, 2010. All presenters, both oral or poster, must submit either a paper (10-12 pages) or an extended abstract with key figures for review by **April 16, 2010**, for inclusion in the *Transactions*. Full instructions for authors will be posted at www.gcags2010.com.

ABSTRACT DEADLINE: FEBRUARY 1, 2010!

Questions or ideas for the technical program should be directed to:

Dr. Mary Feeley
Technical Program Chair
281-654-3588

missy.feeley@exxonmobil.com

Dr. Alan Dutton
GCSSEPM Co-Chair
210-458-5746

alan.dutton@utsa.edu

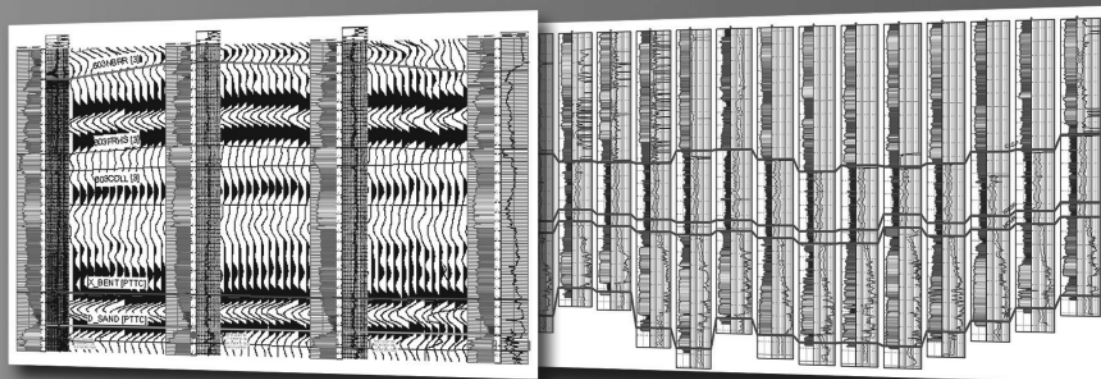


Define your geological model faster than ever before

NO MORE WAITING! Available today from IHS, easy and affordable access to one of the largest U.S. digital log collections

- More than 185,000 LAS files with over 1.5 million curves
- Regional subscription packages for today's active play areas
- Indexed to IHS well and production data
- Linked to the IHS Enerdeq® Browser for quick regional studies and log selection
- Available via IHSLogNet.com or on DVD
- Ready to use in PETRA and other log packages

Request a free 2' x 3' IHS digital log coverage map at ihs.com/energy/DigitalLogs



Use PETRA® to integrate digital log, well, production, perf, seismic and tops data. IHS is the only company to provide you with the complete picture

Why wait? Subscribe today! Call 888.OIL.DATA (645.3282) or e-mail sales.energy@ihs.com



The Source
for Critical Information and Insight™

SAI

Sydboten & Associates, Inc.
*Geological and Geophysical Consulting,
3-D Seismic Interpretation*

Ben D. Sydboten, Jr. CPG

124 Heymann Blvd., Suite 202
Lafayette, LA 70503

Office (337) 234-5288
Cell (337) 234-5491

ATWATER CONSULTANTS, LTD.

REGISTERED AND CERTIFIED PETROLEUM PROFESSIONALS

GEOLOGICAL, ENGINEERING, GEOPHYSICAL,
TRAINING AND EXPERT WITNESS SERVICES

3525 Hessmer Ave, Ste 304
Metairie LA 70002

Tel. (504) 581-6527
Fax (504) 524-7798

"Serving The Oil & Gas Industry Since 1983"

Geological,
Geophysical &
Land Drafting

Anthony Catalanotto
President

Stefani Foster
Drafting & Design

Geo-Draft, Inc.

A Professional Drafting & Graphics Firm

3349 Ridgeline Drive • Suite 202 • Metairie, LA • 70002
Office: (504) 836-2882 Fax: (504) 836-2877 (Cell) (504) 481-7291
E-Mail: geodraft@bellsouth.net
Website: www.geodraftinc.com

*This advertising space is available!
Contact the NOGS office.*

NORTHCOAST OIL COMPANY

610 E. Rutland St.
Covington, LA 70433
(985) 898-3577
(985) 898-3585 FAX

Jack M. Thorson
Eric C. Broadbridge
J. Daryl Gambrell
Raymond W. Stephens

**NOGS thanks our
sponsors for their support:**

GOLD LEVEL SPONSORS:

CHEVRON
LA BAY EXPLORATION CO, LLC.

**SPECIAL THANKS TO
DIVERSIFIED WELL LOGGING**



CIMAREX ENERGY CO.

GULF OF MEXICO REGION
GOM, SE La., N. La., MS, AL

1100 Poydras St.; Suite 1100

New Orleans, Louisiana 70163

504-586-1815 / Fax 504-586-9035

Keith Gourgues
Region Manager

(832) 242-6000 (O)
(713) 917-0493 (O)

(504) 931-7506 (C)
johnjurasin@jurasinoilgas.com

JURASIN OIL & GAS

9700 Richmond Ave., Suite # 124
Houston, TX 77042-4821

JOHN M. JURASIN
President

Cert. Pet. Geologist #4284
Cert. Prof. Earth Scientist #1961

Collarini Energy Staffing

Full-Time and Temporary Personnel

Facilities • Drilling • Production • Reservoir Engineering
Land and Legal • Geoscience • Information Technology •
Health and Safety • Management • Supply Chain
Accounting • Administrative Support

11111 Richmond Ave., Suite 126
Houston, Texas 77082

832-251-0553



www.collarini.com

Collarini Associates

Reservoir Engineering
Oil & Gas Property Evaluation
3-D Seismic Interpretation
Integrated Field Studies

832-251-0160
504-887-7127

Houston
New Orleans



Introducing
**KINGDOM
ADVANCED**

The Future of Interpretation

Taking Geoscience To New Frontiers

SMT's ease of use has made it the geoscience software choice for 2500 customers in 95 countries. KINGDOM Advanced takes SMT's science into the next generation on the largest of data sets.

Best of all, it's so cost effective you can make the best science available to every interpreter. At every location. Even in remote offices that lack IT support.

Never again sacrifice your workflow because of the software.

See the future today - at www.seismicmicro.com/advanced

ANSYTHE Donald I. Andrews 504-887-3432 	H. WARREN BELL Oil and Gas Exploration 2500 Tanglewilde, Suite 485 Houston, TX 77063-2126 Bus (713) 266-7297 Fax (713) 266-7298
THE BOEBEL COMPANY Oil and Gas Investments 170 Broadway Street, Suite 321 New Orleans, LA 70118 (504) 866-4313	PHELPS GEOSCIENCE Onshore Gulf of Mexico Geology and Geophysics Prospect Generation and Evaluation Houston, TX jsfphelps@yahoo.com (281) 398-5208
BOO-KER OIL & GAS CORP. Gray S. Parker 826 Union, Suite 300 New Orleans, LA 70112 Bus. (504) 581-2430 Fax (504) 566-4785	RAFIDI OIL AND GAS, INC. Jaser N. Rafidi, President 4415 Shore Dr., Suite 202 Metairie, LA 70006 Bus. (504) 722-2942 Fax (504) 888-5539; Res. (504) 888-1661
C & R EXPLORATION, INC. Carlo C. Christina Lawrence G. Ringham	ROY C. WALTHER Petroleum Geologist 2421 Prancer Street New Orleans, LA 70131 Bus. (504) 392-8513 Res. (504) 392-9332
C. R. RONDEAU Petroleum Geologist 119 W Southland Ave. Ironwood, MI 49938 Res. (906) 932-4692	 Shoreline Gas Inc. www.shorelinegas.com Full Service Natural Gas Marketing
CLASSEN EXPLORATION, INC. James S. Classen Looking for close in deals P.O. Box 140637 Boise, ID 83714 Bus. (208) 854-1037 Fax (208) 854-1029 classenllc@msn.com	 625 E. Kaliste Saloom Lafayette, LA 70508 16800 Greenspoint Dr., Suite 225-S Houston, TX 77060 www.StoneEnergy.com
D-O-R ENGINEERING, INC. 3-D and Geoscience Services P O Box 80812 Baton Rouge LA 70898	TONY CAROLLO Consulting Geologist Unitization Geosteering Field Studies 1701 Peach Street Metairie, LA 70001 Bus. (504) 885-0004 Res. (504) 885-6829
EDWARD B. PICOU, JR. Consulting Micropaleontologist - Retired 228 St. Charles Ave., Suite 1330 C New Orleans, LA 70130 Bus. (504) 529-5155 Res. (504) 282-3096	Zot Oil & Gas, LLC Jim Zotkiewicz Prospect Generation and Evaluation 3200 Ridgelake Dr. Suite 207 Metairie, LA 70002-4930 Business: 504.831.4694 Email: jimzot38@zotoil.com

Imperial Barrel Award

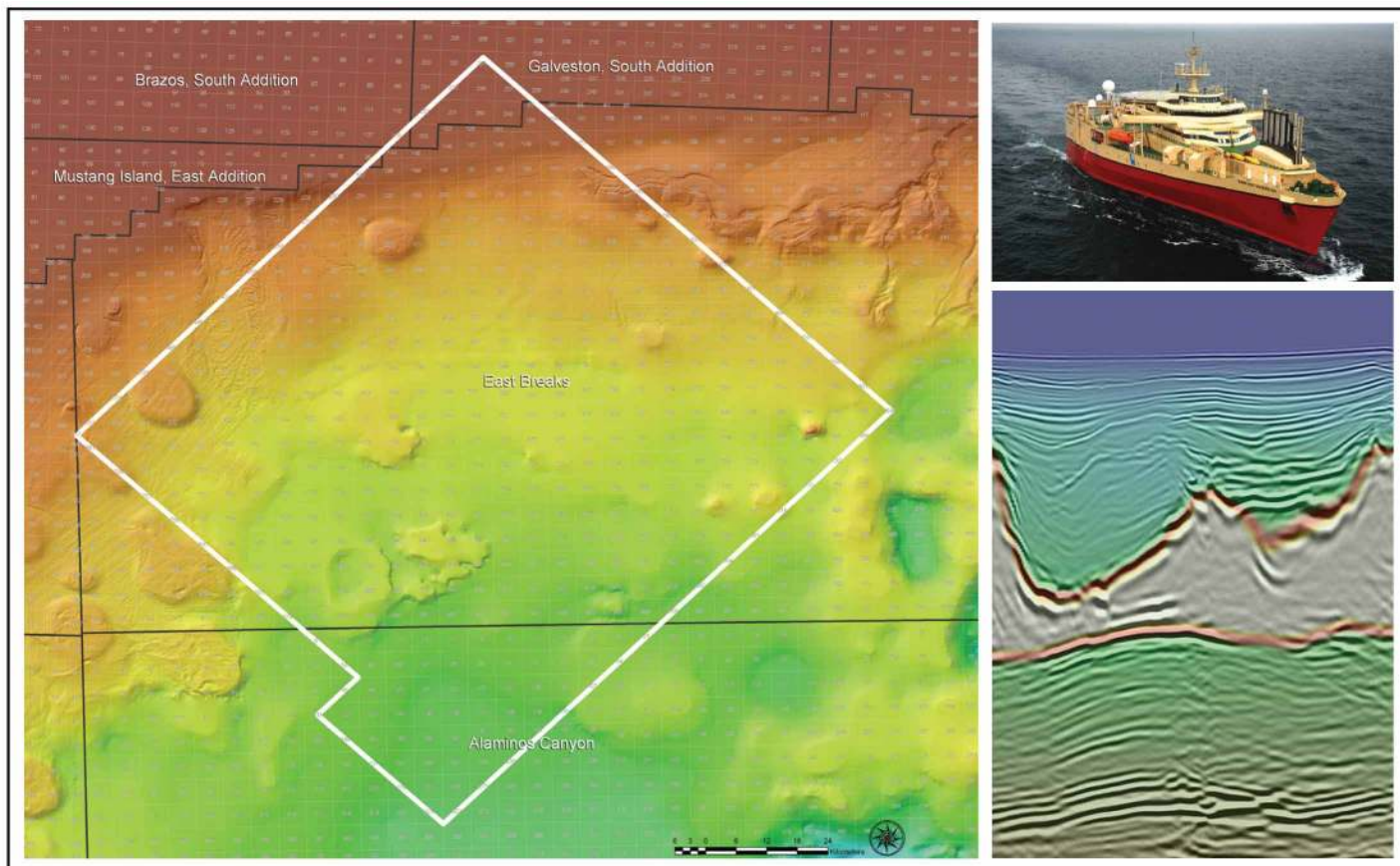
AAPG's Imperial Barrel Award Program (IBA) is a global competition, where University teams analyze a complete dataset (geology, geophysics, land, economics, production infrastructure, and other relevant materials) in six to eight weeks prior to the competition. Each team delivers their results in a 25-minute presentation to a panel of industry experts.

The Gulf Coast competition will take place in March, with the winning team competing in the finals against teams from throughout the world. The finals will be held during the 2010 AAPG Convention in New Orleans. Among the teams entering the Gulf Coast regional competition are LSU, UNO, and Alabama.

Help needed from NOGS members:

- Mentors to make presentations at one or more schools on topics such as basin analysis, subsurface mapping, prospect economics, etc.
- Sponsors to help defray the travel costs for the students

If you would like to help or want additional information, contact Art Johnson (artjohnson51@hotmail.com).



East Breaks

MultiClient Wide Azimuth

- **Size** - 450 OCS blocks
- **Focus** - Sub-Salt Paleogene
- **Technology:**
 - Ramform Acquisition with 4.2 km Crossline Offset
 - True Azimuth 3DSRME & TTI Beam and TTI RTM Imaging
- **Delivery** - Available Q1 2010

PGS MultiClient Wide Azimuth - Delivering a Clearer Image Sub-Salt

Houston
Tel: +1 281 509 8000
Fax: +1 281 509 8500

Oslo
Tel: +47 67 52 6400
Fax: +47 67 52 6464

London
Tel: +44 1932 37 6000
Fax: +44 1932 37 6100

A Clearer Image
www.pgs.com



NEW ORLEANS GEOLOGICAL SOCIETY



810 Union Street, Suite 300
New Orleans, LA 70112-1430

WWW.NOGS.ORG

MARINE PROPERTIES, LLC BERKSHIRE EXPLORATION CO.

MONTE C. SHALETT, CPL, PRESIDENT

3030 Lausatz Street
Metairie, LA 70001-5924

BUS. (504) 831-7779
FAX. (504) 831-8315

PCI

Paleo Control, Inc.

Houston, Texas
713-849-0044

Drilling Wells, Studies and Data Base

Loyd Tuttle

Frio, SE Texas

Bob Liska

Wilcox, S and SE Texas

Jim Thorpe

Miocene and Cam-Miogyp



SEE YOUR DATA IN A WHOLE NEW LIGHT!

Take the pressure out of exploration
and drilling by seeing what you
are going to encounter.



eSeis

www.e-seis.com
713.531.1447

- Lithology & Fluids
- Depositional Facies
- Pore Pressure from V & Q
- Well Planning Consultation

