

# NOGS LOG



December 2010

Volume 51, Number 6

## Upcoming Events and Activities

---

### December 9 - Joint SGS-NOGS Luncheon

\*\*\* At the LePavillon Hotel \*\*\*

Guest speaker John B. Wagner, Nexen Petroleum, Inc. in Dallas, will present  
“The Jurassic Norphlet Formation of the Deep Water Eastern Gulf of Mexico:  
A Revisit of the Sedimentology of Aeolian Systems & Comparisons to both the  
Modern Namib Desert and Ancient Cedar Mesa Analogues.”

(See page 7 for Abstract and Biography)

#### LEPAVILLON HOTEL

Check with concierge or  
front desk for location  
Lunch served at 11:30am

#### ADMISSION:

**with reservation** ..... \$30.00  
**without reservation** ..... \$35.00  
Student Member with reservation .... Free

---

### December 10 - NOGS Christmas Holiday Party

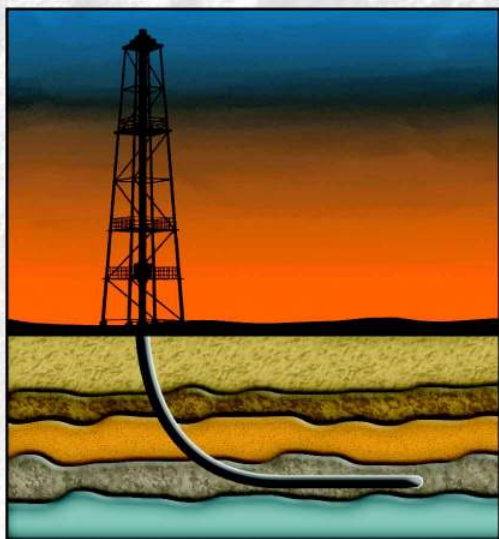
Metairie Country Club. See announcement on page 17.

---

### January 10 - NOGS Luncheon

Holiday Inn Downtown Superdome. Guest speaker John Dacy, of  
Core Laboratories in Houston, will present “Core Tests for Relative  
Permeability of Unconventional Gas Reservoirs.”

# Looking for Accurate Directional Data?



Directional Survey Plus data now available online

## Let TGS lead you in the right direction

Get on the right well path with Directional Survey Plus (DS+) data. DS+ data moves beyond the simple capture of measured depth, azimuth and inclination to create the most accurate spatial representation of the well path, from surface to total depth.

TGS researches DS+ wells to identify all wellbores, entering all runs and composites in original form with extensive metadata and superb quality control. The data are then processed and composited using proprietary workflows. The resulting standardized, high quality data is available in multiple industry formats.

Current coverage includes many of the hottest basins in the US, and multi-client coverage is expanding everyday. TGS also provides DS+ processing to clients worldwide.

Find out more at [www.tgsnopec.com/welldata](http://www.tgsnopec.com/welldata)  
888-LOG-LINE or [WellData@tgsnopec.com](mailto:WellData@tgsnopec.com)



Geophysical  
Products



Geological  
Products



Imaging  
Services



[www.tgsnopec.com](http://www.tgsnopec.com)

**NOGS Office**

Office Manager: Annette Hudson

Office Hours: 8:30 a.m. – 3:30 p.m. on Monday-Wednesday-Friday

Tel: 504-561-8980 □ Fax: 504-561-8988

E-mail: info@nogs.org □ Website: www.nogs.org

The office is located at Suite 300, 810 Union Street, New Orleans, LA 70112.

Correspondence and all luncheon reservations should be sent to the above address.

Sent to press on November 22, 2010.

**BOARD OF DIRECTORS**

President	Rick Kear
Vice President	Eric Zimmermann
Secretary	Penne Rappold
Treasurer	Will Jorgensen
President-Elect	Bob Hafner
Editor	Fran Wiseman
Director 2011	Scott A. Wainwright
Director 2012	Arthur H. Johnson
Director 2013	Jack Langford

**Company**

Schlumberger
LLOG Exploration
Shell
Shell
BOEMRE
Bret Exploration Co Inc
Hydrate Energy International
J C L Services

**Phone**

504-592-5376
985-801-4338
504-728-4338
504-728-6339
504-736-2912
504-889-2700
504-464-6208
985-764-2527

**E-mail**

kearl1@new-orleans.oilfield.slb.com
ericz@llog.com
prappold@gmail.com
william.r.jorgensen@shell.com
ottohaf@aol.com
frances.wiseman@boemre.gov
scott_wainwright@hotmail.com
artjohnson51@hotmail.com
jclangford@latterblum.com

**COMMITTEE**

AAPG Delegates
AAPG Student Chapter
AAPG Student Chapter
Advertising-Log
Auditing
Awards
Ballot
Best Paper
Continuing Education
Employment Counseling
Entertainment
Environmental
External Affairs
Field Trip
Finance and Investment
Historical
Membership/Directory
New Geoscientists (NGNO)
Nominating
Non-Technical Education
Office Operations
Publications Sales
Photography
School Outreach
Scouting
Sponsorship/Houston
Technical Projects
Ad Hoc Committee on
University Support

**Chairperson**

William M. Whiting
Gabriella March
Andrew Ranson
Andrea Stancin
Chuck Holman
Michael N. Fein
Will Jorgensen
Brenda Reilly
TBA
Bob Hafner
Daisy Pate
Michael A. Fogarty
David Garner
Will Jorgensen
Edward B. Picou, Jr.
Carlo C. Christina
Tom Klekamp
TBA
Mike Ledet
Duncan Goldthwaite
Tom Klekamp
Edward B. Picou, Jr.
J. David Cope
Thomas C. Bergeon
Carol Rooney
David E. Reiter
TBA
Michael J. Gallagher

Consultant
Tulane University
UNO
Shell
Independent
W & T Offshore
Shell
Energy Partners Ltd.
Corps of Engineers
Sylvan Energy, LLC
Shell
Shell
Consultant
Retired (C & R Expl.)
Amber Resources
Consultant
Amber Resources
Consultant
Ankor Energy
Century Exploration
Consultant Geologist
Eni Petroleum
Eni Petroleum

504-947-8495
337-578-5587
504-728-0431
504-891-4878
504-210-8148
504-728-6339
504-799-4811
504-957-4372
603-523-4808
504-728-6154
504-728-6339
504-529-5155
985-845-4046
504-394-9636
504-887-4377
985-845-4046
504-529-5155
504-596-3672
504-832-3772
504-835-1909
713-393-6100

bootscon@aol.com
gmarch@tulane.edu
aranson@uno.edu
Andrea.a.stancin@shell.com
charleswholman@bellsouth.net
mikef@wtoffshore.com
william.r.jorgensen@shell.com
breilly@eplweb.com
ottohaf@aol.com
daisy.pate@gmail.com
mike.a.fogarty@gmail.com
David.Garner@shell.com
william.r.jorgensen@shell.com
epicou@bellsouth.net
Carlocc398@aol.com
klekamp@bellsouth.net
mikeledet@cox.net
DGldthwt@aol.com
klekamp@bellsouth.net
epicou@bellsouth.net
dcupe@ankorenergy.com
Tom.bergeon@centuryx.com
carolbrooney@aol.com
david.reiter@enipetroleum.com
Michael.Gallagher@enipetroleum.com

**NOGS LOG STAFF**

Editor	Fran Wiseman	BOEMRE
Editor-Elect	David Tatum	Chevron
Auxiliary	Susie Baker	NOGA
Info Tidbits	Fran Wiseman	BOEMRE
Drill Bits	Carlo C. Christina	Retired (C & R Expl.)
Webmaster	Edward B. Picou, Jr.	Consultant
Layout	Jannette Inc.	

504-736-2912	nogseditor@gmail.com
985-773-6477	davidtatum@chevron.com
504-466-4483	abaker1006@aol.com
504-736-2912	nogseditor@gmail.com
504-529-5155	drillbits81@yahoo.com
	epicou@bellsouth.net

**NOGS AUXILIARY****Officers**

President
1st Vice-President
2nd Vice-President
Secretary
Treasurer
Parliamentarian
Member-at-Large

Jean Jones
Alma Dunlap
Judy Sabatè
Peggy Rogers
Judy Lemarie'
Beverly Kastler
Linda Peirce

**Phone**

504-738-8091
504-737-2678
504-861-4335
504-392-6323
504-393-8659
504-286-0879
504-393-7365

**Directors**

Peggy Campbell
Ruth Grimes
Gerry Waguespack
Carol Andrews
Susie Baker
Joan Collier

**Year**

2009-11
2009-11
2009-11
2010-12
2010-12
2010-12

**Phone**

504-283-2505
504-392-8103
504-737-0532
504-887-3432
504-466-4483
504-833-1738

--- NOGS Contact List continued on page 10 ---

# SYNERGY ENERGY



**Weatherford®**  
LABORATORIES

Your success increasingly depends upon a better understanding of your reservoir. At Weatherford Laboratories, we provide a single source for comprehensive laboratory analyses, creating a synergy previously unknown in laboratory services. This single source includes distinguished geologists, geochemists, analysts, engineers, technicians and software developers, 38 worldwide laboratories, and the broadest portfolio of services for acquiring and interpreting data from physical samples. The end result is an unsurpassed combination of intellectual capital and technical resources — all working together to help you enhance development planning and reduce reservoir uncertainty.

Put our union of Synergy and Energy to work for you.

**Weatherfordlabs.com**

**HIGHER STANDARDS**

**NORTH AMERICA**  
NAInquiries@weatherfordlabs.com

**EUROPE**  
EUIquiries@weatherfordlabs.com

**LATIN AMERICA**  
LAIquiries@weatherfordlabs.com

**MIDDLE EAST/NORTH AFRICA**  
MENAIquiries@weatherfordlabs.com

**ASIA PACIFIC**  
APIquiries@weatherfordlabs.com



### *from the President*

Happy Thanksgiving Ya'll,

We are all waiting to see what comes after the lifting of the Offshore Drilling Moratorium. It has been lifted, which is very good news, but now we await the implementation of the forthcoming regulations and financial requirements for the operating companies. The sooner this happens the better so that we can realize a return to full employment and finding and proving up new reserves.

A reminder - we are having our first joint meeting of the 2010-2011 year on Thursday, December 9th at Le Pavillon Hotel. The speaker for the SGS/NOGS joint meeting is Dr. John Wagner, Chief Geologist for Nexen, and the title of John's presentation is *"The Jurassic Norphlet Formation of the Deep Water Eastern Gulf of Mexico: A Revisit of the Sedimentology of Aeolian Systems & Comparisons to both the Modern Namib Desert and Ancient Cedar Mesa Analogues."*

Dust off your finery and dancing shoes 'cause the NOGA/NOGS Christmas Party on Friday, December 10th at the Metairie Country Club is just about upon us! The evening commences at 7:00 pm. Be further reminded that reservations and payment need to be made in advance. No monies will be accepted at the door or during the party.

Our new Vice President, Mr. Eric Zimmermann has secured interesting speakers for January and February 2011. Specifically on January 10th, John Dacy with Core Laboratories, Houston, Texas will present his paper *"Core Tests for Relative Permeability of Unconventional Gas Reservoirs."* And then on February 7th 2011, Eric has Kadira Singh lined up to present *"The Impact of Meteorites on Earth's History and its Implications for Hydrocarbon Production."*

I want to thank Allen Lowrie and Richard Fillon for sharing their work on continental margins and

crust dynamics as a poster session before and after our November luncheon meeting. If you want your head filled with ideas, just spend some time absorbing from these two fellows and you will be stretched. Thank you gentlemen for opening the window a bit wider and please come back once you have completed the next stage in your work.

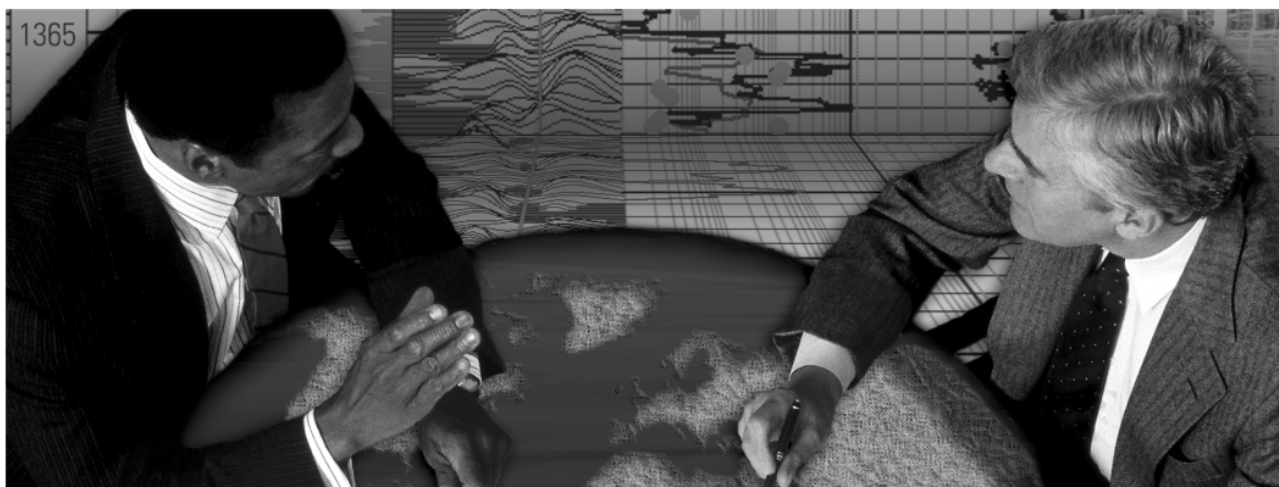
Dave Cope, thank you for all you have done. Your work is most appreciated! Dave has served us well but must retire as the society's photographer. Are you a "shutterbug"? Obviously we are in need of a new photographer or photographers and no you don't have to have a \$3,000 camera for this work. Please contact me or any board member if you are interested in serving in this capacity.

If ya'll have not seriously investigated our forthcoming publication of the *"Oil & Gas Fields of South Louisiana 2010"*, you are behind the curve. This volume is a delight visually and technically. As you follow the theme of increased production from existing fields from case to case, you will definitely pick up some ideas to apply to your own work. And if you've stepped back from an active industry role, what a wonderful "Memory Jogger" of plays you either knew of or were a part of. Significant progress has been made on the publication of the Oil & Gas Fields of South Louisiana 2010. The publication will consist of a color CD-ROM, a black and white paper copy, and an Executive Edition, color paper copy. The price of the CD is \$75, and the price of the black and white paper copy is also \$75. At this time the price of the Executive Edition has not been established. The publication will contain 26 field studies and a discussion and map of the 7-field Black Bay Complex. It will also contain a summary of South Louisiana exploration activities since 1988 by Paul Lawless. Please pre-subscribe and secure your order now.

NOGS will have a booth at AAPG 2011 ACE in Houston April 10-13, 2011. In our booth we will be selling and taking orders for the NOGS Oil & Gas

--- continued on page 30 ---

**Schlumberger formation evaluation solutions deliver the answers you need.** Our extensive portfolio of services, leading-edge technology, and advanced conveyance options keep you in communication with your well throughout its life cycle.



*With formation evaluation technologies from Schlumberger, you can make the best decisions for optimized performance in every well.*

## **The formation evaluation one-stop shop**

Whether you are logging in open hole or behind the casing, our broad selection of services ensures the best solution for acquiring formation evaluation data. Tools can be conveyed while drilling or on wireline or pipe. We offer many specialized evaluation capabilities, from density, neutron porosity, and resistivity to borehole imaging, nuclear magnetic resonance logging, borehole seismic, formation pressure testing, and fluid sampling. Advanced triple-combo logging options include the VISION\* formation evaluation and imaging-while-drilling services. Coupled with Pulse\* telemetry and surveying services, the VISION family provides real-time formation evaluation data and enables optimum well placement.

High-speed wireline measurements are recorded with the Platform Express\* logging services. The SlimXtreme\* platform is designed for high-pressure, high-temperature environments and the ABC\* Analysis Behind Casing services are used after casing is set.

Expert interpretation from the engineers and geoscientists of Schlumberger Data & Consulting Services brings all your data together to give you the answers you need. This expertise is available after logging is complete or as real-time two-way wellsite communication through the InterACT\* real-time monitoring and data delivery system.

Schlumberger delivers leading-edge technology and interpretation expertise for all your formation evaluation needs, so every well benefits from the very best information.

**For more information visit**  
**[www.slb.com/oilfield/formation\\_evaluation/](http://www.slb.com/oilfield/formation_evaluation/)**

\*Mark of Schlumberger

04-FE-114

# Schlumberger

# December 9 Joint SGS-NOGS Luncheon Presentation

\*\*\*At the LePavillon Hotel\*\*\*

## The Jurassic Norphlet Formation of the Deep Water Eastern Gulf of Mexico: A Revisit of the Sedimentology of Aeolian Systems & Comparisons to both the Modern Namib Desert and Ancient Cedar Mesa Analogues

presented by

**John B. Wagner\***

Nexen Petroleum, Inc. Dallas, Texas

### ABSTRACT

Aeolian systems consist of dune and interdune deposits that are intimately associated with a variety of extradunal facies (e.g., wadi, sabkha, sand sheet, alluvial fan, etc.). The Jurassic Norphlet Formation is extensive buried Aeolian sandstone first discovered in 1922 in Norphlet, Arkansas. Recent drilling in the deepwater eastern Gulf of Mexico, utilizing high-resolution 3D seismic has led to further seaward extension of this vast aeolian system.

Aeolian strata interpreted includes dune deposits characterized by grainflow, grainfall, and wind ripple, as well as interdune deposits with dry, wet, and evaporitic interdune elements. Reservoir

properties of these aeolian systems are shown to be related to primary depositional processes and post-depositional diagenetic modifications. Within these Aeolian reservoirs, sublayers of variable reservoir quality are shown to be directly related to the differential distribution of stratification types and are key to understanding the permeability anisotropy observed both vertically and horizontally. Analogs to this study include the modern Namib Desert in Namibia, Africa and the ancient Cedar Mesa (Permian) in Utah.

\*Co-authors: S. W. Douglas and R. J. Moiola

### BIOGRAPHY

**Dr. Wagner** received both his B.S. and M.S. degrees in geology from Louisiana State University in Baton Rouge and his Ph.D. in geology at The University of Texas at Dallas. He joined Nexen Petroleum in December of 2000 as Sedimentologist for Deep-water Exploration and Development and is currently Chief Geologist for Nexen Petroleum U.S.A. Prior to joining the petroleum industry with Mobil Research & Development in 1987, his work ranged from field geologist in Alaska, to manager of a seismic crew, to coastal geologist for the Louisiana Geological

Survey Coastal Geology Program. John was a scientist on board the 1985 USGS/IOS GLORIA survey of the deep-water Mississippi Fan, Gulf of Mexico which was a significant expedition in regards to our understanding of deep-water submarine fan systems. He is a member of both the AAPG and SEPM and has served on Program Committees for the Gulf Coast Section Society of Economic Paleontologists and Mineralogists (GCSSEPM) Foundation Annual

--- continued on page 15 ---

**THE LUNCHEON RESERVATION DEADLINE IS DECEMBER 4 - CONTACT THE NOGS OFFICE**

### “And Looking Ahead...”

The next NOGS Luncheon will be held on January 10 at Holiday Inn Downtown Superdome. Guest speaker John Dacy, of Core Laboratories in Houston, will present “Core Tests for Relative Permeability of Unconventional Gas Reservoirs.” Contact the NOGS office to make your reservation.

# Seismic Imaging of Depositional and Geomorphic Systems

30th Annual GCSSEPM Foundation  
Bob F. Perkins Research Conference

Houston, Texas  
December 5-8, 2010  
Houston Marriott Westchase Hotel



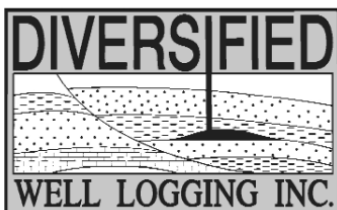
Conference information and  
online registration available  
on our new Web site:

[www.gcssepm.org](http://www.gcssepm.org)



## Relax. We'll keep you posted.

Your rig is offshore and you are not. How do you know what's going on so many miles away? You know because we tell you. Daily or even hourly, Diversified Well Logging's engineers update you on the status of your rig. We are your eyes and ears, especially when it comes to deep water or high pressure, high temperature areas. Diversified offers 24-hour surface evaluation. We provide secure and customized real-time data communication, in-house research and development and 24/7 on-call support for our equipment and our engineers. Whether you have a 10-day job or 110-day job, we provide the specialized attention you require. So, relax. We're with you every step of the way.



*Serving the Gulf Coast for over 40 years.*

New Orleans • Lafayette • Houston • Dallas • Corpus

800.280.2096

711 West 10th Street • Reserve, LA 70084 • Phone: 985.536.4143 • Fax: 985.536.2427  
sales@dwl-usa.com



**FULLY INTEGRATED AND  
CENTRALIZED BIOSTRATIGRAPHIC  
SERVICES**

▼ *Single-source biostratigraphic databases  
for increased accuracy and consistency*

▼ *Integrated foram / nannofossil analyses*

▼ *Complete wellsite paleo services*

▼ *In-house sample preparation  
lab for quality-monitoring  
and efficiency*

▼ *Sample pick-up service*

6619 Fleur de Lis Drive  
New Orleans, LA 70124  
(504) 488-3711

[www.paleodata.com](http://www.paleodata.com)

**MCMORAN EXPLORATION CO.**



**MCMORAN  
OIL & GAS**

[www.mcmoran.com](http://www.mcmoran.com)

NYSE: MMR

16676 Northchase Dr.  
Houston, TX 77060  
(281) 539-7600  
Fax: (281) 539-7655

1615 Poydras  
New Orleans, LA 70112  
(504) 582-4000  
Fax: (504) 582-4155

110 Travis St., Suite 140  
Lafayette, LA 70503  
(337) 735-9150  
Fax: (337) 735-9151

**NOGS CONTACT LIST**

--- continued from page 3 ---

**MEMORIAL FOUNDATION**

**BOARD OF TRUSTEES**

2010-11 Chairman	Tom Klekamp
2010-11 Secretary	Rick Kear
2010-11 Trustee	Chuck Holman
2010-11 Trustee	Michael N. Fein
2011-12 Trustee	Monte Shalett
2011-12 Trustee	James Swaney
2012-13 Trustee	Jennifer Connolly
2012-13 Trustee	William M. Whiting

<b>Company</b>
Amber Resources LLC
Schlumberger
Independent
W & T Offshore
Berkshire Exploration Co
BOEMR E
Shell
Consultant

<b>Phone</b>
985-845-4046
504-592-5376
504-891-4878
504-210-8148
504-831-7779
504-736-2677
504-728-6411
504-947-8495

<b>E-mail</b>
klekamp@bellsouth.net
kearl1@new-orleans.oilfield.slb.com
charleswholman@bellsouth.net
mikef@wtoffshore.com
mshalett@gmail.net
james.swaney@boemre.gov
jennifer.connolly@shell.com
bootscon@aol.com

**AAPG DELEGATES**

**Term Ends**

2011	Tom Hudson
2011	Edward B. Picou, Jr.
2011a)	Brenda Reilly
2011a)	Robert Rooney
2012	William Whiting
2012	Jim Zotkiewicz
2012 a)	David E. Balcer
2012 a)	Richard J. Stancliffe

Chevron	504-529-5155
Consultant	504-799-4811
Energy Partners Ltd.	504-832-3777
Century Exploration	504-947-8495
Consultant	504-831-4694
Zot Oil & Gas	985-773-6725
Chevron	504-728-7553
Shell Expl & Prod Co.	

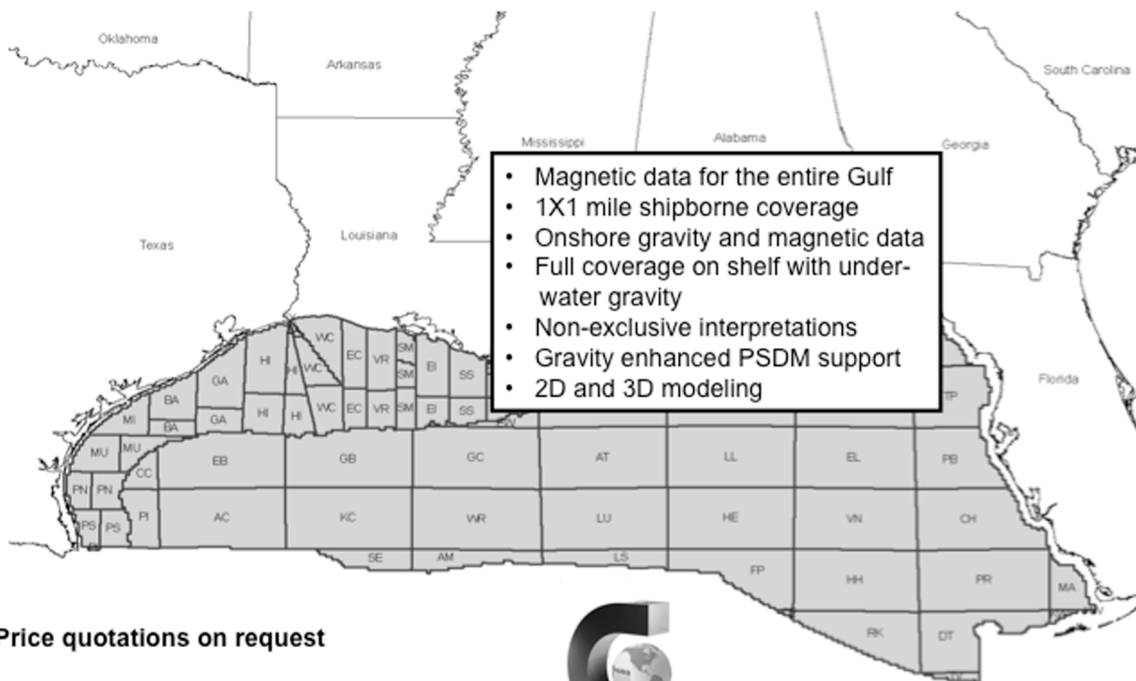
tom.hudson@chevron.com
epicou@bellsouth.net
breilly@eplweb.com
Robert.rooney@centuryx.com
bootscon@aol.com
jimzot38@zotoil.com
dbalcer@Chevron.com
richard.stancliffe@shell.com



## Fugro Gravity & Magnetic Services

LAND • AIRBORNE • UNDERWATER • SHIPBORNE

The most complete coverage Onshore and Offshore Gulf of Mexico



Price quotations on request

Fugro Gravity & Magnetic Services  
www.Fugro-GravMag.com  
Tel: 713-369-6123



Gravity Inspired. Magnetically Inclined.



**Shell has worked in partnership  
with the NOGS for many years, and  
is proud to count the society among  
its closest business associates.**

The New Orleans Geological Society was organized in 1941 to foster scientific research and advance the science of geology. Particular emphasis is laid on the exploration for and production of petroleum and natural gas. Related objectives include encouraging the adoption of improved methods of exploration, disseminating pertinent geological and technological data, and maintaining a high standard of professional conduct among its members.

[www.shell.com/us/sepcos](http://www.shell.com/us/sepcos)

**It's no illusion...  
Core Lab offers everything you need.**



©2009 Core Laboratories. All rights reserved.

Unconventional resource exploitation • Gas shale experts • Deepwater GOM authority  
Capacity for fast turnaround • High-quality people • Global support  
Industry leadership and reliability • Proprietary and patented technologies • Experience

[www.corelab.com/rd/petroleumservices](http://www.corelab.com/rd/petroleumservices) • 24-hour wellsite service hotline: 504-733-6583



From ZNodal Systems to ZNodal Imaging

# We are full spectrum ZNodal™ technology

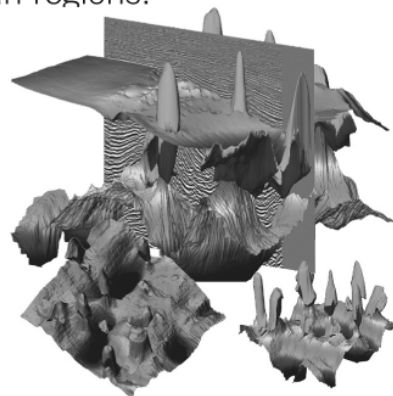
FairfieldNodal.com



We admit it. We're seismic nodal fanatics. Always have been. Which explains our one-of-a-kind, cable-free ZNodal™ systems. They work wonders in dense urban areas and pristine wilderness, in shallow water and deep ocean regions.

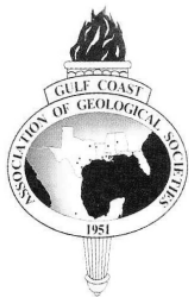
In fact, our exclusive ZNodal technology is behind everything we do, from acquisition and licensing to advanced processing and imaging, bringing nodal data to life in amazing ways.

Right now, our ZNodal systems are on the job in some of the world's most challenging fields, making a powerful difference. So when you're ready to go nodal, count on us to lead the way. ZNodal technology: It's what you need. It's what we're all about.



**fairfield**nodal

SYSTEMS ACQUISITION LICENSING PROCESSING IMAGING



*The Gulf Coast Association of Geological Societies*

## **CALL FOR PAPERS**

**61th Annual Convention**

**October 16-19, 2011**

**Veracruz, Mexico**

*Hosted by the Asociación Mexicana de Geólogos Petroleros*



The Asociación Mexicana de Geólogos Petroleros (AMGP) is proud to host the 2011 GCAGS Annual Convention to be held in Veracruz, Mexico. The meeting will be running from October 16<sup>th</sup>-19<sup>th</sup> and will gather geoscientists from more than 15 geological societies from around the Gulf of Mexico.

Our theme, **“Sharing knowledge to add value”**, highlights the importance of sharing knowledge to maximize the value of the resources lying in the subsurface. GCAGS Transactions derived from annual conventions have long been recognized for gathering the best geoscience from the Gulf Coast. We invite geoscientists from all around the Gulf of Mexico to submit their contributions to the technical program as oral or poster presentations. This will be a great opportunity to exchange ideas. Veracruz and AMGP are looking forward to have you in an unforgettable Convention.

### **PROPOSED TECHNICAL SESSIONS INCLUDE**

- ✓ Remaining potential in circum-Gulf of Mexico Petroleum Provinces
- ✓ Cenozoic sequence stratigraphic framework of the deep Gulf of Mexico and adjacent areas
- ✓ Climate change, environmental challenges and sustainable development
- ✓ Learning and teaching in the geosciences to meet new challenges
- ✓ New perspectives in fractured reservoirs
- ✓ New concepts and methods in biostratigraphy
- ✓ The Gulf of Mexico deepwater setting – Geology, economics, and technology
- ✓ Interaction between salt tectonics and sedimentation
- ✓ Seismic imaging and interpretation of geologically complex areas
- ✓ Petroleum systems and oil quality controls in the Gulf of Mexico
- ✓ New approaches in sandstone reservoirs characterization and diagenetic modeling
- ✓ New insights into the geodynamic evolution of the Gulf of Mexico

### **SYMPOSIUM**

Jurassic Reservoirs of the Gulf Region: Stratigraphy, sedimentology, diagenesis and modeling

### **HOW TO SUBMIT:**

Abstracts (not more than 250 words) should be submitted for review online or via e-mail to the technical program chair. Papers should have application to Gulf Coast and Gulf of Mexico geology. Include your full mailing address, telephone and FAX numbers, e-mail address, and whether you are submitting for oral, poster or either (preferred).

**Submit abstracts by February 4, 2011 as instructed on the website [www.gcags2011.com](http://www.gcags2011.com)**

Notification of acceptance by March 4, 2011. All presenters, both oral or poster, must submit either a paper (10 to 12 pages) or an extended abstract with key figures for review by April 22, 2011 for inclusion in the Transactions. Full instructions for authors will be posted at [www.gcags2011.com](http://www.gcags2011.com).

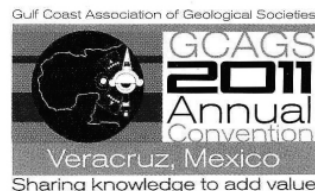
### **ABSTRACT DEADLINE: FEBRUARY 4, 2011**

Questions or ideas for the technical program should be directed to:

**Antonio Cuevas Leree**

Technical Program chair

[juan.antonio.cuevas@pemex.com](mailto:juan.antonio.cuevas@pemex.com), Tel. +52(993) 3164588



## NOGS October Luncheon



Charley Corona and Carlo Christina



Dr. Terrence A. McCloskey and new member Soaziq Leveque



NOGS President Rick Kear introducing Dr. Terrence A. McCloskey



Charley Corona, Duncan Goldthwaite, Tom Klekamp, Art Johnson, Ed Picou, Louis Lemarie', Carlo Christina New Publication "*Oil and Gas Fields of South Louisiana 2010*" Steering Committee

**Oldest Fossil Shrimp Found in Oklahoma** - November 10, 2010 | Kent State University: "The oldest known shrimp prior to this discovery came from Madagascar," Feldmann said. "This one is way younger, having an age of 'only' 245 million years, making the fossil shrimp from Oklahoma 125 million years older." Quoted from the Kent State University press release. *This one missed the pot.* For more information go to: <http://www.kent.edu/news/newsdetail.cfm?newsitem=3268AEDE-E98A-AA63-3FDD6B5DAC67E1EB>

**Chevron to buy Atlas Energy for \$4.3B** - November 10, 2010 | CNN Money: Chevron announced that it will purchase Atlas Energy, a company with extensive holdings in the Marcellus Shale gas play of Pennsylvania for \$4.3 billion. For more information go to: [http://money.cnn.com/2010/11/09/news/companies/chevron\\_atlas/index.htm](http://money.cnn.com/2010/11/09/news/companies/chevron_atlas/index.htm)

**Dead Coral Found Near Deepwater Oil Spill Site** - November 8, 2010 | National Geographic: Large amounts of dead or dying coral have been discovered about seven miles southwest of the Deepwater Horizon oil spill site. Many of the specimens found were covered with an unknown dark substance. For more information go to: <http://news.nationalgeographic.com/news/2010/11/101105-deepwater-coral-dieoff-gulf-oil-spill-science-environment/>

From Dylan, age 12, Melbourne, Australia:) What do you call a blind dinosaur?  
Doyouthinkesauras?



Ha Ha Ha

- Fran Wiselady

---

## NOGS Luncheon Presenter's Biography (continued from page 7)

Research Conferences and was the 2009 President of GCSSEPM. In addition to his role as Chief Geologist for Nexen Petroleum U.S.A., John is currently a Research Associate Professor at Southern Methodist University in Dallas, Texas, where he serves as graduate advisor and teaches graduate courses in the field of sedimentology and has published over 30 papers and abstracts. His work travels have taken him from the rivers and streams of Sakhalin Island Russia, to the coast of Vietnam, to the jungles and mountains of Bolivia and Argentina. His primary research interests are focused on siliciclastic depositional systems both modern and ancient, sandstone sedimentology, reservoir architecture, depositional systems analysis, and understanding the various allocyclic and autocyclic controls that influence deposition.

**New NOGS  
Members  
June - September  
2010**

**Larry Benedetto**  
Howard Weil  
1100 Poydras St - Ste 3500  
New Orleans, LA 70163  
504-582-2655

**Grant Dougal**  
Shell  
701 Poydras St - Ste 2282  
New Orleans, LA 70161  
504-919-9931

**Barbara L. Dutrow**  
Louisiana State University  
Professor  
Dept. of Geology & Geophysics  
Baton Rouge, LA 70803  
225-578-2525

**Jennifer Olszewski**  
UNO-Student  
jolszews@uno.edu

**Andrew M. Ranson**  
UNO - Student  
2000 Lakeshore Dr  
New Orleans, LA 70122  
337-578-5587

**Robert R. Smith**  
McMoRan Exploration Co.  
Expl Manager  
1615 Poydras St  
New Orleans, LA 70112  
504-5825-4635

**William W. Goodell Jr.**  
Goodell Law Firm  
P O Box 52663  
Lafayette, LA 70505  
330-412-2724

**Molly Steiner**  
UNO-Student

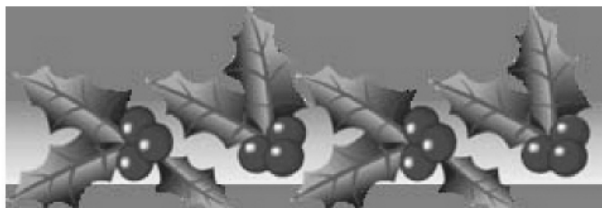
**Carol M. Wicks**  
Louisiana State University  
Department Chair  
Dept. of Geology & Geophysics  
Baton Rouge, LA 70803  
225-578-2692

**REINSTATED**

**Elizabeth C. McDade**  
McMoRan Exploration Co.  
Geologist  
1615 Poydras St  
New Orleans, LA 70160  
504-582-4510

**REINSTATED**

**James R. Moffett**  
McMoran Exploration Co.  
1615 Poydras St Ste 1307  
New Orleans, LA 70112-1307  
504-582-1615



# The New Orleans Geological Society

invites you to the

## **Christmas Holiday Party**

Elegant buffet dinner with complimentary wine

Cash bar

Presentation dessert

Music and dancing

**Friday, December 10, 2010**

**7 pm - 10 pm**

Metairie Country Club

580 Woodvine Avenue

Metairie, Louisiana 70005

Complimentary valet parking

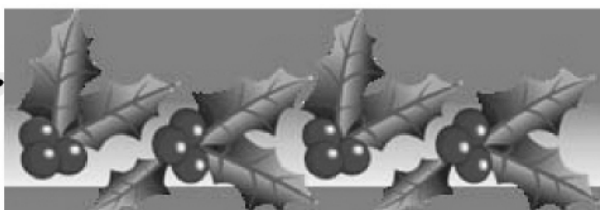
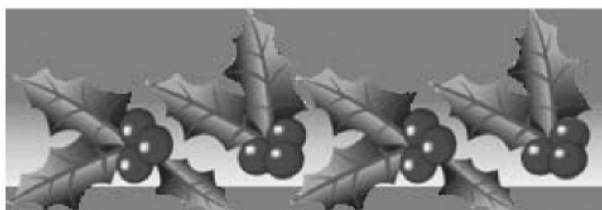
Cost per person \$50.00

Reservations via NOGS Office 561-8980

or email [info@nogs.org](mailto:info@nogs.org)

Reservations and payment must be made

by Tuesday, December 7, 2010



## NOVEMBER MEETING POSTER SESSION

At the November monthly meeting Allen Lowrie and Richard Fillon presented a poster session titled “Continental margin of northern Gulf of Mexico: dynamics from mantle/crust and trans-crust breakage zones provide pathways for mantle heat/fluid migrations, potential impacts onto sediment basins and energy waves impacting form complex Gulf Province.” Their biographies and the abstract follow.

### Biographies

**Allen Lowrie** has worked in basic research at the Lamont Geological Observatory of Columbia University. He was in regional exploration with Mobil Oil Exploration and Production Company in New Orleans, and global marine monitoring for operational Naval acoustic modeling with the US Naval Oceanographic Office. His work areas have covered the continental margins and beyond, along all continents, ranging from beaches to the Marianas Trench. Allen’s work assignments have extended from highly detailed studies over areas as small as one mile square to large areas, basin-spanning, including the North Pacific. His work objectives range from detailed mapping of a specific parameter to describing operating geologic processes.

Allen has a BA from Columbia University, taught graduate courses at Tulane University and University of Southern Mississippi at Stennis Space Center, and continuing education courses for petroleum exploration. He has 100+ publications, including posters, one book (SEG), and he is the lead editor of many data reports.

**Dr. Richard H. Fillon** has been working on a Gulf of Mexico Basin Geohistory GIS Database since 1999. He has written over 100 technical papers and abstracts on marine and petroleum geology and biostratigraphy. Recent work focuses on chronostratigraphy, targeting subjects ranging from Paleogene-Neogene Depositional Systems to Mesozoic Gulf of Mexico Basin Evolution. Active in bringing advanced geoscience concepts to the petroleum exploration community Dr. Fillon has served on program advisory committees for several recent GCSSEPM Perkins Research Conferences and is currently a GCSSEPM Foundation Trustee.

Material here presented resulted from a 3-D database preparation over deep water.

### Abstract

*Continental margin of northern Gulf of Mexico: dynamics from mantle/crust and trans-crust breakage zones provide pathways for mantle heat/fluid migrations, potential impacts onto sediment basins and energy waves impacting form complex Gulf Province.*

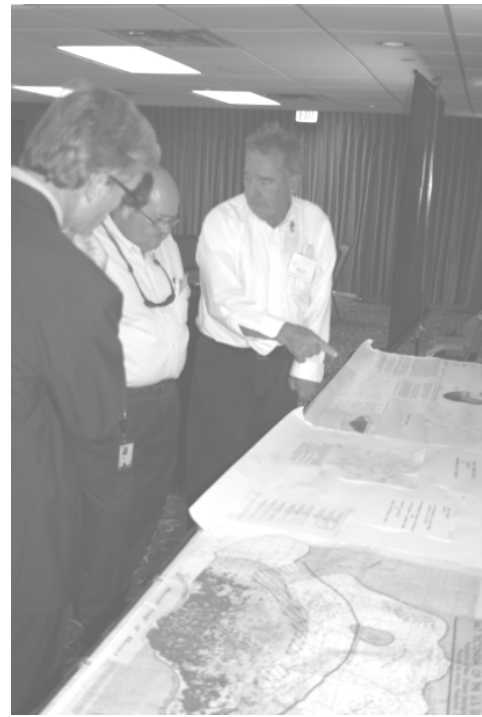
Study of continental margins such as the Gulf of Mexico reveal actual contacts between mantle-crust-sediments-water/hydrosphere-atmosphere-biosphere, all separate units denoted as a single continuum. Boundaries between the various units are variable as temperature-pressure/stress-strain conditions change and as units themselves migrate. Original rifting attenuates/extends continental crust along normal faulting with crust becoming progressively denser via intrusions from ocean crust and mantle beneath. Intrusions are result of complex dynamics within the mantle-crust complex. Much greater mantle heat (1400C +/- 200C) suggests that the entire mantle is buoyant, lending itself to myriad convection cells over spectrum of dimensions from ten-hundred-thousand km lateral extent. Brittle continental crust breaks from plate tectonic interactions. Such breaks are trans-crustal that never “heal” and the breaks yield avenues for buoyant mantle, including fluids, to rise into and through crust. This accumulates onto the crust surface, be it seafloor or overlying sediments. Rising mantle heat changes thermal characteristics. A geothermal gradient for crusts is circa 25C/km and with continental crust thicknesses ranging from 30-40 km. Thus, crust-base could be 750-1000C, apparently mechanically weakened.

Subsiding flanks of Gulf Province rifted margin provide sediment accommodation space and prograding thin-skinned sediments deform by normal/lithic faults as part of a gravity-driven ‘simple shear’

mechanism over a distance of 1200 km. This entire margin-spanning unit may intermittently migrate basinward. These normal/listric faults can serve as migration routes for mantle-derived heat to ascend. Thus, breakages within sediments and crust of whatever origin are passages for fluid and temperature-pressure changes from mantle sources.

With the range of connections from mantle to atmosphere, striking 'energy waves' from within the margin to beyond, can perturbate this communication system. Energy waves range from instantaneous as from meteor impacts, to earthquakes, to very low frequency compressions from slow and silent earthquakes and depositions from glacial lake outbursts.

The novelty here is that mantle-crust dynamics are far more dynamic that theretofore proposed. As envisioned here, continental crust is heterogeneous and that complexity may impact overlying sedimentary basins and maturation of hydrocarbons.



Allen Lowrie presents mantle influence poster

## NOGS November Luncheon



Guest speaker Andrew J. Petty



Dick Fillon and Jeff Nunn



Carlo Christina extols new publication

## South Louisiana and Offshore Exploration and Production Activity

### Lafayette District, Onshore Area and Offshore Area:

By Carlo C. Christina

Since my last report one month ago, drilling activity has increased considerably in South Louisiana, with 63 new locations permitted, 58 in the Lafayette District Onshore Area, and 5 new locations permitted in the Lafayette District Offshore Area.

As previously reported, over the past 4 month period, 113 new wells have been permitted, or about 28 wells per month. It is exciting to see this new increased activity in South Louisiana.

Following is a list of the most interesting new onshore wells:

In Assumption Parish, Meridian Resources, Inc. staked a location in **East Lake Verret Field** in Sec. 34, T13S-R13E. The #3 Kafoury is permitted to 14,450', and is drilling below 12,500 feet.

Cameron Parish is featured with the permitted location of a **26,000'** well. You might recall my first column in October reported a "rumored" very deep test in **Johnson Bayou Field**. Armstrong Louisiana, LLC has permitted the #1 BP Fee, and will operate the well to be located in Sec. 21, T15S-R14W. Armstrong has offices in Denver, Colorado.

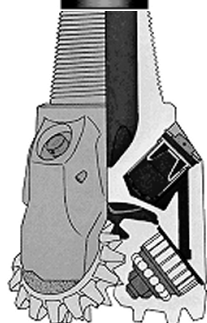
**Johnson Bayou Field** was discovered in 1924 with many shallow completions at depths of 1100 feet or less. Until 1944, no wells were drilled deeper than 11,900 feet, and not until 1972 was there a test deeper than 15,000 feet. Planulina production was established at that time at depths of 10,700' and 11,500'. Most recent production has been in intervals between 7000' and 8000 feet. A 26,000' test might encounter the Hackberry section at approximately 20,000', the Yegua section at 22,000', and could be in the Wilcox at total depth.

In Beauregard Parish, MidStates Petroleum Co. continues to aggressively explore deep Wilcox sands with the #7 Musser-Davis in **South Bearhead Creek Field**. The well is permitted to 15,500' at a location is Sec. 33, T6S-R11W. The #6 Musser-Davis, \*(serial #241216) was recently completed in the LoWx sand, flowing 220 BOPD + 150 MCFG, through perforations 13,638 to 13,846'. The #3 Musser-Davis \*(serial #241333), was completed in the UpWx sand flowing 120 BOPD +350 MCFG.

Jefferson Parish has a new location staked in **Bayou Villars Field**. Royal Production will drill the #1 SL 20260 in T15S-R23E to a proposed depth of 10,500 feet. The well is drilling below 10,200 feet.

**Clovelly Field**, in Lafourche Parish, has a new proposed 14,435' test, operated by Castex Energy, Inc. The #1 Allain-Lebreton is located in Sec. 10, T19S-R22E was spud on 10/17/10, and is drilling below 9287 feet.

In Saint Landry Parish, the old field of **Opelousas** has a new proposed well in Sec. 117, T6S-R4E. Destin Operators will drill the #3 W.Lalonde to a projected depth of 14,014 feet. Destin recently re-established Sparta production in Opelousas Field with the #2 Lalonde, et al. \*(serial #240986), flowing 682 BOPD and 3200 MCFG through perforations 12,188 to 12,263', overall. The #3 Lalonde is waiting on a rig.



Terrebonne Parish has attracted a deep test in **Hollywood Field**. Petro-Hunt will drill the #1 Houma Community well in Sec. 101, T17S-R17E, to a projected depth of 17,700 feet. In 2008 Petro-Hunt completed its #1 Southdown Sugars, \*(serial #235330) in the Hollywood sand through perforations 15,696-15,708', flowing 30 BOPD + 2125 MCFG.

In Vermillion Parish, LLOG has permitted the #1 SL 19639 in **Intracoastal City Field** to a depth of 15,986 feet. The location falls in the Bay in T15S-R3E. It is drilling below 6950 feet.

Also in Vermillion Parish, McMoRan will drill its #1 ExxonMobil Fee in **Rollover Bayou Field**, to a projected depth of 17,847 feet. This well was permitted in Vermillion Block 4, with a bottom hole location in Sec. 8, T17S-R1W.

### **OFFSHORE LOCATIONS:**

Century Exploration has staked 2 locations in **Breton Sound Block 53 Field**. The #1 SL 19051 is permitted to 11,700', and the #1 SL 19391 is projected to 17,550 feet.

### **Lafayette District, Offshore Area:**

#### **SHELF ACTIVITIES:**

By Al Baker

Between May 1<sup>st</sup> and October 25<sup>th</sup>, a total of ten drilling permits have been granted for offshore shelf wells. Approximately half of the GOM jack-up fleet (19 rigs) are currently at work drilling new wells or sidetracking existing wellbores. Of the ten permitted wells, only one appears to be a wildcat, namely, the **Eugene Island Block 233**, McMoRan Oil & Gas, OCS-G 21640 #1 (Lafitte Prospect) in 140 feet of water. The Lafitte exploration well commenced drilling on October 3, 2010, and is preparing to drill ahead towards a proposed total depth of 29,950 feet. This well is targeting Middle and Lower Miocene objectives below a salt weld.

Other wells of note include the Rooster Petroleum, LLC, **Eugene Island Block 28**, OCS-G 5479 #6 well that found 60 feet of high quality pay in two zones of stacked Cib. carst. reservoir sands. The #6 well was drilled to a total depth of 10,950 feet in 15 feet of water. This well is the second successful well drilled by Rooster Petroleum at Eugene Island Block 28 this year. In January 2010, the Rooster, Eugene Island 28 #A-3 oil well began producing from a Tex. W sand. Rooster intends to drill at least two additional wells to delineate the Cib. carst. sands on Block 28.

In offshore Texas, a joint venture comprised of Peregrine Oil & Gas, Entek and Challenger Minerals has received approval to drill a well in **Galveston Block A-133**. An early November 2010 spud date is anticipated. The well is targeting a 12 BCF prospect (Lentic. I?) that is well-defined by a seismic amplitude anomaly.

According to an article in The Oil & Gas Journal by Nick Snow dated October 7, 2010, a new Southern Methodist University study indicates that a marked slowdown in the U.S. government's issuing of new GOM shallow-water drilling permits poses serious implications for the U.S. Gulf Coast's economy. The SMU study stated that nearly 40,000 oil and gas industry-jobs are in jeopardy. Many Gulf Coast communities and laborers are hoping that real "change for the better" happens sooner rather than later.

### **DEEP WATER GULF OF MEXICO ACTIVITIES:**

By Eric Zimmerman

Good news for the deep-water fields of the Gulf of Mexico. Chevron Corp. has approved a \$7.5 billion project to develop the **Jack Field** and the **St. Malo Field**. This project involves building a giant facility that will serve as a single hub for the 2 fields, located 25 miles apart. It will have the capacity to produce 170,000 barrels

--- continued on next page ---

of crude a day and 42.4 billion cubic feet of gas per day. The fields are located in 7000 feet of water with well depths in excess of 20,000 feet.

ATP Oil & Gas Corporation announced first oil production at its **Mississippi Canyon 941 #3** well in the deepwater Gulf of Mexico. The initial rate exceeded original expectations and the well tested in excess of 7,000 BOE per day. The Mississippi Canyon 941 #3 well is located in the **Mirage Field**. The A-1 well encountered four Miocene sands totaling 266 feet of pay, and was completed at a measured depth of 16,300 feet in two of the discovered sands. Plans are to commingle production from the two completed sands.

\* Note that wells reported as, “completed wells”, include serial numbers as carried on the web-site SONRIS, which enables you to acquire complete data on these wells.

#### **BITS AND PIECES:**

The Office of Conservation Scout Report, as carried on the web-site SONRIS, lists all active wells in the Lafayette District, Onshore and Offshore. The current report contains active wells in the following fields: Bayou Villars; Black Bay, North; Breton Sound 53; Lake Washington; Manila Village; Myette Point, Northwest; Pine Prairie; Stella; and West Cote Blanche Bay.

You might ask, “Why are these fields important to this report?” The answer is, “These 9 fields are included in the NOGS publication, **“Oil & Gas Fields of South Louisiana 2010”**. This publication was previewed at the GCAGS Convention in San Antonio in early October, and was well received by all who saw it. Twenty-six fields are featured in the publication, with each field containing the following: a summary sheet; a written summary of the history and geology of the field; a production plot; a type log; one, or more, structure maps; a cross section; copies of logs having significant pay sections, and 3-D seismic displays, when available.

This publication will be available to you before the end of December, in black and white paper binders for \$75, in High Resolution color CD's, for \$75, and in a limited number of an Executive Edition, containing color paper copies in a personalized binder. The price for the Executive Edition has not been determined at this time. Check the web-site [www.nogs.org](http://www.nogs.org) for information.

Please give me your comments on the contents of this column—too many details, not enough information, etc. by contacting me at [drillbits81@yahoo.com](mailto:drillbits81@yahoo.com).

Tune in next month <<<<

Carlo C. Christina

In the meantime, whatever you want to do, do it now. There are only so many tomorrows.

*Michael Landon*

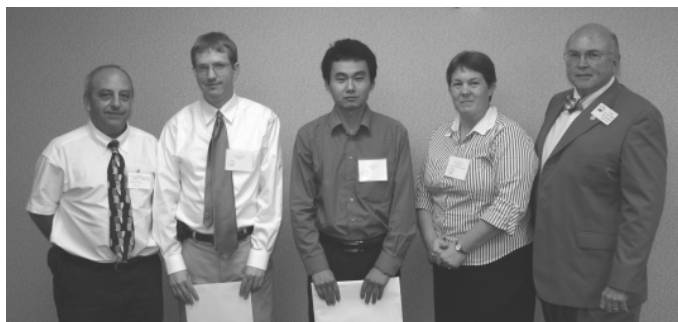


**Save the date!**  
**NOGS Annual Golf Tournament**  
**April 25, 2011**



*Editor's Corrections: In the November 2010 NOGS LOG there was a picture of Tom Hudson receiving the Honorary Life Membership in NOGS award. There was an error in the piece concerning his participation in the Deep Water Symposium held in New Orleans every year. Tom was the co-chairman for the symposium in 2005 and chairman in 2006 and 2007. Rakesh Kumar chaired in 2008 and 2009. Joe Leimkuhler was the chairman in 2010. Our apologies to Mr. Kumar and Mr. Leimkuhler.*

*Also in the November NOGS LOG, some of the NOGS Memorial Foundation Scholarship recipients were incorrectly identified. The LSU picture (below left) included L-R; Professor Juan Lorenzo, Matthew Clark, Yongbo Peng, Professor and Department Chair Carol Wicks, and Tom Klekamp. The Tulane picture (below right) included L-R Jordan Doig, Holly Ann Jefferies, Professor and Department Chair Stephen Nelson, Austin Nijhuis, Janwei Han, and Tom Klekamp.*



# SEI®

**Seismic Exchange, Inc.**

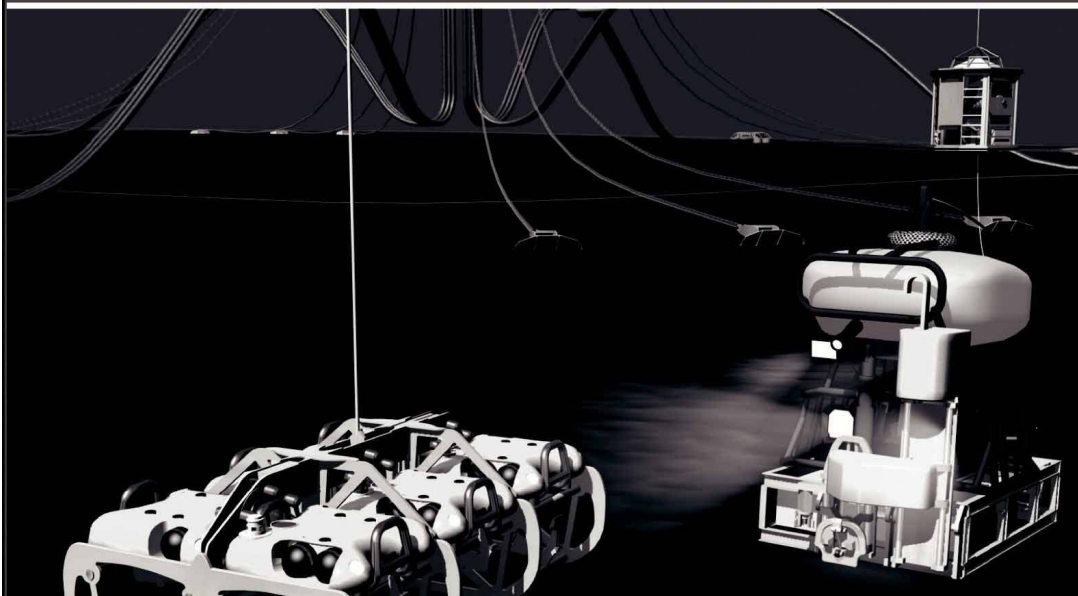
**Strategic Speculative Surveys  
Geophysical Data Marketing & Management**

201 St. Charles Avenue, Suite 4300, New Orleans, Louisiana 70170-4300  
Telephone 504.581.7153 Fax 504.581.9591  
[www.seismicexchange.com](http://www.seismicexchange.com)

**Your**  
**Full Service  
National  
Seismic Data  
Marketing Firm**

New Orleans  
Dallas  
Houston  
Denver  
Oklahoma City  
Corpus Christi  
Tulsa

# Finally - An answer for getting reservoir seismic **OVER THE RESERVOIR!**



- 4C/4D Node Seismic
- ANGOLA
- GoM
- NIGERIA



**“Coming Soon to an Oilfield Near You!”**

[www.sbexp.com](http://www.sbexp.com)

**Dubai**  
T: +971 4 4271700

**Houston**  
T: +1 281 566 1666

**Oslo**  
T: +47 2240 2700

**Rio**  
T: +55 21 2494-0283

**Singapore**  
T: +65 9180 2605

**Trondheim**  
T: +47 7 3879500

RAISING  
THE **STANDARD**



100 Northpark Blvd.  
Covington, LA 70433

(985) 773-6000



**LaBay**  
Exploration Co., L.L.C.

111 Veterans Memorial Blvd.,  
Suite 1550  
Metairie, Louisiana 70005

[www.labayexploration.com](http://www.labayexploration.com)

Office (504) 371-5967  
Fax (504) 371-5969

***This advertising space is available!  
Contact the NOGS office.***

# THE NEW ORLEANS GEOLOGICAL SOCIETY MEMORIAL FOUNDATION, INC.

The Memorial Foundation is an IRS Tax Exempt Code #501 (c)(3) organization. The Federal I.D. is: 72-1220999. Please consider making a donation to the Foundation prior to the close of this year's fiscal cycle on June 30, 2011. Your individual support in any amount will help meet the IRS Guidelines for our Foundation. *Thanks!*

## \$15,000 AND ABOVE

**Olga Braunstein Succession**

**Gibbet Hill Foundation**

*In Memory of Steve & Marion Millendorf, William J. Prutzman,*

*Roger G. Vincent & Ron Youngblood*

## \$10,000

**George W. Schneider, Jr. and Family**

*In Memory of George W. Schneider, Sr.*

GCAGS

*Matching funds*

## \$2,000 TO \$3,000

**NOGS Golf Tournament May 2009**

*In Memory of Bill Craig*

## UP TO \$249

**Donald I. Andrews**

*In Memory of Ray F. Havard*

*In Memory of Harlan (Lanny) Northcott*

**Robert J. Ardell**

*In Memory of Al Gibeath*

*In Memory of Bill Malin*

*In Memory of Bob Williamson*

**Mr. and Mrs. Wesley Barton**

*In Memory of Thomas A. Cullinan*

**Abraham Biadgelgne**

**Maurice N. Birdwell**

**Irion Bordelon, Sr.**

*In Memory of Robert G. Williamson*

**Hilary James Brook**

**Robin Broussard**

**Rob Burnett**

**J. Sybil Callaway**

**Chevron**

*Matching Funds*

**Arthur F. Christensen**

**Ellen F. Clark**

**Willis E. Conatser PhD**

**Clarence F. Conrad**

**Charley Corona**

*In Memory of Professor Hubert Skinner*

**Trudy and Charley Corona**

*In Memory of Erik Mason*

**Michael A. Danahy**

**M. R. "Bob" Douglass**

*In Memory of Robert G. Williamson*

**Merle J. Duplantis**

**Dr. Brooks B. Ellwood**

**Parrish N. Erwin, Jr.**

**Exxon Mobil Matching Funds**

**Michael N. Fein**

**Laurens Gaarenstroom**

**Sherwood M. Gagliano**

**Arthur J. Garden**

**David Garner**

## \$7,000 TO \$9,000

**Paul C. McWilliams**

## \$250 TO \$499

**Carlo C. Christina**

*In Memory of Al Gibeath*

**Tom Klekamp**

**Richard G. Klibert**

**Larry Galloway**

**Peter G. Gray**

*In Memory of Robert G. Williamson*

**Bret Hampton**

**Angela M. Hessler**

*Through the Chevron Humankind*

*Program*

**Bernard L. Hill, Jr.**

*In Memory of Robert E. Osborne*

**Dan E. Hudson**

**Kenneth Huffman**

**Jeffrey E. Jandegian**

**Paul Jurik**

*In Memory of Thomas A. Cullinan*

**Reuben J. Klibert, Jr.**

*In Memory of Dale Klibert*

**John C. Kucewicz, Jr.**

**John C. Langford**

**Jeannie F. Mallick**

**Paul C. McWilliams**

*In Memory of Russell D. "Rusty" Morris*

**New Orleans Geological Auxiliary**

*In Memory of Dee Baysinger*

*In Memory of Doris Meltzer*

*In Memory of Terri Smith*

**Nexen Petroleum USA Inc. Matching**

**Funds**

**Russell H. Nordwell**

**William J. O'Leary**

**Richard A. Olsen**

*In Memory of Richard W. Boebel*

*In Memory of William J. Malin*

*In Memory of Robert W. Sabate'*

**Teresa M. O'Neill**

*In Memory of Brian J. O'Neill*

**Linda and Bill Peirce**

**Edward B. Picou Jr.**

*In Memory of William J. Malin*

*In Memory of Robert G. Williamson*

# FONO FUND

The FONO Fund accepts contributions that are invested and the income dedicated to assure sufficient financial resources will always be available to maintain the NOGS business office. Contributors are reminded that donations to the FONO Fund are not covered by the IRS 501 (c)(3) tax exempt classification and should be reported as a business expense on your IRS tax report.

## \$500

**James A. Hartman**

*In Memory of Hal Hudson*

*In Memory of Robert G. Williamson*

## UP TO \$250

**Donald I. Andrews**

**Alfred H. Baker Jr.**

**Joseph E. Boudreaux**

**Hillary James Brook**

**Jack G. Bryant**

**J. Sybil Callaway**

**Arthur F. Christensen**

**Richard P. Colomes**

**Clarence F. Conrad**

**Michael A. Danahy**

**John Dombrowski**

**Merle J. Duplantis**

**Richard A. Edmund**

**Mark J. Gallagher**

**William J. Furlong**

**Duncan Goldthwaite**

**James A. Hartman**

*In Memory of Hal Hudson*

*In Memory of Robert G. Williamson*

**Bernard L. Hill, Jr.**

**Thomas A. Hudson**

**Kenneth Huffman**

**C. M. (Max) Jacobs**

**Robert M. Jemison, Jr.**

**Tom Klekamp**

**Louis Lemarie'**

**William J. Malin**

**Jeannie F. Mallick**

**James A. McCarty**

**Louis L. McCormick**

**Robert G. Murphy**

**William J. O'Leary**

**Richard A. Olsen**

**Erwin Parrish, Jr.**

**Linda and Bill. Peirce**

**Edward B. Picou, Jr.**

**Richard D. Provensal**

**James P. Raymond, Jr.**

**Brenda E. Reilly**

**C. R. Rondeau**

**George D. Severson**

**Rudolf B. Siegert**

**Richard J. Stancliffe**

**Bryan P. Stephens**

**Raymond Stephens**

**Roy C. Walther**

**Robert C. Weissmann**

**William M. Whiting**

**James W. Yeldell, Jr.**

**Jim Zotkiewicz**

CONTRIBUTIONS FOR BOTH FUNDS THROUGH NOVEMBER 11, 2010.

DONATIONS ARE LISTED FOR ONE YEAR.

**Richard D. Provensal**

*In Memory of Thomas H. Philpott*

**Scott Purinton**

**Brenda E. Reilly**

**Mrs. William B. Rodan**

*In Memory of Robert G. Williamson*

**Robert T. Sellars, Jr.**

*In Memory of Robert G. Williamson*

**George D. Severson**

**Rudolph B. Siegert**

**Dr. J. O. Snowden**

**Gary L. Spraul**

*In Memory of H. Grady Collier*

**Raymond O. Steinhoff**

*In Memory of Harold E. Vokes*

**Roy C. Walther**

**William M. Whiting**

*In Memory of William J. Malin*

**Armour C. Winslow**

*In Memory of Rita Menzel Winslow*

**Frances A. Wiseman**

*In Memory of Steve Widdicombe*

**James W. Yeldell, Jr.**

**Jim Zotkiewicz**

*In Memory of Bill Craig*

**Chevron**

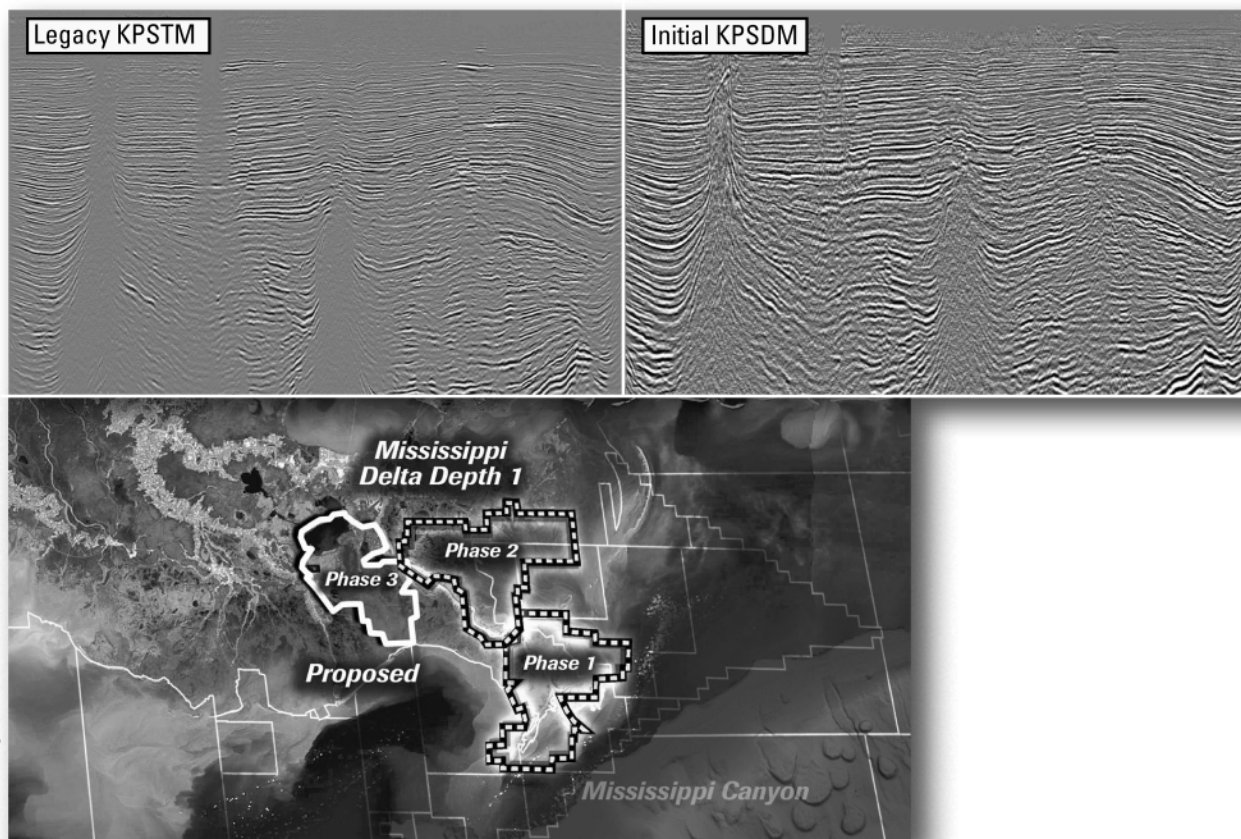
**Bernard L. Hill, Jr.**

**John C. Scheldt**

**Candace V. Strahan**

*In Memory of James Strahan*

## Improved depth imaging in the Mississippi Delta



In the Mississippi Delta region, WesternGeco is utilizing state-of-the-art processing designed to eliminate fault shadows and enhance deep imaging. The Mississippi Delta - Depth 1 survey, now in progress, incorporates the processing and remigration of twelve legacy surveys covering 1,855 square miles. High-quality time imaging using relative amplitude anisotropic Kirchhoff prestack time migration will be followed by improved structural imaging utilizing anisotropic Kirchhoff prestack depth migration.

To learn more about this and other Multiclient products, call +1 713 689 1000.

[www.multiclient.westerngeco.com/la](http://www.multiclient.westerngeco.com/la)

**Multiclient to the Power of E**



# THE NEW ORLEANS GEOLOGICAL SOCIETY, INC.

810 UNION STREET SUITE 300, NEW ORLEANS, LA 70112

TELEPHONE: (504) 561-8980

FAX: (504) 561-8988

E-MAIL: INFO@NOGS.ORG

WEBSITE: WWW.NOGS.ORG

## MEMBERSHIP APPLICATION

Name (First, middle intital, last + suffix, if any)

Date

Company

Title

( )

Phone Number

( )

Fax Number

E-mail Address

Business Address (PO Box/Street, City, State, Zip, Country)

Home Address (Street, City, State, Zip, Country)

( )

Phone Number

Preferred Mailing Address (check one): Office \_\_\_\_\_ or Home \_\_\_\_\_

Spouse's Name

Professional Society Memberships (AAPG\*, AIPG, GSA, etc.) \* Please indicate AAPG member category

College/University:

Degree

Year

Major

Explain, in brief, your experience in industry, government and/or education:

**Please mark appropriate classification:**

☐ New Member

☐ Reinstatement

☐ Renewal

**ANNUAL DUES: \$25.00 FOR ACTIVE OR ASSOCIATE**

**\$12.50 STUDENT MEMBERSHIP\***

\*No intial dues for students in the Sponsorship Program

-- Please mail application to the NOGS office with check payment or Visa/MasterCard/American Express acct# and exp. date --

**Committee preference** (please indicate choices):

☐ AAPG Student Chapter

☐ Advertising-LOG

☐ Awards

☐ Ballot

☐ Best Paper

☐ Continuing Education

☐ Employment Counseling

☐ Entertainment

☐ Environmental

☐ External Affairs

☐ Field Trip

☐ Finance & Audit

☐ Historical

☐ Membership/Directory

☐ Memorial Foundation

☐ NOGS LOG

☐ New Geoscientists (NGNO)

☐ Nominating

☐ Non-Technical Education

☐ Photography

☐ Program/Luncheon

☐ Publication Sales

☐ School Outreach

☐ Scouts: Boy and Girl

☐ Sponsorship

☐ Technical Projects

☐ Website

# SAI

**Sydboten & Associates, Inc.**  
Geological and Geophysical Consulting,  
3-D Seismic Interpretation

**Ben D. Sydboten, Jr. CPG**

124 Heymann Blvd., Suite 202  
Lafayette, LA 70503

Office (337) 234-5288  
Cell (337) 234-5491

## ATWATER CONSULTANTS, LTD.

REGISTERED AND CERTIFIED PETROLEUM PROFESSIONALS

GEOLOGICAL, ENGINEERING, GEOPHYSICAL,  
TRAINING AND EXPERT WITNESS SERVICES

3525 Hessmer Ave, Ste 304  
Metairie LA 70002

Tel. (504) 581-6527  
Fax (504) 524-7798

"Serving The Oil & Gas Industry Since 1983"

Geological,  
Geophysical &  
Land Drafting

Anthony Catalanotto  
President

Stefani Foster  
Drafting & Design

**Geo-Draft, Inc.**

A Professional Drafting & Graphics Firm

3349 Ridgelake Drive • Suite 202 • Metairie, LA • 70002  
Office: (504) 836-2882 Fax: (504) 836-2877 (Cell) (504) 481-7291  
E-Mail: geodraft@bellsouth.net  
Website: www.geodraftinc.com

*This advertising space is available!  
Contact the NOGS office.*

## NORTHCOAST OIL COMPANY

610 E. Rutland St.  
Covington, LA 70433  
(985) 898-3577  
(985) 898-3585 FAX

**Jack M. Thorson**  
**Eric C. Broadbridge**  
**J. Daryl Gambrell**  
**Raymond W. Stephens**

**NOGS thanks our  
sponsors for their support:**

### GOLD LEVEL SPONSORS:

**CHEVRON**  
**LA BAY EXPLORATION CO, LLC.**

**SPECIAL THANKS TO  
DIVERSIFIED WELL LOGGING**



**CIMAREX ENERGY CO.**

GULF OF MEXICO REGION  
GOM, SE La., N. La., MS, AL

1100 Poydras St.; Suite 1100

New Orleans, Louisiana 70163

504-586-1815 / Fax 504-586-9035

Keith Gourgues  
Region Manager

(832) 242-6000 (O)  
(713) 917-0493 (O)

(504) 931-7506 (C)  
johnjurasin@jurasinoilgas.com

## **JURASIN OIL & GAS**

9700 Richmond Ave., Suite # 124  
Houston, TX 77042-4821

JOHN M. JURASIN  
President

Cert. Pet. Geologist #4284  
Cert. Prof. Earth Scientist #1961

### Collarini Energy Staffing

Full-Time and Temporary Personnel

Facilities • Drilling • Production • Reservoir Engineering  
Land and Legal • Geoscience • Information Technology •  
Health and Safety • Management • Supply Chain  
Accounting • Administrative Support

10497 Town and Country Way, Suite 950  
Houston, Texas 77024

832-251-0553



www.collarini.com

### Collarini Associates

Reservoir Engineering  
Oil & Gas Property Evaluation  
3-D Seismic Interpretation  
Integrated Field Studies

832-251-0160  
504-887-7127

Houston  
New Orleans

## New Orleans Geological Auxiliary News

Our thanks go to **Earleen Rodan**, **Carol Andrews** and **Ann Gilbert** for their gift of “event planning”! Austin’s was a wonderful venue for our November Luncheon and the food was delicious. In addition, we were all so appreciative to have WWL’s Sports Director, **Jim Henderson**, serve as our Guest Speaker; it truly made this event worth remembering. This get-together is a perfect example of why the majority of us would never miss a NOGA Luncheon!

After discussing an idea with our President, **Jean Jones**, we thought it would be an interesting concept to highlight a member of our Auxiliary each month and share tidbits of information about this important lady with you. I guess you could call this column a “Did You Know About.....” We have so many giving and treasured members that it was difficult to choose just one, but not to worry ladies, you may be in next month’s column.

This month’s lucky recipient of the “card pull” is **Judy Lemarié**. We are grateful to **Lou** for choosing Geology as his occupation. By doing so, we were blessed in getting Judy as a hard working, dedicated and loyal Auxiliary Member. I do not recall Judy ever saying “no”, when or where her help and talents were needed. Judy joined NOGA in 1970. Since becoming a member, Judy has graciously agreed to serve as Treasurer, Director, President, Photographer, and Secretary. She has also served on the Special Awards Committee and Finance Committee. Judy has been a Hostess and Co-Chaired Luncheons, as well as donating her time as NOGS Event Chairwoman for Kick-off and Christmas Parties. Judy received the Outstanding Service Award in 1991 and Loyalty Award in 2003. In addition to NOGS, Judy has been involved in assisting with A.A.P.G., G.C.A.G.S and S.I.P.E.S. Conventions. Anyone who has had the pleasure of volunteering and working with Judy can attest to her sense of humor, easy going attitude, great conversational skills, and especially how enjoyable it is to work with her. Thanks Judy for all the great memories!

Hope everyone had a safe and Happy Thanksgiving and I’m looking forward to seeing everyone at the NOGS Christmas Party.

Susie Baker

### *NOGA Application Form*

*Dues: \$25.00*

*Name* \_\_\_\_\_

*Home Address* \_\_\_\_\_

*Home phone* \_\_\_\_\_

*Husband's Name* \_\_\_\_\_

*Husband's Company* \_\_\_\_\_

*Please make check payable to New Orleans Geological Auxiliary and  
mail with application to:* *Judy Lemarie'*

*# 2 Yosemite Dr*

*New Orleans LA 70131*

<b>ANSYTHE</b> <b>Donald I. Andrews</b> 504-887-3432 	<b>H. WARREN BELL</b> <b>Oil and Gas Exploration</b> 2500 Tanglewilde, Suite 485 Houston, TX 77063-2126 Bus (713) 266-7297 Fax (713) 266-7298
<b>THE BOEBEL COMPANY</b> <b>Oil and Gas Investments</b> 170 Broadway Street, Suite 321 New Orleans, LA 70118 (504) 866-4313	<b>PHELPS GEOSCIENCE</b> <b>Onshore Gulf of Mexico Geology and Geophysics</b> <b>Prospect Generation and Evaluation</b> Houston, TX jsfphelps@yahoo.com (281) 398-5208
<b>BOO-KER OIL &amp; GAS CORP.</b> <b>Gray S. Parker</b> 826 Union, Suite 300 New Orleans, LA 70112 Bus. (504) 581-2430 Fax (504) 566-4785	<b>RAFIDI OIL AND GAS, INC.</b> <b>Jaser N. Rafidi, President</b> 4415 Shore Dr., Suite 202 Metairie, LA 70006 Bus. (504) 722-2942 Fax (504) 888-5539; Res. (504) 888-1661
<b>C &amp; R EXPLORATION, INC.</b> <b>Carlo C. Christina</b> <b>Lawrence G. Ringham</b>	<b>ROY C. WALTHER</b> <b>Petroleum Geologist</b> 2421 Prancer Street New Orleans, LA 70131 Bus. (504) 392-8513 Res. (504) 392-9332
<b>C. R. RONDEAU</b> <b>Petroleum Geologist</b> 119 W Southland Ave. Ironwood, MI 49938 Res. (906) 932-4692	 <b>Shoreline Gas Inc.</b> <b>www.shorelinegas.com</b> <b>Full Service Natural Gas Marketing</b>
<b>CLASSEN EXPLORATION, INC.</b> <b>James S. Classen</b> Looking for close in deals P.O. Box 140637 Boise, ID 83714 Bus. (208) 854-1037 Fax (208) 854-1029 classenllc@msn.com	 625 E. Kaliste Saloom Lafayette, LA 70508 16800 Greenspoint Dr., Suite 225-S Houston, TX 77060 1100 Poydras St., Suite 1050 New Orleans, LA 70163 www.StoneEnergy.com
<b>D-O-R ENGINEERING, INC.</b> <b>3-D and Geoscience Services</b> 6161 Perkins Rd. P O Box 80812 Bus : (225) 765-1914 Baton Rouge LA 70898	<b>TONY CAROLLO</b> <b>Consulting Geologist</b> Unitization Geosteering Field Studies 1701 Peach Street Metairie, LA 70001 Bus. (504) 885-0004 Res. (504) 885-6829
<b>EDWARD B. PICOU, JR.</b> <b>Consulting Micropaleontologist - Retired</b> 228 St. Charles Ave., Suite 1330 C New Orleans, LA 70130 Bus. (504) 529-5155 Res. (504) 282-3096	<b>Zot Oil &amp; Gas, LLC</b> <b>Jim Zotkiewicz</b> Prospect Generation and Evaluation 3200 Ridgelake Dr. Suite 207 Metairie, LA 70002-4930 Business: 504.831.4694 Email: jimzot38@zotoil.com

## President's Letter (continued from page 5)

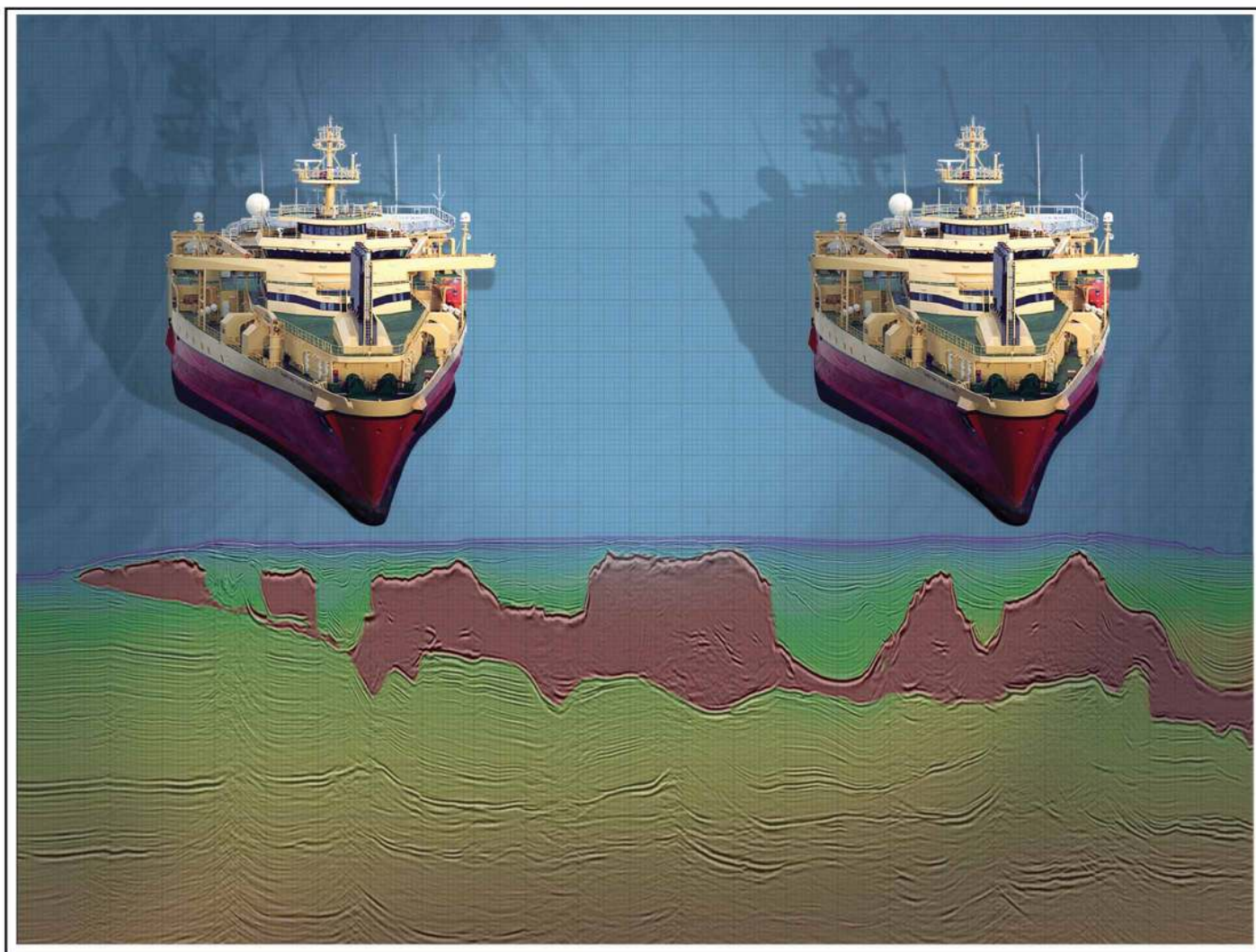
Fields of South Louisiana 2010. We need volunteers to man the NOGS booth across the convention and if we have a large number of volunteers then the time obligation on any single individual will be reduced. Again please contact Annette or any board member and indicate your willingness to serve and assist.

GSA has requested volunteers to serve as session chairs and judges for the South-Central GSA 45th Annual Meeting in New Orleans, March 28 and 29, 2011. If you are interested and can assist, please make yourself known.

One more point, we are looking to establish a meeting location on the Northshore where the NOGS monthly meeting could be WebEx'd and lunch could be served. If you have an idea or can help with this effort, please contact Will Jorgensen or Rick Kear.

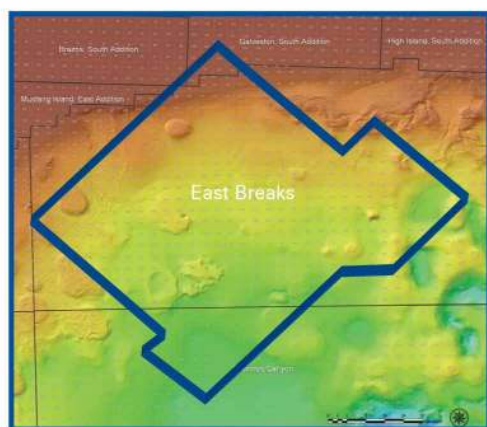
Happy Thanksgiving to each of you!

*Rick*



## Crystal III, East Breaks

## MultiClient Wide Azimuth



- **Size** - 480 OCS blocks
- **Focus** - Sub-Salt Miocene & Paleogene
- **Technology** - TTI Beam and RTM Imaging
- **Delivery** - Available Q4 2010

Houston  
Tel: +1 281 509 8000  
Fax: +1 281 509 8500

Oslo  
Tel: +47 67 52 6400  
Fax: +47 67 52 6464

London  
Tel: +44 1932 37 6000  
Fax: +44 1932 37 6100

**A Clearer Image**  
[www.pgs.com](http://www.pgs.com)



## NEW ORLEANS GEOLOGICAL SOCIETY



810 Union Street, Suite 300  
New Orleans, LA 70112-1430

# WWW.NOGS.ORG

### MARINE PROPERTIES, LLC BERKSHIRE EXPLORATION CO.

MONTE C. SHALETT, CPL, PRESIDENT

3030 Lausatz Street  
Metairie, LA 70001-5924

BUS. (504) 831-7779  
FAX. (504) 831-8315

### PCI

### Paleo Control, Inc.

Houston, Texas  
713-849-0044

Drilling Wells, Studies and Data Base

Loyd Tuttle

Frio, SE Texas

Bob Liska

Wilcox, S and SE Texas

Jim Thorpe

Miocene and Cam-Miogyp



## SEE YOUR DATA IN A WHOLE NEW LIGHT!

Take the pressure out of exploration  
and drilling by seeing what you  
are going to encounter.



### eSeis

www.e-seis.com  
713.531.1447

- Lithology & Fluids
- Depositional Facies
- Pore Pressure from V & Q
- Well Planning Consultation

