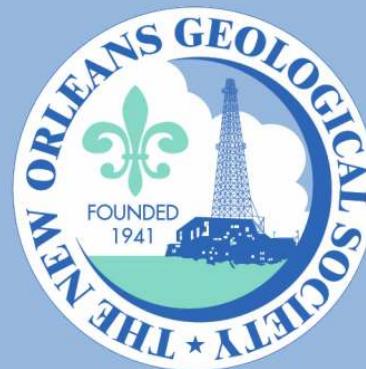


NOGS LOG



August 2010

Volume 51, Number 2

Upcoming Events and Activities

August 2 - NOGS Luncheon

*** At the Holiday Inn Downtown Superdome ***

\$2.00 validated parking in hotel garage

Guest speaker Arthur Johnson, Hydrate Energy International, will present
"Recent Discoveries in South Louisiana Fields Rejuvenate Production."

(See page 7 for Abstract and Biography)

HOLIDAY INN DOWNTOWN SUPERDOME

ADMISSION:

Check with concierge or
front desk for location

Lunch served at 11:30am

with reservation \$30.00

without reservation \$35.00

Student Member with reservation Free

August 18-19 - 14th Annual Deepwater Technical Symposium

At the Hilton Riverside Hotel. See announcement on page 17.

September 13 - NOGS Kick Off Luncheon

Holiday Inn Downtown Superdome. Activities include Foundation Scholarship
Awards and introduction of New Orleans Geological Auxiliary Officers –
Spouses and Significant Others are welcome.

September 12-15 - AAPG 2010 International Conference & Exhibition

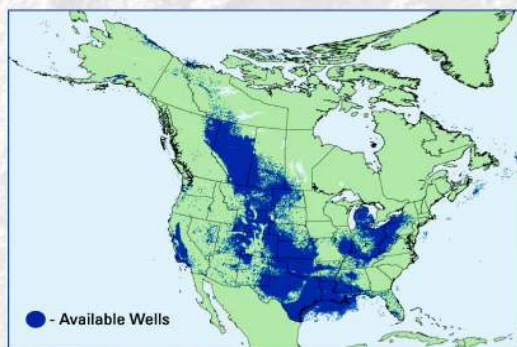
Calgary, AB CANada. See short courses and field trips information on page 14.

October 10-15 - GCAGS 2010 Convention

60th Annual Convention in San Antonio, TX.

Check the "NOGS website" for updated information and see ad on page 19.

Missing Well Data?



Let TGS complete the picture.

TGS adds hundreds of complete LAS everyday to the **world's largest LAS library**, with well logs in 29 countries.

And since you asked for it, we now have nationwide **US Production Data**.

Our well data is online, available immediately, with a team of **dedicated customer support** specialists there for you.

If your own proprietary well files are piling up, our new team of **well data solutions** experts can build a custom solution suited to your needs.

Learn more at www.tgsnopec.com/welldata
888-LOG-LINE | WellData@tgsnopec.com



Geophysical
Products



Geological
Products



Imaging
Services



www.tgsnopec.com

NOGS Office

Office Manager: Annette Hudson

Office Hours: 8:30 a.m. – 3:30 p.m. on Monday-Wednesday-Friday

Tel: 504-561-8980 □ Fax: 504-561-8988

E-mail: info@nogs.org □ Website: www.nogs.org

The office is located at Suite 300, 810 Union Street, New Orleans, LA 70112.

Correspondence and all luncheon reservations should be sent to the above address.

Sent to press on July 16, 2010.

**BOARD OF DIRECTORS**

President	David E. Reiter
Vice President	Rick Kear
Secretary	Penne Rappold
Treasurer	Will Jorgensen
President-Elect	Bob Hafner
Editor	Fran Wiseman
Director 2011	Scott A. Wainwright
Director 2012	Arthur H. Johnson
Director 2013	Jack Langford

Company

ENI	504-593-7606
Schlumberger	504-592-5376
Shell	504-728-4338
Shell	504-728-6339
ENI Petroleum	504-259-9521
MMS	504-736-2912
Bret Exploration Co Inc	504-889-2700
Hydrate Energy International	504-464-6208
J C L Services	985-764-2527

Phone**E-mail**

david.reiter@enipetroleum.com
kear1@new-orleans.oilfield.slb.com
prappold@gmail.com
william.r.jorgensen@shell.com
ottohaf@aol.com
frances.wiseman@mms.gov
scott_wainwright@hotmail.com
artjohnson51@hotmail.com
jclangford@latterblum.com

COMMITTEE

AAPG Delegates
AAPG Student Chapter
AAPG Student Chapter
Advertising-Log
Auditing
Awards
Ballot
Best Paper
Continuing Education
Employment Counseling
Entertainment
Environmental
External Affairs
Field Trip
Finance and Investment
Historical
Membership/Directory
New Geoscientists (NGNO)
Nominating
Non-Technical Education
Office Operations
Publications Sales
Photography
School Outreach
Scouting
Technical Projects
Ad Hoc Committee on University Support

Chairperson

William M. Whiting
Gabriella March
Andrew Ranson
Andrea Stancin
Chuck Holman
Michael N. Fein
Will Jorgensen
Brenda Reilly
TBA
TBA
Bob Hafner
Daisy Pate
Michael A. Fogarty
David Garner
Will Jorgensen
Edward B. Picou, Jr.
Penne Rappold
TBA
Mike Ledet
Duncan Goldthwaite
Tom Klekamp
Edward B. Picou, Jr.
J. David Cope
Thomas C. Bergeon
Carol Rooney
TBA
Michael J. Gallagher

Consultant	504-947-8495
Tulane University	
UNO	337-578-5587
Shell	504-728-0431
Independent	
W & T Offshore	504-210-8148
Shell	504-728-6339
Energy Partners Ltd.	504-799-4811
ENI Petroleum	504-259-9521
Corps of Engineers	504-957-4372
Sylvan Energy, LLC	603-523-4808
Shell	504-728-6154
Shell	504-728-6339
Consultant	504-529-5155
Shell	504-728-4338
Consultant	504-394-9636
Amber Resources	504-887-4377
Consultant	985-845-4046
Ankor Energy	504-529-5155
Century Exploration	504-596-3672
Consultant Geologist	504-832-3772
	504-835-1909
Eni Petroleum	504-593-7480

bootscon@aol.com
gmarch@tulane.edu
aranson@uno.edu
Andrea.a.stancin@shell.com
charleswholman@bellsouth.net
mikef@wtoffshore.com
william.r.jorgensen@shell.com
breilly@eplweb.com
ottohaf@aol.com
daisy.pate@gmail.com
mike.a.fogarty@gmail.com
David.Garner@shell.com
william.r.jorgensen@shell.com
epicou@bellsouth.net
prappold@gmail.com
mikeledet@cox.net
DGldthwt@aol.com
klekamp@bellsouth.net
epicou@bellsouth.net
dcope@ankorenergy.com
Tom.bergeon@centuryx.com
carolbrooney@aol.com
Michael.Gallagher@enipetroleum.com

NOGS LOG STAFF

Editor	Fran Wiseman
Editor-Elect	David Tatum
Auxiliary	Susie Baker
Info Tidbits	Fran Wiseman
Drill Bits	TBA
Webmaster	Edward B. Picou, Jr.
Layout	Jannette Inc.

MMS	504-736-2912	nogseditor@gmail.com
Chevron	985-773-6477	davidtatum@chevron.com
NOGA	504-466-4483	abaker1006@aol.com
MMS	504-736-2912	nogseditor@gmail.com
Consultant	504-529-5155	epicou@bellsouth.net

NOGS AUXILIARY**Officers**

President	Jean Jones	504-738-8091
1st Vice-President	Alma Dunlap	504-737-2678
2nd Vice-President	Judy Sabatè	504-861-4335
Secretary	Peggy Rogers	504-392-6323
Treasurer	Judy Lemarie'	504-393-8659
Parliamentarian	Beverly Kastler	504-286-0879
Member-at-Large	Linda Peirce	504-393-7365

Phone**Directors**

Peggy Campbell	2009-11	504-283-2505
Ruth Grimes	2009-11	504-392-8103
Gerry Waguespack	2009-11	504-737-0532
Carol Andrews	2010-12	504-887-3432
Susie Baker	2010-12	504-466-4483
Joan Collier	2010-12	504-833-1738

Year**Phone**

--- NOGS Contact List continued on page 10 ---

SYNERGY ENERGY



Weatherford®
LABORATORIES

Your success increasingly depends upon a better understanding of your reservoir. At Weatherford Laboratories, we provide a single source for comprehensive laboratory analyses, creating a synergy previously unknown in laboratory services. This single source includes distinguished geologists, geochemists, analysts, engineers, technicians and software developers, 38 worldwide laboratories, and the broadest portfolio of services for acquiring and interpreting data from physical samples. The end result is an unsurpassed combination of intellectual capital and technical resources — all working together to help you enhance development planning and reduce reservoir uncertainty.

Put our union of Synergy and Energy to work for you.

Weatherfordlabs.com

HIGHER STANDARDS

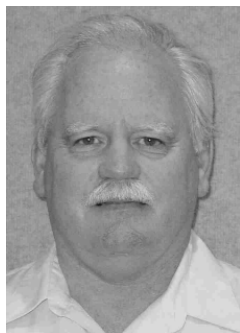
NORTH AMERICA
NAInquiries@weatherfordlabs.com

EUROPE
EUInquiries@weatherfordlabs.com

LATIN AMERICA
LAInquiries@weatherfordlabs.com

MIDDLE EAST/NORTH AFRICA
MENAIquiries@weatherfordlabs.com

ASIA PACIFIC
APIquiries@weatherfordlabs.com



from the President

As I write this month's President's Letter (mid June), BP's Maconda well is still spewing oil out of its "containment" cap, spreading out far and wide, fouling marshes, beaches, and the lives of thousands of people who make a living in the Gulf of Mexico. It will take many months, probably years, to clean up the mess and make everyone's life whole again. It will also take a long time for the overall petroleum industry to regain the trust of the general public as an environmentally responsible extractor of natural resources that are critically vital to the economic health of the U.S. Despite the bad rap that the industry has taken in the media lately, I for one am proud to call myself a Petroleum Geologist, and I hope all the rest of you fellow petroleum geoscientists will continue to do the same. The Maconda disaster is definitely a wake up call for the petroleum industry in terms of both improving worker safety and mitigating risk of a major spill event. Many improvements in how we conduct exploration and production are due to be implemented during the continuing deepwater drilling moratorium, and I hope that all of my fellow geoscientists survive what may be a rather difficult time in our industry. Keep the faith.

Because of the Maconda incident, an upcoming event here in New Orleans will likely be one of the best attended and perhaps controversial industry meetings this year. The 14th Annual Deepwater Technical Symposium is a 2-day event scheduled for the Hilton Riverside Hotel on August 18 & 19. Two concurrent sessions each day will address the latest technological issues concerning Geoscience, Regulatory/HSE, various types of Production and Reservoir Engineering, and alternative energy sources. Registration and additional information can be obtained at: www.deepwaternola.org.

Recently, La Senate Bill 788, the "Louisiana Professional Geoscientist Practice Act," concerning professional registration of geoscientists, passed both the House and Senate and is awaiting final approval of minor amendments before being signed into law by Governor Jindal. The bill requires registration of all geoscientists who perform any work in the public purview and is not required for anyone doing work strictly for a private company. The bill requires all registrants to pass a written examination to become a licensed professional geoscientist although there will be a grandfathering period until the end

of 2011 for qualified geoscientists to avoid having to take the test. The new "Louisiana Board of Professional Geoscientists" will consist of 9 members, 7 of which will be selected by the governor from lists of nominees submitted by 5 different geological and engineering societies in Louisiana, including NOGS. Registration and annual fees are yet to be determined. Both Texas and Mississippi have enacted similar professional registration laws in the past. Let the NOGS Board know if you may want to serve on this board.

Next month's luncheon meeting should prove to be a little different than usual. Instead of having the annual NOGS Kickoff Party at a restaurant or someone's house in late September, the NOGS Board has decided to have the event at the monthly meeting. The installation of the new NOGS Board will be combined with our annual awards ceremony and the awarding of NOGS Memorial Foundation Board scholarships. In addition, we will have the typical sumptuous luncheon buffet, and we are trying to arrange for an open bar. Come meet and greet the new NOGS BOD, annual awardees, and deserving student scholarship winners.

As I mentioned last month, I will be leaving New Orleans soon to take a transfer assignment with Eni Petroleum in Houston. As a result, the current Vice President Rick Kear will take my place as NOGS President around the first of August. Fortunately, as Martha Stewart might say, "This is a good thing." Rick is the Principal Geologist with Schlumberger Well Services here in New Orleans and is one of the best petrophysical/geological interpreters of well log data in the Gulf Coast. He organizes and runs numerous geological field trips and seminars each year for industry participants. I've known Rick for over 20 years, worked with him on many projects, and I know he will bring a very strong moral and ethical well-being to the NOGS Presidency. Of course, he will be at a slight disadvantage without the benefit of having served first as President-Elect last year as I did. So, give him all the support you can, and everything will turn out great.

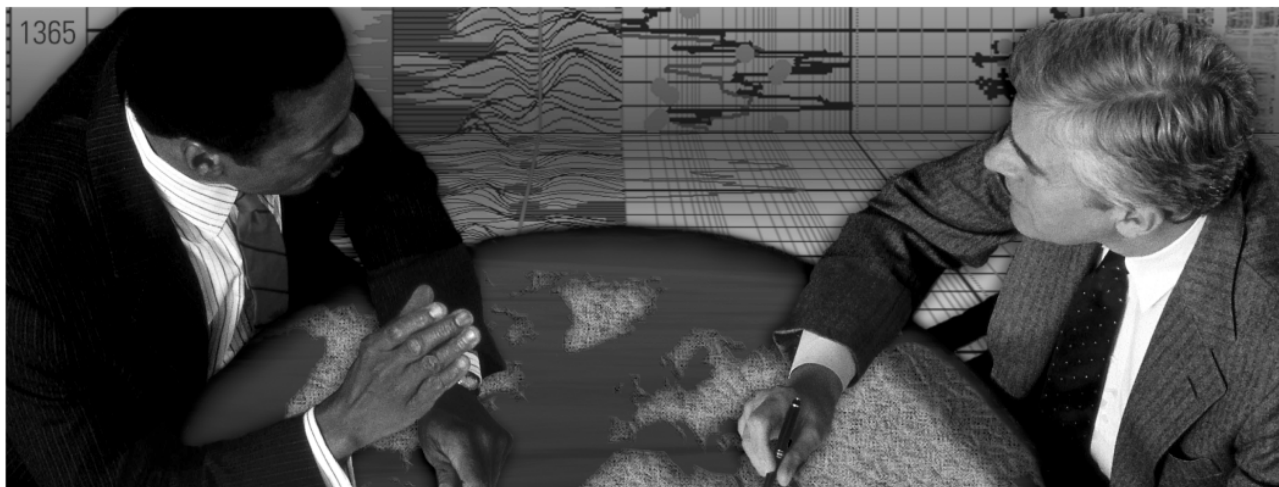
As for me, I will always be a NOGS member no matter where I work or end up retiring. I've thoroughly enjoyed all my past associations with NOGS members, officers,

--- continued on page 26 ---

energyinformation

Business solutions for
the oil & gas industry

Schlumberger formation evaluation solutions deliver the answers you need. Our extensive portfolio of services, leading-edge technology, and advanced conveyance options keep you in communication with your well throughout its life cycle.



With formation evaluation technologies from Schlumberger, you can make the best decisions for optimized performance in every well.

The formation evaluation one-stop shop

Whether you are logging in open hole or behind the casing, our broad selection of services ensures the best solution for acquiring formation evaluation data. Tools can be conveyed while drilling or on wireline or pipe. We offer many specialized evaluation capabilities, from density, neutron porosity, and resistivity to borehole imaging, nuclear magnetic resonance logging, borehole seismic, formation pressure testing, and fluid sampling. Advanced triple-combo logging options include the VISION* formation evaluation and imaging-while-drilling services. Coupled with Pulse* telemetry and surveying services, the VISION family provides real-time formation evaluation data and enables optimum well placement.

High-speed wireline measurements are recorded with the Platform Express* logging services. The SlimXtreme* platform is designed for high-pressure, high-temperature environments and the ABC* Analysis Behind Casing services are used after casing is set.

Expert interpretation from the engineers and geoscientists of Schlumberger Data & Consulting Services brings all your data together to give you the answers you need. This expertise is available after logging is complete or as real-time two-way wellsite communication through the InterACT* real-time monitoring and data delivery system.

Schlumberger delivers leading-edge technology and interpretation expertise for all your formation evaluation needs, so every well benefits from the very best information.

For more information visit
www.slb.com/oilfield/formation_evaluation/

*Mark of Schlumberger

04-FE-114

Schlumberger

August 2 NOGS Luncheon Presentation

At the Holiday Inn Downtown Superdome

Recent Discoveries in South Louisiana Fields Rejuvenate Production

presented by

Arthur Johnson

Hydrate Energy International

ABSTRACT

In 1901 a well drilled into a south Louisiana rice field near Jennings sparked what would become a major world-class petroleum province. The oil and gas fields across the southern tier of parishes, encompassing the Louisiana Department of Natural Resources' Lafayette District, have been a mainstay in the production from Louisiana for decades.

With the decline in production over the years, many of these fields were abandoned or sold by the majors to smaller mid-cap or small-cap operators. Even today some fields continue to be operated by majors. In the late 90's 3-D seismic began to be acquired over many of these older fields. The results yielded new unseen compartments, faulting and in many cases, deeper objectives. An old trend was rejuvenated with new discoveries.

The increase is best documented from the online file system of the Louisiana Dept of

Conservation's SONRIS database. Using the SONRIS data, a technical study group of the New Orleans Geological Society has highlighted over forty rejuvenated fields throughout the Lafayette District. We can now show you several cases where the results are quite dramatic. The purpose of the NOGS study is to produce a field studies volume documenting at least two dozen of these recent discoveries. Local companies have used field studies volumes as a successful exploration tool. The current project is well along the path to completion and will prove a resource for exploration.

This presentation will highlight the stories of several of these unique re-discoveries, including Fresh Water Bayou, Ramos, Stella and Pine Prairie fields, and how they fit into the larger scope of rejuvenated fields in South Louisiana. It will also briefly highlight the story of carrying out a large field studies volume.

BIOGRAPHY

Art Johnson is President and Chief of Exploration for Hydrate Energy International (HEI) and is engaged in energy consulting in the U.S. and throughout the world. Prior to forming HEI in 2002, Art was a geologist with Chevron for 25 years. Art has a B.S. degree from Humboldt State University, with graduate study at LSU.

Art is a Past-President of New Orleans Geological Society. He has advised the U.S. Congress and the White House on energy issues since 1997, and has served on a federal committee advising the Secretary of Energy since 2001, chairing the committee from 2001 to 2006. He has an on-going

role coordinating the research efforts of industry, universities, and government agencies. Art has been appointed as a Lead Analyst for the "Global Energy Assessment," an international project supported by the World Bank, U.N. organizations, and national governments. He has published over 60 papers and articles, along with several books. Art's recent publications include Economic Geology of Natural Gas Hydrate, Alternative Energy and Fuels Technology, and "AAPG Memoir 89". Articles in press include topics on energy conversion, global resource estimation, and the geology of Mars.

THE LUNCHEON RESERVATION DEADLINE IS JULY 28 - CONTACT THE NOGS OFFICE

"And Looking Ahead..."

The next NOGS Kick Off Luncheon will be held on September 13. Activities include Foundation Scholarship Awards and introduction of New Orleans Geological Auxiliary Officers – Spouses and Significant Others are welcome. Contact the NOGS office to make your reservation.

2010 AAPG Convention & Exhibition Thank You!

NOGS wishes to thank its sponsors who generously donated a total of \$13,000 towards the success of “An Evening with America’s Greatest Generation.” The event was held at the National World War II Museum in conjunction with the 2010 AAPG Convention & Exhibition on Tuesday, April 13, 2010.

Century Exploration New Orleans, Inc.
Marathon Oil Corporation
Beacon Exploration, LLC
Diversified Well Logging, Inc.
Huffman Exploration & Production
ORX Exploration, Inc.
Seismic Exchange, Inc.
Amber Resources
ANKOR Energy LLC
Energy Partners, Ltd.
Martin-Marks Minerals LLC
William M. Whiting
Bret Exploration Company
Carol & Robert Rooney

The June luncheon was well attended. Bryan Stephens (right) gave his talk on “Basement Controls on Subsurface Geologic Patterns and Coastal Geomorphology across the Northern Gulf of Mexico: Implications for Subsidence and Coastal Restoration.”



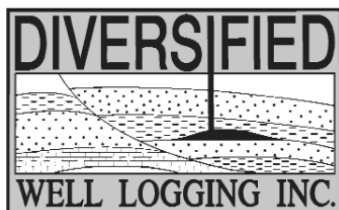
If you missed Bryan Stephens excellent presentation at the June Luncheon, you can access both his slides and audio via the “NOGS website.” On the Homepage, click on Articles and Presentations, then on the title. Be aware that it takes a while for the file to open.

*Ed Picou
NOGS Webmaster*



Relax. We'll keep you posted.

Your rig is offshore and you are not. How do you know what's going on so many miles away? You know because we tell you. Daily or even hourly, Diversified Well Logging's engineers update you on the status of your rig. We are your eyes and ears, especially when it comes to deep water or high pressure, high temperature areas. Diversified offers 24-hour surface evaluation. We provide secure and customized real-time data communication, in-house research and development and 24/7 on-call support for our equipment and our engineers. Whether you have a 10-day job or 110-day job, we provide the specialized attention you require. So, relax. We're with you every step of the way.



Serving the Gulf Coast for over 40 years.

New Orleans • Lafayette • Houston • Dallas • Corpus

800.280.2096

711 West 10th Street • Reserve, LA 70084 • Phone: 985.536.4143 • Fax: 985.536.2427
sales@dwl-usa.com



**FULLY INTEGRATED AND
CENTRALIZED BIOSTRATIGRAPHIC
SERVICES**

▼ *Single-source biostratigraphic databases
for increased accuracy and consistency*

▼ *Integrated foram / nannofossil analyses*

▼ *Complete wellsite paleo services*

▼ *In-house sample preparation
lab for quality-monitoring
and efficiency*

▼ *Sample pick-up service*

6619 Fleur de Lis Drive
New Orleans, LA 70124
(504) 488-3711

www.paleodata.com

MCMORAN EXPLORATION CO.



**MCMORAN
OIL & GAS**

www.mcmoran.com

NYSE: MMR

16676 Northchase Dr.
Houston, TX 77060
(281) 539-7600
Fax: (281) 539-7655

1615 Poydras
New Orleans, LA 70112
(504) 582-4000
Fax: (504) 582-4155

110 Travis St., Suite 140
Lafayette, LA 70503
(337) 735-9150
Fax: (337) 735-9151

NOGS CONTACT LIST

--- continued from page 3 ---

MEMORIAL FOUNDATION

BOARD OF TRUSTEES

2010-11 Chairman	Tom Klekamp
2010-11 Secretary	David E. Reiter
2010-11 Trustee	Tim. Piwowar
2010-11 Trustee	Michael N. Fein
2011-12 Trustee	Monte Shalett
2011-12 Trustee	James Swaney
2012-13 Trustee	TBA
2012-13 Trustee	TBA

Company

Amber Resources LLC
ENI
BHP Billiton
W & T Offshore
Berkshire Exploration Co
MMS

Phone

985-845-4046
504-593-7606
504-401-5022
504-210-8148
504-831-7779
504-736-2677

E-mail

klekamp@bellsouth.net
david.reiter@enipetroleum.com
timpiwowar@bellsouth.net
mikef@wtoffshore.com
mshalett@gmail.net
james.swaney@mms.gov

AAPG DELEGATES

Term Ends

2011	Tom Hudson
2011	Edward B. Picou, Jr.
2011a)	Brenda Reilly
2011a)	Robert Rooney
2012	William Whiting
2012	Jim Zotkiewicz
2012 a)	David E. Balcer
2012 a)	Richard J. Stancliffe

Chevron
Consultant
Energy Partners Ltd.
Century Exploration
Consultant
Zot Oil & Gas
Chevron
Shell Expl & Prod Co.

985-773-7163
504-529-5155
504-799-4811
504-832-3777
504-947-8495
504-831-4694
985-773-6725
504-728-7553

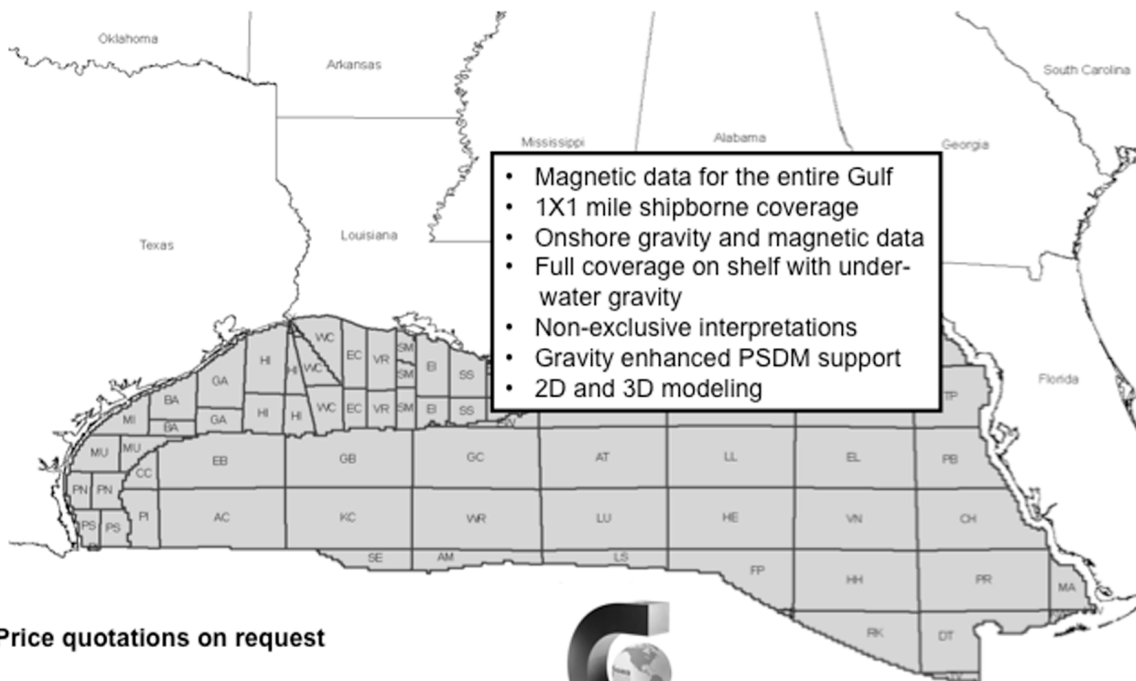
tom.hudson@chevron.com
epicou@bellsouth.net
breilly@eplweb.com
Robert.rooney@centuryx.com
bootscon@aol.com
jimzot38@zotoil.com
dbalcer@Chevron.com
richard.stancliffe@shell.com



Fugro Gravity & Magnetic Services

LAND • AIRBORNE • UNDERWATER • SHIPBORNE

The most complete coverage Onshore and Offshore Gulf of Mexico



Price quotations on request

Fugro Gravity & Magnetic Services
www.Fugro-GravMag.com
Tel: 713-369-6123



Gravity Inspired. Magnetically Inclined.



Shell has worked in partnership
with the NOGS for many years, and
is proud to count the society among
its closest business associates.

The New Orleans Geological Society was organized in 1941 to foster scientific research and advance the science of geology. Particular emphasis is laid on the exploration for and production of petroleum and natural gas. Related objectives include encouraging the adoption of improved methods of exploration, disseminating pertinent geological and technological data, and maintaining a high standard of professional conduct among its members.

www.shell.com/us.sepcoc



GOM
smart

An ocean
of GOM DATA...
updated for you 24/7

Introducing GOMsmart. Web-based GOM data with
real-time updates. No special software or training.
Access data via intuitive interface or customizable maps.

- Wells: header, production, tests, 250,000+ logs
- Production Data: historical and current
- Paleo Data: access to 100,000+ observations
- Affordable: monthly and annual subscriptions

Visit www.GOMsmart.com for your FREE trial.



From ZNodal Systems to ZNodal Imaging

We are full spectrum ZNodal™ technology

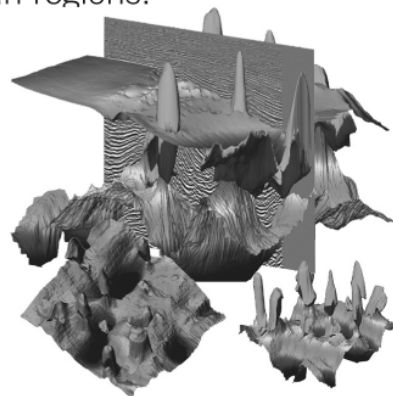
FairfieldNodal.com



We admit it. We're seismic nodal fanatics. Always have been. Which explains our one-of-a-kind, cable-free ZNodal™ systems. They work wonders in dense urban areas and pristine wilderness, in shallow water and deep ocean regions.

In fact, our exclusive ZNodal technology is behind everything we do, from acquisition and licensing to advanced processing and imaging, bringing nodal data to life in amazing ways.

Right now, our ZNodal systems are on the job in some of the world's most challenging fields, making a powerful difference. So when you're ready to go nodal, count on us to lead the way. ZNodal technology: It's what you need. It's what we're all about.



fairfieldnodal

SYSTEMS ACQUISITION LICENSING PROCESSING IMAGING

New Orleans Geological Society Publications

To order NOGS publications, please contact Amanda Masterson by phone at 1-888-839-4365, fax at 1-888-839-6277 or e-mail to: Amanda.Masterson@beg.utexas.edu.

Or write to: Publications Sales Bureau of Economic Geology, The University of Texas at Austin, Box X, University Station, Austin, TX 78713-8924. All orders must be prepaid, by credit card or check payable to ☐UTBEG☐; please contact the Bureau for current prices and handling charges.

Exploration and Exploitation of Coastal Salt Basin Diapiric Structures in the Lower Pliocene through Eocene Trends: Geology and Techniques, by T.G. Falls, G. D. O'Brien, and J. A. Hartman [In cooperation with the Houston Geological Society] 1995, 179 p., 121 figs., 9 tables. **NOGS 01, \$28.00**

Productive Low Resistivity Well Logs of the Offshore Gulf of Mexico [In cooperation with the Houston Geological Society] Dwight Clint Moore, Editor. 1993, 206 p. **NOGS 03, \$25.00**

Introduction to Central Gulf Coast Geology, Duncan Goldthwaite, editor (1991, 232 p., 18 articles). **NOGS 04, \$20.00**

CONVENTION SHORT COURSE NOTES AND GUIDE BOOKS

Introduction to Ground-Water Hydrology, D. H. Easley (1993, 52 p.). **NOGS 06, \$10.00**

Northeastern Gulf Coastal Plain Revisited: Neogene & Quaternary Units and Events: Old and New Concepts, Erwin G. Otves, (Guide-book, 1997, 143 p., 54 figures, with bibliography. **NOGS 08, \$15.00**

Tour of Salt Dome Caprock Features, Winn Rock Quarry, Winn Parish, LA, J. R. Kyle and M. R. Ulrich (1993, 48 p.). **NOGS 09, \$10.00**

Geological and Cultural Excursion, Jackson to Natchez, MS, Maureen K. Carceran, D. Harrelsen, P. Albertsen, and R. T. Saucier (1993, 61 p., read log). **NOGS 10, \$10.00**

Geology of the Ouachita Core Area, Vicinity of East Shore, Lake Ouachita, Garland Co., AR, W. W. Craig, J. K. Bellis, D. A. Danielsen, Jr., J. Bessler (1993, 39 p., geol. map). **NOGS 11, \$10.00**

Meander Belt Deposition, Plaquemine Point, Mississippi River, J. M. Coleman and H. H. Roberts, (1988, 28 p.). **NOGS 12, \$5.00**

Tertiary and Upper Cretaceous Depositional Environments of Central Mississippi, E. R. Adams (1985, 31 p., read log). **NOGS 14, \$5.00**

A Tour of Selected Tertiary and Quaternary Localities and Landscapes of the Jackson-Vicksburg-Natchez-Old River Areas, MS-LA, R. T. Saucier and M. L. Smith (1985, 26 p., read log). **NOGS 15, \$5.00**

OTHER PUBLICATIONS

Offshore Louisiana Oil and Gas Fields, Vol. 2, 1988, 248 p., 23 fields. **NOGS 16, \$35.00**

Oil and Gas Fields of Southeast Louisiana, Vols. 1 and 2, bound together (reprinted 1990, 384 pages, 57 fields). **NOGS 17, \$30.00**

Vol. 3, (1983, 225 pages, 43 fields). NOGS 18, \$30.00

Vol. 3 Supplement (1987, 81 pages, 10 fields). NOGS 19, \$15.00

Salt Domes of South Louisiana

Vol. 2 (1962, 107 pp., 53 domes). NOGS 21, \$18.00

Vol. 3 (1983, 131 pages, 46 domes, plus articles). NOGS 23, \$18.00

Tuscaloosa Trend of South Louisiana, D. B. Steward, editor (1981, 19 fields and other articles). **NOGS 24, \$23.00**

A Tour Guide to the Building Stones of New Orleans, Edward Slagle (1982, 58 p.). **NOGS 25, \$5.00**

Science and Evolution vs. Creationism and Louisiana Act 685
Balanced Treatment For Evolution-Science And Creation Science
In Public School Instruction (1981, 4-p. pamphlet). **NOGS 27, \$1.00**

CONTINUING EDUCATION SERIES NOTES

Deltaic Sands and Sandstones, by R. J. LeBlanc, Sr. (1987, 50 p.). **NOGS 31, \$5.00**

NOGS PUBLICATIONS ON CD-ROM

AAPG/Datapages has released a set of three CDs containing all NOGS publications, including many out-of-print issues. The price of the set is \$125.00, plus \$4.95 for shipping and handling.

The initial CD ☐Atlas of Oil and Gas Fields of the New Orleans Geological Society☐ is available separately. Price is \$50.00, plus \$4.95 for shipping and handling.

The CDs can be ordered online at: <http://bookstore.aapg.org>

Or by calling the AAPG Bookstore at: 1-(800)364-2274

Visit the NOGS Website: www.nogs.org



Register by August 10 for up to \$230 savings
For more information and to register, visit: <http://www.aapg.org/calgary/>

Conference at a Glance

Sunday, September 12

- Opening Ceremony
- Icebreaker Reception
- Exhibition

Monday, September 13

- Technical Program and Posters
- Exhibition
- Plenary Session — Canada: Our Resources to International Exploration
- Management Forum — E&P Challenges in Complex Environments: From the Arctic to Deep Water
- Special Lecture — Burgess Shale Tales — Mud Volcanism and Chemosynthetic Communities on the Middle Cambrian Seafloor of Southeastern British Columbia
- Featured Speaker Luncheon — The Unconventional Future: Where Ideas and Technology Converge
- Student Reception
- James Joyce Pub Social Activity

Tuesday, September 14

- Technical Program and Posters
- Exhibition
- Business Forum — Unconventional Exploration and Development Geoscientists' Toolbox
- Special Lecture — Geology of a Major SAGD Bitumen Development — A Case Study from Long Lake, Northwestern Alberta
- Unconventionals Day Topical Luncheon — Global Challenges in Shale Reservoir Development
- Calgary Zoo Social Activity

Wednesday, September 15

- Technical Program and Posters
- Exhibition
- Forum — The Value of Diversity in Leadership: Global Perspectives
- DPA Luncheon — Evaluation and Classification Issues of Unconventional Resources
- Exhibitor-Sponsored Luncheon



***Expanding
the frontier***

14th Annual Gulf of Mexico
Deepwater Technical
Symposium

August 18th and 19th, 2010 - New Orleans

CONFERENCE DETAILS

*See our website for more
information about:*

- Conference Schedule
- Call for Papers
- Exhibitors
- Conference Sponsors
- Planning Team
- Tech Session
- Keynote Speakers
- Student Posters
- Registration
- Our History
- New Orleans

The Fourteenth Annual Gulf of Mexico
Deepwater Technical Symposium
continues to focus on Gulf of Mexico
case studies and key technologies
in the following sessions:

- ▶ Drilling
- ▶ Well Completions
- ▶ Production Systems
- ▶ Reservoir / Economics
- ▶ HS&E / Regulatory
- ▶ Alternate Energy
- ▶ Emerging Technologies
- ▶ Geoscience



**Accommodations &
Conference held at
THE HILTON
NEW ORLEANS
RIVERSIDE HOTEL**

PROUDLY HOSTED BY



VISIT www.deepwaternola.org today.



Eni Petroleum

1250 Poydras Street
Suite 2000
New Orleans, LA 70113
Tel: (504) 593-7000
Fax: (504) 593-7745

1201 Louisiana Street
Suite 3500
Houston, TX 77002
Tel: (713) 393-6100
Fax: (713) 393-6205

It's no illusion...
Core Lab offers everything you need.



©2009 Core Laboratories. All rights reserved.

Unconventional resource exploitation • Gas shale experts • Deepwater GOM authority
Capacity for fast turnaround • High-quality people • Global support
Industry leadership and reliability • Proprietary and patented technologies • Experience

www.corelab.com/rd/petroleumservices • 24-hour wellsite service hotline: 504-733-6583

SEI®

Seismic Exchange, Inc.

**Strategic Speculative Surveys
Geophysical Data Marketing & Management**

Your
**Full Service
National
Seismic Data
Marketing Firm**

New Orleans
Dallas
Houston
Denver
Oklahoma City
Corpus Christi
Tulsa

201 St. Charles Avenue, Suite 4300, New Orleans, Louisiana 70170-4300
Telephone 504.581.7153 Fax 504.581.9591
www.seismicexchange.com

Excerpts from External Affairs

Michael Fogarty

Chair – External Affairs Committee



ARPA-E - Not a Typical Research Effort

It should come as no surprise that here at GEO-DC we spend a lot of time talking about energy and the future of energy. Our basic objective is to help people understand that oil and natural gas, which currently comprise nearly 65 percent of U.S. energy, provide the fuel and power needed for economic growth and jobs.

But while fossil fuels are the foundation of global energy -- and will remain so for many decades, perhaps longer -- we can expect alternative and renewable energy sources will continue to grow in importance. And it is possible that a scientist or inventor will make a technological breakthrough in coming years that transforms the energy sector.

The Advanced Research Projects Agency -- Energy (ARPA-E) is looking for that potentially "disruptive" energy technology.

Gulf of Mexico spill

The Society of Petroleum Engineers wishes to express its concern for all those impacted by the oil spill in the Gulf of Mexico and support for our colleagues who are working to resolve this situation. Updates on the situation are provided at the following locations: BP, Deepwater Horizon Response and API Gulf spill.

For more information please go to: www.nogs.org/nogs_external_affairs.html

INFO TIDBITS

What would you get if you crossed a whale with a shark? Maybe something like *Leviathan melvillei*, a long-extinct, hypercarnivorous whale with teeth longer than any *T. rex* ever had. *L. melvillei* -- a newly described sperm whale named to honor Herman Melville, author of the whaling novel *Moby-Dick* -- lived between 12 million and 13 million years ago, says Olivier Lambert, a vertebrate paleontologist at the National Museum of Natural History in Paris. For more information visit: http://www.wired.com/wiredscience/2010/06/leviathan_melvillei/#ixzz0t1lVqI6e

Morgan City, Louisiana (CNN) -- Behind each video feed of oil billowing out of the bottom of the Gulf of Mexico is a robot about the size of a minibus built at an industrial center in this Louisiana oil town. The robots, which go by the name Millennium, are constructed as if they're on a voyage to another world -- one that's "harsher than space," says Mark Campbell, the manufacturing manager at Oceaneering International's production site.

For more information visit: http://geology.about.com/gi/o.htm?zi=1/XJ/Ya&zTi=1&sdn=geology&cdn=education&tm=26&gps=133_527_974_586&f=00&tt=14&bt=1&bts=1&zu=http%3A//www.cnn.com/TECH/space/

Bacteria Could Help Clean Oiled Gulf Sands. Microbes could munch oil away from Gulf sands, but dispersants may have made the problem worse. A big effort is underway to scrub and cart away oil-soaked sands in the Gulf. Some researchers believe tiny microbes could do the job. Hurricane Alex recently pushed new sand over oil-covered sands in the region. For more information visit: http://geology.about.com/gi/o.htm?zi=1/XJ/Ya&zTi=1&sdn=geology&cdn=education&tm=561&gps=138_644_974_586&f=00&tt=14&bt=1&bts=1&zu=http%3A//dsc.discovery.com/news/news.html

When can three giant dinosaurs hide under a small umbrella and not get wet?
When it's not raining!

- Fran Wiselady

NOGS Past Presidents Luncheon



Back Row L-R: William Hintz 1965-66, William Whiting 2008-09, Arthur Johnson 2007-08, Duncan Goldthwaite 1982-83, M. R. "Bob" Douglass 1987-88, John Langford 1991-92

Front Row L-R: Robert Branson 1990-91, Donald Andrews 1963-64, Edward Picou 1992-93, Alfred Baker 1996-97, Tom Klekamp 2009-10

New Orleans Geological Auxiliary News

Thanks to all the volunteers who have done so much to make this past year a success and full of many memorable moments. To our Board Members and others who have offered their homes and time in Chairing and Co-chairing events and luncheons, we extend our appreciation. Thanks to Trez and Jim Zotkiewicz for providing their home for our Spring Social, and Joan and Bob Sylvester for the NOGA Coffee/Luncheon Social. We appreciate your willingness to open your homes for our benefit, giving us an opportunity to socialize.

We are so very grateful to Linda Peirce for volunteering for two years to be our fearless leader. You were a great President, and a member who is always willing to do whatever it takes to help out. What would we have done without you? Thank you is an understatement.

Now I introduce to you, our new "Pres" Jean Jones. Jean was born and raised in Long Island, NY. In her adult years, Jean moved to Houston, and in the year 2000 she married Charlie Jones with Taylor Energy. Jean was no stranger to the oil business. Long before Charlie captured her heart, she worked for years in Houston with several different oil companies as a Division Order Analyst.

Susie Baker

NOGA Application Form

Dues: \$25.00

Name _____

Home Address _____

Home phone _____

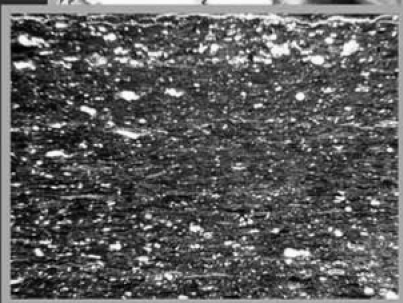
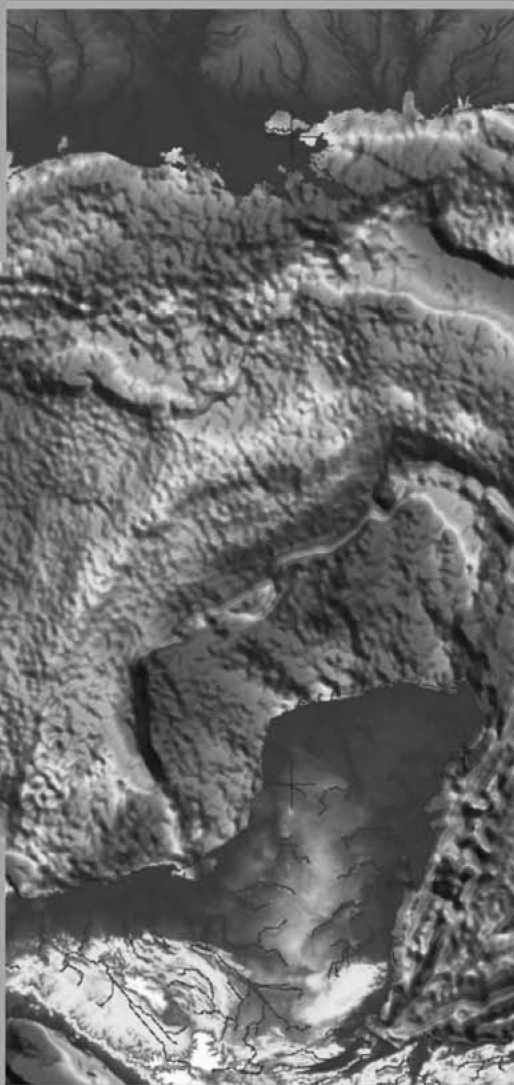
Husband's Name _____

Husband's Company _____

Please make check payable to New Orleans Geological Auxiliary and mail with application to: *Judy Lemarie'*

2 Yosemite Dr

New Orleans LA 70131



**GULF COAST ASSOCIATION OF GEOLOGICAL SOCIETIES
AND GULF COAST SECTION SEPM**

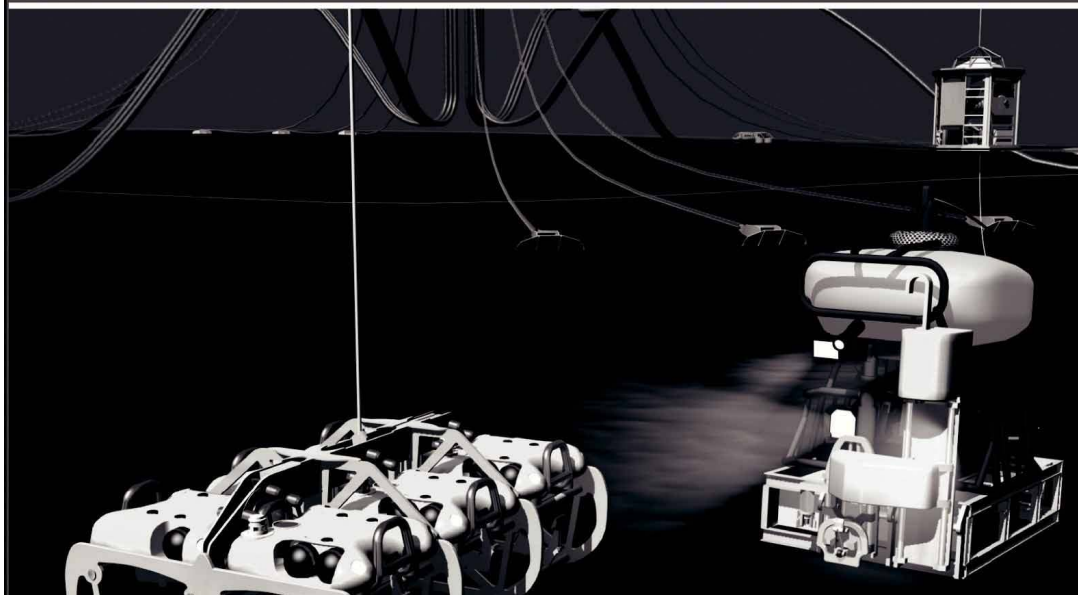
**60TH ANNUAL CONVENTION
SAN ANTONIO, TEXAS**



**Complete Details
can be found at:
<http://www.gcags2010.com>**

HOSTED BY THE SOUTH TEXAS GEOLOGICAL SOCIETY

Finally - An answer for getting reservoir seismic OVER THE RESERVOIR!



• 4C/4D Node Seismic

- ANGOLA
- GoM
- NIGERIA



“Coming Soon to an Oilfield Near You!”

www.sbexp.com

Dubai
T: +971 4 4271700

Houston
T: +1 281 566 1666

Oslo
T: +47 2240 2700

Rio
T: +55 21 2494-0283

Singapore
T: +65 9180 2605

Trondheim
T: +47 7 3879500

RAISING
THE STANDARD



100 Northpark Blvd.
Covington, LA 70433

(985) 773-6000



LaBay
Exploration Co., L.L.C.

111 Veterans Memorial Blvd.,
Suite 1550
Metairie, Louisiana 70005

www.labayexploration.com

Office (504) 371-5967
Fax (504) 371-5969

LAURENT OIL & GAS

is interested in purchasing low risk oil prospect
ideas in the Gulf Coast onshore and state waters.
We will obtain leases, pay a finders fee and
assign an override.

Call: Scott Laurent

Office: 713-464-0299

Cell: 713-515-0675

THE NEW ORLEANS GEOLOGICAL SOCIETY MEMORIAL FOUNDATION, INC.

The Memorial Foundation is an IRS Tax Exempt Code #501 (c)(3) organization. The Federal I.D. is: 72-1220999. Please consider making your donation prior to the close of this year's fiscal cycle which is June 30, 2010. Your individual support in any amount will help meet the IRS Guidelines for our Foundation. *Thanks!*

\$15,000 AND ABOVE

Olga Braunstein Succession

Gibbet Hill Foundation

In Memory of Steve & Marion Millendorf, William J. Prutzman,

Roger G. Vincent & Ron Youngblood

\$10,000

George W. Schneider, Jr. and Family

In Memory of George W. Schneider, Sr.

\$2,000 TO \$3,000

NOGS Golf Tournament May 2009

In Memory of Bill Craig

UP TO \$249

Donald I. Andrews

In Memory of Ray F. Havard

In Memory of Harlan(Lanny) Northcott

Robert J. Ardell

In Memory of Al Gibeath

In Memory of Bill Malin

In Memory of Bob Williamson

Mr. and Mrs. Wesley Barton

In Memory of Thomas A. Cullinan

Abraham Biadgelgne

Maurice N. Birdwell

Irion Bordelon, Sr.

In Memory of Robert G. Williamson

Hilary James Brook

Robin Broussard

Rob Burnett

F. Robert Bussey

In Memory Robert S. Kline

J. Sybil Callaway

Chevron

Matching Funds

Arthur F. Christensen

Ellen F. Clark

Willis E. Conatser PhD

Clarence F. Conrad

Charley Corona

In Memory of Professor Hubert Skinner

Trudy and Charley Corona

In Memory of Thomas A. Cullinan

In Memory of Robert G. Williamson

Michael A. Danahy

M. R. "Bob" Douglass

In Memory of Robert G. Williamson

Merle J. Duplantis

Parrish N. Erwin, Jr.

Exxon Mobil Matching Funds

Niles R. Faulk

Michael N. Fein

Arthur J. Garden

David Garner

Laurens Gaarenstroom

Mark J. Gallagher

\$7,000 TO \$9,000

Paul C. Mc Williams

\$250 TO \$499

Carlo C. Christina

In Memory of Al Gibeath

Tom Klekamp

John C. Kucewicz, Jr.

In Memory of Bill Craig.

Larry Galloway

Peter G. Gray

In Memory of Robert G. Williamson

Angela M. Hessler

Through the Chevron Humankind Program

Bernard L. Hill, Jr.

In Memory of Robert E. Osborne

Owen R. Hopkins

Dan E. Hudson

Kenneth Huffman

Jeffrey E. Jandegian

Paul Jurik

In Memory of Thomas A. Cullinan

Richard G. Klibert

Reuben J. Klibert, Jr.

In Memory of Dale Klibert

John C. Langford

William J. Malin

Jeannie F. Mallick

George M. Markey, Jr.

Paul C. McWilliams

In Memory of Russell D. "Rusty" Morris

Robert G. Murphy

New Orleans Geological Auxiliary

In Memory of Dee Baysinger

In Memory of Doris Meltzer

In Memory of Terri Smith

Nexen Petroleum USA Inc. Matching Funds

Russell H. Nordwell

William J. O'Leary

Richard A. Olsen

In Memory of Richard W. Boebel

In Memory of William J. Malin

In Memory of Robert W. Sabate'

Teresa M. O'Neill

In Memory of Brian J. O'Neill

Linda and Bill Peirce

Edward B. Picou Jr.

In Memory of William J. Malin

In Memory of Robert G. Williamson

FONO FUND

The FONO Fund accepts contributions that are invested and the income dedicated to assure sufficient financial resources will always be available to maintain the NOGS business office. Contributors are reminded that donations to the FONO Fund are not covered by the IRS 501 (c)(3) tax exempt classification and should be reported as a business expense on your IRS tax report.

\$500

James A. Hartman

In Memory of Hal Hudson

In Memory of Robert G. Williamson

UP TO \$250

Donald I. Andrews

Alfred H. Baker Jr.

Joseph E. Boudreaux

Hillary James Brook

Jack G. Bryant

J. Sybil Callaway

Arthur F. Christensen

Richard P. Colomes

Clarence F. Conrad

Michael A. Danahy

John Dombrowski

Merle J. Duplantis

Richard A. Edmund

Mark J. Gallagher

William J. Furlong

Duncan Goldthwaite

James A. Hartman

In Memory of Hal Hudson

In Memory of Robert G. Williamson

Bernard L. Hill, Jr.

Thomas A. Hudson

Kenneth Huffman

C. M. (Max) Jacobs

Robert M. Jemison, Jr.

Tom Klekamp

Louis Lemarie'

William J. Malin

Jeannie F. Mallick

James A. McCarty

Louis L. McCormick

Robert G. Murphy

William J. O'Leary

Richard A. Olsen

Erwin Parrish, Jr.

Linda and Bill. Peirce

Edward B. Picou, Jr.

Richard D. Provensal

James P. Raymond, Jr.

Brenda E. Reilly

C. R. Rondeau

George D. Severson

Rudolf B. Siegert

Richard J. Stancliffe

Bryan P. Stephens

Raymond Stephens

Roy C. Walther

Robert C. Weissmann

William M. Whiting

James W. Yeldell, Jr.

Jim Zotkiewicz

CONTRIBUTIONS FOR BOTH FUNDS THROUGH JUNE 30, 2010.
DONATIONS ARE LISTED FOR ONE YEAR.

Richard D. Provensal

In Memory of Thomas H. Philpott

Scott Purinton

Brenda E. Reilly

Mrs. William B. Rodan

In Memory of Robert G. Williamson

Edmund L. Russell

Robert T. Sellars, Jr.

In Memory of Robert G. Williamson

George D. Severson

Robert C. Shoup

Rudolph B. Siegert

John D. Silvernail

In Memory of Colles C. Stowell

Dr. J. O. Snowden

Gary L. Spraul

In Memory of H. Grady Collier

Raymond O. Steinhoff

In Memory of Professor Hubert C.

Skinner

In Memory of Harold E. Vokes

Stephen Szydluk

Roy C. Walther

William M. Whiting

In Memory of William J. Malin

Armour C. Winslow

In Memory of Rita Menzel Winslow

Frances A. Wiseman

In Memory of Steve Widdicombe

James W. Yeldell, Jr.

Jim Zotkiewicz

In Memory of Bill Craig

Robin A. Broussard

Chevron

Bernard L. Hill, Jr.

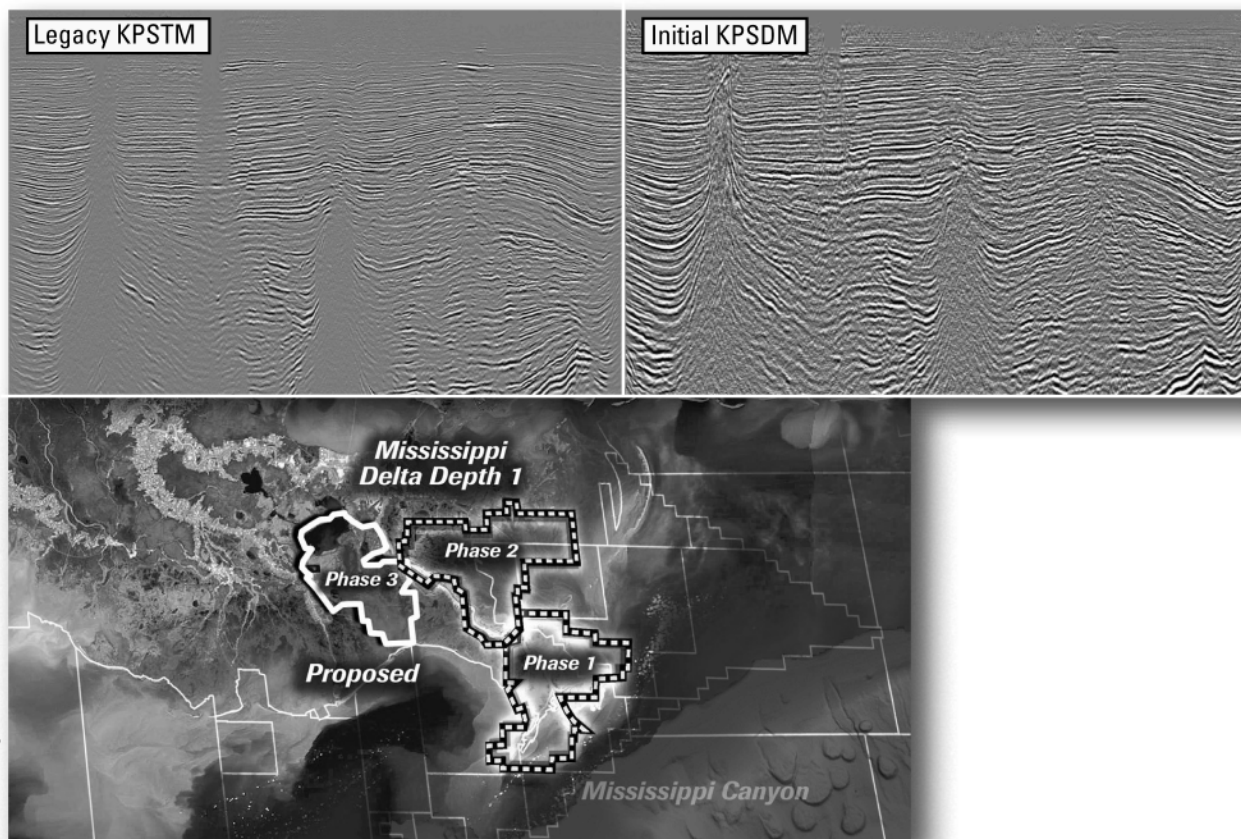
Jeff Jandegian

John C. Scheldt

Candace V. Strahan

In Memory of James Strahan

Improved depth imaging in the Mississippi Delta



In the Mississippi Delta region, WesternGeco is utilizing state-of-the-art processing designed to eliminate fault shadows and enhance deep imaging. The Mississippi Delta - Depth 1 survey, now in progress, incorporates the processing and remigration of twelve legacy surveys covering 1,855 square miles. High-quality time imaging using relative amplitude anisotropic Kirchhoff prestack time migration will be followed by improved structural imaging utilizing anisotropic Kirchhoff prestack depth migration.

To learn more about this and other Multiclient products, call +1 713 689 1000.

www.multiclient.westerngeco.com/la

Multiclient to the Power of E

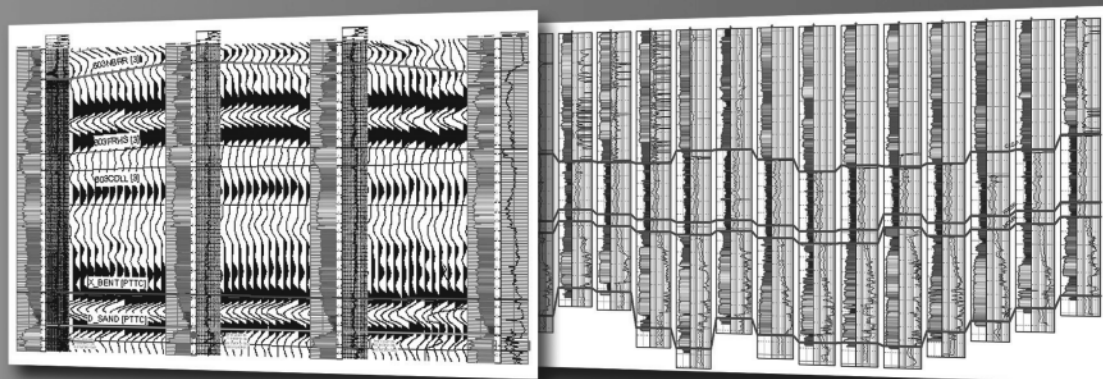


Define your geological model faster than ever before

NO MORE WAITING! Available today from IHS, easy and affordable access to one of the largest U.S. digital log collections

- More than 185,000 LAS files with over 1.5 million curves
- Regional subscription packages for today's active play areas
- Indexed to IHS well and production data
- Linked to the IHS Enerdeq® Browser for quick regional studies and log selection
- Available via IHSLogNet.com or on DVD
- Ready to use in PETRA and other log packages

Request a free 2' x 3' IHS digital log coverage map at ihs.com/energy/DigitalLogs



Use PETRA® to integrate digital log, well, production, perf, seismic and tops data. IHS is the only company to provide you with the complete picture

Why wait? Subscribe today! Call 888.OIL.DATA (645.3282) or e-mail sales.energy@ihs.com



The Source
for Critical Information and Insight™

SAI

Sydboten & Associates, Inc.
*Geological and Geophysical Consulting,
3-D Seismic Interpretation*

Ben D. Sydboten, Jr. CPG

124 Heymann Blvd., Suite 202
Lafayette, LA 70503

Office (337) 234-5288
Cell (337) 234-5491

ATWATER CONSULTANTS, LTD.

REGISTERED AND CERTIFIED PETROLEUM PROFESSIONALS

GEOLOGICAL, ENGINEERING, GEOPHYSICAL,
TRAINING AND EXPERT WITNESS SERVICES

3525 Hessmer Ave, Ste 304
Metairie LA 70002

Tel. (504) 581-6527
Fax (504) 524-7798

"Serving The Oil & Gas Industry Since 1983"

Geological,
Geophysical &
Land Drafting

Anthony Catalanotto
President

Stefani Foster
Drafting & Design

Geo-Draft, Inc.

A Professional Drafting & Graphics Firm

3349 Ridgeline Drive • Suite 202 • Metairie, LA • 70002
Office: (504) 836-2882 Fax: (504) 836-2877 (Cell) (504) 481-7291
E-Mail: geodraft@bellsouth.net
Website: www.geodraftinc.com

*This advertising space is available!
Contact the NOGS office.*

NORTHCOAST OIL COMPANY

610 E. Rutland St.
Covington, LA 70433
(985) 898-3577
(985) 898-3585 FAX

Jack M. Thorson
Eric C. Broadbridge
J. Daryl Gambrell
Raymond W. Stephens

**NOGS thanks our
sponsors for their support:**

GOLD LEVEL SPONSORS:

CHEVRON
LA BAY EXPLORATION CO, LLC.

**SPECIAL THANKS TO
DIVERSIFIED WELL LOGGING**



CIMAREX ENERGY CO.

GULF OF MEXICO REGION
GOM, SE La., N. La., MS, AL

1100 Poydras St.; Suite 1100

New Orleans, Louisiana 70163

504-586-1815 / Fax 504-586-9035

Keith Gourgues
Region Manager

(832) 242-6000 (O)
(713) 917-0493 (O)

(504) 931-7506 (C)
johnjurasin@jurasinoilgas.com

JURASIN OIL & GAS

9700 Richmond Ave., Suite # 124
Houston, TX 77042-4821

JOHN M. JURASIN
President

Cert. Pet. Geologist #4284
Cert. Prof. Earth Scientist #1961

Collarini Energy Staffing

Full-Time and Temporary Personnel

Facilities • Drilling • Production • Reservoir Engineering
Land and Legal • Geoscience • Information Technology •
Health and Safety • Management • Supply Chain
Accounting • Administrative Support

10497 Town and Country Way, Suite 950
Houston, Texas 77024

832-251-0553



www.collarini.com

Collarini Associates

Reservoir Engineering
Oil & Gas Property Evaluation
3-D Seismic Interpretation
Integrated Field Studies

832-251-0160
504-887-7127

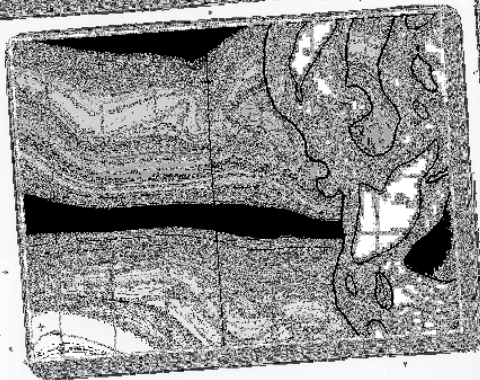
Houston
New Orleans

CALL US **SMT...**

SEISMIC **AND GEOLOGICAL** MICRO-TECHNOLOGY
JUST TAKES TOO LONG TO SAY!

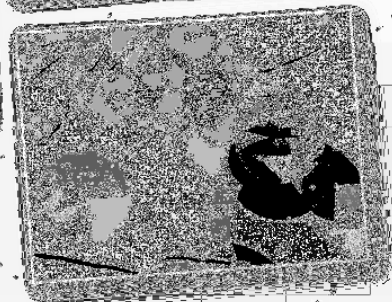


NEXT GENERATION GEOLOGY



KINGDOM Integrates

- Structural Frameworks
- 3D Geomodeling
- Economic Analysis
- Production Forecasting



HAMMER THE COMPETITION

See your new tools at www.seismicmicro.com/geology

ANSYTHE Donald I. Andrews 504-887-3432 	H. WARREN BELL Oil and Gas Exploration 2500 Tanglewilde, Suite 485 Houston, TX 77063-2126 Bus (713) 266-7297 Fax (713) 266-7298
THE BOEBEL COMPANY Oil and Gas Investments 170 Broadway Street, Suite 321 New Orleans, LA 70118 (504) 866-4313	PHELPS GEOSCIENCE Onshore Gulf of Mexico Geology and Geophysics Prospect Generation and Evaluation Houston, TX jsfphelps@yahoo.com (281) 398-5208
BOO-KER OIL & GAS CORP. Gray S. Parker 826 Union, Suite 300 New Orleans, LA 70112 Bus. (504) 581-2430 Fax (504) 566-4785	RAFIDI OIL AND GAS, INC. Jaser N. Rafidi, President 4415 Shore Dr., Suite 202 Metairie, LA 70006 Bus. (504) 722-2942 Fax (504) 888-5539; Res. (504) 888-1661
C & R EXPLORATION, INC. Carlo C. Christina Lawrence G. Ringham	ROY C. WALTHER Petroleum Geologist 2421 Prancer Street New Orleans, LA 70131 Bus. (504) 392-8513 Res. (504) 392-9332
C. R. RONDEAU Petroleum Geologist 119 W Southland Ave. Ironwood, MI 49938 Res. (906) 932-4692	 Shoreline Gas Inc. www.shorelinegas.com Full Service Natural Gas Marketing
CLASSEN EXPLORATION, INC. James S. Classen Looking for close in deals P.O. Box 140637 Boise, ID 83714 Bus. (208) 854-1037 Fax (208) 854-1029 classenllc@msn.com	 625 E. Kaliste Saloom Lafayette, LA 70508 16800 Greenspoint Dr., Suite 225-S Houston, TX 77060 www.StoneEnergy.com
D-O-R ENGINEERING, INC. 3-D and Geoscience Services 6161 Perkins Rd. P O Box 80812 Bus : (225) 765-1914 Baton Rouge LA 70898	TONY CAROLLO Consulting Geologist Unitization Geosteering Field Studies 1701 Peach Street Metairie, LA 70001 Bus. (504) 885-0004 Res. (504) 885-6829
EDWARD B. PICOU, JR. Consulting Micropaleontologist - Retired 228 St. Charles Ave., Suite 1330 C New Orleans, LA 70130 Bus. (504) 529-5155 Res. (504) 282-3096	Zot Oil & Gas, LLC Jim Zotkiewicz Prospect Generation and Evaluation 3200 Ridgelake Dr. Suite 207 Metairie, LA 70002-4930 Business: 504.831.4694 Email: jimzot38@zotoil.com

President's Letter (continued from page 5)

committee members, and NOGA. In Houston, I will continue to promote to my professional colleagues all of the myriad benefits that NOGS membership has to offer. At this time, I would like to take advantage of a suggestion that former NOGS President Tom Klekamp once made to me. I asked him what type of things should I write about in the President's Letter, and he told me that it was my President's Letter and you could go wild and crazy and put anything that comes to mind in it.

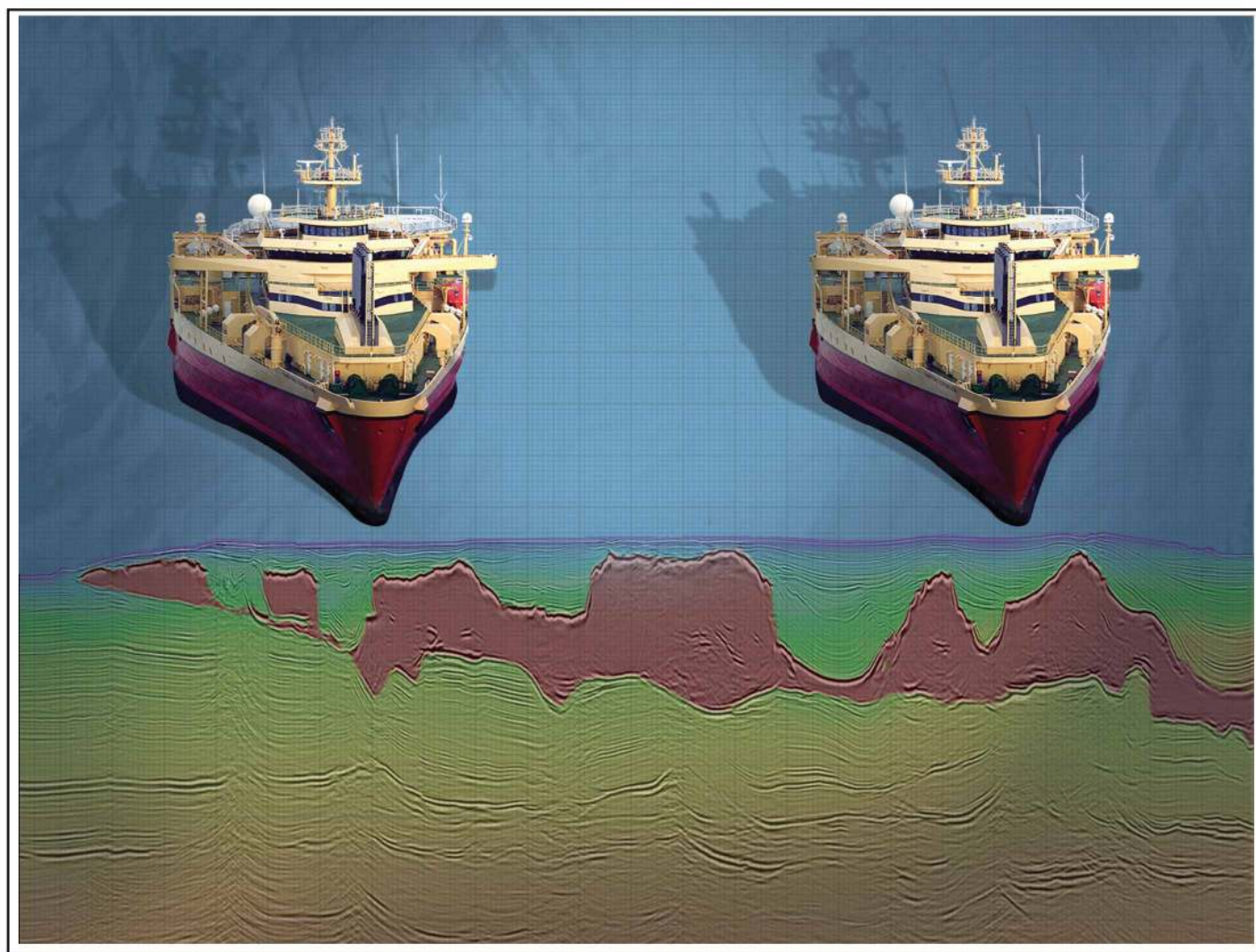
So, in closing, I would like to relate to you something that I memorized many years ago when I was in undergraduate school. It was written by late 18th century author, poet, and erstwhile geologist Robert Burns and is one of the earliest descriptions of a geologist.

He wrote (in his native Scottish brogue):

*The rin up hill and down dale
Knapping the chunky stanes t'pieces with hammers
Like sae many road makers run daft.
They say it is to see how the earth is made.*

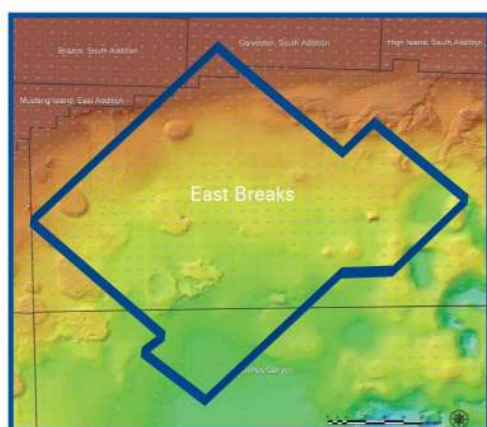
So, from one "daft road maker" to another, have a nice summer, and I'll see you all again soon.

Dave



Crystal III, East Breaks

MultiClient Wide Azimuth



- **Size** - 480 OCS blocks
- **Focus** - Sub-Salt Miocene & Paleogene
- **Technology** - TTI Beam and RTM Imaging
- **Delivery** - Available Q4 2010

Houston
Tel: +1 281 509 8000
Fax: +1 281 509 8500

Oslo
Tel: +47 67 52 6400
Fax: +47 67 52 6464

London
Tel: +44 1932 37 6000
Fax: +44 1932 37 6100

A Clearer Image
www.pgs.com



NEW ORLEANS GEOLOGICAL SOCIETY



810 Union Street, Suite 300
New Orleans, LA 70112-1430

WWW.NOGS.ORG

MARINE PROPERTIES, LLC BERKSHIRE EXPLORATION CO.

MONTE C. SHALETT, CPL, PRESIDENT

3030 Lausat Street
Metairie, LA 70001-5924

BUS. (504) 831-7779
FAX. (504) 831-8315

PCI

Paleo Control, Inc.

Houston, Texas
713-849-0044

Drilling Wells, Studies and Data Base

Loyd Tuttle

Frio, SE Texas

Bob Liska

Wilcox, S and SE Texas

Jim Thorpe

Miocene and Cam-Miogyp



SEE YOUR DATA IN A WHOLE NEW LIGHT!

Take the pressure out of exploration
and drilling by seeing what you
are going to encounter.



eSeis

www.e-seis.com
713.531.1447

- Lithology & Fluids
- Depositional Facies
- Pore Pressure from V & Q
- Well Planning Consultation

