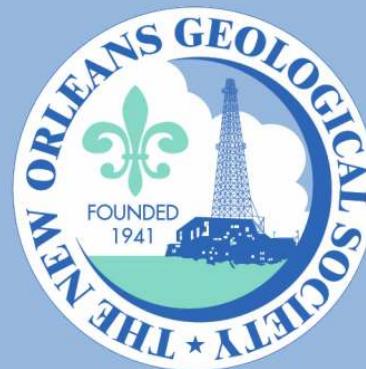


NOGS LOG



April 2010

Volume 50, Number 10

Upcoming Events and Activities

April 5 - NOGS Luncheon

*** At the Holiday Inn Downtown Superdome ***

\$2.00 validated parking in hotel garage

Guest Speaker Martin Perlmutter, Chevron, will present "High Frequency Paleoclimate Change: Impact on Exploration Strategy and Climate Research."

(See page 7 for Abstract and Biography)

LEPAVILLON HOTEL

Check with concierge or
front desk for location

Lunch served at 11:30am

ADMISSION:

with reservation \$30.00

without reservation \$35.00

Student Member with reservation Free

April 6 & 7 - 4th Annual Louisiana Groundwater & Water Resource Symposium

Baton Rouge. See announcement on page 13.

April 6 - Petroleum Geology for Non Geologists

Shell Auditorium, New Orleans. See announcement on page 30.

April 11-14- AAPG Annual Convention & Exhibition

New Orleans. See announcement on page 15.

April 13 - An Evening with "America's Greatest Generation"

National World War II Museum. See announcement on page 8.

April 19 - NOGS Annual Golf Tournament

Tchefuncte Country Club, Covington. See announcement on page 20.

April 29 - May 1 - 2010 Oil History Symposium

Lafayette. See announcement on page 23.

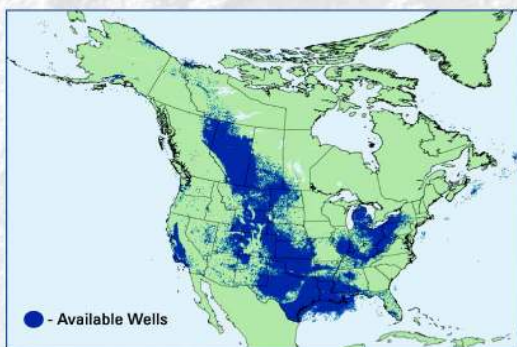
May 10 - NOGS Luncheon

Holiday Inn Downtown Superdome. Guest speaker Charles Cusack, PetroHawk Energy Corporation, will present "The Haynesville and Eagle Ford Shale Gas Play."

May 14 - NOGS and SGS Summer Social

Zephyrs game. See announcement on page 19.

Missing Well Data?



Let TGS complete the picture.

TGS adds hundreds of complete LAS everyday to the **world's largest LAS library**, with well logs in 29 countries.

And since you asked for it, we now have nationwide **US Production Data**.

Our well data is online, available immediately, with a team of **dedicated customer support** specialists there for you.

If your own proprietary well files are piling up, our new team of **well data solutions** experts can build a custom solution suited to your needs.

Learn more at www.tgsnopec.com/welldata
888-LOG-LINE | WellData@tgsnopec.com



Geophysical
Products



Geological
Products



Imaging
Services



www.tgsnopec.com

NOGS Office

Office Manager: Annette Hudson

Office Hours: 8:30am – 3:30pm on Monday-Wednesday-Friday

Tel: 504-561-8980 □ Fax: 504-561-8988

E-mail: info@nogs.org □ Website: www.nogs.org

The office is located at Suite 300, 810 Union Street, New Orleans, LA 70112.

Correspondence and all luncheon reservations should be sent to the above address.

Sent to press on March 15, 2010.

**BOARD OF DIRECTORS**

		Company	Phone	E-mail
President	Tom Klekamp	Amber Resources LLC	985-845-4046	klekamp@bellsouth.net
Vice President	Bob Hafner	ENI Petroleum	504-593-7605	Robert.Hafner@enipetroleum.com
Secretary	Jennifer Connolly	Shell	504-728-6411	jennifer.connolly@shell.com
Treasurer	Chuck Holman	ENI	504-593-7869	chuck.holman@enipetroleum.com
President-Elect	David E. Reiter	ENI	504-593-7606	david.reiter@enipetroleum.com
Editor	Elizabeth Petro	MMS	504-736-2866	nogseditor@gmail.com
Director 2010	Michael M. Ledet		504-394-9636	mikeledet@cox.net
Director 2011	Scott A. Wainwright	Bret Exploration Co Inc	504-889-2700	scott_wainwright@hotmail.com
Director 2012	Arthur H. Johnson	Hydrate Energy International	504-464-6208	artjohnson51@hotmail.com

COMMITTEE

	Chairperson			
AAPG Delegates	William M. Whiting	Consultant	504-947-8495	bootscon@aol.com
AAPG Student Chapter	Gabriella March	Tulane University		gmarch@tulane.edu
AAPG Student Chapter	Mary Ellison	UNO	504-535-6472	mellison4@gmail.com
Advertising-Log	Andrea Stancin	Shell	504-728-0431	Andrea.a.stancin@shell.com
Auditing	James Swaney	MMS	504-736-2677	james.swaney@mms.gov
Awards	Michael N. Fein	W & T Offshore	504-210-8148	mikef@wtffshore.com
Ballot	Chuck Holman	ENI	504-593-7869	chuck.holman@enipetroleum.com
Best Paper	David E. Reiter	ENI	504-593-7606	david.reiter@enipetroleum.com
Continuing Education	TBA			
Employment Counseling	TBA			
Entertainment	David E. Reiter	ENI	504-593-7606	david.reiter@enipetroleum.com
Environmental	Daisy Pate	Core of Engineers	504-957-4372	daisy.pate@gmail.com
External Affairs	Michael A. Fogarty	Sylvan Energy, LLC	603-523-4808	mike.a.fogarty@gmail.com
Field Trip	David Garner	Shell	504-728-6154	David.Garner@shell.com
Finance and Investment	Chuck Holman	ENI	504-593-7869	chuck.holman@enipetroleum.com
Historical	Edward B. Picou, Jr.	Consultant	504-529-5155	epicou@bellsouth.net
Membership/Directory	Penne Rappold	Shell	504-728-4338	prappold@gmail.com
New Geoscientists (NGNO)	TBA			
Nominating	Willis E. Conatser		504-466-9749	weconatser@aol.com
Non-Technical Education	Duncan Goldthwaite	Consultant	504-887-4377	DGldthwt@aol.com
Office Operations	William M. Whiting	Consultant	504-947-8495	bootscon@aol.com
Publications Sales	Edward B. Picou, Jr.	Consultant	504-529-5155	epicou@bellsouth.net
Photography	J. David Cope	Taylor Energy Co LLC	504-589-0419	dcope@taylorenergy.com
School Outreach	Thomas C. Bergeon	Century Exploration	504-832-3772	Tom.bergeon@centuryx.com
Scouting	Carol Rooney	Consultant Geologist	504-835-1909	carolbrooney@aol.com
Technical Projects	TBA			
Ad Hoc Committee on University Support	Michael J. Gallagher	Eni Petroleum	504-593-7480	Michael.Gallagher@enipetroleum.com

NOGS LOG STAFF

Editor	Elizabeth Petro	MMS	504-736-2866	nogseditor@gmail.com
Editor-Elect	Fran Wiseman	MMS	504-736-2912	frances.wiseman@mms.gov
Auxiliary	Susie Baker	NOGA	504-466-4483	abaker1006@aol.com
Info Tidbits	Fran Wiseman	MMS	504-736-2912	Frances.wiseman@mms.gov
Drill Bits	TBA			
Webmaster	Edward B. Picou, Jr.	Consultant	504-529-5155	epicou@bellsouth.net
Layout	Jannette Inc.			

NOGS AUXILIARY

Officers		Phone	Directors	Year	Phone
President	Linda Peirce	504-393-7365	Beverly Christina	2009-10	504-835-2383
1st Vice-President	Jean Jones	504-738-8091	Peggy Rogers	2009-10	504-392-6323
2nd Vice-President	Beverly Kastler	504-286-0879	Judy Sabate'	2009-10	504-861-3179
Secretary	Dolores Murphy	504-393-0878	Peggy Campbell	2009-11	504-283-2505
Treasurer	Judy Lemarie'	504-393-8659	Ruth Grimes	2009-11	504-392-8103
Parliamentarian	Carol Andrews	504-887-3432	Gerry Waguespack	2009-11	504-737-0532
Member-at-Large	Susie Baker	504-466-4483			

--- NOGS Contact List continued on page 10 ---

SYNERGY ENERGY



Weatherford®
LABORATORIES

Your success increasingly depends upon a better understanding of your reservoir. At Weatherford Laboratories, we provide a single source for comprehensive laboratory analyses, creating a synergy previously unknown in laboratory services. This single source includes distinguished geologists, geochemists, analysts, engineers, technicians and software developers, 38 worldwide laboratories, and the broadest portfolio of services for acquiring and interpreting data from physical samples. The end result is an unsurpassed combination of intellectual capital and technical resources — all working together to help you enhance development planning and reduce reservoir uncertainty.

Put our union of Synergy and Energy to work for you.

Weatherfordlabs.com

HIGHER STANDARDS

NORTH AMERICA
NAInquiries@weatherfordlabs.com

EUROPE
EUIInquiries@weatherfordlabs.com

LATIN AMERICA
LAIInquiries@weatherfordlabs.com

MIDDLE EAST/NORTH AFRICA
MENAIInquiries@weatherfordlabs.com

ASIA PACIFIC
APIInquiries@weatherfordlabs.com



from the President

The new GCAGS Scholarship Fund-Matching Program is running from January 1, 2010 through June 30, 2011. During this 18-month period the GCAGS will match funds raised by the NOGS Memorial Foundation on a one-to-one basis, up to a total of \$10,000. This is a great opportunity to double the value of your donation going to the Memorial Foundation and help deserving geoscience students in our three designated universities: LSU, UNO and Tulane. If you have questions call or email Bill Whiting, Chairman of the Memorial Foundation.

The Oil History Symposium, will be held in Lafayette, Louisiana on April 29 - May 1, 2010. This symposium, which is being jointly organized this year by the Petroleum History Institute and the Lafayette Geological Society, is an annual event; this is only the second time it will be held in the Gulf Coast area.

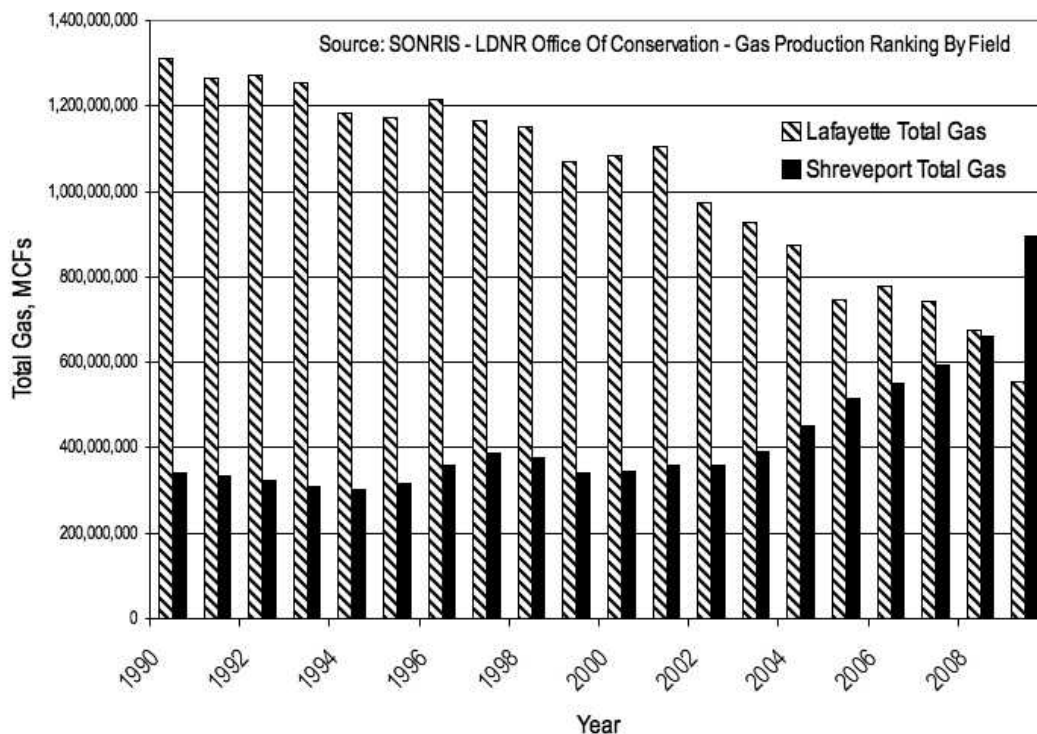
Much progress has been made since December on the Volume 4, Oil and Gas Fields of South Louisiana. We now have a working list of fields matched to contributor names, managers or geologists who can develop data, logs and possibly a seismic line. Carlo Christina and Charley

Corona are heading the effort. At a recent committee meeting the consensus was that the timeline to final publication is roughly 16-18 months.

NOGS member Ken Huffman has been elected national President of the Society of Independent Professional Earth Scientists (SIPES). Ken has also been active and valuable team member in the Volume 4 effort. Congratulations, Ken!

The LaDNR's SONRIS has proven an invaluable source of data, maps and information. It has to be the best state oil and gas information retrieval systems online. One interesting statistic is the annual total gas produced in the Lafayette District (south La.) compared with the Shreveport District. In the past year, the Haynesville Shale Gas Play overtook the Lafayette District in gas production. The major field responsible for this is Elm Grove Field, which has been top producer in the Haynesville for the last four years. The field has 1557 active wells and thirty producing companies. It says a lot about capital switching to the certainty of shale and mudstone gas production.

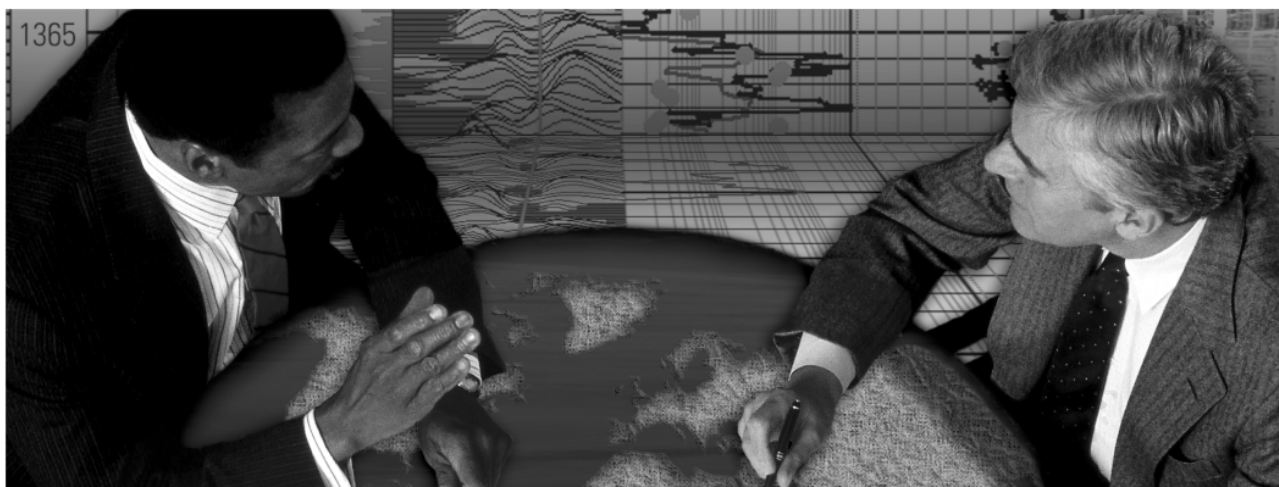
Tom



energyinformation

Business solutions for
the oil & gas industry

Schlumberger formation evaluation solutions deliver the answers you need. Our extensive portfolio of services, leading-edge technology, and advanced conveyance options keep you in communication with your well throughout its life cycle.



With formation evaluation technologies from Schlumberger, you can make the best decisions for optimized performance in every well.

The formation evaluation one-stop shop

Whether you are logging in open hole or behind the casing, our broad selection of services ensures the best solution for acquiring formation evaluation data. Tools can be conveyed while drilling or on wireline or pipe. We offer many specialized evaluation capabilities, from density, neutron porosity, and resistivity to borehole imaging, nuclear magnetic resonance logging, borehole seismic, formation pressure testing, and fluid sampling. Advanced triple-combo logging options include the VISION* formation evaluation and imaging-while-drilling services. Coupled with Pulse* telemetry and surveying services, the VISION family provides real-time formation evaluation data and enables optimum well placement.

High-speed wireline measurements are recorded with the Platform Express* logging services. The SlimXtreme* platform is designed for high-pressure, high-temperature environments and the ABC* Analysis Behind Casing services are used after casing is set.

Expert interpretation from the engineers and geoscientists of Schlumberger Data & Consulting Services brings all your data together to give you the answers you need. This expertise is available after logging is complete or as real-time two-way wellsite communication through the InterACT* real-time monitoring and data delivery system.

Schlumberger delivers leading-edge technology and interpretation expertise for all your formation evaluation needs, so every well benefits from the very best information.

For more information visit
www.slb.com/oilfield/formation_evaluation/

*Mark of Schlumberger

04-FE-114

Schlumberger

April 5 NOGS Luncheon Presentation

At the Holiday Inn Downtown Superdome

High Frequency Paleoclimate Change: Impact on Exploration Strategy and Climate Research

presented by

Martin Perlmutter

Chevron, Houston

ABSTRACT

Orbital cycles alter insolation, which produces climate, sediment yield, lake and sea level cycles. The greatest insolation changes occur at the scale of precession (~20 kyrs) during periods of high eccentricity. Within a hemisphere, the climatic response of a specific region is a function of the phase of the insolation cycle and the paleogeography of the region. Some areas can become wetter while others become drier at the same point in an insolation cycle.

Climate cycles affect the type and rate of sediment weathering and transport, the sediment produced, grain sizes, and yield. Analysis of yield as a function of climate indicates that volume can vary by more than an order of magnitude depending on the conditions. Therefore, a climate cycle can produce a distinct sediment supply cycle whose nature is dependent on the regional climate succession.

An added complexity, similar in some respects to the systematics of annual seasonality, is that precession-scale insolation cycles cause the warmest (or coolest) conditions in the Northern and Southern Hemispheres to be about 10 thousand years out of phase. This is significant because the affects of glacioeustasy, also a function of insolation and climate, are

global. Prior to the Plio-Pleistocene, the common glacial state was a unipolar icecap. Under this condition, eustasy tended to track the precession-scale insolation cycle of the glaciated hemisphere. The results were that similar climatic successions in opposite hemispheres had yield cycles with distinctly different phase relationships to glacioeustasy. Such differences would not exist in an ice-free world.

Understanding the inherent paleoclimatic and stratigraphic variability of a system helps improve depositional models and interpretation and reduces the uncertainty associated with exploration analyses. For example, by taking into account the interaction of sediment yield and sea level, exploration areas that are prone to the development of sand-rich submarine fans or deltas can be forecast and high graded. The same approaches can be used for lacustrine regimes.

Additionally, evaluating the stratigraphic record and recognizing that these types of variability occur and mapping them in an accurate chronologic framework will greatly assist paleoclimate modelers by ensuring that simulations are run with the appropriate input parameters and by validating their simulations at the appropriate timescales.

BIOGRAPHY

Martin Perlmutter has been a research scientist and team leader with Chevron (and Texaco) for the past twenty-five years. Prior to Chevron, Martin was also a team leader and research scientist at Argonne National Laboratory. His expertise is in reservoir prediction, basin analysis, cyclostratigraphy and paleoclimate. He has evaluated over thirty basins in North and South America, Europe, Asia, Africa, & the Indian Ocean. Martin has completed mega-regional studies of eastern North America, Brazil, Argentina, Chile, South Atlantic & China and has contributed over twenty-five scientific publications as well as numerous presentations.

Dr. Perlmutter received his B.S. in geology, 1972 and M.S. geology, 1973 from the State University of New York at Stony Brook. In 1982 he earned a Ph.D. in marine geology from the Rosenstiel School of Marine & Atmospheric Science, University of Miami.

He was 2008 Co-Chairman of the SEPM Research Symposium: Paleoclimate: Implications for Stratigraphic Interpretation & Modern Climate Change, AAPG/SEPM Annual Meeting, San Antonio, Texas. He also co-chaired the

--- continued on page 8 ---

THE LUNCHEON RESERVATION DEADLINE IS MARCH 31 - CONTACT THE NOGS OFFICE

“And Looking Ahead...”

The next NOGS Luncheon will be held on May 10. Guest speaker Charles Cusack, PetroHawk Energy Corporation, will present “The Haynesville and Eagle Ford Shale Gas Play.” Contact the NOGS office to make your reservation.

New and Emerging Exploration Technologies Sessions at the 2008 AAPG/SEPM San Antonio meeting, TX. From 2003-08 he served as the U.S. representative to Integrated Ocean Drilling Program Industry Liaison Panel. His recent professional activities include the 2009 Co-Chairman, Grand Challenges that Limit Our Ability to Understand Paleoclimate and Paleoceanography in Deep Time, AAPG/SEPM Annual Meeting, Denver, Co. In 2008-09 he was the Chevron representative to the National Research Council Panel on Paleoclimate.

From 1996 to 2009 Dr. Perlmutter was Adjunct Professor, Department of Geology, University of Illinois at Chicago. In 2008 he was an invited speaker on the Impact of Interaction between High Frequency Climate Change and Glacioeustasy on Sediment Delivery to Ocean Margins at the AAPG Hedberg Conference on Sediment Transfer from Shelf to Deepwater, Ushuaia, Patagonia.

Dr. Perlmutter's lecture-related publications include:

Perlmutter, M.A., N. Azambuja, 2005, Cyclostratigraphy, in E.A.M. Koutsoukos (ed.), *Applied Stratigraphy*, Springer, pp. 301-338.

Perlmutter, M.A., R.E. Plotnick, 2003, Hemispheric Asymmetry of the Stratigraphic Record: Conceptual Proof of a Unipolar Icecap; B. Cecil (ed.), *Climate Controls on Stratigraphy*, SEPM Spec. Pub. 77, pp. 51-66

Perlmutter, M.A., R.E. Plotnick, 2002, Predictable Differences in the Marine Stratigraphy of the Northern & Southern Hemisphere and the Impact on Reservoir Distribution, 2002 Proceedings of the Gulf Coast SEPM Annual Meeting, pp. 231- 256.

Perlmutter, M.A., R.J. Radovich, M.D. Matthews, R.E Plotnick, C.G. St.C. Kendall, 1999, Impact of High-Frequency Sedimentation Cycles on Stratigraphic Interpretation, in K.O. Sandvik, F.M. Gradstein, N.J. Milton (eds.), *Sequence Stratigraphy*, NPF Spec. Pub. 8, Elsevier Science B. V., Amsterdam, pp. 141-70.

Kim, W., C. Paola, J. Martin, M. Perlmutter, 1982, Experimental & Theoretical Results, in External Controls on Deepwater Depositional Systems, SEPM Spec. Pub. #92. 1982

Celebrate with the New Orleans Geological Society An Evening with “America’s Greatest Generation” at the National World War II Museum

Tuesday, April 13, 2010 from 7:00 to 10:00 p.m.

- * Enjoy a memorable and relaxed evening with your friends and colleagues
- * Open bar social
- * Fabulous Southern buffet dinner catered by world-renowned Chef John Besh
- * Access to all the Museum’s exhibit areas for touring at your leisure.
- * For more information about the Museum and its various amenities, please visit www.nationalww2museum.org
- * Round-trip bus transportation will be provided from the AAPG Convention Headquarters Hotel to the Museum and will be available 6:15 to 10:45 p.m.
- * Cost of admission: \$50 per person

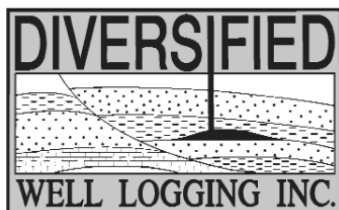
<http://www.aapg.org/neworleans/documents/NOSponsorBrochure.pdf>
or contact

Robert Rooney at (504) 832-3777 — robert.rooney@centuryx.com
or Al Baker at (504) 836-2710 — ABaker1006@aol.com



Relax. We'll keep you posted.

Your rig is offshore and you are not. How do you know what's going on so many miles away? You know because we tell you. Daily or even hourly, Diversified Well Logging's engineers update you on the status of your rig. We are your eyes and ears, especially when it comes to deep water or high pressure, high temperature areas. Diversified offers 24-hour surface evaluation. We provide secure and customized real-time data communication, in-house research and development and 24/7 on-call support for our equipment and our engineers. Whether you have a 10-day job or 110-day job, we provide the specialized attention you require. So, relax. We're with you every step of the way.



Serving the Gulf Coast for over 40 years.

New Orleans • Lafayette • Houston • Dallas • Corpus

800.280.2096

711 West 10th Street • Reserve, LA 70084 • Phone: 985.536.4143 • Fax: 985.536.2427
sales@dwl-usa.com



**FULLY INTEGRATED AND
CENTRALIZED BIOSTRATIGRAPHIC
SERVICES**

▼ *Single-source biostratigraphic databases
for increased accuracy and consistency*

▼ *Integrated foram / nannofossil analyses*

▼ *Complete wellsite paleo services*

▼ *In-house sample preparation
lab for quality-monitoring
and efficiency*

▼ *Sample pick-up service*

6619 Fleur de Lis Drive
New Orleans, LA 70124
(504) 488-3711

www.paleodata.com

MCMORAN EXPLORATION CO.



**MCMORAN
OIL & GAS**

www.mcmoran.com

NYSE: MMR

16676 Northchase Dr.
Houston, TX 77060
(281) 539-7600
Fax: (281) 539-7655

1615 Poydras
New Orleans, LA 70112
(504) 582-4000
Fax: (504) 582-4155

110 Travis St., Suite 140
Lafayette, LA 70503
(337) 735-9150
Fax: (337) 735-9151

NOGS CONTACT LIST

--- continued from page 3 ---

MEMORIAL FOUNDATION

BOARD OF TRUSTEES

2009-10 Chairman	William M. Whiting
2009-10 Secretary	Tom Klekamp
2009-10 Trustee	Michael C. Fauquier
2009-10 Trustee	J. David Cope
2010-11 Trustee	Timothy J. Piwowar
2010-11 Trustee	Michael N. Fein
2011-12 Trustee	Monte Shalett
2011-12 Trustee	James Swaney

Company
Consultant
Amber Resources LLC
W & T Offshore
Ankor Energy
Shell
W & T Offshore
Berkshire Exploration Co
MMS

Phone
504-947-8495
985-845-4046
504-210-8192
504-596-3672
504-728-4066
504-210-8148
504-831-7779
504-736-2677

E-mail
bootscon@aol.com
klekamp@bellsouth.net
mfauquier@wtoffshore.inc
dcope@ankorenergy.com
tim.piwowar@shell.com
mikef@wtoffshore.com
mshalett@gmail.net
james.swaney@mms.gov

AAPG DELEGATES

Term Ends

2011	Tom Hudson
2011	Edward B. Picou, Jr.
2011a)	Brenda Reilly
2011a)	Robert Rooney
2012	William Whiting
2012	Jim Zotkiewicz
2012 a)	David E. Balcer
2012 a)	Richard J. Stancliffe

Chevron
Consultant
Energy Partners Ltd.
Century Exploration
Consultant
Zot Oil & Gas
Chevron
Shell Expl & Prod Co.

985-773-7163
504-529-5155
504-799-4811
504-832-3777
504-947-8495
504-831-4694
985-773-6725
504-728-7553

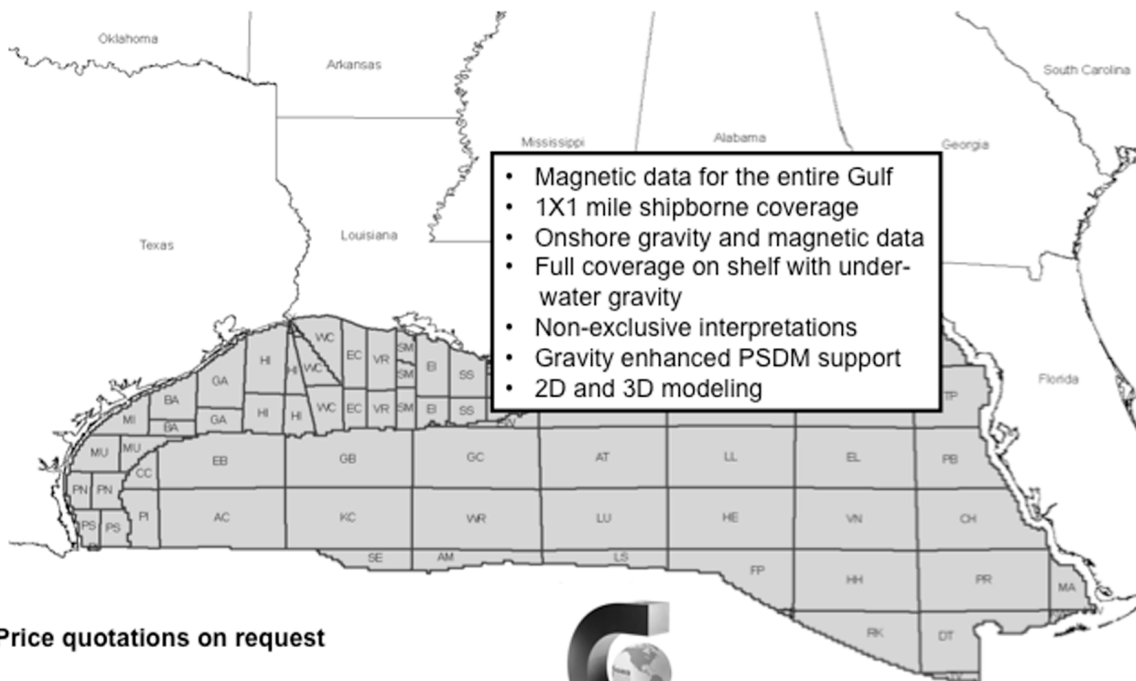
tom.hudson@chevron.com
epicou@bellsouth.net
breilly@eplweb.com
Robert.rooney@centuryx.com
bootscon@aol.com
jimzot38@zotoil.com
dbalcer@Chevron.com
richard.stancliffe@shell.com



Fugro Gravity & Magnetic Services

LAND • AIRBORNE • UNDERWATER • SHIPBORNE

The most complete coverage Onshore and Offshore Gulf of Mexico



Price quotations on request

Fugro Gravity & Magnetic Services
www.Fugro-GravMag.com
Tel: 713-369-6123



Gravity Inspired. Magnetically Inclined.



Shell has worked in partnership
with the NOGS for many years, and
is proud to count the society among
its closest business associates.

The New Orleans Geological Society was organized in 1941 to foster scientific research and advance the science of geology. Particular emphasis is laid on the exploration for and production of petroleum and natural gas. Related objectives include encouraging the adoption of improved methods of exploration, disseminating pertinent geological and technological data, and maintaining a high standard of professional conduct among its members.

www.shell.com/us.sepcor



GOM
smart

An ocean
of GOM DATA...
updated for you 24/7

Introducing GOMsmart. Web-based GOM data with
real-time updates. No special software or training.
Access data via intuitive interface or customizable maps.

- Wells: header, production, tests, 250,000+ logs
- Production Data: historical and current
- Paleo Data: access to 100,000+ observations
- Affordable: monthly and annual subscriptions

Visit www.GOMsmart.com for your FREE trial.



From ZNodal Systems to ZNodal Imaging

We are full spectrum ZNodal™ technology

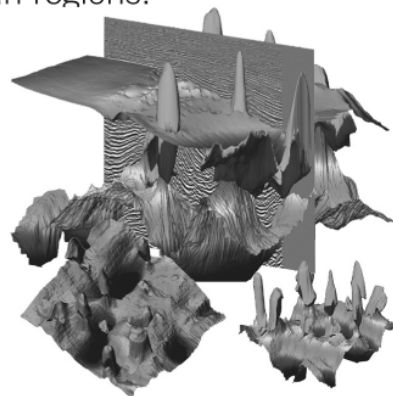
FairfieldNodal.com



We admit it. We're seismic nodal fanatics. Always have been. Which explains our one-of-a-kind, cable-free ZNodal™ systems. They work wonders in dense urban areas and pristine wilderness, in shallow water and deep ocean regions.

In fact, our exclusive ZNodal technology is behind everything we do, from acquisition and licensing to advanced processing and imaging, bringing nodal data to life in amazing ways.

Right now, our ZNodal systems are on the job in some of the world's most challenging fields, making a powerful difference. So when you're ready to go nodal, count on us to lead the way. ZNodal technology: It's what you need. It's what we're all about.



fairfieldnodal

SYSTEMS ACQUISITION LICENSING PROCESSING IMAGING

Baton Rouge Geological Society



4th Annual Louisiana Groundwater & Water Resource Symposium

April 6 & 7, 2010

Louisiana Water a Valuable Resource

Energy Coast & Environment Building
Louisiana State University
Baton Rouge, Louisiana

Hosts:

Louisiana Geological Survey
Baton Rouge Geological Society



Eni Petroleum

1250 Poydras Street
Suite 2000
New Orleans, LA 70113
Tel: (504) 593-7000
Fax: (504) 593-7745

1201 Louisiana Street
Suite 3500
Houston, TX 77002
Tel: (713) 393-6100
Fax: (713) 393-6205

It's no illusion...
Core Lab offers everything you need.



©2009 Core Laboratories. All rights reserved.

Unconventional resource exploitation • Gas shale experts • Deepwater GOM authority
Capacity for fast turnaround • High-quality people • Global support
Industry leadership and reliability • Proprietary and patented technologies • Experience

www.corelab.com/rd/petroleumservices • 24-hour wellsite service hotline: 504-733-6583

SEI®

Seismic Exchange, Inc.

**Strategic Speculative Surveys
Geophysical Data Marketing & Management**

Your
**Full Service
National
Seismic Data
Marketing Firm**

New Orleans
Dallas
Houston
Denver
Oklahoma City
Corpus Christi
Tulsa

201 St. Charles Avenue, Suite 4300, New Orleans, Louisiana 70170-4300
Telephone 504.581.7153 Fax 504.581.9591
www.seismicexchange.com



AAPG

2010 ANNUAL CONVENTION & EXHIBITION

NEW ORLEANS, LOUISIANA, USA | 11-14 APRIL 2010

UNMASKING

THE POTENTIAL OF EXPLORATION & PRODUCTION

MEMBERS

REGISTER BY 16 FEBRUARY
AND SAVE \$200!

**Hear from industry experts
at these special events**

Michel T. Halbouty Lecture

featuring Aubrey K. McClendon of
Chesapeake Energy Corporation

All-Convention Luncheon

featuring Bobby Ryan of Chevron
Global Upstream and Gas



NOGS 2010-2011 CANDIDATES

For PRESIDENT ELECT

HAFNER



Bob Hafner was born in New Jersey and attended the University of Kansas for his B.S. degree in geology (1976). He earned his Master's degree from the University of New Orleans (1980). He started his career with Getty Oil Company in the onshore department. After the Texaco merger with Getty, he completed 15 years with them. He spent two years with Mobil E & P until the Exxon takeover. Thereafter, he became a certified Earth Science teacher for Jefferson Parish and an adjunct professor at Delgado teaching physical and historical geology. After Katrina he did consulting work for Shell and Dominion before joining Eni Petroleum. His current position is Senior Geologist for the Shelf Exploration group.

Bob is the current Vice President of NOGS. He has been a member of AAPG (1978) and NOGS (1981), and has been a long term volunteer for Super Science Saturday at the Children's museum.

For VICE PRESIDENT

KEAR



Rick Kear graduated from University of Florida with a BS in Mechanical Engineering in March 1972. In April 1972, he joined Schlumberger Offshore Services, Lake Charles, LA where he worked as a field engineer and special services specialist. In 1976 Rick came ashore as a Field Service Manager in Houma, LA. He has previously served Schlumberger clients as District Manager of New Orleans East, Senior Sales Engineer and Area Sales Manager in Jackson, MS, City Sales Manager and Division Sales Manager in Shreveport, LA, Sales Development Engineer in Roswell, NM, and Division Sales Manager in Oklahoma City, OK. Rick came to work in Geology full time in New Orleans in 1996 as Gulf Coast Division Interpretation Development Geologist.

Rick is currently the NGC (North Gulf Coast) Geology Domain Champion and Principal Geologist. His professional interests include SPWLA, (Past New Orleans Chapter President and currently VP of Symposia), petrophysics, geological and imaging interpretation, especially in resistive fluids, depositional environment determination, field studies and leading field trips and workshops. He holds 3 patents and has 3 more in process. Rick splits his time between New Orleans and Houston serving GoM clients. His personal interests are his family, the Lord, and his church. He is an AAPG Associate Member, and Member of ASME, SPWLA, SPE, SPE-Delta Section, SGS and SEG. Rick has received 3 Schlumberger Wildcatter Awards for finding clients unrecognized productive hydrocarbons. He has worked for Schlumberger his entire 37-year petroleum industry career.

For SECRETARY

RAPPOLD



Penne Rappold was born in New Orleans and grew up here as well. After graduating from Riverdale High School she went on to receive a BS degree in geology from the University of New Orleans. She has spent the last 30 years working both Exploration and Production projects in the offshore Gulf of Mexico for Shell E&P. After retiring from Shell in 1999, Penne began geologic consulting work and is currently assessing redevelopment opportunities in several deepwater fields for Shell. Professional memberships include AAPG and NOGS with participation on the Continuing Education Committee and currently Membership Committee Chairman. In addition to her professional career, Penne is a wife, mother, grandmother and active volunteer with the Hancock County Food Pantry and Friends of the Animal Shelter.

NOGS 2010-2011 CANDIDATES

For **TREASURER**

JORGENSEN



Will Jorgensen graduated from Texas A&M University, receiving BS degrees in both Geology and Geophysics in 2004. In 2007, after completing his Master's degree in Geology at A&M, he began working for Shell in New Orleans. He is presently a Production Geologist developing mature fields in the deepwater Gulf of Mexico.

Will is currently an oral presentation Co-Chairperson for the 2010 AAPG convention being held in New Orleans. He is also an active member of the Southeastern Geophysical Society

For **EDITOR-ELECT**

TATUM



David M. Tatum grew up a Michigan native and a third-generation petroleum geologist. Earning a BS in Geology from Lake Superior State University in 2005 and a Master's Degree in Geology from University of Texas at El Paso in 2007, Tatum has resided from border to border in the United States. Currently living outside of New Orleans, Louisiana, he is a petroleum geologist with Chevron working the Tahiti Field within the Deep Water Asset Development group. He is also a member of the AAPG (2003), NOGS (2007), co-authored "Eolian topography, as a control on deposition..." in the Journal of Sedimentary Research (2008) and co-chaired the Reservoir Characterization Session at the 2010 AAPG National Conference in New Orleans. He serves the New Orleans community in various community and charitable projects.

For **DIRECTOR 2010-2013** **LANGFORD**



John C. "Jack" Langford of JCL Services is a native of the New Orleans area. He received a degree in Petroleum Engineering from LSU in 1953. Jack has been a very active member of NOGS since 1958, serving on many committees both for the local society, GCAGS and AAPG. He was Exhibit Chairman for the GCAGS/SEPM Convention, September 25-27, 2005 in New Orleans. Jack has served NOGS as Chairman of Membership, Photo Directory and Entertainment committees. He was NOGS' Vice-President in 1988 and President 1991 during the 50th anniversary of NOGS. Recently he served as General Chairman of the 1997 New Orleans GCAGS/SEPM Convention. During our last AAPG convention in New Orleans he was chairman of the International Exhibits and Entertainment Committee. He has received the NOGS Outstanding Service Award, 1987 and Honorary Lifetime Membership in 1998.

Jack has been in the local service business community since 1958. First with Subsurface Evaluation, the Langford Meredith Laboratories, which was merged into the Analysts. He was transferred to London, England as Managing Director to introduce The Analysts services within the Eastern Hemisphere and in 1977 to Houston Texas to direct the Latin/South American expansion. He returned to New Orleans in 1984 and upon retiring from the Analysts/Schlumberger in 1985 formed JCL Services, as a consultant that was a short lived profession in the late 80's.

Not wanting to stay underfoot at my home, I obtained a Real Estate Brokers License. Staying busy with Real Estate and with NOGS activities pleased me to no end.

Although GCAGS-2005 Convention was rained out the Transactions were printed and dedicated to "Ed Picou and Jack Langford" the highest honor anyone can achieve.

Solicitation for Field Studies

The abstract below is from a presentation at the May 2003, NOGS South Louisiana Onshore Petroleum Exploration Symposium. A special NOGS Ad Hoc Committee is currently soliciting Field Studies from members for publication in the forthcoming Oil and Gas Fields Volume IV. Please consider contributing a field study. For details contact: Carlo Christina CarloCC398@cox.net or Charles Corona cjcorona@cox.net.

Patterson Field Re-development

R. Pete Dodge, Dominion Exploration and Production, New Orleans, LA,
and Andy Bittson, Devon, Houston, TX

ABSTRACT

Sun Oil Company discovered Patterson Field with the drilling and completion of their Zenor #1 well in 1951. Drilling continued within the field through 1992 with wells targeting the prolific Miocene age *Robulus* "L" through *Marginulina* "A" sands. No wells were drilled in the field between 1993 through 1998, resulting in a decline in daily production down to 1.7 MMCFGPD and 22 BCPD. In 1997 CNG (now Dominion) entered into a joint exploration agreement with Pennzoil (now Devon) to acquire approximately 65 square miles of new 3-D seismic data over the field. GECO-Prakla completed the acquisition of the data in 1998.

The partnership drilled and completed their first well in 1999. To date we have drilled and completed 5 wells increasing the present daily production to over 20 MMCFGPD and 1,300 BCPD. The 3-D survey helped to define several buried down to the south growth faults located south of the younger Patterson fault. Upthrown closures at the *Discorbis* "B" and *Marginulina* "A" horizons were mapped

which resulted in the drilling and completion of the Zenor A-15 (*Discorbis* "B"), Zenor A-16 (*Marginulina* "A") and Pugh #1 (*Marginulina* "A") wells. The Zenor A-17 well targeted deeper *Planulina* Sands upthrown to the Patterson fault. The *Planulina* Sands were wet. However, a shallower *Operculinoides* age sand was logged productive, reestablishing an interest in the further development of the field pay sands. The Zenor #1 was the most recent well drilled and completed. The Zenor #1 targeted both attic reserves in the *Robulus* L field pay sands and deeper potential reserves within the *Discorbis* "B" and *Marginulina* "A" sands. The well was successful within the main field pay *Robulus* "L" sands, and discovered a new *Robulus* "L" oil sand, the "R3B", which is on production at 300 BOPD.

Additional drilling is scheduled to take place this summer. We look forward to continued success with the Patterson re-development program.



2010 NOGS and SGS Summer Social



-VS-



May 14'th New Orleans Zephyrs vs. the Fresno Grizzlies

Game starts at 7:00pm

We will have someone standing outside with your tickets to avoid the congestion at the will-call window. Location will be announced before the game

*** Friday night Fireworks ***

We will have a block of seats down the third base line. Come out and bring the family

*Cost:

5 \$ – Member of either society and close relatives

Non member Adults 5 \$ + membership fee (SGS or NOGS)

* Parking is usually an additional 3-5 \$ per car

Please RSVP by May 7'th through Annette at the NOGS office (annette@nogs.org) or phone 504-561-8980. Please let us know how many will be in your party.

Thanks and we will see you at the game!

NOGS PRESENTS THE 2010 ANNUAL GOLF OUTING

PROCEEDS FROM THIS EVENT WILL HELP FUND *THE BILL CRAIG MEMORIAL FUND**.
LAST YEAR, THE GOLF TOURNAMENT GENERATED OVER \$2,500.00. LET'S KEEP IT GOING!

A NEW AND EXCITING VENUE THIS YEAR
TcHEFUNCTE COUNTRY CLUB
IN COVINGTON ON **MONDAY, APRIL 19.**

THE FORMAT WILL BE A 4-PERSON SCRAMBLE W/SHOTGUN START AT **12:00 NOON.**
FOOD SPONSORED BY TIM KLIBERT W/ DIVERSIFIED LOGGING

REGISTRATION OPENS AT 10:00 AM WITH BRUNCH SERVED UNTIL TEE TIME. PRICE
INCLUDES GREEN FEES, CART, RANGE BALLS, FOOD & DRINKS, FLIGHT, PRIZES & 2 MULLIGANS.
WHAT ELSE COULD YOU POSSIBLY ASK FOR? DONATIONS OF ANY KIND ARE WELCOME. THE
COST IS \$125.00 / INDIVIDUAL OR \$600/CORPORATE. HOLE SPONSORS ARE \$125.

THIS EVENT ALWAYS FILLS UP AND WE ARE LIMITED TO **120 PLAYERS** ONLY. PLEASE
REGISTER EARLY TO AVOID CONFUSION. REMEMBER YOU ARE NOT REGISTERED UNTIL
NOGS HAS RECEIVED PAYMENT AND YOU ARE CONFIRMED BY ANNETTE. AS USUAL WE NEED
VOLUNTEERS. IF YOU CAN HELP OUT YOU WILL BE TREATED TO A DAY OF FUN, FOOD, AND
BE ELIGIBLE FOR SOME DOOR PRIZES. MAKE SURE YOU SUPPLY YOUR HANDICAP OR A
SCORE THAT TYPIFIES A SET OF ROUNDS OF GOLF OVER RECENT TIME NO GREATER THAN 2
YEARS IN THE SPACE PROVIDED.

DONATIONS AND TO VOLUNTEER CONTACT
DAVID REITER (504-593-7606) OR TIM KLIBERT (985-536-4143)

TO REGISTER, CONTACT ANNETTE HUDSON AT THE NOGS OFFICE, 810 UNION ST. STE. 300
NEW ORLEANS, LA 70112 504-561-8980; FAX 504-561-8988. CASH, CHECK (PAYABLE TO
NOGS), VISA, MC, AND AMEX ARE ACCEPTED.

Name: _____

Company: _____

Phone: _____

Names of others in your group;

V MC Disc Am Ex # _____

Exp Date _____ Total Paid _____

_____ @ \$125 each = _____

_____ @ \$600 each = _____

Cash Donations = _____

Hole Sponsorship = _____

TOTAL = _____

* Information
concerning *The Bill
Craig Memorial
Fund* is available at
www.nogs.org.

**New NOGS
Members
February 2010**

Jonathan C. Chung
ScotiaBank
Associate
Ste 1400, 711 Louisiana St
Houston, TX 77002
832-426-6029

Robert B.P. Clark
UNO - Student
3919 Delgado Dr
New Orleans, LA 70119

Leipin He
Student Tulane
28 Forstall Ave
Kenner, LA 70065
504-296-8806

Jeremy V. Henley
Student - UNO
1911 1/2 Royal St
New Orleans, LA 70130
217-520-9583

William R. Jorgensen
Shell
Geologist
P O Box 61933
New Orleans, LA 70161
504-728-6339

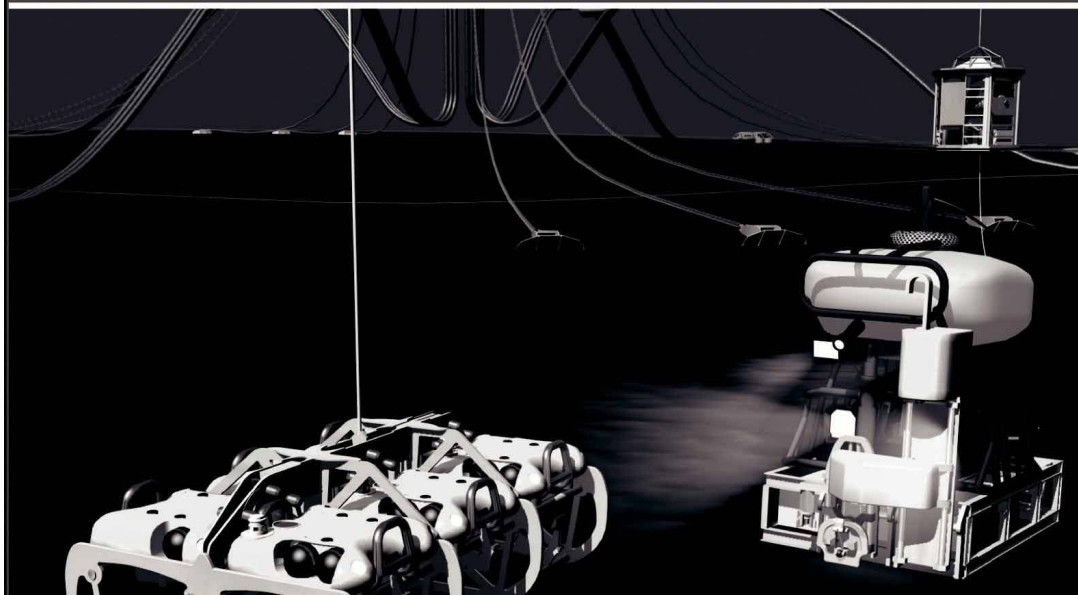
Leah C. Sossamon
Student - UNO
4432 Carondelet St
New Orleans, LA 70115

Anna L. Strimas
Environ. Auditors of America
Professional Geologist
1112 Engineers Rd
Belle Chase, LA 70037
504-391-1185

Kevin J. Trosclair
Student - UNO
839 Gellier St
New Orleans, LA 70117

Janet Verret
Weatherford Laboratories
Account Manager
717 Girod St
New Orleans, LA 70130
504-399-1530

Finally - An answer for getting reservoir seismic OVER THE RESERVOIR!



• 4C/4D Node Seismic

- ANGOLA
- GoM
- NIGERIA



“Coming Soon to an Oilfield Near You!”

www.sbexp.com

Dubai
T: +971 4 4271700

Houston
T: +1 281 566 1666

Oslo
T: +47 2240 2700

Rio
T: +55 21 2494-0283

Singapore
T: +65 9180 2605

Trondheim
T: +47 7 3879500

RAISING
THE STANDARD



100 Northpark Blvd.
Covington, LA 70433

(985) 773-6000



LaBay
Exploration Co., L.L.C.

111 Veterans Memorial Blvd.,
Suite 1550
Metairie, Louisiana 70005

www.labayexploration.com

Office (504) 371-5967
Fax (504) 371-5969

LAURENT OIL & GAS

is interested in purchasing low risk oil prospect
ideas in the Gulf Coast onshore and state waters.
We will obtain leases, pay a finders fee and
assign an override.

Call: Scott Laurent

Office: 713-464-0299

Cell: 713-515-0675

- New fossil evidence points to an earlier origin of dinosaurs, 10 million years earlier. The discovery was made in southern Tanzania. Enough bones were recovered to almost complete a full skeleton. <http://geology.com/press-release/asilisaurus-kongwe/>
- Rig shortages are affecting major oil companies abilities to explore Europe and Africa for shale gas plays. Europe has 20 land rigs compared to the 1500-2000 present in the United States. <http://www.vancouversun.com/business/Most+majors+hunting+shale+Europe/2582149/story.html>
- The effects of Chile's earthquake were felt over long distances. More info can be found here: <http://earthquake.usgs.gov/earthquakes/dyfi/events/us/2010tfan/us/index.html>

- *Liz Petro*

2010

OIL HISTORY SYMPOSIUM



LOUISIANA STRIKES OIL!

The first oil strike in the State of Louisiana was made on September 21, 1901 on the farm of Jules Clement in the community of Evangeline. The well was known as both Jules Clement No. 1 and Jennings Oil No. 1 after the company that drilled the well. The discovery caused a boom resulting in the Evangeline Oil Field and the start of the oil and gas industry in Louisiana. The oil and gas industry has since been an integral part of the economy of Louisiana and the lifestyles of its residents.

April 29th - May 1st
Lafayette, Louisiana

Co-sponsors:
Petroleum History Institute
Lafayette Geological Society



Jennings Oil Field, Jennings, La.

CALL FOR ABSTRACTS
Oral Presentations and Posters



Lafayette Geological Society
 Founded 1992
 Lafayette, Louisiana

**Fieldtrips to: Jennings, LA;
 Texas Energy Museum; &
 Spindletop/Gladys City**

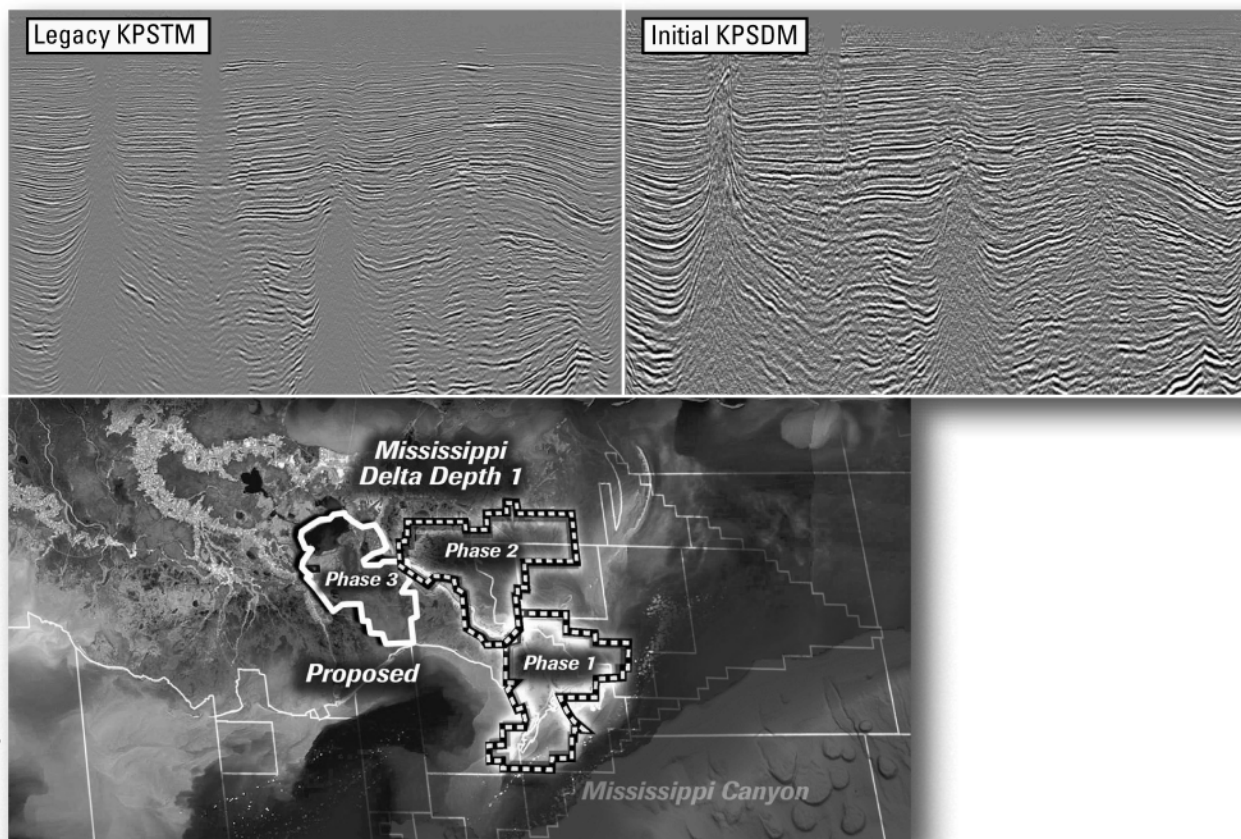
Oil history Authors & Book Signings

**For more information:
www.petroleumhistory.org**



PETROLEUM HISTORY INSTITUTE

Improved depth imaging in the Mississippi Delta



In the Mississippi Delta region, WesternGeco is utilizing state-of-the-art processing designed to eliminate fault shadows and enhance deep imaging. The Mississippi Delta - Depth 1 survey, now in progress, incorporates the processing and remigration of twelve legacy surveys covering 1,855 square miles. High-quality time imaging using relative amplitude anisotropic Kirchhoff prestack time migration will be followed by improved structural imaging utilizing anisotropic Kirchhoff prestack depth migration.

To learn more about this and other Multiclient products, call +1 713 689 1000.

www.multiclient.westerngeco.com/la

Multiclient to the Power of E



THE NEW ORLEANS GEOLOGICAL SOCIETY MEMORIAL FOUNDATION, INC.

The Memorial Foundation is an IRS Tax Exempt Code #501 (c)(3) organization. The Federal I.D. is: 72-1220999. Please consider making your donation prior to the close of this year's fiscal cycle which is June 30, 2010. Your individual support in any amount will help meet the IRS Guidelines for our Foundation. *Thanks!*

\$15,000 AND ABOVE

Olga Braunstein Succession

Gibbet Hill Foundation

In Memory of Steve & Marion Millendorf, William J. Prutzman,

Roger G. Vincent & Ron Youngblood

\$10,000

George W. Schneider, Jr. and Family

In Memory of George W. Schneider, Sr.

\$2,000 TO \$3,000

NOGS Golf Tournament May 2009

In Memory of Bill Craig

\$250 TO \$499

Carlo C. Christina

In Memory of Al Gilbreath

Fotiades Mineral Interests

Julie Fotiades, Joan Fotiades

Evelyn Fotiades Poulos

In Memory of George W. Schneider, Sr.

Kathy King Family

In Memory of George W. Schneider, Sr.

\$7,000 TO \$9,000

Paul C. Mc Williams

Bill Schneider Family

In Memory of George W. Schneider, Sr.

Susan King Family

In Memory of George W. Schneider, Sr.

John C. Kucewicz, Jr.

In Memory of Bill Craig.

FONO FUND

The FONO Fund accepts contributions that are invested and the income dedicated to assure sufficient financial resources will always be available to maintain the NOGS business office. Contributors are reminded that donations to the FONO Fund are not covered by the IRS 501 (c)(3) tax exempt classification and should be reported as a business expense on your IRS tax report.

UP TO \$250

Donald I. Andrews

Alfred H. Baker Jr.

Joseph E. Boudreaux

Hillary James Brook

J. Sybil Callaway

Clarence F. Conrad

John Dombrowski

Merle J. Duplantis

Richard A. Edmund

Mark J. Gallagher

Duncan Goldthwaite

James A. Hartman

In Memory of Hal Hudson

Bernard L. Hill, Jr.

Kenneth Huffman

Tom Klekamp

William J. Malin

Jeannie F. Mallick

James A. McCarty

Robert G. Murphy

William J. O'Leary

Richard A. Olsen

Erwin Parrish, Jr.

Linda and Bill. Peirce

James P. Raymond, Jr.

C. R. Rondeau

Rudolf B. Siegert

Raymond Stephens

Roy C. Walther

Robert C. Weissmann

William M. Whiting

Jim Zotkiewicz

UP TO \$249

Donald I. Andrews

In Memory of Ray F. Havard

In Memory of Harlan (Lanny) Northcott

Robert J. Ardell

In Memory of Al Gilbreath

Mr. and Mrs. Wesley Barton

In Memory of Thomas A. Cullinan

Abraham Biadgelgne

Maurice N. Birdwell

In Memory of Texaco

Hilary James Brook

Robin Broussard

Rob Burnett

F. Robert Bussey

In Memory Robert S. Kline

J. Sybil Callaway

Chevron

Matching Funds

Arthur F. Christensen

Ellen F. Clark

Clarence F. Conrad

Charley Corona

In Memory of Professor Hubert Skinner

Trudy and Charley Corona

In Memory of Thomas A. Cullinan

Michael A. Danahy

M. R. "Bob" Douglass

In Memory of Jack Read

Merle J. Duplantis

Parrish N. Erwin, Jr.

Exxon Mobil Matching Funds

Niles R. Faulk

David Garner

Laurens Gaarenstroom

Mark J. Gallagher

Bernard L. Hill, Jr.

Owen R. Hopkins

Dan E. Hudson

Kenneth Huffman

Jeffrey E. Jandegian

Tom Klekamp

Richard G. Klibert

Reuben J. Klibert, Jr.

William J. Malin

Jeannie F. Mallick

George M. Markey, Jr.

Michael L. Merritt

Robert G. Murphy

In Memory of Thomas A. Cullinan

New Orleans Geological Auxiliary

Nexen Petroleum USA Inc.

Matching Funds

Russell H. Nordwell

Richard A. Olsen

In Memory of Richard W. Boebel

In Memory of Robert W. Sabate'

Teresa M. O'Neill

In Memory of Brian J. O'Neill

Linda and Bill Peirce

Edward B. Picou Jr.

Richard D. Provensal

Edmund L. Russell

George D. Severson

Robert C. Shoup

CONTRIBUTIONS FOR BOTH FUNDS

THROUGH MARCH 2, 2010.

DONATIONS ARE LISTED FOR ONE YEAR.

Rudolph B. Siegert

Daniel L. Smith

Diana "Dee" E. Smith

John D. Silvernail

In Memory of Colles C. Stowell

Dr. J. O. Snowden

Raymond O. Steinhoff

In Memory of Hubert C. Skinner

Stephen Szydlak

Roy C. Walther

William M. Whiting

Armour C. Winslow

In Memory of Rita Menzel Winslow

Frances A. Wiseman

In Memory of Steve Widdicombe

Jim Zotkiewicz

In Memory of Bill Craig

Robin A. Broussard

Chevron

Bernard L. Hill, Jr.

Jeff Jandegian

John C. Scheldt

Candace V. Strahan

In Memory of James Strahan

CALL FOR PAPERS

60th Annual Convention
October 10-12, 2010
San Antonio, Texas

Hosted by the South Texas Geological Society



Welcome back to San Antonio! Our theme this year is ***"Weathering the Cycles"*** – a challenge that resource geologists certainly have faced and overcome in the past! How do we weather the economic cycles? We...

- ✓ Network with our community
- ✓ Experience the latest technology in the technical exhibition
- ✓ Take a course or a trip and grow new and diverse skills
- ✓ Listen to special presentations on strategies to endure and prosper during an economic downtime and prepare for the inevitable rebound.

By celebrating our successes, facing our challenges, and learning from the research results of our peers, we are paid back many fold by sharing ideas and experiences among our professional community. So come and share your experiences! Suggest a session topic, present an oral paper or a poster, learn about the latest ideas and technologies in our field. Come to San Antonio and enjoy the Gulf's own geoscience convention!

PROPOSED TECHNICAL SESSIONS INCLUDE...

- ✓ **Organic 'Shales' of the Gulf Coast – Controls on Reservoir Quality and Producibility**
- ✓ **Gulf of Mexico Paleogene – Reservoirs, Events and Controversies**
- ✓ **Eastern Gulf of Mexico – Exploration Potential and Environmental Challenges**
- ✓ **Texas/Mexico Borderlands – Structures, Resources, and Lessons Learned**
- ✓ **Unconventional Resources – Exploration Decisions and Production Issues**
- ✓ **Integration of Seismic Geomorphology and Wellbore Data – Case Studies**
- ✓ **New and Evolving Technologies – Impact on Commerciality**
- ✓ **Horizontal Drilling and Formation Stimulation – Edwards, Wilcox, and elsewhere**
- ✓ **Carbon Sequestration – Risks, Opportunities, and Implications for EOR**
- ✓ **Alternative Energy Solutions – The Role of Geoscience**
- ✓ **Water for a Growing Region – Geology, Water Quality, and Resource Management**
- ✓ **Geologic Training and Education – Preparing for the Crew Change**

HOW TO SUBMIT:

Abstracts (not more than 250 words) should be submitted for review online or via email to the technical program chair. Papers should have application to Gulf Coast and Gulf of Mexico geology. Include your full mailing address, telephone and FAX numbers, email address, and whether you are submitting for **oral** or **poster** or **either** (preferred).

Submit abstracts by February 1, 2010 as instructed on the website www.gcags2010.com

Notification of acceptance by March 1, 2010. All presenters, both oral or poster, must submit either a paper (10-12 pages) or an extended abstract with key figures for review by **April 16, 2010**, for inclusion in the *Transactions*. Full instructions for authors will be posted at www.gcags2010.com.

ABSTRACT DEADLINE: FEBRUARY 1, 2010!

Questions or ideas for the technical program should be directed to:

Dr. Mary Feeley
Technical Program Chair
281-654-3588

missy.feeley@exxonmobil.com

Dr. Alan Dutton
GCSSEPM Co-Chair
210-458-5746

alan.dutton@utsa.edu

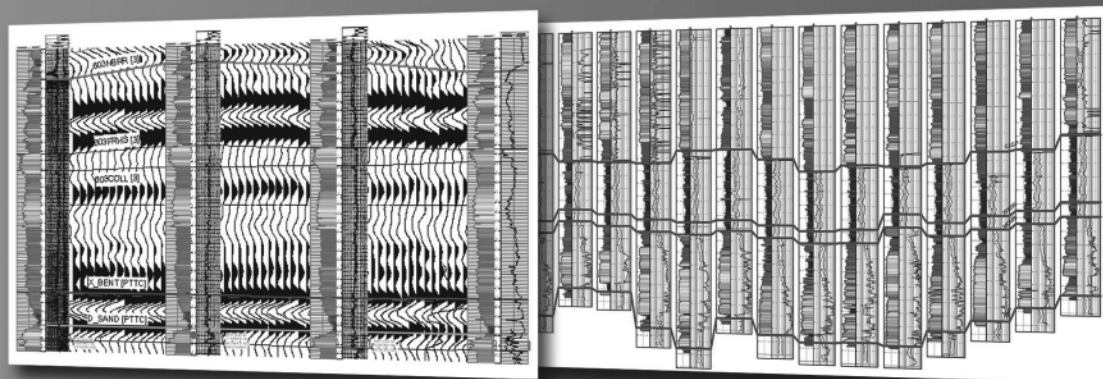


Define your geological model faster than ever before

NO MORE WAITING! Available today from IHS, easy and affordable access to one of the largest U.S. digital log collections

- More than 185,000 LAS files with over 1.5 million curves
- Regional subscription packages for today's active play areas
- Indexed to IHS well and production data
- Linked to the IHS Enerdeq® Browser for quick regional studies and log selection
- Available via IHSLogNet.com or on DVD
- Ready to use in PETRA and other log packages

Request a free 2' x 3' IHS digital log coverage map at ihs.com/energy/DigitalLogs



Use PETRA® to integrate digital log, well, production, perf, seismic and tops data. IHS is the only company to provide you with the complete picture

Why wait? Subscribe today! Call 888.OIL.DATA (645.3282) or e-mail sales.energy@ihs.com



The Source
for Critical Information and Insight™

SAI

Sydboten & Associates, Inc.
Geological and Geophysical Consulting,
3-D Seismic Interpretation

Ben D. Sydboten, Jr. CPG

124 Heymann Blvd., Suite 202
Lafayette, LA 70503

Office (337) 234-5288
Cell (337) 234-5491

ATWATER CONSULTANTS, LTD.

REGISTERED AND CERTIFIED PETROLEUM PROFESSIONALS

GEOLOGICAL, ENGINEERING, GEOPHYSICAL,
TRAINING AND EXPERT WITNESS SERVICES

3525 Hessmer Ave, Ste 304
Metairie LA 70002

Tel. (504) 581-6527
Fax (504) 524-7798

Geological,
Geophysical &
Land Drafting

"Serving The Oil & Gas Industry Since 1983"



3349 Ridgely Drive • Suite 202 • Metairie, LA • 70002
Office: (504) 836-2882 Fax: (504) 836-2877 (Cell) (504) 481-7291
E-Mail: geodraft@bellsouth.net
Website: www.geodraftinc.com

Anthony Catalanotto
President
Stefani Foster
Drafting & Design

**NOGS thanks our
sponsors for their support:**

GOLD LEVEL SPONSORS:

CHEVRON

LA BAY EXPLORATION CO, LLC.

**SPECIAL THANKS TO
DIVERSIFIED WELL LOGGING**

*This advertising space is available!
Contact the NOGS office.*



CIMAREX ENERGY CO.

GULF OF MEXICO REGION
GOM, SE La., N. La., MS, AL

1100 Poydras St.; Suite 1100

New Orleans, Louisiana 70163

504-586-1815 / Fax 504-586-9035

Keith Gourgues
Region Manager

NORTHCOAST OIL COMPANY

610 E. Rutland St.
Covington, LA 70433
(985) 898-3577
(985) 898-3585 FAX

Jack M. Thorson
Eric C. Broadbridge
J. Daryl Gambrell
Raymond W. Stephens

(832) 242-6000 (O)
(713) 917-0493 (O)

(504) 931-7506 (C)
johnjurasin@jurasinoilgas.com

JURASIN OIL & GAS

9700 Richmond Ave., Suite # 124
Houston, TX 77042-4821

JOHN M. JURASIN
President

Cert. Pet. Geologist #4284
Cert. Prof. Earth Scientist #1961

Collarini Energy Staffing

Full-Time and Temporary Personnel

Facilities • Drilling • Production • Reservoir Engineering
Land and Legal • Geoscience • Information Technology •
Health and Safety • Management • Supply Chain
Accounting • Administrative Support

11111 Richmond Ave., Suite 126
Houston, Texas 77082

832-251-0553



www.collarini.com

Collarini Associates

Reservoir Engineering
Oil & Gas Property Evaluation
3-D Seismic Interpretation
Integrated Field Studies

832-251-0160
504-887-7127

Houston
New Orleans

CALL US **SMT...**

SEISMIC **AND GEOLOGICAL** MICRO-TECHNOLOGY
JUST TAKES TOO LONG TO SAY!

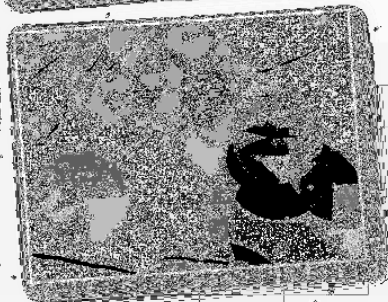


NEXT GENERATION GEOLOGY



KINGDOM Integrates

- Structural Frameworks
- 3D Geomodeling
- Economic Analysis
- Production Forecasting



HAMMER THE COMPETITION

See your new tools at www.seismicmicro.com/geology

ANSYTHE Donald I. Andrews 504-887-3432 	H. WARREN BELL Oil and Gas Exploration 2500 Tanglewilde, Suite 485 Houston, TX 77063-2126 Bus (713) 266-7297 Fax (713) 266-7298
THE BOEBEL COMPANY Oil and Gas Investments 170 Broadway Street, Suite 321 New Orleans, LA 70118 (504) 866-4313	PHELPS GEOSCIENCE Onshore Gulf of Mexico Geology and Geophysics Prospect Generation and Evaluation Houston, TX jsfphelps@yahoo.com (281) 398-5208
BOO-KER OIL & GAS CORP. Gray S. Parker 826 Union, Suite 300 New Orleans, LA 70112 Bus. (504) 581-2430 Fax (504) 566-4785	RAFIDI OIL AND GAS, INC. Jaser N. Rafidi, President 4415 Shore Dr., Suite 202 Metairie, LA 70006 Bus. (504) 722-2942 Fax (504) 888-5539; Res. (504) 888-1661
C & R EXPLORATION, INC. Carlo C. Christina Lawrence G. Ringham	ROY C. WALTHER Petroleum Geologist 2421 Prancer Street New Orleans, LA 70131 Bus. (504) 392-8513 Res. (504) 392-9332
C. R. RONDEAU Petroleum Geologist 119 W Southland Ave. Ironwood, MI 49938 Res. (906) 932-4692	 Shoreline Gas Inc. www.shorelinegas.com Full Service Natural Gas Marketing
CLASSEN EXPLORATION, INC. James S. Classen Looking for close in deals P.O. Box 140637 Boise, ID 83714 Bus. (208) 854-1037 Fax (208) 854-1029 classenllc@msn.com	 625 E. Kaliste Saloom Lafayette, LA 70508 16800 Greenspoint Dr., Suite 225-S Houston, TX 77060 www.StoneEnergy.com
D-O-R ENGINEERING, INC. 3-D and Geoscience Services 6161 Perkins Rd. P O Box 80812 Bus : (225) 765-1914 Baton Rouge LA 70898	TONY CAROLLO Consulting Geologist Unitization Geosteering Field Studies 1701 Peach Street Metairie, LA 70001 Bus. (504) 885-0004 Res. (504) 885-6829
EDWARD B. PICOU, JR. Consulting Micropaleontologist - Retired 228 St. Charles Ave., Suite 1330 C New Orleans, LA 70130 Bus. (504) 529-5155 Res. (504) 282-3096	Zot Oil & Gas, LLC Jim Zotkiewicz Prospect Generation and Evaluation 3200 Ridgelake Dr. Suite 207 Metairie, LA 70002-4930 Business: 504.831.4694 Email: jimzot38@zotoil.com

PETROLEUM GEOLOGY FOR NON GEOLOGISTS

The New Orleans Geological Society is presenting a one day course on "Petroleum Geology for Non Geologists," 8:30 AM to 3:30 PM on Tuesday April 6, 2010 in the Shell Auditorium, Shell Building, 701 Poydras Street, New Orleans. The course will consist of a brief introduction to Basic Geology, followed by a review of how oil and gas are formed, how they are concentrated into reservoirs, the geological and geophysical methods used in exploration, and an overview of drilling and completion practices.

This course should be of significant benefit and interest to anyone who in one way or another works with geologists and geological data, such as land personnel, secretaries, draftsmen and computer programmers and processors.

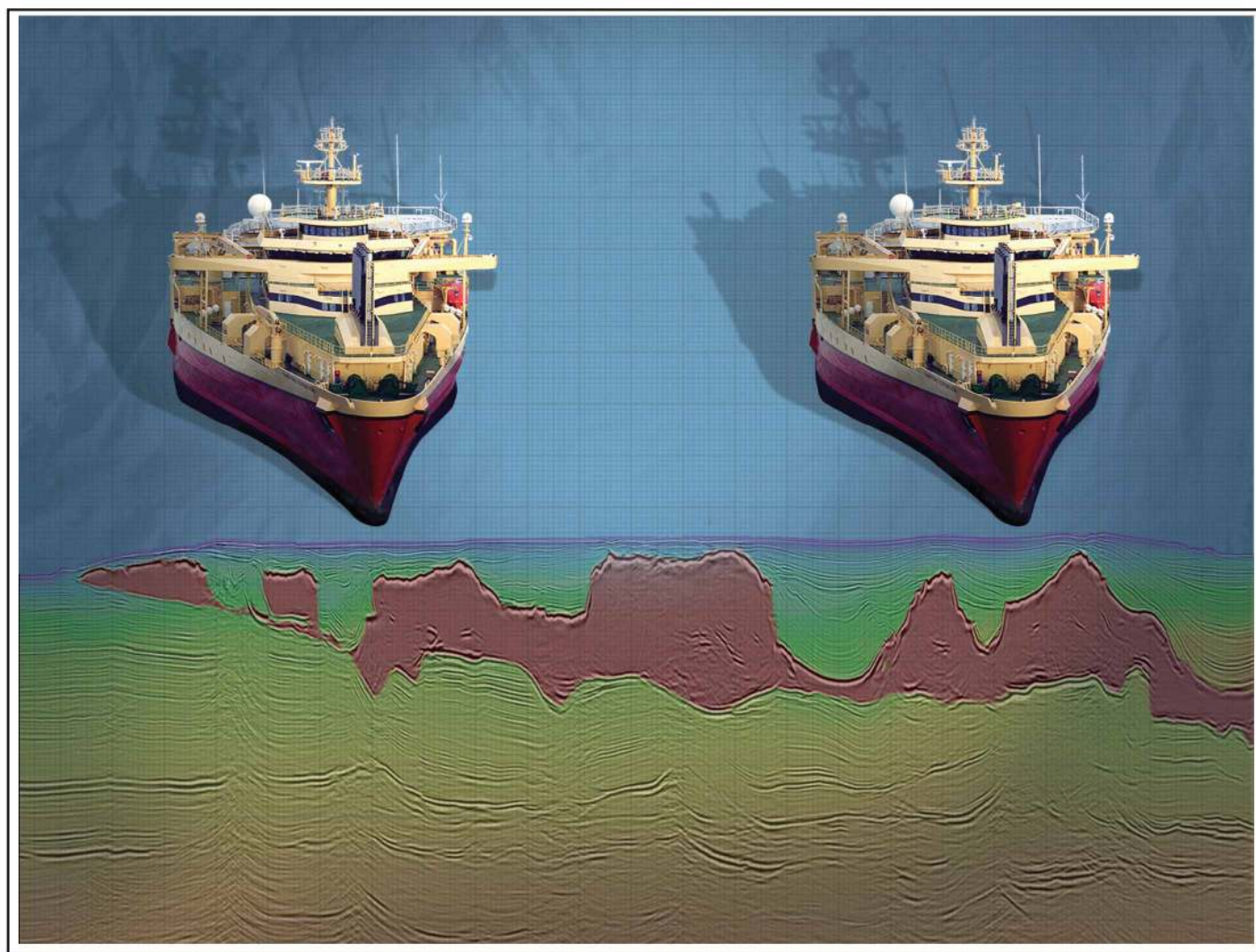
Instructors will be Duncan Goldthwaite, Consulting Geologist, Robert Branson, Consulting Geologist and Bruce Robertson, Consulting Geologist.

Cost will be \$35.00 per participant. Course notes and mid morning refreshments will be provided.

Persons interested can register by sending a check for \$35.00, made out to the New Orleans Geological Society , to:

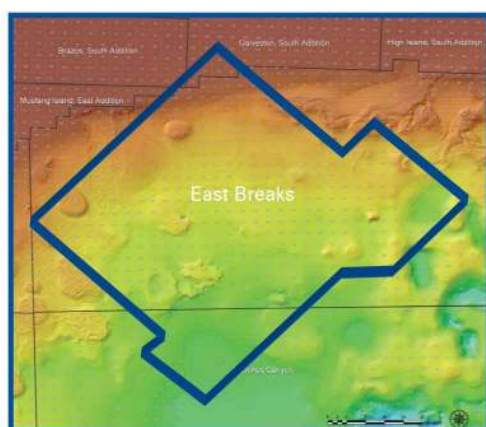
New Orleans Geological Society
Ste 300
810 Union St
New Orleans LA 70112

When registering, please give your name, your work or home address and telephone number and company affiliation, if any.



Crystal III, East Breaks

MultiClient Wide Azimuth



- **Size** - 480 OCS blocks
- **Focus** - Sub-Salt Miocene & Paleogene
- **Technology** - TTI Beam and RTM Imaging
- **Delivery** - Available Q4 2010

Houston
Tel: +1 281 509 8000
Fax: +1 281 509 8500

Oslo
Tel: +47 67 52 6400
Fax: +47 67 52 6464

London
Tel: +44 1932 37 6000
Fax: +44 1932 37 6100

A Clearer Image
www.pgs.com



NEW ORLEANS GEOLOGICAL SOCIETY



810 Union Street, Suite 300
New Orleans, LA 70112-1430

WWW.NOGS.ORG

MARINE PROPERTIES, LLC BERKSHIRE EXPLORATION CO.

MONTE C. SHALETT, CPL, PRESIDENT

3030 Lausatz Street
Metairie, LA 70001-5924

BUS. (504) 831-7779
FAX. (504) 831-8315

PCI

Paleo Control, Inc.

Houston, Texas
713-849-0044

Drilling Wells, Studies and Data Base

Loyd Tuttle

Frio, SE Texas

Bob Liska

Wilcox, S and SE Texas

Jim Thorpe

Miocene and Cam-Miogyp



SEE YOUR DATA IN A WHOLE NEW LIGHT!

Take the pressure out of exploration
and drilling by seeing what you
are going to encounter.



eSeis

www.e-seis.com
713.531.1447

- Lithology & Fluids
- Depositional Facies
- Pore Pressure from V & Q
- Well Planning Consultation

