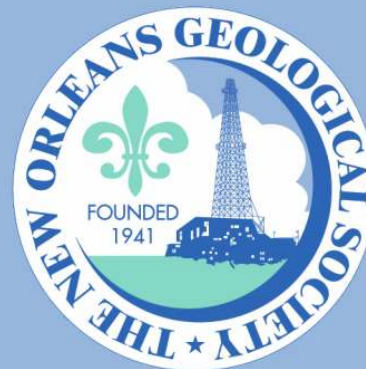


NOGS LOG



October 2009

Volume 50, Number 4

Upcoming Events and Activities

October 2 - NOGS Kick-Off Party

6:30-9:30 PM at Tom and Amber Klekamp's home in Beau Chene, Mandeville.

See announcement on page 13.

October 5 - NOGS Luncheon

*** At the Holiday Inn Downtown Superdome ***

\$2.00 validated parking in hotel garage

Guest speaker Rocky R. Roden, Rocky Ridge Resources Inc., will present
"DHI Threshold Effect in Prospect Risking".

(See page 7 for Abstract and Biography)

HOLIDAY INN DOWNTOWN SUPERDOME ADMISSION:

Check with concierge or

front desk for location

Lunch served at 11:30am

with reservation \$30.00

without reservation \$35.00

Student Member with reservation Free

November 2 - NOGS Luncheon

Guest Speaker Jeffrey A. Spencer, Blackpool Energy, will present

"History of the Oil Industry from the Drake Well to 1900."

November 12 - SGS Technical Symposium

"Exploration Offshore USA OCS: Opening the Next Frontier?" In New Orleans.

See announcement on page 30.

December 4 - NOGA-NOGS Christmas Holiday Party

At Metairie Country Club. More details in future LOG issues.

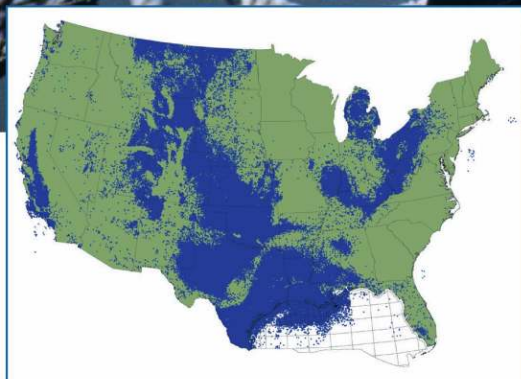
December 6-8 - 29th Annual GCSSEPM Foundation Bob F. Perkins Research Conference

"Unconventional Resources: Making the Unconventional Conventional."

In Houston. See announcement on page 8.

Introducing

LASSO



Lasso up all the digital LAS well log data you need from the industry's largest collection

With LASSO, lock in TGS' program rates on digital LAS well data from our US collection, growing at an unprecedented pace to more than 500,000 wells over the next several months. LASSO strengthens your exploration projects with the higher-order capabilities of increased digital well log use. LASSO digital data from TGS, the industry's well log data leader, is quality controlled and available online for immediate downloads.

For more information about LASSO, contact your TGS account representative or call 1- (888) LOG-LINE.



Geophysical
Products



Geological
Products



Imaging
Services

www.tgsnopec.com

NORWAY +47 66 76 99 00 | USA +1 713 860 2100 | UK +44 (0) 1234 272122 | AUSTRALIA +61 8 9480 0000

© TGS-NOPEC Geophysical Company. All rights reserved.

NOGS Office

Office Manager: Annette Hudson

Office Hours: 8:30am – 3:30pm on Monday-Wednesday-Friday

Tel: 504-561-8980 □ Fax: 504-561-8988

E-mail: info@nogs.org □ Website: www.nogs.org

The office is located at Suite 300, 810 Union Street, New Orleans, LA 70112.

Correspondence and all luncheon reservations should be sent to the above address.

Sent to press on September 28, 2009.

**BOARD OF DIRECTORS**

President	Tom Klekamp
Vice President	Bob Hafner
Secretary	Jennifer Connolly
Treasurer	Chuck Holman
President-Elect	David E. Reiter
Editor	Elizabeth Petro
Director 2010	Michael M. Ledet
Director 2011	Scott A. Wainwright
Director 2012	Arthur H. Johnson

Company

Amber Resources LLC	985-845-4046
ENI Petroleum	504-593-7605
Shell	504-728-6411
ENI	504-593-7869
ENI	504-593-7606
MMS	504-736-2866
	504-394-9636
Bret Exploration Co Inc	504-889-2700
Hydrate Energy International	504-464-6208

Phone**E-mail**

klekamp@bellsouth.net
Robert.Hafner@enipetroleum.com
jennifer.connolly@shell.com
chuck.holman@enipetroleum.com
david.reiter@enipetroleum.com
nogseditor@gmail.com
mikeledet@cox.net
scott_wainwright@hotmail.com
artjohnson51@hotmail.com

COMMITTEE

AAPG Delegates
AAPG Student Chapter
AAPG Student Chapter
Advertising-Log
Auditing
Awards
Ballot
Best Paper
Continuing Education
Employment Counseling
Entertainment
Environmental
External Affairs
Field Trip
Finance and Investment
Historical
Membership/Directory
New Geoscientists (NGNO)
Nominating
Non-Technical Education
Office Operations
Publications Sales
Photography
School Outreach
Scouting
Technical Projects
Ad Hoc Committee on
University Support

Chairperson

Dave Balcer	Chevron
Bobby Cosentino	Tulane University
Bryan Rogers	UNO
Andrea Stancin	Shell
James Swaney	MMS
Michael N. Fein	W & T Offshore
Chuck Holman	ENI
David E. Reiter	ENI
TBA	
Paul J. Post	MMS
David E. Reiter	ENI
Daisy Pate	Eustis Geotechnical Eng.
Michael A. Fogarty	Sylvan Energy, LLC
David Garner	Shell
Chuck Holman	ENI
Edward B. Picou, Jr.	Consultant
Penne Rappold	Shell
TBA	
Willis E. Conatser	
Duncan Goldthwaite	Consultant
William M. Whiting	Consultant
Edward B. Picou, Jr.	Consultant
J. David Cope	Taylor Energy Co LLC
Thomas C. Bergeon	Century Exploration
Carol Rooney	Consultant Geologist
TBA	
Michael J. Gallagher	Eni Petroleum

985-773-6725
504-495-9475
504-736-2772
504-728-0431
504-736-2677
504-210-8148
504-593-7869
504-593-7606
504-736-2954
504-593-7606
504-613-5798
603-523-4808
504-728-6154
504-593-7869
504-529-5155
504-728-4338
504-466-9749
504-887-4377
504-947-8495
504-529-5155
504-589-0419
504-832-3772
504-835-1909
504-593-7480

dbalcer@Chevron.com
rcosenti@tulane.edu
thgem@gmail.com
Andrea.a.stancin@shell.com
james.swaney@mms.gov
mikef@wtoffshore.com
chuck.holman@enipetroleum.com
david.reiter@enipetroleum.com
paul.post@mms.gov
david.reiter@enipetroleum.com
dpate@eustiseng.com
mike.a.fogarty@gmail.com
David.Garner@shell.com
chuck.holman@enipetroleum.com
epicou@bellsouth.net
prappold@gmail.com
weconatser@aol.com
DGldthwt@aol.com
bootscom@aol.com
epicou@bellsouth.net
dclope@taylorenergy.com
Tom.bergeon@centuryx.com
carolbrooney@aol.com
Michael.Gallagher@enipetroleum.com

NOGS LOG STAFF

Editor	Elizabeth Petro
Editor-Elect	Fran Wiseman
Auxiliary	Susie Baker
Info Tidbits	Elizabeth Petro
Drill Bits	TBA
Webmaster	Edward B. Picou, Jr.
Layout	Jannette Sturm-Mexic

MMS	504-736-2866
MMS	504-736-2912
NOGA	504-466-4483
MMS	504-736-2866
Consultant	504-529-5155

nogseditor@gmail.com
frances.wiseman@mms.gov
abaker1006@aol.com
nogseditor@gmail.com
epicou@bellsouth.net

NOGS AUXILIARY**Officers**

President	Linda Peirce
1st Vice-President	Jean Jones
2nd Vice-President	Beverly Kastler
Secretary	Dolores Murphy
Treasurer	Judy Lemarie'
Parliamentarian	Carol Andrews
Member-at-Large	Susie Baker

Phone

504-393-7365
504-738-8091
504-286-0879
504-393-0878
504-393-8659
504-887-3432
504-466-4483

Directors

Beverly Christina
Peggy Rogers
Judy Sabate'
Peggy Campbell
Ruth Grimes
Gerry Waguespack

Year

2009-10	504-835-2383
2009-10	504-392-6323
2009-10	504-861-3179
2009-11	504-283-2505
2009-11	504-392-8103
2009-11	504-737-0532

--- NOGS Contact List continued on page 10 ---

SYNERGY ENERGY



Weatherford®
LABORATORIES

Your success increasingly depends upon a better understanding of your reservoir. At Weatherford Laboratories, we provide a single source for comprehensive laboratory analyses, creating a synergy previously unknown in laboratory services. This single source includes distinguished geologists, geochemists, analysts, engineers, technicians and software developers, 38 worldwide laboratories, and the broadest portfolio of services for acquiring and interpreting data from physical samples. The end result is an unsurpassed combination of intellectual capital and technical resources — all working together to help you enhance development planning and reduce reservoir uncertainty.

Put our union of Synergy and Energy to work for you.

Weatherfordlabs.com

HIGHER STANDARDS

NORTH AMERICA
NAInquiries@weatherfordlabs.com

EUROPE
EUIquiries@weatherfordlabs.com

LATIN AMERICA
LAIquiries@weatherfordlabs.com

MIDDLE EAST/NORTH AFRICA
MENAIquiries@weatherfordlabs.com

ASIA PACIFIC
APIquiries@weatherfordlabs.com



from the President

The 13th Deepwater Technical Symposium has just finished and I believe it was a huge success, even in these times of economic uncertainty. Registration topped 340 and with the extras that come with the exhibitors, attendance was around 400! There were plenty of 'meaty' geoscience papers and student posters. The engineering talks had plenty of interesting geoscience, giving credence to my previous columns about the cross fertilization between geoscience and petroleum engineering. Scott Wessels of UNO and Clint Edrington of LSU presented geoscience student posters; we thank them and their respective advisors, Dr. Mark Kulp and Dr. Harry Roberts for their participation. In addition there were six engineering posters from LSU, some of which dealt with carbon sequestration. This is a growing topic (see below). The Deepwater symposia are models of organization. If you're looking for techniques for managing projects, you can pick up pointers by volunteering for the 14th Deepwater Symposium. It was truly a pleasure working with Shell's Rakesh Kumar and his Committee. Planning for DWS-14 starts early and if you're interested in meeting great people, learning about cutting edge technology and offshore development drop an email or see me at one of the NOGS meetings.

Even as the Deepwater Symposium was in full swing, British Petroleum was readying the news release of their multi-billion barrel Tiber Prospect with one of the deepest wells ever drilled. Rig contractor, Transocean, reported a TVD of 35,050 feet in 4,130 feet of water. The Kola Superdeep Borehole SG-3 in Russia reached 40,230 feet in 1989.

The New Orleans Geological Auxiliary is having a membership drive. NOGA normally runs behind the scenes, but is essential to NOGS. The success of our social events is a credit to the ladies of NOGA. As the AAPG 2010 Convention approaches, NOGA has once again proven their mettle by organizing and being ahead of schedule. Besides NOGS events, they have their own social events throughout the year. This is a group that loves to have a good time! If you want to get involved in some of the fun give NOGA's President Linda Pierce a call (504-393-7365) or email (hpeirce@cox.net), the other NOGA officers are listed in the masthead of the NOGS Log.

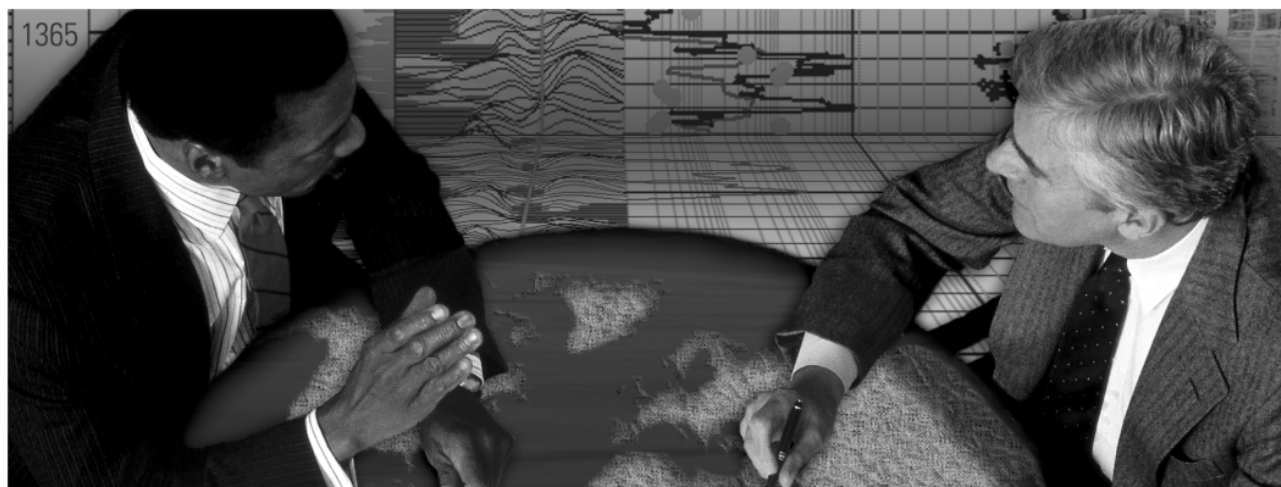
We received a thank you from Dr. Hilary Olson of the BEG-UT in Austin that the carbon sequestration training proposal to the Department of Energy was fully funded. Dr. Olson and the other PIs, Dr. Steven Bryant and Dr. Sue Hovorka, felt strongly that the support letters, including one from NOGS, were an integral part of the successful funding of the project. DOE should begin with a kick-off of all seven training groups in November. Dr. Olson will be in touch once they start looking at calendars in the coming months to do some long-term planning. The University of Texas at Austin created an alliance for Sequestration Training, Outreach, Research and Education (STORE), as part of the Gulf Coast Carbon Center, to promote the transfer of scientific knowledge and applied engineering technologies related to CO₂ storage in the Gulf Coast region. The focus will be on four primary objectives needed for emerging CCS industry in the Gulf region including sequestration workforce training, public outreach, research and technology dissemination, and workforce pipeline education. DOE's share of the program is \$994,702; duration will be 36 months. Full details can be seen at: http://fossil.energy.gov/news/techlines/2009/09062DOE_Awards_CCS_Training_Projects.html

The AAPG 2010 Convention is taking shape. A decade ago the planning committee sat together in a large room and discussed the upcoming 2000 Convention. How times have changed, this same event is handled by a conference call and we are clueless when it comes to body language or expressions.

Tuesday night of the AAPG Convention is the NOGS-sponsored World War II Museum event (April 13th). We need underwriters to make this event a success. Century Exploration has already stepped up and generously donated \$2500 towards the event. If you or your company would like to donate, contact Al Baker or Robert Rooney.

Tom

Schlumberger formation evaluation solutions deliver the answers you need. Our extensive portfolio of services, leading-edge technology, and advanced conveyance options keep you in communication with your well throughout its life cycle.



With formation evaluation technologies from Schlumberger, you can make the best decisions for optimized performance in every well.

The formation evaluation one-stop shop

Whether you are logging in open hole or behind the casing, our broad selection of services ensures the best solution for acquiring formation evaluation data. Tools can be conveyed while drilling or on wireline or pipe. We offer many specialized evaluation capabilities, from density, neutron porosity, and resistivity to borehole imaging, nuclear magnetic resonance logging, borehole seismic, formation pressure testing, and fluid sampling. Advanced triple-combo logging options include the VISION* formation evaluation and imaging-while-drilling services. Coupled with Pulse* telemetry and surveying services, the VISION family provides real-time formation evaluation data and enables optimum well placement.

High-speed wireline measurements are recorded with the Platform Express* logging services. The SlimXtreme* platform is designed for high-pressure, high-temperature environments and the ABC* Analysis Behind Casing services are used after casing is set.

Expert interpretation from the engineers and geoscientists of Schlumberger Data & Consulting Services brings all your data together to give you the answers you need. This expertise is available after logging is complete or as real-time two-way wellsite communication through the InterACT* real-time monitoring and data delivery system.

Schlumberger delivers leading-edge technology and interpretation expertise for all your formation evaluation needs, so every well benefits from the very best information.

For more information visit
www.slb.com/oilfield/formation_evaluation/

*Mark of Schlumberger

04-FE-114

Schlumberger

October 5 NOGS Luncheon Presentation

*** at the Holiday Inn Downtown Superdome ***

DHI Threshold Effect in Prospect Risking?

presented by

Rocky Roden*

Consultant Rose and Associates

ABSTRACT

Seismic amplitude anomalies that are DHI's, Direct Hydrocarbon Indicators, have played a major role in oil and gas exploration since the early 70's. These features are commonly found in offshore Tertiary age sandstones, but are also present in older rock onshore areas. The technology and methods to identify and risk seismic amplitude anomalies have advanced considerably over the years, especially with the use of AVO (Amplitude vs. Offset) seismic technology. A good risk analysis work process is required to rank DHI prospects so oil company management can make business decisions to upgrade their exploration portfolio.

During the past eight years, a consortium of oil companies in the US and Europe has developed a work process to interpret and risk seismic amplitude anomalies on exploration and development prospects. Almost 150 prospects have been reviewed and documented in a database where the geology risk factors, seismic and rock physics data quality and amplitude anomaly characteristics (as many as 37) have been analyzed to calculate the probability of geological success (Pg - flowable hydrocarbons). The drilling results for each prospect were compared to the calculated Final Pg, a function of the Initial Pg (geology) and DHI Index (impact of the anomaly

characteristics modified by data quality).

The Final Pg and DHI Index compared to drilling result trends indicate a DHI Threshold Effect on prospects at the high end of the risk spectrum and a low Pg Threshold Effect at the low end of the spectrum. Published results by ExxonMobil in a similar DHI database study suggests these same threshold effects (although different quantification system). In other words, on the upper end of the spectrum there is a point at which a significant amount of the risks have been reduced to dramatically increase the Final Pg and DHI Index. On the lower end of the spectrum there is a threshold below which essentially all the wells are dry holes. Using these database trends, Pg can be calibrated to a wide range of 5% to 95% Final Pg. Therefore in DHI prospects, geoscientists should be more optimistic in analyzing the prospect risk if Final Pg and DHI Index are above certain threshold levels. Conversely, the low end of the risk profile prospects in the portfolio should probably be farmed out or not drilled with an overall goal of upgrading the exploration portfolio.

** Co-Authors: Mike Forrest/Consultant Rose and Associates, and Roger Holeywell/Marathon Oil Corporation*

BIOGRAPHY

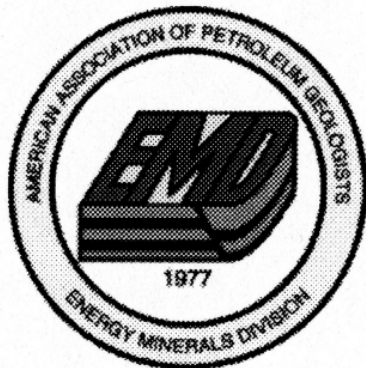
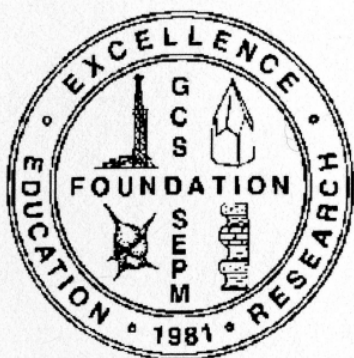
Rocky R. Roden owns his own consulting company, Rocky Ridge Resources Inc., and works with several oil companies on technical and prospect evaluation issues. He also is a principle in the Rose and Associates DHI Risk Analysis Consortium and consults with Seismic Micro-technology on future technical applications. He is a proven oil finder (35 years in the industry) with extensive knowledge of modern geoscience technical approaches (past Chairman-The Leading Edge Editorial Board). As Chief Geophysicist and Director of Applied Technology for Repsol-YPF, his role comprised advising corporate officers, geoscientists, and managers on

interpretation, strategy and technical analysis for exploration and development in offices in U.S., Argentina, Spain, Egypt, Bolivia, Ecuador, Peru, Brazil, Venezuela, Malaysia, and Indonesia. He has been involved in the technical and economic evaluation of Gulf of Mexico lease sales, farmouts worldwide, and bid rounds in South America, Europe, and the Far East. Previous work experience includes exploration and development at Maxus Energy, Pogo Producing, Decca Survey, and Texaco. He holds a BS in Oceanographic Technology-Geology from Lamar University and a MS in Geological and Geophysical Oceanography from Texas A&M University.

THE LUNCHEON RESERVATION DEADLINE IS SEPTEMBER 30 - CONTACT THE NOGS OFFICE

“And Looking Ahead...”

The next NOGS Luncheon will be November 2. Guest Speaker Jeffrey A. Spencer, Blackpool Energy, will present “History of the Oil Industry from the Drake Well to 1900.” Contact the NOGS office to make your reservation.



UNCONVENTIONAL RESOURCES:

Making the Unconventional Conventional

**29th Annual GCSSEPM Foundation Bob F. Perkins
Research Conference**

**Houston, Texas, December 6-8, 2009
Houston Marriott Westchase Hotel**

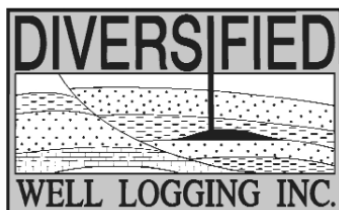
**Latest information and registration
are available on our website:**

www.gcssepm.org



Relax. We'll keep you posted.

Your rig is offshore and you are not. How do you know what's going on so many miles away? You know because we tell you. Daily or even hourly, Diversified Well Logging's engineers update you on the status of your rig. We are your eyes and ears, especially when it comes to deep water or high pressure, high temperature areas. Diversified offers 24-hour surface evaluation. We provide secure and customized real-time data communication, in-house research and development and 24/7 on-call support for our equipment and our engineers. Whether you have a 10-day job or 110-day job, we provide the specialized attention you require. So, relax. We're with you every step of the way.



Serving the Gulf Coast for over 40 years.

New Orleans • Lafayette • Houston • Dallas • Corpus

800.280.2096

711 West 10th Street • Reserve, LA 70084 • Phone: 985.536.4143 • Fax: 985.536.2427
sales@dwl-usa.com



**PALEO
DATA**

**FULLY INTEGRATED AND
CENTRALIZED BIOSTRATIGRAPHIC
SERVICES**

- ▼ Single-source biostratigraphic databases
for increased accuracy and consistency
- ▼ Integrated foram / nannofossil analyses
- ▼ Complete wellsite paleo services
- ▼ In-house sample preparation
lab for quality-monitoring
and efficiency
- ▼ Sample pick-up service

6619 Fleur de Lis Drive
New Orleans, LA 70124
(504) 488-3711

www.paleodata.com

MCMORAN EXPLORATION CO.



MCMORAN OIL & GAS

www.mcmoran.com

NYSE: MMR

16676 Northchase Dr.
Houston, TX 77060
(281) 539-7600
Fax: (281) 539-7655

1615 Poydras
New Orleans, LA 70112
(504) 582-4000
Fax: (504) 582-4155

110 Travis St., Suite 140
Lafayette, LA 70503
(337) 735-9150
Fax: (337) 735-9151

NOGS CONTACT LIST

--- continued from page 3 ---

MEMORIAL FOUNDATION

BOARD OF TRUSTEES

2009-10 Chairman	William M. Whiting
2009-10 Secretary	Tom Klekamp
2009-10 Trustee	Michael C. Fauquier
2009-10 Trustee	J. David Cope
2010-11 Trustee	Timothy J. Piwowar
2010-11 Trustee	Michael N. Fein
2011-12 Trustee	Monte Shalett
2011-12 Trustee	James Swaney

Company

Consultant
Amber Resources LLC
W & T Offshore
Ankor Energy
Shell
W & T Offshore
Berkshire Exploration Co
MMS

Phone

504-947-8495
985-845-4046
504-210-8192
504-596-3672
504-728-4066
504-210-8148
504-831-7779
504-736-2677

E-mail

bootscon@aol.com
klekamp@bellsouth.net
mfauquier@wtoffshore.inc
dcope@ankorenergy.com
tim.piwowar@shell.com
mikef@wtoffshore.com
mshalett@gmail.net
james.swaney@mms.gov

AAPG DELEGATES


Term Ends

2011	Tom Hudson
2011	Edward B. Picou, Jr.
2011a)	Brenda Reilly
2011a)	Robert Rooney
2012	William Whiting
2012	Jim Zotkiewicz
2012 a)	David E. Balcer
2012 a)	Richard J. Stancliffe


Chevron
Consultant
Energy Partners Ltd.
Century Exploration
Consultant
Zot Oil & Gas
Chevron
Shell Expl & Prod Co.

985-773-7163
504-529-5155
504-799-4811
504-832-3777
504-947-8495
504-831-4694
985-773-6725
504-728-7553

tom.hudson@chevron.com
epicou@bellsouth.net
breilly@eplweb.com
Robert.rooney@centuryx.com
bootscon@aol.com
jimzot38@zotoil.com
dbalcer@Chevron.com
richard.stancliffe@shell.com



Take a look at the *future* of
MARINE SEISMIC



www.sbexp.com
www.seabed.no

RAISING
THE **STANDARD**



- Autonomous 4C nodes rated to 3000 m
- Acoustic Communication/Data QC
- Best sensor orientation in the market
- Highest quality coupling
- Sub-meter positioning available



Dubai
T: +971 4 4271700

Houston
T: +1 281 556 1666

Oslo
T: +47 2240 2700

Trondheim
T: +47 7 3879500

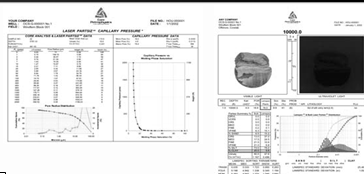
Singapore
T: +65 9180 2605

Sidewall Core Specialists

**Experts in Small
Sample, Laminated
and Shaly Sand
Analysis**

Laboratory Services:

- Core / Log Integration
- Laser Enhanced Permeability
- Porosity
- Fluid Saturations
- Measured Descriptions
- Critical Water
- Capillary Pressure Simulation
- UV Photography /Digital Images
- Lamination Characterization
- NMR Measurements
- Petrology



Core Lab has made many improvements to sidewall core testing which have had a positive synergistic effect on overall data quality.

Laser particle size analysis, Lamination specific analysis, UV-Visible Spectroscopy, lamination classification, Photospec summary reports, digital data bases via our website and capillary pressure simulation are all innovations introduced by Core Lab to help our clients obtain maximum benefit from their samples and analyses.



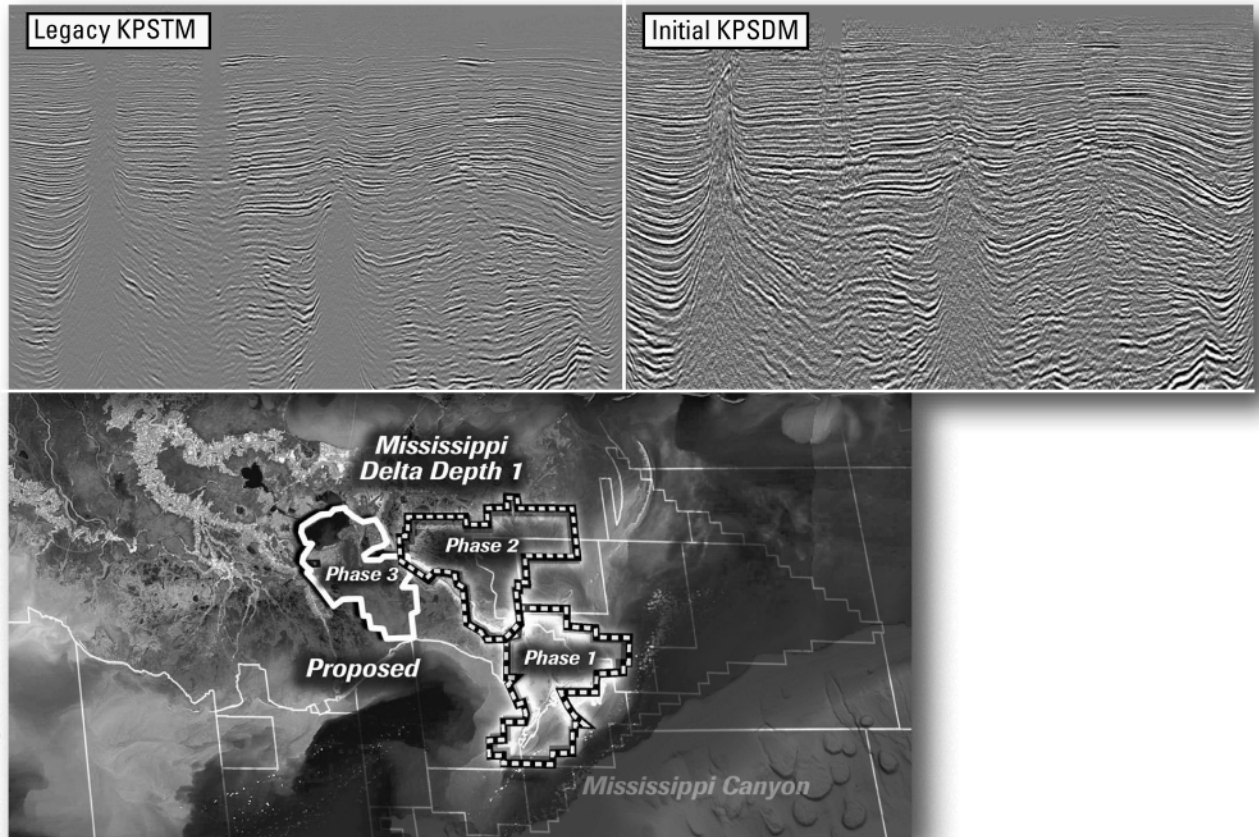
Core Laboratories 504-733-6583

**NOGS thanks our
sponsors for their support:**

GOLD LEVEL SPONSORS:
CHEVRON
LA BAY EXPLORATION CO, LLC.

**SPECIAL THANKS TO
DIVERSIFIED WELL LOGGING**

Improved depth imaging in the Mississippi Delta



In the Mississippi Delta region, WesternGeco is utilizing state-of-the-art processing designed to eliminate fault shadows and enhance deep imaging. The Mississippi Delta - Depth 1 survey, now in progress, incorporates the processing and remigration of twelve legacy surveys covering 1,855 square miles. High-quality time imaging using relative amplitude anisotropic Kirchhoff prestack time migration will be followed by improved structural imaging utilizing anisotropic Kirchhoff prestack depth migration.

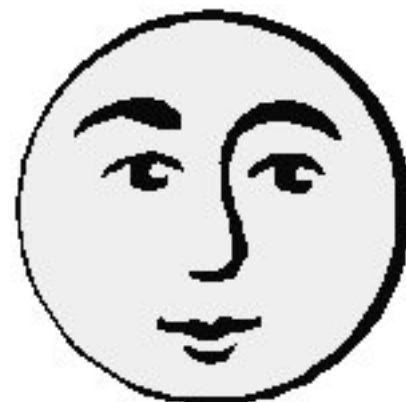
To learn more about this and other Multiclient products, call +1 713 689 1000.

www.multiclient.westerngeco.com/la

Multiclient to the Power of E



*“Join us under a nearly full moon for an evening
of conversation, spirits and food by one of the
Northshore’s best caterers”*



NOGS KICK-OFF PARTY

**Friday, October 2
6:30 to 9:30 PM**

**Tom and Amber Klekamp’s Home
106 Chasse Place
Beau Chene - Mandeville
Driving directions from NOGS Office
(Google maps has incorrect routing)**

\$40 per person

Open Bar - Celebrity Bartender Al Baker

Casual (suits and ties pay extra!)

**Door Prizes!
“L’ours Tours”
Telescope views of Moon**

**Call the NOGS Office for reservations
504-561-8980**



Eni Petroleum

1250 Poydras Street
Suite 2000
New Orleans, LA 70113
Tel: (504) 593-7000
Fax: (504) 593-7745

1201 Louisiana Street
Suite 3500
Houston, TX 77002
Tel: (713) 393-6100
Fax: (713) 393-6205



**Shell has worked in partnership
with the NOGS for many years, and
is proud to count the society among
its closest business associates.**

The New Orleans Geological Society was organized in 1941 to foster scientific research and advance the science of geology. Particular emphasis is laid on the exploration for and production of petroleum and natural gas. Related objectives include encouraging the adoption of improved methods of exploration, disseminating pertinent geological and technological data, and maintaining a high standard of professional conduct among its members.

www.shell.com/us.sepc

SEI®

Seismic Exchange, Inc.

**Strategic Speculative Surveys
Geophysical Data Marketing & Management**

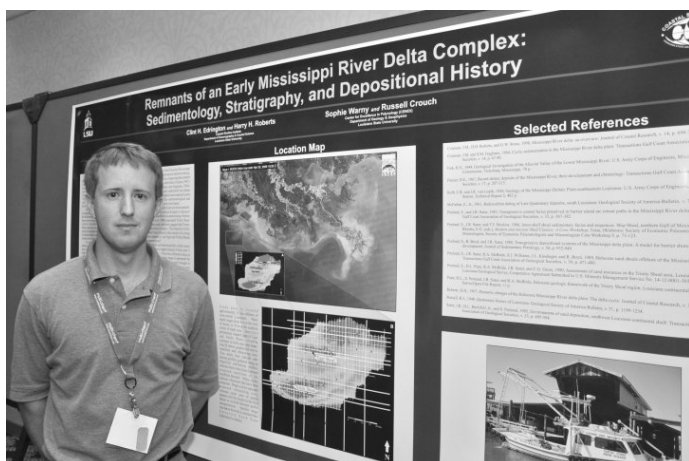
**Your
Full Service
National
Seismic Data
Marketing Firm**

New Orleans
Dallas
Houston
Denver
Oklahoma City
Corpus Christi
Tulsa

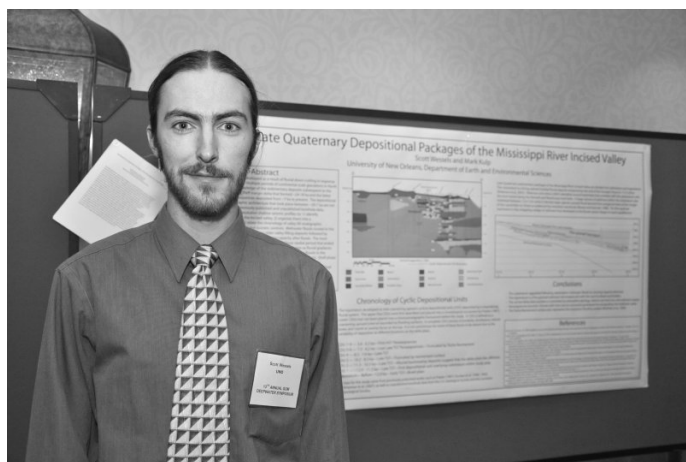
201 St. Charles Avenue, Suite 4300, New Orleans, Louisiana 70170-4300
Telephone 504.581.7153 Fax 504.581.9591
www.seismicexchange.com

Deepwater Symposium

Thursday Geoscience
Session: L-R: Paul Post,
Nathan Vrubel, Mike
Wandstradt, Mike Roberts,
Bob Meltz



Clint Edrington LSU, (student poster) Remnants of an Early Mississippi River Delta Complex: Sedimentological, Stratigraphy and Depositional History. Advisor: Prof. Harry Roberts, LSU



Scott Wessels, UNO (student poster) Late Quaternary Depositional packages of the Mississippi River Incised Valley - with Prof. Mark Kulp, UNO



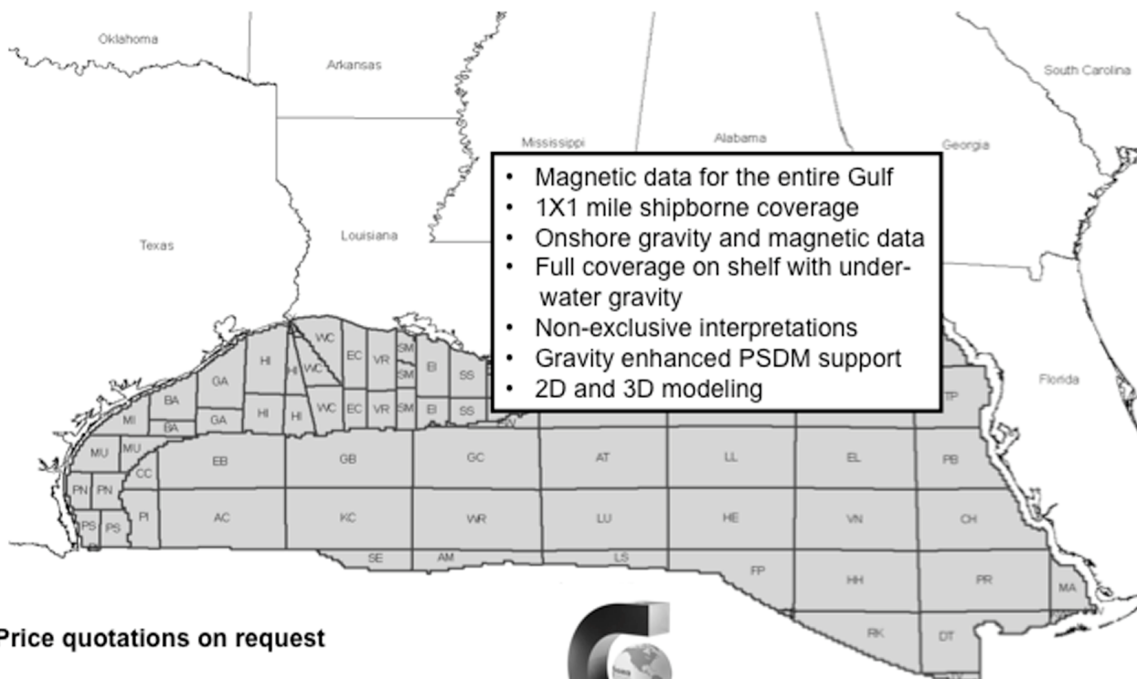
Friday Geoscience
Session: Roger Kocken,
Matt Wandstrat, Segun
Jebutu, Colin Sayers,
and Bob Meltz



Fugro Gravity & Magnetic Services

LAND • AIRBORNE • UNDERWATER • SHIPBORNE

The most complete coverage Onshore and Offshore Gulf of Mexico



Price quotations on request

Fugro Gravity & Magnetic Services
www.Fugro-GravMag.com
Tel: 713-369-6123



Gravity Inspired. Magnetically Inclined.



100 Northpark Blvd.
Covington, LA 70433

(985) 773-6000

"Serving the Oil & Gas Industry Since 1983"

Geological,
Geophysical &
Land Drafting

Anthony Catalanotto

President

Stefani Kelone

Drafting and Design



Geo-Draft, Inc.

A Professional Drafting & Graphics Firm

3349 Ridgeland Drive □ Suite 202 □ Metairie, LA □ 70002

Office: (504) 836-2882 Fax: (504) 836-2877

geodraft@bellsouth.net



LaBay
Exploration Co., L.L.C.

111 Veterans Memorial Blvd.,
Suite 1550
Metairie, Louisiana 70005

www.labayexploration.com

Office (504) 371-5967
Fax (504) 371-5969

*This advertising space is
available! Contact the
NOGS office.*



Celebrate with the New Orleans Geological Society An Evening with “America’s Greatest Generation” at the National World War II Museum

Tuesday, April 13, 2010 from 7:00 to 10:00 p.m.

- * A truly unique museum covering D-Day and the other amphibious invasions of World War II. It honors the more than one million Americans who took part in this global conflict. Hear the stories of the men and women who made the invasions in Europe, Africa and the Pacific theaters successful. There are full- and scaled-sized dioramas of battlefield conditions, plus restored aircraft, amphibious landing craft, and mechanized armor units that played decisive roles in the invasions.
- * Enjoy a memorable and relaxed evening with your friends and colleagues
- * Open bar social
- * Fabulous Southern buffet dinner catered by world-renowned Chef John Besh
- * Access to all the Museum’s exhibit areas for touring at your leisure.
- * For more information about the Museum and its various amenities, please visit www.nationalww2museum.org
- * Round-trip bus transportation will be provided from the AAPG Convention Headquarters Hotel to the Museum and will be available 6:15 to 10:45 p.m.
- * Cost of admission: \$50 per person

An Evening with "America's Greatest Generation" will be a *great* event.

You or your company can be recognized as a sponsor.

Go to

<http://www.aapg.org/neworleans/documents/NOSponsorBrochure.pdf>

or contact

Robert Rooney at (504) 832-3777 — robert.rooney@centuryx.com

or Al Baker at (504) 836-2710 — ABaker1006@aol.com

2008-2009 NOGS Memorial Foundation Scholarships

Lee H. Meltzer Memorial Graduate Award

\$3,000 Cash Award

LSU - Amanda Jo Zimmerman

Amanda grew up in El Paso, Texas with many unique geological opportunities in her backyard, including Mt. Cristo Rey, the Organ Mountains, and Big bend. Because of this she began to study geology in her own way when she was 8 years old, and continued through high school. In high school, she was able to join the local university (UTEP) on field trips. Amanda initially majored in microbiology but after three semesters returned to her first love, geology. During her fourth semester she accepted the unique opportunity of completing her undergraduate studies at the University of Hawaii, Hilo, allowing her the chance to see and study Kilauea volcano and other volcanic features of the island. Now in graduate school at LSU, Amanda is studying under Dr. Ray Ferrell and measuring the levels of heavy metals in surface soils in New Orleans through sequential extraction. In the future she hopes to achieve a PhD and conduct research related to environmental conditions such as those found in New Orleans and other urban cities.

James Allen Gilreath Memorial Graduate Award

\$3,000 Cash Award

Tulane - Kimberly Roe

Kimberly Roe became interested in geosciences as an undergraduate at Hamilton College in Clinton, NY, after participating on a month-long research cruise to the Antarctic Peninsula in April 2006 led by her adviser Eugene Domack. Having graduated from Hamilton in May 2009, she is currently continuing her studies as a graduate student in Tulane University's Earth and Environmental Sciences Ph.D. program. Kimberly's first year at Tulane has introduced her to another dynamic environment-the Mississippi River Delta region, and she is now working on carbon cycling issues in the Mississippi River and other sedimentary environments under her adviser Brad Rosenheim in the Stable Isotopes Laboratory at Tulane University

Richard W. "Dick" Boebel Memorial Graduate Award

\$3,000 Cash Award

UNO- Dane Fischer

Dane Fischer is from Crystal Spring, Pennsylvania, a rural farming community located within the valley and ridge providence of the Appalachian Mountains. Dane graduated from Juniata College in Huntingdon, PA, with a B.S. degree in geology in 2007. Following graduation he moved to New Orleans to obtain a graduate degree with a focus on the upper Quaternary stratigraphy of the north-central Gulf basin and the evolution of modern nearshore environments. Dane will be graduating in 2009 and is hoping to find employment with the petroleum industry as an exploration or production geologist working on international and domestic reservoirs.

George W. Schneider Sr. Memorial Scholarship

\$2,500 Cash Award

UNO- Seth Watkins

Seth Watkins was born in New Orleans but has lived in Colorado, Virginia, and Germany; experiences that exposed him to a wide array of landscapes and outdoor opportunities. After high school Seth moved back to Virginia where he earned an AAS degree in Automotive Management from Lincoln Technical Institute and an AAS in Recreation and Parks from Northern Virginia Community College. Seth loves the outdoors and has recently realized that his ideal career would be to work for the national park service as a geologist, helping others to understand the myriad geologic processes that have led to the creation of beautiful places such Rocky Mountain, Bryce, and Zion National Parks. Seth is extremely grateful for the support offered by the New Orleans Geological Society and how it will contribute toward his educational goals.

2008-2009 NOGS Memorial Foundation Scholarships

SENIOR

Jules & Olga Braunstein Memorial

\$2,500 Cash Award

LSU - Philip Bergeron

Philip Bergeron is a senior geology major who graduated from high school in Baton Rouge. He was the 2008-2009 Geology Club President and has organized geology field trips. Philip collected and logged seismic, multibeam sonar, and core data on a 2008 cruise off Antarctica and presented a poster at the 2008 GSA annual conference. He is a member of the Alpha Lambda Delta National Academic Honor Society and has made the Dean's List for all semesters at LSU. Philip plan to continue his education with graduate school.

Tulane - Andy Menking

Andy Menking is a senior at Tulane University from Fort Worth, Texas. He has a wide range of interests and studies Spanish and Latin American Studies in addition to Geology. Andy spent two months of the summer of 2008 on the Juneau Icefield studying glaciers and climate change, a memorable field experience that has shaped his future research interests. Andy hopes to continue his studies in graduate school, possibly in glaciology. For now, Andy is writing an undergraduate thesis on Hawaiian geomorphology and will be traveling to Hawaii Island this summer.

UNO - Kathryn Purifoy

Kathryn Purifoy was born in 1982 in Oxford, England. At the age of four she moved to North Florida with her mother and sister. It was here that she became interested in Earth Science by exploring local sinkholes, beaches and wetlands. Kathryn graduated in 2002 with an Associate's in Arts degree from Tallahassee Community College. During this time she worked for the Florida Fish and Wildlife Conservation Commission's Bureau of Protected Species promoting sea turtle and manatee awareness. She moved to New Orleans in 2005 and relocated after Katrina and Rita to Westwego where she currently resides with her son, Bradyn. She is currently working on a B.S. degree with a concentration in Coastal Science. She is an active member of the UNO Judicial Committee and the Society for Earth and Environmental Science.



LSU Dept of Geology & Geophysics Awardees
Philip Bergeon (Senior) and Amanda Jo Zimmerman
(Graduate Student). Not present: Dana Thomas (Junior)



Tulane Dept of Earth & Environmental Science
students (l-r): Andy Menking (Senior), Kimberly Roe
(Graduate Student), and Gabriella March (Junior)

2008-2009 NOGS Memorial Foundation Scholarships

JUNIOR

Jules & Olga Braunstein Memorial

\$2,000 Cash Award

LSU - Dana Thomas

Dana Thomas is part of a family of seven and grew up playing outdoors and taking family road trips to national parks across the country. She was a competitive year-round USS swimmer from age five until college. She was a swim coach for five years and now enjoys volunteering with children, especially involving education and science education. Dana is in her third year at Louisiana State University, has been majoring in geology for two semesters, and is extremely glad she chose it as her major. Dana is from Baton Rouge and had all of her schooling in the East Baton Rouge Parish Public School System. She attended high school in Baton Rouge and came to college liking all ends of the spectrum; considering getting a degree in literature, history, or engineering. After searching for four semesters, Dana took "Introduction to Physical Geology" lecture and lab and knew it was a fit. She plans on continuing her geology education past her Bachelor's degree, and wants to either enter the work force or pursue a career as a science educator for students or society through public outreach.

Tulane - Gabriella March

Gabriella March is a rising senior at Tulane University majoring in Geology with a GPA of 3.825. She has been a member of the Tulane Rowing Team for three years as a coxswain and has served as treasurer for two years. She is a Girl Scout and is still active with her troop in her hometown of Fredericksburg, VA. She received her Gold Award in 2006, the highest honor in Girl Scouting.

Gabriella fell in love with geology her sophomore year and has been enjoying her major ever since. She is looking forward to designing and researching her honors thesis during her senior year. In the future, Gabriella hopes to go into industry and work towards her master's degree.

UNO - Leah Sossamon

When Leah Sossamon started her studies at UNO she was initially uncertain about her educational direction and was on the verge of dropping out of school after a frustrating freshman year that was marred by Hurricane Katrina. Brotherly advice however prompted her to take one more class, which she chose because it sounded interesting. The class was Environmental Science in Earth and Environmental Sciences and Leah soon found out that she loved the material, leading her to quickly declare a major in Earth and Environmental Science. The next semester she took Earth Materials as her first upper level class and Leah fully recognized her true love of geology. The intense lab sessions and field trip to Arkansas inspired her unlike any class she had taken previously. She now plans to pursue a graduate degree in geology, and is incredibly grateful to the New Orleans Geological Society for the support toward completing her undergraduate studies at the University of New Orleans. When not in class Leah tries to spend as much time as she can with outdoor activities, whether camping, spending time at the beach or simply walking her dog. Leah also has an intense passion for arts and crafts and spends time drawing, painting, and with photography.

2008-2009 NOGS Memorial Foundation Scholarships

UNO Dept of Earth & Environmental Sciences Awardees receive scholarship awards from Foundation Chairman, William Whiting:



Seth Watkins (George Schneider, Sr. Scholarship)



Dane Fischer (Graduate Student)



Kathryn Purifoy (Senior)



Leah Sossamon (Junior)

NOGS Memorial Foundation Scholarships

The NOGS Memorial Foundation Scholarships are granted each year to those students who have demonstrated exceptional talent in or commitment to their geologic studies and projects. It is the policy of the Memorial Foundation to posthumously name these scholarships after those members whose own extensive contributions to the profession have been particularly praiseworthy.

Lee Hilliard Meltzer for expertise in oil and gas appraisal and exploration, as well as manifold and unstinting support of and service to - from AAPG to NOGS - the region's professional geologic organizations.


James Allen "Al" Gilreath for his work as chief tool developer of down-hole instrumentation and 'pattern' interpretation, earning him - world-wide - the title, 'Mr. Dipmeter'.


Richard W. "Dick" Boebel for his outstanding abilities as an oil and gas finder and in being a unique individual who was most generous of his time and talent to the industry, his peers, and in his support of many professional organizations .


George W. Schneider, Sr. for exceptional leadership in exploration activities and for being a positive force in establishing the New Orleans Geological Society and serving as its first president in 1941-42.

Jules Braunstein gained wide recognition in the oil and gas industry not only for exceptional technical expertise but also as an exacting editor. His long career was conspicuous for selfless devotion - and as carried on by his surviving wife, **Olga**, in her bequeathal of the residue of their estate to NOGS Memorial Foundation Scholarship Fund.

A Company that Shines

 Geophysical Products

 Geological Products

 Imaging Services



TGS has been providing best-in-class multi-client data and services to successful E&P companies for over a quarter century. Our geophysical and geological data products are distributed around the globe and include one of the youngest and best targeted multi-client seismic libraries, extensive magnetic and gravity data, the industry's largest global database of digital well logs, and regional interpretive products. We also provide high-end depth imaging services to help resolve complex seismic imaging problems. Together, our products and services give you a more complete picture of the subsurface to help your exploration program *shine*.

For more information, visit www.tgsnopec.com today.



www.tgsnopec.com

NORWAY +47 66 76 99 00 | USA +1 713 860 2100 | UK +44 (0) 1234 272122 | AUSTRALIA +61 8 9480 0000 | RUSSIA +7 495 959 8117
©TGS-NOPEC Geophysical Company. All Rights Reserved.

**New NOGS
Members
July and
August 2009**

Scott Avanzino
Green Exploration
Geologist
Ste 347, 110 Vets Mem Blvd
Metairie, LA 70005
504-836-2336

Thomas A. Bilinski
Student - UNO
28 Clevner Dr
Kenner, LA 70065
504-458-4760

Robert E. Elliott
TGS Geological Prods/Services
MMS Data Services Manager
Ste 2040, 1010 Common St
New Orleans, LA 70112
504-524-3450

Susan R. Green
Minerals Management Service
Petroleum Engineer
1201 Elmwood Park Blvd
New Orleans, LA 70123
504-736-2401

Jesse A. Hoppes
Southern Environ Management
Specialties, Proj. Geologist
Ste 209, 3801 N Causeway Blvd
Metairie, LA 70002
504-237-8848

Mark Miyaoka
Resolve Geosciences, Inc.
Dir. Business Development
Ste B, 431 Mason Park Blvd
Katy, TX 77450
281-395-6999

Kenneth W. Mohn
Fugro Multi Client Services
Exploration VP
P O Box 740010
Houston, TX 77274
713-369-5898

James M. Sothern
Fletcher Tech Comm College
Geology Instructor (Adjunct)
FTCC 310 Saint Charles St
Houma LA 70363
985-855-2220

REINSTATED

Asani D. Brewton
Minerals Management Service
Physical Science Tech
1201 Elmwood Park Blvd
New Orleans, LA 70123

REINSTATED

Teree C. Campbell
Minerals Management Service
Staff Geologist
1201 Elmwood Park Blvd
New Orleans, LA 70123-2394
504-736-3231

REINSTATED

Sherwood M. Gagliano
Coastal Environments, Inc.
Chief Executive Officer
1260 Main St
Baton Rouge, LA 70802-4657
225-892-3252

REINSTATED

Holly A. Karrigan
Minerals Management Service
1201 Elmwood Park Blvd
New Orleans, LA 70123-2394
504-736-2834

REINSTATED

Donald M. Maclay
Minerals Management Service
Petroleum Engineer
1201 Elmwood Park Blvd
New Orleans, LA 70123
504-736-2891

September NOGS Luncheon



September speaker Dr. Denise J. Reed of the Pontchartrain Institute for Environmental Sciences, University of New Orleans and NOGS Vice-president Robert Hafner. Dr. Reed's talk was "A New Approach to River Management: Action for a Sustainable Coastal Landscape?"



L-R: Dr. Steve Nelson, Tulane University and Mr. Edward B. Picou, members of the NOGS Ad Hoc "The Geologic Facts for Levee Boards," Hon. Susan H. Maclay, President, SE La Flood Protection Authority - West and Hon. Michael L. Merritt, Secretary, SE La Flood Protection Authority -

CALL FOR PAPERS

60th Annual Convention

October 10-12, 2010

San Antonio, Texas

Hosted by the South Texas Geological Society



Welcome back to San Antonio! Our theme this year is ***"Weathering the Cycles"*** – a challenge that resource geologists certainly have faced and overcome in the past! How do we weather the economic cycles? We...

- ✓ Network with our community
- ✓ Experience the latest technology in the technical exhibition
- ✓ Take a course or a trip and grow new and diverse skills
- ✓ Listen to special presentations on strategies to endure and prosper during an economic downtime and prepare for the inevitable rebound.

By celebrating our successes, facing our challenges, and learning from the research results of our peers, we are paid back many fold by sharing ideas and experiences among our professional community. So come and share your experiences! Suggest a session topic, present an oral paper or a poster, learn about the latest ideas and technologies in our field. Come to San Antonio and enjoy the Gulf's own geoscience convention!

PROPOSED TECHNICAL SESSIONS INCLUDE...

- ✓ **Organic 'Shales' of the Gulf Coast – Controls on Reservoir Quality and Producibility**
- ✓ **Gulf of Mexico Paleogene – Reservoirs, Events and Controversies**
- ✓ **Eastern Gulf of Mexico – Exploration Potential and Environmental Challenges**
- ✓ **Texas/Mexico Borderlands – Structures, Resources, and Lessons Learned**
- ✓ **Unconventional Resources – Exploration Decisions and Production Issues**
- ✓ **Integration of Seismic Geomorphology and Wellbore Data – Case Studies**
- ✓ **New and Evolving Technologies – Impact on Commerciality**
- ✓ **Horizontal Drilling and Formation Stimulation – Edwards, Wilcox, and elsewhere**
- ✓ **Carbon Sequestration – Risks, Opportunities, and Implications for EOR**
- ✓ **Alternative Energy Solutions – The Role of Geoscience**
- ✓ **Water for a Growing Region – Geology, Water Quality, and Resource Management**
- ✓ **Geologic Training and Education – Preparing for the Crew Change**

HOW TO SUBMIT:

Abstracts (not more than 250 words) should be submitted for review online or via email to the technical program chair. Papers should have application to Gulf Coast and Gulf of Mexico geology. Include your full mailing address, telephone and FAX numbers, email address, and whether you are submitting for **oral** or **poster** or **either** (preferred).

Submit abstracts by February 1, 2010 as instructed on the website www.gcags2010.com

Notification of acceptance by March 1, 2010. All presenters, both oral or poster, must submit either a paper (10-12 pages) or an extended abstract with key figures for review by **April 16, 2010**, for inclusion in the *Transactions*. Full instructions for authors will be posted at www.gcags2010.com.

ABSTRACT DEADLINE: FEBRUARY 1, 2010!

Questions or ideas for the technical program should be directed to:

Dr. Mary Feeley
Technical Program Chair
281-654-3588

missy.feeley@exxonmobil.com

Dr. Alan Dutton
GCSSEPM Co-Chair
210-458-5746

alan.dutton@utsa.edu



NOGS FINANCIAL STATEMENT 2008-2009

Hibernia Homestead Checking Account

This account is used for the day to day operation of NOGS activities.

Balance as of June 30, 2009 \$11,467.78, down \$13,366.06 from \$24,833.44 on June 30, 2008

Morgan Stanley Smith Barney Operations Investment Account

Income from this account is used to supplement the checking account or excess checking account funds may be invested. Income for 2008-2009 was \$5002.72.

Balance as of June 30, 2009 \$123,731.40, down \$23,469.19 (-15.9%) from \$147,200.59 on June 30, 2008

Morgan Stanley Smith Barney FONO Investment Account

Funded from donations to the Friends of the NOGS Office Fund. There are no expenses charged to this account and income from this account is to be used for office operations and is transferred to the Operations Account. Income for 2008-2009 was \$8,064.95.

Balance as of June 30, 2009 \$137,600.63, down \$30,289.68 (-18.0%) from \$167,890.31 on June 30, 2008

Morgan Stanley Smith Barney Publications Investment Account

Funded from sale of NOGS publications. Expenses charged to this account include postage, refunds and amounts due to HGS. This account contributes \$300.00 per quarter to the operations checking account to be used for office operations.

Balance as of June 30, 2009 \$76,763.39, down \$4,354.21 (-5.4%) from \$81,117.60 on June 30, 2008

Totals: Sum of all Accounts as of June 30, 2008	\$421,042.34
Sum of all Accounts as of June 30, 2009	\$349,563.20
Change	\$-71,479.14 (-16.9%)

2008-2009 Operations Income vs. Expenses (excludes Morgan Stanley Smith Barney accounts)

Income \$136,841.74 (includes \$5,500.00 not yet transferred from Operations Investments)

Expenses \$145,082.10

Net decrease (\$8,240.36)

Major projects	Income	Expenses	Net
NOGS Log	\$53,139.39	\$44,610.07	\$8,529.32
Luncheons	\$19,813.13	\$18,512.90	\$1,300.23
Golf Tournament	\$17,110.00	\$14,678.78	\$2,431.22
Cont. Education	\$5,038.05	\$3,081.22	\$1,956.83
Entertainment	\$4,404.00	\$4,966.06	\$-562.08
Field Trip	\$4,300.00	\$5,059.49	\$-759.49

James Swaney

2008-2009 Treasurer

504-736-2677

THE NEW ORLEANS GEOLOGICAL SOCIETY, INC.

810 UNION STREET SUITE 300, NEW ORLEANS, LA 70112

TELEPHONE: (504) 561-8980 FAX: 561-8988 E-MAIL: NOGS@GS.NET WEBSITE: WWW.NOGS.ORG

MEMBERSHIP APPLICATION

Name (Last, first, middle intital)

Date

Company

Title

()
Phone Number

()
Fax Number

E-mail Address

Work Address (PO Box/Street, City, State, Zip, Country)

Home Address (Street, City, State, Zip, Country)

()
Phone Number

Prefered Mailing Address (check one): Work _____ or Home _____

Spouse's Name

Other Professional Society Memberships (AAPG*, AIPG, GSA, etc.) * Please indicate AAPG member category

College/University:

Degree

Year

Major

Explain, in brief, your affiliation with the petroleum industry:

Please mark appropriate classification:

☐ New Member

☐ Reinstatement

☐ Renewal

ANNUAL DUES: \$25.00 FOR ACTIVE OR ASSOCIATE

\$12.50 STUDENT MEMBERSHIP*

*No intial dues for students in the Sponsorship Program

-- Please mail application to the NOGS office with check payment or Visa/MasterCard/American Express acct# and exp. date --

Committee preference (please indicate choices):

☐ AAPG Student Chapter

☐ Advertising

☐ Awards

☐ Ballot

☐ Best Paper

☐ Computer Applications

☐ Continuing Education

☐ Employment Counseling

☐ Entertainment

☐ Environmental

☐ External Affairs

☐ Field Trip

☐ Finance & Audit

☐ Historical

☐ Membership/Directory

☐ Memorial Foundation

☐ NOGS LOG

☐ New Geoscientists (NGNO)

☐ Nominating

☐ Non-Technical Education

☐ Photography

☐ Program/Luncheon

☐ Publication Sales

☐ School Outreach

☐ Scouts: Boy and Girl

☐ Sponsorship

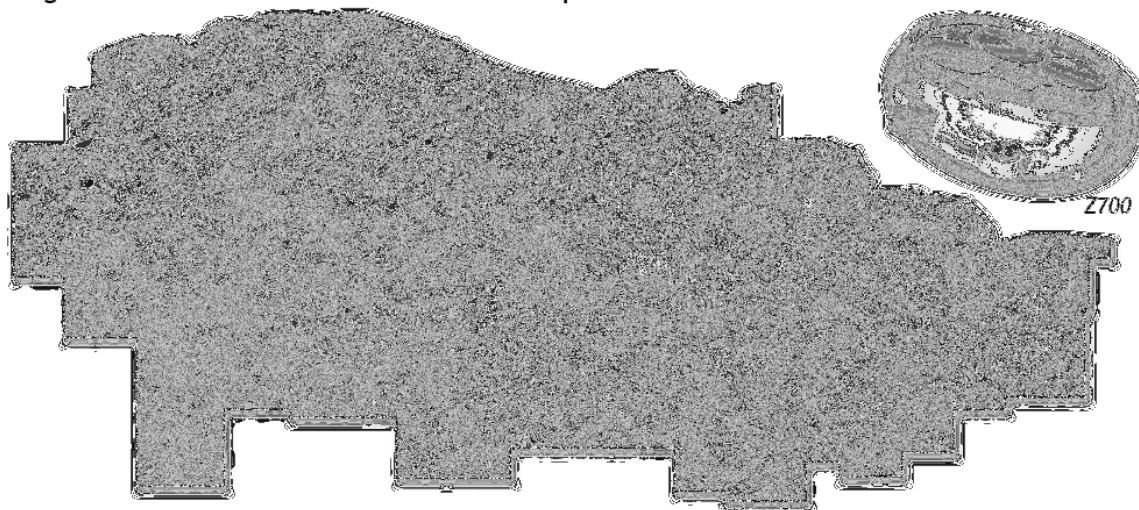
☐ Technical Projects



At Fairfield the future is now.

Our updated seismic vessels equipped with Fairfield's Z700 ocean bottom node systems will be fully operational in the Gulf of Mexico during 2009. By utilizing longer offsets and the continuous recording capability of Z700, Fairfield will be able to image data to unprecedented depths of over 75,000 feet.

By the end of 2009 our entire database will have been processed using Curved Ray Migration and an additional 500 blocks of depth data will have been added.



The Future begins today. Don't be left in the past.

SEISMIC
SYSTEMS

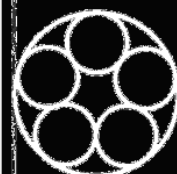
DATA
ACQUISITION

DATA
PROCESSING

DATA
LICENSING

281 273 7500

fairfield.com



Fairfield
INDUSTRIES

THE NEW ORLEANS GEOLOGICAL SOCIETY MEMORIAL FOUNDATION, INC.

The Memorial Foundation is an IRS Tax Exempt Code #501 (c)(3) organization. The Federal I.D. is: 72-1220999. Please consider making your donation prior to the close of this year's fiscal cycle which is September 30, 2009. Your individual support in any amount will help meet the IRS Guidelines for our Foundation. *Thanks!*

\$15,000 AND ABOVE

Olga Braunstein Succession

Gibbett Hill Foundation

*In Memory of Steve & Marion Millendorf, William J. Prutzman,
Roger G. Vincent & Ron Youngblood*

\$10,000

George W. Schneider, Jr. and Family

In Memory of George W. Schneider, Sr.

\$2,000 TO \$3,000

NOGS Golf Tournament May 2008

In Memory of Bill Craig

\$250 TO \$499

Carlo C. Christina

In Memory of Al Gilbreath

Fotiades Mineral Interests

Julie Fotiades, Joan Fotiades

Evelyn Fotiades Poulos

In Memory of George W. Schneider, Sr.

Kathy King Family

In Memory of George W. Schneider, Sr.

\$7,000 TO \$9,000

Paul C. Mc Williams

\$1,000

John M. Henton, Jr.

In Memory of Dr. Gordon Frey

Bill Schneider Family

In Memory of George W. Schneider, Sr.

Susan King Family

In Memory of George W. Schneider, Sr.

John C. Kuczewicz, Jr.

In Memory of Bill Craig.

FONO FUND

The FONO Fund accepts contributions that are invested and the income dedicated to assure sufficient financial resources will always be available to maintain the NOGS business office. Contributors are reminded that donations to the FONO Fund are not covered by the IRS 501 (c)(3) tax exempt classification and should be reported as a business expense on your IRS tax report.

UP TO \$250

Woods W. Allen, Jr.

Donald I. Andrews

Alfred H. Baker Jr.

Philip Beron, Jr.

Joseph E. Boudreaux

Hillary James Brook

Jack G. Bryant

J. Sybil Callaway

Anthony Carolla, Jr.

Arthur F. Christensen

James S. Classen

Richard P. Colomes

John Dombrowski

Merle J. Duplantis

Richard A. Edmund

Parrish N. Erwin, Jr.

Niles R. Faulk

Michael N. Fein

Laurens Gaarenstroom

Mark J. Gallagher

Arthur J. Garden

Duncan Goldthwaite

Peter G. Gray

James A. Hartman

In Memory of Brian J. O'Neill

Bernard L. Hill, Jr.

Owen R. Hopkins

Thomas A. Hudson

Kenneth Huffman

C. M. (Max) Jacobs

Robert M. Jemison, Jr.

Paul Jurik

Terry Keegan

Tom Klekamp

Reuben J. Klibert, Jr.

William J. Malin

Jeannie F. Mallick

George M. Markey, Jr.

James A. McCarty

Robert H. Monahan

Robert G. Murphy

William J. O'Leary

Richard A. Olsen

William S. Peirce

Jaser N. Rafidi

James P. Raymond, Jr.

C. R. Rondeau

George D. Severson

Rudolf B. Siegert

Diana "Dee" E. Smith

Raymond Stephens

Scott A. Wainwright

Roy C. Walther

Robert C. Weissmann

William M. Whiting

Louis E. Willhoit, Jr.

Thomas V. Wilson

Jim Zotkiewicz

UP TO \$249

Donald I. Andrews

In Memory of Ray F. Havard

In Memory of Harlan (Lanny) Northcott

Robert J. Ardell

In Memory of Dr. Gordon Frey

Mr. and Mrs. Wesley Barton

In Memory of Thomas A. Cullinan

Abraham Biadgelgne

Maurice N. Birdwell

In Memory of Texaco

Hilary James Brook

Jack G. Bryant

Rob Burnett

F. Robert Bussey

In Memory Robert S. Kline

J. Sybil Callaway

Chevron

Matching Funds

Arthur F. Christensen

Ellen F. Clark

James S. Classen

In Memory of Thomas A. Cullinan

In Memory of George W. Schneider, Sr.

Clarence F. Conrad

Charley Corona

In Memory of McLain Forman

In Memory of Professor Hubert Skinner

Trudy and Charley Corona

In Memory of Thomas A. Cullinan

Michael A. Danahy

M. R. "Bob" Douglass

In Memory of Jack Read

Merle J. Duplantis

Parrish N. Erwin, Jr.

Exxon Mobil Matching Funds

Niles R. Faulk

Michael N. Fein

David Garner

Laurens Gaarenstroom

Mark J. Gallagher

Peter G. Gray

In Memory of Thomas A. Cullinan

Angela M. Hessler

Bernard L. Hill, Jr.

Owen R. Hopkins

Dan E. Hudson

Thomas A. Hudson

Kenneth Huffman

Jeffrey E. Jandegian

Arthur H. Johnson

In Memory of George W. Schneider, Sr.

Tom Klekamp

Richard G. Klibert

William J. Malin

Jeannie F. Mallick

George M. Markey, Jr.

Michael L. Merritt

Robert G. Murphy

In Memory of Thomas A. Cullinan

New Orleans Geological Auxiliary

Russell H. Nordwell

Richard A. Olsen

In Memory of Richard W. Boebel

In Memory of Robert W. Sabate'

Teresa M. O'Neill

In Memory of Brian J. O'Neill

Linda and Bill Peirce

Edward B. Picou Jr.

In Memory of Dr. M. Gordon Frey

In Memory of Brian J. O'Neill

Richard D. Provensal

Edmund L. Russell

George D. Severson

Robert C. Shoup

Rudolph B. Siegert

Daniel L. Smith

Diana "Dee" E. Smith

John D. Silvernail

In Memory of Colles C. Stowell

Dr. J. O. Snowden

Raymond O. Steinhoff

In Memory of Hubert C. Skinner

In Memory of Harold E. Vokes

Stephen Szydlak

Scott A. Wainwright

Roy C. Walther

Arthur S. Waterman

In Memory of T. Wayne Campbell

William M. Whiting

Louis E. Willhoit, Jr.

Armour C. Winslow

In Memory of Rita Menzel

Winslow

Frances A. Wiseman

In Memory of Steve Widdicombe

Jim Zotkiewicz

In Memory of Bill Craig

Robin A. Broussard

Chevron

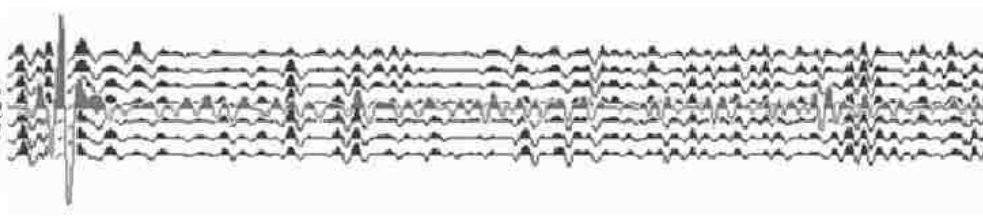
Bernard L. Hill, Jr.

Jeff Jandegian

John C. Scheldt

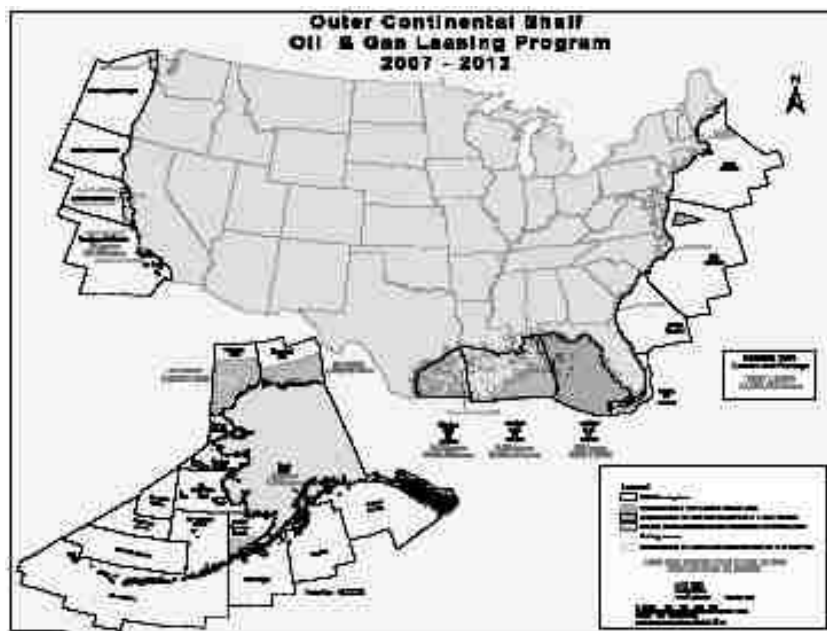
Candace V. Strahan

In Memory of James Strahan



The Southeastern Geophysical Society
presents
**Exploration Offshore USA OCS:
Opening the Next Frontier?**

**SGS Technical Symposium
November 12, 2009
New Orleans, Louisiana**



- Offshore Virginia has been opened.
- When will the potential lifting of other OCS areas result in drilling?
- What is the potential for hydrocarbon accumulations?
- What will the new President and Congress do?

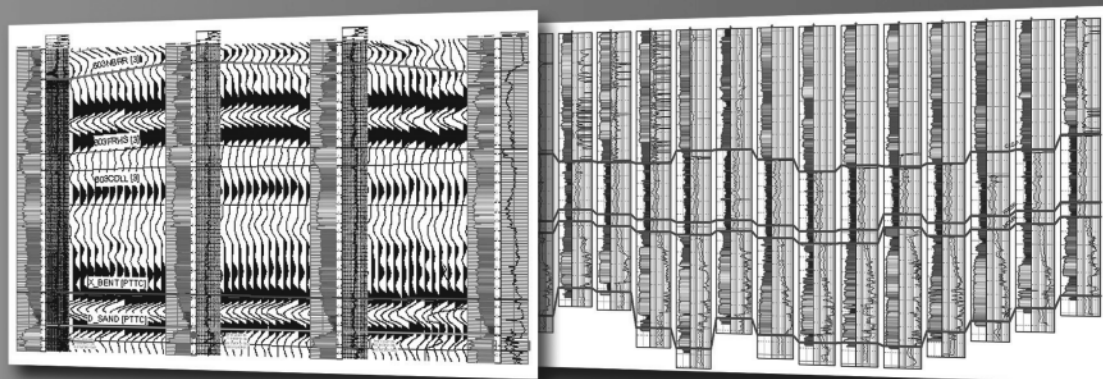
Call for presenters/sponsors – if you or your company would like to present a lecture or sponsor the symposium – contact Wayne Cook at wcook@seitel.com or Eric Zimmermann at ericz@lbg.com

Define your geological model faster than ever before

NO MORE WAITING! Available today from IHS, easy and affordable access to one of the largest U.S. digital log collections

- More than 185,000 LAS files with over 1.5 million curves
- Regional subscription packages for today's active play areas
- Indexed to IHS well and production data
- Linked to the IHS Enerdeq® Browser for quick regional studies and log selection
- Available via IHSLogNet.com or on DVD
- Ready to use in PETRA and other log packages

Request a free 2' x 3' IHS digital log coverage map at ihs.com/energy/DigitalLogs



Use PETRA® to integrate digital log, well, production, perf, seismic and tops data. IHS is the only company to provide you with the complete picture

Why wait? Subscribe today! Call 888.OIL.DATA (645.3282) or e-mail sales.energy@ihs.com



The Source
for Critical Information and Insight™



Shoreline Gas Inc.
www.shorelinegas.com
 Full Service Natural Gas Marketing



Sydboten & Associates, Inc.
*Geological and Geophysical Consulting,
 3-D Seismic Interpretation*

Ben D. Sydboten, Jr. CPG

124 Heymann Blvd., Suite 202
 Lafayette, LA 70503

Office (337) 234-5288
 Cell (337) 234-5491

ATWATER CONSULTANTS, LTD.

REGISTERED AND CERTIFIED PETROLEUM PROFESSIONALS

GEOLOGICAL, ENGINEERING, GEOPHYSICAL,
 TRAINING AND EXPERT WITNESS SERVICES

3525 Hessmer Ave, Ste 304
 Metairie LA 70002

Tel. (504) 581-6527
 Fax (504) 524-7798

Please support NOGS advertisers!



626 E. Kaliste Saloom
 Lafayette, LA 70508

16900 Greenspoint Dr, Suite 225-S,
 Houston, TX 77060

www.stoneenergy.com



CIMAREX ENERGY CO.

GULF OF MEXICO REGION
 GOM, SE La., N. La., MS, AL

1100 Poydras St.; Suite 1100

New Orleans, Louisiana 70163

504-586-1815 / Fax 504-586-9035

Keith Gourgues
 Region Manager

NORTHCOAST OIL COMPANY

610 E. Rutland St.
 Covington, LA 70433
 (985) 898-3577
 (985) 898-3585 FAX

Jack M. Thorson
Eric C. Broadbridge
J. Daryl Gambrell
Raymond W. Stephens

(832) 242-6000 (O)
 (713) 917-0493 (O)

(504) 931-7506 (C)
johnjurasin@jurasinoilgas.com

JURASIN OIL & GAS

9700 Richmond Ave., Suite # 124
 Houston, TX 77042-4821

JOHN M. JURASIN
 President

Cert. Pet. Geologist #4284
 Cert. Prof. Earth Scientist #1961

Collarini Energy Staffing

Full-Time and Temporary Personnel

Facilities • Drilling • Production • Reservoir Engineering
 Land and Legal • Geoscience • Information Technology •
 Health and Safety • Management • Supply Chain
 Accounting • Administrative Support

11111 Richmond Ave., Suite 126
 Houston, Texas 77082

832-251-0553



www.collarini.com

Collarini Associates

Reservoir Engineering
 Oil & Gas Property Evaluation
 3-D Seismic Interpretation
 Integrated Field Studies

832-251-0160
 504-887-7127

Houston
 New Orleans

NEW AVO MODEL TURNS HEADS!

[She Must Have Used **KINGDOM[®] 8.3!**]



Be the envy of your neighbors with **KINGDOM 8.3.**

New KINGDOM 1D Forward Modeling allows geoscientists to conduct advanced “What-If” analysis on pre- and post-stack data. And while the interface is intuitive enough for beginners, it is powerful enough for experts.

You can instantly change geologic properties such as P- and S-velocity, density, thickness, porosity, and Poisson’s Ratio. Interactively substitute fluids using the Biot-Gassmann method. Control the precise makeup of pore fluids by adjusting fluid properties such as salinity, gas gravity, GOR, and API gravity.

Best of all, it’s integrated in one executable, ensuring you never have to switch in and out of multiple applications to finish your workflow.

With KINGDOM 8.3, now every geoscientist can pursue a career in modeling!

See the full fall lineup from SMT, the global market leader for PC-based interpretation. View our webinar on What’s New In KINGDOM 8.3 at www.seismicmicro.com/smt-model7


Call your sales representative TODAY about “Introductory Pricing” on this new module.

Intuitive. Integrated. Interpretation.

USA +1 (713) 464-6188 **Canada** +1 (403) 303-3365 **Colombia** +57 (1) 618-0239

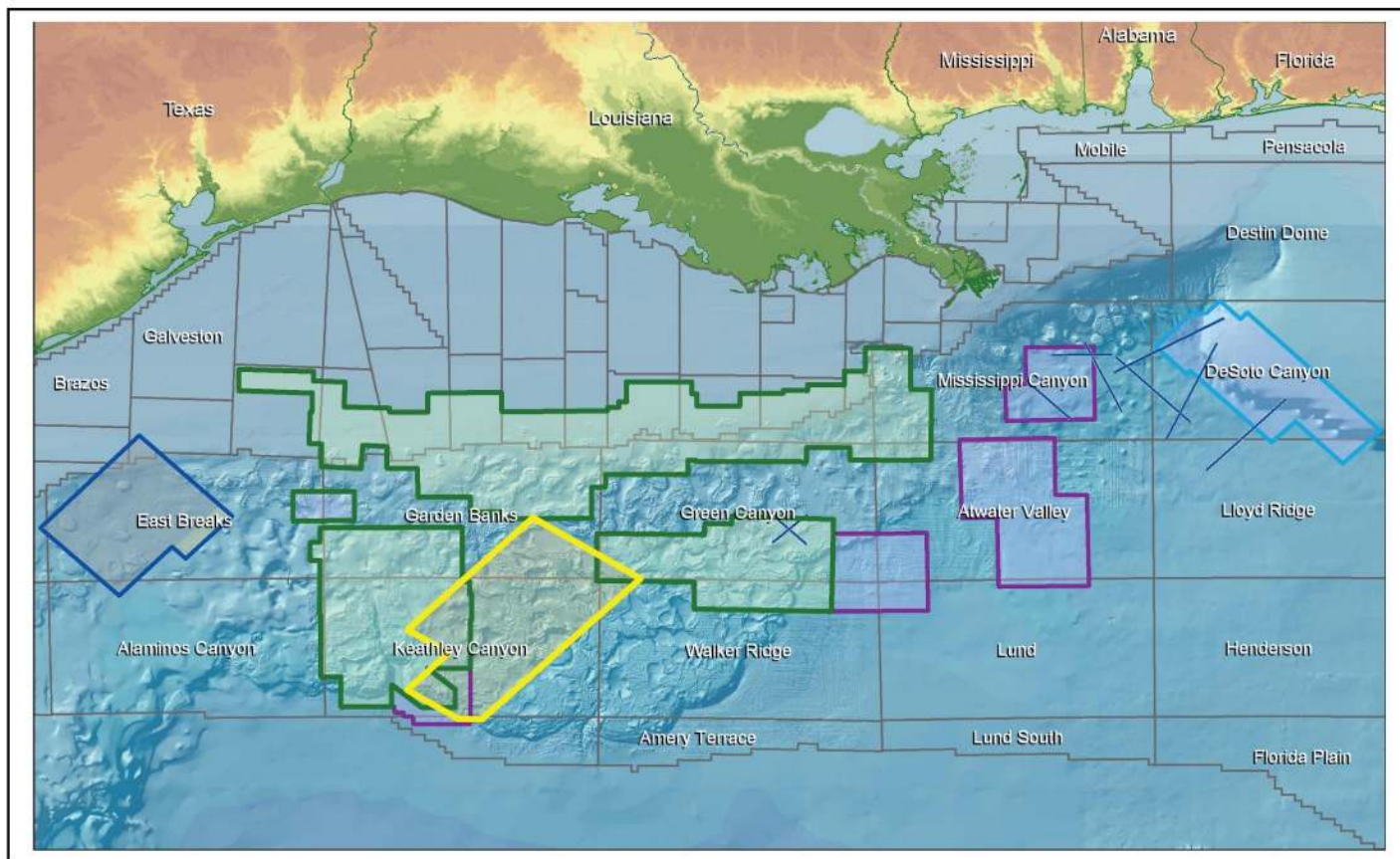
Russia +7 495 980 89 82 **Singapore** +65 6220 1089 **UK** +44 (0) 20 8240 6524



ANSYTHE Donald I. Andrews 504-887-3432 	D-O-R ENGINEERING, INC. 3-D and Geoscience Services P O Box 80812 Baton Rouge LA 70898
THE BOEBEL COMPANY Oil and Gas Investments 170 Broadway Street, Suite 321 New Orleans, LA 70118 (504) 866-4313	EDWARD B. PICOU, JR. Consulting Micropaleontologist - Retired 228 St. Charles Ave., Suite 1330 C New Orleans, LA 70130 Bus. (504) 529-5155 Res. (504) 282-3096
BOO-KER OIL & GAS CORP. Gray S. Parker 826 Union, Suite 300 New Orleans, LA 70112 Bus. (504) 581-2430 Fax (504) 566-4785	H. WARREN BELL Oil and Gas Exploration 2500 Tanglewilde, Suite 485 Houston, TX 77063-2126 Bus (713) 266-7297 Fax (713) 266-7298
C & R EXPLORATION, INC. Carlo C. Christina Lawrence G. Ringham	PHELPS GEOSCIENCE Onshore Gulf of Mexico Geology and Geophysics Prospect Generation and Evaluation Houston, TX jsfphelps@yahoo.com (281) 398-5208
C. R. RONDEAU Petroleum Geologist 119 W Southland Ave. Ironwood, MI 49938 Res. (906) 932-4692	RAFIDI OIL AND GAS, INC. Jaser N. Rafidi, President 4415 Shore Dr., Suite 202 Metairie, LA 70006 Bus. (504) 722-2942 Fax (504) 888-5539; Res. (504) 888-1661
CLASSEN EXPLORATION, INC. James S. Classen Looking for close in deals P.O. Box 140637 Boise, ID 83714 classenllc@msn.com Bus. (208) 854-1037 Fax (208) 854-1029	ROY C. WALTHER Petroleum Geologist 2421 Prancer Street New Orleans, LA 70131 Bus. (504) 392-8513 Res. (504) 392-9332
<i>This advertising space is available!</i> <i>Contact the NOGS office.</i>	TONY CAROLLO Consulting Geologist Unitization Geosteering Field Studies 1701 Peach Street Metairie, LA 70001 Bus. (504) 885-0004 Res. (504) 885-6829



Dr. Willis Conatser receives an Honorary Life Membership and a plaque for his serving the Board of Directors. Presenting the awards was William Whiting, President of NOGS during Dr. Conatser's service.



PGS Gulf Of Mexico Data Library

Challenging Times Require Imaginative Solutions - PGS Your Creative Business Partner

- Newly Reprocessed PSDM - Kirchhoff, Beam & WEM
- Wide-azimuth - Kirchhoff, Beam & WEM
- Narrow azimuth
- Proposed Wide Azimuth – Anisotropic Beam and RTM
- Narrow Azimuth Anisotropic Kirchhoff, Beam and WEM
in cooperation with TGS

Contact your local PGS representative for more information

Houston
Tel: +1 281 509 8000
Fax: +1 281 509 8500

Oslo
Tel: +47 67 52 6400
Fax: +47 67 52 6464

London
Tel: +44 1932 37 6000
Fax: +44 1932 37 6100

A Clearer Image
www.pgs.com



NEW ORLEANS GEOLOGICAL SOCIETY



810 Union Street, Suite 300
New Orleans, LA 70112-1430

WWW.NOGS.ORG

MARINE PROPERTIES, LLC BERKSHIRE EXPLORATION CO.

MONTE C. SHALETT, CPL, PRESIDENT

3030 Lausat Street
Metairie, LA 70001-5924

BUS. (504) 831-7779
FAX. (504) 831-8315

PCI

Paleo Control, Inc.

Houston, Texas
713-849-0044

Drilling Wells, Studies and Data Base

Loyd Tuttle

Frio, SE Texas

Bob Liska

Wilcox, S and SE Texas

Jim Thorpe

Miocene and Cam-Miogyp



SEE YOUR DATA IN A WHOLE NEW LIGHT!

Take the pressure out of exploration
and drilling by seeing what you
are going to encounter.



eSeis

www.e-seis.com
713.531.1447

- Lithology & Fluids
- Depositional Facies
- Pore Pressure from V & Q
- Well Planning Consultation

