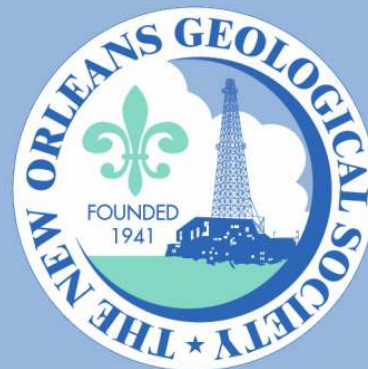


# NOGS LOG



November 2009

Volume 50, Number 5

## Upcoming Events and Activities

---

### November 2 - NOGS Luncheon

\*\*\* At the Holiday Inn Downtown Superdome \*\*\*

\$2.00 validated parking in hotel garage

Guest Speaker Jeffrey A. Spencer, Blackpool Energy, will present "From Brine Wells to Giant Oil Fields: The United States Petroleum Industry of the Nineteenth Century."

(See page 7 for Abstract and Biography)

HOLIDAY INN DOWNTOWN SUPERDOME

ADMISSION:

Check with concierge or  
front desk for location

Lunch served at 11:30am

**with reservation .....** \$30.00

**without reservation .....** \$35.00

Student Member with reservation .... Free

### November 10 - SGS Technical Symposium and API Joint Industry Luncheon

"Exploration Offshore USA OCS: Opening the Next Frontier?" In New Orleans.

See announcement on page 26.

### December 4 - NOGA-NOGS Christmas Holiday Party

At Metairie Country Club. More details in future *LOG* issues.

### December 6-8 - 29th Annual GCSSEPM Foundation Bob F. Perkins Research Conference

"Unconventional Resources: Making the Unconventional Conventional."

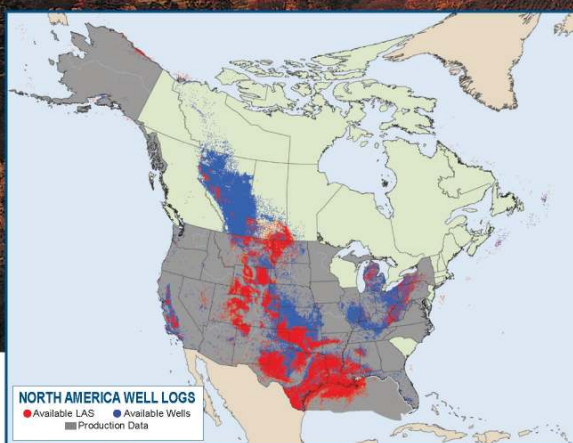
In Houston. See announcement on page 8.

### December 7 - NOGS Luncheon

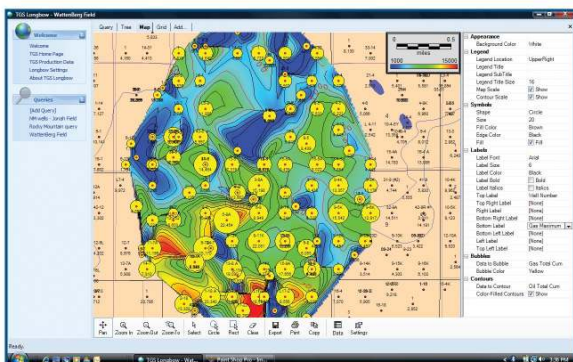
Guest Speakers Dr. M. Roy Gani & Dr. Nahid DS Gani, Department of Environmental Sciences at University of New Orleans, will present:

"Blue Nile Incision, Ethiopian Plateau Uplift, and Human Evolution."

# You Trust Our Well Logs.



States with Production Data



Longbow: Production Cumulatives

## Now Have the Same Confidence with Production Data.

For our production database, we applied the same dedication to data quality, coverage completeness and ongoing updates that helped grow our well log collection into the industry's largest and most trusted. Working with users across disciplines, we designed our collection, delivery mechanics and the LONGBOW query and export tool to create an alternative that provides continuity and increased capabilities: all at an extremely competitive price.

For more information, contact your TGS account representative, or call toll free 1 (888) LOG-LINE.



Geophysical  
Products



Geological  
Products



Imaging  
Services

[www.tgsnopec.com](http://www.tgsnopec.com)

NORWAY +47 66 76 99 00 | USA +1 713 860 2100 | UK +44 (0) 1234 272122 | AUSTRALIA +61 8 9480 0000  
© TGS-NOPEC Geophysical Company. All rights reserved.

**NOGS Office**

Office Manager: Annette Hudson

Office Hours: 8:30am – 3:30pm on Monday-Wednesday-Friday

Tel: 504-561-8980 □ Fax: 504-561-8988

E-mail: info@nogs.org □ Website: www.nogs.org

The office is located at Suite 300, 810 Union Street, New Orleans, LA 70112.

Correspondence and all luncheon reservations should be sent to the above address.

Sent to press on October 12, 2009.

**BOARD OF DIRECTORS**

		<b>Company</b>	<b>Phone</b>	<b>E-mail</b>
President	Tom Klekamp	Amber Resources LLC	985-845-4046	klekamp@bellsouth.net
Vice President	Bob Hafner	ENI Petroleum	504-593-7605	Robert.Hafner@enipetroleum.com
Secretary	Jennifer Connolly	Shell	504-728-6411	jennifer.connolly@shell.com
Treasurer	Chuck Holman	ENI	504-593-7869	chuck.holman@enipetroleum.com
President-Elect	David E. Reiter	ENI	504-593-7606	david.reiter@enipetroleum.com
Editor	Elizabeth Petro	MMS	504-736-2866	nogseditor@gmail.com
Director 2010	Michael M. Ledet		504-394-9636	mikeledet@cox.net
Director 2011	Scott A. Wainwright	Bret Exploration Co Inc	504-889-2700	scott_wainwright@hotmail.com
Director 2012	Arthur H. Johnson	Hydrate Energy International	504-464-6208	artjohnson51@hotmail.com

**COMMITTEE**

	<b>Chairperson</b>			
AAPG Delegates	Dave Balcer	Chevron	985-773-6725	dbalcer@Chevron.com
AAPG Student Chapter	Bobby Cosentino	Tulane University	504-495-9475	rcosenti@tulane.edu
AAPG Student Chapter	Bryan Rogers	UNO	504-736-2772	thgem@gmail.com
Advertising-Log	Andrea Stancin	Shell	504-728-0431	Andrea.a.stancin@shell.com
Auditing	James Swaney	MMS	504-736-2677	james.swaney@mms.gov
Awards	Michael N. Fein	W & T Offshore	504-210-8148	mikef@wtoffshore.com
Ballot	Chuck Holman	ENI	504-593-7869	chuck.holman@enipetroleum.com
Best Paper	David E. Reiter	ENI	504-593-7606	david.reiter@enipetroleum.com
Continuing Education	TBA			
Employment Counseling	TBA			
Entertainment	David E. Reiter	ENI	504-593-7606	david.reiter@enipetroleum.com
Environmental	Daisy Pate	Eustis Geotechnical Eng.	504-613-5798	dpate@eustiseng.com
External Affairs	Michael A. Fogarty	Sylvan Energy, LLC	603-523-4808	mike.a.fogarty@gmail.com
Field Trip	David Garner	Shell	504-728-6154	David.Garner@shell.com
Finance and Investment	Chuck Holman	ENI	504-593-7869	chuck.holman@enipetroleum.com
Historical	Edward B. Picou, Jr.	Consultant	504-529-5155	epicou@bellsouth.net
Membership/Directory	Penne Rappold	Shell	504-728-4338	prappold@gmail.com
New Geoscientists (NGNO)	TBA			
Nominating	Willis E. Conatser		504-466-9749	weconatser@aol.com
Non-Technical Education	Duncan Goldthwaite	Consultant	504-887-4377	DGldthwt@aol.com
Office Operations	William M. Whiting	Consultant	504-947-8495	bootscom@aol.com
Publications Sales	Edward B. Picou, Jr.	Consultant	504-529-5155	epicou@bellsouth.net
Photography	J. David Cope	Taylor Energy Co LLC	504-589-0419	dcope@taylorenergy.com
School Outreach	Thomas C. Bergeon	Century Exploration	504-832-3772	Tom.bergeon@centuryx.com
Scouting	Carol Rooney	Consultant Geologist	504-835-1909	carolbrooney@aol.com
Technical Projects	TBA			
Ad Hoc Committee on University Support	Michael J. Gallagher	Eni Petroleum	504-593-7480	Michael.Gallagher@enipetroleum.com

**NOGS LOG STAFF**

Editor	Elizabeth Petro	MMS	504-736-2866	nogseditor@gmail.com
Editor-Elect	Fran Wiseman	MMS	504-736-2912	frances.wiseman@mms.gov
Auxiliary	Susie Baker	NOGA	504-466-4483	abaker1006@aol.com
Info Tidbits	Elizabeth Petro	MMS	504-736-2866	nogseditor@gmail.com
Drill Bits	TBA			
Webmaster	Edward B. Picou, Jr.	Consultant	504-529-5155	epicou@bellsouth.net
Layout	Jannette Sturm-Mexic			

**NOGS AUXILIARY**

<b>Officers</b>		<b>Phone</b>	<b>Directors</b>	<b>Year</b>	<b>Phone</b>
President	Linda Peirce	504-393-7365	Beverly Christina	2009-10	504-835-2383
1st Vice-President	Jean Jones	504-738-8091	Peggy Rogers	2009-10	504-392-6323
2nd Vice-President	Beverly Kastler	504-286-0879	Judy Sabate'	2009-10	504-861-3179
Secretary	Dolores Murphy	504-393-0878	Peggy Campbell	2009-11	504-283-2505
Treasurer	Judy Lemarie'	504-393-8659	Ruth Grimes	2009-11	504-392-8103
Parliamentarian	Carol Andrews	504-887-3432	Gerry Waguespack	2009-11	504-737-0532
Member-at-Large	Susie Baker	504-466-4483			

--- NOGS Contact List continued on page 10 ---



# SYNERGY ENERGY



**Weatherford®**  
LABORATORIES

Your success increasingly depends upon a better understanding of your reservoir. At Weatherford Laboratories, we provide a single source for comprehensive laboratory analyses, creating a synergy previously unknown in laboratory services. This single source includes distinguished geologists, geochemists, analysts, engineers, technicians and software developers, 38 worldwide laboratories, and the broadest portfolio of services for acquiring and interpreting data from physical samples. The end result is an unsurpassed combination of intellectual capital and technical resources — all working together to help you enhance development planning and reduce reservoir uncertainty.

Put our union of Synergy and Energy to work for you.

**[Weatherfordlabs.com](http://Weatherfordlabs.com)**

**HIGHER STANDARDS**

**NORTH AMERICA**  
[NAInquiries@weatherfordlabs.com](mailto:NAInquiries@weatherfordlabs.com)

**EUROPE**  
[EUInquiries@weatherfordlabs.com](mailto:EUInquiries@weatherfordlabs.com)

**LATIN AMERICA**  
[LAInquiries@weatherfordlabs.com](mailto:LAInquiries@weatherfordlabs.com)

**MIDDLE EAST/NORTH AFRICA**  
[MENAIquiries@weatherfordlabs.com](mailto:MENAIquiries@weatherfordlabs.com)

**ASIA PACIFIC**  
[APIquiries@weatherfordlabs.com](mailto:APIquiries@weatherfordlabs.com)





## *from the President*

The 13th Deepwater Technical Symposium was a huge success. Helping the Symposium were student volunteers, Mary Ellison (UNO) and Scott Wessels (UNO). In addition Scott had a poster exhibit in the hallway. Registration---a huge job---was managed by Annette Hudson, Carol St. Germain, Bill Whiting and UNO's Mary Ellison. Fran Wiseman (MMS) proved immensely helpful with the photography, faithfully recording all the names in the group photos. Josh Etkind (SPE, Shell) was the other photographer.

The GCAGS 2009 Convention, hosted by the Shreveport Geological Society had a registration of over 1000. Sunday, before the regular sessions was dedicated to the Haynesville Shale, with over 400 crowding the auditorium. Convention Chairman Ralph Richardson and his staff deserve a note of gratitude for their excellent technical program, luncheons, trips and short courses. Arthur Johnson received the Distinguished Service Award and Tulane's Dr. Steve Nelson received the Outstanding Educator Award. San Antonio hosts in 2010 and 2012 will probably be held in Vera Cruz, Mexico. NOGS will host the GCAGS in 2013.

JoAnn Burke of the Lake Pontchartrain Basin Foundation sent the results from the September 19th Beach Sweep. The 2,053 volunteers covered 116 miles of coastline and drainageways. 960 bags of trash were filled which, at 17 pounds per bag, totaled over eight tons of trash littering our coast and clogging our bayous and drainages. I can personally attest to the bayou debris as my wife and I snag cans, plastic bottles and fast food wrappers from the bayou behind our home. It isn't all trash---we are frequently rewarded with golf balls, which, along with litter, accumulate as a lag deposit following heavy rains. The golf balls seem to originate on Beau Chene's Magnolia Course #12, a par three with the steep-sided, snake-infested bayou just beneath the tee box.

This November 10th you can attend the Southeastern Geophysical Society's technical symposium and follow up to hear University of Houston's Dr. Michael Economides at the API Joint Luncheon. I heard Dr. Economides several years ago and I can guarantee a talk, which will be informative as well as entertaining. The SGS Symposium focuses on the areas of the United States OCS that may be open to exploration in the near future. New data is being shot over areas never before available for leasing. Offshore Virginia has been opened for potential leasing---what are the next steps? Will the lifting of other OCS areas result in drilling, and when? What is the potential for hydrocarbon accumulations? What will the new President and Congress do? Look for more information in this issue.

Think there isn't a Good Ole Girls' network in the oil patch? Think again. This past week I had the pleasure of meeting Dana Douglas, a young attorney with Liskow & Lewis in New Orleans, who joined us at the API Leadership Luncheon. Dana announced the new chapter of the Women's Energy Network here in Southeast Louisiana. Founded in 1994, the Women's Energy Network (WEN) is a non-profit group that brings together professional women of achievement in the energy industry and fosters their advancement by creating a network of energy contacts. WEN members practice in various areas including management, development, technology, law, operations, accounting, finance, and marketing. WEN members share matters of importance to the energy industry at monthly lunch programs and special events, and welcome those with the common interest of promoting women in the energy industry. The group held a membership drive at Irvin Mayfield's Jazz Playhouse on Thursday, October 8, 2009 at 6pm, located in the Royal Sonesta Hotel in New Orleans. You may RSVP for the luncheon at [www.wenhouston.org](http://www.wenhouston.org) or contact Dana at [dmdouglas@Liskow.com](mailto:dmdouglas@Liskow.com).

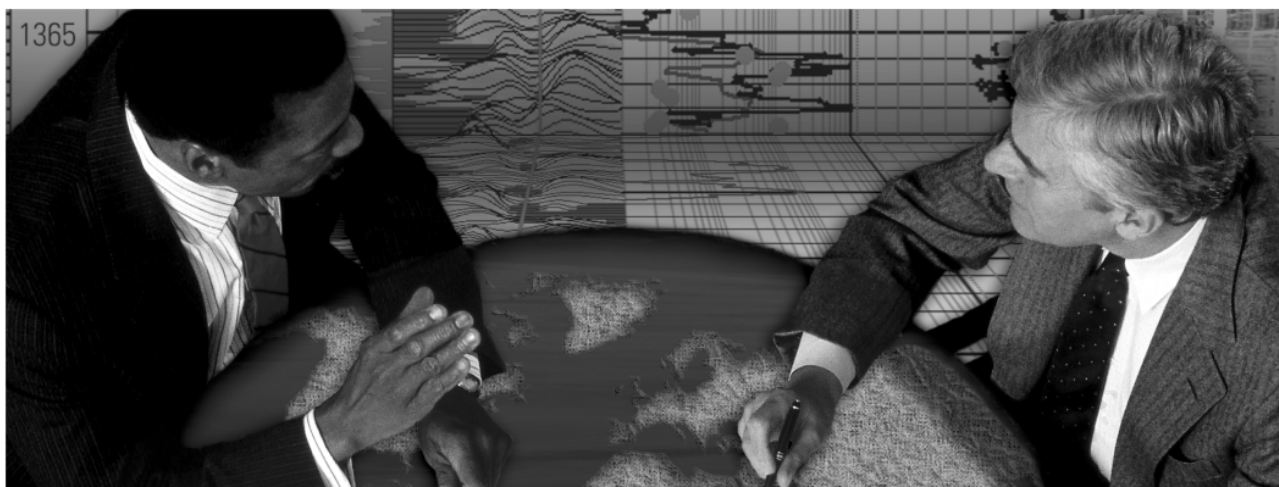
Jennifer Connolly, Art Johnson and I attended the September 17th Core Element Symposium at UNO's Lindy Boggs Center. Personally, this was a real eye opener. Fifty years ago Sputnik and the Luna landings shocked the U.S. into the space race along with a new impetus on science, technology and engineering. We Americans would become tops in these fields. Sadly, students in the U.S. now finish 19th in math and 14th in science in a ranking of 31 countries! Of the 30 fast-track engineering, medical and technology occupations, 16 will require substantial math and science preparation. The situation is particularly acute in our local petroleum industry as tech-savvy aging Baby Boomers are retiring and there is a gap in filling those jobs. While the situation appears gloomy there is hope and some progress towards reversing this trend. In 2007 Shell Oil and Orleans Parish Public Schools partnered to launch "Core Element" to enhance the teaching of science, technology, engineering and math (STEM). Teachers are asking help from local business and industry to guide and finance the initiative. Shell has been the primary funder, backed by partnership with the Smithsonian Institute. Core Element improves the teaching of STEM subjects through (a) teacher training, (b) equipment and materials, and (c) teacher mentoring in the classroom. Locally, about 16,000 students have been impacted by in the past two years. For more information on how you can help go to [www.gnostem.org](http://www.gnostem.org).

*Tom*

# energyinformation

Business solutions for  
the oil & gas industry

**Schlumberger formation evaluation solutions deliver the answers you need.** Our extensive portfolio of services, leading-edge technology, and advanced conveyance options keep you in communication with your well throughout its life cycle.



*With formation evaluation technologies from Schlumberger, you can make the best decisions for optimized performance in every well.*

## **The formation evaluation one-stop shop**

Whether you are logging in open hole or behind the casing, our broad selection of services ensures the best solution for acquiring formation evaluation data. Tools can be conveyed while drilling or on wireline or pipe. We offer many specialized evaluation capabilities, from density, neutron porosity, and resistivity to borehole imaging, nuclear magnetic resonance logging, borehole seismic, formation pressure testing, and fluid sampling. Advanced triple-combo logging options include the VISION\* formation evaluation and imaging-while-drilling services. Coupled with Pulse\* telemetry and surveying services, the VISION family provides real-time formation evaluation data and enables optimum well placement.

High-speed wireline measurements are recorded with the Platform Express\* logging services. The SlimXtreme\* platform is designed for high-pressure, high-temperature environments and the ABC\* Analysis Behind Casing services are used after casing is set.

Expert interpretation from the engineers and geoscientists of Schlumberger Data & Consulting Services brings all your data together to give you the answers you need. This expertise is available after logging is complete or as real-time two-way wellsite communication through the InterACT\* real-time monitoring and data delivery system.

Schlumberger delivers leading-edge technology and interpretation expertise for all your formation evaluation needs, so every well benefits from the very best information.

**For more information visit**  
**[www.slb.com/oilfield/formation\\_evaluation/](http://www.slb.com/oilfield/formation_evaluation/)**

\*Mark of Schlumberger

04-FE-114

# Schlumberger

# November 2 NOGS Luncheon Presentation

\*\*\* at the Holiday Inn Downtown Superdome \*\*\*

## From Brine Wells to Giant Oil Fields: The United States Petroleum Industry of the Nineteenth Century

presented by

**Jeff A. Spencer**

Black Pool Energy and the Petroleum History Institute\*

### ABSTRACT

August 27, 2009 marked the 150th anniversary of the Drake well in Titusville, Pennsylvania, the "first successful commercial oil well in the United States". Although "who was first" claims exist from several states, the importance of the Drake well is the rapid development and financial investment that occurred in the petroleum industry soon after this discovery. The Drake well also led to other "firsts." Approximately eight miles from the Drake well, the first great flowing well in the United States was completed in September, 1861. The Empire well on the Funk Farm initially flowed 3,000 barrels of oil per day. The first giant oil field in the United States was discovered in 1871 at Bradford (EUR 700 MMBO), straddling the Pennsylvania-New York state line.

For many years oil had been collected from seeps, hand-dug pits, and brine wells. Over fifty years before the drilling of the famous 1859 Drake well, the Ruffner brothers operated a salt works near an eastern tributary of the Ohio River in what is now West Virginia. Some of the byproduct oil was collected, though most of the oil was diverted into the Kanawha River giving the river its nickname, "Old Greasy." Eight years later, oil was discovered, produced, and marketed from wells dug in

southeastern Ohio. In 1814, Silas Thorla and Robert McKee operated a salt works in what is now Ohio's Noble County. They drilled for salt brine using the spring-pole drilling method and a hollow sycamore log as surface casing. The associated oil was initially considered a nuisance, but was later collected, bottled, and sold as a medicine for rheumatism, sprains, and bruises. In 1860, one of the first oil fields in Ohio was discovered approximately ten miles southeast of the Thorla-McKee well. The discovery of the Macksburg oil field helped ignite an oil boom in southeastern Ohio. Hundreds of wooden derricks sprang up and refineries were built along the Ohio River.

Oil was discovered in northwestern Ohio near the city of Lima in 1885, a year after natural gas was discovered near the town of Findlay. The discovery of the giant Lima-Indiana oil field (EUR 500 MMBO) set off the "oil boom of northwest Ohio", a period of land speculation and rapid oil field development that lasted over 20 years. As the field was extended to the south, the nation's first "over water" wells were drilled in Grand Lake St. Marys, then the largest man-made lake in the world. John D.

--- continued on page 30 ---

### BIOGRAPHY

**Jeff Spencer** is a geologist/partner with Black Pool Energy, LP in Houston, Texas. He received a BS in Geology from the University of Cincinnati and a MS in Earth Sciences from the University of New Orleans. Prior to joining Black Pool, he was employed by Samson (2005), Osprey Petroleum (2000-2005), Unocal (1998-2000), and Amoco (1981-1998). Jeff has spent most of his career exploring the Gulf Coast onshore and Gulf of Mexico shelf. He has authored or co-authored several papers on

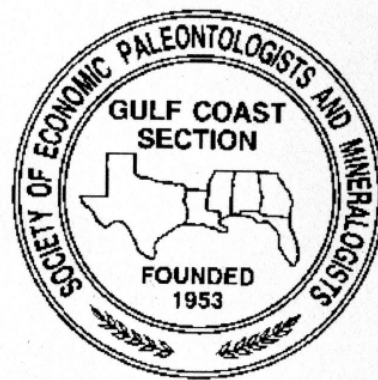
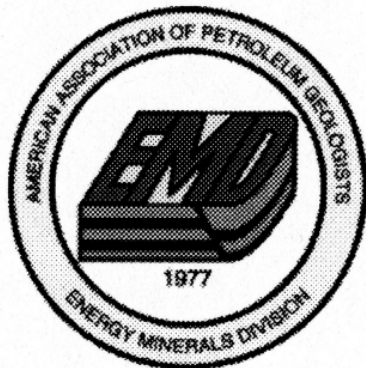
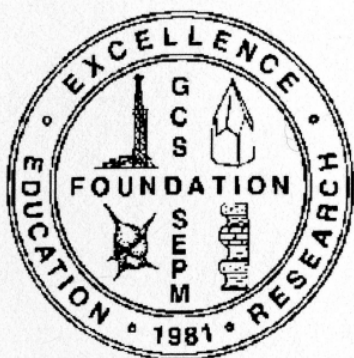
oil field history, with emphasis on the pictorial history of early oil fields and famous oil and gas wells. He is co-author of the book, *Ohio Oil and Gas* and a collector of oil field-related postcards and postal covers. Jeff is an AAPG certified petroleum geologist and a member of HGS, SIPES, NOGS, and OGS (Ohio Geological Society). He currently serves as first vice-president of the Petroleum History Institute.

**THE LUNCHEON RESERVATION DEADLINE IS OCTOBER 28 - CONTACT THE NOGS OFFICE**

### "And Looking Ahead..."

The next NOGS Luncheon will be December 7. Guest Speakers Dr. M. Roy Gani & Dr. Nahid DS Gani, Department of Environmental Sciences at University of New Orleans, will present: "Blue Nile Incision, Ethiopian Plateau Uplift, and Human Evolution." Contact the NOGS office to make your reservation.





# **UNCONVENTIONAL RESOURCES:**

## **Making the Unconventional Conventional**

**29<sup>th</sup> Annual GCSSEPM Foundation Bob F. Perkins  
Research Conference**

**Houston, Texas, December 6-8, 2009  
Houston Marriott Westchase Hotel**

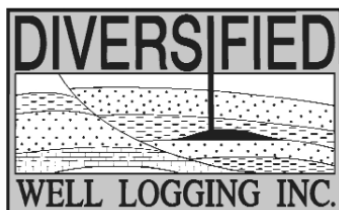
**Latest information and registration  
are available on our website:**

**[www.gcssepm.org](http://www.gcssepm.org)**



## Relax. We'll keep you posted.

Your rig is offshore and you are not. How do you know what's going on so many miles away? You know because we tell you. Daily or even hourly, Diversified Well Logging's engineers update you on the status of your rig. We are your eyes and ears, especially when it comes to deep water or high pressure, high temperature areas. Diversified offers 24-hour surface evaluation. We provide secure and customized real-time data communication, in-house research and development and 24/7 on-call support for our equipment and our engineers. Whether you have a 10-day job or 110-day job, we provide the specialized attention you require. So, relax. We're with you every step of the way.



*Serving the Gulf Coast for over 40 years.*

New Orleans • Lafayette • Houston • Dallas • Corpus

800.280.2096

711 West 10th Street • Reserve, LA 70084 • Phone: 985.536.4143 • Fax: 985.536.2427  
sales@dwl-usa.com



**FULLY INTEGRATED AND  
CENTRALIZED BIOSTRATIGRAPHIC  
SERVICES**

▼ *Single-source biostratigraphic databases  
for increased accuracy and consistency*

▼ *Integrated foram / nannofossil analyses*

▼ *Complete wellsite paleo services*

▼ *In-house sample preparation  
lab for quality-monitoring  
and efficiency*

▼ *Sample pick-up service*

6619 Fleur de Lis Drive  
New Orleans, LA 70124  
(504) 488-3711

[www.paleodata.com](http://www.paleodata.com)

**MCMORAN EXPLORATION CO.**



**MCMORAN  
OIL & GAS**

[www.mcmoran.com](http://www.mcmoran.com)

NYSE: MMR

16676 Northchase Dr.  
Houston, TX 77060  
(281) 539-7600  
Fax: (281) 539-7655

1615 Poydras  
New Orleans, LA 70112  
(504) 582-4000  
Fax: (504) 582-4155

110 Travis St., Suite 140  
Lafayette, LA 70503  
(337) 735-9150  
Fax: (337) 735-9151

**NOGS CONTACT LIST**

--- continued from page 3 ---

**MEMORIAL FOUNDATION**

**BOARD OF TRUSTEES**

2009-10 Chairman	William M. Whiting
2009-10 Secretary	Tom Klekamp
2009-10 Trustee	Michael C. Fauquier
2009-10 Trustee	J. David Cope
2010-11 Trustee	Timothy J. Piwowar
2010-11 Trustee	Michael N. Fein
2011-12 Trustee	Monte Shalett
2011-12 Trustee	James Swaney

Company
Consultant
Amber Resources LLC
W & T Offshore
Ankor Energy
Shell
W & T Offshore
Berkshire Exploration Co
MMS

Phone
504-947-8495
985-845-4046
504-210-8192
504-596-3672
504-728-4066
504-210-8148
504-831-7779
504-736-2677

E-mail
bootscon@aol.com
klekamp@bellsouth.net
mfauquier@wtoffshore.inc
dcope@ankorenergy.com
tim.piwowar@shell.com
mikef@wtoffshore.com
mshalett@gmail.net
james.swaney@mms.gov

**AAPG DELEGATES**

**Term Ends**

2011	Tom Hudson
2011	Edward B. Picou, Jr.
2011a)	Brenda Reilly
2011a)	Robert Rooney
2012	William Whiting
2012	Jim Zotkiewicz
2012 a)	David E. Balcer
2012 a)	Richard J. Stancliffe

Chevron
Consultant
Energy Partners Ltd.
Century Exploration
Consultant
Zot Oil & Gas
Chevron
Shell Expl & Prod Co.

985-773-7163
504-529-5155
504-799-4811
504-832-3777
504-947-8495
504-831-4694
985-773-6725
504-728-7553

tom.hudson@chevron.com
epicou@bellsouth.net
breilly@eplweb.com
Robert.rooney@centuryx.com
bootscon@aol.com
jimzot38@zotoil.com
dbalcer@Chevron.com
richard.stancliffe@shell.com

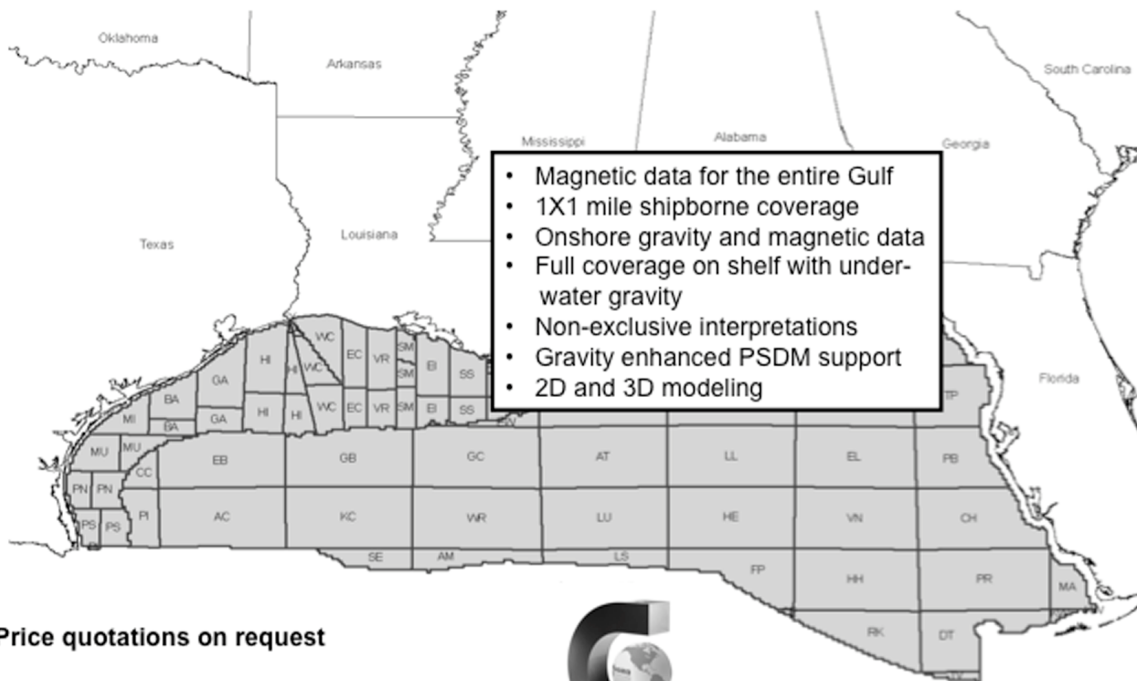




# Fugro Gravity & Magnetic Services

LAND • AIRBORNE • UNDERWATER • SHIPBORNE

The most complete coverage Onshore and Offshore Gulf of Mexico



Price quotations on request

Fugro Gravity & Magnetic Services  
www.Fugro-GravMag.com  
Tel: 713-369-6123



Gravity Inspired. Magnetically Inclined.

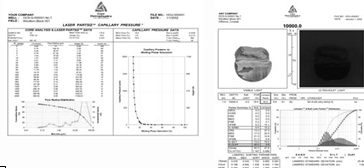


## Sidewall Core Specialists

Experts in Small  
Sample, Laminated  
and Shaly Sand  
Analysis

### Laboratory Services:

- Core / Log Integration
- Laser Enhanced Permeability
- Porosity
- Fluid Saturations
- Measured Descriptions
- Critical Water
- Capillary Pressure Simulation
- UV Photography /Digital Images
- Lamination Characterization
- NMR Measurements
- Petrology

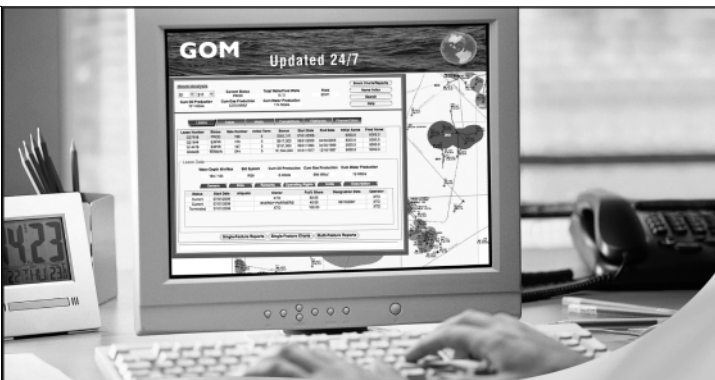


Core Lab has made many improvements to sidewall core testing which have had a positive synergistic effect on overall data quality.

Laser particle size analysis, Lamination specific analysis, UV-Visible Spectroscopy, lamination classification, Photospec summary reports, digital data bases via our website and capillary pressure simulation are all innovations introduced by Core Lab to help our clients obtain maximum benefit from their samples and analyses.



Core Laboratories 504-733-6583



**GOM**  
smart

An ocean  
of GOM DATA...  
updated for you 24/7

Introducing GOMsmart. Web-based GOM data with real-time updates. No special software or training. Access data via intuitive interface or customizable maps.

- Wells: header, production, tests, 250,000+ logs
- Production Data: historical and current
- Paleo Data: access to 100,000+ observations
- Affordable: monthly and annual subscriptions

Visit [www.GOMsmart.com](http://www.GOMsmart.com) for your FREE trial.



## At Fairfield the future is now.

Our updated seismic vessels equipped with Fairfield's Z700 ocean bottom node systems will be fully operational in the Gulf of Mexico during 2009. By utilizing longer offsets and the continuous recording capability of Z700, Fairfield will be able to image data to unprecedented depths of over 75,000 feet.

By the end of 2009 our entire database will have been processed using Curved Ray Migration and an additional 500 blocks of depth data will have been added.



The Future begins today. Don't be left in the past.

SEISMIC  
SYSTEMS

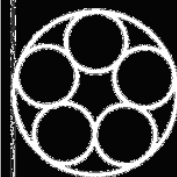
DATA  
ACQUISITION

DATA  
PROCESSING

DATA  
LICENSING

281 273 7500

[fairfield.com](http://fairfield.com)



Fairfield  
INDUSTRIES



## Are You Interested in Global Climate Change?

H. Leighton Steward, long-time NOGS member and former CEO of the Louisiana Land and Exploration Company, has published an excellent book that lays out all of the “science” that bears on the issue. However, he makes no judgments. The text avoids technical terms as much as possible and has 39 excellent figures, plus a glossary and references. His book was reviewed in the October 2008 AAPG **EXPLORER** by Lee C. Gerhard.

Book copies may be ordered from:

[www.authorhouse.com](http://www.authorhouse.com) or 1-888-519-5121

Price: \$19.95 for a grayscale (B&W) version with soft cover, which is the default version if you order online. The color version is much easier to decipher. Best to phone and specify the color version, which is \$25.00, plus shipping and handling.

---

## Gulf Coast Association of Geological Societies *TRANSACTIONS*

Now available on a single DVD! This disk includes a fully searchable archive of the Transactions from the first meeting in 1951 through the recent conventions. It replaces the set of CDs that were previously available, updates through the more recent meetings (the CDs covered 1951 through 2003) and utilizes current search software. The DVD is available through the GCAGS Bookstore at the Bureau of Economic Geology or through AAPG-Datapages – purchase and contact information below.

The purchase price of the DVD is \$250.00, but for holders of the old CD set, a major discount is available if the DVD is purchased through Datapages (note – special discount NOT available through the Bureau of Economic Geology). If you send in a 1998 or 2001 Master Disc, your cost for the DVD is \$75.00. If you had the latest version of the CD set, send in the 2003 Master Disc and the DVD is free!

Order from GCAGS Bookstore:

Visit the BEG Bookstore web site for order forms and instructions at  
<http://www.beg.utexas.edu/mainweb/publications/pubs-toorder.htm>

Order from AAPG-Datapages:

e-mail - [aapgdata@aapg.org](mailto:aapgdata@aapg.org)  
 phone - (918) 560-9423  
 fax - (918) 560-9418  
 mail - AAPG/Datapages, 1444 South Boulder Ave., Tulsa, OK 74119  
           or  
           P.O. Box 979, Tulsa, OK 74101





## Eni Petroleum

1250 Poydras Street  
Suite 2000  
New Orleans, LA 70113  
Tel: (504) 593-7000  
Fax: (504) 593-7745

1201 Louisiana Street  
Suite 3500  
Houston, TX 77002  
Tel: (713) 393-6100  
Fax: (713) 393-6205



**Shell has worked in partnership  
with the NOGS for many years, and  
is proud to count the society among  
its closest business associates.**

The New Orleans Geological Society was organized in 1941 to foster scientific research and advance the science of geology. Particular emphasis is laid on the exploration for and production of petroleum and natural gas. Related objectives include encouraging the adoption of improved methods of exploration, disseminating pertinent geological and technological data, and maintaining a high standard of professional conduct among its members.

[www.shell.com/us.sepc](http://www.shell.com/us.sepc)

# SEI®

## Seismic Exchange, Inc.

**Strategic Speculative Surveys  
Geophysical Data Marketing & Management**

**Your  
Full Service  
National  
Seismic Data  
Marketing Firm**

New Orleans  
Dallas  
Houston  
Denver  
Oklahoma City  
Corpus Christi  
Tulsa

201 St. Charles Avenue, Suite 4300, New Orleans, Louisiana 70170-4300  
Telephone 504.581.7153 Fax 504.581.9591  
[www.seismicexchange.com](http://www.seismicexchange.com)



# AAPG 2010 ANNUAL CONVENTION & EXHIBITION



## UNMASKING THE POTENTIAL OF EXPLORATION & PRODUCTION

11-14 April | New Orleans, LA  
Ernest N. Morial Convention Center

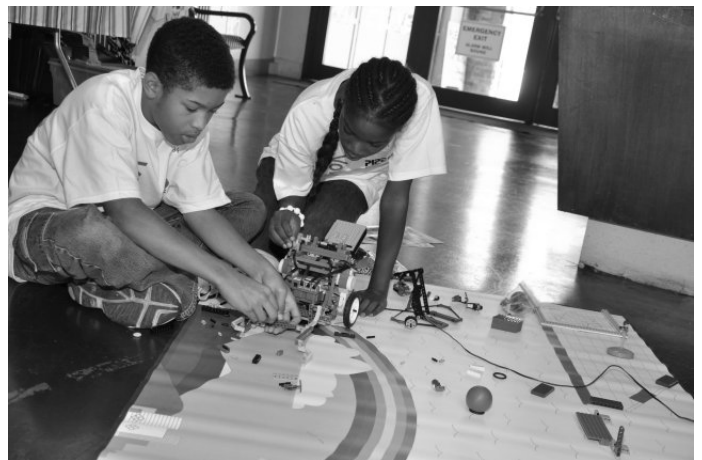
**Registration  
opens December  
2009**

[www.AAPG.org/NewOrleans](http://www.AAPG.org/NewOrleans)

## Super Science Saturday









## Take a look at the *future* of **MARINE SEISMIC**



www.sbexp.com  
www.seabed.no

RAISING  
THE **STANDARD**



- Autonomous 4C nodes rated to 3000 m
- Acoustic Communication/Data QC
- Best sensor orientation in the market
- Highest quality coupling
- Sub-meter positioning available



**Dubai**  
T: +971 4 4271700

**Houston**  
T: +1 281 556 1666

**Oslo**  
T: +47 2240 2700

**Trondheim**  
T: +47 7 3879500

**Singapore**  
T: +65 9180 2605



100 Northpark Blvd.  
Covington, LA 70433

(985) 773-6000

*"Serving the Oil & Gas Industry Since 1983"*

Geological,  
Geophysical &  
Land Drafting

Anthony Catalanotto

*President*

Stefani Kelone

*Drafting and Design*



**Geo-Draft, Inc.**

*A Professional Drafting & Graphics Firm*

3349 Ridgelake Drive □ Suite 202 □ Metairie, LA □ 70002

Office: (504) 836-2882 Fax: (504) 836-2877

geodraft@bellsouth.net



**LaBay**  
Exploration Co., L.L.C.

111 Veterans Memorial Blvd.,  
Suite 1550  
Metairie, Louisiana 70005

www.labayexploration.com

Office (504) 371-5967  
Fax (504) 371-5969

*This advertising space is  
available! Contact the  
NOGS office.*



## Celebrate with the New Orleans Geological Society An Evening with “America’s Greatest Generation” at the National World War II Museum

**Tuesday, April 13, 2010 from 7:00 to 10:00 p.m.**

- \* A truly unique museum covering D-Day and the other amphibious invasions of World War II. It honors the more than one million Americans who took part in this global conflict. Hear the stories of the men and women who made the invasions in Europe, Africa and the Pacific theaters successful. There are full- and scaled-sized dioramas of battlefield conditions, plus restored aircraft, amphibious landing craft, and mechanized armor units that played decisive roles in the invasions.
- \* Enjoy a memorable and relaxed evening with your friends and colleagues
- \* Open bar social
- \* Fabulous Southern buffet dinner catered by world-renowned Chef John Besh
- \* Access to all the Museum’s exhibit areas for touring at your leisure.
- \* For more information about the Museum and its various amenities, please visit [www.nationalww2museum.org](http://www.nationalww2museum.org)
- \* Round-trip bus transportation will be provided from the AAPG Convention Headquarters Hotel to the Museum and will be available 6:15 to 10:45 p.m.
- \* Cost of admission: \$50 per person

**An Evening with "America's Greatest Generation" will be a *great* event.**

You or your company can be recognized as a sponsor.


Go to


<http://www.aapg.org/neworleans/documents/NOSponsorBrochure.pdf>

or contact

Robert Rooney at (504) 832-3777 — [robert.rooney@centuryx.com](mailto:robert.rooney@centuryx.com)  
or Al Baker at (504) 836-2710 — [ABaker1006@aol.com](mailto:ABaker1006@aol.com)

# A Company that Shines

 Geophysical Products

 Geological Products

 Imaging Services



TGS has been providing best-in-class multi-client data and services to successful E&P companies for over a quarter century. Our geophysical and geological data products are distributed around the globe and include one of the youngest and best targeted multi-client seismic libraries, extensive magnetic and gravity data, the industry's largest global database of digital well logs, and regional interpretive products. We also provide high-end depth imaging services to help resolve complex seismic imaging problems. Together, our products and services give you a more complete picture of the subsurface to help your exploration program *shine*.

For more information, visit [www.tgsnopec.com](http://www.tgsnopec.com) today.



[www.tgsnopec.com](http://www.tgsnopec.com)

NORWAY +47 66 76 99 00 | USA +1 713 860 2100 | UK +44 (0) 1234 272122 | AUSTRALIA +61 8 9480 0000 | RUSSIA +7 495 959 8117  
©TGS-NOPEC Geophysical Company. All Rights Reserved.

# New Orleans Geological Auxiliary News

On behalf of the New Orleans Geological Auxiliary, I would like to welcome our three new members: Mrs. Bruce (Linda) Robertson, Mrs. Clarkson (Shirley) Mosely and Mrs. Keith (Jan) Gourgues. We are looking forward to getting to know each of you.

I recently read a quote, "May friendships, like wine, improve as time advances and may we always have old wine, old friends and young cares." For those who attended the NOGS Kick-Off Party at Amber and Tom Klekamp's home in Mandeville on Friday, October 2nd, that statement held true. Their beautiful home and lovely landscaped pool area provided a wonderful backdrop for a night of great conversations, delicious cuisine, and just an all around great party. Thanks to Amber and Tom for offering their home so that old friends, with young hearts and cares could share some wine and a great time together. Also, thanks to our geologist/sommelier Al Baker for tending bar.

Happy Belated Birthday to Jean Jones! Thanks for all you do for NOGA, especially this year, as you have co-chaired/hosted our first 2 events!

Beverly Kastler gets the award as our "party animal" of the month. Beverly has been blessed by helping her Dad celebrate his 80th birthday. However, the fun does not stop there.... Beverly and Everett will also be spending time in Disneyworld with their family. It seems like yesterday since we were taking our little ones to Disneyworld, and now we are taking our little ones "little ones".

I also would like to wish everyone a safe and Happy Thanksgiving as the holiday season is "right around the corner".

I hope that everyone will plan to attend our November Luncheon at Salvatore's Ristorante. This will certainly not be one to miss. We have had many great guest speakers in the past, but this is positively one of the most interesting people we have ever scheduled to speak. John Dunlap, Alma and Jack Dunlap's son, will be sharing his historical knowledge on World War II with us. Please bring your spouses because they will enjoy it, as well.

In addition, for those who are unaware, NOGS will host a party at the National World War II Museum on Tuesday evening, April 13th during the 2010 AAPG Annual Convention and Exhibition. Until then, see you at Salvatore's!

Susie Baker

## *NOGA Application Form*

*Dues: \$25.00*

*Name* \_\_\_\_\_

*Home Address* \_\_\_\_\_

*Home phone* \_\_\_\_\_

*Husband's Name* \_\_\_\_\_

*Husband's Company* \_\_\_\_\_

*Please make check payable to New Orleans Geological Auxiliary and  
mail with application to:*

*Judy Lemarie'*

*# 2 Yosemite Dr*

*New Orleans LA 70131*



## **CALL FOR PAPERS**

**60<sup>th</sup> Annual Convention**

**October 10-12, 2010**

**San Antonio, Texas**

*Hosted by the South Texas Geological Society*



Welcome back to San Antonio! Our theme this year is ***"Weathering the Cycles"*** – a challenge that resource geologists certainly have faced and overcome in the past! How do we weather the economic cycles? We...

- ✓ Network with our community
- ✓ Experience the latest technology in the technical exhibition
- ✓ Take a course or a trip and grow new and diverse skills
- ✓ Listen to special presentations on strategies to endure and prosper during an economic downtime and prepare for the inevitable rebound.

By celebrating our successes, facing our challenges, and learning from the research results of our peers, we are paid back many fold by sharing ideas and experiences among our professional community. So come and share your experiences! Suggest a session topic, present an oral paper or a poster, learn about the latest ideas and technologies in our field. Come to San Antonio and enjoy the Gulf's own geoscience convention!

### **PROPOSED TECHNICAL SESSIONS INCLUDE...**

- ✓ **Organic 'Shales' of the Gulf Coast – Controls on Reservoir Quality and Producibility**
- ✓ **Gulf of Mexico Paleogene – Reservoirs, Events and Controversies**
- ✓ **Eastern Gulf of Mexico – Exploration Potential and Environmental Challenges**
- ✓ **Texas/Mexico Borderlands – Structures, Resources, and Lessons Learned**
- ✓ **Unconventional Resources – Exploration Decisions and Production Issues**
- ✓ **Integration of Seismic Geomorphology and Wellbore Data – Case Studies**
- ✓ **New and Evolving Technologies – Impact on Commerciality**
- ✓ **Horizontal Drilling and Formation Stimulation – Edwards, Wilcox, and elsewhere**
- ✓ **Carbon Sequestration – Risks, Opportunities, and Implications for EOR**
- ✓ **Alternative Energy Solutions – The Role of Geoscience**
- ✓ **Water for a Growing Region – Geology, Water Quality, and Resource Management**
- ✓ **Geologic Training and Education – Preparing for the Crew Change**

### **HOW TO SUBMIT:**

Abstracts (not more than 250 words) should be submitted for review online or via email to the technical program chair. Papers should have application to Gulf Coast and Gulf of Mexico geology. Include your full mailing address, telephone and FAX numbers, email address, and whether you are submitting for **oral** or **poster** or **either** (preferred).

**Submit abstracts by February 1, 2010 as instructed on the website [www.gcags2010.com](http://www.gcags2010.com)**

Notification of acceptance by March 1, 2010. All presenters, both oral or poster, must submit either a paper (10-12 pages) or an extended abstract with key figures for review by **April 16, 2010**, for inclusion in the *Transactions*. Full instructions for authors will be posted at [www.gcags2010.com](http://www.gcags2010.com).

### **ABSTRACT DEADLINE: FEBRUARY 1, 2010!**

Questions or ideas for the technical program should be directed to:

Dr. Mary Feeley  
Technical Program Chair  
281-654-3588

[missy.feeley@exxonmobil.com](mailto:missy.feeley@exxonmobil.com)

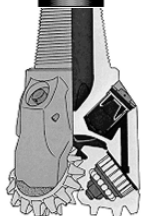
Dr. Alan Dutton  
GCSSEPM Co-Chair  
210-458-5746

[alan.dutton@utsa.edu](mailto:alan.dutton@utsa.edu)

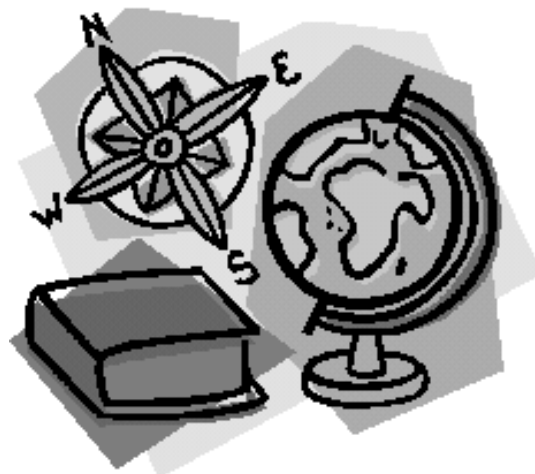


**INFO TIDBITS**

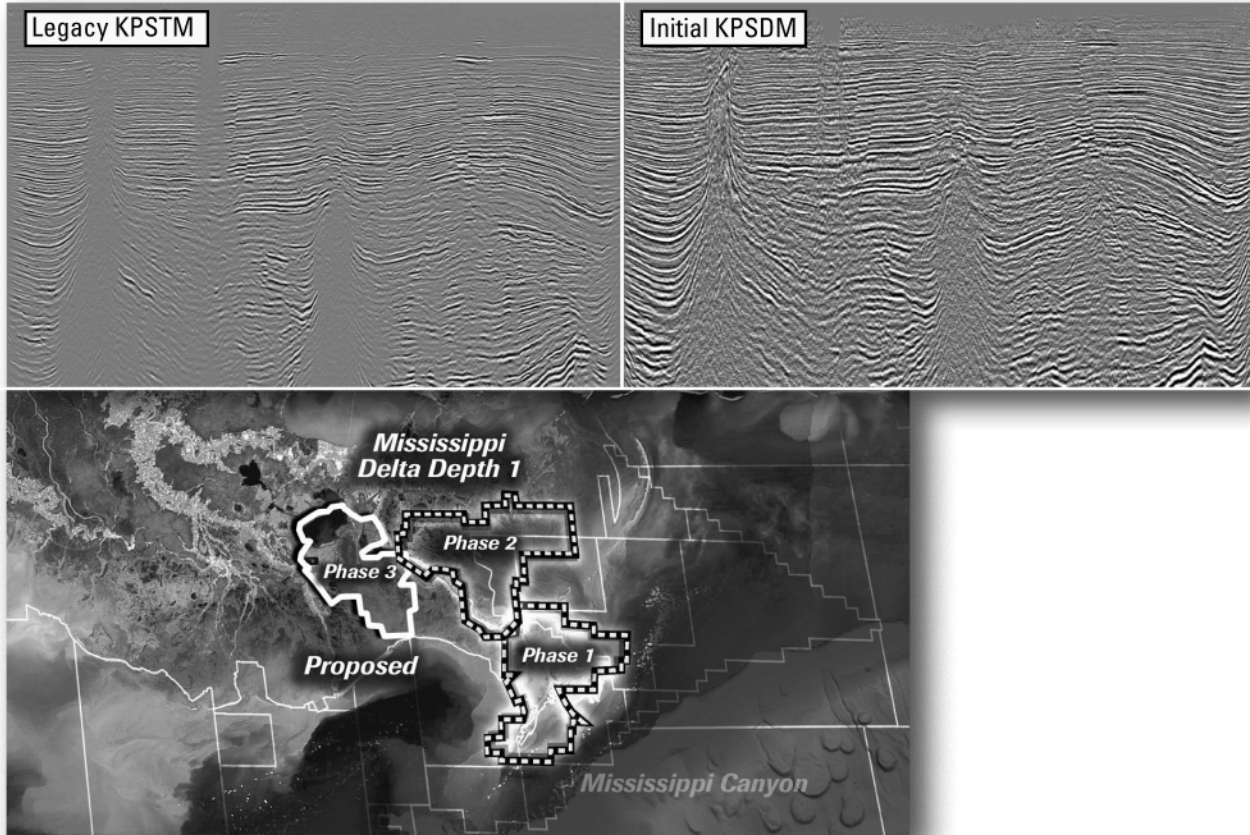
Nogs Log is still looking for assistance in producing Drill Bits and Info Tidbits. If interested please contact *LOG* editor, Liz Petro, at [liz.petro@mms.gov](mailto:liz.petro@mms.gov).

**Academic Abstracts**

We are currently seeking academic abstracts from geology and earth science students from all of our local universities. Please contact the *LOG* editor, Liz Petro, at [liz.petro@mms.gov](mailto:liz.petro@mms.gov) with any questions or abstract submissions.



## Improved depth imaging in the Mississippi Delta



In the Mississippi Delta region, WesternGeco is utilizing state-of-the-art processing designed to eliminate fault shadows and enhance deep imaging. The Mississippi Delta - Depth 1 survey, now in progress, incorporates the processing and remigration of twelve legacy surveys covering 1,855 square miles. High-quality time imaging using relative amplitude anisotropic Kirchhoff prestack time migration will be followed by improved structural imaging utilizing anisotropic Kirchhoff prestack depth migration.

To learn more about this and other Multiclient products, call +1 713 689 1000.

[www.multiclient.westerngeco.com/la](http://www.multiclient.westerngeco.com/la)

**Multiclient to the Power of E**



# THE NEW ORLEANS GEOLOGICAL SOCIETY MEMORIAL FOUNDATION, INC.

The Memorial Foundation is an IRS Tax Exempt Code #501 (c)(3) organization. The Federal I.D. is: 72-1220999. Please consider making your donation prior to the close of this year's fiscal cycle which is September 30, 2010. Your individual support in any amount will help meet the IRS Guidelines for our Foundation. *Thanks!*

## \$15,000 AND ABOVE

**Olga Braunstein Succession**

**Gibbett Hill Foundation**

*In Memory of Steve & Marion Millendorf, William J. Prutzman,  
Roger G. Vincent & Ron Youngblood*

## \$10,000

**George W. Schneider, Jr. and Family**

*In Memory of George W. Schneider, Sr.*

## \$2,000 TO \$3,000

**NOGS Golf Tournament May 2008**

*In Memory of Bill Craig*

## \$250 TO \$499

**Carlo C. Christina**

*In Memory of Al Gilbreath*

**Fotiades Mineral Interests**

**Julie Fotiades, Joan Fotiades**

**Evelyn Fotiades Poulos**

*In Memory of George W. Schneider, Sr.*

**Kathy King Family**

*In Memory of George W. Schneider, Sr.*

## \$7,000 TO \$9,000

**Paul C. Mc Williams**

## \$1,000

**John M. Henton, Jr.**

*In Memory of Dr. Gordon Frey*

**Bill Schneider Family**

*In Memory of George W. Schneider, Sr.*

**Susan King Family**

*In Memory of George W. Schneider, Sr.*

**John C. Kuczewicz, Jr.**

*In Memory of Bill Craig.*

# FONO FUND

The FONO Fund accepts contributions that are invested and the income dedicated to assure sufficient financial resources will always be available to maintain the NOGS business office. Contributors are reminded that donations to the FONO Fund are not covered by the IRS 501 (c)(3) tax exempt classification and should be reported as a business expense on your IRS tax report.

## UP TO \$250

**Woods W. Allen, Jr.**

**Donald I. Andrews**

**Alfred H. Baker Jr.**

**Philip Beron, Jr.**

**Joseph E. Boudreaux**

**Hillary James Brook**

**Jack G. Bryant**

**J. Sybil Callaway**

**Anthony Carolla, Jr.**

**Arthur F. Christensen**

**James S. Classen**

**Richard P. Colomes**

**John Dombrowski**

**Merle J. Duplantis**

**Richard A. Edmund**

**Parrish N. Erwin, Jr.**

**Niles R. Faulk**

**Michael N. Fein**

**Laurens Gaarenstroom**

**Mark J. Gallagher**

**Arthur J. Garden**

**Duncan Goldthwaite**

**Peter G. Gray**

**James A. Hartman**

*In Memory of Hal Hudson*

*In Memory of Brian J. O'Neill*

**Bernard L. Hill, Jr.**

**Owen R. Hopkins**

**Thomas A. Hudson**

**Kenneth Huffman**

**C. M. (Max) Jacobs**

**Robert M. Jemison, Jr.**

**Paul Jurik**

**Terry Keegan**

**Tom Klekamp**

**Reuben J. Klibert, Jr.**

**William J. Malin**

**Jeannie F. Mallick**

**George M. Markey, Jr.**

**James A. McCarty**

**Robert H. Monahan**

**Robert G. Murphy**

**William J. O'Leary**

**Richard A. Olsen**

**William S. Peirce**

**Jaser N. Rafidi**

**James P. Raymond, Jr.**

**C. R. Rondeau**

**George D. Severson**

**Rudolf B. Siegert**

**Diana "Dee" E. Smith**

**Raymond Stephens**

**Scott A. Wainwright**

**Roy C. Walther**

**Robert C. Weissmann**

**William M. Whiting**

**Louis E. Willhoit, Jr.**

**Thomas V. Wilson**

**Jim Zotkiewicz**

## UP TO \$249

**Donald I. Andrews**

*In Memory of Ray F. Havard*

*In Memory of Harlan (Lanny) Northcott*

**Robert J. Ardell**

*In Memory of Dr. Gordon Frey*

**Mr. and Mrs. Wesley Barton**

*In Memory of Thomas A. Cullinan*

**Abraham Biadgelgne**

**Maurice N. Birdwell**

*In Memory of Texaco*

**Hilary James Brook**

**Jack G. Bryant**

**Rob Burnett**

**F. Robert Bussey**

*In Memory Robert S. Kline*

**J. Sybil Callaway**

**Chevron**

*Matching Funds*

**Arthur F. Christensen**

**Ellen F. Clark**

**James S. Classen**

*In Memory of Thomas A. Cullinan*

*In Memory of George W. Schneider, Sr.*

**Clarence F. Conrad**

**Charley Corona**

*In Memory of McLain Forman*

*In Memory of Professor Hubert Skinner*

**Trudy and Charley Corona**

*In Memory of Thomas A. Cullinan*

**Michael A. Danahy**

**M. R. "Bob" Douglass**

*In Memory of Jack Read*

**Merle J. Duplantis**

**Parrish N. Erwin, Jr.**

**Exxon Mobil Matching Funds**

**Niles R. Faulk**

**Michael N. Fein**

**David Garner**

**Laurens Gaarenstroom**

**Mark J. Gallagher**

**Peter G. Gray**

*In Memory of Thomas A. Cullinan*

**Angela M. Hessler**

**Bernard L. Hill, Jr.**

**Owen R. Hopkins**

**Dan E. Hudson**

**Thomas A. Hudson**

**Kenneth Huffman**

**Jeffrey E. Jandegian**

**Arthur H. Johnson**

*In Memory of George W. Schneider, Sr.*

**Tom Klekamp**

**Richard G. Klibert**

**William J. Malin**

**Jeannie F. Mallick**

**George M. Markey, Jr.**

**Michael L. Merritt**

**Robert G. Murphy**

*In Memory of Thomas A. Cullinan*

**New Orleans Geological Auxiliary**

**Russell H. Nordwell**

**Richard A. Olsen**

*In Memory of Richard W. Boebel*

*In Memory of Robert W. Sabate'*

**Teresa M. O'Neill**

*In Memory of Brian J. O'Neill*

**Linda and Bill Peirce**

**Edward B. Picou Jr.**

*In Memory of Dr. M. Gordon Frey*

*In Memory of Brian J. O'Neill*

**Richard D. Provensal**

**Edmund L. Russell**

**George D. Severson**

**Robert C. Shoup**

**Rudolph B. Siegert**

**Daniel L. Smith**

**Diana "Dee" E. Smith**

**John D. Silvernail**

*In Memory of Colles C. Stowell*

**Dr. J. O. Snowden**

**Raymond O. Steinhoff**

*In Memory of Hubert C. Skinner*

*In Memory of Harold E. Vokes*

**Stephen Szydlak**

**Scott A. Wainwright**

**Roy C. Walther**

**Arthur S. Waterman**

*In Memory of T. Wayne Campbell*

**William M. Whiting**

**Louis E. Willhoit, Jr.**

**Armour C. Winslow**

*In Memory of Rita Menzel*

*Winslow*

**Frances A. Wiseman**

*In Memory of Steve Widdicombe*

**Jim Zotkiewicz**

*In Memory of Bill Craig*

**Robin A. Broussard**

**Chevron**

**Bernard L. Hill, Jr.**

**Jeff Jandegian**

**John C. Scheldt**

**Candace V. Strahan**

*In Memory of James Strahan*





*The Southeastern Geophysical Society  
presents*

# **Exploration Offshore Florida and Atlantic: The Next Frontier?**

**November 10, 2009**

**Roosevelt Hotel – Downtown New Orleans  
Breakfast and Registration Begins at 7:30 a.m.**

Speakers from all phases of the O&G Industry will be featured  
-- MMS, Howard Weil, Fugro, CGG Veritas, Earth Studies Group...  
-- Topics include an Update on the 5 Year Federal Plan, Gas Price  
Analysis, Data Available and Planned, Subsurface Interpretation

*Lunch speaker is Dr. Michael Economides – University of Houston  
Authored 11 Books, including The Color of Oil, and over 200 papers  
Lunch is held in conjunction with the API Joint Society Meeting*

- ☐ \$30 Symposium Registration for SGS Members
- ☐ \$35 Symposium Registration for non-members
- ☐ \$40 Registration for API Joint Society Lunch
- ☐ Total

Mail Payments to...  
Southeastern Geophysical Society  
P.O. Box 57141  
New Orleans, LA 70157-7141

*or*

Pay by credit card and join SGS on-line at [www.sgs-neworleans.org](http://www.sgs-neworleans.org)  
Space is limited, registration for Lunch not guaranteed after Oct. 30.

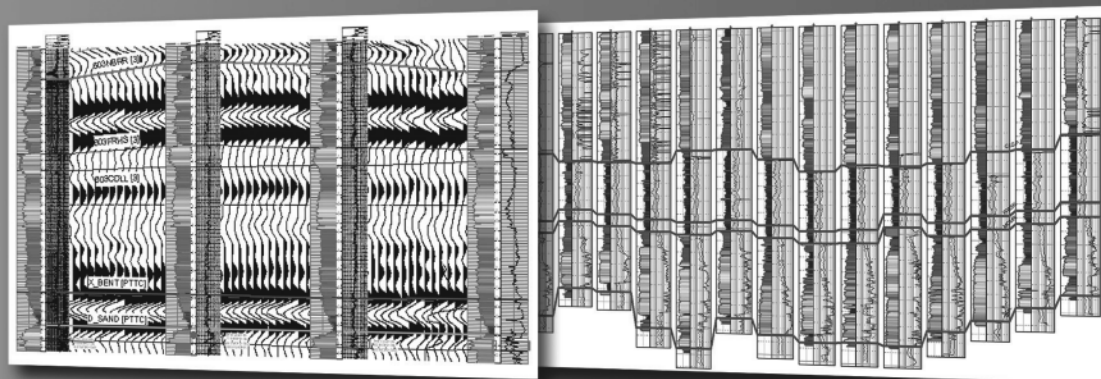
*For information contact Toby Roesler [toby.roesler@enipetroleum.com](mailto:toby.roesler@enipetroleum.com) or Eric Zimmermann [ericz@llog.com](mailto:ericz@llog.com)*

# Define your geological model faster than ever before

**NO MORE WAITING! Available today from IHS, easy and affordable access to one of the largest U.S. digital log collections**

- More than 185,000 LAS files with over 1.5 million curves
- Regional subscription packages for today's active play areas
- Indexed to IHS well and production data
- Linked to the IHS Enerdeq® Browser for quick regional studies and log selection
- Available via IHSLogNet.com or on DVD
- Ready to use in PETRA and other log packages

Request a free 2' x 3' IHS digital log coverage map at [ihs.com/energy/DigitalLogs](http://ihs.com/energy/DigitalLogs)



Use PETRA® to integrate digital log, well, production, perf, seismic and tops data. IHS is the only company to provide you with the complete picture

Why wait? Subscribe today! Call 888.OIL.DATA (645.3282) or e-mail [sales.energy@ihs.com](mailto:sales.energy@ihs.com)



**The Source**  
for Critical Information and Insight™



**Shoreline Gas Inc.**  
[www.shorelinegas.com](http://www.shorelinegas.com)  
 Full Service Natural Gas Marketing



**Sydboten & Associates, Inc.**  
*Geological and Geophysical Consulting,  
 3-D Seismic Interpretation*

**Ben D. Sydboten, Jr. CPG**

124 Heymann Blvd., Suite 202  
 Lafayette, LA 70503

Office (337) 234-5288  
 Cell (337) 234-5491

## ATWATER CONSULTANTS, LTD.

REGISTERED AND CERTIFIED PETROLEUM PROFESSIONALS

GEOLOGICAL, ENGINEERING, GEOPHYSICAL,  
 TRAINING AND EXPERT WITNESS SERVICES

3525 Hessmer Ave, Ste 304  
 Metairie LA 70002

Tel. (504) 581-6527  
 Fax (504) 524-7798

*Please support NOGS advertisers!*



626 E. Kaliste Saloom  
 Lafayette, LA 70508

16900 Greenspoint Dr, Suite 225-S,  
 Houston, TX 77060

[www.stoneenergy.com](http://www.stoneenergy.com)



**CIMAREX ENERGY CO.**

GULF OF MEXICO REGION  
 GOM, SE La., N. La., MS, AL

1100 Poydras St.; Suite 1100

New Orleans, Louisiana 70163

504-586-1815 / Fax 504-586-9035

Keith Gourgues  
 Region Manager

## NORTHCOAST OIL COMPANY

610 E. Rutland St.  
 Covington, LA 70433  
 (985) 898-3577  
 (985) 898-3585 FAX

**Jack M. Thorson**  
**Eric C. Broadbridge**  
**J. Daryl Gambrell**  
**Raymond W. Stephens**

(832) 242-6000 (O)  
 (713) 917-0493 (O)

(504) 931-7506 (C)  
[johnjurasin@jurasinoilgas.com](mailto:johnjurasin@jurasinoilgas.com)

## JURASIN OIL & GAS

9700 Richmond Ave., Suite # 124  
 Houston, TX 77042-4821

JOHN M. JURASIN  
 President

Cert. Pet. Geologist #4284  
 Cert. Prof. Earth Scientist #1961

### Collarini Energy Staffing

Full-Time and Temporary Personnel

Facilities • Drilling • Production • Reservoir Engineering  
 Land and Legal • Geoscience • Information Technology •  
 Health and Safety • Management • Supply Chain  
 Accounting • Administrative Support

11111 Richmond Ave., Suite 126  
 Houston, Texas 77082

832-251-0553



[www.collarini.com](http://www.collarini.com)

### Collarini Associates

Reservoir Engineering  
 Oil & Gas Property Evaluation  
 3-D Seismic Interpretation  
 Integrated Field Studies

832-251-0160  
 504-887-7127

Houston  
 New Orleans



Introducing  
**KINGDOM  
ADVANCED**

The Future of Interpretation

## Taking Geoscience To New Frontiers


SMT's ease of use has made it the geoscience software choice for 2500 customers in 95 countries. KINGDOM Advanced takes SMT's science into the next generation on the largest of data sets.

Best of all, it's so cost effective you can make the best science available to every interpreter. At every location. Even in remote offices that lack IT support.

*Never again sacrifice your workflow because of the software.*

See the future today - at [www.seismicmicro.com/advanced](http://www.seismicmicro.com/advanced)



<b>ANSYTHE</b> <b>Donald I. Andrews</b> 504-887-3432 	<b>D-O-R ENGINEERING, INC.</b> <b>3-D and Geoscience Services</b>  P O Box 80812 Baton Rouge LA 70898
<b>THE BOEBEL COMPANY</b> <b>Oil and Gas Investments</b> 170 Broadway Street, Suite 321 New Orleans, LA 70118 (504) 866-4313	<b>EDWARD B. PICOU, JR.</b> <b>Consulting Micropaleontologist - Retired</b> 228 St. Charles Ave., Suite 1330 C New Orleans, LA 70130 Bus. (504) 529-5155 Res. (504) 282-3096
<b>BOO-KER OIL &amp; GAS CORP.</b> <b>Gray S. Parker</b> 826 Union, Suite 300 New Orleans, LA 70112 Bus. (504) 581-2430 Fax (504) 566-4785	<b>H. WARREN BELL</b> <b>Oil and Gas Exploration</b> 2500 Tanglewilde, Suite 485 Houston, TX 77063-2126 Bus (713) 266-7297 Fax (713) 266-7298
<b>C &amp; R EXPLORATION, INC.</b>  <b>Carlo C. Christina</b> <b>Lawrence G. Ringham</b>	<b>PHELPS GEOSCIENCE</b> <b>Onshore Gulf of Mexico Geology and Geophysics</b> <b>Prospect Generation and Evaluation</b> Houston, TX jsfphelps@yahoo.com (281) 398-5208
<b>C. R. RONDEAU</b> <b>Petroleum Geologist</b> 119 W Southland Ave. Ironwood, MI 49938 Res. (906) 932-4692	<b>RAFIDI OIL AND GAS, INC.</b> <b>Jaser N. Rafidi, President</b> 4415 Shore Dr., Suite 202 Metairie, LA 70006 Bus. (504) 722-2942 Fax (504) 888-5539; Res. (504) 888-1661
<b>CLASSEN EXPLORATION, INC.</b> James S. Classen Looking for close in deals P.O. Box 140637 Boise, ID 83714 classenllc@msn.com Bus. (208) 854-1037 Fax (208) 854-1029	<b>ROY C. WALTHER</b> <b>Petroleum Geologist</b> 2421 Prancer Street New Orleans, LA 70131 Bus. (504) 392-8513 Res. (504) 392-9332
<i><b>This advertising space is available!</b></i> <i><b>Contact the NOGS office.</b></i>	<b>TONY CAROLLO</b> Consulting Geologist Unitization Geosteering Field Studies 1701 Peach Street Metairie, LA 70001 Bus. (504) 885-0004 Res. (504) 885-6829

## November 2 Luncheon Abstract

(continued from page 7)

Rockefeller's Standard Oil of Cleveland, soon to monopolize the oil refining industry, built storage tanks, pipelines, and a refinery near Lima. The Lima-Indiana field propelled Ohio into the leading oil-producing state from 1895-1903.

As production from these early fields declined, oilmen spread out throughout the United States searching for oil. The great 1901 oil gushers of Spindletop, Texas and Jennings, Louisiana ushered in the United States petroleum industry of the twentieth century.

\*The mission of the PETROLEUM HISTORY INSTITUTE is to pursue the history, heritage and development of the modern oil industry from its 1859 inception in Oil Creek Valley, Pennsylvania, to its early roots in other regions in North America and the subsequent spread throughout the world to its current global status (www.petroleumhistory.org).

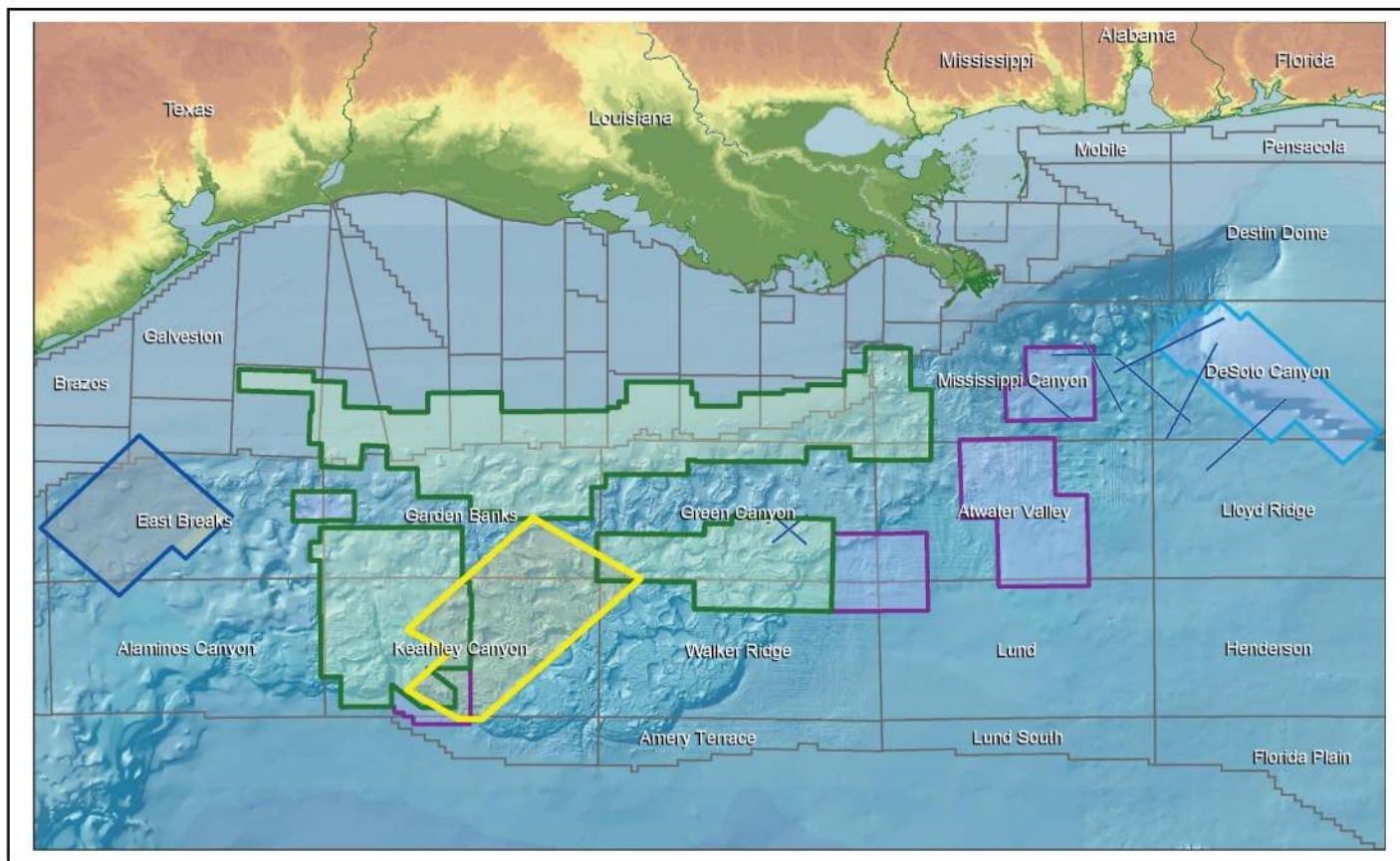
**NOGS thanks our  
sponsors for their support:**

**GOLD LEVEL SPONSORS:**

**CHEVRON**

**LA BAY EXPLORATION CO, LLC.**

**SPECIAL THANKS TO  
DIVERSIFIED WELL LOGGING**



## PGS Gulf Of Mexico Data Library

### Challenging Times Require Imaginative Solutions - PGS Your Creative Business Partner

- Newly Reprocessed PSDM - Kirchhoff, Beam & WEM
- Wide-azimuth - Kirchhoff, Beam & WEM
- Narrow azimuth
- Proposed Wide Azimuth – Anisotropic Beam and RTM
- Narrow Azimuth Anisotropic Kirchhoff, Beam and WEM  
in cooperation with **TGS**

Contact your local PGS representative for more information

**Houston**  
Tel: +1 281 509 8000  
Fax: +1 281 509 8500

**Oslo**  
Tel: +47 67 52 6400  
Fax: +47 67 52 6464

**London**  
Tel: +44 1932 37 6000  
Fax: +44 1932 37 6100

**A Clearer Image**  
[www.pgs.com](http://www.pgs.com)



## NEW ORLEANS GEOLOGICAL SOCIETY



810 Union Street, Suite 300  
New Orleans, LA 70112-1430

# WWW.NOGS.ORG

### MARINE PROPERTIES, LLC BERKSHIRE EXPLORATION CO.

MONTE C. SHALETT, CPL, PRESIDENT

3030 Lausat Street  
Metairie, LA 70001-5924

BUS. (504) 831-7779  
FAX. (504) 831-8315

### PCI

### Paleo Control, Inc.

Houston, Texas  
713-849-0044

Drilling Wells, Studies and Data Base

Loyd Tuttle

Frio, SE Texas

Bob Liska

Wilcox, S and SE Texas

Jim Thorpe

Miocene and Cam-Miogyp



## SEE YOUR DATA IN A WHOLE NEW LIGHT!

Take the pressure out of exploration  
and drilling by seeing what you  
are going to encounter.



### eSeis

www.e-seis.com  
713.531.1447

- Lithology & Fluids
- Depositional Facies
- Pore Pressure from V & Q
- Well Planning Consultation

