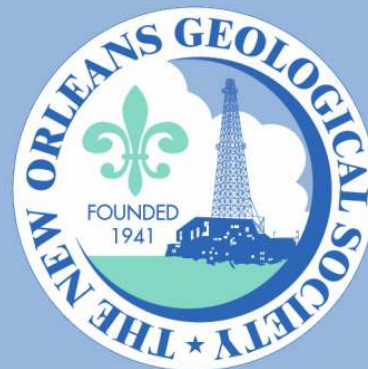


NOGS LOG



May 2009

Volume 49, Number 11

Upcoming Events and Activities

May 4 - NOGS Luncheon

*** At the Holiday Inn Downtown Superdome ***

\$2.00 validated parking in hotel garage

Guest speaker Mark G. Rowan, Rowan Consulting, Inc., Boulder, CO, will present
"Central Louisiana Deepwater: Structural Provinces and Depositional Patterns."

(See page 7 for Abstract and Biography)

HOLIDAY INN DOWNTOWN SUPERDOME

ADMISSION:

Check with concierge or
front desk for location

Lunch served at 11:30am

with reservation \$30.00

without reservation \$35.00

Student Member with reservation Free

May 14 - NOGS Technical Seminar & Core Display

Shell Auditorium, Shell Building in New Orleans. See announcement on page 8.

May 14 - SGS Luncheon

Guest Speaker: Dr. Juan Lorenzo, LSU Department of Geology and Geophysics

Title: Geophysical Characterization of Flood Protection Barriers: West Bank, Louisiana, USA.

Note: This luncheon is on the same day as the NOGS Continuing Education seminar (see page 8). You can attend both as the NOGS seminar will have a lunch break that will allow anyone wanting to go to the SGS event at the Pavillon.

May 14-16 - Petroleum History Institute 2009 Symposium

Caboose Motel in Titusville, PA. See announcement on page 17.

May 19-20 - Louisiana Oil and Gas Symposium

In Baton Rouge. For more information visit BRGS website <http://www.brgs-la.org>.

June 1 - NOGS Luncheon

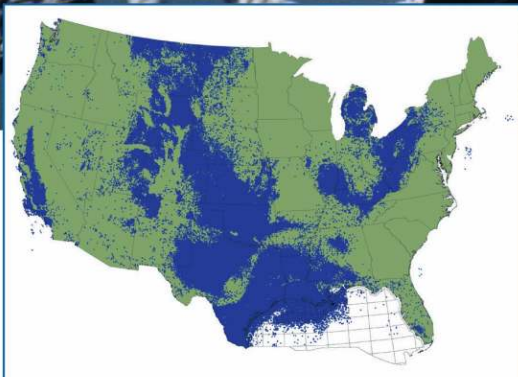
Guest speaker Dr. Roger Sassen, Texas A&M's Deputy Director of Resource Geosciences at the Geochemical and Environmental Research Group will present "Source of Unusual Gas-Condensate from the Hudson Canyon area of the Baltimore Canyon Trough."

July 16 - 2009 Flood Protection Geological Symposium

See call for abstracts on page 15.

Introducing

LASSO



Lasso up all the digital LAS well log data you need from the industry's largest collection

With LASSO, lock in TGS' program rates on digital LAS well data from our US collection, growing at an unprecedented pace to more than 500,000 wells over the next several months. LASSO strengthens your exploration projects with the higher-order capabilities of increased digital well log use. LASSO digital data from TGS, the industry's well log data leader, is quality controlled and available online for immediate downloads.

For more information about LASSO, contact your TGS account representative or call 1- (888) LOG-LINE.



Geophysical
Products



Geological
Products



Imaging
Services

www.tgsnopec.com

NORWAY +47 66 76 99 00 | USA +1 713 860 2100 | UK +44 (0) 1234 272122 | AUSTRALIA +61 8 9480 0000

© TGS-NOPEC Geophysical Company. All rights reserved.

NOGS Office

Office Manager: Annette Hudson

Office Hours: 8:30am – 3:30pm on Monday-Wednesday-Friday

Tel: 504-561-8980 □ Fax: 504-561-8988

E-mail: info@nogs.org □ Website: www.nogs.org

The office is located at Suite 300, 810 Union Street, New Orleans, LA 70112.

Correspondence and all luncheon reservations should be sent to the above address.

Sent to press on April 20, 2009.

**BOARD OF DIRECTORS**

President	William M. Whiting
Vice President	Allan Melillo
Secretary	Frances Wiseman
Treasurer	James Swaney
President-Elect	Tom Klekamp
Editor	Michael D. Miner
Director 2009	Willis E. Conatser
Director 2010	Michael M. Ledet
Director 2011	Scott A. Wainwright

Company

Consultant
Chevron
MMS
MMS
Amber Resources LLC
UNO
Bret Exploration Co Inc

Phone

504-947-8495
985-773-6756
504-736-2912
504-736-2677
985-845-4046
504-280-3866
504-469-2496
504-394-9636
504-889-2700

E-mail

bootscon@aol.com
ajme@chevron.com
frances.wiseman@mms.gov
james.swaney@mms.gov
klekamp@bellsouth.net
mminer@uno.edu
weconatser@aol.com
mikeledet@cox.net
scott_wainwright@hotmail.com

COMMITTEE

AAPG Delegates
AAPG Student Chapter
AAPG Student Chapter
Advertising-Log
Auditing
Awards
Ballot
Best Paper
Continuing Education
Employment Counseling
Entertainment
Environmental
External Affairs
Field Trip
Finance and Investment
Historical
Membership/Directory
New Geoscientists (NGNO)
Nominating
Non-Technical Education
Office Operations
Publications Sales
Photography
School Outreach
Scouting
Technical Projects
Ad Hoc Committee on University Support

Chairperson

Dave Balcer
Bobby Cosentino
Scott Wessels
Jennifer Connolly
J. David Cope
Michael N. Fein
James Swaney
David E. Reiter
TBA
Paul J. Post
Tom Klekamp
Daisy Pate
Michael A. Fogarty
David Garner
James Swaney
Edward B. Picou, Jr.
Penne Rappold
TBA
Alfred H. Baker, Jr.
Duncan Goldthwaite
Arthur H. Johnson
Edward B. Picou, Jr.
J. David Cope
Thomas C. Bergeon
Carol Rooney
TBA
Michael J. Gallagher

Chevron
Tulane University
UNO
Shell
Ankor Energy
W & T Offshore
MMS
ENI
MMS
Amber Resources LLC
Eustis Geotechnical Eng.
Sylvan Energy, LLC
Shell
MMS
Consultant
Shell
Beacon Exploration, LLC
Consultant
Hydrate Energy International
Consultant
Taylor Energy Co LLC
Century Exploration
Consultant Geologist

985-773-6725
504-495-9475
316-295-0800
504-728-6411
504-596-3672
504-210-8148
504-736-2677
985-893-8072
504-736-2954
985-845-4046
504-613-5798
603-523-4808
504-728-6154
504-736-2677
504-529-5155
504-728-4338
504-836-2710
504-887-4377
504-464-6208
504-529-5155
504-589-0419
504-832-3772
504-835-1909

dbalcer@Chevron.com
rcosenti@tulane.edu
scottwes@gmail.com
jennifer.connolly@shell.com
dcope@ankorenergy.com
mikef@wtoffshore.com
james.swaney@mms.gov
david.reiter@enipetroleum.com
paul.post@mms.gov
klekamp@bellsouth.net
dpate@eustiseng.com
mike.a.fogarty@gmail.com
David.Garner@shell.com
james.swaney@mms.gov
epicou@bellsouth.net
prappold@gmail.com
abaker1006@aol.com
DGldthwt@aol.com
artjohnson51@hotmail.com
epicou@bellsouth.net
dcope@taylorenergy.com
Tom.bergeon@centuryx.com
carolbrooney@aol.com
Michael.Gallagher@enipetroleum.com

NOGS LOG STAFF

Editor	Michael D. Miner
Editor-Elect	Elizabeth Petro
Auxiliary	Susie Baker
Info Tidbits	Clare Falcon
Drill Bits	Paul J. Post
Layout	Jannette Sturm-Mexic
Webmaster	Edward B. Picou, Jr.

UNO
MMS
NOGA
Schlumberger
MMS
Consultant

504-280-3866
504-736-2866
504-466-4483
504-592-5385
504-736-2954
504-529-5155

mminer@uno.edu
liz.petro@mms.gov
abaker1006@aol.com
cfalcon2@new-orleans.oilfield.slb.com
paul.post@mms.gov
emailme@jannette.com
epicou@bellsouth.net

NOGS AUXILIARY**Officers**

President	Linda Peirce	504-393-7365
1st Vice-President	Jean Jones	504-738-8091
2nd Vice-President	Beverly Kastler	504-286-0879
Secretary	Dolores Murphy	504-393-0878
Treasurer	Judy Lemarie'	504-393-8659
Parliamentarian	Carol Andrews	504-887-3432
Member-at-Large	Susie Baker	504-466-4483

Phone**Directors**

Ruth Ingram	2008-09	504-887-5404
June Perret	2008-09	504-881-9357
Joan Sylvester	2008-09	504-738-2934
Beverly Christina	2009-10	504-835-2383
Peggy Rogers	2009-10	504-392-6323
Judy Sabate'	2009-10	504-861-3179

Year**Phone**

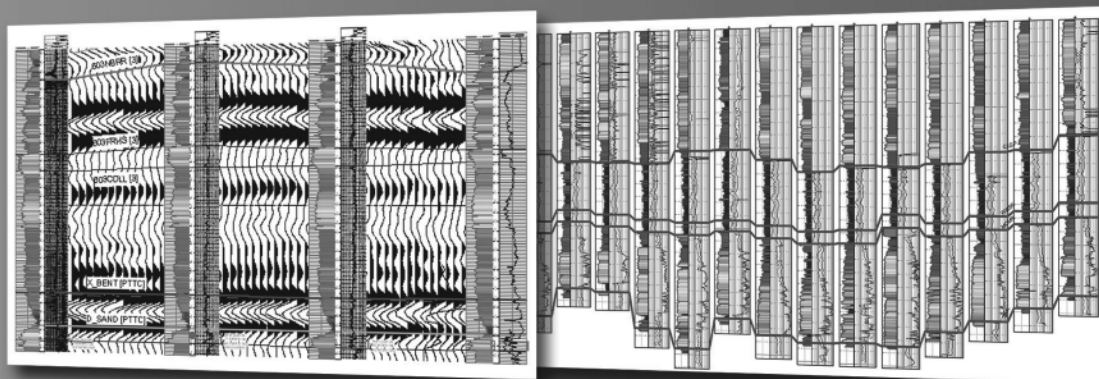
--- NOGS Contact List continued on page 10 ---

Define your geological model faster than ever before

NO MORE WAITING! Available today from IHS, easy and affordable access to one of the largest U.S. digital log collections

- More than 185,000 LAS files with over 1.5 million curves
- Regional subscription packages for today's active play areas
- Indexed to IHS well and production data
- Linked to the IHS Enerdeq® Browser for quick regional studies and log selection
- Available via IHSLogNet.com or on DVD
- Ready to use in PETRA and other log packages

Request a free 2' x 3' IHS digital log coverage map at ihs.com/energy/DigitalLogs



Use PETRA® to integrate digital log, well, production, perf, seismic and tops data. IHS is the only company to provide you with the complete picture

Why wait? Subscribe today! Call 888.OIL.DATA (645.3282)
or e-mail sales.energy@ihs.com



The Source
for Critical Information and Insight™



from the President

Nominations for the NOGS Board of Directors were closed at the April 6 luncheon meeting; congratulations to all of our candidates. While some candidates ran unopposed, there are still contests for the important posts of Secretary and Director 2009-12, good luck to these four candidates. Those who ran unopposed include: President-elect, Dave Reiter; Vice President, Bob Hafner; Treasurer, Chuck Holman; and Editor-elect, Fran Wiseman. Remember you must include your dues renewal for your ballot to be counted. The election will end May 31, 2009. Take time with your renewal form to consider donating to the NOGS FONO Fund or the Memorial Foundation, the Foundation is a 501c and tax-deductible.

I would like to call to your attention the April issue of the AAPG Explorer. NOGS was able to include a ¼ page ad for the 13th annual Gulf of Mexico Deepwater Technical Symposium. The design of the ad reflects the hard work of our current President-elect, Tom Klekamp. NOGS is provided one free ad each year by AAPG. Due to generous ad space donations by the Lafayette Geological Society and the South Texas Geological Society the ad will also appear in the May and June issues of Explorer. The Deepwater Symposium planning committee's work is on track. Note the Symposium's ad in both the April and this month's LOG.

The NOGS Board of Directors is supporting the Nominations Committee's recommendation of NOGS member Art Johnson for the GCAGS Distinguished Service Award and to NOGS member Dr. Steve Nelson (Tulane University) for the GCAGS Outstanding Educator Award. Competition is tough, good luck to both of these gentlemen.

Our outreach group can use more help. Tom and Art have been carrying a heavier load in this program. The USGS "A Tapestry of Time and Terrain" map is an effective tool for reaching out to children and

young adults to improve their appreciation for Geology. In reviewing the minutes of the GCAGS Annual Meeting last October in Houston, I noted that the Houston Geological Society has made map presentation to over 200 classrooms. To date, NOGS has presented in approximately 30 classrooms, Lafayette ~11, South Texas ~27, and Shreveport ~10. In all, there are 7 participating Societies plus the Corpus Christi group that have given a total of 430 presentations. Maps and the guide brochures are available at the NOGS office. We have a limited number of framed maps, but framing is expensive so sponsorships for this program are appreciated.

Volunteers are needed for all aspects of the AAPG Convention 2010 that will be held here in New Orleans, April 11-15. Please contact Tom Hudson or the NOGS Office. I have submitted a list of over 40 volunteers to Tom so far and I know more have enrolled.

A very important date to remember is May 14th for Dr. Gani's seminar on Deltaic Reservoir Analogs from Cretaceous strata in Wyoming. Details are in the March, April and May LOGS. Lunch break is from 11:30 AM to 1 PM, ample time to attend any of the other professional luncheons. Please compare the cost of this seminar to any of the GCAGS, AAPG or other groups cost. This is an easy sell to your management during these tighter budget times.

July 16th is the assigned date for our third Geologic Facts of Life for Flood Protection Symposium. The location will be at Elmwood Parkway Offices. See the Call for Abstracts in this issue of the LOG.

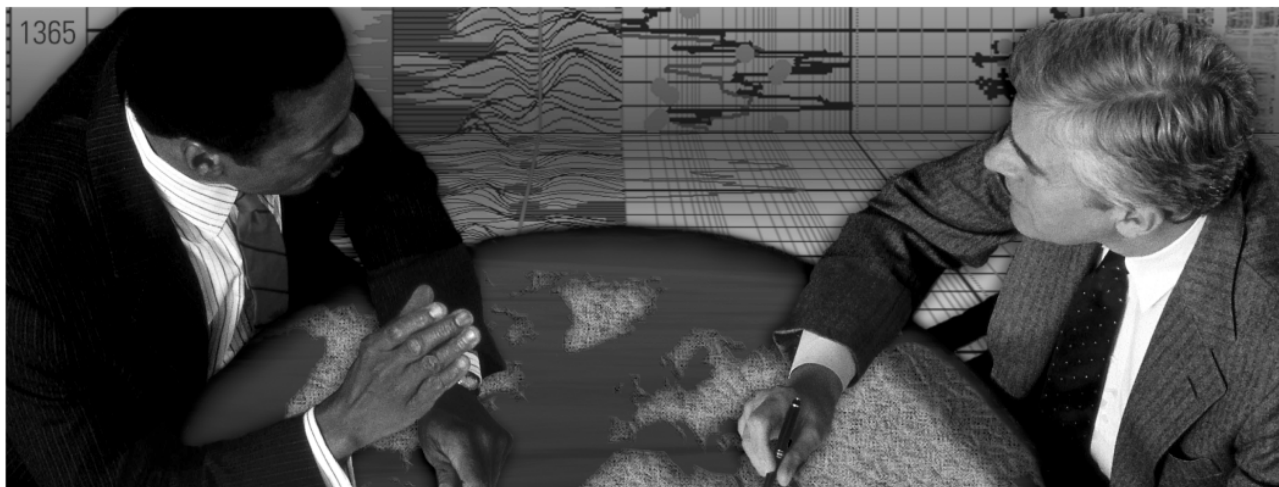
Tom Bergeon has informed us that the Super Science Saturday 2009 has been resurrected in a modified form as a joint effort with FETCH and will take place in August, more details later.

Bill

energyinformation

Business solutions for
the oil & gas industry

Schlumberger formation evaluation solutions deliver the answers you need. Our extensive portfolio of services, leading-edge technology, and advanced conveyance options keep you in communication with your well throughout its life cycle.



With formation evaluation technologies from Schlumberger, you can make the best decisions for optimized performance in every well.

The formation evaluation one-stop shop

Whether you are logging in open hole or behind the casing, our broad selection of services ensures the best solution for acquiring formation evaluation data. Tools can be conveyed while drilling or on wireline or pipe. We offer many specialized evaluation capabilities, from density, neutron porosity, and resistivity to borehole imaging, nuclear magnetic resonance logging, borehole seismic, formation pressure testing, and fluid sampling. Advanced triple-combo logging options include the VISION* formation evaluation and imaging-while-drilling services. Coupled with Pulse* telemetry and surveying services, the VISION family provides real-time formation evaluation data and enables optimum well placement.

High-speed wireline measurements are recorded with the Platform Express* logging services. The SlimXtreme* platform is designed for high-pressure, high-temperature environments and the ABC* Analysis Behind Casing services are used after casing is set.

Expert interpretation from the engineers and geoscientists of Schlumberger Data & Consulting Services brings all your data together to give you the answers you need. This expertise is available after logging is complete or as real-time two-way wellsite communication through the InterACT* real-time monitoring and data delivery system.

Schlumberger delivers leading-edge technology and interpretation expertise for all your formation evaluation needs, so every well benefits from the very best information.

For more information visit
www.slb.com/oilfield/formation_evaluation/

*Mark of Schlumberger

04-FE-114

Schlumberger

May 4 NOGS Luncheon Presentation

*** at the Holiday Inn Downtown Superdome ***

Central Louisiana Deepwater: Structural Provinces and Depositional Patterns

presented by

Mark G. Rowan*

Rowan Consulting, Inc., Boulder, CO

ABSTRACT

Green Canyon and northwest Atwater Valley, in the central Louisiana deepwater are divided into three structural provinces: 1) a distal foldbelt, 2) a narrow zone of turtle structures, and 3) a more proximal region of expulsion rollovers. The foldbelt formed in response to gravity spreading of the margin and has a complex western boundary that trends NNW through central Green Canyon. Lesser amounts of shortening exist to the southwest in Walker Ridge because slope failure occurred above more proximal canopies.

The turtle province has vertical feeders that are sometimes squeezed, whereas the rollover province has welded, basinward-leaning feeders and associated counterregional faults. We infer that the boundary between the two marks the paleo-toe-of-slope, with inclined diapirs forming on the slope and vertical diapirs forming on the abyssal plain. Although both provinces are in the translational domain of the failing margin, local extension, contraction, and strike-slip deformation occurred as primary minibasins jostled about with respect to one another during basinward translation.

Wilcox and Miocene strata are mostly at or above regional in the foldbelt province. This was an area of partially confined deposition, with topographic highs defined by diapirs

and associated linear folds, depending on the timing of shortening. In the turtle province, strata are mostly at or slightly below regional. This area was characterized by unconfined deposition, with thickness patterns controlled by local diapiric highs and the timing of turtle formation. In both cases, extensive canopies were not emplaced until late in the Miocene.

In the rollover province, strata are mostly at or significantly below regional and depositional patterns are markedly different and relatively confined. Canopies were being emplaced locally throughout the Miocene with fairways in between the salt tongues and basinward-shifting depocenters were bounded by inflated salt and arcuate systems of counterregional feeders and faults. Ponded turbidite facies were deposited in these slope minibasins, which are not in trap configurations. The primary targets are structural highs just basinward of the bounding feeders/faults where fan lobes may have formed as turbidite flows diverged at the entry points into the next minibasins.

*Co-Authors: Bob Hutton, Andy Sandberg, Dave Anderson, Ed Mozer, Samson Offshore Co., Houston, TX

BIOGRAPHY

Mark Rowan received a B.S. in biology from CalTech in 1976, an M.S. in geology from Berkeley in 1982, and a Ph.D. in structural geology from the University of Colorado at Boulder in 1991. He spent 3 years at Sohio Petroleum Co. in Denver (1982 to 1985), four years at Geo-Logic Systems in Boulder (1985-1989), and three years at Alastair Beach Associates in Glasgow, Scotland (1989-1992). He then returned to the University of Colorado and in 1996 he was appointed a Research Assistant Professor and headed up a large industrial research consortium investigating Gulf of Mexico salt tectonics. Mark left this position in 1998 and founded his own company

where he consults and teaches for the petroleum industry and conducts research sponsored by industry.

Although Mark's background includes many types of tectonic environments, his recent research and consulting interests are focused on the styles and processes of salt tectonics, salt-sediment interaction, the geometry and kinematics of passive margins, and the applications to petroleum exploration. He is the author or coauthor of over 60 papers and 130 abstracts, is the regular instructor for AAPG's Salt Tectonics School, was an AAPG Distinguished Lecturer, and is the AAPG International Distinguished Instructor for 2009-2010.

THE LUNCHEON RESERVATION DEADLINE IS APRIL 29 - CONTACT THE NOGS OFFICE

"And Looking Ahead..."

The next NOGS Luncheon will be June 1. Guest speaker Dr. Roger Sassen, Texas A&M's Deputy Director of Resource Geosciences at the Geochemical and Environmental Research Group, will present "Source of Unusual Gas-Condensate from the Hudson Canyon area of the Baltimore Canyon Trough." Contact the NOGS office to make your reservation.

Technical Seminar & Core Display

Deltaic Reservoir Analog: Integration of Outcrop, Core, Ground Penetrating Radar, and Fluid-flow Modeling in Cretaceous Strata, Wyoming

May 14, 2009 9:00 AM–3:00 PM
Shell Auditorium, One Shell Square 701 Poydras, New Orleans

Presented by: Dr. M. Royhan Gani, Department of Earth and Environmental Sciences,
University of New Orleans

Cost per participant: \$50 for NOGS members and non-members, \$25 for students
(some sponsorships available through NOGS).

To reserve a spot or for any questions contact the NOGS office at info@nogs.org or
(504) 561-8980

Seminar Description

Despite the present global emphasis on deep-water exploration and reservoir characterization, much of current and projected global production remains in siliciclastic shallow- and marginal-marine reservoirs. Because of the dynamic interaction of fluvial and basinal (e.g. tides, waves, storms) processes, deltaic deposits are inheritably complex. Various outcrops and subsurface data were integrated to study a Cretaceous delta at the top of the upper Turonian Wall Creek Member exposed along the western flank of the Powder River Basin, Wyoming. Investigation was performed from pore-scale to parasequence-scale to document facies and architectural complexity, along with reservoir properties. Experimentally designed flow-simulations were used to examine effects of facies variability and bedding geometry on breakthrough time, sweep efficiency and upscaled permeability.

Regional sandstone isolith, facies, and paleocurrent maps help to reconstruct the paleogeography and show how the various architectural elements varied across the delta front. The channels, bars, frontal splays, and tidally modulated elements are found only near the distributary mouth, whereas the storm sheets occur extensively away from the distributary mouth. The external shape of the studied delta might be seen as controlled primarily by waves, but the internal facies architecture reveals a far more complex interaction of river, waves, storms, and tidal processes. This challenges the tripartite classification of deltas into river-dominated, wave-dominated, and tide-dominated end member types.

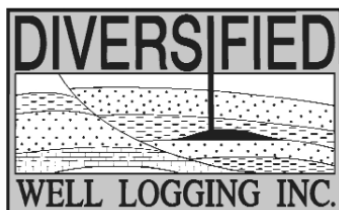
Detailed logging of ichnological variations in several deltaic parasequences are correlated with inferred short- and long-term changes in depositional processes, reflecting various proportions of river, flood, wave, storm, and tide influences that can translate into variable reservoir properties. For this, trend analysis of BI (bioturbation index) log is particularly useful.

The purpose of this seminar is to showcase the internal facies and architectural complexity of deltaic reservoirs. Additionally, display of cores will provide opportunity for the participants to get hands-on experience on how to identify facies, trace fossils, and sequence stratigraphic surfaces in shallow-marine strata.



Relax. We'll keep you posted.

Your rig is offshore and you are not. How do you know what's going on so many miles away? You know because we tell you. Daily or even hourly, Diversified Well Logging's engineers update you on the status of your rig. We are your eyes and ears, especially when it comes to deep water or high pressure, high temperature areas. Diversified offers 24-hour surface evaluation. We provide secure and customized real-time data communication, in-house research and development and 24/7 on-call support for our equipment and our engineers. Whether you have a 10-day job or 110-day job, we provide the specialized attention you require. So, relax. We're with you every step of the way.



Serving the Gulf Coast for over 40 years.

New Orleans • Lafayette • Houston • Dallas • Corpus

800.280.2096

711 West 10th Street • Reserve, LA 70084 • Phone: 985.536.4143 • Fax: 985.536.2427
sales@dwl-usa.com



**PALEO
DATA**

**FULLY INTEGRATED AND
CENTRALIZED BIOSTRATIGRAPHIC
SERVICES**

- ▼ Single-source biostratigraphic databases
for increased accuracy and consistency
- ▼ Integrated foram / nannofossil analyses
- ▼ Complete wellsite paleo services
- ▼ In-house sample preparation
lab for quality-monitoring
and efficiency
- ▼ Sample pick-up service

6619 Fleur de Lis Drive
New Orleans, LA 70124
(504) 488-3711

www.paleodata.com

MCMORAN EXPLORATION CO.



MCMORAN OIL & GAS

www.mcmoran.com

NYSE: MMR

16676 Northchase Dr.
Houston, TX 77060
(281) 539-7600
Fax: (281) 539-7655

1615 Poydras
New Orleans, LA 70112
(504) 582-4000
Fax: (504) 582-4155

110 Travis St., Suite 140
Lafayette, LA 70503
(337) 735-9150
Fax: (337) 735-9151

NOGS CONTACT LIST

--- continued from page 3 ---

MEMORIAL FOUNDATION


BOARD OF TRUSTEES

		Company	Phone	E-mail
2008-09 Chairman	Arthur H. Johnson	Hydrate Energy International	504-464-6208	artjohnson51@hotmail.com
2008-09 Secretary	William M. Whiting	Consultant	504-947-8495	bootscon@aol.com
2008-09 Trustee	David E. Balcer	Chevron	985-773-6725	dbalcer@chevrontexaco.com
2008-09 Trustee	George T. Froming	Consultant	504-799-1918	gtfroming@yahoo.com
2009-10 Trustee	Michael C. Fauquier			
2009-10 Trustee	J. David Cope	Ankor Energy	504-596-3672	dcope@ankorenergy.com
2010-11 Trustee	Timothy J. Piwowar	Shell	504-728-4066	tim.piwowar@shell.com
2010-11 Trustee	Michael N. Fein	W & T Offshore	504-210-8148	mikef@wtoffshore.com

AAPG DELEGATES


Term Ends

		Company	Phone	E-mail
2009	David E. Balcer	Chevron	985-773-6725	dbalcer@Chevron.com
2009	William Whiting	Consultant	504-947-8495	bootscon@aol.com
2009a)	Nancye Dawers	Tulane University	504-862-3200	ndawers@tulane.edu
2009a)	David Cooke	MMS	504-736-2609	david.cooke@mms.gov
2011	Tom Hudson	Chevron	985-773-7163	tom.hudson@chevron.com
2011	Edward B. Picou, Jr.	Consultant	504-529-5155	epicou@bellsouth.net
2011a)	Brenda Reilly	Energy Partners Ltd.	504-799-4811	breilly@eplweb.com
2011a)	Robert Rooney	Century Exploration	504-832-3777	Robert.rooney@centuryx.com




SeaBird Exploration

Take a look at the *future* of
MARINE SEISMIC




www.sbexp.com
www.seabed.no

RAISING
THE **STANDARD**



- Autonomous 4C nodes rated to 3000 m
- Acoustic Communication/Data QC
- Best sensor orientation in the market
- Highest quality coupling
- Sub-meter positioning available



Dubai
T: +971 4 4271700

Houston
T: +1 281 556 1666

Oslo
T: +47 2240 2700

Trondheim
T: +47 7 3879500

Singapore
T: +65 9180 2605

SGS Luncheon
May 14, 11:30-1:00
 at Le Pavillon Hotel

Guest Speaker: Dr. Juan Lorenzo,
 LSU Department of Geology and Geophysics
**Title: Geophysical Characterization of Flood
 Protection Barriers: West Bank, Louisiana, USA**

Note: This luncheon is on the same day as the NOGS Continuing Education seminar (see page 8). You can attend both as the NOGS seminar will have a lunch break that will allow anyone wanting to go to the SGS event at the Pavillon.



Eni Petroleum

1250 Poydras Street
Suite 2000
New Orleans, LA 70113
Tel: (504) 593-7000
Fax: (504) 593-7745

1201 Louisiana Street
Suite 3500
Houston, TX 77002
Tel: (713) 393-6100
Fax: (713) 393-6205



**Shell has worked in partnership
with the NOGS for many years, and
is proud to count the society among
its closest business associates.**

The New Orleans Geological Society was organized in 1941 to foster scientific research and advance the science of geology. Particular emphasis is laid on the exploration for and production of petroleum and natural gas. Related objectives include encouraging the adoption of improved methods of exploration, disseminating pertinent geological and technological data, and maintaining a high standard of professional conduct among its members.

www.shell.com/us.sepc

SEI®

Seismic Exchange, Inc.

**Strategic Speculative Surveys
Geophysical Data Marketing & Management**

**Your
Full Service
National
Seismic Data
Marketing Firm**

New Orleans
Dallas
Houston
Denver
Oklahoma City
Corpus Christi
Tulsa

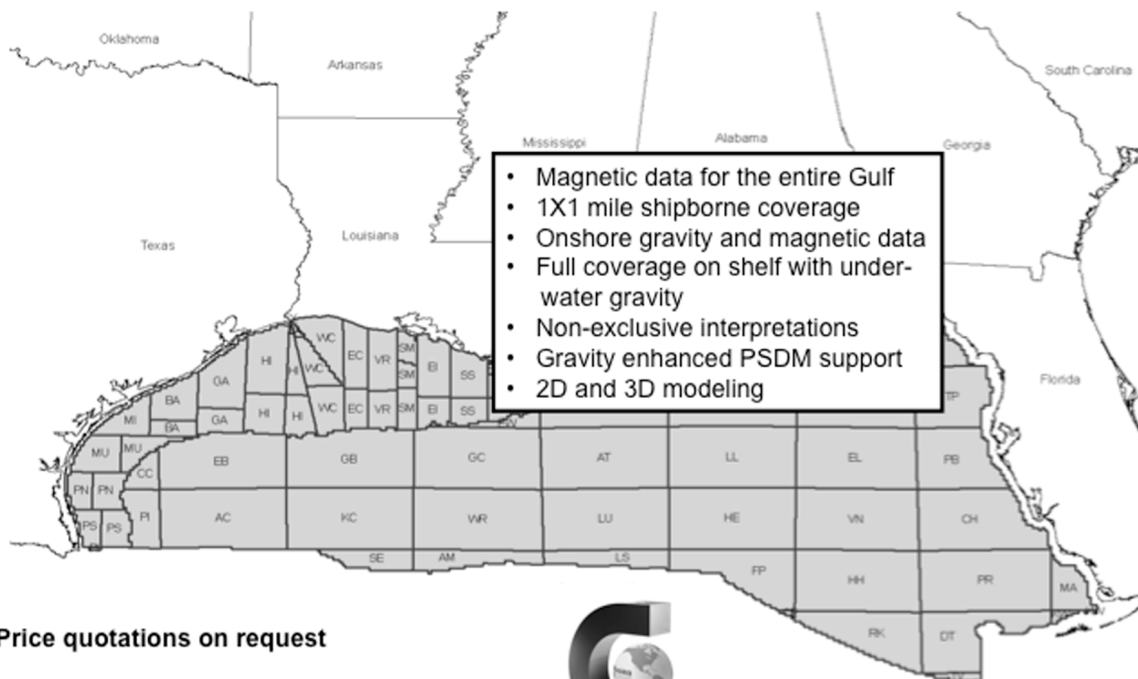
201 St. Charles Avenue, Suite 4300, New Orleans, Louisiana 70170-4300
Telephone 504.581.7153 Fax 504.581.9591
www.seismicexchange.com



Fugro Gravity & Magnetic Services

LAND • AIRBORNE • UNDERWATER • SHIPBORNE

The most complete coverage Onshore and Offshore Gulf of Mexico



Price quotations on request

Fugro Gravity & Magnetic Services

www.Fugro-GravMag.com

Tel: 713-369-6123



Gravity Inspired. Magnetically Inclined.



100 Northpark Blvd.
Covington, LA 70433

(985) 773-6000

"Serving the Oil & Gas Industry Since 1983"

Geological,
Geophysical &
Land Drafting

Anthony Catalanotto

President

Stefani Kelone

Drafting and Design



Geo-Draft, Inc.

A Professional Drafting & Graphics Firm

3349 Ridgelake Drive □ Suite 202 □ Metairie, LA □ 70002

Office: (504) 836-2882 Fax: (504) 836-2877

geodraft@bellsouth.net



LaBay
Exploration Co., L.L.C.

111 Veterans Memorial Blvd.,
Suite 1550
Metairie, Louisiana 70005

www.labayexploration.com

Office (504) 371-5967
Fax (504) 371-5969

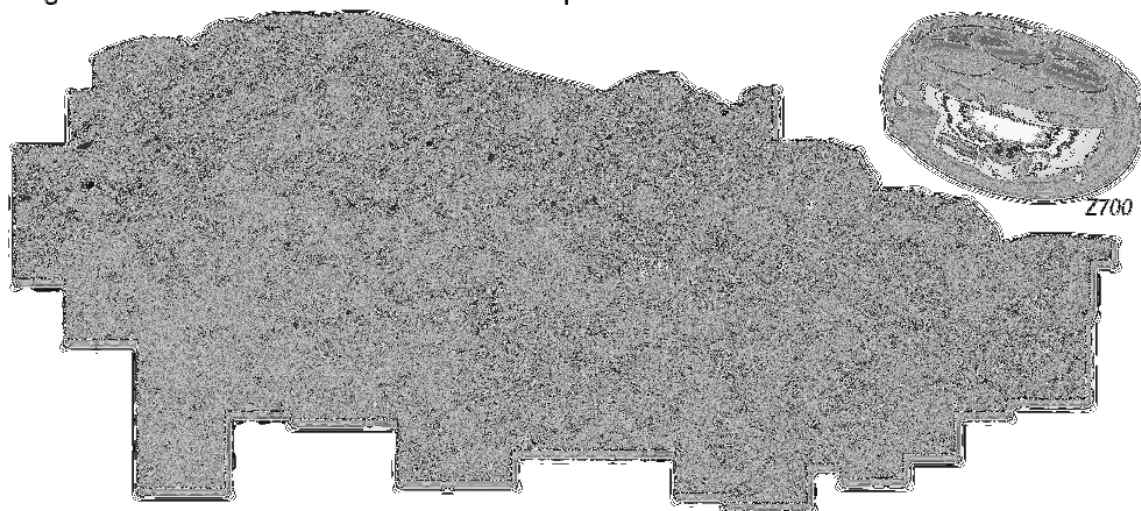
*This advertising space is
available! Contact the
NOGS office.*



At Fairfield the future is now.

Our updated seismic vessels equipped with Fairfield's Z700 ocean bottom node systems will be fully operational in the Gulf of Mexico during 2009. By utilizing longer offsets and the continuous recording capability of Z700, Fairfield will be able to image data to unprecedented depths of over 75,000 feet.

By the end of 2009 our entire database will have been processed using Curved Ray Migration and an additional 500 blocks of depth data will have been added.



The Future begins today. Don't be left in the past.

SEISMIC
SYSTEMS

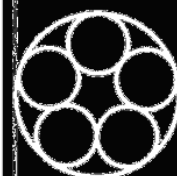
DATA
ACQUISITION

DATA
PROCESSING

DATA
LICENSING

281 275 7500

fairfield.com



Fairfield
INDUSTRIES

CALL FOR ABSTRACTS

2009 Flood Protection Geological Symposium

Geologic Facts of Life for Flood Protection in Coastal Louisiana

July 16, 2009

New Orleans, Louisiana

Abstract Submission Protocol:

The unique purpose of this conference is to convene public agencies and provide the officials in charge, and the public, with the latest geological research affecting flood protection efforts along the Gulf of Mexico Coastal Zone. Again this year, the Flood Protection Geological Symposium Committee invites up to five PowerPoint lectures approximately 30 minutes in length representing diverse geoscience topics such as paleotempestology, subsidence and sea-level rise, geological considerations for coastal restoration and protection, geotechnical hazards and other relevant topics.

Abstract Submission Deadline is June 7, 2008, 11:59 pm CST

Abstracts of no more than 400 words with up to 2 key figures must be submitted by this deadline for review by the Flood Protection Geological Symposium Committee to epicou@bellsouth.net.

Please note: All presenters customarily remain after their lecture and participate in a concluding panel discussion. Proceedings of the conference are to be published digitally. Upon abstract acceptance, presenters are asked provide a digital summary of key points and illustrations for sponsors to post in press releases beforehand and in the public domain on their web sites afterwards.

SPONSORS

New Orleans Geological Society
Louisiana State Geological Survey

INVITED SPONSORS

Southeast Louisiana Flood Protection Authority - East Bank Board of Commissioners
Southeast Louisiana Flood Protection Authority - West Bank Board of Commissioners

Information:

Ed Picou: epicou@bellsouth.net or 504-529-5155
Mike Miner: mminer@uno.edu or 504-280-3866
NOGS: info@nogs.org or 504-561-8980

NOGS FINDS WINNERS AT 2009 SCIENCE FAIR

On March 4th, the Awards Committee judged the Earth Science and related projects at the Region 9 Greater New Orleans Science and Engineering Fair. The Fair was back at UNO, in the Human Performance Center. Judges were Art Johnson, Bill Whiting, Dave Reiter, Jim McCarty, and myself. NOGS thanks our management and clients for their support in allowing our participation.

The long-term trend of fewer geological exhibits and lower quality has abruptly turned. Whereas in past years we have had difficulty in giving out all of our prizes, this year we argued about the top winners, and lamented that projects that did not earn a NOGS prize this year might have been a first place winner in previous years. I believe that the effort NOGS, as well as the PIPE organization, have made to get geology into the schools is having an impact. I also believe that Art Johnson, immediate past-president of NOGS, has had a very significant role in moving these organizations forward and in creating this year's exhibit turnaround. Thanks for a job well done, Art.

NOGS gave all three awards to winners in the Senior and Junior Divisions. While it was clear which exhibit was the best in the Senior Division, we had a very spirited discussion regarding the first-place winner in the Junior Division. This is exactly as it should be. Winners in the Senior Division were: (1st place) Jordan Badeaux (John Curtis) "Columbite Indicating Geochemical Evolution in Emmons Pegmatite"; (2nd place) Matthew Stansbury (John Curtis) "Do Warmer Sea Surface Temperatures Cause Stronger Hurricanes to Form?"; and (3rd place) Hozana Arceli (C.H.E.F. of GNO [homeschool]). Junior Division winners were; (1st Place) Jorge Abadin (Christian Brothers) "Which Soils Can Bear the Most Weight"; (2nd place) Mitchell Fillinger and Dashawn Renard (Benjamin Franklin) "Rebuilding our Wetlands through River Diversions"; and (3rd place) Kevin Alvarado (John Curtis) "What Bagged Material Would Have the Greater Effect on Stopping Flood Waters?"

NOGS will be inviting our first-place winners and their teachers to the May 4th luncheon. This is Jordan's third consecutive winning exhibit for NOGS. Be sure to come over and congratulate this high achiever, as well as Cathy Boucvalt, a multiple winner as a teacher with John Curtis, and Brother Lawrence of Christian Brothers, also a multiple winner with his student Jorge Abadin, with us at that time.

Michael N. Fein
Chairman, Awards Committee

The Petroleum History Institute 2009 Symposium

150th ANNIVERSARY YEAR OF THE DRAKE WELL



(Drake Well Museum DW676)

“RETURN TO THE VALLEY THAT CHANGED THE WORLD”

May 14 - 16, 2009

Titusville, PA; Headquartered at
The Caboose Motel on Perry Street in downtown Titusville

Symposium Chair: Marilyn Black, at Oil Region Alliance of Business,
Industry & Tourism; (814) 677-3152, Ext. 105; mblack@oilregion.org
Coordinator of Presentations: Dr. William Brice, wbrice@pitt.edu;
(814) 269-3950

South Louisiana and Offshore

Exploration and Production Activity

- Energy XXI on 16-March announced that it had identified significant incremental natural gas pay sands at its Cote de Mer prospect in Vermilion Parish, Louisiana, lifting the discovery's resource potential to between 89 and 108 BCFGE, compared with an earlier estimate that ranged between 20 and 40 BCFGE.

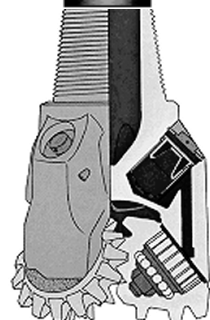
The E.A. McIlhenny #1 well on the Cote de Mer prospect was drilled to its PTD of 22,300 feet. Logs indicated that the well encountered at least 80 net feet of natural gas pay in two zones, and possibly another 70 net feet of pay in two additional sands, all within the targeted Cris-A section. Energy XXI holds a 33% WI and a 24% NRI in the discovery.

"We are pleased to have successfully drilled the Cote de Mer prospect to target depth, resulting in a sizable natural gas discovery," Energy XXI Chairman and CEO John Schiller said. "We have set casing on the well and expect to test the potential pay zones and bring the well on production within six months."

A third-party independent reservoir engineering firm employed by Energy XXI estimated the discovery holds gross proved reserves of 88.8 BCFGE, as well as probable and possible resources of 8.9 BCFGE and 10.3 BCFGE, respectively, implying total recoverable resource potential of up to 108 BCFGE.

- The U.S. DOI's Minerals Management Service held Central GoM Sale 208 on 18-March in New Orleans. The sale consisted of 6,458 tracts comprising ~ 34.6 million acres offshore Louisiana, Mississippi, and Alabama. Seventy (70) companies entered 476 bids on 348 tracts, resulting in a \$703,048,523 in high bids. The following table provides data regarding average high bid per block and per acre.

Water Depth (m)	Blocks w/Bids	Acres Receiving Bids (\$)	Sum of High Bids (\$)	Avg. Bonus per Block (\$)	Avg. Bonus per Acre
0 - <200	95	443,191.68	31,207,913	328,504	~70
200 - <400	10	54,117.62	12,999,843	1,299,984	~240
400 - <800	29	157,101.08	50,761,824	1,750,408	~323
800 - <1600	69	393,745.92	298,809,265	4,330,569	~759
1600 - <2000	39	224,640.00	88,789,722	~2,276,660	~395
>2000	106	610,560.00	220,479,956	~2,078,000	~361



Top Ten Companies Based on the Sum of the High Bids Submitted in Sale 208:

Company	# High Bids Submitted	Sum High Bids Submitted (\$)
Shell Gulf of Mexico Inc.	39	153,631,475
BP Exploration & Production Inc.	27	77,466,559
Marathon Oil Company	16	62,441,178
Noble Energy, Inc.	24	55,442,147
BHP Billiton Petroleum (Deepwater) Inc.	28	50,393,232
Statoil Gulf of Mexico LLC	9	49,276,000
Repsol E&P USA Inc.	20	48,545,024
Exxon Mobil Corporation	15	24,484,400
Chevron U.S.A. Inc.	21	22,400,166
Ecopetrol America Inc.	26	20,558,066

Top Ten Companies Based on Total Number of High Bids Submitted in Sale 208:

Company	# Total Bids Submitted	Sum Total Bids Submitted (\$)
Shell Gulf of Mexico Inc.	39	153,631,475
BHP Billiton Petroleum (Deepwater) Inc.	28	50,393,232
BP Exploration & Production Inc.	27	77,466,559
Ecopetrol America Inc.	26	20,558,066
Noble Energy, Inc.	24	55,442,147
Chevron U.S.A. Inc.	21	22,400,166
Repsol E&P USA Inc.	20	48,545,024
Marathon Oil Company	16	62,441,178
Exxon Mobil Corporation	15	24,484,400
StatoilHydro Gulf Properties Inc.	14	2,970,308

--- continued on next page ---

Companies Submitting the Top Ten High Bids in Sale 208:

Company	Area & Block #	Water Depth Range (m)	Amount of Bid (\$)
Shell Gulf of Mexico Inc.	MC/721	800 - <1600	65,611,235
Marathon Oil Company Repsol E&P USA Inc.	WR/578	>2000	46,471,680
Noble Energy, Inc.	GC/774	800 - <1600	31,786,250
BP Exploration & Production Inc.	MC/418	800 - <1600	29,194,317
Shell Gulf of Mexico Inc.	MC/720	800 - <1600	23,511,235
Eni Petroleum US LLC Cobalt International Energy, L.P. Samson Offshore Company	WR/133	1600 - 2000	22,000,222
Marathon Oil Company Repsol E&P USA Inc.	WR/579	>2000	19,375,173
Shell Gulf of Mexico Inc.	GC/114	800 - <1600	17,011,235
Marathon Oil Company	WR/134	1600 -2000	16,226,128
Statoil Gulf of Mexico LLC	KC/698	>2000	14,289,000

- The federal government on 30-March asked a group of appeals court judges to overturn a ruling that could prevent the U.S. Department of the Interior (DOI) from collecting billions of dollars in royalties on oil and natural gas leases.

In January, a smaller three-judge panel of the 5th U.S. Circuit Court of Appeals upheld a lower court ruling saying the DOI could not collect royalties from eight deep-water leases currently held by Anadarko Petroleum Corp. in the Gulf of Mexico. The leases were originally obtained between 1996 and 2000 by Kerr-McGee Corp., which Anadarko subsequently acquired.

Government lawyers are now asking for an "en banc" review of the case, bringing it before the entire New Orleans-based 5th Circuit. A court spokesman said the circuit has 17 active judges.

At issue is interpretation of a 1995 federal law designed to provide a break from royalties at a time when oil and natural gas prices were extremely low. The law waived all royalty payments until a specific amount of oil and gas was produced.

The DOI contends it had the authority to lift the royalty relief once prices reached a certain level. The law became an issue as oil prices rose and exploration and production companies began posting huge profits.

In the 30-March petition, the government says Anadarko has refused to pay more than \$350 million in royalties due on the eight leases from 2003-2007.

"The sheer amount of money at stake makes this case worthy of en banc review to correct the panel's error," the petition said.

The DOI leases offshore tracts to oil and gas companies and, as owner, collects a percentage of revenue.

The filing states that removing the DOI's authority to suspend royalty relief could cost the U.S. government \$38.3 billion over the next 25 years because the ruling could affect other leases and prohibit the government from collecting royalties from other producers.

Interior Secretary Ken Salazar has signaled the Obama administration's plans to reform how the government collects royalties. However, to date, no specifics have been offered.

In its ruling in January, the panel of the 5th Circuit said the 1995 law was unambiguous: "it does not grant Interior the authority to impose price thresholds that suspend royalty relief at production volumes less than those established by Congress."

Anadarko spokesman John Christiansen in response to the appeal said on 30-March that the appeals court, in its earlier ruling, upheld Congress' clear intent of the law; i.e., "to assure that companies were afforded the royalty treatment it granted as encouragement to make huge investments in the deepwater Gulf of Mexico frontier."

- Paul Post

13th Annual Gulf of Mexico **Deepwater** Technical Symposium

August 27th and 28th - 2009

<http://www.deepwaternola.org/swf/deep.html>

Deepwater Gulf of Mexico case studies
and key technology sessions involving

- Geoscience
- Drilling • Completions
- Production Systems
- Reservoir / Economics
- HS&E / Regulatory
- Management Panel Discussion
- Exhibition Hall
- Student Poster Session

**The Hilton
Riverside
New Orleans**




<http://www.nogs.org/>


In conjunction with the


- American Association of Drilling Engineers
- Society of Petroleum Engineers

NOGS - Host for the 2010
AAPG Convention
April 11-15

A Company that Shines

 Geophysical Products

 Geological Products

 Imaging Services



TGS has been providing best-in-class multi-client data and services to successful E&P companies for over a quarter century. Our geophysical and geological data products are distributed around the globe and include one of the youngest and best targeted multi-client seismic libraries, extensive magnetic and gravity data, the industry's largest global database of digital well logs, and regional interpretive products. We also provide high-end depth imaging services to help resolve complex seismic imaging problems. Together, our products and services give you a more complete picture of the subsurface to help your exploration program *shine*.

For more information, visit www.tgsnopec.com today.



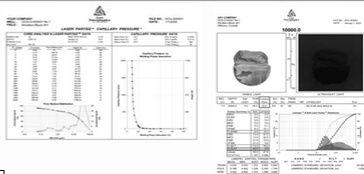
www.tgsnopec.com

NORWAY +47 66 76 99 00 | USA +1 713 860 2100 | UK +44 (0) 1234 272122 | AUSTRALIA +61 8 9480 0000 | RUSSIA +7 495 959 8117
©TGS-NOPEC Geophysical Company. All Rights Reserved.



Sidewall Core Specialists

Experts in Small Sample, Laminated and Shaly Sand Analysis



Laboratory Services:

- Core / Log Integration
- Laser Enhanced Permeability
- Porosity
- Fluid Saturations
- Measured Descriptions
- Critical Water
- Capillary Pressure Simulation
- UV Photography /Digital Images
- Lamination Characterization
- NMR Measurements
- Petrology

Core Lab has made many improvements to sidewall core testing which have had a positive synergistic effect on overall data quality.

Laser particle size analysis, Lamination specific analysis, UV-Visible Spectroscopy, lamination classification, Photospec summary reports, digital data bases via our website and capillary pressure simulation are all innovations introduced by Core Lab to help our clients obtain maximum benefit from their samples and analyses.



Core Laboratories 504-733-6583

**NOGS thanks our
sponsors for their support:**

GOLD LEVEL SPONSORS:

**LA BAY EXPLORATION CO., LLC
LLOG EXPLORATION CO., LLC**

**SPECIAL THANKS TO
DIVERSIFIED WELL LOGGING**

SURVIVOR™

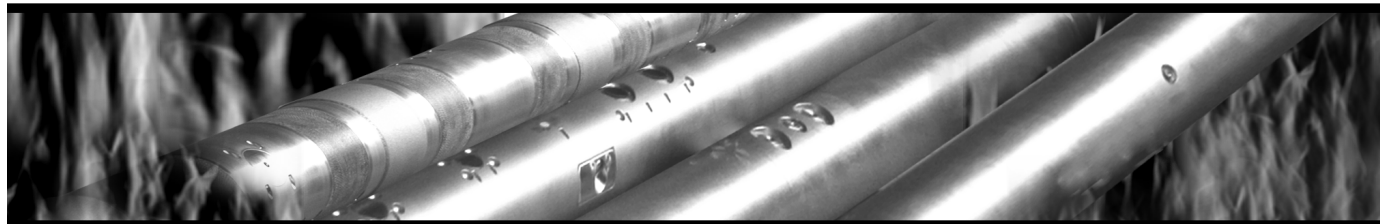
LOGGING-WHILE-DRILLING SUITE

The SURVIVOR™ Suite uses our highly reliable HDS-1 Directional Gamma Ray technology, Array Wave Resistivity tool, Slim Density Neutron Standoff Caliper tool and our Dynamic Pressure Module to create a complete system for logging in hostile drilling environments.

Temperature Rating.....350°F (175°C)

Pressure Rating25,000 psi

Logging Capacity300+ circulating hours



RELIABILITY. ACCURACY. VERSATILITY. WE DELIVER.

e-mail: pfmarketing@pathfinderlwd.com

www.pathfinderlwd.com

© 2006 Pathfinder Energy Services, Inc. All rights reserved.

PATHFINDER®



Higher Standards



Weatherford LABORATORIES

At Weatherford Laboratories, we hold fast to Higher Standards. Our purpose is to continually push past conventional solutions to find new and better ways to optimize oil and gas production.

■ By integrating seven entrepreneurial companies, we bring unsurpassed innovation to the industry. Our accomplishments include 50 new technologies, 45 original products, 35 industry awards, and 13 registered patents. Among our ranks are several luminaries of the industry, as well as scores of respected scientists who have authored hundreds of technical papers. ■ With 38 laboratories around the globe, our team raises the bar for wellsite sampling, core management services, geochemical analyses and evaluation of unconventional reservoirs.

At Weatherford Laboratories, we expect more from ourselves so you can expect more from us.

Weatherfordlabs.com

CORPORATE OFFICES

ACS Laboratories Pty Ltd
Brisbane, Australia

OMNI Laboratories
Houston, Texas USA

ResLab Reservoir Laboratories
Trondheim, Norway

Humble Geochemical Services
Houston, Texas USA

TICORA Geosciences
Denver, Colorado USA

Baseline Resolution, Inc.
Houston, Texas USA

Hycal Energy Research Laboratories
Calgary, Alberta, Canada

THE NEW ORLEANS GEOLOGICAL SOCIETY MEMORIAL FOUNDATION, INC.

The Memorial Foundation is an IRS Tax Exempt Code #501 (c)(3) organization. The Federal I.D. is: 72-1220999. Please consider making your donation prior to the close of this year's fiscal cycle which is September 30, 2009. Your individual support in any amount will help meet the IRS Guidelines for our Foundation. *Thanks!*

\$15,000 AND ABOVE

Olga Braunstein Succession

Gibbett Hill Foundation

*In Memory of Steve & Marion Millendorf, William J. Prutzman,
Roger G. Vincent & Ron Youngblood*

\$10,000

George W. Schneider, Jr. and Family

In Memory of George W. Schneider, Sr.

\$7,000 TO \$9,000

Paul C. Mc Williams

\$3,000 TO \$4,000

NOGS Golf Tournament May 2008

In Memory of Bill Craig

\$1,000

John M/ Henton, Jr.

In Memory of Dr. Gordon Frey

\$250 TO \$499

Carlo C. Christina

In Memory of Al Gibreath

Fotiades Mineral Interests

Julie Fotiades, Joan Fotiades

Evelyn Fotiades Poulos

In Memory of George W. Schneider, Sr.

Kathy King Family

In Memory of George W. Schneider, Sr.

Bill Schneider Family

In Memory of George W. Schneider, Sr.

UP TO \$249

Don and Carol Andrews

In Memory of Thomas H. Philpott

In Memory of William B. Rodan

Robert J. Ardell

In Memory of Dr. Gordon Frey

Jack R. Banttari

Mr. and Mrs. Wesley Barton

In Memory of Thomas A. Cullinan

Abraham Biadgelgne

Hilary James Brook

Robin A. Broussard

In Memory of Charles L. Jones

In Memory of Thomas H. Philpott

Jack G. Bryant

Rob Burnett

Trudy and Charley Corona

In Memory of Thomas A. Cullinan

Chevron

Matching Funds

Arthur F. Christensen

Ellen F. Clark

James S. Classen

In Memory of Thomas A. Cullinan

In Memory of All Gibreath

In Memory of George W. Schneider, Sr.

Charley Corona

In Memory of McLain Forman

Trudy and Charley Corona

In Memory of Professor Hubert Skinner

In memory of Thomas A. Cullinan

Michael A. Danahy

Merle J. Duplantis

George H. Evans

Exxon Mobil Matching Funds

Michael N. Fein

Mark J. Gallagher

David Garner

Peter G. Gray

In Memory of Thomas A. Cullinan

Angela M. Hessler

Bernard L. Hill, Jr.

In Memory of Robert E. Osborne

Owen R. Hopkins

Dan E. Hudson

Thomas A. Hudson

Kenneth Huffman

Arthur H. Johnson

In Memory of George W. Schneider, Sr.

Thomas E. Johnson

Tom Klekamp

In Memory of Robert W. Sabate'

John C. Kucewicz, Jr.

William J. Malin

Jeannie F. Mallick

David C. Mount

Robert G. Murphy

New Orleans Geological Auxiliary

In Memory of Virginia Schell

Russell H. Nordwell

FONO FUND

The FONO Fund accepts contributions that are invested and the income dedicated to assure sufficient financial resources will always be available to maintain the NOGS business office. Contributors are reminded that donations to the FONO Fund are not covered by the IRS 501 (c)(3) tax exempt classification and should be reported as a business expense on your IRS tax report.

\$600

Richard W. Boebel

Willis E. Conatser

\$500

James A. Hartman

In Memory of Richard W. Boebel

UP TO \$249

Woods W. Allen, Jr.

Donald I. Andrews

Alfred H. Baker Jr.

Philip Beron, Jr.

Joseph E. Boudreaux

Hillary James Brook

J. Sybil Calloway

Clarence F. Conrad

John Dombrowski

Merle J. Duplantis

Richard A. Edmund

Niles R. Faulk

Michael N. Fein

Laurens Gaarenstroom

Mark J. Gallagher

Arthur J. Garden

Duncan Goldthwaite

Peter G. Gray

James A. Hartman

In Memory of Brian J. O'Neill

Bernard L. Hill, Jr.

Owen R. Hopkins

Thomas A. Hudson

Kenneth Huffman

Paul Jurik

Tom Klekamp

William J. Malin

Jeannie F. Mallick

George M. Markey, Jr.

Robert H. Monahan

Robert G. Murphy

William J. O'Leary

Richard A. Olsen

Linda and Bill Peirce

Jaser N. Rafidi

James P. Raymond, Jr.

C. R. Rondeau

Rudolf B. Siegert

Raymond Stephens

Scott A. Wainwright

Roy C. Walther

Robert C. Weissmann

Louis E. Willhoit, Jr.

Jim Zotkiewicz

CONTRIBUTIONS FOR BOTH FUNDS
THROUGH APRIL 17, 2009.
DONATIONS ARE LISTED FOR ONE YEAR.

Richard A. Olsen

In Memory of Richard W. Boebel

In Memory of Robert W. Sabate'

Teresa M. O'Neill

In Memory of Brian J. O'Neill

Linda and Bill Peirce

Edward B. Picou Jr.

In Memory of Dr. M. Gordon Frey

In Memory of Brian J. O'Neill

Jaser N. Rafidi

Edmund L. Russell

Robert C. Shoup

Rudolph B. Siegert

In Memory of Richard W. Boebel

Dr. J. O. Snowden

Raymond O. Steinhoff

In Memory of Robert S. Wood

In Memory of Harold E. Vokes

Stephen Szydlak

Patrick F. Taylor Foundation

Employee Matching Gifts Program

Scott A. Wainwright

Roy C. Walther

William M. Whiting

Louis E. Willhoit, Jr.

Armour C. Winslow

In Memory of Rita Menzel

Winslow

Frances A. Wiseman

In Memory of Steve Widdicombe

Jim Zotkiewicz

In Memory of Bill Craig

Robin A. Broussard

Chevron

M. R. "Bob" Douglass

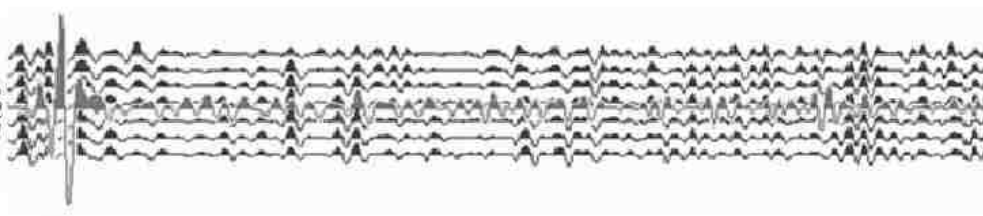
Bernard L. Hill, Jr.

Jeff Jandegian

John C. Scheldt

Candace V. Strahan

In Memory of James Strahan



The Southeastern Geophysical Society
presents
**Exploration Offshore USA OCS:
Opening the Next Frontier?**

**SGS Technical Symposium
November 12, 2009
New Orleans, Louisiana**



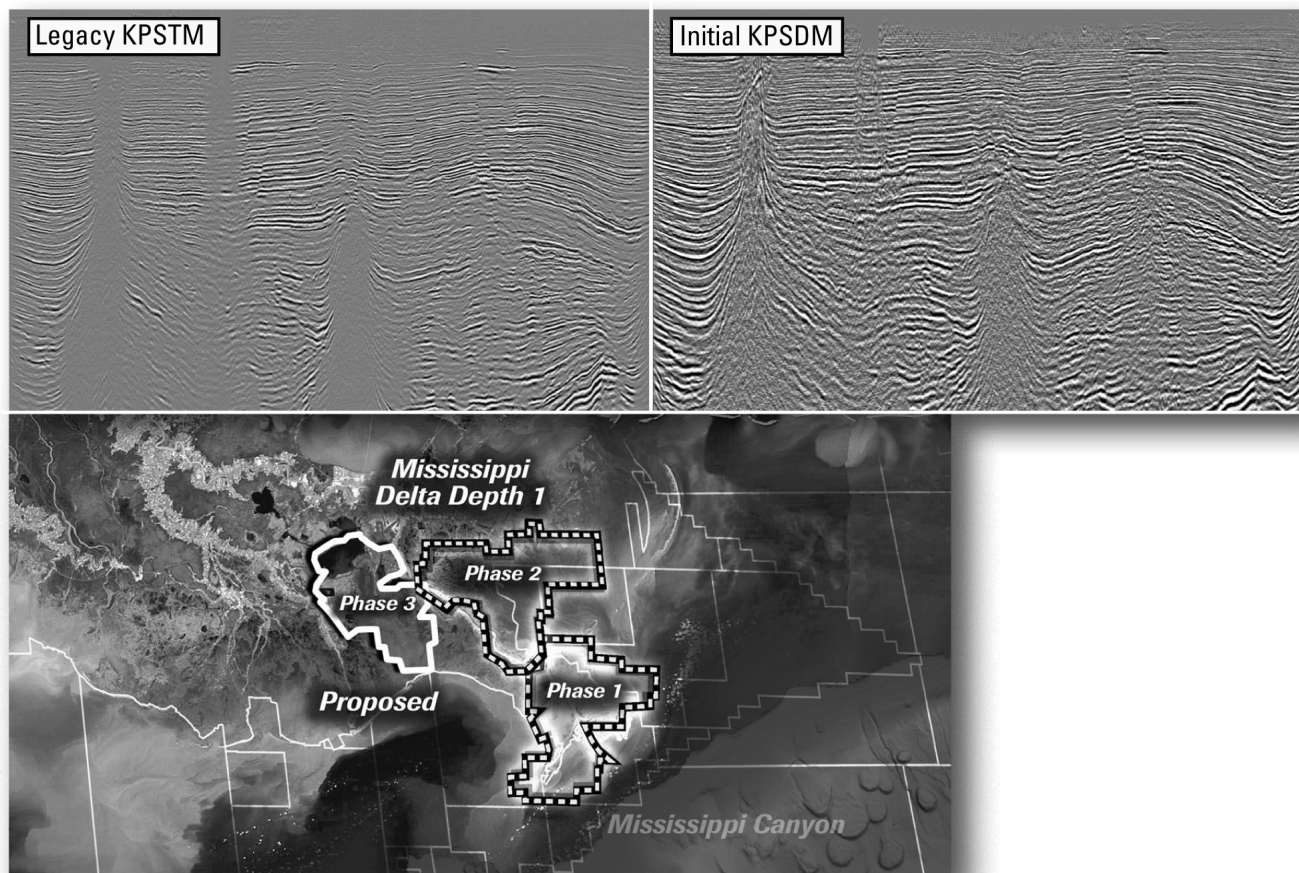
- Offshore Virginia has been opened.
- When will the potential lifting of other OCS areas result in drilling?
- What is the potential for hydrocarbon accumulations?
- What will the new President and Congress do?

Call for presenters/sponsors – if you or your company would like to present a lecture or sponsor the symposium – contact Wayne Cook at wcook@seitel.com or Eric Zimmermann at ericz@lbg.com

Mississippi Delta - *Depth 1*

Depth image reprocessing

Multiclient^E



Experience the industry-leading benefits of WesternGeco state-of-the-art processing, designed to eliminate fault shadows and enhance deep imaging.

Delivering anisotropic Kirchhoff volumes:

- Processing and remigration of twelve legacy surveys covering 1,855 square miles.
- High-quality time imaging using relative amplitude anisotropic prestack time migration followed by improved structural imaging utilizing anisotropic prestack depth migration.

Excellence in technology – Experienced professionals.

To learn more about our Multiclient products, call +1 713 689 1000.

www.multiclient.westerngeco.com

Multiclient to the Power of E





Shoreline Gas Inc.
www.shorelinegas.com
 Full Service Natural Gas Marketing



Sydboten & Associates, Inc.
*Geological and Geophysical Consulting,
 3-D Seismic Interpretation*

Ben D. Sydboten, Jr. CPG

124 Heymann Blvd., Suite 202
 Lafayette, LA 70503

Office (337) 234-5288
 Cell (337) 234-5491

ATWATER CONSULTANTS, LTD.

REGISTERED AND CERTIFIED PETROLEUM PROFESSIONALS

GEOLOGICAL, ENGINEERING, GEOPHYSICAL,
 TRAINING AND EXPERT WITNESS SERVICES

3525 Hessmer Ave, Ste 304
 Metairie LA 70002

Tel. (504) 581-6527
 Fax (504) 524-7798

Please support NOGS advertisers!



626 E. Kaliste Saloom
 Lafayette, LA 70508

16900 Greenspoint Dr, Suite 225-S,
 Houston, TX 77060

www.stoneenergy.com



CIMAREX ENERGY CO.

GULF OF MEXICO REGION
 GOM, SE La., N. La., MS, AL

1100 Poydras St.; Suite 1100

New Orleans, Louisiana 70163

504-586-1815 / Fax 504-586-9035

Keith Gourgues
 Region Manager

NORTHCOAST OIL COMPANY

610 E. Rutland St.
 Covington, LA 70433
 (985) 898-3577
 (985) 898-3585 FAX

Jack M. Thorson
Eric C. Broadbridge
J. Daryl Gambrell
Raymond W. Stephens

(832) 242-6000 (O)
 (713) 917-0493 (O)

(504) 931-7506 (C)
johnjurasin@jurasinoilgas.com

JURASIN OIL & GAS

9700 Richmond Ave., Suite # 124
 Houston, TX 77042-4821

JOHN M. JURASIN
 President

Cert. Pet. Geologist #4284
 Cert. Prof. Earth Scientist #1961

Collarini Energy Staffing

Full-Time and Temporary Personnel

Facilities • Drilling • Production • Reservoir Engineering
 Land and Legal • Geoscience • Information Technology •
 Health and Safety • Management • Supply Chain
 Accounting • Administrative Support

11111 Richmond Ave., Suite 126
 Houston, Texas 77082

832-251-0553



www.collarini.com

Collarini Associates

Reservoir Engineering
 Oil & Gas Property Evaluation
 3-D Seismic Interpretation
 Integrated Field Studies

832-251-0160
 504-887-7127

Houston
 New Orleans

NEW AVO MODEL TURNS HEADS!

[She Must Have Used **KINGDOM[®] 8.3!**]



Be the envy of your neighbors with **KINGDOM 8.3.**

New KINGDOM 1D Forward Modeling allows geoscientists to conduct advanced “What-If” analysis on pre- and post-stack data. And while the interface is intuitive enough for beginners, it is powerful enough for experts.

You can instantly change geologic properties such as P- and S-velocity, density, thickness, porosity, and Poisson’s Ratio. Interactively substitute fluids using the Biot-Gassmann method. Control the precise makeup of pore fluids by adjusting fluid properties such as salinity, gas gravity, GOR, and API gravity.

Best of all, it’s integrated in one executable, ensuring you never have to switch in and out of multiple applications to finish your workflow.

With KINGDOM 8.3, now every geoscientist can pursue a career in modeling!

See the full fall lineup from SMT, the global market leader for PC-based interpretation. View our webinar on What’s New In KINGDOM 8.3 at www.seismicmicro.com/smt-model7


Call your sales representative TODAY about “Introductory Pricing” on this new module.

Intuitive. Integrated. Interpretation.

USA +1 (713) 464-6188 **Canada** +1 (403) 303-3365 **Colombia** +57 (1) 618-0239

Russia +7 495 980 89 82 **Singapore** +65 6220 1089 **UK** +44 (0) 20 8240 6524



ANSYTHE Donald I. Andrews 504-887-3432 	D-O-R ENGINEERING, INC. 3-D and Geoscience Services 120 Oil Center Dr., Bldg. 12 P.O. Box 51707, Lafayette, LA 70505 Bus. (337) 233-2378 Fax (337) 233-2907
THE BOEBEL COMPANY Oil and Gas Investments 170 Broadway Street, Suite 321 New Orleans, LA 70118 (504) 866-4313	EDWARD B. PICOU, JR. Consulting Micropaleontologist - Retired 228 St. Charles Ave., Suite 1330 C New Orleans, LA 70130 Bus. (504) 529-5155 Res. (504) 282-3096
BOO-KER OIL & GAS CORP. Gray S. Parker 826 Union, Suite 300 New Orleans, LA 70112 Bus. (504) 581-2430 Fax (504) 566-4785	H. WARREN BELL Oil and Gas Exploration 2500 Tanglewilde, Suite 485 Houston, TX 77063-2126 Bus (713) 266-7297 Fax (713) 266-7298
C & R EXPLORATION, INC. Carlo C. Christina Lawrence G. Ringham	PHELPS GEOSCIENCE Onshore Gulf of Mexico Geology and Geophysics Prospect Generation and Evaluation Houston, TX jsfphelps@yahoo.com (281) 398-5208
C. R. RONDEAU Petroleum Geologist 119 W Southland Ave. Ironwood, MI 49938 Res. (906) 932-4692	RAFIDI OIL AND GAS, INC. Jaser N. Rafidi, President 4415 Shore Dr., Suite 202 Metairie, LA 70006 Bus. (504) 722-2942 Fax (504) 888-5539; Res. (504) 888-1661
CLASSEN EXPLORATION, INC. James S. Classen Looking for close in deals P.O. Box 140637 Boise, ID 83714 classenllc@msn.com Bus. (208) 854-1037 Fax (208) 854-1029	ROY C. WALTHER Petroleum Geologist 2421 Prancer Street New Orleans, LA 70131 Bus. (504) 392-8513 Res. (504) 392-9332
COLLES C. STOWELL Oil and Gas Consultant 22 Sea St. Manchester, MA 01944 (978) 526-1286	TONY CAROLLO Consulting Geologist Unitization Geosteering Field Studies 1701 Peach Street Metairie, LA 70001 Bus. (504) 885-0004 Res. (504) 885-6829

**New NOGS
Members
February and
March 2009**

Kyle M. Straub
Tulane University
Assistant Professor
6823 Saint Charles Ave
New Orleans, LA 70118
504-862-3273

Paula P. Martin
Resolve Geosciences, Inc.
Marketing Rep
Ste B - 431 Mason Park Blvd
Katy, TX 77450
781-395-6999

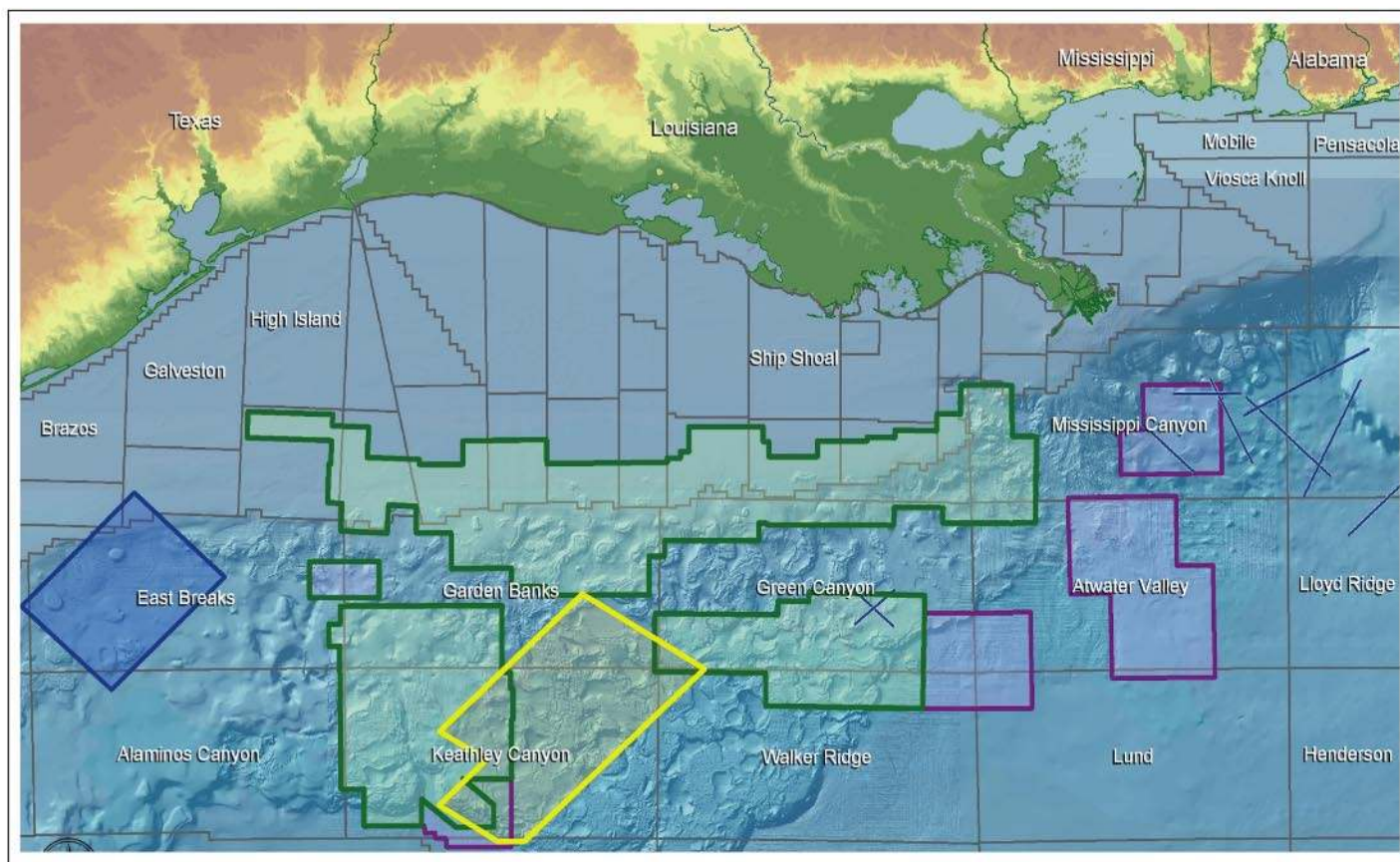
Carlos Constantinov
Atlas Engineering Inc.
Project Manager
Ste 3204 - 201 St Charles Ave
New Orleans, LA 70170
504-734-2747

Jonathan B. Mack
Minerals Management Service
Geophysicist
1201 Elmwood Park Blvd
New Orleans, LA 70123
404-247-7463

REINSTATED
Bryan P. Stephens
Minerals Management Service
1201 Elmwood Park Blvd
New Orleans, LA 70123-2394
504-736-2612

REINSTATED
Reuben J. Klibert Jr.
Diversified Well Logging, Inc.
Recruiting and Training Dir.
711 W 10th St
Reserve, LA 70084-6619
800-280-2096

REINSTATED
Bruce A. Sherman
Southeastern LA University
Instructor
Box 10878
Hammond, LA 70402
985-549-5126



PGS Gulf Of Mexico Data Library

Challenging Times Require Imaginative Solutions - PGS Your Creative Business Partner

- Newly Reprocessed PSDM - Kirchhoff, Beam & WEM
- Wide-azimuth - Kirchhoff, Beam & WEM
- Narrow azimuth
- Proposed Wide-azimuth - Beam & RTM

Contact your local PGS representative for more information

Houston
Tel: +1 281 509 8000
Fax: +1 281 509 8500

Oslo
Tel: +47 67 52 6400
Fax: +47 67 52 6464

London
Tel: +44 1932 37 6000
Fax: +44 1932 37 6100

A Clearer Image
www.pgs.com



NEW ORLEANS GEOLOGICAL SOCIETY



810 Union Street, Suite 300
New Orleans, LA 70112-1430

WWW.NOGS.ORG

MARINE PROPERTIES, LLC BERKSHIRE EXPLORATION CO.

MONTE C. SHALETT, CPL, PRESIDENT

3030 Lausat Street
Metairie, LA 70001-5924

BUS. (504) 831-7779
FAX. (504) 831-8315

PCI

Paleo Control, Inc.

Houston, Texas
713-849-0044

Drilling Wells, Studies and Data Base

Loyd Tuttle

Frio, SE Texas

Bob Liska

Wilcox, S and SE Texas

Jim Thorpe

Miocene and Cam-Miogyp



SEE YOUR DATA IN A WHOLE NEW LIGHT!

Take the pressure out of exploration
and drilling by seeing what you
are going to encounter.



eSeis

www.e-seis.com
713.531.1447

- Lithology & Fluids
- Depositional Facies
- Pore Pressure from V & Q
- Well Planning Consultation

