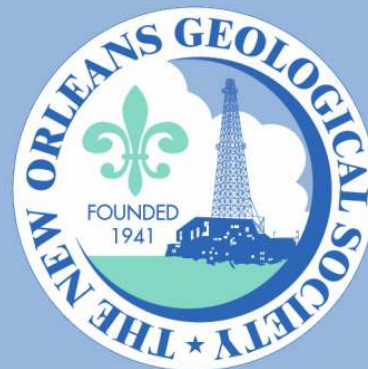


NOGS LOG



March 2009

Volume 49, Number 9

Upcoming Events and Activities

March 2 - NOGS Luncheon

*** At the Holiday Inn Downtown Superdome ***

Free validated parking in hotel garage

Guest speaker Dr. Peter D. Warwick, Research Geologist with the U.S. Geological Survey, Energy Resources Program, will present "USGS Assessment of Undiscovered, Technically Recoverable Oil and Natural Gas Resources in Tertiary Strata of the Gulf of Mexico Coastal Plain and State Waters, U.S.A."

(See page 7 for Abstract and Biography)

HOLIDAY INN DOWNTOWN SUPERDOME

ADMISSION:

Check with concierge or
front desk for location

Lunch served at 11:30am

with reservation \$30.00

without reservation \$35.00

Student Member with reservation Free

March 26-27 - Louisiana Groundwater & Water Resource Symposium

At LSU in Baton Rouge. See announcement on page 8.

April 6 - NOGS Luncheon

Guest speaker Bernie Regel, Chevron, will present "Use of 4D Seismic in Reservoir Management."

April 17 - SGS/NOGS at the Zephyr's Ballpark

7:00PM. More information in the April LOG.

April 27 - NOGS 2009 Annual Golf Outing

Money Hill Golf & Country Club in Abita Springs. See announcement of page 17.

April 29 - Petroleum Geology for Non Geologists

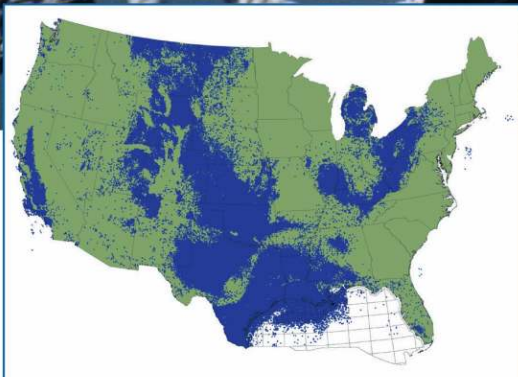
Shell Auditorium, Shell Building in New Orleans.. See announcement of page 12.

May 14 - NOGS Technical Seminar & Core Display

Shell Auditorium, Shell Building in New Orleans.. See announcement of page 15.

Introducing

LASSO



Lasso up all the digital LAS well log data you need from the industry's largest collection

With LASSO, lock in TGS' program rates on digital LAS well data from our US collection, growing at an unprecedented pace to more than 500,000 wells over the next several months. LASSO strengthens your exploration projects with the higher-order capabilities of increased digital well log use. LASSO digital data from TGS, the industry's well log data leader, is quality controlled and available online for immediate downloads.

For more information about LASSO, contact your TGS account representative or call 1- (888) LOG-LINE.



Geophysical
Products



Geological
Products



Imaging
Services

www.tgsnopec.com

NORWAY +47 66 76 99 00 | USA +1 713 860 2100 | UK +44 (0) 1234 272122 | AUSTRALIA +61 8 9480 0000

© TGS-NOPEC Geophysical Company. All rights reserved.

NOGS Office

Office Manager: Annette Hudson

Office Hours: 8:30am – 3:30pm on Monday-Wednesday-Friday

Tel: 504-561-8980 □ Fax: 504-561-8988

E-mail: info@nogs.org □ Website: www.nogs.org

The office is located at Suite 300, 810 Union Street, New Orleans, LA 70112.

Correspondence and all luncheon reservations should be sent to the above address.

Sent to press on February 26, 2009.

**BOARD OF DIRECTORS**

President	William M. Whiting
Vice President	Allan Melillo
Secretary	Frances Wiseman
Treasurer	James Swaney
President-Elect	Tom Klekamp
Editor	Michael D. Miner
Director 2009	Willis E. Conatser
Director 2010	Michael M. Ledet
Director 2011	Scott A. Wainwright

Company

Consultant
Chevron
MMS
MMS
Amber Resources LLC
UNO
Bret Exploration Co Inc

Phone

504-947-8495
985-773-6756
504-736-2912
504-736-2677
985-845-4046
504-280-3866
504-469-2496
504-394-9636
504-889-2700

E-mail

bootscon@aol.com
ajme@chevron.com
frances.wiseman@mms.gov
james.swaney@mms.gov
klekamp@bellsouth.net
mminer@uno.edu
weconatser@aol.com
mikeledet@cox.net
scott_wainwright@hotmail.com

COMMITTEE

AAPG Delegates
AAPG Student Chapter
AAPG Student Chapter
Advertising-Log
Auditing
Awards
Ballot
Best Paper
Continuing Education
Employment Counseling
Entertainment
Environmental
External Affairs
Field Trip
Finance and Investment
Historical
Membership/Directory
New Geoscientists (NGNO)
Nominating
Non-Technical Education
Office Operations
Publications Sales
Photography
School Outreach
Scouting
Technical Projects
Ad Hoc Committee on University Support

Chairperson

Dave Balcer
Bobby Cosentino
Scott Wessels
Jennifer Connolly
J. David Cope
Michael N. Fein
James Swaney
David E. Reiter
TBA
Paul J. Post
Tom Klekamp
Daisy Pate
Michael A. Fogarty
David Garner
James Swaney
Edward B. Picou, Jr.
Penne Rappold
TBA
Alfred H. Baker, Jr.
Duncan Goldthwaite
Arthur H. Johnson
Edward B. Picou, Jr.
J. David Cope
Thomas C. Bergeon
Carol Rooney
TBA
Michael J. Gallagher

Chevron
Tulane University
UNO
Shell
Ankor Energy
W & T Offshore
MMS
Energy Partners Ltd
MMS
Amber Resources LLC
Eustis Geotechnical Eng.
Sylvan Energy, LLC
Shell
MMS
Consultant
Shell
Beacon Exploration, LLC
Consultant
Hydrate Energy International
Consultant
Taylor Energy Co LLC
Century Exploration
Consultant Geologist

985-773-6725
504-495-9475
316-295-0800
504-728-6411
504-596-3672
504-210-8148
504-736-2677
985-893-8072
504-736-2954
985-845-4046
504-613-5798
603-523-4808
504-728-6154
504-736-2677
504-529-5155
504-728-4338
504-836-2710
504-887-4377
504-464-6208
504-529-5155
504-589-0419
504-832-3772
504-835-1909

dbalcer@Chevron.com
rcosenti@tulane.edu
scottwes@gmail.com
jennifer.connolly@shell.com
dcope@ankorenergy.com
mikef@wtoffshore.com
james.swaney@mms.gov
dreiter@eplweb.com
paul.post@mms.gov
klekamp@bellsouth.net
dpate@eustiseng.com
mike.a.fogarty@gmail.com
David.Garner@shell.com
james.swaney@mms.gov
epicou@bellsouth.net
prappold@gmail.com
abaker1006@aol.com
DGldthwt@aol.com
artjohnson51@hotmail.com
epicou@bellsouth.net
dcope@taylorenergy.com
Tom.bergeon@centuryx.com
carolbrooney@aol.com
Michael.Gallagher@enipetroleum.com

NOGS LOG STAFF

Editor	Michael D. Miner
Editor-Elect	Elizabeth Petro
Auxiliary	Susie Baker
Info Tidbits	Clare Falcon
Drill Bits	Paul J. Post
Layout	Jannette Sturm-Mexic
Webmaster	Edward B. Picou, Jr.

UNO
MMS
NOGA
Schlumberger
MMS
Consultant

504-280-3866
504-736-2866
504-466-4483
504-592-5385
504-736-2954
504-529-5155

mminer@uno.edu
liz.petro@mms.gov
abaker1006@aol.com
cfalcon2@new-orleans.oilfield.slb.com
paul.post@mms.gov
emailme@jannette.com
epicou@bellsouth.net

NOGS AUXILIARY**Officers**

President	Linda Peirce	504-393-7365
1st Vice-President	Jean Jones	504-738-8091
2nd Vice-President	Beverly Kastler	504-286-0879
Secretary	Dolores Murphy	504-393-0878
Treasurer	Judy Lemarie'	504-393-8659
Parliamentarian	Carol Andrews	504-887-3432
Member-at-Large	Susie Baker	504-466-4483

Phone**Directors**

Ruth Ingram	2008-09	504-887-5404
June Perret	2008-09	504-881-9357
Joan Sylvester	2008-09	504-738-2934
Beverly Christina	2009-10	504-835-2383
Peggy Rogers	2009-10	504-392-6323
Judy Sabate'	2009-10	504-861-3179

Year**Phone**

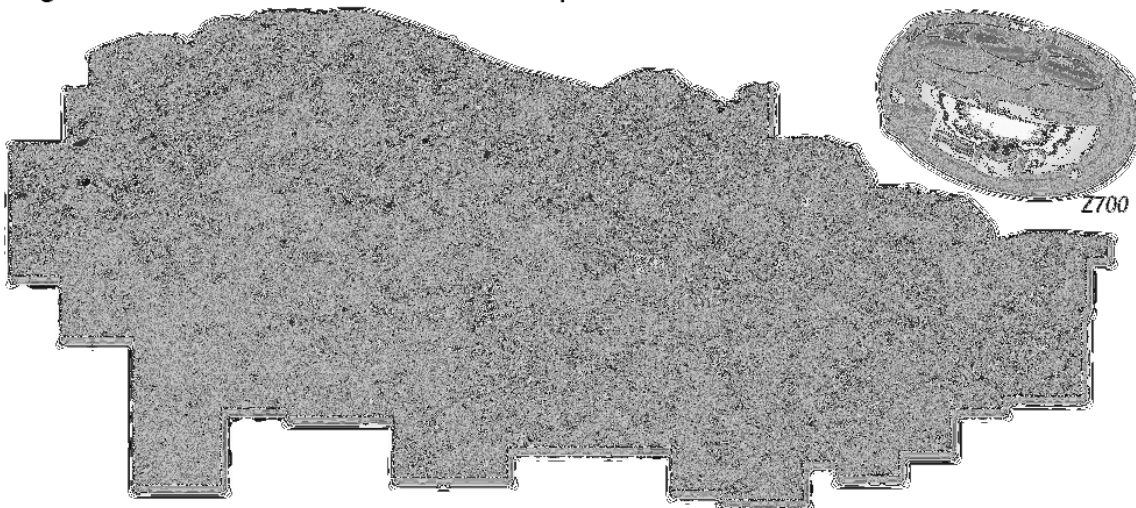
--- NOGS Contact List continued on page 10 ---



At Fairfield the future is now.

Our updated seismic vessels equipped with Fairfield's Z700 ocean bottom node systems will be fully operational in the Gulf of Mexico during 2009. By utilizing longer offsets and the continuous recording capability of Z700, Fairfield will be able to image data to unprecedented depths of over 75,000 feet.

By the end of 2009 our entire database will have been processed using Curved Ray Migration and an additional 500 blocks of depth data will have been added.



The Future begins today. Don't be left in the past.

SEISMIC
SYSTEMS

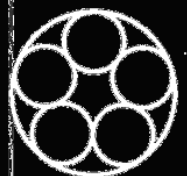
DATA
ACQUISITION

DATA
PROCESSING

DATA
LICENSING

281 278 7500

fairfield.com



Fairfield
INDUSTRIES



from the President

In the February LOG I made reference to the 273 AAPG members whom I was certain were members of NOGS as they claim or are assigned affiliation with a local society (NOGS). A diligent review by our Nominations Chairman Al Baker revealed 105 of these AAPG members are not currently active NOGS members. E-mails and letters have been sent inviting these colleagues to re-join NOGS. Our current membership stands at about 520. Bringing these other professionals back into our Society is important, particularly with AAPG 2010 just around the corner. Likewise a letter written by Ed Picou in 2003 urging NOGS members to join the AAPG is republished in this issue of the LOG.

The AAPG leadership would like to come to New Orleans to conduct a "town hall" type meeting in April. This will be open to all NOGS and AAPG members and spouses and will probably be an evening event. This will also serve as a farewell tour stop by AAPG President Scott Tinker. Also attending will be Rick Fritz, Executive Director of AAPG and Bill Fisher, Chairman of the AAPG Foundation.

Our up and coming events include a seminar by Dr. Royhan Gani of UNO on "Deltaic Reservoir analog: integration of outcrop, core, GPR, and fluid-flow modeling in Cretaceous Strata, Wyoming." The seminar will be held at the Shell Annex Auditorium on May 14th, 2009. Royhan also plans on displaying the cores from a deltaic sequence.

The Petroleum Technology Transfer Council (PTTC) is trying to schedule a June 2009 workshop with Dr. Earnest Mancini on "Microbial Processes in the GOM". Ideally this also will be held at the Shell Annex. Check the LOG for more details on both of these events.

A series of seminars open to all is being offered at UNO on Subsidence. Some of our worthy and experienced members' attendance and participation would likely be appreciated. The NOGS Office will e-mail announcements in the future.

The AAPG student chapter at UNO is being re-activated, the new chairman is Scott Wessels, scottwes@gmail.com. They plan on sponsoring geological talks-your help is appreciated.

Don't forget our up and coming social events under the tutelage of our President-elect Tom Klekamp. The annual Golf tournament is one of our top events and last year was up to pre-Katrina attendance levels. There is plenty of room for volunteers for this event. Profits go to the Bill Craig Fund in the Memorial Foundation. The date of this year's tournament is April 27th.

The NOGS/SGS Zephyrs outing is coming up in the spring and is always quite fun. The kids in particular enjoyed the fireworks after last year's game.

The October 18 Field Trip guide book is currently being edited by Duncan Goldthwaite and Tom Klekamp. The Vol. IV Oil & Gas Fields of SE Louisiana needs more volunteers and submittals. Many of our independents and retirees are ideally situated to present a short field case study. These volumes are a great guide to new professionals in our area. We still receive significant royalties from publications that are over a decade old. Contact Tom Bergeon or myself.

AAPG 2010 is going to require many volunteers. The event is April 18-21, 2010 and is wedged between two New Orleans social events: The French Quarter Festival and the first weekend of Jazz Fest. Contact Tom Hudson, Dr. Nancye Dawers or Art Johnson to volunteer your services. Some of the filled chairmanships are: Robert Rooney, sponsorships; Dave Garner, field trips; Duncan Goldthwaite, short courses; James Swaney, career opportunities; Mike Ledet, Bill Whiting, and Fran Wiseman, volunteers coordination; and George Rhoads, finances.

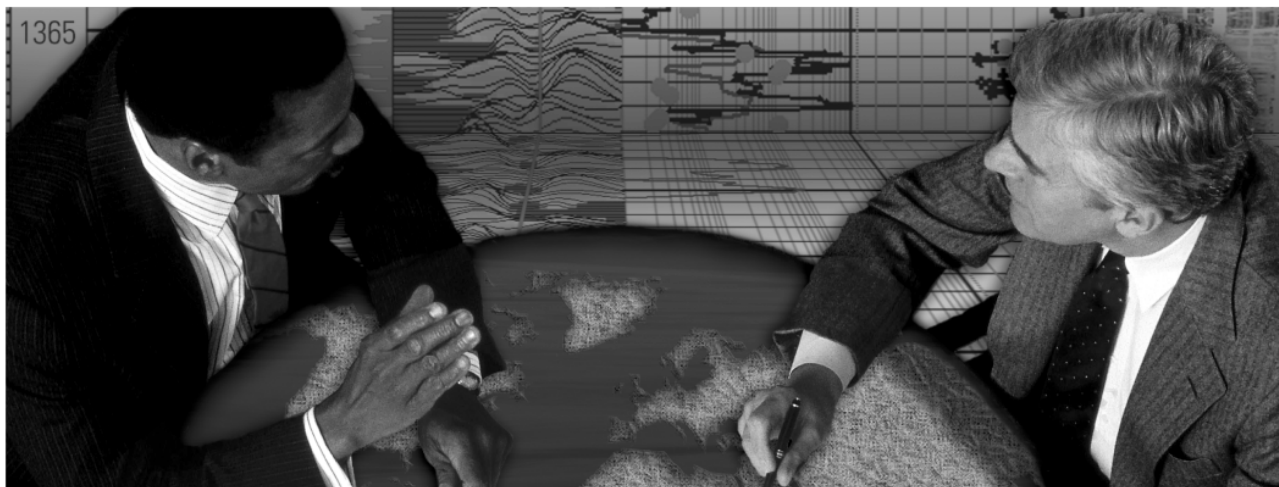
I have received several compliments on the new design of our web site-please use it. Kudos to our webmaster, Ed Picou.

Bill

energyinformation

Business solutions for
the oil & gas industry

Schlumberger formation evaluation solutions deliver the answers you need. Our extensive portfolio of services, leading-edge technology, and advanced conveyance options keep you in communication with your well throughout its life cycle.



With formation evaluation technologies from Schlumberger, you can make the best decisions for optimized performance in every well.

The formation evaluation one-stop shop

Whether you are logging in open hole or behind the casing, our broad selection of services ensures the best solution for acquiring formation evaluation data. Tools can be conveyed while drilling or on wireline or pipe. We offer many specialized evaluation capabilities, from density, neutron porosity, and resistivity to borehole imaging, nuclear magnetic resonance logging, borehole seismic, formation pressure testing, and fluid sampling. Advanced triple-combo logging options include the VISION* formation evaluation and imaging-while-drilling services. Coupled with Pulse* telemetry and surveying services, the VISION family provides real-time formation evaluation data and enables optimum well placement.

High-speed wireline measurements are recorded with the Platform Express* logging services. The SlimXtreme* platform is designed for high-pressure, high-temperature environments and the ABC* Analysis Behind Casing services are used after casing is set.

Expert interpretation from the engineers and geoscientists of Schlumberger Data & Consulting Services brings all your data together to give you the answers you need. This expertise is available after logging is complete or as real-time two-way wellsite communication through the InterACT* real-time monitoring and data delivery system.

Schlumberger delivers leading-edge technology and interpretation expertise for all your formation evaluation needs, so every well benefits from the very best information.

For more information visit
www.slb.com/oilfield/formation_evaluation/

*Mark of Schlumberger

04-FE-114

Schlumberger

March 2 NOGS Luncheon Presentation

*** at the Holiday Inn Downtown Superdome ***

USGS Assessment of Undiscovered, Technically Recoverable Oil and Natural Gas Resources in Tertiary Strata of the Gulf of Mexico Coastal Plain and State Waters, U.S.A.

presented by

Peter D. Warwick

U.S. Geological Survey, Reston VA

ABSTRACT

In 2007, the U.S. Geological Survey (USGS) conducted an assessment of the technically recoverable undiscovered oil and gas resources in Tertiary sediments underlying the U.S. Gulf of Mexico Coastal Plain and State waters. For purposes of the assessment, an Upper Jurassic-Cretaceous-Tertiary total petroleum system (TPS) was defined for the Gulf of Mexico Basin by the USGS Tertiary Assessment Team. Tertiary strata were divided into the following stratigraphic study intervals: 1) Wilcox Group (including Midway Group and the basal Carrizo Sand of the Claiborne Group (Paleocene-Eocene); 2) Claiborne Group (Eocene); 3) Jackson and Vicksburg Groups (Eocene-Oligocene); 4) Frio-Anahuac Formations (Oligocene); 5) Lower, Middle, and Upper Miocene; and 6) Plio-Pleistocene. Based on a generalized structural, stratigraphic, and depositional model, the assessed

stratigraphic intervals were subdivided into 1) up-dip, stable shelf assessment units (AUs), 2) mid-dip, expansion (extension) zone AUs, or 3) down-dip, slope and basin floor AUs. A significant controlling factor for the location of the mid-dip expansion zone AU is the location of underlying, stratigraphically older shelf margins. Recent discoveries of coalbed gas in Paleocene Wilcox strata led to recognition of a new petroleum system that had not been previously assessed by the USGS. In total, 33 conventional and four continuous (coalbed gas) assessment units were defined. Using a geology-based assessment methodology, the USGS estimated a mean of 113.7 trillion cubic feet of undiscovered natural gas, a mean of 690 million barrels of undiscovered oil, and a mean of 3.7 billion barrels of undiscovered natural gas liquids in the assessed AUs.

BIOGRAPHY

Peter Warwick obtained a M.S. in Geology from North Carolina State University in 1982 and a Ph.D. in Geology from the University of Kentucky in 1985. His scientific and technical specialties include sedimentology, stratigraphy, coal and petroleum geology, organic petrology and geochemistry, field geology, and geographic information systems (GIS). He is currently employed by the U.S. Geological Survey (USGS) as a research geologist in the Energy Resources Program. His experience includes coal- and hydrocarbon-related research, exploration, and resource assessments in various sedimentary basins in North and South America, Europe, and Asia. His present

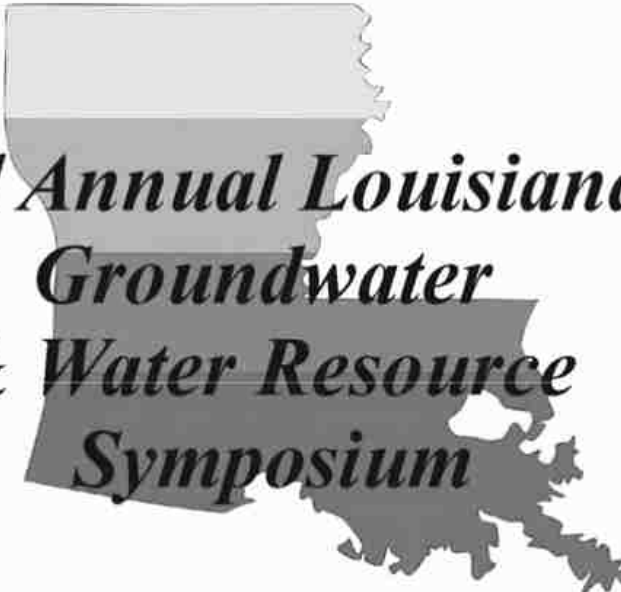
research focus is on petroleum geology and coalbed methane resources and understanding methanogenic processes in organic-rich deposits. He is a member of the ASTM International, American Association of Petroleum Geologists (former President of the Energy Minerals Division), Geological Society of America (former Chair of the Coal Geology Division), Society for Sedimentary Geology (SEPM), The Society for Organic Petrology (former President), and is a member of the editorial board of the International Journal of Coal Geology and the American Association of Petroleum Geologists Bulletin.

THE LUNCHEON RESERVATION DEADLINE IS JANUARY 28 - CONTACT THE NOGS OFFICE

“And Looking Ahead...”

The next NOGS Luncheon will be April 6. Guest speaker Bernie Regel, Chevron, will present “Use of 4D Seismic in Reservoir Management.” Contact the NOGS office to make your reservation.

Baton Rouge Geological Society



3rd Annual Louisiana Groundwater & Water Resource Symposium

March 26 & 27, 2009

Louisiana Water a Valuable Resource

Energy Coast & Environment Building
Louisiana State University
Baton Rouge, Louisiana

For more information see
Baton Rouge Geological Society website
<http://www.brgs-la.org>
or e-mail dcarlson@lsu.edu

First call for abstracts

Abstracts due March 6, 2009

Expanded Abstracts due March 16, 2009

Hosts:

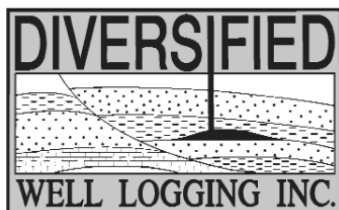
Louisiana Geological Survey

Baton Rouge Geological Society



Relax. We'll keep you posted.

Your rig is offshore and you are not. How do you know what's going on so many miles away? You know because we tell you. Daily or even hourly, Diversified Well Logging's engineers update you on the status of your rig. We are your eyes and ears, especially when it comes to deep water or high pressure, high temperature areas. Diversified offers 24-hour surface evaluation. We provide secure and customized real-time data communication, in-house research and development and 24/7 on-call support for our equipment and our engineers. Whether you have a 10-day job or 110-day job, we provide the specialized attention you require. So, relax. We're with you every step of the way.



Serving the Gulf Coast for over 40 years.

New Orleans • Lafayette • Houston • Dallas • Corpus

800.280.2096

711 West 10th Street • Reserve, LA 70084 • Phone: 985.536.4143 • Fax: 985.536.2427
sales@dwl-usa.com



**PALEO
DATA**

**FULLY INTEGRATED AND
CENTRALIZED BIOSTRATIGRAPHIC
SERVICES**

- ▼ Single-source biostratigraphic databases
for increased accuracy and consistency
- ▼ Integrated foram / nannofossil analyses
- ▼ Complete wellsite paleo services
- ▼ In-house sample preparation
lab for quality-monitoring
and efficiency
- ▼ Sample pick-up service

6619 Fleur de Lis Drive
New Orleans, LA 70124
(504) 488-3711

www.paleodata.com

MCMORAN EXPLORATION CO.



MCMORAN OIL & GAS

www.mcmoran.com

NYSE: MMR

16676 Northchase Dr.
Houston, TX 77060
(281) 539-7600
Fax: (281) 539-7655

1615 Poydras
New Orleans, LA 70112
(504) 582-4000
Fax: (504) 582-4155

110 Travis St., Suite 140
Lafayette, LA 70503
(337) 735-9150
Fax: (337) 735-9151

NOGS CONTACT LIST

--- continued from page 3 ---

MEMORIAL FOUNDATION

BOARD OF TRUSTEES

		Company	Phone	E-mail
2008-09 Chairman	Arthur H. Johnson	Hydrate Energy International	504-464-6208	artjohnson51@hotmail.com
2008-09 Secretary	William M. Whiting	Consultant	504-947-8495	bootscon@aol.com
2008-09 Trustee	David E. Balcer	Chevron	985-773-6725	dbalcer@chevrontexaco.com
2008-09 Trustee	George T. Froming	Consultant	504-799-1918	gtfroming@yahoo.com
2009-10 Trustee	Michael C. Fauquier			
2009-10 Trustee	J. David Cope	Ankor Energy	504-596-3672	dcope@ankorenergy.com
2010-11 Trustee	Timothy J. Piwowar	Shell	504-728-4066	tim.piwowar@shell.com
2010-11 Trustee	Michael N. Fein	W & T Offshore	504-210-8148	mikef@wtoffshore.com

AAPG DELEGATES

Term Ends

		Company	Phone	E-mail
2009	David E. Balcer	Chevron	985-773-6725	dbalcer@Chevron.com
2009	William Whiting	Consultant	504-947-8495	bootscon@aol.com
2009a)	Nancye Dawers	Tulane University	504-862-3200	ndawers@tulane.edu
2009a)	David Cooke	MMS	504-736-2609	david.cooke@mms.gov
2011	Tom Hudson	Chevron	985-773-7163	tom.hudson@chevron.com
2011	Edward B. Picou, Jr.	Consultant	504-529-5155	epicou@bellsouth.net
2011a)	Brenda Reilly	Energy Partners Ltd.	504-799-4811	breilly@eplweb.com
2011a)	Robert Rooney	Century Exploration	504-832-3777	Robert.rooney@centuryx.com

Edward B. Picou, Jr.

228 Saint Charles Ave, Ste 1330 C
New Orleans, LA 70130-2675
Tel: 504.529.5155 (O)
Tel: 504.282.3096 (H)
Fax: 504.288.8230
E-mail: epicou@bellsouth.net

February 9, 2009

Dear Fellow NOGS Member,

I have always considered membership in professional organizations an important part of my career development. You, as a member of NOGS, have taken the first important step.

However, I am asking that you now take the next important step to become a member of the American Association of Petroleum Geologists. Whereas NOGS represents our petroleum and related geoscience industries locally, the AAPG is our standard-bearer both nationally and internationally and has benefits only a larger organization can offer.

AAPG member benefits are too many to enumerate in this brief letter. However, I ask that you review the enclosed **Inside AAPG** brochure. It outlines all of the programs and activities sponsored by the Association. Also enclosed is a copy of the AAPG Membership Value Pyramid which graphically shows how all-embracing the AAPG Professional Community is constructed. (Available at www.aapg.org/member/pyramid.)

For less than 20 cents a day, you can receive the benefits of AAPG membership. Nowhere, in any profession, can such a value be found at such a low price.

Many AAPG programs and activities are subsidized by the AAPG Foundation to enable members to participate in programs at a reduced cost. The Basic Programs listed at the base of the pyramid are, to me, worth the annual dues.

To have at your finger tips the ability to electronically search the entire AAPG *Bulletin* from 1917 to present day is a huge knowledge resource advantage.

The monthly AAPG *Explorer* newspaper provides members with extensive coverage of AAPG activities and publishes top-notch articles analyzing industry trends and technological innovations.

These two superior monthly publications are just the beginning of member benefits.

I encourage you to log onto the AAPG Web site at www.aapg.org and explore in depth the information it provides. The Web site has become the defining information resource for members. One can order AAPG publications online, print application forms, check the schedule for future meetings — regional, national and international, and many, many other items, including daily news of interest to the oil industry.

In the past 42 years I have missed but a few of the Annual AAPG Conventions. I find these meetings a “must attend” event. The technical programs at these conventions present topical technical sessions, both in oral and poster format, on the latest developments in petroleum exploration, exploitation, and in environmental and energy mineral subjects.

AAPG member registration is less than that for non-members—a strong incentive to join the Association.


As one who has benefited handsomely from my 54-year membership in AAPG, I strongly urge you to not delay completing the enclosed necessary forms for joining.

As you can see by the enclosed application, I have already signed as your sponsor. Please contact me by phone or e-mail if I can provide any information or assistance. (Applications available online at www.aapg.org - Membership - Join)

Best regards,


Edward B. Picou, Jr.

Enclosures




SeaBird Exploration

Take a look at the *future* of
MARINE SEISMIC




www.sbexp.com
www.seabed.no

RAISING
THE **STANDARD**



- Autonomous 4C nodes rated to 3000 m
- Acoustic Communication/Data QC
- Best sensor orientation in the market
- Highest quality coupling
- Sub-meter positioning available



Dubai
T: +971 4 4271700

Houston
T: +1 281 556 1666

Oslo
T: +47 2240 2700

Trondheim
T: +47 7 3879500

Singapore
T: +65 9180 2605

PETROLEUM GEOLOGY FOR NON GEOLOGISTS

The New Orleans Geological Society is presenting a one day course on “Petroleum Geology for Non Geologists,” 8:30 AM to 3:30 PM on Wednesday April 29, 2009 in the Shell Auditorium, Shell Building, 701 Poydras Street, New Orleans. The course will consist of a brief introduction to Basic Geology, followed by a review of how oil and gas are formed, how they are concentrated into reservoirs, the geological and geophysical methods used in exploration, and an overview of drilling and completion practices.

This course should be of significant benefit and interest to anyone who in one way or another works with geologists and geological data, such as land personnel, secretaries, draftsmen and computer programmers and processors.

Instructors will be Duncan Goldthwaite - Consulting Geologist, Robert Branson - Consulting Geologist, Bruce Robertson - Consulting Geologist, and Devi Subramaniam- Drilling Engineer, Chevron.

Cost will be \$35.00 per participant. Course notes and mid-morning refreshments will be provided.

Persons interested can register by sending a check for \$35.00, made out to the New Orleans Geological Society, to:

New Orleans Geological Society
Ste 300
810 Union St
New Orleans LA 70112

When registering, please give your name, your work or home address and telephone number and company affiliation, if any.



Eni Petroleum

1250 Poydras Street
Suite 2000
New Orleans, LA 70113
Tel: (504) 593-7000
Fax: (504) 593-7745

1201 Louisiana Street
Suite 3500
Houston, TX 77002
Tel: (713) 393-6100
Fax: (713) 393-6205



**Shell has worked in partnership
with the NOGS for many years, and
is proud to count the society among
its closest business associates.**

The New Orleans Geological Society was organized in 1941 to foster scientific research and advance the science of geology. Particular emphasis is laid on the exploration for and production of petroleum and natural gas. Related objectives include encouraging the adoption of improved methods of exploration, disseminating pertinent geological and technological data, and maintaining a high standard of professional conduct among its members.

www.shell.com/us.sepc

SEI®

Seismic Exchange, Inc.

**Strategic Speculative Surveys
Geophysical Data Marketing & Management**

**Your
Full Service
National
Seismic Data
Marketing Firm**

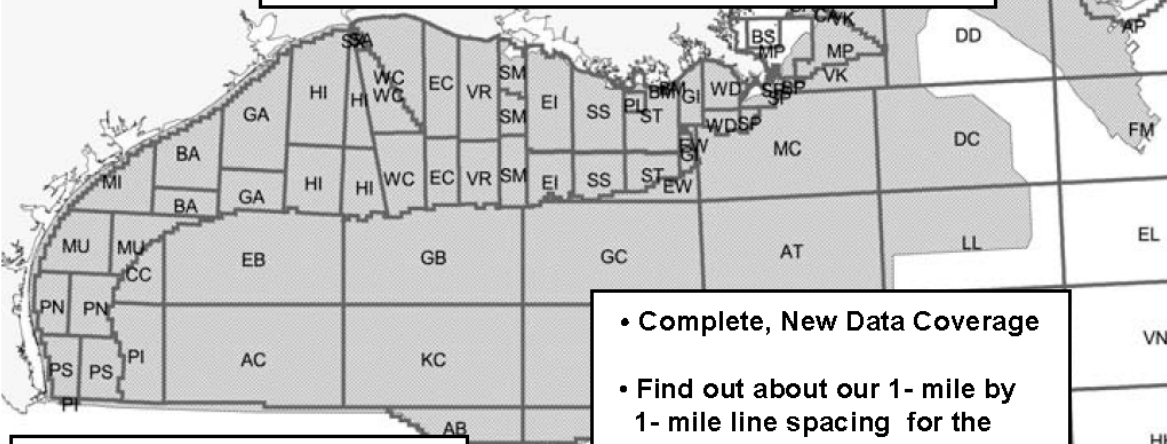
New Orleans
Dallas
Houston
Denver
Oklahoma City
Corpus Christi
Tulsa

201 St. Charles Avenue, Suite 4300, New Orleans, Louisiana 70170-4300
Telephone 504.581.7153 Fax 504.581.9591
www.seismicexchange.com

Robertson



**"The Place to Go"
For GOM Gravity Data and Interpretations**



FUGRO ROBERTSON INC.
Contact: Dave Schwartz
Tel: (713) 369-6100
Fax: (713) 369-6110
Email: infofri@fugro.com
www.fugro-lct.com

- Complete, New Data Coverage
- Find out about our 1- mile by 1- mile line spacing for the entire deepwater
- PSDM Support
- 3D Modeling



**100 Northpark Blvd.
Covington, LA 70433**

(985) 773-6000

"Serving the Oil & Gas Industry Since 1983"

Geological,
Geophysical &
Land Drafting

Anthony Catalanotto

President

Stefani Kelone

Drafting and Design



Geo-Draft, Inc.

A Professional Drafting & Graphics Firm

3349 Ridgelake Drive □ Suite 202 □ Metairie, LA □ 70002

Office: (504) 836-2882 Fax: (504) 836-2877

geodraft@bellsouth.net



LaBay

Exploration Co., L.L.C.

111 Veterans Memorial Blvd.,
Suite 1550
Metairie, Louisiana 70005

www.labayexploration.com

Office (504) 371-5967
Fax (504) 371-5969

***This advertising space is
available! Contact the
NOGS office.***

NEW ORLEANS GEOLOGICAL SOCIETY

Technical Seminar & Core Display

Deltaic Reservoir Analog: Integration of Outcrop, Core, Ground Penetrating Radar, and Fluid-flow Modeling in Cretaceous Strata, Wyoming

May 14, 2009 9:00 AM–3:00 PM

Shell Auditorium, One Shell Square 701 Poydras, New Orleans

Presented by: Dr. M. Royhan Gani, Department of Earth and Environmental Sciences,
University of New Orleans

Cost per participant: \$50 for NOGS members and non-members, \$25 for students
(some sponsorships available through NOGS).

To reserve a spot or for any questions contact the NOGS office at info@nogs.org or
(504) 561-8980

Seminar Description

Despite the present global emphasis on deep-water exploration and reservoir characterization, much of current and projected global production remains in siliciclastic shallow- and marginal-marine reservoirs. Because of the dynamic interaction of fluvial and basinal (e.g. tides, waves, storms) processes, deltaic deposits are inheritably complex. Various outcrops and subsurface data were integrated to study a Cretaceous delta at the top of the upper Turonian Wall Creek Member exposed along the western flank of the Powder River Basin, Wyoming. Investigation was performed from pore-scale to parasequence-scale to document facies and architectural complexity, along with reservoir properties. Experimentally designed flow-simulations were used to examine effects of facies variability and bedding geometry on breakthrough time, sweep efficiency and upscaled permeability.

Regional sandstone isolith, facies, and paleocurrent maps help to reconstruct the paleogeography and show how the various architectural elements varied across the delta front. The channels, bars, frontal splays, and tidally modulated elements are found only near the distributary mouth, whereas the storm sheets occur extensively away from the distributary mouth. The external shape of the studied delta might be seen as controlled primarily by waves, but the internal facies architecture reveals a far more complex interaction of river, waves, storms, and tidal processes. This challenges the tripartite classification of deltas into river-dominated, wave-dominated, and tide-dominated end member types.

Detailed logging of ichnological variations in several deltaic parasequences are correlated with inferred short- and long-term changes in depositional processes, reflecting various proportions of river, flood, wave, storm, and tide influences that can translate into variable reservoir properties. For this, trend analysis of BI (bioturbation index) log is particularly useful.

The purpose of this seminar is to showcase the internal facies and architectural complexity of deltaic reservoirs. Additionally, display of cores will provide opportunity for the participants to get hands-on experience on how to identify facies, trace fossils, and sequence stratigraphic surfaces in shallow-marine strata.

Higher Standards



Weatherford LABORATORIES

At Weatherford Laboratories, we hold fast to Higher Standards. Our purpose is to continually push past conventional solutions to find new and better ways to optimize oil and gas production.

■ By integrating seven entrepreneurial companies, we bring unsurpassed innovation to the industry. Our accomplishments include 50 new technologies, 45 original products, 35 industry awards, and 13 registered patents. Among our ranks are several luminaries of the industry, as well as scores of respected scientists who have authored hundreds of technical papers. ■ With 38 laboratories around the globe, our team raises the bar for wellsite sampling, core management services, geochemical analyses and evaluation of unconventional reservoirs.

At Weatherford Laboratories, we expect more from ourselves so you can expect more from us.

Weatherfordlabs.com

7
DYNAMIC
COMPANIES

50
NEW
TECHNOLOGIES

38
WORLDWIDE
LABORATORIES

CORPORATE OFFICES

ACS Laboratories Pty Ltd
Brisbane, Australia

OMNI Laboratories
Houston, Texas USA

ResLab Reservoir Laboratories
Trondheim, Norway

Humble Geochemical Services
Houston, Texas USA

TICORA Geosciences
Denver, Colorado USA

Baseline Resolution, Inc.
Houston, Texas USA

Hycal Energy Research Laboratories
Calgary, Alberta, Canada

NOGS PRESENTS THE 2009 ANNUAL GOLF OUTING

PROCEEDS FROM THIS EVENT WILL HELP FUND *THE BILL CRAIG MEMORIAL FUND**.
LAST YEAR, THE GOLF TOURNAMENT GENERATED OVER \$3,500.00. LET'S KEEP IT GOING!

WE'RE BACK BY POPULAR DEMAND AT

MONEY HILL GOLF & COUNTRY CLUB

IN ABITA SPRINGS ON **MONDAY, APRIL 27.**

THE FORMAT WILL BE A 4-PERSON SCRAMBLE W/SHOTGUN START AT **12:00 NOON.**

FOOD SPONSORED BY TIM KLIBERT W/ DIVERSIFIED LOGGING

DRINKS SPONSORED BY CHAD LEBLANC W/ HALLIBURTON

REGISTRATION OPENS AT 10:00 AM WITH BRUNCH SERVED UNTIL TEE TIME. PRICE INCLUDES GREEN FEES, CART, RANGE BALLS, FOOD & DRINKS, FLIGHT, PRIZES & 2 MULLIGANS. WHAT ELSE COULD YOU POSSIBLY ASK FOR? DONATIONS OF ANY KIND ARE WELCOME. THE COST IS \$140.00 / INDIVIDUAL OR \$650/CORPORATE. HOLE SPONSORS ARE \$125.

THIS EVENT ALWAYS FILLS UP AND WE ARE LIMITED TO 120 PLAYERS ONLY. PLEASE REGISTER EARLY TO AVOID CONFUSION. REMEMBER YOU ARE NOT REGISTERED UNTIL NOGS HAS RECEIVED PAYMENT AND YOU ARE CONFIRMED BY ANNETTE. AS USUAL WE NEED VOLUNTEERS. IF YOU CAN HELP OUT YOU WILL BE TREATED TO A DAY OF FUN, FOOD, AND BE ELIGIBLE FOR SOME DOOR PRIZES. MAKE SURE YOU SUPPLY YOUR HANDICAP OR A SCORE THAT TYPIFIES A SET OF ROUNDS OF GOLF OVER RECENT TIME NO GREATER THAN 2 YEARS IN THE SPACE PROVIDED.

DONATIONS AND TO VOLUNTEER CONTACT JEFF JANDEGIAN (504-522-7496)
AL PORTER (504-488-3711) BILL WHITING (504-947-8495)

TO REGISTER, CONTACT ANNETTE HUDSON AT THE NOGS OFFICE, 810 UNION ST. STE. 300
NEW ORLEANS, LA 70112 504-561-8980; FAX 504-561-8988. CASH, CHECK (PAYABLE TO NOGS), VISA, MC, AND AMEX ARE ACCEPTED.

Name: _____

Company: _____

Phone: _____

Names of others in your group;

V MC Disc Am Ex # _____

Exp Date _____ Total Paid _____

_____ @ \$140 each = _____

_____ @ \$650 each = _____

Cash Donations = _____

Hole Sponsorship = _____

TOTAL = _____

* Information
concerning *The Bill
Craig Memorial
Fund* is available at
www.nogs.org.

South Louisiana and Offshore

Exploration and Production Activity

- **McMoRan** on 21-January provided updates on its deep gas exploration activities.

Following the July 2007 Flatrock discovery in OCS 310 on SMI 212, five additional successful wells have been drilled in the field. Below is a status report on activities in the area:

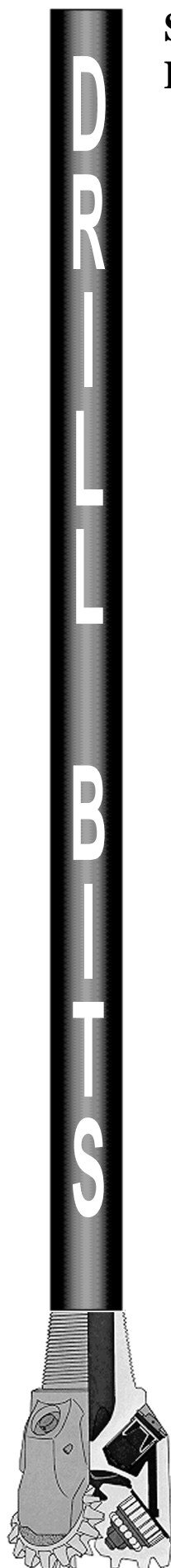
Flatrock Wells	Total Pay Intervals	Net Feet of Pay ⁽¹⁾	Status
No. 1 (#228) - Discovery Well	8	260	Producing from <i>Operc</i> section
No. 2 (#229) - Delineation Well	8	289	Producing from Primary <i>Rob-L</i> sand
No. 3 (#230) - Delineation Well	8	256	Producing from <i>Operc</i> section
No. 4 (#231) - Development Well	2	116	Producing from Primary <i>Rob-L</i> sand
No. 5 (#232) - Development Well	8	155	Completing in <i>Operc</i> section: First production expected in 1Q09
No. 6 (#233) - Delineation Well	2	40	Drilling: Targeting deeper <i>Operc</i> and possibly penetrate the upper <i>Gyro</i> section sands
No. 7 (#234) Delineation Well ⁽²⁾	To Spud in 2Q09: Location pending full evaluation of the #233 well currently drilling		

⁽¹⁾ Confirmed with wireline logs.

⁽²⁾ Located 4,000 feet southwest of the No. 6 well

Four wells are currently producing at a gross rate of approximately 200 MMCFGE/D in the field. Per well rates vary depending on the porosity, permeability, pressures and hydrocarbon column of the reservoir being produced. To date, the primary *Rob-L* reservoir has achieved the highest flow rate in the field, over 100 MMCFGE/D. The No. 4 well, which tested at a rate of 124 MMCFGE/D in October 2008, is currently producing at a rate 60 MMCFGE/D, with a targeted rate of approximately 90 MMCFGE/D. The No. 5 development well logged 155 net feet of pay in the *Rob-L* and *Operc* sections, including an additional 30 net feet of deeper pay since McMoRan's 19-November-2008 update. The well is being completed in the *Operc* section with first production expected in the first quarter of 2009. The Flatrock No. 6 delineation well on SMI 217 was spudded on 28-October-2008, and is currently being drilled below 16,000 feet towards a PTD of 19,700 feet to evaluate the *Operc* and possibly to penetrate the upper *Gyro* sand section. In January 2008, wireline logs logged 40 net feet of pay in the *Rob-L* sand section of the No. 6 well.

The first well on the Tom Sauk deep gas exploratory prospect on Louisiana SL 340 was spudded on 14-August-2008 and as of the report date was being drilling below 17,700 feet towards a PTD of 19,000 feet. McMoRan is currently in the process of logging the well. Tom Sauk, which is located in less than 10 feet of water, is a deep gas prospect which lies below the shallow production at Mound Point Field.



Drilling on the Gladstone East deep gas exploratory prospect on Louisiana SL 340 commenced on 6-November-2008. The well is currently being drilled below 15,600 feet towards a PTD depth of 18,050 feet. The well, which is located in less than 10 feet of water approximately 5 miles east of the Flatrock Field, targets similar potential *Rob-L* and *Operc* sands in the middle-Miocene. The prospect is a deeper pool play, below the western flank of the Mound Point Field.

The Ammazzo deep gas new field wildcat exploratory well, in 25 feet of water, was spudded 22-November-2008 and as of the report date was being drilled below 7,900 feet towards a PTD of 24,500 feet. The Ammazzo prospect is located on the southern portion of a structural ridge extending from the Flatrock and JB Mountain discoveries (located approximately 16 and 11 miles north-northwest, respectively), where productive Middle Miocene *Rob-L*, *Operc* and *Gyro* sands have been discovered.

- ENI on 27-January announced that it had sanctioned two new development projects, Longhorn Phase II and Appaloosa field, both in the Greater Longhorn Area of central Mississippi Canyon. The area includes the ENI-operated Corral Platform, and the Longhorn field currently under development.

The Longhorn Phase II development, sanctioned by ENI in December, 2008 will have a total investment of \$112.9 MM, and will provide for an additional subsea well that will be tied back to the Corral Platform. Expected peak rate production will range from 30 to 50 MMCFG/D. The Longhorn gas development project, located in MC Blocks 502 and 546 in ~2,400 feet of water, is operated by ENI with a 75% WI. Nexen holds the remaining 25% WI. Production at Longhorn is expected to start in July, 2009.

The nearby Appaloosa Unit, entirely held by ENI, consists of MC Blocks 459, 460 and a portion of MC 503 and 504 in ~2,800 feet of water. The Appaloosa unit development was also sanctioned in December, 2008 with a total investment of \$228.1 million. Oil processing capacity at Corral Platform will be upgraded to accommodate Appaloosa's first oil, which is expected in January 2010 with a peak rate of 7,500 BO/D.


These development projects will provide ENI with a further opportunity to increase production and reinforce its operating presence in the Mississippi Canyon area. The ENI-operated Corral platform is expected to become a significant oil and gas processing hub at the edge of the Shelf region in this part of the GoM, with further synergies available in the Greater Longhorn area from an appraisal campaign planned to commence in second half 2009. ENI estimates that the potential of the Greater Longhorn Area in terms of reserves and exploration resources is approximately 100 MMBOE.


- On 29-January, Plains Exploration & Production Company announced an apparent prolific confirmation well at the Friesian Project at GC Block 599.


In November of 2006, the original discovery well, Friesian #1, was drilled in GC 599 to a TD of 29,414 feet and encountered more than 120 feet of net oil pay. The Friesian #2 offset well, located in adjacent GC Block 643 approximately 3,300 feet due south of the initial discovery well, operated by Plains (50% WI) was drilled to a TD of 28,989 feet. Approximately 389 net feet of oil saturated Miocene sands were encountered with three main sand lobes containing more than 210 net feet of high quality oil pay plus a fourth sand lobe with 179 additional feet of oil pay that was not fully evaluated. These four pay sands, all full to base with oil, are the uppermost field pays at the prolific Tahiti field, which is located approximately eight miles to the west across a syncline. Existing data shows strong correlation, both geologic and pressure, from these Miocene field pay sands at Tahiti to the drilled portion of the Friesian #2 well.

--- continued on page 31 ---

A Company that Shines

 Geophysical Products

 Geological Products

 Imaging Services



TGS has been providing best-in-class multi-client data and services to successful E&P companies for over a quarter century. Our geophysical and geological data products are distributed around the globe and include one of the youngest and best targeted multi-client seismic libraries, extensive magnetic and gravity data, the industry's largest global database of digital well logs, and regional interpretive products. We also provide high-end depth imaging services to help resolve complex seismic imaging problems. Together, our products and services give you a more complete picture of the subsurface to help your exploration program *shine*.

For more information, visit www.tgsnopec.com today.



www.tgsnopec.com

NORWAY +47 66 76 99 00 | USA +1 713 860 2100 | UK +44 (0) 1234 272122 | AUSTRALIA +61 8 9480 0000 | RUSSIA +7 495 959 8117
©TGS-NOPEC Geophysical Company. All Rights Reserved.

New Orleans Geological Society Publications

To order NOGS publications, please contact Amanda Masterson by phone at 1-888-839-4365, fax at 1-888-839-6277 or e-mail to: Amanda.Masterson@beg.utexas.edu.

Or write to: Publications Sales Bureau of Economic Geology, The University of Texas at Austin, Box X, University Station, Austin, TX 78713-8924. All orders must be prepaid, by credit card or check payable to "UTBEG"; please contact the Bureau for current prices and handling charges.

Exploration and Exploitation of Coastal Salt Basin Diapiric Structures in the Lower Pliocene through Eocene Trends: Geology and Techniques, by T.G. Fails, G. D. O'Brien, and J. A. Hartman [In cooperation with the Houston Geological Society] 1995, 179 p., 121 figs., 9 tables. **NOGS 01, \$28.00**

Productive Low Resistivity Well Logs of the Offshore Gulf of Mexico [In cooperation with the Houston Geological Society] Dwight "Clint" Moore, Editor. 1993, 206 p. **NOGS 03, \$25.00**

Introduction to Central Gulf Coast Geology, Duncan Goldthwaite, editor (1991, 232 p., 18 articles). **NOGS 04, \$20.00**

CONVENTION SHORT COURSE NOTES AND GUIDE BOOKS

Introduction to Ground-Water Hydrology, D. H. Easley (1993, 52 p.). **NOGS 06, \$10.00**

Northeastern Gulf Coastal Plain Revisited: Neogene & Quaternary Units and Events: Old and New Concepts, Erwin G. Otvos, (Guidebook, 1997, 143 p., 54 figures, with bibliography. **NOGS 08, \$15.00**

Tour of Salt Dome Caprock Features, Winn Rock Quarry, Winn Parish, LA, J. R. Kyle and M. R. Ulrich (1993, 48 p.). **NOGS 09, \$10.00**

Geological and Cultural Excursion, Jackson to Natchez, MS, Maureen K. Corcoran, D. Harrelson, P. Albertson, and R. T. Saucier (1993, 61 p., road log). **NOGS 10, \$10.00**

Geology of the Ouachita Core Area, Vicinity of East Shore, Lake Ouachita, Garland Co., AR, W. W. Craig, J. K. Bellis, D. A. Danielson, Jr., J. Bessler (1993, 39 p., geol. map). **NOGS 11, \$10.00**

Meander Belt Deposition, Plaquemine Point, Mississippi River, J. M. Coleman and H. H. Roberts, (1988, 28 p.). **NOGS 12, \$5.00**

Tertiary and Upper Cretaceous Depositional Environments of Central Mississippi, E. R. Adams (1985, 31 p., road log). **NOGS 14, \$5.00**

A Tour of Selected Tertiary and Quaternary Localities and Landscapes of the Jackson-Vicksburg-Natchez-Old River Areas, MS-LA, R. T. Saucier and M. L. Smith (1985, 26 p., road log). **NOGS 15, \$5.00**

OTHER PUBLICATIONS

Offshore Louisiana Oil and Gas Fields, Vol. 2, 1988, 248 p., 23 fields. **NOGS 16, \$35.00**

Oil and Gas Fields of Southeast Louisiana, Vols. 1 and 2, bound together (reprinted 1990, 384 pages, 57 fields). **NOGS 17, \$30.00**

Vol. 3, (1983, 225 pages, 43 fields). **NOGS 18, \$30.00**

Vol. 3 Supplement (1987, 81 pages, 10 fields). **NOGS 19, \$15.00**

Salt Domes of South Louisiana

Vol. 2 (1962, 107 pp., 53 domes). **NOGS 21, \$18.00**

Vol. 3 (1983, 131 pages, 46 domes, plus articles). **NOGS 23, \$18.00**

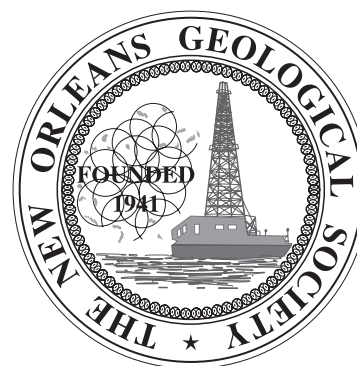
Tuscaloosa Trend of South Louisiana, D. B. Steward, editor (1981, 19 fields and other articles). **NOGS 24, \$23.00**

A Tour Guide to the Building Stones of New Orleans, Edward Slagle (1982, 58 p.). **NOGS 25, \$5.00**

Science and Evolution vs. Creationism and Louisiana Act 685 "Balanced Treatment For Evolution-Science And Creation Science In Public School Instruction" (1981, 4-p. pamphlet). **NOGS 27, \$1.00**

CONTINUING EDUCATION SERIES NOTES

Deltaic Sands and Sandstones, by R. J. LeBlanc, Sr. (1987, 50 p.). **NOGS 31, \$5.00**



NOGS PUBLICATIONS ON CD-ROM

AAPG/Datapages has released a set of three CDs containing all NOGS publications, including many out-of-print issues. The price of the set is \$95.00, plus \$4.95 for shipping and handling.

The initial CD "Atlas of Oil and Gas Fields of the New Orleans Geological Society" is available separately. Price is \$50.00, plus \$4.95 for shipping and handling.

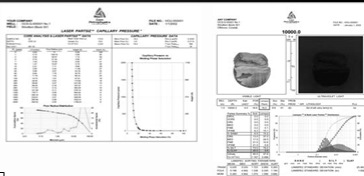
The CDs can be ordered online at: <http://bookstore.aapg.org>
Or by calling the AAPG Bookstore at: 1-(800)364-2274

Visit the NOGS Website: www.nogs.org



Sidewall Core Specialists

**Experts in Small
Sample, Laminated
and Shaly Sand
Analysis**



Laboratory Services:

- Core / Log Integration
- Laser Enhanced Permeability
- Porosity
- Fluid Saturations
- Measured Descriptions
- Critical Water
- Capillary Pressure Simulation
- UV Photography /Digital Images
- Lamination Characterization
- NMR Measurements
- Petrology

Core Lab has made many improvements to sidewall core testing which have had a positive synergistic effect on overall data quality.

Laser particle size analysis, Lamination specific analysis, UV-Visible Spectroscopy, lamination classification, Photospec summary reports, digital data bases via our website and capillary pressure simulation are all innovations introduced by Core Lab to help our clients obtain maximum benefit from their samples and analyses.



Core Laboratories 504-733-6583

**NOGS thanks our
sponsors for their support:**

GOLD LEVEL SPONSORS:

**LA BAY EXPLORATION CO., LLC
LLOG EXPLORATION CO., LLC**

SILVER LEVEL SPONSORS:

**CHEVRON
CLAYMORE OIL AND GAS, L.P.
CIMAREX**

**SPECIAL THANKS TO
DIVERSIFIED WELL LOGGING**

SURVIVOR™

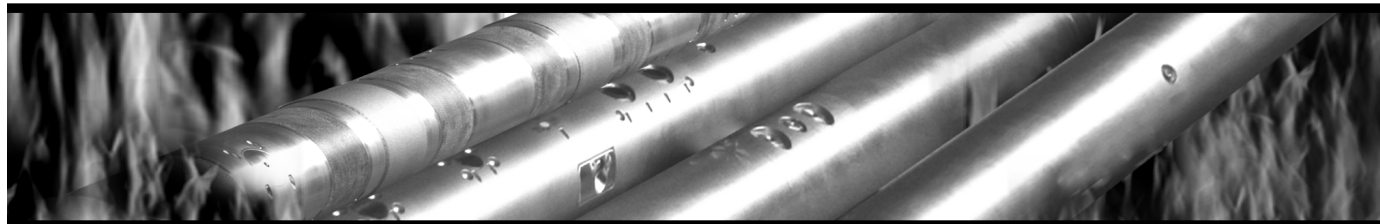
LOGGING-WHILE-DRILLING SUITE

The SURVIVOR™ Suite uses our highly reliable HDS-1 Directional Gamma Ray technology, Array Wave Resistivity tool, Slim Density Neutron Standoff Caliper tool and our Dynamic Pressure Module to create a complete system for logging in hostile drilling environments.

Temperature Rating.....350°F (175°C)

Pressure Rating25,000 psi

Logging Capacity300+ circulating hours



RELIABILITY. ACCURACY. VERSATILITY. WE DELIVER.

e-mail: pfmarketing@pathfinderlwd.com

www.pathfinderlwd.com

© 2006 Pathfinder Energy Services, Inc. All rights reserved.

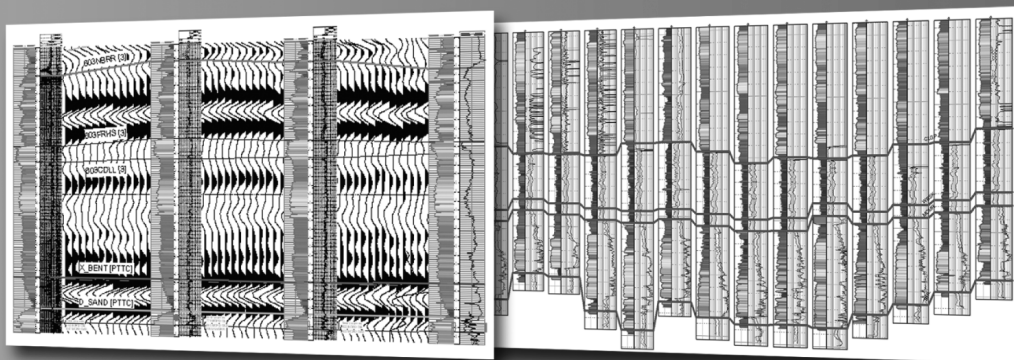
PATHFINDER®

Define your geological model faster than ever before

NO MORE WAITING! Available today from IHS, easy and affordable access to one of the largest U.S. digital log collections

- More than 185,000 LAS files with over 1.5 million curves
- Regional subscription packages for today's active play areas
- Indexed to IHS well and production data
- Linked to the IHS Enerdeq® Browser for quick regional studies and log selection
- Available via IHSLogNet.com or on DVD
- Ready to use in PETRA and other log packages

Request a free 2' x 3' IHS digital log coverage map at ihs.com/energy/DigitalLogs



Use PETRA® to integrate digital log, well, production, perf, seismic and tops data. IHS is the only company to provide you with the complete picture.



Why wait? Subscribe today! Call **888.OIL.DATA** (645.3282) or e-mail sales.energy@ihs.com

The Source
for Critical Information and Insight™

THE NEW ORLEANS GEOLOGICAL SOCIETY MEMORIAL FOUNDATION, INC.

The Memorial Foundation is an IRS Tax Exempt Code #501 (c)(3) organization. The Federal I.D. is: 72-1220999. Please consider making your donation prior to the close of this year's fiscal cycle which is September 30, 2009. Your individual support in any amount will help meet the IRS Guidelines for our Foundation. *Thanks!*

\$15,000 AND ABOVE

Olga Braunstein Succession

Gibbett Hill Foundation

*In Memory of Steve & Marion Millendorf, William J. Prutzman,
Roger G. Vincent & Ron Youngblood*

\$10,000

George W. Schneider, Jr. and Family

In Memory of George W. Schneider, Sr.

\$7,000 TO \$9,000

Paul C. McWilliams

\$3,000 TO \$4,000

NOGS Golf Tournament May 2008

In Memory of Bill Craig

\$1,000

C & R Exploration, Inc.

In Memory of Richard W. Boebel

John M/ Henton, Jr.

In Memory of Dr. Gordon Frey

\$500

Carlo and Beverly Christina

In Memory of Richard W. Boebel

\$250 TO \$499

Carlo C. Christina

In Memory of Robey H. Clark

In Memory of Al Gibeath

In Memory of Allen R. Stern

Carol and Gilbert St. Germain

In Memory of Richard W. Boebel

Kathy King Family

In Memory of George W. Schneider, Sr.

Bill Schneider Family

In Memory of George W. Schneider, Sr.

Susan King Family

In Memory of George W. Schneider, Sr.

UP TO \$249

Don and Carol Andrews

In Memory of Thomas H. Philpott

In Memory of William B. Rodan

Robert J. Ardell

Memory of Richard W. Boebel

In Memory of Dr. Gordon Frey

Jack R. Bantari

Abraham Biadgelgne

Hilary James Brook

Robin A. Broussard

In Memory of Charles L. Jones

In Memory of Thomas H. Philpott

Jack G. Bryant

Rob Burnett

Trudy and Charley Corona

In Memory of Thomas A. Cullinan

Chevron

Matching Funds

Arthur F. Christensen

Ellen F. Clark

James S. Classen

In Memory of Thomas A. Cullinan

In Memory of All Gibeath

In Memory of George W. Schneider, Sr.

Charley Corona

In Memory of Charles L. Jones

In Memory of McLain Forman

In Memory of Richard W. Boebel

Michael A. Danahy

Merle J. Duplantis

George H. Evans

Exxon Mobil Matching Funds

Michael N. Fein

Mark J. Gallagher

David Garner

Peter G. Gray

In Memory of Thomas A. Cullinan

Angela M. Hessler

Bernard L. Hill, Jr.

In Memory of Robert E. Osborne

Owen R. Hopkins

Dan E. Hudson

Thomas A. Hudson

Kenneth Huffman

Arthur H. Johnson

In Memory of George W. Schneider, Sr.

Thomas E. Johnson

Tom Klekamp

In Memory of Robert W. Sabate'

John C. Kuciewicz, Jr.

William J. Malin

Jeannie F. Mallick

David C. Mount

Robert G. Murphy

New Orleans Geological Auxiliary

In Memory of Virginia Schell

FONO FUND

The FONO Fund accepts contributions that are invested and the income dedicated to assure sufficient financial resources will always be available to maintain the NOGS business office. Contributors are reminded that donations to the FONO Fund are not covered by the IRS 501 (c)(3) tax exempt classification and should be reported as a business expense on your IRS tax report.

\$600

Richard W. Boebel

Willis E. Conatser

\$500

James A. Hartman

In Memory of Robert W. Boebel

UP TO \$249

Woods W. Allen, Jr.

Donald I. Andrews

Alfred H. Baker Jr.

Philip Beron, Jr.

Joseph E. Boudreaux

Hillary James Brook

J. Sybil Calloway

Clarence F. Conrad

John Dombrowski

Merle J. Duplantis

Richard A. Edmund

Niles R. Faulk

Michael N. Fein

Laurens Gaarenstroom

Mark J. Gallagher

Arthur J. Garden

Duncan Goldthwaite

Peter G. Gray

James A. Hartman

In Memory of Brian J. O'Neill

Bernard L. Hill, Jr.

Owen R. Hopkins

Thomas A. Hudson

Kenneth Huffman

Paul Jurik

Tom Klekamp

William J. Malin

Jeannie F. Mallick

George M. Markey, Jr.

Robert H. Monahan

Robert G. Murphy

William J. O'Leary

Richard A. Olsen

Linda and Bill Peirce

Jaser N. Rafidi

James P. Raymond, Jr.

C. R. Rondeau

Rudolf B. Siegert

Raymond Stephens

Scott A. Wainwright

Roy C. Walther

Robert C. Weissmann

Louis E. Willhoit, Jr.

Jim Zotkiewicz

CONTRIBUTIONS FOR BOTH FUNDS
THROUGH FEBRUARY 9, 2009.
DONATIONS ARE LISTED FOR ONE YEAR.

Russell H. Nordwell

Richard A. Olsen

In Memory of Richard W. Boebel

In Memory of Robert W. Sabate'

Teresa M. O'Neill

In Memory of Brian J. O'Neill

Linda and Bill Peirce

Edward B. Picou Jr.

In Memory of Dr. M. Gordon Frey

In Memory of Brian J. O'Neill

Jaser N. Rafidi

Edmund L. Russell

Robert C. Shoup

Rudolph B. Siegert

In Memory of Richard W. Boebel

Dr. J. O. Snowden

Raymond O. Steinhoff

In Memory of Robert S. Wood

In Memory of Harold E. Vokes

Stephen Szydlak

Patrick F. Taylor Foundation

Employee Matching Gifts Program

Scott A. Wainwright

Roy C. Walther

William M. Whiting

Louis E. Willhoit, Jr.

Armour C. Winslow

In Memory of Rita Menzel Winslow

Frances A. Wiseman

In Memory of Steve Widdicombe

Jim Zotkiewicz

In Memory of Bill Craig

Robin A. Broussard

Chevron

M. R. "Bob" Douglass

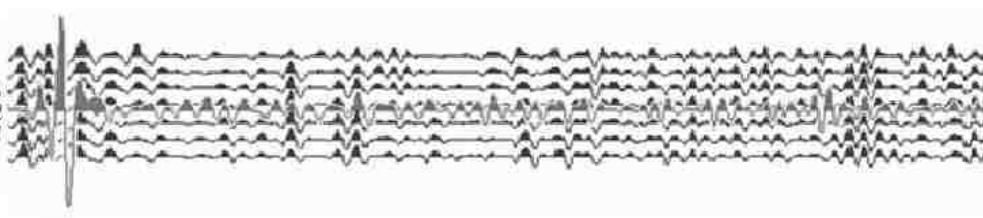
Bernard L. Hill, Jr.

Jeff Jandegian

John C. Scheldt

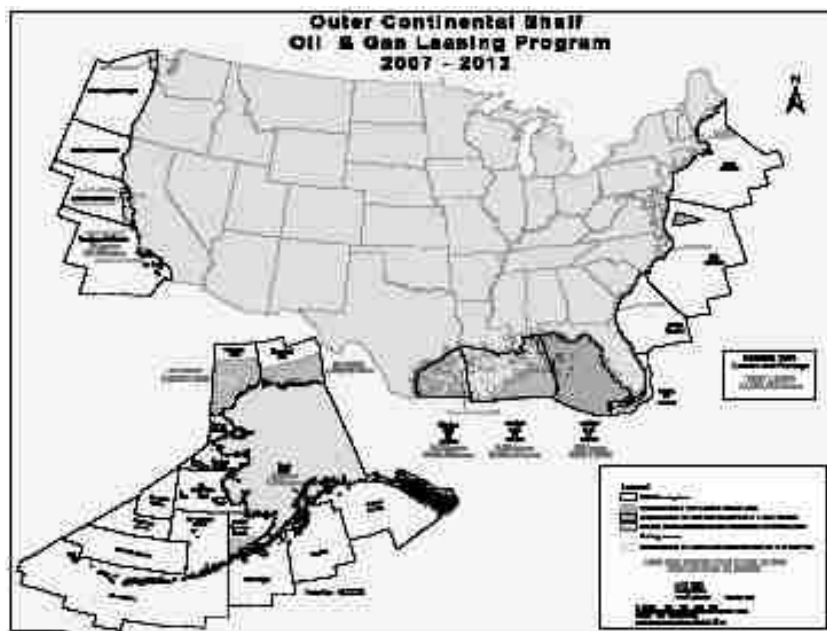
Candace V. Strahan

In Memory of James Strahan



The Southeastern Geophysical Society
presents
**Exploration Offshore USA OCS:
Opening the Next Frontier?**

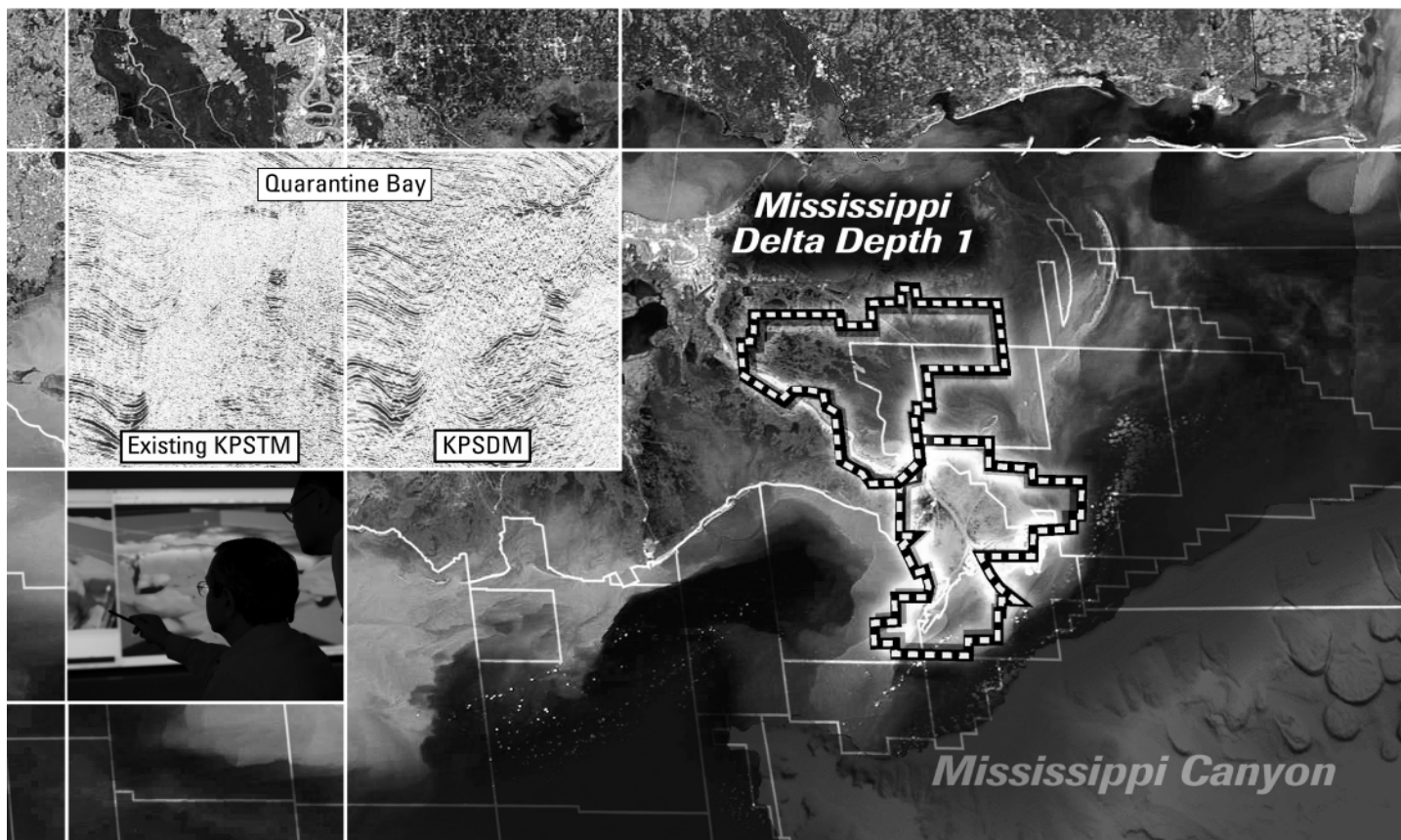
**SGS Technical Symposium
November 12, 2009
New Orleans, Louisiana**



- Offshore Virginia has been opened.
- When will the potential lifting of other OCS areas result in drilling?
- What is the potential for hydrocarbon accumulations?
- What will the new President and Congress do?

Call for presenters/sponsors – if you or your company would like to present a lecture or sponsor the symposium – contact Wayne Cook at wcook@seitel.com or Eric Zimmermann at ericz@lbg.com

Expand your opportunities ...



Announcing Mississippi Delta -*Depth 1*, current depth image reprocessing now in progress.

Multiclient^E

Experience the industry-leading benefits of WesternGeco state-of-the-art processing, designed to eliminate fault shadows and enhance deep imaging.

Delivering anisotropic Kirchhoff volumes:

- Processing and remigration of twelve legacy surveys covering 1,855 square miles.
- High-quality time imaging using relative amplitude anisotropic prestack time migration followed by improved structural imaging utilizing anisotropic prestack depth migration.

Excellence in technology – Experienced professionals.

To learn more about our Multiclient products, call +1 713 689 1000.

Multiclient to the Power of E

www.slb.com/westerngeco



© 2008 Schlumberger



Shoreline Gas Inc.
www.shorelinegas.com
 Full Service Natural Gas Marketing



Sydboten & Associates, Inc.
 Geological and Geophysical Consulting,
 3-D Seismic Interpretation

Ben D. Sydboten, Jr. CPG

124 Heymann Blvd., Suite 202
 Lafayette, LA 70503

Office (337) 234-5288
 Cell (337) 234-5491

ATWATER CONSULTANTS, LTD.

REGISTERED AND CERTIFIED PETROLEUM PROFESSIONALS

GEOLOGICAL, ENGINEERING, GEOPHYSICAL,
 TRAINING AND EXPERT WITNESS SERVICES

3525 Hessmer Ave, Ste 304
 Metairie LA 70002

Tel. (504) 581-6527
 Fax (504) 524-7798

Please support NOGS advertisers!



626 E. Kaliste Saloom
 Lafayette, LA 70508

16900 Greenspoint Dr, Suite 225-S,
 Houston, TX 77060

www.stoneenergy.com



CIMAREX ENERGY CO.

GULF OF MEXICO REGION
 GOM, SE La., N. La., MS, AL

1100 Poydras St.; Suite 1100

New Orleans, Louisiana 70163

504-586-1815 / Fax 504-586-9035

Keith Gourgues
 Region Manager

NORTHCOAST OIL COMPANY

610 E. Rutland St.
 Covington, LA 70433
 (985) 898-3577
 (985) 898-3585 FAX

Jack M. Thorson
Eric C. Broadbridge
J. Daryl Gambrell
Raymond W. Stephens

(832) 242-6000 (O)
 (713) 917-0493 (O)

(504) 931-7506 (C)
johnjurasin@jurasinoilgas.com

JURASIN OIL & GAS

9700 Richmond Ave., Suite # 124
 Houston, TX 77042-4821

JOHN M. JURASIN
 President

Cert. Pet. Geologist #4284
 Cert. Prof. Earth Scientist #1961

Collarini Energy Staffing

Full-Time and Temporary Personnel

Facilities • Drilling • Production • Reservoir Engineering
 Land and Legal • Geoscience • Information Technology •
 Health and Safety • Management • Supply Chain
 Accounting • Administrative Support

11111 Richmond Ave., Suite 126
 Houston, Texas 77082

832-251-0553



www.collarini.com

Collarini Associates

Reservoir Engineering
 Oil & Gas Property Evaluation
 3-D Seismic Interpretation
 Integrated Field Studies

832-251-0160
 504-887-7127

Houston
 New Orleans

THE NEW ORLEANS GEOLOGICAL SOCIETY, INC.

810 UNION STREET SUITE 300, NEW ORLEANS, LA 70112

TELEPHONE: (504) 561-8980 FAX: 561-8988 E-MAIL: NOGS@GS.NET WEBSITE: WWW.NOGS.ORG

MEMBERSHIP APPLICATION

Name (Last, first, middle intital)

Date

Company

Title

()

Phone Number

()

Fax Number

E-mail Address

Work Address (PO Box/Street, City, State, Zip, Country)

Home Address (Street, City, State, Zip, Country)

()

Phone Number

Preferred Mailing Address (check one): Work _____ or Home _____

Spouse's Name

Other Professional Society Memberships (AAPG*, AIPG, GSA, etc.) * Please indicate AAPG member category

College/University:

Degree

Year

Major

Explain, in brief, your affiliation with the petroleum industry:

Please mark appropriate classification:

☐ New Member

☐ Reinstatement

☐ Renewal

ANNUAL DUES: \$25.00 FOR ACTIVE OR ASSOCIATE

\$12.50 STUDENT MEMBERSHIP*

*No intial dues for students in the Sponsorship Program

-- Please mail application to the NOGS office with check payment or Visa/MasterCard/American Express acct# and exp. date --

Committee preference (please indicate choices):

☐ AAPG Student Chapter

☐ Advertising

☐ Awards

☐ Ballot

☐ Best Paper

☐ Computer Applications

☐ Continuing Education

☐ Employment Counseling

☐ Entertainment

☐ Environmental

☐ External Affairs

☐ Field Trip

☐ Finance & Audit

☐ Historical

☐ Membership/Directory

☐ Memorial Foundation

☐ NOGS LOG

☐ New Geoscientists (NGNO)

☐ Nominating

☐ Non-Technical Education

☐ Photography

☐ Program/Luncheon

☐ Publication Sales

☐ School Outreach

☐ Scouts: Boy and Girl

☐ Sponsorship

☐ Technical Projects

NEW AVO MODEL TURNS HEADS!

[She Must Have Used **KINGDOM[®] 8.3!**]



Be the envy of your neighbors with **KINGDOM 8.3.**

New KINGDOM 1D Forward Modeling allows geoscientists to conduct advanced “What-If” analysis on pre- and post-stack data. And while the interface is intuitive enough for beginners, it is powerful enough for experts.

You can instantly change geologic properties such as P- and S-velocity, density, thickness, porosity, and Poisson’s Ratio. Interactively substitute fluids using the Biot-Gassmann method. Control the precise makeup of pore fluids by adjusting fluid properties such as salinity, gas gravity, GOR, and API gravity.

Best of all, it’s integrated in one executable, ensuring you never have to switch in and out of multiple applications to finish your workflow.

With KINGDOM 8.3, now every geoscientist can pursue a career in modeling!

See the full fall lineup from SMT, the global market leader for PC-based interpretation. View our webinar on What’s New In KINGDOM 8.3 at www.seismicmicro.com/smt-model7


Call your sales representative TODAY about “Introductory Pricing” on this new module.

Intuitive. Integrated. Interpretation.

USA +1 (713) 464-6188 **Canada** +1 (403) 303-3365 **Colombia** +57 (1) 618-0239

Russia +7 495 980 89 82 **Singapore** +65 6220 1089 **UK** +44 (0) 20 8240 6524



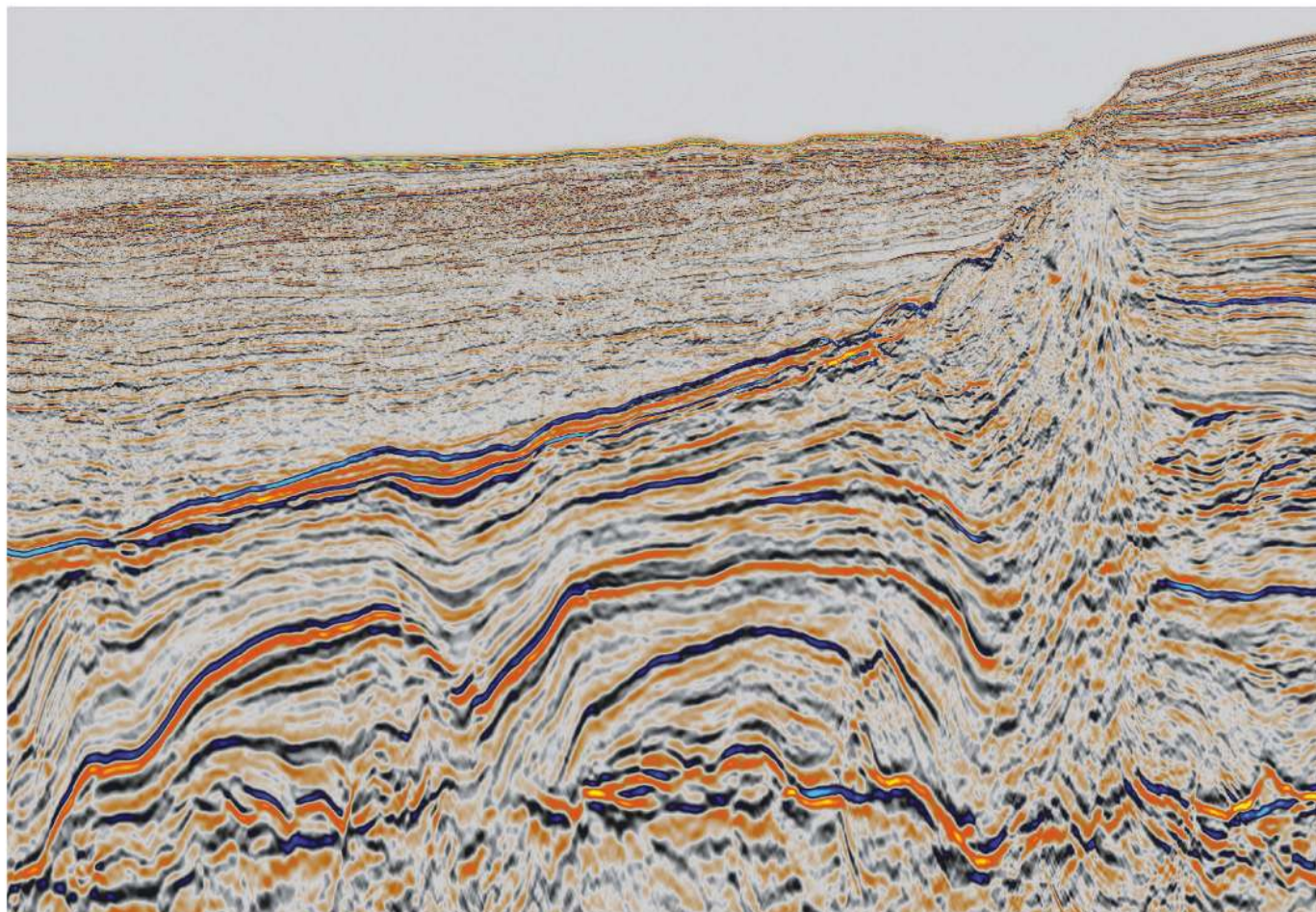
ANSYTHE Donald I. Andrews 504-887-3432 	D-O-R ENGINEERING, INC. 3-D and Geoscience Services 120 Oil Center Dr., Bldg. 12 P.O. Box 51707, Lafayette, LA 70505 Bus. (337) 233-2378 Fax (337) 233-2907
THE BOEBEL COMPANY Oil and Gas Investments 170 Broadway Street, Suite 321 New Orleans, LA 70118 (504) 866-4313	EDWARD B. PICOU, JR. Consulting Micropaleontologist - Retired 228 St. Charles Ave., Suite 1330 C New Orleans, LA 70130 Bus. (504) 529-5155 Res. (504) 282-3096
BOO-KER OIL & GAS CORP. Gray S. Parker 826 Union, Suite 300 New Orleans, LA 70112 Bus. (504) 581-2430 Fax (504) 566-4785	H. WARREN BELL Oil and Gas Exploration 2500 Tanglewilde, Suite 485 Houston, TX 77063-2126 Bus (713) 266-7297 Fax (713) 266-7298
C & R EXPLORATION, INC. Carlo C. Christina Lawrence G. Ringham	PHELPS GEOSCIENCE Onshore Gulf of Mexico Geology and Geophysics Prospect Generation and Evaluation Houston, TX jsfphelps@yahoo.com (281) 398-5208
C. R. RONDEAU Petroleum Geologist 119 W Southland Ave. Ironwood, MI 49938 Res. (906) 932-4692	RAFIDI OIL AND GAS, INC. Jaser N. Rafidi, President 4415 Shore Dr., Suite 202 Metairie, LA 70006 Bus. (504) 722-2942 Fax (504) 888-5539; Res. (504) 888-1661
CLASSEN EXPLORATION, INC. James S. Classen Looking for close in deals P.O. Box 140637 Boise, ID 83714 classenllc@msn.com Bus. (208) 854-1037 Fax (208) 854-1029	ROY C. WALTHER Petroleum Geologist 2421 Prancer Street New Orleans, LA 70131 Bus. (504) 392-8513 Res. (504) 392-9332
COLLES C. STOWELL Oil and Gas Consultant 22 Sea St. Manchester, MA 01944 (978) 526-1286	TONY CAROLLO Consulting Geologist Unitization Geosteering Field Studies 1701 Peach Street Metairie, LA 70001 Bus. (504) 885-0004 Res. (504) 885-6829

Drill Bits, continued from page 19

Plains as operator, and its partner, decided to deepen the Friesian #2 well an additional 3,500 feet to 32,500 feet TVD to test sands equivalent to the prolific Tahiti main field sands; i.e., the M15, M18, M21A and M21B. Several of these Tahiti pay sands were flow tested at rates in excess of 25,000 BOPD. The Ocean Star, the rig which drilled Friesian #2 to its current TD, is not capable the deepening. Consequently, the higher capability semi-submersible Ocean Monarch has been contracted, and is expected to arrive in early March to commence the deepening of the Friesian #2 well.

In addition, early stage commercialization initiatives for Friesian production are under study with multiple parties, with initial production forecast by 2012.

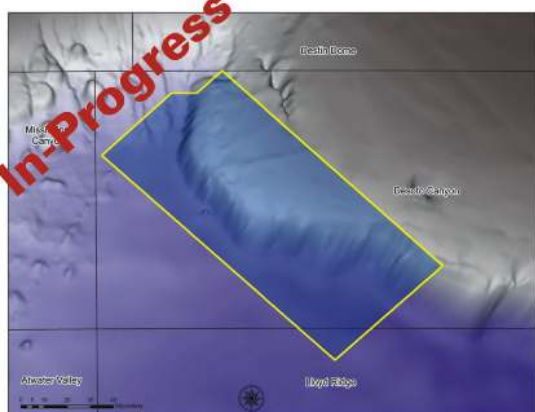
- Paul Post



GeoStreamer®

Two Sensors Are Better Than One

PGS confirms new “Discovery” in DeSoto Canyon



- Improved signal to noise
- Broader bandwidth
- Higher resolution

Houston
Tel: 1-281-509-8000
Fax: 1-281-509-8500

Oslo
Tel: 47-67-52-6400
Fax: 47-67-52-6464

London
Tel: 44-1932-260001
Fax: 44-1932-266465

A Clearer Image
www.pgs.com



SEE YOUR DATA IN A WHOLE NEW LIGHT!

Take the pressure out of exploration and drilling by seeing what you are going to encounter.



eSeis

www.e-seis.com
713.531.1447

- Lithology & Fluids
- Depositional Facies
- Pore Pressure from V & Q
- Well Planning Consultation

MARINE PROPERTIES, LLC BERKSHIRE EXPLORATION CO.

MONTE C. SHALETT, CPL, PRESIDENT

3030 Lausat Street
Metairie, LA 70001-5924

BUS. (504) 831-7779
FAX. (504) 831-8315

WWW.NOGS.ORG

NEW ORLEANS GEOLOGICAL SOCIETY



810 Union Street, Suite 300
New Orleans, LA 70112-1430

PCI

Paleo Control, Inc.

Houston, Texas
713-849-0044

Drilling Wells, Studies and Data Base

Loyd Tuttle

Frio, SE Texas

Bob Liska

Wilcox, S and SE Texas

Jim Thorpe

Miocene and Cam-Miogyp

