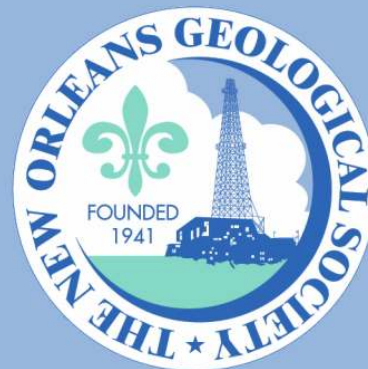


NOGS LOG



June 2009

Volume 49, Number 12

Upcoming Events and Activities

June 1 - NOGS Luncheon

*** At the Holiday Inn Downtown Superdome ***

\$2.00 validated parking in hotel garage

Guest speaker Dr. Roger Sassen, Texas A&M's Deputy Director of Resource Geosciences at the Geochemical and Environmental Research Group, will present "Source of Unusual Gas-Condensate from the Hudson Canyon area of the Baltimore Canyon Trough."

(See page 7 for Abstract and Biography)

HOLIDAY INN DOWNTOWN SUPERDOME ADMISSION:

Check with concierge or
front desk for location

Lunch served at 11:30am

with reservation \$30.00

without reservation \$35.00

Student Member with reservation Free

June 7 - Deadline for abstracts for 2009 Flood Protection Geological Symposium

See call for abstracts on page 16.

July 13 - NOGS Luncheon

Guest speaker Dr. Sherwood M. Gagliano, Coastal Environments, Inc., will present "The Third Delta Conveyance Channel: A New Branch for the Mississippi River."

July 16 - 2009 Flood Protection Geological Symposium

See call for abstracts on page 16.

November 12 - SGS Technical Symposium

"Exploration Offshore USA OCS: Opening the Next Frontier?" In New Orleans.

See announcement on page 30.

December 4 - NOGA-NOGS Christmas Holiday Party

At Metairie Country Club. More details in future *LOG* issues.

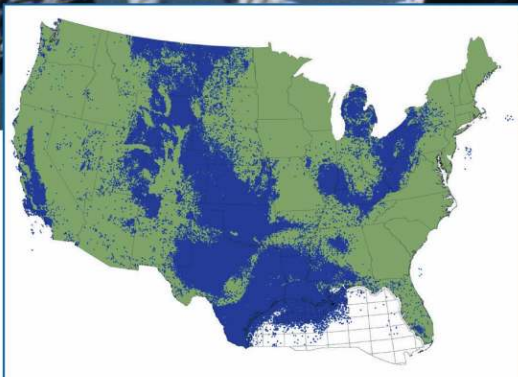
December 6-8 - 29th Annual GCSSEPM Foundation Bob F. Perkins Research Conference

"Unconventional Resources: Making the Unconventional Conventional."

In Houston. See announcement on page 8.

Introducing

LASSO



Lasso up all the digital LAS well log data you need from the industry's largest collection

With LASSO, lock in TGS' program rates on digital LAS well data from our US collection, growing at an unprecedented pace to more than 500,000 wells over the next several months. LASSO strengthens your exploration projects with the higher-order capabilities of increased digital well log use. LASSO digital data from TGS, the industry's well log data leader, is quality controlled and available online for immediate downloads.

For more information about LASSO, contact your TGS account representative or call 1- (888) LOG-LINE.



Geophysical
Products



Geological
Products



Imaging
Services

www.tgsnopec.com

NORWAY +47 66 76 99 00 | USA +1 713 860 2100 | UK +44 (0) 1234 272122 | AUSTRALIA +61 8 9480 0000

© TGS-NOPEC Geophysical Company. All rights reserved.

NOGS Office

Office Manager: Annette Hudson

Office Hours: 8:30am – 3:30pm on Monday-Wednesday-Friday

Tel: 504-561-8980 □ Fax: 504-561-8988

E-mail: info@nogs.org □ Website: www.nogs.org

The office is located at Suite 300, 810 Union Street, New Orleans, LA 70112.

Correspondence and all luncheon reservations should be sent to the above address.

Sent to press on June 1, 2009.

**BOARD OF DIRECTORS**

		Company	Phone	E-mail
President	William M. Whiting	Consultant	504-947-8495	bootscon@aol.com
Vice President	Allan Melillo	Chevron	985-773-6756	ajme@chevron.com
Secretary	Frances Wiseman	MMS	504-736-2912	frances.wiseman@mms.gov
Treasurer	James Swaney	MMS	504-736-2677	james.swaney@mms.gov
President-Elect	Tom Klekamp	Amber Resources LLC	985-845-4046	klekamp@bellsouth.net
Editor	Michael D. Miner	UNO	504-280-3866	mminer@uno.edu
Director 2009	Willis E. Conatser		504-469-2496	weconatser@aol.com
Director 2010	Michael M. Ledet		504-394-9636	mikeledet@cox.net
Director 2011	Scott A. Wainwright	Bret Exploration Co Inc	504-889-2700	scott_wainwright@hotmail.com

COMMITTEE

	Chairperson			
AAPG Delegates	Dave Balcer	Chevron	985-773-6725	dbalcer@Chevron.com
AAPG Student Chapter	Bobby Cosentino	Tulane University	504-495-9475	rcosenti@tulane.edu
AAPG Student Chapter	Scott Wessels	UNO	316-295-0800	scottwes@gmail.com
Advertising-Log	Jennifer Connolly	Shell	504-728-6411	jennifer.connolly@shell.com
Auditing	J. David Cope	Ankor Energy	504-596-3672	dcope@ankorenergy.com
Awards	Michael N. Fein	W & T Offshore	504-210-8148	mikef@wtoffshore.com
Ballot	James Swaney	MMS	504-736-2677	james.swaney@mms.gov
Best Paper	David E. Reiter	ENI	985-893-8072	david.reiter@enipetroleum.com
Continuing Education	TBA			
Employment Counseling	Paul J. Post	MMS	504-736-2954	paul.post@mms.gov
Entertainment	Tom Klekamp	Amber Resources LLC	985-845-4046	klekamp@bellsouth.net
Environmental	Daisy Pate	Eustis Geotechnical Eng.	504-613-5798	dpate@eustiseng.com
External Affairs	Michael A. Fogarty	Sylvan Energy, LLC	603-523-4808	mike.a.fogarty@gmail.com
Field Trip	David Garner	Shell	504-728-6154	David.Garner@shell.com
Finance and Investment	James Swaney	MMS	504-736-2677	james.swaney@mms.gov
Historical	Edward B. Picou, Jr.	Consultant	504-529-5155	epicou@bellsouth.net
Membership/Directory	Penne Rappold	Shell	504-728-4338	prappold@gmail.com
New Geoscientists (NGNO)	TBA			
Nominating	Alfred H. Baker, Jr.	Beacon Exploration, LLC	504-836-2710	abaker1006@aol.com
Non-Technical Education	Duncan Goldthwaite	Consultant	504-887-4377	DGldthwt@aol.com
Office Operations	Arthur H. Johnson	Hydrate Energy International	504-464-6208	artjohnson51@hotmail.com
Publications Sales	Edward B. Picou, Jr.	Consultant	504-529-5155	epicou@bellsouth.net
Photography	J. David Cope	Taylor Energy Co LLC	504-589-0419	dcope@taylorenergy.com
School Outreach	Thomas C. Bergeon	Century Exploration	504-832-3772	Tom.bergeon@centuryx.com
Scouting	Carol Rooney	Consultant Geologist	504-835-1909	carolbrooney@aol.com
Technical Projects	TBA			
Ad Hoc Committee on University Support	Michael J. Gallagher	Eni Petroleum	504-593-7480	Michael.Gallagher@enipetroleum.com

NOGS LOG STAFF

Editor	Michael D. Miner	UNO	504-280-3866	mminer@uno.edu
Editor-Elect	Elizabeth Petro	MMS	504-736-2866	liz.petro@mms.gov
Auxiliary	Susie Baker	NOGA	504-466-4483	abaker1006@aol.com
Info Tidbits	Clare Falcon	Schlumberger	504-592-5385	cfalcon2@new-orleans.oilfield.slb.com
Drill Bits	Paul J. Post	MMS	504-736-2954	paul.post@mms.gov
Layout	Jannette Sturm-Mexic			emailme@jannette.com
Webmaster	Edward B. Picou, Jr.	Consultant	504-529-5155	epicou@bellsouth.net

NOGS AUXILIARY

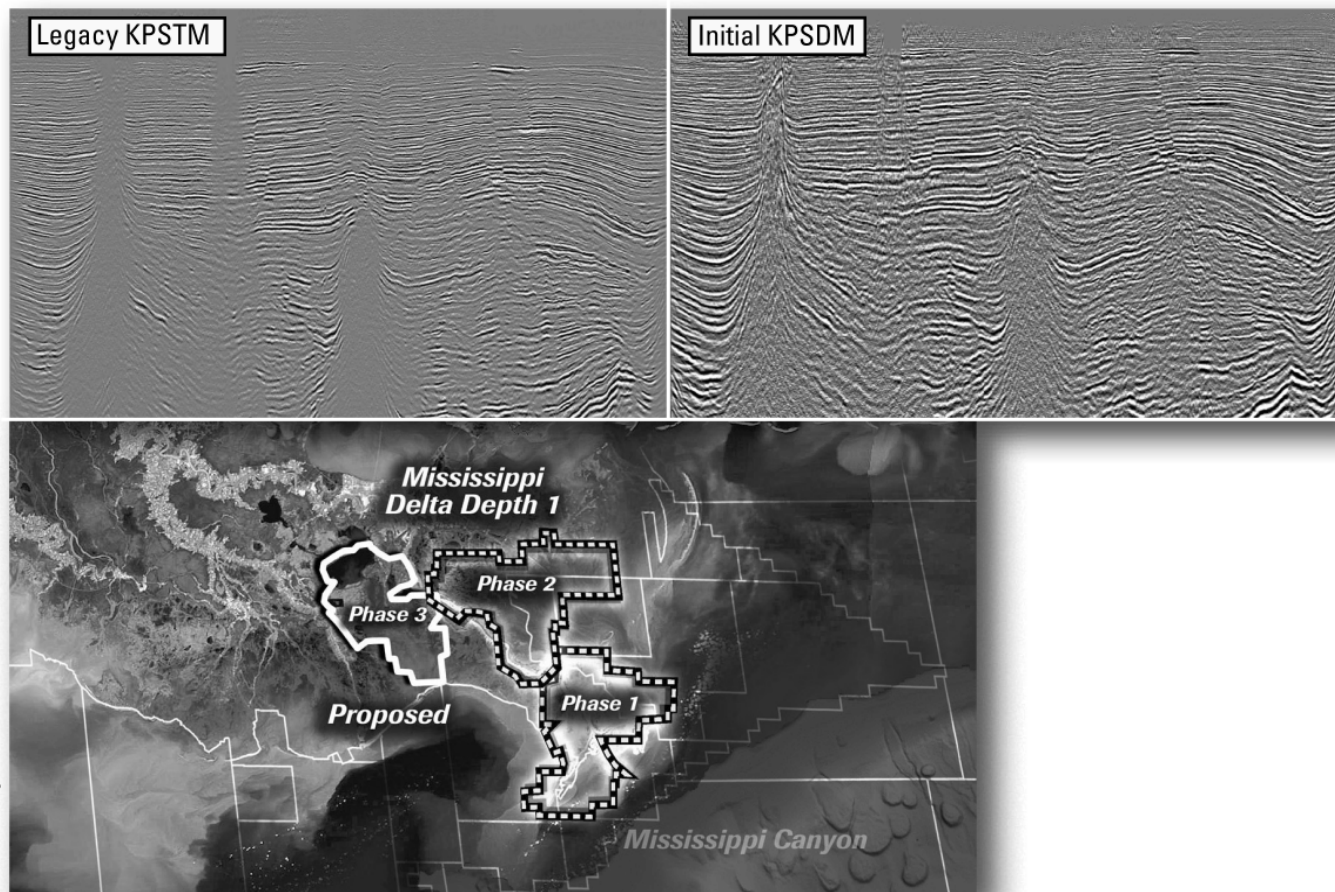
Officers		Phone	Directors	Year	Phone
President	Linda Peirce	504-393-7365	Ruth Ingram	2008-09	504-887-5404
1st Vice-President	Jean Jones	504-738-8091	June Perret	2008-09	504-881-9357
2nd Vice-President	Beverly Kastler	504-286-0879	Joan Sylvester	2008-09	504-738-2934
Secretary	Dolores Murphy	504-393-0878	Beverly Christina	2009-10	504-835-2383
Treasurer	Judy Lemarie'	504-393-8659	Peggy Rogers	2009-10	504-392-6323
Parliamentarian	Carol Andrews	504-887-3432	Judy Sabate'	2009-10	504-861-3179
Member-at-Large	Susie Baker	504-466-4483			

--- NOGS Contact List continued on page 10 ---

Mississippi Delta - *Depth 1*

Depth image reprocessing

Multiclient^E



Experience the industry-leading benefits of WesternGeco state-of-the-art processing, designed to eliminate fault shadows and enhance deep imaging.

Delivering anisotropic Kirchhoff volumes:

- Processing and remigration of twelve legacy surveys covering 1,855 square miles.
- High-quality time imaging using relative amplitude anisotropic prestack time migration followed by improved structural imaging utilizing anisotropic prestack depth migration.

Excellence in technology – Experienced professionals.

To learn more about our Multiclient products, call +1 713 689 1000.

www.multiclient.westerngeco.com

Multiclient to the Power of E





from the President

This being my last President's Letter it is appropriate to thank the NOGS Board, Chairmanship Heads, Membership, and Annette Hudson, our office manager, for their support during the challenging past year.

Tom Klekamp has done a great job as President-elect and entertainment chairman along with his many other NOGS activities. The Zephyr's NOGS/SGS outing was a blast with a fantastic fireworks display and the old ballpark food favorites. The Zephyrs need continued support. Our annual Golf Tournament at Money Hill was down somewhat in attendance from last year but the spirits were high as ever. Special thanks to Al Porter and Jeff Jandegian for the many years they have devoted to organizing this annual event. Diversified Logging and Halliburton are also to be thanked for sponsoring food and beverages. I also want to thank the many volunteers that help make the tournament possible. Proceeds will go to the Memorial Foundation and to the Bill Craig Fund. Our regular golf tournament photographer, Art Christensen, was laid up with an injury; please give him a consolation call at 1-985-893-2013.

The April 20th AAPG/NOGS Town Hall meeting with AAPG Leadership (Dr. Scott Tinker, President; Rick Fritz, AAPG Foundation Executive Director; and Allison Robbins, AAPG Foundation Cooperative Relations Development Coordinator) went well. Thanks for the excellent NOGS turnout at Andrea's Restaurant.

I attended the CGACGS mid-year Board meeting on April 22 in Shreveport. GCAGS made pre-audit about \$135,000 from the joint meeting with GSA last October in Houston. Barry Wawak presented the nominations for GCAGS awards and the NOGS nominations of Art Johnson for Outstanding Service Award and Dr. Steve Nelson for Outstanding

Educator were approved. I circulated the guidebooks from our October field trip The Baton Rouge Fault and It's Friends. They were well received and should make an interesting publication.

Vice-President Dr. Al Melillo is also the Program Chairman and has provided an interesting run of speakers at our monthly luncheons. He has also been able to broadcast at least eleven of these meetings to our members and friends at Chevron North Park in Covington. That alone is quite a feat.

Our Secretary Fran Wiseman made an excellent contribution keeping our minutes and records straight. Fran will be the new NOGS Log Editor-elect and next year's Log Editor. I am certain that she will do an outstanding job.

James Swaney our Treasurer had the difficult task of remaining "cool and objective" during this troublesome economic year. Jim has done a great job of staying on top of NOGS finances and in contact with our financial advisor.

As Editor, Mike Miner and his staff have produced 12 quality issues of the NOGS Log. Mike's position at UNO often requires him to be in the field. Thanks Mike for a job well done.

Liz Petro stepped up to the plate as Editor-elect following the transfer of Clare Falcon to Houston. She will take over editorial duties starting with the July issue of NOGS Log.

All of three Directors have been Presidents of NOGS. Their sage advice has been appreciated.

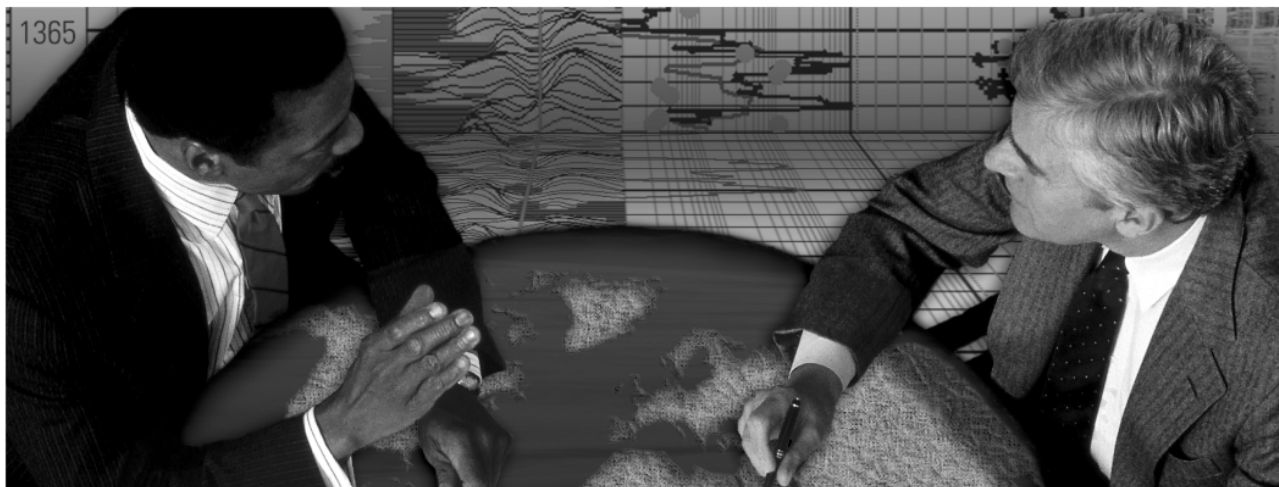
Don't forget to get involved in AAPG 2010! NOGS as Host Society will also share in any profits, but we all want a top quality convention.

Bill

energyinformation

Business solutions for
the oil & gas industry

Schlumberger formation evaluation solutions deliver the answers you need. Our extensive portfolio of services, leading-edge technology, and advanced conveyance options keep you in communication with your well throughout its life cycle.



With formation evaluation technologies from Schlumberger, you can make the best decisions for optimized performance in every well.

The formation evaluation one-stop shop

Whether you are logging in open hole or behind the casing, our broad selection of services ensures the best solution for acquiring formation evaluation data. Tools can be conveyed while drilling or on wireline or pipe. We offer many specialized evaluation capabilities, from density, neutron porosity, and resistivity to borehole imaging, nuclear magnetic resonance logging, borehole seismic, formation pressure testing, and fluid sampling. Advanced triple-combo logging options include the VISION* formation evaluation and imaging-while-drilling services. Coupled with Pulse* telemetry and surveying services, the VISION family provides real-time formation evaluation data and enables optimum well placement.

High-speed wireline measurements are recorded with the Platform Express* logging services. The SlimXtreme* platform is designed for high-pressure, high-temperature environments and the ABC* Analysis Behind Casing services are used after casing is set.

Expert interpretation from the engineers and geoscientists of Schlumberger Data & Consulting Services brings all your data together to give you the answers you need. This expertise is available after logging is complete or as real-time two-way wellsite communication through the InterACT* real-time monitoring and data delivery system.

Schlumberger delivers leading-edge technology and interpretation expertise for all your formation evaluation needs, so every well benefits from the very best information.

For more information visit
www.slb.com/oilfield/formation_evaluation/

*Mark of Schlumberger

04-FE-114

Schlumberger

June 1 NOGS Luncheon Presentation

*** at the Holiday Inn Downtown Superdome ***

Gas-condensate from The Hudson Canyon area, U.S. Atlantic: Insight to deep source rocks

presented by

Roger Sassen

Director of Resource Geosciences at the Geochemical and Environmental Research Group, Texas A&M

ABSTRACT

In contrast to the Canadian Atlantic margin where a series of fields have been discovered and new discoveries are likely, a large volume of deep section remains unexplored along the U.S. Atlantic margin due to early discouragement and an extensive drilling moratorium.

False assumptions concerning Cretaceous black shale from oceanic anoxic events and postulated high heat flow during the aftermath of rifting hampered pre-drill thinking. Cooperative Offshore Stratigraphic Test (COST) wells were drilled in the U.S. Atlantic. The COST wells found no evidence of a thermally mature source rock for oil in the Cretaceous through Upper Jurassic section. However, important insight into the deep petroleum system was likely missed because wells did not extend deep enough to penetrate older Jurassic rocks or to confirm the presence of a thick Triassic section. Considerable uncertainty remains.

Gas-condensate was discovered in sandstone reservoirs ranging from Late Jurassic to Early Cretaceous in the Hudson Canyon area of the Baltimore Canyon Trough. The gas-condensate was altered by intense thermal cracking prior to migration, destroying most biomarkers and concentrating unusual compounds known as the diamondoids. The diamondoids are the most thermally stable of all complex hydrocarbons in the Earth's crust and tend to be concentrated as oil is thermally cracked to gas.

It is important to emphasize that the harsh thermal cracking of the condensate samples is inconsistent with the relatively milder thermal maturity of Hudson Canyon reservoir rocks reported by the Minerals Management Service (MMS). The gas-condensate was generated at greater depth, broadly consistent with a source age from Middle Jurassic to Triassic in age, and thus migrated vertically to reservoirs from deeper in the section.

The age and maturity of the source rocks, however, may be constrained by the carbon isotopes of the condensates. The $\delta^{13}\text{C}$ of uncontaminated condensate samples is about -24‰ PDB, unusually enriched in ^{13}C . The $\delta^{13}\text{C}$ of the condensate is consistent with thermal cracking of Jurassic-sourced oil to gas-condensate. In contrast, the $\delta^{13}\text{C}$ of Triassic oil shows sampled onshore in the Newark Basin is inconsistent with the condensate from Hudson Canyon.

The U.S. Atlantic deserves a reassessment by exploration drilling using all available contemporary technology. The probability that the U.S. Atlantic contains meaningful undiscovered thermal gas and oil cannot be dismissed. In addition, other lines of evidence suggest that large volumes of microbial methane may be trapped in the shallow section, potentially providing clean-burning CH_4 energy for nearby markets.

BIOGRAPHY

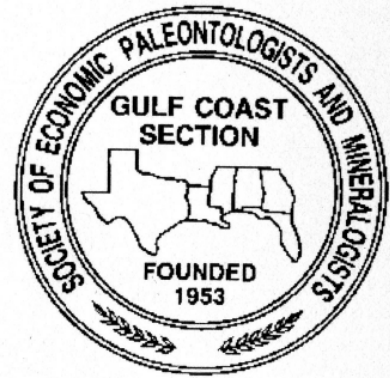
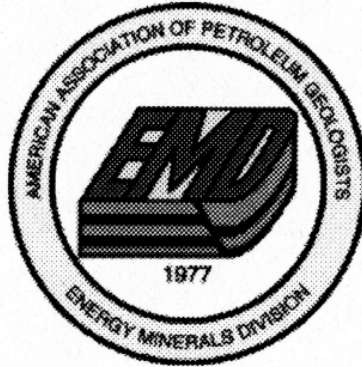
Dr. Roger Sassen graduated from Manhattan's Hunter College in 1968 and following service in the Army as an officer, completed his M.S. and Ph.D. Degrees at Lehigh University. He started at Texaco and by 1978 was chief geochemist at the Getty Oil Company. After the merger with Texaco in 1985, Dr. Sassen was appointed as Director of the Basin Research Institute at Louisiana State University. He was manager of

Geochemistry and Global Consultant for BP Exploration in Houston from 1989-1992. He then joined the Geochemical and Environmental Research Group (GERG) of Texas A&M University as Deputy Director of Resource Geosciences, conducting research on gas hydrate as an alternate energy source. Dr. Sassen has published extensively on petroleum geochemistry and is currently an Adjunct Professor in Geology at Texas A&M

THE LUNCHEON RESERVATION DEADLINE IS MAY 27 - CONTACT THE NOGS OFFICE

“And Looking Ahead...”

The next NOGS Luncheon will be July 13. Guest speaker Dr. Sherwood M. Gagliano, Coastal Environments, Inc., will present “The Third Delta Conveyance Channel: A New Branch for the Mississippi River.” Contact the NOGS office to make your reservation.



UNCONVENTIONAL RESOURCES:

Making the Unconventional Conventional

**29th Annual GCSSEPM Foundation Bob F. Perkins
Research Conference**

**Houston, Texas, December 6-8, 2009
Houston Marriott Westchase Hotel**

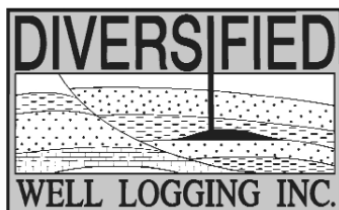
**Latest information and registration
are available on our website:**

www.gcssepm.org



Relax. We'll keep you posted.

Your rig is offshore and you are not. How do you know what's going on so many miles away? You know because we tell you. Daily or even hourly, Diversified Well Logging's engineers update you on the status of your rig. We are your eyes and ears, especially when it comes to deep water or high pressure, high temperature areas. Diversified offers 24-hour surface evaluation. We provide secure and customized real-time data communication, in-house research and development and 24/7 on-call support for our equipment and our engineers. Whether you have a 10-day job or 110-day job, we provide the specialized attention you require. So, relax. We're with you every step of the way.



Serving the Gulf Coast for over 40 years.

New Orleans • Lafayette • Houston • Dallas • Corpus

800.280.2096

711 West 10th Street • Reserve, LA 70084 • Phone: 985.536.4143 • Fax: 985.536.2427
sales@dwl-usa.com



**PALEO
DATA**

**FULLY INTEGRATED AND
CENTRALIZED BIOSTRATIGRAPHIC
SERVICES**

- ▼ Single-source biostratigraphic databases
for increased accuracy and consistency
- ▼ Integrated foram / nannofossil analyses
- ▼ Complete wellsite paleo services
- ▼ In-house sample preparation
lab for quality-monitoring
and efficiency
- ▼ Sample pick-up service

6619 Fleur de Lis Drive
New Orleans, LA 70124
(504) 488-3711

www.paleodata.com

MCMORAN EXPLORATION CO.



MCMORAN OIL & GAS

www.mcmoran.com

NYSE: MMR

16676 Northchase Dr.
Houston, TX 77060
(281) 539-7600
Fax: (281) 539-7655

1615 Poydras
New Orleans, LA 70112
(504) 582-4000
Fax: (504) 582-4155

110 Travis St., Suite 140
Lafayette, LA 70503
(337) 735-9150
Fax: (337) 735-9151

NOGS CONTACT LIST

--- continued from page 3 ---

MEMORIAL FOUNDATION

BOARD OF TRUSTEES

		Company	Phone	E-mail
2008-09 Chairman	Arthur H. Johnson	Hydrate Energy International	504-464-6208	artjohnson51@hotmail.com
2008-09 Secretary	William M. Whiting	Consultant	504-947-8495	bootscon@aol.com
2008-09 Trustee	David E. Balcer	Chevron	985-773-6725	dbalcer@chevrontexaco.com
2008-09 Trustee	George T. Froming	Consultant	504-799-1918	gtfroming@yahoo.com
2009-10 Trustee	Michael C. Fauquier			
2009-10 Trustee	J. David Cope	Ankor Energy	504-596-3672	dcope@ankorenergy.com
2010-11 Trustee	Timothy J. Piwowar	Shell	504-728-4066	tim.piwowar@shell.com
2010-11 Trustee	Michael N. Fein	W & T Offshore	504-210-8148	mikef@wtoffshore.com

AAPG DELEGATES

Term Ends

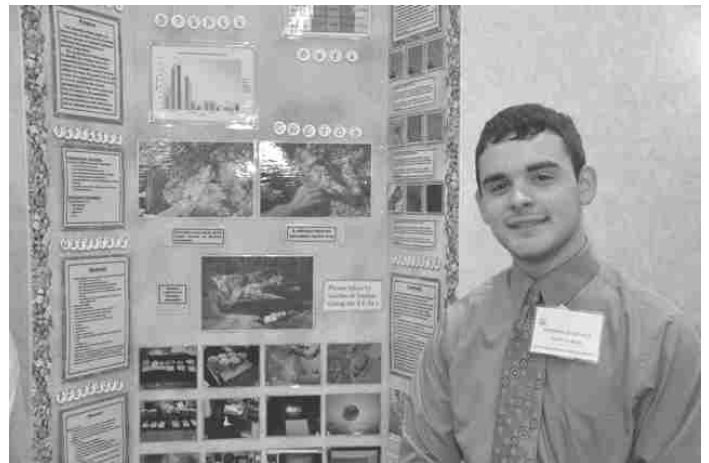
2009	David E. Balcer	Chevron	985-773-6725	dbalcer@Chevron.com
2009	William Whiting	Consultant	504-947-8495	bootscon@aol.com
2009a)	Nancye Dawers	Tulane University	504-862-3200	ndawers@tulane.edu
2009a)	David Cooke	MMS	504-736-2609	david.cooke@mms.gov
2011	Tom Hudson	Chevron	985-773-7163	tom.hudson@chevron.com
2011	Edward B. Picou, Jr.	Consultant	504-529-5155	epicou@bellsouth.net
2011a)	Brenda Reilly	Energy Partners Ltd.	504-799-4811	breilly@eplweb.com
2011a)	Robert Rooney	Century Exploration	504-832-3777	Robert.rooney@centuryx.com


2009 NOGS Science Fair Winners



Jorge Abadin
7th Grade, Christian Brothers Academy
“Measuring Soil Bearing Capacity”
Teacher: Brother Lawrence Konersman

Jordan Badeau
Senior, John Curtis Christian School
“Columbite indicating geochemical evolution in Emmons Pegmatite”
Teacher: Cathy Boucvalt






SeaBird Exploration

Take a look at the *future* of

MARINE SEISMIC



www.sbexp.com
www.seabed.no

RAISING
THE **STANDARD**



- Autonomous 4C nodes rated to 3000 m
- Acoustic Communication/Data QC
- Best sensor orientation in the market
- Highest quality coupling
- Sub-meter positioning available



Dubai
T: +971 4 4271700

Houston
T: +1 281 556 1666

Oslo
T: +47 2240 2700

Trondheim
T: +47 7 3879500

Singapore
T: +65 9180 2605



Eni Petroleum

1250 Poydras Street
Suite 2000
New Orleans, LA 70113
Tel: (504) 593-7000
Fax: (504) 593-7745

1201 Louisiana Street
Suite 3500
Houston, TX 77002
Tel: (713) 393-6100
Fax: (713) 393-6205



**Shell has worked in partnership
with the NOGS for many years, and
is proud to count the society among
its closest business associates.**

The New Orleans Geological Society was organized in 1941 to foster scientific research and advance the science of geology. Particular emphasis is laid on the exploration for and production of petroleum and natural gas. Related objectives include encouraging the adoption of improved methods of exploration, disseminating pertinent geological and technological data, and maintaining a high standard of professional conduct among its members.

www.shell.com/us.sepc

SEI®

Seismic Exchange, Inc.

**Strategic Speculative Surveys
Geophysical Data Marketing & Management**

**Your
Full Service
National
Seismic Data
Marketing Firm**

New Orleans
Dallas
Houston
Denver
Oklahoma City
Corpus Christi
Tulsa

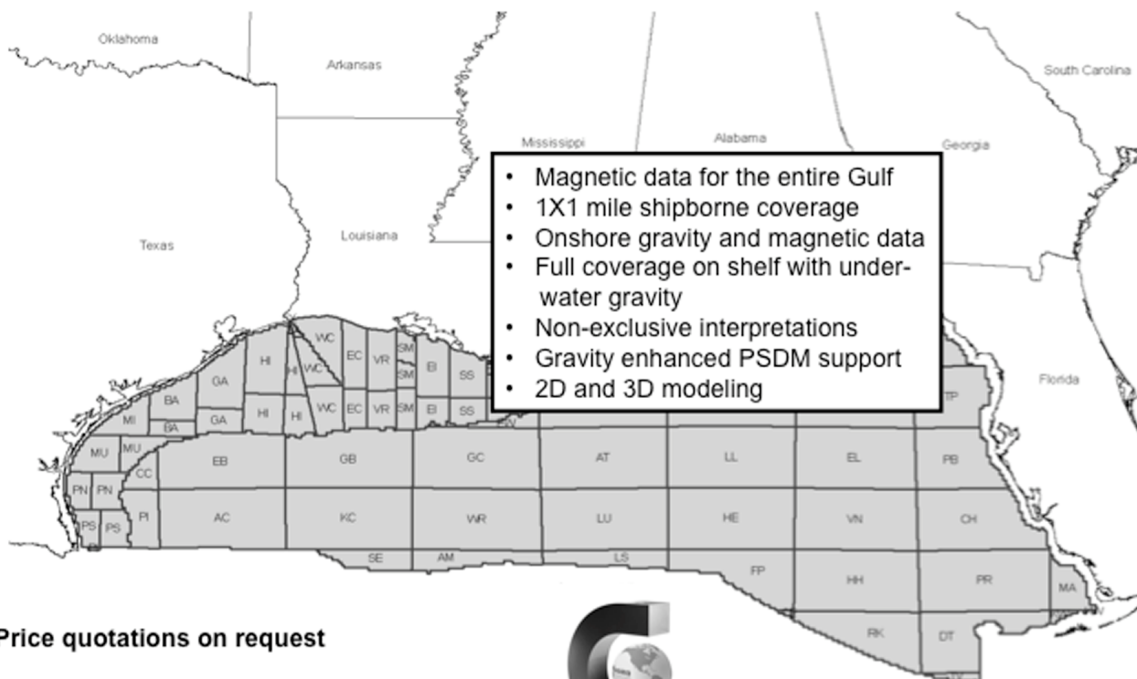
201 St. Charles Avenue, Suite 4300, New Orleans, Louisiana 70170-4300
Telephone 504.581.7153 Fax 504.581.9591
www.seismicexchange.com



Fugro Gravity & Magnetic Services

LAND • AIRBORNE • UNDERWATER • SHIPBORNE

The most complete coverage Onshore and Offshore Gulf of Mexico



Price quotations on request

Fugro Gravity & Magnetic Services

www.Fugro-GravMag.com

Tel: 713-369-6123



Gravity Inspired. Magnetically Inclined.



100 Northpark Blvd.
Covington, LA 70433

(985) 773-6000

"Serving the Oil & Gas Industry Since 1983"

Geological,
Geophysical &
Land Drafting

Anthony Catalanotto

President

Stefani Kelone

Drafting and Design



Geo-Draft, Inc.

A Professional Drafting & Graphics Firm

3349 Ridgeland Drive □ Suite 202 □ Metairie, LA □ 70002

Office: (504) 836-2882 Fax: (504) 836-2877

geodraft@bellsouth.net



LaBay
Exploration Co., L.L.C.

111 Veterans Memorial Blvd.,
Suite 1550
Metairie, Louisiana 70005

www.labayexploration.com

Office (504) 371-5967
Fax (504) 371-5969

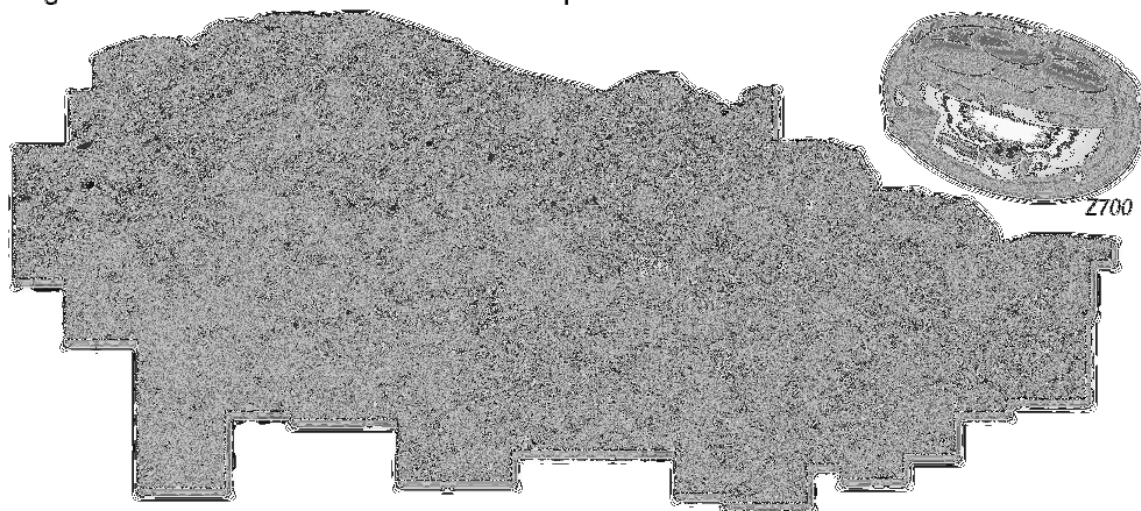
*This advertising space is
available! Contact the
NOGS office.*



At Fairfield the future is now.

Our updated seismic vessels equipped with Fairfield's Z700 ocean bottom node systems will be fully operational in the Gulf of Mexico during 2009. By utilizing longer offsets and the continuous recording capability of Z700, Fairfield will be able to image data to unprecedented depths of over 75,000 feet.

By the end of 2009 our entire database will have been processed using Curved Ray Migration and an additional 500 blocks of depth data will have been added.



The Future begins today. Don't be left in the past.

SEISMIC
SYSTEMS

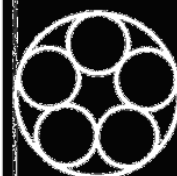
DATA
ACQUISITION

DATA
PROCESSING

DATA
LICENSING

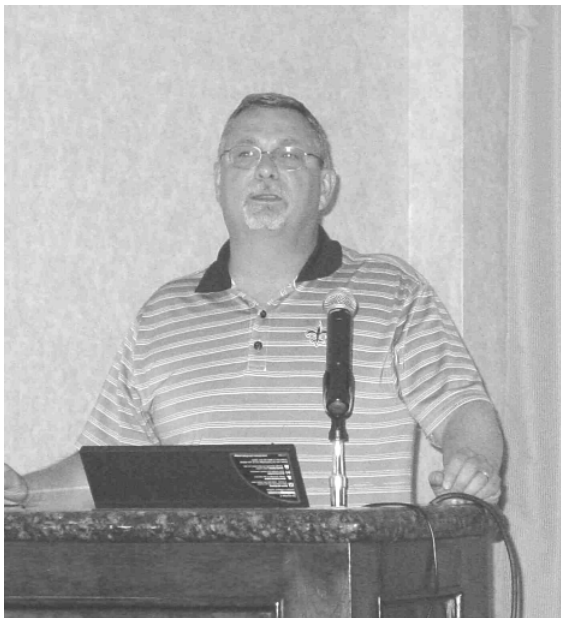
281 275 7500

fairfield.com



Fairfield
INDUSTRIES

Photos From Past NOGS Luncheon Meetings



Bernie Regel, featured speaker at the NOGS April 6th meeting



Al Melillo, NOGS Vice-President with **Mark Rowan**, featured speaker at the NOGS May 4th meeting



NOGS President **Bill Whiting** (left) and Past President **Art Johnson**, at the April 6th meeting



CALL FOR ABSTRACTS

2009 Flood Protection Geological Symposium

Geologic Facts of Life for Flood Protection in Coastal Louisiana

July 16, 2009

New Orleans, Louisiana

Abstract Submission Protocol:

The unique purpose of this conference is to convene public agencies and provide the officials in charge, and the public, with the latest geological research affecting flood protection efforts along the Gulf of Mexico Coastal Zone. Again this year, the Flood Protection Geological Symposium Committee invites up to five PowerPoint lectures approximately 30 minutes in length representing diverse geoscience topics such as paleotempestology, subsidence and sea-level rise, geological considerations for coastal restoration and protection, geotechnical hazards and other relevant topics.

Abstract Submission Deadline is June 7, 2009, 11:59 pm CST

Abstracts of no more than 400 words with up to 2 key figures must be submitted by this deadline for review by the Flood Protection Geological Symposium Committee to epicou@bellsouth.net.

Please note: All presenters customarily remain after their lecture and participate in a concluding panel discussion. Proceedings of the conference are to be published digitally. Upon abstract acceptance, presenters are asked provide a digital summary of key points and illustrations for sponsors to post in press releases beforehand and in the public domain on their web sites afterwards.

SPONSORS

New Orleans Geological Society
Louisiana State Geological Survey

INVITED SPONSORS

Southeast Louisiana Flood Protection Authority - East Bank Board of Commissioners
Southeast Louisiana Flood Protection Authority - West Bank Board of Commissioners

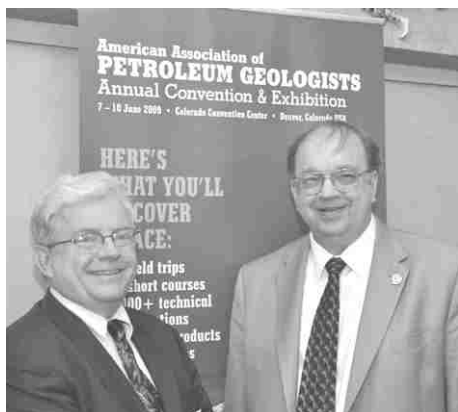
Information:

Ed Picou: epicou@bellsouth.net or 504-529-5155
Mike Miner: mminer@uno.edu or 504-280-3866
NOGS: info@nogs.org or 504-561-8980

2009 NOGS Golf Outing

Look for more photos next month!





Mike Merritt and
AAPG Executive Director Rick Fritz



AAPG Corporate Development
Director Alison Robbins

AAPG-NOGS

Town Hall

Meeting



Ed Picou and George Severson



George Rhoads, David Tatum and Willis Conaster



Bob Douglass and NOGS Treasurer James Swaney



Ed Picou, AAPG President Scott Tinker, and Mike Merritt



Jenna Brooks, Rebecca Murphey, Leah Johanningmeier,
and NOGS Editor-elect Liz Petro



AAPG 2010 Convention Chairman Tom Hudson,
Al Baker and Scott Wainwright



AAPG President Scott Tinker



Alison Robbins presents AAPG Bookstore \$50 gift certificates to prize winners Brenda Reilly and Liz Petro



AAPG Executive Director Rick Fritz



Scott Tinker addresses the Town Hall Meeting



NOGS Past President Art Johnson



Everette and Beverly Kastler, Lucretia and Jack Bryant



NOGS President Bill Whiting and
NOGS Secretary Fran Wiseman



NOGS President Bill Whiting and
AAPG Executive Director Rick Fritz

A Company that Shines

-  Geophysical Products
-  Geological Products
-  Imaging Services



TGS has been providing best-in-class multi-client data and services to successful E&P companies for over a quarter century. Our geophysical and geological data products are distributed around the globe and include one of the youngest and best targeted multi-client seismic libraries, extensive magnetic and gravity data, the industry's largest global database of digital well logs, and regional interpretive products. We also provide high-end depth imaging services to help resolve complex seismic imaging problems. Together, our products and services give you a more complete picture of the subsurface to help your exploration program *shine*.

For more information, visit www.tgsnopec.com today.



Geological
Products



Geophysical
Products



Imaging
Services

www.tgsnopec.com

NORWAY +47 66 76 99 00 | USA +1 713 860 2100 | UK +44 (0) 1234 272122 | AUSTRALIA +61 8 9480 0000 | RUSSIA +7 495 959 8117
©TGS-NOPEC Geophysical Company. All Rights Reserved.

New Orleans Geological Auxiliary News

On behalf of all the New Orleans Geological Auxiliary (NOGA) members, it is my privilege to extend a sincere thank you to our wonderful NOGA Board members that have served this past year. Linda Peirce has been an amazing President. She is a great leader and has been able to keep us all "in check" while still maintaining her sense of humor! Linda, you are a blessing to all of us in so many ways. Beverly Kastler and Jean Jones have added their entertainment planning expertise by spearheading a year full of delicious luncheons and socials. You two could have your own show on HGTV! Dolores Murphy, thank you for taking such comprehensive minutes at our meetings (especially when ten women are talking all at the same time) and for agreeing to not "just say no"! Judy Lemarie, when no one volunteered for the Treasurer position, you once again stepped up as you always do, providing help where it is most needed. Carol Andrews, you have been an incredible Parliamentarian, always with a smile and offering a helping hand or doing whatever is asked of you. You are my role model!

In addition, we are very very grateful to Judy Lemarié and Mary Walther for their work on the newsletter, directory, and so much more.

Special thanks are also extended to our Directors: Ruth Ingram, June Perret, Joan Sylvester, Beverly Christina, Peggy Rogers and Judy Sabaté who have opened up their homes and provided delicious food for our meetings (lagniappe for Board members).

Last but not least, a sincere thank you to all of the women who graciously accepted the responsibility of offering their homes, hosting and co-hosting our luncheons and socials. I am grateful and appreciative to you as I recall all of the valued and cherished moments from this past year's activities.

The good, great, spectacular and astounding news is that all of these wonderful ladies have agreed to devote their time and talents toward leading us for another year!

The luncheons, from September to May have come and gone and the summer break is upon us - giving the Planning Committee time to explore for next year's events! Before you know it, the sounds of friends uniting again, laughter, and questions of "how was your summer" will be heard in September.

I would also like to take this opportunity to extend our sympathies to Carol St. Germain, who has been a friend to so many of us and has worked for several NOGS members. You and your family are in our thoughts and prayers.

Susie Baker
Member-at-Large
(I have the easy job!)

P.S. If anyone has not joined and would like to, please send in this application or contact any of us who are listed in on page 3 of the NOGS LOG.

NOGA Application Form

Dues: \$25.00

Name _____

Home Address _____

Home phone _____

Husband's Name _____

Husband's Company _____

*Please make check payable to New Orleans Geological Auxiliary and
mail with application to: Judy Lemarie'
2 Yosemite Dr
New Orleans LA 70131*

South Louisiana and Offshore Exploration and Production Activity

DRILL BITS

- Noble Energy, Inc. on 1-April announced a discovery at its Santa Cruz prospect in MC Blocks 519/563. The well, located in 6,515 feet of water, was drilled to a TD of ~18,900 feet. Open-hole logging indicated over 140 feet of net gas-condensate pay and more than 110 feet of net oil pay in multiple high-quality reservoirs. The overall reservoir thickness encountered was greater than prognosed.

Noble Energy operates the Santa Cruz discovery with a 23.25% WI. Other interest owners are BP Exploration & Production Inc. (46.5% WI), Red Willow Offshore, LLC (20.25% WI), and Houston Energy, L.P. with a (10% WI).

David Stover, Noble Energy's Executive Vice President and COO, said, "The results at Santa Cruz complement the successful momentum we have been experiencing in our worldwide exploration programs. Our discoveries at Santa Cruz and Isabela will be an important development program for our Company. Current plans consist of subsea tiebacks to nearby infrastructure, and we anticipate first production from this area in 2011.

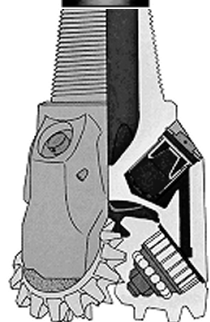
"Our deepwater Gulf of Mexico program is positioned very well, with a combination of existing production, several ongoing developments of recent discoveries, and a growing exploration portfolio. Our next exploration test will likely be late in the year at Deep Blue in the Green Canyon region, which will be testing our largest deepwater Gulf of Mexico prospect to date," Stover added.

- On 20-April, Apache Corporation announced its participation in a discovery at Ewing Banks (EW) 998 #1, which flow-tested a rate of 4,254 BOPD and 5.4 MMCFGPD from perforations 14,352–14,400. The discovery was drilled to a MTD of 14,538 feet in ~1,000 feet of water. The well will be connected to existing facilities using a subsea tie-back with first production expected during the first quarter of 2010. Walter Oil & Gas Corp. acquired the block for \$3,343,334 at OCS Sale 198 in 2006 and is the operator of the discovery with a 50% WI. Apache holds the other 50% WI.

"Apache acquired this block and another block in the immediate area via a joint venture with Walter because of similarities in the amplitudes, identified on three-dimensional seismic, with those found at Apache's EW 826 field," said Jon Jeppesen, senior vice president of Apache's Gulf Coast Region. Apache has completed eight wells at its 100% owned EW 826 and increased production from 700 BOPD in 2007 to a current rate of 5,300 BOPD and 12.9 MMCFGPD, with continued development ongoing in the field.

- Golden Gate Petroleum Ltd. on 14-April announced the discovery of two new *Cib Haz* reservoirs that appear hydrocarbon-bearing based on e-log and SWC analyses in their Jumonville # 2 well at "Bullseye Prospect" in Iberville Parish, LA. Bullseye is a deeper pool project targeting *Miogyp* and *Cib Haz* objectives between 12,400 and 13,500 feet on the crest of the Laurel Ridge anticline. The uppermost new reservoir in the *Cib Haz* may be gas-bearing and the lower reservoir is oil-bearing, based on SWC results. The well was drilled to a TD of 14,100 feet.

These two new zones are in addition to the already reported *Miogyp* reservoir, which from SWC data and preliminary log analysis is oil-bearing, similar to the Jumonville # 1 well where *Miogyp* production continues.



The upper *Cib Haz* sandstone interval in the Jumonville # 2 well is approximately 130 feet thick, and the lower *Cib Haz* sandstone interval is about 60 feet thick. Both are very thin-bedded to laminated sandstones, siltstones and shales, based on the preliminary interpretation of the Formation Micro Imager (FMI) log. Continued analysis of the FMI log along with other log information will provide estimates of net reservoir-quality sandstone thicknesses in these two *Cib Haz* sandstone units, in parallel with separate interpretations of net pay and reserve potential.

From a technical standpoint, the *Cib Haz* intervals are more complex than the initial pre-drilling interpretations which were based on seismic amplitude anomaly data. There are two potential zones and the latest log analysis clearly shows the laminated nature of these intervals, both of which are different from expectations. Further analysis and production testing will determine their ultimate potential.

The Jumonville # 2 well is on the same drill site as the Jumonville # 1 well with the current surface facilities available to put any new production into the established sales lines in a timely manner.

While these results are very encouraging, further analysis and production testing will determine the commercial significance and reserve potential of the *Cib Haz* discoveries. Partners in the Jumonville #2 well are: Golden Gate Petroleum Ltd (operator and 35.33% WI – 33.25% WI following back in rights of the project vendor), Modena Resources Limited (15.00% WI), Pantheon Resources PLC (15.00% WI), Eastern Advisors (20.00% WI), IB Daiwa Corporation (8.00%), and Quest Petroleum NL (6.67% WI).

- McMoRan's first quarter information release on 20-April stated that four wells in Flatrock field are currently producing at a gross rate of approximately 235 MMCFGPD. In addition, completion efforts are in-progress at Flatrock #5 and #6, with first production from both expected by mid-year 2009. When these wells come on-line, the gross production rate from the six wells in the field is expected to be ~335 MMCFGPD.

The Ammazzo deep gas exploratory prospect, located in 25 feet of water, was spudded on 22-November-08 and was being drilled below 21,600 feet towards a proposed total depth of 24,500 feet as of the report date. McMoRan was high bidder on SMI Block 256; a southern offset to the Ammazzo prospect, at the March 2009 MMS Central Gulf of Mexico Lease Sale 208 with a bid of \$612,667. McMoRan was also high bidder (\$526,667) on a lease on an ultra-deep prospect located on SS Block 185.

The Cordage deep gas exploratory prospect was spudded on 18-March-09 and was being drilled below 12,200 feet towards a PTD of 19,500 feet as of the report date. Cordage, located in 50 feet of water on WC Block 207, targets *Rob-L* and *Rob-M (Operc)* sands of Middle Miocene age. Mariner Energy, Inc. operates the well and holds a 50% WI, with McMoRan having rights to a 50% WI.

Upon completion of operations at Cordage, the rig will be moved to the Sherwood prospect on HI Block 133 to spud an exploration well.

On 29-March-09 McMoRan reentered the existing wellbore and commenced sidetracking operations at the Blueberry Hill deep gas prospect located on Louisiana SL 340. The well, in 10 feet of water, has a PTD of 24,000 feet. As previously reported, in February 2005 McMoRan encountered four hydrocarbon-bearing sands in the *Gyro* section below 22,200 feet in the original Blueberry Hill exploratory well. Completion efforts in 2007 were unsuccessful because of blockage above the perforated intervals. The ST currently in-progress is targeting the same *Gyro* sands, which McMoRan believes could be better developed in a downdip position on the flank of the structure. McMoRan has a

--- continued on next page ---

NOGS and SGS members and their families at the Zephyr's - Nashville Sounds game on Friday, April 17th



Drill Bits, continued from page 23

46.8% WI in the well. McMoRan's investment in Blueberry Hill totaled \$23.6 MM as of 31-March-09, substantially all of which was incurred prior to 2008.

- JPMorgan's reported on 28-April that Woodside Petroleum Ltd., may downgrade estimated reserves at Neptune (AT 573, 574, 617, and 618) due to a drop in output.

Production at the BHP Billiton Ltd.-operated venture has "fallen off a cliff" from a peak in the third quarter last year shortly after project start-up, JPMorgan said in an 24-April report. Consequently, the report said that the partners may need to reduce reserve estimates or spend more to produce the same amount of oil.

The \$1.1 billion Neptune project, about 120 miles (193 kilometers) off Louisiana, started production in July of 2008 after a delay due to defects in the hull of the platform were detected in March of that year. Output averaged 20,400 barrels a day of oil in the three months ended 31-March, down from a peak of 50,000 barrels shortly after the project came on-line.

"This result is very disappointing given the asset is less than a year old and average production rate during the quarter was about 40 percent" of the peak, JPMorgan analysts led by Sydney-based Mark Greenwood said in their report. "Clearly the Neptune project is under-performing versus expectations - it was late, and peak production is well below expectations."

What does this mean? The value of the project is at risk of being written down. JPMorgan estimates the carrying value of the project to be about A\$350 million for Woodside, while it now values Neptune at A\$279 million.

Woodside, 34 percent owned by Royal Dutch Shell Plc, cannot comment, said Roger Martin, a spokesman. Samantha Evans, a spokeswoman for Melbourne-based BHP, couldn't be reached for comment. BHP has a 35% WI and operates Neptune. Partners are Marathon Oil Co. (30% WI), Woodside (20% WI) and Repsol YPF SA's Maxus (U.S.) Exploration Co. (15%).

Paul Post

13th Annual Gulf of Mexico **Deepwater** Technical Symposium

August 27th and 28th - 2009

<http://www.deepwaternola.org/swf/deep.html>

Deepwater Gulf of Mexico case studies
and key technology sessions involving

- Geoscience
- Drilling • Completions
- Production Systems
- Reservoir / Economics
- HS&E / Regulatory
- Management Panel Discussion
- Exhibition Hall
- Student Poster Session

**The Hilton
Riverside
New Orleans**



<http://www.nogs.org/>

In conjunction with the

- American Association of Drilling Engineers
- Society of Petroleum Engineers

NOGS - Host for the 2010
AAPG Convention
April 11-15

Nominating Committee Update

Election and Awards Results

AAPG Delegates Election Results:

It is a pleasure to announce the results of the election of the following NOGS candidates for AAPG House of Delegates for the 2009-2012 Term:

DELEGATES

William M. Whiting
Jim Zotkiewicz

ALTERNATES

David E. Balcer
Richard J. Stancliffe

GCAGS 2009 Award Recipients:

It is a privilege to present the NOGS recipients of the following GCAGS 2009 Awards:

DISTINGUISHED SERVICE AWARD

Arthur H. Johnson

OUTSTANDING EDUCATOR AWARD

Stephen A. Nelson

These awards will be presented to at the 59th Annual Convention of the Gulf Coast Association of Geological Societies and the Gulf Coast Section of SEPM in Shreveport, Louisiana on September 27-29, 2009.

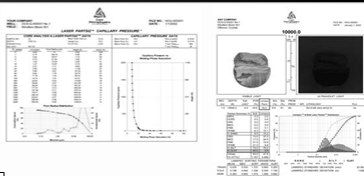
Please join the Nominating Committee in congratulating each of these individuals for their professional achievements.

Alfred H. Baker, Jr.
Chairman, 2008-2009



Sidewall Core Specialists

Experts in Small Sample, Laminated and Shaly Sand Analysis



Laboratory Services:

- Core / Log Integration
- Laser Enhanced Permeability
- Porosity
- Fluid Saturations
- Measured Descriptions
- Critical Water
- Capillary Pressure Simulation
- UV Photography /Digital Images
- Lamination Characterization
- NMR Measurements
- Petrology

Core Lab has made many improvements to sidewall core testing which have had a positive synergistic effect on overall data quality.

Laser particle size analysis, Lamination specific analysis, UV-Visible Spectroscopy, lamination classification, Photospec summary reports, digital data bases via our website and capillary pressure simulation are all innovations introduced by Core Lab to help our clients obtain maximum benefit from their samples and analyses.



Core Laboratories 504-733-6583

**NOGS thanks our
sponsors for their support:**

GOLD LEVEL SPONSORS:

CHEVRON

LA BAY EXPLORATION CO, LLC.

**SPECIAL THANKS TO
DIVERSIFIED WELL LOGGING**

SURVIVOR™

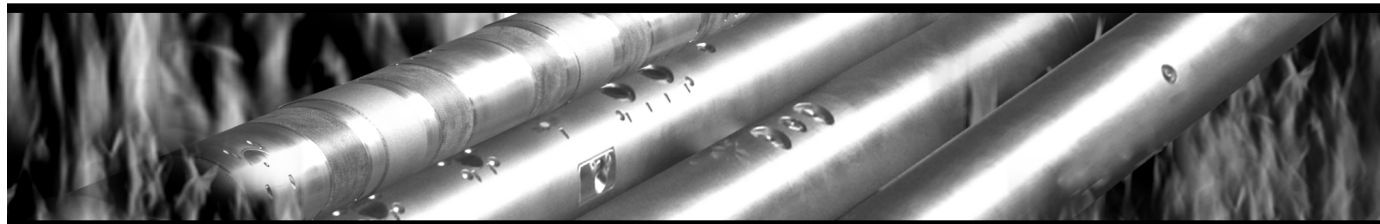
LOGGING-WHILE-DRILLING SUITE

The SURVIVOR™ Suite uses our highly reliable HDS-1 Directional Gamma Ray technology, Array Wave Resistivity tool, Slim Density Neutron Standoff Caliper tool and our Dynamic Pressure Module to create a complete system for logging in hostile drilling environments.

Temperature Rating.....350°F (175°C)

Pressure Rating25,000 psi

Logging Capacity300+ circulating hours



RELIABILITY. ACCURACY. VERSATILITY. WE DELIVER.

e-mail: pfmarketing@pathfinderlwd.com

www.pathfinderlwd.com

© 2006 Pathfinder Energy Services, Inc. All rights reserved.

PATHFINDER®



Higher Standards



Weatherford LABORATORIES

At Weatherford Laboratories, we hold fast to Higher Standards. Our purpose is to continually push past conventional solutions to find new and better ways to optimize oil and gas production.

■ By integrating seven entrepreneurial companies, we bring unsurpassed innovation to the industry. Our accomplishments include 50 new technologies, 45 original products, 35 industry awards, and 13 registered patents. Among our ranks are several luminaries of the industry, as well as scores of respected scientists who have authored hundreds of technical papers. ■ With 38 laboratories around the globe, our team raises the bar for wellsite sampling, core management services, geochemical analyses and evaluation of unconventional reservoirs.

At Weatherford Laboratories, we expect more from ourselves so you can expect more from us.

Weatherfordlabs.com

CORPORATE OFFICES

ACS Laboratories Pty Ltd
Brisbane, Australia

OMNI Laboratories
Houston, Texas USA

ResLab Reservoir Laboratories
Trondheim, Norway

Humble Geochemical Services
Houston, Texas USA

TICORA Geosciences
Denver, Colorado USA

Baseline Resolution, Inc.
Houston, Texas USA

Hycal Energy Research Laboratories
Calgary, Alberta, Canada

THE NEW ORLEANS GEOLOGICAL SOCIETY MEMORIAL FOUNDATION, INC.

The Memorial Foundation is an IRS Tax Exempt Code #501 (c)(3) organization. The Federal I.D. is: 72-1220999. Please consider making your donation prior to the close of this year's fiscal cycle which is September 30, 2009. Your individual support in any amount will help meet the IRS Guidelines for our Foundation. *Thanks!*

\$15,000 AND ABOVE

Olga Braunstein Succession

Gibbett Hill Foundation

*In Memory of Steve & Marion Millendorf, William J. Prutzman,
Roger G. Vincent & Ron Youngblood*

\$10,000

George W. Schneider, Jr. and Family

In Memory of George W. Schneider, Sr.

\$7,000 TO \$9,000

Paul C. McWilliams

\$3,000 TO \$4,000

NOGS Golf Tournament May 2008

In Memory of Bill Craig

\$1,000

John M/ Henton, Jr.

In Memory of Dr. Gordon Frey

\$250 TO \$499

Carlo C. Christina

In Memory of Al Gibeath

Fotiades Mineral Interests

Julie Fotiades, Joan Fotiades

Evelyn Fotiades Poulos

In Memory of George W. Schneider, Sr.

Kathy King Family

In Memory of George W. Schneider, Sr.

Bill Schneider Family

In Memory of George W. Schneider, Sr.

Susan King Family

In Memory of George W. Schneider, Sr.

UP TO \$249

Don and Carol Andrews

In Memory of Thomas H. Philpott

In Memory of William B. Rodan

Robert J. Ardell

In Memory of Dr. Gordon Frey

Jack R. Bantari

Mr. and Mrs. Wesley Barton

In Memory of Thomas A. Cullinan

Abraham Biadgelgne

Hilary James Brook

Robin A. Broussard

In Memory of Charles L. Jones

In Memory of Thomas H. Philpott

Jack G. Bryant

Rob Burnett

Trudy and Charley Corona

In Memory of Thomas A. Cullinan

Chevron

Matching Funds

Arthur F. Christensen

Ellen F. Clark

James S. Classen

In Memory of Thomas A. Cullinan

In Memory of All Gibeath

In Memory of George W. Schneider, Sr.

Charley Corona

In Memory of McLain Forman

In Memory of Professor Hubert Skinner

Trudy and Charley Corona

In memory of Thomas A. Cullinan

Michael A. Danahy

Merle J. Duplantis

George H. Evans

Exxon Mobil Matching Funds

Michael N. Fein

Mark J. Gallagher

David Garner

Peter G. Gray

In Memory of Thomas A. Cullinan

Angela M. Hessler

Bernard L. Hill, Jr.

In Memory of Robert E. Osborne

Owen R. Hopkins

Dan E. Hudson

Thomas A. Hudson

Kenneth Huffman

Arthur H. Johnson

In Memory of George W. Schneider, Sr.

Thomas E. Johnson

Tom Klekamp

In Memory of Robert W. Sabate'

John C. Kuciewicz, Jr.

William J. Malin

Jeannie F. Mallick

David C. Mount

Robert G. Murphy

FONO FUND

The FONO Fund accepts contributions that are invested and the income dedicated to assure sufficient financial resources will always be available to maintain the NOGS business office. Contributors are reminded that donations to the FONO Fund are not covered by the IRS 501 (c)(3) tax exempt classification and should be reported as a business expense on your IRS tax report.

UP TO \$250

Woods W. Allen, Jr.

Donald I. Andrews

Alfred H. Baker Jr.

Philip Beron, Jr.

Joseph E. Boudreaux

Hillary James Brook

J. Sybil Callaway

Clarence F. Conrad

John Dombrowski

Merle J. Duplantis

Richard A. Edmund

Niles R. Faulk

Michael N. Fein

Laurens Gaarenstroom

Mark J. Gallagher

Arthur J. Garden

Duncan Goldthwaite

Peter G. Gray

James A. Hartman

In Memory of Brian J. O'Neill

Bernard L. Hill, Jr.

Owen R. Hopkins

Thomas A. Hudson

Kenneth Huffman

Paul Jurik

Tom Klekamp

William J. Malin

Jeannie F. Mallick

George M. Markey, Jr.

Robert H. Monahan

Robert G. Murphy

William J. O'Leary

Richard A. Olsen

Linda and Bill Peirce

Jaser N. Rafidi

James P. Raymond, Jr.

C. R. Rondeau

Rudolf B. Siebert

Raymond Stephens

Scott A. Wainwright

Roy C. Walther

Robert C. Weissmann

Louis E. Willhoit, Jr.

Jim Zotkiewicz

CONTRIBUTIONS FOR BOTH FUNDS
THROUGH MAY 14, 2009.
DONATIONS ARE LISTED FOR ONE YEAR.

New Orleans Geological Auxiliary

Russell H. Nordwell

Richard A. Olsen

In Memory of Richard W. Boebel

In Memory of Robert W. Sabate'

Teresa M. O'Neill

In Memory of Brian J. O'Neill

Linda and Bill Peirce

Edward B. Picou Jr.

In Memory of Dr. M. Gordon Frey

In Memory of Brian J. O'Neill

Jaser N. Rafidi

Edmund L. Russell

Robert C. Shoup

Rudolph B. Siebert

In Memory of Richard W. Boebel

Dr. J. O. Snowden

Raymond O. Steinhoff

In Memory of Hubert C. Skinner

In Memory of Harold E. Vokes

Stephen Syzlik

Patrick F. Taylor Foundation

Employee Matching Gifts Program

Scott A. Wainwright

Roy C. Walther

William M. Whiting

Louis E. Willhoit, Jr.

Armour C. Winslow

In Memory of Rita Menzel

Winslow

Frances A. Wiseman

In Memory of Steve Widdicombe

Jim Zotkiewicz

In Memory of Bill Craig

Robin A. Broussard

Chevron

M. R. "Bob" Douglass

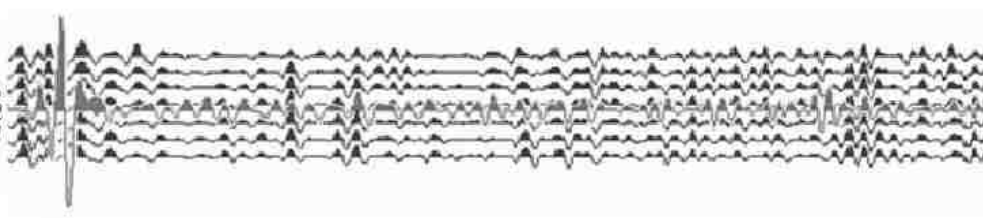
Bernard L. Hill, Jr.

Jeff Jandegian

John C. Scheldt

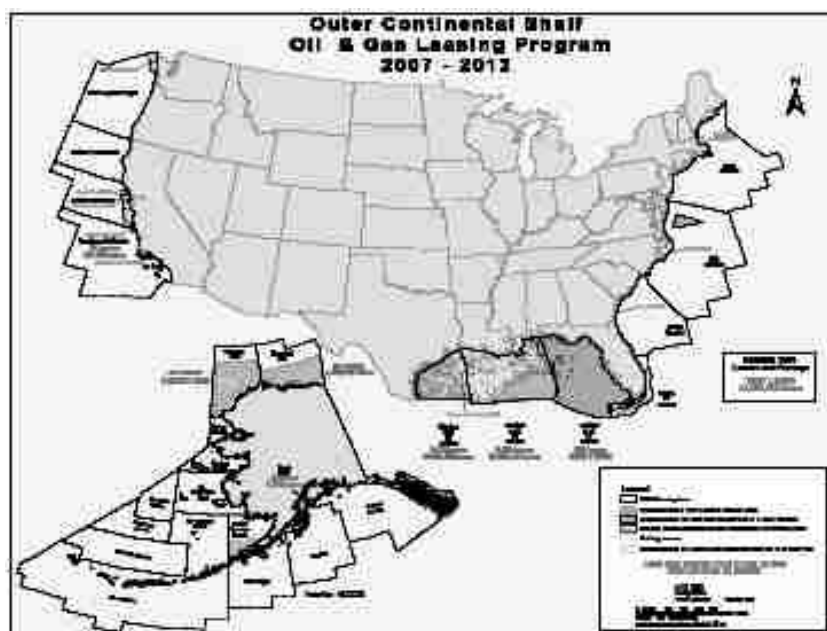
Candace V. Strahan

In Memory of James Strahan



The Southeastern Geophysical Society
presents
**Exploration Offshore USA OCS:
Opening the Next Frontier?**

**SGS Technical Symposium
November 12, 2009
New Orleans, Louisiana**



- Offshore Virginia has been opened.
- When will the potential lifting of other OCS areas result in drilling?
- What is the potential for hydrocarbon accumulations?
- What will the new President and Congress do?

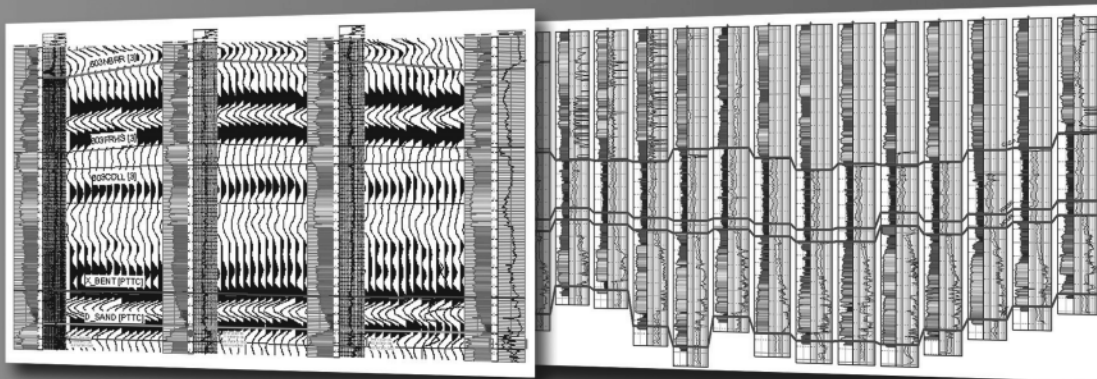
Call for presenters/sponsors – if you or your company would like to present a lecture or sponsor the symposium – contact Wayne Cook at wcook@seitel.com or Eric Zimmermann at ericz@lbg.com

Define your geological model faster than ever before

NO MORE WAITING! Available today from IHS, easy and affordable access to one of the largest U.S. digital log collections

- More than 185,000 LAS files with over 1.5 million curves
- Regional subscription packages for today's active play areas
- Indexed to IHS well and production data
- Linked to the IHS Enerdeq® Browser for quick regional studies and log selection
- Available via IHSLogNet.com or on DVD
- Ready to use in PETRA and other log packages

Request a free 2' x 3' IHS digital log coverage map at ihs.com/energy/DigitalLogs



Use PETRA® to integrate digital log, well, production, perf, seismic and tops data. IHS is the only company to provide you with the complete picture

Why wait? Subscribe today! Call 888.OIL.DATA (645.3282) or e-mail sales.energy@ihs.com



The Source
for Critical Information and Insight™



Shoreline Gas Inc.
www.shorelinegas.com
 Full Service Natural Gas Marketing



Sydboten & Associates, Inc.
 Geological and Geophysical Consulting,
 3-D Seismic Interpretation

Ben D. Sydboten, Jr. CPG

124 Heymann Blvd., Suite 202
 Lafayette, LA 70503

Office (337) 234-5288
 Cell (337) 234-5491

ATWATER CONSULTANTS, LTD.

REGISTERED AND CERTIFIED PETROLEUM PROFESSIONALS

GEOLOGICAL, ENGINEERING, GEOPHYSICAL,
 TRAINING AND EXPERT WITNESS SERVICES

3525 Hessmer Ave, Ste 304
 Metairie LA 70002

Tel. (504) 581-6527
 Fax (504) 524-7798

Please support NOGS advertisers!



626 E. Kaliste Saloom
 Lafayette, LA 70508

16900 Greenspoint Dr, Suite 225-S,
 Houston, TX 77060

www.stoneenergy.com



CIMAREX ENERGY CO.

GULF OF MEXICO REGION
 GOM, SE La., N. La., MS, AL

1100 Poydras St.; Suite 1100

New Orleans, Louisiana 70163

504-586-1815 / Fax 504-586-9035

Keith Gourgues
 Region Manager

NORTHCOAST OIL COMPANY

610 E. Rutland St.
 Covington, LA 70433
 (985) 898-3577
 (985) 898-3585 FAX

Jack M. Thorson
Eric C. Broadbridge
J. Daryl Gambrell
Raymond W. Stephens

(832) 242-6000 (O)
 (713) 917-0493 (O)

(504) 931-7506 (C)
johnjurasin@jurasinoilgas.com

JURASIN OIL & GAS

9700 Richmond Ave., Suite # 124
 Houston, TX 77042-4821

JOHN M. JURASIN
 President

Cert. Pet. Geologist #4284
 Cert. Prof. Earth Scientist #1961

Collarini Energy Staffing

Full-Time and Temporary Personnel

Facilities • Drilling • Production • Reservoir Engineering
 Land and Legal • Geoscience • Information Technology •
 Health and Safety • Management • Supply Chain
 Accounting • Administrative Support

11111 Richmond Ave., Suite 126
 Houston, Texas 77082

832-251-0553



www.collarini.com

Collarini Associates

Reservoir Engineering
 Oil & Gas Property Evaluation
 3-D Seismic Interpretation
 Integrated Field Studies

832-251-0160
 504-887-7127

Houston
 New Orleans

NEW AVO MODEL TURNS HEADS!

[She Must Have Used **KINGDOM[®] 8.3!**]



Be the envy of your neighbors with **KINGDOM 8.3.**

New KINGDOM 1D Forward Modeling allows geoscientists to conduct advanced “What-If” analysis on pre- and post-stack data. And while the interface is intuitive enough for beginners, it is powerful enough for experts.

You can instantly change geologic properties such as P- and S-velocity, density, thickness, porosity, and Poisson’s Ratio. Interactively substitute fluids using the Biot-Gassmann method. Control the precise makeup of pore fluids by adjusting fluid properties such as salinity, gas gravity, GOR, and API gravity.

Best of all, it’s integrated in one executable, ensuring you never have to switch in and out of multiple applications to finish your workflow.

With KINGDOM 8.3, now every geoscientist can pursue a career in modeling!

See the full fall lineup from SMT, the global market leader for PC-based interpretation. View our webinar on What’s New In KINGDOM 8.3 at www.seismicmicro.com/smt-model7


Call your sales representative TODAY about “Introductory Pricing” on this new module.

Intuitive. Integrated. Interpretation.

USA +1 (713) 464-6188 **Canada** +1 (403) 303-3365 **Colombia** +57 (1) 618-0239

Russia +7 495 980 89 82 **Singapore** +65 6220 1089 **UK** +44 (0) 20 8240 6524



ANSYTHE Donald I. Andrews 504-887-3432 	D-O-R ENGINEERING, INC. 3-D and Geoscience Services 120 Oil Center Dr., Bldg. 12 P.O. Box 51707, Lafayette, LA 70505 Bus. (337) 233-2378 Fax (337) 233-2907
THE BOEBEL COMPANY Oil and Gas Investments 170 Broadway Street, Suite 321 New Orleans, LA 70118 (504) 866-4313	EDWARD B. PICOU, JR. Consulting Micropaleontologist - Retired 228 St. Charles Ave., Suite 1330 C New Orleans, LA 70130 Bus. (504) 529-5155 Res. (504) 282-3096
BOO-KER OIL & GAS CORP. Gray S. Parker 826 Union, Suite 300 New Orleans, LA 70112 Bus. (504) 581-2430 Fax (504) 566-4785	H. WARREN BELL Oil and Gas Exploration 2500 Tanglewilde, Suite 485 Houston, TX 77063-2126 Bus (713) 266-7297 Fax (713) 266-7298
C & R EXPLORATION, INC. Carlo C. Christina Lawrence G. Ringham	PHELPS GEOSCIENCE Onshore Gulf of Mexico Geology and Geophysics Prospect Generation and Evaluation Houston, TX jsfphelps@yahoo.com (281) 398-5208
C. R. RONDEAU Petroleum Geologist 119 W Southland Ave. Ironwood, MI 49938 Res. (906) 932-4692	RAFIDI OIL AND GAS, INC. Jaser N. Rafidi, President 4415 Shore Dr., Suite 202 Metairie, LA 70006 Bus. (504) 722-2942 Fax (504) 888-5539; Res. (504) 888-1661
CLASSEN EXPLORATION, INC. James S. Classen Looking for close in deals P.O. Box 140637 Boise, ID 83714 classenllc@msn.com Bus. (208) 854-1037 Fax (208) 854-1029	ROY C. WALTHER Petroleum Geologist 2421 Prancer Street New Orleans, LA 70131 Bus. (504) 392-8513 Res. (504) 392-9332
COLLES C. STOWELL Oil and Gas Consultant 22 Sea St. Manchester, MA 01944 (978) 526-1286	TONY CAROLLO Consulting Geologist Unitization Geosteering Field Studies 1701 Peach Street Metairie, LA 70001 Bus. (504) 885-0004 Res. (504) 885-6829

**New NOGS
Members
February and
April 2009**

REINSTATED

Karl S. Hebert
Katt Corporation
Owner/President
21055 Nolan Ln
Covington LA 70435
985-847-0082

REINSTATED

Scott A. Wessels
UNO - Student
2000 Lakeshore Dr.
New Orleans, LA 70148

J. James Brooks Jr.
Schlumberger
Sales Engineer
Ste 900, 1515 Poydras St
New Orleans, LA 70112
504-220-9502

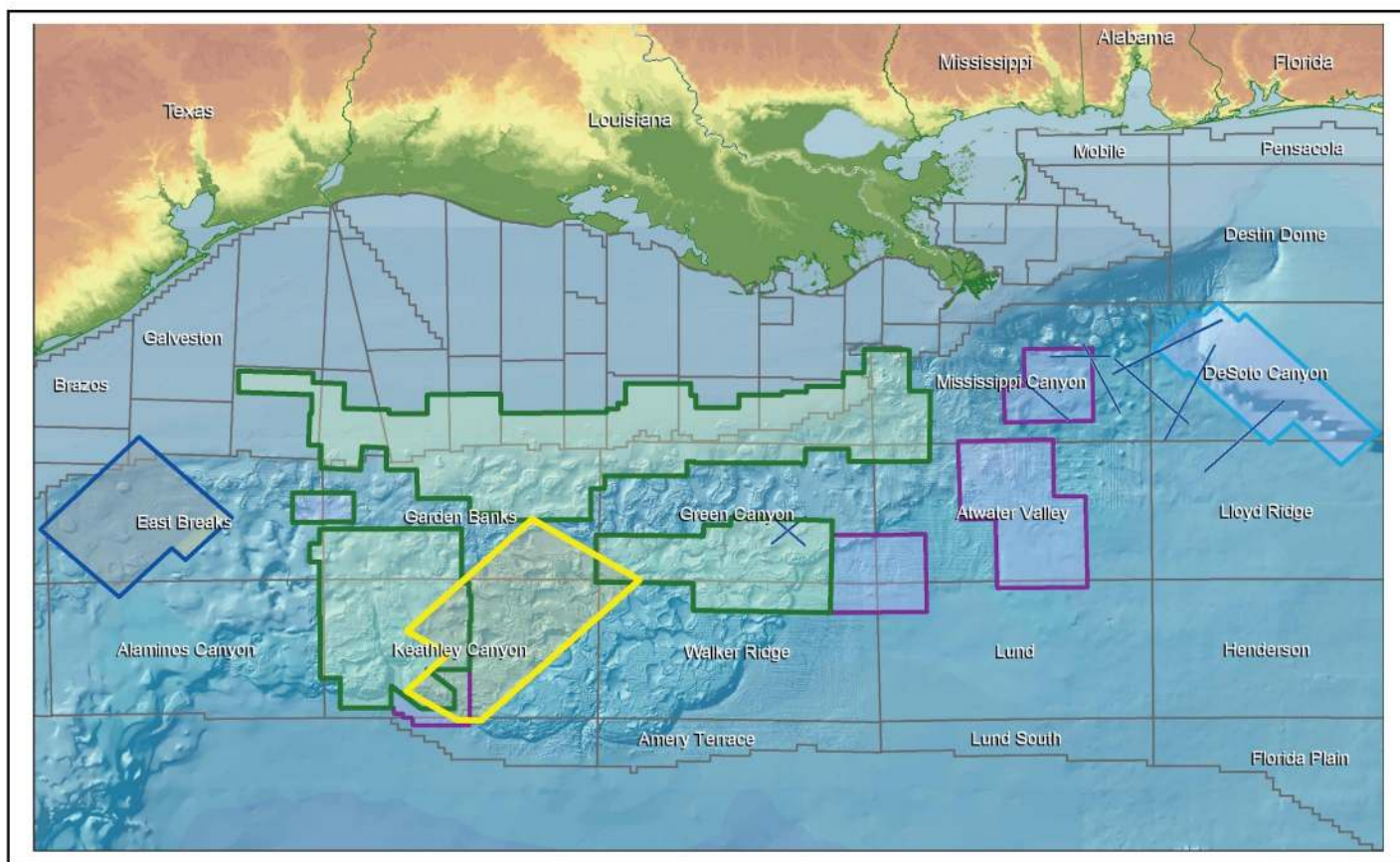
Dominic J. Smith
Minerals Management Service
Geologist
1201 Elmwood Park Blvd
New Orleans, LA 70123
504-736-1744

REINSTATED

Frank E. Larkin
Retired (Exxon)
28 Rail St
New Orleans, LA 70124-4409
504-282-6058

REINSTATED

Joe Kirk Peerson
Baker Atlas
District Engineer
2137 Bayou Blue Rd
Houma, LA 70364
985-438-1866



PGS Gulf Of Mexico Data Library

Challenging Times Require Imaginative Solutions - PGS Your Creative Business Partner

- Newly Reprocessed PSDM - Kirchhoff, Beam & WEM
- Wide-azimuth - Kirchhoff, Beam & WEM
- Narrow azimuth
- Proposed Wide Azimuth – Anisotropic Beam and RTM
- Narrow Azimuth Anisotropic Kirchhoff, Beam and WEM
in cooperation with TGS

Contact your local PGS representative for more information

Houston
Tel: +1 281 509 8000
Fax: +1 281 509 8500

Oslo
Tel: +47 67 52 6400
Fax: +47 67 52 6464

London
Tel: +44 1932 37 6000
Fax: +44 1932 37 6100

A Clearer Image
www.pgs.com



NEW ORLEANS GEOLOGICAL SOCIETY



810 Union Street, Suite 300
New Orleans, LA 70112-1430

WWW.NOGS.ORG

MARINE PROPERTIES, LLC BERKSHIRE EXPLORATION CO.

MONTE C. SHALETT, CPL, PRESIDENT

3030 Lausar Street
Metairie, LA 70001-5924

BUS. (504) 831-7779
FAX. (504) 831-8315

PCI

Paleo Control, Inc.

Houston, Texas
713-849-0044

Drilling Wells, Studies and Data Base

Loyd Tuttle

Frio, SE Texas

Bob Liska

Wilcox, S and SE Texas

Jim Thorpe

Miocene and Cam-Miogyp



SEE YOUR DATA IN A WHOLE NEW LIGHT!

Take the pressure out of exploration
and drilling by seeing what you
are going to encounter.



eSeis

www.e-seis.com
713.531.1447

- Lithology & Fluids
- Depositional Facies
- Pore Pressure from V & Q
- Well Planning Consultation

