

NOGS LOG



January 2009

Volume 49, Number 7

Upcoming Events and Activities

January 5 - NOGS Luncheon

*** At the Holiday Inn Downtown Superdome ***

Free validated parking in hotel garage

Guest speaker Dr. Susan E. Humphris, Woods Hole Oceanographic Institution and AAPG Distinguished Lecturer, will present "Relation Between Volcanism, Tectonism and Hydrothermal Activity Along the Global Mid-Ocean Ridge System."

(See page 7 for Abstract and Biography)

HOLIDAY INN DOWNTOWN SUPERDOME ADMISSION:

Check with concierge or
front desk for location

Lunch served at 11:30am

with reservation \$30.00

without reservation \$35.00

Student Member with reservation Free

February 2 - NOGS Luncheon

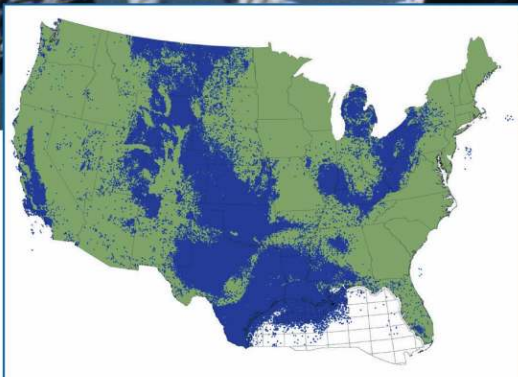
Guest speaker Dr. Michael Hudec, Texas Bureau of Economic Geology, will present "Episodic Advance of the Sigsbee Salt Canopy, Deepwater Gulf of Mexico."

March 26-27 - Louisiana Groundwater & Water Resource Symposium

At LSU in Baton Rouge. See announcement on page 8.

Introducing

LASSO



Lasso up all the digital LAS well log data you need from the industry's largest collection

With LASSO, lock in TGS' program rates on digital LAS well data from our US collection, growing at an unprecedented pace to more than 500,000 wells over the next several months. LASSO strengthens your exploration projects with the higher-order capabilities of increased digital well log use. LASSO digital data from TGS, the industry's well log data leader, is quality controlled and available online for immediate downloads.

For more information about LASSO, contact your TGS account representative or call 1- (888) LOG-LINE.



Geophysical
Products



Geological
Products



Imaging
Services

www.tgsnopec.com

NORWAY +47 66 76 99 00 | USA +1 713 860 2100 | UK +44 (0) 1234 272122 | AUSTRALIA +61 8 9480 0000

© TGS-NOPEC Geophysical Company. All rights reserved.

NOGS Office

Office Manager: Annette Hudson

Office Hours: 8:30am – 3:30pm on Monday-Wednesday-Friday

Tel: 504-561-8980 □ Fax: 504-561-8988

E-mail: info@nogs.org □ Website: www.nogs.org

The office is located at Suite 300, 810 Union Street, New Orleans, LA 70112.

Correspondence and all luncheon reservations should be sent to the above address.

Sent to press on December 18, 2008.

**BOARD OF DIRECTORS**

		Company	Phone	E-mail
President	William M. Whiting	Consultant	504-947-8495	bootscon@aol.com
Vice President	Allan Melillo	Chevron	985-773-6756	ajme@chevron.com
Secretary	Frances Wiseman	MMS	504-736-2912	frances.wiseman@mms.gov
Treasurer	James Swaney	MMS	504-736-2677	james.swaney@mms.gov
President-Elect	Tom Klekamp	Amber Resources LLC	985-845-4046	klekamp@bellsouth.net
Editor	Michael D. Miner	UNO	504-280-3866	mminer@uno.edu
Director 2009	Willis E. Conatser		504-469-2496	weconatser@aol.com
Director 2010	Michael M. Ledet		504-394-9636	mikeledet@cox.net
Director 2011	Scott A. Wainwright	Bret Exploration Co Inc	504-889-2700	scott_wainwright@hotmail.com

COMMITTEE

	Chairperson			
AAPG Delegates	Dave Balcer	Chevron	985-773-6725	dbalcer@Chevron.com
AAPG Student Chapter	Bobby Cosentino	Tulane University	504-495-9475	rcosenti@tulane.edu
AAPG Student Chapter	Bryan Rogers	UNO	504-736-2772	thgem@gmail.com
Advertising-Log	Jennifer Connolly	Shell	504-728-6411	jennifer.connolly@shell.com
Auditing	J. David Cope	Ankor Energy	504-596-3672	dcope@ankorenergy.com
Awards	Michael N. Fein	W & T Offshore	504-210-8148	mikef@wtoffshore.com
Ballot	James Swaney	MMS	504-736-2677	james.swaney@mms.gov
Best Paper	David E. Reiter	Energy Partners Ltd	985-893-8072	dreiter@eplweb.com
Continuing Education	TBA			
Employment Counseling	Paul J. Post	MMS	504-736-2954	paul.post@mms.gov
Entertainment	Tom Klekamp	Amber Resources LLC	985-845-4046	klekamp@bellsouth.net
Environmental	Daisy Pate	Eustis Geotechnical Eng.	504-613-5798	dpate@eustiseng.com
External Affairs	Michael A. Fogarty	Sylvan Energy, LLC	603-523-4808	mike.a.fogarty@gmail.com
Field Trip	David Garner	Shell	504-728-6154	David.Garner@shell.com
Finance and Investment	James Swaney	MMS	504-736-2677	james.swaney@mms.gov
Historical	Edward B. Picou, Jr.	Consultant	504-529-5155	epicou@bellsouth.net
Membership/Directory	Penne Rappold	Shell	504-728-4338	prappold@gmail.com
New Geoscientists (NGNO)	TBA			
Nominating	Alfred H. Baker, Jr.	Beacon Exploration, LLC	504-836-2710	abaker1006@aol.com
Non-Technical Education	Duncan Goldthwaite	Consultant	504-887-4377	DGldthwt@aol.com
Office Operations	Arthur H. Johnson	Hydrate Energy International	504-464-6208	artjohnson51@hotmail.com
Publications Sales	Edward B. Picou, Jr.	Consultant	504-529-5155	epicou@bellsouth.net
Photography	J. David Cope	Taylor Energy Co LLC	504-589-0419	dcope@taylorenergy.com
School Outreach	Thomas C. Bergeon	Century Exploration	504-832-3772	Tom.bergeon@centuryx.com
Scouting	Carol Rooney	Consultant Geologist	504-835-1909	carolbrooney@aol.com
Technical Projects	TBA			
Ad Hoc Committee on				
University Support	Michael J. Gallagher	Eni Petroleum	504-593-7480	Michael.Gallagher@enipetroleum.com

NOGS LOG STAFF

Editor	Michael D. Miner	UNO	504-280-3866	mminer@uno.edu
Editor-Elect	Elizabeth Petro	MMS	504-736-2866	liz.petro@mms.gov
Auxiliary	Susie Baker	NOGA	504-466-4483	abaker1006@aol.com
Info Tidbits	Clare Falcon	Schlumberger	504-592-5385	cfalcon2@new-orleans.oilfield.slb.com
Drill Bits	Paul J. Post	MMS	504-736-2954	paul.post@mms.gov
Webmaster	Jannette Sturm-Mexic			webmaster@nogs.org

NOGS AUXILIARY

Officers		Phone	Directors	Year	Phone
President	Linda Peirce	504-393-7365	Ruth Ingram	2008-09	504-887-5404
1st Vice-President	Jean Jones	504-738-8091	June Perret	2008-09	504-881-9357
2nd Vice-President	Beverly Kastler	504-286-0879	Joan Sylvester	2008-09	504-738-2934
Secretary	Dolores Murphy	504-393-0878	Beverly Christina	2009-10	504-835-2383
Treasurer	Judy Lemarie'	504-393-8659	Peggy Rogers	2009-10	504-392-6323
Parliamentarian	Carol Andrews	504-887-3432	Judy Sabate'	2009-10	504-861-3179
Member-at-Large	Susie Baker	504-466-4483			

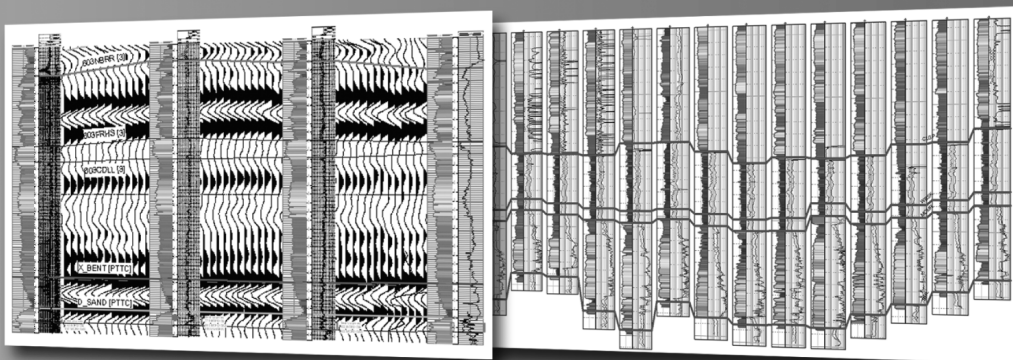
--- NOGS Contact List continued on page 10 ---

Define your geological model faster than ever before

NO MORE WAITING! Available today from IHS, easy and affordable access to one of the largest U.S. digital log collections

- More than 185,000 LAS files with over 1.5 million curves
- Regional subscription packages for today's active play areas
- Indexed to IHS well and production data
- Linked to the IHS Enerdeq® Browser for quick regional studies and log selection
- Available via IHSLogNet.com or on DVD
- Ready to use in PETRA and other log packages

Request a free 2' x 3' IHS digital log coverage map at ihs.com/energy/DigitalLogs



Use PETRA® to integrate digital log, well, production, perf, seismic and tops data. IHS is the only company to provide you with the complete picture.



Why wait? Subscribe today! Call **888.OIL.DATA** (645.3282) or e-mail sales.energy@ihs.com

The Source
for Critical Information and Insight™



from the President

The Holiday Season is behind us and it is time for all of us to focus on our 2009 goals. Personally, I hope we can have at least one more seminar before the Deep Water Technical Symposium in August. Other goals include the finalization of the Baton Rouge Fault Systems Field Guide Book for publication, the initiation of another publication (Oil and Gas Fields IV), more participation in outreach school programs, support for our President-elect Tom Klekamp in his entertainment program (i.e. the Annual Golf Tournament, etc.), and NOGS participation in other joint industry projects (i.e. PIPE, etc.). We have been reviewing our membership list and should have that updated soon. Our updated website can be a powerful tool and I urge all members to use it. We have several vacant Chairmanships open, please step forward and give NOGS some of your valuable time.

Thanks to the 13 NOGS members and friends that showed up for the November 8 Super Volunteer Day at City Park. This is NOGS' third participation day since Hurricane Katrina and the Park is really showing progress. We joined a group of approximately 150 volunteers that day and helped decorate and string lights at the Botanical Gardens, Storyland, and the entrance to the amusement park, which was the NOGS volunteers' assignment. We were joined by students from Tulane University and De La Salle High School. Leftover refreshments from the Baton Rouge Fault field trip helped keep us going. Thanks to Tom Klekamp for a well-coordinated effort.

Our Nominations Committee, chaired by Al Baker, is hard at work for a 2009-2010 slate of candidates. Please answer the call if NOGS asks you to run for a post on the Board. It is an honor and privilege to serve. Also consider being a delegate to the AAPG House of Delegates which is a three-year term, runner-ups generally become alternates.

Thanks again to Tom and Amber, NOGA, and Susie Baker (door prizes) for a successful Holiday/Christmas Party December 12th at Cannon's Restaurant on St. Charles Avenue. I made my annual Christmas trek to Michigan and again this year I played host to my family at my Michigan house. We had 35 family members and guests last year.

The SPE is sponsoring a NEO-Professional group open to all young professionals with 10 years or less experience. It is my understanding that they will also accept graduate students. SPE has funded them with a \$3000 budget and NOGS has also contributed \$200. They are already planning a trip to a refinery and will have regularly scheduled speakers and social events. NOGS used to have an NEO-Geologist group, but it faded away.

Congratulations to our editor, Mike Miner, on a new addition to his family. Our editor-elect, Clare Falcon, had to resign because she accepted a job in Houston. The Board offered the post to the May 2008 election runner-up, Liz Petro from MMS, and she has accepted. Congratulations to Liz.

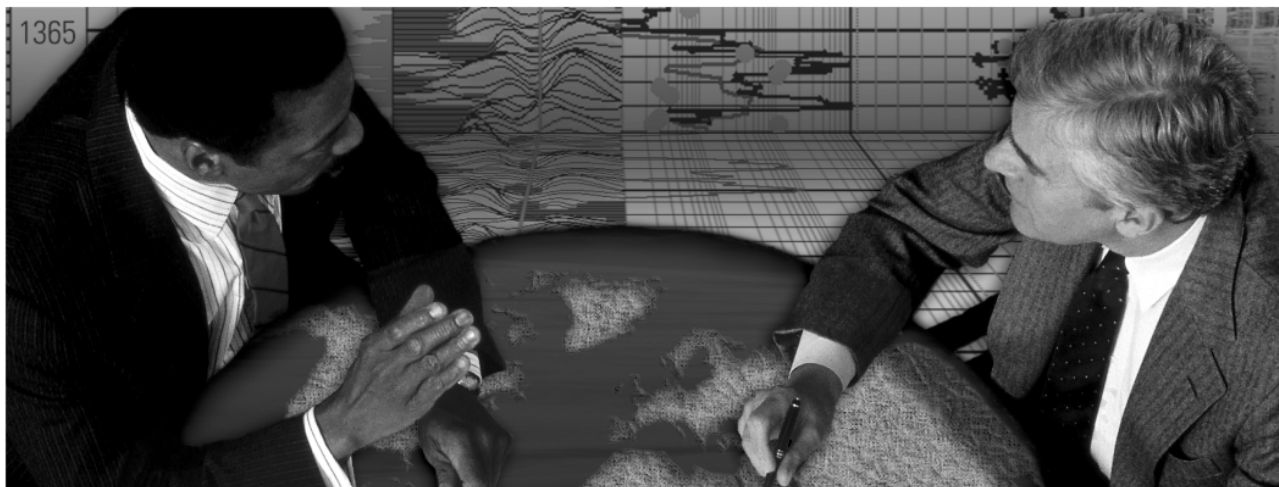
There are still plenty of volunteer opportunities including: school outreach, Super Science Saturday, and judging at science fairs. I had the opportunity to judge Dec. 4th at John Curtis School for the 6th through 8th grade projects which were awesome. It is nice to see a school doing a good job of educating. Don't forget that the countdown is on for the AAPG 2010 Convention here in New Orleans. Tom Hudson and Dr. Nancye Dawers need your support.

Bill

energyinformation

Business solutions for
the oil & gas industry

Schlumberger formation evaluation solutions deliver the answers you need. Our extensive portfolio of services, leading-edge technology, and advanced conveyance options keep you in communication with your well throughout its life cycle.



With formation evaluation technologies from Schlumberger, you can make the best decisions for optimized performance in every well.

The formation evaluation one-stop shop

Whether you are logging in open hole or behind the casing, our broad selection of services ensures the best solution for acquiring formation evaluation data. Tools can be conveyed while drilling or on wireline or pipe. We offer many specialized evaluation capabilities, from density, neutron porosity, and resistivity to borehole imaging, nuclear magnetic resonance logging, borehole seismic, formation pressure testing, and fluid sampling. Advanced triple-combo logging options include the VISION* formation evaluation and imaging-while-drilling services. Coupled with Pulse* telemetry and surveying services, the VISION family provides real-time formation evaluation data and enables optimum well placement.

High-speed wireline measurements are recorded with the Platform Express* logging services. The SlimXtreme* platform is designed for high-pressure, high-temperature environments and the ABC* Analysis Behind Casing services are used after casing is set.

Expert interpretation from the engineers and geoscientists of Schlumberger Data & Consulting Services brings all your data together to give you the answers you need. This expertise is available after logging is complete or as real-time two-way wellsite communication through the InterACT* real-time monitoring and data delivery system.

Schlumberger delivers leading-edge technology and interpretation expertise for all your formation evaluation needs, so every well benefits from the very best information.

For more information visit
www.slb.com/oilfield/formation_evaluation/

*Mark of Schlumberger

04-FE-114

Schlumberger

January 5 NOGS Luncheon Presentation

*** at the Holiday Inn Downtown Superdome ***

Relation Between Volcanism, Tectonism and Hydrothermal Activity Along the Global Mid-Ocean Ridge System

presented by

Dr. Susan E. Humphris

Woods Hole Oceanographic Institution and AAPG Distinguished Lecturer

ABSTRACT

Just over 30 years ago, scientists exploring the global mid-ocean ridge system made the spectacular discovery of black smokers-hydrothermal chimneys made of metal sulfide minerals that vigorously discharge hot, particulate-laden fluids into the ocean. These chimneys are the surface manifestation of convection of seawater through the oceanic crust and water-rock reactions that produce hot, hydrothermal fluids that discharge at the seafloor. This hydrothermal circulation process plays an important role in regulating the chemistry of seawater, building mineral deposits, and supporting chemosynthetically-based ecosystems.

Early studies focused on hydrothermal systems on the fast-spreading East Pacific Rise, where shallow magma lenses beneath the ridge crest provide heat to drive

convection of seawater through the oceanic crust. Ten years later, studies of the slow-spreading Mid-Atlantic Ridge revealed much larger mineral deposits - a surprising result given the lower magma delivery rate and heat availability.

Through the use of different deep-submergence technologies, this talk will explore the characteristics of vents and their associated communities along the mid-ocean ridge, and the varying relations between volcanic and tectonic processes at sites on ridges of different spreading rates. It will focus in particular on how one active hydrothermal system has constructed a large mineral deposit on the Mid-Atlantic Ridge, and how recent experiments at that site have shed light on the role tectonics and faulting play in the evolution of long-lived hydrothermal systems.

BIOGRAPHY

Dr. Susan E. Humphris is a marine geochemist whose studies the geochemistry of seawater-rock reactions in hydrothermal systems. She received her Bachelors of Arts degree with First Class Honors from the University of Lancaster in Environmental Sciences (1972), and a Ph.D. in Chemical Oceanography from the Joint Program between MIT and Woods Hole Oceanographic Institution (1977). She completed a Post-Doctoral Fellowship at Imperial College in London.

During her career, she has spent more than three years at sea on various oceanographic research ships and has completed many dives in the submersible *Alvin* in both the Pacific and the Atlantic. More recently, she has used the remotely-operated vehicle *Jason* and several AUVs for work in the Atlantic, Pacific, Indian and Arctic Oceans. Prior to assuming her position at Woods Hole Oceanographic Institution, Dr. Humphris worked for the

Sea Education Association where she spent thirteen years, first as a Staff Scientist teaching intensive courses in Oceanography to undergraduates both on shore and at sea, and then as Dean for six years. During that time, she was involved in educating over a thousand undergraduates about the ocean, and also developed a program with grade-school teachers to integrate marine topics into their scientific curricula.

Dr. Humphris has authored or co-authored more than 70 scientific papers, and was a co-creator of the highly successful Dive and Discover web site that brings oceanographic expeditions in near real-time to students and the general public. She has served on many national and international scientific advisory committees, including several NRC Committees, and has been involved in ocean drilling for many years.

THE LUNCHEON RESERVATION DEADLINE IS DECEMBER 31 - CONTACT THE NOGS OFFICE

“And Looking Ahead...”

The next NOGS Luncheon will be February 2. Guest speaker Dr. Michael Hudec, Texas Bureau of Economic Geology, will present “Episodic Advance of the Sigsbee Salt Canopy, Deepwater Gulf of Mexico.” Contact the NOGS office to make your reservation.

Baton Rouge Geological Society



3rd Annual Louisiana Groundwater & Water Resource Symposium

March 26 & 27, 2009

Louisiana Water a Valuable Resource

Energy Coast & Environment Building
Louisiana State University
Baton Rouge, Louisiana

For more information see
Baton Rouge Geological Society website
<http://www.brgs-la.org>
or e-mail dcarlson@lsu.edu

First call for abstracts

Abstracts due March 6, 2009

Expanded Abstracts due March 16, 2009

Hosts:

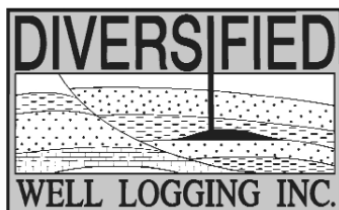
Louisiana Geological Survey

Baton Rouge Geological Society



Relax. We'll keep you posted.

Your rig is offshore and you are not. How do you know what's going on so many miles away? You know because we tell you. Daily or even hourly, Diversified Well Logging's engineers update you on the status of your rig. We are your eyes and ears, especially when it comes to deep water or high pressure, high temperature areas. Diversified offers 24-hour surface evaluation. We provide secure and customized real-time data communication, in-house research and development and 24/7 on-call support for our equipment and our engineers. Whether you have a 10-day job or 110-day job, we provide the specialized attention you require. So, relax. We're with you every step of the way.



Serving the Gulf Coast for over 40 years.

New Orleans • Lafayette • Houston • Dallas • Corpus

800.280.2096

711 West 10th Street • Reserve, LA 70084 • Phone: 985.536.4143 • Fax: 985.536.2427
sales@dwl-usa.com



**PALEO
DATA**

**FULLY INTEGRATED AND
CENTRALIZED BIOSTRATIGRAPHIC
SERVICES**

- ▼ Single-source biostratigraphic databases
for increased accuracy and consistency
- ▼ Integrated foram / nannofossil analyses
- ▼ Complete wellsite paleo services
- ▼ In-house sample preparation
lab for quality-monitoring
and efficiency
- ▼ Sample pick-up service

6619 Fleur de Lis Drive
New Orleans, LA 70124
(504) 488-3711

www.paleodata.com

MCMORAN EXPLORATION CO.



MCMORAN OIL & GAS

www.mcmoran.com

NYSE: MMR

16676 Northchase Dr.
Houston, TX 77060
(281) 539-7600
Fax: (281) 539-7655

1615 Poydras
New Orleans, LA 70112
(504) 582-4000
Fax: (504) 582-4155

110 Travis St., Suite 140
Lafayette, LA 70503
(337) 735-9150
Fax: (337) 735-9151

NOGS CONTACT LIST

--- continued from page 3 ---

MEMORIAL FOUNDATION

BOARD OF TRUSTEES

		Company	Phone	E-mail
2008-09 Chairman	Arthur H. Johnson	Hydrate Energy International	504-464-6208	artjohnson51@hotmail.com
2008-09 Secretary	William M. Whiting	Consultant	504-947-8495	bootscon@aol.com
2008-09 Trustee	David E. Balcer	Chevron	985-773-6725	dbalcer@chevrontexaco.com
2008-09 Trustee	George T. Froming	Consultant	504-799-1918	gtfroming@yahoo.com
2009-10 Trustee	Michael C. Fauquier			
2009-10 Trustee	J. David Cope	Ankor Energy	504-596-3672	dcope@ankorenergy.com
2010-11 Trustee	Timothy J. Piwowar	Shell	504-728-4066	tim.piwowar@shell.com
2010-11 Trustee	Michael N. Fein	W & T Offshore	504-210-8148	mikef@wtoffshore.com

AAPG DELEGATES

Term Ends

		Company	Phone	E-mail
2009	David E. Balcer	Chevron	985-773-6725	dbalcer@Chevron.com
2009	William Whiting	Consultant	504-947-8495	bootscon@aol.com
2009a)	Nancye Dawers	Tulane University	504-862-3200	ndawers@tulane.edu
2009a)	David Cooke	MMS	504-736-2609	david.cooke@mms.gov
2011	Tom Hudson	Chevron	985-773-7163	tom.hudson@chevron.com
2011	Edward B. Picou, Jr.	Consultant	504-529-5155	epicou@bellsouth.net
2011a)	Brenda Reilly	Energy Partners Ltd.	504-799-4811	breilly@eplweb.com
2011a)	Robert Rooney	Century Exploration	504-832-3777	Robert.rooney@centuryx.com



Eni Petroleum

1250 Poydras Street
Suite 2000
New Orleans, LA 70113
Tel: (504) 593-7000
Fax: (504) 593-7745

1201 Louisiana Street
Suite 3500
Houston, TX 77002
Tel: (713) 393-6100
Fax: (713) 393-6205



**Shell has worked in partnership
with the NOGS for many years, and
is proud to count the society among
its closest business associates.**

The New Orleans Geological Society was organized in 1941 to foster scientific research and advance the science of geology. Particular emphasis is laid on the exploration for and production of petroleum and natural gas. Related objectives include encouraging the adoption of improved methods of exploration, disseminating pertinent geological and technological data, and maintaining a high standard of professional conduct among its members.

www.shell.com/us.sepco

SEI®

Seismic Exchange, Inc.

**Strategic Speculative Surveys
Geophysical Data Marketing & Management**

**Your
Full Service
National
Seismic Data
Marketing Firm**

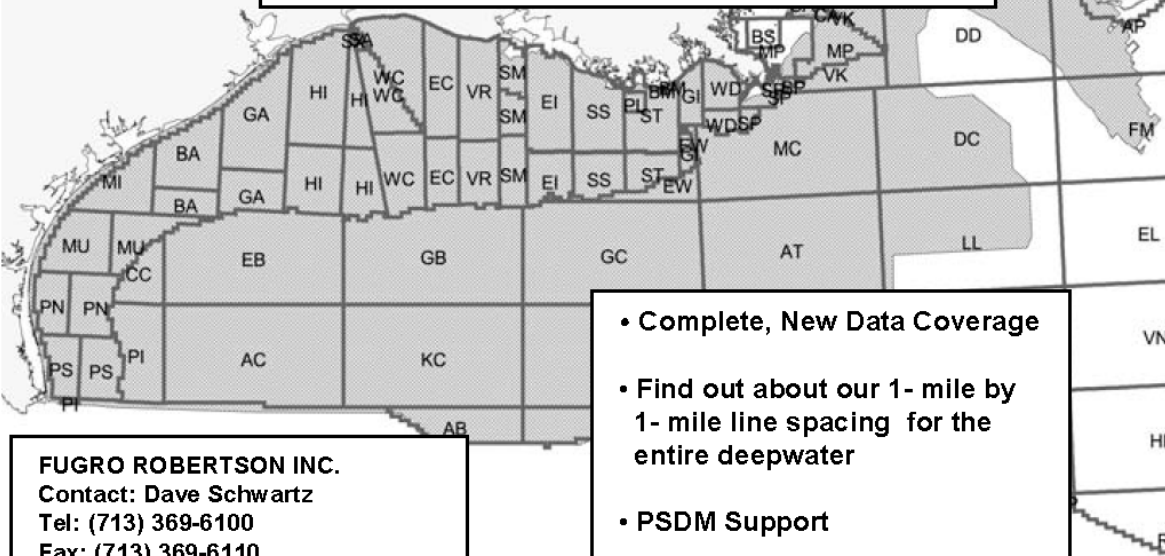
New Orleans
Dallas
Houston
Denver
Oklahoma City
Corpus Christi
Tulsa

201 St. Charles Avenue, Suite 4300, New Orleans, Louisiana 70170-4300
Telephone 504.581.7153 Fax 504.581.9591
www.seismicexchange.com

Robertson



**"The Place to Go"
For GOM Gravity Data and Interpretations**



FUGRO ROBERTSON INC.
Contact: Dave Schwartz
Tel: (713) 369-6100
Fax: (713) 369-6110
Email: infofri@fugro.com
www.fugro-lct.com

- Complete, New Data Coverage
- Find out about our 1- mile by 1- mile line spacing for the entire deepwater
- PSDM Support
- 3D Modeling



100 Northpark Blvd.
Covington, LA 70433

(985) 773-6000

"Serving the Oil & Gas Industry Since 1983"

Geological,
Geophysical &
Land Drafting

Anthony Catalanotto

President

Stefani Kelone

Drafting and Design



Geo-Draft, Inc.

A Professional Drafting & Graphics Firm

3349 Ridgelake Drive □ Suite 202 □ Metairie, LA □ 70002

Office: (504) 836-2882 Fax: (504) 836-2877

geodraft@bellsouth.net



LaBay

Exploration Co., L.L.C.

111 Veterans Memorial Blvd.,
Suite 1550
Metairie, Louisiana 70005

www.labayexploration.com

Office (504) 371-5967
Fax (504) 371-5969

*This advertising space is
available! Contact the
NOGS office.*



The 59th Annual Convention of the
Gulf Coast Association of Geological Societies
and the Gulf Coast Section of SEPM
September 27-29, 2009
www.gcags2009.com

**GCAGS 2009 CONVENTION
GENERAL CHAIRMAN**
Ralph Richardson
Sartor-Richardson
318-869-4100
r_g_richardson@yahoo.com

GCAGS 2009 BOARD:
President
Will Downs
St. Mary Land & Exploration
318-424-0804
wdowns@stmaryland.com

Treasurer
John Grunau
Pride Exploration, Inc.
318-226-1300
explorewithpride@aol.com

Secretary
David Benscoter
Long Petroleum, LLC
318-221-3516
david@longpetro.com

GCAGS 2009 COMMITTEES:
Technical Program
Gary Hanson
LSUS, Red River Watershed
Management Institute
318-797-5041
ghanson@pilot.lsu.edu

Transactions General Coordinator
William R. "Bill" Meaney
Anderson Oil and Gas, Inc.
318-227-2000
bmeaney@andersonoilandgas.com

Transactions Editor
Michael T. Roberts
Palmer Petroleum, Inc.
318-222-0517
mroberts@palmerpetro.com

Contributions/Sponsorship
Robert L. "Bob" Williamson
Williamson Oil and Gas, Inc.
318-221-2923
bob@williamsonogi.com

Convention Consultant
Bruce Lemmon
GEM Global Events
Management, LLC
918-585-1004
blemmon@jurisystems.com



SHREVEPORT GEOLOGICAL SOCIETY
P. O. BOX 750
SHREVEPORT, LA 71162

-CALL FOR PAPERS-

The Shreveport Geological Society is proud to host the 2009 Annual Meeting for the GCAGS/GCSEPM. We look forward to continuing the long tradition of presenting the best of the geosciences from the Gulf Coast. Our theme, "**A Fusion of Geology and Technology**", recognizes the fact that we work using tried and proven geological concepts yet we are in the forefront of technical innovations. Our work is recorded for the worldwide geological community in our superior publication, the *Transactions*. We invite you to be a part of this process by submitting an abstract for an oral or poster presentation in Shreveport for the 2009 Convention of the GCAGS.

PROPOSED TECHNICAL SESSIONS

Haynesville & Other Shale Plays-A Symposium
The Wilcox-Outcrop to the Abyss
Visualization, Geochemistry, & Interpretation of Geologic Systems
Tight Gas Sand Development
Water Resources & Environmental Geology
Old Fields-Rejuvenation & Enhancement
Salt Traps & Technology
Global Change and Coastal Subsidence-Dealing with the Inevitable?
Peak Oil & Bridges to Sustainability
Geology & Education-A Natural
Seismic Applications in the Upper Gulf Coast
Stratigraphy of the Cotton Valley & Louark Groups: Northern Gulf of Mexico

Abstracts for oral and poster presentations may be submitted beginning November 1, 2008, but no later than **February 1, 2009**, by logging onto www.gcags2009.com. First drafts of full papers from selected presenters that will be included in the 2009 *Transactions* volume must be submitted by April 1, 2009. Contact information for the technical session chairs, as well as instructions for authors for the 2009 *Transactions*, can be found at the GCAGS conventions website, www.gcags2009.com. For general questions on the technical program please contact Gary Hanson, 2009 Technical Program Chairman. He may be contacted via email at ghanson@pilot.lsu.edu.

Higher Standards



Weatherford LABORATORIES

At Weatherford Laboratories, we hold fast to Higher Standards. Our purpose is to continually push past conventional solutions to find new and better ways to optimize oil and gas production.

■ By integrating seven entrepreneurial companies, we bring unsurpassed innovation to the industry. Our accomplishments include 50 new technologies, 45 original products, 35 industry awards, and 13 registered patents. Among our ranks are several luminaries of the industry, as well as scores of respected scientists who have authored hundreds of technical papers. ■ With 38 laboratories around the globe, our team raises the bar for wellsite sampling, core management services, geochemical analyses and evaluation of unconventional reservoirs.

At Weatherford Laboratories, we expect more from ourselves so you can expect more from us.

Weatherfordlabs.com

7
DYNAMIC
COMPANIES

50
NEW
TECHNOLOGIES

38
WORLDWIDE
LABORATORIES

CORPORATE OFFICES

ACS Laboratories Pty Ltd
Brisbane, Australia

OMNI Laboratories
Houston, Texas USA

ResLab Reservoir Laboratories
Trondheim, Norway

Humble Geochemical Services
Houston, Texas USA

TICORA Geosciences
Denver, Colorado USA

Baseline Resolution, Inc.
Houston, Texas USA

Hycal Energy Research Laboratories
Calgary, Alberta, Canada

DRILL BITS

South Louisiana and Offshore Exploration and Production Activity

- On 19-November McMoRan Exploration Co. updated its GoM E&P activities.

Following the July 2007 Flatrock discovery in OCS 310 on SMI 212, McMoRan during 2008 drilled 4 successful development wells in the field. Three wells are currently producing and the fourth well, which tested at a rate of 124 MMCFGE/D in October 2008, was expected to commence production during the week of 16-November.

The No. 5 development well logged 125 net feet of pay in the *Rob-L* and *Operc* sections, including an additional 25 net feet of deeper pay since their October 23 update. The No. 5 well is currently drilling below 17,700 feet towards a PTD of 18,400 feet to evaluate deeper *Operc* objectives.

The Flatrock No. 6 delineation well at SMI 217 was spudded on October 28, 2008 and was being drilled below 3,500 feet on 19-Nov. The well has a PTD of 19,700 feet, targeting deeper *Operc* and possibly penetrating the upper *Gyro* sand sections.

Working interests in Flatrock include: Chevron 45%, McMoRan 25.0%, and Plains E & P Co. 30.0%.

The Tom Sauk exploratory well on Louisiana SL 340 was spudded on 14-August 2008 and was being drilled below 14,500 feet towards a PTD of 19,000 feet to evaluate potential *Operc* and *Gyro* sands in the middle-Miocene on 19-Nov. The prospect, which is located in less than 10 feet of water, is a deep gas prospect that lies below the shallow production at Mound Point Field. Working interests are Chevron 57.3%, McMoRan 18.3%, and Plains E & P Co. 24.4%.


McMoRan also announced that the rig is on location and drilling operations commenced on November 16, 2008 at the Gladstone East deep gas exploratory prospect on Louisiana SL 340 in less than 10 feet of water. The well, which is located approximately 5 miles east of the Flatrock Field, has a PTD of 18,050 feet and is targeting similar potential *Rob-L* and *Operc* (Middle Miocene) sandstones. Gladstone East prospect lies below shallow production on the western flank of the Mound Point Field. McMoRan and Plains E & P Co. hold 33.1%, and 44.1% working interests, respectively.


The new-build Rowan-Mississippi 240C class jack-up was on location, and McMoRan on 19-Nov was preparing to spud a wildcat at the Ammazzo deep gas exploration prospect. The prospect, located in 25 feet of water, has a PTD of 24,500 feet. Ammazzo targets what McMoRan describes as one of the largest undrilled deep (below 15,000 foot) structures on the GoM shelf. It is positioned on the southern portion of the structural ridge extending from the Flatrock and JB Mountain discoveries (located approximately 16 and 11 miles north-northwest, respectively), where McMoRan has proven production from the *Rob-L*, *Operc* and *Gyro* sandstones of Middle Miocene age. There are multiple targets at the Ammazzo prospect in these objectives representing significant exploration potential (500 billion cubic feet of natural gas equivalents to greater than 1 trillion cubic feet), similar to Flatrock and potentially larger. McMoRan will operate the well and holds a 25.9% WI with partners, Plains E & P Co. and Energy XXI holding 28.1% and 16.0% WIs, respectively.


The McMoRan operated Northeast Belle Isle exploratory well in St. Mary Parish, Louisiana was spudded 24-August and drilled to a TD of 17,850 feet. Evaluation of the well determined that it did not contain commercial quantities of hydrocarbons and the well is being plugged and abandoned. McMoRan's fourth-quarter 2008 exploration expense will include approximately \$9 million for drilling and related costs associated with the well.

- Paul Post

A Company that Shines

 Geophysical Products

 Geological Products

 Imaging Services



TGS has been providing best-in-class multi-client data and services to successful E&P companies for over a quarter century. Our geophysical and geological data products are distributed around the globe and include one of the youngest and best targeted multi-client seismic libraries, extensive magnetic and gravity data, the industry's largest global database of digital well logs, and regional interpretive products. We also provide high-end depth imaging services to help resolve complex seismic imaging problems. Together, our products and services give you a more complete picture of the subsurface to help your exploration program *shine*.

For more information, visit www.tgsnopec.com today.



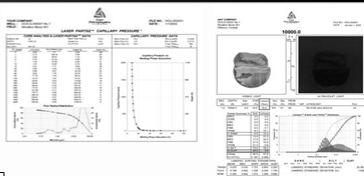
www.tgsnopec.com

NORWAY +47 66 76 99 00 | USA +1 713 860 2100 | UK +44 (0) 1234 272122 | AUSTRALIA +61 8 9480 0000 | RUSSIA +7 495 959 8117
©TGS-NOPEC Geophysical Company. All Rights Reserved.



Sidewall Core Specialists

Experts in Small Sample, Laminated and Shaly Sand Analysis



Laboratory Services:

- Core / Log Integration
- Laser Enhanced Permeability
- Porosity
- Fluid Saturations
- Measured Descriptions
- Critical Water
- Capillary Pressure Simulation
- UV Photography /Digital Images
- Lamination Characterization
- NMR Measurements
- Petrology

Core Lab has made many improvements to sidewall core testing which have had a positive synergistic effect on overall data quality.

Laser particle size analysis, Lamination specific analysis, UV-Visible Spectroscopy, lamination classification, Photospec summary reports, digital data bases via our website and capillary pressure simulation are all innovations introduced by Core Lab to help our clients obtain maximum benefit from their samples and analyses.



Core Laboratories 504-733-6583

To all our members,



from NOGS!

SURVIVOR™

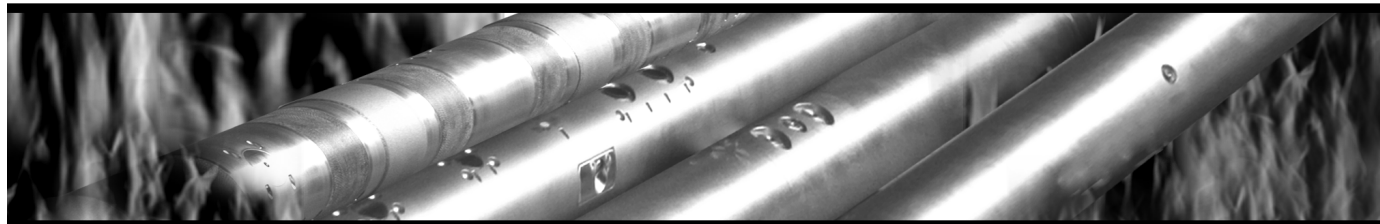
LOGGING-WHILE-DRILLING SUITE

The SURVIVOR™ Suite uses our highly reliable HDS-1 Directional Gamma Ray technology, Array Wave Resistivity tool, Slim Density Neutron Standoff Caliper tool and our Dynamic Pressure Module to create a complete system for logging in hostile drilling environments.

Temperature Rating.....350°F (175°C)

Pressure Rating25,000 psi

Logging Capacity300+ circulating hours



RELIABILITY. ACCURACY. VERSATILITY. WE DELIVER.

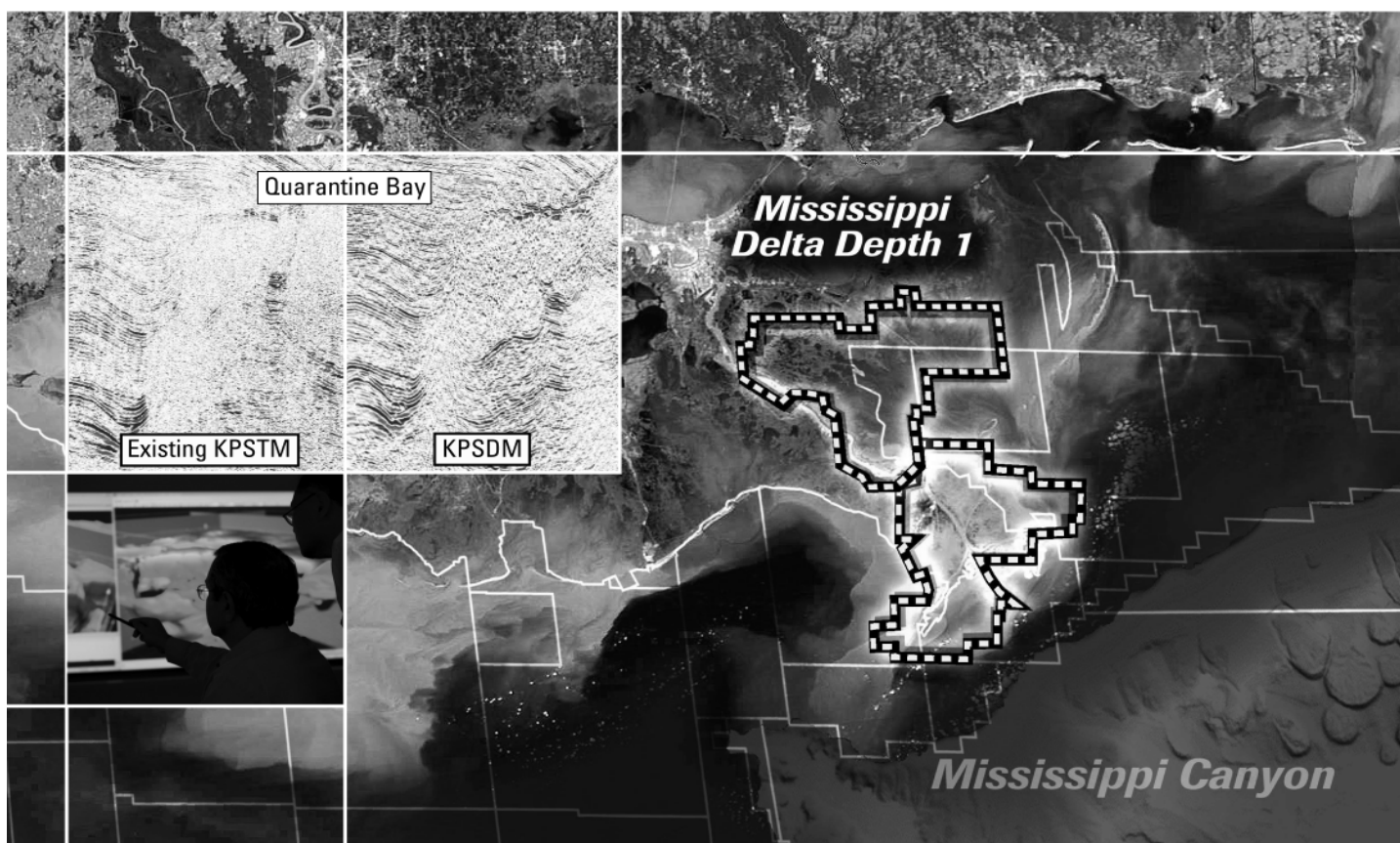
e-mail: pfmarketing@pathfinderlwd.com

www.pathfinderlwd.com

© 2006 Pathfinder Energy Services, Inc. All rights reserved.

PATHFINDER®

Expand your opportunities ...



Announcing Mississippi Delta -*Depth 1*, current depth image reprocessing now in progress.

Experience the industry-leading benefits of WesternGeco state-of-the-art processing, designed to eliminate fault shadows and enhance deep imaging.

Delivering anisotropic Kirchhoff volumes:

- Processing and remigration of twelve legacy surveys covering 1,855 square miles.
- High-quality time imaging using relative amplitude anisotropic prestack time migration followed by improved structural imaging utilizing anisotropic prestack depth migration.

Excellence in technology – Experienced professionals.

To learn more about our Multiclient products, call +1 713 689 1000.

Multiclient to the Power of E

Multiclient^E

www.slb.com/westerngeco



© 2008 Schlumberger

THE NEW ORLEANS GEOLOGICAL SOCIETY MEMORIAL FOUNDATION, INC.

The Memorial Foundation is an IRS Tax Exempt Code #501 (c)(3) organization. The Federal I.D. is: 72-1220999. Please consider making your donation prior to the close of this year's fiscal cycle which is September 30, 2009. Your individual support in any amount will help meet the IRS Guidelines for our Foundation. *Thanks!*

\$15,000 AND ABOVE

Olga Braunstein Succession

Gibbett Hill Foundation

*In Memory of Steve & Marion Millendorf, William J. Prutzman,
Roger G. Vincent & Ron Youngblood*

\$10,000

George W. Schneider, Jr. and Family

In Memory of George W. Schneider, Sr.

\$7,000 TO \$9,000

Paul C. McWilliams

\$3,000 TO \$4,000

NOGS Golf Tournament May 2008

In Memory of Bill Craig

\$1,000

C & R Exploration, Inc.

In Memory of Richard W. Boebel

John M/ Henton, Jr.

In Memory of Dr. Gordon Frey

\$500

Carlo and Beverly Christina

In Memory of Richard W. Boebel

\$250 TO \$499

Carlo C. Christina

In Memory of Robey H. Clark

In Memory of Al Gilreath

In Memory of Allen R. Stern

Carol and Gilbert St. Germain

In Memory of Richard W. Boebel

UP TO \$249

Don and Carol Andrews

In Memory of Thomas H. Philpott

In Memory of William B. Rodan

Robert J. Ardell

Memory of Richard W. Boebel

In Memory of Dr. Gordon Frey

Jack R. Bantari

Abraham Biadgelgne

Hilary James Brook

Robin A. Broussard

In Memory of Charles L. Jones

In Memory of Thomas H. Philpott

Jack G. Bryant

Rob Burnett

Chevron

Matching Funds

Arthur F. Christensen

Ellen F. Clark

James S. Classen

In Memory of All Gilreath

Charley Corona

In Memory of Charles L. Jones

In Memory of McLain Forman

In Memory of Richard W. Boebel

Michael A. Danahy

Merle J. Duplantis

George H. Evans

Exxon Mobil Matching Funds

Michael N. Fein

Mark J. Gallagher

David Garner

Peter G. Gray

Angela M. Hessler

Bernard L. Hill, Jr.

In Memory of Robert E. Osborne

Owen R. Hopkins

Dan E. Hudson

Thomas A. Hudson

Kenneth Huffman

Thomas E. Johnson

Tom Klekamp

In Memory of Robert W. Sabate'

John C. Kucewicz, Jr.

William J. Malin

Jeannie F. Mallick

David C. Mount

Robert G. Murphy

Russell H. Nordwell

Richard A. Olsen

In Memory of Richard W. Boebel

In Memory of Robert W. Sabate'

FONO FUND

The FONO Fund accepts contributions that are invested and the income dedicated to assure sufficient financial resources will always be available to maintain the NOGS business office. Contributors are reminded that donations to the FONO Fund are not covered by the IRS 501 (c)(3) tax exempt classification and should be reported as a business expense on your IRS tax report.

\$600

Richard W. Boebel

Willis E. Conatser

\$500

James A. Hartman

In Memory of Robert W. Boebel

UP TO \$249

Woods W. Allen, Jr.

Donald I. Andrews

Alfred H. Baker Jr.

Philip Beron, Jr.

Joseph E. Boudreaux

Hillary James Brook

J. Sybil Calloway

Clarence F. Conrad

John Dombrowski

Merle J. Duplantis

Richard A. Edmund

Niles R. Faulk

Michael N. Fein

Laurens Gaarenstroom

Mark J. Gallagher

Arthur J. Garden

Duncan Goldthwaite

Peter G. Gray

James A. Hartman

In Memory of Brian J. O'Neill

Bernard L. Hill, Jr.

Owen R. Hopkins

Thomas A. Hudson

Kenneth Huffman

Paul Jurik

Tom Klekamp

William J. Malin

Jeannie F. Mallick

George M. Markey, Jr.

Robert H. Monahan

Robert G. Murphy

William J. O'Leary

Richard A. Olsen

Linda and Bill. Peirce

Jaser N. Rafidi

James P. Raymond, Jr.

C. R. Rondeau

Rudolf B. Siegert

Raymond Stephens

Scott A. Wainwright

Roy C. Walther

Robert C. Weissmann

Louis E. Willhoit, Jr.

Jim Zotkiewicz

CONTRIBUTIONS FOR BOTH FUNDS
THROUGH DECEMBER 11, 2008.

DONATIONS ARE LISTED FOR ONE YEAR.

Edward B. Picou Jr.

In Memory of Dr. M. Gordon Frey

In Memory of Brian J. O'Neill

Jaser N. Rafidi

Edmund L. Russell

Robert C. Shoup

Rudolph B. Siegert

In Memory of Richard W. Boebel

Dr. J. O. Snowden

Raymond O. Steinhoff

In Memory of Robert S. Wood

In Memory of Harold E. Vokes

Stephen Syzdlík

Patrick F. Taylor Foundation

Employee Matching Gifts Program

Scott A. Wainwright

Roy C. Walther

William M. Whiting

Louis E. Willhoit, Jr.

Armour C. Winslow

In Memory of Rita Menzel Winslow

Frances A. Wiseman

In Memory of Steve Widdicombe

Jim Zotkiewicz

In Memory of Bill Craig

Robin A. Broussard

Chevron

M. R. "Bob" Douglass

Bernard L. Hill, Jr.

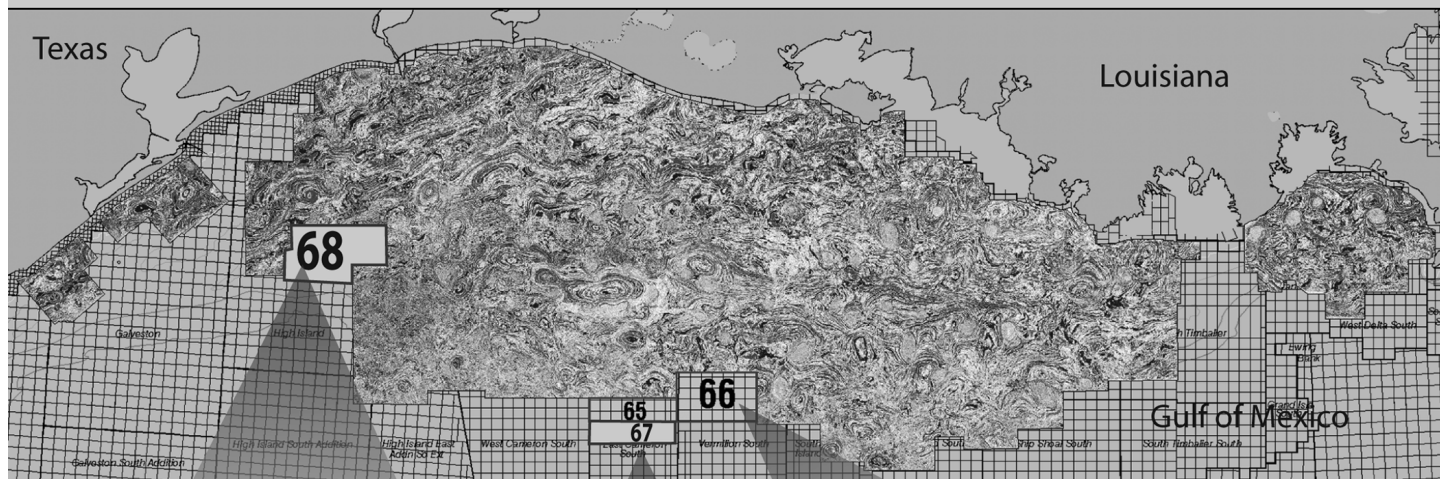
Jeff Jandegian

John C. Scheldt

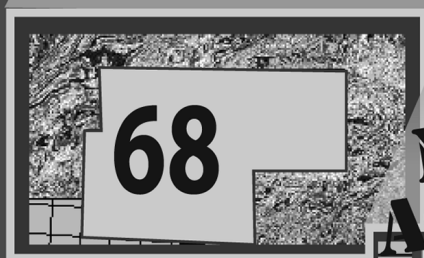
Candace V. Strahan

In Memory of James Strahan

**By the time you read this ad,
this map will be out of date.**



**Because our crews are acquiring data every day, all day
to expand Fairfield's 3D data base.**



**High Island (68) &
E. Cameron S. (67)**
30,000' offsets,
11 second records
processed in mid 2008

**NOW
ACQUIRING**



**E. Cameron South (65) &
Vermilion South (66)**
30,000' offsets, 11 second records
processed in January 2008

Visit www.fairfield.com to view Fairfield's multi-client coverage of 3D GOM data.



FAIRFIELD
INDUSTRIES

Houston 281/275-7500
New Orleans 504/525-6400

**Proud to be
an American
company**



Shoreline Gas Inc.
www.shorelinegas.com
 Full Service Natural Gas Marketing



Sydboten & Associates, Inc.
*Geological and Geophysical Consulting,
 3-D Seismic Interpretation*

Ben D. Sydboten, Jr. CPG

124 Heymann Blvd., Suite 202
 Lafayette, LA 70503

Office (337) 234-5288
 Cell (337) 234-5491

ATWATER CONSULTANTS, LTD.

REGISTERED AND CERTIFIED PETROLEUM PROFESSIONALS

GEOLOGICAL, ENGINEERING, GEOPHYSICAL,
 TRAINING AND EXPERT WITNESS SERVICES

3525 Hessmer Ave, Ste 304
 Metairie LA 70002

Tel. (504) 581-6527
 Fax (504) 524-7798

Please support NOGS advertisers!



626 E. Kaliste Saloom
 Lafayette, LA 70508

16900 Greenspoint Dr, Suite 225-S,
 Houston, TX 77060

www.stoneenergy.com



CIMAREX ENERGY CO.

GULF OF MEXICO REGION
 GOM, SE La., N. La., MS, AL

1100 Poydras St.; Suite 1100

New Orleans, Louisiana 70163

504-586-1815 / Fax 504-586-9035

Keith Gourgues
 Region Manager

NORTHCOAST OIL COMPANY

610 E. Rutland St.
 Covington, LA 70433
 (985) 898-3577
 (985) 898-3585 FAX

Jack M. Thorson
Eric C. Broadbridge
J. Daryl Gambrell
Raymond W. Stephens

(832) 242-6000 (O)
 (713) 917-0493 (O)

(504) 931-7506 (C)
johnjurasin@jurasinoilgas.com

JURASIN OIL & GAS

9700 Richmond Ave., Suite # 124
 Houston, TX 77042-4821

JOHN M. JURASIN
 President

Cert. Pet. Geologist #4284
 Cert. Prof. Earth Scientist #1961

Collarini Energy Staffing

Full-Time and Temporary Personnel

Facilities • Drilling • Production • Reservoir Engineering
 Land and Legal • Geoscience • Information Technology •
 Health and Safety • Management • Supply Chain
 Accounting • Administrative Support

11111 Richmond Ave., Suite 126
 Houston, Texas 77082

832-251-0553




www.collarini.com

Collarini Associates

Reservoir Engineering
 Oil & Gas Property Evaluation
 3-D Seismic Interpretation
 Integrated Field Studies

832-251-0160
 504-887-7127

Houston
 New Orleans

ANSYTHE Donald I. Andrews 504-887-3432 	D-O-R ENGINEERING, INC. 3-D and Geoscience Services 120 Oil Center Dr., Bldg. 12 P.O. Box 51707, Lafayette, LA 70505 Bus. (337) 233-2378 Fax (337) 233-2907
THE BOEBEL COMPANY Oil and Gas Investments 170 Broadway Street, Suite 321 New Orleans, LA 70118 (504) 866-4313	EDWARD B. PICOU, JR. Consulting Micropaleontologist - Retired 228 St. Charles Ave., Suite 1330 C New Orleans, LA 70130 Bus. (504) 529-5155 Res. (504) 282-3096
BOO-KER OIL & GAS CORP. Gray S. Parker 826 Union, Suite 300 New Orleans, LA 70112 Bus. (504) 581-2430 Fax (504) 566-4785	H. WARREN BELL Oil and Gas Exploration 2500 Tanglewilde, Suite 485 Houston, TX 77063-2126 Bus (713) 266-7297 Fax (713) 266-7298
C & R EXPLORATION, INC. Carlo C. Christina Lawrence G. Ringham	PHELPS GEOSCIENCE Onshore Gulf of Mexico Geology and Geophysics Prospect Generation and Evaluation Houston, TX jsfphelps@yahoo.com (281) 398-5208
C. R. RONDEAU Petroleum Geologist 119 W Southland Ave. Ironwood, MI 49938 Res. (906) 932-4692	RAFIDI OIL AND GAS, INC. Jaser N. Rafidi, President 4415 Shore Dr., Suite 202 Metairie, LA 70006 Bus. (504) 722-2942 Fax (504) 888-5539; Res. (504) 888-1661
CLASSEN EXPLORATION, INC. James S. Classen Looking for close in deals P.O. Box 140637 Boise, ID 83714 classenllc@msn.com Bus. (208) 854-1037 Fax (208) 854-1029	ROY C. WALTHER Petroleum Geologist 2421 Prancer Street New Orleans, LA 70131 Bus. (504) 392-8513 Res. (504) 392-9332
COLLES C. STOWELL Oil and Gas Consultant 22 Sea St. Manchester, MA 01944 (978) 526-1286	TONY CAROLLO Consulting Geologist Unitization Geosteering Field Studies 1701 Peach Street Metairie, LA 70001 Bus. (504) 885-0004 Res. (504) 885-6829

**NOGS thanks our
sponsors for their support:**

GOLD LEVEL SPONSORS:

**LA BAY EXPLORATION CO., LLC
LLOG EXPLORATION CO., LLC**

SILVER LEVEL SPONSORS:

**CHEVRON
CLAYMORE OIL AND GAS, L.P.
CIMAREX**

**SPECIAL THANKS TO
DIVERSIFIED WELL LOGGING**

PGS. Clearly Better.

Crystal continues...

Wide Azimuth Multi-Client 3D

- » 580 deepwater Gulf of Mexico blocks
- » Ramform technology and efficiency advantages
- » Proven portfolio of Wide Azimuth data processing technologies
 - » Full Azimuth Tomography
 - » 3DSRME
 - » Pre-stack Depth Migration
 - » Kirchhoff
 - » WEM
 - » Beam
 - » RTM

Osl
Tel: 47-67-52-6400
Fax: 47-67-52-6464

London
Tel: 44-1932-260-001
Fax: 44-1932-266-465

Houston
Tel: 1-281-509-8000
Fax: 1-281-509-8500

Singapore
Tel: 65-6735-6411
Fax: 65-6735-6413

A Clearer Image
www.pgs.com



SEE YOUR DATA IN A WHOLE NEW LIGHT!

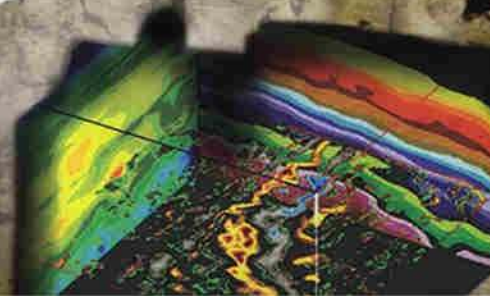
Take the pressure out of exploration and drilling by seeing what you are going to encounter.



eSeis

www.e-seis.com
713.531.1447

- Lithology & Fluids
- Depositional Facies
- Pore Pressure from V & Q
- Well Planning Consultation



MARINE PROPERTIES, LLC BERKSHIRE EXPLORATION CO.

MONTE C. SHALETT, CPL, PRESIDENT

3030 Lausat Street
Metairie, LA 70001-5924

BUS. (504) 831-7779
FAX. (504) 831-8315

WWW.NOGS.ORG

NEW ORLEANS GEOLOGICAL SOCIETY

810 Union Street, Suite 300
New Orleans, LA 70112-1430



PCI

Paleo Control, Inc.

Houston, Texas
713-849-0044



Drilling Wells, Studies and Data Base

Loyd Tuttle

Frio, SE Texas

Bob Liska

Wilcox, S and SE Texas

Jim Thorpe

Miocene and Cam-Miogyp

