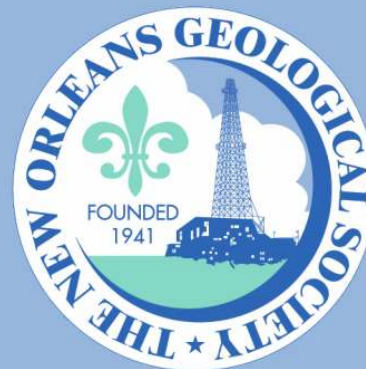


NOGS LOG



February 2009

Volume 49, Number 8

Upcoming Events and Activities

February 1 - Abstract Deadline for 2009 GCAGS

September 27-29 in Shreveport. See announcement on page 13

February 2 - NOGS Luncheon

*** At the Holiday Inn Downtown Superdome ***

Free validated parking in hotel garage

Guest speaker Dr. Michael Hudec, Texas Bureau of Economic Geology, will present "Episodic Advance of the Sigsbee Salt Canopy, Deepwater Gulf of Mexico."

(See page 7 for Abstract and Biography)

HOLIDAY INN DOWNTOWN SUPERDOME ADMISSION:

Check with concierge or
front desk for location

Lunch served at 11:30am

with reservation \$30.00

without reservation \$35.00

Student Member with reservation Free

March 2 - NOGS Luncheon

Guest speaker Dr. Peter D. Warwick, Research Geologist with the U.S. Geological Survey, Energy Resources Program, will present "USGS Assessment of Undiscovered, Technically Recoverable Oil and Natural Gas Resources in Tertiary Strata of the Gulf of Mexico Coastal Plain and State Waters, U.S.A."

March 26-27 - Louisiana Groundwater & Water Resource Symposium

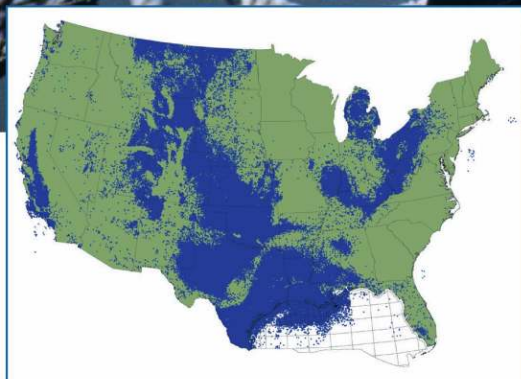
At LSU in Baton Rouge. See announcement on page 8.

April 27 - NOGS 2009 Annual Golf Outing

Money Hill Golf & Country Club in Abita Springs. More details in the March LOG.

Introducing

LASSO



Lasso up all the digital LAS well log data you need from the industry's largest collection

With LASSO, lock in TGS' program rates on digital LAS well data from our US collection, growing at an unprecedented pace to more than 500,000 wells over the next several months. LASSO strengthens your exploration projects with the higher-order capabilities of increased digital well log use. LASSO digital data from TGS, the industry's well log data leader, is quality controlled and available online for immediate downloads.

For more information about LASSO, contact your TGS account representative or call 1- (888) LOG-LINE.



Geophysical
Products



Geological
Products



Imaging
Services

www.tgsnopec.com

NORWAY +47 66 76 99 00 | USA +1 713 860 2100 | UK +44 (0) 1234 272122 | AUSTRALIA +61 8 9480 0000

© TGS-NOPEC Geophysical Company. All rights reserved.

NOGS Office

Office Manager: Annette Hudson

Office Hours: 8:30am – 3:30pm on Monday-Wednesday-Friday

Tel: 504-561-8980 □ Fax: 504-561-8988

E-mail: info@nogs.org □ Website: www.nogs.org

The office is located at Suite 300, 810 Union Street, New Orleans, LA 70112.

Correspondence and all luncheon reservations should be sent to the above address.

Sent to press on January 23, 2009.

**BOARD OF DIRECTORS**

		Company	Phone	E-mail
President	William M. Whiting	Consultant	504-947-8495	bootscon@aol.com
Vice President	Allan Melillo	Chevron	985-773-6756	ajme@chevron.com
Secretary	Frances Wiseman	MMS	504-736-2912	frances.wiseman@mms.gov
Treasurer	James Swaney	MMS	504-736-2677	james.swaney@mms.gov
President-Elect	Tom Klekamp	Amber Resources LLC	985-845-4046	klekamp@bellsouth.net
Editor	Michael D. Miner	UNO	504-280-3866	mminer@uno.edu
Director 2009	Willis E. Conatser		504-469-2496	weconatser@aol.com
Director 2010	Michael M. Ledet		504-394-9636	mikeledet@cox.net
Director 2011	Scott A. Wainwright	Bret Exploration Co Inc	504-889-2700	scott_wainwright@hotmail.com

COMMITTEE

	Chairperson			
AAPG Delegates	Dave Balcer	Chevron	985-773-6725	dbalcer@Chevron.com
AAPG Student Chapter	Bobby Cosentino	Tulane University	504-495-9475	rcosenti@tulane.edu
AAPG Student Chapter	Bryan Rogers	UNO	504-736-2772	thgem@gmail.com
Advertising-Log	Jennifer Connolly	Shell	504-728-6411	jennifer.connolly@shell.com
Auditing	J. David Cope	Ankor Energy	504-596-3672	dcope@ankorenergy.com
Awards	Michael N. Fein	W & T Offshore	504-210-8148	mikef@wtoffshore.com
Ballot	James Swaney	MMS	504-736-2677	james.swaney@mms.gov
Best Paper	David E. Reiter	Energy Partners Ltd	985-893-8072	dreiter@eplweb.com
Continuing Education	TBA			
Employment Counseling	Paul J. Post	MMS	504-736-2954	paul.post@mms.gov
Entertainment	Tom Klekamp	Amber Resources LLC	985-845-4046	klekamp@bellsouth.net
Environmental	Daisy Pate	Eustis Geotechnical Eng.	504-613-5798	dpate@eustiseng.com
External Affairs	Michael A. Fogarty	Sylvan Energy, LLC	603-523-4808	mike.a.fogarty@gmail.com
Field Trip	David Garner	Shell	504-728-6154	David.Garner@shell.com
Finance and Investment	James Swaney	MMS	504-736-2677	james.swaney@mms.gov
Historical	Edward B. Picou, Jr.	Consultant	504-529-5155	epicou@bellsouth.net
Membership/Directory	Penne Rappold	Shell	504-728-4338	prappold@gmail.com
New Geoscientists (NGNO)	TBA			
Nominating	Alfred H. Baker, Jr.	Beacon Exploration, LLC	504-836-2710	abaker1006@aol.com
Non-Technical Education	Duncan Goldthwaite	Consultant	504-887-4377	DGldthwt@aol.com
Office Operations	Arthur H. Johnson	Hydrate Energy International	504-464-6208	artjohnson51@hotmail.com
Publications Sales	Edward B. Picou, Jr.	Consultant	504-529-5155	epicou@bellsouth.net
Photography	J. David Cope	Taylor Energy Co LLC	504-589-0419	dcope@taylorenergy.com
School Outreach	Thomas C. Bergeon	Century Exploration	504-832-3772	Tom.bergeon@centuryx.com
Scouting	Carol Rooney	Consultant Geologist	504-835-1909	carolbrooney@aol.com
Technical Projects	TBA			
Ad Hoc Committee on				
University Support	Michael J. Gallagher	Eni Petroleum	504-593-7480	Michael.Gallagher@enipetroleum.com

NOGS LOG STAFF

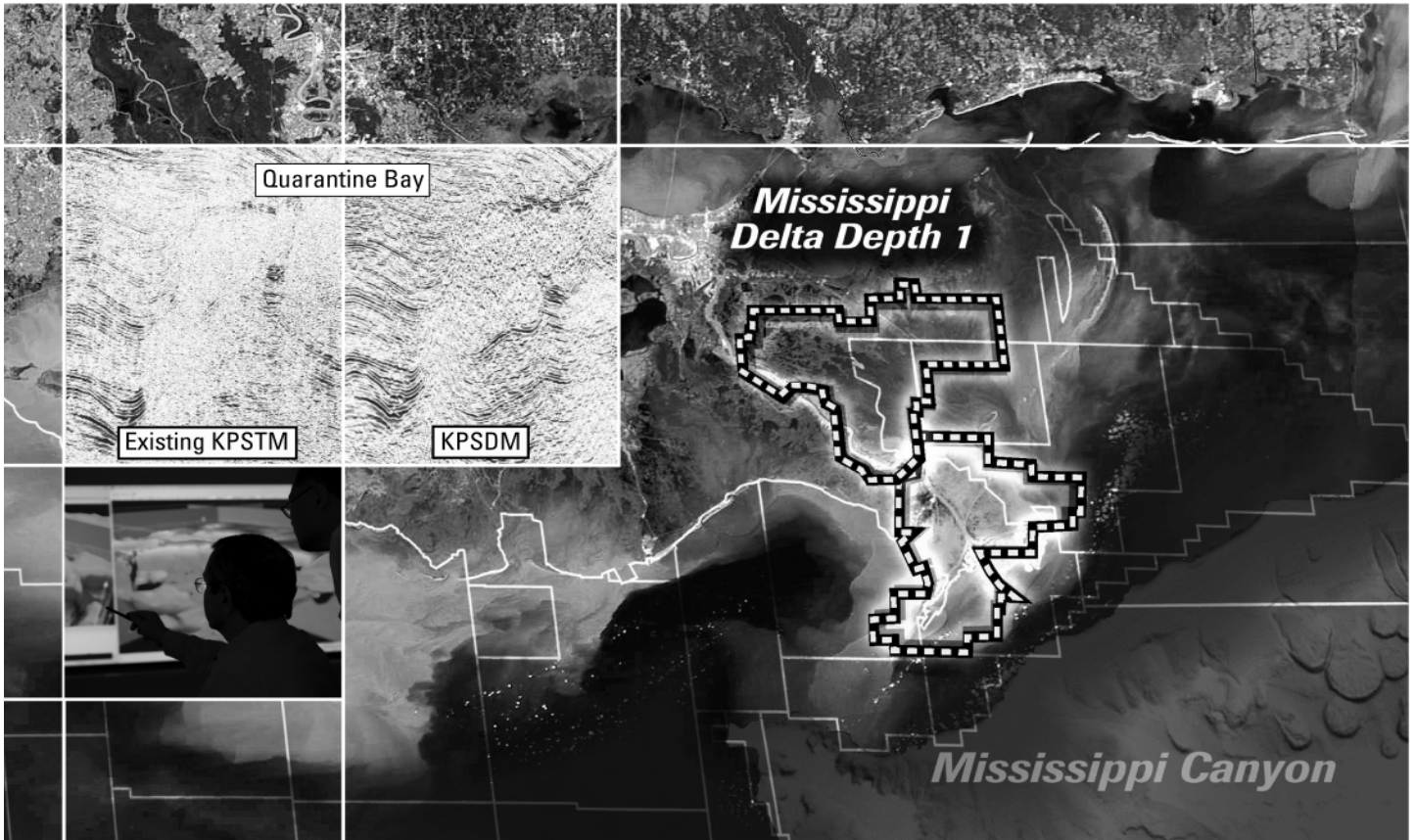
Editor	Michael D. Miner	UNO	504-280-3866	mminer@uno.edu
Editor-Elect	Elizabeth Petro	MMS	504-736-2866	liz.petro@mms.gov
Auxiliary	Susie Baker	NOGA	504-466-4483	abaker1006@aol.com
Info Tidbits	Clare Falcon	Schlumberger	504-592-5385	cfalcon2@new-orleans.oilfield.slb.com
Drill Bits	Paul J. Post	MMS	504-736-2954	paul.post@mms.gov
Webmaster	Jannette Sturm-Mexic			webmaster@nogs.org

NOGS AUXILIARY

Officers		Phone	Directors	Year	Phone
President	Linda Peirce	504-393-7365	Ruth Ingram	2008-09	504-887-5404
1st Vice-President	Jean Jones	504-738-8091	June Perret	2008-09	504-881-9357
2nd Vice-President	Beverly Kastler	504-286-0879	Joan Sylvester	2008-09	504-738-2934
Secretary	Dolores Murphy	504-393-0878	Beverly Christina	2009-10	504-835-2383
Treasurer	Judy Lemarie'	504-393-8659	Peggy Rogers	2009-10	504-392-6323
Parliamentarian	Carol Andrews	504-887-3432	Judy Sabate'	2009-10	504-861-3179
Member-at-Large	Susie Baker	504-466-4483			

--- NOGS Contact List continued on page 10 ---

Expand your opportunities ...



Announcing Mississippi Delta -*Depth 1*, current depth image reprocessing now in progress.

Experience the industry-leading benefits of WesternGeco state-of-the-art processing,
designed to eliminate fault shadows and enhance deep imaging.

Delivering anisotropic Kirchhoff volumes:

- Processing and remigration of twelve legacy surveys covering 1,855 square miles.
- High-quality time imaging using relative amplitude anisotropic prestack time migration followed by improved structural imaging utilizing anisotropic prestack depth migration.

Excellence in technology – Experienced professionals.

To learn more about our Multiclient products, call +1 713 689 1000.

Multiclient to the Power of E

Multiclient^E

www.slb.com/westerngeco



© 2008 Schlumberger



from the President

Now we are all back from the Holidays and into the Mardi Gras season, tax preparations, etc. I enjoyed my seven days of "Winter Water Wonderland" in Michigan, which encompassed two snowstorms, an ice storm, a rainstorm, and a windstorm. As they say in Michigan "if you don't like the weather, just wait a day." Time with the family, of course, was priceless.

The nominations committee chaired by Al Baker is hard at work. We have received the data from the AAPG on the House of Delegates Election. While our current NOGS active membership is around 515 (thanks to Penne Rappold and several NOGS Board members), only 273 of these are active AAPG members that claim NOGS as their representative area. We are allowed a total of 4 delegates based on the active membership count. Two will be elected this year for a three-year term. We are currently 37 active members short of having an additional delegate. Get your renewals and new membership applications in to AAPG because only active AAPG members can vote. Forms are available via the Internet or the NOGS office. Your vote does count. The new delegates' three-year term begins July 1, 2009.

We have several open chairmanships. Two very important ones are Continuing Education and Technical Projects. The NOGS Board is in agreement in initiating a Volume 4 of *The Oil and Gas Fields of Louisiana*. With the exception of the Oct. 18 Field Trip Guidebook, now being edited for publication, it has been over a decade since NOGS produced a new publication. We still receive royalties in excess of \$1200 per annum from our old publications. Tom Bergeon has agreed to co-ordinate and make contacts for field submittals for Volume 4. Tom is a very busy man and we need a sizable cadre to get this effort up

and running. Contact Tom, the NOGS Office, Tom Klekamp, Mike Ledet or myself if you are interested in participating in this project. It would be nice to have a new publication for AAPG 2010.

It is 2009 and 2010 is just around the corner. The AAPG National Convention is scheduled here in New Orleans for April 18-21, 2010. Tom Hudson and his co-chair Dr. Nancy Dawers still have several important chairmanships to fill which must be done soon. Art Johnson with the EMD can also use more support. Even if you cannot chair a committee, your volunteering to serve on a committee goes a long way.

Other continuing events and committees that can use volunteers this year include Super Science Saturday group, education outreach, awards group for judging at Science Fairs (always a rewarding experience), the non-technical education committee, and several groups associated with the API-Delta Chapter such as PIPES, the Neo-Professionals, and Horizons Initiative. In this organization the volunteers get the A+.

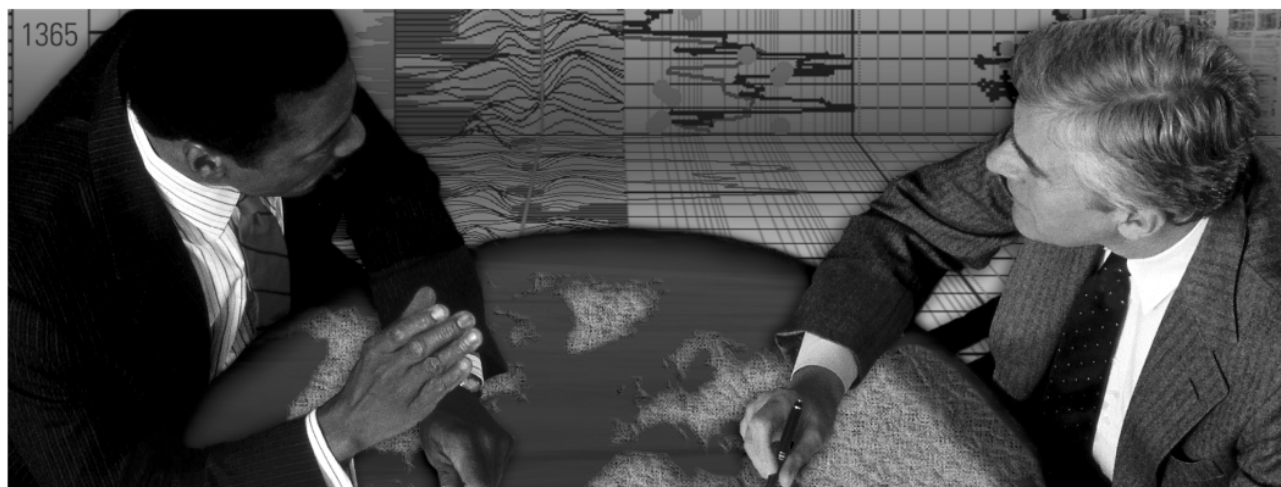
Your suggestions for continuing education courses and seminars are welcome.

Bill

energyinformation

Business solutions for
the oil & gas industry

Schlumberger formation evaluation solutions deliver the answers you need. Our extensive portfolio of services, leading-edge technology, and advanced conveyance options keep you in communication with your well throughout its life cycle.



With formation evaluation technologies from Schlumberger, you can make the best decisions for optimized performance in every well.

The formation evaluation one-stop shop

Whether you are logging in open hole or behind the casing, our broad selection of services ensures the best solution for acquiring formation evaluation data. Tools can be conveyed while drilling or on wireline or pipe. We offer many specialized evaluation capabilities, from density, neutron porosity, and resistivity to borehole imaging, nuclear magnetic resonance logging, borehole seismic, formation pressure testing, and fluid sampling. Advanced triple-combo logging options include the VISION* formation evaluation and imaging-while-drilling services. Coupled with Pulse* telemetry and surveying services, the VISION family provides real-time formation evaluation data and enables optimum well placement.

High-speed wireline measurements are recorded with the Platform Express* logging services. The SlimXtreme* platform is designed for high-pressure, high-temperature environments and the ABC* Analysis Behind Casing services are used after casing is set.

Expert interpretation from the engineers and geoscientists of Schlumberger Data & Consulting Services brings all your data together to give you the answers you need. This expertise is available after logging is complete or as real-time two-way wellsite communication through the InterACT* real-time monitoring and data delivery system.

Schlumberger delivers leading-edge technology and interpretation expertise for all your formation evaluation needs, so every well benefits from the very best information.

For more information visit
www.slb.com/oilfield/formation_evaluation/

*Mark of Schlumberger

04-FE-114

Schlumberger

February 2 NOGS Luncheon Presentation

*** at the Holiday Inn Downtown Superdome ***

Episodic Advance of the Sigsbee Salt Canopy, Deepwater Gulf of Mexico

presented by

Dr. Michael Hudec

Texas Bureau of Economic Geology

ABSTRACT

Many areas along the Sigsbee Escarpment display two stages of salt-sheet advance: (1) an early stage fed from a deeper source layer via feeder diapirs, and (2) a later stage fed by expulsion of salt from beneath updip minibasins. The phases may be continuous if minibasins are already sinking into the updip part of the sheet at the time when the deep source layer is exhausted. However a hiatus between the two stages may occur, especially if the sheet is far from the sediment source, where minibasins are less common.

The end of Stage 1 is often triggered by ponding behind a bathymetric buttress. Buttresses can

by formed by (a) rapid sedimentation in front of an advancing sheet, (b) a fold deforming the sea floor, (c) an imbricate wedge bulldozed by the salt, or (d) a minibasin rafted against the leading edge of the sheet.

Once pinned at the end of Stage 1, constant-thickness sediments bury the leading edge of a sheet. Later subsidence of minibasins further updip inflates the leading edge of the sheet, uplifting this roof. The inflated salt may quickly break out to the sea floor if the roof is thin. Thicker roofs require a longer phase of compressional folding and overthrusting before breakout is possible.

BIOGRAPHY

Mike Hudec received his Ph.D. from the University of Wyoming in 1990 and spent the next eight years at Exxon Production Research, where he specialized in salt tectonics, extensional tectonics, and seismic interpretation. He moved to Baylor University in 1997 as an assistant professor in Structural Geology. In 2000, Mike moved to the Bureau of Economic Geology, where he is co-director of the

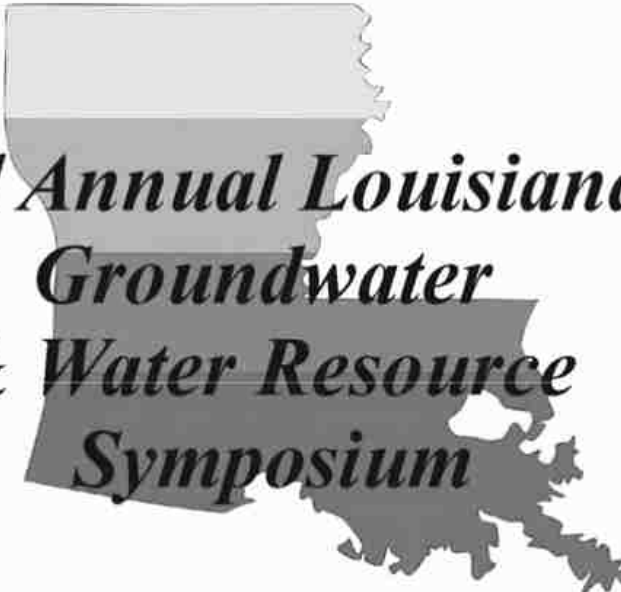
Applied Geodynamics Laboratory, an industry-funded research consortium studying salt tectonics. His current research interests include advance mechanisms for salt sheets, processes in minibasin initiation, configuration of the Louann salt basin in the deepwater Gulf of Mexico, and construction of a digital atlas of salt tectonics.

THE LUNCHEON RESERVATION DEADLINE IS JANUARY 28 - CONTACT THE NOGS OFFICE

“And Looking Ahead...”

The next NOGS Luncheon will be March 2. Guest speaker Dr. Peter D. Warwick, Research Geologist with the U.S. Geological Survey, Energy Resources Program, will present “USGS Assessment of Undiscovered, Technically Recoverable Oil and Natural Gas Resources in Tertiary Strata of the Gulf of Mexico Coastal Plain and State Waters, U.S.A.” Contact the NOGS office to make your reservation.

Baton Rouge Geological Society



3rd Annual Louisiana Groundwater & Water Resource Symposium

March 26 & 27, 2009

Louisiana Water a Valuable Resource

Energy Coast & Environment Building
Louisiana State University
Baton Rouge, Louisiana

For more information see
Baton Rouge Geological Society website
<http://www.brgs-la.org>
or e-mail dcarlson@lsu.edu

First call for abstracts

Abstracts due March 6, 2009

Expanded Abstracts due March 16, 2009

Hosts:

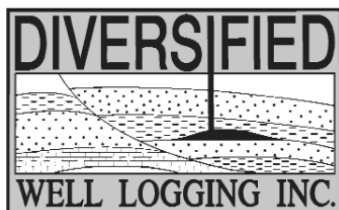
Louisiana Geological Survey

Baton Rouge Geological Society



Relax. We'll keep you posted.

Your rig is offshore and you are not. How do you know what's going on so many miles away? You know because we tell you. Daily or even hourly, Diversified Well Logging's engineers update you on the status of your rig. We are your eyes and ears, especially when it comes to deep water or high pressure, high temperature areas. Diversified offers 24-hour surface evaluation. We provide secure and customized real-time data communication, in-house research and development and 24/7 on-call support for our equipment and our engineers. Whether you have a 10-day job or 110-day job, we provide the specialized attention you require. So, relax. We're with you every step of the way.



Serving the Gulf Coast for over 40 years.

New Orleans • Lafayette • Houston • Dallas • Corpus

800.280.2096

711 West 10th Street • Reserve, LA 70084 • Phone: 985.536.4143 • Fax: 985.536.2427
sales@dwl-usa.com



**PALEO
DATA**

**FULLY INTEGRATED AND
CENTRALIZED BIOSTRATIGRAPHIC
SERVICES**

- ▼ Single-source biostratigraphic databases
for increased accuracy and consistency
- ▼ Integrated foram / nannofossil analyses
- ▼ Complete wellsite paleo services
- ▼ In-house sample preparation
lab for quality-monitoring
and efficiency
- ▼ Sample pick-up service

6619 Fleur de Lis Drive
New Orleans, LA 70124
(504) 488-3711

www.paleodata.com

MCMORAN EXPLORATION CO.



MCMORAN OIL & GAS

www.mcmoran.com

NYSE: MMR

16676 Northchase Dr.
Houston, TX 77060
(281) 539-7600
Fax: (281) 539-7655

1615 Poydras
New Orleans, LA 70112
(504) 582-4000
Fax: (504) 582-4155

110 Travis St., Suite 140
Lafayette, LA 70503
(337) 735-9150
Fax: (337) 735-9151

NOGS CONTACT LIST

--- continued from page 3 ---

MEMORIAL FOUNDATION

BOARD OF TRUSTEES

		Company	Phone	E-mail
2008-09 Chairman	Arthur H. Johnson	Hydrate Energy International	504-464-6208	artjohnson51@hotmail.com
2008-09 Secretary	William M. Whiting	Consultant	504-947-8495	bootscon@aol.com
2008-09 Trustee	David E. Balcer	Chevron	985-773-6725	dbalcer@chevrontexaco.com
2008-09 Trustee	George T. Froming	Consultant	504-799-1918	gtfroming@yahoo.com
2009-10 Trustee	Michael C. Fauquier			
2009-10 Trustee	J. David Cope	Ankor Energy	504-596-3672	dcope@ankorenergy.com
2010-11 Trustee	Timothy J. Piwowar	Shell	504-728-4066	tim.piwowar@shell.com
2010-11 Trustee	Michael N. Fein	W & T Offshore	504-210-8148	mikef@wtoffshore.com

AAPG DELEGATES

Term Ends

		Company	Phone	E-mail
2009	David E. Balcer	Chevron	985-773-6725	dbalcer@Chevron.com
2009	William Whiting	Consultant	504-947-8495	bootscon@aol.com
2009a)	Nancye Dawers	Tulane University	504-862-3200	ndawers@tulane.edu
2009a)	David Cooke	MMS	504-736-2609	david.cooke@mms.gov
2011	Tom Hudson	Chevron	985-773-7163	tom.hudson@chevron.com
2011	Edward B. Picou, Jr.	Consultant	504-529-5155	epicou@bellsouth.net
2011a)	Brenda Reilly	Energy Partners Ltd.	504-799-4811	breilly@eplweb.com
2011a)	Robert Rooney	Century Exploration	504-832-3777	Robert.rooney@centuryx.com



Eni Petroleum

1250 Poydras Street
Suite 2000
New Orleans, LA 70113
Tel: (504) 593-7000
Fax: (504) 593-7745

1201 Louisiana Street
Suite 3500
Houston, TX 77002
Tel: (713) 393-6100
Fax: (713) 393-6205



**Shell has worked in partnership
with the NOGS for many years, and
is proud to count the society among
its closest business associates.**

The New Orleans Geological Society was organized in 1941 to foster scientific research and advance the science of geology. Particular emphasis is laid on the exploration for and production of petroleum and natural gas. Related objectives include encouraging the adoption of improved methods of exploration, disseminating pertinent geological and technological data, and maintaining a high standard of professional conduct among its members.

www.shell.com/us.sepco

SEI®

Seismic Exchange, Inc.

**Strategic Speculative Surveys
Geophysical Data Marketing & Management**

201 St. Charles Avenue, Suite 4300, New Orleans, Louisiana 70170-4300
Telephone 504.581.7153 Fax 504.581.9591
www.seismicexchange.com

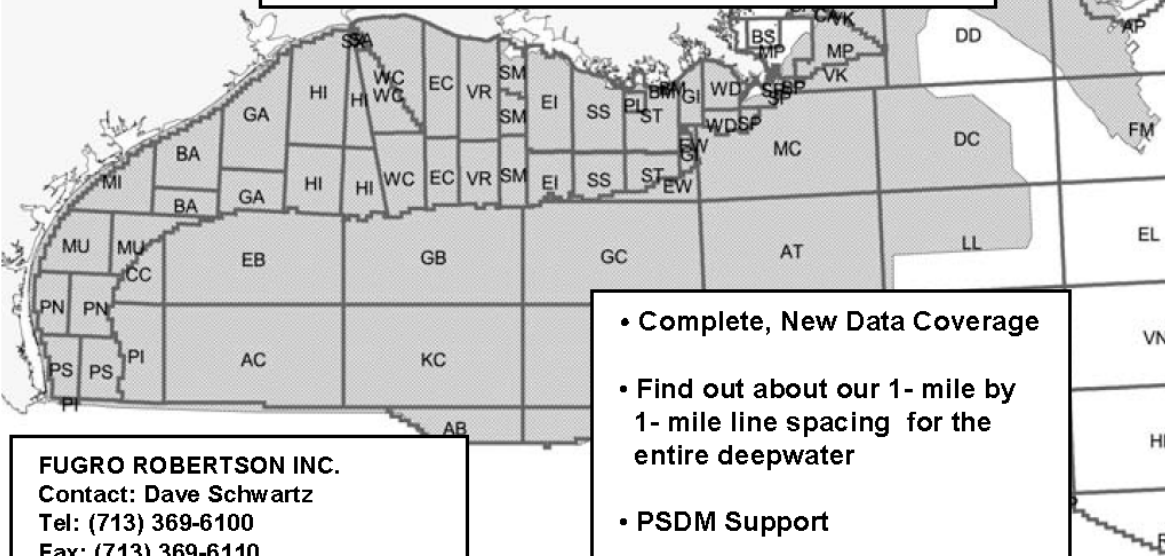
Your
Full Service
National
Seismic Data
Marketing Firm

New Orleans
Dallas
Houston
Denver
Oklahoma City
Corpus Christi
Tulsa

Robertson



**"The Place to Go"
For GOM Gravity Data and Interpretations**



FUGRO ROBERTSON INC.
Contact: Dave Schwartz
Tel: (713) 369-6100
Fax: (713) 369-6110
Email: infofri@fugro.com
www.fugro-lct.com

- Complete, New Data Coverage
- Find out about our 1- mile by 1- mile line spacing for the entire deepwater
- PSDM Support
- 3D Modeling



100 Northpark Blvd.
Covington, LA 70433

(985) 773-6000

"Serving the Oil & Gas Industry Since 1983"

Geological,
Geophysical &
Land Drafting

Anthony Catalanotto

President

Stefani Kelone

Drafting and Design



Geo-Draft, Inc.

A Professional Drafting & Graphics Firm

3349 Ridgelake Drive □ Suite 202 □ Metairie, LA □ 70002

Office: (504) 836-2882 Fax: (504) 836-2877

geodraft@bellsouth.net



LaBay

Exploration Co., L.L.C.

111 Veterans Memorial Blvd.,
Suite 1550
Metairie, Louisiana 70005

www.labayexploration.com

Office (504) 371-5967
Fax (504) 371-5969

*This advertising space is
available! Contact the
NOGS office.*



The 59th Annual Convention of the
Gulf Coast Association of Geological Societies
and the Gulf Coast Section of SEPM
September 27-29, 2009
www.gcags2009.com

**GCAGS 2009 CONVENTION
GENERAL CHAIRMAN**

Ralph Richardson
Sartor-Richardson
318-869-4100
r_g_richardson@yahoo.com

**GCAGS 2009 BOARD:
President**

Will Downs
St. Mary Land & Exploration
318-424-0804
wdowns@stmaryland.com

Treasurer

John Grunau
Pride Exploration, Inc.
318-226-1300
explorewithpride@aol.com

Secretary

David Benscoter
Long Petroleum, LLC
318-221-3516
david@longpetro.com

GCAGS 2009 COMMITTEES:

Technical Program
Gary Hanson
LSUS, Red River Watershed
Management Institute
318-797-5041
ghanson@pilot.lsu.edu

Transactions General Coordinator
William R. "Bill" Meaney
Anderson Oil and Gas, Inc.
318-227-2000
bmeaney@andersonoilandgas.com

Transactions Editor
Michael T. Roberts
Palmer Petroleum, Inc.
318-222-0517
mroberts@palmerpetro.com

Contributions/Sponsorship
Robert L. "Bob" Williamson
Williamson Oil and Gas, Inc.
318-221-2923
bob@williamsonogi.com

Convention Consultant
Bruce Lemmon
GEM Global Events
Management, LLC
918-585-1004
blemon@jurisystems.com



SHREVEPORT GEOLOGICAL SOCIETY
P. O. BOX 750
SHREVEPORT, LA 71162

-CALL FOR PAPERS-

The Shreveport Geological Society is proud to host the 2009 Annual Meeting for the GCAGS/GCSEPM. We look forward to continuing the long tradition of presenting the best of the geosciences from the Gulf Coast. Our theme, "**A Fusion of Geology and Technology**", recognizes the fact that we work using tried and proven geological concepts yet we are in the forefront of technical innovations. Our work is recorded for the worldwide geological community in our superior publication, the *Transactions*. We invite you to be a part of this process by submitting an abstract for an oral or poster presentation in Shreveport for the 2009 Convention of the GCAGS.

PROPOSED TECHNICAL SESSIONS

Haynesville & Other Shale Plays-A Symposium
The Wilcox-Outcrop to the Abyss
Visualization, Geochemistry, & Interpretation of Geologic Systems
Tight Gas Sand Development
Water Resources & Environmental Geology
Old Fields-Rejuvenation & Enhancement
Salt Traps & Technology
Global Change and Coastal Subsidence-Dealing with the Inevitable?
Peak Oil & Bridges to Sustainability
Geology & Education-A Natural
Seismic Applications in the Upper Gulf Coast
Stratigraphy of the Cotton Valley & Louark Groups: Northern Gulf of Mexico

Abstracts for oral and poster presentations may be submitted beginning November 1, 2008, but no later than **February 1, 2009**, by logging onto www.gcags2009.com. First drafts of full papers from selected presenters that will be included in the 2009 *Transactions* volume must be submitted by April 1, 2009. Contact information for the technical session chairs, as well as instructions for authors for the 2009 *Transactions*, can be found at the GCAGS conventions website, www.gcags2009.com. For general questions on the technical program please contact Gary Hanson, 2009 Technical Program Chairman. He may be contacted via email at ghanson@pilot.lsu.edu.

Higher Standards



Weatherford LABORATORIES

At Weatherford Laboratories, we hold fast to Higher Standards. Our purpose is to continually push past conventional solutions to find new and better ways to optimize oil and gas production.

■ By integrating seven entrepreneurial companies, we bring unsurpassed innovation to the industry. Our accomplishments include 50 new technologies, 45 original products, 35 industry awards, and 13 registered patents. Among our ranks are several luminaries of the industry, as well as scores of respected scientists who have authored hundreds of technical papers. ■ With 38 laboratories around the globe, our team raises the bar for wellsite sampling, core management services, geochemical analyses and evaluation of unconventional reservoirs.

At Weatherford Laboratories, we expect more from ourselves so you can expect more from us.

Weatherfordlabs.com

7
DYNAMIC
COMPANIES

50
NEW
TECHNOLOGIES

38
WORLDWIDE
LABORATORIES

CORPORATE OFFICES

ACS Laboratories Pty Ltd
Brisbane, Australia

OMNI Laboratories
Houston, Texas USA

ResLab Reservoir Laboratories
Trondheim, Norway

Humble Geochemical Services
Houston, Texas USA

TICORA Geosciences
Denver, Colorado USA

Baseline Resolution, Inc.
Houston, Texas USA

Hycal Energy Research Laboratories
Calgary, Alberta, Canada

Thomas Anthony Cullinan

1933-2008

Tom grew up in San Francisco and Dallas where he graduated from Jesuit High School. He attended Rice University and the University of Texas where he received a B.S. in Geology. Tom then went to Texas Tech and received a M.S. degree. He went into the Navy and then to work for Honolulu Oil in Midland. Later he worked for Pan American Petroleum/ Amoco in New Orleans.

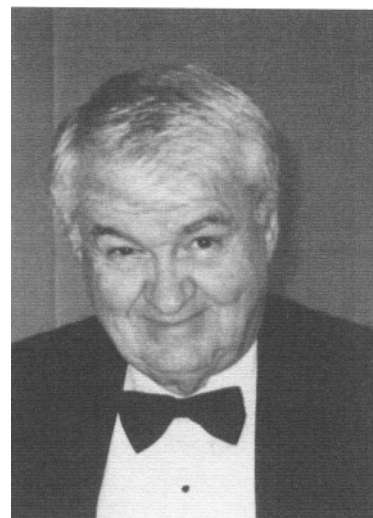
While at Amoco he enrolled at Tulane night program and received a PhD in Geology. His dissertation on the geology of the Florida Parishes is included in the Louisiana State Geological Map. After Amoco, Tom worked for Davis Oil in New Orleans and later Solatex of Houston. He formed his own company, Thomas A. Cullinan, LTD.

He married Jerrienne Carpenter Miller in the mid-1960's and together raised her two children, Keith and Juli. Tom and Jeri lived in Metairie for 40 years among many good friends. He supported many civic, social, and professional groups, particularly, the Toastmasters Club where he developed his copious list making. Also, later at the D-Day Museum where he was a charter member, and the Audubon Zoo where he donated the giraffe "Tommy". He loved animals, including his beloved miniature wirehaired dachshund, "Ralph", and even my dogs "Alfie" and "Rowan".

Tom was a man's man, and he enjoyed hanging out with the guys whether it was at "Lunch-Eat" making football bets, on the many trips we took to Europe to visit World War I and II sites, or camping out under the redwoods in California.

He was a big part of my life and there will never be another like him.

Paul Jurik



NOGS 2009 Annual Golf Outing

Monday, April 27th

**Money Hill
Golf & Country Club
in Abita Springs**

South Louisiana and Offshore Exploration and Production Activity

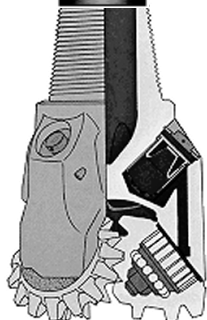
DRILL BITS

- **Newfield and Deep Gulf Energy II, LLC** made a deepwater gas discovery on GB 339, Sargent Prospect. The discovery, located ~4 mi north of Auger Field in 2240 ft of water, encountered 45 ft of net gas pay. The discovery will be developed through a subsea completion to existing infrastructure in the area, with production expected in the first half of 2010. Newfield holds a 25% stake in the Deep Gulf-operated well. Deep Gulf's specialty is to focus on prospects prone to subsea completions and tie-backs to host facilities with capacity for additional volumes. LLOG Exploration Offshore, Inc. originally acquired the drilling rights to Block 339 for \$660,000 at OCS Sale 187 in August 2003.
- **Golden Gate Petroleum, Ltd.** on 6-January updated their activity at Bullseye Prospect in Iberville Parish, LA. Bullseye is a deeper pool project consisting of *Miogyp* and *Cib Haz* objectives between 12,400 and 13,500 ft on the crest of the Laurel Ridge anticline. Existing shallower normal pressured sands (10,100 to 10,600 ft) produced 146 BCF and 4 MMBO and are now depleted. The Golden Gate *et al.* Jumonville #1 discovery well was an offset to the Noble Acosta #1 in which wireline logs indicated 50 ft of pay in the *Miogyp*. The Noble Acosta #1 was lost due to mechanical difficulties. In the Jumonville #1 pay was established in the *Miogyp*, and apparent pay was indicated in the *Camerina*.

On 6-Jan, Golden Gate announced that the Jumonville #2 well was spudded on 25-December 2008. Surface casing in the well was set at 3,600 ft, and the well as of that date was being drilled ahead to the kick-off point for the directional portion of the borehole. Planned total depth is approximately 14,200 ft. Drilling to TD is expected to take approximately 60 days. While the well targets three objectives: the *Camerina*, *Miogyp* and *Cib Haz* Formations, its primary target is the deeper *Cib Haz* reservoir which is contained in the same trap as the shallower productive intervals. Although deeper than the proven *Miogyp* reservoir and the apparent pay in the *Camerina* section, the *Cib Haz* is considered to have a high probability of success. Proprietary 3D seismic data, which provided an accurate pre-drill estimate of pay thickness in the Jumonville #1 well, indicates substantially thicker reservoir sand over a larger area in the deeper *Cib Haz* reservoir. Partners in the Jumonville #2 well are: Golden Gate Petroleum Ltd (operator and 43.33% WI), Modena Resources Limited (15.00% WI), Quest Petroleum NL (6.67% WI), Pantheon Resources PLC (15.00% WI), and Eastern Advisors (20.00% WI). Golden Gate will have a 41.25% WI following back-in rights of the project vendor.

If the deeper test is successful, the combined reserves of the *Camerina*, *Miogyp* and *Cib Haz* have the potential to make Bullseye one of the largest onshore discoveries in South Louisiana in recent years. According to the operator, unrisks reserves in the prospect range from 27.1 MMBOE (P90) to 38.4 (P10), with P50 and mean reserves being 32.5 and 32.7 MMBOE, respectively.

During the transport and rig-up of the H&P #79 rig that is drilling the Jumonville #2, the Jumonville #1 well was shut-in. It is currently back online FARO approximately 570 BO and 300 MCFG/D. Production rates are being monitored to test the optimal flow rates from the reservoir now that a gas sales line is connected and production constraints have been removed.




The Golden Gate et al. Acosta #1 well will be tested directly into production facilities on or before 10-January. The well was drilled to a TD of 12,475 ft. Logs and side wall cores indicated over 20 ft of net pay in the Miogyp Formation and over 20 ft in the Camerina Formation. Both log correlations and samples are consistent with results obtained from drilling the Jumonville # 1 well. The indicated oil column was at the upper end of the Golden Gate's expectation. The Acosta #1 will provide confirmation of the oil-water contact and reservoir thickness, supporting the reserve estimates along with providing a production and cash flow increase. Partners in the Acosta #1 well are: Golden Gate Petroleum Ltd (41.25% WI and operator), Modena Resources Limited (9.00% WI), Quest Petroleum NL (5.00% WI), Pantheon Resources PLC (11.25% WI), and Eastern Advisors (12.00% WI).


- *Paul Post*

NOGS MEMBERS FOR 50 YEARS OR MORE

Donald I. Andrews	1955	Russell J. Landry	1957
H. Warren Bell	1956	John C. Langford	1958
Burton C. Bowen	1956	William C. Langnecker	1959
F. Robert Bussey	1954	E. J. Langhetee Jr.	1949
Carlo C. Christina	1955	Louis Lemarie'	1956
L. David Collier	1955	Roland D. Liberda	1958
Richard P Colomes	1959	George M. Markey Jr.	1957
Willis E. Conatser PhD	1959	Louis L. McCormick	1949
Robert M. Danos	1955	Richard L. Meinert	1958
John H. Dekker	1956	Uno Nummela	1950
M. R. "Bob" Douglass	1958	Paul C. Perret	1956
John B. Dunlap Jr.	1957	Ted P. Polk	1953
Lawrence B. Eustis	1940	James P. Raymond Jr.	1956
John M. Ewing	1957	Warren L. Seal	1957
Niles R. Faulk	1952	James A. Seglund	1949
Robert L. Glasgow	1959	John D. Silvernail	1955
Peter G. Gray	1957	David Sollenberger Jr.	1957
A. T. Green Jr.	1955	Raymond O Steinhoff	1953
Charles E. Griffin	1955	Colles C. Stowell	1952
James A. Hartman	1959	Robert K. Sylvester	1957
John M. Henton Jr.	1958	Leon G. Touns	1958
Dan E. Hudson	1959	John T. Velkas	1950
Robert M. Jemison Jr.	1948	Raymond G. Voelker	1955

A Company that Shines

 Geophysical Products

 Geological Products

 Imaging Services



TGS has been providing best-in-class multi-client data and services to successful E&P companies for over a quarter century. Our geophysical and geological data products are distributed around the globe and include one of the youngest and best targeted multi-client seismic libraries, extensive magnetic and gravity data, the industry's largest global database of digital well logs, and regional interpretive products. We also provide high-end depth imaging services to help resolve complex seismic imaging problems. Together, our products and services give you a more complete picture of the subsurface to help your exploration program *shine*.

For more information, visit www.tgsnopec.com today.



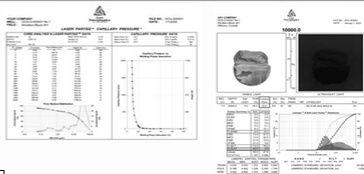
www.tgsnopec.com

NORWAY +47 66 76 99 00 | USA +1 713 860 2100 | UK +44 (0) 1234 272122 | AUSTRALIA +61 8 9480 0000 | RUSSIA +7 495 959 8117
©TGS-NOPEC Geophysical Company. All Rights Reserved.



Sidewall Core Specialists

Experts in Small Sample, Laminated and Shaly Sand Analysis



Laboratory Services:

- Core / Log Integration
- Laser Enhanced Permeability
- Porosity
- Fluid Saturations
- Measured Descriptions
- Critical Water
- Capillary Pressure Simulation
- UV Photography /Digital Images
- Lamination Characterization
- NMR Measurements
- Petrology

Core Lab has made many improvements to sidewall core testing which have had a positive synergistic effect on overall data quality.

Laser particle size analysis, Lamination specific analysis, UV-Visible Spectroscopy, lamination classification, Photospec summary reports, digital data bases via our website and capillary pressure simulation are all innovations introduced by Core Lab to help our clients obtain maximum benefit from their samples and analyses.



Core Laboratories 504-733-6583

**NOGS thanks our
sponsors for their support:**

GOLD LEVEL SPONSORS:

**LA BAY EXPLORATION CO., LLC
LLOG EXPLORATION CO., LLC**

SILVER LEVEL SPONSORS:

**CHEVRON
CLAYMORE OIL AND GAS, L.P.
CIMAREX**

**SPECIAL THANKS TO
DIVERSIFIED WELL LOGGING**

SURVIVOR™

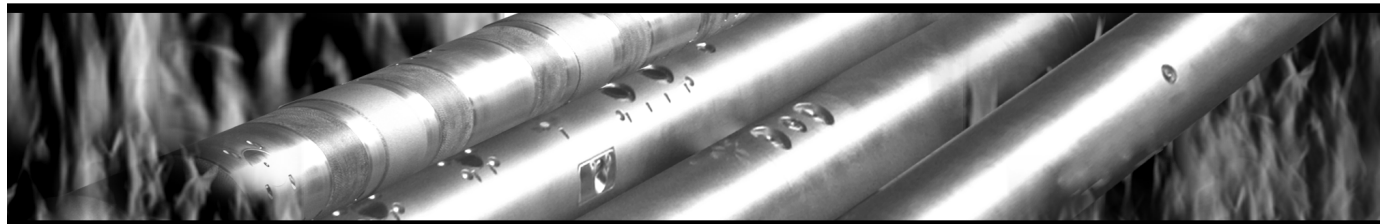
LOGGING-WHILE-DRILLING SUITE

The SURVIVOR™ Suite uses our highly reliable HDS-1 Directional Gamma Ray technology, Array Wave Resistivity tool, Slim Density Neutron Standoff Caliper tool and our Dynamic Pressure Module to create a complete system for logging in hostile drilling environments.

Temperature Rating.....350°F (175°C)

Pressure Rating25,000 psi

Logging Capacity300+ circulating hours



RELIABILITY. ACCURACY. VERSATILITY. WE DELIVER.

e-mail: pfmarketing@pathfinderlwd.com

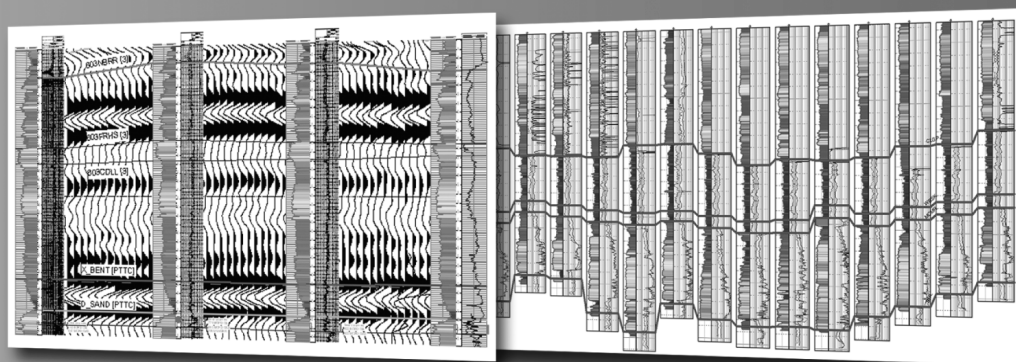
www.pathfinderlwd.com

© 2006 Pathfinder Energy Services, Inc. All rights reserved.

PATHFINDER®

NO MORE WAITING! Available today from IHS, easy and affordable access to one of the largest U.S. digital log collections

- Request a free 2' x 3' IHS digital log coverage map at ihs.com/energy/DigitalLogs



Why wait? Subscribe today! Call **888.OIL.DATA** (645.3282)
or e-mail **sales.energy@ihs.com**

THE NEW ORLEANS GEOLOGICAL SOCIETY MEMORIAL FOUNDATION, INC.

The Memorial Foundation is an IRS Tax Exempt Code #501 (c)(3) organization. The Federal I.D. is: 72-1220999. Please consider making your donation prior to the close of this year's fiscal cycle which is September 30, 2009. Your individual support in any amount will help meet the IRS Guidelines for our Foundation. *Thanks!*

\$15,000 AND ABOVE

Olga Braunstein Succession

Gibbett Hill Foundation

*In Memory of Steve & Marion Millendorf, William J. Prutzman,
Roger G. Vincent & Ron Youngblood*

\$10,000

George W. Schneider, Jr. and Family

In Memory of George W. Schneider, Sr.

\$7,000 TO \$9,000

Paul C. McWilliams

\$3,000 TO \$4,000

NOGS Golf Tournament May 2008

In Memory of Bill Craig

\$1,000

C & R Exploration, Inc.

In Memory of Richard W. Boebel

John M/ Henton, Jr.

In Memory of Dr. Gordon Frey

\$500

Carlo and Beverly Christina

In Memory of Richard W. Boebel

\$250 TO \$499

Carlo C. Christina

In Memory of Robey H. Clark

In Memory of Al Gibeath

In Memory of Allen R. Stern

Carol and Gilbert St. Germain

In Memory of Richard W. Boebel

Kathy King Family

In Memory of George W. Schneider, Sr.

Bill Schneider Family

In Memory of George W. Schneider, Sr.

Susan King Family

In Memory of George W. Schneider, Sr.

UP TO \$249

Don and Carol Andrews

In Memory of Thomas H. Philpott

In Memory of William B. Rodan

Robert J. Ardell

Memory of Richard W. Boebel

In Memory of Dr. Gordon Frey

Jack R. Bantari

Abraham Biadgelgne

Hilary James Brook

Robin A. Broussard

In Memory of Charles L. Jones

In Memory of Thomas H. Philpott

Jack G. Bryant

Rob Burnett

Chevron

Matching Funds

Arthur F. Christensen

Ellen F. Clark

James S. Classen

In Memory of Thomas A. Cullinan

In Memory of All Gibeath

In Memory of George W. Schneider, Sr.

Charley Corona

In Memory of Charles L. Jones

In Memory of McLain Forman

In Memory of Richard W. Boebel

Michael A. Danahy

Merle J. Duplantis

George H. Evans

Exxon Mobil Matching Funds

Michael N. Fein

Mark J. Gallagher

David Garner

Peter G. Gray

In Memory of Thomas A. Cullinan

Angela M. Hessler

Bernard L. Hill, Jr.

In Memory of Robert E. Osborne

Owen R. Hopkins

Dan E. Hudson

Thomas A. Hudson

Kenneth Huffman

Arthur H. Johnson

In Memory of George W. Schneider, Sr.

Thomas E. Johnson

Tom Klekamp

In Memory of Robert W. Sabate'

John C. Kucewicz, Jr.

William J. Malin

Jeannie F. Mallick

David C. Mount

Robert G. Murphy

New Orleans Geological Auxiliary

In Memory of Virginia Schell

FONO FUND

The FONO Fund accepts contributions that are invested and the income dedicated to assure sufficient financial resources will always be available to maintain the NOGS business office. Contributors are reminded that donations to the FONO Fund are not covered by the IRS 501 (c)(3) tax exempt classification and should be reported as a business expense on your IRS tax report.

\$600

Richard W. Boebel

Willis E. Conatser

\$500

James A. Hartman

In Memory of Robert W. Boebel

UP TO \$249

Woods W. Allen, Jr.

Donald I. Andrews

Alfred H. Baker Jr.

Philip Beron, Jr.

Joseph E. Boudreaux

Hillary James Brook

J. Sybil Calloway

Clarence F. Conrad

John Dombrowski

Merle J. Duplantis

Richard A. Edmund

Niles R. Faulk

Michael N. Fein

Laurens Gaarenstroom

Mark J. Gallagher

Arthur J. Garden

Duncan Goldthwaite

Peter G. Gray

James A. Hartman

In Memory of Brian J. O'Neill

Bernard L. Hill, Jr.

Owen R. Hopkins

Thomas A. Hudson

Kenneth Huffman

Paul Jurik

Tom Klekamp

William J. Malin

Jeannie F. Mallick

George M. Markey, Jr.

Robert H. Monahan

Robert G. Murphy

William J. O'Leary

Richard A. Olsen

Linda and Bill Peirce

Jaser N. Rafidi

James P. Raymond, Jr.

C. R. Rondeau

Rudolf B. Siegert

Raymond Stephens

Scott A. Wainwright

Roy C. Walther

Robert C. Weissmann

Louis E. Willhoit, Jr.

Jim Zotkiewicz

CONTRIBUTIONS FOR BOTH FUNDS
THROUGH JANUARY 8, 2009.
DONATIONS ARE LISTED FOR ONE YEAR.

Russell H. Nordwell

Richard A. Olsen

In Memory of Richard W. Boebel

In Memory of Robert W. Sabate'

Teresa M. O'Neill

In Memory of Brian J. O'Neill

Linda and Bill Peirce

Edward B. Picou Jr.

In Memory of Dr. M. Gordon Frey

In Memory of Brian J. O'Neill

Jaser N. Rafidi

Edmund L. Russell

Robert C. Shoup

Rudolph B. Siegert

In Memory of Richard W. Boebel

Dr. J. O. Snowden

Raymond O. Steinhoff

In Memory of Robert S. Wood

In Memory of Harold E. Vokes

Stephen Syzlik

Patrick F. Taylor Foundation

Employee Matching Gifts Program

Scott A. Wainwright

Roy C. Walther

William M. Whiting

Louis E. Willhoit, Jr.

Armour C. Winslow

In Memory of Rita Menzel Winslow

Frances A. Wiseman

In Memory of Steve Widdicombe

Jim Zotkiewicz

In Memory of Bill Craig

Robin A. Broussard

Chevron

M. R. "Bob" Douglass

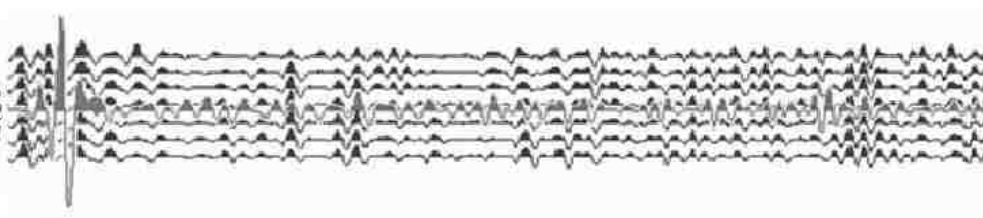
Bernard L. Hill, Jr.

Jeff Jandegian

John C. Scheldt

Candace V. Strahan

In Memory of James Strahan



The Southeastern Geophysical Society
presents
**Exploration Offshore USA OCS:
Opening the Next Frontier?**

**SGS Technical Symposium
November 12, 2009
New Orleans, Louisiana**



- Offshore Virginia has been opened.
- When will the potential lifting of other OCS areas result in drilling?
- What is the potential for hydrocarbon accumulations?
- What will the new President and Congress do?

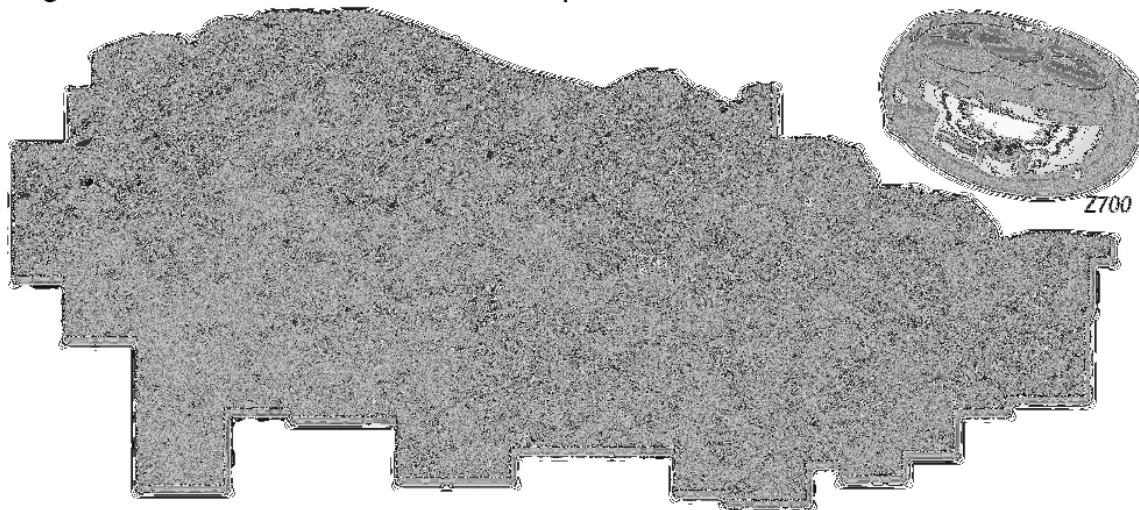
Call for presenters/sponsors – if you or your company would like to present a lecture or sponsor the symposium – contact Wayne Cook at wcook@seitel.com or Eric Zimmermann at ericz@lbg.com



At Fairfield the future is now.

Our updated seismic vessels equipped with Fairfield's Z700 ocean bottom node systems will be fully operational in the Gulf of Mexico during 2009. By utilizing longer offsets and the continuous recording capability of Z700, Fairfield will be able to image data to unprecedented depths of over 75,000 feet.

By the end of 2009 our entire database will have been processed using Curved Ray Migration and an additional 500 blocks of depth data will have been added.



The Future begins today. Don't be left in the past.

SEISMIC
SYSTEMS

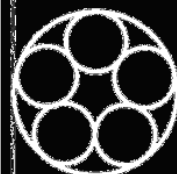
DATA
ACQUISITION

DATA
PROCESSING

DATA
LICENSING

281 278 7500

Fairfield.com



Fairfield
INDUSTRIES



Shoreline Gas Inc.
www.shorelinegas.com
 Full Service Natural Gas Marketing



Sydboten & Associates, Inc.
*Geological and Geophysical Consulting,
 3-D Seismic Interpretation*

Ben D. Sydboten, Jr. CPG

124 Heymann Blvd., Suite 202
 Lafayette, LA 70503

Office (337) 234-5288
 Cell (337) 234-5491

ATWATER CONSULTANTS, LTD.

REGISTERED AND CERTIFIED PETROLEUM PROFESSIONALS

GEOLOGICAL, ENGINEERING, GEOPHYSICAL,
 TRAINING AND EXPERT WITNESS SERVICES

3525 Hessmer Ave, Ste 304
 Metairie LA 70002

Tel. (504) 581-6527
 Fax (504) 524-7798

Please support NOGS advertisers!



626 E. Kaliste Saloom
 Lafayette, LA 70508

16900 Greenspoint Dr, Suite 225-S,
 Houston, TX 77060

www.stoneenergy.com



CIMAREX ENERGY CO.

GULF OF MEXICO REGION
 GOM, SE La., N. La., MS, AL

1100 Poydras St.; Suite 1100

New Orleans, Louisiana 70163

504-586-1815 / Fax 504-586-9035

Keith Gourgues
 Region Manager

NORTHCOAST OIL COMPANY

610 E. Rutland St.
 Covington, LA 70433
 (985) 898-3577
 (985) 898-3585 FAX

Jack M. Thorson
Eric C. Broadbridge
J. Daryl Gambrell
Raymond W. Stephens

(832) 242-6000 (O)
 (713) 917-0493 (O)

(504) 931-7506 (C)
johnjurasin@jurasinoilgas.com

JURASIN OIL & GAS

9700 Richmond Ave., Suite # 124
 Houston, TX 77042-4821

JOHN M. JURASIN
 President

Cert. Pet. Geologist #4284
 Cert. Prof. Earth Scientist #1961

Collarini Energy Staffing

Full-Time and Temporary Personnel

Facilities • Drilling • Production • Reservoir Engineering
 Land and Legal • Geoscience • Information Technology •
 Health and Safety • Management • Supply Chain
 Accounting • Administrative Support

11111 Richmond Ave., Suite 126
 Houston, Texas 77082

832-251-0553



www.collarini.com

Collarini Associates

Reservoir Engineering
 Oil & Gas Property Evaluation
 3-D Seismic Interpretation
 Integrated Field Studies

832-251-0160
 504-887-7127

Houston
 New Orleans

NEW AVO MODEL TURNS HEADS!

[She Must Have Used **KINGDOM[®] 8.3!**]



Be the envy of your neighbors with **KINGDOM 8.3.**

New KINGDOM 1D Forward Modeling allows geoscientists to conduct advanced “What-If” analysis on pre- and post-stack data. And while the interface is intuitive enough for beginners, it is powerful enough for experts.

You can instantly change geologic properties such as P- and S-velocity, density, thickness, porosity, and Poisson’s Ratio. Interactively substitute fluids using the Biot-Gassmann method. Control the precise makeup of pore fluids by adjusting fluid properties such as salinity, gas gravity, GOR, and API gravity.

Best of all, it’s integrated in one executable, ensuring you never have to switch in and out of multiple applications to finish your workflow.

With KINGDOM 8.3, now every geoscientist can pursue a career in modeling!

See the full fall lineup from SMT, the global market leader for PC-based interpretation. View our webinar on What’s New In KINGDOM 8.3 at www.seismicmicro.com/smt-model7


Call your sales representative TODAY about “Introductory Pricing” on this new module.

Intuitive. Integrated. Interpretation.

USA +1 (713) 464-6188 **Canada** +1 (403) 303-3365 **Colombia** +57 (1) 618-0239

Russia +7 495 980 89 82 **Singapore** +65 6220 1089 **UK** +44 (0) 20 8240 6524



ANSYTHE Donald I. Andrews 504-887-3432 	D-O-R ENGINEERING, INC. 3-D and Geoscience Services 120 Oil Center Dr., Bldg. 12 P.O. Box 51707, Lafayette, LA 70505 Bus. (337) 233-2378 Fax (337) 233-2907
THE BOEBEL COMPANY Oil and Gas Investments 170 Broadway Street, Suite 321 New Orleans, LA 70118 (504) 866-4313	EDWARD B. PICOU, JR. Consulting Micropaleontologist - Retired 228 St. Charles Ave., Suite 1330 C New Orleans, LA 70130 Bus. (504) 529-5155 Res. (504) 282-3096
BOO-KER OIL & GAS CORP. Gray S. Parker 826 Union, Suite 300 New Orleans, LA 70112 Bus. (504) 581-2430 Fax (504) 566-4785	H. WARREN BELL Oil and Gas Exploration 2500 Tanglewilde, Suite 485 Houston, TX 77063-2126 Bus (713) 266-7297 Fax (713) 266-7298
C & R EXPLORATION, INC. Carlo C. Christina Lawrence G. Ringham	PHELPS GEOSCIENCE Onshore Gulf of Mexico Geology and Geophysics Prospect Generation and Evaluation Houston, TX jsfphelps@yahoo.com (281) 398-5208
C. R. RONDEAU Petroleum Geologist 119 W Southland Ave. Ironwood, MI 49938 Res. (906) 932-4692	RAFIDI OIL AND GAS, INC. Jaser N. Rafidi, President 4415 Shore Dr., Suite 202 Metairie, LA 70006 Bus. (504) 722-2942 Fax (504) 888-5539; Res. (504) 888-1661
CLASSEN EXPLORATION, INC. James S. Classen Looking for close in deals P.O. Box 140637 Boise, ID 83714 classenllc@msn.com Bus. (208) 854-1037 Fax (208) 854-1029	ROY C. WALTHER Petroleum Geologist 2421 Prancer Street New Orleans, LA 70131 Bus. (504) 392-8513 Res. (504) 392-9332
COLLES C. STOWELL Oil and Gas Consultant 22 Sea St. Manchester, MA 01944 (978) 526-1286	TONY CAROLLO Consulting Geologist Unitization Geosteering Field Studies 1701 Peach Street Metairie, LA 70001 Bus. (504) 885-0004 Res. (504) 885-6829

New NOGS
Members
December 2008

Noelle Chalona
Delta Consultants
Staff Geologist
Ste 206 - 4621 W Napoleon Ave
Metairie, LA 70001
504-324-4009

Brendan T. Yuill
Student - University of Arizona
5207 Magazine St - Apt A
New Orleans, LA 70115
480-710-9894

REINSTATED

Tess Passey
1120 Austerlitz St
New Orleans, LA 70115
765-994-0366

PGS. Clearly Better.

Crystal continues...

Wide Azimuth Multi-Client 3D

- » 580 deepwater Gulf of Mexico blocks
- » Ramform technology and efficiency advantages
- » Proven portfolio of Wide Azimuth data processing technologies
 - » Full Azimuth Tomography
 - » 3DSRME
 - » Pre-stack Depth Migration
 - » Kirchhoff
 - » WEM
 - » Beam
 - » RTM

Osl
Tel: 47-67-52-6400
Fax: 47-67-52-6464

London
Tel: 44-1932-260-001
Fax: 44-1932-266-465

Houston
Tel: 1-281-509-8000
Fax: 1-281-509-8500

Singapore
Tel: 65-6735-6411
Fax: 65-6735-6413

A Clearer Image
www.pgs.com



SEE YOUR DATA IN A WHOLE NEW LIGHT!

Take the pressure out of exploration
and drilling by seeing what you
are going to encounter.



eSeis

www.e-seis.com
713.531.1447

- Lithology & Fluids
- Depositional Facies
- Pore Pressure from V & Q
- Well Planning Consultation

MARINE PROPERTIES, LLC BERKSHIRE EXPLORATION CO.

MONTE C. SHALETT, CPL, PRESIDENT

3030 Lausat Street
Metairie, LA 70001-5924

BUS. (504) 831-7779
FAX. (504) 831-8315

WWW.NOGS.ORG

NEW ORLEANS GEOLOGICAL SOCIETY

810 Union Street, Suite 300
New Orleans, LA 70112-1430



PCI

Paleo Control, Inc.

Houston, Texas
713-849-0044

Drilling Wells, Studies and Data Base

Loyd Tuttle

Frio, SE Texas

Bob Liska

Wilcox, S and SE Texas

Jim Thorpe

Miocene and Cam-Miogyp

